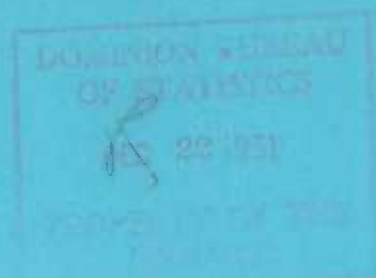


C-1

72 003



GOVERNMENT OF CANADA

DOES NOT CIRCULATE
NE PAS PRÊTER

MAN-HOURS AND HOURLY EARNINGS

OCTOBER, 1951



DOMINION BUREAU OF STATISTICS

Department of Trade and Commerce

Vol. 7

No. 10

Published by

Authority of the Rt. Hon. C. D. Howe
Minister of Trade and Commerce

Prepared in

Employment Section of the Labour and Prices Division,
Dominion Bureau of Statistics, Ottawa

CONTENTS

	<u>Page</u>
TEXTUAL SUMMARY	1

TABLES

1. Changes in the Average Earnings of Hourly-rated Wage-earners Reported at Oct. 1, 1951, as compared with the same date in preceding years	3
2. Average Hours and Average Hourly and Weekly Wages of Hourly-rated Wage-earners, Canada, by Industry	4

AVERAGE HOURS AND AVERAGE HOURLY EARNINGS OF HOURLY-RATED WAGE-EARNERS IN:

3. Manufacturing, Canada	5
4. Specified Non-manufacturing Industries, Canada	6
5. Manufacturing, Provinces	10
6. Manufacturing, Metropolitan Areas	12
7. Specified Industries, Provinces	14
8. Specified Industries, Metropolitan Areas	17

INDEX NUMBERS OF AVERAGE HOURLY EARNINGS IN:

9. Heavy Electrical Machinery and Equipment Industry	18
------------------------------------------------------------	----

AVERAGE WEEKLY WAGES OF HOURLY-RATED WAGE-EARNERS IN:

10. Manufacturing, Canada and Provinces	19
11. Manufacturing, Metropolitan Areas	20

CHART

Average Hourly Earnings, Manufacturing	2
----------------------------------------------	---

EXPLANATORY NOTES AND FOOTNOTES

Notes on methods and scope of monthly surveys of hours and earnings and footnotes to tables	facing page 1
---------------------------------------------------------------------------------------------------	--------------------

EXPLANATORY NOTES.

General.-- The monthly statistics of average hours, average hourly earnings and average weekly wages, like those of employment, payrolls and average weekly wages and salaries, are based on data from establishments usually employing 15 persons and over.

Coverage.-- Firms are asked to furnish information for the male and female wage-earners for whom they keep records of hours worked, so that the statistics relate, in the main, to hourly-rated wage-earners, or production workers, employed full time and part-time. Casual workers are also included. Data for salaried personnel are purposely excluded. In many cases, information is not available for certain classes of wage-earners, whose earnings, like those of most salaried employees, are not directly dependent on the number of hours worked; examples of wage-earners frequently excluded are route drivers, piece-workers in many but not all establishments, truck men, etc. Numerous employers do not keep record of man-hours for any classes of employees. The number of workers for whom information is given in the present report is therefore smaller than the total number of workers (wage-earners and salaried employees) for whom statistics of employment, payrolls, average earnings, sex distribution, etc., are given in the monthly bulletins on employment and payrolls (Report 9-4010).

In manufacturing, largely represented in the statistics of this report, the data relate to over 75 p.c. of all employees on the staffs of the firms co-operating in the monthly surveys of employment and payrolls; in 1948, the wage-earners for whom information on man-hours was obtained formed over 80 p.c. of the total number of wage-earners reported by practically all manufacturing establishments to the Annual Census of Manufactures, including hourly-rated and other wage-earners. In mining and construction, data on man-hours and hourly earnings are provided for approximately 84 p.c. and 71 p.c. of the total employees of firms co-operating in the monthly surveys of employment and payrolls in those industries, respectively; in 1948, the monthly statistics were based on approximately 89 p.c. and 54 p.c. of the total number of wage-earners reported to the Census of Mining and Census of Construction, respectively.

Man-Hours.-- The statistics of man-hours include hours worked by full time and part-time wage-earners, including overtime hours actually worked; premium or penalty hours credited for purposes of computing overtime payment are not included. Hours credited to wage-earners absent on leave with pay in the reported pay periods are included in the statistics as though the hours had been worked. The averages are obtained by dividing the aggregate hours reported for the week by the number of full time and part-time wage-earners working such hours.

Wages.-- The questionnaire calls for a statement of gross wages earned by the full time and part-time wage-earners whose hours are reported, before deductions are made for taxes, unemployment insurance contributions, etc. Payments for overtime work, incentive or production, and cost-of-living bonuses paid at regular intervals, and amounts credited to wage-earners on leave with pay in the reported pay periods are included. The value of board and lodging which in some cases is part of the remuneration of workers is not included. Retroactive pay not earned during the reported pay period, and bonuses paid at infrequent intervals are also excluded.

Pay Periods.-- Statistics of man-hours and wages reported for periods exceeding one week in duration are reduced by the appropriate proportions to calculate the number of hours and the wages in one week in the stated pay period. Such data are combined with weekly figures furnished by employers whose records are maintained on a weekly basis, so that, in all cases, the tabulated statistics represent the situation in one week in each month.

Footnotes.

The following footnotes explain the content of various industrial classes listed in the detailed tables in this bulletin. In some industries, the group breakdown is less extensive than in the Standard Industrial Classification; in these cases, figures for certain categories not shown are contained in the group totals.

- (a) Alluvial gold and auriferous quartz mining.
- (b) Copper-gold-silver; iron; nickel-copper; silver-cobalt; silver-lead-zinc, and miscellaneous metal mining.
- (c) Non-metal mining and quarrying, clay and sand pits.
- (d) Miscellaneous wood products.
- (e) Paper boxes and bags; roofing papers; miscellaneous paper products.
- (f) Household, office and store machinery; machine tools; machinery, n.e.s.
- (g) Abrasives, asbestos, hydraulic cement, clay, glass, lime and gypsum, stone, concrete and miscellaneous non-metallic products.
- (h) Buildings and structures, other construction, and special trade contractors.
- (i) Interurban bus and coach and urban and suburban transportation system; taxi-cab and truck transportation; services incidental to transportation, and other transportation.
- (j) Hotels and restaurants, laundries, dyeing, cleaning and pressing, business and recreational services.

(..) figures not available.

MAN-HOURS AND HOURLY EARNINGS, OCTOBER, 1951.

MANUFACTURING.

Factors contributing to the higher earnings recorded in manufacturing in Canada in the week ending on or about Oct. 1 included the settlement of industrial disputes, increases of wage rates, the payment of larger cost of living bonuses, and greater amounts of overtime work at premium rates. These factors affected the average hourly earnings of hourly paid wage-earners in the tobacco, iron and steel and wood products industries, in particular, although other industries were affected in some provinces.

Average wages of hourly paid factory wage-earners rose to \$51.03 in the week ending on or about Oct. 1, a figure higher by 13 p.c. than in the same week of 1950. The increase of 98 cents from last month was brought about by a fractionally longer work week and higher average hourly earnings; the average rose from 120.6 cents at Sept. 1, to 121.8 cents at Oct. 1, as compared with 105.3 cents 12 months earlier.

In DURABLE GOODS a small increase in hours worked accompanied a rise of 2.1 cents in average hourly earnings, bringing the average weekly wages for hourly paid employees to a new high of \$55.48. This latter figure represents a growth of 12.9 p.c. in the 12-month period ending Oct. 1, 1951. Each of the sub-groups within durable goods revealed higher average hourly earnings, and all but transportation equipment, a longer working week.

In NON-DURABLE GOODS manufacture, the increase in average hourly earnings in the month was fractional, amounting only to 0.5 cents, but there was a rise of 15.4 p.c. in the period Oct. 1, 1950, to Oct. 1, 1951. Average weekly wages advanced by 12.7 p.c. in the same interval.

A small decrease in average hourly earnings occurred in the foods and beverage group, mainly due to the employment of large numbers of seasonal workers in canneries, but in all other industries in the non-durable group hourly earnings increased slightly.

In several of the NON MANUFACTURING INDUSTRIES, hourly earnings also advanced. Instances were in the electric and motor transportation group, mining and construction, in which gains in the month amounted to 0.6 cents, 1.2 cents and 2.0 cents, respectively.

STATISTICS FOR THE PROVINCES

Overtime and increases in employment in establishments paying higher-than-average rates increased hourly earnings in construction in Newfoundland, but short time in pulp and paper mills decreased the average in manufacturing. Wage increases were reported in iron and steel and in saw and planing mills in Nova Scotia and New Brunswick, respectively. The trend was also upward in Quebec's tobacco, transportation equipment and printing, publishing and allied industries. Average hourly earnings moved upward in buildings and structures, and downward in highway, bridge and street construction in Quebec. In Ontario, wage rates were increased in the clothing, paper products, wood products and non-ferrous metal products industries. Employees in bread and bakery products in Alberta also received wage increases. The average hourly earnings of workers engaged in building construction in Saskatchewan rose due to wage increases, overtime payments, and changes in the distribution of employees and hours. Widespread wage boosts were given to wage-earners in pulp and paper mills and in the iron and steel industry in British Columbia.

AVERAGE HOURLY EARNINGS IN MANUFACTURING 1945 — 1951

CENTS

CENTS

150

150

130

130

110

110

90

90

70

70

0

0

Jan. 1945 Jan. 1946 Jan. 1947 Jan. 1948 Jan. 1949 Jan. 1950 Jan. 1951 Jan. 1952 Jan.

DURABLE GOODS

ALL
MANUFACTURES

NON-DURABLE GOODS

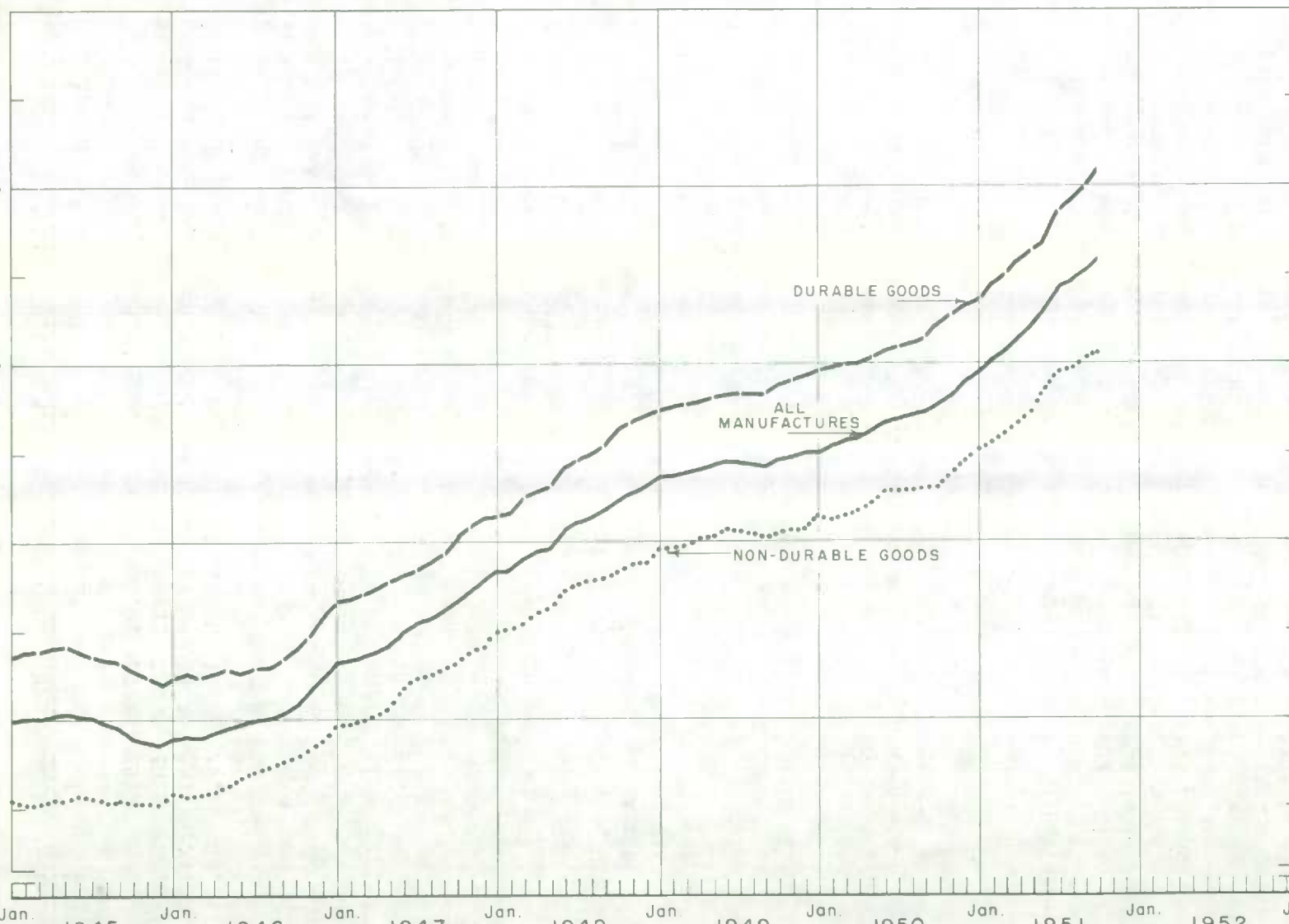


Table 1.- Changes in the Average Earnings of Hourly-rated Wage-earners Reported at Oct. 1, 1951, as compared with the same date in preceding years.

(Decrease indicated by the minus sign)

Changes in Average Hourly Earnings and Weekly Wages
of Hourly-rated Wage-earners

Industry and Area	Hourly-rated Wage-earners Reported at Oct. 1, 1951	Change in Average Hourly Earnings Oct. 1, 1951 over			Change in Average Weekly Wages Oct. 1, 1951 over		
		Oct. 1 1950	Oct. 1 1949	Oct. 1 1948	Oct. 1 1950	Oct. 1 1949	Oct. 1 1948
(a) <u>Canada</u>	no.	p.c.	p.c.	p.c.	p.c.	p.c.	p.c.
Manufacturing	836,514	15.7	22.7	28.8	13.0	20.4	25.4
Mining	79,307	12.3	18.4	20.5	14.4	18.7	21.9
Buildings and Structures	126,593	15.5	23.7	28.5	18.4	24.0	27.9
Service	32,542	6.5	10.3	17.4	6.4	11.6	18.2

(b) Manufacturing, by Provinces

Newfoundland	7,567	19.4	11.6
Nova Scotia	21,316	15.5	15.4	23.4	10.0	10.4	17.8
New Brunswick	16,019	19.2	24.7	28.2	15.3	22.8	25.1
Quebec	268,861	16.0	21.5	27.5	12.9	19.5	23.8
Ontario	413,291	15.5	23.2	29.2	13.3	20.9	26.5
Manitoba	28,260	16.4	23.0	27.5	13.3	17.6	21.0
Saskatchewan	4,112	15.2	20.4	27.6	13.2	18.3	26.7
Alberta	15,701	15.7	21.2	28.2	14.0	15.2	23.6
British Columbia	60,881	17.0	25.5	33.4	13.1	24.5	29.6

(c) Manufacturing, by Cities

Montreal	140,174	14.5	19.8	26.0	12.4	18.1	21.5
Toronto	122,004	16.7	24.7	29.0	15.5	24.4	28.7
Hamilton	46,281	15.1	25.6	36.1	12.0	18.4	28.0
Windsor	24,163	8.2	14.8	14.8	2.0	7.7	5.2
Winnipeg	25,450	16.0	22.4	26.8	12.1	16.1	19.9
Vancouver	23,988	16.9	25.4	34.5	13.3	24.1	31.3

Table 2.- Average Hours and Average Earnings of Hourly-rated Wage-earners, Canada, by Industry.

Industry	Average Hours			Average Hourly Earnings			Average Weekly Wages			Wage-earners Reported at Oct. 1, 1951
	Oct. 1 1951	Sept. 1 1951	Oct. 1 1950	Oct. 1 1951	Sept. 1 1951	Oct. 1 1950	Oct. 1 1951	Sept. 1 1951	Oct. 1 1950	
	no.	no.	no.	¢	¢	¢	¢	¢	¢	no.
Mining	43.9	42.2	43.1	138.3	137.1	123.1	60.71	57.86	53.06	79,307
Metal mining	44.2	42.5	44.5	141.0	140.4	124.6	62.32	59.67	55.45	44,195
Gold (a)	46.4	44.9	..	125.5	124.6	..	58.23	55.95	..	18,528
Other metal (b)	42.6	40.8	..	153.2	152.2	..	65.26	62.10	..	25,667
Fuels	41.8	39.7	..	141.5	140.8	..	59.19	55.90	..	24,548
Coal	41.2	39.1	39.1	138.5	138.7	128.9	57.06	54.23	50.40	19,549
Oil and natural gas	44.0	42.1	..	152.8	148.2	..	67.23	62.39	..	4,999
Non-metal (c)	47.5	46.8	..	120.3	117.8	..	57.23	55.13	..	10,564
Manufacturing	41.9	41.5	42.9	121.8	120.6	105.3	51.03	50.05	45.17	836,514
Food and beverages	42.8	41.8	42.8	99.7	100.8	88.2	42.87	42.13	37.75	96,694
Meat products	40.2	40.5	41.6	133.5	132.9	111.4	53.67	53.82	46.34	15,044
Canned and preserved fruits and vegetables	43.6	36.7	42.8	83.1	83.5	73.9	36.23	30.64	31.63	20,913
Grain mill products	45.9	45.4	46.7	115.5	115.7	99.7	53.01	52.53	46.56	5,520
Bread and other bakery products	44.3	44.9	44.5	93.7	92.2	83.2	41.51	41.40	37.02	8,984
Distilled and malt liquors	41.7	42.3	42.4	122.5	122.3	109.2	51.08	51.73	46.30	10,414
Tobacco and tobacco products	35.7	44.0	41.5	118.7	112.2	100.5	42.38	49.37	41.71	6,851
Rubber products	41.1	40.6	41.5	128.1	127.7	110.6	52.65	51.85	45.98	16,665
Leather products	38.5	38.2	40.4	87.1	86.3	80.4	33.53	32.97	32.48	18,119
Boots and shoes (except rubber)	37.9	38.0	39.0	83.5	83.3	78.2	31.65	31.65	30.67	12,578
Textile products (except clothing)	40.5	39.5	44.0	100.1	99.0	87.1	40.54	39.11	38.32	60,867
Cotton yarn and broad woven goods	37.8	35.4	42.9	101.6	101.3	88.9	38.40	35.86	38.14	23,353
Woollen goods	42.9	41.7	43.9	94.4	93.2	84.0	40.50	38.86	36.88	10,926
Rayon, nylon and silk textiles	43.2	43.4	46.0	103.1	101.8	87.6	44.54	44.18	40.30	13,940
Clothing (textile and fur)	37.6	37.3	39.5	88.6	87.7	80.5	33.49	32.71	31.82	63,964
Men's clothing	36.0	36.0	39.2	85.5	84.7	79.2	30.78	30.49	31.05	21,304
Women's clothing	36.5	36.2	36.8	91.9	90.9	84.6	33.54	32.91	31.21	13,700
Knit goods	40.6	39.7	41.3	89.1	87.9	78.6	36.17	34.90	32.46	18,829
*Wood products	42.2	41.3	42.6	110.5	108.5	98.4	46.76	44.93	41.82	70,157
Saw and planing mills	41.5	40.4	42.2	118.3	116.5	104.1	49.45	47.07	43.53	45,040
Furniture	42.5	42.3	43.6	100.9	98.3	91.0	42.58	41.58	39.68	15,460
Other wood products (d)	44.2	43.7	43.3	93.0	91.2	85.1	41.11	39.85	36.85	9,657
Paper products	47.2	47.3	47.6	136.8	135.0	113.3	64.67	63.86	53.93	68,993
Pulp and paper mills	46.7	46.8	49.0	146.2	143.8	120.8	71.20	70.17	59.19	61,507
Other paper products (e)	42.8	42.7	44.1	105.3	104.4	92.0	45.07	44.56	40.67	17,486
Printing, publishing and allied industries	40.5	40.1	40.8	135.3	133.9	123.9	54.60	53.69	50.55	26,766
*Iron and steel products	42.2	41.8	43.0	137.0	134.8	117.7	57.81	56.35	50.61	140,891
Agricultural implements	38.7	40.5	39.1	153.5	150.4	124.1	59.56	61.36	48.82	13,410
Fabricated and structural steel	43.7	42.2	44.5	140.6	137.5	122.1	61.44	58.03	54.23	6,488
Hardware and tools	43.0	42.4	43.2	122.4	121.0	104.6	52.63	51.30	45.19	9,537
Heating and cooking appliances	40.8	40.3	43.9	120.6	120.3	108.8	49.29	48.48	47.81	6,046
Iron castings	43.5	42.6	44.6	134.7	132.4	120.6	58.59	56.40	53.79	17,250
Machinery mfg. (f)	44.2	43.1	44.1	129.1	127.5	111.7	57.06	54.95	49.26	26,338
Primary iron and steel	40.5	40.7	41.9	150.2	147.1	128.6	61.28	59.87	53.97	32,267
Sheet metal products	41.8	41.6	42.9	130.5	126.1	109.8	54.68	52.46	47.10	13,336
*Transportation equipment	41.4	41.5	42.8	140.2	137.7	123.9	58.04	57.15	53.03	110,529
Aircraft and parts	46.5	47.5	47.8	135.2	135.5	118.7	62.91	64.77	56.74	14,559
Motor vehicles	39.3	39.2	40.7	151.3	148.1	139.8	59.46	58.06	56.90	23,453
Motor vehicle parts and accessories	41.8	39.7	43.3	143.2	138.4	124.4	59.86	54.94	53.87	16,269
Railroad and rolling stock equipment	39.8	40.8	43.1	141.3	137.4	116.7	56.24	56.06	50.30	37,457
Shipbuilding and repairing	42.7	42.8	42.4	128.2	128.0	113.8	54.74	54.78	48.25	17,402
*Non-ferrous metal products	42.2	42.1	43.4	135.7	134.0	113.6	57.27	56.41	49.26	38,151
Aluminum products	41.9	43.1	43.0	123.6	123.3	102.0	51.79	53.14	43.86	4,974
Brass and copper products	43.2	42.4	43.7	126.5	123.5	110.1	54.55	52.36	48.11	7,932
Smelting and refining	42.1	42.2	43.8	150.5	148.6	123.8	63.36	62.71	54.22	18,896
*Electrical apparatus and supplies	41.1	40.5	41.7	132.7	131.7	116.5	54.54	53.73	48.58	44,864
Heavy electrical machinery and equipment	41.0	41.0	41.0	152.6	152.2	132.3	62.57	62.40	54.24	11,294
*Non-metallic mineral products (g)	44.8	44.1	45.4	121.5	120.1	104.4	54.43	52.96	47.40	20,672
Clay products	45.5	44.5	45.0	113.2	112.0	101.2	51.51	49.84	45.64	4,898
Glass and glass products	44.8	43.6	45.8	116.2	115.1	100.5	52.06	50.18	46.13	5,531
Products of petroleum and coal	41.9	41.1	41.4	163.4	159.7	133.7	68.46	65.64	55.35	6,975
Chemical products	42.7	42.6	43.5	123.5	122.3	106.0	52.73	52.10	46.11	29,519
Medicinal and pharmaceutical preparations	41.3	41.1	41.1	99.4	97.8	89.3	41.05	40.20	36.70	3,784
Acids, alkalis and salts	43.7	43.9	45.2	139.6	137.4	119.4	61.01	60.32	53.97	5,766
Miscellaneous manufacturing industries	41.6	41.1	42.1	99.7	98.0	89.7	41.27	40.28	37.76	15,137
Durable goods	42.0	41.7	43.0	132.1	130.0	114.3	55.48	54.21	49.15	425,264
Non-durable goods	41.8	41.4	42.8	111.1	110.6	96.3	46.44	45.79	41.22	411,250
Construction	42.4	41.7	41.0	122.3	120.3	107.2	51.86	50.17	43.95	181,260
Buildings and structures (h)	41.6	40.9	40.6	133.8	131.0	115.8	55.56	53.58	47.01	126,593
Highways, bridges and street construction	43.6	43.0	41.9	96.9	96.4	88.3	42.25	41.45	37.00	51,542
Electric and motor transportation (i)	45.8	45.5	..	119.8	119.2	..	54.87	54.24	..	29,359
Service (j)	42.5	42.7	42.5	70.9	68.3	66.6	30.13	29.18	28.31	32,542
Hotels and restaurants	43.5	44.0	43.4	70.4	66.9	65.3	30.62	29.44	28.34	21,761
Laundries and dry cleaning plants	41.0	40.5	41.3	68.4	67.7	66.0	28.04	27.42	27.26	9,591

For footnotes (a) to (j) see explanatory notes facing page 1. *Durable manufactured goods industries. 1/Index numbers of average hourly earnings in the heavy electrical machinery and equipment industry are given in Table 9 on page 18.

Table 3.- Average Hours Worked and Average Hourly Earnings of Hourly-rated Wage-earners in Manufacturing, Canada.

Week Preceding	All Manu- factures	Average Hours			All Manu- factures	Average Hourly Earnings		
		Durable Goods	Non-durable Goods	Goods		Durable Goods	Non-durable Goods	Goods
Oct. 1	no.	no.	no.		¢	¢	¢	
1945	44.7	45.0	44.5		67.8	75.4	60.4	
1946	42.9	42.8	42.9		71.4	77.8	65.7	
1947	43.1	43.5	42.6		83.4	90.6	76.2	
1948	43.0	43.3	42.7		94.6	102.6	86.6	
<u>1949</u>								
*Jan. 1	40.6	41.0	40.2		97.2	104.8	89.3	
Feb. 1	42.9	43.2	42.7		97.2	105.0	89.3	
Mar. 1	43.0	43.2	42.7		97.6	105.3	89.6	
Apr. 1	42.9	43.2	42.6		98.2	105.7	90.3	
May 1	42.5	42.7	42.3		98.5	106.2	90.7	
June 1	40.8	41.1	40.5		99.1	106.5	91.5	
July 1	41.8	42.4	41.2		99.1	106.7	91.3	
Aug. 1	41.9	42.1	41.7		98.8	106.5	91.1	
Sept. 1	42.4	42.5	42.2		98.4	106.6	90.4	
Oct. 1	42.7	43.0	42.5		99.3	107.8	91.0	
Nov. 1	42.8	42.8	42.9		99.5	108.0	91.4	
Dec. 1	42.9	43.0	42.9		100.0	108.7	91.5	
<u>1950</u>								
*Jan. 1	39.9	40.3	39.6		101.1	109.3	92.9	
Feb. 1	42.3	42.2	42.4		100.9	109.5	92.6	
Mar. 1	42.5	42.6	42.5		101.4	109.8	93.1	
Apr. 1	42.8	43.0	42.6		101.7	110.0	93.6	
May 1	42.6	42.9	42.4		102.5	110.6	94.3	
June 1	42.0	42.2	41.7		103.5	111.4	95.5	
July 1	42.5	42.9	42.2		103.9	111.8	95.7	
Aug. 1	42.5	42.7	42.2		104.2	112.5	95.8	
Sept. 1	41.9	41.5	42.4		104.4	112.9	95.9	
Oct. 1	42.9	43.0	42.8		105.3	114.3	96.3	
Nov. 1	43.0	43.1	43.0		106.4	115.2	97.5	
Dec. 1	43.1	43.1	43.1		107.8	116.4	99.0	
<u>1951</u>								
*Jan. 1	40.1	40.2	39.9		109.0	117.1	100.5	
Feb. 1	42.9	43.1	42.6		110.4	119.0	101.2	
Mar. 1	42.3	42.5	42.2		111.4	119.9	102.3	
*Apr. 1	42.2	42.3	42.1		112.8	121.6	103.4	
May 1	42.5	42.6	42.5		114.1	122.9	104.6	
June 1	41.9	42.1	41.6		115.9	123.8	107.2	
July 1	41.7	42.0	41.4		118.4	127.0	109.1	
Aug. 1	41.4	41.4	41.3		119.1	128.2	109.4	
Sept. 1	41.5	41.7	41.4		120.6	130.0	110.6	
Oct. 1	41.9	42.0	41.8		121.8	132.1	111.1	

*These averages were affected by loss of working time at the year-end holiday in the case of Jan. 1 and by the Easter holidays in the case of Apr. 1, 1951.

Table 4.- Average Hours Worked and Average Hourly Earnings of Hourly-rated Wage-earners in Specified Industries, Canada.

<u>Week Preceding</u>		<u>Mining All Branches</u>	<u>Coal Mining</u>	<u>Metal Mining</u>	<u>Non-metal Mining</u>	<u>Electric and Motor Transportation</u>
<u>Oct. 1</u>		(a) <u>Average Hours</u>				
1945		44.1	40.5	46.3
1946		43.7	40.9	45.5
1947		43.5	39.9	44.9
1948		43.4	39.0	45.4
<u>1949</u>						
*Jan.	1	38.4	31.2	41.8
Feb.	1	44.0	40.3	45.9
Mar.	1	42.5	37.4	45.5
Apr.	1	42.3	36.6	45.5
May	1	41.4	34.7	44.6
June	1	41.2	33.5	45.4
July	1	42.6	37.8	45.5
Aug.	1	42.9	39.0	45.1
Sept.	1	42.9	38.4	45.1
Oct.	1	43.8	39.4	45.8
Nov.	1	44.5	40.3	46.5
Dec.	1	44.4	40.3	46.4
<u>1950</u>						
*Jan.	1	40.2	35.1	42.7
Feb.	1	43.0	37.4	46.0
Mar.	1	43.8	39.0	46.2
Apr.	1	43.7	39.2	46.1
May	1	43.5	38.3	46.1
June	1	42.3	35.1	45.2
July	1	43.2	39.3	44.7
Aug.	1	43.7	39.8	45.2
Sept.	1	41.7	35.4	43.8
Oct.	1	43.1	39.1	44.5
Nov.	1	43.9	39.6	45.3
Dec.	1	43.9	40.2	45.2
<u>1951</u>						
*Jan.	1	40.5	34.9	42.6	41.5	44.7
Feb.	1	44.1	40.6	45.4	45.8	45.0
Mar.	1	43.7	39.5	44.9	45.9	45.3
*Apr.	1	42.5	36.4	44.4	45.6	44.6
May	1	43.4	39.5	44.6	46.6	45.0
June	1	43.0	38.0	44.3	47.0	44.4
July	1	43.3	40.5	43.9	45.1	45.4
Aug.	1	43.0	41.2	43.3	45.3	44.5
Sept.	1	42.2	39.1	42.5	46.8	45.5
Oct.	1	43.9	41.2	44.2	47.5	45.8

*See footnote on page 5.

Table 4.- Average Hours Worked and Average Hourly Earnings of Hourly-rated Wage-earners in Specified Industries. (Continued)

<u>Week</u> <u>Preceding</u>	<u>Mining</u> <u>All Branches</u>	<u>Coal</u> <u>Mining</u>	<u>Metal</u> <u>Mining</u>	<u>Non-metal</u> <u>Mining</u>	<u>Electric and Motor</u> <u>Transportation</u>
<u>Oct. 1</u>	(b) <u>Average Hourly Earnings (in cents)</u>				
1945	85.6	94.0	86.1
1946	88.3	95.7	89.2
1947	101.3	110.9	103.0
1948	114.8	126.8	114.6
<u>1949</u>					
Jan. 1	117.1	130.6	115.9
Feb. 1	116.0	128.2	113.7
Mar. 1	118.1	127.6	115.9
Apr. 1	117.5	127.3	115.1
May 1	117.2	126.4	116.2
June 1	117.0	127.3	116.0
July 1	116.6	125.8	116.0
Aug. 1	115.9	127.4	115.3
Sept. 1	115.8	126.9	115.9
Oct. 1	116.8	127.7	116.4
Nov. 1	118.6	132.1	117.2
Dec. 1	119.6	132.8	117.6
<u>1950</u>					
Jan. 1	120.3	131.3	118.8
Feb. 1	119.4	129.7	117.5
Mar. 1	120.7	130.8	119.0
Apr. 1	120.7	131.3	118.9
May 1	120.9	129.6	120.3
June 1	120.1	130.5	119.7
July 1	120.4	129.3	120.5
Aug. 1	121.5	129.3	122.5
Sept. 1	121.1	129.3	122.2
Oct. 1	123.1	128.9	124.6
Nov. 1	123.7	130.3	124.4
Dec. 1	124.8	130.5	125.2
<u>1951</u>					
Jan. 1	127.1	131.0	127.9	107.4	111.0
Feb. 1	127.7	131.8	128.1	111.3	110.7
Mar. 1	130.1	135.5	130.0	114.8	112.4
Apr. 1	130.5	136.3	130.2	115.5	116.2
May 1	131.5	137.6	131.6	116.4	115.6
June 1	131.6	137.3	132.0	116.7	116.5
July 1	133.3	139.0	134.3	115.8	117.9
Aug. 1	136.1	137.4	139.3	118.0	119.2
Sept. 1	137.1	138.7	140.4	117.8	119.2
Oct. 1	138.3	138.5	141.0	120.6	119.8

Table 4.- Average Hours Worked and Average Hourly Earnings of Hourly-rated Wage-earners in Specified Industries. (Continued)

Week Preceding	Buildings and Structures	Highways, Bridges and Street Construction	Service	Hotels Restaurants	Laundries and Dry Cleaning Plants
Oct. 1	(a) Average Hours				
1945	41.3	37.1	44.0	45.3	41.4
1946	40.1	38.2	42.7	43.5	41.2
1947	40.5	38.9	42.5	43.3	40.9
1948	41.8	39.2	42.2	42.7	41.4
<u>1949</u>					
*Jan. 1	35.6	35.9	41.4	42.8	38.7
Feb. 1	39.6	40.6	42.2	42.9	41.2
Mar. 1	40.8	40.3	42.4	43.4	40.9
Apr. 1	40.5	39.1	42.6	43.4	41.6
May 1	40.4	35.2	42.3	43.0	41.5
June 1	38.6	38.1	41.8	42.7	40.4
July 1	39.1	39.9	42.3	43.1	41.0
Aug. 1	41.1	40.3	42.2	43.2	40.5
Sept. 1	41.1	39.4	42.5	43.4	40.8
Oct. 1	41.5	38.6	42.0	42.5	41.4
Nov. 1	41.2	38.9	41.9	42.4	41.2
Dec. 1	41.1	38.8	42.7	43.6	41.6
<u>1950</u>					
*Jan. 1	34.6	37.8	41.4	43.3	37.7
Feb. 1	38.6	40.6	42.1	42.9	40.9
Mar. 1	40.0	45.2	42.8	44.0	41.0
Apr. 1	40.2	40.8	43.0	43.8	42.0
May 1	40.1	38.6	42.9	43.6	42.2
June 1	39.4	38.6	42.8	43.8	41.4
July 1	40.5	40.5	42.7	43.9	41.0
Aug. 1	40.2	41.9	42.5	43.8	40.5
Sept. 1	40.2	41.9	41.8	42.6	40.5
Oct. 1	40.6	41.9	42.5	43.4	41.3
Nov. 1	40.4	41.4	42.5	43.4	41.3
Dec. 1	40.1	39.8	42.7	43.5	41.5
<u>1951</u>					
*Jan. 1	33.7	38.3	42.0	43.4	39.1
Feb. 1	39.2	42.5	42.9	43.9	41.3
Mar. 1	39.4	44.2	42.4	43.2	41.1
*Apr. 1	37.9	42.3	42.5	43.3	41.0
May 1	39.7	39.5	42.6	43.3	41.6
June 1	38.7	41.2	42.5	43.4	41.1
July 1	40.0	41.8	42.8	43.7	41.4
Aug. 1	40.7	42.7	42.5	43.7	40.2
Sept. 1	40.9	43.0	42.7	44.0	40.5
Oct. 1	41.6	43.6	42.5	43.5	41.0

*See footnote on page 5.

Table 4.- Average Hours Worked and Average Hourly Earnings of Hourly-rated Wage-earners in Specified Industries. (Concluded)

Week Preceding	Buildings and Structures	Highways, Bridges and Street Construction	Service	Hotels Restaurants	Laundries and Dry Cleaning Plants
Oct. 1	(b) Average Hourly Earnings (in cents)				
1945	81.4	63.0	43.9	41.8	48.2
1946	85.3	65.8	48.3	47.5	49.6
1947	94.8	72.6	54.7	53.4	57.5
1948	104.1	80.3	60.4	59.7	60.1
<u>1949</u>					
Jan. 1	105.7	84.4	61.6	61.1	61.2
Feb. 1	108.9	85.5	62.1	61.4	60.8
Mar. 1	108.0	85.7	63.8	63.7	61.2
Apr. 1	108.9	87.6	63.0	62.3	61.9
May 1	108.5	86.2	63.9	63.1	62.8
June 1	107.0	85.1	64.2	63.5	63.0
July 1	107.2	84.9	63.8	62.5	63.5
Aug. 1	106.7	83.7	63.3	62.1	63.2
Sept. 1	107.8	85.1	63.0	61.6	63.2
Oct. 1	108.2	85.4	64.3	63.1	63.9
Nov. 1	109.0	86.8	64.9	63.8	64.3
Dec. 1	109.1	86.5	64.8	63.5	64.5
<u>1950</u>					
Jan. 1	108.9	88.4	64.7	63.4	64.0
Feb. 1	110.7	86.7	65.0	63.8	64.2
Mar. 1	111.7	88.7	66.3	65.4	64.7
Apr. 1	112.4	90.0	65.2	64.0	64.4
May 1	113.9	89.0	66.1	65.1	64.9
June 1	112.4	87.1	65.7	64.3	65.0
July 1	112.2	86.3	65.3	63.9	64.7
Aug. 1	112.5	86.1	64.7	62.9	64.8
Sept. 1	114.1	86.7	64.5	62.2	65.2
Oct. 1	115.8	88.3	66.6	65.3	66.0
Nov. 1	117.1	89.7	67.6	66.5	66.6
Dec. 1	117.5	89.8	67.6	66.8	66.3
<u>1951</u>					
Jan. 1	118.7	89.8	67.5	67.2	65.3
Feb. 1	121.2	93.1	67.7	67.3	65.9
Mar. 1	122.1	92.8	69.6	69.9	66.0
Apr. 1	122.5	94.6	69.0	68.9	66.3
May 1	124.0	94.3	69.8	69.8	66.8
June 1	125.9	95.4	69.3	68.8	67.3
July 1	127.7	95.5	68.9	68.2	67.4
Aug. 1	127.9	95.8	68.4	67.3	67.7
Sept. 1	131.0	96.4	68.3	66.9	67.7
Oct. 1	133.8	96.9	70.9	70.4	68.4

Table 5.- Provincial Averages of Hours Worked and Hourly Earnings of Hourly-rated Wage-earners in Manufacturing.

Week Preceding	N'f'ld.	N.S.	N.B.	Que.	Ont.	Man.	Sask.	Alta.	B.C.
Oct. 1	(a) Average Hours								
1945	..	44.8	46.2	46.7	43.8	43.7	43.5	42.8	42.6
1946	..	42.1	46.1	44.9	41.8	41.9	43.2	41.5	40.4
1947	..	43.9	44.6	45.0	42.4	41.6	41.9	41.7	39.1
1948	..	43.6	45.7	45.0	42.3	43.0	41.2	41.6	38.8
1949									
*Jan. 1	..	41.0	41.4	42.3	40.3	40.1	39.4	40.1	34.9
Feb. 1	..	44.3	45.6	44.5	42.4	42.3	41.6	42.0	38.0
Mar. 1	..	44.0	45.3	44.5	42.6	42.7	41.8	42.4	37.2
Apr. 1	..	43.9	44.8	44.4	42.3	42.7	41.7	42.9	38.4
May 1	..	44.1	44.3	44.1	42.0	41.6	42.4	41.6	37.7
June 1	..	43.3	43.0	41.8	40.3	41.1	42.7	41.4	37.2
July 1	..	43.2	44.3	42.1	41.8	42.5	42.1	42.4	38.3
Aug. 1	..	42.8	44.7	43.1	41.4	42.4	41.5	41.6	37.7
Sept. 1	..	42.9	44.5	43.8	41.8	42.8	41.7	42.9	38.1
Oct. 1	..	43.5	45.3	44.4	42.2	42.7	41.6	42.2	38.0
Nov. 1	..	44.2	44.7	44.4	42.3	42.7	41.1	42.9	38.3
Dec. 1	..	43.0	45.5	44.5	42.4	43.1	41.4	42.7	38.4
1950									
*Jan. 1	..	38.7	41.5	41.3	39.8	39.7	40.2	40.2	34.2
Feb. 1	..	43.1	43.3	43.9	42.1	41.0	40.9	41.2	36.1
Mar. 1	..	43.2	45.3	44.1	41.9	42.9	41.7	42.7	38.1
Apr. 1	45.2	44.0	45.1	44.4	42.2	42.8	42.1	43.0	38.4
May 1	44.1	44.0	44.4	43.9	42.2	42.4	42.3	42.5	38.7
June 1	44.6	43.2	43.8	43.3	41.6	41.7	42.0	42.2	37.4
July 1	44.5	43.6	45.2	43.8	42.2	42.7	41.7	42.6	38.0
Aug. 1	45.0	43.7	45.5	44.0	42.1	42.1	40.4	41.7	37.9
Sept. 1	43.6	42.9	43.8	43.8	41.5	39.2	41.2	39.4	38.1
Oct. 1	46.1	43.7	46.1	44.9	42.2	41.9	41.6	40.7	39.0
Nov. 1	46.0	44.1	44.7	45.0	42.4	42.2	42.0	42.3	38.6
Dec. 1	45.5	43.0	45.3	45.0	42.4	42.8	40.7	42.1	38.7
1951									
*Jan. 1	40.9	38.4	42.1	41.3	39.8	40.4	41.0	40.5	35.5
Feb. 1	41.7	42.6	45.7	44.7	42.4	42.3	40.9	41.6	38.1
Mar. 1	45.2	41.5	44.8	44.4	41.5	42.7	40.5	41.5	38.4
*Apr. 1	43.5	42.7	44.2	43.7	41.8	42.2	40.8	40.7	37.8
May 1	43.7	43.7	43.7	44.3	42.0	41.7	41.0	41.4	38.4
June 1	45.7	43.2	43.5	43.6	41.2	41.8	41.7	41.7	37.4
July 1	44.8	43.9	44.1	42.6	41.5	40.9	41.0	40.7	38.3
Aug. 1	45.2	42.6	43.2	42.9	40.8	40.8	40.7	40.5	37.8
Sept. 1	44.1	41.6	43.4	43.5	40.8	40.9	40.3	40.6	37.6
Oct. 1	43.1	41.6	44.6	43.7	41.4	40.8	40.9	40.1	37.7

*See footnote on page 5.

Table 5.- Provincial Averages of Hours Worked and Hourly Earnings of Hourly-rated Wage-earners in Manufacturing. (Concluded)

Week Preceding	N'f'ld.	N.S.	N.B.	Que.	Ont.	Man.	Sask.	Alta.	B.C.
Oct. 1	(b) Average Hourly Earnings (in cents)								
1945	..	70.2	61.8	62.7	69.2	68.4	66.5	70.6	81.6
1946	..	67.3	65.9	66.5	73.0	72.9	71.3	73.0	87.2
1947	..	76.0	76.0	75.8	87.4	81.2	83.8	81.9	100.5
1948	..	84.9	85.8	85.9	99.3	93.0	96.4	95.3	111.4
1949									
Jan. 1	..	86.6	88.6	88.3	101.8	94.2	97.5	99.3	117.8
Feb. 1	..	87.2	87.9	88.2	102.0	94.2	97.6	99.4	118.3
Mar. 1	..	86.9	88.0	88.4	102.5	94.4	98.2	100.0	118.7
Apr. 1	..	87.7	89.1	89.2	103.0	95.2	98.1	99.2	119.1
May 1	..	87.9	89.4	89.3	103.5	95.6	100.0	100.1	119.3
June 1	..	92.6	87.6	90.1	103.7	96.2	100.1	100.6	118.7
July 1	..	88.1	87.8	90.7	103.3	95.3	99.6	100.3	118.8
Aug. 1	..	90.0	86.6	89.7	103.6	95.6	101.1	99.2	118.5
Sept. 1	..	90.7	87.6	89.5	103.0	95.5	100.4	99.1	117.1
Oct. 1	..	90.8	88.2	90.1	104.1	96.4	102.2	100.8	118.4
Nov. 1	..	89.9	88.7	90.4	104.2	96.7	102.2	101.4	119.6
Dec. 1	..	89.9	89.1	90.6	104.9	97.2	103.1	101.7	119.8
1950									
Jan. 1	..	94.7	91.5	91.2	106.2	98.2	103.8	102.0	121.2
Feb. 1	..	91.1	90.8	90.9	106.4	97.2	103.9	101.9	122.3
Mar. 1	..	91.6	89.6	91.1	107.0	97.5	104.5	102.8	121.9
Apr. 1	100.0	92.0	90.3	91.5	107.4	98.4	103.8	102.5	121.5
May 1	100.4	92.3	90.5	91.9	108.2	98.4	104.2	103.8	122.4
June 1	98.9	95.0	89.4	92.7	109.5	99.6	104.6	104.1	122.6
July 1	106.1	91.3	89.0	93.3	109.5	98.6	105.0	103.6	125.5
Aug. 1	100.9	91.1	89.7	93.3	110.3	99.4	103.4	102.2	125.1
Sept. 1	101.8	91.0	90.4	93.3	110.5	98.7	104.2	103.0	125.7
Oct. 1	100.6	90.7	92.3	94.4	111.1	101.9	106.6	105.6	127.0
Nov. 1	100.6	90.1	93.7	95.2	112.7	101.9	107.5	107.2	127.8
Dec. 1	103.8	91.7	96.8	96.4	114.2	102.7	108.9	108.1	129.1
1951									
Jan. 1	103.7	96.2	97.5	97.4	115.3	103.5	111.3	109.1	131.5
Feb. 1	106.0	95.3	97.8	98.1	117.5	105.1	110.7	110.2	132.5
Mar. 1	102.3	97.4	98.6	99.1	118.7	106.1	113.0	111.6	133.0
Apr. 1	104.5	99.8	98.4	100.2	120.1	106.7	113.9	111.9	136.7
May 1	107.6	97.6	100.2	101.6	121.5	108.6	115.4	112.8	137.1
June 1	107.2	100.2	101.5	103.4	123.6	110.6	117.1	114.9	138.0
July 1	119.1	100.4	104.4	106.4	124.9	116.4	116.9	119.3	140.4
Aug. 1	121.4	103.3	107.3	106.6	125.9	117.0	117.4	119.2	140.6
Sept. 1	120.3	102.6	107.8	108.2	127.5	117.2	121.0	120.8	145.2
Oct. 1	120.1	104.8	110.0	109.5	128.3	118.6	123.0	122.2	148.6

Table 6.- City Averages of Hours Worked and Hourly Earnings of Hourly-rated Wage-earners in Manufacturing.

Week Preceding	Montreal	Toronto	Hamilton	Windsor	Winnipeg	Vancouver
Oct. 1	(a) Average Hours					
1945	45.1	42.0	44.1	43.1	43.4	42.1
1946	42.5	40.5	41.8	35.0	41.6	39.3
1947	42.6	40.8	42.2	41.4	41.2	38.6
1948	43.3	41.1	42.1	41.7	42.6	38.3
1949						
*Jan. 1	41.1	39.1	40.8	38.8	39.8	34.9
Feb. 1	42.7	41.1	42.9	39.7	42.0	37.7
Mar. 1	42.7	41.4	43.1	40.6	42.4	36.1
Apr. 1	43.0	41.2	42.9	40.3	42.4	38.0
May 1	42.6	41.2	43.0	40.2	41.3	37.4
June 1	40.4	39.2	40.6	35.8	40.7	36.7
July 1	40.8	40.6	41.7	41.6	42.2	37.6
Aug. 1	41.3	40.2	40.7	39.7	42.2	37.5
Sept. 1	42.3	40.6	41.4	39.8	42.7	37.6
Oct. 1	42.9	41.1	42.0	40.7	42.5	37.8
Nov. 1	43.1	41.5	41.2	40.4	42.6	37.8
Dec. 1	43.2	41.6	42.5	38.7	42.9	37.8
1950						
*Jan. 1	39.7	39.1	39.6	37.5	39.5	33.2
Feb. 1	42.1	41.1	41.2	40.5	40.6	36.5
Mar. 1	42.5	40.7	40.8	40.8	42.7	37.5
Apr. 1	43.0	41.2	40.8	42.0	42.6	37.7
May 1	42.5	41.2	41.1	41.7	42.0	38.1
June 1	41.6	40.3	41.7	41.0	41.3	36.7
July 1	42.3	41.1	40.5	43.3	42.4	37.8
Aug. 1	41.9	40.9	40.4	43.5	41.8	37.6
Sept. 1	41.5	40.8	39.7	42.2	38.6	37.3
Oct. 1	43.1	41.4	40.7	40.5	41.7	38.6
Nov. 1	43.5	41.6	40.9	39.8	42.0	37.6
Dec. 1	43.3	41.6	41.1	42.0	42.6	37.6
1951						
*Jan. 1	39.5	38.5	39.2	39.3	40.1	34.6
Feb. 1	43.1	41.3	40.7	44.2	42.0	37.6
Mar. 1	43.0	40.2	39.9	43.8	42.3	37.6
*Apr. 1	42.1	41.0	40.5	40.6	41.8	37.4
May 1	42.7	41.4	40.8	38.9	41.2	38.0
June 1	41.6	40.2	40.8	39.8	41.4	36.6
July 1	40.8	40.6	40.9	38.3	40.5	38.3
Aug. 1	41.1	40.5	40.3	35.5	40.4	37.5
Sept. 1	42.5	40.5	39.4	38.5	40.6	37.0
Oct. 1	42.3	41.0	39.6	38.2	40.3	37.4

*See footnote on page 5.

Table 6.- City Averages of Hours Worked and Hourly Earnings of Hourly-rated Wage-earners in Manufacturing. (Concluded)

Week Preceding	Montreal	Toronto	Hamilton	Windsor	Winnipeg	Vancouver
Oct. 1	(b) <u>Average Hourly Earnings</u> (in cents)					
1945	68.1	71.3	72.1	86.8	68.3	83.7
1946	71.1	74.1	72.0	92.6	72.4	87.4
1947	79.9	87.7	90.3	105.8	80.4	99.5
1948	90.4	99.3	104.5	125.7	92.5	109.6
<u>1949</u>						
Jan. 1	93.1	100.1	108.5	123.6	93.7	114.2
Feb. 1	93.1	101.3	109.2	125.4	93.7	115.2
Mar. 1	93.5	101.7	109.7	125.3	93.9	115.4
Apr. 1	94.1	102.3	109.1	124.9	94.7	116.2
May 1	94.0	102.5	111.2	125.0	95.0	116.6
June 1	94.8	102.7	112.5	124.3	95.4	116.9
July 1	95.7	102.2	111.8	125.1	94.5	117.0
Aug. 1	94.6	102.0	112.5	125.5	94.8	116.8
Sept. 1	94.3	102.1	112.4	125.1	95.1	115.8
Oct. 1	95.1	102.7	113.2	125.7	95.8	117.5
Nov. 1	95.4	102.7	113.1	126.3	96.0	117.3
Dec. 1	95.8	103.4	114.7	127.4	96.7	117.7
<u>1950</u>						
Jan. 1	96.9	104.2	117.7	127.3	97.6	117.7
Feb. 1	96.2	105.2	117.7	126.9	96.3	118.1
Mar. 1	96.2	105.6	118.4	127.5	97.0	119.4
Apr. 1	96.8	106.3	119.2	128.2	97.8	119.6
May 1	97.0	107.1	119.6	128.9	97.9	120.6
June 1	97.5	107.5	122.0	131.4	99.2	120.6
July 1	98.0	107.6	121.6	132.7	97.3	123.7
Aug. 1	98.1	108.1	122.1	134.0	98.6	124.9
Sept. 1	97.9	108.4	122.7	133.5	97.8	125.0
Oct. 1	99.5	109.3	123.5	133.4	101.1	126.1
Nov. 1	99.9	111.4	123.5	138.0	101.2	125.6
Dec. 1	100.8	112.5	124.8	142.1	101.3	126.6
<u>1951</u>						
Jan. 1	101.9	113.0	126.4	137.9	102.7	128.9
Feb. 1	102.9	115.2	128.8	144.9	104.2	129.8
Mar. 1	104.1	116.9	131.0	145.4	105.4	129.8
Apr. 1	105.6	118.3	131.8	144.1	106.0	132.7
May 1	107.4	120.1	134.7	142.5	107.3	133.6
June 1	108.1	122.0	136.1	144.4	109.1	135.3
July 1	111.2	123.5	136.3	142.1	115.3	138.0
Aug. 1	111.1	124.7	139.1	142.9	115.7	139.5
Sept. 1	112.4	126.8	140.6	143.4	116.2	144.6
Oct. 1	113.9	128.1	142.2	144.3	117.3	147.4

Table 7.- Provincial Averages of Hours Worked and Hourly Earnings of Hourly-rated Wage-earners, by Industry.

Province and Industry	Average Hours			Average Hourly Earnings		
	Oct. 1 1951	Sept. 1 1951	Oct. 1 1950	Oct. 1 1951	Sept. 1 1951	Oct. 1 1950
	no.	no.	no.	¢	¢	¢
<u>Newfoundland</u>						
Mining	44.6	35.3	43.2	122.7	122.4	112.2
Manufacturing	43.1	44.1	46.1	120.1	120.3	100.6
Food and beverages	39.4	41.2	43.4	69.8	69.1	62.8
Canned and cured fish	35.0	35.9	39.2	69.7	69.8	64.6
Pulp and paper mills	45.9	46.3	47.8	156.1	157.0	127.2
Buildings and structures (h)	53.5	52.1	46.0	116.8	112.8	83.3
<u>Nova Scotia</u>						
Coal mining	43.0	40.4	42.3	127.0	127.4	120.0
Manufacturing	41.6	41.5	43.7	104.8	102.5	90.7
Canned and cured fish	39.2	37.0	35.0	70.9	70.1	66.8
Wood products	42.8	44.2	44.9	66.6	65.2	60.3
Iron and steel products	38.9	39.7	44.1	129.8	123.3	112.6
Primary iron and steel	38.1	39.2	44.1	137.6	129.5	117.4
Transportation equipment	42.2	41.2	43.9	120.7	119.0	103.5
Shipbuilding and repairing	43.6	44.1	43.5	118.1	118.9	105.0
Buildings and structures (h)	40.1	38.4	38.6	100.3	98.2	91.1
Highways, bridges and street construction	39.7	38.4	33.5	80.7	82.0	74.3
<u>New Brunswick</u>						
Manufacturing	44.6	43.4	46.1	110.0	107.8	92.3
Saw and planing mills	47.1	44.6	47.3	77.6	75.9	64.9
Pulp and paper mills	49.5	49.7	47.9	145.3	145.4	122.4
Transportation equipment	42.1	40.1	45.4	133.5	135.1	113.9
Buildings and structures (h)	40.1	39.9	40.3	100.5	95.5	85.4
Highways, bridges and street construction	39.8	40.0	39.6	81.8	81.4	74.7
<u>Quebec</u>						
Mining	46.9	45.8	46.8	123.1	122.1	109.5
Metal mining	45.9	44.3	46.5	119.4	119.4	111.0
Non-metal mining (c)	48.3	47.9	47.3	128.0	125.9	107.5
Manufacturing	43.7	43.5	44.9	109.5	108.2	94.4
Tobacco	35.8	44.7	41.7	121.5	115.3	102.0
Leather products	37.6	37.7	39.7	78.7	78.4	74.9
Boots and shoes (except rubber)	36.8	36.9	38.8	79.0	78.7	75.9
Textile products (except clothing)	41.2	39.6	45.3	95.3	94.3	83.5
Cotton yarn and broad woven goods	37.2	34.0	43.2	98.6	98.5	87.0
Rayon, nylon and silk textiles	45.0	44.6	47.4	96.4	94.5	81.5
Clothing (textile and fur)	38.1	37.5	39.8	85.6	84.8	77.5
Men's clothing	36.3	36.3	39.9	84.2	83.6	76.8
Women's clothing	36.5	35.9	36.2	89.3	88.2	81.6
Knit goods	42.8	41.7	44.0	85.2	84.5	75.3
Wood products	48.9	48.3	48.6	83.2	82.0	74.7
Saw and planing mills	50.9	50.3	50.3	80.2	79.2	71.1
Paper products	49.2	49.7	49.6	131.5	131.3	110.9
Pulp and paper mills	50.4	50.9	50.5	139.7	139.1	117.5
Iron and steel products	46.1	45.1	46.0	122.1	120.0	104.5
Machinery mfg. (f)	48.1	47.1	47.1	120.5	116.5	102.8
Transportation equipment	44.8	46.2	45.2	128.3	126.8	114.7
Railroad and rolling stock equipment	40.3	42.5	43.0	140.8	135.1	118.3
Non-ferrous metal products	46.1	46.0	46.6	124.7	123.6	102.4
Smelting and refining	46.5	46.9	47.0	137.7	136.0	112.0
Electrical apparatus and supplies	42.5	42.0	42.6	123.0	121.3	109.6
Chemical products	43.9	43.9	44.7	111.2	110.6	97.2
Buildings and structures (h)	41.6	41.0	41.0	119.1	117.9	107.8
Highways, bridges and street construction	45.4	45.1	44.7	77.4	77.6	74.3
Electric and motor transportation (i)	48.9	48.0	..	110.5	108.3	..
Service (j)	44.4	43.5	44.2	66.3	65.5	62.8

Footnotes (a) to (j) appear in explanatory notes facing page 1.

Table 7.- Provincial Averages of Hours Worked and Hourly Earnings of Hourly-rated Wage-earners, by Industry. (Continued)

Province and Industry	Average Hours			Average Hourly Earnings		
	Oct. 1	Sept. 1	Oct. 1	Oct. 1	Sept. 1	Oct. 1
	1951	1951	1950	1951	1951	1950
	no.	no.	no.	¢	¢	¢
<u>Ontario</u>						
Metal mining	43.3	42.2	44.0	144.0	143.9	124.9
Manufacturing	41.4	40.8	42.2	128.3	127.5	111.1
Food and beverages	43.9	41.4	42.7	99.6	102.8	88.0
Meat products	41.3	41.7	42.4	132.8	131.7	109.5
vegetables	46.3	37.3	43.4	84.1	86.2	76.4
Canned & preserved fruits &	44.2	44.9	44.4	96.5	95.2	83.0
Bread and other bakery products	39.8	39.2	40.0	139.9	139.9	120.5
Rubber products	39.4	38.4	41.2	96.2	95.1	86.9
Leather products	39.6	39.4	40.8	90.3	90.1	82.3
Boots and shoes (except rubber)	39.4	39.3	42.1	108.4	106.8	93.1
Textile products (except clothing)	38.1	38.3	42.0	107.9	106.8	93.3
Cotton yarn & broad woven goods	41.4	40.2	42.5	100.4	99.0	87.5
Woollen goods	37.1	36.5	38.9	95.9	94.4	87.5
Clothing (textile and fur)	38.9	38.1	39.4	94.3	92.5	83.3
Knit goods	43.3	42.5	43.3	99.6	97.7	88.3
Wood products	45.0	43.3	43.8	96.3	96.1	84.8
Saw and planing mills	41.6	41.6	43.5	104.8	101.1	93.2
Furniture	46.1	45.6	46.4	136.5	135.0	112.8
Paper products	48.2	47.7	48.3	149.7	147.8	122.1
Pulp and paper mills	42.8	42.1	43.6	112.9	110.9	97.8
Other paper products (e)	40.3	39.8	40.4	137.6	136.5	125.4
Printing, publishing & allied ind.	41.2	41.1	42.1	143.7	141.4	122.8
Iron and steel products	38.3	40.5	38.8	157.6	153.9	126.4
Agricultural implements	42.2	41.2	44.3	141.6	139.0	126.5
Iron castings	42.7	42.0	42.5	134.3	133.0	118.0
Machinery mfg. (f)	40.2	40.2	40.6	158.9	156.8	136.3
Primary iron and steel	41.9	41.9	42.9	133.4	128.3	110.9
Sheet metal products	40.7	39.8	42.1	148.4	144.6	130.2
Transportation equipment	39.0	39.0	40.5	153.3	149.8	140.9
Motor vehicles	41.7	39.5	43.2	145.3	140.1	125.8
Motor vehicle parts & accessories	40.4	38.9	43.3	144.2	141.4	117.9
Railroad & rolling stock equip.	40.4	40.2	42.2	138.4	137.3	116.8
Non-ferrous metal products	41.5	41.2	42.6	133.7	130.5	117.9
Brass and copper products	38.9	38.5	42.5	157.8	157.3	128.9
Smelting and refining	40.7	40.5	41.5	136.8	136.0	119.3
Electrical apparatus & supplies	44.1	43.1	44.5	127.9	126.4	110.3
Non-metallic mineral products (g)	41.8	41.5	42.8	132.0	130.4	111.9
Chemical products	42.5	41.9	41.5	141.8	138.5	119.0
Buildings and structures (h)	45.9	44.7	44.5	109.5	109.3	94.5
Highways, bridges and street constr.	45.2	45.1	..	126.2	126.9	..
Electric & motor transportation (i)	41.5	42.0	41.8	70.5	68.6	66.0
Service (j)	43.1	43.9	43.3	68.9	66.5	64.6
Hotels and restaurants						

Footnotes (a) to (j) appear in explanatory notes facing page 1.

Table 7.- Provincial Averages of Hours Worked and Hourly Earnings of Hourly-rated Wage-earners, by Industry. (Concluded)

Province and Industry	Average Hours			Average Hourly Earnings		
	Oct. 1 1951	Sept. 1 1951	Oct. 1 1950	Oct. 1 1951	Sept. 1 1951	Oct. 1 1950
<u>Manitoba</u>	no.	no.	no.	¢	¢	¢
Manufacturing	40.8	40.9	41.9	118.3	117.2	101.9
Food and beverages	40.0	41.2	39.6	115.8	116.7	101.2
Meat products	39.0	39.7	39.4	140.8	140.3	119.9
Clothing (textile and fur)	37.4	37.9	39.9	86.3	87.1	81.5
Iron and steel products	44.1	42.5	43.7	118.0	115.3	104.2
Transportation equipment	39.2	40.4	42.2	138.4	135.8	114.2
Buildings and structures (h)	42.4	42.5	41.9	126.7	124.7	114.7
Highways, bridges and street constr.	43.3	41.6	43.5	93.3	88.3	84.4
Service (j)	42.5	42.6	42.6	71.8	70.5	67.3
<u>Saskatchewan</u>						
Manufacturing	40.9	40.3	41.6	123.0	121.0	106.8
Meat products	39.0	39.1	41.0	138.4	137.8	115.0
Buildings and structures (h)	37.5	38.6	39.1	119.5	116.1	102.7
Highways, bridges and street constr.	38.5	40.0	37.4	95.5	92.4	84.6
Service (j)	41.9	41.9	43.1	73.0	73.3	67.3
<u>Alberta</u>						
Mining	41.5	40.0	39.4	160.0	157.4	142.9
Coal	38.3	37.3	34.9	164.1	162.9	150.4
Manufacturing	40.1	40.6	40.7	122.2	120.8	105.6
Food and beverages	38.9	39.7	38.8	117.2	116.1	102.8
Meat products	38.8	38.8	39.5	140.4	139.3	112.0
Transportation equipment	39.8	41.9	42.5	136.7	134.7	112.5
Non-metallic mineral products (g)	44.2	43.4	42.5	112.8	113.2	93.0
Buildings and structures (h)	37.8	36.3	37.8	151.3	143.2	125.3
Electric and motor transportation(i)	42.5	41.9	..	122.4	121.1	..
Service (j)	44.4	45.6	43.2	74.4	64.5	63.3
<u>British Columbia</u>						
Forestry (logging)	32.0	26.2	35.8	195.3	189.4	164.3
Metal mining	43.1	41.8	42.1	156.7	152.5	135.8
Manufacturing	37.7	37.6	39.0	148.6	145.2	127.0
Food and beverages	36.7	37.4	38.5	117.4	117.8	100.3
Canned and cured fish	37.6	39.3	36.4	134.6	130.2	117.2
Canned & preserved fruits & vegetables	33.9	33.4	37.4	88.6	87.4	79.4
Wood products	36.9	35.4	38.2	153.7	152.3	133.6
Saw and planing mills	36.9	35.3	38.3	155.7	154.4	135.4
Pulp and paper mills	43.8	44.2	45.2	165.9	147.1	135.7
Iron and steel products	39.1	38.7	39.4	157.8	152.4	132.3
Transportation equipment	33.8	36.6	37.1	157.3	157.5	135.5
Steel shipbuilding & repairing	32.9	36.0	36.0	161.1	161.3	140.8
Non-ferrous metal products	40.2	40.3	40.0	161.9	158.0	135.6
Buildings and structures (h)	39.3	38.6	38.4	173.7	171.4	148.6
Highways, bridges and street constr.	38.9	38.9	38.7	130.6	127.9	118.5
Electric and motor transportation(i)	41.7	42.3	..	136.2	132.9	..
Service (j)	39.0	39.5	39.9	83.3	81.9	80.7

Footnotes (a) to (j) appear in explanatory notes facing page 1.

Table 8.- City Averages of Hours and Hourly Earnings of Hourly-rated Wage-earners, by Industry.

Metropolitan Area and Industry	Average Hours			Average Hourly Earnings		
	Oct. 1	Sept. 1	Oct. 1	Oct. 1	Sept. 1	Oct. 1
	1951	1951	1950	1951	1951	1950
	no.	no.	no.	¢	¢	¢
<u>Montreal - Manufacturing</u>	42.3	42.5	43.1	113.9	112.4	99.5
Food and beverages	44.9	45.2	45.8	98.3	98.1	88.3
Tobacco and tobacco products	35.5	44.6	41.3	130.4	129.0	109.6
Leather products	37.5	37.8	40.1	85.4	84.3	78.7
Textile products (except clothing)	38.9	38.4	..	93.2	92.6	..
Clothing (textile and fur)	37.0	36.3	..	92.4	91.7	..
Iron and steel products	45.1	44.2	..	128.4	125.8	..
Transportation equipment	44.2	46.2	..	131.8	130.1	..
Electrical apparatus and supplies	42.1	41.7	41.9	127.9	126.3	112.9
Buildings and structures (h)	38.7	38.0	38.5	130.0	128.3	117.9
Electric and motor transportation (i)	48.2	47.1	..	116.4	114.5	..
Service (j)	43.7	42.7	43.5	66.3	65.9	63.3
 <u>Toronto - Manufacturing</u>	 41.0	 40.5	 41.4	 128.1	 126.8	 109.8
Food and beverages	42.3	41.4	41.9	111.1	109.9	92.9
Rubber products	39.0	39.4	41.1	153.5	154.4	131.4
Textile products (except clothing)	39.3	39.2	..	105.6	104.6	..
Clothing (textile and fur)	36.5	35.8	..	103.4	102.0	..
Paper products	42.5	42.0	42.8	113.9	111.8	100.3
Printing, publishing and allied ind.	39.9	39.4	39.7	145.7	144.6	133.3
Iron and steel products	41.0	41.1	..	142.0	140.5	..
Transportation equipment	42.5	42.5	..	148.0	144.7	..
Electrical apparatus and supplies	41.1	40.5	41.6	133.8	132.2	115.3
Chemical products	41.5	41.1	42.3	124.0	122.7	107.9
Buildings and structures (h)	41.4	39.7	40.2	160.7	158.4	143.1
Electric and motor transportation (i)	43.0	43.1	..	132.6	133.3	..
Service (j)	41.0	41.5	40.6	74.6	73.0	70.0
 <u>Hamilton - Manufacturing</u>	 39.6	 39.4	 40.7	 142.2	 140.6	 123.5
Clothing (textile and fur)	36.8	34.8	..	103.8	102.3	..
Iron and steel products	40.1	40.7	..	156.2	152.8	..
Electrical apparatus and supplies	38.2	38.6	40.1	152.8	153.0	135.7
Buildings and structures (h)	42.0	41.0	41.8	138.1	141.3	124.8
 <u>Windsor - Manufacturing</u>	 38.2	 38.5	 40.5	 144.3	 143.4	 133.4
Iron and steel products	41.8	40.6	..	150.1	148.3	..
Transportation equipment	37.0	38.0	..	147.8	145.9	..
Buildings and structures (h)	43.9	42.1	42.1	178.7	175.3	140.1

Footnotes (a) to (j) appear in explanatory notes facing page 1.

Table 8.- City Averages of Hours and Hourly Earnings of Hourly-rated Wage-earners, by Industry. (Concluded)

Metropolitan Area and Industry	Average Hours			Average Hourly Earnings		
	Oct. 1	Sept. 1	Oct. 1	Oct. 1	Sept. 1	Oct. 1
	1951	1951	1950	1951	1951	1950
	no.	no.	no.	¢	¢	¢
<u>Winnipeg - Manufacturing</u>	40.3	40.6	41.7	117.3	116.2	101.1
Food and beverages	40.0	41.3	39.8	116.5	117.7	102.1
Meat products	39.1	39.6	..	142.0	141.4	..
Clothing (textile and fur)	37.3	37.8	..	87.5	88.2	..
Transportation equipment	39.2	40.4	..	138.4	135.8	..
Buildings and structures (h)	38.3	39.0	37.2	130.2	129.4	122.0
Service (j)	42.5	42.4	42.5	71.9	70.7	67.4
<u>Vancouver - Manufacturing</u>	37.4	37.0	38.6	147.4	144.6	126.1
Wood products	36.4	34.5	37.9	157.6	156.0	135.3
Iron and steel products	39.0	38.7	..	157.8	152.5	..
Transportation equipment	35.5	35.8	..	160.4	159.1	..
Buildings and structures (h)	37.8	37.0	38.0	173.7	169.9	151.4
Electric and motor transportation (i)	41.9	42.3	..	138.3	135.0	..
Service (j)	38.6	39.3	39.8	84.5	83.2	82.5

Footnotes (a) to (j) appear in explanatory notes facing page 1.

Table 9.- Index Numbers of Average Hourly Earnings in the Heavy Electrical Machinery and Equipment Industry^{1/}.

		(June 1, 1941=100)				
Week		1947	1948	1949	1950	1951
<u>Preceding</u>						
Jan.	1	169.6	191.5	224.9	233.6	252.6
Feb.	1	168.6	194.7	224.9	238.9	260.9
Mar.	1	170.0	196.4	226.6	239.3	262.2
Apr.	1	168.9	198.7	228.3	240.4	262.4
May	1	168.7	199.2	227.5	247.1	265.7
June	1	169.8	201.3	227.7	247.4	280.6
July	1	170.6	202.1	228.5	249.5	278.9
Aug.	1	181.2	202.1	228.8	248.0	286.0
Sept.	1	180.3	215.6	228.1	251.2	288.8
Oct.	1	183.3	217.5	230.9	251.0	289.6
Nov.	1	184.6	219.2	231.1	254.5	
Dec.	1	185.2	223.0	231.5	254.6	

^{1/} Computed from data furnished by 8 establishments manufacturing heavy electrical machinery and equipment.

Table 10.- Provincial Averages of Weekly Wages of Hourly-rated Wage-earners in Manufacturing.

Week Preceding	Canada	N'f'ld.	N.S.	N.B.	Que.	Ont.	Man.	Sask.	Alta.	B.C.
Oct. 1	\$	\$	\$	\$	\$	\$	\$	\$	\$	\$
1945	30.31	..	31.45	28.55	29.28	30.21	29.89	28.93	30.22	34.76
1946	30.63	..	28.33	30.38	29.86	30.51	30.55	30.80	30.30	35.23
1947	35.96	..	33.36	33.90	34.11	37.06	33.78	35.11	34.15	39.30
1948	40.68	..	37.02	39.21	38.66	42.00	39.99	39.72	39.64	43.22
<u>1949</u>										
*Jan. 1	39.46	..	35.51	36.68	37.35	41.03	37.77	38.42	39.82	41.11
Feb. 1	41.70	..	38.63	40.08	39.25	43.25	39.85	40.60	41.75	44.95
Mar. 1	41.97	..	38.24	39.86	39.34	43.87	40.31	41.05	42.40	44.16
Apr. 1	42.13	..	38.46	39.92	39.60	43.57	40.65	40.91	42.56	45.73
May 1	41.91	..	38.96	39.60	39.38	43.47	39.77	42.40	41.64	44.98
June 1	40.43	..	40.10	37.67	37.66	41.79	39.54	42.74	41.65	44.16
July 1	41.42	..	38.06	38.90	38.18	43.18	40.50	41.93	42.53	45.50
Aug. 1	41.40	..	38.52	38.71	38.66	42.89	40.53	41.96	41.27	44.67
Sept. 1	41.72	..	38.91	38.98	39.20	43.05	40.87	41.87	42.51	44.62
Oct. 1	42.40	..	39.50	39.95	40.00	43.93	41.16	42.52	42.54	44.99
Nov. 1	42.59	..	39.74	39.65	40.14	44.08	41.29	42.00	43.50	45.81
Dec. 1	42.90	..	38.66	40.54	40.32	44.48	41.89	42.68	43.43	46.00
<u>1950</u>										
*Jan. 1	40.34	..	36.65	37.97	37.67	42.27	38.99	41.73	41.00	41.45
Feb. 1	42.68	..	39.26	39.13	39.91	44.79	39.85	42.50	41.98	44.15
Mar. 1	43.10	..	39.57	40.59	40.18	44.83	41.83	43.58	43.90	46.44
Apr. 1	43.53	45.20	40.48	40.73	40.63	45.32	42.12	43.70	44.08	46.66
May 1	43.67	44.28	40.61	40.18	40.34	45.66	41.72	44.08	44.12	47.37
June 1	43.47	44.11	41.04	39.16	40.14	45.55	41.53	43.93	43.93	45.85
July 1	44.16	47.21	39.81	40.23	40.87	46.21	42.10	43.79	44.13	47.69
Aug. 1	44.29	45.41	39.81	40.81	41.05	46.44	41.85	41.77	42.62	47.41
Sept. 1	43.74	44.38	39.04	39.60	40.87	45.86	38.69	42.93	40.58	47.89
Oct. 1	45.17	46.38	39.64	42.55	42.39	46.88	42.70	44.43	42.98	49.53
Nov. 1	45.75	46.28	39.73	41.88	42.84	47.78	43.00	45.15	45.35	49.33
Dec. 1	46.46	47.23	39.43	43.85	43.38	48.42	43.96	44.32	45.51	49.96
<u>1951</u>										
*Jan. 1	43.71	42.41	36.94	41.05	40.23	45.89	41.81	45.63	44.19	46.68
Feb. 1	47.36	44.20	40.60	44.69	43.85	49.82	44.46	45.28	45.84	50.48
Mar. 1	47.12	49.05	40.30	44.26	44.10	49.22	45.09	45.92	46.31	50.96
Apr. 1	47.60	45.46	42.61	43.49	43.79	50.20	45.03	46.47	45.54	51.67
May 1	48.49	47.11	42.74	43.79	45.01	51.03	45.37	47.31	46.70	52.65
June 1	48.56	48.99	43.29	44.15	45.08	50.92	46.23	48.83	47.91	51.61
July 1	49.37	53.36	44.08	46.04	45.33	51.83	47.61	47.93	48.56	53.77
Aug. 1	49.31	54.87	44.01	46.35	45.73	51.37	47.74	47.78	48.28	53.22
Sept. 1	50.05	53.05	42.68	46.79	47.07	52.02	47.93	48.76	49.04	54.60
Oct. 1	51.03	51.76	43.60	49.06	47.85	53.12	48.39	50.31	49.00	56.02

*See footnote on page 5.

Table 11.- City Averages of Weekly Wages of Hourly-rated Wage-earners
in Manufacturing.

<u>Week Preceding</u>	<u>Montreal</u>	<u>Toronto</u>	<u>Hamilton</u>	<u>Windsor</u>	<u>Winnipeg</u>	<u>Vancouver</u>
<u>Oct. 1</u>	\$	\$	\$	\$	\$	\$
1945	30.71	29.95	31.80	37.41	29.64	35.24
1946	30.22	30.01	30.10	32.41	30.12	34.35
1947	34.04	35.78	38.11	43.80	33.12	38.41
1948	39.14	40.81	43.99	52.42	39.41	41.98
<u>1949</u>						
*Jan. 1	38.26	39.14	44.27	47.96	37.29	39.86
Feb. 1	39.75	41.63	46.85	49.78	39.35	43.43
Mar. 1	39.92	42.10	47.28	50.87	39.81	41.66
Apr. 1	40.46	42.15	46.80	50.33	40.15	44.16
May 1	40.04	42.23	47.82	50.25	39.24	43.61
June 1	38.30	40.25	45.68	44.50	38.83	42.90
July 1	39.05	41.49	46.62	52.04	39.88	44.23
Aug. 1	39.07	41.00	45.79	49.92	40.01	43.80
Sept. 1	39.89	41.45	46.53	49.79	40.61	43.54
Oct. 1	40.80	42.21	47.54	51.16	40.72	44.42
Nov. 1	41.12	42.62	46.30	51.03	40.90	44.34
Dec. 1	41.39	43.01	48.75	49.30	41.43	44.49
<u>1950</u>						
*Jan. 1	38.47	40.74	46.61	47.74	38.55	39.08
Feb. 1	40.50	43.24	48.49	51.39	39.22	43.11
Mar. 1	40.89	42.98	48.31	52.02	41.42	44.78
Apr. 1	41.62	43.80	48.63	53.84	41.66	45.09
May 1	41.23	44.13	49.16	53.75	41.12	45.95
June 1	40.56	43.32	50.87	53.87	40.97	44.26
July 1	41.45	44.22	49.25	57.46	41.47	46.76
Aug. 1	41.10	44.21	49.33	58.29	41.21	46.96
Sept. 1	40.53	44.23	48.71	56.34	37.75	46.53
Oct. 1	42.88	45.46	50.26	54.03	42.16	48.67
Nov. 1	43.46	46.34	50.51	54.92	42.50	47.48
Dec. 1	43.65	46.80	51.29	59.68	43.37	47.60
<u>1951</u>						
*Jan. 1	40.25	43.51	49.55	54.19	41.18	44.60
Feb. 1	44.35	47.58	52.42	64.05	43.76	48.80
Mar. 1	44.76	46.99	52.27	63.69	44.58	48.80
*Apr. 1	44.46	48.50	53.38	58.50	44.31	49.53
May 1	45.86	49.72	54.96	55.43	44.41	50.77
June 1	44.97	49.04	55.53	57.47	45.17	49.79
July 1	45.37	50.14	55.75	54.42	46.70	52.85
Aug. 1	45.56	50.50	56.06	50.73	46.74	52.31
Sept. 1	47.77	51.35	55.40	55.21	47.18	53.50
Oct. 1	48.18	52.52	56.31	55.12	47.27	55.13

*See footnote on page 5.

STATISTICS CANADA LIBRARY
BIBLIOTHEQUE STATISTIQUE CANADA



1010512815

