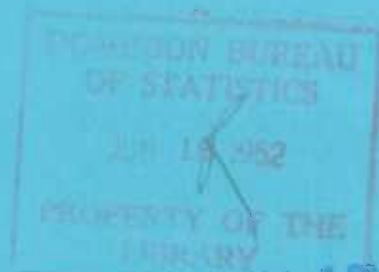


0.1

72 003

GOVERNMENT OF CANADA



**DOES NOT CIRCULATE**  
**NE PAS PRÊTER**

**MAN-HOURS AND HOURLY EARNINGS**

**APRIL, 1952**





DOMINION BUREAU OF STATISTICS

Department of Trade and Commerce

---

Vol. 8

No. 4

MAN-HOURS AND HOURLY EARNINGS

WITH

AVERAGE WEEKLY WAGES

APRIL, 1952

*Published by*

Authority of the Rt. Hon. C. D. Howe  
Minister of Trade and Commerce

---

*Prepared in*

Employment Section of the Labour and Prices Division  
Dominion Bureau of Statistics, Ottawa



## CONTENTS

	<u>Page</u>
TEXTUAL SUMMARY .....	1

### TABLES

1. Changes in the Average Earnings of Hourly-rated Wage-earners Reported at Apr. 1, 1952, as compared with the same date in preceding years .....	5
2. Average Hours and Average Hourly and Weekly Wages of Hourly-rated Wage-earners, Canada, by Industry .....	6

#### AVERAGE HOURS AND AVERAGE HOURLY EARNINGS OF HOURLY-RATED WAGE-EARNERS IN:

3. Manufacturing, Canada .....	7
4. Specified Non-Manufacturing Industries, Canada .....	8
5. Manufacturing, Provinces .....	12
6. Manufacturing Metropolitan Areas .....	14
7. Specified Industries, Provinces .....	16
8. Specified Industries, Metropolitan Areas .....	19

#### INDEX NUMBERS OF AVERAGE HOURLY EARNINGS IN:

9. Heavy Electrical Machinery and Equipment Industry .....	20
--	----

#### AVERAGE WEEKLY WAGES OF HOURLY-RATED WAGE-EARNERS IN:

10. Manufacturing, Canada and Provinces .....	21
11. Manufacturing, Metropolitan Areas .....	22

### CHARTS

1. Average Hourly Earnings, Manufacturing .....	2
2. Average Weekly Wages, Manufacturing .....	3

### EXPLANATORY NOTES AND FOOTNOTES

Notes on methods and scope of monthly surveys of hours and earnings and footnotes to tables .....	facing page 1
---	---------------



## EXPLANATORY NOTES.

General.- The monthly statistics of average hours, average hourly earnings and average weekly wages, like those of employment, payrolls and average weekly wages and salaries, are based on data from establishments usually employing 15 persons and over.

Coverage.- Firms are asked to furnish information for the male and female wage-earners for whom they keep records of hours worked, so that the statistics relate, in the main, to hourly-rated wage-earners, or production workers, employed full time and part-time. Casual workers are also included. Data for salaried personnel are purposely excluded. In many cases, information is not available for certain classes of wage-earners, whose earnings, like those of most salaried employees, are not directly dependent on the number of hours worked; examples of wage-earners frequently excluded are route-drivers, piece-workers in many but not all establishments, truck men, etc. Numerous employers do not keep record of man-hours for any classes of employees. The number of workers for whom information is given in the present report is therefore smaller than the total number of workers (wage-earners and salaried employees) for whom statistics of employment, payrolls, average earnings, sex distribution, etc., are given in the monthly bulletins on employment and payrolls (Report 8003-501)

In manufacturing, largely represented in the statistics of this report, the data relate to over 75 p.c. of all employees on the staffs of the firms co-operating in the monthly surveys of employment and payrolls; in 1948, the wage-earners for whom information on man-hours was obtained formed over 80 p.c. of the total number of wage-earners reported by practically all manufacturing establishments to the Annual Census of Manufactures, including hourly-rated and other wage-earners. In mining and construction, data on man-hours and hourly earnings are provided for approximately 84 p.c. and 71 p.c. of the total employees of firms co-operating in the monthly surveys of employment and payrolls in those industries, respectively; in 1948, the monthly statistics were based on approximately 89 p.c. and 54 p.c. of the total number of wage-earners reported to the Census of Mining and Census of Construction, respectively.

Man-Hours.- The statistics of man-hours include hours worked by full time and part-time wage-earners, including overtime hours actually worked; premium or penalty hours credited for purposes of computing overtime payment are not included. Hours credited to wage-earners absent on leave with pay in the reported pay periods are included in the statistics as though the hours had been worked. The averages are obtained by dividing the aggregate hours reported for the week by the number of full time and part-time wage-earners working such hours.

Wages.- The questionnaire calls for a statement of gross wages earned by the full time and part-time wage-earners whose hours are reported, before deductions are made for taxes, unemployment insurance contributions, etc. Payments for overtime work, incentive or production, and cost-of-living bonuses paid at regular intervals, and amounts credited to wage-earners on leave with pay in the reported pay periods are included. The value of board and lodging which in some cases is part of the remuneration of workers is not included. Retroactive pay not earned during the reported pay period, and bonuses paid at infrequent intervals are also excluded.

Pay Periods.- Statistics of man-hours and wages reported for periods exceeding one week in duration are reduced by the appropriate proportions to calculate the number of hours and the wages in one week in the stated pay period. Such data are combined with weekly figures furnished by employers whose records are maintained on a weekly basis, so that, in all cases, the tabulated statistics represent the situation in one week in each month.

## Footnotes.

The following footnotes explain the content of various industrial classes listed in the detailed tables in this bulletin. In some industries, the group breakdown is less extensive than in the Standard Industrial Classification; in these cases, figures for certain categories not shown are contained in the group totals.

- (a) Alluvial gold and auriferous quartz mining.
- (b) Copper-gold-silver; iron; nickel-copper; silver-cobalt; silver-lead-zinc, and miscellaneous metal mining.
- (c) Non-metal mining and quarrying, clay and sand pits.
- (d) Miscellaneous wood products.
- (e) Paper boxes and bags; roofing papers; miscellaneous paper products.
- (f) Household, office and store machinery; machine tools; machinery, n.e.s.
- (g) Abrasives, asbestos, hydraulic cement, clay, glass, lime and gypsum, stone, concrete and miscellaneous non-metallic mineral products.
- (h) Buildings and structures, other construction, and special trade contractors.
- (i) Interurban bus and coach and urban and suburban transportation systems; taxi-cab and truck transportation; services incidental to transportation, and other transportation.
- (j) Hotels and restaurants, laundries, dyeing, cleaning and pressing, business and recreational services.

(..) figures not available.

## MAN-HOURS AND HOURLY EARNINGS, APRIL 1952

### Statistics for Canada

**Manufacturing.-** Average earnings of hourly-rated wage-earners in the larger manufacturing establishments reached new peaks at Apr. 1 when increases of 1.2 cents per hour, and 89 cents per week were recorded in the month, bringing the latest figures to 129.0 cents and \$54.18, respectively. These averages were 14.4 p.c. and 13.8 p.c. above the Apr. 1, 1951, figures of hourly earnings and weekly wages, respectively. The average working week at Apr. 1 was 42 hours, three-tenths of an hour higher than at Mar. 1.

**Durable Goods.-** The hours worked by hourly-rated wage-earners reported by the co-operating manufacturers of durable goods averaged 42.3 hours in the week under review, half an hour longer than in their last return. The hourly earnings increased by 1.2 cents in the month, while the weekly wages, at \$59.05, were \$1.20 higher than at Mar. 1. The most important change took place in the motor vehicle industry, where more overtime work brought the earnings to a substantially higher level.

**Non-Durable Goods.-** The average hours and earnings of hourly-rated wage-earners in the non-durable goods manufacturing industries at Apr. 1 were slightly higher than at Mar. 1, while the reported number of wage-earners and their aggregate hours had declined. Greater activity was indicated in a number of the important industries in the food and beverage group. In the tobacco industry, on the other hand, a marked seasonal drop in the number of wage-earners and their total hours was reflected in an advance of 8.1 cents in the average hourly earnings; this increase slightly exceeded that shown in the same comparison a year ago. Continued slackness in the primary textile industry was reflected by lower aggregate hours, and in fewer wage-earners than a month earlier. The most important rise in hourly earnings was that of 4 cents in petroleum refining, partly due to wage-rate increases, and partly to more premium overtime work.

**Non-Manufacturing Industries.-** Building construction reported increased activity, with a larger number of wage-earners employed. The averages of hours worked and hourly earnings were also slightly higher than a month earlier. In highway construction, the lay-off of lower paid workers in Quebec and an upward adjustment in the cost-of-living bonus paid to some employees raised the general average of hourly earnings by 3.1 cents; the working week was 2.9 hours shorter. Higher wage rates in coal mining in Nova Scotia, in metallic ore mining in British Columbia, and in asbestos mining in Quebec raised the average hourly earnings of hourly-rated wage-earners in mining by 3 cents; in the asbestos group, the standard working week was shortened. Small variations were noted in the industries in the service division for which data are available, and in electric and motor transportation during the period under review.

### Statistics for the Provinces.

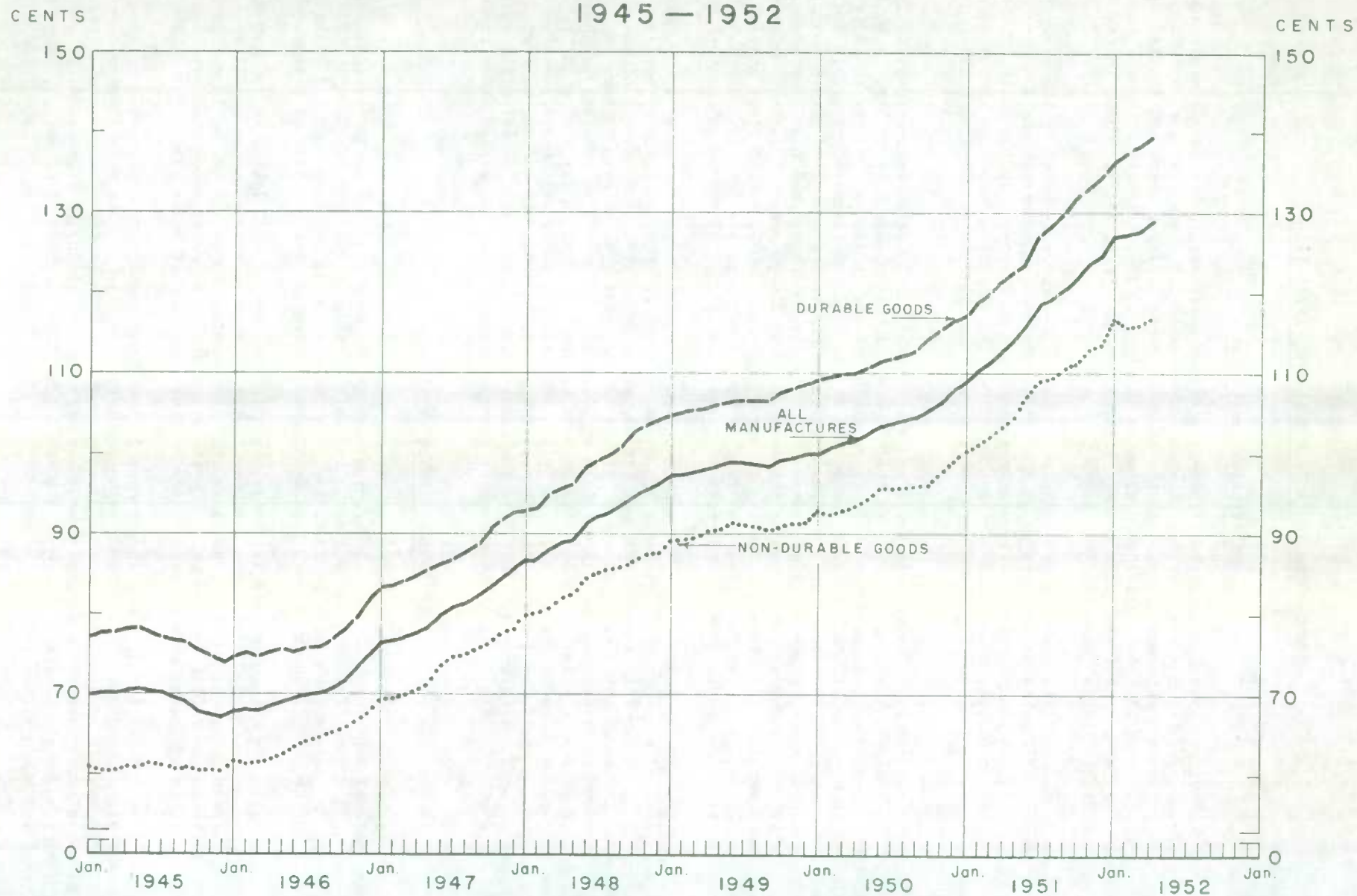
The provincial figures of average hourly earnings of hourly-rated wage-earners in manufacturing were higher at Apr. 1 than at Mar. 1 except in New Brunswick. The increases varied from 0.4 cents in British Columbia and 0.3 cents in Newfoundland, to 1.5 cents in Ontario and 1.7 cents in Saskatchewan. In New Brunswick, the average hourly earnings were 1.1 cents lower largely due to changes in industrial distribution and lessened overtime work at premium rates.

The average working time was slightly longer in the week of Apr. 1 than in that of Mar. 1 in all provinces except Newfoundland. Higher weekly wages were also reported in all areas except Newfoundland, where shorter hours in the fish canning industry resulted in a reduction of 62 cents in manufacturing generally. On the other hand, increased wage rates reported in transportation equipment manufacturing raised the average in that industry.

In Nova Scotia, longer hours were worked in the fish canning, transportation equipment and iron and steel industries. Premium overtime rates paid in fish packing establishments were partly responsible for an increase of 1.3 cents in the general average for manufacturing. Higher wage rates raised the average hourly earnings in coal mining by 13.3 cents, to 141 cents an hour; the hours reported averaged 5.3 hours longer than in the week of Mar. 1, largely due to the termination of industrial disputes.



# AVERAGE HOURLY EARNINGS IN MANUFACTURING 1945 — 1952



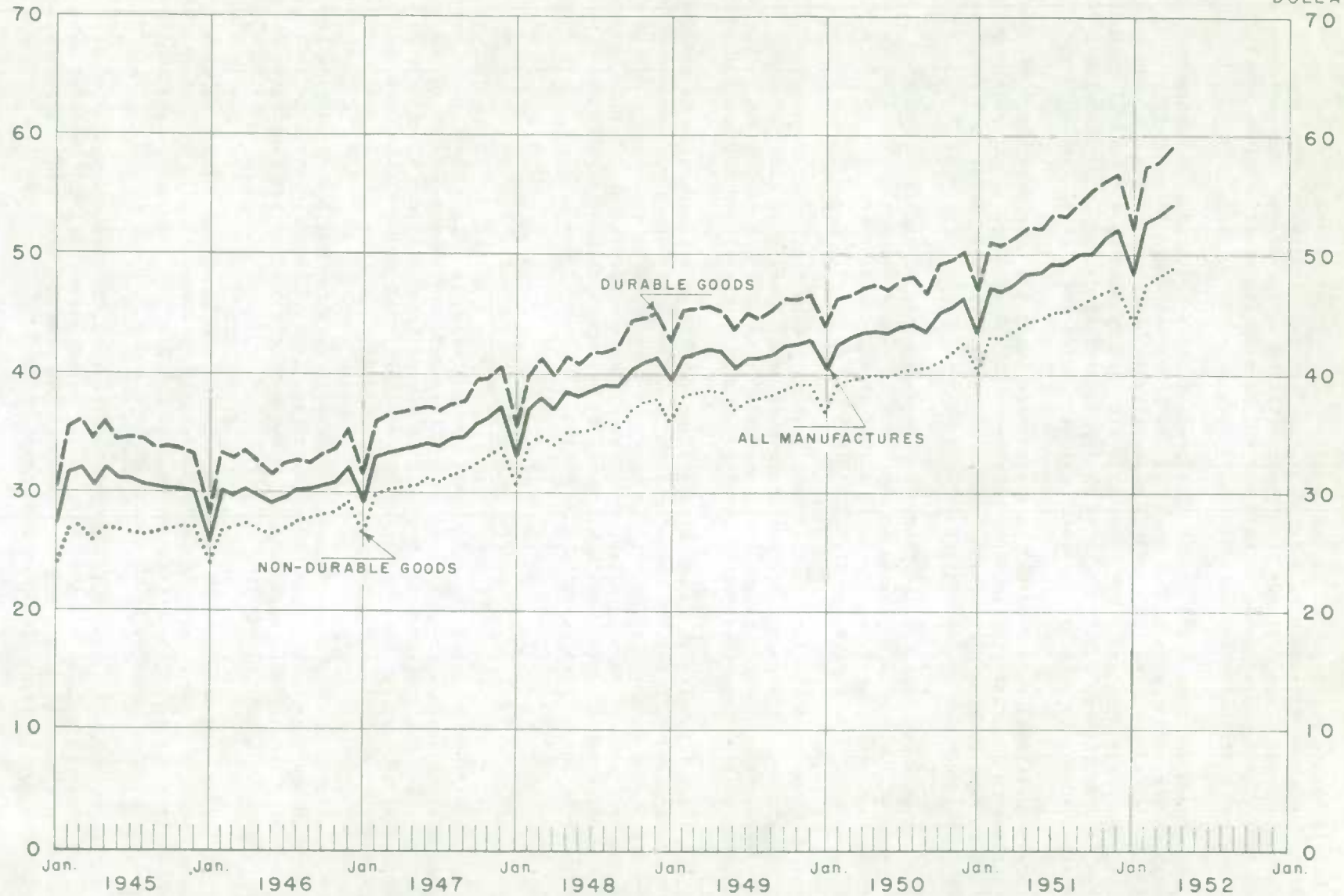


# AVERAGE WEEKLY WAGES IN MANUFACTURING

1945 - 1952

DOLLARS

DOLLARS



Little change was reported in the average hours worked by hourly-rated wage-earners in manufacturing in Quebec between Mar. 1 and Apr. 1. Wage-rate increases were reported in rubber manufacturing, petroleum refining, the transportation equipment and iron and steel and other industries. Continued adjustments in hours and earnings in asbestos mines resulted in a rise of 8.9 cents per hour in non-metallic mining at Apr. 1.

Heightened employment and overtime at premium rates in automobile manufacturing were partly responsible for an increase of 1.5 cents in the hourly earnings in manufacturing in Ontario during the period under review. Higher wage-rates in brass and copper products manufacturing, printing and publishing and other industries also contributed to the general advance. The average in printing and publishing rose at Apr. 1 largely due to labour-management disputes which affected mainly workers whose earnings were below the general level.

Minor variations were reported in the average hours and hourly earnings of hourly-rated wage-earners in manufacturing in Manitoba between Mar. 1 and Apr. 1. Increased employment and overtime in meat packing plants, with upward adjustments in wage rates in transportation equipment manufacturing were the most important changes noted.

In Saskatchewan, the average hourly earnings reported in manufacturing were 1.7 cents higher. The lay-off of lower paid employees in meat packing plants because of the foot and mouth disease epidemic, wage rate increases in petroleum refineries, and overtime work in flour mills and printing establishments were the principal factors.

Overtime work at premium rates in meat packing plants and higher wage rates in the iron and steel industry were the most important changes in manufacturing in Alberta during the period under review. Release of lower paid employees resulted in an increase of 5 cents in the average hourly earnings in coal mining, in which the average working week was over 4.1 hours shorter.

In British Columbia, there was little change in the general averages in manufacturing at Apr. 1 as compared with Mar. 1. Less overtime and the employment of more women workers reduced the hourly figure in the fish packing industry by over 5 cents, while saw and planing mills were generally more active, showing a larger number of wage-earners and a 5.8 p.c. increase in the aggregate hours worked. Men working in metallic ore mines earned larger bonuses, and there was an upward revision in wage rates in coal mining.

#### Statistics for the Cities.

In each of the 6 cities for which data are published in this bulletin, the average hourly earnings and the hours worked by wage-earners in manufacturing were higher in the week of Apr. 1 than at Mar. 1. The increases in working time varied from one-fifth of an hour in Toronto to 3.2 hours in Windsor, and the gain in hourly earnings, from three-fifths of a cent in Hamilton to 5.7 cents in Windsor.

In Montreal, the 1.2 cents an hour increase in earnings was largely due to greater activity with premium overtime work in the food processing, iron and steel, petroleum refining and printing and publishing industries. Wage-rate adjustments in a number of establishments also contributed to the generally higher figure.

In Windsor, a greater volume of employment and considerable overtime work at premium rates in the automotive industry contributed materially to a longer working week in manufacturing than in any earlier period of observation since March, 1951. The hourly earnings and weekly wages reached new high averages of 162.8 cents per hour and \$70.00 a week.

In Vancouver, heightened activity in the wood products, transportation equipment, iron and steel and other industries resulted in a longer working week than any reported since July 1, 1951. There was an upward adjustment in wage rates in the electric and motor transportation industry, in which the hourly average rose by 2 cents.

Table 1.- Changes in the Average Earnings of Hourly-rated Wage-earners Reported at Apr. 1, 1952, as compared with the same date in preceding years.

(Decrease indicated by the minus sign)

Changes in Average Hourly Earnings and Weekly Wages  
of Hourly-rated Wage-earners

Industry and Area	Hourly-rated Wage-earners Reported at Apr. 1, 1952 no.	Change in Average Hourly Earnings Apr. 1, 1952 over			Change in Average Weekly Wages Apr. 1, 1952 over		
		Apr. 1 1951	Apr. 1 1950	Apr. 1 1949	Apr. 1 1951	Apr. 1 1950	Apr. 1 1949
		p.c.	p.c.	p.c.	p.c.	p.c.	p.c.
(a) <u>Canada</u>							
Manufacturing	800,948	14.4	26.8	31.4	13.8	24.5	28.6
Mining	81,214	12.6	21.7	25.0	14.2	20.0	27.4
Buildings and Structures	104,804	14.7	25.0	29.0	27.4	30.9	34.1
Service	30,846	5.8	12.0	15.9	6.3	11.2	16.1
(b) <u>Manufacturing, by Provinces</u>							
Newfoundland	6,727	20.4	25.8	..	17.6	18.3	..
Nova Scotia	22,051	16.0	25.9	32.0	18.5	24.7	31.1
New Brunswick	14,680	14.2	24.5	26.2	13.2	20.9	23.3
Quebec	262,067	14.4	25.2	28.5	14.1	23.0	26.2
Ontario	392,353	14.2	27.7	33.2	13.1	25.3	30.4
Manitoba	27,736	14.3	24.0	28.2	12.2	19.9	24.3
Saskatchewan	3,985	13.6	24.7	31.9	16.4	23.8	32.2
Alberta	15,147	14.9	25.5	29.6	16.9	20.8	25.1
British Columbia	55,704	15.9	30.5	33.1	18.7	31.5	34.1
(c) <u>Manufacturing, by Cities</u>							
Montreal	140,110	13.4	23.7	27.2	15.2	23.1	26.6
Toronto	116,731	14.5	27.5	32.5	14.0	26.2	31.2
Hamilton	45,204	12.1	24.0	35.5	10.5	21.3	26.0
Windsor	27,582	13.0	27.0	30.3	19.7	30.0	39.1
Winnipeg	25,144	14.0	23.5	27.6	11.8	18.9	23.4
Vancouver	22,979	17.0	29.8	33.6	19.5	31.5	34.3



Table 2.- Average Hours and Average Earnings of Hourly-rated Wage-earners, Canada, by Industry.

Industry	Average Hours			Average Hourly Earnings			Average Weekly Wages			Wage-earners Reported at Apr. 1, 1952
	Apr. 1 1952	Mar. 1 1952	Apr. 1 1951	Apr. 1 1952	Mar. 1 1952	Apr. 1 1951	Apr. 1 1952	Mar. 1 1952	Apr. 1 1951	
	no.	no.	no.	\$	\$	\$	\$	\$	\$	no.
Mining	43.1	42.6	42.5	146.9	143.9	130.5	63.31	61.30	55.46	81,214
Metal mining	45.0	44.8	44.4	146.1	145.0	130.2	66.76	64.96	57.81	46,339
Gold (a)	46.6	46.6	46.1	129.2	129.0	118.3	60.21	60.11	54.54	18,845
Other metal (b)	44.0	43.6	43.0	158.4	156.6	140.3	69.70	68.28	60.33	27,494
Fuels	39.7	38.2	37.8	153.4	146.8	138.1	60.90	56.08	52.20	24,159
Coal	38.3	36.3	36.4	160.2	142.5	136.3	57.53	51.73	49.61	19,583
Oil and natural gas	46.0	46.7	44.7	164.7	161.7	145.1	75.76	75.51	64.86	4,576
Non-metal (c)	42.4	43.4	45.6	136.6	132.7	115.5	57.92	57.59	52.67	10,716
Manufacturing	42.0	41.7	42.2	129.0	127.3	112.8	54.18	53.29	47.60	800,948
Food and beverages	42.3	41.8	41.8	111.0	109.4	98.5	46.95	45.73	41.17	74,054
Meat products	42.6	40.7	41.0	139.4	137.3	121.3	59.38	55.88	49.73	14,910
Canned and preserved fruits and vegetables	38.7	39.7	38.6	97.0	94.1	86.3	37.54	37.36	33.31	4,912
Grain mill products	43.3	42.9	45.3	119.9	117.8	106.8	51.92	50.54	43.38	5,187
Bread and other bakery products	44.7	44.5	44.6	97.1	96.8	89.7	43.40	43.08	40.01	8,222
Distilled and malt liquors	41.6	41.5	42.4	135.6	135.3	114.4	56.27	56.15	43.51	9,672
Tobacco and tobacco products	40.7	40.8	41.5	120.5	112.4	100.8	49.04	45.86	41.83	6,806
Rubber products	41.2	41.0	41.7	135.5	135.0	122.6	55.23	55.35	51.12	15,442
Leather products	41.5	41.1	39.8	89.6	89.5	83.9	37.18	36.78	33.39	19,766
Boots and shoes (except rubber)	41.8	41.5	39.4	86.4	86.1	80.9	36.12	35.73	31.87	13,499
Textile products (except clothing)	40.6	40.9	43.6	102.5	101.9	94.6	41.62	41.68	41.25	55,260
Cotton yarn and broad woven goods	36.5	37.2	42.7	100.2	100.1	99.7	36.57	37.24	42.57	21,656
Woollen goods	43.5	43.5	43.8	100.6	99.9	88.7	43.76	43.46	38.85	9,962
Rayon, nylon and silk textiles	44.6	45.1	45.7	106.2	105.7	93.7	47.05	47.67	42.82	10,906
Clothing (textile and fur)	39.6	38.8	38.7	91.0	91.0	85.1	36.04	35.31	32.93	63,914
Men's clothing	40.2	38.5	39.2	88.5	88.2	84.4	35.58	33.96	32.08	21,672
Women's clothing	38.1	37.5	36.4	94.7	95.7	89.1	36.08	35.89	32.43	13,539
Knit goods	39.6	39.3	40.0	92.9	92.8	83.1	36.79	36.47	33.24	17,162
*Wood products	42.0	41.4	40.9	116.5	115.6	103.9	48.93	47.86	42.50	62,588
Saw and planing mills	41.2	40.4	40.0	126.5	126.1	112.7	52.12	50.94	45.08	38,835
Furniture	42.9	42.4	41.8	103.0	102.2	93.9	44.18	43.33	39.25	14,416
Other wood products (d)	44.1	43.9	43.2	97.5	97.2	85.3	43.00	42.67	36.85	9,337
Paper products	45.4	45.7	46.2	141.6	140.8	119.7	64.29	64.35	55.30	63,934
Pulp and paper mills	46.3	47.1	47.7	160.3	149.6	127.2	70.24	70.46	60.67	48,252
Other paper products (e)	41.2	41.5	42.3	111.3	110.4	97.5	45.06	45.82	41.24	15,682
Printing, publishing and allied industries	39.8	39.2	40.2	146.0	143.4	131.7	58.11	56.21	52.94	25,889
*Iron and steel products	42.4	42.1	42.4	144.2	143.3	125.3	61.14	60.35	53.13	138,854
Agricultural implements	40.5	40.4	38.6	160.2	160.9	140.3	64.88	65.00	54.16	15,614
Fabricated and structural steel	43.1	43.7	42.4	147.4	146.4	128.6	63.63	63.98	54.53	6,968
Hardware and tools	42.7	42.8	42.8	129.2	128.8	110.6	55.17	55.13	47.34	9,093
Heating and cooking appliances	41.5	40.6	42.1	125.2	124.0	115.4	51.96	50.34	48.58	4,986
Iron castings	43.3	42.1	44.1	141.6	139.6	126.8	61.31	58.77	55.92	16,512
Machinery mfg. (f)	43.9	43.9	43.9	135.5	135.4	117.9	59.48	59.44	51.76	25,735
Primary iron and steel	41.6	41.5	41.9	156.7	156.4	135.4	55.19	54.91	56.73	32,280
Sheet metal products	41.3	40.8	41.6	133.8	132.8	117.0	55.26	54.18	48.91	11,755
*Transportation equipment	42.6	41.7	42.6	147.0	144.8	129.5	62.62	60.38	55.17	123,418
Aircraft and parts	44.6	45.0	44.5	148.5	146.0	120.5	66.14	65.70	53.82	18,269
Motor vehicles	43.3	40.9	40.9	164.4	158.7	150.5	71.19	64.91	61.55	25,860
Motor vehicle parts and accessories	41.4	40.4	42.7	150.7	149.1	133.9	62.39	60.24	57.18	17,281
Railroad and rolling stock equipment	40.0	40.3	44.0	140.7	139.7	119.2	57.12	56.30	52.45	39,133
Shipbuilding and repairing	44.4	43.3	41.3	135.4	135.3	118.5	60.12	58.80	49.38	21,543
*Non-ferrous metal products	41.7	41.7	43.3	144.1	143.4	121.5	60.09	59.90	52.61	36,978
Aluminum products	43.7	43.6	43.0	131.1	131.3	112.3	57.29	57.25	48.29	4,754
Zinc and copper products	42.6	42.3	43.4	133.9	132.2	118.2	57.04	55.92	51.30	7,245
Smelting and refining	41.1	41.2	43.9	157.6	157.0	131.1	64.77	64.68	57.55	19,794
*Electrical apparatus and supplies	41.0	40.9	41.4	139.0	138.4	123.0	56.99	56.31	50.92	43,373
Heavy electrical machinery and equipment <sup>1/</sup>	41.3	40.7	41.0	156.1	155.3	138.3	64.47	63.21	56.70	11,049
*Non-metallic mineral products (g)	43.8	43.9	44.6	126.3	126.7	111.3	55.54	55.52	49.64	18,681
Clay products	44.0	44.4	44.3	119.3	119.6	106.6	52.71	53.10	47.76	4,189
Glass and glass products	44.6	44.4	44.6	122.5	121.5	108.4	54.64	53.95	48.35	4,731
Products of petroleum and coal	42.3	40.8	41.0	167.5	163.5	141.9	71.69	66.71	58.18	7,044
Chemical products	42.1	42.1	43.4	130.3	130.5	114.2	55.07	54.94	49.56	29,589
Medicinal and pharmaceutical preparations	41.7	41.6	41.6	104.3	104.6	93.4	43.70	43.61	38.35	3,835
Acids, alkalis and salts	42.0	42.2	46.2	151.5	152.1	129.1	63.63	64.19	59.64	5,530
Miscellaneous manufacturing industries	41.8	41.5	41.3	103.9	103.5	94.4	43.43	42.35	38.99	14,758
*Durable goods	42.3	41.8	42.3	139.4	138.4	121.6	59.05	57.35	51.44	423,792
Non-durable goods	41.8	41.5	42.1	116.9	116.0	103.4	48.39	48.14	43.53	377,156
Construction	42.3	42.7	39.0	131.8	129.9	115.0	55.75	55.47	44.35	147,470
Buildings and structures (h)	42.1	41.6	37.9	140.5	139.5	122.5	59.15	58.07	46.43	104,804
Highways, bridges and streets	42.1	45.0	42.3	106.0	102.9	94.6	44.63	46.31	40.02	32,513
Electric and motor transportation (i)	45.9	45.5	44.6	125.1	124.1	116.2	57.30	56.47	51.83	27,843
Service (j)	42.7	42.7	42.5	73.0	73.2	69.0	31.17	31.26	29.33	30,846
Hotels and restaurants	43.7	44.0	43.3	72.1	72.8	68.9	31.51	32.03	29.33	20,298
Laundries and dry cleaning plants	41.3	40.7	41.0	71.9	70.2	66.3	29.32	28.57	27.18	9,212

For footnotes (a) to (j) see explanatory notes facing page 1. <sup>1/</sup>Durable manufactured goods industries. <sup>1/</sup>Index numbers of average hourly earnings in the heavy electrical machinery and equipment industry are given in Table 9 on page 20.

Table 3.- Average Hours Worked and Average Hourly Earnings of Hourly-rated Wage-earners in Manufacturing, Canada.

Week Preceding	All Manu- factures	Average Hours		Non-durable Goods	All Manu- factures	Average Hourly Earnings	
	Durable Goods	no.	Durable Goods		Non-Durable Goods		
Apr. 1	no.	no.	no.	¢	¢	¢	
*1945	43.6	44.2	42.7	70.4	78.0	60.9	
1946	44.4	44.6	44.2	68.4	75.1	61.8	
1947	43.2	43.4	43.1	77.6	84.8	70.5	
*1948	41.6	41.8	41.4	89.0	95.6	82.1	
1949	42.9	43.2	42.6	98.2	105.7	90.3	
1950							
*Jan. 1	39.9	40.3	39.6	101.1	109.3	92.9	
Feb. 1	42.3	42.2	42.4	100.9	109.5	92.6	
Mar. 1	42.5	42.6	42.5	101.4	109.8	93.1	
Apr. 1	42.8	43.0	42.6	101.7	110.0	93.6	
May 1	42.6	42.9	42.4	102.5	110.6	94.3	
June 1	42.0	42.2	41.7	103.5	111.4	95.5	
July 1	42.5	42.9	42.2	103.9	111.8	95.7	
Aug. 1	42.5	42.7	42.2	104.2	112.5	95.8	
Sept. 1	41.9	41.5	42.4	104.4	112.9	95.9	
Oct. 1	42.9	43.0	42.8	105.3	114.3	96.3	
Nov. 1	43.0	43.1	43.0	106.4	115.2	97.5	
Dec. 1	43.1	43.1	43.1	107.8	116.4	99.0	
1951							
*Jan. 1	40.1	40.2	39.9	109.0	117.1	100.5	
Feb. 1	42.9	43.1	42.6	110.4	119.0	101.2	
Mar. 1	42.3	42.5	42.2	111.4	119.9	102.3	
*Apr. 1	42.2	42.3	42.1	112.8	121.6	103.4	
May 1	42.5	42.6	42.5	114.1	122.9	104.6	
June 1	41.9	42.1	41.6	115.9	123.8	107.2	
July 1	41.7	42.0	41.4	118.4	127.0	109.1	
Aug. 1	41.4	41.4	41.3	119.1	128.2	109.4	
Sept. 1	41.5	41.7	41.4	120.6	130.0	110.6	
Oct. 1	41.9	42.0	41.8	121.9	132.1	111.2	
Nov. 1	41.8	42.1	41.5	123.5	133.3	113.0	
Dec. 1	41.9	42.2	41.6	124.5	134.6	113.5	
1952							
*Jan. 1	38.1	38.3	37.9	127.1	136.4	116.8	
Feb. 1	41.6	41.9	41.2	127.1	137.5	115.7	
Mar. 1	41.7	41.8	41.5	127.8	138.4	116.0	
Apr. 1	42.0	42.3	41.8	129.0	139.6	116.9	

\*These averages were affected by loss of working time at the year-end holidays in the case of Jan. 1 and by the Easter holidays in the case of Apr. 1, 1945, 1948 and 1951.

Table 4.- Average Hours Worked and Average Hourly Earnings of Hourly-rated Wage-earners in Specified Industries, Canada.

<u>Week</u> <u>Preceding</u>	<u>Mining</u> <u>All Branches</u>	<u>Coal</u> <u>Mining</u>	<u>Metal</u> <u>Mining</u>	<u>Non-Metal</u> <u>Mining</u>	<u>Electric and Motor</u> <u>Transportation</u>
<u>Apr. 1</u>	(a) <u>Average Hours</u>				
*1945	43.7	39.4	46.3	..	..
1946	44.3	41.5	46.0	..	..
1947	43.2	38.3	44.3	..	..
*1948	42.3	38.6	44.2	..	..
1949	42.3	36.6	45.5	..	..
<u>1950</u>					
*Jan. 1	40.2	35.1	42.7	..	..
Feb. 1	43.0	37.4	46.0	..	..
Mar. 1	43.8	39.0	46.2	..	..
Apr. 1	43.7	39.2	46.1	..	..
May 1	43.5	38.3	46.1	..	..
June 1	42.3	35.1	45.2	..	..
July 1	43.2	39.3	44.7	..	..
Aug. 1	43.7	39.8	45.2	..	..
Sept. 1	41.7	35.4	43.8	..	..
Oct. 1	43.1	39.1	44.5	..	..
Nov. 1	43.9	39.6	45.3	..	..
Dec. 1	43.9	40.2	45.2	46.1	45.6
<u>1951</u>					
*Jan. 1	40.5	34.9	42.6	41.5	44.7
Feb. 1	44.1	40.6	45.4	45.8	45.0
Mar. 1	43.7	39.5	44.9	45.9	45.3
*Apr. 1	42.5	36.4	44.4	45.6	44.6
May 1	43.4	39.5	44.6	46.6	45.0
June 1	43.0	38.0	44.3	47.0	44.4
July 1	43.3	40.5	43.9	45.1	45.4
Aug. 1	43.0	41.2	43.3	45.3	44.5
Sept. 1	42.2	39.1	42.5	46.8	45.5
Oct. 1	43.9	41.2	44.2	47.6	45.9
Nov. 1	43.5	41.2	43.7	47.1	45.4
Dec. 1	44.2	41.6	44.8	46.5	45.2
<u>1952</u>					
*Jan. 1	40.2	32.7	42.5	42.3	44.9
Feb. 1	43.0	37.9	44.5	45.3	45.6
Mar. 1	42.6	36.3	44.8	43.4	45.5
Apr. 1	43.1	38.3	45.0	42.4	45.8

\*See footnote on page 7.



Table 4.- Average Hours Worked and Average Hourly Earnings of Hourly-rated Wage-earners in Specified Industries. (Continued)

<u>Week Preceding</u>	<u>Mining All Branches</u>	<u>Coal Mining</u>	<u>Metal Mining</u>	<u>Non-Metal Mining</u>	<u>Electric and Motor Transportation</u>
<u>Apr. 1</u>	<u>(b) Average Hourly Earnings (in cents)</u>				
1945	84.9	93.1	84.5	..	..
1946	86.3	96.0	85.1	..	..
1947	95.8	113.6	96.8	..	..
1948	110.7	124.8	108.3	..	..
1949	117.5	127.3	115.1	..	..
<u>1950</u>					
Jan. 1	120.3	131.3	118.8	..	..
Feb. 1	119.4	129.7	117.5	..	..
Mar. 1	120.7	130.8	119.0	..	..
Apr. 1	120.7	131.3	118.9	..	..
May 1	120.9	129.6	120.3	..	..
June 1	120.1	130.5	119.7	..	..
July 1	120.4	129.3	120.5	..	..
Aug. 1	121.5	129.3	122.5	..	..
Sept. 1	121.1	129.3	122.2	..	..
Oct. 1	123.1	128.9	124.6	..	..
Nov. 1	123.7	130.3	124.4	..	..
Dec. 1	124.8	130.5	125.2	107.1	109.0
<u>1951</u>					
Jan. 1	127.1	131.0	127.9	107.4	111.0
Feb. 1	127.7	131.8	128.1	111.3	110.7
Mar. 1	130.1	135.5	130.0	114.8	112.4
Apr. 1	130.5	136.3	130.2	115.5	116.2
May 1	131.5	137.6	131.6	116.4	115.6
June 1	131.6	137.3	132.0	116.7	116.5
July 1	133.3	139.0	134.3	115.8	117.9
Aug. 1	136.1	137.4	139.3	118.0	119.2
Sept. 1	137.1	138.7	140.4	117.8	119.2
Oct. 1	138.2	138.5	141.2	120.2	119.7
Nov. 1	138.3	138.7	140.4	120.9	120.5
Dec. 1	139.3	138.7	141.8	121.3	121.2
<u>1952</u>					
Jan. 1	142.6	140.3	145.1	124.5	123.4
Feb. 1	141.4	140.8	143.2	125.8	123.0
Mar. 1	143.9	142.5	145.0	132.7	124.1
Apr. 1	146.9	150.2	146.1	136.6	125.1

Table 4.- Average Hours Worked and Average Hourly Earnings of Hourly-rated Wage-earners in Specified Industries. (Continued)

<u>Week Preceding</u>	<u>Buildings and Structures</u>	<u>Highways, Bridges and Street Construction</u>	<u>Service</u>	<u>Hotels Restaurants</u>	<u>Laundries and Dry Cleaning Plants</u>
<u>Apr. 1</u>	<u>(a) Average Hours</u>				
*1945	39.6	36.9	44.2	45.4	41.7
1946	40.2	38.3	43.9	44.7	42.4
1947	38.9	39.5	43.1	43.3	41.3
*1948	37.6	36.6	43.1	44.0	41.3
1949	40.5	39.1	42.6	43.4	41.6
<u>1950</u>					
*Jan. 1	34.6	37.8	41.4	43.3	37.7
Feb. 1	38.6	40.6	42.1	42.9	40.9
Mar. 1	40.0	45.2	42.8	44.0	41.0
Apr. 1	40.2	40.8	43.0	43.3	42.0
May 1	40.1	38.6	42.9	43.6	42.2
June 1	39.4	38.6	42.3	43.8	41.4
July 1	40.5	40.5	42.7	43.9	41.0
Aug. 1	40.2	41.9	42.5	43.8	40.5
Sept. 1	40.2	41.9	41.8	42.6	40.5
Oct. 1	40.6	41.9	42.5	43.4	41.3
Nov. 1	40.4	41.4	42.5	43.4	41.3
Dec. 1	40.1	39.3	42.7	43.5	41.5
<u>1951</u>					
*Jan. 1	33.7	38.3	42.0	43.4	39.1
Feb. 1	39.2	42.5	42.9	43.9	41.3
Mar. 1	39.4	44.2	42.4	43.2	41.1
*Apr. 1	37.9	42.3	42.5	43.3	41.0
May 1	39.7	39.5	42.6	43.3	41.6
June 1	38.7	41.2	42.5	43.4	41.1
July 1	40.0	41.8	42.3	43.7	41.4
Aug. 1	40.7	42.7	42.5	43.7	40.2
Sept. 1	40.9	43.0	42.7	44.0	40.5
Oct. 1	41.6	43.6	42.5	43.5	41.0
Nov. 1	40.7	42.7	42.4	43.3	41.0
Dec. 1	41.3	41.3	42.6	43.6	41.1
<u>1952</u>					
*Jan. 1	32.3	42.4	41.4	43.6	37.0
Feb. 1	40.3	43.5	42.6	43.6	41.2
Mar. 1	41.6	45.0	42.7	44.0	40.7
Apr. 1	42.1	42.1	42.7	43.7	41.3

\*See footnote on page 7.

Table 4.- Average Hours Worked and Average Hourly Earnings of Hourly-rated Wage-earners in Specified Industries. (Concluded)

<u>Week</u> <u>Preceding</u>	<u>Buildings</u> <u>and Structures</u>	<u>Highways,</u> <u>Bridges and Street</u> <u>Construction</u>	<u>Service</u>	<u>Hotels</u> <u>Restaurants</u>	<u>Laundries</u> <u>and Dry Cleaning</u> <u>Plants</u>
(b) <u>Average Hourly Earnings</u> (in cents)					
<u>Apr. 1</u>					
1945	81.2	65.9	42.6	40.9	46.6
1946	82.3	65.7	44.4	42.3	47.5
1947	88.1	69.2	51.7	51.1	52.7
1948	99.1	81.1	56.2	54.6	59.4
1949	108.9	87.6	63.0	62.3	61.9
<u>1950</u>					
Jan. 1	108.9	88.4	64.7	63.4	64.0
Feb. 1	110.7	86.7	65.0	63.3	64.2
Mar. 1	111.7	88.7	66.3	65.4	64.7
Apr. 1	112.4	90.0	65.2	64.0	64.4
May 1	113.9	89.0	66.1	65.1	64.9
June 1	112.4	87.1	65.7	64.3	65.0
July 1	112.2	86.3	65.3	63.9	64.7
Aug. 1	112.5	86.1	64.7	62.9	64.8
Sept. 1	114.1	86.7	64.5	62.2	65.2
Oct. 1	115.8	88.3	66.6	65.3	66.0
Nov. 1	117.1	89.7	67.5	66.5	66.6
Dec. 1	117.5	89.8	67.5	66.8	66.3
<u>1951</u>					
Jan. 1	118.7	89.8	67.5	67.2	65.3
Feb. 1	121.2	93.1	67.7	67.3	65.9
Mar. 1	122.1	92.8	69.5	69.9	66.0
Apr. 1	122.5	94.6	69.0	68.9	66.3
May 1	124.0	94.3	69.3	69.8	66.8
June 1	125.9	95.4	69.3	68.8	67.3
July 1	127.7	95.5	68.9	68.2	67.4
Aug. 1	127.9	95.8	68.4	67.3	67.7
Sept. 1	131.0	96.4	68.3	66.9	67.7
Oct. 1	133.8	97.0	71.0	70.4	68.6
Nov. 1	134.9	98.1	71.2	70.7	69.1
Dec. 1	135.7	98.9	71.3	70.7	69.3
<u>1942</u>					
Jan. 1	136.2	101.0	71.8	71.1	69.6
Feb. 1	138.8	102.4	72.0	71.2	69.5
Mar. 1	139.6	102.9	73.2	72.3	70.2
Apr. 1	140.5	106.0	73.0	72.1	71.0



Table 5.- Provincial Averages of Hours Worked and Hourly Earnings of Hourly-rated Wage-earners in Manufacturing.

<u>Week</u> <u>Preceding</u>	<u>N.'f'ld.</u>	<u>N.S.</u>	<u>N.B.</u>	<u>Que.</u>	<u>Ont.</u>	<u>Man.</u>	<u>Sask.</u>	<u>Alta.</u>	<u>B.C.</u>
<u>Apr. 1</u>	(a) <u>Average Hours</u>								
*1945	..	47.5	45.4	45.0	42.6	43.0	41.9	43.2	41.4
1946	..	45.8	47.1	46.5	43.2	43.6	41.7	43.0	42.1
1947	..	44.6	46.7	45.1	42.1	42.8	42.7	43.1	40.4
*1948	..	43.3	44.1	42.8	41.1	42.3	42.2	42.1	37.3
1949	..	43.9	44.8	44.4	42.3	42.7	41.7	42.9	38.4
<u>1950</u>									
*Jan. 1	..	38.7	41.5	41.3	39.8	39.7	40.2	40.2	34.2
Feb. 1	..	43.1	43.3	43.9	42.1	41.0	40.9	41.2	36.1
Mar. 1	..	43.2	45.3	44.1	41.9	42.9	41.7	42.7	38.1
Apr. 1	45.2	44.0	45.1	44.4	42.2	42.8	42.1	43.0	38.4
May 1	44.1	44.0	44.4	43.9	42.2	42.4	42.3	42.5	38.7
June 1	44.6	43.2	43.8	43.3	41.6	41.7	42.0	42.2	37.4
July 1	44.5	43.6	45.2	43.8	42.2	42.7	41.7	42.6	38.0
Aug. 1	45.0	43.7	45.5	44.0	42.1	42.1	40.4	41.7	37.9
Sept. 1	43.6	42.9	43.8	43.8	41.5	39.2	41.2	39.4	38.1
Oct. 1	46.1	43.7	46.1	44.9	42.2	41.9	41.6	40.7	39.0
Nov. 1	46.0	44.1	44.7	45.0	42.4	42.2	42.0	42.3	38.6
Dec. 1	45.5	43.0	45.3	45.0	42.4	42.8	40.7	42.1	38.7
<u>1951</u>									
*Jan. 1	40.9	38.4	42.1	41.3	39.8	40.4	41.0	40.5	35.5
Feb. 1	41.7	42.6	45.7	44.7	42.4	42.3	40.9	41.6	38.1
Mar. 1	45.2	41.5	44.8	44.4	41.5	42.7	40.5	41.5	38.4
*Apr. 1	43.5	42.7	44.2	43.7	41.8	42.2	40.8	40.7	37.8
May 1	43.7	43.7	43.7	44.3	42.0	41.7	41.0	41.4	38.4
June 1	45.7	43.2	43.5	43.6	41.2	41.8	41.7	41.7	37.4
July 1	44.8	43.9	44.1	42.6	41.5	40.9	41.0	40.7	38.3
Aug. 1	45.2	42.6	43.2	42.9	40.8	40.8	40.7	40.5	37.8
Sept. 1	44.1	41.6	43.4	43.5	40.8	40.9	40.3	40.6	37.6
Oct. 1	44.2	41.6	44.6	43.6	41.5	40.8	40.9	40.2	37.6
Nov. 1	44.3	42.5	43.7	43.3	41.3	41.4	41.1	41.3	38.2
Dec. 1	44.9	42.4	42.8	43.6	41.3	41.2	41.9	41.0	38.7
<u>1952</u>									
*Jan. 1	39.3	37.5	39.6	39.4	37.7	38.7	39.7	39.0	34.0
Feb. 1	42.0	41.2	44.0	43.1	41.1	40.7	40.3	40.0	37.9
Mar. 1	43.1	41.6	42.3	43.5	41.0	41.2	40.8	40.8	38.0
Apr. 1	42.5	43.6	43.8	43.6	41.4	41.4	41.8	41.4	38.7

\* See footnote on page 7.

Table 5.- Provincial Averages of Hours Worked and Hourly Earnings of Hourly-rated Wage-earners in Manufacturing. (Concluded)

<u>Week</u> <u>Preceding</u>	<u>N'f'ld.</u>	<u>N.S.</u>	<u>N.B.</u>	<u>Que.</u>	<u>Ont.</u>	<u>Man.</u>	<u>Sask.</u>	<u>Alta.</u>	<u>B.C.</u>
<u>Apr. 1</u>	(b) <u>Average Hourly Earnings (in cents)</u>								
1945	..	72.2	63.3	64.8	72.8	68.0	68.3	72.6	84.3
1946	..	69.1	63.2	62.2	71.1	70.1	68.3	70.9	82.1
1947	..	76.0	70.3	69.9	81.5	77.5	77.0	77.4	93.0
1948	..	81.8	79.7	80.6	93.5	85.0	89.7	88.4	106.6
1949	..	87.7	89.1	89.2	103.0	95.2	98.1	99.2	119.1
<u>1950</u>									
Jan. 1	..	94.7	91.5	91.2	106.2	98.2	103.8	102.0	121.2
Feb. 1	..	91.1	90.8	90.9	106.4	97.2	103.9	101.9	122.3
Mar. 1	..	91.6	89.6	91.1	107.0	97.5	104.5	102.8	121.9
Apr. 1	100.0	92.0	90.3	91.5	107.4	93.4	103.8	102.5	121.5
May 1	100.4	92.3	90.5	91.9	108.2	98.4	104.2	103.8	122.4
June 1	98.9	95.0	89.4	92.7	109.5	99.6	104.6	104.1	122.6
July 1	106.1	91.3	89.0	93.3	109.5	98.6	105.0	103.6	125.5
Aug. 1	100.9	91.1	89.7	93.3	110.3	99.4	103.4	102.2	125.1
Sept. 1	101.8	91.0	90.4	93.3	110.5	98.7	104.2	103.0	125.7
Oct. 1	100.6	90.7	92.3	94.4	111.1	101.9	106.8	105.6	127.0
Nov. 1	100.6	90.1	93.7	95.2	112.7	101.9	107.5	107.2	127.8
Dec. 1	103.8	91.7	96.8	96.4	114.2	102.7	108.9	108.1	129.1
<u>1951</u>									
Jan. 1	103.7	96.2	97.5	97.4	115.3	103.5	111.3	109.1	131.5
Feb. 1	106.0	95.3	97.8	98.1	117.5	105.1	110.7	110.2	132.5
Mar. 1	102.3	97.4	98.6	99.1	118.7	106.1	113.0	111.6	133.0
Apr. 1	104.5	99.8	98.4	100.2	120.1	106.7	113.9	111.9	136.7
May 1	107.8	97.8	100.2	101.6	121.5	108.8	115.4	112.8	137.1
June 1	107.2	100.2	101.5	103.4	123.6	110.6	117.1	114.9	138.0
July 1	119.1	100.4	104.4	106.4	124.9	116.4	116.9	119.3	140.4
Aug. 1	121.4	103.3	107.3	106.6	125.9	117.0	117.4	119.2	140.8
Sept. 1	120.3	102.6	107.8	108.2	127.5	117.2	121.0	120.8	145.2
Oct. 1	118.3	104.9	110.2	109.6	128.3	118.6	123.0	122.1	149.0
Nov. 1	121.6	105.6	110.5	111.1	130.4	119.4	125.4	123.2	150.5
Dec. 1	121.2	106.8	111.4	112.2	131.2	120.0	123.3	124.4	153.4
<u>1952</u>									
Jan. 1	127.9	114.6	114.2	114.1	134.0	121.9	126.0	125.9	156.5
Feb. 1	126.4	113.8	112.6	113.7	134.6	120.2	126.5	127.5	156.9
Mar. 1	125.5	114.5	113.5	113.8	135.7	121.3	127.7	127.6	158.1
Apr. 1	125.8	115.8	112.4	114.6	137.2	122.0	129.4	128.6	158.5

Table 6.- City Averages of Hours Worked and Hourly Earnings of Hourly-rated Wage-earners in Manufacturing.

<u>Week</u> <u>Preceding</u>	<u>Montreal</u>	<u>Toronto</u>	<u>Hamilton</u>	<u>Windsor</u>	<u>Winnipeg</u>	<u>Vancouver</u>
<u>Apr. 1</u>	(a) <u>Average Hours</u>					
*1945	43.7	40.4	43.4	43.3	43.0	40.8
1946	44.9	42.1	43.3	42.8	43.2	41.0
1947	43.2	40.8	42.3	40.1	42.5	40.2
*1948	41.4	39.7	42.0	39.6	42.0	37.0
1949	43.0	41.2	42.9	40.3	42.4	38.0
<u>1950</u>						
*Jan. 1	39.7	39.1	39.6	37.5	39.5	33.2
Feb. 1	42.1	41.1	41.2	40.5	40.6	36.5
Mar. 1	42.5	40.7	40.8	40.8	42.7	37.5
Apr. 1	43.0	41.2	40.8	42.0	42.6	37.7
May 1	42.5	41.2	41.1	41.7	42.0	38.1
June 1	41.6	40.3	41.7	41.0	41.3	36.7
July 1	42.3	41.1	40.5	43.3	42.4	37.8
Aug. 1	41.9	40.9	40.4	43.5	41.8	37.6
Sept. 1	41.5	40.8	39.7	42.2	38.6	37.3
Oct. 1	43.1	41.4	40.7	40.5	41.7	38.6
Nov. 1	43.5	41.6	40.9	39.8	42.0	37.8
Dec. 1	43.3	41.6	41.1	42.0	42.6	37.6
<u>1951</u>						
*Jan. 1	39.5	38.5	39.2	39.3	40.1	34.6
Feb. 1	43.1	41.3	40.7	44.2	42.0	37.6
Mar. 1	43.0	40.2	39.9	43.8	42.3	37.6
*Apr. 1	42.1	41.0	40.5	40.6	41.8	37.4
May 1	42.7	41.4	40.8	38.9	41.2	38.0
June 1	41.6	40.2	40.8	39.8	41.4	36.8
July 1	40.8	40.6	40.9	38.3	40.5	38.3
Aug. 1	41.1	40.5	40.3	35.5	40.4	37.5
Sept. 1	42.5	40.5	39.4	38.5	40.6	37.0
Oct. 1	42.2	41.0	39.5	38.2	40.3	37.3
Nov. 1	42.3	40.9	39.5	39.3	40.9	37.7
Dec. 1	42.5	41.0	40.4	40.0	40.6	38.1
<u>1952</u>						
*Jan. 1	37.9	36.8	36.7	38.2	38.3	32.9
Feb. 1	42.0	40.4	39.8	41.1	40.3	37.3
Mar. 1	42.5	40.6	39.4	39.8	40.7	36.7
Apr. 1	42.8	40.8	39.9	43.0	41.0	38.2

\*See footnote on page 7.



Table 6.- City Averages of Hours Worked and Hourly Earnings of Hourly-rated  
Wage-earners in Manufacturing. (Concluded)

<u>Week Preceding</u>	<u>Montreal</u>	<u>Toronto</u>	<u>Hamilton</u>	<u>Windsor</u>	<u>Winnipeg</u>	<u>Vancouver</u>
<u>Apr. 1</u>	(b) <u>Average Hourly Earnings (in cents)</u>					
1945	70.1	73.7	75.5	96.6	68.1	85.8
1946	67.2	71.4	72.5	96.6	69.6	80.6
1947	74.9	81.5	85.4	104.4	77.3	92.2
1948	84.8	93.2	97.7	115.0	84.5	105.3
1949	94.1	102.3	109.1	124.9	94.7	116.2
<u>1950</u>						
Jan. 1	96.9	104.2	117.7	127.3	97.6	117.7
Feb. 1	96.2	105.2	117.7	126.9	96.6	118.1
Mar. 1	96.2	105.6	118.4	127.5	97.0	119.4
Apr. 1	96.8	106.3	119.2	128.2	97.8	119.6
May 1	97.0	107.1	119.6	128.9	97.9	120.6
June 1	97.5	107.5	122.0	131.4	99.2	120.6
July 1	98.0	107.6	121.6	132.7	97.8	123.7
Aug. 1	98.1	108.1	122.1	134.0	98.6	124.9
Sept. 1	97.9	108.4	122.7	133.5	97.8	125.0
Oct. 1	99.5	109.8	123.5	133.4	101.1	126.1
Nov. 1	99.9	111.4	123.5	138.0	101.2	125.6
Dec. 1	100.8	112.5	124.8	142.1	101.8	126.6
<u>1951</u>						
Jan. 1	101.9	113.0	126.4	137.9	102.7	128.9
Feb. 1	102.9	115.2	128.8	144.9	104.2	129.8
Mar. 1	104.1	116.9	131.0	145.4	105.4	129.8
Apr. 1	105.6	118.3	131.8	144.1	106.0	132.7
May 1	107.4	120.1	134.7	142.5	107.8	133.6
June 1	108.1	122.0	136.1	144.4	109.1	135.3
July 1	111.2	123.5	136.3	142.1	115.3	138.0
Aug. 1	111.1	124.7	139.1	142.9	115.7	139.5
Sept. 1	112.4	126.8	140.6	143.4	116.2	144.6
Oct. 1	114.1	128.4	142.6	144.2	117.2	148.2
Nov. 1	115.1	129.3	142.0	145.8	118.2	149.4
Dec. 1	116.8	129.7	144.7	146.7	118.6	150.7
<u>1952</u>						
Jan. 1	118.6	131.6	147.4	150.2	120.3	151.2
Feb. 1	118.3	133.1	146.8	153.1	118.6	153.0
Mar. 1	118.5	134.6	147.2	157.1	119.9	154.4
Apr. 1	119.7	135.5	147.8	162.8	120.8	155.2

Table 7.- Provincial Averages of Hours Worked and Hourly Earnings of Hourly-rated Wage-earners, by Industry.

Province and Industry	Average Hours			Average Hourly Earnings		
	Apr. 1	Mar. 1	Apr. 1	Apr. 1	Mar. 1	Apr. 1
	1952	1952	1951	1952	1952	1951
	no.	no.	no.	¢	¢	¢
<u>Newfoundland</u>						
Mining	45.4	44.2	43.6	132.2	131.2	114.9
Manufacturing	42.5	43.1	43.5	125.8	125.5	104.5
Food and beverages	37.9	39.9	39.2	76.7	76.3	67.9
Canned and cured fish	31.9	35.5	35.0	78.1	77.8	67.5
Pulp and paper mills	45.3	45.4	46.9	167.1	164.4	129.7
Buildings and structures (h)	47.6	45.4	41.4	109.5	110.0	82.4
<u>Nova Scotia</u>						
Coal mining	43.0	37.7	40.9	141.0	127.7	128.4
Manufacturing	43.6	41.6	42.7	115.8	114.5	99.8
Canned and cured fish	49.6	41.7	44.2	93.2	86.9	83.9
Wood products	43.0	41.2	42.3	67.8	66.6	62.8
Iron and steel products	41.7	39.8	42.0	138.9	138.6	118.1
Primary iron and steel	41.3	39.7	41.7	146.4	145.5	122.9
Transportation equipment	45.4	43.5	42.9	130.0	129.8	110.3
Shipbuilding and repairing	46.9	45.3	41.8	130.0	131.7	111.3
Buildings and structures (h)	37.2	35.7	36.5	112.5	111.6	95.0
Highways, bridges and street construction	36.1	36.8	31.5	89.3	90.9	81.5
<u>New Brunswick</u>						
Manufacturing	43.8	42.3	44.2	112.4	113.5	98.4
Saw and planing mills	46.4	44.5	46.1	78.9	79.9	68.6
Pulp and paper mills	47.7	48.3	47.6	148.4	149.1	128.1
Transportation equipment	41.4	40.4	42.9	128.8	133.2	117.1
Buildings and structures (h)	39.5	37.9	38.9	102.1	100.9	87.9
Highways, bridges and street construction	31.5	43.1	40.0	83.7	84.0	75.9
<u>Quebec</u>						
Mining	46.2	46.9	46.9	134.1	130.8	117.0
Metal mining	48.7	48.5	46.7	125.2	124.7	114.1
Non-metal mining (c)	42.0	44.2	47.2	151.0	142.1	121.4
Manufacturing	43.6	43.5	43.7	114.6	113.8	100.2
Tobacco	40.7	39.6	41.5	129.9	130.5	108.4
Leather products	41.5	41.7	39.4	82.2	81.8	76.6
Boots and shoes (except rubber)	41.9	42.2	39.4	82.4	82.1	77.2
Textile products (except clothing)	41.0	41.9	45.0	96.9	96.5	91.3
Cotton yarn and broad woven goods	36.3	37.2	43.1	95.2	95.8	97.7
Rayon, nylon and silk textiles	45.9	46.9	47.4	100.0	98.5	87.9
Clothing (textile and fur)	40.2	39.5	38.6	87.5	87.8	81.9
Men's clothing	41.5	39.7	39.5	87.5	86.6	82.9
Women's clothing	37.5	37.0	35.7	92.0	93.2	86.3
Knit goods	40.7	41.1	40.6	88.0	88.9	78.0
Wood products	47.8	47.2	46.0	85.7	86.0	77.9
Saw and planing mills	49.0	48.3	46.8	84.0	83.7	73.7
Paper products	48.0	48.2	47.7	134.1	133.6	115.2
Pulp and paper mills	49.2	49.3	49.0	141.6	141.3	122.5
Iron and steel products	45.9	45.6	45.0	128.3	126.6	110.9
Machinery mfg. (f)	48.0	48.1	46.6	125.4	125.6	107.1
Transportation equipment	44.0	44.0	44.2	132.3	131.5	116.0
Railroad and rolling stock equipment	41.0	41.0	43.7	140.2	139.5	121.6
Non-ferrous metal products	43.7	43.8	46.5	136.6	135.9	111.2
Smelting and refining	42.9	43.0	47.0	150.2	149.4	120.1
Electrical apparatus and supplies	42.0	42.7	42.6	131.2	131.2	115.8
Chemical products	43.0	42.9	44.9	119.9	119.4	103.7
Buildings and structures (h)	45.2	44.6	38.2	125.1	124.1	112.2
Highways, bridges and street construction	48.9	53.3	49.1	85.8	81.8	77.4
Electric and motor transportation (i)	48.9	48.7	46.9	115.2	114.5	106.7
Service (j)	44.4	44.0	44.0	68.9	68.5	64.9

Footnotes (a) to (j) appear in explanatory notes facing page 1.

Table 7.- Provincial Averages of Hours Worked and Hourly Earnings of Hourly-rated Wage-earners, by Industry. (Continued)

Province and Industry	Average Hours			Average Hourly Earnings		
	Apr. 1 1952	Mar. 1 1952	Apr. 1 1951	Apr. 1 1952	Mar. 1 1952	Apr. 1 1951
	no.	no.	no.	¢	¢	¢
<b>Ontario</b>						
Metal mining	43.4	43.3	44.3	149.2	148.4	132.3
Manufacturing	41.4	41.0	41.8	<b>137.2</b>	135.7	120.1
Food and beverages	41.4	41.3	41.7	113.3	112.1	101.0
Meat products	42.9	41.0	42.1	135.9	135.4	121.0
vegetables						
Canned & preserved fruits &	38.6	40.5	38.8	102.8	102.1	91.2
Bread and other bakery products	44.7	43.9	44.6	98.1	97.8	91.2
Rubber products	40.2	40.2	40.4	146.3	146.6	134.6
Leather products	41.5	40.7	40.2	99.1	99.0	91.8
Boots and shoes (except rubber)	41.6	40.4	39.5	94.0	93.6	86.8
Textile products (except clothing)	40.0	39.4	41.6	111.9	111.6	100.2
Cotton yarn and broad woven goods	36.5	36.2	42.1	110.1	109.2	104.4
Woollen goods	42.5	42.3	42.3	106.2	105.7	93.0
Clothing (textile and fur)	38.5	37.6	39.0	98.9	98.3	92.2
Knit goods	38.9	38.2	39.6	98.4	97.3	88.6
Wood products	42.9	43.0	41.8	103.3	102.8	92.2
Saw and planing mills	43.4	44.3	41.7	100.2	99.9	89.6
Furniture	42.4	42.0	41.9	107.7	106.9	96.2
Paper products	43.8	44.2	45.8	141.4	140.4	119.9
Pulp and paper mills	45.4	45.9	48.0	152.9	152.0	129.8
Other paper products (e)	40.9	41.3	42.6	118.8	117.8	103.7
Printing, publishing and allied ind.	39.1	38.4	39.9	149.9	146.4	134.3
Iron and steel products	41.4	41.3	41.8	151.0	150.5	131.2
Agricultural implements	40.3	40.2	38.3	164.0	164.7	143.4
Iron castings	41.9	40.6	43.8	149.7	147.5	132.4
Machinery mfg. (f)	42.1	42.2	42.8	140.8	140.5	125.5
Primary iron and steel	40.8	41.1	41.1	164.8	165.1	143.1
Sheet metal products	40.7	40.5	42.1	134.5	134.3	117.3
Transportation equipment	42.4	41.0	42.2	157.3	153.8	138.6
Motor vehicles	43.1	40.6	40.7	166.9	161.9	151.8
Motor vehicle parts & accessories	41.2	40.3	42.6	151.9	150.2	135.5
Railroad & rolling stock equip- ment	40.8	40.5	44.3	145.6	142.0	120.2
Non-ferrous metal products	40.5	40.5	42.1	146.8	146.1	125.1
Brass and copper products	40.6	40.6	42.2	141.9	138.4	127.1
Smelting and refining	39.2	39.2	42.3	163.6	153.1	136.9
Electrical apparatus and supplies	<b>40.6</b>	40.2	41.1	<b>142.5</b>	141.7	125.8
Non-metallic mineral products (g)	43.2	43.3	43.9	133.4	133.5	118.0
Chemical products	41.4	41.6	42.4	138.7	138.8	121.3
Buildings and structures (h)	41.5	41.4	39.0	149.6	148.1	128.9
Highways, bridges and street constr.	42.5	43.6	41.3	117.5	115.5	103.6
Electric and motor transportation (i)	45.1	45.3	44.7	130.5	129.8	123.0
Service (j)	42.2	42.2	42.2	71.8	72.1	67.5
Hotels and restaurants	43.9	44.2	43.6	69.8	70.5	66.4

Footnotes (a) to (j) appear in explanatory notes facing page 1.



Table 7.- Provincial Averages of Hours Worked and Hourly Earnings of Hourly-rated Wage-earners, by Industry. (Concluded)

Province and Industry	Average Hours			Average Hourly Earnings		
	Apr. 1	Mar. 1	Apr. 1	Apr. 1	Mar. 1	Apr. 1
	1952	1952	1951	1952	1952	1951
	no.	no.	no.	¢	¢	¢
<u>Manitoba</u>						
Manufacturing	41.4	41.2	42.2	122.0	121.3	106.7
Food and beverages	41.2	40.8	41.9	125.3	123.7	109.4
Meat products	40.0	39.9	40.4	148.0	146.8	128.3
Clothing (textile and fur)	41.5	40.6	39.2	91.1	90.1	84.4
Iron and steel products	43.2	43.7	43.3	121.6	121.4	108.2
Transportation equipment	39.9	39.9	43.4	137.6	136.2	115.6
Buildings and structures (h)	43.1	43.5	41.9	127.9	128.1	120.5
Highways, bridges and street constr.	31.2	32.8	41.8	97.1	96.6	89.8
Service (j)	42.3	42.9	42.9	72.6	73.1	69.7
<u>Saskatchewan</u>						
Manufacturing	41.8	40.8	40.8	129.4	127.7	113.9
Meat products	41.8	39.4	39.6	143.9	142.2	123.1
Buildings and structures (h)	39.4	39.4	37.5	134.0	136.2	109.1
Highways, bridges and street constr.	41.2	41.6	41.6	103.8	104.5	92.3
Service (j)	42.7	43.7	42.4	74.1	74.8	69.9
<u>Alberta</u>						
Mining	37.0	39.2	35.3	171.2	168.5	153.8
Coal	28.7	32.8	28.2	179.0	174.0	159.2
Manufacturing	41.4	40.8	40.7	128.6	127.6	111.9
Food and beverages	41.5	40.3	39.8	127.8	127.0	112.1
Meat products	41.1	39.0	38.8	147.9	145.2	124.6
Transportation equipment	41.4	40.8	43.5	133.3	133.2	114.8
Non-metallic mineral products (g)	43.8	44.2	42.4	112.5	112.8	101.3
Buildings and structures (h)	37.3	36.8	31.9	147.1	147.2	129.7
Electric and motor transportation(i)	42.0	42.2	42.1	130.8	130.3	118.7
Service (j)	44.1	44.5	44.0	77.0	77.7	73.2
<u>British Columbia</u>						
Forestry (logging)	37.6	34.0	32.8	198.2	195.8	180.9
Metal mining	42.9	42.5	41.5	166.4	163.1	144.2
Manufacturing	38.7	38.0	37.8	153.5	153.1	136.7
Food and beverages	37.3	37.4	36.8	133.6	133.1	111.3
Canned and cured fish	36.5	36.9	32.5	131.8	137.3	113.5
Canned and preserved fruits and vegetables	36.4	33.0	34.2	97.6	98.3	88.3
Wood products	37.8	36.6	36.7	159.7	159.7	142.9
Saw and planing mills	37.9	36.7	36.7	161.3	161.4	144.8
Pulp and paper mills	42.7	42.3	40.7	177.9	177.0	143.9
Iron and steel products	39.7	38.4	38.5	169.2	169.1	139.2
Transportation equipment	38.7	37.7	37.9	173.3	175.1	146.5
Steel shipbuilding and repairing	38.4	37.5	36.9	178.0	180.3	151.9
Non-ferrous metal products	40.4	40.9	39.8	161.3	160.2	143.4
Buildings and structures (h)	39.5	39.4	33.9	178.3	176.3	149.7
Highways, bridges and street constr.	38.4	39.5	36.6	132.8	132.9	119.7
Electric and motor transportation(i)	41.9	39.6	40.8	143.9	141.2	131.1
Service (j)	39.0	38.9	38.7	88.1	88.5	81.7

Footnotes (a) to (j) appear in explanatory notes facing page 1.

Table 8.- City Averages of Hours and Hourly Earnings of Hourly-rated Wage-earners, by Industry.

Metropolitan Area and Industry	Average Hours			Average Hourly Earnings		
	Apr. 1 1952	Mar. 1 1952	Apr. 1 1951	Apr. 1 1952	Mar. 1 1952	Apr. 1 1951
	no.	no.	no.	¢	¢	¢
<u>Montreal - Manufacturing</u>	42.8	42.5	42.1	119.7	118.5	105.6
Food and beverages	45.2	44.5	44.1	107.4	104.4	95.7
Tobacco and tobacco products	39.7	39.3	41.9	138.4	139.1	115.0
Leather products	41.0	41.3	39.0	87.0	85.9	81.7
Textile products (except clothing)	40.1	40.2	42.6	96.1	96.4	92.3
Clothing (textile and fur)	39.4	38.4	37.3	95.4	95.4	90.6
Iron and steel products	44.8	44.7	43.7	136.2	133.7	118.2
Transportation equipment	43.4	43.6	44.4	137.0	136.0	118.4
Electrical apparatus and supplies	41.5	42.2	41.9	136.5	136.1	120.6
Buildings and structures (h)	39.2	39.1	36.3	133.0	132.9	120.4
Electric and motor transportation (i)	48.4	48.1	45.7	121.5	120.5	112.9
Service (j)	43.9	43.0	43.5	69.3	68.6	65.2
 <u>Toronto - Manufacturing</u>	 40.8	 40.6	 41.0	 135.5	 134.6	 118.3
Food and beverages	41.2	40.9	41.1	116.4	115.1	103.7
Rubber products	40.1	39.3	40.2	156.6	157.8	142.9
Textile products (except clothing)	41.6	41.2	39.9	105.3	106.0	98.5
Clothing (textile and fur)	38.1	37.3	38.6	105.6	104.9	100.9
Paper products	41.5	41.2	41.8	118.7	117.5	104.7
Printing, publishing and allied ind.	38.4	37.4	39.2	162.8	157.3	144.0
Iron and steel products	41.2	41.5	40.9	150.2	150.2	131.1
Transportation equipment	42.3	42.0	43.8	157.9	156.6	124.6
Electrical apparatus and supplies	40.3	40.8	41.4	140.1	140.3	121.6
Chemical products	41.3	41.2	41.9	131.7	131.4	115.6
Buildings and structures (h)	39.9	39.8	35.2	162.3	162.9	154.0
Electric and motor transportation (i)	43.6	43.4	42.9	135.3	136.0	129.8
Service (j)	41.2	41.4	41.8	75.1	75.8	71.8
 <u>Hamilton - Manufacturing</u>	 39.9	 39.4	 40.5	 147.8	 147.2	 131.8
Clothing (textile and fur)	35.4	34.5	38.9	107.1	106.6	95.9
Iron and steel products	40.3	40.5	40.4	161.0	160.9	141.9
Electrical apparatus and supplies	39.4	37.2	39.4	155.2	153.2	147.6
Buildings and structures (h)	41.3	40.9	38.0	150.2	146.1	128.0
 <u>Windsor - Manufacturing</u>	 43.0	 39.8	 40.6	 162.8	 157.1	 144.1
Iron and steel products	43.7	41.9	42.0	160.9	155.5	144.0
Transportation equipment	43.5	39.3	40.3	168.0	161.9	148.0
Buildings and structures (h)	39.7	39.4	36.0	168.3	172.4	155.6

Footnotes (a) to (j) appear in explanatory notes facing page 1.



Table 8.-City Averages of Hours and Hourly Earnings of Hourly-rated Wage-earners, by Industry. (Concluded)

Metropolitan Area and Industry	Average Hours			Average Hourly Earnings		
	Apr. 1	Mar. 1	Apr. 1	Apr. 1	Mar. 1	Apr. 1
	1952	1952	1951	1952	1952	1951
	no.	no.	no.	\$	\$	\$
Winnipeg - Manufacturing	41.0	40.7	41.8	120.8	119.9	106.0
Food and beverages	41.2	40.8	41.9	125.7	124.0	110.2
Meat products	39.9	39.3	40.4	149.1	147.3	129.3
Clothing (textile and fur)	41.3	40.4	39.0	92.5	91.4	85.3
Transportation equipment	39.9	39.9	43.4	137.6	136.2	115.6
Buildings and structures (h)	40.0	40.5	39.1	131.7	131.4	125.2
Service (j)	42.2	42.9	42.7	72.7	73.2	69.7
Vancouver - Manufacturing	38.2	36.7	37.4	155.2	154.4	132.7
Wood products	37.0	35.1	36.3	160.2	160.3	143.1
Iron and steel products	39.6	38.2	38.3	169.5	169.5	139.1
Transportation equipment	39.1	37.0	37.4	173.0	172.1	144.0
Buildings and structures (h)	38.0	36.0	33.2	181.9	180.7	151.2
Electric and motor transportation (i)	41.3	39.9	40.8	145.8	143.8	132.8
Service (j)	38.3	38.3	38.6	89.6	89.5	82.3

Footnotes (a) to (j) appear in explanatory notes facing page 1.

Table 9.- Index Numbers of Average Hourly Earnings in the Heavy Electrical Machinery and Equipment Industry 1/.

(June 1, 1941=100)

Week Preceding	1947	1948	1949	1950	1951	1952
Jan. 1	169.6	191.5	224.9	233.6	252.6	293.9
Feb. 1	168.6	194.7	224.9	238.9	260.9	294.7
Mar. 1	170.0	196.4	226.6	239.8	262.2	294.7
Apr. 1	168.9	198.7	228.3	240.4	262.4	296.2
May 1	168.7	199.2	227.5	247.1	265.7	
June 1	169.8	201.3	227.7	247.4	280.6	
July 1	170.6	202.1	228.5	249.5	278.9	
Aug. 1	181.2	202.1	228.3	248.0	286.0	
Sept. 1	180.3	215.6	228.1	251.2	288.8	
Oct. 1	183.3	217.5	230.9	251.0	289.6	
Nov. 1	184.6	219.2	231.1	254.5	294.7	
Dec. 1	185.2	223.0	231.5	254.6	293.4	

1/

Computed from data furnished by 8 establishments manufacturing heavy electrical machinery and equipment.



Table 10.- Provincial Averages of Weekly Wages of Hourly-rated Wage-earners  
in Manufacturing.

<u>Week</u> <u>Preceding</u>	<u>Canada</u>	<u>N'f'ld.</u>	<u>N.S.</u>	<u>N.B.</u>	<u>Que.</u>	<u>Ont.</u>	<u>Man.</u>	<u>Sask.</u>	<u>Alta.</u>	<u>B.C.</u>
<u>Apr. 1</u>	\$	\$	\$	\$	\$	\$	\$	\$	\$	\$
*1945	30.69	..	34.30	28.74	29.16	31.01	29.24	28.62	31.36	34.90
1946	30.37	..	31.65	29.86	28.92	30.72	30.35	29.02	30.49	34.10
1947	33.52	..	33.90	32.83	31.52	34.31	33.17	32.88	33.36	37.57
*1948	37.02	..	35.42	35.15	34.50	38.43	35.96	37.85	37.22	39.76
1949	42.13	..	38.50	39.92	39.60	43.57	40.65	40.91	42.56	45.73
<u>1950</u>										
*Jan. 1	40.34	..	36.65	37.97	37.67	42.27	38.99	41.73	41.00	41.45
Feb. 1	42.68	..	39.26	39.13	39.91	44.79	39.85	42.50	41.98	44.15
Mar. 1	43.10	..	39.57	40.59	40.18	44.83	41.83	43.58	43.90	46.44
Apr. 1	43.53	45.20	40.48	40.73	40.63	45.32	42.12	43.70	44.08	46.66
May 1	43.67	44.28	40.61	40.18	40.34	45.66	41.72	44.08	44.12	47.37
June 1	43.47	44.11	41.04	39.16	40.14	45.55	41.53	43.93	43.93	45.85
July 1	44.16	47.21	39.81	40.23	40.87	46.21	42.10	43.79	44.13	47.69
Aug. 1	44.29	45.41	39.81	40.81	41.05	46.44	41.85	41.77	42.62	47.41
Sept. 1	43.74	44.38	39.04	39.60	40.87	45.86	38.69	42.93	40.58	47.89
Oct. 1	45.17	46.38	39.64	42.55	42.39	46.88	42.70	44.43	42.98	49.53
Nov. 1	45.75	46.28	39.73	41.88	42.84	47.78	43.00	45.15	45.35	49.33
Dec. 1	46.46	47.23	39.43	43.85	43.38	48.42	43.96	44.32	45.51	49.96
<u>1951</u>										
*Jan. 1	43.71	42.41	36.94	41.05	40.23	45.89	41.81	45.63	44.19	46.68
Feb. 1	47.36	44.20	40.60	44.69	43.85	49.82	44.46	45.28	45.84	50.48
Mar. 1	47.12	46.24	40.42	44.17	44.00	49.26	45.30	45.77	46.31	51.07
*Apr. 1	47.60	45.46	42.61	43.49	43.79	50.20	45.03	46.47	45.54	51.67
May 1	48.49	47.11	42.74	43.79	45.01	51.03	45.37	47.31	46.70	52.65
June 1	48.56	48.99	43.29	44.15	45.08	50.92	46.23	48.83	47.91	51.61
July 1	49.37	53.36	44.08	46.04	45.33	51.83	47.61	47.93	48.56	53.77
Aug. 1	49.31	54.87	44.01	46.35	45.73	51.37	47.74	47.78	48.28	53.22
Sept. 1	50.05	53.05	42.68	46.79	47.07	52.02	47.93	48.76	49.04	54.60
Oct. 1	51.08	52.29	43.64	49.15	47.79	53.24	48.39	50.31	49.08	56.02
Nov. 1	51.62	53.87	44.88	48.29	48.11	53.86	49.43	51.54	50.88	57.49
Dec. 1	52.17	54.42	45.28	47.68	48.92	54.19	49.44	51.66	51.00	59.37
<u>1952</u>										
*Jan. 1	48.43	50.27	42.98	45.22	44.96	50.52	47.18	50.02	49.10	53.21
Feb. 1	52.87	53.09	46.89	49.54	49.00	55.32	48.02	50.98	51.00	59.47
Mar. 1	53.29	54.09	47.63	48.01	49.50	55.64	49.98	52.10	52.06	60.08
Apr. 1	54.18	53.47	50.49	49.23	49.97	56.80	50.51	54.09	53.24	61.34

\*See footnote on page 7.

Table 11.- City Averages of Weekly Wages of Hourly-rated Wage-earners  
in Manufacturing.

<u>Week Preceding</u>	<u>Montreal</u>	<u>Toronto</u>	<u>Hamilton</u>	<u>Windsor</u>	<u>Winnipeg</u>	<u>Vancouver</u>
<u>Apr. 1</u>	\$	\$	\$	\$	\$	\$
*1945	30.63	29.77	32.77	41.83	29.28	35.01
1946	30.17	30.06	31.39	41.34	30.07	33.05
1947	32.36	33.25	36.12	41.86	32.85	37.06
*1948	35.11	37.00	41.03	45.54	35.49	38.96
1949	40.46	42.15	46.80	50.33	40.15	44.16
<u>1950</u>						
*Jan. 1	38.47	40.74	46.61	47.74	38.55	39.08
Feb. 1	40.50	43.24	48.49	51.39	39.22	43.11
Mar. 1	40.39	42.98	48.31	52.02	41.42	44.73
Apr. 1	41.62	43.80	48.63	53.84	41.66	45.09
May 1	41.23	44.13	49.16	53.75	41.12	45.95
June 1	40.56	43.32	50.37	53.87	40.97	44.26
July 1	41.45	44.22	49.25	57.46	41.47	46.76
Aug. 1	41.10	44.21	49.33	58.29	41.21	46.96
Sept. 1	40.63	44.23	48.71	56.34	37.75	46.63
Oct. 1	42.88	45.46	50.26	54.03	42.16	48.67
Nov. 1	43.46	46.34	50.51	54.92	42.50	47.48
Dec. 1	43.65	46.30	51.29	59.68	43.37	47.60
<u>1951</u>						
*Jan. 1	40.25	43.51	49.55	54.19	41.18	44.60
Feb. 1	44.35	47.58	52.42	64.05	43.76	48.30
Mar. 1	44.76	46.99	52.27	63.69	44.58	48.80
*Apr. 1	44.46	48.50	53.38	58.50	44.31	49.63
May 1	45.86	49.72	54.96	55.43	44.41	50.77
June 1	44.97	49.04	55.53	57.47	45.17	49.79
July 1	45.37	50.14	55.75	54.42	46.70	52.85
Aug. 1	45.66	50.50	56.06	50.73	46.74	52.31
Sept. 1	47.77	51.35	55.40	55.21	47.18	53.50
Oct. 1	48.15	52.64	56.33	55.08	47.23	55.28
Nov. 1	48.69	52.88	56.09	57.30	48.34	56.32
Dec. 1	49.64	53.18	58.46	58.68	48.15	57.42
<u>1952</u>						
*Jan. 1	44.95	48.43	54.10	57.33	46.07	49.74
Feb. 1	49.69	53.77	58.43	62.92	47.80	57.07
Mar. 1	50.36	54.65	58.00	62.53	48.80	56.56
Apr. 1	51.23	55.28	58.97	70.00	49.53	59.29

\*See footnote on page 7.







STATISTICS CANADA LIBRARY  
BIBLIOTHEQUE STATISTIQUE CANADA



1010512809

