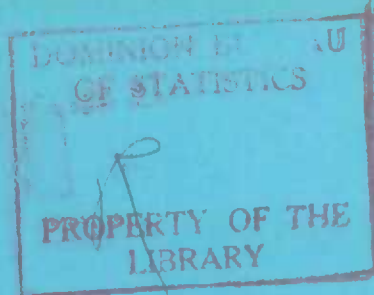


01

72 002



GOVERNMENT OF CANADA

DOES NOT CIRCULATE
NE PAS PRÊTER

MAN-HOURS AND HOURLY EARNINGS

JULY, 1952



EDMOND CLOUTIER, C.M.G., O.A., D.S.P.
QUEEN'S PRINTER AND CONTROLLER OF STATIONERY
OTTAWA, 1952

DOMINION BUREAU OF STATISTICS

Department of Trade and Commerce

Vol. 8

No. 7

MAN-HOURS AND HOURLY EARNINGS

WITH

AVERAGE WEEKLY WAGES

JULY, 1952

Published by

Authority of the Rt. Hon. C. D. Howe
Minister of Trade and Commerce

Prepared in the Employment Section of the Labour and Prices Division
Dominion Bureau of Statistics, Ottawa

CONTENTS

	<u>Page</u>
TEXTUAL SUMMARY	1

TABLES

1. Changes in the Average Earnings of Hourly-rated Wage-earners Reported at July 1, 1952, as compared with the same date in preceding years	5
2. Average Hours and Average Hourly and Weekly Wages of Hourly-rated Wage-earners, Canada, by Industry	6

AVERAGE HOURS AND AVERAGE HOURLY EARNINGS OF HOURLY-RATED WAGE-EARNERS IN:

3. Manufacturing, Canada	7
4. Specified Non-Manufacturing Industries, Canada	8
5. Manufacturing, Provinces	12
6. Manufacturing, Metropolitan Areas	14
7. Specified Industries, Provinces	16
8. Specified Industries, Metropolitan Areas	19

INDEX NUMBERS OF AVERAGE HOURLY EARNINGS IN:

9. Heavy Electrical Machinery and Equipment Industry	20
--	----

AVERAGE WEEKLY WAGES OF HOURLY-RATED WAGE-EARNERS IN:

10. Manufacturing, Canada and Provinces	21
11. Manufacturing, Metropolitan Areas	22

CHARTS

1. Average Hourly Earnings, Manufacturing	2
2. Average Weekly Wages, Manufacturing	3

EXPLANATORY NOTES AND FOOTNOTES

Notes on methods and scope of monthly surveys of hours and earnings and footnotes to tables	1
---	---

EXPLANATORY NOTES.

General.- The monthly statistics of average hours, average hourly earnings and average weekly wages, like those of employment, payrolls and average weekly wages and salaries, are based on data from establishments usually employing 15 persons and over.

Coverage.- Firms are asked to furnish information for the male and female wage-earners for whom they keep records of hours worked, so that the statistics relate, in the main, to hourly-rated wage-earners, or production workers, employed full time and part time. Casual workers are also included. Data for salaried personnel are purposely excluded. In many cases, information is not available for certain classes of wage-earners, whose earnings, like those of most salaried employees, are not directly dependent on the number of hours worked; examples of wage-earners frequently excluded are route-drivers, piece-workers in many but not all establishments, truck men, etc. Numerous employers do not keep record of man-hours for any classes of employees. The number of workers for whom information is given in the present report is therefore smaller than the total number of workers (wage-earners and salaried employees) for whom statistics of employment, payrolls, average earnings, sex distribution, etc., are given in the monthly bulletins on employment and payrolls (Report 8003-501).

In manufacturing, largely represented in the statistics of this report, the data relate to over 75 p.c. of all employees on the staffs of the firms co-operating in the monthly surveys of employment and payrolls; in 1948, the wage-earners for whom information on man-hours was obtained formed over 80 p.c. of the total number of wage-earners reported by practically all manufacturing establishments to the Annual Census of Manufactures, including hourly-rated and other wage-earners. In mining and construction, data on man-hours and hourly earnings are provided for approximately 84 p.c. and 71 p.c. of the total employees of firms co-operating in the monthly surveys of employment and payrolls in those industries, respectively; in 1948, the monthly statistics were based on approximately 89 p.c. and 54 p.c. of the total number of wage-earners reported to the Census of Mining and Census of Construction, respectively.

Man-Hours.- The statistics of man-hours include hours worked by full-time and part-time wage-earners, including overtime hours actually worked; premium or penalty hours credited for purposes of computing overtime payment are not included. Hours credited to wage-earners absent on leave with pay in the reported pay periods are included in the statistics as though the hours had been worked. The averages are obtained by dividing the aggregate hours reported for the week by the number of full-time and part-time wage-earners working such hours.

Wages.- The questionnaire calls for a statement of gross wages earned by the full-time and part-time wage-earners whose hours are reported, before deductions are made for taxes, unemployment insurance contributions, etc. Payments for overtime work, incentive or production, and cost-of-living bonuses paid at regular intervals, and amounts credited to wage-earners on leave with pay in the reported pay periods are included. The value of board and lodging which in some cases is part of the remuneration of workers is not included. Retroactive pay not earned during the reported pay period, and bonuses paid at infrequent intervals are also excluded.

Pay Periods.- Statistics of man-hours and wages reported for periods exceeding one week in duration are reduced by the appropriate proportions to calculate the number of hours and the wages in one week in the stated pay period. Such data are combined with weekly figures furnished by employers whose records are maintained on a weekly basis, so that, in all cases, the tabulated statistics represent the situation in one week in each month.

Footnotes.

The following footnotes explain the content of various industrial classes listed in the detailed tables in this bulletin. In some industries, the group breakdown is less extensive than in the Standard Industrial Classification; in these cases, figures for certain categories not shown are contained in the group totals.

- (a) Alluvial gold and auriferous quartz mining.
- (b) Copper-gold-silver; iron; nickel-copper; silver-cobalt; silver-lead-zinc and miscellaneous metal mining.
- (c) Non-metal mining and quarrying; clay and sand pits.
- (d) Miscellaneous wood products.
- (e) Paper boxes and bags; roofing papers; miscellaneous paper products.
- (f) Household, office and store machinery; machine tools; machinery, n.e.s.
- (g) Abrasives; asbestos; hydraulic cement; clay; glass; lime and gypsum; stone; concrete and miscellaneous non-metallic mineral products.
- (h) Buildings and structures; other construction; special trade contractors.
- (i) Interurban bus and coach and urban and suburban transportation systems; taxi-cab and truck transportation; services incidental to transportation; other transportation.
- (j) Hotels and restaurants; laundries, dyeing, cleaning and pressing; business and recreational services.

(..) figures not available.

MAN-HOURS AND HOURLY EARNINGS, JULY, 1952.

Statistics for Canada

Manufacturing.- There was a fractional lengthening of the average hours worked by hourly-rated wage-earners in manufacturing in the week of July 1 as compared with a month earlier. The average hourly earnings showed a slight drop, the first since Feb. 1, 1950. The latest figure was 128.9 cents, four-fifths of a cent lower than at June 1, but 8.9 p.c. higher than at July 1, 1951. The average weekly wages dropped by 21 cents in the month. Changes in industrial distribution as a result of seasonal fluctuations in employment and industrial disputes were largely responsible for the declines as compared with June 1. Other contributing factors were less overtime than in the week of June 1, when the Victoria Day holiday had affected the situation, and minor revisions of wage-rates in accordance with the lower cost-of-living index.

Durable Goods.- The wage-earners reported in the durable goods manufacturing industries, and their aggregate hours and earnings were lower at July 1 than at June 1, largely because of a major strike in the lumber industry in British Columbia. This was counteracted to some extent by more normal conditions in the automotive industry, which had been affected by industrial disputes at June 1. The average hourly and weekly earnings were slightly lower at the date under review, while hourly-rated wage-earners worked, on the average, one-fifth of an hour longer.

Non-durable Goods.- The average hourly earnings of wage-earners manufacturing non-durable goods was 0.3 cents lower than at June 1. Seasonal activity in the food-processing industries, with consequent employment of large numbers of lower-paid casual help, was a contributing factor. The average hours and weekly earnings were somewhat reduced, partly due to the observance of St. Jean Baptiste Day in Quebec. Among the more important changes in the different industries in this category was a drop of almost 2 cents in the hourly earnings reported by petroleum refineries, largely a result of decreased overtime. An industrial dispute in rubber goods manufacturing was responsible for a substantial drop in the hourly earnings in that industry. Scattered upward revisions in wage rates were reported, notably in the brewing industry in the Western Provinces.

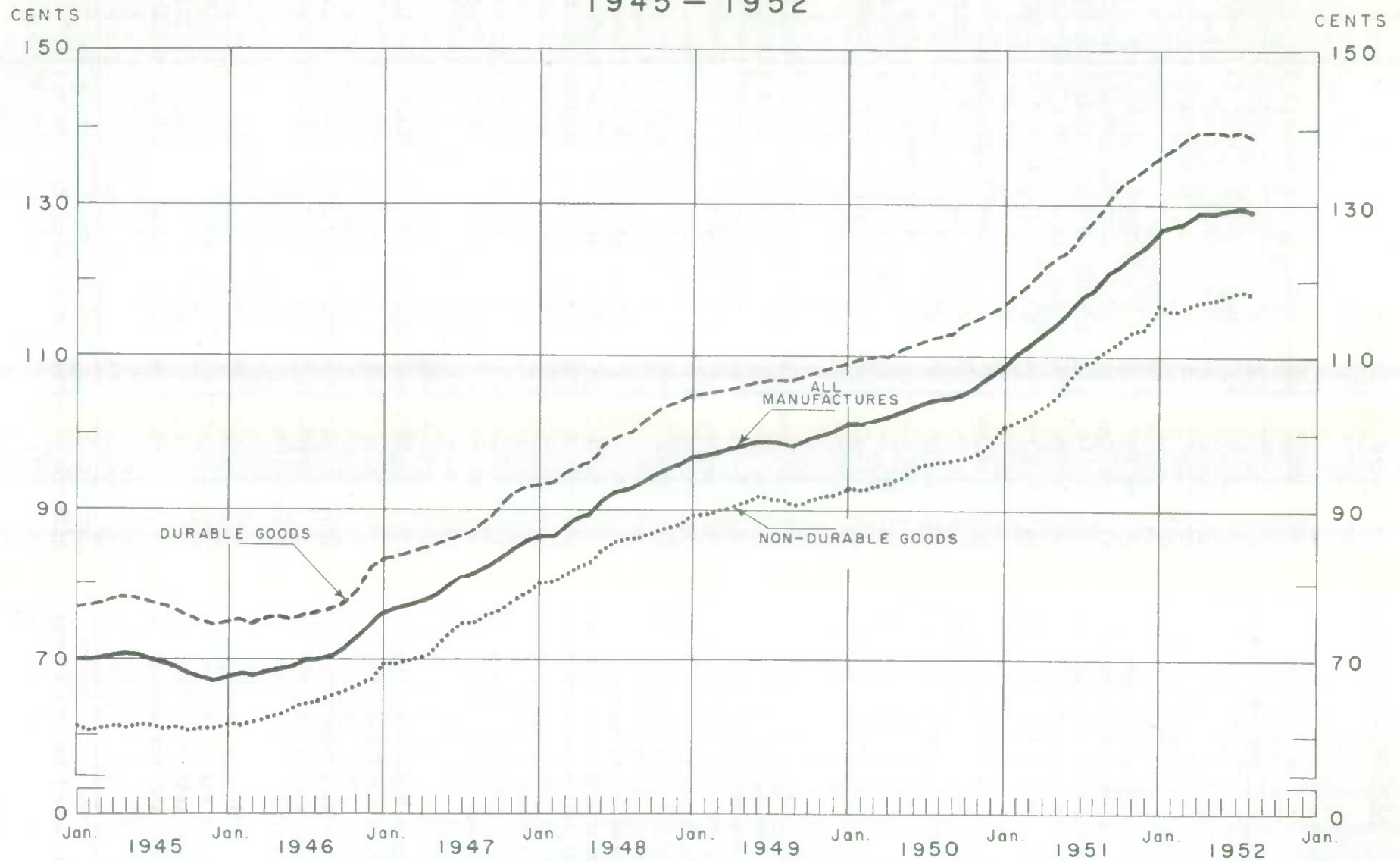
Non-Manufacturing Industries.- Oil well employees worked shorter hours at somewhat lower average hourly earnings at July 1 than at June 1, while other branches of the mining industry showed little change during the month. Both highway and building contractors reported larger numbers of wage-earners. Higher proportions of unskilled or semi-skilled workers on their payroll resulted in a slight decline in the average hourly earnings paid in the industry.

Local transportation companies reported a longer working week and somewhat higher earnings. With an increase in inexperienced help in summer hotels, the hourly earnings in that industry were 0.5 cents lower at June 1 than at July 1.

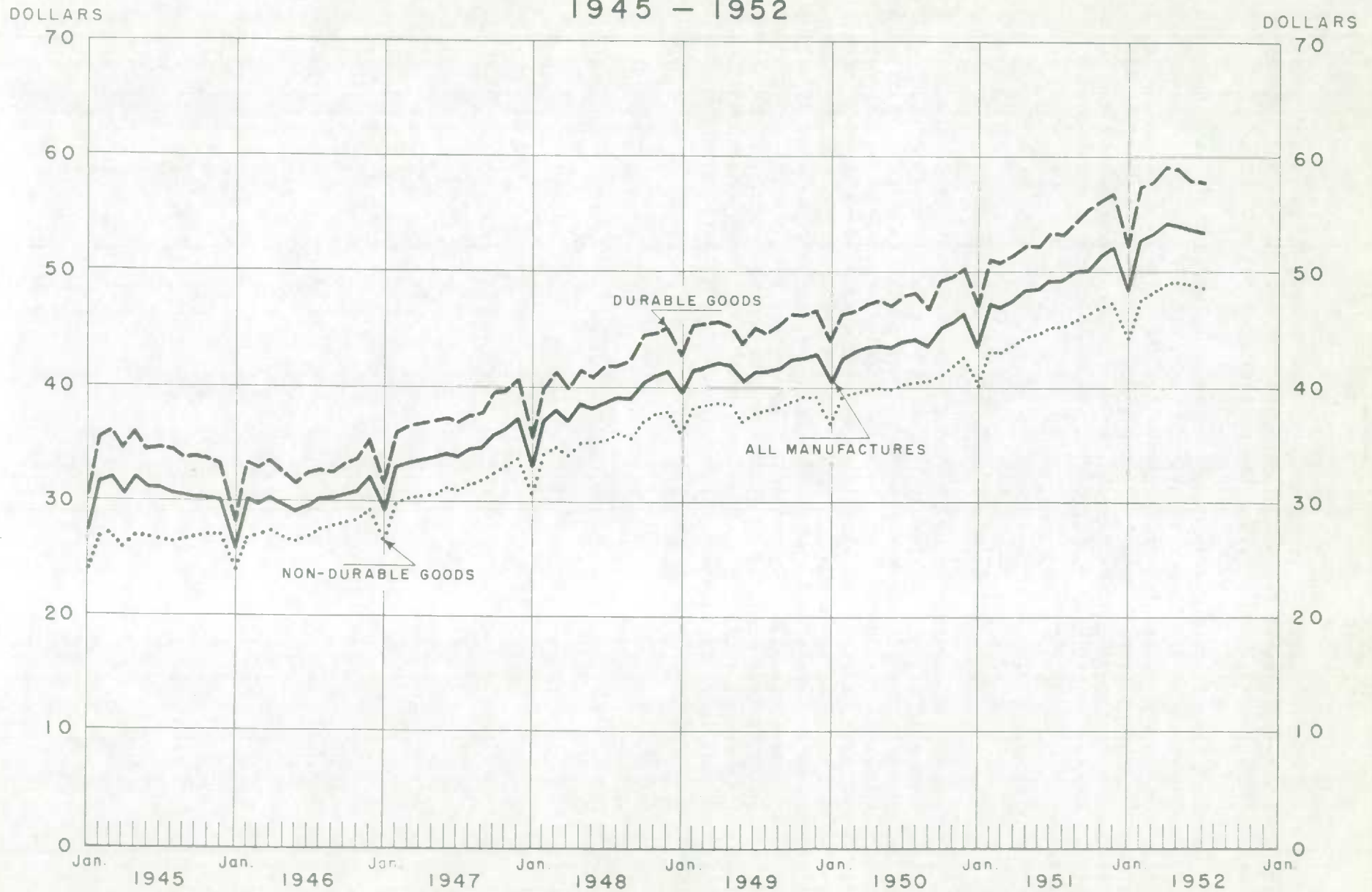
Statistics for the Provinces

With the exception of Quebec and Manitoba, hourly-rated wage-earners in manufacturing establishments in all provinces averaged slightly less per hour in the week of July 1 than June 1. The weekly wages declined in Newfoundland, Quebec and the three most westerly provinces, while in Nova Scotia, New Brunswick, Ontario and Manitoba the weekly earnings were somewhat higher. The average working week showed little change from a month earlier in most provinces. In Quebec, the celebration of St. Jean Baptiste

AVERAGE HOURLY EARNINGS IN MANUFACTURING 1945 - 1952



AVERAGE WEEKLY WAGES IN MANUFACTURING 1945 - 1952



Day on June 24 affected the situation, and in New Brunswick, increased activity in fish processing plants and saw and planing mills raised the general average of hours in manufacturing by 1.3 hours during the period under review.

The most important change in hourly earnings occurred in British Columbia, where widespread strikes in the lumber industry brought about a decline of over 4 cents per hour in the average in manufacturing generally. As already mentioned, slightly lowered earnings in other provinces resulted largely from changes in industrial distribution; in some areas the opening of canning factories for the summer season was an important factor. Reduced overtime as compared with the week of June 1 was recorded in some cases.

Statistics for the Metropolitan Areas.

Average hourly earnings of hourly-rated wage-earners in factories in Montreal and Winnipeg were slightly higher at July 1 than at June 1. In the other cities for which statistics are published, the averages were lower at the date under review. In Vancouver, labour disputes in the lumber industry were largely responsible for the decreased earnings. In Windsor, more normal conditions existed than at June 1, when industrial disputes had affected the situation in the automotive industry. On the other hand, hot weather had an adverse effect in the week under review, and the cost of living allowances paid some workers were slightly reduced. The average weekly wages reported at July 1 were higher in Windsor and also in Winnipeg. The average working hours in the cities showed little change except in Montreal, where the St. Jean Baptiste holiday was widely celebrated, and in Windsor, where strikes in transportation equipment manufacturing had substantially reduced the hours reported a month earlier.

Table 1.- Changes in the Average Earnings of Hourly-rated Wage-earners Reported at July 1, 1952, as compared with the same date in preceding years.

(Decrease indicated by the minus sign)

Changes in Average Hourly Earnings and Weekly Wages
of Hourly-rated Wage-earners

Industry and Area	Hourly-rated Wage-earners Reported at July 1, 1952 no.	Change in Average Hourly Earnings July 1, 1952 over			Change in Average Weekly Wages July 1, 1952 over		
		July 1 1951	July 1 1950	July 1 1949	July 1 1951	July 1 1950	July 1 1949
		p.c.	p.c.	p.c.	p.c.	p.c.	p.c.
(a) <u>Canada</u>							
Manufacturing	809,474	8.9	24.1	30.1	8.1	20.8	28.8
Mining	83,049	10.6	22.4	26.4	9.3	21.3	27.0
Buildings and Structures	121,619	10.9	26.2	32.1	12.8	26.8	37.5
Service	33,594	6.7	12.6	15.2	6.2	12.3	16.0
(b) <u>Manufacturing, by Provinces</u>							
Newfoundland	7,706	4.5	17.3	..	3.8	17.3	..
Nova Scotia	23,408	14.4	25.8	30.4	9.7	21.5	27.1
New Brunswick	15,871	5.3	23.5	25.2	4.8	19.9	24.0
Quebec	264,283	9.5	24.9	28.4	7.9	19.7	28.2
Ontario	408,774	9.8	25.2	32.7	8.2	21.3	29.9
Manitoba	28,742	5.8	24.9	29.3	6.6	20.6	25.3
Saskatchewan	4,440	9.8	22.2	28.8	12.4	23.1	28.5
Alberta	17,025	9.6	26.3	30.4	9.1	20.0	24.5
British Columbia	38,490	9.5	22.5	29.5	10.7	24.8	30.8
(c) <u>Manufacturing, by Cities</u>							
Montreal	141,105	9.5	24.3	27.3	10.3	20.8	28.2
Toronto	119,982	10.2	26.5	33.2	9.9	24.6	32.9
Hamilton	45,104	10.2	23.5	34.3	7.5	21.7	28.5
Windsor	29,728	9.6	17.4	24.5	9.4	3.6	14.4
Winnipeg	25,867	5.4	24.2	28.6	6.4	19.8	24.6
Vancouver	17,054	10.9	23.7	30.8	11.5	26.0	33.2

Table 2.- Average Hours and Average Earnings of Hourly-rated Wage-earners, Canada, by Industry.

Industry	Average Hours			Average Hourly Earnings			Average Weekly Wages			Wage-earners Reported at July 1, 1952
	July 1 1952	June 1 1952	July 1 1951	July 1 1952	June 1 1952	July 1 1951	July 1 1952	June 1 1952	July 1 1951	
	no.	no.	no.	¢	¢	¢	¢	¢	¢	no.
Mining	42.8	42.3	43.3	147.4	147.4	133.3	63.09	62.55	57.72	83,049
Metal mining	44.1	43.7	43.9	148.1	147.8	134.5	65.31	64.59	58.96	46,874
Gold (a)	45.8	45.7	45.7	130.8	130.8	122.9	59.91	59.78	56.17	18,751
Other metal (b)	43.0	42.3	42.6	160.5	160.1	143.5	69.02	67.72	61.13	28,123
Fuels	40.4	39.9	41.1	152.9	153.5	140.6	61.77	61.25	57.79	24,080
Coal	39.8	38.8	40.5	150.6	150.6	139.0	59.94	58.43	56.30	19,030
Oil and natural gas	42.8	44.1	43.0	161.0	162.9	146.5	68.91	71.84	64.31	5,050
Non-metal (c)	42.2	42.0	45.1	133.7	134.0	115.8	56.42	56.28	52.23	12,095
Manufacturing	41.4	41.3	41.7	128.9	129.7	118.4	53.36	53.57	49.37	809,474
Food and beverages	42.6	42.5	42.5	110.0	110.6	100.1	46.86	47.01	42.64	87,791
Meat products	41.8	41.9	41.8	136.4	136.6	127.8	57.02	57.24	53.42	16,989
Canned and preserved fruits and vegetables	39.0	37.7	38.6	93.1	92.4	84.8	36.31	34.83	32.77	10,897
Grain mill products	45.5	45.8	46.7	121.5	119.7	112.1	55.28	54.82	52.35	5,508
Bread and other bakery products	44.8	44.8	44.5	97.9	97.1	89.2	43.86	43.50	39.69	8,721
Distilled and malt liquors	42.8	41.7	42.7	139.3	136.7	119.5	59.62	57.84	51.03	10,293
Tobacco and tobacco products	41.1	41.8	41.2	128.6	128.7	114.6	52.85	53.20	47.22	6,765
Rubber products	40.0	40.5	40.8	132.0	135.5	122.7	53.99	54.88	50.06	14,197
Leather products	39.3	39.5	37.1	92.6	92.1	86.4	36.39	36.38	32.06	19,757
Boots and shoes (except rubber)	38.5	39.1	39.0	89.2	89.1	83.3	34.34	34.84	29.89	13,245
Textile products (except clothing)	40.8	40.7	41.1	104.5	104.6	97.5	42.55	42.53	39.99	49,351
Cotton yarn and broad woven goods	37.9	36.8	39.9	103.7	103.8	99.9	39.30	38.20	39.86	15,998
Woolen goods	42.3	42.9	41.8	99.4	99.7	91.6	42.05	42.77	38.29	9,790
Rayon, nylon and silk textiles	42.9	43.3	42.6	107.7	109.0	98.9	46.20	47.20	42.13	11,139
Clothing (textile and fur)	36.7	36.0	35.8	91.4	91.1	86.7	33.54	34.62	31.04	63,211
Men's clothing	37.0	38.4	35.3	89.8	89.3	85.7	33.23	34.29	30.25	23,044
Women's clothing	35.8	36.7	31.8	94.8	94.0	88.2	32.04	33.56	28.05	12,010
Knit goods	37.7	38.6	38.0	93.0	93.8	86.3	35.06	36.21	33.57	16,345
Wood products	44.0	41.7	42.1	100.0	117.1	105.9	44.00	48.83	44.68	49,231
Saw and planing mills	44.8	41.1	41.8	98.5	125.8	112.6	44.13	51.70	47.07	24,824
Furniture	42.7	42.7	42.0	104.9	104.6	97.2	44.79	44.66	40.82	14,942
Other wood products (d)	43.6	43.2	43.9	96.7	98.5	88.7	42.16	42.55	38.94	9,465
Paper products	45.0	44.4	47.2	141.5	141.9	133.6	63.68	63.00	63.06	66,682
Pulp and paper mills	45.1	45.3	48.8	149.3	150.0	142.9	68.83	67.95	69.74	50,795
Other paper products (e)	41.6	41.5	42.6	113.8	114.1	102.2	47.23	47.35	43.54	15,887
Printing, publishing and allied industries	39.6	39.8	40.3	149.6	148.9	133.1	59.24	59.26	53.64	26,383
*Iron and steel products	41.4	42.2	42.5	144.8	145.2	131.1	59.95	61.27	55.72	140,459
Agricultural implements	38.7	41.2	41.8	159.5	151.6	149.5	61.73	66.68	62.49	15,516
Fabricated and structural steel	42.4	42.3	41.3	152.1	150.8	133.5	64.49	63.79	55.14	7,207
Hardware and tools	42.2	42.4	42.5	131.1	130.8	119.3	55.32	55.46	50.70	8,833
Heating and cooking appliances	41.3	42.1	41.8	128.5	126.7	119.0	53.07	53.34	49.74	5,688
Iron castings	40.9	42.4	43.9	142.1	141.8	131.1	58.12	60.12	57.55	16,048
Machinery mfg. (f)	42.9	43.2	43.3	134.5	136.4	125.4	58.56	58.92	54.30	25,320
Primary iron and steel	41.3	41.0	41.8	157.1	157.9	130.6	64.88	66.16	57.93	33,009
Sheet metal products	41.3	40.8	41.8	135.0	134.8	122.0	55.76	55.00	51.00	12,540
*Transportation equipment	40.7	39.8	40.9	146.7	145.6	136.6	59.71	57.95	55.87	130,211
Aircraft and parts	40.9	43.7	42.3	146.2	145.7	128.9	59.80	63.67	54.52	19,968
Motor vehicles	38.8	32.2	39.1	162.7	164.9	147.0	63.29	53.10	57.48	27,667
Motor vehicle parts and accessories	40.6	41.0	41.5	151.4	152.1	136.9	61.47	62.36	56.81	18,465
Railroad and rolling stock equipment	40.2	39.8	40.5	142.2	140.9	138.9	57.16	58.08	56.25	40,903
Shipbuilding and repairing	43.6	43.1	43.4	135.4	135.7	122.5	59.03	58.49	53.17	21,778
*Non-ferrous metal products	41.5	41.3	42.6	146.7	145.0	127.6	60.88	59.89	54.36	37,959
Aluminum products	42.7	43.3	42.5	132.1	130.4	119.7	56.41	56.46	50.87	4,991
Brass and copper products	42.6	42.5	42.3	136.4	135.8	121.5	58.11	57.72	51.39	7,188
Smelting and refining	41.0	40.7	43.3	159.8	158.2	138.3	65.52	64.39	59.88	20,691
*Electrical apparatus and supplies	41.1	41.1	40.8	140.4	140.6	130.0	57.70	57.79	53.04	44,833
Heavy electrical machinery and equipment ^{1/}	41.1	41.1	41.6	153.5	156.2	147.0	67.20	64.20	61.15	10,998
*Non-metallic mineral products (g)	44.0	44.8	44.7	128.3	127.8	117.1	56.45	57.25	52.34	20,222
Clay products	45.0	45.6	44.7	121.1	121.2	110.5	54.50	55.27	49.39	4,242
Glass and glass products	45.1	45.7	45.2	123.4	123.7	113.8	55.65	56.53	51.44	5,400
Products of petroleum and coal	40.8	41.8	40.6	173.5	175.4	149.6	70.79	73.32	60.74	7,503
Chemical products	41.9	42.3	42.6	130.9	131.9	118.9	54.85	55.79	50.65	30,030
Medicinal and pharmaceutical preparations	41.5	41.2	41.6	106.7	106.1	96.2	44.28	43.71	40.02	3,695
Acids, alkalis and salts	41.1	42.3	44.1	150.7	152.1	134.1	61.94	64.34	59.14	5,754
Miscellaneous manufacturing industries	40.5	41.3	41.9	104.8	104.7	97.9	42.44	43.24	40.98	14,889
*Durable goods	41.6	41.4	42.0	138.7	139.6	127.0	57.70	57.79	53.34	422,915
Non-durable goods	41.2	41.3	41.4	118.1	118.4	109.1	48.66	48.90	45.17	386,559
Construction	41.5	41.8	40.7	128.2	130.2	117.5	53.20	54.42	47.82	180,633
Buildings and structures (h)	40.7	41.2	40.0	141.8	142.0	127.7	57.63	58.50	51.06	121,619
Highways, bridges and streets	42.2	42.2	41.8	101.5	103.9	95.5	42.83	43.85	39.92	53,571
Electric and motor transportation (i)	46.0	44.7	45.4	129.9	129.3	117.9	59.75	57.80	53.53	28,366
Service (j)	42.6	42.9	42.8	73.5	73.7	68.9	31.31	31.62	29.49	33,594
Hotels and restaurants	43.7	43.9	43.7	72.2	72.7	68.2	31.55	31.92	29.90	22,534
Laundries and dry cleaning plants	41.0	41.5	41.4	72.0	71.9	67.4	29.52	29.94	27.90	9,649

For footnotes (a) to (j) see explanatory notes facing page 1. *Durable manufactured goods industries. ^{1/}Index numbers of average hourly earnings in the heavy electrical machinery and equipment industry are given in Table 9 on page 20.

Table 3.- Average Hours Worked and Average Hourly Earnings of Hourly-rated Wage-earners in Manufacturing, Canada.

Week Preceding	All Manu- factures	Average Hours		All Manu- factures	Average Hourly Earnings	
		Durable Goods	Non-durable Goods		Durable Goods	Non-durable Goods
<u>July 1</u>	no.	no.	no.	¢	¢	¢
1945	44.3	45.0	43.3	70.1	77.0	61.2
1946	42.4	42.3	42.1	70.0	75.7	64.1
1947	42.0	42.5	41.6	80.8	86.3	74.7
1948	42.0	42.3	41.6	92.3	99.2	85.2
1949	41.8	42.4	41.2	99.1	106.7	91.3
<u>1950</u>						
xJan. 1	39.9	40.3	39.6	101.1	109.3	92.9
Feb. 1	42.3	42.2	42.4	100.9	109.5	92.6
Mar. 1	42.5	42.6	42.5	101.4	109.8	93.1
Apr. 1	42.8	43.0	42.6	101.7	110.0	93.6
May 1	42.6	42.9	42.4	102.5	110.6	94.3
June 1	42.0	42.2	41.7	103.5	111.4	95.5
July 1	42.5	42.9	42.2	103.9	111.8	95.7
Aug. 1	42.5	42.7	42.2	104.2	112.5	95.8
Sept. 1	41.9	41.5	42.4	104.4	112.9	95.9
Oct. 1	42.9	43.0	42.8	105.3	114.3	96.3
Nov. 1	43.0	43.1	43.0	106.4	115.2	97.5
Dec. 1	43.1	43.1	43.1	107.8	116.4	99.0
<u>1951</u>						
xJan. 1	40.1	40.2	39.9	109.0	117.1	100.5
Feb. 1	42.9	43.1	42.6	110.4	119.0	101.2
Mar. 1	42.3	42.5	42.2	111.4	119.9	102.3
xApr. 1	42.2	42.3	42.1	112.8	121.6	103.4
May 1	42.5	42.6	42.5	114.1	122.9	104.6
June 1	41.9	42.1	41.6	115.9	123.8	107.2
July 1	41.7	42.0	41.4	118.4	127.0	109.1
Aug. 1	41.4	41.4	41.3	119.1	128.2	109.4
Sept. 1	41.5	41.7	41.4	120.6	130.0	110.6
Oct. 1	41.9	42.0	41.8	121.9	132.1	111.2
Nov. 1	41.8	42.1	41.5	123.5	133.3	113.0
Dec. 1	41.9	42.2	41.6	124.5	134.6	113.5
<u>1952</u>						
xJan. 1	38.1	38.3	37.9	127.1	136.4	116.8
Feb. 1	41.6	41.9	41.2	127.1	137.5	115.7
Mar. 1	41.7	41.8	41.5	127.8	138.4	116.0
Apr. 1	42.1	42.3	41.8	129.0	139.6	116.9
May 1	41.9	42.1	41.6	129.4	139.5	117.8
June 1	41.3	41.4	41.3	129.7	139.6	118.4
July 1	41.4	41.6	41.2	128.9	138.7	118.1

*These averages were affected by loss of working time at the year-end holidays in the case of Jan. 1 and by the Easter holidays in the case of Apr. 1, 1951.

Table 4.- Average Hours Worked and Average Hourly Earnings of Hourly-rated Wage-earners in Specified Industries, Canada.

Week Preceding	Mining All Branches	Coal Mining	Metal Mining	Non-Metal Mining	Electric and Motor Transportation
July 1	(a) Average Hours				
1945	44.6	42.4	46.1
1946	43.6	40.1	45.9
1947	42.2	37.6	44.5
1948	43.0	38.1	45.0
1949	42.6	37.8	45.5
1950					
xJan. 1	40.2	35.1	42.7
Feb. 1	43.0	37.4	46.0
Mar. 1	43.8	39.0	46.2
Apr. 1	43.7	39.2	46.1
May 1	43.5	38.3	46.1
June 1	42.3	35.1	45.2
July 1	43.2	39.3	44.7
Aug. 1	43.7	39.8	45.2
Sept. 1	41.7	35.4	43.8
Oct. 1	43.1	39.1	44.5
Nov. 1	43.9	39.6	45.3
Dec. 1	43.9	40.2	45.2	46.1	45.6
1951					
xJan. 1	40.5	34.9	42.6	41.5	44.7
Feb. 1	44.1	40.6	45.4	45.8	45.0
Mar. 1	43.7	39.5	44.9	45.9	45.3
xApr. 1	42.5	36.4	44.4	45.6	44.6
May 1	43.4	39.5	44.6	46.6	45.0
June 1	43.0	38.0	44.3	47.0	44.4
July 1	43.3	40.5	43.9	45.1	45.4
Aug. 1	43.0	41.2	43.3	45.3	44.5
Sept. 1	42.2	39.1	42.5	46.8	45.5
Oct. 1	43.9	41.2	44.2	47.6	45.9
Nov. 1	43.5	41.2	43.7	47.1	45.4
Dec. 1	44.2	41.6	44.8	46.5	45.2
1952					
xJan. 1	40.2	32.7	42.5	42.3	44.9
Feb. 1	43.0	37.9	44.5	45.3	45.6
Mar. 1	42.6	36.3	44.8	43.4	45.5
Apr. 1	43.1	38.3	45.1	42.4	45.8
May 1	42.4	37.7	44.2	42.7	45.3
June 1	42.3	38.8	43.7	42.0	44.7
July 1	42.8	39.8	44.1	42.2	46.0

xSee footnote on page 7.

Table 4.- Average Hours Worked and Average Hourly Earnings of Hourly-rated Wage-earners in Specified Industries. (Continued)

<u>Week Preceding</u>	<u>Mining All Branches</u>	<u>Coal Mining</u>	<u>Metal Mining</u>	<u>Non-Metal Mining</u>	<u>Electric and Motor Transportation</u>
<u>July 1</u>	(b) <u>Average Hourly Earnings (in cents)</u>				
1945	85.5	93.6	85.8
1946	87.5	95.4	88.8
1947	98.9	109.8	101.0
1948	111.8	124.9	111.2
1949	116.6	125.8	116.0
<u>1950</u>					
Jan. 1	120.3	131.3	118.8
Feb. 1	119.4	129.7	117.5
Mar. 1	120.7	130.8	119.0
Apr. 1	120.7	131.3	118.9
May 1	120.9	129.6	120.3
June 1	120.1	130.5	119.7
July 1	120.4	129.3	120.5
Aug. 1	121.5	129.3	122.5
Sept. 1	121.1	129.3	122.2
Oct. 1	123.1	128.9	124.6
Nov. 1	123.7	130.3	124.4
Dec. 1	124.8	130.5	125.2	107.1	109.0
<u>1951</u>					
Jan. 1	127.1	131.0	127.9	107.4	111.0
Feb. 1	127.7	131.8	128.1	111.3	110.7
Mar. 1	130.1	135.5	130.0	114.8	112.4
Apr. 1	130.5	136.3	130.2	115.5	116.2
May 1	131.5	137.6	131.6	116.4	115.6
June 1	131.6	137.3	132.0	116.7	116.5
July 1	133.3	139.0	134.3	115.8	117.9
Aug. 1	136.1	137.4	139.3	118.0	119.2
Sept. 1	137.1	138.7	140.4	117.8	119.2
Oct. 1	138.2	138.5	141.2	120.2	119.7
Nov. 1	138.3	138.7	140.4	120.9	120.5
Dec. 1	139.3	138.7	141.8	121.3	121.2
<u>1952</u>					
Jan. 1	142.6	140.3	145.1	124.5	123.4
Feb. 1	141.4	140.8	143.2	125.8	123.0
Mar. 1	143.9	142.5	145.0	132.7	124.1
Apr. 1	146.9	150.2	146.2	136.6	125.1
May 1	147.3	149.7	147.7	135.5	127.7
June 1	147.4	150.6	147.8	134.0	129.3
July 1	147.4	150.6	148.1	133.7	129.9

Table 4.- Average Hours Worked and Average Hourly Earnings of Hourly-rated Wage-earners in Specified Industries. (Continued)

Week Preceding	Buildings and Structures	Highways, Bridges and Street Construction	Service	Hotels Restaurants	Laundries and Dry Cleaning Plants
<u>July 1</u>		(a) <u>Average Hours</u>			
1945	40.9	36.5	44.0	45.1	41.9
1946	38.4	38.5	43.4	44.7	41.0
1947	38.8	38.7	42.3	43.1	40.8
1948	40.0	38.0	41.9	42.9	39.9
1949	39.1	39.9	42.3	43.1	41.0
<u>1950</u>					
xJan. 1	34.6	37.8	41.4	43.3	37.7
Feb. 1	38.6	40.6	42.1	42.9	40.9
Mar. 1	40.0	45.2	42.8	44.0	41.0
Apr. 1	40.2	40.8	43.0	43.8	42.0
May 1	40.1	38.6	42.9	43.6	42.2
June 1	39.4	38.6	42.8	43.8	41.4
July 1	40.5	40.5	42.7	43.9	41.0
Aug. 1	40.2	41.9	42.5	43.8	40.5
Sept. 1	40.2	41.9	41.8	42.6	40.5
Oct. 1	40.6	41.9	42.5	43.4	41.3
Nov. 1	40.4	41.4	42.5	43.4	41.3
Dec. 1	40.1	39.8	42.7	43.5	41.5
<u>1951</u>					
xJan. 1	33.7	38.3	42.0	43.4	39.1
Feb. 1	39.2	42.5	42.9	43.9	41.3
Mar. 1	39.4	44.2	42.4	43.2	41.1
xApr. 1	37.9	42.3	42.5	43.3	41.0
May 1	39.7	39.5	42.6	43.3	41.6
June 1	38.7	41.2	42.5	43.4	41.1
July 1	40.0	41.8	42.8	43.7	41.4
Aug. 1	40.7	42.7	42.5	43.7	40.2
Sept. 1	40.9	43.0	42.7	44.0	40.5
Oct. 1	41.6	43.6	42.5	43.5	41.0
Nov. 1	40.7	42.7	42.4	43.3	41.0
Dec. 1	41.3	41.3	42.6	43.6	41.1
<u>1952</u>					
xJan. 1	32.3	42.4	41.4	43.6	37.0
Feb. 1	40.8	43.5	42.6	43.6	41.2
Mar. 1	41.6	45.0	42.7	44.0	40.7
Apr. 1	42.0	42.1	42.7	43.7	41.3
May 1	41.9	40.1	42.8	43.5	42.2
June 1	41.2	42.2	42.9	43.9	41.5
July 1	40.7	42.2	42.6	43.7	41.0

xSee footnote on page 7.

Table 4.- Average Hours Worked and Average Hourly Earnings of Hourly-rated Wage-earners in Specified Industries. (Concluded)

Week Preceding	Buildings and Structures	Highways, Bridges and Street Construction	Service	Hotels Restaurants	Laundries and Dry Cleaning Plants
July 1	(b) Average Hourly Earnings (in cents)				
1945	79.9	62.1	43.0	41.4	46.8
1946	82.8	64.7	45.7	44.5	48.3
1947	90.7	71.0	53.1	52.3	54.7
1948	100.0	78.8	59.8	59.4	58.5
1949	107.2	84.9	63.8	62.5	63.5
1950					
Jan. 1	108.9	88.4	64.7	63.4	64.0
Feb. 1	110.7	86.7	65.0	63.8	64.2
Mar. 1	111.7	88.7	66.3	65.4	64.7
Apr. 1	112.4	90.0	65.2	64.0	64.4
May 1	113.9	89.0	66.1	65.1	64.9
June 1	112.4	87.1	65.7	64.3	65.0
July 1	112.2	86.3	65.3	63.9	64.7
Aug. 1	112.5	86.1	64.7	62.9	64.8
Sept. 1	114.1	86.7	64.5	62.2	65.2
Oct. 1	115.8	88.3	66.6	65.3	66.0
Nov. 1	117.1	89.7	67.6	66.5	66.6
Dec. 1	117.5	89.8	67.6	66.8	66.3
1951					
Jan. 1	118.7	89.8	67.5	67.2	65.3
Feb. 1	121.2	93.1	67.7	67.3	65.9
Mar. 1	122.1	92.8	69.6	69.9	66.0
Apr. 1	122.5	94.6	69.0	68.9	66.3
May 1	124.0	94.3	69.8	69.8	66.8
June 1	125.9	95.4	69.3	68.8	67.3
July 1	127.7	95.5	68.9	68.2	67.4
Aug. 1	127.9	95.8	68.4	67.3	67.7
Sept. 1	131.0	96.4	68.3	66.9	67.7
Oct. 1	133.8	97.0	71.0	70.4	68.6
Nov. 1	134.9	98.1	71.2	70.7	69.1
Dec. 1	135.7	98.9	71.3	70.7	69.3
1952					
Jan. 1	136.2	101.0	71.8	71.1	69.6
Feb. 1	138.8	102.4	72.0	71.2	69.5
Mar. 1	139.6	102.9	73.2	72.8	70.2
Apr. 1	141.1	106.1	73.0	72.1	71.0
May 1	142.4	104.3	74.2	73.6	71.6
June 1	142.0	103.9	73.7	72.7	71.9
July 1	141.6	101.5	73.5	72.2	72.0

Table 5.- Provincial Averages of Hours Worked and Hourly Earnings of Hourly-rated Wage-earners in Manufacturing.

<u>Week</u> <u>Preceding</u>		<u>N'f'ld.</u>	<u>N.S.</u>	<u>N.B.</u>	<u>Que.</u>	<u>Ont.</u>	<u>Man.</u>	<u>Sask.</u>	<u>Alta.</u>	<u>B.C.</u>
<u>July 1</u>				(a) <u>Average Hours</u>						
1945		..	46.2	46.5	45.0	44.0	43.5	41.4	43.2	41.6
x1946		..	44.2	46.0	42.9	42.0	42.4	42.9	41.9	40.8
1947		..	45.2	45.6	42.3	41.8	42.6	42.0	42.7	39.4
1948		..	43.9	45.4	42.8	41.7	42.6	41.2	42.7	37.7
1949		..	43.2	44.3	42.1	41.8	42.5	42.1	42.4	38.3
<u>1950</u>										
xJan.	1	..	38.7	41.5	41.3	39.8	39.7	40.2	40.2	34.2
Feb.	1	..	43.1	43.3	43.9	42.1	41.0	40.9	41.2	36.1
Mar.	1	..	43.2	45.3	44.1	41.9	42.9	41.7	42.7	38.1
Apr.	1	45.2	44.0	45.1	44.4	42.2	42.8	42.1	43.0	38.4
May	1	44.1	44.0	44.4	43.9	42.2	42.4	42.3	42.5	38.7
June	1	44.6	43.2	43.8	43.3	41.6	41.7	42.0	42.2	37.4
July	1	44.5	43.6	45.2	43.8	42.2	42.7	41.7	42.6	38.0
Aug.	1	45.0	43.7	45.5	44.0	42.1	42.1	40.4	41.7	37.9
Sept.	1	43.6	42.9	43.8	43.8	41.5	39.2	41.2	39.4	38.1
Oct.	1	46.1	43.7	46.1	44.9	42.2	41.9	41.6	40.7	39.0
Nov.	1	46.0	44.1	44.7	45.0	42.4	42.2	42.0	42.3	38.6
Dec.	1	45.5	43.0	45.3	45.0	42.4	42.8	40.7	42.1	38.7
<u>1951</u>										
xJan.	1	40.9	38.4	42.1	41.3	39.8	40.4	41.0	40.5	35.5
Feb.	1	41.7	42.6	45.7	44.7	42.4	42.3	40.9	41.6	38.1
Mar.	1	45.2	41.5	44.8	44.4	41.5	42.7	40.5	41.5	38.4
xApr.	1	43.5	42.7	44.2	43.7	41.8	42.2	40.8	40.7	37.8
May	1	43.7	43.7	43.7	44.3	42.0	41.7	41.0	41.4	38.4
June	1	45.7	43.2	43.5	43.6	41.2	41.8	41.7	41.7	37.4
July	1	44.8	43.9	44.1	42.6	41.5	40.9	41.0	40.7	38.3
Aug.	1	45.2	42.6	43.2	42.9	40.8	40.8	40.7	40.5	37.8
Sept.	1	44.1	41.6	43.4	43.5	40.8	40.9	40.3	40.6	37.6
Oct.	1	44.2	41.6	44.6	43.6	41.5	40.8	40.9	40.2	37.6
Nov.	1	44.3	42.5	43.7	43.3	41.3	41.4	41.1	41.3	38.2
Dec.	1	44.9	42.4	42.8	43.6	41.3	41.2	41.9	41.0	38.7
<u>1952</u>										
xJan.	1	39.3	37.5	39.6	39.4	37.7	38.7	39.7	39.0	34.0
Feb.	1	42.0	41.2	44.0	43.1	41.1	40.7	40.3	40.0	37.9
Mar.	1	43.1	41.6	42.3	43.5	41.0	41.2	40.8	40.8	38.0
Apr.	1	42.2	43.6	43.8	43.7	41.4	41.4	41.8	41.4	38.7
May	1	43.0	42.6	43.7	43.5	41.2	40.9	41.1	40.4	38.6
June	1	44.7	41.4	42.6	42.8	40.6	41.0	42.0	40.7	39.0
July	1	44.5	42.1	43.9	42.3	40.9	41.2	42.0	40.5	38.7

xSee footnote on page 7.

Table 5.- Provincial Averages of Hours Worked and Hourly Earnings of Hourly-rated Wage-earners in Manufacturing. (Concluded)

Week Preceding	N'f'ld.	N.S.	N.B.	Que.	Ont.	Man.	Sask.	Alta.	B.C.
July 1	(b) Average Hourly Earnings (in cents)								
1945	..	71.3	62.9	65.0	71.7	68.2	67.1	72.6	83.3
1946	..	68.5	64.1	65.2	71.6	70.4	68.0	71.8	84.9
1947	..	75.4	73.6	73.9	84.1	79.7	79.4	79.9	96.2
1948	..	85.0	83.1	84.4	96.3	90.3	90.9	92.1	108.9
1949	..	88.1	87.8	90.7	103.3	95.3	99.6	100.3	118.8
1950									
Jan. 1	..	94.7	91.5	91.2	106.2	98.2	103.8	102.0	121.2
Feb. 1	..	91.1	90.8	90.9	106.4	97.2	103.9	101.9	122.3
Mar. 1	..	91.6	89.6	91.1	107.0	97.5	104.5	102.8	121.9
Apr. 1	100.0	92.0	90.3	91.5	107.4	98.4	103.8	102.5	121.5
May 1	100.4	92.3	90.5	91.9	108.2	98.4	104.2	103.8	122.4
June 1	98.9	95.0	89.4	92.7	109.5	99.6	104.6	104.1	122.6
July 1	106.1	91.3	89.0	93.3	109.5	98.6	105.0	103.6	125.5
Aug. 1	100.9	91.1	89.7	93.3	110.3	99.4	103.4	102.2	125.1
Sept. 1	101.8	91.0	90.4	93.3	110.5	98.7	104.2	103.0	125.7
Oct. 1	100.6	90.7	92.3	94.4	111.1	101.9	106.8	105.6	127.0
Nov. 1	100.6	90.1	93.7	95.2	112.7	101.9	107.5	107.2	127.8
Dec. 1	103.8	91.7	96.8	96.4	114.2	102.7	108.9	108.1	129.1
1951									
Jan. 1	103.7	96.2	97.5	97.4	115.3	103.5	111.3	109.1	131.5
Feb. 1	106.0	95.3	97.8	98.1	117.5	105.1	110.7	110.2	132.5
Mar. 1	102.3	97.4	98.6	99.1	118.7	106.1	113.0	111.6	133.0
Apr. 1	104.5	99.8	98.4	100.2	120.1	106.7	113.9	111.9	136.7
May 1	107.8	97.8	100.2	101.6	121.5	108.8	115.4	112.8	137.1
June 1	107.2	100.2	101.5	103.4	123.6	110.6	117.1	114.9	138.0
July 1	119.1	100.4	104.4	106.4	124.9	116.4	116.9	119.3	140.4
Aug. 1	121.4	103.3	107.3	106.6	125.9	117.0	117.4	119.2	140.8
Sept. 1	120.3	102.6	107.8	108.2	127.5	117.2	121.0	120.8	145.2
Oct. 1	118.3	104.9	110.2	109.6	128.3	118.6	123.0	122.1	149.0
Nov. 1	121.6	105.6	110.5	111.1	130.4	119.4	125.4	123.2	150.5
Dec. 1	121.2	106.8	111.4	112.2	131.2	120.0	123.3	124.4	153.4
1952									
Jan. 1	127.9	114.6	114.2	114.1	134.0	121.9	126.0	125.9	156.5
Feb. 1	126.4	113.8	112.6	113.7	134.6	120.2	126.5	127.5	156.9
Mar. 1	125.5	114.5	113.5	113.8	135.7	121.3	127.7	127.6	158.1
Apr. 1	126.6	115.8	112.4	114.6	137.2	122.0	129.4	128.6	158.6
May 1	124.6	115.4	114.3	115.2	137.6	121.6	129.2	130.3	157.8
June 1	125.2	115.0	111.6	116.0	137.5	122.8	128.7	130.9	158.3
July 1	124.5	114.9	109.9	116.5	137.1	123.2	128.3	130.8	153.8

Table 6.- City Averages of Hours Worked and Hourly Earnings of Hourly-rated Wage-earners in Manufacturing.

<u>Week Preceding</u>	<u>Montreal</u>	<u>Toronto</u>	<u>Hamilton</u>	<u>Windsor</u>	<u>Winnipeg</u>	<u>Vancouver</u>
<u>July 1</u>	(a) <u>Average Hours</u>					
1945	43.4	42.6	44.6	41.7	43.2	41.2
1946	41.0	41.0	42.1	37.5	42.2	40.3
1947	40.4	40.7	41.5	40.1	42.3	39.0
1948	41.4	40.7	41.1	40.2	42.3	37.5
1949	40.8	40.6	41.7	41.6	42.2	37.8
<u>1950</u>						
xJan. 1	39.7	39.1	39.6	37.5	39.5	33.2
Feb. 1	42.1	41.1	41.2	40.5	40.6	36.5
Mar. 1	42.5	40.7	40.8	40.8	42.7	37.5
Apr. 1	43.0	41.2	40.8	42.0	42.6	37.7
May 1	42.5	41.2	41.1	41.7	42.0	38.1
June 1	41.6	40.3	41.7	41.0	41.3	36.7
July 1	42.3	41.1	40.5	43.3	42.4	37.8
Aug. 1	41.9	40.9	40.4	43.5	41.8	37.6
Sept. 1	41.5	40.8	39.7	42.2	38.5	37.3
Oct. 1	43.1	41.4	40.7	40.5	41.7	38.6
Nov. 1	43.5	41.6	40.9	39.8	42.0	37.8
Dec. 1	43.3	41.6	41.1	42.0	42.6	37.6
<u>1951</u>						
xJan. 1	39.5	38.5	39.2	39.3	40.1	34.6
Feb. 1	43.1	41.3	40.7	44.2	42.0	37.6
Mar. 1	43.0	40.2	39.9	43.8	42.3	37.6
xApr. 1	42.1	41.0	40.5	40.6	41.8	37.4
May 1	42.7	41.4	40.8	38.9	41.2	38.0
June 1	41.6	40.2	40.8	39.8	41.4	36.8
July 1	40.8	40.6	40.9	38.3	40.5	38.3
Aug. 1	41.1	40.5	40.3	35.5	40.4	37.5
Sept. 1	42.5	40.5	39.4	38.5	40.6	37.0
Oct. 1	42.2	41.0	39.5	38.2	40.3	37.3
Nov. 1	42.3	40.9	39.5	39.3	40.9	37.7
Dec. 1	42.5	41.0	40.4	40.0	40.6	38.1
<u>1952</u>						
xJan. 1	37.9	36.8	36.7	38.2	38.3	32.9
Feb. 1	42.0	40.4	39.8	41.1	40.3	37.3
Mar. 1	42.5	40.6	39.4	39.8	40.7	36.7
Apr. 1	42.8	40.8	40.0	43.0	41.0	38.2
May 1	42.7	40.7	39.8	42.2	40.6	38.0
June 1	41.9	40.8	40.1	31.7	40.7	38.7
July 1	41.1	40.5	39.9	38.2	40.9	38.5

xSee footnote on page 7.

Table 6.- City Averages of Hours Worked and Hourly Earnings of Hourly-rated
Wage-earners in Manufacturing. (Concluded)

<u>Week Preceding</u>	<u>Montreal</u>	<u>Toronto</u>	<u>Hamilton</u>	<u>Windsor</u>	<u>Winnipeg</u>	<u>Vancouver</u>
<u>July 1</u>	(b) <u>Average Hourly Earnings (in cents)</u>					
1945	70.2	73.5	72.6	92.4	68.3	84.9
1946	69.0	71.4	73.4	92.1	70.1	82.5
1947	77.6	83.7	86.0	105.3	79.3	93.8
1948	88.5	95.5	102.8	116.7	90.0	106.3
1949	95.7	102.2	111.8	125.1	94.5	117.0
<u>1950</u>						
Jan. 1	96.9	104.2	117.7	127.3	97.5	117.7
Feb. 1	96.2	105.2	117.7	126.9	96.6	118.1
Mar. 1	96.2	105.6	118.4	127.5	97.0	119.4
Apr. 1	96.8	106.3	119.2	128.2	97.8	119.5
May 1	97.0	107.1	119.6	128.9	97.9	120.6
June 1	97.5	107.5	122.0	131.4	99.2	120.6
July 1	98.0	107.6	121.5	132.7	97.8	123.7
Aug. 1	98.1	108.1	122.1	134.0	98.6	124.9
Sept. 1	97.9	108.4	122.7	133.5	97.9	125.0
Oct. 1	99.5	109.8	123.5	133.4	101.1	126.1
Nov. 1	99.9	111.4	123.5	138.0	101.2	125.6
Dec. 1	100.8	112.5	124.3	142.1	101.8	126.6
<u>1951</u>						
Jan. 1	101.9	113.0	126.4	137.9	102.7	128.9
Feb. 1	102.9	115.2	128.8	144.9	104.2	129.8
Mar. 1	104.1	116.9	131.0	145.4	105.4	129.8
Apr. 1	105.5	118.3	131.8	144.1	106.0	132.7
May 1	107.4	120.1	134.7	142.5	107.6	133.6
June 1	108.1	122.0	136.1	144.4	109.1	135.3
July 1	111.2	123.5	136.3	142.1	115.3	138.0
Aug. 1	111.1	124.7	139.1	142.9	115.7	139.5
Sept. 1	112.4	126.8	140.6	143.4	116.2	144.0
Oct. 1	114.1	128.4	142.6	144.2	117.2	148.2
Nov. 1	115.1	129.3	142.0	145.8	118.2	149.4
Dec. 1	116.8	129.7	144.7	146.7	118.6	150.7
<u>1952</u>						
Jan. 1	118.6	131.6	147.4	150.2	120.3	151.2
Feb. 1	118.3	133.1	146.8	153.1	118.6	153.0
Mar. 1	118.5	134.6	147.2	157.1	119.9	154.4
Apr. 1	119.7	135.5	148.1	162.7	120.8	155.2
May 1	120.5	136.1	148.2	159.3	120.1	154.9
June 1	121.1	136.3	151.2	161.6	121.0	156.7
July 1	121.8	136.1	150.2	158.8	121.5	158.0

Table 7.- Provincial Averages of Hours Worked and Hourly Earnings of Hourly-rated Wage-earners, by Industry.

Province and Industry	Average Hours			Average Hourly Earnings		
	July 1	June 1	July 1	July 1	June 1	July 1
	1952	1952	1951	1952	1952	1951
	no.	no.	no.	\$	\$	\$
Newfoundland						
Mining	43.7	38.4	42.4	130.1	125.9	118.5
Manufacturing	44.5	44.7	44.8	124.5	125.2	119.1
Food and beverages	42.2	43.6	39.0	77.5	80.0	70.9
Canned and cured fish	38.6	40.5	35.5	78.1	82.2	72.6
Pulp and paper mills	47.3	46.4	49.7	159.0	159.8	153.0
Buildings and structures (h)	52.7	51.4	47.3	110.7	110.3	99.9
Nova Scotia						
Coal mining	42.9	41.9	42.7	139.8	140.0	128.8
Manufacturing	42.1	41.4	43.9	114.9	115.0	100.4
Canned and cured fish	40.6	39.7	44.5	82.0	83.6	79.1
Wood products	45.9	42.7	46.0	71.3	69.5	64.6
Iron and steel products	41.1	40.8	43.3	139.7	138.4	119.4
Primary iron and steel	41.2	40.5	43.1	147.5	146.5	123.5
Transportation equipment	42.4	41.5	44.0	131.0	131.1	109.8
Shipbuilding and repairing	43.0	42.2	43.0	129.5	129.0	108.8
Buildings and structures (h)	37.3	34.0	38.5	98.9	106.1	97.6
Highways, bridges and street construction	34.2	35.6	40.0	84.3	89.3	83.2
New Brunswick						
Manufacturing	43.9	42.6	44.1	109.9	111.6	104.4
Saw and planing mills	47.7	42.9	45.2	80.6	80.1	73.7
Pulp and paper mills	46.3	46.3	48.1	145.7	150.4	141.4
Transportation equipment	39.8	41.2	40.4	134.3	133.4	139.8
Buildings and structures (h)	39.1	37.4	39.0	105.1	104.3	94.5
Highways, bridges and street construction	33.1	27.5	39.5	93.5	91.2	82.1
Quebec						
Mining	45.2	45.2	46.1	135.9	135.7	120.9
Metal mining	46.9	47.1	44.9	128.0	127.5	118.9
Non-metal mining (c)	42.6	42.1	47.8	150.2	150.4	123.5
Manufacturing	42.3	42.8	42.6	116.5	116.0	106.4
Tobacco	41.3	42.1	41.5	131.3	130.3	116.9
Leather products	37.2	38.6	34.5	84.9	84.6	79.4
Boots and shoes (except rubber)	36.8	38.5	33.5	85.2	85.2	79.5
Textile products (except clothing)	41.5	41.6	41.4	98.3	98.7	93.3
Cotton yarn and broad woven goods	38.1	36.9	39.5	99.4	99.3	97.0
Woollen goods	43.6	45.2	43.9	93.5	93.7	83.7
Rayon, nylon and silk textiles	43.8	44.5	43.5	99.7	101.8	92.9
Clothing (textile and fur)	35.7	38.1	34.5	88.2	88.0	83.8
Men's clothing	38.6	38.4	34.8	88.7	87.6	84.8
Women's clothing	32.8	36.0	30.2	92.0	92.8	86.2
Knit goods	36.5	39.5	38.4	90.0	90.8	82.5
Wood products	46.2	46.1	47.3	87.3	86.6	80.1
Saw and planing mills	47.9	46.8	49.2	86.0	85.7	77.4
Paper products	47.9	46.8	49.5	135.4	135.1	130.5
Pulp and paper mills	49.0	47.9	50.9	142.1	141.9	138.7
Iron and steel products	44.2	44.9	44.7	130.3	129.4	117.0
Machinery mfg. (f)	46.2	46.7	46.4	126.5	126.7	114.1
Transportation equipment	41.7	43.1	42.5	131.4	131.2	126.4
Railroad and rolling stock equipment	40.2	40.2	40.8	141.3	141.2	137.4
Non-ferrous metal products	42.9	42.9	45.4	140.3	138.2	114.2
Smelting and refining	42.9	42.0	46.2	153.1	150.9	122.5
Electrical apparatus and supplies	41.6	42.6	41.7	127.6	127.9	121.1
Chemical products	42.5	42.9	44.0	119.3	120.2	107.3
Buildings and structures (h)	39.5	41.7	38.1	130.2	129.6	114.6
Highways, bridges and street construction	45.7	47.6	42.2	78.4	79.8	76.4
Electric and motor transportation (i)	48.4	47.0	48.0	123.3	123.6	107.7
Service (j)	43.1	44.5	43.6	70.4	69.8	66.2

Footnotes (a) to (j) appear in explanatory notes facing page 1.

Table 7.- Provincial Averages of Hours Worked and Hourly Earnings of Hourly-rated Wage-earners, by Industry. (Continued)

Province and Industry	Average Hours			Average Hourly Earnings		
	July 1	June 1	July 1	July 1	June 1	July 1
	1952	1952	1951	1952	1952	1951
	no.	no.	no.	¢	¢	¢
Ontario						
Metal mining	43.0	42.9	43.6	149.9	150.1	134.7
Manufacturing	40.9	40.6	41.5	137.1	137.5	124.9
Food and beverages	42.4	42.3	42.5	111.8	113.0	101.8
Meat products	41.6	43.1	43.0	135.8	134.4	126.9
vegetables	41.6	43.1	43.0	135.8	134.4	126.9
Canned and preserved fruits and	39.9	37.9	39.5	95.0	96.2	86.5
Bread and other bakery products	44.7	44.8	44.4	95.8	96.3	91.9
Rubber products	39.1	39.7	39.7	142.4	145.6	133.0
Leather products	41.4	40.5	39.5	101.2	100.9	93.3
Boots and shoes (except rubber)	41.3	40.0	39.6	95.6	95.8	88.5
Textile products (except clothing)	40.1	39.7	40.6	112.3	112.5	103.8
Cotton yarn and broad woven	37.3	36.7	40.5	109.3	109.4	106.1
Woollen goods	42.0	41.6	40.9	103.8	104.7	96.5
Rayon, nylon and silk textiles	41.6	40.6	40.8	137.1	139.5	119.6
Clothing (textile and fur)	37.6	37.5	37.3	98.9	99.0	93.3
Knit goods	38.2	37.8	39.0	97.0	98.2	90.9
Wood products	43.5	42.8	43.0	104.6	104.6	95.5
Saw and planing mills	44.6	43.1	44.3	102.3	102.5	92.8
Furniture	42.9	42.8	41.9	108.7	108.6	100.0
Paper products	42.4	42.4	45.9	141.8	141.4	133.8
Pulp and paper mills	43.4	43.0	48.1	153.0	152.8	147.1
Other paper products (e)	40.7	41.3	42.4	120.6	120.3	109.5
Printing, publishing and allied	39.2	39.5	39.9	153.3	152.0	135.2
Iron and steel products	40.6	41.5	41.9	151.1	152.0	136.9
Agricultural implements	38.4	41.0	41.7	163.3	165.3	152.7
Iron castings	39.7	41.7	43.3	148.9	149.1	136.8
Machinery mfg.(f)	41.9	41.8	42.3	142.0	142.1	130.9
Primary iron and steel	40.6	41.6	40.6	165.5	166.6	146.3
Sheet metal products	40.3	40.5	41.9	135.0	134.9	122.7
Transportation equipment	40.4	37.8	40.6	156.9	156.6	142.5
Motor vehicles	38.7	31.6	39.0	164.9	168.6	148.5
Motor vehicle parts & accesories	40.6	40.9	41.5	152.4	153.2	138.4
Railroad & rolling stock equip-	41.3	39.4	40.5	146.9	142.0	145.5
Non-ferrous metal products	40.8	40.3	41.4	148.4	147.0	131.5
Brass and copper products	42.3	40.8	41.6	144.4	143.8	129.5
Smelting and refining	39.4	39.3	41.6	164.7	163.7	145.5
Electrical apparatus and supplies	40.9	40.6	40.6	145.7	146.1	133.5
Non-metallic mineral products (g)	43.9	44.4	44.6	135.0	134.9	123.5
Chemical products	41.5	41.9	41.5	139.3	140.8	126.7
Buildings and structures (h)	41.0	41.0	41.9	150.4	149.2	135.4
Highways, bridges and street constr.	46.0	44.1	44.2	115.6	117.0	106.9
Electric and motor transportation(i)	46.3	45.0	44.9	134.4	132.9	125.0
Service (j)	42.1	42.2	42.3	73.2	72.2	68.9
Hotels and restaurants	43.7	43.9	43.5	71.4	70.4	67.4

Footnotes (a) to (j) appear in explanatory notes facing page 1.

Table 7.- Provincial Averages of Hours Worked and Hourly Earnings of Hourly-rated Wage-earners, by Industry. (Concluded)

Province and Industry	Average Hours			Average Hourly Earnings		
	July 1	June 1	July 1	July 1	June 1	July 1
	1952	1952	1951	1952	1952	1951
	no.	no.	no.	¢	¢	¢
<u>Manitoba</u>						
Manufacturing	41.2	41.0	40.9	123.2	122.8	116.4
Food and beverages	41.5	41.4	41.9	124.9	124.0	115.1
Meat products	40.2	40.0	39.8	142.1	143.9	133.8
Clothing (textile and fur)	39.2	39.2	37.9	88.1	88.4	85.8
Iron and steel products	42.6	43.1	43.1	124.7	125.2	115.6
Transportation equipment	40.0	39.8	39.5	137.4	136.2	136.5
Buildings and structures (h)	42.1	41.1	42.9	129.7	130.9	123.9
Highways, bridges and street constr.	37.2	38.2	41.7	101.0	101.1	89.4
Service (j)	43.0	42.6	43.1	74.0	73.5	69.8
<u>Saskatchewan</u>						
Manufacturing	42.0	42.0	41.0	128.3	128.7	116.9
Meat products	44.8	43.3	39.7	138.5	140.0	129.0
Buildings and structures (h)	41.4	41.0	37.5	144.3	141.8	107.7
Highways, bridges and street constr.	40.5	36.6	37.5	98.2	98.2	91.3
Service (j)	42.5	43.2	43.1	77.5	76.5	72.8
<u>Alberta</u>						
Mining	38.6	38.6	40.6	170.3	170.8	157.0
Coal	33.6	33.0	37.0	179.2	178.2	162.3
Manufacturing	40.5	40.7	40.7	130.8	130.9	119.3
Food and beverages	40.5	40.9	41.2	126.9	128.2	114.6
Meat products	40.4	41.1	40.4	140.6	142.5	132.0
Transportation equipment	39.4	38.9	39.5	135.8	135.5	134.6
Non-metallic mineral products (g)	42.2	44.6	43.0	115.9	113.5	109.6
Buildings and structures (h)	35.7	36.6	36.7	152.0	151.7	142.8
Electric and motor transportation (i)	42.5	41.5	43.1	134.2	135.3	118.9
Service (j)	44.6	44.5	44.6	70.7	77.3	67.4
<u>British Columbia</u>						
Forestry (logging)	36.3	37.3	36.4	172.7	198.1	188.6
Metal mining	43.4	43.1	43.0	167.5	166.6	148.7
Manufacturing	38.7	39.0	38.3	153.8	158.3	140.4
Food and beverages	37.2	39.2	36.4	130.6	136.0	115.2
Canned and cured fish	37.2	41.5	35.2	131.3	136.9	128.1
Canned and preserved fruits and	32.5	32.2	32.1	98.8	95.8	88.5
Wood products vegetables	38.2	38.2	37.9	141.4	159.5	144.6
Saw and planing mills	38.0	38.2	37.8	144.0	160.9	146.2
Pulp and paper mills	41.4	40.6	41.5	174.7	177.9	146.3
Iron and steel products	38.2	38.3	38.9	168.4	167.9	146.3
Transportation equipment	38.5	39.2	37.2	173.1	174.5	149.9
Steel shipbuilding and repairing	38.2	39.2	36.7	177.6	178.8	153.1
Non-ferrous metal products	40.1	40.7	40.2	160.7	160.4	157.5
Buildings and structures (h)	39.6	41.5	37.9	180.1	180.9	154.6
Highways, bridges and street constr.	38.2	38.8	39.4	139.6	138.5	125.2
Electric and motor transportation (i)	40.9	39.8	41.8	144.5	143.8	131.7
Service (j)	39.4	39.2	39.3	91.6	89.8	80.9

Footnotes (a) to (j) appear in explanatory notes facing page 1.

Table 8.- City Averages of Hours and Hourly Earnings of Hourly-rated Wage-earners, by Industry.

Metropolitan Area and Industry	Average Hours			Average Hourly Earnings		
	July 1	June 1	July 1	July 1	June 1	July 1
	1952	1952	1951	1952	1952	1951
	no.	no.	no.	¢	¢	¢
Montreal - Manufacturing	41.1	41.9	40.8	121.8	121.1	111.2
Food and beverages	44.8	44.4	44.4	109.4	108.0	98.4
Tobacco and tobacco products	41.3	41.3	41.3	136.0	136.9	124.9
Leather products	38.6	39.4	34.7	88.3	88.2	83.9
Textile products (except clothing)	42.7	41.8	40.1	99.5	99.0	92.2
Clothing (textile and fur)	35.1	37.3	33.0	96.8	96.5	91.5
Iron and steel products	44.0	43.7	43.9	138.1	137.1	123.2
Transportation equipment	40.7	42.2	42.0	135.9	135.7	130.0
Electrical apparatus and supplies	40.7	41.8	41.4	134.8	134.7	126.1
Buildings and structures (h)	34.8	38.3	34.9	142.2	139.7	125.8
Electric and motor transportation (i)	47.7	46.5	47.0	130.8	131.7	113.9
Service (j)	42.7	43.7	43.1	70.7	70.7	66.0
Toronto - Manufacturing	40.5	40.8	40.6	136.1	136.3	123.5
Food and beverages	41.8	41.4	42.1	116.6	117.6	107.3
Rubber products	38.5	39.5	38.2	156.2	157.5	141.7
Textile products (except clothing)	41.3	41.4	39.8	106.7	106.1	102.6
Clothing (textile and fur)	37.4	37.4	36.1	105.5	105.1	101.0
Paper products	40.7	41.0	41.4	121.8	121.3	112.2
Printing, publishing and allied ind.	38.5	38.9	39.3	166.3	165.0	143.6
Iron and steel products	40.0	41.5	41.7	150.3	150.5	136.9
Transportation equipment	41.8	41.9	42.4	157.7	158.0	135.9
Electrical apparatus and supplies	40.7	40.4	40.5	140.3	140.3	129.7
Chemical products	41.1	41.4	40.9	132.0	132.4	119.5
Buildings and structures (h)	39.3	39.5	38.4	164.5	163.9	156.0
Electric and motor transportation (i)	45.9	43.8	43.2	139.9	137.3	130.6
Service (j)	41.3	41.3	41.4	77.0	75.4	73.9
Hamilton - Manufacturing	39.9	40.1	40.9	150.2	151.2	136.3
Clothing (textile and fur)	35.2	35.8	37.9	106.2	106.2	98.6
Iron and steel products	40.2	40.8	41.7	163.9	165.4	145.8
Electrical apparatus and supplies	39.5	39.7	39.2	169.2	168.8	151.1
Buildings and structures (h)	43.7	41.2	41.5	146.1	147.0	138.9
Windsor - Manufacturing	38.2	31.7	38.3	155.8	161.6	142.1
Iron and steel products	40.7	42.7	41.7	158.6	160.5	147.1
Transportation equipment	36.4	26.8	37.4	164.2	172.1	145.6
Buildings and structures (h)	37.8	37.9	42.3	173.2	172.8	164.3

Footnotes (a) to (j) appear in explanatory notes facing page 1.

Table 8.- City Averages of Hours and Hourly Earnings of Hourly-rated Wage-earners, by Industry. (Concluded)

Metropolitan Area and Industry	Average Hours			Average Hourly Earnings		
	July 1	June 1	July 1	July 1	June 1	July 1
	1952	1952	1951	1952	1952	1951
	no.	no.	no.	¢	¢	¢
Winnipeg - Manufacturing	40.9	40.7	40.5	121.5	121.0	115.3
Food and beverages	41.5	41.4	42.1	125.4	124.5	115.8
Meat products	40.2	39.9	39.9	142.9	145.0	134.7
Clothing (textile and fur)	39.3	39.1	37.7	88.7	89.3	86.8
Transportation equipment	40.0	39.8	39.5	137.5	136.3	136.5
Buildings and structures (h)	40.0	39.7	38.8	137.8	139.6	130.9
Service (j)	42.9	42.5	43.0	74.1	73.6	70.0
Vancouver - Manufacturing	38.5	38.7	38.3	153.0	156.7	138.0
Wood products	37.1	37.8	38.1	136.5	161.2	146.2
Iron and steel products	38.2	38.2	38.9	168.7	168.1	146.3
Transportation equipment	39.6	40.3	35.8	174.4	176.4	149.0
Buildings and structures (h)	35.1	37.9	37.8	184.9	180.1	155.0
Electric and motor transportation (i)	40.9	39.4	41.2	145.5	145.4	134.2
Service (j)	39.0	38.8	39.4	91.9	91.4	81.3

Footnotes (a) to (j) appear in explanatory notes facing page 1.

Table 9.- Index Numbers of Average Hourly Earnings in the Heavy Electrical Machinery and Equipment Industry^{1/}.

(June 1, 1941=100)

Week Preceding	1947	1948	1949	1950	1951	1952
Jan. 1	169.6	191.5	224.9	233.6	252.6	293.9
Feb. 1	168.6	194.7	224.9	238.9	260.9	294.7
Mar. 1	170.0	196.4	226.6	239.8	262.2	294.7
Apr. 1	168.9	198.7	228.3	240.4	262.4	296.2
May 1	168.7	199.2	227.5	247.1	265.7	298.5
June 1	169.8	201.3	227.7	247.4	280.6	296.4
July 1	170.6	202.1	228.5	249.5	278.9	310.2
Aug. 1	181.2	202.1	228.8	248.0	286.0	
Sept. 1	180.8	215.6	228.1	251.2	288.8	
Oct. 1	183.3	217.5	230.9	251.0	289.6	
Nov. 1	184.6	219.2	231.1	254.5	294.7	
Dec. 1	185.2	223.0	231.5	254.6	293.4	

^{1/}Computed from data furnished by 8 establishments manufacturing heavy electrical machinery and equipment.

Table 10.- Provincial Averages of Weekly Wages of Hourly-rated Wage-earners
in Manufacturing.

Week Preceding	Canada	N'f'ld.	N.S.	N.B.	Que.	Ont.	Man.	Sask.	Alta.	B.C.
July 1	\$	\$	\$	\$	\$	\$	\$	\$	\$	\$
1945	31.05	..	32.94	29.25	29.25	31.55	29.67	27.78	31.36	34.65
1946	29.68	..	30.28	29.49	27.97	30.07	29.85	29.17	30.08	34.64
1947	33.94	..	34.08	33.56	31.26	35.15	33.95	33.35	34.12	37.90
1948	38.77	..	37.32	37.73	36.12	40.16	38.47	37.45	39.33	41.06
1949	41.42	..	38.06	38.90	38.18	43.18	40.50	41.93	42.53	45.50
1950										
xJan. 1	40.34	..	36.65	37.97	37.67	42.27	38.99	41.73	41.00	41.45
Feb. 1	42.68	..	39.26	39.13	39.91	44.79	39.85	42.50	41.98	44.15
Mar. 1	43.10	..	39.57	40.69	40.18	44.83	41.83	43.58	43.90	46.44
Apr. 1	43.53	45.20	40.48	40.73	40.63	45.32	42.12	43.70	44.08	46.66
May 1	43.67	44.28	40.61	40.18	40.34	45.66	41.72	44.08	44.12	47.37
June 1	43.47	44.11	41.04	39.16	40.14	45.55	41.53	43.93	43.93	45.85
July 1	44.16	47.21	39.81	40.23	40.87	46.21	42.10	43.79	44.13	47.69
Aug. 1	44.29	45.41	39.81	40.81	41.05	46.44	41.85	41.77	42.62	47.41
Sept. 1	43.74	44.38	39.04	39.60	40.87	45.86	38.69	42.93	40.58	47.89
Oct. 1	45.17	46.38	39.64	42.55	42.39	46.88	42.70	44.43	42.98	49.53
Nov. 1	45.75	46.28	39.73	41.88	42.84	47.78	43.00	45.15	45.35	49.33
Dec. 1	46.46	47.23	39.43	43.85	43.38	48.42	43.96	44.32	45.51	49.96
1951										
xJan. 1	43.71	42.41	36.94	41.05	40.23	45.89	41.81	45.63	44.19	46.68
Feb. 1	47.36	44.20	40.60	44.69	43.85	49.82	44.46	45.28	45.84	50.48
Mar. 1	47.12	46.24	40.42	44.17	44.00	49.26	45.30	45.77	46.31	51.07
xApr. 1	47.60	45.46	42.61	43.49	43.79	50.20	45.03	46.47	45.54	51.67
May 1	48.49	47.11	42.74	43.79	45.01	51.03	45.37	47.31	46.70	52.65
June 1	48.56	48.99	43.29	44.15	45.08	50.92	46.23	48.83	47.91	51.61
July 1	49.37	53.36	44.08	46.04	45.33	51.83	47.61	47.93	48.56	53.77
Aug. 1	49.31	54.87	44.01	46.35	45.73	51.37	47.74	47.78	48.28	53.22
Sept. 1	50.05	53.05	42.68	46.79	47.07	52.02	47.93	48.76	49.04	54.60
Oct. 1	51.08	52.29	43.64	49.15	47.79	53.24	48.39	50.31	49.08	56.02
Nov. 1	51.62	53.87	44.88	48.29	48.11	53.86	49.43	51.54	50.88	57.49
Dec. 1	52.17	54.42	45.28	47.68	48.92	54.19	49.44	51.66	51.00	59.37
1952										
xJan. 1	48.43	50.27	42.98	45.22	44.96	50.52	47.18	50.02	49.10	53.21
Feb. 1	52.87	53.09	46.89	49.54	49.00	55.32	48.92	50.98	51.00	59.47
Mar. 1	53.29	54.09	47.63	48.01	49.50	55.64	49.98	52.10	52.06	60.08
Apr. 1	54.31	53.43	50.49	49.23	50.08	56.80	50.51	54.09	53.24	61.38
May 1	54.22	53.58	49.16	49.95	50.11	56.69	49.73	53.10	52.64	60.91
June 1	53.57	55.96	47.61	47.54	49.65	55.83	50.35	54.05	53.28	61.74
July 1	53.36	55.40	48.37	48.25	48.93	56.07	50.76	53.89	52.97	59.52

xSee footnote on page 7.

Table 11.- City Averages of Weekly Wages of Hourly-rated Wage-earners
in Manufacturing.

<u>Week Preceding</u>	<u>Montreal</u>	<u>Toronto</u>	<u>Hamilton</u>	<u>Windsor</u>	<u>Winnipeg</u>	<u>Vancouver</u>
<u>July 1</u>	\$	\$	\$	\$	\$	\$
1945	30.47	31.31	32.38	38.53	29.51	34.98
x1946	28.29	29.27	30.90	34.54	29.58	33.29
1947	31.35	34.07	35.69	42.23	33.54	36.58
1948	36.64	38.91	42.25	46.91	38.07	39.86
1949	39.05	41.49	46.62	52.04	39.88	44.23
<u>1950</u>						
xJan. 1	38.47	40.74	46.61	47.74	38.55	39.08
Feb. 1	40.50	43.24	48.49	51.39	39.22	43.11
Mar. 1	40.89	42.98	48.31	52.02	41.42	44.78
Apr. 1	41.62	43.80	48.63	53.84	41.66	45.09
May 1	41.23	44.13	49.16	53.75	41.12	45.95
June 1	40.56	43.32	50.87	53.87	40.97	44.26
July 1	41.45	44.22	49.25	57.46	41.47	46.76
Aug. 1	41.10	44.21	49.33	58.29	41.21	46.96
Sept. 1	40.63	44.23	48.71	56.34	37.75	46.63
Oct. 1	42.88	45.46	50.26	54.03	42.16	48.67
Nov. 1	43.46	46.34	50.51	54.92	42.50	47.48
Dec. 1	43.65	46.80	51.29	59.68	43.37	47.60
<u>1951</u>						
xJan. 1	40.25	43.51	49.55	54.19	41.18	44.60
Feb. 1	44.35	47.58	52.42	64.05	43.76	48.80
Mar. 1	44.76	46.99	52.27	63.69	44.58	48.80
xApr. 1	44.46	48.50	53.38	58.50	44.31	49.63
May 1	45.86	49.72	54.96	55.43	44.41	50.77
June 1	44.97	49.04	55.53	57.47	45.17	49.79
July 1	45.37	50.14	55.75	54.42	46.70	52.85
Aug. 1	45.66	50.50	56.06	50.73	46.74	52.31
Sept. 1	47.77	51.35	55.40	55.21	47.18	53.50
Oct. 1	48.15	52.64	56.33	55.08	47.23	55.28
Nov. 1	48.69	52.88	56.09	57.30	48.34	56.32
Dec. 1	49.64	53.18	58.46	58.68	48.15	57.42
<u>1952</u>						
xJan. 1	44.95	48.43	54.10	57.38	46.07	49.74
Feb. 1	49.69	53.77	58.43	62.92	47.80	57.07
Mar. 1	50.36	54.65	58.00	62.53	48.80	56.66
Apr. 1	51.23	55.28	59.24	69.96	49.53	59.29
May 1	51.45	55.39	58.98	67.22	48.76	58.86
June 1	50.74	55.61	60.63	51.23	49.25	60.64
July 1	50.06	55.12	59.93	59.52	49.69	58.91

xSee footnote on page 7.

STATISTICS CANADA LIBRARY
BIBLIOTHÈQUE STATISTIQUE CANADA



1010512806

