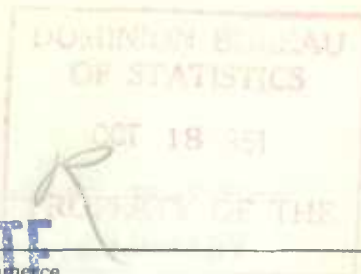




72 005

DOMINION BUREAU OF STATISTICS
Labour and Prices Division
OTTAWA



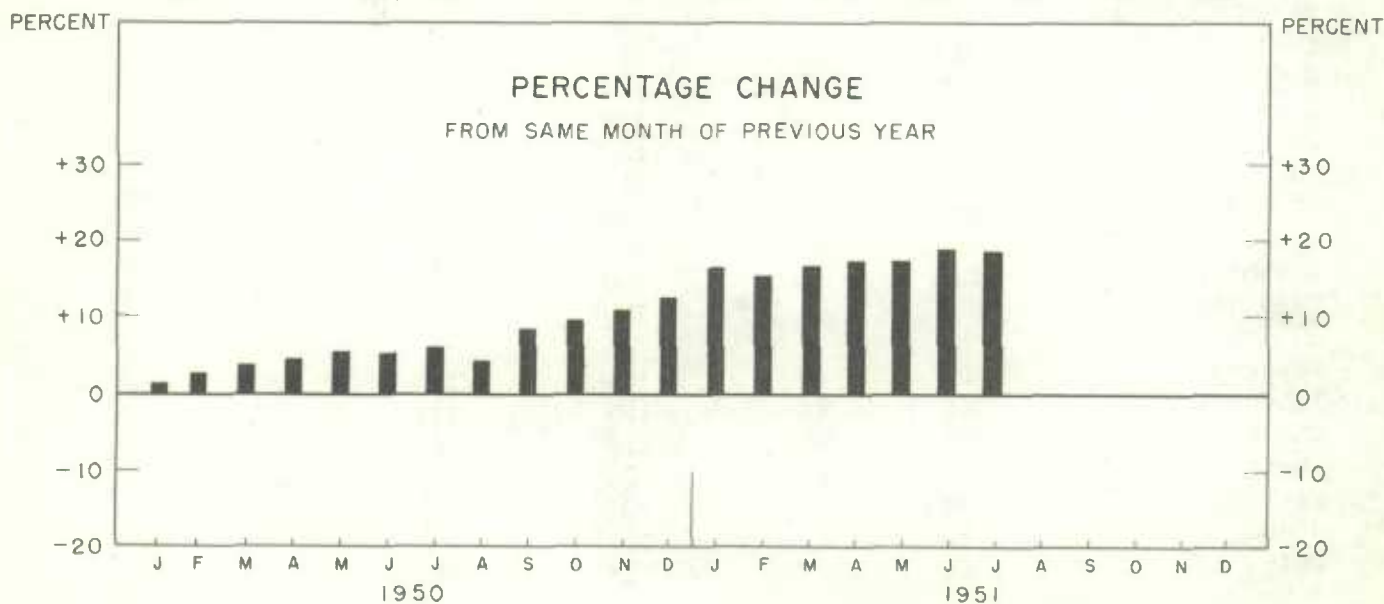
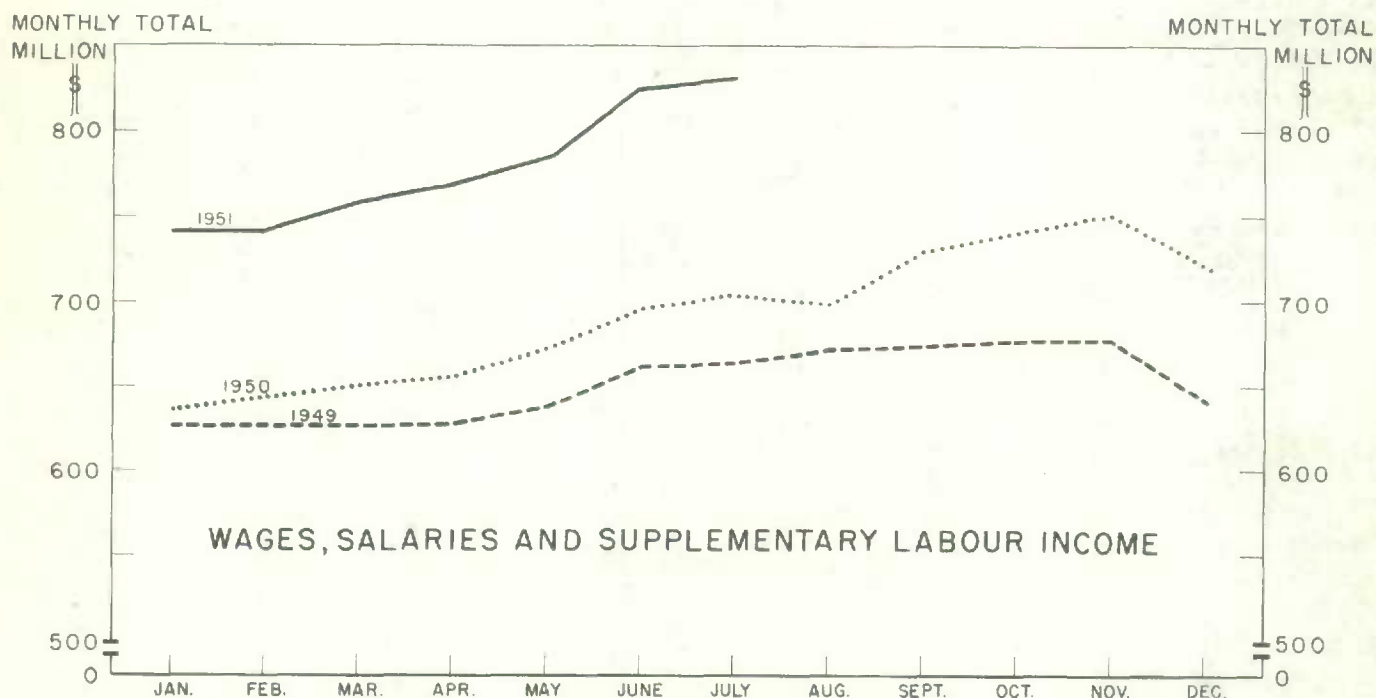
Published by Authority of the Rt. Hon. C. D. Howe, Minister of Trade and Commerce

VOLUME V NUMBER 6

10 cents a copy, \$1.00 per year.

ESTIMATES OF LABOUR INCOME

JULY 1951



ESTIMATES OF LABOUR INCOME
(\$ Millions)

	Agriculture, Forestry, Fishing, Trapping, Mining	Manu- fac- turing	Con- struc- tion	Utilities Trans- portation, Communi- cation, Storage, Trade	Finance, Services (includ- ing Govern- ment)	Supple- mentary Labour Income	Total
1938 - Average	22	60	15	58	57	5	216
1939 - Average	23	62	16	61	57	5	224
1940 - Average	25	78	11	66	59	6	245
1941 - Average	28	107	16	76	64	8	297
1942 - Average	33	142	19	83	71	10	357
1943 - Average	34	167	22	89	77	11	400
1944 - Average	37	171	17	98	81	12	417
1945 - Average	38	156	19	105	89	13	418
1946 - Average	46	147	25	118	99	14	448
1947 - Average	52	176	34	138	111	21	532
1948 - Average	58	204	41	160	128	19	610
1949 - January	54	214	37	165	137	20	626
February	52	215	36	165	137	21	627
March	46	216	37	166	140	20	626
April	44	216	41	169	139	20	628
May	50	212	44	171	141	20	638
June	55	218	49	175	142	21	661
July	55	217	53	177	141	21	664
August	58	220	55	178	139	21	672
September	55	223	55	179	141	21	674
October	55	222	54	181	143	21	677
November	55	222	52	183	145	21	677
December	50	207	38	181	145	20	642
1950 - January	45	215	38	171	146	21	637
February	46	219	39	173	147	20	643
March	44	221	40	174	149	21	650
April	42	223	43	177	148	21	655
May	47	225	50	181	148	21	672
June	52	233	54	185	149	22	695
July	55	234	56	188	148	23	704
August	57	237	58	177	147	23	699
September	60	245	58	192	150	24	729
October	63	249	57	195	152	24	740
November	65	252	55	200	154	25	750
December	62	238	44	199	154	24	721
1951 - January	61	257	46	194	157	26	741
February	61	259	45	195	157	24	741
March	58	264	45	198	168	25	759
April	57	270	53	203	161	27	771
May	63	273	58	208	163	26	791
June	69	280	63	216	170	27	825
July	67	281	67	217	170	30	832

ESTIMATES OF LABOUR INCOME

JULY, 1951

During the seven months from January to July, 1951, inclusive, the estimates of labour income have been, on the average, 17.2 per cent over the same months of 1950; individual percentage increases ranged from 15.2 in February to 18.7 in June. In July, wages, salaries and supplementary income rose to the unprecedented levels of \$832 million, 18.2 per cent above July, 1950, and \$7 million above June of this year.

During the month of July, wages and salaries in Construction recorded an increase of over 6 per cent; there were fractional increments in the other industrial groups with the exception of Agriculture, Forestry, Fishing, Trapping, Mining, where earnings dropped 2.9 per cent. In this connection it may be noted that employment in Forestry during the month under review, was down in Quebec, Ontario and British Columbia. The rate of increase in earnings in the primary industries group has shown a drop in July of 1949, 1950 and 1951 as compared with June, in common with the general total of wages, salaries and supplementary income.

On August 1 the index of employment (1939=100) in non-agricultural industry was 184.3 compared with 183.6 on July 1, and in the same period, the Canadian cost-of-living index (1935-39=100) rose 0.7 per cent to 188.9.



1010511228

The Chart

The upper portion of the chart on the front of this publication shows labour income (total of wages, salaries and supplementary income) by months for the years 1949, 1950 and 1951. The lower part shows the percentage changes of any month from the same month one year earlier.

Methods

For most of the major industries, the monthly estimates of labour income are obtained from annual estimates by projection on indexes of aggregate payrolls. For other industries, a variety of wage-rate and employment data are used to provide an estimating series. The annual data, on which the monthly estimates are based, are compiled from original sources within the Dominion Bureau of Statistics and from data supplied by several industrial or trade associations. No adjustment is made for different numbers of working days in each month. A more detailed description of concepts and methods is set out in the bulletin "Wages, Salaries and Supplementary Labour Income by Months, January, 1946 to April, 1947", and the method of adjusting the estimates to the annual totals is outlined in "Monthly Estimates of Labour Income in Canada, September, 1949". The figures included in the table of this bulletin supersede those in earlier bulletins, and those for the most recent years are subject to further minor revisions as new source materials become available.

Relation to the National Accounts

Labour Income constituted 58 per cent of "Net National Income at Factor Cost" in 1950. The relationship between labour income and other items of the National Accounts can be studied in the bulletin "National Accounts, Income and Expenditures, Revised Preliminary 1950".

Components of Labour Income

Estimates of total labour income included all wages, salaries and supplementary remuneration for employees' services. Gross earnings - before deductions for income tax or other payments - are used in the calculation of wages and salaries, and include bonuses and commissions as well as allowances for food, clothing and living accommodation where these are provided by the employer. Employers contributions to unemployment insurance, workmen's compensation, pensions and welfare are shown as supplementary labour income.