



Transport
Canada

Transports
Canada



TP 6980E
(02/2015)

Feedback

Issue 2/2015

Canadian Aviation Service Difficulty Reports



The Boeing 787-8 as seen in Air Canada colours for Canada's first operator. First registered in May 2014 with Air Canada and as of May 2015, eight aircraft are flying and 29 more to be delivered through to 2019.

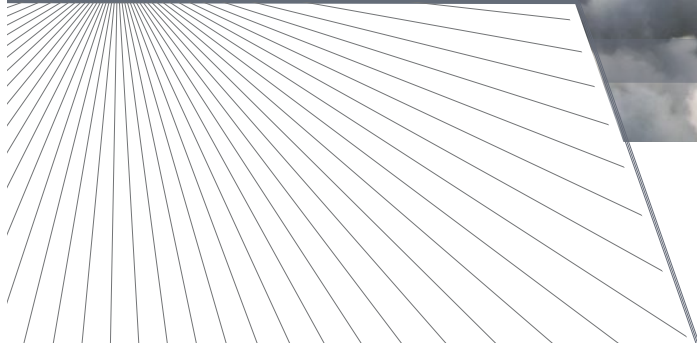


Table of Contents

Hangar Noise	3
Fixed Wing	4
Engines	10
Propellers	11
Rotorcraft	12
Heads Up	14
FAA Special Airworthiness Information Bulletins (SAIB)	16
EASA Safety Information Bulletin (SIB)	17
Equipment Airworthiness Directives (ADS)	18
Service Difficulty Reports (SDR)	19
Ordering TC Publication and Forms	36
Civil Aviation Internet Sites	36



Feedback is published quarterly by the Continuing Airworthiness Division of Transport Canada, informing the aviation community of reported day-to-day problems that affect aircraft airworthiness in Canada.

Reprints of original *Feedback* material are encouraged, but credit must be given to Transport Canada's *Feedback* magazine. Please forward one copy of the reprinted article to the Editor.

To obtain information concerning copyright ownership and restrictions on reproduction of the material, please address your correspondence to:

J r mie Laviolette, Editor
Feedback
Transport Canada (AARDG)
Place de Ville, Tower C
Ottawa ON K1A 0N8

E-mail: jeremie.laviolette@tc.gc.ca
Tel.: 613-952-4360
Fax: 613-996-9178

To view *Feedback* online or to receive it electronically please visit:
www.tc.gc.ca/feedback-magazine

The articles contained in *Feedback* are derived from *Service Difficulty Reports* (SDRs) submitted by Aircraft Maintenance Engineers (AMEs), owners, operators and other sources in accordance with *Canadian Aviation Regulation* (CAR) 521.

SDRs are normally published verbatim. Transport Canada assumes no responsibility for the accuracy or content of any of these reports. Only spelling errors are corrected and content may be reduced as well as personal references deleted.

All defects or occurrences should be reported to Transport Canada through the Service Difficulty Reporting Program. For additional information about this program or concerning an article in *Feedback* magazine, contact your nearest Transport Canada Centre.

For all technical inquires related to articles of this magazine, please address your correspondence to CAWWebFeedback@tc.gc.ca

Feedback est aussi disponible en fran ais.

  Her Majesty the Queen in Right of Canada, as represented by the Minister of Transport (2015).

ISSN 1925-8429 (Online)

TP 6980E
(02/2015)

TC-1005665

Paperless!

Two years ago, Transport Canada Civil Aviation (TCCA) started transitioning to a paperless environment when distributing Airworthiness Directives (ADs), Civil Aviation Safety Alerts (CASAs) and the Feedback Magazine.

As of today, 69 percent of aircraft owners have provided an e-mail address or fax number to TCCA. This has helped reduce TCCA's carbon footprint significantly, as well as informing the aviation community of urgent/important safety concerns more rapidly than traditional mail.

TCCA is presently working on making the Annual Airworthiness Information Report (AAIR) program paperless as well. At the moment, over 25 000 personalized forms are sent out on an annual basis reminding aircraft owners of their obligation to report under CAR 501 by a specific due date. TCCA plans on terminating the hard copy distribution of these forms in the near future and proceeding electronically instead. More details will be provided when this initiative takes effect.

We understand that email might not be convenient or available for everyone, therefore, TCCA continues to offer fax as an option. For those who want to continue to receive ADs and CASAs by regular mail, we encourage you to contact TCCA in order to provide a valid e-mail address or fax number. Please note, our systems are automated, therefore, your fax number must solely be a number used to receive faxes (it cannot be a dual line where someone could answer the phone).

You may contact TCCA either by e-mail at cawwebfeedback@tc.gc.ca or by phone at 613-954-9973 in order to update your e-mail and/or fax.

Failed Tire Rim

SDR submitted:

The left hand main landing gear (MLG) tire was found partially deflated during a daily inspection. The main wheel assembly was inspected and an aft wheel half flange was found broken. Approximately 8 inches of wheel flange was missing from the aft wheel half.

The failed main wheel assembly had received an eddy current non-destructive testing (NDT) inspection prior to its installation on the aeroplane and had accumulated 390 cycles prior to its failure. No sign of damage was found in proximity of the landing gear.

A new wheel assembly was installed making the aeroplane serviceable.

Transport Canada Comments:

In discussions with BAE, the aeroplane manufacturer, it was stated that in some of the previous occurrences of cracked wheels, the recorded cracks were likely present at the previous tire change, which called into question the manner by which the NDT was being performed.

In some cases, the cracking had initiated in an area of corrosion pitting and damaged paint, the type of which was unlikely to have occurred since the previous tire change. This highlights the importance of inspecting for and promptly repairing corrosion and paint damage, particularly in the area of the tire bead seat.

BAE released an All Operators Message (AOM) 11/014J-1 to address the aspect of the protective treatment.

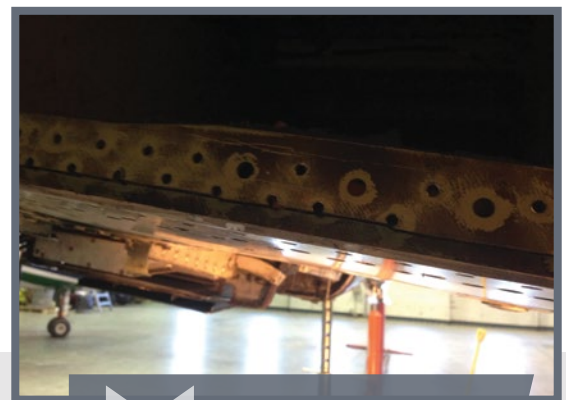
Auxiliary Spar Boom Cracked

SDR submitted:

During the investigation of a fuel leak on the left hand wing around the left hand main landing gear (MLG) wheel well, it was discovered that the left hand wing auxiliary spar boom was cracked with an abnormal crack of approximately 43 cm (17 inches) long. This failure has previously occurred on another aeroplane in the fleet.

Transport Canada Comments:

Damage that is covered by sealant or paint can be hard to detect during inspections and can show up in other ways such as buckled or cracked skin, fuel leaks or loose rivets.



View of the crack as seen from the wheel well after the parts were disassembled

Damage Caused by Hard Landings

SDR submitted:

The crew notified maintenance that an odor was coming into the aeroplane from the right hand engine when the bleed valve was on. Maintenance suspected a burnt bleed air gasket on the engine since a new gasket had just been installed prior at the phase inspection. As a precaution, the aeroplane was diverted to the maintenance base for further investigation. Once the aeroplane landed, the crew notified maintenance that a few sparks were seen coming from the exhaust of the right hand engine on landing. Maintenance split the engine and determined that there was evidence of a power section that was starting to fail due to rubbing of the power turbine wheel. Since further disassembly of the engine was beyond the scope of work, a loaner engine was installed to return the aeroplane back to service. The crew was interviewed to determine the cause of the failing power section; they indicated all operations had been normal.

The aeroplane had previously declared an emergency, not having any indication of a down and locked gear on the right hand side. The aeroplane landed without incident, maintenance inspected the gear and adjusted the down lock switch, no other defects were noted. The engine shop then brought to maintenance's attention that the likely cause of the damage to the power section was the result of a "hard landing". A hard landing inspection was carried out as per the maintenance manual. The landing gear, actuators and all hardware were replaced, as a precaution, and the aeroplane was returned to service.

Transport Canada Comments:

Hard landings can cause severe damage to an aeroplane's structure, including structural or landing gear failure. Unreported hard landings can be a safety hazard. Some manufacturers' hard landing inspections are very onerous and vague on when to do a hard landing inspection. If you suspect that an unreported hard landing has occurred, try to look for evidence that supports your decision to go ahead with a hard landing inspection and if need be ask the aeroplane's manufacturer for their opinion.

Pitot Static System Problems

SDR submitted:

On departure passing through 4000 feet, the crew encountered yaw dampener/rudder boost failure. The decision was made to action the checklist. Shortly after this, the flight director failed. Once climbing through 10 000, it was noticed that the captain's air speed indicator was reading incorrectly.

This prompted the crew to check the accuracy of the altimeters; they were in error between 2000-2500 feet. At this point the decision was made, in consultation with air traffic control, to maintain cleared altitudes using transponder #1. However, the crew felt as though they were flying 2500 too high, due to the errors on the captain's side altimeter. The decision was made to use alternate air source just prior to descent. At this point the air speed indicator began to read properly and the altimeter slowly started to catch up to the proper altitude. Once passing through, approximately, 3000ft, the yaw dampener/rudder boost and flight director came back online. The crew had ground contact and landed safely without incident.

No indications of failures were noticed prior to departure.

Maintenance re-positioned the kinked pitot line & secured the loose static line at the #1 airspeed indicator. The pitot & static leak checks were carried out with no faults found. The aeroplane was returned to service.

Transport Canada Comments:

There have been a number of events recently, where the pitot tubes have frozen in flight which has affected the systems connected to the pitot static system. It is recommended that the pitot heater current draw is checked on a regular basis to ensure the proper ice removal from the pitot tubes. As pitot tubes age the heat output from the heating element is reduced and may not be capable of removing ice from the pitot system.

BOEING, 737 7CT

SDR # 20130123008

Fuel Imbalance Event

SDR submitted:

During cruise, a higher than normal fuel imbalance trend was noticed. The crew confirmed the cross feed circuit breaker was popped and they were unable to correct the imbalance using the fuel cross feed system. Due to the duration of the remaining flight and the availability of maintenance support, it was recommended for the crew to divert the aeroplane. On the ground, maintenance confirmed the fuel cross feed actuator had a short that popped the circuit breaker, leaving the valve to fail in a slightly open position, which caused the fuel imbalance during flight.

The fuel cross feed valve actuator was replaced with no further reports.

Transport Canada Comments:

Through the operator's investigation with Boeing, it was determined that the current aeroplane configuration and flight crew procedures provide adequate indication and instructions to safely address this condition in operation. Boeing notes further that this 737NG design is a derivative of the 737 classic, which has been used successfully since the late 1960s.

Missing Engine Cowl Blow-out Panel

SDR submitted:

During a post flight inspection and standard maintenance walk-around, the blow-out panel was found missing from the upper cowl on the #3 engine. Further maintenance inspection discovered the right inlet anti-ice duct cracked and disconnected, which caused an overpressure in the engine cowl area and the departure of the blow-out panel.

The anti-ice duct and upper engine cowl blow-out panel were replaced and the aeroplane was returned to service.



Missing engine cowl blow-out panel and failed anti-ice duct

Transport Canada Comments:

The importance of accomplishing a thorough maintenance walk-around and/or post flight inspection prior to departure is essential, as seen in this service difficulty event.

Flight Data Recorder Wiring System Fault

SDR submitted:

During the 2013-2014 seasonal operation in Canada, the crew have experienced several repeated "FDR off" (Flight Data Recorder off) intermittent illuminations. The extensive trouble shooting that was carried out did not isolate the fault as it was very difficult to replicate the defect. The aeroplane was operated under its Minimum Equipment List (MEL) 31-02-01 to continue operation.

After much troubleshooting and further correspondence with Boeing, the aeroplanes FDR defect was traced to a broken 115 volt ground return wire (w5409-0005-20), which was making intermittent contact at the terminal block GD 3864AC.

The wiring fault was repaired, removing the MEL restriction and returning the aeroplane to service.



Wiring fault causing an intermittent failure of the flight data recording system

Transport Canada Comments:

As the aeroplanes we maintain become more electrically driven and controlled with advanced complex avionic systems, the proper support and condition of all wiring is essential for a safe operation.

Cracked Nose Gear Fork

SDR submitted:

The upper portion of the nose gear fork was found cracked during a visual inspection.

Transport Canada Comments:

It is important to conduct a thorough inspection of the nose gear fork on any aeroplane as they can be exposed to excessive loads due to poor landings or improper ground handling.



View of the cracked nose gear fork

Shorted Diodes Supplied With A Mod Kit

SDR submitted:

While carrying out post installation wiring checks for Service Bulletin (SB) 8-76-35-DH1 Beta Modification, the technician found a mod kit supplied with diode splices which were shorted. Further investigation found that the diodes were manufactured with shorting pins installed.

Transport Canada Comments:

When installing parts on an aeroplane don't assume anything. Even simple parts can malfunction and the installer will be the first to find the problem.



View of both the serviceable and shorted diodes

Brake Carrier Rotor Clip Failure

SDR submitted:

A brake unit, part number AHA2227-6, had to be replaced due to a rotor clip failure. The problem was observed during a standard brake inspection after a main wheel change. Both brake units were modified as per Dunlop Aerospace Service Bulletin (SB) AHA2227-32-1304, making the aeroplane serviceable.

Transport Canada Comments:

As commented by the operator, SB AHA2227-32-1304 is available to improve the rotor clip design due to the high rate of in-service brake rotor failures.

Transport Canada Civil Aviation is advising all Dornier 328 owners, operators and maintainers to incorporate this SB at the earliest opportunity.



Failed Brake Carrier Rotor Clip

PRATT & WHITNEY - CANADA, PW123

SDR # 20150126005

Delamination of the Engines Turbine Shroud Sections

SDR submitted:

The engine was returned to the shop due to deteriorated condition of the low pressure shroud segments, which was discovered during a scheduled borescope inspection in the field.

The low pressure shroud segments were subsequently removed from the engine and inspected at piece-part level. The thermal spray coating on 12 segments was found to be delaminating to varying extents from the base metal. This resulted in rubbing by low pressure turbine blade tips, resulting in damage to the blades.

The engine was repaired and returned to service, however after only 95.8 flight hours, it was found to have 2 high pressure shroud segments that were also delaminating, and showing evidence of contact with the high pressure blades.



High pressure turbine shroud segment with evidence of delamination

Transport Canada Comments:

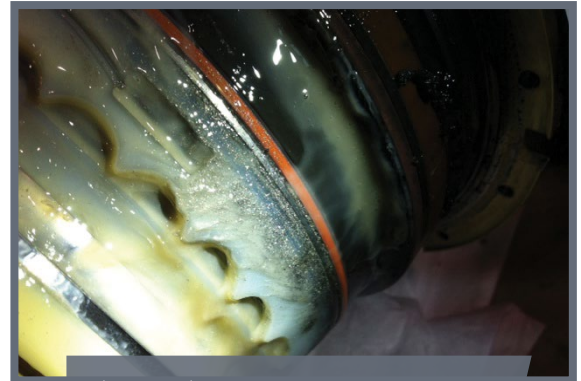
The subject shroud sections had been previously repaired. Pratt & Whitney investigated this incident and found it to be an isolated case.

In the event that unexpected findings are found during routine maintenance, Transport Canada Civil Aviation would like to remind technicians that a service difficulty report must be submitted.

Dowty Propeller Grease Discoloration

SDR submitted:

Due to reports of a minor vibration suspected to be coming from the number two propeller, the propeller was inspected. The cable assembly on blade number six had unusually dark grease relative to the other blades. After removal for further investigation, scoring was discovered on the hub inner surface, above the propeller ball rake. The grease in this area contained hub material. The hub scoring extended the complete circumference of the blade. The propeller was removed for inspection by the manufacturer to determine the extent of the damage and if there was similar damage elsewhere in the hub.



Ball rake with discolored grease

Transport Canada Comments:

Minor vibration can be indicative of anything from an out of balance condition to impending catastrophic component failure. In this case, the investigation was conducted well before any serious incident or damage occurred. This particular incident represents good troubleshooting and maintenance practices.

BELL TEXTRON - USA, 204B

SDR # 20150204016

Cracked Head Rest Release Pin (T Handle)

SDR submitted:

During a routine inspection of the head rest, part number (P/N) 204-072-727-013, the Aircraft Maintenance Engineer (AME) noted that the "T" handle portion on the quick release pin, P/N NAS1333A2S07D, was cracked and the handle was free to move approximately 1mm along the axis of the pin.



Cracked Release T Handle
P/N 204-072-727-013

Transport Canada Comments:

The in-service functionality and removal of the quick release pin is very important to ensure that the head rest can turn 90 degrees if needed to assist occupants of the helicopter to escape through the cockpit during an emergency. The quick release pin's annual inspection is also the subject of Airworthiness Directive (AD) CF-91-29R1.

BELL TEXTRON - CANADA, 407

SDR # 20150212003

Oil Tank Seam Rupture

SDR submitted:

During the first flight after ground runs, a leak check was conducted after installation of an overhauled engine assembly; the pilot noted that the transmission had low oil pressure followed by low engine oil pressure.

The pilot began descending from 6000 feet and upon landing the engine chip light illuminated. The maintenance technician exited the aircraft and noted oil all down the tail of the aircraft; he then signaled the pilot to shut down the engine. Upon investigation, the technician determined the engine oil tank had ruptured along the seam.

Transport Canada Comments:

A subsequent investigation by Bell Helicopter revealed the inner lip of the power take off (PTO) shaft seal, Part Number 406-304-104-101, had rolled over by 50% due to an incorrect installation. The improper PTO seal installation allowed transmission oil to transfer to the engine oil tank and over fill it, which increased the pressure in the oil tank. The over pressure in the engine oil tank led to the rupturing of the tank.

Stiff Tail Rotor Pedal

SDR submitted:

The tail rotor pedals became increasingly stiff during flight. A visual inspection revealed no mechanical obstruction. The stiffness may have been caused by the pedal bearing block grease freezing due to low outside air temperature, with the possibility of improper grease being installed. The blocks were removed, cleaned, inspected and re-lubricated with A257-1 general purpose grease. The pedals were tested and found to be serviceable.

Transport Canada Comments:

Most of the bearings for this model are sealed or self lubricated and do not require periodic lubrication as recommended by the manufacturer.

This serves as a reminder, these types of bearings must still be periodically inspected for serviceability and proper range of motion. When servicing is required, use the manufactures recommended lubricants.

In this case, the Pilot did not experience a complete loss of tail rotor control but did make an unscheduled landing; any abnormal flight control is undesirable and so are the decisions we may be forced to make as a result.

Flap Flex Drive Shaft Failure

SDR submitted:

The flight crew reported a flap fault when selecting flaps from 0 to 15 degrees and was unable to reset the system. Maintenance performed the flap fault isolation procedure and found the right-hand flap would not move when using the flap maintenance switch. The faulted flap panel was removed where the right-hand flex drive shaft was found sheared at the flap power drive unit (PDU).

While maintenance was removing the flap panel, a small tear was discovered, as seen in the attached figure, on the wing trailing edge (non-structural) skin fillet. The tear (13 mm long) was just above the inboard flap support arm.

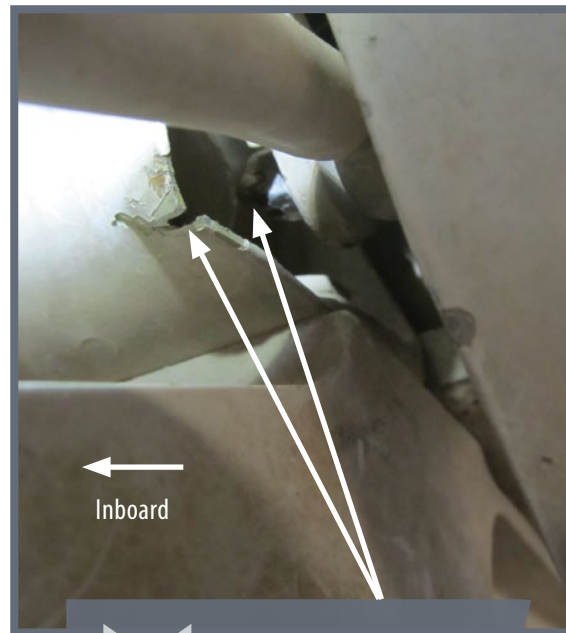
The damage to the skin fillet is consistent with contact from the attachment bolt, part number AN174C14, threading through the nut end of the flap tension rod.

The bolt and nut installation was found to be installed in the wrong orientation after close review of the aircraft maintenance manual (AMM) and the illustrated parts catalog (IPC). Aircraft standard practices call for bolt heads to be installed in the outboard position, however for this configuration, the correct installation requires the head to be installed in the inboard position. Further investigation found the illustrations contained in the IPC and AMM were misleading and did not provide clear direction for the correct orientation of the bolts and attaching hardware of the flap tension rod linkage system.

Other suspected contributing factors include the presence of icing when the flaps were selected from 0 to 15 degrees, possibly causing a twist in the flap panels which would result in the tension rod hardware to have less clearance with the lower wing skin fillet. Normally there is sufficient clearance, however if a twist was initiated during the beginning of flap travel, the bolt and nut to skin fillet gap will be reduced.

The possible combination of freezing precipitation and incorrect orientation of the attaching hardware likely resulted in the binding of the flap system, skin fillet damage and the flex drive shaft shearing at the PDU.

The flap hardware orientation was corrected, the flap skin fillet repaired, the flex drive shaft replaced and a system functional test was carried out, making the aeroplane serviceable.



Flap skin fillet tear and tension rod attaching nut hardware

Transport Canada Comments:

A Service Difficulty Report (SDR) was issued from the owner of this aeroplane where it was promptly forwarded to Pilatus, the design approval holder and the original equipment manufacturer (OEM). This included a notification to the European Aviation Safety Agency (EASA), who is the governing authority responsible for the continued airworthiness and type design of this aeroplane.

Pilatus performed their Airworthiness review and evaluation for this event and its impact to safety and risk analysis, where it was determined that a revision to the AMM and IPC was required for clarification of the hardware configuration.

FAA SPECIAL AIRWORTHINESS INFORMATION BULLETINS (SAIB)

A Federal Aviation Administration (FAA) SAIB is an information tool that alerts, educates, and makes recommendations to the general aviation community. It is non-regulatory information and guidance that does not meet the criteria for an Airworthiness Directive (AD). www.faa.gov/aircraft/safety/alerts/SAIB/

SAIB Number	Make/Company	Subject	Issue Date
HQ-15-16	Aircraft	Step-Down Fixes	04/23/15
CE-15-15	Beechcraft Corporation	Empennage – Horizontal & Vertical Stabilizer Structure	04/20/15
NM-15-14	ATR - GIE Avions de Transport Régional	Propellers/Propulsors	04/20/15
CE-15-12	B-N Group Ltd.	Flight Controls; Control System Interference with Access Panel Fasteners	04/15/15
CE-15-13	Cessna Aircraft Company	Fuselage – Seat Belt Mounting Bracket	04/15/15
SW-15-08R1	Robinson Helicopter Company	Robinson R44 and R44 Main Rotor Blades	03/31/15
NM-15-11	Honeywell	Navigation: Enhanced Ground Proximity Warning System	03/13/15
CE-15-10	Eaton (Aeroquip)	Hoses and Tubes – Eaton Aerospace (Aeroquip)	03/06/15
CE-15-09	M7 Aerospace LLC	Windows; Flight Compartment Windows	02/24/15
SW-15-08	Robinson Helicopter Company	Robinson R44 Main Rotor Blades	02/23/15

A European Aviation Safety Agency (EASA) SIB is an information tool that alerts, educates, and makes recommendations to the general aviation community. It is non-regulatory information and guidance that does not meet the criteria for an Airworthiness Directive (AD) <http://ad.easa.europa.eu/sib-docs/page-1>

SIB Number	Subject	Issue Date
2015-09	Fokker 70/100 Aeroplanes - Cargo Compartment Fire Extinguishing Bottles Electrical Wiring	04/29/15
2015-08	Britten Norman BN2 Aeroplanes - Installation of Correct Access Panel Bolts	04/23/15
2015-07	Prevention of Hazardous Low Speed at High Altitude Cruise	04/15/15
2014-24R1	Iraqi Airspace	04/08/15
2009-22R1	Fighting Fires caused by Lithium Type Batteries in Portable Electronic Devices	04/07/15
2015-06	Fire Risk of Electronic Cigarettes in Checked Baggage	04/07/15
2015-05	Yemeni Airspace	03/30/15
2015-04	Authorised persons in the flight crew compartment	03/27/15
2014-23R1	Libyan Airspace	03/25/15
2015-02R1	Pakistan Airspace	02/25/15

EQUIPMENT AIRWORTHINESS DIRECTIVES (ADS)

Transport Canada (TC) endeavours to send copies of new Airworthiness Directives (ADs), which are applicable in Canada to the registered owners of the affected products. Equipment/appliance ADs are often only distributed to our regional offices because the owners of aircraft affected by this type of AD are not generally known.

Aircraft Maintenance Engineers (AMEs) and operators of the affected products are encouraged to obtain further information or a copy of the ADs from their regional TC office, their local Transport Canada Centre (TCC), their Principal Maintenance Inspector (PMI), or from the Civil Aviation AD website at: www.tc.gc.ca/cawis-swimn

Manufacturer	AD Number	Origin	Description
AERAZUR STC 10017156 STC SH10-3 ZODIAC	2015-0013	Europe	Fuel – Internal Auxiliary Fuel System – Modification

SERVICE DIFFICULTY REPORTS (SDR)

LEGEND

JASC: Joint Aircraft System Code number defining assembly/system/components

SDR No.: Transport Canada Civil Aviation (TCCA) assigned SDR control number — please quote in any correspondence or inquiries

Region (RGN): TCCA region of SDR submitter:

PAC = Pacific

ONT = Ontario

ATL = Atlantic

VAR = Various

PNR = Prairie and Northern

QUE = Quebec

NCR = Ottawa (Headquarters)

AIRCRAFT

AEROSPATIALE

Make/Model	Jasc	Part Name	Part Number	Part Condition	SDR No.	RGN
ATR 42 320	2000	BULB LIGHT	8GH00391206	SHORTED CONTACTS	20150224028	PNR
ATR 72 212	1000	FASTENER	HL106	SHEARED	20150126007	ONT

AEROSPATIALE HC

Make/Model	Jasc	Part Name	Part Number	Part Condition	SDR No.	RGN
AS 350B2	2822	FUEL PUMP	P94B12209	SHAFT SHEARED	20150320004	QUE
AS 350B2	3416	ENCODER	A30	MELTED	20150210007	PAC
AS 350B2	6410	TAIL ROTOR BLADE	355A12004008	DELAMINATED	20150210006	PAC
AS 350B3	2900	HYDRAULIC HOSE	630B060081	GOOD	20150211006	ONT
AS 350B3	2900	HYDRAULIC HOSE	9SN33096	GOOD	20150211005	ONT
AS 350B3	2900	HYDRAULIC HOSE	630B060076	LEAKING	20150211007	ONT
AS 350B3	3340	STROBE WIRE HARNESS		WIRE CHAFFED	20150211001	ONT
AS 350B3	7600	TIGHTENER SPRING	350A27519822	GOOD	20150202011	PNR
AS 355NP	6510	BOX ASSEMBLY	355A34104920	WORN	20150330010	PNR

AGUSTA

Make/Model	Jasc	Part Name	Part Number	Part Condition	SDR No.	RGN
AW139	2434	DIRECT CURRENT GENERATOR	115254622	FAILED	20150218004	ONT

AIR TRACTOR

Make/Model	Jasc	Part Name	Part Number	Part Condition	SDR No.	RGN
AT 802A	2435	STARTER	300SGL153Q	SHORTED	20150123006	PAC
AT 802A	2590	RAIL - TOP MID	10A01382020	CRACKED	20150119006	PAC
AT 802A	3246	BULKHEAD #7	13A01000191	CRACKED	20150119004	PAC
AT 802A	3246	BULKHEAD #7	13A01000191	CRACKED	20150119005	PAC

Make/Model	Jasc	Part Name	Part Number	Part Condition	SDR No.	RGN
AT 802A	3246	BULKHEAD #17 LEFT SIDE PANEL	13A01150053	CRACKED	20150119003	PAC
AT 802A	3246	BULKHEAD ASSEMBLY #12 LEFT SIDE	13A01150065	CRACKED	20150119001	PAC
AT 802A	3246	MANIFOLD TO DECK HYDROLIN	10A09000321	CORRODED	20150119002	PAC
AT 802A	5301	RAIL - TOP MID	10A01382020	CRACKED	20150119007	PAC

AIRBUS

Make/Model	Jasc	Part Name	Part Number	Part Condition	SDR No.	RGN
A310 300	2497	ELECTRICAL PANEL	A92591915000	CHAFING	20150318005	QUE
A319 112	3230	GEAR SELECTOR VALVE	114079017	FAILED	20150209004	QUE
A319 114	2213	FLIGHT MANAGEMENT COMPUTER	B546CAM0104	FAILED	20150217001	QUE
A319 114	2421	INTEGRATED DRIVE GENERATOR	740119D	FAILED	20150305002	QUE
A319 114	2710	AILERON CONTROL SERVO	31073068	FAILED	20150216001	QUE
A319 114	2910	B NUT		LOOSE	20150326001	QUE
A319 114	2910	DOOR BY-PASS VALVE	114087005	LEAKING	20150319005	QUE
A319 114	2910	RING	NAS1611217	LEAKING	20150206006	QUE
A319 114	2910	RING	NAS161220	LEAKING	20150129001	QUE
A319 114	2910	VALVE CHECK	ZCV636	LOOSE	20150316006	QUE
A319 114	3230	CONTROL INTERFACE UNIT	664700500A4A	FAILED	20150325025	QUE
A319 114	3230	GEAR SYSTEM		FAILED	20150130002	QUE
A319 114	3230	NOSE LANDING GEAR UPLOCK		OVERGREASED	20150309001	QUE
A319 114	3442	WEATHER RADAR TRANSCIEVER	6225132120	FAILED	20150330001	QUE
A320 211	2120	DUCT		DISCONNECTED	20150302001	QUE
A320 211	2120	PRESSURE SWITCH	1209100	FAILED	20150318001	QUE
A320 211	2312	INTERACTIVE CABIN MANAGEMENT TERMINAL UNIT	179000801	FAILED	20150227001	QUE
A320 211	2720	RUDDER SYSTEM		UNCOMMANDED	20150202008	QUE
A320 211	2910	FLEXIBLE HOSE ASSEMBLY	AE2463921G0181	LEAKING	20150105005	QUE
A320 211	3242	BRAKE ASSEMBLY		SMOKING	20150216004	QUE
A320 211	3250	NOSE LANDING GEAR STEER SERVO VALVE	C2473600001	FAILED	20150306014	QUE
A320 214	2530	HIGHT TEMP OVEN	8201170000	DEFECT	20150216002	QUE
A320 214	3251	NOSE LANDING GEAR STEER SERVO VALVE	C247360012	FAILED	20150112003	QUE
A321 211	2120	OZONE FILTER CONVERTER	20499001	DEFECT	20150302002	QUE
A321 211	2213	FLIGHT MANAGEMENT GUIDANCE COMPUTER		FAILED	20150112002	QUE
A321 211	2820	FUEL HOSE	AE7074221	LEAKING	20150213015	QUE
A321 211	2910	TUBE	2380658505	DEFECT	20150202009	QUE
A321 211	3197	RELAY		FAILED	20150219002	QUE
A330 343	2120	CABIN		SMELL	20150218006	QUE

Make/Model	Jasc	Part Name	Part Number	Part Condition	SDR No.	RGN
A330 343	2520	SMART VIDEO DISPLAY UNIT	179000201	DISCONNECTED	20150305013	QUE
A330 343	3230	MAIN LANDING GEAR UNLOCK ACTUATOR	C248311004	FAILED	20150122001	QUE

BAE - (RAYTHEON)

Make/Model	Jasc	Part Name	Part Number	Part Condition	SDR No.	RGN
HS 125 700A	3230	LANDING GEAR		BINDING	20150116011	QUE

BAE - UK

Make/Model	Jasc	Part Name	Part Number	Part Condition	SDR No.	RGN
3212	5700	AUX SPAR BOOM		CRACKED	20150310006	QUE

BEECH

Make/Model	Jasc	Part Name	Part Number	Part Condition	SDR No.	RGN
1900C	2731	CONDUIT	131819TCAC360	UNSECURED	20150218002	ATL
1900D	0	DIRECT CURRENT POWER PANEL	1293800161	UNSERVICEABLE	20150113023	PNR
1900D	2400	CONNECTOR	2060363	CORRODED	20150323004	ATL
1900D	2400	WIRE		CHAFFED	20150113021	ATL
1900D	2430	STARTER/GENERATOR	23078019	FAILED	20150311003	ATL
1900D	2750	FLAP SYSTEM		INOPERATIVE	20150213001	ATL
1900D	3010	TUBE ASSEMBLY	1299700401	CHAFFED	20150310005	ATL
1900D	3230	HOSE ASSEMBLY-LEFT HAND MAIN LANDING GEAR	1013880175	CRACKED	20150301001	ATL
1900D	3260	CIRCUIT BREAKER		INCORRECT PART	20150311006	ATL
1900D	3260	POWER CONTROL BOARD		FAULTY	20150211003	ATL
1900D	3411	PITOT STATIC		INTERMITTENT	20150319002	ATL
1900D	3457	GLOBAL POSITIONING SYSTEM		INTERMITTENT	20150318003	ATL
1900D	3610	DUCT ASSEMBLY	12991003317	CRACKED	20150324005	ATL
1900D	5200	DOOR PULLEY BRACKET	1295140801	CRACKED	20150203006	ONT
1900D	5210	HANDLE SUPPORT		CRACKED	20150223001	ATL
1900D	5310	STRINGER		DISBONDED	20150317004	ATL
1900D	5310	STRINGER		DISBONDED	20150317005	ATL
1900D	5414	COWLING		MISSING	20150107001	ATL
1900D	5540	FASTENER		LOOSE	20150211002	ATL
1900D	5711	SPAR		CORRODED	20150217009	ATL
200	7900	CHIP DETECTOR	304595102	CRACKED	20150121007	PNR
300	3421	VERTICAL GYRO	6224565001	UNSERVICEABLE	20150203007	PNR
76	3220	GEAR ACTUATOR	1053840001	WORN SEALS	20150327019	PAC
95A55	6123	PROPELLER ACCUMULATOR	95380026A	FAILED	20150113033	PNR
A100	5753	FLAP TRACK	501600183	CRACKED	20150217004	QUE
B100	6114	START LOCK		BROKEN	20150305004	QUE
B200	2700	BOLT	AN17520A	CORRODED	20150320002	PNR
B200	2710	AILERON HINGE SCREWS	AN52510R9	PROPER LENGTH	20150309007	PNR
B200	2720	BEARING	MS289135C	SEIZED	20150309006	PNR
B200	2840	FUEL PROBE	100380006169	FAILED	20150323011	PNR
B200	3150	ADVISORY ANNUNCIATOR TEST	10136458225	CIRCUIT DAMAGE	20150301002	ONT

Make/Model	Jasc	Part Name	Part Number	Part Condition	SDR No.	RGN
B200	3260	SWITCH	10181013311	ADJUSTED	20150227005	PNR
B200	3416	AIR DATA COMPUTER	6224365221	FAULTY	20150323015	PNR
B200	3420	HORIZON REF INDICATOR	3003BCF	LAGGING	20150323016	PNR
B200	5220	LOWER FRAME	11543010041	CRACKED	20150324007	PNR
B200	5544	BOLTS	NAS11049	LOOSE	20150312006	PNR
B200	5700	AILERON HINGE SCREWS	AN52510R9	IMPROPER LENGTH	20150320003	PNR
B200	5730	UPPR WING SKIN	5011002592	CRACKED	20150105010	PNR
B200	5751	AILERON HINGE SCREWS	AN52510R9	IMPROPER LENGTH	20150312007	PNR
B200	5751	RIB	10113000195	CRACKED	20150105011	PNR
B300	2160	BYPASS VALVE	10155008725	UNSERVICEABLE	20150217006	ATL
B300C	2720	BEARING	MS289135C	UNSERVICEABLE	20150116001	ATL
C90A	2720	STOP SCREW	1015247593	BENT	20150213012	PNR
C90A	3243	MASTER BRAKE CYLINDER	903800123	UNSERVICEABLE	20150227002	ONT

BELL TEXTRON - CAN

Make/Model	Jasc	Part Name	Part Number	Part Condition	SDR No.	RGN
206B	3210	SKID TUBE	206320202	CRACKED	20150327010	PNR
206B	6420	NUT	MS21245L8	CRACKED	20150327013	PNR
206B	6520	RETENTION NUT	MS21042L4	CRACKED	20150318009	QUE
206B 3	2900	HYDRAULIC PIPE		BURST	20150204008	QUE
206L	2810	FUEL VENT LINE	70061L000A540A	LEAKING	20150220002	PAC
206L	5313	HORIZONTAL STIFFENER	206033110197	CRACKING FOUND	20150217005	PNR
206L 4	7200	TURBINE		DISINTEGRATED	20150218007	QUE
407	2820	FUEL SUPPLY LINE		WORN	20150119011	QUE
407	2913	HYDRAULIC PUMP	206076030117F	FAILED	20150226004	PAC
407	3340	WIRING HARNESS		CHAFFED	20150324004	QUE
407	5210	SPRING	3159910	BROKEN	20150212004	QUE
407	6210	MAIN ROTOR BLADE	407012101	CRACKED	20150318008	QUE
407	7120	ENGINE MOUNT		CRACKED	20150123007	PAC
427	5311	FRAME		CRACKED	20150212005	QUE
427	5530	FIN	427035840109	CRACKED	20150324009	QUE
427	6320	TRANSMISSION CASE	427040200111	CRACKED	20150324006	QUE
429	3220	NOSE GEAR		COLLAPSED	20150113029	QUE
429	3230	NOSE LANDING GEAR	429036100	UNSAFE	20150204007	QUE
429	5210	ROLLER		MISALIGNED	20150120022	QUE
429	6420	BEARING	429312107103	DISLODGED	20150204012	QUE
429	6420	LINK BEARING	429012112101	WORN	20150127002	QUE

BELL TEXTRON - USA

Make/Model	Jasc	Part Name	Part Number	Part Condition	SDR No.	RGN
204B	2500	QUICK RELEASE PIN	NAS1333A2S07D	CRACKED	20150204016	PNR
205A 1	6320	GEAR	205040785003	CRACKED	20150121002	ONT
205A 1	6500	GREASE SHIELD	212040600005	LEAKING	20150225006	PNR
212	5610	WINDOW	D36761	CRACKED	20150123004	PAC
212	5610	WINDOW	D36761	CRACKED	20150123005	PAC
212	6220	BLADE BOLT	204011151007	NEW	20150326007	PNR

BELLANCA

Make/Model	Jasc	Part Name	Part Number	Part Condition	SDR No.	RGN
8GCBC	5510	LEFT HAND STABILIZER FRAME	41478	CRACKED	20150106010	PNR

BOEING

Make/Model	Jasc	Part Name	Part Number	Part Condition	SDR No.	RGN
737 248C	5753	FITTING	69406739	BROKEN	20150126008	ONT
737 252C	3222	INNER CYLINDER ASSEMBLY	654621512	REPAIR	20150218005	QUE
737 6CT	2120	RAM AIR ACTUATOR		FAILED	20150112014	PNR
737 6CT	2742	STABILIZER TRIM MOTOR	6355C00001	FAILED	20150119012	PNR
737 700	3230	GEAR SYSTEM		FAILED	20150114009	PNR
737 76N	2133	FITTING	14C3312	FAILED	20150218003	PNR
737 7CT	2751	RIGHT HAND FLAP POSITION TRANSMITTER	18173810	FAILED	20150108013	PNR
737 7CT	2910	FLEX LINE	AS116080294	RUPTURED	20150112006	PNR
737 7CT	3244	#2 MAIN TIRE	26123012	BLEW OUT	20150309009	PNR
737 7CT	3411	PITOT PROBE	0851HT1	FAILED	20150325026	PNR
737 7CT	5610	CAPTAIN'S #2 WINDOW	58935587	CRACKED	20150106004	PNR
737 8CT	2610	M268 SENSOR ELEMENT	355992255	FAILED	20150226003	PNR
737 8CT	3020	COWL THERMAL ANTI-ICE	32156184	FAILED	20150126006	PNR
737 8CT	3610	HOSE	242034410150	FAILED	20150213003	PNR
757 236	2910	TUBE ASSEMBLY	UL16539	CHAFFED	20150128007	ONT
757 23A	3246	OUTER WHEEL BEARING	LM718947	FAILED	20150113026	ONT
767 333	2510	FLIGHT DECK		FUMES	20150204001	QUE
767 333	2752	ACTUATOR	5500500305	FAILED	20150209001	QUE
767 333	2780	FLAP/SLAT CONTROL UNIT	285T004953	FAILED	20150112004	QUE
767 333	2781	TARGET	284T084323	OUT OF TOLERANCE	20150112005	QUE
767 333	3320	TRANSFORMER RECTIFIER	BR9012001	BURNT	20150327004	QUE
767 35H	2520	BALLAST		BURNT	20150318012	QUE
767 375	2750	FLAP SYSTEM		FAILED	20150324002	QUE
767 38E	2730	ELEVATOR CONTROL		HEAVY CONTROLS	20150319004	QUE
777 233LR	2121	FAN RECIRCULAT	6454052	FAILED	20150312005	QUE
777 233LR	2620	CARTRIDGE ASSEMBLY	4463841	DEFECT	20150206005	QUE
777 333ER	2121	RECIRC/VENT/COOL FAN	4100941C	FAILED	20150316001	QUE
777 333ER	2160	TRIM CHECK VALVE	8102212	FAILED	20150115001	QUE
777 333ER	2213	FLIGHT DIRECTOR		FAILED	20150216003	QUE
777 333ER	2840	FUEL INDICATION		FAILED	20150310013	QUE
787 8	2450	UNIT-OVER VOLTAGE TRANSIENT PROTECT	7002444H02	OVERHEATED	20150304003	QUE
787 8	2740	PITCH TRIM SYSTEM		FAILED	20150202001	QUE

BOMBARDIER

Make/Model	Jasc	Part Name	Part Number	Part Condition	SDR No.	RGN
BD 100 1A10	2750	FLAP POWER UNIT	1751A000004	FAILED	20150129010	QUE
BD 100 1A10	2820	HOSE ASSEMBLY	AE2460260E0240	FRETTED	20150210009	QUE
BD 100 1A10	2910	CLAMP	M8505226	DETERIORATED	20150103001	ONT
BD 100 1A10	2913	ENGINE DRIVEN PUMP	5116003	FAILED	20150309002	QUE
BD 100 1A10	3100	DATA CONCENTRATOR UNIT	8221578003	BURNT	20150317006	QUE
BD 100 1A10	3140	LINK2000 SOFTWARE	8221200999	MIS CONFIG	20150323014	QUE
BD 100 1A10	3197	ROTARY SWITCH	24390	QUALITY ESCAPE	20150106007	QUE
BD 100 1A10	3230	MAIN LANDING GEAR ACTUATOR	40310103	FAILED	20150114006	QUE
BD 100 1A10	3297	GEAR CONTROL LEVER		LOOSE WIRE	20150204003	QUE
BD 700 1A10	2420	VARIABLE FREQUENCY GENERATOR	GL51111035	RUPTURED	20150121004	QUE
BD 700 1A10	2430	ALTERNATING CURRENT POWER CONTROLLER	1714157	BURNT	20150330003	QUE
BD 700 1A10	2711	CABLE ASSEMBLY AUTO PILOT SERVO	GC413001145	CORRODED	20150126001	QUE

Make/Model	Jasc	Part Name	Part Number	Part Condition	SDR No.	RGN
BD 700 1A10	2720	ROD	GC41521391	FAILED	20150223015	QUE
BD 700 1A10	2740	MOTOR DRIVE UNIT		FAILED	20150320006	QUE
BD 700 1A10	2761	MULTI FUNCTIONAL SPOILER POWER CONTROL UNIT CYLINDER	3763407	INTERNAL LEAK	20150204009	QUE
BD 700 1A10	3461	FLIGHT MANAGEMENT SYSTEM		MALFUNCTION	20150206004	QUE
BD 700 1A11	2432	AVIONICS BATTERY	GL51122015	FAILED	20150227004	QUE
BD 700 1A11	2820	REFUEL DEFUEL MANIFOLD	GP42511019	CRACK	20150210005	QUE
BD 700 1A11	3400	GLOBAL NAVIGATION SATELLITE SENSOR UNIT		FAILED	20150116004	QUE
CL600 2B19 (RJ100)	2120	LEFT/RIGHT COALESCER BAGS	7536893	DIRTY	20150305012	QUE
CL600 2B19 (RJ100)	2213	FLIGHT CONTROL COMPUTER	6229815904	FAILED	20150224026	QUE
CL600 2B19 (RJ100)	2215	ACTUATOR	6229968001	FAILED	20150324003	ATL
CL600 2B19 (RJ100)	2450	AIR DRIVEN GENERATOR	604908203	DEPLOYED	20150224022	QUE
CL600 2B19 (RJ100)	2597	CONNECTORS		BURNT	20150130005	QUE
CL600 2B19 (RJ100)	2612	CARGO FIRE DETECTION		FAILED	20150106012	QUE
CL600 2B19 (RJ100)	2740	STAB TRIM PANEL	601R51706	FAILED	20150107004	QUE
CL600 2B19 (RJ100)	2751	BRAKE POSITION SENSOR UNIT	855D10013	FAILED	20150218001	ATL
CL600 2B19 (RJ100)	2751	FLAP POSITION TRANSMITTER	601R93030307	FAILED	20150108005	QUE
CL600 2B19 (RJ100)	2751	FLAP TRANSMITTER POSITION UNIT	601R930301	FAILED	20150112010	QUE
CL600 2B19 (RJ100)	2752	FLAP ACTUATOR RIGHT HAND2	852D10025	FAILED	20150116017	ATL
CL600 2B19 (RJ100)	2820	FUEL ASSEMBLY PIPE	601R6227221	WORN	20150312002	ONT
CL600 2B19 (RJ100)	3230	NOSE LANDING GEAR SELECTOR VALVE	750006000	BYPASSING	20150109002	ATL
CL600 2B19 (RJ100)	3230	SOLENOID SELECTOR VALVE	750006000	FAILED	20150210010	QUE
CL600 2B19 (RJ100)	3231	MAIN GEAR DOOR ROD	601R385305	DEPARTED	20150220008	ATL
CL600 2B19 (RJ100)	3297	NOSE LANDING GEAR HARNESS	17300203	FAILED	20150130004	QUE
CL600 2B19 (RJ100)	3297	NOSE LANDING GEAR RIGHT HAND WOW HARNESS	17300205	FAILED	20150112007	QUE
CL600 2B19 (RJ100)	3417	AIR DATA COMPUTER	8220372445	FAILED	20150327001	ATL
CL600 2B19 (RJ100)	5610	WINDOW (RIGHT HAND)	NP1393216	CRACKED	20150128001	QUE
CL600 2B19 (RJ100)	7603	LOCK OUT SWITCH	1EN2893	FAILED	20150123009	QUE
CL600 2C10 (RJ700)	2120	RISER DUCT ASSEMBLY	BA67096056003	DISCONNECTED	20150220005	QUE
CL600 2C10 (RJ700)	2721	RUDDER TRIM PANEL		FAILED	20150107006	QUE
CL600 2C10 (RJ700)	2730	ACTUATOR LINEAR	DL2428M4	FAILED	20150303006	QUE
CL600 2C10 (RJ700)	2910	COUPLING BULKHEAD	AE99118H	CRACKED	20150123008	QUE
CL600 2C10 (RJ700)	3310	CO-PILOTS FORWARD SIDE CONSOL	2LA00691307	SHORTED	20150211004	QUE
CL600 2C10 (RJ700)	5610	WINDOW SIDE (LEFT HAND)		CRACKED	20150224024	QUE
CL600 2C10 (RJ700)	5610	WINDSHIELD (RIGHT HAND)		CRACKED	20150324013	QUE
CL600 2D15 (705)	2597	WIRE	FBG839822	BURNT	20150323012	ATL
CL600 2D15 (705)	2620	SWITCH	13739002	SHORTED	20150223004	ATL
CL600 2D15 (705)	2697	CONNECTOR		SHORTED	20150107007	ATL
CL600 2D15 (705)	2710	AILERON CABLES	BA6709321029	CORRODED	20150204002	ATL
CL600 2D15 (705)	2752	FLAP ACTUATOR	766363C	JAMMED	20150224027	ATL
CL600 2D15 (705)	3213	ANTI ROTATION SLEEVE	492301	CRACKED	20150112001	ATL
CL600 2D15 (705)	3251	ELECTRO-HYDRAULIC SERVO VALVE	530003	FAILED	20150317003	ATL

Make/Model	Jasc	Part Name	Part Number	Part Condition	SDR No.	RGN
CL600 2D15 (705)	3297	DRAG BRACE HARNESS	525143	FAILED	20150310012	ATL
CL600 2D15 (705)	5210	POWER ASSIST MOTOR	2R5206B	INOPERATIVE	20150126002	ATL
CL600 2D15 (705)	5311	FRAME 280 CROSSBEAM	CC670340941S	CORRODED	20150305010	ATL
CL600 2D15 (705)	5312	BULKHEAD		CORRODED	20150305009	ATL
CL600 2D24 (RJ900)	2121	RECIRCULATION FAN	GG670950227	FAULT	20150318006	QUE
CL600 2D24 (RJ900)	2751	SKEW SENSOR	5913164	FAILED	20150208001	PNR
CL600 2E25 (RJ1000)	5720	SEAL		FAILED	20150119009	QUE

CANADAIR

Make/Model	Jasc	Part Name	Part Number	Part Condition	SDR No.	RGN
CL215 1A10	2750	SUPPORT	215928082	USED	20150310016	PNR
CL215 1A10	3200	BEARING	KSC253224V	NEW	20150302011	PNR
CL215 1A10	3200	BEARING	KSC253224V	NEW	20150302012	PNR
CL215 6B11(CL215T)	5514	FITTING-FINLET		CRACKED	20150128002	PAC
CL215 6B11(CL415)	2720	CARRIAGE-RUDDER PEDAL LEFT HAND	215907042	CRACKED	20150225004	QUE
CL215 6B11(CL415)	7600	SHAFT	87620130101	SHEARED	20150227008	QUE
CL600 2B16(601 3A)	2720	ADJUSTING SCREW	600902231	BROKEN	20150327002	QUE
CL600 2B16(604)	2550	HONEYCOMB PANEL	CDM18712750	CORRODED PANEL	20150327005	QUE
CL600 2B16(604)	2613	ELEMENT BLEED AIR	356024310	UNSERVICEABLE	20150128006	QUE
CL600 2B16(604)	2710	FUEL DRAIN LINES	PN60062020201	MISROUTED	20150106005	QUE
CL600 2B16(604)	2761	GROUND SPOILER MANIFOLD	621307	FAILED	20150113028	ONT
CL600 2B16(604)	2897	WIRING	AV16B20824	BAD CRIMP	20150106006	QUE
CL600 2B16(604)	3320	CONNECTOR	14807630	MELTED	20150217002	ONT
CL600 2B16(604)	3418	STALL PROTECTION COMPUTER		NON CONFORMING	20150323013	QUE
CL600 2B16(604)	7830	FLEX SHAFT	1217543	DAMAGED/CRACKED	20150304006	ONT

CESSNA

Make/Model	Jasc	Part Name	Part Number	Part Condition	SDR No.	RGN
150G	7800	RIGHT HAND MUFFLER	K045040026M	CRACKED INTERIOR	20150319006	NCR
150J	5530	FITTING	4310091	CORRODED CRACKED	20150223008	ONT
150M	2720	SPRING	31019613	BROKEN	20150225007	ONT
152	2312	RADIO		FAILED	20150312003	ATL
152	2800	FUEL LINE		LEAKING	20150114007	ONT
152	3220	FORK	4425037	CRACKED	20150212002	PNR
172M	2560	SHROUD ASSEMBLY	17500114	BROKEN TABS	20150213014	PNR
172N	3720	SUCTION GAGE	C6685090101	DAMAGED	20150202013	PNR
172N	7414	MAGNETO POINTS	4371	FAILED	20150316009	PNR
172P	2720	RUDDER CONTROL SYSTEM	3101965	BROKEN SPRING	20150310010	PNR
172P	7160	AIRBOX ASSEMBLY	17289011	NEW	20150311009	PNR
172RG	3240	LANDING GEAR PIVOT	24411001	CRACKED	20150330007	ONT
180	5310	BULKHEAD		DEFORMED	20150205010	PAC
180K	2731	CHAIN		OFF THE SPROCKET	20150127005	ONT
208B	2752	FLAP ACTATOR ASSEMBLY	99105864RX	UNSERVICEABLE	20150120023	ONT
208B	6120	CONTROL ASSEMBLY	C2995150101	UNSERVICEABLE	20150108004	PNR
525C	3200	UPLOCK ACTUATOR		CRACKED	20150224031	ONT
550	2750	PIN	C4466CL08	BROKEN	20150216005	NCR

Make/Model	Jasc	Part Name	Part Number	Part Condition	SDR No.	RGN
560(ENCORE)	3200	SELECTOR LEVER	ASABOVE	OPEN	20150113030	PNR
560(ENCORE)	5730	PICCOLO TUBE DE-ICE	65145322	IMPROPER MANUFACTURING	20150202012	PNR
680	7600	THROTTLE QUADRANT		WORN	20150116002	QUE
A188B	5720	JURY STRUT	16200313	FRACTURED	20150223014	PNR

CIRRUS

Make/Model	Jasc	Part Name	Part Number	Part Condition	SDR No.	RGN
SR22	3201	NOSE WHEEL PANT ATTACH BRACKET	11799003C	CRACKED	20150325027	PNR

CONVAIR - CAN

Make/Model	Jasc	Part Name	Part Number	Part Condition	SDR No.	RGN
340	2720	CROSSOVER		REPAIRED	20150107009	PNR

DEHAVILLAND-CAN

Make/Model	Jasc	Part Name	Part Number	Part Condition	SDR No.	RGN
DHC 2 MKI	2730	ELEVATOR STOP BRACKET		CRACKED	20150327018	PAC
DHC 6 200	6123	AUTO FEATHER TORQUE PRESSURE SWITCH	8190026	FAILED	20150318016	PAC
DHC 6 300	2612	TEMPERATURE PROBE 300 DEGREES	1734362300	FAILED	20150122002	QUE
DHC 6 300	2711	AILERON SERVO ROD ASSEMBLY	C6CW10871	UNSERVICEABLE	20150312008	ATL
DHC 6 300	3240	BRAKE PEDAL	C6CFM121029	FRACTURED	20150108012	PAC
DHC 7 110	2760	SPOILER ASSEMBLY - ROLL	75770001029	SEPARATED	20150318015	ONT
DHC 8 102	2611	SMOKE DETECTOR		DEFECTIVE	20150126004	ATL
DHC 8 102	2700	HYDRAULIC LINE	8Z6069243	HOLE IN LINE	20150302009	ATL
DHC 8 102	2750	SCRAPER RING		DISLODGED	20150223010	ONT
DHC 8 102	2843	FUEL TEMP INDICATOR		INCORRECT READINGS	20150316003	ATL
DHC 8 102	3220	NOSE LANDING GEAR TRAILING ARM	88343	UNSERVICEABLE	20150109006	PAC
DHC 8 102	3230	HYDRAULIC HOSE	171K0056CR0220	LEAKING	20150327006	ATL
DHC 8 102	3231	ACTUATOR LINK	83231032101	BROKEN	20150303002	ONT
DHC 8 102	7600	DIODE	M81714241D002	SHORTED	20150310007	ATL
DHC 8 106	2710	ROLL SPOILER ACTUATOR	A44700009	CRACKED	20150302013	PNR
DHC 8 300	2420	WIRES		MELTED	20150220007	ONT
DHC 8 301	2710	PULLEY	MS202203	CORRODED	20150128004	PNR
DHC 8 301	2710	PULLEY	MS202203	CORRODED	20150210008	PNR
DHC 8 301	2897	TERMINAL BLOCK	M817142DE1	SHORTED	20150212010	PNR
DHC 8 301	3246	OUTER BEARING	L81214820629	FAILURE	20150206001	ATL
DHC 8 311	2130	COMPUTER		FAULTY	20150106014	ATL
DHC 8 311	2920	SELECTOR VALVE		SEIZED	20150227006	ATL
DHC 8 311	3200	LANDING GEAR BYPASS VALVE	69220	UNSERVICEABLE	20150316011	PAC
DHC 8 311	3230	SOLENOID		OPEN CIRCUIT	20150225005	ATL
DHC 8 311	3240	CABLE		RUSTED	20150320005	ATL
DHC 8 311	3411	PITOT TUBE		CIRCUIT BREAKER POPPED	20150325024	QUE

Make/Model	Jasc	Part Name	Part Number	Part Condition	SDR No.	RGN
DHC 8 400	2910	HYDRAULIC FLEX HOSE	46455	LEAKING	20150219004	QUE
DHC 8 400	3200	LANDING GEAR		RIGGING	20150122006	QUE
DHC 8 400	3200	LEFT HAND MAIN LANDING GEAR	46100	COLLAPSED	20150310002	QUE
DHC 8 400	3220	HYDRAULIC HOSE	AE7202941	LEAKING	20150116005	QUE
DHC 8 400	3220	NOSE LANDING GEAR DOOR ACTUATOR	47830	DID NOT EXTEND	20150116008	QUE
DHC 8 400	3220	NOSE LANDING GEAR DOOR LINKAGE	47840	SEAL BROKEN	20150116009	QUE
DHC 8 400	3220	SOLENOID SEQUENCE VALVE	483023	FAULTY	20150219005	QUE
DHC 8 400	3220	SPUR GEARS	47180	SPUN	20150209003	QUE
DHC 8 400	3230	ROTARY VARIABLE DIFFERENTIAL TRANSDUCER	47200	OUT OF LIMITS	20150129011	QUE
DHC 8 400	3232	NOSE LANDING GEAR DOOR ACTUATOR	47830	INTERNAL LEAK	20150127004	QUE
DHC 8 400	3244	MAIN WHEEL ASSEMBLY	415117	TIRE FAILED	20150317001	QUE
DHC 8 400	3244	MAIN LANDING GEAR TIRE	DR0231T	TIRE CAP FAILURE	20150311001	QUE
DHC 8 400	3244	TIRE	DR19122T	FAILED	20150116010	QUE
DHC 8 400	3246	WHEEL BEARING	315731	FAILED	20150105007	QUE
DHC 8 400	3250	CONDUIT	47200	PINCHED	20150122004	QUE
DHC 8 400	3250	NOSE LANDING GEAR STEERING	47200	OUT OF LIMITS	20150122003	QUE
DHC 8 400	3297	CONNECTOR		INTERMITTENT	20150121008	ONT
DHC 8 400	3297	NOSE LANDING GEAR DOOR SENSOR	82410888	OPEN CIRCUIT	20150127003	QUE
DHC 8 400	5230	AFT CARGO DOOR SEAL		DAMAGED	20150213005	QUE
DHC 8 400	5230	AFT CARGO DOOR SEAL	502213	DAMAGED	20150213006	QUE
DHC 8 400	6123	PROPELLER ELECTRONIC CONTROL	699018003	MALFUNCTION	20150223013	QUE
DHC 8 402	2100	AIRCONDITIONING		CONTAMINATED	20150105004	ONT
DHC 8 402	2130	BLOW OUT PANEL		DISLODGED	20150213004	QUE
DHC 8 402	2130	CABIN PRESSURE CONTROLLER	92146A010401	FAULTY	20150115002	QUE
DHC 8 402	2130	CABIN PRESSURE CONTROL & OUTFLOW VALVE		NO FAULT	20150309011	QUE
DHC 8 402	2130	OUTFLOW VALVE		FAILED	20150109005	QUE
DHC 8 402	2131	CABIN PRESSURE CONTROLLER	92146A010401	FAULTY	20150107010	QUE
DHC 8 402	2133	FORWARD SAFETY VALVE		FAILED	20150224020	QUE
DHC 8 402	2150	VALVE FLOW CONTROL & SHUT-OFF	8209026	FAILED	20150313002	QUE
DHC 8 402	2497	CIRCUIT BREAKER	MS332015	BODY CRACKED	20150204006	QUE
DHC 8 402	2500	SEAT TRACK COVERS		DEFORMED	20150327008	ATL
DHC 8 402	2520	COFFEE BREWER	400247501	BURNT SMELL	20150223003	ATL
DHC 8 402	2520	SEAT TRACK COVER		DEFORMED	20150323008	ATL
DHC 8 402	2720	RUDDER POWER CONTROL UNIT		BYPASSING	20150311002	ATL
DHC 8 402	2750	FLAP ASSEMBLY	85750700001	OVERSPEED	20150116016	ONT
DHC 8 402	2750	FLAP CONTROL UNIT	C1599931001	FAILED	20150217003	PNR
DHC 8 402	2760	SPOILER CLUTCH BRACKET	82740061019	DAMAGED	20150326006	QUE
DHC 8 402	2900	AE99116H	NAS16128A	LOOSE	20150121001	QUE

Make/Model	Jasc	Part Name	Part Number	Part Condition	SDR No.	RGN
DHC 8 402	2900	HYDRAULIC LINE	82920621007	LEAKING	20150202005	PNR
DHC 8 402	2910	ENGINE DRIVEN HYDRAULIC PUMP	6617303	SPLIT	20150323002	ONT
DHC 8 402	2913	ENGINE DRIVEN PUMP	6617304	FAILED	20150312001	QUE
DHC 8 402	3040	PILOTS WINDSHIELD	80260007	UNSERVICEABLE	20150302006	ONT
DHC 8 402	3060	BRUSH ASSEMBLY	666000600	WORN	20150212008	PNR
DHC 8 402	3220	CENTERING ACTUATOR ASSEMBLY	471703	CONTAMINATED	20150219007	PNR
DHC 8 402	3220	PIVOT BOLT		LOOSE	20150324011	ONT
DHC 8 402	3230	SEQUENCE VALVE		FAILED	20150227003	ONT
DHC 8 402	3231	ACTUATOR		FAULTY	20150327007	PNR
DHC 8 402	3244	MAIN WHEEL TIRE	DR0231T	FAILED	20150102003	PNR
DHC 8 402	3244	TIRE	DR031T	TREAD SEPERATED	20150127001	QUE
DHC 8 402	3246	WHEEL ASSEMBLY	315731	HUB FRACTURED	20150330005	ATL
DHC 8 402	3250	PROXIMITY SENSOR	401020201	CONTAMINATED	20150225003	PNR
DHC 8 402	3260	WIRING	M2750022SD2T23	SEVERE CHAFFING	20150310014	QUE
DHC 8 402	3411	PITOT LINE	83410474001	SPLIT/CRACKED	20150106001	ATL
DHC 8 402	3411	STATIC LINE	83410474001	CRACKED	20150203005	ATL
DHC 8 402	5210	CHARGING VALVE	510316	BODY CRACKED	20150102002	QUE
DHC 8 402	5210	CRANK DOOR MECHANISM	NAS62043	DISLODGED	20150219008	QUE
DHC 8 402	5220	DITCHING DOOR		FOREIGN OBJECT DEBRIS	20150324010	ONT
DHC 8 402	5230	BEARING	NAS5625R10	BROKEN	20150323005	ATL
DHC 8 402	5230	DOOR HANDLE	85236900001	BINDING	20150202007	ATL
DHC 8 402	5230	SEAL BAGGAGE DOOR	8SC0940003	DAMAGED	20150130006	PNR
DHC 8 402	5240	CAM FOLLOWER		CHIPPED	20150318014	ATL
DHC 8 402	5270	PROXIMITY SENSOR		ADJUSTED	20150102004	ONT
DHC 8 402	5600	COPILOTS WINDSHIELD	80260008	CRACKED	20150204004	QUE
DHC 8 402	7160	FOREIGN OBJECT DAMAGE DOOR ACTUATOR	LA11A2104	REPLACED	20150305003	QUE

DIAMOND - CAN

Make/Model	Jasc	Part Name	Part Number	Part Condition	SDR No.	RGN
DA 20 C1	2410	ALTERNATOR BOLT	2224120001	BROKEN	20150112012	ATL
DA 20 C1	2410	BOLT - ALTERNATOR PIVOT	2224150001	BROKEN	20150102001	ATL
DA 20 C1	2720	BRAKE RUDDER PEDAL	2227291300	CRACKED	20150302004	ATL
DA 20 C1	2720	BRAKE RUDDER PEDAL	2227291300	SEIZED	20150302005	ATL
DA 20 C1	2720	BRAKE RUDDER PEDAL	2227291400	SEIZED	20150302008	ATL
DA 20 C1	2720	BRAKE RUDDER PEDAL	2227291300	SEIZED	20150302003	ATL
DA 20 C1	2842	GASKET	226053	SWELLED	20150110001	ATL
DA 20 C1	3243	RUDDER FRAME LATCH ASSEMBLY	22272291011	BROKEN	20150314001	ATL
DA 20 C1	5540	RUDDER TOWER		CRACKED	20150209002	ATL

DORNIER

Make/Model	Jasc	Part Name	Part Number	Part Condition	SDR No.	RGN
328 100	2500	SAFETY WALK	DOLN557CB605	NON COMPLIANCE	20150204013	ONT

EMBRAER

Make/Model	Jasc	Part Name	Part Number	Part Condition	SDR No.	RGN
ERJ 170 200 SU	2710	BEARING	MS2764829G	FLAT SPOTS	20150207002	ONT
ERJ 170 200 SU	2710	TORQUE TUBE BEARING STOP	17029160001	CRACKED	20150312004	ONT
ERJ 170 200 SU	3297	WOW SENSOR HARNESS	200A0397K01	FAILED	20150209008	QUE
ERJ 190 100 IGW	2120	FLIGHT DECK		SMELL	20150318004	QUE
ERJ 190 100 IGW	2440	CONNECTOR RECEPTACLE	17015144401	DEFECT	20150209005	QUE
ERJ 190 100 IGW	2440	EXTERNAL ALTERNATE CURRENT POWER RECEPTACLE	17013624505	DAMAGED	20150309005	QUE
ERJ 190 100 IGW	2520	SMART VIDEO DISPLAY UNIT	179000201	FAILED	20150310015	QUE
ERJ 190 100 IGW	2750	SLAT/FLAP ACE CONTROL	1700064F	FAILED	20150105003	QUE
ERJ 190 100 IGW	2751	OUTBOARD SLAT SKEW SENSOR	1716280A	FAILED	20150107005	QUE
ERJ 190 100 IGW	2780	SLAT		FAILED	20150309004	QUE
ERJ 190 100 IGW	2781	SLAT OUTBOARD SKEW SENSOR	1702286A	FAILED	20150326002	QUE
ERJ 190 100 IGW	2782	SLAT ACTUATOR	1703909A	FAILED	20150123002	QUE
ERJ 190 100 IGW	2820	FLOAT PILOT VALVE	2990074101	DEFECT	20150209006	QUE
ERJ 190 100 IGW	2820	MAIN EJECTOR PUMP	2990054101	LOOSE	20150109003	QUE
ERJ 190 100 IGW	2910	BOLT		LOOSE	20150318007	QUE
ERJ 190 100 IGW	3140	NETWORK INTERFACE CONTROLLER PROCESSOR MODULE	70265421901	FAILED	20150305001	QUE
ERJ 190 100 IGW	3240	BRAKE SYSTEM		FAILED	20150309008	QUE
ERJ 190 100 IGW	3240	BRAKE SYSTEM		FAILED	20150309010	QUE
ERJ 190 100 IGW	3610	BLEED PRESSURE RELEASE VALVE	10139525	FAILED	20150220001	QUE

EUROCOPOWER TURBINEER DEUT

Make/Model	Jasc	Part Name	Part Number	Part Condition	SDR No.	RGN
BK117 B 2	3050	EMERGENCY LOCATOR TRANSMITTER ANTENNA	ANT406RW	UNSERVICEABLE	20150118002	PNR
BK117 B 2	5302	FORWARD VERY HIGH FREQUENCY ANTENNA MOUNT PRO		CRACKED	20150112015	PNR

EUROCOPOWER TURBINEER FRANCE

Make/Model	Jasc	Part Name	Part Number	Part Condition	SDR No.	RGN
EC 130 B4	6730	SEAL OR O-RING		LEAKING	20150224021	ONT

FAIRCHILD

Make/Model	Jasc	Part Name	Part Number	Part Condition	SDR No.	RGN
SA226AT	3040	TEMPERATURE CONTROLLER	HYLZ88821	UNSERVICEABLE	20150105006	PNR
SA227AC	7600	BRACKET	2621505013	CRACKED	20150126003	PNR
SA227DC	2612	MODULE	3219027001	FAULTY	20150204014	ONT

GROB-WERKE

Make/Model	Jasc	Part Name	Part Number	Part Condition	SDR No.	RGN
G115C	3220	BUSHING	115C520004	MISSING	20150304004	ONT
G120A	2430	AVIONICS BUS RELAY	GS2460011	DAMAGED	20150106003	PNR

GULFSTREAM - ISRAEL

Make/Model	Jasc	Part Name	Part Number	Part Condition	SDR No.	RGN
ASTRA SPX	3260	SWITCH	M8805100016	INTERMITTENT	20150326003	ONT

KAMOV

Make/Model	Jasc	Part Name	Part Number	Part Condition	SDR No.	RGN
KA32A11BC	2420	REVERSE CURRENT RELAY	DMR200VU	OVERHEATED	20150223028	PAC

LEARJET

Make/Model	Jasc	Part Name	Part Number	Part Condition	SDR No.	RGN
35A	3610	DUCT	261903311	SMOKED	20150327016	PNR
45	5350	RUBBING STRIP	45571001920	DEPARTED	20150114004	QUE
45	5754	RIVET	MS20426E	HEAD DISTORTION	20150223009	PAC

LOCKHEED

Make/Model	Jasc	Part Name	Part Number	Part Condition	SDR No.	RGN
382G	5313	SLOPING LONGERON	3428613	CRACKED	20150118001	PAC

NORTH AMERICAN

Make/Model	Jasc	Part Name	Part Number	Part Condition	SDR No.	RGN
HARVARD II (AT6)	5511	HORIZONTAL STABILIZER SPAR	7721003	CRACKED	20150112016	ONT

PILATUS - SW

Make/Model	Jasc	Part Name	Part Number	Part Condition	SDR No.	RGN
PC 12 47E	3260	PROXIMITY SWITCH	9733033116	FAILED	20150225001	ONT

PIPER

Make/Model	Jasc	Part Name	Part Number	Part Condition	SDR No.	RGN
PA31 350	2797	TAXI LIGHT SWITCH	487772	SHORTED	20150220006	PAC
PA31 350	3000	EXHAUST TAIL-PIPE	4031010	FRACTURED	20150220003	PAC
PA31 350	3230	HYDRAULIC CANISTER	460635	SHEARED THREADS	20150306015	PAC
PA31 350	3240	BRAKE LINE	1776673	INTERNAL DAMAGE	20150220004	PAC
PA31 350	5330	SKIN BOTTOM INBOARD LEFT HAND NACELLE	4166708	RIVETS PULLING	20150311008	PNR

PIPER

Make/Model	Jasc	Part Name	Part Number	Part Condition	SDR No.	RGN
PA31 350	8550	VACUUM PUMP	442CW6	NEW	20150310017	PNR
PA31T	2900	POWER PACK	WTC21351	UNSERVICEABLE	20150203003	ONT
PA31T	2912	HYDRAULIC FILTER HOUSING	AN62341	UNSERVICEABLE	20150119008	ONT
PA34 200T	3233	ACTUATOR	SFA2323	USED	20150316010	PNR
PA44 180	3246	GOODYEAR TUBE	302013400	HOLE	20150326005	ONT
PA60 600	7800	EXHAUST STACK SUPPORT	300049504	BROKEN	20150323006	ATL

ROBINSON

Make/Model	Jasc	Part Name	Part Number	Part Condition	SDR No.	RGN
R44 II	2435	STARTER GENERATOR		FAILED TO OPERATE	20150205012	PNR
R44 II	6720	BEARING BLOCK SET	A31812	FROZEN	20150313012	ONT
R44 II	7314	PUMP	19001B	STOPPED	20150205011	PNR

SIKORSKY

Make/Model	Jasc	Part Name	Part Number	Part Condition	SDR No.	RGN
S92A	6320	INPUT MODULE	9235115001042	UNSERVICEABLE	20150305006	ATL

SWEARINGEN

Make/Model	Jasc	Part Name	Part Number	Part Condition	SDR No.	RGN
SA226TC	3210	SHAFT SCISSOR LINK	2752529005	SHEARED	20150209011	PAC

VIKING CANADA

Make/Model	Jasc	Part Name	Part Number	Part Condition	SDR No.	RGN
DHC 6 400	2520	FRAME ASSEMBLY BOTTOM AFT	C6FF1702179	NON CONFORMANCE	20150126009	PAC

ENGINE

ALLISON

Make/Model	Jasc	Part Name	Part Number	Part Condition	SDR No.	RGN
250-C20R	7250	TURBINE	23038160	SERVICEABLE	20150122007	PAC

AVCO LYCOMING

Make/Model	Jasc	Part Name	Part Number	Part Condition	SDR No.	RGN
LTIO-540-J2BD	8520	CRANKCASE	LT1054022B	PIN HOLE CRACK	20150205009	ONT
O-235-L2C	8520	PISTON	LW18729	CRACKED	20150317007	PNR
O-320-E2D	8520	CAMSHAFT	LW18840	UNSERVICEABLE	20150319007	PNR
T5317A	7230	TURBINE FAN ASSEMBLY ENGINE	204062540	CRACKED	20150316004	QUE
TIO-540-AH1A	8520	SET SCREW	AN565B1032H5	DAMAGED	20150303007	PNR

CFM INTERNATIONAL

Make/Model	Jasc	Part Name	Part Number	Part Condition	SDR No.	RGN
CFM56-5A1	3140	SYSTEM DATA ACQUISITION CONCENTRATOR COMPUTER	350E5151331	FAILED	20150318002	QUE
CFM56-5A5	7600	ELECTRONIC CONTROL UNIT CONTROL	1519M83P19	FAILED	20150120021	QUE
CFM56-7B24	7314	FUEL PUMP	8283005	SHAFT SHEARED	20150106002	ATL

GARRETT

Make/Model	Jasc	Part Name	Part Number	Part Condition	SDR No.	RGN
TFE731-2-2B	7314	FUEL PUMP	307085063	FAILED	20150213017	ONT
TFE731-5R-1H	7261	TUBE ASSEMBLY	30753871	ORIGINAL INSTALL	20150113022	ONT
TPE331-10UA-511G	7800	EXHAUST DUCT	31015827	OVERIGHT HANDAULED	20150123003	PNR
TPE331-12UHR	7600	TEMPERATURE LIMITER BYPASS VALVE	18389546	OUT OF ADJUSTMENT	20150204015	ONT

GENERAL ELECTRIC

Make/Model	Jasc	Part Name	Part Number	Part Condition	SDR No.	RGN
CF6-80C2B6	7530	HIGH PRESSURE SHUT OFF VALVE	8021709	DEFECT	20150302010	QUE
CT7-8A	7321	FUEL METERING UNIT	4110T52P10	UNSERVICEABLE	20150203002	ATL
GENX1B67	1220	OIL CAP		MISSING	20150212006	QUE

PRATT & WHITNEY-CAN

Make/Model	Jasc	Part Name	Part Number	Part Condition	SDR No.	RGN
JT15D-5A	7250	ENGINE	JT15D5A	UNSERVICEABLE	20150128005	ONT
PT6A-114A	6122	OVERSPEED GOVERNOR	D210507	UNSERVICEABLE	20150113024	ONT
PT6A-15AG	7260	AIR CONDITION DRIVE	518951	UNSERVICEABLE	20150316007	PAC
PT6A-28	6122	OVERSPEED GOVERNOR	210632	OVERHEATED	20150223012	QUE
PT6A-28	7200	TRANSFER TUBE PROPELLER	3013146	DISLODGED	20150324012	QUE
PT6A-34	7250	POWER TURBINE BLADE	3013102	CRACKED	20150302007	PNR
PT6A-67D	7930	OIL PRESSURE TRANSDUCER	1013890235	READING HIGH	20150223002	ATL
PT6A-67P	2000	IDLER GEAR	533750	MISSING INSERT	20150323009	PNR
PT6A-67P	7321	FUEL CONTROL UNIT	311989209	FAULTY	20150130001	QUE
PW120A	7200	1ST STAGE POWER TURBINE DISK	3038613	BEYOND CYCLE LIMIT	20150330006	ATL
PW120A	7261	OIL SYSTEM		INTERNAL LEAK	20150311004	ATL
PW120A	7321	P3 SENSING TUBE	3034514	FRACTURED	20150316002	ATL
PW121	7250	2ND STAGE POWER TURBINE BLADE		FRACTURED	20150212001	ATL
PW121	7250	RETAINING PLATE		FRACTURED	20150226001	ATL
PW123	7250	SHROUD SEGMENT LOW PRESSURE	3039186CL	OVERHAUL	20150126005	PNR
PW123	7261	COMPRESSOR SEAL		LEAKING SEAL	20150120026	PNR
PW123C	2000	TORQUE SIGNAL CONDITIONER	30005000046	UNRECOGNIZED	20150109001	QUE
PW124B	7230	HYDRAULIC PUMP CONTACTOR IMPELLER	312276301	CYCLES EXPIRED	20150219001	QUE

PRATT & WHITNEY-USA

Make/Model	Jasc	Part Name	Part Number	Part Condition	SDR No.	RGN
JT8D-15	7120	ISOLATOR MOUNT	7350000	MISALIGNED	20150224030	ONT
R-985-AN-14B	8530	VALVE GUIDE		BROKEN	20150211008	PAC

ROLLS ROYCE - GY

Make/Model	Jasc	Part Name	Part Number	Part Condition	SDR No.	RGN
A250-C20	7200	BEARING	6871505	USED	20150108008	ONT

ROLLS ROYCE - UK

Make/Model	Jasc	Part Name	Part Number	Part Condition	SDR No.	RGN
RB211 TRENT 772B-60	7300	ZONE CONTROLLER	978B000002	FAILED	20150206003	QUE

TELEDYNE CONTINENTAL

Make/Model	Jasc	Part Name	Part Number	Part Condition	SDR No.	RGN
IO-240-B	7414	MAGNETO	4310	FAILED	20150223005	ATL
IO-470-D	8530	CYLINDER ASSEMBLY	AEC631397TISN70	UNSERVICEABLE	20150317002	PNR
IO-520-M	7414	MAGNETO (LEFT HAND)	101630203	UNSERVICEABLE	20150107011	PNR
TSIO-550-C	8120	PROBET IT	86245	LOOSE	20150315001	PNR

PROPELLER

DOWTY ROTOL

Make/Model	Jasc	Part Name	Part Number	Part Condition	SDR No.	RGN
R408/6-123-F/17	6111	BLADE	697071003	CRACKED	20150106008	QUE
R408/6-123-F/17	6114	HUB ASSEMBLY	697037001	LEAKING	20150327003	PNR
R408/6-123-F/17	6114	PROPELLER HUB ASSEMBLY	697037001	LEAKING	20150209010	PNR

HAMILTON STANDARD

Make/Model	Jasc	Part Name	Part Number	Part Condition	SDR No.	RGN
14SF-7	6111	PROPELLER BLADE ASSEMBLY	SFA13M1ROAD	CRACKED	20150108010	PAC

HARTZELL

Make/Model	Jasc	Part Name	Part Number	Part Condition	SDR No.	RGN
HC-B3TN-3DY	6114	BEARING	A1851TA	BROKEN	20150114005	PNR

EQUIPMENT

AMERI-KING

Make/Model	Jasc	Part Name	Part Number	Part Condition	SDR No.	RGN
AK451	2562	BATTERY		DISCHARGED	20150304001	ONT
AK451	2562	BATTERY		DISCHARGED	20150304002	ONT

BOEING

Make/Model	Jasc	Part Name	Part Number	Part Condition	SDR No.	RGN
2631	1420	LAMP DIMMER	2631	BURNT	20150212009	PAC

BOMBARDIER

Make/Model	Jasc	Part Name	Part Number	Part Condition	SDR No.	RGN
GRDLUGGL26	1420	RING TERMINAL	320551	CRACKED	20150130003	ONT

HONEYWELL

Make/Model	Jasc	Part Name	Part Number	Part Condition	SDR No.	RGN
32448974	7321	DRIVE BODY/ MOUNTING FLANG	32448974	UNSERVICEABLE	20150112013	ONT

MESSIER BUGATTI

Make/Model	Jasc	Part Name	Part Number	Part Condition	SDR No.	RGN
A1023738	2916	HYDRAULIC RESERVOIR CAP	G6660	CRACKED	20150223007	ONT

SAFT AMERICA

Make/Model	Jasc	Part Name	Part Number	Part Condition	SDR No.	RGN
GL51123015	2432	BATTERY APU	GL51123015	LOW VOLTAGE	20150209007	QUE

TEMPEST

Make/Model	Jasc	Part Name	Part Number	Part Condition	SDR No.	RGN
AA442CW12	3600	PRESSURE PUMP	AA442CW12	OVERHAULED	20150121006	ONT

WIPAIRE

Make/Model	Jasc	Part Name	Part Number	Part Condition	SDR No.	RGN
3730	3246	FUSELAGE ATTACHMENT FITTING	3A02000005	CRACKED	20150330004	ONT
MODEL10000	2590	ACTUATOR	10A09000293	UNSERVICEABLE	20150313014	PAC

UNAPPROVED PART**GOODRICH**

Make/Model	Jasc	Part Name	Part Number	Part Condition	SDR No.	RGN
2LA0051710	2000	BULB LIGHT	8GH00391206	SHORTED	20150224028	PNR

PRATT & WHITNEY-CAN

Make/Model	Jasc	Part Name	Part Number	Part Condition	SDR No.	RGN
PW123C	2000	TORQUE SIGNAL CONDITIONER	30005000046	UNRECOGNIZED	20150109001	QUE

WOODWARD

Make/Model	Jasc	Part Name	Part Number	Part Condition	SDR No.	RGN
8210137H	2000	IDLER GEAR	533750	MISSING INSERT	20150323009	PNR



ORDERING TC PUBLICATION AND FORMS

HEADQUARTERS

Transport Canada (AARDG)
Place de Ville, Tower C
Ottawa, ON K1A 0N8
Tel: 1-800-305-2059

REGIONAL OFFICES

Atlantic

Transport Canada
95 Foundry St., 6th Floor
Moncton, NB E1C 5H7
Tel: 1-800-305-2059

Prairie and Northern

Transport Canada
344 Edmonton Street
Winnipeg, MB R3C 0P6
Tel: 1-800-305-2059

Ontario

Transport Canada
4900 Yonge St., Suite 400
Toronto, ON M2N 6A5
Tel: 1-800-305-2059

Quebec

Transport Canada
700 Leigh Capreol
Dorval, QC H4Y 1G7
Tel: 1-800-305-2059

Pacific

Transport Canada
800 Burrard St., Suite 620
Vancouver, BC V6Z 2J8
Tel: 1-800-305-2059

North America:

1-800-305-2059

National Capital Region:

613 991-4071

Fax:

613 991-2081

E-mail:

MPS@tc.gc.ca

CIVIL AVIATION INTERNET SITES

Civil Aviation Homepage

www.tc.gc.ca/eng/civilaviation/menu.htm

Continuing Airworthiness

www.tc.gc.ca/eng/civilaviation/certification/continuing-menu-1432.htm

Canadian Aviation Regulations (CARs)

www.tc.gc.ca/eng/civilaviation/regserv/cars/menu.htm

Airworthiness Directive

www.tc.gc.ca/cawis-swimn

Civil Aviation Safety Alerts (CASA)

www.tc.gc.ca/civil-aviation-safety-alert

Web Service Difficulty Reporting System (WSDRS)

www.tc.gc.ca/wsdrrs