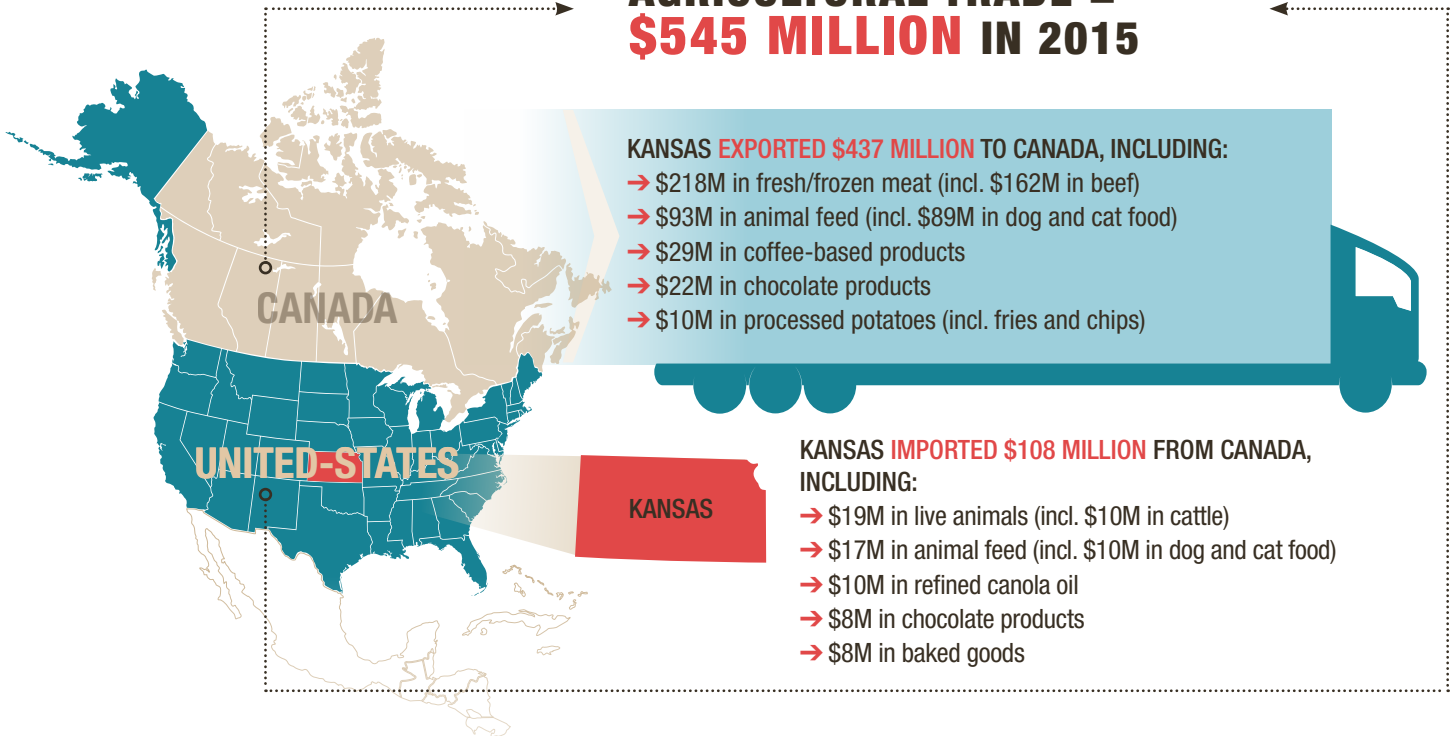


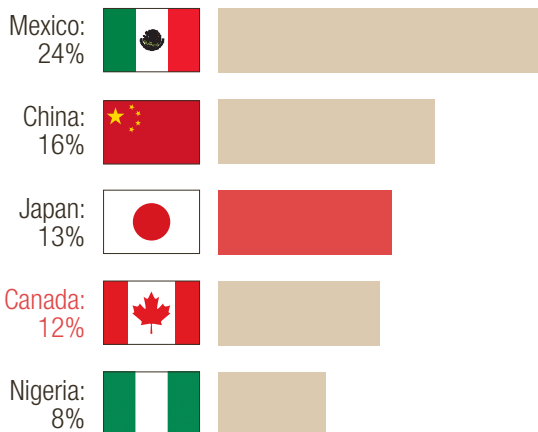
# KANSAS-CANADA

**A STRONG PARTNERSHIP IN AGRICULTURE**  
*Let's keep a good thing growing!*

**AGRICULTURAL TRADE =  
 \$545 MILLION IN 2015**

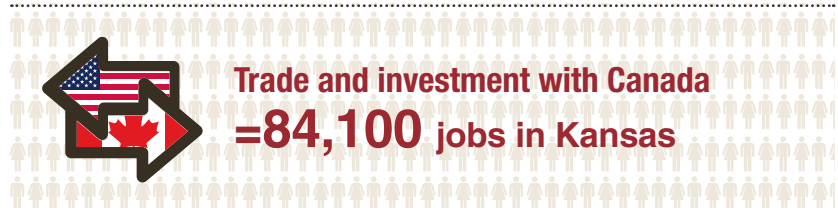


**KANSAS' TOP AGRICULTURE AND AGRI-FOOD EXPORT MARKETS:**



**A STRONG PARTNERSHIP IN TRADE:**

**Keep trade moooving!** – Kansas' meat processing facilities and Canada's livestock outputs proved mutually beneficial in 2015. Canadian ranchers supplied Kansas with \$10M of cattle and Kansas exported \$162M of fresh/frozen beef to Canada in 2015. Kansas' efficiency in meat processing provides Canadians with a variety of meat products at competitive prices, while Canadian exports allow processing plants in Kansas to operate at full capacity. Canada and the United States are each other's most important trading partners. This relationship is increasingly important as U.S.-Canada trade and integration mutually strengthens our competitive position in the changing global marketplace.



For more information: [www.agr.gc.ca/agpartners](http://www.agr.gc.ca/agpartners)  
 Follow the conversation on Twitter using #agpartners

M = Million B = Billion  
 Data source: U.S. Census Bureau  
 All figures in U.S. dollars and based on 2015 data (as of March 2016), including re-exports  
 E-mail: MAS-SAM@agr.gc.ca