



"O" Division HQ

The Commanding Officer, senior executive, administrative and support services for RCMP "O" Division (Ontario) operate from Headquarters located in London, Ontario.

"O" Division locations are functionally divided into three districts within Ontario: Greater Toronto Area District (GTA), the North East (NE) District, and the South West (SW) District. Each District is led by a Superintendent.

The "O" Division RCMP is responsible for federal policing in Ontario, (exclusive of the National Capital Region), and has primary law enforcement authority in federal matters.

O DIVISION

With a focus on organized crime, economic integrity, border enforcement and national security, the "O" Division RCMP enhances its police operations by working closely with police partners and other law enforcement agencies for a safe and secure Canada.

North East District

North East District Office
1000 Gardiners Rd., 3rd Floor,
Kingston, ON K7P 3C4
Phone: (613) 384-8459
Fax: (613) 384-3255

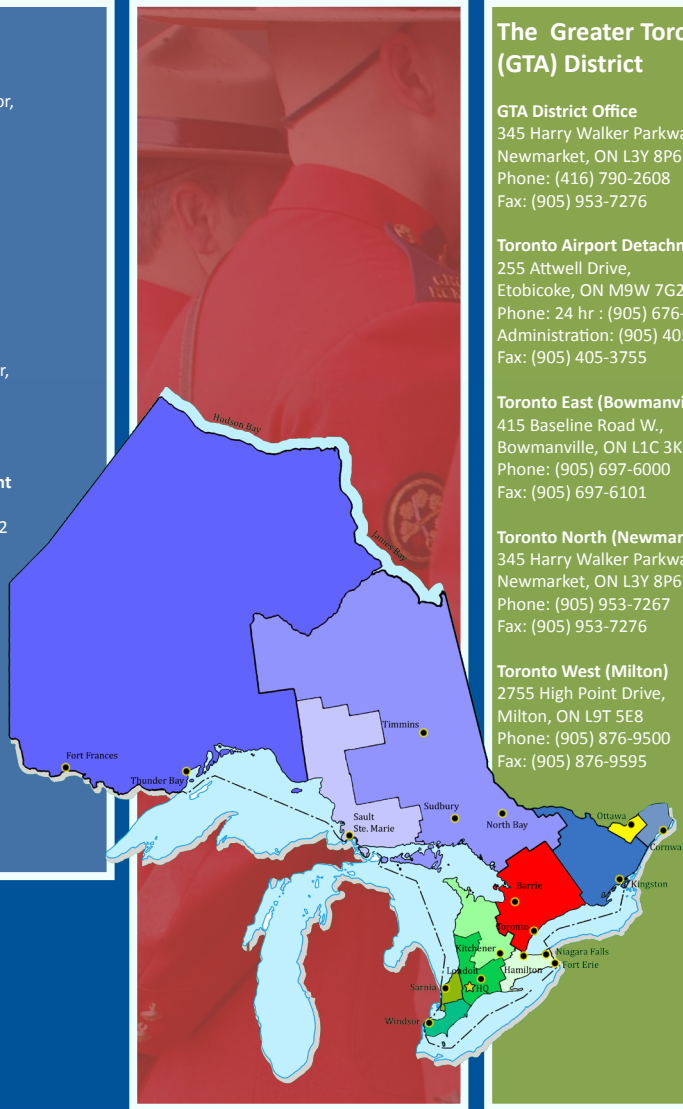
Cornwall Detachment
501 Tollgate Road East,
Cornwall, ON K6H 5R6
Phone: (613) 937-2800
Fax: (613) 937-2804

Kingston Detachment
1000 Gardiners Rd. 3rd Floor,
Kingston, ON K7P 3C4
Phone: (613) 384-7201
Fax: (613) 384-1760

Sault Ste. Marie Detachment
22 Bay St. 2nd Floor,
Sault Ste. Marie, ON P6A 5S2
Phone: (705) 941-7267
Fax: (705) 941-7276

Sudbury Detachment
1310 Sparks Street,
Sudbury, ON P3A 2C8
Phone: (705) 671-0645
Fax: (705) 670-5599

Thunder Bay Detachment
221 Archibald Street N.
Thunder Bay, ON P7C 3Y3
Phone: (807) 623-2791
Fax: (807) 622-3728



The Greater Toronto Area (GTA) District

GTA District Office
345 Harry Walker Parkway S.,
Newmarket, ON L3Y 8P6
Phone: (416) 790-2608
Fax: (905) 953-7276

Toronto Airport Detachment
255 Attwell Drive,
Etobicoke, ON M9W 7G2
Phone: 24 hr : (905) 676-5555
Administration: (905) 405-3750
Fax: (905) 405-3755

Toronto East (Bowmanville)
415 Baseline Road W.,
Bowmanville, ON L1C 3K3
Phone: (905) 697-6000
Fax: (905) 697-6101

Toronto North (Newmarket)
345 Harry Walker Parkway S.,
Newmarket, ON L3Y 8P6
Phone: (905) 953-7267
Fax: (905) 953-7276

Toronto West (Milton)
2755 High Point Drive,
Milton, ON L9T 5E8
Phone: (905) 876-9500
Fax: (905) 876-9595

South West District

South West District Office
17 Executive Place,
Kitchener, ON N2P 2V3
Phone: (519) 896-3211
Fax: (519) 896-5112

Hamilton Niagara Regional Detachment
#777 Highway 8,
Stoney Creek, ON L8E 5J4
Phone: (905) 643-5800
Fax: (905) 643-5932

Kitchener Detachment
17 Executive Place,
Kitchener, ON N2P 2V3
Phone: (519) 896-3542
Fax: (519) 896-3150

London Detachment
451 Talbot Street, 8th Floor,
London, ON N6A 5C9
Phone: (519) 645-4329
Fax: (519) 645-5218

Sarnia Detachment
105 South Christina Street
P.O. Box 400 Stn Main,
Sarnia, ON N7T 7J2
Phone: (519) 337-7543
Fax: (519) 337-2197

Windsor Detachment
6080 Riverside Drive E.,
Windsor, ON N8S 1B6
Phone: (519) 948-5287
Fax: (519) 948-5289



PROTECTIVE OPERATIONS:

The RCMP is federally mandated to provide protection to the Prime Minister, the Governor General, other members of the Canadian Executive, visiting Heads of State, Internationally Protected Persons and members of the Royal Family. Protective Operations is also responsible for: the protection of designated sites; Major Events; Canadian Air Carrier Security; Explosives Disposal; and Tactical Troop operations.

Protective Operations is dedicated in delivering professional protective services that ensure the safety of our protectees and the security of Canadian interests. This is accomplished through a combination of plainclothes and uniformed enforcement strategies.

FEDERAL OPERATIONS SUPPORT BRANCH:

Federal Operations Support Branch (FOSB) provides key support to our criminal investigators. These services include: the fields of police surveillance including electronic investigations authorized under the authority of the Criminal Code; the provision of an air service consisting of both fixed wing aircraft and a helicopter; technical expertise to investigate computer crime including assistance with forensic analysis; oversight of the Federal Witness Protection Program and its application to high risk investigations requiring source/witness protection; and 24 hour access to the RCMP through our Operational Communications Centre. Two additional FOSB units work in support of our diverse communities across Ontario:

- ### Aboriginal Policing Section

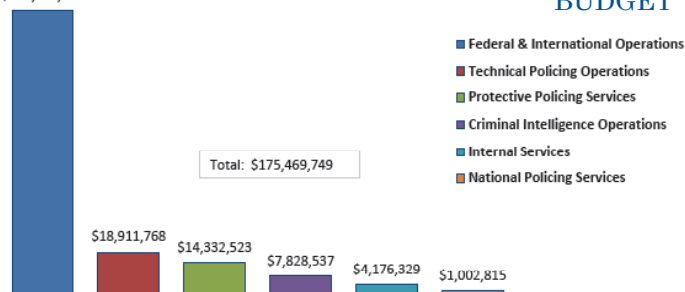
Members in our Aboriginal Policing Section work in partnership with First Nations Police Services, the Ontario Provincial Police, community leaders, and various organizations, to provide a quality service that is in line with the community needs.

- ### Drugs and Organized Crime Awareness Section (DOCAS)

Working with federal, provincial, territorial and community partners, "O" Division Drugs and Organized Crime Awareness Section (DOCAS) participates in the development of unique, long-term solutions to substance abuse issues. One of the main programs provided by DOCAS is Racing Against Drugs.

\$129,217,777

BUDGET



OUR FEDERAL POLICING SERVICES:

Commercial Crime Section

Active in investigations related to bankruptcy, counterfeit currency, frauds against the federal government and other types of white-collar crime at the local, regional, provincial, national and international levels.

Criminal Intelligence Section

A key service which supports both RCMP senior management and enforcement operations in the Division. Through intelligence-led policing, the mandate of this service is to gather and share intelligence that will effectively deter and detect organized crime, and provides strategic direction in the deployment of resources.

Customs and Excise Section

Investigates smuggling enterprises including the illicit manufacture, importation, exportation and international shipment of contraband goods, firearms, weapons and technology.

Drug Section

Works to identify, target, investigate, and dismantle the international, national/regional, and local drug trafficking organizations that are having the most significant impact in Canada. The aim is to prevent the importation, production, traffic and use of illicit drugs.

Federal Enforcement Section

Combats organized crime through the enforcement of 270 federal statutes within four programs: Consumer Protection, Environmental Protection, Financial Loss to Government and Public Safety.

Immigration and Passport Section

Prevents and combats illegal migrant smuggling, illegal immigration and misuse of Canadian passports and citizenship.

OUR INTEGRATED UNITS:

The support of our policing partners and the development of multi-disciplinary teams contributes to the efficiency and effectiveness of our efforts. "O" Division Integrated Units are specialized RCMP-led units, comprised of multiple federal or law enforcement agencies.

Combined Forces Special Enforcement Unit (CFSEU)

A multi-partner operation specifically tasked with the mandate to expose, investigate, prosecute, and dismantle organized criminal enterprises.

Immigration Task Force (ITF)

This team is part of the GTA Immigration and Passport section and works closely with other police departments and partner agencies to apprehend high risk migrant fugitives through teamwork and the effective use of intelligence.

Integrated Border Enforcement Team (IBET)

These teams are multi-partner law enforcement team harmonizing Canadian and U.S. efforts to target cross-border criminal activity and enhance border integrity.

Marine Security Enforcement Team (MSET)

The marine unit patrols the Great Lakes and St. Lawrence Seaway with a mandate to enforce laws relating to national security, organized crime and other federal statutes.

Integrated Counterfeit Enforcement Team (ICET)

In partnership with the Bank of Canada and working closely with other financial institutions, this team investigates the production, possession, and passing of counterfeit currency and payment cards.

Integrated Market Enforcement Team (IMET)

The GTA is home to three specialized IMET teams. These teams strengthen the law enforcement community's ability to detect, investigate, prosecute, and deter capital markets fraud by focusing resources on the most serious market related crimes.

Integrated National Security Enforcement Team (INSET)

The O Division INSET team includes representatives of the RCMP, federal partners and agencies as well as provincial and municipal police services. This specialized team collects, analyzes and shares intelligence in order to detect and investigate terrorist groups or individuals who pose a threat to Canada's national security.

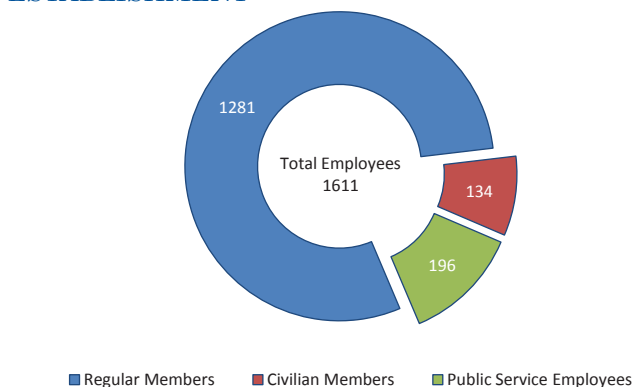
Integrated Proceeds of Crime (IPOC)

Anything bought with money generated by crime can legally be taken away. Integrated Proceeds of Crime (IPOC) Units take the profit out of crime through the identification and restraining of illicit wealth, as well as investigating money laundering activities.

Regional Integrated Gang Unit (RIGU)

Formed in 2007, RIGU has three primary mandates for combating gang activity in north-western Ontario: intelligence gathering, investigation/enforcement and education.

ESTABLISHMENT



CONTACT US:

www.rcmp-grc.gc.ca/on

www.facebook.com/rcmp.ontario

[@RCMPONT](https://twitter.com/RCMPONT)

"O" Division RCMP Headquarters
 130 Dufferin Avenue, 5th Floor
 P.O. Box 3240, Station "B"
 London, ON N6A 4K3
 Telephone: 519.640.7267
 Recruiting: 1.877.888.0433