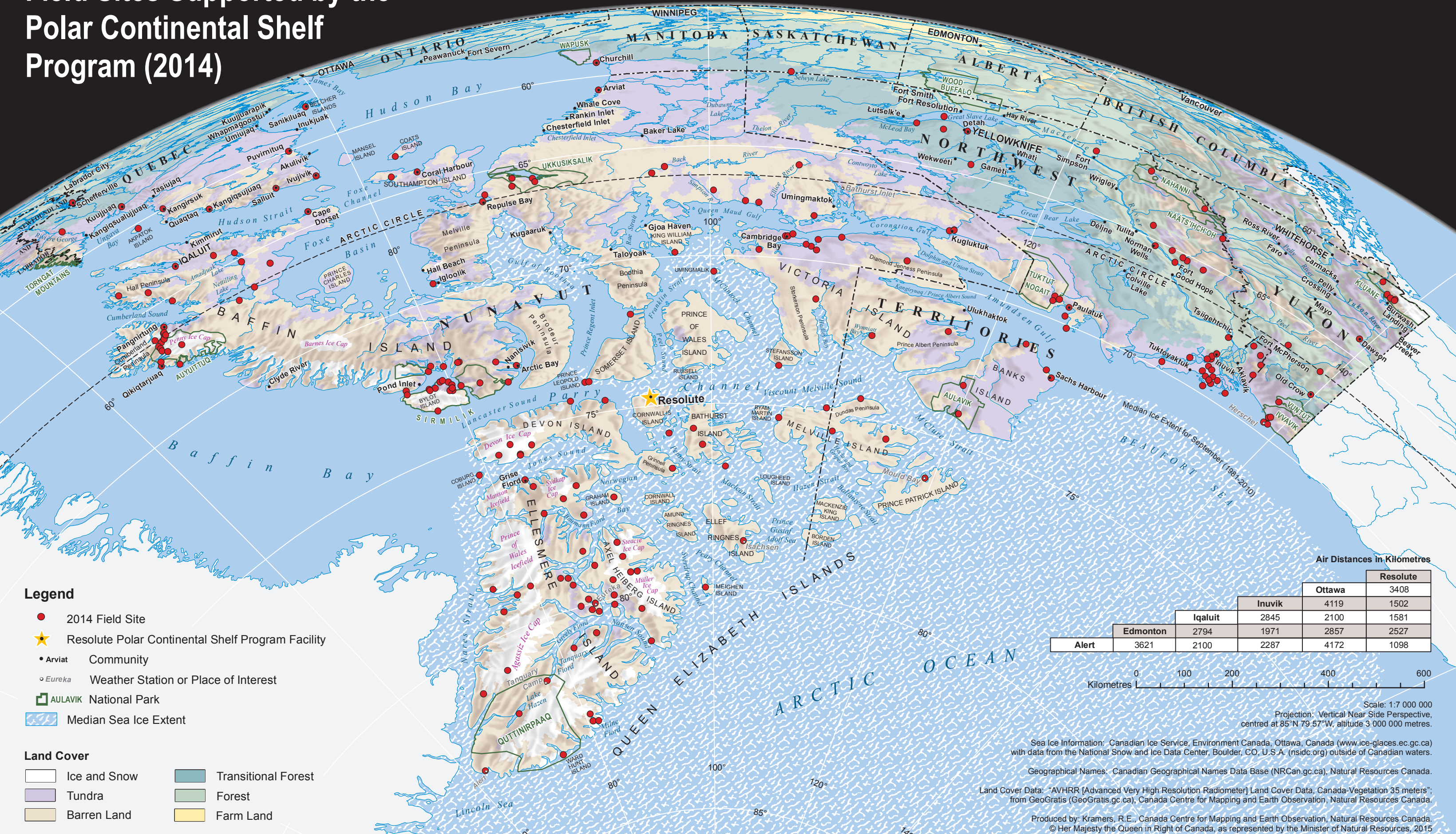


Field Sites Supported by the Polar Continental Shelf Program (2014)



- Legend**
- 2014 Field Site
 - ★ Resolute Polar Continental Shelf Program Facility
 - Arviat Community
 - Eureka Weather Station or Place of Interest
 - AULAVIK National Park
 - Median Sea Ice Extent
- Land Cover**
- Ice and Snow
 - Transitional Forest
 - Tundra
 - Forest
 - Barren Land
 - Farm Land

Air Distances in Kilometres

	Ottawa	Inuvik	Resolute
Alert	3621	2100	2287
Edmonton	2794	1971	2857
Iqaluit	2845	2100	1581



Scale: 1:7 000 000
 Projection: Vertical Near Side Perspective, centred at 85°N 79.57°W, altitude 3 000 000 metres.

Sea Ice Information: Canadian Ice Service, Environment Canada, Ottawa, Canada (www.ice-glaces.ec.gc.ca) with data from the National Snow and Ice Data Center, Boulder, CO, U.S.A. (nsidc.org) outside of Canadian waters.

Geographical Names: Canadian Geographical Names Data Base (NRCan.gc.ca), Natural Resources Canada.

Land Cover Data: "AVHRR [Advanced Very High Resolution Radiometer] Land Cover Data, Canada-Vegetation 35 meters"; from GeoGratis (GeoGratis.gc.ca), Canada Centre for Mapping and Earth Observation, Natural Resources Canada.

Produced by: Kramers, R.E., Canada Centre for Mapping and Earth Observation, Natural Resources Canada.
 © Her Majesty the Queen in Right of Canada, as represented by the Minister of Natural Resources, 2015