

How to read the geological map
The objective of mapping south-central Baffin Island in 2015 was to improve the geological knowledge and document the economic potential of the greater local area.

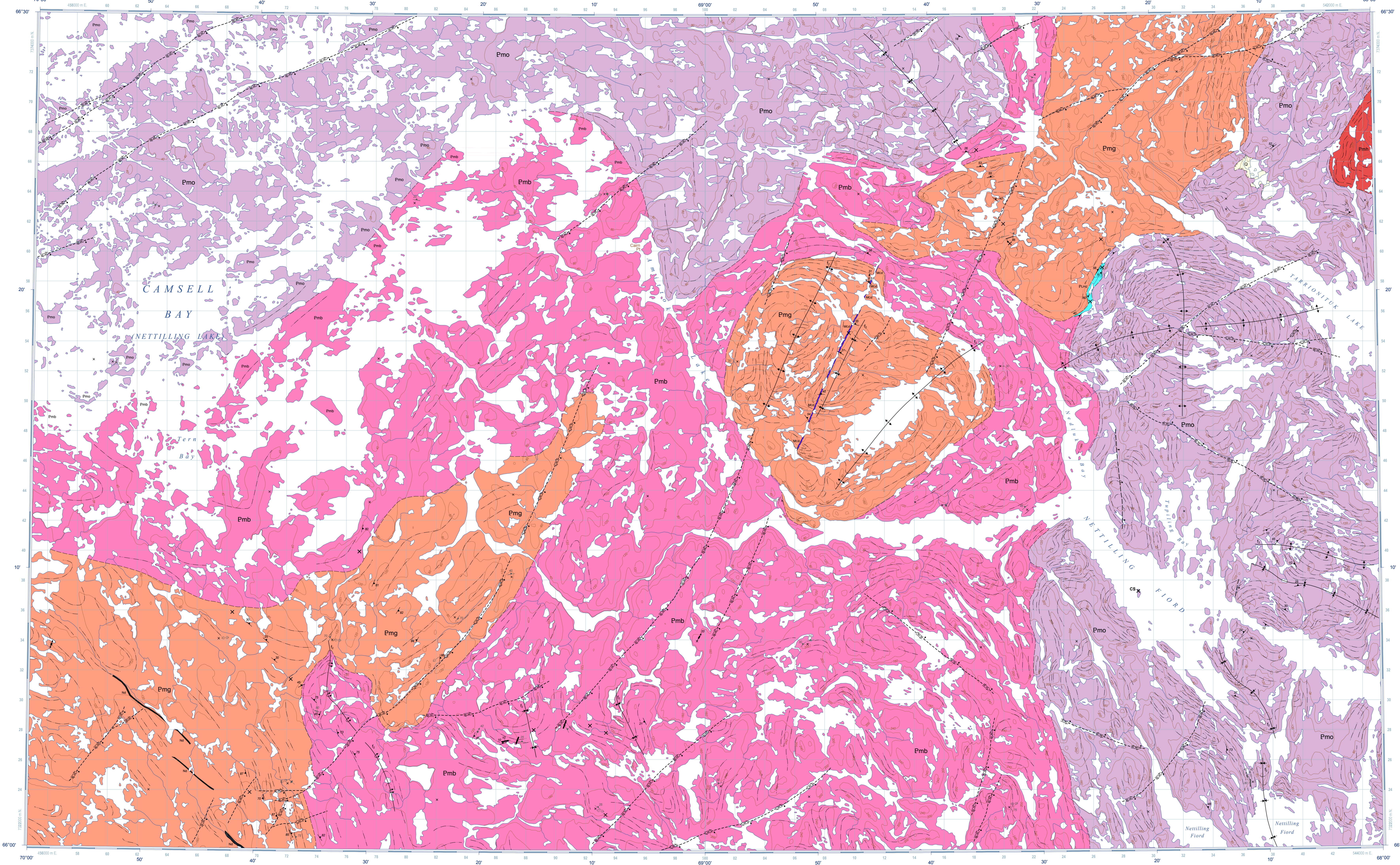
The most striking features of geological maps are its colours. Each colour represents a different geological unit. A geological unit is a volume of rock of a given age.

The place where two different geological units are found next to each other is called a contact, and this is represented by different kinds of lines on the geological map.

All geological maps come with a table called a map legend. In the legend, all the colours and symbols are shown and explained.

Fieldwork and geological mapping on south-central Baffin Island established the distribution of metasedimentary rocks (Lake Harbour Group) map units.

This map summarizes the field observations for the Amittok Lake (south) map area following eight weeks of regional and targeted bedrock mapping.



HOW TO READ THE LEGEND
This legend is common to CGM 256E, CGM 254E, CGM 255E, CGM 256E, CGM 257E, CGM 258E, CGM 259E, CGM 260E, CGM 261E, and CGM 262E. Coloured legend blocks denote map units that appear on this map.

Abstract Résumé
The 2015 field campaign comprises a two-week mission to update map coverage for the whole of Baffin Island south of latitude 70°N.

Authors: M.R. St-Onge, O.M. Weller, B.J. Dyck, N.M. Rayner, T. Chadwick, and D. Liliane
Geology by M.R. St-Onge, O.M. Weller, B.J. Dyck, N.M. Rayner, T. Chadwick, and D. Liliane.

This map is part of the Geo-mapping for Energy and Minerals (GEM) Program on Baffin Island led by the Geological Survey of Canada (GSC) in collaboration with the Canada-Nunavut Geoscience Office (CNGO).

GEOLOGY AMITTOK LAKE (SOUTH) Baffin Island, Nunavut 1:100 000
Mean magnetic declination 2016, 31°10'W, decreasing 28.9 annually.

The Geological Survey of Canada welcomes corrections or additional information from users.
Data may include additional observations not portrayed on this map.

This publication is available for free download through GEOCAN (http://geocan.nrcan.gc.ca/) and the Canada-Nunavut Geoscience Office (http://cngoc.ca/).

Recommended citation
St-Onge, M.R., Weller, O.M., Dyck, B.J., Rayner, N.M., Chadwick, T., and Liliane, D., 2016, Geology, Amittok Lake (south), Baffin Island, Nunavut, Geological Survey of Canada, Canadian Geoscience Map 256E, (preliminary), Canada-Nunavut Geoscience Office, Open File Map 2016-13E, scale 1:100 000, doi:10.4095/297971

Preiminary publications in this series have not been scientifically edited.

GEOLOGICAL SURVEY OF CANADA CANADIAN GEOSCIENCE MAP 256E CANADA-NUNAVUT GEOSCIENCE OFFICE OPEN FILE MAP 2016-13E GEOLOGY AMITTOK LAKE (SOUTH) Baffin Island, Nunavut