



**GEOLOGICAL SURVEY OF CANADA
OPEN FILE 6948**

**An Inventory of Borrow Pits and Pond Development
between 1961 and 2005, Highway 3, Yellowknife Region,
Northwest Territories**

S.A. Wolfe, S. Delaney, C. Duchesne

2011



**Natural Resources
Canada**

**Ressources naturelles
Canada**

Canada



**GEOLOGICAL SURVEY OF CANADA
OPEN FILE 6948**

**An Inventory of Borrow Pits and Pond Development
between 1961 and 2005, Highway 3, Yellowknife Region,
Northwest Territories**

S.A.Wolfe, S. Delaney, C. Duchesne

2011

©Her Majesty the Queen in Right of Canada 2011

doi:10.4095/289032

This publication is available from the Geological Survey of Canada Bookstore
(http://gsc.nrcan.gc.ca/bookstore_e.php).

It can also be downloaded free of charge from GeoPub
(<http://geopub.nrcan.gc.ca/>).

Wolfe, S.A., Delaney, S., and Duchesne, C., 2011. An Inventory of Borrow Pits and Pond Development between 1961 and 2005, Highway 3, Yellowknife Region, Northwest Territories, Geological Survey of Canada, Open File 6948, 1 CD-ROM. doi:10.4095/289032

Publications in this series have not been edited; they are released as submitted by the author.

ABSTRACT

This open file provides an inventory of historical borrow pit locations and subsequent pond development formed between 1961 and 2005 along the highway corridor between Behchoko and Yellowknife, Northwest Territories. The inventory and database were prepared to better understand potential relationships between highway performance and past terrain disturbance that could affect permafrost and geotechnical properties of sediments. The accompanying shapefile format data can be used in a GIS to place areas of borrow pits and recent ponds onto digital maps for referencing. In addition, files provided in KML format can also be used to locate these areas in Google™ Earth. The primary purpose of this inventory is to approximate the location and size of historical borrow pits and pond development in relation to highway infrastructure, as a basis for present and future reference to highway performance in this permafrost-affected terrain.

TABLE OF CONTENTS

	Page
Abstract	i
Table of Contents	ii
List of figures and tables	iii
1. Introduction	1
2. Purpose	3
3. Methods	4
Digitization	4
Spatial referencing correction	5
4. Limitations	6
5. Results	7
6. Conclusions	11
7. Acknowledgements	12
8. References	12
Appendix I: Historical disturbance maps along Highway 3 corridor	14
Appendix II: Historical disturbance inventory along Highway 3 corridor	20

LIST OF FIGURES

	Page
1. Permafrost and ground ice in western Canada.	1
2. Taiga Shield Ecoregions depicting the Great Slave Lowland High Boreal Ecoregion	2
3. Example of borrow pit and pond identification in Google™ Earth	5
4. Location of areas where geo-referencing adjustments were made	6
5. Reference map of historical disturbances along Highway 3 corridor	7
6. Frequency distribution of disturbances area for borrow pits	9
7. Frequency distribution of disturbances area for pond in borrow pits	9
8. Frequency distribution of disturbances area for other ponds	10
9. Cumulative area of historical disturbances in the Yellowknife to Behchoko corridor	11

LIST OF TABLES

1. Flight lines and photo information for historical air photos used in study	4
2. Descriptive statistics for disturbances noted between 1961 and 2005	8
3. Descriptive statistics for borrow pits, ponds in borrow pits and other ponds noted between 1961 and 2005	8

1. INTRODUCTION

Permafrost is an important component of the landscape in the Yellowknife region, which lies within the extensive discontinuous permafrost zone of Canada (Fig. 1). Permafrost and its associated ground ice can affect entire ecosystems through their influence on drainage patterns and ground stability, and can also present challenges to northern development. The region between Yellowknife and Behchoko, along the north shore of Great Slave Lake, resides within the Great Slave Lowland High Boreal Ecoregion (Fig. 2).

Bedrock, wet fens and saturated bogs are typically devoid of permafrost in this area, whereas spruce and deciduous forests and peatlands typically contain permafrost, though at relatively warm temperatures (Wolfe, 1998; Gaandarse, 2011). Thus, the presence of permafrost in this region is highly variable, with abrupt transitions from frozen to unfrozen ground usually occurring over short distances. In addition, thick ice lenses and even massive ground ice in excess

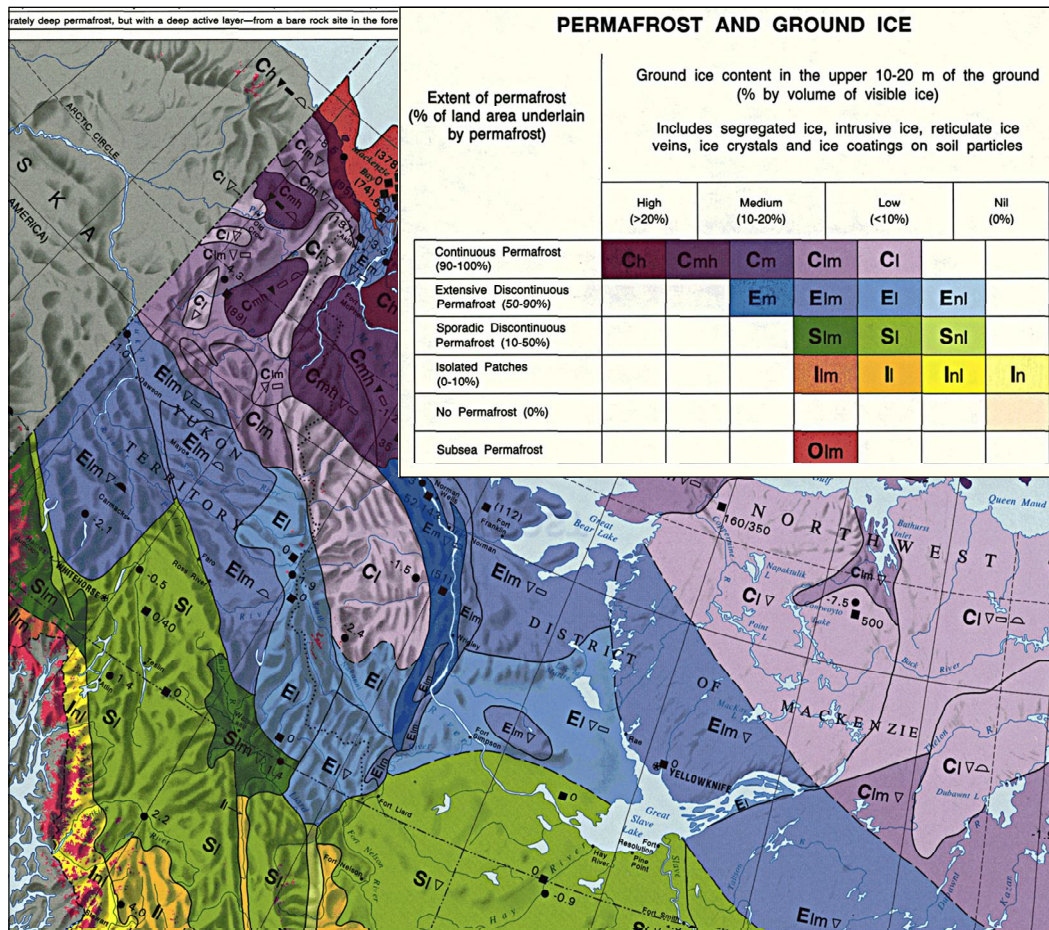


Figure 1. Permafrost and ground ice in western Canada. The Yellowknife region resides within the extensive discontinuous permafrost zone with a low-to-medium ground ice content (Heginbottom et al., 1995).

of 2.5 m thick can be found in the area (Aspler 1978; EBA, 1995). More common, however, are thinner (1 to 20 mm thick) lenticular ice lenses found primarily in clays of glaciolacustrine origin. These clays represent the dominant surficial unit in the region, and were deposited by Glacial Lake McConnell between about 10 and 8.5 ka BP (Lemmen et al., 1994; Smith, 1994).

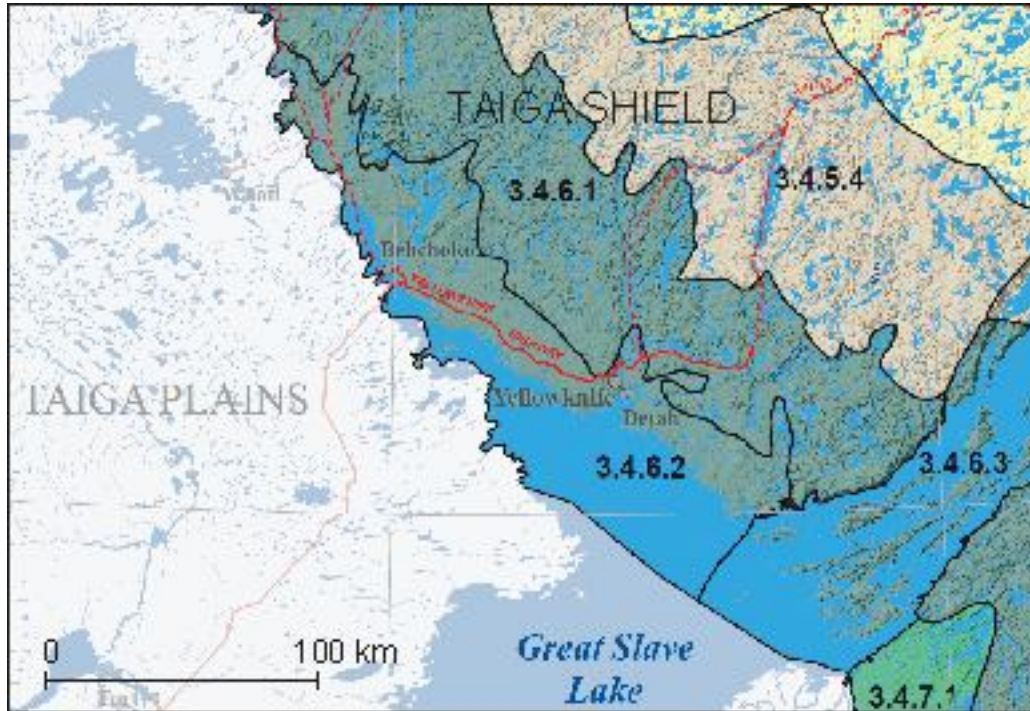


Figure 2. Taiga Shield Ecoregions, depicting the Great Slave Lowland High Boreal Ecoregion (area 3.4.6.2). Highway 3, between Behchoko and Yellowknife extends across this region (Ecosystem Classification Group, 2008).

The only all-weather ground-based transportation access to and from Yellowknife is via Highway 3, which extends across the discontinuous permafrost zone and the high boreal ecoregion (Figs. 1 and 2). During the mid-1960s, the first all-weather road access was constructed along the route between Yellowknife and Behchoko (formerly Rae-Edzo). The road embankment was built from local borrow materials, derived primarily from the Glacial Lake McConnell glaciolacustrine silts and clays, as this is the main locally-available surficial sediment in the area. This route largely avoided bedrock and water bodies, thus resulting in a numerous turns. Between 1999 and 2006, the highway route between Yellowknife and Behchoko was upgraded with major realignments to straighten the road and maximize the portion of the road that is on bedrock (EBA, 1995).

Before and after construction, several engineering studies were conducted (EBA, 1995, 1998, 2003a and 2003b), which provide background to the pre-existing and as-built geotechnical and geothermal conditions. Based on these reports, it is recognized that, where it is present, permafrost is generally warm (-1°C or warmer) and contains excess ground ice (EBA 2003b) within the fine-grained soils. This permafrost is very sensitive to factors that affect natural surface

heat transfer conditions such as removal of vegetation and alteration of snowdrift patterns, and is also sensitive to climatic variations (EBA, 2003b).

The re-built highway embankment is comprised primarily of open-graded blast rock fill (300 mm and less). The highway alignment was constructed over a variety of terrain conditions, including bedrock outcrops, undisturbed terrain and areas where new embankments were constructed over existing embankments (EBA, 2003b). In addition to these terrains, it is expected that the new highway alignment also intersects former borrow pits and related disturbed terrain. With the recognition that permafrost in this region is sensitive to natural and human disturbances, historical terrain disturbances may be a factor in the potential present and future performance of the highway embankment. Thus, documenting the location of historical terrain disturbance may provide important insight into future highway performance.

For these reasons, an initiative was undertaken to document the location of past borrow pits and disturbed terrain formed during earlier highway construction in the 1960s. In addition, historical change in the form of ponds, that developed either in borrow pits or in surrounding terrain, is also documented.

This Open File provides an inventory of borrow pits, as noted in aerial photographs taken in 1961, for the Highway 3 route between Behchoko and Yellowknife. The primary purpose of this inventory is to approximate the location and size of borrow pits along the corridor for present and future reference, given the possibility that these disturbance have likely affected permafrost in these locations. In addition, the location and size of ponds which have developed since 1961 either within borrow pits or in surrounding terrain along the highway corridor are also inventoried. It is anticipated that this inventory will assist in better understanding present and future highway performance.

2. PURPOSE

The purpose of this work is to inventory the changes that have occurred in the last 50 years at sites used as borrow pits for the construction of the original highway in 1961, between Behchoko and Yellowknife in the Northwest Territories. This stretch of highway spans about 130 km. This study documents the location, size, shape and number of borrow pit sites, and changes that have occurred in pits and surrounding areas in the last 50 years. It was initially recognized that a large number of borrow pits had since developed into ponds either as a results of excavation and/or thermokarst development. Thus, close attention was to be paid toward outlining such changes. In addition, portions of the new highway have been built overtop of former borrow pits. Thus, insight may be gained toward the changes of the conditions of the road over these locations.

3. METHODS

Digitization

This inventory was prepared by digitizing the location of past disturbed areas (borrow pits, etc) as noted on historical air photographs onto 2005 satellite-based imagery. This was accomplished through the use of NAPL air photos from 1961, Google™ Earth imagery and software application, and Arc GIS® software.

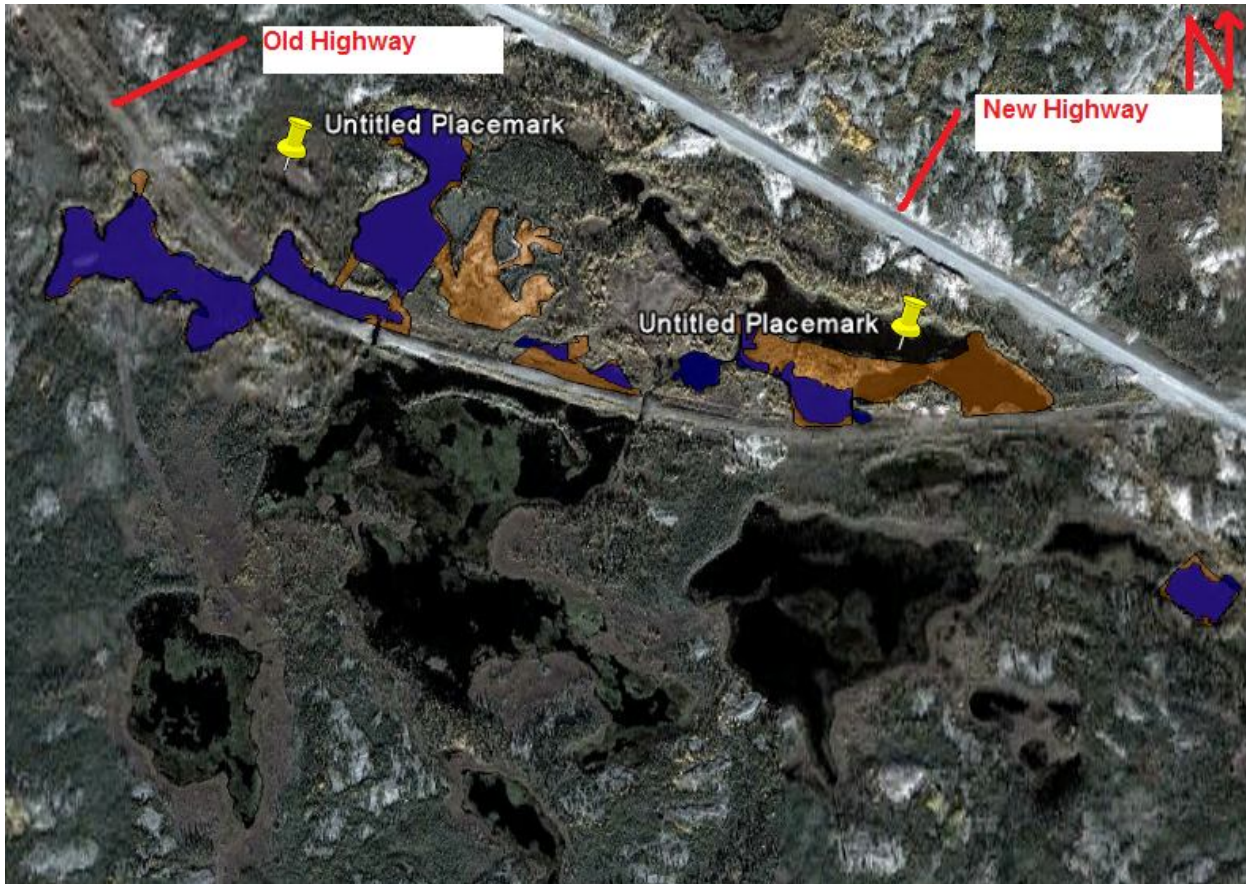
Air photos from September 1961, at an approximate scale of 1:17,400 were used as the historical basis for the study (Table 1). High resolution (600 dpi) scans of the photos were imaged on a high resolution computer monitor, to fill half of the screen area. On the other half of the screen area, the 2005 satellite image was displayed in Google™ Earth. By placing the air photos adjacent to the satellite image, the borrow pits observed in the air photos were outlined onto Google™ Earth using the “Polygon” tool.

Table 1. Flight lines and photo information for historical air photos used in study.

Flight Line	Year	Date	Alt (feet)	Focal Length (mm)	Scale	Photo Numbers
A-17494	1961	Sep-16	8700	152.14	1:17400	67-121
A-17495	1961	Sep-16	8700	152.14	1:17400	1-82

Polygons were sorted into three categories: “BP”, “BPpond”, and “1961 Ponds”. The “BP” polygons delineate the borrow pits that were visible as a white, scraped, land surface on the monochromatic 1961 air photos. These polygons were digitized onto the current Google™ Earth imagery where evidence of the past disturbance may or may not have been visible. The “BPpond” polygons delineate ponds that had developed within the borrow pits since the initial disturbance (therefore, ponds that were not present in 1961). Lastly, the “1961 Ponds” polygons delineate ponds that were visible on the Google™ Earth imagery, but not within the borrow pit locations observed in the 1961 air photos (meaning that they had formed at some point between 1961 and 2005). The polygons were created as 50% transparent to permit viewing of the land cover beneath; wherever needed, important notes about the polygons were saved within the description field (usually only in special cases). Important “Placemarks” were added to the Google™ Earth imagery using yellow push pins, and saved under a “Miscellaneous Features” folder. These placemarks predominantly marked areas that had been cleared in the 1961 images, but not excavated, or areas where there were differences in the morphology of the landscape between both images (for example: a change in lake margins, or forest that was flooded). An example of the inventory, as it appears in Google™ Earth, is shown in Figure 3.

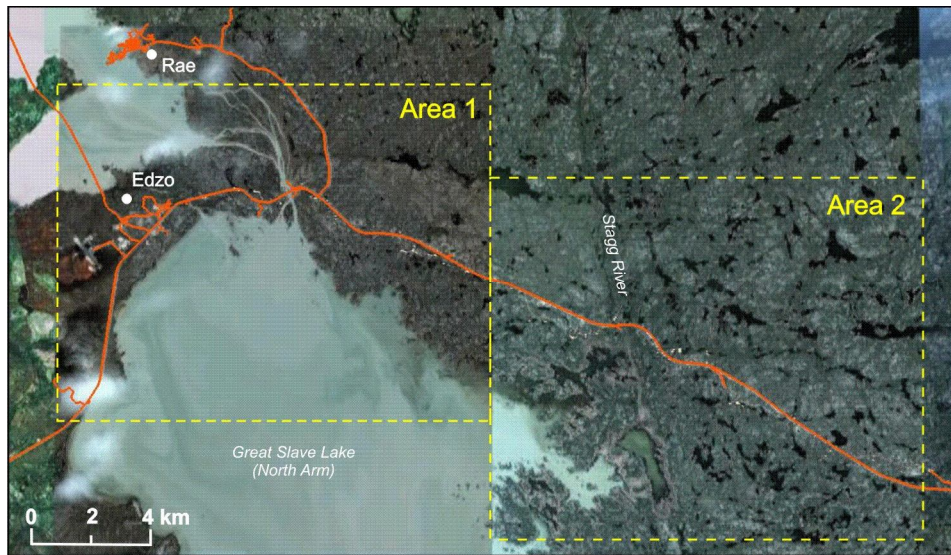
Figure 3. Example of borrow pit and pond identification in Google™ Earth. Former borrow pits are marked as orange polygons, and blue polygons represent new ponds. Yellow pushpins are placemarks, noting a cleared area (left) and a change in lake margin (right).



Spatial referencing correction

The borrow pits were digitized on Google™ Earth image base. Some geo-referencing problems were noted in two areas (Figure 4). Using road intersections from the National Topographic Database (1:50 000 scale maps) as reference, the geographical coordinates of 88 borrow pits found in area 1 were shifted 68 m west and 6 m north, and 295 borrow pits in area 2 were shifted 45 m east and 5m north, together with ponded areas.

Figure 4. Location of areas where geo-referencing adjustments were made.



The polygons and placemarks were saved as kml and kmz shape files and subsequently converted to Arc GIS® shapefile format. From the kml files, statistics such as the number of each type of polygon present, the mean, minimum, and maximum size of such polygons, their standard deviations, and total area covered were calculated (see Table 2 below).

4. LIMITATIONS

First, the digitizing process involved expert decisions, which were somewhat dependent on personal interpretation.

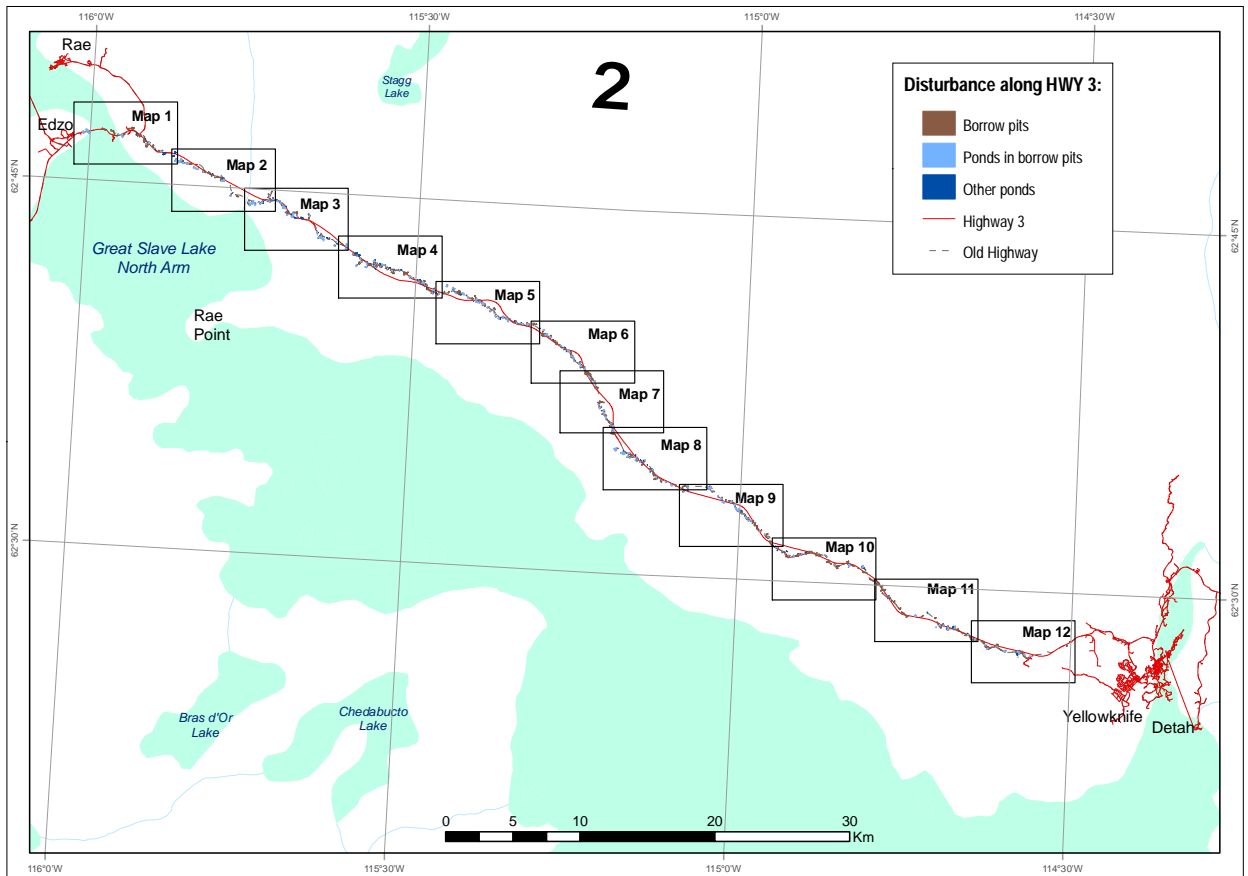
A limitation of this inventory is the temporal restriction of comparison between only two dates. This inventory only compares differences in borrow pits and ponds between the dates of 1961 and 2005. The inventory of borrow pits, for example, is based upon pits observed in the 1961 air photos, so that additional borrow pits developed after 1961 would not be captured. In contrast, as pond development is based upon ponds observed in 2005, these represent any ponded areas that occurred between 1961 and 2005 along the highway corridor. As this inventory documents ponds that were located within the 1961 borrow pits, as well as other ponds, the additional ponds may represent ponds that were formed in borrow pits created after 1961, or by other hydrological changes or disturbances that occurred after 1961.

The inventory only includes areas excavated as borrow pits. Other areas cleared but not used as borrow pits are documented as a separate point database rather than within the digitized polygon inventory.

5. RESULTS

Figure 5 is a reference map of the historical disturbances noted in this inventory. Appendix I provides individual maps (numbered 1 to 12 on the reference map) of the historical disturbances and Appendix II provides a detailed inventory.

Figure 5. Reference map of historical disturbances along Highway 3 corridor.



Based upon the descriptive statistics compiled in Table 2, a total of 1039 disturbances (borrow pits, ponds in borrow pits and other ponds) occur between 1961 and 2005, for a total of 365 hectares. Table 3 indicates that these disturbances include 431 borrow pits, 420 ponds in borrow pits and 180 other ponds. Borrow pits comprise a total of 295 hectares and are larger (mean = 0.68 ha; max. = 4.3 ha) than either ponds in borrow pits (total = 56; mean = 0.13 ha; max. = 2.0 ha) or other ponds (total = 15; mean = 0.8 ha; max. = 0.96 ha) formed between 1961 and 2005.

Table 2. Descriptive statistics for disturbances noted between 1961 and 2005.

<i>Disturbance parameter</i>	<i>Value</i>
Total disturbances	1039
Mean (ha)	0.35
Standard Error (ha)	0.02
Median (ha)	0.12
Standard Deviation (ha)	0.57
Sample Variance (ha)	0.32
Kurtosis (ha)	12.8
Skewness (ha)	3.2
Range (ha)	4.3
Minimum (ha)	0.001
Maximum (ha)	4.301
Sum (ha)	365
Confidence Level (95.0%)	0.035

Table 3. Descriptive statistics for borrow pits, ponds in borrow pits and other ponds noted between 1961 and 2005.

<i>Disturbance parameter</i>	<i>Borrow Pits</i>	<i>Ponds in Borrow Pits</i>	<i>Other Ponds</i>
Total disturbances	431	420	188
Mean (ha)	0.68	0.13	0.08
Standard Error (ha)	0.04	0.01	0.01
Median (ha)	0.42	0.05	0.03
Standard Deviation (ha)	0.73	0.24	0.14
Sample Variance (ha)	0.53	0.06	0.02
Kurtosis (ha)	5.9	20.6	17.7
Skewness (ha)	2.2	4.0	3.9
Range (ha)	4.3	2.0	0.9
Minimum (ha)	0.039	0.001	0.001
Maximum (ha)	4.301	2.026	0.958
Sum (ha)	295	56	15
Confidence Level (95.0%)	0.069	0.023	0.020

Figures 6 to 8 are histograms of the frequency distribution of the size of disturbances by type. The figures show the positive skewness of the disturbance distribution, with ponds tending to have a greater range of size than borrow pits.

Figure 6. Frequency distribution of disturbances area for borrow pits

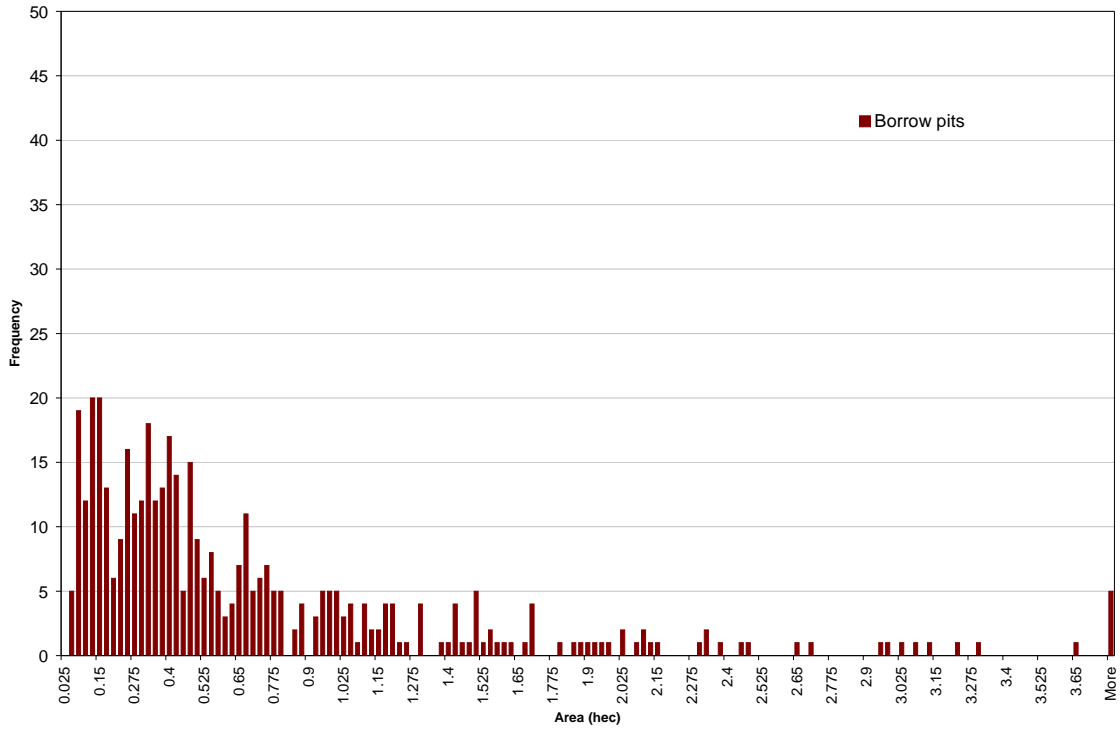


Figure 7. Frequency distribution of disturbances area for ponds in borrow pits

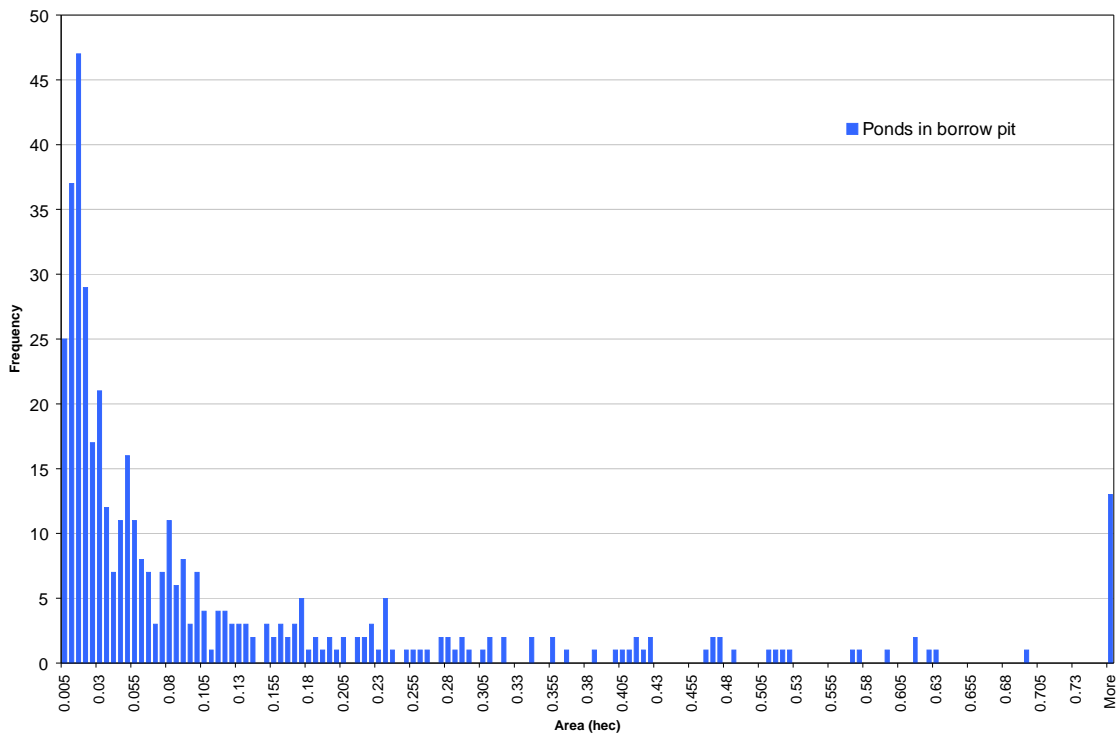


Figure 8. Frequency distribution of disturbances area for other ponds

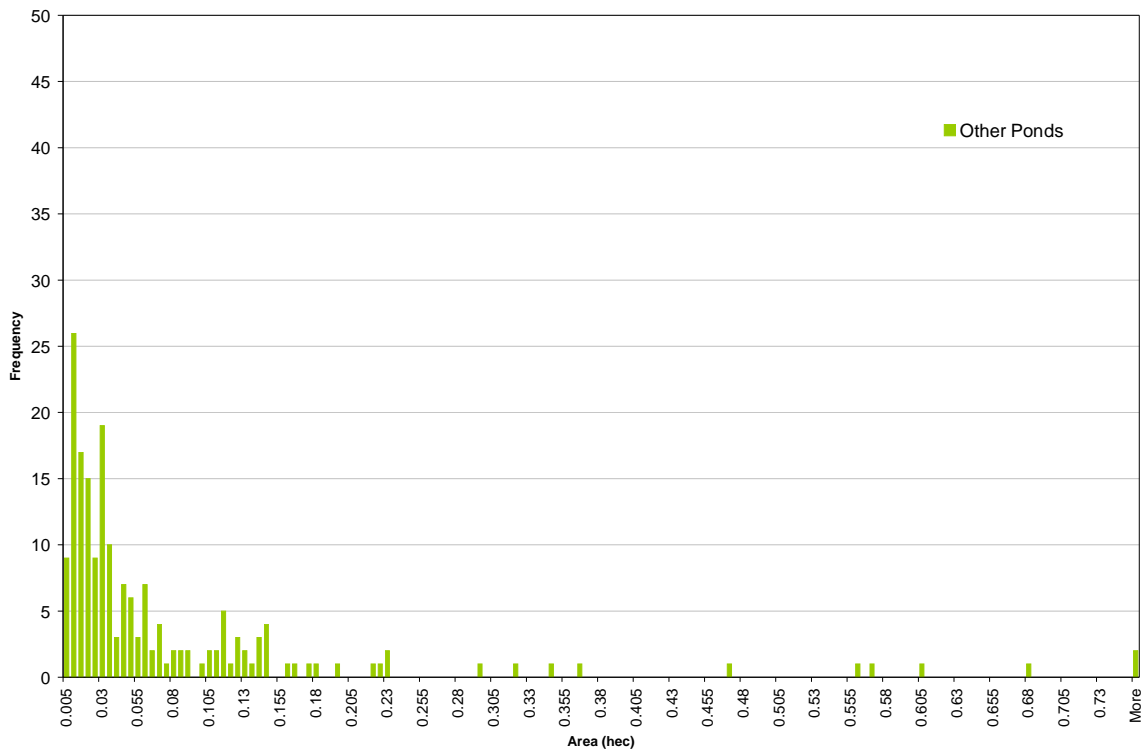
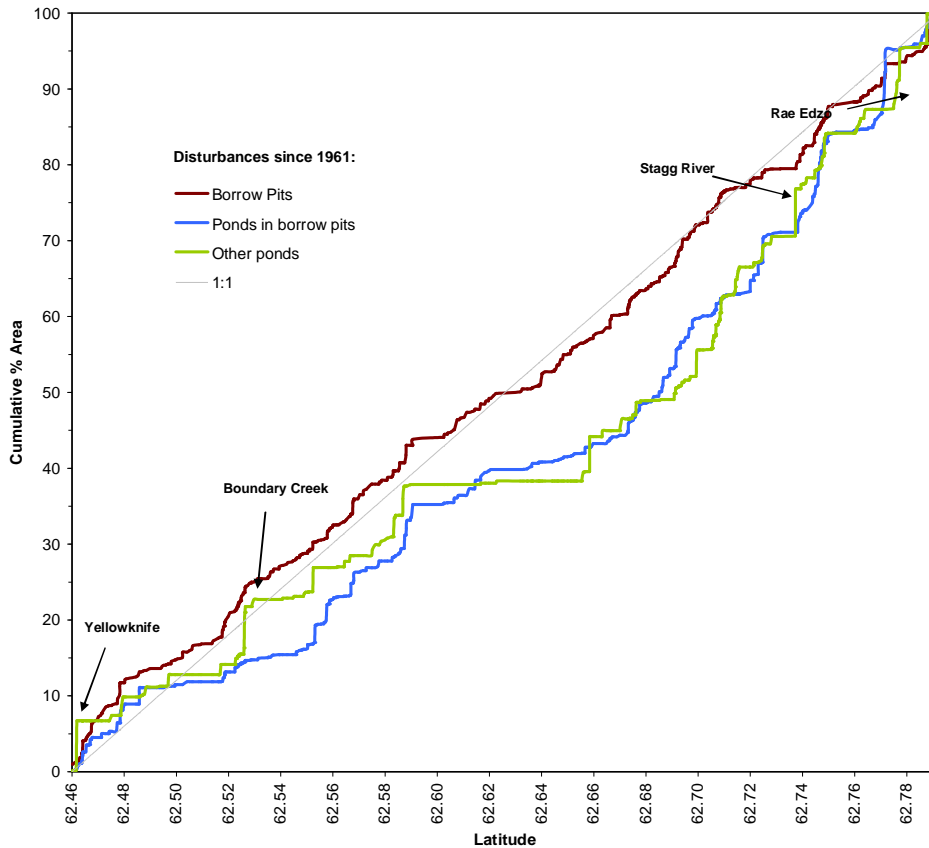


Figure 9 shows the cumulative area of the disturbances by latitude from Yellowknife to Behchoko. This figure shows the distribution of borrow pits and ponds along the highway corridor as may be related to sediment availability. For example, in the vicinity of Boundary Creek, Stagg River and Rae clay deposits are relatively thick and cover much of the local area. Consequently borrow pits and ponding sites are abundant in these areas. In contrast, much of the terrain between Boundary Creek and Stagg River in the vicinity of 62.58° and 62.66° contains exposed bedrock with less clay sediments and thus fewer locations for borrow pits and potential pond development.

Figure 9. Cumulative area of historical disturbances in the Yellowknife to Behchoko (Rae-Edzo) corridor.



Based on a 10 m buffer on each side of the road alignment along Highway 3, historical disturbance (borrow pits and ponds) intersect the highway in 130 locations. The mean area of the intersection is about 0.6 hectares, with a standard deviation of 0.75 hectares.

6. CONCLUSIONS

This Open File provides an inventory of historical disturbances between 1961 and 2005 along the Highway 3 corridor between Behchoko and Yellowknife. Construction of the original overland highway created approximately 431 borrow pits along the highway corridor between Behchoko and Yellowknife by 1961. These borrow pits average about 6800 m² (0.68 ha) in area, and range up to 43 000 m² (4.3 ha). In subsequent years about 420 ponds developed within borrow pits, and this has likely been accompanied by permafrost degradation where permafrost occurred prior to excavation. Ponds within borrow pits average about 1300 m² (0.13 ha) in area, and range up to 20 000 m² (2.0 ha). About 188 ponds have also formed along the highway corridor, that are not visibly associated with these borrow pits. These are smaller in area, averaging about 800 m²

(0.08 ha), and range up to 960 m² (0.96 ha). About 130 historical disturbances (borrow pits and ponds) intersect the most recent highway embankment. This information may be useful for assessing the performance of the newer highway, in addition to other surficial, historical and geotechnical information.

7. ACKNOWLEDGEMENTS

This Open File is a contribution to the Great Slave – TRACS (Transportation Risk in the Arctic to Climatic Sensitivity) Project, in the Natural Resources Canada, Climate Change Geoscience Program. Special thanks are extended to Dr. Steve Prashker for leading the Department of Geography & Environmental Studies, Student Practicum program and to Dr. Michael Pisaric for initiating contact with respects to this particular practicum study.

8. REFERENCES

Aspler, L.B., 1978. Surficial geology, permafrost and related engineering problems: in Mineral Industry Report, 1976: Indian and Northern Affairs Canada, Geology Division, Yellowknife, Northwest Territories, EGS 1978-11, p. 119-135.

Wolfe, S.A. (Ed.) 1998. Living with Frozen Ground: a field guide to permafrost in Yellowknife, Northwest Territories. Geological Survey of Canada, Miscellaneous Report 64, 71 p.

EBA Engineering Consultants Limited, 1995. Yellowknife Highway (No. 3), N.W.T., km 242 to km 256, Preliminary Geotechnical Evaluation; Project 0701-95-11776, 14 p.

EBA Engineering Consultants Limited, 1998. Conceptual Road Design Study, N.W.T. HWY. No. 3., km 243.9 - km 256.4; Project 0701-98-13330, 13 p.

EBA Engineering Consultants Limited, 2003a. Yellowknife Highway (No. 3), Ground Temperature Cable Installation As-Built Report; Project 0701-95-1700051.506, 3 p.

EBA Engineering Consultants Limited, 2003b. Preliminary Geothermal Evaluation Yellowknife Highway (NWT No. 3), Km 252 + 680 & Km 262 +330; Project 0701-95-1700051.506, 12 p.

Ecosystem Classification Group. 2008. Ecological Regions of the Northwest Territories – Taiga Shield. Government of the Northwest Territories, Yellowknife, NT, Canada, viii + 149 p. + insert map.

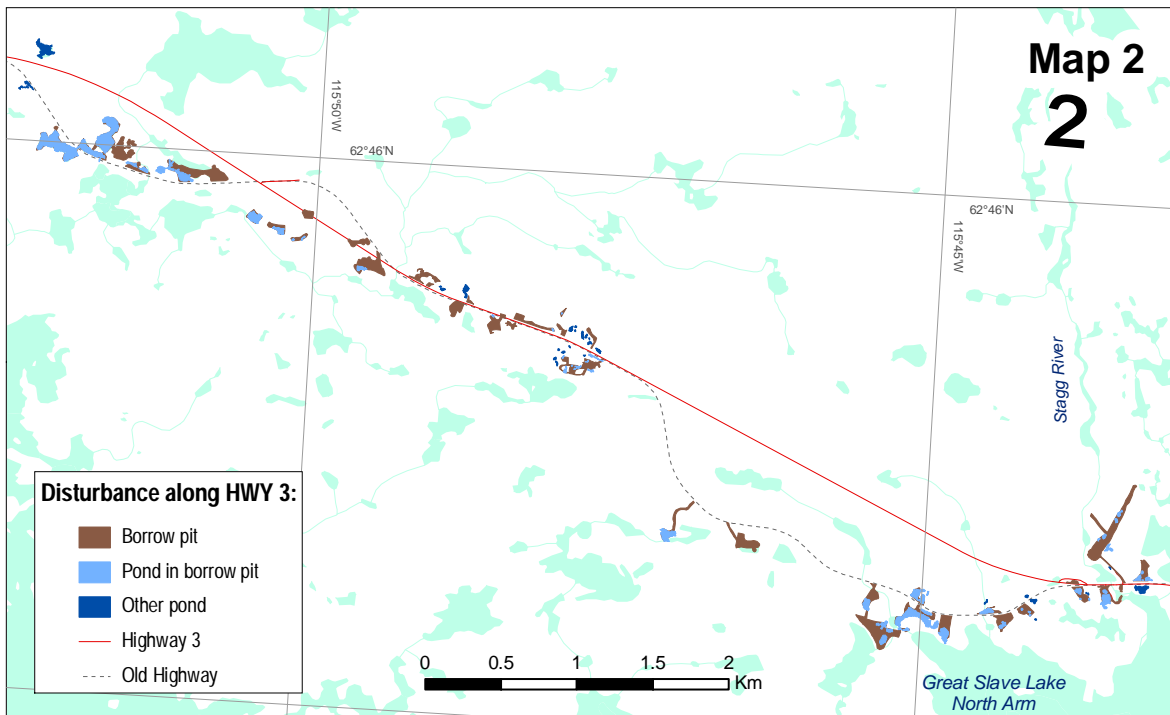
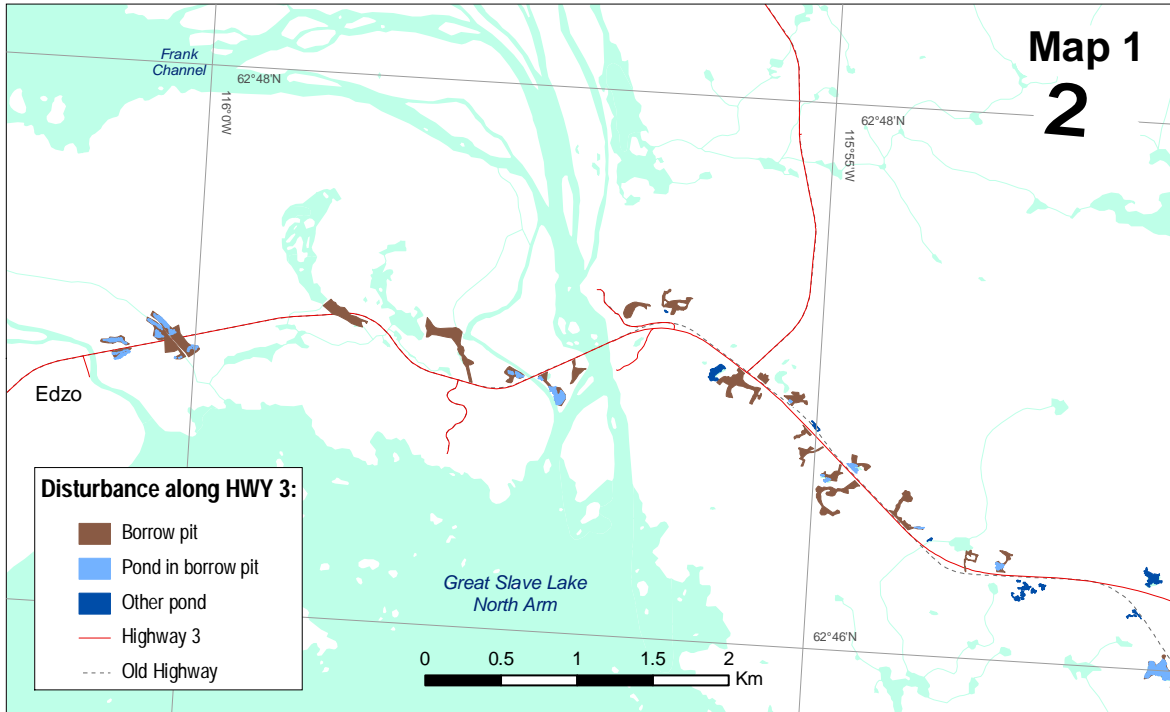
Gaandarse, A. 2011. Seasonal Thaw Depths in Relation to Surficial Characteristics in the Taiga Shield High Boreal Ecoregion Surrounding Yellowknife, Northwest Territories. Department of Geography, Carleton University, BA Thesis, 59 p.

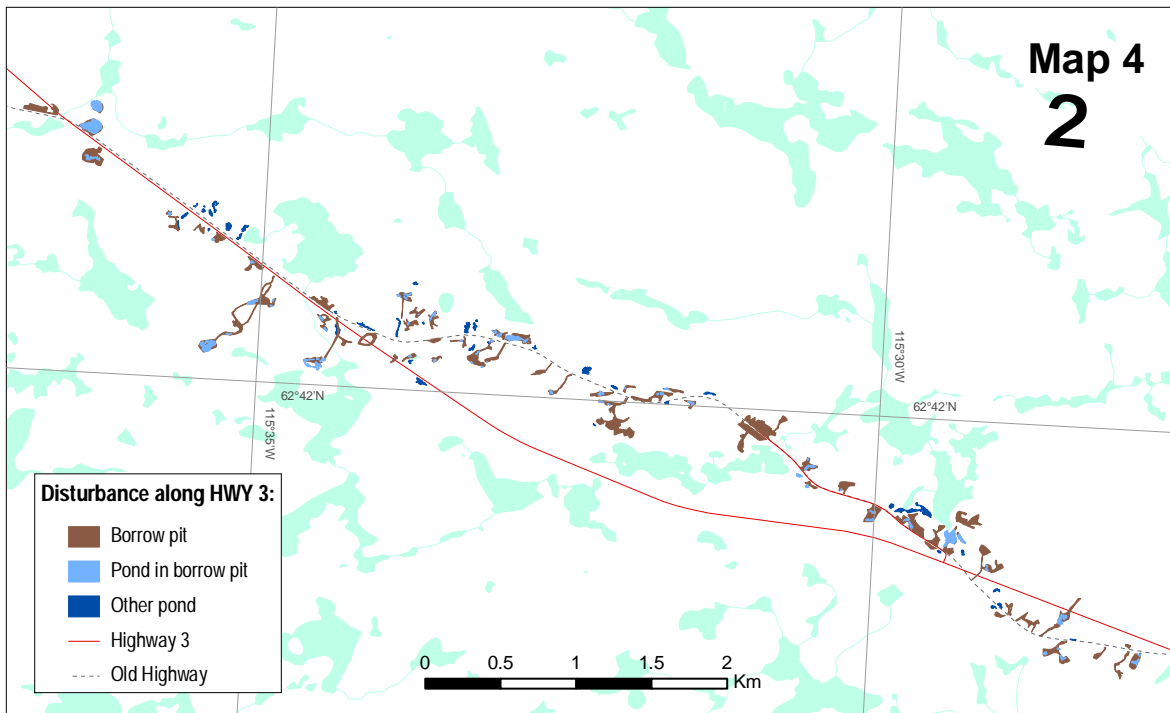
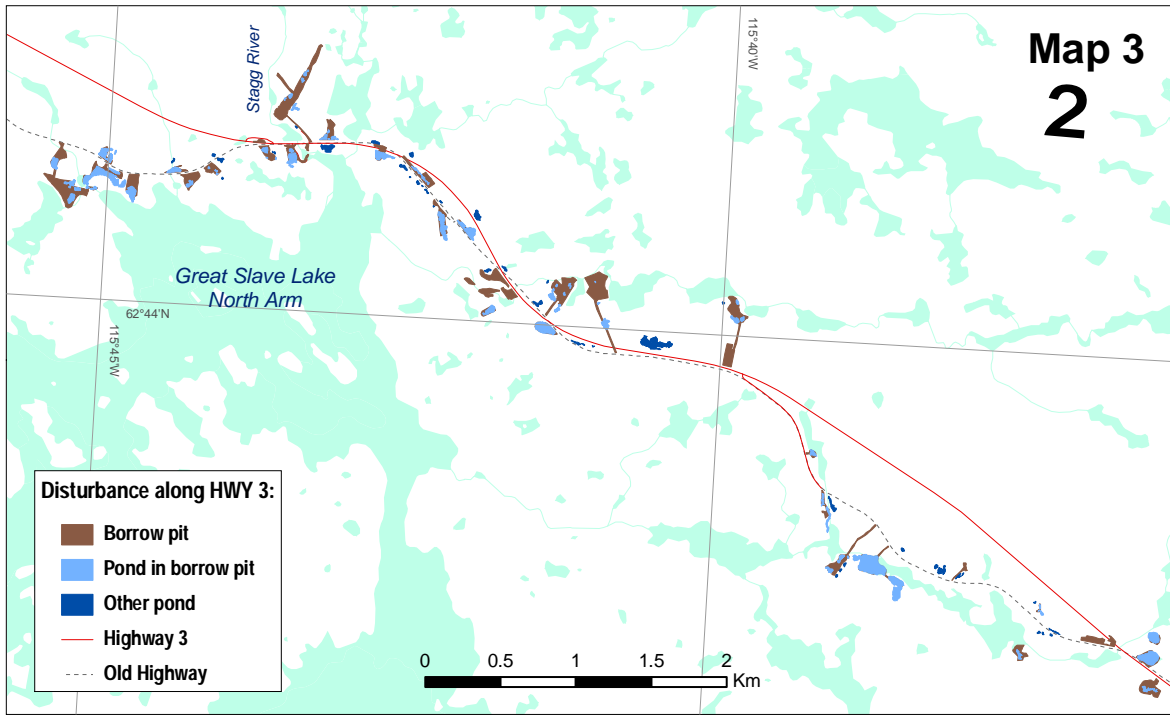
Heginbottom, J.A., Dubeuil, M.A., and Harker, P.T. 1995. Canada, Permafrost. The National Atlas of Canada, 5th ed. Ottawa: Natural Resources Canada.

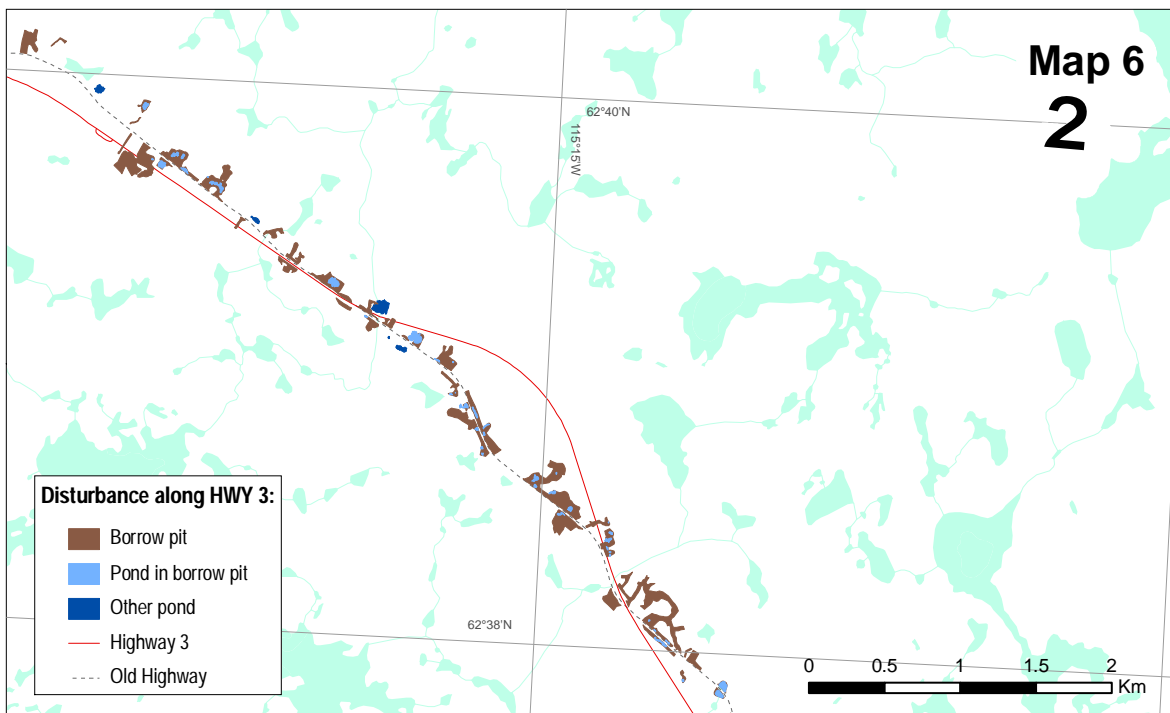
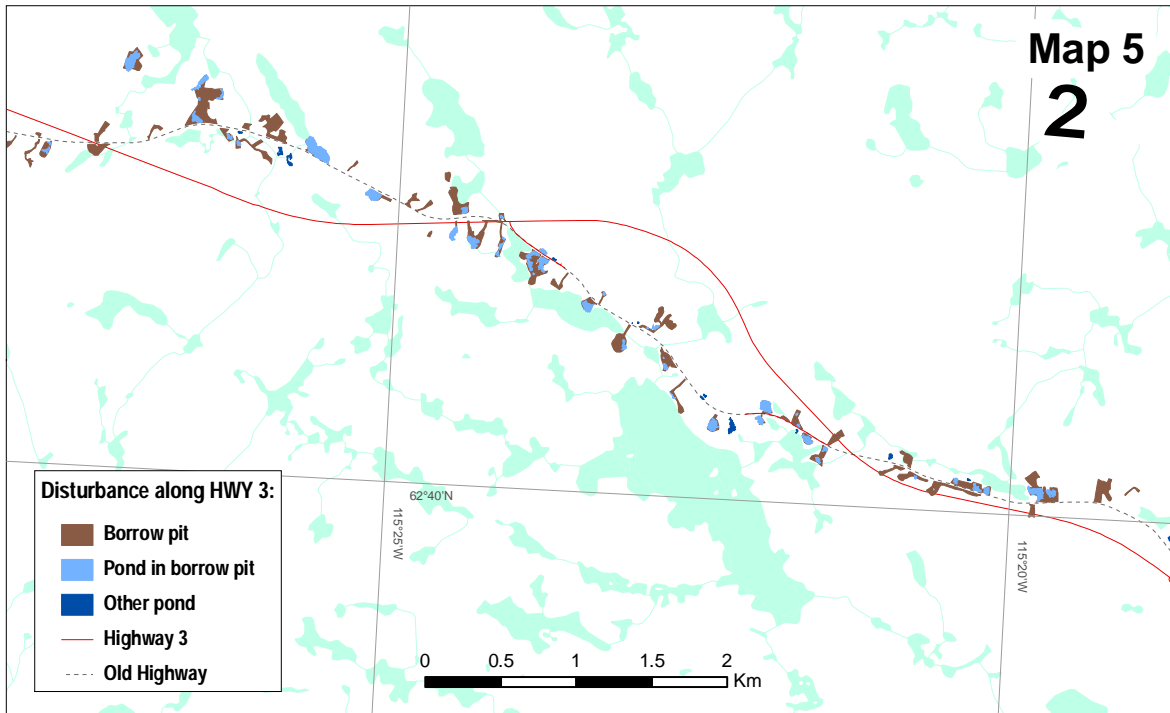
Lemmen, D.S., Duk-Rodkin, A. and Bednarski, J.M. 1994. Late glacial drainage systems along the northwestern margin of the Laurentide Ice Sheet. *Quaternary Science Reviews*, 13, p. 805-828.

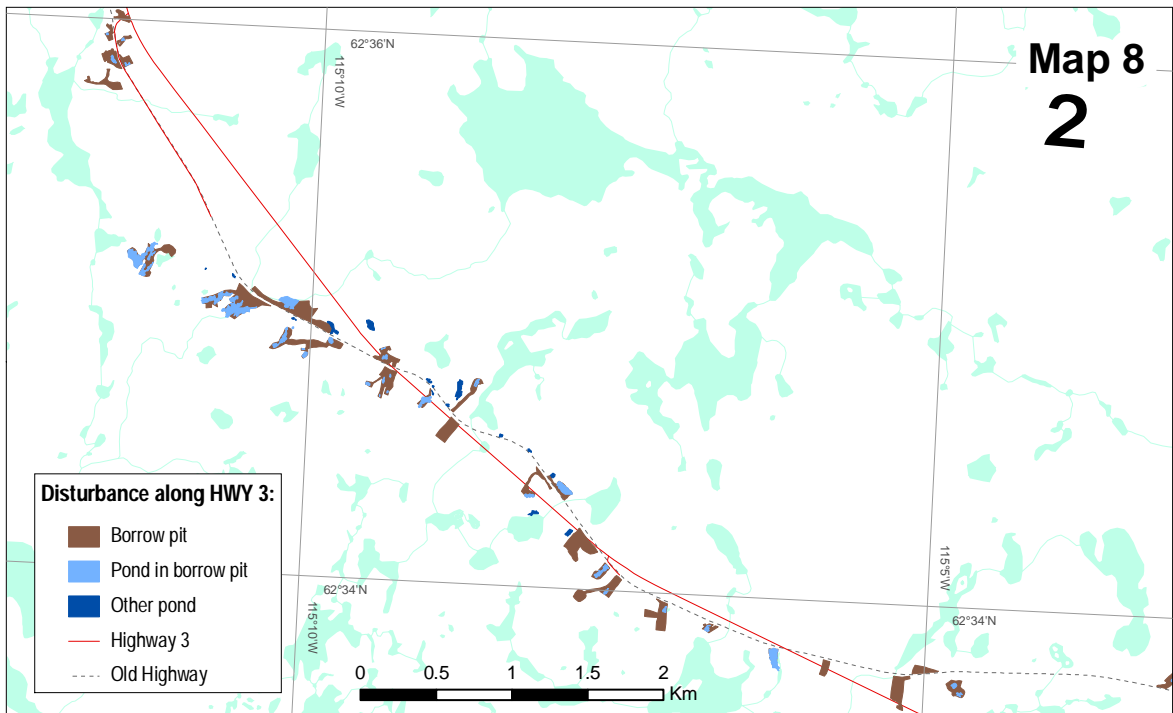
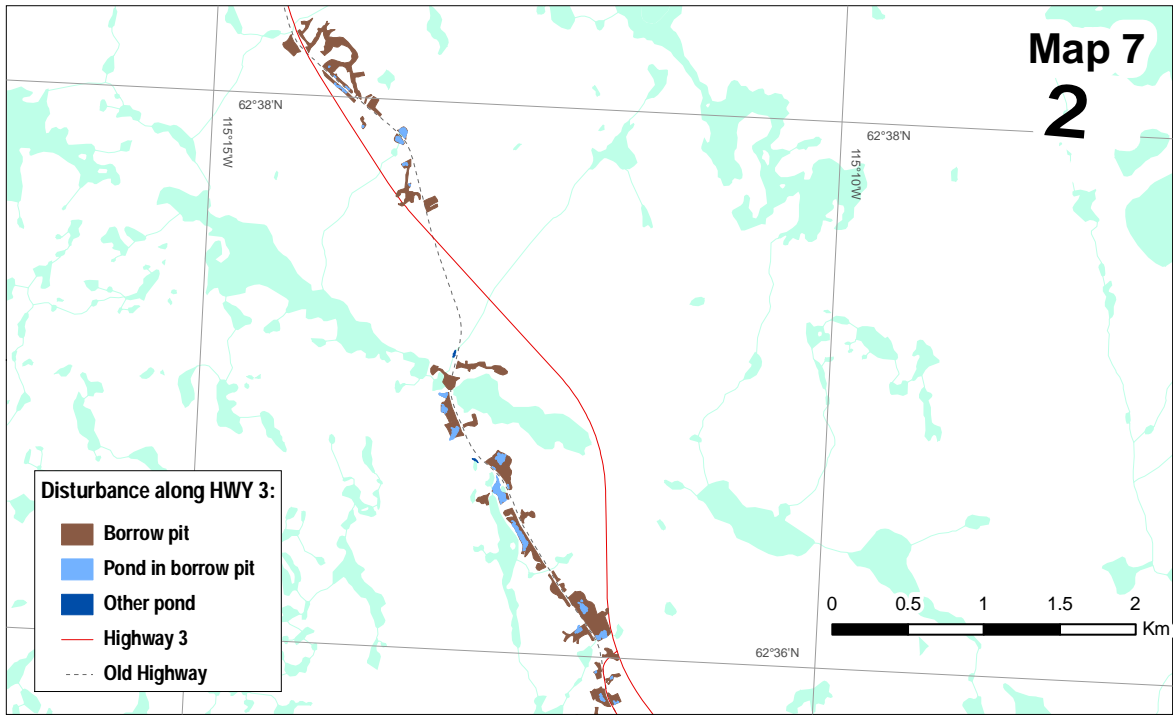
Smith, D.G., 1994. Glacial lake McConnell: Paleogeography, age, duration, and associated river deltas, mackenzie river basin, western Canada. *Quaternary Science Reviews*, 13, p. 829-843.

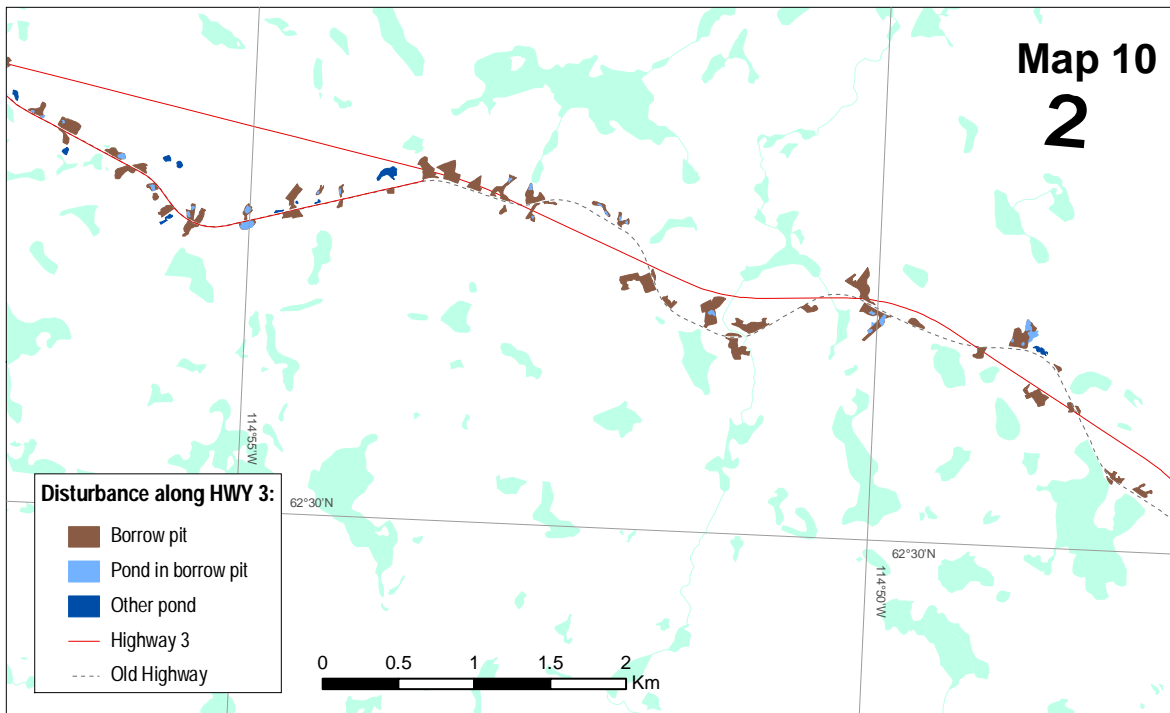
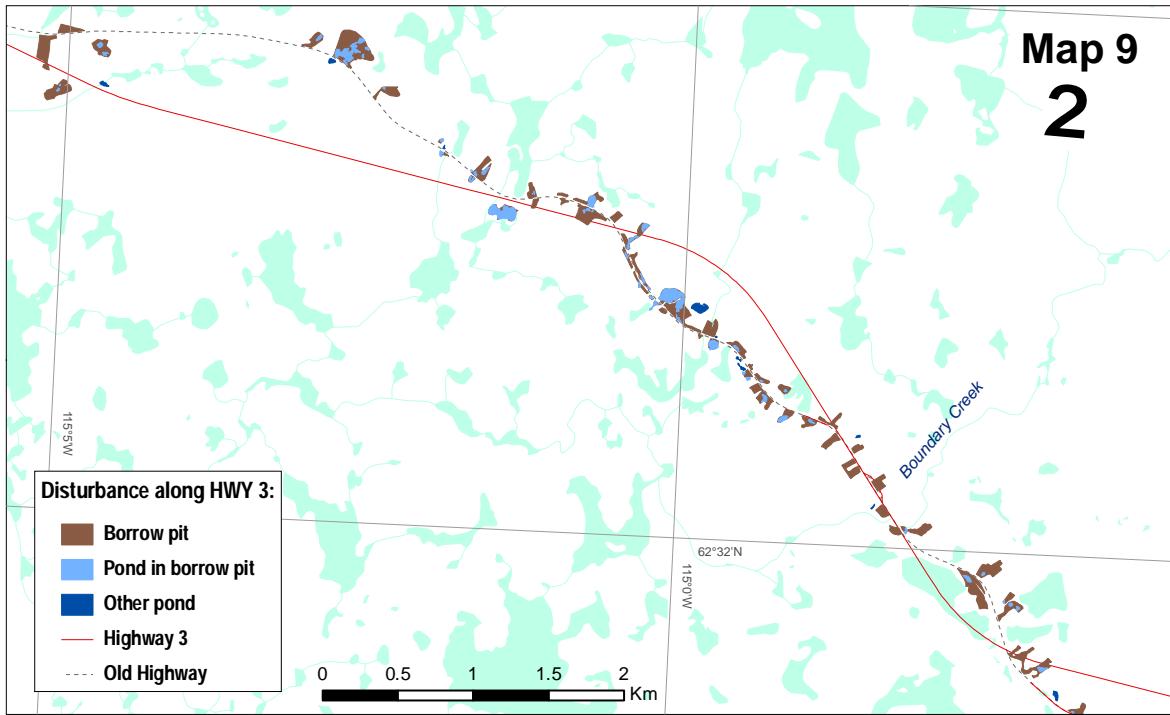
Appendix I Historical disturbance maps along Highway 3 corridor

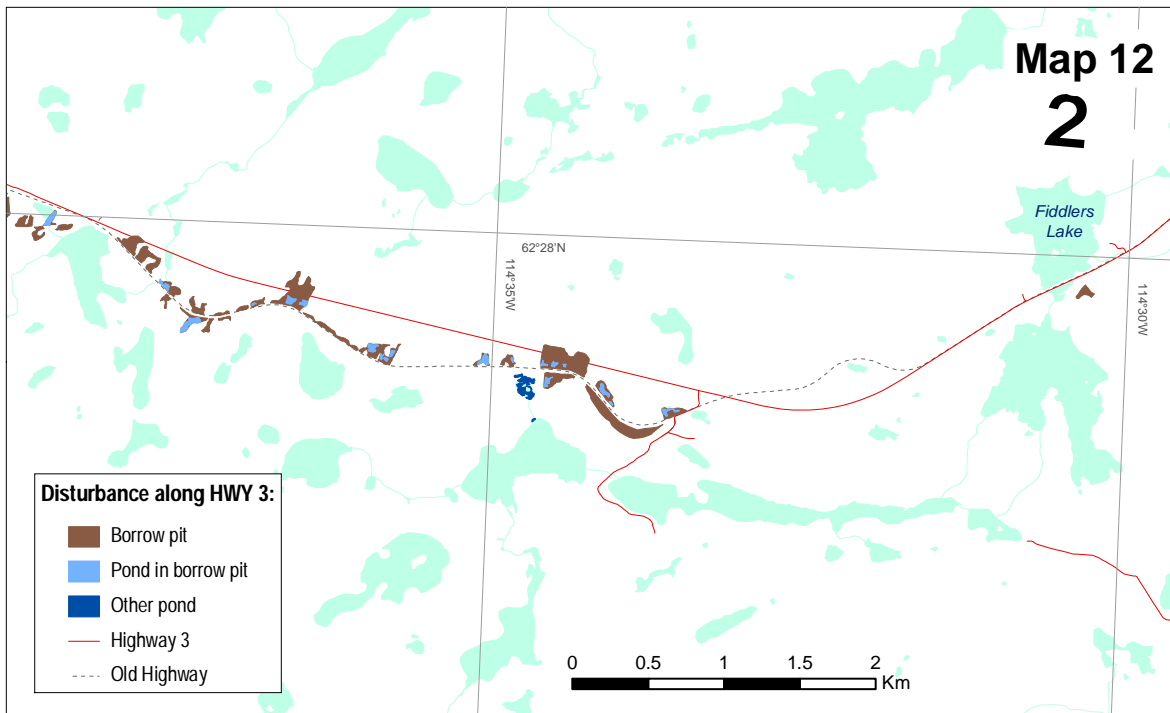
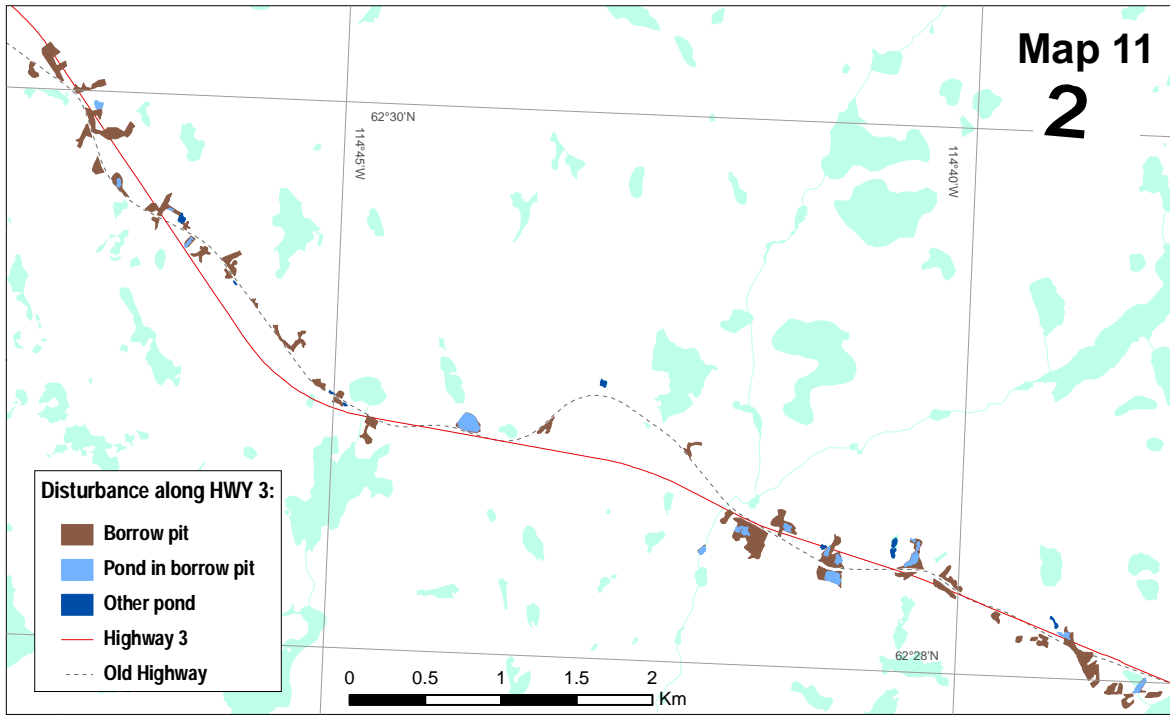












Appendix II Historical disturbance inventory along Highway 3 corridor

ID	Name	Description	Latitude	Longitude	Area (m ²)	Area (ha)
1	61pond170	Other Pond	62.759	-115.813	1400.6	0.140
2	61pond171	Other Pond	62.759	-115.816	67.7	0.007
3	61pond172	Other Pond	62.759	-115.816	265.5	0.027
4	61pond173	Other Pond	62.787	-115.938	187.3	0.019
5	61pond174	Other Pond	62.783	-115.930	5683.7	0.568
6	61pond175	Other Pond	62.780	-115.917	770.0	0.077
7	61pond176	Other Pond	62.774	-115.901	278.4	0.028
8	61pond177	Other Pond	62.771	-115.889	1125.5	0.113
9	61pond178	Other Pond	62.771	-115.888	166.4	0.017
10	61pond179	Other Pond	62.771	-115.888	673.2	0.067
11	61pond180	Other Pond	62.771	-115.888	1209.9	0.121
12	61pond181	Other Pond	62.771	-115.885	489.8	0.049
13	61pond182	Other Pond	62.771	-115.886	186.1	0.019
14	61pond183	Other Pond	62.771	-115.886	465.2	0.047
15	61pond184	Other Pond	62.772	-115.889	160.5	0.016
16	61pond185	Other Pond	62.772	-115.888	74.5	0.007
17	61pond186	Other Pond	62.770	-115.873	691.4	0.069
18	61pond187	Other Pond	62.770	-115.873	141.4	0.014
19	61pond188	Other Pond	62.770	-115.874	253.9	0.025
20	61pond189	Other Pond	62.772	-115.871	6018.7	0.602
21	BP392	Borrow Pit	62.758	-115.814	6048.6	0.605
22	BP393	Borrow Pit	62.760	-115.819	4736.0	0.474
23	BP394	Borrow Pit	62.758	-115.812	714.2	0.071
24	BP395	Borrow Pit	62.760	-115.826	14758.4	1.476
25	BP401	Borrow Pit	62.759	-115.818	579.0	0.058
26	BP402	Borrow Pit	62.762	-115.828	4080.8	0.408
27	BP403	Borrow Pit	62.763	-115.835	3210.4	0.321
28	BP404	Borrow Pit	62.762	-115.839	4540.4	0.454
29	BP405	Borrow Pit	62.762	-115.835	2076.3	0.208
30	BP406	Borrow Pit	62.763	-115.842	4753.0	0.475
31	BP407	Borrow Pit	62.765	-115.849	24725.5	2.473
32	BP408	Borrow Pit	62.765	-115.858	4769.5	0.477
33	BP409	Borrow Pit	62.767	-115.862	36427.8	3.643
34	BP410	Borrow Pit	62.767	-115.868	20212.1	2.021
35	BP411	Borrow Pit	62.772	-115.891	4597.4	0.460
36	BP412	Borrow Pit	62.773	-115.895	2233.9	0.223
37	BP413	Borrow Pit	62.775	-115.904	9472.1	0.947
38	BP414	Borrow Pit	62.775	-115.913	14661.4	1.466
39	BP415	Borrow Pit	62.777	-115.914	5016.7	0.502
40	BP416	Borrow Pit	62.778	-115.911	4680.1	0.468
41	BP417	Borrow Pit	62.779	-115.917	4632.1	0.463
42	BP418	Borrow Pit	62.780	-115.918	2359.9	0.236
43	BP419	Borrow Pit	62.782	-115.920	6343.8	0.634
44	BP420	Borrow Pit	62.783	-115.924	2707.0	0.271
45	BP421	Borrow Pit	62.783	-115.927	17920.2	1.792
46	BP422	Borrow Pit	62.787	-115.936	9536.3	0.954
47	BP423	Borrow Pit	62.787	-115.942	7173.8	0.717
48	BP424	Borrow Pit	62.783	-116.003	19501.0	1.950
49	BP425	Borrow Pit	62.783	-116.004	16884.0	1.688
50	BP426	Borrow Pit	62.783	-116.011	5305.4	0.531
51	BP427	Borrow Pit	62.782	-116.010	3798.4	0.380
52	BP428	Borrow Pit	62.785	-115.980	15418.0	1.542
53	BP429	Borrow Pit	62.782	-115.957	6497.7	0.650
54	BP430	Borrow Pit	62.785	-115.966	23170.5	2.317
55	BP431	Borrow Pit	62.782	-115.952	9714.9	0.971
56	BP432	Borrow Pit	62.783	-115.949	4943.8	0.494

ID	Name	Description	Latitude	Longitude	Area (m ²)	Area (ha)
57	BPpond389	Pond in Borrow Pit	62.760	-115.827	985.6	0.099
58	BPpond390	Pond in Borrow Pit	62.762	-115.836	128.3	0.013
59	BPpond391	Pond in Borrow Pit	62.762	-115.835	190.3	0.019
60	BPpond392	Pond in Borrow Pit	62.762	-115.838	1578.2	0.158
61	BPpond393	Pond in Borrow Pit	62.763	-115.842	4148.2	0.415
62	BPpond394	Pond in Borrow Pit	62.765	-115.854	3022.1	0.302
63	BPpond395	Pond in Borrow Pit	62.765	-115.851	4073.5	0.407
64	BPpond396	Pond in Borrow Pit	62.766	-115.858	828.3	0.083
65	BPpond397	Pond in Borrow Pit	62.765	-115.857	793.2	0.079
66	BPpond398	Pond in Borrow Pit	62.767	-115.862	16343.9	1.634
67	BPpond399	Pond in Borrow Pit	62.766	-115.864	6117.0	0.612
68	BPpond400	Pond in Borrow Pit	62.767	-115.868	20261.1	2.026
69	BPpond401	Pond in Borrow Pit	62.772	-115.891	1357.1	0.136
70	BPpond402	Pond in Borrow Pit	62.782	-115.958	703.4	0.070
71	BPpond403	Pond in Borrow Pit	62.782	-115.957	1205.7	0.121
72	BPpond404	Pond in Borrow Pit	62.782	-115.954	426.1	0.043
73	BPpond405	Pond in Borrow Pit	62.781	-115.951	5941.1	0.594
74	BPpond406	Pond in Borrow Pit	62.782	-115.920	176.9	0.018
75	BPpond407	Pond in Borrow Pit	62.778	-115.912	1667.8	0.167
76	BPpond408	Pond in Borrow Pit	62.777	-115.915	589.4	0.059
77	BPpond409	Pond in Borrow Pit	62.777	-115.916	134.0	0.013
78	BPpond410	Pond in Borrow Pit	62.774	-115.902	444.5	0.044
79	BPpond411	Pond in Borrow Pit	62.784	-116.004	4225.6	0.423
80	BPpond412	Pond in Borrow Pit	62.783	-116.005	1693.7	0.169
81	BPpond413	Pond in Borrow Pit	62.784	-116.005	1698.6	0.170
82	BPpond414	Pond in Borrow Pit	62.783	-116.001	544.2	0.054
83	BPpond415	Pond in Borrow Pit	62.783	-116.000	516.4	0.052
84	BPpond416	Pond in Borrow Pit	62.783	-116.000	151.2	0.015
85	BPpond417	Pond in Borrow Pit	62.782	-116.002	143.9	0.014
86	BPpond418	Pond in Borrow Pit	62.782	-116.002	139.8	0.014
87	BPpond419	Pond in Borrow Pit	62.783	-116.011	2812.0	0.281
88	BPpond420	Pond in Borrow Pit	62.782	-116.010	2454.9	0.245
89	61pond76	Other Pond	62.701	-115.523	621.5	0.062
90	61pond77	Other Pond	62.700	-115.528	269.9	0.027
91	61pond78	Other Pond	62.701	-115.536	417.7	0.042
92	61pond79	Other Pond	62.702	-115.539	1793.3	0.179
93	61pond80	Other Pond	62.699	-115.538	68.9	0.007
94	61pond81	Other Pond	62.703	-115.546	256.0	0.026
95	61pond82	Other Pond	62.703	-115.555	618.2	0.062
96	61pond83	Other Pond	62.704	-115.555	337.7	0.034
97	61pond84	Other Pond	62.704	-115.556	1259.2	0.126
98	61pond85	Other Pond	62.705	-115.554	92.6	0.009
99	61pond86	Other Pond	62.704	-115.555	61.3	0.006
100	61pond87	Other Pond	62.703	-115.553	77.8	0.008
101	61pond88	Other Pond	62.704	-115.561	75.2	0.008
102	61pond89	Other Pond	62.704	-115.565	423.5	0.042
103	61pond90	Other Pond	62.704	-115.565	48.8	0.005
104	61pond91	Other Pond	62.703	-115.565	273.1	0.027
105	61pond92	Other Pond	62.707	-115.563	259.1	0.026
106	61pond93	Other Pond	62.702	-115.563	312.7	0.031
107	61pond94	Other Pond	62.701	-115.561	1333.9	0.133
108	61pond95	Other Pond	62.704	-115.569	746.2	0.075
109	61pond96	Other Pond	62.705	-115.573	136.6	0.014
110	61pond97	Other Pond	62.703	-115.573	1117.2	0.112
111	61pond98	Other Pond	62.709	-115.588	1390.4	0.139
112	61pond99	Other Pond	62.709	-115.591	119.9	0.012
113	61pond100	Other Pond	62.710	-115.591	597.6	0.060
114	61pond101	Other Pond	62.710	-115.590	233.9	0.023

ID	Name	Description	Latitude	Longitude	Area (m ²)	Area (ha)
115	61pond102	Other Pond	62.711	-115.590	120.3	0.012
116	61pond103	Other Pond	62.711	-115.590	282.1	0.028
117	61pond104	Other Pond	62.710	-115.592	360.0	0.036
118	61pond105	Other Pond	62.711	-115.592	47.3	0.005
119	61pond106	Other Pond	62.711	-115.592	53.8	0.005
120	61pond107	Other Pond	62.711	-115.593	84.6	0.008
121	61pond108	Other Pond	62.711	-115.590	75.9	0.008
122	61pond109	Other Pond	62.711	-115.590	11.2	0.001
123	61pond110	Other Pond	62.711	-115.590	9.9	0.001
124	61pond111	Other Pond	62.710	-115.594	586.5	0.059
125	61pond112	Other Pond	62.709	-115.595	198.9	0.020
126	61pond113	Other Pond	62.709	-115.587	431.5	0.043
127	61pond114	Other Pond	62.709	-115.586	800.3	0.080
128	61pond115	Other Pond	62.718	-115.623	101.9	0.010
129	61pond116	Other Pond	62.716	-115.620	182.1	0.018
130	61pond117	Other Pond	62.716	-115.621	140.5	0.014
131	61pond118	Other Pond	62.716	-115.622	203.8	0.020
132	61pond119	Other Pond	62.716	-115.620	322.4	0.032
133	61pond120	Other Pond	62.719	-115.633	475.9	0.048
134	61pond121	Other Pond	62.720	-115.633	72.6	0.007
135	61pond122	Other Pond	62.720	-115.635	1627.7	0.163
136	61pond123	Other Pond	62.720	-115.636	414.7	0.041
137	61pond124	Other Pond	62.721	-115.641	307.4	0.031
138	61pond125	Other Pond	62.719	-115.649	201.8	0.020
139	61pond126	Other Pond	62.719	-115.649	178.0	0.018
140	61pond127	Other Pond	62.720	-115.648	260.4	0.026
141	61pond128	Other Pond	62.723	-115.651	1404.1	0.140
142	61pond129	Other Pond	62.735	-115.667	137.4	0.014
143	61pond130	Other Pond	62.734	-115.692	868.7	0.087
144	61pond131	Other Pond	62.736	-115.690	126.0	0.013
145	61pond132	Other Pond	62.736	-115.698	526.8	0.053
146	61pond133	Other Pond	62.744	-115.714	817.5	0.082
147	61pond134	Other Pond	62.743	-115.710	592.0	0.059
148	61pond135	Other Pond	62.743	-115.711	770.2	0.077
149	61pond136	Other Pond	62.742	-115.710	44.9	0.004
150	61pond137	Other Pond	62.742	-115.708	289.4	0.029
151	61pond138	Other Pond	62.741	-115.708	48.2	0.005
152	61pond139	Other Pond	62.741	-115.707	158.3	0.016
153	61pond140	Other Pond	62.741	-115.705	97.2	0.010
154	61pond141	Other Pond	62.740	-115.706	50.7	0.005
155	61pond142	Other Pond	62.740	-115.700	1445.6	0.145
156	61pond143	Other Pond	62.732	-115.675	8435.3	0.844
157	61pond144	Other Pond	62.732	-115.686	567.5	0.057
158	61pond145	Other Pond	62.732	-115.684	74.8	0.007
159	61pond146	Other Pond	62.732	-115.685	100.3	0.010
160	61pond147	Other Pond	62.737	-115.696	467.1	0.047
161	61pond148	Other Pond	62.743	-115.721	2907.1	0.291
162	61pond149	Other Pond	62.743	-115.728	130.9	0.013
163	61pond150	Other Pond	62.745	-115.725	91.1	0.009
164	61pond151	Other Pond	62.742	-115.742	71.8	0.007
165	61pond152	Other Pond	62.742	-115.741	88.1	0.009
166	61pond153	Other Pond	62.743	-115.736	309.2	0.031
167	61pond154	Other Pond	62.742	-115.735	580.2	0.058
168	61pond155	Other Pond	62.741	-115.735	95.3	0.010
169	61pond156	Other Pond	62.756	-115.799	247.9	0.025
170	61pond157	Other Pond	62.756	-115.800	119.2	0.012
171	61pond158	Other Pond	62.755	-115.801	218.9	0.022
172	61pond159	Other Pond	62.755	-115.800	171.0	0.017

ID	Name	Description	Latitude	Longitude	Area (m ²)	Area (ha)
173	61pond160	Other Pond	62.756	-115.797	86.2	0.009
174	61pond161	Other Pond	62.756	-115.799	92.5	0.009
175	61pond162	Other Pond	62.757	-115.799	518.1	0.052
176	61pond163	Other Pond	62.757	-115.798	89.2	0.009
177	61pond164	Other Pond	62.757	-115.798	45.7	0.005
178	61pond165	Other Pond	62.757	-115.797	471.4	0.047
179	61pond166	Other Pond	62.756	-115.796	323.5	0.032
180	61pond167	Other Pond	62.757	-115.796	61.4	0.006
181	61pond168	Other Pond	62.757	-115.797	119.4	0.012
182	61pond169	Other Pond	62.756	-115.795	322.7	0.032
183	BP318	Borrow Pit	62.700	-115.525	1404.1	0.140
184	BP319	Borrow Pit	62.701	-115.528	1399.4	0.140
185	BP320	Borrow Pit	62.700	-115.530	5571.5	0.557
186	BP321	Borrow Pit	62.701	-115.534	1018.9	0.102
187	BP322	Borrow Pit	62.700	-115.537	2668.3	0.267
188	BP323	Borrow Pit	62.701	-115.543	1901.0	0.190
189	BP324	Borrow Pit	62.702	-115.545	1713.9	0.171
190	BP325	Borrow Pit	62.699	-115.535	16805.4	1.681
191	BP326	Borrow Pit	62.704	-115.548	5314.9	0.531
192	BP327	Borrow Pit	62.704	-115.551	2638.4	0.264
193	BP328	Borrow Pit	62.702	-115.552	2120.7	0.212
194	BP329	Borrow Pit	62.702	-115.553	6711.4	0.671
195	BP330	Borrow Pit	62.704	-115.560	2432.1	0.243
196	BP331	Borrow Pit	62.705	-115.562	2015.2	0.202
197	BP332	Borrow Pit	62.702	-115.559	1064.5	0.106
198	BP333	Borrow Pit	62.704	-115.563	2531.7	0.253
199	BP334	Borrow Pit	62.706	-115.564	3318.6	0.332
200	BP335	Borrow Pit	62.703	-115.557	1306.9	0.131
201	BP336	Borrow Pit	62.703	-115.560	1304.3	0.130
202	BP337	Borrow Pit	62.702	-115.563	1385.2	0.139
203	BP338	Borrow Pit	62.702	-115.565	717.2	0.072
204	BP339	Borrow Pit	62.703	-115.569	3340.6	0.334
205	BP340	Borrow Pit	62.702	-115.576	3131.0	0.313
206	BP341	Borrow Pit	62.703	-115.573	3680.1	0.368
207	BP342	Borrow Pit	62.704	-115.575	2551.6	0.255
208	BP343	Borrow Pit	62.703	-115.586	20845.3	2.085
209	BP344	Borrow Pit	62.705	-115.575	4708.2	0.471
210	BP345	Borrow Pit	62.707	-115.584	3747.7	0.375
211	BP346	Borrow Pit	62.709	-115.592	1262.9	0.126
212	BP347	Borrow Pit	62.709	-115.589	2584.6	0.258
213	BP348	Borrow Pit	62.709	-115.595	1546.6	0.155
214	BP349	Borrow Pit	62.710	-115.596	597.6	0.060
215	BP350	Borrow Pit	62.713	-115.607	10771.8	1.077
216	BP351	Borrow Pit	62.715	-115.607	9528.5	0.953
217	BP352	Borrow Pit	62.716	-115.606	3566.4	0.357
218	BP353	Borrow Pit	62.716	-115.614	7199.9	0.720
219	BP354	Borrow Pit	62.715	-115.624	5372.9	0.537
220	BP355	Borrow Pit	62.718	-115.622	612.3	0.061
221	BP356	Borrow Pit	62.720	-115.633	1354.3	0.135
222	BP357	Borrow Pit	62.720	-115.644	19305.1	1.931
223	BP358	Borrow Pit	62.721	-115.648	10473.9	1.047
224	BP359	Borrow Pit	62.726	-115.654	1731.1	0.173
225	BP360	Borrow Pit	62.723	-115.651	3078.5	0.308
226	BP361	Borrow Pit	62.733	-115.665	20863.4	2.086
227	BP362	Borrow Pit	62.734	-115.683	23637.8	2.364
228	BP363	Borrow Pit	62.735	-115.688	16838.6	1.684
229	BP364	Borrow Pit	62.733	-115.690	7067.5	0.707
230	BP365	Borrow Pit	62.734	-115.698	3297.6	0.330

ID	Name	Description	Latitude	Longitude	Area (m ²)	Area (ha)
231	BP366	Borrow Pit	62.735	-115.698	3561.4	0.356
232	BP367	Borrow Pit	62.735	-115.698	780.7	0.078
233	BP368	Borrow Pit	62.736	-115.701	1469.7	0.147
234	BP369	Borrow Pit	62.736	-115.698	7458.4	0.746
235	BP370	Borrow Pit	62.735	-115.695	4236.4	0.424
236	BP371	Borrow Pit	62.739	-115.702	4422.1	0.442
237	BP372	Borrow Pit	62.739	-115.705	7892.3	0.789
238	BP373	Borrow Pit	62.742	-115.708	7513.0	0.751
239	BP374	Borrow Pit	62.743	-115.714	4351.3	0.435
240	BP375	Borrow Pit	62.744	-115.721	6506.6	0.651
241	BP376	Borrow Pit	62.745	-115.725	26991.4	2.699
242	BP377	Borrow Pit	62.743	-115.724	699.7	0.070
243	BP378	Borrow Pit	62.743	-115.725	7010.2	0.701
244	BP379	Borrow Pit	62.743	-115.729	5141.6	0.514
245	BP380	Borrow Pit	62.744	-115.730	1015.2	0.102
246	BP381	Borrow Pit	62.742	-115.736	4795.7	0.480
247	BP382	Borrow Pit	62.741	-115.739	7625.0	0.763
248	BP383	Borrow Pit	62.742	-115.741	2654.6	0.265
249	BP384	Borrow Pit	62.740	-115.747	9953.0	0.995
250	BP385	Borrow Pit	62.742	-115.750	4072.2	0.407
251	BP386	Borrow Pit	62.741	-115.751	7979.6	0.798
252	BP387	Borrow Pit	62.740	-115.755	32986.4	3.299
253	BP388	Borrow Pit	62.745	-115.774	10477.2	1.048
254	BP389	Borrow Pit	62.747	-115.783	7316.7	0.732
255	BP390	Borrow Pit	62.754	-115.797	10927.6	1.093
256	BP391	Borrow Pit	62.756	-115.796	2069.7	0.207
257	BP396	Borrow Pit	62.757	-115.809	6697.9	0.670
258	BP397	Borrow Pit	62.757	-115.807	1354.2	0.135
259	BP398	Borrow Pit	62.757	-115.800	1699.2	0.170
260	BP399	Borrow Pit	62.758	-115.800	564.8	0.056
261	BP400	Borrow Pit	62.757	-115.804	4538.2	0.454
262	BPpond267	Pond in Borrow Pit	62.700	-115.525	477.9	0.048
263	BPpond268	Pond in Borrow Pit	62.701	-115.529	120.1	0.012
264	BPpond269	Pond in Borrow Pit	62.701	-115.529	283.4	0.028
265	BPpond270	Pond in Borrow Pit	62.701	-115.530	111.6	0.011
266	BPpond271	Pond in Borrow Pit	62.701	-115.534	41.3	0.004
267	BPpond272	Pond in Borrow Pit	62.700	-115.537	489.0	0.049
268	BPpond273	Pond in Borrow Pit	62.700	-115.544	289.5	0.029
269	BPpond274	Pond in Borrow Pit	62.700	-115.537	166.4	0.017
270	BPpond275	Pond in Borrow Pit	62.700	-115.536	77.5	0.008
271	BPpond276	Pond in Borrow Pit	62.703	-115.548	299.7	0.030
272	BPpond277	Pond in Borrow Pit	62.704	-115.549	2339.4	0.234
273	BPpond278	Pond in Borrow Pit	62.704	-115.551	384.7	0.038
274	BPpond279	Pond in Borrow Pit	62.704	-115.552	215.3	0.022
275	BPpond280	Pond in Borrow Pit	62.702	-115.553	24.2	0.002
276	BPpond281	Pond in Borrow Pit	62.703	-115.552	139.0	0.014
277	BPpond282	Pond in Borrow Pit	62.703	-115.554	154.2	0.015
278	BPpond283	Pond in Borrow Pit	62.702	-115.555	49.3	0.005
279	BPpond284	Pond in Borrow Pit	62.702	-115.553	50.2	0.005
280	BPpond285	Pond in Borrow Pit	62.705	-115.560	456.0	0.046
281	BPpond286	Pond in Borrow Pit	62.704	-115.563	128.4	0.013
282	BPpond287	Pond in Borrow Pit	62.706	-115.565	171.4	0.017
283	BPpond288	Pond in Borrow Pit	62.706	-115.564	162.9	0.016
284	BPpond289	Pond in Borrow Pit	62.706	-115.564	250.3	0.025
285	BPpond290	Pond in Borrow Pit	62.703	-115.556	82.3	0.008
286	BPpond291	Pond in Borrow Pit	62.707	-115.585	224.8	0.022
287	BPpond292	Pond in Borrow Pit	62.702	-115.590	4121.7	0.412
288	BPpond293	Pond in Borrow Pit	62.703	-115.587	87.6	0.009

ID	Name	Description	Latitude	Longitude	Area (m ²)	Area (ha)
289	BPpond294	Pond in Borrow Pit	62.705	-115.585	879.9	0.088
290	BPpond295	Pond in Borrow Pit	62.705	-115.584	93.2	0.009
291	BPpond296	Pond in Borrow Pit	62.705	-115.584	33.7	0.003
292	BPpond297	Pond in Borrow Pit	62.705	-115.582	75.6	0.008
293	BPpond298	Pond in Borrow Pit	62.705	-115.582	35.3	0.004
294	BPpond299	Pond in Borrow Pit	62.703	-115.574	166.6	0.017
295	BPpond300	Pond in Borrow Pit	62.704	-115.575	273.3	0.027
296	BPpond301	Pond in Borrow Pit	62.702	-115.575	470.8	0.047
297	BPpond302	Pond in Borrow Pit	62.702	-115.575	50.6	0.005
298	BPpond303	Pond in Borrow Pit	62.701	-115.575	882.8	0.088
299	BPpond304	Pond in Borrow Pit	62.701	-115.575	207.0	0.021
300	BPpond305	Pond in Borrow Pit	62.702	-115.576	99.5	0.010
301	BPpond306	Pond in Borrow Pit	62.701	-115.577	684.4	0.068
302	BPpond307	Pond in Borrow Pit	62.702	-115.563	163.1	0.016
303	BPpond308	Pond in Borrow Pit	62.705	-115.562	20.0	0.002
304	BPpond309	Pond in Borrow Pit	62.702	-115.560	191.7	0.019
305	BPpond310	Pond in Borrow Pit	62.709	-115.590	150.7	0.015
306	BPpond311	Pond in Borrow Pit	62.710	-115.596	252.2	0.025
307	BPpond312	Pond in Borrow Pit	62.713	-115.607	1151.8	0.115
308	BPpond313	Pond in Borrow Pit	62.715	-115.607	8092.6	0.809
309	BPpond314	Pond in Borrow Pit	62.716	-115.607	4005.5	0.401
310	BPpond315	Pond in Borrow Pit	62.715	-115.624	588.4	0.059
311	BPpond316	Pond in Borrow Pit	62.715	-115.624	102.4	0.010
312	BPpond317	Pond in Borrow Pit	62.718	-115.622	149.9	0.015
313	BPpond318	Pond in Borrow Pit	62.717	-115.622	417.3	0.042
314	BPpond319	Pond in Borrow Pit	62.718	-115.641	8094.1	0.809
315	BPpond320	Pond in Borrow Pit	62.720	-115.645	17719.6	1.772
316	BPpond321	Pond in Borrow Pit	62.719	-115.650	825.9	0.083
317	BPpond322	Pond in Borrow Pit	62.720	-115.649	925.6	0.093
318	BPpond323	Pond in Borrow Pit	62.720	-115.648	90.7	0.009
319	BPpond324	Pond in Borrow Pit	62.724	-115.652	764.7	0.076
320	BPpond325	Pond in Borrow Pit	62.722	-115.651	1647.9	0.165
321	BPpond326	Pond in Borrow Pit	62.726	-115.654	962.4	0.096
322	BPpond327	Pond in Borrow Pit	62.734	-115.665	1314.4	0.131
323	BPpond328	Pond in Borrow Pit	62.734	-115.664	572.9	0.057
324	BPpond329	Pond in Borrow Pit	62.735	-115.665	270.2	0.027
325	BPpond330	Pond in Borrow Pit	62.734	-115.682	2209.2	0.221
326	BPpond331	Pond in Borrow Pit	62.735	-115.688	184.8	0.018
327	BPpond332	Pond in Borrow Pit	62.735	-115.690	1649.1	0.165
328	BPpond333	Pond in Borrow Pit	62.734	-115.689	595.0	0.059
329	BPpond334	Pond in Borrow Pit	62.733	-115.690	6921.7	0.692
330	BPpond335	Pond in Borrow Pit	62.734	-115.698	2327.3	0.233
331	BPpond336	Pond in Borrow Pit	62.739	-115.702	4623.2	0.462
332	BPpond337	Pond in Borrow Pit	62.743	-115.713	3643.2	0.364
333	BPpond338	Pond in Borrow Pit	62.739	-115.705	5166.2	0.517
334	BPpond339	Pond in Borrow Pit	62.742	-115.708	1179.4	0.118
335	BPpond340	Pond in Borrow Pit	62.736	-115.684	42.9	0.004
336	BPpond341	Pond in Borrow Pit	62.735	-115.683	104.0	0.010
337	BPpond342	Pond in Borrow Pit	62.736	-115.689	79.8	0.008
338	BPpond343	Pond in Borrow Pit	62.736	-115.687	74.5	0.007
339	BPpond344	Pond in Borrow Pit	62.736	-115.687	34.7	0.003
340	BPpond345	Pond in Borrow Pit	62.736	-115.687	20.4	0.002
341	BPpond346	Pond in Borrow Pit	62.744	-115.721	785.2	0.079
342	BPpond347	Pond in Borrow Pit	62.744	-115.720	512.9	0.051
343	BPpond348	Pond in Borrow Pit	62.744	-115.720	42.6	0.004
344	BPpond349	Pond in Borrow Pit	62.744	-115.721	23.4	0.002
345	BPpond350	Pond in Borrow Pit	62.744	-115.721	158.9	0.016
346	BPpond351	Pond in Borrow Pit	62.743	-115.726	493.6	0.049

ID	Name	Description	Latitude	Longitude	Area (m ²)	Area (ha)
347	BPpond352	Pond in Borrow Pit	62.742	-115.725	3503.8	0.350
348	BPpond353	Pond in Borrow Pit	62.743	-115.729	1105.4	0.111
349	BPpond354	Pond in Borrow Pit	62.743	-115.729	56.3	0.006
350	BPpond355	Pond in Borrow Pit	62.743	-115.728	61.1	0.006
351	BPpond356	Pond in Borrow Pit	62.746	-115.726	506.3	0.051
352	BPpond357	Pond in Borrow Pit	62.747	-115.725	313.7	0.031
353	BPpond358	Pond in Borrow Pit	62.748	-115.724	401.2	0.040
354	BPpond359	Pond in Borrow Pit	62.748	-115.724	58.5	0.006
355	BPpond360	Pond in Borrow Pit	62.746	-115.726	889.2	0.089
356	BPpond361	Pond in Borrow Pit	62.746	-115.727	93.0	0.009
357	BPpond362	Pond in Borrow Pit	62.742	-115.750	3843.6	0.384
358	BPpond363	Pond in Borrow Pit	62.742	-115.749	189.1	0.019
359	BPpond364	Pond in Borrow Pit	62.740	-115.747	3502.6	0.350
360	BPpond365	Pond in Borrow Pit	62.741	-115.739	941.5	0.094
361	BPpond366	Pond in Borrow Pit	62.742	-115.741	1893.3	0.189
362	BPpond367	Pond in Borrow Pit	62.742	-115.737	124.8	0.012
363	BPpond368	Pond in Borrow Pit	62.741	-115.735	62.4	0.006
364	BPpond369	Pond in Borrow Pit	62.742	-115.736	60.2	0.006
365	BPpond370	Pond in Borrow Pit	62.741	-115.749	964.0	0.096
366	BPpond371	Pond in Borrow Pit	62.741	-115.750	10932.9	1.093
367	BPpond372	Pond in Borrow Pit	62.741	-115.757	2387.4	0.239
368	BPpond373	Pond in Borrow Pit	62.739	-115.755	1820.9	0.182
369	BPpond374	Pond in Borrow Pit	62.740	-115.754	561.0	0.056
370	BPpond375	Pond in Borrow Pit	62.740	-115.755	1281.3	0.128
371	BPpond376	Pond in Borrow Pit	62.740	-115.753	144.3	0.014
372	BPpond377	Pond in Borrow Pit	62.740	-115.752	312.8	0.031
373	BPpond378	Pond in Borrow Pit	62.745	-115.784	4690.5	0.469
374	BPpond379	Pond in Borrow Pit	62.755	-115.796	328.9	0.033
375	BPpond380	Pond in Borrow Pit	62.755	-115.797	432.5	0.043
376	BPpond381	Pond in Borrow Pit	62.755	-115.798	56.0	0.006
377	BPpond382	Pond in Borrow Pit	62.755	-115.799	462.6	0.046
378	BPpond383	Pond in Borrow Pit	62.755	-115.799	104.2	0.010
379	BPpond384	Pond in Borrow Pit	62.755	-115.796	56.6	0.006
380	BPpond385	Pond in Borrow Pit	62.756	-115.795	465.5	0.047
381	BPpond386	Pond in Borrow Pit	62.758	-115.800	51.7	0.005
382	BPpond387	Pond in Borrow Pit	62.757	-115.801	120.9	0.012
383	BPpond388	Pond in Borrow Pit	62.758	-115.809	109.9	0.011
384	61pond1	Other Pond	62.455	-114.578	263.2	0.026
385	61pond2	Other Pond	62.457	-114.579	9581.3	0.958
386	61pond3	Other Pond	62.470	-114.654	1008.7	0.101
387	61pond4	Other Pond	62.475	-114.675	1565.7	0.157
388	61pond5	Other Pond	62.474	-114.675	1439.8	0.144
389	61pond6	Other Pond	62.474	-114.685	552.5	0.055
390	61pond7	Other Pond	62.483	-114.715	1359.5	0.136
391	61pond8	Other Pond	62.482	-114.748	294.6	0.029
392	61pond9	Other Pond	62.482	-114.750	241.5	0.024
393	61pond10	Other Pond	62.489	-114.764	207.3	0.021
394	61pond11	Other Pond	62.492	-114.771	2232.9	0.223
395	61pond12	Other Pond	62.512	-114.812	1941.7	0.194
396	61pond13	Other Pond	62.521	-114.899	5567.0	0.557
397	61pond14	Other Pond	62.519	-114.908	264.6	0.026
398	61pond15	Other Pond	62.519	-114.911	124.2	0.012
399	61pond16	Other Pond	62.518	-114.913	386.7	0.039
400	61pond17	Other Pond	62.518	-114.927	1207.5	0.121
401	61pond18	Other Pond	62.521	-114.926	1227.9	0.123
402	61pond19	Other Pond	62.521	-114.928	1280.2	0.128
403	61pond20	Other Pond	62.521	-114.941	1119.5	0.112
404	61pond21	Other Pond	62.525	-114.948	1363.4	0.136

ID	Name	Description	Latitude	Longitude	Area (m ²)	Area (ha)
405	61pond22	Other Pond	62.536	-114.974	255.1	0.026
406	61pond23	Other Pond	62.540	-114.976	345.2	0.035
407	61pond24	Other Pond	62.544	-114.992	514.2	0.051
408	61pond25	Other Pond	62.545	-114.992	295.4	0.030
409	61pond26	Other Pond	62.546	-114.996	69.3	0.007
410	61pond27	Other Pond	62.547	-114.998	4683.5	0.468
411	61pond28	Other Pond	62.557	-115.033	142.6	0.014
412	61pond29	Other Pond	62.562	-115.048	1089.3	0.109
413	61pond30	Other Pond	62.560	-115.078	1049.7	0.105
414	61pond31	Other Pond	62.570	-115.131	1126.4	0.113
415	61pond32	Other Pond	62.574	-115.134	683.9	0.068
416	61pond33	Other Pond	62.571	-115.136	976.3	0.098
417	61pond34	Other Pond	62.576	-115.141	323.8	0.032
418	61pond35	Other Pond	62.575	-115.137	280.4	0.028
419	61pond36	Other Pond	62.578	-115.147	3412.4	0.341
420	61pond37	Other Pond	62.577	-115.148	279.7	0.028
421	61pond39	Other Pond	62.578	-115.150	181.0	0.018
422	61pond40	Other Pond	62.579	-115.151	452.7	0.045
423	61pond41	Other Pond	62.579	-115.150	104.6	0.010
424	61pond42	Other Pond	62.582	-115.159	2256.2	0.226
425	61pond43	Other Pond	62.582	-115.164	3189.2	0.319
426	61pond44	Other Pond	62.582	-115.169	137.5	0.014
427	61pond45	Other Pond	62.582	-115.169	43.7	0.004
428	61pond46	Other Pond	62.585	-115.177	239.1	0.024
429	61pond47	Other Pond	62.585	-115.181	52.1	0.005
430	61pond48	Other Pond	62.612	-115.213	251.6	0.025
431	61pond49	Other Pond	62.618	-115.216	422.1	0.042
432	61pond50	Other Pond	62.651	-115.270	1713.3	0.171
433	61pond51	Other Pond	62.652	-115.271	82.7	0.008
434	61pond52	Other Pond	62.653	-115.273	6783.1	0.678
435	61pond53	Other Pond	62.658	-115.290	1135.1	0.114
436	61pond54	Other Pond	62.666	-115.311	2279.1	0.228
437	61pond55	Other Pond	62.669	-115.339	114.1	0.011
438	61pond56	Other Pond	62.670	-115.349	663.5	0.066
439	61pond57	Other Pond	62.671	-115.362	196.4	0.020
440	61pond58	Other Pond	62.671	-115.371	2193.7	0.219
441	61pond59	Other Pond	62.673	-115.375	195.4	0.020
442	61pond60	Other Pond	62.673	-115.375	155.2	0.016
443	61pond61	Other Pond	62.677	-115.384	59.2	0.006
444	61pond62	Other Pond	62.677	-115.385	15.6	0.002
445	61pond63	Other Pond	62.681	-115.396	154.1	0.015
446	61pond64	Other Pond	62.686	-115.432	1153.4	0.115
447	61pond65	Other Pond	62.686	-115.433	1055.3	0.106
448	61pond66	Other Pond	62.688	-115.438	233.0	0.023
449	61pond67	Other Pond	62.687	-115.473	163.2	0.016
450	61pond68	Other Pond	62.689	-115.483	387.7	0.039
451	61pond69	Other Pond	62.689	-115.483	313.5	0.031
452	61pond70	Other Pond	62.690	-115.483	425.2	0.043
453	61pond71	Other Pond	62.692	-115.488	429.4	0.043
454	61pond72	Other Pond	62.692	-115.491	286.8	0.029
455	61pond73	Other Pond	62.695	-115.498	564.8	0.056
456	61pond74	Other Pond	62.694	-115.497	897.0	0.090
457	61pond75	Other Pond	62.694	-115.494	3641.1	0.364
458	BP1	Borrow Pit	62.465	-114.506	4555.7	0.456
459	BP2	Borrow Pit	62.456	-114.559	6952.1	0.695
460	BP3	Borrow Pit	62.455	-114.566	29541.5	2.954
461	BP4	Borrow Pit	62.457	-114.568	7941.9	0.794
462	BP5	Borrow Pit	62.458	-114.574	11017.1	1.102

ID	Name	Description	Latitude	Longitude	Area (m ²)	Area (ha)
463	BP6	Borrow Pit	62.459	-114.574	40340.9	4.034
464	BP7	Borrow Pit	62.459	-114.581	3964.4	0.396
465	BP8	Borrow Pit	62.459	-114.585	4043.7	0.404
466	BP9	Borrow Pit	62.459	-114.598	15873.6	1.587
467	BP10	Borrow Pit	62.460	-114.605	6462.8	0.646
468	BP11	Borrow Pit	62.463	-114.610	30560.4	3.056
469	BP12	Borrow Pit	62.462	-114.614	2772.0	0.277
470	BP13	Borrow Pit	62.461	-114.616	1565.2	0.157
471	BP14	Borrow Pit	62.461	-114.619	995.2	0.100
472	BP15	Borrow Pit	62.461	-114.619	1384.5	0.138
473	BP16	Borrow Pit	62.460	-114.621	2344.6	0.234
474	BP17	Borrow Pit	62.461	-114.622	5247.2	0.525
475	BP18	Borrow Pit	62.461	-114.623	7157.3	0.716
476	BP19	Borrow Pit	62.462	-114.626	6327.7	0.633
477	BP20	Borrow Pit	62.462	-114.627	2106.5	0.211
478	BP21	Borrow Pit	62.464	-114.629	10908.6	1.091
479	BP22	Borrow Pit	62.465	-114.632	9831.2	0.983
480	BP23	Borrow Pit	62.466	-114.640	2857.5	0.286
481	BP24	Borrow Pit	62.465	-114.644	3627.3	0.363
482	BP25	Borrow Pit	62.466	-114.642	3243.9	0.324
483	BP26	Borrow Pit	62.466	-114.646	5315.4	0.532
484	BP27	Borrow Pit	62.468	-114.650	24365.9	2.437
485	BP28	Borrow Pit	62.469	-114.655	3432.1	0.343
486	BP29	Borrow Pit	62.469	-114.656	885.5	0.089
487	BP30	Borrow Pit	62.469	-114.658	1311.5	0.131
488	BP31	Borrow Pit	62.470	-114.662	2445.4	0.245
489	BP32	Borrow Pit	62.472	-114.668	5696.6	0.570
490	BP33	Borrow Pit	62.472	-114.668	5051.6	0.505
491	BP34	Borrow Pit	62.473	-114.673	11798.5	1.180
492	BP35	Borrow Pit	62.473	-114.674	3166.0	0.317
493	BP36	Borrow Pit	62.473	-114.684	15262.7	1.526
494	BP37	Borrow Pit	62.472	-114.684	11883.7	1.188
495	BP38	Borrow Pit	62.475	-114.690	12099.8	1.210
496	BP39	Borrow Pit	62.473	-114.694	32224.3	3.222
497	BP40	Borrow Pit	62.476	-114.698	3165.2	0.317
498	BP41	Borrow Pit	62.480	-114.702	2943.2	0.294
499	BP42	Borrow Pit	62.480	-114.722	3687.2	0.369
500	BP43	Borrow Pit	62.481	-114.732	12979.1	1.298
501	BP44	Borrow Pit	62.479	-114.745	7341.0	0.734
502	BP45	Borrow Pit	62.482	-114.749	1554.7	0.155
503	BP46	Borrow Pit	62.482	-114.749	1623.8	0.162
504	BP47	Borrow Pit	62.483	-114.752	2824.2	0.282
505	BP48	Borrow Pit	62.485	-114.756	6811.8	0.681
506	BP49	Borrow Pit	62.487	-114.761	738.5	0.074
507	BP50	Borrow Pit	62.490	-114.764	7071.4	0.707
508	BP51	Borrow Pit	62.489	-114.765	1400.8	0.140
509	BP52	Borrow Pit	62.490	-114.768	4082.6	0.408
510	BP53	Borrow Pit	62.491	-114.770	2412.2	0.241
511	BP54	Borrow Pit	62.492	-114.770	1203.6	0.120
512	BP55	Borrow Pit	62.492	-114.774	1476.8	0.148
513	BP56	Borrow Pit	62.493	-114.774	9479.0	0.948
514	BP57	Borrow Pit	62.494	-114.779	5901.4	0.590
515	BP58	Borrow Pit	62.495	-114.782	4385.5	0.439
516	BP59	Borrow Pit	62.497	-114.784	4977.2	0.498
517	BP60	Borrow Pit	62.497	-114.781	21186.4	2.119
518	BP61	Borrow Pit	62.500	-114.784	6407.9	0.641
519	BP62	Borrow Pit	62.501	-114.791	3476.4	0.348
520	BP63	Borrow Pit	62.501	-114.789	14938.5	1.494

ID	Name	Description	Latitude	Longitude	Area (m ²)	Area (ha)
521	BP64	Borrow Pit	62.504	-114.797	3617.5	0.362
522	BP65	Borrow Pit	62.504	-114.802	741.4	0.074
523	BP66	Borrow Pit	62.505	-114.801	2998.1	0.300
524	BP67	Borrow Pit	62.509	-114.806	703.4	0.070
525	BP68	Borrow Pit	62.509	-114.807	1719.5	0.172
526	BP69	Borrow Pit	62.509	-114.812	9077.2	0.908
527	BP70	Borrow Pit	62.511	-114.809	891.9	0.089
528	BP71	Borrow Pit	62.512	-114.820	3512.0	0.351
529	BP72	Borrow Pit	62.513	-114.814	16224.8	1.622
530	BP73	Borrow Pit	62.513	-114.828	3246.9	0.325
531	BP74	Borrow Pit	62.513	-114.833	12762.9	1.276
532	BP75	Borrow Pit	62.515	-114.836	14153.9	1.415
533	BP76	Borrow Pit	62.514	-114.842	3271.2	0.327
534	BP77	Borrow Pit	62.513	-114.850	10426.9	1.043
535	BP78	Borrow Pit	62.512	-114.852	1314.0	0.131
536	BP79	Borrow Pit	62.511	-114.852	9698.2	0.970
537	BP80	Borrow Pit	62.513	-114.855	15608.3	1.561
538	BP81	Borrow Pit	62.514	-114.861	2842.5	0.284
539	BP82	Borrow Pit	62.515	-114.865	14917.8	1.492
540	BP83	Borrow Pit	62.516	-114.863	849.6	0.085
541	BP84	Borrow Pit	62.519	-114.867	2852.3	0.285
542	BP85	Borrow Pit	62.474	-114.701	1378.3	0.138
543	BP86	Borrow Pit	62.520	-114.877	803.9	0.080
544	BP87	Borrow Pit	62.520	-114.879	7304.7	0.730
545	BP88	Borrow Pit	62.519	-114.879	2722.9	0.272
546	BP89	Borrow Pit	62.519	-114.883	1343.0	0.134
547	BP90	Borrow Pit	62.520	-114.883	6619.0	0.662
548	BP91	Borrow Pit	62.520	-114.870	2557.6	0.256
549	BP92	Borrow Pit	62.521	-114.887	4757.5	0.476
550	BP93	Borrow Pit	62.521	-114.891	11694.1	1.169
551	BP94	Borrow Pit	62.521	-114.893	8738.5	0.874
552	BP95	Borrow Pit	62.520	-114.898	1113.5	0.111
553	BP96	Borrow Pit	62.520	-114.905	1401.1	0.140
554	BP97	Borrow Pit	62.519	-114.905	974.5	0.097
555	BP98	Borrow Pit	62.520	-114.908	1007.9	0.101
556	BP99	Borrow Pit	62.518	-114.911	4192.5	0.419
557	BP100	Borrow Pit	62.519	-114.911	6699.1	0.670
558	BP101	Borrow Pit	62.517	-114.917	4038.3	0.404
559	BP102	Borrow Pit	62.518	-114.917	2969.7	0.297
560	BP103	Borrow Pit	62.517	-114.924	4135.4	0.414
561	BP104	Borrow Pit	62.518	-114.923	3143.5	0.314
562	BP105	Borrow Pit	62.518	-114.924	3468.5	0.347
563	BP106	Borrow Pit	62.518	-114.928	3866.5	0.387
564	BP107	Borrow Pit	62.519	-114.929	1265.1	0.127
565	BP108	Borrow Pit	62.520	-114.930	2252.3	0.225
566	BP109	Borrow Pit	62.521	-114.931	3019.7	0.302
567	BP110	Borrow Pit	62.521	-114.933	5479.7	0.548
568	BP111	Borrow Pit	62.522	-114.935	4602.4	0.460
569	BP112	Borrow Pit	62.523	-114.941	9500.9	0.950
570	BP113	Borrow Pit	62.522	-114.942	2299.0	0.230
571	BP114	Borrow Pit	62.524	-114.945	4457.2	0.446
572	BP115	Borrow Pit	62.526	-114.952	13562.1	1.356
573	BP116	Borrow Pit	62.530	-114.955	6829.6	0.683
574	BP117	Borrow Pit	62.531	-114.955	2235.2	0.224
575	BP118	Borrow Pit	62.532	-114.958	10771.5	1.077
576	BP119	Borrow Pit	62.531	-114.960	16919.4	1.692
577	BP120	Borrow Pit	62.534	-114.968	6691.3	0.669
578	BP121	Borrow Pit	62.534	-114.971	3001.5	0.300

ID	Name	Description	Latitude	Longitude	Area (m ²)	Area (ha)
579	BP122	Borrow Pit	62.536	-114.972	3945.2	0.395
580	BP123	Borrow Pit	62.537	-114.973	5295.8	0.530
581	BP124	Borrow Pit	62.538	-114.977	6504.1	0.650
582	BP125	Borrow Pit	62.539	-114.976	2501.3	0.250
583	BP126	Borrow Pit	62.540	-114.980	4590.5	0.459
584	BP127	Borrow Pit	62.541	-114.980	3625.2	0.363
585	BP128	Borrow Pit	62.541	-114.983	4126.4	0.413
586	BP129	Borrow Pit	62.541	-114.986	4167.4	0.417
587	BP130	Borrow Pit	62.542	-114.989	8677.1	0.868
588	BP131	Borrow Pit	62.543	-114.986	3158.7	0.316
589	BP132	Borrow Pit	62.544	-114.991	1802.3	0.180
590	BP133	Borrow Pit	62.546	-114.996	6746.5	0.675
591	BP134	Borrow Pit	62.545	-114.996	3457.9	0.346
592	BP135	Borrow Pit	62.543	-114.989	2363.1	0.236
593	BP136	Borrow Pit	62.545	-114.993	5099.2	0.510
594	BP137	Borrow Pit	62.544	-114.991	585.8	0.059
595	BP138	Borrow Pit	62.546	-114.998	386.9	0.039
596	BP139	Borrow Pit	62.547	-115.003	993.4	0.099
597	BP140	Borrow Pit	62.547	-115.000	26358.9	2.636
598	BP141	Borrow Pit	62.548	-115.004	454.8	0.045
599	BP142	Borrow Pit	62.548	-115.004	584.3	0.058
600	BP143	Borrow Pit	62.549	-115.006	3762.8	0.376
601	BP144	Borrow Pit	62.550	-115.008	1670.6	0.167
602	BP145	Borrow Pit	62.549	-115.006	1854.2	0.185
603	BP146	Borrow Pit	62.552	-115.006	4725.9	0.473
604	BP147	Borrow Pit	62.551	-115.008	2256.4	0.226
605	BP148	Borrow Pit	62.554	-115.013	6239.2	0.624
606	BP149	Borrow Pit	62.553	-115.013	12861.7	1.286
607	BP150	Borrow Pit	62.553	-115.010	2750.3	0.275
608	BP151	Borrow Pit	62.554	-115.017	1058.0	0.106
609	BP152	Borrow Pit	62.554	-115.017	984.6	0.098
610	BP153	Borrow Pit	62.554	-115.021	3796.6	0.380
611	BP154	Borrow Pit	62.553	-115.021	1795.9	0.180
612	BP155	Borrow Pit	62.553	-115.025	12454.0	1.245
613	BP156	Borrow Pit	62.555	-115.028	8545.1	0.855
614	BP157	Borrow Pit	62.555	-115.029	1094.6	0.109
615	BP158	Borrow Pit	62.556	-115.033	468.5	0.047
616	BP159	Borrow Pit	62.557	-115.033	500.5	0.050
617	BP160	Borrow Pit	62.560	-115.041	6472.4	0.647
618	BP161	Borrow Pit	62.563	-115.046	38199.7	3.820
619	BP162	Borrow Pit	62.563	-115.051	5772.7	0.577
620	BP163	Borrow Pit	62.562	-115.079	9144.3	0.914
621	BP164	Borrow Pit	62.563	-115.083	5544.5	0.554
622	BP165	Borrow Pit	62.559	-115.085	11896.7	1.190
623	BP166	Borrow Pit	62.561	-115.086	14011.7	1.401
624	BP167	Borrow Pit	62.563	-115.097	4227.7	0.423
625	BP168	Borrow Pit	62.563	-115.103	4990.4	0.499
626	BP169	Borrow Pit	62.565	-115.112	3063.2	0.306
627	BP170	Borrow Pit	62.568	-115.127	5624.6	0.562
628	BP171	Borrow Pit	62.565	-115.119	14002.4	1.400
629	BP172	Borrow Pit	62.567	-115.127	14783.4	1.478
630	BP173	Borrow Pit	62.570	-115.130	20745.7	2.075
631	BP174	Borrow Pit	62.573	-115.133	7632.6	0.763
632	BP175	Borrow Pit	62.574	-115.136	7283.0	0.728
633	BP177	Borrow Pit	62.576	-115.148	11250.7	1.125
634	BP178	Borrow Pit	62.578	-115.146	6724.5	0.672
635	BP179	Borrow Pit	62.578	-115.151	3744.8	0.374
636	BP180	Borrow Pit	62.578	-115.157	14306.2	1.431

ID	Name	Description	Latitude	Longitude	Area (m ²)	Area (ha)
637	BP181	Borrow Pit	62.580	-115.157	9114.1	0.911
638	BP182	Borrow Pit	62.581	-115.167	22783.7	2.278
639	BP183	Borrow Pit	62.583	-115.177	38108.6	3.811
640	BP184	Borrow Pit	62.583	-115.169	29431.2	2.943
641	BP185	Borrow Pit	62.586	-115.188	23232.9	2.323
642	BP186	Borrow Pit	62.596	-115.196	7607.7	0.761
643	BP187	Borrow Pit	62.597	-115.193	3716.7	0.372
644	BP188	Borrow Pit	62.599	-115.195	2998.4	0.300
645	BP189	Borrow Pit	62.598	-115.195	8497.6	0.850
646	BP190	Borrow Pit	62.599	-115.193	2134.0	0.213
647	BP191	Borrow Pit	62.600	-115.194	4044.2	0.404
648	BP192	Borrow Pit	62.601	-115.198	8632.5	0.863
649	BP193	Borrow Pit	62.603	-115.197	38595.8	3.860
650	BP194	Borrow Pit	62.604	-115.201	6224.4	0.622
651	BP195	Borrow Pit	62.604	-115.201	1027.5	0.103
652	BP196	Borrow Pit	62.605	-115.201	1008.6	0.101
653	BP197	Borrow Pit	62.605	-115.204	1904.4	0.190
654	BP198	Borrow Pit	62.606	-115.206	18689.3	1.869
655	BP199	Borrow Pit	62.609	-115.206	3424.7	0.342
656	BP200	Borrow Pit	62.609	-115.209	5929.8	0.593
657	BP201	Borrow Pit	62.609	-115.212	3293.9	0.329
658	BP202	Borrow Pit	62.612	-115.210	20064.7	2.006
659	BP203	Borrow Pit	62.614	-115.214	3094.7	0.309
660	BP204	Borrow Pit	62.613	-115.216	8498.0	0.850
661	BP205	Borrow Pit	62.615	-115.217	10396.4	1.040
662	BP206	Borrow Pit	62.617	-115.213	10043.5	1.004
663	BP207	Borrow Pit	62.616	-115.217	9339.1	0.934
664	BP208	Borrow Pit	62.631	-115.225	2411.3	0.241
665	BP209	Borrow Pit	62.631	-115.225	2477.7	0.248
666	BP210	Borrow Pit	62.628	-115.224	11513.3	1.151
667	BP211	Borrow Pit	62.627	-115.220	5401.9	0.540
668	BP212	Borrow Pit	62.633	-115.229	4601.1	0.460
669	BP213	Borrow Pit	62.632	-115.230	1170.3	0.117
670	BP214	Borrow Pit	62.633	-115.230	605.7	0.061
671	BP215	Borrow Pit	62.635	-115.235	43006.4	4.301
672	BP216	Borrow Pit	62.636	-115.240	7336.5	0.734
673	BP217	Borrow Pit	62.634	-115.233	4558.4	0.456
674	BP218	Borrow Pit	62.641	-115.246	14842.2	1.484
675	BP219	Borrow Pit	62.642	-115.248	21370.3	2.137
676	BP220	Borrow Pit	62.643	-115.250	18352.1	1.835
677	BP221	Borrow Pit	62.641	-115.242	3457.6	0.346
678	BP222	Borrow Pit	62.640	-115.241	6710.5	0.671
679	BP223	Borrow Pit	62.639	-115.241	2357.5	0.236
680	BP224	Borrow Pit	62.646	-115.258	14143.1	1.414
681	BP225	Borrow Pit	62.645	-115.258	3013.1	0.301
682	BP226	Borrow Pit	62.647	-115.261	11857.5	1.186
683	BP227	Borrow Pit	62.648	-115.261	1184.1	0.118
684	BP228	Borrow Pit	62.648	-115.263	3940.1	0.394
685	BP229	Borrow Pit	62.650	-115.263	10604.4	1.060
686	BP230	Borrow Pit	62.651	-115.267	3924.2	0.392
687	BP231	Borrow Pit	62.652	-115.271	2485.7	0.249
688	BP232	Borrow Pit	62.652	-115.269	489.0	0.049
689	BP233	Borrow Pit	62.652	-115.274	3975.7	0.398
690	BP234	Borrow Pit	62.653	-115.274	3486.6	0.349
691	BP235	Borrow Pit	62.653	-115.277	2132.8	0.213
692	BP236	Borrow Pit	62.654	-115.277	1529.1	0.153
693	BP237	Borrow Pit	62.655	-115.280	11630.6	1.163
694	BP238	Borrow Pit	62.655	-115.285	3914.0	0.391

ID	Name	Description	Latitude	Longitude	Area (m ²)	Area (ha)
695	BP239	Borrow Pit	62.656	-115.284	4788.0	0.479
696	BP240	Borrow Pit	62.658	-115.287	3617.4	0.362
697	BP241	Borrow Pit	62.658	-115.292	1217.4	0.122
698	BP242	Borrow Pit	62.660	-115.296	16640.2	1.664
699	BP243	Borrow Pit	62.662	-115.300	13894.3	1.389
700	BP244	Borrow Pit	62.662	-115.302	3161.7	0.316
701	BP245	Borrow Pit	62.664	-115.306	429.5	0.043
702	BP246	Borrow Pit	62.663	-115.308	977.6	0.098
703	BP247	Borrow Pit	62.661	-115.306	30084.7	3.008
704	BP248	Borrow Pit	62.665	-115.305	2975.6	0.298
705	BP249	Borrow Pit	62.669	-115.321	11176.1	1.118
706	BP250	Borrow Pit	62.669	-115.317	787.1	0.079
707	BP251	Borrow Pit	62.668	-115.329	18897.1	1.890
708	BP252	Borrow Pit	62.667	-115.330	2393.1	0.239
709	BP253	Borrow Pit	62.668	-115.339	9889.9	0.989
710	BP254	Borrow Pit	62.668	-115.341	7922.7	0.792
711	BP255	Borrow Pit	62.670	-115.347	3971.5	0.397
712	BP256	Borrow Pit	62.669	-115.349	2866.6	0.287
713	BP257	Borrow Pit	62.669	-115.346	4744.8	0.474
714	BP258	Borrow Pit	62.669	-115.359	5637.1	0.564
715	BP259	Borrow Pit	62.671	-115.357	3950.0	0.395
716	BP260	Borrow Pit	62.672	-115.362	3780.8	0.378
717	BP261	Borrow Pit	62.671	-115.361	3127.0	0.313
718	BP262	Borrow Pit	62.672	-115.364	580.9	0.058
719	BP263	Borrow Pit	62.672	-115.366	3833.5	0.383
720	BP264	Borrow Pit	62.671	-115.367	1078.3	0.108
721	BP265	Borrow Pit	62.671	-115.373	5114.5	0.511
722	BP266	Borrow Pit	62.673	-115.378	3911.7	0.391
723	BP267	Borrow Pit	62.675	-115.380	6793.7	0.679
724	BP268	Borrow Pit	62.676	-115.386	9460.0	0.946
725	BP269	Borrow Pit	62.678	-115.391	4835.8	0.484
726	BP270	Borrow Pit	62.677	-115.381	9276.4	0.928
727	BP271	Borrow Pit	62.679	-115.389	771.1	0.077
728	BP272	Borrow Pit	62.679	-115.395	2659.5	0.266
729	BP273	Borrow Pit	62.681	-115.397	519.0	0.052
730	BP274	Borrow Pit	62.680	-115.398	19074.5	1.907
731	BP275	Borrow Pit	62.683	-115.403	1117.1	0.112
732	BP276	Borrow Pit	62.684	-115.409	11298.1	1.130
733	BP277	Borrow Pit	62.686	-115.410	1677.3	0.168
734	BP278	Borrow Pit	62.681	-115.403	3551.9	0.355
735	BP279	Borrow Pit	62.683	-115.405	10136.7	1.014
736	BP280	Borrow Pit	62.682	-115.409	1323.0	0.132
737	BP281	Borrow Pit	62.682	-115.412	569.1	0.057
738	BP282	Borrow Pit	62.684	-115.415	2292.7	0.229
739	BP283	Borrow Pit	62.684	-115.413	1580.2	0.158
740	BP284	Borrow Pit	62.684	-115.419	4269.5	0.427
741	BP285	Borrow Pit	62.686	-115.423	670.4	0.067
742	BP286	Borrow Pit	62.687	-115.428	9837.0	0.984
743	BP287	Borrow Pit	62.687	-115.434	15100.0	1.510
744	BP288	Borrow Pit	62.689	-115.443	31215.3	3.122
745	BP289	Borrow Pit	62.688	-115.438	1258.3	0.126
746	BP290	Borrow Pit	62.687	-115.440	3006.9	0.301
747	BP291	Borrow Pit	62.687	-115.436	6440.8	0.644
748	BP292	Borrow Pit	62.688	-115.450	1803.2	0.180
749	BP293	Borrow Pit	62.686	-115.457	6142.3	0.614
750	BP294	Borrow Pit	62.687	-115.457	3776.9	0.378
751	BP295	Borrow Pit	62.692	-115.453	11749.6	1.175
752	BP296	Borrow Pit	62.686	-115.464	4523.4	0.452

ID	Name	Description	Latitude	Longitude	Area (m ²)	Area (ha)
753	BP297	Borrow Pit	62.687	-115.465	513.1	0.051
754	BP298	Borrow Pit	62.685	-115.466	2356.0	0.236
755	BP299	Borrow Pit	62.686	-115.469	1529.3	0.153
756	BP300	Borrow Pit	62.686	-115.475	7331.1	0.733
757	BP301	Borrow Pit	62.688	-115.474	6880.3	0.688
758	BP302	Borrow Pit	62.688	-115.479	3205.0	0.320
759	BP303	Borrow Pit	62.688	-115.482	1019.6	0.102
760	BP304	Borrow Pit	62.688	-115.481	1224.9	0.122
761	BP305	Borrow Pit	62.691	-115.485	7622.9	0.762
762	BP306	Borrow Pit	62.692	-115.490	5489.1	0.549
763	BP307	Borrow Pit	62.694	-115.487	7942.4	0.794
764	BP308	Borrow Pit	62.693	-115.492	3899.4	0.390
765	BP309	Borrow Pit	62.694	-115.495	10123.9	1.012
766	BP310	Borrow Pit	62.694	-115.500	6719.2	0.672
767	BP311	Borrow Pit	62.693	-115.488	1085.6	0.109
768	BP312	Borrow Pit	62.692	-115.492	1186.1	0.119
769	BP313	Borrow Pit	62.696	-115.504	4181.3	0.418
770	BP314	Borrow Pit	62.697	-115.509	4179.3	0.418
771	BP315	Borrow Pit	62.696	-115.509	1157.7	0.116
772	BP316	Borrow Pit	62.699	-115.517	9994.0	0.999
773	BP317	Borrow Pit	62.699	-115.515	12976.2	1.298
774	BPpond1	Pond in Borrow Pit	62.456	-114.560	1752.6	0.175
775	BPpond2	Pond in Borrow Pit	62.457	-114.567	291.5	0.029
776	BPpond3	Pond in Borrow Pit	62.457	-114.568	2235.2	0.224
777	BPpond4	Pond in Borrow Pit	62.459	-114.574	285.3	0.029
778	BPpond5	Pond in Borrow Pit	62.459	-114.575	838.7	0.084
779	BPpond6	Pond in Borrow Pit	62.458	-114.576	1492.9	0.149
780	BPpond7	Pond in Borrow Pit	62.459	-114.576	625.6	0.063
781	BPpond8	Pond in Borrow Pit	62.459	-114.581	276.7	0.028
782	BPpond9	Pond in Borrow Pit	62.459	-114.585	2789.3	0.279
783	BPpond10	Pond in Borrow Pit	62.459	-114.597	792.2	0.079
784	BPpond11	Pond in Borrow Pit	62.459	-114.597	489.3	0.049
785	BPpond12	Pond in Borrow Pit	62.459	-114.598	460.8	0.046
786	BPpond13	Pond in Borrow Pit	62.459	-114.598	22.7	0.002
787	BPpond14	Pond in Borrow Pit	62.459	-114.599	2215.1	0.222
788	BPpond15	Pond in Borrow Pit	62.462	-114.608	1498.0	0.150
789	BPpond16	Pond in Borrow Pit	62.462	-114.610	2181.7	0.218
790	BPpond17	Pond in Borrow Pit	62.462	-114.615	302.6	0.030
791	BPpond18	Pond in Borrow Pit	62.461	-114.623	5087.8	0.509
792	BPpond19	Pond in Borrow Pit	62.463	-114.627	1565.4	0.157
793	BPpond20	Pond in Borrow Pit	62.466	-114.642	2879.8	0.288
794	BPpond21	Pond in Borrow Pit	62.469	-114.653	1701.3	0.170
795	BPpond22	Pond in Borrow Pit	62.473	-114.673	4701.4	0.470
796	BPpond23	Pond in Borrow Pit	62.475	-114.673	285.3	0.029
797	BPpond24	Pond in Borrow Pit	62.472	-114.683	6262.0	0.626
798	BPpond25	Pond in Borrow Pit	62.473	-114.683	1733.0	0.173
799	BPpond26	Pond in Borrow Pit	62.474	-114.684	1272.8	0.127
800	BPpond27	Pond in Borrow Pit	62.475	-114.690	1721.9	0.172
801	BPpond28	Pond in Borrow Pit	62.475	-114.695	2612.0	0.261
802	BPpond29	Pond in Borrow Pit	62.474	-114.701	1549.1	0.155
803	BPpond30	Pond in Borrow Pit	62.481	-114.732	11925.6	1.193
804	BPpond31	Pond in Borrow Pit	62.493	-114.772	260.2	0.026
805	BPpond32	Pond in Borrow Pit	62.491	-114.770	990.2	0.099
806	BPpond33	Pond in Borrow Pit	62.494	-114.780	1006.9	0.101
807	BPpond34	Pond in Borrow Pit	62.499	-114.783	2128.2	0.213
808	BPpond35	Pond in Borrow Pit	62.513	-114.813	2187.0	0.219
809	BPpond36	Pond in Borrow Pit	62.512	-114.814	225.5	0.023
810	BPpond37	Pond in Borrow Pit	62.514	-114.813	1733.7	0.173

ID	Name	Description	Latitude	Longitude	Area (m ²)	Area (ha)
811	BPpond38	Pond in Borrow Pit	62.513	-114.815	124.3	0.012
812	BPpond39	Pond in Borrow Pit	62.513	-114.833	1294.8	0.129
813	BPpond40	Pond in Borrow Pit	62.513	-114.834	336.6	0.034
814	BPpond41	Pond in Borrow Pit	62.513	-114.834	147.9	0.015
815	BPpond42	Pond in Borrow Pit	62.514	-114.834	383.5	0.038
816	BPpond43	Pond in Borrow Pit	62.513	-114.855	837.7	0.084
817	BPpond44	Pond in Borrow Pit	62.519	-114.867	146.6	0.015
818	BPpond45	Pond in Borrow Pit	62.519	-114.868	126.1	0.013
819	BPpond46	Pond in Borrow Pit	62.519	-114.870	106.1	0.011
820	BPpond47	Pond in Borrow Pit	62.520	-114.871	128.2	0.013
821	BPpond48	Pond in Borrow Pit	62.519	-114.879	91.1	0.009
822	BPpond49	Pond in Borrow Pit	62.521	-114.880	632.1	0.063
823	BPpond50	Pond in Borrow Pit	62.521	-114.882	264.6	0.026
824	BPpond51	Pond in Borrow Pit	62.520	-114.905	129.1	0.013
825	BPpond52	Pond in Borrow Pit	62.520	-114.908	126.6	0.013
826	BPpond53	Pond in Borrow Pit	62.517	-114.917	3151.8	0.315
827	BPpond54	Pond in Borrow Pit	62.518	-114.917	1154.2	0.115
828	BPpond55	Pond in Borrow Pit	62.518	-114.924	271.7	0.027
829	BPpond56	Pond in Borrow Pit	62.518	-114.925	431.9	0.043
830	BPpond57	Pond in Borrow Pit	62.520	-114.930	597.0	0.060
831	BPpond58	Pond in Borrow Pit	62.521	-114.934	1119.2	0.112
832	BPpond59	Pond in Borrow Pit	62.523	-114.942	117.2	0.012
833	BPpond60	Pond in Borrow Pit	62.524	-114.945	177.5	0.018
834	BPpond61	Pond in Borrow Pit	62.524	-114.946	133.8	0.013
835	BPpond62	Pond in Borrow Pit	62.526	-114.950	1121.5	0.112
836	BPpond63	Pond in Borrow Pit	62.530	-114.955	404.0	0.040
837	BPpond64	Pond in Borrow Pit	62.530	-114.954	427.9	0.043
838	BPpond65	Pond in Borrow Pit	62.530	-114.956	126.9	0.013
839	BPpond66	Pond in Borrow Pit	62.532	-114.959	297.9	0.030
840	BPpond67	Pond in Borrow Pit	62.532	-114.961	1149.8	0.115
841	BPpond68	Pond in Borrow Pit	62.534	-114.969	391.3	0.039
842	BPpond69	Pond in Borrow Pit	62.541	-114.982	457.1	0.046
843	BPpond70	Pond in Borrow Pit	62.541	-114.986	1541.3	0.154
844	BPpond71	Pond in Borrow Pit	62.542	-114.989	987.0	0.099
845	BPpond72	Pond in Borrow Pit	62.543	-114.986	213.0	0.021
846	BPpond73	Pond in Borrow Pit	62.543	-114.989	135.0	0.014
847	BPpond74	Pond in Borrow Pit	62.543	-114.991	358.5	0.036
848	BPpond75	Pond in Borrow Pit	62.544	-114.992	249.9	0.025
849	BPpond76	Pond in Borrow Pit	62.545	-114.993	539.9	0.054
850	BPpond77	Pond in Borrow Pit	62.548	-115.004	762.1	0.076
851	BPpond78	Pond in Borrow Pit	62.548	-115.004	305.9	0.031
852	BPpond79	Pond in Borrow Pit	62.548	-115.002	12750.9	1.275
853	BPpond80	Pond in Borrow Pit	62.547	-115.001	376.1	0.038
854	BPpond81	Pond in Borrow Pit	62.549	-115.005	108.4	0.011
855	BPpond82	Pond in Borrow Pit	62.549	-115.006	416.0	0.042
856	BPpond83	Pond in Borrow Pit	62.552	-115.007	1193.6	0.119
857	BPpond84	Pond in Borrow Pit	62.552	-115.006	1303.5	0.130
858	BPpond85	Pond in Borrow Pit	62.554	-115.013	2725.2	0.273
859	BPpond86	Pond in Borrow Pit	62.553	-115.014	227.6	0.023
860	BPpond87	Pond in Borrow Pit	62.553	-115.013	44.5	0.004
861	BPpond88	Pond in Borrow Pit	62.553	-115.013	182.5	0.018
862	BPpond89	Pond in Borrow Pit	62.551	-115.008	211.5	0.021
863	BPpond90	Pond in Borrow Pit	62.549	-115.006	283.2	0.028
864	BPpond91	Pond in Borrow Pit	62.545	-114.996	2870.7	0.287
865	BPpond92	Pond in Borrow Pit	62.554	-115.021	18.8	0.002
866	BPpond93	Pond in Borrow Pit	62.554	-115.021	29.7	0.003
867	BPpond94	Pond in Borrow Pit	62.553	-115.025	11754.3	1.175
868	BPpond95	Pond in Borrow Pit	62.555	-115.027	882.3	0.088

ID	Name	Description	Latitude	Longitude	Area (m ²)	Area (ha)
869	BPpond96	Pond in Borrow Pit	62.555	-115.029	371.5	0.037
870	BPpond97	Pond in Borrow Pit	62.555	-115.029	83.0	0.008
871	BPpond98	Pond in Borrow Pit	62.555	-115.029	540.4	0.054
872	BPpond99	Pond in Borrow Pit	62.556	-115.033	542.1	0.054
873	BPpond100	Pond in Borrow Pit	62.557	-115.033	313.1	0.031
874	BPpond101	Pond in Borrow Pit	62.560	-115.041	117.4	0.012
875	BPpond102	Pond in Borrow Pit	62.562	-115.046	7829.1	0.783
876	BPpond103	Pond in Borrow Pit	62.563	-115.045	981.9	0.098
877	BPpond104	Pond in Borrow Pit	62.562	-115.044	265.9	0.027
878	BPpond105	Pond in Borrow Pit	62.562	-115.044	198.2	0.020
879	BPpond106	Pond in Borrow Pit	62.563	-115.050	740.3	0.074
880	BPpond107	Pond in Borrow Pit	62.562	-115.079	801.3	0.080
881	BPpond108	Pond in Borrow Pit	62.561	-115.079	456.7	0.046
882	BPpond109	Pond in Borrow Pit	62.565	-115.112	602.3	0.060
883	BPpond110	Pond in Borrow Pit	62.567	-115.126	529.3	0.053
884	BPpond111	Pond in Borrow Pit	62.568	-115.127	2116.8	0.212
885	BPpond112	Pond in Borrow Pit	62.566	-115.118	608.2	0.061
886	BPpond113	Pond in Borrow Pit	62.563	-115.103	5723.2	0.572
887	BPpond114	Pond in Borrow Pit	62.559	-115.085	174.0	0.017
888	BPpond115	Pond in Borrow Pit	62.559	-115.084	63.5	0.006
889	BPpond116	Pond in Borrow Pit	62.573	-115.132	3970.1	0.397
890	BPpond117	Pond in Borrow Pit	62.572	-115.137	1018.6	0.102
891	BPpond118	Pond in Borrow Pit	62.579	-115.144	348.5	0.035
892	BPpond119	Pond in Borrow Pit	62.579	-115.144	168.7	0.017
893	BPpond120	Pond in Borrow Pit	62.578	-115.151	2572.5	0.257
894	BPpond121	Pond in Borrow Pit	62.579	-115.159	430.7	0.043
895	BPpond122	Pond in Borrow Pit	62.578	-115.156	104.2	0.010
896	BPpond123	Pond in Borrow Pit	62.579	-115.157	309.0	0.031
897	BPpond124	Pond in Borrow Pit	62.579	-115.156	108.2	0.011
898	BPpond125	Pond in Borrow Pit	62.578	-115.157	32.2	0.003
899	BPpond126	Pond in Borrow Pit	62.580	-115.157	694.5	0.069
900	BPpond127	Pond in Borrow Pit	62.581	-115.157	75.7	0.008
901	BPpond128	Pond in Borrow Pit	62.581	-115.164	861.9	0.086
902	BPpond129	Pond in Borrow Pit	62.580	-115.167	769.3	0.077
903	BPpond130	Pond in Borrow Pit	62.581	-115.171	631.8	0.063
904	BPpond131	Pond in Borrow Pit	62.581	-115.170	1809.3	0.181
905	BPpond132	Pond in Borrow Pit	62.582	-115.169	118.3	0.012
906	BPpond133	Pond in Borrow Pit	62.580	-115.168	62.2	0.006
907	BPpond134	Pond in Borrow Pit	62.583	-115.179	5121.0	0.512
908	BPpond135	Pond in Borrow Pit	62.583	-115.176	9988.4	0.999
909	BPpond136	Pond in Borrow Pit	62.583	-115.170	5660.7	0.566
910	BPpond137	Pond in Borrow Pit	62.586	-115.189	9675.5	0.968
911	BPpond138	Pond in Borrow Pit	62.585	-115.189	2024.1	0.202
912	BPpond139	Pond in Borrow Pit	62.597	-115.195	764.4	0.076
913	BPpond140	Pond in Borrow Pit	62.597	-115.193	282.9	0.028
914	BPpond141	Pond in Borrow Pit	62.599	-115.193	205.6	0.021
915	BPpond142	Pond in Borrow Pit	62.599	-115.196	132.7	0.013
916	BPpond143	Pond in Borrow Pit	62.602	-115.198	1094.9	0.109
917	BPpond144	Pond in Borrow Pit	62.601	-115.195	2315.4	0.232
918	BPpond145	Pond in Borrow Pit	62.603	-115.198	1933.2	0.193
919	BPpond146	Pond in Borrow Pit	62.603	-115.198	112.5	0.011
920	BPpond147	Pond in Borrow Pit	62.607	-115.207	4715.7	0.472
921	BPpond148	Pond in Borrow Pit	62.610	-115.209	6141.1	0.614
922	BPpond149	Pond in Borrow Pit	62.612	-115.210	2949.7	0.295
923	BPpond150	Pond in Borrow Pit	62.611	-115.210	110.0	0.011
924	BPpond151	Pond in Borrow Pit	62.610	-115.208	151.1	0.015
925	BPpond152	Pond in Borrow Pit	62.613	-115.216	2718.3	0.272
926	BPpond153	Pond in Borrow Pit	62.615	-115.217	1210.5	0.121

ID	Name	Description	Latitude	Longitude	Area (m ²)	Area (ha)
927	BPpond154	Pond in Borrow Pit	62.616	-115.218	999.2	0.100
928	BPpond155	Pond in Borrow Pit	62.631	-115.225	2251.5	0.225
929	BPpond156	Pond in Borrow Pit	62.631	-115.225	1570.3	0.157
930	BPpond157	Pond in Borrow Pit	62.629	-115.224	236.5	0.024
931	BPpond158	Pond in Borrow Pit	62.629	-115.224	112.1	0.011
932	BPpond159	Pond in Borrow Pit	62.628	-115.223	127.7	0.013
933	BPpond160	Pond in Borrow Pit	62.632	-115.230	152.3	0.015
934	BPpond161	Pond in Borrow Pit	62.634	-115.233	768.8	0.077
935	BPpond162	Pond in Borrow Pit	62.634	-115.232	105.1	0.011
936	BPpond163	Pond in Borrow Pit	62.634	-115.232	72.3	0.007
937	BPpond164	Pond in Borrow Pit	62.635	-115.234	49.8	0.005
938	BPpond165	Pond in Borrow Pit	62.635	-115.235	58.4	0.006
939	BPpond166	Pond in Borrow Pit	62.643	-115.251	924.3	0.092
940	BPpond167	Pond in Borrow Pit	62.644	-115.248	41.9	0.004
941	BPpond168	Pond in Borrow Pit	62.643	-115.251	288.9	0.029
942	BPpond169	Pond in Borrow Pit	62.643	-115.249	457.6	0.046
943	BPpond170	Pond in Borrow Pit	62.642	-115.246	572.0	0.057
944	BPpond171	Pond in Borrow Pit	62.641	-115.247	347.6	0.035
945	BPpond172	Pond in Borrow Pit	62.640	-115.241	670.9	0.067
946	BPpond173	Pond in Borrow Pit	62.640	-115.241	176.5	0.018
947	BPpond174	Pond in Borrow Pit	62.641	-115.241	21.2	0.002
948	BPpond175	Pond in Borrow Pit	62.639	-115.241	76.0	0.008
949	BPpond176	Pond in Borrow Pit	62.639	-115.240	52.4	0.005
950	BPpond177	Pond in Borrow Pit	62.639	-115.241	117.0	0.012
951	BPpond178	Pond in Borrow Pit	62.646	-115.258	139.6	0.014
952	BPpond179	Pond in Borrow Pit	62.647	-115.258	253.9	0.025
953	BPpond180	Pond in Borrow Pit	62.647	-115.259	647.0	0.065
954	BPpond181	Pond in Borrow Pit	62.645	-115.258	94.9	0.009
955	BPpond182	Pond in Borrow Pit	62.645	-115.258	177.3	0.018
956	BPpond183	Pond in Borrow Pit	62.646	-115.259	290.7	0.029
957	BPpond184	Pond in Borrow Pit	62.648	-115.261	787.3	0.079
958	BPpond185	Pond in Borrow Pit	62.648	-115.262	12.2	0.001
959	BPpond186	Pond in Borrow Pit	62.648	-115.263	88.4	0.009
960	BPpond187	Pond in Borrow Pit	62.650	-115.265	160.8	0.016
961	BPpond188	Pond in Borrow Pit	62.650	-115.263	42.3	0.004
962	BPpond189	Pond in Borrow Pit	62.652	-115.268	4240.3	0.424
963	BPpond190	Pond in Borrow Pit	62.655	-115.279	2787.1	0.279
964	BPpond191	Pond in Borrow Pit	62.653	-115.274	153.8	0.015
965	BPpond192	Pond in Borrow Pit	62.660	-115.295	1727.6	0.173
966	BPpond193	Pond in Borrow Pit	62.661	-115.296	25.6	0.003
967	BPpond194	Pond in Borrow Pit	62.662	-115.301	745.7	0.075
968	BPpond195	Pond in Borrow Pit	62.662	-115.300	336.7	0.034
969	BPpond196	Pond in Borrow Pit	62.661	-115.300	640.8	0.064
970	BPpond197	Pond in Borrow Pit	62.661	-115.303	1376.9	0.138
971	BPpond198	Pond in Borrow Pit	62.662	-115.304	91.8	0.009
972	BPpond199	Pond in Borrow Pit	62.665	-115.305	1040.3	0.104
973	BPpond200	Pond in Borrow Pit	62.668	-115.330	4685.6	0.469
974	BPpond201	Pond in Borrow Pit	62.668	-115.328	1985.3	0.199
975	BPpond202	Pond in Borrow Pit	62.668	-115.336	1205.4	0.121
976	BPpond203	Pond in Borrow Pit	62.668	-115.338	1002.5	0.100
977	BPpond204	Pond in Borrow Pit	62.668	-115.338	218.7	0.022
978	BPpond205	Pond in Borrow Pit	62.669	-115.341	705.6	0.071
979	BPpond206	Pond in Borrow Pit	62.668	-115.343	30.6	0.003
980	BPpond207	Pond in Borrow Pit	62.669	-115.346	215.6	0.022
981	BPpond208	Pond in Borrow Pit	62.671	-115.362	176.4	0.018
982	BPpond209	Pond in Borrow Pit	62.672	-115.362	129.9	0.013
983	BPpond210	Pond in Borrow Pit	62.671	-115.361	2046.2	0.205
984	BPpond211	Pond in Borrow Pit	62.671	-115.361	144.0	0.014

ID	Name	Description	Latitude	Longitude	Area (m ²)	Area (ha)
985	BPpond212	Pond in Borrow Pit	62.672	-115.367	1455.7	0.146
986	BPpond213	Pond in Borrow Pit	62.673	-115.366	4175.1	0.418
987	BPpond214	Pond in Borrow Pit	62.669	-115.359	708.1	0.071
988	BPpond215	Pond in Borrow Pit	62.670	-115.358	547.3	0.055
989	BPpond216	Pond in Borrow Pit	62.671	-115.373	3389.6	0.339
990	BPpond217	Pond in Borrow Pit	62.673	-115.379	59.4	0.006
991	BPpond218	Pond in Borrow Pit	62.673	-115.379	62.5	0.006
992	BPpond219	Pond in Borrow Pit	62.675	-115.380	821.6	0.082
993	BPpond220	Pond in Borrow Pit	62.675	-115.380	24.6	0.002
994	BPpond221	Pond in Borrow Pit	62.676	-115.386	491.0	0.049
995	BPpond222	Pond in Borrow Pit	62.676	-115.386	408.6	0.041
996	BPpond223	Pond in Borrow Pit	62.677	-115.382	722.0	0.072
997	BPpond224	Pond in Borrow Pit	62.677	-115.383	66.9	0.007
998	BPpond225	Pond in Borrow Pit	62.679	-115.389	204.0	0.020
999	BPpond226	Pond in Borrow Pit	62.678	-115.391	3075.0	0.307
1000	BPpond227	Pond in Borrow Pit	62.681	-115.397	885.3	0.089
1001	BPpond228	Pond in Borrow Pit	62.681	-115.399	3090.2	0.309
1002	BPpond229	Pond in Borrow Pit	62.680	-115.397	3158.3	0.316
1003	BPpond230	Pond in Borrow Pit	62.680	-115.398	105.2	0.011
1004	BPpond231	Pond in Borrow Pit	62.683	-115.403	225.2	0.023
1005	BPpond232	Pond in Borrow Pit	62.684	-115.408	1314.3	0.131
1006	BPpond233	Pond in Borrow Pit	62.687	-115.428	12154.0	1.215
1007	BPpond234	Pond in Borrow Pit	62.684	-115.420	4805.8	0.481
1008	BPpond235	Pond in Borrow Pit	62.682	-115.409	2327.1	0.233
1009	BPpond236	Pond in Borrow Pit	62.682	-115.407	3373.5	0.337
1010	BPpond237	Pond in Borrow Pit	62.682	-115.403	518.8	0.052
1011	BPpond238	Pond in Borrow Pit	62.681	-115.403	387.2	0.039
1012	BPpond239	Pond in Borrow Pit	62.682	-115.403	148.1	0.015
1013	BPpond240	Pond in Borrow Pit	62.687	-115.438	532.8	0.053
1014	BPpond241	Pond in Borrow Pit	62.687	-115.440	754.1	0.075
1015	BPpond242	Pond in Borrow Pit	62.688	-115.444	2344.0	0.234
1016	BPpond243	Pond in Borrow Pit	62.689	-115.444	189.5	0.019
1017	BPpond244	Pond in Borrow Pit	62.690	-115.441	782.6	0.078
1018	BPpond245	Pond in Borrow Pit	62.690	-115.444	2523.7	0.252
1019	BPpond246	Pond in Borrow Pit	62.692	-115.453	6243.5	0.624
1020	BPpond247	Pond in Borrow Pit	62.686	-115.464	156.1	0.016
1021	BPpond248	Pond in Borrow Pit	62.686	-115.464	702.7	0.070
1022	BPpond249	Pond in Borrow Pit	62.686	-115.474	477.9	0.048
1023	BPpond250	Pond in Borrow Pit	62.686	-115.476	309.3	0.031
1024	BPpond251	Pond in Borrow Pit	62.686	-115.474	146.7	0.015
1025	BPpond252	Pond in Borrow Pit	62.688	-115.474	1921.2	0.192
1026	BPpond253	Pond in Borrow Pit	62.694	-115.501	472.8	0.047
1027	BPpond254	Pond in Borrow Pit	62.694	-115.501	70.5	0.007
1028	BPpond255	Pond in Borrow Pit	62.694	-115.500	213.7	0.021
1029	BPpond256	Pond in Borrow Pit	62.693	-115.495	492.5	0.049
1030	BPpond257	Pond in Borrow Pit	62.694	-115.496	247.5	0.025
1031	BPpond258	Pond in Borrow Pit	62.693	-115.490	5200.6	0.520
1032	BPpond259	Pond in Borrow Pit	62.693	-115.488	892.5	0.089
1033	BPpond260	Pond in Borrow Pit	62.691	-115.485	197.1	0.020
1034	BPpond261	Pond in Borrow Pit	62.691	-115.485	106.2	0.011
1035	BPpond262	Pond in Borrow Pit	62.695	-115.505	46.4	0.005
1036	BPpond263	Pond in Borrow Pit	62.697	-115.509	867.0	0.087
1037	BPpond264	Pond in Borrow Pit	62.697	-115.509	77.5	0.008
1038	BPpond265	Pond in Borrow Pit	62.695	-115.509	244.3	0.024
1039	BPpond266	Pond in Borrow Pit	62.696	-115.510	570.2	0.057