

**SMALL
HOUSE
DESIGNS**

One-and-a-half Storey

CENTRAL MORTGAGE AND HOUSING CORPORATION

**SMALL
HOUSE
DESIGNS**

*One-and-a-half
Storey*

CENTRAL MORTGAGE AND HOUSING CORPORATION

minimum lot widths

● Minimum lot widths indicated on plans conform to the minimum standards set by Central Mortgage and Housing Corporation. Where such standards are less than local requirements, local requirements will govern. Conversely, where local requirements are less than CMHC standards, the latter will apply.



FOREWORD

ONE of a series of booklets containing attractive house plans designed especially by Canadian architects for Canadian requirements, SMALL HOUSE DESIGNS—1½-STOREY has been published to provide prospective home-owners with suggestions for new homes in the form of standard plans and designs. Other booklets in the series are:

SMALL HOUSE DESIGNS—BUNGALOWS

SMALL HOUSE DESIGNS— 2-STOREY

SMALL HOUSE DESIGNS— DUPLEXES

In addition, FARM HOUSES, a volume of ten farm house designs prepared and issued under the direction of the Prairie Rural Housing Committee, is available on request.

A complete set of working drawings of each house illustrated, comprising four copies of blueprints and four copies of "Outline Specification Form (CMHC-24)"—to be filled in by the owner and builder—may be purchased through Central Mortgage and Housing Corporation for \$10.00.

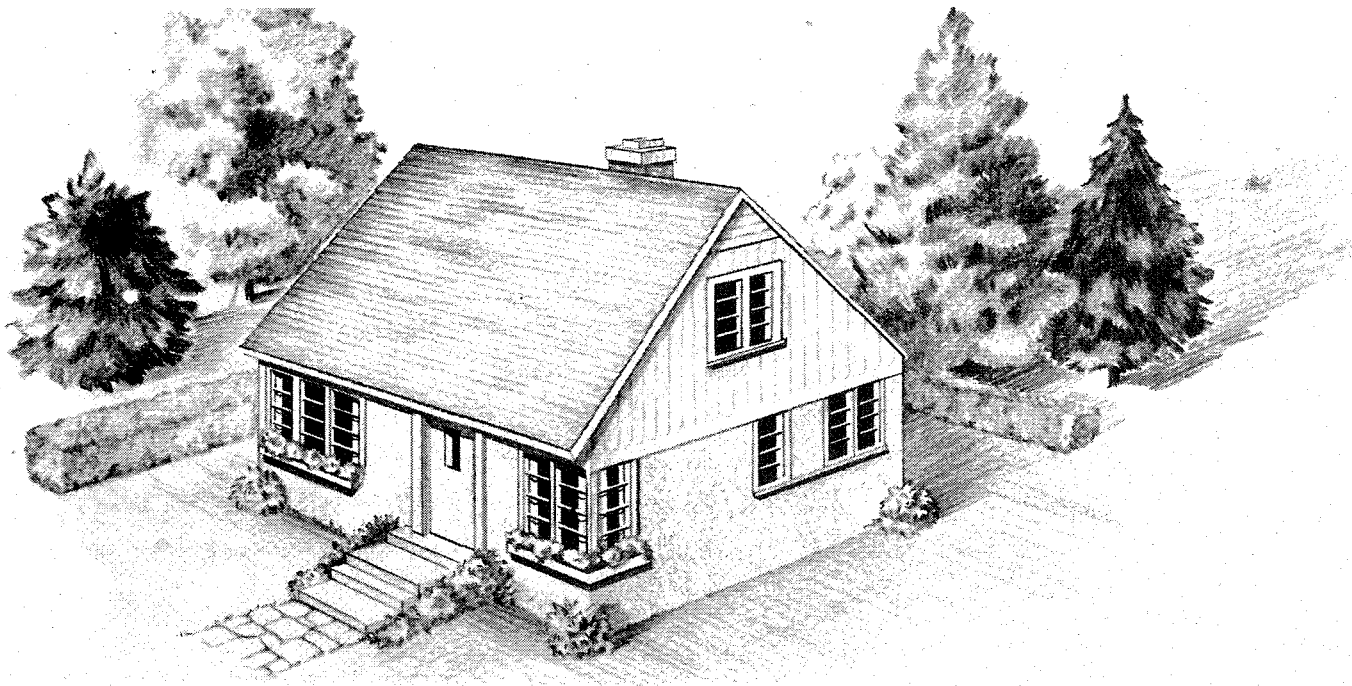
Working drawings should be ordered by number from: Central Mortgage and Housing Corporation, 56 Lyon Street, Ottawa, or from the nearest regional or branch office of the Corporation. Regional and branch offices are located as follows:

REGIONAL OFFICES

Vancouver	Montreal
Winnipeg	Halifax
Toronto	

BRANCH OFFICES

Victoria	Regina	London	Sherbrooke
Edmonton	Saskatoon	Hamilton	Quebec
Calgary	Windsor	Ottawa	Saint John

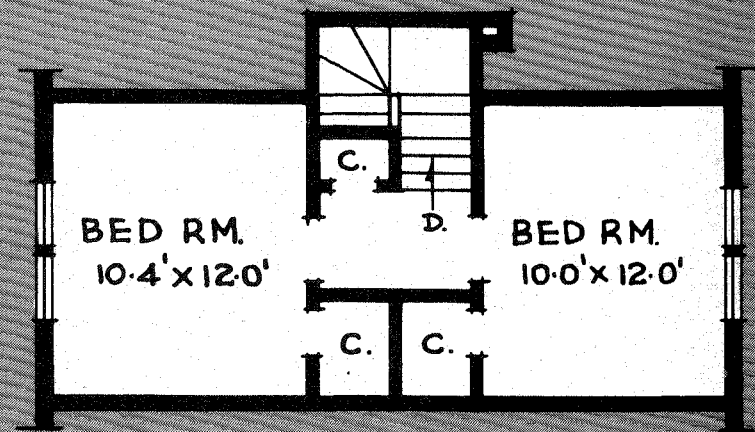
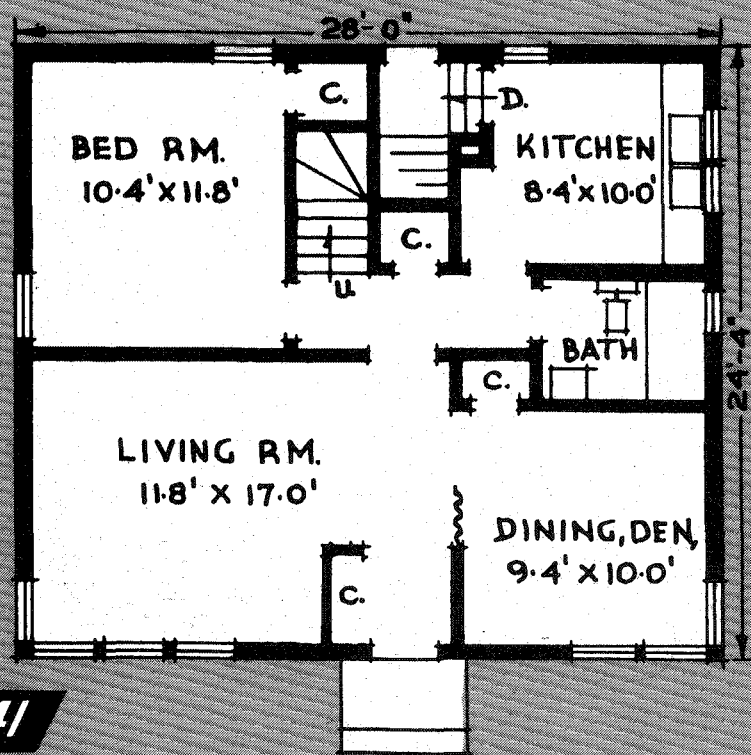


Area:
 1st Floor: 680 sq. ft.
 2nd Floor: 376 sq. ft.
 Total: 1,056 sq. ft.

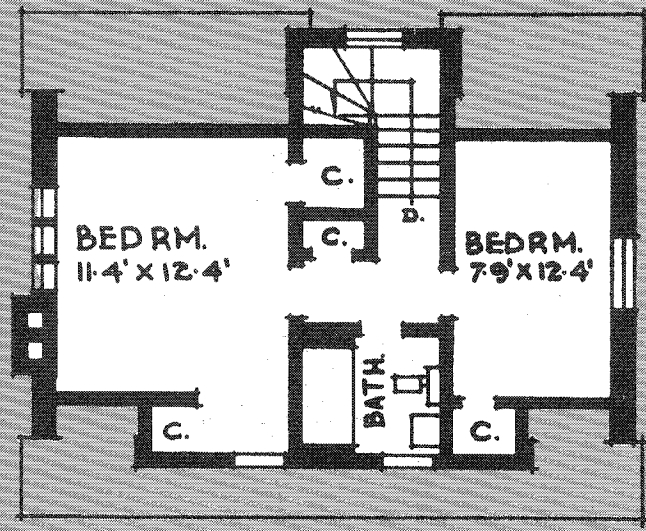
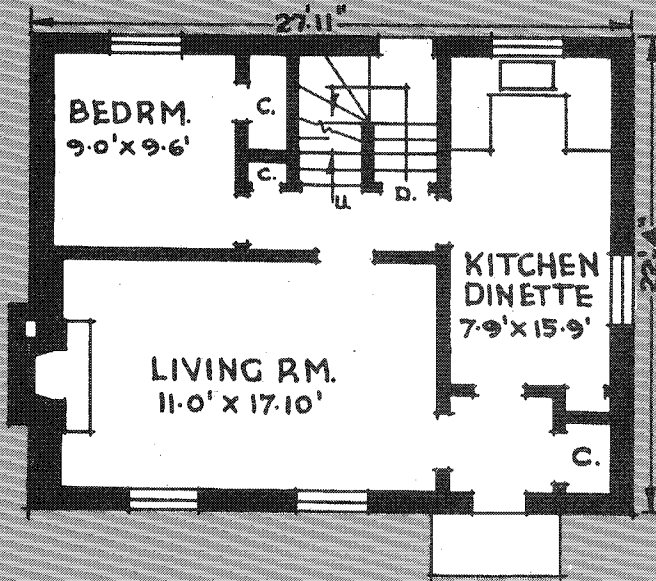
Cubic Contents:
 15,524 cu. ft.

Minimum lot width:
 with drive: 42'-0"
 without drive: 40'-0"

Architect: M. G. Dixon



DESIGN N° 49-41



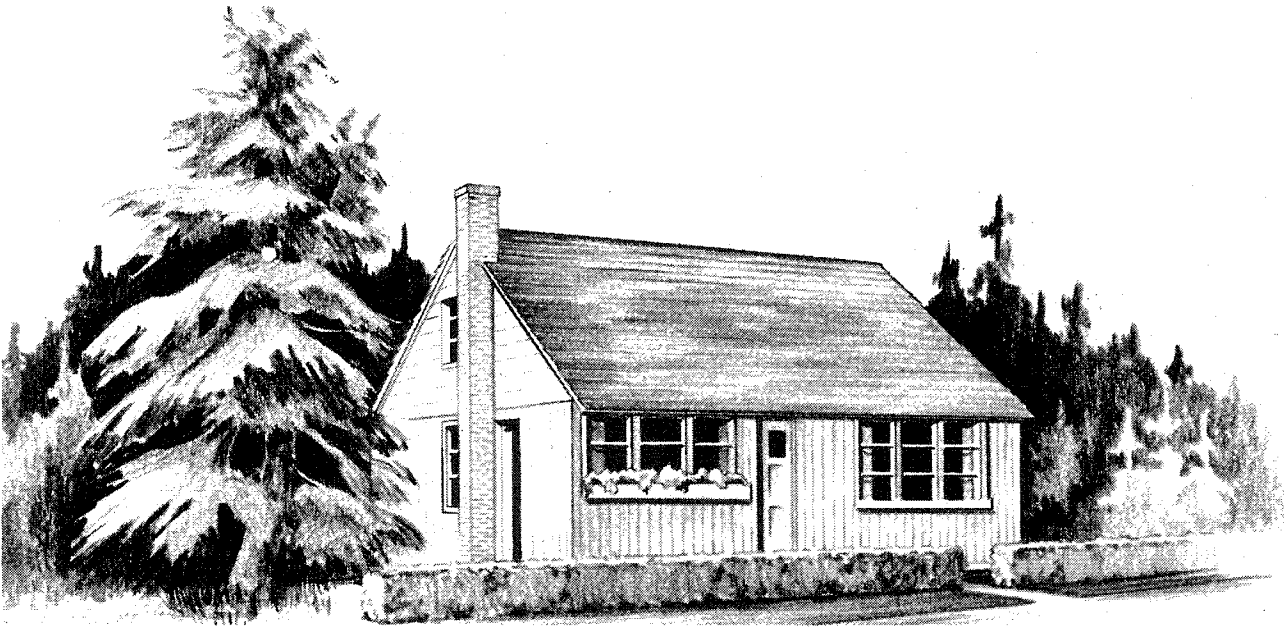
Area:
 1st Floor: 623 sq. ft.
 2nd Floor: 453 sq. ft.
 Total: 1,076 sq. ft.

Cubic Contents:
 15,974 cu. ft.

Minimum lot width:
 with drive: 41'-11"
 without drive: 39'-11"

Architects:
 Greensides & Langley

DESIGN NO. 49-42

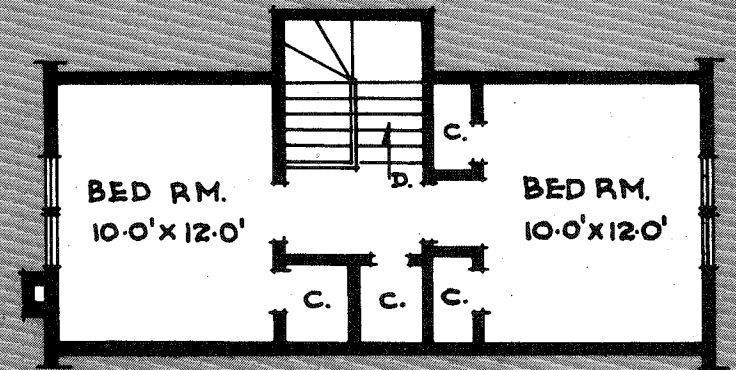
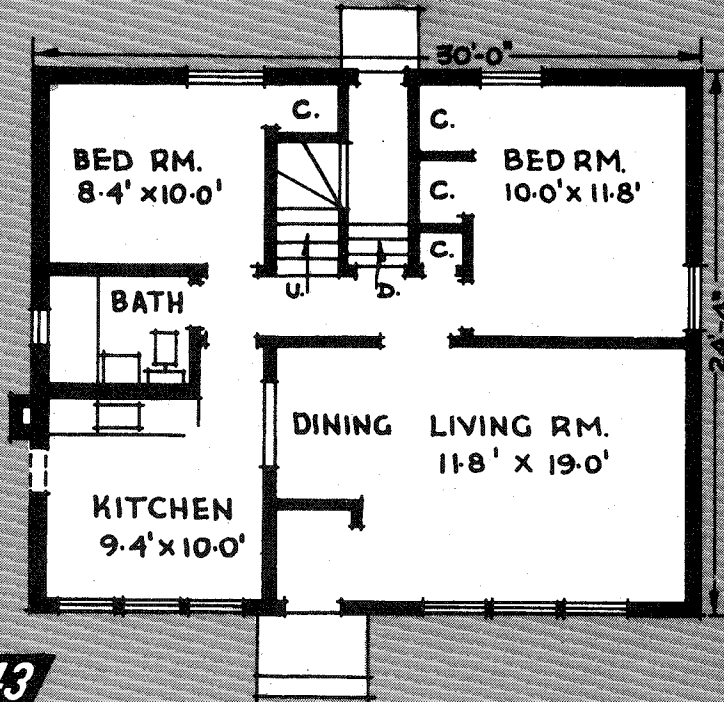


Area:
 1st Floor: 730 sq. ft.
 2nd Floor: 434 sq. ft.
 Total: 1,164 sq. ft.

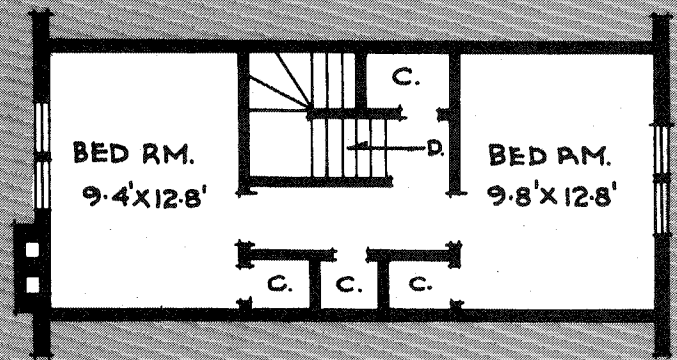
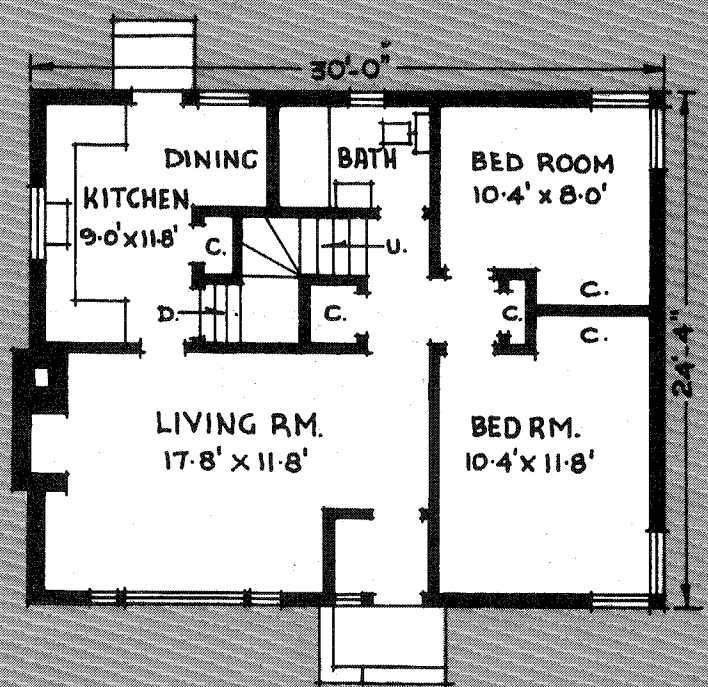
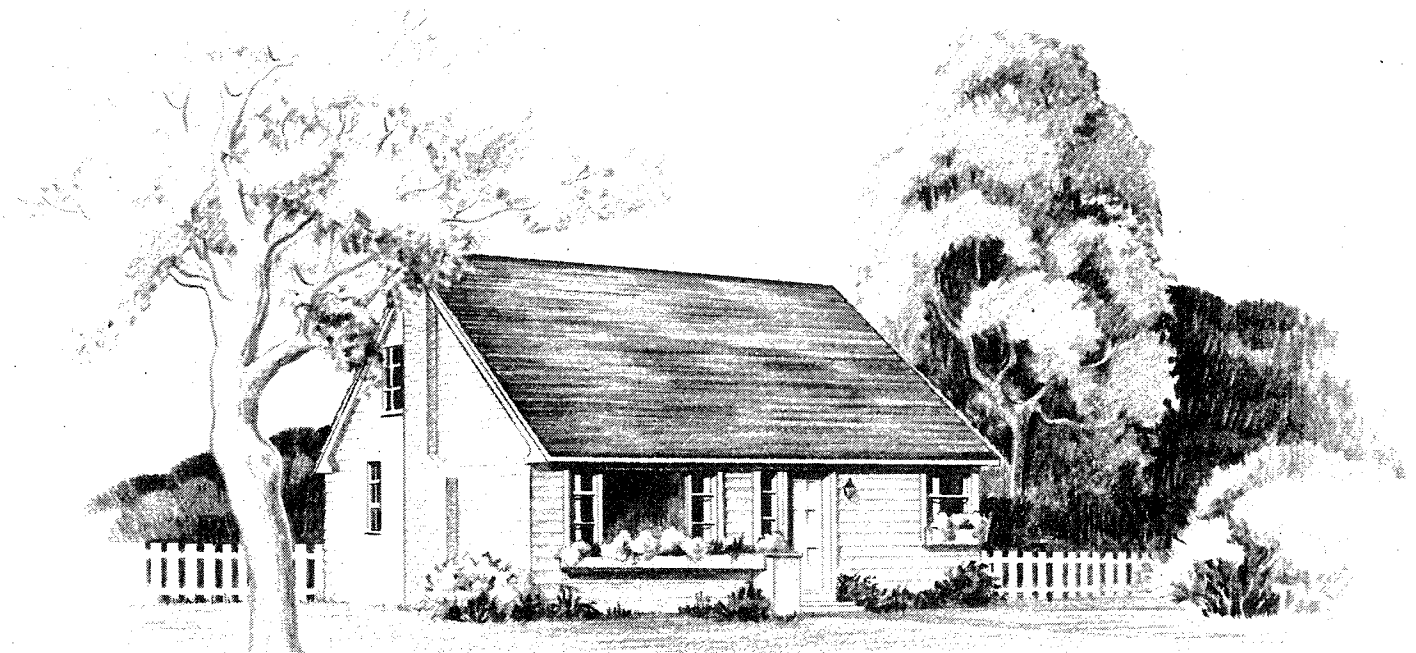
Cubic Contents:
 16,666 cu. ft.

Minimum lot width:
 with drive 44'-0"
 without drive: 42'-0"

Architect:
 M. G. Dixon



DESIGN N° 49-43



Area:
 1st Floor: 730 sq. ft.
 2nd Floor: 399 sq. ft.
 Total: 1,129 sq. ft.

Cubic Contents:
 16,666 cu. ft.

Minimum lot width:
 with drive 44'-0"
 without drive: 42'-0"

Architect:
 M. G. Dixon

DESIGN NO 49-44

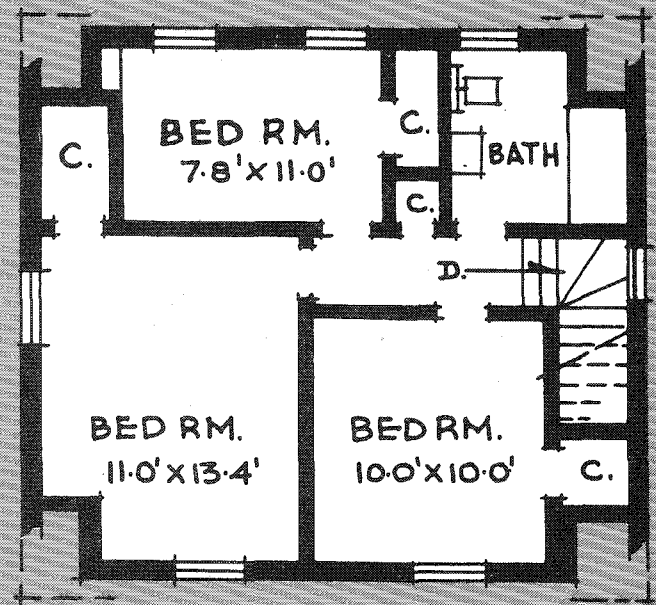
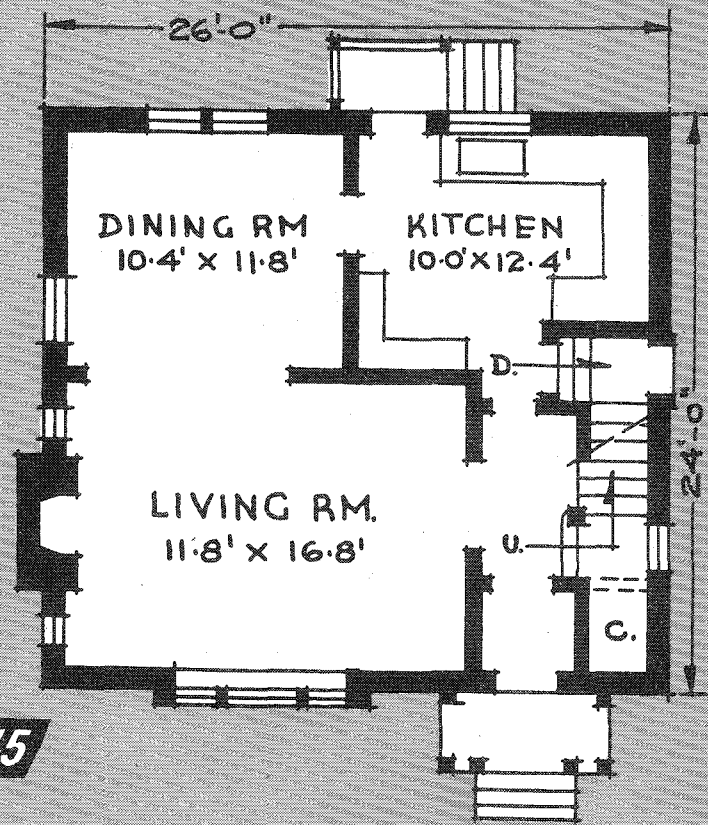


Area:
 1st Floor: 633 sq. ft.
 2nd Floor: 555 sq. ft.
 Total: 1,188 sq. ft.

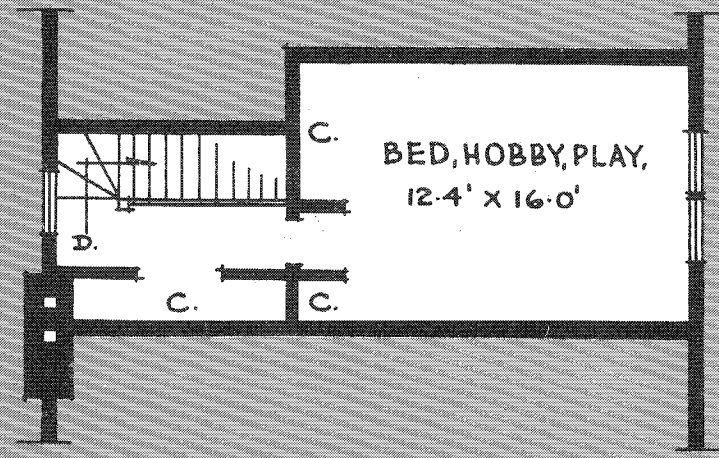
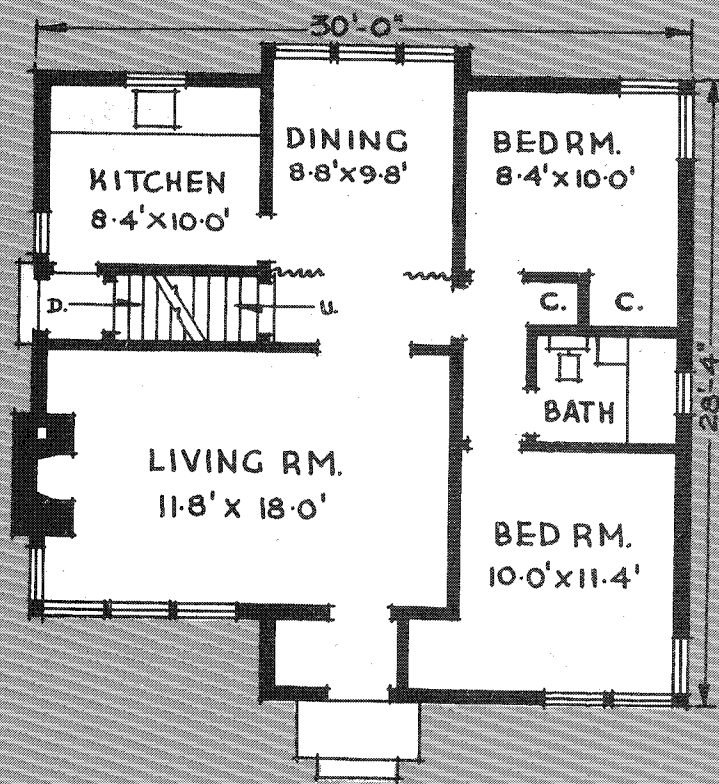
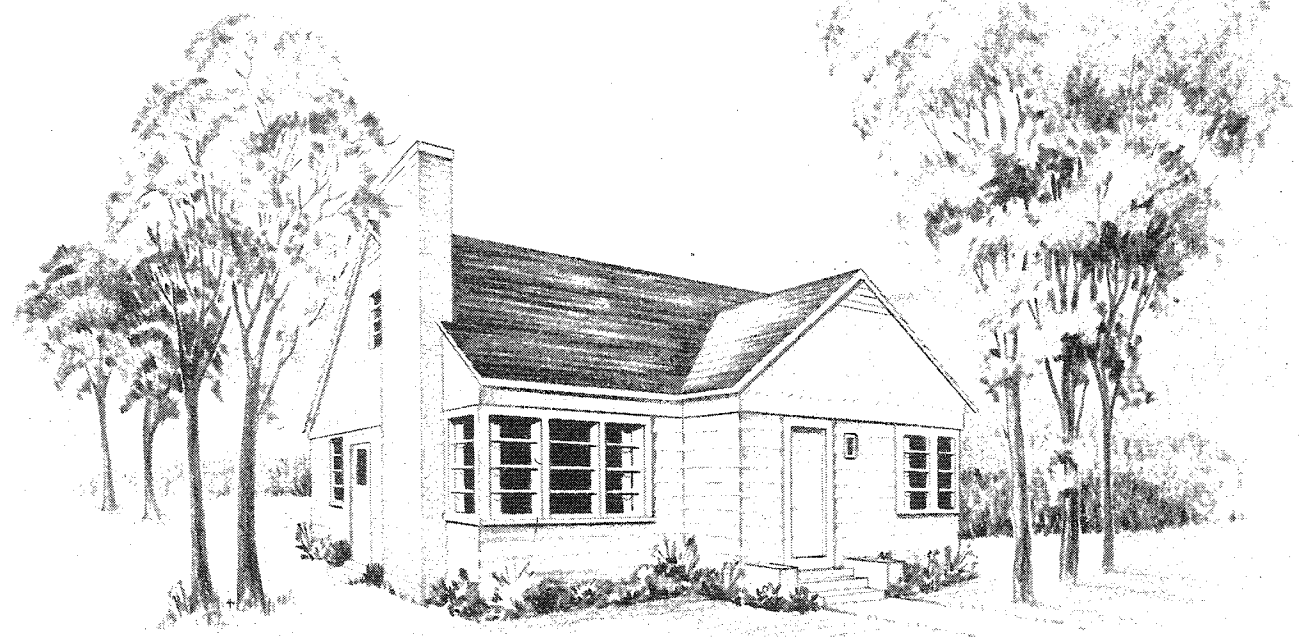
Cubic Contents:
 17,598 cu. ft.

Minimum lot width:
 with drive: 40'-0"
 without drive: 38'-0"

Architect:
 H. C. Jarvis



DESIGN N° 49-45



Area:
 1st Floor: 815 sq. ft.
 2nd Floor: 359 sq. ft.
 Total: 1,174 sq. ft.
 Cubic Contents:
 18,555 cu. ft.
 Minimum lot width:
 with drive 45'-0"
 without drive: 42'-0"
 Architect:
 M. G. Dixon

DESIGN NO. 49-46

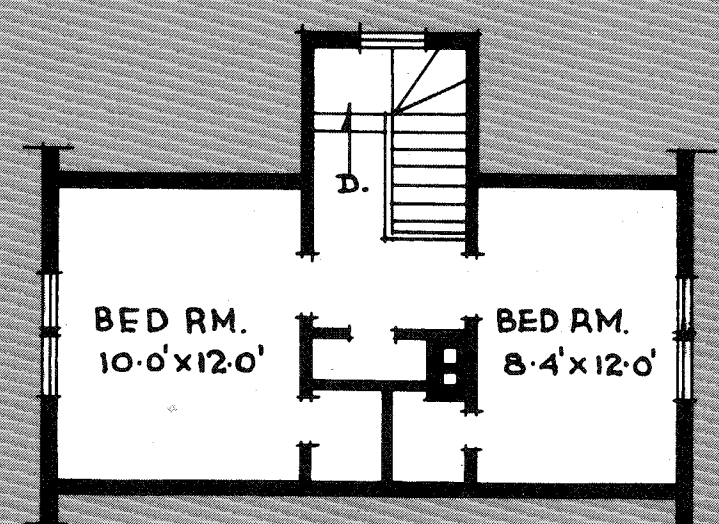
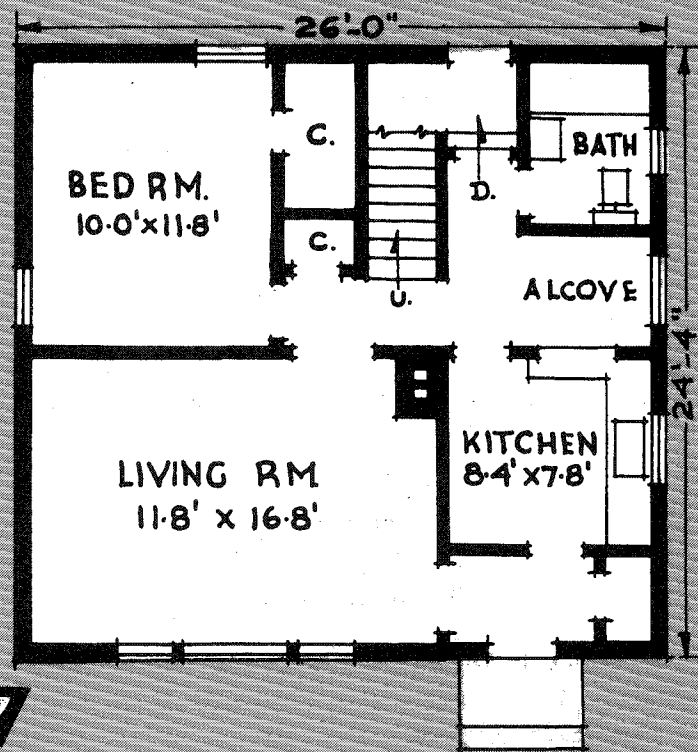


Area:
 1st Floor: 633 sq. ft.
 2nd Floor: 378 sq. ft.
 Total: 1,011 sq. ft.

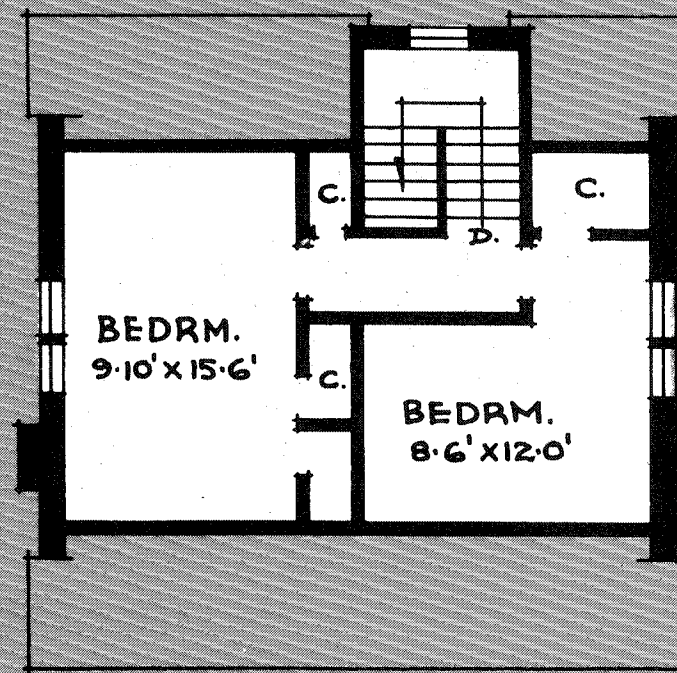
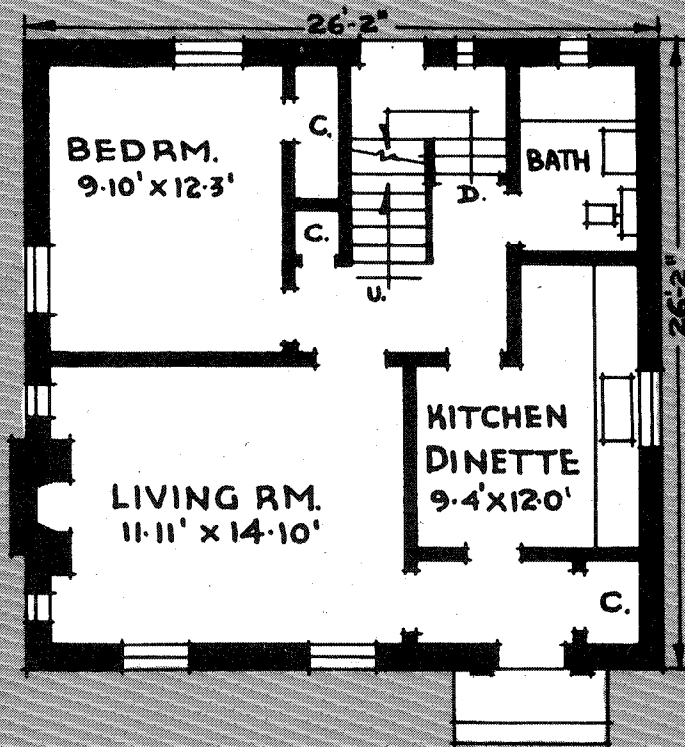
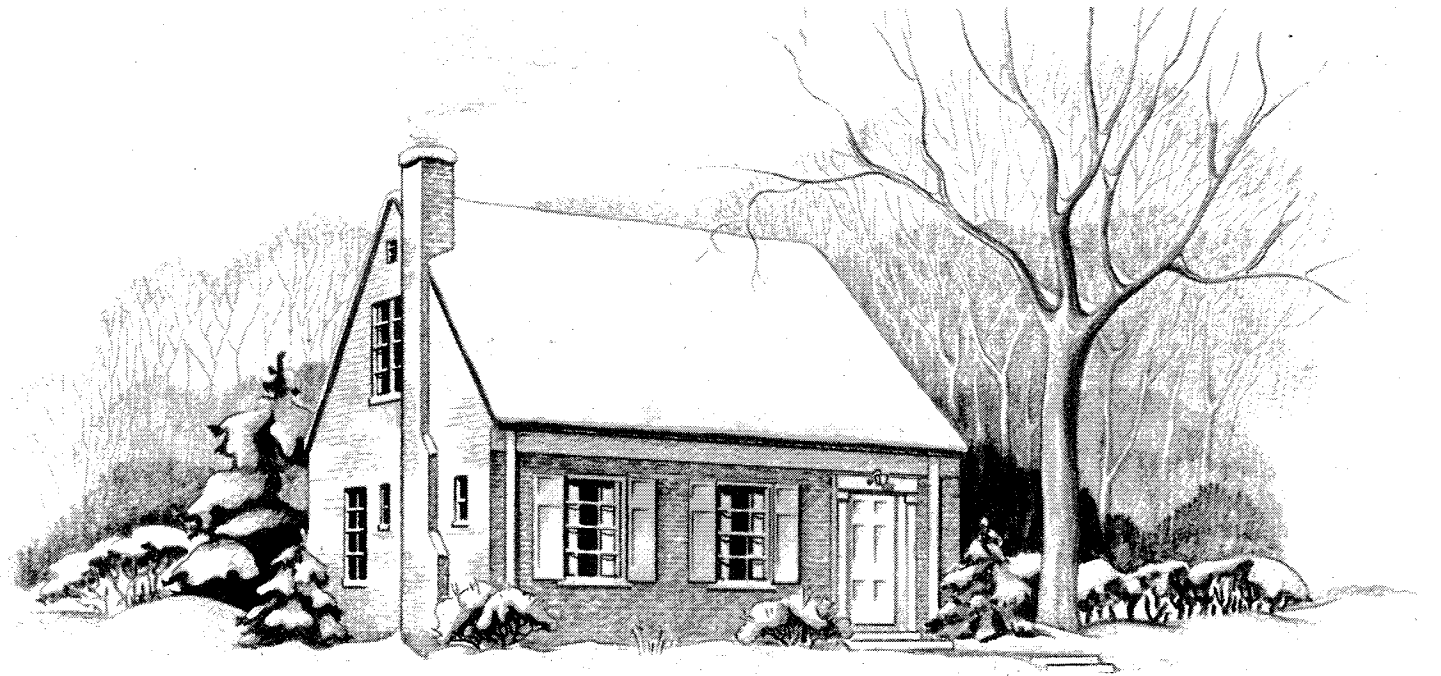
Cubic Contents:
 14,703 cu. ft.

Minimum lot width:
 with drive: 40'-0"
 without drive: 38'-0"

Architect:
 M. G. Dixon



DESIGN N° 49-47

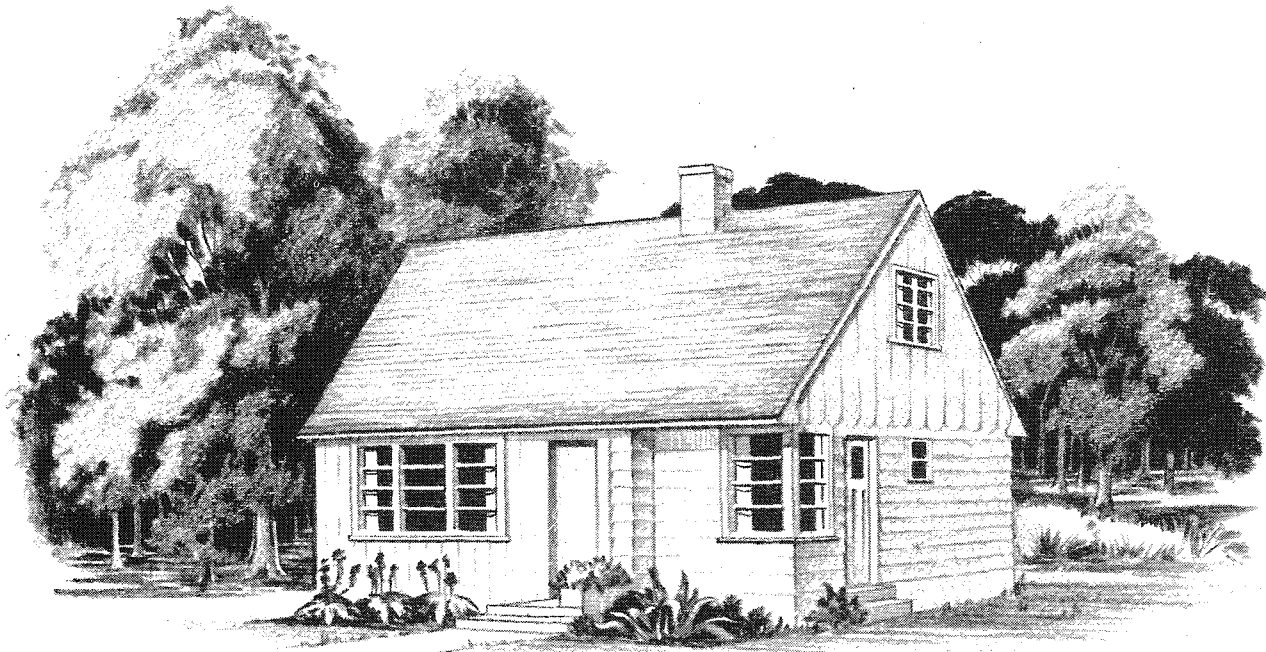


Area:
 1st Floor: 685 sq. ft.
 2nd Floor: 459 sq. ft.
 Total: 1,144 sq. ft.

Cubic Contents:
 16,775 cu. ft.

Minimum lot width:
 with drive: 41'-0"
 without drive: 39'-0"

DESIGN NO 49-48

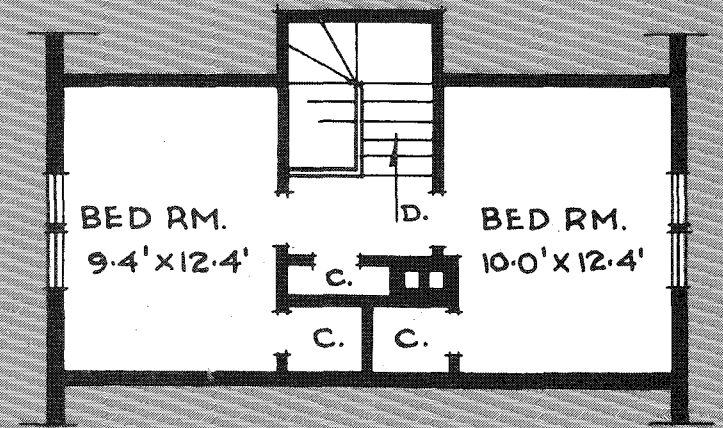
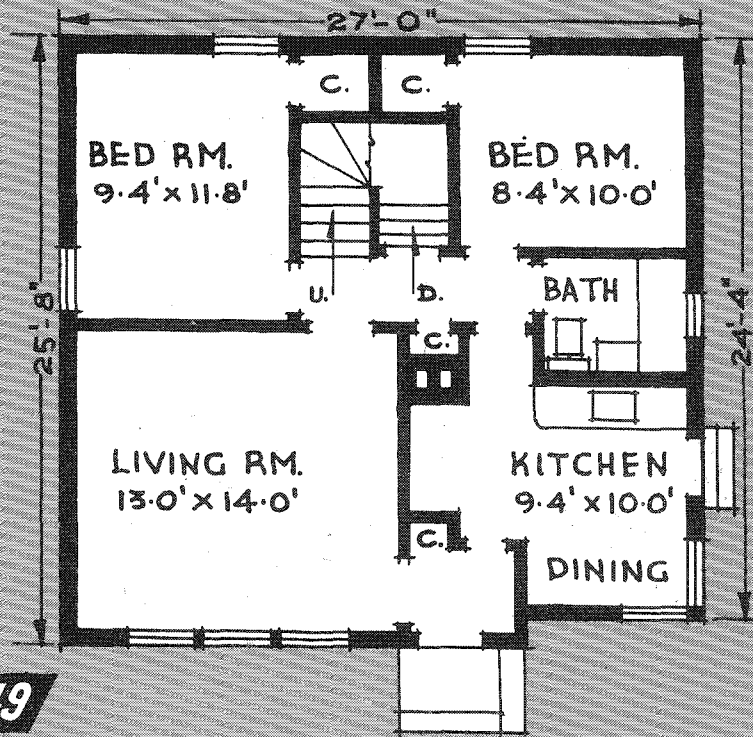


Area:
 1st Floor: 684 sq. ft.
 2nd Floor: 391 sq. ft.
 Total: 1,075 sq. ft.

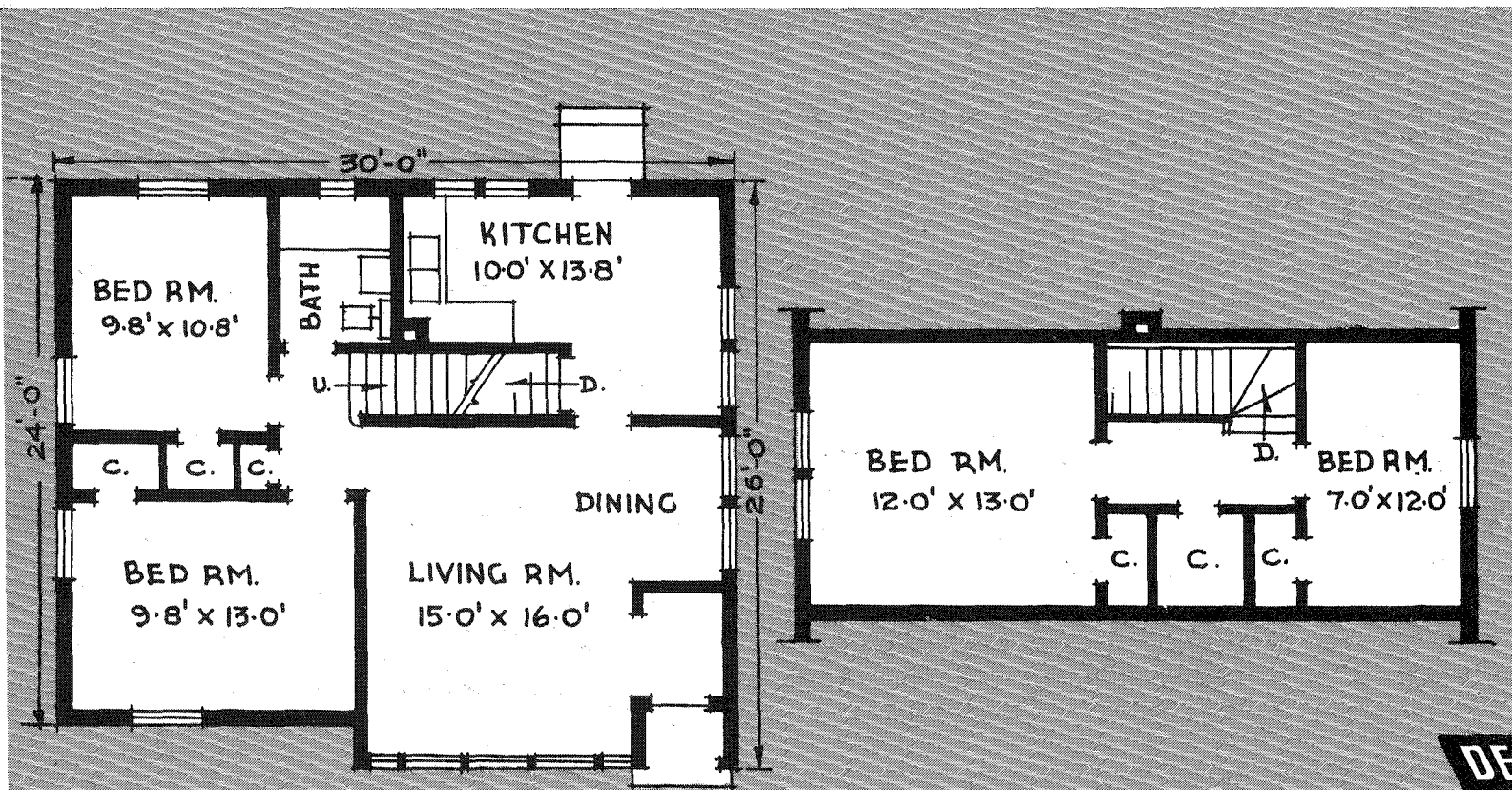
Cubic Contents:
 15,768 cu. ft.

Minimum lot width:
 with drive: 42'-0"
 without drive: 40'-0"

Architect:
 M. G. Dixon



DESIGN N° 49-49



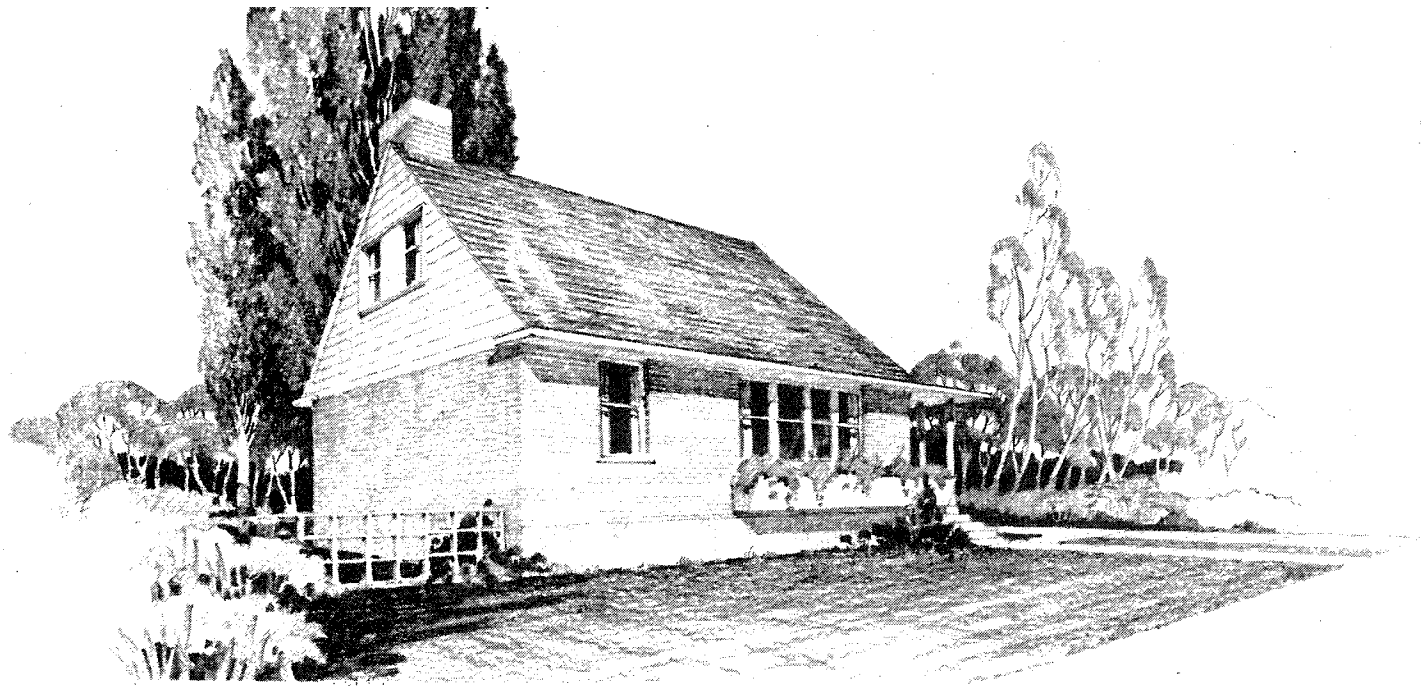
Area:
 1st Floor: 745 sq. ft.
 2nd Floor: 380 sq. ft.
 Total: 1,125 sq. ft.

Cubic Contents:
 17,287 cu. ft.

Minimum lot width:
 with drive: 44'-0"
 without drive: 42'-0"

Architect:
 M. G. Dixon

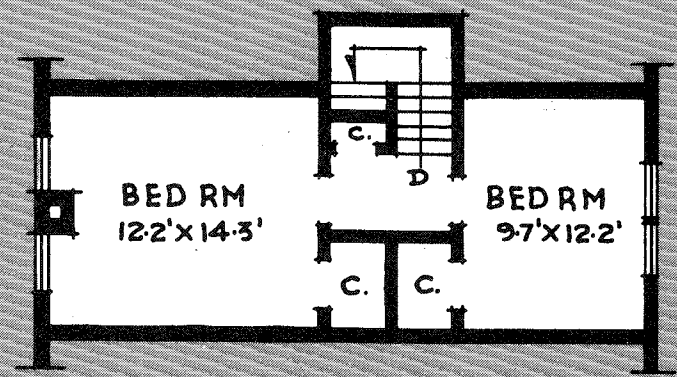
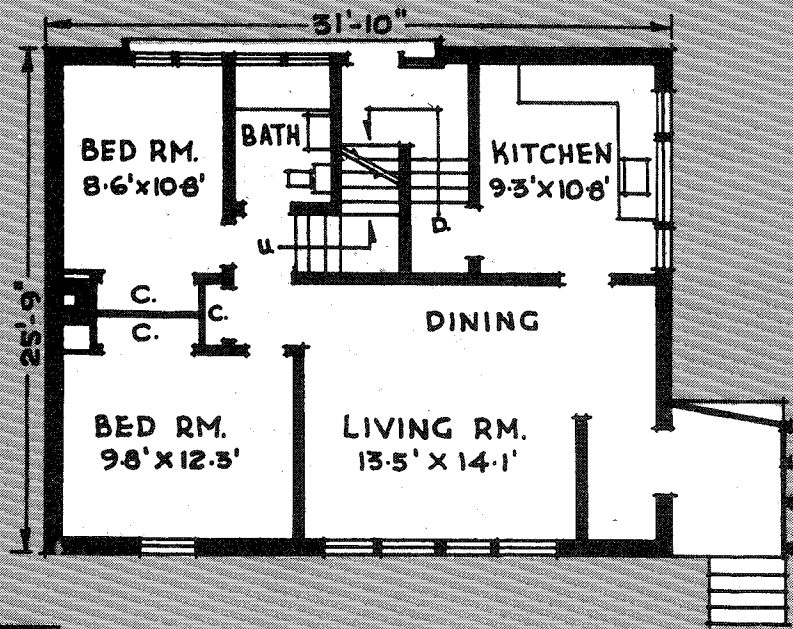
DESIGN NO. 49-50



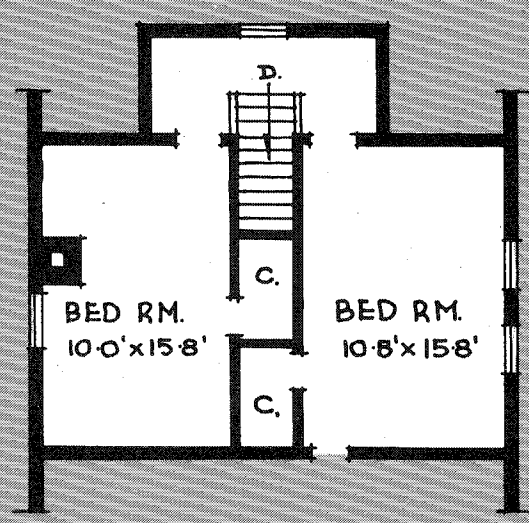
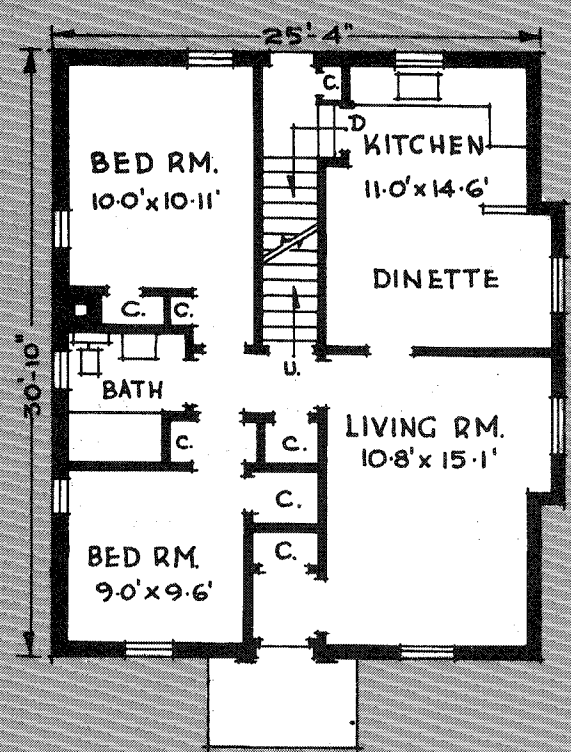
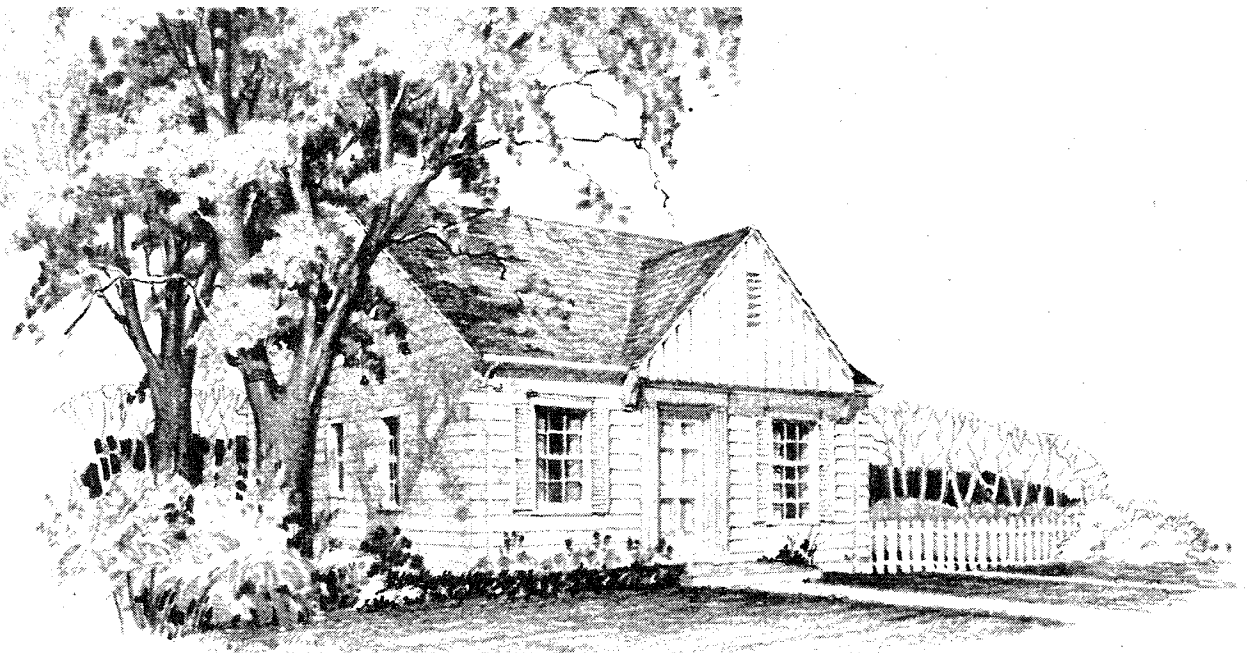
Area:
 1st Floor: 820 sq. ft.
 2nd Floor: 435 sq. ft.
 Total: 1,255 sq. ft.

Cubic Contents:
 18,516 cu. ft.

Minimum lot width:
 with drive: 50'-7"
 without drive: 48'-7"



DESIGN N° 49-51



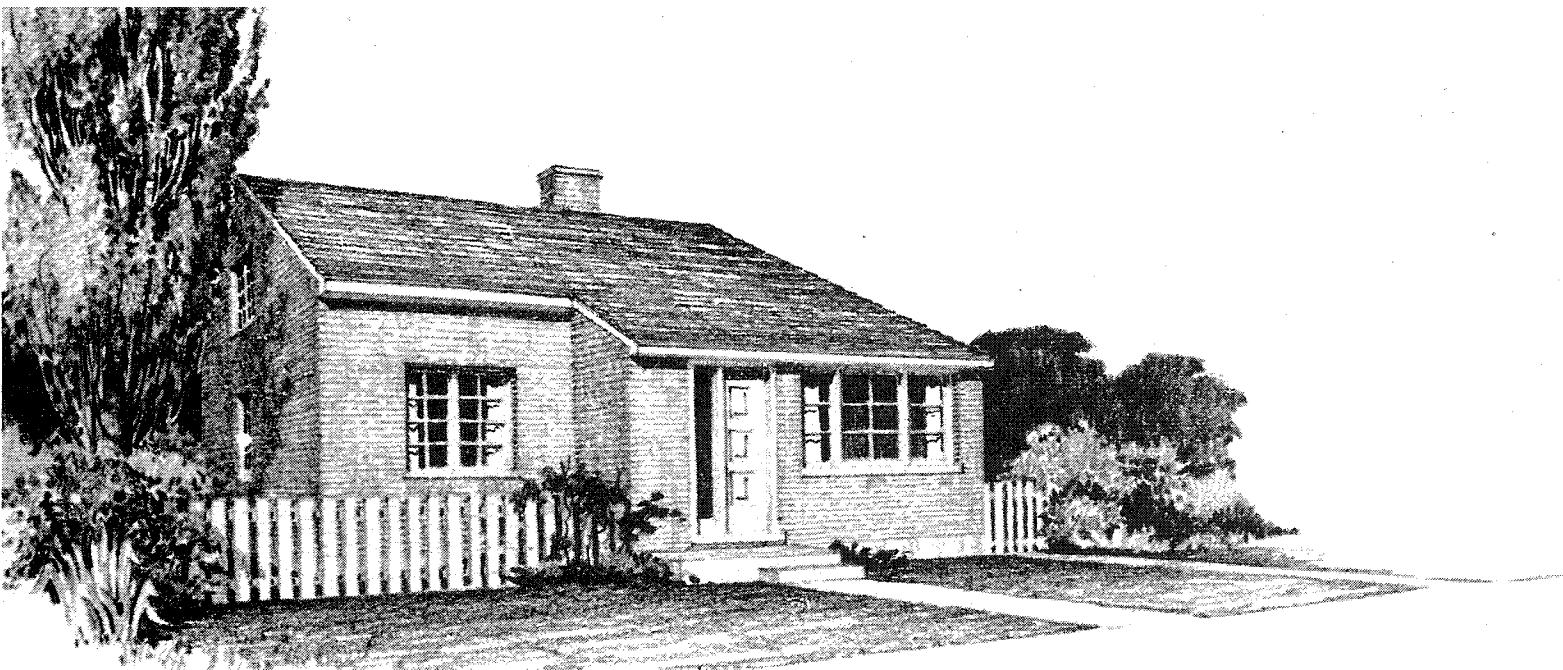
Area:
 1st Floor: 801 sq. ft.
 2nd Floor: 481 sq. ft.
 Total: 1,282 sq. ft.

Cubic Contents:
 18,524 cu. ft.

Minimum lot width:
 with drive: 40'-7"
 without drive: 38'-7"

Architect:
 H. C. Beckett

DESIGN NO 49-52

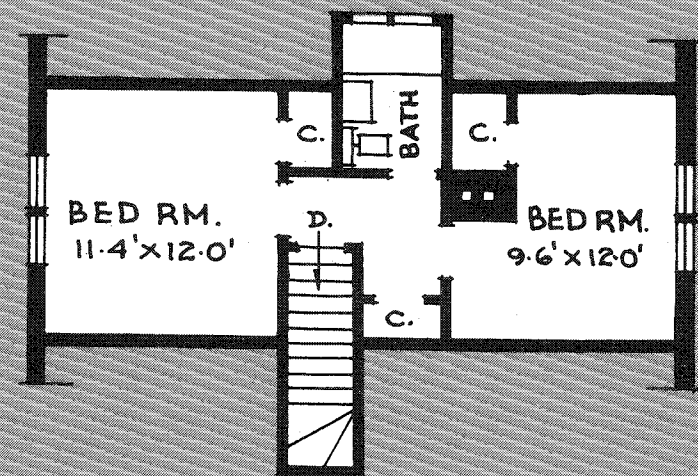
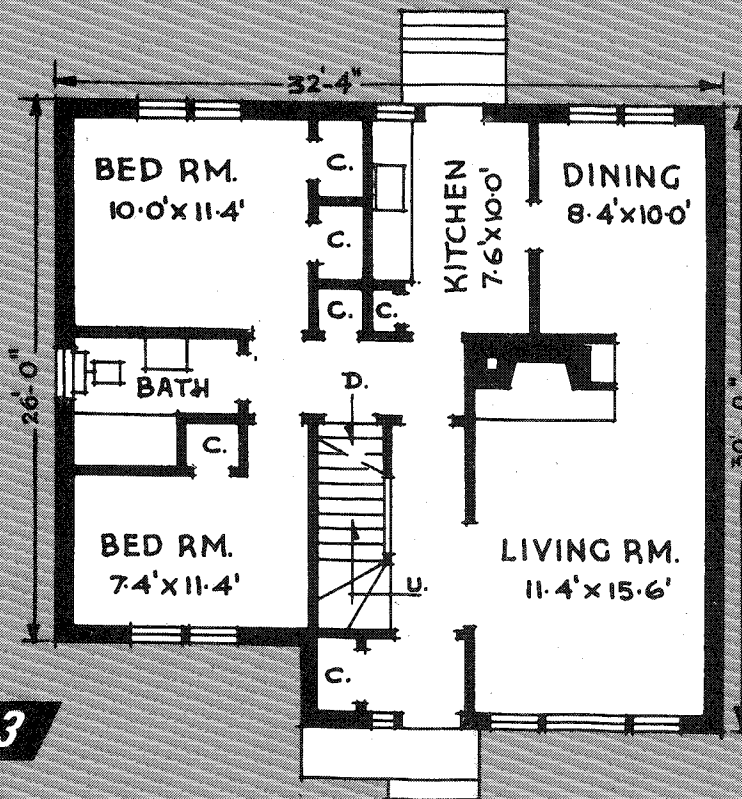


Area:
 1st Floor: 913 sq. ft.
 2nd Floor: 451 sq. ft.
 Total: 1,364 sq. ft.

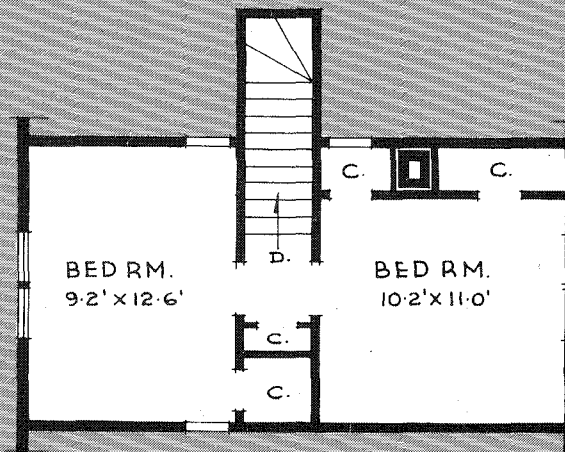
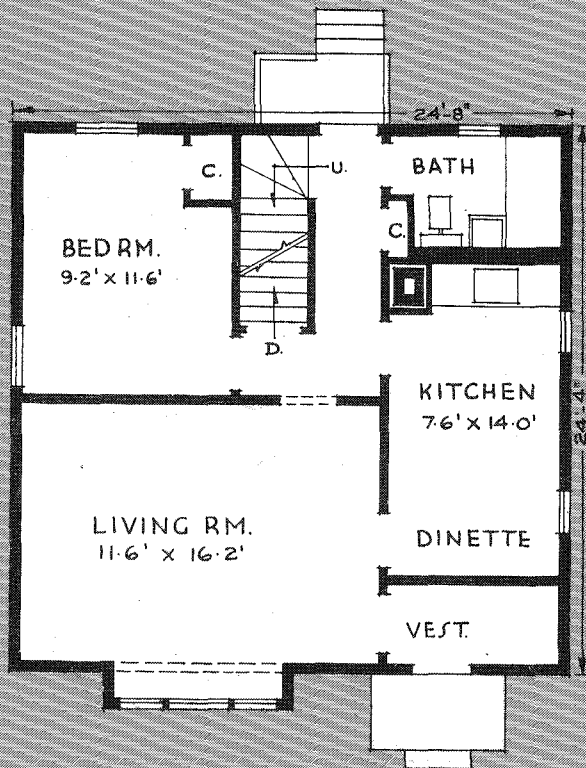
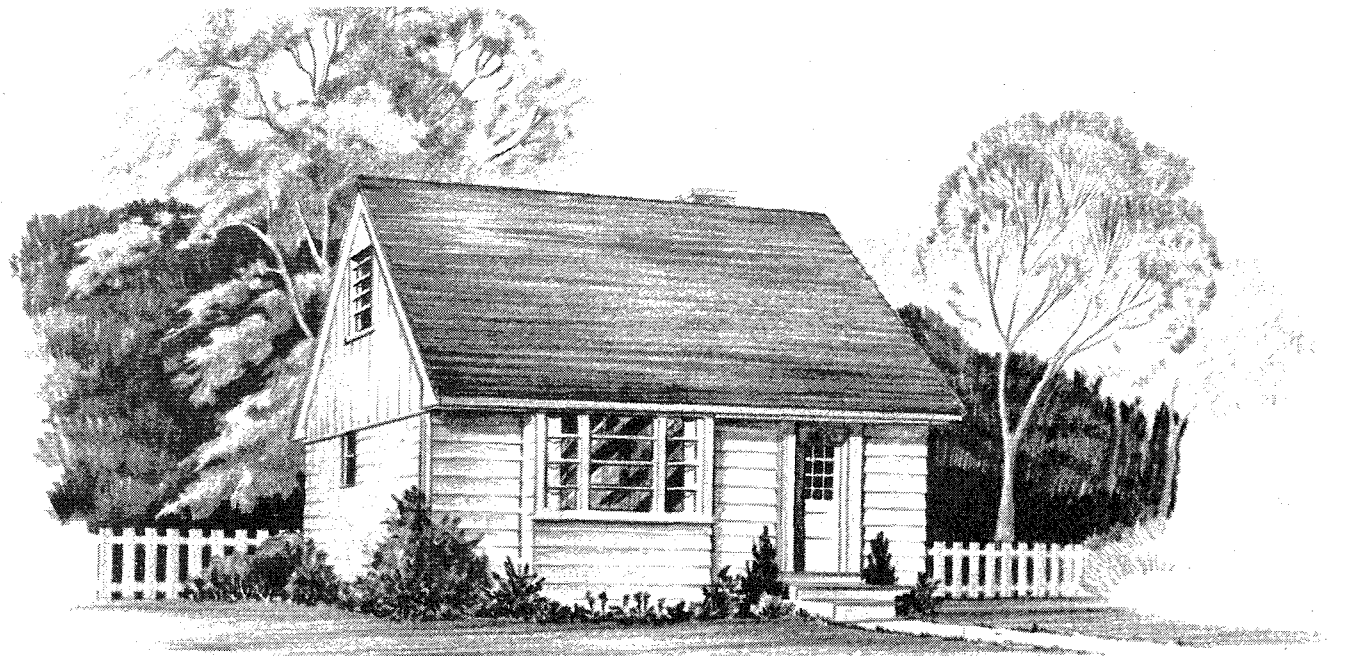
Cubic Contents:
 20,585 cu. ft.

Minimum lot width:
 with drive: 46'-4"
 without drive: 44'-4"

Architects:
 Wilson & Newton



DESIGN NO 49-53

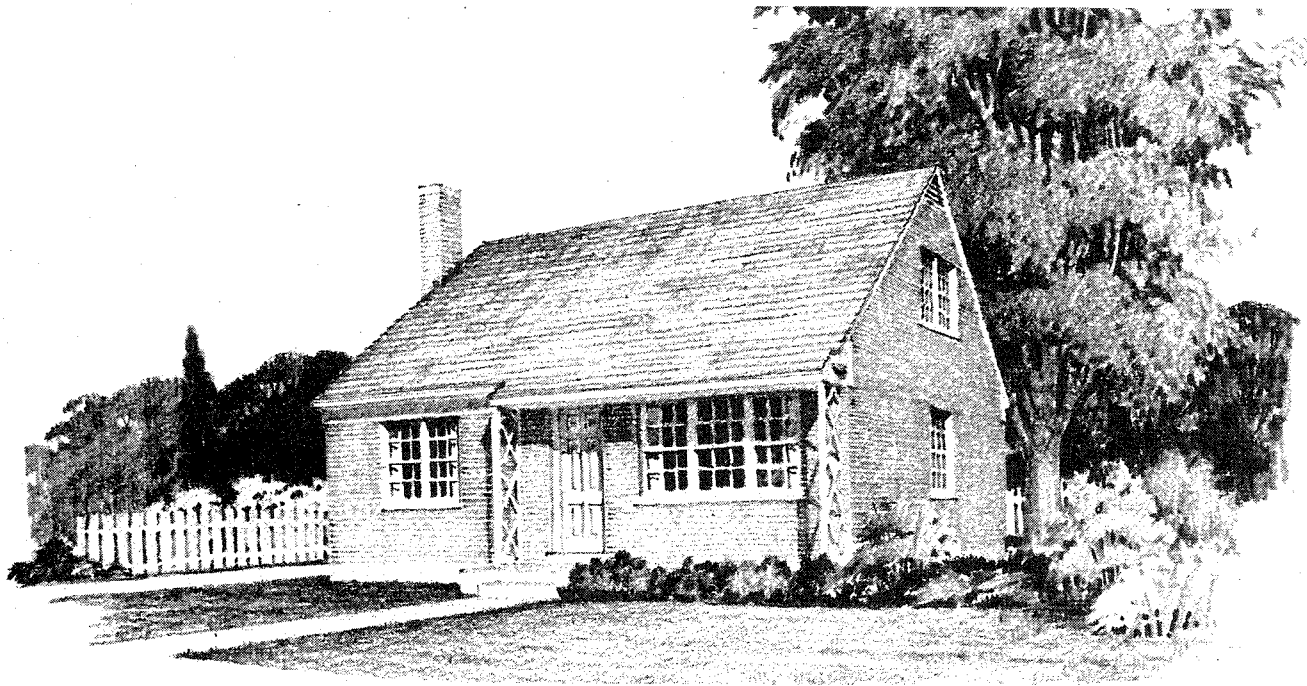


Area:
 1st Floor: 615 sq. ft.
 2nd Floor: 342 sq. ft.
 Total: 957 sq. ft.

Cubic Contents:
 13,975 cu. ft.

Minimum lot width:
 with drive: 38'-8"
 without drive: 36'-8"

DESIGN NO. 49-54

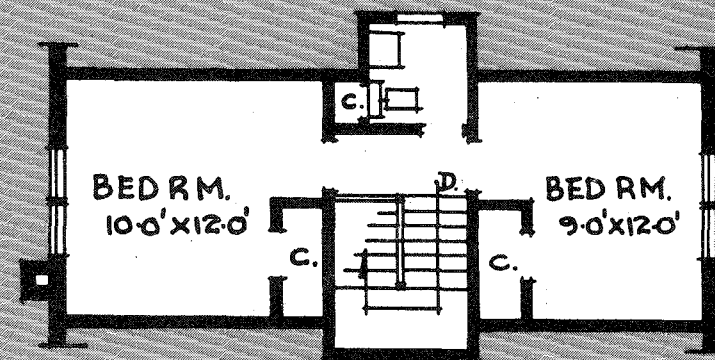
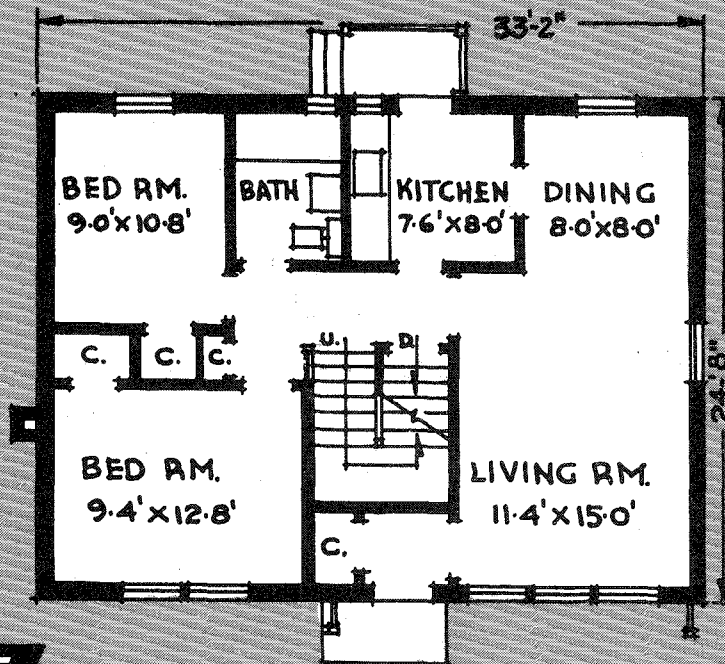


Area:
 1st Floor: 835 sq. ft.
 2nd Floor: 445 sq. ft.
 Total: 1,280 sq. ft.

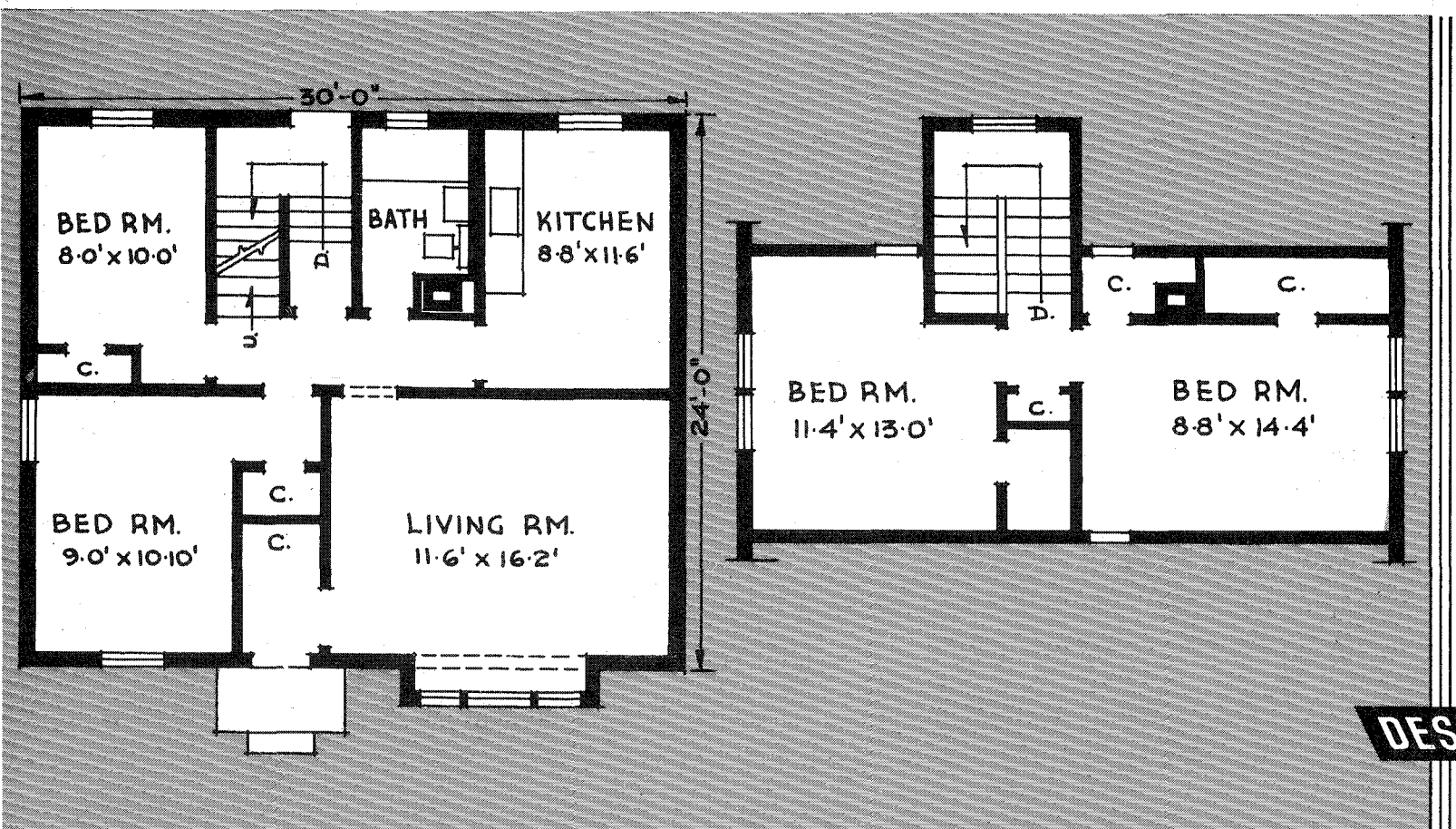
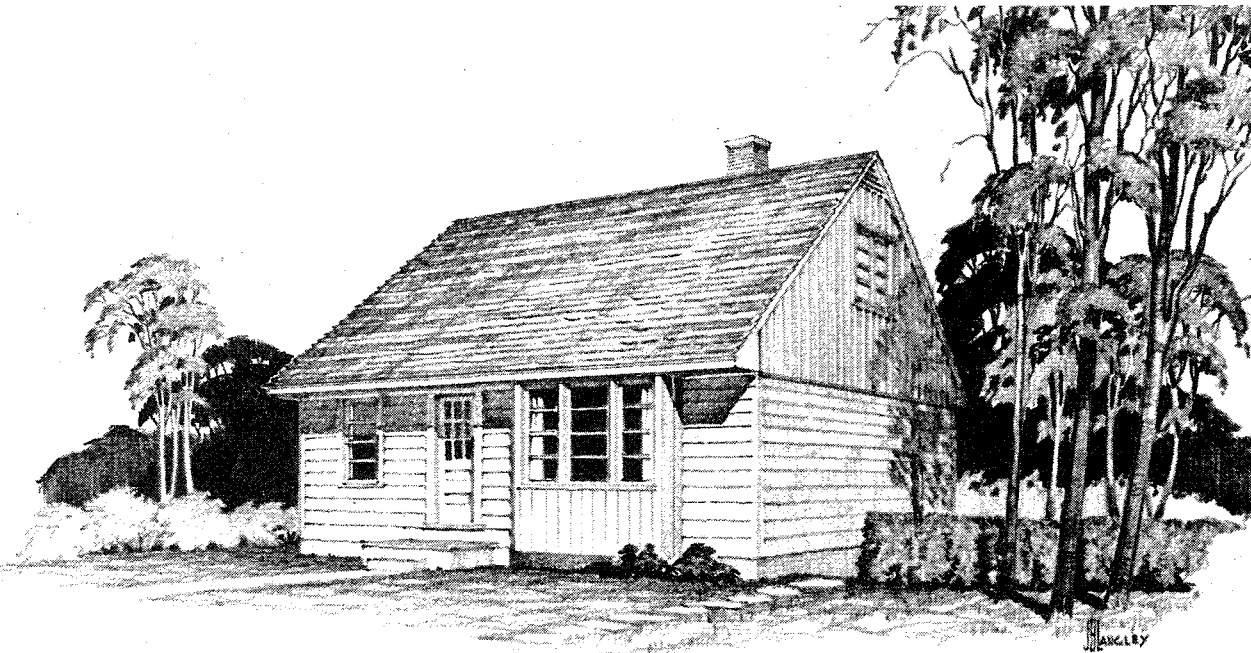
Cubic Contents:
 18,467 cu. ft.

Minimum lot width:
 with drive: 47'-2"
 without drive: 45'-2"

Architects:
 Wilson & Newton



DESIGN N^o 49-55

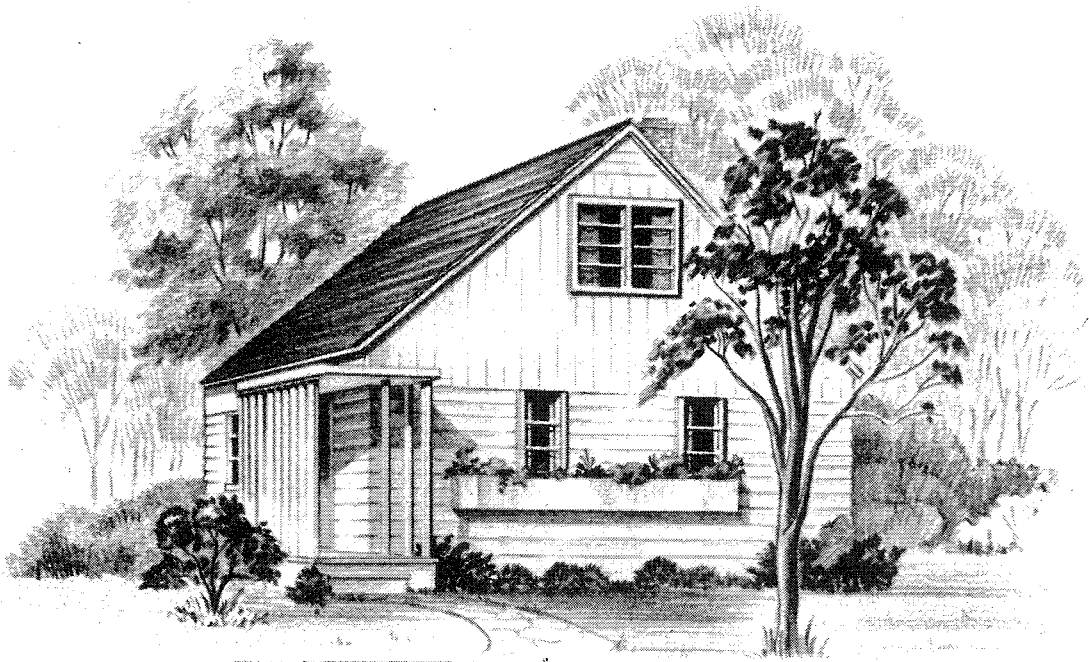


Area:
 1st Floor: 745 sq. ft.
 2nd Floor: 430 sq. ft.
 Total: 1,175 sq. ft.

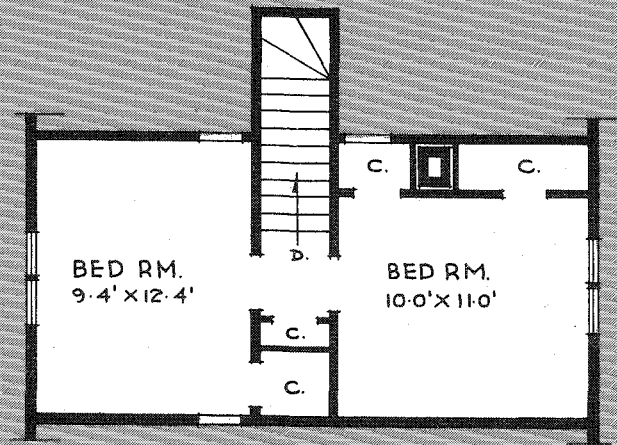
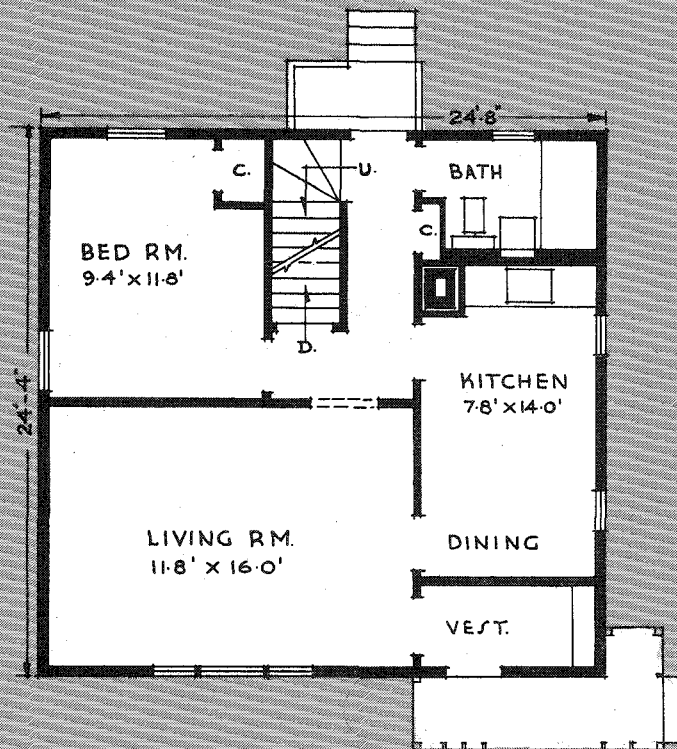
Cubic Contents:
 16,960 cu. ft.

Minimum lot width:
 with drive: 44'-0"
 without drive: 42'-0"

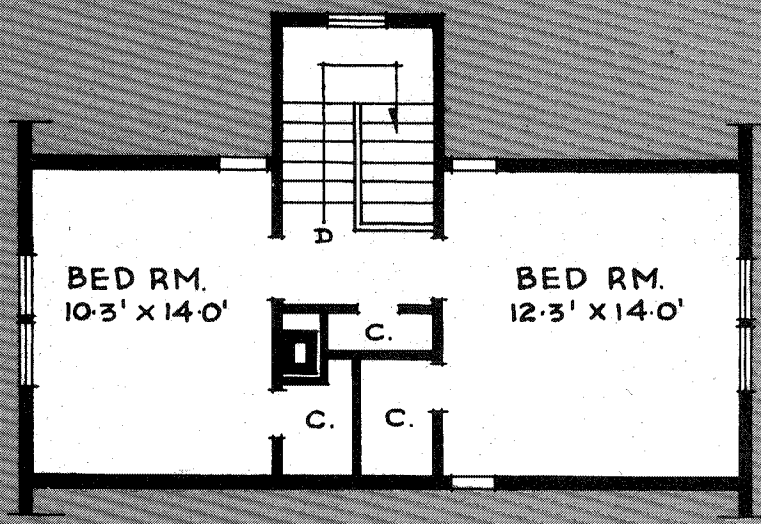
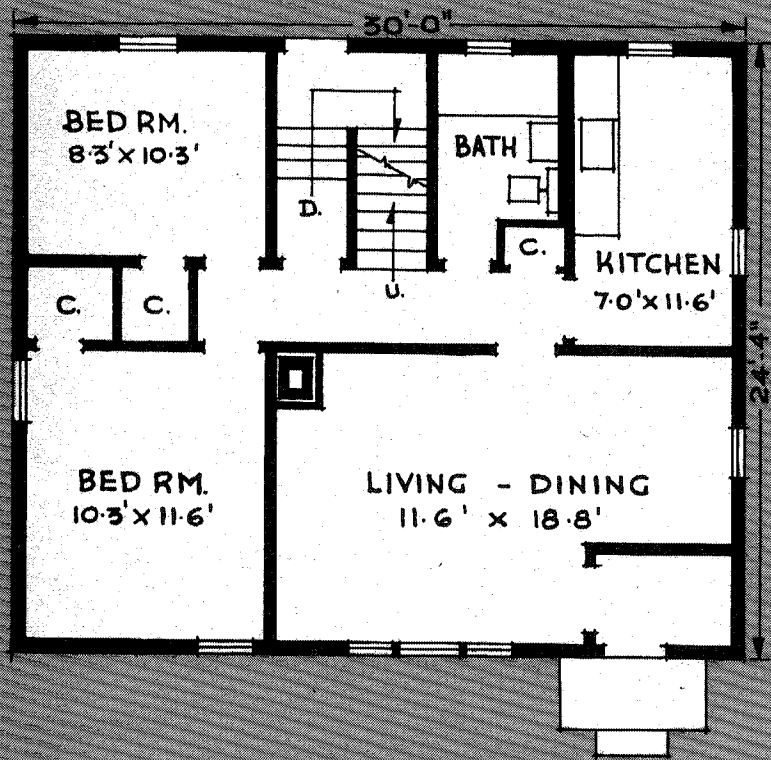
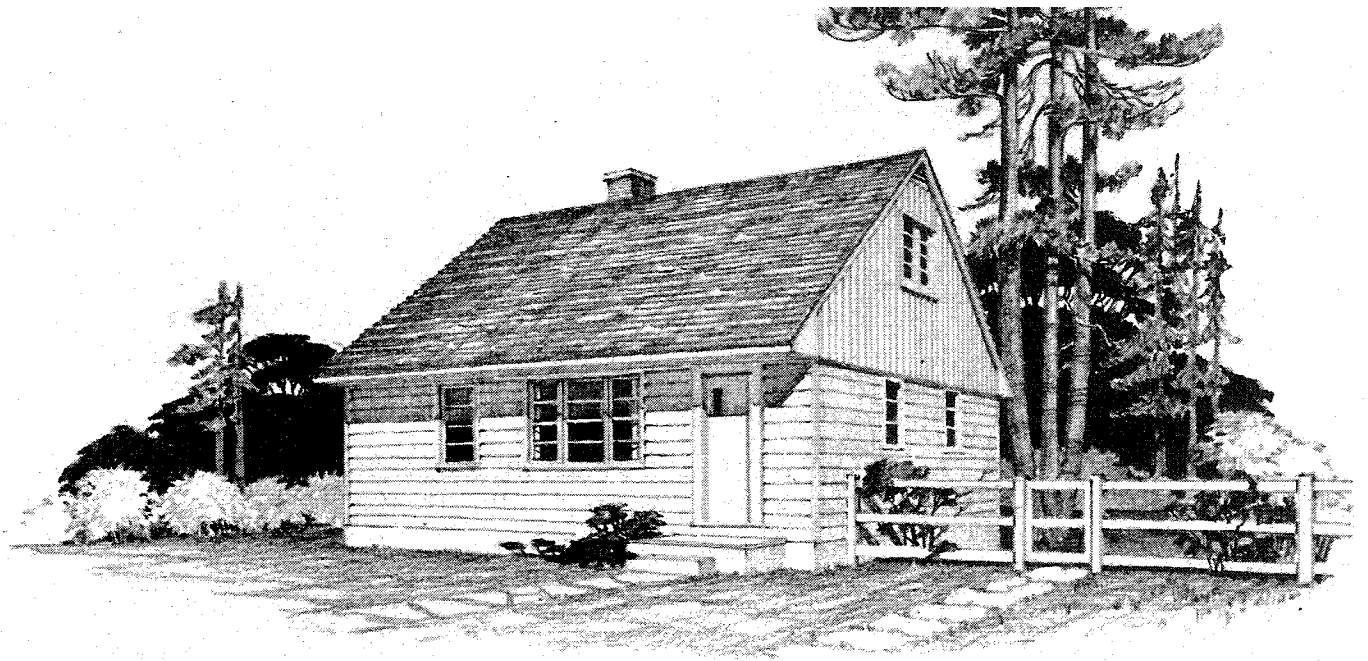
DESIGN NO. 49-56



Area:
 1st Floor: 600 sq. ft.
 2nd Floor: 342 sq. ft.
 Total: 942 sq. ft.
 Cubic Contents:
 13,848 cu. ft.
 Minimum lot width:
 with drive: 45'-6"
 without drive: 41'-8"



DESIGN N° 49-57

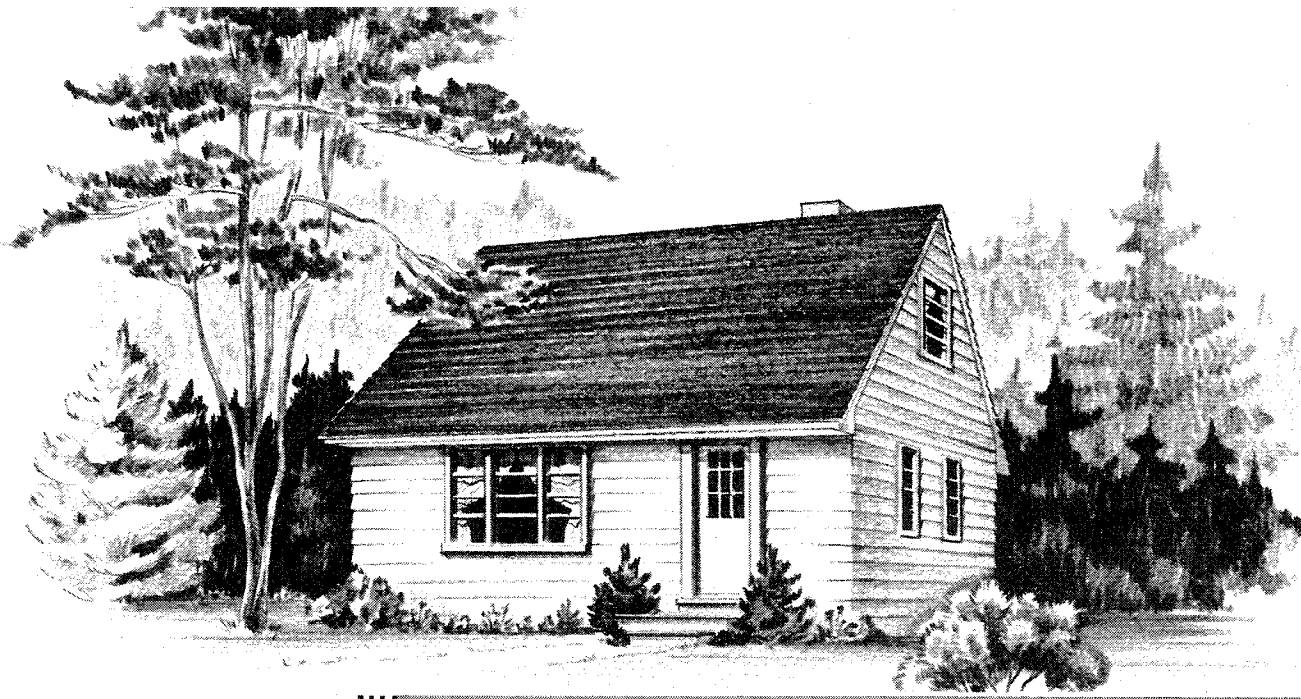


Area:
 1st Floor: 730 sq. ft.
 2nd Floor: 430 sq. ft.
 Total: 1,160 sq. ft.

Cubic Contents:
 16,940 cu. ft.

Minimum lot width:
 with drive: 44'-0"
 without drive: 42'-0"

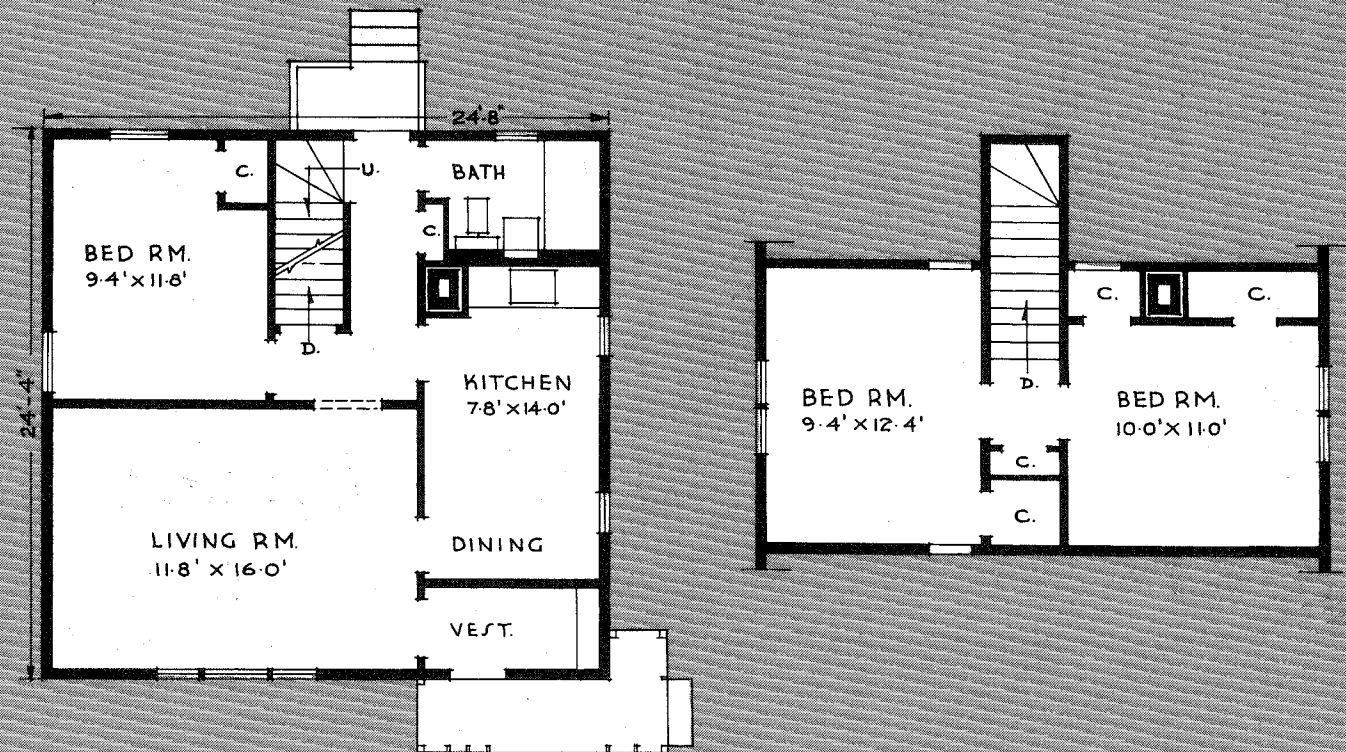
DESIGN No 49-58



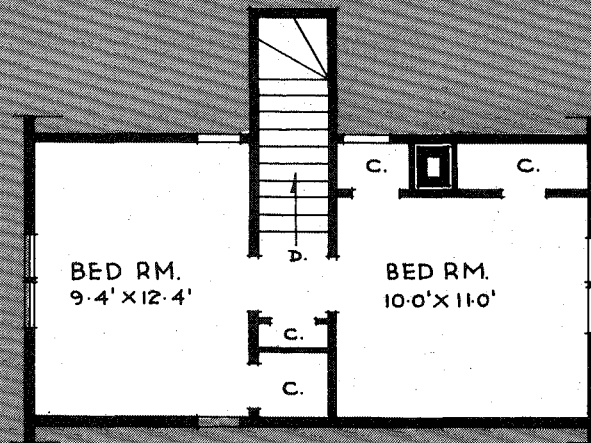
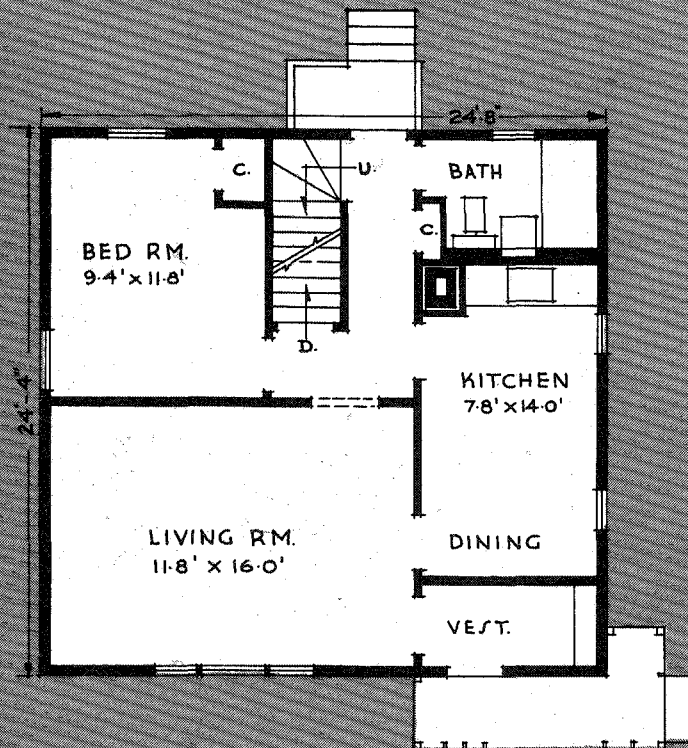
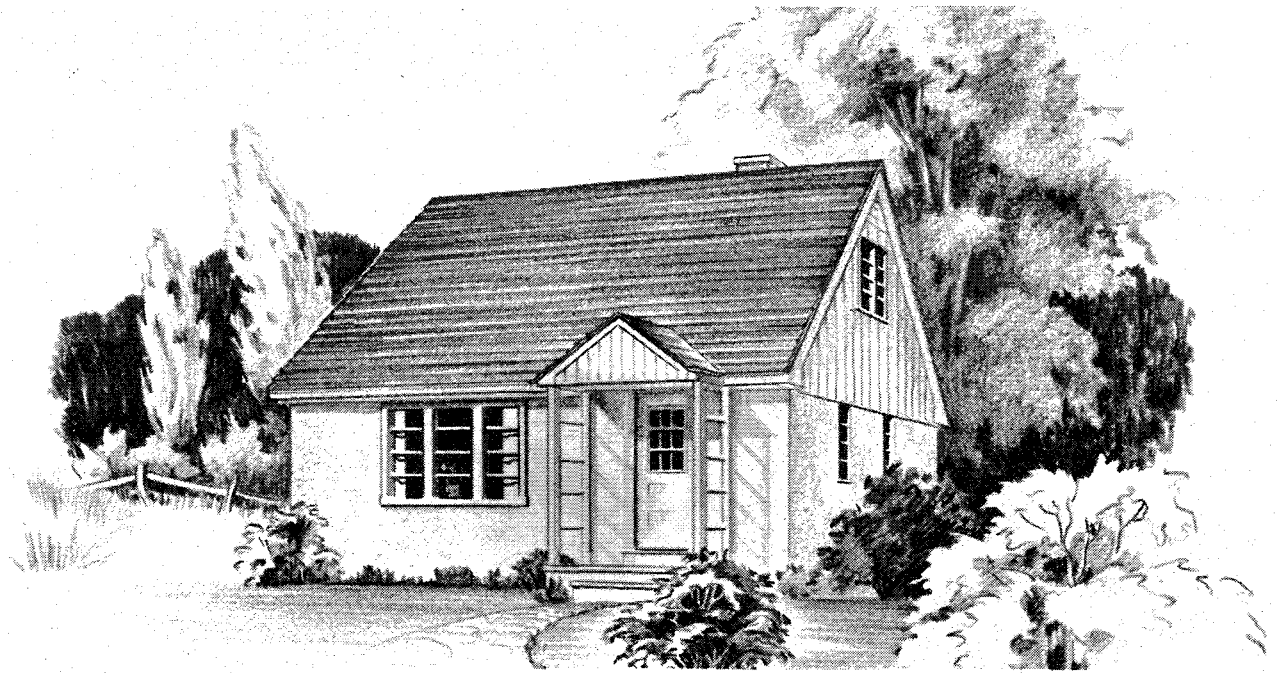
Area:
 1st Floor: 600 sq. ft.
 2nd Floor: 342 sq. ft.
 Total: 942 sq. ft.

Cubic Contents:
 13,848 cu. ft.

Minimum lot width:
 with drive: 38'-8"
 without drive: 36'-8"



DESIGN N° 49-59



Area:
 1st Floor: 600 sq. ft.
 2nd Floor: 342 sq. ft.
 Total: 942 sq. ft.

Cubic Contents:
 13,848 cu. ft.

Minimum lot width:
 with drive: 38'-8"
 without drive: 36'-8"

DESIGN NO 49-60

INDEX

<u>DESIGN NO.</u>	<u>PAGE</u>
49-41.....	6
49-42.....	7
49-43.....	8
49-44.....	9
49-45.....	10
49-46.....	11
49-47.....	12
49-48.....	13
49-49.....	14
49-50.....	15

<u>DESIGN NO.</u>	<u>PAGE</u>
49-51.....	16
49-52.....	17
49-53.....	18
49-54.....	19
49-55.....	20
49-56.....	21
49-57.....	22
49-58.....	23
49-59.....	24
49-60.....	25

_____ **Central**

_____ **Mortgage and**

_____ **Housing**

_____ **Corporation**