

**SMALL
HOUSE
DESIGNS**

Two-Storey

CENTRAL MORTGAGE AND HOUSING CORPORATION

**SMALL
HOUSE
DESIGNS**

Two-Storey

CENTRAL MORTGAGE AND HOUSING CORPORATION

minimum lot widths

● Minimum lot widths indicated on plans conform to the minimum standards set by Central Mortgage and Housing Corporation. Where such standards are less than local requirements, local requirements will govern. Conversely, where local requirements are less than CMHC standards, the latter will apply.



F O R E W O R D

ONE of a series of booklets containing attractive house plans designed especially by Canadian architects for Canadian requirements, SMALL HOUSE DESIGNS—2-STOREY has been published to provide prospective home-owners with suggestions for new homes in the form of standard plans and designs. Other booklets in the series are:

SMALL HOUSE DESIGNS—BUNGALOWS

SMALL HOUSE DESIGNS—1½-STOREY

SMALL HOUSE DESIGNS—DUPLEXES

In addition, FARM HOUSES, a volume of ten farm house designs prepared and issued under the direction of the Prairie Rural Housing Committee, is available on request.

A complete set of working drawings of each house illustrated, comprising four copies of blueprints and four copies of "Outline Specification Form (CMHC-24)"—to be filled in by the owner and builder—may be purchased through Central Mortgage and Housing Corporation for \$10.00.

Working drawings should be ordered by number from: Central Mortgage and Housing Corporation, 56 Lyon Street, Ottawa, or from the nearest regional or branch office of the Corporation. Regional and branch offices are located as follows:

REGIONAL OFFICES

Vancouver

Montreal

Winnipeg

Halifax

Toronto

Victoria

Edmonton

Calgary

BRANCH OFFICES

Regina

Saskatoon

Windsor

London

Hamilton

Ottawa

Sherbrooke

Quebec

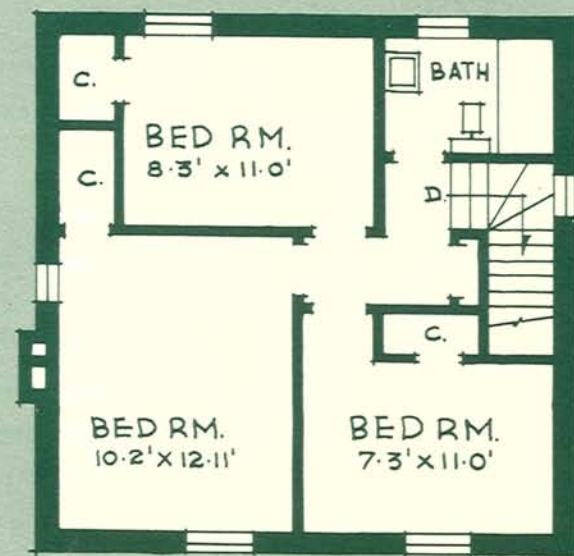
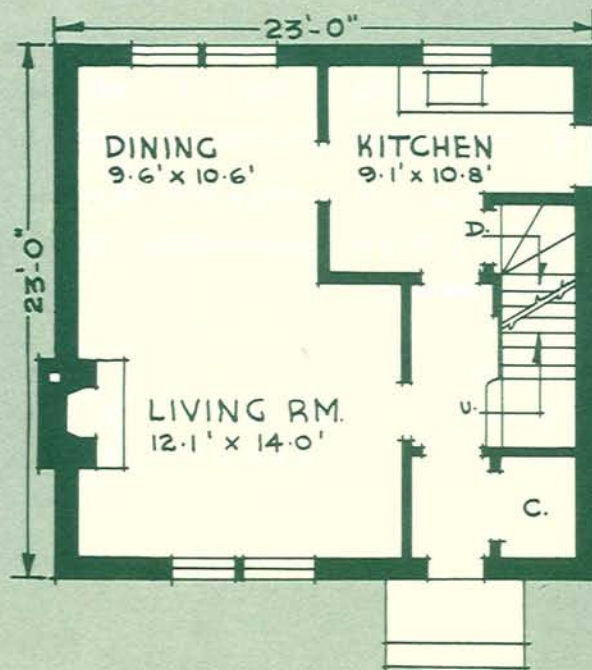
Saint John



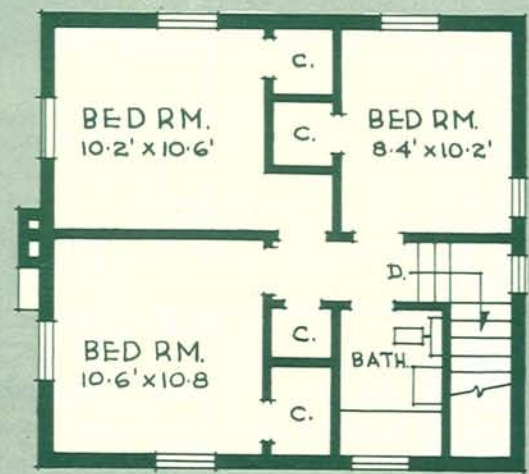
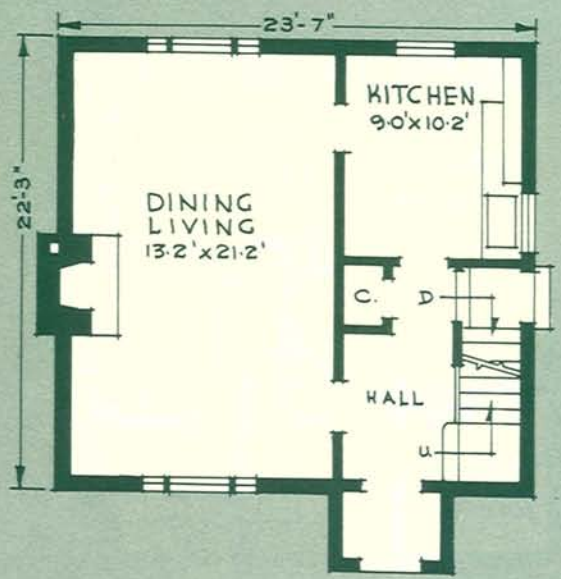
Area:
 1st Floor: 532 sq. ft.
 2nd Floor: 532 sq. ft.
 Total: 1,064 sq. ft.

Cubic Contents:
 14,364 cu. ft.

Minimum lot width:
 with drive: 40'-0"
 without drive: 38'-0"



DESIGN N° 49-61



Area:
 1st Floor: 550 sq. ft.
 2nd Floor: 528 sq. ft.
 Total: 1,078 sq. ft.

Cubic Contents:
 14,712 cu. ft.

Minimum lot width:
 with drive: 38'-6"
 without drive: 35'-8"

DESIGN NO. 49-62

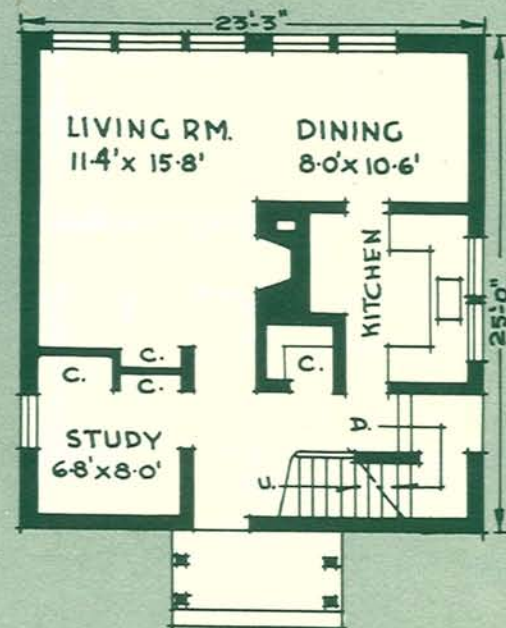
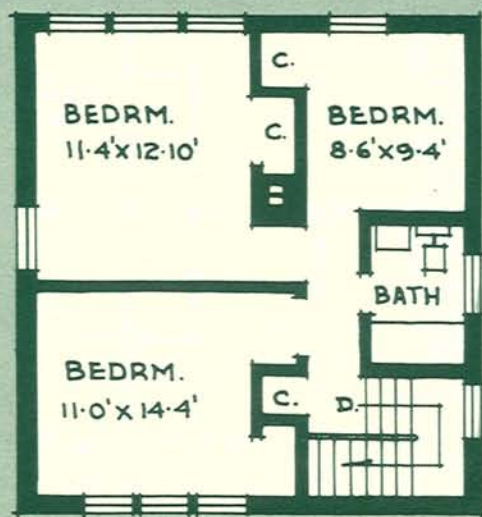


Area:
 1st Floor: 581 sq. ft.
 2nd Floor: 581 sq. ft.
 Total: 1,162 sq. ft.

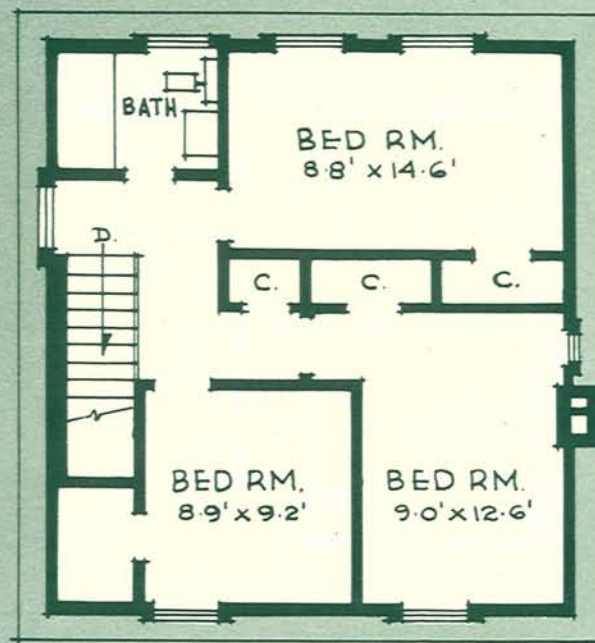
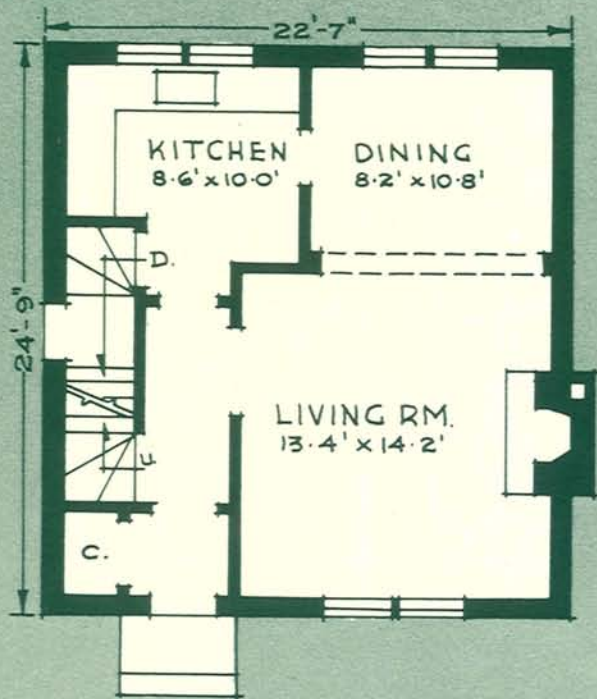
Cubic Contents:
 16,442 cu. ft.

Minimum lot width:
 with drive: 37'-0"
 without drive: 35'-3"

Architect:
 Kent Barker



DESIGN N° 49-63

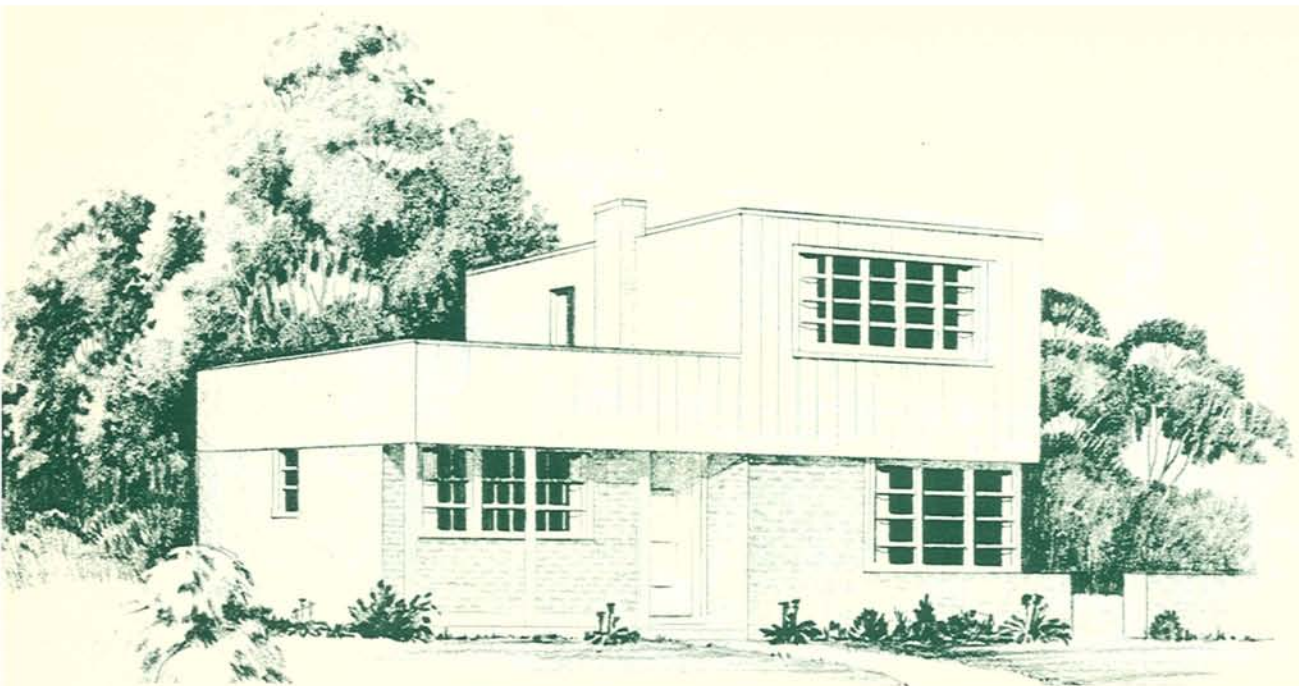


Area:
 1st Floor: 593 sq. ft.
 2nd Floor: 591 sq. ft.
 Total: 1,184 sq. ft.

Cubic Contents:
 16,054 cu. ft.

Minimum lot width:
 with drive: 34'-7"
 without drive: 33'-0"

DESIGN NO. 49-64

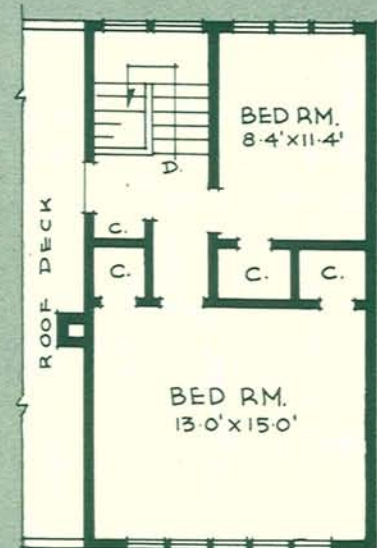
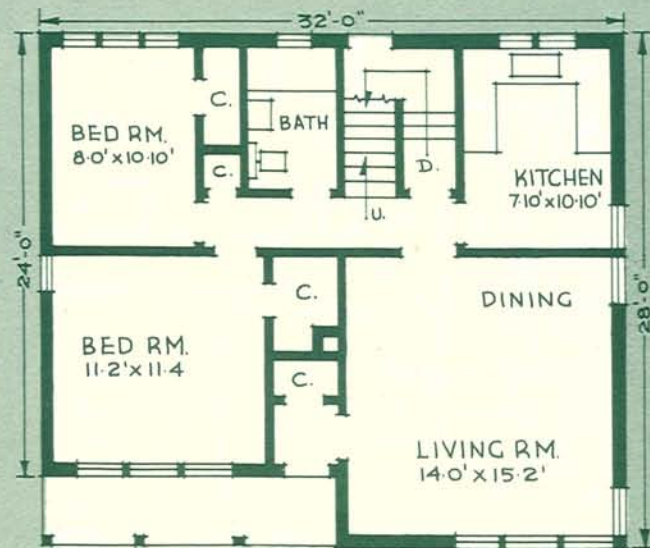


Area:
 1st Floor: 830 sq. ft.
 2nd Floor: 449 sq. ft.
 Total: 1,279 sq. ft.

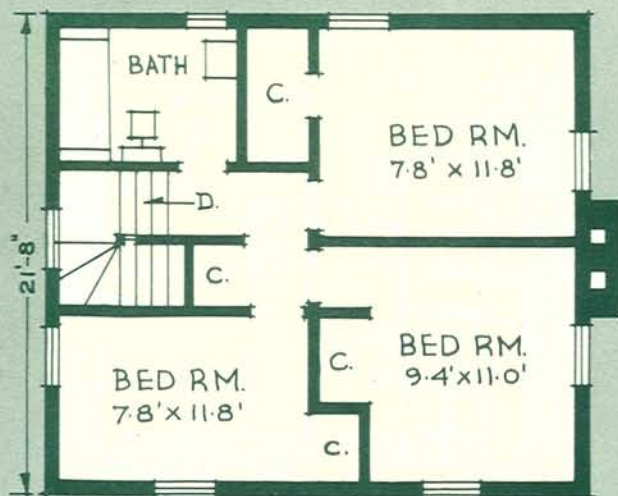
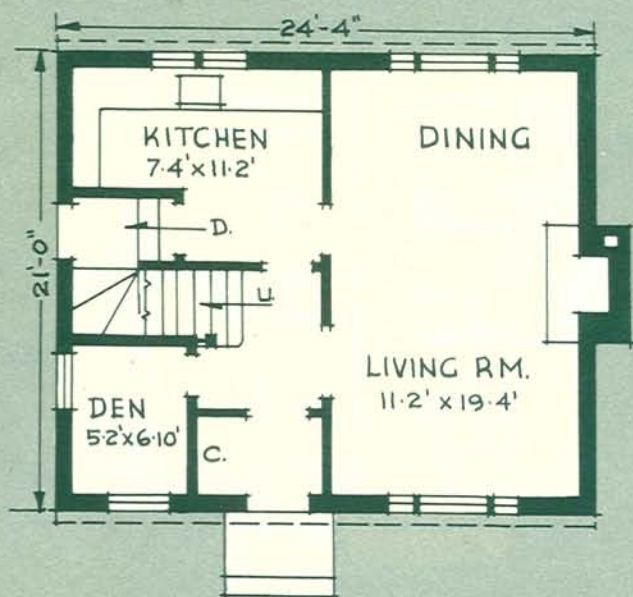
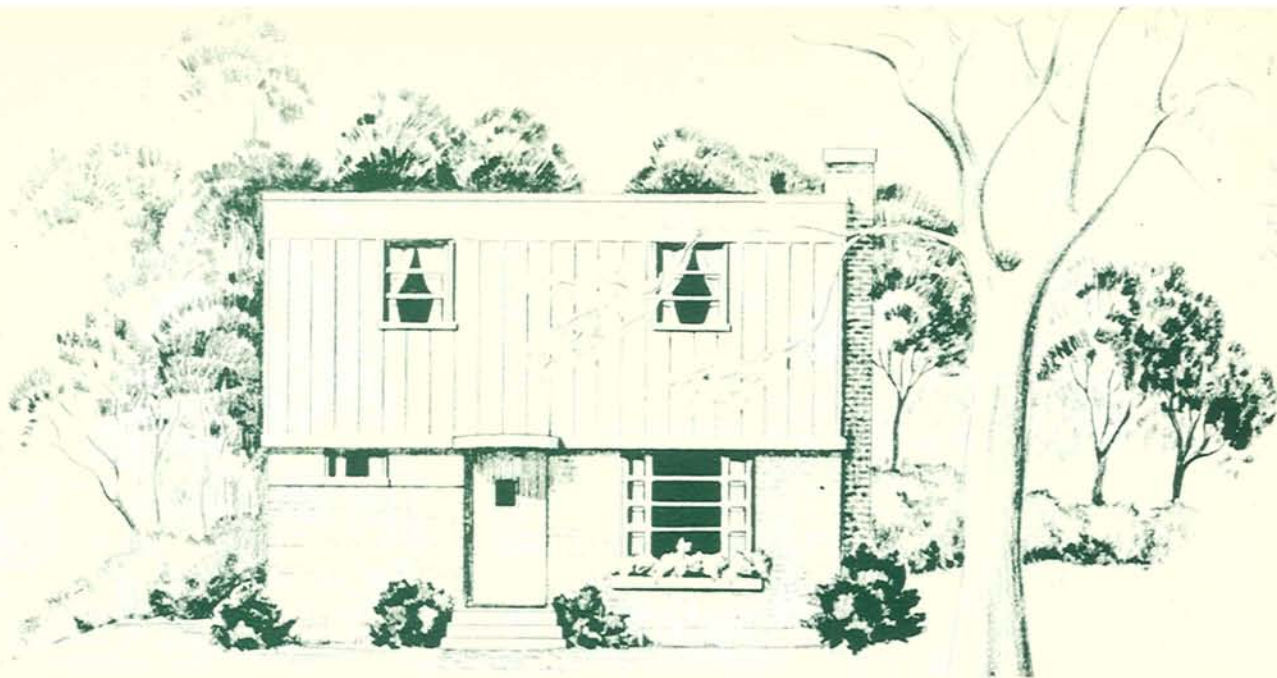
Cubic Contents:
 16,200 cu. ft.

Minimum lot width:
 with drive: 44'-0"
 without drive: 42'-0"

Architect:
 M. G. Dixon



DESIGN N° 49-65



Area:
1st Floor: 511 sq. ft.
2nd Floor: 526 sq. ft.
Total: 1,037 sq. ft.

Cubic Contents:
14,485 cu. ft.

Minimum lot width:
with drive: 39'-0"
without drive: 37'-0"

Architect:
M. G. Dixon

DESIGN NO. 49-66

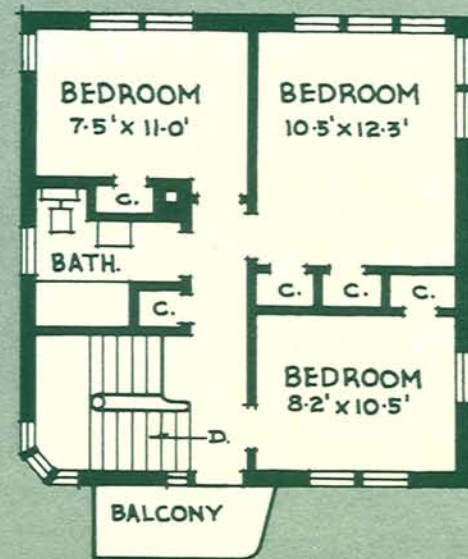
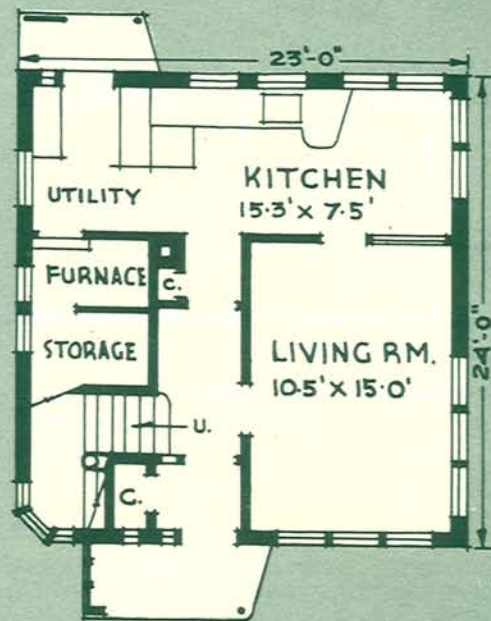


Area:
 1st Floor: 552 sq. ft.
 2nd Floor: 552 sq. ft.
 Total: 1,104 sq. ft.

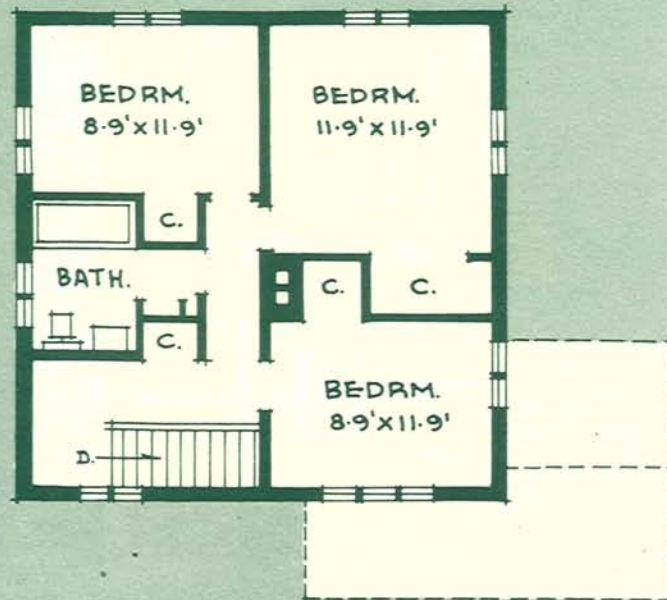
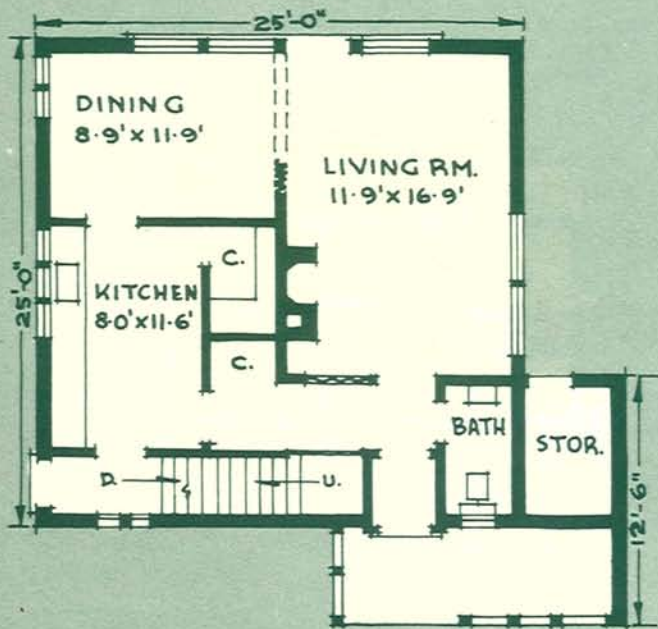
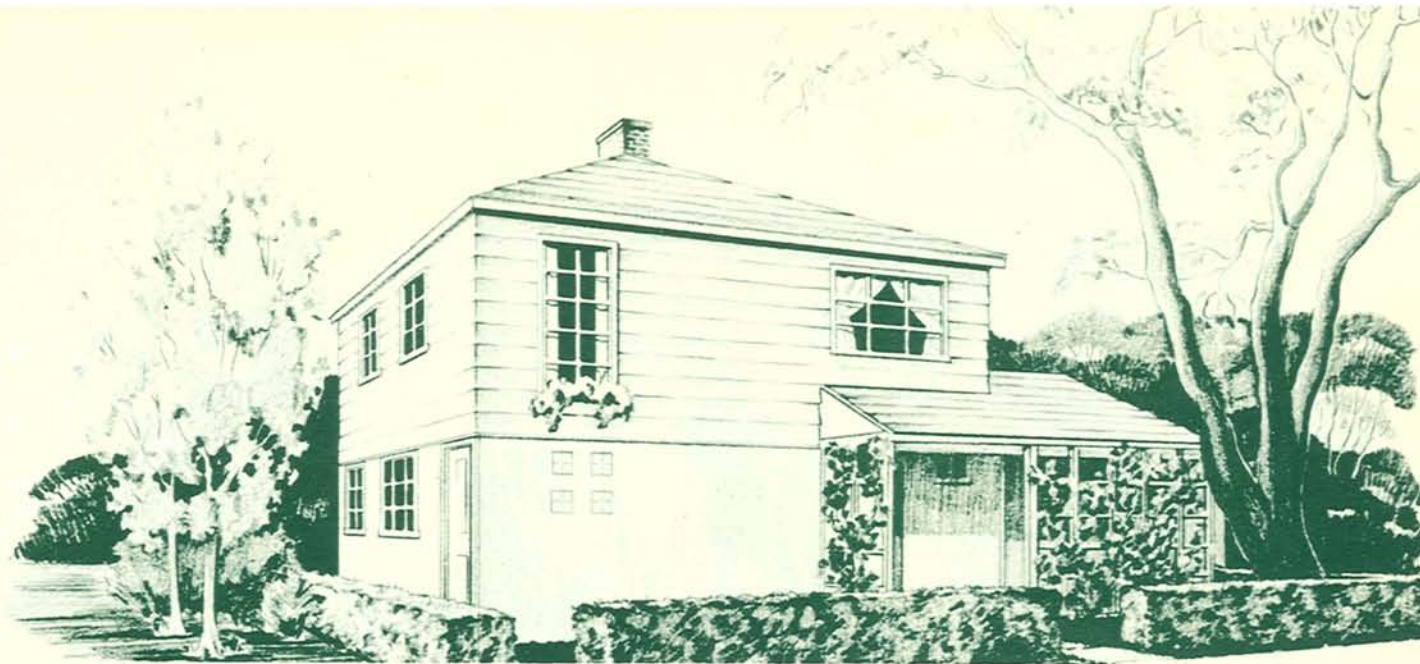
Cubic Contents:
 11,592 cu. ft.

Minimum lot width:
 with drive: 37'-0"
 without drive: 35'-0"

Architect:
 Jean Favreau



DESIGN N° 49-67



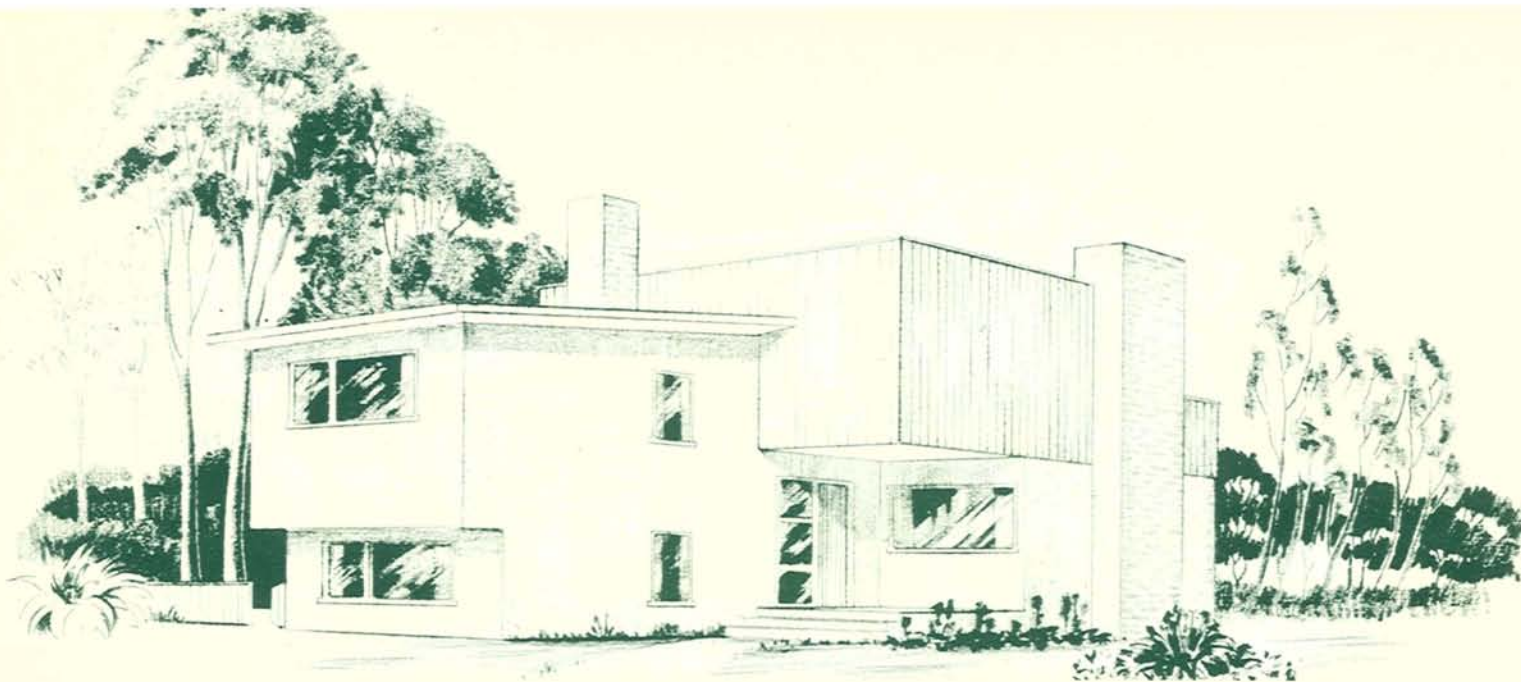
Area:
1st Floor: 625 sq. ft.
2nd Floor: 625 sq. ft.
Total: 1,250 sq. ft.

Cubic Contents:
17,329 cu. ft.

Minimum lot width:
with drive: 46'-6"
without drive: 40'-6"

Architect:
A. Henri Tremblay

DESIGN NO 49-68

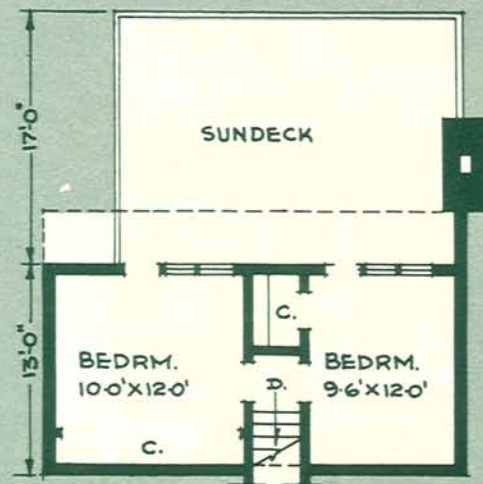
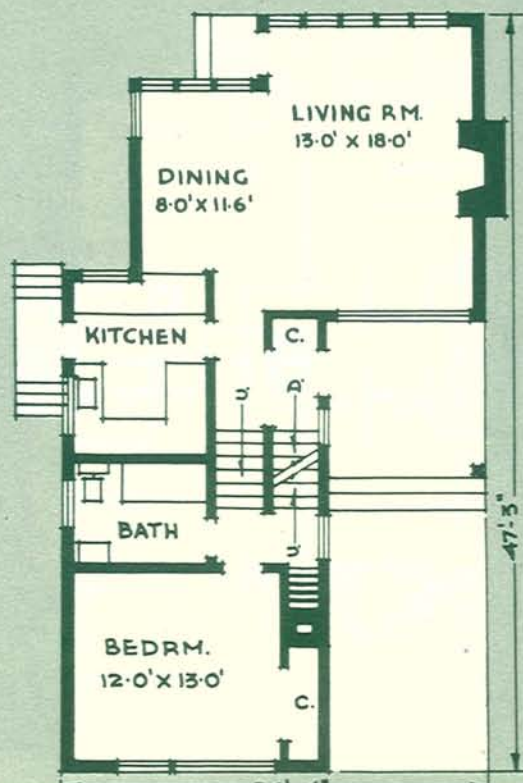


Area:
 1st Floor: 882 sq. ft.
 2nd Floor: 342 sq. ft.
 Total: 1,224 sq. ft.

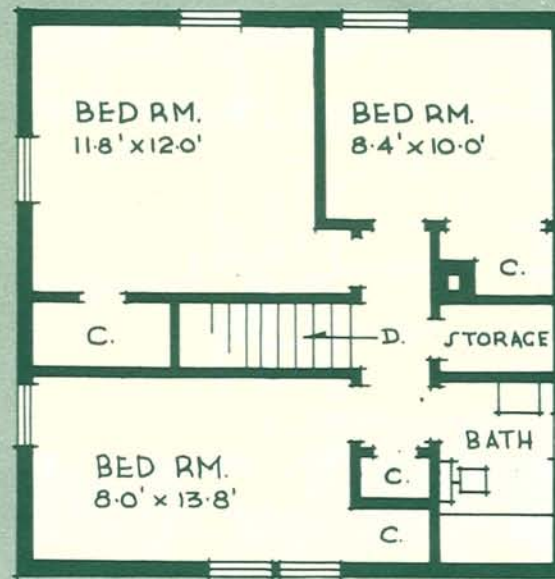
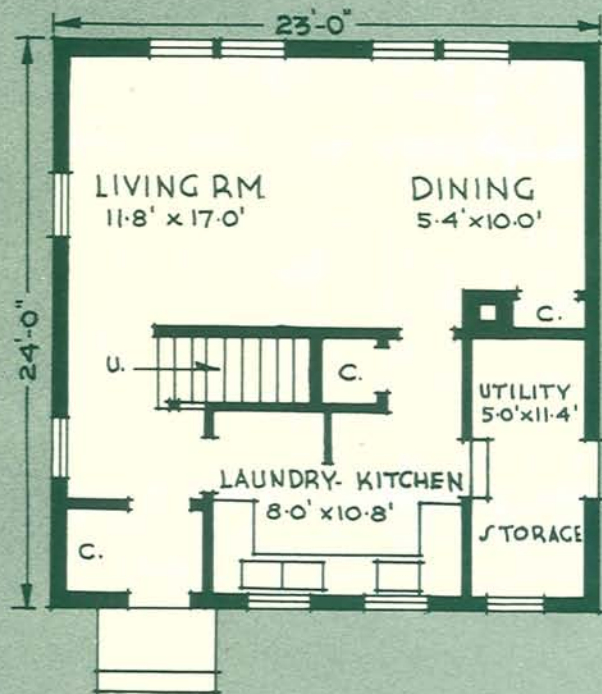
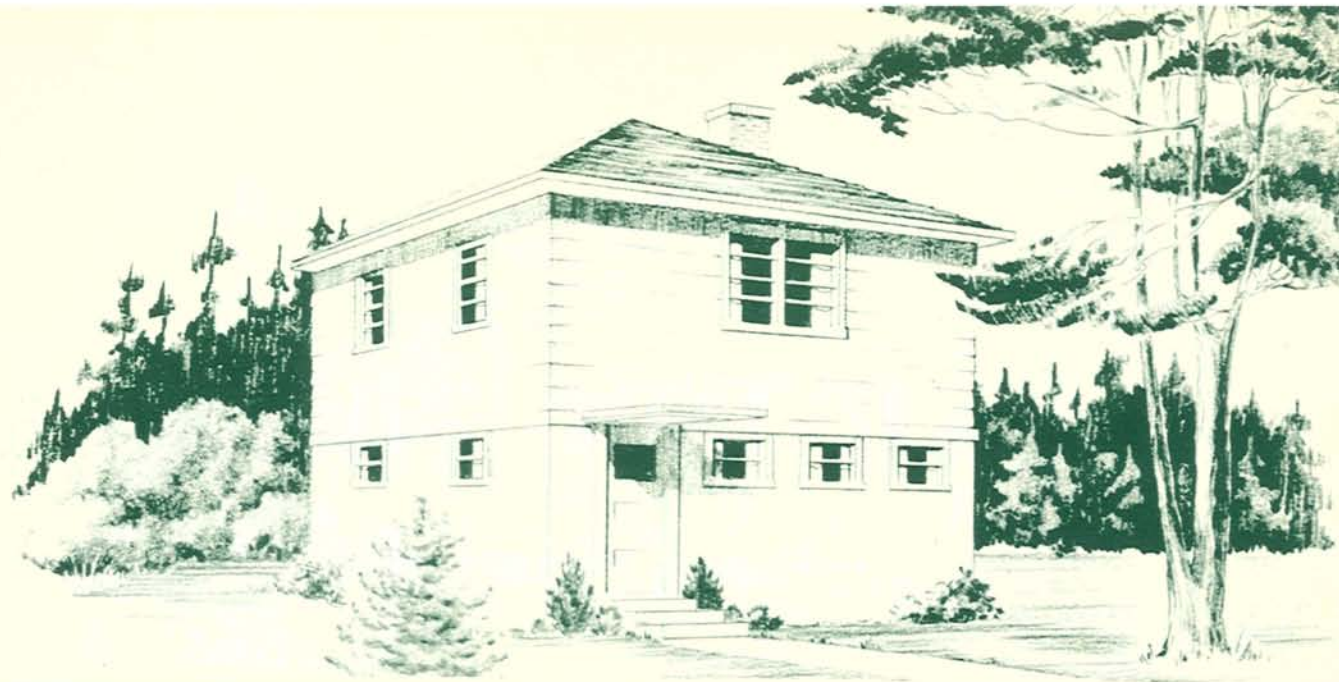
Cubic Contents:
 13,367 cu. ft.

Minimum lot width:
 with drive: 43'-2"
 without drive: 39'-2"

Architect:
 E. A. Mulford



DESIGN N^o 49-69



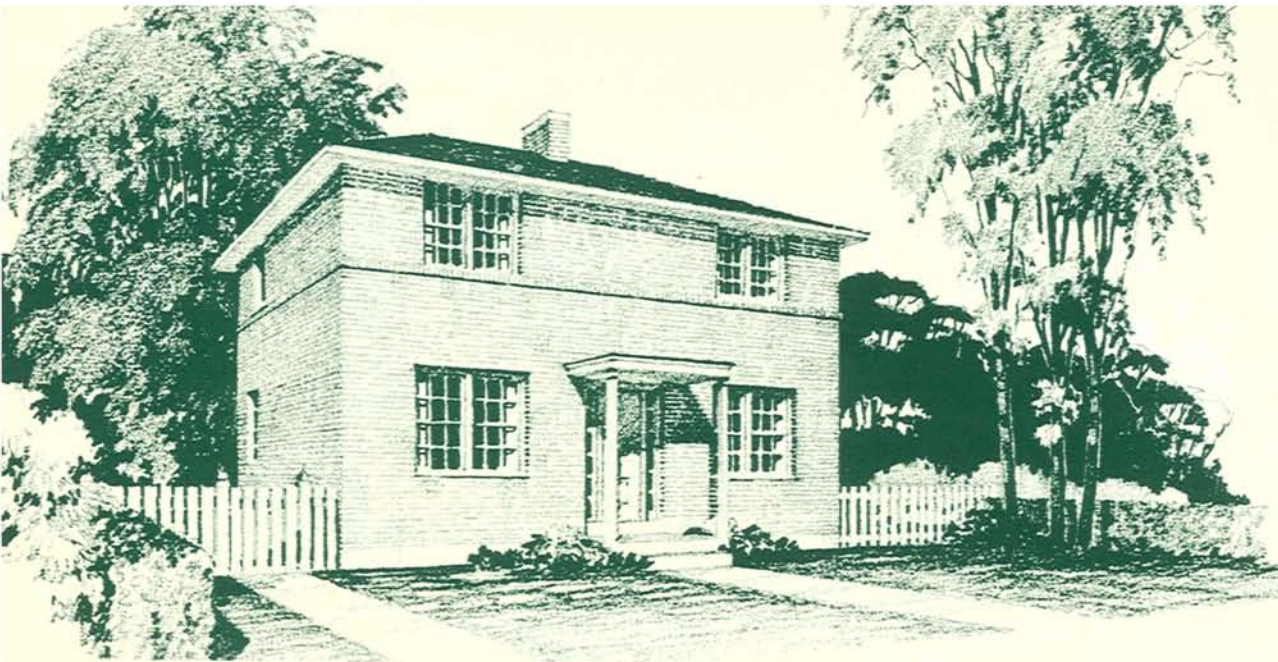
Area:
1st Floor: 552 sq. ft.
2nd Floor: 552 sq. ft.
Total: 1,104 sq. ft.

Cubic Contents:
12,150 cu. ft.

Minimum lot width:
with drive: 37'-0"
without drive: 35'-0"

Architect:
M. G. Dixon

DESIGN NO. 49-70

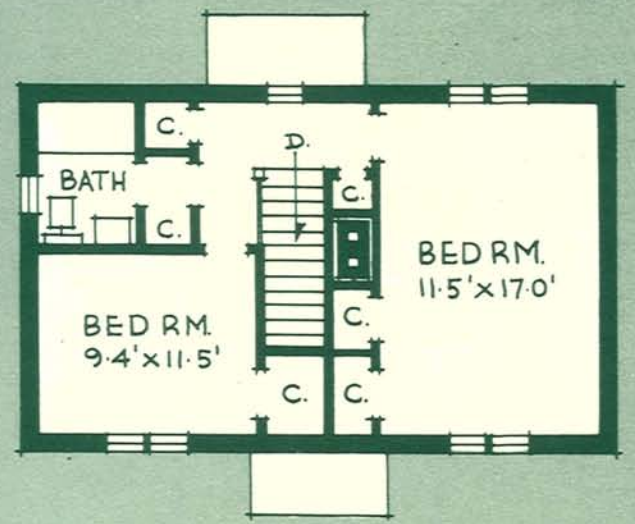
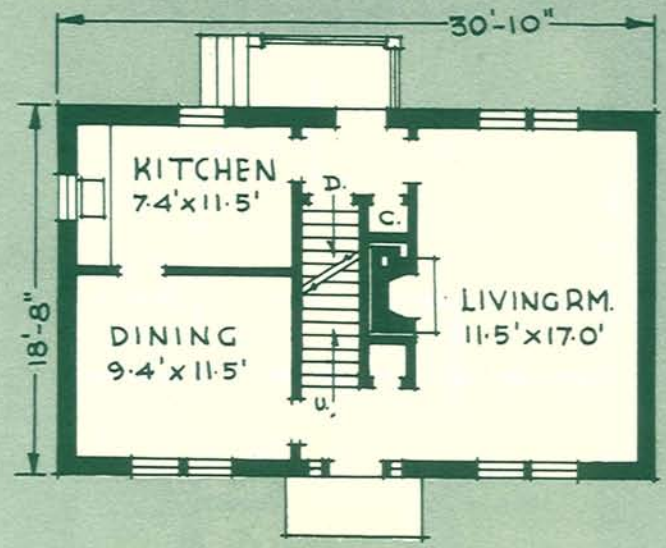


Area:
 1st Floor: 576 sq. ft.
 2nd Floor: 576 sq. ft.
 Total: 1,152 sq. ft.

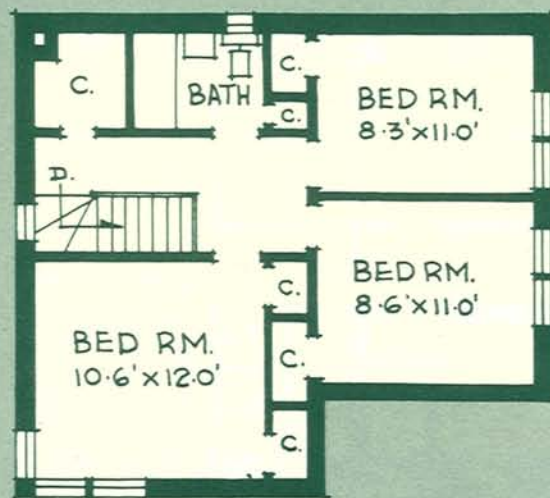
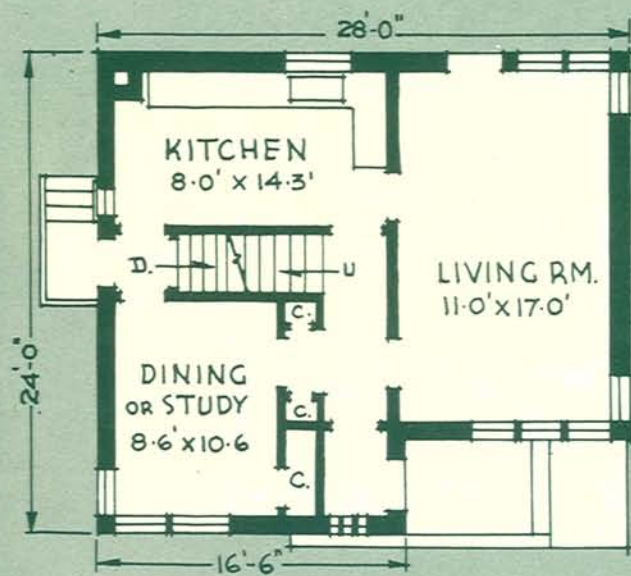
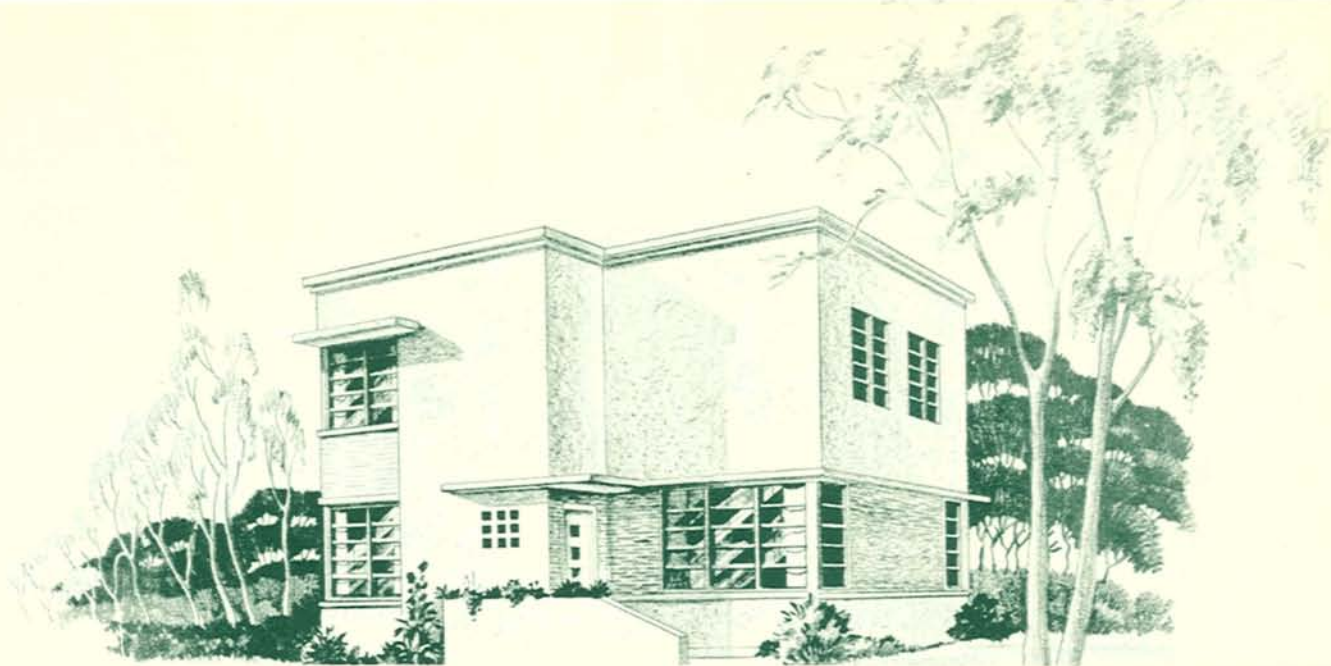
Cubic Contents:
 15,217 cu. ft.

Minimum lot width:
 with drive: 42'-8"
 without drive: 38'-6"

Architects:
 Wilson & Newton



DESIGN N^o 49-71



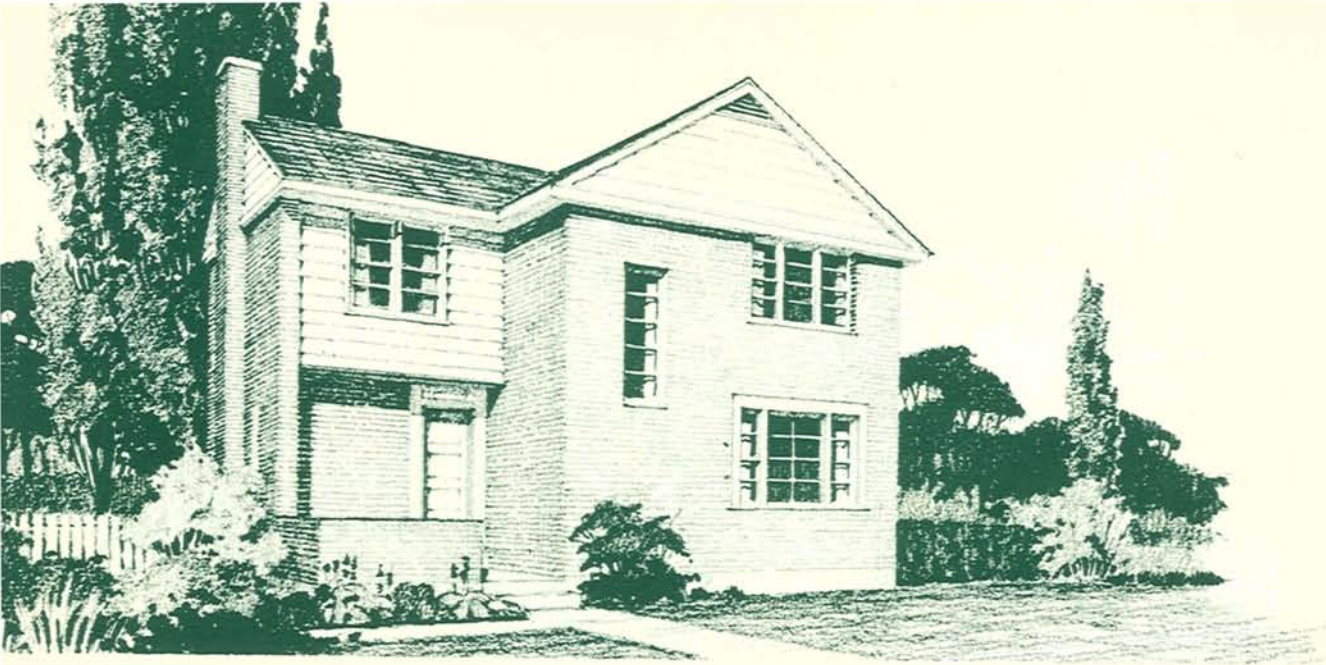
Area:
1st Floor: 615 sq. ft.
2nd Floor: 615 sq. ft.
Total: 1,230 sq. ft.

Cubic Contents:
17,820 cu. ft.

Minimum lot width:
with drive: 41'-8"
without drive: 37'-4"

Architect:
M. G. Dixon

DESIGN NO. 49-72

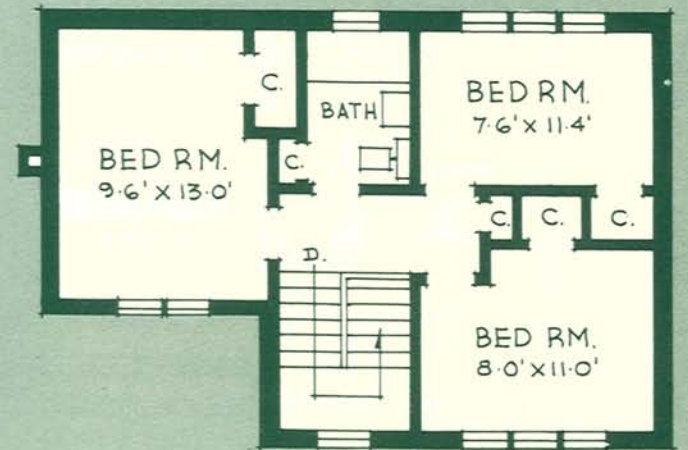
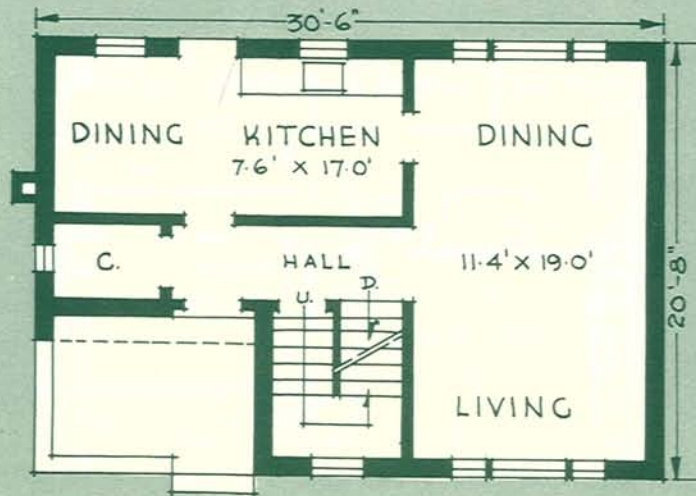


Area:
 1st Floor: 530 sq. ft.
 2nd Floor: 545 sq. ft.
 Total: 1,075 sq. ft.

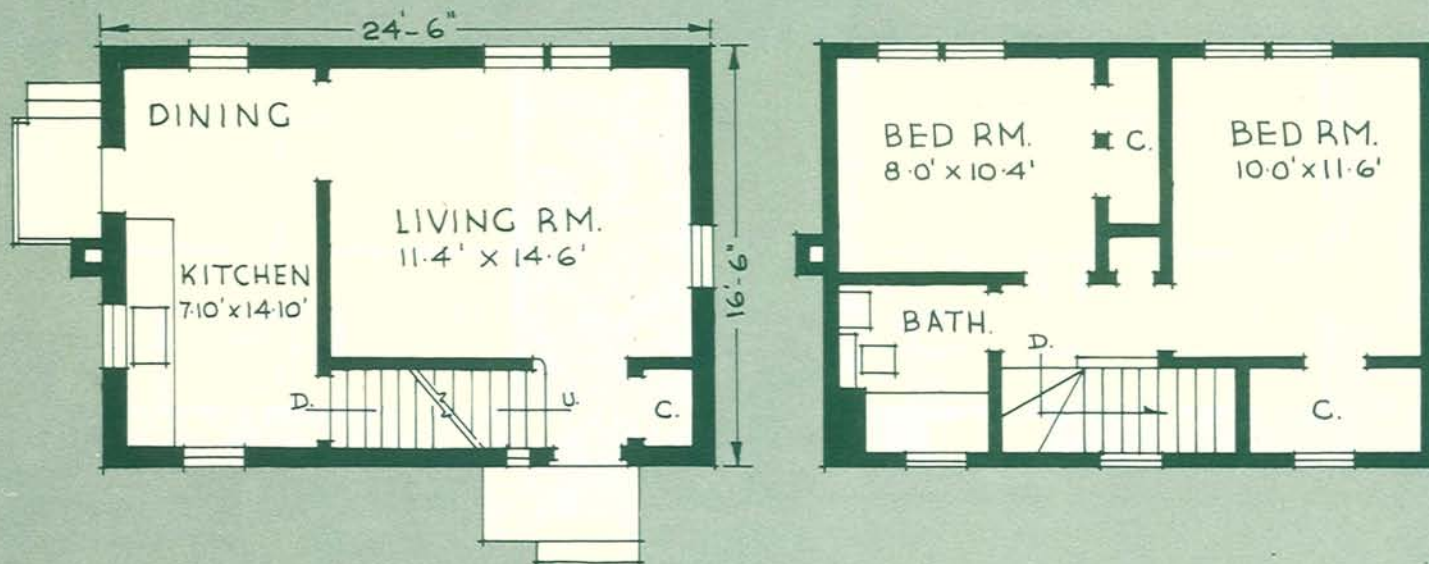
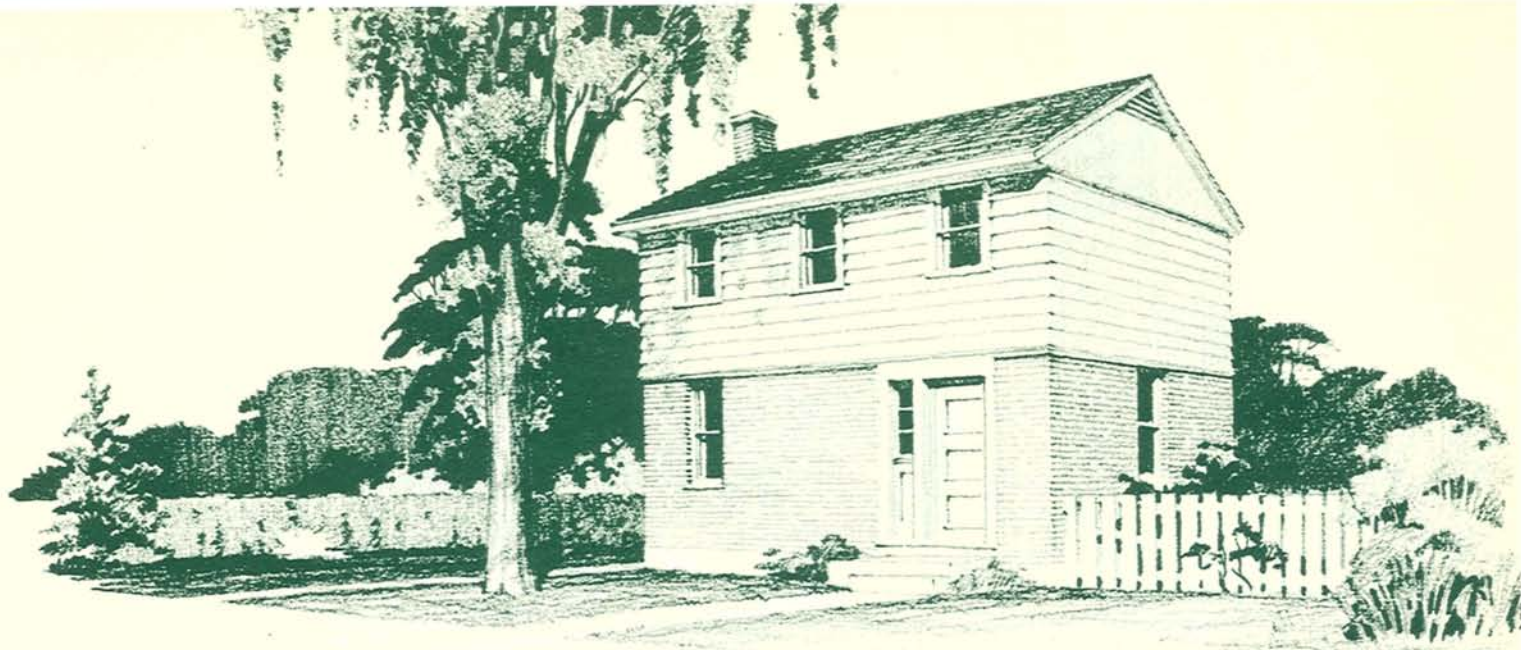
Cubic Contents:
 14,977 cu. ft.

Minimum lot width:
 with drive: 43'-6"
 without drive: 39'-4"

Architects:
 Wilson & Newton



DESIGN N^o 49-73



Area:
 1st Floor: 404 sq. ft.
 2nd Floor: 404 sq. ft.
 Total: 808 sq. ft.

Cubic Contents:
 10,807 cu. ft.

Minimum lot width:
 with drive: 39'-6"
 without drive: 35'-0"

Architects:
 Wilson & Newton

DESIGN NO. 49-74

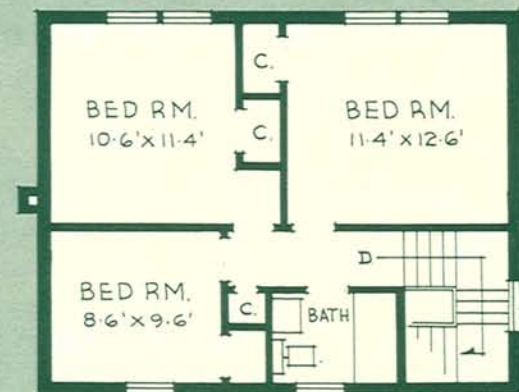
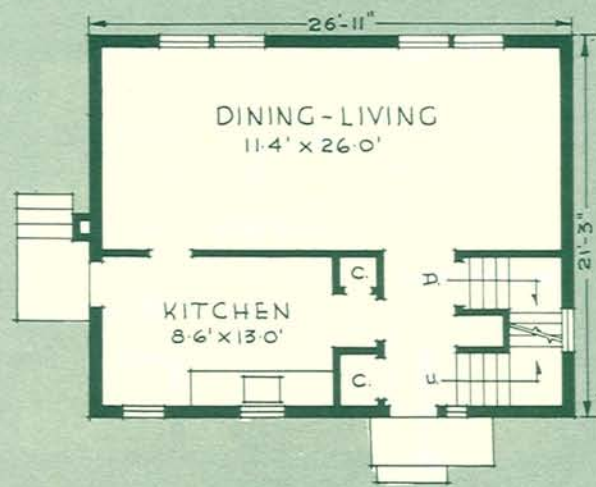


Area:
 1st Floor: 572 sq. ft.
 2nd Floor: 572 sq. ft.
 Total: 1,144 sq. ft.

Cubic Contents:
 15,684 cu. ft.

Minimum lot width:
 with drive: 43'-0"
 without drive: 38'-9"

Architects:
 Wilson & Newton



DESIGN N^o 49-75

INDEX

<u>DESIGN NO.</u>	<u>PAGE</u>
49-61.....	6
49-62.....	7
49-63.....	8
49-64.....	9
49-65.....	10
49-66.....	11
49-67.....	12
49-68.....	13
49-69.....	14
49-70.....	15
49-71.....	16
49-72.....	17
49-73.....	18
49-74.....	19
49-75.....	20

Central

Mortgage and

Housing

Corporation