



SMALL  
HOUSE  
DESIGNS

*Bungalows*

CENTRAL MORTGAGE AND HOUSING CORPORATION

**SMALL  
HOUSE  
DESIGNS**

*Bungalows*

**CENTRAL MORTGAGE AND HOUSING CORPORATION**

## minimum lot widths

● Minimum lot widths indicated on plans conform to the minimum standards set by Central Mortgage and Housing Corporation. Where such standards are less than local requirements, local requirements will govern. Conversely, where local requirements are less than CMHC standards, the latter will apply.



# FOREWORD

**O**NE of a series of booklets containing attractive house plans designed especially by Canadian architects for Canadian requirements, SMALL HOUSE DESIGNS—BUNGALOWS has been published to provide prospective home-owners with suggestions for new homes in the form of standard plans and designs. Other booklets in the series are:

SMALL HOUSE DESIGNS—1½-STOREY

SMALL HOUSE DESIGNS— 2-STOREY

SMALL HOUSE DESIGNS— DUPLEXES

In addition, FARM HOUSES, a volume of ten farm house designs prepared and issued under the direction of the Prairie Rural Housing Committee, is available on request.

A complete set of working drawings of each house illustrated, comprising four copies of blueprints and four copies of "Outline Specification Form (CMHC-24)"—to be filled in by the owner and builder—may be purchased through Central Mortgage and Housing Corporation for \$10.00.

Working drawings should be ordered by number from: Central Mortgage and Housing Corporation, 56 Lyon Street, Ottawa, or from the nearest regional or branch office of the Corporation. Regional and branch offices are located as follows:

## REGIONAL OFFICES

Vancouver  
Winnipeg  
Toronto

Montreal  
Halifax

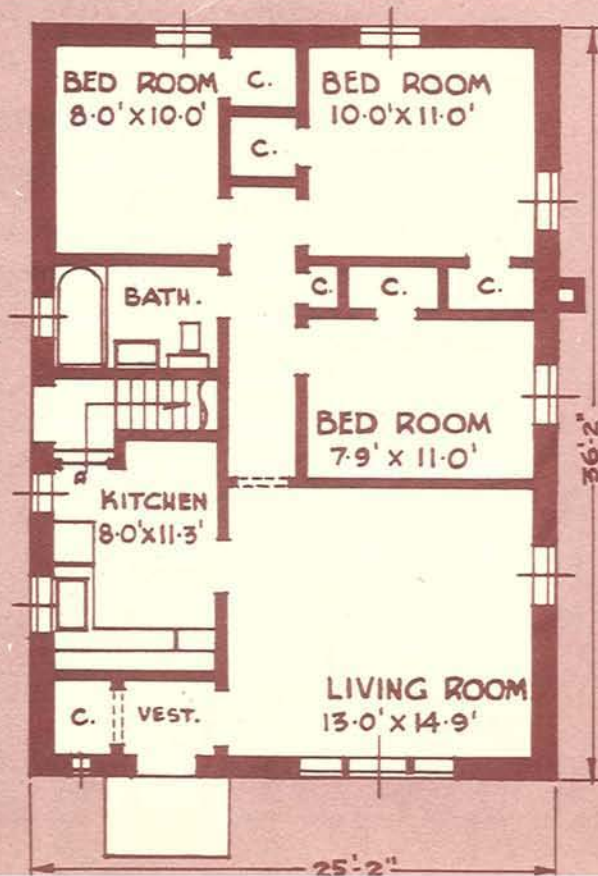
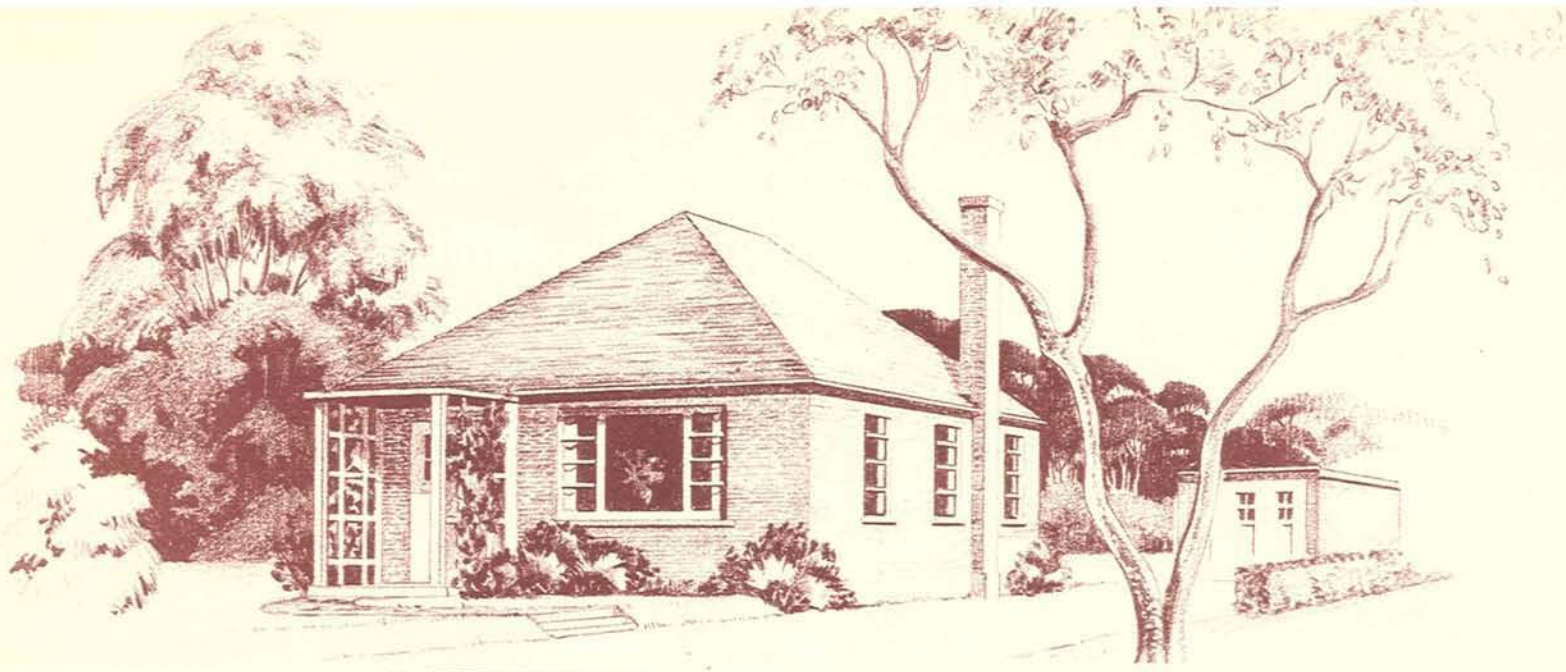
Victoria  
Edmonton  
Calgary

## BRANCH OFFICES

Regina  
Saskatoon  
Windsor

London  
Hamilton  
Ottawa

Sherbrooke  
Quebec  
Saint John

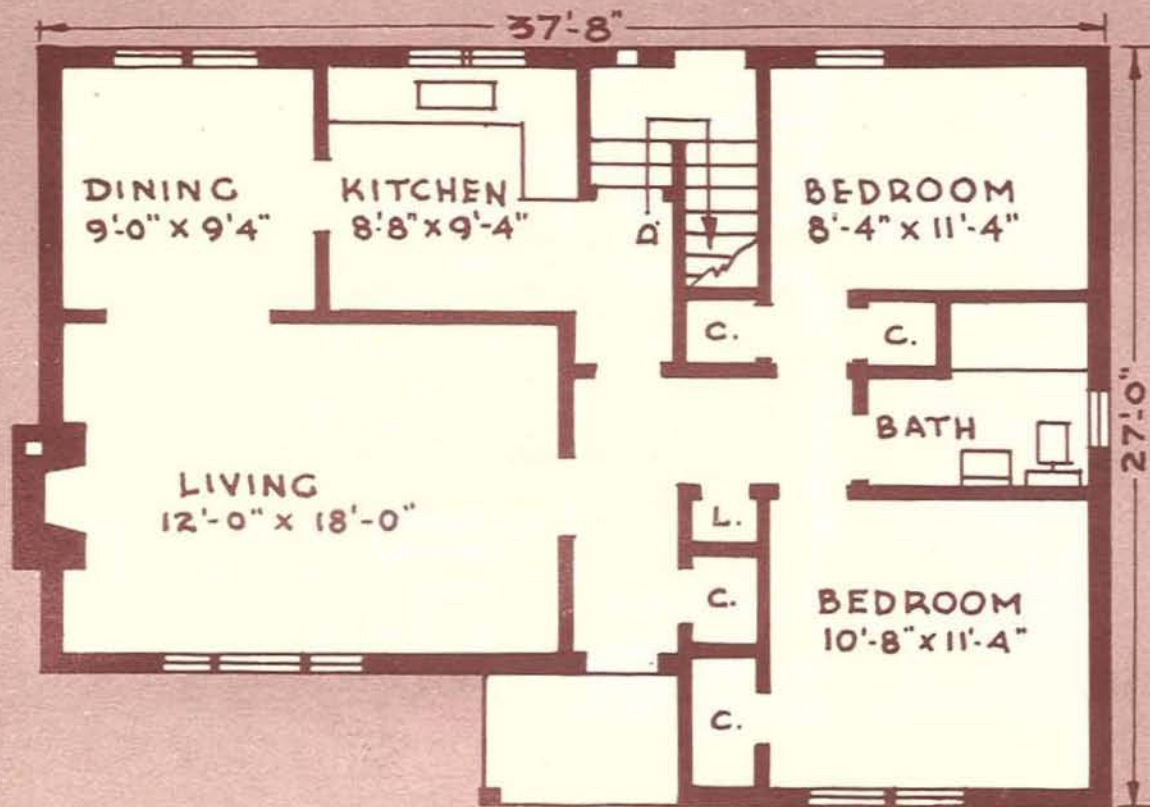
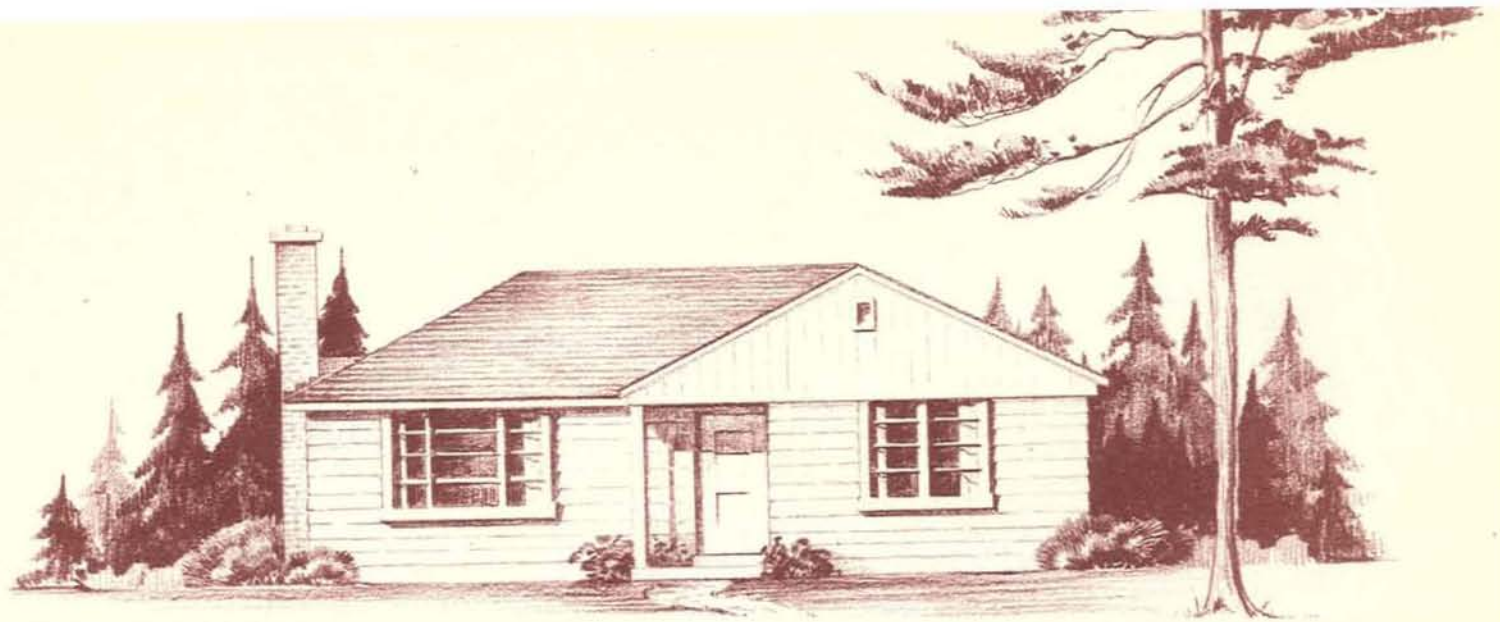


Area: 900 sq. ft.

Cubic Contents:  
17,100 cu. ft.

Minimum lot width—  
with driveway: 39'-7"  
without driveway: 35'-0"

**DESIGN N<sup>o</sup> 49-1**



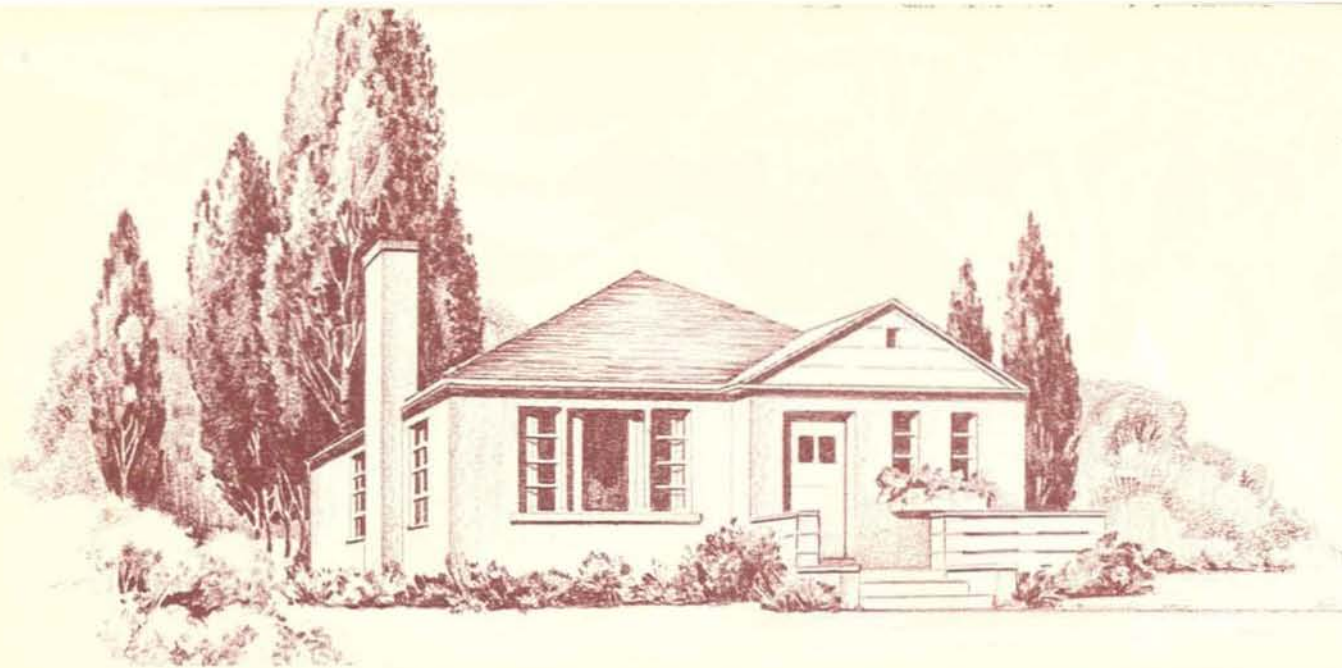
Area: 936 sq. ft.

Cubic Contents:  
17,195 cu. ft.

Minimum lot width—  
with driveway: 50'-0"  
without driveway: 47'-0"

Architect: M. G. Dixon

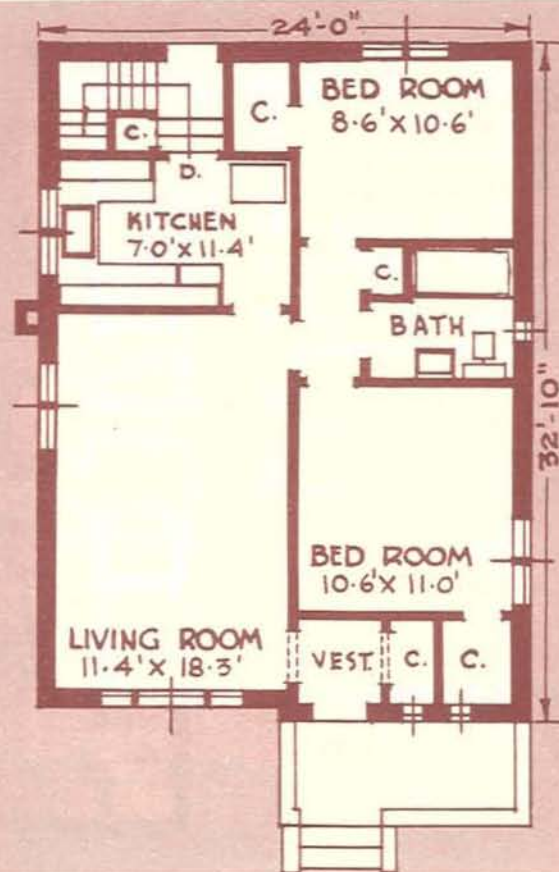
**DESIGN NO 49-2**



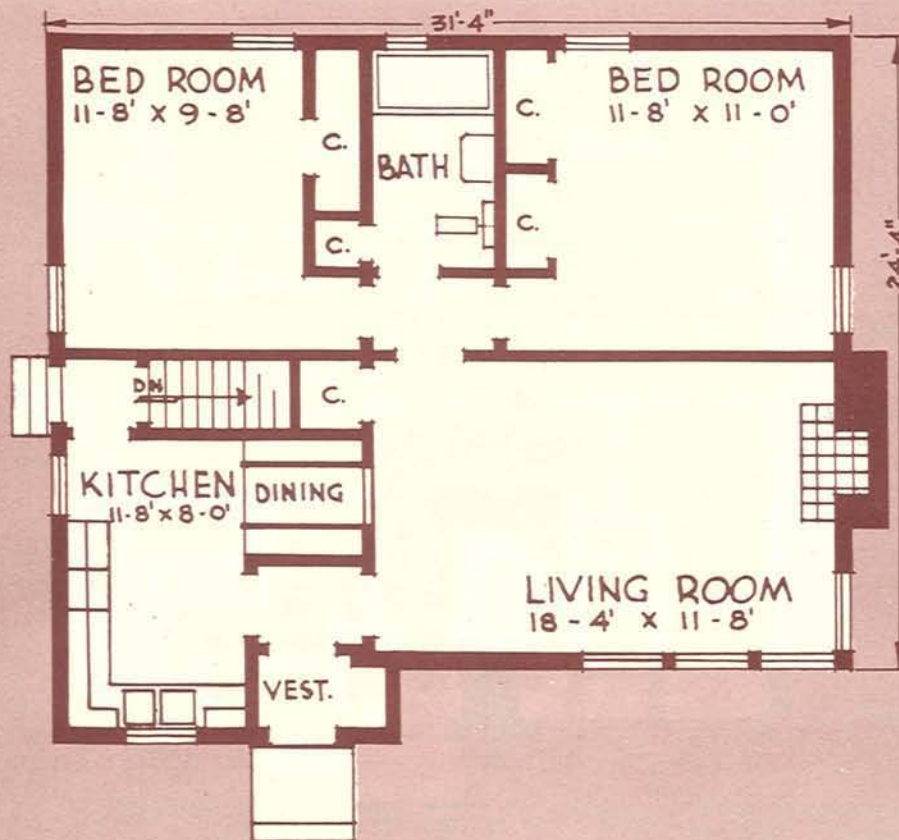
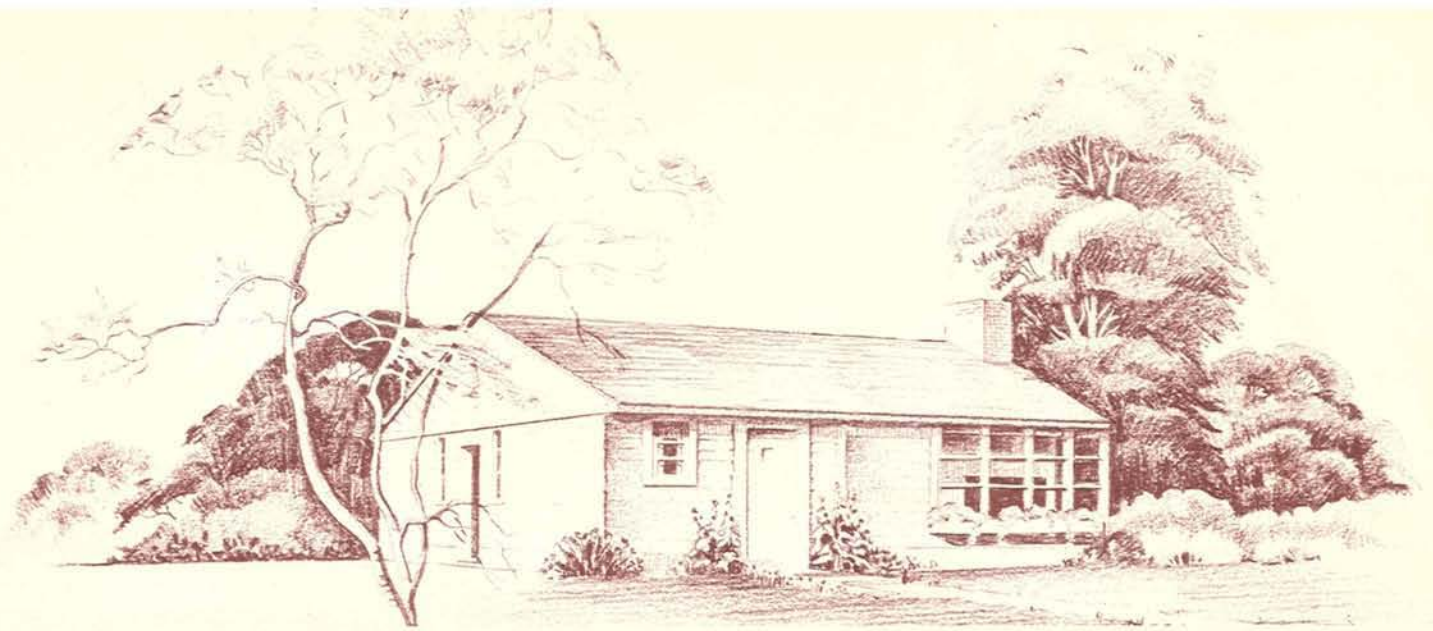
Area: 778 sq. ft.

Cubic Contents:  
14,393 cu. ft.

Minimum lot width—  
with driveway: 36'-4"  
without driveway: 33'-0"



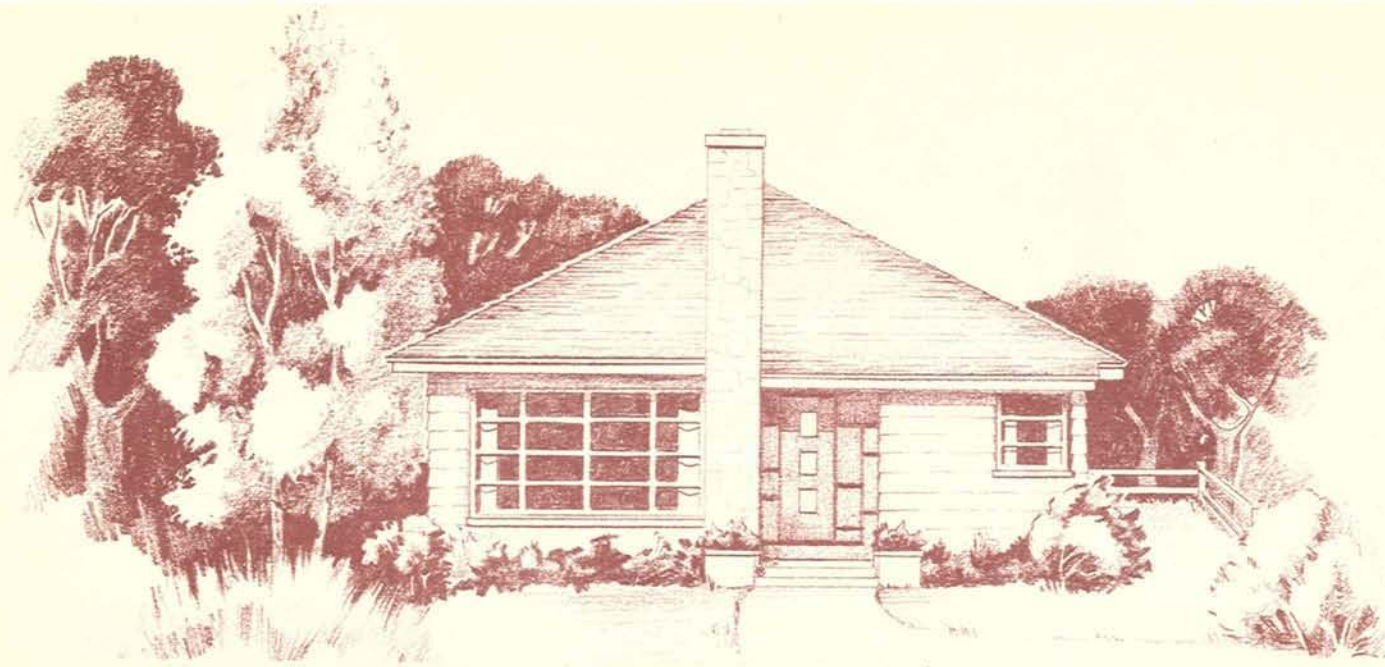
**DESIGN N° 49-3**



Area: 807 sq. ft.  
 Cubic Contents:  
 16,140 cu. ft.  
 Minimum lot width—  
 with driveway: 45'-0"  
 without driveway: 40'-0"  
 Architect: M. G. Dixon

**DESIGN No. 49-4**



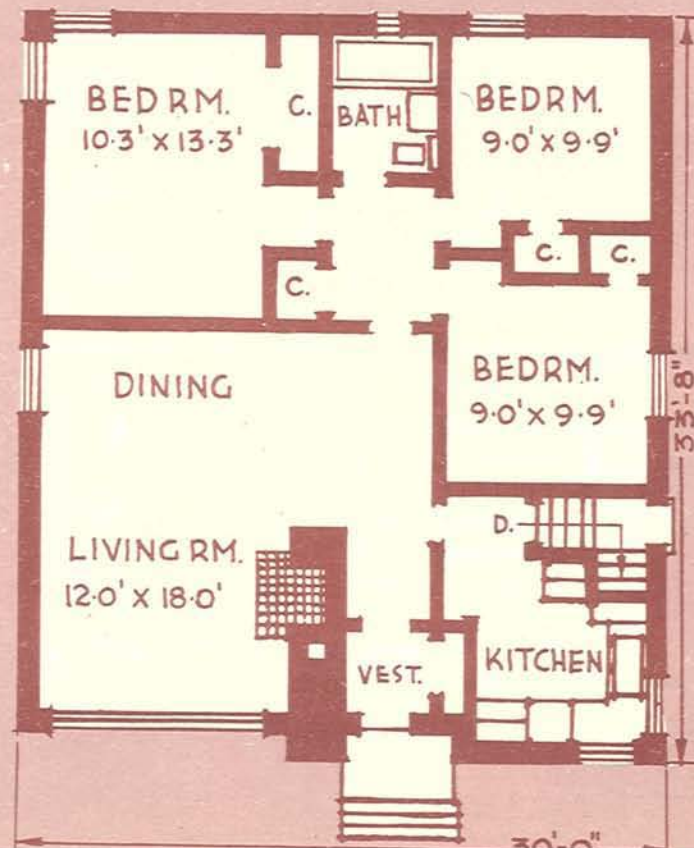


Area: 1,020 sq. ft.

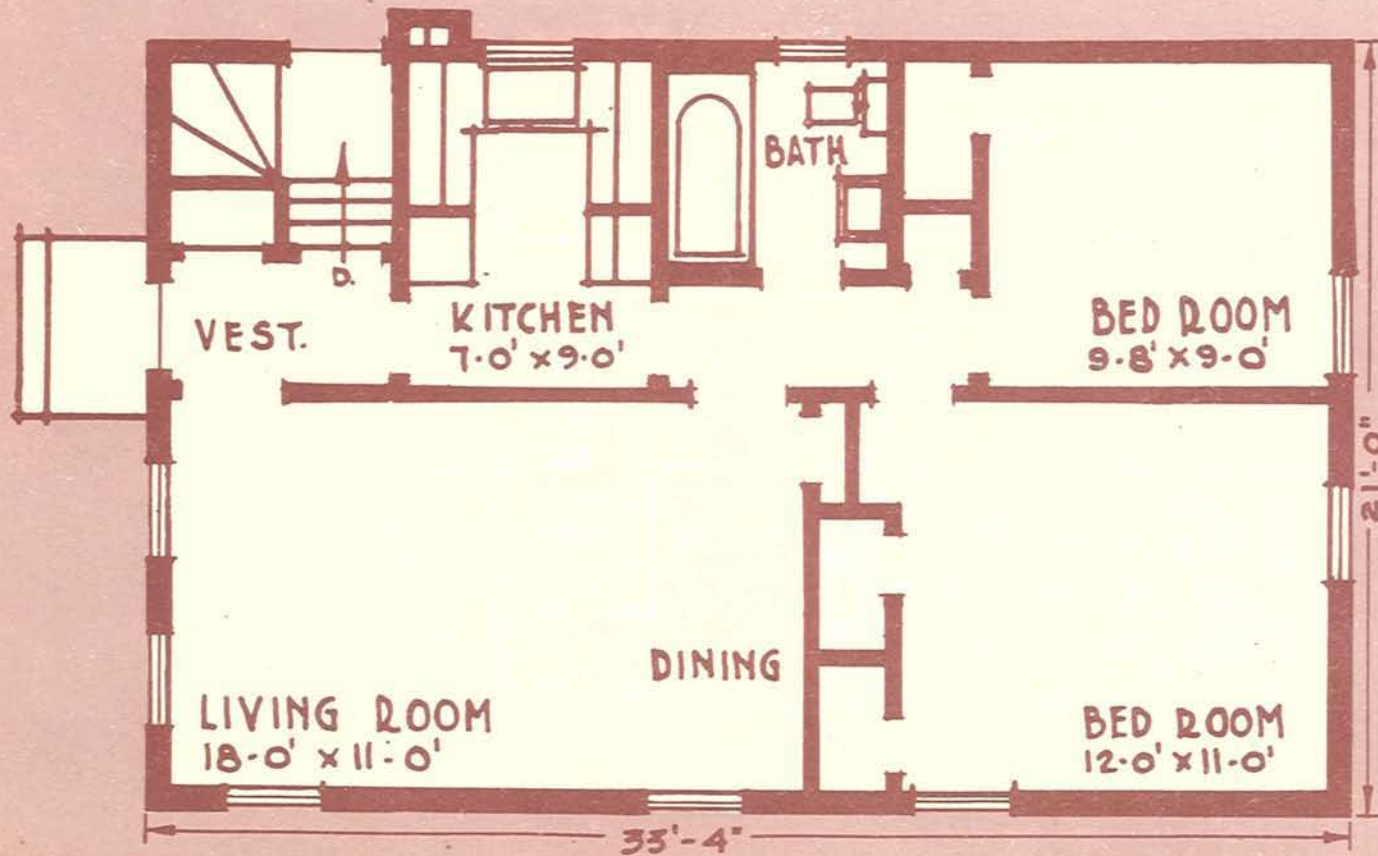
Cubic Contents:  
20,910 cu. ft.

Minimum lot width—  
with driveway: 42'-0"  
without driveway: 37'-6"

Architect: H. C. Jarvis



**DESIGN N<sup>o</sup> 49-5**



Area: 700 sq. ft.

Cubic Contents:  
12,950 cu. ft.

Minimum lot width—  
with driveway: 33'-0"  
without driveway: 33'-0"

Architect: M. G. Dixon

**DESIGN NO. 49-6**

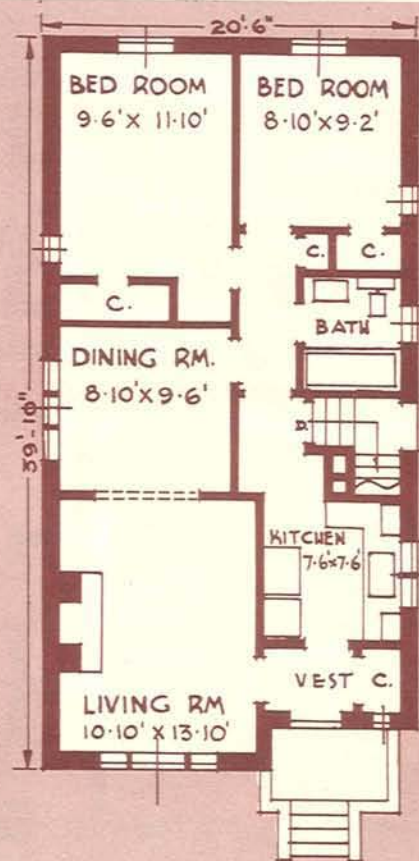


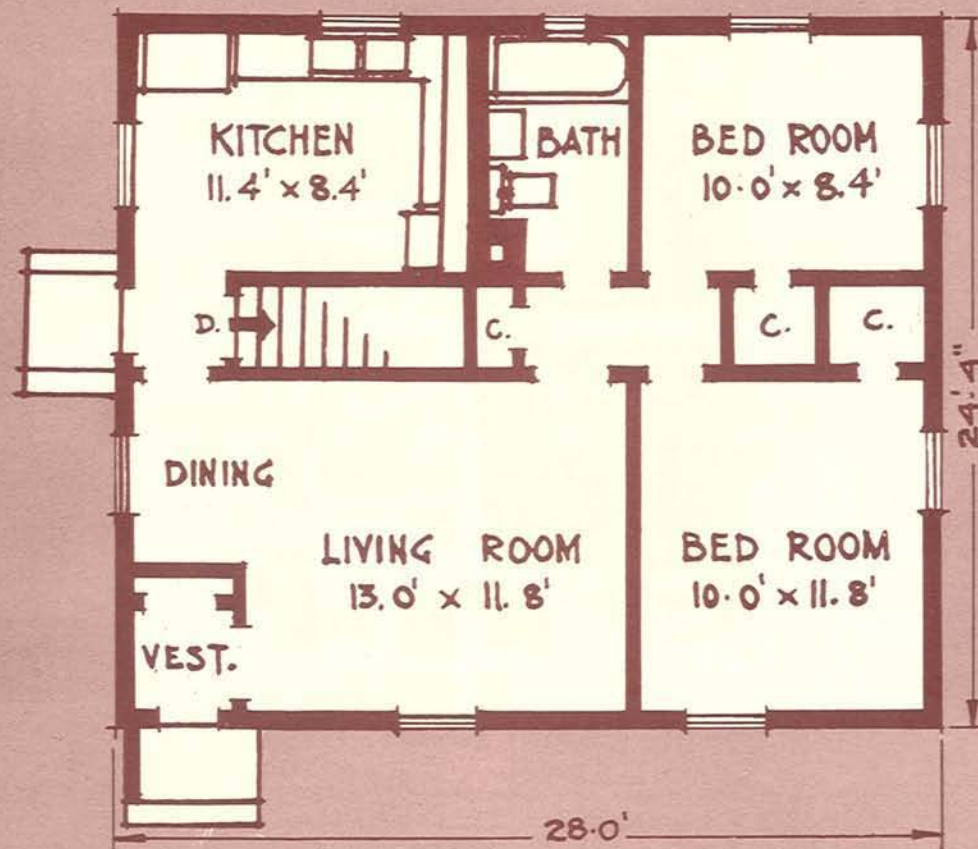
Area: 796 sq. ft.

Cubic Contents:  
14,726 cu. ft.

Minimum lot width—  
with driveway: 33'-0"  
without driveway: 33'-0"

**DESIGN N° 49-7**





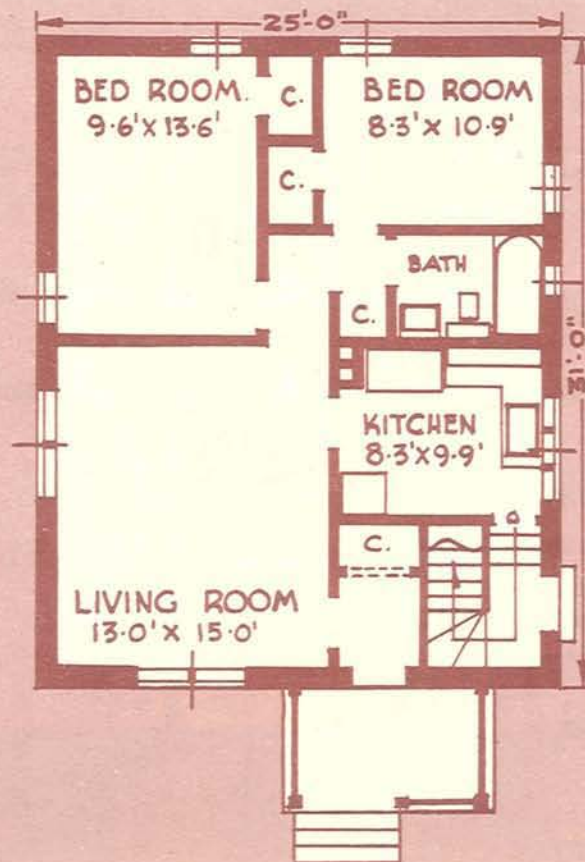
Area: 681 sq. ft.

Cubic Contents:  
13,620 cu. ft.

Minimum lot width—  
with driveway: 43'-0"  
without driveway: 35'-0"

Architect: M. G. Dixon

**DESIGN NO. 49-B**



Area: 775 sq. ft.

Cubic Contents:

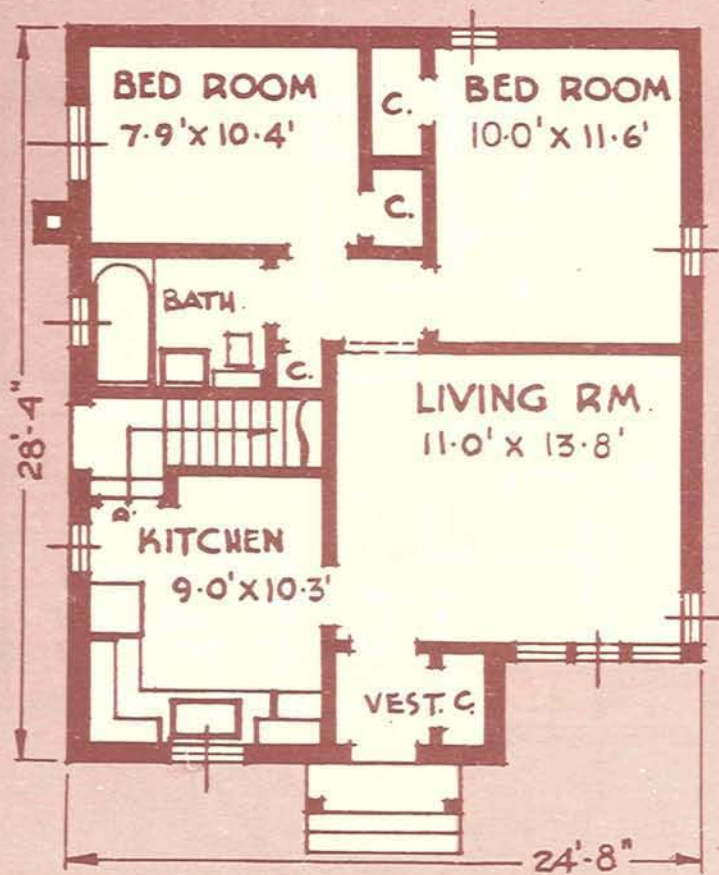
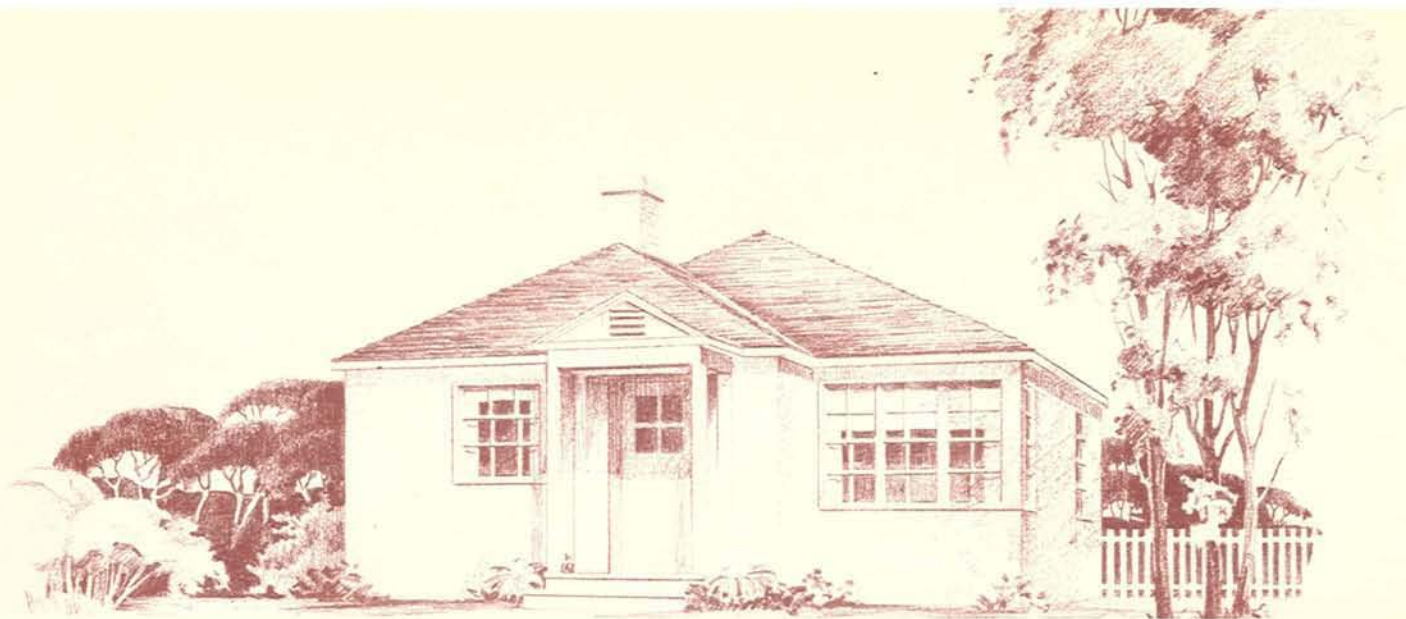
14,338 cu. ft.

Minimum lot width—

with driveway: 36'-4"

without driveway: 33'-0"

**DESIGN N<sup>o</sup> 49-9**

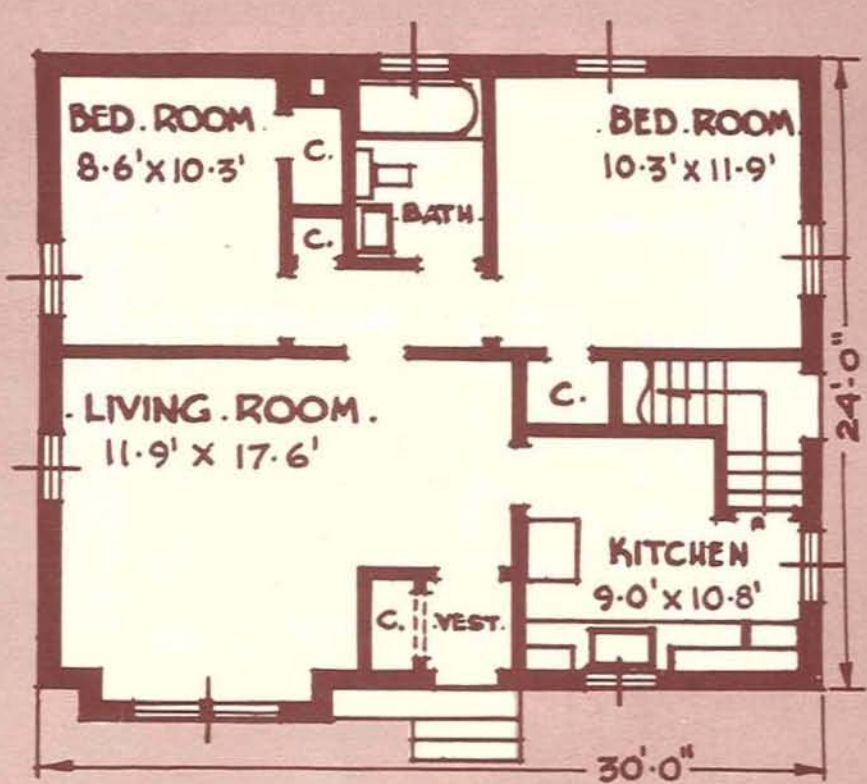


Area: 643 sq. ft.

Cubic Contents:  
12,006 cu. ft.

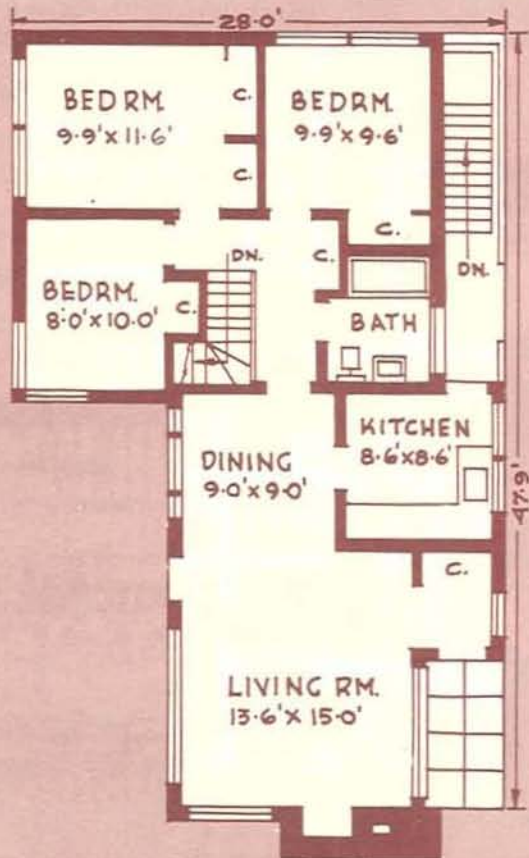
Minimum lot width—  
with driveway: 37'-8"  
without driveway: 33'-0"

**DESIGN NO. 49-10**



Area: 732 sq. ft.  
 Cubic Contents:  
 14,508 cu. ft.  
 Minimum lot width—  
 with driveway: 41'-4"  
 without driveway: 36'-8"

**DESIGN N° 49-11**



Area: 953 sq. ft.

Cubic Contents:  
19,060 cu. ft.

Minimum lot width—  
with driveway: 61'-9"  
without driveway: 57'-1"

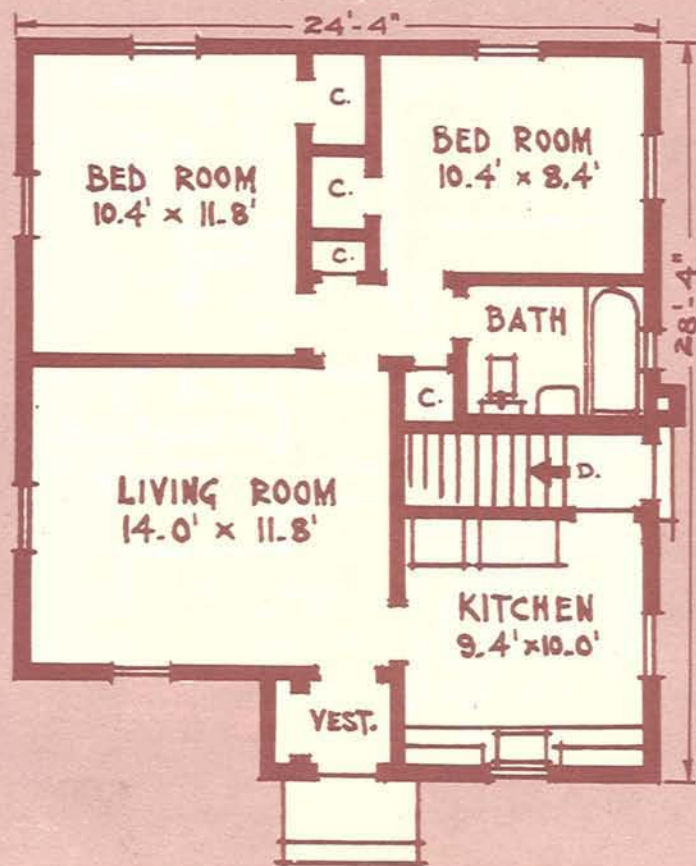
Architect: E. C. S. Cox

**DESIGN No. 49-12**

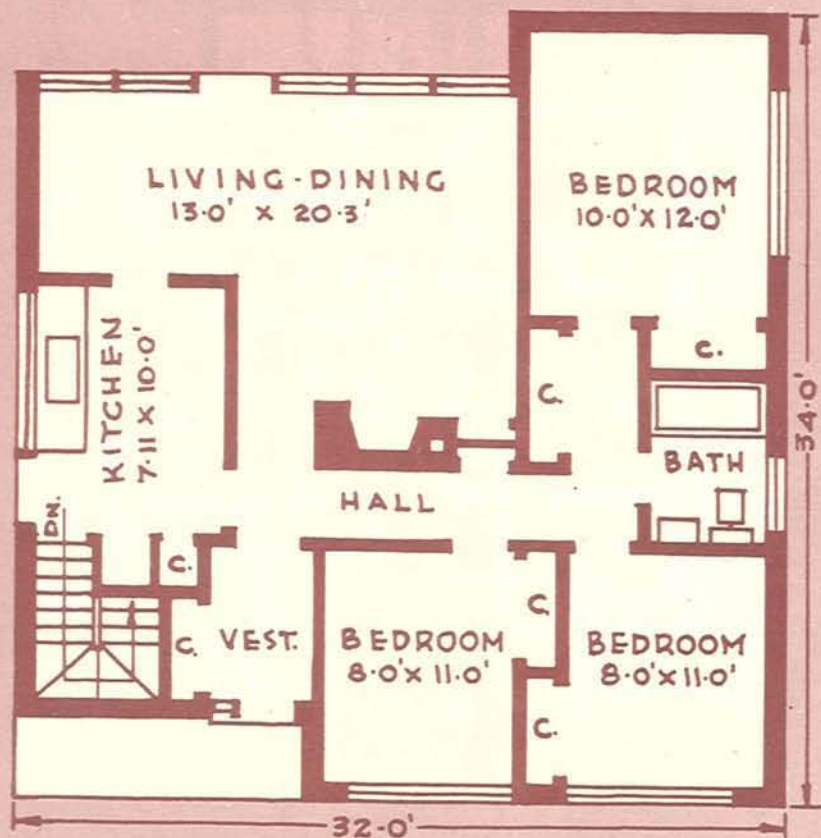
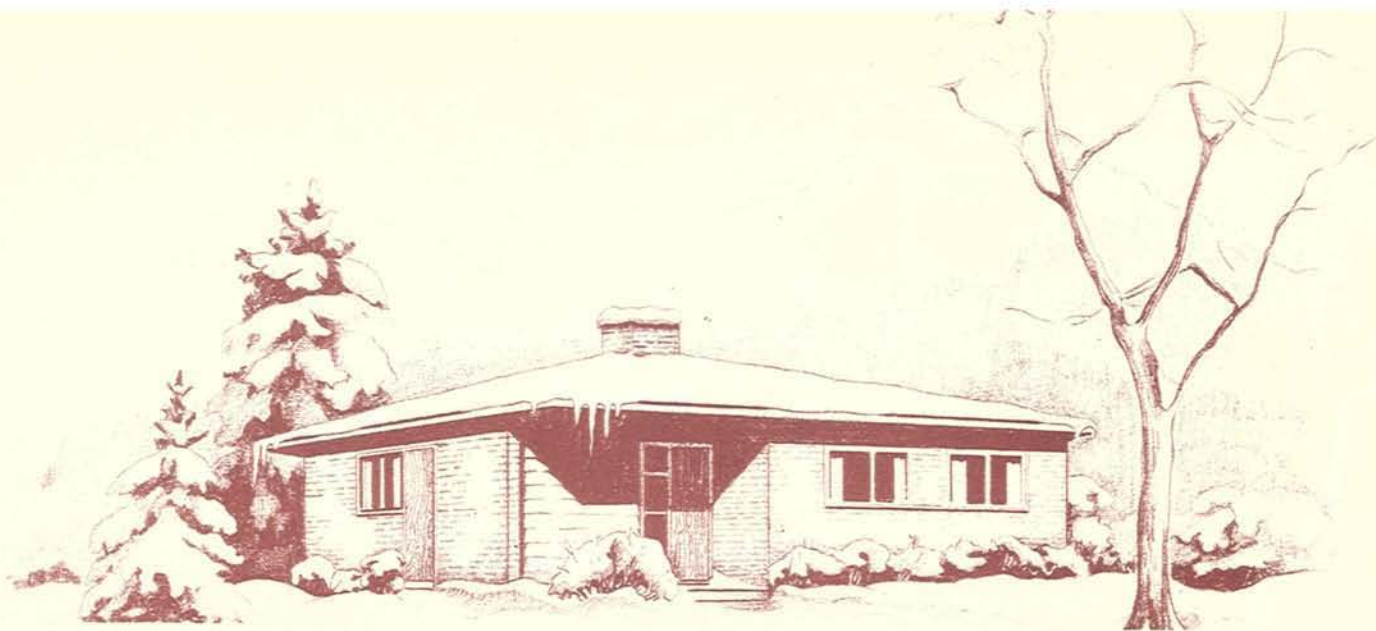




Area: 652 sq. ft.  
 Cubic Contents:  
 13,040 cu. ft.  
 Minimum lot width—  
 with driveway: 37'-0"  
 without driveway: 33'-0"  
 Architect: M. G. Dixon



**DESIGN N° 49-13**



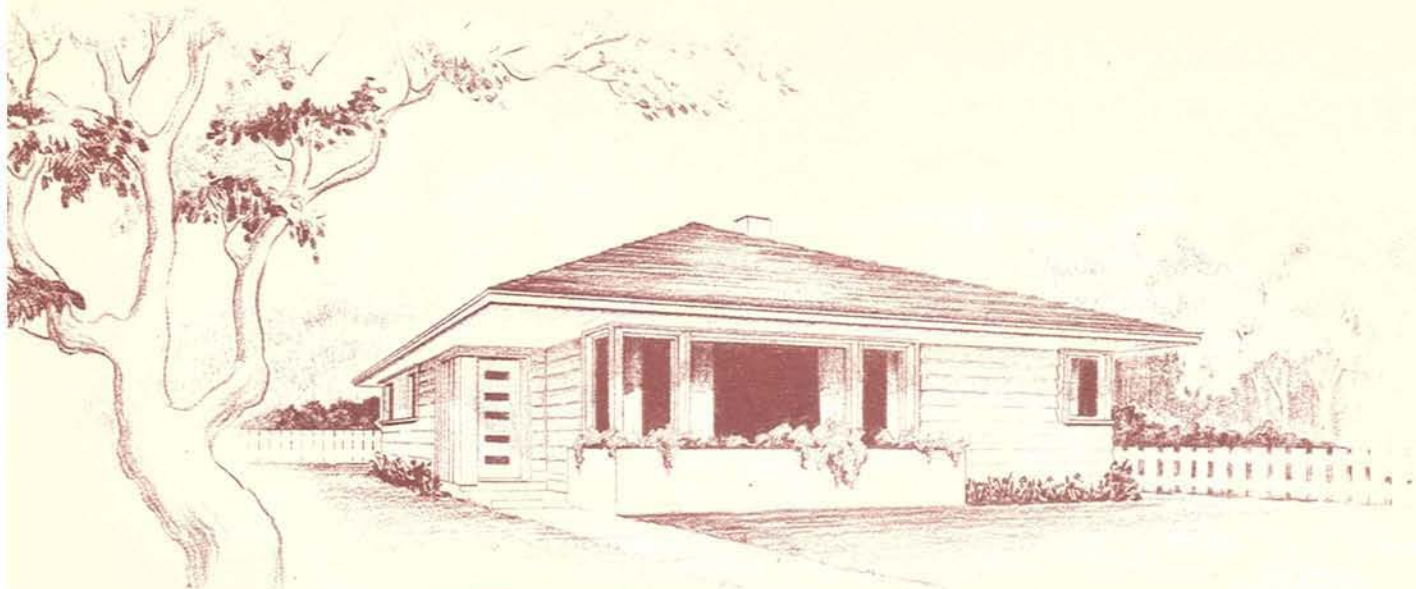
Area: 969 sq. ft.

Cubic Contents:  
17,442 cu. ft.

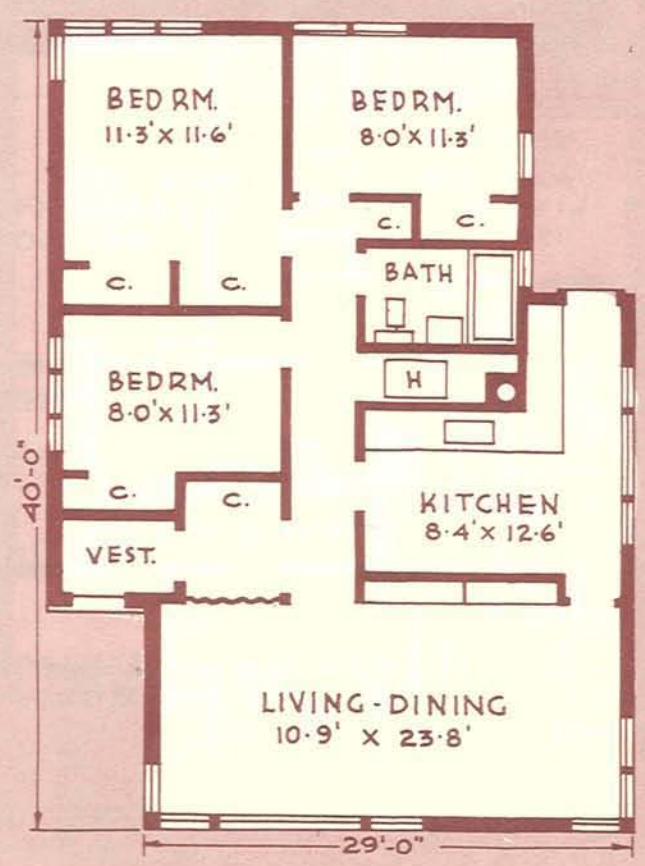
Minimum lot width—  
with driveway: 49'-4"  
without driveway: 44'-2"

Architects:  
G. Burniston; J. Storey

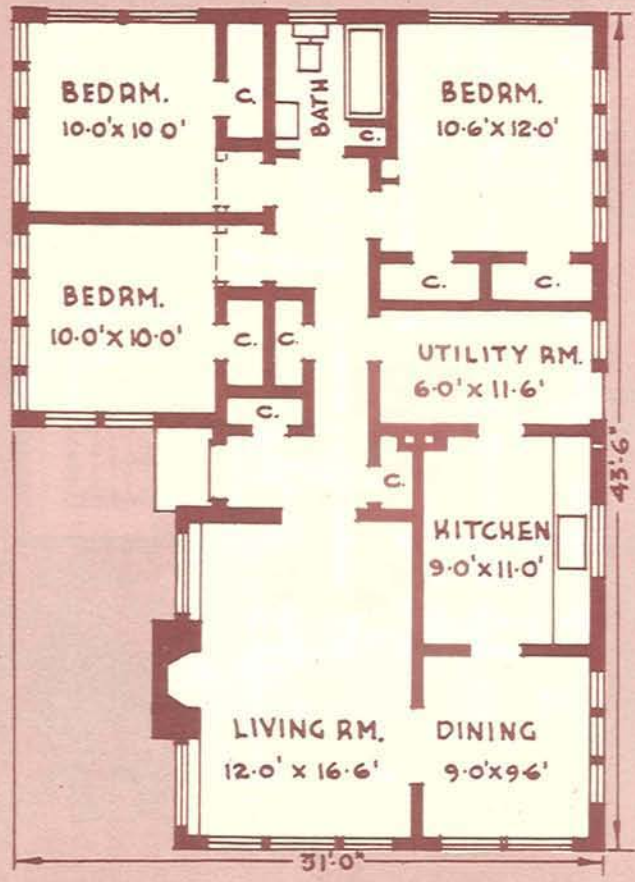
**DESIGN NO. 49-14**



Area: 1,040 sq. ft.  
 Cubic Contents:  
 11,440 cu. ft.  
 Minimum lot width—  
 with driveway: 40'-8"  
 without driveway: 36'-0"  
 Architect: Roland Dumais

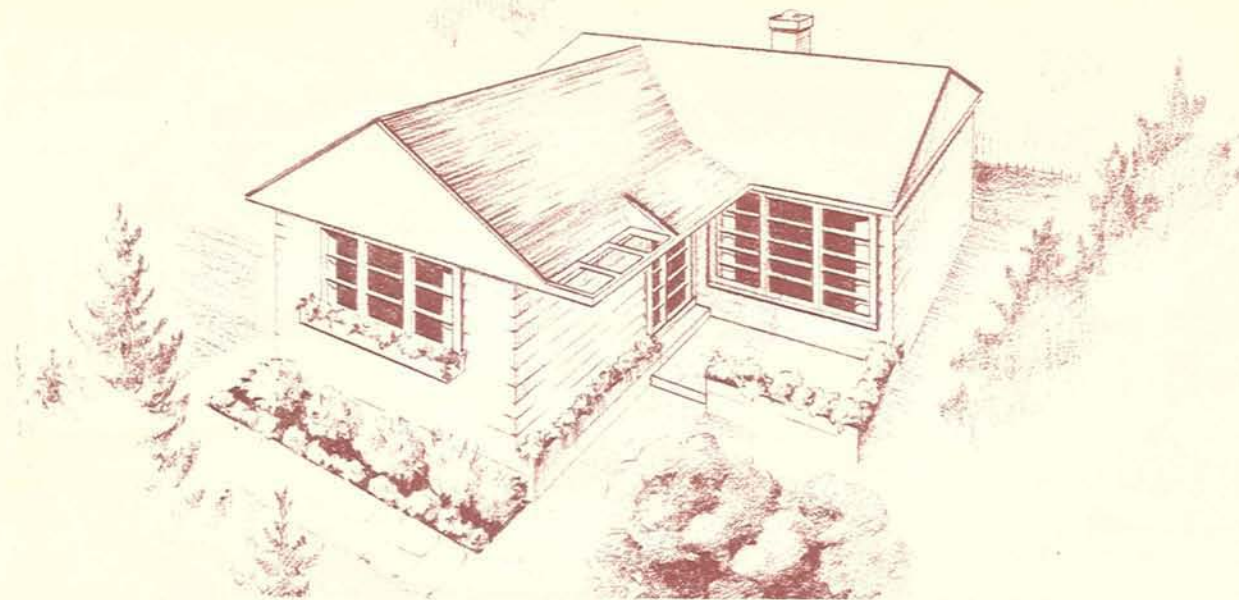


**DESIGN N° 49-15**



Area: 1,142 sq. ft.  
 Cubic Contents:  
 13,707 cu. ft.  
 Minimum lot width—  
 with driveway: 42'-4"  
 without driveway: 37'-4"  
 Architect: George A. Barr

**DESIGN NO. 49-16**

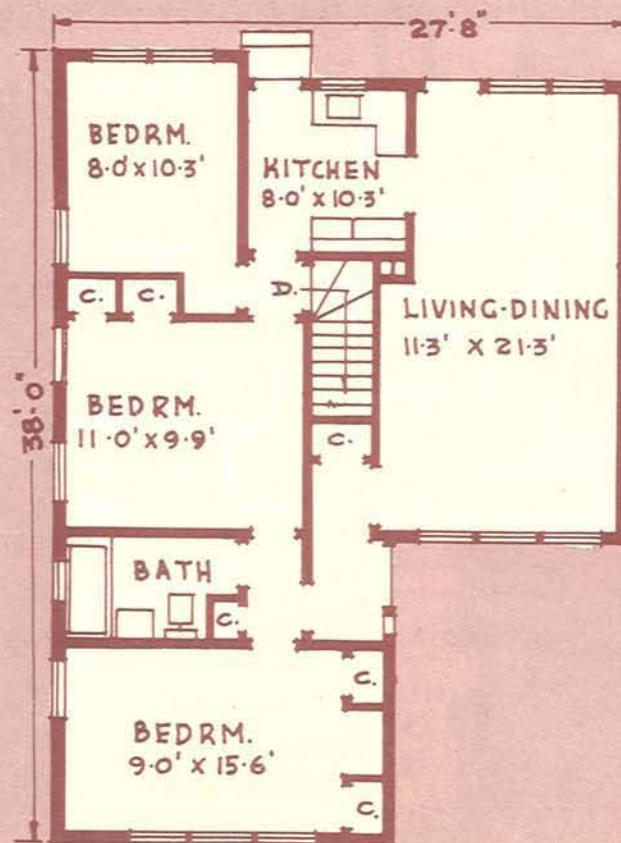


Area: 860 sq. ft.

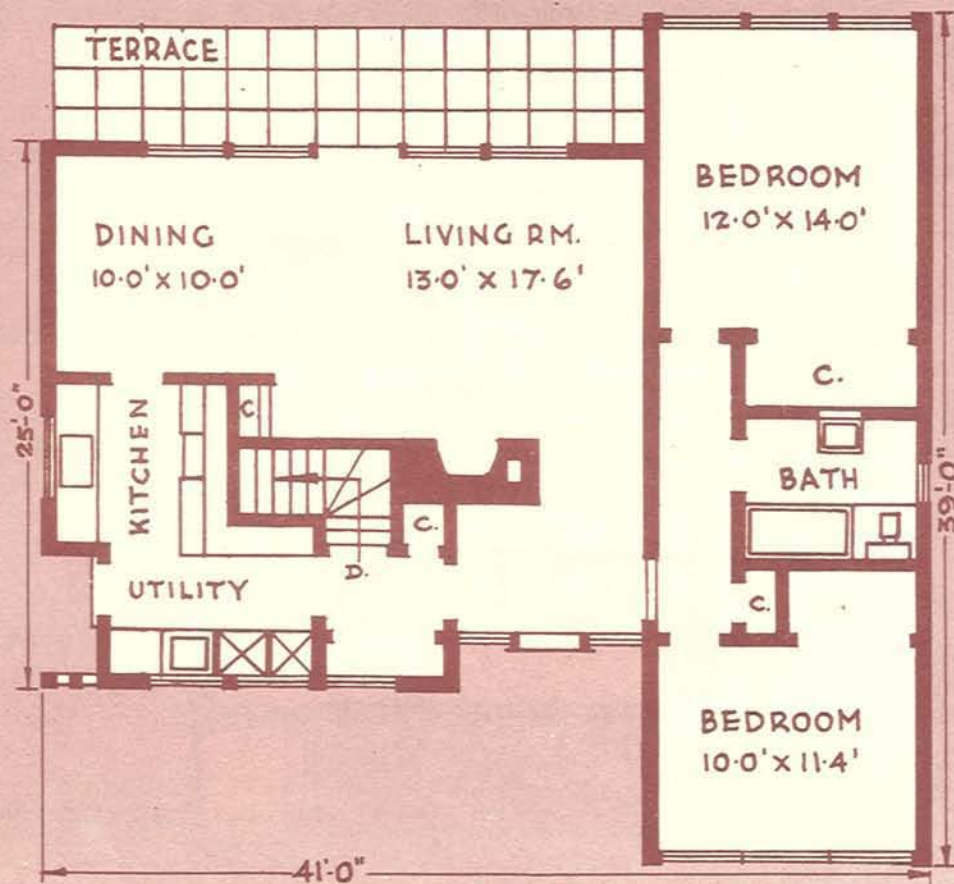
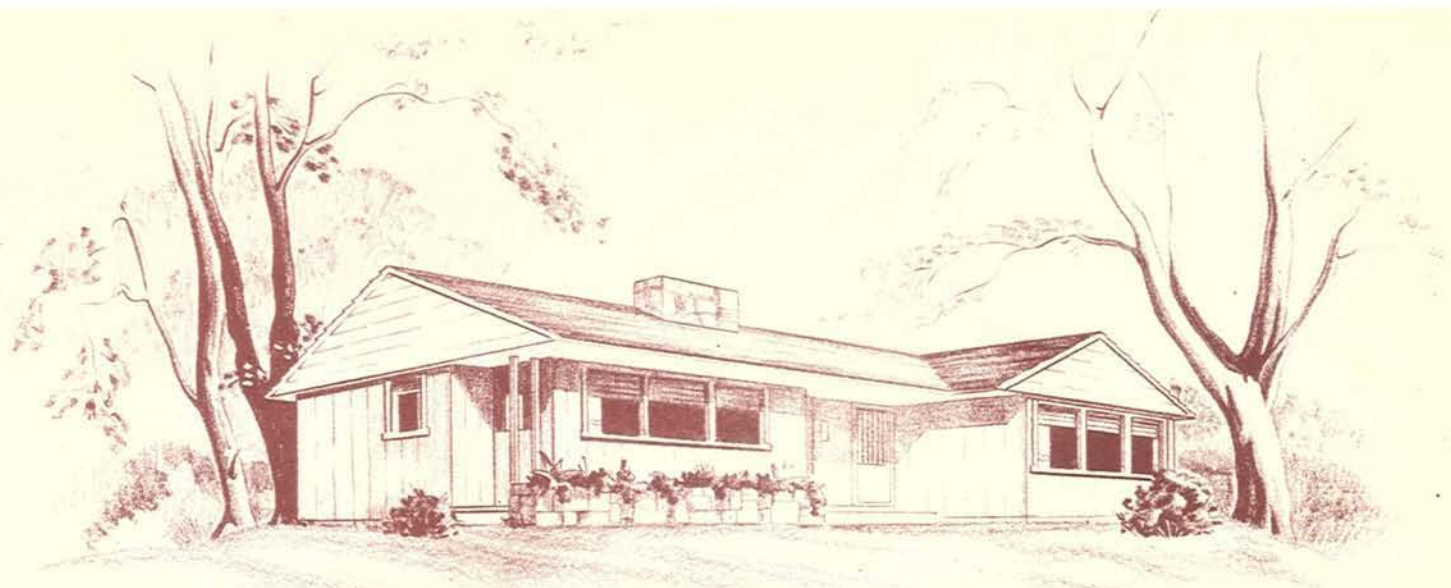
Cubic Contents:  
16,340 cu. ft.

Minimum lot width—  
with driveway: 39'-0"  
without driveway: 34'-4"

Architect: M. G. Dixon



**DESIGN NO. 49-17**



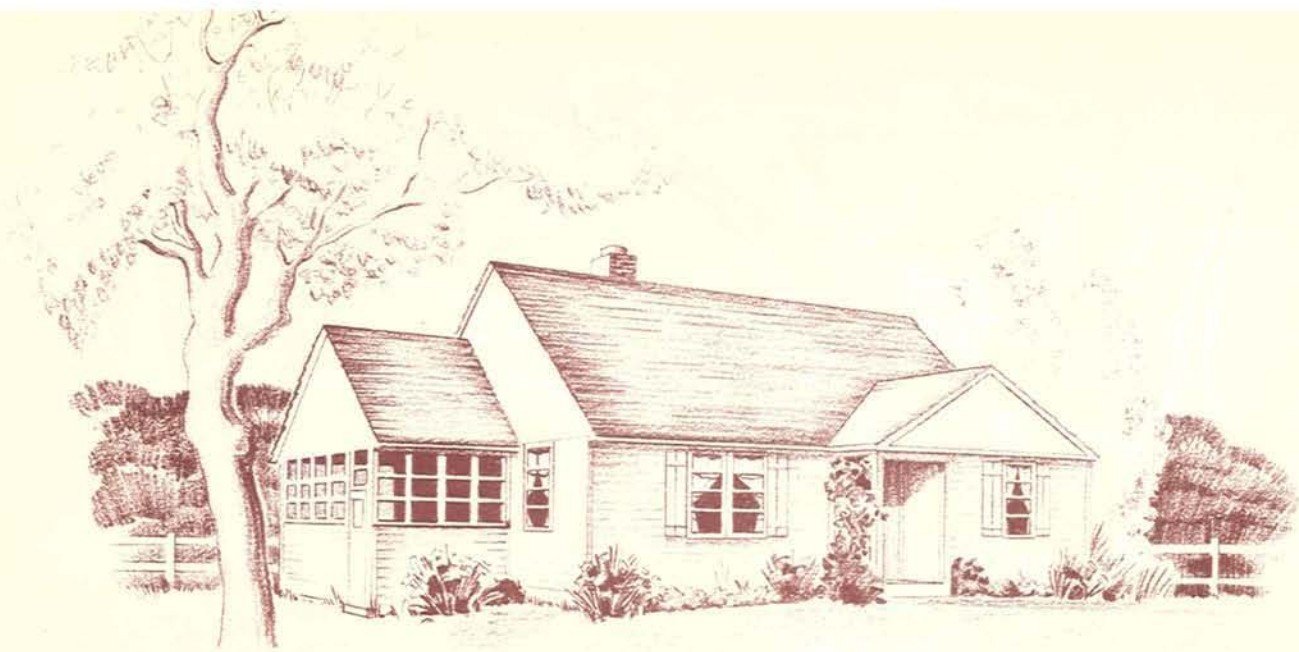
Area: 1,207 sq. ft.

Cubic Contents:  
20,590 cu. ft.

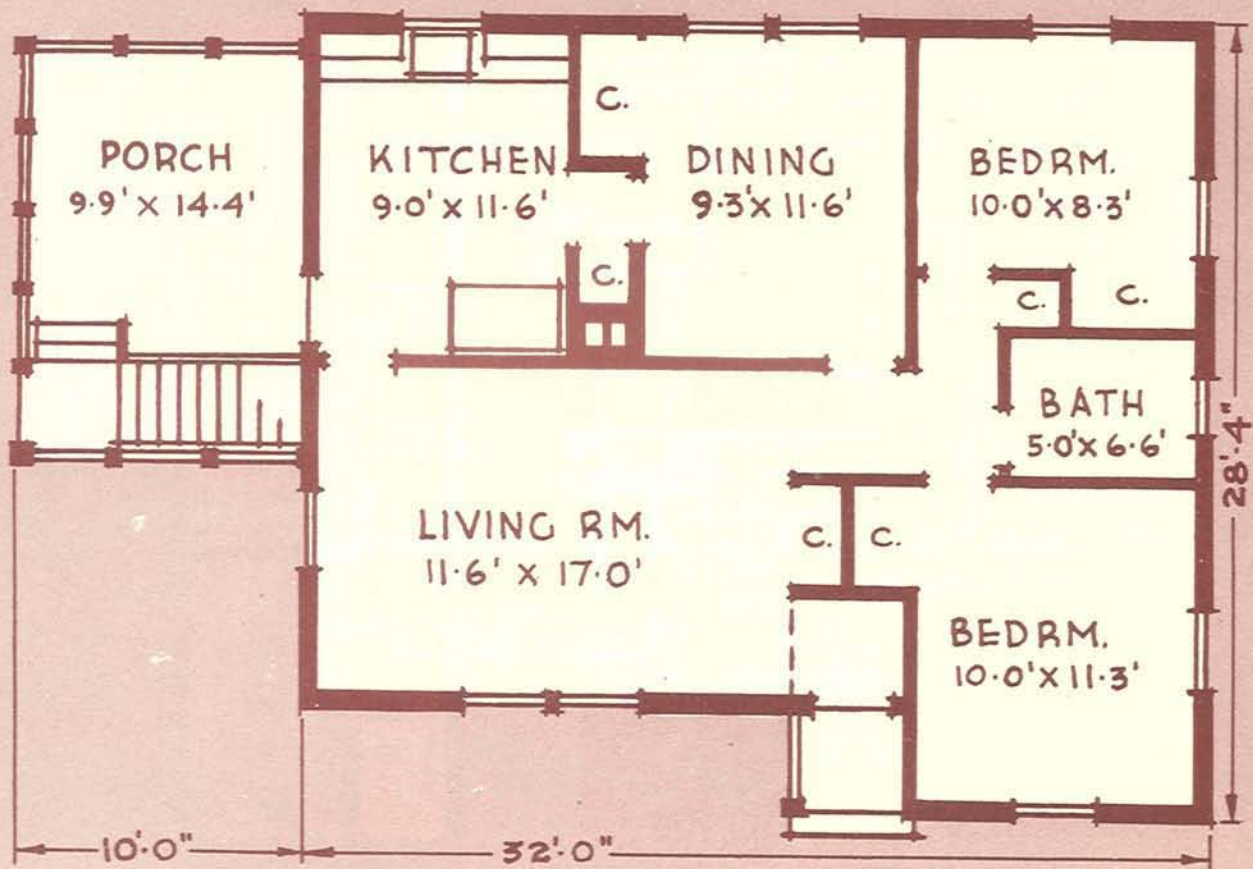
Minimum lot width—  
with driveway: 54'-6"  
without driveway: 51'-0"

Architect:  
C. B. K. Van Norman

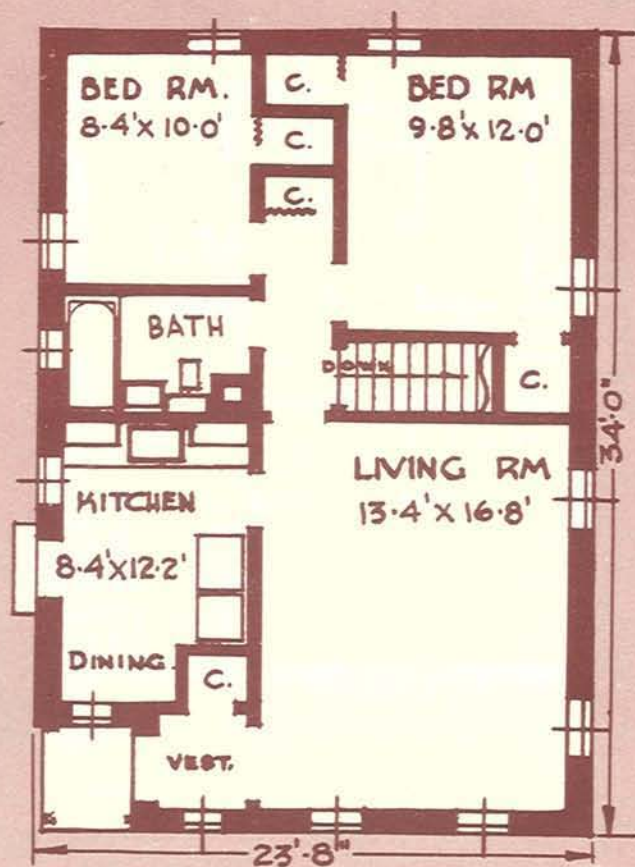
**DESIGN NO. 49-18**



Area: 988 sq. ft.  
 Cubic Contents:  
 19,400 cu. ft.  
 Minimum lot width—  
 with driveway: 55'-6"  
 without driveway: 50'-0"  
 Architect: M. G. Dixon



**DESIGN N°49-19**



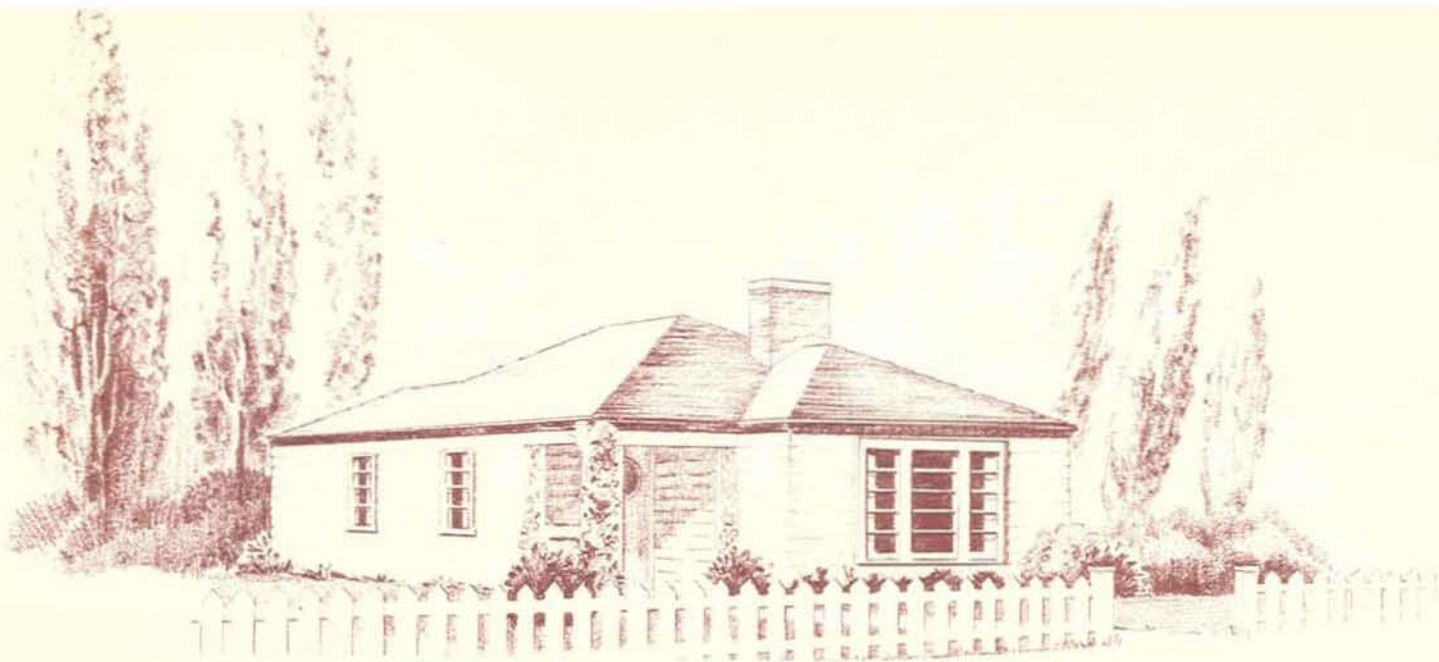
Area: 765 sq. ft.

Cubic Contents:  
15,300 cu. ft.

Minimum lot width—  
with driveway: 38'-8"  
without driveway: 34'-0"

**DESIGN NO. 49-20**





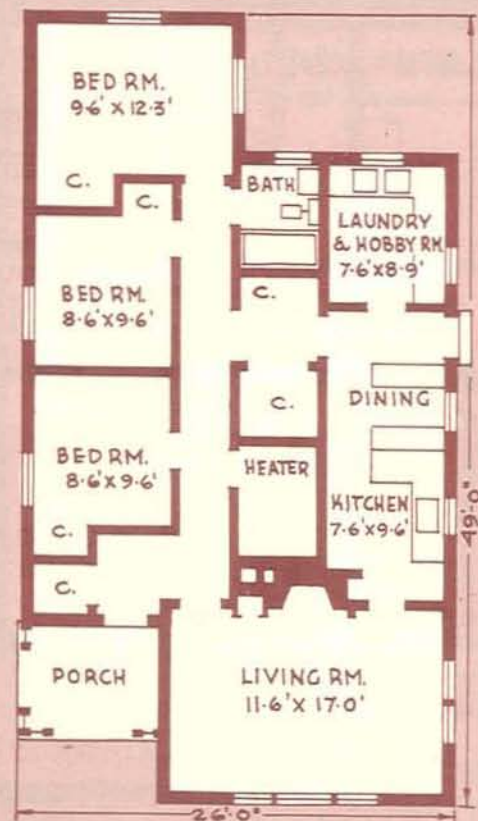
Area: 965 sq. ft.

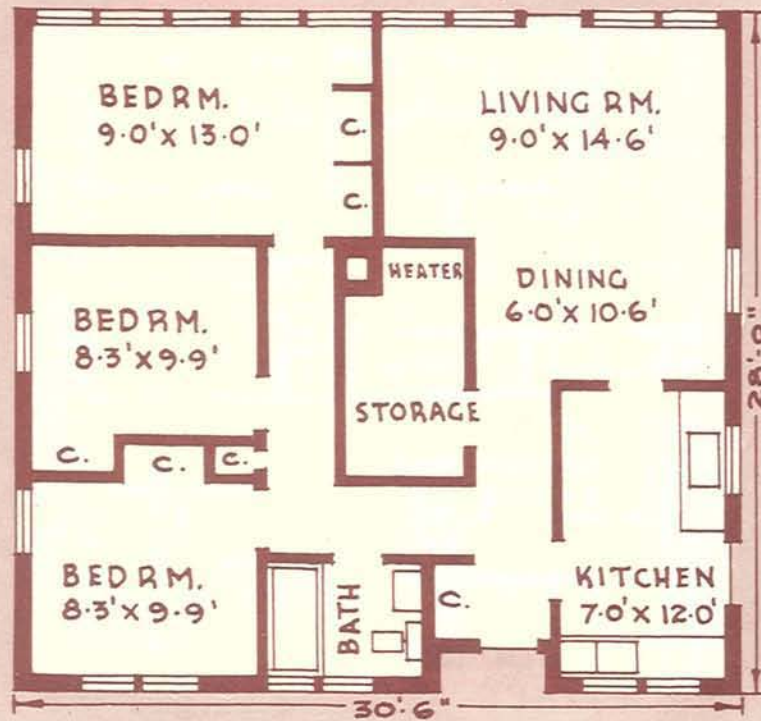
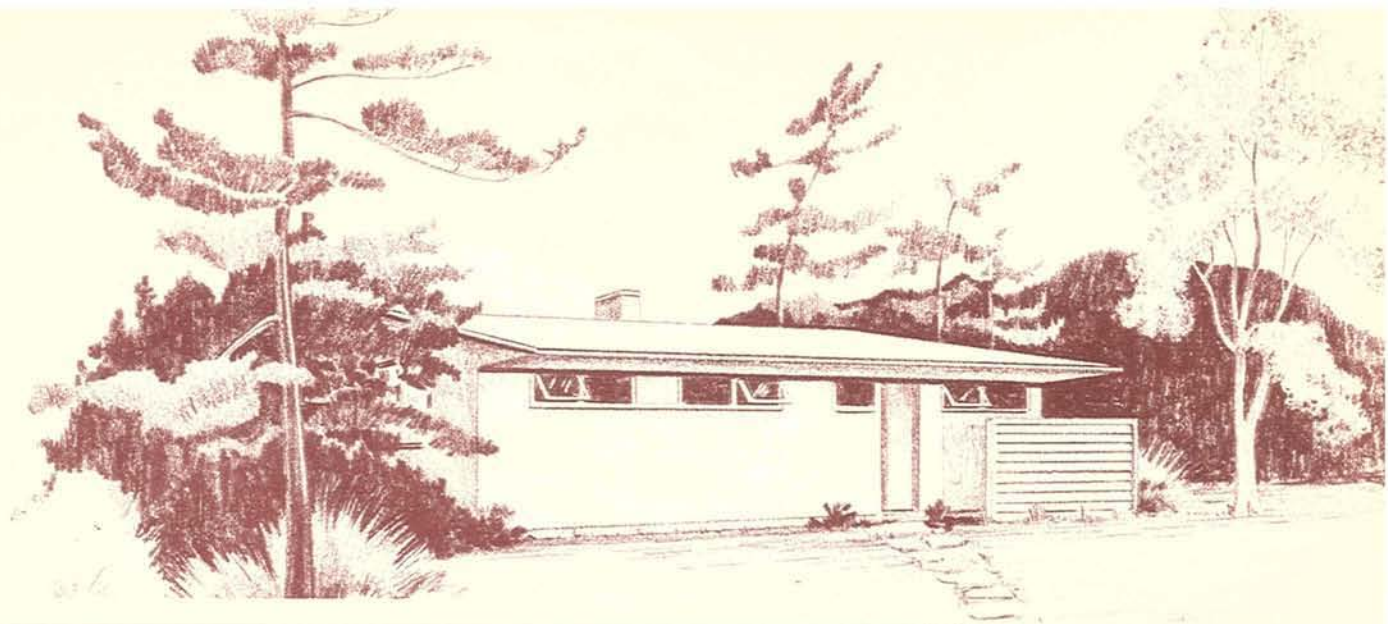
Cubic Contents:  
10,615 cu. ft.

Minimum lot width—  
with driveway: 39'-0"  
without driveway: 34'-2"

Architect:  
Stanley W. Emmerson

**DESIGN N° 49-23**





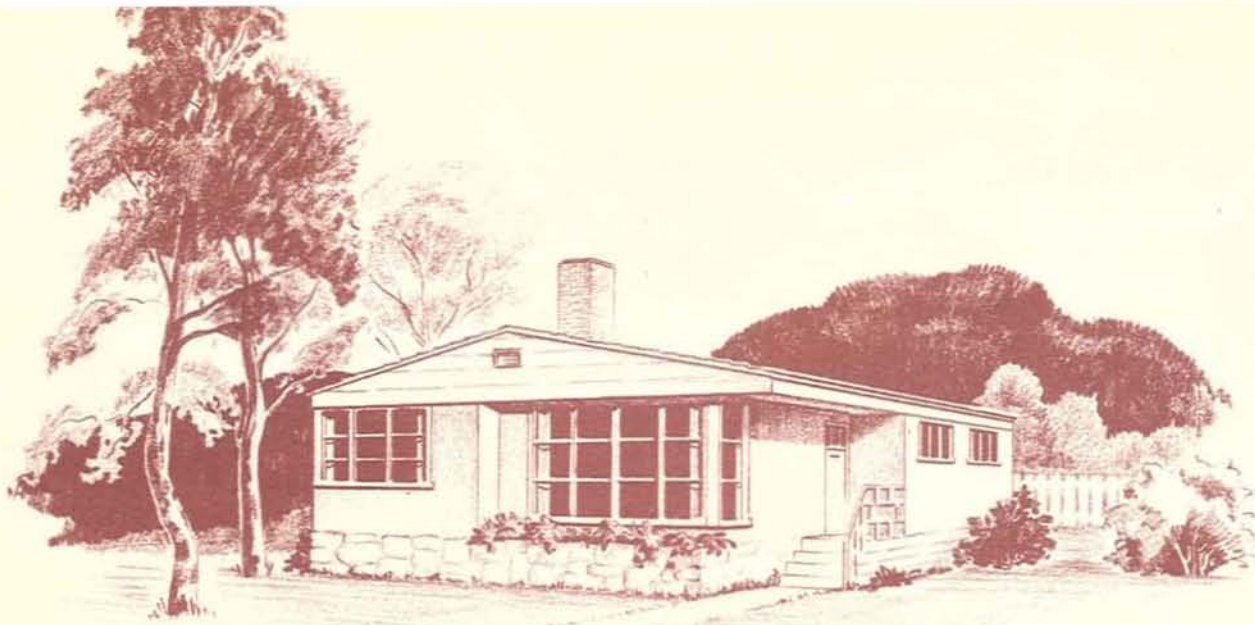
Area: 832 sq. ft.

Cubic Contents:  
10,816 cu. ft.

Minimum lot width—  
with driveway: 48'-2"  
without driveway: 43'-6"

Architect:  
Charles W. Worsley

**DESIGN No. 49-24**

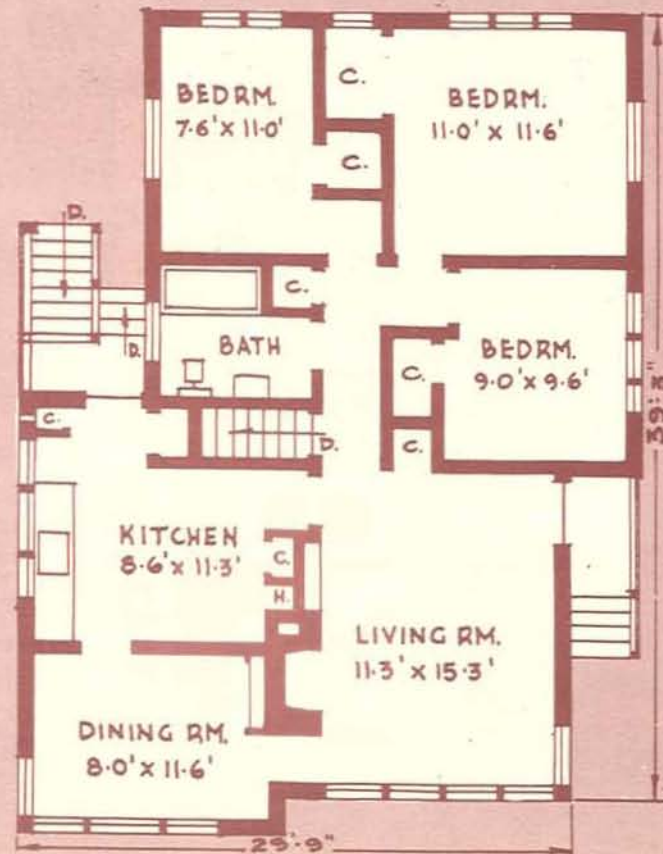


Area: 972 sq. ft.

Cubic Contents:  
14,824 cu. ft.

Minimum lot width—  
with driveway: 41'-4"  
without driveway: 36'-8"

Architect: A. W. Gray



**DESIGN N° 49-25**



Area: 982 sq. ft.

Cubic Contents:  
14,364 cu. ft.

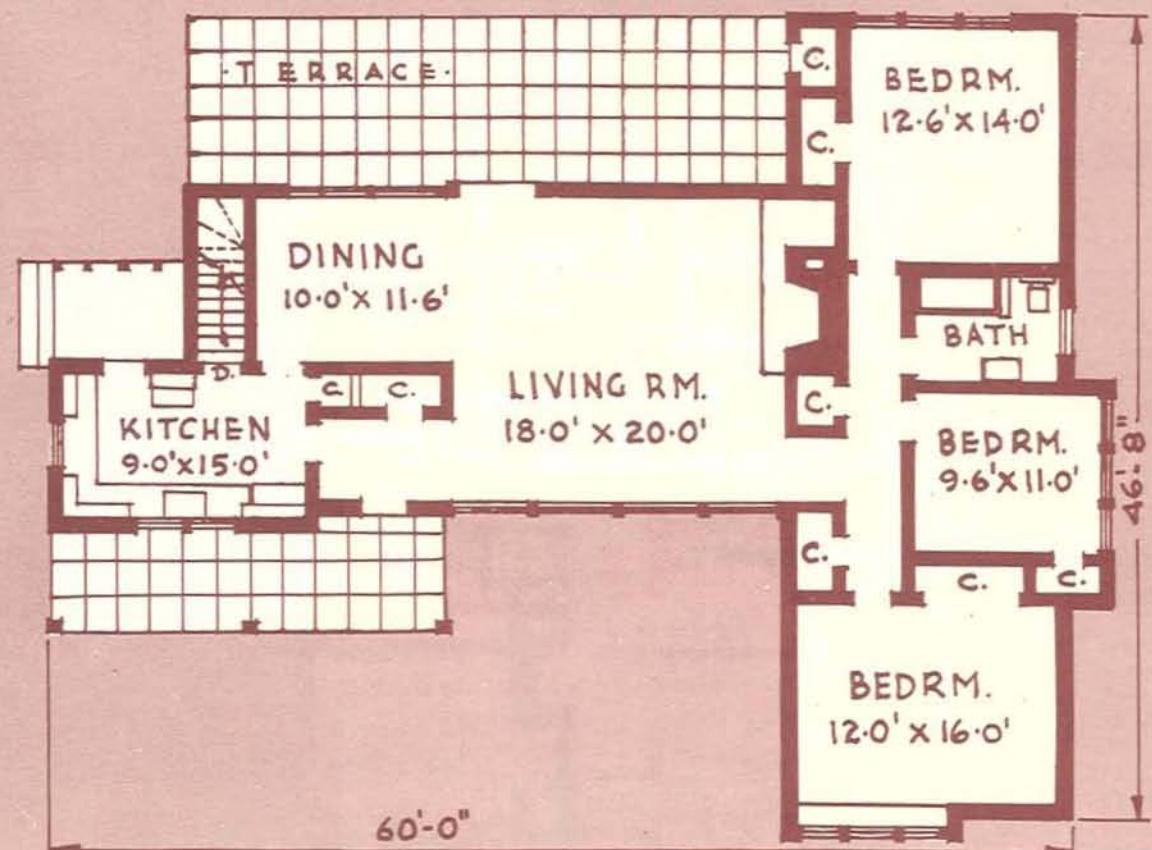
Minimum lot width—  
with driveway: 41'-2"  
without driveway: 36'-6"

Architect:  
J. Douglas Hunter

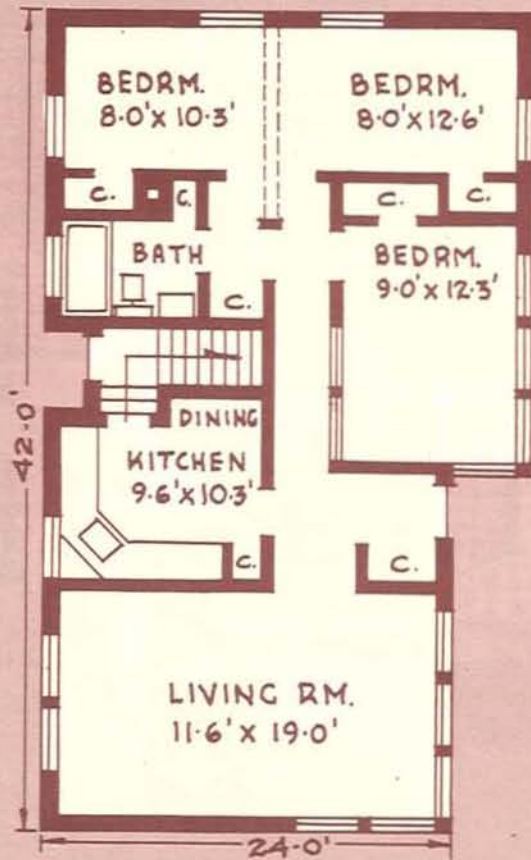
**DESIGN NO. 49-26**



Area: 1,760 sq. ft.  
 Cubic Contents:  
 25,400 cu. ft.  
 Minimum lot width—  
 with driveway: 80'-0"  
 without driveway: 75'-6"  
 Architect:  
 C. B. K. Van Norman

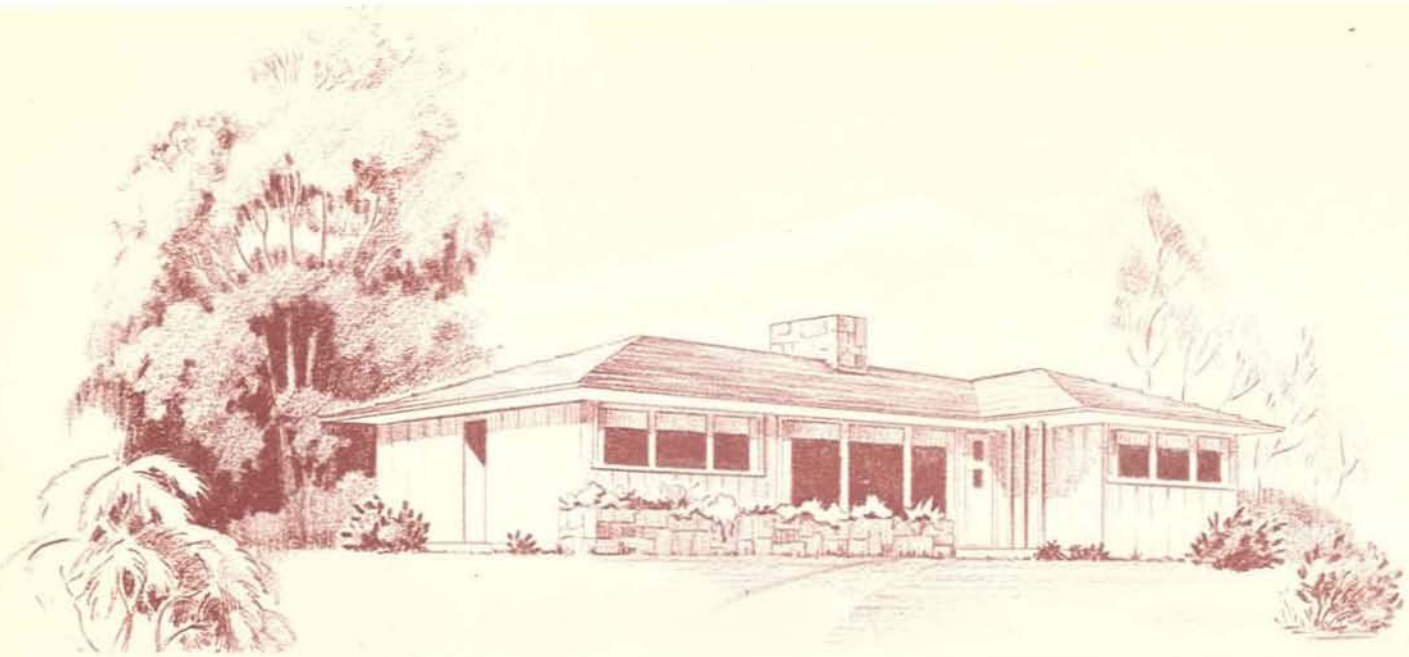


**DESIGN N° 49-27**



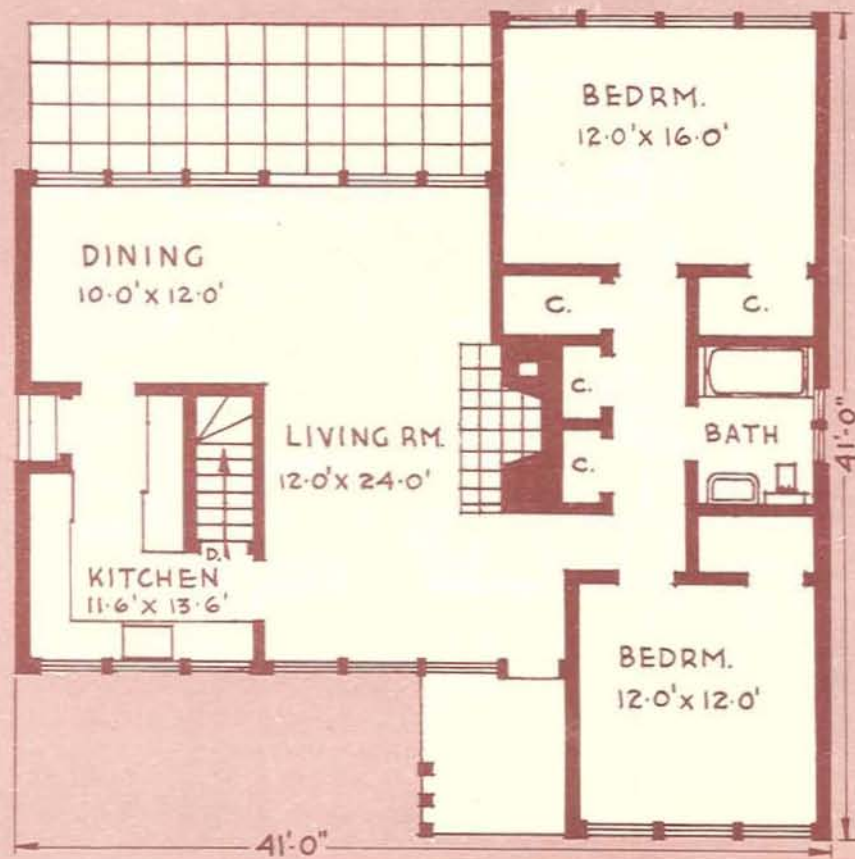
Area: 912 sq. ft.  
 Cubic Contents:  
 17,328 cu. ft.  
 Minimum lot width—  
 with driveway: 38'-4"  
 without driveway: 33'-8"  
 Architect: A. B. Stovel

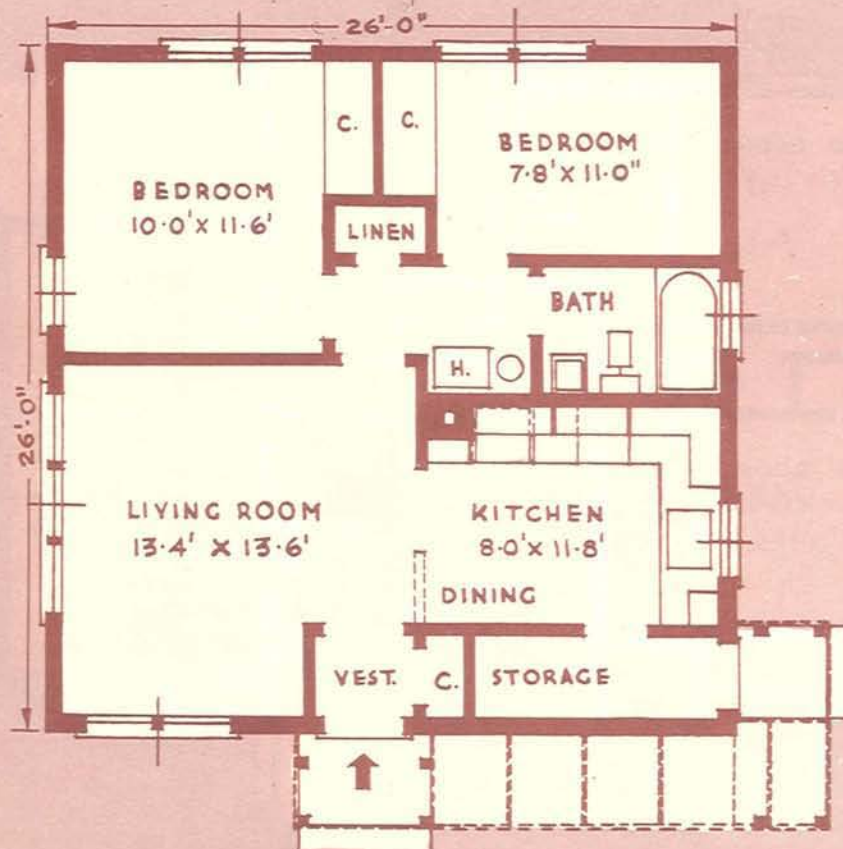
**DESIGN No. 49-28**



Area: 1,325 sq. ft.  
 Cubic Contents:  
 25,300 cu. ft.  
 Minimum lot width—  
 with driveway: 54'-6"  
 without driveway: 51'-0"  
 Architect:  
 C. B. K. Van Norman

**DESIGN N° 49-29**





Area: 676 sq. ft.

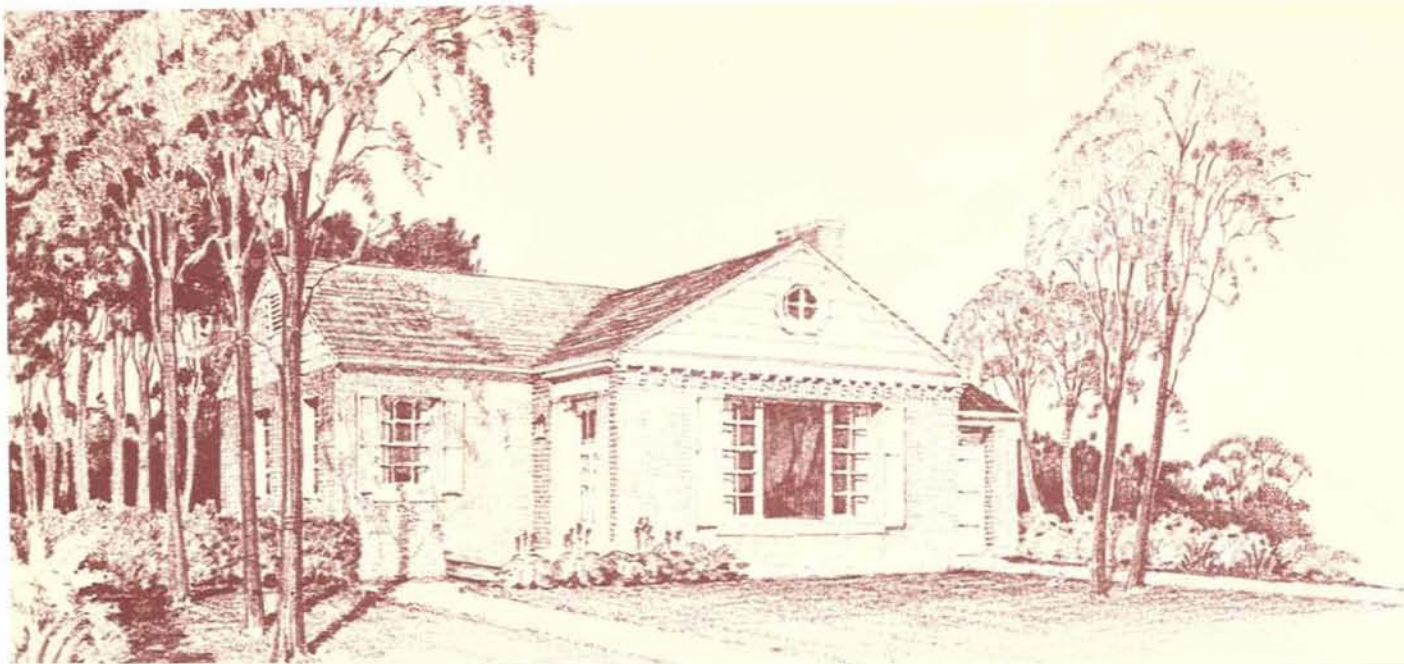
Cubic Contents:  
9,464 cu. ft.

Minimum lot width—  
with driveway: 41'-10"  
without driveway: 37'-2"

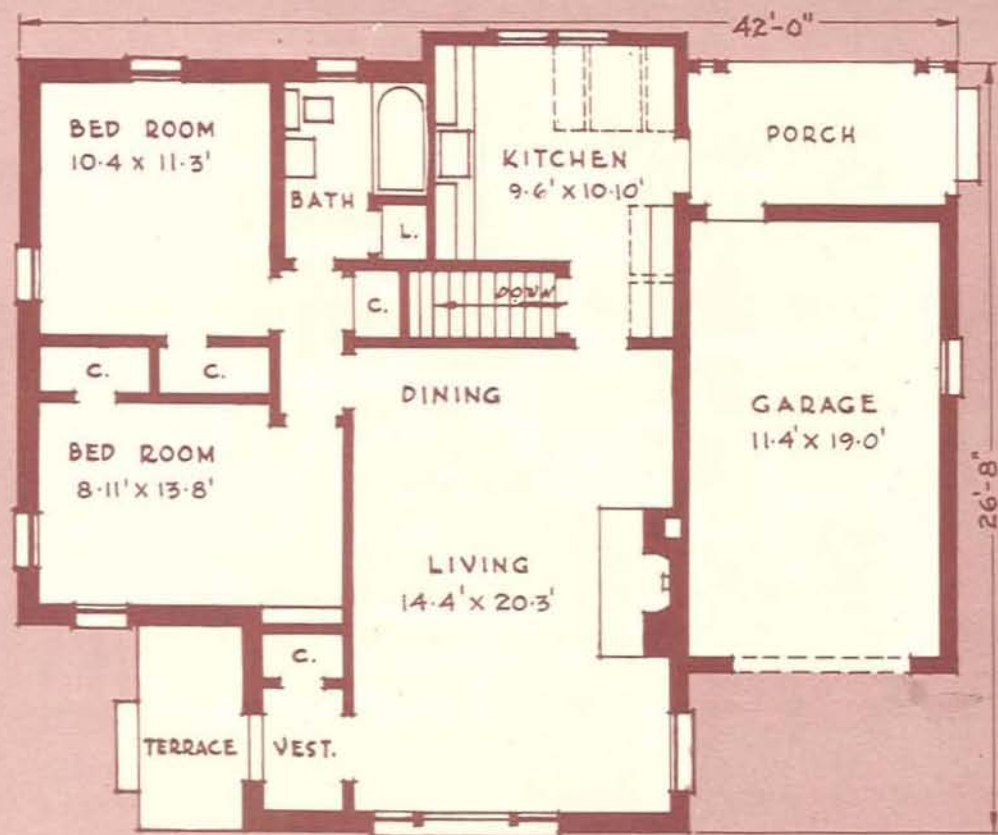
Architect: W. Gilleland

**DESIGN NO. 49-30**

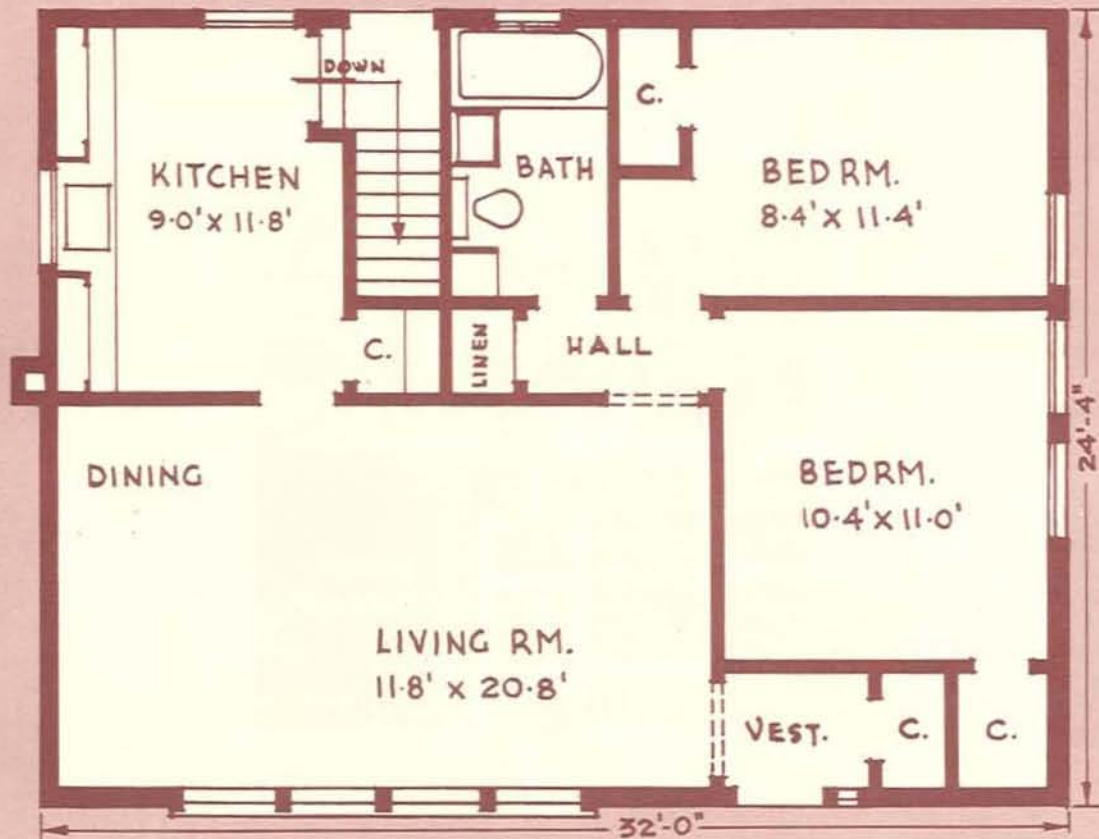




Area: 933 sq. ft.  
 Cubic Contents: 17,610 cu.  
 ft. (less garage)  
 Minimum lot width—  
 with driveway: 42'-6"  
 without driveway: 37'-10"  
 Architect: H. C. Beckett



**DESIGN N° 49-31**



Area: 779 sq. ft.

Cubic Contents:

14,412 cu. ft.

Minimum lot width—

with driveway: 44'-4"

without driveway: 39'-8"

Architect: M. G. Dixon

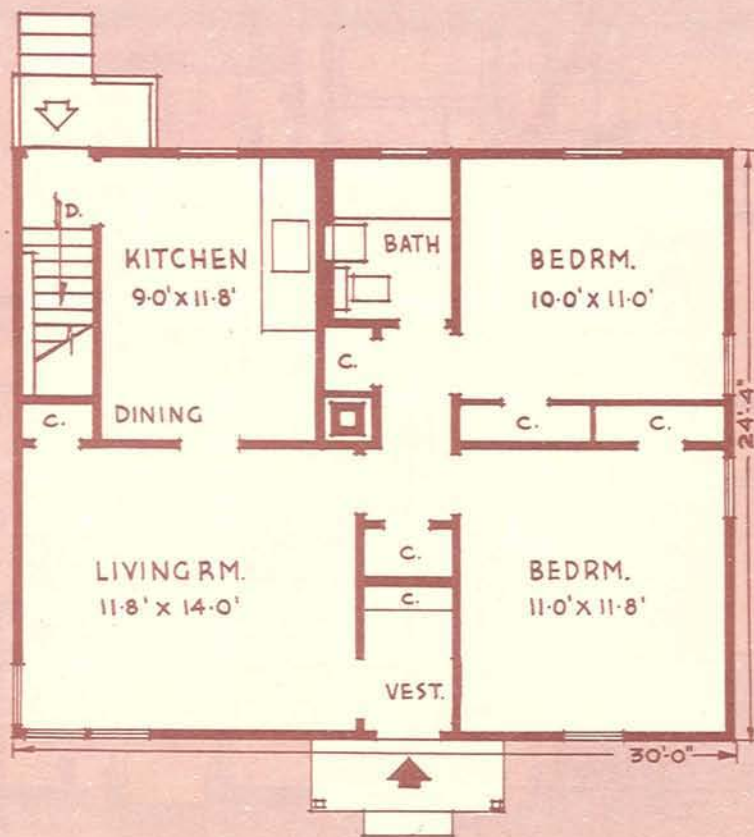
**DESIGN NO. 49-32**



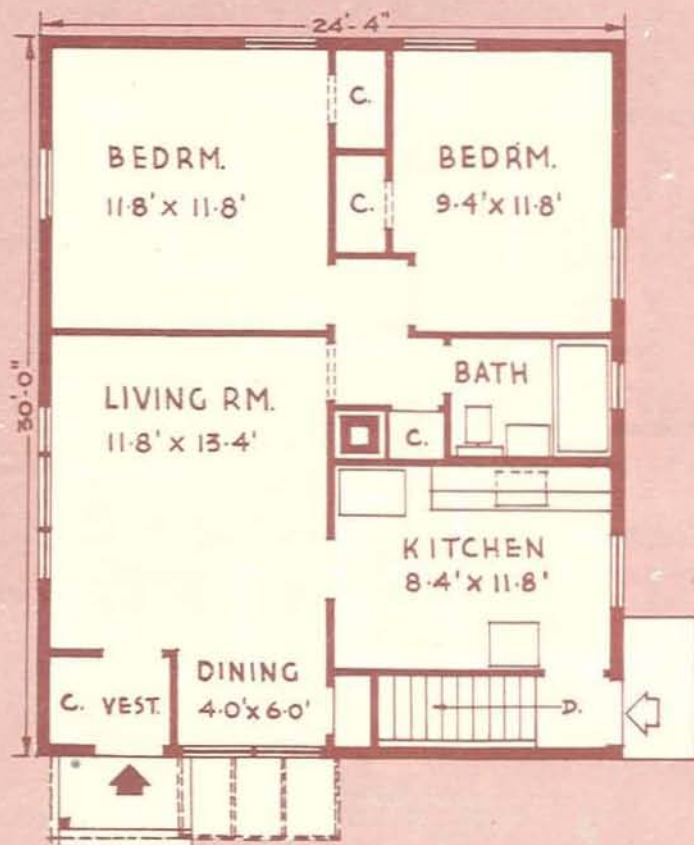
Area: 730 sq. ft.

Cubic Contents:  
13,505 cu. ft.

Minimum lot width—  
with driveway: 41'-4"  
without driveway: 36'-8"



**DESIGN N<sup>o</sup> 49-33**

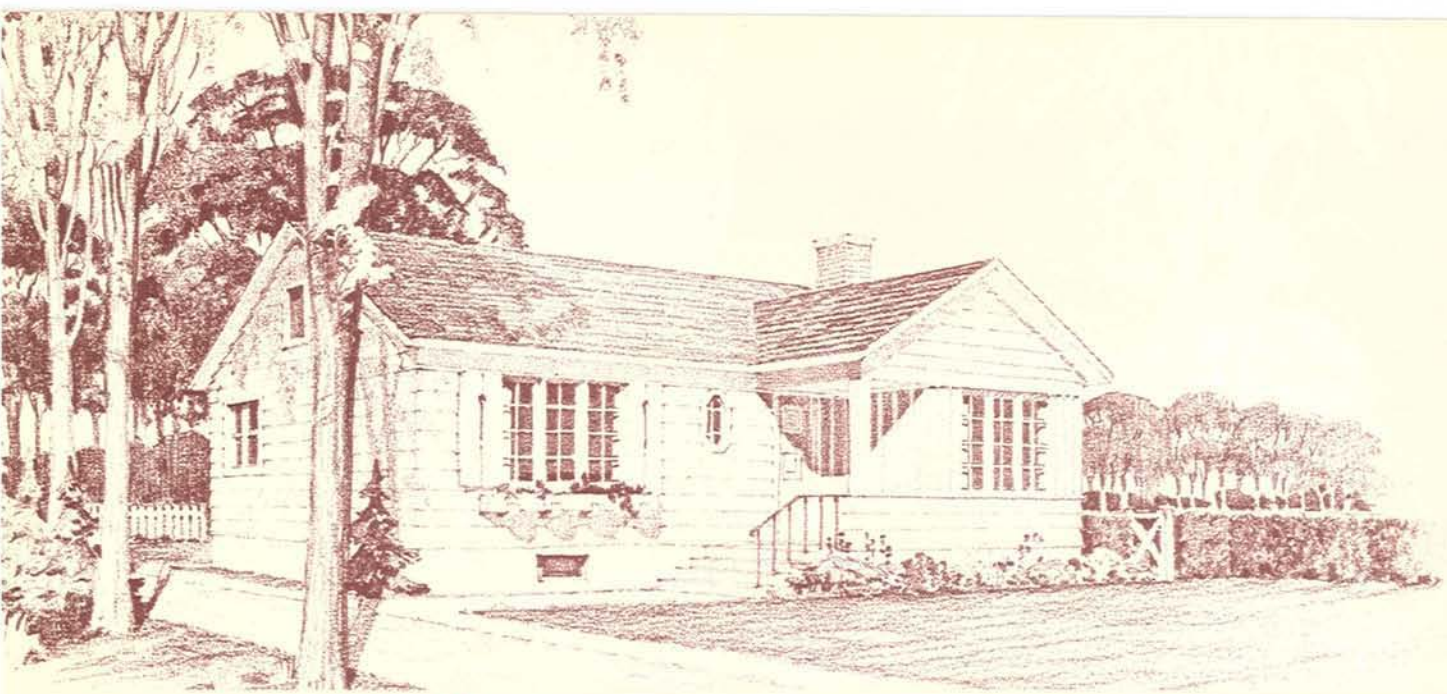


Area: 730 sq. ft.

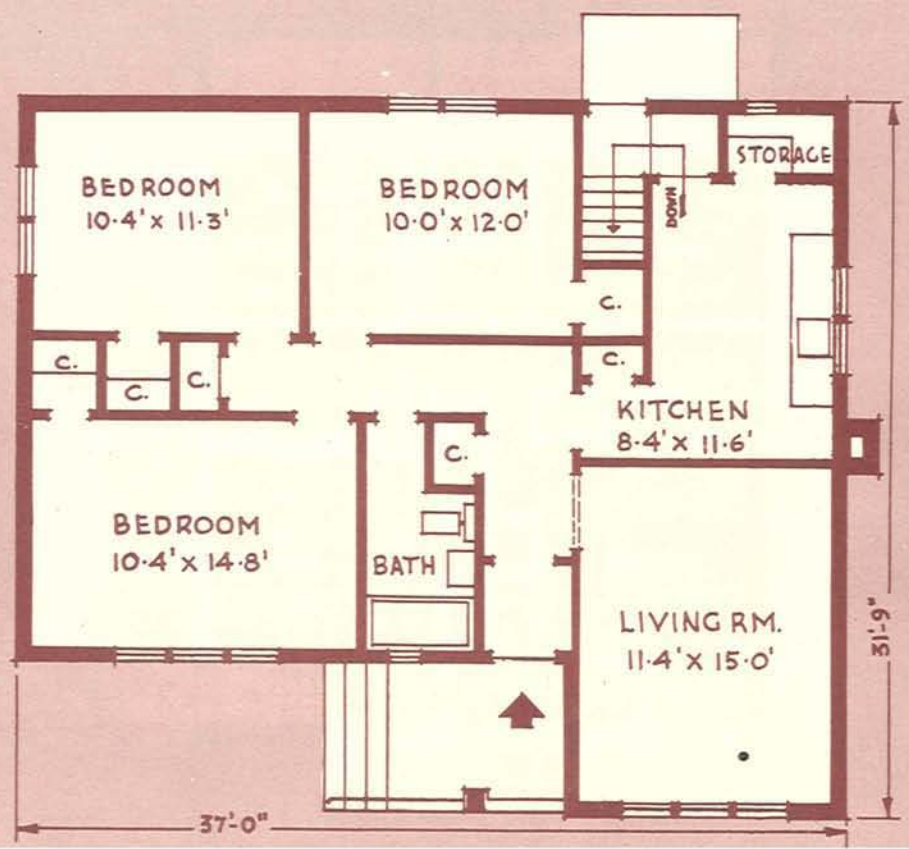
Cubic Contents:  
13,505 cu. ft.

Minimum lot width—  
with driveway: 45'-4"  
without driveway: 40'-8"

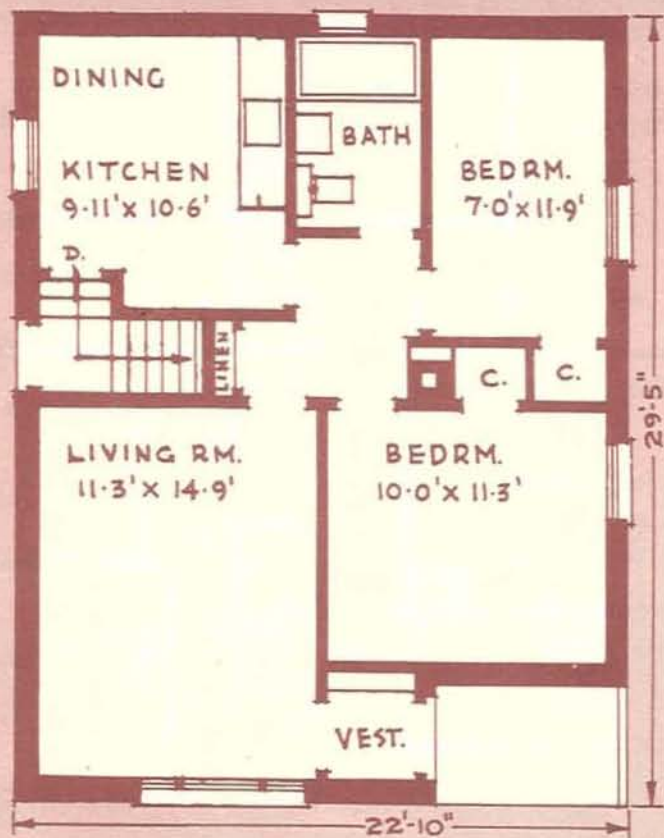
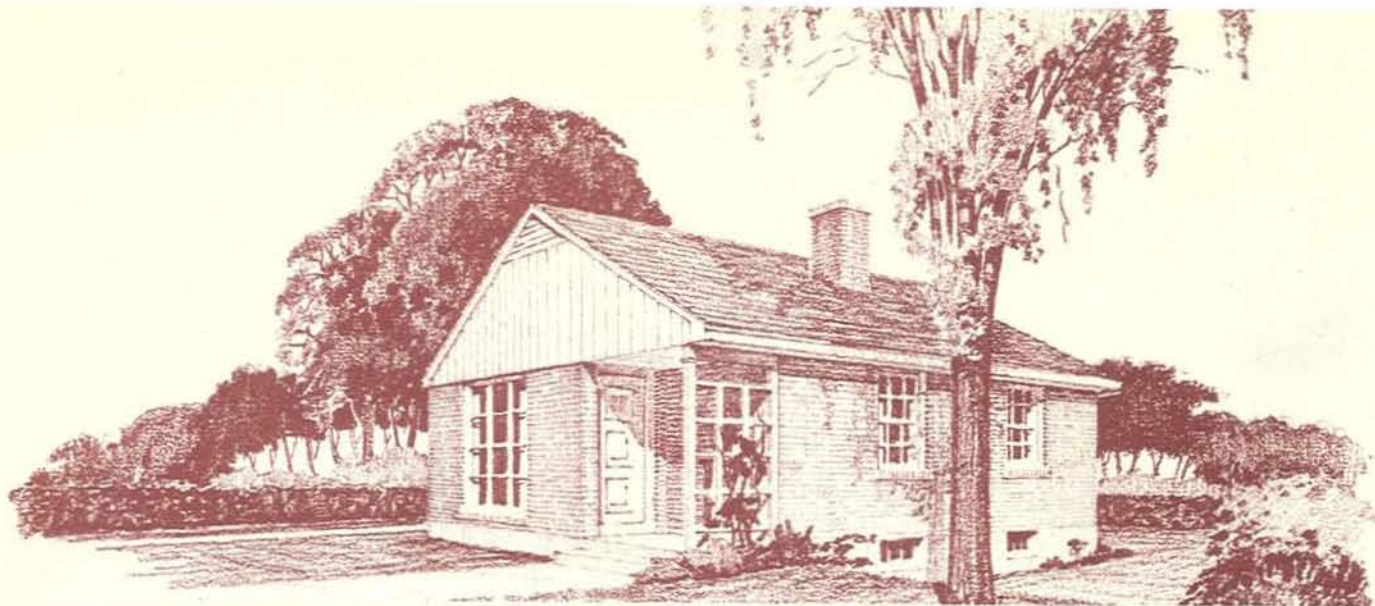
**DESIGN NO. 49-34**



Area: 1,044 sq. ft.  
 Cubic Contents:  
 20,761 cu. ft.  
 Minimum lot width—  
 with driveway: 49'-4"  
 without driveway: 45'-2"  
 Architect: Roland Dumais



**DESIGN N° 49-35**



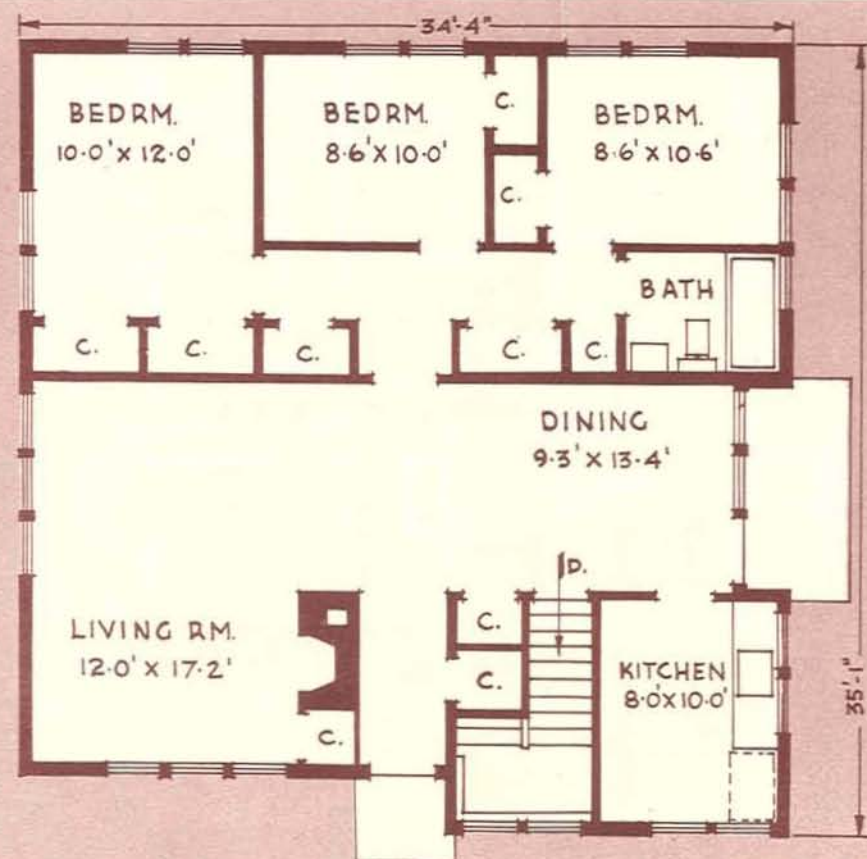
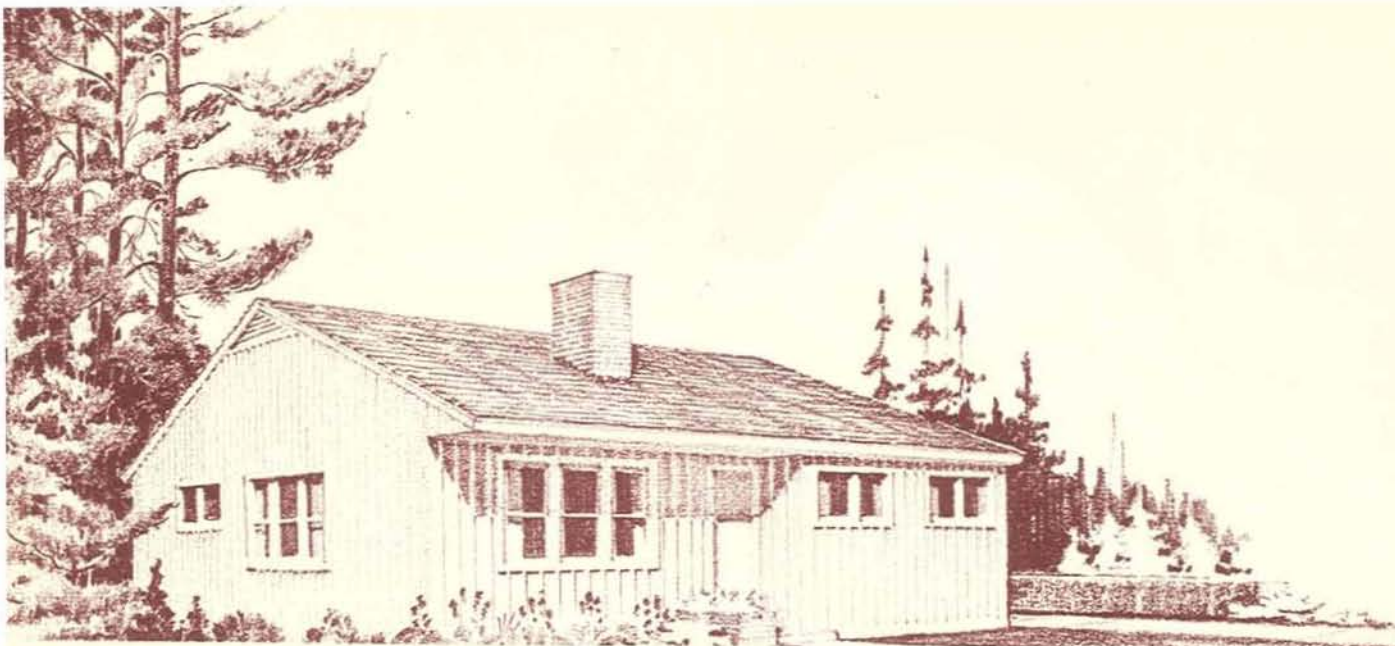
Area: 745 sq. ft.

Cubic Contents:  
14,900 cu. ft.

Minimum lot width—  
with driveway: 36'-8"  
without driveway: 33'-0"

Architects:  
Wilson & Newton

**DESIGN No. 49-36**



Area: 1,136 sq. ft.

Cubic Contents:

21,584 cu. ft.

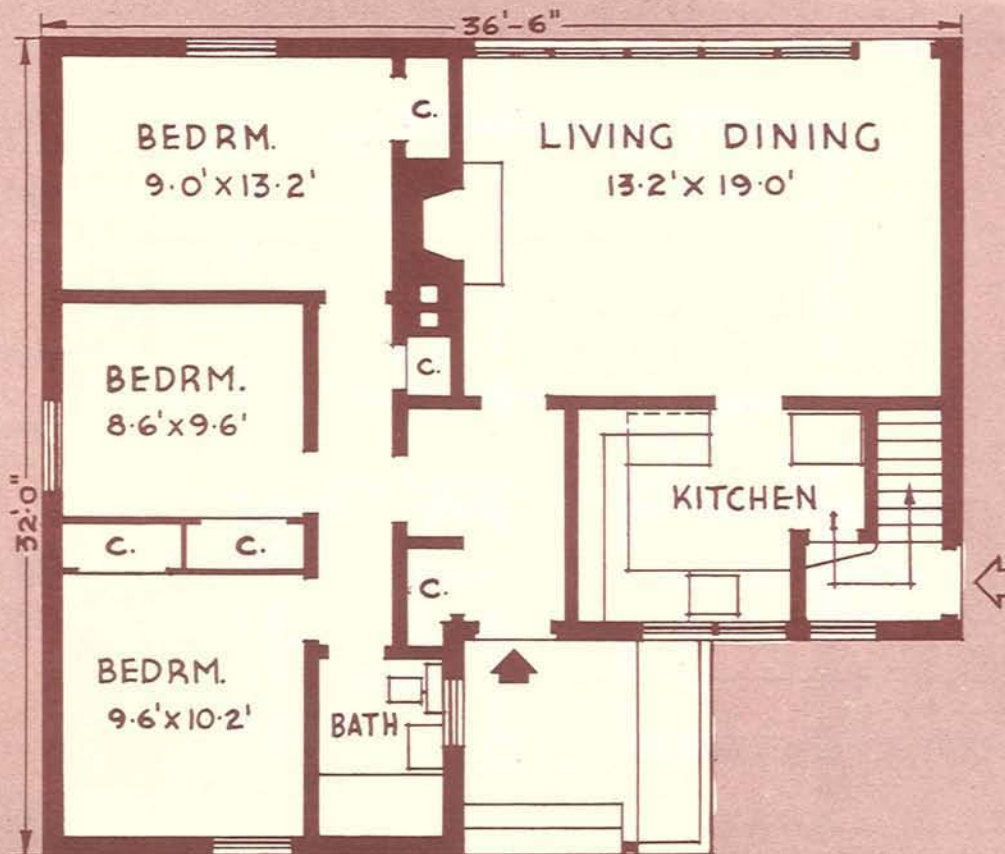
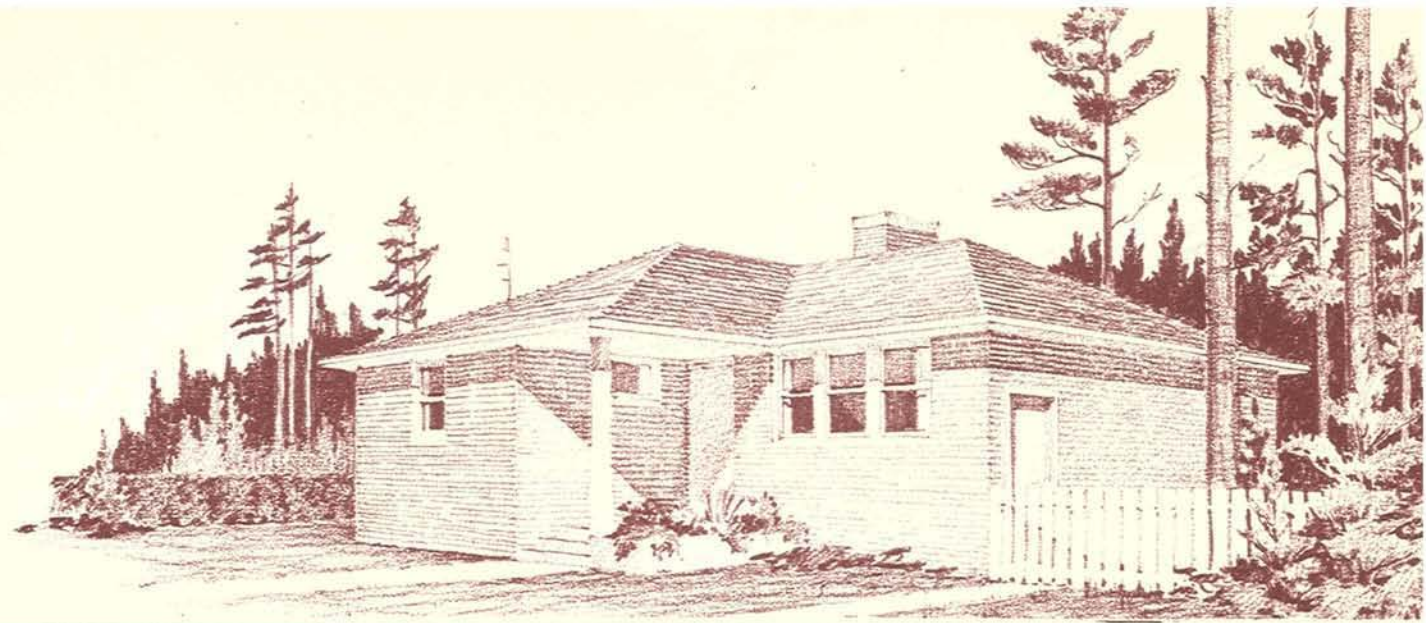
Minimum lot width—

with driveway: 50'-4"

without driveway: 45'-8"

Architect: Roy Sellors

**DESIGN NO. 49-37**



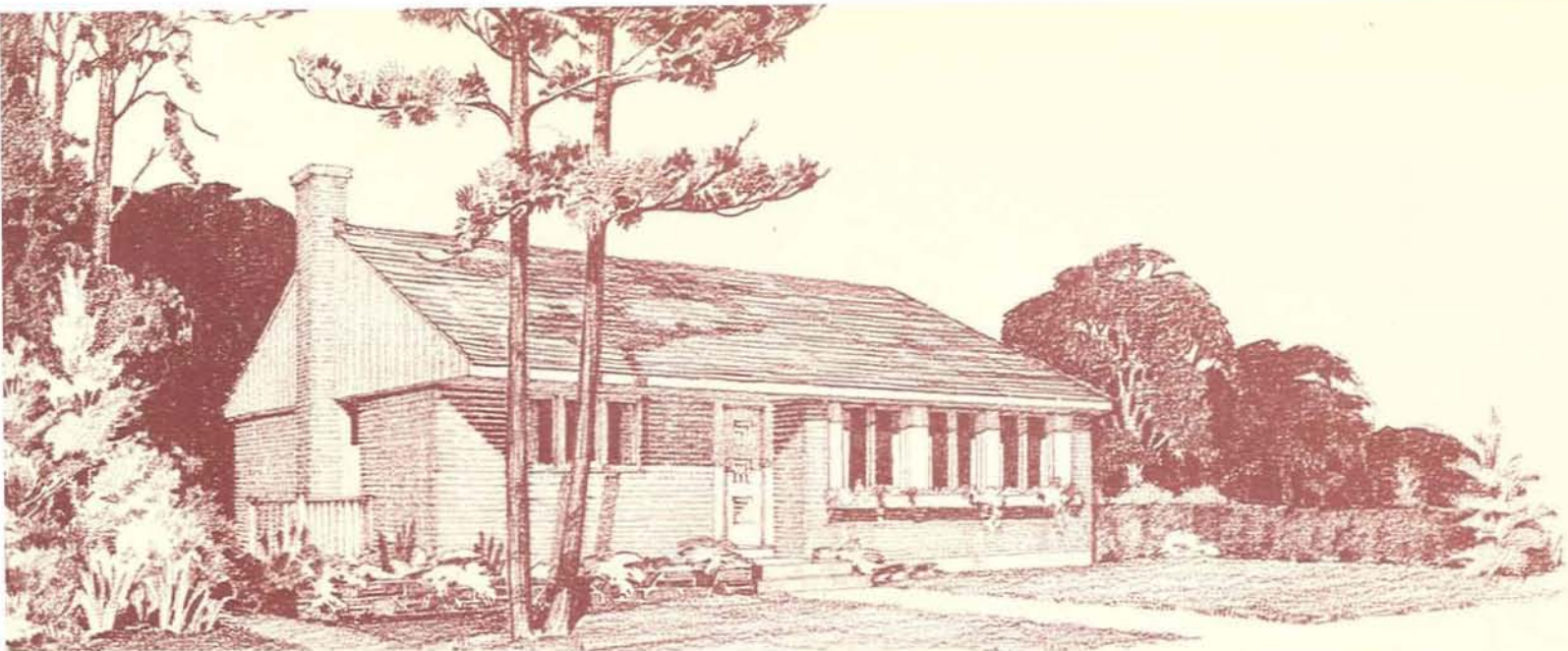
Area: 999 sq. ft.

Cubic Contents:  
18,981 cu. ft.

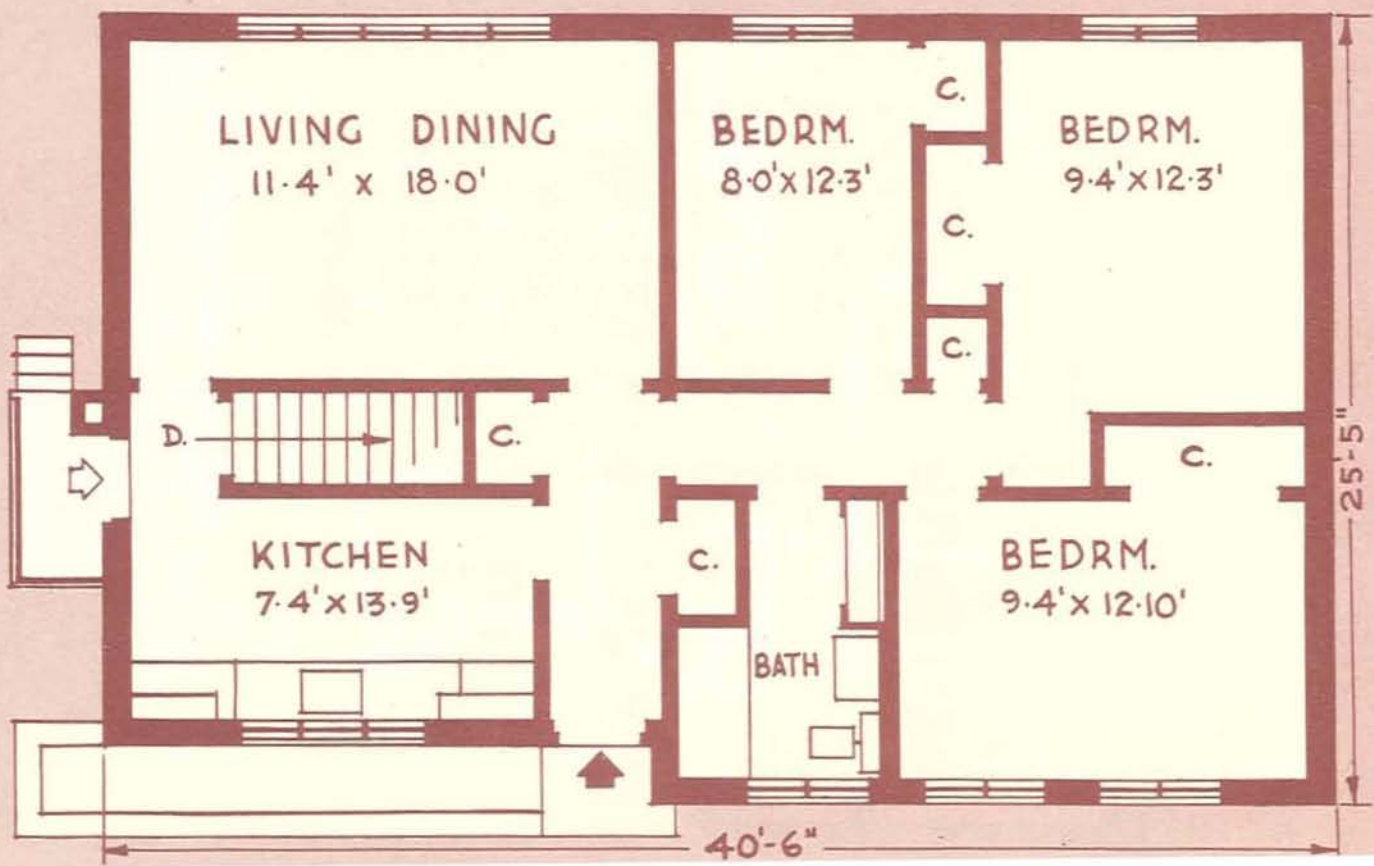
Minimum lot width—  
with driveway: 52'-10"  
without driveway: 48'-2"

**DESIGN NO. 49-38**

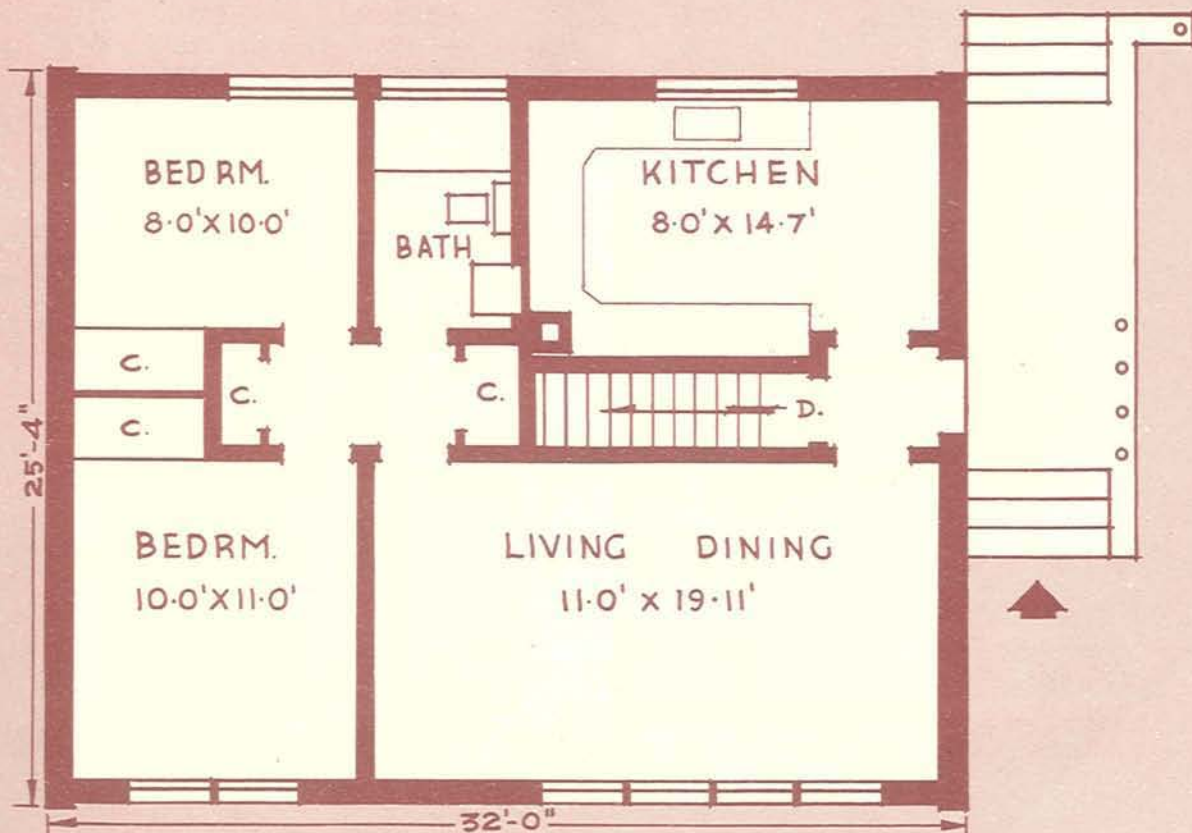
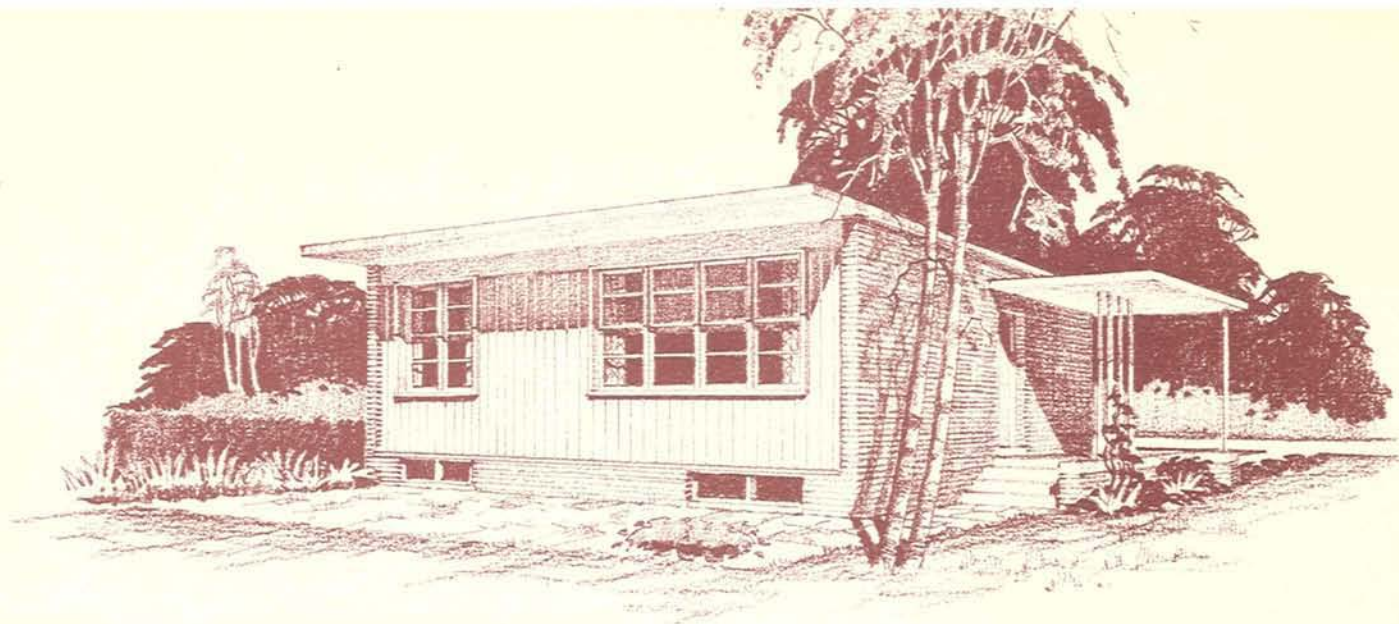




Area: 1,051 sq. ft.  
 Cubic Contents:  
 21,020 cu. ft.  
 Minimum lot width—  
 with driveway: 56'-8"  
 without driveway: 52'-0"  
 Architects:  
 Wilson & Newton



**DESIGN N° 49-39**



Area: 810 sq. ft.  
 Cubic Contents:  
 13,770 cu. ft.  
 Minimum lot width—  
 with driveway: 51'-4"  
 without driveway: 46'-8"

**DESIGN NO. 49-40**

# INDEX

<u>DESIGN NO.</u>	<u>PAGE</u>
49-1 .....	6
49-2 .....	7
49-3 .....	8
49-4 .....	9
49-5 .....	10
49-6 .....	11
49-7 .....	12
49-8 .....	13
49-9 .....	14
49-10 .....	15
49-11 .....	16
49-12 .....	17
49-13 .....	18
49-14 .....	19
49-15 .....	20
49-16 .....	21
49-17 .....	22
49-18 .....	23
49-19 .....	24
49-20 .....	25

<u>DESIGN NO.</u>	<u>PAGE</u>
49-21 .....	26
49-22 .....	27
49-23 .....	28
49-24 .....	29
49-25 .....	30
49-26 .....	31
49-27 .....	32
49-28 .....	33
49-29 .....	34
49-30 .....	35
49-31 .....	36
49-32 .....	37
49-33 .....	38
49-34 .....	39
49-35 .....	40
49-36 .....	41
49-37 .....	42
49-38 .....	43
49-39 .....	44
49-40 .....	45

**Central**

**Mortgage and**

**Housing**

**Corporation**