



# The Daily

Statistics Canada

**Friday, March 10, 2000**

For release at 8:30 a.m.

---

## MAJOR RELEASES

---

- **Labour Force Survey, February 2000** 2  
 Employment grew by an estimated 36,000 in February, continuing the upward trend that began three years ago. However, February's job growth was matched by a similar increase in the size of the labour force, leaving the unemployment rate steady at 6.8%.
- 

## OTHER RELEASES

---

New Housing Price Index, January 2000	7
Industrial monitor on CD-ROM, March 2000	7
Survey on Changes in Employment, 1998-1999	8

---

## PUBLICATIONS RELEASED 9

---

## REGIONAL REFERENCE CENTRES 11

---

## RELEASE DATES: March 13 to 17 12

---



## MAJOR RELEASES

### Labour Force Survey

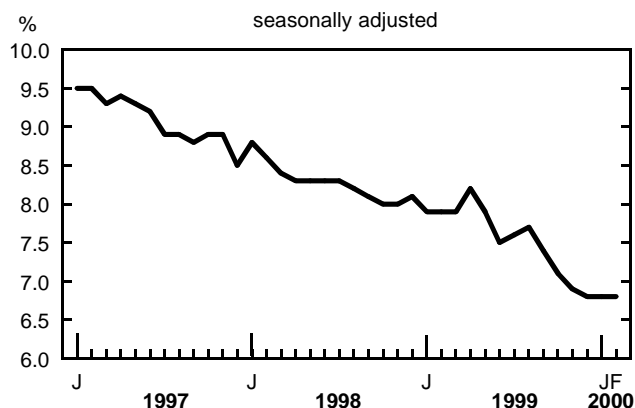
February 2000

Employment grew by an estimated 36,000 in February, continuing the upward trend that began three years ago. However, February's job growth was matched by a similar increase in the size of the labour force, leaving the unemployment rate steady at 6.8%.

All of February's job growth was in full-time employment (+40,000); part-time changed little.

Nearly all of the employment gains were among men aged 25 and over (+31,000), the result of 36,000 more full-time jobs and slightly fewer part-time ones. This continues a strong upward trend for this group who, over the last 12 months, have gained a total of 199,000 jobs, all full-time, an increase of 3.0%. The unemployment rate in this age group fell 0.2 percentage points in February to 5.6%.

Unemployment rate



Although little changed in February, employment for women 25 and over and youths (15- to 24-year-olds) has been rising. In the last 12 months, adult women have gained 152,000 jobs, all full-time, an increase of 2.7%. For youths, employment is up 82,000 (+3.8%) from a year ago, with nearly all of the gains in full-time.

Recent strength in full-time employment is also reflected in the number of hours worked, which rose by 0.7% from January, and 4.3% from a year ago.

#### More private sector employees

The number of private sector jobs continued to grow in February (+27,000). Nearly all of the increase

#### Notes to Readers

The Labour Force Survey (LFS) has undergone extensive revisions to reflect two important changes to the way in which labour market data are produced. As a result, all LFS estimates have been revised back to January 1976. For more information on these revisions, please go to "Improvements in 2000 to the LFS" on Statistics Canada's Web site ([www.statcan.ca](http://www.statcan.ca)).

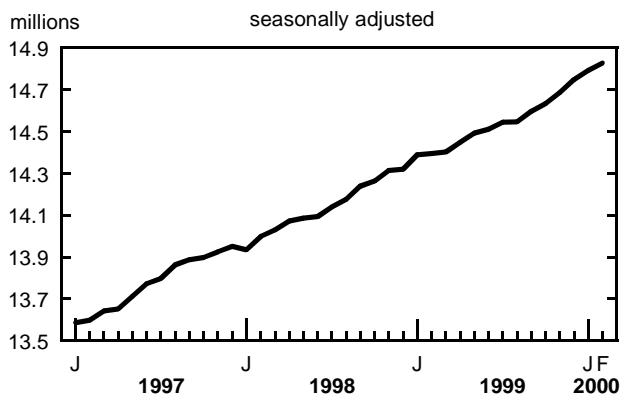
The new revised data, which are now available on CANSIM, must be used to make historical comparisons of LFS estimates. Before obtaining any data from CANSIM, please read the "Revised historical Labour Force Survey Data" communiqué at [www.statcan.ca](http://www.statcan.ca).

To harmonize with other Statistics Canada data sources, the LFS recently introduced a new definition of the public and private sectors. As a result, the estimates of public employment, which are not seasonally adjusted, are somewhat underestimated prior to May 1999. To better reflect real changes in public and private sector employment and to avoid a break in the series, the historical seasonally adjusted series have been modified. In addition, the annual averages available on CANSIM have been calculated using these modified data instead of the unadjusted data.

was among employees; the number of self-employed scarcely changed. Over the last 12 months, the number of private sector employees has grown steadily, by 308,000 (+3.3%). The number of self-employed has increased at a slower pace, by 64,000 (+2.6%); most of this gain occurred in the last three months.

Employment in the public sector was little changed in February, but is up 2.3% from a year ago.

Employment



---

## Industry focus

Trade (+29,000) and accommodation and food services (+14,000) were the major industries contributing to February's employment rise. Employment edged higher in construction (+11,000); over the last six months, this industry has gained 61,000 jobs. Professional, scientific and technical services lost ground (-18,000).

Despite a small decline in February (-16,000), manufacturing employment is up 100,000 (+4.6%) from a year ago.

## Provincial summary

February's employment growth was concentrated in Alberta and British Columbia.

In Alberta, employment rose by 10,000, with the increase mostly in trade. Over the last 12 months, the province has gained 41,000 jobs (+2.7%). In February, the unemployment rate fell 0.3 percentage points to 4.9%, the lowest since December 1981.

Employment in British Columbia grew by 15,000, the fourth consecutive rise following eight months of little change. February's job gains were mostly in construction as well as information, culture and recreation. The province's unemployment rate fell by 0.3 percentage points to 7.0%, the lowest since August 1981.

In Quebec, employment changed little for the second consecutive month, after consistent growth over the last four months of 1999 totalling 80,000 jobs. The unemployment rate in February edged up to 8.3% (+0.1 percentage points).

Although nearly steady in February, employment in Ontario has increased over the last 12 months by 193,000 (+3.4%). The unemployment rate remained at its January level of 5.7%.

Employment was little changed in the other provinces in February.

**Available on CANSIM: matrices 3450-3471, 3483-3492, 3503, and table 00799999.**

Available at 7 a.m. on Statistics Canada's Web site ([www.statcan.ca](http://www.statcan.ca)) under *Daily news*.

A summary, *Labour force information*, for the week ending February 19, 2000 (71-001-PPB, \$11/\$103) is now available.

The next release of the Labour Force Survey will be on Friday, April 7.

For more information on this release, or to enquire about the concepts, methods and data quality of this release, contact Geoff Bowlby (613-951-3325), Vincent Ferrao (613-951-4750), Labour Statistics Division. □

# Labour force characteristics for both sexes, aged 15 and over

	January 2000	February 2000	January to February 2000 seasonally adjusted	January 2000	February 2000	January to February 2000
Labour force			Participation rate			
	'000		% change	%		change
<b>Canada</b>	<b>15,869.3</b>	<b>15,907.0</b>	<b>0.2</b>	<b>65.7</b>	<b>65.8</b>	<b>0.1</b>
Newfoundland	245.8	247.2	0.6	55.9	56.2	0.3
Prince Edward Island	73.5	73.2	-0.4	67.6	67.2	-0.4
Nova Scotia	462.5	461.7	-0.2	62.1	62.0	-0.1
New Brunswick	367.0	366.7	-0.1	61.0	60.9	-0.1
Quebec	3,734.4	3,742.0	0.2	63.1	63.2	0.1
Ontario	6,142.4	6,156.1	0.2	66.8	66.9	0.1
Manitoba	580.0	580.6	0.1	67.8	67.9	0.1
Saskatchewan	514.6	514.0	-0.1	67.4	67.3	-0.1
Alberta	1,661.5	1,667.1	0.3	72.4	72.6	0.2
British Columbia	2,087.6	2,098.3	0.5	64.9	65.1	0.2
Employment			Employment rate			
	'000		% change	%		change
<b>Canada</b>	<b>14,791.8</b>	<b>14,827.5</b>	<b>0.2</b>	<b>61.3</b>	<b>61.4</b>	<b>0.1</b>
Newfoundland	204.1	203.6	-0.2	46.4	46.3	-0.1
Prince Edward Island	64.4	64.8	0.6	59.2	59.5	0.3
Nova Scotia	417.5	417.0	-0.1	56.1	56.0	-0.1
New Brunswick	332.4	331.3	-0.3	55.2	55.0	-0.2
Quebec	3,428.7	3,430.6	0.1	57.9	57.9	0.0
Ontario	5,795.3	5,804.2	0.2	63.0	63.0	0.0
Manitoba	549.9	549.6	-0.1	64.3	64.2	-0.1
Saskatchewan	488.2	490.2	0.4	64.0	64.2	0.2
Alberta	1,575.4	1,585.8	0.7	68.7	69.0	0.3
British Columbia	1,935.9	1,950.4	0.7	60.2	60.6	0.4
Unemployment			Unemployment rate			
	'000		% change	%		change
<b>Canada</b>	<b>1,077.5</b>	<b>1,079.5</b>	<b>0.2</b>	<b>6.8</b>	<b>6.8</b>	<b>0.0</b>
Newfoundland	41.7	43.6	4.6	17.0	17.6	0.6
Prince Edward Island	9.2	8.4	-8.7	12.5	11.5	-1.0
Nova Scotia	45.0	44.8	-0.4	9.7	9.7	0.0
New Brunswick	34.6	35.4	2.3	9.4	9.7	0.3
Quebec	305.7	311.4	1.9	8.2	8.3	0.1
Ontario	347.2	351.9	1.4	5.7	5.7	0.0
Manitoba	30.1	31.0	3.0	5.2	5.3	0.1
Saskatchewan	26.5	23.9	-9.8	5.1	4.6	-0.5
Alberta	86.1	81.3	-5.6	5.2	4.9	-0.3
British Columbia	151.6	147.9	-2.4	7.3	7.0	-0.3



**Employment by industry (based on NAICS) and class of worker for both sexes, aged 15 and over**

	January 2000	February 2000	January to February 2000	February 1999 to February 2000	January to February 2000	February 1999 to February 2000
seasonally adjusted						
	'000			% change		
<b>All industries</b>	<b>14,791.8</b>	<b>14,827.5</b>	<b>35.7</b>	<b>433.0</b>	<b>0.2</b>	<b>3.0</b>
<b>Goods-producing sector</b>	<b>3,889.2</b>	<b>3,886.1</b>	<b>-3.1</b>	<b>140.8</b>	<b>-0.1</b>	<b>3.8</b>
Agriculture	401.1	400.2	-0.9	-21.8	-0.2	-5.2
Forestry, fishing, mining, oil and gas	275.5	278.0	2.5	0.7	0.9	0.3
Utilities	116.0	116.9	0.9	2.1	0.8	1.8
Construction	815.0	825.6	10.6	59.7	1.3	7.8
Manufacturing	2,281.7	2,265.3	-16.4	99.9	-0.7	4.6
<b>Services-producing sector</b>	<b>10,902.6</b>	<b>10,941.4</b>	<b>38.8</b>	<b>292.2</b>	<b>0.4</b>	<b>2.7</b>
Trade	2,263.1	2,292.4	29.3	58.9	1.3	2.6
Transportation and warehousing	776.6	784.2	7.6	60.7	1.0	8.4
Finance, insurance, real estate and leasing	859.6	861.1	1.5	0.5	0.2	0.1
Professional, scientific and technical services	927.1	909.4	-17.7	17.9	-1.9	2.0
Management, administrative and other support	512.5	512.7	0.2	27.0	0.0	5.6
Educational services	998.5	995.9	-2.6	32.9	-0.3	3.4
Health care and social assistance	1,511.0	1,518.4	7.4	90.7	0.5	6.4
Information, culture and recreation	628.4	635.3	6.9	8.2	1.1	1.3
Accommodation and food services	951.7	965.8	14.1	46.1	1.5	5.0
Other services	701.3	701.2	-0.1	-35.6	0.0	-4.8
Public administration	772.8	765.2	-7.6	-14.8	-1.0	-1.9
<b>Class of worker</b>						
Public sector employees	2,746.3	2,755.0	8.7	61.0	0.3	2.3
Private sector	12,045.5	12,072.5	27.0	371.9	0.2	3.2
Private employees	9,514.3	9,539.9	25.6	308.2	0.3	3.3
Self-employed	2,531.2	2,532.6	1.4	63.7	0.1	2.6



## OTHER RELEASES

## New Housing Price Index

January 2000

The New Housing Price Index was 1.7% higher in January 2000 than in January 1999. On a monthly basis at the Canada level, however, this index of contractors' selling prices of new houses was unchanged.

Annual increases were noted in 17 of the 21 urban centres surveyed. Ottawa-Hull and St. Catharines-Niagara registered the highest increases (+4.4%) followed by Calgary (+3.5%) and Montréal (+3.4%). Winnipeg, Regina, Québec and Halifax also saw notable increases. Three urban centres registered annual decreases, notably Victoria (-6.1%). St. John's was the only urban centre that registered no change on a year-over-year basis.

On a monthly basis, five urban centres saw increases. The greatest rise was in Québec, where higher prices for land, materials and labour were passed on to new home buyers. These increases, however, were offset by monthly decreases in other urban centres. Victoria registered the greatest decrease (-0.5%), a result of very competitive market conditions experienced by builders, followed by Ottawa-Hull, Saint John-Moncton-Fredericton, Vancouver and Toronto. Eleven urban centres registered no change between December 1999 and January 2000.

New housing price indexes  
(1992=100)

	January 2000	January 1999 to January 2000 % change	December 1999 to January 2000 % change
<b>Canada total</b>	<b>102.0</b>	<b>1.7</b>	-
House only	103.5	2.7	-
Land only	102.3	0.3	-
St. John's	96.3	-	0.2
Halifax	113.4	3.0	-
Charlottetown	105.2	1.6	-
Saint John-Moncton-Fredericton	94.3	1.1	-0.3
Québec	102.2	3.1	1.4
Montréal	106.2	3.4	0.2
Ottawa-Hull	102.5	4.4	-0.3
Toronto	105.3	2.1	-0.1
Hamilton	104.7	2.2	-
St. Catharines-Niagara	105.4	4.4	-
Kitchener-Waterloo	103.2	2.1	-
London	99.4	1.0	-
Windsor	106.0	0.2	-
Sudbury-Thunder Bay	98.8	-1.1	-
Winnipeg	116.0	3.2	-
Regina	130.6	3.2	-
Saskatoon	114.6	1.7	-
Calgary	131.2	3.5	0.1
Edmonton	111.3	2.2	0.2
Vancouver	83.6	-1.5	-0.2
Victoria	72.7	-6.1	-0.5

- Nil or zero.

**Note:** The total New Housing Price Index for January 2000 is below the level of its two components, the House-only Index and the Land-only Index. This has occurred because the component index series is derived and linked independently. These processes, particularly linking, create total indices that are not averages of their sub-indices in a strict sense.

## Available on CANSIM: matrix 9921.

The first quarter 2000 issue of *Construction price statistics* (62-007-XPB, \$24/\$79) will be available in June. See *How to order publications*.

For more information on this release, or to enquire about the concepts, methods and data quality of this release, contact Louise Châiné (613-951-3350, fax: 613-951-1539; [infounit@statcan.ca](mailto:infounit@statcan.ca)), Client Services Unit, Prices Division. ■

## Industrial monitor on CD-ROM

March 2000

The *Industrial monitor on CD-ROM* offers up-to-date data on more than 150 manufacturing industries and 33 other industries covering construction, wholesale trade and retail trade. This information is offered for 25 sectors, and can be purchased by individual sector or as a complete package.

For each industry, up to 50 variables are organized in the table viewer according to five table types: supply, demand, price, labour/employment, and investment/capital stock. The underlying database is also available via the series browser for more extensive time-series analyses and inter-industry comparisons.

The *Industrial monitor on CD-ROM* is linked to the Standard Industrial Classification manual, provides pop-up textual descriptions for every series and embodies consistent data conventions — all features designed to make analysis easy and accurate. State-of-the-art functions offer searching, graphing, viewing, exporting and transforming capabilities, providing you the information quickly and easily.

The March 2000 issue of the *Industrial monitor on CD-ROM* is now available. An annual subscription (one CD-ROM per month) to the full package (15F0015XCB) costs \$995, a saving of more than 80% on the annual subscription price of \$258 per individual sector.

For more information, or to request a free demonstration CD-ROM, contact Yolande Chantigny (1-800-887-IMAD [4623]; 613-951-IMAD [4623]; fax:

---

613-951-3688; [imad@statcan.ca](mailto:imad@statcan.ca)), Industry Measures and Analysis Division, or your nearest Statistics Canada Regional Reference Centre. ■

## **Survey on Changes in Employment**

1998-1999 (preliminary)

Data are now available from the Survey on Changes in Employment, which was conducted between October 1998 and May 1999 on behalf of Human

Resources Development Canada. This survey gathered employment histories from people who had a job interruption between January 1997 and September 1998.

For more information about the current survey results and related products and services, or to enquire about the concepts, methods, or data quality of this release, contact Client Services (613-951-7355 or 1-888-297-7355; fax: 613-951-3012; [ssd@statcan.ca](mailto:ssd@statcan.ca)), Special Surveys Division. ■



---

## PUBLICATIONS RELEASED

---

**Infomat — A weekly review**, March 10, 2000  
**Catalogue number 11-002-XIE**  
(Canada: \$3/\$109; outside Canada: US\$3/US\$109).

**Infomat — A weekly review**, March 10, 2000  
**Catalogue number 11-002-XPE**  
(Canada: \$4/\$145; outside Canada: US\$4/US\$145).

**Primary iron and steel**, January 2000  
**Catalogue number 41-001-XIB**  
(Canada: \$5/\$47).

**Surface and marine transport, Service bulletin**,  
vol. 16, no. 1  
**Catalogue number 50-002-XIB**  
(Canada: \$10/\$62).

**Aviation, Service bulletin**, vol. 32, no. 2  
**Catalogue number 51-004-XIB**  
(Canada: \$8/\$82).

**Pipeline transportation of crude oil and refined petroleum products**, December 1999  
**Catalogue number 55-001-XIB**  
(Canada: \$9/\$86).

**Energy statistics handbook**, February 2000  
**Catalogue number 57-601-UPB**  
(Canada: \$387; outside Canada: US\$387).

**Energy statistics handbook**, February 2000  
**Catalogue number 57-601-XDE**  
(Canada: \$284; outside Canada: US\$284).

**Wholesale trade**, December 1999  
**Catalogue number 63-008-XIB**  
(Canada: \$14/\$140).

**All prices exclude sales tax.**

Catalogue numbers with an -XIB or an -XIE extension are Internet versions; those with -XMB or -XME are microfiche; and -XPB or -XPE denote a paper version.

---

### How to order publications

---

**Order publications by phone:**

Please refer to the • Title • Catalogue number • Volume number • Issue number • Your VISA or MasterCard number.

In Canada and the United States call:

**1-800-267-6677**

From other countries call:

**1-613-951-7277**

To fax your order:

**1-877-287-4369**

Address changes or account inquiries:



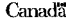
**1-800-700-1033**

**To order a publication by mail write:** Statistics Canada, Circulation Management, Dissemination Division, Ottawa, K1A 0T6.

Include a cheque or money order payable to **Receiver General of Canada/Publications**. Canadian customers add 7% GST and applicable PST.

**To order by Internet:** write to [order@statcan.ca](mailto:order@statcan.ca) or download an electronic version by accessing Statistics Canada's Web site ([www.statcan.ca](http://www.statcan.ca)), under the headings *Products and services*, *Downloadable publications*.

**Authorized agents and bookstores also carry Statistics Canada's catalogued publications.**

Catalogue 11-001E (P) Catalogue 11-001E/11-001E-001E-001E	
 <b>The Daily</b>	
Statistics Canada	
Thursday, June 3, 1997 For release at 9:30 a.m.	
<b>MAJOR RELEASES</b>	
• <b>Urban transit, 1996</b> Despite the emphasis on taking urban transit, Canadians are using it less and less. In 1996, each Canadian took an average of about 21 trips on some form of urban transit, the lowest level in the past 25 years.	2
• <b>Productivity, hourly compensation and unit labour cost, 1996</b> Growth in productivity among Canadian businesses was modestly weak again in 1996, accompanied by sluggish gains in employment and slow economic growth during the year.	4
<b>OTHER RELEASES</b>	
• <b>Help-wanted index, May 1997</b>	3
• <b>Short-term Expectations Survey</b>	2
• <b>Steel primary forms, steel ending May 31, 1997</b>	12
• <b>Ugg producer, Apr. 1997</b>	13
<b>PUBLICATIONS RELEASED</b>	11
 	

## Statistics Canada's official release bulletin

Catalogue 11-001E.

Published each working day by the Communications Division, Statistics Canada, 10-H, R.H. Coats Bldg., Tunney's Pasture, Ottawa, Ontario K1A 0T6.

To access *The Daily* on the Internet, visit our site at <http://www.statcan.ca>. To receive *The Daily* each morning by E-mail, send an E-mail message to [listproc@statcan.ca](mailto:listproc@statcan.ca). Leave the subject line blank. In the body of the message, type "subscribe daily firstname lastname".

Editor: Tim Prichard (613-951-1197, [prictim@statcan.ca](mailto:prictim@statcan.ca))

Head of Official Release: Dan Smythe (613-951-1088), [smytdan@statcan.ca](mailto:smytdan@statcan.ca)

Published by authority of the Minister responsible for Statistics Canada. © Minister of Industry, 2000. Citation in newsprint, magazine, radio, and television reporting is permitted subject to the requirement that Statistics Canada is acknowledged as the source. Any other reproduction is permitted subject to the requirement that Statistics Canada is acknowledged as the source on all copies as follows: Statistics Canada, *The Daily*, catalogue 11-001E, along with date and page references.

---

## REGIONAL REFERENCE CENTRES

---

Statistics Canada's Regional Reference Centres offer a full range of the Agency's products and services. Each reference centre is equipped with a library and sales counter where you can consult or purchase publications, diskettes, CD-ROM discs, microfiche, maps and more.

Each centre has facilities to retrieve information from CANSIM, Statistics Canada's data retrieval system. A telephone inquiry service is available with toll-free access for those located outside local calling areas. Many other valuable services—from seminars to consultations—are also offered. For information, contact your nearest Regional Reference Centre.

**Newfoundland and Labrador, Nova Scotia, Prince Edward Island and New Brunswick**

Advisory Services  
Statistics Canada  
1741 Brunswick Street  
2<sup>nd</sup> Floor, Box 11  
Halifax, Nova Scotia  
B3J 3X8  
Local calls: (902) 426-5331  
Toll free: 1-800-263-1136  
Fax: 1-902-426-9538  
E-mail: atlantic.info@statcan.ca

**Quebec and Nunavut**

Advisory Services  
Statistics Canada  
4<sup>th</sup> Floor, East Tower  
Guy Favreau Complex  
200 René Lévesque Blvd. W.  
Montréal, Québec  
H2Z 1X4  
Local calls: (514) 283-5725  
Toll free: 1-800-263-1136  
Fax: 1-514-283-9350

**National Capital Region**

Statistical Reference Centre (NCR)  
Statistics Canada  
Lobby, R.H. Coats Building  
Holland Avenue  
Tunney's Pasture  
Ottawa, Ontario  
K1A 0T6  
Local calls: (613) 951-8116  
Fax: 1-613-951-0581  
E-mail: infostats@statcan.ca

**Ontario**

Advisory Services  
Statistics Canada  
10<sup>th</sup> Floor  
Arthur Meighen Building  
25 St. Clair Avenue East  
Toronto, Ontario  
M4T 1M4  
Local calls: (416) 973-6586  
Toll free: 1-800-263-1136  
Fax: 1-416-973-7475

**Manitoba**

Advisory Services  
Statistics Canada  
Via Rail Building, Suite 200  
123 Main Street  
Winnipeg, Manitoba  
R3C 4V9  
Local calls: (204) 983-4020  
Toll free: 1-800-263-1136  
Fax: 1-204-983-7543  
E-mail: statswpg@solutions.net

**Saskatchewan**

Advisory Services  
Statistics Canada  
Park Plaza, Suite 440  
2365 Albert Street  
Regina, Saskatchewan  
S4P 4K1  
Local calls: (306) 780-5405  
Toll free: 1-800-263-1136  
Fax: 1-306-780-5403  
E-mail: statcan@sk.sympatico.ca

**Southern Alberta**

Advisory Services  
Statistics Canada  
Discovery Place, Room 201  
3553-31 Street N.W.  
Calgary, Alberta  
T2L 2K7  
Local calls: (403) 292-6717  
Toll free: 1-800-263-1136  
Fax: 1-403-292-4958  
E-mail: degagnej@cadvision.com

**Northern Alberta and the Northwest Territories**

Advisory Services  
Statistics Canada  
15<sup>th</sup> Floor, Park Square  
10001 Bellamy Hill  
Edmonton, Alberta  
T5J 3B6  
Local calls: (780) 495-3027  
Toll free: 1-800-263-1136  
Fax: 1-780-495-5318  
E-mail: ewieall@statcan.ca

**British Columbia and the Yukon**

Advisory Services  
Statistics Canada  
Library Square Tower, Suite 600  
300 West Georgia Street  
Vancouver, B.C.  
V6B 6C7  
Local calls: (604) 666-3691  
Toll free: 1-800-263-1136  
Fax: 1-604-666-4863

National toll-free enquiries line (Canada and the United States): 1-800-263-1136  
Toll-free order-only line (Canada and the United States): 1-800-267-6677  
Toll-free fax order line (Canada and the United States): 1-877-287-4369  
Toll-free telecommunications device for the hearing impaired: 1-800-363-7629

*The Daily*, March 10, 2000

---

**RELEASE DATES: MARCH 13 TO 17**

---

**March 13 to 17**

(Release dates are subject to change.)

---

<b>Release date</b>	<b>Title</b>	<b>Reference period</b>
15	<b>Consumer Price Index</b>	February 2000
16	<b>Monthly Survey of Manufacturing</b>	January 2000
16	<b>Canadian social trends</b>	Spring 2000
17	<b>New motor vehicle sales</b>	January 2000

---