

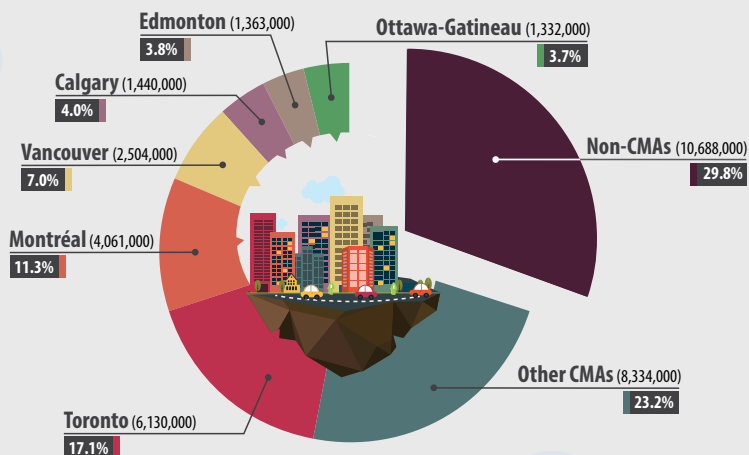
# Demographic Estimates

## CENSUS METROPOLITAN AREAS

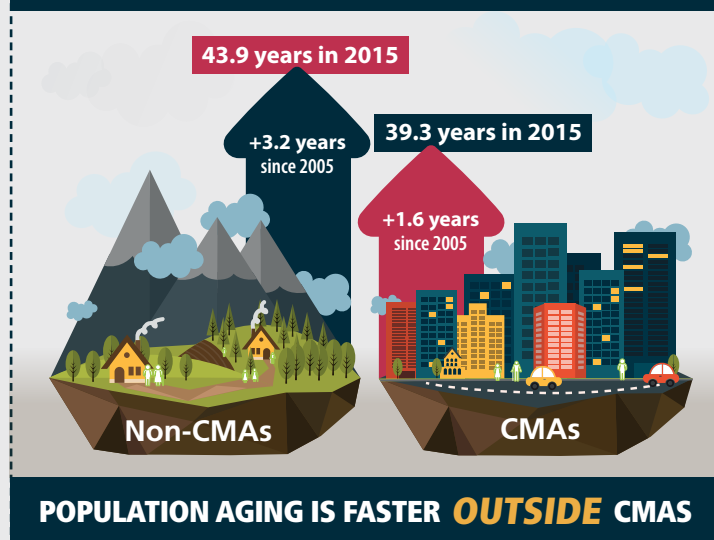
### Canada, 2015

#### SEVEN IN TEN CANADIANS LIVE IN A CMA

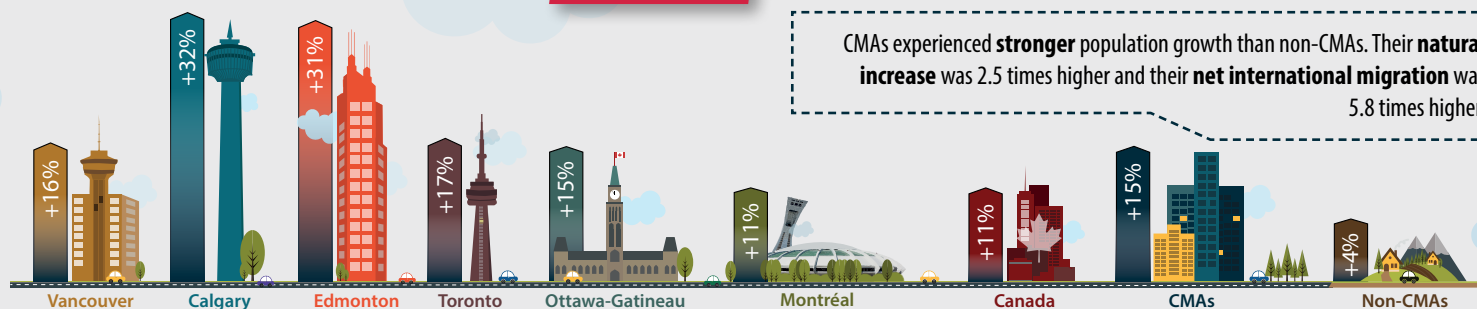
ON JULY 1, 2015



#### INCREASE OF MEDIAN AGE SINCE 2005

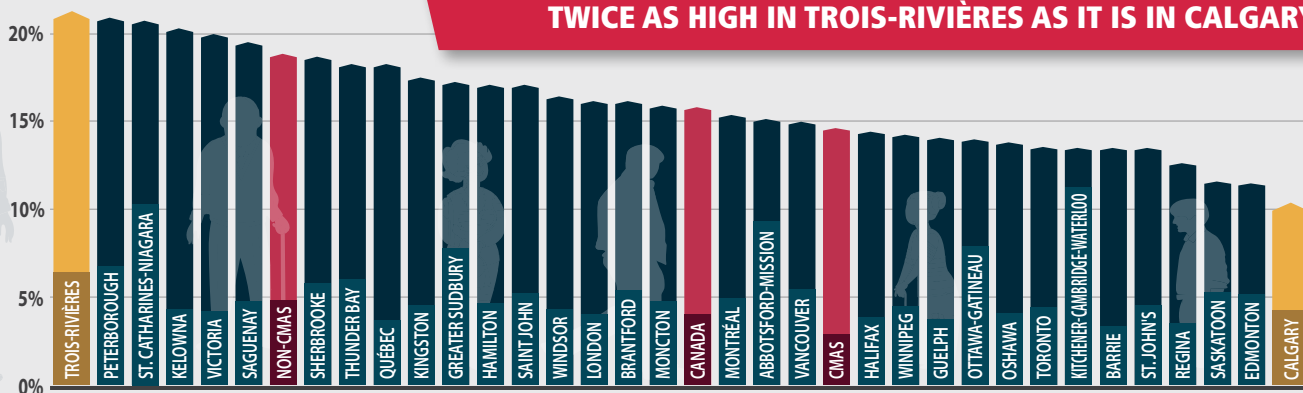


#### ALBERTA CMAS EXPERIENCED THE STRONGEST POPULATION GROWTH BETWEEN 2005 AND 2015



Proportion of persons aged 65 years and older on July 1, 2015

#### THE PROPORTION OF PERSONS AGED 65 YEARS AND OLDER IS TWICE AS HIGH IN TROIS-RIVIÈRES AS IT IS IN CALGARY



CMA

Census metropolitan area (CMA): Area consisting of one or more neighbouring municipalities situated around a core. A census metropolitan area must have a total population of at least 100,000 of which 50,000 or more live in the core. Canada has 33 CMAs; regions that are not CMAs are categorized as non-CMAs.

Source: Annual Demographic Estimates: Subprovincial Areas, 2015



Statistics  
Canada

Statistique  
Canada

www.statcan.gc.ca

Canada