

C A N A D A

DEPARTMENT OF TRADE AND COMMERCE

DOMINION BUREAU OF STATISTICS

AGRICULTURAL BRANCH

Vol. 10

No. 52

Historical File Copy

CANADIAN GRAIN STATISTICS

Week ending

JULY 25, 1930

(Records for Western Inspection Division supplied by Board of Grain Commissioners for Canada.)

• • •

Published by Authority of the Hon. James Malcolm, M. P.,

Minister of Trade and Commerce.

• • •

OTTAWA

1930

INDEX

Export Movement of Canadian Wheat

General Summary.....	1-4
Canadian Grain in Store by Elevators.....	5
Canadian Grain in Store by Grades.....	6
Comparative Statement of Grain in Store.....	7
Receipts and Shipments of Canadian Grain.....	8
U. S. Grain in Store, Receipts and Shipments.....	9
Receipts, Shipments and Quantities in Store at Country Elevators Western Division.....	10
Receipts, Shipments and Quantities in Store at Interior Terminal Elevators.....	11
Receipts, Shipments and Quantities in store at Pacific Coast Elevators and Vancouver Prices.....	12
Daily and Weekly Average prices of Grain at Ft. William, Pt. Arthur and Toronto for the week ending July 26, 1930.....	13
Shipments of Canadian Wheat & Wheatflour (in transit) from Atlantic Coast Customs Districts of the United States by Countries of destination and by Seaboard Ports May 1930.....	14-15
Mill Grindings June 1930 Preliminary Statement.....	16
Mill Productions June 1930 Preliminary Statement.....	17

DEPARTMENT OF TRADE AND COMMERCE
DOMINION BUREAU OF STATISTICS - CANADA
AGRICULTURAL BRANCH

(Issued Aug. 1, 1930)

Dominion Statistician: R.H. Coats, B.A., F.S.S. (Hon.), F.R.S.C.
Chief, Agricultural Branch: T.W. Grindley, Ph.D.

CANADIAN GRAIN STATISTICS - WEEK ENDING JULY 25, 1930.

Elevator reports from Montreal, Quebec, Sorel and Vancouver show that 2,845,641 bushels were shipped by vessel overseas during the week ended July 25, 1930, making a total of 10,820,038 bushels for the first four weeks of the month. Shipments to Buffalo and other United States Lake Ports for the week ended July 21, were 3,248,870 bushels, a total of 7,205,802 bushels for the three week period. There has been no later figures for the latter movement.

Wheat stocks show a reduction from the previous week ending July 18, 1930. The quantity in store on July 25, 1930 was 110,648,937 bushels, compared with 117,011,575 bushels last week and 107,018,685 bushels for the same week last year.

Of the total quantity in store for the week, 16,127,421 bushels are in the Elevators at United States Lake and Atlantic Seaboard Ports.

The shipments for the week ended July 25 from the above elevators classified as Local Requirements, Rail and Vessel Shipments were as follows:-

	Local Requirements	Rail	Vessel
Country Elevators	-	4,079,430	-
Interior Terminal Elevators	-	7,436	-
Vancouver, B.C.	-	14,863	856,231
Fort William and Port Arthur	-	176,274	5,364,390
Interior Private and Mfg. Elevs.	-	461,970	-
Public Elevators in the East	497,699	234,381	1,989,410
To Montreal	-	-	1,620,933
T O T A L S	497,699	4,974,354	9,830,964

Shipments from Western Country Elevators continue heavy, being 4,079,430 bushels, while during the previous week, the amount was 2,903,313 bushels. All the elevators show decreases in stocks for the week, the quantity being 6,362,638 bushels. Western inspection returns for the week ended July 21, 1930, were 2,683 cars against 3,024 cars for the previous week and 3,286 cars for the same week in 1929.

FOREIGN SITUATION

The Bureau, through the Department of Agriculture, received the following cablegram from the International Institute at Rome: "Germany's production this year calculated on the basis of crop conditions first of July, (thousand tons of 1,000 Kilos): Wheat, 3,842 tons or 141,166,990 bushels; rye 8,523 tons or 335,537,726 bushels; barley 2,921 tons or 134,163,283 bushels; oats 6,083 tons or 394,436,319 bushels. During July the weather was unfavourable and yields are subject to revision." In 1929, Germany's production was as follows: Wheat, 123,073,000 bushels; rye 321,050,000 bushels; barley 146,093,000 bushels and oats 508,636,000 bushels.

During the week ended July 18 according to the London (Eng.) Grain, Seed and Oil Reporter, the import market shows quite an active business in Manitoba but very little interest was indicated in plates. Australian and Indian cargoes and parcels were in request, the latter for September delivery. Millers are holding small stocks and any business being done was for consumption.

The chief factors affecting prices are the varying weather in Canada and the United States, together with the uncertainty of the action of the United States Farm Board. It is being consistently rumoured that the Board will not purchase any more wheat, while in Canada the Wheat Pool have stated that their initial payment on 1930 wheat would be 70¢ per bushel for the 1930 crop. The latter statement is considered berrish.

Poor crops are assured in France and Italy although the carryover in France may be important. Central and South-eastern European yields will be the same as last year. Portugal's wheat crop shows considerable increase over last year. A Russian report states that crop prospects are satisfactory and that they may have fair quantities for export. Good crop prospects continue in the Southern Hemisphere.

Requirements of importing countries are placed at 568,000,000 bushels, by the Grain, Seed and Oil Reporter, a reduction of 32,000,000 bushels. The original estimate was 600,000,000 bushels, the said reduction is anticipated owing to good yield and economies in Europe. Broomhall's estimates that the world wheat crop will be 160,000,000 bushels greater than last year and the outlook is for larger North American shipments.

In the United States, the domestic market is slightly firmer for the week ended July 25, on account of good export inquiry and some slackening in the movement of new winter wheat. The spring wheat was benefitted by the recent rains although some sections had ripened early and were beyond any help from moisture. World shipments during the week July 25 of wheat and wheatflour in bushels amounted to 12,487,000 bu. made up as follows: North America, 9,424,000 bu.; Argentine, 425,000 bu.; Australia 1,304,000 bu.; Other Countries 1,334,000 bu. For the week ended July 12, the imports of wheat and wheatflour to the United Kingdom were 3,415,088 bushels against 4,369,168 bushels for the previous week.

DEPARTMENT OF TRADE AND COMMERCE
DOMINION BUREAU OF STATISTICS - CANADA
AGRICULTURAL BRANCH
(Issued August 1st, 1930).

Dominion Statistician:	R.H.Coats, B.A., F.S.S.(Hon.), F.R.S.C.
Chief, Agricultural Branch:	T.W.Grindley, Ph.D.

CANADIAN GRAIN STATISTICS - WEEK ENDING JULY 25, 1930.

Returns received as to stocks of grain in store for the week ending July 25, 1930, show a decrease of 7,812,607 bushels. Stocks for the week were as follows: Wheat, 110,648,937; Oats, 7,906,525; Barley, 21,313,051; Flax 477,142; and Rye 8,037,062, a total of 148,382,717 bushels. Decreases are noted in Wheat of 6,362,638; Oats 465,306; Barley, 728,266; Flax 10,846; and Rye 245,551 bushels. For the same week last year the amount in store was 135,448,236 bushels made up as follows: Wheat, 107,018,685; Oats, 15,612,348; Barley 8,893,575; Flax 419,381; and Rye 3,504,247 bushels.

WESTERN COUNTRY ELEVATORS:-

Stocks of grain in store at these elevators show a decrease of 4,179,643 bushels made up as follows:- Wheat, 3,444,171; Oats, 273,873; Barley, 269,756; Flax 45,970 and Rye 145,873 bushels.

The following table shows the quantities of grain in store at the Country Elevators in each of the Prairie Provinces on July 18, 1930, with comparison for the previous week and the same period 1929.

	MANITOBA Bushels	SASKATCHEWAN Bushels	ALBERTA Bushels	TOTAL Bushels
Wheat	1,792,671	7,601,577	7,267,346	16,661,594
Oats	455,794	1,375,679	441,184	2,272,657
Barley	2,122,173	870,244	177,508	3,169,925
Flax	7,983	31,531	4,869	44,383
Rye	140,938	444,856	123,362	709,156
T O T A L S	4,519,559	10,323,887	8,014,269	22,857,715
Previous week	6,201,622	12,110,258	8,725,478	27,037,358
Same period, 1929	969,537	4,965,521	2,867,738	8,802,796

The receipts and shipments at the Country Elevators for the above week ending July 18, 1930, compared with the previous week and the same period 1929 were as follows:-

	R E C E I P T S			S H I P M E N T S		
	Previous Week	Week ended July 18, 1930	Week ended July 19, 1929	Previous Week	Week ended July 18, 1930	Week ended July 19, 1929.
Wheat	594,864	635,682	545,143	2,903,313	4,079,430	2,608,369
Oats	82,081	124,234	197,568	283,227	398,106	639,966
Barley	23,059	29,008	72,519	153,098	298,697	254,361
Flax	3,705	1,957	8,703	45,178	47,927	27,390
Rye	6,880	10,607	22,618	111,537	156,480	76,649
T O T A L S	710,589	801,488	846,551	3,496,353	4,980,640	3,606,735

Platform loadings shown by Prairie Provinces for the period ending July 14, 1930, were as follows:-

	WHEAT Bushels	OTHER GRAINS Bushels	TOTAL Bushels
Manitoba	15,497	13,180	28,677
Saskatchewan	13,594	-	13,594
Alberta	1,553	-	1,553
T O T A L S	30,644	13,180	43,824
Period ending July 14, 1929.	35,758	20,204	55,962
Increase - Decrease	- 5,114	- 7,024	- 12,138

INTERIOR TERMINAL (SASKATOON, MOOSE JAW, EDMONTON AND CALGARY).- Stocks for the week show a decrease of 99,778 bushels, made up as follows: Wheat, 3,188, Oats, 94,961 and Barley 1,629 bushels.

VANCOUVER PRIVATE AND TERMINAL ELEVATORS.- Grain stocks at these elevators show a decrease of 217,544 bushels, made up as follows: Wheat 211,152, Oats 2,983, Barley 450 and Rye 2,959 bushels.

PRINCE RUPERT ELEVATORS.- Wheat stocks at this elevator are the same as previous week.

VICTORIA ELEVATORS.- Wheat stocks at this elevator are nil.

PUBLIC AND PRIVATE (FORT WILLIAM AND PORT ARTHUR).- Stocks at the head of the lakes show a net decrease of 2,743,918 bushels. Wheat and Rye show decreases of 2,891,994 and 66,960 bushels, respectively, while increases are noted in Oats of 84,476, Barley 89,378 and Flax 41,182 bushels.

1/8/30/M.

The stocks in store at the Head of the lakes compared with the same week last year were as follows:

	Week ended July 25, 1930	Week ended July 26, 1929	+ Increase - Decrease
Wheat	38,764,239	48,117,023	- 9,352,784
Oats	1,558,516	7,613,925	- 6,055,409
Barley	14,152,568	3,601,758	+ 10,550,810
Flax	415,585	316,106	+ 99,479
Rye	5,441,586	2,032,516	+ 3,409,070
T O T A L S	60,332,494	61,681,328	- 1,348,834

The receipts (including transfers) at the Head of the Lakes for the week ending July 25, 1930, with comparative figures for the same week last year were as follows:

	Week ended July 25, 1930	Week ended July 26, 1929	+ Increase - Decrease
Wheat	2,633,850	3,247,833	- 613,983
Oats	172,926	574,383	- 401,457
Barley	201,059	586,528	- 385,469
Flax	42,520	55,013	- 12,493
Rye	119,326	87,674	+ 31,652
T O T A L S	3,169,681	4,551,431	- 1,381,750

Preliminary figures showing receipts and shipments at the Head of the Lakes also Vancouver and Prince Rupert for the period August 1st, 1929 to July 25, 1930, compared with the same period last year.

	FORT WILLIAM AND PORT ARTHUR		VANCOUVER	
	RECEIPTS	SHIPMENTS	RECEIPTS	SHIPMENTS
Wheat	131,576,496	139,687,368	53,116,731	49,495,451
Oats	4,803,284	10,314,864	876,759	426,791
Barley	16,884,087	7,078,914	90,560	69,553
Flax	1,042,025	968,387	43	43
Rye	4,742,250	1,147,266	84,701	1,607
T O T A L S	159,048,142	159,196,799	54,168,794	49,993,445
Same period last year	403,602,265	369,926,350	98,943,322	97,253,206
+ Increase - Decrease	-244,554,123	-210,729,551	-44,774,528	-47,259,761

	PRINCE RUPERT		VICTORIA	
	RECEIPTS	SHIPMENTS	RECEIPTS	SHIPMENTS
T O T A L S	1,118,063	272,566	995	6,550
Same period last year	2,501,047	2,472,289	193,438	188,076
+ Increase - Decrease	-1,382,984	-2,199,756	-192,443	-161,526

INTERIOR PRIVATE AND MANUFACTURING ELEVATORS. - Grain stocks for the week show a net decrease of 230,340 bushels. Decreases are noted in Wheat of 182,524, Oats 46,340, Flax 6,058 and Rye 14 bushels, while Barley shows a decrease of 4,596 bushels.

Stocks in store at the Country, Interior, Terminal Public and Private at the Head of the Lakes, Winnipeg and Vancouver, compared with the same week last year were as follows:

	Week ended July 25, 1930.	Week ended July 26, 1929.	+ Increase - Decrease
Wheat	73,174,937	66,878,983	+ 6,295,954
Oats	5,159,309	11,678,833	- 6,519,524
Barley	18,119,157	5,370,311	+ 12,748,846
Flax	477,142	436,631	+ 40,511
Rye	6,252,168	2,290,735	+ 3,961,433
T O T A L S	103,182,713	86,655,493	+ 16,527,220

PUBLIC ELEVATORS IN THE EAST - LAKE PORTS (CANADIAN GRAIN). - Grain stocks for the week show a net decrease of 467,870 bushels. Decreases are noted in Wheat of 450,976, Oats 52,851 and Rye 1,134 bushels, while Barley shows an increase of 37,091 bushels.

PUBLIC ELEVATORS IN THE EAST - SEABOARD PORTS. - Grain stocks for the week show a net increase of 303 bushels. Wheat and Barley show increases of 173,897 and 15,670 bushels respectively while Oats and Rye show decreases of 160,650 and 28,613 bushels respectively.

The receipts of the above by classes of ports were as follows:

	WHEAT		TOTAL GRAIN	
	Vessel	Rail	Vessel	Rail
Georgian Bay Ports	103,574	-	233,072	-
Lower Lake Ports	1,583,441	25,492	1,623,425	27,997
Montreal and Quebec	2,333,343	19,497	2,406,672	21,497
Seaboard Ports	-	-	-	-
T O T A L S	4,020,358	44,989	4,263,169	49,494

Shipments overseas of Canadian Grain from St. Lawrence and Seaboard Ports were as follows:

Montreal		To U. K.	To C. C.
	Wheat	-	1,989,410 bushels
	Oats	-	76,470 "
	Barley	-	16,666 "
	Rye	-	28,613 "

PUBLIC ELEVATORS IN THE EAST (U.S. GRAIN).- U. S. grain stocks show an increase of 5,596,123 bushels compared with same week previous year. Increases are noted in Wheat of 2,360,330, Oats 178,206, Barley 351,558, Rye 2,492,871 and Corn 213,158 bushels.

The quantities in store by classes of ports with increases and decreases are:

	x Week ended July 25, 1930	1/ Week ended July 26, 1929	+ Increase - Decrease
At Georgian Bay Ports	5,303,323	2,057,388	+ 3,245,935
At Lower Lake Ports	699,772	682,770	+ 17,002
At St. Lawrence Ports	4,311,419	2,425,923	+ 1,885,496
At Seaboard Ports	1,049,513	601,823	+ 447,690
T O T A L S	11,364,027	5,767,904	+ 5,596,123

x Included in the above 1,350,761 bushels of Argentine Corn.

1/Included in the above 603,775 bushels of Argentine Corn.

Shipments overseas of U. S. Grain from Atlantic Seaboard Ports were as follows:

Montreal		To U. K.	To C. C.
	Wheat	-	365,901
	Barley	-	66,679

U. S. LAKE PORTS.- Canadian grain shows a net increase of 498,380 bushels. Wheat and Oats show increases of 989,470 and 82,476 bushels respectively, while Barley shows a decrease of 573,566 bushels.

U. S. ATLANTIC SEABOARD PORTS.- Canadian grain stocks show a net decrease of 372,198 bushels. Decreases are noted in Wheat of 342,000, Oats 600 and Barley 29,600 bushels, while Rye shows an increase of 2 bushels.

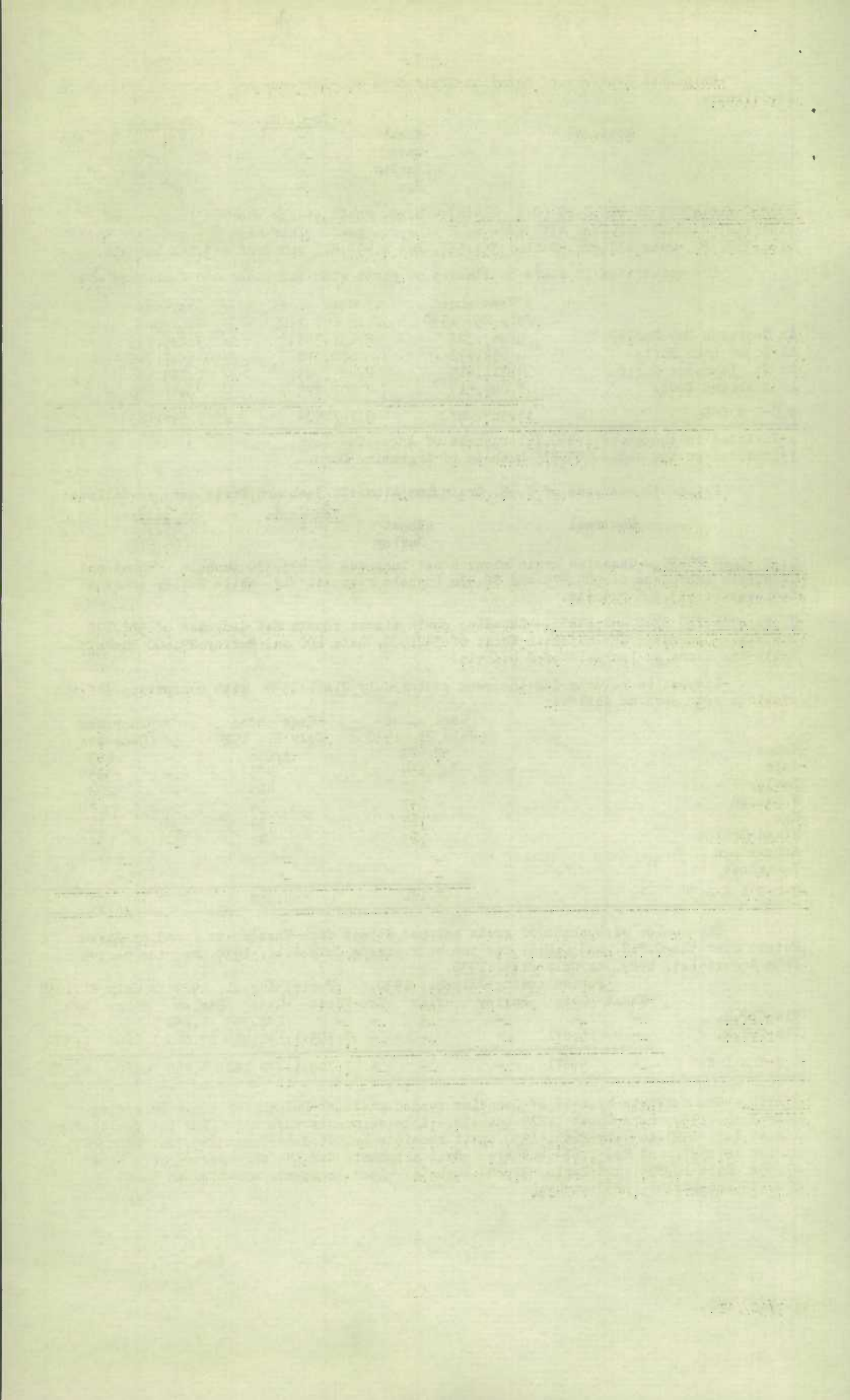
Inspection returns for the week ending July 21st, 1930, with comparison for the previous year were as follows:-

	Week ended July 21, 1930	Week ended July 21, 1929	+ Increase - Decrease
Wheat	2,683	3,286	- 603
Oats	154	479	- 325
Barley	158	420	- 262
Flaxseed	47	54	- 7
Rye	115	79	+ 36
Mixed Grains	23	41	- 18
Screenings	-	-	-
Buckwheat	-	-	-
T O T A L S	3,180	4,359	- 1,179

The number of bushels of grain shipped direct from Western to Canadian Eastern Points over the C.P.R. and C.N.R. for the week ending July 21st, 1930, and the period from August 1st, 1929, to July 21st, 1930.

	Period ending July 21, 1930.					Period Aug. 1, 1929 to July 21, 1930				
	Wheat	Oats	Barley	Flax	Rye	Wheat	Oats	Barley	Flax	Rye
Via C.P.R.	-	-	-	-	-	-	142,353	1,250	-	-
Via C.N.R.	-	5,871	-	-	-	7,705	1,190,430	13,840	1,160	1,304
T O T A L S	-	5,871	-	-	-	7,705	1,332,783	14,290	1,160	1,304

DULUTH.- The receipts by rail of Canadian bonded grain at Duluth for the week ending July 26th, 1930, were Wheat 1,235 bushels. Lake shipments were nil. For the period from August 1st, 1929 to July 26th, 1930, rail receipts amounted to Wheat 265,726, Oats 703, Barley 107,687, and Rye 1,674 bushels. Rail shipments for the same period were Wheat 27,552, Oats 10,894, and Barley 31,204 bushels. Lake shipments amounted to Wheat 270,575 and Barley 1,250 bushels.



Stocks of Grain in Store at the Different Elevators during the Week
Ending July 25, 1930.

	WHEAT Bushels	OAT S Bushels	BARLEY Bushels	FLAX Bushels	RYE Bushels
Western Country Elevators	16,661,594	2,272,657	3,169,925	43,383	709,156
Interior Terminal Elevators	2,964,306	189,285	23,270	1,082	17,486
Vancouver Elevators	8,509,480	71,448	11,954	52	27,764
Victoria Elevators			Nil		
Prince Rupert Elevators	887,304	284	-	-	-
Fort William and Port Arthur	38,764,239	1,558,516	14,152,568	415,585	5,441,586
Interior Pte.&Mfg. Elevators	5,387,924	1,067,119	761,440	16,040	56,176
Public Elevators - Lake Ports	11,725,995	1,141,708	832,745	-	382,800
Public Elevators - Sbd. Ports	9,620,584	1,451,836	847,968	-	1,213,987
U.S.Lake Ports	9,536,009	136,811	1,197,456	-	24,812
U.S.Atlantic Seaboard Ports	6,591,412	16,811	315,725	-	163,295
T O T A L S	110,648,937	7,906,525	21,313,051	477,142	8,037,062
Previous week	117,011,575	8,371,831	22,041,317	487,988	8,282,613
Same week previous year	107,018,685	15,612,348	8,893,575	419,381	3,504,247

Week ending July 18, 1930.

Quantity of Screenings and Oat Scalpings received, shipped and in store at
the undermentioned Elevators, during the week ending July 25, 1930.

	Amount In Store July 18, 1930	Amount received by vessel	Amount Shipped	Amount In Store July 25, 1930
Scalpings	Bushels	Bushels	Bushels	Bushels
Midland Elevator Co.	66,108	-	600	65,508
Owen Sound	104,458	-	1,232	103,226
Goderich Elevator Co.	120,653	-	1,650	119,003
Port Colborne Maple Leaf	18,417	-	-	18,417
Port Colborne Dom. Govt.	5,431	-	-	5,431
Quebec	41,160	-	-	41,160
T O T A L S	356,227	-	3,482	352,745

	Tons	Lbs.	Tons	Lbs.	Tons	Lbs.	Tons	Lbs.
Screenings								
Midland Elevator Co.	205	201	-	-	30	-	175	201
Owen Sound	500	628	-	-	175	-	325	628
Goderich Elevator Co.								
Standard Recleaned	6,122	848	-	-	255	-	5,867	848
Sarnia Elevator Co.								
Recleaned	434	1,020	-	-	40	-	394	1,020
T O T A L S	7,262	697	-	-	500	-	6,762	697

- 5 -
CANADIAN GRAIN IN STORE - JULY 25, 1930.

	WHEAT	OATS	BARLEY	FLAX	RYE	TOTAL
<u>WESTERN COUNTRY ELEVATORS</u>						
Manitoba	1792671	455794	2122173	7983	140938	4519559
Saskatchewan	7601577	1375679	870244	31531	444856	10323887
Alberta	7267346	441184	177508	4869	123362	8014269
<u>TOTAL WESTERN COUNTRY ELEVATORS</u>	<u>16661594</u>	<u>2272657</u>	<u>3169925</u>	<u>44383</u>	<u>709156</u>	<u>22857715</u>
Calgary Can. Govt. Elevs.	4535	31041	3641	-	128	39345
Edmonton Can. Govt. Elevs.	91083	131992	10634	-	11	233720
Moose Jaw Can. Govt. Elevs.	902760	4278	5720	764	8485	922007
Saskatoon Can. Govt. Elevs.	1965928	21974	3275	318	8862	2000357
<u>TOTAL INTERIOR TERMINAL ELEVATORS</u>	<u>2964306</u>	<u>189285</u>	<u>23270</u>	<u>1082</u>	<u>17486</u>	<u>3195429</u>
<u>VANCOUVER TERML. & PUB. ELEVATORS</u>	<u>8509480</u>	<u>71448</u>	<u>11954</u>	<u>52</u>	<u>27764</u>	<u>8620698</u>
<u>VICTORIA ELEVATORS</u>	-	-	-	-	-	-
<u>PRINCE RUPERT</u>	<u>887394</u>	<u>284</u>	-	-	-	<u>887678</u>
<u>FORT WILLIAM</u>						
G.T. Pacific	3811786	80253	389021	45097	381691	4707848
<u>PORT ARTHUR</u>						
Sask. Pool No. 4	3108512	49457	286849	57466	1018306	4520590
Sask. Pool No. 5	764413	1043	-	-	-	765456
Sask. Pool No. 6	3880140	60747	293361	47087	534934	4816269
Sask. Pool No. 7	5502117	14828	-	73	51862	5568880
Sask. Pool No. 8	1647502	47	-	68	-	1647617
Man. Pool No. 1	388982	31516	544195	-	-	964693
Man. Pool No. 2	1021783	-	-	-	-	1021783
Can. Govt. Elevators	407545	6224	508229	42021	93577	1057596
Private Terminal Elevators	18231459	1314401	12130913	223773	3361216	35261762
<u>TOTAL PUB. & PRIV. TERML. ELEVS.</u>	<u>38764239</u>	<u>1558516</u>	<u>14152568</u>	<u>415585</u>	<u>5441586</u>	<u>60332494</u>
<u>AT FT. WILLIAM AND PT. ARTHUR</u>	<u>38764239</u>	<u>1558516</u>	<u>14152568</u>	<u>415585</u>	<u>5441586</u>	<u>60332494</u>
<u>INTERIOR PTE. & MFG. ELEVATORS</u>	<u>5387924</u>	<u>1067119</u>	<u>761440</u>	<u>16040</u>	<u>56176</u>	<u>7288699</u>
<u>PUBLIC ELEVATORS IN THE EAST</u>						
Depot Harbour	161836	-	-	-	-	161836
Tiffin Aberdeen	369327	-	-	-	-	369327
Tiffin C.N.R.	223329	-	-	-	-	223329
Midland Elevators	1182925	30245	38722	-	45628	1297520
Midland Simcoe	546476	121882	-	-	41490	709848
Port McNicoll	631063	-	6000	-	106834	743897
Collingwood	356906	6150	-	-	-	363056
Owen Sound G.L. Elevator Co.	599561	54790	x282722	-	79235	1016308
Goderich Elev. & Transit	1440242	428831	x241679	-	-	2110752
Goderich West Can. Flour Mills	92665	-	-	-	-	92665
Sarnia	1397207	55062	159615	-	4943	1616827
Toronto	892895	292736	101350	-	22310	1309291
Kingston, Richardson No. 1	1114	1678	659	-	-	3451
Pt. Colborne Dom. Govt. Elevs.	2050190	114670	-	-	12906	2177766
Port Colborne Maple Leaf	1780259	35664	1998	-	69454	1887375
<u>TOTAL PUB. ELEVS. - LAKE PORTS</u>	<u>11725995</u>	<u>1141708</u>	<u>832745</u>	-	<u>382800</u>	<u>14083248</u>
Montreal Hbr. Commr's.	6746976	966088	670874	-	590534	8974472
St. Lawrence Mfg. Co.	113756	3702	-	-	-	117458
Ogilvie Flour Mills	276129	22039	-	-	-	298168
North Amer. Elev. Ltd., Sorel	463821	-	57396	-	-	521217
Quebec Hbr. Commr's.	1996266	460057	119680	-	75229	2651232
West St. John, N.B., C.P.R.	14360	-	18	-	868	15246
Halifax	9276	-	-	-	547356	556632
<u>TOTAL PUB. ELEVS. - SBD. PORTS</u>	<u>9620584</u>	<u>1451886</u>	<u>847968</u>	-	<u>1213987</u>	<u>13134425</u>
<u>TOTAL QUANTITY IN CANADA</u>	<u>94521516</u>	<u>7752903</u>	<u>19799870</u>	<u>477142</u>	<u>7848955</u>	<u>130400386</u>
Duluth	25685	4915	75412	-	24812	130824
Buffalo	7974293	131896	1122044	-	-	9228233
Buffalo Afloat	573000	-	-	-	-	573000
Erie, Pa.	963031	-	-	-	-	963031
<u>TOTAL U.S. LAKE PORTS</u>	<u>9536009</u>	<u>136811</u>	<u>1197456</u>	-	<u>24812</u>	<u>10895088</u>
Philadelphia	2270000	-	-	-	-	2270000
Portland			Not Reported			
Baltimore	2340733	-	-	-	1237	2341970
New York	940483	16811	315725	-	162058	1435077
Boston, Mass.	1040196	-	-	-	-	1040196
<u>TOTAL U.S. ATLANTIC SBD. PORTS</u>	<u>6591412</u>	<u>16811</u>	<u>315725</u>	-	<u>163295</u>	<u>7087243</u>
<u>TOTAL QUANTITY IN STORE</u>	<u>110648937</u>	<u>7906525</u>	<u>21313051</u>	<u>477142</u>	<u>8037062</u>	<u>148382717</u>

Week ending July 18th, 1930.

x Includes Wild Oats.

Grades of Canadian Grain in Store at Public and Private Elevators (Head of the Lakes)
Interior Terminal Elevators, Vancouver and Victoria Terminal and Private Elevators and
Public Elevators in the East for the week ending July 25, 1930.

	Public and Terminal Elevators Bushels	Interior Terminal Elevators Bushels	Vancouver & Victoria Terminal & Private Elevators Bushels	Public Elevators in the East Lake Ports Bushels	Public Elevators in the East Sbd. Ports Bushels	Total Bushels
WHEAT						
No. 1 Hard	1,459,153	114,502	195,550	131,153	-	1,900,358
No. 1 Northern	21,642,666	1,973,715	3,072,541	4,850,296	2,158,989	33,698,207
No. 1 Northern Dr.	-	-	-	-	-	-
No. 2 Northern	8,696,874	793,238	2,691,681	3,093,111	1,711,872	16,986,776
No. 2 Northern Dr.	-	1,042	-	-	-	1,042
No. 3 Northern	1,064,114	11,373	1,188,155	711,131	410,687	3,385,460
No. 4 Wheat	306,583	5,632	522,514	139,859	483,683	1,458,271
No. 5 Wheat	475,010	2,423	142,391	254,097	770,975	1,644,896
No. 6 Wheat	758,661	12,546	167,521	1,087,597	1,070,100	3,096,425
Feed	685,611	-	91,758	705,169	719,585	2,202,123
Other	3,667,594	49,835	437,369	753,582	2,294,693	7,203,073
T O T A L S	38,755,266	2,964,306	8,509,480	11,725,995	9,620,584	71,576,631
OATS						
No. 1 C. W.	-	-	22,184	-	-	22,184
No. 2 C. W.	226,884	8,306	808	-	49,038	285,036
No. 3 C. W.	174,974	39,077	23,478	138,963	117,080	493,572
Ex. No. 1 Feed	21,884	10,130	9,860	21,965	78,356	142,195
No. 1 Feed	381,477	46,728	12,048	408,511	233,269	1,082,033
No. 2 Feed	407,844	56,793	893	340,073	191,842	997,445
Other	310,915	28,251	2,177	232,196	782,301	1,355,840
T O T A L S	1,523,978	189,285	71,448	1,141,708	1,451,886	4,378,305
NEW GRADE BARLEY						
No. 2 C. W. 6 Row	3,209	-	-	-	-	3,209
3 Ex. C. W. 6 Row	302,166	4,695	-	-	105,529	412,390
2 C. W. Trebi	9,704	-	-	-	-	9,704
3 Ex. C. W. Trebi	243,006	-	-	-	69,527	312,533
2 C. W. 2 Row	2,000	-	-	-	-	2,000
3 Ex. C. W. 2 Row	5,638	-	-	-	-	5,638
3 C. W.	10,538,072	10,944	-	-	93,395	10,642,411
4 C. W.	1,234,172	1,799	-	14,581	52,544	1,303,096
5 C. W.	543,896	4,945	-	101,520	138,970	789,331
6 C. W.	63,992	-	-	-	-	63,992
Others	344,697	-	-	-	-	344,697
OLD GRADE						
Ex. No. 3 C. W.	771	-	-	82,012	-	82,783
No. 3 C. W.	556,805	-	1,659	223,064	141	781,669
No. 4 C. W.	135,346	-	-	259,565	95,790	490,701
Feed	121,494	878	-	13,331	156,767	302,470
Rejected	19,761	-	-	-	98,029	117,790
Other	-	9	10,295	138,672	37,276	186,252
T O T A L S	14,134,729	23,270	11,954	832,745	847,968	15,850,666
FLAX						
No. 1 N. C. W.	362,060	987	-	-	-	363,047
No. 2 C. W.	22,722	43	-	-	-	22,765
No. 3 C. W.	4,219	46	-	-	-	4,265
Other	26,584	-	52	-	-	26,636
Rejected	-	6	-	-	-	6
T O T A L S	415,585	1,082	52	-	-	416,719
RYE						
No. 1 C. W.	317,016	-	-	19,592	-	336,608
No. 2 C. W.	3,020,520	10,431	26,743	253,487	-	3,311,181
No. 3 C. W.	1,658,435	6,048	-	106,834	454,252	2,225,569
Rejected	-	1,007	-	-	170,170	171,177
Other	445,615	-	1,021	2,887	589,565	1,039,088
T O T A L S	5,441,586	17,486	27,764	382,800	1,213,987	7,083,623
Total Quantity in Store	60,272,144	3,195,429	8,620,698	14,083,248	13,134,425	99,305,944

31/7/30/FED.

CANADIAN GRAIN IN STORE - COMPARATIVE STATEMENT, 1925-1930.

	WHEAT Bushels	OTHER GRAINS Bushels	TOTAL Bushels
July 25, 1930.			
Western Country Elevators	16,661,594	6,196,121	22,857,715
Interior Terminal Elevators	2,964,306	231,123	3,195,429
Vancouver Elevators	8,509,480	111,218	8,620,698
Victoria Elevators	-	-	-
Prince Rupert Elevators	887,304	284	887,678
Port William and Port Arthur Elevators	38,764,239	21,568,255	60,332,494
Interior Private and Mfg. Elevators	5,387,924	1,900,775	7,288,699
Public Elevators in the East - Lake Ports	11,725,995	2,357,253	14,083,248
Public Elevators in the East - Sbd. Ports	7,620,584	3,513,841	13,134,425
U.S.Lake Ports	9,536,009	1,359,079	10,895,088
U.S.Atlantic Seaboard Ports	6,591,412	495,831	7,087,243
T O T A L S	110,648,937	37,733,780	148,382,717
July 26, 1929			
Western Country Elevators	5,255,305	3,547,491	8,802,796
Interior Terminal Elevators	4,021,957	309,074	4,331,031
Vancouver Elevators	5,057,655	98,782	5,156,437
Victoria Elevators	5,360	-	5,360
Prince Rupert Elevators	39,820	-	39,820
Public & Private Terminal Elevators			
Port William and Port Arthur	48,117,023	13,564,305	61,681,328
Interior Private and Mfg. Elevators	4,381,863	2,256,858	6,638,721
Public Elevators in the East - Lake Ports	10,452,134	2,445,803	12,897,937
Public Elevators in the East - Sbd. Ports	9,097,524	4,376,485	13,474,009
U.S.Lake Ports	10,638,366	1,527,300	12,165,666
U.S.Atlantic Seaboard Ports	11,966,032	1,080,295	13,046,327
T O T A L S	109,033,039	29,206,393	138,239,432
July 27, 1928.			
Western Country Elevators	3,543,129	2,309,955	5,853,084
Interior Terminal Elevators	2,730,632	145,959	2,876,591
Vancouver Elevators	3,876,728	22,525	3,899,253
Prince Rupert Elevators	330,939	-	330,939
Public and Private Terminal Elevators			
Port William and Port Arthur	27,991,403	4,442,419	32,433,822
Interior Private and Mfg. Elevators	3,236,994	1,755,827	4,992,821
Public Elevs. in the East - Lake Ports	9,232,017	396,814	9,628,831
Public Elevs. in the East - Sbd. Ports	6,331,817	2,378,647	8,710,464
U.S.Lake Ports	12,093,405	181,516	12,274,921
U.S.Atlantic Seaboard Ports	1,511,375	53,460	1,564,835
T O T A L S	70,878,439	11,687,142	82,565,581
July 29, 1927			
Western Country Elevators	2,638,574	1,545,632	4,184,206
Interior Terminal Elevators	602,172	169,028	771,200
Vancouver Elevators	502,034	60,180	562,214
Prince Rupert Elevators	2,951	-	2,951
Public and Private Term. Elevs.			
Pt. William and Pt. Arthur	22,496,746	5,534,908	28,031,654
Interior Private and Mfg. Elevs.	3,004,745	1,346,292	4,351,037
Public Elevators in the East	8,589,113	2,299,687	10,888,800
U.S.Lake Ports	1,393,930	70,715	1,464,645
U.S.Atlantic Seaboard Ports	3,441,218	20,454	3,461,672
T O T A L S	42,671,483	1,046,896	53,718,379
July 30, 1926.			
Western Country Elevators	1,710,976	2,104,826	3,815,802
Interior Terminal Elevators	42,050	186,249	228,299
Vancouver Terminal Elevators	175,440	44,769	220,209
Public and Private Terminal Elevators			
Pt. William and Port Arthur	13,155,622	7,103,063	20,258,685
Interior Private & Mfg. Elevators	2,744,477	1,486,918	4,231,395
Public Elevators in the East	9,268,470	6,896,484	16,164,954
U. S. Lake Ports	1,775,775	172,932	1,948,707
U. S. Atlantic Seaboard Ports	1,888,404	439,609	2,328,013
T O T A L S	30,761,214	18,434,850	49,196,064
July 31, 1925.			
Western Country Elevators	3,263,477	2,715,337	5,978,814
Interior Terminal Elevators	208,324	152,047	360,371
Vancouver Terminal Elevators	1,036,131	87,154	1,123,285
Public and Private Terminal Elevators			
Pt. William and Pt. Arthur	9,150,824	6,080,256	15,231,080
Winnipeg Private Terminal Elevs.	3,714	16,181	19,895
Public Elevators in the East	4,816,227	3,533,420	8,349,647
U.S.Lake Ports	2,238,756	21,739	2,260,495
U.S.Atlantic Seaboard Ports	788,528	40,601	829,129
T O T A L S	21,505,981	12,646,735	34,152,716
28/7/30/41			

RECEIPTS AND SHIPMENTS BY CLASSES OF ELEVATORS
Week ended July 25, 1930.

	WHEAT Bush.	BARLEY Bush.	FLAX Bush.	RYE Bush.	TOTAL Bush.
<u>#COUNTRY ELEVATORS, WESTERN DIVISION</u>					
Rcts. - Rail	635,632	124,234	29,008	1,957	801,488
Shpts. - Rail	4,079,430	298,106	298,697	47,927	4,980,040
<u>INTERIOR TERMINAL ELEVATORS</u>					
Rcts. - Rail	4,249	3,423	-	-	7,672
Shpts. - Rail	7,436	98,301	1,629	-	107,449
<u>VANCOUVER ELEVATORS</u>					
Rcts. - Rail	621,600	2,105	-	-	623,705
Shpts. - Vessel	856,231	-	-	-	856,231
Rail	14,863	4,577	483	-	19,923
<u>PRINCE RUPERT ELEVATORS</u>					
Rcts. - Rail			Nil		
Shpts. - Vessel			"		
<u>PUBLIC AND PRIVATE TERMINAL ELEVATORS, FORT WILLIAM AND PORT ARTHUR</u>					
Rcts. - Rail	2,633,850	172,926	201,059	42,520	3,169,681
Shpts. - Vessel	5,364,390	111,867	83,372	-	5,749,151
Rail	176,274	23,051	3,369	-	202,694
<u>#INTERIOR PRIVATE AND MANUFACTURING ELEVATORS</u>					
Rcts. - Rail	279,436	138,200	25,079	620	443,335
Shpts. - Rail	461,970	184,539	20,513	6,678	673,714
<u>PUBLIC ELEVATORS IN THE EAST - GEORGIAN BAY PORTS</u>					
Rcts. - Vessel	103,574	56,582	72,916	-	233,072
Shpts. - Rail	71,437	3,531	10,850	-	92,918
Local and Mill	238,963	93,375	19,757	-	352,095
<u>LOWER LAKE PORTS</u>					
Rcts. - Vessel	1,583,441	39,984	-	-	1,623,425
Rail	25,492	5	2,500	-	27,997
Shpts. - Vessel	1,620,933	-	-	-	1,620,933
Rail	14,733	11,505	2,118	-	28,356
Local and Mill	193,416	35,611	5,600	-	234,661
<u>ST. LAWRENCE PORTS</u>					
Rcts. - Vessel	2,333,343	-	73,329	-	2,406,672
Rail	19,497	2,000	-	-	21,497
Shpts. - Vessel	1,989,411	76,470	16,666	-	2,111,666
Rail	-	-	-	-	-
Local and Mill	189,508	86,180	40,966	-	316,654
<u>SEABOARD PORTS</u>					
Rcts. - Rail			Nil		
Shpts. - Vessel			"		
Local and Mill	25	-	27	-	52
<u>TOTAL PUBLIC ELEVATORS IN THE EAST</u>					
Rcts. - Vessel	4,020,353	96,566	146,245	-	4,263,169
Rail	44,989	2,005	2,500	-	49,494
Shpts. - Vessel	3,610,344	76,470	16,666	-	3,732,993
Rail	86,170	21,036	12,968	-	121,274
Local and Mill	621,912	215,166	56,350	-	903,452

#Week ending July 18, 1930.

Platform Loadings for the week ended July 14, 1930 were as follows: Wheat 30,644, Other Grains 13,180, Total 43,824 bushels.

31/7/30/FED.

U.S. GRAIN - QUANTITY IN STORE-RECEIPTS AND SHIPMENTS
Week ended July 25, 1930.

	WHEAT Bush.	OATS Bush.	BARLEY Bush.	RYE Bush.	CORN Bush.	TOTAL Bush.
Depot Harbour	-	35,465	-	671,557	82,083	789,105
Tiffin-Aberdeen	-	6,055	-	-	x 39,827	90,122
Tiffin C.N.R. Elev. Co.	161,102	141,485	74,877	288,097	-	665,561
Midland Elevators	-	Nil	-	-	-	-
Midland Simcoe	128,256	88,778	-	147,202	74,103	438,339
Port McNicoll Elev. Co.	414,865	-	-	321,913	-	736,778
Collingwood, C.N.R.	-	3,200	-	-	-	3,200
Collingwood Terminal	-	100,294	-	419,021	-	519,315
Owen Sound G.L.	-	136,061	2,250	657,363	21,107	816,781
Goderich Elev. & Transit	-	Nil	-	-	-	-
Sarnia	1,227,109	15,913	-	-	1,100	1,244,122
Kingston Richardson No. 1	-	-	-	-	x5,640	5,680
Port Colborne Maple Leaf	-	-	-	-	40	-
Port Colborne Dom. Govt.	462,072	-	176,767	-	x 40,790	55,253
Montreal Hbr. Commrs.	-	-	-	-	14,463	638,839
Nos. 1, 2 and B.	1,259,988	-	576,369	708,602	x586,902	3,131,871
North Am. Elev. Sorel	953,974	-	-	-	10	953,974
Quebec	-	-	-	-	-	225,574
West St. John, N.B. C.P.R.	-	-	-	183,317	x225,574	183,317
St. John	3,900	-	-	249,331	-	522,020
Halifax, N.S. Can. Govt.	-	47,947	-	112,990	x 268,789	344,176
TOTALS	4,611,266	575,198	830,263	3,759,393	x1,350,761	11,364,027
Same week previous year	2,250,936	396,992	478,705	1,266,522	237,146	5,767,904
					x603,775	

+ Week ending July 18, 1930.

	R E C E I P T S		S H I P M E N T S	
	WATER	RAIL	WATER	RAIL
	GEORGIAN BAY PORTS			
Wheat	-	-	96,000	4,626
Oats	-	-	-	82,900
Rye	-	-	-	30,000
Corn	232,277	-	-	288,141
	LOWER LAKE PORTS			
Wheat	356,937	-	332,388	-
xCorn	9,959	-	-	15,519
	ST. LAWRENCE PORTS			
Wheat	624,247	58,332	365,901	-
Barley	-	-	66,679	2,500
Corn	-	-	-	(Local) 1,000
xCorn	-	-	43,174	" 42,751
	SEABOARD PORTS			
Wheat	-	-	-	(Local) 3
Oats	-	-	-	" 2,997
Rye	-	-	-	50
xCorn	-	-	-	27,978

x Argentine Corn.

30/7/30/AG.

COUNTRY ELEVATORS - WESTERN DIVISION - RECEIPTS, SHIPMENTS & STOCKS
Week ended July 18, 1930.

	WHEAT Bush.	OATS Bush.	BARLEY Bush.	FLAX Bush.	RYE Bush.	TOTAL Bush.
<u>MANITOBA</u>						
On Hand, previous week	3,182,863	512,031	2,300,343	23,858	182,527	6,201,622
Receipts	58,522	23,793	19,571	1,233	1,864	104,983
Totals	3,241,385	535,824	2,319,914	25,091	184,391	6,306,605
Shipments	1,448,714	80,030	197,737	17,108	43,453	1,787,042
In Store	1,792,671	455,794	2,122,173	7,983	140,938	4,519,559

<u>SASKATCHEWAN</u>						
On Hand, previous week	9,013,362	1,531,075	963,416	59,827	542,578	12,110,258
Receipts	288,263	68,441	904	673	7,051	365,332
Totals	9,301,625	1,599,516	964,320	60,500	549,629	12,475,590
Shipments	1,699,650	223,837	94,015	28,969	104,773	2,151,244
In Store	7,601,577	1,375,679	870,244	31,531	444,856	10,323,887

<u>ALBERTA</u>						
On Hand, previous week	7,909,540	503,424	175,922	6,668	129,924	8,725,478
Receipts	288,897	32,000	8,533	51	1,692	331,173
Totals	8,198,437	535,424	184,455	6,719	131,616	9,056,651
Shipments	931,066	94,239	6,945	1,850	8,254	1,042,354
In Store	7,267,346	441,184	177,508	4,869	123,362	8,014,269

TOTAL RECEIPTS AT COUNTRY ELEVATORS

AND PLATFORM LOADINGS

August 1st, 1929 to July 14, 1930.

	WHEAT Bush.	OTHER GRAIN Bush.	TOTAL Bush.
Manitoba	23,671,370	19,591,967	43,263,337
Saskatchewan	134,701,465	26,350,192	161,051,657
Alberta	77,320,132	12,475,461	89,795,593
Total 1929 - 1930	235,692,967	58,417,620	294,110,587
Same period 1928 - 1929	473,786,913	113,384,142	587,171,055

INTERIOR TERMINAL ELEVATORS

Receipts, Shipments and Quantities in Store
Week ended July 25, 1930.

	WHEAT Bush.	OATS Bush.	BARLEY Bush.	FLAX Bush.	RYE Bush.	TOTAL Bush.
<u>CALGARY</u>						
On Hand, previous week	7,295	31,041	3,849	-	128	42,313
Receipts	1,947	-	-	-	-	1,947
Total	9,242	31,041	3,849	-	128	44,260
Shipments - Rail	4,707	-	208	-	-	4,915
In Store	4,535	31,041	3,641	-	128	39,345
<u>EDMONTON</u>						
On Hand, previous week	92,715	226,089	11,926	-	11	330,741
Receipts	1,097	1,754	-	-	-	2,851
Total	93,812	227,843	11,926	-	11	333,592
Shipments - Rail	2,729	95,851	1,292	-	-	99,872
In Store	91,083	131,992	10,634	-	11	233,720
<u>MOOSE JAW</u>						
On Hand, previous week	901,555	4,642	5,849	764	8,485	921,295
Receipts	1,205	1,669	-	-	-	2,874
Total	902,760	6,311	5,849	764	8,485	924,169
Shipments - Rail	-	2,033	129	-	-	2,162
In Store	902,760	4,278	5,720	-764	8,485	922,007
<u>SASKATOON</u>						
On Hand, previous week	1,965,929	22,474	3,275	318	8,862	2,000,858
Receipts	-	-	-	-	-	-
Total	1,965,929	22,474	3,275	318	8,862	2,000,858
Shipments - Rail	-	500	-	-	-	500
In Store	1,965,928	21,974	3,275	318	8,862	2,000,357

30/7/30/FED.

PACIFIC COAST ELEVATORS

Receipts, Shipments and Quantities in Store
Week ending July 25, 1930.

	WHEAT Bush.	OATS Bush.,	BARLEY Bush.	FLAX Bush.	RYE Bush.	TOTAL Bush.
<u>VANCOUVER</u>						
On Hand, previous week	8,720,632	74,431	12,404	52	30,723	8,838,242
Receipts	621,600	2,105	-	-	-	623,705
TOTALS	9,342,232	76,536	12,404	52	30,723	9,461,947
Shipments - Vessel	856,231	-	-	-	-	856,231
Rail	14,863	4,577	483	-	-	19,923
In Store	8,509,480	71,448	11,954	52	27,764	8,620,698
<u>PRINCE RUPERT</u>						
On Hand, previous week	887,394	284	-	-	-	887,678
Receipts						
TOTALS	887,394	284	-	-	-	887,678
Shipments - Vessel						
Rail						
In Store	887,394	284	-	-	-	887,678
<u>VICTORIA</u>						
On Hand, previous week		N11				
Receipts						
TOTALS		N11				
Shipments - Vessel						
Rail						
In Store		N11				

DAILY AND WEEKLY AVERAGE PRICES OF GRAIN
Week ending July 26, 1930.
WESTERN DIVISION
(Basis Vancouver, B.C.)

	July 21	July 22	July 23	July 24	July 25	July 26	Weekly Average
	\$ ¢	\$ ¢	\$ ¢	\$ ¢	\$ ¢	\$ ¢	\$ ¢
No. 1 Northern	.961	.971	.971	.967	.967	.962	.967
No. 2 Northern	.931	.941	.941	.937	.937	.932	.937
No. 3 Northern	.901	.911	.911	.907	.907	.902	.907
No. 4 Northern	.851	.861	.861	.857	.857	.852	.857
No. 5 Northern	.791	.801	.801	.797	.797	.792	.797
No. 6 Northern	.741	.751	.751	.717	.717	.712	.732
Feed	.641	.651	.651	.617	.617	.612	.632
Screenings per ton			no bids				

- 13 -
DAILY AND WEEKLY AVERAGE PRICES OF GRAIN
Week ended July 26, 1930.
WESTERN DIVISION
Basis Fort William and Port Arthur

	July 21	July 22	July 23	July 24	July 25	July 26	Weekly Average
	\$ ¢	\$ ¢	\$ ¢	\$ ¢	\$ ¢	\$ ¢	\$ ¢
WHEAT							
No. 1 Man. Hard	.966	.979	.979	.975	.975	.97	.974
No. 1 Northern	.961	.971	.971	.967	.967	.962	.967
No. 2 Northern	.941	.955	.955	.952	.95	.946	.950
No. 3 Northern	.919	.931	.931	.927	.927	.922	.926
No. 4 Northern	.891	.901	.901	.902	.902	.897	.899
No. 5 Northern	.809	.821	.821	.837	.837	.832	.826
No. 6 Northern	.661	.686	.686	.707	.707	.692	.690
Feed	.536	.546	.571	.577	.567	.542	.557
Rejected No. 1 Northern	.876	.896	.896	.892	.892	.887	.890
No. 2 Northern	.841	.861	.861	.857	.857	.852	.855
No. 3 Northern	.819	.831	.831	.827	.827	.822	.826
Tough No. 1 Northern	.921	.931	.931	.927	.927	.922	.927
No. 2 Northern	.901	.914	.914	.912	.91	.906	.909
No. 3 Northern	.879	.891	.891	.887	.887	.882	.886
Smutty No. 1 Northern	.886	.901	.901	.897	.897	.892	.896
No. 2 Northern	.851	.861	.861	.857	.857	.852	.857
No. 3 Northern	.816	.836	.836	.827	.827	.822	.827
Durum No. 1 Northern	.961	.971	.971	.972	.967	.962	.967
No. 2 Northern	.921	.936	.936	.937	.937	.932	.933
No. 3 Northern	.861	.881	.881	.877	.877	.872	.875
A.R.W. No. 1 Northern	.821	.831	.831	.827	.827	.822	.827
No. 2 Northern	.801	.811	.811	.807	.807	.802	.807
No. 3 Northern	.731	.741	.741	.737	.737	.732	.737
OATS							
No. 2 C.W.	.455	.466	.46	.455	.454	.457	.458
No. 3 C.W.	.425	.436	.43	.425	.424	.427	.428
Ex. No. 1 Feed	.425	.436	.43	.425	.424	.427	.428
No. 1 Feed	.405	.416	.41	.405	.404	.407	.408
No. 2 Feed	.33	.35	.346	.347	.349	.346	.345
Rejected	.267	.275	.269	.267	.269	.266	.269
BARLEY (NEW GRADE)							
2 Row	.445	.46	.455	.452	.457	.462	.455
6 Row	.425	.44	.435	.432	.437	.442	.435
Trebi	.405	.42	.415	.412	.417	.422	.415
No. 3 C.W.	.405	.42	.415	.412	.417	.422	.415
No. 4 C.W.	.364	.379	.374	.371	.376	.381	.374
No. 5 C.W.	.34	.355	.35	.347	.352	.357	.349
No. 6 C.W.	.32	.335	.33	.327	.332	.337	.330
FLAX							
No. 1 N.C.W.	1.765	1.85	1.84	1.81	1.82	1.835	1.820
No. 2 C.W.	1.725	1.81	1.80	1.77	1.78	1.795	1.780
No. 3 C.W.	1.365	1.45	1.44	1.41	1.42	1.435	1.420
Rejected	1.365	1.45	1.44	1.41	1.42	1.435	1.420
RYE							
No. 1 C.W.	.552	.564	.55	.556	.569	.579	.560
No. 2 C.W.	.552	.564	.55	.556	.569	.579	.560
No. 3 C.W.	.502	.514	.50	.506	.519	.529	.512
Rejected No. 2 C.W.	.432	.444	.43	.436	.449	.479	.445
Rejected	.402	.414	.40	.406	.419	.469	.412
Rejected for Ergot	.342	.354	.34	.346	.359	.419	.360
Screenings per ton	1.00	1.00	1.00	1.00	1.00	1.00	1.00

ONTARIO - TORONTO							
x Wheat, Good Milling	1.15	1.15	1.15	1.15	1.15	1.15	1.15
Oats			nominal				
#Corn Amer. No. 2 Yellow	.94	.95	.95	.955	.97	.97	.956
" " No. 3 "	-	-	-	-	-	-	-
Rye No. 2			nominal				
Barley			nominal				
Buckwheat			nominal				

x F.O.B. Shipping Points according to freight.
Track Toronto.

Shipments of Canadian in transit Wheat and Wheatflour from Atlantic Coast Customs Ports of the United States by Countries of Destination and by Seaboard Ports during the month of May, 1930, and the ten months ended May, 1930.

(From U. S. Bureau of Foreign and Domestic Commerce, Washington, D.C.)

	W H E A T		W H E A T F L O U R	
	10 Months		10 Months	
	May 1930	ended May, 1930	May 1930	ended May, 1930
	Bushels		Barrels	
Aden	-	-	60	160
Arabia	-	-	-	210
Argentina	-	2,500	-	60
Australia	-	-	-	1,590
Austria	30,800	30,800	518	12,543
Azores and Madeira	-	4,462	352	8,567
Belgium	247,632	2,748,909	-	185
Belgium Congo	-	-	-	180
Brazil	-	-	364	670
British Africa				
East	-	7,482	48	1,243
South	124,164	526,951	128	2,637
Gold Coast	-	13,182	830	11,558
Nigeria	-	-	94	13,618
Other Br. Africa	-	2,985	-	5,034
British India	-	-	-	-
Br. West Indies				
Barbados	-	-	590	5,276
Jamaica	-	3,128	4,901	69,060
Trinidad	-	-	1,522	12,599
Other Br. W. Indies	-	10,000	1,341	30,988
Br. Guiana	-	-	484	4,462
Br. Honduras	-	-	-	275
Br. Malaya	-	-	328	328
Canada	-	20,961	-	160
Canary Island	-	-	-	723
Chili	-	-	-	25
China	-	-	-	41,081
Colombia	36,758	318,080	2	1,468
Costa Rica	-	-	-	-
Cuba	-	1,000	812	6,252
Czecho-Slovakia	-	-	-	28
Denmark	69,200	520,241	12,594	80,605
Dominican Republic	-	11,532	153	4,295
Dutch East Indies	-	-	-	10
Dutch Guiana	-	-	-	-
Dutch West Indies	-	-	110	3,913
Ecuador	-	-	-	99
Egypt	-	9,446	5,363	43,564
Estonia	-	-	-	525
Finland	332	72,423	4,406	63,240
France	187,546	1,769,688	-	1,115
French Africa	-	-	119	1,755
French Guiana	-	-	-	16,489
French Oceania	-	-	-	163
French West Indies	-	-	1,199	11,078
Germany	362,696	3,379,311	19,232	225,526
Great Britain	3,344,380	26,918,382	42,909	459,802
Greece	-	674,776	5,091	110,830
Guatemala	-	2,500	11	145
Haiti	-	-	149	2,184
Hungary	-	19,540	-	22
Iceland	-	-	257	732
Iraq	26,952	26,952	-	-
Irish Free State	24,000	119,736	679	22,134
Italy	199,450	1,410,121	3,411	24,293
Japan	244,960	479,197	-	200
Java and Madura	-	-	-	171
Kwantung	-	-	-	12,885
Latvia	-	-	-	20
Liberia	-	-	33	887
Malta	-	83,911	2,050	18,403
Morocco	-	-	-	275
Mozambique	1,870	13,029	51	868
Netherlands	664,367	3,386,099	3,058	29,762

29/7/30/FED.

	<u>W H E A T</u>		<u>W H E A T F L O U R</u>	
	10 Months		10 Months	
	May 1930	ended May, 1930	May 1930	ended May, 1930
	Bushels		Barrels	
Newfoundland	-	-	-	-
New Zealand	-	-	-	-
Norway	-	295,444	412	83,085
Other British Oceania	-	-	-	-
Palestine	-	-	390	2,266
Panama	-	-	175	1,981
Persia	-	-	-	400
Peru	-	-	-	600
Philippines	-	-	-	25
Poland	-	-	428	2,777
Portugal	81,872	81,872	414	3,117
Portuguese Africa	3,740	13,101	123	233
Roumania	-	-	-	-
Russia	-	-	-	1,076
Salvador	-	-	-	-
Spain	-	83,411	32	2,258
Spanish Africa	-	-	-	487
Surinam	-	-	64	940
Sweden	-	341,897	1,274	11,046
Switzerland	-	37,836	-	-
Syria	-	-	60	3,240
St. Pierre and Miquelon	-	-	-	-
Turkey	1,837	1,837	-	1,868
Uruguay	-	-	-	-
Venezuela	-	-	5,634	37,124
Virgin Island	-	-	-	116
T O T A L S	5,652,556	43,442,722	122,255	1,519,609

Canadian Wheat and Wheatflour Shipments through the various U.S. Atlantic Seaboard Ports during the month of May, 1930, and the ten months ended May, 1930.

	Philadelphia Bushels	New York Bushels	Portland Bushels	Baltimore Bushels	Boston Bushels	Norfolk Bushels	Total Bushels
<u>W H E A T</u>							
May, 1930	742,748	4,191,773	138,593	543,684	35,758	-	5,652,556
10 Mos. ended May, 1930	2,281,554	36,621,672	890,928	3,329,658	318,910	-	43,442,722
<u>W H E A T F L O U R (Barrels)</u>							
May, 1930	-	100,840	-	-	21,415	-	122,255
10 Mos. ended May, 1930	3,956	1,254,721	112,249	-	148,683	-	1,519,609
<u>O A T S</u>							
May, 1930	-	49,801	-	-	-	-	49,801
10 Mos. ended May, 1930	-	271,797	-	-	-	-	271,797
<u>B A R L E Y</u>							
May, 1930	-	46,195	-	-	-	-	46,195
10 Mos. ended May, 1930	3,000	2,851,733	5,884	8,311	30,846	-	2,899,774
<u>R Y E</u>							
May, 1930	-	-	-	-	-	-	-
10 Mos. ended May, 1930	-	7,293	-	960	-	-	8,253
<u>B U C K W H E A T</u>							
May, 1930	-	4,588	-	-	-	-	4,588
10 Mos. ended	-	81,239	64,061	-	-	-	145,300
<u>TOTAL GRAIN EXCLUDING WHEATFLOUR</u>							
May, 1930	742,748	4,292,357	138,593	543,684	35,758	-	5,753,140
10 Mos. ended May, 1930	2,284,554	39,833,734	960,873	3,338,929	349,756	-	46,767,846

MILL GRINDINGS - JUNE, 1930 - PRELIMINARY STATEMENT
CAPACITY OF MERCHANT MILLS REPORTING 121,186 BARRELS

Name of Grain	Total Quantity of Grain Ground				Grain Stocks on Hand at end of Month		
	Merchant Mills	Custom Mills	Total Ground June, 1930.	Total Ground June, 1929.	Merchant Mills	Custom Mills	Total on Hand
Bushels				Bushels			
EASTERN DIVISION							
Wheat	2,905,303	110,571	3,016,374	3,266,198	1,995,132	94,775	2,089,907
Oats	270,152	98,885	369,037	395,733	773,603	52,283	825,886
Corn	38,042	108,972	147,014	151,497	77,701	56,308	134,009
Barley	8,027	29,083	37,110	19,680	33,910	20,265	54,175
Buckwheat	-	6,028	6,028	5,171	1,733	2,646	4,379
Mixed Grain	11,112	455,056	466,168	542,656	642	16,249	16,891
WESTERN DIVISION							
Wheat	2,150,616	51,402	2,202,018	3,762,602	5,146,277	34,218	5,180,495
Oats	333,875	15,687	349,562	499,648	951,631	2,915	954,546
Corn	14,017	225	14,242	18,657	14,659	-	14,659
Barley	14,284	11,194	25,478	14,234	57,257	4,271	61,528
Buckwheat	-	-	-	-	-	-	-
Mixed Grain	-	35,327	35,327	37,117	-	-	-
DOMINION OF CANADA							
Wheat	5,056,419	161,973	5,218,392	7,028,300	7,141,409	128,993	7,270,402
Oats	604,027	114,572	718,599	895,381	1,725,234	55,198	1,780,432
Corn	52,059	109,197	161,256	170,154	92,360	56,308	148,668
Barley	22,311	40,277	62,588	33,914	91,167	24,536	115,703
Buckwheat	-	6,028	6,023	5,171	1,733	2,646	4,379
Mixed Grain	11,112	490,383	501,495	579,773	642	16,249	16,891

RECAPITULATION - MILL GRINDINGS
AUGUST, 1929 to JUNE, 1930

Months.		WHEAT Bushels	OATS Bushels	CORN Bushels	BARLEY Bushels	MIXED GRAIN Bushels
August, 1929		7,178,447	1,100,655	219,756	49,780	583,577
September, 1929		5,744,564	975,379	200,018	59,223	318,298
October, 1929		6,813,614	1,156,341	269,182	105,953	1,297,265
November, 1929		7,260,750	907,883	222,712	106,894	1,395,403
December, 1929		4,836,600	792,903	130,584	97,945	1,479,791
January, 1930		5,200,656	660,312	203,813	82,384	1,259,810
February, 1930		4,702,053	837,950	184,758	105,405	1,262,302
March, 1930		5,475,020	795,443	149,731	100,383	1,125,891
April, 1930		5,429,137	705,710	163,105	85,798	1,040,206
May, 1930		6,258,322	650,539	186,656	77,425	692,495
June, 1930		5,218,392	718,599	161,256	62,588	501,495
Total to June, 1930		64,117,615	9,305,214	2,141,571	933,778	11,456,533
Total to June, 1929		87,547,969	10,633,945	1,956,302	776,571	13,020,393

MILL PRODUCTION - JUNE, 1930 - PRELIMINARY STATEMENT

DOMINION OF CANADA						
Names of Products	Unit of Measure	Total Production from Grindings		June 1930	June 1930	Total Stocks on Hand June, 1930
		Eastern Division	Western Division	Dominion of Canada	Dominion of Canada	
<u>WHEAT FLOUR</u>						
	Bbls.					
	196 lbs.					
Man. Sp. P. No. 1	"	257,353	166,307	423,660	364,140	395,078
Man. Sp. P. No. 2	"	149,517	118,906	268,423	352,649	164,478
Ont. Winter Straight	"	48,271	-	48,271	39,166	19,453
All Other	"	186,185	178,206	364,391	609,148	288,524
TOTAL FLOUR	"	641,326	463,419	1,104,745	1,365,103	867,533
<u>SUNDRY CEREALS</u>						
Low Grade or F. Fl.	Bbls.	26,209	29,968	56,177	183,361	51,305
Bran	Tons	10,205	7,545	17,750	21,618	11,929
Shorts	"	11,607	8,874	20,481	28,252	17,253
Middlings	"	3,013	1,292	4,305	7,203	3,418
All Other Offal	"	2,615	2,420	5,035	6,622	2,879
Oatmeal	Pounds	729,062	337,208	1,066,270	787,185	627,934
Rolled Oats	"	3,945,360	4,647,870	8,593,230	10,572,672	3,855,379
Corn Fl. & Meal	"	1,772,632	-	1,772,632	2,212,264	938,131
Barley Fl. & Meal	"	-	-	-	-	-
Barley Pot & Pearl	"	112,962	72,618	185,580	181,187	130,271
Buckwheat Flour	"	103,544	-	103,544	82,736	-
<u>GROUND FEED</u>						
Ground Oats (Feed)	"	2,646,679	1,674,960	4,321,639	5,376,979	502,790
Cr. Corn	"	4,765,176	797,576	5,562,752	5,021,592	371,395
Ground Barley	"	1,567,906	1,098,514	2,666,420	1,278,131	309,928
Mixed Grain	"	20,738,575	1,591,443	22,330,018	25,960,266	111,970

/ Including Coarse Grain Offal.

RECAPITULATION - MILL PRODUCTION
AUGUST, 1929 TO JUNE, 1930.

Months	WHEAT FLOUR			OATMEAL	ROLLED OATS	CORN FLOUR AND MEAL	WHEAT FLOUR EXPORTED
	Percentage of Operation	Quantity					
		Barrels	Pounds	Pounds	Pounds	Pounds	Barrels.
August, 1929	54.2	1,607,264	860,672	13,367,389	2,076,274	643,246	
September, 1929	44.7	1,282,553	680,306	11,583,159	2,403,889	492,381	
October, 1929	52.0	1,527,507	1,197,488	13,434,705	2,615,639	554,039	
November, 1929	56.0	1,628,615	929,545	9,527,302	1,720,474	538,038	
December, 1929	36.7	1,073,308	650,723	8,239,655	948,387	604,979	
January, 1930	38.6	1,168,004	1,193,198	6,124,696	1,315,234	502,888	
February, 1930	37.7	1,051,114	734,504	9,528,470	1,475,302	480,587	
March, 1930	40.4	1,219,202	1,210,472	8,439,370	1,014,958	680,697	
April, 1930	42.0	1,215,002	840,212	7,265,954	1,241,786	451,395	
May, 1930	46.6	1,393,982	1,044,472	6,906,250	2,397,964	573,187	
June, 1930	42.7	1,160,922	1,066,270	8,593,230	1,772,632	597,752	
Total to June, 1930	-	14,327,473	10,407,862	103,010,180	18,988,539	6,119,189	
to June, 1929	-	19,290,409	13,164,329	127,504,850	20,453,051	10,973,182	

STATISTICS CANADA LIBRARY
BIBLIOTHEQUE STATISTIQUE CANADA
1010674694