

C A N A D A
DEPARTMENT OF TRADE AND COMMERCE
DOMINION BUREAU OF STATISTICS
AGRICULTURAL BRANCH

Vol. 11

No. 39

Historical File Copy

CANADIAN GRAIN STATISTICS

Week ending

APRIL 24, 1931

(Records for Western Inspection Division supplied by Board of Grain Commissioners for Canada.)

Published by Authority of the Hon. H. H. Stevens, M.P.,
Minister of Trade and Commerce.

♦ ♦ ♦

OTTAWA

1931

I N D E X

General Summary.....	1-6
Canadian Grain in Store by Elevators.....	7
Canadian Grain in Store by Grades.....	8
Comparative Statement of Grain in Store.....	9
Receipts and Shipments of Canadian Grain.....	10
U. S. Grain in Store, Receipts and Shipments.....	11
Receipts, Shipments and Quantities in Store at Country Elevators Western Division.....	12
Receipts, Shipments and Quantities in Store at Interior Terminal Elevators.....	13
Receipts, Shipments and Quantities in Store at Pacific Coast Elevators and Vancouver Prices.....	14
Daily and Weekly Average prices of Grain at Ft. William, Pt. Arthur and Toronto for the week ending April 25, 1931.....	15
Mill Grindings March 1931 Preliminary Statement.....	16
Mill Productions March 1931 Preliminary Statement.....	17

DEPARTMENT OF TRADE AND COMMERCE
DOMINION BUREAU OF STATISTICS - CANADA
AGRICULTURAL BRANCH
(Issued May 1st, 1931)

Dominion Statistician: Chief, Agricultural Branch:	R. H. Coats, B.A., F.S.S. (Hon.), F.R.S.C. T. W. Grindley, Ph.D.
---	---

CANADIAN WHEAT MOVEMENT

During the week ended April 23, 1931, according to elevator reports from Canadian Seaboard ports, 1,044,257 bushels of Canadian wheat were shipped by vessel overseas. The clearances of Canadian wheat from United States Atlantic Seaboard ports amounted to 1,458,000 bushels, making a total export clearance for the week of 2,502,257 bushels.

According to elevator reports for the period from April 1st to April 23rd, 1931, from Canadian Seaboard ports, 4,600,835 bushels of Canadian wheat were shipped by vessel overseas. The clearances of Canadian wheat from the United States Atlantic ports amounted to 4,907,000 bushels, making total export clearances during the period of 9,507,835 bushels from these ports.

Wheat stocks show a decrease compared with the previous week ended April 7th, 1931. The quantity in store on April 24th, 1931, was 164,573,149 bushels, compared with 172,651,244 bushels for the week ended April 17th, 1931, while 182,131,379 bushels were in store for the week ended April 25th last year.

Of the total quantity of wheat in store on April 17th, 3,896,181 bushels are in elevators at the United States Lake and Atlantic Seaboard ports, of which 3,019,372 bushels are stored at Buffalo, N.Y.

The shipments for the week ended April 24th, from the above elevators, classified as Local Requirements, Rail and Vessel Shipments were as follows:-

	<u>Local Requirements</u>	<u>Rail</u>	<u>Vessel</u>
Country Elevators		3,041,088	
Interior Terminal Elevators		456,841	
Vancouver, B.C.		1,333	614,406
Fort William and Port Arthur		21,735	5,492,776
Private and Mill Elevators		552,943	-
Public Elevators in the East	382,685	106,928	1,869,540
T O T A L S	<u>382,685</u>	<u>4,180,868</u>	<u>7,976,722</u>

The western country elevator shipments for the period ended April 17th, amounted to 1,697,833 bushels, compared with 4,801,924 bushels for the week ended April 10th, 1931. For the period from August 1st to April 17th, 1931, wheat delivered at country elevators was 283,935,239, or 61,331,632 bushels more than the total of 222,603,607 bushels for the period from August 1st to April 18th, 1930.

During the week ended April 21st, 2,350 cars of wheat were inspected, compared with 832 cars for the same week last year. Of the 2,350 cars inspected, 915 cars or 38.9 p.c. graded tough and damp and 1,230 cars or 52.4 p.c. were placed within the contract grades.

Navigation opened on the Great Lakes on April 15, 1931, and since that date to April 21, 1931, some 6,300,412 bushels were moved by vessel from the Head of the Lakes. The distribution of which were as follows:- To Canadian Lower Lake ports 4,199,294 bushels; To Montreal 998,710 bushels; To Buffalo 1,102,408 bushels.

The weather in the West is still unsettled and unseasonable. Seeding has been delayed over most of the wheat area by high winds and soil-drifting. For some districts, re-seeding has been necessary. More warmth and precipitation are urgently needed in Saskatchewan and Alberta particularly. In Manitoba, seeding is proceeding normally.

Daily receipts of wheat at western country elevators continue at a high rate, but since large quantities of wheat are in transit from the Head of the Lakes by water and from Buffalo by rail, the last visible statement showed another considerable decrease.

THE FOREIGN SITUATION

The foreign demand for wheat is still satisfactory, although limited to immediate requirements, and there are indications of improving demand from Germany and France, in particular. Germany has only recently revised her milling regulations to favour foreign wheat and Broomhall now reports the probability of a lower German tariff on wheat. France has again raised the allowance of foreign wheat in flour milled in that country - 25 p.c. being permitted at present.

Wheat prices have been firmer than in the preceding week, since better export demand has counter-balanced the variable reports on crop conditions. Conditions in the American winter wheat belt, form a distinct contrast with those in the Canadian spring wheat area. Winter wheat promises a large crop, while the seed conditions in the Canadian West are very discouraging.

World shipments showed a slight decline compared with the preceding week, but were more than double those of the very low shipments of the same week in 1930. North American shipments remained fairly high at nearly $4\frac{1}{2}$ million bushels. Argentine shipments were nearly a million bushels lower at 3,706,000 bushels. Australia, after two weeks of low shipments, made the highest shipments of the present season on 5,608,000 bushels. Russian shipments were much lower than in the preceding week.

Supplies of wheat on passage registered an increase of over a million bushels. European arrivals were almost unchanged from the previous week, but United Kingdom, arrivals were much lower. Liverpool stocks declined to 2,336,000 bushels, about $2\frac{1}{2}$ million bushels under last year's total. The world visible supply continued the downward tendency which began in mid-March.

Southern Hemisphere supplies are still dominating the market. The Argentine exchange rate was weak during the past week, which encouraged demand for the wheat of that country, from France and Italy especially. Australia is rapidly shipping her surplus, especially good demand emanating from the Orient for soft wheats. Continued heavy Australian shipments are expected for two or three months. A cable received from the International Institute at Rome during the past week conveys the information that a rough estimate of the Australia wheat area for next year indicates about $13\frac{1}{2}$ million acres. This is not as serious a reduction as other recent forecasts.

European crop conditions were generally reported as favourable during the past week.

The Canadian Trade Commissioner at Rotterdam reports that imports of wheat into Switzerland during March, 1931, were 1,458,304 bushels compared with 1,193,414 bushels last year. About half the imports were of Canadian origin.

The Canadian Trade Commissioner at Rotterdam sends the following report on conditions in Holland and Germany:

"It is reported that winter wheat in Holland is in fairly good shape. Severe night frost during the first two weeks of March retarded its development but its general position to date is considered to be approximately average.

The wheat mixing law passed the Upper House of the States General on February 21, 1931, and details as to how it was to operate and when it was to come into effect were left to the Minister. No information on these points is as yet available but in the interval an Advisory Committee has been appointed to assist the Government in the execution of the law when it comes into force. This committee consists of representatives of the growers, flour importers, millers and bakers, as well as one or two economists who are supposed to be impartial in their views.

The large Dutch mills have now agreed to increase the price of flour by the equivalent of \$0.04 for 220 lbs. for each per cent of Dutch wheat that they will be compelled to mill under the terms of the mixing law.

Attempts have also been made to make an inventory of the domestic wheat which is now available in the country and it is reported that there is approximately 120,000 tons on hand, out of a crop which last year was roughly 180,000 tons. This large supply at this comparatively late date is regarded in some quarters with considerable scepticism and it is considered possible that in view of the mixing law legislation coming into force some foreign wheat similar in quality to the domestic product has been surreptitiously imported with a view to selling it at an enhanced price as Dutch wheat.

In connection with tentative plans it is probable that the Netherlands will be divided up into a number of districts for purposes of administration and control.

Stocks of domestic wheat in Germany are reported to be getting low and because of this purchases and imports into that country via Rotterdam have been somewhat stimulated during recent weeks. The high duty still remains in force, however, and has a restricting influence."

A report from the Canadian Trade Commissioner at Paris conveys the following information:

"The latest statistics, relative to the wheat trade, issued by the French Government, show that imports of wheat from Canada for the first two months of 1931 were nearly twice as high as the total for the two preceding months and about seven times as great as during the first two months of 1930."

CANADIAN GRAIN STATISTICS - WEEK ENDED APRIL 24, 1931.

Returns received as to stocks of grain in store for the week ending April 24, show a net decrease of 9,912,383 bushels. Stocks for the week were as follows: Wheat 164,573,149, Oats 14,000,647, Barley 24,115,735, Flax 1,922,490, and Rye 13,614,633 bushels, a total of 218,226,654 bushels. Decreases are noted in Wheat of 8,078,095, Oats 303,851, Barley 1,455,468 and Flax 91,512 bushels while Rye increased 16,543 bushels. For the same week last year the amount in store was 229,855,898 bushels made up as follows: Wheat 182,131,379, Oats 13,855,508, Barley 24,424,628, Flax 851,854 and Rye 8,592,529 bushels.

WESTERN COUNTRY ELEVATORS:- Stocks of grain in store in these elevators show a net decrease of 1,722,328 bushels. Decreases are noted in Wheat of 1,343,371, Oats 356,344, Barley 5,817 and Flax 19,086 bushels while Rye shows an increase of 2,290 bushels.

The following table shows the quantities of grain in store at the Country Elevators in each of the Prairie Provinces on April 17, 1931, with comparison for the previous week and the same period 1930.

	<u>MANITOBA</u> Bushels	<u>SASKATCHEWAN</u> Bushels	<u>ALBERTA</u> Bushels	<u>TOTAL</u> Bushels
Wheat	6,228,448	45,531,555	21,931,474	73,691,477
Oats	1,530,228	3,364,046	2,274,213	7,168,487
Barley	2,489,889	840,863	302,348	3,633,100
Flax	135,839	619,649	65,598	821,086
Rye	318,644	1,702,411	175,157	2,196,212
T O T A L S	10,703,048	52,058,524	24,748,790	87,510,362
Previous week	10,894,652	52,835,859	25,502,179	89,232,690
Same period, 1930	10,867,257	50,320,633	21,107,475	82,295,365

The receipts and shipments at the Country Elevators for the week ending April 17, 1931, compared with the previous week and the same period 1930, were as follows:

	<u>R E C E I P T S</u>			<u>S H I P M E N T S</u>		
	Previous Week	Week ended Apr. 17, 1931	Week ended Apr. 18, 1930	Previous Week	Week ended Apr. 17, 1931	Week ended Apr. 18, 1930
Wheat	3,444,764	1,697,833	607,709	4,601,924	3,041,088	1,652,673
Oats	828,514	442,908	169,112	1,138,447	799,240	682,950
Barley	231,850	162,136	63,799	225,869	169,053	263,425
Flax	18,983	19,210	5,356	34,245	38,296	15,549
Rye	101,409	69,804	6,512	98,002	67,588	36,513
T O T A L S	4,625,520	2,391,891	852,488	6,298,487	4,115,265	2,651,110

Platform Loadings shown by Prairie Provinces for the period ending April 14, 1931, were as follows:

	<u>WHEAT</u> Bushels	<u>OTHER GRAIN</u> Bushels	<u>TOTAL</u> Bushels
Manitoba	12,343	19,837	32,180
Saskatchewan	48,766	131,715	180,481
Alberta	31,658	17,593	49,251
T O T A L S	92,767	169,145	261,912
Period ending April 14, 1930	34,655	19,736	54,391
+ Increase -Decrease	+ 58,112	+ 149,409	+ 207,521

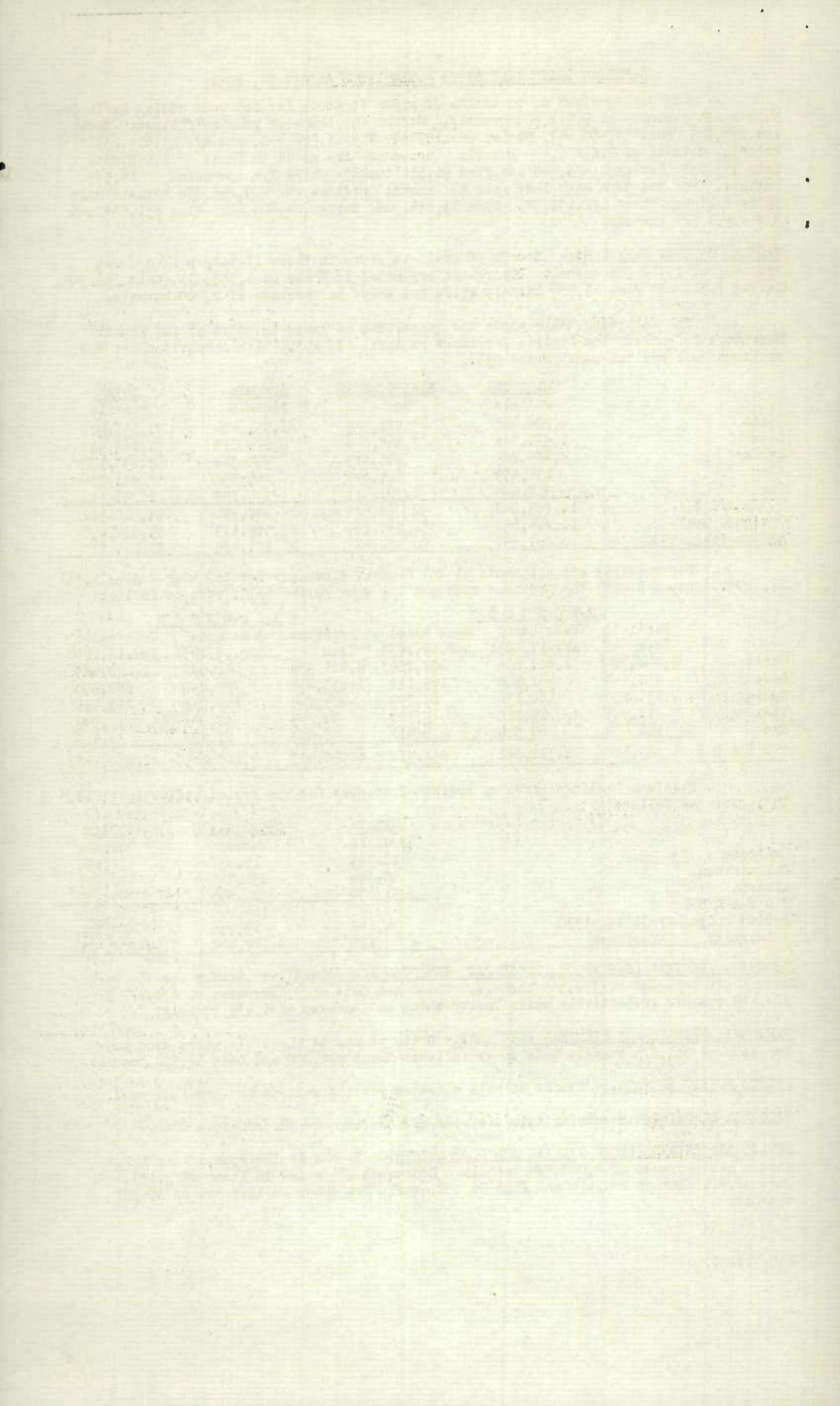
INTERIOR TERMINAL (SASKATOON, MOOSE JAW, EDMONTON AND CALGARY).- Stocks for the week show a net decrease of 772,665 bushels. Wheat and Oats show decreases of 670,224 and 104,410 bushels respectively while Barley shows an increase of 1,969 bushels.

VANCOUVER PRIVATE AND TERMINAL ELEVATORS.- Grain stocks at these elevators show an increase of 912,878 bushels made up as follows: Wheat 878,290 and Oats 34,588 bushels.

PRINCE RUPERT ELEVATOR.- Stocks at this elevator are the same as for previous week.

VICTORIA ELEVATOR.- Stocks at this elevator are the same as the previous week.

PUBLIC AND PRIVATE (FORT WILLIAM AND PORT ARTHUR).- Stocks at the Head of the Lakes show a net decrease of 4,060,594 bushels. Decreases are noted in Wheat of 3,139,443, Oats 62,911, Barley 848,656 and Flax 96,172, while Rye shows an increase of 86,588 bushels.



The stocks in store at the Head of the Lakes compared with the same week last year were as follows:-

	Week ended April 24, 1931	Week ended April 25, 1930	+ - -	Increase Decrease
Wheat	48,653,932	54,130,277	-	5,476,345
Oats	3,884,561	3,254,190	+	630,371
Barley	13,150,949	14,368,646	-	1,217,697
Flax	1,024,105	380,600	+	643,505
Rye	8,393,195	4,598,333	+	3,794,862
TOTALS	75,106,742	76,732,046	-	1,625,304

The receipts (including transfers) at the Head of the Lakes for the period ending April 24, 1931, with comparative figures for the same week last year were as follows:-

	Week ended April 24, 1931	Week ended April 25, 1930	+ - -	Increase Decrease
Wheat	2,397,844	331,582	+	2,066,262
Oats	697,028	119,212	+	577,816
Barley	78,883	23,751	+	55,132
Flax	33,241	6,433	+	26,808
Rye	86,674	15,965	+	70,709
TOTALS	3,293,670	496,943	+	2,796,727

Preliminary figures showing receipts and shipments at the Head of the Lakes also Vancouver and Prince Rupert for the period August 1st, 1930 to April 24, 1931, compared with the same period last year.

	FORT WILLIAM & PORT ARTHUR		VANCOUVER	
	Receipts	Shipments	Receipts	Shipments
Wheat	135,929,496	123,108,178	61,649,802	55,168,551
Oats	10,235,394	10,302,594	624,059	489,040
Barley	12,289,639	11,587,742	10,657	11,365
Flax	3,023,021	2,266,431	1,493	356
Rye	5,553,643	2,493,913	27,971	20,382
TOTALS	167,031,193	149,758,858	62,313,982	55,689,694
Same period last year	111,678,222	95,689,213	44,437,311	38,476,764
+ Increase - Decrease	+55,352,971	+54,069,645	+17,876,671	+17,212,930

	PRINCE RUPERT		VICTORIA	
	Receipts	Shipments	Receipts	Shipments
TOTALS	274,851	94	936,166	-
Same period last year	1,118,585	-	-	2,338
+ Increase - Decrease	-843,734	+94	+936,166	-2,338

INTERIOR PRIVATE AND MILL ELEVATORS.- Grain stocks for the week show a decrease of 302,353 bushels made up as follows:- Wheat 226,390, Oats 57,112, Barley 11,275, Flax 7,565 and Rye 11 bushels.

Stocks in store at the Country Interior Terminal, Public and Private at the Head of the Lakes, Winnipeg and Vancouver, compared with the same week last year were as follows:

	Week ended April 24, 1931	Week ended April 25, 1930	+ - -	Increase Decrease
Wheat	147,836,968	142,579,615	+	5,257,353
Oats	12,449,695	11,558,011	+	891,684
Barley	18,662,588	21,455,313	-	2,792,725
Flax	1,890,443	887,148	+	1,003,295
Rye	10,573,532	6,806,942	+	3,866,590
TOTALS	191,513,226	183,287,029	+	8,226,197

EASTERN ELEVATORS - LAKE PORTS.- Grain stocks for the week show a net decrease of 373,043 bushels. Decreases are noted in; Wheat 142,893, Barley 371,944 and Rye 93,293 bushels, while Oats and Flax show increases of 204,040 and 31,047 bushels respectively.

EASTERN ELEVATORS - SEABOARD PORTS (CANADIAN GRAIN).- Grain stocks for the week show a net decrease of 290,720 bushels. Decreases are noted in; Wheat 273,039, Barley 57,979 and Rye 22,000 bushels, while Oats show an increase of 42,298 bushels.

The receipts of the above by classes of ports were as follows:-

	WHEAT		TOTAL GRAIN	
	Vessel	Rail	Vessel	Rail
Georgian Bay Ports	940,271	-	940,271	-
Lower Lake Ports	1,071,532	996	1,901,800	996
Montreal, and Quebec	170,720	53,319	322,798	74,118
Seaboard Ports	-	-	-	-
TOTALS	2,182,523	54,315	3,164,869	75,114

Shipments overseas of Canadian Grain from St. Lawrence and Seaboard Ports were as follows:-

		To U.K.	To O.C.
Montreal, Que.	Wheat	-	165,068 Bushels
	Barley	-	8,333 Bushels
Quebec, Que.	Wheat	264,783 Bushels	-

PUBLIC ELEVATORS IN THE EAST (U.S. GRAIN).- U.S. Grain stocks show a net decrease of 1,921,880 bushels compared with the same week last year. Decreases are noted in Oats of 1,283,699, Barley 580,261, Rye 461,036 and Corn 375,095 bushels, while Wheat shows an increase of 778,211 bushels.

The quantities in store by classes of ports with increases and decreases are:-

	x Week ended April 24, 1931	1/Week ended April 25, 1930	+ Increase - Decrease
At Georgian Bay Ports	5,362,735	8,172,675	- 2,809,940
At Lower Lake Ports	1,145,670	380,453	+ 765,217
At St. Lawrence Ports	2,900,435	2,661,392	+ 239,043
At Seaboard Ports	949,415	1,065,615	- 116,200
T O T A L S	10,358,255	12,280,135	- 1,921,880

x Included in the above 500,389 bushels of Argentine Corn and 43,355 bushels of African Corn.

1/ Included in the above 1,015,782 bushels of Argentine Corn.

Shipments of U.S. Grain from Atlantic Seaboard Ports were as follows:-

		To U.K.	To O.C.
Montreal, Que.	Wheat	-	62,000 Bushels

U.S. LAKE PORTS.- Canadian grain shows a net decrease of 2,993,352 bushels. Wheat and Barley show decreases of 2,740,754 and 252,862 bushels respectively, while Flax shows an increase of 264 bushels.

U.S. ATLANTIC SEABOARD PORTS.- Canadian grain shows a net decrease of 310,206 bushels. Decreases are noted in Wheat of 420,271 and Oats 4,000 bushels, while Barley and Rye show increases of 71,096 and 42,969 bushels respectively.

Inspection returns for the week ending April 21, 1931, with comparison for the previous year were as follows:-

	x Week ended April 21, 1931	1/Week ended April 21, 1930	+ Increase - Decrease
Wheat	2,350	832	+ 1,518
Oats	485	151	+ 334
Barley	111	71	+ 40
Flax	27	16	+ 11
Rye	47	20	+ 27
Mixed Grain	3	1	+ 2
Screenings	-	-	-
Buckwheat	-	1	- 1
T O T A L S	3,023	1,092	+ 1,931

The number of bushels of grain shipped from Western to Canadian Eastern Points over the C.P. R. and C.N.R. for the week ending April 21, 1931, and the period from August 1st, 1930 to April 21, 1931.

	Week ending April 21, 1931					Period Aug. 1, 1930 to April 21, 1931				
	WHEAT	OATS	BARLEY	FLAX	RYE	WHEAT	OATS	BARLEY	FLAX	RYE
Via C.P.R.	-	5,410	-	-	-	2,100	119,701	-	-	-
Via C.N.R.	-	40,940	-	-	-	7,735	873,429	2,999	-	-
T O T A L S	-	46,350	-	-	-	9,835	993,130	2,999	-	-

DULUTH.- The receipts by rail of Canadian grain at Duluth for the week ending April 25, 1931, were nil. Lake shipments were nil. Rail shipments were nil. For the period from August 1st, 1930, to April 25, 1931, rail receipts amounted to Wheat 439,374, Barley 202,821 and Flax 736 bushels. Lake shipments amounted to Wheat 365,111, Oats 703, Barley 166,524 and Rye 24,812 bushels, while rail shipments amounted to Wheat 75,032, Oats 4,212 and Barley 61,138 bushels.

Lake Shipments from Head of Lakes for the period from the opening of navigation to April 21st, 1931.

	Buffalo	Other U. S. Lake Ports	Lower Lake Ports	Montreal	Quebec	Total
	Bushels	Bushels	Bushels	Bushels	Bushels	Bushels
Wheat	1,102,408	-	4,199,294	998,710	-	6,300,412
Oats	-	-	659,478	124,113	139,715	923,306
Barley	96,678	-	1,159,640	118,935	-	1,375,253
Flaxseed	-	-	31,000	-	-	31,000
Rye	-	-	Nil	-	-	-
T O T A L S	1,199,086	-	6,049,412	1,241,758	139,715	8,629,971
Same week, 1930			Season of navigation not open until May 7, 1930.			

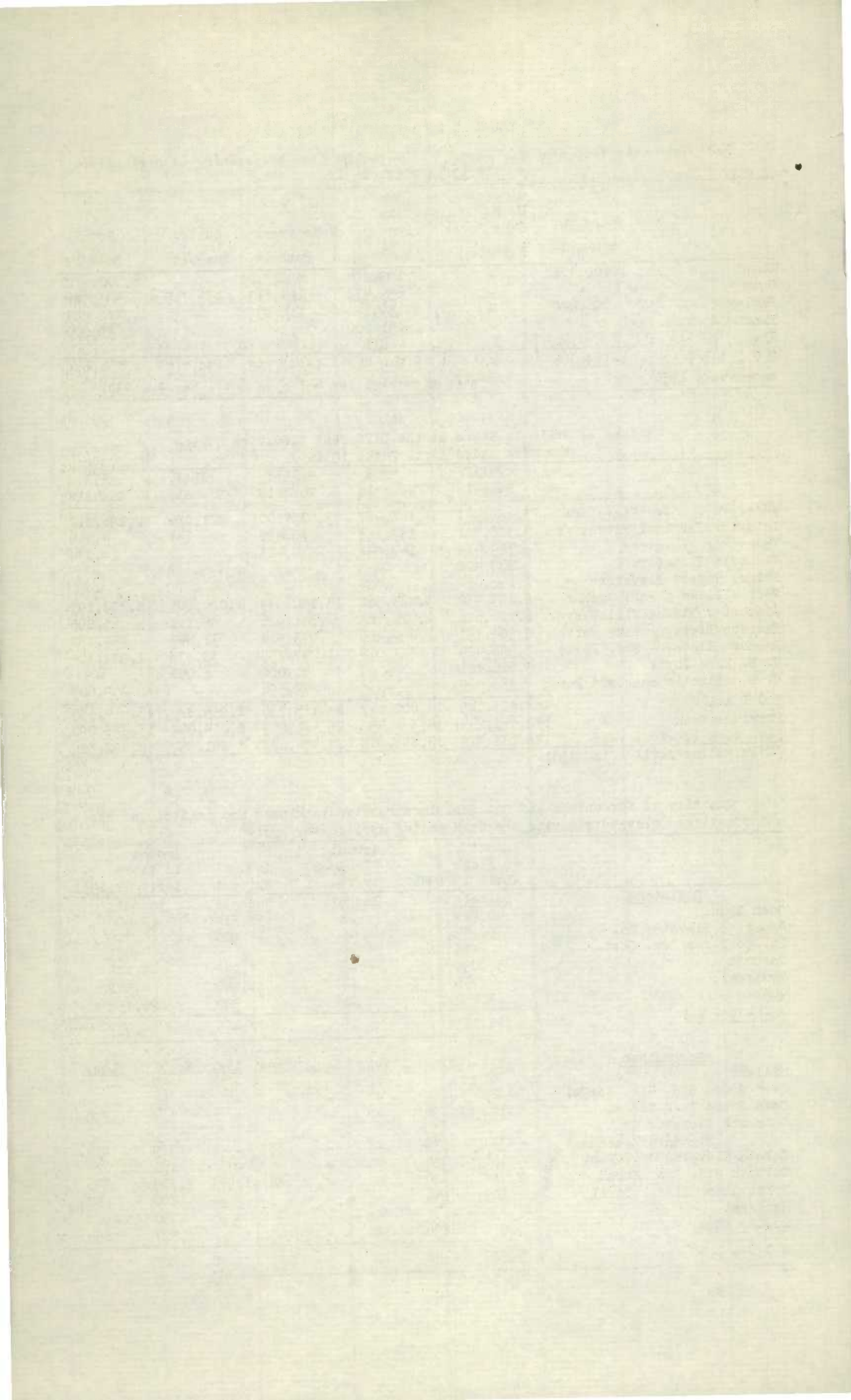
Stocks of Grain in Store at the Different Elevators during the week ended April 24th, 1931.

	WHEAT Bushels	OATS Bushels	BARLEY Bushels	FLAX Bushels	RYE Bushels
Western Country Elevators	73,691,477	7,168,487	3,633,100	821,086	2,196,212
Interior Terminal Elevators	3,322,411	133,151	33,488	141	4,246
Vancouver Elevators	13,729,414	140,941	4,403	-	14,274
Victoria Elevators	933,422	-	-	-	-
Prince Rupert Elevators	1,166,474	234	-	-	-
Fort William & Port Arthur	48,653,932	3,884,561	13,150,949	1,024,105	8,393,195
Interior Pte. & Mill Elevs.	6,116,616	1,026,785	1,841,926	45,111	65,605
Eastern Elevs. - Lake Ports	5,504,797	1,099,420	4,073,514	31,047	754,132
Eastern Elevs. - Sbd. Ports	7,558,425	517,018	1,247,759	33,335	1,927,364
U. S. Lake Ports	3,516,121	-	51,000	1,000	-
U. S. Atlantic Seaboard Ports	380,060	-	79,596	-	259,605
T O T A L S	164,573,149	14,000,647	24,115,735	1,955,825	13,614,633
Previous week	172,651,244	14,304,498	25,571,203	2,014,002	13,598,090
Same week previous year	182,131,379	13,855,508	24,424,628	851,854	8,592,529
Week ending April 17th, 1931.					

Quantity of Screenings and Oat Scalpings received, shipped and in Store at the undermentioned elevators during the week ending April 24th, 1931.

	Amount in Store April 17, 1931	Amount Received by Vessel	Amount Shipped	Amount in Store April 24, 1931
Scalpings	Bushels	Bushels	Bushels	Bushels
Owen Sound	40,914	-	38,314	2,600
Goderich Elevator Co.	5,645	-	900	4,745
Pt. Colborne Dom. Govt.	423	-	-	423
Toronto	56,098	-	7,252	48,846
Montreal	6,041	-	1,500	4,541
Quebec	29,252	-	500	28,752
T O T A L S	138,373	-	48,466	89,907

Screenings	Tons	Lbs.	Tons	Lbs.	Tons	Lbs.	Tons	Lbs.
Midland	57	-	-	-	-	-	57	-
Owen Sound Std. Rec. Scrags.	25	-	-	-	-	-	25	-
Owen Sound Feed Scrags.	122	1,890	-	-	5	-	117	1,890
Goderich Elevator Co.								
Standard Recleaned	344	176	-	-	15	-	329	176
Sarnia Elevator Co., Rec.	161	1,020	-	-	-	-	161	1,020
Toronto Std. Rec. Scrags.	2,798	320	-	-	88	1,984	2,709	336
North Amer. Elev., Sorel	807	144	-	-	7	64	800	80
Montreal	30	-	-	-	-	-	30	-
Quebec, Que.	977	896	-	-	-	-	977	896
T O T A L S	5,323	446	-	-	116	48	5,207	398



CANADIAN GRAIN IN STORE, APRIL 24th, 1931.

	WHEAT	OATS	BARLEY	FLAX	RYE	TOTAL
	Bushels	Bushels	Bushels	Bushels	Bushels	Bushels
<u>WESTERN COUNTRY ELEVATORS</u>						
Manitoba	6228448	1530228	2489889	135839	318644	10703048
Saskatchewan	45531555	3364046	840863	619649	1702411	52058524
Alberta	21931474	2274213	302348	65598	175157	24748790
TOTAL WESTERN COUNTRY ELEVATORS	73591477	7168487	3633100	821086	2196212	87510362
Calgary Can. Govt. Elevs.	95834	14848	3442	-	122	114246
Edmonton Can. Govt. Elevs.	315445	76177	9698	-	-	401320
Moose Jaw Can. Govt. Elevs.	843066	14683	13187	141	4124	875201
Saskatchewan Can. Govt. Elevs.	2068066	27443	7161	-	-	2102670
TOTAL INTERIOR TERML. ELEV.	3322411	133151	33488	141	4246	3493437
VANCOUVER TERML. AND PUB. ELEV.	13729414	140941	4403	-	14274	13889032
VICTORIA ELEVATORS	933422	-	-	-	-	933422
PRINCE RUPERT	1166474	284	-	-	-	1166758
<u>FORT WILLIAM</u>						
G. T. Pacific	3549429	250619	519452	42050	845058	5206608
<u>PORT ARTHUR</u>						
Sask. Pool No. 4	4016051	94511	22255	219308	442698	4794823
Sask. Pool No. 5	1822465	8322	-	-	-	1830787
Sask. Pool No. 6	5318163	204416	90289	254053	220273	6087194
Sask. Pool No. 7	5307248	24115	-	-	8020	5339383
Sask. Pool No. 8	2401407	1845	-	-	-	2403252
Man. Pool No. 1	698215	105971	64469	-	-	868655
Man. Pool No. 2	1238869	9429	-	-	-	1248298
Canadian Govt. Elevators	134455	8393	99196	42892	76967	361903
Private Terminal Elevators	24167630	3176940	12355288	465802	6800179	46965839
TOTAL AT FT. WILLIAM & PT. ARTHUR	48653932	3884561	13150949	1024105	8393195	75106742
INTERIOR PTE. & MILL ELEV.	6116616	1026785	1841926	45111	65605	9096043
<u>EASTERN ELEVATORS</u>						
Depot Harbour Afloat	-	-	350000	-	-	350000
Tiffin C. M. R.	35775	9159	-	-	106190	151124
Midland Elevators	62063	1550	10292	-	3499	77404
Midland Simcoe	252422	325807	1004986	-	41490	1624705
Port McNicoll	467894	1000	11238	-	38105	518237
Collingwood	53980	3000	-	-	-	56980
Owen Sound G. L. Elevator Co.	208586	30592	21932	-	57891	319001
Goderich Elev. and Transit	338533	157448	x 90494	-	-	586475
Goderich West Can. Flour Mill	194027	-	-	-	-	194027
Sarnia	715102	23312	233866	-	-	972280
Pt. Colborne Dom. Govt. Elevs.	1123064	154016	736034	31047	1559	2045720
Pt. Colborne Maple Leaf	934489	232811	22609	-	10796	1200705
Toronto	598064	160264	409808	-	91939	1260075
Kingston Richardson No. 1	29422	461	11898	-	-	41781
Kingston Elevator Co.	274920	-	638809	-	402663	1316392
Prescott	216456	-	531548	-	-	748004
TOTAL EASTERN ELEV.- LAKE PORTS	5504797	1099420	4073514	31047	754132	11462910
Montreal Hbr. Commrs.	4287912	456161	918926	-	1244963	6907962
St. Lawrence Mfg. Co.	126149	6031	-	-	-	132180
Ogilvie Flour Mills	217	14211	3392	-	-	17820
North Amer. Elev. Ltd., Sorel	880720	49264	106590	A 33335	-	1069909
Quebec Hbr. Commrs.	2253781	21351	218833	-	75229	2569194
West St. John	370	-	18	-	59816	60204
Halifax	9276	-	-	-	547356	556632
TOTAL EASTERN ELEV.- SBD. PORTS	7558425	547018	1247759	A 33335	1297364	11313901
TOTAL QUANTITY IN CANADA	160076968	14000647	23985139	1954825	13355028	213972607
Duluth	25000	-	51000	1000	-	77000
Buffalo	2807000	-	-	-	-	2807000
Buffalo Afloat	212000	-	-	-	-	212000
Erie, Pa.	472121	-	-	-	-	472121
TOTAL U. S. LAKE PORTS	3516121	-	51000	1000	-	3568121
Philadelphia	12000	-	-	-	-	12000
Portland	-	-	-	-	216605	216605
Baltimore	126060	-	-	-	-	126060
New York	242000	-	-	-	43000	285000
Boston, Mass.	-	-	79596	-	-	79596
TOTAL U. S. ATLANTIC SBD. PORTS	380060	-	79596	-	259605	719261
TOTAL QUANTITY IN STORE	164573149	14000647	24115735	1955825	13614633	218259989

* Week ended April 17th, 1931.

x Includes Wild Oats.

A Screenings.

1/5, 31, 22.

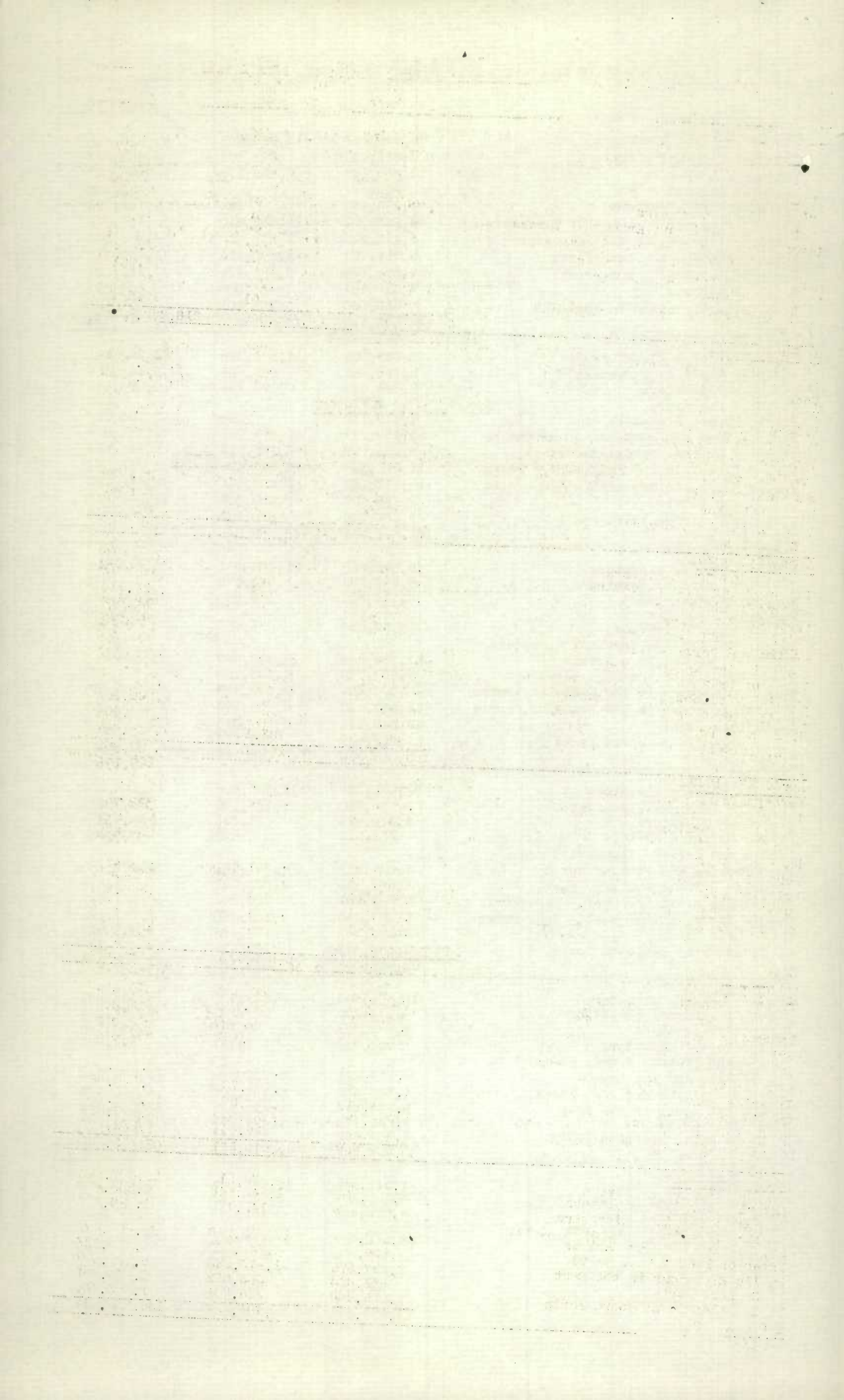
Grades of Canadian Grain in Store at Public and Private Elevators (Head of the Lakes)
Interior Terminal Elevators, Vancouver and Victoria Terminal and Private Elevators and
Public Elevators in the East for the week ending April 24, 1931.

	Public and Terminal Elevators Bushels	Interior Terminal Elevators Bushels	Vancouver & Victoria Terminal & Private Elevators Bushels	Eastern Elevator Lake Ports Bushels	Eastern Elevator Sbd. Ports Bushels	Total Bushels
WHEAT						
No. 1 Hard	2,914,807	38,735	1,654,577	1,012,787	74,967	4,795,873
No. 1 Northern	16,309,236	2,191,520	1,948,946	1,694,387	5,127,147	27,271,236
No. 1 Northern Dr.	-	-	-	-	-	-
No. 2 Northern	7,011,089	954,222	3,661,819	1,049,179	1,236,743	13,913,052
No. 2 Northern Dr.	-	5,012	-	-	-	5,012
No. 3 Northern	2,506,613	22,915	1,364,911	292,378	59,008	4,245,825
No. 4 Wheat	2,307,767	14,201	1,122,464	388,340	62,191	3,894,963
No. 5 Wheat	220,781	5,526	302,072	66,688	745	595,812
No. 6 Wheat	27,135	366	17,839	14,980	21,812	82,132
No. 4 Special	163,226	-	-	-	-	163,226
No. 5 Special	85,280	-	-	-	-	85,280
No. 6 Special	28,018	-	-	-	-	28,018
Feed	56,038	-	28,336	14,957	38,456	137,787
Other	17,923,942	89,914	4,561,872	971,101	937,356	24,484,185
T O T A L S	48,653,932	3,322,411	14,662,836	5,504,797	7,558,425	79,702,401
OATS						
No. 1 C.W.	7,679	-	-	-	-	7,679
No. 2 C.W.	517,105	20,827	19,226	11,651	10,076	578,885
No. 3 C.W.	719,481	54,963	56,740	242,961	5,239	1,079,384
Special Feed	11,041	-	-	-	-	11,041
Ex. No. 1 Feed	72,224	5,030	-	226	1,219	78,699
No. 1 Feed	472,938	20,621	22,366	198,423	148,506	862,854
No. 2 Feed	163,744	8,458	4,722	231,560	136,971	545,455
No. 3 Feed	85,648	-	-	-	34,062	119,710
Private Elevators	2,154	-	-	-	-	2,154
Other	1,832,547	23,252	37,887	414,599	210,945	2,519,230
T O T A L S	3,884,561	133,151	140,941	1,099,420	547,018	5,805,091
NEW GRADE BARLEY						
No. 3 Ex. C.W. 6 Row	88,539	4,793	-	-	42,649	135,981
No. 2 C. W. 6 Trebi	25,511	-	-	-	-	25,511
3 Ex. C.W. Trebi	131,829	-	-	-	50,702	182,531
3 Ex. C.W. 2 Row	22,391	-	-	-	-	22,391
3 C.W.	11,983,704	15,026	-	3,505,276	793,595	16,297,601
4 C.W.	482,987	2,196	99	195,997	200,637	881,916
5 C.W.	201,451	3,052	-	3,575	52,464	260,542
6 C.W.	22,273	-	-	-	-	22,273
Private Elevator	126,103	-	-	-	-	126,103
Other	66,161	8,421	-	18,666	29,143	122,391
Feed	-	-	-	-	78,569	78,569
Afloat	-	-	-	350,000	-	350,000
T O T A L S	13,150,949	33,488	99	4,073,514	1,247,759	18,505,809
FLAX						
No. 1 C.W.	862,470	18	575	31,047	-	894,110
No. 2 C.W.	98,319	40	-	-	-	98,359
No. 3 C.W.	30,799	46	-	-	-	30,845
No. 4 C.W.	7,828	-	-	-	-	7,828
Other	24,689	37	-	-	-	24,726
T O T A L S	1,024,105	141	575	31,047	-	1,055,868
RYE						
No. 1 C.W.	553,529	-	-	129,249	-	682,778
No. 2 C.W.	6,668,679	-	14,274	368,813	167,648	7,219,414
No. 3 C.W.	1,020,150	4,181	-	256,070	711,845	1,992,246
No. 4 C.W.	13,373	-	-	-	-	13,373
Rejected	38,816	65	-	-	-	38,881
Other	98,648	-	-	-	1,047,871	1,146,519
T O T A L S	8,393,195	4,246	14,274	754,132	1,927,364	11,093,211
Total Quantity in Store						
	75,106,742	3,493,437	14,818,725	11,462,910	11,280,566	116,162,380

GENERAL LEDGER						
DATE	DESCRIPTION	DEBIT	CREDIT	DEBIT	CREDIT	BALANCE
1900						
Jan 1	Balance			100.00		100.00
Jan 5	Interest			5.00		105.00
Jan 10	Interest			5.00		110.00
Jan 15	Interest			5.00		115.00
Jan 20	Interest			5.00		120.00
Jan 25	Interest			5.00		125.00
Jan 30	Interest			5.00		130.00
Feb 1	Interest			5.00		135.00
Feb 5	Interest			5.00		140.00
Feb 10	Interest			5.00		145.00
Feb 15	Interest			5.00		150.00
Feb 20	Interest			5.00		155.00
Feb 25	Interest			5.00		160.00
Feb 28	Interest			5.00		165.00
Mar 1	Interest			5.00		170.00
Mar 5	Interest			5.00		175.00
Mar 10	Interest			5.00		180.00
Mar 15	Interest			5.00		185.00
Mar 20	Interest			5.00		190.00
Mar 25	Interest			5.00		195.00
Mar 30	Interest			5.00		200.00
Apr 1	Interest			5.00		205.00
Apr 5	Interest			5.00		210.00
Apr 10	Interest			5.00		215.00
Apr 15	Interest			5.00		220.00
Apr 20	Interest			5.00		225.00
Apr 25	Interest			5.00		230.00
Apr 30	Interest			5.00		235.00
May 1	Interest			5.00		240.00
May 5	Interest			5.00		245.00
May 10	Interest			5.00		250.00
May 15	Interest			5.00		255.00
May 20	Interest			5.00		260.00
May 25	Interest			5.00		265.00
May 30	Interest			5.00		270.00
Jun 1	Interest			5.00		275.00
Jun 5	Interest			5.00		280.00
Jun 10	Interest			5.00		285.00
Jun 15	Interest			5.00		290.00
Jun 20	Interest			5.00		295.00
Jun 25	Interest			5.00		300.00
Jun 30	Interest			5.00		305.00
Jul 1	Interest			5.00		310.00
Jul 5	Interest			5.00		315.00
Jul 10	Interest			5.00		320.00
Jul 15	Interest			5.00		325.00
Jul 20	Interest			5.00		330.00
Jul 25	Interest			5.00		335.00
Jul 30	Interest			5.00		340.00
Aug 1	Interest			5.00		345.00
Aug 5	Interest			5.00		350.00
Aug 10	Interest			5.00		355.00
Aug 15	Interest			5.00		360.00
Aug 20	Interest			5.00		365.00
Aug 25	Interest			5.00		370.00
Aug 30	Interest			5.00		375.00
Sep 1	Interest			5.00		380.00
Sep 5	Interest			5.00		385.00
Sep 10	Interest			5.00		390.00
Sep 15	Interest			5.00		395.00
Sep 20	Interest			5.00		400.00
Sep 25	Interest			5.00		405.00
Sep 30	Interest			5.00		410.00
Oct 1	Interest			5.00		415.00
Oct 5	Interest			5.00		420.00
Oct 10	Interest			5.00		425.00
Oct 15	Interest			5.00		430.00
Oct 20	Interest			5.00		435.00
Oct 25	Interest			5.00		440.00
Oct 30	Interest			5.00		445.00
Nov 1	Interest			5.00		450.00
Nov 5	Interest			5.00		455.00
Nov 10	Interest			5.00		460.00
Nov 15	Interest			5.00		465.00
Nov 20	Interest			5.00		470.00
Nov 25	Interest			5.00		475.00
Nov 30	Interest			5.00		480.00
Dec 1	Interest			5.00		485.00
Dec 5	Interest			5.00		490.00
Dec 10	Interest			5.00		495.00
Dec 15	Interest			5.00		500.00
Dec 20	Interest			5.00		505.00
Dec 25	Interest			5.00		510.00
Dec 30	Interest			5.00		515.00
Total						

CANADIAN GRAIN IN STORE - COMPARATIVE STATEMENT, 1926 - 1931.

	WHEAT Bushels	OTHER GRAIN Bushels	TOTAL Bushels
April 24, 1931			
Western Country Elevators	73,691,477	13,818,885	87,510,362
Interior Terminal Elevators	3,322,411	171,026	3,493,437
Vancouver Elevators	13,729,414	159,618	13,889,032
Victoria Elevators	933,422	-	933,422
Prince Rupert Elevators	1,166,474	284	1,166,758
Fort William and Port Arthur Elevators	48,653,932	26,452,810	75,106,742
Interior Private and Mill Elevators	6,116,616	2,979,427	9,096,043
Eastern Elevators - Lake Ports	5,504,797	5,958,113	11,462,910
Eastern Elevators - Sbd. Ports	7,558,425	3,755,476	11,313,901
U. S. Lake Ports	3,516,121	52,000	3,568,121
U. S. Atlantic Seaboard Ports	380,060	339,201	719,261
T O T A L S	164,573,149	53,686,840	218,259,989
April 25, 1930			
Western Country Elevators	67,422,085	14,873,280	82,295,365
Interior Terminal Elevators	3,765,983	685,901	4,451,884
Vancouver Elevators	9,843,844	196,289	10,040,133
Victoria Elevators	3,216	-	3,216
Prince Rupert Elevators	1,160,112	284	1,160,396
Fort William and Port Arthur Elevators	54,130,277	22,601,769	76,732,046
Interior Private & Mfg. Elevators	6,254,098	2,122,525	8,376,623
Public Elevs. in the East - Lake Ports	11,244,559	2,011,125	13,255,684
Public Elevs. in the East - Sbd. Ports	10,092,081	2,462,945	12,555,026
U. S. Lake Ports	9,188,750	2,409,300	11,598,050
U. S. Atlantic Seaboard Ports	3,786,946	830,277	10,617,223
T O T A L S	182,891,951	48,193,695	231,085,646
April 26, 1929.			
Western Country Elevators	45,005,325	21,005,971	66,011,296
Interior Terminal Elevators	6,993,494	343,379	7,336,873
Vancouver Elevators	6,775,349	148,865	6,924,214
Victoria Elevators	35,664	-	35,664
Prince Rupert Elevators	39,836	1,654	41,490
Public and Private Terminal Elevators			
Fort William and Port Arthur	57,769,296	13,715,957	71,485,253
Interior Private and Mfg. Elevators	4,391,778	2,363,199	6,754,977
Public Elevators in the East-Lake Ports	10,096,609	2,825,823	12,922,432
Public Elevators in the East-Sbd. Ports	12,341,216	2,658,793	15,000,009
U. S. Lake Ports	15,042,114	2,207,385	17,249,499
U. S. Atlantic Seaboard Ports	11,052,469	783,132	11,835,601
T O T A L S	169,543,150	46,054,158	215,597,308
April 27, 1928.			
Western Country Elevators	31,058,699	12,583,805	43,642,504
Interior Terminal Elevators	4,565,790	1,103,479	5,669,269
Vancouver Elevators	3,910,923	51,733	3,962,656
Prince Rupert Elevators	299,512	876	300,388
Public and Private Terminal Elevs.			
Fort William and Port Arthur	66,089,939	9,791,381	75,881,320
Interior Private and Mfg. Elevs.	4,681,132	2,672,387	7,353,519
Public Elevs. in the East - Lake Ports	5,603,202	728,655	6,331,857
Public Elevs. in the East - Sbd. Ports	5,967,218	1,159,970	7,127,188
U. S. Lake Ports	8,277,932	777,885	9,055,817
U. S. Atlantic Seaboard Ports	2,487,348	168,957	2,656,305
T O T A L S	132,941,695	29,039,128	161,980,823
April 29, 1927.			
Western Country Elevators	19,504,033	5,885,958	25,389,991
Interior Terminal Elevators	4,311,905	597,769	4,909,674
Vancouver Elevators	4,379,991	68,784	4,448,775
Prince Rupert Elevators	584,436	2,161	586,597
Public and Private Termnl. Elevs.			
Ft. William and Pt. Arthur	29,279,271	10,395,569	39,674,840
Interior Private and Mfg. Elevs.	3,925,380	2,184,704	6,110,084
Public Elevators in the East	8,218,910	4,820,873	13,039,783
U. S. Lake Ports	6,533,779	2,429,299	8,963,078
U. S. Atlantic Seaboard Ports	4,107,532	125,444	4,232,976
T O T A L S	80,845,237	26,510,561	107,355,798
April 30, 1926.			
Western Country Elevators	21,911,825	13,576,015	35,487,840
Interior Terminal Elevators	4,295,209	1,940,648	6,235,857
Vancouver Terminal Elevators	4,028,443	142,177	4,170,620
Public and Private Terminal Elevs.			
Ft. William and Port Arthur	48,538,627	17,512,048	66,050,675
Interior Pte. & Mfg. Elevs.	3,809,950	1,840,773	5,650,723
Public Elevators in the East	6,737,373	2,913,623	9,650,996
U. S. Lake Ports	932,320	503,072	1,435,392
U. S. Atlantic Seaboard Ports	1,535,208	368,201	1,903,409
T O T A L S	91,789,485	32,793,587	124,583,072



RECEIPTS AND SHIPMENTS BY CLASSES OF ELEVATORS
Week ended April 24, 1931.

	WHEAT Bush.	OATS Bush.	BARLEY Bush.	FLAX Bush.	RYE Bush.	TOTAL Bush.
<u>#COUNTRY ELEVATORS, WESTERN DIVISION</u>						
Rcts. -- Rail	1,697,833	442,908	162,136	19,210	69,804	2,391,891
Shpts.-- Rail	3,041,088	799,240	169,053	38,296	67,588	4,115,265
<u>INTERIOR TERMINAL ELEVATORS</u>						
Rcts. -- Rail	9,839	48,699	8,660	-	-	67,198
Shpts.-- Rail	680,063	153,109	6,691	-	-	839,863
<u>VANCOUVER ELEVATORS</u>						
Rcts. -- Rail	1,521,150	35,264	-	-	-	1,556,414
Shpts.-- Vessel	614,406	-	-	-	-	614,406
Rail	1,333	-	-	-	-	1,333
<u>PRINCE RUPERT ELEVATORS</u>						
Rcts. -- Rail	NIL					
Shpts.-- Vessel	NIL					
<u>PUBLIC AND PRIVATE TERMINAL ELEVATORS, FORT WILLIAM AND PORT ARTHUR</u>						
Rcts. -- Rail	2,397,844	697,028	78,883	33,241	86,674	3,293,670
Shpts.-- Vessel	5,492,776	664,521	910,432	129,360	-	7,197,089
Rail	21,735	105,556	15,581	-	-	142,872
<u>#INTERIOR PRIVATE AND MILL ELEVATORS</u>						
Rcts. -- Rail	327,446	186,627	73,476	3,292	-	589,841
Shpts.-- Rail	552,943	243,739	84,701	10,857	11	892,251
<u>EASTERN ELEVATORS - GEORGIAN BAY PORTS</u>						
Rcts. -- Vessel	940,271	-	-	-	-	940,271
Shpts.-- Vessel	701,190	-	174,151	-	-	875,341
Rail	103,434	-	295,772	-	2,100	401,306
Local and Mill	137,357	165,582	4,139	-	-	307,078
<u>LOWER LAKE PORTS</u>						
Rcts. -- Vessel	1,071,532	-	799,221	31,047	-	1,901,800
Rail	996	-	-	-	-	996
Shpts.-- Vessel	728,779	-	665,613	-	91,192	1,485,584
Rail	3,494	4,047	23,365	-	-	30,906
Local and Mill	187,825	33,249	8,122	-	-	229,196
<u>ST. LAWRENCE PORTS</u>						
Rcts. -- Vessel	170,720	108,356	43,722	-	-	322,798
Rail	53,319	3,622	17,477	-	-	74,418
Shpts.-- Vessel	439,571	-	8,333	-	-	447,904
Rail	NIL					
Local and Mill	57,503	71,677	90,845	293	22,000	242,318
<u>SEABOARD PORTS</u>						
Rcts. -- Rail	NIL					
Shpts.-- Vessel	439,571	-	8,333	-	-	447,904
<u>EASTERN ELEVATORS</u>						
Rcts. -- Vessel	2,182,523	108,356	842,943	31,047	-	3,164,869
Rail	54,315	3,622	17,477	-	-	75,414
Shpts.-- Vessel	1,869,540	-	848,097	-	91,192	2,808,829
Rail	106,328	4,047	319,137	-	2,100	432,212
Local and Mill	382,685	270,508	403,106	293	22,000	778,592

Week ending April 17, 1931.

Platform Loadings for the week ended April 14, 1931, Wheat 92,767, Other Grains 169,145. Total 261,912 bushels.

29/4/31
B. G.

1907-1908

-11-
U. S. GRAIN - QUANTITY IN STORE - RECEIPTS AND SHIPMENTS
Week ended April 24th, 1931.

	WHEAT Bush.	OATS Bush.	BARLEY Bush.	RYE Bush.		CORN Bush.	TOTAL Bush.
Depot Harbour	262,344	477,124	-	371,380		198,819	1,309,667
					x	352	
Midland-Aberdeen	222,611	4,979	-	-		1,610	229,552
Tiffin C.N.R. Elev. Co.	57,970	-	-	-		-	57,970
Midland Elevators				Nil			
Midland Simcoe	-	-	-	42,421		-	42,421
Port McNicoll	48,150	-	-	109,894		-	158,044
Collingwood C.N.R.	-	64,129	-	-		-	64,129
Collingwood Terminal	102,701	-	-	410,041		34,276	547,018
Owen Sound G.L.	65,728	-	-	-		-	65,728
Goderich Elev. & Transit	338,533	157,448	90,494	-		-	586,475
Sarnia	2,301,731	-	-	-		-	2,301,731
					#	12,581	
					x	38,922	
Port Colborne Maple Leaf	207,552	-	-	-		2,086	261,141
Port Colborne Dom. Govt.	766,437	-	53,973	-	x	5,911	846,321
					#	637	
Kingston, Richardson No. 1	-	-	-	-	x	3,653	4,290
Prescott				Nil			
					#	30,137	
					x	1,596	
Toronto	-	-	-	-		2,185	33,918
Montreal Hbr. Commrs.							
Nos. 1, 2 and B.	1,096,185	-	191,775	643,311	x	28,434	1,959,705
North Amer. Elev. Sorel	933,960	-	-	-		-	933,960
Quebec	-	-	-	-	x	6,770	6,770
West St. John, N.B., C.P.R.	-	-	-	170,257		-	170,257
Saint John, N.B.	-	-	-	249,236	x	339,532	588,768
Halifax, N.S. Can. Govt.	-	2,181	-	112,990	x	75,219	190,390
					#	43,355	
					x	500,389	
T O T A L S	6,423,902	705,861	336,242	2,109,530		238,976	10,358,255
					x1	1,015,782	
Same week previous year	5,645,691	1,989,560	916,503	2,570,566		142,033	12,280,135

	R E C E I P T S		S H I P M E N T S	
	Water	Rail	Water	Rail
		GEORGIAN BAY PORTS		
Wheat	-	-	-	81,098
Oats	-	-	-	128,500
Corn	-	-	-	64,962
Rye	-	-	-	1,122
		LOWER LAKE PORTS		
Wheat	1,393,485	-	731,665	-
Corn	-	-	-	(Local) 214
#Corn	-	-	-	" 10,362
xCorn	-	3,291	-	" 13,085
		ST. LAWRENCE PORTS		
Barley	-	-	-	3,000
xCorn	-	-	-	(Local) 2,000
		SEABOARD PORTS		
Rye	-	-	-	(Local) 30
xCorn	-	-	-	3,500
xCorn	-	-	-	(Local) 10,500
xCorn	-	(Local)	16,500	-
Oats	-	-	-	(Local) 3,001

African Corn.
xArgentine Corn.

COUNTRY ELEVATORS - WESTERN DIVISION - RECEIPTS,
SHIPMENTS & STOCKS

Week ended April 17, 1931

	WHEAT Bush.	OATS Bush.	BARLEY Bush.	FLAX Bush.	RYE Bush.	TOTAL Bush.
<u>MANITOBA</u>						
On Hand, previous week	6,375,959	1,571,846	2,489,563	137,212	320,072	10,894,652
Receipts	196,264	45,885	78,442	1,314	6,954	328,859
Totals	6,572,223	1,617,731	2,568,005	138,526	327,026	11,223,511
Shipments	343,875	87,491	78,116	2,687	8,382	520,551
In Store	6,228,448	1,530,228	2,489,889	135,839	318,644	10,703,048
<u>SASKATCHEWAN</u>						
On Hand, previous week	46,071,771	3,593,427	838,419	636,198	1,696,044	52,835,859
Receipts	1,014,118	254,096	59,908	16,383	57,954	1,402,459
Totals	47,085,889	3,847,523	898,327	652,581	1,753,998	54,238,318
Shipments	1,554,433	483,477	58,564	32,932	51,661	2,181,067
In Store	45,531,555	3,364,046	840,863	619,649	1,702,411	52,058,524
<u>ALBERTA</u>						
On Hand, previous week	22,587,118	2,359,558	310,935	66,762	177,806	25,502,179
Receipts	487,451	142,927	23,786	1,513	4,896	660,573
Totals	23,074,569	2,502,485	334,721	68,275	182,702	26,162,752
Shipments	1,142,780	228,272	32,373	2,677	7,545	1,413,647
In Store	21,931,474	2,274,213	302,348	65,598	175,157	24,748,790

TOTAL RECEIPTS AT COUNTRY ELEVATORS AND
PLATFORM LOADINGS

August 1st, 1930 to April 14th, 1931.

	WHEAT Bush.	OTHER GRAIN Bush.	TOTAL Bush.
Manitoba	32,930,766	20,175,141	53,105,907
Saskatchewan	153,057,705	27,778,297	80,735,902
Alberta	98,046,868	9,506,369	107,553,237
Total 1930 - 1931	284,028,106	57,628,952	341,656,958
Same period - 1929 - 1930	224,830,422	55,604,799	280,435,221

INTERIOR TERMINAL ELEVATORS

Receipts, Shipments and Quantities in Store
Week ended April 24th, 1931.

	WHEAT Bushels	OATS Bushels	BARLEY Bushels	FLAX Bushels	RYE Bushels	TOTAL Bushels
<u>CALGARY</u>						
On Hand, previous week	327,914	17,348	3,694	-	122	349,078
Receipts	6,778	-	-	-	-	6,778
Total	334,692	17,348	3,694	-	122	355,856
Shipments - Rail	238,858	2,500	252	-	-	241,610
In Store	95,834	14,848	3,442	-	122	114,246
<u>EDMONTON</u>						
On Hand, previous week	441,981	82,276	9,698	-	-	533,955
Receipts	3,061	1,901	-	-	-	4,962
Total	445,042	84,177	9,698	-	-	538,917
Shipments - Rail	129,597	8,000	-	-	-	137,597
In Store	315,445	76,177	9,698	-	-	401,320
<u>MOOSE JAW</u>						
On Hand, previous week	931,452	15,008	12,244	141	4,124	962,969
Receipts	-	28,885	7,382	-	-	36,267
Totals	931,452	43,893	19,626	141	4,124	999,236
Shipments - Rail	88,386	29,210	6,439	-	-	124,035
In Store	843,066	14,683	13,187	141	4,124	875,201
<u>SASKATOON</u>						
On Hand, previous week	2,291,288	122,929	5,883	-	-	2,420,100
Receipts	-	17,913	1,278	-	-	19,191
Total	2,291,288	140,842	7,161	-	-	2,439,291
Shipments - Rail	223,222	113,399	-	-	-	336,621
In Store	2,068,066	27,443	7,161	-	-	2,102,670

PACIFIC COAST ELEVATORS

Receipts, Shipments and Quantities in Store
Week ending April 24th, 1931.

	WHEAT Bush.	OATS Bush.	BARLEY Bush.	FLAX Bush.	RYE Bush.	TOTAL Bush.
<u>VANCOUVER</u>						
On Hand, previous	12,851,124	106,353	4,403	-	14,274	12,976,154
Receipts	1,521,150	35,264	-	-	-	1,556,414
T O T A L S	14,372,274	141,617	4,403	-	14,274	14,532,568
Shipments - Vessel	614,406	-	-	-	-	614,406
Rail	1,333	-	-	-	-	1,333
In Store	13,729,414	140,941	4,403	-	14,274	13,889,032
<u>PRINCE RUPERT</u>						
On Hand, previous week	1,166,474	284	-	-	-	1,166,758
Receipts			Nil	-	-	
T O T A L S	1,166,474	284	-	-	-	1,166,758
Shipments - Vessel			Nil			
Rail			Nil			
In Store	1,166,474	284	-	-	-	1,166,758
<u>VICTORIA</u>						
On Hand, previous week	933,422	-	-	-	-	933,422
Receipts			Nil	-	-	
T O T A L S	933,422	-	-	-	-	933,422
Shipments - Vessel			Nil			
Rail			Nil			
In Store	933,422	-	-	-	-	933,422

DAILY AND WEEKLY AVERAGE PRICES OF GRAIN
Week ending April 25th, 1931.
WESTERN DIVISION
(Basis Vancouver, B.C.)

	April 20 \$ ¢	April 21 \$ ¢	April 22 \$ ¢	April 23 \$ ¢	April 24 \$ ¢	April 25 \$ ¢	Weekly Average \$ ¢
No. 1 Northern	.624	.622	.61	.602	.596	.58	.606
No. 2 Northern	.586	.59	.577	.57	.564	.545	.572
No. 3 Northern	.546	.55	.532	.525	.516	.502	.529
No. 4 Northern	.499	.507	.495	.487	.481	.467	.489
No. 5 Northern	.479	.487	.47	.462	.456	.442	.466
No. 6 Northern	.469	.477	.465	.457	.451	.437	.459
Feed	.469	.477	.465	.457	.451	.437	.459
Screenings per ton			No Bids.				

STATE OF NEW YORK

IN SENATE,
January 11, 1911.

REPORT
OF THE
COMMISSIONERS OF THE LAND OFFICE

ALBANY:
J. B. LIPPINCOTT & CO.,
PRINTERS,
1911.

CONTENTS

ALBANY, N. Y., JANUARY 11, 1911.
TO THE SENATE,
BY THE COMMISSIONER OF THE LAND OFFICE.

INDEX

ALBANY, N. Y., JANUARY 11, 1911.
TO THE SENATE,
BY THE COMMISSIONER OF THE LAND OFFICE.

STATE OF NEW YORK

IN SENATE,
January 11, 1911.

REPORT
OF THE
COMMISSIONERS OF THE LAND OFFICE

ALBANY:
J. B. LIPPINCOTT & CO.,
PRINTERS,
1911.

ALBANY:
J. B. LIPPINCOTT & CO.,
PRINTERS,
1911.

ALBANY:
J. B. LIPPINCOTT & CO.,
PRINTERS,
1911.

- 15 -
DAILY AND WEEKLY AVERAGE PRICES OF GRAIN
Week ended April 25, 1931.
WESTERN DIVISION
(Basis Fort William and Port Arthur)

	Apr. 20	Apr. 21	Apr. 22	Apr. 23	Apr. 24	Apr. 25	Weekly Average
	\$ ¢	\$ ¢	\$ ¢	\$ ¢	\$ ¢	\$ ¢	\$ ¢
<u>WHEAT</u>							
No. 1 Manl. Hard	.649	.642	.63	.622	.616	.602	.627
No. 1 Northern	.626	.624	.611	.604	.599	.585	.608
No. 2 Northern	.604	.60	.587	.58	.572	.56	.584
No. 3 Northern	.569	.565	.552	.545	.536	.522	.548
No. 4 Northern	.531	.527	.515	.505	.496	.482	.509
No. 5 Northern	.504	.502	.49	.482	.476	.462	.486
No. 6 Northern	.469	.467	.455	.447	.441	.427	.451
Feed	.469	.457	.445	.437	.441	.427	.446
No. 4 Spec.	.509	.507	.495	.485	.474	.46	.488
No. 5 Spec.	.479	.477	.465	.452	.441	.427	.457
No. 6 Spec.	.439	.437	.425	.412	.401	.387	.417
Rejected No. 1 Northern	.571	.57	.557	.55	.544	.53	.554
No. 2 Northern	.549	.545	.532	.525	.519	.505	.529
No. 3 Northern	.514	.51	.497	.49	.481	.467	.493
Tough No. 1 Northern	.591	.587	.575	.567	.561	.547	.571
No. 2 Northern	.566	.56	.547	.537	.531	.52	.544
No. 3 Northern	.526	.522	.51	.50	.494	.482	.506
Smutty No. 1 Northern	.586	.584	.571	.564	.559	.545	.568
No. 2 Northern	.557	.555	.542	.535	.529	.515	.539
No. 3 Northern	.519	.515	.502	.495	.481	.467	.497
Durum No. 1 Northern	.809	.807	.795	.807	.801	.797	.803
No. 2 Northern	.749	.747	.735	.727	.721	.727	.734
No. 3 Northern	.679	.677	.665	.657	.651	.657	.664
A. R. W. No. 1 Northern	.539	.537	.525	.517	.511	.497	.521
No. 2 Northern	.519	.517	.505	.497	.491	.477	.501
No. 3 Northern	.499	.497	.485	.477	.471	.457	.481
<u>OATS</u>							
No. 2 C.W.	.285	.286	.289	.292	.295	.292	.290
No. 3 C.W.	.255	.256	.259	.262	.265	.262	.260
Ex. No. 1 Feed	.252	.254	.256	.257	.262	.26	.257
No. 1 Feed	.245	.244	.246	.245	.247	.247	.246
No. 2 Feed	.215	.216	.219	.222	.225	.222	.220
No. 3 Feed	.18	.181	.184	.185	.185	.157	.179
<u>BARLEY (NEW GRADE)</u>							
2 Row	.369	.377	.381	.375	.372	.367	.374
6 Row	.389	.397	.401	.405	.402	.397	.399
Trebi	.295	.304	.309	.302	.30	.295	.301
No. 3 C.W.	.295	.304	.309	.302	.30	.295	.301
No. 4 C.W.	.276	.285	.289	.282	.28	.275	.281
No. 5 C.W.	.256	.265	.269	.262	.26	.255	.261
No. 6 C.W.	.246	.255	.259	.252	.25	.245	.251
<u>FLAX</u>							
No. 1. C.W.	1.072	1.065	1.061	1.042	1.031	1.02	1.049
No. 2 C.W.	1.032	1.025	1.021	1.002	.991	.98	1.009
No. 3 C.W.	.927	.92	.915	.896	.885	.872	.903
No. 4 C.W.	.927	.92	.915	.896	.885	.872	.903
<u>RYE</u>							
No. 1 C.W.	.324	.332	.334	.331	.33	.311	.327
No. 2 C.W.	.324	.332	.334	.331	.33	.311	.327
No. 3 C.W.	.294	.302	.302	.30	.297	.279	.296
Rejected No. 2 C.W.	.269	.277	.277	.275	.272	.254	.271
No. 4 C.W.	.259	.267	.267	.265	.262	.244	.261
Rejected for Ergot	.249	.257	.257	.255	.252	.234	.251
Screenings per ton	.50	.50	.50	.50	.50	.50	.50
<u>ONTARIO - TORONTO</u>							
xWheat-Good Milling	.70	.70	.70	.70	.70	.70	.70
Oats		.25-	.25-	.25-	.25-	.25-	.25-
		.27	.27	.30	.30	.30	.29
/Argentine Corn	.55	.55	.55	.55	.58	.58	.56
Rye		.35	.35	.35	.35	.35	.35
Barley		.31-	.31-	.28-	.28-	.28-	.29-
		.32	.32	.32	.32	.32	.32
Buckwheat		.50	.50	.50	.50	.50	.50

x F.O.B. Shipping Points according to freight.
/ Track Toronto.

1. The first group of people who are interested in the study of the history of the United States are the people who are interested in the history of the United States.

-16-
MILL GRINDINGS - MARCH, 1931 - PRELIMINARY STATEMENT
CAPACITY OF MERCHANT MILLS REPORTING 122,281 BARRELS

Name of Grain	Total Quantity of Grain Ground				: Grain Stocks on Hand at end : of month		
	Merchant Mills	Custom Mills	Total Ground March, 1931	Total Ground March 1930	Merchant Mills	Custom Mills	Total on Hand
B U S H E L S				B U S H E L S			
EASTERN DIVISION							
Wheat	2,943,803	132,182	3,075,985	3,136,091	3,030,648	111,544	3,142,192
Oats	365,128	172,535	537,663	425,686	545,217	117,064	662,281
Corn	62,823	75,292	138,115	137,506	166,193	1,100	167,293
Barley	48,017	52,020	100,037	65,101	65,830	25,147	90,977
Buckwheat	-	11,502	11,502	7,534	13,415	3,830	17,245
Mixed Grain	44,097	1,569,201	1,613,298	1,070,003	4,269	31,903	36,172
WESTERN DIVISION							
Wheat	1,983,141	110,253	2,093,394	2,338,929	6,395,196	78,016	6,473,212
Oats	281,154	24,944	306,098	372,757	882,627	2,528	885,155
Corn	2,311	845	3,156	12,225	10,686	535	11,221
Barley	24,635	9,625	34,260	35,282	68,848	5,304	74,152
Buckwheat	-	-	-	-	-	-	-
Mixed Grain	-	47,275	47,275	55,888	1,847	100	1,947
DOMINION OF CANADA							
Wheat	4,926,944	242,435	5,169,379	5,475,020	9,425,844	189,560	9,615,404
Oats	646,282	197,479	843,761	798,443	1,427,844	119,592	1,547,436
Corn	65,134	76,137	141,271	149,731	176,879	1,635	178,514
Barley	72,652	61,645	134,297	100,383	134,678	30,451	165,129
Buckwheat	-	11,502	11,502	7,534	13,415	3,830	17,245
Mixed Grain	44,097	1,616,476	1,660,573	1,125,891	6,116	32,003	38,119

RECAPITULATION - MILL GRINDINGS
AUGUST, 1930 to MARCH, 1931.

		WHEAT Bushels	OATS Bushels	CORN Bushels	BARLEY Bushels	MIXED GRAIN Bushels
August,	1930	6,930,364	817,134	235,271	83,094	632,982
September,	1930	7,254,614	1,054,097	151,357	90,074	1,059,204
October,	1930	8,348,434	1,173,911	183,786	131,307	1,432,239
November,	1930	7,788,827	1,085,491	176,074	128,156	1,872,362
December,	1930	5,225,805	1,125,885	148,866	136,065	1,886,930
January,	1931	4,833,535	997,080	160,976	125,357	1,915,710
February,	1931	4,607,154	940,355	170,167	129,777	1,657,462
March,	1931	5,169,379	843,761	141,271	134,297	1,660,573
Total to March, 1931		50,158,112	8,037,714	1,367,768	958,127	12,117,462
Total to March, 1930		47,211,764	7,230,366	1,630,554	707,967	9,222,337

MILL PRODUCTION - MARCH, 1931 - PRELIMINARY STATEMENT

DOMINION OF CANADA

Names of Products	Unit of Measure	Total Production from Grindings		March 1931	March 1930	Total Stocks on Hand Mar. 1931
		Eastern Division	Western Division	Dominion of Canada	Dominion of Canada	
Wheat Flour	Bbls. 196 lbs.					
Man. Sp. P. No. 1	"	283,181	129,220	412,401	386,148	418,415
Man. Sp. P. No. 2	"	169,406	154,460	323,866	296,339	195,828
Ont. Winter Straight	"	45,824	-	45,824	56,011	16,157
All Other	"	168,230	169,680	337,910	434,031	319,199
TOTAL FLOUR	"	666,641	453,360	1,120,001	1,172,529	949,599
Sundry Cereals						
Low Grade or F. Fl.	Bbls.	25,674	22,733	48,407	46,673	37,399
Bran	Tons	11,096	7,915	19,011	18,395	4,423
Shorts	Tons	10,959	7,441	18,400	20,046	5,597
Middlings	"	2,321	662	2,983	5,087	1,910
+ All other offal	"	235	2,075	2,310	5,186	176
Oatmeal	Pounds	793,530	774,722	1,568,252	1,210,472	1,284,265
Rolled Oats	"	5,034,298	3,640,195	8,674,493	8,439,370	5,877,806
Corn Fl. & Meal	"	1,158,556	-	1,158,556	1,014,958	583,682
Barley Fl. and Meal	"	-	-	-	-	-
Barley, Pot and Pearl	"	248,906	146,804	395,710	321,730	339,548
Buckwheat Flour	"	190,296	-	190,296	125,266	700
Ground Feed						
Ground Oats (Feed)	"	5,640,280	1,873,810	7,514,090	6,246,010	2,869,534
Cracked Corn	"	5,074,474	176,708	5,251,182	6,024,897	590,504
Ground Barley	"	3,938,568	1,383,012	5,321,680	4,320,603	401,865
Mixed Grain	"	72,122,584	2,135,236	74,257,820	50,376,229	102,710

+ Including Coarse Grain Offal.

RECAPITULATION - MILL PRODUCTION
AUGUST, 1930 to MARCH, 1931.

Months	WHEAT FLOUR		Oatmeal	Rolled Oats	Corn Flour and Meal	Wheat Flour Exported
	Percent- age of Operation	Quantity Barrels	Pounds	Pounds	Pounds	Barrels
August, 1930	53.3	1,547,936	922,208	10,109,769	2,195,274	627,233
September, 1930	57.2	1,624,235	1,017,130	13,825,936	1,755,038	734,349
October, 1930	62.0	1,868,575	1,160,492	13,588,271	1,945,636	813,691
November, 1930	62.1	1,739,375	1,278,662	13,326,255	1,499,621	792,271
December, 1930	38.7	1,170,025	3,636,850	10,723,499	1,070,225	601,894
January, 1931	36.6	1,086,272	2,449,163	10,870,397	1,155,518	392,256
February, 1931	37.3	1,035,383	1,461,180	10,434,204	1,894,492	414,773
March, 1931	38.9	1,168,408	1,568,252	8,674,493	1,158,556	560,553
Total to March, 1931	-	11,240,212	13,493,937	91,552,824	12,677,410	4,937,020
Total to March, 1930	-	10,557,567	7,456,908	80,244,746	13,576,157	4,496,855

