

C A N A D A

DEPARTMENT OF TRADE AND COMMERCE

DOMINION BUREAU OF STATISTICS

AGRICULTURAL BRANCH

Vol. 12

No. 3

Historical File Copy

CANADIAN GRAIN STATISTICS

Week ending

AUGUST 21, 1931

(Records for Western Inspection Division supplied by Board of Grain Commissioners for Canada.)

Published by Authority of the Hon. H. H. Stevens, M.P.,
Minister of Trade and Commerce.

OTTAWA

1931

CANADA

DEPARTMENT OF TRADE AND COMMERCE

DOMINION STATISTICS INDEX

AGRICULTURAL BRANCH

General Summary	1 - 6
Canadian Grain in Store by Elevators.....	7
Canadian Grain in Store by Grades.....	8
Comparative Statement of Grain in Store.....	9
Receipts and Shipments of Canadian Grain.....	10
U. S. Grain in Store, Receipts and Shipments	11
Receipts, Shipments and Quantities in Store at Country Elevators, Western Division.....	12
Receipts, Shipments and Quantities in Store at Interior Terminal Elevators.....	13
Receipts, Shipments and Quantities in Store at Pacific Coast Elevators and Vancouver Prizes.....	14
Daily and weekly Average Prices of Grain at Ft. William, Pt. Arthur and Toronto for the week ending August 22, 1931.....	15

DEPARTMENT OF TRADE AND COMMERCE
DOMINION BUREAU OF STATISTICS -CANADA
AGRICULTURAL BRANCH
(Issued August 28, 1931)

Dominion Statistician: R. H. Coats, B.A., F.S.S.(Hon.), F.R.S.C.
Chief, Agricultural Branch: T. W. Grindley, Ph.D.

CANADIAN WHEAT MOVEMENT.

During the week ended August 21, 1931, according to elevator reports from Canadian Seaboard ports, 1,245,037 bushels of Canadian wheat were shipped by vessel overseas. The clearances of Canadian wheat from United States Atlantic Seaboard ports amounted to 801,000 bushels, making a total export clearance for the week of 2,046,037 bushels.

For the first three weeks of the crop year 3,697,268 bushels of Canadian wheat were shipped overseas from Canadian Seaboard ports. The clearance of Canadian wheat from United States Atlantic seaboard ports amounted to 2,000,000 bushels, making a total export clearance for the period of 5,697,268 bushels.

Wheat stocks show a decrease compared with the previous week ended August 14, 1931. The quantity in store on August 21, 1931, was 102,318,070 bushels, compared with 105,836,986 bushels for the week ended August 14, 1931, while 89,874,556 bushels were in store for the week ended August 22, 1930.

Of the total quantity of wheat in store on August 21, 4,853,962 bushels are in elevators at the United States Lake and Atlantic Seaboard ports, of which 3,758,523 bushels are in store and afloat at Buffalo, New York.

The shipments for the week ended August 21, from the above elevators, classified as Local Requirements, Rail and Vessel Shipments were as follows:-

	Local Requirements	Rail	Vessel
Country Elevators	-	1,181,909	-
Interior Terminal Elevators	-	3,000	-
Vancouver, B.C.	-	2,666	558,783
Fort William and Port Arthur	-	32,740	3,667,686
Private and Mill Elevators	-	596,640	-
Public Elevators in the East (Rail	599,441	336,998	-
(Vessel	-	-	987,039
T O T A L S	599,441	2,153,953	5,213,508

The Western County Elevator shipments during the first two weeks of the crop year, viz., Aug. 1 to August 14, amounted to 1,732,425 bushels, as compared with 2,649,291 bushels for the same two weeks last year.

The movement from the farms to the elevators in western Canada was heavier during the two weeks of 1931 than for the same period in 1930, being 1,889,916 bushels and 1,306,872 bushels, respectively. According to Western Inspection returns, for the period from August 1 to 21, 411 cars of new crop wheat were inspected, against 935 cars for the same period in 1930. Old crop wheat inspections amounted to 3,173 cars, as compared with 7,174 cars during the same three weeks in 1930.

Shipments by vessel from Fort William and Port Arthur amounted to 9,754,906 bushels, the distribution of which was as follows:- To Canadian Lower Lake ports 4,516,451 bushels; to Buffalo 3,898,178 bushels; to Montreal 1,142,519 bushels; to Sorel 185,438 bushels; to Quebec 12,320 cars.

FOREIGN SITUATION

Argentine Acreage for 1931-32.

The Dominion Bureau of Statistics reports the receipt of information (August 26) from the International Institute at Rome stating that the preliminary estimate for wheat for the crop season 1931-32 is 17,051,000 acres, as compared with 21,320,000 acres in 1930-31 and with 19,228,000 acres, the average for the five years 1926-27 to 1930-31. For flaxseed, the estimated area is 8,204,000 acres, compared with 7,262,000 acres last year and with 6,487,000 acres, the five-year average; for oats, 3,484,000 acres as compared with 2,051,000 acres in 1930-31 and with 2,074,000 acres, the five-year average.

Crop Situation in Germany, Poland, Austria and Yugoslavia.

Germany.- The Canadian Trade Commissioner at Hamburg reports that the first official crop forecast based on the condition of the crops at the beginning of July showed the following expected average yields for the whole of Germany:-

Kind of grain	Provisional estimate,	Final estimate, 1930.
	1931 Bushels per acre	1930 Bushels per acre
Winter rye	26.78	26.15
Summer rye	21.68	18.81
Winter wheat	31.69	31.69
Summer wheat.....	30.65	31.09
Winter barley	42.59	45.0
Summer barley.....	35.89	33.48
Oats	51.20	43.06

Converting the above expected average yields per acre into total yields for the whole country on the basis of the estimated areas cultivated with the different grains, the following results are obtained:-

Kind of grain	Provisional crop estimate, 1931	Final crop estimate, 1930.
	Bushels	Bushels
Rye	288,175,000	302,348,000
Wheat.....	167,919,000	139,259,000
Winter barley.....	24,021,000	21,817,000
Summer barley.....	123,091,000	109,312,000
Oats.....	423,417,000	367,000,000

The changes in the estimated total yields as compared with the previous year are chiefly due to the greater area sown this year with wheat and barley and corresponding decreases in the areas planted with rye and oats. The total yield of oats this year, however, is expected to be greater in spite of the decrease in area sown with this grain as the 1930 yield of oats was poor.

The increase in the area planted with wheat this year is estimated to amount to 21.2 per cent. This accounts for the estimated total yield being 28,000,000 bushels greater than the final estimated wheat yield of last year. The minimum German requirements for wheat in the next crop year are estimated to amount to 176,320,000 bushels, so that the estimated yield from this year's crop would mean a deficit to be covered by imports from abroad of only around 10,000,000 bushels. However, owing to the shortage of credits for financing the crop it is the intention of the Government to introduce measures for encouraging the export of German wheat in the autumn. The quantity of German wheat exported in this manner will be replaced by an importation of foreign wheat in the spring. In this way the total imports of foreign wheat into Germany during the 1931-32 crop year will probably be as great as in the crop year just past. On the other hand there will be a fairly large export of German wheat in the autumn, whereas last year only negligible quantities of wheat were exported from Germany.

The official German trade statistics show an importation of wheat in the eleven months, August, 1930, to June, 1931, amounting to 27,000,000 bushels, of which 4,305,000 bushels were imported in June. In the same period of the year 1929-30 the imports into Germany amounted to around 49,000,000 bushels and in the first eleven months of the crop year 1928-29 to 76,750,000 bushels.

The appearance of new crop grain on the market has coincided with the financial crisis in Germany. This has resulted in a marked fall in grain prices, which is giving rise to a great deal of anxiety. The Government are now contemplating measures for financing the crop and overcoming the worst effects on agriculture of the financial stringency. It is anticipated that exports of grain will be facilitated by the reintroduction of import bonds on a new basis. The compulsory milling of domestic wheat will be retained and a high compulsory percentage will be fixed for the first part of the crop year.

Germany faces the new crop year with very small carry-overs of grain. The investigation of the Markets Report Bureau of the German Agricultural Council into the stocks of grain in the hands of farmers on June 15th, 1931, showed that out of a total wheat crop amounting to 139,219,300 bushels there remained in the hands of farmers on the above date a total of only 4,004,000 bushels. The situation is similar with respect to other grains; only in the case of oats will there be an appreciable carry-over.

The estimates of the German Agricultural Council covering the stocks of grain in farmers' hands are published in the form of percentages of the total crop. These percentages have been translated by the German Grain Journal into actual quantities. The following table gives the percentage figures and the quantities translated by the above mentioned journal for June 15th, 1930, and 1931:-

Stocks on Farmers' Hands.

	June 15th. 1930	June 1th. 1931	June 15th., 1930	June 15th. 1931
	In percentages of total crop		Bushels	
Winter wheat.....	3.5	2.8	3,711,110	3,564,140
Summer wheat.....	3.0	3.5	293,950	440,924
Winter rye.....	11.3	5.7	35,825,000	20,038,143
Winter barley.....	6.1	2.9	1,955,330	1,643,014
Summer barley.....	4.7	2.5	6,062,700	2,755,800
Oats	13.9	14.8	90,195,000	54,337,430
Potatoes.....	5.7	3.8	78,007,000	61,766,000

The preliminary Prussian report on the condition of the crops at the beginning of August indicates the yields of grain are not likely to have been adversely affected by the prevalence of cool wet weather and the excessive rains during July. Towards the end of the month warm dry weather set in, making the conditions very favourable for harvesting operations.

Poland.- The Canadian Trade Commissioner at Hamburg reports that the latest crop reports indicate an improvement directly before the harvest in the condition of the Polish crops, which had previously been reported as worse than last year. The yield of winter wheat should only be slightly less than that of last year, but the prospects for the rye crop are poorer than in the previous year. Official statistics show the progressive increase in recent years in the areas cultivated with bread grains in Poland, as the following table will indicate:-

Polish Wheat Crop.

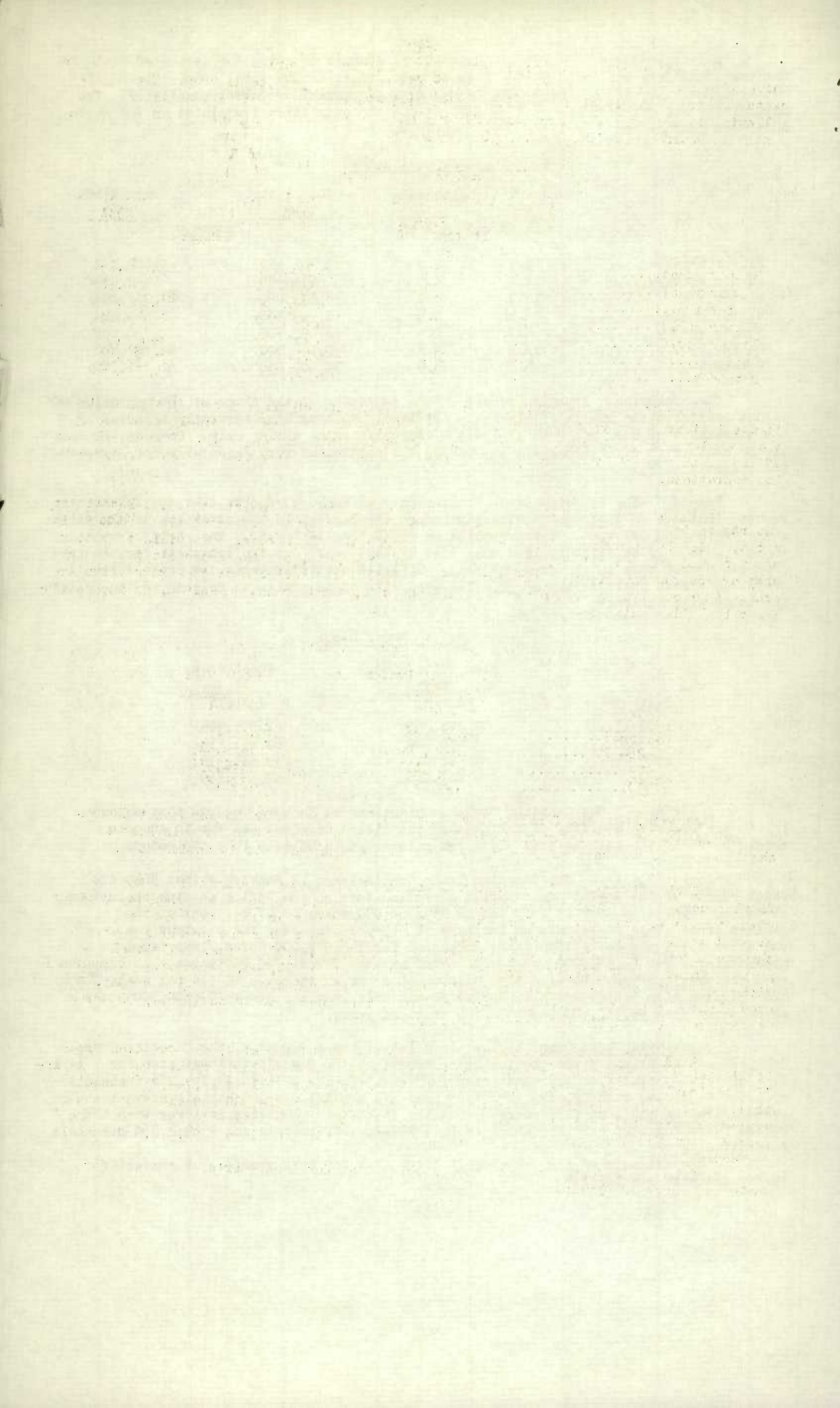
Year	Area cultivated with wheat Acres	Wheat crop Bushels
1909-13.....	3,343,263	61,655,905
1926-30.....	3,476,700	64,191,219
1929	3,526,117	65,881,430
1930.....	4,067,266	82,305,860

Austria.- The Canadian Trade Commissioner at Hamburg reports that according to the Austrian Ministry of Agriculture the yields of wheat and rye in Austria should be about the same as last year, but a lower yield of oats is anticipated.

Soviet Russia.- The Canadian Trade Commissioner at Hamburg writes that the final report of the Soviet Commissariat of Agriculture on the spring seeding operations gives the total area sown on July 1st as 239,766,000 acres or 97 per cent of the planned area. This represents an increase of 9.9 per cent over the previous year. Of the above total the collective farms accounted for 145,542,000 acres, individual peasant farms for 72,371,000 acres and Soviet estates for 21,745,000 acres. As compared with the previous year the area sown with wheat shows an increase of 7.3 per cent. The area planted with winter grain in Soviet Russia this year amounts to 97,604,500 acres as compared with 95,380,600 acres in the previous year.

Yugoslavia Wheat Crop, 1931.- In a letter dated August 4, the Canadian Trade Commissioner at Milan, gives the following report on the Yugoslavia wheat crop for 1931:- "The official estimate of the wheat crop in Yugoslavia for 1931 is 84,744,286 bushels or about 4,556,144 bushels more than last year and about 3,674,000 bushels above the average crop of the last five years. But the estimated production is lower than the record years for 1928 and 1929 which reached 102,880,680 bushels and 95,932,060 bushels respectively,

"The estimate of the rye crop is above that for last year's, but those for barley and oats are lower."



CANADIAN GRAIN STATISTICS - WEEK ENDED AUGUST 21, 1931.

Returns received as to stocks of grain in store for the week ending August 21st 1931, show a net decrease of 3,715,242 bushels. Stocks for the week were as follows:- Wheat 102,318,070, Oats 9,118,196, Barley 8,001,281, Flax 796,904 and Rye 12,340,335, a total of 132,574,786 bushels. Decreases are noted in Wheat of 3,518,916, Barley 412,109, and Flax 31,661 bushels, while Oats and Rye show increases of 144,613 and 102,831 bushels respectively. For the same week last year the amount in store was 126,825,371 bushels made up as follows:- Wheat 89,874,556, Oats 6,426,749, Barley 21,237,359, Flax 429,692 and Rye 8,857,015 bushels.

WESTERN COUNTRY ELEVATORS.- Stocks of grain in store in these elevators show an increase of 578,813 bushels made up as follows:- Wheat 93,559, Oats 318,305, Barley 136,558, Flax 6,208 and Rye 24,183 bushels.

The following table show the quantities of grain in store at the Country Elevators in each of the Prairie Provinces on August 14, 1931, with comparison for the previous week and the same period 1930.

	<u>MANITOBA</u> Bushels	<u>SASKATCHEWAN</u> Bushels	<u>ALBERTA</u> Bushels	<u>TOTAL</u> Bushels
Wheat	1,341,749	16,969,695	10,467,255	28,778,699
Oats	641,576	1,538,194	1,563,164	3,742,934
Barley	684,628	629,439	281,973	1,596,040
Flax	22,432	166,193	26,308	214,933
Rye	136,150	949,863	141,464	1,227,477
T O T A L S	2,826,535	20,253,384	12,480,164	35,560,083
Previous week	2,731,058	20,030,735	12,219,483	34,981,276
Same period, 1930	1,707,673	6,358,787	6,846,577	14,913,037

The receipts and shipments at the Country Elevators for the week ending August 14, 1931, compared with the previous week and the same period 1930, were as follows:-

		<u>R E C E I P T S</u>		<u>S H I P M E N T S</u>		
	Previous Week	Week ended Aug. 14, 1931	Week ended Aug. 15, 1930	Previous Week	Week ended Aug. 14, 1931	Week ended Aug. 15, 1930
Wheat	576,397	1,222,251	847,716	550,516	1,181,909	1,066,332
Oats	306,213	534,263	122,678	201,138	236,676	105,803
Barley	116,400	219,251	94,827	95,018	111,691	123,166
Flax	2,516	7,522	1,211	4,574	6,371	2,721
Rye	28,769	62,181	98,402	9,429	42,214	74,564
T O T A L S	1,030,295	2,045,468	1,164,294	860,675	1,578,861	1,372,586

Platform Loadings shown by Prairie Provinces for the period ending August 14, 1931, were as follows:-

	<u>WHEAT</u>	<u>OTHER GRAIN</u>	<u>TOTAL</u>
Manitoba	20,916	21,655	42,571
Saskatchewan	11,972	28,808	40,780
Alberta	9,620	9,068	18,688
T O T A L S	42,508	59,531	102,039
Period ending August 14, 1930	27,900	28,553	56,453
↑ Increase - Decrease	↑ 14,608	↑ 30,978	↑ 45,586

INTERIOR TERMINAL (SASKATOON, MOOSE JAW).- Stocks for the week show a net increase of 2,910 bushels. Oats shows an increase of 5,372 bushels, while decreases are noted in Wheat of 613, Barley 1,794 and Rye 55 bushels.

VANCOUVER PRIVATE AND TERMINAL ELEVATORS.- Grain stocks at these elevators show a net decrease of 255,353 bushels. Wheat shows a decrease of 262,903 bushels, while Oats and Rye show increases of 162 and 7,388 bushels respectively.

PRINCE RUPERT ELEVATOR.- Wheat stocks at this elevator are the same as for previous week,

VICTORIA ELEVATOR.- Stocks at this elevator are nil.

PUBLIC AND PRIVATE (FORT WILLIAM AND PORT ARTHUR).- Stocks at the Head of the Lakes show a net decrease of 3,221,832 bushels. Decreases are noted in Wheat of 2,965,089, Oats 53,342, Barley 346,677 and Flax 35,026 bushels, while Rye shows an increase of 178,302 bushels.

Stocks in Store at the Head of the Lakes compared with the same week last year were as follows:-

	Week ended Aug. 21, 1931	Week ended Aug. 22, 1930	+ Increase - Decrease
Wheat	38,248,378	32,411,792	+ 5,836,586
Oats	2,132,225	1,623,396	+ 508,829
Barley	4,673,430	14,172,960	- 9,499,530
Flax	534,919	388,547	+ 146,372
Rye	9,195,969	5,630,692	+ 3,565,277
T O T A L S	54,784,921	54,227,387	+ 557,534

The receipts (including transfers) at the Head of the Lakes for the period ending August 21, 1931, with comparative figures for the same week last year were as follows:-

	Week ended Aug. 21, 1931	Week ended Aug. 22, 1930	+ Increase - Decrease
Wheat	643,951	1,928,000	- 1,284,049
Oats	115,729	137,772	- 22,043
Barley	167,332	723,053	- 555,721
Flax	22,133	6,703	+ 15,430
Rye	23,253	152,371	- 129,118
T O T A L S	972,398	2,947,899	- 1,975,501

Preliminary figures showing receipts and shipments at the Head of the Lakes also Vancouver and Prince Rupert for the period August 1st, 1931, to August 21, 1931, compared with the same period last year.

	FORT WILLIAM & PORT ARTHUR		VANCOUVER	
	Receipts	Shipments	Receipts	Shipments
Wheat	2,086,803	9,482,624	1,333,071	1,899,762
Oats	445,095	638,659	7,007	-
Barley	373,246	2,223,282	1,349	-
Flax	72,824	43,956	-	-
Rye	138,609	45,000	9,950	-
T O T A L S	3,116,578	12,433,521	1,351,377	1,899,762
Same period last year	3,375,688	11,571,188	2,696,356	2,425,663
+ Increase - Decrease	- 5,259,110	+ 862,333	-1,344,979	- 525,901

	PRINCE RUPERT		VICTORIA	
	Receipts	Shipments	Receipts	Shipments
T O T A L S	Nil	Nil	Nil	Nil
Same period last year	"	"	"	"
+ Increase - Decrease	"	"	"	"

INTERIOR PRIVATE AND MILL ELEVATORS. - Stocks for the week show a net decrease of 167,976 bushels. Decreases are noted in wheat of 110,809 bushels. Oats 57,689 and Flax 2,843 bushels while Barley shows an increase of 31,365 bushels.

Stocks in store at the Country Interior Terminal, Public and Private at the Head of the Lakes, Winnipeg and Vancouver, compared with the same week last year were as follows:-

	Week ended Aug. 14, 1931	Week ended Aug. 15, 1930	+ Increase - Decrease
Wheat	81,920,025	58,462,164	+ 23,457,861
Oats	7,382,513	4,214,680	+ 3,166,833
Barley	7,346,489	16,732,295	- 9,383,806
Flax	78,248	430,698	+ 351,550
Rye	10,541,021	6,178,799	+ 4,361,222
T O T A L S	107,972,296	86,118,636	+ 21,953,660

EASTERN ELEVATORS - LAKE PORTS. - Grain stocks for the week show a net increase of 130,898 bushels. Increases are noted in wheat of 392,044 and Oats 2,698 bushels while Barley shows a decrease of 156,852 and Rye 106,987 bushels.

EASTERN ELEVATORS - SEABOARD PORTS (CANADIAN GRAIN). - Grain stocks for the week show a net decrease of 17,894. Barley shows an increase of 59,303 while decreases are noted in wheat of 105,909, Oats 71,288 bushels.

	WHEAT		TOTAL GRAIN	
	Vessel	Rail	Vessel	Rail
Georgian Bay Ports	695,097	-	695,097	-
Lower Lake Ports	936,979	998	976,444	3,530
Montreal and Quebec	640,434	133,306	1,062,630	139,000
Seaboard Ports			Nil.	
T O T A L S	2,272,510	134,304	2,734,171	142,530

28/8/31/DA.

Shipments overseas of Canadian Grain from St. Lawrence and Seaboard Ports are as follows:-

		To U. K.	To O. C.
Montreal, Que.	Wheat	-	686,254 bushels
	Oats	-	90,363 "
	Barley	-	230,833 "

PUBLIC ELEVATORS IN THE EAST (U. S. GRAIN).- U. S. grain stocks show a net increase of 23,990,254 bushels, compared with the same week the previous year. Wheat shows an increase of 28,462,241 bushels, while decreases are noted in Oats of 2,267,461, Barley 546,050, Rye 1,656,202 and Corn 2,274 bushels.

The quantities in store by classes of ports with increases and decreases are:-

	x Week ended Aug. 21, 1931	1/ Week ended Aug. 22, 1930	+ Increase - Decrease
At Georgian Bay Ports	24,549,830	6,353,548	+ 18,196,282
At Lower Lake Ports	4,137,788	575,688	+ 3,562,100
At St. Lawrence Ports	5,895,733	3,421,384	+ 2,474,349
At Seaboard Ports	671,693	914,170	- 242,477
T O T A L S	35,255,044	11,264,790	+ 23,990,254

x Included in the above 298,360 bushels of Argentine Corn and 20,746 bushels of African Corn.

1/ Included in the above 861,775 bushels of Argentine Corn.

Shipments of U. S. Grain from Atlantic Seaboard Ports were as follows:-

		To U. K.	To O. C.
Montreal, Que.	Wheat	-	140,207 bushels
North American Elevator, Sorel	Wheat	281,600 bushels	

U. S. LAKE PORTS.- Canadian grain shows a decrease of 459,867 bushels made up as follows: Wheat 353,856 and Barley 106,012 bushels.

U. S. ATLANTIC SEABOARD PORTS.- Canadian grain shows a decrease of 205,340 bushels of Wheat.

Inspection returns for the week ending August 21, 1931, with comparison for the previous year were as follows:-

	Week ended August 21, 1931		Week ended August 21, 1930		+ Increase - Decrease	
	New crop	Old crop	New crop	Old crop	New crop	Old crop
Wheat	373	1,348	903	3,426	- 530	- 2,078
Oats	2	214	8	116	- 6	+ 98
Barley	23	147	241	420	- 218	- 273
Flax	-	14	-	-	-	+ 14
Rye	12	26	96	153	- 84	- 127
Mixed Grain	-	4	1	4	- 1	-
Screenings	-	1	-	-	-	+ 1
T O T A L S	410	1,750	1,249	4,119	- 739	- 2,365

The number of bushels of grain shipped from Western to Canadian Eastern Points over the C.P.R. and C.N.R. for the week ending August 14, 1931, and the period from August 1, 1931 to August 14, 1931.

	WEEK ENDING AUGUST 14, 1931					PERIOD AUG. 1, 1931 to AUG 14, 1931				
	WHEAT	OATS	BARLEY	FLAX	RYE	WHEAT	OATS	BARLEY	FLAX	RYE
Via C.P.R.	-	-	-	-	-	-	-	1,765	-	-
Via C.N.R.	-	4,068	-	-	-	-	-	8,324	-	-
T O T A L S	-	4,068	-	-	-	-	-	10,089	-	-

-5-

Stocks of Grain at the Different Elevators during the Week ended August 21, 1931.

	WHEAT Bush.	OATS Bush.	BARLEY Bush.	FLAX Bush.	RYE Bush.
Western Country Elevators	28,778,699	3,742,934	1,596,040	214,933	1,227,477
Interior Terminal Elevators	624,185	89,557	20,011	1,042	4,124
Vancouver Elevators	8,988,830	121,148	25,797	-	28,385
Victoria Elevators	Nil.				
Prince Rupert Elevators	6,861	-	-	-	-
Fort William and Port Arthur	38,248,378	2,132,225	4,673,430	534,919	9,195,969
Interior Pte. & Mill Elevs.	5,273,072	1,295,649	1,033,211	31,354	84,066
Eastern Elevs. - Lake Ports	5,957,499	785,834	62,161	13,933	313,382
Eastern Elevs. - Sbd. Ports	9,526,584	909,233	587,683	723	1,484,613
U. S. Lake Ports	3,767,801	39,864	2,948	-	-
U. S. Atlantic Seaboard Ports	1,086,161	1,752	-	-	2,319
T O T A L S	102,318,070	9,118,196	8,001,281	796,904	12,340,335
Previous week	105,836,986	8,973,583	8,413,390	828,565	12,237,504
Same week previous year	89,874,556	6,426,749	21,237,359	429,692	8,857,015
Week ending August 14, 1931.					

Quantity of Screenings and Oat Scalpings received, shipped and in Store at the undermentioned elevators during the week ending August 21, 1931.

	Amount in Store Aug. 14, 1931 Bushels	Amount received by vessel Bushels	Amount shipped Bushels	Amount in Store Aug. 21, 1931. Bushels
<u>Scalpings</u>				
Owen Sound	300	-	-	300
Goderich Elevator Co.	500	-	-	500
Port Colborne Dom. Govt.	423	-	-	423
Toronto	435	-	112	323
Montreal	12,337	-	884	11,453
Quebec	3,202	-	400	2,802
T O T A L S	17,197	-	1,396	15,801

	Tons	Lbs.	Tons	Lbs.	Tons	Lbs.	Tons	Lbs.
<u>Screenings</u>								
Owen Sound Std. Re. Scrags.	10	-	-	-	-	-	10	-
Owne Sound Feed Scrags.	431	400	-	-	277	-	154	400
Goderich Elev. Co.								
Standard Recleaned	1,107	1,632	-	-	210	-	897	1,632
Sarnia Elev. Co. Rec.	138	-	-	-	-	-	138	-
Toronto Std. Rec. Scrags.	1,399	940	-	-	259	1,000	1,139	1,940
North Amer. Elev. Sorel	792	1,584	-	-	248	32	544	1,552
Montreal	30	-	-	-	-	-	38	-
Quebec, Que.	852	912	-	-	-	-	852	912
T O T A L S	4,761	1,468	-	-	994	1,032	3,767	436

Lake Shipments from Head of Lakes for the week ending August 21, 1931.

	Buffalo Bush.	Other Lake Ports Bush.	Can. Lower Lake Ports Bush.	Montreal Bush.	Quebec Bush.	Sorel Bush.	Total Bush.
Wheat	827,400	-	1,758,362	392,265	-	185,438	3,163,465
Oats	-	-	73,470	112,620	-	-	186,090
Barley	-	-	65,925	404,309	-	-	470,234
Flaxseed	-	-	44,400	-	-	-	44,400
Rye	-	-	Nil.				
T O T A L S	827,400	-	1,942,157	909,194	-	185,438	3,864,189
Period ended Aug. 21, 1930	1,908,461	-	2,242,538	273,334	-	-	4,424,333

Lake Shipments from the Head of the Lakes for the period from the opening of navigation to August 21, 1931

	Wheat	Oats	Barley	Flaxseed	Rye	T O T A L S
	29,939,902	515,826	29,847,546	8,332,390	24,451	484,503
	837,110	-	4,046,995	3,730,332	566,047	36,220
	3,715,670	210,000	6,470,476	5,903,713	132,223	35,000
	268,336	527,500	293,919	229,111	-	-
	-	-	859,750	438,737	-	-
T O T A L S	34,761,018	1,253,326	41,518,686	18,634,283	722,721	555,723
Period ended Aug. 21, 1930	33,666,273	1,723,753	38,606,592	9,110,954	600,787	167,113
						83,875,472

CANADIAN GRAIN IN STORE: August 21, 1931.

	WHEAT Bush.	OATS Bush.	BARLEY Bush.	FLAX Bush.	RYE Bush.	TOTAL Bush.
WESTERN COUNTRY ELEVATORS						
Manitoba	1341749	641576	684628	22432	136150	2826535
Saskatchewan	16969695	1538194	629439	166193	949863	20253384
Alberta	10467255	1563164	281973	26308	141464	12480164
TOTAL WESTERN COUNTRY ELEVS.	28778699	3742934	1596040	214933	1227477	35560083
Calgary Can. Govt. Elevs.	10269	4068	-	-	-	14337
Edmonton Can. Govt. Elevs.	51901	76673	9092	-	-	137666
Moose Jaw Can. Govt. Elevs.	7600	2425	6399	1042	4124	21590
Saskatchewan Can. Govt. Elevs.	554415	6391	4520	-	-	565326
TOTAL INTERIOR TERMINAL ELEVS.	624185	89557	20011	1042	4124	738919
VANCOUVER TERML. & PUBL. ELEVS.	8988230	121148	25797	-	28385	9164160
VICTORIA ELEVATORS						
PRINCE RUP. RT	6861	-	-	-	-	6861
FORT WILLIAM						
G. T. Pacific	2487414	81249	31592	33689	807702	3441646
PORT ARTHUR						
Sask. Pool No. 4	1079606	39299	10064	92234	149254	1370457
Sask. Pool No. 5	1106747	4176	-	-	-	1110923
Sask. Pool No. 6	1516157	91369	14457	83101	103375	1808459
Sask. Pool No. 7	1924066	5968	-	-	4764	1934798
Sask. Pool No. 8	591834	5726	-	-	-	597560
Man. Pool No. 1	387455	17982	106254	-	-	511691
Man. Pool No. 2	90706	-	-	-	-	90706
Canadian Govt. Elevators	108609	6937	24264	34738	21529	196077
Private Terminal Elevators	28955784	1879519	4486799	231157	8109345	43722604
TOTAL AT FT. WILLIAM & PT. ARTHUR	38248378	2132225	4673430	534919	9195969	54784921
INTERIOR PTE. & MILL ELEVS.	5273072	1295649	1033211	31354	84066	7717352
EASTERN ELEVATORS						
Tiffin C.N.R.	290295	-	-	-	-	290295
Midland Elevators	223537	-	-	-	-	223537
Midland Simcoe	580630	349899	-	-	40390	970919
Port McNicoll	900010	-	-	-	-	900010
Collingwood	60680	49590	-	-	-	110270
Owen Sound G.L. Elevator Co.	460849	35452	-	-	57891	554192
Goderich Elev. & Transit	533895	116750	x 5334	13933	-	669912
Goderich West.Can. Flour Mill	74216	5000	-	-	-	79216
Sarnia	464185	1500	-	-	-	465685
Pt. Colborne Dom. Govt. Elevs.	140133	47372	1440	-	-	188945
Pt. Colborne Maple Leaf	1283604	39440	7197	-	129345	1459586
Toronto	414313	136919	40056	-	84679	675967
Kingston Richardson No. 1	121649	2641	-	-	1077	125367
Kingston Elevator Co.	350120	-	-	-	-	350120
Prescott	59383	1271	8134	-	-	68788
TOTAL EASTERN ELEVS.-LAKE PORTS	5957499	785834	62161	13933	313382	7132809
Montreal Hor. Commrs.	7560077	770549	524548	723	802232	9658129
St. Lawrence Mfg. Co.	111479	12927	-	-	-	124406
Ogilvie Flour Mills	588863	-	-	-	-	588863
North Amer. Elev. Ltd. Sorel	707387	4605	528	-	-	712520
Quebec Hor. Commrs.	609132	121152	62589	-	75229	868102
West St. John	370	-	18	-	59796	60184
Halifax	9276	-	-	-	547356	556632
TOTAL EASTERN ELEV.-Sbd. Ports	9586584	909233	587683	723	1484613	12568836
TOTAL QUANTITY IN CANADA	97464108	9076580	7998333	796904	12338016	127673941
Duluth	1000	-	2948	-	-	3948
Buffalo	3029929	39864	-	-	-	3069793
Buffalo Afloat	728594	-	-	-	-	728594
Erie, Pa.	8278	-	-	-	-	8278
TOTAL U. S. LAKE PORTS	3767801	39864	2948	-	-	3810613
Philadelphia	-	Nil	-	-	-	-
Portland	-	-	-	-	2319	2319
Baltimore	9238	-	-	-	-	9238
New York	1076923	1752	-	-	-	1078675
Boston, Mass.	-	Nil	-	-	-	-
TOTAL U.S. ATLANTIC SBD. PORTS	1086161	1752	-	-	2319	1090232
TOTAL QUANTITY IN STORE	102318070	9118196	8001281	796904	12340335	132574786

/ Week ended August 14, 1931.

x Includes Wild Oats.

- 7 -

26/8/31/DA.

-5-

Grades of Canadian Grain in Store at Public and Private Elevators (Head of the Lakes) Interior Terminal Elevators, Vancouver and Victoria Terminal and Private Elevators and Public Elevators in the East for the week ending August 21, 1931.

	Public and Terminal Bushels	Interior Terminal Elevators Bushels	Vancouver & Victoria & Private Elevators Bushels	Eastern Elevator Lake Ports Bushels	Eastern Elevator Sbd. Ports Bushels	Total Bushels
WHEAT						
No. 1 Hard	519,480	22,580	506,041	691,193	506,495	2,245,789
No. 1 Northern	8,505,886	265,477	1,324,145	2,203,706	5,949,040	18,248,254
No. 1 Northern Dr.	-	-	-	-	-	-
No. 2 Northern	11,859,921	206,869	2,877,938	1,119,066	1,758,401	17,922,195
No. 2 Northern Dr.	-	-	-	-	-	-
No. 3 Northern	5,631,218	2,296	1,484,943	611,701	659,584	8,389,742
No. 4 Wheat	1,515,334	1,575	644,233	328,003	112,100	2,601,245
No. 5 Wheat	351,988	2,688	320,988	17,467	20,059	713,190
No. 6 Wheat	32,811	1,532	33,814	1,180	9,128	78,465
No. 4 Special	329,887	-	-	-	-	329,887
No. 5 Special	70,185	-	-	-	-	70,185
No. 6 Special	4,172	-	-	-	-	4,172
Feed	53,168	-	16,069	3,975	23,468	96,680
Other	9,374,328	21,168	1,780,659	981,208	548,309	12,705,672
T O T A L S	38,248,374	624,185	8,988,830	5,957,499	9,586,584	63,405,476
OATS						
No. 1 C.W.	1,851	-	-	-	-	1,851
No. 2 C.W.	323,120	36,472	55,177	127,557	77,736	620,062
No. 3 C.W.	368,825	34,381	32,621	159,080	190,514	785,421
Special Feed	5,208	-	-	-	-	5,208
Ex. No. 1 Feed	27,046	2,211	-	-	11,044	40,301
No. 1 Feed	258,334	12,507	9,929	113,230	325,895	719,895
No. 2 Feed	134,236	264	11,462	88,217	114,529	348,708
No. 3 Feed	29,544	-	-	-	5,786	35,330
Other	948,715	3,722	11,959	297,750	183,729	1,445,875
Private Elevators	35,346	-	-	-	-	-
T O T A L S	2,132,225	89,557	121,143	785,834	909,233	4,037,997
NEW GRADE BARLEY						
No. 3 Ex. C.W. 6 Row	51,276	-	-	-	11,955	63,231
No. 2 C.W.	926	-	-	-	-	926
3 Ex. C.W. Trebi	62,298	-	-	-	42,335	104,633
3 Ex. C.W. 2 Row	8,434	-	-	-	-	8,434
3 C.W.	4,038,718	15,014	23,166	59,316	490,513	4,629,727
4 C.W.	189,309	-	-	-	12,025	201,334
5 C.W.	111,045	-	-	-	19,063	130,108
6 C.W.	12,570	-	-	-	-	12,570
Feed	-	-	-	-	643	643
Private Elevators	69,540	-	-	-	-	69,540
Other	129,314	1,997	2,631	2,845	11,149	147,936
T O T A L S	4,673,430	20,011	25,797	62,161	587,683	5,369,082
FLAX						
No. 1 C.W.	419,809	956	-	-	-	420,765
No. 2 C.W.	30,539	40	-	-	-	30,579
No. 3 C.W.	41,600	46	-	-	-	41,646
No. 4 C.W.	20,253	-	-	-	-	20,253
Other	22,718	-	-	13,933	723	37,374
T O T A L S	534,919	1,042	-	13,933	723	550,617
RYE						
No. 1 C.W.	360,315	-	-	44,282	72,272	476,869
No. 2 C.W.	7,472,288	-	11,481	268,023	385,503	8,137,295
No. 3 C.W.	1,151,968	4,059	6,516	-	354,312	1,516,855
No. 4 C.W.	37,347	-	1,811	-	-	39,158
Rejected	32,510	65	-	-	3,055	35,630
Other	113,451	-	8,577	1,077	669,471	792,576
Private Elevators	28,090	-	-	-	-	28,090
T O T A L S	9,195,969	4,124	28,385	313,382	1,484,613	11,026,473
Total Quantity in Store	54,784,921	738,919	9,164,160	7,132,809	12,568,836	84,389,645

CANADIAN GRAIN IN STORE - COMPARATIVE STATEMENT, 1926-1931.

	WHEAT Bushels	OTHER GRAIN Bushels	TOTAL Bushels
<u>August 21, 1931.</u>			
Western Country Elevators	28,778,699	6,781,384	35,560,083
Interior Terminal Elevators	624,185	114,734	738,919
Vancouver Elevators	8,988,830	175,330	9,164,160
Victoria Elevators	-	-	-
Prince Rupert Elevators	6,861	-	6,861
Fort William and Port Arthur Elevators	38,248,378	16,536,543	54,784,921
Interior Private and Mill Elevators	5,273,072	2,444,280	7,717,352
Eastern Elevators - Lake Ports	5,957,499	1,175,310	7,132,809
Eastern Elevators - Seaboard Ports	9,586,584	2,982,252	12,568,836
U. S. Lake Ports	3,767,801	42,812	3,810,613
U. S. Atlantic Seaboard Ports	1,086,161	4,071	1,090,232
T O T A L S	102,318,070	30,256,716	132,574,786
<u>August 22, 1930.</u>			
Western Country Elevators	11,063,254	3,849,783	14,913,037
Interior Terminal Elevators	2,511,351	198,822	2,710,173
Vancouver Elevators	7,970,634	80,107	8,050,741
Victoria Elevators	-	-	-
Prince Rupert Elevators	891,623	378	892,001
Fort William and Port Arthur Elevators	32,411,792	21,815,595	54,227,387
Interior Private and Mfg. Elevators	3,613,510	1,611,787	5,225,297
Public Elevators in the East - Lake Ports	10,801,790	3,670,737	14,472,527
Public Elevators in the East - Sbd. Ports	10,060,558	3,251,195	13,311,753
U. S. Lake Ports	6,634,118	1,378,858	8,012,976
U. S. Atlantic Seaboard Ports	5,156,085	425,256	5,581,341
T O T A L S	91,114,715	36,282,518	127,397,233
<u>August 23, 1929.</u>			
Western Country Elevators	2,707,848	2,589,922	5,297,770
Interior Terminal Elevators	2,531,192	280,827	2,812,019
Vancouver Elevators	4,705,139	109,765	4,814,904
Victoria Elevators	5,360	-	5,360
Prince Rupert Elevators	39,820	-	39,820
Fort William and Port Arthur Elevators	44,301,709	14,310,031	58,611,740
Interior Private and Mfg. Elevators	3,511,275	1,713,079	5,224,354
Public Elevators in the East - Lake Ports	10,171,150	2,762,609	12,933,759
Public Elevators in the East - Sbd. Ports	9,790,557	4,619,924	14,410,481
U. S. Lake Ports	10,001,817	1,184,999	11,186,816
U. S. Atlantic Seaboard Ports	12,113,176	1,009,552	13,122,728
T O T A L S	99,879,043	28,580,708	128,459,751
<u>August 24, 1928.</u>			
Western Country Elevators	1,699,328	1,266,477	2,965,805
Interior Terminal Elevators	186,659	82,074	268,733
Vancouver Elevators	2,983,989	27,783	3,011,772
Prince Rupert Elevators	11,197	-	11,197
Fort William and Port Arthur Elevators	6,055,043	1,678,088	7,733,131
Interior Private and Mfg. Elevators	2,742,418	946,735	3,689,153
Public Elevators in the East - Lake Ports	13,074,838	891,916	13,966,754
Public Elevators in the East - Sbd. Ports	5,740,370	1,434,594	7,174,964
U. S. Lake Ports	4,344,320	116,075	4,460,395
U. S. Atlantic Seaboard Ports	1,180,747	417,038	1,597,785
T O T A L S	38,018,909	6,860,780	44,879,689
<u>August 26, 1927.</u>			
Western Country Elevators	1,324,908	812,564	2,137,472
Interior Terminal Elevators	151,229	79,469	230,698
Vancouver Elevators	377,607	35,714	413,321
Prince Rupert Elevators	2,951	-	2,951
Fort William and Port Arthur Elevators	14,699,286	3,028,656	17,727,942
Interior Private and Mfg. Elevators	1,681,982	891,916	2,573,898
Public Elevators in the East - Lake Ports	3,395,877	1,003,367	4,399,244
Public Elevators in the East - Sbd. Ports	3,733,789	1,122,587	4,856,376
U.S. Lake Ports	1,812,871	70,622	1,883,493
U.S. Atlantic Seaboard Ports	2,244,476	85,744	2,330,220
T O T A L S	29,424,976	7,130,639	36,555,615
<u>August 27, 1926.</u>			
Western Country Elevators	1,023,224	1,263,594	2,286,818
Interior Terminal Elevators	29,392	92,796	122,188
Vancouver Terminal Elevators	106,768	59,142	165,910
Fort William and Port Arthur Elevators	4,472,772	4,275,493	8,748,265
Interior Private and Mfg. Elevators	1,431,424	1,121,459	2,552,883
Public Elevators in the East	8,902,168	6,819,245	15,721,413
U. S. Lake Ports	1,404,334	400,203	1,804,537
U. S. Atlantic Seaboard Ports	1,526,309	1,337,528	2,863,837
T O T A L S	18,896,391	15,369,460	34,265,851

RECEIPTS AND SHIPMENTS BY CLASSES OF ELEVATORS
Week ended August 21, 1931.

	WHEAT Bush.	OATS Bush.	BARLEY Bush.	FLAX Bush.	RYE Bush.	TOTAL Bush.
<u>#COUNTRY ELEVATORS, WESTERN DIVISION</u>						
Rcts. - Rail	1,222,251	534,263	219,251	7,522	62,181	2,045,468
Shpts. - Rail	1,181,909	236,676	111,691	6,371	42,214	1,578,861
<u>INTERIOR TERMINAL ELEVATORS</u>						
Rcts. - Rail	2,387	17,648	15,596	-	-	35,631
Shpts. - Rail	3,000	12,152	17,174	-	55	32,381
<u>VANCOUVER ELEVATORS</u>						
Rcts. - Rail	305,724	260	-	-	7,388	313,378
Shpts. - Vessel	558,783	-	-	-	-	558,783
Rail	2,666	-	-	-	-	2,666
<u>PRINCE RUPERT ELEVATORS</u>						
Rcts. - Rail			Nil			
Shpts. - Vessel			"			
<u>PUBLIC AND PRIVATE TERMINAL ELEVATORS, FORT WILLIAM AND FORT ARTHUR</u>						
Rcts. - Rail	643,951	115,729	167,332	22,133	23,253	972,398
Shpts. - Vessel	3,667,686	216,042	514,291	43,956	5,000	4,446,975
Rail	32,740	34,205	570	-	-	67,515
<u>INTERIOR PRIVATE AND MILL ELEVATORS</u>						
Rcts. - Rail	491,400	98,007	69,450	399	-	659,256
Shpts. - Rail	596,640	154,686	66,090	3,200	-	820,616
<u>EASTERN ELEVATORS - GEORGIAN BAY PORTS</u>						
Rcts. - Vessel	695,097	-	-	-	-	695,097
Shpts. - Rail	334,612	1,663	-	-	-	336,275
Local and Mill	159,046	7,800	1,250	-	-	168,096
<u>LOWER LAKE PORTS</u>						
Rcts. - Vessel	936,979	29,744	9,574	-	147	976,444
Rail	998	1,455	-	-	1,077	3,530
Shpts. - Vessel	300,785	-	93,450	-	102,763	496,998
Rail	2,386	3,817	67,092	-	1,000	74,295
Local and Mill	246,999	15,226	67,840	3,348	1,100	334,513
<u>ST. LAWRENCE PORTS</u>						
Rcts. - Vessel	640,434	104,218	317,978	-	-	1,062,630
Rail	133,306	5,694	-	-	-	139,000
Shpts. - Vessel	682,254	90,363	230,833	-	-	1,007,450
Rail			Nil			
Local and Mill	193,396	92,119	28,463	-	-	313,978
<u>SEABOARD PORTS</u>						
Rcts. - Rail			Nil			
Shpts. - Vessel			"			
<u>TOTAL EASTERN ELEVATORS</u>						
Rcts. - Vessel	2,272,510	133,962	327,552	-	147	2,734,171
Rail	134,304	7,149	-	-	1,077	142,530
Shpts. - Vessel	987,039	90,363	324,283	-	102,763	1,504,448
Rail	336,998	5,480	67,092	-	1,000	410,570
Local and Mill	599,441	115,145	97,553	3,348	1,100	816,587

Week ending August 14th, 1931.

Platform Loadings for the week ended August 14, 1931:- Wheat 42,508, Other Grains 59,531 and Total 102,039 bushels.

- 11 -

U. S. GRAIN - QUANTITY IN STORE - RECEIPTS AND SHIPMENTS

Week ended August 21, 1931.

	WHEAT Bush.	OATS Bush.	BARLEY Bush.	RYE Bush.	CORN Bush.	TOTAL Bush.
Depot Harbour	1,036,589	16,400	-	371,380	-	1,424,369
Midland Aberdeen	862,830	-	-	-	1,363	864,193
Tiffin, C.M.R. Elev. Co.	2,822,560	-	-	-	-	2,822,560
Midland	3,916,600	-	-	-	-	3,916,600
Midland Simcoe	3,219,283	-	-	-	-	3,219,283
Port McNicoll	2,721,047	-	-	109,394	636,913	3,467,854
Collingwood Terminal	1,207,440	-	-	404,429	-	1,611,869
Collingwood C.M.R.	-	1,182	-	-	-	1,182
Owen Sound G.L.	2,575,453	-	-	-	-	2,575,453
Goderich Elev. & Transit	1,941,000	-	-	-	-	1,941,000
Sarnia	2,705,467	-	-	-	-	2,705,467
Port Colborne Maple Leaf	323,025	-	-	-	# 20,135 x 10,632	353,792
Port Colborne Dom. Govt.	496,699	-	23,973	-	x 1,700	522,372
Kingston Elevator Co.	1,786,403	-	-	-	-	1,786,403
Kingston Afloat	176,689	-	-	-	-	176,689
Kingston, Richardson No.1	-	-	-	-	# 611 x 3,220	3,831
Prescott	3,621	-	-	-	-	3,621
Toronto	1,263,549	-	-	-	x 24,735 2,796	1,291,080
Montreal Hbr. Commrs.						
Nos. 1, 2 and B.	2,303,610	-	20,995	357,219	x 84,160	2,765,984
North Amer. Elevs. Sorel	1,020,763	-	-	-	-	1,020,763
Quebec	2,073,843	-	-	-	x 35,143	2,108,986
West St. John, N.B.	-	-	-	170,197	-	170,197
Saint John, N.B., C.M.R.	-	-	-	249,236	x115,374	364,610
Halifax, N.S. Can. Govt.	-	-	-	112,990	x 23,896	136,886
					# 20,746 x298,860	
T O T A L S	32,456,471	17,582	44,968	1,775,345	641,072 x861,775	35,255,044
Same week previous year	3,994,230	2,285,043	591,018	3,431,547	101,177	11,264,790

R E C E I P T S

S H I P M E N T S

Water

Rail

Water

Rail

GEORGIAN BAY PORTS

Wheat	2,650,138	-	-	160,862
Wheat	-	-	-	2,500 (Local)
Oats	-	-	-	53,898
Corn	-	-	-	1,327

LOWER LAKE PORTS

Wheat	143,476	-	183,986	-
xCorn	-	-	-	14,030 (Local)
#Corn	-	-	-	26 "

ST. LAWRENCE PORTS

Wheat	399,321	-	421,807	-
xCorn	-	-	-	19,345 (Local)

SEABOARD PORTS

xCorn	-	-	-	16,564 (Local)
xCorn	-	-	-	3,700

xA Argentine Corn,
#African Corn.

26/8/31/FED.

COUNTRY ELEVATORS - WESTERN DIVISION - RECEIPTS, SHIPMENTS & STOCKS

Week ended August 14, 1931.

	WHEAT Bush.	OATS Bush.	BARLEY Bush.	FLAX Bush.	RYE Bush.	TOTAL Bush.
<u>MANITOBA</u>						
On Hand, previous week	1,351,031	621,277	614,866	18,667	125,217	2,731,058
Receipts	90,400	34,126	74,186	859	14,322	213,893
Totals	1,441,431	655,403	689,052	19,526	139,539	2,944,951
Shipments	133,705	25,807	33,334	-	5,548	198,394
In Store	1,341,749	641,576	684,628	22,432	136,150	2,826,535

SASKATCHEWAN

On Hand, previous week	16,926,805	1,421,542	579,517	161,987	940,884	20,030,735
Receipts	563,868	232,322	112,730	5,273	37,073	951,266
Totals	17,490,673	1,653,864	692,247	167,260	977,957	20,982,001
Shipments	552,026	120,463	59,450	3,212	30,151	765,302
In Store	16,969,695	1,538,194	629,439	166,193	949,863	20,253,384

ALBERTA

On Hand, previous week	10,407,304	1,381,810	265,099	28,077	137,193	12,219,483
Receipts	567,983	267,815	32,335	1,390	10,786	880,309
Totals	10,975,287	1,649,625	297,434	29,467	147,979	13,099,792
Shipments	496,178	90,406	18,907	3,159	6,515	615,165
In Store	10,467,255	1,563,164	281,973	26,308	141,464	12,480,164

TOTAL RECEIPTS AT COUNTRY ELEVATORS AND
PLATFORM LOADINGS

August 1st, 1931 to August 14th, 1931.

	WHEAT Bushels	OTHER GRAIN Bushels	TOTAL Bushels
Manitoba	164,000	278,453	432,453
Saskatchewan	834,785	638,358	1,473,153
Alberta	891,131	506,495	1,397,626
Total 1931-1932	1,889,916	1,413,316	3,303,232
Same period - 1930-1931	1,306,872	509,908	1,816,780

INTERIOR TERMINAL ELEVATORS

Receipts, Shipments and Quantities in Store
Week ended August 21, 1931.

	WHEAT Bush.	OATS Bush.	BARLEY Bush.	FLAX Bush.	RYE Bush.	TOTAL Bush.
<u>CALGARY</u>						
On Hand, previous week	7,882	4,068	-	-	-	11,950
Receipts	2,387	-	-	-	-	2,387
Total	10,269	4,068	-	-	-	14,337
Shipments - Rail	-	-	-	-	-	-
In Store	10,269	4,068	-	-	-	14,337
<u>EDMONTON</u>						
On Hand, previous week	54,830	70,457	12,222	-	-	137,509
Receipts	-	10,542	-	-	-	10,542
Total	54,830	80,999	12,222	-	-	148,051
Shipments - Rail	2,929	4,326	3,130	-	-	10,385
In Store	51,901	76,673	9,092	-	-	137,666
<u>MOOSE JAW</u>						
On Hand, previous week	7,638	3,204	3,537	1,042	4,179	19,600
Receipts	-	7,106	15,596	-	-	22,701
Total	7,638	10,310	19,133	1,042	4,179	42,301
Shipments - Rail	38	7,761	12,528	-	-	20,327
In Store	7,600	2,425	6,399	1,042	4,124	21,590
<u>SASKATOON</u>						
On Hand, previous week	554,448	6,456	6,046	-	-	566,950
Receipts	-	-	-	-	-	-
Total	554,448	6,456	6,046	-	-	566,950
Shipments - Rail	33	65	1,516	-	55	1,669
In Store	554,415	6,391	4,520	-	-	565,326

26/8/31/FED.

STATE OF NEW YORK

IN SENATE,
January 1, 1901.

REPORT OF THE

COMMISSIONER OF THE LAND OFFICE

FOR THE YEAR 1900.

PACIFIC COAST ELEVATORS

Receipts, Shipments and Quantities in Store
Week ending August 21, 1931.

	WHEAT	OATS	BARLEY	FLAX	RYE	TOTAL
	Bush.	Bush.	Bush.	Bush.	Bush.	Bush.
<u>VANCOUVER</u>						
On Hand, previous week	9,251,733	120,986	25,797	-	20,997	9,419,513
Receipts	305,724	260	-	-	7,388	313,372
TOTALS	9,557,457	121,246	25,797	-	28,385	9,732,885
Shipments - Vessel	558,783	-	-	-	-	558,783
Rail	2,666	-	-	-	-	2,666
In Store	8,988,830	121,148	25,797	-	28,385	9,164,160

PRINCE RUPERT

On Hand, previous week	6,861	-	-	-	-	6,861
Receipts			Nil			
TOTALS	6,861	-	-	-	-	6,861
Shipments - Vessel			Nil			
Rail			"			
In Store	6,861	-	-	-	-	6,861

VICTORIA

On Hand, previous week						N I L
Receipts						"
TOTALS						"
Shipments - Vessel						"
Rail						"
In Store						"

DAILY AND WEEKLY AVERAGE PRICES OF GRAIN

Week ending August 22, 1931.

WESTERN DIVISION

(Basis Vancouver, B.C.)

	August 17th	August 18th	August 19th	August 20th	August 21st	August 22nd	Weekly Average
	\$	\$	\$	\$	\$	\$	\$
No. 1 Hard		.534	.536	.546	.55	.545	.542
No. 1 Northern		.529	.531	.541	.545	.54	.557
No. 2 Northern		.484	.486	.496	.50	.495	.492
No. 3 Northern		.446	.449	.459	.46	.455	.454
No. 4 Northern		.424	.426	.436	.435	.43	.430
No. 5 Northern		.394	.396	.404	.405	.40	.499
No. 6 Northern		.379	.381	.391	.395	.39	.387
Feed		.379	.381	.391	.395	.39	.383
Screenings per ton		-	-	-	-	-	-

STANDARD FORM NO. 64

OFFICE OF THE SECRETARY OF THE ARMY
WASHINGTON, D. C.

1. Name of the person or organization to whom the award is made
2. Title of the award
3. Date of the award
4. Amount of the award
5. Name of the person or organization making the award
6. Signature of the person or organization making the award

1. Name of the person or organization to whom the award is made
2. Title of the award
3. Date of the award
4. Amount of the award
5. Name of the person or organization making the award
6. Signature of the person or organization making the award

1. Name of the person or organization to whom the award is made
2. Title of the award
3. Date of the award
4. Amount of the award
5. Name of the person or organization making the award
6. Signature of the person or organization making the award

1. Name of the person or organization to whom the award is made
2. Title of the award
3. Date of the award
4. Amount of the award
5. Name of the person or organization making the award
6. Signature of the person or organization making the award

1. Name of the person or organization to whom the award is made
2. Title of the award
3. Date of the award
4. Amount of the award
5. Name of the person or organization making the award
6. Signature of the person or organization making the award

1. Name of the person or organization to whom the award is made
2. Title of the award
3. Date of the award
4. Amount of the award
5. Name of the person or organization making the award
6. Signature of the person or organization making the award

1. Name of the person or organization to whom the award is made
2. Title of the award
3. Date of the award
4. Amount of the award
5. Name of the person or organization making the award
6. Signature of the person or organization making the award

1. Name of the person or organization to whom the award is made
2. Title of the award
3. Date of the award
4. Amount of the award
5. Name of the person or organization making the award
6. Signature of the person or organization making the award

WHEAT AND BARLEY AT WHOLESALE PRICES OF CANADA

Week ended August 22, 1931.

WESTERN DIVISION

(Basis Fort William and Port Arthur)

	August 17th \$ c	August 18th \$ c	August 19th \$ c	August 20th \$ c	August 21st \$ c	August 22nd \$ c	Weekly Average \$ c
WHEAT							
No. 1 Man. Hard	.575	.574	.581	.596	.595	.585	.584
No. 1 Northern	.557	.554	.561	.576	.572	.562	.564
No. 2 Northern	.515	.512	.516	.526	.595	.52	.531
No. 3 Northern	.465	.461	.465	.476	.475	.47	.469
No. 4 Northern	.412	.411	.414	.429	.429	.424	.419
No. 5 Northern	.39	.386	.389	.404	.402	.397	.395
No. 6 Northern	.357	.354	.366	.376	.375	.37	.366
Feed	.377	.374	.376	.386	.385	.38	.379
No. 4 Special	.377	.374	.376	.386	.385	.38	.379
No. 5 Special	.357	.354	.356	.366	.365	.36	.359
No. 6 Special	.322	.319	.321	.331	.33	.325	.325
Rejected No. 1 Northern	.482	.479	.481	.491	.49	.485	.485
No. 2 Northern	.447	.444	.446	.456	.455	.45	.449
No. 3 Northern	.392	.389	.391	.401	.40	.395	.395
Tough No. 1 Northern	.507	.504	.506	.521	.52	.515	.512
No. 2 Northern	.474	.47	.471	.481	.482	.477	.476
No. 3 Northern	.425	.421	.426	.439	.44	.435	.430
Smutty No. 1 Northern	.467	.464	.466	.476	.475	.47	.469
No. 2 Northern	.437	.444	.436	.446	.445	.44	.441
No. 3 Northern	.382	.379	.381	.391	.39	.385	.384
Durum No. 1 Northern	.577	.574	.586	.596	.595	.70	.671
No. 2 Northern	.587	.584	.596	.606	.605	.60	.596
No. 3 Northern	.497	.494	.506	.516	.515	.51	.507
A. R. W. No. 1 Northern	.447	.444	.446	.456	.455	.45	.458
No. 2 Northern	.427	.424	.426	.436	.435	.43	.429
No. 3 Northern	.407	.404	.406	.416	.415	.41	.409
OATS							
No. 2 C. W.	.294	.285	.277	.285	.282	.276	.283
No. 3 C. W.	.26	.251	.245	.25	.247	.241	.249
Ex. No. 1 Feed	.26	.251	.247	.252	.25	.244	.251
No. 1 Feed	.246	.235	.236	.241	.239	.232	.238
No. 2 Feed	.229	.22	.217	.225	.222	.216	.221
No. 3 Feed	.186	.177	.175	.18	.177	.171	.178
BARLEY (NEW GRADE)							
2 Row	.349	.342	.345	.352	.349	.346	.347
6 Row	.359	.352	.355	.362	.359	.356	.357
Trebi	.326	.317	.32	.33	.326	.324	.324
No. 3 C. W.	.326	.317	.32	.33	.326	.324	.324
No. 4 C. W.	.304	.297	.30	.302	.306	.301	.302
No. 5 C. W.	.291	.285	.287	.295	.291	.287	.289
No. 6 C. W.	.276	.27	.272	.28	.276	.274	.275
RYE							
No. 1 C. W.	.297	.294	.292	.30	.299	.297	.296
No. 2 C. W.	.297	.294	.292	.30	.299	.297	.296
No. 3 C. W.	.277	.274	.271	.279	.277	.276	.276
Rejected No. 2 C. W.	.25	.246	.245	.251	.25	.249	.268
No. 4 C. W.	.24	.236	.235	.241	.24	.239	.238
Rejected for Ergot	.23	.226	.225	.231	.23	.229	.228
FLAX							
No. 1 C. W.	1.035	1.042	1.03	1.035	1.034	1.006	1.030
No. 2 C. W.	.995	1.002	.99	.995	.994	.996	.990
No. 3 C. W.	.825	.832	.82	.825	.824	.795	.958
No. 4 C. W.	.825	.832	.82	.825	.824	.795	.958
Screenings per ton	.50	.50	.50	.50	.50	.50	.50

ONTARIO - TORONTO

x Wheat, Good Milling	.40-.42	.40-.42	.40-.42	.40-.42	.40-.42	.40-.42	.40-.42
Oats	.22-.24	.22-.24	.22-.24	.22-.24	.22-.25	.22-.25	.22-.24
✓ Argentine Corn	.60	.60	.62	.60	.615	.615	.60
Rye				Nominal			
Barley	.35	.35	.35	.375	.35-.36	.35	.35
Buckwheat				Nominal			

x f.o.b. Shipping Points

✓ Track Toronto

25/8/31 BG

STATISTICS CANADA LIBRARY
BIBLIOTHÈQUE STATISTIQUE CANADA



1010674763