



CANADA
DEPARTMENT OF TRADE AND COMMERCE
DOMINION BUREAU OF STATISTICS
AGRICULTURAL BRANCH

Vol. 12

No. 44

Historical File Copy

CANADIAN GRAIN STATISTICS

Week ending

JUNE 3, 1932

(Records for Western Inspection Division supplied by Board of Grain Commissioners for Canada.)

Published by Authority of the Hon. H. H. Stevens, M.P.,
Minister of Trade and Commerce.

OTTAWA

1932

I N D E X

General Summary	1 - 6
Canadian Grain in Store by Elevators	7
Canadian Grain in Store by Grades	8
Comparative statement of Grain in Store	9
Receipts and Shipments of Canadian Grain	10
U. S. Grain in Store, Receipts and Shipments	11
Receipts, Shipments and Quantities in Store at Country Elevators Western Division	12
Receipts, Shipments and Quantities in Store at Interior Terminal Elevators	13
Receipts, Shipments and Quantities in Store at Pacific Coast Elevators and Vancouver Prices	14
Daily and Weekly Average, Prices of Grain at Fort William and Port Arthur and Toronto for the week ending June 4, 1932	15
Receipts of Canadian Grain at Public Elevators, in the East with Shipment by destination May, 1932	16
Receipts of United States Grain at Public Elevators in the East with Shipments by destination May, 1932	17
Inspections Eastern Division month of May, 1932	18 - 19
Receipts and Shipments of Grain at Fort William and Port Arthur, Month of May, 1932	20
Page 7 Wheat stocks should read 144,330,131 bushels instead of 143,899,623 bushels; 430,508 bushels in store at Churchill being inadvertently omitted.	
Page 10 Should show a receipts of 430,508 bushels of wheat at Churchill.	

DEPARTMENT OF TRADE AND COMMERCE
DOMINION BUREAU OF STATISTICS - CANADA
AGRICULTURAL BRANCH
(Issued June 10, 1932)

Dominion Statistician:
Chief, Agricultural Branch:

R. H. Coats, B.A., F.S.S. (Hon.), F.R.S.C.
T. W. Grindley, Ph.D.

CANADIAN WHEAT STATISTICS

Primary Movement

The deliveries to the Western Country Elevators for the week ended May 27th, 1932 increased over the previous week. The amount delivered for the week ended May 27th was 2,164,812 bushels and for the previous week 1,637,584 bushels. By Provinces, the receipts for the above week were as follows:- Manitoba 224,586 bushels; Saskatchewan 1,113,076 bushels; Alberta 827,150 bushels. From August 1, to May 27, 1932, Country elevators and platform loadings amounted to 243,339,333 bushels, compared with 292,971,781 bushels for the same period in 1930-31.

Marketings of wheat in the three prairie provinces up to May 27, as compared with the same period a year ago were as follows; figures within brackets being those for 1931:- Manitoba 22,751,955 (33,738,126) bushels; Saskatchewan 108,777,007 (157,671,764) bushels; Alberta 111,810,371 (101,561,891) bushels.

STOCKS IN STORE

Canadian wheat stocks in the elevators and afloat in Canada and the United States for the week ended June 7, 1932 amounted to 144,330,131 bushels a reduction of 4,593,620 bushels from the previous week. For the first time wheat is shown in store at Churchill, Manitoba the quantity being 430,508 bushels. This amount was inadvertently omitted from page 7 showing the quantities of wheat in store by elevators. For the week ended May 27, 1932, 148,923,751 bushels were shown as stored and for the same week, a year ago, 126,207,040 bushels were reported in storage in the elevators.

Wheat in Transit on the Lakes for the week was 3,953,623 bushels, 1,053,119 bushels less than the previous week. Stocks in all the western elevators show decreased holdings with the exception of Vancouver and the Private and Mill elevators. In the Eastern Division, the storage shows an increase, the only exception being the United States lake ports.

Eastern Canadian elevators wheat stocks increased 349,595 bushels. The amount reported in store for the week was 12,837,974 bushels, compared with 12,538,379 bushels for a week ago. The amount reported in United States positions decreased from the previous week, the quantities being 5,958,366 bushels, and 7,202,208 bushels respectively. For the same week in 1931, 6,132,432 bushels were shown as stored.

EXPORT CLEARANCES

The wheat clearances overseas for the week ended June 2, 1932 show an appreciable increase over the previous week, when 5,173,206 bushels were shipped from the Canadian and United States ports compared with 3,992,200 bushels a week ago, while for the corresponding week in 1931, 4,442,817 bushels were forwarded.

By ports the export clearances for the week ended June 2, 1932 and June 5, 1931 were as follows:-

	Week ended June 2, 1932	Week ended June 5, 1931
Montreal	2,711,480	1,965,044
Sorel	549,933	766,721
Vancouver	1,369,793	1,058,052
United States Atlantic Ports	542,000	653,000
TOTAL	5,173,206	4,442,817

INTERNAL MOVEMENT

During the week ended June 2, the principal internal movements for the western division consisted of large rail shipments from Western Country Elevators of 5,753,442 bushels; while 3,695,251 bushels were moved by vessel from the Head of the Lakes and 1,369,793 bushels from Vancouver, B. C. In the Eastern Division 3,261,413 bushels were shipped overseas from Montreal and Sorel and 1,095,797 bushels from the Lower Lake Ports to the Lawrence ports.

The shipments for the week ended June 2, 1932, from the above elevators classified as Local Requirements, Rail and Vessel Shipments were as follows:-

	Local Requirements	Rail	Vessel
Country Elevators	-	3,753,442	-
Interior Terminal Elevators	-	14,727	-
Vancouver, B. C.	-	1,000	1,369,793
Fort William and Port Arthur	-	56,243	3,695,251
Private and Mill Elevators	-	212,253	-
Eastern Elevators	503,143	58,778	4,573,350
TOTALS	503,143	4,096,443	9,638,394

Figures for the week ended May 27, 1932.

INSPECTIONS

Wheat inspections during the period ended May 31, 1932, consisted of 4,438 cars compared with 2,161 cars for the week ended May 21, and 4,263 cars for the corresponding week in 1931. Gradings show that 3,850 cars were placed in the first four grades and 270 cars tough and damp for the above period in 1932. For the same period in 1931, 3,378 cars graded in the contract grades and 562 cars tough and damp.

WATER MOVEMENT

The vessel movement from the Head of the Lakes amounted to 5,263,000 bushels, as compared with 6,665,509 bushels of a week ago. The distribution of the former amount was as follows:- To Montreal 1,359,239 bushels of which 891,119 bushels were lightered at Port Colborne, Prescott and Kingston; to Lower Lake ports, 2,535,252 bushels; to Georgian Bay and Lake Huron ports 761,668 bushels; to Sorel 325,621 bushels all of which was lightered at Prescott, Kingston and Port Colborne; and the balance 281,219 bushels went to Buffalo. During the same week in 1931 the distribution was 3,061,689 bushels to lower lake ports which includes the Lake Huron and Georgian Bay ports; 2,924,264 bushels to Buffalo, 585,556 bushels to Montreal and 94,000 bushels to Sorel.

According to a report dated June 8, 1932, received from our correspondents in Montreal, the ocean freight rates were as follows:- To Liverpool for June and July delivery 6 cents per bushel to London 5.25 cents per bushels; to Glasgow, Leith, New Castle, Belfast and Dublin 6.75 cents per bushel; to Avonmouth, Cardiff, Swansea 6 cents per bushel; to continental ports of Antwerp and Rotterdam 8 cents per bushel; to Havre 11 cents per bushel and to Hamburg and Bremen 9 to 10 cents per bushel.

COARSE GRAIN

The coarse grain movement to the western country elevators for the week ended May 27, 1932 consisted of 280,862 bushels of Oats, 93,615 bushels of Barley 6,862 bushels of flaxseed and 19,364 bushels of Rye; while the shipments from the above elevators were as follows:- 337,667 bushels of Oats, 158,272 bushels of Barley, 29,797 bushels of Flaxseed and 114,394 bushels of Rye.

The amount of coarse grains in the elevators in Canada and United States for the week ended June 3, 1932 was as follows:- Oats 6,074,642 bushels; Barley 6,438,912 bushels; Flaxseed 1,420,167 bushels and Rye 9,541,237 bushels. As in wheat, the majority of this was in the Western Country Elevators and the Elevators at the Head of the Lakes. For the same week in 1931, there were in store 10,601,109 bushels of Oats; 15,054,720 bushels of Barley; 1,255,114 bushels of Flaxseed and 12,503,039 bushels of Rye.

Export Clearances were as follows:-

Kind of Grain	Montreal Bushels	Vancouver Bushels	United States Seaboard Ports Bushels	TOTAL Bushels
Oats	95,285	84,246	-	179,531
Barley	222,500	-	-	222,500
Rye	436,531	-	43,000	479,531

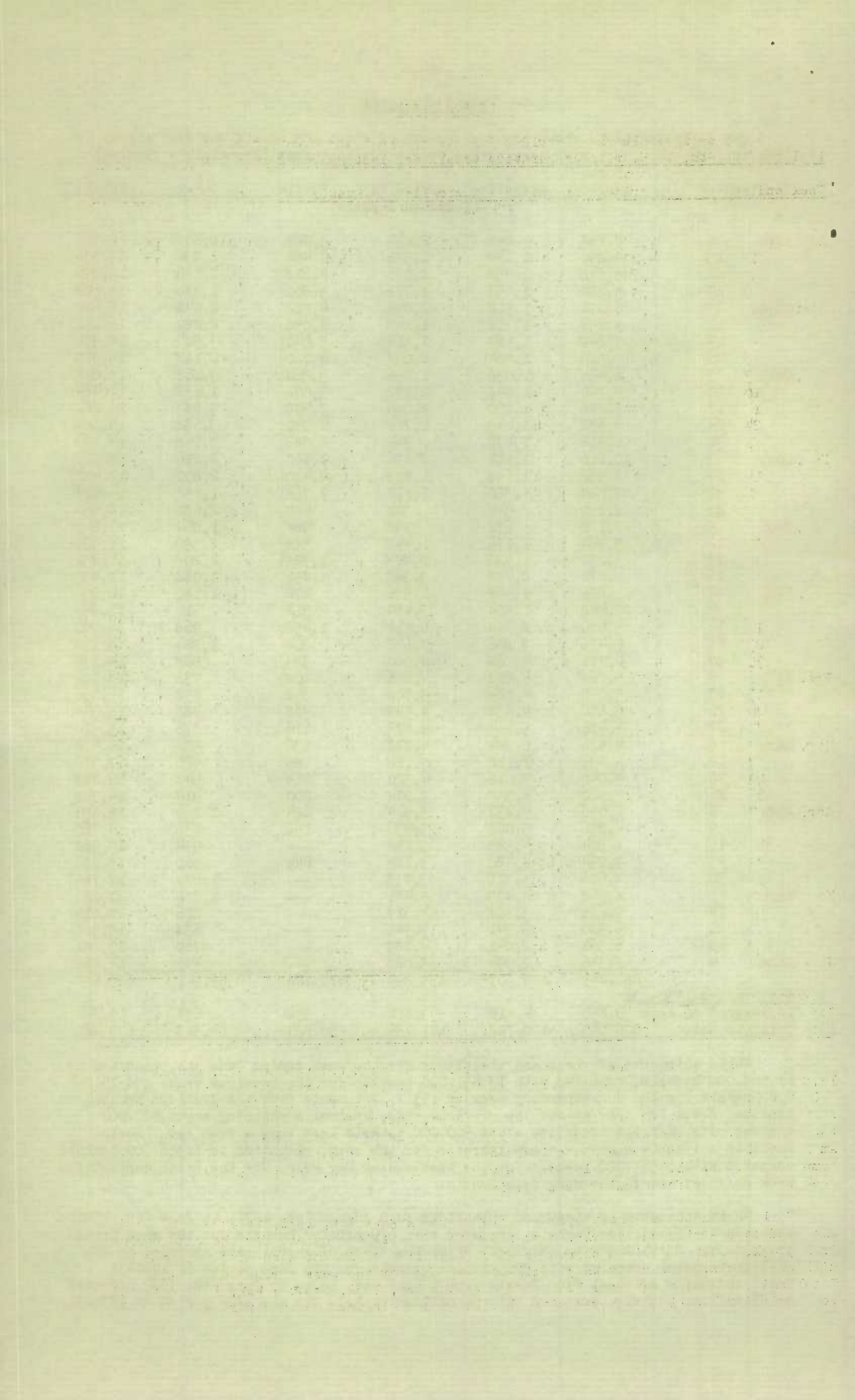
WORLD SITUATION

The following table shows world shipments of wheat and wheatflour from August 1st, 1931 to June 4th, 1932, with comparative totals for last year (Broomhall's figures)

		North					
Week ending		America	Argentina	Australia	Russia	Other	Total
		(Thousand Bushels)					
Aug.	8	7,888	1,240	2,144	3,080	1,208	15,560
	15	4,296	1,144	1,576	4,484	1,836	13,336
	22	5,648	1,352	2,096	4,618	2,176	15,890
	29	5,520	1,632	1,776	5,800	1,880	16,608
Sept.	5	6,072	1,912	2,056	4,512	2,048	16,600
	12	5,256	1,312	1,248	6,056	2,280	16,152
	19	7,648	1,168	1,616	5,040	3,504	18,976
	26	5,560	1,504	2,032	4,720	2,112	15,928
Oct.	3	6,424	1,032	1,256	3,368	3,168	15,248
	10	8,720	1,848	2,192	3,072	1,632	17,464
	17	5,776	1,200	2,000	3,408	3,883	16,267
	24	8,632	1,048	1,712	4,040	3,632	19,064
	31	6,912	1,472	944	2,088	3,168	14,584
Nov.	7	10,616	1,912	2,656	1,160	2,216	18,560
	14	8,936	1,648	1,808	2,480	2,600	17,472
	21	7,024	1,360	1,112	2,768	1,752	14,016
	28	8,160	944	328	448	2,680	12,560
Dec.	5	7,128	672	992	984	1,864	11,640
	12	5,864	1,176	1,448	520	2,352	11,360
	19	5,032	1,736	1,528	1,328	2,208	11,832
	26	4,272	2,448	3,368	1,256	1,088	12,432
Jan.	2	5,856	1,424	1,536	272	1,120	10,208
	9	5,448	1,504	3,464	512	912	11,840
	16	5,080	2,744	6,512	1,456	968	16,760
	23	5,456	3,856	7,672	304	1,824	19,112
	30	4,776	4,168	4,000	384	808	14,136
Feb.	6	5,768	4,208	4,656	408	736	15,776
	13	5,240	4,124	5,728	352	752	16,096
	20	5,672	4,232	4,544	408	488	15,344
	27	4,416	5,144	4,872	112	776	15,320
Mar.	5	4,536	6,344	4,872	136	584	16,472
	12	4,736	7,112	5,120	88	920	17,976
	19	4,040	7,016	4,320	264	648	16,288
	26	5,520	4,352	3,024	200	912	14,008
Apr.	2	6,096	4,232	3,944	224	1,160	15,656
	9	4,856	5,080	3,936	152	736	14,760
	16	7,304	4,528	3,144	---	944	15,920
	23	7,294	4,420	3,184	224	960	15,082
	30	7,626	5,321	3,733	---	1,088	17,768
May	7	8,962	4,435	5,481	---	1,208	20,086
	14	9,656	3,827	4,317	---	816	18,616
	21	6,580	3,541	4,741	---	638	15,500
	28	6,561	2,041	4,189	---	760	13,551
June	4	8,356	2,994	3,022	---	496	14,868
		281,249	126,307	135,899	70,726	69,541	683,652
Comparative 1930-31							
Corresponding Week		9,850	4,512	3,872	392	638	19,264
Total to date		306,040	100,728	127,736	90,824	54,313	679,441

World shipments of wheat and wheatflour for the week ending June 4th, amounted to 14,868,000 bushels, compared with 13,551,000 bushels for the previous week: and 19,264,000 bushels for the corresponding week in 1931. Shipments from the Southern Hemisphere remained about the same as for the previous week, Australia shipping about 900,000 bushels more, and the Argentine about 900,000 bushels less than a week ago. North American shipments showed a sharp increase for the week, amounting to 8,356,000 bushels compared with 6,561,000 bushels for the week ending May 28th. For the sixth consecutive week no wheat was forthcoming from Russia.

World shipments of wheat and wheatflour from August 1st, 1931, to June 4th, 1932, amounted to 684 million bushels, compared with 679 million bushels for the same period in 1930-31. North American shipments since the first of August have amounted to 281 million bushels, compared with 306 million bushels for the same period in 1930-31. Total shipments of wheat from Russia from August 1st, 1931, to June 4th, 1932 amounted to 71 million bushels, compared with 91 million bushels for the same period in 1930-31.



Import Requirement Estimate

Mr. Broomhall estimates world wheat import requirements for 1931-32 at 776 million bushels. The position of this estimate on June 4th, 1932, is shown in the following table:-

Import Requirements Aug. 1, 1931 to July 31, 1932 (52 weeks)	Actual Shipments Aug. 1, 1931 to June 4th, 1932 (44 weeks)	Balance to be Shipped June 4, 1932 to July 31, 1932. (8 weeks)
776,000,000 Bushels or 14,923,000 Bushels Weekly	683,652,000 Bushels or 15,527,545 Bushels Weekly	92,348,000 Bushels or 11,543,500 Bushels Weekly

According to the above estimate there is a balance of 92 million bushels to be shipped in the last 8 weeks of the present crop year, or an average of 11,543,500 bushels per week compared with weekly average shipments of 15,537,545 bushels for the preceding 44 weeks.

RUSSIA

Our London correspondent advises that up to May 31st a total of 185,657,934 acres had been sown to all grains, thereby completing the plan to the extent of 73.4 per cent. A total of 50,808,081 acres were sown to wheat, or 78.5 per cent of the plan. Barley sowings amounted to 13,739,260 acres, or 78.4 per cent of the plan: sowings of oats amounted to 28,069,111 acres, or 62.3 per cent of the plan. At the same date last year, a total of 186,320,186 acres of all grains were sown, or 75.4 per cent of the planned acreage for 1931.

Weather conditions in Russia for the week ending June 9, are summarized as follows:

Week ending June 9, 1932.

	Temperature Fahrenheit		Precipitation Inches		Weather June 9th	Ground Condition
	Min.	Max.	Min.	Max.		
<u>Ukraine</u>	34-63	72-86	.2	1.4	Overcast	Wet
Lower Volga	45-59	75-86	.2	.9	Cloudy to over-cast	Dry to wet
Middle Volga	32-54	73-82	.2	2.0	Overcast	Dry to wet
Western Siberia	37-50	63-82	.1	.6	Cloudy to rain	Dry to wet
Caucasus	50-58	77-104	.1	.7	Clear	Dry to wet
Ural	32-52	57-97	.1	1.7	Cloudy to over-cast	Dry to wet
Kazakstan	43-57	79-84	.1	.3	Cloudy	Dry
Black Soil Region	39-37	68-82	.2	1.5	Cloudy to rain	Wet

THE ARGENTINE

The correspondent for the Dominion Bureau of Statistics in Buenos Aires cabled as follows on June 2nd:

"Wheat exported during May, 353,900 tons. Estimated balance remaining for export 1,375,600 tons. Deliveries show slight falling off. Fair demand export. Domestic demand poor. Prices improved slightly on continental buying. Seeding new crop well advanced under generally favourable conditions. Expect increased wheat acreage, possibly ten per cent. Weather generally seasonable, some local droughts."

CANADIAN GRAIN STATISTICS - WEEK ENDING JUNE 3, 1932.

Returns received as to stocks of grain in store for the week ending June 3, 1932 show a decrease of 6,534,981 bushels. Stocks for the week were as follows:- Wheat 143,899,623, Oats 6,074,642, Barley 6,438,912, Flax 1,420,167 and Rye 9,541,237, a total of 167,374,581 bushels. Decreases are noted in Wheat of 5,024,128, Oats 465,725, Barley 299,323, Flax 20,729 and Rye 725,076 bushels. For the same week last year the amount in store was 165,621,022 bushels, made up as follows, Wheat 126,207,040, Oats 10,601,109, Barley 15,054,720, Flax 1,255,114 and Rye 12,503,039 bushels.

WESTERN COUNTRY ELEVATORS:-

Stocks of grain in store in these elevators show a net decrease of 1,972,621 bushels. Decreases are noted in wheat of 1,896,869, Barley 7,802, Flax 19,870 and Rye 48,108 bushels, while Oats shows an increase of 28 bushels.

The following table shows the quantities of grain in store at the Country Elevators in each of the Prairie Provinces on May 27, 1932 with comparison for the previous week and the same period 1931.

	<u>MANITOBA</u>	<u>SASKATCHEWAN</u>	<u>ALBERTA</u>	<u>TOTAL</u>
	Bushels	Bushels	Bushels	Bushels
Wheat	5,473,213	33,482,023	21,431,642	60,386,878
Oats	213,951	603,137	1,056,592	1,873,680
Barley	399,118	483,094	450,636	1,332,848
Flax	75,842	382,147	76,267	534,256
Rye	159,773	1,009,376	172,220	1,341,369
T O T A L S	6,321,897	35,959,777	23,187,357	64,127,662
Previous week	6,411,469	37,376,189	23,653,994	67,441,652
Same period 1931	7,477,128	40,294,433	18,850,428	66,631,989

The receipts and shipments at the Country Elevators for the week ending May 27, 1932 compared with the previous week and the same period 1931 were as follows:-

	<u>R E C E I P T S</u>			<u>S H I P M E N T S</u>		
	Previous week	Week ended May 27, 1932	Week ended May 29, 1931	Previous week	Week ended May 27, 1932	Week ended May 29, 1931
Wheat	1,584,958	2,164,812	1,149,151	4,404,858	5,753,442	4,061,400
Oats	653,846	280,862	282,435	1,350,527	337,667	458,410
Barley	111,159	93,615	168,821	191,335	158,272	690,982
Flax	3,334	6,862	7,117	34,083	29,797	22,551
Rye	13,348	19,364	66,014	129,347	114,394	135,891
TOTALS	2,366,645	2,565,515	1,673,538	6,110,150	6,393,572	5,369,234

Platform Loadings shown by Prairie Provinces for the period ending May 31, 1932 were as follows:-

	<u>WHEAT</u>	<u>OTHER GRAIN</u>	<u>TOTAL</u>
	Bushels	Bushels	Bushels
Manitoba			
Saskatchewan		Not reported	
Alberta			
T O T A L S			
Period ending May 31, 1931	129,778	133,284	263,062
+/Increase -Decrease			

INTERIOR TERMINAL (SASKATOON, MOOSE JAW, EDMONTON AND CALGARY). Stocks for the week show a decrease of 114,111 bushels made up as follows:- Wheat 10,417 bushels, Oats 83,544 bushels and Barley 20,150 bushels.

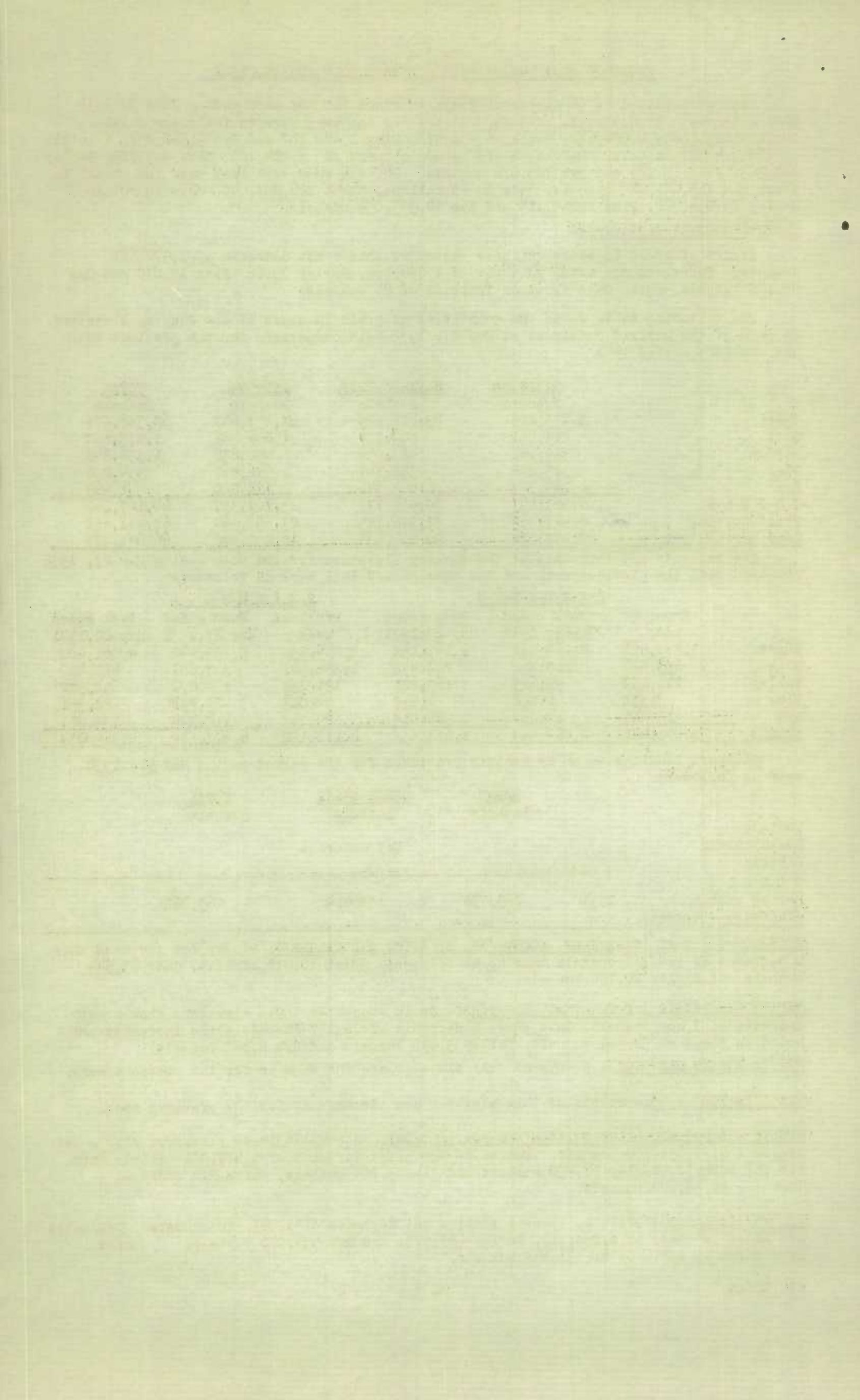
VANCOUVER PRIVATE AND TERMINAL ELEVATORS.- Grain stocks at these elevators show a net decrease of 8,661 bushels, Oats shows a decrease of 72,177 bushels while increases are noted in Wheat of 54,981 bushels, Barley 5,890 bushels and Rye 2,645 bushels.

PRINCE HUPERT ELEVATOR.- Stocks at this elevator are the same as for the previous week.

VICTORIA ELEVATORS.- Stocks at this elevator are the same as for the previous week.

PUBLIC AND PRIVATE (FORT WILLIAM AND PORT ARTHUR). Stocks at these elevators show a net decrease of 1,551,500 bushels. Decreases are noted in Wheat of 1,419,901 bushels Oats 186,767 bushels, Barley 71,950 bushels and Flax 3,704 bushels, while Rye shows an increase of 30,822 bushels.

IN TRANSIT LAKES.- Grain in transit shows a net decrease of 1,843,910 bushels. Decreases are noted in Wheat of 1,053,119, Barley 427,675, and Rye 534,572 bushels, while Oats shows an increase of 171,455 bushels.



Stocks in Store at the Head of the Lakes compared with the same week last year were as follows:-

	Week ended June 3, 1932	Week ended June 5, 1931	+ Increase - Decrease
Wheat	44,953,391	35,689,130	+ 9,269,211
Oats	778,480	2,795,255	- 2,016,775
Barley	2,091,923	8,418,177	- 6,326,254
Flax	830,767	604,292	+ 226,475
Rye	5,058,552	8,799,328	- 3,740,676
T O T A L S	53,718,133	56,306,232	- 2,588,119

The receipts (including transfers) at the Head of the Lakes for the period ending June 3, 1932 with comparative figures for the same week last year were as follows:-

	Week ending June 3, 1932	Week ending June 5, 1931	+ Increase - Decrease
Wheat	2,321,571	4,336,966	- 2,015,395
Oats	136,463	455,359	- 318,896
Barley	128,807	741,723	- 612,916
Flax	33,560	49,220	- 15,660
Rye	87,110	129,094	- 41,984
T O T A L S	2,707,511	5,712,362	- 3,004,851

Preliminary figures showing receipts and shipments at the Head of the Lakes also Vancouver and Prince Rupert for the period August 1st, 1931 to June 3, 1932, compared with the same period last year.

	FORT WILLIAM & PORT ARTHUR		VANCOUVER	
	Receipts	Shipments	Receipts	Shipments
Wheat	109,579,071	110,236,145	63,697,235	65,149,030
Oats	9,930,520	12,643,076	6,884,928	6,268,403
Barley	4,362,826	8,690,877	1,947,274	1,702,041
Flax	1,263,875	934,739	2,054	-
Rye	1,798,537	6,334,292	98,989	51,977
T O T A L S	126,934,829	138,839,129	72,630,480	73,171,451
Same period last year	190,332,644	194,265,619	70,392,818	65,440,423
+Increase -Decrease	-63,397,815	-55,426,490	-2,237,662	-7,731,028

	PRINCE RUPERT		VICTORIA	
	Receipts	Shipments	Receipts	Shipments
T O T A L S	1,151,329	1,294	857,047	294,186
Same period last year	373,638	1,257,039	936,166	648,853
+Increase -Decrease	-777,691	-1,255,745	-79,119	-354,667

INTERIOR PRIVATE AND MILL ELEVATORS:- Grain stocks for the week show a net increase of 195,614 bushels. Increases are noted in Wheat of 195,444 bushels and Barley 15,737 bushels while Oats shows a decrease of 15,916 bushels, Flax 2,598 bushels and Rye 53 bushels.

Stocks in store at the Country Interior Terminal, Public and Private Elevators at the Head of the Lakes, Winnipeg and Vancouver, compared with the same week last year were as follows:-

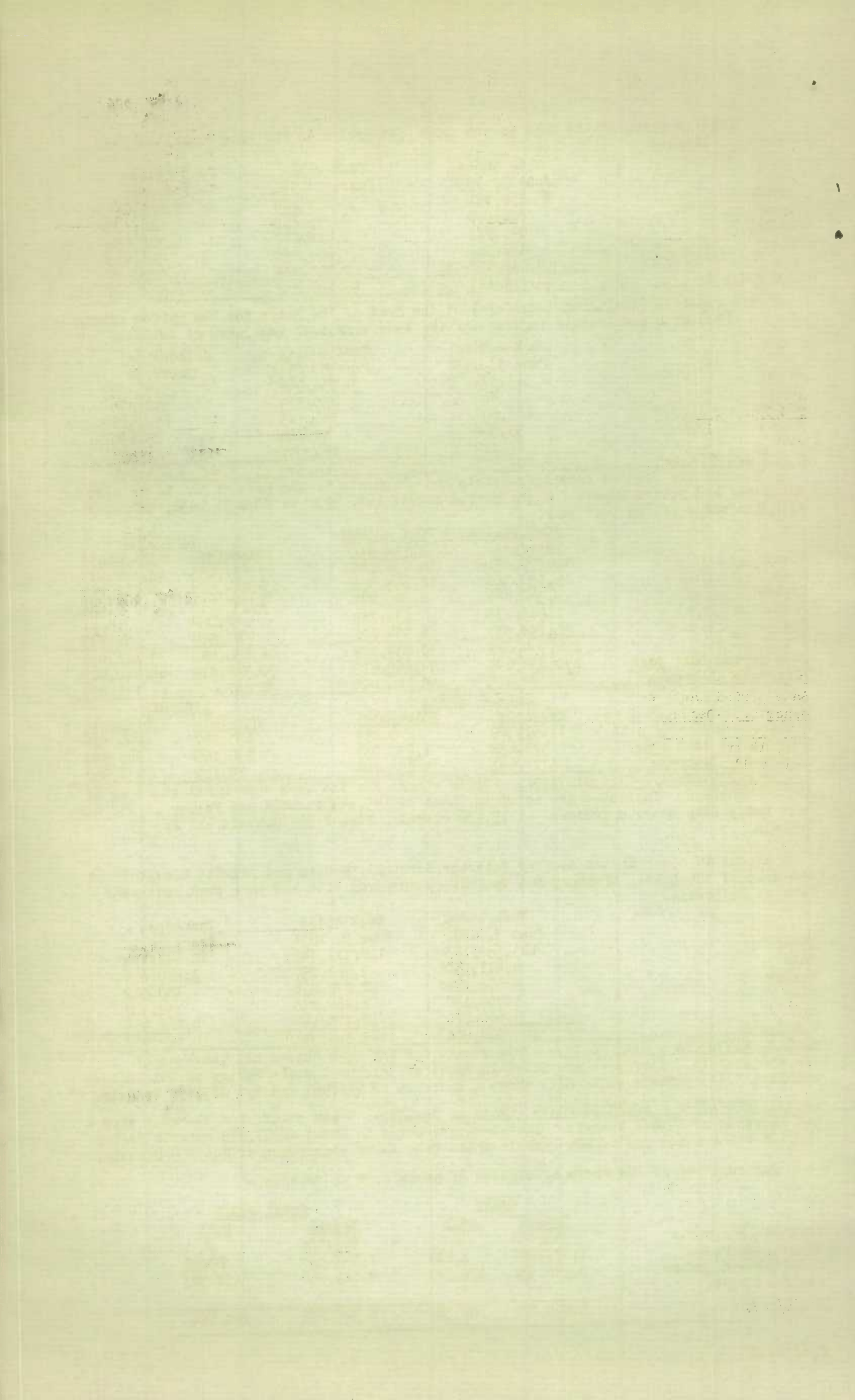
	Week ended June 3, 1932	Week ended June 5, 1931	+ Increase - Decrease
Wheat	123,559,123	112,911,349	+ 10,647,774
Oats	4,411,180	7,991,857	- 3,580,677
Barley	5,022,374	12,872,896	- 7,850,522
Flax	1,405,132	1,266,830	+ 138,302
Rye	6,506,279	10,775,144	- 4,268,865
T O T A L S	140,904,086	145,818,076	- 4,913,990

EASTERN ELEVATORS - LAKE PORTS:- Grain stocks for the week show a net increase of 112,256 bushels. Increases are noted in Wheat of 321,796 bushels Barley 62,841 bushels and Flax 5,443 bushels while Oats shows a decrease of 111,967 and Rye 165,857 bushels.

EASTERN ELEVATORS - SEABOARD PORTS (CANADIAN GRAIN):- Grain stocks for the week show a net increase of 24,677 bushels. Increases are noted in Wheat of 27,799 bushels Barley 140,786 bushels and Rye 62,901 bushels while Oats shows a decrease of 206,809 bushels.

The receipts of the above by classes of ports were as follows:-

	WHEAT		TOTAL GRAIN	
	Vessel	Rail	Vessel	Rail
Georgian Bay Ports	565,632	-	565,632	-
Lower Lake Ports	1,477,258	1,841	1,843,680	1,841
Montreal and Quebec	3,396,531	138,523	4,189,966	138,523
Seaboard Ports				
T O T A L S	5,439,421	140,365	6,599,278	140,364



Shipments overseas of Canadian Grain from St. Lawrence and Seaboard Ports were as follows:-

	<u>U. K.</u>	<u>O. C.</u>
Montreal, Que.	Wheat -	2,711,480 bushels
	Oats -	95,285 "
	Barley -	222,500 "
	Rye -	436,531 "
North Am. Elevator, Sorel, Que.	Wheat 228,800	-

EASTERN ELEVATORS - U. S. GRAIN (INCLUDING FOREIGN CORN):- Stocks show a net increase of 7,921,926 bushels compared with the same week last year. Increases are noted in Wheat of 9,439,647, Barley 31,634, U. S. Corn 108,153 and African Corn 940,124 bushels, while decreases are noted in Oats of 592,418 Rye 1,643,293 and Argentine Corn 361,921 bushels.

The quantities by classes of ports with increases and decreases:-

	<u>xWeek ended</u> June 3, 1932	<u>1/Week ended</u> June 5, 1931	<u>+Increases</u> <u>-Decreases</u>
At Georgian Bay Ports	12,010,631	5,632,522	+ 6,378,109
At Lower Lake Ports	2,553,796	1,056,116	+ 1,497,680
At St. Lawrence Ports	5,278,039	4,823,796	+ 454,243
At Seaboard Ports	417,542	825,648	- 408,106
T O T A L S	20,260,008	12,338,082	+ 7,921,926

x Included in the above 171,806 bushels of Argentine Corn and 1,026,609 bushels of African Corn.

1/Included in the above 533,727 bushels of Argentine Corn, and 86,485 bushels of African Corn.

Shipments of U. S. Grain and Foreign Corn from Atlantic Seaboard Ports were as follows:-

	<u>O. C.</u>
Montreal, Que.	Wheat 176,000 bushels
	Barley 9,830 "
	Rye 43,592

U. S. LAKE PORTS:- Canadian grain stocks show a decrease of 1,545,939 bushels made up as follows:- Wheat 1,533,445, and Rye 12,494 bushels.

U. S. ATLANTIC SEABOARD PORTS:- Canadian grain stocks show a net increase of 269,214 bushels.. Wheat and Oats show increases of 289,603 and 39,971 bushels respectively, while Rye shows a decrease of 60,360 bushels.

Inspection returns for the week ending May 31, 1932, with comparison for the previous year were as follows:-

	<u>Week ended</u> May 31, 1932	<u>Week ended</u> May 31, 1931	<u>+ Increase</u> <u>- Decrease</u>
Wheat	4,438	4,263	+ 175
Oats	327	409	- 82
Barley	157	513	- 356
Flax	47	55	- 8
Rye	112	187	- 75
Mixed Grain	5	7	- 2
Screenings	1	-	+ 1
Corn	-	-	-
TOTALS	5,087	5,434	- 347

The number of bushels of grain shipped from Western to Canadian Eastern Points over the C.P.R. and C.N.R. for the week ending May 31, 1932 and the period from August 1, 1931 to May 31, 1932.

	<u>WEEK ENDING MAY 31, 1932</u>					<u>PERIOD AUGUST 1, 1931 TO MAY 31, 1932.</u>				
	<u>WHEAT</u>	<u>OATS</u>	<u>BARLEY</u>	<u>FLAX</u>	<u>RYE</u>	<u>WHEAT</u>	<u>OATS</u>	<u>BARLEY</u>	<u>FLAX</u>	<u>RYE</u>
Via C.P.R.	-	-	-	-	-	-	40,746	-	-	-
Via C.N.R.	-	2,087	1,569	-	-	-	73,895	13,990	-	1,247
TOTALS	-	2,087	1,569	-	-	-	114,641	13,990	-	1,247

Stocks of Grain at the Different Elevators during the week ending June 3, 1932.

	WHEAT Bush.	OATS Bush.	BARLEY Bush.	FLAX Bush.	RYE Bush.
Western Country Elevators	60,386,878	1,873,680	1,332,848	534,256	1,341,369
Interior Terminal Elevators	140,745	99,251	14,439	1,159	263
Vancouver Elevators	7,947,075	762,324	251,919	803	59,704
Victoria	561,349	-	-	-	-
Prince Rupert Elevators	1,157,853	45	-	-	-
Fort William and Port Arthur	44,958,391	778,480	2,091,923	630,767	5,058,552
In Transit - Lakes	3,953,623	367,717	229,999	-	148,378
Interior Pte. & Mill Elevs.	5,947,369	888,714	1,357,464	32,509	22,948
Eastern Elevators - Lake Ports	6,722,377	771,639	265,971	20,673	131,334
Eastern Elevators - Sbd. Ports	6,165,597	492,771	608,376	-	2,252,041
U. S. Lake Ports	2,569,117	-	282,000	-	83,312
U. S. Atlantic Seaboard Ports	3,389,249	39,971	973	-	443,336
T O T A L S	143,899,623	6,074,642	6,455,912	1,420,167	9,541,237
Previous week	148,923,751	6,540,367	6,736,235	1,440,896	10,266,313
Same week previous week	126,207,040	10,601,109	15,054,720	1,255,114	12,503,039

Quantity of Screenings and Oat Scalpings received, shipped and in store at the under-mentioned elevators during the week ending June 3, 1932.

	Amount in Store May 27, 1932 Bushels	Amount Received by Vessel Bushels	Amount Shipped Bushels	Amount in Store June 3, 1932 Bushels
<u>SCALPINGS</u>				
Montreal	541	-	-	541
<u>SCREENINGS</u>				
Owen Sound	125	-	20	105
Goderich Elev. and Transit	307	1,552	73	233
Toronto	469	130	59	409
T O T A L	901	1,682	153	748

Lake Shipments from Head of Lakes for the week ending May 31st, 1932.

	Buffalo	Other U.S. Lake Ports	Can. Lower Lake Ports	Montreal	Quebec	Sorel	Prescott	Total
Wheat	281,219	-	3,296,920	1,359,239	-	325,622	-	5,263,000
Oats	-	-	25,282	226,614	-	-	-	251,896
Barley	-	-	243,766	301,849	-	-	-	545,615
Flax	-	-	37,616	-	-	-	-	37,616
Rye	-	-	105,000	103,377	-	-	-	208,377
TOTAL	281,219	-	3,708,584	1,991,079	-	325,622	-	6,306,504
Period ended May 31, 1931	3,445,119	-	3,388,689	1,619,095	94,766	94,000	-	8,641,669

Lake Shipments from the Head of the Lakes for the period from the opening of navigation to May 31, 1932.

Wheat	2,311,432	146,500	12,300,456	7,102,066	62,482	985,001	-	22,907,937
Oats	-	-	854,975	1,329,700	317,067	-	-	2,501,742
Barley	-	-	597,703	1,149,249	-	-	-	1,746,952
Flax	-	-	37,616	-	-	-	-	37,616
Rye	454,236	158,259	2,126,848	781,021	-	-	-	3,520,364
TOTAL	2,765,668	304,759	15,917,598	10,362,036	379,549	985,001	-	30,714,611
Period ended May 31, 1931	20,372,062	264,000	21,491,182	7,630,897	339,481	94,000	-	50,191,622

- 7 -
CANADIAN GRAIN IN STORE - JUNE 3, 1932.

	WHEAT Bush.	OATS Bush.	BARLEY Bush.	FLAX Bush.	RYE Bush.	TOTAL Bush.
<u>WESTERN COUNTRY ELEVATORS</u>						
Manitoba	5473213	213951	399118	75842	159773	6321897
Saskatchewan	33482023	603137	483094	382147	1009376	35959777
Alberta	21431642	1056592	450636	76267	172220	23187357
TOTAL WESTERN COUNTRY ELEVS.	60386878	1873680	1332848	543256	1341369	65469031
Calgary Can. Govt. Elevs.	28102	333	149	-	-	28584
Edmonton Can. Govt. Elevs.	102073	29289	2442	-	-	133804
Moose Jaw Can. Govt.	6565	12279	7895	1159	263	28161
Saskatoon Can. Govt. Elevs.	4005	57350	3953	-	-	65308
TOTAL INTERIOR TERMINAL ELEVS.	140745	99251	14439	1159	263	255857
VANCOUVER TER. & PUBL. ELEVS.	7947075	762324	251919	803	59704	9021825
VICTORIA ELEVATORS	561349	-	-	-	-	561349
PRINCE RUPERT	1157853	45	-	-	-	1157898
<u>PUBLIC TERMINALS</u>						
G. P. Pacific Ft. William	2895847	32414	43248	28386	810543	3810438
Can. Govt. Pt. Arthur	17447	7441	6700	18192	4862	54642
<u>SEMI-PUBLIC TERMINALS</u>						
Port Arthur	26550037	395356	1228761	507997	1964856	30647007
Fort William	13905356	323794	809414	276192	2278291	17593047
Private Elevators	2324	19475	3800	-	-	25599
Storage Afloat	1587380	-	-	-	-	1587380
TOTAL AT FT. WM. & PT. ARTHUR	44958391	778480	2091923	830767	5058552	53718113
In Transit Lakes	3953623	367717	229999	-	148378	4699717
INTERIOR PTE. & MILL ELEVS.	5947369	888714	1357464	32509	22948	8249004
<u>EASTERN ELEVATORS</u>						
Tiffin # 2.	1876863	-	-	-	-	1876863
Midland Elevators	253405	-	-	-	-	253405
Midland Simcoe	410609	563175	-	-	-	973784
Pt. McNicoll	946147	-	-	-	-	946147
Collingwood	44972	-	-	-	-	44972
Owen Sound G.L. Elev. Co.	94400	20352	76066	-	-	190818
Goderich Elev. & Transit	498394	59815	10162	14802	-	583173
Goderich West Can. Flour Mill	145505	-	-	-	-	145505
Sarnia	824129	-	-	-	-	824129
Pt. Colborne Dom. Govt. Elevs.	532847	-	12423	-	111284	656554
Pt. Colborne Maple Leaf	527370	66889	152616	-	19809	766684
Toronto	305327	60955	12996	5871	-	385149
Kingston, Richardson No. 1	1823	503	2080	-	241	4647
Kingston Terminal	36262	-	-	-	-	36262
Prescott	224324	-	2628	-	-	226952
TOTAL EASTERN ELEVS. LAKE PORTS	6722377	771689	268971	20673	131334	7915044
Montreal Hbr. Comms.	5179290	292103	570448	-	2087962	8129803
Ogilvie Flour Mills	477981	-	-	-	-	477981
North Amer. Elev. Ltd. Sorel	354875	1609	37005	-	88850	482339
Quebec Hbr. Comms	153451	199059	905	-	75229	428644
West Saint John	-	-	18	-	-	18
TOTAL EASTERN ELEVS. SBD. PORTS	6165597	492771	608376	-	2252041	9518785
TOTAL QUANTITY IN CANADA	137941237	6034671	6155939	1420167	9014539	160566623
Buffalo	1936117	-	-	-	83312	2019429
Buffalo Afloat	507000	-	-	-	-	507000
Erie	126000	-	282000	-	-	408000
TOTAL U. S. LAKE PORTS	2569117	-	282000	-	83312	2934429
New York	1595249	39971	973	-	366336	2002529
New York Afloat	1794000	-	-	-	77000	1871000
TOTAL U. S. ATLANTIC SBD. PORTS	3389249	39971	973	-	443336	3873529
TOTAL QUANTITY IN STORE	143899623	6074642	6438912	1420167	9541237	167374581

Grades of Canadian Grain in Store at Public and Private Elevators (Head of the Lakes) Interior Terminal Elevators, Vancouver and Victoria Terminal and Public Elevators in the East for the week ending June 3, 1932.

	Public and Terminal Elevators Bushels	Interior Terminal Elevators Bushels	Vancouver & Victoria & Private Elevators Bushels	Eastern Elevator Lake Ports Bushels	Eastern Elevator Seaboard Ports Bushels	Total Bushels
WHEAT						
No. 1 Hard	858,875	5,671	1,174,371	150,038	277,299	2,466,254
No. 1 Northern	10,600,417	15,034	1,357,956	1,766,237	2,378,994	16,149,638
No. 2 Northern	24,432,272	30,732	2,475,088	3,632,766	1,570,563	32,141,421
Dr. 2 Northern	-	940	-	-	-	940
No. 3 Northern	5,152,471	11,591	1,354,156	859,046	740,924	8,118,188
No. 4 Wheat	185,699	8,405	603,750	166,292	355,085	1,319,231
No. 5 Wheat	36,890	10,193	347,448	19,499	64,381	478,411
No. 6 Wheat	11,183	5,565	157,959	-	3,116	177,803
No. 4 Special	2,916	-	-	-	-	2,916
No. 5 Special	79	-	-	-	-	79
Feed	2,849	-	298,165	264	15,196	316,474
Private Elevators	2,324	-	-	-	-	2,324
Other	3,672,416	21,614	739,531	128,235	760,039	760,039
TOTALS	40,958,391	140,745	8,508,424	6,722,377	6,165,597	66,495,534
OATS						
No. 1 C. W.	-	969	-	-	-	969
No. 2 C. W.	364,022	36,413	246,674	288,013	199	953,321
No. 3 C. W.	100,023	16,766	269,151	407,502	53,524	846,966
Special Feed	5,990	-	-	-	-	5,990
Ex. No. 1 Feed	33,054	4,767	32,187	-	3,663	73,761
No. 1 Feed	82,873	17,406	108,155	6,300	167,139	381,873
No. 2 Feed	56,152	6,261	54,967	21,106	103,974	242,460
No. 3 Feed	31,187	-	-	-	-	31,187
Private Elevators	19,475	-	-	-	-	19,475
Other	85,704	16,669	51,190	48,768	164,272	366,603
TOTALS	778,480	99,251	762,324	771,689	492,771	2,904,515
NEW GRADE BARLEY						
No. 3 Ex. C. W. 6 Row	12,937	411	4,345	-	49,279	66,972
No. 2 C. W. 6 Row	-	-	-	-	-	-
3 Ex. C. W. Trebi	5,961	-	-	-	9,424	15,385
3 Ex. C. W. 2 Row	1,135	-	-	-	-	1,135
3 C. W.	1,893,910	6,771	132,943	239,958	451,477	2,725,059
4 C. W.	73,624	2,684	46,434	-	923	123,665
5 C. W.	56,341	1,333	34,590	-	92,136	184,400
6 C. W.	14,397	1,877	1,238	-	-	17,512
Feed	-	-	-	-	643	643
Private Elevators	3,800	-	-	-	-	3,800
Other	29,818	1,363	32,369	29,013	4,494	97,057
TOTALS	2,091,923	14,439	251,919	268,971	608,376	3,235,628
FLAX						
No. 1 C. W.	731,087	1,136	727	5,871	-	738,821
No. 2 C. W.	55,804	-	76	-	-	55,880
No. 3 C. W.	20,129	23	-	-	-	20,152
No. 4 C. W.	9,345	-	-	-	-	9,345
Other	14,402	-	-	14,802	-	29,204
TOTALS	830,767	1,159	803	20,673	-	853,402
RYE						
No. 1 C. W.	150,385	-	5,660	-	54,457	210,502
No. 2 C. W.	4,633,806	-	35,830	124,081	1,759,296	6,553,003
No. 3 C. W.	182,061	263	4,861	-	386,619	573,804
No. 4 C. W.	7,651	-	13,353	-	-	21,004
Rejected	24,158	-	-	-	3,055	27,213
Private Elevators	-	-	-	-	-	-
Other	60,491	-	-	7,253	48,614	116,358
TOTALS	5,058,552	263	59,704	131,334	2,252,041	7,501,894
TOTAL QUANTITY IN STORE						
	53,718,113	255,857	9,583,174	7,915,044	9,518,785	80,990,973

CANADIAN GRAIN IN STORE - COMPARATIVE STATEMENT, 1928-1932.

	WHEAT Bush.	OTHER GRAIN Bush.	TOTAL Bush.
<u>June 4th, 1932.</u>			
Western Country Elevators	60,386,878	5,082,153	65,469,031
Interior Terminal Elevators	140,745	115,112	255,857
Vancouver Elevators	7,947,075	1,074,750	9,021,825
Victoria Elevators	561,349	-	561,349
Prince Rupert Elevators	1,157,853	45	1,157,898
Fort William and Port Arthur Elevators	44,958,391	8,759,722	53,718,113
Interior Private and Mill Elevators	5,947,369	2,301,635	8,249,004
In Transit - Lakes	3,953,623	746,094	4,699,717
Eastern Elevators - Lake Ports	6,722,377	1,192,667	7,915,044
Eastern Elevators - Sbd. Ports	6,165,597	3,353,188	9,518,785
U. S. Lake Ports	2,569,117	365,312	2,934,429
U. S. Atlantic Seaboard Ports	3,389,249	484,280	3,873,529
T O T A L S	143,899,623	23,474,958	167,374,581
<u>June 5th, 1931.</u>			
Western Country Elevators	57,329,259	9,292,730	66,621,989
Interior Terminal Elevators	1,693,663	78,318	1,771,981
Vancouver Elevators	12,043,559	135,192	12,178,751
Victoria Elevators	284,569	-	284,569
Prince Rupert Elevators	9,928	-	9,928
Fort William and Port Arthur Elevators	35,689,180	20,617,052	56,306,232
Interior Private and Mill Elevators	5,861,191	2,783,435	8,644,626
Eastern Elevators - Lake Ports	5,623,990	2,038,602	7,662,596
Eastern Elevators - Sbd. Ports	6,091,249	3,976,853	10,068,102
U. S. Lake Ports	4,857,069	572,326	5,429,395
U. S. Atlantic Seaboard Ports	1,275,363	112,880	1,388,243
T O T A L S	130,759,020	39,607,392	170,366,412
<u>June 6, 1930.</u>			
Western Country Elevators	51,472,060	10,661,097	62,133,157
Interior Terminal Elevators	3,136,483	509,545	3,646,028
Vancouver Elevators	8,156,913	146,507	8,303,420
Victoria Elevators	-	-	-
Prince Rupert Elevators	887,394	284	887,678
Fort William and Port Arthur Elevators	38,377,042	20,659,369	59,036,411
Interior Private and Mfg. Elevators	5,885,349	1,969,487	7,854,836
Public Elevators in the East - Lake Ports	10,789,473	2,494,062	13,283,535
Public Elevators in the East - Sbd. Ports	9,444,238	3,406,256	12,850,494
U. S. Lake Ports	6,558,406	2,025,761	8,584,167
U. S. Atlantic Seaboard Ports	7,407,909	702,182	8,110,091
T O T A L S	142,115,267	42,574,550	184,689,817
<u>June 7, 1929.</u>			
Western Country Elevators	26,386,427	10,473,136	36,859,563
Interior Terminal Elevators	6,232,484	305,919	6,538,403
Vancouver Elevators	5,532,767	127,378	5,660,145
Victoria Elevators	38,693	-	38,693
Prince Rupert Elevators	39,820	-	39,820
Fort William and Port Arthur	43,859,476	11,986,525	55,846,001
Interior Private and Mfg. Elevators	4,329,852	2,151,366	6,481,218
Public Elevators in the East-Lake Ports	15,030,879	4,484,759	19,515,638
Public Elevators in the East-Sbd. Ports	10,334,376	3,190,140	13,524,516
U. S. Lake Ports	12,563,429	2,742,081	15,305,510
U. S. Atlantic Seaboard Ports	12,890,497	1,233,067	14,123,564
T O T A L S	137,238,700	36,694,371	173,933,071
<u>June 8, 1928.</u>			
Western Country Elevators	18,381,403	5,499,152	23,880,555
Interior Terminal Elevators	3,441,766	238,752	3,680,518
Vancouver Elevators	5,414,432	27,627	5,442,059
Prince Rupert Elevators	269,037	-	269,037
Fort William and Port Arthur	51,731,478	6,365,151	58,096,629
Interior Private and Mfg. Elevs.	4,659,802	2,039,994	6,699,796
Public Elevs. in the East-Lake Ports	6,061,078	1,007,762	7,068,840
Public Elevs. in the East-Sbd. Ports	6,968,596	1,822,995	8,791,591
U. S. Lake Ports	8,591,520	298,891	8,890,411
U. S. Atlantic Seaboard Ports	2,735,830	300,597	3,036,427
T O T A L S	108,254,942	17,600,921	125,855,863

RECEIPTS AND SHIPMENTS BY CLASSES OF ELEVATORS

Week ended June 3, 1932.

	WHEAT Bush.	OATS Bush.	BARLEY Bush.	FLAX Bush.	RYE Bush.	TOTAL Bush.
#COUNTRY ELEVATORS, WESTERN DIVISION						
Rcts. - Rail	2,164,812	280,862	93,615	6,862	19,364	2,565,515
Shpts. - Rail	5,753,442	337,667	158,272	29,797	114,394	6,393,572
INTERIOR TERMINAL ELEVATORS						
Rcts. - Rail	4,310	9,243	-	-	-	13,553
Shpts. - Rail	14,727	2,281	3,252	-	-	20,260
VANCOUVER ELEVATORS						
Rcts. - Rail	1,431,837	11,990	5,889	-	2,645	1,452,361
Shpts. - Vessel	1,369,793	84,246	-	-	-	1,454,039
Rail	1,000	-	-	-	-	1,000
PUBLIC AND PRIVATE TERMINAL ELEVATORS, FORT WILLIAM AND PORT ARTHUR						
Rcts. - Rail	2,321,571	136,463	128,807	33,560	87,110	2,707,511
Shpts. - Vessel	3,695,251	288,994	187,376	37,240	56,731	4,265,592
Rail	56,243	36,237	26,738	-	-	119,218
#INTERIOR PRIVATE AND MILL ELEVATORS						
Rcts. - Rail	330,794	97,669	119,887	4,754	-	553,104
Shpts. - Rail	212,253	121,024	89,613	6,616	206	429,712
EASTERN ELEVATORS - GEORGIAN BAY PORTS						
Rcts. - Vessel	565,632	-	-	-	-	565,632
Shpts. - Vessel	-	73,770	49,651	-	-	123,421
Rail	54,970	1,500	-	-	-	56,470
Local and Mill	179,619	12,159	4,300	428	-	196,506
LOWER LAKE PORTS						
Rcts. - Vessel	1,477,258	25,321	243,510	37,605	59,986	1,843,680
Rail	1,841	-	-	-	-	1,841
Shpts. - Vessel	1,188,645	25,321	107,292	31,734	219,998	1,572,990
Rail	3,808	290	83	-	493	4,674
Local and Mill	200,976	24,246	19,343	-	5,352	249,917
ST. LAWRENCE PORTS						
Rcts. - Vessel	3,396,531	-	382,852	-	410,583	4,189,966
Rail	138,523	-	-	-	-	138,523
Shpts. - Vessel	3,063,572	95,285	222,500	-	436,531	3,814,888
Local and Mill	122,548	111,524	19,564	-	-	253,636
TOTAL EASTERN ELEVATORS						
Rcts. - Vessel	5,439,421	25,321	626,362	37,605	470,569	6,559,278
Rail	140,364	-	-	-	-	140,364
Shpts. - Vessel	4,252,217	194,376	379,443	31,734	656,529	5,514,299
Rail	58,778	1,790	83	-	493	61,144
Local and Mill	503,143	147,929	43,207	428	5,352	700,059

#Week ending May 27, 1932.

Platform Loadings for the week ended May 31, 1932 reports not yet received.

8/6/32/AG.

1911	1910	1909	1908	1907	1906	1905	1904	1903	1902	1901	1900	1899	1898	1897	1896	1895	1894	1893	1892	1891	1890	1889	1888	1887	1886	1885	1884	1883	1882	1881	1880	1879	1878	1877	1876	1875	1874	1873	1872	1871	1870	1869	1868	1867	1866	1865	1864	1863	1862	1861	1860	1859	1858	1857	1856	1855	1854	1853	1852	1851	1850	1849	1848	1847	1846	1845	1844	1843	1842	1841	1840	1839	1838	1837	1836	1835	1834	1833	1832	1831	1830	1829	1828	1827	1826	1825	1824	1823	1822	1821	1820	1819	1818	1817	1816	1815	1814	1813	1812	1811	1810	1809	1808	1807	1806	1805	1804	1803	1802	1801	1800	1799	1798	1797	1796	1795	1794	1793	1792	1791	1790	1789	1788	1787	1786	1785	1784	1783	1782	1781	1780	1779	1778	1777	1776	1775	1774	1773	1772	1771	1770	1769	1768	1767	1766	1765	1764	1763	1762	1761	1760	1759	1758	1757	1756	1755	1754	1753	1752	1751	1750	1749	1748	1747	1746	1745	1744	1743	1742	1741	1740	1739	1738	1737	1736	1735	1734	1733	1732	1731	1730	1729	1728	1727	1726	1725	1724	1723	1722	1721	1720	1719	1718	1717	1716	1715	1714	1713	1712	1711	1710	1709	1708	1707	1706	1705	1704	1703	1702	1701	1700	1699	1698	1697	1696	1695	1694	1693	1692	1691	1690	1689	1688	1687	1686	1685	1684	1683	1682	1681	1680	1679	1678	1677	1676	1675	1674	1673	1672	1671	1670	1669	1668	1667	1666	1665	1664	1663	1662	1661	1660	1659	1658	1657	1656	1655	1654	1653	1652	1651	1650	1649	1648	1647	1646	1645	1644	1643	1642	1641	1640	1639	1638	1637	1636	1635	1634	1633	1632	1631	1630	1629	1628	1627	1626	1625	1624	1623	1622	1621	1620	1619	1618	1617	1616	1615	1614	1613	1612	1611	1610	1609	1608	1607	1606	1605	1604	1603	1602	1601	1600	1599	1598	1597	1596	1595	1594	1593	1592	1591	1590	1589	1588	1587	1586	1585	1584	1583	1582	1581	1580	1579	1578	1577	1576	1575	1574	1573	1572	1571	1570	1569	1568	1567	1566	1565	1564	1563	1562	1561	1560	1559	1558	1557	1556	1555	1554	1553	1552	1551	1550	1549	1548	1547	1546	1545	1544	1543	1542	1541	1540	1539	1538	1537	1536	1535	1534	1533	1532	1531	1530	1529	1528	1527	1526	1525	1524	1523	1522	1521	1520	1519	1518	1517	1516	1515	1514	1513	1512	1511	1510	1509	1508	1507	1506	1505	1504	1503	1502	1501	1500	1499	1498	1497	1496	1495	1494	1493	1492	1491	1490	1489	1488	1487	1486	1485	1484	1483	1482	1481	1480	1479	1478	1477	1476	1475	1474	1473	1472	1471	1470	1469	1468	1467	1466	1465	1464	1463	1462	1461	1460	1459	1458	1457	1456	1455	1454	1453	1452	1451	1450	1449	1448	1447	1446	1445	1444	1443	1442	1441	1440	1439	1438	1437	1436	1435	1434	1433	1432	1431	1430	1429	1428	1427	1426	1425	1424	1423	1422	1421	1420	1419	1418	1417	1416	1415	1414	1413	1412	1411	1410	1409	1408	1407	1406	1405	1404	1403	1402	1401	1400	1399	1398	1397	1396	1395	1394	1393	1392	1391	1390	1389	1388	1387	1386	1385	1384	1383	1382	1381	1380	1379	1378	1377	1376	1375	1374	1373	1372	1371	1370	1369	1368	1367	1366	1365	1364	1363	1362	1361	1360	1359	1358	1357	1356	1355	1354	1353	1352	1351	1350	1349	1348	1347	1346	1345	1344	1343	1342	1341	1340	1339	1338	1337	1336	1335	1334	1333	1332	1331	1330	1329	1328	1327	1326	1325	1324	1323	1322	1321	1320	1319	1318	1317	1316	1315	1314	1313	1312	1311	1310	1309	1308	1307	1306	1305	1304	1303	1302	1301	1300	1299	1298	1297	1296	1295	1294	1293	1292	1291	1290	1289	1288	1287	1286	1285	1284	1283	1282	1281	1280	1279	1278	1277	1276	1275	1274	1273	1272	1271	1270	1269	1268	1267	1266	1265	1264	1263	1262	1261	1260	1259	1258	1257	1256	1255	1254	1253	1252	1251	1250	1249	1248	1247	1246	1245	1244	1243	1242	1241	1240	1239	1238	1237	1236	1235	1234	1233	1232	1231	1230	1229	1228	1227	1226	1225	1224	1223	1222	1221	1220	1219	1218	1217	1216	1215	1214	1213	1212	1211	1210	1209	1208	1207	1206	1205	1204	1203	1202	1201	1200	1199	1198	1197	1196	1195	1194	1193	1192	1191	1190	1189	1188	1187	1186	1185	1184	1183	1182	1181	1180	1179	1178	1177	1176	1175	1174	1173	1172	1171	1170	1169	1168	1167	1166	1165	1164	1163	1162	1161	1160	1159	1158	1157	1156	1155	1154	1153	1152	1151	1150	1149	1148	1147	1146	1145	1144	1143	1142	1141	1140	1139	1138	1137	1136	1135	1134	1133	1132	1131	1130	1129	1128	1127	1126	1125	1124	1123	1122	1121	1120	1119	1118	1117	1116	1115	1114	1113	1112	1111	1110	1109	1108	1107	1106	1105	1104	1103	1102	1101	1100	1099	1098	1097	1096	1095	1094	1093	1092	1091	1090	1089	1088	1087	1086	1085	1084	1083	1082	1081	1080	1079	1078	1077	1076	1075	1074	1073	1072	1071	1070	1069	1068	1067	1066	1065	1064	1063	1062	1061	1060	1059	1058	1057	1056	1055	1054	1053	1052	1051	1050	1049	1048	1047	1046	1045	1044	1043	1042	1041	1040	1039	1038	1037	1036	1035	1034	1033	1032	1031	1030	1029	1028	1027	1026	1025	1024	1023	1022	1021	1020	1019	1018	1017	1016	1015	1014	1013	1012	1011	1010	1009	1008	1007	1006	1005	1004	1003	1002	1001	1000	999	998	997	996	995	994	993	992	991	990	989	988	987	986	985	984	983	982	981	980	979	978	977	976	975	974	973	972	971	970	969	968	967	966	965	964	963	962	961	960	959	958	957	956	955	954	953	952	951	950	949	948	947	946	945	944	943	942	941	940	939	938	937	936	935	934	933	932	931	930	929	928	927	926	925	924	923	922	921	920	919	918	917	916	915	914	913	912	911	910	909	908	907	906	905	904	903	902	901	900	899	898	897	896	895	894	893	892	891	890	889	888	887	886	885	884	883	882	881	880	879	878	877	876	875	874	873	872	871	870	869	868	867	866	865	864	863	862	861	860	859	858	857	856	855	854	853	852	851	850	849	848	847	846	845	844	843	842	841	840	839	838	837	836	835	834	833	832	831	830	829	828	827	826	825	824	823	822	821	820	819	818	817	816	815	814	813	812	811	810	809	808	807	806	805	804	803	802	801	800	799	798	797	796	795	794	793	792	791	790	789	788	787	786	785	784	783	782	781	780	779	778	777	776	775	774	773	772	771	770	769	768	767	766	765	764	763	762	761	760	759	758	757	756	755	754	753	752	751	750	749	748	747	746	745	744	743	742	741	740	739	738	737	736	735	734	733	732	731	730	729	728	727	726	725	724	723	722	721	720	719	718	717	716	715	714	713	712	711	710	709	708	707	706	705	704	703	702	701	700	699	698	697	696	695	694	693	692	691	690	689	688	687	686	685	684	683	682	681	680	679	678	677	676	675	674	673	672	671	670	669	668	667	666	665	664	663	662	661	660	659	658	657	656	655	654	653	652	651	650</
------	------	------	------	------	------	------	------	------	------	------	------	------	------	------	------	------	------	------	------	------	------	------	------	------	------	------	------	------	------	------	------	------	------	------	------	------	------	------	------	------	------	------	------	------	------	------	------	------	------	------	------	------	------	------	------	------	------	------	------	------	------	------	------	------	------	------	------	------	------	------	------	------	------	------	------	------	------	------	------	------	------	------	------	------	------	------	------	------	------	------	------	------	------	------	------	------	------	------	------	------	------	------	------	------	------	------	------	------	------	------	------	------	------	------	------	------	------	------	------	------	------	------	------	------	------	------	------	------	------	------	------	------	------	------	------	------	------	------	------	------	------	------	------	------	------	------	------	------	------	------	------	------	------	------	------	------	------	------	------	------	------	------	------	------	------	------	------	------	------	------	------	------	------	------	------	------	------	------	------	------	------	------	------	------	------	------	------	------	------	------	------	------	------	------	------	------	------	------	------	------	------	------	------	------	------	------	------	------	------	------	------	------	------	------	------	------	------	------	------	------	------	------	------	------	------	------	------	------	------	------	------	------	------	------	------	------	------	------	------	------	------	------	------	------	------	------	------	------	------	------	------	------	------	------	------	------	------	------	------	------	------	------	------	------	------	------	------	------	------	------	------	------	------	------	------	------	------	------	------	------	------	------	------	------	------	------	------	------	------	------	------	------	------	------	------	------	------	------	------	------	------	------	------	------	------	------	------	------	------	------	------	------	------	------	------	------	------	------	------	------	------	------	------	------	------	------	------	------	------	------	------	------	------	------	------	------	------	------	------	------	------	------	------	------	------	------	------	------	------	------	------	------	------	------	------	------	------	------	------	------	------	------	------	------	------	------	------	------	------	------	------	------	------	------	------	------	------	------	------	------	------	------	------	------	------	------	------	------	------	------	------	------	------	------	------	------	------	------	------	------	------	------	------	------	------	------	------	------	------	------	------	------	------	------	------	------	------	------	------	------	------	------	------	------	------	------	------	------	------	------	------	------	------	------	------	------	------	------	------	------	------	------	------	------	------	------	------	------	------	------	------	------	------	------	------	------	------	------	------	------	------	------	------	------	------	------	------	------	------	------	------	------	------	------	------	------	------	------	------	------	------	------	------	------	------	------	------	------	------	------	------	------	------	------	------	------	------	------	------	------	------	------	------	------	------	------	------	------	------	------	------	------	------	------	------	------	------	------	------	------	------	------	------	------	------	------	------	------	------	------	------	------	------	------	------	------	------	------	------	------	------	------	------	------	------	------	------	------	------	------	------	------	------	------	------	------	------	------	------	------	------	------	------	------	------	------	------	------	------	------	------	------	------	------	------	------	------	------	------	------	------	------	------	------	------	------	------	------	------	------	------	------	------	------	------	------	------	------	------	------	------	------	------	------	------	------	------	------	------	------	------	------	------	------	------	------	------	------	------	------	------	------	------	------	------	------	------	------	------	------	------	------	------	------	------	------	------	------	------	------	------	------	------	------	------	------	------	------	------	------	------	------	------	------	------	------	------	------	------	------	------	------	------	------	------	------	------	------	------	------	------	------	------	------	------	------	------	------	------	------	------	------	------	------	------	------	------	------	------	------	------	------	------	------	------	------	------	------	------	------	------	------	------	------	------	------	------	------	------	------	------	------	------	------	------	------	------	------	------	------	------	------	------	------	------	------	------	------	------	------	------	------	------	------	------	------	------	------	------	------	------	------	------	------	------	------	------	------	------	------	------	------	------	------	------	------	------	------	------	------	------	------	------	------	------	------	------	------	------	------	------	------	------	------	------	------	------	------	------	------	------	------	------	------	------	------	------	------	------	------	------	------	------	------	------	------	------	------	------	------	------	------	------	------	------	------	------	------	------	------	------	------	------	------	------	------	------	------	------	------	------	------	------	------	------	------	------	------	------	------	------	------	------	------	------	------	------	------	------	------	------	------	------	------	------	------	------	------	------	------	------	------	------	------	------	------	------	------	------	------	------	------	------	------	------	------	------	------	------	------	------	------	------	------	------	------	------	------	------	------	------	------	------	------	------	------	------	------	------	------	------	------	------	------	------	------	------	------	------	------	------	------	------	------	------	------	------	------	------	------	------	-----	-----	-----	-----	-----	-----	-----	-----	-----	-----	-----	-----	-----	-----	-----	-----	-----	-----	-----	-----	-----	-----	-----	-----	-----	-----	-----	-----	-----	-----	-----	-----	-----	-----	-----	-----	-----	-----	-----	-----	-----	-----	-----	-----	-----	-----	-----	-----	-----	-----	-----	-----	-----	-----	-----	-----	-----	-----	-----	-----	-----	-----	-----	-----	-----	-----	-----	-----	-----	-----	-----	-----	-----	-----	-----	-----	-----	-----	-----	-----	-----	-----	-----	-----	-----	-----	-----	-----	-----	-----	-----	-----	-----	-----	-----	-----	-----	-----	-----	-----	-----	-----	-----	-----	-----	-----	-----	-----	-----	-----	-----	-----	-----	-----	-----	-----	-----	-----	-----	-----	-----	-----	-----	-----	-----	-----	-----	-----	-----	-----	-----	-----	-----	-----	-----	-----	-----	-----	-----	-----	-----	-----	-----	-----	-----	-----	-----	-----	-----	-----	-----	-----	-----	-----	-----	-----	-----	-----	-----	-----	-----	-----	-----	-----	-----	-----	-----	-----	-----	-----	-----	-----	-----	-----	-----	-----	-----	-----	-----	-----	-----	-----	-----	-----	-----	-----	-----	-----	-----	-----	-----	-----	-----	-----	-----	-----	-----	-----	-----	-----	-----	-----	-----	-----	-----	-----	-----	-----	-----	-----	-----	-----	-----	-----	-----	-----	-----	-----	-----	-----	-----	-----	-----	-----	-----	-----	-----	-----	-----	-----	-----	-----	-----	-----	-----	-----	-----	-----	-----	-----	-----	-----	-----	-----	-----	-----	-----	-----	-----	-----	-----	-----	-----	-----	-----	-----	-----	-----	-----	-----	-----	-----	-----	-----	-----	-----	-----	-----	-----	-----	-----	-----	-----	-----	-----	-----	-----	-----	-----	-----	-----	-----	-----	-----	-----	-----	-----	-----	-----	-----	-----	-----	-----	-----	-----	-----	-----	-----	-----	-----	-----	-----	-----	-----	-----	-----	-----	-----	-----	-----	-----	-----	-----	-----	-----	-----	-----	-----	-----	-----	-----	-----	-----	-----	-----	-----	-----	-----	-----	-----	-----	-----	-----	-----	-----	-----	-----	-----	-----	-----	-----	-----	-----	-----	-----	-----	-----	-----	-----	-------

- 11 -
U. S. GRAIN - QUANTITY IN STORE - RECEIPTS AND SHIPMENTS
Week ended June 3, 1932.

	WHEAT Bush.	OATS Bush.	BARLEY Bush.	RYE Bush.	CORN Bush.	TOTAL Bush.
Depot Harbour	986,589	44,324	14,992	-	475,756	1,521,661
Midland Aberdeen	782,580	-	-	-	52,638	835,218
Tiffin, C.N.R. Elev. Co.	896,801	-	-	-	-	896,801
Midland	229,341	-	-	-	-	229,341
Midland Simcoe	1,880,133	-	-	-	209,335	2,089,468
Port McNicoll	608,871	-	-	-	90,034	698,905
Collingwood Terminal	1,129,479	-	-	-	-	1,129,479
Collingwood C.N.R.	-	124,537	-	-	27,372	151,909
Owen Sound, G.L.	1,175,430	57,016	-	-	85,619	1,318,065
Goderich Elev. & Transit	720,661	-	-	-	#62,159	782,820
Sarnia	2,356,964	-	-	-	-	2,356,964
					x97,077	
					#17,751	
Port Colborne Maple Leaf	-	-	-	-	5,247	120,075
Port Colborne Dom. Govt.	-	-	-	-	#14,814	14,814
Kingston Elevator Co.	991,562	-	-	-	-	991,562
					x 2,795	
Kingston, Richardson Co.	-	-	-	-	# 516	3,311
Prescott	-	-	-	-	#16,910	16,910
					x69,700	
					#62,116	
Toronto	1,238,056	-	-	-	37,252	1,407,124
Montreal Hbr. Commrs.	-	-	-	-	#500,361	
Nos. 1, 2 and B.	1,907,875	-	61,610	295,244	x 2,234	2,767,324
North Amer. Elev. Sorel	873,701	-	-	-	#23,836	897,537
Quebec	1,526,168	-	-	-	#87,010	1,613,178
West Saint John, N.B.	7,315	-	-	-	-	7,315
Saint John, N.B., C.N.R.	169,091	-	-	-	#113,684	282,775
Halifax, N.S. Hbr. Comm.	-	-	-	-	#127,452	127,452
					x171,806	
					#1,026,609	
T O T A L S	17,480,617	225,877	76,602	295,244	983,253	20,260,008
					# 86,485	
					x533,727	
Same week previous week	8,040,970	818,295	44,963	1,938,537	875,100	12,338,082

	R E C E I P T S		S H I P M E N T S	
	Water	Rail	Water	Rail
			GEORGIAN BAY PORTS	
Oats	145,232	-	-	78,261
Barley	-	-	-	2,500
Corn	30,971	-	24,964	114,258
#Corn	-	-	-	600 Local
Wheat	141,145	22,350	502,022	305,358
			LOWER LAKE PORTS	
Corn	10,482	3,676	-	23,265 Local
xCorn	-	-	-	6,436 Local
#Corn	-	-	-	9,328 Local
#Corn	-	-	-	1,662
			ST. LAWRENCE PORTS	
Wheat	39,878	157,840	176,000	-
Barley	-	-	9,830	-
Rye	113,305	-	43,592	-
#Corn	-	-	-	25,948
xCorn	-	-	-	500
			SEABOARD PORTS	
#Corn	77,463	-	-	21,000
x Argentine Corn				
# African Corn				

COUNTRY ELEVATORS - WESTERN DIVISION - RECEIPTS,
SHIPMENTS & STOCKS

Week ended May 27, 1932

	WHEAT Bush.	OATS Bush.	BARLEY Bush.	FLAX Bush.	RYE Bush.	TOTAL Bush.
<u>MANITOBA</u>						
On Hand, previous week	5,765,011	224,787	442,473	90,218	186,981	6,709,470
Receipts	224,586	17,976	42,327	1,000	3,031	288,920
TOTALS	5,989,597	242,763	484,800	91,218	190,012	6,998,390
Shipments	488,087	28,510	81,337	14,000	30,821	642,755
In Store	5,501,510	214,252	403,463	77,017	159,291	6,355,533
<u>SASKATCHEWAN</u>						
On Hand, previous week	36,543,989	533,383	480,074	395,753	1,085,512	39,038,711
Receipts	1,113,076	131,710	23,985	4,836	13,486	1,287,093
TOTALS	37,657,065	665,093	504,059	400,589	1,098,998	40,325,804
Shipments	2,601,997	107,246	33,639	14,834	75,178	2,832,944
In Store	35,077,812	561,847	470,920	385,705	1,023,820	37,520,104
<u>ALBERTA</u>						
On Hand, previous week	23,888,773	1,080,823	455,457	75,461	187,139	25,687,653
Receipts	827,150	131,176	27,303	1,026	2,847	989,502
TOTALS	24,715,923	1,211,999	482,760	76,487	189,986	26,677,155
Shipments	2,663,358	201,911	43,296	913	8,395	2,917,873
In Store	22,052,567	1,010,088	439,464	75,574	181,591	23,759,284

TOTAL RECEIPTS AT COUNTRY ELEVATORS AND
PLATFORM LOADINGS

August 1st 1931 to May 27, 1932

	WHEAT Bush.	OTHER GRAIN Bush.	TOTAL Bush.
Manitoba	22,751,955	8,563,934	31,315,889
Saskatchewan	108,777,007	20,162,448	128,939,455
Alberta	111,810,371	26,598,661	138,409,032
Total 1931 - 1932	243,339,333	55,325,043	298,664,376
Same period 1930-1931	307,007,298	70,180,153	377,187,461

#Platform Loadings up to May 28, 1932.

7/6/32/AG.

INTERIOR TERMINAL ELEVATORS

Receipts, Shipments and Quantities in Store
Week ended June 3, 1932.

	WHEAT Bush.	OATS Bush.	BARLEY Bush.	FLAX Bush.	RYE Bush.	TOTAL Bush.
<u>CALGARY</u>						
On Hand, previous week	36,931	333	149	-	-	37,413
Receipts	1,113	-	-	-	-	1,113
Total	38,044	333	149	-	-	38,526
Shipments - Rail	9,942	-	-	-	-	9,942
In Store	28,102	333	149	-	-	28,584
<u>EDMONTON</u>						
On Hand, previous week	103,661	23,923	5,694	-	-	133,278
Receipts	1,586	7,182	-	-	-	8,768
Total	105,247	31,105	5,694	-	-	142,046
Shipments - Rail	3,174	1,816	3,252	-	-	8,242
In Store	102,073	29,289	2,442	-	-	133,804
<u>MOOSE JAW</u>						
On Hand, previous week	6,565	10,683	7,895	1,159	263	26,565
Receipts	1,611	2,061	-	-	-	3,672
Total	8,176	12,744	7,895	1,159	263	30,237
Shipments - Rail	1,611	465	-	-	-	2,076
In Store	6,565	12,279	7,895	1,159	263	28,161
<u>SASKATOON</u>						
On Hand, previous week	4,005	147,856	20,851	-	-	172,712
Receipts	-	-	-	-	-	-
Total	4,005	147,856	20,851	-	-	172,712
Shipments - Rail	-	86,735	15,860	-	-	102,595
In Store	4,005	57,350	3,953	-	-	65,308

PACIFIC COAST ELEVATORS

Receipts, Shipments and Quantities in Store
Week ending June 3, 1932.

	WHEAT Bush.	OATS Bush.	BARLEY Bush.	FLAX Bush.	RYE Bush.	TOTAL Bush.
<u>VANCOUVER</u>						
On Hand, previous week	7,892,094	834,501	246,029	803	57,059	9,030,486
Receipts	1,431,837	11,990	5,889	-	2,645	1,452,361
TOTALS	9,323,931	846,491	251,918	803	59,704	10,482,847
Shipments - Vessel	1,369,793	84,246	-	-	-	1,454,039
Rail	1,000	-	-	-	-	1,000
In Store	7,947,075	762,324	251,919	803	59,704	9,021,825
<u>PRINCE RUPERT</u>						
On Hand, previous week	1,157,853	45	-	-	-	1,157,898
Receipts	-	-	-	-	-	-
TOTALS	1,157,853	45	-	-	-	1,157,898
Shipments - Vessel	-	-	-	-	-	-
Rail	-	-	-	-	-	-
In Store	1,157,853	45	-	-	-	1,157,898
<u>VICTORIA</u>						
On Hand, previous week	561,349	-	-	-	-	561,349
Receipts	-	-	-	-	-	-
TOTALS	561,349	-	-	-	-	561,349
Shipments - Vessel	-	-	-	-	-	-
Rail	-	-	-	-	-	-
In Store	561,349	-	-	-	-	561,349

DAILY AND WEEKLY AVERAGE PRICES OF GRAIN
Week ending June 3, 1932.
WESTERN DIVISION
(Basis Vancouver, B.C.)

	May 30 \$ ¢	May 31 \$ ¢	June 1 \$ ¢	June 2 \$ ¢	June 3 \$ ¢	June 4 \$ ¢	Weekly Average \$ ¢
No. 1 Hard	.624	.617	.609	.561		.561	.594
No. 1 Northern	.609	.602	.594	.546		.546	.579
No. 2 Northern	.576	.57	.561	.514		.514	.547
No. 3 Northern	.554	.547	.539	.491		.491	.606
No. 4 Northern	.544	.537	.529	.481		.481	.512
No. 5 Northern	.514	.507	.499	.451		.451	.485
No. 6 Northern	.484	.477	.469	.421		.421	.454
Feed	.444	.437	.429	.381		.381	.414
Screenings per ton			No bid				

1994

DAILY AND WEEKLY AVERAGE PRICES OF GRAIN

Week ended June 3, 1932.

WESTERN DIVISION

(Basis Fort William and Port Arthur)

	May 30	May 31	June 1	June 2	June 3	June 4	Weekly average
<u>WHEAT</u>							
No. 1 Man. Hard	.649	.635	.631	.629		.589	.627
No. 1 Man. Northern	.627	.62	.612	.609		.567	.607
No. 2 Man. Northern	.597	.59	.582	.579		.537	.577
No. 3 Man. Northern	.562	.556	.549	.545		.506	.544
No. 4 Man. Northern	.55	.545	.539	.534		.496	.533
No. 5	.502	.502	.494	.494		.451	.489
No. 6	.457	.457	.449	.444		.401	.441
Feed	.437	.437	.429	.424		.385	.422
No. 4 Special	.489	.482	.474	.474		.431	.470
No. 5 Special	.469	.462	.454	.454		.411	.450
No. 6 Special	.439	.432	.424	.424		.381	.420
Rejected No. 1 Northern	.534	.527	.519	.514		.471	.513
No. 2 Northern	.494	.487	.479	.474		.431	.473
No. 3 Northern	.464	.457	.449	.444		.401	.443
Tough No. 1 Northern	.599	.592	.584	.579		.536	.578
No. 2 Northern	.564	.555	.549	.544		.506	.544
No. 3 Northern	.539	.53	.521	.516		.476	.517
Smutty No. 1 Northern	.574	.567	.559	.554		.516	.554
No. 2 Northern	.534	.527	.519	.514		.476	.514
No. 3 Northern	.504	.497	.489	.484		.446	.484
Durum No. 1 Northern	.854	.847	.839	.834		.791	.833
No. 2 Northern	.774	.767	.759	.754		.711	.753
No. 3 Northern	.634	.627	.619	.614		.571	.613
A.R.W. No. 1 Northern	.564	.557	.549	.544		.501	.543
No. 2 Northern	.544	.537	.529	.524		.481	.523
No. 3 Northern	.514	.507	.499	.494		.451	.493
<u>OATS</u>							
No. 2 C.W.	.337	.336	.34	.342		.34	.339
No. 3 C.W.	.307	.314	.32	.325		.325	.316
Ex. No. 1 Feed	.307	.306	.31	.312		.315	.314
No. 1 Feed	.287	.296	.302	.307		.307	.299
No. 2 Feed	.277	.284	.292	.297		.297	.289
No. 3 Feed	.237	.226	.23	.232		.23	.231
<u>BARLEY (NEW GRADE)</u>							
2 Row	.416	.402	.387	.385		.38	.394
6 Row	.436	.422	.407	.405		.40	.414
Trebi	.396	.385	.374	.371		.366	.378
No. 4 C.W.	.396	.385	.374	.371		.366	.378
No. 5 C.W.	.371	.362	.347	.345		.34	.333
No. 6 C.W.	.361	.352	.337	.335		.33	.343
No. 6 C.M.	.331	.322	.307	.305		.30	.313
<u>RYE</u>							
No. 1 C. W.	.401	.384	.355	.36		.344	.369
No. 2 C. W.	.401	.384	.355	.36		.344	.348
No. 3 C. W.	.386	.369	.34	.345		.324	.312
Rejected No. 2 C. W.	.386	.364	.335	.337		.319	.348
No. 4 C. W.	.346	.329	.30	.302		.284	.312
Rejected for Ergot	.336	.319	.29	.292		.274	.302
<u>FLAX</u>							
No. 1 C.W.	.836	.815	.799	.799		.752	.800
No. 2 C.W.	.796	.775	.759	.759		.712	.760
No. 3 C.W.	.586	.569	.552	.552		.505	.553
No. 4 C.W.	.586	.569	.552	.552		.505	.553
<u>ONTARIO - TORONTO</u>							
Wheat, good milling	.47-.50	.47-.50	.47-.50	.47-.50		.47-.50	.47-.50
Oats	.27-.30	.29-.30	.29-.30	.29-.30		.29-.30	.29-.30
Ontario Corn	.40-.43	.40-.43	.40-.43	.40-.43		.40-.43	.40-.43
Rye	.45	.45	.45	.45		.45	.45
Barley	.35-.40	.35-.40	.35-.40	.35-.40		.35-.40	.35-.40
F.O.B. Shipping Point + Track Toronto.							

HOLIDAY

PUBLIC ELEVATORS IN THE EAST

Receipts of Canadian Grain with Shipments by Destination, May, 1952.

	WHEAT Bush.	OATS Bush.	BARLEY Bush.	FLAX Bush.	RYE Bush.	TOTAL Bush.
<u>GEORGIAN BAY PORTS</u>						
	Receipts - Vessel					
Pittin, #2	1,391,970	-	-	-	-	1,391,970
Midland	97,639	-	-	-	-	97,639
Midland Simcoe	202,084	24,959	-	-	-	227,043
Pt. McMillan	946,146	-	-	-	-	946,146
Corn Sound	61,999	-	-	-	-	61,999
Goderich Elev. & Transit	180,091	46,216	-	15,230	-	241,537
" W.C.F. Mills	279,275	-	-	-	-	279,275
Sarnia	346,039	-	-	-	-	346,039
TOTAL	3,505,243	71,175	-	15,230	-	3,591,648

SHIPMENTS - VESSEL

To Montreal	95,000	-	-	-	-	95,000
-------------	--------	---	---	---	---	--------

SHIPMENTS - RAIL

To Other Can. Points	126,064	17,500	1,250	-	-	144,814
To Montreal	333,159	-	-	-	-	333,159
Local	505,179	157,481	2,950	-	-	665,610
TOTAL	964,402	174,981	4,200	-	-	1,143,583

LOWER LAKE PORTS

RECEIPTS - VESSEL

Pt. Colborne Dom. Govt.	1,012,950	-	130,682	-	872,694	2,015,426
" " Maple Leaf	885,960	-	129,129	-	-	1,015,089
Toronto	271,907	-	-	-	-	271,907
Kingston (Jas. R.)	158,148	654	3,094	-	835	162,731
" Elev. Co.	1,669,831	-	50,017	-	724,907	2,444,855
Prescott	231,043	-	2,628	-	-	233,671
TOTAL	4,229,832	654	15,550	-	1,598,436	6,143,679

RECEIPTS - RAIL

Pt. Colborne Maple Leaf	300	-	-	-	-	306
Toronto	-	-	59	-	-	59
Kingston (Jas. R.)	-	3,889	-	-	-	3,889
TOTAL	300	3,889	59	-	-	4,254

SHIPMENTS - VESSEL

To Other Can. Points	151,418	-	-	-	-	151,418
To Montreal	3,281,592	-	223,716	-	763,418	4,268,726
Local	59,697	-	-	-	-	59,697
TOTAL	3,492,707	-	223,716	-	763,418	4,479,841

SHIPMENTS - RAIL

To Other Can. Points	29,249	3,873	8,956	-	101	42,179
To Montreal	983,430	-	129,916	-	978,165	2,091,511
Local and Mill	573,200	91,302	12,146	-	3,134	683,282
TOTAL	1,585,879	95,175	151,018	-	981,400	2,816,972

ST. LAWRENCE PORTS

RECEIPTS - VESSEL

Montreal	9,132,559	1,003,672	2,268,504	-	3,087,783	15,492,518
St. Lawrence	384,153	9,990	-	-	-	394,143
Ogilvie	510,371	-	-	-	-	510,371
North America Elev.	557,717	-	49,049	-	27,459	634,225
Quebec	59,347	316,778	-	-	-	376,125
TOTAL	10,644,147	1,330,440	2,317,553	-	3,115,242	17,407,382

RECEIPTS - RAIL

Montreal	76,422	483	-	-	-	77,105
St. Lawrence	-	5,996	-	-	-	5,996
TOTAL	76,422	6,479	-	-	-	83,101

SHIPMENTS - VESSEL

To Other Can. Ports	310,000	-	-	-	-	310,000
To United Kingdom	193,600	-	-	-	-	193,600
" Other Countries	9,269,505	981,127	2,121,375	-	1,590,054	13,962,061
TOTAL	9,773,105	981,127	2,121,375	-	1,590,054	14,465,661

SHIPMENTS - RAIL

Local	975,332	610,285	44,602	-	-	1,630,919
-------	---------	---------	--------	---	---	-----------

Seaboard Ports

RECEIPTS - RAIL

SHIPMENTS - RAIL

Note:- Where the shipments are over the receipts, the same is accounted for by the carry-over from the previous month.

7/6/52/AG.

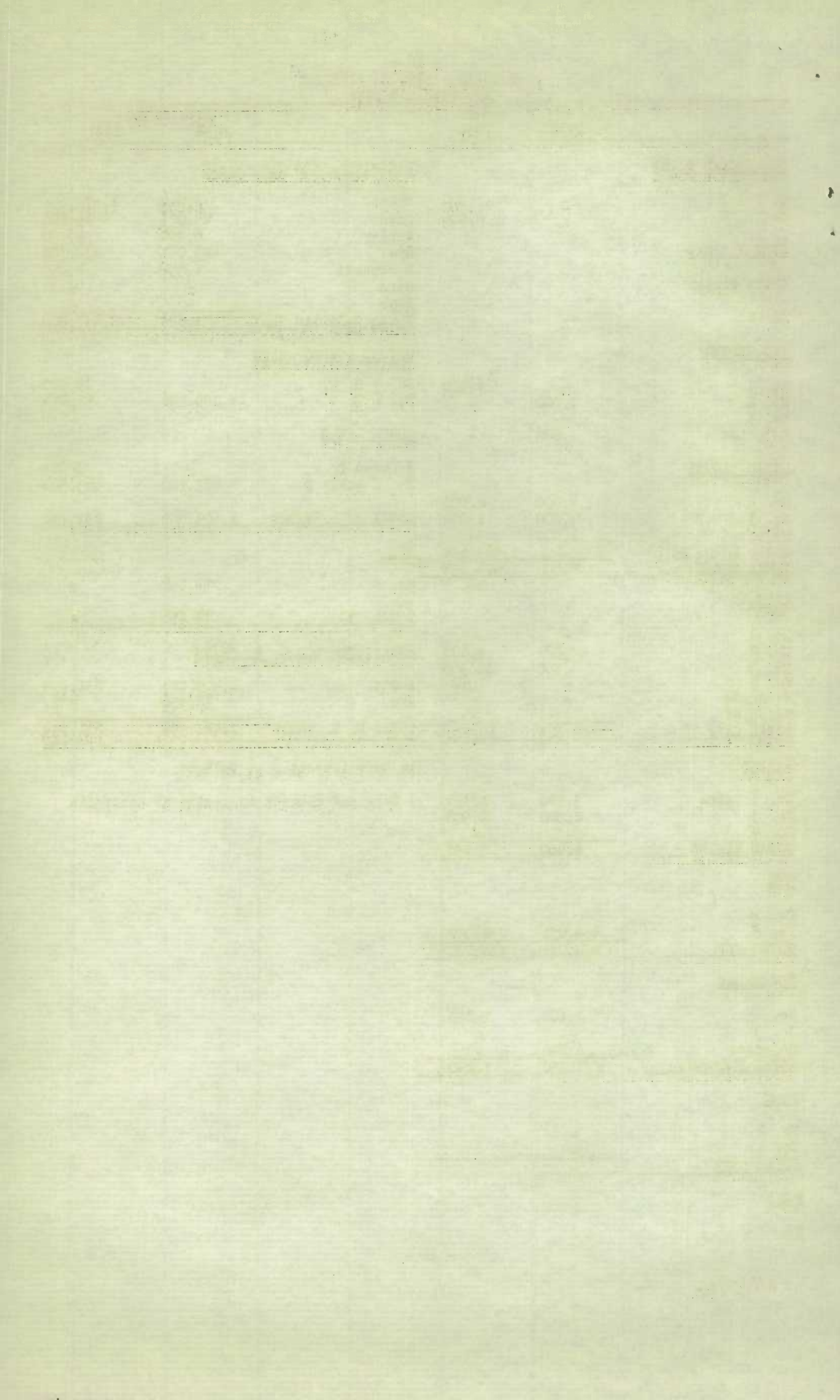
Receipts of U. S. Grain with Shipments by Destination, May, 1932.

	WHEAT	OATS	BARLEY	RYE	CORN	ARGENTINE CORN	AFRICAN CORN	TOTAL
	Bush.	Bush.	Bush.	Bush.	Bush.	Bush.	Bush.	Bush.
<u>GEORGIAN BAY PORTS</u>								
<u>RECEIPTS - RAIL</u>								
Depot Harbour	-	-	17,492	-	143,333	-	-	160,825
Aberdeen	-	-	-	-	207,710	-	-	207,710
Midland Simcoe	-	-	-	-	232,763	-	-	232,763
Collingwood C.N.R.	-	296,090	-	-	10,616	-	-	306,706
Owen Sound	-	244,477	-	-	326,296	-	-	570,773
<u>T O T A L</u>	-	540,567	17,492	-	920,718	-	-	1,478,777
<u>SHIPMENTS - VESSEL</u>								
To Other U. S. Points	4,685,982	-	-	-	86,800	-	-	4,772,782
" U. S. Sbd.	680,579	-	-	-	-	-	-	680,579
<u>T O T A L</u>	5,366,561	-	-	-	86,800	-	-	5,453,361
<u>SHIPMENTS - RAIL</u>								
To Other Can. Points	-	-	-	-	46,948	-	-	46,948
" " U.S. "	373,553	370,200	-	-	707,106	-	-	1,450,859
" U.S. Sbd.	497,400	-	-	-	-	-	-	497,400
" Montreal	1,893,690	-	-	-	-	-	-	1,893,690
Local	-	-	-	-	-	-	22,600	22,600
<u>T O T A L</u>	2,764,643	370,200	-	-	754,054	-	22,600	3,911,497
<u>LOWER LAKE PORTS</u>								
<u>RECEIPTS - VESSEL</u>								
Ft. Colborne Maple Leaf	-	-	-	-	-	-	2,526	2,526
" " Dom. Govt.	-	-	-	89,895	-	-	14,814	104,709
Kingston Elev. Co.	-	-	-	146,346	-	-	-	146,346
Prescott	-	-	-	-	-	-	8,000	8,000
Toronto	-	-	-	-	-	-	84,925	84,925
<u>T O T A L</u>	-	-	-	236,241	-	-	110,265	346,506
<u>SHIPMENTS - VESSEL</u>								
To Montreal	383,051	-	-	236,241	-	-	-	619,292
<u>SHIPMENTS - RAIL</u>								
To Other Can. Points	-	-	-	-	-	-	5,872	5,872
Local & Mill	-	-	-	-	33,351	11,977	57,756	103,084
<u>T O T A L</u>	-	-	-	-	33,351	11,977	63,628	108,956
<u>ST. LAWRENCE PORTS</u>								
<u>RECEIPTS - VESSEL</u>								
Montreal	563,306	-	111,610	199,035	-	-	272,803	1,146,754
<u>RECEIPTS - RAIL</u>								
Montreal	1,147,567	-	-	-	-	-	-	1,147,567
<u>SHIPMENTS - VESSEL</u>								
To Other Can. Points	-	-	-	-	-	-	108,000	108,000
" " Countries	1,920,382	-	65,000	186,419	-	-	-	2,171,801
<u>T O T A L</u>	1,920,382	-	65,000	186,419	-	-	108,000	2,279,801
<u>SHIPMENTS - RAIL</u>								
Local	-	-	-	-	-	2,150	126,662	128,812
<u>SEABOARD PORTS</u>								
<u>RECEIPTS - Mill</u>								
<u>SHIPMENTS - RAIL</u>								
To Other Can. Points	-	-	-	-	-	-	8,100	8,100
Local	-	-	-	-	-	-	67,276	67,276
<u>T O T A L</u>	-	-	-	-	-	-	75,376	75,376

Note:- When the receipts are over the shipments the same is accounted for by the carry-over from the previous month.

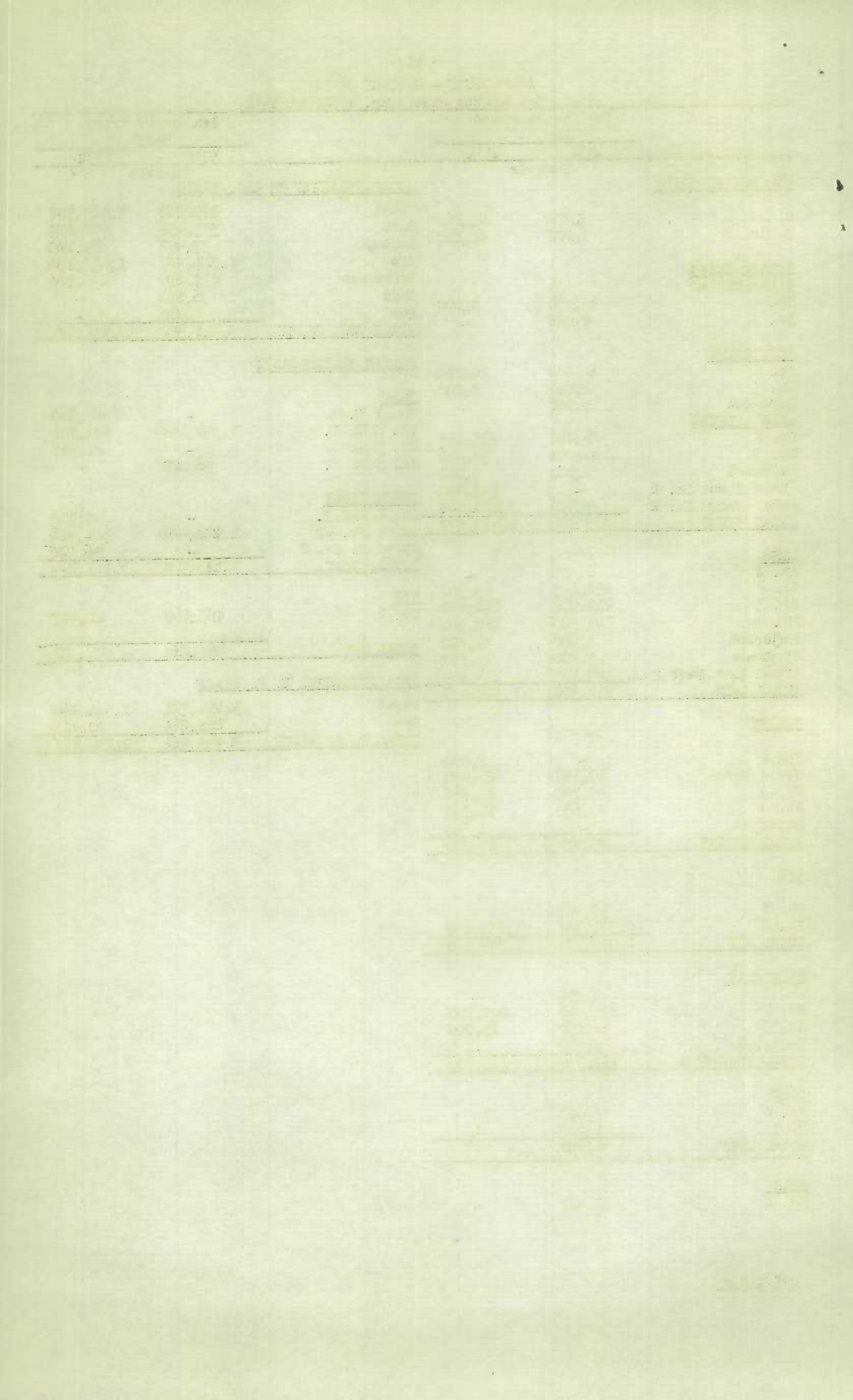
INSPECTION - EASTERN DIVISION
May, 1932 and 1931

		Month of May		Month of May	
		1932	1931	1932	1931
<u>COMMERCIAL TRADE</u>			<u>RECAPITULATION CAN. GRAIN</u>		
C. No. 1	-	1,000	Wheat	8,000	1,574,658
C. No. 2	-	2,000	Oats	24,823	19,200
<u>WINTER WHEAT</u>			Barley	6,400	3,750
White Winter			Rye	484,081	838,702
No. 2	-	-	Buckwheat	8,350	1,250
			Corn	-	-
			Peas	-	-
			<u>TOTAL CANADIAN GRAIN</u>	<u>531,654</u>	<u>2,437,560</u>
<u>RED WINTER</u>			<u>UNITED STATES GRAIN</u>		
No. 1	-	1,000	No. 1 H. W.	-	18,000
No. 2	1,000	-	No. 2 H. W.	1,189,986	42,294
No. 3	-	-	<u>DURUM WHEAT</u>		
Rejected	1,000	-	2 Mixed D.	-	8,000
<u>MIXED WINTER</u>			No. 2 Amber D	219,100	163,500
No. 2	4,000	2,000	<u>TOTAL U. S. WHEAT</u>	<u>1,409,086</u>	<u>231,794</u>
No. 3	1,000	1,000	<u>RYE</u>		
Rejected	1,000	-	No. 2	72,856	-
Amber Durum No.2	-	1,567,658	<u>TOTAL RYE</u>	<u>72,856</u>	<u>-</u>
<u>TOTAL WHEAT</u>	<u>8,000</u>	<u>1,574,658</u>	<u>RECAPITULATION U. S. GRAIN</u>		
<u>OATS</u>			Wheat	1,409,086	231,794
No. 1	-	-	Rye	72,856	-
No. 2	20,323	1,600	<u>TOTAL U. S. GRAIN</u>	<u>1,481,942</u>	<u>231,794</u>
No. 3	4,500	10,300	16 Cars inspected at Toronto.		
No. 4	-	7,300	7 Cars and cargoes inspected at Montreal.		
No Grade	-	-			
Rejected	-	-			
<u>TOTAL OATS</u>	<u>24,823</u>	<u>19,200</u>			
<u>BARLEY</u>					
No. 3 Extra	3,900	1,250			
No. 3	2,500	2,500			
No. 4	-	-			
<u>TOTAL BARLEY</u>	<u>6,400</u>	<u>3,750</u>			
<u>RYE</u>					
No. 1	-	-			
No. 2	484,081	838,702			
<u>TOTAL RYE</u>	<u>484,081</u>	<u>838,702</u>			
<u>BUCKWHEAT</u>					
No. 2	7,100	1,250			
No. 3	-	-			
Rejected	1,250	-			
<u>TOTAL BUCKWHEAT</u>	<u>8,350</u>	<u>1,250</u>			
<u>CORN</u>					
No. 2	-	-			
No. 3	-	-			
<u>TOTAL CORN</u>	<u>-</u>	<u>-</u>			
<u>PEAS</u>					
No.	-	-			



INSPECTION - EASTERN DIVISION
Ten Months ended May, 1932 and 1931

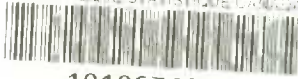
Ten Months ended May			Ten Months ended May		
	1932	1931		1932	1931
	Bushels			Bushels	
<u>COMMERCIAL TRADE</u>			<u>RECAPITULATION OF CAN. GRAIN</u>		
C. No. 1	5,000	25,000	Wheat	169,000	8,429,577
C. No. 2	1,000	20,000	Oats	555,458	502,859
			Barley	75,450	69,800
			Rye	2,373,778	1,233,150
<u>Winter Wheat</u>			Buckwheat	237,296	235,700
White Winter			Corn	6,600	-
No. 2	11,000	9,000	Peas	1,000	-
No. 3	2,000	-	<u>TOTAL CAN. GRAIN</u>	<u>3,418,582</u>	<u>10,471,086</u>
<u>RED WINTER</u>			<u>UNITED STATES GRAIN</u>		
No. 2	12,000	20,000	Wheat		
No. 3	1,000	8,000	No. 1 H. W.	-	45,000
Rejected	1,000	-	No. 2 H. W.	1,348,194	623,201
<u>MIXED WINTER</u>			No. 3 H. W.	-	21,917
No. 2	86,000	125,135	No. 3 R. W.	36,000	-
No. 3	11,000	54,000			
Rejected	1,000	5,000	<u>DURUM WHEAT</u>		
Mixed Durum No. 2	-	543,400	No. 2 Red D.	-	40,000
Amber Durum No. 2	8,000	7,620,042	Amber No. 2D	1,800,404	924,326
<u>TOTAL WHEAT</u>	<u>169,000</u>	<u>8,429,577</u>	Mixed D. No. 2	-	56,800
			<u>TOTAL WHEAT</u>	<u>3,184,598</u>	<u>1,711,244</u>
<u>OATS</u>					
No. 1	6,300	-	<u>RYE</u>		
No. 2	158,323	65,300	No. 2	265,268	21,427
No. 3	211,000	140,650			
No. 4	41,300	120,000	<u>TOTAL RYE</u>	<u>265,268</u>	<u>21,427</u>
Rejected	3,600	30,700			
No Grade	5,400	11,750			
Mixed Elev. Feed No. 1	129,535	134,459	<u>RECAPITULATION U. S. GRAIN</u>		
<u>TOTAL OATS</u>	<u>555,458</u>	<u>502,859</u>	Wheat	3,184,598	1,711,244
			Rye	265,268	21,427
<u>BARLEY</u>			<u>TOTAL U. S. GRAIN</u>	<u>3,449,866</u>	<u>1,732,671</u>
No. 2	-	3,800			
No. 3 Extra	10,150	26,250			
No. 3	43,700	21,750			
No. 4	21,600	16,750			
Rejected	-	1,250			
<u>TOTAL BARLEY</u>	<u>75,450</u>	<u>69,800</u>			
<u>RYE</u>					
No. 1	52,427	-			
No. 2	2,321,351	1,233,150			
<u>TOTAL RYE</u>	<u>2,373,778</u>	<u>1,233,150</u>			
<u>BUCKWHEAT</u>					
No. 1	3,750	-			
No. 2	191,896	220,700			
No. 3	32,850	15,000			
Rejected	8,800	-			
<u>TOTAL BUCKWHEAT</u>	<u>237,296</u>	<u>235,700</u>			
<u>CORN</u>					
No. 2	5,600	-			
No. 3	1,000	-			
<u>TOTAL CORN</u>	<u>6,600</u>	<u>-</u>			
<u>PEAS</u>					
No. 1	1,000	-			



Receipts and Shipments at Fort William, and Port Arthur, Month of May, 1932, and ten months ended May, 1931-32.

		WHEAT	OATS	BARLEY	FLAX	RYE	CORN	TOTAL	MIXED GRAIN
		Bushels	Bushels	Bushels	Bushels	Bushels	Bushels	Bushels	Pounds
R E C E I P T S									
August,	1931	4,143,209	657,484	679,409	88,355	173,019	-	5,741,476	230,760
September,	1931	18,709,579	1,699,462	1,054,600	67,859	192,586	-	21,724,086	267,750
October,	1931	27,089,704	1,695,539	448,462	176,345	120,670	-	20,530,720	421,410
							By Vessel		
November,	1931	30,075,080	3,862,159	482,726	334,338	225,771	49,906	35,029,980	705,950
December,	1931	9,481,888	1,272,839	582,127	83,761	160,029	-	11,580,644	469,000
January,	1932	1,998,813	187,964	142,878	29,402	44,847	-	2,383,904	113,810
February,	1932	1,922,120	75,265	63,627	23,522	51,893	-	2,136,427	34,430
March,	1932	3,715,262	105,710	154,112	20,639	77,374	-	4,073,097	70,100
April,	1932	5,924,863	104,234	179,884	143,443	320,868	-	6,673,292	95,200
May,	1932	6,530,330	289,784	574,827	296,141	431,480	-	8,122,562	335,030
10 Months ended May	1932	109,590,848	9,930,440	4,362,652	1,263,805	1,798,537	49,906	126,996,188	2,743,440
10 Months ended May	1931	151,680,109	13,716,931	13,483,090	3,212,820	6,103,133	24,931	188,221,014	8,680,976
S H I P M E N T S									
August,	1931 - Lake	15,455,630	1,177,729	2,969,887	93,595	107,000	-	19,803,841	97,876
August,	1931 - Rail	88,360	170,762	3,772	-	-	-	262,894	85,000
September,	1931 - Lake	15,885,005	926,400	30,000	29,365	916,105	-	17,786,875	42,180
September,	1931 - Rail	126,563	143,068	3,831	143	-	2,143	275,748	73,900
October,	1931 - Lake	23,097,784	2,569,325	798,864	117,521	-	-	26,583,494	13,574
October,	1931 - Rail	94,839	215,226	1,500	-	-	-	311,565	229,080
November,	1931 - Lake	30,580,182	3,571,811	3,051,566	595,403	1,807,460	-	39,606,422	-
November,	1931 - Rail	159,671	176,097	3,027	-	100	15,843	354,738	34,000
December,	1931 - Lake	1,679,863	554,157	60,831	55,328	-	-	2,350,179	-
December,	1931 - Rail	71,990	89,515	3,328	-	-	3,285	168,118	66,420
January,	1932 - Lake			Nil					
January,	1932 - Rail	24,156	139,375	3,544	4,936	-	1,875	173,886	157,910
February,	1932 - Lake			Nil					
February,	1932 - Rail	7,402	132,977	2,300	-	-	12,784	155,463	-
March,	1932 - Lake			Nil					
March,	1932 - Rail	15,376	111,994	4,142	-	2	1,071	132,585	71,800
April,	1932 - Lake	5,697,851	1,828,910	327,221	-	1,062,037	-	8,916,019	1,212,119
April,	1932 - Rail	16,888	157,269	4,217	-	-	11,285	189,659	-
May,	1932 - Lake	17,216,874	558,419	1,419,733	38,448	2,441,587	-	21,675,061	1,083,045
May,	1932 - Rail	17,713	120,045	3,114	-	-	1,071	141,943	61,060
10 Months ended May,	1932 Lake	109,613,189	11,186,751	8,658,102	929,660	6,334,189	-	136,721,891	2,448,794
	Rail	622,958	1,456,328	32,775	5,079	102	49,357	2,166,599	779,170
10 Months ended May,	1931 Lake	151,238,569	13,293,242	18,619,728	2,824,452	2,660,784	-	188,636,775	12,077,777
	Rail	1,264,527	2,314,509	100,613	197,938	128	27,462	3,905,177	1,089,710

STATISTICS CANADA LIBRARY
BIBLIOTHÈQUE STATISTIQUE CANADA



1010674805