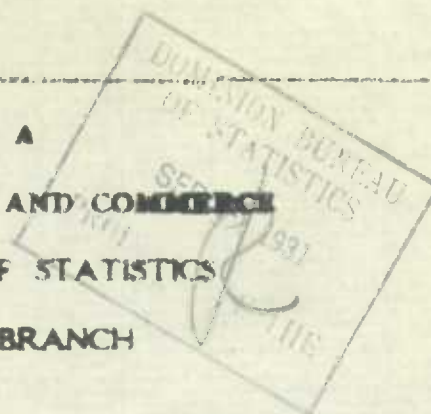


CANADA  
DEPARTMENT OF TRADE AND COMMERCE  
DOMINION BUREAU OF STATISTICS  
AGRICULTURAL BRANCH



Vol. 12

No. 5

Historical File Copy

CANADIAN GRAIN STATISTICS

Week ending

SEPTEMBER 4, 1931

(Records for Western Inspection Division supplied by Board of Grain Commissioners for Canada.)

Published by Authority of the Hon. H. H. Stevens, M.P.,  
Minister of Trade and Commerce.

OTTAWA

1931

# I N D E X - - - - -

General Summary .....	1 - 6
Canadian Grain in Store by Elevators .....	7
Canadian Grain in Store by Grades .....	8
Comparative Statement of Grain in Store .....	9
Receipts and Shipments of Canadian Grain .....	10
U. S. Grain in Store, Receipts and Shipments .....	11
Receipts, Shipments and Quantities in Store at Country Elevators Western Division .....	12
Receipts, Shipments and Quantities in Store at Interior Terminal Elevators .....	13
Receipts, Shipments and Quantities in Store at Pacific Coast Elevators and Vancouver Prices .....	14
Daily and Weekly Average prices of Grain at Ft. William and Pt. Arthur and Toronto for the week ending Sept. 5, 1931 ...	15
Receipts and Shipments of Grain at Ft. William and Pt. Arthur Month of August, 1931 .....	16
Receipts of Canadian Grain at Public Elevators in the East with Shipments by destinations August, 1931 .....	17
Receipts of United States Grain at Public Elevators in the East with Shipments by destination August, 1931 .....	18
Inspections Eastern Division Month of August, 1931 .....	19.

DEPARTMENT OF TRADE AND COMMERCE  
DOMINION BUREAU OF STATISTICS - CANADA  
AGRICULTURAL BRANCH  
(Issued September 11, 1931).

---

Dominion Statistician:	R. H. Coats, B.A., F.S.S. (Hon.), F.R.S.C.
Chief, Agricultural Branch:	T. W. Grindley, Ph.D.

---

CANADIAN WHEAT MOVEMENT

During the week ended September 4, 1931, according to elevator reports from Canadian Seaboard ports, 1,830,790 bushels of Canadian wheat were shipped by vessel overseas. The clearances of Canadian wheat from United States Atlantic Seaboard ports amounted to 1,300,000 bushels, making a total export clearance for the week of 3,130,790 bushels.

Wheat stocks show a decrease compared with the previous week ended August 28, 1931. The quantity in store on September 4, 1931, was 99,778,270 bushels, compared with 100,487,671 bushels for the week ended August 28, 1931, while 111,987,943 bushels were in store for the week ended September 5, 1930.

Of the total quantity of wheat in store on September 4, 1931, 6,409,517 bushels are in elevators at the United States Lake and Atlantic Seaboard ports, of which 5,464,545 bushels are in store and afloat at Buffalo, New York.

The shipments for the week ended September 4, 1931, from the above elevators, classified as Local Requirements, Rail and Vessel Shipments were as follows:-

	<u>Local Requirements</u>	<u>Rail</u>	<u>Vessel</u>
Country Elevators	-	2,707,830	-
Interior Terminal Elevators	-	296,003	-
Vancouver, B.C.	-	2,333	968,761
Fort William and Port Arthur	-	27,824	4,090,791
Private and Mill Elevators	-	757,676	-
Public Elevators in the East (Rail)	309,591	568,179	1,603,984
<b>T O T A L S</b>	309,591	5,360,845	6,663,536

A slight increase is shown in the movement of wheat during the week ended August 28, 1931, over the previous week August 21. The receipts being 4,376,362 bushels, and 2,713,947 bushels respectively. During the same week in 1930, 6,191,670 bushels were moved.

The first four weeks of the crop year ended August 28, 1931, 8,980,245 bushels were received, as compared with 21,247,752 bushels for the month of August 1930.

Rail shipments from these elevators during the four week period amounted to 6,398,752 bushels, while 15,477,116 bushels were moved for the same month in 1930.

New crop wheat inspections for the period from August 21 to 31, were 1,522 cars, against 5,749 cars for the same period in 1930. The month of August inspections amounted to 2,139 cars, while 6,684 cars were inspected for the same month in 1930.

Wheat shipments, by vessel from Fort William and Port Arthur for the week ended September 7th, were 3,209,208 bushels, the distribution of which was as follows:- To Canadian Lower Lake Ports 1,453,759 bushels; to Buffalo 740,988 bushels; Montreal 729,683 bushels and to Sorel 284,777 bushels.

The Foreign Situation

Japanese Wheat Imports

The Canadian Trade Commissioner in Japan reports as follows:-

"As to Japan's requirements of wheat, it is estimated that about 50 per cent is produced domestically, the remainder being imported. Actually however the volume of imports depends on the amount of wheat flour exported from Japan. During the past five months, these flour exports have shown an increase over the same period last year and are only about 25 percent below the same period for 1929. The result has been that total imports of wheat for the five months ending May 31st have increased over those for the first five months of 1930 and are slightly below those of 1929.



The Foreign Situation (Cont'd.)Japanese Wheat Imports (Cont'd.)

"By far the largest amount of wheat is coming from Australia due to the low prices offered there. Full particulars of these imports are as follows:-

<u>O r i g i n</u>	<u>1 9 3 1</u>	<u>1 9 3 0</u>
	Jan.-May Bushels	Jan.-May Bushels
Canada	3,045,775	3,061,640
Australia	10,691,358	1,732,817
United States	672,426	4,229,653
China	9	423
Others	829	31
<b>T O T A L</b>	<b>14,410,397</b>	<b>9,024,564</b>

It will be seen from the above Table that Australia has enjoyed a large share of the Japanese trade during the first five months of the present year. The currency situation in Australia has enabled that country to underquote Canada and the United States in the Orient. The trade Commissioner further states that price is the dominating factor in the Japanese market and business generally goes with the lowest offers.

Swiss Wheat Imports

The Canadian Trade Commissioner at Rotterdam has forwarded the following table showing Swiss imports of wheat for the period January to July, 1931, by countries of origin:

	(Bushels)
Germany	37,230
France	559
Hungary	208,662
Yugoslavia	12,099
Bulgaria	5,503
Roumania	54,553
Russia	1,695,006
Canada	5,233,801
United States	1,074,873
Australia	53,341
Argentina	1,003,975
<b>T O T A L</b>	<b>9,379,605</b>

Canadian wheat takes a prominent place in the Swiss flour trade.

The Netherlands Wheat Mixing Law

The Netherlands is the most recent country to adopt some form of milling regulation in the interest of her domestic wheat producers. The legislation which is now in effect makes it compulsory for all bread sold in the Netherlands to contain 20 percent of flour ground from domestic wheat.

According to the Canadian Trade Commissioner in Holland, the Law will have the effect of curtailing flour imports, increasing production of wheat in the Netherlands and the replacement of low quality imported wheat with high quality imported wheat.

The Canadian Trade Commissioner reports:

"The average yearly production of Dutch wheat is 6,000,000 bushels. The provinces of Zeeland and Groningen, which are respectively in the extreme south and north of the country, are the principal wheat growing centers. Of the total area mentioned above, 94,118 acres were devoted to winter wheat and 18,153 acres to spring wheat. The principal winter variety is a white wheat.

"As a result of the mixing law it is already apparent that the cultivation of wheat in Holland is going to substantially increase and under the circumstances it will be difficult to repeal the measure when the three year period is ended.

"The official estimate for 1931 of the area sown with spring wheat shows a dilatation of more than 325 per cent, while winter wheat shows an increase of 7.5 per cent in comparison with the previous year. The difference between these figures is due to the fact that the wheat bill was introduced into the Dutch Parliament 3 to 6 weeks after the winter crop had been sown. On the other hand the extension of the spring wheat acreage can be credited to the definite passage of the Wheat Law on February 19, 1931.



The Netherlands Wheat Mixing Law (Cont'd.)

The appended table shows the acreage sown with wheat in 1931 in comparison with the average of the period from 1921 to 1930.

Acreage Planted With Wheat in Holland

	Annual Average 1921-1930	1930	1931
	Acres	Acres	Acres.
Winter Wheat	130,325	128,948	140,152
Spring Wheat	11,915	13,180	50,875
TOTAL	142,240	142,128	191,027

Apart from wheat the 1931 areas sown with rye, barley and oats all show a decrease although these do not offset the enlargement registered by wheat.

Use of Domestic Wheat.

"Up to the present Dutch grown wheat has not been utilized to any extent for the manufacture of ordinary white bread owing to its softness and consequent unsuitability. It has, however, been employed extensively by bakers making brown bread, cakes, biscuits, and similar products which do not require a flour with a high gluten content. During recent years out of a total annual production of approximately 6,000,000 bushels, roughly 3,500,000 bushels were used for the latter purpose; in the neighbourhood of 2,000,000 bushels for feeding purposes. There were small exports to Germany and Belgium, which could account for approximately 250,000 bushels; the balance was used as seed.

Effect on Wheat Imports

"Dutch grown wheat is soft and unsuitable for bread making. Consequently its compulsory employment will cause the substitution of other soft wheat by hard wheat in the 80 per cent of foreign grain which may be employed. One large mill which was using a 25 per cent mixture of Manitobas 1 and 2 before the law went into effect now reports that it is using 30 per cent and that this figure would be greater if it were not for the attractive price at which hard winter may be obtained.

"Imports of wheat by the Netherlands totalled 26,007,354 bushels in 1930, in comparison with 24,054,311 bushels in 1929.

"With 20 per cent of home-grown wheat now being used for the manufacture of bread where none was previously employed, it is logical to conclude that imports of foreign wheat will decrease by the same amount. This figure must be modified by the decreased imports of flour and the increased manufacture at home, thus necessitating that domestic mills use greater quantities of wheat in future than they have in the past.

"Another point in this connection which must be taken into consideration is a possible decrease in the consumption of bread if the quality of the new product is not satisfactory which is a contingency that has been pointed out by writers in the press."



CANADIAN GRAIN STATISTICS - WEEK ENDED SEPT. 4, 1931.

Returns received as to stocks of grain in store for the week ending Sept. 4, 1931, show a net decrease of 507,433 bushels. Stocks for the week were as follows: Wheat 99,778,270, Oats 9,109,607, Barley 8,540,215, Flax 776,058 and Rye 12,176,172 bushels, a total of 130,380,322 bushels. Wheat and Rye show decreases of 709,401 and 174,143 bushels respectively, while increases are noted in Oats of 247,292, Barley 122,690 and Flax 6,129 bushels. For the same week last year the amount in store was 150,967,372 bushels made up as follows: Wheat 111,987,943, Oats 6,112,836, Barley 22,441,499, Flax 500,816 and Rye 9,924,278 bushels.

WESTERN COUNTRY ELEVATORS:- Stocks of grain in store in these elevators show a net increase of 1,103,490 bushels. Wheat shows an increase of 1,205,432 bushels, while decreases are noted in Oats of 53,760, Barley 22,668, Flax 11,727 and Rye 14,087 bushels.

The following table shows the quantities of grain in store at the Country Elevators in each of the Prairie Provinces on August 28, 1931, with comparison for the previous week and the same period 1930.

	<u>MANITOBA</u>	<u>SASKATCHEWAN</u>	<u>ALBERTA</u>	<u>TOTAL</u>
	Bushels	Bushels	Bushels	Bushels
Wheat	2,317,297	17,434,801	10,890,035	30,642,133
Oats	610,800	1,709,840	1,709,278	4,029,918
Barley	772,916	628,543	295,962	1,697,421
Flax	22,215	143,673	25,775	191,663
Rye	149,859	918,159	136,660	1,204,678
<b>T O T A L S</b>	<b>3,873,087</b>	<b>20,835,016</b>	<b>13,057,710</b>	<b>37,765,813</b>
Previous week	3,367,259	20,128,813	13,166,251	36,662,323
Same period, 1930	2,784,235	9,142,406	7,186,178	19,112,819

The receipts and shipments at the Country Elevators for the week ending August 28, 1931, compared with the previous week and the same period 1930, were as follows:-

	<u>R E C E I P T S</u>			<u>S H I P M E N T S</u>		
	Previous Week	Week ended Aug. 28, 1931	Week ended Aug. 29, 1930	Previous Week	Week ended Aug. 28, 1931	Week ended Aug. 29, 1930
Wheat	2,525,190	3,878,710	11,265,490	1,958,497	2,707,830	5,963,811
Oats	708,515	951,409	294,862	435,826	1,053,422	325,646
Barley	267,148	328,904	573,351	165,077	362,135	544,907
Flax	8,300	23,323	12,326	20,610	20,116	1,818
Rye	52,158	76,889	622,943	65,683	90,437	305,246
<b>T O T A L S</b>	<b>3,561,311</b>	<b>5,259,235</b>	<b>12,768,972</b>	<b>2,645,693</b>	<b>4,233,940</b>	<b>7,141,428</b>

Platform Loadings shown by Prairie Provinces for the period ending August 31, 1931, were as follows:

	<u>WHEAT</u>	<u>OTHER GRAIN</u>	<u>TOTAL</u>
Manitoba	453,544	81,582	535,126
Saskatchewan	32,128	13,827	45,955
Alberta	12,000	1,474	13,474
<b>T O T A L S</b>	<b>497,672</b>	<b>96,883</b>	<b>594,555</b>
Period ending August 31, 1930	860,620	301,938	1,162,558
<b>+ Increase - Decrease</b>	<b>- 362,948</b>	<b>- 205,055</b>	<b>- 568,003</b>

EDMONTON & CALGARY)

INTERIOR TERMINAL (SASKATOON, MOOSE JAW):- Stocks for the week show a net decrease of 270,266 bushels. Decreases are noted in Wheat of 281,859 and Barley 387 bushels, while Oats and Rye show increases of 11,944 and 36 bushels respectively.

VANCOUVER PRIVATE AND TERMINAL ELEVATORS:- Grain stocks at these elevators show a decrease of 604,612 bushels made up as follows: Wheat 534,424, Oats 46,211 and Rye 23,977 bushels.

PRINCE RUPERT ELEVATOR:- Wheat stocks at this elevator are the same as for previous week.

VICTORIA ELEVATOR:- Stocks at this elevator are nil.

PUBLIC AND PRIVATE (FORT WILLIAM AND FORT ARTHUR):- Stocks at the Head of the Lakes show a net decrease of 1,973,736 bushels. Decreases are noted in Wheat of 1,723,471, Barley 145,551 and Rye 237,213 bushels, while Oats and Flax show increases of 123,301 and 9,198 bushels respectively.



Stocks in Store at the Head of the Lakes compared with the same week last year were as follows:-

	Week ended Sept. 4, 1931	Week ended Sept. 5, 1930	+ Increase - Decrease
Wheat	34,049,548	32,123,642	+ 1,925,906
Oats	1,792,715	1,414,552	+ 378,163
Barley	4,311,059	14,818,363	-10,507,304
Flax	502,227	399,309	+ 102,918
Rye	8,951,878	6,202,375	+ 2,749,503
<b>T O T A L S</b>	<b>49,607,427</b>	<b>54,958,241</b>	<b>- 5,350,814</b>

The receipts (including transfers) at the Head of the Lakes for the period ending September 4, 1931, with comparative figures for the same week last year were as follows:-

	Week ended Sept. 4, 1931	Week ended Sept. 5, 1930	+ Increase - Decrease
Wheat	2,572,918	5,835,804	- 3,262,886
Oats	290,299	187,590	+ 102,709
Barley	228,507	918,549	- 690,042
Flax	9,198	2,164	+ 7,034
Rye	49,901	385,458	- 335,557
<b>T O T A L S</b>	<b>3,150,823</b>	<b>7,329,565</b>	<b>- 4,178,742</b>

Preliminary figures showing receipts and shipments at the Head of the Lakes also Vancouver and Prince Rupert for the period August 1st, 1931, to September 4, 1931, compared with the same period last year.

	<u>FORT WILLIAM &amp; PORT ARTHUR</u>		<u>VANCOUVER</u>	
	<u>Receipts</u>	<u>Shipments</u>	<u>Receipts</u>	<u>Shipments</u>
Wheat	4,962,918	16,603,623	2,145,544	3,464,456
Oats	754,395	1,380,146	18,670	56,117
Barley	761,607	2,973,655	1,349	-
Flax	89,993	93,595	-	-
Rye	192,178	106,999	9,950	23,977
<b>T O T A L S</b>	<b>6,761,091</b>	<b>21,158,018</b>	<b>2,175,513</b>	<b>3,544,550</b>
Same period last year	18,213,039	22,230,766	5,708,364	2,907,633
+Increase -Decrease	-11,451,948	- 1,072,748	-3,532,851	+ 636,917

	<u>PRINCE RUPERT</u>		<u>VICTORIA</u>	
	<u>Receipts</u>	<u>Shipments</u>	<u>Receipts</u>	<u>Shipments</u>
<b>T O T A L S</b>	-	-	-	-
Same period last year	81,024	-	-	-
+Increase -Decrease	- 81,024	-	-	-

INTERIOR PRIVATE AND MILL ELEVATORS.- Stocks for the week show an increase of 254,871 bushels made up as follows: Wheat 114,604, Oats 43,073, Barley 75,441, Flax 1 and Rye 21,752 bushels.

Stocks in store at the Country Interior Terminal, Public and Private at the Head of the Lakes, Winnipeg and Vancouver, compared with the same week last year were as follows:-

	Week ended Sept. 4, 1931	Week ended Sept. 5, 1930	+ Increase - Decrease
Wheat	78,227,082	65,905,439	+12,321,643
Oats	7,309,379	3,913,887	+ 3,395,492
Barley	7,175,443	17,451,494	-10,276,051
Flax	727,842	451,437	+ 276,405
Rye	10,272,148	7,111,286	+ 3,160,862
<b>T O T A L S</b>	<b>103,711,894</b>	<b>94,833,543</b>	<b>+ 8,878,351</b>

EASTERN ELEVATORS - LAKE PORTS.- Grain stocks for the week show a decrease of 275,552, bushels. Wheat and Rye show decreases of 568,100 and 1,099 bushels respectively, while increases are noted in Oats of 137,293, Barley 247,697 and Flax 8,657 bushels.

EASTERN ELEVATORS - SEABOARD PORTS (CANADIAN GRAIN).-Grain stocks for the week show a net increase of 139,584 bushels. Increases are noted in Wheat of 53,079, Oats 38,652 and Rye 80,445 bushels, while Barley shows a decrease of 32,592 bushels.

The receipts of the above by classes of ports were as follows:-

	<u>WHEAT</u>		<u>TOTAL GRAIN</u>	
	<u>Vessel</u>	<u>Rail</u>	<u>Vessel</u>	<u>Rail</u>
Georgian Bay Ports	37,832	-	109,749	-
Lower Lake Ports	872,482	7,274	1,556,862	8,520
Montreal and Quebec	882,355	171,001	1,634,697	174,506
Seaboard Ports	-	-	-	-
<b>T O T A L S</b>	<b>1,792,719</b>	<b>178,275</b>	<b>3,301,308</b>	<b>183,026</b>



Shipments overseas of Canadian Grain from St. Lawrence and Seaboard Ports are as follows:-

		To U. K.	To O.C.
Montreal, Que.	Wheat	-	640,163 bushels
	Oats	-	164,058 "
	Barley	-	357,285
	Rye	-	16,352

North Amer. Elev. Sorel, Que. Wheat 221,866 -

PUBLIC ELEVATORS IN THE EAST (U. S. GRAIN).- U. S. grain stocks show a net increase of 22,343,889 bushels compared with the same week of previous year. Wheat shows an increase of 28,335,006 bushels, while decreases are noted in Oats of 2,192,111, Barley 636,656, Rye 1,679,815 and Corn 432,535 bushels.

The quantities in store by classes of ports with increases and decreases are:

	xWeek ended Sept. 4, 1931	1/Week ended Sept. 5, 1930	+ Increase - Decrease
At Georgian Bay Ports	24,736,662	7,133,633	+ 27,603,029
At Lower Lake Ports	4,300,950	435,397	+ 3,865,553
At St. Lawrence Ports	5,549,658	3,545,079	- 2,004,579
At Seaboard Ports	726,720	855,992	- 129,272
T O T A L S	35,313,990	11,970,101	+ 23,343,889

x Included in the above 310,548 bushels of Argentine Corn and 17,217 bushels of African corn.

1/ Included in the above 726,822 bushels of Argentine Corn.

Shipments of U. S. Grain from Atlantic Seaboard Ports were as follows:

		To U. K.	To O. C.
Montreal, Que.	Wheat	-	37,484 bushels
	Rye	-	22,219 "

U. S. LAKE PORTS. - Canadian grain shows a net increase of 942,042 bushels. Wheat and Barley show increases of 948,592 and 450 bushels respectively, while Oats show a decrease of 7,000 bushels.

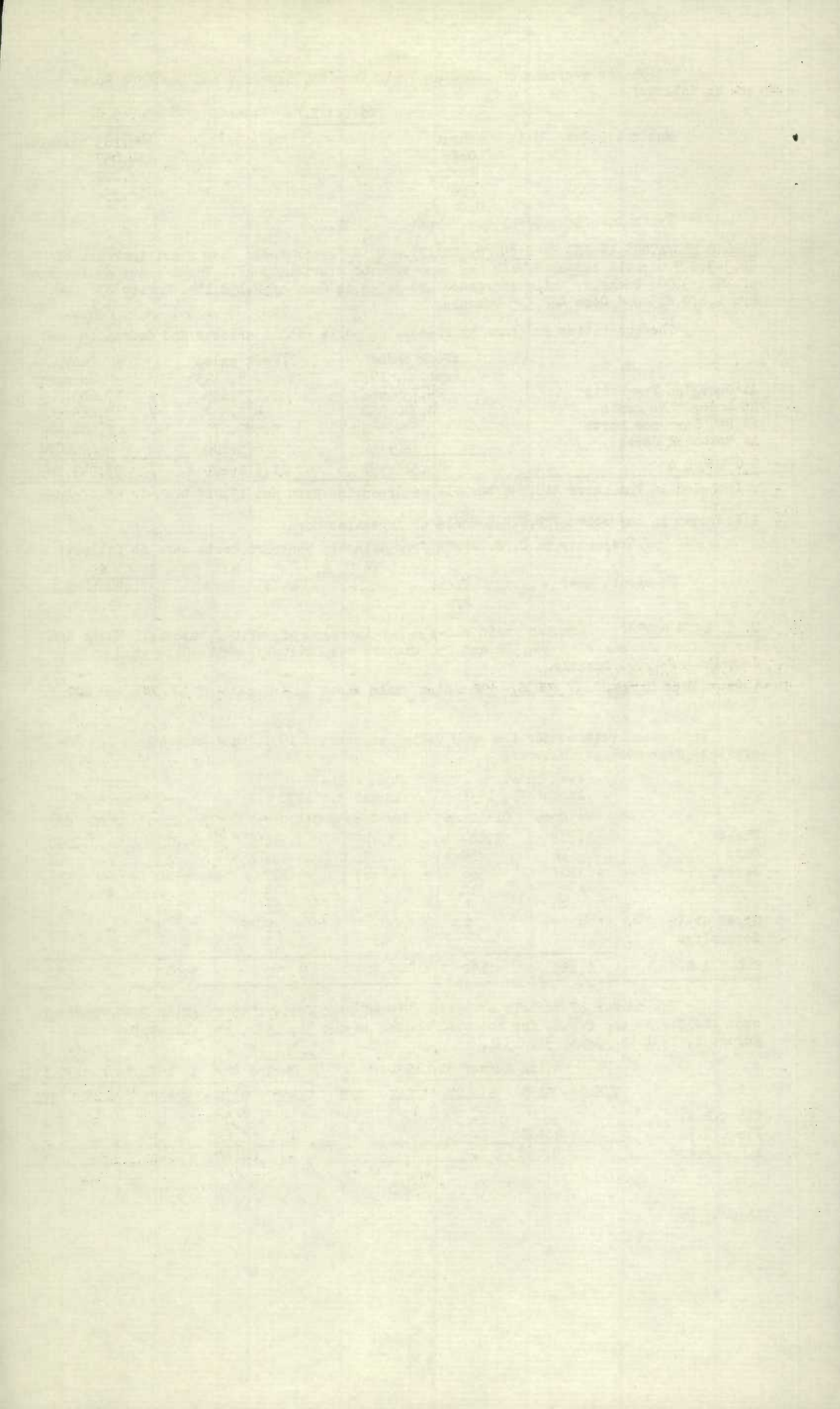
U. S. ATLANTIC SEABOARD PORTS.- Canadian grain shows an increase of 176,746 bushels in Wheat.

Inspection returns for the week ending August 31, 1931, with comparison for the previous year were as follows:-

	Week ended August 31, 1931		Week ended August 31, 1930		+ Increase - Decrease	
	New Crop	Old Crop	New Crop	Old Crop	New Crop	Old Crop
Wheat	1,522	3,284	5,749	7,916	- 4,227	- 4,632
Oats	12	454	71	186	- 59	+ 268
Barley	107	336	667	892	- 560	- 556
Flax	-	12	2	3	- 2	+ 9
Rye	44	85	234	301	- 190	- 216
Mixed Grain	-	1	5	9	- 5	- 8
Screenings	-	-	-	3	-	- 3
T O T A L S	1,685	4,172	6,728	9,310	- 5,043	- 5,138

The number of bushels of grain shipped from Western to Canadian Eastern Points over the C.P.R. and C.N.R. for the week ending August 31, 1931, and the period from August 1, 1931 to August 31, 1931.

	Week ending August 31, 1931					Period Aug. 1, 1931 to Aug. 31, 1931				
	WHEAT	OATS	BARLEY	FLAX	RYE	WHEAT	OATS	BARLEY	FLAX	RYE
Via C.P.R.	-	-	-	-	-	-	1,765	-	-	-
Via C.N.R.	-	4,068	-	-	-	-	16,460	-	-	-
T O T A L S	-	4,068	-	-	-	-	18,225	-	-	-



Stocks of Grain at the Different Elevators during the Week ended September 4, 1931.

	WHEAT Bush.	OATS Bush.	BARLEY Bush.	FLAX Bush.	RYE Bush.
Western Country Elevators	30,642,133	4,029,918	1,697,421	191,663	1,204,678
Interior Terminal Elevators	88,731	110,256	14,967	1,042	5,419
Vancouver Elevators	8,194,859	76,524	25,797	-	4,408
Victoria Elevators			Nil		
Prince Rupert Elevators	6,861	-	-	-	-
Fort William and Port Arthur	34,049,548	1,792,715	4,311,059	502,227	8,951,878
Interior Pte. & Mill Elevs.	5,244,950	1,299,966	1,126,199	32,910	105,765
Eastern Elevs. - Lake Ports	5,690,386	918,198	454,443	47,493	309,039
Eastern Elevs. - Sbd. Ports	9,451,285	847,814	907,381	723	1,592,666
U. S. Lake Ports	5,473,823	32,464	2,948	-	-
U. S. Atlantic Seaboard Ports	935,694	1,752	-	-	-
T O T A L S	99,778,270	9,109,607	8,540,215	776,058	12,176,172
Previous week	100,487,671	8,862,315	8,417,525	769,929	12,350,315
Same week previous year	111,987,943	6,112,836	22,441,499	500,816	9,924,278

Quantity of Screenings and Oat Scalpings received, shipped and in Store at the undermentioned elevators during the week ending September 4, 1931.

	Amount in Store Aug. 28, 1931	Amount received by vessel	Amount shipped	Amount in Store Sept. 4, 1931.
<u>Scalpings</u>				
Owen Sound	300	-	-	300
Goderich Elevator Co.	500	-	-	500
Port Colborne Dom. Govt.	423	-	-	423
Montreal	11,453	-	-	11,453
Quebec	2,302	-	950	1,352
T O T A L S	14,978	-	950	14,028

	Tons	Lbs.	Tons	Lbs.	Tons	Lbs.	Tons	Lbs.
<u>Screenings</u>								
Owen Sound Std. Re. Scrsgs.	10	-	-	-	-	-	10	-
Owen Sound Feed Scrsgs.	77	400	-	-	-	-	77	400
Goderich Elev. Co.								
Standard Recleaned	2,188	496	-	-	259	496	1,929	-
Sarnia Elev. Co. Rec.	138	-	-	-	-	-	138	-
Toronto Std. Rec. Scrsgs.	946	940	-	-	527	1,500	418	1,440
North Amer. Elev. Sorel	454	1,552	-	-	120	-	334	1,552
Montreal	30	-	-	-	-	-	30	-
Quebec, Que.	777	912	-	-	64	1,984	712	928
T O T A L S	4,622	300	-	-	971	1,980	3,650	320

Lake Shipments from Head of Lakes for the week ending September 7, 1931.

	Buffalo Bush.	Other Lake Ports Bush.	Can. Lower Lake Ports Bush.	Montreal Bush.	Quebec Bush.	Sorel Bush.	Total Bush.
Wheat	740,988	-	1,453,750	729,683	-	284,777	3,209,208
Oats	-	-	-	225,907	-	-	225,907
Barley				Nil			
Flaxseed				Nil			
Rye				Nil			
T O T A L S	740,988	-	1,453,750	955,590	-	284,777	3,435,115
Period ended Sept. 7, 1930.	5,815,613	-	1,633,530	449,718	129,300	-	8,033,161

Lake Shipments from the Head of the Lakes for the period from the opening of navigation to September 7, 1931.

	Buffalo Bush.	Other Lake Ports Bush.	Can. Lower Lake Ports Bush.	Montreal Bush.	Quebec Bush.	Sorel Bush.	Total Bush.
Wheat	34,660,173	515,826	32,848,192	9,307,737	24,451	769,280	78,125,669
Oats	837,110	-	4,351,240	4,247,528	566,047	36,220	10,038,145
Barley	3,715,670	210,000	6,902,230	6,224,775	132,223	35,000	17,219,898
Flaxseed	268,336	527,500	344,517	229,111	-	-	1,369,464
Rye	62,000	-	859,750	438,737	-	-	1,360,487
T O T A L S	39,543,289	1,253,326	45,305,929	20,447,888	722,721	840,500	108,113,663
Period ended Sept. 7, 1930	42,223,721	1,723,753	42,542,755	10,179,298	730,087	167,113	97,566,727



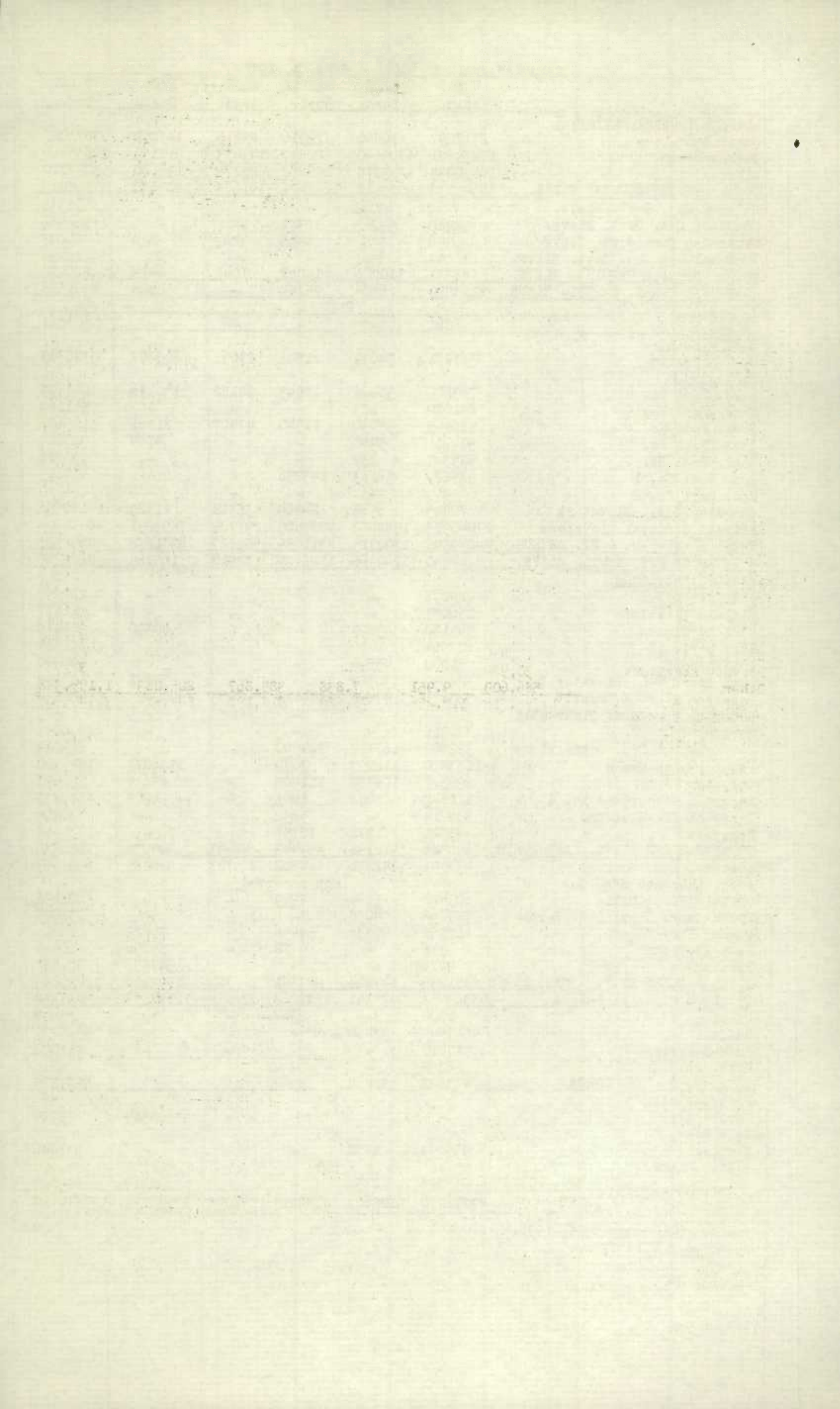
7  
CANADIAN GRAIN IN STORE -- SEPT. 4, 1931.

	WHEAT Bush.	OATS Bush.	BARLEY Bush.	FLAX Bush.	RYE Bush.	TOTAL Bush.
<u>WESTERN COUNTRY ELEVATORS</u>						
Manitoba	2317297	610800	772916	22215	149859	3873087
Saskatchewan	17434801	1709840	628543	143673	918159	20835016
Alberta	10890035	1709278	295962	25775	136660	13057710
TOTAL WESTERN COUNTRY ELEVS.	30642133	4029918	1657421	191663	1204678	37765813
Calgary Can. Govt. Elevs.	7262	4068	-	-	-	11330
Edmonton Can. Govt. Elevs.	58980	93215	10371	-	-	162566
Moose Jaw Can. Govt. Elevs.	6396	6582	4596	1042	5419	24035
Saskatchewan Can. Govt. Elevs.	16093	6391	-	-	-	22484
TOTAL INTERIOR TERMINAL ELEVS.	88731	110256	14967	1042	5419	220415
VANCOUVER TERML. & PUBL. ELEVS.	8194859	76524	25797	-	4408	8301583
VICTORIA ELEVATORS	Nil					
PRINCE RUPERT	6861	-	-	-	-	6861
FORT WILLIAM						
G. T. Pacific	2361271	94639	61547	27091	803797	3348345
PORT ARTHUR						
Sask. Pool No. 4	763602	30866	12943	94182	146136	1047729
Sask. Pool No. 5	841030	123	-	-	-	841153
Sask. Pool No. 6	989445	35030	11540	47907	81761	1165683
Sask. Pool No. 7	970111	5968	-	-	4764	980843
Sask. Pool No. 8	535347	739	-	-	-	536086
Man. Pool No. 1	475274	36163	143256	-	-	654693
Man. Pool No. 2	-	-	-	-	-	-
Canadian Govt. Elevators	72495	6985	24264	35318	21529	160591
Private Terminal Elevators	27040973	1582202	4057509	297729	7893891	40872504
TOTAL AT PT. WM. & PT. ARTHUR	34049548	1792715	4311059	502227	8951878	49607427
+ INTERIOR PTE. & MILL ELEVS.	5244950	1299966	1126199	32910	105765	7809790
<u>EASTERN ELEVATORS</u>						
+ Tiffin C.N.R.	289295	-	-	-	-	289295
Midland Elevators	156037	-	-	-	-	156037
Midland Simcoe	569130	349899	-	-	40390	959419
Port McNicoll	678564	-	-	-	-	678564
Collingwood	51000	49590	-	-	-	100590
Owen Sound C.L. Elevator Co.	426949	30352	-	-	57891	515192
Goderich Elev. & Transit	593071	97850	x114018	47493	-	852432
Goderich West Can. Flour Mill	16309	-	-	-	-	16309
Sarnia	470015	-	-	-	-	470015
Pt. Colborne Dom. Govt. Elevs.	522802	167117	204900	-	-	894819
Pt. Colborne Maple	1133860	112293	3070	-	126077	1375300
Toronto	292577	108738	111903	-	83679	596897
Kingston Richardson No. 1	111842	1088	1903	-	1002	115835
Kingston Elevator Co.	333014	-	5892	-	-	338906
Prescott	45921	1271	12757	-	-	59949
TOTAL EASTERN ELEVS. LAKE PORTS	5690386	918198	454443	47493	309039	7413559
Montreal Hbr. Commrs.	7494791	742236	844868	723	910285	9992903
+ St. Lawrence Mfg. Co.	Not reported					
Ogilvie Flour Mills	603428	1604	2999	-	-	608031
North Amer. Elev. Ltd. Sorel	727465	4038	-	-	-	731503
Quebec Hbr. Commrs.	615955	99936	59496	-	75229	850616
West St. John	370	-	18	-	59796	60184
Halifax	9276	-	-	-	547356	556632
TOTAL EASTERN ELEV. - SBD. PORTS	9451255	844818	907381	723	1592666	12799869
TOTAL QUANTITY IN CANADA	93368753	9075391	8537267	776058	12173853	123931322
Duluth	1000	-	2948	-	-	3948
Buffalo	4547545	32464	-	-	-	4580009
Buffalo Afloat	917000	-	-	-	-	917000
Erie, Pa.	8278	-	-	-	-	8278
TOTAL U. S. LAKE PORTS	5473823	32464	2948	-	-	5509235
Philadelphia	Nil					
Portland	-	-	-	-	2319	2319
Baltimore	Nil					
New York	935694	1752	-	-	-	937446
Boston, Mass.	Nil					
TOTAL U. S. ATLANTIC SBD. PORTS	935694	1752	-	-	2319	939765
TOTAL QUANTITY IN STORE	99778270	9109607	8540215	776058	12176172	130380322

+ Week ended August 28, 1931.

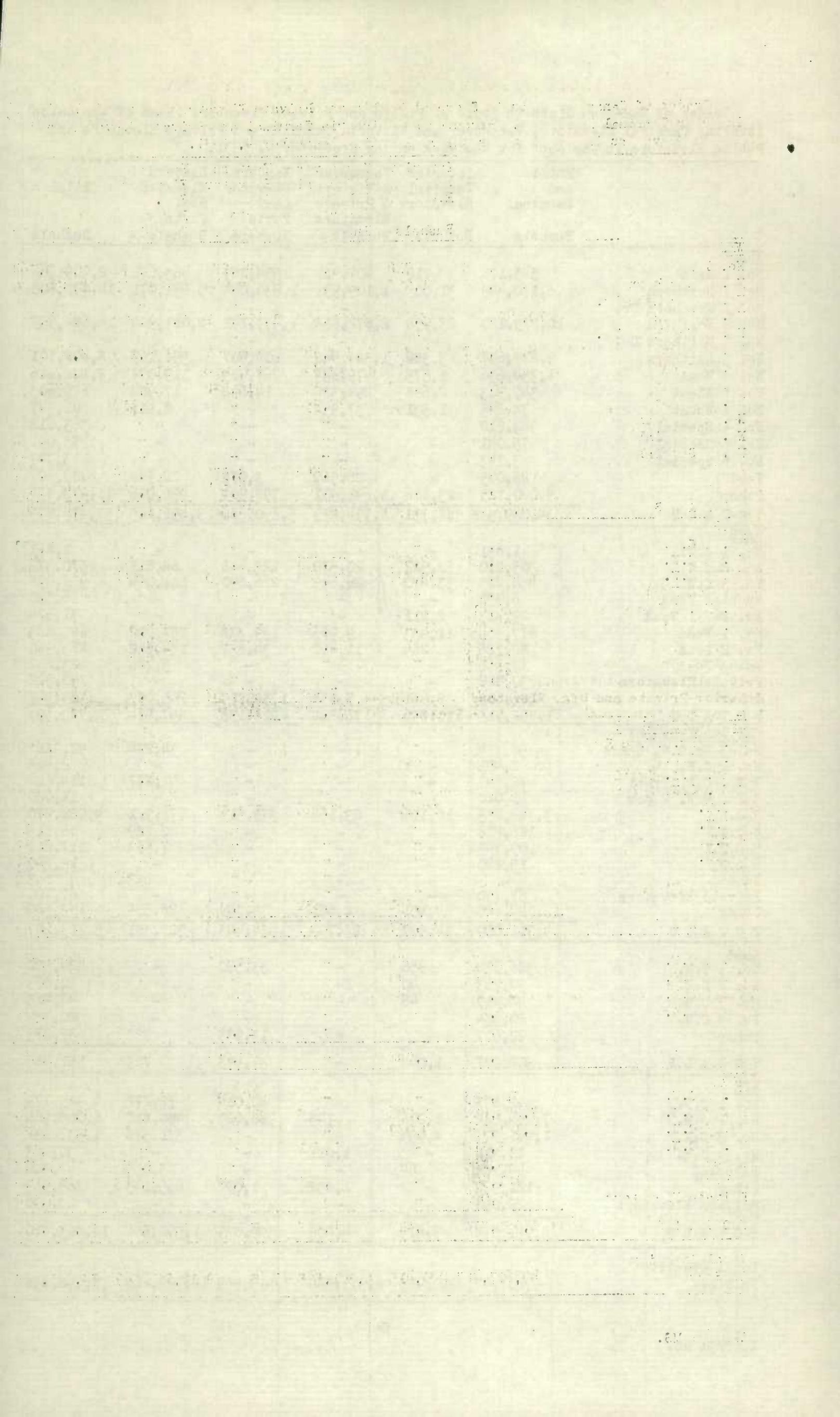
x Includes Wild Oats.

10/9/31 DG



Grades of Canadian Grain in Store at Public and Private Elevators (Head of the Lakes)  
Interior Terminal Elevators, Vancouver and Victoria Terminal and Private Elevators and  
Public Elevators in the East for the week ending September 4, 1931.

	Public and Terminal  Bushels	Interior Terminal Elevators  Bushels	Vancouver & Victoria & Private Elevators  Bushels	Eastern Elevator Lake Ports  Bushels	Eastern Elevator Sbd. Ports  Bushels	Total   Bushels
<u>WHEAT</u>						
No. 1 Hard	543,178	712	407,514	594,289	463,671	2,009,364
No. 1 Northern	6,170,489	31,005	1,109,991	1,930,044	5,651,071	14,892,600
No. 1 Northern Dr.	-	-	-	-	-	-
No. 2 Northern	10,229,120	23,958	2,872,818	1,477,141	2,081,902	16,684,939
No. 2 Northern Dr.	-	-	-	-	-	-
No. 3 Northern	5,879,697	3,386	1,323,942	604,907	596,169	8,408,101
No. 4 Wheat	1,354,636	1,575	479,844	267,484	119,077	2,222,616
No. 5 Wheat	349,963	2,688	294,326	14,642	17,984	679,603
No. 6 Wheat	33,845	1,531	37,954	-	8,417	81,747
No. 4 Special	363,612	-	-	-	-	363,612
No. 5 Special	75,041	-	-	-	-	75,041
No. 6 Special	3,743	-	-	-	-	3,743
Feed	26,095	-	26,569	3,975	22,968	79,607
Other	9,020,129	23,876	1,641,901	797,904	490,026	11,973,836
T O T A L S	34,049,548	88,731	8,194,859	5,690,386	9,451,285	57,474,809
<u>OATS</u>						
No. 1 C.W.	1,851	-	-	-	-	1,851
No. 2 C.W.	305,210	52,927	20,579	127,446	64,217	570,379
No. 3 C.W.	454,225	33,470	26,649	226,690	181,064	922,098
Special Feed	6,390	-	-	-	-	6,390
Ex. No. 1 Feed	29,413	2,211	-	-	-	31,624
No. 1 Feed	277,904	11,433	9,996	139,338	257,012	695,683
No. 2 Feed	82,725	264	11,462	34,857	134,652	263,960
No. 3 Feed	17,466	-	-	-	5,786	23,252
Private Elevators	30,922	-	-	-	-	30,922
Other	586,609	9,951	7,838	389,867	205,083	1,199,348
T O T A L S	1,792,715	110,256	76,524	918,198	847,814	3,745,507
<u>NEW GRADE BARLEY</u>						
No. 3 Ex. C.W. 6 Row	58,704	-	-	-	34,234	92,938
No. 2 C.W.	2,405	-	-	-	-	2,405
3 Ex. C.W. Trebi	72,747	-	-	-	41,877	114,624
3 Ex. C.W. 2 Row	11,020	-	-	-	-	11,020
3 C.W.	3,744,253	10,116	23,166	379,514	771,921	4,928,970
4 C.W.	186,526	-	-	-	22,289	208,815
5 C.W.	109,749	-	-	-	7,863	117,612
6 C.W.	15,240	-	-	-	-	15,240
Feed	-	-	-	-	643	643
Private Elevators	67,790	-	-	-	-	67,790
Other	42,625	4,851	2,631	74,929	28,554	153,590
T O T A L S	4,311,059	14,967	25,797	454,443	907,381	5,713,647
<u>FLAX</u>						
No. 1 C.W.	386,074	956	-	33,560	-	420,590
No. 2 C.W.	30,763	40	-	-	-	30,803
No. 3 C.W.	42,419	46	-	-	-	42,465
No. 4 C.W.	20,354	-	-	-	-	20,354
Other	22,617	-	-	13,933	723	37,273
T O T A L S	502,227	1,042	-	47,493	723	551,485
<u>RYE</u>						
No. 1 C.W.	312,893	-	-	40,014	72,272	425,179
No. 2 C.W.	7,254,682	1,296	745	268,023	480,818	8,005,564
No. 3 C.W.	1,161,794	4,059	-	-	371,378	1,537,231
No. 4 C.W.	28,312	-	1,811	-	-	30,123
Rejected	44,185	64	-	-	3,055	47,304
Other	121,922	-	1,852	1,002	665,143	789,919
Private Elevators	28,090	-	-	-	-	28,090
T O T A L S	8,951,878	5,419	4,408	309,039	1,592,666	10,863,410
Total Quantity in Store	49,607,427	220,415	8,301,588	7,419,559	12,799,869	78,348,858



-8-  
CANADIAN GRAIN IN STORE - COMPARATIVE STATEMENT, 1926-1931.

	WHEAT Bushels	OTHER GRAIN Bushels	TOTAL Bushels
<u>Sept. 4, 1931.</u>			
Western Country Elevators	30,642,133	7,123,680	37,765,813
Interior Terminal Elevators	88,731	131,684	220,415
Vancouver Elevators	8,194,859	106,729	8,301,588
Victoria Elevators		Nil	
Prince Rupert Elevators	6,861	-	6,861
Fort William and Port Arthur Elevators	34,049,548	15,557,879	49,607,427
Interior Private and Mill Elevators	5,244,950	2,564,840	7,809,790
Eastern Elevators - Lake Ports	5,690,386	1,729,173	7,419,559
Eastern Elevators - Seaboard Ports	9,451,285	3,348,584	12,799,869
U. S. Lake Ports	5,473,823	35,412	5,509,235
U. S. Atlantic Seaboard Ports	935,694	4,071	939,765
T O T A L S	99,778,270	30,602,052	130,380,322
<u>Sept. 5, 1930.</u>			
Western Country Elevators	14,924,622	4,188,197	19,112,819
Interior Terminal Elevators	3,635,692	199,652	3,835,344
Vancouver Elevators	10,527,707	99,967	10,627,674
Victoria Elevators	-	-	-
Prince Rupert Elevators	972,647	378	973,025
Ft. William and Pt. Arthur Elevators	32,123,642	22,834,599	54,958,241
Interior Private and Mfg. Elevators	3,721,129	1,605,311	5,326,440
Public Elevators in the East -Lake Port	10,666,039	3,854,175	14,520,214
Public Elevators in the East -Sbd. Port	8,882,110	3,102,884	11,984,994
U. S. Lake Ports	8,556,500	883,116	9,439,616
U. S. Atlantic Seaboard Ports	4,993,409	1,141,343	6,134,752
T O T A L S	99,003,497	37,909,622	136,913,119
<u>Sept. 6, 1929.</u>			
Western Country Elevators	7,129,648	3,231,011	10,360,659
Interior Terminal Elevators	2,376,194	282,721	2,658,915
Vancouver Elevators	4,985,121	132,945	5,118,066
Victoria Elevators	4,629	-	4,629
Prince Rupert Elevators	39,820	-	39,820
Fort William and Port Arthur	42,974,950	15,525,425	58,500,375
Interior Private and Mfg. Elevators	3,544,500	1,593,752	5,138,252
Public Elevators in the East - Lake Ports	10,241,727	2,657,930	12,899,657
Public Elevators in the East - Sbd. Ports	10,265,467	4,615,629	14,881,096
U. S. Lake Ports	9,513,729	1,142,811	10,656,540
U. S. Atlantic Seaboard Ports	11,984,978	1,160,217	13,145,195
T O T A L S	103,050,763	30,342,441	133,403,204
<u>Sept. 7, 1928.</u>			
Western Country Elevators	2,256,766	1,870,366	4,127,132
Interior Terminal Elevators	52,978	74,911	127,889
Vancouver Elevators	1,992,557	74,046	2,066,603
Prince Rupert Elevators	11,197	-	11,197
Fort William and Port Arthur	3,536,781	1,427,818	4,964,599
Interior Private and Mfg. Elevs.	2,376,135	765,856	3,141,991
Public Elevs. in the East - Lake Ports	8,661,713	364,708	9,026,421
Public Elevs. in the East - Sbd. Ports	5,399,450	1,206,058	6,605,508
U. S. Lake Ports	1,917,253	134,658	2,051,911
U. S. Atlantic Seaboard Ports	1,059,749	124,511	1,184,260
T O T A L S	27,264,579	6,042,932	33,307,511
<u>Sept. 9, 1927.</u>			
Western Country Elevators	1,483,946	1,333,078	2,817,024
Interior Terminal Elevators	87,964	73,706	161,670
Vancouver Elevators	475,221	38,555	513,776
Prince Rupert Elevators	2,951	-	2,951
Fort William and Port Arthur	8,099,103	2,503,664	10,602,767
Interior Private and Mfg. Elevs.	1,232,544	695,738	1,928,282
Public Elevs. in the East-Lake Ports	2,020,915	1,106,506	3,127,421
" " " " Sbd. Ports	3,070,300	1,446,195	4,516,495
U. S. Lake Ports	1,967,871	57,859	2,025,730
U. S. Atlantic Seaboard Ports	2,088,534	27,850	2,116,384
T O T A L S	20,529,349	7,283,151	27,812,500
<u>Sept. 10, 1926.</u>			
Western Country Elevators	3,284,386	2,093,067	5,377,453
Interior Terminal Elevators	25,242	41,265	66,507
Vancouver Terminal Elevators	208,377	99,174	307,551
Ft. William and Ft. Arthur	4,466,661	4,720,802	9,187,463
Interior Pte. and Mfg. Elevs.	1,029,026	994,926	2,023,952
Public Elevators in the East	7,405,748	7,329,383	14,735,131
U. S. Lake Ports	1,095,698	315,114	1,410,812
U. S. Atlantic Seaboard Ports	2,050,638	720,008	2,770,646
T O T A L S	19,565,776	16,314,739	35,880,515



RECEIPTS AND SHIPMENTS BY CLASSES OF ELEVATORS  
Week ended September 4, 1931.

		WHEAT Bush.	OATS Bush.	BARLEY Bush.	FLAX Bush.	RYE Bush.	TOTAL Bush.
<u>#COUNTRY ELEVATORS, WESTERN DIVISION</u>							
Rcts. - Rail		3,878,710	951,409	328,904	23,323	76,889	5,259,235
Shpts. - Rail		2,707,830	1,053,422	362,135	20,116	90,437	4,233,940
<u>INTERIOR TERMINAL ELEVATORS</u>							
Rcts. - Rail		14,145	17,751	16,147	-	8,845	56,888
Shpts. - Rail		296,003	5,339	16,264	-	8,678	326,284
<u>VANCOUVER ELEVATORS</u>							
Rcts. - Rail		443,403	9,707	-	-	-	453,110
Shpts. - Vessel		968,761	56,117	-	-	23,977	1,048,855
	Rail	2,333	-	-	-	-	2,333
<u>PRINCE RUPERT ELEVATORS</u>							
Rcts. - Rail				Nil.			
Shpts. - Vessel				Nil.			
<u>PUBLIC AND PRIVATE TERMINAL ELEVATORS, FORT WILLIAM AND PORT ARTHUR</u>							
Rcts. - Rail		2,572,918	290,299	228,507	9,198	49,901	3,150,823
Shpts. - Vessel		4,090,791	62,462	381,972	-	309,654	4,844,879
	Rail	27,824	63,085	1,800	-	-	92,709
<u>#INTERIOR PRIVATE AND MILL ELEVATORS</u>							
Rcts. - Rail		872,900	191,906	131,243	91	383	1,196,523
Shpts. - Rail		757,676	147,577	56,456	91	-	961,800
<u>EASTERN ELEVATORS - GEORGIAN BAY PORTS</u>							
Rcts. - Vessel		37,882	-	21,307	50,560	-	109,749
Shpts. - Rail		563,416	2,900	-	-	-	566,316
Local and Mill		145,335	14,800	4,125	17,000	-	181,260
<u>LOWER LAKE PORTS</u>							
Rcts. - Vessel		872,482	304,044	380,336	-	-	1,556,862
	Rail	7,274	-	1,246	-	-	8,520
Shpts. - Vessel		741,955	126,785	114,500	-	-	983,240
	Rail	4,763	-	400	-	-	5,163
Local and Mill - Rail		129,068	22,266	36,167	24,903	1,099	213,503
	Vessel	1,200	-	-	-	-	1,200
Rcts. - Vessel		882,355	302,245	353,299	-	96,798	1,634,697
	Rail	171,001	3,505	-	-	-	174,506
Shpts. - Vessel		862,029	164,058	353,285	-	16,352	1,395,724
	Rail			Nil.			
Local and Mill		35,188	92,560	32,607	-	-	160,355
<u>SEABOARD PORTS</u>							
Rcts. - Rail				Nil.			
Shpts. - Vessel				Nil.			
<u>EASTERN ELEVATORS</u>							
Rcts. - Vessel		1,792,719	606,289	754,942	50,560	96,798	3,301,308
	Rail	178,275	3,505	1,246	-	-	183,026
Shpts. - Vessel		1,603,984	290,843	467,785	-	16,352	2,378,964
	Rail	568,179	2,900	400	-	-	571,479
Local and Mill		309,591	129,626	72,899	41,903	1,099	555,118

#Week ending August 28, 1931.

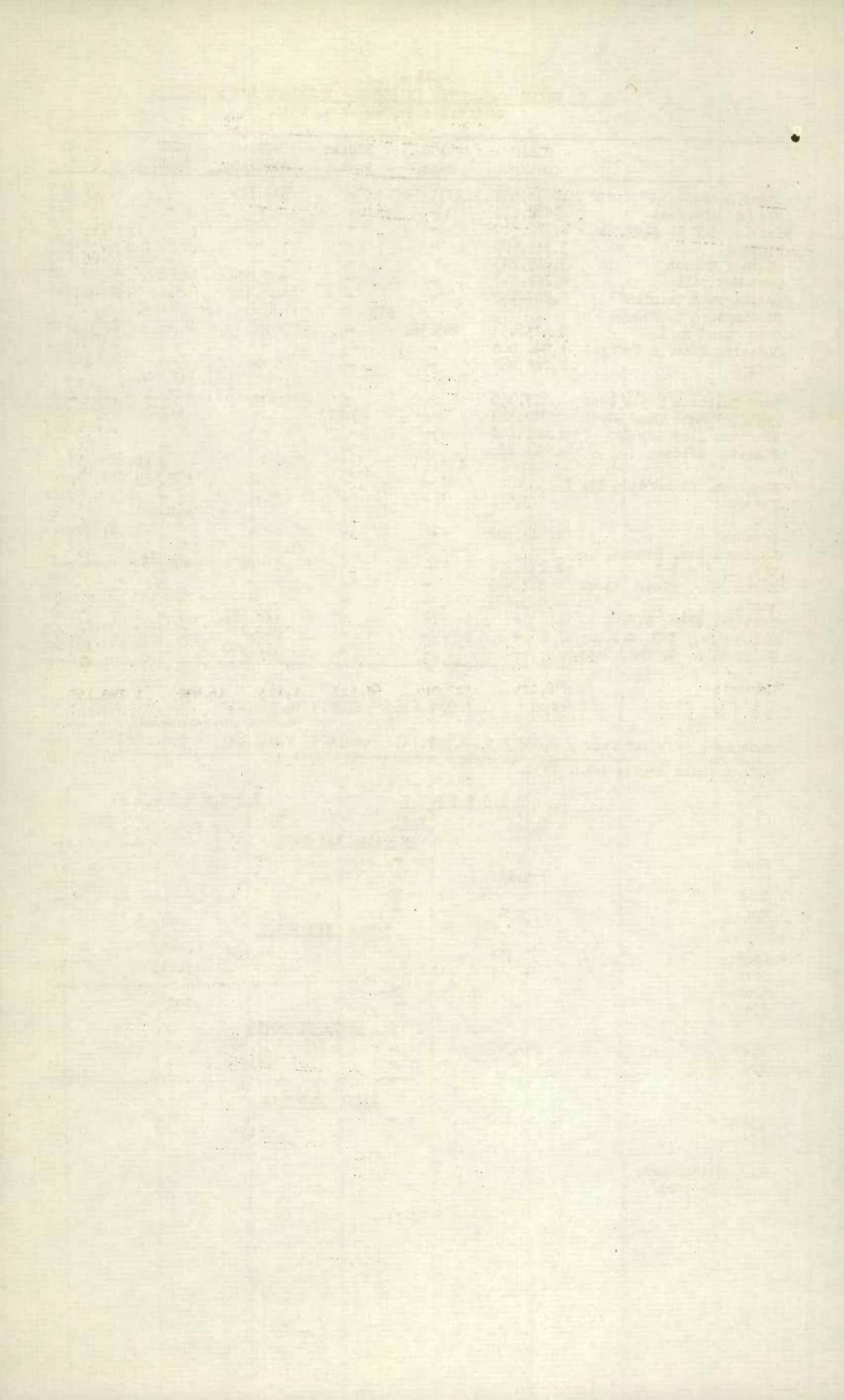
Platform Loadings for the week ended August 31st, 1931, Wheat 497,672, Other Grains 96,883, Total 594,555 bushels.



U. S. GRAIN - QUANTITY IN STORE - RECEIPTS AND SHIPMENTS  
Week ended September 4, 1931.

	WHEAT Bush.	OATS Bush.	BARLEY Bush.	RYE Bush.	CORN Bush.	TOTAL Bush.
Depot Harbour	1,036,589	111,674	-	371,380	-	1,519,643
Midland Aberdeen	862,830	-	-	-	-	862,830
*Tiffin, C.N.R. Elev. Co.	2,822,560	-	-	-	-	2,822,560
Midland	3,916,600	-	-	-	-	3,916,600
Midland Simcoe	3,219,283	-	-	-	-	3,219,283
Port McNicoll	2,721,047	-	-	109,894	486,177	3,317,118
Collingwood Terminal	2,207,440	-	-	403,306	-	2,610,746
Collingwood C. N.R.	-	-	Nil	-	-	-
Owen Sound G. L.	2,575,453	245,962	-	-	-	2,821,415
Goderich Elev. & Transit	1,941,000	-	-	-	-	1,941,000
Sarnia	2,705,467	-	-	-	-	2,705,467
Port Colborne Maple Leaf	187,750	-	-	-	#16,606	204,356
Port Colborne Dom. Govt.	317,382	-	23,973	-	x 3000	341,355
Kingston Elevator Co.	1,828,808	-	-	-	x 700	1,829,508
Kingston Afloat	481,836	-	-	-	-	481,836
Kingston, Richardson No. 1	-	-	-	-	#611	-
Prescott	3,621	-	-	-	x 2,639	6,260
Toronto	1,413,302	-	-	-	-	1,413,302
Montreal Hbr. Commrs.	-	-	-	-	x18,001	-
Nos. 1, 2 and B.	2,211,576	-	-	334,829	2,721	2,612,173
North Amer. Elevs. Sorel	837,499	-	-	-	x65,768	837,499
Quebec	2,073,843	-	-	-	-	2,073,843
West St. John, N.B.	-	-	-	170,197	x26,143	170,197
Saint John, N.B. C.N.R.	-	-	-	249,236	-	249,236
Halifax, N. S. Can. Govt.	-	-	-	112,990	x96,199	211,088
TOTALS	32,363,886	357,636	23,913	1,751,832	x98,098	35,313,990
Same week previous year	4,028,880	2,549,747	660,629	3,431,647	#17,217	11,970,101
* Week ended August 28th, 1931.					x310,548	

	<u>R E C E I P T S</u>		<u>S H I P M E N T S</u>	
	<u>Water</u>	<u>Rail</u>	<u>Water</u>	<u>Rail</u>
		<u>GEORGIAN BAY PORTS</u>		
Wheat	-	-	-	-
Oats	339,137	-	-	91,607
Corn	-	-	-	68,358
Rye	-	-	-	1,122
		<u>LOWER LAKE PORTS</u>		
Wheat	192,158	-	91,630	-
Corn	-	-	-	8,152
xCorn	-	-	-	536
#Corn	-	-	-	65
		<u>St. LAWRENCE PORTS</u>		
Wheat	185,320	-	37,484	-
Rye	-	-	22,219	-
xCorn	-	-	-	18,892
		<u>SEABOARD PORTS</u>		
xCorn	83,202	-	-	11,400
xCorn	-	-	-	1,500
xArgentine Corn,				
#African Corn.				



COUNTRY ELEVATORS - WESTERN DIVISION - RECEIPTS,  
SHIPMENTS & STOCKS

Week ended August 28th, 1931.

	WHEAT Bush.	OATS Bush.	BARLEY Bush.	FLAX Bush.	RYE Bush.	TOTAL Bush.
<u>MANITOBA</u>						
On Hand, previous week	1,846,824	598,644	755,622	21,777	144,792	3,367,259
Receipts	935,108	49,259	126,431	1,574	11,055	1,123,427
Totals	2,781,932	647,903	882,053	22,951	155,847	4,490,686
Shipments	454,795	28,995	103,185	50	5,880	592,905
In Store	2,317,297	610,800	772,916	22,215	149,859	3,873,087

<u>SASKATCHEWAN</u>						
On Hand, previous week	16,780,199	1,624,300	641,021	155,661	927,632	20,128,813
Receipts	1,926,993	726,596	164,958	21,213	59,085	2,898,845
Totals	18,707,192	2,350,896	805,979	176,874	986,717	23,027,658
Shipments	1,316,962	697,413	190,423	18,953	68,127	2,291,878
In Store	17,434,801	1,709,840	628,543	143,673	918,159	20,835,016

<u>ALBERTA</u>						
On Hand, previous week	10,809,678	1,860,734	323,146	26,352	146,341	13,166,251
Receipts	1,016,609	175,554	37,515	536	6,749	1,236,963
Totals	11,826,287	2,036,288	360,661	26,888	153,090	14,403,214
Shipments	936,073	327,014	68,527	1,113	16,430	1,349,157
In Store	10,890,035	1,709,278	295,962	25,775	136,660	13,057,710

TOTAL RECEIPTS AT COUNTRY ELEVATORS AND  
PLATFORM LOADINGS

August 1st, 1931 to August 31st, 1931.

	WHEAT Bush.	OTHER GRAIN Bush.	TOTAL Bush.
Manitoba	2,479,434	762,893	3,242,328
Saskatchewan	3,477,778	2,008,728	5,486,506
Alberta	3,023,032	1,270,461	4,293,493
Total 1931-1932	8,980,244	4,042,082	13,022,327
Same period - 1930- 1931	15,917,302	2,902,210	18,810,512



INTERIOR TERMINAL ELEVATORS

Receipts, Shipments and Quantities in Store  
Week ended Sept. 4th, 1931.

	WHEAT Bush.	OATS Bush.	BARLEY Bush.	FLAX Bush.	RYE Bush.	TOTAL Bush.
<u>CALGARY</u>						
On Hand, previous week	7,262	4,068	-	-	-	11,330
Receipts	5,720	-	-	-	-	5,720
Total	12,982	4,068	-	-	-	17,052
Shipments - Rail	5,720	-	-	-	-	5,720
In Store	7,262	4,068	-	-	-	11,330
<u>EDMONTON</u>						
On Hand, previous week	57,377	84,126	9,092	-	-	150,595
Receipts	1,604	9,089	1,278	-	-	11,971
Total	58,981	93,215	10,370	-	-	162,566
Shipments - Rail			Nil			
In Store	58,980	93,215	10,371	-	-	162,566
<u>MOOSE JAW</u>						
On Hand, previous week	8,387	3,727	1,742	1,042	5,383	20,281
Receipts	-	8,488	11,538	-	8,845	28,871
Total	8,387	12,215	13,280	1,042	14,228	49,152
Shipments - Rail	1,991	5,339	8,455	-	8,678	24,463
In Store	6,396	6,582	4,596	1,042	5,419	24,035
<u>SASKATOON</u>						
On Hand, previous week	297,564	6,391	4,520	-	-	308,475
Receipts	6,821	174	3,331	-	-	10,326
Total	304,385	6,565	7,851	-	-	318,801
Shipments - Rail	288,292	-	7,809	-	-	296,101
In Store	16,093	6,391	-	-	-	22,484

# THE UNIVERSITY OF CHICAGO

THE UNIVERSITY OF CHICAGO  
 LIBRARY

DATE	DESCRIPTION	AMOUNT	CHECK NO.	ACCOUNT
1900	...	...	...	...
1901	...	...	...	...
1902	...	...	...	...
1903	...	...	...	...
1904	...	...	...	...
1905	...	...	...	...
1906	...	...	...	...
1907	...	...	...	...
1908	...	...	...	...
1909	...	...	...	...
1910	...	...	...	...
1911	...	...	...	...
1912	...	...	...	...
1913	...	...	...	...
1914	...	...	...	...
1915	...	...	...	...
1916	...	...	...	...
1917	...	...	...	...
1918	...	...	...	...
1919	...	...	...	...
1920	...	...	...	...
1921	...	...	...	...
1922	...	...	...	...
1923	...	...	...	...
1924	...	...	...	...
1925	...	...	...	...
1926	...	...	...	...
1927	...	...	...	...
1928	...	...	...	...
1929	...	...	...	...
1930	...	...	...	...
1931	...	...	...	...
1932	...	...	...	...
1933	...	...	...	...
1934	...	...	...	...
1935	...	...	...	...
1936	...	...	...	...
1937	...	...	...	...
1938	...	...	...	...
1939	...	...	...	...
1940	...	...	...	...
1941	...	...	...	...
1942	...	...	...	...
1943	...	...	...	...
1944	...	...	...	...
1945	...	...	...	...
1946	...	...	...	...
1947	...	...	...	...
1948	...	...	...	...
1949	...	...	...	...
1950	...	...	...	...
1951	...	...	...	...
1952	...	...	...	...
1953	...	...	...	...
1954	...	...	...	...
1955	...	...	...	...
1956	...	...	...	...
1957	...	...	...	...
1958	...	...	...	...
1959	...	...	...	...
1960	...	...	...	...
1961	...	...	...	...
1962	...	...	...	...
1963	...	...	...	...
1964	...	...	...	...
1965	...	...	...	...
1966	...	...	...	...
1967	...	...	...	...
1968	...	...	...	...
1969	...	...	...	...
1970	...	...	...	...
1971	...	...	...	...
1972	...	...	...	...
1973	...	...	...	...
1974	...	...	...	...
1975	...	...	...	...
1976	...	...	...	...
1977	...	...	...	...
1978	...	...	...	...
1979	...	...	...	...
1980	...	...	...	...
1981	...	...	...	...
1982	...	...	...	...
1983	...	...	...	...
1984	...	...	...	...
1985	...	...	...	...
1986	...	...	...	...
1987	...	...	...	...
1988	...	...	...	...
1989	...	...	...	...
1990	...	...	...	...
1991	...	...	...	...
1992	...	...	...	...
1993	...	...	...	...
1994	...	...	...	...
1995	...	...	...	...
1996	...	...	...	...
1997	...	...	...	...
1998	...	...	...	...
1999	...	...	...	...
2000	...	...	...	...

PACIFIC COAST ELEVATORS

Receipts, Shipments and Quantities in Store  
Week ending September 4th, 1931.

	WHEAT Bush.	OATS Bush.	BARLEY Bush.	FLAX Bush.	RYE Bush.	TOTAL Bush.
<u>VANCOUVER</u>						
On Hand, previous week	8,729,283	122,735	25,797	-	28,385	8,906,200
Receipts	443,403	9,707	-	-	-	453,110
TOTALS	9,172,686	132,442	25,797	-	28,385	9,359,311
Shipments - Vessel	968,761	56,117	-	-	23,977	1,048,855
Rail	2,333	-	-	-	-	2,333
In Store	8,194,859	76,524	25,797	-	4,408	8,301,588
<u>PRINCE RUPERT</u>						
On Hand, previous week	6,861	-	-	-	-	6,861
Receipts			NIL			
TOTALS	6,861	-	-	-	-	6,861
Shipments - Vessel			NIL			
Rail			NIL			
In Store	6,861	-	-	-	-	6,861
<u>VICTORIA</u>						
On Hand, previous week			NIL			
Receipts			"			
TOTALS			"			
Shipments - Vessel			"			
Rail			"			
In Store			"			

DAILY AND WEEKLY AVERAGE PRICES OF GRAIN  
Week ending Sept. 5th, 1931.  
WESTERN DIVISION  
(Basis Vancouver, B.C.)

	Aug. 31	Sept. 1	Sept. 2	Sept. 3	Sept. 4	Sept. 5	Weekly Average
	\$ ¢	\$ ¢	\$ ¢	\$ ¢	\$ ¢	\$ ¢	\$ ¢
No. 1 Hard	.545	.540	.529	.526	.530	.531	.535
No. 1 Northern	.535	.531	.519	.516	.520	.521	.524
No. 2 Northern	.480	.476	.464	.461	.465	.466	.469
No. 3 Northern	.435	.431	.424	.421	.425	.426	.427
No. 4 Northern	.405	.401	.404	.401	.395	.396	.400
No. 5 Northern	.375	.371	.374	.371	.375	.376	.374
No. 6 Northern	.365	.361	.354	.351	.365	.366	.360
Feed	.375	.371	.374	.391	.415	.416	.390
Screenings per ton			No bids				



## DAILY AND WEEKLY AVERAGE PRICES OF GRAIN

Week ended September 5th, 1931.

## WESTERN DIVISION

(Basis Fort William and Port Arthur)

	Aug. 31	Sept. 1	Sept. 2	Sept. 3	Sept. 4	Sept. 5	Weekly Average
	\$ ¢	\$ ¢	\$ ¢	\$ ¢	\$ ¢	\$ ¢	\$ ¢
<u>WHEAT</u>							
No. 1 Man. Hard	.560	.556	.551	.551	.555	.562	.556
No. 1 Northern	.540	.536	.531	.531	.532	.536	.534
No. 2 Northern	.495	.492	.455	.486	.490	.491	.485
No. 3 Northern	.445	.444	.439	.436	.440	.441	.441
No. 4 Northern	.400	.399	.394	.396	.400	.404	.399
No. 5 Northern	.372	.374	.369	.366	.370	.371	.370
No. 6 Northern	.345	.341	.334	.331	.335	.336	.337
Feed	.355	.351	.344	.341	.345	.346	.347
No. 4 Special	.355	.351	.344	.356	.360	.361	.354
No. 5 Special	.335	.331	.324	.336	.340	.341	.334
No. 6 Special	.300	.296	.289	.301	.305	.306	.299
Rejected No. 1 Northern	.460	.456	.449	.446	.455	.456	.454
No. 2 Northern	.425	.421	.414	.411	.420	.421	.419
No. 3 Northern	.370	.366	.359	.356	.365	.366	.364
Tough No. 1 Northern	.492	.489	.481	.479	.482	.484	.484
No. 2 Northern	.457	.454	.446	.444	.447	.451	.450
No. 3 Northern	.410	.406	.399	.396	.400	.404	.402
Smutty No. 1 Northern	.445	.441	.434	.441	.445	.446	.448
No. 2 Northern	.415	.411	.404	.411	.415	.416	.412
No. 3 Northern	.360	.356	.349	.356	.360	.361	.357
Durum No. 1 Northern	.670	.671	.674	.681	.685	.686	.678
No. 2 Northern	.590	.591	.594	.601	.605	.606	.598
No. 3 Northern	.500	.501	.504	.511	.515	.516	.508
A. R. W. No. 1 Northern	.425	.421	.414	.411	.415	.416	.417
No. 2 Northern	.405	.401	.394	.391	.395	.396	.397
No. 3 Northern	.385	.381	.374	.371	.375	.376	.377
<u>OATS</u>							
No. 2 C. W.	.274	.276	.277	.272	.276	.272	.274
No. 3 C. W.	.239	.239	.239	.237	.241	.239	.239
Ex. No. 1 Feed	.239	.239	.239	.237	.241	.239	.239
No. 1 Feed	.226	.226	.225	.222	.226	.222	.224
No. 2 Feed	.214	.214	.212	.210	.214	.212	.213
No. 3 Feed	.169	.169	.167	.165	.169	.165	.167
<u>BARLEY (NEW GRADE)</u>							
2 Row	.349	.347	.346	.355	.356	.355	.351
6 Row	.359	.357	.356	.355	.356	.355	.356
Trebi	.316	.315	.311	.310	.311	.310	.312
No. 3 C. W.	.316	.315	.311	.310	.311	.310	.312
No. 4 C. W.	.296	.295	.294	.292	.294	.292	.294
No. 5 C. W.	.284	.282	.281	.280	.281	.280	.281
No. 6 C. W.	.269	.267	.266	.265	.266	.265	.266
<u>RYE</u>							
No. 1 C. W.	.305	.307	.305	.302	.300	.300	.303
No. 2 C. W.	.305	.307	.305	.302	.300	.300	.303
No. 3 C. W.	.281	.284	.280	.277	.275	.274	.278
Rejected No. 2 C. W.	.251	.254	.250	.247	.245	.244	.248
No. 4 C. W.	.241	.244	.240	.237	.235	.234	.238
Rejected for Ergo	.231	.234	.230	.227	.225	.224	.228
<u>FLAX</u>							
No. 1 C. W.	.990	.995	.985	.981	.979	.984	.986
No. 2 C. W.	.950	.955	.945	.941	.939	.944	.946
No. 3 C. W.	.775	.780	.770	.765	.762	.765	.769
No. 4 C. W.	.775	.780	.770	.765	.762	.765	.769
Screenings per ton				Not reported			
ONTARIO - TORONTO							
x Wheat, Good Milling	.42-.45	.42-.45	.42-.45	.42-.45	.42-.45	.42-.45	.42-.45
Oats	.19-.22	.19-.22	.19-.22	Not reported	.187-.217	.187-.217	.189-.219
Argentine Corn	.58	.58	.58	"	.59	.59	.582
Rye				Nominal			
Barley	.35-.36	.35-.36	.35-.36	.35-.36	.35-.36	.35-.36	.35-.36
Buckwheat				Nominal			
x F.O.B. Shipping Points							
+ Track Toronto							



Receipts and Shipments at Fort William and Port Arthur, Month ended August, 1931 and 1930.

	WHEAT Bushels	OATS Bushels	BARLEY Bushels	FLAX Bushels	RYE Bushels	CORN Bushels	TOTAL Bushels	MIXED GRAIN Lbs.
<u>R E C E I P T S</u>								
August, 1931	4,143,209	657,484	679,409	88,355	173,019	-	5,741,476	230,760
August, 1930	11,121,848	649,253	2,395,000	36,998	751,676	-	14,954,775	2,295,070
<u>S H I P M E N T S</u>								
August, 1931 - Lake	15,455,630	1,177,729	2,969,887	93,595	107,000	-	19,803,841	97,876
Rail	88,360	170,762	3,772	-	-	-	262,894	85,000 <sup>1</sup> / <sub>5</sub>
August, 1930 - Lake	15,793,429	1,184,833	1,610,642	24,871	175,476	-	18,789,251	1,500,008 <sup>1</sup> / <sub>5</sub>
Rail	157,315	55,229	7,472	1,485	-	8,344	229,845	264,170

9/9/31/FED



- 17 -  
INSPECTION - EASTERN DIVISION  
August, 1931 and 1930

	Month of August			Month of August	
	1931	1930		1931	1930
<u>WHEAT - SPRING</u>			<u>CORN - CANADIAN YELLOW</u>		
No. 2	-	-	No. 3 Mixed	-	-
No. 3	-	-	No. Grade	-	-
Rejected	-	-	No. 5	-	-
Commercial Grade	-	-	<u>TOTAL CORN</u>	-	-
C. No. 1	1,000	1,000	<u>MIXED GRAIN</u>		
C. No. 2	1,000	-	<u>RECAPITULATION CAN. GRAIN</u>		
<u>WINTER WHEAT</u>			Wheat	60,000	1,749,955
<u>WHITE WINTER</u>			Oats	27,800	129,809
No. 1	-	-	Barley	6,250	17,500
No. 2	15,000	5,000	Rye	95,566	-
No. 3	2,000	-	Peas	-	-
Rejected	-	-	Buckwheat	-	-
<u>RED WINTER</u>			Corn	-	-
No. 1	-	-	Mixed Grain	-	-
No. 2	2,000	11,000	<u>TOTAL CANADIAN GRAIN</u>	189,616	1,952,977
No. 3	1,000	6,000	<u>UNITED STATES GRAIN</u>		
No. Grade	-	-	Wheat 1 H.W.	-	24,000
Rejected	-	-	No. 1 R.W.	-	-
<u>MIXED WINTER</u>			No. 2 R.W.	-	-
No. 2	28,000	68,135	No. 2 H.W.	-	365,907
No. 3	2,000	23,000	No. 3 H.W.	-	21,917
Rejected	-	-	No. 2 Mixed Winter	-	-
No. Grade	-	-	No. 2 Mixed	-	-
Mixed Durum No. 2	-	332,600	<u>DURUM WHEAT</u>		
Amber Durum No. 2	8,000	1,303,220	No. 2 D.	-	-
Amber Durum No. 3	-	-	No. 2 Red D.	-	-
Red Durum No. 2	-	-	No. 2 Amber D.	384,746	261,177
<u>TOTAL WHEAT</u>	60,000	1,749,955	No. 3 Amber D.	-	-
<u>OATS</u>			No. 2 Mixed D.	-	4,800
No. 1	3,300	-	No. 1 Nor. Duluth	-	-
No. 2	19,700	18,400	No. 2 Nor. Duluth	-	-
No. 3	3,000	6,750	<u>TOTAL U.S. WHEAT</u>	384,746	677,801
No. 4	1,800	-	<u>CORN No. 1</u>		
Rejected	-	-	No. 2	-	-
No. Grade	-	-	No. 3	-	-
Mixed Elev. Feed No. 1	-	104,659	No. 4	-	-
Mixed Elev. Feed No. 2	-	-	No. 5	-	-
Ex. 1 F.	-	-	Rejected	-	-
Ex. 2 F.	-	-	Arg. Corn	-	-
<u>TOTAL OATS</u>	27,800	129,809	Condemned	-	-
<u>RYE No. 1</u>			<u>TOTAL CORN</u>	-	-
No. 2	95,566	55,713	<u>BARLEY - Malting</u>		
No. 3	-	-	Export 2	-	-
Rejected	-	-	Exports	-	-
No. Grade	-	-	<u>TOTAL BARLEY</u>	-	-
<u>TOTAL RYE</u>	95,566	55,713	<u>RYE No. 1</u>		
<u>BARLEY</u>			No. 2	-	-
No. 2	-	-	No. 3	-	-
No. 3 Extra	-	13,750	<u>TOTAL RYE</u>	-	-
No. 3	5,000	3,750	<u>OATS</u>		
No. 4	1,250	-	No. 2 Clipped	-	-
Rejected	-	-	No. 3 Clipped	-	-
No. Grade	-	-	Rejected	-	-
Maltings	-	-	<u>TOTAL OATS</u>	-	-
No. 2 Barley Sbd.	-	-	<u>RECAPITULATION U.S. GRAIN</u>		
<u>TOTAL BARLEY</u>	6,250	17,500	Wheat	384,746	677,801
<u>PEAS</u>			Corn	-	-
No. 2	-	-	Barley	-	-
No. 3	-	-	Rye	-	-
Rejected	-	-	Oats	-	-
<u>TOTAL PEAS</u>	-	-	<u>TOTAL U.S. GRAIN</u>	384,746	677,801
<u>BUCKWHEAT No. 1</u>					
No. 2	-	-			
No. 3	-	-			
Rejected	-	-			
No. Grade	-	-			
<u>TOTAL BUCKWHEAT</u>	-	-			

59 Cars inspected at Toronto.  
14 Cars and Cargoes inspected at Montreal.



-18-  
PUBLIC ELEVATORS IN THE EAST

Receipts of Canadian Grain with Shipments by Destination, August, 1931.

	WHEAT Bush.	OATS Bush.	BARLEY Bush.	FLAX Bush.	RYE Bush.	TOTAL Bush.
<u>GEORGIAN BAY PORTS</u>						
	<u>RECEIPTS - VESSEL</u>					
Midland	96,529	-	-	-	-	96,529
Pt. McNicoll	1,733,306	-	-	-	-	1,733,306
Owen Sound	315,550	-	-	-	-	315,550
Goderich Elev.&Transit	298,083	-	95,752	-	-	393,835
Goderich W.C.F. Mills	108,345	-	-	-	-	108,345
Sarnia	198,683	-	-	-	-	198,683
T O T A L	2,750,496	-	95,752	-	-	2,846,248
	<u>SHIPMENTS - RAIL</u>					
To Other Can.Points	198,176	9,963	2,250	-	-	210,389
To Other U.S. Points	9,500	-	-	-	-	9,500
To Montreal	950,699	5,706	-	-	-	956,405
Local and Mill	644,001	83,600	13,596	1,964	-	743,161
T O T A L	1,802,376	99,269	15,846	1,964	-	1,919,455
<u>LOWER LAKE PORTS</u>						
	<u>RECEIPTS - VESSEL</u>					
Pt. Colborne Dom.Govt.	719,315	84,631	502,878	-	147	1,306,971
Pt. Colborne Maple Leaf	1,186,483	71,779	68,312	-	-	1,326,574
Toronto	72,660	29,744	-	44,403	-	146,807
Kingston (Richardson)	13,013	-	-	-	-	13,013
Kingston Elevator Co.	501,382	-	5,892	-	-	507,274
Prescott	8,279	-	12,757	-	-	21,036
T O T A L	2,501,132	186,154	589,839	44,403	147	3,321,675
	<u>RECEIPTS - RAIL</u>					
Kingston (Richardson)	1,998	1,455	1,552	-	1,077	6,082
	<u>SHIPMENTS - VESSEL</u>					
To Other Can. Points	8,221	-	80	-	-	8,301
To Montreal	1,263,605	139,224	707,065	-	199,666	2,309,560
Local	4,800	-	-	-	-	4,800
T O T A L	1,276,626	139,224	707,145	-	199,666	2,322,661
	<u>SHIPMENTS - RAIL</u>					
To Other Can.Points	15,431	9,205	1,992	-	1,075	26,703
Local and Mill	915,626	74,320	41,454	19,500	11,527	1,062,427
T O T A L	931,057	82,525	43,446	19,500	12,602	1,089,130
<u>ST. LAWRENCE PORTS</u>						
	<u>RECEIPTS - VESSEL</u>					
Montreal	1,974,227	598,359	2,338,396	-	262,147	5,173,129
St. Lawrence	327,315	20,031	-	-	-	347,346
Ogilvie	189,088	-	-	-	-	189,088
Sorel	392,083	-	-	-	-	392,083
Quebec	12,319	86,493	-	-	-	98,812
T O T A L	2,895,032	704,883	2,338,396	-	262,147	6,200,458
	<u>RECEIPTS - RAIL</u>					
Montreal	693,794	5,694	-	-	-	699,488
Ogilvie	-	-	2,999	-	-	2,999
Sorel	-	-	314	-	-	314
T O T A L	693,794	5,694	3,313	-	-	702,801
	<u>SHIPMENTS - VESSEL</u>					
To Other Countries	2,746,056	364,600	2,039,391	-	75,944	5,225,991
To United Kingdom	25,421	-	-	-	-	25,421
Local	42,370	-	-	-	-	42,370
T O T A L	2,813,847	364,600	2,039,391	-	75,944	5,273,782
	<u>SHIPMENTS - RAIL</u>					
Local	677,387	400,473	146,616	-	400	1,224,876
<u>SEABOARD PORTS</u>						
	<u>RECEIPTS - Nil</u>					
	<u>SHIPMENTS - Nil</u>					

NOTE: Where the shipments are over the receipts the same is accounted for by the carry-over from the previous month.



Receipts of U. S. Grain with Shipments by Destination August, 1931.

	WHEAT	OATS	BARLEY	RYE	CORN	ARGENTINE	AFRICAN	TOTAL
	Bush.	Bush.	Bush.	Bush.	Bush.	Corn Bush.	Corn Bush.	Bush.
<u>GEORGIAN PORTS</u>								
RECEIPTS - VESSEL								
Depot Harbour	658,828	159,407	-	-	24,957	-	-	843,192
Aberdeen	1,189,523	-	-	-	-	-	-	1,189,523
Tiffin C.N.R.	2,274,172	-	-	-	-	-	-	2,274,172
Midland	2,730,074	-	-	-	-	-	-	2,730,074
Pt. McNicoll	1,777,129	-	-	-	799,214	-	-	2,576,343
Owen Sound	314,754	-	-	-	-	-	-	314,754
Goderich Elev. & Tran.	1,260,376	-	-	-	-	-	-	1,260,376
TOTAL	10,204,856	159,407	-	-	824,171	-	-	11,188,434

SHIPMENTS - RAIL

To Other Can. Points	-	-	-	-	27,157	-	-	27,157
" " U. S. "	9,564	255,998	-	-	435,992	-	-	701,554
" U. S. Sbd.	2,234,989	-	-	-	-	-	-	2,234,989
TOTAL	2,244,553	255,998	-	-	463,149	-	-	2,963,700

LOWER LAKE PORTS

RECEIPTS - VESSEL

Pt. Colborne Maple Leaf	377,166	-	-	-	-	23,974	-	351,140
" " Dom. Govt.	311,061	-	-	-	-	-	-	311,061
Kingston Terminal	524,837	-	-	-	-	-	-	524,837
" Jas. Richardson	-	-	-	-	-	4,485	-	4,485
Toronto	281,195	-	-	-	-	27,629	-	308,824
Prescott	95,530	-	-	-	-	-	-	95,530
TOTAL	1,589,789	-	-	-	-	56,088	-	1,645,877

RECEIPTS - RAIL

Pt. Colborne Maple Leaf	-	-	-	-	-	-	1,066	1,066
-------------------------	---	---	---	---	---	---	-------	-------

SHIPMENTS - VESSEL

To Other Can. Points	19,435	-	-	-	-	-	-	19,435
" Montreal	492,268	-	-	-	-	-	-	492,268
TOTAL	511,703	-	-	-	-	-	-	511,703

SHIPMENTS - RAIL

To Other Can. Points	-	-	-	-	-	4,212	24	4,236
Local and Mill	-	-	-	-	125	55,878	4,975	60,978
TOTAL	-	-	-	-	125	60,090	4,999	65,214

ST. LAWRENCE PORTS

RECEIPTS - VESSEL

Montreal	196,161	-	-	-	-	168,070	-	364,231
Sorel	424,554	-	-	-	-	-	-	424,554
TOTAL	620,715	-	-	-	-	168,070	-	788,785

SHIPMENTS - VESSEL

To Other Countries	570,983	-	20,995	15,342	-	-	-	607,320
To United Kingdom	470,600	-	-	-	-	-	-	470,600
" Other Can. Points	-	-	-	-	-	56,140	-	56,140
TOTAL	1,041,583	-	20,995	15,342	-	56,140	-	1,124,060

SHIPMENTS - RAIL

Local	-	-	-	-	-	130,992	-	130,992
-------	---	---	---	---	---	---------	---	---------

SEABOARD PORTS

RECEIPTS - Nil

SHIPMENTS - RAIL

To Other Can. Points	-	-	-	-	-	11,943	-	11,943
Local	-	-	-	-	-	58,952	-	58,952
TOTAL	-	-	-	-	-	70,895	-	70,895

NOTE:-

Where the receipts are over the shipments the same is accounted for by the carryover from the previous month.

STATISTICS CANADA LIBRARY  
BIBLIOTHÈQUE STATISTIQUE CANADA



1010674765