

C A N A D A  
DEPARTMENT OF TRADE AND COMMERCE  
DOMINION BUREAU OF STATISTICS  
AGRICULTURAL BRANCH

Vol. 18  
14

No. 24

Historical File Copy

CANADIAN GRAIN STATISTICS

Week ending

JANUARY 12, 1934

(Records for Western Inspection Division supplied by Board of Grain Commissioners for Canada.)

Published by Authority of the Hon. H.H. Stevens, M.P.,  
Minister of Trade and Commerce.

+ + +

OTTAWA

1934

General Summary .....	1 - 6
Canadian Grain in Store by Elevators .....	7
Canadian Grain in Store by Grades .....	8
Comparative Statement of Grain in Store .....	9
Receipts and Shipments of Canadian Grain .....	10
U. S. Grain in Store, receipts and shipments .....	11
Receipts, Shipments and Quantities in Store at Country Elevators Western Division .....	12
Receipts, Shipments and Quantities in Store at Interior Terminal Elevators .....	13
Receipts, Shipments and Quantities in Store at Pacific Elevators and Vancouver Prices .....	14
Daily and Weekly Average Prices of Grain at Fort William and Toronto for the week ending January 13, 1934 .....	15
Inspections, Western Division month of December, 1933 .....	16-17-18
Receipts and Shipments of Canadian Grain at Country Elevators, and Platform Loadings also in Interior, Vancouver-New Westminster, Victoria, Prince Rupert and Churchill Elevators month of December, 1933 .....	19-20-21
Exports of Grain, wheatflour, and millfeed by countries of destination, December, 1933 .....	22 - 23



DEPARTMENT OF TRADE AND COMMERCE  
DOMINION BUREAU OF STATISTICS - CANADA  
AGRICULTURAL BRANCH

(Issued January 19, 1934)

• Dominion Statistician:	R. H. Coats, B.A., F. S.S. (Hon.), F.R.S.C.
Chief, Agricultural Branch:	T. W. Grindley, Ph.D.
Assistant Chief, Agricultural Branch:	W. Dougan.

WHEAT STOCKS IN STORE

Canadian wheat in store for the week ending January 12, 1934 shows a decrease of 2,789,729 bushels as compared with the previous week. The visible supply was reported as 237,027,635 bushels compared with a revised figure of 239,817,364 bushels for the previous week and 231,000,754 bushels for the corresponding week in 1933.

Canadian wheat in the United States amounted to 11,711,703 bushels of which 4,073,075 bushels and 5,442,631 bushels were in store and afloat at Buffalo and New York respectively. This compared with 12,007,750 bushels on the same date last year of which 6,820,620 bushels were located at Buffalo and 2,550,643 bushels at New York.

United States wheat in Canada was shown as 2,248,845 bushels compared with 6,707,566 bushels last year.

PRIMARY MOVEMENT

Wheat marketings in the Prairie Provinces for the week ending January 5, 1934 amounted to 1,493,297 bushels, an increase of 242,713 bushels compared with those of the previous week when 1,250,584 bushels were marketed. During the same week in 1933 2,483,134 bushels were marketed. For the twenty-three weeks ending January 5, 1934 and January 6, 1933, 162,306,901 bushels and 277,988,571 bushels were received from the farms. By provinces the receipts for the week ending January 5, 1934 were as follows, figures within brackets being those of the same week in 1933: Manitoba 104,137 (88,193) bushels; Saskatchewan 731,131 (910,863) bushels; Alberta 658,029 (1,484,078) bushels.

Marketings of wheat in the three Prairie Provinces up to January 5, 1934 as compared with the same period in 1933 were as follows, figures in brackets being those for 1933: Manitoba 22,963,479 (29,657,039) bushels; Saskatchewan 81,743,849 (146,493,860) bushels; Alberta 57,599,573 (101,837,672) bushels.

EXPORT CLEARANCES

During the week ending January 12, 1934 the export clearances of wheat amounted to 2,633,028 bushels compared with 2,285,338 bushels for the previous week, an increase of 347,690 bushels. During the corresponding week in 1933, 5,465,411 bushels were cleared for overseas ports.

Clearances by ports for the weeks ending January 12, 1934 and January 13, 1933 were as follows (in bushels):

	Week ending January 12, 1934	Week ending January 13, 1933.
Montreal	200 (x)	-
United States Ports	1,046,000	777,000
Vancouver - New Westminster	1,437,428	4,018,411
West Saint John and Saint John	149,400	670,000
<b>T O T A L</b>	<b>2,633,028</b>	<b>5,465,411</b>

(x) Shipped to the Maritime ports for export overseas.

The following table shows export clearances of Canadian wheat, by ports, since the commencement of the present crop year along with comparative figures for the same period in 1932-33 (in bushels):

	1933 - 34	1932 - 33
Montreal	31,927,234	45,165,867
Quebec	8,491,665	1,217,904
Sorel	5,287,684	11,073,265
West Saint John and Saint John	929,270	2,791,717
Halifax	315,067	72,000
United States Ports	10,710,000	13,302,000
Churchill	2,707,891	2,736,030
Vancouver - New Westminster	21,587,581	51,281,321
Victoria	-	596,121
Prince Rupert	-	677,813
<b>T O T A L</b>	<b>81,956,392</b>	<b>128,914,038</b>

1931

1932

1933

1934

1935

1936

1937

1938

1939

1940

1941

1942

1943

1944

1945

1946

1947

1948

1949

1950

1951

1952

1953

1954

1955

1956

1957

1958

1959

1960

1961

1962

1963

1964

1965



International Trade

The following table shows world shipments of wheat and wheat flour for the first twenty-four weeks of the present crop year. (Broomhall's figures)

Week Ending		North America	Argentina	Australia	Russia	Other	Total
(Thousand Bushels)							
August	7	4,224	1,920	2,784	-	144	9,072
	14	3,328	4,848	608	-	120	8,904
	21	3,472	3,056	2,472	248	360	9,608
	28	4,536	3,912	2,448	168	520	11,584
September	4	5,008	2,728	584	296	880	9,496
	11	4,160	2,832	2,072	944	1,048	11,056
	18	3,800	1,768	1,416	1,552	1,208	9,744
	25	4,952	2,000	2,024	1,616	1,576	12,168
October	2	4,416	1,288	2,024	1,040	1,152	9,920
	9	5,096	816	1,312	1,088	1,744	10,056
	16	5,256	1,264	800	1,120	944	9,384
	23	6,320	1,328	984	560	1,592	10,784
	30	4,464	1,360	912	1,824	2,008	10,568
November	6	4,153	1,379	1,426	384	2,016	9,358
	13	5,277	915	1,226	768	1,408	9,594
	20	5,494	835	1,468	944	1,387	10,128
	27	5,675	482	815	1,400	1,344	9,716
December	4	6,276	1,344	1,622	1,024	1,450	11,716
	11	4,005	590	1,125	632	1,584	7,936
	18	3,631	843	1,606	1,464	1,368	8,912
	25	3,724	1,396	2,405	1,272	1,289	10,086
January	1	3,228	1,974	2,941	1,464	680	10,287
	8	3,421	1,055	1,034	1,320	592	7,422
	15	4,723	2,406	1,981	624	816	10,550
TOTAL		108,639	42,339	38,089	21,752	27,230	238,049
<u>Comparative 1932-33</u>							
Corresponding week		6,760	2,384	6,456	512	392	16,504
Total to date		165,472	24,344	48,352	16,256	17,712	272,136

World shipments for the week ending January 15, amounted to 10,550,000 bushels as compared with shipments of 7,422,000 bushels for the previous week and 16,504,000 bushels for the corresponding week in 1932-33. Shipments from North America increased by more than a million bushels during the past week, while clearances from the Argentine and Australia increased by one million and nine hundred thousand bushels respectively. Russian shipments showed a decrease of six hundred thousand bushels.

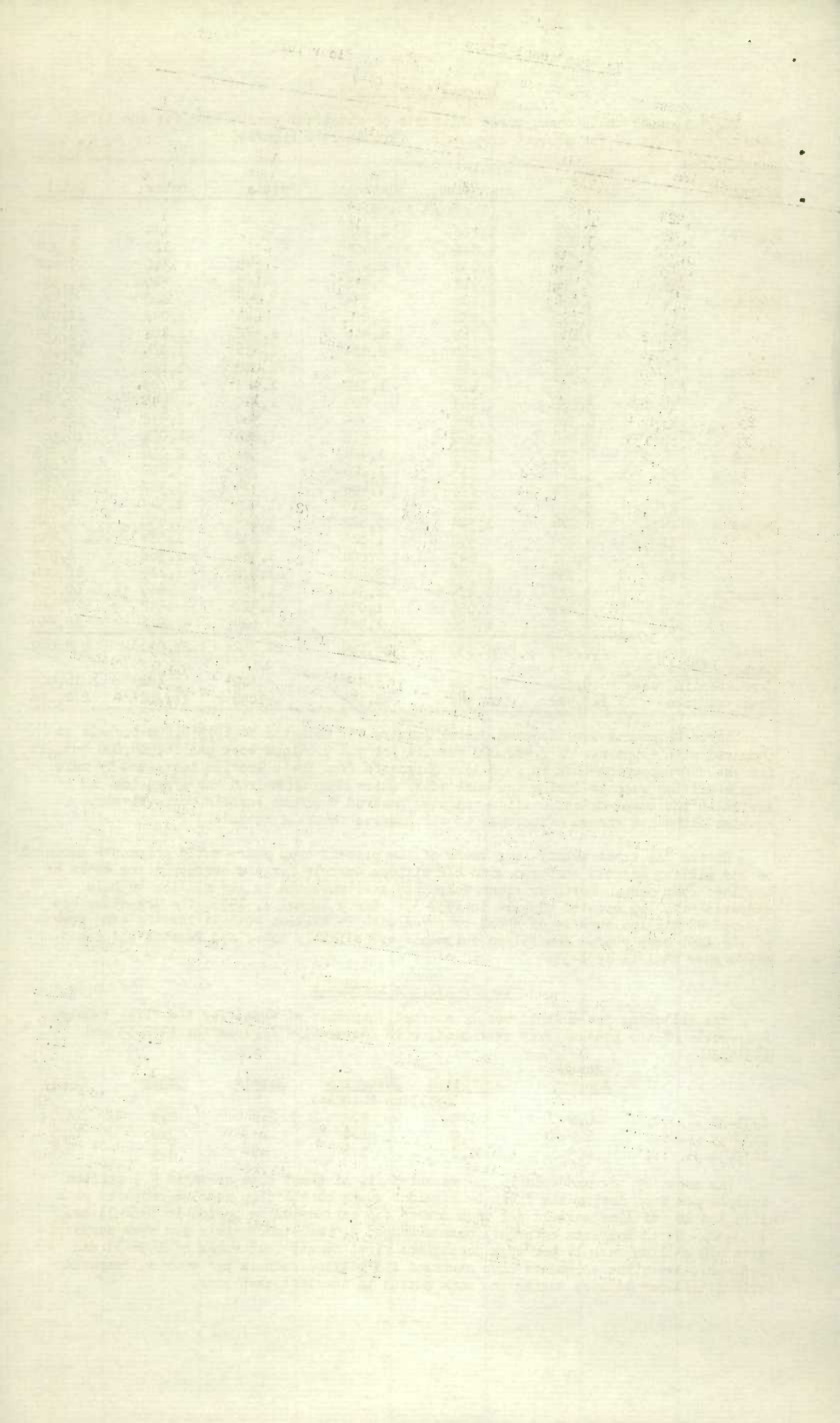
During the first twenty-four weeks of the present crop year, world shipments amounted to 238 million bushels compared with 272 million bushels for the corresponding weeks of the last crop year. North American shipments have amounted to 108 million bushels compared with 165 million bushels in 1932-33. Since August 1, 1933, the Argentine has cleared 42 million bushels of wheat compared with 24 million bushels for the same weeks of the last crop year. Australian shipments are slightly lower and Russian shipments are higher than in 1932-33.

Weekly Average Shipments

The following table shows weekly average shipments of wheat for the first twenty-four weeks of the present crop year along with comparative figures for 1932-33 and 1931-32.

	North America	Argentina	Australia	Russia	Other	Total
(Million Bushels)						
1931-32 .....	6.6	1.5	2.0	2.8	2.2	15.0
1932-33 .....	6.9	1.0	2.0	.7	.7	11.3
1933-34 .....	4.5	1.8	1.6	.9	1.1	9.9

As shown by the above table, world shipments of wheat have averaged 9.9 million bushels per week during the first twenty-four weeks of the crop year as compared with 11.3 and 15 million bushels per week during the corresponding period in 1932-33 and 1931-32. North American shipments have averaged 4.5 million bushels per week compared with 6.9 million bushels per week during the first twenty-four weeks of 1932-33 and 1931-32. Argentine shipments have averaged 1.8 million bushels per week as compared with 1 million bushels during the same period in the last crop year.





### Import Requirement Estimate

The London Wheat Conference estimated world import requirements for 1933-34 at 560 million bushels. From August 1, 1933 to January 15, 1934 world shipments amounted to 238 million bushels, or an average of 9.9 million bushels per week. This leaves a balance of 322 million bushels to be shipped during the remaining 28 weeks of the crop year or a weekly average of 11.5 million bushels.

### ITALY

The Dominion Bureau of Statistics has received the following cable from the International Institute of Agriculture at Rome.

"Italy, Minister of Agriculture intimates wheat area sown this season until now decreased 10 per cent compared with last year. Forecast to be sown less than in 1933 and 1932. Crop condition affected everywhere by excessive rains especially Venezia, lower Toscana, Campania, Sardinia. Probably 1934 crop insufficient to cover requirements".

Italian wheat acreage in 1933 and 1932 amounted to 12,518,000 acres and 12,251,000 acres respectively. Production in 1933 is estimated at 297 million bushels.

### A U S T R A L I A

The Dominion Bureau of Statistics received on January 16, the following cable from the Canadian Trade Commissioner for Australia.

"Wheat markets continue in a very depressed condition and prices have fallen with no consequent increased demand from oversea. Wheat shipments December first to date total 10,391,505 bushels, about two thirds going to United Kingdom and remainder to China and Japan. Quotations per bushel about forty cents at country sidings or fifty-one cents F.O.B. steamer with growers not selling freely at present prices. Flour quotations have weakened slightly todays export price per ton 2,000 pounds twenty-one dollars, eighteen cents in 150 pound sacks and twenty-one dollars seventy cents in 49 pound bags. Oversea enquiries not forthcoming Australian flour millers feel keenly the loss of the Eastern Market which was feature of last years trading. Flour duties imposed by Chinese Government amounting to about twenty-five per cent ad valorem on Australian first grade flour benefit the Shanghai flour mills at expense of Oversea millers. One cargo only of 4,500 tons has been booked for dairen, the only active enquirer, New crop chartering is proceeding very slowly at unchanged rates."

### A R G E N T I N E

The following report was received from the Buenos Aires correspondent of the Dominion Bureau of Statistics. The report was mailed to the Bureau on January 1, 1934.

"In the middle of the month the Ministry of Agriculture made public its first estimate of the volume of the new crop of wheat, with a corrected estimate of the acreage seeded. The figures are as follows, together with those of former years for comparison:-

1933 - 34	6,972,000 tons, or	255,872,400 bushels
1932 - 33	6,405,993 "	235,100,000 "
Av. 5 Yrs.	6,526,274 "	239,514,255 "
" 10 "	6,372,431 "	233,868,208 "
Area:	1933 -34 (3rd estimate)	19,654,531 acres
	" " (2nd " )	18,895,500 "
	1932 -33.....	19,782,230 "
	Avg. last 5 years.....	20,316,046 "
	" " 10 " .....	19,567,241 "

A week later an official report on the condition of the crops was published, which may be summarised as follows with regard to wheat:- In the province of Buenos Aires the condition is generally good, with normal yields in prospect, except in some parts of the south, where there has been damage from frost and other causes and in some cases it will not be profitable to cut the grain. In Santa Fe the grain is mostly cut, with good results in the centre and south, but poor returns in the north. In Cordoba 60 per cent of the threshing was completed when the report was compiled, with satisfactory results except in the central parts of the province, where they were poor. In the Pampa the crop was generally good, with the work of harvesting well advanced; and in Entre Rios the yields and quality were both described as good."

The first of these is the fact that the  
the second is the fact that the  
the third is the fact that the

The fourth is the fact that the  
the fifth is the fact that the

The sixth is the fact that the  
the seventh is the fact that the

The eighth is the fact that the  
the ninth is the fact that the

The tenth is the fact that the  
the eleventh is the fact that the

The twelfth is the fact that the  
the thirteenth is the fact that the  
the fourteenth is the fact that the  
the fifteenth is the fact that the  
the sixteenth is the fact that the  
the seventeenth is the fact that the  
the eighteenth is the fact that the  
the nineteenth is the fact that the  
the twentieth is the fact that the

The twenty-first is the fact that the  
the twenty-second is the fact that the

The twenty-third is the fact that the  
the twenty-fourth is the fact that the

The twenty-fifth is the fact that the  
the twenty-sixth is the fact that the

The twenty-seventh is the fact that the  
the twenty-eighth is the fact that the

The twenty-ninth is the fact that the  
the thirtieth is the fact that the

The thirty-first is the fact that the  
the thirty-second is the fact that the



# CANADIAN GRAIN STATISTICS - WEEK ENDING JANUARY 12, 1934.

Returns received as to stocks of grain in store for the week ending January 12, 1934 show a net decrease of 3,052,289 bushels compared with the revised total of the previous week. Stocks in store were as follows: wheat 237,027,635, oats 19,673,454, barley 11,397,952, flaxseed 601,568 and rye 4,036,441 bushels a total of 272,787,050 bushels. Decreases are noted in wheat of 2,789,729, oats 288,729, flaxseed 367 and rye 36, bushels while barley increased 26,572 bushels. At a comparable date last year stocks in store were as follows: wheat 231,000,754, oats 9,103,274, barley 6,762,829, flaxseed 1,453,688 and rye 5,013,363 bushels, a total of 253,334,408 bushels.

WESTERN COUNTRY ELEVATORS: Stocks in store this week show a net increase of 252,655 bushels. Increases are noted in wheat of 316,576, barley 16,686, and flaxseed 825 bushels while oats and rye decreased 81,339 and 95, bushels respectively,

The following table shows the quantities of grain in store at the Country Elevators in each of the Prairie Provinces on January 5, 1934 with comparison for the previous week and the same period 1933.

	<u>MANITOBA</u>	<u>SASKATCHEWAN</u>	<u>ALBERTA</u>	<u>TOTAL</u>
	<u>B U S H E L S</u>			
Wheat	10,460,752	56,291,807	39,871,653	106,624,212
Oats	359,574	3,955,512	3,091,472	7,906,558
Barley	1,545,165	1,421,481	694,122	3,660,768
Flaxseed	20,252	171,658	32,831	224,741
Rye	107,562	539,244	176,993	823,799
T O T A L S	12,993,305	62,379,702	43,867,071	119,240,078
Previous week	13,010,317	62,177,129	43,915,836	119,103,282
Same period 1933	11,384,671	67,428,664	44,104,433	122,917,768

The receipts and shipments at the Country Elevators for the week ending January 5, 1934 compared with the previous week and the same period 1933 were as follows:-

	<u>R E C E I P T S</u>			<u>S H I P M E N T S</u>		
	Previous week	Week ending Jan. 5, 1934	Week ending Jan. 6, 1933	Previous week	Week ending Jan. 5, 1934	Week ending Jan. 6, 1933
Wheat	1,223,589	1,449,561	2,365,459	1,132,593	1,323,526	1,800,593
Oats	298,427	122,155	183,113	286,389	16,413	182,027
Barley	81,206	124,937	136,402	111,604	109,542	119,947
Flaxseed	2,390	2,019	20,179	6,451	1,800	9,385
Rye	1,899	1,848	13,941	5,176	3,970	7,039
TOTALS	1,607,511	1,559,510	2,719,094	1,542,213	1,422,425	2,118,991

Platform Loadings shown by Prairie Provinces for the period ending January 7, 1934 were as follows:-

	<u>WHEAT</u>	<u>OTHER GRAIN</u>	<u>TOTAL</u>
	<u>B U S H E L S</u>		
Manitoba	7,190	-	7,190
Saskatchewan	6,012	5,390	11,402
Alberta	30,534	24,212	54,746
T O T A L S	43,736	29,602	73,338
Period ending January 7, 1933	117,675	29,537	147,212
Increase - Decrease	-73,939	765	-73,874

INTERIOR PUBLIC AND SEMI-PUBLIC TERMINALS: Stocks for the week show a decrease of 771,992 bushels made up as follows: wheat 749,461, oats 21,798 and barley 733 bushels.

VANCOUVER AND NEW WESTMINSTER ELEVATORS: Grain stocks at these elevators show a net decrease of 356,125 bushels. Decreases are noted in wheat and oats of 344,131 and 15,630 bushels respectively while barley increased 3,636 bushels.

PRINCE RUPERT AND CHURCHILL ELEVATORS: Grain stocks remain same as previous week.

VICTORIA ELEVATOR: Grain stocks show a net increase of 7,820 bushels. Wheat stocks increased 7,943 bushels while oats decreased 123 bushels.

PUBLIC AND PRIVATE (PORT WILLIAM AND PORT ARTHUR): Grain stocks show a net increase of 541,335 bushels. Increases are noted in wheat of 350,007, oats 35,220, barley 154,049 and rye 2,250 bushels while flaxseed decreased 191 bushels.







Stocks in Store at the Head of the Lakes compared with the same week last year were as follows:-

	Week ending Jan. 12, 1934	Week ending Jan. 13, 1933	+ Increase - Decrease
Wheat	63,614,311	60,104,511	+ 3,509,800
Oats	4,780,622	884,379	+ 3,896,243
Barley	4,632,993	1,153,031	+ 3,479,962
Flaxseed	342,096	539,207	- 197,111
Rye	2,130,924	1,760,494	+ 370,430
T O T A L S	75,500,946	64,441,622	+ 11,059,324

The receipts (including transfers) at the Head of the Lakes for the period ending January 12, 1934 with comparative figures for the same week last year were as follows:-

	Week ending Jan. 12, 1934	Week ending Jan. 13, 1933	+ Increase - Decrease
Wheat	300,520	258,014	+ 42,506
Oats	48,848	21,803	+ 27,045
Barley	19,381	25,022	- 5,641
Flaxseed	602	4,908	- 4,306
Rye	-	5,554	- 5,554
T O T A L S	369,351	315,301	+ 54,050

Preliminary figures showing receipts and shipments at the Head of the Lakes also Vancouver and New Westminster, Prince Rupert, Victoria and Churchill for the period August 1, 1933 to January 12, 1934 compared with the same period last year.

	FORT WILLIAM AND PORT ARTHUR		VANCOUVER - NEW WESTMINSTER	
	Receipts	Shipments	Receipts	Shipments
Wheat	82,474,431	80,744,958	23,261,755	21,618,699
Oats	7,786,633	7,541,594	290,520	652,830
Barley	4,620,932	2,791,505	186,569	381,201
Flaxseed	134,752	552,695	1,557	910
Rye	827,029	1,983,977	7,494	44,886
T O T A L S	95,843,777	93,614,729	23,747,895	22,698,526
Same period last year	128,295,518	121,913,491	54,125,011	53,685,309
+Increase -Decrease	-32,451,741	-28,298,762	-30,377,116	-30,986,783

	PRINCE RUPERT		VICTORIA	
	Receipts	Shipments	Receipts	Shipments
T O T A L S	1,091,804	2,100	934,051	167
Same period last year	139,304	687,860	1,185,009	628,541
+Increase -Decrease	-952,500	-685,760	-250,958	-628,374

	C H U R C H I L L	
	Receipts	Shipments
T O T A L S	2,751,395	2,707,891
Same period last year	2,869,116	2,736,029
+Increase -Decrease	-117,721	-28,138

**INTERIOR PRIVATE AND MILL ELEVATORS:-** Grain stocks for the week show a net decrease of 4,384 bushels. Decreases are noted in oats of 25,671, barley 33,741 and flaxseed of 1,001 bushels while increases are shown in wheat of 50,990 and rye 5,039 bushels.

Stocks in store, at the Country, Interior, Private & Mill, Head of the Lakes, Vancouver, New Westminster, Victoria, Prince Rupert, Interior Public and Semi-Public Terminals and Churchill compared with the same week last year were as follows:-

	Week ending Jan. 12, 1934	Week ending Jan. 13, 1933	+ Increase - Decrease
Wheat	193,294,416	194,859,854	- 1,565,438
Oats	14,862,785	6,807,954	+ 8,054,831
Barley	9,926,548	5,633,305	+ 4,293,243
Flaxseed	601,744	1,345,652	- 743,908
Rye	3,040,457	2,852,082	+ 188,375
T O T A L S	221,725,950	211,498,847	+ 10,227,103

**EASTERN ELEVATORS-LAKE PORTS:-** Grain stocks for the week show a net decrease of 1,101,498 bushels, made up as follows:- wheat 870,256, oats 121,208, barley 106,052 and rye 3,982 bushels.

**EASTERN ELEVATORS - SEABOARD PORTS (CANADIAN GRAIN):-** Grain stocks for the week show a net decrease of 187,563 bushels, made up as follows:- wheat 118,860, oats 58,180, barley 7,273 and rye 3,250 bushels.

The receipts of the above by classes of ports were as follows:-

	W H E A T		TOTAL GRAIN	
	Vessel	Rail	Vessel	Rail
Georgian Bay Ports	96,781	-	96,781	-
Lower Lake Ports	-	-	-	5,096
St. Lawrence Ports	-	-	-	4,000
Seaboard Ports	-	282,645	-	284,842
T O T A L S	96,781	282,645	96,781	293,938







Shipments overseas of Canadian grain from Seaboard Ports were as follows:-

		<u>UNITED KINGDOM</u>	<u>OTHER COUNTRIES</u>
West St. John, N.B.	Wheat	72,000	77,400

EASTERN ELEVATORS:- United States grain stocks were 1,468,623 bushels higher than at a comparable date last year. Corn increased 6,254,341 bushels while decreases are noted in wheat of 4,458,721, oats 206,755, barley 21,460 and rye 98,782 bushels.

The quantities by classes of ports with increases and decreases:-

	Week ending Jan. 12, 1934	Week ending Jan. 13, 1933	+ Increase - Decrease
At Georgian Bay Ports	8,193,547	5,661,330	+ 2,532,217
At Lower Lake Ports	2,926,668	1,519,044	+ 1,407,624
At St. Lawrence Ports	1,458,292	3,909,597	- 2,451,305
At Seaboard Ports	-	19,913	- 19,913
<b>T O T A L S</b>	<b>12,578,507</b>	<b>11,109,884</b>	<b>+ 1,468,623</b>

U.S. LAKE PORTS:- Wheat stocks decreased 1,176,180 bushels.

U. S. ATLANTIC SEABOARD PORTS:- Wheat stocks decreased 256,357 bushels.

Inspections returns for the week ending January 14, 1934, with comparison for the previous year were as follows:-

	Week ending Jan. 14, 1934	Week ending Jan. 14, 1933	+ Increase - Decrease
Wheat	1,027	1,538	- 511
Oats	139	88	+ 51
Barley	66	41	+ 25
Flaxseed	5	3	+ 2
Rye	4	7	- 3
Mixed Grain	-	-	-
Screenings	-	-	-
<b>T O T A L S</b>	<b>1,241</b>	<b>1,677</b>	<b>- 436</b>

The number of bushels of grain shipped from western to the Canadian eastern points, over the C.P.R. and C.N.R. for the week ending January 7, 1934 and the period from August 1, 1933 to January 7, 1934.

	<u>WEEK ENDING JANUARY 7, 1934</u>					<u>PERIOD AUG. 1, 1933 TO JAN. 7, 1934</u>				
	<u>WHEAT</u>	<u>OATS</u>	<u>BARLEY</u>	<u>FLAXSEED</u>	<u>RYE</u>	<u>WHEAT</u>	<u>OATS</u>	<u>BARLEY</u>	<u>FLAXSEED</u>	<u>RYE</u>
Via C.P.R.	1,000	-	-	-	-	2,000	11,827	-	-	-
Via C.N.R.	1,438	16,400	-	-	-	1,438	188,537	2,991	-	-
<b>TOTAL</b>	<b>2,438</b>	<b>16,400</b>	<b>-</b>	<b>-</b>	<b>-</b>	<b>3,438</b>	<b>200,364</b>	<b>2,991</b>	<b>-</b>	<b>-</b>





Stocks of Grain at Different Elevators during the week ending January 12, 1934.

	WHEAT	OATS	BARLEY	FLAXSEED	RYE
	B U S H E L S				
Western Country Elevators	106,940,788	7,825,219	3,677,454	225,566	823,705
Interior Pte. & Mill Elevs.	5,768,587	1,509,693	1,320,156	33,647	23,079
Interior Pub. & Semi-Pub. Terms.	1,976,215	460,956	10,398	77	224
Vancouver & New Westminster	10,861,262	178,864	268,492	182	67,470
Victoria	938,890	-	-	-	-
Prince Rupert Elevator	1,092,150	421	-	-	-
Churchill	2,475,779	-	-	-	-
Fort William & Port Arthur	63,614,311	4,780,622	4,632,993	342,096	2,130,924
Eastern Elevs. - Lake Ports	21,753,693	4,181,039	1,009,974	-	313,113
Eastern Elevs. - Sbd. Ports	9,900,257	736,640	478,485	-	642,079
U. S. Lake Ports	4,707,951	-	-	-	-
U. S. Atlantic Seaboard Ports	7,003,752	-	-	-	85,846
T O T A L S	237,027,635	19,673,454	11,397,952	601,568	4,086,441
Previous week	239,817,364	19,962,183	11,371,380	601,935	4,086,477
Same week previous year	231,000,754	9,103,274	6,762,829	1,453,688	5,013,863

Quantity of Screenings received, shipped and in store at the undermentioned elevators during the week ending January 12, 1934.

	Amount in Store Jan. 5, 1934		Amount Received by Vessel		Amount Shipped		Amount in Store Jan. 12, 1934	
	Tons	Lbs.	Tons	Lbs.	Tons	Lbs.	Tons	Lbs.
Owen Sound	3,524	480	-	-	200	-	3,324	480
Goderich Elev. Co.	1,018	1,490	-	-	175	-	843	1,490
Toronto	1,373	1,910	-	-	90	1,600	1,283	310
Montreal	-	1,126	-	-	-	-	-	1,126
T O T A L S	5,917	1,006	-	-	465	1,600	5,451	1,406

Number of cars of grain unloaded at Fort William and Port Arthur over the C.P.R. and C.N.R. for the month of December, 1933 and the five months ending December, 1933.

	Month of December, 1933			Five Months ending December, 1933		
	C.P.R.	C.N.R.	TOTAL	C.P.R.	C.N.R.	TOTAL
Wheat	1,294½	1,482	2,776½	25,420½	30,630½	56,051
Oats	61	146½	207½	1,359½	2,287	3,646½
Barley	55	74	129	1,122½	1,858	2,980½
Flaxseed	1	3½	4½	69	68½	137½
Rye	5½	3½	9	285	318	603
T O T A L S	1,417	1,709½	3,126½	28,256½	35,162	63,418½

Number of cars of grain unloaded at Vancouver, B.C. over the different railroads December, 1933.

	Via C.P.R.	Via C.N.R.	Via G.N.R.	TOTAL
Wheat	1,055½	1,040	-	2,095½
Oats	15½	9	-	24½
Barley	3	11	-	14
T O T A L S	1,074	1,060	-	13,630

Number of cars of grain unloaded at Vancouver, B.C. for the five months December, 1933.

	Via C.P.R.	Via C.N.R.	Via G.N.R.	TOTAL
Wheat	7,191½	6,129	-	13,320½
Oats	94	55	-	149
Barley	71½	43	-	114½
Flaxseed	-	2	-	2
Rye	33	5	-	38
Mixed Grain	3	1	-	4
United States Wheat	-	-	2	2
T O T A L S	7,393	6,235	2	13,630





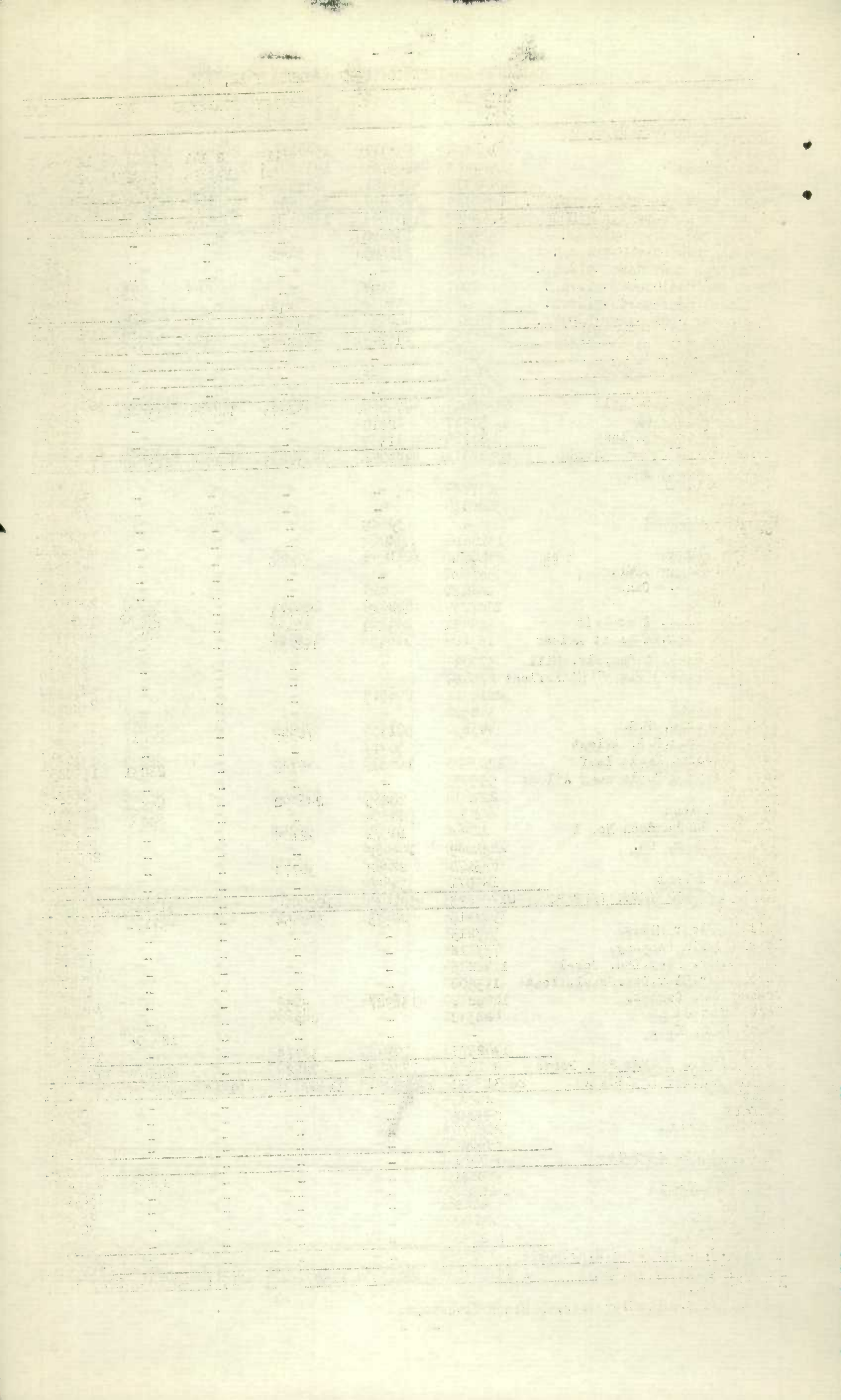
CANADIAN GRAIN IN STORE - JANUARY 12, 1934.

	WHEAT	OATS	BARLEY	FLAXSEED	RYE	TOTAL
	B U S H E L S					
WESTERN COUNTRY ELEVATORS						
Manitoba	10456804	855317	1546115	20141	106910	12985287
Saskatchewan	56447268	3849781	1435801	173683	540271	62446804
Alberta	40036716	3120121	695538	31742	176525	44060642
TOTAL WESTERN COUNTRY ELEVS.	106940788	7825219	3677454	225566	823706	119492733
INTERIOR PRIVATE AND MILL ELEVS.						
Calgary Can. Govt. Elevs.	525053	138610	-	-	-	663663
Edmonton Can. Govt. Elevs.	410427	278145	5249	-	-	693821
Lethbridge Can. Govt. Elevs.	14592	-	-	-	-	14592
Moose Jaw Can. Govt. Elevs.	8067	9164	-	77	224	17532
Saskatoon Can. Govt. Elevs.	5426	35037	5149	-	-	45612
TOTAL INT. PUB. & SEMI-PUB.	1976215	460956	10398	77	224	2447870
VANCOUVER & NEW WESTMINSTER	10861262	178864	268492	182	67470	11376270
VICTORIA ELEVATOR	972890	-	-	-	-	972890
PRINCE RUPERT ELEVATOR	1092150	421	-	-	-	1092571
CHURCHILL	2475779	-	-	-	-	2475779
Semi-Public Terminals	63480619	4746980	4632993	342096	2130924	75333612
Private Elevators	51927	20106	-	-	-	72033
Winter Storage Afloat	81765	13536	-	-	-	95301
TOTAL INT. WM. & PT. ARTHUR	63614311	4780622	4632993	342096	2130924	75500946
EASTERN ELEVATORS						
Port McNicoll	3037829	-	-	-	-	3037829
Griffin	3060116	-	-	-	-	3060116
Midland Aberdeen	-	34521	-	-	-	34521
Midland	1316812	52000	-	-	-	1368812
Midland Simcoe	2810812	1211049	16080	-	-	4037941
Midland Simcoe Afloat	347848	-	-	-	-	347848
Collingwood	142010	649	-	-	-	142659
Owen Sound	1027235	668029	282861	-	39963	2018088
Goderich Elev. & Transit	589451	241201	94937	-	79094	1004683
Goderich Elev. & Transit Afloat	183606	186155	128987	-	-	498748
Goderich Western Can. Flr. Mill	370099	-	-	-	-	370099
Goderich West. & Can. Fl. Mill Afloat	275620	-	-	-	-	275620
Sarnia	2215312	206515	-	-	-	2421827
Sarnia Afloat	348500	-	-	-	-	348500
Port Colborne, D.G.	443830	591355	70945	-	25017	1131147
Port Colborne, D.G. Afloat	-	95217	-	-	-	95217
Port Colborne, Maple Leaf	1207428	106392	46786	-	28231	1388837
Port Colborne Maple Leaf Afloat	555933	-	-	-	-	555933
Toronto	222614	90265	246492	-	45808	605179
Toronto Afloat	658380	504634	-	-	95000	1258014
Kingston Richardson No. 1	22968	19571	92108	-	-	134647
Kingston Elev. Co.	2091049	109968	-	-	-	2201017
Prescott	693170	28862	30778	-	-	752810
Prescott Afloat	133071	34656	-	-	-	167727
TOTAL EASTERN ELEVS. LAKE PORTS	21753693	4181039	1009974	-	313113	27257819
Montreal	3963415	528973	388954	-	457171	5338513
Ogilvie Flour Mills	543213	-	-	-	-	543213
Morris Grain Company	737718	-	-	-	-	737718
North Amer. Elev. Ltd. Sorel	1328256	-	-	-	-	1328256
North Amer. Elev. Ltd. Sorel Afloat	143000	-	-	-	-	143000
Quebec Hbr. Commsr.	1298290	136927	5456	-	-	1440673
West Saint John	423392	-	45290	-	-	468682
Saint John, N.B.	-	-	-	-	184908	184908
Halifax	1462973	70740	38785	-	-	1572498
TOTALS EAST. ELEVS. SBD. Ports	9900257	736640	478485	-	642079	11757461
TOTAL QUANTITY IN CANADA	225315932	19673454	11397952	601568	4000595	260989501
Duluth	40876	-	-	-	-	40876
Buffalo	854097	-	-	-	-	854097
Buffalo Afloat	3218978	-	-	-	-	3218978
Erie	594000	-	-	-	-	594000
TOTAL U.S. LAKE PORTS	4707951	-	-	-	-	4707951
New York	3920631	-	-	-	85846	4006477
New York Afloat	1522000	-	-	-	-	1522000
Boston	986121	-	-	-	-	986121
Philadelphia	322000	-	-	-	-	322000
Newport News	253000	-	-	-	-	253000
TOTAL U.S. ATLANTIC SBD. PORTS	7003752	-	-	-	85846	7089598
TOTAL QUANTITY IN STORE	237027635	19673454	11397952	601568	4086441	272787050

\* Estimated.

x Included C.P.R. Elevators, North Transcona.







Grades of Canadian Grain in Store at Public, Semi-Public and Private Elevators (Head of the Lakes), Interior, Public and Semi-Public Elevators, Vancouver, New Westminster, Prince Rupert, Churchill and Victoria Terminals and Eastern Elevators for the week ending January 12, 1934.

	Semi-Public and Private Terminals	Interior Public and Semi-Public Terminals	Vancouver New West- minster Prince Rupert and Victoria Elevators	Eastern Elevators Lake Ports	Eastern Elevators Seaboard Ports	Total
<u>WHEAT</u>						
<u>B U S H E L S</u>						
No. 1 Hard	430,084	30,790	594,923	262,452	263,888	1,582,137
No. 1 Northern	47,673,535	230,264	3,776,925	18,269,107	7,155,139	77,104,970
No. 2 Northern	8,411,021	663,711	5,355,383	2,043,343	1,653,624	18,127,082
No. 3 Northern	501,040	14,837	341,635	511,343	177,702	1,546,557
No. 4 Northern	233,040	4,646	473,874	359,886	44,465	1,115,911
No. 5 Wheat	169,903	6,115	143,201	29,059	8,560	356,838
No. 6 Wheat	44,866	-	173,434	-	-	218,300
Feed	9,391	-	79,143	-	-	88,534
No. 1 C. W. Durum	1,593,876	-	-	29,690	403,690	2,027,256
No. 2 C. W. Durum	413,101	-	-	21,232	46,765	481,093
No. 3 C. W. Durum	190,608	-	-	-	27,032	217,640
No. 4 C. W. Durum	14,365	-	-	-	-	14,365
Other Durum	196,371	-	-	25,505	53,779	275,655
Other	3,681,183	13,202	855,634	202,076	65,613	4,817,708
Private Elevators	51,927	-	-	-	-	51,927
<b>TOTAL</b>	<b>63,614,311</b>	<b>963,565</b>	<b>11,794,152</b>	<b>21,753,693</b>	<b>9,900,257</b>	<b>108,025,978</b>
<u>OATS</u>						
No. 1 C. W.	5,883	-	-	-	-	5,883
No. 2 C. W.	1,579,856	266,039	54,566	1,670,289	39,317	3,610,057
No. 3 C. W.	1,535,029	97,489	13,522	819,722	162,604	2,628,366
Ex. No. 1 Feed	91,780	38,872	45,195	-	25,028	200,875
No. 1 Feed	805,217	25,601	29,289	575,786	159,411	1,595,304
No. 2 Feed	171,846	7,664	9,150	156,393	71,419	416,472
No. 3 Feed	77,765	-	-	-	-	77,765
Private Elevators	20,106	-	-	-	-	20,106
Other	493,140	25,291	27,142	958,849	278,861	1,783,283
<b>TOTAL</b>	<b>4,780,622</b>	<b>460,956</b>	<b>176,864</b>	<b>4,181,039</b>	<b>736,640</b>	<b>10,338,121</b>
<u>NEW GRADE BARLEY</u>						
No. 3 Ex. C.W. 6 Row	136,288	-	12,034	-	24,462	172,784
3 Ex. C.W. Trebi	15,440	-	-	-	9,185	24,625
3 Ex. C.W. 2 Row	20,707	-	-	31,080	-	51,787
3 C. W.	3,753,363	6,768	135,867	542,789	395,837	4,834,624
4 C. W.	250,060	664	77,518	62,545	27,786	418,573
5 C. W.	143,365	2,077	38,917	3,873	-	188,232
6 C. W.	27,567	889	-	-	-	28,456
Private Elevators	-	-	-	-	-	-
Other	286,203	-	4,156	369,687	21,215	681,261
<b>TOTAL</b>	<b>4,632,993</b>	<b>10,398</b>	<b>268,492</b>	<b>1,009,974</b>	<b>478,485</b>	<b>6,400,342</b>
<u>FLAXSEED</u>						
No. 1 C. W.	317,898	77	81	-	-	318,056
No. 2 C. W.	7,541	-	101	-	-	7,642
No. 3 C. W.	8,165	-	-	-	-	8,165
No. 4 C. W.	118	-	-	-	-	118
Other	8,374	-	-	-	-	8,374
<b>TOTAL</b>	<b>342,096</b>	<b>77</b>	<b>182</b>	<b>-</b>	<b>-</b>	<b>342,355</b>
<u>RYE</u>						
No. 1 C. W.	21,889	-	-	-	-	21,889
No. 2 C. W.	1,917,416	-	66,384	229,903	485,133	2,698,836
No. 3 C. W.	133,879	224	1,086	59,660	153,905	348,754
No. 4 C. W.	8,206	-	-	-	-	8,206
Ergoty	34,501	-	-	-	-	34,501
Other	15,033	-	-	23,550	3,041	41,624
<b>TOTAL</b>	<b>2,130,924</b>	<b>224</b>	<b>67,470</b>	<b>313,113</b>	<b>642,079</b>	<b>3,153,810</b>
<b>TOTAL QUANTITY IN STORE</b>	<b>75,500,946</b>	<b>1,435,220</b>	<b>12,309,160</b>	<b>27,257,819</b>	<b>11,757,461</b>	<b>128,260,606</b>





- 9 -  
CANADIAN GRAIN IN STORE - COMPARATIVE STATEMENT, 1931 - 1934.

	W H E A T	OTHER GRAIN B U S H E L S	T O T A L
<u>January 12, 1934.</u>			
Country Elevators - Manitoba	10,456,804	2,528,483	12,985,287
Saskatchewan	56,447,268	5,999,536	62,446,804
Alberta	40,036,716	4,023,926	44,060,642
TOTAL	106,940,788	12,551,945	119,492,733
Interior Private and Mill Elevs.	5,768,587	2,886,575	8,655,162
Interior Public and Semi-Public Terms.	1,976,215	471,655	2,447,870
Vancouver & New Westminster	10,861,262	515,008	11,376,270
Victoria Elevator	932,890	-	932,890
Prince Rupert Elevator	1,092,150	121	1,092,571
Churchill	2,475,779	-	2,475,779
Fort William & Port Arthur Elevs.	63,614,311	11,886,635	75,500,946
Eastern Elevators - Lake Ports	21,753,693	5,504,126	27,257,819
Eastern Elevators - Seaboard Ports	9,900,257	1,857,204	11,757,461
U. S. Lake Ports	4,707,951	-	4,707,951
U. S. Atlantic Seaboard Ports	7,003,752	85,846	7,089,598
T O T A L S	237,027,635	35,759,415	272,787,050
<u>January 13, 1932.</u>			
Country Elevators - Manitoba	9,534,254	1,876,176	11,410,430
Saskatchewan	63,442,802	4,231,577	67,674,379
Alberta	40,367,338	2,723,328	43,090,666
TOTAL	113,344,394	8,831,081	122,175,475
Interior Terminal Elevators	3,710,474	14,571	3,725,045
Vancouver - New Westminster	7,796,642	1,645,853	9,442,495
Victoria Elevator	881,594	1,712	883,306
Prince Rupert Elevator	301,695	-	301,695
Churchill	2,430,283	-	2,430,283
Fort William and Port Arthur Elevs.	60,104,511	4,337,111	64,441,622
Interior Private and Mill Elevs.	5,355,231	1,790,014	7,145,245
Eastern Elevators - Lake Ports	17,941,592	2,274,260	20,215,852
Eastern Elevators - Seaboard Ports	7,126,588	2,889,556	10,016,144
U. S. Lake Ports	7,641,109	550	7,641,659
U. S. Atlantic Seaboard Ports	4,366,641	548,946	4,915,587
T O T A L S	231,000,754	22,333,654	253,334,408
<u>January 15, 1932.</u>			
Country Elevators - Manitoba	6,551,372	2,403,103	8,954,475
Saskatchewan	42,913,593	4,876,495	47,790,088
Alberta	34,816,454	3,891,733	38,708,187
TOTAL	84,281,419	11,171,331	95,452,750
Interior Terminal Elevators	2,445,086	659,216	3,104,302
Vancouver Elevators	11,535,508	909,805	12,445,313
Victoria Elevator	832,572	-	832,572
Prince Rupert Elevator	1,110,389	104	1,110,493
Fort William and Port Arthur Elevs.	48,991,908	13,600,917	62,592,825
Interior Private and Mill Elevs.	5,517,078	2,788,789	8,305,867
Eastern Elevators - Lake Ports	14,067,827	3,211,397	17,279,224
Eastern Elevators - Seaboard Ports	6,004,996	5,468,879	11,473,875
U. S. Lake Ports	17,427,531	3,225,942	20,653,473
U. S. Atlantic Seaboard Ports	6,476,215	66,047	6,542,262
T O T A L S	198,650,529	41,102,427	239,752,956
<u>January 16, 1931.</u>			
Country Elevators - Manitoba	6,525,332	4,658,238	11,183,570
Saskatchewan	48,446,801	6,569,847	55,016,648
Alberta	29,641,897	2,125,390	31,767,287
TOTAL	84,614,030	13,353,475	97,967,505
Interior Terminal Elevators	8,469,420	293,742	8,763,162
Vancouver Elevators	12,262,351	114,732	12,377,083
Victoria Elevator	711,582	296	711,878
Prince Rupert Elevators	1,050,294	284	1,050,578
Fort William and Port Arthur Elevs.	39,368,895	26,616,722	65,985,617
Interior Private and Mfg. Elevs.	6,017,254	2,825,288	8,842,542
Eastern Elevators - Lake Ports	19,244,096	10,434,321	29,678,417
Eastern Elevators - Seaboard Ports	8,883,802	5,664,601	14,548,403
U. S. Lake Ports	26,605,138	1,317,027	27,922,165
U. S. Atlantic Seaboard Ports	2,686,120	273,101	2,959,221
T O T A L S	209,912,982	60,893,589	270,806,571





RECEIPTS AND SHIPMENTS OF GRAIN BY CLASSES OF ELEVATORS  
IN THE WEEK ENDING JANUARY 12, 1934.

	WHEAT	OATS	BARLEY	FLAXSEED	RYE	TOTAL
	B U S H E L S					
<u>COUNTRY ELEVATORS, WESTERN DIVISION#</u>						
Receipts - Rail	1,449,561	-22,155	124,937	2,019	4,848	1,559,210
Shipments - Rail	1,323,526	-16,413	109,542	1,800	31,970	1,422,425
<u>INTERIOR PUBLIC AND SEMI-PUBLIC TERMINALS</u>						
Receipts - Rail	3,510	51,352	-	-	-	54,862
Shipments - Rail	752,971	73,150	733	-	-	826,854
<u>VANCOUVER - NEW WESTMINSTER ELEVATORS</u>						
Receipts - Rail	1,110,587	5,778	5,803	-	-	1,122,168
Shipments - Vessel	1,437,428	21,408	-	-	-	1,458,836
Rail	166	-	83	-	-	249
<u>VICTORIA ELEVATOR</u>						
Receipts - Rail	7,943	-	-	-	-	7,943
Shipments - Vessel			Nil			
<u>PUBLIC AND PRIVATE TERMINAL ELEVATORS FORT WILLIAM AND FORT ARTHUR</u>						
Receipts - Rail	300,520	48,848	19,381	602	-	369,351
Shipments - Rail	5,719	35,754	679	-	-	42,152
<u>INTERIOR PRIVATE AND MILL ELEVATORS#</u>						
Receipts - Rail	617,737	113,596	56,356	1,027	3,558	792,274
Shipments - Rail	535,257	116,550	102,935	2,200	2,824	759,766
<u>EASTERN ELEVATORS - GEORGIAN BAY PORTS</u>						
Receipts - Vessel	96,781	-	-	-	-	96,781
Shipments - Rail	405,331	31,803	17,050	-	-	454,184
Local and Mill	196,775	106,482	18,132	-	-	321,389
<u>LOWER LAKE PORTS</u>						
Receipts - Rail	-	-	5,096	-	-	5,096
Shipments - Rail	61,899	6,687	4,612	-	-	73,198
Local and Mill	206,296	34,565	71,353	-	3,981	316,195
<u>ST. LAWRENCE PORTS</u>						
Receipts - Rail	-	4,000	-	-	-	4,000
Shipments - Rail	200	-	-	-	-	200
Local and Mill	91,647	58,885	9,370	-	3,250	163,152
<u>SEABOARD PORTS</u>						
Receipts - Rail	282,645	-	2,197	-	-	284,842
Shipments - Vessel	149,400	-	-	-	-	149,400
Local and Mill	258	3,294	100	-	-	3,652
<u>TOTAL EASTERN ELEVATORS</u>						
Receipts - Vessel	96,781	-	-	-	-	96,781
Rail	282,645	4,000	7,293	-	-	293,938
Shipments - Vessel	149,400	-	-	-	-	149,400
Rail	467,430	38,430	21,662	-	-	527,582
Local and Mill	494,976	203,226	98,955	-	7,231	804,388

# Week ending January 5, 1934.





STOCKS OF UNITED STATES GRAIN IN CANADA AT JANUARY 12, 1934.

	WHEAT	OATS BARLEY	RYE	CORN	TOTAL
	B U S H E L S				
Depot Harbour	-	50,152	-	1,320,632	1,370,784
Port McNicoll	-	15,129	-	1,353,363	1,368,492
Tiffin No. 2	-	-	-	189,895	189,895
Midland Aberdeen	-	103,450	-	377,822	481,272
Midland Grain	-	61,200	-	613,138	674,338
Collingwood Terminal	-	-	-	1,109,247	1,109,247
Collingwood C.N.R.	-	110,101	-	2,207	112,308
Owen Sound, G.L.	-	365,689	-	493,569	859,258
Goderich Elev. Co.	-	-	-	1,132,980	1,132,980
Sarnia	-	-	-	701,964	701,964
Sarnia Afloat	-	-	-	193,009	193,009
Port Colborne, D.G.	-	-	-	1,385,712	1,385,712
Port Colborne Maple Leaf	-	-	-	56,044	56,044
Toronto	887,297	-	-	292,997	1,180,294
Toronto Afloat	102,500	-	-	192,837	295,337
Kingston Elev. Co.	-	-	-	9,281	9,281
Montreal Harbour Commrs.					
No. 1, 2 and B.	187,553	-	366	198,878	386,797
North Amer. Elev. Sorel	295,049	-	-	-	295,049
Quebec	776,446	-	-	-	776,446
T O T A L S	2,248,845	705,721	366	9,623,575	12,578,507
Same period previous year	6,707,566	912,476	21,460	3,369,234	11,109,884

RECEIPTS AND SHIPMENTS OF UNITED STATES GRAIN JANUARY 12, 1934.

	R E C E I P T S		S H I P M E N T S	
	Water	Rail	Water	Rail
			GEORGIAN BAY PORTS	
Oats	-	-	-	67,564
Corn	-	-	-	245,300
			LOWER LAKE PORTS	
Corn	205,013	-	-	21,784

STOCKS OF FOREIGN CORN IN CANADA, JANUARY 12, 1934.

	ARGENTINE CORN	SOUTH AFRICAN CORN	TOTAL CORN
Port Colborne, D. G.	9,450	-	9,450
Port Colborne, M. L.	70,149	49,374	119,523
Toronto	1,560	21,618	23,178
Kingston, J.R.	9,233	-	9,233
Prescott	3,524	-	3,524
Montreal	965,424	68,212	1,033,636
Quebec	372,147	1,000	373,147
Saint John	88,655	-	88,655
Halifax	220,053	-	220,053
T O T A L S	1,740,195	140,204	1,880,399
Same period previous year	28,874	1,899,961	1,928,835

RECEIPTS AND SHIPMENTS OF FOREIGN CORN IN CANADA FOR THE WEEK ENDING JANUARY 12, 1934.

	ARGENTINE CORN		SOUTH AFRICAN CORN	
	Receipts	Shipments	Receipts	Shipments
Lower Lake Ports	-	6,359	-	6,042
St. Lawrence Ports	-	16,035	-	9,150
Seaboard Ports	198,729	30,701	-	-

1. The first part of the report deals with the general situation of the country and the progress of the war. It is a very interesting and informative account of the events of the year.

2. The second part of the report deals with the economic situation of the country. It is a very detailed and accurate account of the economic conditions of the year.

3. The third part of the report deals with the social situation of the country. It is a very thorough and complete account of the social conditions of the year.

4. The fourth part of the report deals with the political situation of the country. It is a very clear and concise account of the political conditions of the year.



STOCKS, RECEIPTS AND SHIPMENTS OF THE COUNTRY ELEVATORS IN THE WESTERN  
DIVISION IN THE WEEK ENDING JANUARY 5, 1934.

	WHEAT	OATS	BARLEY	FLAXSEED	RYE	TOTAL
	B U S H E L S					
<u>MANITOBA</u>						
In Store, previous week	10,435,006	893,436	1,554,673	20,235	106,967	13,010,317
Receipts	55,947	17,144	21,905	42	605	136,643
TOTAL	10,531,953	910,580	1,576,578	20,277	107,572	13,146,960
Shipments	71,202	50,916	31,413	25	10	153,566
In Store	10,460,752	859,574	1,545,165	20,252	107,562	12,993,305
<u>SASKATCHEWAN</u>						
In Store, previous week	56,159,249	3,902,487	1,404,630	171,824	538,939	62,177,129
Receipts	725,119	142,272	57,092	1,574	3,801	655,314
TOTAL	56,884,368	3,760,215	1,461,722	173,398	542,740	62,832,443
Shipments	592,661	195,296	50,242	1,740	3,497	452,844
In Store	56,291,807	3,955,512	1,421,481	171,658	539,244	62,379,702
<u>ALBERTA</u>						
In Store, previous week	39,903,824	3,116,466	686,069	32,463	177,014	43,915,836
Receipts	627,495	102,973	35,940	403	442	767,253
TOTAL	40,531,319	3,219,439	722,009	32,866	177,456	44,683,089
Shipments	659,663	127,967	27,887	35	463	816,015
In Store	39,871,653	3,091,472	694,122	32,831	176,993	43,867,071

TOTAL RECEIPTS AT COUNTRY ELEVATORS AND PLATFORM LOADINGS\* IN THE  
PERIOD AUGUST 1, 1933 TO JANUARY 5, 1934

	WHEAT	OTHER GRAIN	TOTAL
	B U S H E L S		
Manitoba	22,963,479	6,546,762	29,510,241
Saskatchewan	83,743,849	13,328,861	95,072,710
Alberta	57,599,573	7,595,995	65,195,568
Total 1933 - 1934	162,306,901	27,471,618	189,778,519
Same period 1932 - 1933	277,988,571	26,399,755	304,388,326

\* Platform Loadings to January 7, 1934.

THE UNIVERSITY OF CHICAGO

IN THE DEPARTMENT OF THE HISTORY OF ARTS AND ARCHITECTURE

THE UNIVERSITY OF CHICAGO LIBRARY

THE UNIVERSITY OF CHICAGO LIBRARY  
1215 EAST 58TH STREET  
CHICAGO, ILLINOIS 60637

THE UNIVERSITY OF CHICAGO LIBRARY

THE UNIVERSITY OF CHICAGO LIBRARY  
1215 EAST 58TH STREET  
CHICAGO, ILLINOIS 60637

THE UNIVERSITY OF CHICAGO LIBRARY

THE UNIVERSITY OF CHICAGO LIBRARY  
1215 EAST 58TH STREET  
CHICAGO, ILLINOIS 60637

THE UNIVERSITY OF CHICAGO LIBRARY

THE UNIVERSITY OF CHICAGO LIBRARY

THE UNIVERSITY OF CHICAGO LIBRARY

THE UNIVERSITY OF CHICAGO LIBRARY

THE UNIVERSITY OF CHICAGO LIBRARY

THE UNIVERSITY OF CHICAGO LIBRARY

THE UNIVERSITY OF CHICAGO LIBRARY

THE UNIVERSITY OF CHICAGO LIBRARY

THE UNIVERSITY OF CHICAGO LIBRARY

THE UNIVERSITY OF CHICAGO LIBRARY

THE UNIVERSITY OF CHICAGO LIBRARY

THE UNIVERSITY OF CHICAGO LIBRARY

THE UNIVERSITY OF CHICAGO LIBRARY

THE UNIVERSITY OF CHICAGO LIBRARY

THE UNIVERSITY OF CHICAGO LIBRARY



INTERIOR TERMINAL ELEVATORS

Receipts, Shipments and Quantities in Store, Week ending January 12, 1934.

	WHEAT	OATS	BARLEY	FLAXSEED	RYE	TOTAL
	B U S H E L S					
<u>CALGARY</u>						
In Store, previous week	963,116	164,645	-	-	-	1,127,761
Receipts	2,630	4,475	-	-	-	7,105
TOTAL	965,746	169,120	-	-	-	1,134,866
Shipments - Rail	440,693	30,510	-	-	-	471,203
In Store	525,053	138,610	-	-	-	663,663
<u>EDMONTON</u>						
In Store, previous week	721,825	278,145	5,249	-	-	1,005,219
Receipts	880	-	-	-	-	880
TOTAL	722,705	278,145	5,249	-	-	1,006,099
Shipments - Rail	312,278	-	-	-	-	312,278
In Store	410,427	278,145	5,249	-	-	693,821
<u>LETHBRIDGE</u>						
In Store, previous week	14,592	-	-	-	-	14,592
Receipts	-	-	Nil	-	-	-
TOTAL	14,592	-	-	-	-	14,592
Shipments - Rail	-	-	Nil	-	-	-
In Store	14,592	-	-	-	-	14,592
<u>MOOSE JAW</u>						
In Store, previous week	8,067	16,848	-	77	224	25,216
Receipts	-	15,063	-	-	-	15,063
TOTAL	8,067	31,911	-	77	224	40,279
Shipments - Rail	-	22,747	-	-	-	22,747
In Store	8,067	9,164	-	77	224	17,532
<u>SASKATOON</u>						
In Store, previous week	5,426	23,116	5,882	-	-	34,424
Receipts	-	31,814	-	-	-	31,814
TOTAL	5,426	54,930	5,882	-	-	66,238
Shipments - Rail	-	19,893	733	-	-	20,626
In Store	5,426	35,037	5,149	-	-	45,612
<u>CHURCHILL</u>						
<u>PUBLIC TERMINAL</u>						
In Store, previous week	2,475,779	-	-	-	-	2,475,779
Receipts	-	-	Nil	-	-	-
TOTAL	2,475,779	-	-	-	-	2,475,779
Shipments - Vessel	-	-	Nil	-	-	-
In Store	2,475,779	-	-	-	-	2,475,779

1. NAME  
 2. DATE  
 3. TIME  
 4. PLACE  
 5. REMARKS

10/1/10	-	-	-	-	-	10/1/10	10/1/10
10/1/10	-	-	-	-	-	10/1/10	10/1/10
10/1/10	-	-	-	-	-	10/1/10	10/1/10

10/1/10	-	-	-	-	-	10/1/10	10/1/10
10/1/10	-	-	-	-	-	10/1/10	10/1/10
10/1/10	-	-	-	-	-	10/1/10	10/1/10

10/1/10	-	-	-	-	-	10/1/10	10/1/10
10/1/10	-	-	-	-	-	10/1/10	10/1/10
10/1/10	-	-	-	-	-	10/1/10	10/1/10

10/1/10	-	-	-	-	-	10/1/10	10/1/10
10/1/10	-	-	-	-	-	10/1/10	10/1/10
10/1/10	-	-	-	-	-	10/1/10	10/1/10

10/1/10	-	-	-	-	-	10/1/10	10/1/10
10/1/10	-	-	-	-	-	10/1/10	10/1/10
10/1/10	-	-	-	-	-	10/1/10	10/1/10

10/1/10	-	-	-	-	-	10/1/10	10/1/10
10/1/10	-	-	-	-	-	10/1/10	10/1/10
10/1/10	-	-	-	-	-	10/1/10	10/1/10

10/1/10	-	-	-	-	-	10/1/10	10/1/10
10/1/10	-	-	-	-	-	10/1/10	10/1/10
10/1/10	-	-	-	-	-	10/1/10	10/1/10



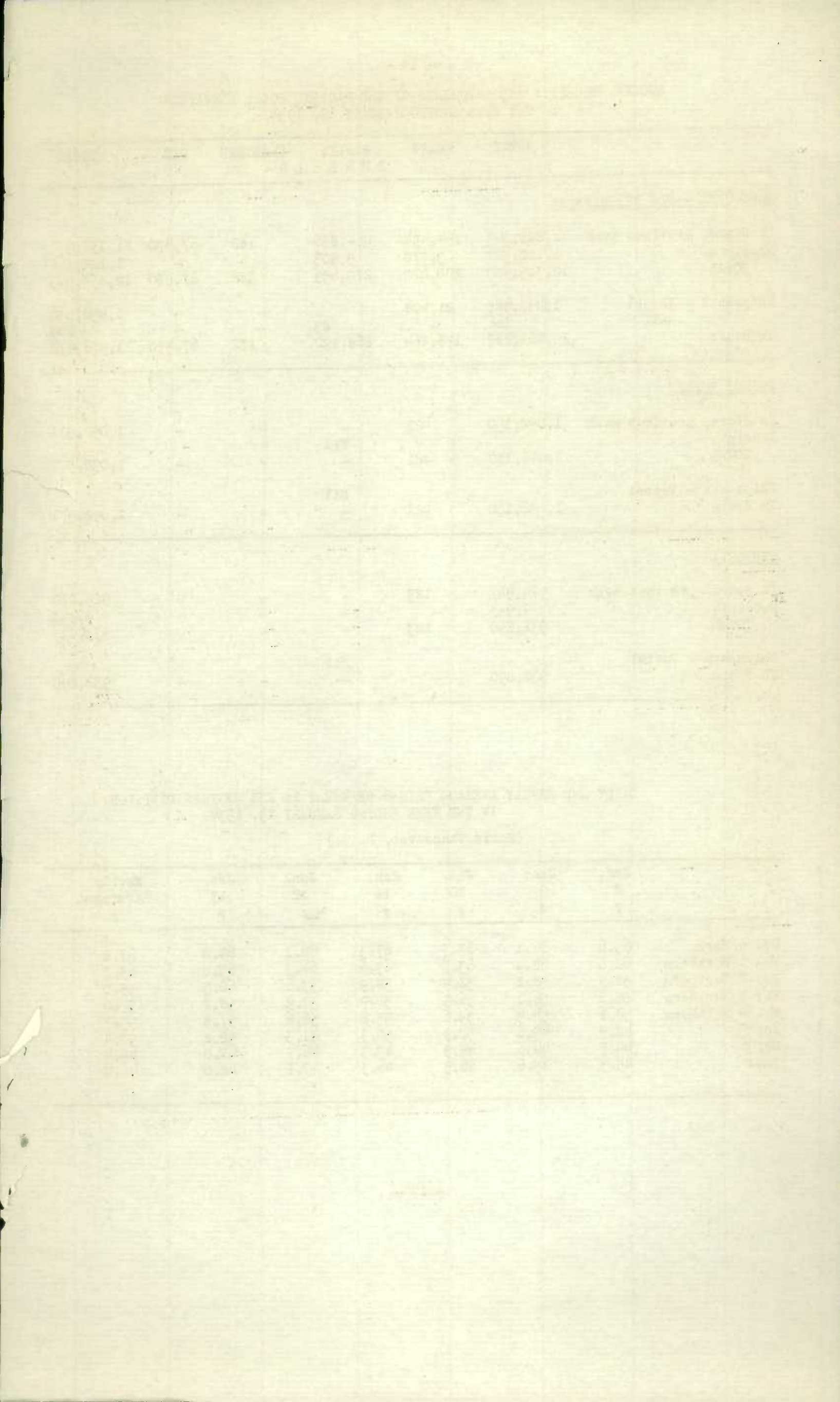
STOCKS, RECEIPTS AND SHIPMENTS OF THE PACIFIC COAST ELEVATORS  
IN THE WEEK ENDING JANUARY 12, 1934.

	WHEAT	OATS	BARLEY B U S H E L S	FLAXSEED	RYE	TOTAL
<u>VANCOUVER - NEW WESTMINSTER</u>						
In Store, previous week	11,205,393	194,494	264,856	182	67,470	11,732,395
Receipts	1,110,587	5,778	5,803	-	-	1,122,168
TOTAL	12,315,980	200,272	270,659	182	67,470	12,854,563
Shipments - Vessel	1,437,428	21,408	-	-	-	1,458,836
Rail	166	-	83	-	-	249
In Store	10,861,262	178,864	268,492	182	67,470	11,376,270
<u>PRINCE RUPERT</u>						
In Store, previous week	1,092,150	421	-	-	-	1,092,571
Receipts			Nil	-	-	
TOTAL	1,092,150	421	-	-	-	1,092,571
Shipments - Vessel			Nil	-	-	
In Store	1,092,150	421	-	-	-	1,092,571
<u>VICTORIA</u>						
In Store, previous week	924,947	123	-	-	-	925,070
Receipts	7,943	-	-	-	-	7,943
TOTAL	932,890	123	-	-	-	933,013
Shipments - Vessel			Nil	-	-	
In Store	932,890	-	-	-	-	932,890

DAILY AND WEEKLY AVERAGE PRICES OF WHEAT IN THE WESTERN DIVISION  
IN THE WEEK ENDING JANUARY 13, 1934

(Basis Vancouver, B. C.)

	Jan. 8 ¢	Jan. 9 ¢	Jan. 10 ¢	Jan. 11 ¢	Jan. 12 ¢	Jan. 13 ¢	Weekly Average ¢
No. 1 Hard	65.6	66.1	67.3	67.3	68.1	69.0	67.2
No. 1 Northern	62.6	62.9	63.6	63.6	64.3	65.2	63.7
No. 2 Northern	57.9	58.1	58.9	58.9	59.6	60.5	59.0
No. 3 Northern	55.6	56.1	56.9	56.9	57.9	58.7	57.0
No. 4 Northern	54.1	54.9	55.6	55.6	56.6	57.5	55.7
No. 5	48.9	49.6	50.3	50.3	51.3	52.2	50.4
No. 6	44.3	44.6	45.3	45.3	46.1	47.0	45.4
Feed	45.3	45.6	46.3	46.3	47.1	48.0	46.4





- 15 -  
DAILY AND WEEKLY AVERAGE PRICES OF GRAIN  
Week ending January 13, 1934.  
WESTERN DIVISION  
(Basis Fort William and Port Arthur)

	Jan. 8 \$ ¢	Jan. 9 \$ ¢	Jan. 10 \$ ¢	Jan. 11 \$ ¢	Jan. 12 \$ ¢	Jan. 13 \$ ¢	Weekly Average \$ ¢
<u>WHEAT</u>							
No. 1 Man. Hard	.656	.659	.669	.669	.676	.685	.669
No. 1 Man. Northern	.626	.629	.639	.639	.646	.655	.639
No. 2 Man. Northern	.596	.599	.609	.609	.616	.625	.609
No. 3 Man. Northern	.569	.571	.581	.581	.589	.597	.581
No. 4 Man. Northern	.553	.556	.566	.566	.573	.582	.566
No. 5	.546	.549	.556	.556	.553	.562	.554
No. 6	.536	.539	.546	.546	.543	.552	.544
Feed	.516	.519	.526	.526	.523	.532	.524
Rejected No. 1 Northern	.566	.569	.579	.579	.586	.595	.579
No. 2 Northern	.546	.549	.559	.559	.566	.575	.559
No. 3 Northern	.519	.521	.531	.531	.539	.547	.531
Tough No. 1 Hard	.626	.629	.639	.639	.646	.655	.639
No. 1 Northern	.606	.609	.619	.619	.626	.635	.619
No. 2 Northern	.576	.579	.589	.589	.596	.605	.589
No. 3 Northern	.549	.551	.561	.561	.569	.577	.561
Smutty No. 1 Northern	.581	.583	.593	.593	.601	.61	.594
No. 2 Northern	.556	.559	.569	.569	.576	.585	.569
No. 3 Northern	.539	.541	.551	.551	.559	.567	.551
Durum No. 1 Northern	.626	.639	.636	.636	.643	.652	.639
No. 2 Northern	.581	.593	.591	.591	.599	.607	.593
No. 3 Northern	.571	.583	.581	.581	.589	.597	.583
A. R. W. No. 1 Northern	.546	.549	.556	.556	.563	.572	.557
No. 2 Northern	.526	.529	.536	.536	.543	.552	.537
No. 3 Northern	.506	.509	.516	.516	.523	.532	.517
<u>OATS</u>							
No. 2 C. W.	.316	.323	.327	.329	.341	.35	.331
No. 3 C. W.	.291	.301	.305	.306	.321	.33	.309
Ex. No. 1 Feed	.296	.306	.312	.316	.331	.34	.317
No. 1 Feed	.281	.291	.297	.301	.316	.325	.302
No. 2 Feed	.271	.279	.282	.286	.301	.31	.288
No. 3 Feed	.231	.239	.242	.243	.256	.265	.246
<u>BARLEY MALTING GRADES</u>							
2 Row	.422	.431	.435	.436	.446	.453	.437
6 Row	.447	.456	.46	.461	.476	.483	.464
Trebl	.365	.373	.377	.379	.389	.396	.38
No. 3 C. W.	.365	.373	.377	.379	.389	.396	.38
No. 4 C. W.	.342	.351	.355	.356	.366	.373	.357
No. 5 C. W.	.322	.331	.335	.336	.346	.353	.337
No. 6 C. W.	.312	.321	.325	.326	.336	.343	.327
<u>RYE</u>							
No. 1 C. W.	.427	.435	.442	.44	.453	.466	.444
No. 2 C. W.	.427	.435	.442	.44	.453	.466	.444
No. 3 C. W.	.39	.397	.405	.402	.416	.429	.407
Rejected No. 2 C. W.	.37	.377	.385	.382	.396	.409	.387
No. 4 C. W.	.37	.377	.385	.382	.396	.409	.387
Rejected for Ergot	.36	.367	.375	.372	.386	.399	.377
<u>FLAXSEED</u>							
No. 1 C. W.	1.43	1.445	1.46	1.45	1.462	1.477	1.454
No. 2 C. W.	1.39	1.405	1.42	1.41	1.422	1.437	1.414
No. 3 C. W.	1.31	1.325	1.34	1.33	1.342	1.357	1.334
No. 4 C. W.	1.31	1.325	1.34	1.33	1.342	1.357	1.334
<u>ONTARIO - TORONTO</u>							
Wheat, good Milling	.74	.74	.74	.74	.74	.74	.74
	.76	.76	.76	.76	.76	.76	.76
Ontario Corn	.62	.62	.62	.62	.62	.62	.62
	.64	.64	.64	.64	.64	.64	.64
Rye	.40	.40	.40	.40	.40	.40	.40
	.42	.42	.42	.42	.42	.42	.42
Barley	.40	.40	.40	.40	.40	.40	.40
	.42	.42	.42	.42	.42	.42	.42

F.O.B. Shipping Point







INSPECTIONS - WESTERN DIVISIONS  
Month of December, 1933 and 1932

	Month of Dec. 1933	5 Months ending December, 1933	5 Months ending December, 1932
<b>WHEAT</b>			
One Man. Hard	204	4,042	10,517
One Man. Northern	1,534	34,576	59,064
Two Man. Northern	1,695	26,092	39,311
Three Man. Northern	327	3,609	4,621
Four Man. Northern	263	2,075	1,665
Number Five	100	883	773
Number Six	25	289	254
Feed	13	99	31
Smutty	15	233	654
Tough	1,042	7,844	3,468
Damp	26	102	170
Rejected	23	320	442
Sample wheat	1	41	51
SUB-TOTAL	5,268	80,205	121,021
No. 1 Amber Durum	24	2,167	3,544
No. 2 Amber Durum	14	659	1,351
No. 3 Amber Durum	2	154	356
No. 4 Amber Durum	-	5	6
Rejected Amber Durum	5	223	174
Smutty Amber Durum	1	17	51
Tough Amber Durum	5	26	6
Red Durum	-	1	-
SUB-TOTAL	51	3,252	5,488
No. 1 White Spring	5	35	33
No. 2 White Spring	1	21	42
No. 3 White Spring	1	15	21
Smutty White Spring	-	1	1
Tough White Spring	-	7	1
Rejected White Spring	1	4	6
No. 1 Mixed Wheat	-	4	12
No. 2 Mixed Wheat	-	1	1
No. 3 Mixed Wheat	-	15	13
No. 4 Mixed Wheat	-	1	3
No. 5 Mixed Wheat	-	28	47
No. 6 Mixed Wheat	-	-	3
Tough Mixed Wheat	1	2	-
Smutty Mixed Wheat	-	1	4
Rejected Mixed Wheat	-	5	2
Damp Mixed Wheat	1	1	-
No. 1 A. R. W.	-	40	37
No. 2 A. W.	-	12	39
No. 3 A. W.	-	-	8
Rejected A. W.	-	1	-
Smutty A. W.	-	5	12
Tough A. W.	-	-	1
SUB-TOTAL	10	199	286
TOTALS	(Cars 5,329 (Bushels 8,039,116	83,656 124,339,586	126,795 190,063,169

After eliminating special grades such as Durums, White Springs and Winters the number of cars and percentages of inspections grading No. 3 northern or higher are shown as follows:

	No. of Cars	Percentages of Inspections
December, 1933	3,760	71.37
Five months ending December, 1933	68,319	85.18
Five months ending December, 1932	113,513	93.8





INSPECTIONS - WESTERN DIVISION  
Month of December, 1933 and 1932

		Month of Dec. 1933	5 Months ending Dec. 1933	5 Months ending Dec. 1932
<u>OATS</u>				
No. 1 C. W.		-	4	8
No. 2 C. W.		219	1,732	1,815
No. 3 C. W.		242	1,917	1,662
Extra No. 1 Feed		36	238	89
No. 1 Feed		207	1,624	1,044
No. 2 Feed		51	448	326
No. 3 Feed		5	33	44
Special Feed		2	13	14
Rejected		1	13	3
Mixed Feed		5	8	14
Tough		79	428	115
Sample Oats		2	4	-
Damp		13	16	2
TOTAL OATS	(Cars (Bushels	862 1,740,973	6,478 13,649,859	5,136 10,988,986
<u>BARLEY</u>				
No. 2 C. W.	} Six Row	-	1	2
No. 3 Ex. C. W.	}	51	934	1,066
No. 2 C. W.	} Two Row	-	7	2
No. 3 Ex. C. W.	}	-	64	87
No. 2 C. W.	}	-	-	1
No. 3 Ex. C. W.	} Trobi	-	20	50
No. 3 C. W.		121	1,517	1,985
No. 4 C. W.		39	518	448
No. 5 C. W.		27	247	178
No. 6 C. W.		6	53	21
Rejected		-	2	2
Sample		-	2	-
Tough		97	854	107
Damp		2	16	15
TOTAL BARLEY	(Cars (Bushels	343 528,831	4,235 6,547,352	3,964 6,079,349
<u>FLAXSEED</u>				
No. 1 C. W.		34	160	540
No. 2 C. W.		1	9	8
No. 3 C. W.		-	2	8
No. 4 C. W.		-	1	-
Tough		2	5	12
Sample		1	1	3
TOTAL FLAXSEED	(Cars (Bushels	38 43,886	178 173,230	571 674,357
<u>RYE</u>				
No. 1 C. W.		1	28	29
No. 2 C. W.		4	268	441
No. 3 C. W.		7	276	231
No. 4 C. W.		-	16	7
Rejected		-	3	1
Ergoty		-	17	9
Tough		2	23	14
Sample		-	-	1
TOTAL RYE	(Cars (Bushels	14 18,967	631 865,221	733 1,016,700
<u>MIXED GRAIN</u>				
No. 1		1	16	17
No. 2		-	5	5
No. 3		10	41	20
Tough		1	6	2
Rejected		-	1	-
Sample		-	1	-
Damp		-	-	2
Smutty		-	1	-
TOTAL	(Cars (Bushels	12 12,000	71 71,000	46 46,000
<u>SCREENINGS</u>		(Cars (Bushels	8 14,000	5 5,000
<u>BUCKWHEAT</u>		(Cars (Bushels	2 2,000	2 2,000





-13-  
INSPECTIONS - WESTERN DIVISION  
Month of December, 1933 and 1932

	Month of December 1 9 3 3	5 Months ending December 1933	5 Months ending December 1932.
<u>RECAPITULATION</u>			
Wheat	(Cars 5,329 (Bushels 8,039,116	83,656 124,339,586	126,795 190,063,169
Oats	(Cars 862 (Bushels 1,740,973	6,478 13,649,859	5,136 10,988,986
Barley	(Cars 343 (Bushels 528,831	4,235 6,547,352	3,964 6,079,349
Flaxseed	(Cars 38 (Bushels 43,886	178 173,230	571 674,357
Rye	(Cars 14 (Bushels 18,967	631 865,221	733 1,016,700
Mixed Grain	(Cars 12 (Bushels 12,000	71 71,000	46 46,000
Screenings	(Cars 8 (Bushels 8,000	14 14,000	5 5,000
Buckwheat	(Cars - (Bushels -	2 2,000	2 2,000
T O T A L S	(Cars 6,606 (Bushels 10,391,773	95,265 145,662,248	137,252 208,875,561
(Canadian Pacific Railway (Winnipeg and Other Points Canadian Northern Railway Great Northern Railway, Duluth Northern Alberta Railway	3,423 2,769 2 412	44,667 47,033 220 3,345	68,231 66,002 249 2,770
T O T A L S	6,606	95,265	137,252
		+ Increase - Decrease	% Decrease
(Canadian Pacific Railway (Winnipeg and Other Points Canadian Northern Railway Great Northern Railway, Duluth Northern Alberta Railway TOTAL DECREASE		- - 23,564 - 18,969 - 29 + 575 - 41,987	  30.59%

RECAPITULATION - COMPARATIVE FIGURES FOR THE 5 MONTHS ENDING DECEMBER, 1908-09 to  
DECEMBER, 1933-34  
(Total Number of Cars)

1908-09	60,931
1909-10	70,602
1910-11	63,122
1911-12	86,319
1912-13	104,205
1913-14	144,179
1914-15	80,068
1915-16	186,149
1916-17	131,753
1917-18	115,343
1918-19	88,339
1919-20	69,221
1920-21	124,430
1921-22	153,811
1922-23	202,650
1923-24	232,219
1924-25	148,122
1925-26	235,491
1926-27	207,338
1927-28	203,831
1928-29	286,023
1929-30	112,288
1930-31	148,984
1931-32	119,519
1932-33	137,252
1933-34	95,265





Receipts and Shipments of Grain at the Country Elevators in the Western Division and Platform for the five months ending December, 1933

	WHEAT	OATS	BARLEY	FLAXSEED	RYE	TOTAL
	B U S H E L S					
	COUNTRY - ELEVATORS					
	MANITOBA - RECEIPTS					
Aug. 1933	7,981,463	322,658	778,583	- 4,793	59,608	9,137,519
Sept. 1933	6,662,423	982,557	1,181,470	6,284	68,326	8,901,060
Oct. 1933	2,694,253	530,730	670,909	15,947	21,241	3,933,080
Nov. 1933	1,378,288	345,087	414,291	1,721	6,856	2,146,243
Dec. 1933	431,904	157,029	134,061	1,254	3,759	728,007
T O T A L	19,148,331	2,338,061	3,179,314	20,413	159,790	24,845,909

	MANITOBA - PLATFORM LOADINGS					
	WHEAT	OTHER GRAINS			TOTAL	
Aug. 1933	2,193,672	373,008			2,566,680	
Sept. 1933	1,061,983	292,709			1,354,692	
Oct. 1933	279,231	84,021			363,252	
Nov. 1933	130,377	38,669			169,046	
Dec. 1933	147,034	51,576			198,610	
T O T A L	3,812,297	839,983			4,652,280	

	SASKATCHEWAN - RECEIPTS					
Aug. 1933	10,105,718	688,610	402,409	11,326	272,331	11,480,394
Sept. 1933	29,443,266	2,056,791	914,649	43,589	169,668	32,627,963
Oct. 1933	23,512,992	3,052,632	924,539	118,157	83,634	27,691,954
Nov. 1933	11,631,883	2,045,122	633,391	29,297	35,224	14,374,917
Dec. 1933	4,857,438	1,114,506	326,573	15,080	20,750	6,334,347
T O T A L	79,551,297	8,957,661	3,201,561	217,449	581,607	92,509,575

	SASKATCHEWAN - PLATFORM LOADINGS					
Aug. 1933	140,803	14,002			154,805	
Sept. 1933	470,634	64,110			534,744	
Oct. 1933	551,270	163,285			714,555	
Nov. 1933	294,269	114,398			408,667	
Dec. 1933	96,829	52,278			149,107	
T O T A L	1,553,805	408,073			1,961,878	

	ALBERTA - RECEIPTS					
Aug. 1933	5,071,473	910,697	234,680	1,619	79,853	6,298,322
Sept. 1933	17,317,912	1,177,873	364,718	5,067	41,278	18,906,848
Oct. 1933	18,206,684	1,659,657	360,451	7,681	20,757	20,255,230
Nov. 1933	9,127,254	1,045,836	216,683	3,857	9,147	10,402,777
Dec. 1933	4,696,645	655,721	135,472	2,370	4,351	5,494,559
T O T A L	54,419,968	5,449,784	1,312,004	20,594	155,386	61,357,736

	ALBERTA - PLATFORM LOADINGS					
Aug. 1933	130,732	55,098			185,830	
Sept. 1933	629,647	42,232			671,879	
Oct. 1933	1,167,512	163,567			1,331,079	
Nov. 1933	447,949	123,308			571,257	
Dec. 1933	167,372	89,798			257,170	
T O T A L	2,543,212	474,003			3,017,215	

	TOTAL COUNTRY ELEVATORS - PRAIRIE PROVINCES - RECEIPTS					
Aug. 1933	23,158,651	1,921,964	1,415,670	8,150	411,790	26,916,225
Sept. 1933	53,423,603	4,217,223	2,460,839	54,943	279,274	60,435,882
Oct. 1933	44,413,930	5,243,018	1,955,897	141,784	125,631	51,880,260
Nov. 1933	22,137,423	3,436,044	1,264,364	34,875	51,226	26,923,932
Dec. 1933	9,985,989	1,927,258	596,107	18,704	28,863	12,556,921
T O T A L	153,119,596	16,745,507	7,692,877	258,456	896,784	178,713,220





Receipts, and Shipments of Grain at the Country Elevators in the Western Division and Platform Loadings for the five months ending December, 1933.

		WHEAT	OATS	BARLEY	FLAXSEED	RYE	TOTAL
		B U S H E L S					
		TOTAL PLATFORM LOADINGS - PRAIRIE PROVINCES					
		WHEAT	OTHER GRAINS			TOTAL	
Aug.	1933	2,465,207	442,108			2,907,315	
Sept.	1933	2,162,264	399,051			2,561,315	
Oct.	1933	1,998,013	410,872			2,408,885	
Nov.	1933	872,595	276,375			1,148,970	
Dec.	1933	306,025	157,183			463,213	
T O T A L		7,804,104	1,685,595			9,489,699	

TOTAL SHIPMENTS - RAIL - PRAIRIE PROVINCES							
Aug.	1933	20,779,295	1,766,253	1,219,558	38,176	269,540	24,072,827
Sept.	1933	35,096,987	3,351,573	1,698,507	16,638	449,495	40,613,200
Oct.	1933	34,377,326	4,059,538	1,594,289	45,898	177,348	40,254,399
Nov.	1933	20,787,927	3,103,292	1,174,168	61,559	62,820	25,189,766
Dec.	1933	7,999,775	1,855,230	664,507	30,176	36,549	10,587,237
T O T A L		119,041,310	14,135,891	6,351,029	192,447	995,752	140,717,429

Receipts and Shipments of Grain at Interior Public and Semi-Public Elevators for the five months ending December, 1933.

INTERIOR PUBLIC & SEMI-PUBLIC ELEVATORS - RECEIPTS - RAIL							
Aug.	1933	46,064	114,835	2,360	-	-	163,309
Sept.	1933	2,722,020	193,681	36,720	-	-	2,952,421
Oct.	1933	1,784,995	96,170	78,455	-	-	1,959,620
Nov.	1933	51,291	52,621	11,621	-	-	115,533
Dec.	1933	4,134	307,898	3,124	-	-	315,156
T O T A L		4,608,504	765,255	132,280	-	-	5,506,039

SHIPMENTS - RAIL							
Aug.	1933	605,255	1,637	1,301	-	-	608,193
Sept.	1933	388,632	575	284	-	-	389,491
Oct.	1933	163,999	8,577	3,354	-	-	175,930
Nov.	1933	683,246	33,529	27,056	-	-	743,831
Dec.	1933	1,685,975	291,475	93,184	-	-	2,070,634
T O T A L		3,527,107	335,793	125,179	-	-	3,988,079

RECEIPTS AND SHIPMENTS OF GRAIN AT VANCOUVER-NEW WESTMINSTER FOR THE FIVE MONTHS  
DECEMBER, 1933

VANCOUVER-NEW WESTMINSTER ELEVATORS - RECEIPTS - RAIL							
Aug.	1933	2,168,814	70,194	68,569	286	6,950	2,314,813
Sept.	1933	3,861,093	47,522	40,816	719	1,905	3,952,055
Oct.	1933	6,503,554	46,361	20,826	410	-	6,571,151
Nov.	1933	4,997,970	89,607	21,290	-	-	5,108,867
Dec.	1933	4,081,198	46,918	27,638	-	-	4,155,754
T O T A L		21,612,629	300,602	179,139	1,415	8,855	22,102,640

SHIPMENTS - VESSEL - RAIL							
Aug.	1933-Vessel	1,777,921	4,392	32,666	-	-	1,814,979
	Rail	917	10,901	-	286	600	12,704
Sept.	1933-Vessel	3,045,981	79,607	34,999	-	-	3,160,587
	Rail	11,695	2,352	-	46	24,285	38,378
Oct.	1933-Vessel	4,492,169	146,948	68,332	-	-	4,707,349
	Rail	4,240	-	-	-	7,143	11,383
Nov.	1933-Vessel	4,443,370	225,569	172,831	-	-	4,841,770
	Rail	8,616	2,353	-	287	8,572	19,828
Dec.	1933-Vessel	4,922,071	119,171	71,573	-	-	5,112,815
	Rail	5,477	-	833	24	-	6,334
T O T A L		18,681,512	575,687	330,301	-	-	19,637,500
	Rail	30,945	15,606	833	643	40,600	88,627





RECEIPTS AND SHIPMENTS OF GRAIN AT VICTORIA ELEVATOR FOR THE FIVE MONTHS ENDING DEC.1933

		WHEAT	OATS	BARLEY	FLAXSEED	RYE	TOTAL
		B U S H E L S					
		<u>RECEIPTS - RAIL</u>					
Sept.	1933	1,449	-	-	-	-	1,449
Oct.	1933	21,306	-	-	-	-	21,306
Nov.	1933	397,112	123	-	-	-	397,235
Dec.	1933	442,678	-	-	-	-	442,678
T O T A L		862,545	123	-	-	-	862,668

S H I P M E N T S - N I L

RECEIPTS AND SHIPMENTS OF GRAIN AT PRINCE RUPERT ELEVATOR FOR THE FIVE MONTHS ENDING DECEMBER, 1933

<u>PRINCE RUPERT ELEVATOR - RECEIPTS - RAIL</u>							
Sept.	1933	525,977	497	-	-	-	526,474
Oct.	1933	559,088	1,802	-	-	-	560,890
Nov.	1933	4,310	230	-	-	-	4,540
T O T A L		1,089,375	2,520	-	-	-	1,091,904

<u>SHIPMENTS - VESSEL - RAIL</u>							
Oct.	1933	- Rail	-	137	-	-	117
Nov.	1933	- Vessel	-	980	-	-	980
		- Rail	-	588	-	-	588
Dec.	1933	- Vessel	-	196	-	-	196
		- Rail	-	227	-	-	227
T O T A L		Vessel	-	1,176	-	-	1,176
		Rail	-	932	-	-	932

RECEIPTS AND SHIPMENTS OF GRAIN AT CHURCHILL FOR THE FIVE MONTHS ENDING DECEMBER, 1933

<u>RECEIPTS - RAIL</u>							
Aug.	1933	5,515	-	-	-	-	5,515
Sept.	1933	344,326	-	-	-	-	344,326
Oct.	1933	1,223,236	-	-	-	-	1,223,236
Nov.	1933	1,177,510	-	-	-	-	1,177,510
T O T A L		2,750,587	-	-	-	-	2,750,587

<u>SHIPMENTS - VESSEL</u>							
Aug.	1933	2,020,921	-	-	-	-	2,020,921
Sept.	1933	51,001	-	-	-	-	51,001
T O T A L		2,071,922	-	-	-	-	2,071,922





EXPORTS OF GRAIN, WHEATFLOUR AND MILLFEED BY COUNTRIES OF DESTINATION, DEC. 1933 AND  
THE FIVE MONTHS ENDING DECEMBER, 1933

	W H E A T		W H E A T F L O U R		O A T S		B A R L E Y	
	Dec. 1933 Bush.	5 Mos. Dec. 1933 Bush.	Dec. 1933 Bbls.	5 Mos. Dec. 1933 Bbls.	Dec. 1933 Bush.	5 Mos. Dec. 1933 Bush.	Dec. 1933 Bush.	5 Mos. Dec. 1933 Bush.
Aden	-	-	-	216	-	-	-	-
Africa	-	-	-	-	-	-	-	-
British East	-	-	-	150	-	-	-	-
British South	3733	9545	198	628	-	-	-	-
Alaska	-	-	-	4	-	-	-	-
Azores and Madeira	-	-	-	923	-	-	-	-
Belgian Congo	-	-	102	784	-	-	-	-
Belgium	1171865	6627969	280	1236	-	65882	-	-
Bermuda	-	83	1749	10453	25629	118399	-	-
Bolivia	-	203117	-	-	-	-	-	-
Brazil	-	279070	-	-	-	-	-	-
British Guiana	-	-	4609	26042	11719	27002	-	-
British Honduras	-	-	551	6599	138	1223	-	-
British India	-	-	510	520	-	-	-	-
British Oceania	-	-	6	11	-	-	-	-
British West Indies	-	-	-	-	-	-	-	-
Barbados	-	10	4434	31795	14859	41820	-	-
Jamaica	160	2367	18883	134885	1086	12185	-	-
Trinidad	5	46	11354	92509	7728	33637	-	-
Other Br. W. Indies	-	3	10689	66736	1053	10547	-	-
Canary Islands	-	-	282	2068	-	-	-	-
Chili	18433	73733	50	50	-	-	-	-
China	274000	357333	4341	24861	294	2597	-	-
Colombia	12500	33233	-	29	-	-	-	-
Costa Rica	-	-	1200	4954	-	-	-	-
Cuba	-	-	4312	21596	-	-	-	-
Denmark	58800	766643	5386	42151	-	-	-	-
Dutch East Indies	-	-	1518	7164	-	-	-	-
Dutch Guiana	-	-	287	2614	-	-	-	-
Dutch West Indies	-	-	1359	4902	-	-	-	-
Ecuador	-	-	450	4089	-	-	-	-
Egypt	-	-	229	859	-	-	-	-
Finland	-	56500	3536	19366	-	-	-	-
France	547168	4148328	-	4318	42353	101647	-	-
French Africa	-	56000	-	61	-	-	-	-
French Guiana	-	-	1080	9783	-	-	-	-
French West Indies	-	-	870	5682	-	-	-	-
Gambia	-	-	100	438	-	-	-	-
Germany	288741	3753238	224	1134	-	-	-	-
Gibraltar	-	-	-	57	-	-	-	-
Gold Coast	-	-	305	5157	-	-	-	-
Great Britain	13087802	59921992	190076	1136998	433765	1161715	249233	660032
Guatemala	-	-	2111	9880	-	-	-	-
Hayti	-	-	1708	9486	-	-	-	-
Hong Kong	-	-	13989	91138	2579	15730	625	5625
Honduras	-	-	127	3255	-	-	-	-
Iceland	-	-	197	1237	-	-	-	-
Irish Free State	328000	897244	18518	185519	-	-	-	-
Italy	30233	1570584	737	27748	-	88	-	-
Japan	366732	1851713	36750	99700	-	-	-	-
Jugo	-	36	-	-	-	-	-	-
Liberia	-	-	100	588	-	-	-	-
Malta	-	56000	714	3857	-	-	-	-
Mexico	-	55	-	-	-	-	-	-
Morocco	-	-	-	28	-	-	-	-
Netherlands	1130990	9719433	5874	26471	-	32941	-	10281
Newfoundland	184	667	39571	191654	29528	226599	-	-
New Zealand	26834	101621	5097	27959	-	-	-	-
Nicaragua	-	-	-	100	-	-	-	-
Nigeria	-	-	11	110	-	-	-	-
Norway	-	977163	-	62076	-	-	-	-
Panama	-	-	433	3451	-	-	-	-
Peru	111533	186317	-	190	-	-	-	-
Palestine	-	-	913	2861	-	-	-	-





EXPORTS OF GRAIN, WHEATFLOUR AND MILLFEED BY COUNTRIES OF DESTINATION, DEC. 1933 AND  
THE FIVE MONTHS ENDING DECEMBER, 1933 (Concluded)

	W H E A T		WHEATFLOUR		O A T S		B A R L E Y	
	Dec. 1933 Bush.	5 Mos. Dec. 1933 Bush.	Dec. 1933 Bbls.	5 Mos. Dec. 1933 Bbls.	Dec. 1933 Bush.	5 Mos. Dec. 1933 Bush.	Dec. 1933 Bush.	5 Mos. Dec. 1933 Bush.
Philippine Islands	167	499	13831	53521	1647	6588	-	-
Poland and Danzig	-	-	-	113	-	-	-	-
Portugal	-	-	650	650	-	-	-	-
Portuguese Africa	-	21466	1568	4926	-	-	-	-
Salvador	-	-	-	369	-	-	-	-
Siam	-	-	13	63	-	-	-	-
San Domingo	-	-	576	1863	-	-	-	-
Sierre Leone	-	-	779	7290	-	-	-	-
South Rhodesia	-	-	-	1077	-	-	-	-
Spanish Africa	-	-	36	36	-	-	-	-
St. Pierre & Miquelon	83	100	290	1586	825	1980	-	-
Straits Settlements	-	-	79	92	-	-	-	-
Sweden	-	454999	341	1994	-	-	-	-
Syria	-	-	34	296	-	-	-	-
United States	-	99645	520	1816	2259	35023	50	50
Venezuela	-	-	3119	16756	-	-	-	-
Virgin Islands	-	-	527	1419	-	-	-	-
TOTAL DEC.1933	17457963	92226752	418183	2512997	575462	1895603	249908	675988
Nov. 1933	23143958	-	547603	-	595580	-	169910	-
Dec. 1932	27735999	-	492033	-	1433865	-	272667	-
12 Months ending Dec. 1932	228219755	-	5131781	-	15457074	-	9992743	-
12 Months ending Dec. 1933	191968861	-	5570424	-	6018389	-	2011278	-

	Rye Bushels	Flaxseed Bushels	Bran Shorts and Middlings Cwt.	Oatmeal and Rolled Oats Cwt.	Screenings Cwt.
Belgium	-	-	-	193	-
Bermuda	-	-	2,974	104	-
British Guiana	-	-	185	211	-
British Straits Settlements	-	-	-	34	-
British India	-	-	-	568	-
British South Africa	-	-	-	223	-
British West Indies	-	-	-	-	-
Barbados	-	-	35	27	-
Jamaica	-	-	125	206	-
Trinidad	-	-	-	86	-
Other	-	-	15	56	-
Ceylon	-	-	-	36	-
China	-	-	-	478	-
Costa Rica	-	-	50	-	-
Fiji Islands	-	-	-	1	-
Portuguese Africa	-	-	-	22	-
Great Britain	-	412	121,608	20,564	-
Hong Kong	-	-	250	-	-
Netherlands	-	-	-	497	-
Newfoundland	-	-	1,999	463	-
Philippine Islands	-	-	-	189	-
Sierre Leone	-	-	-	18	-
St. Pierre	-	-	60	4	-
United States	-	-	74,636	-	-
Venezuela	-	-	-	41	164,774
TOTALS Dec. 1933	-	412	201,937	24,021	164,774
Nov. 1933	351,540	-	404,538	42,657	49,236
Dec. 1932	17,143	-	221,458	49,520	36,542
12 Months ending Dec. 1932	8,900,434	367,450	1,891,819	606,105	406,759
12 Months ending Dec. 1933	2,864,681	614,925	2,897,514	489,890	831,601

STATISTICS CANADA LIBRARY  
BIBLIOTHÈQUE STATISTIQUE CANADA



1010674889