

DEPARTMENT OF TRADE  
AND COMMERCE  
JUN 2 1934  
FROM THE  
LIBRARY

CANADA  
DEPARTMENT OF TRADE AND COMMERCE  
DOMINION BUREAU OF STATISTICS  
AGRICULTURAL BRANCH

Vol. 14  
14

No. 43

Historical File Copy

CANADIAN GRAIN STATISTICS

Week ending

MAY 25, 1934

(Records for Western Inspection Division supplied by Board of Grain Commissioners for Canada.)

Published by Authority of the Hon. H.H. Stevens, M.P.,  
Minister of Trade and Commerce.

+ + +

OTTAWA

1934

## INDEX

General Summary .....	1 - 6
Canadian Grain in Store by Elevators .....	7
Canadian Grain in Store by Grades .....	8
Comparative Statement of Grain in Store .....	9
Receipts and Shipments of Canadian Grain .....	10
U. S. Grain in Store, Receipts and Shipments .....	11
Stocks, Receipts and Shipments of the Country Elevators in the Western Division .....	12
Receipts, Shipments and Quantities in Store at Interior Terminal Elevators .....	13
Stocks, Receipts and Shipments of the Pacific Elevators and Vancouver Prices .....	14
Daily and Weekly Average Prices of Grain at Fort William and Port Arthur and Toronto for the week ending May 26, 1934.....	15



DEPARTMENT OF TRADE AND COMMERCE  
DOMINION BUREAU OF STATISTICS - CANADA  
AGRICULTURAL BRANCH

(Issued June 1, 1934)

Dominion Statistician:	R. H. Coats, B.A., F.S.S. (Hon.), F.R.S.C.
Chief, Agricultural Branch:	T. W. Grindley, Ph.D.
Assistant Chief, Agricultural Branch:	W. Dougan.

WHEAT STOCKS IN STORE

Canadian wheat in store for the week ending May 25, 1934 shows a slight decrease of 1,461,794 bushels as compared with the previous week. The visible supply was reported as 199,103,431 bushels as compared with a revised figure of 200,565,225 bushels for the previous week and 203,423,983 bushels for the corresponding week in 1933.

Canadian wheat in the United States amounted to 4,455,797 bushels of which 3,350,500 bushels were in store at Buffalo, 416,079 bushels at New York and 540,000 bushels at Erie. This compared with 3,789,785 bushels on the same date last year of which 1,909,477 bushels were located at Buffalo, 192,916 bushels at New York and 1,670,000 bushels at Erie.

United States wheat in Canada was shown as 2 bushels compared with 4,801,913 bushels last year.

In transit wheat on the lakes amounted to 3,004,306 bushels compared with 4,319,425 bushels for the previous week and 4,401,793 bushels for the corresponding date in 1933.

PRIMARY MOVEMENT

Wheat marketings in the Prairie Provinces for the week ending May 18, 1934 amounted to 1,967,688 bushels, an increase of 895,919 bushels when 1,071,769 bushels were marketed. During the same week in 1933, 2,281,927 bushels were marketed. For the forty-two weeks ending May 18, 1934 and May 19, 1933, 199,793,770 bushels and 336,441,969 bushels respectively were received from the farms. By provinces the receipts for the week ending May 18, 1934 were as follows, figures within brackets being those for the same week in 1933: Manitoba 243,315 (545,344) bushels; Saskatchewan 830,429 (1,025,841) bushels; Alberta 893,944 (710,742) bushels.

Marketings of wheat in the three Prairie Provinces up to May 18, 1934 as compared with the same period in 1932-33 were as follows, figures in brackets being those for 1932-33: Manitoba 25,727,065 (34,515,026) bushels; Saskatchewan 98,478,049 (171,102,825) bushels; Alberta 75,588,656 (120,824,118) bushels.

EXPORT CLEARANCES

During the week ending May 25, 1934 the export clearances of wheat amounted to 2,407,019 bushels compared with 4,908,645 bushels for the previous week, a decrease of 2,264,153 bushels.

Clearances by ports for the weeks ending May 25, 1934 and May 26, 1933 were as follows (in bushels):

	Week ending May 25, 1934	Week ending May 26, 1933
Montreal	879,375	2,116,215
Sorel	448,583	264,800
Quebec	279,383	258,011
United States Ports	234,000	682,000
Vancouver - New Westminster	565,678	1,350,146
T O T A L	2,407,019	4,671,172

The following table shows the export clearances of Canadian wheat by ports, since the commencement of the present crop year along with comparative figures for the same period in 1932-33 (in bushels):

	1933-34	1932-33
Montreal	37,130,959	54,252,751
Quebec	10,728,876	3,536,759
Sorel	6,951,245	14,659,854
West Saint John and Saint John	5,601,996	6,864,873
Halifax	1,942,691	1,655,901
United States Ports	22,987,000	22,858,000
Churchill	2,707,891	2,736,030
Vancouver - New Westminster	40,424,848	84,316,800
Victoria	-	1,166,721
Prince Rupert	-	677,813
T O T A L	128,505,506	192,725,532





- 2 -  
International Trade

The following table shows world shipments of wheat and wheat flour for the first forty-three weeks of the present crop year (Broomhall's figures)

Week ending		North America	Argentina	Australia	Russia	Other	Total
		(Thousand Bushels)					
August	7	4,225	1,920	2,784	-	144	9,072
	14	3,328	4,848	608	-	120	8,904
	21	3,472	3,056	2,472	248	360	9,608
	28	4,536	3,912	2,448	168	520	11,584
September	4	5,008	2,728	584	296	880	9,496
	11	4,160	2,832	2,072	944	1,048	11,056
	18	3,800	1,768	1,416	1,552	1,208	9,744
	25	4,952	2,000	2,024	1,616	1,576	12,168
October	2	4,418	1,288	2,024	1,040	1,152	9,920
	9	5,096	816	1,312	1,088	1,744	10,056
	16	5,256	1,264	800	1,120	944	9,384
	23	6,320	1,328	984	560	1,592	10,784
November	30	4,464	1,360	912	1,824	2,008	10,568
	6	4,153	1,379	1,426	384	2,018	9,358
	13	5,277	915	1,226	768	1,408	9,594
	20	5,494	835	1,468	944	1,387	10,128
December	27	5,675	482	815	1,400	1,344	9,716
	4	6,276	1,344	1,622	1,024	1,450	11,716
	11	4,005	590	1,125	632	1,584	7,936
	18	3,631	843	1,606	1,464	1,368	8,912
January	25	3,724	1,396	2,405	1,272	1,289	10,086
	1	3,228	1,974	2,941	1,464	680	10,287
	8	3,421	1,055	1,034	1,320	592	7,422
	15	4,723	2,406	1,981	624	816	10,550
February	22	4,714	3,157	2,981	688	680	12,220
	29	4,144	4,047	3,314	1,368	496	13,369
	5	5,055	3,561	2,646	640	608	12,510
	12	3,960	4,178	2,160	648	576	11,522
March	19	3,325	4,092	1,986	400	392	10,195
	26	4,239	4,020	2,588	-	816	11,663
	5	4,014	2,628	1,352	-	424	8,418
	12	3,920	4,940	2,030	328	408	11,626
April	19	3,851	4,787	1,915	152	600	11,305
	26	3,302	3,963	1,823	-	480	9,568
	2	3,542	3,991	1,099	136	384	9,152
	9	3,328	2,412	1,323	120	936	8,119
May	16	4,151	4,292	1,415	136	720	10,714
	23	3,449	1,896	1,430	-	1,376	8,151
	30	3,769	2,226	1,209	-	808	8,012
	7	4,301	2,072	1,657	248	944	9,222
	14	4,637	1,941	951	-	1,426	8,955
	21	5,359	3,624	1,189	-	816	10,988
	28	4,406	3,353	1,395	-	768	9,902
TOTAL		186,105	107,499	72,552	26,616	40,888	433,660

Comparative 1932-33

Corresponding week	6,288	3,224	2,184	-	200	11,896
Total to date	250,904	97,712	138,184	17,408	23,312	527,520

World shipments for the week ending May 28, 1934, amounted to 9,902,000 bushels as compared with shipments of 10,988,000 bushels for the previous week and 11,896,000 bushels for the corresponding week in 1932-33. North American and Argentine shipments showed decreases of 953,000 bushels and 291,000 bushels respectively as compared with last week. Australian shipments were slightly higher this week compared with the previous week.

Weekly Average Shipments.

The following table shows weekly average shipments of wheat for the first forty-three weeks of the present crop year along with comparative figures for 1932-33 and 1931-32.

	North America	Argentina	Australia	Russia	Other	Total
	(Million Bushels)					
1931-32.....	6.3	2.9	3.1	1.6	1.6	15.6
1932-33.....	5.8	2.3	3.2	.4	.5	12.3
1933-34.....	4.3	2.5	1.7	.6	1.0	10.1

As shown by the above table world shipments of wheat have averaged 10.1 million bushels per week during the first forty-three weeks of the crop year as compared with 12.3 and 15.6 million bushels per week during the corresponding period in 1932-33 and 1931-32. North American shipments have averaged 4.3 million bushels per week compared with 5.8 million bushels per week during the first forty-three weeks of 1932-33.





# CANADIAN GRAIN STATISTICS - WEEK ENDING MAY 25, 1934.

Returns received as to stocks of grain in store for the week ending May 25, 1934 show a decrease of 2,210,601 bushels compared with the revised figure of the previous week. Stocks in store were as follows:- wheat 199,103,431, oats 10,993,242, barley 9,431,062, flaxseed 511,205 and rye 3,904,020 bushels, a total of 223,942,960 bushels. Decreases noted were as follows:- wheat 1,461,794, oats 504,229, barley 210,456, flaxseed 29,645 and rye 4,477 bushels. At a comparable date last year stocks in store were as follows:- wheat 203,423,983, oats 9,805,591, barley 6,579,908, flaxseed 1,288,459 and rye 5,062,050 bushels, a total of 226,159,991 bushels.

WESTERN COUNTRY ELEVATORS:- Stocks in store show a decrease of 1,591,445 bushels made up as follows:- wheat 1,475,175, oats 65,617, barley 45,332, flaxseed 1,678 and rye 3,643 bushels.

The following table shows the quantities of grain in store at the Country Elevators in each of the Prairie Provinces on May 18, 1934 with comparison for the previous week and the same period 1933.

	<u>MANITOBA</u>	<u>SASKATCHEWAN</u> <u>B U S H E L S</u>	<u>ALBERTA</u>	<u>TOTAL</u>
Wheat	7,016,352	45,191,028	31,901,938	84,109,318
Oats	444,469	1,683,327	1,522,508	3,650,304
Barley	843,249	1,071,680	464,612	2,379,541
Flaxseed	17,699	152,077	19,247	189,023
Rye	95,476	450,542	134,257	680,275
TOTAL	8,417,245	48,548,654	34,042,562	91,008,461
Previous week	9,372,678	49,500,195	34,788,100	93,660,973
Same period 1933	9,566,179	63,153,037	35,121,038	107,840,254

The receipts and shipments at the Country Elevators for the week ending May 18, 1934 compared with the previous week and the same period 1933 were as follows:-

	<u>R E C E I P T S</u>			<u>S H I P M E N T S</u>		
	Previous week	Week ending May 18, 1934	Week ending May 19, 1933	Previous week	Week ending May 18, 1934	Week ending May 19, 1933
Wheat	1,071,769	1,907,587	2,032,459	3,895,199	4,342,677	4,419,038
Oats	285,042	305,175	340,115	734,133	387,068	483,817
Barley	64,073	134,694	157,194	197,393	257,316	277,942
Flaxseed	2,978	1,766	10,433	6,047	9,701	23,070
Rye	4,474	6,684	45,105	22,734	11,500	58,397
TOTAL	1,428,336	2,355,906	2,635,306	4,855,506	5,008,252	5,262,264

Platform Loadings shown by Prairie Provinces for the period ending May 14, 1934 were as follows:-

	<u>WHEAT</u>	<u>OTHER GRAIN</u> <u>B U S H E L S</u>	<u>TOTAL</u>
Manitoba	30,669	6,393	37,062
Saskatchewan	7,516	7,980	15,496
Alberta	21,916	24,691	46,607
TOTAL	60,101	39,064	99,165
Period ending May 14, 1933	146,172	48,320	194,492
+Increase -Decrease	-86,071	-9,256	-95,327

INTERIOR PUBLIC & SEMI-PUBLIC TERMINALS.- Stocks for the week show a net decrease of 11,401 bushels. Decreases are noted in wheat of 699, oats 13,276 and flaxseed 50 bushels, while barley increased 2,624 bushels.

VANCOUVER - NEW WESTMINSTER ELEVATORS.- Grain stocks at these elevators show a net decrease of 36,776 bushels. Wheat decreased 40,743 and barley 2,856 bushels, while oats increased 6,821 bushels.

PRINCE RUPERT & CHURCHILL ELEVATORS.- Grain stocks remain unchanged.

VICTORIA ELEVATOR.- Grain stocks remain same as previous week.

PUBLIC AND PRIVATE (FORT WILLIAM AND PORT ARTHUR).- Stocks of grain this week show a net decrease of 987,731 bushels. Decreases are noted in wheat of 104,211, oats 616,797, barley 223,747 and rye 45,328 bushels, while flaxseed increased 2,352 bushels.

IN TRANSIT LAKES.- Grain in transit shows a net decrease of 1,470,515 bushels. Decreases are noted in wheat of 1,315,119, oats 104,139, barley 70,135 and flaxseed 28,532 bushels, while rye increased 47,460 bushels.







Stocks in Store at the Head of the Lakes compared with the same week last year were as follows:-

	Week ending May 25, 1934	Week ending May 26, 1933	+ Increase - Decrease
Wheat	71,517,128	51,145,610	+ 20,371,518
Oats	2,010,154	1,803,566	+ 206,588
Barley	3,958,051	1,988,675	+ 1,969,376
Flaxseed	292,233	447,707	- 155,474
Rye	2,214,630	2,239,152	- 24,522
TOTAL	79,992,196	57,624,710	+ 22,367,486

The receipts (including transfers) at the Head of the Lakes for the period ending May 25, 1934 with comparative figures for the same week last year were as follows:-

	Week ending May 25, 1934	Week ending May 26, 1933	+ Increase - Decrease
Wheat	4,100,444	2,184,678	+ 1,915,766
Oats	86,438	198,845	- 112,407
Barley	158,765	46,813	+ 111,952
Flaxseed	2,351	15,211	- 12,860
Rye	10,013	44,467	- 34,454
TOTAL	4,358,011	2,490,014	+ 1,867,997

Preliminary figures showing receipts and shipments at the Head of the Lakes also Vancouver-New Westminster, Prince Rupert, Victoria and Churchill for the period August 1, 1933 to May 25, 1934 compared with the same period last year.

	FORT WILLIAM & PORT ARTHUR		VANCOUVER & NEW WESTMINSTER	
	Receipts	Shipments	Receipts	Shipments
Wheat	109,589,082	99,206,100	40,556,686	40,462,974
Oats	9,597,132	13,115,472	1,695,811	1,854,107
Barley	5,948,550	4,795,397	366,905	659,251
Flaxseed	153,205	622,590	2,041	910
Rye	959,927	2,049,554	10,913	44,886
TOTAL	126,247,896	119,789,113	42,632,356	43,022,128
Same period last year	161,678,444	161,878,332	88,974,099	89,486,967
+ Increase -Decrease	-35,430,548	-42,089,219	-45,341,743	-46,464,839

	PRINCE RUPERT		VICTORIA	
	Receipts	Shipments	Receipts	Shipments
TOTAL	1,091,804	2,159	934,052	1,667
Same period last year	139,304	687,920	1,706,331	1,199,143
+ Increase -Decrease	+952,500	-685,761	-772,279	-1,197,476

	CHURCHILL	
	Receipts	Shipments
TOTAL	2,751,395	2,707,891
Same period last year	2,870,018	2,736,029
+ Increase -Decrease	-118,623	-28,138

INTERIOR PRIVATE AND MILL ELEVATORS:- Grain stocks for the week show a net decrease of 58,340 bushels. Decreases are noted in oats of 45,354, barley 61,003, flaxseed 1,737 and rye 18 bushels, while wheat increased 49,772 bushels.

Stocks in store at the Country, Private and Mill, Elevators, Head of the Lakes, Victoria, Vancouver-New Westminster, Prince Rupert and Churchill compared with the same week last year were as follows:-

	Week ending May 25, 1934	Week ending May 26, 1933	+ Increase - Decrease
Wheat	176,461,141	171,391,411	+ 5,069,730
Oats	7,516,556	7,582,036	- 65,480
Barley	7,954,636	5,639,011	+ 2,315,625
Flaxseed	514,620	1,036,881	- 522,261
Rye	2,990,922	3,203,401	- 212,479
TOTAL	195,437,875	188,852,740	+ 6,585,135

EASTERN ELEVATORS-LAKE PORTS:- Grain stocks for the week show a net increase of 51,588 bushels. Increases are noted in oats of 203,859, barley 192,498 and rye 1,840 bushels, while wheat decreased 346,609 bushels.

EASTERN ELEVATORS-SEABOARD PORTS (CANADIAN GRAIN):- Grain stocks for the week show a net increase of 1,131,199 bushels. Increases are noted in wheat of 988,168 and oats 150,274 bushels, while barley and rye decreased 2,455 and 4,788 bushels respectively.

The receipts of the above by classes of ports were as follows:-

	WHEAT		TOTAL GRAIN	
	Vessel	Rail	Vessel	Rail
Georgian Bay Ports	1,012,474	-	1,658,347	-
Lower Lake Ports	760,859	-	1,729,476	1,991
St. Lawrence Ports	2,135,675	507,720	2,557,604	507,720
Seaboard Ports	-	-	-	1,791
TOTAL	3,909,008	507,720	5,945,427	511,502



Income  
Expenses

Income  
Expenses

Income  
Expenses

Income  
Expenses

Income  
Expenses

Income  
Expenses

Income  
Expenses

Income  
Expenses

Income  
Expenses

Income  
Expenses

Income  
Expenses

Income  
Expenses

Income  
Expenses

Income  
Expenses

Income  
Expenses

Income  
Expenses

Income  
Expenses

Income  
Expenses

Income  
Expenses

Income  
Expenses

Income  
Expenses

Income  
Expenses

Income  
Expenses

Income  
Expenses

Income  
Expenses

Income  
Expenses

Income  
Expenses

Income  
Expenses

Income  
Expenses

Income  
Expenses

Income  
Expenses

Income  
Expenses

Income  
Expenses

Income  
Expenses

Income  
Expenses



Shipments overseas of Canadian grain from Seaboard Ports were as follows:-

		United Kingdom	Other Countries
		Bushels	
Montreal, Quebec	Wheat	-	879,375
	Oats	-	169,342
	Barley	-	8,333
Sorel, Quebec	Wheat	234,600	213,983
Quebec, Quebec	Wheat	179,500	99,883

EASTERN ELEVATORS:- United States grain stocks were 3,926,118 bushels lower than at a comparable date last year. Decreases are noted in wheat of 4,801,911, oats 145,733, barley 21,460 and rye 740 bushels while corn increased 1,043,726 bushels.

The quantities by classes of ports with increases and decreases:-

	Week ending May 25, 1934.	Week ending May 26, 1933	+ Increase - Decrease
At Georgian Bay Ports	2,833,906	4,256,436	- 1,422,530
At Lower Lake Ports	1,175,958	1,195,606	- 18,648
At St-Lawrence Ports	148,193	2,633,133	- 2,484,940
At Seaboard Ports	-	-	-
<b>T O T A L</b>	<b>4,158,057</b>	<b>8,084,175</b>	<b>- 3,926,118</b>

Shipments overseas of United States Grain from St. Lawrence Ports were as follows:-

	United Kingdom	Other Countries
Sorel, Quebec.	Wheat -	67,678 Bushels

U.S. LAKE PORTS:- Wheat stocks increased 541,969 bushels.

U.S. ATLANTIC SEABOARD PORTS:-Wheat stocks increased 240,851 bushels.

Inspections returns for the week ending May 21, 1934 with comparison for the previous year were as follows:-

	Week ending May 21, 1934	Week ending May 21, 1933	+ Increase - Decrease
Wheat	2,752	2,759	- 7
Oats	175	257	- 82
Barley	146	127	+ 19
Flaxseed	5	21	- 16
Rye	9	37	- 28
Mixed Grain	2	2	-
<b>T O T A L</b>	<b>3,069</b>	<b>3,203</b>	<b>- 134</b>

The number of bushels of grain shipped from western to the Canadian eastern points over the C.P.R. and C.N.R. for the week ending May 21, 1934 and the period from August 1, 1933 to May 21, 1934.

	WEEK ENDING MAY 21, 1934					PERIOD AUGUST 1, 1933 TO MAY 21, 1934				
	WHEAT	OATS	BARLEY	FLAXSEED	RYE	WHEAT	OATS	BARLEY	FLAXSEED	RYE
Via C.P.R.	-	1,765	4,165	-	-	13,032	64,007	19,410	-	-
Via C.N.R.	-	15,099	-	-	-	33,281	1,028,138	28,689	-	2,334
<b>T O T A L</b>	<b>-</b>	<b>16,864</b>	<b>4,165</b>	<b>-</b>	<b>-</b>	<b>46,313</b>	<b>1,092,145</b>	<b>48,099</b>	<b>-</b>	<b>2,334</b>

DULUTH.- Receipts of Canadian bonded grain at Duluth by rail for the week ending May 26, 1934 amounted to wheat 4,089 bushels. For the period August 1st, 1933 to May 26, 1934, rail receipts amounted to wheat 479,102 and rye 2,630 bushels.

Lake shipments for the week ending May 26, 1934 were nil. For the period from August 1, 1933 to date, 362,420 bushels of wheat were shipped.

Rail shipments for the week ending May 26, 1934 were nil.

Rail shipments from August 1, 1933 to date amounted to wheat 125,424 and rye 2,630 bushels.

ORIGINAL ARTICLES		DEPARTMENTS	
1	1	1	1
2	2	2	2
3	3	3	3
4	4	4	4
5	5	5	5
6	6	6	6
7	7	7	7
8	8	8	8
9	9	9	9
10	10	10	10

CONTENTS  
ORIGINAL ARTICLES  
DEPARTMENTS  
CONTENTS  
ORIGINAL ARTICLES  
DEPARTMENTS

1	1	1	1
2	2	2	2
3	3	3	3
4	4	4	4
5	5	5	5
6	6	6	6
7	7	7	7
8	8	8	8
9	9	9	9
10	10	10	10

1	1	1	1
2	2	2	2
3	3	3	3
4	4	4	4
5	5	5	5
6	6	6	6
7	7	7	7
8	8	8	8
9	9	9	9
10	10	10	10

CONTENTS  
ORIGINAL ARTICLES  
DEPARTMENTS  
CONTENTS  
ORIGINAL ARTICLES  
DEPARTMENTS

1	1	1	1
2	2	2	2
3	3	3	3
4	4	4	4
5	5	5	5
6	6	6	6
7	7	7	7
8	8	8	8
9	9	9	9
10	10	10	10

CONTENTS  
ORIGINAL ARTICLES  
DEPARTMENTS  
CONTENTS  
ORIGINAL ARTICLES  
DEPARTMENTS

1	1	1	1
2	2	2	2
3	3	3	3
4	4	4	4
5	5	5	5
6	6	6	6
7	7	7	7
8	8	8	8
9	9	9	9
10	10	10	10

CONTENTS  
ORIGINAL ARTICLES  
DEPARTMENTS  
CONTENTS  
ORIGINAL ARTICLES  
DEPARTMENTS

1	1	1	1
2	2	2	2
3	3	3	3
4	4	4	4
5	5	5	5
6	6	6	6
7	7	7	7
8	8	8	8
9	9	9	9
10	10	10	10

CONTENTS  
ORIGINAL ARTICLES  
DEPARTMENTS  
CONTENTS  
ORIGINAL ARTICLES  
DEPARTMENTS



Stocks of Grain at Different Elevators during the week ending May 25, 1934.

	WHEAT	OATS	BARLEY	FLAXSEED	RYE
	B u s h e l s				
Western Country Elevators /	82,634,143	3,584,687	2,334,209	187,345	676,632
Interior Pte. and Mill Elevs. /	6,049,078	1,191,802	1,321,116	27,406	27,423
Interior Pub. and Semi-Pub. Terms.	1,142,339	251,358	123,094	3,953	224
Vancouver and New Westminster	9,194,662	367,281	111,831	268	68,352
Victoria	930,474	-	-	-	-
Prince Rupert Elevator	1,092,150	303	-	-	-
Churchill	2,475,764	-	-	-	-
Fort William and Port Arthur	71,517,128	2,010,154	3,958,051	292,233	2,214,630
In Transit Lakes	3,004,306	1,021,538	418,733	-	55,000
Eastern Elevs. - Lake Ports	5,482,598	1,816,931	1,015,924	-	176,210
Eastern Elevs. - Sbd. Ports	11,124,992	749,188	148,104	-	609,948
U. S. Lake Ports	3,954,610	-	-	-	-
U. S. Atlantic Seaboard Ports	501,187	-	-	-	75,601
T O T A L	199,103,431	10,993,242	9,431,062	511,205	3,904,020
Previous week	200,565,225	11,497,471	9,641,518	540,850	3,908,497
Same week previous year	203,423,983	9,805,591	6,579,908	1,288,459	5,062,050

/ Estimated.

Quantity of Screenings received, shipped and in store at the undermentioned elevators during the week ending May 25, 1934.

	Amount in Store May 18, 1934		Amount Received by Vessel		Amount Shipped		Amount in Store May 25, 1934.	
	Tons	Lbs.	Tons	Lbs.	Tons	Lbs.	Tons	Lbs.
Owen Sound	356	1,918	-	-	10	-	346	1,918
Goderich Elev. Co.	204	-	271	770	95	-	380	770
Toronto	30	-	-	-	-	-	30	-
Montreal	-	1,126	-	-	-	-	-	126
T O T A L	591	1,044	271	770	105	-	757	1,814

Lake Shipments from Head of the Lakes, for the period ending May 21, 1934.

	Canadian Lower Lake Ports	Montreal	Sorel	Quebec	Buffalo	Other U. S. A. Ports	Total
Wheat	2,179,695	318,254	112,068	-	2,412,068	220,000	5,242,085
Oats	1,315,048	93,341	-	-	-	-	1,408,389
Barley	291,813	85,823	-	-	-	-	377,636
Flaxseed	-	-	-	Nil	-	-	-
Rye	62,540	-	-	-	-	-	62,540
T O T A L	3,849,096	497,418	112,068	-	2,412,068	220,000	7,090,650
Period ending May 21, 1933	3,311,703	1,768,409	95,500	266,434	1,989,776	609,286	8,041,208

Lake Shipments from Head of the Lakes for the period from the opening of navigation to May 21, 1934.

Wheat	7,712,496	3,188,648	329,712	169,302	6,362,986	508,562	18,271,706
Oats	3,707,729	301,252	-	79,031	-	-	4,088,012
Barley	1,551,102	203,825	-	37,078	-	-	1,792,005
Flaxseed	-	28,531	-	-	-	-	28,531
Rye	62,540	-	-	-	-	-	62,540
T O T A L	13,033,867	3,722,256	329,712	285,411	6,362,986	508,562	24,242,794
Period ending May 21, 1933	20,466,435	5,424,445	726,116	2,318,071	6,584,010	1,861,489	37,380,566



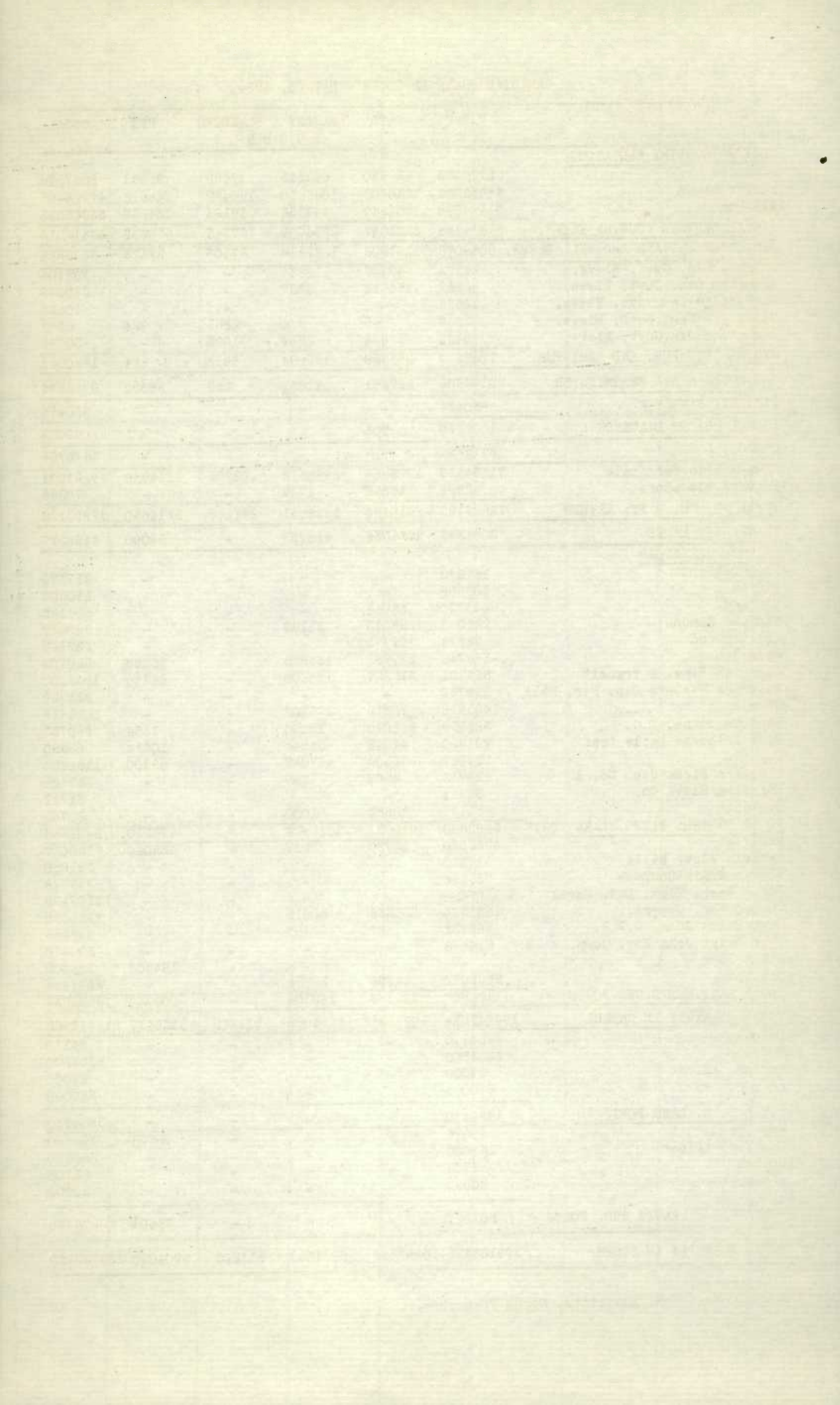


- 7 -  
CANADIAN GRAIN IN STORE - MAY 25, 1934.

	WHEAT	OATS	BARLEY	FLAXSEED	RYE	TOTAL
	B U S H E L S					
WESTERN COUNTRY ELEVATORS						
Manitoba	6706463	426630	841343	17689	95451	8087576
Saskatchewan	44432982	1650708	1043630	150472	446613	47724405
Alberta	31494698	1507349	449236	19184	134568	33605035
TOTAL WESTERN COUNTRY ELEVS.	82634143	3584687	2334209	187345	676632	89417016
INTERIOR PRIVATE AND MILL ELEVS.	6049073	1191802	1321116	27406	27423	8616825
Calgary Can. Govt. Elevs.	24128	47747	110234	-	-	182109
Edmonton Can. Govt. Elevs.	83557	184612	9857	-	-	278026
Lethbridge Can. Govt. Elevs.	10525	-	-	-	-	10525
Moose Jaw Can. Govt. Elevs.	3058	65	674	2855	224	6876
Saskatoon Can. Govt. Elevs.	8421	18934	2329	1098	-	30782
TOTAL INT. PUB. AND SEMI-PUB.	1142339	251358	123094	3953	224	1520968
VANCOUVER & NEW WESTMINSTER	9194662	367281	111831	268	68352	9742394
VICTORIA ELEVATOR	930474	-	-	-	-	930474
PRINCE RUPERT ELEVATOR	1092150	303	-	-	-	1092453
CHURCHILL	2475764	-	-	-	-	2475764
Semi-Public Terminals	71464837	1993789	3956312	292233	2214630	79921801
Private Elevators	52291	16365	1739	-	-	70395
TOTAL FT. WM. & PT. ARTHUR	71517128	2010154	3958051	292233	2214630	79992196
IN TRANSIT LAKES	3004306	1021538	418733	-	55000	4499577
EASTERN ELEVATORS						
Port McNicoll	157370	-	-	-	-	157370
Tiffin	295608	-	-	-	-	295608
Midland	491230	62955	-	-	-	554185
Midland Simcoe	221039	298013	21168	-	-	540220
Collingwood	32375	199773	-	-	-	232148
Owen Sound	546746	227763	155975	-	30298	960782
Goderich Elev. & Transit	556121	275257	173208	-	44444	1049030
Goderich Western Can. Flr. Mill	228759	-	-	-	-	228759
Sarnia	1495918	70515	126103	-	-	1692536
Port Colborne, D.G.	322999	241090	15090	-	1554	580733
Port Colborne Maple Leaf	791350	47042	54944	-	10014	903350
Toronto	234527	363384	467047	-	89900	1154853
Kingston Richardson No. 1	23712	2507	1389	-	-	27608
Kingston Elev. Co.	33711	-	-	-	-	33711
Prescott	51133	28632	1000	-	-	80765
TOTAL EASTERN ELEVS. LAKE PORTS	5482593	1816931	1015924	-	176210	8491663
Montreal	4252820	512720	68037	-	425040	5258617
Ogilvie Flour Mills	317860	-	-	-	-	317860
Norris Grain Company	737718	-	-	-	-	737718
North Amer. Elev. Ltd. Sorel	1107498	-	-	-	-	1107498
Quebec Hbr. Commrs.	1681514	221566	40815	-	-	1943895
West Saint John, C.P.R.	486732	7	12497	-	-	499236
West Saint John Hbr. Comm.	514878	-	-	-	-	514878
Saint John	-	-	-	-	184908	184908
Halifax	2025972	14895	26755	-	-	2067622
TOTAL EAST. ELEVS. SBD. PORTS	11124992	749188	148104	-	609948	12632232
TOTAL QUANTITY IN CANADA	194647634	10993242	9431062	511205	3828419	219411562
Duluth	64110	-	-	-	-	64110
Buffalo	3323500	-	-	-	-	3323500
Buffalo Afloat	27000	-	-	-	-	27000
Erie	540000	-	-	-	-	540000
TOTAL U. S. LAKE PORTS	3954610	-	-	-	-	3954610
New York	48079	-	-	-	75601	123680
New York Afloat	368000	-	-	-	-	368000
Boston	65108	-	-	-	-	65108
Albany	20000	-	-	-	-	20000
TOTAL U.S. ATLANTIC SBD. PORTS	501187	-	-	-	75601	576788
TOTAL QUANTITY IN STORE	199103431	10993242	9431062	511205	3904020	223942960

/ Estimated.

x Included C.P.R. Elevators, North Transcona.





Grades of Canadian Grain in Store at Public, Semi-Public and Private Elevators, (Head of the Lakes, ), Interior, Public and Semi-Public Elevators, Vancouver, New Westminster, Prince Rupert, Churchill and Victoria Terminals and Eastern Elevators for the week ending May 25, 1934.

	Fort William & Port Arthur Semi-Public and Private	Interior Public and Semi-Public Terminals	Vancouver New West- minster Prince Rupert and Victoria Elevators	Eastern Elevators Lake Ports	Eastern Elevators Seaboard Ports	Total
<u>WHEAT</u>						
<u>B U S H E L S</u>						
No. 1 Hard	1,742,920	7,624	842,712	50,007	598,114	3,241,377
No. 1 Northern	46,843,529	25,161	2,489,200	3,850,963	7,257,640	60,466,493
No. 2 Northern	14,201,759	59,739	4,694,853	488,029	1,721,570	21,165,950
Dr. No. 2 Northern	-	960	-	-	-	960
No. 3 Northern	837,668	3,580	431,173	422,433	191,043	1,885,897
No. 4 Northern	439,499	1,612	386,134	212,985	207,499	1,247,729
No. 5 Wheat	287,277	3,936	211,235	211,715	1,000	715,163
No. 6 Wheat	215,497	7,522	90,133	10,550	-	323,702
Feed	35,025	-	167,019	-	-	202,044
No. 1 C.W. Durum	1,412,840	-	-	158,607	860,337	2,431,784
No. 2 C.W. Durum	429,096	-	-	-	59,647	488,743
No. 3 C.W. Durum	194,706	-	-	-	16,782	211,488
No. 4 C.W. Durum	20,276	-	-	-	-	20,276
Other Durum	53,635	-	-	-	141,741	195,376
Other	4,751,110	19,555	812,677	77,309	69,619	5,730,270
Private Elevators	52,291	-	-	-	-	52,291
TOTAL	71,517,128	129,689	10,125,136	5,482,598	11,124,992	98,279,543
<u>OATS</u>						
No. 1 C.W.	4,153	-	-	-	-	4,153
No. 2 C.W.	918,299	41,247	60,416	599,375	48,020	1,667,357
No. 3 C.W.	424,658	33,007	117,161	693,700	106,081	1,374,607
Ex. No. 1 Feed	96,112	44,176	98,084	-	14,001	252,373
No. 1 Feed	243,682	70,356	24,992	266,708	264,682	870,420
No. 2 Feed	82,419	21,917	8,156	-	68,740	181,232
No. 3 Feed	35,140	-	-	-	-	35,140
Private Elevators	16,365	-	-	-	-	16,365
Other	189,326	40,655	58,472	257,148	247,664	793,265
TOTAL	2,010,154	251,358	367,281	1,816,931	749,188	5,194,912
<u>NEW GRADE BARLEY</u>						
No. 3 Ex. C.W. 6 Row	398,972	-	-	-	1,667	400,639
3 Ex. C.W. Trebl	16,703	45	-	-	500	17,248
3 Ex. C.W. 2 Row	23,881	-	-	4,000	-	27,881
3 C. W.	2,785,299	3,313	57,366	770,762	108,875	3,725,615
4 C. W.	150,524	3,435	39,796	92,296	-	286,051
5 C. W.	110,877	1,684	10,918	-	1,232	124,711
6 C. W.	20,462	-	1,247	-	-	21,709
Private Elevators	1,739	-	-	-	-	1,739
Other	449,594	114,617	2,504	148,866	35,830	751,411
TOTAL	3,958,051	123,094	111,831	1,015,924	148,104	5,357,004
<u>FLAXSEED</u>						
No. 1 C. W.	278,628	3,953	185	-	-	282,766
No. 2 C. W.	6,132	-	83	-	-	6,215
No. 3 C. W.	931	-	-	-	-	931
No. 4 C. W.	453	-	-	-	-	453
Other	6,089	-	-	-	-	6,089
TOTAL	292,233	3,953	268	-	-	296,454
<u>RYE</u>						
No. 1 C. W.	21,547	-	403	89,900	-	111,850
No. 2 C. W.	1,897,331	-	67,949	46,915	453,002	2,465,197
No. 3 C. W.	201,373	224	-	39,395	153,905	394,897
No. 4 C. W.	12,362	-	-	-	-	12,362
Ergoty	55,569	-	-	-	-	55,569
Other	26,448	-	-	-	3,041	29,489
TOTAL	2,214,630	224	68,352	176,210	609,948	3,069,364
<u>TOTAL QUANTITY IN STORE</u>						
	79,992,196	508,318	10,672,868	8,491,663	12,632,232	112,297,277

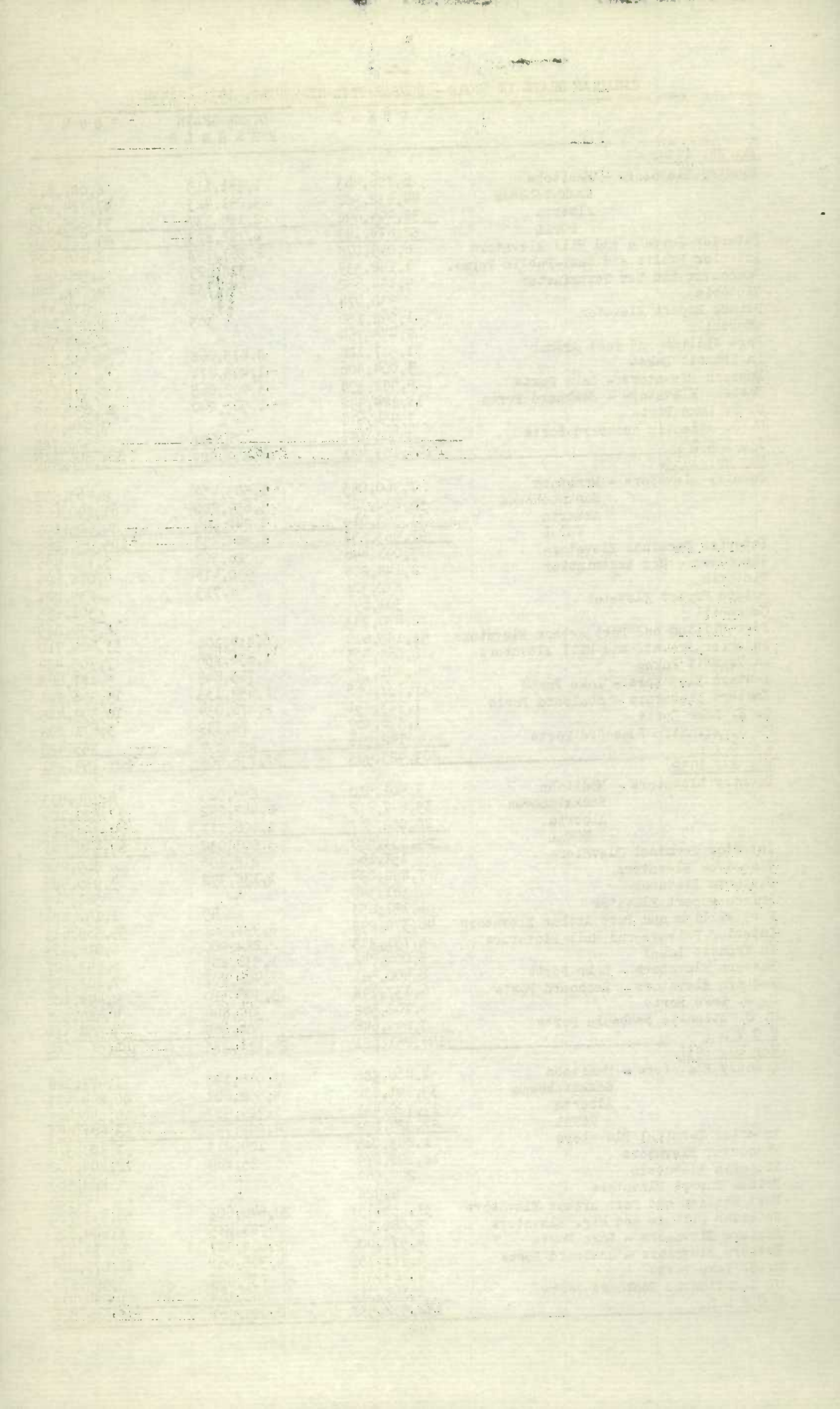




## CANADIAN GRAIN IN STORE - COMPARATIVE STATEMENT, 1931 - 1934

	W H E A T	OTHER GRAIN B U S H E L S	T O T A L
<u>May 25, 1934.</u>			
Country Elevators - Manitoba	6,706,463	1,381,113	8,087,576
Saskatchewan	44,432,982	3,291,423	47,724,405
Alberta	31,494,698	2,110,337	33,605,035
TOTAL	82,634,143	6,782,873	89,417,016
Interior Private and Mill Elevators	6,049,078	2,567,747	8,616,825
Interior Public and Semi-Public Terms.	1,142,339	378,629	1,520,968
Vancouver and New Westminster	9,194,662	547,732	9,742,394
Victoria	930,474	-	930,474
Prince Rupert Elevator	1,092,150	303	1,092,453
Churchill	2,475,764	-	2,475,764
Fort William and Port Arthur	71,517,128	8,475,068	79,992,196
In Transit Lakes	3,004,306	1,495,271	4,499,577
Eastern Elevators - Lake Ports	5,482,598	3,009,065	8,491,663
Eastern Elevators - Seaboard Ports	11,124,992	1,507,240	12,632,232
U. S. Lake Ports	3,954,610	-	3,954,610
U. S. Atlantic Seaboard Ports	501,187	75,601	576,788
T O T A L	199,103,431	24,839,529	223,942,960
<u>May 26, 1933.</u>			
Country Elevators - Manitoba	7,960,093	1,503,459	9,463,552
Saskatchewan	58,230,726	3,659,880	61,890,606
Alberta	31,363,014	3,242,094	34,605,108
TOTAL	97,553,833	8,405,433	105,959,266
Interior Terminal Elevators	3,091,446	26,509	3,117,955
Vancouver - New Westminster	8,148,208	930,416	9,078,624
Victoria	832,308	1,713	834,021
Prince Rupert Elevator	301,695	-	301,695
Churchill	2,430,283	-	2,430,283
Fort William and Port Arthur Elevators	51,145,610	6,479,100	57,624,710
Interior Private and Mill Elevators	6,068,503	1,636,956	7,705,459
In Transit Lakes	4,401,793	785,869	5,187,662
Eastern Elevators - Lake Ports	17,737,068	1,659,133	19,396,201
Eastern Elevators - Seaboard Ports	7,923,451	2,476,034	10,399,485
U. S. Lake Ports	3,596,869	74,339	3,671,208
U. S. Atlantic Seaboard Ports	192,916	260,506	453,422
T O T A L	203,423,983	22,736,008	226,159,991
<u>May 27, 1932.</u>			
Country Elevators - Manitoba	5,501,510	854,023	6,355,533
Saskatchewan	35,077,812	2,442,292	37,520,104
Alberta	22,052,567	1,706,717	23,759,284
TOTAL	62,631,889	5,003,032	67,634,921
Interior Terminal Elevators	151,162	218,806	369,968
Vancouver Elevators	7,892,094	1,138,392	9,030,486
Victoria Elevator	561,349	-	561,349
Prince Rupert Elevator	1,157,853	45	1,157,898
Fort William and Port Arthur Elevators	46,378,292	8,991,321	55,369,613
Interior Private and Mill Elevators	5,731,313	2,284,900	8,016,213
In Transit Lakes	5,006,742	1,536,885	6,543,627
Eastern Elevators - Lake Ports	6,400,581	1,402,207	7,802,788
Eastern Elevators - Seaboard Ports	6,137,798	3,356,310	9,494,108
U. S. Lake Ports	4,102,562	377,806	4,480,368
U. S. Atlantic Seaboard Ports	3,099,646	504,669	3,604,315
T O T A L	149,251,281	24,814,373	174,065,654
<u>May 29, 1931.</u>			
Country Elevators - Manitoba	4,466,986	3,010,142	7,477,128
Saskatchewan	35,741,832	4,552,601	40,294,433
Alberta	17,120,441	1,729,987	18,850,428
TOTAL	57,329,259	9,292,730	66,621,989
Interior Terminal Elevators	1,803,065	105,813	1,908,878
Vancouver Elevators	12,108,879	95,889	12,204,768
Victoria Elevators	284,569	-	284,569
Prince Rupert Elevators	9,928	-	9,928
Fort William and Port Arthur Elevators	37,855,157	20,640,603	58,495,760
Interior Private and Mfg. Elevators	5,861,191	2,783,435	8,644,626
Eastern Elevators - Lake Ports	4,577,006	2,062,407	6,639,413
Eastern Elevators - Seaboard Ports	6,771,755	4,306,061	11,077,816
U. S. Lake Ports	4,823,018	736,859	5,559,877
U. S. Atlantic Seaboard Ports	1,168,711	66,164	1,234,875
T O T A L	132,592,538	40,089,961	172,682,499







RECEIPTS AND SHIPMENTS OF GRAIN BY CLASSES OF ELEVATORS  
IN THE WEEK ENDING MAY 25, 1934.

		WHEAT	OATS	BARLEY	FLAXSEED	RYE	TOTAL
		B u s h e l s					
COUNTRY ELEVATORS, WESTERN DIVISION #							
Receipts	- Rail	1,907,587	305,175	134,694	1,766	6,684	2,355,906
Shipments	- Rail	4,342,677	387,068	257,316	9,701	11,500	5,008,262
INTERIOR PUBLIC AND SEMI-PUBLIC TERMINALS							
Receipts	- Rail	6,132	23,986	4,369	-	-	34,487
Shipments	- Rail	6,831	37,262	1,745	50	-	45,888
VANCOUVER - NEW WESTMINSTER ELEVATORS							
Receipts	- Rail	530,836	27,048	1,388	-	-	559,272
Shipments	- Vessel	565,678	20,094	-	-	-	585,772
	Rail	-	2,352	-	-	-	2,352
PUBLIC AND PRIVATE TERMINAL ELEVATORS FORT WILLIAM AND PORT ARTHUR							
Receipts	- Rail	4,100,444	86,438	158,765	2,351	10,013	4,358,011
Shipments	- Vessel	4,330,216	676,445	386,964	-	55,000	5,448,625
	Rail	7,994	44,860	3,935	-	-	56,789
INTERIOR PRIVATE AND MILL ELEVATORS #							
Receipts	- Rail	648,608	284,296	93,074	16,995	671	1,043,644
Shipments	- Rail	727,697	336,581	153,618	3,497	6	1,221,399
EASTERN ELEVATORS - GEORGIAN BAY PORTS							
Receipts	- Vessel	1,012,474	620,855	25,018	-	-	1,658,347
Shipments	- Vessel	285,229	-	-	-	-	285,229
	Rail	248,180	16,022	6,707	-	-	270,909
Local and Mill		158,584	198,063	25,650	-	825	383,122
LOWER LAKE PORTS							
Receipts	- Vessel	760,859	543,259	417,819	-	7,539	1,729,476
	Rail	-	1,991	-	-	-	1,991
Shipments	- Vessel	1,285,488	673,838	166,740	-	-	2,126,066
	Rail	89,591	6,001	1,464	-	2,774	99,830
Local and Mill		52,870	68,519	49,778	-	2,100	173,267
ST. LAWRENCE PORTS							
Receipts	- Vessel	2,135,675	378,412	15,003	28,514	-	2,557,604
	Rail	507,720	-	-	-	-	507,720
Shipments	- Vessel	1,607,341	169,342	8,333	-	-	1,785,016
	Rail	-	2,000	-	-	-	2,000
Local and Mill		47,819	54,717	9,125	28,514	4,788	144,963
SEABOARD PORTS							
Receipts	- Rail	-	1,791	-	-	-	1,791
Shipments	-	-	-	Nil	-	-	-
Local and Mill		67	3,868	-	-	-	3,935
TOTAL EASTERN ELEVATORS							
Receipts	- Vessel	3,909,008	1,542,526	457,840	28,514	7,539	5,945,427
	Rail	507,720	3,782	-	-	-	511,502
Shipments	- Vessel	3,178,058	843,180	175,073	-	-	4,196,311
	Rail	337,771	24,023	8,171	-	2,774	372,739
Local and Mill		259,340	325,167	84,553	28,514	7,713	705,287

# Week ending May 18, 1934.





STOCKS OF UNITED STATES GRAIN IN CANADA AT MAY 25, 1934.

	WHEAT	OATS	BARLEY	RYE	CORN	TOTAL
	B U S H E L S					
Deport Harbour	-	26,385	-	-	1,256,142	1,282,527
Port McNicoll	-	1,929	-	-	181,419	183,348
Tiffin No. 2	-	-	-	-	138,431	138,431
Midland Aberdeen	-	137,999	-	-	116,261	254,266
Midland Grain	-	-	-	-	8,674	8,674
Collingwood Terminal	-	-	-	-	356,813	356,813
Collingwood, C.N.R.	-	5,121	-	-	-	5,121
Owen Sound, G.L.	-	105,912	-	-	139,741	245,653
Goderich Elev. Co.	-	-	-	-	260,753	260,753
Sarnia	-	-	-	-	98,320	98,320
Port Colborne, D.G.	-	-	-	-	863,232	863,232
Port Colborne, Maple Leaf	-	-	-	-	5,948	5,948
Toronto	-	-	-	-	290,304	290,304
Kingston Elev. Co.	-	-	-	-	1,000	1,000
Prescott	-	-	-	-	15,474	15,474
Montreal Harbour Commrs.	-	-	-	-	-	-
No.s 1, 2 and B.	2	-	-	366	147,825	148,193
T O T A L	2	277,346	-	366	3,880,343	4,158,057
Same period previous year	4,801,913	423,079	21,460	1,106	2,836,617	8,084,175

RECEIPTS AND SHIPMENTS OF UNITED STATES GRAIN MAY 25, 1934.

	R E C E I P T S		S H I P M E N T S	
	Water	Rail	Water	Rail
	GEORGIAN BAY PORTS			
Oats	67,939	-	-	42,150
Corn	48,942	-	28,891	247,459
	LOWER LAKE PORTS			
Wheat	66,814	-	131,894	-
Corn	25,474	5,989	405,236	16,103
	ST. LAWRENCE PORTS			
Wheat	-	-	67,678	-

STOCKS OF FOREIGN GRAIN IN CANADA. MAY 25, 1934.

	ARGENTINE CORN	SOUTH AFRICAN CORN	TOTAL CORN	RUSSIAN RYE	ARGENTINE FLAXSEED
Goderich Elev. Co.	-	-	-	-	33,500
Port Colborne, D.G.	14,000	-	14,000	-	-
Port Colborne, M.L.	95,428	-	95,428	-	-
Toronto	89,881	-	89,881	-	-
Kingston, J.R.	1,288	-	1,288	-	-
Kingston Elev. Co.	-	-	-	263,076	-
Prescott	24,691	-	24,691	-	-
Montreal	352,156	46,714	398,870	-	311,396
Quebec	179,150	-	179,150	-	-
Saint John	6,800	-	6,800	-	-
Halifax	22,020	-	22,020	-	-
T O T A L	785,414	46,714	832,128	263,076	344,896
Same period previous year	9,135	1,103,910	1,113,045	-	-

RECEIPTS AND SHIPMENTS OF FOREIGN GRAIN IN CANADA FOR THE WEEK ENDING MAY 25, 1934.

	ARGENTINE CORN		SOUTH AFRICAN CORN		RUSSIAN RYE		ARGENTINE FLAXSEED	
Ports	Receipts	Shipments	Receipts	Shipments	Receipts	Shipments	Receipts	Shipments
Georgian Bay	-	-	-	-	-	-	-	10,178
Lower Lake	100,358	3,978	-	-	559,425	296,348	-	-
St. Lawrence	-	123,108	-	1,000	-	212,929	-	8,000
Seaboard	-	8,925	-	-	-	-	-	-





STOCKS, RECEIPTS AND SHIPMENTS OF THE COUNTRY ELEVATORS IN THE WESTERN  
DIVISION IN THE WEEK ENDING MAY 18, 1934.

	WHEAT	OATS	BARLEY	FLAXSEED	RYE	TOTAL
	B U S H E L S					
<u>MANITOBA</u>						
In Store, previous week	7,877,086	463,826	918,057	18,226	95,483	9,372,678
Receipts	212,646	30,695	59,654	95	429	303,519
TOTAL	8,089,732	494,521	977,711	18,321	95,912	9,676,197
Shipments	1,073,380	50,052	134,462	622	436	1,258,952
In Store	7,016,352	444,469	843,249	17,699	95,476	8,417,245
<u>SASKATCHEWAN</u>						
In Store, previous week	46,220,181	1,566,191	1,101,254	158,009	454,560	49,500,195
Receipts	822,913	147,026	58,145	1,621	5,238	1,034,943
TOTAL	47,043,094	1,713,217	1,159,399	159,630	459,798	50,535,138
Shipments	1,852,065	29,746	87,719	7,553	9,246	1,986,329
In Store	45,191,028	1,683,327	1,071,680	152,077	450,542	48,548,654
<u>ALBERTA</u>						
In Store, previous week	32,447,132	1,702,324	482,852	20,723	135,069	34,788,100
Receipts	872,028	127,454	16,895	50	1,017	1,017,444
TOTAL	33,319,160	1,829,778	499,747	20,773	136,086	35,805,544
Shipments	1,417,232	307,270	35,135	1,526	1,818	1,762,981
In Store	31,901,938	1,522,508	464,612	19,247	134,257	34,042,562

TOTAL RECEIPTS AT COUNTRY ELEVATORS AND PLATFORM LOADINGS# IN THE  
PERIOD AUGUST 1, 1933 TO MAY 18, 1934.

	WHEAT	OTHER GRAIN	TOTAL
	B U S H E L S		
Manitoba	25,727,065	8,066,759	33,793,824
Saskatchewan	98,478,049	22,248,059	120,726,108
Alberta	75,588,656	15,221,925	90,810,581
Total 1933 - 1934	199,793,770	45,536,743	245,330,513
Same period 1932 - 1933	336,441,969	41,672,072	378,114,041

#Platform Loadings to May 14, 1934.

STATE OF NEW YORK  
IN SENATE

January 1, 1900

REPORT OF THE  
COMMISSIONER OF THE LAND OFFICE  
IN RESPONSE TO A RESOLUTION PASSED BY THE SENATE  
JANUARY 1, 1899

ALBANY:  
J. B. LIPPINCOTT & CO. PRINTERS  
1899

ALBANY:  
J. B. LIPPINCOTT & CO. PRINTERS  
1899

STATE OF NEW YORK  
IN SENATE

January 1, 1900

REPORT OF THE  
COMMISSIONER OF THE LAND OFFICE  
IN RESPONSE TO A RESOLUTION PASSED BY THE SENATE  
JANUARY 1, 1899

ALBANY:  
J. B. LIPPINCOTT & CO. PRINTERS  
1899



INTERIOR TERMINAL ELEVATORS

Receipts, Shipments and Quantities in Store, Week ending May 25, 1934.

	WHEAT	OATS	BARLEY	FLAXSEED	RYE	TOTAL
	B U S H E L S					
<u>CALGARY</u>						
In Store, previous week	24,128	47,747	107,155	-	-	179,030
Receipts	-	-	3,079	-	-	3,079
TOTAL	24,128	47,747	110,234	-	-	182,109
Shipments - Rail			N i l			
In Store	24,128	47,747	110,234	-	-	182,109
<u>EDMONTON</u>						
In Store, previous week	81,965	197,083	8,567	-	-	287,615
Receipts	3,192	-	1,290	-	-	4,482
TOTAL	85,157	197,083	9,857	-	-	292,097
Shipments - Rail	1,600	12,471	-	-	-	14,071
In Store	83,557	184,612	9,857	-	-	278,026
<u>LETHBRIDGE</u>						
In Store, previous week	10,525	-	-	-	-	10,525
Receipts	-	-	N i l	-	-	-
TOTAL	10,525	-	-	-	-	10,525
Shipments - Rail	-	-	N i l	-	-	-
In Store	10,525	-	-	-	-	10,525
<u>MOOSE JAW</u>						
In Store, previous week	8,289	65	2,074	2,855	224	13,507
Receipts	-	17,817	-	-	-	17,817
TOTAL	8,289	17,882	2,074	2,855	224	31,324
Shipments - Rail	5,231	17,817	1,400	-	-	24,448
In Store	3,058	65	674	2,855	224	6,876
<u>SASKATOON</u>						
In Store, previous week	5,481	19,739	2,674	1,148	-	29,042
Receipts	2,940	6,169	-	-	-	9,109
TOTAL	8,421	25,908	2,674	1,148	-	38,151
Shipments - Rail	-	6,974	345	50	-	7,369
In Store	8,421	18,934	2,329	1,098	-	30,782
<u>CHURCHILL</u>						
<u>PUBLIC TERMINAL</u>						
In Store, previous week	2,475,764	-	-	-	-	2,475,764
Receipts	-	-	N i l	-	-	-
TOTAL	2,475,764	-	-	-	-	2,475,764
Shipments - Vessel	-	-	N i l	-	-	-
In Store	2,475,764	-	-	-	-	2,475,764





STOCKS, RECEIPTS AND SHIPMENTS OF THE PACIFIC COAST ELEVATORS  
IN THE WEEK ENDING MAY 25, 1934.

	WHEAT	OATS	BARLEY	FLAXSEED	RYE	TOTAL
	B U S H E L S					
<u>VANCOUVER - NEW WESTMINSTER</u>						
In Store, previous week	9,235,403	360,460	114,687	268	68,352	9,779,170
Receipts	530,836	27,048	1,388	-	-	559,272
TOTAL	9,766,239	387,508	116,075	268	68,352	10,338,442
Shipments - Vessel	565,678	20,094	-	-	-	585,772
Rail	-	2,352	-	-	-	2,352
In Store	9,194,662	367,281	111,831	268	68,352	9,742,394

PRINCE RUPERT

In Store, previous week	1,092,150	303	-	-	-	1,092,453
Receipts			Nil			
TOTAL	1,092,150	303	-	-	-	1,092,453
Shipments - Vessel			Nil			
In Store	1,092,150	303	-	-	-	1,092,453

VICTORIA

In Store, previous week	930,474	-	-	-	-	930,474
Receipts			Nil			
TOTAL	930,474	-	-	-	-	930,474
Shipments - Vessel			Nil			
In Store	930,474	-	-	-	-	930,474

DAILY AND WEEKLY AVERAGE PRICES OF WHEAT IN THE WESTERN DIVISION  
IN THE WEEK ENDING MAY 26, 1934

(Basis Vancouver, B. C.)

	May 21 ¢	May 22 ¢	May 23 ¢	May 24 ¢	May 25 ¢	May 26 ¢	Weekly Average ¢
No. 1 Hard	70.5	70.7	71.6	H o l i d a y	74.5	74.6	72.4
No. 1 Northern	67.2	67.5	68.3		71.2	71.3	69.1
No. 2 Northern	62.2	62.7	63.6		66.5	66.3	64.3
No. 3 Northern	60.5	60.7	61.6		64.5	64.6	62.4
No. 4 Northern	60	60.2	61.1		64	64.1	61.9
No. 5	56.2	57	57.9		60.7	60.9	58.5
No. 6	51.2	52	52.9		55.7	55.9	53.5
Feed	45.7	46	46.9		49.7	49.9	47.6

STATE OF NEW YORK

IN SENATE

NAME	RESIDENCE	EDUCATION	EXPERIENCE	REMARKS
JOHN A. BROWN	ALBANY	B.S.	1900-1905	
JAMES C. DAVIS	ALBANY	B.S.	1905-1910	
WILLIAM E. FORD	ALBANY	B.S.	1910-1915	
CHARLES H. GIBSON	ALBANY	B.S.	1915-1920	
EDWARD J. HARRIS	ALBANY	B.S.	1920-1925	
FRANK L. JONES	ALBANY	B.S.	1925-1930	
GEORGE M. KELLY	ALBANY	B.S.	1930-1935	
HENRY N. LEE	ALBANY	B.S.	1935-1940	
IRVING O. MANN	ALBANY	B.S.	1940-1945	
JACOB P. ROSS	ALBANY	B.S.	1945-1950	
JOHN Q. SMITH	ALBANY	B.S.	1950-1955	
LESLIE T. TAYLOR	ALBANY	B.S.	1955-1960	
MICHAEL V. WALKER	ALBANY	B.S.	1960-1965	
NATHAN Y. WHITE	ALBANY	B.S.	1965-1970	
OSCAR Z. BLACK	ALBANY	B.S.	1970-1975	
PETER A. GREEN	ALBANY	B.S.	1975-1980	
ROBERT B. HILL	ALBANY	B.S.	1980-1985	
SAMUEL C. JONES	ALBANY	B.S.	1985-1990	
THOMAS D. KELLY	ALBANY	B.S.	1990-1995	
URSULA E. LEE	ALBANY	B.S.	1995-2000	
VICTOR F. MANN	ALBANY	B.S.	2000-2005	
WILLIAM G. ROSS	ALBANY	B.S.	2005-2010	
XAVIER H. SMITH	ALBANY	B.S.	2010-2015	
YVONNE I. TAYLOR	ALBANY	B.S.	2015-2020	
ZACHARY J. WALKER	ALBANY	B.S.	2020-2025	

STATE OF NEW YORK

IN SENATE

COMMITTEE ON

NAME	RESIDENCE	EDUCATION	EXPERIENCE	REMARKS
JOHN A. BROWN	ALBANY	B.S.	1900-1905	
JAMES C. DAVIS	ALBANY	B.S.	1905-1910	
WILLIAM E. FORD	ALBANY	B.S.	1910-1915	
CHARLES H. GIBSON	ALBANY	B.S.	1915-1920	
EDWARD J. HARRIS	ALBANY	B.S.	1920-1925	
FRANK L. JONES	ALBANY	B.S.	1925-1930	
GEORGE M. KELLY	ALBANY	B.S.	1930-1935	
HENRY N. LEE	ALBANY	B.S.	1935-1940	
IRVING O. MANN	ALBANY	B.S.	1940-1945	
JACOB P. ROSS	ALBANY	B.S.	1945-1950	
JOHN Q. SMITH	ALBANY	B.S.	1950-1955	
LESLIE T. TAYLOR	ALBANY	B.S.	1955-1960	
MICHAEL V. WALKER	ALBANY	B.S.	1960-1965	
NATHAN Y. WHITE	ALBANY	B.S.	1965-1970	
OSCAR Z. BLACK	ALBANY	B.S.	1970-1975	
PETER A. GREEN	ALBANY	B.S.	1975-1980	
ROBERT B. HILL	ALBANY	B.S.	1980-1985	
SAMUEL C. JONES	ALBANY	B.S.	1985-1990	
THOMAS D. KELLY	ALBANY	B.S.	1990-1995	
URSULA E. LEE	ALBANY	B.S.	1995-2000	
VICTOR F. MANN	ALBANY	B.S.	2000-2005	
WILLIAM G. ROSS	ALBANY	B.S.	2005-2010	
XAVIER H. SMITH	ALBANY	B.S.	2010-2015	
YVONNE I. TAYLOR	ALBANY	B.S.	2015-2020	
ZACHARY J. WALKER	ALBANY	B.S.	2020-2025	



DAILY AND WEEKLY AVERAGE PRICES OF GRAIN  
Week ending May 26, 1934

WESTERN DIVISION  
(Basis Fort William and Port Arthur)

	May 21 \$ ¢	May 22 \$ ¢	May 23 \$ ¢	May 24 \$ ¢	May 25 \$ ¢	May 26 \$ ¢	Weekly Average \$ ¢
<u>WHEAT</u>							
No. 1 Man. Hard	.722	.729	.736		.76	.759	.741
No. 1 Man. Northern	.692	.693	.703		.732	.733	.711
No. 2 Man. Northern	.662	.663	.673		.702	.703	.681
No. 3 Man. Northern	.637	.639	.649		.675	.676	.655
No. 4 Man. Northern	.612	.616	.626		.652	.653	.632
No. 5	.577	.579	.579		.602	.603	.588
No. 6	.537	.543	.543		.567	.563	.551
Feed	.472	.473	.473		.497	.493	.482
Rejected No. 1 Northern	.622	.623	.633		.662	.663	.641
No. 2 Northern	.602	.603	.613		.642	.643	.621
No. 3 Northern	.567	.569	.579		.607	.609	.586
Tough No. 1 Hard	.692	.699	.706		.73	.729	.711
No. 1 Northern	.662	.663	.673	H o l i d a y	.702	.603	.681
No. 2 Northern	.627	.629	.639		.667	.669	.646
No. 3 Northern	.605	.611	.621		.647	.649	.627
Smutty No. 1 Northern	.662	.663	.673		.702	.703	.681
No. 2 Northern	.632	.633	.643		.672	.673	.651
No. 3 Northern	.592	.593	.603		.632	.633	.611
Durum No. 1	.712	.719	.729		.752	.749	.732
No. 2	.662	.663	.669		.697	.699	.678
No. 3	.622	.623	.629		.657	.659	.638
A. R. W. No. 1	.642	.643	.653		.682	.683	.661
No. 2	.622	.623	.633		.662	.663	.641
No. 3	.602	.603	.613		.642	.643	.621
<u>OATS</u>							
No. 2 C. W.	.343	.345	.353		.357	.356	.351
No. 3 C. W.	.316	.32	.33		.333	.336	.327
Ex. No. 1 Feed	.313	.315	.323		.327	.326	.321
No. 1 Feed	.309	.31	.319		.322	.326	.317
No. 2 Feed	.301	.302	.311		.315	.313	.308
No. 3 Feed	.263	.265	.273		.277	.276	.271
<u>BARLEY (NEW GRADE)</u>							
2 Row	.466	.471	.48		.487	.489	.479
6 Row	.426	.431	.44		.447	.449	.439
Trebi	.366	.371	.38		.387	.389	.379
No. 3 C. W.	.366	.371	.38		.387	.389	.379
No. 4 C. W.	.343	.349	.357		.365	.366	.356
No. 5 C. W.	.326	.331	.34		.347	.349	.339
No. 6 C. W.	.313	.319	.327		.335	.336	.326
<u>RYE</u>							
No. 1 C. W.	.455	.462	.471		.486	.486	.472
No. 2 C. W.	.455	.462	.471		.486	.486	.472
No. 3 C. W.	.41	.417	.426		.441	.441	.427
Rejected No. 2 C. W.	.395	.402	.411		.426	.426	.412
No. 4 C. W.	.395	.402	.411		.426	.426	.412
Rejected for Ergot	.355	.362	.371		.386	.386	.372
<u>FLAXSEED</u>							
No. 1 C. W.	1.552	1.557	1.575		1.602	1.607	1.579
No. 2 C. W.	1.512	1.517	1.535		1.562	1.567	1.539
No. 3 C. W.	1.412	1.417	1.435		1.462	1.467	1.439
No. 4 C. W.	1.412	1.417	1.435		1.462	1.467	1.439
<u>ONTARIO - TORONTO</u>							
Wheat, good Milling	.97-	.97-	.97-	H o l i d a y	.97-	.97-	.97-
	.98	.98	.98		.98	.98	.98
Ontario Corn	.65-	.65-	.65-		.65-	.65-	.65-
	.70	.70	.70		.70	.70	.70
Barley	.45-	.45-	.45-		.45-	.45-	.45-
	.47	.47	.47		.47	.47	.47
F.O.B. Shipping Point							

STATISTICS CANADA LIBRARY  
BIBLIOTHÈQUE STATISTIQUE CANADA



1010674908