

DOMINION BUREAU OF STATISTICS  
APR 6 1935  
PROPERTY OF THE LIBRARY

CANADA  
DEPARTMENT OF TRADE AND COMMERCE  
DOMINION BUREAU OF STATISTICS  
AGRICULTURAL BRANCH

Vol. 15

No. 35

Historical File Copy

CANADIAN GRAIN STATISTICS

Week ending

MARCH 29, 1935

[Records for Western Inspection Division supplied by Board of Grain Commissioners for Canada.]

-----+ + +-----

Published by Authority of the HON. R.B. HANSON, K.C., M.P.,  
Minister of Trade and Commerce.

+ + +

OTTAWA

1935

# I N D E X

General Summary .....	1 - 6
Canadian Grain in Store by Elevators .....	7
Canadian Grain in Store by Grades .....	8
Comparative Statement of Grain in Store .....	9
Receipts and Shipments of Canadian Grain .....	10
U. S. Grain in Store, Receipts and Shipments .....	11
Stocks, Receipts and Shipments of the Country Elevators in the Western Division .....	12
Receipts, Shipments and Quantities in Store at Interior Terminal Elevators .....	13
Stocks, Receipts and Shipments of the Pacific Elevators and Vancouver Prices .....	14
Daily and Weekly Average Prices at Fort William and Port Arthur and Toronto for the Week ending March 30, 1935 .....	15
Inspections, Eastern Division, March, 1935 .....	16 - 17

---



DEPARTMENT OF TRADE AND COMMERCE  
DOMINION BUREAU OF STATISTICS - CANADA  
AGRICULTURAL BRANCH

(Issued April 5, 1935.)

Dominion Statistician:	R. H. Coats, I.L.D., F.R.S.C., F.S.S. (Hon.)
Chief, Agricultural Branch:	T. W. Grindley, Ph.D.
Assistant Chief, Agricultural Branch:	W. Dougan.

WHEAT STOCKS IN STORE

Canadian wheat in store for the week ending March 29, 1935 shows a decrease of 2,614,733 bushels as compared with the previous week and an increase of 7,499,517 bushels when compared with the same week in 1934. The visible supply was reported as 231,533,622 bushels as compared with a revised figure of 234,148,355 bushels for the previous week and 224,024,105 bushels for the corresponding week in 1934.

Canadian wheat in the United States amounted to 16,217,206 bushels, a net decrease of 1,632,560 bushels from the previous week when 17,849,766 bushels were reported. The Canadian wheat in store in the United States is located at the following ports: Buffalo 3,854,291; New York 634,888; Erie 1,018,000; Albany 4,144,000; Duluth 1,367,027 and New Orleans 199,000 bushels. Decreases took place in all the United States ports except New York and New Orleans which show small increases of 38,240 and 1,000 bushels respectively over the previous week. The largest reductions are shown at Buffalo and Erie, while smaller decreases are noted at Duluth and Albany. For the corresponding week a year ago the Canadian wheat stocks amounted to 5,655,616 bushels located as follows: Buffalo 1,526,513; New York 1,013,917; Albany 2,778,000; Boston 284,568; Newport News 39,000 and Duluth 13,618 bushels.

United States wheat in Canada was shown as 1,048,912 bushels as compared with 2,228,643 bushels a year ago.

PRIMARY MOVEMENT

Wheat marketings in the Prairie Provinces for the week ending March 22, 1935 amounted to 2,308,323 bushels, an increase of 584,888 bushels over the previous week when 1,723,435 bushels were marketed. During the corresponding period a year ago the receipts were 1,981,647 bushels. For the thirty-three weeks ending March 22, 1935 and March 23, 1934, 192,803,098 and 186,484,034 bushels respectively were received from the farms. This is an increase of 6,319,064 bushels over the same period a year ago. By provinces the receipts for the week ending March 22, 1935 were as follows, figures within brackets being those for the week ending March 23, 1934: Manitoba 205,362 (271,638) Saskatchewan 1,055,734 (960,686); Alberta 1,047,227 (749,323) bushels.

Marketings of wheat in the three Prairie Provinces to March 22, 1935 as compared with the same period in 1934 were as follows, figures within brackets being those for 1934: Manitoba 28,000,642 (24,517,314); Saskatchewan 84,620,477 (91,898,287); Alberta 80,181,979 (70,068,433) bushels.

OVERSEAS EXPORT CLEARANCES

During the week ending March 29, 1935 the export clearances of wheat amounted to 1,842,277 bushels as compared with 1,690,049 bushels for the previous week, an increase of 152,228 bushels and when compared with the same week in 1934, an increase of 427,681 bushels.

Clearances by ports for the weeks ending March 29, 1935 and March 30, 1934 were as follows (in bushels):

	Week ending March 29, 1935	Week ending March 30, 1934
Montreal	-	(x) 200
West Saint John	298,284	323,605
Halifax	252,133	79,994
United States Ports	65,000	451,000
Vancouver-New Westminster	1,226,860	559,797
<b>TOTAL</b>	<b>1,842,277</b>	<b>1,414,596</b>

(x) Shipped by rail to Maritime ports for export overseas.

The following table shows the export clearances of Canadian wheat by ports since the commencement of the present crop year, along with comparative figures for the same period in 1933-34 (in bushels):

	1934-35	1933-34
Montreal	18,702,244	31,928,354
Quebec	1,762,051	8,491,665
Sorel	2,806,891	5,287,684
Halifax	2,477,841	1,502,419
West Saint John	4,160,976	4,801,603
United States Ports	15,692,000	18,924,000
Churchill	4,049,877	2,707,891
Vancouver-New Westminster	31,720,785	34,925,852
Prince Rupert	1,316,369	-
<b>TOTAL</b>	<b>82,689,034</b>	<b>108,569,468</b>





# International Trade

The following table shows world shipments of wheat and wheat flour for the first thirty-five weeks of the present crop year. (Brookhall's revised figures)

Week Ending		North America	Argentina	Australia	Russia	Other	Total
(Thousand Bushels)							
August	6	4,168	3,760	2,024	-	488	10,440
	13	3,960	3,144	816	-	800	11,720
	20	4,488	3,496	2,192	-	488	10,664
	27	4,864	3,432	3,112	192	656	12,256
September	4	3,664	2,380	1,144	256	520	8,464
	10	3,056	4,552	1,336	448	816	10,208
	17	4,672	4,224	1,192	-	944	11,032
	24	3,936	3,216	1,472	168	648	9,440
October	1	3,256	3,768	2,872	-	968	10,864
	9	4,616	4,456	1,720	464	952	12,208
	15	3,128	4,272	2,808	256	1,344	11,808
	22	4,352	2,800	1,232	112	1,168	9,664
	29	3,920	1,568	2,256	320	1,352	9,416
November	5	3,400	1,960	3,224	-	992	9,576
	12	4,232	4,200	2,808	-	1,128	12,368
	19	3,176	3,976	1,200	280	1,752	10,384
	26	3,360	3,832	2,256	-	864	10,312
December	3	4,008	3,064	1,728	128	1,296	10,224
	10	2,696	3,592	1,240	96	1,720	9,344
	17	1,768	1,552	1,904	-	1,456	6,680
	24	1,968	2,072	2,536	-	1,152	7,728
	31	2,208	1,520	1,944	-	1,328	7,000
January	7	1,392	2,944	2,200	-	1,384	7,920
	14	2,168	4,256	2,176	-	1,448	10,048
	21	2,240	3,264	3,176	-	808	9,488
	28	2,424	4,120	3,160	-	1,032	10,736
February	4	2,600	5,080	2,344	-	600	10,624
	11	2,792	4,808	2,824	-	872	11,296
	18	2,008	4,280	2,264	-	1,328	9,880
	25	3,384	4,064	2,424	-	648	10,520
March	4	2,040	4,952	2,680	-	520	10,192
	11	2,064	2,784	3,040	-	984	8,872
	18	3,128	4,240	3,128	-	1,176	11,672
	25	2,542	2,826	2,242	-	800	8,410
April	1	2,183	4,869	2,955	-	744	10,751
TOTAL		159,861	126,823	77,629	2,720	35,176	352,209
Comparative 1933-34							
Corresponding week		3,536	4,040	1,096	136	408	9,216
Total to Date		153,560	85,960	61,880	26,392	32,904	360,696

World shipments for the week ending April 1, 1935 amounted to 10,751,000 bushels compared with 8,410,000 bushels for the previous week and 9,216,000 bushels for the corresponding week last year. During the past week North American shipments showed a decrease of 359,000 bushels while shipments from the Argentine and Australia increased by 2,043,000 and 713,000 bushels respectively, as compared with the previous week.

## Weekly Average Shipments

The following table shows weekly average shipments of wheat for the first thirty-five weeks of the present crop year along with comparative figures for 1933-34 and 1932-33.

	North America	Argentina	Australia	Russia	Other	Total
(Million Bushels)						
1932-33	6.1	2.0	3.3	.5	.6	12.5
1933-34	4.4	2.5	2.8	.7	.9	10.3
1934-35	3.1	3.6	2.2	.1	1.0	10.1

As shown by the above table, world shipments of wheat have averaged 10.1 million bushels per week during the first thirty-five weeks of the crop year as compared with 10.3 and 12.5 million bushels per week during the corresponding period in 1933-34 and 1932-33. North American shipments have averaged 3.1 million bushels per week compared with 4.4 and 6.1 million bushels per week during the first thirty-five weeks of 1933-34 and 1932-33. Argentine shipments have averaged 3.6 million bushels per week as compared with 2.5 million bushels during the same period last year.





- 3 -  
CANADIAN GRAIN STATISTICS - WEEK ENDING MARCH 29, 1935.

Returns received as to stocks of grain in store for the week ending March 29, 1935 show a net decrease of 3,057,226 bushels. Stocks in store were as follows:- wheat 231,533,622, oats 14,423,129, barley 10,810,825, flaxseed 411,413 and rye 3,828,700 bushels, a total of 261,007,689 bushels. Decreases were noted in wheat of 2,614,733, oats 356,830, barley 86,116 and rye 1,356 bushels while flaxseed increased 1,809 bushels. At a comparable date last year stocks in store were as follows:- wheat 224,024,105, oats 16,746,958, barley 10,536,294, flaxseed 564,777 and rye 4,021,462 bushels, a total of 255,893,596 bushels.

WESTERN COUNTRY ELEVATORS:- Grain stocks show a decrease of 547,043 bushels, composed of wheat 333,819, oats 182,818, barley 26,896, flaxseed 102 and rye 3,408 bushels.

The following table shows the quantities of grain in store at the Country Elevators in each of the Prairie Provinces on March 22, 1935 with comparison for the previous week and the same period 1934.

	<u>MANITOBA</u>	<u>SASKATCHEWAN</u>	<u>ALBERTA</u>	<u>TOTAL</u>
	<u>B u s h e l s</u>			
Wheat	10,273,396	51,374,812	35,937,116	97,585,324
Oats	410,959	3,734,751	3,270,861	7,416,571
Barley	548,474	833,783	628,414	2,010,671
Flaxseed	33,074	181,921	25,787	240,782
Rye	131,109	317,800	174,102	623,011
TOTAL	11,397,012	56,443,067	40,036,280	107,876,359
Previous week	11,395,006	56,332,162	40,414,943	108,142,111
Same period 1934	12,596,908	62,110,923	41,561,323	116,269,154

The receipts and shipments at the Country Elevators for the week ending March 22, 1935 compared with the previous week and the same period 1934 were as follows:-

	<u>R E C E I P T S</u>			<u>S H I P M E N T S</u>		
	Previous week	Week ending Mar. 22, 1935	Week ending Mar. 23, 1934	Previous week	Week ending Mar. 22, 1935	Week ending Mar. 23, 1934
Wheat	1,647,769	2,210,581	1,892,126	2,032,170	2,243,812	2,476,554
Oats	728,398	715,377	794,912	820,413	872,530	637,035
Barley	94,270	137,023	169,927	159,609	196,884	120,130
Flaxseed	2,143	4,111	3,666	-	3,739	4,244
Rye	1,921	2,469	6,916	6,658	12,940	12,711
TOTAL	2,474,501	3,069,561	2,867,547	3,018,850	3,329,905	3,250,674

Platform Loadings shown by Prairie Provinces for the period ending March 21, 1935 were as follows:-

	<u>WHEAT</u>	<u>OTHER GRAIN</u>	<u>TOTAL</u>
		<u>B u s h e l s</u>	
Manitoba	26,606	6,641	33,247
Saskatchewan	15,568	13,171	28,739
Alberta	55,568	16,686	72,254
TOTAL	97,742	36,498	134,240
Period ending March 21, 1934	89,521	161,832	251,353
+Increase -Decrease	+ 8,221	-125,334	-117,113

INTERIOR PUBLIC AND SEMI-PUBLIC TERMINALS:- Stocks for the week show a net decrease of 154,574 bushels. Decreases are noted in wheat of 148,649 and oats 9,082 bushels while barley increased 3,157 bushels.

VANCOUVER-NEW WESTMINSTER ELEVATORS:- Grain stocks at these elevators show a net decrease of 283,744 bushels. Decreases are noted in wheat of 217,444, oats 46,786 and barley 20,143 bushels while flaxseed increased 629 bushels.

PRINCE RUPERT ELEVATOR:- Wheat stocks show an increase of 6,108 bushels.

VICTORIA ELEVATOR:- Wheat stocks show a decrease of 333 bushels.

CHURCHILL ELEVATOR:- Wheat stocks remain unchanged.

PUBLIC AND PRIVATE (FORT WILLIAM AND PORT ARTHUR):- Grain in store shows an increase of 756,724 bushels. Increases are noted in wheat of 746,555, barley 40,642, flaxseed 1,282 and rye 1,410 bushels, while oats decreased 33,145 bushels.





Stocks in Store at the Head of the Lakes compared with the same week last year were as follows:-

	Week ending March 29, 1935	Week ending March 30, 1934	+ Increase - Decrease
Wheat	63,610,578	71,921,021	- 8,310,443
Oats	2,575,670	4,964,845	- 2,389,175
Barley	3,517,965	4,880,214	- 1,362,249
Flaxseed	155,852	325,356	- 169,504
Rye	2,575,898	2,186,795	+ 389,103
<b>TOTAL</b>	<b>72,435,963</b>	<b>84,278,231</b>	<b>- 11,842,268</b>

The receipts (including transfers) at the Head of the Lakes for the period ending March 29, 1935 with comparative figures for the same week last year were as follows:-

	Week ending March 29, 1935	Week ending March 30, 1934	+ Increase - Decrease
Wheat	751,762	530,615	+ 221,147
Oats	8,952	72,946	- 63,994
Barley	45,825	35,226	+ 10,599
Flaxseed	1,452	380	+ 1,072
Rye	1,410	1,428	- 18
<b>TOTAL</b>	<b>809,401</b>	<b>640,595</b>	<b>+ 168,806</b>

Preliminary figures showing receipts and shipments at the Head of the Lakes also Vancouver-New Westminster, Prince Rupert, Victoria and Churchill for the period August 1, 1934 to March 29, 1935 compared with the same period last year.

	<u>FORT WILLIAM &amp; PORT ARTHUR</u>		<u>VANCOUVER-NEW WESTMINSTER</u>	
	<u>Receipts</u>	<u>Shipments</u>	<u>Receipts</u>	<u>Shipments</u>
Wheat	92,789,503	88,545,310	34,415,391	31,141,911
Oats	6,113,149	7,526,601	3,972,816	3,656,112
Barley	9,207,874	9,502,555	977,486	670,917
Flaxseed	93,829	270,406	1,066	-
Rye	766,261	595,274	2,399	-
<b>TOTAL</b>	<b>108,970,616</b>	<b>106,440,146</b>	<b>39,369,158</b>	<b>35,468,940</b>
Same period last year	105,584,571	94,814,369	37,356,273	36,778,118
<b>+Increase -Decrease</b>	<b>- 3,386,045</b>	<b>+11,625,777</b>	<b>+ 2,012,885</b>	<b>- 1,309,178</b>

	<u>PRINCE RUPERT</u>		<u>VICTORIA</u>	
	<u>Receipts</u>	<u>Shipments</u>	<u>Receipts</u>	<u>Shipments</u>
<b>TOTAL</b>	<b>1,094,920</b>	<b>1,316,687</b>	<b>1,527</b>	<b>4,724</b>
Same period last year	1,091,804	2,100	934,052	167
<b>+Increase -Decrease</b>	<b>+3,116</b>	<b>+1,314,587</b>	<b>-932,525</b>	<b>+4,557</b>

	<u>C H U R C H I L L</u>	
	<u>Receipts</u>	<u>Shipments</u>
<b>TOTAL</b>	<b>3,967,593</b>	<b>4,053,953</b>
Same period last year	2,751,395	2,707,891
<b>+Increase -Decrease</b>	<b>+1,216,198</b>	<b>+1,346,062</b>

INTERIOR PRIVATE AND MILL ELEVATORS:- Grain in store shows a net decrease of 85,788 bushels. Decreases are noted in wheat of 42,243, barley 47,651 and rye 214 bushels while oats increased 4,320 bushels.

Stocks in store at the Country, Interior, Private and Mill, Head of the Lakes, Victoria, Vancouver-New Westminster, Prince Rupert and Churchill compared with the same week last year were as follows:-

	Week ending March 29, 1935	Week ending March 30, 1934	+ Increase - Decrease
Wheat	184,720,832	197,575,664	- 12,854,832
Oats	12,470,858	15,508,919	- 3,038,061
Barley	7,814,597	10,173,675	- 2,359,078
Flaxseed	411,515	562,199	- 150,684
Rye	3,255,304	3,073,794	+ 181,510
<b>TOTAL</b>	<b>208,673,106</b>	<b>226,894,251</b>	<b>- 18,221,145</b>

EASTERN ELEVATORS-LAKE PORTS:- Grain in store shows a decrease of 821,065 bushels, composed of wheat 770,580, oats 41,161, barley 9,180 and rye 144 bushels.

EASTERN ELEVATORS-SEAWOARD PORTS (CANADIAN GRAIN):- Grain stocks show a decrease of 294,493 bushels, composed of wheat 221,748, oats 48,158 and barley 24,587 bushels.

The receipts of the above by classes of ports were as follows:-

	<u>WHEAT</u>		<u>TOTAL GRAIN</u>	
	<u>Vessel</u>	<u>Rail</u>	<u>Vessel</u>	<u>Rail</u>
Georgian Bay Ports	345,839	-	414,852	-
Lower Lake Ports	410,988	-	410,988	10,149
St. Lawrence Ports	-	-	-	879
Seaboard Ports	-	404,452	-	444,089
<b>TOTAL</b>	<b>756,827</b>	<b>404,452</b>	<b>825,840</b>	<b>455,117</b>





Shipments overseas of Canadian grain from Seaboard Ports were as follows:-

		<u>United Kingdom</u>	<u>Other Countries</u>
		<u>B u s h e l s</u>	
West Saint John, C.P.R.	Wheat	197,190	-
	Barley	33,253	-
West Saint John Hbr. Comm	Wheat	101,094	-
Halifax, N.S.	Wheat	252,133	-

EASTERN ELEVATORS:- United States grain stocks were 2,755,592 bushels lower than at a comparable date last year. Decreases were as follows:- wheat 1,179,731, oats 25,612 and corn 1,550,249 bushels.

The quantities by classes of ports with increases and Decreases:-

	Week ending March 29, 1935	Week ending March 30, 1934	+ Increase - Decrease
At Georgian Bay Ports	5,817,866	5,015,820	+ 802,046
At Lower Lake Ports	518,310	2,695,250	- 2,176,940
At St. Lawrence Ports	57,392	1,438,090	- 1,380,698
At Seaboard Ports	-	-	-
<b>TOTAL</b>	<b>6,393,568</b>	<b>9,149,160</b>	<b>- 2,755,592</b>

U. S. LAKE PORTS:- Grain in store shows a decrease of 1,478,258 bushels, composed of wheat 1,476,800 and barley 1,458 bushels.

U. S. ATLANTIC SEABOARD PORTS:- Wheat stocks show a decrease of 155,760 bushels.

Inspection returns for the week ending March 31, 1934 with comparison for the previous year were as follows:-

	Week ending March 31, 1935	Week ending March 31, 1934	+ Increase - Decrease
Wheat	1,939	1,802	+ 137
Oats	453	505	- 52
Barley	114	139	- 25
Flaxseed	5	4	+ 1
Rye	2	2	-
Mixed Grain	6	3	+ 3
<b>TOTAL</b>	<b>2,519</b>	<b>2,455</b>	<b>+ 64</b>

The number of bushels of grain shipped from western to the Canadian eastern points over the C.P.R. and C.N.R. for the week ending March 21, 1935 and the period from August 1, 1934 to March 21, 1935.

	<u>WEEK ENDING MARCH 21, 1935</u>					<u>PERIOD AUGUST 1, 1934 TO MAR. 21, 1935</u>				
	<u>WHEAT</u>	<u>OATS</u>	<u>BARLEY</u>	<u>FLAXSEED</u>	<u>RYE</u>	<u>WHEAT</u>	<u>OATS</u>	<u>BARLEY</u>	<u>FLAXSEED</u>	<u>RYE</u>
Via C.P.R.	-	3,300	-	-	-	2,170	27,003	2,500	-	-
Via C.N.R.	-	12,258	-	-	-	5,672	306,031	1,366	-	2,680
<b>TOTAL</b>	<b>-</b>	<b>15,558</b>	<b>-</b>	<b>-</b>	<b>-</b>	<b>7,842</b>	<b>333,034</b>	<b>3,866</b>	<b>-</b>	<b>2,680</b>





STOCKS OF GRAIN AT DIFFERENT ELEVATORS DURING THE WEEK ENDING MARCH 29, 1935.

	WHEAT	OATS	BARLEY	FLAXSEED	RYE
	B u s h e l s				
Western Country Elevators +	97,251,505	7,233,753	1,983,775	240,680	619,603
Interior Pte. & Mill Elevs. +	6,736,478	1,091,131	1,519,077	10,220	8,743
Interior Pub. & Semi-Pub. Terms.	2,011,994	631,650	420,683	3,876	164
Vancouver - New Westminster	10,546,089	760,156	298,550	785	47,274
Victoria	926,435	-	-	-	-
Prince Rupert	872,287	-	-	-	-
Churchill	2,389,404	-	-	-	-
Fort William and Port Arthur	63,610,578	2,575,670	3,517,965	155,852	2,575,898
Eastern Elevators - Lake Ports	21,684,893	1,198,931	776,356	-	347,865
Eastern Elevators - Sbd. Ports	9,286,753	931,838	1,136,343	-	229,153
U. S. Lake Ports	11,239,318	-	1,158,076	-	-
U. S. Atlantic Sbd. Ports	4,977,888	-	-	-	-
TOTAL	231,533,622	14,423,129	10,810,825	411,413	3,828,700
Previous week	234,148,355	14,779,959	10,896,941	409,604	3,831,056
Same week previous year	224,024,105	16,746,958	10,536,294	564,777	4,021,462
+ Estimated.					

Quantity of Screenings received, shipped and in store  
at the undermentioned elevators during the week ending March 29, 1935.

	Amount in Store Mar. 22, 1935		Amount Received by vessel		Amount Shipped		Amount in Store Mar. 29, 1935	
	Tons	Lbs.	Tons	Lbs.	Tons	Lbs.	Tons	Lbs.
Owen Sound	1,165	-	-	-	45	-	1,120	-
Goderich Elev. Co.	335	-	-	-	-	-	335	-
Toronto	55	320	-	-	55	320	-	-
Prescott	290	560	-	-	-	-	290	560
Montreal	1,107	1,270	-	-	-	-	1,107	1,270
Dominion Elev. Co.	1,140	1,620	-	-	-	-	1,140	1,620
TOTAL	4,093	1,770	-	-	100	320	3,993	1,450

DULUTH.- Receipts of Canadian bonded grain at Duluth by rail for the week ending March 30, 1935 were nil. For the period from August 1, 1934 to date rail receipts amounted to wheat 110,620, oats 194,873 and rye 3,179 bushels.

Receipts by water for the week ending March 30, 1935 were nil. Receipts by water from August 1, 1934 to date amounted to wheat 6,306,019, oats 858,257, barley 1,633,847 and rye 49,906 bushels.

Rail shipments for the week ending March 30, 1935 amounted to wheat 77,666 bushels, duty paid. Rail shipments from August 1, 1934 to date amounted to wheat 1,602,508, oats 322,276, and barley 994,755 bushels.

Lake shipments for the week ending March 30, 1935 were nil. Lake shipments from August 1, 1934 to date amounted to wheat 49,562 bushels.





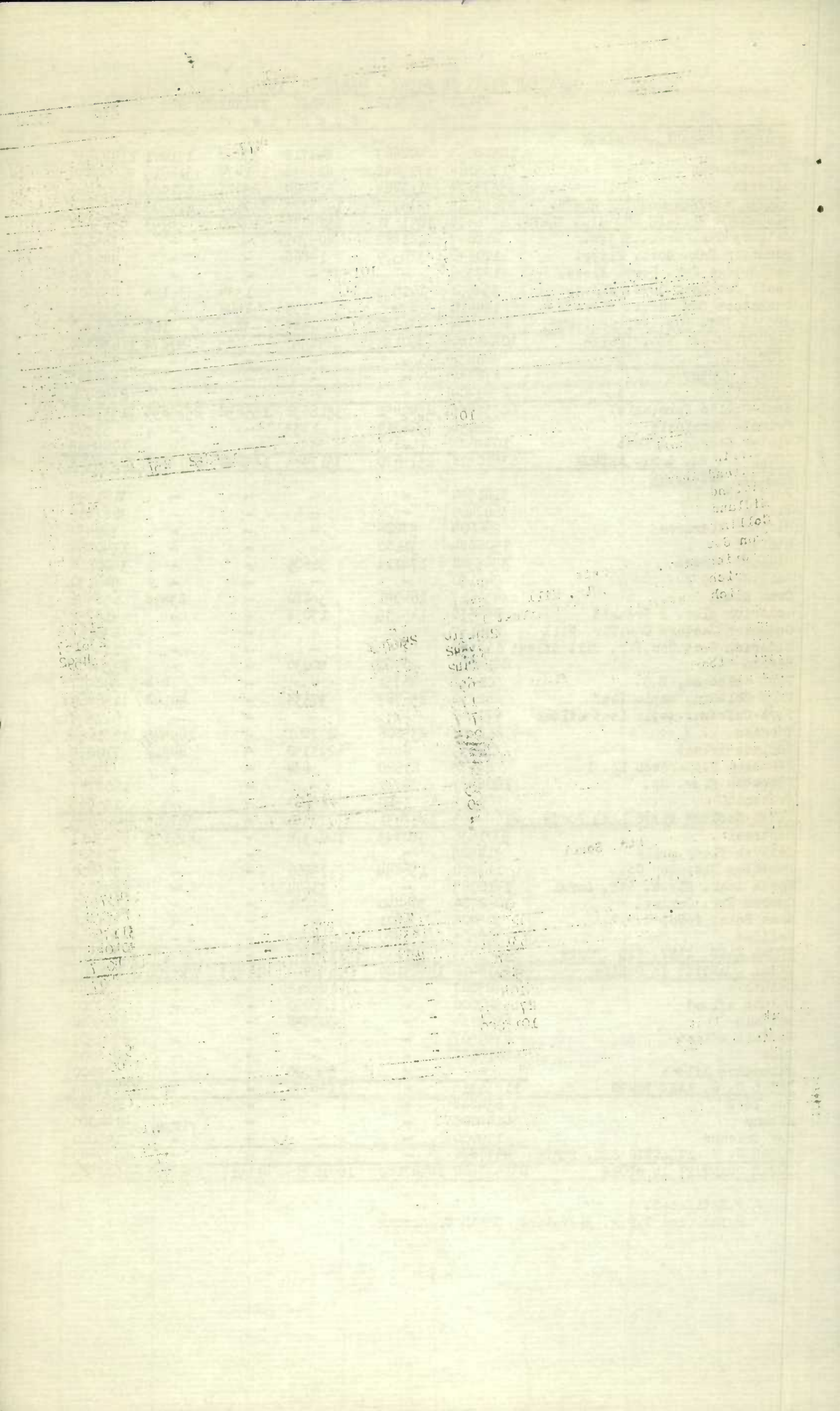
CANADIAN GRAIN IN STORE - MARCH 29, 1935.

	WHEAT	OATS	BARLEY	FLAXSEED	RYE	TOTAL
	Bushels					
WESTERN COUNTRY ELEVATORS						
Manitoba	10312663	402627	547713	33228	131001	11427232
Saskatchewan	51365168	3713842	823538	181474	316616	56400638
Alberta	35573674	3117284	612524	25978	171986	39501446
+TOTAL WESTERN COUNTRY ELEVS.	97251505	7233753	1983775	240680	619603	107329316
+INTERIOR PRIVATE AND MILL ELEVS.	6736478	1091131	1519077	10220	8743	9365649
Calgary Can. Govt. Elevs.	218047	121822	405706	-	-	745575
Edmonton Can. Govt. Elevs.	110196	324309	14868	-	-	449373
Lethbridge Can. Govt. Elevs.	187306	-	-	-	-	187306
Moose Jaw Can. Govt. Elevs.	354552	101553	-	1334	164	457603
Saskatoon Can. Govt. Elevs.	144410	83966	109	2542	-	231027
xTOTAL INT. PUB. AND SEMI-PUB.	2011994	631650	420683	3876	164	3068367
VANCOUVER-NEW WESTMINSTER	10546089	760156	298550	785	47274	11652854
VICTORIA	926435	-	-	-	-	926435
PRINCE RUPERT	872287	-	-	-	-	872287
CHURCHILL	2389404	-	-	-	-	2389404
Semi-Public Terminals	62539855	2549451	3516832	155852	2575898	71337888
Private Terminals	26038	26219	1133	-	-	53390
Winter Storage Afloat	1044685	-	-	-	-	1044685
TOTAL FT. WM. & PT. ARTHUR	63610578	2575670	3517965	155852	2575898	72435963
EASTERN ELEVATORS						
Port McNicoll	3181399	-	-	-	-	3181399
Tiffin	3667469	-	-	-	-	3667469
Midland Aberdeen	262204	57226	-	-	-	319430
Midland	1508884	31180	-	-	-	1540064
Midland Simcoe	3585542	178111	36609	-	-	3800262
Collingwood	546130	-	-	-	-	546130
Owen Sound	432617	164051	38280	-	23498	658446
Goderich Elev. & Transit	286538	115135	17078	-	-	418751
Goderich Western Can. Flr. Mill	236167	-	-	-	-	236167
Goderich West. Can. Flr. Mill Afloat	114592	-	-	-	-	114592
Sarnia	2814009	90768	50030	-	-	2954807
Port Colborne, D.G.	501392	46751	-	-	454	548597
Port Colborne Maple Leaf	822310	256783	37634	-	40142	1156869
Port Colborne Maple Leaf Afloat	977542	-	-	-	-	977542
Toronto	668442	235806	277861	-	199545	1381654
Toronto Afloat	332699	-	293350	-	84226	710275
Kingston Richardson No. 1	28175	21620	114	-	-	49909
Kingston Elev. Co.	1608787	-	-	-	-	1608787
Prescott	109995	1500	25400	-	-	136895
TOTAL EASTERN ELEVS. LAKE PORTS	21684893	1198931	776356	-	347865	24008045
Montreal	5301636	310843	1001379	-	229153	6843011
Ogilvie Flour Mills	314525	-	-	-	-	314525
Dominion Elevator Co.	153890	156844	75266	-	-	386000
North Amer. Elevs. Ltd. Sorel	1810083	-	33674	-	-	1843757
Quebec Hbr. Commrs.	1052709	304440	23801	-	-	1380950
West Saint John, C.P.R.	305405	6391	-	-	-	311796
Halifax	348505	153320	2223	-	-	504043
TOTAL EAST. ELEV. SBD. PORTS	9286753	931838	1136143	-	229153	11584087
TOTAL QUANTITY IN CANADA	215316416	14423129	9652749	411413	3828700	24352407
Duluth	827027	-	145218	-	-	972245
Duluth Afloat	540000	-	120000	-	-	660000
Buffalo	6104784	-	200858	-	-	6305642
Buffalo Afloat	2749507	-	-	-	-	2749507
Erie	1018000	-	-	-	-	1018000
Milwaukee Afloat	-	-	692000	-	-	692000
TOTAL U. S. LAKE PORTS	11239313	-	1158076	-	-	12397394
New York	634888	-	-	-	-	634888
Albany	4144000	-	-	-	-	4144000
New Orleans	199000	-	-	-	-	199000
TOTAL U. S. ATLANTIC SBD. PORTS	4977888	-	-	-	-	4977888
TOTAL QUANTITY IN STORE	231533622	14423129	10810825	411413	3828700	261007689

+ Estimated.

x Included C.P.R. Elevators, North Transcona.







Grades of Canadian Grain in Store at Public, Semi-Public and Private Elevators  
(Head of the Lakes), Interior, Public and Semi-Public Elevators, Vancouver-New Westminster  
Churchill and Victoria Terminal and Eastern Elevators for the week ending March 29, 1935.

	Fort William & Port Arthur Semi-Public and Private	Interior Public and Semi-Public Terminals	Vancouver New West- minster Victoria Elevators	Eastern Elevators Lake Ports	Eastern Elevators Seaboard Ports	Total
<b>WHEAT</b>						
Bushels						
No. 1 Hard	2,435,286	333,030	1,523,305	493,252	436,278	5,321,152
No. 1 Northern	30,462,091	89,373	3,103,957	17,312,396	2,909,953	53,877,775
No. 2 Northern	22,732,012	149,344	3,338,706	1,538,837	4,684,340	32,443,239
No. 3 Northern	1,613,629	9,462	393,376	533,575	143,619	2,693,661
No. 4 Northern	1,456,982	9,709	832,267	402,735	124,883	2,826,576
No. 5 Wheat	826,444	28,456	857,326	850,700	396,275	2,959,201
No. 6 Wheat	575,663	319,220	134,873	171,698	23,726	1,225,180
Feed	31,175	-	39,551	-	-	70,726
No. 1 C. W. Durum	964,953	-	-	130,916	203,083	1,298,952
No. 2 C. W. Durum	222,447	-	-	2,323	-	224,575
No. 3 C. W. Durum	101,815	-	-	-	8,577	110,392
No. 4 C. W. Durum	13,859	-	-	-	-	13,859
Other Durum	122,434	-	-	-	-	122,434
Other	1,975,750	75,917	1,249,162	248,656	306,014	3,855,499
Private Elevators	26,038	-	-	-	-	26,038
TOTAL	63,610,578	1,024,511	11,472,524	21,684,893	9,286,753	107,069,259
<b>OPS</b>						
No. 2 C. W.	821,730	166,682	47,514	189,402	40,245	1,257,573
No. 3 C. W.	143,468	45,905	106,272	270,455	294,764	860,864
Ex. No. 1 Feed	314,271	54,210	195,537	87,310	48,196	699,524
No. 1 Feed	690,205	10,794	177,353	570,963	283,579	1,732,894
No. 2 Feed	181,669	793	23,614	21,698	133,266	361,040
No. 3 Feed	112,232	-	-	-	-	112,232
Private Elevators	26,219	-	-	-	-	26,219
Other	293,876	353,266	209,866	59,103	131,788	1,047,899
TOTAL	2,575,670	631,650	760,156	1,198,931	931,333	6,098,245
<b>NEW GRADE BARLEY</b>						
3 Ex. C.W. 6 Row	178,516	-	-	-	-	178,516
3 Ex. C.W. Trebi	14,621	-	2,107	-	-	16,728
3 Ex. C.W. 2 Row	17,827	-	-	-	-	17,827
1 C.W.	2,262,621	926	57,299	449,333	691,431	3,461,610
1 C.W.	117,880	760	77,853	37,762	174,175	479,776
5 C.W.	237,330	2,824	41,247	8,500	82,666	372,567
6 C.W.	160,907	6,591	82,173	-	-	249,671
Private Elevators	1,133	-	-	-	-	1,133
Other	455,784	409,552	37,871	260,761	188,071	1,352,069
TOTAL	3,517,965	420,683	298,550	776,356	1,136,343	6,149,897
<b>FLAXSEED</b>						
No. 1 C. W.	136,839	3,876	-	-	-	140,715
No. 2 C. W.	5,695	-	649	-	-	6,344
No. 3 C. W.	5,432	-	85	-	-	5,517
No. 4 C. W.	2,170	-	-	-	-	2,170
Other	5,716	-	51	-	-	5,767
TOTAL	155,852	3,876	785	-	-	160,513
<b>RYE</b>						
No. 1 C.W.	11,850	-	-	-	-	11,850
No. 2 C. W.	2,374,471	-	47,274	322,149	137,222	2,871,116
No. 3 C. W.	122,363	164	-	23,498	98,890	244,915
No. 4 C. W.	18,899	-	-	-	-	18,899
Regoty	10,317	-	-	-	-	10,317
Other	37,993	-	-	2,218	3,041	43,257
TOTAL	2,575,898	164	47,274	347,865	229,153	3,200,354
<b>TOTAL QUANTITY IN STORE</b>						
	72,435,963	2,070,884	12,579,289	24,008,045	11,584,087	122,678,268





CANADIAN GRAIN IN STORE - COMPARATIVE STATEMENT, 1932 - 1935:

	WHEAT	OTHER GRAIN Bushels	TOTAL
<u>March 29, 1935.</u>			
Country Elevators - Manitoba	10,312,663	1,114,569	11,427,232
Saskatchewan	51,365,168	5,035,470	56,400,638
Alberta	35,573,674	3,927,772	39,501,446
TOTAL	97,251,505	10,077,811	107,329,316
Interior Private and Mill	6,736,478	2,629,171	9,365,649
Interior Public and Semi-Public Terms.	2,011,994	1,056,373	3,068,367
Vancouver - New Westminster	10,546,089	1,106,765	11,652,854
Victoria	926,435	-	926,435
Prince Rupert	872,287	-	872,287
Churchill	2,389,404	-	2,389,404
Fort William and Port Arthur	63,610,578	8,825,385	72,435,963
Eastern Elevators - Lake Ports	21,684,893	2,323,152	24,008,045
Eastern Elevators - Seaboard Ports	9,286,753	2,297,334	11,584,087
U. S. Lake Ports	11,239,318	1,158,076	12,397,394
U. S. Atlantic Seaboard Ports	4,977,888	-	4,977,888
TOTAL	231,533,622	29,474,067	261,007,689
<u>March 30, 1934.</u>			
Country Elevators - Manitoba	10,200,319	2,312,749	12,513,068
Saskatchewan	56,555,226	5,642,563	62,197,789
Alberta	37,410,129	3,985,695	41,395,824
TOTAL	104,165,674	11,941,007	116,106,681
Interior Terminal	1,382,534	864,570	2,247,104
Vancouver - New Westminster	9,982,856	832,688	10,815,544
Victoria	931,974	-	931,974
Prince Rupert	1,092,150	362	1,092,512
Churchill	2,475,764	-	2,475,764
Fort William and Port Arthur	71,921,021	12,357,210	84,278,231
Interior Private and Mill	5,736,505	3,034,908	8,771,413
Eastern Elevators - Lake Ports	12,066,410	1,683,774	13,750,184
Eastern Elevators - Seaboard Ports	8,613,601	1,073,031	9,686,632
U. S. Lake Ports	1,540,131	-	1,540,131
U. S. Atlantic Seaboard Ports	4,115,485	81,941	4,197,426
TOTAL	224,024,105	31,869,491	255,893,596
<u>March 31, 1933.</u>			
Country Elevators - Manitoba	9,655,424	2,123,984	11,779,408
Saskatchewan	63,367,621	5,319,963	68,687,584
Alberta	34,980,034	4,473,458	39,453,492
TOTAL	108,003,079	11,917,405	119,920,484
Interior Terminal	3,148,224	104,559	3,252,783
Vancouver - New Westminster	9,998,644	1,272,247	11,270,891
Victoria	453,710	1,713	455,423
Prince Rupert	301,695	-	301,695
Churchill	2,430,283	-	2,430,283
Fort William and Port Arthur	69,963,711	5,912,866	75,876,577
Interior Private and Mill	5,819,710	1,666,903	7,486,613
Eastern Elevators - Lake Ports	13,799,575	1,513,435	15,313,010
Eastern Elevators - Seaboard Ports	5,618,116	2,427,533	8,045,649
U. S. Lake Ports	5,470,744	549	5,471,293
U. S. Atlantic Seaboard Ports	521,729	543,363	1,065,092
TOTAL	225,529,220	25,360,573	250,889,793
<u>April 1, 1932.</u>			
Country Elevators - Manitoba	6,929,602	2,107,923	9,037,525
Saskatchewan	44,026,497	4,935,772	48,962,269
Alberta	32,558,316	4,961,394	37,519,710
TOTAL	83,514,415	12,005,089	95,519,504
Interior Terminal	387,635	1,280,634	1,668,269
Vancouver	12,085,346	1,848,978	13,934,324
Victoria	855,535	-	855,535
Prince Rupert	1,110,389	104	1,110,493
Fort William and Port Arthur	55,595,087	13,939,734	69,534,821
Interior Private and Mill	6,261,926	2,596,596	8,858,522
Eastern Elevators - Lake Ports	7,732,474	1,161,830	8,894,304
Eastern Elevators - Seaboard Ports	4,738,080	3,874,057	8,612,137
U. S. Lake Ports	9,608,716	2,805,614	12,414,330
U. S. Atlantic Seaboard Ports	2,066,332	93,533	2,159,865
TOTAL	183,955,935	39,606,169	223,562,104



SECRET

CLASSIFICATION

CONFIDENTIAL

11.1  
01.17

100.17

10.1.01  
10.1.02  
10.1.03  
10.1.04

10.1.01  
10.1.02  
10.1.03  
10.1.04

10.1.01  
10.1.02  
10.1.03  
10.1.04

10.1.01  
10.1.02  
10.1.03  
10.1.04

10.1.01  
10.1.02  
10.1.03  
10.1.04

10.1.01  
10.1.02  
10.1.03  
10.1.04

10.1.01  
10.1.02  
10.1.03  
10.1.04

10.1.01  
10.1.02  
10.1.03  
10.1.04

10.1.01  
10.1.02  
10.1.03  
10.1.04

10.1.01  
10.1.02  
10.1.03  
10.1.04

10.1.01  
10.1.02  
10.1.03  
10.1.04

10.1.01  
10.1.02  
10.1.03  
10.1.04

10.1.01  
10.1.02  
10.1.03  
10.1.04

10.1.01  
10.1.02  
10.1.03  
10.1.04

10.1.01  
10.1.02  
10.1.03  
10.1.04

10.1.01  
10.1.02  
10.1.03  
10.1.04

10.1.01  
10.1.02  
10.1.03  
10.1.04

10.1.01  
10.1.02  
10.1.03  
10.1.04

10.1.01  
10.1.02  
10.1.03  
10.1.04

10.1.01  
10.1.02  
10.1.03  
10.1.04

10.1.01  
10.1.02  
10.1.03  
10.1.04

10.1.01  
10.1.02  
10.1.03  
10.1.04

10.1.01  
10.1.02  
10.1.03  
10.1.04

10.1.01  
10.1.02  
10.1.03  
10.1.04

10.1.01  
10.1.02  
10.1.03  
10.1.04

10.1.01  
10.1.02  
10.1.03  
10.1.04

10.1.01  
10.1.02  
10.1.03  
10.1.04

10.1.01  
10.1.02  
10.1.03  
10.1.04

10.1.01  
10.1.02  
10.1.03  
10.1.04

10.1.01  
10.1.02  
10.1.03  
10.1.04

10.1.01  
10.1.02  
10.1.03  
10.1.04

10.1.01  
10.1.02  
10.1.03  
10.1.04

10.1.01  
10.1.02  
10.1.03  
10.1.04

10.1.01  
10.1.02  
10.1.03  
10.1.04

10.1.01  
10.1.02  
10.1.03  
10.1.04

10.1.01  
10.1.02  
10.1.03  
10.1.04

10.1.01  
10.1.02  
10.1.03  
10.1.04

10.1.01  
10.1.02  
10.1.03  
10.1.04

10.1.01  
10.1.02  
10.1.03  
10.1.04

10.1.01  
10.1.02  
10.1.03  
10.1.04



RECEIPTS AND SHIPMENTS OF GRAIN BY CLASSES OF ELEVATORS  
IN THE WEEK ENDING MARCH 29, 1935.

	WHEAT	OATS	BARLEY	FLAXSEED	RYE	TOTAL
	B u s h e l s					
<u>COUNTRY ELEVATORS, WESTERN DIVISION#</u>						
Receipts - Rail	2,210,581	715,377	137,023	4,111	2,469	3,069,561
Shipments - Rail	2,243,812	872,530	196,884	3,739	12,940	3,329,905
<u>INTERIOR PUBLIC AND SEMI-PUBLIC TERMINALS</u>						
Receipts - Rail	1,029	6,548	3,157	-	-	10,734
Shipments - Rail	149,678	15,630	-	-	-	165,308
<u>VANCOUVER - NEW WESTMINSTER ELEVATORS</u>						
Receipts - Rail	1,022,152	55,731	8,998	629	-	1,087,510
Shipments - Vessel	1,226,860	98,164	23,333	-	-	1,348,357
Rail	4,275	235	1,250	-	-	5,760
<u>VICTORIA ELEVATOR</u>						
Receipts - Rail			Nil			
Shipments - Rail	333	-	-	-	-	333
<u>PRINCE RUPERT ELEVATOR</u>						
Receipts - Rail	6,108	-	-	-	-	6,108
Shipments - Vessel			Nil			
<u>PUBLIC AND PRIVATE TERMINAL ELEVATORS FORT WILLIAM AND PORT ARTHUR</u>						
Receipts - Rail	751,762	8,952	45,825	1,452	1,410	809,401
Shipments - Rail	2,727	29,622	-	-	-	32,349
<u>INTERIOR PRIVATE AND MILL ELEVATORS#</u>						
Receipts - Rail	362,254	168,455	51,657	2,716	7	585,089
Shipments - Rail	534,834	207,557	106,361	6,511	493	855,756
<u>EASTERN ELEVATORS - GEORGIAN BAY PORTS</u>						
Receipts - Vessel	345,839	69,013	-	-	-	414,852
Shipments - Rail	567,522	21,990	13,687	-	-	603,199
<u>LOWER LAKE PORTS</u>						
Receipts - Vessel	410,988	-	-	-	-	410,988
Rail	-	3,737	6,412	-	-	10,149
Shipments - Rail	234,775	7,361	903	-	144	243,183
Truck	2,636	200	1,000	-	-	3,836
<u>ST. LAWRENCE PORTS</u>						
Receipts - Rail	-	879	-	-	-	879
Shipments - Rail	75,381	53,757	23,536	-	-	152,674
<u>SEABOARD PORTS</u>						
Receipts - Rail	404,452	6,384	33,253	-	-	444,089
Shipments - Vessel	550,417	-	33,253	-	-	583,670
- Teamed	400	1,661	1,050	-	-	3,111
<u>TOTAL EASTERN ELEVATORS</u>						
Receipts - Vessel	756,827	69,013	-	-	-	825,840
Rail	404,452	11,000	39,665	-	-	455,117
Shipments - Vessel	550,417	-	33,253	-	-	583,670
Rail	877,678	83,108	38,126	-	144	999,056
Truck & Teamed	3,036	1,861	2,050	-	-	6,947

# Week ending March 22, 1935.





STOCKS OF UNITED STATES GRAIN IN CANADA AT MARCH 29, 1935.

	WHEAT	OATS	BARLEY	RYE	CORN	TOTAL
			B u s h e l s			
Depot Harbour	-	28,076	-	-	1,196,036	1,224,112
Midland Aberdeen	-	27,091	-	-	97,293	124,384
Midland Grain	-	-	-	-	401,452	401,452
Collingwood Terminal	-	-	-	-	1,273,450	1,273,450
Collingwood C.N.R.	-	-	-	-	79,898	79,898
Owen Sound, G.L.	200,292	-	-	-	909,277	1,109,569
Goderich Elev. Co.	848,618	-	-	-	756,383	1,605,001
Sarnia	-	-	-	-	108,777	108,777
Port Colborne, D.G.	-	-	-	-	262,949	262,949
Port Colborne Maple Leaf	-	-	-	-	1,234	1,234
Toronto	-	-	-	-	145,350	145,350
Montreal Harbour Commrs.						
Nos. 1, 2 and B.	2	-	-	366	57,024	57,392
TOTAL	1,048,912	55,167	-	366	5,289,123	6,393,568
Same period previous year	2,228,643	80,779	-	366	6,839,372	9,149,160

RECEIPTS AND SHIPMENTS OF UNITED STATES GRAIN IN CANADA AT MARCH 29, 1935.

	R E C E I P T S		S H I P M E N T S	
	Water	Rail	Water	Rail
			G E O R G I A N B A Y P O R T S	
Oats	-	-	-	7,200
Corn	-	-	-	22,878
			L O W E R L A K E P O R T S	
Corn	-	-	-	25,062

STOCKS OF FOREIGN CORN IN CANADA AT MARCH 29, 1935.

	ARGENTINE CORN	SOUTH AFRICAN CORN	TOTAL CORN
Port Colborne, M.L.	70,037	98,192	168,229
Toronto	50,682	29,523	80,205
Kingston, J.R.	-	1,000	1,000
Prescott	-	8,075	8,075
Montreal	-	575,526	575,526
Dominion Elev. Co.	-	999	999
Sorel	-	7,001	7,001
Quebec	-	372,197	372,197
Saint John	-	301,795	301,795
Halifax	-	946,604	946,604
TOTAL	120,719	2,340,912	2,461,631
Same period previous year	1,152,601	60,566	1,213,167

RECEIPTS AND SHIPMENTS OF FOREIGN CORN IN CANADA FOR THE WEEK ENDING MARCH 29, 1935.

	ARGENTINE CORN		SOUTH AFRICAN CORN	
	Receipts	Shipments	Receipts	Shipments
			B u s h e l s	
Lower Lake Ports	-	3,021	14,969	5,380
St. Lawrence Ports	-	-	3,997	17,105
Seaboard Ports	-	-	-	24,189





STOCKS, RECEIPTS AND SHIPMENTS OF THE COUNTRY ELEVATORS IN THE WESTERN  
DIVISION IN THE WEEK ENDING MARCH 22, 1935.

	WHEAT	OATS	BARLEY	FLAX	RYE	TOTAL
	B U S H E L S					
<u>MANITOBA</u>						
In Store, previous week	10,213,035	452,144	566,598	32,115	131,114	11,395,006
Receipts	178,756	36,985	60,411	1,224	618	277,994
TOTAL	10,391,791	489,129	627,009	33,339	131,732	11,673,000
Shipments	118,395	78,170	78,535	265	623	275,988
In Store	10,273,396	410,959	548,474	33,074	131,109	11,397,012

SASKATCHEWAN

In Store, previous week	51,236,108	3,729,102	862,339	180,276	324,337	56,332,162
Receipts	1,040,166	338,431	43,421	2,639	1,543	1,426,200
TOTAL	52,276,274	4,067,533	905,760	182,915	325,880	57,758,362
Shipments	901,378	332,782	72,013	994	8,080	1,315,247
In Store	51,374,812	3,734,751	833,783	181,921	317,800	56,443,067

ALBERTA

In Store, previous week	36,169,758	3,397,576	641,559	28,019	178,031	40,414,943
Receipts	991,659	339,961	33,191	248	308	1,365,367
TOTAL	37,161,417	3,737,537	674,750	28,267	178,339	41,780,310
Shipments	1,224,039	461,578	46,336	2,480	4,237	1,738,670
In Store	35,937,116	3,270,861	628,414	25,787	174,102	40,036,280

TOTAL RECEIPTS AT COUNTRY ELEVATORS AND PLATFORM LOADINGS # IN THE  
PERIOD AUGUST 1, 1934 to MARCH 22, 1935.

	WHEAT	OTHER GRAIN	TOTAL
	B U S H E L S		
Manitoba	28,000,642	10,205,536	38,206,178
Saskatchewan	84,620,477	16,249,561	100,870,038
Alberta	80,181,979	16,045,204	96,227,183
Total 1934 - 1935	192,803,098	42,500,301	235,303,399
Same period 1933 - 1934	186,484,034	39,949,658	226,433,692

# Platform Loadings to March 21, 1935.

THE UNIVERSITY OF CHICAGO PRESS  
CHICAGO, ILL. 60607

THE UNIVERSITY OF CHICAGO PRESS  
CHICAGO, ILL. 60607

THE UNIVERSITY OF CHICAGO PRESS  
CHICAGO, ILL. 60607

THE UNIVERSITY OF CHICAGO PRESS  
CHICAGO, ILL. 60607

THE UNIVERSITY OF CHICAGO PRESS  
CHICAGO, ILL. 60607

THE UNIVERSITY OF CHICAGO PRESS  
CHICAGO, ILL. 60607

THE UNIVERSITY OF CHICAGO PRESS  
CHICAGO, ILL. 60607

THE UNIVERSITY OF CHICAGO PRESS  
CHICAGO, ILL. 60607



INTERIOR TERMINAL ELEVATORS

Receipts, Shipments and Quantities in Store, Week ending March 29, 1935.

	WHEAT	OATS	BARLEY B u s h e l s	FLAXSEED	RYE	TOTAL
<u>CALGARY</u>						
In Store, previous week	253,294	121,822	402,549	-	-	777,665
Receipts	-	-	3,157	-	-	3,157
TOTAL	253,294	121,822	405,706	-	-	780,822
Shipments - Rail	35,247	-	-	-	-	35,247
In Store	218,047	121,822	405,706	-	-	745,575
<u>EDMONTON</u>						
In Store, previous week	195,726	331,425	14,868	-	-	542,019
Receipts	-	6,548	-	-	-	6,548
TOTAL	195,726	337,973	14,868	-	-	548,567
Shipments - Rail	85,530	13,664	-	-	-	99,194
In Store	110,196	324,309	14,868	-	-	449,373
<u>LETHBRIDGE</u>						
In Store, previous week	202,035	-	-	-	-	202,035
Receipts	-	-	Nil	-	-	-
TOTAL	202,035	-	-	-	-	202,035
Shipments - Rail	14,729	-	-	-	-	14,729
In Store	187,306	-	-	-	-	187,306
<u>MOOSE JAW</u>						
In Store, previous week	357,302	101,553	-	1,334	164	460,353
Receipts	-	-	Nil	-	-	-
TOTAL	357,302	101,553	-	1,334	164	460,353
Shipments - Rail	2,750	-	-	-	-	2,750
In Store	354,552	101,553	-	1,334	164	457,603
<u>SASKATOON</u>						
In Store, previous week	154,803	85,932	109	2,542	-	243,386
Receipts	1,029	-	-	-	-	1,029
TOTAL	155,832	85,932	109	2,542	-	244,415
Shipments - Rail	11,422	1,966	-	-	-	13,388
In Store	144,410	83,966	109	2,542	-	231,027
<u>CHURCHILL</u>						
<u>PUBLIC TERMINAL</u>						
In Store, previous week	2,389,404	-	-	-	-	2,389,404
Receipts	-	-	Nil	-	-	-
TOTAL	2,389,404	-	-	-	-	2,389,404
Shipments - Vessel	-	-	Nil	-	-	-
In Store	2,389,404	-	-	-	-	2,389,404





STOCKS, RECEIPTS AND SHIPMENTS OF THE PACIFIC COAST ELEVATORS  
IN THE WEEK ENDING MARCH 29, 1935.

	WHEAT	OATS	BARLEY B U S H E L S	FLAXSEED	RYE	TOTAL
<b>VANCOUVER - NEW WESTMINSTER</b>						
In Store, previous week	10,763,533	806,942	318,693	156	47,274	11,936,598
Receipts	1,022,152	55,731	6,998	629	-	1,085,510
TOTAL	11,785,685	862,673	325,691	785	47,274	13,022,108
Shipments - Vessel	1,226,860	98,164	23,333	-	-	1,348,357
Rail	4,275	235	1,250	-	-	5,760
In Store	10,546,089	760,156	298,550	785	47,274	11,652,854
<b>PRINCE RUPERT</b>						
In Store, previous week	866,179	-	-	-	-	866,179
Receipts	6,108	-	-	-	-	6,108
TOTAL	872,287	-	-	-	-	872,287
Shipments - Vessel		nil				
In Store	872,287	-	-	-	-	872,287
<b>VICTORIA</b>						
In Store, previous week	926,768	-	-	-	-	926,768
Receipts		nil				
TOTAL	926,768	-	-	-	-	926,768
Shipments - Rail	333	-	-	-	-	333
In Store	926,435	-	-	-	-	926,435

DAILY AND WEEKLY AVERAGE PRICES OF WHEAT IN THE WESTERN DIVISION  
IN THE WEEK ENDING MARCH 30, 1935.

(Basis Vancouver, B. C. )

	March 25 ¢	March 26 ¢	March 27 ¢	March 28 ¢	March 29 ¢	March 30 ¢	Weekly Average ¢
No. 1 Hard	82.1	82.3	82.7	82.6	82.6	82.7	82.5
No. 1 Northern	81.6	81.9	82.2	82.1	82.1	82.2	82.0
No. 2 Northern	73.9	74.1	74.5	74.3	74.6	74.7	74.4
No. 3 Northern	72.1	72.3	72.7	72.6	73.1	73.2	72.7
No. 4 Northern	70.3	70.6	71.0	70.9	71.3	71.5	70.9
No. 5	64.6	64.9	65.2	65.1	65.6	65.7	65.2
No. 6	58.3	58.6	59.0	58.9	58.9	59.0	58.8
Feed	58.3	58.6	59.0	58.9	58.9	59.0	58.8
Track	81.9	82.1	82.5	82.3	82.3	82.5	82.3

THE UNIVERSITY OF CHICAGO

THE UNIVERSITY OF CHICAGO

THE UNIVERSITY OF CHICAGO

THE UNIVERSITY OF CHICAGO

THE UNIVERSITY OF CHICAGO

THE UNIVERSITY OF CHICAGO

THE UNIVERSITY OF CHICAGO

THE UNIVERSITY OF CHICAGO



DAILY AND WEEKLY AVERAGE PRICES OF GRAIN

Week ending March 30, 1935.

WESTERN DIVISION

(Basis Fort William and Port Arthur)

	March 25 \$ ¢	March 26 \$ ¢	March 27 \$ ¢	March 28 \$ ¢	March 29 \$ ¢	March 30 \$ ¢	Weekly Average \$ ¢
<u>WHEAT</u>							
No. 1 Man. Hard	.829	.832	.836	.836	.836	.84	.835
No. 1 Man. Northern	.827	.83	.833	.833	.833	.836	.832.
No. 2 Man. Northern	.797	.80	.803	.803	.803	.806	.802
No. 3 Man. Northern	.757	.761	.767	.766	.766	.77	.765
No. 4 Man. Northern	.706	.713	.72	.719	.719	.72	.716
No. 5	.633	.636	.642	.641	.641	.642	.639
No. 6	.633	.636	.64	.639	.639	.64	.638
Feed	.623	.626	.63	.629	.629	.63	.628
Rejected No. 1 Northern	.723	.726	.74	.739	.743	.745	.736
No. 2 Northern	.703	.706	.72	.719	.723	.725	.716
No. 3 Northern	.679	.681	.695	.693	.693	.695	.689
Tough No. 1 Hard	.805	.809	.812	.813	.813	.817	.812
No. 1 Northern	.805	.807	.811	.811	.811	.813	.81
No. 2 Northern	.775	.777	.781	.781	.781	.783	.78
No. 3 Northern	.727	.731	.737	.736	.736	.74	.735
Smutty No. 1 Hard	.763	.766	.78	.779	.779	.78	.775
No. 1 Northern	.763	.766	.78	.779	.779	.78	.775
No. 2 Northern	.729	.731	.745	.743	.743	.745	.739
No. 3 Northern	.699	.701	.715	.713	.713	.715	.709
Durum No. 1	.883	.886	.89	.889	.893	.895	.889
No. 2	.833	.836	.84	.839	.843	.845	.839
No. 3	.793	.796	.80	.799	.799	.80	.798
A. R. W. No. 1	.733	.736	.74	.739	.739	.74	.738
No. 2	.713	.716	.72	.719	.719	.72	.718
No. 3	.693	.696	.70	.699	.699	.70	.698
<u>OATS</u>							
No. 2 C. W.	.40	.405	.416	.412	.413	.415	.41
No. 3 C. W.	.345	.35	.361	.357	.359	.36	.355
Ex. No. 1 Feed	.345	.35	.361	.357	.359	.36	.355
No. 1 Feed	.327	.332	.343	.34	.341	.342	.338
No. 2 Feed	.31	.315	.331	.327	.329	.33	.324
No. 3 Feed	.285	.29	.301	.297	.299	.30	.295
<u>BARLEY (NEW GRADE)</u>							
2 Row	.569	.571	.581	.575	.575	.579	.575
6 Row	.779	.781	.791	.785	.785	.789	.785
Trebi	.433	.436	.447	.441	.441	.446	.441
No. 3 C. W.	.433	.436	.447	.441	.441	.446	.441
No. 4 C. W.	.386	.389	.401	.395	.395	.403	.395
No. 5 C. W.	.373	.376	.391	.385	.385	.393	.384
No. 6 C. W.	.363	.366	.381	.375	.375	.383	.374
<u>RYE</u>							
No. 1 C. W.	.475	.477	.487	.481	.479	.483	.48
No. 2 C. W.	.475	.477	.487	.481	.479	.483	.48
No. 3 C. W.	.425	.427	.437	.431	.429	.432	.43
Rejected No. 2 C. W.	.38	.382	.391	.385	.382	.386	.384
No. 4 C. W.	.37	.372	.381	.375	.372	.376	.374
Rejected for Ergot	.37	.372	.381	.375	.372	.376	.374
<u>FLAXSEED</u>							
No. 1 C. W.	1.363	1.381	1.407	1.395	1.395	1.399	1.39
No. 2 C. W.	1.323	1.341	1.367	1.355	1.355	1.359	1.35
No. 3 C. W.	1.189	1.206	1.232	1.22	1.22	1.222	1.215
No. 4 C. W.	1.189	1.206	1.232	1.22	1.22	1.222	1.215
<u>ONTARIO - TORONTO</u>							
Wheat, good Milling	.88-	.88-	.88-	.88-	.88-	.88-	.88-
	.90	.90	.90	.90	.90	.90	.90
Oats	.30-	.30-	.30-	.30-	.30-	.30-	.30-
	.32	.32	.32	.32	.32	.32	.32
Malting Barley	.63-	.63-	.63-	.63-	.63-	.63-	.63-
	.65	.65	.65	.65	.65	.65	.65
Ontario Corn	.55-	.55-	.55-	.55-	.55-	.55-	.55-
	.58	.58	.58	.58	.58	.58	.58
Rye	.40-	.40-	.40-	.40-	.40-	.40-	.40-
	.43	.43	.43	.43	.43	.43	.43
Barley	.40-	.40-	.40-	.40-	.40-	.40-	.40-
	.42	.42	.42	.42	.42	.42	.42
Buckwheat	.36-	.36-	.36-	.36-	.36-	.36-	.36-
	.38	.38	.38	.38	.38	.38	.38

F.O.B. Shipping Point





INSPECTIONS - EASTERN DIVISION

March, 1935 and 1934

	<u>Month of March</u>			<u>Month of March</u>	
	1935	1934		1935	1934
	<u>B u s h e l s</u>			<u>B u s h e l s</u>	
<u>CANADIAN GRAIN</u>			<u>CORN</u>		
<u>WHEAT</u>			No. 2 Yellow	4,000	-
Red Winter	-	-	MIXED GRAIN	9,690	-
No. 2	-	3,000			
<u>Mixed Winter</u>			<u>RECAPITULATION OF CANADIAN GRAIN</u>		
No. 2	-	4,000	Wheat	-	8,000
Rejected	-	1,000	Oats	35,300	3,700
			Barley	36,350	-
<u>TOTAL</u>	-	8,000	Rye	1,000	-
			Buckwheat	39,500	1,000
<u>OATS</u>			Corn	4,000	-
No. 2	3,200	-	Mixed Grain	9,690	-
No. 3	24,600	-	<u>TOTAL</u>	125,840	12,700
No. 4	7,500	-			
White Tough	-	3,700	<u>UNITED STATES GRAIN</u>		
<u>TOTAL</u>	35,300	3,700	<u>CORN</u>		
			2 Mixed	-	17,126
<u>BARLEY</u>					
No. 3	31,350	-			
No. 4	5,000	-			
<u>TOTAL</u>	36,350	-			
<u>RYE</u>			55 Cars inspected at Toronto.		
No. 2	1,000	-	36 Cars inspected at Montreal.		
<u>BUCKWHEAT</u>					
No. 3	7,500	-			
No. 2	2,550	-			
No. 3 Tough	12,700	1,000			
No. 2 Damp	10,650	-			
No. 3 Damp	6,100	-			
<u>TOTAL</u>	39,500	1,000			

1914

1914

1914



Eight Months ending March, 1935 and 1934

- 17 -

264001

STATISTICS CANADA LIBRARY  
BIBLIOTHÈQUE STATISTIQUE CANADA



1010674952