

DEPARTMENT OF
STATISTICS
JUN 1 1935
PROPERTY OF THE
LIBRARY

CANADA
DEPARTMENT OF TRADE AND COMMERCE
DOMINION BUREAU OF STATISTICS
AGRICULTURAL BRANCH

Vol. 15

No. 43

Historical File Copy

CANADIAN GRAIN STATISTICS

Week ending

MAY 24, 1935

[Records for Western Inspection Division supplied by Board of Grain Commissioners for Canada]

— ♦ ♦ ♦ —

Published by Authority of the HON. R.B. HANSON, K.C., M.P.,
Minister of Trade and Commerce.

♦ ♦ ♦

OTTAWA

1935

I N D E X

General Summary	1 - 6
Canadian Grain in Store by Elevators	7
Canadian Grain in Store by Grades	8
Comparative Statement of Grain in Store	9
Receipts and Shipments of Canadian Grain	10
U. S. Grain in Store, Receipts and Shipments	11
Stocks, Receipts and Shipments of the Country Elevators in the Western Division	12
Receipts, Shipments and Quantities in Store at Interior Terminal Elevators	13
Stocks, Receipts and Shipments of the Pacific Elevators and Vancouver Prices	14
Daily and Weekly Average Prices at Fort William and Port Arthur and Toronto for the week ending May 25, 1935	15

DEPARTMENT OF TRADE AND COMMERCE
DOMINION BUREAU OF STATISTICS - CANADA
AGRICULTURAL BRANCH

(Issued May 31, 1935)

Dominion Statistician:	R. H. Coats, LL.D., F.R.S.C., F.S.S. (Hon.)
Chief, Agricultural Branch:	T. W. Grindley, Ph.D.
Assistant Chief, Agricultural Branch:	W. Dougan.

WHEAT STOCKS IN STORE

Canadian wheat in store for the week ending May 24, 1935 shows a decrease of 2,611,456 bushels as compared with the previous week and an increase of 4,883,214 bushels when compared with the same week in 1934. The visible supply was reported as 204,657,462 bushels as compared with a revised figure of 207,268,918 for the previous week and 199,774,248 bushels for the corresponding week in 1934.

Canadian wheat in the United States amounted to 10,195,025 bushels, a net decrease of 273,224 bushels from the previous week when 10,468,249 bushels were reported. The Canadian wheat in store in the United States is located at the following ports: Buffalo 4,683,744; New York 996,869; Erie 455,000; New Orleans 66,000; Albany 3,242,000; Duluth 716,343 and Galveston 35,000 bushels. Decreases are shown in all the United States ports except New York and Erie, the former increased 211,515 bushels, while Albany stocks remained the same as those of the previous week. The decreases are as follows: Buffalo 199,931; Erie 153,000 New Orleans 117,000 and Duluth 49,808 bushels. For the first time Galveston reports 35,000 bushels of Canadian wheat in store. For the corresponding week a year ago, the Canadian wheat in the United States amounted to 4,455,797 bushels located as follows: Buffalo 3,350,500; New York 416,079; Erie 540,000; Duluth 64,110; Boston 65,108 and Albany 20,000 bushels.

United States wheat in Canada was shown as 200,294 bushels as compared with 2 bushels a year ago.

Wheat in transit on the lakes is reported as 781,501 bushels compared with 1,002,702 bushels for the previous week.

PRIMARY MOVEMENT

Wheat marketings in the Prairie Provinces for the week ending May 17, 1935 amounted 1935 amounted to 1,079,304 bushels, an increase of 393,051 bushels over the previous week's total when 686,253 bushels were marketed. During the corresponding period a year ago, the receipts were 1,967,688 bushels. For the forty-two weeks ending May 17, 1935 and May 18, 1934, 203,788,566 and 199,793,770 bushels were received from the farms. This is an increase of 3,994,796 bushels over the same period a year ago. By provinces, the receipts for the week of May 17, 1935 were as follows, figures within brackets being those for the week ending May 18, 1934: Manitoba 140,746 (243,315); Saskatchewan 540,534 (830,429); Alberta 392,024 (893,944) bushels.

Marketings of wheat in the three Prairie Provinces to May 17, 1935 as compared with the same period in 1934 were as follows, figures within brackets being those for 1934: Manitoba 29,181,254 (25,727,065); Saskatchewan 89,494,311 (98,478,049); Alberta 85,113,001 (75,538,656) bushels.

OVERSEAS EXPORT CLEARANCES

During the week ending May 24, 1935 the export clearances of wheat amounted to 3,420,694 bushels as compared with 2,941,258 bushels for the previous week, an increase of 479,446 and when compared with the same week in 1934 an increase of 1,013,675 bushels.

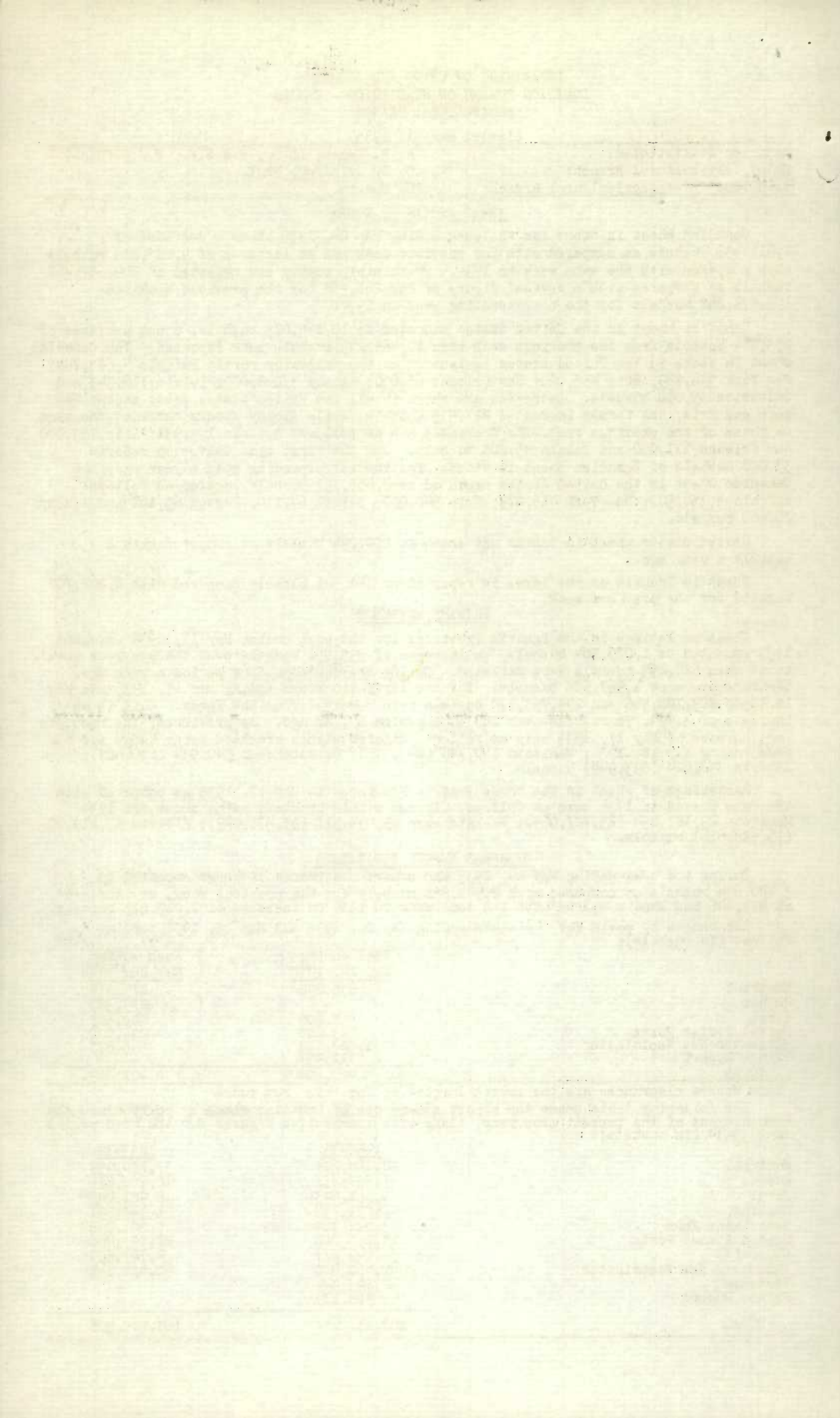
Clearances by ports for the weeks ending May 24, 1935 and May 25, 1934 were as follows (in bushels):

	Week ending May 24, 1935	Week ending May 25, 1934
Montreal	635,295	879,375
Quebec	-	279,383
Sorel	592,600	448,583
United States Ports	293,000	234,000
Vancouver-New Westminster	1,587,842	565,678
Prince Rupert	311,957	-
TOTAL	3,420,694	2,407,019

This Week's clearances are the fourth largest so far this crop year.

The following table shows the export clearances of Canadian wheat by ports since the commencement of the present crop year, along with comparative figures for the same period in 1933-34 (in bushels):

	1934-35	1933-34
Montreal	22,144,284	37,130,959
Quebec	1,838,851	10,728,876
Sorel	3,661,493	6,981,245
Halifax	2,891,730	1,942,691
West Saint John	5,022,924	5,601,996
United States Ports	18,766,000	22,987,000
Churchill	4,049,877	2,707,891
Vancouver-New Westminster	41,460,420	40,424,848
Victoria	2,293,949	-
Prince Rupert	308,129	-
TOTAL	102,437,657	128,505,506



International Trade

The following table shows world shipments of wheat and wheat flour for the first forty-three weeks of the present crop year. (Broomhall's revised figures).

Week Ending		North America	Argentina	Australia	Russia	Other	Total
		(Thousand Bushels)					
August	6	4,163	3,760	2,024	-	488	10,440
	13	3,960	6,144	816	-	800	11,720
	20	4,483	3,496	2,192	-	488	10,664
	27	4,864	3,432	3,112	192	656	12,256
September	4	3,664	2,880	1,144	256	520	8,464
	10	3,056	4,552	1,336	448	816	10,208
	17	4,672	4,224	1,192	-	944	11,032
	24	3,936	3,216	1,472	168	648	9,440
October	1	3,256	3,768	2,872	-	968	10,864
	9	4,616	4,456	1,720	464	952	12,208
	15	3,128	4,272	2,808	256	1,344	11,808
	22	4,352	2,800	1,232	112	1,168	9,664
November	29	3,920	1,568	2,256	320	1,352	9,416
	5	3,400	1,960	3,224	-	992	9,576
	12	4,232	4,200	2,808	-	1,128	12,368
	19	3,176	3,976	1,200	280	1,752	10,384
December	26	3,360	3,832	2,256	-	864	10,312
	3	4,008	3,064	1,728	128	1,296	10,224
	10	2,696	3,592	1,240	96	1,720	9,344
	17	1,768	1,552	1,904	-	1,456	6,680
January	24	1,968	2,072	2,536	-	1,152	7,728
	31	2,208	1,520	1,944	-	1,328	7,000
	7	1,392	2,944	2,200	-	1,384	7,920
	14	2,168	4,256	2,176	-	1,448	10,048
February	21	2,240	3,264	3,176	-	808	9,488
	28	2,424	4,120	3,160	-	1,032	10,736
	4	2,600	5,080	2,344	-	600	10,624
	11	2,792	4,808	2,824	-	872	11,296
March	18	2,008	4,280	2,264	-	1,328	9,880
	25	3,384	4,064	2,424	-	648	10,520
	4	2,040	4,952	2,680	-	520	10,192
	11	2,064	2,784	3,040	-	984	8,872
April	18	3,128	4,240	3,128	-	1,176	11,672
	25	2,496	2,824	2,256	-	1,104	8,680
	1	2,120	4,872	2,960	-	856	10,808
	8	2,696	5,080	1,224	-	872	9,872
May	15	2,736	3,496	2,568	-	1,096	9,896
	22	2,952	2,832	3,664	-	1,176	10,624
	29	2,736	2,344	1,688	-	1,464	8,232
	7	2,560	2,824	2,192	-	1,416	8,992
May	13	3,203	5,608	1,760	-	1,880	12,456
	20	1,177	3,549	1,526	-	1,384	10,636
	27	1,166	3,721	3,860	-	3,768	15,515
TOTAL		134,983	156,278	96,130	2,720	48,648	438,759
<u>Comparative 1933-34</u>							
Corresponding week		4,384	3,336	1,400	-	864	9,984
Total to date		188,016	107,808	72,424	26,896	40,744	435,888

World shipments for the week ending May 27, 1935 amounted to 15,515,000 bushels as compared with 10,636,000 bushels, for the previous week and 9,984,000 bushels for the corresponding week last year. North American shipments showed only a slight decrease while Australian shipments showed an increase of 2,334,000 bushels as compared with the previous week.

Weekly Average Shipments

The following table shows weekly average shipments of wheat for the first forty-three weeks of the present crop year along with comparative figures for 1933-34 and 1932-33.

	North America	Argentina	Australia	Russia	Other	Total
	(Million Bushels)					
1932-33	5.8	2.3	3.2	.4	.5	12.3
1933-34	4.4	2.5	1.7	.6	.9	10.1
1934-35	3.1	3.6	2.2	.1	1.1	10.2

As shown by the above table, world shipments of wheat have averaged 10.2 million bushels per week during the first forty-three weeks of the crop year as compared with 10.1 and 12.3 million bushels per week during the corresponding period in 1933-34 and 1932-33. North American shipments have averaged 3.1 million bushels per week compared with 4.4 and 5.8 million bushels per week during the first forty-three weeks of 1933-34 and 1932-33. Argentine shipments have averaged 3.6 million bushels per week as compared with 2.5 million bushels during the same period last year.

CANADIAN GRAIN STATISTICS - WEEK ENDING MAY 24, 1935.

Returns received as to stocks of grain in store for the week ending May 24, 1935 show a net decrease of 3,596,834 bushels, compared with the revised figure of the previous week. Stocks in store were as follows: wheat 204,657,462, oats 7,803,277, barley 7,218,239, flaxseed 404,222 and rye 3,678,749 bushels, a total of 223,761,949 bushels. Decreases were noted in wheat of 2,611,456, oats 464,483, barley 339,587 and rye 182,629 bushels, while flaxseed increased 1,321 bushels. At a comparable date last year stocks in store were as follows:- wheat 199,774,248, oats 10,973,127, barley 9,407,048, flaxseed 514,225, and rye 3,905,458 bushels, a total of 224,570,106 bushels.

WESTERN COUNTRY ELEVATORS:- Grain in store shows a decrease of 1,253,316 bushels, composed of wheat 1,134,421, oats 94,706, barley 16,667, flaxseed 1,264 and rye 6,258 bushels.

The following table shows the quantities of grain in store at the Country Elevators in each of the Prairie Provinces on May 17, 1935 with comparison for the previous week and the same period 1934.

	<u>MANITOBA</u>	<u>SASKATCHEWAN</u>	<u>ALBERTA</u>	<u>TOTAL</u>
	<u>B u s h e l s</u>			
Wheat	8,510,660	40,592,623	27,185,003	76,288,286
Oats	215,346	1,434,756	971,003	2,621,105
Barley	326,230	498,429	386,345	1,211,004
Flaxseed	28,898	163,977	26,138	219,013
Rye	104,394	248,469	118,701	471,564
TOTAL	9,185,528	42,938,254	28,687,190	80,810,972
Previous week	9,403,590	44,576,850	30,142,298	84,122,738
Same period 1934	8,417,245	48,548,654	34,042,562	91,008,461

The receipts and shipments at the Country Elevators for the week ending May 17, 1935 compared with the previous week and the same period 1934 were as follows:-

	<u>R E C E I P T S</u>			<u>S H I P M E N T S</u>		
	Previous week	Week ending May 17, 1935	Week ending May 18, 1934	Previous week	Week ending May 17, 1935	Week ending May 18, 1934
Wheat	652,183	1,038,138	1,907,587	3,074,432	4,308,857	4,342,677
Oats	378,746	364,730	305,175	793,999	285,573	387,068
Barley	40,822	88,022	134,694	114,780	179,064	257,316
Flaxseed	1,800	3,148	1,766	3,883	5,751	9,701
Rye	895	3,160	6,684	17,442	24,833	11,500
TOTAL	1,074,446	1,497,198	2,355,906	4,004,536	4,804,078	5,008,262

Platform Loadings shown by Prairie Provinces for the period ending May 14, 1935 were as follows:-

	<u>WHEAT</u>	<u>OTHER GRAIN</u>	<u>TOTAL</u>
	<u>B u s h e l s</u>		
Manitoba	9,035	3,856	12,891
Saskatchewan	8,922	16,192	25,114
Alberta	23,209	17,148	40,357
TOTAL	41,166	37,196	78,362
Period ending May 14, 1934	60,101	39,064	99,165
+Increase -Decrease	-18,935	-1,868	-20,803

INTERIOR PUBLIC AND SEMI-PUBLIC TERMINALS:- Stocks for the week show a decrease of 59,190 bushels, composed of wheat 7,586, oats 50,203 and barley 1,401 bushels.

VANCOUVER-NEW WESTMINSTER ELEVATORS:- Grain stocks at these elevators show a decrease of 1,241,329 bushels, composed of wheat 1,116,965, oats 84,773 and barley 39,591 bushels.

PRINCE RUPERT ELEVATOR:- Wheat stocks show a decrease of 300,155 bushels.

VICTORIA AND CHURCHILL ELEVATORS:- Grain stocks remain same as previous week.

PUBLIC AND PRIVATE (FORT WILLIAM AND PORT ARTHUR):- Grain in store shows a net decrease of 243,830 bushels. Decreases are noted in oats of 81,637, and barley 325,646 bushels, while increases are shown in wheat of 147,658, flaxseed 1,490 and rye 14,305 bushels.

IN TRANSIT LAKES:- Grain in transit shows a net decrease of 232,193 bushels. Decreases are noted in wheat of 221,201, oats 189,372 and flaxseed 22,000 bushels while barley increased 194,380 bushels.

Stocks in Store at the Head of the Lakes compared with the same week last year were as follows:-

	Week ending May 24, 1935	Week ending May 25, 1934	+ Increase - Decrease
Wheat	71,310,501	71,517,128	- 206,627
Oats	1,981,455	2,010,154	- 28,699
Barley	2,638,569	3,958,051	- 1,269,482
Flaxseed	252,044	292,233	- 140,189
Rye	2,623,158	2,214,630	+ 408,528
TOTAL	78,755,727	79,992,196	- 1,236,469

The receipts (including transfers) at the Head of the Lakes for the period ending May 24, 1935 with comparative figures for the same week last year were as follows:-

	Week ending May 24, 1935	Week ending May 25, 1934	+ Increase - Decrease
Wheat	1,384,922	4,100,444	- 2,715,522
Oats	19,854	86,438	- 66,584
Barley	33,136	158,765	- 125,629
Flaxseed	1,502	2,351	- 849
Rye	5,872	10,013	- 4,141
TOTAL	1,445,286	4,358,011	- 2,912,725

Preliminary figures showing receipts and shipments at the Head of the Lakes also Vancouver-New Westminster, Prince Rupert, Victoria and Churchill for the period August 1, 1934 to May 24, 1935 compared with the same period last year.

	FORT WILLIAM & PORT ARTHUR		VANCOUVER-NEW WESTMINSTER	
	Receipts	Shipments	Receipts	Shipments
Wheat	106,991,106	94,942,910	42,119,047	40,914,578
Oats	6,302,377	3,871,310	4,323,968	4,852,853
Barley	9,554,692	10,526,215	1,001,001	784,498
Flaxseed	112,093	292,480	1,102	107
Rye	811,056	595,439	2,399	-
TOTAL	123,771,329	115,228,354	47,447,517	46,552,036
Same period last year	126,247,896	119,789,113	42,632,356	43,022,128
+Increase -Decrease	- 2,476,567	- 4,560,759	+ 4,815,161	+3,429,908

	PRINCE RUPERT		VICTORIA	
	Receipts	Shipments	Receipts	Shipments
TOTAL	1,229,838	2,294,300	3,505	314,254
Same period last year	1,091,804	2,159	934,052	1,667
+Increase -Decrease	+ 138,034	+ 2,292,141	- 930,547	+ 312,587

	CHURCHILL	
	Receipts	Shipments
TOTAL	3,967,593	4,053,953
Same period last year	2,751,395	2,707,891
+Increase -Decrease	+ 1,216,198	+1,346,062

INTERIOR PRIVATE AND MILL ELEVATORS:- Grain in store shows a net increase of 33,084 bushels. Increases are noted in oats of 6,362, barley 51,035, flaxseed 1,133 and rye 400 bushels while wheat stocks show a decrease of 26,346 bushels.

Stocks in Store at the Country, Interior, Private and Mill, Head of the Lakes, Victoria, Vancouver-New Westminster, Prince Rupert and Churchill compared with the same week last year were as follows:-

	Week ending May 24, 1935	Week ending May 25, 1934	+ Increase - Decrease
Wheat	167,036,751	176,461,141	- 9,374,390
Oats	6,037,817	7,516,556	- 1,478,739
Barley	5,590,912	7,954,636	- 2,363,724
Flaxseed	382,391	514,620	- 132,229
Rye	3,151,475	2,990,922	+ 160,553
TOTAL	182,249,346	195,437,875	- 13,188,529

EASTERN ELEVATORS-LAKE PORTS:- Grain stocks show a net increase of 342,252 bushels.

Increases are noted in wheat of 378,617, and oats 52,148 bushels while barley and rye decreased 86,152 and 2,361 bushels respectively.

EASTERN ELEVATORS-SEABOARD PORTS (CANADIAN GRAIN):-Grain in store shows a net decrease of 179,885, bushels. Decreases are noted in wheat of 57,833, oats 22,802 and barley 121,212 bushels while flaxseed increased 21,962 bushels.

The receipts of the above by classes of ports were as follows:-

	WHEAT		TOTAL GRAIN	
	Vessel	Rail	Vessel	Rail
Georgian Bay Ports	64,970	-	221,422	-
Lower Lake Ports	889,834	-	1,023,764	16,470
St. Lawrence Ports	1,213,568	-	1,497,871	1,954
Seaboard Ports		Nil		
TOTAL	2,173,372	-	2,743,057	18,424

Shipments overseas of Canadian grain from St. Lawrence Ports were as follows:-

		United Kingdom	Other Countries
		B u s h e l s	
Montreal, Que.	Wheat		635,295
	Oats		231,171
	Barley		99,970
Sorel, Que.	Wheat	592,600	-

EASTERN ELEVATORS:- United States grain stocks were 1,354,284 bushels lower than at a comparable date last year. Decreases were noted in oats of 272,895 and corn 1,281,681 bushels while wheat shows an increase of 200,292 bushels.

The quantities by classes of ports with increases and decreases:-

	Week ending May 24, 1935	Week ending May 25, 1934	+ Increase - Decrease
At Georgian Bay Ports	2,569,916	2,833,906	- 263,990
At Lower Lake Ports	208,563	1,175,958	- 967,395
At St. Lawrence Ports	25,294	148,193	- 122,899
At Seaboard Ports	-	-	-
TOTAL	2,803,773	4,158,057	- 1,354,284

U. S. LAKE PORTS:- Grain in store shows a net decrease of 397,072 bushels. Wheat stocks show a decrease of 402,739 bushels while barley increased 5,667 bushels.

U. S. ATLANTIC SEABOARD PORTS:- Wheat stocks show an increase of 129,515 bushels.

Inspections returns for the week ending May 21, 1935 with comparison for the previous year were as follows:-

	Week ending May 21, 1935	Week ending May 21, 1934	+ Increase - Decrease
Wheat	1,809	2,752	- 943
Oats	193	175	+ 18
Barley	48	136	- 98
Flaxseed	4	5	- 1
Rye	15	9	+ 6
Mixed Grain	-	2	- 2
TOTAL	2,069	3,089	- 1,020

The number of bushels of grain shipped from western to the Canadian eastern points over the C.P.R. and C.N.R. for the week ending May 14, 1935 and the period from August 1, 1934 to May 14, 1935.

	WEEK ENDING MAY 14, 1935					PERIOD AUGUST 1, 1934 TO MAY 14, 1935				
	WHEAT	OATS	BARLEY	FLAXSEED	RYE	WHEAT	OATS	BARLEY	FLAXSEED	RYE
Via C.P.R.	-	6,235	-	-	-	3,205	54,708	3,750	-	-
Via C.N.R.	-	4,112	-	-	-	5,672	377,687	2,820	-	2,680
TOTAL	-	10,347	-	-	-	8,877	432,395	6,570	-	2,680

1871

1872

1873

1874

STOCKS OF GRAIN IN DIFFERENT ELEVATORS DURING THE WEEK ENDING MAY 24, 1935.

	WHEAT	OATS	BARLEY	FLAXSEED	RYE
	B u s h e l s				
Western Country Elevators ^x	75,153,865	2,526,399	1,194,337	217,749	465,306
Interior Private & Mill Elevs. ^x	6,666,708	955,129	1,403,465	8,250	9,715
Interior Pub. & Semi-Public Terms.	1,363,991	291,285	167,553	3,876	164
Vancouver-New Westminster	8,392,989	195,705	171,356	341	47,274
Victoria	618,884	-	-	-	-
Prince Rupert	29,642	-	-	-	-
Churchill	2,389,404	-	-	-	-
Fort William and Port Arthur	71,310,501	1,981,455	2,688,569	152,044	2,623,158
In Transit Lakes	781,501	78,615	194,380	-	-
Eastern Elevs. - Lake Ports	18,746,949	819,198	464,323	-	321,622
Eastern Elevs. - Seaboard Ports	9,008,003	955,491	562,921	21,962	211,510
U. S. Lake Ports	5,855,156	-	371,335	-	-
U. S. Atlantic Seaboard Ports	4,339,869	-	-	-	-
TOTAL	204,657,462	7,803,277	7,218,239	404,222	3,678,749
Previous week	207,268,918	8,267,760	7,557,826	402,901	3,861,378
Same week previous year	199,774,248	10,973,127	9,407,048	514,225	3,905,458

x Estimated.

Quantities of Screenings received, shipped and in store at the undermentioned elevators during the week ending May 24, 1935.

	Amount in Store May 17, 1935		Amount Received by vessel		Amount shipped		Amount in Store May 24, 1935	
	Tons	Lbs.	Tons	Lbs.	Tons	Lbs.	Tons	Lbs.
Owen Sound	870	-	-	-	140	-	730	-
Goderich Elev. Co.	298	-	198	1,990	40	-	456	1,990
Prescott	290	560	-	-	-	-	290	560
Montreal	-	1,126	-	-	-	-	-	1,126
Dominion Elev. Co.	1,064	20	-	-	12	-	1,052	20
Sorel	1,104	1,610	-	-	-	-	1,104	1,610
TOTAL	3,627	1,316	198	1,990	192	-	3,634	1,306

DULUTH.- Receipts of Canadian bonded grain at Duluth by rail for the week ending May 25, 1935 were nil. For the period from August 1, 1934 to date rail receipts amounted to wheat 110,620, oats 194,873 and rye 3,179 bushels.

Receipts by water for the week ending May 25, 1935 amounted to barley 108,805 bushels. Receipts by water from August 1, 1934 to date amounted to wheat 6,705,764, oats 858,257, barley 1,920,567 and rye 49,906 bushels.

Rail shipments for the week ending May 25, 1935 amounted to wheat 49,808 and barley 177,915 bushels, duty paid. Rail shipments from August 1, 1934 to date amounted to wheat 1,858,608, oats 322,276 and barley 1,336,183 bushels.

Lake shipments for the week ending May 25, 1935 were nil. Lake shipments from August 1, 1934 to date amounted to wheat 303,891 bushels.

CANADIAN GRAIN IN STORE - MAY 24, 1935.

	WHEAT	OATS	BARLEY	FLAXSEED	RYE	TOTAL
CANADIAN GRAIN IN STORE - MAY 1 st , 1957						
	B u s h e l s					
<u>WESTERN COUNTRY ELEVATORS</u>						
Manitoba	8415155	214730	321975	28967	104236	9085063
Saskatchewan	40074788	1374927	489078	162631	241906	42343330
Alberta	26663922	936742	383284	26151	119164	28129263
TOTAL WESTERN COUNTRY ELEVS.	75153865	2526399	1194337	217749	465306	79557656
INTERIOR PRIVATE AND MILL ELEVS.	6666708	955129	1403465	8250	9715	9043267
Calgary Can. Govt. Elevs.	11815	51111	161155	-	-	224081
Edmonton Can. Govt. Elevs.	63184	115397	6289	-	-	184870
Lethbridge Can. Govt. Elevs.	3856	-	-	-	-	3856
Moose Jaw Can. Govt. Elevs.	256995	51619	-	1334	164	310112
Saskatoon Can. Govt. Elevs.	30658	73158	109	2542	-	106467
TOTAL INT. & PUB. AND SEMI-PUB.	1363991	291285	167553	3876	164	1826869
VANCOUVER-NEW WESTMINSTER	8392989	195705	171356	341	47274	8807665
VICTORIA	618884	-	-	-	-	618884
PRINCE RUPERT	29642	-	-	-	-	29642
CHURCHILL	2389404	-	-	-	-	2389404
Semi-Public Terminals	71284448	1973139	2686127	152044	2623158	78718916
Private Terminals	26053	8316	2442	-	-	36811
TOTAL FT. WM. & PT. ARTHUR	71310501	1981455	2688569	152044	2623158	78755727
IN TRANSIT LAKES	781501	78615	194380	-	-	1054496
<u>EASTERN ELEVATORS</u>						
Port McNicoll	2979954	-	-	-	-	2979954
Tiffin	3062485	-	-	-	-	3062485
Midland Aberdeen	168209	55720	-	-	-	223929
Midland	2011402	17880	-	-	-	2029282
Midland Simcoe	3307604	70602	34826	-	-	3413032
Collingwood	529130	-	-	-	-	529130
Owen Sound	479507	98349	19368	-	19998	617222
Goderich Elev. & Transit	198810	19650	211	-	-	218671
Goderich Western Can. Flr. Mill	192104	-	-	-	-	192104
Sarnia	2537922	150762	37830	-	-	2782514
Port Colborne, D.G.	416085	2848	-	-	453	419386
Port Colborne Maple Leaf	1047402	137005	56634	-	30462	1271503
Toronto	666705	264004	54929	-	270709	1256347
Toronto Afloat	-	-	245000	-	-	245000
Kingston Richardson No. 1	12293	878	-	-	-	13171
Kingston Elev. Co.	158951	-	-	-	-	158951
Prescott	922386	1500	15525	-	-	939411
TOTAL EASTERN ELEVS. LAKE PORTS	18746949	819198	464323	-	321622	20352092
Montreal	6239345	497994	505443	21962	211510	7476254
Ogilvie Flour Mills	141324	-	-	-	-	141324
Dominion Elevs. Co.	89396	121129	36560	-	-	247085
North Amer. Elevs. Ltd. Sorel	1548144	-	8791	-	-	1556935
Quebec Hbr. Commrs.	965990	201722	11000	-	-	1178712
Halifax	23804	134646	1127	-	-	159577
TOTAL EAST. ELEVS. SBD. PORTS	9008003	955491	562921	21962	211510	10759887
TOTAL QUANTITY IN CANADA	194462437	7803277	6846904	404222	3678749	213195589
Duluth	716343	-	210528	-	-	926871
Buffalo	4393966	-	160807	-	-	4554773
Buffalo Afloat	289847	-	-	-	-	289847
Erie	455000	-	-	-	-	455000
TOTAL U.S. LAKE PORTS	5855156	-	371335	-	-	6226491
New York	599869	-	-	-	-	599869
New York Afloat	397000	-	-	-	-	397000
Albany	3242000	-	-	-	-	3242000
New Orleans	66000	-	-	-	-	66000
Galveston	35000	-	-	-	-	35000
TOTAL U.S. ATLANTIC SBD. PORTS	4339869	-	-	-	-	4339869
TOTAL QUANTITY IN STORE	204657462	7803277	7218239	404222	3678749	223761949

* Estimated.

x Included C.P.R. Elevators, North Transcona.

Grades of Canadian Grain in Store at Public, Semi-Public and Private Elevators (Head of the Lakes), Interior, Public and Semi-Public Elevators, Vancouver-New Westminster, Churchill and Victoria Terminal and Eastern Elevators for the week ending May 24, 1935.

	Fort William & Port Arthur Semi-Public and Private	Interior Public and Semi-Public Terminals	Vancouver New West- minster Victoria Elevators	Eastern Elevators Lake Ports	Eastern Elevators Seaboard Ports	Total
WHEAT						
	B u s h e l s					
No. 1 Hard	2,914,370	661	1,567,807	518,258	258,526	5,259,622
No. 1 Northern	32,265,408	7,298	2,221,291	14,617,555	3,494,536	52,606,088
No. 2 Northern	27,390,245	68,099	1,246,570	1,214,317	4,282,607	34,201,838
No. 3 Northern	2,355,627	1,088	339,080	476,021	25,170	3,196,986
No. 4 Northern	1,786,736	638	1,278,212	308,369	90,833	3,464,788
No. 5 Wheat	739,791	13,880	1,069,292	765,454	418,048	3,006,465
No. 6 Wheat	515,133	229,274	201,642	116,673	18,792	1,081,514
Feed	37,429	-	48,435	-	-	85,864
No. 1 C.W. Durum	1,128,770	-	-	554,118	215,758	1,898,646
No. 2 C.W. Durum	200,502	-	-	1,253	15,994	217,749
No. 3 C.W. Durum	105,268	-	-	-	7,378	112,646
No. 4 C.W. Durum	13,040	-	-	-	998	14,038
Other Durum	101,940	-	-	19,962	-	121,902
Other	1,730,189	45,570	1,039,544	154,969	179,363	3,149,635
Private Elevators	26,053	-	-	-	-	26,053
TOTAL	71,310,501	366,508	9,011,873	18,746,949	9,008,003	108,443,834
OATS						
No. 2 C. W.	728,341	98,249	34,755	193,610	40,020	1,095,005
No. 3 C. W.	90,073	42,034	50,971	209,743	210,351	603,172
Ex. No. 1 Feed	264,043	35,782	21,139	74,039	9,910	404,913
No. 1 Feed	448,044	3,061	29,483	217,852	438,196	1,130,636
No. 2 Feed	112,863	538	1,888	13,774	116,100	245,163
No. 3 Feed	109,688	-	-	-	-	109,688
Private Elevators	8,316	-	-	-	-	8,316
Other	220,087	111,621	57,439	110,180	146,914	646,241
TOTAL	1,981,455	291,285	195,705	819,198	955,491	4,243,134
NEW GRADE BARLEY						
3 Ex. C.W. 6 Row	39,824	-	-	-	-	39,824
3 Ex. C.W. Trebl	-	-	2,108	-	-	2,108
3 Ex. C.W. 2 Row	17,766	-	-	-	-	17,766
3 C. W.	2,007,492	124	48,673	431,458	409,776	2,897,523
4 C. W.	99,876	-	26,886	14,775	67,006	208,543
5 C. W.	211,772	3,751	21,825	2,000	26,030	265,378
6 C. W.	149,336	3,936	59,090	-	-	212,362
Private Elevators	2,442	-	-	-	-	2,442
Other	160,061	159,742	12,774	16,090	60,109	408,776
TOTAL	2,688,569	167,553	171,356	464,323	562,921	4,054,722
FLAXSEED						
No. 1 C.W.	130,804	3,876	-	-	21,962	156,642
No. 2 C.W.	9,178	-	169	-	-	9,347
No. 3 C.W.	5,105	-	85	-	-	5,190
No. 4 C.W.	905	-	-	-	-	905
Other	6,052	-	87	-	-	6,139
TOTAL	152,044	3,876	341	-	21,962	178,223
RYE						
No. 1 C. W.	10,135	-	-	-	-	10,135
No. 2 C.W.	2,434,984	-	47,274	299,406	109,579	2,891,243
No. 3 C.W.	118,166	164	-	19,998	98,890	237,218
No. 4 C.W.	15,899	-	-	-	-	15,899
Ergoty	4,370	-	-	-	-	4,370
Other	39,604	-	-	2,218	3,041	44,863
TOTAL	2,623,158	164	47,274	321,622	211,510	3,203,728
TOTAL QUANTITY						
IN STORE	78,755,727	829,386	9,426,549	20,352,092	10,759,887	120,123,641

CANADIAN GRAIN IN STORE - COMPARATIVE STATEMENT, 1932 - 1935.

	W H E A T	OTHER GRAIN Bushels	T O T A L
<u>May 24, 1935.</u>			
Country Elevators- Manitoba	8,415,155	669,908	9,085,063
Saskatchewan	40,074,788	2,268,542	42,343,330
Alberta	26,663,922	1,465,341	28,129,263
TOTAL	75,153,865	4,403,791	79,557,656
Interior Private and Mill	6,666,708	2,376,559	9,043,267
Interior Public and Semi-Public Terms.	1,363,991	462,878	1,826,869
Vancouver - New Westminster	8,392,989	414,676	8,807,665
Victoria	618,884	-	618,884
Prince Rupert	29,642	-	29,642
Churchill	2,389,404	-	2,389,404
Fort William and Port Arthur	71,310,501	7,445,226	78,755,727
In Transit Lakes	781,501	272,995	1,054,496
Eastern Elevators - Lake Ports	18,746,949	1,605,143	20,352,092
Eastern Elevators - Seaboard Ports	9,008,003	1,751,884	10,759,887
U. S. Lake Ports	5,855,156	371,335	6,226,491
U. S. Atlantic Seaboard Ports	4,339,869	-	4,339,869
TOTAL	204,657,462	19,104,487	223,761,949
<u>May 25, 1934.</u>			
Country Elevators - Manitoba	6,770,461	1,375,445	8,145,906
Saskatchewan	44,645,495	3,284,442	47,929,937
Alberta	31,805,741	2,102,158	33,907,899
TOTAL	83,221,697	6,762,045	89,983,742
Interior Public and Semi-Public Terms.	1,142,339	378,629	1,520,968
Vancouver - New Westminster	9,194,662	547,732	9,742,394
Victoria	930,474	-	930,474
Prince Rupert	1,092,150	303	1,092,453
Churchill	2,475,764	-	2,475,764
Fort William and Port Arthur	71,517,128	8,475,068	79,992,196
In Transit Lakes	3,004,306	1,495,271	4,499,577
Interior Private and Mill	6,132,341	2,548,904	8,681,245
Eastern Elevs. - Lake Ports	5,482,598	3,009,065	8,491,663
Eastern Elevs. - Seaboard Ports	11,124,992	1,507,240	12,632,232
U. S. Lake Ports	3,954,610	-	3,954,610
U. S. Atlantic Seaboard Ports	501,187	75,601	576,788
TOTAL	199,774,248	24,799,858	224,574,106
<u>May 26, 1933.</u>			
Country Elevators - Manitoba	7,960,093	1,503,459	9,463,552
Saskatchewan	58,230,726	3,659,880	61,890,606
Alberta	31,363,014	3,242,094	34,605,108
TOTAL	97,553,833	8,405,433	105,959,266
Interior Terminal Elevators	3,091,446	26,509	3,117,955
Vancouver - New Westminster	8,148,208	930,416	9,078,624
Victoria	832,308	1,713	834,021
Prince Rupert Elevators	301,695	-	301,695
Churchill	2,430,283	-	2,430,283
Fort William and Port Arthur	51,145,610	6,479,100	57,624,710
Interior Private and Mill Elevs.	6,068,503	1,636,956	7,705,459
In Transit Lakes	4,401,793	785,869	5,187,662
Eastern Elevs. - Lake Ports	17,737,068	1,659,133	19,396,201
Eastern Elevs. - Seaboard Ports	7,923,451	2,476,034	10,399,485
U. S. Lake Ports	3,596,869	74,339	3,671,208
U. S. Atlantic Seaboard Ports	192,916	260,506	453,422
TOTAL	203,423,983	22,736,008	226,159,991
<u>May 27, 1932.</u>			
Country Elevators - Manitoba	5,501,510	854,023	6,355,533
Saskatchewan	35,077,812	2,442,292	37,520,104
Alberta	22,052,567	1,706,717	23,759,284
TOTAL	62,631,889	5,003,032	67,634,921
Interior Terminal Elevators	151,162	218,806	369,968
Vancouver - New Westminster	7,892,094	1,138,392	9,030,486
Victoria Elevator	561,349	-	561,349
Prince Rupert Elevator	1,157,853	45	1,157,898
Fort William and Port Arthur	46,378,292	8,991,321	55,369,613
Interior Private and Mill Elevs.	5,731,313	2,284,900	8,016,213
In Transit Lakes	5,006,742	1,536,885	6,543,627
Eastern Elevs. - Lake Ports	6,400,581	1,402,207	7,802,788
Eastern Elevs. - Seaboard Ports	6,137,798	3,356,310	9,494,108
U. S. Lake Ports	4,102,562	377,806	4,480,368
U. S. Atlantic Seaboard Ports	3,099,646	504,669	3,604,315
TOTAL	149,251,281	24,814,373	174,065,654

RECEIPTS AND SHIPMENTS OF GRAIN BY CLASSES OF ELEVATORS
IN THE WEEK ENDING MAY 24, 1935.

	WHEAT	OATS	BARLEY	FLAXSEED	RYE	TOTAL
	B u s h e l s					
<u>COUNTRY ELEVATORS, WESTERN DIVISION#</u>						
Receipts - Rail	1,033,138	364,730	88,022	3,148	3,160	1,497,198
Shipments - Rail	4,308,857	285,573	179,064	5,751	24,833	4,804,078
<u>INTERIOR PUBLIC AND SEMI-PUBLIC TERMINALS</u>						
Receipts - Rail	1,188	12,948	-	-	-	14,136
Shipments - Rail	8,774	63,151	1,401	-	-	73,326
<u>VANCOUVER - NEW WESTMINSTER ELEVATORS</u>						
Receipts - Rail	487,622	4,010	-	-	-	491,632
Shipments - Vessel	1,598,842	82,352	36,318	-	-	1,706,512
Rail	3,706	235	250	-	-	4,191
<u>PRINCE RUPERT ELEVATOR</u>						
Receipts - Rail	11,802	-	-	-	-	11,802
Shipments - Vessel	311,957	-	-	-	-	311,957
<u>PUBLIC AND PRIVATE TERMINAL ELEVATORS FORT WILLIAM AND PORT ARTHUR</u>						
Receipts - Rail	1,384,922	19,854	33,136	1,502	5,872	1,445,286
Shipments - Vessel	1,233,645	157,475	304,379	-	-	1,695,499
Rail	127	14,528	247	12	-	14,914
<u>INTERIOR PRIVATE AND MILL ELEVATORS#</u>						
Receipts - Rail	517,159	71,445	52,558	1,508	2,665	645,335
Shipments - Rail	655,004	205,934	111,096	3,401	1,428	976,863
<u>EASTERN ELEVATORS - GEORGIAN BAY PORTS</u>						
Receipts - Vessel	64,970	156,452	-	-	-	221,422
Shipments - Vessel	101,600	106,300	-	-	-	207,900
Rail	152,868	33,411	13,439	-	-	204,718
<u>LOWER LAKE PORTS</u>						
Receipts - Vessel	889,834	128,825	5,105	-	-	1,023,764
Rail	-	6,000	10,470	-	-	16,470
Shipments - Vessel	229,175	92,767	75,000	-	-	396,942
Rail	163,325	1,650	11,787	-	2,361	179,123
Truck	2,818	-	1,500	-	-	4,318
<u>ST. LAWRENCE PORTS</u>						
Receipts - Vessel	1,218,568	257,341	-	21,962	-	1,497,871
Rail	-	497	1,457	-	-	1,954
Shipments - Vessel	1,227,895	231,171	99,970	-	-	1,559,036
Rail	47,889	46,749	22,699	-	-	117,337
<u>SEABOARD PORTS</u>						
Receipts - Vessel	-	-	Nil	-	-	-
Shipments - Rail	-	7	-	-	-	7
Teamed	615	2,711	-	-	-	3,326
<u>TOTAL EASTERN ELEVATORS</u>						
Receipts - Vessel	2,173,372	542,618	5,105	21,962	-	2,743,057
Rail	-	6,497	11,927	-	-	18,424
Shipments - Vessel	1,558,670	430,238	174,970	-	-	2,163,878
Rail	364,082	86,817	47,925	-	2,361	501,185
Truck & Teamed	3,433	2,711	1,500	-	-	7,644

Week ending May 17, 1935.

- 11 -
STOCKS OF UNITED STATES GRAIN IN CANADA AT MAY 24, 1935.

	WHEAT	OATS	BARLEY	RYE	CORN	TOTAL
	B u s h e l s					
Depot Harbour	-	4,451	-	-	811,117	815,568
Midland Aberdeen	-	-	-	-	2,870	2,870
Midland Grain	-	-	-	-	399,542	399,542
Collingwood Terminal	-	-	-	-	513,950	513,950
Collingwood C.N.R.	-	-	-	-	1,149	1,149
Owen Sound, G.L.	200,292	-	-	-	610,097	810,389
Sarnia	-	-	-	-	26,448	26,448
Port Colborne, D.G.	-	-	-	-	83,579	83,579
Port Colborne Maple Leaf	-	-	-	-	634	634
Toronto	-	-	-	-	124,350	124,350
Montreal Harbour Commrs.						
Nos. 1, 2 and B.	2	-	-	366	24,926	25,294
TOTAL	200,292	4,451	-	366	2,598,662	2,803,773
Same period previous year	2	277,346	-	366	3,880,343	4,158,057

RECEIPTS AND SHIPMENTS OF UNITED STATES GRAIN IN CANADA AT MAY 24, 1935.

	R E C E I P T S		S H I P M E N T S	
	Water	Rail	Water	Rail
	GEORGIAN BAY PORTS			
Wheat	-	-	345,650	-
Oats	-	-	-	1,875
Corn	-	-	671,500	81,314
	LOWER LAKE PORTS			
Corn	-	-	178,000	1,254
	ST. LAWRENCE PORTS			
Corn	-	-	-	7,821

STOCKS OF FOREIGN GRAIN IN CANADA AT MAY 24, 1935.

	ARGENTINE CORN	SOUTH AFRICAN CORN	TOTAL CORN	ARGENTINE FLAXSEED	ARGENTINE RYE
Sarnia	-	107,056	107,056	-	-
Port Colborne, M.L.	35,762	67,788	103,550	-	-
Toronto	1,500	15,536	17,036	-	-
Prescott	13,776	4,040	17,816	-	-
Montreal	-	686,421	686,421	243,036	367,075
Dominion Elev. Co.	-	2,165	2,165	-	-
Sorel	-	4,001	4,001	-	-
Quebec	-	313,997	313,997	-	-
Saint John	-	254,795	254,795	-	-
Halifax	-	1,072,204	1,072,204	-	-
TOTAL	51,038	2,528,003	2,579,041	243,086	367,075
Same period previous year	78,414	46,714	832,128	344,896	x263,076

RECEIPTS AND SHIPMENTS OF FOREIGN GRAIN IN CANADA FOR THE WEEK ENDING MAY 24, 1935.

	ARGENTINE CORN		SOUTH AFRICAN CORN		POLISH RYE	
	Receipts	Shipments	Receipts	Shipments	Receipts	Shipments
Georgian Bay Ports	-	-	-	30,000	-	-
Lower Lake Ports	-	1,302	-	13,328	159,350	358,896
St. Lawrence Ports	-	-	249,795	224,717	-	32,315
Seaboard Ports	-	-	-	20,800	-	-
	ARGENTINE RYE		ARGENTINE FLAXSEED		ARGENTINE OATS	
	Receipts	Shipments	Receipts	Shipments	Receipts	Shipments
Georgian Bay Ports	-	-	-	40,713	-	-
Lower Lake Ports	-	-	-	-	-	-
St. Lawrence Ports	-	269,930	296,308	117,700	-	280,212
Seaboard Ports	-	-	-	-	-	-

x Russian Rye.

STOCKS, RECEIPTS AND SHIPMENTS OF THE COUNTRY ELEVATORS IN THE WESTERN
DIVISION IN THE WEEK ENDING MAY 17, 1935.

	WHEAT	OATS	BARLEY	FLAXSEED	RYE	TOTAL
	B u s h e l s					
<u>MANITOBA</u>						
In Store, previous week	8,696,957	233,828	332,937	29,037	110,831	9,403,590
Receipts	137,711	18,137	66,564	50	343	222,805
TOTAL	8,834,668	251,965	399,501	29,087	111,174	9,626,395
Shipments -	324,008	36,619	73,271	189	6,780	440,867
In Store	8,510,660	215,346	326,230	28,898	104,394	9,185,528
<u>SASKATCHEWAN</u>						
In Store, previous week	42,406,225	1,196,284	548,002	166,981	259,358	44,576,850
Receipts	531,612	245,822	19,467	2,535	2,045	801,481
TOTAL	42,937,837	1,442,106	567,469	169,516	261,403	45,378,331
Shipments	2,345,212	2,565	68,941	5,539	12,934	2,435,191
In Store	40,592,623	1,434,756	498,429	163,977	248,469	42,938,254
<u>ALBERTA</u>						
In Store, previous week	28,455,825	1,116,621	421,206	25,598	123,048	30,142,298
Receipts	368,815	100,771	1,991	563	772	472,912
TOTAL	28,824,640	1,217,392	423,197	26,161	123,820	30,615,210
Shipments	1,639,637	246,389	36,852	23	5,119	1,928,020
In Store	27,185,003	971,003	386,345	26,138	118,701	28,687,190

TOTAL RECEIPTS AT COUNTRY ELEVATORS AND PLATFORM LOADINGS# IN THE
PERIOD AUGUST 1, 1934 TO MAY 17, 1935.

	W H E A T	OTHER GRAIN	T O T A L
	B u s h e l s		
Manitoba	29,181,254	10,930,177	40,111,431
Saskatchewan	89,494,311	18,556,277	108,050,588
Alberta	85,113,001	18,196,559	103,309,560
Total 1934 - 1935	203,788,566	47,683,013	251,471,579
Same period 1933 - 1934	199,793,770	45,536,743	245,330,513

#Platform Loadings to May 14, 1935.

STATE OF NEW YORK
IN SENATE

January 1, 1900.

REPORT OF THE
COMMISSIONER OF THE LAND OFFICE
IN RESPONSE TO A RESOLUTION PASSED BY THE SENATE
JANUARY 1, 1899.

ALBANY:
J. B. LEECH, STATE PRINTER,
1899.

THE LAND OFFICE
ALBANY, N. Y.

REPORT OF THE
COMMISSIONER OF THE LAND OFFICE

IN RESPONSE TO A RESOLUTION PASSED BY THE SENATE
JANUARY 1, 1899.

ALBANY:
J. B. LEECH, STATE PRINTER,
1899.

THE LAND OFFICE
ALBANY, N. Y.

INTERIOR TERMINAL ELEVATORS

Receipts, Shipments and Quantities in Store, Week ending May 24, 1935.

	WHEAT	OATS	BARLEY	FLAXSEED	RYE	TOTAL
	B u s h e l s					
<u>CALGARY</u>						
In Store, previous week	11,815	71,673	162,556	-	-	246,044
Receipts	-	13,178	-	-	-	13,178
TOTAL	11,815	84,851	162,556	-	-	259,222
Shipments - Rail	-	33,740	1,401	-	-	35,141
In Store	11,815	51,111	161,155	-	-	224,081
<u>EDMONTON</u>						
In Store, previous week	66,188	137,249	6,289	-	-	209,726
Receipts	1,188	-	-	-	-	1,188
TOTAL	67,376	137,249	6,289	-	-	210,914
Shipments - Rail	4,192	21,852	-	-	-	26,044
In Store	63,184	115,397	6,289	-	-	184,870
<u>LETHBRIDGE</u>						
In Store, previous week	3,856	-	-	-	-	3,856
Receipts	-	-	Nil	-	-	-
TOTAL	3,856	-	-	-	-	3,856
Shipments - Rail	-	-	Nil	-	-	-
In Store	3,856	-	-	-	-	3,856
<u>MOOSE JAW</u>						
In Store, previous week	256,995	59,356	-	1,334	164	317,849
Receipts	-	-230	-	-	-	-230
TOTAL	256,995	59,126	-	1,334	164	317,619
Shipments - Rail	-	7,507	-	-	-	7,507
In Store	256,995	51,619	-	1,334	164	310,112
<u>SASKATOON</u>						
In Store, previous week	35,240	73,210	109	2,542	-	111,101
Receipts	-	-	Nil	-	-	-
TOTAL	35,240	73,210	109	2,542	-	111,101
Shipments - Rail	4,582	52	-	-	-	4,634
In Store	30,658	73,158	109	2,542	-	106,467
<u>CHURCHILL</u>						
<u>PUBLIC TERMINAL</u>						
In Store, previous week	2,389,404	-	-	-	-	2,389,404
Receipts	-	-	Nil	-	-	-
TOTAL	2,389,404	-	-	-	-	2,389,404
Shipments - Vessel	-	-	Nil	-	-	-
In Store	2,389,404	-	-	-	-	2,389,404

STATE OF NEW YORK

IN SENATE,

1891

1892

1893

1894

1895

1896

1897

1898

1899

1900

1901

• 2 •

1891	1892	1893	1894	1895	1896	1897	1898	1899	1900	1901
1891	1892	1893	1894	1895	1896	1897	1898	1899	1900	1901
1891	1892	1893	1894	1895	1896	1897	1898	1899	1900	1901

1891	1892	1893	1894	1895	1896	1897	1898	1899	1900	1901
1891	1892	1893	1894	1895	1896	1897	1898	1899	1900	1901
1891	1892	1893	1894	1895	1896	1897	1898	1899	1900	1901

1891	1892	1893	1894	1895	1896	1897	1898	1899	1900	1901
1891	1892	1893	1894	1895	1896	1897	1898	1899	1900	1901
1891	1892	1893	1894	1895	1896	1897	1898	1899	1900	1901

1891	1892	1893	1894	1895	1896	1897	1898	1899	1900	1901
1891	1892	1893	1894	1895	1896	1897	1898	1899	1900	1901
1891	1892	1893	1894	1895	1896	1897	1898	1899	1900	1901

1891	1892	1893	1894	1895	1896	1897	1898	1899	1900	1901
1891	1892	1893	1894	1895	1896	1897	1898	1899	1900	1901
1891	1892	1893	1894	1895	1896	1897	1898	1899	1900	1901

1891	1892	1893	1894	1895	1896	1897	1898	1899	1900	1901
1891	1892	1893	1894	1895	1896	1897	1898	1899	1900	1901
1891	1892	1893	1894	1895	1896	1897	1898	1899	1900	1901

STOCKS, RECEIPTS AND SHIPMENTS OF THE PACIFIC COAST ELEVATORS
IN THE WEEK ENDING MAY 24, 1935.

	WHEAT	OATS	BARLEY	FLAXSEED	RYE	TOTAL
	B u s h e l s					
<u>VANCOUVER - NEW WESTMINSTER</u>						
In Store, previous week	9,509,954	280,478	210,947	341	47,274	10,048,994
Receipts	487,622	4,010	-	-	-	491,632
TOTAL	9,997,576	284,488	210,947	341	47,274	10,540,626
Shipments - Vessel	1,587,842	82,352	36,318	-	-	1,706,512
Rail	3,706	235	250	-	-	4,191
In Store	8,392,989	195,705	171,356	341	47,274	8,807,665
<u>PRINCE RUPERT</u>						
In Store, previous week	329,797	-	-	-	-	329,797
Receipts	11,802	-	-	-	-	11,802
TOTAL	341,599	-	-	-	-	341,599
Shipments - Vessel	311,957	-	-	-	-	311,957
In Store	29,642	-	-	-	-	29,642
<u>VICTORIA</u>						
In Store, previous week	618,884	-	-	-	-	618,884
Receipts			Nil			
TOTAL	618,884	-	-	-	-	618,884
Shipments - Vessel			Nil			
In Store	618,884	-	-	-	-	618,884

DAILY AND WEEKLY AVERAGE PRICES OF WHEAT IN THE WESTERN DIVISION
IN THE WEEK ENDING TO MAY 25, 1935.

(Basis Vancouver, B. C.)

	May 20 ¢	May 21 ¢	May 22 ¢	May 23 ¢	May 24 ¢	May 25 ¢	Weekly Average ¢
No. 1 Hard	83.9	84.6	84.9	84.9			84.6
No. 1 Northern	83.3	84.1	84.3	84.3			84
No. 2 Northern	77.6	78.1	78.3	78.3			78.1
No. 3 Northern	75.3	75.9	76.1	76.1			75.9
No. 4 Northern	72.3	72.9	73.1	73.1			72.9
No. 5	65.3	65.9	66.1	66.1			65.9
No. 6	60.3	60.3	60.6	60.6			60.5
Feed	60.3	60.3	60.6	60.6			60.5
Track	83.6	84.3	84.6	84.6			84.3

- 15 -
DAILY AND WEEKLY AVERAGE PRICES OF GRAIN
WEEK ENDING MAY 25, 1935.

WESTERN DIVISION
(Basis Fort William and Port Arthur)

	May 20 \$ ¢	May 21 \$ ¢	May 22 \$ ¢	May 23 \$ ¢	May 24 \$ ¢	May 25 \$ ¢	Weekly Average \$ ¢
WHEAT							
No. 1 Man. Hard	.853	.853	.856	.855			.854
No. 1 Man. Northern	.853	.853	.856	.855			.854
No. 2 Man. Northern	.823	.823	.826	.825			.824
No. 3 Man. Northern	.773	.773	.776	.775			.774
No. 4 Man. Northern	.719	.719	.721	.715			.719
No. 5	.653	.653	.656	.65			.653
No. 6	.639	.639	.641	.635			.639
Feed	.621	.621	.623	.617			.621
Rejected No. 1 Northern	.749	.749	.751	.75			.75
No. 2 Northern	.729	.729	.731	.73			.73
No. 3 Northern	.699	.699	.701	.70			.70
Tough No. 1 Hard	.831	.831	.833	.832			.832
No. 1 Northern	.831	.831	.833	.832			.832
No. 2 Northern	.801	.801	.803	.802			.802
No. 3 Northern	.743	.743	.746	.745			.744
Scruffy No. 1 Hard	.783	.783	.786	.785			.784
No. 1 Northern	.783	.783	.786	.785			.784
No. 2 Northern	.753	.753	.756	.755			.754
No. 3 Northern	.719	.719	.721	.72			.72
Durum No. 1	.843	.843	.846	.845			.844
No. 2	.803	.803	.806	.805			.804
No. 3	.753	.753	.756	.755			.754
A.R. W. No. 1	.743	.743	.746	.745			.744
No. 2	.723	.723	.726	.725			.724
No. 3	.703	.703	.706	.705			.704
OATS							
No. 2 C. W.	.425	.423	.443	.445			.434
No. 3 C. W.	.395	.393	.413	.415			.404
Pr. No. 1 Feed	.395	.393	.413	.415			.404
No. 1 Feed	.375	.373	.393	.395			.384
No. 2 Feed	.343	.342	.359	.35			.349
No. 3 Feed	.301	.30	.316	.307			.306
BARLEY (NEW GRADE)							
2 Row	.486	.49	.50	.497			.493
6 Row	.786	.782	.769	.743			.77
Trebi	.426	.43	.44	.437			.433
No. 3 C. W.	.426	.43	.44	.437			.433
No. 4 C. W.	.386	.39	.40	.397			.393
No. 5 C. W.	.371	.375	.385	.382			.378
No. 6 C. W.	.361	.365	.375	.372			.368
RYE							
No. 1 C. W.	.452	.445	.449	.451			.449
No. 2 C. W.	.452	.445	.449	.451			.449
No. 3 C. W.	.422	.415	.419	.421			.419
Rejected No. 2 C. W.	.392	.385	.389	.391			.389
No. 4 C. W.	.392	.385	.389	.391			.389
Rejected for Ergot	.382	.375	.379	.381			.379
WAXSEED							
No. 1 C. W.	1.353	1.34	1.347	1.34			1.345
No. 2 C. W.	1.313	1.30	1.307	1.30			1.305
No. 3 C. W.	1.163	1.15	1.157	1.15			1.155
No. 4 C. W.	1.163	1.15	1.157	1.15			1.155
ONTARIO - TORONTO							
Wheat, good Milling	.85	.85	.85	.85	.85	.85	.85
Oats	.32-	.32-	.32-	.32-			.32-
	.33	.33	.33	.33			.33
Malting barley	.63-	.63-	.63-	.63-			.63-
	.66	.66	.66	.66			.66
Ontario Corn	.59-	.59-	.59-	.59-			.59-
	.61	.61	.61	.61			.61
Rye	.52-	.52-	.52-	.52-			.52-
	.54	.54	.54	.54			.54
Barley	.43-	.43-	.43-	.43-			.43-
	.45	.45	.45	.45			.45
Buckwheat	.47-	.47-	.47-	.47-			.47-
	.49	.49	.49	.49			.49
F.O.B. Shipping Point.							

STATISTICS CANADA LIBRARY
BIBLIOTHÈQUE STATISTIQUE CANADA



1010674960