

B  
FILE

C A N A D A  
DEPARTMENT OF TRADE AND COMMERCE  
DOMINION BUREAU OF STATISTICS  
AGRICULTURAL BRANCH

Vol. 16

No. 22

Historical File Copy

CANADIAN GRAIN STATISTICS

Week ending

JANUARY 3, 1936

[Records for Western Inspection Division supplied by Board of Grain Commissioners for Canada]

Published by Authority of the HON. W.D. Euler, M.P.,  
Minister of Trade and Commerce.

+ + +

OTTAWA

1936

## I N D E X

General Summary .....	1 - 6
Canadian Grain in Store by Elevators .....	7
Canadian Grain in Store by Grades .....	8
Comparative Statement of Grain in Store .....	9
U. S. Grain in Store, receipts and shipments .....	10
Receipts, Shipments and Quantities in Store at Country Elevators Western Division and platform loadings .....	11
Receipts, Shipments and Quantities in Store at Interior Terminal Elevators .....	12
Receipts, Shipments and Quantities in Store at Pacific Elevators and Vancouver Prices .....	13
Daily and Weekly Average Prices of Grain at Fort William and Toronto for week ending January 4, 1936 .....	14
Receipts and Shipments at Fort William and Port Arthur, month of December, 1935 .....	15
Receipts of Canadian Grain with shipments by destination, December, 1935 .....	16-17
Receipts of U. S. and Foreign Grain with shipments by destination, December, 1935 .....	17



DEPARTMENT OF TRADE AND COMMERCE  
DOMINION BUREAU OF STATISTICS - CANADA  
AGRICULTURAL BRANCH

(Issued January 10, 1936)

Dominion Statistician:	R. H. Coats, LL.D., F.R.S.C., F.S.S. (Hon.)
Chief, Agricultural Branch:	T. W. Grindley, Ph.D.
Assistant Chief, Agricultural Branch:	W. Dougan

WHEAT STOCKS IN STORE

Canadian wheat in store for the week ending January 3, shows a decrease of 1,118,501 bushels compared with the previous week and an increase of 3,402,833 bushels compared with the corresponding week in 1935. The visible supply was reported as 261,127,093 bushels compared with the revised figure of 262,245,594 bushels for the previous week and 257,724,260 bushels for the week ending January 4, 1935.

Canadian wheat in the United States amounted to 34,759,523 bushels a net decrease of 553,210 bushels from the previous week when 35,312,735 bushels were reported. The Canadian wheat in store in the United States is located at the following ports: Duluth 960,558; Buffalo 19,830,427; Erie 2,049,000; Chicago 280,000; New York 3,987,596; Albany 5,087,000; Galveston 112,000; Boston 1,062,942; Philadelphia 768,000 and Baltimore 572,000 bushels. Decreases are shown in the Canadian stocks from the previous week at Duluth 3,333; Buffalo 534,168; Erie 125,000; Chicago 35,000; Galveston 2,000; and Baltimore 280,000 bushels, while an increase is noted in the stocks at New York of 426,291 bushels. The stocks at Albany, Boston, and Philadelphia remained the same as those of the previous week, viz: 5,087,000; 1,062,942 and 768,000 bushels. For the same week a year ago the Canadian wheat in the United States amounted to 27,136,698 bushels distributed as follows: Chicago 786,000; Duluth 1,739,374; Buffalo 15,643,035; Erie 2,495,000; Milwaukee 283,000; New York 1,991,289; Albany 4,139,000 and Philadelphia 60,000 bushels.

United States wheat in Canada is shown as 2 bushels, compared with 1,048,912 bushels at the corresponding date a year ago.

PRIMARY MOVEMENT

Wheat marketings in the Prairie Provinces for the week ending December 27, amounted to 1,799,370 bushels, a decrease of 939,204 bushels from the previous week's total when 2,738,574 bushels were marketed. During the corresponding week a year ago, the receipts were 1,658,000 bushels.

By provinces, the receipts for the week ending December 27, 1935, were as follows, figures within brackets being those for 1934: Manitoba 99,967 (131,728); Saskatchewan 881,162 (700,937); Alberta 818,241 (825,335) bushels.

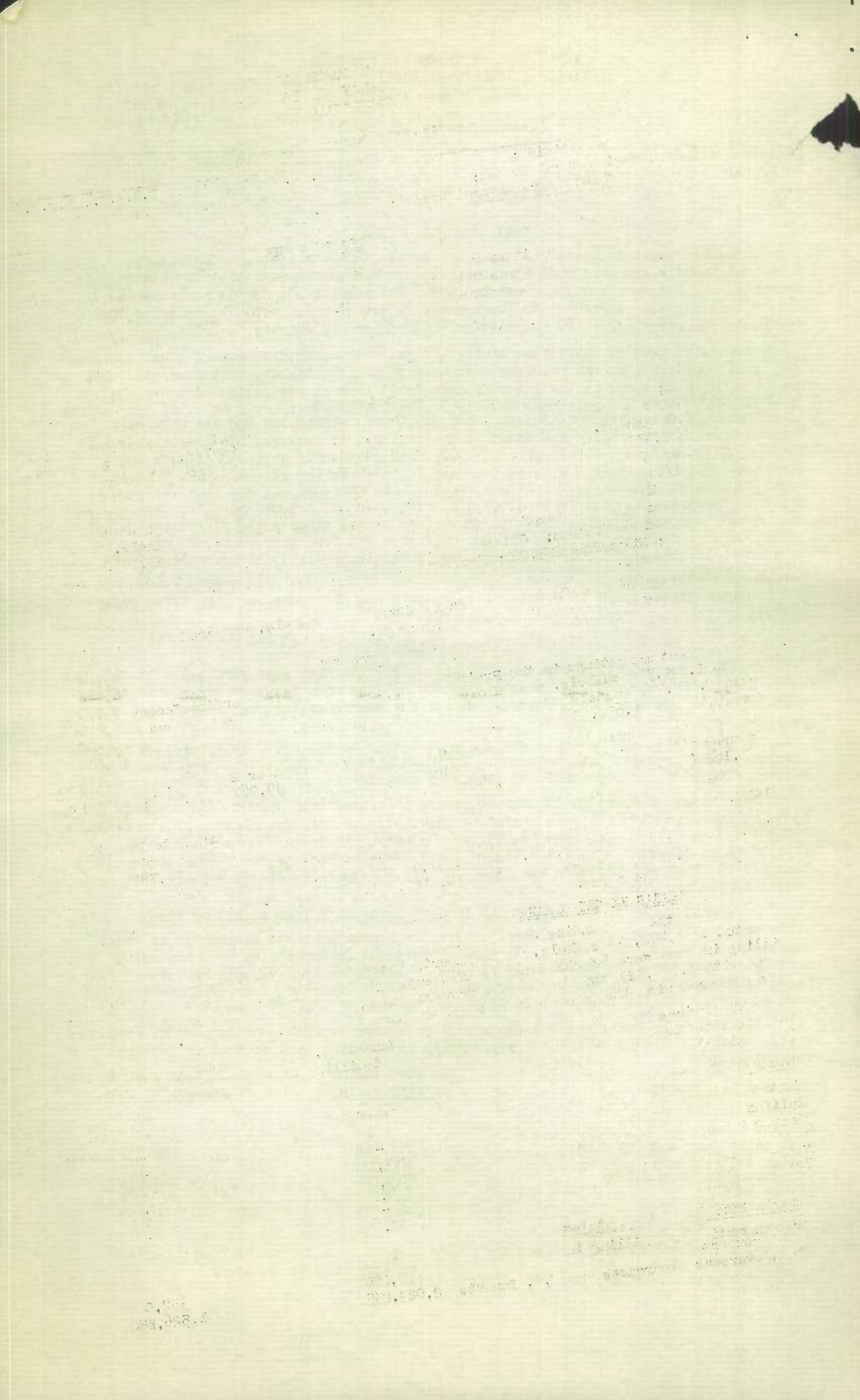
Marketings of wheat in the three prairie provinces from August 1 to December 27, 1935, as compared with the same period in 1934, were as follows, figures within brackets being those of 1934: Manitoba 15,099,162 (26,687,535); Saskatchewan 97,747,516 (77,350,187); Alberta 67,474,484 (69,747,661) bushels. For the twenty-one weeks ending December 27, 1935 and December 28, 1934, 180,321,162 and 173,785,383 bushels were received from the farms.

OVERSEAS EXPORT CLEARANCES AND IMPORTS INTO THE UNITED STATES OF WHEAT

During the week ending January 3, 1936 the overseas export clearances of wheat amounted to 1,402,235 bushels, while imports into the United States for consumption and milling in bond were 627,000 bushels of wheat. The total is 2,029,235 bushels as compared with 3,027,327 bushels for the previous week, a decrease of 999,092 bushels, and when compared with the same week in 1935, an increase of 502,385 bushels.

Clearances by ports for the weeks ending January 3, 1936, and January 4, 1935, and imports into the United States for consumption and milling in bond were as follows, (in bushels).

	Week ending January 3, 1936	Week ending January 4, 1935.
<u>Overseas Clearances</u>		
Montreal	180	-
Halifax	-	-
West Saint John & Saint John	263,953	184,999
United States Ports	319,000	39,000
Vancouver-New Westminster	819,102	649,571
Prince Rupert	-	301,280
TOTAL	1,402,235	1,174,850
<u>Imports into the United States</u>		
For consumption and milling in bond for re-export	627,000	352,000
Total, overseas clearances and U.S. Imports	2,029,235	1,526,850





The following table shows the export clearances of Canadian wheat by ports from August 1 to January 3, along with comparative figures for the same period in 1934-35, and imports into the United States for consumption and milling in bond (in bushels):

Overseas Clearances	1935-36 (bushels)	1934-35
Montreal	22,639,553	18,150,048
Sorel	4,537,590	2,806,893
Quebec	1,095,227	1,762,051
West Saint John & Saint John	1,415,799	897,682
Halifax	166,630	-
United States Ports	8,774,000	11,972,000
Vancouver-New Westminster	15,710,464	19,235,402
Churchill	2,407,000	4,049,877
Prince Rupert	-	301,280
Total, Overseas Clearances	56,746,263	59,175,233
Imports into the United States		
For Consumption and milling in bond for re-export	24,668,220	12,564,488
Total, Overseas Clearances and U. S. Imports to date	81,414,483	71,739,721

Quantities of wheat moved by rail from Eastern Elevators on the Georgian Bay, Lake Huron and Lake Huron ports to the Maritime ports during the week ended January 3, 1936 were as follows:- Depot Harbour 126,829; Port McNicoll 246,400; Owen Sound 40,000; Sarnia 128,210; Port Colborne 40,000; Toronto 144,137 and Prescott 78,876 bushels, a total of 804,452 bushels.

International Trade (Broomhall's Revised Figures), 1935-36.

The following table shows the world shipments of wheat and wheat flour for the first twenty-two weeks of the present crop year:

Week Ending	North America	Argentina	Australia	Russia	Other	Total
(Thousand Bushels)						
August 10x	2,760	3,194	1,253	-	888	8,095
17	2,880	1,312	1,192	648	728	6,760
24	2,640	4,016	1,704	872	696	9,928
31	2,584	1,888	1,080	1,144	416	7,112
September 7	2,256	2,432	1,384	1,296	872	8,240
14	2,784	3,440	1,560	592	1,184	9,560
21	3,672	2,568	2,384	1,008	440	10,072
28	3,680	1,056	1,824	992	624	8,176
October 5	3,944	3,136	1,936	1,936	1,104	12,056
12	3,968	1,880	1,808	2,064	880	10,600
19	3,928	1,368	2,504	2,920	1,040	11,760
26	3,664	1,800	2,032	1,088	1,440	10,024
November 2	5,880	1,480	2,792	456	1,856	12,464
9	4,632	1,792	2,160	1,224	1,456	11,264
16	4,880	1,168	2,808	992	976	10,824
23	4,872	1,216	1,184	1,264	952	9,488
30	6,024	1,048	1,000	1,072	1,000	10,144
December 7	5,136	1,736	1,584	1,320	712	10,488
14	3,672	1,368	1,872	1,992	952	9,856
21	5,088	920	1,680	968	1,320	9,976
28	2,661	704	778	80	688	4,911
January 1935 4	1,549	803	1,620	560	1,096	5,628
T o t a l s	83,154	40,325	38,139	24,488	21,320	207,426

Comparative 1934-35

Corresponding week	1,392	2,944	2,200	-	1,384	7,920
Total to Date	78,177	74,766	43,869	2,720	23,728	223,260

\* Includes 1,200,000 bushels shipped from North America on August 1, 2 or 3, 250,000 bushels shipped from Argentina and 245,000 from Australia on August 1.





(N.B. Because of the splitting of weeks by cut-off dates of weekly shipment records, Mr. Broomhall's figures do not begin or end with the crop year. It so happens that either 1934-35 or 1935-36 must have 53 weeks - and thus make comparisons a little misleading - unless certain weekly figures are broken up to start at August 1 and end at July 31 so far as possible. This division is not easy and can only be approximated. For different countries Mr. Broomhall makes the cut-off on different days - the Black Sea on Wednesdays, Argentina and Australia on Thursdays and North America on Saturdays (excepting the Canadian Pacific Coast where the cut-off is made on Thursdays).

The new tables set up above attempt a cut-off at July 31 in each year so that 52 weeks' shipments will be included. The differences are confined to the period ending August 10).

World shipments for the week ending January 4, 1936 amounted to 5,628,000 bushels compared with 4,911,000 bushels for the previous week and 7,920,000 bushels for the corresponding week last year. World shipments showed a decrease of 5,065,000 bushels made up of 2,427,000 from North America, 216,000 from the Argentine, 902,000 from Australia, 888,000 from Russia and 632,000 bushels from other countries. The figures for North America are again much too low--probably by at least half a million bushels.

During the first twenty-two weeks of the present crop year world shipments amounted to 207 million bushels as compared with 223 million for the corresponding weeks last year. Australian shipments were slightly lower than last year. North American shipments were 83 million bushels as compared with 78 million bushels for the same period in 1934-35 and Argentine shipments were only 40 million bushels as compared with 75 million bushels for the corresponding period last year.

Weekly Average Shipments

The following table shows the weekly average shipments of wheat for the first twenty-two weeks of the present crop year along with comparative figures for 1934-35.

	<u>North America</u>	<u>Argentina</u>	<u>Australia</u>	<u>Russia</u>	<u>Other</u>	<u>Total</u>
		(Million Bushels)				
1934-35	3.6	3.4	2.0	.1	1.1	10.2
1935-36	3.8	1.8	1.7	1.1	1.0	9.3

As shown by the above table world shipments of wheat have averaged 9.3 million bushels per week during the first 22 weeks of the crop year as compared with 10.2 million bushels for the corresponding period last year. North American shipments have averaged 3.8 million bushels per week compared with 3.6 million bushels per week during the same period 1934-35.

Argentine shipments have averaged 1.8 million bushels per week as compared with 3.4 in 1934-35.

The first part of the report deals with the general situation of the country and the progress of the work. It is followed by a detailed account of the various projects and the results obtained. The report concludes with a summary of the work done and the conclusions reached.

The second part of the report deals with the financial aspects of the work. It gives a detailed account of the income and expenditure of the organization and the results of the financial year.

The third part of the report deals with the administrative aspects of the work. It gives a detailed account of the organization of the work and the results of the administrative year. It also deals with the personnel of the organization and the results of the personnel year.

The fourth part of the report deals with the technical aspects of the work. It gives a detailed account of the various projects and the results obtained. It also deals with the technical staff of the organization and the results of the technical year.

Summary of the work done

The work done during the year has been very satisfactory. The various projects have been completed and the results obtained are very good. The financial year has also been successful and the administrative year has been well managed.

The technical staff of the organization has also done very well and the results of the technical year are very good. The personnel of the organization have also done well and the results of the personnel year are very good.

The work done during the year has been very satisfactory. The various projects have been completed and the results obtained are very good. The financial year has also been successful and the administrative year has been well managed.

The technical staff of the organization has also done very well and the results of the technical year are very good. The personnel of the organization have also done well and the results of the personnel year are very good.

The work done during the year has been very satisfactory. The various projects have been completed and the results obtained are very good. The financial year has also been successful and the administrative year has been well managed.

The technical staff of the organization has also done very well and the results of the technical year are very good. The personnel of the organization have also done well and the results of the personnel year are very good.

The work done during the year has been very satisfactory. The various projects have been completed and the results obtained are very good. The financial year has also been successful and the administrative year has been well managed.

The technical staff of the organization has also done very well and the results of the technical year are very good. The personnel of the organization have also done well and the results of the personnel year are very good.

The work done during the year has been very satisfactory. The various projects have been completed and the results obtained are very good. The financial year has also been successful and the administrative year has been well managed.

The technical staff of the organization has also done very well and the results of the technical year are very good. The personnel of the organization have also done well and the results of the personnel year are very good.

The work done during the year has been very satisfactory. The various projects have been completed and the results obtained are very good. The financial year has also been successful and the administrative year has been well managed.

The technical staff of the organization has also done very well and the results of the technical year are very good. The personnel of the organization have also done well and the results of the personnel year are very good.

The work done during the year has been very satisfactory. The various projects have been completed and the results obtained are very good. The financial year has also been successful and the administrative year has been well managed.

The technical staff of the organization has also done very well and the results of the technical year are very good. The personnel of the organization have also done well and the results of the personnel year are very good.



CANADIAN GRAIN STATISTICS - WEEK ENDING January 3, 1936.

Returns received as to stocks of grain in store for the week ending January 3, 1936 show a net decrease of 928,205 bushels, compared with the revised figure of the previous week. Stocks in store were as follows:- wheat 261,127,093, oats 12,491,664, barley 9,162,204, flaxseed 474,334 and rye 4,680,931 bushels, a total of 287,936,226 bushels. Decreases are noted in wheat of 1,118,501 and flaxseed 28,112 bushels while increases are shown in oats of 156,690, barley 51,650 and rye 10,068 bushels. At a comparable date last year stocks in store were as follows:- wheat 257,724,260, oats 16,796,233, barley 13,095,810, flaxseed 439,691 and rye 3,933,512 bushels, a total of 291,989,506 bushels.

Western Country Elevators:- Grain stocks show a net increase of 14,627 bushels. Increases are noted in oats of 55,200, barley 16,793 and rye 1,200 bushels, while decreases are shown in wheat of 26,141 and flaxseed 32,425 bushels.

The following table shows the quantities of grain in store at the Country Elevators in each of the Prairie Provinces on December 27, 1935 with comparison for the previous week and the same period 1934.

	<u>MANITOBA</u>	<u>SASKATCHEWAN</u>	<u>ALBERTA</u>	<u>TOTAL</u>
	<u>B U S H E L S</u>			
Wheat	7,061,153	48,928,081	35,852,672	91,841,906
Oats	601,081	2,615,857	1,978,080	5,195,018
Barley	1,760,645	1,435,129	416,966	3,612,740
Flaxseed	35,860	346,237	43,396	425,493
Rye	377,900	680,568	79,248	1,137,716
T O T A L	9,836,639	54,005,872	38,370,362	102,212,873
Previous week	9,793,728	53,517,807	38,933,228	102,244,763
Same period 1934	11,670,118	57,747,970	42,780,267	112,198,355

The receipts and shipments at the Country Elevators for the week ending December 27, 1935 compared with the previous week and the same period 1934 were as follows:-

	<u>R E C E I P T S</u>			<u>S H I P M E N T S</u>		
	Previous week	Week ending Dec.27, 1935	Week ending Dec.28, 1934	Previous week	Week ending Dec.27, 1935	Week ending Dec.28, 1934
Wheat	2,654,371	1,799,370	1,621,404	2,910,647	1,812,841	1,386,664
Oats	357,798	298,104	430,441	380,119	304,668	411,674
Barley	115,279	120,655	138,075	135,804	130,280	163,458
Flaxseed	8,537	5,235	894	14,028	10,751	15,062
Rye	22,545	25,624	6,728	17,603	13,068	9,523
T O T A L	3,158,530	2,248,988	2,197,542	3,458,201	2,271,608	1,986,381

Platform Loadings shown by Prairie Provinces for the period ending December 31, 1935 were as follows:-

	<u>WHEAT</u>	<u>OTHER GRAIN</u>	<u>TOTAL</u>
	<u>B U S H E L S</u>		
Manitoba			
Saskatchewan			
Alberta			
T O T A L			
Period ending Dec.31,1934.			
✓Increase - Decrease			

INTERIOR PUBLIC AND SEMI-PUBLIC TERMINALS . Stocks for the week show a net decrease of 24,326 bushels. Wheat stocks decreased 69,110 bushels while increases are shown in oats and barley of 32,275 and 12,509 bushels respectively.

VANCOUVER - NEW WESTMINSTER ELEVATORS.- Grain stocks at these elevators show an increase of 594,448 bushels, composed of wheat 500,156,oats 90,141, barley 3,062, flaxseed 6 and rye 1,083 bushels .

PRINCE RUPERT AND CHURCHILL ELEVATORS.- Grain stocks remain unchanged.

PUBLIC AND PRIVATE (FORT WILLIAM AND PORT ARTHUR).- Grain stocks show a net increase of 427,849 bushels. Increases are noted in wheat of 353,628, oats 48,316, barley 17,707 and rye 11,582 bushels while flaxseed decreased 3,384 bushels.





Stocks in Store at the Head of the Lakes compared with the same week last year were as follows:-

	Week ending January 3, 1936	Week ending January 4, 1935	+ Increase - Decrease
Wheat	38,213,320	56,409,732	- 18,196,412
Oats	2,175,251	2,464,021	- 288,770
Barley	2,403,118	3,143,989	- 740,871
Flaxseed	43,713	150,937	- 107,224
Rye	3,058,057	2,535,502	+ 522,555

The receipts (including transfers) at the Head of the Lakes for the period ending January 3, 1936 with comparative figures for the same week last year were as follows:-

	Week ending January 3, 1936	Week ending January 4, 1935	+ Increase - Decrease
Wheat	342,681	645,098	- 302,417
Oats	40,875	96,306	- 55,431
Barley	18,957	51,387	- 32,430
Flaxseed	6,313	1,865	+ 4,448
Rye	3,838	6,721	- 2,883

The shipments at the Head of the Lakes for the period ending January 3, 1936 with comparative figures for the same week last year were as follows:-

	Week ending January 3, 1936	Week ending January 4, 1935	+ Increase - Decrease
Wheat	8,185	212	+ 7,973
Oats	58,178	15,096	+ 43,082
Barley	1,250	-	+ 1,250
Flaxseed	9,697	-	+ 9,697
Rye	-	-	-

Preliminary figures showing receipts and shipments at the Head of the Lakes also Vancouver-New Westminster, Prince Rupert, Victoria and Churchill for the period August 1, 1935 to January 3, 1936 compared with the same period last year:

	FORT WILLIAM & PORT ARTHUR		VANCOUVER-NEW WESTMINSTER	
	Receipts	Shipments	Receipts	Shipments
Wheat	89,224,516	122,721,735	22,608,760	15,909,953
Oats	8,016,111	10,290,952	843,790	576,511
Barley	5,741,371	4,407,720	27,408	43,024
Flaxseed	321,962	451,501	1,814	1,672
Rye	1,013,320	234,276	5,837	32,461
TOTAL	104,317,280	138,106,184	23,487,609	16,563,621
Same period last year	100,947,803	105,990,608	29,426,404	21,664,730
+Increase -Decrease	+ 3,369,477	+ 32,115,576	+ 5,938,795	- 5,101,109

	PRINCE RUPERT		VICTORIA	
	Receipts	Shipments	Receipts	Shipments
TOTAL	998,790	29	-	-
Same period last year	-	301,580	1,527	3,724
+Increase -Decrease	+998,790	-301,551	-1,527	-3,724

	CHURCHILL	
	Receipts	Shipments
TOTAL	2,289,587	2,407,000
Same period last year	3,967,593	4,053,953
+Increase -Decrease	-1,678,006	+ 1,646,953

INTERIOR PRIVATE AND MILL ELEVATORS:- Grain stocks show a net decrease of 10,432 bushels. Decreases are noted in oats of 8,336 and barley 16,764 bushels while increases are shown in wheat of 4,961, flaxseed 7,691 and rye 2,016 bushels.

Stocks in Store at the Country, Interior, Private and Mill, Head of the Lakes, Victoria, Vancouver-New Westminster, Prince Rupert and Churchill compared with the same week last year were as follows:-

	Week ending January 3, 1936	Week ending January 4, 1935	+ Increase - Decrease
Wheat	161,187,745	186,934,505	- 25,746,760
Oats	9,063,366	13,935,267	- 4,871,901
Barley	7,445,920	8,565,109	- 1,219,189
Flaxseed	499,068	433,680	+ 65,388
Rye	4,281,266	3,325,707	+ 955,559

EASTERN ELEVATORS-LAKE PORTS:-Grain stocks show a net decrease of 1,322,941 bushels. Decreases are shown in wheat of 1,340,024, oats 13,850 and rye 4,563 bushels, while barley increased 35,496 bushels.

EASTERN ELEVATORS-SEABOARD PORTS (CANADIAN GRAIN):- Grain in store shows a net decrease of 1,226 bushels. Decreases are noted in oats of 14,062 and rye 1,250 bushels while increases are shown in wheat of 11,239 and barley 2,847 bushels.





Shipments overseas of Canadian Grain from Seaboard Ports were as follows:-

		United Kingdom	Other Countries
		Bushels	
West Saint John, N. B.	Wheat	263,953	-
	Oats	18,078	-

EASTERN ELEVATORS:- United States grain stocks were 6,928,639 bushels lower than at a comparable date last year. Decreases were as follows:- wheat 1,048,910, oats 101,967 and corn 5,777,762 bushels.

The quantities by classes of ports with increases and decreases:-

	Week ending Jan. 3, 1936	Week ending Jan. 4, 1935	+ Increase - Decrease
At Georgian Bay Ports	991	6,334,121	- 6,333,130
At Lower Lake Ports	198	534,898	- 534,700
At St. Lawrence Ports	368	61,177	- 60,809
<b>TOTAL</b>	<b>1,557</b>	<b>6,930,196</b>	<b>- 6,928,639</b>

U. S. LAKE PORTS:- Grain stocks show a decrease of 717,501 bushels, composed of wheat 697,501 and barley 20,000 bushels.

U. S. ATLANTIC SEABOARD PORTS:- Grain in store shows a net increase of 111,297 bushels. Wheat increased 144,291 bushels while oats decreased 32,994 bushels.

Inspection returns for the week ending December 31, 1935 with comparison for the previous year were as follows:-

	Week ending Dec. 31, 1935	Week ending Dec. 31, 1934	+ Increase - Decrease
Wheat	1,999	1,454	+ 545
Oats	137	267	- 130
Barley	97	105	- 8
Flaxseed	16	9	+ 7
Rye	8	5	+ 3
Mixed Grain	1	4	- 3
Screenings	-	-	-
<b>TOTAL</b>	<b>2,258</b>	<b>1,844</b>	<b>+ 414</b>

The number of bushels of grain shipped from western to the Canadian eastern points over the C.P.R. and C.N.R. for the week ending December 31, 1935 and the period from August 1, 1935 to December 31, 1935.

	WEEK ENDING DECEMBER 31, 1935			PERIOD AUGUST 1, 1935 TO DEC. 31, 1935.		
	WHEAT	OATS	BARLEY	WHEAT	OATS	BARLEY
Via C.P.R.	-	1,825	-	1,000	18,180	1,710
Via C.N.R.	-	5,784	2,866	2,868	141,866	12,956
<b>TOTAL</b>	<b>-</b>	<b>7,609</b>	<b>2,866</b>	<b>3,868</b>	<b>160,046</b>	<b>14,666</b>

DULUTH.- Receipts of Canadian bonded grain at Duluth by rail for the week ending January 4, 1936 were nil. For the period August 1, 1935 to date rail receipts amounted to wheat 95,287 bushels.

Receipts by water for the week ending January 4, 1936 were nil. Receipts by water from August 1, 1935 to date amounted to wheat 2,573,857 and barley 225,495 bushels.

Rail shipments for the week ending January 4, 1936 amounted to wheat 3,333 bushels duty paid and barley 20,000 bushels. Rail shipments from August 1, 1935 to date amounted to wheat 2,049,499 and barley 191,623 bushels.

Lake shipments for the week ending January 4, 1936 were nil. Lake shipments from August 1, 1935 to date amounted to wheat 251,592 and barley 101,723 bushels.





STOCKS OF GRAIN IN DIFFERENT ELEVATORS DURING THE WEEK ENDING JANUARY 3, 1936.

	WHEAT	OATS	BARLEY	FLAXSEED	RYE
	B u s h e l s				
Western Country Elevators x	91,815,765	5,250,218	3,629,533	393,068	1,138,916
Interior Private and Mill Elevs. x	6,984,672	1,042,467	1,252,941	36,300	83,106
Interior Pub. & Semi-Pub. Terms.	5,484,077	303,092	147,068	1,105	170
Vancouver-New Westminster	15,360,232	339,202	13,289	148	4,233
Prince Rupert	1,027,676	-	-	-	-
Churchill	2,280,823	-	-	-	-
Fort William & Port Arthur	38,213,320	2,175,251	2,403,118	43,713	3,058,057
Eastern Elevs. - Lake Ports	47,314,906	2,259,083	666,670	-	284,815
Eastern Elevs. - Sbd. Ports	17,886,099	923,923	1,015,713	-	111,634
U. S. Lake Ports	23,169,985	72,812	33,872	-	-
U. S. Atlantic Sbd. Ports	11,589,538	125,616	-	-	-
TOTAL	261,127,093	12,491,664	9,162,204	474,334	4,680,931
Previous Week	262,245,594	12,334,974	9,110,554	502,446	4,670,863
Same week previous year	257,724,260	16,796,233	13,095,810	439,691	3,933,512

x Estimated.

Quantity of Screenings received, shipped and in store at the undermentioned elevators during the week ending January 3, 1936.

	Amount in Store December 27, 1935		Amount Received by Vessel		Amount Shipped		Amount in Store Jan. 3, 1936	
	Tons	Lbs.	Tons	Lbs.	Tons	Lbs.	Tons	Lbs.
Owen Sound	810	-	-	-	75	-	735	-
Goderich Elev. Co.	618	-	-	-	183	-	435	-
Toronto	479	1,460	-	-	68	-	411	1,460
Montreal	-	1,126	-	-	-	-	-	1,126
Dominion Elev. Co.	515	1,520	-	-	-	-	515	1,520
Sorel	200	-	-	-	-	-	200	-
TOTAL	2,624	106	-	-	326	-	2,298	106

Lake Shipments of United States Grain from Duluth, Month of December, 1935.

	WHEAT	OATS	BARLEY	FLAXSEED	RYE	CORN
	B u s h e l s					
United States grain to United States Ports						
Buffalo	2,441,048	210,000	566,748	167,602	-	235,753
Chicago	-	-	-	-	34,461	-
Toledo	-	956,500	-	-	-	-
TOTAL	2,441,048	1,166,500	566,748	167,602	34,461	235,753

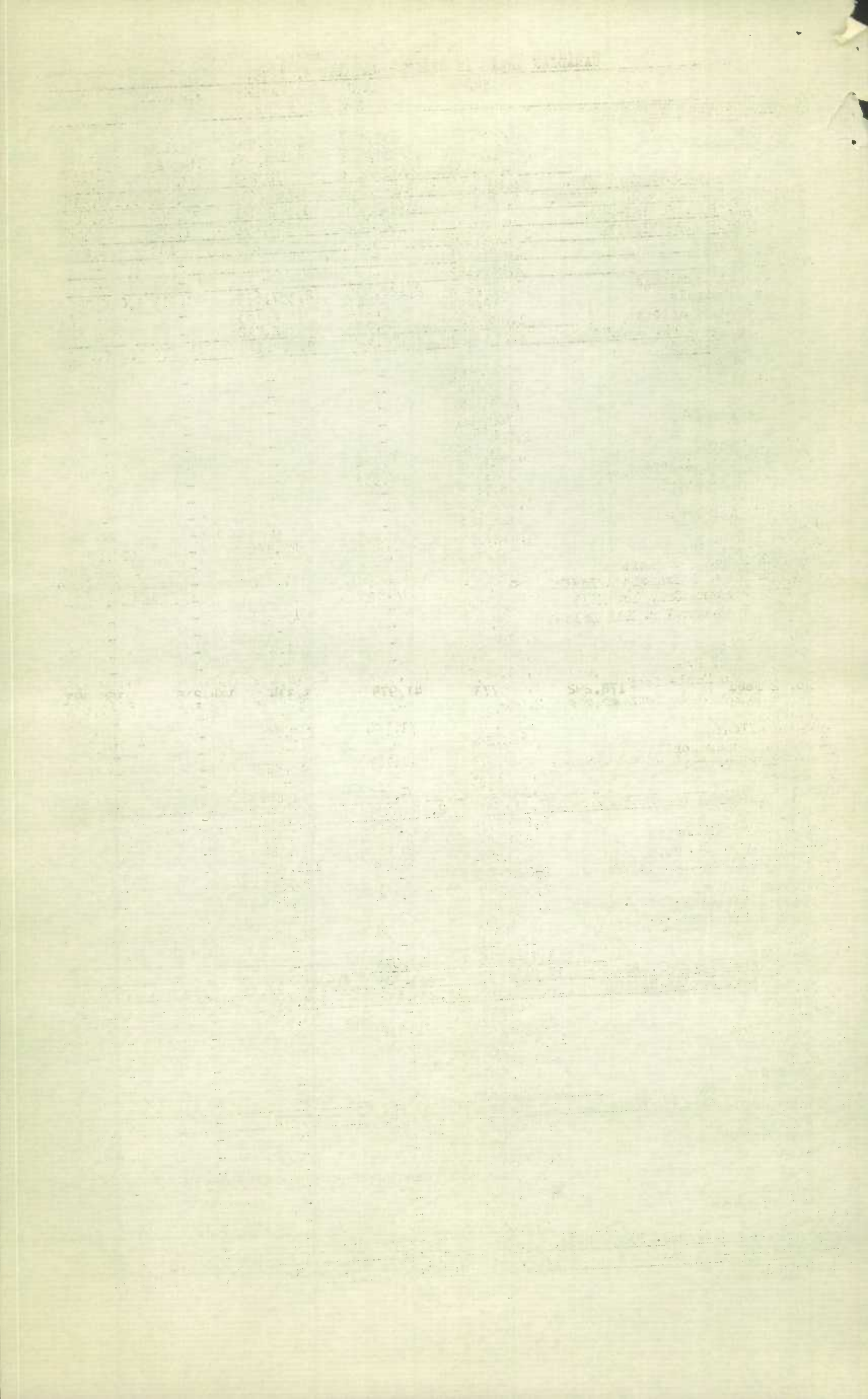




- 7 -  
CANADIAN GRAIN IN STORE - JANUARY 3, 1936.

	WHEAT	OATS	BARLEY	FLAXSEED	RYE
	Bushels				
WESTERN COUNTRY ELEVATORS					
Manitoba	7,092,388	608,079	1,774,808	35,190	379,666
Saskatchewan	49,099,841	2,622,886	1,442,494	314,429	684,174
Alberta	35,623,536	2,019,257	412,231	43,449	75,076
TOTAL WESTERN COUNTRY ELEVS.	91,815,765	5,250,218	3,629,533	393,068	1,138,916
INTERIOR PRIVATE & MILL ELEVS.	6,984,672	1,042,467	1,252,941	36,300	83,106
TOTAL INT. PUB. & SEMI-PUB.	5,484,077	303,092	147,068	1,105	170
VANCOUVER-NEW WESTMINSTER	15,360,232	339,202	13,289	148	4,233
PRINCE RUPERT	1,027,676	-	-	-	-
CHURCHILL	2,280,823	-	-	-	-
Semi-Public Terminals	37,180,281	2,122,306	2,357,673	43,713	3,058,057
Private Terminals	12,299	6,871	2,733	-	-
Winter Storage Afloat	1,020,740	46,074	42,712	-	1,109,526
TOTAL FT. WM. & PT. ARTHUR	38,213,320	2,175,251	2,403,118	43,713	3,058,057
EASTERN ELEVATORS					
Depot Harbour	774,615	-	-	-	-
Port McNicoll	5,437,470	-	-	-	-
Tiffin	4,141,780	-	-	-	-
Midland Aberdeen	793,541	-	-	-	-
Midland	2,704,755	-	-	-	-
Midland Simcoe	3,928,669	536,722	-	-	-
Midland Simcoe Afloat	376,047	942,353	-	-	1,318,400
Collingwood C.N.R.	87,855	-	-	-	-
Collingwood	1,923,919	-	-	-	-
Collingwood Afloat	249,801	-	-	-	249,801
Owen Sound	3,442,114	145,899	25,160	-	17,239
Owen Sound Afloat	290,343	-	-	-	290,343
Goderich Elev. & Transit	2,267,815	15,000	31,830	-	16,245
Goderich Elev. & Transit Afloat	568,941	347,565	-	-	916,506
Goderich Western Can. Flr. Mill	359,509	-	15,151	-	-
Goderich West. Can. Flr. Mill Afloat	408,987	-	-	-	408,987
Sarnia	2,627,313	-	1,460	-	-
Sarnia Afloat	1,198,304	-	-	-	1,198,304
Port Colborne, D.G.	2,684,057	500	214,993	-	-
Port Colborne Maple Leaf	1,065,456	144,207	23,821	-	54,341
Port Colborne Maple Leaf Afloat	2,014,327	-	-	-	2,014,327
Toronto	2,524,675	71,754	293,810	-	196,990
Toronto Afloat	622,289	-	-	-	622,289
Kingston Richardson	30,378	48,107	15,922	-	-
Kingston Elev. Co.	2,029,830	-	-	-	-
Prescott	4,847,116	6,976	44,473	-	-
TOTAL EASTERN ELEVS. LAKE PORTS	47,314,906	2,259,083	666,670	-	284,815
Montreal	8,851,394	619,585	677,217	-	111,634
Ogilvie Flour Mills	511,404	8,442	33,684	-	-
Dominion Elev. Co.	249,254	38,938	121,420	-	-
North Amer. Elevs. Ltd. Sorel	2,080,300	-	20,651	-	-
Quebec	2,585,688	243,850	90,161	-	-
West Saint John Hbr. Comm.	1,103,491	-	-	-	-
West Saint John, C.P.R.	668,924	35	72,580	-	-
Saint John	121,328	-	-	-	-
Halifax	1,714,316	13,073	-	-	-
TOTAL EAST. ELEVS. SBD. PORTS	17,886,099	923,923	1,015,713	-	111,634
TOTAL QUANTITY IN CANADA	226,367,570	12,293,236	9,128,332	474,334	4,680,931
Duluth	960,558	-	33,872	-	252,944
Buffalo	8,911,975	72,812	-	-	-
Buffalo Afloat	10,968,452	-	-	-	-
Erie	2,049,000	-	-	-	-
Chicago	165,000	-	-	-	-
Chicago Afloat	115,000	-	-	-	-
TOTAL U.S. LAKE PORTS	23,169,985	72,812	33,872	-	-
New York	3,118,596	125,616	-	-	-
New York Afloat	869,000	-	-	-	-
Albany	5,087,000	-	-	-	-
Galveston	112,000	-	-	-	-
Boston	1,062,942	-	-	-	-
Philadelphia	768,000	-	-	-	-
Baltimore	572,000	-	-	-	-
TOTAL U.S. ATLANTIC SBD. PORTS	11,589,538	125,616	-	-	-
TOTAL QUANTITY IN STORE	261,127,093	12,491,664	9,162,204	474,334	4,680,931

\* Estimated.





Grades of Canadian Grain in Store at Public, Semi-Public and Private Elevators (Head of the Lakes), Interior, Public and Semi-Public Elevators, Vancouver-New Westminster, Churchill, and Victoria Terminal and Eastern Elevators for the period ending January 3, 1936.

	Fort William & Port Arthur Semi-Public and Private	Interior Public and Semi-Public Terminals	Vancouver New West- minster, Victoria Elevators	Eastern Elevators Lake Ports	Eastern Elevators Seaboard Ports	Total
<b>WHEAT</b>						
<b>Bushels</b>						
No. 1 Hard	972,463	771,240	1,437,807	399,664	100,827	3,682,001
No. 1 Northern	15,839,895	2,225,613	3,869,979	21,540,596	5,054,323	48,530,406
No. 2 Northern	2,778,298	202,158	1,016,935	18,683,687	10,276,540	32,957,618
No. 3 Northern	1,081,141	281,371	1,361,635	1,802,031	1,088,719	5,614,897
No. 4 Northern	1,081,361	231,599	2,176,165	977,093	354,567	4,820,785
No. 4 Special	1,709,307	-	-	682,606	118,394	2,510,307
No. 5 Wheat	1,254,262	455,030	2,024,349	447,466	271,833	4,452,940
No. 5 Special	874,004	-	-	214,217	51,045	1,139,266
No. 6 Wheat	1,486,154	122,939	1,287,433	380,577	76,223	3,353,326
No. 6 Special	1,045,309	-	-	388,683	-	1,433,992
Feed	2,254,212	-	817,823	581,911	165,405	3,819,351
No. 1 C.W. Garnet	30,521	22,508	134,621	-	-	187,650
No. 2 C.W. Garnet	169,245	76,052	265,175	-	529	511,001
No. 1 C.W. Durum	2,015,907	-	-	262,152	79,521	2,357,580
No. 2 C.W. Durum	1,160,899	-	-	-	8,288	1,169,187
No. 3 C.W. Durum	1,468,916	-	-	683,618	28,841	2,181,375
No. 4 C.W. Durum	865,759	-	-	193,810	5,973	1,066,542
No. 5 C.W. Durum	-	-	-	-	25,652	25,652
No. 6 C.W. Durum	-	-	-	-	21,923	21,923
Other Durum	1,438,441	-	-	10,462	100,475	1,549,378
Private Elevators	12,299	-	-	-	-	12,299
Other	674,927	207,020	968,310	66,333	56,021	1,972,611
<b>TOTAL</b>	<b>38,213,320</b>	<b>4,595,530</b>	<b>15,360,232</b>	<b>47,314,906</b>	<b>17,886,099</b>	<b>123,370,037</b>
<b>OATS</b>						
No. 2 C.W.	62,920	4,046	3,680	1,070,191	15,697	1,155,534
No. 3 C.W.	220,913	-	20,102	680,140	168,143	1,089,298
Ex. No. 1 Feed	497,965	-	35,792	130,468	13,326	677,551
No. 1 Feed	977,087	6,063	168,514	254,632	339,840	1,746,136
No. 2 Feed	178,292	773	41,979	3,334	134,215	358,593
No. 3 Feed	80,088	-	-	-	88,190	168,278
Private Elevators	6,871	-	-	-	-	6,871
Other	151,115	292,106	69,135	120,318	164,512	797,186
<b>TOTAL</b>	<b>2,175,251</b>	<b>302,988</b>	<b>339,202</b>	<b>2,259,083</b>	<b>923,923</b>	<b>6,000,447</b>
<b>BARLEY</b>						
2 C.W. 6 Row	1,394	-	-	-	-	1,394
3 Ex. C.W. 6 Row	691,996	-	-	279,558	157,036	1,128,590
3 Ex. C.W. 2 Row	52,125	-	-	-	-	52,125
3 C.W.	910,669	5,153	1,096	54,182	297,159	1,268,259
4 C.W.	182,429	105	5,771	-	38,189	226,494
5 C.W.	222,384	674	2,386	58,975	276,068	560,487
6 C.W.	73,902	-	2,642	18,130	68,278	162,952
Private Elevators	2,733	-	-	-	-	2,733
Other	265,486	14,230	1,394	255,825	173,983	715,918
<b>TOTAL</b>	<b>2,403,118</b>	<b>20,162</b>	<b>13,289</b>	<b>666,670</b>	<b>1,015,713</b>	<b>4,118,952</b>
<b>FLAXSEED</b>						
No. 1 C.W.	35,022	1,014	148	-	-	36,184
No. 2 C.W.	3,930	-	-	-	-	3,930
No. 3 C.W.	2,283	-	-	-	-	2,283
Other	2,478	-	-	-	-	2,478
<b>TOTAL</b>	<b>43,713</b>	<b>1,014</b>	<b>148</b>	<b>-</b>	<b>-</b>	<b>44,875</b>
<b>RYE</b>						
No. 1 C.W.	10,092	-	-	-	-	10,092
No. 2 C.W.	2,469,490	-	3,150	279,038	94,031	2,845,709
No. 3 C.W.	508,296	170	1,083	-	17,603	527,152
No. 4 C.W.	3,201	-	-	-	-	3,201
Ergoty	26,860	-	-	-	-	26,860
Other	40,118	-	-	5,777	-	45,895
<b>TOTAL</b>	<b>3,058,057</b>	<b>170</b>	<b>4,233</b>	<b>284,815</b>	<b>111,634</b>	<b>3,458,909</b>
<b>TOTAL QUANTITY</b>						
<b>IN STORE</b>	<b>45,893,459</b>	<b>4,919,864</b>	<b>15,717,104</b>	<b>50,525,474</b>	<b>19,937,369</b>	<b>136,993,270</b>





CANADIAN GRAIN IN STORE - COMPARATIVE STATEMENT, 1932 - 1935.

	W H E A T B u s h e l s	OTHER GRAIN
<u>January 3, 1936</u>		
Country Elevators- Manitoba	7,092,388	2,797,743
Saskatchewan	49,099,841	5,063,983
Alberta	35,623,536	2,550,009
TOTAL	91,815,765	10,411,735
Interior Private and Mill	6,984,672	2,414,814
Interior Public and Semi-Public Terms.	5,484,077	451,435
Vancouver-New Westminster	15,360,232	356,872
Prince Rupert	1,027,676	-
Churchill	2,280,823	-
Fort William and Port Arthur	38,213,320	7,680,139
Eastern Elevs. - Lake Ports	47,314,906	3,210,568
Eastern Elevs. - Sbd. Ports	17,836,099	2,051,270
U. S. Lake Ports	23,169,985	106,684
U. S. Atlantic Seaboard Ports	11,589,538	125,616
TOTAL	261,127,093	26,809,133
<u>January 4, 1935.</u>		
Country Elevators - Manitoba	10,151,965	1,503,522
Saskatchewan	52,029,021	5,696,662
Alberta	38,156,746	4,614,666
TOTAL	100,337,732	11,814,850
Interior Private and Mill	7,157,385	3,457,194
Interior Public and Semi-Public Terms.	5,008,694	974,391
Vancouver-New Westminster	13,967,330	1,702,483
Victoria	927,435	-
Prince Rupert	792,473	-
Churchill	2,389,404	-
Fort William and Port Arthur	56,409,732	8,294,449
Eastern Elevs. - Lake Ports	30,412,018	2,707,148
Eastern Elevs. - Sbd. Ports	13,185,359	3,021,905
U. S. Lake Ports	20,946,409	2,292,826
U. S. Sbd. Ports	6,190,289	-
TOTAL	257,724,260	34,265,246
<u>January 5, 1934.</u>		
Country Elevators - Manitoba	10,460,752	2,532,553
Saskatchewan	56,291,807	6,087,895
Alberta	39,871,653	3,995,418
TOTAL	106,624,212	12,615,866
Interior Private and Mill	5,717,597	2,941,949
Interior Public and Semi-Public Terms.	2,725,676	494,186
Vancouver-New Westminster	11,205,393	527,002
Victoria	924,947	123
Prince Rupert	1,092,150	421
Churchill	2,475,779	-
Fort William and Port Arthur	63,264,304	11,695,307
Eastern Elevs. - Lake Ports	22,623,949	5,735,368
Eastern Elevs. - Sbd. Ports	10,019,117	1,925,907
U. S. Lake Ports	5,884,131	-
U. S. Atlantic Sbd. Ports	7,260,109	85,846
TOTAL	239,817,364	36,021,975
<u>January 6, 1933.</u>		
Country Elevators - Manitoba	9,503,581	1,881,090
Saskatchewan	63,205,928	4,222,736
Alberta	41,424,917	2,679,516
TOTAL	114,134,426	8,783,342
Interior Private and Mill	5,500,229	1,856,404
Interior Public and Semi-Public Terms.	3,717,289	74,473
Vancouver-New Westminster	10,838,951	1,592,250
Victoria	864,285	1,712
Prince Rupert	301,695	-
Churchill	2,430,233	-
Fort William and Port Arthur	59,804,471	4,314,524
Eastern Elevs. - Lake Ports	18,428,770	2,315,647
Eastern Elevs. - Sbd. Ports	7,513,222	2,926,127
U. S. Lake Ports	8,028,976	549
U. S. Atlantic Sbd. Ports	5,289,278	548,946
TOTAL	236,851,875	22,413,974

FST, 100

FST, 100

FST, 100

FST, 100

FST, 100

FST, 100

FST, 100

FST, 100

FST, 100

FST, 100

FST, 100

FST, 100

FST, 100

FST, 100

FST, 100

FST, 100

FST, 100

FST, 100

FST, 100

FST, 100

FST, 100

FST, 100

FST, 100

FST, 100

FST, 100

FST, 100

FST, 100

FST, 100

FST, 100

FST, 100

FST, 100

FST, 100

FST, 100

FST, 100

FST, 100



STOCKS OF UNITED STATES GRAIN IN CANADA JANUARY 3, 1936.

	WHEAT	OATS	BARLEY	RYE	CORN	SOYA BEANS
	B u s h e l s					
Midland Aberdeen	-	-	-	-	470	-
Midland Grain	-	-	-	-	521	-
Port Colborne Maple Leaf	-	-	-	-	198	-
Montreal Harbour Commrs. Nos. 1, 2 and B.	2	-	-	366	-	469
TOTAL	2	-	-	366	1,189	469
Same period previous year	1,048,912	101,967	-	366	5,778,951	-

RECEIPTS AND SHIPMENTS OF UNITED STATES GRAIN IN CANADA JANUARY 3, 1936.

	R E C E I P T S		S H I P M E N T S	
	Water	Rail	Water	Rail
	L O W E R L A K E P O R T S			
U. S. Corn				Nil

STOCKS OF FOREIGN CORN IN CANADA JANUARY 3, 1936.

	ARGENTINE CORN	SOUTH AFRICAN CORN	TOTAL CORN
Sarnia	-	133,765	133,765
Port Colborne, M.L.	128,289	35,107	163,396
Toronto	-	564,723	564,723
Montreal	123,000	658,176	781,176
Dominion Elev. Co.	-	119,517	119,517
Quebec	-	109,384	109,384
Saint John	-	103,568	103,568
Halifax	10,345	135,839	146,184
TOTAL	261,634	1,860,079	2,121,713
Same period previous year	197,688	2,234,021	2,431,709

RECEIPTS AND SHIPMENTS OF FOREIGN CORN IN CANADA FOR THE WEEK ENDING JANUARY 3, 1936.

	ARGENTINE CORN		SOUTH AFRICAN CORN	
	Receipts	Shipments	Receipts	Shipments
Georgian Bay Ports	-	-	-	1,200
Lower Lake Ports	-	961	-	2,676
St. Lawrence Ports	-	18,000	-	6,750
Seaboard Ports	-	-	-	9,000

45, 4

000, 4

000, 4

000, 4

000, 4

000, 4

000, 4

000, 4



STOCKS, RECEIPTS AND SHIPMENTS OF THE COUNTRY ELEVATORS IN THE WESTERN  
DIVISION IN THE WEEK ENDING DECEMBER 27, 1935.

	WHEAT	OATS	BARLEY	FLAXSEED	RYE
		B u s h e l s			
<u>MANITOBA</u>					
In Store, previous week	7,007,959	600,870	1,776,460	35,008	373,431
Receipts	99,967	23,162	36,358	269	8,007
TOTAL	7,107,926	624,032	1,812,818	35,277	381,438
Shipments	46,773	22,951	52,099	- 583	3,538
In Store	7,061,153	601,081	1,760,645	35,860	377,900
<u>SASKATCHEWAN</u>					
In Store, previous week	48,421,156	2,629,748	1,441,965	351,839	673,049
Receipts	881,162	121,151	50,745	4,607	14,592
TOTAL	49,302,318	2,750,899	1,492,710	356,496	687,641
Shipments	374,115	135,042	57,591	10,259	7,073
In Store	48,928,081	2,615,857	1,435,129	346,237	680,568
<u>ALBERTA</u>					
In Store, previous week	36,435,458	1,970,974	404,004	44,112	78,680
Receipts	818,241	153,791	33,552	359	3,025
TOTAL	37,253,699	2,124,765	437,556	44,471	81,705
Shipments	1,391,953	146,675	20,590	1,075	2,457
In Store	35,852,672	1,978,080	416,966	43,396	79,248

TOTAL RECEIPTS AT COUNTRY ELEVATORS AND PLATFORM LOADINGS# IN THE  
PERIOD AUGUST 1, 1935 TO DECEMBER 27, 1935.

	W H E A T	OTHER GRAIN
	B u s h e l s	
Manitoba	15,099,162	11,030,045
Saskatchewan	97,747,516	15,282,656
Alberta	67,474,484	6,039,902
Total 1935 - 1936	180,321,162	32,352,603
Same period 1934 - 1935	173,785,383	34,824,757

#Platform Loadings to December 31, 1935 not reported.

Minus figures occasioned by corrected reports received from licensees.

RECEIVED  
JAN 10 1954  
U.S. DEPT. OF AGRICULTURE  
WASHINGTON, D.C.

TO: DIRECTOR, BUREAU OF PLANT INDUSTRY  
FROM: ASSISTANT SECRETARY, AGRICULTURAL RESEARCH  
SUBJECT: ...  
...

...

...

...

...

...

...



INTERIOR TERMINAL ELEVATORS

Receipts, Shipments and Quantities in Store, Week ending January 3, 1936.

	WHEAT	OATS	BARLEY	FLAXSEED	RYE
	B U S H E L S				
<u>CALGARY</u>					
In Store, previous week	1,827,349	241,460	2,679	-	-
Receipts	-	30,364	1,294	-	-
TOTAL	1,827,349	271,824	3,973	-	-
Shipments - Rail	70,398	-	-	-	-
In Store	1,756,951	271,824	3,973	-	-
<u>EDMONTON</u>					
In Store, previous week	1,523,506	22,105	10,257	-	-
Receipts	3,554	1,911	1,496	-	-
TOTAL	1,527,060	24,016	11,753	-	-
Shipments - Rail	4,294	-	-	-	-
In Store	1,522,766	24,016	11,753	-	-
<u>LETHBRIDGE</u>					
In Store, previous week	1,143,938	-	-	-	-
Receipts	-	-	n i l	-	-
TOTAL	1,143,938	-	-	-	-
Shipments - Rail	-	-	n i l	-	-
In Store	1,143,938	-	-	-	-
<u>MOOSE JAW</u>					
In Store, previous week	95,020	4,388	1,915	994	170
Receipts	3,181	-	-	-	-
TOTAL	98,201	4,388	1,915	994	170
Shipments - Rail	-	-	n i l	-	-
In Store	98,201	4,388	1,915	994	170
<u>SASKATOON</u>					
In Store, previous week	81,972	2,760	2,521	20	-
Receipts	1,433	-	-	-	-
TOTAL	83,405	2,760	2,521	20	-
Shipments - Rail	9,731	-	-	-	-
In Store	73,674	2,760	2,521	20	-
<u>RECAPITULATION</u>					
Total receipts	8,168	32,275	2,790	-	-
Total shipments	84,423	-	-	-	-





STOCKS, RECEIPTS AND SHIPMENTS OF THE PACIFIC COAST ELEVATORS  
IN THE WEEK ENDING JANUARY 3, 1936.

	WHEAT	OATS	BARLEY	FLAXSEED	RYE
		B u s h e l s			
<hr/>					
<u>VANCOUVER-NEW WESTMINSTER</u>					
In Store, previous week	14,860,076	249,061	10,227	142	3,150
Receipts	1,329,439	106,611	4,044	-	1,083
TOTAL	16,190,515	355,672	14,271	142	4,233
Shipments - Vessel	819,102	16,470	-	-	-
Rail	9,135	-	982	-	-
In Store	15,360,232	339,202	13,289	148	4,233
<hr/>					
<u>PRINCE RUPERT</u>					
In Store, previous week	1,027,676	-	-	-	-
Receipts			Nil		
TOTAL	1,027,676	-	-	-	-
Shipments - Vessel			Nil		
In Store	1,027,676	-	-	-	-
<hr/>					
<u>CHURCHILL</u>					
In Store, previous week	2,280,823	-	-	-	-
Receipts			Nil		
TOTAL	2,280,823	-	-	-	-
Shipments - Vessel			Nil		
In Store	2,280,823	-	-	-	-

DAILY AND WEEKLY AVERAGE PRICES OF WHEAT IN THE WESTERN DIVISION  
IN THE WEEK ENDING JANUARY 4, 1936

(Basis Vancouver, B. C.)

	Dec. 30 ¢	Dec. 31 ¢	Jan. 1 ¢	Jan. 2 ¢	Jan. 3 ¢	Jan. 4 ¢	Weekly Average ¢
No. 1 Hard	88.1	88.2	HOLIDAY	89.1	88.7	88.5	88.5
No. 1 Northern	87.1	87.5		88.4	88	87.7	87.7
No. 2 Northern	84.6	85		85.9	85.5	85.2	85.2
No. 3 Northern	80.6	81		81.9	81.5	81.2	81.2
No. 4 Northern	79.1	79		79.9	79.5	79.2	79.3
No. 5	71.1	71.5		72.4	72	71.7	71.7
No. 6	63.6	63.5		64.4	64	63.7	63.8
Feed	46.6	46.5		47.4	47	46.7	46.8
No. 1 Garnet	82.6	83		83.9	83.5	83.2	83.2
No. 2 Garnet	81.1	81.5		82.4	82	81.7	81.7
Track	87.1	87.5		88.4	88	87.7	87.7





DAILY AND WEEKLY AVERAGE PRICES OF GRAIN

Week ending January 4, 1936

WESTERN DIVISION

(Basis Fort William and Port Arthur)

	Dec. 30 \$ ¢	Dec. 31 \$ ¢	Jan. 1 \$ ¢	Jan. 2 \$ ¢	Jan. 3 \$ ¢	Jan. 4 \$ ¢	Weekly Average \$ ¢
<b>WHEAT</b>							
No. 1 Man. Hard	.854	.86		.869	.867	.865	.863
No. 1 Man. Northern	.847	.847		.859	.855	.852	.852
No. 2 Man. Northern	.817	.822		.831	.829	.827	.825
No. 3 Man. Northern	.776	.782		.794	.792	.79	.787
No. 4 Man. Northern	.739	.745		.761	.762	.76	.753
No. 5	.654	.66		.676	.675	.677	.668
No. 6	.584	.587		.596	.592	.592	.59
Feed	.469	.472		.486	.485	.49	.48
No. 1 Garnet	.806	.81		.824	.82	.817	.815
No. 2 Garnet	.771	.775		.789	.785	.782	.78
No. 4 Special	.681	.685		.694	.69	.687	.687
No. 5 Special	.626	.63		.641	.637	.637	.634
No. 5 Special	.571	.575		.586	.582	.58	.579
Rejected No. 1 Northern	.741	.745		.774	.77	.767	.759
No. 2 Northern	.731	.735		.749	.745	.742	.74
No. 3 Northern	.706	.712		.724	.722	.72	.717
Tough No. 1 Hard	.834	.84		.849	.847	.845	.843
No. 1 Northern	.827	.827		.849	.845	.842	.838
No. 2 Northern	.797	.802		.811	.809	.807	.805
No. 3 Northern	.756	.762		.774	.772	.77	.767
Smutty No. 1 Hard	.791	.795		.804	.80	.797	.797
No. 1 Northern	.791	.795		.804	.80	.797	.797
No. 2 Northern	.771	.775		.784	.78	.777	.777
No. 3 Northern	.721	.727		.739	.737	.735	.732
Durum No. 1	.801	.805		.814	.81	.807	.807
No. 2	.751	.755		.764	.76	.757	.757
No. 3	.681	.685		.694	.69	.687	.687
A. R. W. No. 1	.751	.755		.764	.76	.757	.757
No. 2	.731	.735		.744	.74	.737	.737
No. 3	.711	.715		.724	.72	.717	.717
<b>OATS</b>							
No. 2 C. W.	.309	.319		.326	.322	.332	.322
No. 3 C. W.	.274	.274		.279	.275	.277	.276
Ex. No. 1 Feed	.279	.274		.279	.275	.277	.277
No. 1 Feed	.254	.254		.259	.255	.255	.255
No. 2 Feed	.234	.239		.246	.242	.247	.242
No. 3 Feed	.214	.219		.226	.222	.227	.222
<b>BARLEY</b>							
2 Row	.394	.409		.411	.405	.402	.404
6 Row	.404	.419		.421	.415	.412	.414
Trebi	.354	.359		.361	.355	.352	.356
No. 3 C. W.	.354	.359		.361	.355	.352	.356
No. 4 C. W.	.319	.329		.336	.33	.327	.328
No. 5 C. W.	.305	.314		.321	.315	.312	.313
No. 6 C. W.	.294	.304		.311	.305	.302	.303
<b>RYE</b>							
No. 1 C. W.	.435	.434		.437	.432	.429	.433
No. 2 C. W.	.435	.434		.437	.432	.429	.433
No. 3 C. W.	.39	.394		.397	.392	.389	.392
Rejected No. 2 C. W.	.37	.369		.372	.367	.364	.368
No. 4 C. W.	.37	.369		.372	.367	.364	.368
Ergoty	.36	.359		.362	.357	.354	.358
<b>FLAXSEED</b>							
No. 1 C. W.	1.55	1.552		1.599	1.575	1.585	1.572
No. 2 C. W.	1.51	1.512		1.559	1.535	1.545	1.532
No. 3 C. W.	1.39	1.392		1.439	1.415	1.425	1.412
No. 4 C. W.	1.33	1.332		1.379	1.355	1.365	1.352
<b>ONTARIO-TORONTO</b>							
Wheat, good Milling	.73-.76	.73-.76		.73-.76	.73-.76	.73-.76	.73-.76
Oats	.23-.25	.23-.25		.23-.25	.23-.25	.23-.25	.23-.25
Malting Barley	.38-.40	.38-.40		.34-.37	.34-.37	.34-.37	.356-.382
Ontario Corn	.43-.45	.43-.45		.43-.45	.43-.45	.43-.45	.43-.45
Eye	.32-.34	.32-.34		.32-.34	.32-.34	.32-.34	.32-.34
Barley	.30-.35	.30-.35		.30-.35	.30-.35	.30-.35	.30-.35
F.O.B. Shipping Point.							

Holiday

Holiday

- 1 -  
 STATE OF NEW YORK  
 DEPARTMENT OF AGRICULTURE  
 DIVISION OF MARKET BUREAU  
 MONTHLY REPORT FOR THE YEAR 1917

Commodity	Jan.	Feb.	Mar.	Apr.	May	June	July	Aug.	Sept.	Oct.	Nov.	Dec.	Year
Wheat	100.	100.	100.	100.	100.	100.	100.	100.	100.	100.	100.	100.	100.
Barley	100.	100.	100.	100.	100.	100.	100.	100.	100.	100.	100.	100.	100.
Oats	100.	100.	100.	100.	100.	100.	100.	100.	100.	100.	100.	100.	100.
Rye	100.	100.	100.	100.	100.	100.	100.	100.	100.	100.	100.	100.	100.
Indian Corn	100.	100.	100.	100.	100.	100.	100.	100.	100.	100.	100.	100.	100.
Sorghum	100.	100.	100.	100.	100.	100.	100.	100.	100.	100.	100.	100.	100.
Millet	100.	100.	100.	100.	100.	100.	100.	100.	100.	100.	100.	100.	100.
Buckwheat	100.	100.	100.	100.	100.	100.	100.	100.	100.	100.	100.	100.	100.
Speltz	100.	100.	100.	100.	100.	100.	100.	100.	100.	100.	100.	100.	100.
Wild Rice	100.	100.	100.	100.	100.	100.	100.	100.	100.	100.	100.	100.	100.
Flaxseed	100.	100.	100.	100.	100.	100.	100.	100.	100.	100.	100.	100.	100.
Soybeans	100.	100.	100.	100.	100.	100.	100.	100.	100.	100.	100.	100.	100.
Peas	100.	100.	100.	100.	100.	100.	100.	100.	100.	100.	100.	100.	100.
Lentils	100.	100.	100.	100.	100.	100.	100.	100.	100.	100.	100.	100.	100.
Beans	100.	100.	100.	100.	100.	100.	100.	100.	100.	100.	100.	100.	100.
Alfalfa	100.	100.	100.	100.	100.	100.	100.	100.	100.	100.	100.	100.	100.
Timothy	100.	100.	100.	100.	100.	100.	100.	100.	100.	100.	100.	100.	100.
Clover	100.	100.	100.	100.	100.	100.	100.	100.	100.	100.	100.	100.	100.
Orchard Grass	100.	100.	100.	100.	100.	100.	100.	100.	100.	100.	100.	100.	100.
Perennial Ryegrass	100.	100.	100.	100.	100.	100.	100.	100.	100.	100.	100.	100.	100.
Annual Ryegrass	100.	100.	100.	100.	100.	100.	100.	100.	100.	100.	100.	100.	100.
Lucerne	100.	100.	100.	100.	100.	100.	100.	100.	100.	100.	100.	100.	100.
Straw	100.	100.	100.	100.	100.	100.	100.	100.	100.	100.	100.	100.	100.
Hay	100.	100.	100.	100.	100.	100.	100.	100.	100.	100.	100.	100.	100.
Stalks	100.	100.	100.	100.	100.	100.	100.	100.	100.	100.	100.	100.	100.
Wheat Middlings	100.	100.	100.	100.	100.	100.	100.	100.	100.	100.	100.	100.	100.
Barley Middlings	100.	100.	100.	100.	100.	100.	100.	100.	100.	100.	100.	100.	100.
Oats Middlings	100.	100.	100.	100.	100.	100.	100.	100.	100.	100.	100.	100.	100.
Rye Middlings	100.	100.	100.	100.	100.	100.	100.	100.	100.	100.	100.	100.	100.
Indian Corn Middlings	100.	100.	100.	100.	100.	100.	100.	100.	100.	100.	100.	100.	100.
Sorghum Middlings	100.	100.	100.	100.	100.	100.	100.	100.	100.	100.	100.	100.	100.
Millet Middlings	100.	100.	100.	100.	100.	100.	100.	100.	100.	100.	100.	100.	100.
Buckwheat Middlings	100.	100.	100.	100.	100.	100.	100.	100.	100.	100.	100.	100.	100.
Speltz Middlings	100.	100.	100.	100.	100.	100.	100.	100.	100.	100.	100.	100.	100.
Wild Rice Middlings	100.	100.	100.	100.	100.	100.	100.	100.	100.	100.	100.	100.	100.
Flaxseed Middlings	100.	100.	100.	100.	100.	100.	100.	100.	100.	100.	100.	100.	100.
Soybeans Middlings	100.	100.	100.	100.	100.	100.	100.	100.	100.	100.	100.	100.	100.
Peas Middlings	100.	100.	100.	100.	100.	100.	100.	100.	100.	100.	100.	100.	100.
Lentils Middlings	100.	100.	100.	100.	100.	100.	100.	100.	100.	100.	100.	100.	100.
Beans Middlings	100.	100.	100.	100.	100.	100.	100.	100.	100.	100.	100.	100.	100.
Alfalfa Middlings	100.	100.	100.	100.	100.	100.	100.	100.	100.	100.	100.	100.	100.
Timothy Middlings	100.	100.	100.	100.	100.	100.	100.	100.	100.	100.	100.	100.	100.
Clover Middlings	100.	100.	100.	100.	100.	100.	100.	100.	100.	100.	100.	100.	100.
Orchard Grass Middlings	100.	100.	100.	100.	100.	100.	100.	100.	100.	100.	100.	100.	100.
Perennial Ryegrass Middlings	100.	100.	100.	100.	100.	100.	100.	100.	100.	100.	100.	100.	100.
Annual Ryegrass Middlings	100.	100.	100.	100.	100.	100.	100.	100.	100.	100.	100.	100.	100.
Lucerne Middlings	100.	100.	100.	100.	100.	100.	100.	100.	100.	100.	100.	100.	100.
Straw Middlings	100.	100.	100.	100.	100.	100.	100.	100.	100.	100.	100.	100.	100.
Hay Middlings	100.	100.	100.	100.	100.	100.	100.	100.	100.	100.	100.	100.	100.
Stalks Middlings	100.	100.	100.	100.	100.	100.	100.	100.	100.	100.	100.	100.	100.



Receipts and Shipments at Fort William and Port Arthur for the five months ending December, 1935 and 1934.

		WHEAT	OATS	BARLEY	FLAXSEED	RYE	ONTARIO CORN	SOUTH AFRICAN CORN	MIXED GRAIN Lb.
		B u s h e l s							
		<u>R E C E I P T S</u>							
August,	1935	13,900,486	178,060	319,664	14,546	122,175	-	-	394,900
September	1935	28,590,302	1,676,812	2,250,420	16,208	383,659	-	-	1,313,430
October,	1935	31,102,022	4,231,773	2,412,886	139,811	338,963	-	-	664,110
November,	1935	11,545,740	1,427,793	538,452	109,259	109,172	10,133	14,880	647,290
December,	1935	4,085,829	501,677	219,952	42,103	59,351	-	-	182,660
5 months ending December, 1935		89,224,379	8,016,115	5,741,374	321,927	1,013,320	10,133	14,880	3,202,390
5 months ending December, 1934		85,568,615	5,578,162	8,826,569	84,195	726,608	-	-	3,079,802
		<u>S H I P M E N T S</u>							
August,	1935	Lake	37,920,414	314,404	258,871	70,600	68,000	-	-
		Rail	13,031	82,065	15,588	1,477	-	-	-
September,	1935	Lake	20,604,384	1,065,867	1,272,965	28,650	71,785	-	-
		Rail	9,168	106,843	22,996	-	-	-	80,750
October,	1935	Lake	33,870,367	4,604,112	1,726,554	57,981	94,491	-	634,990
		Rail	9,163	116,620	22,324	96	-	-	388,500
November,	1935	Lake	27,247,321	2,489,209	1,024,470	212,524	-	-	66,080
		Rail	9,537	135,243	29,334	2,184	10,124	10,500	261,000
December,	1935	Lake	2,859,287	1,178,528	15,124	-	-	-	-
		Rail	15,348	215,624	18,607	80,128	-	2,200	154,370
5 months ending December,	1935	Lake	122,501,773	9,652,120	4,297,984	369,755	234,276	-	701,070
		Rail	56,247	656,395	108,849	83,885	10,124	12,700	884,620
5 months ending December,	1934	Lake	88,451,151	6,701,012	9,467,522	264,857	595,274	-	105,479,816
		Rail	41,848	439,358	18,942	2,748	23,812	12,143	116,510





## Receipts of Canadian Grain with Shipments by Destination, December, 1935.

	WHEAT	OATS	BARLEY	FLAXSEED	RYE
	B u s h e l s				
<u>GEORGIAN BAY PORTS</u>					
	<u>RECEIPTS - VESSEL</u>				
Port McNicoll	309,739	-	-	-	-
Midland Simcoe	399,151	575,764	15,150	-	-
Owen Sound	121,937	236,399	-	-	-
Goderich Elev. & Transit	4,094	-	-	-	-
Goderich W.C.F. mills	145,543	-	-	-	-
Sarnia	53,065	-	-	-	-
TOTAL	1,043,529	812,163	15,150	-	-
	<u>SHIPMENTS - VESSEL</u>				
To Montreal	70,972	-	-	25,380	-
	<u>SHIPMENTS - RAIL</u>				
To Canadian Domestic points	534,824	239,273	37,718	9,441	6,500
To Canadian Flour mills	338,044	62,538	-	-	-
To Montreal	193,932	-	-	-	-
To Can. Sbd.	241,171	-	-	-	-
To Maritime ports	2,318,361	59,500	63,771	-	-
To U. S. points	23,000	-	-	-	-
To U. S. Sbd.	202,586	-	-	-	-
To U. S. Flour mills	5,159	-	-	-	-
To New England points	20,700	-	-	-	-
TOTAL	3,382,768	361,711	101,489	9,441	6,500
<u>LOWER LAKE PORTS</u>					
	<u>RECEIPTS - VESSEL</u>				
Pt. Colborne, D.G.	19,059	-	-	-	-
Pt. Colborne, M.L.	142,233	-	-	-	-
Toronto	241,520	-	-	-	49,929
Kingston Elev. Co.	881,737	-	-	-	-
TOTAL	1,284,549	-	-	-	49,929
	<u>RECEIPTS - RAIL</u>				
Toronto	2,228	10,712	125,918	-	375
	<u>SHIPMENTS - VESSEL</u>				
To Canadian Flour mills	100,000	-	-	-	-
To Montreal	457,267	133,968	36,620	-	-
To Sorel	512,586	-	-	-	-
TOTAL	1,069,853	133,968	36,620	-	-
	<u>SHIPMENTS - RAIL</u>				
To Canadian Domestic points	211,822	21,464	7,007	19,917	10,465
To Canadian Flour mills	311,522	12,576	4,709	-	4,039
To Montreal	10,061	-	-	-	-
To Maritime ports	572,369	-	-	-	-
To U.S. points	4,250	-	-	-	-
TOTAL	1,110,024	34,040	11,716	19,917	14,504
	<u>SHIPMENTS - TRUCK</u>				
To Canadian Domestic points	4,210	-	8,933	-	-
To Canadian Flour mills	6,500	-	-	-	-
TOTAL	10,710	-	8,933	-	-
<u>ST. LAWRENCE PORTS</u>					
	<u>RECEIPTS - VESSEL</u>				
Montreal	436,433	133,798	120,570	25,344	-
Ogilvie	-	-	42,669	-	-
Dominion Elev. Co.	56,466	18,313	84,404	-	-
St. Lawrence	163,625	-	-	-	-
Sorel	1,315,920	-	-	-	-
TOTAL	1,972,444	152,111	247,643	25,344	-
	<u>RECEIPTS - RAIL</u>				
Montreal	178,620	37,459	46,132	-	-
Ogilvie	210,437	-	1,609	-	-
Dominion Elev. Co.	-	2,138	-	-	-
St. Lawrence	113,912	12,000	-	-	-
TOTAL	502,969	51,597	47,741	-	-
	<u>SHIPMENTS - VESSEL</u>				
To United Kingdom	449,280	-	-	-	-
To Other Countries	349,535	-	-	-	-
To U.K. & O.C.	844,915	144,486	16,486	-	-
TOTAL	1,643,729	144,486	16,486	-	-
	<u>SHIPMENTS - RAIL</u>				
To Canadian Domestic points	71,584	90,962	135,912	25,344	5,500
To Canadian Flour mills	701,611	8,353	8,985	-	-
To U. S. points	2,000	-	-	-	-
TOTAL	775,195	99,315	144,897	25,344	5,500





Receipts of Canadian Grain with Shipments by Destination, December, 1935 - Cont'd.

	WHEAT	OATS	BARLEY	FLAXSEED	RYE
	B u s h e l s				
<u>SEABOARD PORTS</u>		<u>RECEIPTS - RAIL</u>			
West Saint John, C.P.R.	684,588	38,124	124,999	-	-
Saint John	287,923	-	-	-	-
Halifax	298,099	-	-	-	-
TOTAL	1,270,610	38,124	124,999	-	-
		<u>SHIPMENTS - VESSEL</u>			
To United Kingdom	1,255,826	38,089	74,413	-	-
To Other Countries	56,000	-	-	-	-
TOTAL	1,311,826	38,089	74,413	-	-
		<u>SHIPMENTS - RAIL</u>			
To Canadian Domestic points	1,000	-	-	-	-
To West Saint John	500	-	-	-	-
TOTAL	1,500	-	-	-	-
		<u>T E A M E D</u>			
To Canadian Domestic points	1,316	3,388	-	-	-

Receipts of U. S. Grain with Shipments by Destination, December, 1935.

	SOYA BEANS	CORN	ARGENTINE CORN	SOUTH AFRICAN CORN
	B u s h e l s			
<u>GEORGIAN BAY PORTS</u>		<u>RECEIPTS - NIL</u>		
		<u>SHIPMENTS - RAIL</u>		
To Canadian Domestic points	-	-	-	2,406
To U. S. mills	-	-	-	2,929
TOTAL	-	-	-	5,335
<u>LOWER LAKE PORTS</u>		<u>RECEIPTS - VESSEL</u>		
Pt. Colborne, D.G.	24,080	-	-	-
Toronto	-	-	-	35,765
TOTAL	24,080	-	-	35,765
		<u>RECEIPTS - RAIL</u>		
Toronto	-	-	-	56,447
		<u>SHIPMENTS - RAIL</u>		
To Canadian Domestic points	-	-	-	67,300
To Canadian Flour mills	-	167	17,683	8,695
To Montreal	24,080	-	-	-
TOTAL	24,080	167	17,683	75,995
<u>ST. LAWRENCE PORTS</u>		<u>RECEIPTS - VESSEL</u>		
Montreal	195,680	-	-	-
Dominion Elev. Co.	-	-	-	99,915
TOTAL	195,680	-	-	99,915
		<u>RECEIPTS - RAIL</u>		
Montreal	35,946	-	-	-
		<u>SHIPMENTS - VESSEL</u>		
To U.K. & O.C.	445,301	-	-	-
To Eastern Elevators	-	-	53,510	173,382
To U.S. Points	-	-	64,300	-
TOTAL	445,301	-	117,810	173,382
		<u>SHIPMENTS - RAIL</u>		
To Canadian Domestic points	-	-	45,339	110,239
To Canadian Flour mills	-	-	-	15,000
To U.S. points	-	-	64,300	-
TOTAL	-	-	109,639	125,239
<u>SEABOARD PORTS</u>		<u>RECEIPTS - VESSEL</u>		
Saint John C.N.R.	-	-	-	125,768
		<u>SHIPMENTS - RAIL</u>		
To Canadian Domestic points	-	-	-	68,700
		<u>T E A M E D</u>		
To Canadian Domestic points	-	-	4,549	24,000

STATISTICS CANADA LIBRARY  
BIBLIOTHEQUE STATISTIQUE CANADA



1010674992