

CANADA  
DEPARTMENT OF TRADE AND COMMERCE  
DOMINION BUREAU OF STATISTICS  
AGRICULTURAL BRANCH

Vol. 16

No. 3

Historical File Copy

CANADIAN GRAIN STATISTICS

Week ending

AUGUST 23, 1935

[Records for Western Inspection Division supplied by Board of Grain Commissioners for Canada]

Published by Authority of the HON. R.B. HANSON, K.C., M.P.,  
Minister of Trade and Commerce.

+ + +

OTTAWA

1935

## I N D E X

General Summary .....	1 - 6
Canadian Grain in Store by Elevators .....	7
Canadian Grain in Store by Grades .....	8
Comparative Statement of Grain in Store .....	9
U. S. Grain in Store, Receipts and Shipments .....	10
Stocks, Receipts and Shipments of the Country Elevators in the Western Division .....	11
Receipts, Shipments and Quantities in Store at Interior Terminal Elevators and receipts and shipments at Eastern Elevators .....	12
Stocks, Receipts and Shipments of the Pacific Elevators and Vancouver Prices .....	13
Daily and Weekly Average Prices at Fort William and Port Arthur and Toronto for the week ending August 24, 1935 .....	14
Lake Shipments of grain from Fort William - Port Arthur during the crop year 1934-35, according to the ports of destination of vessels in which carried .....	15
Lake Shipments of grain from Fort William-Port Arthur during the period from the opening of navigation to July 31, 1935, according to the ports of destination of vessels in which carried .....	16



DEPARTMENT OF TRADE AND COMMERCE  
DOMINION BUREAU OF STATISTICS - CANADA  
AGRICULTURAL BRANCH

(Issued August 30, 1935)

Dominion Statistician:	R. H. Coats, LL.D., F.R.S.C., F.S.S.(Hon.)
Chief, Agricultural Branch:	T. W. Grindley, Ph.D.
Assistant Chief, Agricultural Branch:	W. Dougan.

WHEAT STOCKS IN STORE

Canadian wheat in store for the week ending August 23, shows an increase of 1,809,073 bushels as compared with the previous week and an increase of 9,506,162 bushels when compared with the corresponding week in 1934. The visible supply was reported as 194,742,701 bushels as compared with the revised figure of 196,551,774 bushels for the previous week and 185,236,589 bushels for the week ending August 24, 1934.

Canadian wheat in the United States amounted to 17,716,941 bushels a net decrease of 173,198 bushels from the previous week when 17,890,139 bushels were reported. The Canadian wheat in store in the United States is located at the following ports: Buffalo 15,112,266; Erie 27,000; New York 364,895; Albany 1,399,000; New Orleans 21,000; Duluth 581,824 and Galveston 211,000 bushels. Buffalo and Duluth stocks show increases of 124,980 and 38,717 bushels respectively, over those of the previous week. Decreases are noted in New York stocks of 294,895 and Galveston of 42,000 bushels compared with those of a week ago. Wheat at Albany, Erie, and New Orleans remained the same as those of the previous week. For the same week a year ago the Canadian wheat in the United States amounted to 9,965,316 bushels distributed as follows:- Buffalo 4,272,108; Erie 1,615,000; Albany 2,236,000; New York 1,804,265 and Duluth 37,943 bushels.

United States wheat in Canada was shown as 2 bushels compared with the same amount at the corresponding date a year ago.

Wheat in transit on the lakes is reported as 5,935,728 bushels compared with 7,029,283 bushels for the previous week.

PRIMARY MOVEMENT

Wheat marketings in the Prairie Provinces for the period ending August 16 amounted to 1,621,021 bushels an increase of 176,338 bushels over the previous week's total when 1,444,683 bushels were marketed. During the corresponding week a year ago the receipts were 3,002,817 bushels. By provinces the receipts for the period ending August 16, 1935 were as follows, figures within brackets being those for 1934: Manitoba 161,633 (356,899); Saskatchewan 586,240 (898,535); Alberta 873,148 (1,747,383) bushels.

Marketings of wheat in the three Prairie Provinces from August 1, to 16th as compared with the same period in 1934 were as follows, figures within brackets being those for 1934: Manitoba 231,360 (633,336); Saskatchewan 1,145,111 (1,832,832); Alberta 1,689,333 (3,548,566) bushels.

OVERSEAS EXPORT CLEARANCES

During the week ending August 23, 1935 the export clearances of wheat amounted to 2,237,851 bushels as compared with 1,568,097 bushels for the previous week, an increase of 669,754 and when compared with the same week in 1934 a decrease of 746,676 bushels.

Clearances by ports for the weeks ending August 23, 1935 and August 24, 1934 were as follows (in bushels):

	Week ending August 23, 1935	Week ending August 24, 1934
Montreal	676,530	1,171,259
Sorel	230,600	-
United States Ports	327,000	661,000
Vancouver - New Westminster	403,721	500,780
Churchill	600,000	651,488
<b>TOTAL</b>	<b>2,237,851</b>	<b>2,984,527</b>





The following table shows the export clearances of Canadian wheat by ports since the commencement of the present crop year along with comparative figures for the same period in 1934-35 (in bushels):

	1935-36	1934-35
Montreal	2,411,443	3,520,737
Quebec	25,000	284,000
Sorel	722,987	536,595
United States Ports	782,000	1,889,000
Churchill	600,000	1,339,555
Vancouver - New Westminster	1,090,644	2,668,354
<b>TOTAL</b>	<b>5,632,074</b>	<b>10,238,241</b>

Number of cars of grain unloaded at Vancouver, B. C. over the different railroads  
July, 1935

	Via C.P.R.	Via C.N.R.	Via P.G.E.R.	TOTAL
Wheat	889½	751	-	1,640½
Oats	13	17	-	30
Barley	½	9	-	9½
1 Feed Scrags.	1	-	-	1
<b>TOTAL</b>	<b>904</b>	<b>777</b>	<b>-</b>	<b>1,681</b>

Number of cars of grain unloaded at Vancouver, B. C. over the different railroads  
for the twelve months ending July, 1935.

	Via C.P.R.	Via C.N.R.	Via P.G.E.R.	TOTAL
Wheat	19,644	11,599	1	31,244
Oats	954	1,252	-	2,206
Barley	297½	440½	-	738
Flaxseed	-	1	-	1
Rye	4	1½	-	5½
Mixed Grain	1½	2	-	3½
1 Feed Scrags.	1	-	-	1
Elevator Scrags.	-	1	-	1
<b>TOTAL</b>	<b>20,902</b>	<b>13,297</b>	<b>1</b>	<b>34,200</b>





## EXPORTS BY SHIPPING ROUTES

### Wheat Exports Crop Year 1934 - 35

Exports of wheat for the twelve months ending July 31, 1935 amounted to 144,374,910 bushels, valued at \$118,427,684, compared with 170,234,013 bushels, valued at \$121,010,954, for the Crop Year 1933-34. This is a reduction of 25,859,103 bushels in quantity but only \$2,583,270 in value.

The routing of the wheat exports during the crop year 1934 - 1935 shows that 15,076,098 bushels were exported to the United States for consumption compared with 218,814 bushels a year ago. Exports to United States Atlantic Seaboard ports, for overseas destinations, amounted to 38,717,524 bushels. The quantity exported via Canadian Atlantic Seaboard ports was 36,230,422 bushels; via Canadian Pacific ports, 50,300,995 bushels; and via Churchill, Manitoba 4,049,871 bushels. The total export by Canadian ports was 90,581,288 bushels.

The re-routed wheat from United States Lake ports to Canadian ports amounted to 5,503,132 bushels which increased the movement via Canadian ports to 96,084,420 bushels and decreases the export via United States ports to 33,214,392 bushels.

### Wheatflour

Wheatflour exports during the crop year 1934-35 show a decrease when compared with same period 1933 - 1934. The number of barrels exported for 1934-35 amounted to 4,750,310 valued at \$18,237,933, compared with 5,454,636 barrels valued at \$19,477,652 for the same twelve months in 1934.

Exports via Canadian Atlantic Seaboard ports amounted to 3,268,858 barrels; via Canadian Pacific ports, 1,012,774 barrels; via Churchill 14,643 barrels; while 350,988 barrels were exported overseas via United States Atlantic Seaboard ports, and 103,047 barrels to the United States for consumption. This latter amount shows an increase of 99,310 barrels over the same period a year ago.

### Wheat and Wheatflour

Exports of wheat and wheatflour in bushels (the latter being reduced to wheat at  $4\frac{1}{2}$  bushels to the barrel) for the crop year 1934-35 amounted to 165,751,309 bushels, valued at \$136,665,617. This compares with 194,779,876 bushels, valued at \$140,488,606 for the crop year 1933-34.

The routing of the 1934-35 crop year export was as follows:- 15,539,813 bushels moved to the United States (direct) for consumption; 40,296,968 bushels were shipped to the United States, for export overseas; 50,940,283 bushels were exported direct from Canadian Atlantic ports; 54,858,479 bushels were shipped overseas from Canadian Pacific ports, and 4,115,765 bushels moved from Churchill, Manitoba.

The re-routed wheat amounted to 5,503,132 bushels which increased the Canadian Atlantic exports to 56,443,415 bushels and decreased the amount routed via United States ports to 34,793,836 bushels. The total revised movement via Canadian seaboard ports would therefore be 115,417,659 bushels against 34,793,836 bushels via United States ports.

### Coarse Grain Exports

Oats exported during the crop year 1934-35 amounted to 14,604,924 bushels, valued at \$5,704,525. This is a large increase over the previous year's export, when 6,087,835 bushels valued at \$2,063,522 were exported. The routing of the oat exports during the crop year 1934-35 was 3,764,027 bushels, exported to the United States for consumption while 15,330 bushels was shipped via the United States Atlantic seaboard ports for overseas export. The amount exported from Canadian Atlantic seaboard ports was 5,290,396 bushels, and 5,531,095 bushels from Canadian Pacific ports while 4,076 bushels were shipped from Churchill, Manitoba.

### Barley

The exports of barley during the crop year 1934-35 shows a large increase over the previous year. The amount of barley exported during the 1934-35 was 15,056,873 bushels, valued at \$9,079,822, compared with 1,710,651 bushels valued at \$780,611. The exports to the United States for consumption amounted to 9,296,245 bushels, compared with 223,059 bushels, for the crop year 1933-34. Exports to overseas countries show small increases over those of the previous year.







The amount exported via United States Atlantic seaboard ports was 423,802 bushels; while none was reported last crop year. The amount exported (direct) from Canadian Atlantic seaboard ports was 4,487,682 bushels compared with 741,974 bushels a year ago.

The shipments from Canadian Pacific ports were 849,144 bushels compared with 735,227 bushels in the previous year.

Rye exports declined from the previous year's export amounting to 1,187,394 bushels, valued at \$658,275, compared with 2,579,637 bushels, valued at \$1,353,142 a year ago. The routing of 1934-35 exports shows 604,523 bushels were exported to the United States for consumption; 259,999 bushels moved via United States Atlantic seaboard ports, and 322,855 bushels were shipped from Canadian Atlantic ports while 17 bushels were forwarded from Canadian Pacific ports. Re-routed rye amounting to 178,429 bushels from United States to Canadian ports, increased the exports by the former route to 501,301 bushels and reduced the latter to 81,570 bushels.

Flaxseed exports amounted to only 11,951 bushels, valued at \$53,619, compared with 187,407 bushels, valued at \$278,473 a year ago. The routing of 1934-35 export shows only 201 bushels shipped to the United States for consumption; 11,679 bushels moved overseas, via Canadian Atlantic ports; and 71 bushels were forwarded from Canadian Pacific ports.

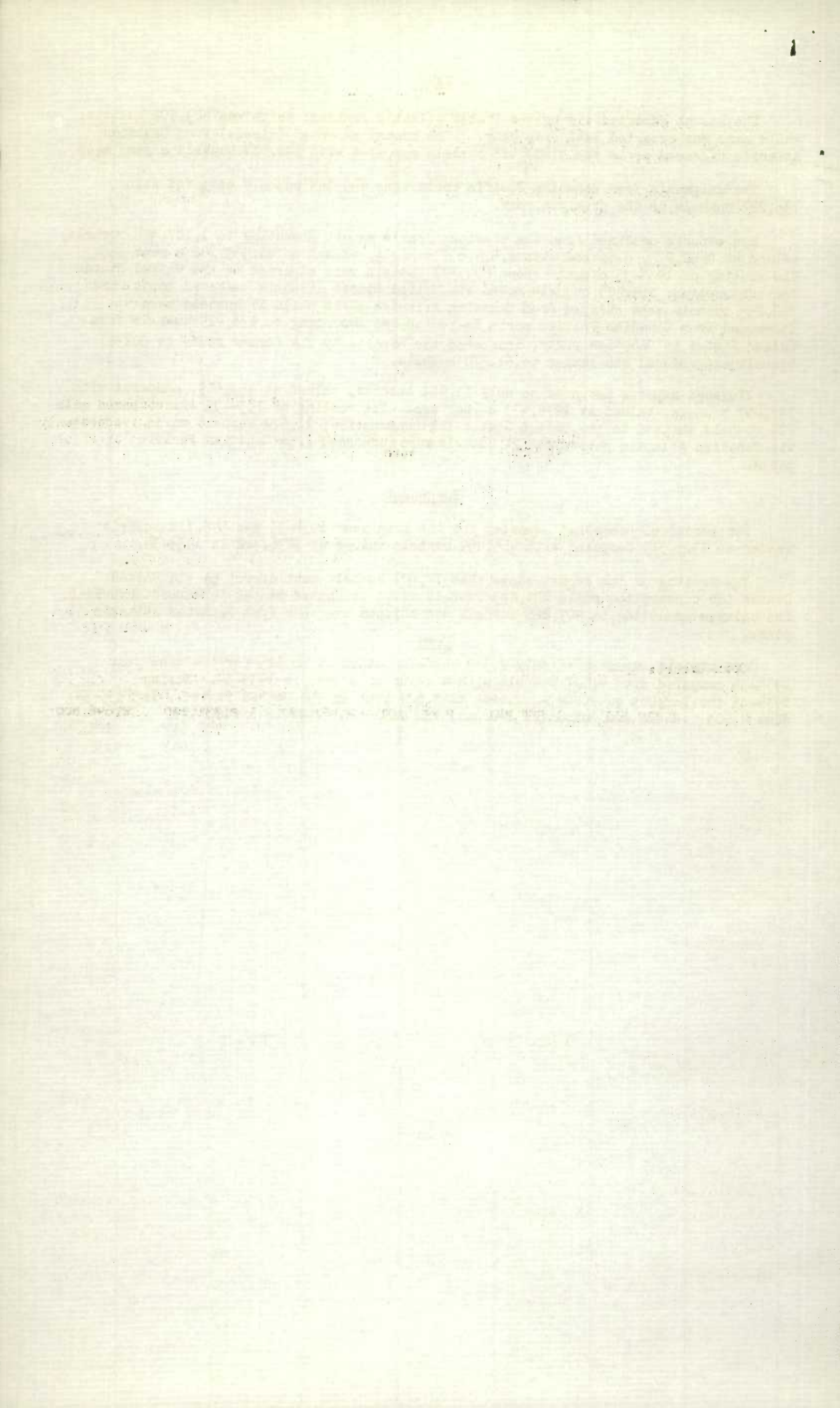
#### Buckwheat

The amount of buckwheat exported for the crop year 1934-35 was 548,718 bushels valued at \$305,379 compared with 465,459 bushels valued at \$236,422 in 1933-34.

The routing of the export shows that 17,607 bushels went direct to the United States for consumption while 121,843 bushels moved to United States for export overseas. The balance amounting to 409,268 bushels was shipped overseas from Canadian Atlantic ports.

#### Corn

Corn exports amounted to only 2,325 bushels valued at \$6,125 for the crop year 1934-35 compared with 4,007 bushels with a value of \$2,947 in 1933-34. During 1934-35 the largest quantity amounting to 3,629 went to the United States. In 1933-34 some 4,003 bushels was exported overseas via Canadian Atlantic ports.





CANADIAN GRAIN STATISTICS - WEEK ENDING AUGUST 23, 1935.

Returns received as to stocks of grain in store for the week ending August 23, 1935 show a net decrease of 1,484,505 bushels, compared with the revised figure of the previous week. Stocks in store were as follows:- wheat 194,742,701, oats 5,844,215, barley 3,203,695, flaxseed 272,850 and rye 3,241,201 bushels, a total of 207,304,662 bushels. Decreases were noted in wheat of 1,809,073 and flaxseed 7,579 bushels while increases were shown in oats 69,866, barley 82,902 and rye 179,379 bushels. At a comparable date last year stocks in store were as follows:- wheat 185,236,539, oats 10,645,211, barley 8,993,018, flaxseed 459,403 and rye 3,916,694 bushels, a total of 209,250,865 bushels.

WESTERN COUNTRY ELEVATORS:- Grain stocks show a net decrease of 610,539 bushels. Decreases were noted in wheat of 997,070 and flaxseed 3,051 bushels, while increases were shown in oats 241,563, barley 102,175 and rye 45,844 bushels.

The following table shows the quantities of grain in store at the Country Elevators in each of the Prairie Provinces on August 16, 1935 with comparison for the previous week and the same period 1934.

	<u>MANITOBA</u>	<u>SASKATCHEWAN</u>	<u>ALBERTA</u>	<u>TOTAL</u>
		<u>B u s h e l s</u>		
Wheat	3,646,064	22,700,124	19,217,525	45,563,713
Oats	94,168	328,190	461,628	883,986
Barley	188,958	152,079	105,817	446,854
Flaxseed	4,600	65,077	11,194	80,871
Rye	110,297	166,480	36,219	312,996
TOTAL	4,044,087	23,411,950	19,832,383	47,288,420
Previous week	3,969,138	23,884,505	19,769,389	47,623,032
Same period 1934	4,823,298	37,577,378	27,688,925	70,089,601

The receipts and shipments at the Country Elevators for the week ending August 16, 1935 compared with the previous week and the same period 1934 were as follows:-

	<u>R E C E I P T S</u>			<u>S H I P M E N T S</u>		
	Previous week	Week ending Aug. 16, 1935	Week ending Aug. 17, 1934	Previous week	Week ending Aug. 16, 1935	Week ending Aug. 17, 1934
Wheat	1,319,661	1,558,841	2,857,201	2,461,787	2,331,190	2,646,800
Oats	101,992	135,992	366,856	63,267	107,617	285,195
Barley	39,821	88,510	212,426	17,948	38,693	135,673
Flaxseed	6,395	3,059	4,021	-575	4,080	2,523
Rye	58,047	72,381	58,189	11,128	17,152	40,135
TOTAL	1,525,916	1,858,783	3,498,693	2,553,555	2,498,732	3,110,326

Platform Loadings shown by Prairie Provinces for the period ending August 14, 1935 were as follows:-

	<u>WHEAT</u>	<u>OTHER GRAIN</u>	<u>TOTAL</u>
		<u>B u s h e l s</u>	
Manitoba	6,504	23,062	29,566
Saskatchewan	12,356	1,933	14,289
Alberta	43,320	-	43,320
TOTAL	62,180	24,995	87,175
Period ending Aug. 14, 1934	145,616	52,644	198,260
+Increase -Decrease	- 83,436	-27,649	-111,085

INTERIOR PUBLIC AND SEMI-PUBLIC TERMINALS:- Stocks for the week show a net increase of 234,216 bushels. Increases are noted in wheat of 233,808 and oats 1,836 bushels while decreases are shown in barley and flaxseed of 1,250 and 178 bushels respectively.

VANCOUVER-NEW WESTMINSTER ELEVATORS:- Grain stocks at these elevators show a decrease of 246,062 bushels, composed of wheat 206,648, oats 21,682, barley 12,430 and rye 5,302 bushels.

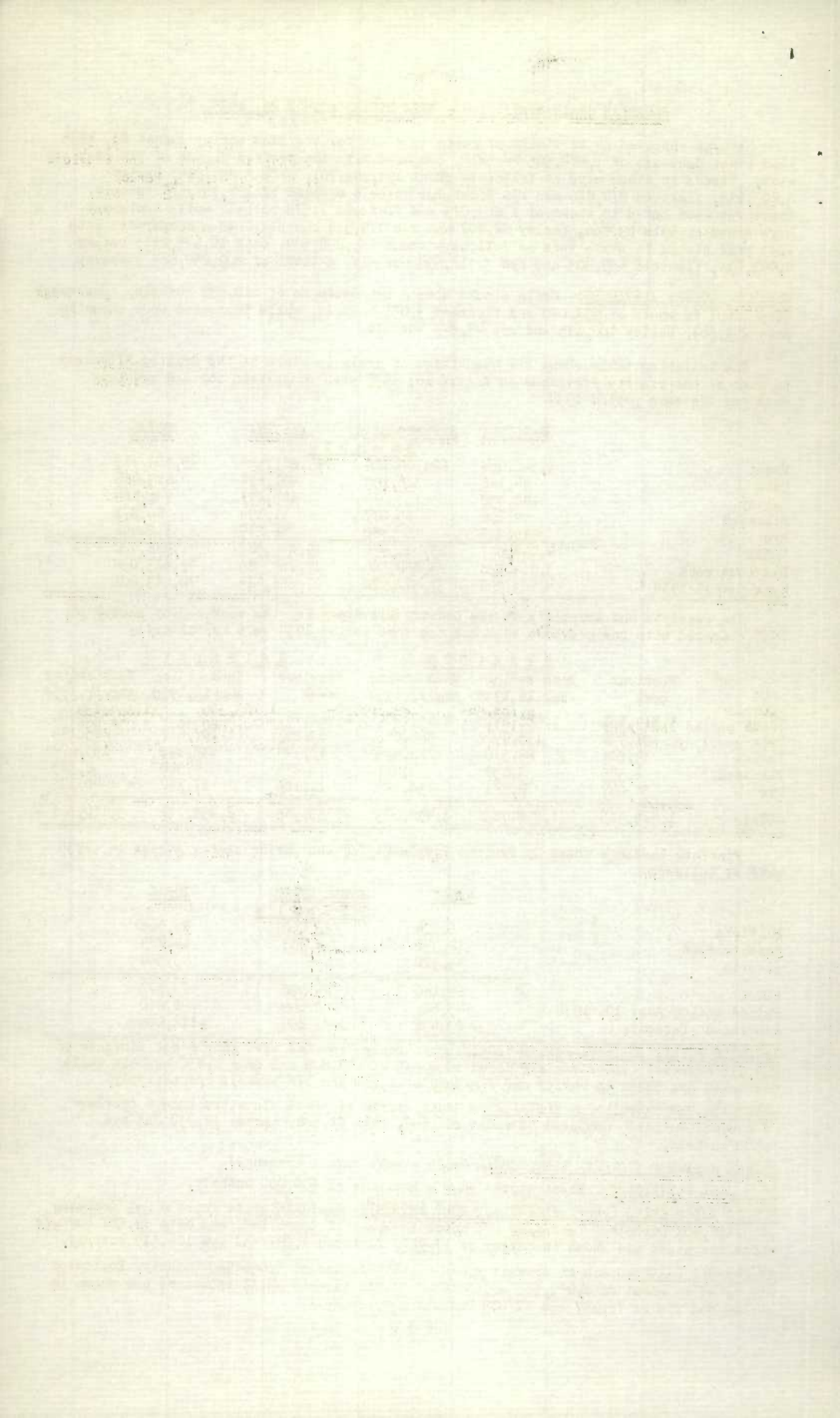
PRINCE RUPERT & VICTORIA ELEVATORS:- Grain stocks remain unchanged.

CHURCHILL ELEVATORS:- Wheat stocks show a decrease of 600,000 bushels.

PUBLIC AND PRIVATE (FORT WILLIAM AND PORT ARTHUR):- Grain in store shows a net decrease of 3,436,902 bushels. Decreases are noted in wheat of 3,546,102, and oats 34,527 bushels while increases are shown in barley of 17,927, flaxseed 1,281 and rye 124,519 bushels.

IN TRANSIT LAKES:- Grain in transit shows a net decrease of 1,048,580 bushels. Decreases are noted in wheat of 1,093,555 and oats of 39,212 bushels while increases are shown in barley and rye of 72,187 and 12,000 bushels respectively.







Stocks in Store at the Head of the Lakes compared with the same week last year were as follows:-

	Week ending Aug. 23, 1935	Week ending Aug. 24, 1934	+ Increase - Decrease
Wheat	52,069,136	53,933,031	- 1,863,895
Oats	3,653,203	2,216,336	+ 1,436,867
Barley	900,255	2,460,296	- 1,560,041
Flaxseed	115,663	339,474	- 223,811
Rye	2,340,245	2,288,211	+ 52,034

The receipts (including transfers) at the Head of the Lakes for the period ending August 23, 1935 with comparative figures for the same week last year were as follows:-

	Week ending Aug. 23, 1935	Week ending Aug. 24, 1934	+ Increase - Decrease
Wheat	2,834,360	1,406,806	+ 1,427,554
Oats	17,917	102,241	- 84,324
Barley	87,266	150,795	- 63,529
Flaxseed	1,281	380	+ 901
Rye	44,264	52,659	- 8,395

The shipments at the Head of the Lakes for the period ending August 23, 1935 with comparative figures for the same week last year were as follows:-

	Week ending Aug. 23, 1935	Week ending Aug. 24, 1934	+ Increase - Decrease
Wheat	6,344,434	1,697,380	+ 4,647,054
Oats	71,140	99,857	- 28,717
Barley	69,012	228,521	- 159,509
Flaxseed	-	-	-
Rye	12,000	50,014	- 38,014

Preliminary figures showing receipts and shipments at the Head of the Lakes also Vancouver-New Westminster, Prince Rupert, Victoria and Churchill for the period August 1, 1935 to August 23, 1935 compared with the same period last year.

	FORT WILLIAM & PORT ARTHUR		VANCOUVER-NEW WESTMINSTER	
	Receipts	Shipments	Receipts	Shipments
Wheat	9,460,341	29,084,563	1,078,222	1,126,424
Oats	133,545	184,607	19,625	24,362
Barley	113,456	213,256	4,604	2,759
Flaxseed	10,476	72,078	614	614
Rye	50,646	12,000	240	-
TOTAL	9,768,464	29,566,504	1,103,305	1,154,159
Same period last year	6,151,381	13,404,255	2,707,320	2,278,496
+Increase -Decrease	+3,617,083	+16,162,249	-1,604,015	-1,124,337

	PRINCE RUPERT		VICTORIA	
	Receipts	Shipments	Receipts	Shipments
TOTAL	-	-	-	-
Same period last year	-	-	-	1,000
+Increase	-	-	-	- 1,000

	CHURCHILL	
	Receipts	Shipments
TOTAL	-	600,000
Same period last year	-	1,339,554
+Increase- Decrease	-	-739,554

INTERIOR PRIVATE AND MILL ELEVATORS:- Grain stocks show a net decrease of 68,805 bushels. Decreases are noted in wheat of 29,068, oats 40,539 and flaxseed 5,631 bushels while barley and rye increased 3,025 and 3,408 bushels respectively.

Stocks in Store at the Country, Interior, Private and Mill, Head of the Lakes, Victoria, Vancouver-New Westminster, Prince Rupert and Churchill compared with the same week last year were as follows:-

	Week ending Aug. 23, 1935	Week ending Aug. 24, 1934	+ Increase - Decrease
Wheat	116,110,072	137,147,146	- 21,037,074
Oats	5,092,735	7,387,128	- 2,294,393
Barley	2,116,110	5,490,942	- 3,374,832
Flaxseed	209,541	456,125	- 246,584
Rye	2,730,134	2,999,551	- 269,417

EASTERN ELEVATORS-LAKE PORTS:- Grain in store shows a net increase of 3,468,966 bushels. Increases are noted in wheat of 3,522,392 and oats 13,713 bushels while barley and rye decreased 62,571 and 4,568 bushels respectively.

EASTERN ELEVATORS-SEABOARD PORTS (CANADIAN GRAIN):- Grain stocks show a net increase of 992,158 bushels. Wheat increased 1,080,368 bushels while decreases are shown in oats of 51,286, barley 36,161 and rye 763 bushels.







Shipments overseas of Canadian Grain from St. Lawrence Ports were as follows:-

		United Kingdom	Other Countries
		B u s h e l s	
Montreal, Que.	Wheat	676,510	-
	Oats	84,055	-
	Barley	83,329	-
	Buckwheat	20,000	-
Montreal Ogilvie	Wheat	-	20
Sorel, Que.	Wheat	230,600	-

EASTERN ELEVATORS:- United States grain stocks were 5,997,461 bushels lower than at a comparable date last year. Decreases were noted in oats and corn of 184,338 and 5,813,123 bushels respectively.

The quantities by classes of ports with increases and decreases:-

	Week ending Aug. 23, 1935	Week ending Aug. 24, 1934	+ Increase - Decrease
At Georgian Bay Ports	280,343	5,028,160	- 4,747,817
At Lower Lake Ports	6,570	1,121,703	- 1,115,133
At St. Lawrence Ports	368	134,879	- 134,511
At Seaboard Ports	-	-	-
<b>TOTAL</b>	<b>287,281</b>	<b>6,284,742</b>	<b>- 5,997,461</b>

U. S. LAKE PORTS:- Grain in store shows an increase of 167,938 bushels, composed of wheat 153,697 and rye 4,241 bushels.

U. S. ATLANTIC SEABOARD PORTS:- Wheat stocks show a decrease of 336,895 bushels.

Inspection returns for the week ending August 14, 1935 with comparison for the previous year were as follows:-

	Week ending Aug. 14, 1935	Week ending Aug. 14, 1934	+ Increase - Decrease
Wheat	1,834	1,377	+ 457
Oats	17	98	- 81
Barley	30	100	- 70
Flaxseed	4	3	+ 1
Rye	18	27	- 9
Mixed Grain	-	2	- 2
<b>TOTAL</b>	<b>1,903</b>	<b>1,607</b>	<b>+ 286</b>

The number of bushels of grain shipped from western to the Canadian eastern points over the C.P.R. and C.N.R. for the week ending August 14, 1935 and the period from August 1, 1935 to August 14, 1935.

	WEEK ENDING AUGUST 14, 1935					PERIOD AUGUST 1, 1935 TO AUGUST 14, 1935				
	WHEAT	OATS	BARLEY	FLAXSEED	RYE	WHEAT	OATS	BARLEY	FLAXSEED	RYE
Via D.P.R.	-	-	-	-	-	-	-	-	-	-
Via C.N.R.	1,476	-	-	-	-	1,476	2,004	-	-	-
<b>TOTAL</b>	<b>1,476</b>	<b>-</b>	<b>-</b>	<b>-</b>	<b>-</b>	<b>1,476</b>	<b>2,004</b>	<b>-</b>	<b>-</b>	<b>-</b>

DULUTH:- Receipts of Canadian bonded grain at Duluth by rail for the week ending August 24, 1935, amounted to 13,003 bushels. For the period from August 1, 1935 to date rail receipts amounted to wheat 50,397 bushels.

Receipts by water for the week ending August 24, 1935 amounted to wheat 342,306 bushels. Receipts by water from August 1, 1935 to date amounted to wheat 521,581 bushels.

Rail shipments for the week ending August 24, 1935 amounted to wheat 65,000 bushels duty paid. Rail shipments from August 1, 1935 to date amounted to wheat 331,067 bushels.

Lake shipments for the week ending August 24, 1935 amounted to wheat 251,592 bushels. Lake shipments from August 1, 1935 to date amounted to wheat 251,592 bushels.





STOCKS OF GRAIN IN DIFFERENT ELEVATORS DURING THE WEEK ENDING AUGUST 23, 1935.

	WHEAT	OATS	BARLEY	FLAXSEED	RYE
	B u s h e l s				
Western Country Elevators x	44,566,643	1,125,549	549,029	77,820	358,840
Interior Private & Mill Elevs.x	6,404,273	474,770	725,606	7,261	42,210
Interior Pub.& Semi-Pub. Terms.	1,438,352	7,220	109	63	164
Vancouver-New Westminster	8,786,209	33,017	46,311	52	37,927
Victoria	275	-	-	-	-
Prince Rupert	29,642	-	-	-	-
Churchill	1,789,404	-	-	-	-
Fort William & Port Arthur	52,069,136	3,653,203	900,255	115,663	2,340,245
In Transit Lakes	5,935,728	51,358	151,372	-	12,000
Eastern Elevs.-Lake Ports	39,053,448	44,423	160,520	-	231,467
Eastern Elevs.-Sbd. Ports	16,952,650	454,675	445,242	71,991	185,564
U. S. Lake Ports	15,721,090	-	225,251	-	32,784
U. S. Atlantic Sbd. Ports	1,995,851	-	-	-	-
TOTAL	194,742,701	5,844,215	3,203,695	272,850	3,241,201
Previous week	196,551,774	5,774,349	3,120,793	280,429	3,061,822
Same week previous year	185,236,539	10,645,211	8,993,018	459,403	3,916,694

x Estimated.

Quantity of Screenings received, shipped and in store at the undermentioned elevators during the week ending August 23, 1935.

	Amount in Store Aug. 16, 1935		Amount Received by vessel		Amount shipped		Amount in Store Aug. 23, 1935	
	Tons	Lbs.	Tons	Lbs.	Tons	Lbs.	Tons	Lbs.
Owen Sound	255	-	404	420	160	-	499	420
Goderich Elev. Co.	69	-	-	-	59	-	10	-
Prescott	195	560	-	-	-	-	195	560
Montreal	-	1,126	-	-	-	-	-	1,126
Dominion Elev. Co.	869	120	-	-	-	-	869	120
Sorel	1,024	1,610	-	-	25	-	999	1,610
TOTAL	2,413	1,416	404	420	244	-	2,573	1,836

Lake Shipments from Head of the Lakes for the period ending August 21, 1935.

	CANADIAN LOWER LAKE PORTS	MONTREAL	SOREL	QUEBEC	BUFFALO	OTHER U.S.A. PORTS	TOTAL
	B u s h e l s						
Wheat	4,281,021	948,453	113,601	-	982,544	447,258	6,772,877
Oats	16,535	41,946	-	-	-	-	58,481
Barley	-	63,924	-	-	-	-	63,924
Flaxseed	-	-	-	Nil	-	-	-
Rye	-	12,000	-	-	-	-	12,000
TOTAL	4,297,556	1,066,323	113,601	-	982,544	447,258	6,907,282
Period Aug 21, 1934	823,631	477,260	-	-	1,102,292	368,056	2,771,239

Lake Shipments from Head of the Lakes for the period from the opening of navigation to August 21, 1935.

Wheat	37,464,773	9,298,045	795,043	2,222,436	21,331,747	1,614,379	#72,959,630
Oats	1,055,331	1,345,976	-	-	130,000	-	2,531,307
Barley	1,127,677	1,122,112	-	-	271,529	1,018,277	3,539,595
Flaxseed	85,000	94,000	-	-	-	-	179,000
Rye	185,000	12,000	-	-	310,000	-	507,000
TOTAL	39,917,781	11,872,133	795,043	2,222,436	22,043,276	2,632,656	#79,716,532
Period Aug. 21, 1934	53,165,563	10,674,295	877,128	342,880	21,036,470	3,026,770	*89,208,124

# Includes 233,207 bushels wheat shipped to Montreal or Quebec.

x Includes 85,018 bushels of Oats shipped to Halifax.







- 7 -  
CANADIAN GRAIN IN STORE - AUGUST 23, 1935.

	WHEAT	OATS	BARLEY	FLAXSEED	RYE
	Bushels				
WESTERN COUNTRY ELEVATORS					
Manitoba	3,681,277	105,004	226,556	4,619	119,854
Saskatchewan	22,008,120	553,930	210,589	61,949	202,658
Alberta	18,877,246	466,615	111,884	11,252	36,328
+TOTAL WESTERN COUNTRY ELEVS.	44,566,643	1,125,549	549,029	77,820	358,840
+INTERIOR PRIVATE & MILL ELEVS.	6,404,273	474,770	725,606	7,261	42,210
Calgary Can. Govt. Elevs.	177,992	-	-	-	-
Edmonton Can. Govt. Elevs.	30,947	4,058	-	-	-
Lethbridge Can. Govt. Elevs.	264,725	119	-	-	-
Moose Jaw Can. Govt. Elevs.	2,942	694	-	48	164
Saskatoon Can. Govt. Elevs.	1,806	2,349	109	15	-
+TOTAL INT. & PUB. SEMI-PUB.	1,438,352	7,220	109	63	164
VANCOUVER-NEW WESTMINSTER	8,786,209	33,017	46,311	52	37,927
VICTORIA	275	-	-	-	-
PRINCE RUPERT	29,642	-	-	-	-
CHURCHILL	1,789,404	-	-	-	-
Semi-Public Terminals	52,054,478	3,639,375	897,530	115,663	2,340,245
Private Terminals	14,658	13,828	2,725	-	-
TOTAL FT. WM. & PT. ARTHUR	52,069,136	3,653,203	900,255	115,663	2,340,245
IN TRANSIT LAKES	5,935,728	51,358	151,372	-	12,000
EASTERN ELEVATORS					
Depot Harbor	1,188,615	-	-	-	-
Port McNicoll	6,396,371	-	-	-	-
Tiffin	4,386,780	-	-	-	-
Midland Aberdeen	724,634	-	-	-	-
Midland	1,647,947	-	-	-	-
Midland Simcoe	3,888,942	-	-	-	-
Collingwood	2,015,916	-	-	-	-
Owen Sound	3,396,342	12,000	5,643	-	-
Goderich Elev. & Transit	1,458,408	-	91	-	-
Goderich Elev. Can. Flr. Mill	324,639	-	-	-	-
Sarnia	2,637,695	-	4,840	-	-
Port Colborne, D.G.	3,124,963	823	-	-	-
Port Colborne Maple Leaf	1,585,664	12,656	26,214	-	13,745
Toronto	516,361	14,854	7,231	-	217,722
Toronto Afloat	-	-	115,000	-	-
Kingston Richardson	60,626	4,090	-	-	-
Kingston Elev. Co.	1,596,539	-	-	-	-
Prescott	4,103,006	-	1,501	-	-
TOTAL EASTERN ELEVS. LAKE PORTS	39,053,448	44,423	160,520	-	231,467
Montreal	11,322,334	189,263	426,839	71,991	179,103
Ogilvie Flour Mills	396,421	1,876	-	-	-
Dominion Elevs. Co.	175,401	47,884	17,579	-	6,461
North Amer. Elevs. Ltd. Sorel	1,187,368	-	824	-	-
Quebec Hbr. Commrs.	2,887,735	109,647	-	-	-
Halifax	983,391	106,005	-	-	-
TOTAL EAST. ELEVS. SBD. PORTS	16,952,650	454,675	445,242	71,991	185,564
TOTAL QUANTITY IN CANADA	177,025,760	5,844,215	2,978,444	272,850	3,208,417
Duluth	581,824	-	103,723	-	-
Buffalo	15,112,266	-	123,528	-	32,784
Erie	27,000	-	-	-	-
TOTAL U.S. LAKE PORTS	15,721,090	-	225,251	-	32,784
New York	339,851	-	-	-	-
New York Afloat	25,000	-	-	-	-
Albany	1,399,000	-	-	-	-
New Orleans	21,000	-	-	-	-
Galveston	211,000	-	-	-	-
TOTAL U.S. ATLANTIC SBD. PORTS	1,995,851	-	-	-	-
TOTAL QUANTITY IN STORE	194,742,701	5,844,215	3,203,695	272,850	3,241,201

+ Estimated.

x Included C.P.R. Elevators, North Transcona.





Grades of Canadian Grain in Store at Public, Semi-Public and Private Elevators, (Head of the Lakes), Interior, Public and Semi-Public Elevators, Vancouver-New Westminster, Churchill and Victoria Terminal and Eastern Elevators for the period ending August 23, 1935.

	Fort William & Port Arthur Semi-Public and Private	Interior Public and Semi-Public Terminals	Vancouver New West- minster Victoria Elevators	Eastern Elevators Lake Ports	Eastern Elevators Seaboard Ports	Total
<b>WHEAT</b>						
	<b>B u s h e l s</b>					
No. 1 Hard	4,146,455	162,159	1,030,520	585,970	265,172	6,190,276
No. 1 Northern	32,695,646	321,005	2,477,609	19,932,188	3,672,367	59,098,815
No. 2 Northern	7,857,890	16,202	1,018,118	16,978,345	11,442,075	37,312,630
No. 3 Northern	1,734,727	8,104	513,906	280,723	670,435	3,207,895
No. 4 Northern	1,276,796	2,219	1,686,594	283,918	230,544	3,480,071
No. 5 Wheat	468,533	1,919	1,094,192	362,288	232,825	2,159,757
No. 6 Wheat	395,081	5,450	258,949	-	4,987	664,467
Feed	45,748	-	53,429	-	-	99,177
No. 1 C.W. Durum	2,137,685	-	-	543,372	53,252	2,734,309
No. 2 C.W. Durum	291,799	-	-	803	-	292,602
No. 3 C.W. Durum	121,085	-	-	-	502	121,587
No. 4 C.W. Durum	13,539	-	-	-	998	14,537
Other Durum	84,707	-	-	-	-	84,707
Other	784,787	11,354	653,167	85,841	379,493	1,914,642
Private Elevators	14,658	-	-	-	-	14,658
<b>TOTAL</b>	<b>52,069,136</b>	<b>528,412</b>	<b>8,786,484</b>	<b>39,053,448</b>	<b>16,952,650</b>	<b>117,390,130</b>
<b>OATS</b>						
No. 1 C.W.	-	-	-	-	-	-
No. 2 C.W.	1,434,286	1,726	3,926	8,000	16,409	1,464,347
No. 3 C.W.	588,166	-	213	650	89,346	678,375
Ex. No. 1 Feed	622,858	14	2,937	12,329	4,097	642,235
No. 1 Feed	871,975	923	5,732	-	94,014	972,644
No. 2 Feed	21,770	538	2,488	-	75,745	100,541
No. 3 Feed	6,161	-	-	-	-	6,161
Private Elevators	13,828	-	-	-	-	13,828
Other	94,159	4,019	17,721	23,444	175,064	314,407
<b>TOTAL</b>	<b>3,653,203</b>	<b>7,220</b>	<b>33,017</b>	<b>44,423</b>	<b>454,675</b>	<b>4,192,538</b>
<b>NEW GRADE BARLEY</b>						
Ex. C.W. 6 Row	64,210	-	-	-	18,992	83,202
Ex. C.W. Trebi	-	-	-	-	-	-
Ex. C.W. 2 Row	21,638	-	-	-	-	21,638
C.W.	631,938	109	5,620	36,988	328,432	1,003,087
C.W.	34,502	-	2,850	-	24,125	61,477
C.W.	57,378	-	13,146	1,501	32,374	104,399
C.W.	31,012	-	18,138	-	17,579	66,729
Feed	-	-	-	-	-	-
Private Elevators	2,725	-	-	-	-	2,725
Other	56,852	-	6,557	122,031	23,740	209,180
<b>TOTAL</b>	<b>900,255</b>	<b>109</b>	<b>46,311</b>	<b>160,520</b>	<b>445,242</b>	<b>1,552,437</b>
<b>FLAXSEED</b>						
No. 1 C.W.	86,921	63	2	-	71,991	158,977
No. 2 C.W.	14,355	-	16	-	-	14,371
No. 3 C.W.	6,703	-	-	-	-	6,703
No. 4 C.W.	384	-	-	-	-	384
Other	7,300	-	34	-	-	7,334
<b>TOTAL</b>	<b>115,663</b>	<b>63</b>	<b>52</b>	<b>-</b>	<b>71,991</b>	<b>187,769</b>
<b>RYE</b>						
No. 1 C.W.	11,166	-	-	-	-	11,166
No. 2 C.W.	2,110,252	-	37,927	230,445	173,957	2,552,581
No. 3 C.W.	156,722	164	-	-	11,607	168,493
No. 4 C.W.	16,986	-	-	-	-	16,986
Ergoty	20,875	-	-	-	-	20,875
Other	24,244	-	-	1,022	-	25,266
<b>TOTAL</b>	<b>2,340,245</b>	<b>164</b>	<b>37,927</b>	<b>231,467</b>	<b>185,564</b>	<b>2,795,367</b>
<b>TOTAL QUANTITY IN STORE</b>						
	59,078,502	535,968	8,903,791	39,489,858	18,110,122	126,118,241





CANADIAN GRAIN IN STORE - COMPARATIVE STATEMENT, 1932 - 1935.

	W H E A T	OTHER GRAIN
	B u s h e l s	
<u>August 23, 1935.</u>		
Country Elevators - Manitoba	3,681,277	456,033
Saskatchewan	22,008,120	1,029,126
Alberta	18,877,246	626,079
TOTAL	44,566,643	2,111,238
Interior Private and Mill	6,404,273	1,249,847
Interior Public and Semi-Public Terms.	1,438,352	7,556
Vancouver-New Westminster	8,786,209	117,307
Victoria	275	-
Prince Rupert	29,642	-
Churchill	1,789,404	-
Fort William and Port Arthur	52,069,136	7,009,366
In Transit Lakes	5,935,728	214,730
Eastern Elevators - Lake Ports	39,053,448	436,410
Eastern Elevators - Seaboard Ports	16,952,650	1,157,472
U. S. Lake Ports	15,721,090	258,035
U. S. Atlantic Seaboard Ports	1,995,851	-
TOTAL	194,742,701	12,561,961
<u>August 24, 1934.</u>		
Country Elevators - Manitoba	4,816,532	991,018
Saskatchewan	35,747,104	3,540,558
Alberta	26,022,246	1,980,831
TOTAL	66,585,882	6,512,407
Interior Private and Mill	6,229,421	2,467,921
Interior Public and Semi-Public Terms.	1,828,740	104,346
Vancouver - New Westminster	7,717,946	706,223
Victoria	928,632	-
Prince Rupert	1,091,087	303
Churchill	1,136,210	-
Fort William and Port Arthur	53,933,031	7,304,317
In Transit Lakes	1,703,504	299,088
Eastern Elevators - Lake Ports	23,764,495	3,666,737
Eastern Elevators - Seaboard Ports	10,352,275	2,739,243
U. S. Lake Ports	5,925,051	159,841
U. S. Atlantic Seaboard Ports	4,040,265	53,900
TOTAL	185,236,539	24,014,326
<u>August 25, 1933.</u>		
Country Elevators - Manitoba	6,963,051	1,456,016
Saskatchewan	36,918,753	3,249,128
Alberta	29,445,587	4,556,241
TOTAL	73,327,391	9,261,385
Interior Private and Mill	5,980,332	2,886,613
Interior Public and Semi-Public Terms.	2,033,238	130,024
Vancouver-New Westminster	9,228,955	1,221,808
Victoria	172	-
Prince Rupert	2,775	-
Churchill	1,195,622	-
Fort William and Port Arthur	61,197,964	10,225,571
In Transit Lakes	3,918,703	436,972
Eastern Elevators - Lake Ports	20,056,058	2,690,292
Eastern Elevators - Seaboard Ports	14,312,859	1,942,576
U. S. Lake Ports	4,394,052	114,249
U. S. Atlantic Seaboard Ports	945,601	170,386
TOTAL	196,593,722	29,079,876
<u>August 26, 1932.</u>		
Country Elevators - Manitoba	3,698,593	568,349
Saskatchewan	10,098,630	1,260,725
Alberta	8,883,130	1,041,811
TOTAL	22,680,353	2,870,885
Interior Private and Mill	5,885,689	1,593,967
Interior Public and Semi-Public Terms.	168,644	9,960
Vancouver-New Westminster	7,966,028	484,293
Victoria	335,228	-
Prince Rupert	840,299	9,753
Churchill	1,873,183	-
Fort William and Port Arthur	41,067,148	6,004,053
In Transit lakes	4,646,816	617,629
Eastern Elevators - Lake Ports	10,429,458	1,162,145
Eastern Elevators - Seaboard Ports	11,658,749	2,084,765
U. S. Lake Ports	4,044,784	63,646
U. S. Atlantic Seaboard Ports	1,439,668	348,798
TOTAL	113,036,047	15,249,894







STOCKS OF UNITED STATES GRAIN IN CANADA AUGUST 23, 1935.

	WHEAT	OATS	BARLEY	RYE	CORN
	Bushels				
Midland Aberdeen	-	-	-	-	470
Midland Grain	-	-	-	-	277,950
Owen Sound, G.L.	-	-	-	-	1,923
Port Colborne, MapleLeaf	-	-	-	-	855
Toronto	-	-	-	-	5,715
Montreal Harbour Commrs.					
Nos. 1, 2 and B.	2	-	-	366	-
TOTAL	2	-	-	366	286,913
Same period previous year	2	184,338	-	366	6,100,036

RECEIPTS AND SHIPMENTS OF UNITED STATES GRAIN IN CANADA AUGUST 23, 1935.

	R E C E I P T S		S H I P M E N T S	
	Water	Rail	Water	Rail
	GEORGIAN BAY PORTS			
Corn	-	-	-	6,000
	LOWER LAKE PORTS			
Corn	-	-	112,634	39

STOCKS OF FOREIGN GRAIN IN CANADA AUGUST 23, 1935.

	ARGENTINE CORN	SOUTH AFRICAN CORN	TOTAL CORN	ARGENTINE FLAXSEED
Sarnia	-	157,100	157,100	-
Port Colborne, M.L.	23,010	36,473	59,483	-
Toronto	24,852	668,064	692,916	-
Prescott	1,005	-	1,005	-
Montreal	147,877	472,737	620,614	-
Dominion Elev. Co.	-	72,413	72,413	-
Quebec	-	101,108	101,108	-
Saint John	-	97,595	97,595	-
Halifax	39,296	544,888	584,184	-
TOTAL	236,040	2,150,378	2,386,418	-
Same period previous year	208,588	20,000	228,588	67,845

RECEIPTS AND SHIPMENTS OF FOREIGN CORN IN CANADA FOR THE WEEK ENDING AUGUST 23, 1935.

	ARGENTINE CORN		SOUTH AFRICAN CORN	
	Receipts	Shipments	Receipts	Shipments
Georgian Bay Ports	-	-	-	-
Lower Lake Ports	-	4,544	-	35,644
St. Lawrence Ports	-	310,845	-	81,697
Seaboard Ports	-	3,161	-	19,000





STOCKS, RECEIPTS AND SHIPMENTS OF THE COUNTRY ELEVATORS IN THE WESTERN  
DIVISION IN THE WEEK ENDING AUGUST 16, 1935.

	WHEAT	OATS	BARLEY	FLAXSEED	RYE
	B u s h e l s				
<u>MANITOBA</u>					
In Store, previous week	3,656,645	79,551	136,588	4,501	91,853
Receipts	155,129	13,634	59,769	15	26,521
TOTAL	3,811,774	93,185	196,357	4,516	118,374
Shipments	186,634	840	14,860	411	10,995
In Store	3,646,064	94,168	188,958	4,600	110,297
<u>SASKATCHEWAN</u>					
In Store, previous week	23,237,993	304,370	145,040	64,648	132,454
Receipts	573,884	62,285	24,612	3,262	40,357
TOTAL	23,811,877	366,655	169,652	67,910	172,811
Shipments	1,338,335	54,666	14,867	2,195	3,479
In Store	22,700,124	328,190	152,079	65,077	166,480
<u>ALBERTA</u>					
In Store, previous week	19,164,938	448,831	109,317	12,889	33,414
Receipts	829,828	60,073	4,129	-218	5,503
TOTAL	19,994,766	508,904	113,446	12,671	38,917
Shipments	806,221	52,111	8,966	1,474	2,678
In Store	19,217,525	461,628	105,817	11,194	36,219

TOTAL RECEIPTS AT COUNTRY ELEVATORS AND PLATFORM LOADINGS# IN THE  
PERIOD AUGUST 1, 1935 TO AUGUST 16, 1935

	W H E A T	OTHER GRAIN
	B u s h e l s	
Manitoba	231,360	209,164
Saskatchewan	1,145,111	187,116
Alberta	1,689,233	156,185
Total 1935 - 1936	3,065,704	552,465
Same period 1934 - 1935	6,014,734	1,514,261

# Platform Loadings to August 14, 1934.

Minus figures occasioned by corrected reports received from Licensees.





INTERIOR TERMINAL ELEVATORS

Receipts, Shipments and Quantities in Store, week ending August 23, 1935.

	WHEAT	OATS	BARLEY	FLAXSEED	RYE
		Bushels			
<u>CALGARY</u>					
In Store, previous week	66,599	-	-	-	-
Receipts	111,394	-	-	-	-
TOTAL	177,993	-	-	-	-
Shipments - Rail			Nil		
In Store	177,992	-	-	-	-
<u>EDMONTON</u>					
In Store, previous week	46,855	2,341	1,250	178	-
Receipts	34,092	2,673	-	-	-
TOTAL	80,947	5,014	1,250	178	-
Shipments - Rail	-	955	1,250	178	-
In Store	80,947	4,058	-	-	-
<u>LETHBRIDGE</u>					
In Store, previous week	133,354	-	-	-	-
Receipts	131,372	119	-	-	-
TOTAL	264,726	119	-	-	-
Shipments - Rail			Nil		
In Store	264,725	119	-	-	-
<u>MOOSE JAW</u>					
In Store, previous week	3,515	694	-	48	164
Receipts			Nil		
TOTAL	3,515	694	-	48	164
Shipments - Rail	573	-	-	-	-
In Store	2,942	694	-	48	164
<u>SASKATOON</u>					
In Store, previous week	1,806	2,349	109	15	-
Receipts			Nil		
TOTAL	1,806	2,349	109	15	-
Shipments - Rail			Nil		
In Store	1,806	2,349	109	15	-
<u>RECAPITULATION</u>					
Total Receipts	276,858	2,792	-	-	-
Total Shipments	573	955	1,250	178	-
Total receipts and Shipments at Eastern Elevators for the week ending August 23, 1935.					
Total Receipts - Vessel	7,437,465	87,491	84,175	-	-
Rail	292,118	41,227	3,535	-	79
Total Shipments - Vessel	2,358,250	84,055	140,777	-	-
Rail	592,610	82,174	45,665	-	5,577
Truck & Teamed	3,017	1,794	-	-	-





STOCKS, RECEIPTS AND SHIPMENTS OF THE PACIFIC COAST ELEVATORS  
IN THE WEEK ENDING AUGUST 23, 1935.

	WHEAT	OATS B u s h e l s	BARLEY	FLAXSEED	RYE
<u>VANCOUVER - NEW WESTMINSTER</u>					
In Store, previous week	8,992,857	54,699	58,741	52	43,229
Receipts	221,812	14,923	2,343	614	-
TOTAL	9,214,669	69,622	61,084	666	43,229
Shipments - Vessel	403,721	16,470	-	-	-
Rail	7,680	-	2,250	614	-
In Store	8,786,209	33,017	46,311	52	37,927
<u>PRINCE RUPERT</u>					
In Store, previous week	29,642	-	-	-	-
Receipts			N11		
TOTAL	29,642	-	-	-	-
Shipments - Vessel			N11		
In Store	29,642	-	-	-	-
<u>VICTORIA</u>					
In Store, previous week	275	-	-	-	-
Receipts			N11		
TOTAL	275	-	-	-	-
Shipments - Vessel			N11		
In Store	275	-	-	-	-

DAILY AND WEEKLY AVERAGE PRICES OF WHEAT IN THE WESTERN DIVISION  
IN THE WEEK ENDING AUGUST 24, 1935

(Basis Vancouver, B. C.)

	Aug. 19 ¢	Aug. 20 ¢	Aug. 21 ¢	Aug. 22 ¢	Aug. 23 ¢	Aug. 24 ¢	Weekly Average ¢
No. 1 Hard	80.4	82	83.7	83.6	83.9	83.6	82.9
No. 1 Northern	80.1	81.7	83.5	83.6	83.6	83.4	82.7
No. 2 Northern	76.9	78.5	80.2	79.6	79.9	79.6	79.1
No. 3 Northern	71.4	73	74.7	73.6	73.9	73.6	73.4
No. 4 Northern	66.9	67.5	69.2	67.6	67.9	67.6	67.8
No. 5	59.9	60.5	62.2	60.4	60.6	60.4	60.6
No. 6	54.9	55.5	57.2	56.1	56.4	56.1	56
Feed	54.4	54	55.7	54.6	54.9	54.6	54.7
No. 1 Garnet	72.4	74	75.7	74.6	74.9	74.6	74.4
No. 2 Garnet	71.4	73	74.7	73.6	73.9	73.6	73.4
Track	80.2	81.7	83.5	83.4	83.6	83.4	82.6





- 14 -  
DAILY AND WEEKLY AVERAGE PRICES OF GRAIN  
Week ending August 24, 1935.  
WESTERN DIVISION  
(Basic Fort William and Port Arthur)

	Aug. 19	Aug. 20	Aug. 21	Aug. 22	Aug. 23	Aug. 24	Weekly Average
	\$ ¢	\$ ¢	\$ ¢	\$ ¢	\$ ¢	\$ ¢	\$ ¢
<u>WHEAT</u>							
No. 1 Man. Hard	.845	.864	.88	.864	.869	.865	.865
No. 1 Man. Northern	.844	.861	.877	.864	.869	.865	.863
No. 2 Man. Northern	.814	.831	.847	.834	.839	.835	.833
No. 3 Man. Northern	.764	.781	.797	.784	.789	.785	.783
No. 4 Man. Northern	.684	.70	.717	.716	.719	.721	.71
No. 5	.634	.65	.667	.656	.659	.656	.654
No. 6	.604	.63	.647	.631	.629	.626	.628
Feed	.564	.58	.597	.586	.559	.556	.574
No. 1 Garnet	.784	.801	.817	.804	.809	.805	.803
No. 2 Garnet	.754	.781	.797	.784	.789	.785	.782
No. 4 Special	.664	.68	.697	.696	.699	.701	.69
No. 5 Special	.604	.62	.637	.626	.609	.606	.617
No. 6 Special	.574	.60	.617	.601	.575	.576	.591
Rejected No. 1 Northern	.724	.741	.757	.744	.749	.745	.743
No. 2 Northern	.704	.721	.737	.724	.729	.725	.723
No. 3 Northern	.674	.691	.707	.694	.699	.695	.693
Tough No. 1 Hard	.825	.844	.86	.844	.849	.845	.845
No. 1 Northern	.824	.841	.857	.844	.849	.845	.843
No. 2 Northern	.794	.811	.827	.814	.819	.815	.813
No. 3 Northern	.739	.756	.772	.759	.764	.76	.758
Smutty No. 1 Hard	.794	.811	.827	.814	.819	.815	.813
No. 1 Northern	.794	.811	.827	.814	.819	.815	.813
No. 2 Northern	.764	.781	.797	.784	.789	.785	.783
No. 3 Northern	.704	.721	.737	.724	.729	.725	.723
Durum No. 1	.789	.805	.802	.761	.784	.781	.787
No. 2	.739	.755	.752	.711	.734	.731	.737
No. 3	.689	.705	.702	.661	.684	.681	.687
A. R. W. No. 1	.744	.76	.777	.766	.769	.766	.764
No. 2	.724	.74	.757	.746	.749	.746	.744
No. 3	.704	.72	.707	.696	.729	.726	.714
<u>OATS</u>							
No. 2 C. W.	.366	.366	.37	.364	.365	.371	.367
No. 3 C. W.	.336	.336	.34	.334	.335	.341	.337
Ex. No. 1 Feed	.336	.336	.34	.334	.335	.341	.337
No. 1 Feed	.321	.321	.325	.319	.32	.326	.322
No. 2 Feed	.286	.286	.29	.284	.285	.286	.286
No. 3 Feed	.256	.256	.26	.254	.255	.256	.256
<u>BARLEY (NEW GRADE)</u>							
2 Row	.365	.366	.37	.376	.379	.379	.373
6 Row	.415	.416	.43	.431	.449	.449	.432
Trebi	.337	.339	.345	.341	.344	.344	.342
No. 3 C. W.	.337	.339	.345	.341	.344	.344	.342
No. 4 C. W.	.30	.301	.31	.306	.309	.309	.306
No. 5 C. W.	.285	.286	.29	.286	.289	.289	.288
No. 6 C. W.	.275	.276	.28	.276	.279	.279	.278
<u>RYE</u>							
No. 1 C. W.	.359	.361	.366	.361	.36	.36	.361
No. 2 C. W.	.359	.361	.366	.361	.36	.36	.361
No. 3 C. W.	.32	.322	.327	.321	.32	.319	.322
Rejected No. 2 C. W.	.295	.297	.302	.296	.295	.294	.297
No. 4 C. W.	.30	.302	.307	.301	.30	.299	.302
Rejected for Ergot	.285	.287	.292	.286	.285	.284	.287
<u>FLAXSEED</u>							
No. 1 C. W.	1.22	1.249	1.269	1.239	1.257	1.266	1.25
No. 2 C. W.	1.18	1.209	1.229	1.199	1.217	1.226	1.21
No. 3 C. W.	1.02	1.049	1.067	1.037	1.054	1.062	1.048
No. 4 C. W.	1.02	1.049	1.067	1.037	1.054	1.062	1.048
<u>ONTARIO - TORONTO</u>							
Wheat, good Milling	.58-.60	.58-.60	.58-.60	.58-.60	.58-.60	.58-.60	.58-.60
Oats	.28-.30	.28-.30	.28-.30	.28-.30	.28-.30	.28-.30	.28-.30
Malting Barley	.37-.42	.37-.42	.37-.42	.37-.42	.37-.42	.37-.42	.37-.42
Ontario Corn	.54-.56	.54-.56	.54-.56	.54-.56	.54-.56	.54-.56	.54-.56
Rye	.35-.38	.35-.38	.35-.38	.35-.38	.35-.38	.35-.38	.35-.38
Barley	.30-.35	.30-.35	.30-.35	.30-.35	.30-.35	.30-.35	.30-.35
F.O.B. Shipping Point							







Lake Shipments of Grain from Fort William - Port Arthur during the Crop Year 1934-35 (Ended 31st July) According  
to the Ports of Destination of vessels in which carried

	WHEAT	OATS	BARLEY	FLAXSEED	RYE	BARLEY MALT	MIXED FEED OATS GROATS	SCREENINGS	
	B u s h e l s					Lbs.	Tons	Tons	
TO CANADIAN PORTS									
Collingwood	2,270,517	-	-	-	-	-	-	-	
Depot Harbour	943,500	-	-	-	-	-	-	-	
Goderich	4,661,338	134,980	57,438	105,408	-	-	100	880	
Halifax	27,186	118,015	-	-	-	-	-	-	
Kingston	8,699,232	40,000	700,333	-	-	-	-	-	
Midland	6,321,594	1,080,273	79,828	-	-	-	-	-	
Montreal	10,822,093	1,626,422	1,424,212	81,906	-	16,676,490	500	4,126	
Owen Sound	3,739,826	563,575	20,000	-	-	-	-	1,365	
Port Colborne	15,060,976	1,395,483	1,883,655	109,187	85,000	-	-	-	
Port McNicoll	3,770,232	-	-	-	-	-	-	-	
Prescott	6,164,597	186,809	696,674	-	-	-	-	290	
Quebec	1,975,089	221,138	39,495	-	-	-	-	-	
Sarnia	4,948,566	366,723	164,907	-	160,000	-	-	-	
Sorel	652,574	-	43,987	-	-	-	-	-	
Tiffin	3,319,509	102,475	-	-	-	-	-	-	
Toronto	5,193,164	532,291	299,896	80,767	20,000	-	-	416	
Walkerville	185,790	-	-	-	-	-	-	-	
TOTAL - TO CANADIAN PORTS	-	78,755,783	6,368,184	5,410,425	377,268	265,000	16,676,490	600	7,077
TO UNITED STATES PORTS									
Buffalo	43,502,397	631,383	655,479	-	310,000	-	-	17,591	
Chicago	1,314,188	1,092,305	-	-	312,713	-	-	7,285	
Duluth-Superior	6,594,640	1,018,005	2,636,418	-	110,014	-	-	10,741	
Erie	1,002,104	-	-	-	-	-	-	-	
Manitowoc	-	-	1,731,837	-	-	-	-	-	
Milwaukee	773,459	-	2,148,386	-	97,000	-	-	-	
Toledo	472,276	-	217,744	-	-	-	-	-	
TOTAL - TO UNITED STATES PORTS	-	53,659,064	2,741,693	7,389,864	-	829,727	-	-	35,617
GRAND TOTAL		132,414,847	9,109,877	12,800,289	377,268	1,094,727	16,676,490	600	42,694





Lake Shipments of Grain from Fort William - Port Arthur during the period from the opening of Navigation to 31st July, 1935,  
according to the Ports of Destination of vessels in which carried.

	WHEAT	OATS	BARLEY	FLAXSEED	RYE	BARLEY MALT	MIXED FEED OATS GROATS	SCREENINGS	
	Bushels					Lbs.	Tons	Tons	
TO CANADIAN PORTS									
Collingwood	1,505,275	-	-	-	-	-	-	-	
Depot Harbour	943,500	-	-	-	-	-	-	-	
Goderich	1,211,100	-	15,000	-	-	-	100	200	
Kingston	2,398,719	-	37,333	-	-	-	-	-	
Midland	1,403,943	-	-	-	-	-	-	-	
Montreal	6,099,110	1,385,453	860,153	22,000	-	7,960,600	500	1,417	
Owen Sound	2,695,764	39,000	-	-	-	-	-	-	
Port Colborne	5,011,877	510,140	1,071,563	50,000	25,000	-	-	-	
Port McNicoll	1,808,621	-	-	-	-	-	-	-	
Prescott	2,499,653	-	57,327	-	-	-	-	-	
Quebec	1,377,274	-	-	-	-	-	-	-	
Sarnia	1,810,928	272,214	-	-	160,000	-	-	-	
Sorel	54,158	-	-	-	-	-	-	-	
Tiffin	1,479,606	-	-	-	-	-	-	-	
Toronto	1,007,499	65,000	-	35,000	-	-	-	-	
Walkerville	25,000	-	-	-	-	-	-	-	
TOTAL - CANADIAN PORTS	-	31,332,027	2,271,807	2,041,376	107,000	185,000	7,960,600	600	1,617
TO UNITED STATES PORTS									
Buffalo, U.S. A.	12,369,586	130,000	271,529	-	310,000	-	-	6,226	
Chicago	100,000	-	-	-	-	-	-	2,092	
Duluth - Superior	160,000	-	290,000	-	-	-	-	-	
Milwaukee	-	-	728,278	-	-	-	-	-	
TOTAL - UNITED STATES PORTS	-	12,629,586	130,000	1,289,807	-	310,000	-	-	8,318
GRAND TOTAL	-	43,961,613	2,401,807	3,331,183	107,000	495,000	7,960,600	600	9,935



1010674973

Table 1. Summary of the results of the 1996 Census of the population and housing, by sex, age, and marital status, for the population aged 15 years and over, in the provinces and territories, 1996									
Province or territory	Male	Female	Total	Male	Female	Total	Male	Female	Total
Alberta	1,100,000	1,100,000	2,200,000	1,100,000	1,100,000	2,200,000	1,100,000	1,100,000	2,200,000
Saskatchewan	1,100,000	1,100,000	2,200,000	1,100,000	1,100,000	2,200,000	1,100,000	1,100,000	2,200,000
Manitoba	1,100,000	1,100,000	2,200,000	1,100,000	1,100,000	2,200,000	1,100,000	1,100,000	2,200,000
Ontario	1,100,000	1,100,000	2,200,000	1,100,000	1,100,000	2,200,000	1,100,000	1,100,000	2,200,000
Quebec	1,100,000	1,100,000	2,200,000	1,100,000	1,100,000	2,200,000	1,100,000	1,100,000	2,200,000
Atlantic	1,100,000	1,100,000	2,200,000	1,100,000	1,100,000	2,200,000	1,100,000	1,100,000	2,200,000
Total	1,100,000	1,100,000	2,200,000	1,100,000	1,100,000	2,200,000	1,100,000	1,100,000	2,200,000