

APR 1936
R

C A N A D A
DEPARTMENT OF TRADE AND COMMERCE
DOMINION BUREAU OF STATISTICS
AGRICULTURAL BRANCH

Vol. 16

No. 34

Historical File Copy

CANADIAN GRAIN STATISTICS

Week ending

MARCH 27, 1936

[Records for Western Inspection Division supplied by Board of Grain Commissioners for Canada]

— ♦ ♦ ♦ —

Published by Authority of the HON. W.D. Euler, M.P.,
Minister of Trade and Commerce.

+ + +

OTTAWA

1936

I N D E X

General Summary	1-6
Canadian Grain in Store by Elevators	7
Canadian Grain in Store by Grades	8
Comparative Statement of Grain in Store	9
U. S. Grain in Store, receipts and shipments	10
Receipts, Shipments and Quantities in Store at Country Elevators Western Division and Platform Loadings	11
Receipts, Shipments and Quantities in Store at Interior Terminal Elevators	12
Receipts, Shipments and Quantities in Store at Pacific Elevators and Vancouver Prices	13
Daily and Weekly Average Prices of Grain at Fort William and Toronto for the week ending March 28, 1936	14

DEPARTMENT OF TRADE AND COMMERCE
DOMINION BUREAU OF STATISTICS - CANADA
AGRICULTURAL BRANCH

(Issued April 3, 1936)

Dominion Statistician:	R. H. Coats, LL.D., F.R.S.C., F.S.S. (Hon.)
Chief, Agricultural Branch:	T. W. Grindley, Ph.D.
Assistant Chief, Agricultural Branch:	W. Dougan.

WHEAT STOCKS IN STORE

Canadian wheat in store for the week ending March 27, 1936 shows a decrease of 3,498,203 bushels compared with the previous week and a decrease of 21,984,236 bushels compared with the corresponding week in 1935. The visible supply was reported as 209,263,559 bushels compared with the revised figure of 212,761,762 bushels for the previous week and 231,247,795 bushels for the week ending March 29, 1935.

Canadian wheat in the United States amounted to 17,031,018, a net decrease of 1,964,603 bushels from the previous week when 18,995,621 bushels were reported. The Canadian wheat in the United States is located at the following ports: Duluth 588,580; Buffalo 9,377,000; Erie 145,000; Chicago 204,000; New York 1,471,370; Albany 4,715,000; Norfolk 62,000; Galveston 24,000; Boston 64,063 and Philadelphia 380,000 bushels. Decreases are shown from the previous week's stocks at Duluth 33,551; Buffalo 1,204,000; New York 498,359; Norfolk 36,000; Boston 196,693; and Philadelphia 16,000 bushels. The wheat at Chicago increased 20,000 bushels over that of a week ago. Erie, Albany and Galveston remain unchanged. The same week a year ago Canadian wheat in the United States amounted to 16,217,206 bushels distributed as follows: Duluth 1,367,027; Buffalo 8,854,291; Erie 1,018,000; New York 634,832; Albany 4,144,000 and New Orleans 199,000 bushels.

PRIMARY MOVEMENT

Wheat marketings in the Prairie Provinces for the week ending March 20, amounted to 1,534,406 bushels, a decrease of 527,098 bushels over the previous week when 2,121,504 bushels were marketed. During the corresponding week a year ago, the receipts were 2,308,323 bushels. By provinces the receipts for the week ending March 20, 1936 were as follows, figures within brackets being those for 1935: Manitoba 17,599 (205,362); Saskatchewan 1,019,051 (1,055,734); Alberta 557,756 (1,047,227) bushels. Marketings of wheat in the three Prairie Provinces from August 1, 1935 to March 20, 1936 as compared with the same period in 1935 were as follows, figures within brackets being those for 1935: Manitoba 15,718,726 (28,000,642); Saskatchewan 103,002,332 (84,620,477); Alberta 72,297,022 (80,131,979) bushels. For the thirty-three weeks ending March 20, 1936 and March 22, 1935, 191,018,080 and 192,803,098 bushels were received from the farms.

There is no United States wheat in store in Canada, but 1,048,912 bushels were shown at the corresponding date a year ago.

OVERSEAS EXPORT CLEARANCES AND IMPORTS OF WHEAT INTO THE UNITED STATES

During the week ending March 27, 1936 the overseas export clearances of wheat amounted to 2,622,522 bushels while imports into the United States for consumption and milling in bond were 762,000 bushels. The total is 3,384,522 bushels as compared with 2,798,179 bushels for the previous week, an increase of 586,343 bushels, and when compared with the same week in 1935, an increase of 780,244 bushels.

Clearances by ports for the weeks ending March 27, 1936 and March 29, 1935, and imports into the United States for consumption and milling in bond were as follows (in bushels):

<u>Overseas Clearances</u>	<u>Week ending March 27, 1936</u>	<u>Week ending March 29, 1935</u>
Montreal	200	-
Halifax	132,952	252,133
West Saint John and Saint John	886,597	298,285
United States Ports	353,000	65,000
Vancouver-New Westminster	1,249,773	1,226,860
 Total	 2,622,522	 1,842,278
 <u>Imports into the United States</u>		
For consumption and milling in bond for re-export	762,000	762,000
 <u>Total, Overseas Clearances and United States Imports</u>		
	3,384,522	2,604,278

The following table shows the export clearances of Canadian wheat by ports from August 1 to March 27, 1936 along with comparative figures for the same period in 1934-35 and imports into the United States for consumption and milling in bond (in bushels):

<u>Overseas Clearances</u>	<u>1935 - 36</u>	<u>1934- 35</u>
Montreal	22,640,753	18,160,517
Sorel	4,537,590	2,806,893
Quebec	1,095,227	1,762,051
West Saint John and Saint John	9,647,451	4,160,985
Halifax	1,638,475	2,477,842
United States Ports	18,000,000	15,692,000
Vancouver-New Westminster	36,323,475	31,028,100
Churchill	2,407,000	4,049,877
Prince Rupert	-	1,316,369
<hr/>		
Total, Overseas Clearances	96,289,971	81,454,634
<u>Imports into the United States</u>		
For consumption and milling in bond for re-export	33,981,448	17,543,154
<hr/>		
<u>Total, Overseas Clearances and United States Imports to date</u>	130,271,419	98,997,788
<hr/>		

The amount of wheat moved by rail from the Eastern Elevators on Georgian Bay and Lake Huron to the Maritime ports during the week ending March 27, 1936:

	<u>Bushels</u>
Tiffin	8,000
Midland-Simcoe	2,972
Sarnia	8,500
<hr/>	
Total	19,472
<hr/>	

THE UNIVERSITY OF CHICAGO
LIBRARY
540 EAST 57TH STREET
CHICAGO, ILL. 60637

DATE	AMOUNT	REMARKS
1950-1-1	100.00	BALANCE
1950-1-15	50.00	PAID
1950-1-30	25.00	PAID
1950-2-15	75.00	PAID
1950-2-28	100.00	PAID
1950-3-15	50.00	PAID
1950-3-31	25.00	PAID
1950-4-15	75.00	PAID
1950-4-30	100.00	PAID
1950-5-15	50.00	PAID
1950-5-31	25.00	PAID
1950-6-15	75.00	PAID

DATE	AMOUNT	REMARKS
1950-6-30	100.00	PAID
1950-7-15	50.00	PAID
1950-7-31	25.00	PAID
1950-8-15	75.00	PAID
1950-8-31	100.00	PAID
1950-9-15	50.00	PAID
1950-9-30	25.00	PAID
1950-10-15	75.00	PAID
1950-10-31	100.00	PAID
1950-11-15	50.00	PAID
1950-11-30	25.00	PAID
1950-12-15	75.00	PAID
1950-12-31	100.00	PAID

THE UNIVERSITY OF CHICAGO
LIBRARY
540 EAST 57TH STREET
CHICAGO, ILL. 60637

International Trade (Broomhall's Revised Figures), 1935 - 36.

The following table shows the world shipments of wheat and wheat flour for the first thirty-four weeks of the present crop year:

Week ending		North America	Argentina	Australia	Russia	Other	Total
		(Thousand Bushels)					
August	10, 1935x	2,760	3,194	1,253	-	888	8,095
	17	2,880	1,312	1,192	648	728	6,760
	24	2,640	4,016	1,704	872	696	9,928
	31	2,584	1,888	1,080	1,144	416	7,112
September	7	2,256	2,432	1,384	1,296	872	8,240
	14	2,784	3,440	1,560	592	1,184	9,560
	21	3,672	2,568	2,384	1,008	440	10,072
	28	3,680	1,056	1,824	992	624	8,176
October	5	3,944	3,136	1,936	1,936	1,104	12,056
	12	3,968	1,880	1,808	2,064	880	10,600
	19	3,928	1,368	2,504	2,920	1,040	11,760
	26	3,664	1,800	2,032	1,088	1,440	10,024
November	2	5,880	1,480	2,792	456	1,856	12,464
	9	4,632	1,792	2,160	1,224	1,456	11,264
	16	4,880	1,168	2,808	992	976	10,824
	23	4,872	1,126	1,184	1,264	952	9,488
December	30	6,024	1,048	1,000	1,072	1,000	10,144
	7	5,136	1,736	1,584	1,320	712	10,488
	14	3,672	1,368	1,872	1,992	952	9,856
	21	5,088	920	1,680	968	1,320	9,976
January	28	3,264	656	768	488	912	6,088
	4, 1936	1,496	792	1,624	840	712	5,464
	11	3,992	1,080	2,216	1,272	1,072	9,632
	18	4,536	648	2,912	88	912	9,096
February	25	5,248	440	3,848	280	1,000	10,816
	1	4,088	656	2,344	-	968	8,056
	8	5,504	1,680	2,848	688	1,304	12,024
	15	4,464	1,024	3,096	288	1,064	9,936
March	22	5,648	1,280	4,528	192	880	12,528
	29	5,536	1,200	4,976	216	904	12,832
	7	3,376	1,664	3,816	592	864	10,312
	14	3,672	1,168	3,480	216	1,032	9,568
	21	3,130	1,028	2,952	168	1,976	9,254
	28	3,969	1,355	2,863	-	1,192	9,379
TOTAL		xx141,267	53,489	78,012	29,176	34,328	xx336,272
<u>Comparative 1934-35</u>							
Corresponding week		2,120	4,872	2,960	-	856	10,808
Total to Date		107,641	124,310	76,301	2,720	35,104	346,076

x Includes 1,200,000 bushels shipped from North America on August 1, 2 and 3; 250,000 bushels shipped from Argentina and 245,000 from Australia on August 1. See page 2 Canadian Grain Statistics, January 3, 1936.

xx Includes 4,400,000 bushels credited to North America but not included in the weekly distribution.

World shipments for the week ending March 28, 1936 amounted to 9,379,000 bushels compared with 9,254,000 bushels for the previous week and 10,808,000 bushels for the corresponding week last year. North American and Argentine shipments showed increases of 839,000 and 327,000 bushels respectively as compared with the previous week while Australian shipments showed a slight decrease.

During the first thirty-four weeks of the present crop year world shipments amounted to 336 million bushels as compared with 346 million bushels for the corresponding weeks last year. Australian shipments were slightly higher than last year. North American shipments were 141 million bushels as compared with 108 million bushels for the same period in 1934-35 and Argentina shipments were only 53 million bushels as compared with 124 million bushels for the corresponding period last year.

Weekly Average Shipments

The following table shows the weekly average shipments of wheat and wheat flour for the first thirty-four weeks of the present crop year along with comparative figures for 1934-35.

	North America	Argentina	Australia	Russia	Other	Total
	(Million Bushels)					
1934-35	3.2	3.7	2.2	0.1	1.0	10.2
1935-36	4.1	1.6	2.3	0.9	1.0	9.9

CANADIAN GRAIN STATISTICS - WEEK ENDING MARCH 27, 1936.

Returns received as to stocks of grain in store for the week ending March 27, 1936 show a net decrease of 3,117,219 bushels, compared with the revised figure of the previous week. Stocks in store were as follows:- wheat 209,263,559, oats 12,344,448, barley 8,997,643, flaxseed 419,826 and rye 4,759,948, bushels, a total of 235,785,424 bushels. Decreases are noted in wheat of 3,498,203 and flaxseed 7,420 bushels while increases are shown in oats of 125,029, barley 232,722 and rye 30,653 bushels. At a comparable date last year stocks in store were as follows:- wheat 231,247,795; oats 14,164,497; barley 10,727,224; flaxseed 408,676 and rye 3,820,536 bushels, a total of 260,368,728 bushels.

WESTERN COUNTRY ELEVATORS:- Grain stocks show a net decrease of 2,142,982 bushels. Decreases are noted in wheat of 2,108,942, oats 44,321 and flaxseed 8,034 bushels while barley and rye increased 6,258 bushels and 12,057 bushels respectively.

The following table shows the quantities of grain in store at the Country Elevators in each of the Prairie Provinces on March 20, 1936 with comparison for the previous week and the same period 1935.

	<u>MANITOBA</u>	<u>SASKATCHEWAN</u> <u>B u s h e l s</u>	<u>ALBERTA</u>	<u>TOTAL</u>
Wheat	5,918,430	44,287,735	26,502,777	76,708,942
Oats	643,723	3,108,468	2,689,130	6,441,321
Barley	1,684,305	1,369,324	415,113	3,468,742
Flaxseed	29,315	299,318	34,401	363,034
Rye	401,374	757,680	72,889	1,231,943
TOTAL	8,677,147	49,822,525	29,714,310	88,213,982
Previous week	8,682,565	50,449,975	29,937,706	89,070,246
Same period 1935	11,397,012	56,443,067	40,036,280	107,876,359

The receipts and shipments at the Country Elevators for the week ending March 20, 1936 compared with the previous week and the same period 1935 were as follows:-

	<u>R E C E I P T S</u>			<u>S H I P M E N T S</u>		
	Previous week	Week ending Mar. 20, 1936	Week ending Mar. 22, 1935	Previous week	Week ending Mar. 20, 1936	Week ending Mar. 22, 1935
Wheat	2,085,433	1,547,662	2,210,581	4,130,910	2,819,953	2,243,812
Oats	1,542,651	1,042,037	715,377	974,695	646,211	872,530
Barley	480,466	398,590	137,023	422,626	389,066	196,884
Flaxseed	12,080	12,972	4,111	12,737	14,547	3,739
Rye	41,256	44,627	2,469	21,001	28,111	12,940
TOTAL	4,161,886	3,045,888	3,069,561	5,561,969	3,897,888	3,329,905

Platform Loadings shown by Prairie Provinces for the period ending March 21, 1936 were as follows:-

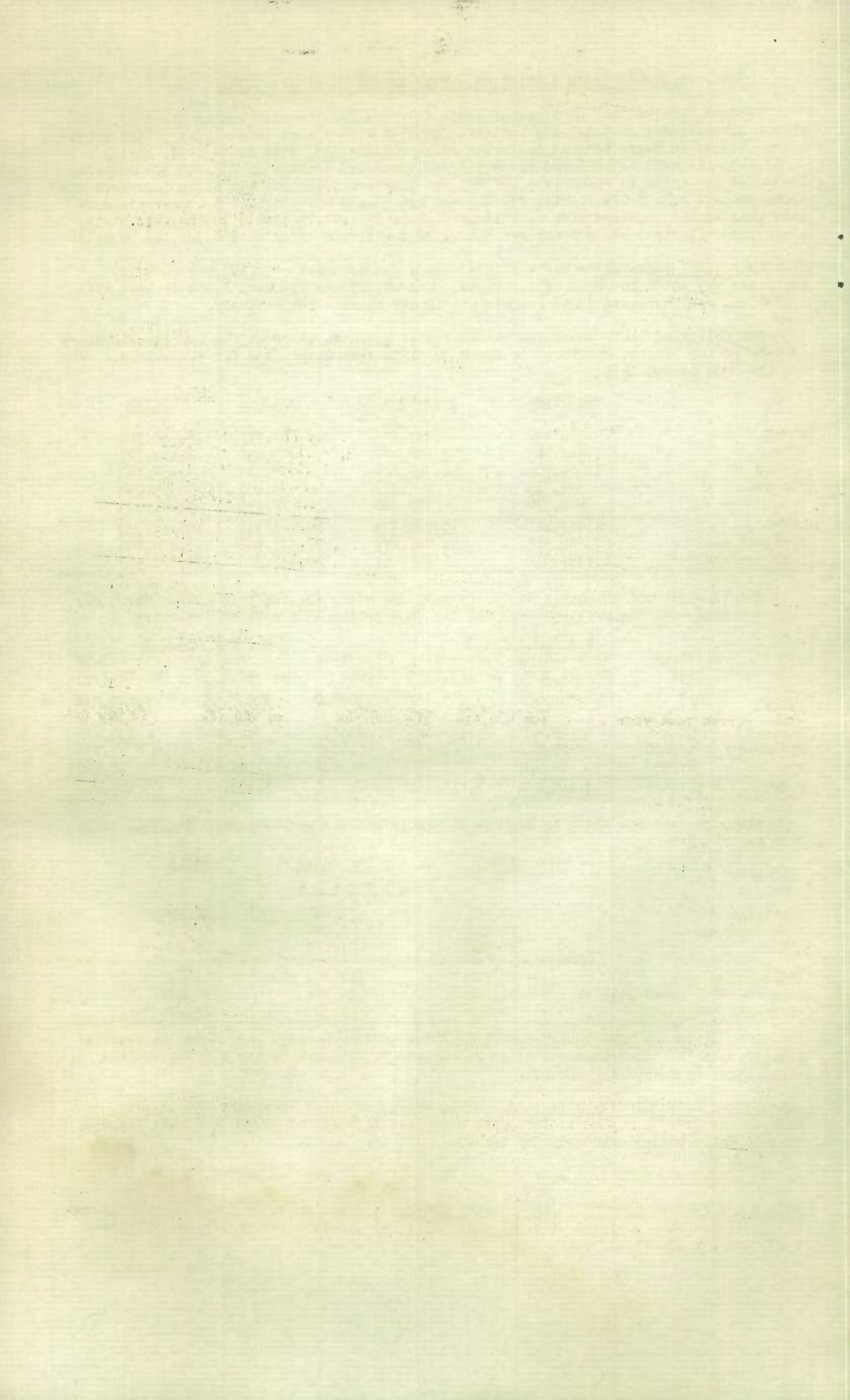
	<u>WHEAT</u>	<u>OTHER GRAIN</u> <u>B u s h e l s</u>	<u>TOTAL</u>
Manitoba	9,490	33,460	42,950
Saskatchewan	12,692	28,404	41,096
Alberta	24,562	51,033	75,595
TOTAL	46,744	112,897	159,641
Period ending March 21, 1935	97,742	36,498	134,240
*Increase -Decrease	- 50,998	+ 76,399	- 25,401

INTERIOR PUBLIC AND SEMI-PUBLIC TERMINALS.- Stocks for the week show a net increase of 142,337 bushels. Increases are noted in oats of 36,243, and barley 106,941 bushels while wheat decreased 847 bushels.

VANCOUVER-NEW WESTMINSTER ELEVATORS.- Grain stocks at these elevators show a net increase of 205,999 bushels. Increases are noted in wheat of 92,370 and oats 113,957 bushels while barley decreased 328 bushels.

PRINCE RUPERT AND CHURCHILL ELEVATORS.- Wheat stock remain unchanged.

PUBLIC AND PRIVATE (FORT WILLIAM AND PORT ARTHUR).- Grain in store shows an increase of 1,973,371 bushels, composed of wheat 1,747,238, oats 67,126, barley 129,897, flaxseed 1,697 and rye 27,413 bushels.



Stocks in Store at the Head of the Lakes compared with the same week last year were as follows:-

	Week ending March 27, 1936	Week ending March 29, 1935	+ Increase - Decrease
Wheat	43,081,648	63,610,578	- 20,528,930
Oats	1,949,200	2,575,670	- 626,470
Barley	2,630,883	3,517,965	- 887,082
Flaxseed	37,714	155,852	- 118,138
Rye	3,141,564	2,575,898	+ 565,666

The receipts (including transfers) at the Head of the Lakes for the period ending March 27, 1936 with comparative figures for the same week last year were as follows:-

	Week ending March 27, 1936	Week ending March 29, 1935	+ Increase - Decrease
Wheat	1,762,928	751,762	+ 1,011,166
Oats	123,756	8,952	+ 114,804
Barley	134,723	45,825	+ 88,898
Flaxseed	1,736	1,452	+ 284
Rye	27,413	1,410	+ 26,003

The shipments at the Head of the Lakes for the period ending March 27, 1936 with comparative figures for the same week last year were as follows:-

	Week ending March 27, 1936	Week ending March 29, 1935	+ Increase - Decrease
Wheat	17,146	2,727	+ 14,419
Oats	56,468	29,622	+ 26,846
Barley	4,709	-	+ 4,709
Flaxseed	38	-	+ 38
Rye	-	-	-

Preliminary figures showing receipts and shipments at the Head of the Lakes also Vancouver-New Westminster, Prince Rupert, Victoria and Churchill for the period August 1, 1935 to March 27, 1936 compared with the same period last year.

	FORT WILLIAM & PORT ARTHUR		VANCOUVER-NEW WESTMINSTER	
	Receipts	Shipments	Receipts	Shipments
Wheat	93,859,079	122,669,365	39,447,765	36,611,912
Oats	8,510,937	10,938,430	1,634,965	1,447,327
Barley	6,049,218	4,489,886	64,672	60,514
Flaxseed	339,380	477,340	1,814	1,672
Rye	1,091,804	234,276	5,838	33,532
TOTAL	109,850,418	138,809,297	41,155,054	38,154,957
Same period last year	108,970,616	106,440,146	39,369,158	35,468,940
+Increase -Decrease	+ 879,802	+32,369,151	+ 1,785,896	+ 2,686,017

	PRINCE RUPERT		VICTORIA	
	Receipts	Shipments	Receipts	Shipments
TOTAL	998,890	129	-	-
Same period last year	1,094,920	1,316,687	1,527	4,724
+Increase -Decrease	-96,030	-1,316,558	-1,527	-4,724

	CHURCHILL	
	Receipts	Shipments
TOTAL	2,289,587	2,407,000
Same period last year	3,967,593	4,053,953
+Increase -Decrease	- 1,678,006	- 1,646,953

INTERIOR PRIVATE AND MILL ELEVATORS:- Grain stocks show a net increase of 40,302. Increases are noted in wheat of 12,736, and barley 29,927 bushels while decreases are shown in oats of 348, flaxseed 1,083 and rye 930 bushels.

Stocks in Store in the Western Division compared with the same week last year were as follows:-

	Week ending March 27, 1936	Week ending March 29, 1935	+ Increase - Decrease
Wheat	143,610,951	184,720,832	- 41,109,881
Oats	10,957,253	12,470,858	- 1,513,605
Barley	7,890,892	7,814,597	+ 76,295
Flaxseed	428,943	411,515	+ 17,428
Rye	4,413,698	3,255,304	+ 1,158,394

EASTERN ELEVATORS - LAKE PORTS:- Grain stocks show a decrease of 477,640 bushels composed of wheat 441,752, oats 22,129, barley 5,872 and rye 7,887 bushels.

EASTERN ELEVATORS-SEABOARD PORTS (CANADIAN GRAIN):- Grain in store shows a decrease of 882,503 bushels, composed of wheat 834,403, oats 24,499 and barley 23,601 bushels.

Shipments overseas of Canadian Grain from Seaboard Ports were as follows:-

		<u>United Kingdom</u>	<u>Other Countries</u>
		<u>B u s h e l s</u>	
West Saint John, N. B.	Wheat	458,794	387,804
	Oats	-	26,934
St. John, N.B.	Wheat	40,000	-
Halifax, N. S.	Wheat	132,953	-

EASTERN ELEVATORS:- United States grain stocks were 6,392,298 bushels lower than at a comparable date last year. Decreases were as follows:- wheat 1,048,912, oats 55,167, rye 366 and corn 5,287,853 bushels.

Number of cars inspected for the week ending March 21, 1936 with comparison for the previous year were as follows:-

	<u>Week ending</u> <u>March 21, 1936</u>	<u>Week ending</u> <u>March 21, 1935</u>	<u>+ Increase</u> <u>- Decrease</u>
Wheat	2,397	1,249	+ 1,148
Oats	444	292	+ 152
Barley	278	74	+ 204
Flaxseed	7	1	+ 6
Rye	19	3	+ 16
Mixed Grain	2	2	-
Corn	1	-	+ 1
Screenings	1	1	-
TOTAL	3,149	1,622	+ 1,527

The number of bushels of grain shipped from western to the Canadian eastern points over the C.P.R. and C.N.R. for the week ending March 14, 1936 and the period from August 1, 1935 to March 14, 1936.

	<u>WEEK ENDING MARCH 14, 1936</u>			<u>PERIOD AUGUST 1, 1935 TO MARCH 14, 1936.</u>		
	<u>WHEAT</u>	<u>OATS</u>	<u>BARLEY</u>	<u>WHEAT</u>	<u>OATS</u>	<u>BARLEY</u>
Via C.P.R.	1,000	-	2,542	4,500	43,417	4,252
Via C.N.R.	-	7,852	2,798	4,369	184,151	18,592
TOTAL	1,000	7,852	5,340	8,869	227,568	22,844

DULUTH.- Receipts of Canadian bonded grain at Duluth by rail for the week ending March 28, 1936 were nil. For the period August 1, 1935 to date rail receipts amounted to wheat 137,913 bushels.

Receipts by water for the week ending March 28, 1936 were nil. Receipts by water from August 1, 1935 to date amounted to wheat 2,573,857 and barley 225,495 bushels.

Rail shipments for the week ending March 28, 1936 amounted to wheat 33,551 bushels, of which 32,031 bushels were duty paid. Rail shipments from August 1, 1935 to date amounted to wheat 2,464,103 and barley 204,623 bushels.

Lake shipments for the week ending March 28, 1936 were nil. Lake shipments from August 1, 1935 to date amounted to wheat 251,592 and barley 101,723 bushels.

STOCKS OF GRAIN IN DIFFERENT ELEVATORS DURING THE WEEK ENDING MARCH 27, 1936

	WHEAT	OATS	BARLEY	FLAXSEED	RYE
	B u s h e l s				
Western Country Elevators x	74,600,000	6,397,000	3,475,000	355,000	1,244,000
Interior Private & Mill Elevs. x	6,167,000	1,148,000	1,375,000	26,000	37,000
Interior Pub. & Semi-Pub. Terms.	2,807,520	973,409	436,853	1,105	170
Vancouver - New Westminster	11,550,078	444,975	9,341	7	2,091
Prince Rupert	1,027,676	-	-	-	-
Churchill	2,280,823	-	-	-	-
Fort William & Port Arthur	43,081,648	1,949,200	2,630,883	37,714	3,141,564
Eastern Elevs. - Lake Ports	35,316,252	820,493	415,404	-	236,412
Eastern Elevs. - St. Lawrence Ports	13,137,229	528,882	636,463	-	98,711
Eastern Elevs. - Sbd. Ports	2,264,315	874	8,327	-	-
U. S. Lake Ports	10,314,580	73,000	10,372	-	-
U. S. Atlantic Sbd. Ports	6,716,438	8,615	-	-	-
TOTAL	209,263,559	12,344,448	8,997,643	419,826	4,759,948
Previous week	212,761,762	12,219,419	8,764,921	427,246	4,729,295
Same week previous year	231,247,795	14,164,497	10,727,224	408,676	3,820,536

x Estimated.

Quantity of Screenings received, shipped and in store at the undermentioned elevators during the week ending March 27, 1936.

	Amount in Store March 20, 1936		Amount Received by vessel		Amount shipped		Amount in Store March 27, 1936	
	<u>Tons</u>	<u>Lbs.</u>	<u>Tons</u>	<u>Lbs.</u>	<u>Tons</u>	<u>Lbs.</u>	<u>Tons</u>	<u>Lbs.</u>
Goderich Elev. Co.	45	-	-	-	15	-	20	-
Dominion Elev. Co.	91	1,520	-	-	36	-	55	1,520
Sorel	25	-	-	-	25	-	-	-
TOTAL	161	1,520	-	-	76	-	85	1,520

- 7 -
CANADIAN GRAIN IN STORE - MARCH 27, 1936.

	WHEAT	OATS	BARLEY	FLAXSEED	RYE
	B u s h e l s				
WESTERN COUNTRY ELEVATORS					
Manitoba	5,500,000	645,000	1,706,000	29,000	405,000
Saskatchewan	43,500,000	3,072,000	1,360,000	291,000	763,000
Alberta	25,600,000	2,680,000	409,000	35,000	76,000
TOTAL WESTERN COUNTRY ELEVS.	74,600,000	6,397,000	3,475,000	355,000	1,244,000
INTERIOR PRIVATE AND MILL ELEVS.	6,167,000	1,148,000	1,375,000	26,000	37,000
TOTAL INT. PUB. AND SEMI-PUB.	2,807,520	977,409	436,853	1,105	170
VANCOUVER-NEW WESTMINSTER	11,550,078	444,275	9,341	7	2,091
PRINCE RUPERT	1,027,676	-	-	-	-
CHURCHILL	2,280,823	-	-	-	-
Semi-Public Terminals	42,047,946	1,885,851	2,587,486	37,714	3,141,564
Private Terminals	12,962	17,275	685	-	-
Winter Storage Afloat	1,020,740	46,074	42,712	-	- 1109526
TOTAL PT. WM. & PT. ARTHUR	43,031,648	1,949,200	2,630,883	37,714	3,141,564
EASTERN ELEVATORS					
Depot Harbour	165,910	-	-	-	-
Port McNicoll	3,428,513	-	-	-	-
Tiffin	3,125,980	-	-	-	-
Midland Aberdeen	39,977	-	-	-	-
Midland	1,027,478	-	-	-	-
Midland Simcoe	3,254,659	169,357	-	-	-
Midland Simcoe Afloat	376,047	447,653	-	-	- 823,700
Collingwood C.N.R.	1,505	-	-	-	-
Collingwood	1,855,916	-	-	-	-
Collingwood Afloat	249,801	-	-	-	- 249,801
Owen Sound	2,841,961	46,993	2,860	-	17,239
Goderich Elev. & Transit	2,261,871	-	-	-	-
Goderich Elev. & Transit Afloat	89,969	-	-	-	- 89,969
Goderich Western Can. Flr. Mill	216,399	-	-	-	-
Sarnia	2,517,114	-	-	-	-
Sarnia Afloat	319,650	-	-	-	- 319,650
Port Colborne, D.G.	1,727,733	-	115,409	-	-
Port Colborne Maple Leaf	1,144,426	94,766	8,350	-	25,801
Port Colborne Maple Leaf Afloat	1,479,865	-	-	-	- 1,479,865
Toronto	2,377,306	22,017	278,792	-	193,372
Toronto Afloat	188,820	-	-	-	- 188,820
Kingston Richardson	1,493	39,707	7,993	-	-
Kingston Elev. Co.	1,889,219	-	-	-	-
Prescott	4,754,585	-	2,000	-	-
TOTAL EASTERN ELEVS. LAKE PORTS	35,316,252	820,493	415,404	-	236,412
Montreal	8,085,541	383,043	511,683	-	98,711
Ogilvie Flour Mills	328,301	-	25,087	-	-
Dominion Elev. Co.	84,062	12,345	49,699	-	-
North Amer. Elevs. Ltd. Sorel	2,076,837	-	20,651	-	-
Quebec	2,562,438	133,494	29,343	-	-
West Saint John Hbr. Comm	228,580	-	-	-	-
West Saint John C.P.R.	506,474	-	8,327	-	-
Saint John	141,867	-	-	-	-
Halifax	1,387,394	874	-	-	-
TOTAL EAST. ELEVS. SBD. PORTS	15,401,544	529,756	644,790	-	98,711
TOTAL QUANTITY IN CANADA	192,232,541	12,262,833	8,987,271	419,826	4,759,948
Duluth	588,580	-	10,372	-	- 218,662
Buffalo	6,508,000	73,000	-	-	- 419
Buffalo Afloat	2,759,000	-	-	-	-
Erie	145,000	-	-	-	-
Chicago	89,000	-	-	-	-
Chicago Afloat	115,000	-	-	-	-
TOTAL U. S. LAKE PORTS	10,314,580	73,000	10,372	-	-
New York	1,471,370	8,615	-	-	-
Albany	4,715,000	-	-	-	-
Norfolk	62,000	-	-	-	-
Galveston	24,000	-	-	-	-
Boston	64,068	-	-	-	-
Philadelphia	380,000	-	-	-	-
TOTAL U. S. ATLANTIC SBD. PORTS	6,716,438	8,615	-	-	-
TOTAL QUANTITY IN STORE	209,265,559	12,344,448	8,997,643	419,826	4,759,948

* Estimated.

Grades of Canadian Grain in Store at Public, Semi-Public and Private Elevators, (Head of the Lakes), Interior, Public and Semi-Public Elevators, Vancouver-New Westminster, Churchill and Prince Rupert Terminal and Eastern Elevators for the period ending March 27, 1936.

	Fort William & Port Arthur Semi-Public and Private	Interior Public and Semi-Public Terminals	Vancouver New West- minster Pr. Rupert Elevators	Eastern Elevators Lake Ports	Eastern Elevators St. Lawrence Ports	Eastern Elevators Maritime Ports
<u>WHEAT</u>						
			<u>B u s h e l s</u>			
No. 1 Hard	991,536	607,099	1,166,941	330,389	100,799	-
No. 1 Northern	16,114,300	267,976	4,065,620	17,496,825	2,099,257	1,504,846
No. 2 Northern	1,271,910	163,406	935,619	1,235,295	142,384	-
Old 2 Northern	1,744,871	-	18,124	12,000,393	9,377,217	438,413
No. 3 Northern	1,568,642	252,846	902,328	1,092,901	649,324	129,531
No. 4 Northern	2,637,325	49,363	1,203,828	354,087	481	160,500
No. 4 Special	2,178,509	-	-	228,272	118,394	23,944
No. 5 Wheat	1,739,139	292,162	901,636	250,169	115,255	4,154
No. 5 Special	1,202,754	-	-	205,717	51,045	-
No. 6 Wheat	1,716,787	71,040	850,724	195,371	49,934	-
No. 6 Special	1,283,923	-	-	383,683	-	-
Feed	2,430,201	-	912,093	515,911	150,424	1,660
No. 1 C.W. Garnet	30,421	22,508	61,172	-	-	-
No. 2 C.W. Garnet	186,786	66,528	79,143	-	529	-
No. 1 C.W. Durum	2,156,377	-	-	32,094	79,514	1,267
No. 2 C.W. Durum	1,315,390	-	-	-	8,288	-
No. 3 C.W. Durum	1,463,330	-	-	636,538	24,755	-
No. 4 C.W. Durum	918,476	-	-	193,566	1,973	-
No. 5 C.W. Durum	-	-	-	-	20,347	-
No. 6 C.W. Durum	-	-	-	-	6,976	-
Other Durum	1,328,446	-	-	3,000	12,580	-
Other	802,525	93,841	452,850	162,041	127,753	-
TOTAL	43,081,648	1,886,769	11,550,078	35,316,252	13,137,229	2,264,315
<u>OATS</u>						
No. 2 C. W.	64,548	9,809	6,318	447,653	11,749	-
No. 3 C. W.	221,379	2,108	17,621	34,456	86,996	-
Ex. No. 1 Feed	313,512	39,770	28,076	80,422	5,249	-
No. 1 Feed	873,057	19,225	165,199	191,085	179,697	-
No. 2 Feed	214,995	2,978	49,083	-	77,273	-
No. 3 Feed	86,180	-	-	-	57,119	-
Other	175,529	899,415	178,678	66,877	110,799	874
TOTAL	1,949,200	973,305	444,975	820,493	528,882	874
<u>BARLEY</u>						
2 C.W. 6 Row	1,394	-	-	-	-	-
3 Ex. C.W. 6 Row	837,389	-	-	157,674	133,594	8,327
3 Ex. C.W. 2 Row	36,576	3,323	-	-	-	-
3 Ex. C.W. Trebi	-	3,742	-	-	-	-
3 C.W.	973,311	4,886	2,510	8,350	262,423	-
4 C.W.	183,573	105	185	-	28,274	-
5 C.W.	265,809	675	871	9,993	103,041	-
6 C.W.	86,399	-	5,775	-	28,485	-
Other	246,432	122,882	-	239,387	80,646	-
TOTAL	2,630,883	135,613	9,341	415,404	636,463	8,327
<u>FLAXSEED</u>						
No. 1 C.W.	27,358	1,014	7	-	-	-
No. 2 C.W.	3,927	-	-	-	-	-
No. 3 C.W.	2,381	-	-	-	-	-
Other	4,048	-	-	-	-	-
TOTAL	37,714	1,014	7	-	-	-
<u>RYE</u>						
No. 1 C.W.	10,092	-	-	-	-	-
No. 2 C.W.	2,511,415	-	2,091	230,215	81,344	-
No. 3 C.W.	533,762	170	-	-	17,367	-
Other	86,295	-	-	6,197	-	-
TOTAL	3,141,564	170	2,091	236,412	98,711	-
TOTAL QUANTITY						
IN STORE	50,841,009	2,996,871	12,006,492	36,788,561	14,401,285	2,273,516

CANADIAN GRAIN IN STORE - COMPARATIVE STATEMENT, 1933 - 1936.

	W H E A T	OTHER GRAIN
	B u s h e l s	
<u>March 27, 1936.</u>		
Country Elevators - Manitoba	5,500,000	2,785,000
Saskatchewan	43,500,000	5,486,000
Alberta	25,600,000	3,200,000
TOTAL	74,600,000	11,471,000
Interior Private and Mill	6,167,000	2,586,000
Interior Public and Semi-Public Terms.	2,807,520	1,411,537
Vancouver-New Westminster	11,550,078	456,414
Prince Rupert	1,027,676	-
Churchill	2,280,823	-
Fort William and Port Arthur	43,081,648	7,759,361
Eastern Elevs. - Lake Ports	35,316,252	1,472,309
Eastern Elevs. - Sbd. Ports	15,401,544	1,273,257
U. S. Lake Ports	10,314,580	83,372
U. S. Atlantic Seaboard Ports	6,716,438	8,615
TOTAL	209,263,559	26,521,865
<u>March 29, 1935.</u>		
Country Elevators - Manitoba	10,339,364	1,048,856
Saskatchewan	51,424,431	4,897,262
Alberta	35,406,966	3,784,786
TOTAL	97,170,761	9,730,904
Interior Private and Mill	6,531,395	2,622,944
Interior Public and Semi-Public Terms.	2,011,994	1,056,373
Vancouver-New Westminster	10,546,039	1,106,765
Victoria	926,435	-
Prince Rupert	872,287	-
Churchill	2,389,404	-
Fort William and Port Arthur	63,610,578	8,825,385
Eastern Elevs. - Lake Ports	21,684,893	2,323,152
Eastern Elevs. - Sbd. Ports	9,286,753	2,297,334
U. S. Lake Ports	11,239,318	1,158,076
U. S. Atlantic Sbd. Ports	4,977,888	-
TOTAL	231,247,795	29,120,933
<u>March 30, 1934.</u>		
Country Elevators - Manitoba	10,200,319	2,312,749
Saskatchewan	56,555,226	5,642,563
Alberta	37,430,129	3,985,695
TOTAL	104,165,674	11,941,007
Interior Private and Mill	5,736,505	3,034,908
Interior Public and Semi-Public Terms.	1,382,534	864,570
Vancouver-New Westminster	9,982,856	832,688
Victoria	931,974	-
Prince Rupert	1,092,150	362
Churchill	2,475,764	-
Fort William and Port Arthur	71,921,021	12,357,210
Eastern Elevs. - Lake Ports	12,066,410	1,683,774
Eastern Elevs. - Sbd. Ports	8,613,601	1,073,031
U. S. Lake Ports	1,540,131	-
U. S. Atlantic Sbd. Ports	4,115,485	81,941
TOTAL	224,024,105	31,869,491
<u>March 31, 1933.</u>		
Country Elevators-- Manitoba	9,655,424	2,123,984
Saskatchewan	63,367,621	5,319,963
Alberta	34,980,034	4,473,458
TOTAL	108,003,079	11,917,405
Interior Private and Mill	5,819,710	1,666,903
Interior Public and Semi-Public Terms.	3,148,224	104,559
Vancouver-New Westminster	9,998,644	1,272,247
Victoria	453,710	1,713
Prince Rupert	301,695	-
Churchill	2,430,283	-
Fort William and Port Arthur	69,953,711	5,912,866
Eastern Elevs. - Lake Ports	13,799,575	1,513,435
Eastern Elevs. - Sbd. Ports	5,618,116	2,427,533
U. S. Lake Ports	5,470,744	549
U. S. Atlantic Sbd. Ports	521,729	543,363
TOTAL	225,529,220	25,360,573

STOCKS OF UNITED STATES GRAIN IN CANADA MARCH 27, 1936.

	WHEAT	OATS Bushels	RYE	CORN	SOYA BEANS
Midland Aberdeen	-	-	-	470	-
Port Colborne Maple Leaf	-	-	-	800	-
Montreal Harbour Commrs. Nos. 1, 2 and B.	-	-	-	-	469
TOTAL	-	-	-	1,270	469
Same period previous year	1,048,912	55,167	366	5,289,123	-

RECEIPTS AND SHIPMENTS OF UNITED STATES GRAIN IN CANADA MARCH 27, 1936.

	R E C E I P T S		S H I P M E N T S	
	Water	Rail	Water	Rail
<u>GEORGIAN BAY PORTS</u>				
U. S. Corn	-	-	-	521
<u>LOWER LAKE PORTS</u>				
U. S. Corn	-	-	-	117

STOCKS OF FOREIGN CORN IN CANADA MARCH 27, 1936.

	ARGENTINE CORN	SOUTH AFRICAN CORN	TOTAL CORN
Sarnia	-	124,160	124,160
Port Colborne M.L.	82,313	17,625	99,938
Toronto	-	351,023	351,023
Montreal	-	382,918	382,918
Dominion Elev. Co.	-	92,688	92,688
Quebec	-	96,509	96,509
Saint John	-	97,995	97,995
Halifax	10,145	124,727	134,872
TOTAL	92,458	1,287,645	1,380,103
Same period previous year	120,719	2,340,912	2,461,631

RECEIPTS AND SHIPMENTS OF FOREIGN CORN IN CANADA MARCH 27, 1936.

	ARGENTINE CORN		SOUTH AFRICAN CORN	
	Receipts	Shipments	Receipts	Shipments
Georgian Bay Ports	-	-	-	1,200
Lower Lake Ports	-	6,078	-	24,563
St. Lawrence Ports	-	-	-	21,058
Seaboard Ports	-	-	-	12,117

STOCKS, RECEIPTS AND SHIPMENTS OF THE COUNTRY ELEVATORS IN THE WESTERN
DIVISION IN THE WEEK ENDING MARCH 20, 1936.

	WHEAT	OATS B u s h e l s	BARLEY	FLAXSEED	RYE
<u>MANITOBA</u>					
In Store, previous week	5,961,656	615,815	1,671,448	30,661	402,985
Receipts	8,109	105,908	119,149	105	11,019
TOTAL	5,969,765	721,723	1,790,597	30,766	414,004
Shipments	51,577	77,999	106,292	1,451	12,630
In Store	5,918,430	643,723	1,684,305	29,315	401,374
<u>SASKATCHEWAN</u>					
In Store, previous week	45,126,577	2,891,032	1,394,016	297,387	740,963
Receipts	1,006,359	518,238	208,819	12,582	29,740
TOTAL	46,132,936	3,409,270	1,602,835	309,969	770,703
Shipments	1,844,824	300,598	233,509	10,653	13,023
In Store	44,287,735	3,108,468	1,369,324	299,318	757,680
<u>ALBERTA</u>					
In Store, previous week	26,893,766	2,539,887	395,292	36,575	72,186
Receipts	533,194	417,891	70,622	285	3,868
TOTAL	27,426,960	2,957,778	465,914	36,860	76,054
Shipments	923,552	267,614	49,265	2,443	2,458
In Store	26,502,777	2,689,130	415,113	34,401	72,889

TOTAL RECEIPTS AT COUNTRY ELEVATORS AND PLATFORM LOADINGS# IN THE
PERIOD AUGUST 1, 1935 TO MARCH 20, 1936

	WHEAT B u s h e l s	OTHER GRAIN
Manitoba	15,718,726	12,312,525
Saskatchewan	103,002,332	19,485,219
Alberta	72,297,022	9,812,845
Total 1935 - 1936	191,018,080	41,610,589
Same period 1934 - 1935	192,803,098	42,500,301

Platform Loadings to March 21, 1936

INTERIOR TERMINAL ELEVATORS

Receipts, Shipments and Quantities in Store, week ending March 27, 1936.

	WHEAT	OATS	BARLEY	FLAXSEED	TOTAL
		B u s h e l s			
<u>CALGARY</u>					
In Store, previous week	417,441	800,096	53,419	-	-
Receipts	-	29,129	11,845	-	-
TOTAL	417,441	829,225	65,264	-	-
Shipments - Rail	1,318	-	-	-	-
In Store	416,123	829,225	65,264	-	-
<u>EDMONTON</u>					
In Store, previous week	836,920	130,601	55,327	-	-
Receipts	-	4,305	2,292	-	-
TOTAL	836,920	134,906	57,619	-	-
Shipments - Rail	2,550	711	-	-	-
In Store	834,370	134,195	57,619	-	-
<u>LETHBRIDGE</u>					
In Store, previous week	607,595	-	-	-	-
Receipts	-	-	Nil	-	-
TOTAL	607,595	-	-	-	-
Shipments - Rail	-	-	Nil	-	-
In Store	607,595	-	-	-	-
<u>MOOSE JAW</u>					
In Store, previous week	19,854	4,388	4,314	994	170
Receipts	3,021	3,520	6,936	-	-
TOTAL	22,875	7,908	11,250	994	170
Shipments - Rail	-	-	Nil	-	-
In Store	22,815	7,908	11,250	994	170
<u>BASKATOON</u>					
In Store, previous week	5,806	1,977	2,521	20	-
Receipts	-	-	Nil	-	-
TOTAL	5,806	1,977	2,521	20	-
Shipments - Rail	-	-	1,041	-	-
In Store	5,806	1,977	1,480	20	-
<u>RECAPITULATION</u>					
Total receipts	3,021	36,954	21,073	-	-
Total shipments	3,868	711	1,041	-	-

STOCKS, RECEIPTS AND SHIPMENTS OF THE PACIFIC COAST ELEVATORS
IN THE WEEK ENDING MARCH 27, 1936.

	WHEAT	OATS Bushels	BARLEY	FLAXSEED	RYE
<u>VANCOUVER - NEW WESTMINSTER</u>					
In Store, previous week	11,457,708	331,018	9,669	7	2,091
Receipts	1,352,022	115,498	-	-	-
TOTAL	12,809,730	446,516	9,669	7	2,091
Shipments - Vessel	1,249,773	-	-	-	-
Rail	1,934	2,589	327	-	-
In Store	11,550,078	444,975	9,341	7	2,091
<u>PRINCE RUPERT</u>					
In Store, previous week	1,027,676	-	-	-	-
Receipts	-	-	Nil	-	-
TOTAL	1,027,676	-	-	-	-
Shipments - Vessel	-	-	Nil	-	-
In Store	1,027,676	-	-	-	-
<u>CHURCHILL</u>					
In Store, previous week	2,280,823	-	-	-	-
Receipts	-	-	Nil	-	-
TOTAL	2,280,823	-	-	-	-
Shipments - Vessel	-	-	Nil	-	-
In Store	2,280,823	-	-	-	-

DAILY AND WEEKLY AVERAGE PRICES OF WHEAT IN THE WESTERN DIVISION
IN THE WEEK ENDING MARCH 28, 1936

(Basis Vancouver, B. C.)

	March 23 ¢	March 24 ¢	March 25 ¢	March 26 ¢	March 27 ¢	March 28 ¢	Weekly Average ¢
No. 1 Hard	81.6	81.5	81.2	81.2	81.4	81.4	81.4
No. 1 Northern	80.9	80.7	80.5	80.5	80.6	80.6	80.6
No. 2 Northern	79.4	79.2	79	79	79.1	79.1	79.1
No. 3 Northern	74.9	74.7	74.5	74.5	74.6	74.6	74.6
No. 4 Northern	72.6	72.5	72.2	72.2	72.4	72.4	72.4
No. 5	64.6	64.5	64.2	64.2	64.4	64.4	64.4
No. 6	51.6	51.5	51.2	51.2	51.4	51.4	51.4
Feed	45.1	45	44.7	44.7	44.9	44.9	44.9
No. 1 Garnet	75.6	75.5	75.2	75.2	75.4	75.4	75.4
No. 2 Garnet	74.6	74.5	74.2	74.2	74.4	74.4	74.4
Track	80.9	80.7	80.5	80.5	80.6	80.6	80.6

- 14 -
DAILY AND WEEKLY AVERAGE PRICES OF GRAIN
Week ending March 28, 1936
WESTERN DIVISION
(Basis Fort William and Port Arthur)

	March 23 \$ ¢	March 24 \$ ¢	March 25 \$ ¢	March 26 \$ ¢	March 27 \$ ¢	March 28 \$ ¢	Weekly Average \$ ¢
<u>WHEAT</u>							
No. 1 Man. Hard	.821	.822	.82	.82	.824	.824	.822
No. 1 Man. Northern	.812	.812	.81	.81	.812	.812	.811
No. 2 Man. Northern	.789	.787	.786	.786	.789	.789	.788
No. 3 Man. Northern	.746	.745	.742	.742	.744	.744	.744
No. 4 Man. Northern	.714	.712	.71	.71	.711	.712	.712
No. 5	.636	.635	.632	.632	.634	.634	.634
No. 6	.536	.535	.532	.532	.534	.534	.534
Feed	.466	.465	.462	.462	.464	.464	.464
No. 1 Garnet	.771	.77	.767	.767	.769	.769	.769
No. 2 Garnet	.741	.74	.737	.737	.739	.739	.739
No. 4 Special	.631	.63	.627	.627	.632	.634	.63
No. 5 Special	.576	.575	.572	.572	.574	.574	.574
No. 6 Special	.519	.517	.515	.515	.516	.516	.516
Rejected No. 1 Northern	.726	.725	.722	.722	.724	.724	.724
No. 2 Northern	.706	.705	.702	.702	.704	.704	.704
No. 3 Northern	.686	.685	.682	.682	.684	.684	.684
Tough No. 1 Hard	.804	.805	.802	.802	.804	.806	.804
No. 1 Northern	.802	.802	.80	.80	.802	.802	.801
No. 2 Northern	.769	.767	.766	.765	.769	.769	.768
No. 3 Northern	.726	.725	.722	.722	.724	.724	.724
Shrubby No. 1 Hard	.736	.735	.732	.732	.734	.734	.734
No. 1 Northern	.736	.735	.732	.732	.734	.734	.734
No. 2 Northern	.726	.725	.722	.722	.724	.724	.724
No. 3 Northern	.686	.685	.682	.682	.684	.684	.684
Durum No. 1	.749	.747	.745	.745	.746	.746	.746
No. 2	.701	.70	.697	.697	.699	.699	.699
No. 3	.626	.625	.622	.622	.624	.624	.624
A. R. W. No. 1	.706	.705	.702	.702	.704	.704	.704
No. 2	.686	.685	.682	.682	.684	.684	.684
No. 3	.666	.665	.662	.662	.664	.664	.664
<u>OATS</u>							
No. 2 C. W.	.347	.349	.351	.352	.354	.336	.348
No. 3 C. W.	.287	.289	.291	.292	.294	.296	.292
Ex. No. 1 Feed	.285	.286	.289	.29	.291	.294	.289
No. 1 Feed	.257	.259	.261	.262	.264	.264	.261
No. 2 Feed	.232	.234	.236	.237	.239	.241	.237
No. 3 Feed	.212	.214	.216	.217	.219	.221	.217
<u>BARLEY</u>							
2 Row	.442	.434	.437	.441	.442	.455	.442
6 Row	.442	.434	.437	.441	.452	.455	.442
No. 3 C. W.	.372	.374	.377	.381	.382	.386	.379
No. 4 C. W.	.357	.359	.362	.371	.372	.375	.366
No. 5 C. W.	.342	.344	.347	.351	.352	.355	.349
No. 6 C. W.	.327	.329	.332	.336	.337	.34	.334
<u>RYE</u>							
No. 2 C. W.	.432	.429	.427	.426	.424	.426	.427
No. 3 C. W.	.384	.38	.377	.376	.374	.376	.378
Rejected No. 2 C. W.	.359	.355	.352	.351	.349	.351	.353
No. 4 C. W.	.359	.355	.352	.351	.349	.351	.353
Mergoty	.349	.345	.342	.341	.339	.341	.343
<u>FLAXSEED</u>							
No. 1 C. W.	1.57	1.57	1.571	1.55	1.55	1.55	1.56
No. 2 C. W.	1.525	1.525	1.526	1.51	1.51	1.51	1.518
No. 3 C. W.	1.42	1.42	1.421	1.41	1.41	1.41	1.415
No. 4 C. W.	1.33	1.33	1.331	1.32	1.32	1.32	1.325

ONTARIO - TORONTO

Wheat, good Milling	.72-.74	.72-.74	.72-.74	.72-.74	.72-.74	.72-.74	.72-.74
Oats	.25-.28	.25-.28	.25-.28	.25-.28	.25-.28	.25-.28	.25-.28
Malting Barley	.42-.45	.42-.45	.42-.45	.42-.45	.42-.45	.42-.45	.42-.45
Ontario Corn	.37-.41	.37-.41	.37-.41	.37-.41	.37-.41	.37-.41	.37-.41
Rye	.38-.40	.38-.40	.38-.40	.38-.40	.38-.40	.38-.40	.38-.40
Barley	.30-.35	.30-.35	.30-.35	.30-.35	.30-.35	.30-.35	.30-.35
Milling Oats	.29-.32	.29-.32	.29-.32	.29-.32	.29-.32	.29-.32	.29-.32
F.O.B. Shipping Point.							

STOCKS OF GRAIN IN CANADA AT MARCH 31, 1936.

The Dominion Bureau of Statistics has collected and compiled data showing complete stocks of grain in Canada at the close of the fiscal year ended March 31, 1936. The quantities in farmers' hands are estimated from the reports of Crop Correspondents. The quantities in flour mills are estimated on the basis of holdings at the end of February.

	WHEAT	OATS	BARLEY	FLAXSEED	RYE
	B u a h e l s				
Public, Semi-Public Terminals and Private Elevators, Fort William and Port Arthur	44,283,061	1,993,938	2,759,238	38,719	3,153,354
Mill and Mill Elevators	6,162,066	1,028,890	1,397,072	39,377	36,639
Interior Public and Semi-Public Elevators - Western Division	2,807,470	970,980	433,943	117	170
Vancouver - New Westminster Elevators	11,519,403	518,810	11,710	-	3,172
Prince Rupert and Victoria Elevators	1,027,676	-	-	-	-
Churchill	2,280,823	-	-	-	-
Country Elevators and Private Terminals	71,714,359	6,567,843	3,262,525	353,922	1,246,425
In Transit - Railways	6,630,575	699,312	514,225	21,622	24,911
In Flour Mills - Eastern Division (Estimated)	3,200,000	200,000	75,000	-	3,000
Eastern Elevators - In Store	50,281,456	1,380,068	1,045,124	-	333,765
On farms	46,116,000	142,164,000	21,951,000	241,200	2,178,000
TOTAL - 1936	246,022,889	155,523,841	31,449,837	694,957	6,979,436
TOTAL - 1935 (revised)	283,032,184	113,191,418	22,766,540	580,839	4,611,969

Stocks of Canadian Grain in the United States at March 31, 1936, with Comparative Figures for 1935 in brackets:

Wheat -	16,435,165	(16,217,206)
Oats -	81,615	(Nil)
Barley -	Nil	(1,156,969)

Total Stocks of Canadian Grain in Canada and The United States at March 31, 1936, with Comparative Figures for 1935 in brackets:

Wheat -	262,458,054	(299,249,390)
Oats -	155,605,456	(113,191,418)
Barley -	31,449,837	(23,923,509)
Rye and Flaxseed - as above; no stocks in the United States at either date.		

343005

STATISTICS CANADA LIBRARY
BIBLIOTHÈQUE STATISTIQUE CANADA



1010675004