

DOMINION BUREAU
OF STATISTICS
MAY 9 1936
PROPERTY OF THE
LIBRARY.

CANADA
DEPARTMENT OF TRADE AND COMMERCE
DOMINION BUREAU OF STATISTICS
AGRICULTURAL BRANCH

Vol. 16

No. 39

Historical File Copy

CANADIAN GRAIN STATISTICS

Week ending

MAY 1, 1936

[Records for Western Inspection Division supplied by Board of Grain Commissioners for Canada]

Published by Authority of the HON. W.D. Euler, M.P.,
Minister of Trade and Commerce.

♦ ♦ ♦

OTTAWA

1936

I N D E X

General Summary	1 - 6
Canadian Grain in Store by Elevators	7
Canadian Grain in Store by Grades	8
Comparative Statement of Grain in Store	9
Receipts and Shipments of Canadian Grain	10
U. S. Grain in Store, receipts and shipments	11
Receipts, Shipments and Quantities in Store at Country Elevators Western Division and Platform Loadings	12
Receipts, Shipments and Quantities in Store at Interior Terminal Elevators	13
Receipts, Shipments and Quantities in Store at Pacific Elevators and Vancouver Prices	14
Daily and Weekly Average Prices of Grain at Fort William and Toronto for the week ending May, 2, 1936	15
Inspections Eastern Division, month of April, 1936	16 - 17

DEPARTMENT OF TRADE AND COMMERCE
DOMINION BUREAU OF STATISTICS - CANADA
AGRICULTURAL BRANCH

(Issued May 8, 1936)

Dominion Statistician:	R. H. Coats, LL.D., F.R.S.C., F.S.S. (Hon.)
Chief, Agricultural Branch:	T. W. Grindley, Ph.D.
Assistant Chief, Agricultural Branch	W. Dougan.

WHEAT STOCKS IN STORE

Canadian wheat in store for the week ending May 1, 1936, shows a decrease of 6,016,507 bushels compared with the previous week and a decrease of 29,082,531 bushels compared with the corresponding week in 1935. The visible supply was reported as 185,172,053 bushels compared with the revised figure of 191,188,560 bushels for the previous week and 214,254,584 bushels for the week ending May 3, 1935.

Canadian wheat in the United States amounted to 11,888,396 bushels a net decrease of 558,016 bushels from the previous week when 12,446,412 bushels were reported. The Canadian wheat in the United States is located at the following ports: Duluth 551,376; Buffalo 6,525,000; Erie 86,000; Chicago 74,000; New York 612,649; Albany 3,967,000; Boston 41,371 and Philadelphia 31,000 bushels. Decreases are shown from the previous week's stocks at Buffalo 387,000; Chicago 15,000; New York 63,016; Philadelphia 56,000; Norfolk 27,000 and Galveston 10,000. Stocks at Duluth, Erie, Albany and Boston remained unchanged. For the same week a year ago, Canadian wheat in the United States amounted to 11,918,099 bushels distributed as follows: Duluth 1,210,671; Buffalo 5,701,749; Erie 860,000; New York 553,679; Albany 3,406,000 and New Orleans 186,000 bushels.

There is no United States wheat in store in Canada, but 1,048,912 bushels were shown at the corresponding date a year ago.

Wheat in transit on the lakes amounted to 531,087 bushels compared with 1,417,272 bushels for the previous week and 1,115,465 bushels for the same week in 1935.

There were 14,197,444 bushels of wheat in rail transit at May 1, 1936 not included in the visible because no comparable figures for 1935 or previous years were secured.

PRIMARY MOVEMENT

Wheat marketings in the Prairie Provinces for the week ending April 24 amounted to 1,075,119 bushels, an increase of 288,642 bushels over the previous week when 786,477 bushels were marketed. During the corresponding week a year ago, the receipts were 1,072,450 bushels. By provinces, the receipts for the week ending April 24 were as follows, figures within brackets being those for 1935: Manitoba 54,855 (76,547); Saskatchewan 616,424 (528,028); Alberta 403,840 (467,875) bushels. Marketings of wheat in the three Prairie Provinces from August 1 to April 24, 1936 as compared with the same period in 1935 were as follows, figures within brackets being those for 1935: Manitoba 16,297,466 (28,750,695); Saskatchewan 106,016,998 (88,030,779); Alberta 74,814,188 (83,990,846) bushels. For the thirty-eight weeks ending April 24, 1936 and April 26, 1935, 197,128,652 and 200,772,320 bushels were received from the farms.

Vol. 10, No. 1, January 1, 1917

Subscription price, Five Dollars per Annum in Advance
Single Copies, Fifteen Cents

CONTENTS

Original Articles
The Problem of the Control of the Epidemic of Influenza
The Problem of the Control of the Epidemic of Influenza
The Problem of the Control of the Epidemic of Influenza

Editorial
The Problem of the Control of the Epidemic of Influenza
The Problem of the Control of the Epidemic of Influenza
The Problem of the Control of the Epidemic of Influenza

Correspondence
The Problem of the Control of the Epidemic of Influenza
The Problem of the Control of the Epidemic of Influenza
The Problem of the Control of the Epidemic of Influenza

Obituary
The Problem of the Control of the Epidemic of Influenza
The Problem of the Control of the Epidemic of Influenza
The Problem of the Control of the Epidemic of Influenza

DEPARTMENTS

News and Notes
The Problem of the Control of the Epidemic of Influenza
The Problem of the Control of the Epidemic of Influenza
The Problem of the Control of the Epidemic of Influenza

Advertisements
The Problem of the Control of the Epidemic of Influenza
The Problem of the Control of the Epidemic of Influenza
The Problem of the Control of the Epidemic of Influenza

OVERSEAS EXPORT CLEARANCES AND IMPORTS OF WHEAT INTO THE UNITED STATES

During the week ending May 1, 1936 the overseas export clearances of wheat amounted to 3,945,663 bushels while imports into the United States for consumption and milling in bond were 549,000 bushels. The total is 4,494,663 bushels as compared with 3,358,753 bushels for the previous week, an increase of 1,135,910 bushels, and when compared with the same week in 1935, an increase of 2,201,365.

Clearances by ports for the weeks ending May 1, 1936 and May 3, 1935, and imports into the United States for consumption and milling in bond were as follows, (in bushels).

<u>Overseas Clearances</u>	<u>Week ending May 1, 1936</u>	<u>Week ending May 3, 1935</u>
Montreal	1,371,271	417,437
Quebec	312,800	-
Sorel	686,483	-
United States Ports	281,000	455,000
Vancouver-New Westminster	1,294,109	755,661
Prince Rupert	-	333,200
TOTAL	3,945,663	1,961,298
<u>Imports into the United States</u>		
For consumption and milling in bond for re-export	549,000	332,000
<u>Total, Overseas Clearances and United States Imports</u>	<u>4,494,663</u>	<u>2,293,298</u>

The following table shows the export clearances of Canadian wheat by ports from August 1, to May 1, 1936 along with comparative figures for the same period in 1934-35 and imports into the United States for consumption and milling in bond (in bushels):

<u>Overseas Clearances</u>	<u>1935 - 36</u>	<u>1934 - 35</u>
Montreal	24,192,464	18,698,134
Sorel	5,555,932	2,806,893
Quebec	1,700,027	1,762,051
West Saint John and Saint John	10,759,807	5,022,923
Halifax	2,077,661	2,891,730
United States Ports	20,535,000	17,945,000
Vancouver-New Westminster	42,335,869	36,806,346
Churchill	2,407,000	4,049,877
Prince Rupert	-	1,981,992
Total, Overseas Clearances	109,563,760	91,964,946
<u>Imports into the United States</u>		
For consumption and milling in bond for re-export	36,992,709	21,030,668
<u>Total, Overseas Clearances and United States Imports to date</u>	<u>146,556,469</u>	<u>112,995,614</u>

International Trade (Broomhall's Revised Figures), 1935 - 36.

The following table shows the world shipments of wheat and wheat flour for the first thirty-nine weeks of the present crop year.

Week ending		North America	Argentina	Australia	Russia	Other	Total
		(Thousand Bushels)					
August,	10, 1935x	2,760	3,194	1,253	-	882	8,095
	17	2,880	1,312	1,192	648	728	6,760
	24	2,640	4,016	1,704	872	696	9,928
	31	2,584	1,888	1,080	1,144	416	7,112
September	7	2,258	2,432	1,384	1,296	872	8,240
	14	2,784	3,440	1,560	592	1,184	9,560
	21	3,672	2,568	2,384	1,008	1,440	10,072
	28	3,680	1,056	1,824	992	624	8,176
October	5	3,944	3,136	1,936	1,936	1,104	12,056
	12	3,968	1,880	1,808	2,064	880	10,600
	19	3,928	1,368	2,504	2,920	1,040	11,760
	26	3,664	1,800	2,032	1,088	1,410	10,024
November	2	5,880	1,480	2,792	456	1,856	12,464
	9	4,632	1,792	2,160	1,224	1,456	11,264
	16	4,880	1,168	2,808	992	976	10,824
	23	4,872	1,126	1,184	1,264	952	9,488
December	30	6,024	1,048	1,000	1,072	1,000	10,144
	7	5,136	1,736	1,584	1,320	712	10,488
	14	3,672	1,368	1,872	1,992	952	9,856
	21	5,088	920	1,680	968	1,320	9,976
January	28	3,264	656	768	488	912	6,088
	4, 1936	1,496	792	1,624	840	712	5,464
	11	3,992	1,080	2,216	1,272	1,072	9,632
	18	4,536	648	2,912	88	912	9,096
February	25	5,248	440	3,848	280	1,000	10,816
	1	4,088	656	2,344	-	968	8,056
	8	5,504	1,680	2,848	688	1,304	12,024
	15	4,464	1,024	3,096	288	1,064	9,936
March	22	5,648	1,280	4,528	192	880	12,528
	29	5,536	1,200	4,976	216	904	12,832
	7	3,376	1,664	3,816	592	864	10,312
	14	3,672	1,168	3,480	216	1,032	9,568
April	21	3,664	1,032	2,968	168	1,464	9,296
	28	4,312	1,368	2,880	-	1,080	9,640
	4	3,672	1,216	3,952	-	1,120	9,960
	11	3,280	1,296	2,392	128	752	7,848
May	18	3,312	376	1,936	-	864	6,488
	25	2,693	830	1,370	-	1,187	6,080
	2	6,291	1,145	1,467	232	1,077	10,212
TOTAL		xx161,392	58,369	89,162	xxx29,024	38,704xx	376,651

Comparative 1934-35

Corresponding week	2,560	2,824	2,192	-	1,416	8,992
Total to Date	121,321	140,886	87,637	2,720	41,128	393,692

x Includes 1,200,000 bushels shipped from North America on August 1, 2 and 3; 250,000 bushels shipped from Argentina and 245,000 from Australia on August 1. See page 2 Canadian Grain Statistics, January 3, 1936.

xx Includes 4,400,000 bushels credited to North America but not included in the weekly distribution.

xxx Revised figure. The weekly shipments add to 29,536.

World shipments for the week ending May 2, 1936 amounted to 10,212,000 bushels as compared with 6,080,000 bushels for the previous week and 8,992,000 bushels for the corresponding week last year. World shipments showed a total increase of 4,132,000 bushels as compared with the previous week, made up of 3,598,000 bushels from North America, 315,000 from the Argentine and 97,000 bushels from Australia.

During the first thirty-nine weeks of the present crop year world shipments amounted to 377 million bushels as compared with 394 million bushels for the corresponding weeks last year. Australian shipments were slightly higher than last year. North American shipments were 161 million bushels as compared with the 121 million bushels for the same period in 1934-35. Argentine shipments were only 58 million bushels as compared with 141 million bushels for the corresponding period last year.

Weekly Average Shipments

The following table shows the weekly average shipments of wheat and wheat flour for the first thirty-nine weeks of the present crop year along with comparative figures for 1934-35.

	North America	Argentina	Australia	Russia	Other	Total
	(Million Bushels)					
1934-35	3.1	3.6	2.2	0.1	1.1	10.1
1935-36	4.1	1.5	2.3	0.7	1.0	9.6

CANADIAN GRAIN STATISTICS - WEEK ENDING MAY 1, 1936.

Returns received as to stocks of grain in store for the week ending May 1, 1936 show a decrease of 6,801,136 bushels, compared with the revised figures of the previous week. Stocks in store were as follows:- wheat 185,172,053, oats 10,560,347, barley 8,732,735, flaxseed 366,672 and rye 4,809,134 bushels, a total of 209,640,941 bushels. Decreases were as follows:- wheat 6,016,507, oats 513,890, barley 225,958, flaxseed 20,182 and rye 24,599 bushels. At a comparable date last year stocks in store were as follows:- wheat 214,254,584, oats 9,446,784, barley 8,570,025, flaxseed 409,279 and rye 3,777,266 bushels.

WESTERN COUNTRY ELEVATORS:- Grain stocks show a decrease of 5,729,873 bushels composed of wheat 5,084,628, oats 309,652, barley 283,130, flaxseed 36,026 and rye 16,437 bushels.

The following table shows the quantities of grain in store at the Country Elevators in each of the Prairie Provinces on April 24, 1936 with comparison for the previous week and the same period 1935.

	<u>MANITOBA</u>	<u>SASKATCHEWAN</u>	<u>ALBERTA</u>	<u>TOTAL</u>
		B u s h e l s		
Wheat	4,827,124	33,631,554	21,125,950	59,584,628
Oats	518,972	2,550,223	2,100,457	5,169,652
Barley	1,536,306	1,075,935	325,889	2,938,130
Flaxseed	27,403	235,467	31,156	294,026
Rye	384,945	797,938	73,554	1,256,437
TOTAL	7,294,750	38,291,117	23,657,006	69,242,873
Previous week	7,671,151	42,035,489	24,958,151	74,664,791
Same period 1935	9,996,640	48,211,593	32,932,601	91,140,834

The receipts and shipments at the Country Elevators for the week ending April 24, 1936 compared with the previous week and the same period 1935 were as follows:-

	<u>R E C E I P T S</u>			<u>S H I P M E N T S</u>		
	Previous week	Week ending Apr. 24, 1936	Week ending Apr. 26, 1935	Previous week	Week ending Apr. 24, 1936	Week ending Apr. 26, 1935
Wheat	777,330	1,058,433	1,043,514	4,757,444	5,863,918	5,783,941
Oats	249,106	265,251	236,145	705,062	713,771	2,037,588
Barley	103,586	78,363	58,139	188,756	217,249	151,641
Flaxseed	3,676	9,207	3,527	24,586	44,417	6,082
Rye	20,506	25,227	646	25,676	13,905	19,653
TOTAL	1,154,204	1,436,481	1,341,971	5,701,524	6,853,260	7,998,905

Platform Loadings shown by Prairie Provinces for the period ending April 21, 1936 were as follows:-

	<u>WHEAT</u>	<u>OTHER GRAIN</u>	<u>TOTAL</u>
		B u s h e l s	
Manitoba	1,000	3,480	4,480
Saskatchewan	2,100	9,475	11,575
Alberta	13,586	25,320	38,906
TOTAL	16,686	38,275	54,961
Period ending April 21, 1936	28,936	30,012	58,948
+Increase -Decrease	-12,250	+ 8,263	- 3,987

INTERIOR PUBLIC AND SEMI-PUBLIC TERMINALS.- Stocks for the week show a decrease of 498,729 bushels, composed of wheat 339,387, oats 102,119, and barley 57,223 bushels.

VANCOUVER-NEW WESTMINSTER ELEVATORS.- Grain stocks at these elevators show a net decrease of 137,262 bushels. Decreases are noted in wheat of 162,458 and rye 1,428 bushels while increases are shown in oats of 25,000, barley 1,500 and flaxseed 124 bushels.

PRINCE RUPERT & CHURCHILL ELEVATORS.- Wheat stocks remain unchanged.

PUBLIC AND PRIVATE (FORT WILLIAM AND PORT ARTHUR).- Grain in store shows an increase of 3,335,734 bushels, composed of wheat 3,065,156, oats 93,350, barley 155,223, flaxseed 16,365 and rye 5,640 bushels.

STATE OF NEW YORK - DEPARTMENT OF AGRICULTURE

REPORT OF THE COMMISSIONER OF AGRICULTURE FOR THE YEAR 1900

THE COMMISSIONER OF AGRICULTURE, NEW YORK

NAME	AGE	SEX	RELATION	EDUCATION	INDUSTRY
JOHN A. BROWN	45	M	Owner	High School	Farmer
MARY A. BROWN	42	F	Wife	High School	Homemaker
JOHN B. BROWN	18	M	Son	High School	Farmer
MARY B. BROWN	15	F	Daughter	High School	Homemaker
JOHN C. BROWN	12	M	Son	High School	Farmer
MARY C. BROWN	10	F	Daughter	High School	Homemaker
JOHN D. BROWN	8	M	Son	High School	Farmer
MARY D. BROWN	6	F	Daughter	High School	Homemaker
JOHN E. BROWN	4	M	Son	High School	Farmer
MARY E. BROWN	2	F	Daughter	High School	Homemaker

THE COMMISSIONER OF AGRICULTURE, NEW YORK

NAME	AGE	SEX	RELATION	EDUCATION	INDUSTRY
JOHN F. BROWN	40	M	Owner	High School	Farmer
MARY F. BROWN	38	F	Wife	High School	Homemaker
JOHN G. BROWN	16	M	Son	High School	Farmer
MARY G. BROWN	14	F	Daughter	High School	Homemaker
JOHN H. BROWN	11	M	Son	High School	Farmer
MARY H. BROWN	9	F	Daughter	High School	Homemaker
JOHN I. BROWN	7	M	Son	High School	Farmer
MARY I. BROWN	5	F	Daughter	High School	Homemaker
JOHN J. BROWN	3	M	Son	High School	Farmer
MARY J. BROWN	1	F	Daughter	High School	Homemaker

THE COMMISSIONER OF AGRICULTURE, NEW YORK

NAME	AGE	SEX	RELATION	EDUCATION	INDUSTRY
JOHN K. BROWN	35	M	Owner	High School	Farmer
MARY K. BROWN	33	F	Wife	High School	Homemaker
JOHN L. BROWN	13	M	Son	High School	Farmer
MARY L. BROWN	11	F	Daughter	High School	Homemaker
JOHN M. BROWN	9	M	Son	High School	Farmer
MARY M. BROWN	7	F	Daughter	High School	Homemaker
JOHN N. BROWN	5	M	Son	High School	Farmer
MARY N. BROWN	3	F	Daughter	High School	Homemaker
JOHN O. BROWN	1	M	Son	High School	Farmer
MARY O. BROWN	0	F	Daughter	High School	Homemaker

THE COMMISSIONER OF AGRICULTURE, NEW YORK

THE COMMISSIONER OF AGRICULTURE, NEW YORK

THE COMMISSIONER OF AGRICULTURE, NEW YORK

THE COMMISSIONER OF AGRICULTURE, NEW YORK

Stocks in Store at the Head of the Lakes compared with the same week last year were as follows:-

	Week ending May 1, 1936	Week ending May 3, 1935	+ Increase - Decrease
Wheat	53,627,925	68,213,191	- 14,585,266
Oats	2,401,278	2,514,433	- 113,155
Barley	3,315,956	3,349,872	- 33,916
Flaxseed	69,381	163,916	- 94,535
Rye	3,210,674	2,594,259	+ 616,415

The receipts (including transfers) at the Head of the Lakes for the period ending May 1, 1936 with comparative figures for the same week last year were as follows:-

	Week ending May 1, 1936	Week ending May 3, 1935	+ Increase - Decrease
Wheat	3,027,918	3,372,708	- 348,790
Oats	134,795	30,909	+ 103,886
Barley	162,607	58,298	+ 104,309
Flaxseed	16,873	3,053	+ 13,820
Rye	6,166	3,927	+ 2,169

Preliminary figures showing receipts and shipments at the Head of the Lakes also Vancouver-New Westminster, Prince Rupert, Victoria and Churchill for the period August 1, 1935 to May 1, 1936 compared with the same period last year.

	FORT WILLIAM & PORT ARTHUR		VANCOUVER-NEW WESTMINSTER	
	Receipts	Shipments	Receipts	Shipments
Wheat	104,252,513	122,703,478	45,234,047	42,661,448
Oats	9,136,665	11,110,497	1,983,725	1,545,241
Barley	6,764,852	4,525,636	76,732	66,962
Flaxseed	371,240	478,516	1,983	1,672
Rye	1,171,395	234,376	12,691	34,961
TOTAL	121,696,665	139,052,503	47,309,178	44,310,284
Same period last year	116,923,173	110,438,804	45,310,805	42,242,948
+Increase - Decrease	+ 4,773,492	+ 28,613,699	+ 1,998,373	+ 2,067,336

	PRINCE RUPERT		VICTORIA	
	Receipts	Shipments	Receipts	Shipments
TOTAL	998,890	129	-	-
Same period last year	1,094,921	1,982,343	3,505	5,391
+Increase - Decrease	-96,031	- 1,982,214	- 3,505	- 5,391

	CHURCHILL	
	Receipts	Shipments
TOTAL	2,289,587	2,407,000
Same period last year	3,967,593	4,053,953
+Increase - Decrease	-1,678,006	-1,646,953

INTERIOR PRIVATE AND MILL ELEVATORS:- Grain stocks show a net decrease of 500 bushels. Decreases were noted in oats of 53,563, flaxseed 645, and rye 28 bushels while wheat and barley increased 30,216 and 23,520 bushels respectively.

Stocks in Store in the Western Division compared with the same week last year were as follows:-

	Week ending May 1, 1936	Week ending May 3, 1935	+ Increase - Decrease
Wheat	136,050,774	175,853,466	- 39,802,692
Oats	10,000,871	7,925,971	+ 2,074,900
Barley	8,024,502	6,791,081	+ 1,233,421
Flaxseed	403,343	408,474	- 5,131
Rye	4,511,824	3,185,512	+ 1,326,312

EASTERN ELEVATORS-LAKE PORTS:- Grain stocks show a decrease of 2,186,886 bushels composed of wheat 1,930,784, oats 121,384, barley 112,929 and rye 21,789 bushels.

EASTERN ELEVATORS-SEABOARD PORTS (CANADIAN GRAIN):- Grain in store shows a net decrease of 104,385 bushels. Decreases are noted in wheat of 150,421 and oats 44,502 bushels while increases are shown in barley and rye of 47,081 and 43,457 bushels respectively.

Shipments overseas of Canadian Grain from St. Lawrence Ports were as follows:-

		<u>B u s h e l s</u>	
		<u>United Kingdom</u>	<u>Other Countries</u>
Montreal, Que.	Wheat	1,371,271	
	Oats	1,294	
	Barley	33,261	
Sorel, Que.	Wheat	454,400	232,084
Quebec, Que.	Wheat	312,800	-

EASTERN ELEVATORS:-United States grain stocks were 5,548,236 bushels lower than at a comparable date last year. Decreases were as follows:- wheat 1,048,912, oats 14,842, rye 366 and corn 4,484,116 bushels.

Number of cars inspected for the week ending April 30, 1936 with comparison for the previous year were as follows:-

	Week ending April 30, 1936	Week ending April 30, 1935	+ Increase - Decrease
Wheat	5,206	3,679	+ 1,527
Oats	299	346	- 47
Barley	219	76	+ 143
Flaxseed	37	22	+ 15
Rye	12	10	+ 2
Mixed Grain	4	1	+ 3
Screenings	-	1	- 1
TOTAL	5,777	4,135	+ 1,642

The number of bushels of grain shipped from western to the Canadian eastern points over the C.P.R. and C.N.R. for the week ending April 30, 1936 and the period from August 1, 1935 to April 30, 1936.

<u>WEEK ENDING APRIL 30, 1936</u>			<u>PERIOD AUGUST 1, 1935 TO APRIL 30, 1936.</u>		
<u>WHEAT</u>	<u>OATS</u>	<u>BARLEY</u>	<u>WHEAT</u>	<u>OATS</u>	<u>BARLEY</u>
Via C.P.R.					
Via C.N.R.					
N O T R E P O R T E D					
TOTAL					

DULUTH:- Receipts of Canadian bonded grain at Duluth by rail for the week ending May 2, 1936 were nil. For the period August 1, 1935 to date rail receipts amounted to wheat 137,913 bushels.

Receipts by water for the week ending May 2, 1936 were nil. Receipts by water from August 1, 1935 to date amounted to wheat 2,573,857 and barley 225,495 bushels.

Rail shipments for the week ending May 2, 1936 were nil. Rail shipments from August 1, 1935 to date amounted to wheat 2,501,307 and barley 214,995 bushels.

Lake shipments for the week ending May 2, 1936 were nil. Lake shipments from August 1, 1935 to date amounted to wheat 251,592 and barley 101,723 bushels.

STOCKS OF GRAIN IN DIFFERENT ELEVATORS DURING THE WEEK ENDING MAY 1, 1936.

	WHEAT	OATS B u s h e l s	BARLEY	FLAXSEED	RYE
Western Country Elevators z	54,500,000	4,860,000	2,655,000	258,000	1,240,000
Interior Private & Mill Elevs.x	6,100,000	1,025,000	1,410,000	39,000	37,000
Interior Pub. & Semi-Pub.Terms.	2,187,816	674,742	372,137	116	170
Vancouver-New Westminster	11,272,122	676,636	11,799	175	7,515
Prince Rupert	1,027,676	-	-	-	-
Churchill	2,280,823	-	-	-	-
Fort William & Port Arthur	53,627,925	2,401,278	3,315,956	69,381	3,210,674
Eastern Elevs. - Lake Ports	27,372,738	444,194	378,582	-	171,607
Eastern Elevs. - St. Lawrence Ports	12,408,599	398,902	589,261	-	142,168
Eastern Elevs. - Sbd. Ports	1,974,871	-	-	-	-
U. S. Lake Ports	7,236,376	73,000	-	-	-
U. S. Atlantic Sbd. Ports	4,652,020	6,595	-	-	-
TOTAL	185,172,055	10,560,347	8,732,735	366,672	4,809,134
Previous week	191,188,560	11,074,237	8,958,693	386,854	4,833,733
Same week previous year	214,254,584	9,446,784	8,570,025	409,279	3,777,266

x Estimated.

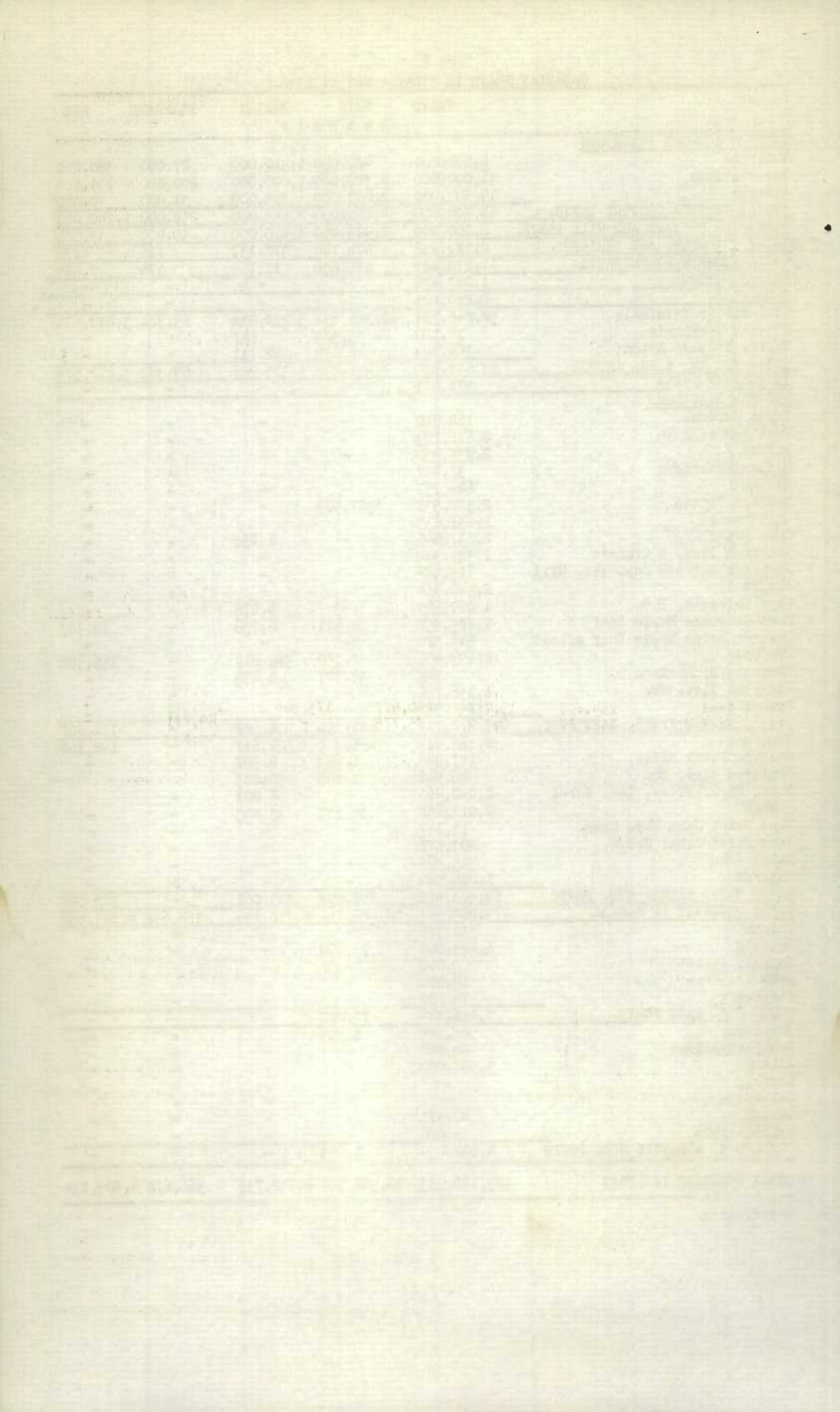
Quantity of Screenings received, shipped and in store at the undermentioned elevator during the week ending May 1, 1936.

	Amount in Store April 24, 1936		Amount Received by vessel		Amount shipped		Amount in Store May 1, 1936	
	Tons	Lbs.	Tons	Lbs.	Tons	Lbs.	Tons	Lbs.
Dominion Elev. Co.	7	1,520	-	-	7	1,520	-	-

CANADIAN GRAIN IN STORE - MAY 1, 1936.

	WHEAT	OATS	BARLEY	FLAXSEED	RYE
	Bushels				
WESTERN COUNTRY ELEVATORS					
Manitoba	4,000,000	480,000	1,340,000	27,000	380,000
Saskatchewan	31,000,000	2,380,000	1,000,000	200,000	790,000
Alberta	19,500,000	2,000,000	315,000	31,000	70,000
+TOTAL WESTERN COUNTRY ELEVS.	54,500,000	4,860,000	2,655,000	258,000	1,240,000
+INTERIOR PRIVATE AND MILL ELEVS.	6,100,000	1,025,000	1,410,000	39,000	37,000
TOTAL INT. PUB. AND SEMI-PUB.	2,187,816	674,742	372,137	116	170
VANCOUVER-NEW WESTMINSTER	11,272,122	676,636	11,799	175	7,515
PRINCE RUPERT	1,027,676	-	-	-	-
CHURCHILL	2,280,823	-	-	-	-
Semi-Public Terminals	52,846,381	2,321,651	3,272,598	69,381	3,210,674
Private Terminals	17,100	33,573	647	-	-
Winter Storage Afloat	764,444	46,074	42,711	-	-
TOTAL FT. WM. & PT. ARTHUR	53,627,925	2,401,278	3,315,956	69,381	3,210,674
IN TRANSIT LAKES	531,087	-	-	-	-
EASTERN ELEVATORS					
Depot Harbour	165,910	-	-	-	-
Port McNicoll	2,676,283	-	-	-	-
Tiffin	2,935,930	-	-	-	-
Midland Aberdeen	37,477	-	-	-	-
Midland	626,757	-	-	-	-
Midland Simcoe	2,370,551	327,926	-	-	-
Collingwood	1,831,633	-	-	-	-
Owen Sound	2,237,646	-	2,860	-	-
Goderich Elev. & Transit	1,381,944	-	-	-	-
Goderich Western Can. Flr. Mill	119,586	-	-	-	-
Sarnia	2,540,964	-	-	-	-
Port Colborne, D.G.	1,060,699	-	4,876	-	-
Port Colborne Maple Leaf	1,425,450	68,411	2,736	-	14,707
Port Colborne Maple Leaf Afloat	543,370	-	-	-	-
Toronto	2,109,491	8,150	362,617	-	156,900
Kingston Richardson	343	39,707	5,493	-	-
Kingston Elev. Co.	1,156,766	-	-	-	-
Prescott	4,151,938	-	-	-	-
TOTAL EASTERN ELEVS. LAKE PORTS	27,372,738	441,194	378,582	-	171,607
Montreal	8,162,014	296,814	521,617	-	142,168
Ogilvie Flour Mills	147,545	1,664	6,727	-	-
Dominion Elev. Co.	46,942	1,242	30,273	-	-
North Amer. Elevs. Ltd. Sorel	2,040,260	-	16,301	-	-
Quebec	2,011,838	95,182	13,843	-	-
West Saint John Hbr. Comm.	71,147	-	-	-	-
West Saint John, C.P.R.	803,571	-	-	-	-
Saint John	15,569	-	-	-	-
Halifax	1,084,584	-	-	-	-
TOTAL EAST. ELEVS. SBD. PORTS	14,383,470	398,902	589,261	-	142,168
TOTAL QUANTITY IN CANADA	173,283,657	10,480,752	8,732,735	366,672	4,809,134
Duluth	551,376	-	-	-	-
Buffalo	6,425,000	73,000	-	-	-
Buffalo Afloat	100,000	-	-	-	-
Erie	86,000	-	-	-	-
Chicago	74,000	-	-	-	-
TOTAL U.S. LAKE PORTS	7,236,376	73,000	-	-	-
New York	568,649	6,595	-	-	-
New York Afloat	44,000	-	-	-	-
Albany	3,967,000	-	-	-	-
Norfolk	-	-	-	-	-
Galveston	-	-	-	-	-
Boston	41,371	-	-	-	-
Philadelphia	31,000	-	-	-	-
TOTAL U.S. ATLANTIC SBD. PORTS	4,652,000	6,595	-	-	-
TOTAL QUANTITY IN STORE	185,172,053	10,560,347	8,732,735	366,672	4,809,134

+ Estimated.



Grades of Canadian Grain in Store at Public, Semi-Public and Private (Head of the Lakes), Interior Public and Semi-Public, Vancouver-New Westminster, Churchill, Prince Rupert and Eastern Elevators for the period ending May 1, 1936.

	Fort William & Port Arthur Semi-Public and Private	Interior Public and Semi-Public Terminals	Vancouver New West- minster Pr. Rupert Elevators	Eastern Elevators Lake Ports	Eastern Elevators St. Lawrence Ports	Eastern Elevators Maritime Ports
<u>WHEAT</u>			<u>Bushels</u>			
No. 1 Hard	1,060,104	509,940	1,089,854	129,524	172,234	-
No. 1 Northern	18,086,551	267,976	3,481,537	15,171,442	1,474,183	1,688,674
No. 2 Northern	2,684,596	163,406	774,932	920,057	57,918	-
Old No. 2 Northern	1,804,623	-	8,375	8,999,589	8,987,198	144,264
No. 3 Northern	3,273,074	4,228	640,051	377,287	641,088	121,520
No. 4 Northern	4,163,830	1,328	1,230,866	168,763	93,185	-
No. 4 Special	2,846,064	-	-	147,794	118,394	-
No. 5 Wheat	2,423,009	292,162	1,878,907	67,086	232,847	19,723
No. 5 Special	1,732,541	-	-	175,637	51,045	-
No. 6 Wheat	1,826,918	72	858,737	114,520	41,447	-
No. 6 Special	1,514,528	-	-	326,532	-	-
Feed	3,205,199	-	761,409	453,444	127,025	690
No. 1 C.W. Garnet	45,638	17,275	37,025	-	-	-
No. 2 C.W. Garnet	324,513	28,438	86,107	-	529	-
No. 1 C.W. Durum	2,163,366	-	-	-	77,030	-
No. 2 C.W. Durum	1,342,178	-	-	-	8,288	-
No. 3 C.W. Durum	1,678,898	-	-	95,303	210,984	-
No. 4 C.W. Durum	918,919	-	-	176,500	1,000	-
No. 5 C.W. Durum	-	-	-	-	19,214	-
No. 6 C.W. Durum	-	-	-	-	792	-
Other Durum	1,369,657	-	-	1,000	10,580	-
Other	1,163,719	39,479	424,322	48,260	83,618	-
<u>TOTAL</u>	<u>53,627,925</u>	<u>1,324,304</u>	<u>11,272,122</u>	<u>27,372,738</u>	<u>12,408,599</u>	<u>1,974,871</u>
<u>OATS</u>						
No. 2 C.W.	111,947	11,687	8,488	168,973	8,744	-
No. 3 C.W.	316,150	6,535	26,247	-	78,296	-
Ex. No. 1 Feed	286,019	41,369	24,289	52,008	1,950	-
No. 1 Feed	954,865	15,788	260,677	173,506	101,176	-
No. 2 Feed	352,512	2,390	85,775	-	69,771	-
No. 3 Feed	97,779	-	-	-	43,863	-
Other	282,006	596,869	271,160	39,707	95,102	-
<u>TOTAL</u>	<u>2,401,278</u>	<u>674,638</u>	<u>676,636</u>	<u>444,194</u>	<u>398,902</u>	<u>-</u>
<u>BARLEY</u>						
2 C.W. 6 Row	1,394	-	-	-	-	-
3 Ex. C.W. 6 Row	1,091,163	-	-	47,141	219,695	-
3 Ex. C.W. 2 Row	30,218	5,936	-	-	-	-
3 Ex. C.W. Trebi	1,666	4,612	-	-	-	-
3 C.W.	1,127,522	4,836	3,304	2,736	261,301	-
4 C.W.	231,479	180	1,750	-	16,863	-
5 C.W.	418,541	675	3,116	5,493	37,710	-
6 C.W.	143,306	-	3,629	-	22,985	-
Other	270,647	75,654	-	323,212	30,707	-
<u>TOTAL</u>	<u>3,315,956</u>	<u>91,943</u>	<u>11,799</u>	<u>378,582</u>	<u>589,261</u>	<u>-</u>
<u>FLAXSEED</u>						
No. 1 C. W.	57,172	25	7	-	-	-
No. 2 C. W.	6,013	-	-	-	-	-
No. 3 C. W.	1,914	-	44	-	-	-
Other	4,282	-	124	-	-	-
<u>TOTAL</u>	<u>69,381</u>	<u>25</u>	<u>175</u>	<u>-</u>	<u>-</u>	<u>-</u>
<u>RYE</u>						
No. 1 C. W.	10,092	-	2,106	-	-	-
No. 2 C. W.	2,573,685	-	5,409	166,507	124,800	-
No. 3 C. W.	520,226	170	-	-	17,368	-
No. 4 C. W.	2,066	-	-	-	-	-
Other	104,605	-	-	5,100	-	-
<u>TOTAL</u>	<u>3,210,674</u>	<u>170</u>	<u>7,515</u>	<u>171,607</u>	<u>142,168</u>	<u>-</u>
<u>TOTAL QUANTITY IN STORE</u>	<u>62,625,214</u>	<u>2,091,080</u>	<u>11,968,247</u>	<u>28,367,121</u>	<u>13,538,930</u>	<u>1,974,871</u>

CANADIAN GRAIN IN STORE - COMPARATIVE STATEMENT, 1933 - 1936.

	W H E A T	OTHER GRAIN
	B u s h e l s	
<u>May 1, 1936.</u>		
Country Elevators - Manitoba	4,000,000	2,227,000
Saskatchewan	31,000,000	4,370,000
Alberta	19,500,000	2,416,000
TOTAL	54,500,000	9,013,000
Interior Private and Mill	6,100,000	2,511,000
Interior Public and Semi-Public Terms.	2,187,816	1,047,165
Vancouver-New Westminster	11,272,122	696,125
Prince Rupert	1,027,676	-
Churchill	2,280,823	-
Fort William and Port Arthur	53,627,325	8,997,289
In Transit Lakes	531,087	-
Eastern Elevs. - Lake Ports	27,372,738	994,383
Eastern Elevs. - Sbd. Ports	14,383,470	1,130,331
U. S. Lake Ports	7,236,376	73,000
U. S. Atlantic Seaboard Ports	4,652,020	6,595
TOTAL	185,172,053	24,468,888
<u>May 3, 1935.</u>		
Country Elevators - Manitoba	8,880,418	727,653
Saskatchewan	43,629,808	2,453,764
Alberta	29,470,088	1,891,702
TOTAL	81,980,314	5,073,119
Interior Private and Mill	7,023,905	2,553,119
Interior Public and Semi-Public Terms.	1,512,001	610,125
Vancouver-New Westminster	10,369,926	689,602
Victoria	927,747	-
Prince Rupert	206,631	-
Churchill	2,389,404	-
Fort William and Port Arthur	68,213,191	8,622,480
In Transit Lakes	1,115,465	434,737
Eastern Elevs. - Lake Ports	19,651,576	1,793,637
Eastern Elevs. - Sbd. Ports	8,946,325	2,043,782
U. S. Lake Ports	7,772,420	382,753
U. S. Atlantic Sbd. Ports	4,145,679	-
TOTAL	214,254,584	22,203,354
<u>May 4, 1934.</u>		
Country Elevators - Manitoba	8,127,793	1,567,816
Saskatchewan	47,661,515	3,549,323
Alberta	33,578,545	2,603,269
TOTAL	89,367,853	7,720,408
Interior Private and Mill	6,008,005	2,836,641
Interior Public and Semi-Public Terms.	1,174,672	450,460
Vancouver-New Westminster	8,850,969	641,620
Victoria	930,974	-
Prince Rupert	1,092,150	303
Churchill	2,475,764	-
Fort William and Port Arthur	75,203,738	12,602,871
In Transit Lakes	1,271,277	108,753
Eastern Elevs. - Lake Ports	6,703,598	545,896
Eastern Elevs. - Sbd. Ports	8,983,928	895,724
U. S. Lake Ports	74,159	-
U. S. Atlantic Sbd. Ports	821,162	76,506
TOTAL	202,958,249	25,879,182
<u>May 5, 1933.</u>		
Country Elevators - Manitoba	8,686,204	1,695,567
Saskatchewan	61,849,296	3,996,509
Alberta	33,388,845	3,544,173
TOTAL	103,924,345	9,236,249
Interior Private and Mill	6,001,497	1,471,474
Interior Public and Semi-Public Terms.	3,113,581	29,521
Vancouver-New Westminster	7,850,920	1,351,507
Victoria	815,111	1,713
Prince Rupert	301,695	-
Churchill	2,430,283	-
Fort William and Port Arthur	62,757,224	6,612,530
In Transit Lakes	7,461,242	814,898
Eastern Elevs. - Lake Ports	10,882,130	1,338,929
Eastern Elevs. - Sbd. Ports	7,332,326	2,226,655
U. S. Lake Ports	2,953,978	549
U. S. Atlantic Sbd. Ports	81,953	389,077
TOTAL	215,906,285	23,473,102

RECEIPTS AND SHIPMENTS OF GRAIN BY CLASSES OF ELEVATORS IN THE WEEK ENDING MAY 1, 1936.

	WHEAT	OATS	BARLEY	FLAXSEED	RYE
	B u s h e l s				
<hr/>					
<u>R E C E I P T S</u>					
Country Elevators x	1,058,433	265,251	78,363	9,207	25,227
Int. Private & Mill Elevx. x	5,863,918	713,771	217,249	44,417	13,905
Int. Pub. & Semi-Pub. Terms.	2,958	2,116	1,345	-	-
Vancouver-New Westminster	1,143,378	38,031	4,915	124	-
Fort William & Port Arthur	3,023,918	134,795	162,607	16,873	6,166
Eastern Elevators					
Georgian Bay Ports Vessel			Nil		
Lower Lake Ports Rail	1,996	54	3,592	-	-
St. Lawrence Ports Vessel	1,786,772	-	111,030	-	33,977
Rail	503,866	4,160	1,249	-	9,479
<u>S H I P M E N T S</u>					
Country Elevators x	5,863,918	713,771	217,249	44,417	13,905
Int. Private & Mill Elevs. x	722,648	177,175	111,906	3,430	376
Int. Pub. Semi-Pub. Terms.	342,345	104,235	58,568	-	-
Vancouver-New Westminster					
Vessel	1,294,109	-	-	-	-
Rail	7,226	10,030	2,168	-	1,428
Fort William-Port Arthur	18,284	39,581	4,991	-	-
Eastern Elevators					
Georgian Bay Ports Rail	1,173,740	106,000	-	-	17,239
Lower Lake Ports Vessel	689,563	-	111,130	-	-
Rail	69,475	15,438	5,393	-	4,550
St. Lawrence Ports Vessel	2,370,555	1,294	33,261	-	-
Rail	70,503	47,366	31,935	-	-

STOCKS OF UNITED STATES GRAIN IN CANADA MAY 1, 1936.

	WHEAT	OATS Bushels	RYE	CORN	SOYA BEANS
Midland Aberdeen	-	-	-	470	-
Port Colborne Maple Leaf	-	-	-	18	-
Montreal Harbour Commrs. Nos. 1, 2 and B.	-	-	-	-	469
TOTAL	-	-	-	488	469
Same period previous year	1,048,912	14,842	366	4,484,604	-

RECEIPTS AND SHIPMENTS OF UNITED STATES GRAIN IN CANADA MAY 1, 1936.

	R E C E I P T S		S H I P M E N T S	
	Water	Rail	Water	Rail
	L O W E R L A K E P O R T S			
U. S. Corn	-	-	-	46

STOCKS OF FOREIGN GRAIN IN CANADA MAY 1, 1936.

	ARGENTINE CORN	SOUTH AFRICAN CORN	TOTAL CORN	ARGENTINE FLAXSEED	POLISH & ARGENTINE RYE
Sarnia	-	16,960	16,960	-	-
Port Colborne, M.L.	63,906	11,708	75,614	-	-
Toronto	-	303,023	303,023	-	-
Montreal	-	230,175	230,175	31,174	-
Dominion Elev. Co.	-	82,038	82,038	-	-
Quebec	-	82,509	82,509	-	-
Saint John	-	109,244	109,244	-	-
Halifax	10,145	89,780	99,925	-	-
TOTAL	74,051	925,437	999,488	31,174	-
Same period previous year	65,367	2,876,211	2,941,578	206,352	1,147,121

RECEIPTS AND SHIPMENTS OF FOREIGN GRAIN IN CANADA MAY 1, 1936.

	ARGENTINE CORN		SOUTH AFRICAN CORN		ARGENTINE FLAXSEED	
	Receipts	Shipments	Receipts	Shipments	Receipts	Shipments
Georgian Bay Ports	-	-	-	26,000	-	-
Lower Lake Ports	-	7,039	-	24,312	-	-
St. Lawrence Ports	-	-	-	105,823	-	50,000
Seaboard Ports	-	-	-	12,000	-	-

STOCKS, RECEIPTS AND SHIPMENTS OF THE COUNTRY ELEVATORS IN THE WESTERN DIVISION
IN THE WEEK ENDING APRIL 24, 1936.

	WHEAT	OATS	BARLEY	FLAXSEED	RYE
	B u s h e l s				
<u>COUNTRY ELEVATORS</u>					
<u>STOCKS IN STORE</u>					
Manitoba	4,837,124	518,972	1,536,306	27,403	384,945
Saskatchewan	33,631,554	2,550,223	1,075,935	235,467	797,938
Alberta	21,125,950	2,100,457	325,889	31,156	73,554
TOTAL	59,584,628	5,169,652	2,938,130	294,026	1,256,437
Total - a week ago	64,391,742	5,620,295	3,078,278	329,276	1,245,200
a year ago	85,324,319	3,575,157	1,481,361	222,246	537,751
<u>RECEIPTS DURING WEEK</u>					
Manitoba	53,855	11,095	26,887	337	2,633
Saskatchewan	614,324	148,757	39,676	6,852	19,843
Alberta	390,254	105,399	11,800	2,018	2,751
TOTAL	1,058,433	265,251	78,363	9,207	25,227
Total - week ago	777,330	249,106	103,586	3,676	20,506
year ago	1,043,514	236,145	58,139	3,527	646
<u>SHIPMENTS DURING WEEK</u>					
Manitoba	385,678	32,675	49,154	378	2,421
Saskatchewan	3,989,160	392,942	137,630	43,084	9,053
Alberta	1,489,080	288,154	30,465	955	2,431
TOTAL	5,863,918	713,771	217,249	44,417	13,905
Total - a week ago	4,757,444	705,062	188,756	24,586	25,676
a year ago	5,783,941	2,037,588	151,641	6,082	19,653

TOTAL RECEIPTS AT COUNTRY ELEVATORS AND PLATFORM LOADINGS# IN THE
PERIOD AUGUST 1, 1935 TO APRIL 24, 1936.

	W H E A T	OTHER GRAIN
	B u s h e l s	
Manitoba	16,297,466	13,004,133
Saskatchewan	106,016,998	20,958,797
Alberta	74,814,188	11,182,006
Total 1935 - 1936	197,128,652	45,144,936
Same period 1934 - 1935	200,772,320	45,920,575

#Platform Loadings to April 21, 1936.

STOCKS IN STORE, RECEIPTS AND SHIPMENTS AT THE CANADIAN GOVERNMENT INTERIOR TERMINAL
ELEVATORS, DURING THE WEEK ENDING MAY 1, 1936

	WHEAT	OATS	BARLEY Bushels	FLAXSEED	RYE
<u>STOCKS IN STORE</u>					
Calgary	298,107	544,178	13,220	-	-
Edmonton	496,833	120,339	62,434	-	-
Lethbridge	510,436	-	-	-	-
Moose Jaw	16,026	6,546	14,809	5	170
Saskatoon	2,902	3,575	1,480	20	-
TOTAL	1,324,304	674,638	91,943	25	170
<u>RECEIPTS</u>					
Calgary	999	284	-	-	-
Edmonton	Minus 3	-	1,270	-	-
Lethbridge	-	-	-	-	-
Moose Jaw	1,962	1,832	75	-	-
Saskatoon	-	-	-	-	-
TOTAL	2,958	2,116	1,345	-	-
<u>SHIPMENTS - RAIL</u>					
Calgary	21,274	95,983	25,083	-	-
Edmonton	172,209	3,180	2,021	-	-
Lethbridge	97,159	-	-	-	-
Moose Jaw	1,567	5,072	-	-	-
Saskatoon	2,904	-	-	-	-
TOTAL	295,113	104,235	27,104	-	-

Minus adjustment in receipts due to cleaning.

RECEIVED FROM THE UNITED STATES DEPARTMENT OF THE INTERIOR, BUREAU OF LAND MANAGEMENT, DENVER, COLORADO, MAY 1, 1900.

DATE	DESCRIPTION	AMOUNT	PAID TO	REMARKS
1900
1900
1900
1900
1900

TOTAL ...

DATE	DESCRIPTION	AMOUNT	PAID TO	REMARKS
1900
1900
1900
1900
1900

TOTAL ...

DATE	DESCRIPTION	AMOUNT	PAID TO	REMARKS
1900
1900
1900
1900
1900

TOTAL ...

...

STOCKS, RECEIPTS AND SHIPMENTS OF THE PACIFIC COAST ELEVATORS
IN THE WEEK ENDING MAY 1, 1936.

	WHEAT	OATS	BARLEY Bushels	FLAXSEED	RYE
<u>STOCKS IN STORE</u>					
Vancouver-New Westminster	11,272,122	676,636	11,799	175	7,515
Prince Rupert	1,027,676	-	-	-	-
Churchill	2,280,823	-	-	-	-
<u>RECEIPTS DURING WEEK</u>					
Vancouver-New Westminster	1,143,378	38,031	4,915	124	-
<u>SHIPMENTS DURING WEEK</u>					
Vancouver-New Westminster					
Ocean	1,294,109	-	-	-	-
Rail	7,226	10,030	2,168	-	1,428

DAILY QUOTATIONS AND WEEKLY AVERAGES OF CASH WHEAT BY GRADES IN CENTS AND
EIGHTHS OF A CENT PER BUSHEL

IN THE WEEK ENDING MAY 2, 1936.

(Basis Vancouver, B.C.)

	April 27 ¢	April 28 ¢	April 29 ¢	April 30 ¢	May 1 ¢	May 2 ¢	Weekly Average ¢
No. 1 Hard	78/3	78/6	78/2	78/7	77/4	76/6	78/1
No. 1 Northern	77/7	78/2	77/6	78/3	77	76/2	77/5
No. 2 Northern	76/3	76/6	76/2	76/7	75/4	74/6	76/1
No. 3 Northern	73/1	73/4	73	73/3	72	71/2	72/6
No. 4 Northern	69/5	70	69/4	70/3	69	68/2	69/4
No. 5	62/5	63	62/4	63/3	62	61/2	62/4
No. 6	50/3	50/6	51/4	52/3	51	50/2	51
Feed	44/1	44/4	44	44/3	43	42/2	43/6
No. 1 Garnet	73/7	74/2	73/6	74/3	73	72/2	73/5
No. 2 Garnet	72/7	73/4	72/6	73/3	72	71/2	72/5
Track	77/7	78/2	77/6	78/3	77	76/2	77/5

DAILY QUOTATIONS AND WEEKLY AVERAGES OF CASH GRAIN BY GRADES ON
WINNIPEG AND TORONTO MARKETS

Week ending May 2, 1936.

	April 27 \$ ¢	April 28 \$ ¢	April 29 \$ ¢	April 30 \$ ¢	May 1 \$ ¢	May 2 \$ ¢	Weekly Average \$ ¢
<u>WHEAT</u>							
(Basis Fort William and Port Arthur)							
No. 1 Man. Hard	.81/2	.81/4	.81	.81/3	.80	.79/5	.80/6
No. 1 Man. Northern	.79/5	.79/7	.79/3	.79/7	.78/4	.77/7	.79/2
No. 2 Man. Northern	.77/5	.77/7	.77/3	.77/7	.76/4	.75/7	.77/2
No. 3 Man. Northern	.74/1	.74/3	.73/7	.74/2	.72/7	.72/2	.73/5
No. 4 Man. Northern	.70/3	.70/5	.70	.70/4	.69/1	.68/4	.69/7
No. 5	.64/2	.64/4	.64	.64/3	.63	.62/3	.63/6
No. 6	.52/2	.53	.53	.53/7	.52/4	.51/7	.52/6
Feed	.44/6	.45	.44/4	.44/7	.43/4	.42/7	.44/2
No. 1 Garnet	.75/6	.76	.75/4	.75/7	.74/4	.73/7	.75/2
No. 2 Garnet	.73/6	.74	.73/4	.73/7	.72/4	.71/7	.73/2
No. 4 Special	.62/4	.62/6	.62/2	.62/3	.60/6	.60/1	.61/6
No. 5 Special	.56/4	.56/6	.56/2	.56/3	.54/6	.54/1	.56/6
No. 6 Special	.49	.49/2	.48/6	.49/1	.47/4	.46/7	.48/3
Rejected No. 1 Northern	.70/6	.71	.70/4	.70/7	.69/4	.68/7	.70/5
No. 2 Northern	.68/6	.69	.68/4	.68/7	.67/4	.66/7	.68/5
No. 3 Northern	.65/6	.66	.65/4	.65/7	.64/4	.63/7	.65/5
Tough No. 1 Hard	.79/4	.79/6	.79/2	.79/5	.78/2	.77/7	.79/2
No. 1 Northern	.78/5	.78/7	.78/3	.78/7	.77/4	.76/7	.78/2
No. 2 Northern	.75/5	.75/7	.75/3	.75/7	.74/4	.73/7	.75/2
No. 3 Northern	.72/1	.72/3	.71/7	.72/2	.70/8	.70/2	.71/5
Smutty No. 1 Hard	.73/6	.74	.73/4	.73/7	.72/4	.71/7	.73/2
No. 1 Northern	.73/6	.74	.73/4	.73/7	.72/4	.71/7	.73/2
No. 2 Northern	.71/6	.72	.71/4	.71/7	.70/4	.69/7	.71/2
No. 3 Northern	.67/6	.68	.67/4	.67/7	.66/4	.65/7	.67/2
Durum No. 1	.74/2	.74/4	.74	.74/3	.73	.72/3	.73/6
No. 2	.70/2	.70/4	.70	.70/5	.69/4	.68/7	.70
No. 3	.64/2	.64/4	.64	.64/5	.63/4	.63/7	.64/1
A. R. W. No. 1	.69/6	.70	.69/4	.69/7	.68/4	.67/7	.69/2
A. W. No. 2	.67/6	.68	.67/4	.67/7	.66/4	.65/7	.67/2
No. 3	.65/6	.66	.65/4	.65/7	.64/4	.63/7	.65/2
<u>OATS</u>							
No. 2 C. W.	.33/2	.33	.33/2	.32/6	.33/3	.34/3	.33/3
No. 3 C. W.	.30	.29/6	.30	.29/4	.29/5	.30/1	.29/7
Ex. No. 1 Feed	.29/2	.29	.29/2	.28/6	.28/7	.29/3	.29/1
No. 1 Feed	.26/2	.26	.26/2	.25/6	.25/7	.26/3	.26/1
No. 2 Feed	.24/2	.24	.24/2	.23/6	.23/7	.24/5	.24/1
No. 3 Feed	.22	.21/6	.22	.21/4	.21/5	.22/1	.21/7
<u>BARLEY</u>							
2 Row	.42/4	.42/4	.42/4	.41/4	.43	.42	.42/3
6 Row	.43	.43	.43	.42	.43/4	.42/4	.42/7
No. 3 C. W.	.37/3	.37/3	.37/3	.36/4	.38	.37	.37/2
No. 4 C. W.	.36/6	.36/6	.36/6	.35/6	.37/2	.36/2	.36/5
No. 5 C. W.	.34/4	.34/4	.34/4	.33/4	.35	.34	.34/3
No. 6 C. W.	.32	.32	.32	.31	.32/4	.31/4	.31/7
<u>RYE</u>							
No. 2 C. W.	.39/6	.40	.39/6	.38/7	.38/4	.38/7	.39/2
No. 3 C. W.	.35/7	.37/1	.36/7	.35/7	.36	.36/7	.36/4
Rejected No. 2 C. W.	.33/3	.34/1	.33/7	.32/7	.32/4	.32/7	.33/2
No. 4 C. W.	.33/3	.34/1	.33/7	.32/7	.32/4	.32/7	.33/2
Ergoty	.32/3	.33/1	.32/7	.31/7	.31/4	.31/7	.32/2
<u>FLAXSEED</u>							
No. 1 C. W.	1.49/3	1.48/1	1.47/5	1.47/2	1.46/6	1.46/4	1.47/5
No. 2 C. W.	1.45/3	1.44/1	1.43/5	1.43/2	1.42/6	1.42/4	1.43/5
No. 3 C. W.	1.34/4	1.33/2	1.32/6	1.32/2	1.31/6	1.31/4	1.32/5
No. 4 C. W.	1.25/4	1.24/2	1.23/6	1.23/2	1.22/6	1.22/4	1.21/5
<u>ONTARIO - TORONTO</u>							
Wheat, good milling	.71-.74	.71-.74	.71-.74	.71-.74	.71-.74	.71-.74	.71-.74
Oats	.25-.28	.25-.28	.25-.28	.25-.28	.25-.28	.25-.28	.25-.28
Barley	.35-.38	.35-.38	.35-.38	.35-.38	.35-.38	.35-.38	.35-.38
Corn	.40-.42	.40-.42	.40-.42	.40-.42	.40-.42	.40-.42	.40-.42
Rye	.40-.42	.40-.42	.40-.42	.40-.42	.40-.42	.40-.42	.40-.42
Malting Barley	.45-.50	.45-.50	.45-.50	.45-.50	.45-.50	.45-.50	.45-.50
Milling Oats	.29-.32	.29-.32	.29-.32	.29-.32	.29-.32	.29-.32	.29-.32
F.O.B. Shipping point.							

INSPECTIONS - EASTERN DIVISION
APRIL, 1936 AND 1935.

	Month of April			Month of April	
	1936	1935		1936	1935
	<u>Bushels</u>			<u>Bushels</u>	
<u>CANADIAN GRAIN</u>			<u>BUCKWHEAT</u>		
<u>WHITE WINTER WHEAT</u>			No. 2	-	1,250
No. 3	23,000	-	No. 3	2,500	6,250
No. 4	10,000	-	No. 4	-	1,250
Rejected	1,000	-	Damp No. 2	-	5,228
<u>RED WINTER WHEAT</u>			Damp No. 3	1,415	4,159
No. 2	1,000	-	Tough rej. musty	1,300	-
<u>MIXED WINTER WHEAT</u>			Tough No. 2	3,850	-
No. 1	1,000	-	Tough No. 3	1,250	11,447
No. 2	20,000	1,000	Tough rej.heated	-	3,250
TOTAL	56,000	1,000	TOTAL	10,315	32,834
<u>OATS</u>			<u>CORN</u>		
No. 2	-	3,300	No. 2 yellow	51,000	6,000
No. 3	6,890	19,521	No. 3 yellow	6,000	-
No. 4	27,500	12,600	No. 3 mixed	1,000	-
No. 3 tough	2,800	4,800	Rejected	1,000	-
TOTAL	37,190	40,221	TOTAL	59,000	6,000
<u>BARLEY</u>			<u>RECAPITULATION OF CANADIAN GRAIN</u>		
No. 3	10,000	175,511	Wheat	55,000	1,000
No. 3 Ex.	2,500	27,431	Oats	37,190	40,221
No. 4	1,250	6,250	Barley	13,750	209,192
TOTAL	13,750	209,192	Buckwheat	10,315	32,834
			Corn	59,000	6,000
			Mixed Grain	-	62,530
			TOTAL	175,255	351,777
				</	

INSPECTIONS - EASTERN DIVISION
9 MONTHS ENDING APRIL, 1936 AND 1935.

9 Months ending April			9 Months ending April		
1936			1935		
Bushels			Bushels		
<u>CANADIAN GRAIN</u>					
<u>Wheat</u>			<u>RYE</u>		
Commercial Grades			No. 2	10,000	3,000
No. 1	110,000	6,000	No. 3	-	1,000
No. 2	15,700	1,000	TOTAL	10,000	4,000
No. 3	16,538	-	<u>BUCKWHEAT</u>		
No. 1 Tough	12,000	-	No. 2	1,250	16,250
<u>WHITE WINTER</u>			No. 3	70,142	65,300
No. 2	8,000	3,000	No. 4	7,500	3,750
No. 3	434,000	-	No. 2 tough	19,176	33,925
No. 4	268,050	-	No. 3 tough	87,882	78,872
Rejected	22,000	-	No. 4 tough	20,200	4,400
Spring & Winter	1,000	-	Tough rej. musty	7,928	1,100
<u>RED WINTER</u>			Tough rej. heated	2,915	3,250
No. 2	11,000	8,000	No. 2 damp	5,250	52,065
<u>MIXED WINTER</u>			No. 3 damp	27,377	64,684
No. 1	4,000	-	No. 4 damp	7,300	5,650
No. 2	237,633	54,000	Damp rej. musty	6,200	6,200
No. 3	50,141	3,000	Rejected	1,250	-
No. 4	9,750	-	TOTAL	264,370	335,446
Rejected	-	6,000	<u>Corn</u>		
Rejected No. 4	1,040	-	No. 2 white	1,000	-
Rejected sprouted	1,300	-	No. 3 white	1,000	-
Rejected No. 3 sprouted	14,345	-	No. 2 yellow	236,000	72,000
Rejected No. 4 sprouted	7,195	-	No. 3 yellow	42,900	1,000
Tough rej. No. 3 sprouted	3,800	-	No. 2 mixed	3,000	-
Tough rej. No. 4 sprouted	2,400	-	No. 3 mixed	2,000	-
Tough rej. No. 3	-	-	Damp	1,000	1,400
sprouted & heating	1,100	-	Rejected	9,000	-
Tough rej. No. 4	-	-	TOTAL	295,900	74,400
sprouted & heating	2,100	-	<u>MIXED GRAIN</u>		
Tough rej. No. 4	1,100	-	Oats & Barley	90,437	-
Tough No. 3	13,290	-	Oats, wheat & barley	13,835	-
Tough No. 4	1,000	-	Weevily	8,000	-
TOTAL	1,248,482	81,000	Tough	1,900	-
<u>OATS</u>			Damp	1,000	-
No. 2	81,244	330,766	TOTAL	115,172	87,120
No. 3	1,440,507	465,125	<u>RECAPITULATION OF CANADIAN GRAIN</u>		
No. 4	610,294	110,700	Wheat	1,248,482	81,000
Tough No. 2	5,050	-	Oats	2,250,654	923,491
Tough No. 3	52,100	12,500	Barley	309,650	979,242
Tough No. 4	32,890	3,000	Rye	10,000	4,000
Tough rej. musty	1,500	1,400	Buckwheat	264,370	335,446
Tough rej. musty heating	1,600	-	Corn	295,900	74,400
Rejected	9,000	-	Mixed grain	115,172	87,120
Rejected musty	11,269	-	Sample grain	37,732	-
Weevily	5,200	-	TOTAL	4,531,960	2,484,699
TOTAL	2,250,654	923,491			
<u>BARLEY</u>					
No. 2	-	1,250			
No. 3	235,550	714,361			
No. 3 Ex.	59,100	194,931			
No. 3 Tough	1,250	1,250			
No. 4	26,250	66,250			
Rejected	7,500	-			
Tough rej. musty	-	1,200			
TOTAL	309,650	979,242			

STATISTICS CANADA LIBRARY
BIBLIOTHÈQUE STATISTIQUE CANADA



1010675009