

DOMINION BUREAU
OF STATISTICS
SEP 14 1935
PROPERTY OF THE
LIBRARY

CANADA
DEPARTMENT OF TRADE AND COMMERCE
DOMINION BUREAU OF STATISTICS
AGRICULTURAL BRANCH

Vol. 16

No. 6

Historical File Copy

CANADIAN GRAIN STATISTICS

Week ending

SEPTEMBER 13, 1935

[Records for Western Inspection Division supplied by Board of Grain Commissioners for Canada]

Published by Authority of the HON. R.B. HANSON, K.C.,
Minister of Trade and Commerce.

+++

OTTAWA

1935

I N D E X

General Summary	1 - 6
Canadian Grain in Store by Elevators	7
Canadian Grain in Store by Grades	8
Comparative Statement of Grain in Store	9
U. S. Grain in Store, receipts and shipments	10
Receipts, Shipments and Quantities in Store at Country Elevators Western Division	11
Receipts, Shipments and Quantities in Store at Interior, Terminal Elevators and receipts and shipments at Eastern Elevators	12
Receipts, Shipments and Quantities in Store at Pacific Elevators and Vancouver Prices	13
Daily and Weekly Average Prices of Grain at Fort William and Toronto for the week ending September 14, 1935	14
Receipts and shipments of Canadian Grain at Country Elevators and Platform Loadings also in Interior, Vancouver-New Westminster, Victoria Prince Rupert and Churchill Elevators, month of August, 1935	15
Exports of Grain, Wheatflour and Millfeed by Countries of Destination, August, 1935	16 - 17
Receipts and shipments of each kind of grain at Fort William - Port Arthur, separately, during the Crop Year 1934 - 35	18
Receipts and shipments of each kind of grain at Vancouver, New Westminster, Prince Rupert and Victoria, B. C. during the Crop Year, 1934 - 35	19

DEPARTMENT OF TRADE AND COMMERCE
DOMINION BUREAU OF STATISTICS - CANADA
AGRICULTURAL BRANCH

(Issued September 20, 1935)

Dominion Statistician:	R. H. Coats, LL.D., F.R.S.C., F.S.S.(Hon.)
Chief, Agricultural Branch:	T. W. Grindley, Ph.D.
Assistant Chief, Agricultural Branch:	W. Dougan.

WHEAT STOCKS IN STORE

Canadian wheat in store for the week ending September 13 shows an increase of 7,807,703 bushels as compared with the previous week and a decrease of 11,447,208 bushels when compared with the corresponding week in 1934. The visible supply was reported as 205,929,171 bushels as compared with the revised figure of 198,121,468 bushels for the previous week and 217,376,379 bushels for the week ending September 14, 1934.

Canadian wheat in the United States amounted to 17,810,777 bushels, a net decrease of 151,876 bushels from the previous week when 17,962,653 bushels were reported. The Canadian wheat in store in the United States is located at the following ports: Buffalo 14,541,159; Erie 27,000; New York 518,949; Albany 1,399,000; New Orleans 4,000; Duluth 1,188,669 and Galveston 132,000 bushels. Duluth increased her Canadian wheat stocks 587,011 bushels over those of the previous week, thus being the only port to show an increase. Decreases are shown in the Canadian wheat in store at Buffalo of 564,989; New York 99,898; Galveston 68,000 and New Orleans 6,000 bushels. The stocks in Albany and Erie remained the same as in the previous week. For the same week a year ago the Canadian wheat in the United States amounted to 11,579,502 bushels distributed as follows: Buffalo 6,199,081; Erie 1,575,000; New York 1,117,359; Duluth 399,062; Albany 2,236,000 and Philadelphia 53,000 bushels.

United States wheat in Canada was shown as 2 bushels compared with the same amount at the corresponding date a year ago.

Wheat in transit on the lakes is reported as 3,360,908 bushels compared with 3,581,803 bushels for the previous week.

PRIMARY MOVEMENT

Wheat marketings in the Prairie Provinces for the week ending September 6 amounted to 14,171,639 bushels, an increase of 9,369,130 bushels over the previous week's total when 4,802,509 bushels were marketed. During the corresponding week a year ago the receipts were 15,573,590 bushels. By provinces the receipts for the period ending September 6, 1935 were as follows, figures within brackets being those for 1934: Manitoba 2,098,352 (2,985,337); Saskatchewan 8,682,159 (7,837,653); Alberta 3,391,128 (4,750,600) bushels.

Marketings of wheat in the three Prairie Provinces from August 1 to September 6 as compared with the same period in 1934 were as follows, figures within brackets being those for 1934: Manitoba 3,661,833 (13,423,695); Saskatchewan 12,946,199 (20,019,307); Alberta 7,745,460 (13,657,625) bushels.

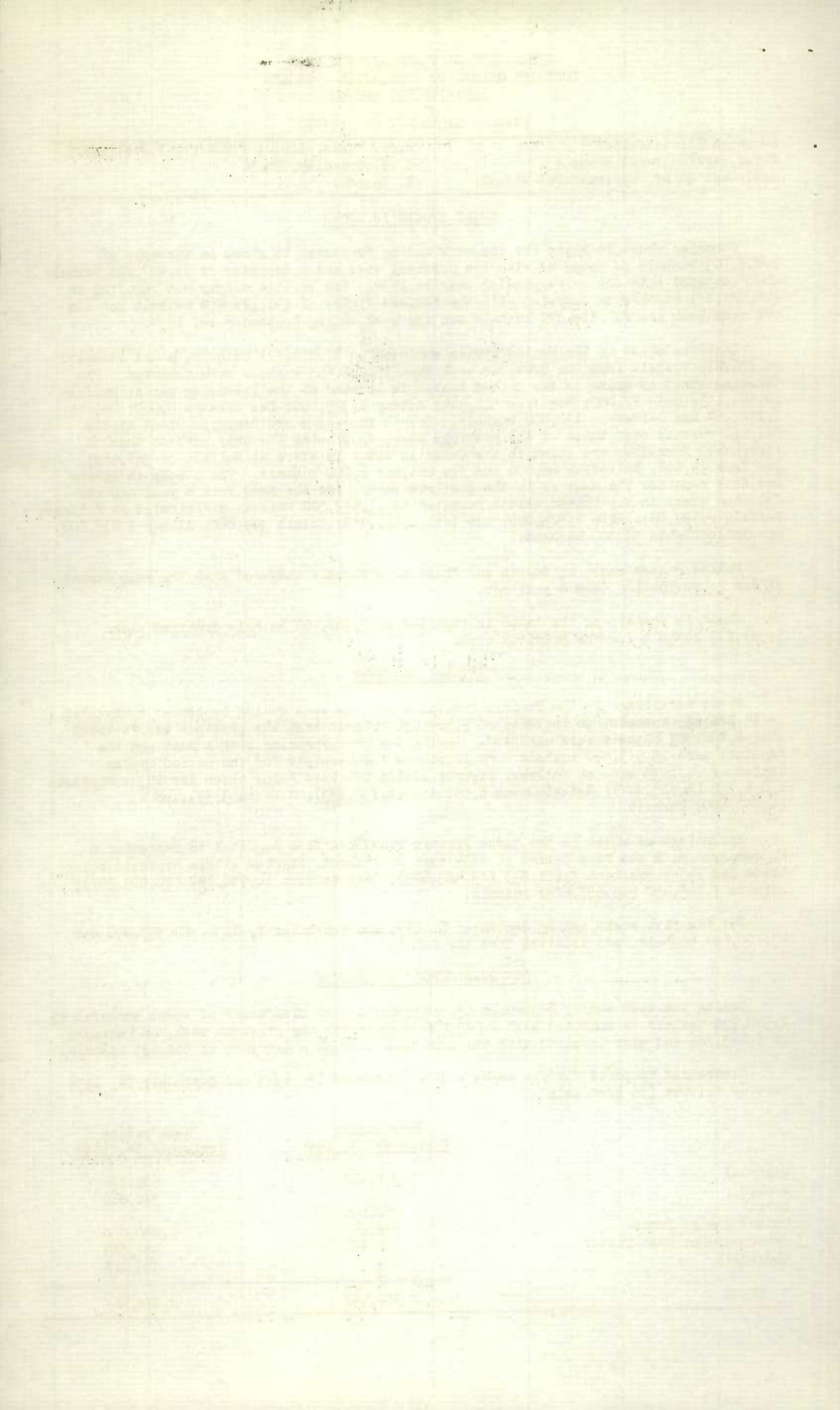
For the five weeks ending September 6, 1935 and September 7, 1934, 24,353,490 and 47,100,627 bushels were received from the farms.

OVERSEAS EXPORT CLEARANCES

During the week ending September 13, 1935 the export clearances of wheat amounted to 2,310,992 bushels as compared with 1,245,806 bushels for the previous week, an increase of 1,065,186 and when compared with the same week in 1934 a decrease of 567,633 bushels.

Clearances by ports for the weeks ending September 13, 1935 and September 14, 1934 were as follows (in bushels):

	Week ending September 13, 1935	Week ending September 14, 1934
Montreal	1,338,192	601,176
Quebec	-	370,860
Sorel	200,000	-
United States Ports	672,000	1,050,000
Vancouver-New Westminster	100,800	497,583
Churchill	-	359,006
TOTAL	2,310,992	2,878,625



The following table shows the export clearances of Canadian wheat by ports since the commencement of the present crop year along with comparative figures for the same period in 1934-35 (in bushels):

	<u>1935 - 36</u>	<u>1934 - 35</u>
Montreal	5,516,748	6,129,935
Quebec	49,315	654,860
Sorel	922,987	901,878
United States Ports	2,080,000	4,962,000
Vancouver	2,039,844	3,948,439
Churchill	600,000	2,417,193
TOTAL	11,208,894	19,014,305

Number of cars of grain unloaded at Fort William and Port Arthur over the C.P.R. and C.N.R. for the month of August, 1935.

	<u>Month of August, 1935.</u>		
	<u>C.P.R.</u>	<u>C.N.R.</u>	<u>TOTAL</u>
Wheat	4,525	4,727	9,252
Oats	40	49	89
Barley	105	107½	212½
Flaxseed	6½	9	15½
Rye	46½	40	86½
TOTAL	4,723	4,932½	9,655½

Number of cars of grain unloaded at Vancouver, B. C. over the different railroads for the month of August, 1935.

	<u>VIA C.P.R.</u>	<u>VIA C.N.R.</u>	<u>TOTAL</u>
Wheat	615	422	1,037
Oats	7½	8½	16
Barley	-	5	5
Flaxseed	1	½	1½
Rye	½	-	½
Mixed Grain	-	1	1
TOTAL	624	437	1,061

CANADIAN GRAIN STATISTICS - WEEK ENDING SEPTEMBER 13, 1935.

Returns received as to stocks of grain in store for the week ending September 13, 1935 show an increase of 9,499,003 bushels compared with the revised figure of the previous week. Stocks in store were as follows:- wheat 205,929,171, oats 7,186,768, barley 5,592,856, flaxseed 218,257 and rye 3,608,719 bushels, a total of 222,535,771 bushels. Increases were noted in wheat of 7,807,703, oats 814,495, barley 733,946, flaxseed 11,775 and rye 131,084 bushels. At a comparable date last year stocks in store were as follows:- wheat 217,376,379, oats 11,453,746, barley 12,497,254, flaxseed 507,300 and rye 4,216,113 bushels, a total of 246,050,792 bushels.

WESTERN COUNTRY ELEVATORS:- Grain stocks show an increase of 7,146,121 bushels, composed of wheat 6,361,544, oats 511,960, barley 210,547, flaxseed 7,676 and rye 54,394 bushels.

The following table shows the quantities of grain in store at the Country Elevators in each of the Prairie Provinces on September 6, 1935 with comparison for the previous week and the same period 1934.

	<u>MANITOBA</u>	<u>SASKATCHEWAN</u>	<u>ALBERTA</u>	<u>TOTAL</u>
	<u>B u s h e l s</u>			
Wheat	4,356,697	25,396,778	18,944,108	48,697,583
Oats	280,760	965,806	528,629	1,775,195
Barley	948,781	616,406	144,423	1,709,610
Flaxseed	4,318	61,752	11,601	77,671
Rye	195,080	288,763	37,670	521,513
TOTAL	5,785,636	27,329,505	19,666,431	52,781,572
Previous week	4,530,638	22,890,780	19,268,014	46,689,432
Same period 1934	9,307,325	45,428,078	30,161,331	84,896,734

The receipts and shipments at the Country Elevators for the week ending September 6, 1935 compared with the previous week and the same period 1934 were as follows:-

	<u>R E C E I P T S</u>			<u>S H I P M E N T S</u>		
	Previous week	Week ending Sept. 6, 1935	Week ending Sept. 7, 1934	Previous week	Week ending Sept. 6, 1935	Week ending Sept. 7, 1934
Wheat	4,633,337	13,875,708	13,999,344	3,665,407	9,165,217	9,477,920
Oats	232,806	819,676	838,403	144,286	285,085	938,897
Barley	476,600	1,302,859	1,009,114	184,033	567,039	792,860
Flaxseed	2,206	6,418	8,193	2,721	2,476	1,550
Rye	110,669	195,661	93,531	50,395	89,361	59,871
TOTAL	5,455,618	16,200,322	15,948,585	4,046,842	10,109,178	11,271,098

Platform Loadings shown by Prairie Provinces for the period ending September 7, 1935 were as follows:-

	<u>WHEAT</u>	<u>OTHER GRAIN</u>	<u>TOTAL</u>
	<u>B u s h e l s</u>		
Manitoba	215,332	232,241	447,573
Saskatchewan	24,712	9,266	33,978
Alberta	55,887	6,775	62,662
TOTAL	295,931	248,282	544,213
Period ending Sept. 7, 1934	1,574,246	429,701	2,003,947
+Increase -Decrease	-1,278,315	- 181,419	- 1,459,734

INTERIOR PUBLIC AND SEMI-PUBLIC TERMINALS:- Stocks for the week show a net increase of 407,889 bushels. Increases are noted in wheat of 404,469, oats 296, barley 3,161 and rye 6 bushels while flaxseed decreased 43 bushels.

VANCOUVER-NEW WESTMINSTER ELEVATORS:- Grain stocks at these elevators show a net increase of 736,120 bushels. Increases are noted in wheat of 722,567, oats 15,785 and flaxseed 90 bushels while barley and rye decreased 1,250 and 1,072 bushels respectively.

PRINCE RUPERT AND CHURCHILL ELEVATORS:- Grain stocks remain same as previous week.

PUBLIC AND PRIVATE (FORT WILLIAM AND PORT ARTHUR):- Grain in store shows an increase of 1,018,639 bushels, composed of wheat 363,560, oats 132,804, barley 428,549, flaxseed 2,696 and rye 91,030 bushels.

IN TRANSIT LAKES:- Grain in transit shows a net decrease of 190,424 bushels. Decreases are noted in wheat of 220,895, barley 34,886 and rye 3,059 bushels, while oats increased 68,416 bushels.

Stocks in Store at the Head of the Lakes compared with the same week last year were as follows:-

	Week ending Sept. 13, 1935	Week ending Sept. 14, 1934	+ Increase - Decrease
Wheat	48,736,919	57,460,188	- 8,723,269
Oats	3,782,935	1,479,602	+ 2,303,333
Barley	1,580,206	3,496,800	- 1,916,594
Flaxseed	125,969	342,328	- 216,359
Rye	2,476,536	2,433,697	+ 42,839

The receipts (including transfers) at the Head of the Lakes for the period ending September 13, 1935 with comparative figures for the same week last year were as follows:-

	Week ending Sept. 13, 1935	Week ending Sept. 14, 1934	+ Increase - Decrease
Wheat	5,254,336	8,061,672	- 2,807,336
Oats	179,369	311,430	- 132,061
Barley	564,623	1,126,730	- 562,107
Flaxseed	2,603	653	+ 1,945
Rye	91,754	65,686	+ 26,068

The shipments at the Head of the Lakes for the period ending September 13, 1935 with comparative figures for the same week last year were as follows:-

	Week ending Sept. 13, 1935	Week ending Sept. 14, 1934	+ Increase - Decrease
Wheat	4,993,192	7,093,393	- 2,100,201
Oats	90,223	355,643	- 265,425
Barley	140,092	451,259	- 311,167
Flaxseed	-	-	-
Rye	-	194,459	- 194,459

Preliminary figures showing receipts and shipments at the Head of the Lakes also Vancouver-New Westminster, Prince Rupert, Victoria and Churchill for the period August 1, 1935 to September 13, 1935 compared with the same period last year.

	FORT WILLIAM & PORT ARTHUR		VANCOUVER - NEW WESTMINSTER	
	Receipts	Shipments	Receipts	Shipments
Wheat	20,872,651	44,292,250	2,799,834	2,089,860
Oats	373,223	546,387	62,860	26,716
Barley	980,061	502,953	4,606	7,968
Flaxseed	20,779	72,077	705	614
Rye	277,635	99,785	240	1,071
TOTAL	22,524,399	45,513,452	2,863,245	2,126,229
Same period last year	27,200,038	30,279,301	8,609,196	4,170,595
+Increase -Decrease	- 4,675,639	+15,234,151	-5,740,951	- 2,044,366

	PRINCE RUPERT		VICTORIA	
	Receipts	Shipments	Receipts	Shipments
TOTAL	-	-	-	-
Same period last year	-	-	-	1,333
+Increase -Decrease	-	-	-	-1,333

	CHURCHILL	
	Receipts	Shipments
TOTAL	8,822	600,000
Same period last year	1,151,556	2,421,269
+Increase - Decrease	- 1,142,734	- 1,821,269

INTERIOR PRIVATE AND MILL ELEVATORS:- Grain stocks show a net increase of 260,714 bushels. Increases are noted in wheat of 135,261, oats 11,542, barley 113,911 and flaxseed 1,356 bushels while rye decreased 1,356 bushels.

Stocks in Store at the Country, Interior, Private and Mill, Head of the Lakes, Victoria, Vancouver-New Westminster, Prince Rupert and Churchill compared with the same week last year were as follows:-

	Week ending Sept. 13, 1935	Week ending Sept. 14, 1934	+ Increase - Decrease
Wheat	117,262,695	158,765,533	- 41,502,838
Oats	6,041,936	7,273,487	- 1,231,551
Barley	4,226,475	8,333,252	- 4,106,777
Flaxseed	209,225	478,572	- 269,347
Rye	3,080,319	3,313,340	- 233,021

EASTERN ELEVATORS-LAKE PORTS:- Grain stocks show a net decrease of 362,150 bushels. Decreases are noted in wheat of 471,899 and barley 205 bushels while oats and rye increased 3,170 and 106,784 bushels respectively.

EASTERN ELEVATORS-SEABOARD PORTS (CANADIAN GRAIN):- Grain in store shows a net increase of 824,106 bushels. Increases are noted in wheat of 664,972, oats 70,522 and barley 91,755 bushels while rye decreased 3,143 bushels.

Shipments overseas of Canadian Grain from St. Lawrence and Seaboard Ports were as follows:-

		United Kingdom	Other Countries
		B u s h e l s	
Montreal, Que.	Wheat	1,337,992	
	Oats	150,776	
	Barley	34,346	
Montreal Ogilvie	Wheat	-	200
Sorel, Que.	Wheat	200,000	-

EASTERN ELEVATORS:- United States grain stocks were 6,972,808 bushels lower than at a comparable date last year. Decreases were as follows:- wheat 657,134, oats 134,588 and corn 6,181,086 bushels.

The quantities by classes of ports with increases and decreases:-

	Week ending Sept. 13, 1935	Week ending Sept. 14, 1934	+ Increase - Decrease
At Georgian Bay Ports	991	5,775,162	- 5,774,171
At Lower Lake Ports	3,658	1,067,784	- 1,064,126
At St. Lawrence Ports	368	134,879	- 134,511
At Seaboard Ports	-	-	-
TOTAL	5,017	6,977,825	- 6,972,808

U. S. LAKE PORTS:- Grain stocks show a net decrease of 55,614 bushels. Barley decreased 77,636 bushels while wheat increased 22,022 bushels.

U. S. ATLANTIC SEABOARD PORTS:- Wheat stocks show a decrease of 173,898 bushels.

Inspection returns for the week ending September 7, 1935 with comparison for the previous year were as follows:-

	Week ending Sept. 7, 1935	Week ending Sept. 7, 1934	+ Increase - Decrease
Wheat	6,541	8,326	- 1,785
Oats	196	318	- 122
Barley	531	893	- 362
Flaxseed	1	1	-
Rye	58	51	+ 7
Mixed Grain	-	2	- 2
TOTAL	7,327	9,591	- 2,264

The number of bushels of grain shipped from western to the Canadian eastern points over the C.P.R. and C.N.R. for the week ending September 7, 1935 and the period from August 1, 1935 to September 7, 1935.

	WEEK ENDING SEPTEMBER 7, 1935					PERIOD AUGUST 1, 1935 TO SEPTEMBER 7, 1935				
	WHEAT	OATS	BARLEY	FLAXSEED	RYE	WHEAT	OATS	BARLEY	FLAXSEED	RYE
Via C.P.R.	-	-	-	-	-	1,000	-	-	-	-
Via C.N.R.	-	-	-	-	-	1,476	2,004	1,375	-	-
TOTAL	-	-	-	-	-	2,476	2,004	1,375	-	-

DULUTH:- Receipts of Canadian bonded grain at Duluth by rail for the week ending Sept. 14, 1934 were nil. For the period from August 1, 1935 to date rail receipts amounted to wheat 89,238 bushels.

Receipts by water for the week ending Sept. 14, 1935 amounted to wheat 616,936 bushels. Receipts by water from August 1, 1935 to date amounted to wheat 1,435,336 and barley 79,652 bushels.

Rail shipments for the week ending September 14, 1935 amounted to wheat 29,925 bushels, duty paid. Rail shipments from August 1, 1935 to date amounted to wheat 676,818 and barley 79,652 bushels.

Lake shipments for the week ending September 14, 1935 were nil. Lake shipments from August 1, 1935 to date amounted to wheat 251,592 bushels.

STOCKS OF GRAIN IN DIFFERENT ELEVATORS DURING THE WEEK ENDING SEPTEMBER 13, 1935.

	WHEAT	OATS	BARLEY	FLAXSEED	RYE
	Bushels				
Western Country Elevators x	55,059,127	2,287,155	1,920,157	85,347	575,907
Interior Private & Mill Elevs. x	6,612,109	408,155	1,000,649	6,826	43,839
Interior Pub. & Semi-Pub. Terms.	1,976,311	7,309	8,639	25	170
Vancouver-New Westminster	9,547,892	79,884	41,282	90	36,855
Prince Rupert	28,916	-	-	-	-
Churchill	1,798,226	-	-	-	-
Fort William & Port Arthur	48,736,919	3,752,935	1,580,206	125,969	2,476,536
In Transit Lakes	3,360,908	238,792	198,515	-	83,126
Eastern Elevs. - Lake Ports	41,821,102	45,506	64,973	-	270,817
Eastern Elevs. - Sbd. Ports	19,176,834	337,032	630,815	-	175,819
U. S. Lake Ports	15,756,828	-	147,615	-	-
U. S. Atlantic Sbd. Ports	2,053,949	-	-	-	-
TOTAL	205,980,171	7,126,788	5,592,856	218,257	3,608,719
Previous week	198,121,468	6,372,273	4,858,910	206,482	3,477,635
Same week previous year	217,375,379	11,453,746	12,497,254	507,300	4,216,113

x Estimated.

Quantity of Screenings received, shipped and in store at the undermentioned elevators during the week ending September 13, 1935

	Amount in Store Sept. 6, 1935		Amount Received by vessel		Amount shipped		Amount in Store Sept. 13, 1935	
	Tons	Lbs.	Tons	Lbs.	Tons	Lbs.	Tons	Lbs.
Owen Sound	745	1,170	545	1,600	110	420	1,182	350
Goderich Elev. Co.	1,119	1,370	-	-	110	-	1,009	1,370
Prescott	195	560	-	-	-	-	195	560
Montreal	-	1,126	-	-	-	-	-	1,126
Dominion Elev. Co.	837	1,120	-	-	-	-	837	1,120
Sorel	674	1,410	-	-	85	1,000	769	410
TOTAL	3,754	756	545	1,600	305	1,420	3,994	936

Lake Shipments from Head of the Lakes for the period ending September 14, 1935.

	CANADIAN LOWER LAKE PORTS	MONTREAL	SOREL	QUEBEC	BUFFALO	OTHER U.S.A. PORTS	TOTAL
	Bushels						
Wheat	2,576,866	304,402	-	-	1,444,402	100,000	4,425,670
Oats	-	-	-	-	81,848	-	81,848
Barley	75,295	167,736	-	-	-	-	243,031
Flaxseed	-	29,051	-	-	-	-	29,051
Rye	-	-	-	-	-	-	Nil
TOTAL	2,652,161	501,189	-	-	1,526,250	100,000	4,779,600
Period Sept. 14, 1934.	3,240,418	224,028	-	-	1,906,195	1,419,553	6,790,594

Lake Shipments from Head of the Lakes for the period from the opening of navigation to September 14, 1935.

Wheat	44,115,235	11,119,562	941,327	2,222,436	27,953,529	3,954,777	90,540,076#
Oats	1,235,707	1,376,298	-	-	211,843	-	2,823,853
Barley	1,253,425	1,387,977	-	-	271,529	1,012,277	3,931,208
Flaxseed	85,000	123,051	-	-	-	-	208,051
Rye	241,000	43,785	-	-	310,000	-	594,785
TOTAL	46,930,370	14,050,673	941,327	2,222,436	28,746,906	4,973,054	98,097,973#
Period Sept. 14, 1934.	62,142,663	11,873,245	1,002,322	342,880	26,881,386	6,530,961	104,878,486x

Includes 233,207 bushels wheat shipped to Montreal or Quebec.

x Includes 85,013 bushels of Oats shipped to Halifax.

CANADIAN GRAIN IN STORE-SEPTEMBER 13, 1935.

	WHEAT	OATS	BARLEY	FLAXSEED	RYE
	Bushels				
WESTERN COUNTRY ELEVATORS					
Manitoba	4,929,978	320,561	973,737	4,661	190,943
Saskatchewan	31,012,482	1,434,183	793,610	68,903	348,404
Alberta	19,116,687	532,411	152,310	11,783	36,560
TOTAL WESTERN COUNTRY ELEVS.	55,059,147	2,287,155	1,920,157	85,347	575,907
INTERIOR PRIVATE & MILL ELEVS.	6,612,109	408,155	1,000,649	6,826	43,889
Calgary Can. Govt. Elevs.	573,744	783	12	-	-
Edmonton Can. Govt. Elevs.	192,720	3,751	-	-	-
Lethbridge Can. Govt. Elevs.	903,983	119	-	-	-
Moose Jaw Can. Govt. Elevs.	5,032	990	-	5	170
Saskatoon Can. Govt. Elevs.	3,262	1,661	104	20	-
TOTAL INT. & PUB. SEMI-PUB.	1,976,311	7,303	8,639	25	170
VANCOUVER-NEW WESTMINSTER	9,547,892	79,884	41,232	90	36,855
PRINCE RUPERT	28,916	-	-	-	-
CHURCHILL	1,793,226	-	-	-	-
Semi-Public Terminals	48,723,495	3,763,415	1,573,052	125,969	2,476,536
Private Terminals	13,424	10,520	7,154	-	-
TOTAL PT. WM. & PT. ARTHUR	18,736,919	3,773,935	1,580,206	125,969	2,476,536
IN TRANSIT LAKES	3,360,908	238,792	198,515	-	28,726
EASTERN ELEVATORS					
Depot Harbor	1,188,615	-	-	-	-
Port McNicoll	6,533,470	-	-	-	-
Tiffin	4,366,780	-	-	-	-
Midland Aberdeen	686,634	-	-	-	-
Midland	1,615,947	-	-	-	-
Midland Simcoe	3,990,987	-	-	-	-
Collingwood	2,007,916	-	-	-	-
Owen Sound	5,337,868	10,093	-	-	-
Godfrich Elev. & Transit	2,127,972	-	-	-	5,986
Godfrich Western Can. Flr. Mill	329,703	-	-	-	-
Sarnia	3,045,609	-	3,590	-	-
Port Colborne, D.G.	3,407,890	500	-	-	-
Port Colborne Maple Leaf	1,525,499	5,468	22,240	-	48,816
Toronto	608,548	13,838	36,515	-	103,515
Toronto Afloat	-	-	-	-	112,500
Kingston Richardson	127,269	15,607	2,633	-	-
Kingston Elev. Co.	1,788,658	-	-	-	-
Prescott	4,781,737	-	-	-	-
TOTAL EASTERN ELEVS. LAKE PORTS	41,821,102	45,806	64,978	-	270,817
Montreal	11,744,754	174,161	617,074	-	171,951
Ogilvie Flour Mills	443,640	-	-	-	-
Dominion Elev. Co.	230,133	43,509	13,017	-	3,868
North Amer. Elevs. Ltd. Sorel	1,486,054	-	724	-	-
Sorel Afloat	100,000	-	-	-	-
Quebec Har. Commrs.	3,332,360	86,277	-	-	-
West Saint John Har. Comm.	424,278	-	-	-	-
Saint John	87,863	-	-	-	-
Halifax	1,327,802	33,035	-	-	-
TOTAL EAST. ELEVS. SBD. PORTS	19,176,884	337,032	630,815	-	175,819
TOTAL QUANTITY IN CANADA	188,118,354	7,186,768	5,445,241	218,257	3,608,719
Duluth	1,183,669	-	101,723	-	-
Buffalo	14,233,941	-	45,892	-	-
Buffalo	307,213	-	-	-	-
Tole	27,000	-	-	-	-
TOTAL U.S. LAKE PORTS	15,756,828	-	147,615	-	-
New York	110,949	-	-	-	-
New York Afloat	408,000	-	-	-	-
Albany	1,399,000	-	-	-	-
New Orleans	4,000	-	-	-	-
Galveston	132,000	-	-	-	-
TOTAL U.S. ATLANTIC SBD. PORTS	2,053,949	-	-	-	-
TOTAL QUANTITY IN STORE	205,929,171	7,186,768	5,592,856	218,256	3,608,719

x Estimated.

x Included C.P.R. Elevators, North Transcona.

Grades of Canadian Grain in Store at Public, Semi-Public and Private Elevators, (Head of the Lakes), Interior, Public and Semi-Public Elevators, Vancouver-New Westminster, Churchill and Victoria Terminal and Eastern Elevators for the period ending September 13, 1935.

	Fort William & Port Arthur Semi-Public and Private	Interior Public and Semi-Public Terminals	Vancouver New West- minster Victoria Elevators	Eastern Elevators Lake Ports	Eastern Elevators Seaboard Ports	Total
<u>WHEAT</u>						
	B u s h e l s					
No. 1 Hard	3,433,587	544,281	1,259,572	588,163	211,326	6,036,929
No. 1 Northern	33,219,833	1,059,183	3,363,062	20,448,370	5,872,056	63,962,504
Dr. No. 1 Northern	-	1,081	-	-	-	1,081
No. 2 Northern	5,052,113	18,173	983,494	18,896,135	11,755,252	36,705,167
Dr. No. 2 Northern	-	1,085	-	-	-	1,085
No. 3 Northern	441,952	15,854	485,724	322,489	584,063	1,850,082
No. 4 Northern	564,818	17,802	1,496,481	335,926	186,865	2,601,892
No. 5 Wheat	499,269	3,511	970,691	291,293	242,722	2,007,486
No. 6 Wheat	471,679	2,849	272,507	16,600	3,987	767,622
Feed	312,885	-	65,151	-	5,049	383,085
No. 1 C.W. Durum	2,191,011	-	-	723,013	76,859	2,990,883
No. 2 C.W. Durum	722,014	-	-	65,569	3,696	791,279
No. 3 C.W. Durum	729,436	-	-	-	502	729,938
No. 4 C.W. Durum	133,438	-	-	-	498	133,936
Other Durum	186,994	-	-	19,962	14,122	221,078
Other	764,466	14,922	651,210	113,582	219,887	1,764,067
Private Elevators	13,424	-	-	-	-	13,424
TOTAL	48,736,919	1,678,741	9,547,892	41,821,102	19,176,884	120,961,538
<u>OATS</u>						
No. 1 C. W.	1,866	-	-	-	-	1,866
No. 2 C.W.	1,456,471	4,833	14,597	-	3,280	1,479,182
No. 3 C. W.	621,418	-	3,897	650	19,368	645,333
Ex. No. 1 Feed	614,446	-	10,292	-	6,571	631,309
No. 1 Feed	905,546	1,566	9,807	4,818	50,644	972,381
No. 2 Feed	76,144	773	2,489	-	62,877	142,283
No. 3 Feed	30,988	-	-	-	-	30,988
Private Elevators	19,520	-	-	-	-	19,520
Other	56,536	136	38,802	40,038	194,292	329,804
TOTAL	3,782,935	7,309	79,884	45,506	337,032	4,252,666
<u>NEW GRADE BARLEY</u>						
3 Ex. C.W. 6 Row	170,165	12	-	-	18,993	189,170
3 Ex. C.W. Trebi	-	-	Nil	-	-	-
3 Ex. C.W. 2 Row	40,483	-	-	-	-	40,483
3 C. W.	811,609	-	4,916	25,830	579,911	1,422,266
4 C. W.	132,715	104	3,272	-	3,089	139,180
5 C. W.	212,372	-	8,884	-	24,527	245,783
6 C. W.	78,190	-	18,138	-	-	96,328
Private Elevators	7,154	-	-	-	-	7,154
Other	127,518	-	6,072	39,148	4,295	177,033
TOTAL	1,580,206	116	41,282	64,978	630,815	2,317,397
<u>FLAXSEED</u>						
No. 1 C. W.	97,068	25	90	-	-	97,183
No. 2 C. W.	13,471	-	-	-	-	13,471
No. 3 C. W.	7,793	-	-	-	-	7,793
No. 4 C. W.	411	-	-	-	-	411
Other	7,226	-	-	-	-	7,226
TOTAL	125,969	25	90	-	-	126,084
<u>RYE</u>						
No. 1 C. W.	14,312	-	-	-	-	14,312
No. 2 C. W.	2,187,641	-	36,855	269,002	164,212	2,657,710
No. 3 C. W.	210,901	170	-	-	11,607	222,678
No. 4 C. W.	9,430	-	-	-	-	9,430
Ergoty	17,613	-	-	-	-	17,613
Other	36,639	-	-	1,815	-	38,454
TOTAL	2,476,536	170	36,855	270,817	175,819	2,960,197
TOTAL QUANTITY IN STORE	56,702,565	1,686,361	9,706,003	42,202,403	20,320,550	130,617,882

THE STATE OF NEW YORK, in SENATE,
January 15, 1891.

REPORT OF THE		COMMISSIONERS OF THE LAND OFFICE		IN RESPONSE TO A RESOLUTION PASSED BY THE SENATE, JANUARY 15, 1891.	
AND		OF THE		LANDS BELONGING TO THE STATE.	
ALBANY:		J. B. LEECH, PRINTER.		1891.	
1890	1891	1892	1893	1894	1895
1896	1897	1898	1899	1900	1901
1902	1903	1904	1905	1906	1907
1908	1909	1910	1911	1912	1913
1914	1915	1916	1917	1918	1919
1920	1921	1922	1923	1924	1925
1926	1927	1928	1929	1930	1931
1932	1933	1934	1935	1936	1937
1938	1939	1940	1941	1942	1943
1944	1945	1946	1947	1948	1949
1950	1951	1952	1953	1954	1955
1956	1957	1958	1959	1960	1961
1962	1963	1964	1965	1966	1967
1968	1969	1970	1971	1972	1973
1974	1975	1976	1977	1978	1979
1980	1981	1982	1983	1984	1985
1986	1987	1988	1989	1990	1991
1992	1993	1994	1995	1996	1997
1998	1999	2000	2001	2002	2003
2004	2005	2006	2007	2008	2009
2010	2011	2012	2013	2014	2015
2016	2017	2018	2019	2020	2021
2022	2023	2024	2025	2026	2027
2028	2029	2030	2031	2032	2033
2034	2035	2036	2037	2038	2039
2040	2041	2042	2043	2044	2045
2046	2047	2048	2049	2050	2051
2052	2053	2054	2055	2056	2057
2058	2059	2060	2061	2062	2063
2064	2065	2066	2067	2068	2069
2070	2071	2072	2073	2074	2075
2076	2077	2078	2079	2080	2081
2082	2083	2084	2085	2086	2087
2088	2089	2090	2091	2092	2093
2094	2095	2096	2097	2098	2099
2100	2101	2102	2103	2104	2105
2106	2107	2108	2109	2110	2111
2112	2113	2114	2115	2116	2117
2118	2119	2120	2121	2122	2123
2124	2125	2126	2127	2128	2129
2130	2131	2132	2133	2134	2135
2136	2137	2138	2139	2140	2141
2142	2143	2144	2145	2146	2147
2148	2149	2150	2151	2152	2153
2154	2155	2156	2157	2158	2159
2160	2161	2162	2163	2164	2165
2166	2167	2168	2169	2170	2171
2172	2173	2174	2175	2176	2177
2178	2179	2180	2181	2182	2183
2184	2185	2186	2187	2188	2189
2190	2191	2192	2193	2194	2195
2196	2197	2198	2199	2200	2201
2202	2203	2204	2205	2206	2207
2208	2209	2210	2211	2212	2213
2214	2215	2216	2217	2218	2219
2220	2221	2222	2223	2224	2225
2226	2227	2228	2229	2230	2231
2232	2233	2234	2235	2236	2237
2238	2239	2240	2241	2242	2243
2244	2245	2246	2247	2248	2249
2250	2251	2252	2253	2254	2255
2256	2257	2258	2259	2260	2261
2262	2263	2264	2265	2266	2267
2268	2269	2270	2271	2272	2273
2274	2275	2276	2277	2278	2279
2280	2281	2282	2283	2284	2285
2286	2287	2288	2289	2290	2291
2292	2293	2294	2295	2296	2297
2298	2299	2300	2301	2302	2303
2304	2305	2306	2307	2308	2309
2310	2311	2312	2313	2314	2315
2316	2317	2318	2319	2320	2321
2322	2323	2324	2325	2326	2327
2328	2329	2330	2331	2332	2333
2334	2335	2336	2337	2338	2339
2340	2341	2342	2343	2344	2345
2346	2347	2348	2349	2350	2351
2352	2353	2354	2355	2356	2357
2358	2359	2360	2361	2362	2363
2364	2365	2366	2367	2368	2369
2370	2371	2372	2373	2374	2375
2376	2377	2378	2379	2380	2381
2382	2383	2384	2385	2386	2387
2388	2389	2390	2391	2392	2393
2394	2395	2396	2397	2398	2399
2400	2401	2402	2403	2404	2405
2406	2407	2408	2409	2410	2411
2412	2413	2414	2415	2416	2417
2418	2419	2420	2421	2422	2423
2424	2425	2426	2427	2428	2429
2430	2431	2432	2433	2434	2435
2436	2437	2438	2439	2440	2441
2442	2443	2444	2445	2446	2447
2448	2449	2450	2451	2452	2453
2454	2455	2456	2457	2458	2459
2460	2461	2462	2463	2464	2465
2466	2467	2468	2469	2470	2471
2472	2473	2474	2475	2476	2477
2478	2479	2480	2481	2482	2483
2484	2485	2486	2487	2488	2489
2490	2491	2492	2493	2494	2495
2496	2497	2498	2499	2500	2501
2502	2503	2504	2505	2506	2507
2508	2509	2510	2511	2512	2513
2514	2515	2516	2517	2518	2519
2520	2521	2522	2523	2524	2525
2526	2527	2528	2529	2530	2531
2532	2533	2534	2535	2536	2537
2538	2539	2540	2541	2542	2543
2544	2545	2546	2547	2548	2549
2550	2551	2552	2553	2554	2555
2556	2557	2558	2559	2560	2561
2562	2563	2564	2565	2566	2567
2568	2569	2570	2571	2572	2573
2574	2575	2576	2577	2578	2579
2580	2581	2582	2583	2584	2585
2586	2587	2588	2589	2590	2591
2592	2593	2594	2595	2596	2597
2598	2599	2600	2601	2602	2603
2604	2605	2606	2607	2608	2609
2610	2611	2612	2613	2614	2615
2616	2617	2618	2619	2620	2621
2622	2623	2624	2625	2626	2627
2628	2629	2630	2631	2632	2633
2634	2635	2636	2637	2638	2639
2640	2641	2642	2643	2644	2645
2646	2647	2648	2649	2650	2651
2652	2653	2654	2655	2656	2657
2658	2659	2660	2661	2662	2663
2664	2665	2666	2667	2668	2669
2670	2671	2672	2673	2674	2675
2676	2677	2678	2679	2680	2681
2682	2683	2684	2685	2686	2687
2688	2689	2690	2691	2692	2693
2694	2695	2696	2697	2698	2699
2700	2701	2702	2703	2704	2705
2706	2707	2708	2709	2710	2711
2712	2713	2714	2715	2716	2717
2718	2719	2720	2721	2722	2723
2724	2725	2726	2727	2728	2729
2730	2731	2732	2733	2734	2735
2736	2737	2738	2739	2740	2741
2742	2743	2744	2745	2746	2747
2748	2749	2750	2751	2752	2753
2754	2755	2756	2757	2758	2759
2760	2761	2762	2763	2764	2765
2766	2767	2768	2769	2770	2771
2772	2773	2774	2775	2776	2777
2778	2779	2780	2781	2782	2783
2784	2785	2786	2787	2788	2789
2790	2791	2792	2793	2794	2795
2796	2797	2798	2799	2800	2801
2802	2803	2804	2805	2806	2807
2808	2809	2810	2811	2812	2813
2814	2815	2816	2817	2818	2819
2820	2821	2822	2823	2824	2825
2826	2827	2828	2829	2830	2831
2832	2833	2834	2835	2836	2837
2838	2839	2840	2841	2842	2843
2844	2845	2846	2847	2848	2849
2850	2851	2852	2853	2854	2855
2856	2857	2858	2859	2860	2861
2862	2863	2864	2865	2866	2867
2868	2869	2870	2871	2872	2873
2874	2875	2876	2877	2878	2879
2880	2881	2882	2883	2884	2885
2886	2887	2888	2889	2890	2891
2892	2893	2894	2895	2896	2897
2898	2899	2900	2901	2902	2903
2904	2905	2906	2907	2908	2909
2910	2911	2912	2913	2914	2915
2916	2917	2918	2919	2920	2921
2922	2923	2924	2925	2926	2927
2928	2929	2930	2931	2932	2933
2934	2935	2936	2937	2938	2939
2940	2941	2942	2943	2944	2945
2946	2947	2948	2949	2950	2951
2952	2953	2954	2955	2956	2957
2958	2959	2960	2961	2962	2963
2964	2965	2966	2967	2968	2969
2970	2971	2972	2973	2974	2975
2976	2977	2978	2979	2980	2981
2982	2983	2984	2985	2986	2987
2988	2989	2990	2991	2992	2993
2994	2995	2996	2997	2998	2999
3000	3001	3002	3003	3004	3005
3006	3007	3008	3009	3010	3011
3012	3013	3014	3015	3016	3017
3018	3019	3020	3021	3022	3023
3024	3025	3026	3027	3028	3029
3030	3031	3032	3033	3034	3035
3036	3037	3038	3039	3040	3041
3042	3043	3044	3045	3046	3047
3048	3049	3050	3051	3052	3053
3054	3055	3056	3057	3058	3059
3060	3061	3062	3063	3064	3065
3066	3067	3068	3069	3070	3071
3072	3073	3074	3075	3076	3077
3078	3079	3080	3081	3082	3083
3084	3085	3086	3087	3088	3089
3090	3091	3092	3093	3094	3095
3096	3097	3098	3099	3100	3101
3102	3103	3104	3105	3106	3107
3108	3109	3110	3111	3112	3113
3114	3115	3116	3117	3118	3119
3120	3121	3122	3123	3124	3125
3126	3127	3128	3129		

- 9 -
CANADIAN GRAIN IN STORE - COMPARATIVE STATEMENT, 1932 - 1935.

	W H E A T	O T H E R G R A I N
	B u s h e l s	
<u>Sept. 13, 1935.</u>		
Country Elevators - Manitoba	4,929,978	1,489,902
Saskatchewan	31,012,462	2,645,100
Alberta	19,116,687	733,564
TOTAL	55,059,127	4,868,566
Interior Private and Mill	6,612,109	1,459,519
Interior Public and Semi-Public Terms.	1,976,311	16,143
Vancouver-New Westminster	9,547,892	158,111
Prince Rupert	28,916	-
Churchill	1,798,226	-
Fort William and Port Arthur	48,736,919	7,965,646
In Transit Lakes	3,360,908	466,033
Eastern Elevs. - Lake Ports	41,821,102	381,301
Eastern Elevs. - Seaboard Ports	19,176,884	1,143,666
U. S. Lake Ports	15,756,828	147,615
U. S. Atlantic Seaboard Ports	2,053,949	-
TOTAL	205,929,171	16,606,600
<u>Sept. 14, 1934.</u>		
Country Elevators - Manitoba	9,309,161	1,976,477
Saskatchewan	46,285,055	4,324,017
Alberta	29,242,864	2,337,365
TOTAL	84,837,080	8,637,859
Interior Private and Mill	6,893,859	3,252,367
Interior Public and Semi-Public Terms.	2,527,089	105,141
Vancouver-New Westminster	11,464,549	984,479
Victoria	928,299	-
Prince Rupert	1,094,053	-
Churchill	1,206,051	-
Fort William and Port Arthur	57,460,188	7,752,427
In Transit Lakes	3,896,580	1,007,571
Eastern Elevs. - Lake Ports	24,953,489	3,509,319
Eastern Elevs. - Seaboard Ports	10,535,640	2,868,866
U. S. Lake Ports	8,173,143	556,384
U. S. Atlantic Seaboard Ports	3,406,359	-
TOTAL	217,376,379	28,674,413
<u>Sept. 15, 1933.</u>		
Country Elevators - Manitoba	9,697,345	2,141,149
Saskatchewan	42,859,410	3,549,286
Alberta	29,858,363	4,114,050
TOTAL	82,415,118	9,804,485
Interior Private and Mill	6,401,009	3,148,565
Interior Public and Semi-Public Terms.	2,370,725	211,225
Vancouver-New Westminster	9,309,348	1,250,755
Victoria	782	-
Prince Rupert	63,233	-
Churchill	35,020	-
Fort William and Port Arthur	63,581,138	10,887,592
In Transit Lakes	5,846,340	667,355
Eastern Elevators - Lake Ports	21,016,904	2,825,862
Eastern Elevators - Sbd. Ports	16,015,987	1,760,679
U. S. Lake Ports	4,657,053	114,249
U. S. Atlantic Seaboard Ports	416,992	146,602
TOTAL	212,129,649	30,817,869
<u>Sept. 16, 1932.</u>		
Country Elevators - Manitoba	5,882,986	1,176,853
Saskatchewan	28,773,959	2,115,851
Alberta	15,841,583	1,395,889
TOTAL	50,498,528	4,688,593
Interior Private and Mill	6,153,166	1,697,842
Interior Public and Semi-Public Terms.	659,753	17,281
Vancouver - New Westminster	10,053,129	340,386
Victoria	271,200	-
Prince Rupert	840,299	3,283
Churchill	1,336,968	-
Fort William and Port Arthur	42,405,283	6,228,908
In Transit Lakes	7,520,453	896,768
Eastern Elevs. - Lake Ports	13,809,163	751,309
Eastern Elevs. - Seaboard Ports	12,826,600	2,110,408
U. S. Lake Ports	6,324,372	66,525
U. S. Atlantic Seaboard Ports	1,060,261	346,817
TOTAL	153,759,175	17,148,120

STOCKS OF UNITED STATES GRAIN IN CANADA SEPTEMBER 13, 1935.

	WHEAT	OATS	BARLEY	FLAXSEED	RYE
	B u s h e l s				
Midland Aberdeen	-	-	-	-	470
Midland Grain	-	-	-	-	521
Port Colborne Maple Leaf	-	-	-	-	800
Toronto	-	-	-	-	2,858
Montreal Harbour Commrs. Nos. 1, 2 and B.	2	-	-	366	-
TOTAL	2	-	-	366	4,649
Same period previous year	657,136	134,588	-	366	6,185,735

RECEIPTS AND SHIPMENTS OF UNITED STATES GRAIN IN CANADA SEPTEMBER 13, 1935.

	R E C E I P T S		S H I P M E N T S	
	Water	Rail	Water	Rail
		G E O R G I A N B A Y P O R T S		
Corn	-	-	169,496	4,301
		L O W E R L A K E P O R T S		
Corn	-	-	-	14

STOCKS OF FOREIGN GRAIN IN CANADA SEPTEMBER 13, 1935.

	ARGENTINE CORN	SOUTH AFRICAN CORN	TOTAL CORN
Sarnia	-	157,100	157,100
Port Colborne, M.L.	6,844	72,265	79,109
Toronto	24,852	611,678	636,530
Prescott	1,005	-	1,005
Montreal	413,879	402,262	816,141
Dominion Elev. Co.	-	59,733	59,733
Quebec	-	82,108	82,108
Saint John	-	69,165	69,165
Halifax	37,064	431,843	468,907
TOTAL	483,644	1,886,154	2,369,798
Same period previous year	96,221	18,500	114,721

RECEIPTS AND SHIPMENTS OF FOREIGN CORN IN CANADA FOR THE WEEK ENDING SEPTEMBER 13, 1935.

	ARGENTINE CORN		SOUTH AFRICAN CORN	
	Receipts	Shipments	Receipts	Shipments
Georgian Bay Ports	-	-	-	-
Lower Lake Ports	-	5,724	8,310	19,658
St. Lawrence Ports	326,183	178,657	-	151,324
Seaboard Ports	-	9	-	x91,044

x Includes 600 bushels shrinkage.

STOCKS, RECEIPTS AND SHIPMENTS OF THE COUNTRY ELEVATORS IN THE WESTERN
DIVISION IN THE WEEK ENDING SEPTEMBER 6, 1935.

	WHEAT	OATS	BARLEY	FLAXSEED	RYE
	B u s h e l s				
<u>MANITOBA</u>					
In Store, previous week	3,685,133	144,922	549,655	4,299	146,629
Receipts	1,883,020	218,227	370,348	52	97,474
TOTAL	5,568,153	363,149	1,420,003	4,351	244,103
Shipments	1,211,459	82,389	471,224	33	50,023
In Store	4,356,697	280,760	948,781	4,318	195,080
<u>SASKATCHEWAN</u>					
In Store, previous week	21,715,820	571,910	312,401	58,209	232,440
Receipts	8,657,447	513,016	379,735	5,886	91,505
TOTAL	30,373,267	1,084,926	692,136	64,095	323,945
Shipments	4,976,489	119,120	75,730	2,343	35,182
In Store	25,396,778	965,806	616,406	61,752	288,763
<u>ALBERTA</u>					
In Store, previous week	18,536,135	523,772	111,732	11,211	35,154
Receipts	3,335,241	88,433	52,776	480	6,782
TOTAL	21,921,376	612,205	164,508	11,691	41,836
Shipments	2,977,269	83,576	20,035	100	4,156
In Store	18,944,108	528,629	144,423	11,601	37,670

TOTAL RECEIPTS AT COUNTRY ELEVATORS AND PLATFORM LOADINGS # IN THE
PERIOD AUGUST 1, 1935 TO SEPTEMBER 6, 1935.

	WHEAT	OTHER GRAIN
	B u s h e l s	
Manitoba	3,661,833	2,636,842
Saskatchewan	12,946,197	1,651,730
Alberta	7,745,460	488,784
Total 1935 - 1936	24,353,490	4,777,356
Same period 1934 - 1935	47,100,627	8,053,805

Platform Loadings to September 7, 1935.

INTERIOR TERMINAL ELEVATORS

Receipts, Shipments and Quantities in Store, week ending September 13, 1935.

	WHEAT	OATS	BARLEY	FLAXSEED	RYE
	B u s h e l s				
<u>CALGARY</u>					
In Store, previous week	402,020	788	2,053	-	-
Receipts	171,724	-	-	-	-
TOTAL	573,744	788	2,053	-	-
Shipments - Rail	-	-	2,041	-	-
In Store	573,744	788	12	-	-
<u>EDMONTON</u>					
In Store, previous week	137,991	3,751	-	-	-
Receipts	54,729	-	-	-	-
TOTAL	192,720	3,751	-	-	-
Shipments - Rail	-	-	Nil	-	-
In Store	192,720	3,751	-	-	-
<u>LETHBRIDGE</u>					
In Store, previous week	751,186	119	-	-	-
Receipts	158,950	-	-	-	-
TOTAL	910,136	119	-	-	-
Shipments - Rail	6,153	-	-	-	-
In Store	903,983	119	-	-	-
<u>MOOSE JAW</u>					
In Store, previous week	600	694	-	48	164
Receipts	6,275	-	-	-	-
TOTAL	6,875	694	-	48	164
Shipments - Rail	1,573	-	-	-	-
In Store	5,032	990	-	5	170
<u>SASKATOON</u>					
In Store, previous week	2,588	1,661	104	20	-
Receipts	674	-	-	-	-
TOTAL	3,262	1,661	104	20	-
Shipments - Rail	-	-	Nil	-	-
In Store	3,262	1,661	104	20	-

RECAPITULATION

Total Receipts	412,465	-	5,202	-	-
Total Shipments	7,726	-	2,041	-	-

Receipts and Shipments of grain at Eastern Elevators, week ending September 13, 1935.

Total Receipts - Vessel	2,474,206	82,102	158,593	-	3,059
Rail	353,826	205,884	22,351	-	1,885
Total Shipments - Vessel	2,138,140	183,442	34,346	-	-
Rail	568,395	28,834	34,867	-	13,802
Truck & Teamed	4,243	2,119	-	-	-

100-10-
200

OS

STOCKS, RECEIPTS AND SHIPMENTS OF THE PACIFIC COAST ELEVATORS
IN THE WEEK ENDING SEPTEMBER 13, 1935.

	WHEAT	OATS	BARLEY	FLAXSEED	RYE
		B u s h e l s			
<u>VANCOUVER - NEW WESTMINSTER</u>					
In Store, previous week	8,825,325	64,099	42,532	-	37,937
Receipts	842,258	15,785	-	90	-
TOTAL	9,667,583	79,884	42,532	90	37,927
Shipments - Vessel	100,800	-	-	-	-
Rail	6,891	-	-	-	-
In Store	9,547,892	79,884	41,282	90	36,855

PRINCE RUPERT

In Store, previous week	28,916	-	-	-	-
Receipts			Nil		
TOTAL	28,916	-	-	-	-
Shipments - Vessel			Nil		
In Store	28,916	-	-	-	-

CHURCHILL

In Store, previous week	1,798,226	-	-	-	-
Receipts			Nil		
TOTAL	1,798,226	-	-	-	-
Shipments - Vessel			Nil		
In Store	1,798,226	-	-	-	-

DAILY AND WEEKLY AVERAGE PRICES OF WHEAT IN THE WESTERN DIVISION
IN THE WEEK ENDING SEPTEMBER 14, 1935.

(Basis Vancouver, B. C.)

	Sept. 9 ¢	Sept. 10 ¢	Sept. 11 ¢	Sept. 12 ¢	Sept. 13 ¢	Sept. 14 ¢	Weekly Average ¢
No. 1 Hard	86.2	87	88	88.2	88.7	88.1	87.7
No. 1 Northern	86	86.7	87.7	88	88.5	87.9	87.5
No. 2 Northern	83	83.7	84.7	85	85.5	84.9	84.5
No. 3 Northern	76	76.7	77.7	78	78.5	78.9	77.6
No. 4 Northern	71.5	72.2	73.2	73.5	74	73.9	73.1
No. 5	64	64.7	65.7	66	66.5	66.4	65.6
No. 6	58	58.7	59.7	60	60.5	59.9	59.5
Feed	51	51.7	52.7	53	53.5	52.9	52.5
No. 1 Garnet	80	80.7	81.7	82	82.5	81.9	81.5
No. 2 Garnet	78	78.7	79.7	80	80.5	79.9	79.5
Track	86	86.7	87.7	88	88.5	87.9	87.5

- 14 -
DAILY AND WEEKLY AVERAGE PRICES OF GRAIN
Week ending September 14, 1935.
WESTERN DIVISION
(Basis Fort William and Port Arthur)

	Sept. 9 \$ ¢	Sept. 10 \$ ¢	Sept. 11 \$ ¢	Sept. 12 \$ ¢	Sept. 13 \$ ¢	Sept. 14 \$ ¢	Weekly Average \$ ¢
<u>WHEAT</u>							
No. 1 Man. Hard	.887	.895	.907	.91	.915	.906	.903
No. 1 Man. Northern	.882	.892	.902	.905	.91	.904	.899
No. 2 Man. Northern	.852	.862	.872	.875	.88	.874	.869
No. 3 Man. Northern	.82	.83	.84	.845	.847	.839	.837
No. 4 Man. Northern	.76	.767	.78	.785	.795	.789	.779
No. 5	.65	.657	.672	.68	.71	.709	.68
No. 6	.64	.647	.657	.66	.675	.669	.658
Feed	.48	.497	.507	.51	.525	.539	.51
No. 1 Garnet	.82	.827	.847	.85	.86	.854	.843
No. 2 Garnet	.80	.807	.827	.83	.84	.834	.823
No. 4 Special	.70	.707	.717	.73	.755	.759	.728
No. 5 Special	.60	.607	.617	.63	.655	.669	.63
No. 6 Special	.525	.532	.542	.555	.58	.594	.555
Rejected No. 1 Northern	.76	.767	.777	.78	.785	.779	.775
No. 2 Northern	.74	.747	.757	.76	.765	.759	.755
No. 3 Northern	.715	.722	.732	.735	.74	.734	.73
Tough No. 1 Hard	.867	.875	.887	.89	.895	.886	.883
No. 1 Northern	.862	.872	.882	.885	.89	.884	.879
No. 2 Northern	.832	.842	.852	.855	.86	.854	.849
No. 3 Northern	.795	.805	.812	.82	.822	.814	.811
Smutty No. 1 Hard	.83	.837	.847	.85	.855	.849	.845
No. 1 Northern	.83	.837	.847	.85	.855	.849	.845
No. 2 Northern	.80	.807	.817	.82	.825	.819	.815
No. 3 Northern	.745	.752	.762	.765	.77	.764	.76
Durum No. 1	.84	.857	.847	.85	.855	.859	.851
No. 2	.77	.797	.787	.79	.795	.799	.79
No. 3	.70	.727	.717	.72	.725	.719	.718
A. R. W. No. 1	.79	.797	.807	.81	.815	.809	.805
No. 2	.77	.777	.787	.79	.795	.789	.785
No. 3	.75	.757	.767	.77	.775	.769	.765
<u>OATS</u>							
No. 2 C. W.	.365	.362	.367	.367	.37	.361	.365
No. 3 C. W.	.32	.317	.322	.322	.325	.316	.32
Ex. No. 1 Feed	.32	.317	.322	.322	.325	.316	.32
No. 1 Feed	.305	.302	.307	.307	.31	.301	.305
No. 2 Feed	.28	.277	.282	.282	.285	.276	.28
No. 3 Feed	.25	.247	.252	.252	.255	.246	.25
<u>BARLEY (NEW GRADE)</u>							
2 Row	.394	.396	.402	.405	.416	.402	.403
6 Row	.424	.426	.452	.455	.466	.452	.446
Trebi	.344	.346	.352	.355	.366	.354	.353
No. 3 C. W.	.344	.346	.352	.355	.366	.354	.353
No. 4 C. W.	.319	.321	.327	.33	.341	.327	.328
No. 5 C. W.	.299	.301	.307	.31	.321	.307	.308
No. 6 C. W.	.284	.286	.292	.295	.306	.292	.293
<u>RYE</u>							
No. 1 C. W.	.385	.39	.397	.394	.399	.395	.393
No. 2 C. W.	.385	.39	.397	.394	.399	.395	.393
No. 3 C. W.	.351	.356	.362	.359	.364	.36	.359
Rejected No. 2 C. W.	.326	.331	.337	.334	.339	.335	.334
No. 4 C. W.	.331	.336	.342	.339	.344	.34	.339
Rejected for Ergot	.316	.321	.327	.324	.329	.325	.324
<u>FLAXSEED</u>							
No. 1 C. W.	1.297	1.302	1.302	1.315	1.334	1.31	1.31
No. 2 C. W.	1.257	1.262	1.262	1.275	1.294	1.27	1.27
No. 3 C. W.	1.082	1.087	1.087	1.10	1.179	1.155	1.115
No. 4 C. W.	1.082	1.087	1.087	1.10	1.119	1.095	1.095
<u>ONTARIO - TORONTO</u>							
Wheat, good Milling	.63-.67	.63-.67	.63-.67	.63-.67	.63-.67	.63-.67	.63-.67
Oats	.28-.30	.28-.30	.28-.30	.28-.30	.28-.30	.26-.29	.277-.298
Malting Barley	.37-.42	.37-.42	.37-.42	.37-.42	.37-.42	.38-.42	.372-.42
Ontario Corn	.52-.54	.52-.54	.52-.54	.52-.54	.52-.54	.48-.51	.513-.535
Rye	.35-.38	.35-.38	.35-.38	.35-.38	.35-.38	.35-.38	.35-.38
Barley	.30-.35	.30-.35	.30-.35	.30-.35	.30-.35	.30-.35	.30-.35
F.O.B. Shipping Point							

Receipts and Shipments of Grain at the Country Elevators in the Western Division and Platform Loadings for the month of August, 1935.

		WHEAT	OATS	BARLEY	FLAXSEED	RYE
		Bushels				
		<u>COUNTRY ELEVATORS</u>				
		<u>MANITOBA - RECEIPTS</u>				
Aug.	1935	1,702,721	162,330	807,688	965	198,012
		<u>MANITOBA - PLATFORM LOADINGS</u>				
		<u>WHEAT</u>	<u>OTHER GRAINS</u>			
Aug.	1935	174,596	247,187			
		<u>SASKATCHEWAN - RECEIPTS</u>				
Aug.	1935	5,639,293	365,672	279,219	15,658	154,862
		<u>SASKATCHEWAN - PLATFORM LOADINGS</u>				
		<u>WHEAT</u>	<u>OTHER GRAINS</u>			
Aug.	1935	67,652	1,933			
		<u>ALBERTA - RECEIPTS</u>				
Aug.	1935	4,757,411	280,468	35,871	709	15,588
		<u>ALBERTA - PLATFORM LOADINGS</u>				
		<u>WHEAT</u>	<u>OTHER GRAINS</u>			
Aug.	1935	152,794	25,729			
		<u>TOTAL COUNTRY ELEVATORS - PRAIRIE PROVINCES - RECEIPTS</u>				
Aug.	1935	12,099,427	808,471	1,122,778	17,332	368,464
		<u>TOTAL - PLATFORM LOADINGS - PRAIRIE PROVINCES</u>				
		<u>WHEAT</u>	<u>OTHER GRAINS</u>			
Aug.	1935	395,042	274,849			
		<u>TOTAL SHIPMENTS - RAIL - PRAIRIE PROVINCES</u>				
Aug.	1935	14,498,266	576,396	416,519	17,668	147,960
Receipts of Grain at Interior Public and Semi-Public Elevators for the month of August, 1935.						
Aug.	1935	909,770	3,704	565	887	-
Shipments of Grain at Interior Public and Semi-Public Elevators for the month of August, 1935.						
		<u>SHIPMENTS - RAIL</u>				
Aug.	1935	125,567	24,741	1,250	871	-
Receipts and Shipments of Grain at Vancouver-New Westminster for the month of August, 1935.						
		<u>VANCOUVER-NEW WESTMINSTER ELEVATORS - RECEIPTS - RAIL</u>				
Aug.	1935	1,532,331	31,890	4,604	614	240
		<u>SHIPMENTS - VESSEL - RAIL</u>				
Aug.	1935-Vessel	1,736,044	16,470	-	-	-
	Rail	40,491	10,244	5,327	614	-
Receipts and Shipments of Grain at Victoria Elevator for the month of August, 1935.						
Aug.	1935	<u>RECEIPTS - NIL</u>				
Aug.	1935	<u>SHIPMENTS - NIL</u>				
Receipts and Shipments of Grain at Prince Rupert Elevator for the month of August, 1935.						
		<u>PRINCE RUPERT ELEVATORS-RECEIPTS-RAIL</u>				
Aug.	1935	Nil				
		<u>SHIPMENTS - VESSEL - RAIL</u>				
Aug.	1935	Nil				
Receipts and Shipments of Grain at Churchill for the month of August, 1935.						
Aug.	1935	<u>RECEIPTS - RAIL - NIL</u>				
		<u>SHIPMENTS - VESSEL</u>				
Aug.	1935	600,000	-	-	-	-

EXPORTS OF GRAIN, WHEATFLOUR AND MILLFEED BY COUNTRIES OF DESTINATION FOR THE MONTH
OF AUGUST, 1935.

	WHEAT Aug. 1935 Bushels	WHEATFLOUR Aug. 1935 Barrels	OATS Aug. 1935 Bushels	BARLEY Aug. 1935 Bushels
Aden	-	50	-	-
Africa				
British South	2,900	61	-	-
Alaska	-	1	-	-
Australia	-	100	-	-
Azores	-	71	-	-
Belgium	723,281	224	16,470	-
Belgium Congo	-	11	-	-
Bermuda	10	2,192	13,686	-
British Guiana	2	5,425	5,819	-
British Honduras	-	1,487	170	-
British Straits Settlements	933	100	800	10
British West Indies				
Barbados	-	5,051	12,091	-
Jamaica	516	18,753	3,553	-
Trinidad	10	14,133	9,788	-
Other British West Indies	-	9,947	1,071	-
Canary Islands	-	472	-	-
China	-	4,882	-	625
Costa Rica	-	125	-	-
Cuba	-	625	-	-
Denmark	74,666	866	-	-
Dutch Guiana	-	784	-	-
Dutch East Indies	-	1,258	-	-
Dutch West Indies	-	1,050	-	-
Ecuador	-	1,966	-	-
Finland	-	2,528	-	-
France	63,967	-	-	-
French Guiana	-	250	-	-
French West Indies	-	322	-	-
Gambia	-	75	-	-
Germany	-	229	-	-
Gold Coast	-	542	-	-
Great Britain	17,159,182	203,529	500,092	699,105
Guatemala	-	651	-	-
Haiti	-	442	-	-
Honduras	-	394	-	-
Hong Kong	17	20,714	2,109	-
Iceland	-	214	-	-
Irish Free State	120,000	714	-	16,666
Italy	8,000	98	-	-
Japan	15,000	5,000	-	-
Liberia	-	160	-	-
Malta	56,000	3,033	-	-
Netherlands	162,277	2,989	65,882	-
Newfoundland	47	17,399	19,817	-
New Zealand	2,360	9,129	-	-
Norway	214,784	8,321	-	-
Palestine	-	286	-	-
Panama	-	576	-	-

	WHEAT Aug. 1935 Bushels	WHEAT FLOUR Aug. 1935 Barrels	OATS Aug. 1935 Bushels	BARLEY Aug. 1935 Bushels
Philippine Island	83	14,189	-	-
Portuguese Africa	-	767	-	-
Salvador	1,667	-	-	-
San Domingo	-	420	-	-
Sierre Leone	-	1,542	-	-
Southern Rhodesia	1,867	51	-	-
St. Pierre and Miquelon	22	160	-	-
Sweden	-	450	-	-
United States	3,090,693	8,162	14	5,050
Venezuela	-	3,387	-	-
Virgin Islands	-	205	-	-
TOTALS - August, 1935	21,698,284	376,562	651,362	721,456
July, 1935	9,158,035	395,232	1,070,836	1,097,971
August, 1934	14,709,675	412,089	1,075,756	1,134,501
12 Months ended August, 1935	176,290,718	5,386,437	6,926,022	2,786,198
12 Months ended August, 1934	151,363,519	4,714,783	14,180,530	14,643,828

	Rye Bushels	Flaxseed Bushels	Bran, Shorts, and Middlings Cwt.	Oatmeal and Rolled Oats Cwt.	Screenings Cwt.	Corn Bushels	Buck- wheat Bushels
Belgium	-	-	-	85	-	-	-
Bermuda	-	10	323	41	10	-	-
British Guiana	-	-	75	96	-	-	-
British Honduras	-	-	6	-	-	70	-
British India	-	-	-	657	-	-	-
British South Africa	-	-	-	773	-	-	-
British West Indies	-	-	-	-	-	-	-
Barbados	-	-	12	103	-	-	-
Jamaica	-	-	85	70	-	-	-
Trinidad	-	-	2	90	-	-	-
Other	-	-	40	115	-	-	-
Ceylon	-	-	-	55	-	-	-
China	-	-	-	203	-	-	-
Colombia	-	-	-	500	-	-	-
Costa Rica	-	-	-	100	-	-	-
Dutch West Indies	-	-	-	7	-	-	-
France	-	-	-	919	-	-	-
Gambia	-	-	-	9	-	-	-
Great Britain	50,000	-	4,943	25,444	28,260	-	-
Guatemala	-	-	-	247	-	-	-
Hong Kong	-	-	450	-	-	-	-
Netherlands	8,571	-	-	100	-	-	26,813
Newfoundland	-	-	164	324	40	-	-
Norway	16,000	-	-	-	-	-	-
Panama	-	-	-	10	-	-	-
Philippine Islands	-	-	-	27	-	-	-
Sierra Leona	-	-	-	14	-	-	-
Southern Rhodesia	-	-	-	7	-	-	-
St. Pierre and Miquelon	-	-	25	1	-	208	-
United States	224	-	161,588	300	217,779	3	6
Venezuela	-	-	-	165	-	-	-
TOTAL - August, 1935	74,795	10	167,713	30,462	246,089	281	26,819
July, 1935	214,556	9	294,518	66,797	68,935	-	59,346
August, 1934	166,745	1	257,262	43,021	143,105	-	2,811
12 Months ended August, 1934	2,568,279	187,408	2,048,338	503,010	937,702	-	459,759
12 Months ended August, 1935	1,095,444	11,960	3,634,345	525,047	1,328,302	-	572,726

Receipts and Shipments of each kind of grain at Vancouver, New Westminster, Prince Rupert and Victoria, B. C.
during the Crop Year 1934 - 1935. (ended 31st July)

	WHEAT	OATS	BARLEY	FLAX- SEED Bushels	RYE	MIXED GRAIN	CORN+
<u>RECEIPTS</u>							
Vancouver & New Westminster	50,054,836	4,702,450	1,102,049	1,948	6,360	3,498	581,977
Prince Rupert	1,229,849	322	-	-	-	-	-
Victoria	3,506	-	-	-	-	-	-
TOTAL	51,288,191	4,702,772	1,102,049	1,948	6,360	3,498	581,977
<u>SHIPMENTS - OCEAN</u>							
Vancouver & New Westminster	47,798,688	5,240,250	853,020	107	-	-	-
Prince Rupert	2,293,949	-	-	-	-	-	-
Victoria	925,524	-	-	-	-	-	-
TOTAL	51,018,161	5,240,250	853,020	107	-	-	-
<u>SHIPMENTS - RAIL (including Milled & Manufactured)</u>							
Vancouver & New Westminster	688,695	293,618	123,859	793	2,554	7,048	115,839
Prince Rupert	351	1,616	-	-	-	-	-
Victoria	7,584	195	-	-	-	-	-
TOTAL	696,630	295,429	123,859	793	2,554	7,048	115,839
<u>SHIPMENTS - OCEAN & RAIL</u>							
Vancouver & New Westminster	48,487,383	5,533,868	976,879	900	2,554	7,048	115,839
Prince Rupert	2,294,300	1,616	-	-	-	-	-
Victoria	933,108	195	-	-	-	-	-
TOTAL	51,714,791	5,535,679	976,879	900	2,554	7,048	115,839
RECEIPTS of U. S. A. Wheat (not included above)	2,685,-40	-	-	-	-	-	-

+ Argentine Corn Receipts 116,762-38 bus. Shipments Rail 31,390-10 bus. South African Corn Receipts 465,214-43 bus.
Shipments Rail 84,449-16 bus. Mixed Grain is shown in bushels of 50 lbs.

Receipts and Shipments of each kind of Grain at Fort William-Port Arthur, separately, during the
Crop Year 1934-35 (ended 31st July)

		WHEAT	OATS	BARLEY	FLAXSEED Bushels	RYE	+CORN	+ MIXED GRAIN	OATS GROATS
<u>RECEIPTS</u>									
Fort William		53,990,193	4,074,223	3,983,249	65,177	554,650	34,374	43,287	-
Port Arthur		90,523,503	4,791,618	6,212,436	158,532	427,886	-	54,407	-
TOTAL	-	144,513,696	8,865,841	10,195,685	223,709	982,536	34,374	97,694	-
<u>SHIPMENTS - LAKE</u>									
Fort William		46,349,037	3,964,855	4,613,522	39,061	503,353	-	2,899	29,412
Port Arthur		85,985,035	5,137,963	8,185,183	330,634	586,921	-	8,410	5,882
TOTAL	-	132,334,072	9,102,818	12,798,705	369,695	1,090,274	-	11,309	35,294
<u>SHIPMENTS - RAIL</u>									
Fort William		88,524	798,326	45,655	4,289	165	22,562	11,736	6,765
Port Arthur		34,593	359,656	24,812	2,035	-	34,366	9,339	15,588
TOTAL	--	123,117	1,157,982	70,467	6,324	165	56,928	21,075	22,353
<u>TOTAL SHIPMENTS - LAKE & RAIL</u>									
Fort William		46,437,561	4,763,181	4,659,177	43,350	503,518	22,562	14,635	36,177
Port Arthur		86,019,628	5,497,619	8,209,995	332,669	586,921	34,366	17,749	21,470
TOTAL	-	132,457,189	10,260,800	12,869,172	376,019	1,090,439	56,928	32,384	57,647

+NOTE:- Corn Receipts are from South Africa. Corn shipped 22,562 bushels Argentine and 34,366 bushels South African. Mixed Grain is shown in bushels of 50 pounds and Oats Groats in bushels of 34 pounds.

STATISTICS CANADA LIBRARY
BIBLIOTHÈQUE STATISTIQUE CANADA



1010674976