

DOMINION BUREAU
OF STATISTICS
OCT 22 1937
PROPERTY OF THE
LIBRARY

CANADA
DEPARTMENT OF TRADE AND COMMERCE
DOMINION BUREAU OF STATISTICS
AGRICULTURAL BRANCH

Vol. 18

No. 11

Historical File Copy

CANADIAN GRAIN STATISTICS

Week ending

OCTOBER 15, 1937

[Records for Western Inspection Division supplied by Board of Grain Commissioners for Canada]

+ + +

Published by Authority of the HON. W.D. Euler, M.P.,
Minister of Trade and Commerce.

OTTAWA

1937

I N D E X

General Summary	1 - 6
Canadian Grain in Store by Elevators	7
Canadian Grain in Store by Grades	8
Comparative Statement of Grain in Store	9
Receipts and Shipments of Canadian Grain	10
U. S. Grain in Store, Receipts and Shipments	11
Receipts, Shipments and Quantities in Store at Country Elevators, Western Division and Platform Loadings	12
Receipts, Shipments and Quantities in Store at Interior Terminal Elevators	13
Receipts, Shipments and Quantities in Store at Pacific Elevators, and Vancouver Prices	14
Daily and Weekly Average Prices of Grain at Fort William and Toronto for the week ending October 16, 1937	15
Exports of Coarse Grain, Wheatflour and Millfeed by Countries of Destination, September, 1937	16 - 17

DEPARTMENT OF TRADE AND COMMERCE
DOMINION BUREAU OF STATISTICS - CANADA
AGRICULTURAL BRANCH

(Issued October 21, 1937)

Dominion Statistician:	R. E. Coats, LL.D., F.R.S.C., F.S.S. (Hon.)
Chief, Agricultural Branch:	T. W. Grindley, Ph.D.
Assistant Chief, Agricultural Branch:	W. Dougan.

WHEAT STOCKS IN STORE

Canadian wheat in store for the week ending October 15, 1937, decreased 868,750 bushels compared with the previous week and decreased 86,307,224 bushels when compared with the corresponding week in 1936. The amount in store was reported as 73,265,768 bushels compared with 74,134,518 bushels for the previous week and 159,573,002 bushels for the week ending October 16, 1936. The stocks of 73,265,768 bushels include 17,453,926 bushels of Durum wheat.

CANADIAN WHEAT IN THE UNITED STATES

Canadian wheat in the United States amounted to 1,755,000 bushels, a decrease of 123,000 bushels from the previous week when 1,878,000 bushels were reported. Canadian wheat is located at the following ports: Buffalo 827,000; Erie Canal 371,000; New York 547,000 and Albany 10,000 bushels. Decreases are shown at Buffalo of 54,000; New York 67,000 and Albany 332,000 bushels while an increase is noted at Erie of 330,000 bushels.

For the same week a year ago, Canadian wheat in the United States amounted to 20,972,126 bushels distributed as follows: Duluth 5,721,926; Buffalo 8,676,000; Erie 1,726,000; New York 1,689,200; Albany 3,079,000 and Chicago 80,000 bushels.

United States wheat in Canada amounted to 1,585,567 bushels for the above week. Last year for the same week, no United States wheat in Canada was reported.

CANADIAN WHEAT IN CANADA

The wheat stocks in the elevators in Canada for the week ending October 15, 1937, were 71,500,866 bushels, compared with 72,246,616 bushels for the previous week and 139,726,282 bushels for the corresponding date last year.

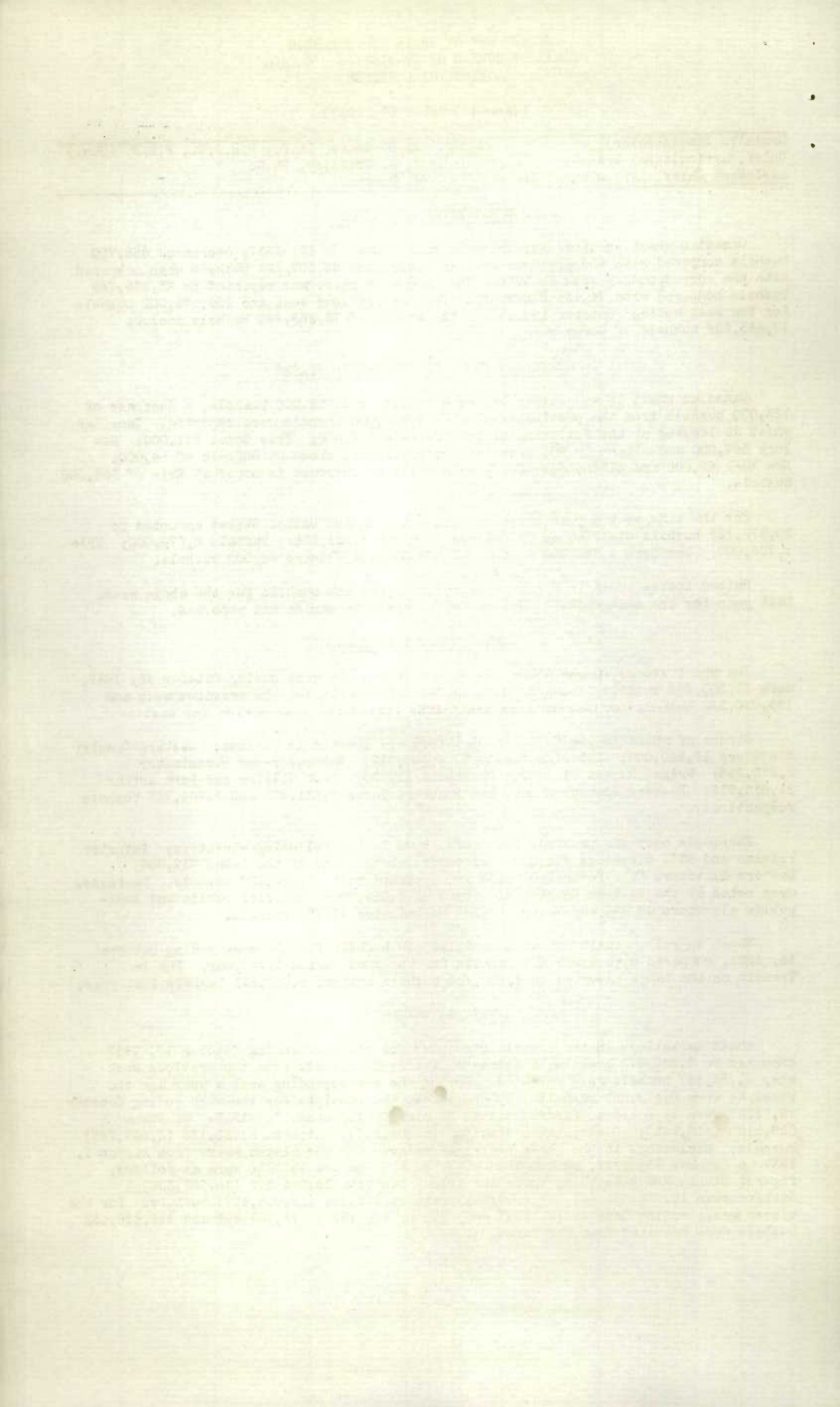
Stocks of wheat in the Canadian Elevators are located as follows: Western Country Elevators 19,240,000; Interior Terminals 5,308,712; Vancouver-New Westminster 2,972,348; Prince Rupert 911,340; Churchill 11,820; Fort William and Port Arthur 21,813,918; Eastern Elevators Lake and Seaboard Ports 7,631,571 and 3,866,743 bushels respectively.

Increases over the previous week were shown in the following elevators: Interior Private and Mill Elevators 385,000; elevators at the Head of the Lakes 739,806; Eastern Elevators Lake Ports 1,078,634 and Seaboard ports 1,068,107 bushels. Decreases were noted at the Western Country Elevators of 1,055,000; Interior public and Semi-public elevators 49,966 and Vancouver-New Westminster 94,294 bushels.

Wheat in rail transit amounted to 6,114,599 bushels for the week ending October 15, 1937, compared with 9,823,227 bushels for the same period last year. The In Transit on the Lakes amounted to 2,650,732 bushels against 5,653,271 bushels last year.

PRIMARY MOVEMENT

Wheat marketings in the Prairie Provinces for the week ending October 15, 1937 amounted to 3,339,873 bushels, a decrease of 443,794 bushels from the previous week when 3,783,667 bushels were marketed. During the corresponding week a year ago the receipts were 6,470,881 bushels. By provinces, the receipts for the week ending October 15, 1937 were as follows, figures within brackets being those for 1936: Manitoba 329,510 (316,865); Saskatchewan 829,185 (3,306,228); Alberta 2,181,178 (2,847,788) bushels. Marketings in the three Prairie Provinces for the eleven weeks from August 1, 1937 to October 15, 1937, as compared with the same period in 1936 were as follows, figures within brackets being those for 1936: Manitoba 28,964,473 (16,603,395); Saskatchewan 15,666,661 (67,007,600); Alberta 28,070,164 (29,005,457) bushels. For the eleven weeks ending October 15, 1937 and October 16, 1936, 72,701,298 and 112,616,452 bushels were received from the farms.



OVERSEAS EXPORT CLEARANCES AND IMPORTS OF WHEAT INTO THE UNITED STATES

During the week ending October 15, 1937, the overseas export clearances of wheat amounted to 1,846,124 bushels while imports into the United States for consumption and milling in bond were 47,000 bushels. The total is 1,893,124 bushels as compared with 2,579,059 bushels for the previous week, a decrease of 685,935 bushels and when compared with the same period in 1936, a decrease of 2,358,762 bushels.

Clearances by ports for the weeks ending October 15, 1937 and October 16, 1936 and imports into the United States for consumption and milling in bond were as follows (in bushels):-

<u>Overseas Clearances</u>	<u>Week ending October 15, 1937</u>	<u>Week ending October 16, 1936</u>
Montreal	1,296,091	1,040,089
Sorel	-	951,400
Quebec	-	-
Fort William and Port Arthur	-	49,220
Vancouver-New Westminster	216,033	309,483
United States Ports	334,000	548,694
<hr/>		
TOTAL	1,846,124	2,898,886
<u>Imports into the United States</u>		
For consumption and milling in bond for re-export	47,000	1,353,000
<hr/>		
<u>Total Overseas Clearances and</u>		
<u>United States Imports</u>	1,893,124 .	4,251,886

The following table shows the export clearances of Canadian wheat by ports from August 1, 1937 to October 15, 1937, along with the comparative figures for the same period in 1936-37 and imports into the United States for consumption and milling in bond (in bushels):-

<u>Overseas Clearances</u>	<u>1937-38</u>	<u>1936-37</u>
Montreal	x12,313,252	13,322,308
Sorel	770,000	6,740,063
Quebec	-	773,581
Three Rivers	41,078	814,487
Fort William and Port Arthur	-	407,578
Churchill	603,982	4,293,501
Vancouver-New Westminster	1,036,138	7,227,102
United States Ports	3,394,000	6,019,394
<hr/>		
TOTAL	18,158,450	39,598,014
<u>Imports into the United States</u>		
For consumption and milling in bond for re-export	1,476,000	15,721,412
<hr/>		
<u>Total Overseas Clearances and</u>		
<u>United States Imports to Date</u>	19,634,450	55,319,426

x Includes 40,000 bushels Durum wheat cleared from Atlantic Seaboard Ports.

The accumulated totals of imports of wheat into the United States for consumption and milling in bond are adjusted at the end of the month, due to the fact that the United States Department of Domestic and Foreign Commerce revises their weekly figures on a monthly basis.

STATE OF TEXAS

WHEREAS the Board of Directors of the State of Texas has determined that it is in the best interest of the State to issue bonds for the purpose of raising money to be used for the construction of a certain public building, and

WHEREAS the Board of Directors has also determined that it is in the best interest of the State to issue bonds for the purpose of raising money to be used for the construction of a certain public building, and

Year ending October 31, 1933	Year ending October 31, 1932	Particulars
1,000,000	1,000,000	Interest on bonds
500,000	500,000	Principal of bonds
500,000	500,000	Reserve fund
1,000,000	1,000,000	Total

Year ending October 31, 1933	Year ending October 31, 1932	Particulars
1,000,000	1,000,000	Interest on bonds
500,000	500,000	Principal of bonds
500,000	500,000	Reserve fund
1,000,000	1,000,000	Total

Year ending October 31, 1933	Year ending October 31, 1932	Particulars
1,000,000	1,000,000	Interest on bonds
500,000	500,000	Principal of bonds
500,000	500,000	Reserve fund
1,000,000	1,000,000	Total

Year ending October 31, 1933	Year ending October 31, 1932	Particulars
1,000,000	1,000,000	Interest on bonds
500,000	500,000	Principal of bonds
500,000	500,000	Reserve fund
1,000,000	1,000,000	Total

Year ending October 31, 1933	Year ending October 31, 1932	Particulars
1,000,000	1,000,000	Interest on bonds
500,000	500,000	Principal of bonds
500,000	500,000	Reserve fund
1,000,000	1,000,000	Total

Year ending October 31, 1933	Year ending October 31, 1932	Particulars
1,000,000	1,000,000	Interest on bonds
500,000	500,000	Principal of bonds
500,000	500,000	Reserve fund
1,000,000	1,000,000	Total

IN WITNESS WHEREOF, I have hereunto set my hand and the seal of the State of Texas, at Austin, this 1st day of October, 1933.

CANADIAN GRAIN STATISTICS - WEEK ENDING OCTOBER 15, 1937

Returns received as to stocks of grain in store for the week ending Oct. 15, 1937, show a net decrease of 299,422 bushels compared with the previous week. Grain stocks were as follows:- wheat 73,265,768, oats 6,492,782, barley 12,629,862, flaxseed 574,451 and rye 1,177,489 bushels. Decreases were noted in wheat of 868,750, flaxseed 15,093 and rye 131,993 bushels, while increases were shown in oats of 666,780 and barley 49,634 bushels. At a comparable date last year grain stocks were as follows:- wheat 159,573,002, oats 17,369,285, barley 16,369,267, flaxseed 1,106,835 and rye 2,790,048 bushels.

WESTERN COUNTRY ELEVATORS:- Grain in store shows a net decrease of 296,000 bushels. Decreases were noted in wheat of 1,055,000, flaxseed 10,000 and rye 6,000 bushels, while oats and barley increased 490,000 and 285,000 bushels respectively.

The following table shows the quantities of grain in store at the Country Elevators in each of the Prairie Provinces on October 8, 1937 and with comparison for the previous week and the same period 1936:-

	<u>MANITOBA</u>	<u>SASKATCHEWAN</u>	<u>ALBERTA</u>	<u>TOTAL</u>
	B u s h e l s			
Wheat	3,870,000	6,795,000	9,630,000	20,295,000
Oats	1,028,000	1,217,000	975,000	3,220,000
Barley	1,640,000	412,000	438,000	2,490,000
Flaxseed	71,000	74,000	12,000	157,000
Rye	202,000	84,000	44,000	330,000
TOTAL	6,811,000	8,582,000	11,099,000	26,492,000
Previous week	7,640,000	8,938,000	12,517,000	29,095,000
Same period 1936	5,266,257	28,068,389	23,537,162	56,871,808

The receipts and shipments at the Country Elevators for the week ending Oct. 8, 1937 compared with the previous week and the same period 1936 were as follows:-

	<u>R E C E I P T S</u>			<u>S H I P M E N T S</u>		
	Previous week	Week ending Oct. 8, 1937	Week ending Oct. 9, 1936	Previous week	Week ending Oct. 8, 1937	Week ending Oct. 9, 1936
Wheat	6,256,204	3,697,963	5,465,574	7,046,257	6,369,060	7,807,249
Oats	1,005,765	937,696	1,154,153	532,948	693,059	437,694
Barley	1,041,968	655,255	1,332,694	960,884	514,407	1,466,451
Flaxseed	49,946	13,882	117,986	26,251	11,113	87,423
Rye	46,494	50,884	36,994	49,450	43,965	74,412
TOTAL	8,400,377	5,355,680	8,107,401	8,615,790	7,631,604	9,873,229

Platform Loadings shown by Prairie Provinces for the period ending October 7, 1937 were as follows:-

	<u>WHEAT</u>	<u>OTHER GRAIN</u>	<u>TOTAL</u>
	B u s h e l s		
Manitoba	17,250	41,450	58,700
Saskatchewan	5,600	-	5,600
Alberta	62,854	25,350	88,204
TOTAL	85,704	66,800	152,504
Period ending Oct. 7, 1936	132,463	114,123	246,586
+Increase -Decrease	-46,759	-47,323	-94,082

INTERIOR PUBLIC AND SEMI-PUBLIC TERMINALS.- Wheat stocks for the week show a decrease of 49,966 bushels.

VANCOUVER-NEW WESTMINSTER ELEVATORS.- Grain stocks at these elevators show a net decrease of 101,556 bushels. Decreases were noted in wheat of 94,204, oats 8,276 and rye 2,218 bushels, while barley increased 3,232 bushels.

PRINCE RUPERT & CHURCHILL ELEVATORS.- Wheat stocks remain unchanged.

PUBLIC AND PRIVATE (FORT WILLIAM AND PORT ARTHUR).- Grain in store shows a net decrease of 249,314 bushels. Decreases were noted in oats of 228,220, barley 634,054, flaxseed 21,907 and rye 104,939 bushels, while wheat stocks increased 739,806 bushels.

Stocks in Store at the Head of the Lakes compared with the same week last year were as follows:-

	Week ending Oct. 15, 1937	Week ending Oct. 16, 1936	+ Increase - Decrease
Wheat	21,813,918	35,548,869	- 13,734,951
Oats	531,973	2,883,840	- 2,351,867
Barley	4,435,623	5,189,842	- 754,219
Flaxseed	287,139	333,034	- 45,895
Rye	684,614	1,183,762	- 499,148

The receipts (including transfers) at the Head of the Lakes for the period ending Oct. 15, 1937 with comparative figures for the same week last year were as follows:-

	Week ending Oct. 15, 1937	Week ending Oct. 16, 1936	+ Increase - Decrease
Wheat	3,712,641	5,102,610	- 1,389,969
Oats	80,898	357,782	- 276,884
Barley	210,186	973,320	- 763,134
Flaxseed	1,424	73,402	- 71,978
Rye	26,374	38,268	- 11,894

Preliminary figures showing receipts and shipments at the Head of the Lakes also Vancouver-New Westminster, Churchill and Prince Rupert for the period August 1, 1937 to Oct. 15, 1937 compared with the same period last year:-

	FORT WILLIAM & PORT ARTHUR		VANCOUVER-NEW WESTMINSTER	
	Receipts	Shipments	Receipts	Shipments
Wheat	42,361,624	27,729,579	802,951	1,343,730
Oats	1,755,222	1,862,529	121,878	85,972
Barley	10,185,469	6,599,532	11,797	12,274
Flaxseed	23,079	26,303	89	-
Rye	929,858	202,686	4,979	4,691
TOTAL	55,255,252	36,420,629	941,694	1,446,667
Same period last year	88,740,646	73,900,861	8,861,921	7,719,454
+Increase -Decrease	-32,485,394	-37,480,232	-7,920,227	-6,272,787

	PRINCE RUPERT		CHURCHILL	
	Receipts	Shipments	Receipts	Shipments
Wheat	-	-	-	603,982
Same period last year	21	-	2,426,721	4,293,501
+Increase -Decrease	-21	-	-2,426,721	-3,689,519

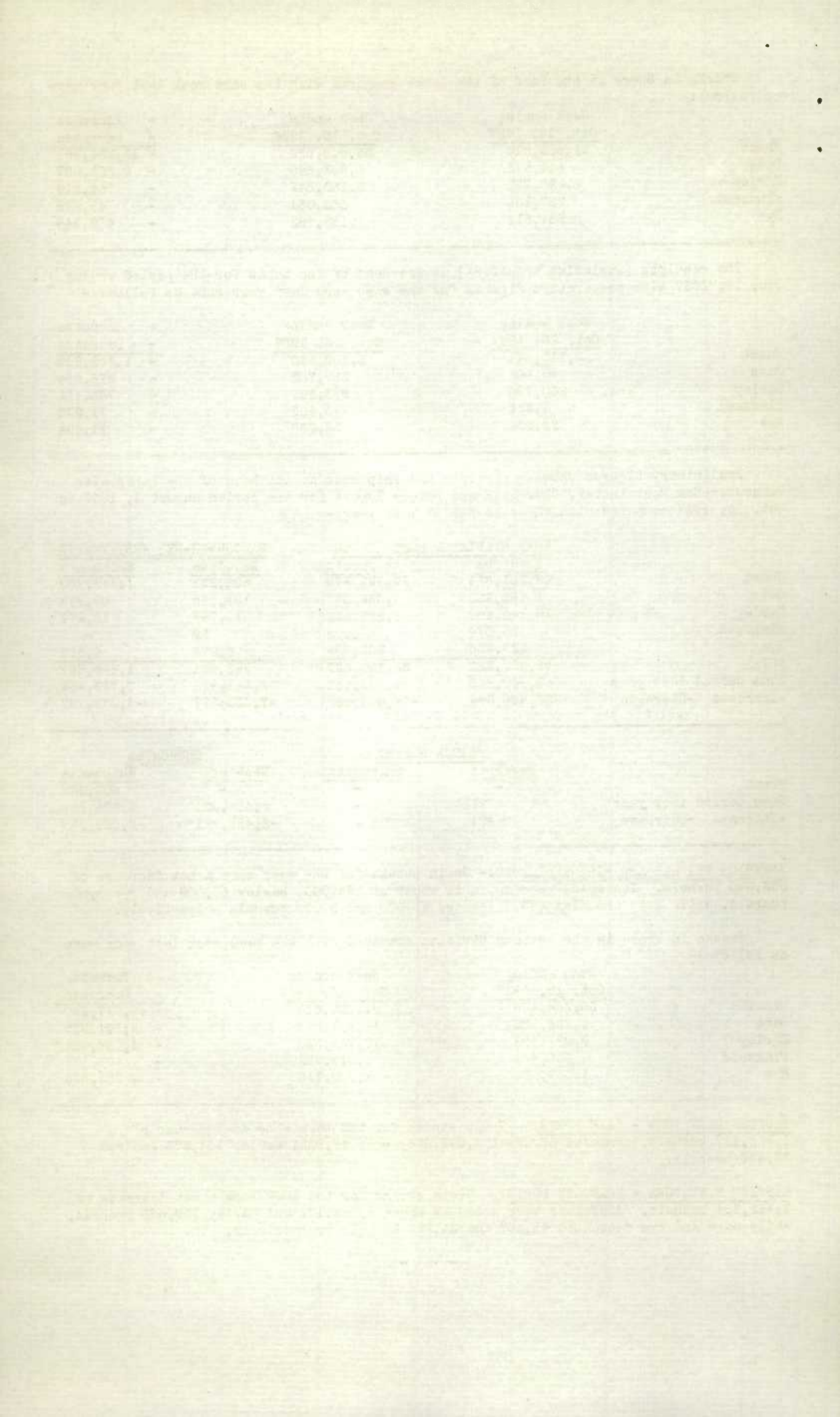
INTERIOR PRIVATE AND MILL ELEVATORS:- Grain stocks for the week show a net increase of 393,000 bushels. Increases were noted in wheat of 385,000, barley 53,000 and rye 3,000 bushels, while oats and flaxseed decreased 45,000 and 3,000 bushels respectively.

Stocks in store in the Western Division compared with the same week last year were as follows:-

	Week ending Oct. 15, 1937	Week ending Oct. 16, 1937	+ Increase - Decrease
Wheat	50,258,138	97,235,418	- 46,977,280
Oats	4,786,123	12,891,038	- 8,104,915
Barley	9,077,306	12,104,330	- 3,027,024
Flaxseed	535,606	1,013,785	- 478,179
Rye	1,037,020	1,990,718	- 953,698

EASTERN ELEVATORS - LAKE PORTS:- Grain stocks for the week show an increase of 1,313,417 bushels, composed of wheat 1,075,634, oats 46,932, barley 161,373 and rye 29,478 bushels.

EASTERN ELEVATORS - SEABOARD PORTS:- Grain stocks for the week show a net increase of 1,162,384 bushels. Increases were noted in wheat 1,068,107 and barley 160,665 bushels, while oats and rye decreased 41,467 and 24,921 bushels respectively.



Shipments Overseas of Canadian Grain from St. Lawrence Ports were as follows:-

		United Kingdom	Other Countries
		B u s h e l s	
Montreal, Quebec	Wheat	1,295,971	
	Oats	18,823	
	Barley	401,364	
	Rye	24,921	
	Buckwheat	10,176	
Montreal (Ogivilie), Quebec	Wheat	-	120

EASTERN ELEVATORS:- United States grain stocks were 4,941,076 bushels higher than at a comparable date last year. Increases were noted in wheat of 1,585,567, oats 2,340,363, barley 134,921, and rye 889,792 bushels, while corn decreased 9,567 bushels.

Number of cars inspected in the Western Division for the week ending October 14, 1937 with comparison for the previous year were as follows:-

	Week ending October 14, 1937	Week ending October 14, 1936	+ Increase - Decrease
Wheat	3,122	4,623	- 1,501
Oats	213	336	- 123
Barley	287	824	- 537
Flaxseed	9	70	- 61
Rye	25	36	- 11
Mixed Grain	2	6	- 4
Screenings	1	7	- 6
TOTAL	3,659	5,902	- 2,243

The number of bushels of grain shipped from Western to Eastern points over the C.P.R. and C.N.R. for the week ending Oct. 7, 1937 and the period from August 1, 1937 to Oct. 7, 1937:-

	WEEK ENDING OCT. 7, 1937				PERIOD AUG. 1, 1937 TO OCT. 7, 1937			
	WHEAT	OATS	BARLEY	RYE	WHEAT	OATS	BARLEY	RYE
Via C.P.R.	-	1,825	-	-	-	14,298	3,335	-
Via C.N.R.	-	9,735	-	-	1,348	59,871	7,740	-
TOTAL	-	11,560	-	-	1,348	74,169	11,075	-

DULUTH:- Receipts of Canadian bonded grain at Duluth by rail for the week ending October 16, 1937 were nil. For the period August 1, 1937 to date rail receipts amounted to barley 23,208 bushels.

Receipts by water for the week ending October 16, 1937 were nil. For the period from August 1, 1937 to date receipts by water amounted to barley 273,787 bushels.

Rail shipments for the week ending October 16, 1937 were nil. For the period from August 1, 1937 to date rail shipments amounted to wheat 104,442 and barley 237,164 bushels.

Lake shipments for the week ending October 16, 1937 were nil. For the period from August 1, 1937 to date, lake shipments amounted to wheat 359,946 bushels.

STATE OF NEW YORK

IN SENATE

JANUARY 10, 1917

REPORT

OF THE

COMMISSIONERS OF THE LAND OFFICE

FOR THE YEAR 1916

ALBANY:

THE STATE PRINTING OFFICE, 1917.

Published by the State Printing Office, Albany, N. Y., 1917.

Price, 50 cents.

Copyright, 1917, by the State of New York.

Printed and bound by the State Printing Office, Albany, N. Y.

Revised Edition, 1917.

THE STATE OF NEW YORK

IN SENATE

JANUARY 10, 1917

REPORT

OF THE

COMMISSIONERS OF THE LAND OFFICE

FOR THE YEAR 1916

ALBANY:

THE STATE PRINTING OFFICE, 1917.

Published by the State Printing Office, Albany, N. Y., 1917.

Price, 50 cents.

Copyright, 1917, by the State of New York.

Printed and bound by the State Printing Office, Albany, N. Y.

Revised Edition, 1917.

THE STATE OF NEW YORK

STOCKS OF GRAIN IN DIFFERENT ELEVATORS DURING THE WEEK ENDING OCTOBER 15, 1937

	WHEAT	DURUM WHEAT	OATS	BARLEY	FLAX- SEED	RYE
	B u s h e l s					
Western Country Elevators	17695000	1545000	3710000	2775000	147000	324000
Interior Private & Mill Elevs.	3950000	250000	427000	1860000	101000	28000
Interior Pub. & Semi-Pub. Terms.	1108712	-	953	594	-	-
Vancouver-New Westminster	2972348	-	116197	6089	467	406
Prince Rupert	911340	-	-	-	-	-
Churchill	11820	-	-	-	-	-
Fort William & Port Arthur	11611951	10201967	531973	4435623	287139	684614
In Transit Lakes	2650732	979083	392546	687208	23850	-
In Transit Rail	6114599	-	531196	289846	12880	20521
Eastern Elevs. - Lake Ports	4363708	3267863	316296	868123	-	52875
Eastern Elevs. - St. Lawrence Ports	2656665	893450	466621	1342035	2115	67073
Eastern Elevs. - Seaboard Ports	65	316563	-	-	-	-
U. S. Lake Ports	1198000	9902	-	345344	-	-
U. S. Atlantic Seaboard Ports	557000	-	-	20000	-	-
TOTAL	55801940	17463828	6492782	12629862	574451	1177489
Previous week	56623257	17511261	5826002	12580228	589544	1309482
Same week previous year	159573002		17369285	16369267	1106835	2790048

LAKE SHIPMENTS FROM HEAD OF THE LAKES FOR THE WEEK ENDING OCTOBER 14, 1937

	CANADIAN LOWER LAKE PORTS	MONTREAL	SOREL	QUEBEC	BUFFALO	OTHER U.S.A. PORTS	EUROPE DIRECT
Wheat	3229424	235513	-	-	324824	-	-
Oats	250315	85544	-	-	-	-	-
Barley	767597	-	-	-	-	-	-
Flaxseed			N	i	l		
Rye			N	i	l		
TOTAL	4247336	321057	-	-	324824	-	-
Period Oct. 14, 1936	3080045	239443	173637	-	1577190	962279	49220

LAKE SHIPMENTS FROM HEAD OF THE LAKES FOR THE PERIOD FROM THE OPENING
OF NAVIGATION TO OCTOBER 14, 1937

Wheat	44444182	8466121	120421	50000	5542460	280090	163793
Oats	2520255	2161541	-	124882	-	-	-
Barley	5748306	2038308	10000	18000	587224	2302363	-
Flaxseed	186861	65595	-	-	-	-	-
Rye	1119350	418778	-	-	142520	-	-
TOTAL	54018954	13150343	130421	192882	6272204	2582453	163793
Period Oct. 14, 1936	55589831	16523519	3311485	$\frac{1}{7}$ 1702410	38468449	24904557	x1324879

x Includes 114,039 bushels wheat to Great Britain.

$\frac{1}{7}$ Includes 1,384,934 bushels wheat to Three Rivers.

STATE OF TEXAS, COUNTY OF DALLAS, DEPARTMENT OF HEALTH, DIVISION OF PUBLIC HEALTH, BIRTH AND DEATH REGISTRATION, 1910.

YEAR	SEX	RACE	MARRIAGE	BIRTHS		DEATHS
				WHITE	COLORED	
1910	MALE	WHITE	1000	1000	1000	1000
1910	MALE	COLORED	500	500	500	500
1910	FEMALE	WHITE	1000	1000	1000	1000
1910	FEMALE	COLORED	500	500	500	500
1910	TOTAL	WHITE	2000	2000	2000	2000
1910	TOTAL	COLORED	1000	1000	1000	1000
1910	TOTAL		3000	3000	3000	3000

STATE OF TEXAS, COUNTY OF DALLAS, DEPARTMENT OF HEALTH, DIVISION OF PUBLIC HEALTH, BIRTH AND DEATH REGISTRATION, 1911.

YEAR	SEX	RACE	MARRIAGE	BIRTHS		DEATHS
				WHITE	COLORED	
1911	MALE	WHITE	1000	1000	1000	1000
1911	MALE	COLORED	500	500	500	500
1911	FEMALE	WHITE	1000	1000	1000	1000
1911	FEMALE	COLORED	500	500	500	500
1911	TOTAL	WHITE	2000	2000	2000	2000
1911	TOTAL	COLORED	1000	1000	1000	1000
1911	TOTAL		3000	3000	3000	3000

STATE OF TEXAS, COUNTY OF DALLAS, DEPARTMENT OF HEALTH, DIVISION OF PUBLIC HEALTH, BIRTH AND DEATH REGISTRATION, 1912.

YEAR	SEX	RACE	MARRIAGE	BIRTHS		DEATHS
				WHITE	COLORED	
1912	MALE	WHITE	1000	1000	1000	1000
1912	MALE	COLORED	500	500	500	500
1912	FEMALE	WHITE	1000	1000	1000	1000
1912	FEMALE	COLORED	500	500	500	500
1912	TOTAL	WHITE	2000	2000	2000	2000
1912	TOTAL	COLORED	1000	1000	1000	1000
1912	TOTAL		3000	3000	3000	3000

CANADIAN GRAIN IN STORE - OCTOBER 15, 1937

	WHEAT	DURUM WHEAT	OATS	BARLEY	FLAX-- SEED	RYE
		B u s h e l s				
WESTERN COUNTRY ELEVATORS						
Manitoba	2460000	1340000	1060000	1650000	60000	196000
Saskatchewan	6355000	205000	1410000	455000	76000	84000
Alberta	8880000	-	1240000	670000	11000	44000
TOTAL WESTERN COUNTRY ELEVATORS	17695000	1545000	3710000	2775000	147000	324000
INTERIOR PRIVATE AND MILL	3980000	250000	427000	1860000	101000	28000
INTERIOR PUBLIC & SEMI-PUBLIC	1108712	-	953	594	-	-
VANCOUVER-NEW WESTMINSTER	2972548	-	116197	6089	467	406
PRINCE RUPERT	911340	-	-	-	-	-
CHURCHILL	11820	-	-	-	-	-
Semi-Public Terminals	11603679	10201967	514897	4433636	287139	684614
Private Terminals	6272	-	17076	1987	-	-
TOTAL FT. WM. & PT. ARTHUR	11611951	10201967	531973	4435623	287139	684614
IN TRANSIT LAKES	2650732	979083	392546	687208	23650	-
IN TRANSIT RAIL	6114599	-	531196	289846	12880	20521
EASTERN ELEVATORS						
Midland	89656	60976	-	-	-	-
Midland Simcoe	214303	464390	260972	-	-	-
Collingwood	-	1161624	-	-	-	-
Owen Sound	81809	121946	6000	-	-	-
Goderich Elev. & Transit	81563	191166	-	-	-	-
Goderich West. Can. Flr. Mill	294298	-	4658	-	-	-
Sarnia	954104	141867	3253	140426	-	108
Port Colborne, D. G.	274274	540194	-	315984	-	-
Port Colborne, Maple Leaf	671521	67507	-	54228	-	14968
Toronto	948309	353014	9972	269084	-	37799
Kingston, James Richardson	19587	-	-	-	-	-
Kingston Elevator Co.	718720	102982	31441	88401	-	-
Prescott	15264	62197	-	-	-	-
TOTAL EAST. ELEVS. LAKE PORTS	4363708	3267863	316296	868123	-	52875
Montreal	1953523	646697	307492	1298670	2115	67073
Ogilvie Flour Mills	460154	-	-	-	-	-
Dominion Elevator Co.	22273	-	84512	16408	-	-
Three Rivers	56574	-	-	-	-	-
North Amer. Ltd. Sorel	179377	195008	-	4805	-	-
Quebec	4764	51745	74617	29152	-	-
West Saint John Hbr. Comm.	-	226049	-	-	-	-
West Saint John C.P.R.	65	90514	-	-	-	-
TOTAL EAST. ELEVS. SBD. PORTS	2656730	1210013	466621	1342035	2115	67073
TOTAL QUANTITY IN CANADA	84046940	17453926	6492782	12264518	574451	1177489
U. S. LAKE PORTS						
Duluth	-	9902	-	235344	-	-
Buffalo	501000	-	-	110000	-	-
Buffalo Afloat	326000	-	-	-	-	-
Erie Canal	371000	-	-	-	-	-
TOTAL U. S. LAKE PORTS	1198000	9902	-	345344	-	-
U. S. ATLANTIC SBD. PORTS						
New York	478000	-	-	-	-	-
New York Afloat	69000	-	-	20000	-	-
Albany	10000	-	-	-	-	-
TOTAL U. S. ATLANTIC SBD. PORTS	557000	-	-	20000	-	-
TOTAL QUANTITY IN STORE	55801940	17463828	6492782	12629862	574451	1177489

Grades of Canadian Grain in Store at Public, Semi-Public, and Private (Head of the Lakes), Interior Public and Semi-Public, Vancouver-New Westminster, and Eastern Elevators for the week ending October 15, 1937.

	Ft. William & Pt. Arthur Semi-Public and Private	Interior Public and Semi-Public Terminals	Vancouver New West- minster Elevators	Eastern Elevators Lake Ports	Eastern Elevators St. Lawrence Ports	Eastern Elevators Maritime Ports
B u s h e l s						
WHEAT						
No. 1 Hard	49,426	6,624	463,926	-	23,376	-
No. 1 Northern	1,769,240	1,036,415	389,367	684,867	478,516	65
No. 2 Northern	1,185,190	39,266	230,488	409,586	370,087	-
Old No. 2 Northern	1,618	-	-	-	223	-
No. 3 Northern	3,273,316	2,559	813,579	1,027,860	736,330	-
No. 4 Northern	1,303,848	1,279	307,581	295,595	721,963	-
No. 4 Special	294,383	-	-	954,788	9,509	-
No. 5 Wheat	58,454	-	87,233	52,704	96,085	-
No. 5 Special	462,370	-	-	-	56,031	-
No. 6 Wheat	84,405	-	121,995	54,321	4,087	-
No. 6 Special	288,576	-	-	106,391	2,498	-
Feed	353,636	-	146,457	145,083	21,639	-
No. 1 C.W. Garnet	1,799,034	-	45,121	136,534	106,720	-
No. 2 C.W. Garnet	432,776	-	162,402	-	-	-
No. 1 C.W. Durum	1,114,637	-	-	180,935	34,392	225,748
No. 2 C.W. Durum	5,314,927	-	-	2,766,031	660,161	56,834
No. 3 C.W. Durum	3,334,430	-	-	320,896	177,356	33,981
No. 4 C.W. Durum	136,629	-	-	-	-	-
Other Durum	311,705	-	-	-	21,542	-
Other	245,518	19,398	204,199	495,980	29,600	-
TOTAL	21,813,918	1,105,541	2,972,348	7,631,571	3,550,115	316,628
OLTS						
No. 2 C.W.	77,799	15	-	59,090	38,854	-
No. 3 C.W.	198,516	929	2,182	189,072	62,448	-
Ex. No. 1 Feed	5,023	-	-	-	-	-
No. 1 Feed	133,803	-	-	50,386	193,649	-
No. 2 Feed	58,019	-	-	-	27,736	-
No. 3 Feed	7,684	-	-	-	3,514	-
Other	51,129	9	114,015	17,748	140,420	-
TOTAL	531,973	953	116,197	316,296	466,621	-
BARLEY						
3 Ex. C.W. 6 Row	2,774,267	-	-	305,838	256,634	-
3 C.W. 6 Row	-	-	-	-	10,589	-
3 Ex. C. W. 2 Row	17,962	-	-	44,237	-	-
3 C.W. 2 Row	-	-	-	1,000	997	-
3 C.W.	1,055,604	554	2,471	434,615	1,048,089	-
4 C.W.	110,402	-	-	-	953	-
5 C.W.	94,388	-	-	-	5,273	-
6 C.W.	18,472	-	-	-	1,250	-
Feed	-	-	-	-	-	-
Other	364,528	40	3,618	82,433	18,250	-
TOTAL	4,435,623	594	6,089	868,123	1,342,035	-
FLAXSEED						
No. 1 C.W.	236,073	-	82	-	2,115	-
No. 2 C.W.	30,886	-	98	-	-	-
No. 3 C.W.	7,792	-	168	-	-	-
No. 4 C.W.	198	-	-	-	-	-
Other	12,190	-	119	-	-	-
TOTAL	287,139	-	467	-	2,115	-
RYE						
No. 1 C.W.	-	-	26	-	-	-
No. 2 C.W.	587,765	-	-	45,587	63,781	-
No. 3 C.W.	85,864	-	-	-	-	-
No. 4 C.W.	327	-	-	-	-	-
Ergoty	1,589	-	-	-	-	-
Other	9,069	-	380	7,288	3,292	-
TOTAL	684,614	-	406	52,875	67,073	-
TOTAL QUANTITY						
IN STORE	27,753,267	1,107,088	3,095,507	8,868,865	5,427,959	316,628

- 9 -
CANADIAN GRAIN IN STORE - COMPARATIVE STATEMENT, 1934-1937.

	W H E A T	(Bushels)	OTHER GRAIN
<u>October 15, 1937.</u>			
Country Elevators - Manitoba	3,800,000		2,966,000
Saskatchewan	6,560,000		2,025,000
Alberta	8,880,000		1,965,000
TOTAL	<u>19,240,000</u>		<u>6,956,000</u>
Interior Private and Mill	4,200,000		2,416,000
Interior Public and Semi-Public Terminals	1,108,712		1,547
Vancouver-New Westminster	2,972,348		123,159
Prince Rupert	911,340		-
Churchill	11,820		-
Fort William & Port Arthur	21,813,918		5,939,349
In Transit Lakes	3,629,815		1,103,604
In Transit Rail	6,114,599		854,443
Eastern Elevators - Lake Ports	7,631,571		1,237,294
Eastern Elevators - Sbd. Ports	3,866,743		1,877,844
U. S. Lake Ports	1,207,902		345,344
U. S. Atlantic Sbd. Ports	557,000		20,000
TOTAL	<u>73,265,768</u>		<u>20,874,584</u>
<u>October 16, 1936.</u>			
Country Elevators - Manitoba	2,910,629		1,965,360
Saskatchewan	18,536,021		7,109,475
Alberta	20,404,876		3,467,689
TOTAL	<u>41,851,526</u>		<u>12,542,524</u>
Interior Private and Mill	6,973,068		4,815,822
Interior Public and Semi-Public Terminals	105,098		786,722
Vancouver-New Westminster	8,515,214		688,622
Prince Rupert	1,025,959		-
Churchill	610,450		-
Fort William and Port Arthur	35,548,869		9,590,478
In Transit Lakes	5,653,271		779,479
In Transit Rail	9,823,227		2,256,063
Eastern Elevators - Lake Ports	13,707,948		2,016,628
Eastern Elevators - Sbd. Ports	14,786,246		1,839,751
U. S. Lake Ports	16,203,926		2,304,601
U. S. Atlantic Sbd. Ports	4,768,200		14,745
TOTAL	<u>159,573,002</u>		<u>37,635,435</u>
<u>October 18, 1935.</u>			
Country Elevators - Manitoba	6,436,856		2,784,177
Saskatchewan	43,684,868		5,160,090
Alberta	32,741,695		2,019,802
TOTAL	<u>82,863,419</u>		<u>9,964,069</u>
Interior Private and Mill	6,760,705		2,658,879
Interior Public and Semi-Public Terminals	5,046,000		65,730
Vancouver-New Westminster	14,577,826		159,998
Prince Rupert	133,203		-
Churchill	166,051		-
Fort William and Port Arthur	55,517,506		10,807,776
In Transit Lakes	5,442,809		1,618,895
Eastern Elevators - Lake Ports	44,599,183		1,196,318
Eastern Elevators - Sbd. Ports	19,606,371		1,394,621
U. S. Lake Ports	22,864,356		254,805
U. S. Atlantic Sbd. Ports	4,858,768		-
TOTAL	<u>262,436,197</u>		<u>28,121,091</u>
<u>October 19, 1934.</u>			
Country Elevators - Manitoba	9,475,948		1,899,405
Saskatchewan	52,086,951		6,174,434
Alberta	35,380,940		3,131,617
TOTAL	<u>96,943,839</u>		<u>11,205,456</u>
Interior Private and Mill	7,086,678		3,667,818
Interior Public and Semi-Public Terminals	5,580,809		276,351
Vancouver-New Westminster	10,933,784		565,221
Victoria	926,965		-
Prince Rupert	1,093,753		-
Churchill	838,043		-
Fort William and Port Arthur	58,221,926		10,275,918
In Transit Lakes	3,980,213		288,339
Eastern Elevators - Lake Ports	28,773,110		2,530,403
Eastern Elevators - Sbd. Ports	13,383,284		3,291,138
U. S. Lake Ports	13,681,830		1,033,509
U. S. Atlantic Sbd. Ports	4,089,737		-
TOTAL	<u>245,533,971</u>		<u>33,134,153</u>

Item No.	Quantity	Description
100,000	100,000	...
200,000	200,000	...
300,000	300,000	...
400,000	400,000	...
500,000	500,000	...
600,000	600,000	...
700,000	700,000	...
800,000	800,000	...
900,000	900,000	...
1,000,000	1,000,000	...
1,100,000	1,100,000	...
1,200,000	1,200,000	...
1,300,000	1,300,000	...
1,400,000	1,400,000	...
1,500,000	1,500,000	...
1,600,000	1,600,000	...
1,700,000	1,700,000	...
1,800,000	1,800,000	...
1,900,000	1,900,000	...
2,000,000	2,000,000	...
2,100,000	2,100,000	...
2,200,000	2,200,000	...
2,300,000	2,300,000	...
2,400,000	2,400,000	...
2,500,000	2,500,000	...
2,600,000	2,600,000	...
2,700,000	2,700,000	...
2,800,000	2,800,000	...
2,900,000	2,900,000	...
3,000,000	3,000,000	...
3,100,000	3,100,000	...
3,200,000	3,200,000	...
3,300,000	3,300,000	...
3,400,000	3,400,000	...
3,500,000	3,500,000	...
3,600,000	3,600,000	...
3,700,000	3,700,000	...
3,800,000	3,800,000	...
3,900,000	3,900,000	...
4,000,000	4,000,000	...
4,100,000	4,100,000	...
4,200,000	4,200,000	...
4,300,000	4,300,000	...
4,400,000	4,400,000	...
4,500,000	4,500,000	...
4,600,000	4,600,000	...
4,700,000	4,700,000	...
4,800,000	4,800,000	...
4,900,000	4,900,000	...
5,000,000	5,000,000	...

RECEIPTS AND SHIPMENTS OF GRAIN BY CLASSES OF ELEVATORS IN THE WEEK ENDING OCT. 15, 1937

	WHEAT	DURUM WHEAT	OATS	BARLEY	FLAX- SEED	RYE
	B u s h e l s					
<u>R E C E I P T S</u>						
Country Elevators x	3,415,677	282,286	937,696	655,255	13,882	50,884
Int. Private & Mill Elevs. x	1,357,911	8,703	203,027	93,366	17,829	2,322
Int. Pub. & Semi-Pub. Terms.	8,133	-	-	-	-	-
Vancouver-New Westminster	155,106	-	3,527	4,841	-	-
Fort William & Port Arthur	3,429,642	282,999	80,898	210,186	1,424	26,374
Eastern Elevators -						
Georgian Bay Ports						
Vessel	763,118	-	89,198	133,597	-	-
Rail	9,891	-	-	79	-	-
Lower Lake Ports						
Vessel	3,261,572	-	84,877	679,958	-	32,119
Rail	17,475	-	4,192	1,471	-	58
St. Lawrence Ports						
Vessel	2,434,986	-	-	594,904	-	-
Rail	-	-	10,567	1,493	-	-

S H I P M E N T S

Country Elevators x	5,970,609	398,451	693,059	514,407	11,113	43,965
Int. Private & Mill Elevs. x	931,073	157,056	334,805	231,111	6,255	14,356
Int. Pub. & Semi-Pub. Terms.	57,448	-	-	-	-	-
Vancouver-New Westminster						
Vessel	216,033	-	735	-	-	-
Rail	25,436	-	11,067	1,608	-	1,110
Fort William & Port Arthur						
Vessel	1,876,606	1,125,393	332,877	842,347	23,331	-
Rail	12,602	-	82,456	1,910	-	-
Eastern Elevators -						
Georgian Bay Ports						
Vessel	189,976	-	-	-	-	-
Rail	188,348	-	5,515	13,451	-	-
Lower Lake Ports						
Vessel	2,495,616	-	125,820	605,310	-	-
Rail	107,375	-	-	34,971	-	2,700
St. Lawrence Ports						
Vessel	1,296,091	-	18,823	401,364	-	24,921
Rail	70,787	-	33,209	34,369	-	-

x Week ending October 8, 1937.

STOCKS OF UNITED STATES GRAIN IN CANADA OCTOBER 15, 1937

	WHEAT	OATS B u s h e l s	BARLEY	RYE	CORN
Midland Simcoe	-	1,209,796	-	-	-
Owen Sound	-	414,718	-	-	-
Sarnia	-	28,235	-	-	-
Port Colborne, D. G.	-	149,471	86,058	86,943	-
Port Colborne, Maple Leaf	260,163	34,141	-	30,961	587
Toronto	-	282,934	-	305,888	-
Kingston Elevator Co.	11,356	-	-	-	-
Prescott	-	27,500	-	-	-
Montreal	870,348	92,841	48,863	466,000	-
Sorel	94,127	16,000	-	-	-
Three Rivers	349,573	35,091	-	-	-
Quebec	-	174,862	-	-	-
TOTAL	1,585,567	2,465,589	134,921	889,792	587
Same period previous year	-	125,226	-	-	10,154

RECEIPTS AND SHIPMENTS OF UNITED STATES GRAIN IN CANADA OCTOBER 15, 1937

	R E C E I P T S			S H I P M E N T S	
	Water	Rail		Water	Rail
			GEORGIAN BAY PORTS		
Oats	906,464	-	To United States	-	1,500
			" Can. Dom. Points	-	155,858
			LOWER LAKE PORTS		
Wheat	96,328	-	To Montreal	96,191	-
			" Can. Flour Mills	-	13,597
Oats	444,511	-	" Montreal	70,588	-
			" Can. Dom. Points	-	106,363
			" Can. Flour Mills	-	3,620
Barley	89,735	-	" Montreal	28,250	-
Corn	-	-	" Can. Flour Mills	-	56
			ST. LAWRENCE PORTS		
Wheat	84,717	-	To Other Countries	82,229	-
Oats	142,327	3,599	" Other Countries	20,735	-
			" Eastern Elevators	-	14,117
			" Can. Dom. Points	-	52,241
Barley	95,952	-	" Other Countries	250,784	-
Rye	96,106	-	" Other Countries	65,472	-

RECEIPTS AND SHIPMENTS OF FOREIGN GRAIN IN CANADA OCTOBER 15, 1937

			ARGENTINE CORN	
Lower Lake Ports	-	-	To Can. Flour Mills	7,062
St. Lawrence Ports	-	-	" United States	20,650
			" Can. Dom. Points	6,904
			SOUTH AFRICAN CORN	
Georgian Bay Ports T.	54,437	-	To Can. Dom. Points	-
Lower Lake Ports T.	70,000	-	" Can. Flour Mills	3,237
			" Can. Dom. Points	31,810
St. Lawrence Ports P.	380,471	-	" Can. Dom. Points	127,308
			" United States	25,100
			" Can. Flour Mills	11,250
Maritime Ports P.	19,815	-	" Can. Dom. Points	28,200
			" Can. Flour Mills	9,000
			ARGENTINE FLAXSEED	
St. Lawrence Ports P.	135,056	-	To Can. Dom. Points	40,000

T.- Transfer P.- Primary

STOCKS OF FOREIGN GRAIN IN CANADA OCTOBER 15, 1937

	ARGENTINE CORN	SOUTH AFRICAN CORN	ARGENTINE FLAXSEED	POLISH BARLEY
Goderich Elev. Co.	-	54,437	-	-
Port Colborne, M. L.	104,759	134,383	-	-
Toronto	55,358	234,336	-	-
Kingston, J. R.	-	17,045	-	-
Montreal	365,837	1,699,225	311,013	-
Dominion Elev. Co.	151,418	147,765	-	-
Sorel	-	486,873	-	-
Three Rivers	160,110	-	17,256	-
Quebec	-	287,115	-	-
Saint John	-	33,664	-	-
Halifax	-	87,334	-	-
TOTAL	837,482	3,182,177	328,269	-
Same period last year	803,955	25,465	7,605	98,612

STOCKS, RECEIPTS AND SHIPMENTS OF THE COUNTRY ELEVATORS IN THE WESTERN DIVISION IN THE
WEEK ENDING OCTOBER 8, 1937.

	WHEAT	DURUM WHEAT B u s h e l s	OATS	BARLEY	FLAXSEED	RYE
<u>COUNTRY ELEVATORS</u>						
<u>STOCKS IN STORE</u>						
Manitoba	2,380,000	1,490,000	1,028,000	1,640,000	71,000	202,000
Saskatchewan	6,590,000	205,000	1,217,000	412,000	74,000	84,000
Alberta	9,630,000	-	975,000	438,000	12,000	44,000
TOTAL	18,600,000	1,695,000	3,220,000	2,490,000	157,000	330,000
Total - a week ago	21,115,000	1,960,000	3,050,000	2,475,000	160,000	335,000
a year ago	44,521,684		7,295,108	3,775,115	559,567	720,334
<u>RECEIPTS DURING WEEK</u>						
Manitoba	317,350	274,426	305,961	397,756	10,408	38,353
Saskatchewan	1,094,207	7,860	300,915	81,110	2,309	6,617
Alberta	2,004,120	-	330,820	176,389	1,165	5,914
TOTAL	3,415,677	282,286	937,696	655,255	13,882	50,884
Total - a week ago	5,079,218	1,176,986	1,005,765	1,041,968	49,946	46,494
a year ago	8,465,574		1,154,153	1,332,694	117,986	36,994
<u>SHIPMENTS DURING WEEK</u>						
Manitoba	598,979	377,274	292,991	432,659	6,768	37,642
Saskatchewan	1,535,979	21,177	244,098	36,330	-	4,014
Alberta	3,835,651	-	155,970	45,418	4,345	2,309
TOTAL	5,970,609	398,451	693,059	514,407	11,113	43,965
Total - a week ago	6,116,414	929,843	532,948	960,884	26,251	49,450
a year ago	7,807,249		437,694	1,466,451	87,423	74,412

TOTAL RECEIPTS AT COUNTRY ELEVATORS AND PLATFORM LOADINGS^{1/2} IN THE
PERIOD AUGUST 1, 1937 TO OCTOBER 8, 1937.

	W H E A T B u s h e l s	OTHER GRAIN
Manitoba	28,634,963	17,576,456
Saskatchewan	14,837,476	2,305,641
Alberta	25,888,986	1,977,897
Total - 1937 - 1938	69,361,425	21,859,994
Same period 1936 - 1937	106,145,571	29,495,741

^{1/2}Platform Loadings to October 7, 1937.

STOCKS IN STORE, RECEIPTS AND SHIPMENTS AT THE CANADIAN GOVERNMENT INTERIOR TERMINAL
ELEVATORS, DURING THE WEEK ENDING OCTOBER 15, 1937

	WHEAT	OLDS B u s h e l s	BARLEY	FLAXSEED	RYE
<u>STOCKS IN STORE</u>					
Calgary	213	953	536	-	-
Edmonton	13,279	-	58	-	-
Lethbridge	1,092,049	-	-	-	-
TOTAL	1,105,541	953	594	-	-
<u>RECEIPTS</u>					
Calgary	3,185	-	-	-	-
Edmonton	-	-	-	-	-
Lethbridge	4,948	-	-	-	-
TOTAL	8,133	-	-	-	-
<u>SHIPMENTS - RAIL</u>					
Calgary	3,519	-	-	-	-
Edmonton	6,068	-	-	-	-
Lethbridge	47,861	-	-	-	-
TOTAL	57,448	-	-	-	-
U. S. A. WHEAT	3,171				

STOCKS, RECEIPTS AND SHIPMENTS OF THE PACIFIC COAST ELEVATORS

IN THE WEEK ENDING OCTOBER 15, 1937.

	WHEAT	OATS B u s h e l s	BARLEY	FLAXSEED	RYE
<u>STOCKS IN STORE</u>					
Vancouver-New Westminster	2,972,348	116,197	6,089	467	406
Prince Rupert	911,340	-	-	-	-
Churchill	11,820	-	-	-	-
<u>RECEIPTS DURING WEEK</u>					
Vancouver-New Westminster	155,106	3,527	4,841	-	-
<u>SHIPMENTS DURING WEEK</u>					
Vancouver-New Westminster					
Vessel	216,033	735	-	-	-
Rail	25,436	11,067	1,608	-	1,110

DAILY QUOTATIONS AND WEEKLY AVERAGES OF CASH WHEAT BY GRADES IN CENTS AND

EIGHTHS OF A CENT PER BUSHEL

IN THE WEEK ENDING OCTOBER 16, 1937

(Basis Vancouver, B.C.)

	Oct. 11	Oct. 12	Oct. 13	Oct. 14	Oct. 15	Oct. 16	Weekly Average
	\$ ¢	\$ ¢	\$ ¢	\$ ¢	\$ ¢	\$ ¢	\$ ¢
No. 1 Hard		1.27	1.25/5	1.25/4	1.29/6	1.30	1.27/5
No. 1 Northern	H	1.27	1.25/5	1.25/4	1.29/6	1.30	1.27/5
No. 2 Northern	O	1.22	1.20/5	1.20/4	1.24/6	1.25	1.22/5
No. 3 Northern	L	1.09	1.07/5	1.07/4	1.09/6	1.10	1.08/6
No. 4 Northern	I	1.04	1.02/5	1.02/4	1.04/6	1.05	.97/6
No. 5	D	.98	.96/5	.96/4	.98/6	.99	.91/6
No. 6	A	.85/4	.84/1	.84	.86/2	.86/4	.85/2
Feed	Y	.73/4	.72/1	.72	.74/2	.74/4	.73/2
No. 1 Garnet		1.09	1.07/5	1.07/4	1.09/6	1.10	1.08/6
No. 2 Garnet		1.06	1.04/5	1.04/4	1.06/6	1.07	1.05/6

DAILY QUOTATIONS AND WEEKLY AVERAGES OF CASH GRAIN BY GRADES ON WINNIPEG AND TORONTO MARKETS

Week ending October 16, 1937

	Oct. 11	Oct. 12	Oct. 13	Oct. 14	Oct. 15	Oct. 16	Weekly Average
	\$ ¢	\$ ¢	\$ ¢	\$ ¢	\$ ¢	\$ ¢	\$ ¢
WHEAT							
(Basis Fort William and Port Arthur)							
No. 1 Man. Hard		1.35/5	1.36/3	1.39/5	1.42/1	1.42/5	1.39/2
No. 1 Man. Northern		1.35/5	1.36/3	1.39/5	1.42/1	1.42/5	1.39/2
No. 2 Man. Northern		1.30/1	1.30/3	1.30/5	1.34/1	1.33/5	1.31/6
No. 3 Man. Northern		1.14/5	1.13/3	1.13/5	1.16/3	1.15/7	1.14/6
No. 4 Man. Northern		1.09/1	1.08/3	1.09/1	1.12/1	1.11/5	1.10/1
No. 5	H	1.04/5	1.03/3	1.03/5	1.06/1	1.05/5	1.04/3
No. 6		.97/5	.97/3	.97/5	1.00/1	.99/5	.98/3
Feed		.79/5	.79/3	.79/5	.82/1	.81/5	.80/3
No. 1 Garnet		1.17/5	1.16/3	1.16/5	1.19/1	1.18/5	1.17/5
No. 2 Garnet		1.14/5	1.13/3	1.13/5	1.16/1	1.15/5	1.14/5
No. 4 Special	O	1.02/5	.99/7	1.00/5	1.03/1	1.02/5	1.01/6
No. 5 Special		.98/5	.97/3	.97/5	1.00/1	.99/5	.98/5
No. 6 Special		.86/5	.85/3	.85/5	.88/1	.87/5	.86/5
Rejected No. 1 Northern		1.18/5	1.17/3	1.17/5	1.20/1	1.19/5	1.18/5
No. 2 Northern		1.16/5	1.15/3	1.15/5	1.18/1	1.17/5	1.16/5
No. 3 Northern	L	1.07/5	1.06/3	1.06/5	1.09/1	1.08/5	1.07/5
Tough No. 1 Hard		1.33/5	1.34/3	1.37/5	1.40/1	1.40/5	1.37/2
No. 1 Northern		1.33/5	1.34/3	1.37/5	1.40/1	1.40/5	1.37/2
No. 2 Northern		1.28/1	1.28/3	1.28/5	1.32/1	1.31/5	1.29/6
No. 3 Northern		1.13/1	1.11/7	1.12/1	1.14/7	1.14/3	1.13/2
Smutty No. 1 Hard	I	1.20/5	1.19/3	1.19/5	1.22/1	1.21/5	1.20/5
No. 1 Northern		1.20/5	1.19/3	1.19/5	1.22/1	1.21/5	1.20/5
No. 2 Northern		1.17/5	1.16/3	1.16/5	1.19/1	1.18/5	1.17/5
No. 3 Northern		1.09/5	1.08/3	1.08/5	1.11/1	1.10/5	1.09/5
Durum No. 1		1.00/3	.99/1	.97/2	1.01/4	1.00/4	.99/6
No. 2	D	.98/3	.97/1	.95/2	.98/4	.97/4	.97/3
No. 3		.94/3	.93/1	.91/2	.94/4	.94/4	.93/4
A. R. W. No. 1		1.07/5	1.06/3	1.06/5	1.09/1	1.08/5	1.07/5
A. W. No. 2		1.05/5	1.04/3	1.04/5	1.07/1	1.06/5	1.05/5
No. 3		1.03/5	1.02/3	1.02/5	1.05/1	1.04/5	1.03/5
OATS							
No. 2 C.W.	A	.53/3	.56/1	.55	.55/4	.52/6	.54/4
No. 3 C.W.		.49/3	.51/5	.50/2	.50/6	.49/2	.50/2
Ex. No. 1 Feed		.49/3	.51/5	.50/2	.50/6	.49/2	.50/2
No. 1 Feed		.48/3	.50/7	.49/2	.59/6	.48	.49/2
No. 2 Feed	Y	.45/7	.49/3	.47/2	.47/6	.46/2	.47/2
No. 3 Feed		.42/3	.46/3	.44/2	.44/6	.43/2	.44/2
BARLEY							
6 Row		.63	.64/3	.63/5	.63/4	.63	.63/4
2 Row		.63	.64/3	.63/5	.63/4	.63	.63/4
No. 3 C.W.		.61/6	.63/1	.62/3	.62/2	.61/4	.62/2
No. 4 C.W.		.60/4	.61/7	.61/1	.61	.60/4	.61
No. 5 C.W.		.59/4	.60/7	.60/1	.60	.59/4	.60
No. 6 C.W.		.58/4	.59/7	.59/1	.59	.58/4	.59
RYE							
No. 2 C.W.		.83/2	.84/4	.81	.83/6	.82/3	.83
No. 3 C.W.		.80/6	.82	.78/4	.81/2	.79/7	.80/4
Rejected No. 2 C.W.		.76/2	.77/4	.74	.76/6	.75/3	.76
No. 4 C.W.		.76/6	.78	.74/4	.77/2	.75/7	.76/4
Ergoty		.74/6	.76	.72/4	.75/2	.73/7	.74/4
FLAXSEED							
No. 1 C.W.		1.73/4	1.74/7	1.75/6	1.77/4	1.77/4	1.75/7
No. 2 C.W.		1.69/4	1.70/7	1.71/6	1.73/4	1.73/4	1.71/7
No. 3 C.W.		1.48/4	1.49/7	1.50/6	1.52/4	1.52/4	1.50/7
No. 4 C.W.		1.43/4	1.44/7	1.45/6	1.47/4	1.47/4	1.45/7
Wheat, ONTARIO - TORONTO							
good milling		1.03-.05	1.03-.05	1.03-.05	1.03-.05	1.03-.05	1.03-.05
Oats	H	.38-.40	.38-.40	.38-.40	.38-.40	.38-.40	.38-.40
Barley	O	.52-.54	.52-.54	.52-.54	.52-.54	.52-.54	.52-.54
Rye	L	.80-.85	.80-.85	.80-.85	.80-.85	.80-.85	.80-.85
Corn	I	.70-.75	.70-.75	.70-.75	.65-.70	.65-.70	.68-.73
Buckwheat	D	.54-.56	.54-.56	.54-.56	.54-.56	.54-.56	.54-.56
Malting Barley	A	.63-.65	.63-.65	.63-.65	.63-.65	.63-.65	.63-.65
Milling Oats	Y	.39-.41	.39-.41	.39-.41	.39-.41	.39-.41	.39-.41
South African Corn		.87	.87	.87	.87	.87	.87

EXPORTS OF GRAIN, WHEATFLOUR AND MILLFEED BY COUNTRIES OF DESTINATION, SEPTEMBER, 1937
AND THE 2 MONTHS ENDING SEPTEMBER, 1937.

	WHEAT		WHEATFLOUR		OATS		BARLEY	
	2 Mos.		2 Mos.		2 Mos.		2 Mos.	
	Sept. 1937	Sept. 1937	Sept. 1937	Sept. 1937	Sept. 1937	Sept. 1937	Sept. 1937	Sept. 1937
	Bushels		Barrels		Bushels		Bushels	
BRITISH EMPIRE								
United Kingdom	5334334	10279358	173824	342294	236268	447296	1391694	1951712
Irish Free State	32000	274234	-	893	-	-	-	25000
Aden	-	-	-	20	-	-	-	-
AFRICA								
Br. South Africa	2613	3546	150	211	-	-	-	-
Gambia	-	-	225	350	-	-	-	-
Gold Coast	-	-	402	967	-	-	-	-
Nigeria	-	-	-	35	-	-	-	-
Sierra Leone	-	-	1576	3116	-	-	-	-
Bermuda	-	-	1945	3802	15271	33378	-	-
BRITISH EAST INDIES								
British India	-	-	38	38	-	-	-	-
Straits Settlements	-	-	36	77	707	1434	22	42
British Guiana	2	2	5725	10637	3988	10437	-	-
British Honduras	-	-	722	2382	154	168	-	-
BRITISH WEST INDIES								
Barbados	-	-	2577	4870	5166	11040	-	-
Jamaica	1020	1680	11779	24289	357	1392	-	-
Trinidad & Tobago	67	99	17774	29260	2470	5999	-	-
Other Br. West Indies	-	-	11039	20763	3258	5262	-	-
Gibraltar	-	-	-	-	-	735	-	-
Hong Kong	-	-	8403	17986	4170	11801	416	1040
Malta	-	-	4887	8207	-	-	-	-
Newfoundland	2	2	28010	49849	11868	14447	-	-
OCEANIA								
New Zealand	37333	37333	-	-	-	-	-	-
FOREIGN COUNTRIES								
Belgium	18845	383049	112	112	-	9412	55167	55167
Belgian Congo	-	-	5	96	-	-	-	-
Brazil	-	-	1496	2820	-	-	-	-
China	-	-	-	3097	-	315	-	-
Colombia	25000	50000	-	-	-	-	-	-
Costa Rica	-	-	250	725	-	-	-	-
Czecho-Slovakia	-	-	41	41	-	-	-	-
Denmark	-	73762	-	-	-	-	-	-
Egypt	-	-	457	492	-	-	-	-
Finland	-	-	1264	3113	-	-	-	-
FRANCE	-	4000	-	-	-	-	-	-
French Guiana	-	-	100	500	-	-	-	-
French East Indies	-	-	10	10	-	-	-	-
French West Indies	-	-	313	1688	-	-	-	-
St. Pierre & Miquelon	8	23	452	617	-	-	-	-
Germany	48533	278017	56	56	-	-	-	-
Guatemala	-	-	-	104	-	-	-	-
Hayti	-	-	600	625	-	-	-	-
Iceland	-	-	286	286	-	-	-	-
Italy	-	-	100	100	-	-	-	-
Japan	119133	275933	2150	2150	-	-	-	-
Liberia	-	-	111	247	-	-	-	-
NETHERLANDS								
Dutch East Indies	34027	150779	168	1386	37647	75294	25873	25873
Dutch Guiana	-	-	917	1219	-	-	-	-
Dutch West Indies	-	-	25	345	-	-	-	-
Nicaragua	-	-	832	1551	-	-	-	-
Nicaragua	5601	11201	-	94	-	-	-	-
Norway	201129	447528	9630	13900	-	-	-	-
Panama	-	-	537	1137	-	-	-	-

EXPORTS OF GRAIN, WHEATFLOUR AND MILLFEED BY COUNTRIES OF DESTINATION, SEPTEMBER, 1937
AND THE 2 MONTHS ENDING SEPTEMBER, 1937.

	WHEAT		WHEATFLOUR		OATS		BARLEY	
	Sept. 1937	2 Mos.	Sept. 1937	2 Mos.	Sept. 1937	2 Mos.	Sept. 1937	2 Mos.
		Sept. 1937		Sept. 1937		Sept. 1937		Sept. 1937
	Bushels		Barrels		Bushels		Bushels	
PORTUGAL								
Azores & Madeira	-	-	-	121	-	-	-	-
Portuguese Africa	10266	15866	857	1729	-	-	-	-
Salvador	-	167	-	-	-	-	-	-
San Domingo	-	-	323	443	-	-	-	-
Sweden	-	-	62	231	-	-	-	-
UNITED STATES	33064	161102	1578	3399	1882	2122	143231	332310
American Virgin Is.	-	-	-	50	-	-	-	-
Philippine Islands	83	166	11665	25903	-	-	-	-
Venezuela	-	-	2646	6830	-	-	-	-
TOTAL - Sept. 1937	5903060	12448027	306655	595263	323206	630532	1616403	2391144
Aug. 1937	6544967	-	288608	-	307326	-	774741	-
Sept. 1936	20720316	-	378318	-	371619	-	2673804	-
12 mos. ended Sept. 1936	-	-	4972761	-	11258259	-	11345040	-
12 mos. ended Sept. 1937	145428603	-	4354882	-	5879748	-	15314758	-

	Rye	Flaxseed	Bran Shorts, and Middlings	Oatmeal and Rolled Oats	Screenings	Corn	Buck- wheat
	bushels	bushels	Cwt.	cwt.	cwt.	bushels	bushels
BRITISH EMPIRE							
United Kingdom	1030	-	139008	48840	-	-	-
AFRICA							
British South Africa	-	-	-	1355	-	-	-
Southern Rhodesia	-	-	-	66	-	-	-
Sierra Leone	-	-	-	53	-	-	-
Bermuda	-	1	1564	43	-	40	-
BRITISH EAST INDIES							
British India	-	-	-	976	-	-	-
Straits Settlements	-	2	-	90	-	-	-
British Guiana	-	-	132	242	-	-	-
BRITISH WEST INDIES							
Barbados	-	-	13	204	-	-	-
Jamaica	-	-	141	97	-	-	-
Trinidad & Tobago	-	-	-	7	-	-	-
Other Br. West Indies	-	-	89	85	-	36	-
Hong Kong	-	-	306	-	-	-	-
Newfoundland	-	-	2660	484	-	27	-
FOREIGN COUNTRIES							
Belgium	25714	-	10	-	-	-	-
Belgian Congo	-	-	-	21	-	-	-
China	-	-	-	113	-	-	-
France	-	-	-	2129	-	-	-
St. Pierre & Miquelon	-	-	10	3	-	-	188
Netherlands	25714	-	-	-	-	-	-
Norway	20000	-	-	-	-	-	-
PORTUGAL							
Portuguese Africa	-	-	-	57	-	-	-
UNITED STATES	151	-	3591	-	44180	-	-
Venezuela	-	-	-	60	-	-	-
TOTAL - Sept. 1937	72659	3	147524	54925	44180	103	188
Aug. 1937	199624	4	69717	47922	43563	1660	4
Sept. 1936	532272	1	450538	54985	196088	55	199
12 months ended Sept. 1936	3401373	64389	3882043	628122	1268061	-	288227
12 months ended Sept. 1937	2833477	133436	3102830	563821	1449608	-	202531



1010675086

Faint, illegible text and table structure, possibly a statistical report or index. The text is too light to transcribe accurately.