



CANADA  
DEPARTMENT OF TRADE AND COMMERCE  
DOMINION BUREAU OF STATISTICS  
AGRICULTURAL BRANCH

Vol. 18

No. 12

*Historical File Copy*

CANADIAN GRAIN STATISTICS

Week ending

OCTOBER 22, 1937

[Records for Western Inspection Division supplied by Board of Grain Commissioners for Canada]

+ + +

Published by Authority of the HON. W.D. Euler, M.P.,  
Minister of Trade and Commerce.

+ + +

OTTAWA

1937

I N D E X

General Summary .....	1 - 6
Canadian Grain in Store by Elevators .....	7
Canadian Grain in Store by Grades .....	8
Comparative Statement of Grain in Store .....	9
Receipts and Shipments of Canadian Grain .....	10
U. S. Grain in Store, Receipts and Shipments .....	11
Receipts, Shipments and Quantities in Store at Country Elevators, Western Division and Platform Loadings .....	12
Receipts, Shipments and Quantities in Store at Interior Terminal Elevators .....	13
Receipts, Shipments and Quantities in Store at Pacific Elevators, and Vancouver Prices .....	14
Daily and Weekly Average Prices of Grain at Fort William and Toronto for the week ending October 23, 1937 .....	15
Inspections, Eastern Division, August and September, 1937 corrected statement .....	16-17-18



DEPARTMENT OF TRADE AND COMMERCE  
DOMINION BUREAU OF STATISTICS - CANADA  
AGRICULTURAL BRANCH  
(Issued October 28, 1937)

Dominion Statistician:	R. H. Coats, LL.D., F.R.S.C., F.S.S. (Hon.)
Chief, Agricultural Branch:	T. W. Grindley, Ph.D.
Assistant Chief:	W. Dougan.

WHEAT STOCKS IN STORE

Canadian wheat in store for the week ending October 22, 1937, decreased 198,746 bushels compared with the previous week and decreased 84,195,274 bushels when compared with the corresponding week in 1936. The amount in store was reported as 73,067,012 bushels compared with 73,265,758 bushels for the previous week and 157,262,286 bushels for the week ending October 23, 1936. The stocks of 73,067,012 bushels include 17,319,564 bushels of Durum wheat.

CANADIAN WHEAT IN THE UNITED STATES

Canadian wheat in the United States amounted to 1,905,849 bushels, an increase of 150,849 bushels over the previous week when 1,755,000 bushels were reported. Canadian wheat is located at the following ports: Buffalo 900,849; Erie Canal 311,000; New York 671,000 and Baltimore 23,000 bushels. Increases are shown at Buffalo of 73,849; New York 124,000 and Baltimore 23,000 while decreases were noted at Erie Canal of 60,000 and Albany 10,000 bushels.

For the same week a year ago, Canadian wheat in the United States amounted to 20,990,550 bushels distributed as follows: Duluth 5,617,885; Buffalo 8,754,000; Erie 1,726,000; New York 1,733,665; Albany 3,079,000 and Chicago 80,000 bushels.

United States wheat in Canada amounted to 1,792,944 bushels for the above week. Last year for the same week no United States wheat in Canada was reported.

CANADIAN WHEAT IN CANADA

The wheat stocks in the elevators in Canada for the week ending October 22, 1937 were 71,151,261 bushels compared with 71,500,866 bushels for the previous week and 136,577,866 bushels for the corresponding date last year.

Stocks of wheat in the Canadian elevators are located as follows: Western Country Elevators 18,620,000; Interior Terminals 5,997,322; Vancouver-New Westminster 2,867,379; Prince Rupert 911,340; Churchill 11,820; Fort William and Port Arthur 20,875,557; Eastern Elevators Lake and Seaboard Ports 8,737,741 and 4,481,743 bushels respectively.

Increases over the previous week were shown in the following elevators: Interior Private and Mill 690,000; Eastern Elevators, Lake and Seaboard Ports, 1,106,170 and 615,000 bushels respectively. Decreases were noted at Western Country Elevators of 620,000; Interior Public and Semi-Public Elevators 1,390; Vancouver-New Westminster 104,969 and Head of the Lakes 938,361 bushels.

Wheat in rail transit amounted to 5,197,469 bushels for the week ending October 22, 1937 compared with 9,718,253 bushels for the same period last year. The In Transit on the Lakes amounted to 3,450,890 bushels against 6,800,782 bushels last year.

PRIMARY MOVEMENT

Wheat marketings in the Prairie Provinces for the week ending October 22, 1937 amounted to 3,850,186 bushels, an increase of 510,313 bushels over the previous week when 3,339,873 bushels were marketed. During the corresponding week a year ago the receipts were 4,564,291 bushels. By provinces, the receipts for the week ending October 22, 1937 were as follows, figures within brackets being those for 1936: Manitoba 527,689 (155,445); Saskatchewan 902,344 (1,922,998); Alberta 2,420,153 (2,485,848) bushels. Marketings in the three Prairie Provinces for the twelve weeks from August 1, 1937 to October 22, 1937 as compared with the same period in 1936 were as follows, figures within brackets being those for 1936: Manitoba 29,492,162 (16,758,840); Saskatchewan 16,569,005 (68,930,598); Alberta 30,490,317 (31,491,305) bushels. For the twelve weeks ending October 22, 1937 and October 23, 1936, 76,551,484 and 117,180,743 bushels were received from the farms.





OVERSEAS EXPORT CLEARANCES AND IMPORTS OF WHEAT INTO THE UNITED STATES

During the week ending October 22, 1937, the overseas export clearances of wheat amounted to 2,545,612 bushels while imports into the United States for consumption and milling in bond were 116,000 bushels. The total is 2,661,612 bushels as compared with 1,893,124 bushels for the previous week, an increase of 768,488 bushels and when compared with the same period in 1936, a decrease of 1,607,192 bushels.

Clearances by ports for the weeks ending October 22, 1937 and October 23, 1936, and imports into the United States for consumption and milling in bond were as follows (in bushels):-

<u>Overseas Clearances</u>	<u>Week ending October 22, 1937</u>	<u>Week ending October 23, 1936</u>
Montreal	1,685,786	1,231,001
Sorel	-	657,378
Three Rivers	-	245,285
Vancouver-New Westminster	268,826	1,058,310
United States Ports	591,000	213,830
 TOTAL	 2,545,612	 3,405,804
 <u>Imports into the United States</u>		
For consumption and milling in bond for re-export	116,000	863,000
 <u>Total Overseas Clearances and United States Imports</u>	 2,661,612	 4,268,804

The following table shows the export clearances of Canadian wheat by ports from August 1, 1937 to October 22, 1937, along with the comparative figures for the same period in 1936-37 and imports into the United States for consumption and milling in bond (in bushels):-

<u>Overseas Clearances</u>	<u>1937-38</u>	<u>1936-37</u>
Montreal	x13,999,038	14,553,309
Sorel	770,000	7,397,441
Quebec	-	773,581
Three Rivers	41,078	1,059,772
Fort William and Port Arthur	-	407,578
Churchill	603,982	4,293,501
Vancouver-New Westminster	1,304,964	8,285,412
United States Ports	3,985,000	6,233,224
 TOTAL	 20,704,062	 43,003,818
 <u>Imports into the United States</u>		
For consumption and milling in bond for re-export	1,765,690	16,584,412
 <u>Total Overseas Clearances and United States Imports to Date</u>	 22,469,752	 59,588,230

x Includes 40,000 bushels Durum wheat cleared from Atlantic Seaboard Ports.

The accumulated totals of imports of wheat into the United States for consumption and milling in bond are adjusted at the end of the month, due to the fact that the United States Department of Domestic and Foreign Commerce revises their weekly figures on a monthly basis.





# INTERNATIONAL TRADE

The following table shows the world shipments of wheat and wheat flour for the first twelve weeks of the present crop year. (Broomhall's figures).

Week ending	North America	Argentina	Australia	Russia	Danube	India	Other	Total
(Thousand Bushels)								
August 7, 1937	2,512	888	1,808	184	688	680	280	7,040
14	2,560	880	1,472	-	880	336	416	6,544
21	4,072	856	920	88	1,192	352	192	7,672
28	2,848	968	1,440	456	1,712	248	160	7,832
Sept. 4	2,160	992	840	768	960	928	56	6,704
11	2,128	888	944	1,680	1,264	456	112	7,472
18	2,904	560	376	1,280	1,984	64	24	7,192
25	3,024	408	1,184	1,416	2,056	472	416	8,976
Oct. 2	3,312	1,144	704	1,768	1,728	200	400	9,256
9	4,048	1,216	904	2,504	2,176	552	184	11,584
16	4,370	365	2,013	1,896	1,608	88	544	10,884
23	3,622	1,071	1,103	1,480	2,072	424	360	10,132
TOTAL	37,560	10,236	13,708	13,520	18,320	4,800	3,144	101,288
Comparative 1936								
Corresponding week	5,176	1,984	1,064	-	3,288	808	120	12,440
TOTAL	67,000	12,208	16,440	88	27,576	2,928	3,248	129,488

World shipments for the week ending October 23, 1937 amounted to 10,132,000 bushels as compared with shipments of 10,884,000 bushels for the previous week and 12,440,000 bushels for the corresponding week a year ago. Shipments from Argentina were higher than in the previous week showing an increase of 706,000 bushels, while shipments from North America and Australia showed decreases of 748,000 and 910,000 bushels respectively.

During the first twelve weeks of the present crop year world shipments amounted to 101.3 million bushels as compared with 129.5 million bushels for the corresponding weeks last year. North American shipments amounted to 37.6 million bushels this year, as compared with 67 million bushels in 1936. Australian shipments are 13.7 million bushels this year as compared with 16.4 for the same period last year. Russian shipments amounted to 13.5 million bushels while last year for the same period they were only 88,000 bushels.

## WEEKLY AVERAGE SHIPMENTS

The following table shows the weekly average shipments of wheat and wheat flour for the first twelve weeks of the present crop year along with comparative figures for 1936:-

	North America	Argentina	Australia	Russia	Danube	India	Other	Total
(Million Bushels)								
1936	5.6	1.0	1.4	-	2.3	0.2	0.3	10.8
1937	3.1	0.9	1.1	1.1	1.5	0.4	0.3	8.4

According to the above table weekly average shipments of wheat and wheat flour amounted to 8.4 million bushels per week compared with 10.8 million bushels for the same period last year. North American weekly average shipments amounted to only 3.1 million bushels per week as compared with 5.6 million bushels per week for the same period last year. Russian shipments averaged 1.1 million bushels per week this year.





CANADIAN GRAIN STATISTICS - WEEK ENDING OCTOBER 22, 1937

Returns received as to stocks of grain in store for the week ending Oct. 22, 1937 show a net increase of 820,841 bushels compared with the previous week. Grain stocks were as follows:- wheat 73,067,012, oats 7,455,723, barley 12,544,353, flaxseed 616,316 and rye 1,277,789 bushels. Increases were noted in oats of 962,941, flaxseed 41,865 and rye 100,300 bushels, while wheat and barley show decreases of 198,756 and 85,509 bushels respectively. At a comparable date last year stocks in store were as follows:- wheat 157,262,286, oats 17,183,559, barley 16,887,932, flaxseed 1,058,993 and rye 2,695,310 bushels.

WESTERN COUNTRY ELEVATORS:- Grain in store shows a net increase of 549,000 bushels. Increases were noted in oats of 740,000, barley 417,000 and flaxseed 16,000 bushels, while wheat and rye decreased 620,000 and 4,000 bushels respectively.

The following table shows the quantities of grain in store at the Country Elevators in each of the Prairie Provinces on Oct. 15, 1937 with comparison for the previous week and the same period 1936:-

	<u>MANITOBA</u>	<u>SASKATCHEWAN</u>	<u>ALBERTA</u>	<u>TOTAL</u>
		<u>B u s h e l s</u>		
Wheat	3,800,000	6,560,000	8,880,000	19,240,000
Oats	1,060,000	1,410,000	1,240,000	3,710,000
Barley	1,650,000	455,000	670,000	2,775,000
Flaxseed	60,000	76,000	11,000	147,000
Rye	196,000	84,000	44,000	324,000
TOTAL	6,766,000	8,585,000	10,845,000	26,196,000
Previous week	6,811,000	8,582,000	11,099,000	26,492,000
Same period 1936	4,875,989	25,645,496	23,872,565	54,394,050

The receipts and shipments at the Country Elevators for the week ending October 15, 1937 compared with the previous week and the same period 1936 were as follows:-

	<u>R E C E I P T S</u>			<u>S H I P M E N T S</u>		
	<u>Previous week</u>	<u>Week ending Oct. 15, 1937</u>	<u>Week ending Oct. 16, 1936</u>	<u>Previous week</u>	<u>Week ending Oct. 15, 1937</u>	<u>Week ending Oct. 16, 1936</u>
Wheat	3,697,963	3,339,873	5,333,348	6,369,060	4,372,204	6,832,746
Oats	937,696	926,484	992,887	693,059	426,794	456,672
Barley	655,255	675,336	873,365	514,407	369,632	1,236,357
Flaxseed	13,882	6,348	61,412	11,113	17,203	73,301
Rye	50,884	25,340	36,747	43,965	23,091	86,827
TOTAL	5,355,680	4,973,381	7,297,759	7,631,604	5,213,924	8,685,903

Platform Loadings shown by Prairie Provinces for the period ending October 14, 1937 were as follows:-

	<u>WHEAT</u>	<u>OTHER GRAIN</u>	<u>TOTAL</u>
		<u>B u s h e l s</u>	
Manitoba	42,550	50,500	93,050
Saskatchewan	4,500	8,477	12,977
Alberta	71,250	17,800	89,050
TOTAL	118,300	76,777	195,077
Period ending Oct. 14, 1936	84,701	69,574	154,275
+Increase -Decrease	+33,599	+7,203	+40,802

INTERIOR PUBLIC AND SEMI-PUBLIC TERMINALS.- Stocks for the week show a net increase of 1,284 bushels. Barley increased 2,674 bushels while wheat decreased 1,390 bushels.

VANCOUVER-NEW WESTMINSTER ELEVATORS.- Grain stocks at these elevators show a net decrease of 99,377 bushels. Wheat stocks decreased 104,969 bushels, while increases were noted in oats of 331, barley 4,991 and rye 270 bushels.

PRINCE RUPERT & CHURCHILL ELEVATORS.- Wheat stocks remain unchanged.

PUBLIC AND PRIVATE (FORT WILLIAM AND FORT ARTHUR).- Grain in store shows a net decrease of 1,740,073 bushels. Decreases were noted in wheat of 938,361, oats 27,053, barley 867,896 and flaxseed 33,679 bushels, while rye increased 126,916 bushels.





Stocks in Store at the Head of the Lakes compared with the same week last year were as follows:-

	Week ending Oct. 22, 1937	Week ending Oct. 23, 1936	+ Increase - Decrease
Wheat	20,875,557	31,831,690	- 10,956,133
Oats	504,920	2,890,141	- 2,385,221
Barley	3,567,727	5,704,984	- 2,137,257
Flaxseed	253,460	312,934	- 59,474
Rye	811,530	1,179,717	- 368,187

The receipts (including transfers) at the Head of the Lakes for the period ending October 22, 1937 with comparative figures for the same week last year were as follows:-

	Week ending Oct. 22, 1937	Week ending Oct. 23, 1936	+ Increase - Decrease
Wheat	3,282,144	4,958,317	- 1,676,173
Oats	78,749	329,355	- 250,606
Barley	109,261	1,017,045	- 907,784
Flaxseed	2,971	69,680	- 66,709
Rye	29,584	52,264	- 22,680

Preliminary figures showing receipts and shipments at the Head of the Lakes also Vancouver-New Westminster, Prince Rupert and Churchill for the period August 1, 1937 to October 22, 1937, compared with the same period last year:-

	FORT WILLIAM & PORT ARTHUR		VANCOUVER-NEW WESTMINSTER	
	Receipts	Shipments	Receipts	Shipments
Wheat	45,874,254	31,826,368	1,012,899	1,634,226
Oats	1,827,042	1,936,598	129,354	93,119
Barley	10,314,468	7,717,775	17,761	13,247
Flaxseed	26,258	86,250	89	-
Rye	955,864	202,686	6,089	5,531
TOTAL	58,997,886	41,769,677	1,166,192	1,746,123
Same period last year	95,580,299	83,452,370	10,075,053	8,823,265
+Increase -Decrease	-36,582,413	-41,682,693	-8,908,861	-7,077,142

	PRINCE RUPERT		CHURCHILL	
	Receipts	Shipments	Receipts	Shipments
Wheat	-	-	-	603,982
Same period last year	21	-	2,426,721	4,293,501
+Increase -Decrease	-21	-	-2,426,721	-3,689,519

INTERIOR PRIVATE AND MILL ELEVATORS:- Grain stocks for the week show an increase of 878,000 bushels composed of wheat 690,000, oats 54,000, barley 123,000 and flaxseed 11,000 bushels.

Stocks in store in the Western Division, compared with the same week last year were as follows:-

	Week ending Oct. 22, 1937	Week ending Oct. 23, 1936	+ Increase - Decrease
Wheat	49,283,418	91,048,813	- 41,765,395
Oats	5,553,401	13,554,672	- 8,001,271
Barley	8,757,075	12,434,985	- 3,677,910
Flaxseed	528,927	990,470	- 461,543
Rye	1,160,206	1,915,019	- 754,813

EASTERN ELEVATORS - LAKE PORTS:- Grain stocks for the week show a net increase of 1,437,231 bushels. Increases were noted in wheat of 1,106,170, oats 128,487, barley 149,024 and flaxseed 61,228 bushels, while rye decreased 7,678 bushels.

EASTERN ELEVATORS - SEABOARD PORTS:- Grain stocks for the week show a net increase of 243,850 bushels. Increases were noted in wheat of 615,000 and oats 171,448 bushels, while decreases were shown in barley and rye of 534,026 and 8,572 bushels respectively.





Shipments Overseas of Canadian Grain from St. Lawrence Ports were as follows:-

		United Kingdom	Other Countries
		B u s h e l s	
Montreal, Quebec	Wheat	1,685,606	
	Oats	65,882	
	Barley	784,921	
	Rye	8,571	
Montreal (Ogilvie), Quebec	Wheat	-	180

EASTERN ELEVATORS:- United States grain stocks were 4,927,976 bushels higher than at a comparable date last year. Increases were noted in wheat of 1,792,944, oats 2,352,366, barley 115,272 and rye 675,951 bushels while corn decreased 8,557 bushels.

Number of cars inspected in the Western Division for the week ending October 21, 1937 with comparison for the previous year were as follows:-

	Week ending October 21, 1937	Week ending October 21, 1936	+ Increase - Decrease
Wheat	2,735	4,689	- 1,954
Oats	330	297	+ 33
Barley	383	730	- 347
Flaxseed	15	82	- 67
Rye	19	28	- 9
Mixed Grain	1	4	- 3
Screenings	13	3	+ 10
TOTAL	3,496	5,833	- 2,337

The number of bushels of grain shipped from Western to Eastern points over the C.P.R. and C.N.R. for the week ending Oct. 14, 1937 and the period from August 1, 1937 to Oct. 14, 1937:-

	WEEK ENDING OCT. 14, 1937				PERIOD AUG. 1, 1937 TO OCT. 14, 1937			
	WHEAT	OATS	BARLEY	RYE	WHEAT	OATS	BARLEY	RYE
Via C.P.R.	-	1,705	1,042	-	-	16,003	4,377	-
Via C.N.R.	-	6,141	-	-	1,348	66,012	7,740	-
TOTAL	-	7,846	1,042	-	1,348	82,015	12,117	-

DULUTH.- Receipts of Canadian bonded grain at Duluth by rail for the week ending October 23, 1937 were nil. For the period August 1, 1937 to date rail receipts amounted to barley 23,208 bushels.

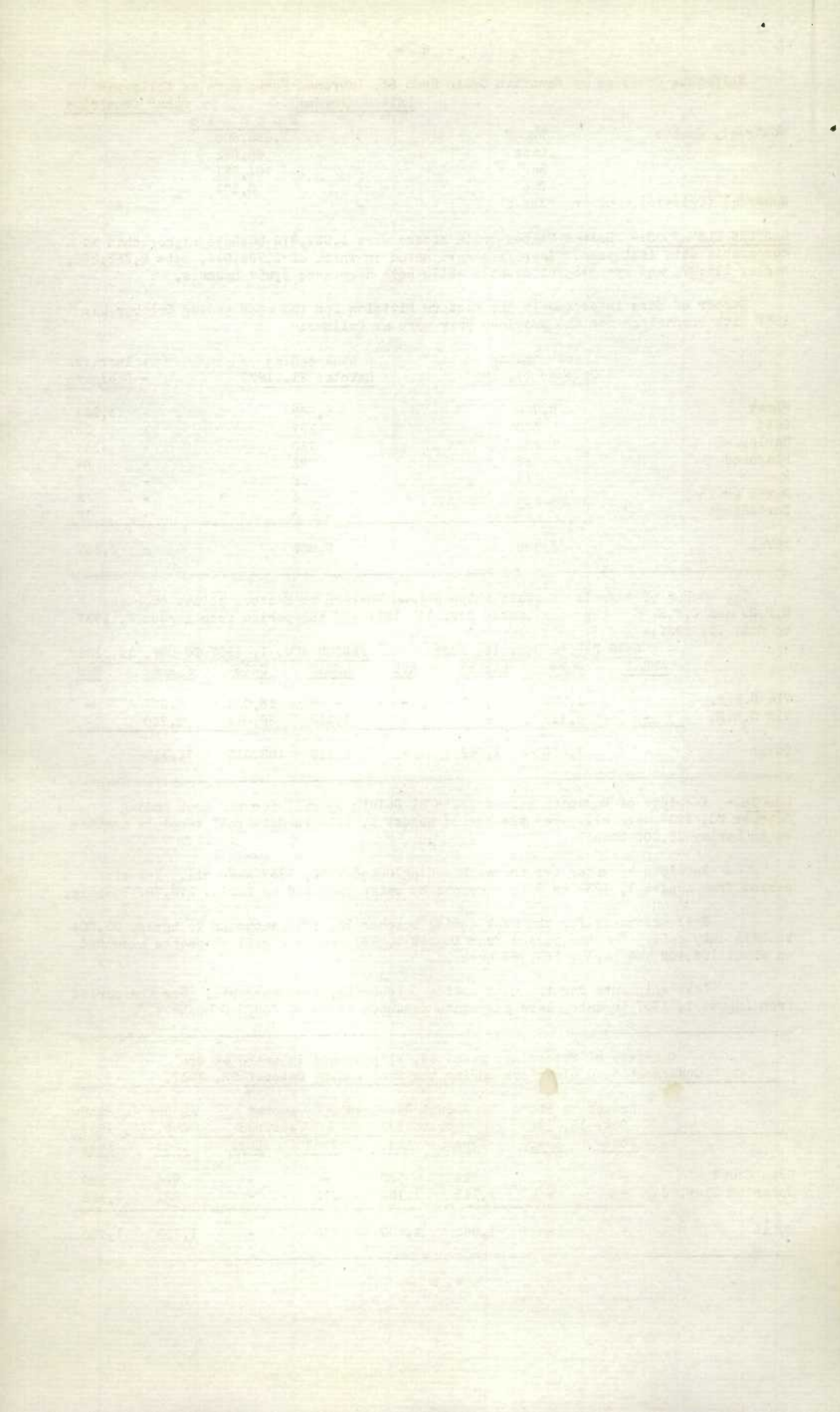
Receipts by water for the week ending October 23, 1937 were nil. For the period from August 1, 1937 to date receipts by water amounted to barley 273,787 bushels.

Rail shipments for the week ending October 23, 1937 amounted to barley 32,604 bushels duty paid. For the period from August 1, 1937 to date rail shipments amounted to wheat 104,442 and barley 269,768 bushels.

Lake shipments for the week ending October 23, 1937 were nil. For the period from August 1, 1937 to date, lake shipments amounted to wheat 359,946 bushels.

Quantity of Screenings received, shipped and in store at the undermentioned elevators during the week ending October 22, 1937.

	Amount in Store Oct. 15, 1937		Amount Received by vessel		Amount shipped		Amount in Store Oct. 22, 1937	
	Tons	Lbs.	Tons	Lbs.	Tons	Lbs.	Tons	Lbs.
Owen Sound	-	-	824	580	-	-	824	580
Goderich Elev. Co.	-	-	1,141	1,120	210	-	931	1,120
TOTAL	-	-	1,965	1,700	210	-	1,755	1,700





STOCKS OF GRAIN IN DIFFERENT ELEVATORS DURING THE WEEK ENDING OCTOBER 22, 1937

	WHEAT	DURUM WHEAT B u s h e l s	OATS	BARLEY	FLAX- SEED	RYE
Western Country Elevators	17100000	1520000	4450000	3192000	163000	320000
Interior Private & Mill Elevs.	4623000	267000	481000	1983000	112000	28000
Interior Pub. & Semi-Pub. Terms.	1107322	-	953	3268	-	-
Vancouver-New Westminster	2867379	-	116528	11080	467	676
Prince Rupert	911340	-	-	-	-	-
Churchill	11820	-	-	-	-	-
Fort William & Port Arthur	11175951	9699606	504920	3567727	253460	811530
In Transit Lakes	3025087	425803	-	1209159	-	-
In Transit Rail	5197469	-	819470	400223	24046	13885
Eastern Elevs. - Lake Ports	4835383	3902358	444783	1017147	61228	45197
Eastern Elevs. - St. Lawrence Ports	2986783	1178332	633069	808009	2115	58501
Eastern Elevs. - Seaboard Ports	65	316563	-	-	-	-
U. S. Lake Ports	1211849	9902	-	312740	-	-
U. S. Atlantic Seaboard Ports	694000	-	-	40000	-	-
TOTAL	55747448	17319564	7455723	12544353	616316	1277789
Previous week	55801940	17463828	6492782	12629862	574451	1177489
Same week previous year	157262286		17183559	16887932	1058993	2695310

LAKE SHIPMENTS FROM HEAD OF THE LAKES FOR THE WEEK ENDING OCTOBER 21, 1937

	CANADIAN LOWER LAKE PORTS	MONTREAL	SOREL	QUEBEC	BUFFALO	OTHER U.S.A. PORTS	EUROPE DIRECT
Wheat	2689985	399080	-	534439	598046	-	-
Oats	15187	-	-	-	-	-	-
Barley	1018102	34000	-	-	-	-	-
Flaxseed	61299	-	-	-	-	-	-
Rye	-	-	-	-	-	-	-
TOTAL	3784573	433080	-	534439	598046	-	-
Period Oct. 21, 1936	5296566	796585	549634	249122	2530233	718432	-

LAKE SHIPMENTS FROM HEAD OF THE LAKES FOR THE PERIOD FROM THE OPENING  
OF NAVIGATION TO OCTOBER 21, 1937

Wheat	47134167	8865201	120421	584439	6140506	280090	163793
Oats	2535442	2161541	-	124882	-	-	-
Barley	6766408	2072308	10000	18000	587224	2302363	-
Flaxseed	248160	65595	-	-	-	-	-
Rye	1119350	418778	-	-	142520	-	-
TOTAL	57803527	13583423	130421	727321	6870250	2582453	163793
Period Oct. 21, 1936	60886397	17320104	3861119	1951532	40998682	25622989	x1324879

x Includes 114,039 bushels wheat to Great Britain.

# Includes Three Rivers.

/ Includes 534,439 bushels to Three Rivers.





CANADIAN GRAIN IN STORE - OCTOBER 22, 1937

	WHEAT	DURUM WHEAT	OATS	BARLEY	FLAX- SEED	RYE
		B u s h e l s				
<u>WESTERN COUNTRY ELEVATORS</u>						
Manitoba	2400000	1314000	1110000	1785000	66000	188000
Saskatchewan	6120000	206000	1635000	520000	84000	84000
Alberta	2580000	-	1705000	887000	13000	48000
TOTAL WESTERN COUNTRY ELEVATORS	17100000	1520000	4450000	3192000	163000	320000
INTERIOR PRIVATE AND MILL	4623000	267000	481000	1983000	112000	28000
INTERIOR PUBLIC & SEMI-PUBLIC	1107322	-	953	3268	-	-
VANCOUVER-NEW WESTMINSTER	2867379	-	116528	11080	467	676
PRINCE RUPERT	911340	-	-	-	-	-
CHURCHILL	11820	-	-	-	-	-
Semi-Public Terminals	11166653	9699606	492377	3562243	253460	811530
Private Terminals	9298	-	12543	5484	-	-
TOTAL FT. WM. & PT. ARTHUR	11175951	9699606	504920	3567727	253460	811530
IN TRANSIT LAKES	3025087	425803	-	1209159	-	-
IN TRANSIT RAIL	5197469	-	819470	400223	24046	13885
<u>EASTERN ELEVATORS</u>						
Midland	58951	57976	-	-	-	-
Midland Simcoe	184302	628522	260972	-	-	-
Collingwood	-	1361689	-	-	-	-
Owen Sound	145195	121946	56000	-	-	-
Goderich Elev. & Transit	188961	191165	107497	94062	-	-
Goderich West. Can. Flr. Mill	386020	-	4658	10077	-	-
Sarnia	1117223	296716	3253	140426	-	108
Port Colborne, D. G.	415847	741740	-	233633	-	-
Port Colborne, Maple Leaf	790832	62893	-	53901	-	14968
Toronto	1186623	351014	12403	394902	61228	30121
Kingston, James Richardson	15503	-	-	-	-	-
Kingston, Elevator Co.	345926	28000	-	90146	-	-
Prescott	-	60697	-	-	-	-
TOTAL EAST. ELEVS. LAKE PORTS	4835383	3902358	444783	1017147	61228	45197
Montreal	2233065	828890	496675	779510	2115	58501
Ogilvie Flour Mills	491729	-	-	-	-	-
Dominion Elevator Co.	21274	12059	82827	11222	-	-
Three Rivers	56574	29709	-	-	-	-
North Amer. Ltd. Sorel	179377	260008	-	2930	-	-
Quebec	4764	47666	58567	14347	-	-
West Saint John Hbr. Comm.	-	226049	-	-	-	-
West Saint John C.P.R.	65	90514	-	-	-	-
TOTAL EAST. ELEVS. SBD. PORTS	2986848	1494895	638069	808009	2115	58501
TOTAL QUANTITY IN CANADA	53841599	17309662	7455723	12191613	616316	1277789
<u>U. S. LAKE PORTS</u>						
Duluth	-	9902	-	202740	-	-
Buffalo	692000	-	-	110000	-	-
Buffalo Afloat	208849	-	-	-	-	-
Erie Canal	311000	-	-	-	-	-
TOTAL U. S. LAKE PORTS	1211849	9902	-	312740	-	-
New York	541000	-	-	-	-	-
New York Afloat	130000	-	-	-	-	-
Baltimore	23000	-	-	40000	-	-
TOTAL U. S. ATLANTIC SBD. PORTS	694000	-	-	40000	-	-
TOTAL QUANTITY IN STORE	55747448	17319564	7455723	12544353	616316	1277789





Grades of Canadian Grain in Store at Public, Semi-Public, and Private (Head of the Lakes), Interior Public and Semi-Public, Vancouver-New Westminster, and Eastern Elevators for the week ending October 22, 1937.

	Ft. William & Pt. Arthur Semi-Public and Private	Interior Public and Semi-Public Terminals	Vancouver New West- minster Elevators	Eastern Elevators Lake Ports	Eastern Elevators St. Lawrence Ports	Eastern Elevators Maritime Ports
	B u s h e l s					
WHEAT						
No. 1 Hard	47,456	6,624	455,248	-	29,566	-
No. 1 Northern	1,452,168	1,031,406	297,667	720,734	662,143	65
No. 2 Northern	1,110,877	39,357	187,025	863,645	556,725	-
Old No. 2 Northern	1,618	-	-	-	223	-
No. 3 Northern	3,495,253	3,652	889,558	1,057,821	683,011	-
No. 4 Northern	1,140,506	1,280	309,841	354,795	763,437	-
No. 4 Special	230,843	-	-	945,487	9,010	-
No. 5 Wheat	55,664	-	84,352	37,440	70,593	-
No. 5 Special	412,557	-	-	-	56,031	-
No. 6 Wheat	81,990	-	104,977	51,085	4,087	-
No. 6 Special	278,900	-	-	105,727	2,498	-
Feed	353,147	-	132,108	143,783	21,639	-
No. 1 C.W. Garnet	1,775,221	-	45,120	19,384	98,720	-
No. 2 C.W. Garnet	463,237	-	160,987	37,908	-	-
No. 1 C.W. Durum	1,118,970	-	-	149,939	117,981	225,748
No. 2 C.W. Durum	4,988,365	-	-	3,462,995	718,892	56,834
No. 3 C.W. Durum	3,261,736	-	-	289,424	319,917	33,981
No. 4 C.W. Durum	108,880	-	-	-	-	-
Other Durum	269,384	-	-	-	21,542	-
Other	228,785	21,832	200,436	497,574	29,100	-
TOTAL	20,875,557	1,104,151	2,867,379	8,737,741	4,165,115	316,628
ONTS						
No. 2 C.W.	69,815	15	-	74,028	38,854	-
No. 3 C.W.	154,062	929	4,191	239,072	89,968	-
Ex. No. 1 Feed	5,023	-	-	-	-	-
No. 1 Feed	161,397	-	-	61,365	214,092	-
No. 2 Feed	43,346	-	-	-	23,280	-
No. 3 Feed	13,127	-	-	-	1,769	-
Other	58,150	9	112,337	70,318	270,106	-
TOTAL	504,920	953	116,528	444,783	638,069	-
BARLEY						
3 Ex. C.W. 6 Row	2,459,151	-	-	300,875	261,570	-
3 C.W. 6 Row	-	-	-	-	4,788	-
3 Ex. C.W. 2 Row	13,325	-	-	-	-	-
3 C.W. 2 Row	-	-	-	1,000	997	-
3 C.W.	858,231	554	2,255	554,198	521,456	-
4 C.W.	104,601	-	-	-	953	-
5 C.W.	68,645	1,949	-	-	5,273	-
6 C.W.	18,503	725	-	-	1,250	-
Feed	-	-	-	-	-	-
Other	45,271	40	8,825	161,074	11,722	-
TOTAL	3,567,727	3,268	11,080	1,017,147	808,009	-
FLAXSEED						
No. 1 C.W.	201,723	-	82	61,228	2,115	-
No. 2 C.W.	30,886	-	98	-	-	-
No. 3 C.W.	7,792	-	168	-	-	-
No. 4 C.W.	5	-	-	-	-	-
Other	13,054	-	119	-	-	-
TOTAL	253,460	-	467	61,228	2,115	-
RYE						
No. 1 C.W.	-	-	26	-	-	-
No. 2 C.W.	708,772	-	-	37,804	55,209	-
No. 3 C.W.	88,350	-	-	-	-	-
No. 4 C.W.	3,750	-	-	-	-	-
Ergoty	1,589	-	-	-	-	-
Other	9,069	-	650	7,393	3,292	-
TOTAL	811,530	-	676	45,197	58,501	-
TOTAL QUANTITY IN STORE						
	26,013,194	1,108,372	2,996,130	10,306,096	5,671,809	316,628





CANADIAN GRAIN IN STORE - COMPARATIVE STATEMENT, 1934-1937

	W H E A T	(Bushels)	OTHER GRAIN
<u>October 22, 1937</u>			
Country Elevators - Manitoba	3,714,000		3,149,000
Saskatchewan	6,326,000		2,323,000
Alberta	8,580,000		2,653,000
TOTAL	18,620,000		8,125,000
Interior Private and Mill	4,890,000		2,604,000
Interior Public and Semi-Public Terminals	1,107,322		4,221
Vancouver-New Westminster	2,867,379		128,751
Prince Rupert	911,340		-
Churchill	11,820		-
Fort William & Port Arthur	20,875,557		5,137,637
In Transit Lakes	3,450,890		1,209,159
In Transit Rail	5,197,469		1,257,624
Eastern Elevators - Lake Ports	8,737,741		1,568,355
Eastern Elevators - Sbd. Ports	4,481,743		1,506,694
U. S. Lake Ports	1,221,751		312,740
U. S. Atlantic Sbd. Ports	694,000		40,000
TOTAL	73,067,012		21,894,181
<u>October 23, 1936</u>			
Country Elevators - Manitoba	2,727,062		1,893,186
Saskatchewan	16,837,226		7,048,962
Alberta	20,001,392		3,629,093
TOTAL	39,565,680		12,571,241
Interior Private and Mill	6,878,190		4,716,295
Interior Public and Semi-Public Terminals	99,828		790,828
Vancouver-New Westminster	8,656,292		658,196
Prince Rupert	1,025,959		-
Churchill	610,450		-
Fort William and Port Arthur	31,831,690		10,087,776
In Transit Lakes	6,800,782		638,069
In Transit Rail	9,718,253		1,833,305
Eastern Elevators - Lake Ports	15,523,529		2,099,032
Eastern Elevators - Sbd. Ports	15,561,083		1,834,125
U. S. Lake Ports	16,177,885		2,585,688
U. S. Atlantic Sbd. Ports	4,812,665		11,239
TOTAL	157,262,286		37,825,794
<u>October 25, 1935</u>			
Country Elevators - Manitoba	6,778,175		2,793,139
Saskatchewan	45,243,765		5,332,018
Alberta	33,901,111		2,304,605
TOTAL	85,923,051		10,429,762
Interior Private and Mill	6,379,008		2,714,073
Interior Public and Semi-Public Terminals	5,326,889		98,496
Vancouver-New Westminster	15,117,778		195,304
Prince Rupert	290,633		-
Churchill	495,036		-
Fort William and Port Arthur	54,835,096		9,972,937
In Transit Lakes	4,518,096		2,371,830
Eastern Elevators - Lake Ports	44,946,948		1,242,783
Eastern Elevators - Sbd. Ports	19,659,917		1,668,107
U. S. Lake Ports	24,481,658		268,694
U. S. Atlantic Sbd. Ports	5,434,106		-
TOTAL	267,408,216		28,961,991
<u>October 26, 1934</u>			
Country Elevators - Manitoba	9,726,223		1,953,348
Saskatchewan	52,172,714		6,361,275
Alberta	36,254,062		3,483,921
TOTAL	98,152,999		11,798,544
Interior Private and Mill	7,388,092		3,738,827
Interior Public and Semi-Public Terminals	5,871,695		390,064
Vancouver-New Westminster	11,725,318		563,360
Victoria	926,632		-
Prince Rupert	1,093,753		-
Churchill	1,211,978		-
Fort William and Port Arthur	59,909,144		10,165,163
In Transit Lakes	3,988,894		1,042,184
Eastern Elevators - Lake Ports	28,559,934		2,567,491
Eastern Elevators - Sbd. Ports	13,573,408		3,330,251
U. S. Lake Ports	12,943,905		983,526
U. S. Atlantic Sbd. Ports	4,269,572		-
TOTAL	249,615,324		34,579,410





RECEIPTS AND SHIPMENTS OF GRAIN BY CLASSES OF ELEVATORS IN THE WEEK ENDING OCT. 22, 1937

		WHEAT	DURUM WHEAT	OATS	BARLEY	FLAX- SEED	RYE
			B u s h e l s				
<u>R E C E I P T S</u>							
Country Elevators x		3,144,003	195,870	926,484	675,336	6,348	25,340
Int. Private & Mill Elevs. x		1,079,990	20,535	122,622	156,665	14,756	1,707
Int. Pub. & Semi-Pub. Terms.		7,628	-	-	2,907	-	-
Vancouver-New Westminster		169,948	-	7,476	5,963	-	1,110
Fort William & Port Arthur		3,139,528	142,616	78,749	109,261	2,971	29,584
Eastern Elevators -							
Georgian Bay Ports	Vessel	1,190,629	-	175,889	167,803	-	-
Lower Lake Ports	Vessel	1,279,219	-	-	615,328	61,228	-
	Rail	21,055	-	2,565	3,955	-	105
St. Lawrence Ports	Vessel	2,383,853	-	262,803	292,254	-	-
	Rail	1,390	-	11,412	100	-	-
Seaboard Ports	Rail	650	-	-	-	-	-

S H I P M E N T S

Country Elevators x		4,034,688	337,516	426,794	369,632	17,203	28,091
Int. Private & Mill Elevs. x		736,800	21,263	190,388	126,752	18,151	-
Int. Pub. & Semi-Pub. Terms.		7,628	-	-	2,907	-	-
Vancouver-New Westminster							
	Vessel	268,826	-	-	-	-	-
	Rail	21,669	-	7,145	972	-	840
Fort William & Port Arthur							
	Vessel	3,602,878	605,374	28,996	957,852	36,615	21,905
	Rail	13,398	1,081	72,616	1,045	-	-
Eastern Elevators -							
Georgian Bay Ports	Vessel	54,956	-	-	59,914	-	-
	Rail	258,188	-	18,392	3,750	-	-
Lower Lake Ports	Vessel	952,177	-	31,441	528,573	-	-
	Rail	122,590	-	134	46,825	-	7,782
St. Lawrence Ports	Vessel	1,685,786	-	65,882	784,921	-	8,571
	Rail	84,457	-	36,884	41,457	-	-
Seaboard Ports	Rail	650	-	-	-	-	-

x Week ending October 15, 1937.





STOCKS OF UNITED STATES GRAIN IN CANADA OCTOBER 22, 1937

	WHEAT	OATS	BARLEY	RYE	CORN
	B u s h e l s				
Midland Simcoe	159,439	1,062,972	-	-	-
Owen Sound	-	396,643	-	-	-
Sarnia	-	28,235	-	-	-
Port Colborne, D. G.	-	13,221	86,058	34,530	-
Port Colborne, M. L.	213,401	113,391	-	30,961	1,572
Toronto	-	274,669	-	305,888	-
Kingston Elevator Co.	11,356	-	-	-	-
Prescott	-	25,500	-	-	-
Montreal	770,615	226,784	29,214	304,572	-
Dominion Elevator Co.	-	65,717	-	-	-
Sorel	94,127	13,500	-	-	-
Three Rivers	544,006	33,355	-	-	-
Quebec	-	209,605	-	-	-
TOTAL	1,792,944	2,463,592	115,272	675,951	1,572
Same period previous year	-	111,226	-	-	10,129

RECEIPTS AND SHIPMENTS OF UNITED STATES GRAIN IN CANADA OCTOBER 22, 1937

	R E C E I P T S			S H I P M E N T S	
	Water	Rail	GEORGIAN BAY PORTS	Water	Rail
Wheat	199,439	-	To Can. Dom. Points	-	40,000
			" United States	-	3,200
			" Can. Dom. Points	-	161,698
			LOWER LAKE PORTS		
Wheat	-	-	To Can. Flour Mills	-	46,761
Oats	84,765	-	" Maritime Ports	-	2,000
			" Montreal	128,250	-
			" Can. Dom. Points	-	11,914
			" Can. Flour Mills	-	3,865
			" Quebec	-	6,000
Rye	-	-	" Montreal	52,413	-
Corn	-	1,065	" Can. Flour Mills	-	81
			ST. LAWRENCE PORTS		
Wheat	194,432	-	To Other Countries	99,733	-
Oats	284,378	1,798	" Can. Flour Mills	-	1,000
			" U. S. Seaboard	-	2,330
			" Can. Dom. Points	-	52,678
Barley	28,226	-	" Other Countries	47,875	-
Rye	-	-	" Other Countries	161,428	-
			MARITIME PORTS		
Oats	-	625	To Can. Flour Mills	-	625

RECEIPTS AND SHIPMENTS OF FOREIGN GRAIN IN CANADA OCTOBER 22, 1937

			ARGENTINE CORN		
Lower Lake Ports	-	-	To Can. Flour Mills	-	5,658
St. Lawrence Ports	-	-	" United States	-	11,250
			" Can. Dom. Points	-	9,339
			SOUTH AFRICAN CORN		
Georgian Bay Ports T.	35,332	-	To Can. Dom. Points	-	-
Lower Lake Ports T.	92,293	-	" Can. Flour Mills	-	5,072
			" Can. Dom. Points	-	99,265
St. Lawrence Ports P.	855,687	-	" Can. Dom. Points	93,700	164,492
			" Can. Flour Mills	-	2,250
Maritime Ports P.	281,335	-	" Can. Dom. Points	-	35,900
			" Can. Flour Mills	-	8,300
			ARGENTINE FLAXSEED		
St. Lawrence Ports	-	-	To Eastern Elevators	14,140	-
			" Can. Dom. Points	-	30,000

STOCKS OF FOREIGN GRAIN IN CANADA OCTOBER 22, 1937

	ARG. CORN	S. A. CORN	ARG. FLAX	POL. BARLEY
T. - Transfer	-	-	-	-
P. - Primary	-	-	-	-
Goderich Elev. Co.	-	54,437	-	-
Goderich West. Can. Fl. Mill	-	35,332	-	-
Port Colborne, M. L.	99,101	120,311	-	-
Toronto	55,358	236,989	-	-
Kingston, J. R.	-	16,420	-	-
Montreal	350,441	2,102,278	266,872	-
Dominion Elev. Co.	147,418	139,140	-	-
Sorel	-	475,873	-	-
Three Rivers	158,860	237,864	17,256	-
Quebec	-	261,068	-	-
Saint John	-	89,624	-	-
Halifax	-	268,510	-	-
TOTAL	811,178	4,037,846	284,128	-
Same period last year	446,057	98,772	-	224,044





STOCKS, RECEIPTS AND SHIPMENTS OF THE COUNTRY ELEVATORS IN THE WESTERN DIVISION IN THE  
WEEK ENDING OCTOBER 15, 1937

	WHEAT	DURUM WHEAT B u s h e l s	OATS	BARLEY	FLAXSEED	RYE
<u>COUNTRY ELEVATORS</u>						
<u>STOCKS IN STORE</u>						
Manitoba	2,460,000	1,340,000	1,060,000	1,650,000	60,000	196,000
Saskatchewan	6,355,000	205,000	1,410,000	455,000	76,000	84,000
Alberta	8,880,000	-	1,240,000	670,000	11,000	44,000
TOTAL	17,695,000	1,545,000	3,710,000	2,775,000	147,000	324,000
Total - a week ago	18,600,000	1,695,000	3,220,000	2,490,000	157,000	330,000
a year ago	41,851,526		7,935,496	3,399,457	553,677	653,894
<u>RECEIPTS DURING WEEK</u>						
Manitoba	145,933	183,577	169,391	244,634	2,157	12,637
Saskatchewan	816,892	12,293	327,179	103,829	4,172	7,748
Alberta	2,181,178	-	429,914	326,873	19	4,955
TOTAL	3,144,003	195,870	926,484	675,336	6,348	25,340
Total - a week ago	3,415,677	282,286	937,696	655,255	13,882	50,884
a year ago	5,333,348		992,887	673,365	61,412	36,747
<u>SHIPMENTS DURING WEEK</u>						
Manitoba	63,490	325,715	127,866	215,872	11,185	19,008
Saskatchewan	1,046,259	11,801	133,284	61,446	3,299	5,536
Alberta	2,924,939	-	165,644	92,314	2,719	3,547
TOTAL	4,034,688	337,516	426,794	369,632	17,203	28,091
Total - a week ago	5,970,609	398,451	693,059	514,407	11,113	43,965
a year ago	6,832,746		456,672	1,236,357	73,301	86,827

TOTAL RECEIPTS AT COUNTRY ELEVATORS AND PLATFORM LOADINGS<sup>#</sup> IN THE  
PERIOD AUGUST 1, 1937 TO OCTOBER 15, 1937

	W H E A T B u s h e l s	OTHER GRAIN
Manitoba	28,964,473	18,005,275
Saskatchewan	15,666,661	2,748,569
Alberta	28,070,164	2,739,658
Total - 1937-1938	72,701,298	23,493,502
Same period 1936-1937	112,616,452	32,022,757

# Platform loadings to October 14, not reported.

REPORT OF THE  
LAND SURVEYOR  
FOR THE YEAR 1961

STATE OF CALIFORNIA  
COUNTY OF SAN DIEGO

SECTION 1  
TOWNSHIP 12N  
RANGE 12E

SECTION 2  
TOWNSHIP 12N  
RANGE 12E

SECTION 3  
TOWNSHIP 12N  
RANGE 12E

SECTION 4  
TOWNSHIP 12N  
RANGE 12E

SECTION 5  
TOWNSHIP 12N  
RANGE 12E

SECTION 6  
TOWNSHIP 12N  
RANGE 12E

SECTION 7  
TOWNSHIP 12N  
RANGE 12E

SECTION 8  
TOWNSHIP 12N  
RANGE 12E

SECTION 9  
TOWNSHIP 12N  
RANGE 12E

SECTION 10  
TOWNSHIP 12N  
RANGE 12E

SECTION 11  
TOWNSHIP 12N  
RANGE 12E

SECTION 12  
TOWNSHIP 12N  
RANGE 12E

SECTION 13  
TOWNSHIP 12N  
RANGE 12E

SECTION 14  
TOWNSHIP 12N  
RANGE 12E

SECTION 15  
TOWNSHIP 12N  
RANGE 12E

SECTION 16  
TOWNSHIP 12N  
RANGE 12E



STOCKS IN STORE, RECEIPTS AND SHIPMENTS AT THE CANADIAN GOVERNMENT INTERIOR TERMINAL  
ELEVATORS, DURING THE WEEK ENDING OCTOBER 22, 1937

	WHEAT	OATS Bushels	BARLEY	FLAXSEED	RYE
<u>STOCKS IN STORE</u>					
Calgary	213	953	2,135	-	-
Edmonton	14,372	-	1,133	-	-
Lethbridge	1,089,566	-	-	-	-
TOTAL	1,104,151	953	3,268	-	-
<u>RECEIPTS</u>					
Calgary	1,780	-	1,599	-	-
Edmonton	1,261	-	1,308	-	-
Lethbridge	4,587	-	-	-	-
TOTAL	7,628	-	2,907	-	-
<u>SHIPMENTS - RAIL</u>					
Calgary	1,780	-	-	-	-
Edmonton	101	-	80	-	-
Lethbridge	6,703	-	-	-	-
TOTAL	8,584	-	80	-	-

1. The first part of the report is a general statement of the purpose and scope of the study.

2. The second part is a description of the methods used in the study.

3. The third part is a description of the results of the study.

4. The fourth part is a discussion of the results.

5. The fifth part is a conclusion and a list of references.

6. The sixth part is a list of references.

7. The seventh part is a list of references.

8. The eighth part is a list of references.

9. The ninth part is a list of references.

10. The tenth part is a list of references.





STOCKS, RECEIPTS AND SHIPMENTS OF THE PACIFIC COAST ELEVATORS  
IN THE WEEK ENDING OCTOBER 22, 1937

	WHEAT	OATS	BARLEY	FLAXSEED	RYE
		B u s h e l s			

STOCKS IN STORE

Vancouver-New Westminster	2,867,379	116,528	11,080	467	676
Prince Rupert	911,340	-	-	-	-
Churchill	11,820	-	-	-	-

RECEIPTS DURING WEEK

Vancouver-New Westminster	169,948	7,476	5,963	-	1,110
---------------------------	---------	-------	-------	---	-------

SHIPMENTS DURING WEEK

Vancouver-New Westminster					
Vessel	268,826	-	-	-	-
Rail	21,669	7,145	972	-	840

DAILY QUOTATIONS AND WEEKLY AVERAGES OF CASH WHEAT BY GRADES IN CENTS AND  
EIGHTHS OF A CENT PER BUSHEL  
IN THE WEEK ENDING OCTOBER 23, 1937  
(Basis Vancouver, B.C.)

	Oct. 18 \$ ¢	Oct. 19 \$ ¢	Oct. 20 \$ ¢	Oct. 21 \$ ¢	Oct. 22 \$ ¢	Oct. 23 \$ ¢	Weekly Average \$ ¢
No. 1 Hard	1.29/2	1.27	1.31/2	1.31/7	1.34/3	1.32/6	1.31/1
No. 1 Northern	1.29/2	1.27	1.31/2	1.31/7	1.34/3	1.32/6	1.31/1
No. 2 Northern	1.24/2	1.22	1.26/2	1.26/7	1.29/3	1.27/6	1.26/1
No. 3 Northern	1.09/2	1.07	1.11/2	1.11/7	1.10/7	1.09/2	1.09/7
No. 4 Northern	1.04/2	1.02	1.06/2	1.06/7	1.05/7	1.04/2	1.04/7
No. 5	.98/2	.96	1.00/2	1.00/7	.99/7	.98/2	.98/7
No. 6	.85/6	.83/4	.87/6	.88/3	.87/3	.85/6	.86/3
Feed	.73/6	.71/4	.75/6	.76/3	.75/3	.73/6	.74/3
No. 1 Garnet	1.09/2	1.07	1.11/2	1.11/7	1.10/7	1.09/2	1.09/7
No. 2 Garnet	1.06/2	1.04	1.08/2	1.08/7	1.07/7	1.06/2	1.06/7





DAILY QUOTATIONS AND WEEKLY AVERAGES OF CASH GRAIN BY  
GRADES ON WINNIPEG AND TORONTO MARKETS

Week ending October 23, 1937

	Oct. 18	Oct. 19	Oct. 20	Oct. 21	Oct. 22	Oct. 23	Weekly Average
<b>WHEAT</b>							
	(Basis Port William and Port Arthur)						
No. 1 Man. Hard	1.44/4	1.43/3	1.48/7	1.51/4	1.50/6	1.48/3	1.47/7
No. 1 Man. Northern	1.44/4	1.43/3	1.48/7	1.51/4	1.50/6	1.48/3	1.47/7
No. 2 Man. Northern	1.35	1.34/3	1.39/7	1.42/4	1.41/6	1.40/3	1.39
No. 3 Man. Northern	1.15/2	1.13/3	1.19/3	1.19/6	1.18/6	1.18/1	1.17/4
No. 4 Man. Northern	1.10/4	1.07/7	1.13/7	1.14/4	1.13/2	1.11/7	1.12
No. 5	1.05	1.02/7	1.07/7	1.08/4	1.07/6	1.06/3	1.06/3
No. 6	.99	.96/7	1.01/7	1.02/4	1.03/6	1.03/3	1.01/2
Feed	.81/4	.79/7	.82/7	.83/4	.80/6	.78/3	.81/1
No. 1 Garnet	1.18	1.15/7	1.20/7	1.21/4	1.20/6	1.20/3	1.19/5
No. 2 Garnet	1.15	1.12/7	1.18/3	1.18/4	1.17/6	1.17/3	1.16/5
No. 4 Special	1.02	.99/7	1.05/7	1.06/4	1.05/6	1.05/3	1.04/2
No. 5 Special	.99	.96/7	1.01/7	1.02/4	1.01/6	1.01/3	1.00/5
No. 6 Special	.87	.84/7	.89/7	.90/4	.89/6	.89/3	.88/5
Rejected No. 1 Northern	1.19	1.16/7	1.21/7	1.22/4	1.21/6	1.21/3	1.20/5
No. 2 Northern	1.17	1.14/7	1.19/7	1.20/4	1.19/6	1.19/3	1.18/5
No. 3 Northern	1.08	1.05/7	1.10/7	1.11/4	1.10/6	1.10/3	1.09/5
Tough No. 1 Hard	1.42/4	1.41/3	1.46/7	1.49/4	1.48/6	1.46/3	1.45/7
No. 2 Northern	1.42/4	1.41/3	1.46/7	1.49/4	1.48/6	1.46/3	1.45/7
- No. 2 Northern	1.33	1.32/3	1.37/7	1.40/4	1.39/6	1.38/3	1.37
No. 3 Northern	1.13/6	1.11/7	1.17/7	1.18/2	1.17/2	1.16/5	1.16
Smutty No. 1 Hard	1.21	1.18/7	1.23/7	1.24/4	1.23/6	1.23/3	1.22/5
No. 1 Northern	1.21	1.18/7	1.23/7	1.24/4	1.23/6	1.23/3	1.22/5
No. 2 Northern	1.18	1.15/7	1.20/7	1.21/4	1.20/6	1.20/3	1.19/5
No. 3 Northern	1.10	1.07/7	1.12/7	1.13/4	1.12/6	1.12/3	1.11/5
Durum No. 1	.98/5	.96/2	1.01/6	1.01	1.00	.98/1	.99/2
No. 2	.96/5	.94/2	.98/6	.98	.97/4	.95/5	.96/6
No. 3	.93/5	.91/2	.95/6	.95	.94	.92/1	.93/5
A. R. W. No. 1	1.03	1.00/7	1.05/7	1.06/4	1.05/6	1.05/3	1.04/5
A. W. No. 2	1.01	.98/7	1.03/7	1.04/4	1.03/6	1.03/3	1.02/5
No. 3	.99	.96/7	1.01/7	1.02/4	1.01/6	1.01/3	1.00/5
<b>OATS</b>							
No. 2 C.W.	.52	.53/2	.52/1	.54/2	.54/4	.54/2	.53/3
No. 3 C.W.	.48/4	.49/6	.48/5	.50/6	.50	.49/6	.49/5
Ex. No. 1 Feed	.48/4	.49/6	.48/5	.50/6	.50	.49/6	.49/5
No. 1 Feed	.47/4	.49	.47/7	.50	.49/2	.49/2	.48/7
No. 2 Feed	.45/6	.47/2	.46/1	.48/2	.47/4	.47/2	.47
No. 3 Feed	.42/4	.44/2	.43/1	.45/2	.44/4	.44/2	.44
<b>BARLEY</b>							
6 Row	.62/2	.62/2	.62/2	.61/7	.61/7	.62/3	.62/1
2 Row	.62/2	.62/2	.62/2	.61/7	.61/7	.62/3	.62/1
No. 3 C.W.	.60/6	.61	.61	.60/5	.60/7	.61/3	.61
No. 4 C.W.	.59/6	.59/6	.59/6	.59/3	.59/3	.59/7	.59/5
No. 5 C.W.	.58/6	.58/6	.58/6	.58/3	.58/3	.58/7	.58/5
No. 6 C.W.	.57/6	.57/6	.57/6	.57/3	.57/3	.57/7	.57/5
<b>RYE</b>							
No. 2 C.W.	.81/6	.78	.80/7	.83	.82/2	.80/7	.81/1
No. 3 C.W.	.79/2	.75/4	.78/3	.80/4	.79/6	.78/3	.78/5
Rejected No. 2 C.W.	.74/6	.71	.73/7	.76	.75/2	.73/7	.74/1
No. 4 C.W.	.75/2	.71/4	.74/3	.76/4	.75/6	.74/3	.74/5
Ergoty	.73/2	.69/4	.72/3	.74/4	.73/6	.72/3	.72/5
<b>FLAXSEED</b>							
No. 1 C.W.	1.77/2	1.77/4	1.78/4	1.80/2	1.80	1.79/6	1.78/7
No. 2 C.W.	1.73/2	1.73/4	1.74/4	1.76/2	1.76	1.75/6	1.74/7
No. 3 C.W.	1.52/2	1.52/4	1.53/4	1.55/2	1.55	1.54/6	1.53/7
No. 4 C.W.	1.47/2	1.47/4	1.48/4	1.50/2	1.50	1.49/6	1.48/7
Wheat,	ONTARIO - TORONTO						
good milling	1.04-.05	1.04-.05	1.04-.05	1.04-.05	1.04-.05	1.04-.05	1.04 -.05
Oats	.38-.40	.38-.40	.38-.40	.38-.40	.38-.40	.38-.40	.38 -.40
Barley	.52-.54	.52-.54	.52-.54	.52-.54	.52-.54	.52-.54	.52 -.54
Rye	.80-.85	.80-.85	.78-.80	.78-.80	.78-.80	.78-.80	.78/5-.81/5
Corn	.65-.70	.65-.70	.60-.62	.60-.62	.60-.62	.60-.62	.61/5-.64/5
Buckwheat	.54-.56	.54-.56	.54-.56	.54-.56	.54-.56	.54-.56	.54 -.56
Malting Barley	.63-.65	.63-.65	.63-.65	.63-.65	.63-.65	.63-.65	.63 -.65
Milling Oats	.39-.41	.39-.41	.39-.41	.39-.41	.39-.41	.39-.41	.39 -.41
South African Corn	.87	.87	.87	.87	.87	.87	.87

Table with multiple columns and rows, containing faint text and numbers. The text is mostly illegible due to fading and bleed-through from the reverse side.

Table with multiple columns and rows, containing faint text and numbers. The text is mostly illegible due to fading and bleed-through from the reverse side.



INSPECTIONS - EASTERN DIVISION

August, 1937 and 1936

	Month of August			Month of August	
	1937	1936		1937	1936
	Bushels			Bushels	
CANADIAN GRAIN			RYE		
			No. 2	3,000	1,000
			No. 3	1,000	-
			TOTAL	4,000	1,000
WHITE WINTER WHEAT			CORN		
No. 2	23,000	7,000	No. 2 Yellow	3,000	12,250
No. 3	1,100	46,000	No. 2 Mixed	-	1,000
No. 4	1,000	31,000	TOTAL	3,000	13,250
Tough No. 2	10,000	-	MIXED GRAIN		
RED WINTER WHEAT			Oats & Wheat	1,500	3,000
No. 2	11,000	6,000	Oats & Barley	1,800	-
Tough # 2 Red	1,000	-	TOTAL	3,300	3,000
MIXED WINTER WHEAT			RECAPITULATION OF CANADIAN GRAIN		
No. 2	280,400	63,000	Wheat	524,229	160,000
Tough No. 2	41,000	-	Oats	102,148	149,397
No. 3	69,225	-	Barley	58,300	240,500
No. 3 Tough	41,156	-	Rye	4,000	1,000
No. 4	14,528	-	Corn	3,000	13,250
No. 4 Tough	18,506	-	Mixed Grain	3,300	3,000
Rejected	1,000	7,000	TOTAL	694,977	567,147
No. 3 Rejected	1,000	-	572 cars inspected at Toronto.		
No. 4 Rejected	2,314	-	65 cars & 9 cargoes inspected at Montreal.		
Tough Rejected	3,000	-			
Damp No. 4	1,000	-			
Damp Rejected	4,000	-			
TOTAL	524,229	160,000			
OATS			AMERICAN GRAIN		
No. 2	11,000	40,200	WHEAT		
No. 3	41,598	79,400	2 Hard Winter	52,000	-
No. 4	18,950	16,697	OATS		
Tough No. 2	-	3,300	No. 3	8,004	-
Tough No. 3	-	8,300	No. 4	9,000	-
Tough No. 4	3,000	1,500	TOTAL	17,004	-
Tough Rejected	5,000	-	RYE		
Rejected	17,900	-	No. 2	127,560	-
Rejected Musty	4,700	-	RECAPITULATION OF AMERICAN GRAIN		
TOTAL	102,148	149,347	Wheat	52,000	-
BARLEY			Oats	17,004	-
No. 3	5,000	70,050	Rye	127,560	-
No. 3 Ex.	-	162,900	TOTAL	196,564	-
No. 4	30,950	6,250			
Tough No. 3	1,300	-			
Tough No. 4	3,750	-			
Tough Rejected	3,250	-			
Damp Rejected Heated	-	1,300			
Rejected	10,250	-			
Rejected Musty	2,550	-			
Rejected Musty & Heating	1,250	-			
TOTAL	58,300	240,500			

RECEIVED  
JAN 10 1900  
U. S. DEPT. OF AGRICULTURE  
BUREAU OF PLANT INDUSTRY

1	100	100	100
2	100	100	100
3	100	100	100
4	100	100	100
5	100	100	100
6	100	100	100
7	100	100	100
8	100	100	100
9	100	100	100
10	100	100	100
11	100	100	100
12	100	100	100
13	100	100	100
14	100	100	100
15	100	100	100
16	100	100	100
17	100	100	100
18	100	100	100
19	100	100	100
20	100	100	100
21	100	100	100
22	100	100	100
23	100	100	100
24	100	100	100
25	100	100	100
26	100	100	100
27	100	100	100
28	100	100	100
29	100	100	100
30	100	100	100
31	100	100	100
32	100	100	100
33	100	100	100
34	100	100	100
35	100	100	100
36	100	100	100
37	100	100	100
38	100	100	100
39	100	100	100
40	100	100	100
41	100	100	100
42	100	100	100
43	100	100	100
44	100	100	100
45	100	100	100
46	100	100	100
47	100	100	100
48	100	100	100
49	100	100	100
50	100	100	100
51	100	100	100
52	100	100	100
53	100	100	100
54	100	100	100
55	100	100	100
56	100	100	100
57	100	100	100
58	100	100	100
59	100	100	100
60	100	100	100
61	100	100	100
62	100	100	100
63	100	100	100
64	100	100	100
65	100	100	100
66	100	100	100
67	100	100	100
68	100	100	100
69	100	100	100
70	100	100	100
71	100	100	100
72	100	100	100
73	100	100	100
74	100	100	100
75	100	100	100
76	100	100	100
77	100	100	100
78	100	100	100
79	100	100	100
80	100	100	100
81	100	100	100
82	100	100	100
83	100	100	100
84	100	100	100
85	100	100	100
86	100	100	100
87	100	100	100
88	100	100	100
89	100	100	100
90	100	100	100
91	100	100	100
92	100	100	100
93	100	100	100
94	100	100	100
95	100	100	100
96	100	100	100
97	100	100	100
98	100	100	100
99	100	100	100
100	100	100	100





INSPECTIONS - EASTERN DIVISION

September, 1937 and 1936

	Month of September			Month of September	
	1937	1936		1937	1936
	B u s h e l s			B u s h e l s	
<u>CANADIAN GRAIN</u>			<u>CORN</u>		
<u>WHITE WINTER WHEAT</u>			No. 2 Yellow	1,000	14,000
No. 2	1,000	12,000	No. 3 Yellow	-	1,000
No. 3	-	20,000	No. 2 Mixed	-	3,000
No. 4	-	4,000	TOTAL	1,000	18,000
Rejected	-	1,000			
<u>RED WINTER</u>			<u>MIXED GRAIN</u>		
No. 2	2,000	1,000	Oats & Wheat	-	3,000
			Oats & Barley	12,400	3,200
<u>MIXED WINTER WHEAT</u>			TOTAL	12,400	6,200
No. 2	59,000	93,000	<u>RECAPITULATION OF CANADIAN GRAIN</u>		
Tough No. 2	7,000	-	Wheat	106,000	131,000
No. 3	26,000	-	Oats	85,857	129,346
Tough No. 3	5,000	-	Barley	76,200	130,450
No. 4	2,000	-	Rye	6,200	1,000
Tough No. 4	1,000	-	Corn	1,000	18,000
Rejected	3,000	-	Mixed Grain	12,400	6,200
TOTAL	106,000	131,000	TOTAL	287,657	414,996
<u>OATS</u>			164 cars inspected at Toronto.		
No. 2	-	5,000	66 cars & 8 cargoes inspected at Montreal.		
No. 3	23,542	24,950			
No. 4	20,562	3,500			
Tough No. 2	-	6,026			
Tough No. 3	-	64,600	<u>AMERICAN GRAIN</u>		
Tough No. 4	1,600	23,700	<u>WHEAT</u>		
Tough Rejected	1,100	-	2 Hard Winter	8,000	-
Tough Rejected Musty	-	1,570			
Rejected	39,053	-			
TOTAL	85,857	129,346			
<u>BARLEY</u>			<u>OATS</u>		
No. 3	25,250	61,350	3 White	6,300	-
No. 3 Extra	-	63,450			
No. 4	24,350	-	<u>RYE</u>		
Tough No. 3 Extra	-	1,500	No. 2	74,372	-
Tough No. 4	6,500	-	No. 2 Western	146,857	-
Tough Rejected Musty	-	1,250	TOTAL	221,229	-
Damp No. 3	-	1,400	<u>RECAPITULATION OF AMERICAN GRAIN</u>		
Damp Rejected Musty	-	1,500	Wheat	8,000	-
Rejected	17,450	-	Oats	6,300	-
Rejected Musty	2,650	-	Rye	221,229	-
TOTAL	77,100	130,450	TOTAL	235,529	-
<u>RYE</u>					
No. 2	5,000	1,000			
Tough No. 2	1,200	-			
TOTAL	6,200	1,000			





INSPECTIONS - EASTERN DIVISION  
2 months ending September, 1937 and 1936

2 months ending September			2 months ending September		
1937			1936		
Bushels			Bushels		
<u>CANADIAN GRAIN</u>			<u>RYE</u>		
<u>WHEAT</u>			No. 2	8,000	-
<u>WHITE WINTER</u>			No. 3	1,000	-
			Tough No. 2	1,200	-
			TOTAL	10,200	-
No. 2	24,000	19,000	<u>CORN</u>		
No. 3	1,100	66,000	No. 2 Yellow	4,000	26,250
No. 4	1,000	35,000	No. 3 Yellow	-	1,000
Tough No. 2	10,000	-	No. 2 Mixed	-	4,000
Rejected	-	8,000	TOTAL	4,000	31,250
<u>RED WINTER</u>			<u>MIXED GRAIN</u>		
No. 2	13,000	7,000	Oats & Barley	14,200	6,200
Tough No. 2	1,000	-	Oats & Wheat	1,500	3,000
<u>MIXED WINTER</u>			TOTAL	15,700	9,200
No. 2	339,400	156,000	<u>RECAPITULATION OF CANADIAN GRAIN</u>		
Tough No. 2	48,000	-	Wheat	630,229	291,000
No. 3	95,225	-	Oats	188,005	278,743
Tough No. 3	46,156	-	Barley	134,500	370,950
No. 4	16,528	-	Rye	10,200	1,000
Tough No. 4	19,506	-	Corn	4,000	31,250
Rejected	4,000	-	Mixed Grain	15,700	9,200
Rejected No. 3	1,000	-	TOTAL	982,634	982,143
Rejected No. 4	2,314	-	<u>AMERICAN GRAIN</u>		
Tough Rejected	3,000	-	<u>WHEAT</u>		
Damp No. 4	1,000	-	2 Hard Winter	60,000	-
Damp Rejected	4,000	-	<u>OATS</u>		
TOTAL	630,229	291,000	No. 3	14,304	-
<u>OATS</u>			No. 4	9,000	-
No. 2	11,000	45,200	TOTAL	23,304	-
No. 3	65,140	104,350	<u>RYE</u>		
No. 4	39,512	20,197	No. 2	201,932	-
Tough No. 2	-	9,326	No. 2 Western	146,857	-
Tough No. 3	-	72,900	TOTAL	348,789	-
Tough No. 4	4,600	25,200	<u>RECAPITULATION OF AMERICAN GRAIN</u>		
Tough Rejected	6,100	-	Wheat	60,000	-
Tough Rejected Musty	-	1,570	Oats	23,304	-
Rejected	56,953	-	Rye	348,789	-
Rejected Musty	4,700	-	TOTAL	432,093	-
TOTAL	188,005	278,743	<u>BARLEY</u>		
<u>BARLEY</u>			No. 3	30,250	131,400
No. 3	30,250	131,400	No. 3 Ex.	-	226,350
No. 3 Ex.	-	226,350	No. 4	55,300	6,250
No. 4	55,300	6,250	Tough No. 3	1,300	-
Tough No. 3	1,300	-	Tough No. 4	10,250	-
Tough No. 4	10,250	-	Tough No. 3 Ex.	-	1,500
Tough Rejected	-	1,500	Tough Rejected	3,250	1,250
Damp No. 3	-	1,400	Damp No. 3	-	1,400
Damp Rej. Musty	-	1,500	Damp Rej. Musty	-	1,500
Damp Rej. Heated	-	1,300	Damp Rej. Heated	-	1,300
Rejected	27,700	-	Rejected	27,700	-
Rejected Musty Heating	1,250	-	Rejected Musty Heating	1,250	-
Rejected Musty	5,200	-	Rejected Musty	5,200	-
TOTAL	134,500	270,950			

STATISTICS CANADA LIBRARY  
BIBLIOTHÈQUE STATISTIQUE CANADA



1010675087