

CANADA
DEPARTMENT OF TRADE AND COMMERCE
DOMINION BUREAU OF STATISTICS
AGRICULTURAL BRANCH

Vol. 18

No. 18

Historical File Copy

CANADIAN GRAIN STATISTICS

Week ending

DECEMBER 4, 1937

[Records for Western Inspection Division supplied by Board of Grain Commissioners for Canada]

+++

Published by Authority of the HON. W.D. Euler, M.P.,
Minister of Trade and Commerce.

+++

OTTAWA

1937

I N D E X

General Summary	1-6
Canadian Grain in Store by Elevators	7
Canadian Grain in Store by Grades	8
Comparative Statement of Grain in Store	9
Receipts and Shipments of Canadian Grain	10
U. S. Grain in Store, Receipts and Shipments	11-12
Receipts, Shipments and Quantities in Store at Interior Terminal Elevators	12
Receipts, Shipments and Quantities in Store at Country Elevators, Western Division and Platform Loadings	13
Receipts, Shipments and Quantities in Store at Pacific Elevators, and Vancouver Prices	14
Daily and Weekly Average Prices of Grain at Fort William and Toronto for the week ending December 4, 1937	15
Receipts and Shipments at Fort William and Port Arthur, November, 1937	16
Inspections, Eastern Division, November, 1937	17-18
Receipts and Shipments of Canadian Grain at Country Elevators and Platform Loadings also in Interior, Vancouver-New Westminster, and Churchill Elevators month of November, 1937	19-20

DEPARTMENT OF TRADE AND COMMERCE
DOMINION BUREAU OF STATISTICS - CANADA
AGRICULTURAL BRANCH

(Issued December 9, 1937)

Dominion Statistician:	R. H. Coats, LL.D., F.R.S.C., F.S.S. (Hon.)
Chief, Agricultural Branch:	T. W. Grindley, Ph.D.
Assistant Chief, Agricultural Branch:	W. Dougan.

WHEAT STOCKS IN STORE

Canadian wheat in store for the week ending December 3, 1937 decreased 4,524,116 bushels compared with the previous week and decreased 57,480,002 bushels when compared with the corresponding week in 1936. The amount in store was reported as 62,573,462 bushels compared with 67,097,578 bushels for the previous week and 120,053,464 bushels for the week ending December 4, 1936. The stocks of 62,573,462 bushels include 14,868,559 bushels of Durum wheat.

CANADIAN WHEAT IN THE UNITED STATES

Canadian wheat in the United States amounted to 5,176,000 bushels, a net increase of 716,000 bushels from the previous week when 4,460,000 bushels were reported. Canadian wheat is located at the following ports: Buffalo 1,691,000; New York 2,142,000; Erie 878,000; Albany 445,000 and Baltimore 20,000 bushels. Increases are shown at Erie of 878,000; New York 141,000; Albany 82,000 and Baltimore 20,000 bushels while Buffalo stocks decreased 405,000 bushels.

For the same week a year ago, Canadian wheat in the United States amounted to 24,911,035 bushels distributed as follows: Duluth 4,787,912; Buffalo 11,465,000; Erie 2,080,000; New York 3,202,123; Albany 3,048,000 and Chicago 348,000 bushels.

United States wheat in Canada amounted to 1,853,568 bushels for the above week. Last year for the same week no United States wheat in Canada was reported.

CANADIAN WHEAT IN CANADA

The wheat stocks in the elevators in Canada for the week ending December 3, 1937 were 57,397,462 bushels compared with 62,637,578 bushels for the previous week and 95,142,429 bushels for the corresponding week last year.

Stocks of wheat in Canadian elevators are located as follows: Western Country Elevators 15,140,000; Interior Terminals 5,839,633; Vancouver-New Westminster 2,370,813; Prince Rupert 911,340; Churchill 11,820; Fort William and Port Arthur 11,666,148; Eastern Elevators Lake and Seaboard Ports 12,251,245 and 3,429,441 bushels respectively.

Decreases from the previous week were shown in the following elevators: Western Country Elevators 628,000; Interior Terminals 30,006; Fort William and Port Arthur 2,911,470; and Eastern Elevators, Seaboard ports 674,856 bushels. Increases were noted at Vancouver-New Westminster of 214,252 and Eastern elevators, Lake ports 1,097,897 bushels.

Wheat in rail transit amounted to 3,420,734 bushels for the week ending December 3, 1937 compared with 3,312,614 bushels for the same period last year. The In Transit on the Lakes amounted to 1,797,689 bushels against 4,816,472 bushels last year.

PRIMARY MOVEMENT

Wheat marketings in the Prairie Provinces for the week ending December 3, 1937 amounted to 1,655,250 bushels, an increase of 117,573 bushels over the previous week when 1,537,677 bushels were marketed. During the corresponding week a year ago the receipts were 1,912,236 bushels. By provinces, the receipts for the week ending December 3, 1937 were as follows, figures within brackets being those for 1936: Manitoba 288,403 (167,721); Saskatchewan 234,077 (691,282); Alberta 1,132,770 (1,053,233) bushels. Marketings in the three Prairie Provinces for the eighteen weeks from August 1, 1937 to December 3, 1937 as compared with the same period in 1936 were as follows, figures within brackets being those for 1936: Manitoba 31,819,257 (17,957,901); Saskatchewan 19,649,804 (75,079,335); Alberta 42,213,080 (38,374,005) bushels. For the eighteen weeks ending December 3, 1937 and December 4, 1936, 93,682,141 and 131,411,241 bushels were received from the farms.

1911

THE UNIVERSITY OF CHICAGO
LIBRARY

THE UNIVERSITY OF CHICAGO
LIBRARY

THE UNIVERSITY OF CHICAGO
LIBRARY

THE UNIVERSITY OF CHICAGO
LIBRARY

THE UNIVERSITY OF CHICAGO
LIBRARY

THE UNIVERSITY OF CHICAGO
LIBRARY

THE UNIVERSITY OF CHICAGO
LIBRARY

THE UNIVERSITY OF CHICAGO
LIBRARY

THE UNIVERSITY OF CHICAGO
LIBRARY

THE UNIVERSITY OF CHICAGO
LIBRARY

THE UNIVERSITY OF CHICAGO
LIBRARY

THE UNIVERSITY OF CHICAGO
LIBRARY

THE UNIVERSITY OF CHICAGO
LIBRARY

THE UNIVERSITY OF CHICAGO
LIBRARY

THE UNIVERSITY OF CHICAGO
LIBRARY

THE UNIVERSITY OF CHICAGO
LIBRARY

OVERSEAS EXPORT CLEARANCES AND IMPORTS OF WHEAT INTO THE UNITED STATES

During the week ending December 3, 1937 the overseas export clearances of wheat amounted to 2,537,945 bushels while imports into the United States for consumption and milling in bond were 6,000 bushels. The total is 2,543,945 bushels as compared with 2,924,436 bushels for the previous week, a decrease of 380,491 bushels and when compared with the same period in 1936, a decrease of 4,071,410 bushels.

Clearances by ports for the weeks ending December 3, 1937 and December 4, 1936, and imports into the United States for consumption and milling in bond were as follows (in bushels):-

<u>Overseas Clearances</u>	<u>Week ending December 3, 1937</u>	<u>Week ending December 4, 1936</u>
Montreal	1,288,306	2,066,714
Sorel	182,110	827,269
Saint John, N.B.	225,895	463,008
Vancouver-New Westminster	315,634	1,263,734
United States Ports	526,000	716,630
 TOTAL	 2,537,945	 5,337,355
 <u>Imports into the United States</u>		
For consumption and milling in bond for re-export	6,000	1,278,000

Total Overseas Clearances and

<u>United States Imports</u>	2,543,945	6,615,355
------------------------------	-----------	-----------

The following table shows the export clearances of Canadian wheat by ports from August 1, 1937 to December 3, 1937, along with the comparative figures for the same period in 1936-37 and imports into the United States for consumption and milling in bond (in bushels):-

<u>Overseas Clearances</u>	<u>1937-38</u>	<u>1936-37</u>
Montreal	22,532,991	28,567,529
Sorel	2,439,536	11,836,379
Quebec	-	1,074,172
Three Rivers	420,809	4,251,007
Saint John, N.B.	225,895	-
Fort William and Port Arthur	114,374	407,578
Churchill	603,982	4,293,501
Vancouver-New Westminster	3,293,687	14,118,684
Prince Rupert	-	562,613
United States Ports	6,930,659	8,591,232
 TOTAL	 x36,561,933	 73,702,695
 <u>Imports into the United States</u>		
For consumption and milling in bond for re-export	1,912,069	24,350,847

Total Overseas Clearances and

<u>United States Imports to Date</u>	38,474,002	98,053,542
--------------------------------------	------------	------------

x Includes 3,551,269 bushels Durum wheat cleared from Canadian and United States Atlantic Seaboard Ports.

The accumulated totals of imports of wheat into the United States for consumption and milling in bond are adjusted at the end of the month, due to the fact that the United States Department of Domestic and Foreign Commerce revises their weekly figures on a monthly basis.

INTERNATIONAL TRADE

The following table shows the world shipments of wheat and wheat flour for the first eighteen weeks of the present crop year. (Broomhall's figures.)

Week ending	North America	Argentina	Australia	Russia	Danube	India	Other	Total
(Thousand Bushels)								
August 7, 1937	2,512	888	1,808	184	688	680	280	7,040
14	2,560	880	1,472	-	880	336	416	6,544
21	4,072	856	920	88	1,192	352	192	7,672
28	2,848	968	1,440	456	1,712	248	160	7,832
Sept. 4	2,160	992	840	768	960	928	56	6,704
11	2,128	888	944	1,680	1,264	456	112	7,472
18	2,904	560	376	1,280	1,984	64	24	7,192
25	3,024	408	1,184	1,416	2,056	472	416	8,976
Oct. 2	3,312	1,144	704	1,768	1,728	200	400	9,256
9	4,048	1,216	904	2,504	2,176	552	184	11,584
16	4,400	368	2,016	1,896	1,952	88	200	10,920
23	3,568	1,072	1,104	1,480	2,352	424	80	10,080
30	4,704	256	1,712	3,632	1,408	216	-	11,928
Nov. 6	4,888	216	1,760	3,600	872	296	24	11,656
13	5,368	-	1,896	2,120	2,664	48	48	12,144
20	5,360	1,016	936	1,832	1,624	544	24	11,336
27	5,286	128	978	1,680	632	-	424	9,128
Dec. 4	6,299	368	2,876	960	1,160	168	440	12,271
TOTAL	69,441	12,224	23,870	27,344	27,304	6,072	3,480	169,735
Comparative 1936								
18th week	6,608	1,336	1,816	-	1,824	536	80	12,200
TOTAL	104,384	19,600	25,376	88	40,472	5,984	3,888	199,792

World shipments for the week ending December 4, 1937 amounted to 12,271,000 bushels as compared with shipments of 9,128,000 bushels for the previous week and 12,200,000 bushels for the corresponding week a year ago. Shipments from North America and Australia showed increases of 1,013,000 and 1,898,000 bushels respectively, as compared with the previous week, while Argentine shipments were 240,000 bushels higher. Russian shipments amounted to 960,000 bushels.

During the first eighteen weeks of the present crop year world shipments amounted to 169.7 million bushels as compared with 199.8 million bushels for the corresponding weeks last year. North American shipments amounted to 69.4 million bushels this year as compared with 104.4 million bushels in 1936. Argentine shipments are only 12.2 million bushels this year as compared with 19.6 for the same period last year. Russian shipments amounted to 27.3 million bushels while last year for the same period they were only 88,000 bushels.

WEEKLY AVERAGE SHIPMENTS

The following table shows the weekly average shipments of wheat and wheat flour for the first eighteen weeks of the present crop year along with the comparative figures for 1936:-

	North America	Argentina	Australia	Russia	Danube	India	Other	Total
(Million Bushels)								
1936	5.8	1.1	1.4	-	2.2	0.3	0.2	11.0
1937	3.9	0.7	1.3	1.5	1.5	0.3	0.2	9.4

According to the above table weekly average shipments of wheat and wheat flour amounted to 9.4 million bushels per week compared with 11.0 million bushels for the same period last year. North American weekly average shipments amounted to only 3.9 million bushels per week as compared with 5.8 million bushels per week for the same period in 1936. Russian shipments averaged 1.5 million bushels per week this year.

CANADIAN GRAIN STATISTICS - WEEK ENDING DECEMBER 3, 1937

Returns received as to stocks of grain in store for the week ending December 3, 1937 show a net decrease of 5,038,722 bushels compared with the previous week. Grain stocks were as follows:- wheat 62,573,462, oats 10,358,377, barley 11,333,064, flaxseed 535,882 and rye 1,332,331 bushels. Decreases were noted in wheat of 4,525,116, oats 84,910, barley 393,201 and flaxseed 51,704 bushels, while rye increased 16,209 bushels. At a comparable date last year grain stocks were as follows:- wheat 120,053,464, oats 15,703,008, barley 15,221,571, flaxseed 973,201 and rye 2,168,827 bushels.

WESTERN COUNTRY ELEVATORS:- Grain in store shows a net decrease of 675,000 bushels. Decreases were noted in wheat of 628,000, barley 60,000, flaxseed 15,000 and rye 7,000 bushels, while oats increased 35,000 bushels.

The following table shows the quantities of grain in store at the Country Elevators in each of the Prairie Provinces on November 26, 1937 with comparison for the previous week and the same period 1936:-

	<u>MANITOBA</u>	<u>SASKATCHEWAN</u>	<u>ALBERTA</u>	<u>TOTAL</u>
		B u s h e l s		
Wheat	3,400,000	4,760,000	6,980,000	15,140,000
Oats	900,000	2,395,000	2,790,000	6,085,000
Barley	1,395,000	790,000	915,000	3,100,000
Flaxseed	61,000	91,000	13,000	165,000
Rye	143,000	75,000	57,000	275,000
TOTAL	5,899,000	8,111,000	10,755,000	24,765,000
Previous week	6,511,000	9,117,000	12,236,000	27,864,000
Same period 1936	3,039,518	13,145,007	20,014,199	41,198,724

The receipts and shipments at the Country Elevators for the week ending November 26, 1937 compared with the previous week and the same period 1936 were as follows:-

	<u>R E C E I P T S</u>			<u>S H I P M E N T S</u>		
	Previous week	Week ending Nov. 26, 1937	Week ending Nov. 27, 1936	Previous week	Week ending Nov. 26, 1937	Week ending Nov. 27, 1936
Wheat	1,420,352	1,520,885	1,665,291	2,918,041	2,119,647	1,089,504
Oats	635,326	689,026	462,125	1,339,302	742,151	440,106
Barley	400,286	402,659	148,379	714,408	497,466	232,078
Flaxseed	4,551	4,035	6,312	12,704	18,263	11,087
Rye	8,001	10,156	22,601	22,825	17,281	80,267
TOTAL	2,468,516	2,626,761	2,304,708	5,007,280	3,394,808	1,853,042

Platform Loadings shown by Prairie Provinces for the period ending November 21, 1937 were as follows:-

	<u>WHEAT</u>	<u>OTHER GRAIN</u>	<u>TOTAL</u>
	B u s h e l s		
Manitoba	32,364	19,150	51,514
Saskatchewan	4,622	-	4,622
Alberta	97,379	48,890	146,269
TOTAL	134,365	68,040	202,405
Period ending Nov. 21, 1936	58,157	57,394	115,551
+Increase -Decrease	+76,208	+10,646	+86,854

INTERIOR PUBLIC AND SEMI-PUBLIC TERMINALS.- Stocks for the week show a net decrease of 9,397 bushels. Decreases were noted in wheat of 15,006, barley 603 and rye 1,674 bushels, while oats increased 7,886 bushels.

VANCOUVER-NEW WESTMINSTER ELEVATORS.- Grain stocks at these elevators show an increase of 440,748 bushels composed of wheat 214,252, oats 190,744 and barley 440,748 bushels.

PRINCE RUPERT AND CHURCHILL ELEVATORS.- Wheat stocks remain unchanged.

PUBLIC AND PRIVATE (FORT WILLIAM AND PORT ARTHUR).- Grain stocks show a net decrease of 2,955,840 bushels. Decreases were noted in wheat of 2,911,470 and barley 374,409 bushels, while increases were shown in oats 316,173, flaxseed 6,782 and rye 7,084 bushels.

IN SENATE
January 10, 1907.

REPORT OF THE COMMISSIONERS OF THE LAND OFFICE
IN RESPONSE TO A RESOLUTION PASSED BY THE SENATE
JANUARY 10, 1907.

ALBANY: J.B. LEECH, STATE PRINTER, 1907.

NAME	RESIDENCE	DATE OF SALE	AMOUNT PAID
John A. Smith	New York City	1906	\$100,000
James B. Jones	Brooklyn	1906	\$50,000
William C. Brown	Albany	1906	\$25,000
Charles D. White	Schenectady	1906	\$15,000
Edward F. Green	Rochester	1906	\$10,000
George H. Black	Syracuse	1906	\$8,000
Frank I. Gray	Buffalo	1906	\$6,000
Henry J. Hall	Chester	1906	\$4,000
Isaac K. King	Watkins	1906	\$3,000
Julius L. Lee	Canastota	1906	\$2,000

THE FOLLOWING TABLE SHOWS THE AMOUNT OF LAND SOLD BY THE STATE OF NEW YORK DURING THE YEAR 1906.

NAME	RESIDENCE	DATE OF SALE	AMOUNT PAID
John A. Smith	New York City	1906	\$100,000
James B. Jones	Brooklyn	1906	\$50,000
William C. Brown	Albany	1906	\$25,000
Charles D. White	Schenectady	1906	\$15,000
Edward F. Green	Rochester	1906	\$10,000
George H. Black	Syracuse	1906	\$8,000
Frank I. Gray	Buffalo	1906	\$6,000
Henry J. Hall	Chester	1906	\$4,000
Isaac K. King	Watkins	1906	\$3,000
Julius L. Lee	Canastota	1906	\$2,000

THE FOLLOWING TABLE SHOWS THE AMOUNT OF LAND SOLD BY THE STATE OF NEW YORK DURING THE YEAR 1906.

NAME	RESIDENCE	DATE OF SALE	AMOUNT PAID
John A. Smith	New York City	1906	\$100,000
James B. Jones	Brooklyn	1906	\$50,000
William C. Brown	Albany	1906	\$25,000
Charles D. White	Schenectady	1906	\$15,000
Edward F. Green	Rochester	1906	\$10,000
George H. Black	Syracuse	1906	\$8,000
Frank I. Gray	Buffalo	1906	\$6,000
Henry J. Hall	Chester	1906	\$4,000
Isaac K. King	Watkins	1906	\$3,000
Julius L. Lee	Canastota	1906	\$2,000

THE FOLLOWING TABLE SHOWS THE AMOUNT OF LAND SOLD BY THE STATE OF NEW YORK DURING THE YEAR 1906.

NAME	RESIDENCE	DATE OF SALE	AMOUNT PAID
John A. Smith	New York City	1906	\$100,000
James B. Jones	Brooklyn	1906	\$50,000
William C. Brown	Albany	1906	\$25,000
Charles D. White	Schenectady	1906	\$15,000
Edward F. Green	Rochester	1906	\$10,000
George H. Black	Syracuse	1906	\$8,000
Frank I. Gray	Buffalo	1906	\$6,000
Henry J. Hall	Chester	1906	\$4,000
Isaac K. King	Watkins	1906	\$3,000
Julius L. Lee	Canastota	1906	\$2,000

THE FOLLOWING TABLE SHOWS THE AMOUNT OF LAND SOLD BY THE STATE OF NEW YORK DURING THE YEAR 1906.

NAME	RESIDENCE	DATE OF SALE	AMOUNT PAID
John A. Smith	New York City	1906	\$100,000
James B. Jones	Brooklyn	1906	\$50,000
William C. Brown	Albany	1906	\$25,000
Charles D. White	Schenectady	1906	\$15,000
Edward F. Green	Rochester	1906	\$10,000
George H. Black	Syracuse	1906	\$8,000
Frank I. Gray	Buffalo	1906	\$6,000
Henry J. Hall	Chester	1906	\$4,000
Isaac K. King	Watkins	1906	\$3,000
Julius L. Lee	Canastota	1906	\$2,000

Stocks in Store at the Head of the Lakes compared with the same week last year were as follows:-

	Week Ending Dec. 3, 1937	Week Ending Dec. 4, 1936	+ Increase - Decrease
Wheat	11,666,148	11,301,895	+ 364,253
Oats	1,228,625	1,264,153	- 35,528
Barley	1,118,657	2,323,251	- 1,204,594
Flaxseed	206,703	307,286	- 100,583
Rye	931,521	747,021	+ 184,500

The receipts (including transfers) at the Head of the Lakes for the period ending December 3, 1937 with comparative figures for the same week last year were as follows:-

	Week Ending Dec. 3, 1937	Week Ending Dec. 4, 1936	+ Increase - Decrease
Wheat	1,667,118	1,188,132	+ 478,986
Oats	461,637	229,108	+ 232,529
Barley	343,508	290,232	+ 53,276
Flaxseed	6,784	8,334	- 1,550
Rye	12,955	50,193	- 17,238

Preliminary figures showing receipts and shipments at the Head of the Lakes also Vancouver-New Westminster, Churchill and Prince Rupert for the period August 1, 1937 to December 3, 1937 compared with the same period last year:-

	FORT WILLIAM & PORT ARTHUR		VANCOUVER-NEW WESTMINSTER	
	Receipts	Shipments	Receipts	Shipments
Wheat	61,227,327	56,015,352	2,634,905	3,720,858
Oats	3,489,586	3,187,527	480,454	140,982
Barley	12,000,396	11,842,260	161,136	28,234
Flaxseed	66,908	173,219	89	-
Rye	1,059,685	227,903	10,073	9,163
TOTAL	77,843,902	71,446,261	3,286,657	3,899,237
Same period last year	117,272,760	131,981,824	18,803,967	15,049,868
+Increase -Decrease	-39,428,858	-60,535,563	-15,517,310	-11,150,631

	PRINCE RUPERT		CHURCHILL	
	Receipts	Shipments	Receipts	Shipments
Wheat	-	-	-	603,982
Same period last year	395,868	562,646	2,430,846	4,293,501
+Increase -Decrease	-395,868	-562,646	-2,430,846	-3,689,519

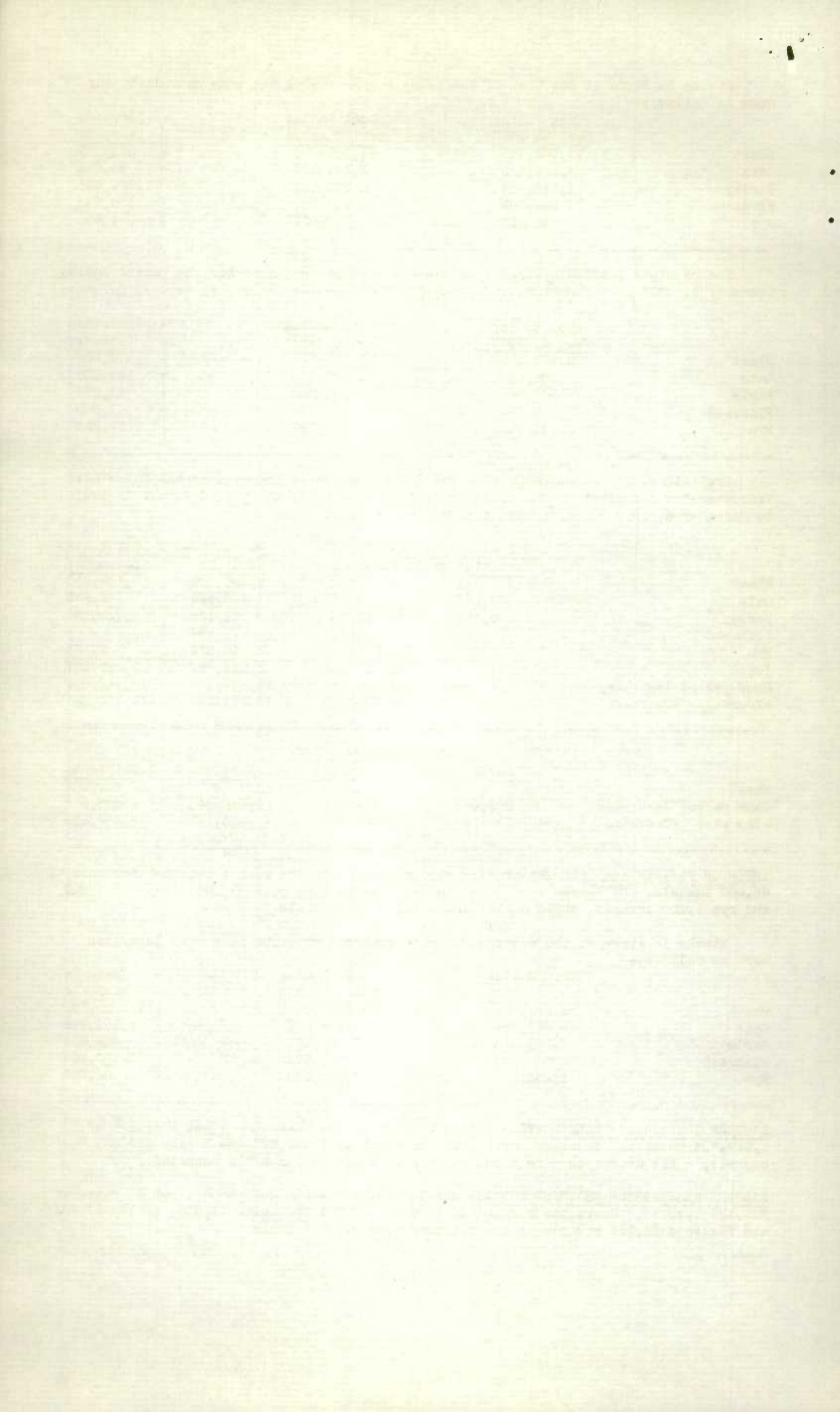
INTERIOR PRIVATE AND MILL ELEVATORS:- Grain stocks for the week show a net decrease of 82,000 bushels. Decreases were noted in wheat of 15,000, oats 67,000, flaxseed 7,000 and rye 1,000 bushels, while barley increased 8,000 bushels.

Stocks in store at the Western Division compared with the same week last year were as follows:-

	Week Ending Dec. 3, 1937	Week Ending Dec. 4, 1936	+ Increase - Decrease
Wheat	35,939,754	59,829,944	- 23,890,190
Oats	8,832,624	11,985,373	- 3,152,749
Barley	7,259,014	7,585,343	- 326,329
Flaxseed	503,170	903,577	- 400,207
Rye	1,243,551	1,326,240	- 84,689

EASTERN ELEVATORS - LAKE PORTS:- Grain stocks for the week show a net increase of 1,627,754 bushels. Increases were noted in wheat of 1,097,897 and barley 559,321 bushels, while decreases were shown in oats of 28,691 and rye 775 bushels.

EASTERN ELEVATORS - SEABOARD PORTS:- Grain stocks for the week show a net decrease of 735,199 bushels. Decreases were noted in wheat of 674,856, oats 14,836, barley 27,767 and flaxseed 21,332 bushels, while rye increased 3,592 bushels.



Shipments Overseas of Canadian Grain from St. Lawrence and Seaboard Ports were as follows:-

		United Kingdom	Other Countries
		B u s h e l s	
Montreal, Quebec	Wheat	1,288,306	
	Oats	80,425	
	Barley	240,392	
	Buckwheat	59,865	
Sorel, Quebec	Wheat	182,110	-
	Barley	70,588	-
West Saint John, N.B.	Wheat	225,895	-
	Barley	8,333	-

EASTERN ELEVATORS:- United States grain stocks were 7,611,641 bushels higher than at a comparable date last year. Increases were noted in wheat of 1,853,568, oats 4,019,283, rye 680,790 and corn 1,058,000 bushels.

Number of cars inspected in the Western Division for the week ending November 30, 1937 with comparison for the previous year were as follows:

	Week ending Nov. 30, 1937	Week ending Nov. 30, 1936	+ Increase - Decrease
Wheat	2,625	2,308	+ 317
Oats	707	394	+ 313
Barley	534	274	+ 260
Flaxseed	14	26	- 12
Rye	17	31	- 14
Mixed Grain	1	9	- 8
Screenings	11	2	+ 9
Corn	1	-	+ 1
TOTAL	3,910	3,044	+ 866

The Number of bushels of grain shipped from Western to the Eastern points over the C.P.R. and C.N.R. for the week ending Nov. 30, 1937 and the period from August 1, 1937 to Nov. 30, 1937:-

	WEEK ENDING NOV. 30, 1937				PERIOD AUG. 1, 1937 TO NOV. 30, 1937			
	WHEAT	OATS	BARLEY	RYE	WHEAT	OATS	BARLEY	RYE
Via C.P.R.								
Via C.N.R.								
TOTAL								

NOT REPORTED

DULUTH.- Receipts of Canadian bonded grain at Duluth by rail for the week ending December 4, 1937 were nil. For the period August 1, 1937 to date, rail receipts amounted to barley 23,208 bushels.

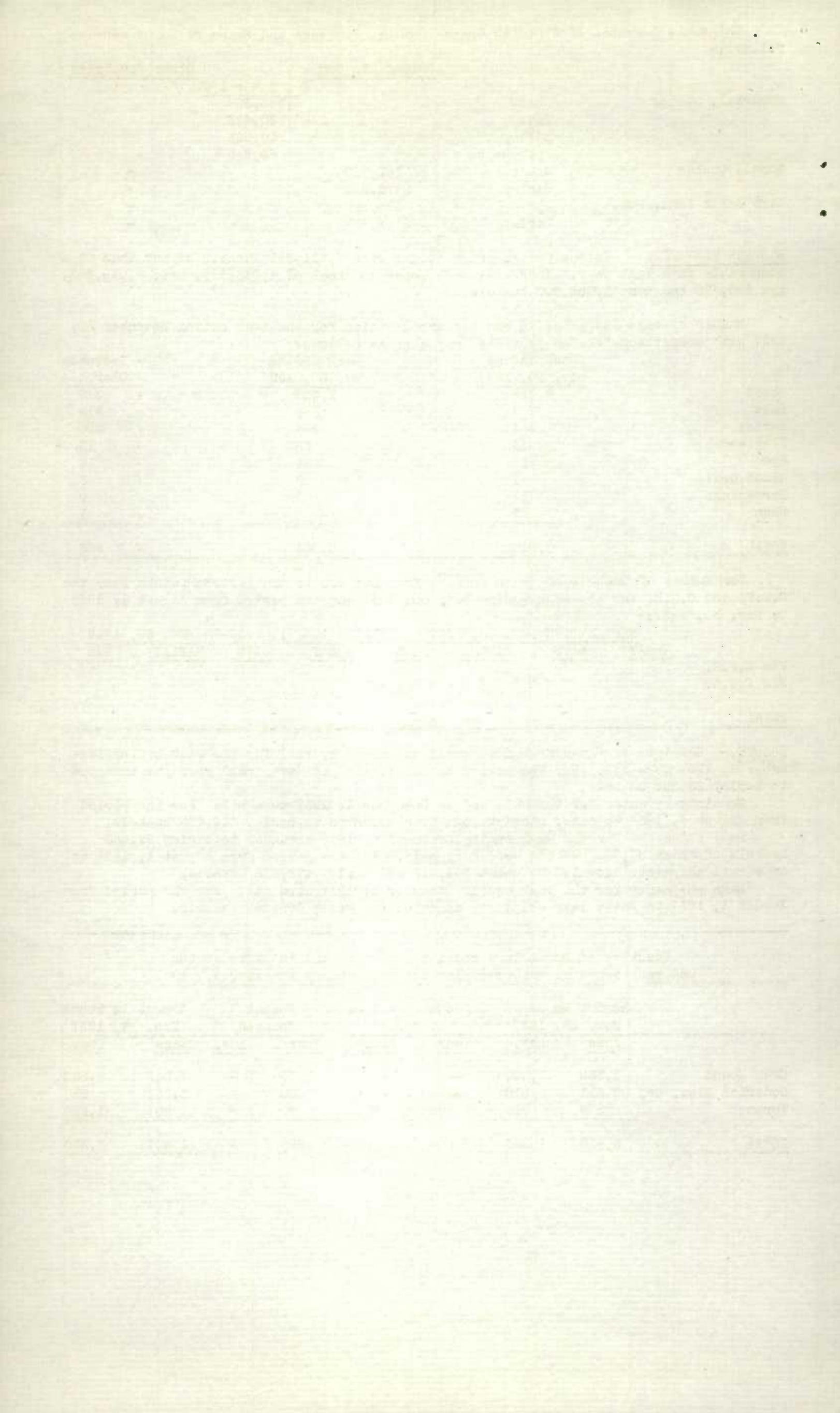
Receipts by water for the week ending December 4, 1937 were nil. For the period from August 1, 1937 to date, receipts by water amounted to barley 424,433 bushels.

Rail shipments for the week ending December 4, 1937 amounted to barley 67,653 bushels of which 57,653 bushels were duty paid. For the period from August 1, 1937 to date rail shipments amounted to wheat 104,442 and barley 492,675 bushels.

Lake shipments for the week ending December 4, 1937 were nil. For the period from August 1, 1937 to date, lake shipments amounted to wheat 369,848 bushels.

Quantity of Screenings received, shipped and in store at the undermentioned elevators during the week ending December 3, 1937

	Amount in Store Nov. 26, 1937		Amount Received by vessel		Amount shipped		Amount in Store Dec. 3, 1937	
	Tons	Lbs.	Tons	Lbs.	Tons	Lbs.	Tons	Lbs.
Owen Sound	1,338	1,500	-	-	90	-	1,248	1,500
Goderich Elev. Co.	2,311	810	-	-	60	-	2,251	810
Toronto	279	920	598	600	70	-	807	1,520
TOTAL	3,929	1,230	598	600	220	-	4,307	1,830



STOCKS OF GRAIN IN DIFFERENT ELEVATORS DURING THE WEEK ENDING DECEMBER 3, 1937

	WHEAT	DURUM WHEAT	OATS	BARLEY	FLAX- SEED	RYE
			B u s h e l s			
Western Country Elevators	13370000	1770000	6085000	3100000	165000	275000
Interior Private & Mill Elevs.	4509000	218000	993000	2608000	131000	36000
Interior Pub. & Semi-Pub. Terms.	1112633	-	111967	292671	-	-
Vancouver-New Westminster	2370813	-	414032	139686	467	1030
Prince Rupert	911340	-	-	-	-	-
Churchill	11820	-	-	-	-	-
Fort William & Port Arthur	4975861	6690237	1228625	1118657	206703	931521
In Transit Lakes	1797689	558599	79989	420490	-	4800
In Transit Rail	3420734	-	703059	647315	5270	39580
Eastern Elevs. - Lake Ports	8779282	3471963	385861	1910395	20991	32187
Eastern Elevs. - St. Lawrence Ports	1456644	1311148	356844	735053	6451	8621
Eastern Elevs. - Seaboard Ports	345087	316562	-	195318	-	3592
U. S. Lake Ports	2037000	532000	-	130479	-	-
U. S. Atlantic Seaboard Ports	2607000	-	-	35000	-	-
TOTAL	47704903	14868559	10358377	11333064	535882	1332331
Previous week	51853795	15244783	10443287	11726265	587586	1316122
Same week previous year	120053464		15703008	15221571	973201	2168827

LAKE SHIPMENTS FROM HEAD OF THE LAKES FOR THE WEEK ENDING NOVEMBER 30, 1937

	CANADIAN LOWER LAKE PORTS	MONTREAL	SOREL	THREE RIVERS	QUEBEC	BUFFALO	OTHER U.S.A. PORTS	EUROPE DIRECT
Wheat	4298923	-	-	-	-	1521002	878235	-
Oats	226369	-	-	-	-	-	-	-
Barley	1095790	-	-	-	-	-	101000	-
Flaxseed	-	-	-	-	-	-	-	-
Rye	4800	-	-	-	-	-	-	-
TOTAL	5625882	-	-	-	-	1521002	979235	-
Period Nov. 30, 1936	4511737	261261	-	-	-	6650410	2658835	-

LAKE SHIPMENTS FROM HEAD OF THE LAKES FOR THE PERIOD FROM THE OPENING
OF NAVIGATION TO NOVEMBER 30, 1937

Wheat	62368511	9908240	120421	534439	50000	12629249	1158325	278168
Oats	3145976	2418225	-	-	179960	59284	-	-
Barley	10335018	2417968	10000	-	49373	587224	2453363	-
Flaxseed	305766	95648	-	-	-	-	-	-
Rye	1141292	418778	-	-	-	142520	-	-
TOTAL	77296563	15258859	130421	534439	279333	13418277	3611688	278168
Period Nov. 30, 1936	82079211	19334995	4139424	1734032	451053	57269013	33432013	x1324879

x Includes 114,039 bushels wheat to Great Britain.

CANADIAN GRAIN IN STORE - DECEMBER 3, 1937

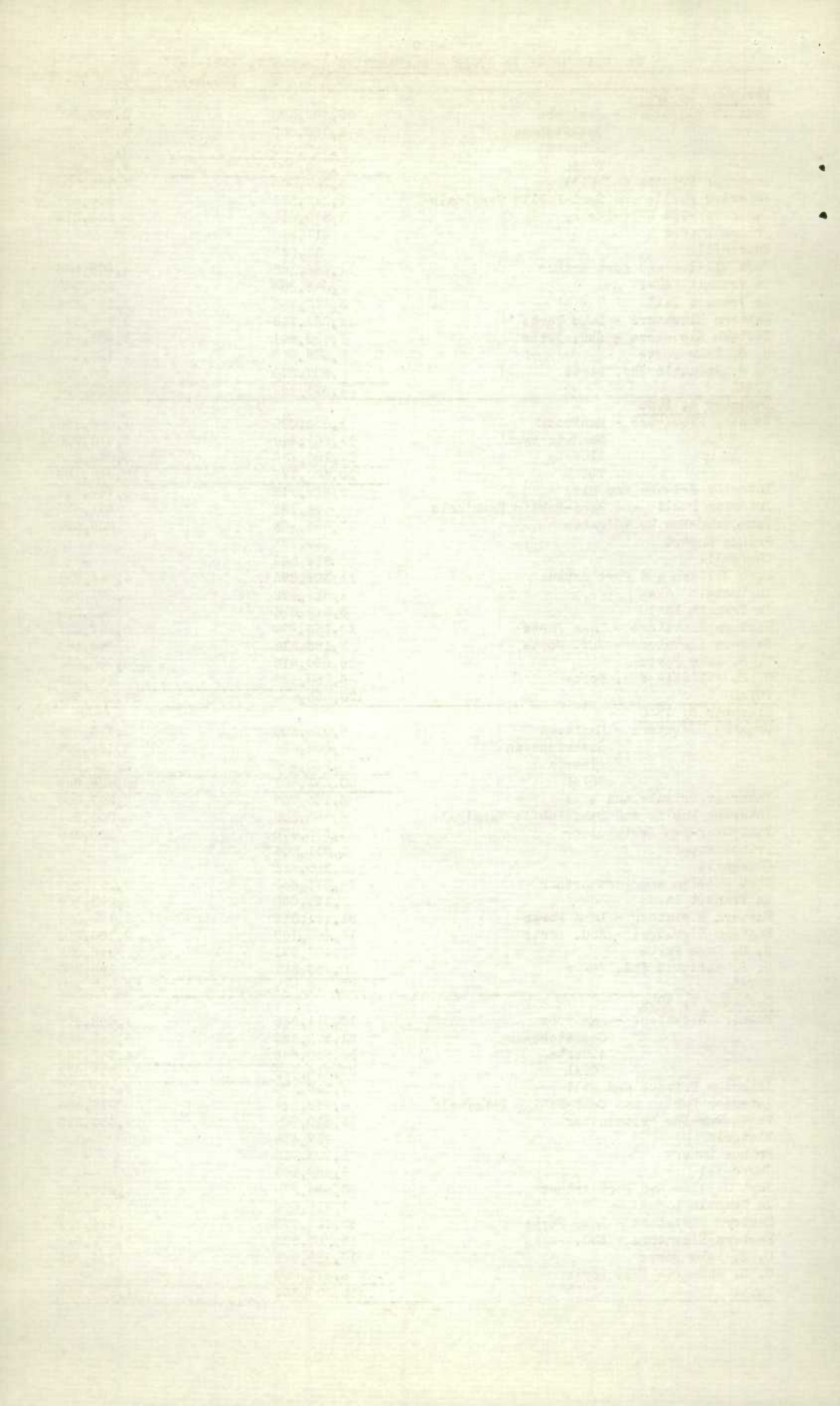
	WHEAT	DURUM WHEAT	OATS	BARLEY	FLAX- SEED	RYE
		B u s h e l s				
WESTERN COUNTRY ELEVATORS						
Manitoba	1800000	1600000	900000	1395000	61000	143000
Saskatchewan	4590000	170000	2395000	790000	91000	75000
Alberta	6930000	-	2790000	915000	13000	57000
TOTAL WESTERN COUNTRY ELEVATORS	13370000	1770000	6085000	3100000	165000	275000
INTERIOR PRIVATE AND MILL	4509000	212000	993000	2608000	131000	36000
INTERIOR PUBLIC & SEMI-PUBLIC	1112633	-	111967	292671	-	-
VANCOUVER-NEW WESTMINSTER	2370813	-	414032	139686	467	1030
PRINCE RUPERT	911340	-	-	-	-	-
CHURCHILL	11820	-	-	-	-	-
Semi-Public Terminals	4964943	6690287	1205957	1115733	206703	931521
Private Terminals	10918	-	22668	2924	-	-
TOTAL PT. WM. & PT. ARTHUR	4975861	6690287	1228625	1118657	206703	931521
IN TRANSIT LAKES	1797689	558599	79989	420490	-	4800
IN TRANSIT RAIL	3420734	-	703059	647315	5270	39580
EASTERN ELEVATORS						
Port McNicoll	2631137	286640	-	854138	-	-
Tiffin	286451	-	-	-	-	-
Midland	881567	48976	-	-	-	-
Midland Simcoe	341853	612522	196450	-	-	-
Collingwood	77526	1361689	-	-	-	-
Owen Sound	503446	117946	88505	91087	-	-
Goderich Elev. & Transit	435959	36226	21805	19878	-	-
Goderich West. Can. Flour Mill	253482	14972	2058	5077	-	-
Sarnia	1180538	389005	3223	260169	-	108
Port Colborne, Dom. Government	44971	968	-	1308	-	-
Port Colborne, Maple Leaf	568199	56958	52310	26475	-	14968
Port Colborne Afloat	443212	70000	-	-	-	-
Toronto	1116742	340693	21510	607033	20991	17111
Kingston, J. Richardson	13199	13136	-	26230	-	-
Kingston Elevator Co.	1000	49956	-	13000	-	-
Prescott	-	72276	-	6000	-	-
TOTAL EAST. ELEVS. LAKE PORTS	8779282	3471963	385861	1910395	20991	32187
Montreal	760440	691022	203992	525271	6451	8621
Ogilvie Flour Mills	669780	230	-	-	-	-
Dominion Elevator Co.	18074	15027	97424	126695	-	-
Three Rivers	2586	364165	-	13620	-	-
North Amer. Ltd. Sorel	1000	177953	-	25375	-	-
Quebec	4764	62751	55428	44092	-	-
West Saint John Hbr. Comm.	142790	226049	-	137241	-	-
West Saint John C.P.R.	164499	90513	-	58077	-	3592
Halifax	37798	-	-	-	-	-
TOTAL EAST. ELEVS. SBD. PORTS	1801731	1627710	356844	930371	6451	12213
TOTAL QUANTITY IN CANADA	43060903	14336559	10358377	11167585	535882	1332331
Duluth	-	-	-	130479	-	-
Buffalo	1482000	-	-	-	-	-
Buffalo Afloat	209000	-	-	-	-	-
Erie	346000	532000	-	-	-	-
TOTAL U. S. LAKE PORTS	2037000	532000	-	130479	-	-
New York	1997000	-	-	35000	-	-
New York Afloat	145000	-	-	-	-	-
Albany	445000	-	-	-	-	-
Baltimore	20000	-	-	-	-	-
TOTAL U. S. ATLANTIC SBD. PORTS	2607000	-	-	35000	-	-
TOTAL QUANTITY IN STORE	47704903	14868559	10358377	11333064	535882	1332331

Grades of Canadian Grain in Store at Public, Semi-Public, and Private (Head of the Lakes), Interior Public and Semi-Public, Vancouver-New Westminster, and Eastern Elevators for the week ending December 3, 1937.

	Ft. William & Ft. Arthur Semi-Public and Private	Interior Public and Semi-Public Terminals	Vancouver New West- minster Elevators	Eastern Elevators Lake Ports	Eastern Elevators St. Lawrence Ports	Eastern Elevators Maritime Ports
	B u s h e l s					
WHEAT						
No. 1 Hard	11,791	6,624	167,142	-	1,621	-
No. 1 Northern	711,338	1,026,555	38,313	1,318,642	478,174	164,427
No. 2 Northern	836,094	40,481	109,760	1,583,640	201,442	24,685
Old No. 2 Northern	-	-	-	-	223	-
No. 3 Northern	1,010,884	8,220	876,036	3,027,021	295,570	47,345
No. 4 Northern	346,947	3,605	378,068	679,580	43,130	108,630
No. 4 Special	182,255	-	-	1,023,702	9,010	-
No. 5 Wheat	79,600	915	100,870	37,440	11,708	-
No. 5 Special	262,356	-	-	51,221	4,764	-
No. 6 Wheat	109,580	-	125,097	51,085	4,087	-
No. 6 Special	165,977	-	-	84,953	2,498	-
Feed	222,845	-	58,355	225,902	16,639	-
No. 1 C.W. Garnet	463,457	-	43,643	11,000	368,322	-
No. 2 C.W. Garnet	131,206	-	160,348	15,632	-	-
No. 1 C.W. Durum	402,255	-	-	199,589	77,392	225,747
No. 2 C.W. Durum	3,669,357	-	-	2,773,193	743,190	56,834
No. 3 C.W. Durum	2,311,926	-	-	499,181	454,767	33,981
No. 4 C.W. Durum	93,316	-	-	-	-	-
Other Durum	213,435	-	-	-	20,772	-
Other	441,529	26,233	313,181	529,554	34,483	-
TOTAL	11,666,148	1,112,633	2,370,813	12,251,245	2,767,792	661,649
OATS						
No. 2 C.W.	50,976	5,378	-	90,864	48,030	-
No. 3 C.W.	254,354	1,774	27,983	157,456	60,300	-
Ex. No. 1 Feed	32,536	-	12,578	-	-	-
No. 1 Feed	393,330	-	128,206	79,514	154,799	-
No. 2 Feed	104,145	1,238	17,089	-	1,615	-
No. 3 Feed	24,918	-	-	-	11,079	-
Other	368,366	103,577	228,176	58,027	81,021	-
TOTAL	1,228,625	111,967	414,032	385,861	356,844	-
BARLEY						
3 Ex. C.W. 6 Row	584,774	-	-	916,165	298,733	173,952
3 C.W. 6 Row	-	-	-	-	1,650	-
3 Ex. C.W. 2 Row	9,354	-	-	-	-	-
3 C.W. 2 Row	-	-	-	1,000	-	-
3 C.W.	319,440	1,140	32,747	664,142	368,113	21,366
4 C.W.	28,512	-	42,905	-	953	-
5 C.W.	25,470	2,386	6,228	-	5,273	-
6 C.W.	17,917	725	-	-	625	-
Feed	-	-	-	-	-	-
Other	133,190	288,420	57,806	329,088	59,706	-
TOTAL	1,118,657	292,671	139,686	1,910,395	735,053	195,318
FLAXSEED						
No. 1 C.W.	146,123	-	82	-	6,451	-
No. 2 C.W.	41,772	-	98	-	-	-
No. 3 C.W.	6,877	-	168	-	-	-
No. 4 C.W.	76	-	-	-	-	-
Other	11,855	-	119	20,991	-	-
TOTAL	206,703	-	467	20,991	6,451	-
RYE						
No. 1 C.W.	-	-	27	-	-	-
No. 2 C.W.	816,362	-	3	25,001	6,506	-
No. 3 C.W.	102,666	-	-	-	-	-
No. 4 C.W.	327	-	-	-	-	-
Ergoty	1,060	-	-	-	-	-
Other	11,106	-	1,000	7,186	5,707	-
TOTAL	931,521	-	1,030	32,187	12,213	-
TOTAL QUANTITY						
IN STORE	15,151,654	1,517,271	2,926,028	14,600,679	3,878,353	856,967

CANADIAN GRAIN IN STORE - COMPARATIVE STATEMENT, 1934-1937

	W H E A T	(Bushels)	OTHER GRAIN
<u>December 3, 1937</u>			
Country Elevators - Manitoba	3,400,000		2,499,000
Saskatchewan	4,760,000		3,351,000
Alberta	6,980,000		3,775,000
TOTAL	15,140,000		9,625,000
Interior Private and Mill	4,727,000		3,768,000
Interior Public and Semi-Public Terminals	1,112,633		404,638
Vancouver-New Westminster	2,370,813		555,215
Prince Rupert	911,340		-
Churchill	11,820		-
Fort William and Port Arthur	11,666,148		3,485,506
In Transit Lakes	2,356,288		505,279
In Transit Rail	3,420,734		1,395,224
Eastern Elevators - Lake Ports	12,251,245		2,349,434
Eastern Elevators - Sbd. Ports	3,429,441		1,305,879
U. S. Lake Ports	2,569,000		130,479
U. S. Atlantic Sbd. Ports	2,607,000		35,000
TOTAL	62,573,462		23,559,654
<u>December 4, 1936</u>			
Country Elevators - Manitoba	1,628,099		1,236,108
Saskatchewan	11,641,342		6,619,905
Alberta	17,150,736		3,086,256
TOTAL	30,420,177		10,942,269
Interior Private and Mill	5,619,718		4,747,627
Interior Public and Semi-Public Terminals	74,197		651,612
Vancouver-New Westminster	11,086,303		629,099
Prince Rupert	859,193		-
Churchill	614,569		-
Fort William and Port Arthur	11,301,895		4,641,711
In Transit Lakes	4,816,472		2,074,700
In Transit Rail	3,312,614		748,904
Eastern Elevators - Lake Ports	18,853,979		3,457,235
Eastern Elevators - Sbd. Ports	8,183,312		1,244,358
U. S. Lake Ports	18,660,912		4,780,853
U. S. Atlantic Sbd. Ports	6,250,123		148,239
TOTAL	120,053,464		34,066,607
<u>December 6, 1935</u>			
Country Elevators - Manitoba	6,976,505		2,776,662
Saskatchewan	47,008,594		5,154,999
Alberta	36,348,402		2,493,368
TOTAL	90,333,501		10,425,029
Interior Private and Mill	6,123,709		2,597,044
Interior Public and Semi-Public Terminals	6,188,308		304,801
Vancouver-New Westminster	14,975,476		218,220
Prince Rupert	1,011,004		-
Churchill	2,280,823		-
Fort William and Port Arthur	35,371,350		7,297,097
In Transit Lakes	1,141,065		1,293,706
Eastern Elevators - Lake Ports	51,441,018		2,162,057
Eastern Elevators - Sbd. Ports	18,440,106		2,190,060
U. S. Lake Ports	28,483,671		186,026
U. S. Atlantic Sbd. Ports	10,756,351		168,260
TOTAL	266,546,382		26,842,300
<u>December 7, 1934</u>			
Country Elevators - Manitoba	10,014,835		1,562,977
Saskatchewan	51,371,392		5,641,456
Alberta	35,930,658		4,343,239
TOTAL	97,316,885		11,547,672
Interior Private and Mill	7,215,500		3,621,017
Interior Public and Semi-Public Terminals	4,968,114		813,338
Vancouver-New Westminster	13,750,809		1,457,315
Victoria	927,435		-
Prince Rupert	1,093,753		-
Churchill	2,389,404		-
Fort William and Port Arthur	53,553,670		7,910,187
In Transit Lakes	1,715,506		589,289
Eastern Elevators - Lake Ports	32,121,678		2,674,799
Eastern Elevators - Sbd. Ports	13,753,950		3,049,645
U. S. Lake Ports	19,829,062		715,325
U. S. Atlantic Sbd. Ports	6,574,098		-
TOTAL	255,209,864		32,378,587

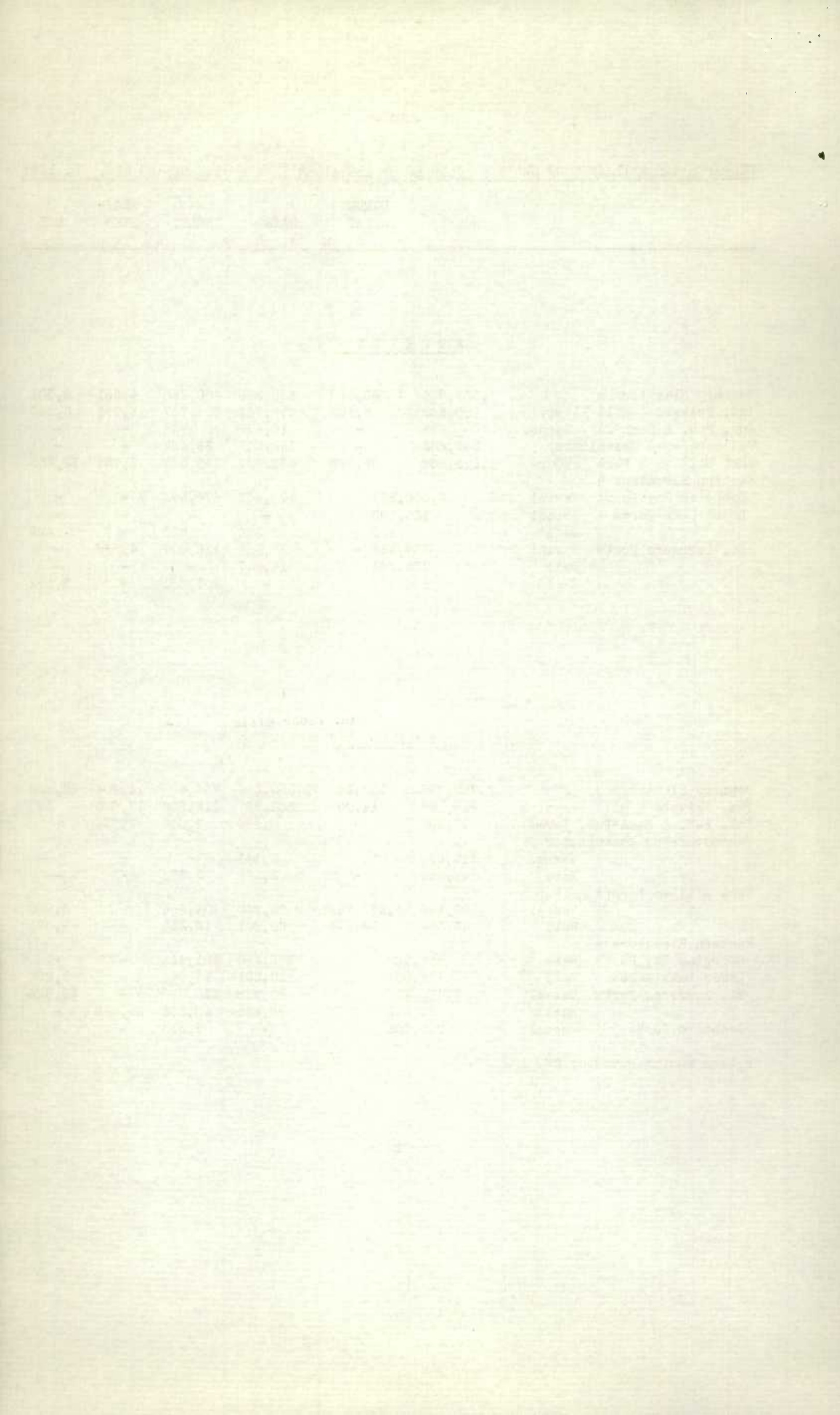


RECEIPTS AND SHIPMENTS OF GRAIN BY CLASSES OF ELEVATORS IN THE WEEK ENDING DEC. 3, 1937

	WHEAT	DURUM WHEAT	OATS	BARLEY	FLAX- SEED	RYE
		B u s h e l s				
<u>R E C E I P T S</u>						
Country Elevators x	1,339,864	80,488	635,326	400,286	4,551	8,001
Int. Private & Mill Elevs. x	730,869	5,166	276,741	207,787	13,744	3,040
Int. Pub. & Semi-Pub. Terms.	292	-	16,469	938	-	-
Vancouver-New Westminster	548,603	-	198,003	36,457	-	-
Fort William & Port Arthur	1,571,566	95,552	461,637	343,508	6,784	12,955
Eastern Elevators -						
Georgian Bay Ports Vessel	2,000,571		146,467	674,573	-	-
Lower Lake Ports Vessel	105,798		-	-	-	-
Rail	653		354	529	-	425
St. Lawrence Ports Vessel	337,931		79,968	128,097	4,336	-
Rail	155,861		14,847	-	-	-
Rail	570,917		-	203,651	-	3,592

<u>S H I P M E N T S</u>						
Country Elevators x	2,760,796	157,245	1,339,302	714,408	12,704	22,825
Int. Private & Mill Elevs. x	918,176	14,082	301,957	112,509	17,660	307
Int. Pub. & Semi-Pub. Terms.	15,299	-	8,584	1,540	1,674	-
Vancouver-New Westminster						
Vessel	315,634	-	2,141	-	-	-
Rail	44,444	-	2,998	2,275	-	-
Fort William & Port Arthur						
Vessel	3,309,146	1,272,768	71,840	704,554	-	4,800
Rail	43,594	17,874	68,601	10,250	-	1,071
Eastern Elevators -						
Georgian Bay Ports Rail	952,768		165,290	101,431	-	-
Lower Lake Ports Rail	172,001		10,221	14,348	-	1,200
St. Lawrence Ports Vessel	1,470,416		80,425	310,980	-	59,865
Rail	58,279		29,225	40,203	25,668	-
Seaboard Ports Vessel	225,895		-	8,333	-	-

x Week ending November 26, 1937



STOCKS OF UNITED STATES GRAIN IN CANADA DECEMBER 3, 1937

	WHEAT	OATS	BARLEY	RYE	CORN	SOYA BEANS	
	B	u	s	h	e	l	s
Port McNicoll	-	-	-	-	92,828	-	
Midland Aberdeen	-	288,222	-	-	-	-	
Midland Simcoe	119,439	1,355,611	-	-	-	-	
Owen Sound	-	350,509	-	-	-	-	
Goderich W. C. F. M.	108,388	-	-	-	-	-	
Goderich Elev. Co.	160,067	403,261	-	-	319,065	-	
Sarnia	-	452,526	-	-	349,737	-	
Port Colborne, D. G.	211,077	1,821	-	-	-	-	
Port Colborne, M. L.	402,500	82,265	-	30,961	96,844	-	
Port Colborne Afloat	433,999	-	-	-	-	-	
Toronto	-	218,319	-	305,433	-	20,000	
Kingston, J. Richardson	-	-	-	-	95,132	-	
Prescott	-	23,500	-	-	-	-	
Montreal	325,592	584,587	-	344,346	41,423	19,625	
Dominion Elevator Co.	-	53,123	-	-	-	-	
Sorel	-	8,000	-	-	-	-	
Three Rivers	70,530	27,223	-	-	27,893	-	
Quebec	-	288,025	-	-	-	-	
West Saint John	21,976	-	-	-	40,992	-	
TOTAL	1,853,568	4,136,992	-	680,790	1,063,914	39,625	
Same period previous year	-	117,709	-	-	5,914	-	

RECEIPTS AND SHIPMENTS OF UNITED STATES GRAIN IN CANADA DECEMBER 3, 1937

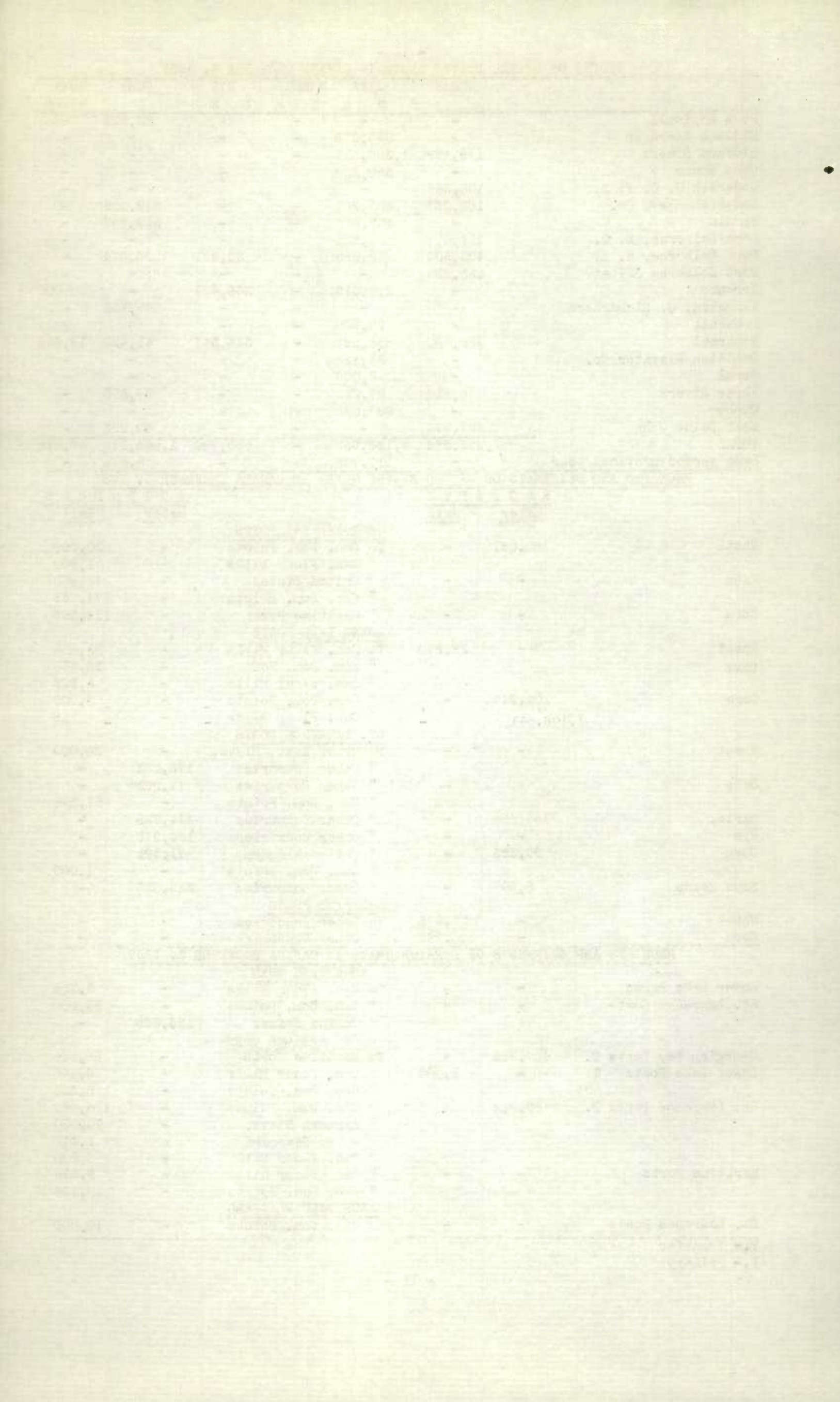
	R E C E I P T S			S H I P M E N T S	
	Water	Rail		Water	Rail
GEORGIAN BAY PORTS					
Wheat	160,067	-	To Can. Dom. Points	-	20,000
			" Can. Flour Mills	-	1,500
Oats	-	-	" United States	-	12,800
			" Can. Dom. Points	-	174,745
Corn	-	-	" Maritime Ports	-	178,396
LOWER LAKE PORTS					
Wheat	-	29,270	To Can. Flour Mills	-	82,189
Oats			" Can. Dom. Points	-	16,450
			" Can. Flour Mills	-	4,908
Corn	104,844	-	" Can. Dom. Points	-	7,000
			" Can. Flour Mills	-	16
ST. LAWRENCE PORTS					
Wheat	-	-	To Other East. Elevs.	-	24,000
			" Other Countries	178,733	-
Oats	-	-	" Other Countries	17,963	-
			" Can. Dom. Points	-	57,398
Barley	135,258	-	" Other Countries	414,725	-
Rye	-	-	" Other Countries	134,918	-
Corn	99,385	-	" United Kingdom	71,491	-
			" Can. Dom. Points	-	1,000
Soya Beans	8,597	-	" Other Countries	335,555	-
MARITIME PORTS					
Wheat	-	21,976	To Other Countries	-	-
Corn	-	40,992	" Other Countries	-	-

RECEIPTS AND SHIPMENTS OF FOREIGN GRAIN IN CANADA DECEMBER 3, 1937

ARGENTINE CORN					
Lower Lake Ports	-	-	To Can. Flour Mills	-	3,738
St. Lawrence Ports	-	-	" Can. Dom. Points	-	33,500
			" United States	155,665	-
SOUTH AFRICAN CORN					
Georgian Bay Ports T.	407,589	-	To Maritime Ports	-	88,524
Lower Lake Ports T.	-	1,000	" Can. Flour Mills	-	6,146
			" Can. Dom. Points	-	5,353
St. Lawrence Ports P.	89,942	-	" Can. Dom. Points	-	115,441
			" Eastern Elevs.	-	10,000
			" U. S. Seaboard	-	1,446
			" Can. Flour Mills	-	6,250
Maritime Ports	-	-	" Can. Flour Mills	-	9,819
			" Can. Dom. Points	-	16,144
ARGENTINE FLAXSEED					
St. Lawrence Ports	-	-	To Can. Dom. Points	-	10,000

T.- Transfer

P.- Primary



STOCKS OF FOREIGN GRAIN IN CANADA DECEMBER 3, 1937

	ARGENTINE CORN	SOUTH AFRICAN CORN B u s h e l s	ARGENTINE FLAXSEED	DANISH BARLEY
Goderich Elev. Co.	-	54,437	-	-
Goderich W. C. F. M.	-	30,000	-	-
Port Colborne, Maple Leaf	63,317	135,331	-	-
Toronto	53,608	453,565	-	-
Kingston, J. Richardson	-	11,014	-	-
Prescott	-	98,291	-	-
Montreal	296,964	1,887,637	417,392	-
Dominion Elevator Co.	116,718	182,105	-	-
Sorel	-	306,973	-	-
Three Rivers	-	29,443	32,522	-
Quebec	-	364,211	-	-
Saint John	-	13,913	-	-
Halifax	-	104,091	-	-
TOTAL	530,607	3,671,011	449,914	-
Same period previous year	5,170,572	399,867	72,002	27,825

STOCKS IN STORE, RECEIPTS AND SHIPMENTS AT THE CANADIAN GOVERNMENT INTERIOR TERMINAL ELEVATORS, DURING THE WEEK ENDING DECEMBER 3, 1937

	WHEAT	OATS B u s h e l s	BARLEY B u s h e l s	FLAXSEED	RYE
<u>STOCKS IN STORE</u>					
Calgary	1,886	93,768	290,336	-	-
Edmonton	4,206	18,199	2,335	-	-
Lethbridge	1,106,541	-	-	-	-
TOTAL	1,112,633	111,967	292,671	-	-
<u>RECEIPTS</u>					
Calgary	292	4,182	-	-	-
Edmonton	-	12,287	938	-	-
Lethbridge	-	-	-	-	-
TOTAL	292	16,469	938	-	-
<u>SHIPMENTS - RAIL</u>					
Calgary	8,880	8,584	1,367	1,674	-
Edmonton	2,563	-	173	-	-
Lethbridge	3,856	-	-	-	-
TOTAL	15,299	8,584	1,540	1,674	-

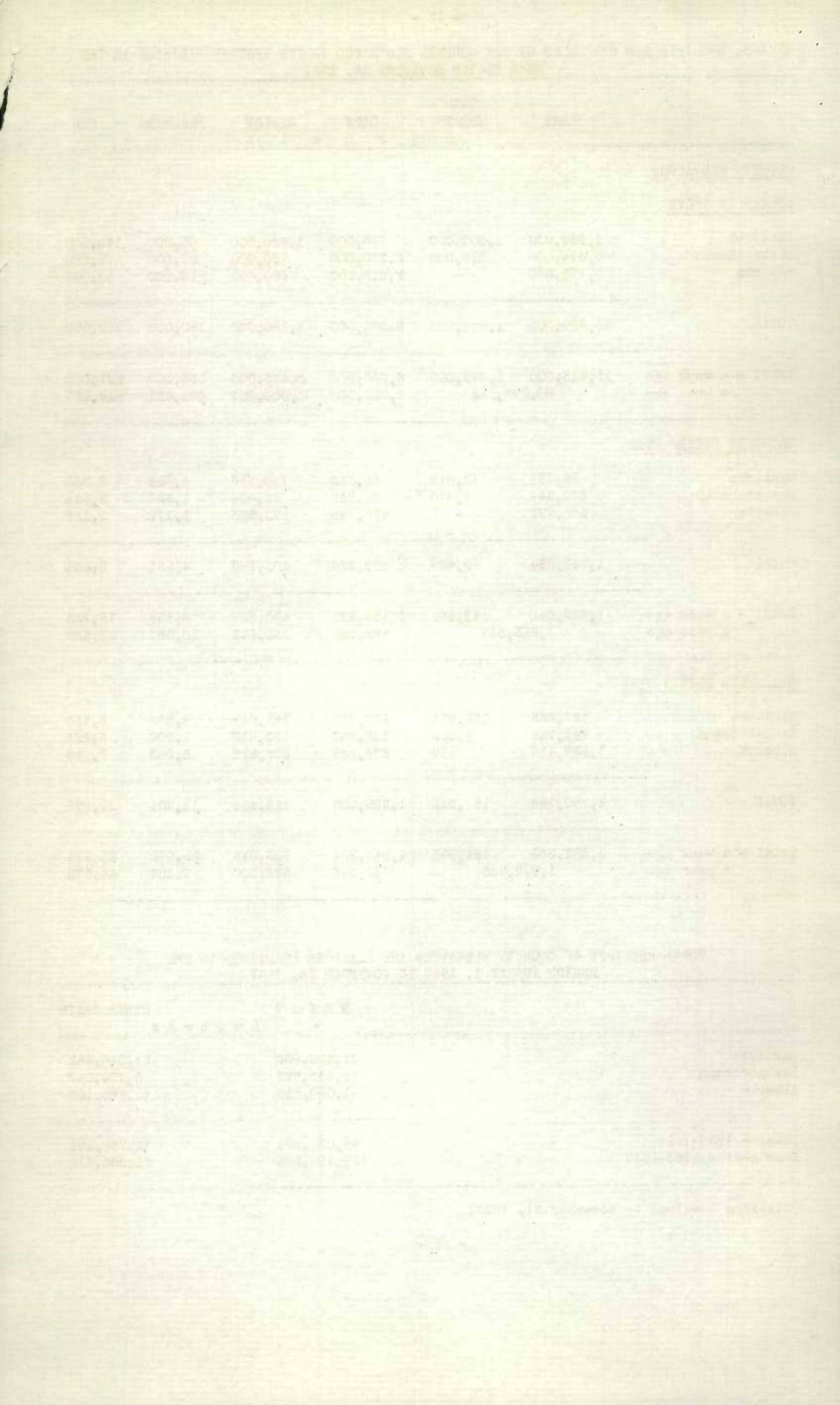
STOCKS, RECEIPTS AND SHIPMENTS OF THE COUNTRY ELEVATORS IN THE WESTERN DIVISION IN THE
WEEK ENDING NOVEMBER 26, 1937

	WHEAT	DURUM WHEAT	OATS	BARLEY	FLAXSEED	RYE
		B u s h e l s				
<u>COUNTRY ELEVATORS</u>						
<u>STOCKS IN STORE</u>						
Manitoba	1,960,000	1,600,000	960,000	1,440,000	65,000	145,000
Saskatchewan	4,615,000	218,000	2,275,000	730,000	99,000	79,000
Alberta	7,175,000	-	2,815,000	990,000	16,000	58,000
TOTAL	13,950,000	1,818,000	6,050,000	3,160,000	180,000	282,000
Total - a week ago	15,415,000	1,879,000	6,650,000	3,435,000	188,000	297,000
a year ago	80,077,368		8,088,500	2,036,907	481,421	514,528
<u>RECEIPTS DURING WEEK</u>						
Manitoba	94,731	72,818	68,335	159,616	1,833	2,366
Saskatchewan	279,341	7,670	130,249	46,804	1,539	3,518
Alberta	965,792	-	436,742	193,866	1,179	2,117
TOTAL	1,339,864	80,488	635,326	400,286	4,551	8,001
Total - a week ago	1,729,046	148,861	1,121,881	590,207	9,551	15,733
a year ago	1,555,347		462,945	185,611	10,089	27,503
<u>SHIPMENTS DURING WEEK</u>						
Manitoba	177,635	152,231	116,719	285,041	8,292	8,753
Saskatchewan	944,745	4,895	345,752	192,839	1,209	6,834
Alberta	1,638,416	119	876,831	236,528	3,203	7,238
TOTAL	2,760,796	157,245	1,339,302	714,408	12,704	22,825
Total - a week ago	3,652,566	161,903	1,317,351	723,013	22,072	25,964
a year ago	1,978,233		660,445	306,200	7,454	44,575

TOTAL RECEIPTS AT COUNTRY ELEVATORS AND PLATFORM LOADINGS^{1/2} IN THE
PERIOD AUGUST 1, 1937 TO NOVEMBER 26, 1937

	W H E A T	OTHER GRAIN
	B u s h e l s	
Manitoba	31,530,854	21,316,442
Saskatchewan	19,415,727	5,754,047
Alberta	41,080,310	11,680,105
Total - 1937-1938	92,026,891	38,750,594
Same period 1936-1937	129,499,005	38,855,919

^{1/2}Platform loadings to November 21, 1937.



STOCKS, RECEIPTS AND SHIPMENTS OF THE PACIFIC COAST ELEVATORS
IN THE WEEK ENDING DECEMBER 3, 1937

	WHEAT	OATS B u s h e l s	BARLEY	FLAXSEED	RYE
<u>STOCKS IN STORE</u>					
Vancouver-New Westminster	2,370,813	414,032	139,686	467	1,030
Prince Rupert	911,340	-	-	-	-
Churchill	11,820	-	-	-	-
<u>RECEIPTS DURING WEEK</u>					
Vancouver-New Westminster	548,603	198,003	36,457	-	-
<u>SHIPMENTS DURING WEEK</u>					
Vancouver-New Westminster					
Vessel	315,634	2,141	-	-	-
Rail	44,444	2,998	2,273	-	-

DAILY QUOTATIONS AND WEEKLY AVERAGES OF CASH WHEAT BY GRADES IN CENTS
AND EIGHTHS OF A CENT PER BUSHEL
IN THE WEEK ENDING DECEMBER 4, 1937
(Basis Vancouver, B.C.)

	Nov. 29 \$ ¢	Nov. 30 \$ ¢	Dec. 1 \$ ¢	Dec. 2 \$ ¢	Dec. 3 \$ ¢	Dec. 4 \$ ¢	Weekly Average \$ ¢
No. 1 Hard	1.21/1	1.20/5	1.26/6	1.28/1	1.28/3	1.28/5	1.25/5
No. 1 Northern	1.21/1	1.20/5	1.26/6	1.28/1	1.28/3	1.28/5	1.25/5
No. 2 Northern	1.16/1	1.15/5	1.20/2	1.21/5	1.21/7	1.22/1	1.19/5
No. 3 Northern	1.02/5	1.02/1	1.07/6	1.09/1	1.09/3	1.09/5	1.06/6
No. 4 Northern	.94/1	.92/5	.98/6	1.00/1	1.00/3	1.00/5	.97/6
No. 5	.87/1	.86/5	.88/6	.90/1	.90/3	.90/5	.89
No. 6	.78/1	.77/5	.78/6	.80/1	.80/3	.80/5	.79/2
Feed	.66/1	.65/5	.68/6	.70/1	.70/3	.70/5	.68/5
No. 1 Garnet	.97/1	.95/5	1.00/6	1.02/1	1.02/3	1.02/5	1.00/1
No. 2 Garnet	.94/1	.92/5	.98/6	1.00/1	1.00/3	1.00/5	.97/6

DAILY QUOTATIONS AND WEEKLY AVERAGES OF CASH GRAIN BY
GRADES ON WINNIPEG AND TORONTO MARKETS

Week ending December 4, 1937

	Nov. 29	Nov. 30	Dec. 1	Dec. 2	Dec. 3	Dec. 4	Weekly Average
	\$	\$	\$	\$	\$	\$	\$
WHEAT							
	(Basis Fort William and Port Arthur)						
No. 1 Man. Hard	1.30/7	1.28/1	1.32/2	1.35/4	1.35/1	1.37/2	1.33/2
No. 1 Man. Northern	1.30/7	1.28/1	1.32/2	1.35/4	1.35/1	1.37/2	1.33/2
No. 2 Man. Northern	1.23/7	1.21/1	1.25/2	1.28/4	1.28/1	1.30/2	1.26/2
No. 3 Man. Northern	1.08/3	1.06/1	1.10/2	1.11/4	1.11/1	1.12/2	1.10
No. 4 Man. Northern	.96/7	.95/1	.99/2	1.00	.99/1	1.01/2	.98/5
No. 5	.86/7	.85/1	.89/2	.92	.91/1	.92/2	.89/4
No. 6	.77/7	.76/1	.80/2	.83	.82/1	.83/2	.80/4
Feed	.68/7	.67/1	.71/2	.74	.73/1	.74/2	.71/4
No. 1 Garnet	1.07/7	1.05/1	1.09/2	1.12	1.11/1	1.12/2	1.09/5
No. 2 Garnet	1.04/7	1.02/1	1.06/2	1.09	1.08/1	1.09/2	1.06/5
No. 4 Special	.90/7	.88/1	.92/2	.95	.94/1	.95/2	.92/5
No. 5 Special	.81/7	.80/1	.84/2	.87	.86/1	.87/2	.84/4
No. 6 Special	.72/7	.71/1	.75/2	.78	.77/1	.78/2	.75/4
Rejected No. 1 Northern	1.08/7	1.06/1	1.10/2	1.13	1.12/1	1.13/2	1.10/5
No. 2 Northern	1.06/7	1.04/1	1.08/2	1.11	1.10/1	1.11/2	1.08/5
No. 3 Northern	.97/7	.96/1	1.00/2	1.03	1.02/1	1.03/2	1.00/4
Tough No. 1 Hard	1.28/7	1.26/1	1.30/2	1.33/4	1.33/1	1.35/2	1.31/2
No. 1 Northern	1.28/7	1.26/1	1.30/2	1.33/4	1.33/1	1.35/2	1.31/2
No. 2 Northern	1.21/7	1.19/1	1.23/2	1.26/4	1.26/1	1.28/2	1.24/2
No. 3 Northern	1.02/7	1.01/1	1.05/2	1.08	1.07/1	1.09/2	1.05/5
Smutty No. 1 Hard	1.10/7	1.08/1	1.12/2	1.15	1.14/1	1.15/2	1.12/5
No. 1 Northern	1.10/7	1.08/1	1.12/2	1.15	1.14/1	1.15/2	1.12/5
No. 2 Northern	1.07/7	1.05/1	1.09/2	1.12	1.11/1	1.12/2	1.09/5
No. 3 Northern	.99/7	.98/1	1.02/2	1.05	1.04/1	1.05/2	1.02/4
Durum No. 1	.88/1	.87/5	.90/2	.91/5	.91/7	.92/1	.90/2
No. 2	.79/1	.81/5	.84/2	.85/5	.85/7	.86/1	.83/6
No. 3	.79/1	.78/5	.82/2	.83/5	.83/7	.84/1	.82
A. R. W. No. 1	.92/7	.90/1	.94/2	.97	.96/1	.97/2	.94/5
A. W. No. 2	.90/7	.88/1	.92/2	.95	.94/1	.95/2	.92/5
No. 3	.88/7	.86/1	.90/2	.93	.92/1	.93/2	.90/5
OATS							
No. 2 C.W.	.45/6	.45/6	.46/4	.47/3	.47/6	.48/3	.46/7
No. 3 C.W.	.42/6	.42/2	.42/4	.43/1	.43/4	.44/1	.43
Ex. No. 1 Feed	.42/6	.42/2	.42/4	.43/1	.43/4	.44/1	.43
No. 1 Feed	.39/6	.39/6	.40/2	.40/7	.41/2	.41/7	.40/5
No. 2 Feed	.36/6	.36/6	.37/4	.38/3	.38/6	.39/3	.38
No. 3 Feed	.34/6	.34/6	.35/4	.36/3	.36/6	.37/3	.36
BARLEY							
6 Row	.58/5	.55/5	.56/7	.57/2	.57/7	.58/6	.57/4
2 Row	.58/5	.55/5	.56/7	.57/2	.57/6	.58/5	.57/4
No. 3 C.W.	.56/5	.54/5	.55/7	.55/6	.56/2	.57/1	.56
No. 4 C.W.	.54/1	.52/5	.53/7	.54/2	.54/6	.55/5	.54/2
No. 5 C.W.	.53/1	.51/5	.52/7	.53/2	.53/6	.54/5	.53/2
No. 6 C.W.	.52/1	.50/5	.51/7	.52/2	.52/6	.53/5	.52/2
RYE							
No. 2 C.W.	.70/3	.69/6	.72/6	.73/7	.74/2	.75	.72/7
No. 3 C.W.	.67/3	.66/6	.69/6	.70/7	.71/2	.72	.69/7
Rejected No. 2 C.W.	.63/3	.62/6	.65/6	.66/7	.67/2	.68	.65/7
No. 4 C.W.	.63/3	.62/6	.65/6	.66/7	.67/2	.68	.65/7
Ergoty	.62/3	.61/6	.64/6	.65/7	.66/2	.67	.64/7
FLAXSEED							
No. 1 C.W.	1.67/2	1.66	1.66	1.71	1.71	1.71	1.68/6
No. 2 C.W.	1.63/2	1.62	1.62	1.67	1.67	1.67	1.64/6
No. 3 C.W.	1.42/2	1.41	1.41	1.46	1.46	1.46	1.43/6
No. 4 C.W.	1.37/2	1.36	1.36	1.41	1.41	1.41	1.38/6
Wheat,							
good milling	1.00-.01	1.00-.01	1.00-.01	1.00-.01	1.00-.01	1.00-.01	1.00-.01
Oats	.38-.40	.38-.40	.38-.40	.38-.40	.38-.40	.38-.40	.38-.40
Barley	.52-.54	.52-.54	.52-.54	.52-.54	.52-.54	.52-.54	.52-.54
Rye	.70-.73	.70-.73	.70-.73	.70-.73	.70-.73	.70-.73	.70-.73
Corn	.60-.67	.60-.62	.60-.62	.60-.62	.60-.62	.60-.62	.60-.62/7
Buckwheat	.58-.60	.58-.60	.58-.60	.58-.60	.58-.60	.58-.60	.58-.60
Malting Barley	.63-.65	.63-.65	.63-.65	.63-.65	.63-.65	.63-.65	.63-.65
Milling Oats	.39-.41	.39-.41	.39-.41	.39-.41	.39-.41	.39-.41	.39-.41
South African Corn	-	.84	.84	.84	.84	.84	.84

RECEIPTS AND SHIPMENTS AT FORT WILLIAM AND PORT ARTHUR FOR THE MONTH OF NOVEMBER 1937 and 1936

	WHEAT	DURUM WHEAT	OATS B u s h e l s	BARLEY s h e l s	FLAXSEED l s	RYE	ARGENTINE CORN	AFRICAN CORN	MIXED GRAIN Lb.
--	-------	----------------	-----------------------	---------------------	-----------------	-----	-------------------	-----------------	-----------------------

R E C E I P T S

August 1937	4,587,365	2,005,925	131,416	2,455,086	3,058	508,009	-	-	51,600
September 1937	15,807,940	12,261,984	1,438,682	7,210,073	11,858	363,328	-	-	535,200
October 1937	14,307,838	1,250,588	458,789	892,518	20,947	110,345	-	29,810	207,570
November 1937	9,854,733	530,203	1,433,737	1,403,959	30,935	77,936	-	10,000	560,702
Four months ending November 1937	45,057,876	16,048,700	3,462,624	11,961,636	66,798	1,059,618	-	39,810	1,355,072
Four months ending November 1936	93,442,553		5,889,971	15,307,593	568,851	1,435,099	54,950	-	3,476,210

S H I P M E N T S

August 1937	Lake	4,486,410	224,528	305,693	1,575,101	26,303	123,619	-	-	-
	Rail	5,749	7,663	93,010	27,525	-	-	3,747	-	30,700
September 1937	Lake	11,776,699	3,451,126	765,586	3,465,658	-	46,909	-	-	37,730
	Rail	9,719	6,094	177,595	19,491	-	-	4,249	-	243,600
October 1937	Lake	14,553,522	3,608,404	779,984	3,764,431	59,979	32,158	-	-	-
	Rail	10,810	2,081	189,759	17,885	-	-	3,518	9,570	2,200
November 1937	Lake	14,849,615	2,926,065	665,593	2,951,305	85,436	21,943	-	-	-
	Rail	28,360	13,202	187,753	18,366	1,500	3,274	-	9,602	274,810
Four months ending November 1937	Lake	45,666,246	10,210,123	2,516,856	11,756,495	171,718	224,629	-	-	37,730
	Rail	54,638	29,040	648,117	83,267	1,500	3,274	11,514	19,172	551,310
Four months ending November 1936	Lake	106,607,025		6,890,510	13,479,314	399,576	2,041,564	-	-	20,250
	Rail	54,722		494,586	83,780	3,546	-	24,251	4,197	752,370

NAME		ADDRESS		CITY		STATE		COUNTRY	
Mr. J. H. Smith	123 Main St.	Springfield	Mass.	U.S.A.					
Mr. W. R. Jones	456 Oak Ave.	Chicago	Ill.	U.S.A.					
Mr. A. B. Brown	789 Elm St.	New York	N.Y.	U.S.A.					
Mr. C. D. White	101 Pine St.	London	Eng.	Great Britain					
Mr. E. F. Green	202 Cedar St.	Paris	France	France					
Mr. G. H. Black	303 Birch St.	Berlin	Germany	Germany					
Mr. I. J. Gray	404 Spruce St.	Moscow	U.S.S.R.	U.S.S.R.					
Mr. K. L. Hall	505 Willow St.	Beijing	China	China					
Mr. M. N. King	606 Ash St.	Tokyo	Japan	Japan					
Mr. O. P. Lee	707 Hickory St.	Sydney	Australia	Australia					
Mr. Q. R. Scott	808 Sycamore St.	Melbourne	Australia	Australia					
Mr. S. T. Walker	909 Magnolia St.	Buenos Aires	Argentina	Argentina					
Mr. U. V. Young	1010 Dogwood St.	Sao Paulo	Brazil	Brazil					
Mr. X. Y. Allen	1111 Redwood St.	Rio de Janeiro	Brazil	Brazil					
Mr. Z. A. Baker	1212 Cypress St.	Montevideo	Uruguay	Uruguay					
Mr. B. C. Clark	1313 Juniper St.	Montevideo	Uruguay	Uruguay					
Mr. D. E. Evans	1414 Fir St.	Montevideo	Uruguay	Uruguay					
Mr. F. G. Fisher	1515 Palm St.	Montevideo	Uruguay	Uruguay					
Mr. H. I. Gibson	1616 Laurel St.	Montevideo	Uruguay	Uruguay					
Mr. J. K. Hall	1717 Birch St.	Montevideo	Uruguay	Uruguay					
Mr. L. M. Harris	1818 Spruce St.	Montevideo	Uruguay	Uruguay					
Mr. N. O. Ingram	1919 Cedar St.	Montevideo	Uruguay	Uruguay					
Mr. P. Q. Jackson	2020 Willow St.	Montevideo	Uruguay	Uruguay					
Mr. R. S. Keller	2121 Ash St.	Montevideo	Uruguay	Uruguay					
Mr. T. U. Lester	2222 Hickory St.	Montevideo	Uruguay	Uruguay					
Mr. V. W. Martin	2323 Sycamore St.	Montevideo	Uruguay	Uruguay					
Mr. X. Y. Nelson	2424 Magnolia St.	Montevideo	Uruguay	Uruguay					
Mr. Z. A. Owen	2525 Dogwood St.	Montevideo	Uruguay	Uruguay					
Mr. B. C. Parker	2626 Redwood St.	Montevideo	Uruguay	Uruguay					
Mr. D. E. Quinn	2727 Cypress St.	Montevideo	Uruguay	Uruguay					
Mr. F. G. Roberts	2828 Juniper St.	Montevideo	Uruguay	Uruguay					
Mr. H. I. Russell	2929 Fir St.	Montevideo	Uruguay	Uruguay					
Mr. J. K. Scott	3030 Palm St.	Montevideo	Uruguay	Uruguay					
Mr. L. M. Turner	3131 Laurel St.	Montevideo	Uruguay	Uruguay					
Mr. N. O. Vance	3232 Birch St.	Montevideo	Uruguay	Uruguay					
Mr. P. Q. Webb	3333 Spruce St.	Montevideo	Uruguay	Uruguay					
Mr. R. S. Wright	3434 Cedar St.	Montevideo	Uruguay	Uruguay					
Mr. T. U. Young	3535 Willow St.	Montevideo	Uruguay	Uruguay					
Mr. V. W. Adams	3636 Ash St.	Montevideo	Uruguay	Uruguay					
Mr. X. Y. Baker	3737 Hickory St.	Montevideo	Uruguay	Uruguay					
Mr. Z. A. Clark	3838 Sycamore St.	Montevideo	Uruguay	Uruguay					
Mr. B. C. Evans	3939 Magnolia St.	Montevideo	Uruguay	Uruguay					
Mr. D. E. Fisher	4040 Dogwood St.	Montevideo	Uruguay	Uruguay					
Mr. F. G. Gibson	4141 Redwood St.	Montevideo	Uruguay	Uruguay					
Mr. H. I. Hall	4242 Cypress St.	Montevideo	Uruguay	Uruguay					
Mr. J. K. Harris	4343 Juniper St.	Montevideo	Uruguay	Uruguay					
Mr. L. M. Ingram	4444 Fir St.	Montevideo	Uruguay	Uruguay					
Mr. N. O. Jackson	4545 Palm St.	Montevideo	Uruguay	Uruguay					
Mr. P. Q. Keller	4646 Laurel St.	Montevideo	Uruguay	Uruguay					
Mr. R. S. Lester	4747 Birch St.	Montevideo	Uruguay	Uruguay					
Mr. T. U. Martin	4848 Spruce St.	Montevideo	Uruguay	Uruguay					
Mr. V. W. Nelson	4949 Cedar St.	Montevideo	Uruguay	Uruguay					
Mr. X. Y. Owen	5050 Willow St.	Montevideo	Uruguay	Uruguay					
Mr. Z. A. Parker	5151 Ash St.	Montevideo	Uruguay	Uruguay					
Mr. B. C. Quinn	5252 Hickory St.	Montevideo	Uruguay	Uruguay					
Mr. D. E. Roberts	5353 Sycamore St.	Montevideo	Uruguay	Uruguay					
Mr. F. G. Russell	5454 Magnolia St.	Montevideo	Uruguay	Uruguay					
Mr. H. I. Scott	5555 Dogwood St.	Montevideo	Uruguay	Uruguay					
Mr. J. K. Turner	5656 Redwood St.	Montevideo	Uruguay	Uruguay					
Mr. L. M. Vance	5757 Cypress St.	Montevideo	Uruguay	Uruguay					
Mr. N. O. Webb	5858 Juniper St.	Montevideo	Uruguay	Uruguay					
Mr. P. Q. Wright	5959 Fir St.	Montevideo	Uruguay	Uruguay					
Mr. R. S. Young	6060 Palm St.	Montevideo	Uruguay	Uruguay					
Mr. T. U. Adams	6161 Laurel St.	Montevideo	Uruguay	Uruguay					
Mr. V. W. Baker	6262 Birch St.	Montevideo	Uruguay	Uruguay					
Mr. X. Y. Clark	6363 Spruce St.	Montevideo	Uruguay	Uruguay					
Mr. Z. A. Evans	6464 Cedar St.	Montevideo	Uruguay	Uruguay					
Mr. B. C. Fisher	6565 Willow St.	Montevideo	Uruguay	Uruguay					
Mr. D. E. Gibson	6666 Ash St.	Montevideo	Uruguay	Uruguay					
Mr. F. G. Hall	6767 Hickory St.	Montevideo	Uruguay	Uruguay					
Mr. H. I. Harris	6868 Sycamore St.	Montevideo	Uruguay	Uruguay					
Mr. J. K. Ingram	6969 Magnolia St.	Montevideo	Uruguay	Uruguay					
Mr. L. M. Jackson	7070 Dogwood St.	Montevideo	Uruguay	Uruguay					
Mr. N. O. Keller	7171 Redwood St.	Montevideo	Uruguay	Uruguay					
Mr. P. Q. Lester	7272 Cypress St.	Montevideo	Uruguay	Uruguay					
Mr. R. S. Martin	7373 Juniper St.	Montevideo	Uruguay	Uruguay					
Mr. T. U. Nelson	7474 Fir St.	Montevideo	Uruguay	Uruguay					
Mr. V. W. Owen	7575 Palm St.	Montevideo	Uruguay	Uruguay					
Mr. X. Y. Parker	7676 Laurel St.	Montevideo	Uruguay	Uruguay					
Mr. Z. A. Quinn	7777 Birch St.	Montevideo	Uruguay	Uruguay					
Mr. B. C. Roberts	7878 Spruce St.	Montevideo	Uruguay	Uruguay					
Mr. D. E. Russell	7979 Cedar St.	Montevideo	Uruguay	Uruguay					
Mr. F. G. Scott	8080 Willow St.	Montevideo	Uruguay	Uruguay					
Mr. H. I. Turner	8181 Ash St.	Montevideo	Uruguay	Uruguay					
Mr. J. K. Vance	8282 Hickory St.	Montevideo	Uruguay	Uruguay					
Mr. L. M. Webb	8383 Sycamore St.	Montevideo	Uruguay	Uruguay					
Mr. N. O. Wright	8484 Magnolia St.	Montevideo	Uruguay	Uruguay					
Mr. P. Q. Young	8585 Dogwood St.	Montevideo	Uruguay	Uruguay					
Mr. R. S. Adams	8686 Redwood St.	Montevideo	Uruguay	Uruguay					
Mr. T. U. Baker	8787 Cypress St.	Montevideo	Uruguay	Uruguay					
Mr. V. W. Clark	8888 Juniper St.	Montevideo	Uruguay	Uruguay					
Mr. X. Y. Evans	8989 Fir St.	Montevideo	Uruguay	Uruguay					
Mr. Z. A. Fisher	9090 Palm St.	Montevideo	Uruguay	Uruguay					
Mr. B. C. Gibson	9191 Laurel St.	Montevideo	Uruguay	Uruguay					
Mr. D. E. Hall	9292 Birch St.	Montevideo	Uruguay	Uruguay					
Mr. F. G. Harris	9393 Spruce St.	Montevideo	Uruguay	Uruguay					
Mr. H. I. Ingram	9494 Cedar St.	Montevideo	Uruguay	Uruguay					
Mr. J. K. Jackson	9595 Willow St.	Montevideo	Uruguay	Uruguay					
Mr. L. M. Keller	9696 Ash St.	Montevideo	Uruguay	Uruguay					
Mr. N. O. Lester	9797 Hickory St.	Montevideo	Uruguay	Uruguay					
Mr. P. Q. Martin	9898 Sycamore St.	Montevideo	Uruguay	Uruguay					
Mr. R. S. Nelson	9999 Magnolia St.	Montevideo	Uruguay	Uruguay					
Mr. T. U. Owen	10000 Dogwood St.	Montevideo	Uruguay	Uruguay					

INSPECTIONS - EASTERN DIVISION

November, 1937 and 1936

	Month of November			Month of November	
	1937	1936		1937	1936
	Bushels			Bushels	
<u>CANADIAN GRAIN</u>			<u>MIXED GRAIN</u>		
<u>WHITE WINTER WHEAT</u>			Oats & Barley	10,500	-
			Barley & Oats	2,000	-
No. 2	2,000	1,000			
No. 3	-	4,000	TOTAL	12,500	-
<u>MIXED WINTER WHEAT</u>			<u>PEAS - BEANS</u>		
No. 2	18,000	1,000	No. 1	2,050	-
No. 3	1,000	-	No. 2	2,605	-
Rejected	1,000	-	No. 3	1,000	-
TOTAL	22,000	6,000	No. 4	1,300	-
<u>OATS</u>			TOTAL	6,955 bags	-
No. 2	-	6,000	<u>RECAPITULATION OF CANADIAN GRAIN</u>		
No. 4	3,500	-	Wheat	22,000	6,000
Tough No. 3	-	10,911	Oats	23,602	25,661
Tough No. 4	1,533	8,750	Barley	26,730	40,000
Rejected	12,083	-	Rye	5,100	-
Rejected Musty	3,286	-	Buckwheat	130,047	25,755
Rejected Mildew	3,200	-	Corn	34,000	3,000
TOTAL	23,602	25,661	Mixed Grain	12,500	-
<u>BARLEY</u>			TOTAL	253,979	100,416
No. 3	8,750	12,500	123 cars inspected at Toronto.		
No. 3 Extra	8,750	27,500	91 cars and 3 cargoes inspected at Montreal.		
No. 4	3,250	-	<u>AMERICAN GRAIN</u>		
Tough No. 3	1,250	-	<u>WHEAT</u>		
Tough No. 4	1,250	-	2 Hard Winter	120,000	-
Tough Rejected Musty	2,200	-	<u>BARLEY</u>		
Rejected Musty	1,280	-	No. 2	9,990	-
TOTAL	26,730	40,000	<u>CORN</u>		
<u>RYE</u>			No. 2 Yellow	42,423	-
No. 2	5,100	-	<u>RECAPITULATION OF AMERICAN GRAIN</u>		
<u>BUCKWHEAT</u>			Wheat	120,000	-
No. 3	-	7,500	Barley	9,990	-
Tough No. 2	2,400	-	Corn	42,423	-
Tough No. 3	16,145	-	TOTAL	172,413	-
Tough No. 4	2,400	-	<u>CORN</u>		
Damp No. 2	21,150	1,280	No. 2 Yellow	2,000	3,000
Damp No. 3	78,142	15,375	Damp No. 2	22,000	-
Damp No. 4	8,610	1,600	Damp No. 3	7,000	-
Damp musty heating	1,200	-	Tough No. 2	3,000	-
TOTAL	130,047	25,755	TOTAL	34,000	3,000

GENERAL LEDGER

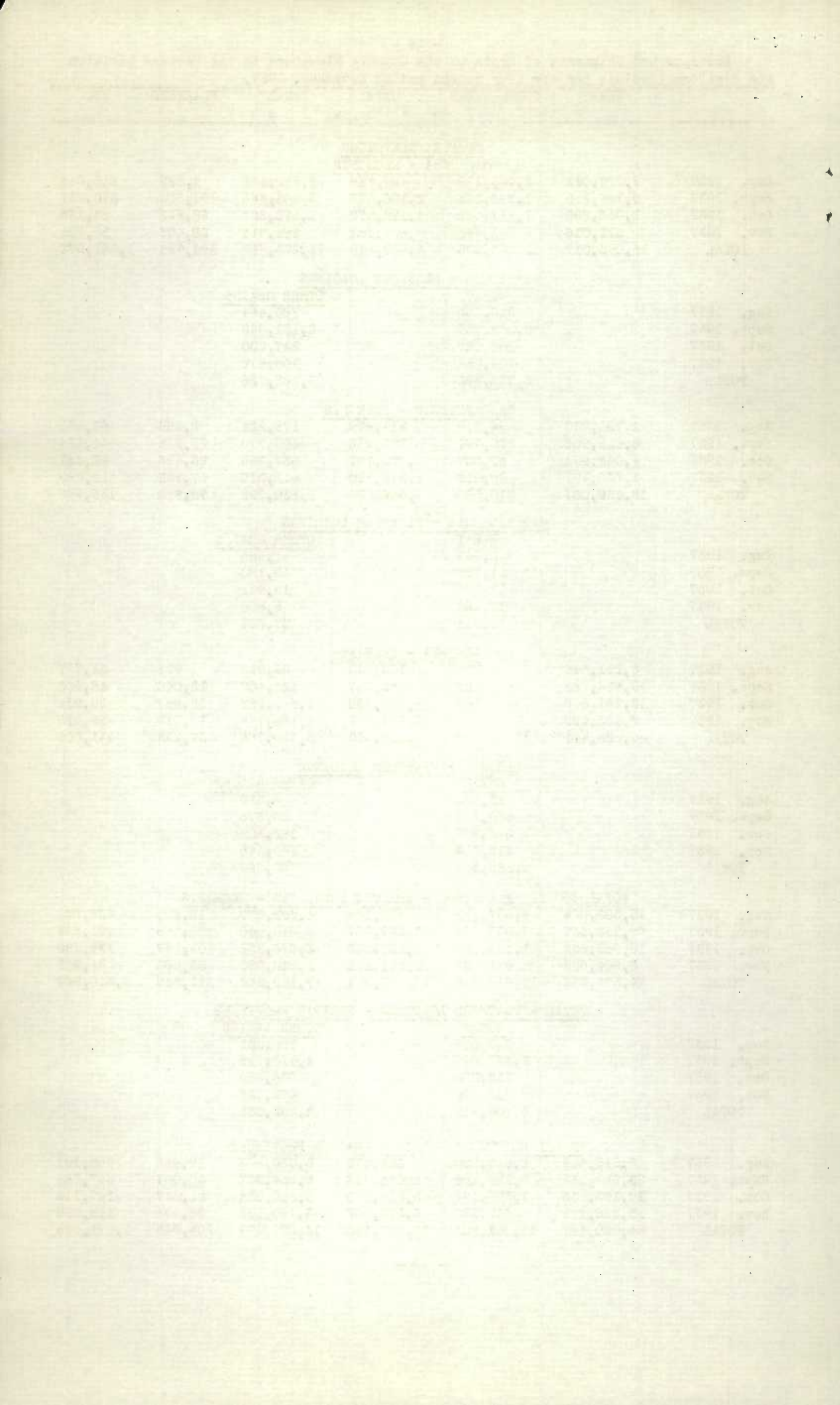
DATE		DESCRIPTION		AMOUNT	
1900		BALANCE		100.00	100.00
1901		SALES		200.00	200.00
1902		PURCHASES		150.00	150.00
1903		EXPENSES		50.00	50.00
1904		REVENUE		300.00	300.00
1905		INVENTORY		100.00	100.00
1906		DEBIT		250.00	250.00
1907		CREDIT		150.00	150.00
1908		BALANCE		100.00	100.00
1909		SALES		200.00	200.00
1910		PURCHASES		150.00	150.00
1911		EXPENSES		50.00	50.00
1912		REVENUE		300.00	300.00
1913		INVENTORY		100.00	100.00
1914		DEBIT		250.00	250.00
1915		CREDIT		150.00	150.00
1916		BALANCE		100.00	100.00
1917		SALES		200.00	200.00
1918		PURCHASES		150.00	150.00
1919		EXPENSES		50.00	50.00
1920		REVENUE		300.00	300.00
1921		INVENTORY		100.00	100.00
1922		DEBIT		250.00	250.00
1923		CREDIT		150.00	150.00
1924		BALANCE		100.00	100.00
1925		SALES		200.00	200.00
1926		PURCHASES		150.00	150.00
1927		EXPENSES		50.00	50.00
1928		REVENUE		300.00	300.00
1929		INVENTORY		100.00	100.00
1930		DEBIT		250.00	250.00
1931		CREDIT		150.00	150.00
1932		BALANCE		100.00	100.00
1933		SALES		200.00	200.00
1934		PURCHASES		150.00	150.00
1935		EXPENSES		50.00	50.00
1936		REVENUE		300.00	300.00
1937		INVENTORY		100.00	100.00
1938		DEBIT		250.00	250.00
1939		CREDIT		150.00	150.00
1940		BALANCE		100.00	100.00
1941		SALES		200.00	200.00
1942		PURCHASES		150.00	150.00
1943		EXPENSES		50.00	50.00
1944		REVENUE		300.00	300.00
1945		INVENTORY		100.00	100.00
1946		DEBIT		250.00	250.00
1947		CREDIT		150.00	150.00
1948		BALANCE		100.00	100.00
1949		SALES		200.00	200.00
1950		PURCHASES		150.00	150.00
1951		EXPENSES		50.00	50.00
1952		REVENUE		300.00	300.00
1953		INVENTORY		100.00	100.00
1954		DEBIT		250.00	250.00
1955		CREDIT		150.00	150.00
1956		BALANCE		100.00	100.00
1957		SALES		200.00	200.00
1958		PURCHASES		150.00	150.00
1959		EXPENSES		50.00	50.00
1960		REVENUE		300.00	300.00
1961		INVENTORY		100.00	100.00
1962		DEBIT		250.00	250.00
1963		CREDIT		150.00	150.00
1964		BALANCE		100.00	100.00
1965		SALES		200.00	200.00
1966		PURCHASES		150.00	150.00
1967		EXPENSES		50.00	50.00
1968		REVENUE		300.00	300.00
1969		INVENTORY		100.00	100.00
1970		DEBIT		250.00	250.00
1971		CREDIT		150.00	150.00
1972		BALANCE		100.00	100.00
1973		SALES		200.00	200.00
1974		PURCHASES		150.00	150.00
1975		EXPENSES		50.00	50.00
1976		REVENUE		300.00	300.00
1977		INVENTORY		100.00	100.00
1978		DEBIT		250.00	250.00
1979		CREDIT		150.00	150.00
1980		BALANCE		100.00	100.00
1981		SALES		200.00	200.00
1982		PURCHASES		150.00	150.00
1983		EXPENSES		50.00	50.00
1984		REVENUE		300.00	300.00
1985		INVENTORY		100.00	100.00
1986		DEBIT		250.00	250.00
1987		CREDIT		150.00	150.00
1988		BALANCE		100.00	100.00
1989		SALES		200.00	200.00
1990		PURCHASES		150.00	150.00
1991		EXPENSES		50.00	50.00
1992		REVENUE		300.00	300.00
1993		INVENTORY		100.00	100.00
1994		DEBIT		250.00	250.00
1995		CREDIT		150.00	150.00
1996		BALANCE		100.00	100.00
1997		SALES		200.00	200.00
1998		PURCHASES		150.00	150.00
1999		EXPENSES		50.00	50.00
2000		REVENUE		300.00	300.00
2001		INVENTORY		100.00	100.00
2002		DEBIT		250.00	250.00
2003		CREDIT		150.00	150.00
2004		BALANCE		100.00	100.00
2005		SALES		200.00	200.00
2006		PURCHASES		150.00	150.00
2007		EXPENSES		50.00	50.00
2008		REVENUE		300.00	300.00
2009		INVENTORY		100.00	100.00
2010		DEBIT		250.00	250.00
2011		CREDIT		150.00	150.00
2012		BALANCE		100.00	100.00
2013		SALES		200.00	200.00
2014		PURCHASES		150.00	150.00
2015		EXPENSES		50.00	50.00
2016		REVENUE		300.00	300.00
2017		INVENTORY		100.00	100.00
2018		DEBIT		250.00	250.00
2019		CREDIT		150.00	150.00
2020		BALANCE		100.00	100.00
2021		SALES		200.00	200.00
2022		PURCHASES		150.00	150.00
2023		EXPENSES		50.00	50.00
2024		REVENUE		300.00	300.00
2025		INVENTORY		100.00	100.00
2026		DEBIT		250.00	250.00
2027		CREDIT		150.00	150.00
2028		BALANCE		100.00	100.00
2029		SALES		200.00	200.00
2030		PURCHASES		150.00	150.00
2031		EXPENSES		50.00	50.00
2032		REVENUE		300.00	300.00
2033		INVENTORY		100.00	100.00
2034		DEBIT		250.00	250.00
2035		CREDIT		150.00	150.00
2036		BALANCE		100.00	100.00
2037		SALES		200.00	200.00
2038		PURCHASES		150.00	150.00
2039		EXPENSES		50.00	50.00
2040		REVENUE		300.00	300.00
2041		INVENTORY		100.00	100.00
2042		DEBIT		250.00	250.00
2043		CREDIT		150.00	150.00
2044		BALANCE		100.00	100.00
2045		SALES		200.00	200.00
2046		PURCHASES		150.00	150.00
2047		EXPENSES		50.00	50.00
2048		REVENUE		300.00	300.00
2049		INVENTORY		100.00	100.00
2050		DEBIT		250.00	250.00
2051		CREDIT		150.00	150.00
2052		BALANCE		100.00	100.00

INSPECTIONS - EASTERN DIVISION
4 months ending November, 1937 and 1936

	4 months ending November			4 months ending November	
	1937	1936		1937	1936
<u>CANADIAN GRAIN</u>					
<u>B u s h e l s</u>			<u>B u s h e l s</u>		
<u>WHEAT</u>			<u>RYE</u>		
WHITE WINTER			No. 2	20,229	1,000
No. 2	29,000	27,000	No. 3	1,000	-
No. 3	1,100	78,000	Tough No. 2	1,200	-
No. 4	1,000	36,000	TOTAL	22,429	1,000
Tough No. 2	10,000	-	<u>CORN</u>		
Rejected	-	9,000	No. 2 Mixed	-	4,000
<u>RED WINTER</u>			No. 2 Yellow	6,000	35,250
No. 2	13,000	10,000	No. 3 Yellow	-	1,000
Tough No. 2	1,000	-	No. 2 Damp	26,000	-
<u>MIXED WINTER</u>			No. 3 Damp	7,000	-
No. 2	424,400	211,000	Tough No. 2	3,000	-
Tough No. 2	48,000	-	TOTAL	42,000	40,250
No. 3	113,225	-	<u>MIXED GRAIN</u>		
Tough No. 3	48,156	-	Barley & Oats	6,200	-
No. 4	17,528	-	Oats & Barley	40,550	9,200
Tough No. 4	21,506	-	Oats & Wheat	1,500	3,000
Rejected	8,000	-	TOTAL	48,250	12,200
Rejected No. 3	1,000	-	<u>PEAS - BEANS</u>		
Rejected No. 4	2,314	-	No. 1	7,050	-
Tough Rejected	3,000	-	No. 2	2,605	-
Damp No. 4	1,000	-	No. 3	1,000	-
Damp Rejected	4,000	-	No. 4	1,300	-
TOTAL	747,229	371,000	TOTAL	11,955 bags	-
<u>OATS</u>					
No. 2	11,000	53,200	<u>RECAPITULATION OF CANADIAN GRAIN</u>		
No. 3	67,040	113,850	Wheat	747,229	371,000
No. 4	62,112	20,197	Oats	263,107	392,635
Tough No. 2	-	11,126	Barley	214,362	575,850
Tough No. 3	-	143,042	Rye	22,429	1,000
Tough No. 4	7,833	49,650	Buckwheat	188,993	69,205
Tough Rejected	6,100	-	Corn	42,000	40,250
Tough Rejected Musty	2,000	1,570	Mixed Grain	48,250	12,200
Rejected	91,036	-	TOTAL	1,526,370	1,462,140
Rejected Musty	12,786	-	<u>AMERICAN GRAIN</u>		
Rejected Mildew	3,200	-	<u>WHEAT</u>		
TOTAL	263,107	392,635	2 Hard Winter	180,000	-
<u>BARLEY</u>					
No. 3	51,500	185,700	<u>OATS</u>		
No. 3 Ex.	18,750	375,650	No. 3	23,004	-
No. 4	82,450	6,250	No. 4	9,000	-
Tough No. 3	2,550	-	TOTAL	32,004	-
Tough No. 4	14,300	-	<u>BARLEY</u>		
Tough No. 3 Ex.	-	1,500	No. 2	9,990	-
Tough Rejected	3,250	-	<u>RYE</u>		
Tough Rejected Musty	4,882	2,550	No. 2	226,174	-
Damp No. 3	-	1,400	No. 2 Western	181,315	-
Damp Rej. Musty	-	1,500	TOTAL	407,489	-
Damp Rej. Heated	-	1,300	<u>CORN</u>		
Rejected	28,950	-	2 Yellow	42,423	-
Rejected Musty Heating	1,250	-	<u>RECAPITULATION OF AMERICAN GRAIN</u>		
Rejected Musty	6,480	-	Wheat	180,000	-
TOTAL	214,362	575,850	Oats	32,004	-
<u>BUCKWHEAT</u>					
No. 3	-	24,300	Barley	9,990	-
Tough No. 2	8,650	-	Rye	407,489	-
Tough No. 3	27,241	5,800	Corn	42,423	-
Tough No. 4	4,400	-	TOTAL	671,906	-
Damp No. 2	31,050	1,280			
Damp No. 3	104,342	21,825			
Damp No. 4	12,110	16,000			
Damp Musty Heating	1,200	-			
TOTAL	188,993	69,205			

Receipts and Shipments of Grain at the Country Elevators in the Western Division and Platform Loadings for the four months ending November, 1937.

	WHEAT	DURUM WHEAT	OATS	BARLEY	FLAXSEED	RYE
	B u s h e l s					
COUNTRY ELEVATORS						
MANITOBA - RECEIPTS						
Aug. 1937	7,274,041	3,443,379	459,275	3,870,662	5,895	615,246
Sept. 1937	6,184,270	7,896,281	2,196,076	5,864,880	91,800	310,757
Oct. 1937	1,058,690	1,117,402	1,199,077	1,573,227	68,622	83,195
Nov. 1937	575,016	841,743	608,187	964,914	28,406	32,774
TOTAL	15,092,017	13,298,805	4,462,615	12,273,683	194,723	1,041,972
MANITOBA - PLATFORM LOADINGS						
	WHEAT	OTHER GRAINS				
Aug. 1937	926,255	780,464				
Sept. 1937	2,055,184	2,131,849				
Oct. 1937	204,087	247,600				
Nov. 1937	109,034	105,812				
TOTAL	3,926,560	3,265,725				
SASKATCHEWAN - RECEIPTS						
Aug. 1937	4,794,978	94,210	211,629	178,222	9,466	49,598
Sept. 1937	8,432,906	138,761	925,966	403,770	23,518	44,424
Oct. 1937	4,064,992	47,607	1,635,781	537,785	28,596	25,661
Nov. 1937	1,866,191	30,012	1,275,720	411,019	17,742	16,299
TOTAL	19,159,067	310,590	4,049,096	1,530,796	79,322	135,982
SASKATCHEWAN - PLATFORM LOADINGS						
	WHEAT	OTHER GRAINS				
Aug. 1937	5,643	1,855				
Sept. 1937	21,720	13,190				
Oct. 1937	12,260	18,941				
Nov. 1937	10,188	5,855				
TOTAL	49,811	39,841				
ALBERTA - RECEIPTS						
Aug. 1937	3,231,844	200	105,240	39,995	977	31,797
Sept. 1937	19,626,263	423	745,547	341,400	13,046	46,403
Oct. 1937	10,961,848	143	3,422,738	1,565,222	12,557	29,931
Nov. 1937	6,503,492	15	3,727,275	1,164,148	10,713	32,875
TOTAL	40,323,447	781	8,000,800	3,110,765	37,293	141,006
ALBERTA - PLATFORM LOADINGS						
	WHEAT	OTHER GRAINS				
Aug. 1937	13,681	8,616				
Sept. 1937	360,743	28,676				
Oct. 1937	571,903	362,309				
Nov. 1937	412,014	380,468				
TOTAL	1,358,341	780,069				
TOTAL COUNTRY ELEVATORS - PRAIRIE PROVINCES - RECEIPTS						
Aug. 1937	15,300,864	3,537,789	776,144	4,299,879	16,338	696,640
Sept. 1937	34,243,437	8,035,464	3,867,587	6,610,048	128,363	401,583
Oct. 1937	16,085,532	1,165,154	6,257,598	3,676,236	109,777	138,788
Nov. 1937	8,944,699	871,769	5,611,182	2,540,080	56,860	81,949
TOTAL	74,574,532	13,610,176	16,512,511	17,126,243	311,338	1,318,960
TOTAL - PLATFORM LOADINGS - PRAIRIE PROVINCES						
	WHEAT	OTHER GRAINS				
Aug. 1937	947,579	790,935				
Sept. 1937	2,437,647	2,173,715				
Oct. 1937	788,250	628,850				
Nov. 1937	531,236	492,135				
TOTAL	4,704,712	4,085,635				
TOTAL SHIPMENTS - RAIL - PRAIRIE PROVINCES						
Aug. 1937	7,515,649	2,446,520	429,472	3,050,353	19,632	465,197
Sept. 1937	28,927,332	7,223,166	1,974,666	5,506,972	40,001	347,261
Oct. 1937	19,198,935	1,396,477	3,286,270	2,280,034	61,817	147,116
Nov. 1937	13,358,771	615,362	5,575,082	3,190,132	83,492	112,299
TOTAL	64,000,687	11,681,525	11,265,490	14,027,491	204,942	1,071,873



Receipts and Shipments of Grain at Interior Public and Semi-Public Elevators for the four months ending November, 1937.

	WHEAT	DURUM WHEAT	OATS	BARLEY	FLAXSEED	RYE
	B u s h e l s					
<hr/>						
<u>RECEIPTS - RAIL</u>						
Aug. 1937	99,445	-	-	-	-	-
Sept. 1937	959,486	-	-	-	-	-
Oct. 1937	178,779	-	28,114	4,797	-	-
Nov. 1937	55,647	-	84,762	298,446	1,674	-
TOTAL	1,293,357	-	112,876	303,243	1,674	-
 <u>SHIPMENTS - RAIL</u>						
Aug. 1937	12,554	-	34,781	2,567	-	-
Sept. 1937	29,629	-	-	-	-	-
Oct. 1937	109,167	-	51	807	-	-
Nov. 1937	57,173	-	5,283	9,841	837	-
TOTAL	208,623	-	40,115	13,215	837	-

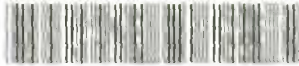
Receipts and Shipments of Grain at Vancouver-New Westminster for the four months ending November, 1937.

<u>VANCOUVER - NEW WESTMINSTER ELEVATORS - RECEIPTS - RAIL</u>						
Aug. 1937	46,275	-	-	1,081	-	-
Sept. 1937	387,823	-	96,486	4,357	-	1,235
Oct. 1937	739,798	-	37,973	31,836	89	2,244
Nov. 1937	1,199,282	-	232,591	107,790	-	2,850
TOTAL	2,372,178	-	369,050	145,064	89	6,299
<u>SHIPMENTS - VESSEL - RAIL</u>						
Aug. 1937 - Vessel	238,517	-	5,296	497	-	1
Rail	115,926	-	30,358	5,517	-	1,140
Sept. 1937 - Vessel	323,174	-	6,829	324	-	1
Rail	120,807	-	30,986	4,936	-	1,887
Oct. 1937 - Vessel	1,159,456	-	5,104	48	2	-
Rail	115,901	-	22,601	6,290	-	2,850
Nov. 1937 - Vessel	1,414,710	-	3,521	392	2	-
Rail	92,035	-	31,623	10,426	-	3,060
TOTAL - Vessel	3,135,857	-	20,750	1,261	4	2
Rail	444,669	-	115,568	25,169	-	8,937

Shipments of Grain at Churchill for the four months ending November, 1937.

<u>SHIPMENTS - VESSEL</u>						
Aug. 1937	603,982	-	-	-	-	-

STATISTICS CANADA LIBRARY
BIBLIOTHÈQUE STATISTIQUE CANADA



1010675093