

Historical File Copy

RECEIVED
STATISTICS
R
28 1938
CITY OF OTTAWA

C A N A D A

DEPARTMENT OF TRADE AND COMMERCE

DOMINION BUREAU OF STATISTICS

AGRICULTURAL BRANCH

Vol. 18

No. 25

CANADIAN GRAIN STATISTICS

Week ending

JANUARY 21, 1938

[Records for Western Inspection Division supplied by Board of Grain Commissioners for Canada]

..... + + +

Published by Authority of the HON. W.D. Euler, M.P.,
Minister of Trade and Commerce.

+ + +

OTTAWA

1938

I N D E X

General Summary	1-6
Canadian Grain in Store by Elevators	7
Canadian Grain in Store by Grades	8
Comparative Statement of Grain in Store	9
Receipts and Shipments of Canadian Grain	10
U. S. Grain in Store, Receipts and Shipments	11-12
Receipts, Shipments and Quantities in Store at Interior Terminal Elevators	12
Receipts, Shipments and Quantities in Store at Country Elevators, Western Division and Platform Loadings	13
Receipts, Shipments and Quantities in Store at Pacific Elevators, and Vancouver Prices	14
Daily and Weekly Average Prices of Grain at Fort William and Toronto for the week ending January 22, 1938	15

DEPARTMENT OF TRADE AND COMMERCE
DOMINION BUREAU OF STATISTICS - CANADA
AGRICULTURAL BRANCH

(Issued January 27, 1938)

Dominion Statistician:	R. H. Coats, LL.D., F.R.S.C., F.S.S. (Hon.)
Chief, Agricultural Branch:	T. W. Grindley, Ph.D.
Assistant Chief, Agricultural Branch:	W. Dougan.

WHEAT STOCKS IN STORE

Canadian wheat in store for the week ending January 21, 1938 decreased 916,821 bushels compared with the previous week and decreased 48,997,612 bushels when compared with the corresponding week in 1937. The amount in store was reported as 54,900,617 bushels compared with 55,817,436 bushels for the previous week and 103,898,229 bushels for the week ending January 22, 1937. The stocks of 54,900,617 bushels include 14,121,076 bushels of Durum wheat.

CANADIAN WHEAT IN THE UNITED STATES

Canadian wheat in the United States amounted to 3,793,000 bushels, a net decrease of 577,000 bushels from the previous week when 4,370,000 bushels were reported. Canadian wheat is located at the following ports: Buffalo 288,000; New York 2,528,000; Erie 701,000 and Albany 276,000 bushels. Decreases are noted at Buffalo of 38,000; Erie 290,000; New York 247,000 and Philadelphia 2,000 bushels. Stocks at Albany remained unchanged.

For the same week a year ago, Canadian wheat in the United States amounted to 24,135,232 bushels distributed as follows: Duluth 3,153,172; Buffalo 7,350,000; Erie 2,123,201; New York 8,261,012; Albany 3,048,000; Chicago 257,000; Toledo 110,648; Cleveland 310,000; Philadelphia 5,000 and Detroit 120,000 bushels.

United States wheat in Canada amounted to 1,556,620 bushels for the above week. Last year for the same week no United States wheat in Canada was reported.

CANADIAN WHEAT IN CANADA

The wheat stocks in the elevators in Canada for the week ending January 21, 1938 were 51,107,617 bushels compared with 51,447,438 bushels for the previous week and 79,762,997 bushels for the corresponding week last year.

Stocks of wheat in Canadian elevators are located as follows: Western Country Elevators 16,085,000; Interior Terminals 5,862,559; Vancouver-New Westminster 2,962,497; Prince Rupert 292,279; Churchill 11,820; Fort William and Port Arthur 10,544,333; Eastern Elevators Lake and Seaboard Ports 9,213,045 and 3,656,250 bushels respectively.

Decreases in stocks from those of the previous week were shown at the following elevators: Western Country Elevators 67,000; Interior Public and Semi-Public Elevators 9,945; Eastern Elevators Lake Ports 473,787 and Seaboard Ports 137,824 bushels. Increases were noted at the Interior Public and Mill Elevators of 15,000; Vancouver 155,740 and at the Head of the Lakes 494,546 bushels.

PRIMARY MOVEMENT

Wheat marketings in the Prairie Provinces for the week ending January 21, 1938 amounted to 1,643,038 bushels, a decrease of 489,235 bushels from the previous week when 2,132,273 bushels were marketed. During the corresponding week a year ago, the receipts were 565,008 bushels. By provinces, the receipts for the week ending January 21, 1938 were as follows, figures within brackets being those for 1937: Manitoba 223,291 (40,814); Saskatchewan 400,412 (156,554); Alberta 1,019,335 (367,640) bushels. Marketings in the three Prairie Provinces for the twenty-five weeks from August 1, 1937 to January 21, 1938 as compared with the same period in 1937 were as follows, figures within brackets being those for 1937: Manitoba 32,829,770 (18,488,532); Saskatchewan 21,758,972 (78,589,997); Alberta 48,348,168 (43,610,145) bushels. For the twenty-five weeks ending January 21, 1938 and January 22, 1937, 102,936,910 and 140,688,674 bushels respectively were received from the farms.

Wheat in rail transit amounted to 2,479,834 bushels for the week ending January 21, 1938 compared with 3,040,581 bushels for the same period last year.

1890-1891

1890-1891
1890-1891
1890-1891

1890-1891

1890-1891
1890-1891
1890-1891

1890-1891
1890-1891
1890-1891

1890-1891
1890-1891
1890-1891

1890-1891
1890-1891
1890-1891

1890-1891
1890-1891
1890-1891

1890-1891
1890-1891
1890-1891

1890-1891
1890-1891
1890-1891

1890-1891
1890-1891
1890-1891

OVERSEAS EXPORT CLEARANCES AND IMPORTS OF WHEAT INTO THE UNITED STATES

During the week ending January 21, 1938 the overseas export clearances of wheat amounted to 1,500,397 bushels while imports into the United States for consumption and milling in bond were 1,000 bushels. The total is 1,501,397 bushels as compared with 1,158,343 bushels for the previous week, an increase of 343,054 bushels and when compared with the same period in 1937, a decrease of 1,755,938 bushels.

Clearances by ports for the weeks ending January 21, 1938 and January 22, 1937 and imports into the United States for consumption and milling in bond were as follows (in bushels):-

<u>Overseas Clearances</u>	<u>Week ending January 21, 1938</u>	<u>Week ending January 22, 1937</u>
Montreal	-	-
Halifax	-	16,000
Saint John, N.B.	671,060	545,617
Vancouver-New Westminster	294,733	1,051,978
United States Ports	534,604	930,740
TOTAL	1,500,397	2,544,335
<u>Imports into the United States</u>		
For consumption and milling in bond for re-export	1,000	713,000

Total Overseas Clearances and

<u>United States Imports</u>	1,501,397	3,257,335
------------------------------	-----------	-----------

The following table shows the export clearances of Canadian wheat by ports from August 1, 1937 to January 21, 1938 along with comparative figures for the same period in 1936-37 and imports into United States for consumption and milling in bond (in bushels):-

<u>Overseas Clearances</u>	<u>1937-38</u>	<u>1936-37</u>
Montreal	22,542,088	28,681,955
Sorel	2,476,038	12,076,571
Quebec	-	1,998,072
Three Rivers	420,809	4,519,728
Halifax	103,954	630,948
Saint John, N.B.	4,915,220	3,354,012
Fort William & Port Arthur	114,374	407,578
Churchill	603,982	4,293,501
Vancouver-New Westminster	5,586,967	22,550,947
Prince Rupert	619,061	562,613
United States Ports	9,075,857	12,681,636
TOTAL	x46,458,350	91,757,561

Imports into United States

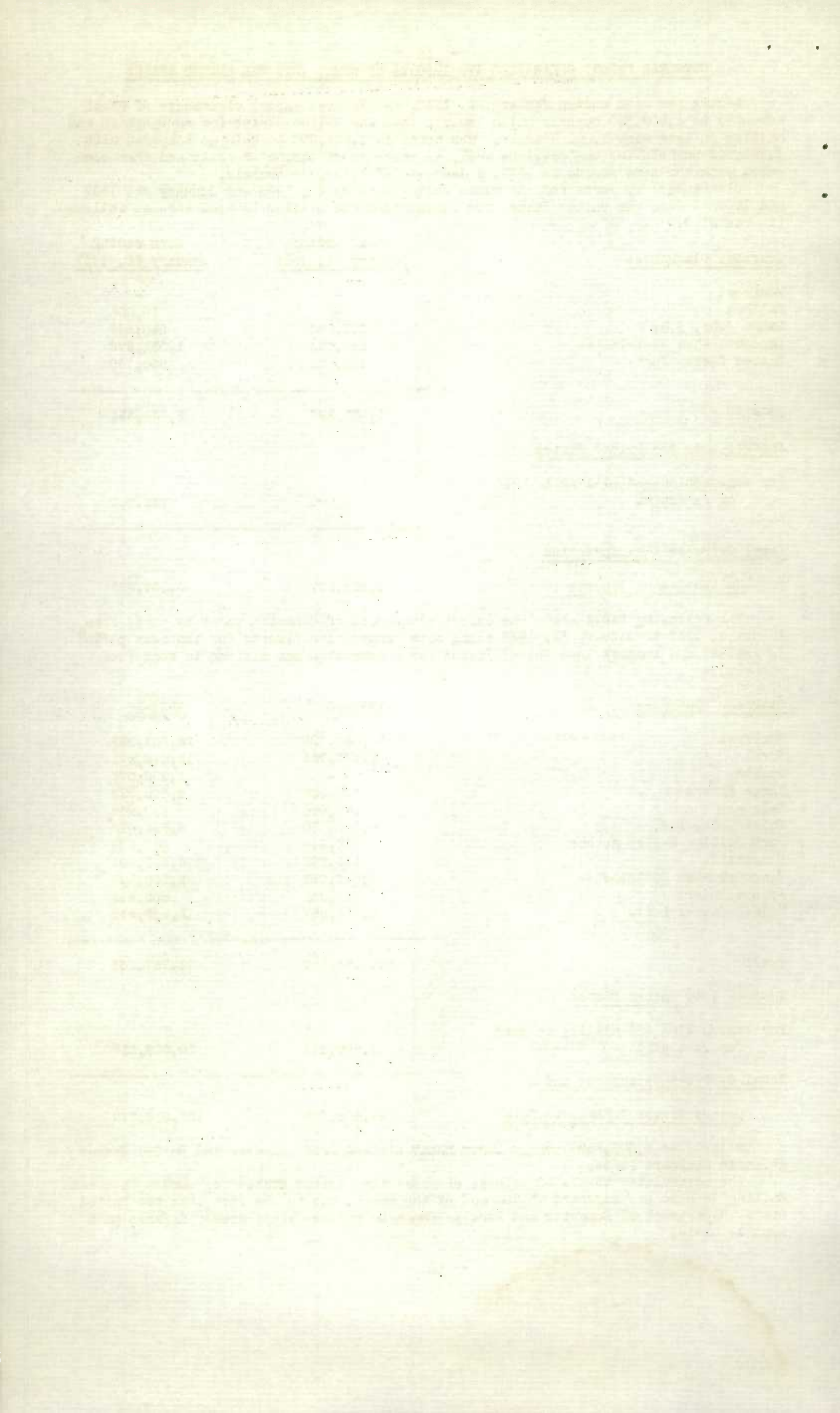
For consumption and milling in bond for re-export	1,950,426	30,859,218
--	-----------	------------

Total Overseas Clearances and

<u>United States Imports to Date</u>	48,408,776	122,616,779
--------------------------------------	------------	-------------

x Includes 4,502,559 bushels Durum Wheat cleared from Canadian and United States Atlantic Seaboard Ports.

The accumulated totals of imports of wheat into United States for consumption and milling in bond are adjusted at the end of the month, due to the fact that the United States Department of Domestic and Foreign Commerce revises their weekly figures on a monthly basis.



INTERNATIONAL TRADE

The following table shows the world shipments of wheat and wheat flour for the first twenty-five weeks of the present crop year. (Broomhall's figures.)

Week ending	North America	Argentina	Australia	Russia	Danube	India	Other	Total
(Thousand Bushels)								
August 7, 1937	2,512	888	1,808	184	638	680	280	7,040
14	2,560	880	1,472	-	880	336	416	6,544
21	4,072	856	920	88	1,192	352	192	7,672
28	2,848	968	1,440	456	1,712	248	160	7,832
Sept. 4	2,160	992	840	768	960	928	56	6,704
11	2,128	888	944	1,680	1,264	456	112	7,472
18	2,904	560	376	1,280	1,984	64	24	7,192
25	3,024	408	1,184	1,416	2,056	472	416	8,976
Oct. 2	3,312	1,144	704	1,768	1,728	200	400	9,256
9	4,048	1,216	904	2,504	2,176	552	184	11,584
16	4,400	368	2,016	1,896	1,952	88	200	10,920
23	3,568	1,072	1,104	1,480	2,352	424	80	10,080
30	4,704	256	1,712	3,632	1,408	216	-	11,928
Nov. 6	4,888	216	1,760	3,600	872	296	24	11,656
13	5,368	-	1,896	2,120	2,664	48	48	12,144
20	5,360	1,016	936	1,832	1,624	544	24	11,336
27	5,304	128	968	1,680	1,056	-	16	9,152
Dec. 4	6,360	368	2,872	960	1,600	168	-	12,328
11	3,592	408	1,472	1,240	1,496	480	16	8,704
18	4,128	1,072	2,064	1,128	504	120	16	9,032
25	4,816	1,912	2,192	320	608	360	8	10,216
Jan. 1, 1938	3,080	1,112	3,168	-	928	160	-	8,448
8	3,728	1,056	808	1,616	808	-	-	8,016
15	4,155	1,656	3,591	288	288	192	264	10,434
22	3,639	2,500	2,462	760	264	-	408	10,033
TOTAL 1936-37	96,658	21,940	39,613	32,696	33,064	7,384	3,344	234,699
25th week	3,760	7,720	3,760	-	1,296	528	608	17,672
TOTAL	151,776	47,224	39,648	88	50,192	7,392	5,712	282,032

World shipments for the week ending January 22, 1938 amounted to 10,033,000 bushels as compared with shipments of 10,434,000 bushels for the previous week and 17,672,000 bushels for the corresponding week a year ago. Shipments from North America and Australia showed a decrease of 516,000 bushels and 1,129,000 bushels respectively, as compared with the previous week, while Argentine shipments showed an increase of 844,000 bushels.

During the first twenty-five weeks of the present crop year world shipments amounted to 234.7 million bushels as compared with 282 million bushels for the corresponding weeks last year. North American shipments amounted to 96.7 million bushels this year as compared with 151.8 million bushels in 1936-37. Argentine shipments are only 21.9 million bushels this year as compared with 47.2 for the same period last year. Russian shipments amounted to 32.7 million bushels while last year for the same period they were only 88,000 bushels.

WEEKLY AVERAGE SHIPMENTS

The following table shows the weekly average shipments of wheat and wheat flour for the first twenty-five weeks of the present crop year along with the comparative figures for 1936-37:-

	North America	Argentina	Australia	Russia	Danube	India	Other	Total
(Million Bushels)								
1936-37	5.3	1.9	1.6	-	2.0	0.3	0.2	11.3
1937-38	3.9	0.9	1.6	1.3	1.3	0.3	0.1	9.4

According to the above table weekly average shipments of wheat and wheat flour amounted to 9.4 million bushels per week compared with 11.3 million bushels for the same period last year. North American weekly average shipments amounted to only 3.9 million bushels per week as compared with 5.3 million bushels for the same period in 1936-37. Russian shipments averaged 1.3 million bushels per week this year.

CANADIAN GRAIN STATISTICS - WEEK ENDING JANUARY 21, 1938

Returns received as to stocks of grain in store for the week ending Jan. 21, 1938 show a net decrease of 765,489 bushels compared with the previous week. Stocks in store were as follows:- wheat 54,900,617, oats 9,278,834, barley 10,039,880, flaxseed 487,361 and rye 1,297,574 bushels. Wheat stocks decreased 916,821 bushels, while increases were shown in oats of 102,899, barley 33,913, flaxseed 10,309 and rye 4,211 bushels. At a comparable date last year grain stocks were as follows:- wheat 103,693,893, oats 13,789,241, barley 14,390,470, flaxseed 753,410 and rye 2,082,557 bushels.

WESTERN COUNTRY ELEVATORS:- Grain stocks show a net increase of 223,000 bushels. Increases were noted in oats of 140,000, barley 145,000, flaxseed 1,000 and rye 4,000 bushels, while wheat decreased 67,000 bushels.

The following table shows the quantities of grain in store at the Country Elevators in each of the Prairie Provinces on Jan. 14, 1938 with comparison for the previous week and the same period 1937:-

	<u>MANITOBA</u>	<u>SASKATCHEWAN</u>	<u>ALBERTA</u>	<u>TOTAL</u>
		B u s h e l s		
Wheat	3,446,000	4,936,000	7,770,000	16,152,000
Oats	720,000	1,810,000	2,700,000	5,230,000
Barley	1,310,000	525,000	885,000	2,720,000
Flaxseed	58,000	94,000	10,000	162,000
Rye	143,000	73,000	57,000	273,000
TOTAL	5,677,000	7,438,000	11,422,000	24,537,000
Previous week	5,778,000	7,296,000	10,676,000	23,750,000
Same period 1937	2,706,422	19,013,192	19,598,492	41,318,106

The receipts and shipments at the Country Elevators for the week ending Jan. 14, 1938 compared with the previous week and the same period 1937 were as follows:-

	<u>R E C E I P T S</u>			<u>S H I P M E N T S</u>		
	Previous week	Week ending Jan. 14, 1938	Week ending Jan. 15, 1937	Previous week	Week ending Jan. 14, 1938	Week ending Jan. 15, 1937
Wheat	819,758	2,109,469	805,246	985,882	1,266,748	1,246,625
Oats	220,694	483,086	294,336	286,033	457,363	447,658
Barley	187,732	340,086	124,768	155,359	368,621	147,587
Flaxseed	1,256	2,557	3,433	1,785	2,103	15,777
Rye	2,971	3,415	10,163	2,592	4,171	10,204
TOTAL	1,232,411	2,938,613	1,237,946	1,431,651	2,099,006	1,867,851

Platform Loadings shown by Prairie Provinces for the period ending January 7, 1938 were as follows:-

	<u>WHEAT</u>	<u>OTHER GRAIN</u>	<u>TOTAL</u>
	B u s h e l s		
Manitoba	6,400	-	6,400
Saskatchewan	1,100	-	1,100
Alberta	15,304	19,459	34,763
TOTAL	22,804	19,459	42,263
Period ending Jan. 7, 1937	17,350	1,000	18,350
+Increase -Decrease	+5,454	+18,459	+23,913

INTERIOR PUBLIC AND SEMI-PUBLIC TERMINALS.- Stocks for the week show a net increase of 56,854 bushels. Oats increased 85,915 bushels, while wheat and barley decreased 9,945 and 19,116 bushels respectively.

VANCOUVER-NEW WESTMINSTER ELEVATORS.- Grain stocks at these elevators show a net increase of 191,942 bushels. Increases were noted in wheat of 155,740, oats 5,456, and barley 30,789 bushels, while rye decreased 43 bushels.

PRINCE RUPERT & CHURCHILL ELEVATORS.- Wheat stocks remain unchanged.

PUBLIC AND PRIVATE (PORT WILLIAM AND PORT ARTHUR).- Grain stocks show a net increase of 558,822 bushels. Increases were noted in wheat of 494,546, barley 77,565, flaxseed 7,712 and rye 2,810 bushels, while oats decreased 23,811 bushels.

STATE OF NEW YORK - SENATE

REPORT OF THE COMMISSIONER OF THE LAND OFFICE
IN RESPONSE TO A RESOLUTION PASSED BY THE SENATE
MAY 1, 1890, RELATIVE TO THE LANDS BELONGING TO THE STATE
AND THE PROCEEDINGS THEREON

ALBANY: J.B. LEECH, STATE PRINTER, 1891.

THE COMMISSIONER OF THE LAND OFFICE HAS THE HONOR TO ACKNOWLEDGE THE RECEIPT OF THE REPORT OF THE COMMISSIONER OF THE LAND OFFICE IN RESPONSE TO A RESOLUTION PASSED BY THE SENATE MAY 1, 1890, RELATIVE TO THE LANDS BELONGING TO THE STATE AND THE PROCEEDINGS THEREON.

NAME	ADDRESS	AMOUNT	DATE
JOHN J. LEECH	ALBANY, N.Y.	100.00	1890
JOHN J. LEECH	ALBANY, N.Y.	100.00	1891
JOHN J. LEECH	ALBANY, N.Y.	100.00	1892
JOHN J. LEECH	ALBANY, N.Y.	100.00	1893
JOHN J. LEECH	ALBANY, N.Y.	100.00	1894
JOHN J. LEECH	ALBANY, N.Y.	100.00	1895
JOHN J. LEECH	ALBANY, N.Y.	100.00	1896
JOHN J. LEECH	ALBANY, N.Y.	100.00	1897
JOHN J. LEECH	ALBANY, N.Y.	100.00	1898
JOHN J. LEECH	ALBANY, N.Y.	100.00	1899

THE COMMISSIONER OF THE LAND OFFICE HAS THE HONOR TO ACKNOWLEDGE THE RECEIPT OF THE REPORT OF THE COMMISSIONER OF THE LAND OFFICE IN RESPONSE TO A RESOLUTION PASSED BY THE SENATE MAY 1, 1890, RELATIVE TO THE LANDS BELONGING TO THE STATE AND THE PROCEEDINGS THEREON.

NAME	ADDRESS	AMOUNT	DATE
JOHN J. LEECH	ALBANY, N.Y.	100.00	1890
JOHN J. LEECH	ALBANY, N.Y.	100.00	1891
JOHN J. LEECH	ALBANY, N.Y.	100.00	1892
JOHN J. LEECH	ALBANY, N.Y.	100.00	1893
JOHN J. LEECH	ALBANY, N.Y.	100.00	1894
JOHN J. LEECH	ALBANY, N.Y.	100.00	1895
JOHN J. LEECH	ALBANY, N.Y.	100.00	1896
JOHN J. LEECH	ALBANY, N.Y.	100.00	1897
JOHN J. LEECH	ALBANY, N.Y.	100.00	1898
JOHN J. LEECH	ALBANY, N.Y.	100.00	1899

THE COMMISSIONER OF THE LAND OFFICE HAS THE HONOR TO ACKNOWLEDGE THE RECEIPT OF THE REPORT OF THE COMMISSIONER OF THE LAND OFFICE IN RESPONSE TO A RESOLUTION PASSED BY THE SENATE MAY 1, 1890, RELATIVE TO THE LANDS BELONGING TO THE STATE AND THE PROCEEDINGS THEREON.

NAME	ADDRESS	AMOUNT	DATE
JOHN J. LEECH	ALBANY, N.Y.	100.00	1890
JOHN J. LEECH	ALBANY, N.Y.	100.00	1891
JOHN J. LEECH	ALBANY, N.Y.	100.00	1892
JOHN J. LEECH	ALBANY, N.Y.	100.00	1893
JOHN J. LEECH	ALBANY, N.Y.	100.00	1894
JOHN J. LEECH	ALBANY, N.Y.	100.00	1895
JOHN J. LEECH	ALBANY, N.Y.	100.00	1896
JOHN J. LEECH	ALBANY, N.Y.	100.00	1897
JOHN J. LEECH	ALBANY, N.Y.	100.00	1898
JOHN J. LEECH	ALBANY, N.Y.	100.00	1899

THE COMMISSIONER OF THE LAND OFFICE HAS THE HONOR TO ACKNOWLEDGE THE RECEIPT OF THE REPORT OF THE COMMISSIONER OF THE LAND OFFICE IN RESPONSE TO A RESOLUTION PASSED BY THE SENATE MAY 1, 1890, RELATIVE TO THE LANDS BELONGING TO THE STATE AND THE PROCEEDINGS THEREON.

THE COMMISSIONER OF THE LAND OFFICE HAS THE HONOR TO ACKNOWLEDGE THE RECEIPT OF THE REPORT OF THE COMMISSIONER OF THE LAND OFFICE IN RESPONSE TO A RESOLUTION PASSED BY THE SENATE MAY 1, 1890, RELATIVE TO THE LANDS BELONGING TO THE STATE AND THE PROCEEDINGS THEREON.

THE COMMISSIONER OF THE LAND OFFICE HAS THE HONOR TO ACKNOWLEDGE THE RECEIPT OF THE REPORT OF THE COMMISSIONER OF THE LAND OFFICE IN RESPONSE TO A RESOLUTION PASSED BY THE SENATE MAY 1, 1890, RELATIVE TO THE LANDS BELONGING TO THE STATE AND THE PROCEEDINGS THEREON.

THE COMMISSIONER OF THE LAND OFFICE HAS THE HONOR TO ACKNOWLEDGE THE RECEIPT OF THE REPORT OF THE COMMISSIONER OF THE LAND OFFICE IN RESPONSE TO A RESOLUTION PASSED BY THE SENATE MAY 1, 1890, RELATIVE TO THE LANDS BELONGING TO THE STATE AND THE PROCEEDINGS THEREON.

Stocks in Store at the Head of the Lakes compared with the same week last year were as follows:-

	Week ending Jan. 21, 1938	Week ending Jan. 22, 1937	+ Increase - Decrease
Wheat	10,544,333	9,291,739	+ 1,252,594
Oats	917,278	1,735,369	- 818,091
Barley	1,205,329	2,795,598	- 1,590,269
Flaxseed	219,204	241,990	- 22,786
Rye	930,661	861,852	+ 68,809

The receipts (including transfers) at the Head of the Lakes for the period ending Jan. 21, 1938 with comparative figures for the same week last year were as follows:-

	Week ending Jan. 21, 1938	Week ending Jan. 22, 1937	+ Increase - Decrease
Wheat	321,421	90,801	+ 230,620
Oats	72,032	24,606	+ 47,426
Barley	34,071	54,934	- 20,863
Flaxseed	8	96	- 88
Rye	2,811	3,165	- 354

Preliminary figures showing receipts and shipments at the Head of the Lakes also Vancouver-New Westminster, Churchill and Prince Rupert for the period August 1, 1937 to Jan. 21, 1938 compared with the same period last year:-

	FORT WILLIAM & PORT ARTHUR		VANCOUVER-NEW WESTMINSTER	
	Receipts	Shipments	Receipts	Shipments
Wheat	62,988,183	59,043,761	5,647,826	6,135,681
Oats	3,765,174	3,759,880	1,413,572	778,742
Barley	12,411,809	12,167,060	1,128,054	434,309
Flaxseed	81,692	174,289	115	547
Rye	1,074,319	242,475	20,503	11,688
TOTAL	80,321,177	75,387,465	8,210,070	7,360,967
Same period last year	120,318,342	136,342,802	24,379,124	24,456,765
+Increase -Decrease	-39,997,165	-60,955,337	-16,169,054	-17,095,798

	PRINCE RUPERT		CHURCHILL	
	Receipts	Shipments	Receipts	Shipments
Wheat	-	619,061	-	603,982
Same period last year	447,658	562,646	2,430,846	4,293,501
+Increase -Decrease	-447,658	+56,415	-2,430,846	-3,689,519

INTERIOR PRIVATE AND MILL ELEVATORS:- Grain stocks for the week show a net decrease of 78,000 bushels. Decreases were noted in oats of 52,000, barley 43,000 and rye 1,000 bushels, while wheat and flaxseed increased 15,000 and 3,000 bushels respectively.

Stocks in store in the Western Division compared with the same week last year were as follows:-

	Week ending Jan. 21, 1938	Week ending Jan. 22, 1937	+ Increase - Decrease
Wheat	35,758,488	54,411,066	- 18,652,578
Oats	8,249,011	11,821,071	- 3,572,060
Barley	7,252,017	7,492,935	- 240,918
Flaxseed	485,246	767,929	- 282,683
Rye	1,256,011	1,373,008	- 116,997

EASTERN ELEVATORS - LAKE PORTS:- Grain stocks show a decrease of 490,816 bushels, composed of wheat 473,787, oats 797, barley 14,860 and rye 1,372 bushels.

EASTERN ELEVATORS - SEABOARD PORTS:- Grain stocks for the week show a net decrease of 181,540 bushels. Decreases were noted in wheat of 137,824 and oats 48,309 bushels, while barley and rye increased 2,795 and 1,798 bushels respectively.

Shipments overseas of Canadian Grain from Seaboard Ports were as follows:-

		United Kingdom	B u s h e l s	Other Countries
West Saint John, N.B.	Wheat	607,766		63,294
	Oats	18,823		-
	Barley	32,333		-
	Buckwheat	-		10,362

EASTERN ELEVATORS:- United States grain stocks were 6,013,845 bushels higher than at a comparable date last year. Increases were noted in wheat of 1,556,620, oats 3,256,783, rye 589,829 and corn 610,613 bushels.

Number of cars inspected in the Western Division for the week ending January 21, 1938 with comparison for the previous year were as follows:-

	Week ending Jan. 21, 1938	Week ending Jan. 21, 1937	+ Increase - Decrease
Wheat	827	829	- 2
Oats	244	184	+ 60
Barley	134	88	+ 46
Flaxseed	1	6	- 5
Rye	1	8	- 7
Mixed Grain	1	2	- 1
Screenings	1	-	+ 1
TOTAL	1,209	1,117	+ 92

The number of bushels of grain shipped from Western to the Eastern points over the C.P.R. and C.N.R. for the week ending Jan. 14, 1938 and the period from August 1, 1937 to Jan. 14, 1938:-

	WEEK ENDING JAN. 14, 1938				PERIOD AUG. 1, 1937 TO JAN. 14, 1938			
	WHEAT	OATS	BARLEY	RYE	WHEAT	OATS	BARLEY	RYE
Via C.P.R.	-	8,100	1,665	-	3,866	100,168	10,207	-
Via C.N.R.	1,383	13,986	1,559	-	14,243	312,278	21,855	-
TOTAL	1,383	22,086	3,224	-	18,109	412,446	32,062	-

DULUTH.- Receipts of Canadian bonded grain at Duluth by rail for the week ending January 15, 1938 were nil. For the period August 1, 1937 to date, rail receipts amounted to barley 23,208 bushels.

Receipts by water for the week ending January 15, 1938 were nil. For the period from August 1, 1937 to date, receipts by water amounted to barley 424,433 bushels.

Rail shipments for the week ending January 15, 1938 were nil. For the period from August 1, 1937 to date rail shipments amounted to wheat 104,442 and barley 512,675 bushels.

Lake shipments for the week ending January 15, 1938 were nil. For the period from August 1, 1937 to date, lake shipments amounted to wheat 369,848 bushels.

STOCKS OF GRAIN IN DIFFERENT ELEVATORS DURING THE WEEK ENDING JANUARY 21, 1938

	WHEAT	DURUM WHEAT B u s h e l s	OATS s h e l s	BARLEY s h e l s	FLAX- SEED s	RYE
Western Country Elevators	14240000	1845000	5370000	2865000	163000	277000
Interior Private & Mill Elevs.	4607000	174000	911000	2372000	103000	41000
Interior Pub. & Semi-Pub. Terms.	1081559	-	338333	114976	-	-
Vancouver-New Westminster	2962497	-	712400	694712	42	7350
Prince Rupert	292279	-	-	-	-	-
Churchill	11820	-	-	-	-	-
Fort William - Port Arthur	3784885	6759448	917278	1205329	219204	930661
In Transit Rail	2479834	-	330881	616957	-	3294
Eastern Elevs.- Lake Ports	5872694	3340351	398606	1311235	-	22136
Eastern Elevs.- St. Lawrence Ports	1155887	1169759	286897	451726	2115	7525
Eastern Elevs.- Seaboard Ports	1150086	180518	13439	262466	-	8608
U. S. Lake Ports	337000	652000	-	110479	-	-
U. S. Atlantic Sbd. Ports	2804000	-	-	35000	-	-
TOTAL	40779541	14121076	9278834	10039880	487361	1297574
Previous week	41708873	14108565	9175935	10005967	477052	1293363
Same week previous year	103693893		13789241	14390470	753410	2082557

QUANTITY OF SCREENINGS RECEIVED, SHIPPED AND IN STORE AT THE
UNDERMENTIONED ELEVATORS DURING THE WEEK ENDING JANUARY 21, 1938

	Amount in Store Jan. 14, 1938		Amount Received by vessel		Amount shipped		Amount in Store Jan. 21, 1938	
	Tons	Lbs.	Tons	Lbs.	Tons	Lbs.	Tons	Lbs.
Owen Sound	1,372	1,690	-	-	112	1,290	1,260	400
Goderich Elev. Co.	1,891	810	-	-	90	-	1,801	810
Toronto	388	600	-	-	60	-	328	600
TOTAL	3,652	1,100	-	-	262	1,290	3,389	1,810

DULUTH.- Receipts of Canadian bonded grain at Duluth by rail for the week ending January 22, 1938 were nil. For the period August 1, 1937 to date, rail receipts amounted to barley 23,208 bushels.

Receipts by water for the week ending January 22, 1938 were nil. For the period from August 1, 1937 to date, receipts by water amounted to barley 424,433 bushels.

Rail shipments for the week ending January 22, 1938 were nil. For the period from August 1, 1937 to date rail shipments amounted to wheat 104,442 and barley 512,675 bushels.

Lake shipments for the week ending January 22, 1938 were nil. For the period from August 1, 1937 to date, lake shipments amounted to wheat 369,848 bushels.

Name		Address		Occupation	
John	Smith	123	456	Teacher	Male
Mary	Johnson	789	101	Housewife	Female
James	Wilson	234	567	Farmer	Male
Elizabeth	Brown	890	123	Shopkeeper	Female
Robert	Miller	345	678	Blacksmith	Male
Sarah	Davis	901	234	Washer	Female
Thomas	Garcia	456	789	Merchant	Male
Anna	Lee	012	345	Laundress	Female
Charles	White	567	890	Doctor	Male
Isabella	Harris	123	456	Artist	Female

...

...

...

...

...

...

...

...

...

...

...

...

CANADIAN GRAIN IN STORE - JANUARY 21, 1938

	WHEAT	DURUM WHEAT B u s h e l s	OATS	BARLEY	FLAX- SEED	RYE
WESTERN COUNTRY ELEVATORS						
Manitoba	1810000	1710000	760000	1335000	58000	145000
Saskatchewan	4465000	135000	1865000	505000	95000	75000
Alberta	7965000	-	2755000	1025000	10000	57000
TOTAL WESTERN COUNTRY ELEVATORS	14240000	1845000	5370000	2865000	163000	277000
INTERIOR PRIVATE AND MILL	4607000	174000	911000	2372000	103000	41000
INTERIOR PUBLIC & SEMI-PUBLIC	1081559	-	338533	114976	-	-
VANCOUVER-NEW WESTMINSTER	2962497	-	712400	694712	42	7350
PRINCE RUPERT	292279	-	-	-	-	-
CHURCHILL	11820	-	-	-	-	-
Semi-Public Terminals	3784679	6759448	770378	1199682	219204	913036
Private Elevators	206	-	69291	5647	-	-
Winter Storage Afloat	-	-	77609	-	-	17625
TOTAL FT. WM. & FT. ARTHUR	3784885	6759448	917278	1205329	219204	930661
IN TRANSIT RAIL	2479834	-	330861	616957	-	3294
EASTERN ELEVATORS						
Port McNicoll	64000	-	-	59960	-	-
Midland	301019	31976	-	-	-	-
Midland Simcoe	189984	612522	193294	21255	-	-
Collingwood	56026	1361689	-	-	-	-
Owen Sound	1540918	110446	52174	501960	-	-
Goderich Elev. & Transit	323542	26201	7800	8762	-	-
Goderich West. Can. Flour Mill	199274	14972	2058	5077	-	-
Goderich W. C. F. M. Afloat	97021	-	-	-	-	-
Sarnia	952989	713436	3313	46368	-	108
Port Colborne, D.G.	33834	968	-	1308	-	-
Port Colborne, M.L.	1073964	67514	47734	16401	-	14915
Toronto	941924	332573	66488	581502	-	7113
Toronto Afloat	90000	-	-	-	-	-
Kingston, J. Richardson	8199	12278	25745	25512	-	-
Kingston Elevator Co.	-	-	-	43130	-	-
Prescott	-	55776	-	-	-	-
TOTAL EAST. ELEVS. LAKE PORTS	5872694	3340351	398606	1311235	-	22136
Montreal	547738	610114	17436	301406	2115	225
Ogilvie Flour Mills	584025	-	-	-	-	-
Dominion Elevator Co.	16074	3560	34804	85683	-	-
Three Rivers	2586	362024	-	11942	-	-
North Amer. Ltd. Sorel	1000	138052	-	15375	-	-
Quebec	4464	56009	24357	37320	-	-
West Saint John C.P.R.	482324	95279	9700	120761	-	8608
West Saint John Hbr. Comm.	651764	85239	3739	141705	-	-
Halifax	15998	-	-	-	-	-
TOTAL EAST. ELEVS. SBD. PORTS	2305973	1350277	300336	714192	2115	16133
TOTAL QUANTITY IN CANADA	37638541	13469076	9278834	9894401	487361	1297574
Duluth	-	-	-	110479	-	-
Buffalo	288000	-	-	-	-	-
Erie	49000	652000	-	-	-	-
TOTAL U. S. LAKE PORTS	337000	652000	-	110479	-	-
New York	2412000	-	-	35000	-	-
New York Afloat	116000	-	-	-	-	-
Albany	276000	-	-	-	-	-
TOTAL U. S. ATLANTIC SBD. PORTS	2804000	-	-	35000	-	-
TOTAL QUANTITY IN STORE	40779541	14121076	9278834	10039880	487361	1297574

Grades of Canadian Grain in Store at Public, Semi-Public, and Private (Head of the Lakes), Interior Public and Semi-Public, Vancouver-New Westminster, and Eastern Elevators for the week ending January 21, 1938.

	Ft. William & Pt. Arthur Semi-Public and Private	Interior Public and Semi-Public Terminals	Vancouver New West- minster Elevators	Eastern Elevators Lake Ports	Eastern Elevators St. Lawrence Ports	Eastern Elevators Maritime Ports
B u s h e l s						
WHEAT						
No. 1 Hard	8,774	6,624	31,062	-	683	-
No. 1 Northern	341,693	1,027,979	333,506	585,799	307,054	205,986
No. 2 Northern	654,783	30,270	285,403	1,251,088	271,497	256,696
Old No. 2 Northern	-	-	-	-	223	-
No. 3 Northern	830,969	2,350	1,065,689	1,128,441	175,436	380,235
No. 4 Northern	316,511	1,145	336,879	433,425	17,922	297,177
No. 4 Special	238,812	-	-	966,741	8,810	-
No. 5 Wheat	68,351	-	127,022	36,440	11,708	-
No. 5 Special	240,592	-	-	44,091	4,464	-
No. 6 Wheat	105,004	-	56,827	51,085	4,087	-
No. 6 Special	167,429	-	-	61,928	2,498	-
Feed	222,903	-	48,516	205,802	14,639	-
No. 1 C.W. Garnet	581,726	-	43,140	232,954	304,178	-
No. 2 C.W. Garnet	93,976	-	149,259	15,632	-	-
No. 1 C.W. Durum	543,061	-	-	149,633	42,725	58,065
No. 2 C.W. Durum	3,745,536	-	-	2,842,589	687,960	37,690
No. 3 C.W. Durum	2,231,132	-	-	348,129	423,532	84,764
No. 4 C.W. Durum	75,798	-	-	-	-	-
Other Durum	163,921	-	-	-	15,542	-
Other	143,363	13,191	485,194	859,268	32,683	9,991
TOTAL	10,544,333	1,081,559	2,962,497	9,213,045	2,325,646	1,330,604
OATS						
No. 2 C.W.	11,035	10,678	4,384	120,643	41,986	-
No. 3 C.W.	137,705	5,793	74,640	140,923	46,510	-
Ex. No. 1 Feed	17,076	-	49,382	-	-	-
No. 1 Feed	355,529	30,558	218,498	122,453	106,465	-
No. 2 Feed	124,286	-	44,194	-	615	-
No. 3 Feed	40,127	-	-	-	7,079	-
Other	231,520	291,304	321,302	14,587	84,242	13,439
TOTAL	917,278	338,333	712,400	398,606	286,897	13,439
BARLEY						
3 Ex. C.W. 6 Row	514,603	-	4,642	734,423	195,685	103,438
3 C.W. 6 Row	-	-	-	-	1,150	-
3 Ex. C.W. 2 Row	5,172	-	-	-	-	-
3 C.W. 2 Row	-	-	-	1,000	-	-
3 C.W.	481,681	554	230,675	253,473	230,181	159,028
4 C.W.	39,590	1,829	70,942	-	953	-
5 C.W.	31,732	787	25,179	-	3,136	-
6 C.W.	20,240	725	1,372	-	625	-
Feed	-	-	-	-	-	-
Other	112,311	111,081	361,902	317,339	14,946	-
TOTAL	1,205,329	114,976	694,712	1,311,235	451,726	262,466
FLAXSEED						
No. 1 C.W.	157,566	-	28	-	2,115	-
No. 2 C.W.	44,006	-	9	-	-	-
No. 3 C.W.	7,108	-	4	-	-	-
No. 4 C.W.	71	-	-	-	-	-
Other	10,453	-	1	-	-	-
TOTAL	219,204	-	42	-	2,115	-
RYE						
No. 1 C.W.	-	-	27	-	-	-
No. 2 C.W.	854,184	-	3	16,204	2,914	8,608
No. 3 C.W.	66,376	-	-	-	-	-
No. 4 C.W.	1,376	-	-	-	-	-
Ergoty	986	-	-	-	-	-
Other	7,739	-	7,320	5,932	4,611	-
TOTAL	930,661	-	7,350	22,136	7,525	8,608
TOTAL QUANTITY						
IN STORE	13,816,805	1,534,868	4,377,001	10,945,022	3,073,909	1,615,117

CANADIAN GRAIN IN STORE - COMPARATIVE STATEMENT, 1935-1938

	W H E A T	(Bushels)	OTHER GRAIN
<u>January 21, 1938</u>			
Country Elevators - Manitoba	3,520,000		2,288,000
Saskatchewan	4,600,000		2,540,000
Alberta	7,965,000		3,847,000
TOTAL	16,085,000		8,675,000
Interior Private and Mill	4,781,000		3,427,000
Interior Public and Semi-Public Terminals	1,081,559		453,309
Vancouver-New Westminster	2,962,497		1,414,504
Prince Rupert	292,279		-
Churchill	11,820		-
Fort William & Port Arthur	10,544,333		3,272,472
In Transit Rail	2,479,834		951,132
Eastern Elevators - Lake Ports	9,213,045		1,731,977
Eastern Elevators - Sbd. Ports	3,656,250		1,032,776
U. S. Lake Ports	989,000		110,479
U. S. Atlantic Sbd. Ports	2,804,000		35,000
TOTAL	54,900,617		21,103,649
<u>January 22, 1937</u>			
Country Elevators - Manitoba	1,693,371		989,686
Saskatchewan	12,373,709		6,077,613
Alberta	15,915,621		3,140,518
TOTAL	29,982,701		10,207,817
Interior Private and Mill	4,912,963		4,389,405
Interior Public and Semi-Public Terminals	54,761		533,873
Vancouver-New Westminster	7,863,887		273,093
Prince Rupert	910,983		-
Churchill	614,569		-
Fort William and Port Arthur	9,291,739		5,634,809
In Transit Rail	3,040,581		650,474
Eastern Elevators - Lake Ports	16,887,434		2,403,327
Eastern Elevators - Sbd. Ports	5,999,043		956,945
U. S. Lake Ports	13,424,021		5,824,208
U. S. Atlantic Sbd. Ports	10,711,211		141,727
TOTAL	103,693,893		31,015,678
<u>January 24, 1936</u>			
Country Elevators - Manitoba	6,983,559		2,809,150
Saskatchewan	48,246,479		4,943,826
Alberta	33,053,020		2,520,416
TOTAL	88,283,058		10,273,392
Interior Private and Mill	6,775,273		2,231,457
Interior Public and Semi-Public Terminals	5,044,030		534,858
Vancouver-New Westminster	14,869,983		440,094
Prince Rupert	1,027,676		-
Churchill	2,280,823		-
Fort William and Port Arthur	38,575,225		7,637,126
Eastern Elevators - Lake Ports	43,113,434		2,793,772
Eastern Elevators - Sbd. Ports	17,664,941		1,926,583
U. S. Lake Ports	20,139,505		93,872
U. S. Atlantic Sbd. Ports	9,715,309		121,830
TOTAL	247,489,257		26,052,984
<u>January 25, 1935</u>			
Country Elevators - Manitoba	10,158,430		1,450,278
Saskatchewan	51,539,138		5,406,581
Alberta	37,732,495		4,329,369
TOTAL	99,430,063		11,186,228
Interior Private and Mill	6,744,717		3,190,845
Interior Public and Semi-Public Terminals	3,350,363		929,100
Vancouver-New Westminster	12,287,088		1,145,786
Victoria	927,435		-
Prince Rupert	757,208		-
Churchill	2,389,404		-
Fort William and Port Arthur	57,811,922		8,497,458
Eastern Elevators - Lake Ports	28,642,816		2,830,750
Eastern Elevators - Sbd. Ports	11,959,787		2,735,283
U. S. Lake Ports	19,955,282		1,884,175
U. S. Atlantic Sbd. Ports	5,863,628		-
TOTAL	250,119,713		32,399,625

RECEIPTS AND SHIPMENTS OF GRAIN BY CLASSES OF ELEVATORS IN THE WEEK ENDING JAN. 21, 1938

	WHEAT	DURUM WHEAT	OATS	BARLEY	FLAX- SEED	RYE		
		B	u	s	h	e	l	s

R E C E I P T S

Country Elevators x	2,041,552	67,917	483,086	340,086	2,557	3,415
Int. Private & Mill Elevs. x	419,631	3,966	185,902	99,881	3,306	149
Int. Pub. & Semi-Pub. Terms.	-	-	85,915	4,289	-	-
Vancouver-New Westminster	475,024	-	44,062	159,918	-	-
Fort William & Port Arthur	310,431	10,990	72,032	34,071	8	2,811
Eastern Elevators -						
Georgian Bay Ports Rail	30,387	-	134	-	-	-
Lower Lake Ports Vessel	166,425	-	-	-	-	-
Rail	960	-	4,641	-	-	-
St. Lawrence Ports Rail	65,134	-	1,999	1,666	-	-
Seaboard Ports Rail	668,098	-	1,875	85,386	-	1,798

S H I P M E N T S

Country Elevators x	1,206,981	59,767	457,363	368,621	2,103	4,171
Int. Private & Mill Elevs. x	363,248	11,155	187,018	187,898	178	1,336
Int. Pub. & Semi-Pub. Terms.	9,944	-	-	23,406	-	-
Vancouver-New Westminster						
Vessel	294,733	-	37,864	126,312	89	-
Rail	24,719	-	13,489	2,236	-	40
Fort William & Port Arthur						
Rail	54,476	5,000	75,360	15,215	-	-
Eastern Elevators -						
Georgian Bay Ports Rail	383,198	-	-	7,325	-	-
Lower Lake Ports Rail	121,917	-	5,574	7,535	-	1,371
St. Lawrence Ports Rail	199,996	-	31,485	51,924	-	-
Seaboard Ports Vessel	671,060	-	18,823	32,333	-	-
Rail	-	1,875	-	-	-	-

x Week ending January 14, 1938.

STOCKS OF UNITED STATES GRAIN IN CANADA JANUARY 21, 1938

	WHEAT	OATS	RYE	CORN	SOYA BEANS
		B u s h e l s			
Midland Aberdeen	-	282,250	-	-	-
Midland Simcoe	-	1,206,529	-	-	-
Owen Sound	-	293,912	-	-	-
Goderich Elev. Co.	271,831	143,367	-	20,929	-
Goderich W. C. F. M.	78,838	-	-	-	-
Sarnia	-	439,676	-	318,237	-
Port Colborne, D.G.	179,077	1,821	-	-	-
Port Colborne, M.L.	306,253	58,372	-	76,390	-
Port Colborne Afloat	325,499	-	-	-	-
Toronto	-	184,029	245,483	114,200	20,000
Kingston, J. Richardson	-	-	-	62,577	-
Prescott	-	21,500	-	-	-
Montreal	324,592	356,962	344,346	-	19,625
Dominion Elevator Co.	-	16,401	-	-	-
Sorel	-	5,000	-	-	-
Three Rivers	70,530	26,044	-	-	-
Quebec	-	234,487	-	-	-
West St. John C.P.R.	-	-	-	6,500	-
West St. John Hbr. Comm.	-	-	-	12,103	-
Halifax	-	-	-	253	-
TOTAL	1,556,620	3,270,350	589,829	611,189	39,625
Same period last year	-	13,567	-	576	-

RECEIPTS AND SHIPMENTS OF UNITED STATES GRAIN IN CANADA JANUARY 21, 1938

	R E C E I P T S			S H I P M E N T S	
	Water	Rail		Water	Rail
GEORGIAN BAY PORTS					
Wheat	-	-	To Can. Flour Mills	-	13,825
			" Can. Dom. Points	-	47,439
Oats	-	-	" Can. Dom. Points	-	105,014
			" Quebec	-	4,250
LOWER LAKE PORTS					
Wheat	108,385	23,757	To Can. Flour Mills	-	76,576
Oats	-	-	" Can. Flour Mills	-	1,423
			" Can. Dom. Points	-	16,640
Corn	-	-	" Can. Flour Mills	-	3,314
			" Can. Dom. Points	-	3,343
ST. LAWRENCE PORTS					
Oats	-	-	To Can. Dom. Points	-	57,810
			" Can. Flour Mills	-	6,388
Corn	-	-	" Can. Seaboard	-	13,893
MARITIME PORTS					
Wheat	-	23,945	To United Kingdom	23,945	-
Corn	-	118,961	" United Kingdom	62,028	-
			" Other Countries	38,561	-
			" Can. Dom. Points	-	4,995
Rye	-	-	" Other Countries	26,877	-

RECEIPTS AND SHIPMENTS OF FOREIGN GRAIN IN CANADA JANUARY 21, 1938

ARGENTINE CORN					
Lower Lake Ports	-	-	To Can. Dom. Points	-	1,200
			" Can. Flour Mills	-	194
St. Lawrence Ports	-	-	" Can. Dom. Points	-	20,000
SOUTH AFRICAN CORN					
Georgian Bay Ports	-	-	To Can. Flour Mills	-	2,000
			" Can. Dom. Points	-	594
Lower Lake Ports	-	-	" Can. Flour Mills	-	7,040
			" Can. Dom. Points	-	27,580
St. Lawrence Ports	-	-	" Can. Dom. Points	-	96,456
			" U. S. Seaboard	-	2,000
			" Can. Flour Mills	-	4,250
Maritime Ports	-	48,713	" Can. Dom. Points	-	23,700
			" Can. Flour Mills	-	5,000
			" United Kingdom	48,713	-

STOCKS OF FOREIGN GRAIN IN CANADA JANUARY 21, 1938

	ARGENTINE CORN	SOUTH AFRICAN CORN B u s h e l s	ARGENTINE FLAXSEED	DANISH BARLEY
Goderich Elev. Co.	-	49,100	-	-
Goderich W. C. F. M.	-	22,000	-	-
Port Colborne, M. L.	42,742	110,157	-	-
Toronto	52,408	294,290	-	-
Kingston, J. Richardson	-	7,103	-	-
Prescott	-	98,291	-	-
Montreal	151,964	1,461,016	347,392	-
Dominion Elevator Co.	116,718	185,651	-	-
Sorel	-	230,351	-	-
Three Rivers	-	17,588	32,522	-
Quebec	-	292,111	-	-
Saint John	-	112,332	-	-
Halifax	-	133,001	-	-
TOTAL	363,832	3,012,991	379,914	-
Same period previous year	5,034,546	975,101	11,002	27,825

STOCKS IN STORE, RECEIPTS AND SHIPMENTS AT THE CANADIAN GOVERNMENT INTERIOR TERMINAL ELEVATORS, DURING THE WEEK ENDING JANUARY 21, 1938.

	WHEAT	OATS B u s h e l s	BARLEY B u s h e l s	FLAXSEED	RYE
<u>STOCKS IN STORE</u>					
Calgary	1,317	68,562	110,945	-	-
Edmonton	2,218	269,771	4,031	-	-
Lethbridge	1,078,024	-	-	-	-
TOTAL	1,081,559	338,333	114,976	-	-
<u>RECEIPTS</u>					
Calgary	-	10,377	1,829	-	-
Edmonton	-	75,538	2,460	-	-
Lethbridge	-	-	-	-	-
TOTAL	-	85,915	4,289	-	-
<u>SHIPMENTS - RAIL</u>					
Calgary	2,100	-	23,406	-	-
Edmonton	1,053	-	-	-	-
Lethbridge	6,791	-	-	-	-
TOTAL	9,944	-	23,406	-	-

STOCKS, RECEIPTS AND SHIPMENTS OF THE COUNTRY ELEVATORS IN THE WESTERN DIVISION IN THE
WEEK ENDING JANUARY 14, 1938.

	WHEAT	DURUM WHEAT	OATS	BARLEY	FLAXSEED	RYE
		B u s h e l s				
<u>COUNTRY ELEVATORS</u>						
<u>STOCKS IN STORE</u>						
Manitoba	1,785,000	1,661,000	720,000	1,310,000	58,000	143,000
Saskatchewan	4,790,000	146,000	1,810,000	525,000	94,000	73,000
Alberta	7,770,000	-	2,700,000	885,000	10,000	57,000
TOTAL	14,345,000	1,807,000	5,230,000	2,720,000	162,000	273,000
Total - a week ago	13,520,000	1,800,000	5,245,000	2,750,000	162,000	273,000
a year ago	30,776,084		7,738,530	1,907,346	433,810	462,336
<u>RECEIPTS DURING WEEK</u>						
Manitoba	63,878	64,833	29,297	66,032	168	1,291
Saskatchewan	515,422	3,084	99,205	30,454	2,168	432
Alberta	1,462,252	-	354,584	243,600	221	1,692
TOTAL	2,041,552	67,917	483,086	340,086	2,557	3,415
Total - a week ago	760,148	59,610	220,694	187,732	1,256	2,971
a year ago	805,246		294,336	124,768	3,433	10,163
<u>SHIPMENTS DURING WEEK</u>						
Manitoba	31,293	51,539	73,218	169,628	20	473
Saskatchewan	387,791	8,228	77,416	36,426	37	2,935
Alberta	787,897	-	306,729	162,567	2,046	763
TOTAL	1,206,981	59,767	457,363	368,621	2,103	4,171
TOTAL - a week ago	945,515	40,367	286,033	155,359	1,785	2,592
a year ago	1,246,625		447,658	147,587	15,777	10,204

TOTAL RECEIPTS AT COUNTRY ELEVATORS AND PLATFORM LOADINGS^{1/2} IN THE
PERIOD AUGUST 1, 1937 TO JANUARY 14, 1938

	W H E A T	OTHER GRAIN
	B u s h e l s	
Manitoba	32,606,479	22,382,759
Saskatchewan	21,358,560	6,394,999
Alberta	47,328,833	15,152,596
Total 1937-1938	101,293,872	43,930,354
Same period 1936-1937	140,123,666	43,568,576

^{1/2}Platform loadings to January 7, 1938.

STOCKS, RECEIPTS AND SHIPMENTS OF THE PACIFIC COAST ELEVATORS
IN THE WEEK ENDING JANUARY 21, 1938

	WHEAT	OATS B u s h e l s	BARLEY s h e l s	FLAXSEED l s	RYE
<u>STOCKS IN STORE</u>					
Vancouver-New Westminster	2,962,497	712,400	694,712	42	7,350
Prince Rupert	292,279	-	-	-	-
Churchill	11,820	-	-	-	-
<u>RECEIPTS DURING WEEK</u>					
Vancouver-New Westminster	475,024	44,062	159,918	-	-
<u>SHIPMENTS DURING WEEK</u>					
Vancouver-New Westminster					
Vessel	294,733	37,864	126,312	89	-
Rail	24,719	13,489	2,236	-	40

DAILY QUOTATIONS AND WEEKLY AVERAGES OF CASH WHEAT BY GRADES IN CENTS
AND EIGHTHS OF A CENT PER BUSHEL
IN THE WEEK ENDING JANUARY 22, 1938
(Basis Vancouver, B.C.)

	Jan. 17 \$ ¢	Jan. 18 \$ ¢	Jan. 19 \$ ¢	Jan. 20 \$ ¢	Jan. 21 \$ ¢	Jan. 22 \$ ¢	Weekly Average \$ ¢
No. 1 Hard	1.40/4	1.39/5	1.38/4	1.39/7	1.39	1.40	1.39/5
No. 1 Northern	1.40/4	1.39/5	1.38/4	1.39/7	1.39	1.40	1.39/5
No. 2 Northern	1.30/4	1.29/5	1.28/4	1.29/7	1.29	1.30	1.29/5
No. 3 Northern	1.14/4	1.13/5	1.12/4	1.13/7	1.13	1.14	1.13/5
No. 4 Northern	1.04/4	1.03/5	1.02/4	1.03/7	1.03	1.04	1.03/5
No. 5	.96/4	.95/5	.94/4	.95/7	.95	.96	.95/5
No. 6	.87/4	.86/5	.85/4	.86/7	.86	.87	.86/5
Feed	.77/4	.76/5	.75/4	.76/7	.76	.77	.76/5
No. 1 Garnet	1.06/4	1.05/5	1.04/4	1.05/7	1.05	1.06	1.05/5
No. 2 Garnet	1.04/4	1.03/5	1.02/4	1.03/7	1.03	1.04	1.03/5

RECAPITULATION OF THE RESULTS OF THE INVESTIGATION

FOR THE YEAR 1900

NAME	AGE	SEX	RELATION	EDUCATION	INDUSTRY
John Doe	25	M	Head of Family	High School	Farmer
Mary Doe	22	F	Wife	High School	Homemaker
William Doe	18	M	Son	High School	Farmer
Elizabeth Doe	15	F	Daughter	High School	Homemaker
James Doe	12	M	Son	High School	Farmer
Anna Doe	10	F	Daughter	High School	Homemaker
Robert Doe	8	M	Son	High School	Farmer
Lucy Doe	6	F	Daughter	High School	Homemaker
Charles Doe	4	M	Son	High School	Farmer
Frances Doe	3	F	Daughter	High School	Homemaker

RECAPITULATION OF THE RESULTS OF THE INVESTIGATION

FOR THE YEAR 1900

FOR THE YEAR 1900

FOR THE YEAR 1900

NAME	AGE	SEX	RELATION	EDUCATION	INDUSTRY
John Doe	25	M	Head of Family	High School	Farmer
Mary Doe	22	F	Wife	High School	Homemaker
William Doe	18	M	Son	High School	Farmer
Elizabeth Doe	15	F	Daughter	High School	Homemaker
James Doe	12	M	Son	High School	Farmer
Anna Doe	10	F	Daughter	High School	Homemaker
Robert Doe	8	M	Son	High School	Farmer
Lucy Doe	6	F	Daughter	High School	Homemaker
Charles Doe	4	M	Son	High School	Farmer
Frances Doe	3	F	Daughter	High School	Homemaker

DAILY QUOTATIONS AND WEEKLY AVERAGES OF CASH GRAIN BY
GRADES ON WINNIPEG AND TORONTO MARKETS

Week ending January 22, 1938

	Jan. 17	Jan. 18	Jan. 19	Jan. 20	Jan. 21	Jan. 22	Weekly Average
	\$	\$	\$	\$	\$	\$	\$
	¢	¢	¢	¢	¢	¢	¢
(Basis Fort William and Port Arthur)							
WHEAT							
No. 1 Man. Northern	1.48/4	1.47/5	1.44/4	1.46/7	1.48	1.47	1.47/1
No. 2 Man. Northern	1.36/4	1.36/5	1.35/4	1.36/7	1.36	1.37	1.36/3
No. 3 Man. Northern	1.13/4	1.17/5	1.17/4	1.18/7	1.18/4	1.19/6	1.18/4
No. 4 Man. Northern	1.09/4	1.08/5	1.08/4	1.09/7	1.09	1.10	1.09/2
No. 5	.97/4	.96/5	.96/4	.97/7	.97	.98	.97/2
No. 6	.88/4	.87/5	.87/4	.88/7	.88	.89	.88/2
Feed	.78/4	.77/5	.77/4	.78/7	.78	.79	.78/2
No. 1 Garnet	1.19/4	1.18/5	1.18/4	1.19/7	1.19	1.20	1.19/2
No. 2 Garnet	1.16/4	1.15/5	1.15/4	1.16/7	1.16	1.17	1.16/2
No. 4 Special	1.05/4	1.02/5	1.02/4	1.03/7	1.03	1.04	1.03/5
No. 5 Special	.93/4	.92/5	.92/4	.93/7	.93	.94	.93/2
No. 6 Special	.84/4	.83/5	.83/4	.84/7	.84	.85	.84/2
Rejected No. 1 Northern	1.21/4	1.20/5	1.20/4	1.21/7	1.21	1.22	1.21/2
No. 2 Northern	1.19/4	1.18/5	1.18/4	1.19/7	1.19	1.20	1.19/2
No. 3 Northern	1.13/4	1.12/5	1.12/4	1.13/7	1.13	1.14	1.13/2
Tough No. 1 Northern	1.46/4	1.45/5	1.42/4	1.44/7	1.46	1.45	1.45/1
No. 2 Northern	1.34/4	1.34/5	1.33/4	1.34/7	1.34	1.35	1.34/3
No. 3 Northern	1.16/4	1.15/5	1.15/4	1.16/7	1.16/4	1.17/6	1.16/4
Smutty No. 1 Northern	1.23/4	1.22/5	1.22/4	1.23/7	1.23	1.24	1.23/2
No. 2 Northern	1.20/4	1.19/5	1.19/4	1.20/7	1.20	1.21	1.20/2
No. 3 Northern	1.15/4	1.14/5	1.14/4	1.15/7	1.15	1.16	1.15/2
Durum No. 1	.88/4	.88/5	.92/4	.91/7	.91	.90	.90/3
No. 2	.86/4	.86/5	.90/4	.89/7	.89	.88	.88/3
No. 3	.83/4	.84/1	.87/4	.86/7	.86	.85	.85/3
A. R. W. No. 1	1.08/4	1.07/5	1.07/4	1.08/7	1.08	1.09	1.08/2
A. W. No. 2	1.06/4	1.05/5	1.05/4	1.06/7	1.06	1.07	1.06/2
No. 3	1.04/4	1.03/5	1.03/4	1.04/7	1.04	1.05	1.04/2
OATS							
No. 2 C.W.	.56/6	.56/3	.56/4	.56/5	.56/1	.56/1	.56/3
No. 3 C.W.	.50	.49/5	.50	.50/1	.49	.49/5	.49/6
Ex. No. 1 Feed	.50/2	.49/7	.50	.50/1	.49	.49/5	.49/7
No. 1 Feed	.45/6	.45/3	.45/4	.45/5	.45/1	.45/1	.45/3
No. 2 Feed	.41/4	.41/1	.41/2	.41/3	.40/7	.40/7	.41/1
No. 3 Feed	.38/6	.38/3	.38/4	.38/5	.38/1	.38/1	.38/3
BARLEY							
6 Row	.61/6	.62/3	.62/5	.65/1	.65/1	.65/3	.63/6
2 Row	.61/6	.62/3	.62/5	.65/1	.65/1	.65/3	.63/6
No. 3 C.W.	.60/2	.61/3	.61/5	.62/1	.62/1	.62/3	.61/5
No. 4 C.W.	.59/6	.60/3	.60/5	.61/1	.61/1	.61/3	.60/6
No. 5 C.W.	.58/2	.58/7	.59/1	.59/5	.59/5	.59/7	.59/2
No. 6 C.W.	.57/2	.57/7	.58/1	.58/5	.58/5	.58/7	.58/2
RYE							
No. 2 C.W.	.81/4	.81/7	.81	.82/2	.81/2	.82	.81/5
No. 3 C.W.	.78/4	.78/7	.78	.79/2	.78/2	.79	.78/5
Rejected No. 2 C.W.	.74/4	.74/7	.74	.75/2	.74/2	.75	.74/5
No. 4 C.W.	.74/4	.74/7	.74	.75/2	.74/2	.75	.74/5
Ergoty	.73/4	.75/7	.73	.74/2	.73/2	.74	.73/5
FLAXSEED							
No. 1 C.W.	1.77/3	1.76/7	1.76/6	1.77/6	1.77/6	1.77/7	1.77/3
No. 2 C.W.	1.73/3	1.72/7	1.72/6	1.73/6	1.73/6	1.73/7	1.73/3
No. 3 C.W.	1.52/3	1.51/7	1.51/6	1.52/6	1.52/6	1.52/7	1.52/3
No. 4 C.W.	1.47/3	1.46/7	1.46/6	1.47/6	1.47/6	1.47/7	1.47/3
Wheat, ONTARIO-TORONTO							
good milling	.99-1.00	.99-1.00	.99-1.00	.99-1.00	.99-1.00	.99-1.00	.99-1.00
Oats	.43- .45	.43- .45	.43- .45	.43- .45	.43- .45	not	.43- .45
Barley	.58- .60	.58- .60	.58- .60	.58- .60	.58- .60		.58- .60
Rye	.78- .80	.78- .80	.78- .80	.78- .80	.78- .80	avail-	.78- .80
Corn	.70- .72	.70- .72	.70- .72	.70- .72	.70- .72	able	.70- .72
Buckwheat	.62- .64	.62- .64	.62- .64	.62- .64	.62- .64		.62- .64
Malting Barley	.68- .71	.68- .71	.68- .71	.68- .71	.68- .71		.68- .71
Milling Oats	.43- .47	.43- .47	.43- .47	.43- .47	.43- .47		.43- .47
South African Corn(Y)	.91	.91	.91	.91	.91		.91
South African Corn(W)	.80	.80	.80	.80	.80		.80

STATISTICS CANADA LIBRARY
BIBLIOTHÈQUE STATISTIQUE CANADA



1010675100