

RECEIVED  
FEB 4 1938  
PROPERTY OF THE  
LIBRARY

C A N A D A  
DEPARTMENT OF TRADE AND COMMERCE  
DOMINION BUREAU OF STATISTICS  
AGRICULTURAL BRANCH

Vol. 18

No. 26

Historical File Copy

CANADIAN GRAIN STATISTICS

Week ending

JANUARY 28, 1938

[Records for Western Inspection Division supplied by Board of Grain Commissioners for Canada]

+ + +

Published by Authority of the HON. W.D. Euler, M.P.,  
Minister of Trade and Commerce.

+ + +

OTTAWA

1938

## I N D E X

General Summary .....	1-6
Canadian Grain in Store by Elevators .....	7
Canadian Grain in Store by Grades .....	8
Comparative Statement of Grain in Store .....	9
Receipts and Shipments of Canadian Grain .....	10
U. S. Grain in Store, Receipts and Shipments .....	11-12
Receipts, Shipments and Quantities in Store at Interior Terminal Elevators .....	12
Receipts, Shipments and Quantities in Store at Country Elevators, Western Division and Platform Loadings .....	13
Receipts, Shipments and Quantities in Store at Pacific Elevators, and Vancouver Prices .....	14
Daily and Weekly Average Prices of Grain at Fort William and Toronto for the week ending January 29, 1938 .....	15

---



DEPARTMENT OF TRADE AND COMMERCE  
DOMINION BUREAU OF STATISTICS - CANADA  
AGRICULTURAL BRANCH

(Issued February 3, 1938)

---

Dominion Statistician:	R. H. Coats, LL.D., F.R.S.C., F.S.S. (Hon.)
Chief, Agricultural Branch:	T. W. Grindley, Ph.D.
Assistant Chief, Agricultural Branch:	W. Dougan.

---

WHEAT STOCKS IN STORE

Canadian wheat in store for the week ending January 28, 1938 decreased 1,467,671 bushels compared with the previous week and decreased 47,943,124 bushels when compared with the corresponding week in 1937. The amount in store was reported as 53,432,946 bushels compared with 54,900,617 bushels for the previous week and 101,376,070 bushels for the week ending January 29, 1937. The stocks of 53,432,946 bushels include 14,184,386 bushels of Durum wheat.

CANADIAN WHEAT IN THE UNITED STATES

Canadian wheat in the United States amounted to 3,345,000 bushels, a net decrease of 448,000 bushels from the previous week when 3,793,000 bushels were reported. Canadian wheat is located at the following ports: Buffalo 270,000; New York 2,068,000; Erie 731,000 and Albany 276,000 bushels. Decreases are noted at Buffalo of 18,000; Erie 30,000; New York 460,000 bushels. Stocks at Albany remained unchanged.

For the same week a year ago, Canadian wheat in the United States amounted to 23,572,067 bushels distributed as follows: Duluth 2,959,474; Buffalo 6,685,000; Erie 2,123,201; New York 7,971,744; Albany 3,048,000; Chicago 239,000; Toledo 110,648; Cleveland 310,000; Philadelphia 5,000 and Detroit 120,000 bushels.

United States wheat in Canada amounted to 1,516,874 bushels for the above week. Last year for the same week no United States wheat in Canada was reported.

CANADIAN WHEAT IN CANADA

The wheat stocks in the elevators in Canada for the week ending January 28, 1938 were 50,087,946 bushels compared with 51,107,617 bushels for the previous week and 77,804,003 bushels for the corresponding week last year.

Stocks of wheat in Canadian elevators are located as follows: Western Country Elevators 15,375,000; Interior Terminals 5,799,952; Vancouver-New Westminster 3,082,419; Prince Rupert 292,279; Churchill 11,820; Fort William and Port Arthur 11,032,824; Eastern Elevators Lake and Seaboard Ports 8,788,726 and 3,527,801 bushels respectively.

Decreases in stocks from those of the previous week were shown at the following elevators: Western Country Elevators 710,000; Interior Private and Mill Elevators 67,000; Eastern Elevators Lake and Seaboard Ports 424,319 and 128,449 bushels respectively. Increases were noted at the Interior Public and Semi-Public Elevators of 4,393; Vancouver 119,922 and at the Head of the Lakes 488,491 bushels.

Wheat in rail transit amounted to 2,177,125 bushels for the week ending January 21, 1938 compared with 3,029,240 bushels for the same period last year.

PRIMARY MOVEMENT

Wheat marketings in the Prairie Provinces for the week ending January 28, 1938 amounted to 924,718 bushels, a decrease of 718,320 bushels from the previous week when 1,643,038 bushels were marketed. During the corresponding week a year ago, the receipts were 506,619 bushels. By provinces, the receipts for the week ending January 28, 1938 were as follows, figures within brackets being those for 1937: Manitoba 174,784 (25,464); Saskatchewan 229,927 (199,927); Alberta 520,007 (281,228) bushels. Marketings in the three Prairie Provinces for the twenty-six weeks from August 1, 1937 to January 28, 1938 as compared with the same period in 1937 were as follows, figures within brackets being those for 1937: Manitoba 33,004,554 (18,513,996); Saskatchewan 21,988,899 (78,789,924); Alberta 48,868,175 (43,891,373) bushels. For the twenty-six weeks ending January 28, 1938 and January 29, 1937, 103,861,628 and 141,195,293 bushels respectively were received from the farms.





OVERSEAS EXPORT CLEARANCES AND IMPORTS OF WHEAT INTO THE UNITED STATES

During the week ending January 28, 1938 the overseas export clearances of wheat amounted to 1,106,571 bushels while imports into the United States for consumption and milling in bond were 2,000 bushels. The total is 1,108,571 bushels as compared with 1,501,397 bushels for the previous week, an increase of 392,826 bushels, and when compared with the same period in 1937, a decrease of 1,028,819 bushels.

Clearances by ports for the weeks ending January 28, 1938 and January 29, 1937 and imports into the United States for consumption and milling in bond were as follows (in bushels):-

<u>Overseas Clearances</u>	<u>Week ending January 28, 1938</u>	<u>Week ending January 29, 1937</u>
Montreal	1,173	240
Halifax	15,998	16,000
Saint John, N.B.	351,944	767,000
Vancouver-New Westminster	236,000	603,807
United States Ports	401,456	174,343
 TOTAL	 1,106,571	 1,561,390
 <u>Imports into the United States</u>		
For consumption and milling in bond for re-export	2,000	576,000
 <u>Total Overseas Clearances and United States Imports</u>	 1,108,571	 2,137,390

The following table shows the export clearances of Canadian wheat by ports from August 1, 1937 to January 28, 1938 along with comparative figures for the same period in 1936-37 and imports into the United States for consumption and milling in bond (in bushels):-

<u>Overseas Clearances</u>	<u>1937-38</u>	<u>1936-37</u>
Montreal	22,543,261	28,682,195
Sorel	2,476,038	12,076,571
Quebec	-	1,998,072
Three Rivers	420,809	4,519,728
Halifax	119,952	646,948
Saint John, N.B.	5,267,164	4,121,012
Fort William & Port Arthur	114,374	407,578
Churchill	603,982	4,293,501
Vancouver-New Westminster	5,922,967	23,154,754
Prince Rupert	619,061	562,613
United States Ports	9,477,313	12,855,979
 TOTAL	 x47,564,921	 93,318,951
 <u>Imports into United States</u>		
For consumption and milling in bond for re-export	1,952,426	31,435,218
 <u>Total Overseas Clearances and United States Imports to Date</u>	 49,517,347	 124,754,169

x Includes 4,526,559 bushels Durum Wheat cleared from Canadian and United States Atlantic Seaboard Ports.

The accumulated totals of imports of wheat into United States for consumption and milling in bond are adjusted at the end of the month, due to the fact that the United States Department of Domestic and Foreign Commerce revises their weekly figures on a monthly basis.





# INTERNATIONAL TRADE

The following table shows the world shipments of wheat and wheat flour for the first twenty-six weeks of the present crop year. (Broomhall's figures.)

Week ending	North America	Argentina	Australia	Russia	Danube	India	Other	Total
(Thousand Bushels)								
August 7, 1937	2,512	888	1,808	184	638	680	280	7,040
14	2,560	880	1,472	-	880	336	416	6,544
21	4,072	856	920	88	1,192	352	192	7,672
28	2,848	968	1,440	456	1,712	248	160	7,832
Sept. 4	2,160	992	840	768	960	928	56	6,704
11	2,128	868	944	1,680	1,264	456	112	7,472
18	2,904	560	376	1,280	1,984	64	24	7,192
25	3,024	408	1,184	1,416	2,056	472	416	8,976
Oct. 2	3,312	1,144	704	1,768	1,728	200	400	9,256
9	4,048	1,216	904	2,504	2,176	552	184	11,584
16	4,400	368	2,016	1,896	1,952	88	200	10,920
23	3,568	1,072	1,104	1,480	2,352	424	80	10,080
30	4,704	256	1,712	3,632	1,408	216	-	11,928
Nov. 6	4,888	216	1,760	3,600	872	296	24	11,656
13	5,368	-	1,896	2,120	2,664	48	48	12,144
20	5,360	1,016	936	1,832	1,624	544	24	11,336
27	5,304	128	968	1,680	1,056	-	16	9,152
Dec. 4	6,360	368	2,872	960	1,600	168	-	12,328
11	3,592	408	1,472	1,240	1,496	480	16	8,704
18	4,128	1,072	2,064	1,128	504	120	16	9,032
25	4,816	1,912	2,192	320	608	360	8	10,216
Jan. 1, 1938	3,080	1,112	3,168	-	928	160	-	8,448
8	3,568	1,056	808	1,616	808	-	-	7,856
15	4,096	1,656	3,592	288	552	192	-	10,376
22	3,639	2,500	2,462	760	264	-	408	10,033
29	3,600	2,190	3,172	464	856	-	408	10,690
TOTAL 1936-1937	100,039	24,130	42,786	33,160	34,184	7,384	3,488	245,171
26th week	2,672	7,488	3,536	-	752	16	360	14,824
TOTAL	134,488	54,712	43,184	88	50,944	7,408	6,072	296,896

World shipments for the week ending January 29, 1938 amounted to 10,690,000 bushels as compared with shipments of 10,033,000 bushels for the previous week and 14,824,000 bushels for the corresponding week a year ago. Shipments from North America and Australia showed slight decreases as compared with the previous week, while Australian shipments showed an increase of 710,000 bushels.

During the first twenty-six weeks of the present crop year world shipments amounted to 245.2 million bushels as compared with 296.9 million bushels for the corresponding weeks last year. North American shipments amounted to 100 million bushels this year as compared with 134.5 million bushels in 1936-37. Argentine shipments are only 24.1 million bushels this year as compared with 54.7 for the same period last year. Russian shipments amounted to 33.2 million bushels while last year for the same period they were only 88,000 bushels.

## WEEKLY AVERAGE SHIPMENTS

The following table shows the weekly average shipments of wheat and wheat flour for the first twenty-six weeks of the present crop year along with the comparative figures for 1936-37:-

	North America	Argentina	Australia	Russia	Danube	India	Other	Total
(Million Bushels)								
1936-37	5.2	2.1	1.7	-	1.9	0.3	0.2	11.4
1937-38	3.8	0.9	1.6	1.3	1.3	0.3	0.1	9.3

According to the above table weekly average shipments of wheat and wheat flour amounted to 9.3 million bushels per week compared with 11.4 million bushels for the same period last year. North American weekly average shipments amounted to only 3.8 million bushels per week as compared with 5.2 million bushels for the same period in 1936-37. Russian shipments averaged 1.3 million bushels per week this year.







CANADIAN GRAIN STATISTICS - WEEK ENDING JANUARY 28, 1938

Returns received as to stocks of grain in store for the week ending January 28, 1938 show a net decrease of 1,557,077 bushels compared with the previous week. Grain stocks were as follows:- wheat 53,432,946, oats 9,359,666, barley 9,880,278, flaxseed 486,749 and rye 1,287,550 bushels. Decreases were noted in wheat of 1,467,671, barley 159,602, flaxseed 612 and rye 10,024 bushels while oats increased 80,832 bushels. At a comparable date last year grain stocks were as follows:- wheat 101,376,070, oats 13,351,502, barley 14,223,608, flaxseed 730,402 and rye 2,021,790 bushels.

WESTERN COUNTRY ELEVATORS:- Grain stocks show a net decrease of 937,000 bushels. Decreases were noted in wheat of 710,000, oats 230,000 and flaxseed 1,000 bushels while rye increased 4,000 bushels.

The following table shows the quantities of grain in store at the Country Elevators in each of the Prairie Provinces on January 21, 1938 with comparison for the previous week and the same period 1937:-

	<u>MANITOBA</u>	<u>SASKATCHEWAN</u>	<u>ALBERTA</u>	<u>TOTAL</u>
		B u s h e l s		
Wheat	3,520,000	4,600,000	7,965,000	16,085,000
Oats	750,000	1,865,000	2,755,000	5,370,000
Barley	1,335,000	505,000	1,025,000	2,865,000
Flaxseed	58,000	95,000	10,000	163,000
Rye	145,000	75,000	57,000	277,000
TOTAL	5,808,000	7,140,000	11,812,000	24,760,000
Previous week	5,677,000	7,438,000	11,422,000	24,537,000
Same period 1937	2,683,057	18,451,322	19,056,139	40,190,518

The receipts and shipments at the Country Elevators for the week ending Jan. 21, 1938 compared with the previous week and the same period 1937 were as follows:-

	<u>R E C E I P T S</u>			<u>S H I P M E N T S</u>		
	Previous week	Week ending Jan. 21, 1938	Week ending Jan. 22, 1937	Previous week	Week ending Jan. 21, 1938	Week ending Jan. 22, 1937
Wheat	2,109,469	1,549,258	509,973	1,266,748	1,501,106	1,369,484
Oats	483,086	656,685	284,084	457,363	434,222	560,171
Barley	340,086	360,652	109,979	368,621	186,159	120,577
Flaxseed	2,557	1,146	1,119	2,103	128	13,957
Rye	3,415	5,590	6,353	4,171	1,617	5,319
TOTAL	2,938,613	2,573,331	911,508	2,099,006	2,123,232	2,069,508

Platform loadings shown by Prairie Provinces for the period ending January 14, 1938 were as follows:-

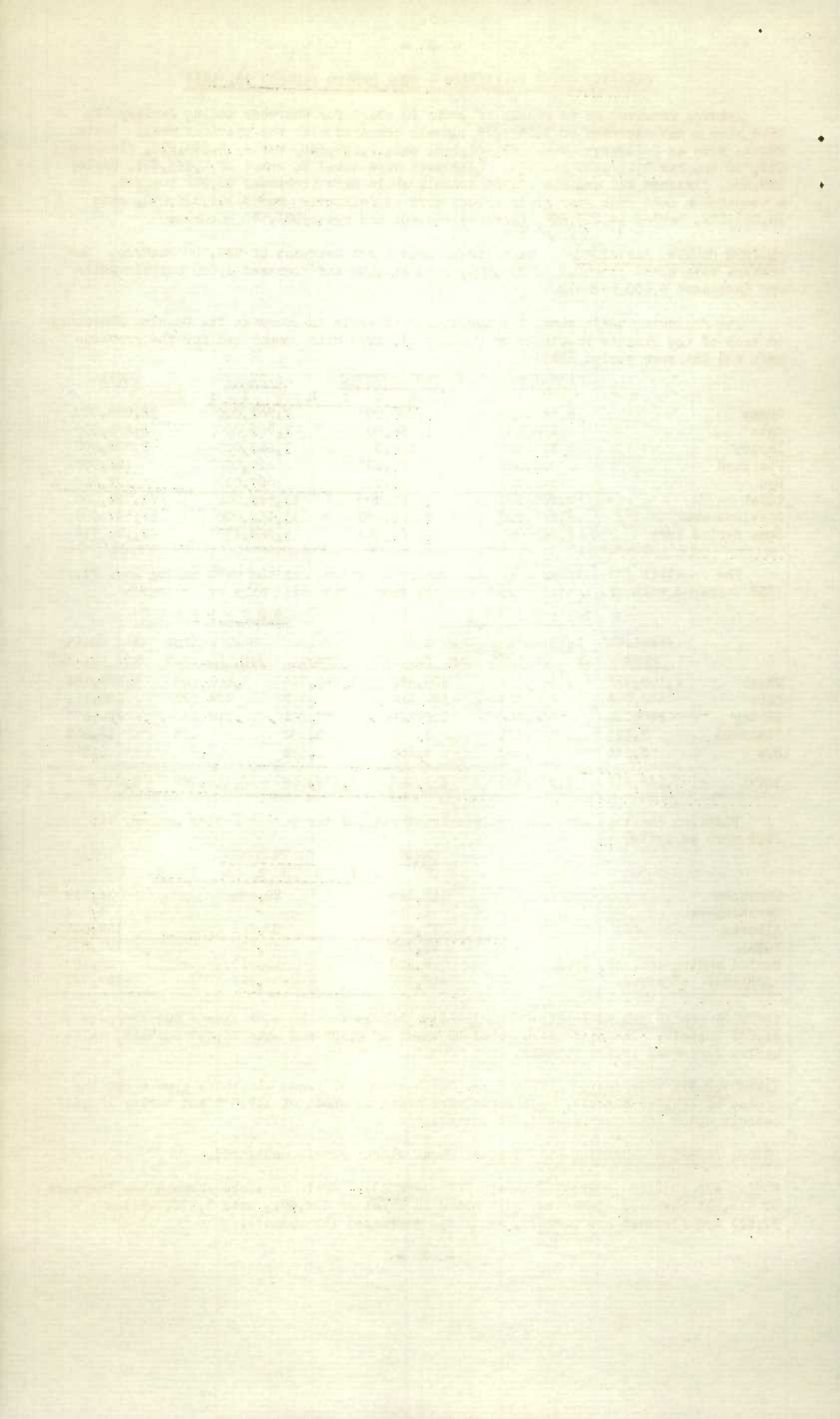
	<u>WHEAT</u>	<u>OTHER GRAIN</u>	<u>TOTAL</u>
		B u s h e l s	
Manitoba	18,348	20,468	38,816
Saskatchewan	4,012	-	4,012
Alberta	71,420	67,668	139,088
TOTAL	93,780	88,136	181,916
Period ending Jan. 14, 1937	8,520	13,639	22,159
+Increase -Decrease	+85,260	+74,497	+159,757

INTERIOR PUBLIC AND SEMI-PUBLIC TERMINALS:- Stocks for the week show a net increase of 61,031 bushels. Increases were noted in wheat of 4,393 and oats 76,217 bushels, while barley decreased 19,579 bushels.

VANCOUVER-NEW WESTMINSTER ELEVATORS:- Grain stocks at these elevators show a net increase of 252,848 bushels. Increases were noted in wheat of 119,922 and barley 136,647 bushels while oats decreased 3,721 bushels.

PRINCE RUPERT & CHURCHILL ELEVATORS:- Wheat stocks remain unchanged.

PUBLIC AND PRIVATE (FORT WILLIAM AND PORT ARTHUR):- Grain in store shows a net increase of 518,843 bushels. Increases were noted in wheat of 488,491, oats 2,575, barley 27,511 and flaxseed 388 bushels, while rye decreased 122 bushels.





Stocks in Store at the Head of the Lakes compared with the same week last year were as follows:-

	Week ending Jan. 28, 1938	Week ending Jan. 29, 1937	+ Increase - Decrease
Wheat	11,032,824	9,343,635	+ 1,689,189
Oats	919,853	1,705,617	- 785,764
Barley	1,232,840	2,829,954	- 1,597,114
Flaxseed	219,592	225,224	- 5,632
Rye	930,539	861,401	+ 69,138

The receipts (including transfers) at the Head of the Lakes for the period ending Jan. 28, 1938 with comparative figures for the same week last year were as follows:-

	Week ending Jan. 28, 1938	Week ending Jan. 29, 1937	+ Increase - Decrease
Wheat	324,678	50,976	+ 273,702
Oats	67,463	39,017	+ 28,451
Barley	38,207	33,731	+ 4,476
Flaxseed	1,776	1,260	+ 516
Rye	1,344	6,410	- 5,066

Preliminary figures showing receipts and shipments at the Head of the Lakes also Vancouver-New Westminster, Churchill and Prince Rupert for the period August 1, 1937 to January 28, 1938 compared with the same period last year:-

	FORT WILLIAM & PORT ARTHUR		VANCOUVER-NEW WESTMINSTER	
	Receipts	Shipments	Receipts	Shipments
Wheat	63,302,381	59,107,412	6,096,680	6,484,814
Oats	3,852,979	3,814,181	1,436,793	810,181
Barley	12,451,938	12,176,832	1,318,021	484,617
Flaxseed	33,468	176,923	115	548
Rye	1,075,663	242,475	20,503	11,688
TOTAL	80,746,429	75,517,823	8,872,112	7,791,848
Same period last year	120,453,594	136,473,607	24,892,168	25,165,256
+Increase -Decrease	-39,707,165	-60,955,784	-16,020,056	-18,373,408

	PRINCE RUPERT		CHURCHILL	
	Receipts	Shipments	Receipts	Shipments
Wheat	-	619,061	-	603,982
Same period last year	447,658	562,646	2,430,846	4,293,501
+Increase -Decrease	-447,658	+56,415	-2,430,846	-3,689,519

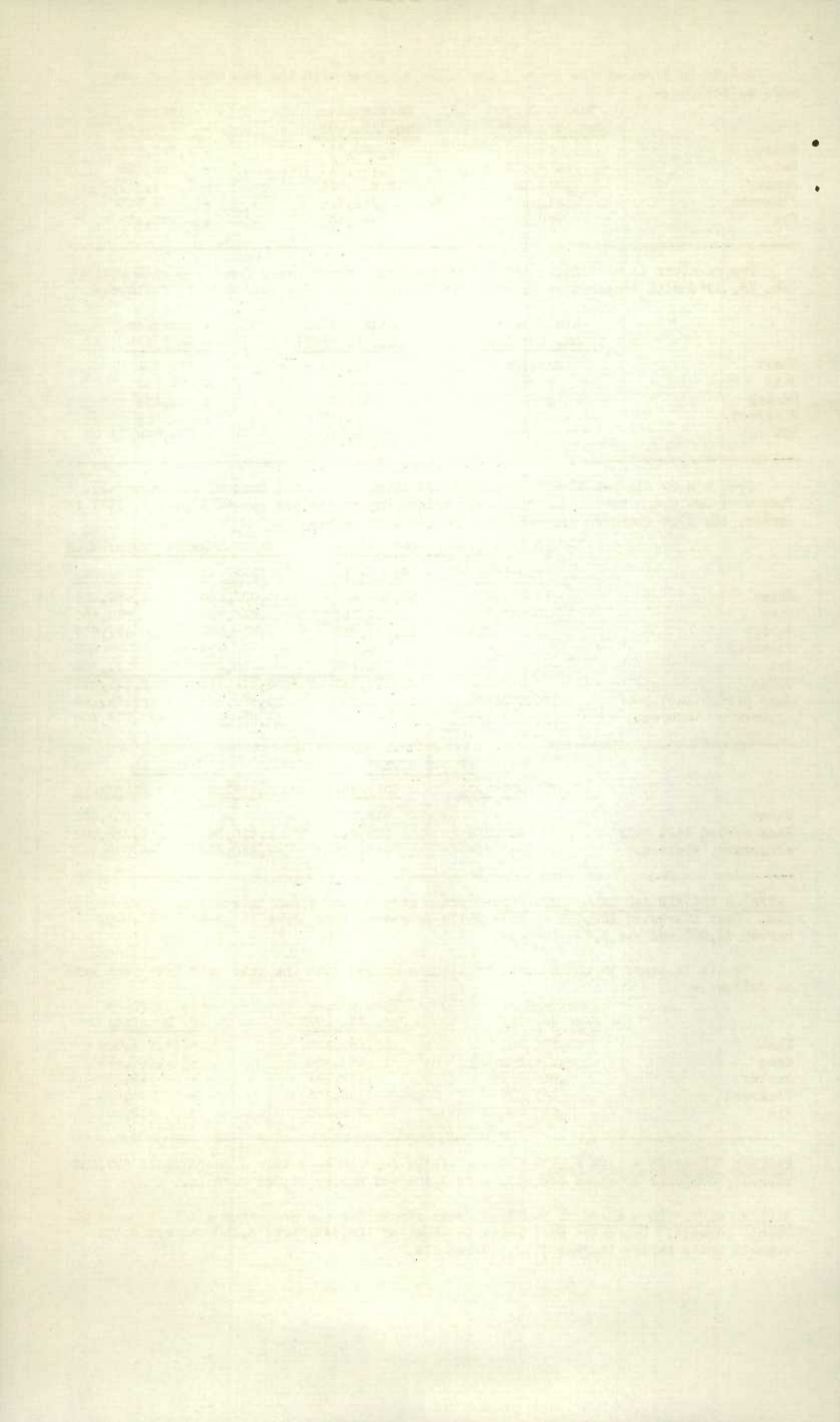
INTERIOR PRIVATE AND MILL ELEVATORS:- Grain stocks show a net increase of 9,000 bushels. Oats increased 120,000 bushels while decreases were shown in wheat of 67,000, barley 42,000 and rye 2,000 bushels.

Stocks in store in the Western Division compared with the same week last year were as follows:-

	Week ending Jan. 28, 1938	Week ending Jan. 29, 1937	+ Increase - Decrease
Wheat	35,594,294	53,565,320	- 17,971,026
Oats	8,214,032	11,450,905	- 3,236,823
Barley	7,354,596	7,467,921	- 113,325
Flaxseed	484,634	729,103	- 244,469
Rye	1,257,889	1,371,393	- 113,504

EASTERN ELEVATORS - LAKE PORTS:- Grain stocks for the week show a decrease of 507,507 bushels, composed of wheat 424,319, oats 9,105 and barley 74,083 bushels.

EASTERN ELEVATORS - SEABOARD PORTS:- Grain stocks for the week show a net decrease of 83,819 bushels. Decreases were noted in wheat of 128,449, oats 6,250 and rye 8,608 bushels while barley increased 59,488 bushels.





Shipments overseas of Canadian Grain from Seaboard Ports were as follows:-

		United Kingdom	B u s h e l s	Other Countries
West Saint John, N.B.	Wheat	351,944		-
	Barley	113,305		-
	Rye	8,608		-
Halifax, N.S.	Wheat	15,998		-

EASTERN ELEVATORS:- United States grain stocks were 5,714,767 bushels higher than at a comparable date last year. Increases were noted in wheat of 1,516,874, oats 3,035,521, rye 589,829 and corn 572,543 bushels.

Number of cars inspected in the Western Division for the week ending January 31, 1938 with comparison for the previous year were as follows:-

	Week ending Jan. 31, 1938	Week ending Jan. 31, 1937	+ Increase - Decrease
Wheat			
Oats			
Barley			
Flaxseed			
Rye			
Mixed Grain			
Screenings			
N O T R E P O R T E D			

TOTAL

The number of bushels of grain shipped from Western to the Eastern points over the C.P.R. and C.N.R. for the week ending Jan. 21, 1938 and the period from August 1, 1937 to Jan. 21, 1938:-

	WEEK ENDING JAN. 21, 1938				PERIOD AUG. 1, 1937 TO JAN. 21, 1938			
	WHEAT	OATS	BARLEY	RYE	WHEAT	OATS	BARLEY	RYE
Via C.P.R.	1,035	8,940	-	-	4,901	109,108	10,207	-
Via C.N.R.	1,383	25,974	-	-	15,626	338,252	21,855	-
TOTAL	2,418	34,914	-	-	20,527	447,360	32,062	-

DULUTH:- Receipts of Canadian bonded grain at Duluth by rail for the week ending January 29, 1938 were nil. For the period August 1, 1937 to date, rail receipts amounted to barley 23,208 bushels.

Receipts by water for the week ending January 29, 1938 were nil. For the period from August 1, 1937 to date, receipts by water amounted to barley 424,433 bushels.

Rail shipments for the week ending January 29, 1938 were nil. For the period from August 1, 1937 to date rail shipments amounted to wheat 104,442 and barley 512,675 bushels.

Lake shipments for the week ending January 29, 1938 were nil. For the period from August 1, 1937 to date, lake shipments amounted to wheat 369,848 bushels.





STOCKS OF GRAIN IN DIFFERENT ELEVATORS DURING THE WEEK ENDING JANUARY 28, 1938

	WHEAT	DURUM WHEAT	OATS	BARLEY	FLAX- SEED	RYE
		B u s h e l s				
Western Country Elevators	13475000	1900000	5140000	2865000	162000	281000
Interior Private & Mill Elevs.	4543000	171000	1031000	2330000	103000	39000
Interior Pub. & Semi-Pub. Terms.	1085952	-	414550	95397	-	-
Vancouver-New Westminster	3082419	-	708679	831359	42	7350
Prince Rupert	292279	-	-	-	-	-
Churchill	11820	-	-	-	-	-
Fort William - Port Arthur	4252904	6779920	919853	1232840	219592	930539
In Transit Rail	2177125	-	461997	369371	-	-
Eastern Elevs.- Lake Ports	5459142	3329584	389501	1237152	-	22136
Eastern Elevs. - St. Lawrence Pts.	1068162	1159361	274073	432258	2115	7525
Eastern Elevs. - Seaboard Ports	1107757	192521	20013	341422	-	-
U. S. Lake Ports	349000	652000	-	110479	-	-
U. S. Atlantic Sbd. Ports	2344000	-	-	35000	-	-
TOTAL	39248560	14184386	9359666	9880278	486749	1287550
Previous week	40779541	14121076	9278834	10039880	487361	1297574
Same week previous year	101376070		13351502	14223608	730402	2021790

QUANTITY OF SCREENINGS RECEIVED, SHIPPED AND IN STORE AT  
THE UNDERMENTIONED ELEVATORS DURING THE WEEK ENDING JANUARY 28, 1938

	Amount in Store Jan. 21, 1938		Amount Received by vessel		Amount shipped		Amount in Store Jan. 28, 1938	
	Tons	Lbs.	Tons	Lbs.	Tons	Lbs.	Tons	Lbs.
Owen Sound	1,260	400	-	-	-	-	1,260	400
Goderich Elev. Co.	1,801	810	-	-	60	-	1,741	810
Toronto	328	600	-	-	30	-	298	600
TOTAL	3,389	1,810	-	-	90	-	3,299	1,810

Published Weekly, excepting the last two weeks of December, when it is published bi-weekly.  
Subscription price, \$5.00 per annum in advance.

NAME	ADDRESS	CITY	STATE	DEPT.	CLASS.
Dr. J. H. Smith	123 Main St.	Chicago	Ill.	Medicine	Internal
Dr. W. E. Jones	456 Oak St.	St. Paul	Minn.	Surgery	General
Dr. R. L. Brown	789 Elm St.	Portland	Me.	Gynecology	Obstetrics
Dr. T. M. White	101 Pine St.	Boston	Mass.	Pediatrics	General
Dr. S. K. Green	234 Cedar St.	Philadelphia	Pa.	Medicine	Internal
Dr. P. Q. Black	567 Birch St.	New York	N.Y.	Surgery	General
Dr. M. N. Gray	890 Spruce St.	San Francisco	Calif.	Gynecology	Obstetrics
Dr. L. O. Hall	1122 Walnut St.	Los Angeles	Calif.	Pediatrics	General
Dr. K. J. Young	1345 Madison St.	Seattle	Wash.	Medicine	Internal
Dr. H. G. Adams	1567 Franklin St.	Denver	Colo.	Surgery	General

For a full and complete list of members of the American Medical Association, see the "List of Members" published in the January issue of the JOURNAL.

THE JOURNAL OF THE AMERICAN MEDICAL ASSOCIATION  
PUBLISHED WEEKLY, EXCEPTING THE LAST TWO WEEKS OF DECEMBER, WHEN IT IS PUBLISHED BI-WEEKLY.

Subscription price, \$5.00 per annum in advance.  
Single copies, 15 cents.

NAME	ADDRESS	CITY	STATE	DEPT.	CLASS.
Dr. J. H. Smith	123 Main St.	Chicago	Ill.	Medicine	Internal
Dr. W. E. Jones	456 Oak St.	St. Paul	Minn.	Surgery	General
Dr. R. L. Brown	789 Elm St.	Portland	Me.	Gynecology	Obstetrics
Dr. T. M. White	101 Pine St.	Boston	Mass.	Pediatrics	General
Dr. S. K. Green	234 Cedar St.	Philadelphia	Pa.	Medicine	Internal
Dr. P. Q. Black	567 Birch St.	New York	N.Y.	Surgery	General
Dr. M. N. Gray	890 Spruce St.	San Francisco	Calif.	Gynecology	Obstetrics
Dr. L. O. Hall	1122 Walnut St.	Los Angeles	Calif.	Pediatrics	General
Dr. K. J. Young	1345 Madison St.	Seattle	Wash.	Medicine	Internal
Dr. H. G. Adams	1567 Franklin St.	Denver	Colo.	Surgery	General



CANADIAN GRAIN IN STORE - JANUARY 28, 1938

	WHEAT	DURUM WHEAT	OATS	BARLEY	FLAX- SEED	RYE
		B u s h e l s				
<u>WESTERN COUNTRY ELEVATORS</u>						
Manitoba	1725000	1770000	750000	1380000	58000	147000
Saskatchewan	3865000	130000	1545000	435000	94000	75000
Alberta	7885000	-	2845000	1050000	10000	59000
TOTAL WESTERN COUNTRY ELEVATORS	13475000	1900000	5140000	2865000	162000	281000
INTERIOR PRIVATE AND MILL	4543000	171000	1031000	2330000	103000	39000
INTERIOR PUBLIC & SEMI-PUBLIC	1085952	-	414550	95397	-	-
VANCOUVER-NEW WESTMINSTER	3082419	-	708679	831359	42	7350
PRINCE RUPERT	292279	-	-	-	-	-
CHURCHILL	11820	-	-	-	-	-
Semi-Public Terminals	4252698	6779920	769575	1224909	219592	912914
Private Elevators	206	-	72669	7931	-	-
Winter Storage Afloat	-	-	77609	-	-	17625
TOTAL FT. WM. & PT. ARTHUR	4252904	6779920	919853	1232840	219592	930539
IN TRANSIT RAIL	2177125	-	461997	369371	-	-
<u>EASTERN ELEVATORS</u>						
Port McNicoll	64000	-	-	59960	-	-
Midland	285999	31976	-	-	-	-
Midland Simcoe	144985	612521	193294	21255	-	-
Collingwood	52026	1361689	-	-	-	-
Owen Sound	1356713	110446	52174	472610	-	-
Goderich Elev. & Transit	296832	26201	7800	8762	-	-
Goderich West. Can. Flour Mill	185519	14972	2058	5077	-	-
Goderich W. C. F. M. Afloat	97021	-	-	-	-	-
Sarnia	918989	713436	3313	46368	-	108
Port Colborne, D. G.	32834	968	-	1308	-	-
Port Colborne, M. L.	1034330	60540	45467	14128	-	14915
Toronto	892727	329573	59650	541189	-	7113
Toronto Afloat	90000	-	-	-	-	-
Kingston, J. Richardson	7167	11986	25745	24869	-	-
Kingston, Elevator Co.	-	-	-	39130	-	-
Prescott	-	55276	-	2496	-	-
TOTAL EAST. ELEVS. LAKE PORTS	5459142	3329584	389501	1237152	-	22136
Montreal	441497	603364	164620	285148	2115	7525
Ogilvie Flour Mills	602541	-	-	-	-	-
Dominion Elevator Co.	16074	2560	84251	87854	-	-
Three Rivers	2586	361876	-	11942	-	-
North Amer. Ltd. Sorel	1000	138052	-	12875	-	-
Quebec	4464	53509	25202	34439	-	-
West Saint John C.P.R.	565686	109291	9700	93595	-	-
West Saint John Hbr. Comm.	542071	83230	10313	247827	-	-
TOTAL EAST. ELEVS. SBD. PORTS	2175919	1351882	294086	773680	2115	7525
TOTAL QUANTITY IN CANADA	36555560	13532386	9359666	9734799	486749	1287550
<u>U. S. LAKE PORTS</u>						
Duluth	-	-	-	110479	-	-
Buffalo	270000	-	-	-	-	-
Erie	79000	652000	-	-	-	-
TOTAL U. S. LAKE PORTS	349000	652000	-	110479	-	-
New York	1985000	-	-	35000	-	-
New York Afloat	83000	-	-	-	-	-
Albany	276000	-	-	-	-	-
TOTAL U. S. ATLANTIC SBD. PORTS	2344000	-	-	35000	-	-
TOTAL QUANTITY IN STORE	39248560	14184386	9359666	9880278	486749	1287550

GENERAL STATEMENT OF ACCOUNTS					
DATE	DESCRIPTION	DEBIT	CREDIT	BALANCE	REMARKS
1900					
1901					
1902					
1903					
1904					
1905					
1906					
1907					
1908					
1909					
1910					
1911					
1912					
1913					
1914					
1915					
1916					
1917					
1918					
1919					
1920					
1921					
1922					
1923					
1924					
1925					
1926					
1927					
1928					
1929					
1930					
1931					
1932					
1933					
1934					
1935					
1936					
1937					
1938					
1939					
1940					
1941					
1942					
1943					
1944					
1945					
1946					
1947					
1948					
1949					
1950					
1951					
1952					
1953					
1954					
1955					
1956					
1957					
1958					
1959					
1960					
1961					
1962					
1963					
1964					
1965					
1966					
1967					
1968					
1969					
1970					
1971					
1972					
1973					
1974					
1975					
1976					
1977					
1978					
1979					
1980					
1981					
1982					
1983					
1984					
1985					
1986					
1987					
1988					
1989					
1990					
1991					
1992					
1993					
1994					
1995					
1996					
1997					
1998					
1999					
2000					
2001					
2002					
2003					
2004					
2005					
2006					
2007					
2008					
2009					
2010					
2011					
2012					
2013					
2014					
2015					
2016					
2017					
2018					
2019					
2020					
2021					
2022					
2023					
2024					
2025					
2026					
2027					
2028					
2029					
2030					
2031					
2032					
2033					
2034					
2035					
2036					
2037					
2038					
2039					
2040					
2041					
2042					
2043					
2044					
2045					
2046					
2047					
2048					
2049					
2050					
2051					
2052					
2053					
2054					
2055					
2056					
2057					
2058					
2059					
2060					
2061					
2062					
2063					
2064					
2065					
2066					
2067					
2068					
2069					
2070					
2071					
2072					
2073					
2074					
2075					
2076					
2077					
2078					
2079					
2080					
2081					
2082					
2083					
2084					
2085					
2086					
2087					
2088					
2089					
2090					
2091					
2092					
2093					
2094					
2095					
2096					
2097					
2098					
2099					
2100					



Grades of Canadian Grain in Store at Public, Semi-Public, and Private (Head of the Lakes), Interior Public and Semi-Public, Vancouver-New Westminster, and Eastern Elevators for the week ending January 28, 1938.

	Ft. William & Pt. Arthur Semi-Public and Private	Interior Public and Semi-Public Terminals	Vancouver New West- mintser Elevators	Eastern Elevators Lake Ports	Eastern Elevators St. Lawrence Ports	Eastern Elevators Maritime Ports
B u s h e l s						
WHEAT						
No. 1 Hard	7,245	6,624	32,552	-	688	-
No. 1 Northern	418,613	1,027,979	394,634	538,122	358,611	230,221
No. 2 Northern	705,135	34,662	349,531	1,097,687	243,412	180,834
Old No. 2 Northern	-	-	-	-	223	-
No. 3 Northern	980,966	2,350	1,135,483	918,220	172,101	440,001
No. 4 Northern	369,937	1,146	289,145	463,270	15,368	246,709
No. 4 Special	277,069	-	-	957,741	8,810	-
No. 5 Wheat	70,325	-	104,705	36,440	11,708	-
No. 5 Special	241,163	-	-	41,223	4,464	-
No. 6 Wheat	104,456	-	45,411	51,085	4,087	-
No. 6 Special	166,858	-	-	58,608	2,498	-
Feed	220,833	-	48,289	204,302	13,606	-
No. 1 C.W. Garnet	440,140	-	43,140	232,954	201,403	-
No. 2 C.W. Garnet	100,857	-	149,259	15,632	-	-
No. 1 C.W. Durum	551,011	-	-	149,633	42,725	58,065
No. 2 C.W. Durum	3,758,120	-	-	2,835,615	685,460	49,692
No. 3 C.W. Durum	2,231,610	-	-	344,337	416,634	84,764
No. 4 C.W. Durum	74,390	-	-	-	-	-
Other Durum	164,789	-	-	-	14,542	-
Other	149,301	13,191	490,270	843,857	31,183	9,992
TOTAL	11,032,824	1,085,952	3,082,419	8,788,726	2,227,523	1,300,278
OATS						
No. 2 C.W.	10,608	10,678	4,384	120,643	39,749	-
No. 3 C.W.	151,389	7,998	76,508	138,816	44,214	-
Ex. No. 1 Feed	14,184	-	51,155	-	-	-
No. 1 Feed	335,752	42,579	217,880	117,004	96,327	-
No. 2 Feed	123,951	-	27,724	-	615	-
No. 3 Feed	40,127	-	-	-	6,591	-
Other	243,842	353,295	331,028	13,038	86,577	20,013
TOTAL	919,853	414,550	708,679	389,501	274,073	20,013
BARLEY						
3 Ex. C.W. 6 Row	514,125	-	9,413	705,073	192,186	209,163
3 C.W. 6 Row	-	-	-	-	1,150	-
3 Ex. C.W. 2 Row	5,172	-	-	-	-	-
3 C.W. 2 Row	-	-	-	1,000	-	-
3 C.W.	488,940	1,041	310,538	251,556	212,939	132,259
4 C.W.	46,234	1,829	89,678	-	953	-
5 C.W.	37,630	788	43,893	-	9,850	-
6 C.W.	18,970	725	2,637	-	1,215	-
Feed	-	-	-	-	-	-
Other	121,769	91,014	375,200	279,523	13,965	-
TOTAL	1,232,840	95,397	831,359	1,237,152	432,258	341,422
FLAXSEED						
No. 1 C.W.	159,073	-	28	-	2,115	-
No. 2 C.W.	44,015	-	9	-	-	-
No. 3 C.W.	7,108	-	4	-	-	-
No. 4 C.W.	71	-	-	-	-	-
Other	9,325	-	1	-	-	-
TOTAL	219,592	-	42	-	2,115	-
RYE						
No. 1 C.W.	-	-	27	-	-	-
No. 2 C.W.	854,062	-	3	16,204	2,914	-
No. 3 C.W.	66,376	-	-	-	-	-
No. 4 C.W.	1,376	-	-	-	-	-
Ergoty	986	-	-	-	-	-
Other	7,739	-	7,320	5,932	4,611	-
TOTAL	930,539	-	7,350	22,136	7,525	-
TOTAL QUANTITY						
IN STORE	14,335,648	1,595,899	4,629,849	10,427,515	2,943,494	1,661,713

STATE OF NEW YORK									
IN SENATE									
JANUARY 18, 1890									
REPORT OF THE									
COMMISSIONERS OF THE LAND OFFICE									
IN RESPONSE TO A RESOLUTION PASSED BY THE SENATE									
APRIL 18, 1889									
ALBANY:									
J. B. LIPPINCOTT & CO. PRINTERS									
1890									
1	2	3	4	5	6	7	8	9	10
11	12	13	14	15	16	17	18	19	20
21	22	23	24	25	26	27	28	29	30
31	32	33	34	35	36	37	38	39	40
41	42	43	44	45	46	47	48	49	50
51	52	53	54	55	56	57	58	59	60
61	62	63	64	65	66	67	68	69	70
71	72	73	74	75	76	77	78	79	80
81	82	83	84	85	86	87	88	89	90
91	92	93	94	95	96	97	98	99	100
101	102	103	104	105	106	107	108	109	110
111	112	113	114	115	116	117	118	119	120
121	122	123	124	125	126	127	128	129	130
131	132	133	134	135	136	137	138	139	140
141	142	143	144	145	146	147	148	149	150
151	152	153	154	155	156	157	158	159	160
161	162	163	164	165	166	167	168	169	170
171	172	173	174	175	176	177	178	179	180
181	182	183	184	185	186	187	188	189	190
191	192	193	194	195	196	197	198	199	200
201	202	203	204	205	206	207	208	209	210
211	212	213	214	215	216	217	218	219	220
221	222	223	224	225	226	227	228	229	230
231	232	233	234	235	236	237	238	239	240
241	242	243	244	245	246	247	248	249	250
251	252	253	254	255	256	257	258	259	260
261	262	263	264	265	266	267	268	269	270
271	272	273	274	275	276	277	278	279	280
281	282	283	284	285	286	287	288	289	290
291	292	293	294	295	296	297	298	299	300
301	302	303	304	305	306	307	308	309	310
311	312	313	314	315	316	317	318	319	320
321	322	323	324	325	326	327	328	329	330
331	332	333	334	335	336	337	338	339	340
341	342	343	344	345	346	347	348	349	350
351	352	353	354	355	356	357	358	359	360
361	362	363	364	365	366	367	368	369	370
371	372	373	374	375	376	377	378	379	380
381	382	383	384	385	386	387	388	389	390
391	392	393	394	395	396	397	398	399	400
401	402	403	404	405	406	407	408	409	410
411	412	413	414	415	416	417	418	419	420
421	422	423	424	425	426	427	428	429	430
431	432	433	434	435	436	437	438	439	440
441	442	443	444	445	446	447	448	449	450
451	452	453	454	455	456	457	458	459	460
461	462	463	464	465	466	467	468	469	470
471	472	473	474	475	476	477	478	479	480
481	482	483	484	485	486	487	488	489	490
491	492	493	494	495	496	497	498	499	500
501	502	503	504	505	506	507	508	509	510
511	512	513	514	515	516	517	518	519	520
521	522	523	524	525	526	527	528	529	530
531	532	533	534	535	536	537	538	539	540
541	542	543	544	545	546	547	548	549	550
551	552	553	554	555	556	557	558	559	560
561	562	563	564	565	566	567	568	569	570
571	572	573	574	575	576	577	578	579	580
581	582	583	584	585	586	587	588	589	590
591	592	593	594	595	596	597	598	599	600
601	602	603	604	605	606	607	608	609	610
611	612	613	614	615	616	617	618	619	620
621	622	623	624	625	626	627	628	629	630
631	632	633	634	635	636	637	638	639	640
641	642	643	644	645	646	647	648	649	650
651	652	653	654	655	656	657	658	659	660
661	662	663	664	665	666	667	668	669	670
671	672	673	674	675	676	677	678	679	680
681	682	683	684	685	686	687	688	689	690
691	692	693	694	695	696	697	698	699	700
701	702	703	704	705	706	707	708	709	710
711	712	713	714	715	716	717	718	719	720
721	722	723	724	725	726	727	728	729	730
731	732	733	734	735	736	737	738	739	740
741	742	743	744	745	746	747	748	749	750
751	752	753	754	755	756	757	758	759	760
761	762	763	764	765	766	767	768	769	770
771	772	773	774	775	776	777	778	779	780
781	782	783	784	785	786	787	788	789	790
791	792	793	794	795	796	797	798	799	800
801	802	803	804	805	806	807	808	809	810
811	812	813	814	815	816	817	818	819	820
821	822	823	824	825	826	827	828	829	830
831	832	833	834	835	836	837	838	839	840
841	842	843	844	845	846	847	848	849	850
851	852	853	854	855	856	857	858	859	860
861	862	863	864	865	866	867	868	869	870
871	872	873	874	875	876	877	878	879	880
881	882	883	884	885	886	887	888	889	890
891	892	893	894	895	896	897	898	899	900
901	902	903	904	905	906	907	908	909	910
911	912	913	914	915	916	917	918	919	920
921	922	923	924	925	926	927	928	929	930
931	932	933	934	935	936	937	938	939	940
941	942	943	944	945	946	947	948	949	950
951	952	953	954	955	956	957	958	959	960
961	962	963	964	965	966	967	968	969	970
971	972	973	974	975	976	977	978	979	980
981	982	983	984	985	986	987	988	989	990
991	992	993	994	995	996	997	998	999	1000



CANADIAN GRAIN IN STORE - COMPARATIVE STATEMENT, 1935-1938

	W H E A T	(Bushels)	OTHER GRAIN
<u>January 28, 1938</u>			
Country Elevators - Manitoba	3,495,000		2,335,000
Saskatchewan	3,995,000		2,149,000
Alberta	7,885,000		3,964,000
TOTAL	15,375,000		8,448,000
Interior Private and Mill	4,714,000		3,503,000
Interior Public and Semi-Public Terminals	1,085,952		509,947
Vancouver-New Westminster	3,082,419		1,547,430
Prince Rupert	292,279		-
Churchill	11,820		-
Fort William and Port Arthur	11,032,824		3,302,824
In Transit Rail	2,177,125		831,368
Eastern Elevators - Lake Ports	8,788,726		1,648,789
Eastern Elevators - Sbd. Ports	3,527,801		1,077,406
U. S. Lake Ports	1,001,000		110,479
U. S. Atlantic Sbd. Ports	2,344,000		35,000
TOTAL	53,432,946		21,014,243
<u>January 29, 1937</u>			
Country Elevators - Manitoba	1,683,847		1,003,281
Saskatchewan	12,037,375		5,979,107
Alberta	15,655,614		3,080,158
TOTAL	29,376,836		10,062,546
Interior Private and Mill	5,110,872		4,371,776
Interior Public and Semi-Public Terminals	55,819		536,927
Vancouver-New Westminster	7,744,650		262,977
Prince Rupert	910,983		-
Churchill	614,569		-
Fort William and Port Arthur	9,343,635		5,622,196
In Transit Rail	3,029,240		536,693
Eastern Elevators - Lake Ports	16,179,151		2,209,610
Eastern Elevators - Sbd. Ports	5,438,248		931,127
U. S. Lake Ports	12,547,323		5,651,723
U. S. Atlantic Sbd. Ports	11,024,744		141,727
TOTAL	101,376,070		30,327,302
<u>January 31, 1936</u>			
Country Elevators - Manitoba	6,965,195		2,800,432
Saskatchewan	47,932,906		4,850,031
Alberta	32,645,463		2,595,264
TOTAL	87,543,564		10,245,727
Interior Private and Mill	6,842,695		2,209,437
Interior Public and Semi-Public Terminals	4,758,300		547,192
Vancouver-New Westminster	14,064,306		354,495
Prince Rupert	1,027,676		-
Churchill	2,280,823		-
Fort William and Port Arthur	38,779,028		7,596,686
Eastern Elevators - Lake Ports	42,197,617		2,592,046
Eastern Elevators - Sbd. Ports	17,766,056		1,897,542
U. S. Lake Ports	19,998,756		93,872
U. S. Atlantic Sbd. Ports	9,281,331		86,830
TOTAL	244,540,152		25,623,827
<u>February 1, 1935</u>			
Country Elevators - Manitoba	10,060,283		1,364,527
Saskatchewan	51,254,347		5,345,123
Alberta	37,239,723		4,227,821
TOTAL	98,554,352		10,937,471
Interior Private and Mill	6,955,111		3,099,126
Interior Public and Semi-Public Terminals	3,246,792		924,867
Vancouver-New Westminster	10,994,593		1,059,923
Victoria	927,435		-
Prince Rupert	928,123		-
Churchill	2,389,404		-
Fort William and Port Arthur	58,147,039		8,527,075
Eastern Elevators - Lake Ports	27,992,179		2,786,531
Eastern Elevators - Sbd. Ports	11,715,586		3,001,544
U. S. Lake Ports	13,371,685		1,873,425
U. S. Atlantic Sbd. Ports	5,650,525		-
TOTAL	245,852,824		32,209,962





RECEIPTS AND SHIPMENTS OF GRAIN BY CLASSES OF ELEVATORS IN THE WEEK ENDING JAN. 28, 1938

	WHEAT	DURUM WHEAT	OATS	BARLEY	FLAX- SEED	RYE
		B u s h e l s				

R E C E I P T S

Country Elevators x	1,423,432	125,826	656,685	360,652	1,146	5,590
Int. Private & Mill Elevs. x	490,462	14,619	272,458	68,624	1,829	58
Int. Pub. & Semi-Pub. Terms.	4,393	-	76,217	536	-	-
Vancouver-New Westminster	448,854	-	23,220	189,967	-	-
Fort William & Port Arthur	276,308	48,370	67,468	38,207	1,776	1,344
Eastern Elevators -						
Lower Lake Ports      Rail	1,028	-	500	4,293	-	-
St. Lawrence Ports    Rail	101,610	-	7,389	2,879	-	-
Seaboard Ports	337,615	-	6,574	192,260	-	-

S H I P M E N T S

Country Elevators x	1,416,028	85,078	434,222	186,159	128	1,617
Int. Private & Mill Elevs. x	481,659	29,756	308,944	155,049	-	1,507
Int. Pub. & Semi-Pub. Terms.	-	-	-	20,115	-	-
Vancouver-New Westminster						
Vessel	336,000	-	16,570	47,133	-	-
Rail	13,132	-	14,868	3,174	-	-
Fort William & Port Arthur						
Rail	76,573	9,192	64,724	18,506	2,635	-
Eastern Elevators -						
Georgian Bay Ports    Rail	322,689	-	-	29,350	-	-
Lower Lake Ports      Rail	102,618	-	9,604	49,026	-	-
St. Lawrence Ports    Rail	199,731	-	20,213	22,347	-	-
Seaboard Ports        Vessel	367,942	-	-	113,305	-	8,608

x Week ending January 21, 1938





STOCKS OF UNITED STATES GRAIN IN CANADA JANUARY 28, 1938

	WHEAT	OATS	RYE	CORN	SOYA BEANS
		B u s h e l s			
Midland Aberdeen	-	280,444	-	-	-
Midland Simcoe	-	1,148,176	-	-	-
Owen Sound	-	272,394	-	-	-
Goderich Elev. Co.	271,831	111,743	-	20,929	-
Goderich W. C. F. M.	73,168	"	"	-	-
Sarnia	-	424,801	"	318,237	-
Port Colborne, D. G.	166,877	1,821	-	-	-
Port Colborne, M. L.	284,377	54,534	-	74,905	-
Port Colborne Afloat	325,499	"	-	-	-
Toronto	-	182,529	245,483	92,920	20,000
Kingston, J. Richardson	-	"	-	56,954	-
Prescott	-	20,500	-	-	-
Montreal	324,592	290,160	344,346	-	19,625
Dominion Elevator Co.	-	6,154	-	-	-
Sorel	-	3,500	-	-	-
Three Rivers	70,530	25,995	-	-	-
Quebec	-	224,737	-	-	-
West St. John C.P.R.	-	-	-	6,500	-
West St. John Hbr. Comm.	-	-	-	2,323	-
Halifax	-	-	-	221	-
TOTAL	1,516,874	3,047,488	589,829	572,989	39,625
Same period last year	-	11,967	-	446	-

RECEIPTS AND SHIPMENTS OF UNITED STATES GRAIN IN CANADA JANUARY 28, 1938

R E C E I P T S			S H I P M E N T S		
	<u>Water</u>	<u>Rail</u>		<u>Water</u>	<u>Rail</u>
GEORGIAN BAY PORTS					
Wheat	-	-	To Can. Flour Mills	-	5,670
Oats	-	-	" United States	-	7,600
			" Can. Dom. Points	-	105,700
			" Quebec	-	14,875
LOWER LAKE PORTS					
Wheat	-	15,780	To Can. Flour Mills	-	49,856
Oats	-	-	" Can. Flour Mills	-	2,338
			" Can. Dom. Points	-	4,000
Corn	-	-	" Can. Flour Mills	-	1,485
			" Can. Dom. Points	-	18,303
			" Canadian Seaboard	-	8,600
ST. LAWRENCE PORTS					
Oats	-	-	To Can. Dom. Points	-	58,432
			" Can. Flour Mills	-	28,784
			" U. S. Seaboard	-	1,129
MARITIME PORTS					
Corn	-	62,015	To United Kingdom	67,800	-
			" Can. Flour Mills	-	4,027

RECEIPTS AND SHIPMENTS OF FOREIGN GRAIN IN CANADA JANUARY 28, 1938

ARGENTINE CORN					
Lower Lake Ports	-	-	To Canadian Seaboard	-	17,200
			" Can. Flour Mills	-	6,021
St. Lawrence Ports	-	-	" Can. Dom. Points	-	18,000
SOUTH AFRICAN CORN					
Georgian Bay Ports	-	-	To Can. Flour Mills	-	2,000
			" Can. Dom. Points	-	1,100
Lower Lake Ports	-	-	" Can. Flour Mills	-	5,617
			" Can. Dom. Points	-	36,321
St. Lawrence Ports	-	-	" Can. Dom. Points	-	74,219
			" U. S. Seaboard	-	2,518
			" Can. Flour Mills	-	1,250
Maritime Ports	-	-	" Can. Dom. Points	-	17,500
			" Can. Flour Mills	-	4,000





STOCKS OF FOREIGN GRAIN IN CANADA JANUARY 28, 1938

	ARGENTINE CORN	SOUTH AFRICAN CORN B u s h	ARGENTINE FLAXSEED e l s	DANISH BARLEY
Goderich Elev. Co.	-	48,000	-	-
Goderich W. C. F. M.	-	20,000	-	-
Port Colborne, M. L.	36,721	104,540	-	-
Toronto	35,208	259,148	-	-
Kingston, J. Richardson	-	5,924	-	-
Prescott	-	98,291	-	-
Montreal	133,964	1,406,979	347,392	-
Dominion Elevator Co.	116,718	177,947	-	-
Sorel	-	224,351	-	-
Three Rivers	-	17,239	32,522	-
Quebec	-	282,211	-	-
Saint John	-	102,832	-	-
Halifax	-	121,001	-	-
TOTAL	322,611	2,868,463	379,914	-
Same period previous year	4,842,161	1,104,793	-	27,825

STOCKS IN STORE, RECEIPTS AND SHIPMENTS AT THE CANADIAN GOVERNMENT INTERIOR TERMINAL ELEVATORS, DURING THE WEEK ENDING JANUARY 28, 1938

	WHEAT	OATS B u s h	BARLEY e l s	FLAXSEED e l s	RYE
<u>STOCKS IN STORE</u>					
Calgary	1,317	92,274	90,830	-	-
Edmonton	6,611	322,276	4,567	-	-
Lethbridge	1,078,024	-	-	-	-
TOTAL	1,085,952	414,550	95,397	-	-
<u>RECEIPTS</u>					
Calgary	-	23,712	-	-	-
Edmonton	4,393	52,505	536	-	-
Lethbridge	-	-	-	-	-
TOTAL	4,393	76,217	536	-	-
<u>SHIPMENTS - RAIL</u>					
Calgary	-	-	20,115	-	-
Edmonton	-	-	-	-	-
Lethbridge	-	-	-	-	-
TOTAL	-	-	20,115	-	-

# STATE OF CALIFORNIA - DEPARTMENT OF REVENUE

DATE	DESCRIPTION	AMOUNT	TOTAL
1917	...	...	...
1918	...	...	...
1919	...	...	...
1920	...	...	...
1921	...	...	...
1922	...	...	...
1923	...	...	...
1924	...	...	...
1925	...	...	...
1926	...	...	...
1927	...	...	...
1928	...	...	...
1929	...	...	...
1930	...	...	...
1931	...	...	...
1932	...	...	...
1933	...	...	...
1934	...	...	...
1935	...	...	...
1936	...	...	...
1937	...	...	...
1938	...	...	...
1939	...	...	...
1940	...	...	...
1941	...	...	...
1942	...	...	...
1943	...	...	...
1944	...	...	...
1945	...	...	...
1946	...	...	...
1947	...	...	...
1948	...	...	...
1949	...	...	...
1950	...	...	...
1951	...	...	...
1952	...	...	...
1953	...	...	...
1954	...	...	...
1955	...	...	...
1956	...	...	...
1957	...	...	...
1958	...	...	...
1959	...	...	...
1960	...	...	...
1961	...	...	...
1962	...	...	...
1963	...	...	...
1964	...	...	...
1965	...	...	...
1966	...	...	...
1967	...	...	...
1968	...	...	...
1969	...	...	...
1970	...	...	...
1971	...	...	...
1972	...	...	...
1973	...	...	...
1974	...	...	...
1975	...	...	...
1976	...	...	...
1977	...	...	...
1978	...	...	...
1979	...	...	...
1980	...	...	...
1981	...	...	...
1982	...	...	...
1983	...	...	...
1984	...	...	...
1985	...	...	...
1986	...	...	...
1987	...	...	...
1988	...	...	...
1989	...	...	...
1990	...	...	...
1991	...	...	...
1992	...	...	...
1993	...	...	...
1994	...	...	...
1995	...	...	...
1996	...	...	...
1997	...	...	...
1998	...	...	...
1999	...	...	...
2000	...	...	...
2001	...	...	...
2002	...	...	...
2003	...	...	...
2004	...	...	...
2005	...	...	...
2006	...	...	...
2007	...	...	...
2008	...	...	...
2009	...	...	...
2010	...	...	...
2011	...	...	...
2012	...	...	...
2013	...	...	...
2014	...	...	...
2015	...	...	...
2016	...	...	...
2017	...	...	...
2018	...	...	...
2019	...	...	...
2020	...	...	...
2021	...	...	...
2022	...	...	...
2023	...	...	...
2024	...	...	...
2025	...	...	...
2026	...	...	...
2027	...	...	...
2028	...	...	...
2029	...	...	...
2030	...	...	...
2031	...	...	...
2032	...	...	...
2033	...	...	...
2034	...	...	...
2035	...	...	...
2036	...	...	...
2037	...	...	...
2038	...	...	...
2039	...	...	...
2040	...	...	...
2041	...	...	...
2042	...	...	...
2043	...	...	...
2044	...	...	...
2045	...	...	...
2046	...	...	...
2047	...	...	...
2048	...	...	...
2049	...	...	...
2050	...	...	...
2051	...	...	...
2052	...	...	...
2053	...	...	...
2054	...	...	...
2055	...	...	...
2056	...	...	...
2057	...	...	...
2058	...	...	...
2059	...	...	...
2060	...	...	...
2061	...	...	...
2062	...	...	...
2063	...	...	...
2064	...	...	...
2065	...	...	...
2066	...	...	...
2067	...	...	...
2068	...	...	...
2069	...	...	...
2070	...	...	...
2071	...	...	...
2072	...	...	...
2073	...	...	...
2074	...	...	...
2075	...	...	...
2076	...	...	...
2077	...	...	...
2078	...	...	...
2079	...	...	...
2080	...	...	...
2081	...	...	...
2082	...	...	...
2083	...	...	...
2084	...	...	...
2085	...	...	...
2086	...	...	...
2087	...	...	...
2088	...	...	...
2089	...	...	...
2090	...	...	...
2091	...	...	...
2092	...	...	...
2093	...	...	...
2094	...	...	...
2095	...	...	...
2096	...	...	...
2097	...	...	...
2098	...	...	...
2099	...	...	...
2100	...	...	...



STOCKS, RECEIPTS AND SHIPMENTS OF THE COUNTRY ELEVATORS IN THE WESTERN DIVISION IN THE  
WEEK ENDING JANUARY 21, 1938

	WHEAT	DURUM WHEAT B u s h e l s	OATS	BARLEY	FLAX- SEED	RYE
<u>COUNTRY ELEVATORS</u>						
<u>STOCKS IN STORE</u>						
Manitoba	1,810,000	1,710,000	750,000	1,335,000	58,000	145,000
Saskatchewan	4,465,000	135,000	1,865,000	505,000	95,000	75,000
Alberta	7,965,000	-	2,755,000	1,025,000	10,000	57,000
TOTAL	14,240,000	1,845,000	5,370,000	2,865,000	163,000	277,000
Total - a week ago	14,345,000	1,807,000	5,230,000	2,720,000	162,000	273,000
a year ago	29,982,701		7,429,601	1,893,349	421,263	463,604
<u>RECEIPTS DURING WEEK</u>						
Manitoba	90,237	114,706	60,381	82,856	121	1,905
Saskatchewan	385,280	11,120	121,193	43,856	982	2,226
Alberta	947,915	-	475,111	233,940	43	1,459
TOTAL	1,423,432	125,826	656,685	360,652	1,146	5,590
Total - a week ago	2,041,552	67,917	483,086	340,086	2,557	3,415
a year ago	509,973		284,084	109,979	1,119	6,353
<u>SHIPMENTS DURING WEEK</u>						
Manitoba	58,272	65,536	28,882	54,900	10	162
Saskatchewan	708,013	19,539	12,574	33,257	118	445
Alberta	649,743	3	392,766	98,002	-	1,010
TOTAL	1,416,028	85,078	434,222	186,159	128	1,617
Total - a week ago	1,206,981	59,767	457,363	368,621	2,103	4,171
a year ago	1,369,484		560,171	120,577	13,957	5,319

TOTAL RECEIPTS AT COUNTRY ELEVATORS AND PLATFORM LOADINGS\* IN THE  
PERIOD AUGUST 1, 1937 TO JANUARY 21, 1938

	W H E A T B u s h e l s	OTHER GRAIN
Manitoba	32,829,770	22,548,490
Saskatchewan	21,758,972	6,563,256
Alberta	48,348,168	15,930,817
Total 1937-1938	102,936,910	45,042,563
Same period 1936-1937	140,688,674	43,972,574

\*Platform loadings to Jan. 14, 1938.





STOCKS, RECEIPTS AND SHIPMENTS OF THE PACIFIC COAST ELEVATORS

IN THE WEEK ENDING JANUARY 28, 1938

	WHEAT	OATS B u s h e l s	BARLEY B u s h e l s	FLAXSEED l s	RYE
<u>STOCKS IN STORE</u>					
Vancouver-New Westminster	3,082,419	708,679	831,359	42	7,350
Prince Rupert	292,279	-	-	-	-
Churchill	11,820	-	-	-	-

RECEIPTS DURING WEEK

Vancouver-New Westminster	448,854	23,220	189,967	-	-
---------------------------	---------	--------	---------	---	---

SHIPMENTS DURING WEEK

Vancouver-New Westminster					
Vessel	336,000	16,570	47,133	-	-
Rail	13,132	14,868	3,174	-	-

DAILY QUOTATIONS AND WEEKLY AVERAGES OF CASH WHEAT BY GRADES IN CENTS AND

EIGHTHS OF A CENT PER BUSHEL

IN THE WEEK ENDING JANUARY 29, 1938

(Basis Vancouver, B.C.)

	Jan. 24 \$ ¢	Jan. 25 \$ ¢	Jan. 26 \$ ¢	Jan. 27 \$ ¢	Jan. 28 \$ ¢	Jan. 29 \$ ¢	Weekly Average \$ ¢
No. 1 Hard	1.41/7	1.41/7	1.39/5	1.40/1	1.40	1.39/2	1.40/4
No. 1 Northern	1.41/7	1.41/7	1.39/5	1.40/1	1.40	1.39/2	1.40/4
No. 2 Northern	1.31/7	1.31/7	1.29/5	1.30/1	1.30	1.29/2	1.30/4
No. 3 Northern	1.15/7	1.15/7	1.13/5	1.14/1	1.14	1.13/2	1.14/4
No. 4 Northern	1.05/7	1.05/7	1.03/5	1.04/1	1.04	1.03/2	1.04/4
No. 5	.97/7	.97/7	.95/5	.96/1	.96	.95/2	.96/4
No. 6	.88/7	.88/7	.86/5	.87/1	.87	.86/2	.87/4
Feed	.78/7	.78/7	.76/5	.77/1	.77	.76/2	.77/4
No. 1 Garnet	1.07/7	1.07/7	1.05/5	1.06/1	1.06	1.05/2	1.06/4
No. 2 Garnet	1.05/7	1.05/7	1.03/5	1.04/2	1.04	1.03/2	1.04/4

# STATE OF NEW YORK

IN SENATE

JANUARY 1, 1900

REPORT OF THE

COMMISSIONERS OF THE LAND OFFICE

FOR THE YEAR 1899

ALBANY: PUBLISHED BY THE STATE PRINTING OFFICE, 1899.

JANUARY 1, 1900

IN SENATE

JANUARY 1, 1900

NAME	RESIDENCE	DATE	AMOUNT	REMARKS
JOHN A. BROWN	ALBANY	1899	100.00	PAID TO
JAMES C. DAVIS	ALBANY	1899	200.00	PAID TO
WILLIAM E. FOSTER	ALBANY	1899	300.00	PAID TO
CHARLES G. HARRIS	ALBANY	1899	400.00	PAID TO
EDWARD H. JONES	ALBANY	1899	500.00	PAID TO
FRANK I. KELLY	ALBANY	1899	600.00	PAID TO
GEORGE K. LEE	ALBANY	1899	700.00	PAID TO
HENRY L. MANN	ALBANY	1899	800.00	PAID TO
JOHN M. NICHOLS	ALBANY	1899	900.00	PAID TO
WILLIAM O. PETERSON	ALBANY	1899	1000.00	PAID TO
CHARLES Q. RICHARDS	ALBANY	1899	1100.00	PAID TO
EDWARD S. SMITH	ALBANY	1899	1200.00	PAID TO
FRANK T. TAYLOR	ALBANY	1899	1300.00	PAID TO
GEORGE U. VAN DYKE	ALBANY	1899	1400.00	PAID TO
HENRY V. WATSON	ALBANY	1899	1500.00	PAID TO
JOHN W. YOUNG	ALBANY	1899	1600.00	PAID TO
WILLIAM Z. ZIMMERMAN	ALBANY	1899	1700.00	PAID TO



DAILY QUOTATIONS AND WEEKLY AVERAGES OF CASH GRAIN BY  
GRADES ON WINNIPEG AND TORONTO MARKETS

Week ending January 29, 1938

	Jan. 24	Jan. 25	Jan. 26	Jan. 27	Jan. 28	Jan. 29	Weekly Average
	\$ ¢	\$ ¢	\$ ¢	\$ ¢	\$ ¢	\$ ¢	\$ ¢
(Basis Fort William and Port Arthur)							
<u>WHEAT</u>							
No. 1 Man. Northern	1.48/7	1.48/7	1.46/5	1.47/1	1.48	1.47/2	1.47/6
No. 2 Man. Northern	1.38/7	1.38/7	1.35/5	1.36/1	1.37/4	1.36/6	1.37/2
No. 3 Man. Northern	1.21/5	1.21/5	1.19/3	1.20/5	1.20/4	1.19/6	1.20/5
No. 4 Man. Northern	1.11/7	1.11/7	1.09/5	1.11/5	1.11/4	1.10/6	1.11/2
No. 5	.99/7	.99/7	.97/5	.98/1	.98	.97/2	.98/4
No. 6	.90/7	.90/7	.88/5	.89/1	.89	.88/2	.89/4
Feed	.80/7	.80/7	.78/5	.79/1	.79	.78/2	.79/4
No. 1 Garnet	1.21/7	1.21/7	1.19/5	1.20/1	1.20	1.19/2	1.20/4
No. 2 Garnet	1.18/7	1.18/7	1.16/5	1.17/1	1.17	1.16/2	1.17/4
No. 4 Special	1.05/7	1.05/7	1.03/5	1.04/1	1.04	1.03/2	1.04/4
No. 5 Special	.95/7	.95/7	.93/5	.94/1	.94	.93/2	.94/4
No. 6 Special	.86/7	.86/7	.84/5	.85/1	.85	.84/2	.85/4
Rejected No. 1 Northern	1.23/7	1.23/7	1.21/5	1.22/1	1.22	1.21/2	1.22/4
No. 2 Northern	1.21/7	1.21/7	1.19/5	1.20/1	1.20	1.19/2	1.20/4
No. 3 Northern	1.15/7	1.15/7	1.13/5	1.14/1	1.14	1.13/2	1.14/4
Tough No. 1 Northern	1.46/7	1.46/7	1.44/5	1.45/1	1.46	1.45/2	1.45/6
No. 2 Northern	1.36/7	1.36/7	1.33/5	1.34/1	1.35/4	1.34/6	1.35/3
No. 3 Northern	1.19/5	1.19/5	1.17/3	1.18/5	1.18/4	1.17/6	1.18/5
Smutty No. 1 Northern	1.25/7	1.25/7	1.23/5	1.24/1	1.24	1.23/2	1.24/4
No. 2 Northern	1.22/7	1.22/7	1.20/5	1.21/1	1.21	1.20/2	1.21/4
No. 3 Northern	1.17/7	1.17/7	1.15/5	1.16/1	1.16	1.15/2	1.16/4
Durum No. 1	.91/7	.91/7	.89/5	.90/1	.90	.89/2	.90/4
No. 2	.89/7	.89/7	.87/5	.88/1	.88	.87/2	.88/4
No. 3	.86/7	.86/7	.84/5	.85/1	.85	.84/2	.85/4
A. R. W. No. 1	1.10/7	1.10/7	1.08/5	1.09/1	1.09	1.08/2	1.09/4
A. W. No. 2	1.08/7	1.08/7	1.06/5	1.07/1	1.07	1.06/2	1.07/4
No. 3	1.06/7	1.06/7	1.04/5	1.05/1	1.05	1.04/2	1.05/4
<u>OATS</u>							
No. 2 C.W.	.56/2	.56/6	.56/5	.57/4	.57	.56/5	.56/6
No. 3 C.W.	.49/6	.50/2	.50/1	.51	.50/4	.49/5	.50/2
Ex. No. 1 Feed	.49/6	.50/2	.50/1	.51	.50/4	.49/5	.50/2
No. 1 Feed	.45/2	.45/6	.45/5	.46/4	.46	.45/1	.45/6
No. 2 Feed	.41	.41/4	.41/3	.42/2	.41/6	.40/7	.41/4
No. 3 Feed	.38/2	.38/6	.38/5	.39/4	.39	.38/1	.38/6
<u>BARLEY</u>							
6 Row	.65/7	.65/2	.64/5	.65/3	.65/3	.65/6	.65/3
2 Row	.65/7	.65/2	.64/5	.65/3	.65/3	.65/6	.65/3
No. 3 C.W.	.62/7	.62/2	.61/5	.61/7	.61/7	.62/2	.62/1
No. 4 C.W.	.61/7	.61/2	.60/5	.60/7	.60/7	.61/2	.61/1
No. 5 C.W.	.60/3	.59/6	.59/1	.59/3	.59/3	.59/6	.59/5
No. 6 C.W.	.59/3	.58/6	.58/1	.58/3	.58/3	.58/6	.58/5
<u>RYE</u>							
No. 2 C.W.	.82/6	.83/2	.81/1	.81/5	.82/2	.81	.82
No. 3 C.W.	.79/6	.80/2	.78/1	.78/5	.79/2	.78	.79
Rejected No. 2 C.W.	.75/6	.76/2	.74/1	.74/5	.75/2	.74	.75
No. 4 C.W.	.75/6	.76/2	.74/1	.74/5	.75/2	.74	.75
Ergoty	.74/6	.75/2	.73/1	.73/5	.74/2	.73	.74
<u>FLAXSEED</u>							
No. 1 C.W.	1.77/7	1.77/4	1.76/6	1.76/6	1.76/6	1.75/4	1.76/7
No. 2 C.W.	1.73/7	1.73/4	1.72/6	1.72/6	1.72/6	1.71/4	1.72/7
No. 3 C.W.	1.52/7	1.52/4	1.51/6	1.51/6	1.51/6	1.50/4	1.51/7
No. 4 C.W.	1.47/7	1.47/4	1.46/6	1.46/6	1.46/6	1.45/4	1.45/7
<u>Wheat, good milling</u>							
Oats	.45- .47	.45- .47	.45- .47	.45- .47	.45- .47	not	.45- .47
Barley	.60- .62	.60- .62	.60- .62	.60- .62	.60- .62		.60- .62
Rye	.80- .82	.80- .82	.80- .82	.80- .82	.80- .82	avail-	.80- .82
Corn	.70- .72	.70- .72	.70- .72	.70- .72	.70- .72		.70- .72
Buckwheat	.64- .66	.64- .66	.64- .66	.64- .66	.64- .66	able	.64- .66
Malting Barley	.68- .71	.68- .71	.68- .71	.68- .71	.68- .71		.68- .71
Milling Oats	.45- .47	.45- .47	.45- .47	.45- .47	.45- .47		.45- .47
S.A. Corn (Yellow)	.91	.91	.91	.91	.91		.91
S.A. Corn (White)	.82	.82	.82	.82	.82		.82

STATISTICS CANADA LIBRARY  
BIBLIOTHEQUE STATISTIQUE CANADA



1010675101