



CANADA

DEPARTMENT OF TRADE AND COMMERCE

DOMINION BUREAU OF STATISTICS

AGRICULTURAL BRANCH

Vol. 19

No. 12

Historical File Copy

CANADIAN GRAIN STATISTICS

Week ending

OCTOBER 21, 1938

[Records for Western Inspection Division supplied by Board of Grain Commissioners for Canada]

----- + + + -----

Published by Authority of the HON. W.D. Euler, M.P.,
Minister of Trade and Commerce.

+ + +

OTTAWA

1938

I N D E X

General Summary	1 - 6
Canadian Grain in Store by Elevators.....	7
Canadian Grain in Store by Grades.....	8
Comparative Statement of Grain in Store.....	9
Receipts and Shipments of Canadian Grain.....	10
United States Grain in Store, Receipts and Shipments.....	11 - 12
Receipts, Shipments and Quantities in Store at Interior Terminal Elevators.....	12
Receipts, Shipments and Quantities in Store at Country Elevators, Western Division and Platform Loadings.....	13
Receipts, Shipments and Quantities in Store at Pacific Elevators, and Vancouver Prices.....	14
Daily and Weekly Average Prices of Grain at Fort William and Toronto for the week ending October 22, 1938.....	15

DEPARTMENT OF TRADE AND COMMERCE
DOMINION BUREAU OF STATISTICS - CANADA
AGRICULTURAL BRANCH

(Issued October 27, 1938)

Dominion Statistician:	R. H. Coats, LL.D., F.R.S.C., F.S.S. (Hon.)
Acting Chief, Agricultural Branch:	W. Dougan

WHEAT STOCKS IN STORE

Canadian wheat in store for the week ending October 21, 1938 increased 3,433,414 bushels compared with the previous week and increased 101,807,965 bushels when compared with the corresponding week in 1937. The amount in store was reported as 174,873,977 bushels compared with 171,440,563 bushels for the previous week and 73,066,012 bushels for the week ending October 22, 1937. The stocks of 174,873,977 bushels include 15,725,147 bushels of Durum wheat.

CANADIAN WHEAT IN THE UNITED STATES

Canadian wheat in the United States amounted to 4,802,000 bushels, an increase of 1,441,000 bushels over the previous week when 3,361,000 bushels were reported. This Canadian wheat was located at the following ports: Buffalo 1,105,000; Buffalo Afloat 707,000; Erie 1,217,000; Erie Canal 779,000; New York 428,000; New York Afloat 72,000 and Albany 494,000 bushels. Increases over the stocks of the previous week were shown at the following elevators: Buffalo Afloat 707,000; Erie 839,000; Erie Canal 110,000; Albany 97,000 bushels while decreases were noted in the stocks at Buffalo of 268,000; New York 5,000 and New York Afloat 39,000 bushels.

For the same week a year ago, the Canadian wheat in the United States amounted to 1,905,849 bushels distributed as follows: Buffalo 900,849; Erie Canal 311,000; New York 671,000 and Baltimore 23,000 bushels.

United States wheat in Canada totalled 520,265 bushels compared with 1,792,944 bushels for the previous year.

CANADIAN WHEAT IN CANADA

The wheat stocks in the elevators in Canada for the week ending October 21, 1938 were 174,873,977 bushels compared with 168,079,563 bushels for the previous week and 71,151,261 bushels for the corresponding week last year.

Stocks of wheat in Canadian elevators were located as follows: Western Country Elevators 68,272,000; Interior Terminals 11,194,104; Vancouver-New Westminster 17,174,464; Victoria 76,863; Churchill 377,535; Fort William and Port Arthur 30,545,709; Eastern Elevators Lake and Seaboard Ports 9,001,041 and 8,700,486 bushels respectively.

Increases were shown in the stocks over those of the previous week at the following elevators: Western Country Elevators 27,000; Interior Terminal Elevators 853,623; Vancouver-New Westminster 545,751; Victoria 31,792; Head of the Lakes 928,532; Eastern Elevators Lake Ports 2,622,870 bushels, while decreases were noted at the Eastern Elevators Seaboard Ports of 336,134 and Churchill 24 bushels.

Wheat in rail transit amounted to 16,230,364 bushels and the amount in lake transit was 8,499,411 bushels for the week ending October 21, 1938 compared with 5,197,469 and 3,025,087 bushels respectively for the same period last year.

PRIMARY MOVEMENT

Wheat receipts in the Prairie Provinces for the week ending October 21, 1938 amounted to 14,215,891 bushels, a slight increase of 765,474 bushels over the previous week when 13,450,417 bushels were marketed. During the corresponding week a year ago the receipts were 3,850,186 bushels. By Provinces, the receipts for the week ending October 21, 1938 were as follows, figures within brackets being those for 1937: Manitoba 597,270 (527,689); Saskatchewan 5,702,426 (902,344); Alberta 7,915,745 (2,420,153) bushels.

Marketings in the three Prairie Provinces for the twelve weeks from August 1, 1938 to October 21, 1938 as compared with the same period in 1937 were as follows, figures within brackets being those for 1937: Manitoba 38,130,183 (29,492,162); Saskatchewan 82,010,612 (16,569,005); Alberta 86,514,333 (30,490,317) bushels. For the twelve weeks ending October 21, 1938 and the same period in 1937, 206,655,128 and 76,551,484 bushels respectively were received from the farms.

MEMORANDUM FOR THE DIRECTOR, FBI
SUBJECT: [Illegible]

1. [Illegible]

[Illegible text block]

2. [Illegible]

[Illegible text block]

[Illegible text block]

[Illegible text block]

3. [Illegible]

[Illegible text block]

[Illegible text block]

[Illegible text block]

[Illegible text block]

4. [Illegible]

[Illegible text block]

[Illegible text block]

OVERSEAS EXPORT CLEARANCES AND IMPORTS OF WHEAT INTO THE UNITED STATES

During the week ending October 21, 1938 the overseas export clearances of wheat amounted to 7,343,021 bushels while imports into the United States for consumption and milling in bond were 212,000 bushels. The total is 7,555,021 bushels compared with 3,367,384 bushels for the previous week, an increase of 4,187,637 bushels, and when compared with the same period in 1937 an increase of 5,190,938 bushels.

The overseas export clearance of 7,343,021 bushels is the largest single week's export since the fall of 1932.

Clearances by ports for the week ending October 21, 1938 and the week ending October 22, 1937 and imports into the United States for consumption and milling in bond were as follows (in bushels):-

<u>Overseas Clearances</u>	<u>Week ending October 21, 1938</u>	<u>Week ending October 22, 1937</u>
Montreal	3,443,601	1,685,786
Sorel	1,760,785	-
Three Rivers	724,078	-
Fort William and Port Arthur	56,066	-
Vancouver-New Westminster	742,733	268,827
Churchill	-	-
United States Ports	615,758	293,475
TOTAL	7,343,021	2,248,088
<u>Imports into the United States</u>		
For consumption and milling in bond for re-export	212,000	116,000
<u>Total Overseas Clearances and United States Imports</u>	7,555,021	2,364,088

The following table shows the export clearances of Canadian wheat by ports from August 1, 1938 to October 21, 1938 along with comparative figures for the same period in 1937-38 and imports into the United States for consumption and milling in bond (in bushels):-

<u>Overseas Clearances</u>	<u>1938-39</u>	<u>1937-38</u>
Montreal	19,074,655	13,999,040
Sorel	4,454,461	770,000
Three Rivers	3,608,614	41,078
Fort William and Port Arthur	112,066	-
Churchill	916,913	603,982
Vancouver-New Westminster	2,982,749	1,296,634
United States Ports	3,685,616	3,922,080
TOTAL	* 34,835,074	20,632,814
<u>Imports into the United States</u>		
For consumption and milling in bond for re-export	1,833,924	1,548,690
<u>Total Overseas Clearances and United States Imports to Date</u>	36,668,998	22,181,504

* Includes 5,413,875 bushels Durum wheat cleared from Canadian and United States Atlantic Seaboard Ports.

The accumulated totals of imports of wheat into the United States for consumption and milling in bond are adjusted at the end of the month, due to the fact that the United States Department of Domestic and Foreign Commerce revises their weekly figures on a monthly basis.

At the meeting of the Board of Directors held on the 1st day of January, 1901, the following resolutions were adopted:

Resolved, That the sum of \$10,000 be appropriated for the purchase of land for the purpose of establishing a national monument.

Resolved, That the sum of \$5,000 be appropriated for the purchase of land for the purpose of establishing a national monument.

Resolved, That the sum of \$5,000 be appropriated for the purchase of land for the purpose of establishing a national monument.

Resolved, That the sum of \$5,000 be appropriated for the purchase of land for the purpose of establishing a national monument.

Resolved, That the sum of \$5,000 be appropriated for the purchase of land for the purpose of establishing a national monument.

Resolved, That the sum of \$5,000 be appropriated for the purchase of land for the purpose of establishing a national monument.

Resolved, That the sum of \$5,000 be appropriated for the purchase of land for the purpose of establishing a national monument.

Resolved, That the sum of \$5,000 be appropriated for the purchase of land for the purpose of establishing a national monument.

Resolved, That the sum of \$5,000 be appropriated for the purchase of land for the purpose of establishing a national monument.

Resolved, That the sum of \$5,000 be appropriated for the purchase of land for the purpose of establishing a national monument.

Resolved, That the sum of \$5,000 be appropriated for the purchase of land for the purpose of establishing a national monument.

Resolved, That the sum of \$5,000 be appropriated for the purchase of land for the purpose of establishing a national monument.

Resolved, That the sum of \$5,000 be appropriated for the purchase of land for the purpose of establishing a national monument.

Resolved, That the sum of \$5,000 be appropriated for the purchase of land for the purpose of establishing a national monument.

INTERNATIONAL TRADE

The following table shows the world shipments of wheat and flour for the first twelve weeks of the present crop year. (Broomhall's figures).

Week ending	North America	Argentina	Australia	Russia	Danube	India	Other	Total
(Thousand Bushels)								
Aug. 6, 1938	4,288	1,120	2,608	2,784	336	896	-	12,032
13	4,192	1,032	2,104	3,512	696	736	-	12,272
20	4,376	600	2,104	2,624	512	640	-	10,856
27	3,760	1,568	2,576	3,552	808	224	-	12,488
Sept. 3	4,104	1,448	2,160	2,368	280	328	-	10,688
10	3,400	760	1,456	3,960	640	304	-	10,520
17	4,152	1,120	1,384	1,304	992	8	-	8,960
24	4,296	880	1,704	1,552	768	-	-	9,200
Oct. 1	5,536	1,528	1,256	1,512	936	112	-	10,880
8	5,776	840	976	2,568	904	-	-	11,064
15	4,774	411	1,707	1,264	920	-	808	9,884
22	8,109	795	836	1,280	696	144	872	12,732
TOTAL	56,763	12,102	20,871	28,280	8,488	3,392	1,680	131,576
<u>Comparative 1937</u>								
12th week	3,568	1,072	1,104	1,480	2,352	424	80	10,080
TOTAL	37,536	10,240	13,712	13,520	18,944	4,800	2,520	101,272

World shipments for the week ending October 22, 1938 amounted to 12,732,000 bushels as compared with shipments of 9,884,000 bushels for the previous week and 10,080,000 bushels for the corresponding week last year. North American shipments increased sharply this week amounting to 8,109,000 bushels, the largest amount shipped since December 1932 and an increase over the previous week of over 3 million bushels. Argentine and Russian shipments showed increases of 384,000 bushels and 16,000 bushels respectively while Australian shipments were 871,000 bushels lower as compared with last week.

During the first twelve weeks of the present crop year world shipments amounted to 131,576,000 bushels as compared with only 101,272,000 bushels for the corresponding weeks last year. North American shipments amounted to 56,763,000 bushels as compared with 37,536,000 bushels for the same period in 1937. Shipments from Australia were 7.2 million bushels higher for the first twelve weeks of the present crop year as compared with the same period last year. Russian shipments were 14.8 million bushels higher than for the corresponding weeks in 1937.

WEEKLY AVERAGE SHIPMENTS

The following table shows the weekly average shipments of wheat and wheat flour in the first twelve weeks of the present crop year along with comparative figures for 1937: -

	N. America	Argentina	Australia	Russia	Danube	India	Other	Total
(Million Bushels)								
1937	3.1	0.9	1.1	1.1	1.6	0.4	0.2	8.4
1938	4.7	1.0	1.7	2.4	0.7	0.3	0.1	10.9

According to the above table weekly average shipments of wheat and wheat flour amounted to 10.9 million bushels per week compared with 8.4 million bushels for the corresponding weeks in 1937. North American weekly average shipments amounted to 4.7 million bushels as compared with 3.1 million bushels in the same weeks last year.

1871-1872

... ..

Stocks in Store at the Head of the Lakes compared with the same week last year were as follows:

	Week ending October 21, 1938	Week ending October 22, 1937	+ Increase - Decrease
Wheat	30,545,709	20,875,557	+ 9,670,152
Oats	744,993	504,920	+ 240,073
Barley	1,498,382	3,567,727	- 2,069,345
Flaxseed	138,501	253,460	- 114,959
Rye	683,891	811,530	- 127,639

The receipts (including transfers) at the Head of the Lakes for the week ending October 21, 1938 with comparative figures for the same week last year were as follows:

	Week ending October 21, 1938	Week ending October 22, 1937	+ Increase - Decrease
Wheat	10,144,612	3,282,144	+ 6,862,468
Oats	410,377	78,749	+ 331,628
Barley	376,955	109,261	+ 267,694
Flaxseed	29,894	2,971	+ 26,923
Rye	106,336	29,584	+ 76,752

Preliminary figures showing receipts and shipments at the Head of the Lakes also Vancouver-New Westminster, Churchill and Victoria for the period August 1, 1938 to October 21, 1938 compared with the same period last year:

	FORT WILLIAM & PORT ARTHUR		VANCOUVER-NEW WESTMINSTER	
	Receipts	Shipments	Receipts	Shipments
Wheat	86,573,145	63,800,788	20,280,763	3,177,273
Oats	3,317,831	3,628,365	213,940	93,469
Barley	9,309,913	8,766,117	32,566	97,656
Flaxseed	218,160	222,418	316	92
Rye	931,874	859,905	-	1,822
TOTAL	100,350,923	77,277,593	20,527,585	3,370,312
Same period last year	58,997,886	41,769,677	1,166,192	1,746,123
+ Increase - Decrease	+ 41,353,037	+ 35,507,916	+ 19,361,393	+ 1,624,189

	VICTORIA		CHURCHILL	
	Receipts	Shipments	Receipts	Shipments
Wheat	76,863	-	1,282,651	916,913
Same period last year	-	-	-	603,982
+ Increase - Decrease	+ 76,863	-	+ 1,282,651	+ 312,931

Stocks in store in the Western Division compared with the same week last year were as follows:

	Week ending October 21, 1938	Week ending October 22, 1937	+ Increase - Decrease
Wheat	127,640,675	49,283,418	+78,357,257
Oats	5,483,065	5,553,401	- 70,336
Barley	5,535,422	8,757,075	- 3,221,653
Flaxseed	432,756	528,927	- 96,171
Rye	1,491,301	1,160,206	+ 331,095

Platform Loadings shown by Prairie Provinces for the period ending October 14, 1938 were as follows:

	WHEAT	OTHER GRAIN Bushels	TOTAL
Manitoba	55,440	17,700	73,140
Saskatchewan	36,942	5,642	42,584
Alberta	313,915	22,550	336,465
TOTAL	406,297	45,892	452,189
Period ending October 14, 1937	118,300	76,777	195,077

Shipments Overseas of Canadian Grain from St. Lawrence Ports were as follows:

		United Kingdom	B u s h e l s	Other Countries
Montreal, Quebec	Wheat		3,443,480	
	Oats		103,558	
	Barley		456,704	
	Rye		8,571	
Ogilvie Montreal, Quebec	Wheat			120
Sorel, Quebec	Wheat	1,044,484		716,300
	Barley	66,624		-
Three Rivers, Quebec	Wheat	328,344		395,733
	Oats	18,823		

EASTERN ELEVATORS:- United States grain stocks were 24,904 bushels higher than at a comparable date last year. Barley and corn increased 761,623 and 2,545,535 bushels respectively, while decreases were noted in wheat of 1,272,679, oats 1,381,089 and rye 628,486 bushels.

Number of cars inspected in the Western Division for the week ending October 21, 1938 with comparison for the previous year were as follows:

	Week ending October 21, 1938	Week ending October 21, 1937.	+ Increase - Decrease
Wheat			
Oats			
Barley			
Flaxseed			
Rye			
Mixed Grain			
Screenings			

N O T R E P O R T E D

TOTAL

The number of bushels of grain shipped from the Western to the Eastern points over the C.P.R. and C.N.R. for the week ending October 14, 1938 and the period from August 1, 1938 to October 14, 1938:-

	WEEK ENDING OCTOBER 14, 1938				PERIOD AUGUST 1, 1938 TO OCTOBER 14, 1938			
	WHEAT	OATS	BARLEY	FLAX	WHEAT	OATS	BARLEY	FLAX
Via C.P.R.	-	10,410	-	-	1,866	24,707	-	-
Via C.N.R.	-	16,344	-	-	-	60,929	5,136	3,000
TOTAL	-	26,754	-	-	1,866	85,636	5,136	3,000

The number of bushels of grain shipped from the Western to the Eastern points over the C.P.R. and C.N.R. for the week ending October 21, 1938 and the period from August 1, 1938 to October 21, 1938:-

	WEEK ENDING OCTOBER 21, 1938				PERIOD AUGUST 1, 1938 TO OCTOBER 21, 1938			
	WHEAT	OATS	BARLEY	FLAX	WHEAT	OATS	BARLEY	FLAX
Via C.P.R.	-	10,765	-	-	1,866	35,472	-	-
Via C.N.R.	-	22,473	-	-	-	83,402	5,136	3,000
TOTAL	-	33,238	-	-	1,866	118,874	5,136	3,000

Duluth: Receipts of Canadian bonded grain at Duluth by water for the week ending October 22, 1938 were nil. For the period from August 1, 1938 to October 22, 1938 water receipts amounted to barley 51,338 bushels.

Rail shipments for the week ending October 22, 1938 were nil. For the period from August 1, 1938 to October 22, 1938 rail shipments amounted to 51,250 bushels.

STOCKS OF GRAIN IN DIFFERENT ELEVATORS DURING THE WEEK ENDING OCTOBER 21, 1938.

	WHEAT	DURUM WHEAT	OATS	BARLEY	FLAX- SEED	RYE
	B u s h e l s					
Western Country Elevators	63245000	4427000	3780000	2455000	219000	768000
Interior Private & Mill Elevs.	5223000	122000	764000	1548000	75000	33000
Interior Pub. & Semi-Pub. Terms.	5849104	-	11362	1330	-	-
Vancouver-New Westminster	17174464	-	182710	32710	255	6410
Victoria	76863	-	-	-	-	-
Chunhill	377535	-	-	-	-	-
Fort William & Port Arthur	22344006	3201703	744993	1498382	138501	683891
In Transit Lakes	7974368	525043	941504	554083	52774	139354
In Transit Rail	16230364	-	1117115	845586	34039	31402
Eastern Elevators-Lake Ports	7803998	1197043	211769	985782	-	102175
Eastern Elevators-St. Lawrence Ports	8142128	535719	775223	2147133	61730	96672
Eastern Elevators-Maritime Ports	-	22639	-	-	-	-
U. S. Lake Ports	3483000	325000	-	88	-	-
U. S. Atlantic Seaboard Ports	625000	369000	-	137000	-	119000
TOTAL	159148830	15725147	8528676	10205094	581299	1979904
Previous week	155121609	16318954	7587653	10214446	550760	1863445
Same week previous year	55757448	17319564	7455723	12544353	616316	1277789

QUANTITY OF SCREENINGS RECEIVED, SHIPPED AND IN STORE AT THE
UNDERMENTIONED ELEVATORS DURING THE WEEK ENDING OCTOBER 21, 1938

	Amount in Store October 14, 1938		Amount Received by vessel		Amount Shipped		Amount in Store October 21, 1938	
	Tons	Lbs.	Tons	Lbs.	Tons	Lbs.	Tons	Lbs.
Owen Sound	2057	1450	-	-	751	70	1306	1380
Goderich Elev. Co.	419	650	-	-	260	-	159	650
Montreal	244	880	663	714	254	-	653	1594
Dominion Elev. Co.	314	112	449	1540	24	-	739	1652
TOTAL	3035	1092	1113	254	1289	70	2859	1276

LAKE SHIPMENTS FROM HEAD OF THE LAKES FOR THE PERIOD ENDING OCTOBER 21, 1938

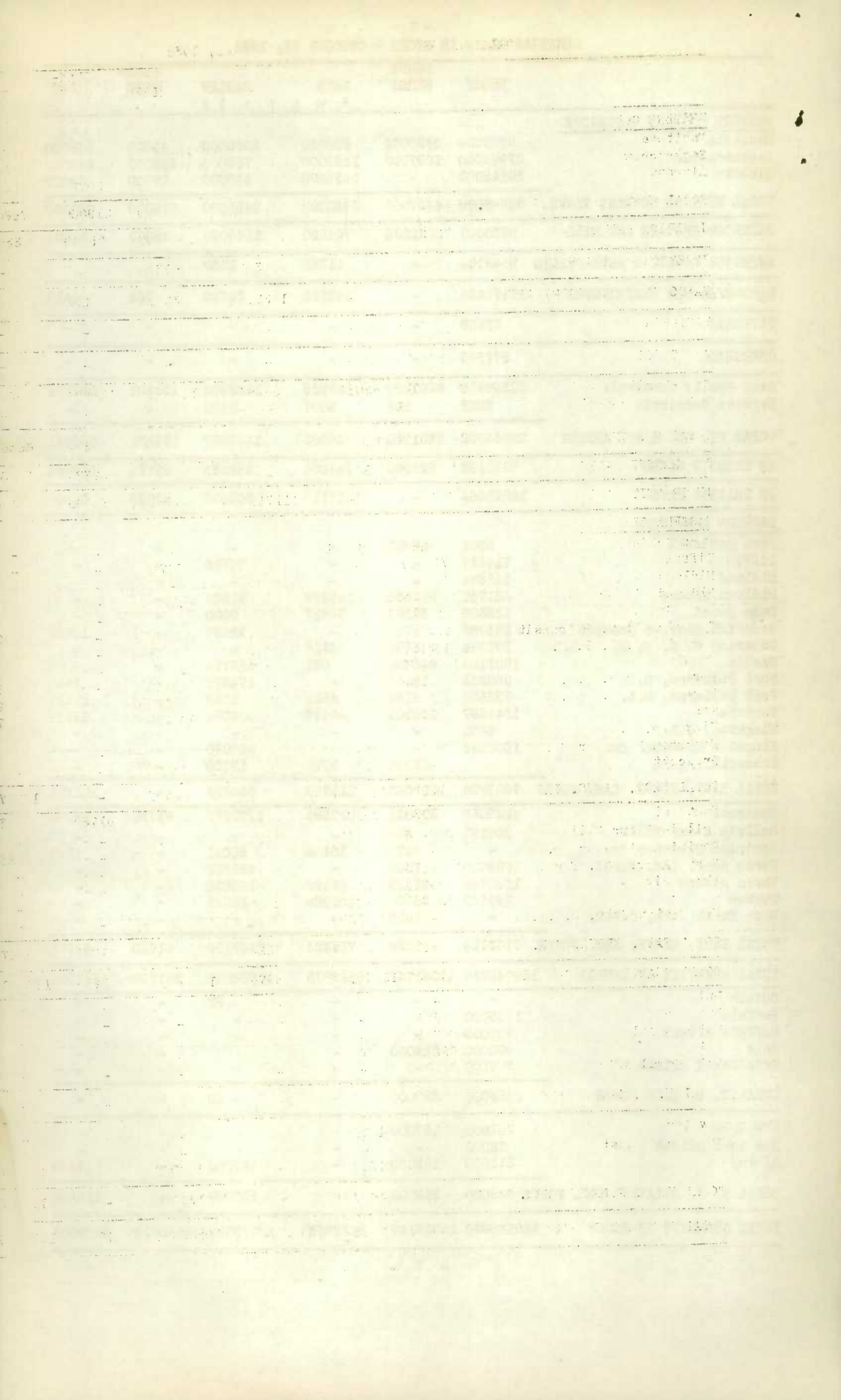
	CANADIAN LOWER LAKE PORTS	ST. LAWRENCE PORTS	BUFFALO	OTHER U.S.A PORTS	EUROPE
	B u s h e l s				
Wheat	6699910	343801	707296	763273	56066
Oats	444489	378328	-	-	-
Barley	436361	23063	-	-	-
Flaxseed	-	52773	-	-	-
Rye	87274	-	-	-	-
TOTAL	7668034	797965	707296	763273	56066
Same period 1937	3784573	967519	598046	-	-

LAKE SHIPMENTS FROM THE HEAD OF THE LAKES FOR THE PERIOD
FROM THE OPENING OF NAVIGATION TO OCTOBER 21, 1938

Wheat	64880557	15161627	6658597	4699277	112066
Oats	2025145	3890156	-	-	-
Barley	9349461	2860264	1067938	584929	-
Flaxseed	252739	123420	-	-	-
Rye	718258	348553	20000	260444	56000
TOTAL	77226160	22384020	7746535	5544650	168066
Same period 1937	57803527	14441165	6870250	2582453	163793

- 7 -
CANADIAN GRAIN IN STORE - OCTOBER 21, 1938

	WHEAT	DURUM WHEAT	OATS B u s h e l s	BARLEY	FLAX- SEED	RYE
<u>WESTERN COUNTRY ELEVATORS</u>						
Manitoba	5740000	3330000	690000	1065000	41000	356000
Saskatchewan	27960000	1097000	1535000	750000	152000	343000
Alberta	30145000	-	1555000	640000	26000	69000
TOTAL WESTERN COUNTRY ELEVS.	63845000	4427000	3780000	2455000	219000	768000
INTERIOR PRIVATE AND MILL	5223000	122000	764000	1548000	75000	33000
INTERIOR PUBLIC & SEMI-PUBLIC	5849104	-	11362	1330	-	-
VANCOUVER-NEW WESTMINSTER	17174464	-	182710	32710	255	6410
VICTORIA	76863	-	-	-	-	-
CHURCHILL	377535	-	-	-	-	-
Semi-Public Terminals	22340918	8201194	739986	1492982	138501	683891
Private Terminals	3088	509	5007	5400	-	-
TOTAL FT. WM. & PT. ARTHUR	22344006	8201703	744993	1498382	138501	683891
IN TRANSIT LAKES	7974368	525043	941504	554083	52774	139354
IN TRANSIT RAIL	16230364	-	1117115	845586	34039	31402
<u>EASTERN ELEVATORS</u>						
Port McNicoll	8992	63811	-	-	-	-
Tiffin	714217	-	-	76715	-	-
Midland	142884	-	-	-	-	-
Midland Simcoe	331747	512535	122478	11594	-	-
Owen Sound	123369	67179	32617	9000	-	-
Goderich Elev. & Transit	293789	8731	-	12087	-	16695
Goderich W. C. F. M.	183994	3902	4928	-	-	-
Sarnia	1801168	246804	661	122774	-	-
Port Colborne, D.G.	860983	15831	-	174670	-	2885
Port Colborne, M.L.	752800	8156	6895	1768	-	21421
Toronto	1249597	240100	40415	106384	-	61174
Kingston, J.R.	9460	-	-	-	-	-
Kingston Elevator Co.	1330998	-	-	457090	-	-
Prescott	-	29994	3775	13700	-	-
TOTAL EAST. ELEVS. LAKE PORTS	7803998	1197043	211769	985782	-	102175
Montreal	4628039	392621	627986	1170899	61730	92432
Ogilvie Flour Mills	306193	429	-	-	-	-
Dominion Elevator Co.	-	6273	18108	62021	-	4240
North Amer. Ltd. Sorel	1898410	7380	-	687538	-	-
Three Rivers	1009746	92416	28163	193630	-	-
Quebec	299740	36600	100966	33045	-	-
West Saint John, C.P.R.	-	22639	-	-	-	-
TOTAL EAST. ELEVS. SBD. PORTS	8142128	558358	775223	2147133	61730	96672
TOTAL QUANTITY IN CANADA	155040830	15031147	8528676	10068006	581299	1860904
Duluth	-	-	-	88	-	-
Buffalo	1105000	-	-	-	-	-
Buffalo Afloat	707000	-	-	-	-	-
Erie	892000	325000	-	-	-	-
Erie Canal Afloat	779000	-	-	-	-	-
TOTAL U. S. LAKE PORTS	3483000	325000	-	- 88	-	-
New York	241000	187000	-	-	-	-
New York Afloat	72000	-	-	-	-	-
Albany	312000	182000	-	137000	-	119000
TOTAL U. S. ATLANTIC SBD. PORTS	625000	369000	-	137000	-	119000
TOTAL QUANTITY IN STORE	159148830	15725147	8528676	10205094	581299	1979904



Grades of Canadian Grain in Store at Public, Semi-Public, and Private (Head of the Lakes), Interior Public and Semi-Public, Vancouver-New Westminster, and Eastern Elevators for the week ending October 21, 1938.

	Ft. William & Pt. Arthur Semi-Public and Private	Interior Public and Semi-Public Terminals	Vancouver New West- Minster Elevators	Eastern Elevators Lake Ports	Eastern Elevators St. Lawrence Ports	Eastern Elevators Maritime Ports
WHEAT	B u s h e l s					
No. 1 Hard	331,804	256,847	1,835,536	40,965	67,305	-
No. 1 Northern	3,108,005	2,494,488	7,210,472	1,426,879	2,219,018	-
No. 2 Northern	5,519,209	1,118,007	2,778,743	4,262,263	4,454,512	-
Old No. 2 Northern	-	-	-	-	223	-
No. 3 Northern	6,436,862	632,527	2,024,474	1,129,754	822,074	-
Old No. 3 Northern	8,940	-	-	686	-	-
No. 4 Northern	983,221	72,027	146,680	355,161	402,379	-
Old No. 4 Northern	1,885	-	522	3,001	14	-
No. 4 Special	1,379,933	-	-	54,298	-	-
No. 5 Wheat	850,800	143,088	132,107	-	8,089	-
No. 5 Special	456,988	-	-	17,328	3,464	-
No. 6 Wheat	107,778	3,580	5,629	7,097	3,845	-
No. 6 Special	211,850	-	-	24,305	2,498	-
Feed	387,502	-	13,272	7,111	43,349	-
No. 1 C.W. Garnet	301,317	72,117	191,730	-	-	-
No. 2 C.W. Garnet	1,111,486	777,047	1,929,538	169,462	27,315	-
No. 3 C.W. Garnet	531,125	242,614	721,349	7,983	-	-
No. 1 C.W. Durum	518,020	-	-	26,747	47,661	-
No. 2 C.W. Durum	6,336,966	-	-	913,566	232,751	22,639
No. 3 C.W. Durum	1,182,803	-	-	256,730	197,918	-
No. 4 C.W. Durum	40,705	-	-	-	-	-
Other Durum	122,700	-	-	-	50,546	-
Other	615,810	36,762	184,412	297,705	94,886	-
TOTAL	30,545,709	5,849,104	17,174,464	9,001,041	8,667,847	22,639
OATS						
No. 2 C.W.	122,376	-	-	115,183	80,005	-
No. 3 C.W.	292,177	4,663	8,780	80,936	203,118	-
Ex. No. 1 Feed	2,201	-	-	-	-	-
No. 1 Feed	156,757	886	20,816	11,823	138,927	-
No. 2 Feed	70,675	118	3,728	-	71,981	-
No. 3 Feed	9,566	-	-	-	4,528	-
Other	91,241	5,695	149,386	3,827	276,664	-
TOTAL	744,993	11,362	182,710	211,769	775,223	-
BARLEY						
3 Ex. C.W. 6 Row	699,120	-	-	12,700	462,479	-
3 Ex. C.W. 2 Row	5,507	-	-	-	-	-
3 C.W.	613,981	251	5,445	877,446	1,645,359	-
4 C.W.	44,106	149	3,909	-	4,900	-
5 C.W.	35,347	68	8,371	-	12,674	-
6 C.W.	2,681	725	2,510	-	1,871	-
Other	97,640	137	12,475	95,636	19,850	-
TOTAL	1,498,382	1,330	32,710	985,782	2,147,133	-
FLAXSEED						
No. 1 C.W.	130,577	-	56	-	61,730	-
No. 2 C.W.	2,151	-	192	-	-	-
No. 3 C.W.	191	-	-	-	-	-
No. 4 C.W.	1,989	-	-	-	-	-
Other	3,593	-	7	-	-	-
TOTAL	138,501	-	255	-	61,730	-
RYE						
No. 1 C.W.	2,178	-	-	-	-	-
No. 2 C.W.	517,786	-	-	102,175	92,432	-
No. 3 C.W.	149,838	-	-	-	4,240	-
No. 4 C.W.	2,948	-	-	-	-	-
Ergoty	1,152	-	-	-	-	-
Other	9,989	-	6,410	-	-	-
TOTAL	683,891	-	6,410	102,175	96,672	-
TOTAL QUANTITY IN STORE	33,611,476	5,861,796	17,396,549	10,300,767	11,748,605	22,639

- 9 -
CANADIAN GRAIN IN STORE - COMPARATIVE STATEMENT, 1936-1938

	WHEAT	(Bushels)	OTHER GRAIN
<u>October 21, 1938</u>			
Country Elevators - Manitoba	9,070,000		2,152,000
Saskatchewan	29,057,000		2,780,000
Alberta	30,145,000		2,290,000
TOTAL	68,272,000		7,222,000
Interior Private and Mill	5,345,000		2,420,000
Interior Public and Semi-Public Terminals	5,849,104		12,692
Vancouver-New Westminster	17,174,464		222,085
Victoria	76,863		-
Churchill	377,535		-
Fort William & Port Arthur	30,545,709		3,065,767
In Transit Lakes	8,499,411		1,687,715
In Transit Rail	16,230,364		2,028,142
Eastern Elevators - Lake Ports	9,001,041		1,299,726
Eastern Elevators - Sbd. Ports	8,700,486		3,080,758
U. S. Lake Ports	3,808,000		88
U. S. Atlantic Sbd. Ports	994,000		256,000
TOTAL	174,873,977		21,294,973
<u>October 22, 1937</u>			
Country Elevators - Manitoba	3,714,000		3,149,000
Saskatchewan	6,326,000		2,323,000
Alberta	8,580,000		2,653,000
TOTAL	18,620,000		8,125,000
Interior Private and Mill	4,890,000		2,604,000
Interior Public and Semi-Public Terminals	1,107,322		4,221
Vancouver-New Westminster	2,867,379		128,751
Prince Rupert	911,340		-
Churchill	11,820		-
Fort William and Port Arthur	20,875,557		5,137,637
In Transit Lakes	3,450,690		1,209,159
In Transit Rail	5,197,469		1,257,624
Eastern Elevators - Lake Ports	8,737,741		1,568,355
Eastern Elevators - Sbd. Ports	4,481,743		1,506,694
U. S. Lake Ports	1,221,751		312,740
U. S. Atlantic Sbd. Ports	694,000		40,000
TOTAL	73,067,012		21,894,181
<u>October 23, 1936</u>			
Country Elevators - Manitoba	2,727,062		1,893,166
Saskatchewan	16,837,226		7,048,962
Alberta	20,001,392		3,629,093
TOTAL	39,565,680		12,571,241
Interior Private and Mill	6,878,190		4,716,295
Interior Public and Semi-Public Terminals	99,828		790,828
Vancouver-New Westminster	8,656,292		658,196
Prince Rupert	1,025,959		-
Churchill	610,450		-
Fort William and Port Arthur	31,831,690		10,087,776
In Transit Lakes	6,800,782		633,069
In Transit Rail	9,718,253		1,833,305
Eastern Elevators - Lake Ports	15,523,529		2,099,032
Eastern Elevators - Sbd. Ports	15,561,083		1,834,125
U. S. Lake Ports	16,177,885		2,585,688
U. S. Atlantic Sbd. Ports	4,812,665		11,239
TOTAL	157,262,286		37,825,794

RECEIPTS AND SHIPMENTS OF GRAIN BY CLASSES OF ELEVATORS

IN THE WEEK ENDING OCTOBER 21, 1938

	WHEAT	DURUM WHEAT	OATS	BARLEY	FLAX- SEED	RYE
			B u s h e l s			

R E C E I P T S

Country Elevators		13,600,808	208,786	1,101,482	670,916	38,917	101,730
Int. Private & Mill Elevs.		1,288,592	20,339	426,554	243,373	6,829	1,185
Int. Pub. & Semi-Pub. Terms.		619,658	-	586	-	-	-
Vancouver-New Westminster		1,325,188	-	25,082	16,994	-	-
Fort William & Port Arthur		9,903,942	240,670	410,377	376,955	29,894	106,336
Victoria		31,791	-	-	-	-	-
Eastern Elevators -							
Georgian Bay Ports	Vessel	2,475,992		12,200	-	56	-
Lower Lake Ports	Vessel	5,455,503		3,775	570,857	73,494	26,873
	Rail	-		-	7,580	-	-
St. Lawrence Ports	Vessel	5,062,445		330,039	695,066	59,615	-
	Rail	678,409		123,019	97,516	-	-
Seaboard Ports	Rail	1,000		-	-	-	-

S H I P M E N T S

Country Elevators		13,353,756	214,490	1,144,786	847,645	43,493	87,057
Int. Private & Mill Elevs.		1,119,271	26,102	345,825	107,768	12,120	6,464
Int. Pub. & Semi-Pub. Terms.		1,000	-	216	-	-	-
Vancouver-New Westminster							
	Vessel	742,733	-	-	-	-	-
	Rail	22,856	-	2,125	1,404	-	161
Fort William & Port Arthur							
	Vessel	8,623,481	607,666	796,698	422,938	51,756	143,417
	Rail	3,008	3,000	52,450	3,217	6	7,132
Eastern Elevators -							
Georgian Bay Ports	Vessel	995,219		-	-	-	-
	Rail	1,090,213		41,974	21,074	4,025	2,200
Lower Lake Ports	Vessel	2,965,897		16,672	481,895	59,578	-
	Rail	257,196		15,088	18,588	13,916	4,148
St. Lawrence Ports	Vessel	5,928,461		122,381	523,328	-	8,571
	Rail	147,703		46,123	37,208	-	21,920
Seaboard Ports	Rail	1,000		-	-	-	-

CHICAGO, ILL., MAY 1, 1919

CONTENTS

ORIGINAL ARTICLES
The Effect of the War on the Medical Profession
The Medical Profession and the War
The Medical Profession and the War
The Medical Profession and the War

DEPARTMENTS
The Medical Profession and the War
The Medical Profession and the War
The Medical Profession and the War
The Medical Profession and the War

THE JOURNAL OF THE AMERICAN MEDICAL ASSOCIATION
PUBLISHED WEEKLY
CHICAGO, ILL., MAY 1, 1919

CONTENTS
ORIGINAL ARTICLES
DEPARTMENTS

THE JOURNAL OF THE AMERICAN MEDICAL ASSOCIATION
PUBLISHED WEEKLY
CHICAGO, ILL., MAY 1, 1919

CONTENTS
ORIGINAL ARTICLES
DEPARTMENTS

THE JOURNAL OF THE AMERICAN MEDICAL ASSOCIATION
PUBLISHED WEEKLY
CHICAGO, ILL., MAY 1, 1919

STOCKS OF UNITED STATES GRAIN IN CANADA OCTOBER 21, 1938

	WHEAT	OATS	BARLEY	RYE	CORN
		B u s h e l s			
Midland Aberdeen	291,260	139,875	-	-	146,144
Midland Simcoe	-	568,784	-	-	92,252
Owen Sound	-	62,070	-	-	16,800
Collingwood	-	-	-	-	549,725
Goderich Elevator & Transit	-	232,650	-	-	98,706
Goderich W. C. F. M.	-	-	-	-	2,000
Sarnia	-	1,148	-	-	289,434
Port Colborne, D.G.	-	-	-	-	580,622
Port Colborne, M.L.	216,991	1,128	-	-	307,099
Toronto	-	-	-	-	216,249
Prescott	-	-	-	-	7,757
Montreal	12,014	38,897	313,278	47,465	35,669
Dominion Elevator Co.	-	23,841	-	-	27,954
Sorel	-	-	93,526	-	-
Three Rivers	-	7,031	470,091	-	173,558
Quebec	-	-	-	-	3,138
Halifax	-	7,079	-	-	-
TOTAL	520,265	1,082,503	876,895	47,465	2,547,107
Same period last year	1,792,944	2,463,592	115,272	675,951	1,572

RECEIPTS AND SHIPMENTS OF UNITED STATES GRAIN IN CANADA OCTOBER 21, 1938

	R E C E I P T S			S H I P M E N T S	
	Water	Rail		Water	Rail
Wheat	-	-	To U. S. Points	-	13,131
Oats	451,557	-	" Can.Dom. Points	-	239,434
			" U. S. Points	-	12,800
			" New England	-	1,882
Corn	373,956	-	" Can.Dom. Points	-	9,500
			" U. S. Points	-	22,850
			" U. S. Seaboard	-	30,400
			" New England	-	3,700
			" Montreal	-	381,742
			LOWER LAKE PORTS		
Wheat	106,785	-	To Can.Dom. Points	-	8,400
			" Can. Flour Mills	-	1,207
Oats	-	-	" Can. Flour Mills	-	1,042
Barley	16,666	-	" Montreal	16,666	-
Corn	269,492	-	" Can.Dom. Points	97,812	55,715
			" Can. Flour Mills	-	10,560
			ST. LAWRENCE PORTS		
Oats	-	-	To Can.Dom. Points	-	19,615
			" U.K. and O.C.	5,200	-
Barley	552,129	-	" U.K. and O.C.	47,670	-
Corn	-	207,314	" Can.Dom. Points	-	15,156
			" U. S. Seaboard	-	6,000
			" U.K. and O.C.	188,386	-
			MARITIME PORTS		
Oats	-	-	To Can.Dom. Points	-	1,000

STOCKS OF FOREIGN GRAIN IN CANADA OCTOBER 21, 1938

	ARGENTINE CORN	SOUTH AFRICAN CORN B u s h e l s	AUSTRALIAN CORN	ARGENTINE FLAXSEED
Goderich Elevator & Transit	-	1,500	-	-
Goderich W. C. F. M.	-	6,000	-	-
Port Colborne, M.L.	-	2,395	-	-
Montreal	26,305	87,276	117,263	35,630
Dominion Elevator Co.	13,319	7,738	-	-
Three Rivers	-	2,807	-	-
Quebec	-	11,010	142,265	-
Saint John	-	77,462	-	-
Halifax	-	5,807	-	-
TOTAL	39,624	201,995	259,528	35,630
Same period last year	811,178	4,037,846	-	284,128

RECEIPTS AND SHIPMENTS OF FOREIGN GRAIN IN CANADA OCTOBER 21, 1938

	R E C E I P T S			S H I P M E N T S	
	Water	Rail		Water	Rail
Afr. Corn	-	-	LOWER LAKE PORTS To Can. Flour Mills	-	234
			ST. LAWRENCE PORTS		
Arg. Corn	-	-	To Can. Dom. Points	-	1,000
			" U. S. Seaboard	-	632
Afr. Corn	-	-	" Can. Dom. Points	-	3,000
			" U. S. Seaboard	-	1,250
Australian Corn	278,428	-	" Can. Dom. Points	-	17,600
			" Can. Flour Mills	-	1,250
Arg. Flaxseed	-	-	" Can. Dom. Points	27,070	57,383
			MARITIME PORTS		
Afr. Corn	-	-	To Can. Dom. Points	-	17,000

STOCKS IN STORE, RECEIPTS AND SHIPMENTS AT THE CANADIAN GOVERNMENT INTERIOR
TERMINAL ELEVATORS, DURING THE WEEK ENDING OCTOBER 21, 1938

	WHEAT	OATS	BARLEY B u s h e l s	FLAXSEED	RYE
STOCKS IN STORE					
Calgary	2,357,939	5,481	369	-	-
Edmonton	2,348,148	675	961	-	-
Lethbridge	856,131	303	-	-	-
Moose Jaw	238,795	-	-	-	-
Saskatoon	48,091	4,903	-	-	-
TOTAL	5,849,104	11,362	1,330	-	-
RECEIPTS					
Calgary	375,539	586	-	-	-
Edmonton	127,372	-	-	-	-
Lethbridge	2,315	-	-	-	-
Moose Jaw	111,834	-	-	-	-
Saskatoon	2,598	-	-	-	-
TOTAL	619,658	586	-	-	-
SHIPMENTS					
Calgary	-	216	-	-	-
Edmonton	1,000	-	-	-	-
Lethbridge	-	-	-	-	-
Moose Jaw	-	-	-	-	-
Saskatoon	-	-	-	-	-
TOTAL	1,000	216	-	-	-

THE UNIVERSITY OF CHICAGO PRESS
1215 EAST 58TH STREET
CHICAGO, ILL. 60637
U.S.A.
LONDON
WILSON JONES

THE UNIVERSITY OF CHICAGO PRESS
1215 EAST 58TH STREET
CHICAGO, ILL. 60637
U.S.A.
LONDON
WILSON JONES

THE UNIVERSITY OF CHICAGO PRESS
1215 EAST 58TH STREET
CHICAGO, ILL. 60637
U.S.A.
LONDON
WILSON JONES

THE UNIVERSITY OF CHICAGO PRESS
1215 EAST 58TH STREET
CHICAGO, ILL. 60637
U.S.A.
LONDON
WILSON JONES

THE UNIVERSITY OF CHICAGO PRESS
1215 EAST 58TH STREET
CHICAGO, ILL. 60637
U.S.A.
LONDON
WILSON JONES

THE UNIVERSITY OF CHICAGO PRESS
1215 EAST 58TH STREET
CHICAGO, ILL. 60637
U.S.A.
LONDON
WILSON JONES

THE UNIVERSITY OF CHICAGO PRESS
1215 EAST 58TH STREET
CHICAGO, ILL. 60637
U.S.A.
LONDON
WILSON JONES

THE UNIVERSITY OF CHICAGO PRESS
1215 EAST 58TH STREET
CHICAGO, ILL. 60637
U.S.A.
LONDON
WILSON JONES

STOCKS, RECEIPTS AND SHIPMENTS OF THE COUNTRY ELEVATORS IN THE WESTERN DIVISION
IN THE WEEK ENDING OCTOBER 21, 1938

	WHEAT	DURUM WHEAT	OATS	BARLEY	FLAXSEED	RYE
	B u s h e l s					
<u>COUNTRY ELEVATORS</u>						
<u>STOCKS IN STORE</u>						
Manitoba	5,740,000	3,330,000	690,000	1,065,000	41,000	356,000
Saskatchewan	27,960,000	1,097,000	1,535,000	750,000	152,000	343,000
Alberta	30,145,000	-	1,555,000	640,000	26,000	69,000
TOTAL	63,845,000	4,427,000	3,780,000	2,455,000	219,000	768,000
Total - a week ago	63,815,000	4,430,000	3,830,000	2,630,000	223,000	753,000
a year ago	17,100,000	1,520,000	4,450,000	3,192,000	163,000	320,000
<u>RECEIPTS DURING WEEK</u>						
Manitoba	401,853	140,427	69,303	199,784	5,324	28,384
Saskatchewan	5,597,125	68,359	527,751	280,122	23,884	62,817
Alberta	7,601,830	-	504,428	191,010	9,709	10,529
TOTAL	13,600,808	208,786	1,101,482	670,916	38,917	101,730
Total - a week ago	13,043,654	139,620	892,354	513,388	21,221	100,056
a year ago	3,194,381	178,027	1,414,545	813,629	49,026	20,539
<u>SHIPMENTS DURING WEEK</u>						
Manitoba	549,090	173,395	119,722	379,721	23,038	45,365
Saskatchewan	6,016,545	41,095	616,845	325,394	18,857	36,729
Alberta	6,788,101	-	408,219	142,530	1,598	4,963
TOTAL	13,353,736	214,490	1,144,786	847,645	43,493	87,057
Total - a week ago	14,742,736	168,251	758,584	460,019	40,885	135,895
a year ago	3,630,928	187,408	677,932	463,502	12,060	25,047

TOTAL RECEIPTS AT COUNTRY ELEVATORS AND PLATFORM LOADINGS* IN THE
PERIOD AUGUST 1, 1938 TO OCTOBER 21, 1938

	w W H E A T	OTHER GRAIN
	B u s h e l s	
Manitoba	38,130,183	12,989,907
Saskatchewan	82,010,612	6,893,726
Alberta	86,514,333	4,199,979
TOTAL - 1937-1938	206,655,128	24,083,612
Same period 1936-1937	76,551,484	26,078,690

*Platform loadings to October 14, 1938.

UNIVERSITY OF CHICAGO
LIBRARY

1. TITLE: [Illegible]
2. AUTHOR: [Illegible]
3. SUBJECT: [Illegible]
4. DATE: [Illegible]
5. LOCATION: [Illegible]

6. CALL NUMBER: [Illegible]
7. PRICE: [Illegible]
8. NOTES: [Illegible]
9. ACQUISITION: [Illegible]
10. STATUS: [Illegible]

11. DATE ACQUIRED: [Illegible]
12. SOURCE: [Illegible]
13. FUND: [Illegible]
14. COMMENTS: [Illegible]
15. ACTION: [Illegible]

UNIVERSITY OF CHICAGO LIBRARY
100 EAST 57TH STREET, CHICAGO, ILL. 60637

16. DATE: [Illegible]
17. BY: [Illegible]
18. FOR: [Illegible]
19. TO: [Illegible]
20. FROM: [Illegible]

UNIVERSITY OF CHICAGO LIBRARY

STOCKS, RECEIPTS AND SHIPMENTS OF THE PACIFIC COAST ELEVATORS

IN THE WEEK ENDING OCTOBER 21, 1938.

	WHEAT	OATS	BARLEY	FLAXSEED	RYE
		B u s h e l s			

STOCKS IN STORE

Vancouver-New Westminster	17,174,464	182,710	32,710	255	6,410
Victoria	76,863	-	-	-	-
Churchill	377,535	-	-	-	-

RECEIPTS DURING WEEK

Vancouver-New Westminster	1,325,188	25,082	16,994	-	-
Victoria	31,791	-	-	-	-

SHIPMENTS DURING WEEK

Vancouver-New Westminster					
Vessel	742,733	-	-	-	-
Rail	22,856	2,125	1,404	-	161

DAILY QUOTATIONS AND WEEKLY AVERAGES OF CASH WHEAT BY GRADES IN CENTS

AND EIGHTHS OF A CENT PER BUSHEL

IN THE WEEK ENDING OCTOBER 22, 1938

(Basis Vancouver, B.C.)

	Oct. 17	Oct. 18	Oct. 19	Oct. 20	Oct. 21	Oct. 22	Weekly Average
	\$ ¢	\$ ¢	\$ ¢	\$ ¢	\$ ¢	\$ ¢	\$ ¢

No. 1 Hard
No. 1 Northern
No. 2 Northern
No. 3 Northern
No. 4 Northern
No. 5
No. 6
Feed
No. 1 Garnet
No. 2 Garnet

(VANCOUVER PRICES DISCONTINUED UNTIL FURTHER NOTICE.)

DAILY QUOTATIONS AND WEEKLY AVERAGES OF CASH GRAIN BY
GRADES ON WINNIPEG AND TORONTO MARKETS
Week ending October 22, 1938

	Oct. 17	Oct. 18	Oct. 19	Oct. 20	Oct. 21	Oct. 22	Weekly Average
	\$ ¢	\$ ¢	\$ ¢	\$ ¢	\$ ¢	\$ ¢	\$ ¢
<u>WHEAT</u> (Basis Fort William and Port Arthur)							
No. 1 Man. Hard	.64	.62/4	.62/6	.63/2	.63/7	.63/2	.63/3
No. 1 Man. Northern	.63/4	.62	.62/2	.62/6	.63/3	.62/6	.63
No. 2 Man. Northern	.59/4	.58	.58/2	.58/6	.59/3	.58/6	.59
No. 3 Man. Northern	.57/4	.55/6	.56	.56/4	.57/1	.56	.56/5
No. 4 Man. Northern	.50/4	.48/6	.49	.49/4	.50/1	.49/4	.49/6
No. 5	.44	.42/6	.43	.43/4	.44/1	.43/4	.43/5
No. 6	.37	.35/6	.36	.36/4	.37/1	.36/4	.36/5
Feed	.36	.34/6	.35	.35/4	.36/1	.35/4	.35/5
No. 4 Special	.43	.41/6	.42	.43/4	.44/1	.43/4	.43
No. 5 Special	.40	.38/6	.39	.40/4	.41/1	.40/4	.40
No. 6 Special	.38	.36/6	.37	.38/4	.39/1	.38/4	.38
Tough No. 1 Hard	.62	.60/4	.60/6	.61/2	.61/7	.61/2	.61/3
No. 1 Northern	.62	.60/4	.60/6	.61/2	.61/7	.61/2	.61/3
No. 2 Northern	.58	.56/4	.56/6	.57/2	.57/7	.57/2	.57/3
No. 3 Northern	.56	.54/2	.54/4	.55	.55/5	.54/4	.55
Rejected No. 1 Northern	.57	.55/6	.56	.56/4	.57/1	.56/4	.56/5
No. 2 Northern	.54	.52/6	.53	.53/4	.54/1	.53/4	.53/5
No. 3 Northern	.52	.50/6	.51	.51/4	.52/1	.51/4	.51/5
Smutty No. 1 Northern	.58/4	.57/2	.57/4	.58	.58/5	.58	.58
No. 2 Northern	.55/4	.54/2	.54/4	.55	.55/5	.55	.55
No. 3 Northern	.53	.51/6	.52	.52/4	.53/1	.52/4	.52/5
No. 1 Garnet	.54	.52/6	.53	.53/4	.54/1	.53/4	.53/5
No. 2 Garnet	.51	.49/6	.50	.50/4	.51/1	.50/4	.50/5
No. 3 Garnet	.47/4	.46/2	.46/4	.47	.47/5	.47	.47
Durum No. 1	.48	.46/6	.47	.47/4	.48/1	.47/4	.47/5
No. 2	.46	.44/6	.45	.45/4	.46/1	.45/4	.45/5
No. 3	.45	.43/6	.44	.44/4	.45/1	.44/4	.44/5
<u>OATS</u>							
No. 2 C.W.	.28/4	.28/3	.28/1	.28/2	.28/2	.27/7	.28/2
No. 3 C.W.	.25/7	.25/6	.25/5	.25/6	.26	.25/5	.25/6
Ex. No. 1 Feed	.25/7	.25/6	.25/5	.25/6	.26	.25/5	.25/6
No. 1 Feed	.24/7	.24/6	.24/5	.25	.25/2	.24/7	.25
No. 2 Feed	.23/7	.23/6	.23/5	.24	.24/2	.23/7	.24
No. 3 Feed	.20/7	.20/6	.20/5	.21/2	.21/2	.20/7	.21
<u>BARLEY</u>							
6 Row	.37/2	.37/1	.37/3	.37/1	.36/6	.36/2	.37
2 Row	.37/2	.37/1	.37/3	.37/1	.36/6	.36/2	.37
No. 3 C.W.	.37	.36/7	.36/7	.36/1	.36	.35/2	.36/4
No. 4 C.W.	.35	.34/7	.35/1	.34/1	.33/6	.33/2	.34/4
No. 5 C.W.	.34	.33/7	.34/1	.33/1	.32/6	.32/2	.33/4
No. 6 C.W.	.33	.32/7	.33/1	.32/1	.31/6	.31/2	.32/4
<u>RYE</u>							
No. 2 C.W.	.40/4	.39/6	.40/5	.41/4	.41	.40/2	.40/6
No. 3 C.W.	.37	.36/2	.37/1	.38	.37/4	.36/6	.37/1
Rejected No. 2 C.W.	.33/4	.32/6	.33/5	.34/4	.34	.33/2	.33/6
No. 4 C.W.	.32/4	.31/6	.32/5	.33/4	.33	.32/2	.32/6
Ergoty	.31/4	.30/6	.31/5	.32/4	.32	.31/2	.31/6
<u>FLAXSEED</u>							
No. 1 C.W.	1.31/4	1.32	1.32/2	1.34	1.33/4	1.33	1.32/7
No. 2 C.W.	1.27/4	1.28	1.28/2	1.30	1.29/4	1.29	1.28/7
No. 3 C.W.	1.15/4	1.16	1.16/2	1.18	1.17/4	1.17	1.16/7
No. 4 C.W.	1.10/4	1.11	1.11/2	1.13	1.12/4	1.12	1.11/7
<u>ONTARIO - TORONTO</u>							
Wheat, good milling	.60	.60	.60	.60	.60	.60	.60
Oats	.24- .26	.24- .26	.24- .26	.24- .26	.24- .26	.24- .26	.24- .26
Barley	.32- .34	.32- .34	.32- .34	.32- .34	.32- .34	.32- .34	.32- .34
Rye	.40- .42	.40- .42	.40- .42	.40- .42	.40- .42	.40- .42	.40- .42
Buckwheat	.38- .40	.38- .40	.38- .40	.38- .40	.41- .43	.41- .43	.39- .41
Malting Barley	.43- .44	.43- .44	.43- .44	.43- .44	.43- .44	.43- .44	.43- .44
Milling Oats	.24- .26	.24- .26	.24- .26	.24- .26	.24- .26	.24- .26	.24- .26
American No. 2 Yellow Corn	.82	.82	.82	.82	.82	.82	.82

STATISTICS CANADA LIBRARY
BIBLIOTHÈQUE STATISTIQUE CANADA



1010675138