

CANADA

DEPARTMENT OF TRADE AND COMMERCE

DOMINION BUREAU OF STATISTICS

AGRICULTURAL BRANCH

Vol. 19

No. 13

Historical File Copy

CANADIAN GRAIN STATISTICS

Week ending

OCTOBER 28, 1938

[Records for Western Inspection Division supplied by Board of Grain Commissioners for Canada]

----- + + + -----

Published by Authority of the HON. W.D. Euler, M.P.,
Minister of Trade and Commerce.

+ + +

OTTAWA

1938

Price \$2 a year

I N D E X

General Summary	1 - 6
Canadian Grain in Store by Elevators	7
Canadian Grain in Store by Grades	8
Comparative Statement of Grain in Store	9
Receipts and Shipments of Canadian Grain	10
United States Grain in Store, Receipts and Shipments	11 - 12
Receipts, Shipments and Quantities in Store at Interior Terminal Elevators	12
Receipts, Shipments and Quantities in Store at Country Elevators, Western Division and Platform Loadings	13
Receipts, Shipments and Quantities in Store at Pacific Elevators, and Vancouver Prices	14
Daily and Weekly Average Prices of Grain at Fort William and Toronto for the week ending October 29, 1938	15

DEPARTMENT OF TRADE AND COMMERCE
DOMINION BUREAU OF STATISTICS - CANADA
AGRICULTURAL BRANCH

(Issued November 3, 1938)

Dominion Statistician:	R. H. Coats, LL.D., F.R.S.C., F.S.S. (Hon.)
Acting Chief, Agricultural Branch:	W. Dougan.

WHEAT STOCKS IN STORE

Canadian wheat in store for the week ending October 28, 1938 increased 3,567,803 bushels compared with the previous week and increased 103,957,867 bushels when compared with the corresponding week in 1937. The amount in store was reported as 178,441,780 bushels compared with 174,873,977 bushels for the previous week and 74,483,913 bushels for the week ending October 29, 1937. The stocks of 178,441,780 bushels include 15,399,269 bushels of Durum wheat.

CANADIAN WHEAT IN CANADA

The wheat stocks in the elevators in Canada for the week ending October 28, 1938 were 173,541,780 bushels compared with 170,071,977 bushels for the previous week and 71,950,011 bushels for the corresponding week last year.

Stocks of wheat in Canadian elevators were located as follows: Western Country Elevators 66,758,000; Interior Terminals 11,651,071; Vancouver-New Westminster 17,011,793; Victoria 133,070; Churchill 377,535; Fort William and Port Arthur 35,677,609; Eastern Elevators Lake and Seaboard Ports 10,181,852 and 8,857,286 bushels respectively.

Increases were shown in the stocks over those of the previous week at the following elevators: Interior Terminal Elevators 456,967; Victoria 56,207; Head of the Lakes 5,131,900; Eastern Elevators Lake and Seaboard Ports 1,180,811 and 156,800 bushels respectively. Decreases were noted at Country Elevators of 1,514,000 and Vancouver-New Westminster 162,671 bushels.

Wheat in rail transit amounted to 17,579,229 bushels and the amount in lake transit was 5,314,335 bushels for the week ending October 28, 1938 compared with 5,758,414 and 2,838,063 bushels respectively for the same period last year.

CANADIAN WHEAT IN THE UNITED STATES

Canadian wheat in the United States amounted to 4,900,000 bushels, an increase of 98,000 bushels over the previous week when 4,802,000 bushels were reported. This Canadian wheat was located at the following ports: Buffalo 920,000; Buffalo Afloat 427,000; Erie, 1,277,000; Erie Canal 687,000; New York 588,000; New York Afloat 71,000 and Albany 930,000 bushels. Increases over the stocks of the previous week were shown at the following elevators: Erie 60,000; New York 160,000; Albany 436,000 bushels while decreases were noted in the stocks at Buffalo of 185,000; Buffalo Afloat 280,000; Erie Canal 92,000 and New York Afloat 1,000 bushels.

For the same week a year ago, the Canadian wheat in the United States amounted to 2,533,902 bushels distributed as follows: Duluth 9,902; Buffalo 689,000; Buffalo Afloat 924,000; Erie Canal 120,000; New York 656,000; New York Afloat 112,000 and Baltimore 23,000 bushels.

PRIMARY MOVEMENT

Wheat receipts in the Prairie Provinces for the week ending October 28, 1938 amounted to 12,989,083 bushels, a decrease of 1,226,808 bushels from the previous week when 14,215,891 bushels were marketed. During the corresponding week a year ago the receipts were 4,930,385 bushels. By provinces, the receipts for the week ending October 28, 1938 were as follows, figures within brackets being those for 1937: Manitoba 658,833 (466,858); Saskatchewan 5,793,981 (938,840); Alberta 6,536,269 (3,524,687) bushels.

Marketings in the three Prairie Provinces for the thirteen weeks from August 1, 1938 to October 28, 1938 as compared with the same period in 1937 were as follows, figures within brackets being those for 1937: Manitoba 38,789,016 (29,959,020); Saskatchewan 87,804,593 (17,507,845); Alberta 93,050,602 (34,015,004) bushels. For the thirteen weeks ending October 28, 1938 and the same period in 1937, 219,644,211 and 81,481,869 bushels respectively were received from the farms.

REPUBLIC OF THE PHILIPPINES
DEPARTMENT OF AGRICULTURE
BUREAU OF PLANT INDUSTRY

OFFICE OF THE CHIEF, BUREAU OF PLANT INDUSTRY
MANILA, PHILIPPINES

REPORT OF THE CHIEF, BUREAU OF PLANT INDUSTRY

For the year ending December 31, 1921

Summary of the Work of the Bureau of Plant Industry

The Bureau of Plant Industry has been organized since the year 1901, and has since that time been engaged in the study and development of the plant resources of the Philippines.

The Bureau has been organized into three main divisions, namely: the Division of Horticulture, the Division of Forestry, and the Division of Plant Pathology.

The Division of Horticulture has been engaged in the study and development of the fruit and vegetable resources of the Philippines. It has been successful in introducing many new and improved varieties of fruits and vegetables into the country.

The Division of Forestry has been engaged in the study and development of the forest resources of the Philippines. It has been successful in introducing many new and improved methods of forest management and in developing many new and improved forest products.

Summary of the Work of the Bureau of Plant Industry

The Division of Plant Pathology has been engaged in the study and development of the plant diseases of the Philippines. It has been successful in identifying many new and improved plant diseases and in developing many new and improved methods of plant disease control.

The Bureau of Plant Industry has been successful in many of its efforts, and it is hoped that it will continue to be successful in the future.

Summary of the Work of the Bureau of Plant Industry

The Bureau of Plant Industry has been successful in many of its efforts, and it is hoped that it will continue to be successful in the future.

The Bureau of Plant Industry has been successful in many of its efforts, and it is hoped that it will continue to be successful in the future.

OVERSEAS EXPORT CLEARANCES AND IMPORTS OF WHEAT INTO THE UNITED STATES.

During the week ending October 28, 1938 the overseas export clearances of wheat amounted to 6,399,261 bushels while imports into the United States for consumption and milling in bond were 264,000 bushels. The total is 6,663,261 bushels compared with 7,555,021 bushels for the previous week, a decrease of 891,760 bushels, and when compared with the same period in 1937 an increase of 4,150,776 bushels.

Clearances by ports for the week ending October 28, 1938 and the week ending October 29, 1937 and imports into the United States for consumption and milling in bond were as follows (in bushels):-

<u>Overseas Clearances</u>	<u>Week ending October 28, 1938</u>	<u>Week ending October 29, 1937</u>
Montreal	3,400,058	1,536,757
Sorel	1,398,048	-
Three Rivers	284,300	-
Vancouver-New Westminster	1,129,340	378,500
United States Ports	187,515	501,228
TOTAL	6,399,261	2,416,485
<u>Imports into the United States</u>		
For consumption and milling in bond for re-export	264,000	96,000
<u>Total Overseas Clearances and United States Imports</u>	6,663,261	2,512,485

The following table shows the export clearances of Canadian wheat by ports from August 1, 1938 to October 28, 1938 along with comparative figures for the same period in 1937-38 and imports into the United States for consumption and milling in bond (in bushels):-

<u>Overseas Clearances</u>	<u>1938-39</u>	<u>1937-38</u>
Montreal	22,474,713	15,535,797
Sorel	5,852,509	770,000
Three Rivers	3,892,914	41,078
Fort William and Port Arthur	112,066	-
Churchill	916,913	603,982
Vancouver-New Westminster	4,112,089	1,675,134
United States Ports	3,873,131	4,423,308
TOTAL	x 41,234,335	23,049,299
<u>Imports into the United States</u>		
For consumption and milling in bond for re-export	2,097,924	1,644,690
<u>Total Overseas Clearances and United States Imports to date</u>	43,332,259	24,693,989

x Includes 5,800,141 bushels Durum wheat cleared from Canadian and United States Atlantic Seaboard Ports.

The accumulated totals of imports of wheat into the United States for consumption and milling in bond are adjusted at the end of the month, due to the fact that the United States Department of Domestic and Foreign Commerce revises its weekly figures on a monthly basis.

STATE OF NEW YORK

IN SENATE,
January 10, 1907.

REPORT OF THE
COMMISSIONER OF THE LAND OFFICE

Year	Amount	Year	Amount
1897	\$1,000,000	1902	\$1,000,000
1898	\$1,000,000	1903	\$1,000,000
1899	\$1,000,000	1904	\$1,000,000
1900	\$1,000,000	1905	\$1,000,000

1901	\$1,000,000	1906	\$1,000,000
1902	\$1,000,000	1907	\$1,000,000
1903	\$1,000,000	1908	\$1,000,000
1904	\$1,000,000	1909	\$1,000,000
1905	\$1,000,000	1910	\$1,000,000

1911	\$1,000,000	1916	\$1,000,000
1912	\$1,000,000	1917	\$1,000,000
1913	\$1,000,000	1918	\$1,000,000
1914	\$1,000,000	1919	\$1,000,000
1915	\$1,000,000	1920	\$1,000,000

1921	\$1,000,000	1926	\$1,000,000
1922	\$1,000,000	1927	\$1,000,000
1923	\$1,000,000	1928	\$1,000,000
1924	\$1,000,000	1929	\$1,000,000
1925	\$1,000,000	1930	\$1,000,000

1931	\$1,000,000	1936	\$1,000,000
1932	\$1,000,000	1937	\$1,000,000
1933	\$1,000,000	1938	\$1,000,000
1934	\$1,000,000	1939	\$1,000,000
1935	\$1,000,000	1940	\$1,000,000

1941	\$1,000,000	1946	\$1,000,000
1942	\$1,000,000	1947	\$1,000,000
1943	\$1,000,000	1948	\$1,000,000
1944	\$1,000,000	1949	\$1,000,000
1945	\$1,000,000	1950	\$1,000,000

1951	\$1,000,000	1956	\$1,000,000
1952	\$1,000,000	1957	\$1,000,000
1953	\$1,000,000	1958	\$1,000,000
1954	\$1,000,000	1959	\$1,000,000
1955	\$1,000,000	1960	\$1,000,000

- 3 -
INTERNATIONAL TRADE

The following table shows the world shipments of wheat and flour for the first thirteen weeks of the present crop year. (Broomhall's figures).

Week ending	North America	Argentina	Australia	Russia	Danube	India	Other	Total
(Thousand Bushels)								
Aug. 6, 1938	4,288	1,120	2,608	2,784	336	896	-	12,032
13	4,192	1,032	2,104	3,512	696	736	-	12,272
20	4,376	600	2,104	2,624	512	640	-	10,856
27	3,760	1,568	2,576	3,552	808	224	-	12,488
Sept. 3	4,104	1,448	2,160	2,368	280	328	-	10,688
10	3,400	760	1,456	3,960	640	304	-	10,520
17	4,152	1,120	1,384	1,304	992	8	-	8,960
24	4,296	880	1,204	1,552	768	-	-	9,200
Oct. 1	5,536	1,528	1,256	1,512	936	112	-	10,880
8	5,776	840	976	2,568	904	-	-	11,064
15	4,768	416	1,712	1,264	1,728	-	16	9,904
22	8,109	795	836	1,280	696	144	872	12,732
29	7,350	1,484	1,782	1,072	1,576	-	1,520	14,784
TOTAL	64,107	13,591	22,658	29,352	10,872	3,392	2,408	146,380
<u>Comparative 1937</u>								
13th week	4,704	256	1,712	3,632	1,408	216	-	11,928
TOTAL	42,240	10,496	15,424	17,152	20,352	5,016	2,520	113,200

World shipments for the week ending October 29, 1938 amounted to 14,784,000 bushels as compared with shipments of 12,732,000 bushels for the previous week and 11,928,000 bushels for the corresponding week last year. North American shipments were still high this week amounting to 7,350,000 bushels although they show a decrease from the previous week of 759,000 bushels. Argentine and Australian shipments showed increases of 689,000 and 946,000 bushels respectively as compared with the previous week while Russian shipments were 208,000 bushels lower.

During the first thirteen weeks of the present crop year world shipments amounted to 146,380,000 bushels as compared with only 113,200,000 bushels for the corresponding weeks last year. North American shipments amounted to 64,107,000 bushels as compared with 42,240,000 bushels for the same period in 1937. Shipments from Australia were 7.2 million bushels higher for the first thirteen weeks of the present crop year as compared with the same period last year. Russian shipments were 12.2 million bushels higher than for the corresponding weeks in 1937.

WEEKLY AVERAGE SHIPMENTS

The following table shows the weekly average shipments of wheat and wheat flour in the first thirteen weeks of the present crop year along with comparative figures for 1937: -

	N. America	Argentina	Australia	Russia	Danube	India	Other	Total
(Million Bushels)								
1937	3.2	0.8	1.2	1.3	1.6	0.4	0.2	8.7
1938	4.9	1.0	1.7	2.3	0.8	0.3	0.2	11.2

According to the above table weekly average shipments of wheat and wheat flour amounted to 11.2 million bushels per week compared with 8.7 million bushels for the corresponding weeks in 1937. North American weekly average shipments amounted to 4.9 million bushels as compared with 3.2 million bushels in the same weeks last year.

THE FOLLOWING TABLE SHOWS THE AMOUNT OF STOCK AND BONDS FOR THE YEAR 1907, AS REPORTED BY THE COMPANIES.

Company	Common Stock	Preferred Stock	Bonds	Total
1. American Tobacco Co.	1,000,000	1,000,000	1,000,000	3,000,000
2. United Fruit Co.	500,000	500,000	500,000	1,500,000
3. Standard Oil Co.	2,000,000	2,000,000	2,000,000	6,000,000
4. General Electric Co.	1,500,000	1,500,000	1,500,000	4,500,000
5. International Harvester Co.	1,000,000	1,000,000	1,000,000	3,000,000
6. American Express Co.	500,000	500,000	500,000	1,500,000
7. Western Union Telegraph Co.	1,000,000	1,000,000	1,000,000	3,000,000
8. Pullman Palace Car Co.	500,000	500,000	500,000	1,500,000
9. American Telephone & Telegraph Co.	2,000,000	2,000,000	2,000,000	6,000,000
10. United States Steel Corp.	1,500,000	1,500,000	1,500,000	4,500,000
11. General Motors Corp.	1,000,000	1,000,000	1,000,000	3,000,000
12. Ford Motor Co.	500,000	500,000	500,000	1,500,000
13. Chrysler Corp.	1,000,000	1,000,000	1,000,000	3,000,000
14. Packard Motor Car Co.	500,000	500,000	500,000	1,500,000
15. Olds Motor Vehicle Co.	500,000	500,000	500,000	1,500,000
16. Buick Motor Vehicle Co.	500,000	500,000	500,000	1,500,000
17. Cadillac Motor Vehicle Co.	500,000	500,000	500,000	1,500,000
18. Lincoln Motor Vehicle Co.	500,000	500,000	500,000	1,500,000
19. Hupmobile Motor Vehicle Co.	500,000	500,000	500,000	1,500,000
20. Buick Motor Vehicle Co.	500,000	500,000	500,000	1,500,000

Company	Common Stock	Preferred Stock	Bonds	Total
21. American Tobacco Co.	1,000,000	1,000,000	1,000,000	3,000,000
22. United Fruit Co.	500,000	500,000	500,000	1,500,000
23. Standard Oil Co.	2,000,000	2,000,000	2,000,000	6,000,000
24. General Electric Co.	1,500,000	1,500,000	1,500,000	4,500,000
25. International Harvester Co.	1,000,000	1,000,000	1,000,000	3,000,000
26. American Express Co.	500,000	500,000	500,000	1,500,000
27. Western Union Telegraph Co.	1,000,000	1,000,000	1,000,000	3,000,000
28. Pullman Palace Car Co.	500,000	500,000	500,000	1,500,000
29. American Telephone & Telegraph Co.	2,000,000	2,000,000	2,000,000	6,000,000
30. United States Steel Corp.	1,500,000	1,500,000	1,500,000	4,500,000

The following table shows the amount of stock and bonds for the year 1907, as reported by the companies. The table is divided into two parts, one for the first half of the year and one for the second half. The first part shows the amount of stock and bonds for the first half of the year, and the second part shows the amount of stock and bonds for the second half of the year. The table is organized by company, with the first column listing the company name, the second column listing the amount of common stock, the third column listing the amount of preferred stock, the fourth column listing the amount of bonds, and the fifth column listing the total amount of stock and bonds. The table is organized in descending order of total amount of stock and bonds.

Company	Common Stock	Preferred Stock	Bonds	Total
1. American Tobacco Co.	1,000,000	1,000,000	1,000,000	3,000,000
2. United Fruit Co.	500,000	500,000	500,000	1,500,000
3. Standard Oil Co.	2,000,000	2,000,000	2,000,000	6,000,000
4. General Electric Co.	1,500,000	1,500,000	1,500,000	4,500,000
5. International Harvester Co.	1,000,000	1,000,000	1,000,000	3,000,000
6. American Express Co.	500,000	500,000	500,000	1,500,000
7. Western Union Telegraph Co.	1,000,000	1,000,000	1,000,000	3,000,000
8. Pullman Palace Car Co.	500,000	500,000	500,000	1,500,000
9. American Telephone & Telegraph Co.	2,000,000	2,000,000	2,000,000	6,000,000
10. United States Steel Corp.	1,500,000	1,500,000	1,500,000	4,500,000

The following table shows the amount of stock and bonds for the year 1907, as reported by the companies. The table is divided into two parts, one for the first half of the year and one for the second half. The first part shows the amount of stock and bonds for the first half of the year, and the second part shows the amount of stock and bonds for the second half of the year. The table is organized by company, with the first column listing the company name, the second column listing the amount of common stock, the third column listing the amount of preferred stock, the fourth column listing the amount of bonds, and the fifth column listing the total amount of stock and bonds. The table is organized in descending order of total amount of stock and bonds.

Stocks in Store at the Head of the Lakes compared with the same week last year were as follows:-

	Week ending October 28, 1938	Week ending October 29, 1937	+ Increase - Decrease
Wheat	35,677,609	19,548,742	+16,128,867
Oats	1,266,546	437,088	+ 829,458
Barley	1,118,519	2,953,376	- 1,834,857
Flaxseed	160,136	258,349	- 98,213
Rye	768,503	858,185	- 89,682

The receipts (including transfers) at the Head of the Lakes for the week ending October 28, 1938 with comparative figures for the same week last year were as follows:-

	Week ending October 28, 1938	Week ending October 29, 1937	+ Increase - Decrease
Wheat	11,400,184	3,090,380	+ 8,309,804
Oats	902,177	128,818	+ 773,359
Barley	550,303	151,605	+ 398,698
Flaxseed	47,138	4,922	+ 42,216
Rye	90,284	19,924	+ 70,360

Preliminary figures showing receipts and shipments at the Head of the Lakes also Vancouver-New Westminster, Churchill and Victoria for the period August 1, 1938 to October 28, 1938 compared with the same period last year:-

	FORT WILLIAM & PORT ARTHUR		VANCOUVER-NEW WESTMINSTER	
	Receipts	Shipments	Receipts	Shipments
Wheat	9,577,046	70,560,775	21,264,399	4,319,806
Oats	4,125,312	4,202,820	250,175	99,072
Barley	9,882,109	9,649,799	37,753	98,221
Flaxseed	266,675	243,314	316	95
Rye	1,031,287	859,905	-	1,874
TOTAL	112,882,429	85,516,613	21,552,643	4,519,068
Same period last year	62,115,054	47,538,209	1,333,289	2,119,810
+ Increase - Decrease	+ 50,767,375	+ 37,978,404	+ 20,219,354	+ 2,399,258

	VICTORIA		CHURCHILL	
	Receipts	Shipments	Receipts	Shipments
Wheat	133,069	-	1,282,651	916,913
Same period last year	-	-	-	603,982
+ Increase - Decrease	+ 133,069	-	+ 1,282,651	+ 312,931

Stocks in store in the Western Division compared with the same week last year were as follows:-

	Week ending October 28, 1938	Week ending October 29, 1937	+ Increase - Decrease
Wheat	131,609,078	48,771,256	+82,837,822
Oats	6,402,763	7,002,564	- 599,801
Barley	5,222,420	8,771,638	- 3,549,218
Flaxseed	471,391	590,816	- 119,425
Rye	1,612,003	1,196,521	+ 415,482

Platform Loadings shown by Prairie Provinces for the period ending October 21, 1938 were as follows:-

	WHEAT	OTHER GRAIN Bushels	TOTAL
Manitoba	45,100	19,400	64,500
Saskatchewan	43,989	10,996	54,985
Alberta	383,972	96,048	480,020
TOTAL	473,061	126,444	599,505
Period ending October 21, 1937	140,010	101,539	241,549

THE UNIVERSITY OF CHICAGO
DIVISION OF THE PHYSICAL SCIENCES
DEPARTMENT OF CHEMISTRY
CHICAGO, ILLINOIS 60637

RECEIVED

NAME
ADDRESS
CITY
STATE
ZIP

DATE

FROM

TO

RE

ATTENTION

REFERENCE

NOTES

Shipments Overseas of Canadian Grain from St. Lawrence Ports were as follows:-

		United Kingdom	Other Countries
		B u s h e l s	
Montreal, Quebec	Wheat	3,399,918	
	Oats	359,529	
	Barley	371,372	
	Rye	8,571	
Ogilvie Montreal, Quebec	Wheat	-	140
Sorel, Quebec	Wheat	546,500	851,548
	Barley	-	366,666
Three Rivers, Quebec	Wheat	284,300	-
	Oats	50,000	-

EASTERN ELEVATORS:- United States grain stocks were 439,818 bushels lower than at a comparable date last year. Decreases were noted in wheat of 1,978,412, oats 1,699,804, and rye 789,633 bushels, while barley and corn increased 798,586 and 3,229,450 bushels respectively.

Number of cars inspected in the Western Division for the week ending October 21, 1938 with comparison for the previous year were as follows:

	Week ending October 21, 1938	Week ending October 21, 1937	+ Increase - Decrease
Wheat	8,692	2,735	+ 5,957
Oats	424	330	+ 94
Barley	412	383	+ 29
Flaxseed	21	15	+ 16
Rye	62	19	+ 43
Mixed Grain	3	1	+ 2
Screenings	7	13	- 6
TOTAL	9,631	3,496	+ 6,135

CARS INSPECTED IN THE WESTERN INSPECTION DIVISION BY PROVINCES, SEPTEMBER, 1938.

	WHEAT	OATS	BARLEY	FLAX- SEED	RYE	MIXED GRAIN	CORN	SCREENINGS
Manitoba	7,459	504	2,780	44	159	5	3	2
Saskatchewan	18,489	330	211	38	50	2	-	2
Alberta	18,491	95	73	9	16	1	-	-
British Columbia	39	-	-	-	-	-	-	-
TOTAL	44,478	929	3,064	91	225	8	3	4

CARS INSPECTED IN THE WESTERN INSPECTION DIVISION BY PROVINCES DURING THE TWO MONTHS ENDING SEPTEMBER, 1938.

Manitoba	18,761	658	5,049	45	386	14	3	2
Saskatchewan	20,822	350	258	42	77	3	-	2
Alberta	19,728	124	87	9	20	3	-	-
British Columbia	51	-	-	-	-	-	-	2
TOTAL	59,362	1,132	5,394	96	483	20	3	6

100-100000-100000

100-100000-100000

100-100000-100000

100-100000-100000

100-100000-100000

100-100000-100000

100-100000-100000

100-100000-100000

100-100000-100000

100-100000-100000

100-100000-100000

100-100000-100000

100-100000-100000

100-100000-100000

100-100000-100000

100-100000-100000

100-100000-100000

100-100000-100000

100-100000-100000

100-100000-100000

100-100000-100000

100-100000-100000

100-100000-100000

100-100000-100000

100-100000-100000

100-100000-100000

100-100000-100000

100-100000-100000

100-100000-100000

100-100000-100000

100-100000-100000

100-100000-100000

100-100000-100000

100-100000-100000

100-100000-100000

100-100000-100000

100-100000-100000

100-100000-100000

100-100000-100000

100-100000-100000

100-100000-100000

100-100000-100000

100-100000-100000

STOCKS OF GRAIN IN DIFFERENT ELEVATORS DURING THE WEEK ENDING OCTOBER 28, 1938.

	WHEAT	DURUM WHEAT	OATS	BARLEY	FLAX- SEED	RYE
			B u s h e l s			
Western Country Elevators	62810000	3948000	4030000	2465000	240000	807000
Interior Private & Mill Elevs.	5421000	123000	883000	1600000	71000	33000
Interior Pub. & Semi-Pub. Terms.	6107071	-	9228	1552	-	-
Vancouver-New Westminster	17011793	-	213989	37349	255	3500
Victoria	133070	-	-	-	-	-
Churchill	377535	-	-	-	-	-
Fort William & Port Arthur	27518501	8159108	1266546	1118519	160136	768503
In Transit Lakes	5037063	277272	542470	1072025	24475	-
In Transit Rail	17579229	-	1228880	823823	27931	28352
Eastern Elevators-Lake Ports	8886506	1295346	519355	765699	4148	177691
Eastern Elevators-St. Lawrence Ports	8206743	627904	758135	1860342	50685	140900
Eastern Elevators-Maritime Ports	-	22639	-	-	-	-
U. S. Lake Ports	2986000	325000	-	80588	-	-
U. S. Atlantic Seaboard Ports	968000	621000	-	107000	-	42000
TOTAL	163042511	15399269	9451603	9931897	578630	2000946
Previous week	159148830	15725147	8528676	10205094	581299	1979904
Same week previous year	57492537	16991376	9178852	12726214	678206	1288151

QUANTITY OF SCREENINGS RECEIVED, SHIPPED AND IN STORE AT THE UNDERMENTIONED ELEVATORS DURING THE WEEK ENDING OCTOBER 28, 1938

	Amount in Store October 21, 1938		Amount Received by Vessel		Amount Shipped		Amount in Store October 28, 1938	
	Tons	Lbs.	Tons	Lbs.	Tons	Lbs.	Tons	Lbs.
Owen Sound	1306	1380	-	-	378	960	928	420
Goderich Elev. Co.	159	650	1293	1760	661	360	792	50
Montreal	653	1594	-	-	20	-	633	1594
Dominion Elev. Co.	739	1652	-	-	45	1000	694	652
TOTAL	2859	1276	1293	1760	1105	320	3048	716

LAKE SHIPMENTS FROM HEAD OF THE LAKES FOR THE PERIOD ENDING OCTOBER 31, 1938.

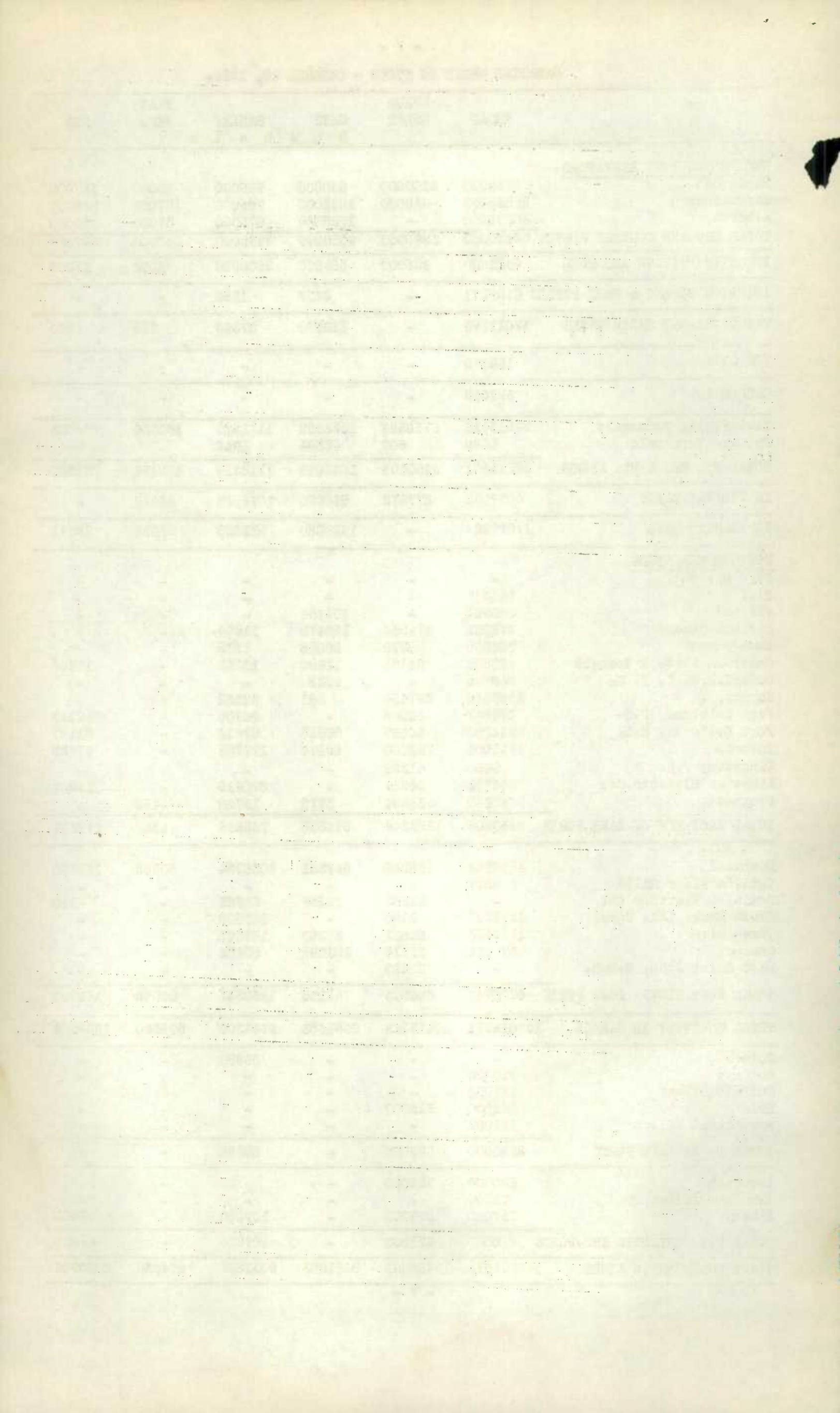
	CANADIAN LOWER LAKE PORTS	ST. LAWRENCE PORTS	BUFFALO	OTHER U.S.A. PORTS	EUROPE
	B u s h e l s				
Wheat	7320009	604481	395132	594421	-
Oats	264362	329481	-	-	-
Barley	593317	244771	-	80500	-
Flaxseed	-	83887	-	-	-
Rye			Nil		
TOTAL	8177688	1262620	395132	674921	-
Same period 1937	5117096	892348	1364069	-	57533

LAKE SHIPMENTS FROM THE HEAD OF THE LAKES FOR THE PERIOD FROM THE OPENING OF NAVIGATION TO OCTOBER 31, 1938

Wheat	72200566	15766108	7053729	5293698	112066
Oats	2289507	4219637	-	-	-
Barley	9942778	3105035	1067938	665429	-
Flaxseed	252739	207307	-	-	-
Rye	718258	348553	20000	260444	56000
TOTAL	85403848	23646640	8141667	6219571	168066
Same period 1937	62920623	15333513	8234319	2582453	221326

CANADIAN GRAIN IN STORE - OCTOBER 28, 1938.

	WHEAT	DURUM WHEAT	OATS B u s h e l s	BARLEY h e l s	FLAX SEED	RYE
<u>WESTERN COUNTRY ELEVATORS</u>						
Manitoba	5650000	3300000	660000	995000	36000	357000
Saskatchewan	26365000	648000	1615000	795000	167000	368000
Alberta	30795000	-	1755000	675000	37000	82000
TOTAL WESTERN COUNTRY ELEVS.	62810000	3948000	4030000	2465000	240000	807000
INTERIOR PRIVATE AND MILL	5421000	123000	883000	1600000	71000	33000
INTERIOR PUBLIC & SEMI-PUBLIC	6107071	-	9228	1552	-	-
VANCOUVER-NEW WESTMINSTER	17011793	-	213989	37349	255	3500
VICTORIA	133070	-	-	-	-	-
CHURCHILL	377535	-	-	-	-	-
Semi-Public Terminals	27515413	8158599	1223952	1111573	160136	768503
Private Terminals	3088	509	42594	6946	-	-
TOTAL FT. WM. & PT. ARTHUR	27518501	8159108	1266546	1118519	160136	768503
IN TRANSIT LAKES	5037063	277272	542470	1072025	24475	-
IN TRANSIT RAIL	17579229	-	1228880	823823	27931	28352
<u>EASTERN ELEVATORS</u>						
Port McNicoll	-	-	-	-	-	-
Tiffin	541771	-	-	-	-	-
Midland	580961	-	199766	-	-	-
Midland Simcoe	272389	374534	122478	11594	-	-
Owen Sound	353525	59679	20028	5875	-	-
Goderich Elev. & Transit	499556	24498	11390	13255	-	16695
Goderich W. Co. F. M.	266746	-	4928	-	-	-
Sarnia	2353158	297454	661	31362	-	-
Port Colborne, D.G.	887867	80268	-	84105	-	42187
Port Colborne, M.L.	792206	54667	56855	57633	-	21187
Toronto	1311006	233600	99474	177756	-	57625
Kingston, J.R.	9460	41226	-	-	-	-
Kingston Elevator Co.	985122	94926	-	370419	-	39997
Prescott	32749	34494	3775	13700	4148	-
TOTAL EAST.ELEVS. LAKE PORTS	8886506	1295346	519355	765699	4148	177691
Montreal	4598142	468049	557331	1036924	50685	136760
Ogilvie Flour Mills	378877	-	-	-	-	-
Dominion Elevator Co.	-	29952	19336	53783	-	4140
North Amer. Ltd. Sorel	1673397	6380	-	533800	-	-
Three Rivers	1179513	89813	28383	183382	-	-
Quebec	376814	33710	153085	52453	-	-
West Saint John, C.P.R.	-	22639	-	-	-	-
TOTAL EAST.ELEVS. SBD. PORTS	8206743	650543	758135	1860342	50685	140900
TOTAL QUANTITY IN CANADA	159088511	14453269	9451603	9744309	578630	1958946
Duluth	-	-	-	80588	-	-
Buffalo	920000	-	-	-	-	-
Buffalo Afloat	427000	-	-	-	-	-
Erie	952000	325000	-	-	-	-
Erie Canal Afloat	687000	-	-	-	-	-
TOTAL U. S. LAKE PORTS	2986000	325000	-	80588	-	-
New York	260000	328000	-	-	-	-
New York Afloat	71000	-	-	-	-	-
Albany	637000	293000	-	107000	-	42000
TOTAL U.S. ATLANTIC SBD. PORTS	968000	621000	-	107000	-	42000
TOTAL QUANTITY IN STORE	163042511	15399269	9451603	9931897	578630	2000946

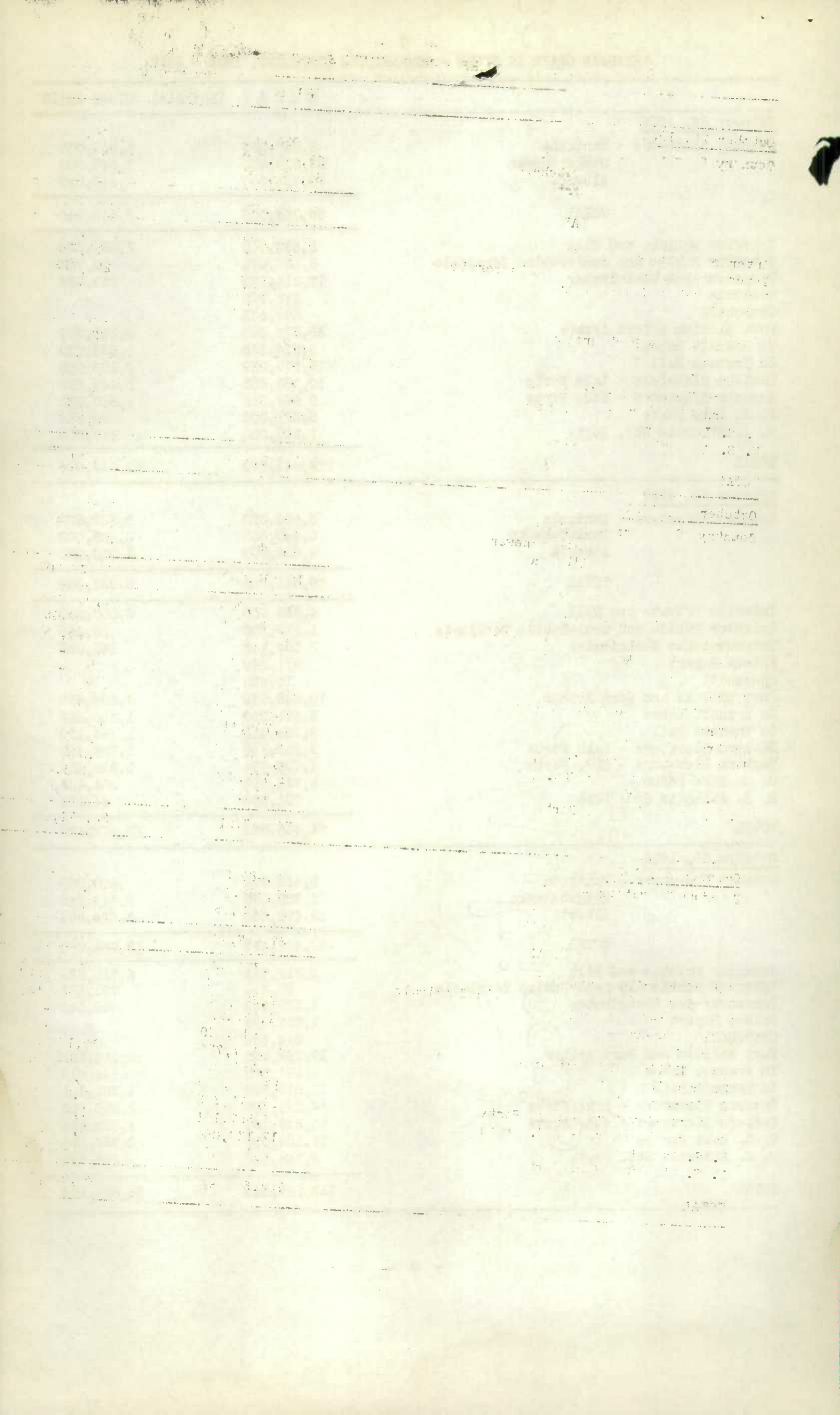


Grades of Canadian Grain in Store at Public, Semi-Public, and Private (Head of the Lakes), Interior Public and Semi-Public, Vancouver-New Westminster, and Eastern Elevators for the week ending October 28, 1938.

	Ft. William & Pt. Arthur Semi-Public and Private	Interior Public and Semi-Public Terminals	Vancouver New West- minster Elevators	Eastern Elevators Lake Ports	Eastern Elevators St. Lawrence Ports	Eastern Elevators Maritime Ports
B u s h e l s						
WHEAT						
No. 1 Hard	448,547	270,580	1,863,398	36,965	55,105	-
No. 1 Northern	4,165,499	2,645,874	7,047,498	2,029,591	2,328,022	-
No. 2 Northern	6,877,365	1,167,922	2,723,705	4,708,994	3,863,100	-
Old No. 2 Northern	-	-	-	600	223	-
No. 3 Northern	7,854,361	657,739	2,068,327	627,786	1,079,057	-
Old No. 3 Northern	8,565	-	-	86	-	-
No. 4 Northern	1,231,077	73,911	157,455	558,488	428,831	-
Old No. 4 Northern	936	-	522	3,001	14	-
No. 4 Special	1,616,460	-	-	37,675	-	-
No. 5 Wheat	1,009,029	147,612	180,970	-	8,089	-
No. 5 Special	497,457	-	-	17,328	3,464	-
No. 6 Wheat	120,883	3,580	10,146	7,097	3,845	-
No. 6 Special	184,821	-	-	73,000	2,498	-
Feed	356,947	-	12,942	58,258	86,878	-
No. 1 C.W. Garnet	323,116	75,254	205,367	-	-	-
No. 2 C.W. Garnet	1,467,783	786,195	1,971,127	145,238	116,924	-
No. 3 C.W. Garnet	607,757	244,162	566,257	197,737	115,490	-
No. 1 C.W. Durum	555,323	647	-	114,939	30,426	-
No. 2 C.W. Durum	6,406,703	-	-	829,477	292,646	22,639
No. 3 C.W. Durum	1,079,027	-	-	364,719	213,281	-
No. 4 C.W. Durum	37,185	-	-	-	-	-
Other Durum	80,361	-	-	-	67,705	-
Other	748,407	33,595	204,079	370,871	139,049	-
TOTAL	27,518,501	6,107,071	17,011,793	10,181,252	8,834,647	22,639
OATS						
No. 2 C.W.	251,104	-	8,719	213,916	49,182	-
No. 3 C.W.	528,451	4,663	25,034	294,468	291,551	-
Ex. No. 1 Feed	568	-	-	-	-	-
No. 1 Feed	254,152	988	27,111	6,596	165,452	-
No. 2 Feed	71,091	198	3,846	-	71,980	-
No. 3 Feed	13,956	-	-	-	2,878	-
Other	147,224	3,379	149,279	4,375	181,092	-
TOTAL	1,266,546	9,228	213,989	519,355	758,135	-
BARLEY						
3 Ex. C.W. 6 Row	445,751	-	-	263,910	432,322	-
3 C.W. 6 Row	-	-	-	-	-	-
3 Ex. C.W. 2 Row	4,872	-	-	4,168	-	-
3 C.W. 2 Row	-	-	-	-	-	-
3 C.W.	384,338	251	10,633	397,878	1,392,581	-
4 C.W.	57,824	150	3,400	-	3,025	-
5 C.W.	34,259	68	8,371	-	10,436	-
6 C.W.	5,512	475	2,510	-	1,871	-
Feed	-	-	-	-	-	-
Other	185,963	608	12,435	99,743	20,107	-
TOTAL	1,118,519	1,552	37,349	765,699	1,860,342	-
FLAXSEED						
No. 1 C.W.	153,210	-	56	4,148	50,685	-
No. 2 C.W.	2,353	-	192	-	-	-
No. 3 C.W.	26	-	-	-	-	-
No. 4 C.W.	1,930	-	-	-	-	-
Other	2,617	-	7	-	-	-
TOTAL	160,136	-	255	4,148	50,685	-
RYE						
No. 1 C.W.	2,178	-	-	-	-	-
No. 2 C.W.	585,211	-	-	177,691	136,760	-
No. 3 C.W.	169,848	-	-	-	4,140	-
No. 4 C.W.	2,948	-	-	-	-	-
Ergoty	1,152	-	-	-	-	-
Other	7,166	-	3,500	-	-	-
TOTAL	768,503	-	3,500	177,691	140,900	-
TOTAL QUANTITY IN STORE	38,991,313	6,117,851	17,266,886	11,648,745	11,644,709	22,639

- 9 -
CANADIAN GRAIN IN STORE - COMPARATIVE STATEMENT, 1936 - 1938.

	W H E A T (Bushels)	OTHER GRAIN
<u>October 28, 1938</u>		
Country Elevators - Manitoba	8,950,000	2,048,000
Saskatchewan	27,013,000	2,945,000
Alberta	30,795,000	2,549,000
TOTAL	66,758,000	7,542,000
Interior Private and Mill	5,544,000	2,587,000
Interior Public and Semi-Public Terminals	6,107,071	10,780
Vancouver-New Westminster	17,011,793	255,093
Victoria	133,070	-
Churchill	377,535	-
Fort William & Port Arthur	35,677,609	3,313,704
In Transit Lakes	5,314,335	1,638,970
In Transit Rail	17,579,229	2,108,986
Eastern Elevators - Lake Ports	10,181,852	1,466,893
Eastern Elevators - Sbd. Ports	8,857,286	2,810,062
U. S. Lake Ports	3,311,000	80,588
U. S. Atlantic Sbd. Ports	1,589,000	149,000
TOTAL	178,441,780	21,963,076
<u>October 29, 1937</u>		
Country Elevators - Manitoba	3,490,000	3,322,000
Saskatchewan	6,460,000	2,585,000
Alberta	9,695,000	3,930,000
TOTAL	19,645,000	9,837,000
Interior Private and Mill	4,938,000	3,000,000
Interior Public and Semi-Public Terminals	1,119,206	20,455
Vancouver-New Westminster	2,597,148	143,086
Prince Rupert	911,340	-
Churchill	11,820	-
Fort William and Port Arthur	19,548,742	4,506,998
In Transit Lakes	3,471,353	1,380,282
In Transit Rail	5,758,414	1,764,118
Eastern Elevators - Lake Ports	9,153,294	1,738,461
Eastern Elevators - Sbd. Ports	4,795,694	1,215,537
U. S. Lake Ports	1,742,902	201,486
U. S. Atlantic Sbd. Ports	791,000	64,000
TOTAL	74,483,913	23,871,423
<u>October 30, 1936</u>		
Country Elevators - Manitoba	2,486,398	1,810,958
Saskatchewan	15,288,583	7,444,248
Alberta	19,672,486	3,665,874
TOTAL	37,447,467	12,921,080
Interior Private and Mill	6,714,431	4,710,971
Interior Public and Semi-Public Terminals	95,142	791,117
Vancouver-New Westminster	9,329,688	645,140
Prince Rupert	1,025,959	-
Churchill	614,569	-
Fort William and Port Arthur	29,267,729	10,168,352
In Transit Lakes	4,291,688	544,950
In Transit Rail	10,010,729	1,793,141
Eastern Elevators - Lake Ports	16,871,795	2,295,086
Eastern Elevators - Sbd. Ports	15,557,181	1,926,599
U. S. Lake Ports	17,136,050	2,950,523
U. S. Atlantic Sbd. Ports	5,146,412	148,239
TOTAL	153,508,840	38,895,198



RECEIPTS AND SHIPMENTS OF GRAIN BY CLASSES OF ELEVATORS

IN THE WEEK ENDING OCTOBER 28, 1938.

		WHEAT	DURUM WHEAT	OATS B u s h e l s	BARLEY	FLAXSEED	RYE
<u>R E C E I P T S</u>							
Country Elevators		12,288,972	227,050	1,538,365	911,998	76,713	116,849
Int. Private & Mill Elevs.		1,380,728	3,084	363,567	93,940	4,867	1,389
Int. Pub. & Semi-Pub. Terms.		271,405	-	366	472	-	-
Vancouver-New Westminster		983,636	-	36,235	5,187	-	-
Fort William & Port Arthur		11,108,168	292,016	902,177	550,303	47,138	90,284
Victoria		56,207	-	-	-	-	-
Eastern Elevators -							
Georgian Bay Ports	Vessel	2,433,891		234,528	20,255	-	-
Lower Lake Ports	Vessel	3,238,664		152,486	415,440	61,802	87,184
	Rail	1,457		547	5,578	-	-
St. Lawrence Ports	Vessel	4,570,450		379,562	321,697	48,570	54,899
	Rail	788,905		11,508	219,404	-	-
<u>S H I P M E N T S</u>							
Country Elevators		13,291,163	751,025	1,286,664	892,694	53,796	77,242
Int. Private & Mill Elevs.		1,240,826	11,634	243,068	47,103	9,372	2,169
Int. Pub. & Semi-Pub. Terms.		13,415	-	2,500	250	-	-
Vancouver-New Westminster							
	Vessel	1,129,340	-	647	17	3	-
	Rail	13,193	-	4,956	548	-	52
Fort William & Port Arthur							
	Vessel	5,920,315	338,512	359,817	929,139	23,978	-
	Rail	1,096	1,132	53,000	493	-	-
Eastern Elevators -							
Georgian Bay Ports	Vessel	570,829		-	105,000	-	-
	Rail	741,922		35,960	85,340	-	-
Lower Lake Ports	Vessel	3,051,431		81,849	460,303	-	2,885
	Rail	232,281		19,271	11,262	-	8,783
St. Lawrence Ports	Vessel	5,082,406		359,529	788,038	-	8,571
	Rail	120,146		48,849	39,857	59,615	2,100

STOCKS OF UNITED STATES GRAIN IN CANADA OCTOBER 28, 1938.

	WHEAT	OATS	BARLEY	RYE	CORN	SOYA BEANS
			B u s h e l s			
Midland Aberdeen	277,129	129,075	-	-	154,322	-
Midland Simcoe	-	568,784	-	-	92,252	-
Owen Sound	-	53,035	-	-	16,800	-
Collingwood	-	-	-	-	904,302	-
Goderich Elevator & Transit	-	65,497	-	-	255,668	-
Goderich W. C. F. M.	-	-	-	-	2,000	-
Sarnia	-	-	-	-	289,434	-
Port Colborne, D.G.	-	-	-	-	840,080	-
Port Colborne, M.L.	176,860	1,054	-	-	291,758	-
Toronto	-	-	-	-	173,249	8,357
Prescott	-	-	-	-	7,757	-
Montreal	10,967	34,676	296,623	36,642	158,392	37,148
Dominion Elevator Co.	-	21,081	-	-	13,954	-
Sorel	-	-	93,526	-	-	-
Three Rivers	-	6,590	496,538	-	28,885	-
Quebec	-	-	-	-	2,139	-
Halifax	-	6,976	-	-	-	-
TOTAL	464,956	886,768	886,687	36,642	3,230,992	45,505
Same period last year	2,443,368	2,586,572	88,101	826,280	1,542	-

RECEIPTS AND SHIPMENTS OF UNITED STATES GRAIN IN CANADA OCTOBER 28, 1938.

	R E C E I P T S			S H I P M E N T S	
	Water	Rail		Water	Rail
Wheat	-	-	To U. S. Points	-	14,131
Oats	-	-	" Can. Dom. Points	-	168,300
			" U. S. Points	-	10,800
			" New England	-	9,035
Corn	653,473	-	" Can. Dom. Points	-	7,000
			" U. S. Points	-	126,757
LOWER LAKE PORTS					
Wheat	-	-	To Can. Dom. Points	-	37,016
			" Can. Flour Mills	-	3,114
Oats	-	-	" Can. Flour Mills	-	73
Corn	259,458	-	" Can. Dom. Points	-	43,000
			" Can. Flour Mills	-	15,340
Soya Beans	8,357	-	" Can. Dom. Points	-	-
ST. LAWRENCE PORTS					
Wheat	-	21,495	To U.K. and O.C.	22,542	-
Oats	-	-	" Can. Dom. Points	-	5,906
			" U.K. and O.C.	1,505	-
Barley	26,446	-	" U.K. and O.C.	16,655	-
Rye	-	-	" U.K. and O.C.	10,822	-
Corn	96,975	202,212	" Can. Dom. Points	-	2,501
			" U.S. Seaboard	14,000	-
			" U.K. and O.C.	115,658	-
			" United Kingdom	203,977	-
Soya Beans	37,148	-	" Can. Dom. Points	-	-
MARITIME PORTS					
Oats	-	-	To Can. Dom. Points	-	102

THE UNIVERSITY OF CHICAGO
LIBRARY
1850
1851
1852
1853
1854
1855
1856
1857
1858
1859
1860
1861
1862
1863
1864
1865
1866
1867
1868
1869
1870
1871
1872
1873
1874
1875
1876
1877
1878
1879
1880
1881
1882
1883
1884
1885
1886
1887
1888
1889
1890
1891
1892
1893
1894
1895
1896
1897
1898
1899
1900
1901
1902
1903
1904
1905
1906
1907
1908
1909
1910
1911
1912
1913
1914
1915
1916
1917
1918
1919
1920
1921
1922
1923
1924
1925
1926
1927
1928
1929
1930
1931
1932
1933
1934
1935
1936
1937
1938
1939
1940
1941
1942
1943
1944
1945
1946
1947
1948
1949
1950
1951
1952
1953
1954
1955
1956
1957
1958
1959
1960
1961
1962
1963
1964
1965
1966
1967
1968
1969
1970
1971
1972
1973
1974
1975
1976
1977
1978
1979
1980
1981
1982
1983
1984
1985
1986
1987
1988
1989
1990
1991
1992
1993
1994
1995
1996
1997
1998
1999
2000
2001
2002
2003
2004
2005
2006
2007
2008
2009
2010
2011
2012
2013
2014
2015
2016
2017
2018
2019
2020
2021
2022
2023
2024
2025

THE UNIVERSITY OF CHICAGO
LIBRARY
1850
1851
1852
1853
1854
1855
1856
1857
1858
1859
1860
1861
1862
1863
1864
1865
1866
1867
1868
1869
1870
1871
1872
1873
1874
1875
1876
1877
1878
1879
1880
1881
1882
1883
1884
1885
1886
1887
1888
1889
1890
1891
1892
1893
1894
1895
1896
1897
1898
1899
1900
1901
1902
1903
1904
1905
1906
1907
1908
1909
1910
1911
1912
1913
1914
1915
1916
1917
1918
1919
1920
1921
1922
1923
1924
1925
1926
1927
1928
1929
1930
1931
1932
1933
1934
1935
1936
1937
1938
1939
1940
1941
1942
1943
1944
1945
1946
1947
1948
1949
1950
1951
1952
1953
1954
1955
1956
1957
1958
1959
1960
1961
1962
1963
1964
1965
1966
1967
1968
1969
1970
1971
1972
1973
1974
1975
1976
1977
1978
1979
1980
1981
1982
1983
1984
1985
1986
1987
1988
1989
1990
1991
1992
1993
1994
1995
1996
1997
1998
1999
2000
2001
2002
2003
2004
2005
2006
2007
2008
2009
2010
2011
2012
2013
2014
2015
2016
2017
2018
2019
2020
2021
2022
2023
2024
2025

STOCKS OF FOREIGN GRAIN IN CANADA OCTOBER 28, 1938.

	ARGENTINE CORN	SOUTH AFRICAN CORN B u s h e l s	AUSTRALIAN CORN	ARGENTINE FLAXSEED
Goderich Elevator & Transit	-	1,500	-	-
Goderich W. C. F. M.	-	6,000	-	-
Port Colborne, M.L.	-	2,145	-	-
Montreal	26,305	87,276	109,513	25,630
Dominion Elevator Co.	10,587	7,238	-	-
Three Rivers	-	3,131	-	-
Quebec	-	11,011	135,265	-
Saint John	-	65,400	-	-
Halifax	-	27,358	-	-
TOTAL	36,892	211,059	244,778	25,630
Same period last year	797,637	4,062,300	-	230,758

RECEIPTS AND SHIPMENTS OF FOREIGN GRAIN IN CANADA OCTOBER 28, 1938.

	R E C E I P T S		LOWER LAKE PORTS	S H I P M E N T S	
	Water	Rail		Water	Rail
Afr. Corn	-	-	To Can. Flour Mills	-	250
Arg. Flaxseed	13,145	-	" Can. Dom. Points	-	13,145
ST. LAWRENCE PORTS					
Arg. Corn	-	-	To Can. Dom. Points	-	2,500
			" U.S. Seaboard	232	-
Afr. Corn	-	324	" Can. Dom. Points	-	500
Australian Corn	-	-	" Can. Dom. Points	-	13,500
			" Can. Flour Mills	-	1,250
Arg. Flaxseed	-	-	" Can. Dom. Points	-	10,000
MARITIME PORTS					
Afr. Corn	36,858	-	To Can. Dom. Points	-	27,369

STOCKS IN STORE, RECEIPTS AND SHIPMENTS AT THE CANADIAN GOVERNMENT INTERIOR TERMINAL ELEVATORS, WEEK ENDING OCTOBER 28, 1938.

	WHEAT bus.	OATS bus.	BARLEY bus.	FLAXSEED bus.	RYE bus.
STOCKS IN STORE					
Calgary	2,551,686	3,347	369	-	-
Edmonton	2,388,541	675	711	-	-
Lethbridge	854,180	303	-	-	-
Moose Jaw	266,647	-	-	-	-
Saskatoon	46,017	4,903	472	-	-
TOTAL	6,107,071	9,228	1,552	-	-
RECEIPTS					
Calgary	196,489	366	-	-	-
Edmonton	40,737	-	-	-	-
Lethbridge	4,732	-	-	-	-
Moose Jaw	29,447	-	-	-	-
Saskatoon	-	-	472	-	-
TOTAL	271,405	366	472	-	-
SHIPMENTS					
Calgary	2,742	2,500	-	-	-
Edmonton	345	-	250	-	-
Lethbridge	6,683	-	-	-	-
Moose Jaw	1,595	-	-	-	-
Saskatchewan	2,050	-	-	-	-
TOTAL	13,415	2,500	250	-	-

STOCKS, RECEIPTS AND SHIPMENTS OF THE COUNTRY ELEVATORS IN THE WESTERN DIVISION IN THE
WEEK ENDING OCTOBER 28, 1938.

	WHEAT	DURUM WHEAT	OATS	BARLEY	FLAXSEED	RYE
			B u s h e l s			
<u>COUNTRY ELEVATORS</u>						
<u>STOCKS IN STORE</u>						
Manitoba	5,650,000	3,300,000	660,000	995,000	36,000	357,000
Saskatchewan	26,365,000	648,000	1,615,000	795,000	167,000	368,000
Alberta	30,795,000	-	1,755,000	675,000	37,000	82,000
TOTAL	62,810,000	3,948,000	4,030,000	2,465,000	240,000	807,000
Total - a week ago	63,845,000	4,427,000	3,780,000	2,455,000	219,000	768,000
a year ago	18,185,000	1,460,000	5,670,000	3,660,000	199,000	308,000
<u>RECEIPTS DURING WEEK</u>						
Manitoba	457,772	155,961	95,800	298,090	7,825	37,645
Saskatchewan	5,678,903	71,089	776,947	355,031	48,052	61,064
Alberta	6,152,297	-	665,618	258,877	20,836	18,140
TOTAL	12,288,972	227,050	1,538,365	911,998	76,713	116,849
Total - a week ago	13,600,808	208,786	1,101,482	670,916	38,917	101,730
a year ago	4,885,881	333,257	2,036,672	1,045,090	39,772	25,409
<u>SHIPMENTS DURING WEEK</u>						
Manitoba	568,603	231,824	125,509	359,469	11,456	35,725
Saskatchewan	7,251,995	519,201	698,260	312,782	32,341	35,456
Alberta	5,470,565	-	462,895	220,443	9,999	6,061
TOTAL	13,291,163	751,025	1,286,664	892,694	53,796	77,242
Total - a week ago	13,353,736	214,490	1,144,786	847,645	43,493	87,057
a year ago	3,670,737	180,161	857,485	461,671	21,907	28,878

TOTAL RECEIPTS AT COUNTRY ELEVATORS AND PLATFORM LOADINGS/ IN THE
PERIOD AUGUST 1, 1938 TO OCTOBER 28, 1938.

	W H E A T	OTHER GRAIN
	B u s h e l s	
Manitoba	38,789,016	13,448,667
Saskatchewan	87,804,593	8,145,816
Alberta	93,050,602	5,259,498
Total - 1937 - 1938	219,644,211	26,853,981
Same period 1936 - 1937	81,481,869	29,662,115

/ Platform loadings to October 21, 1938.

STOCKS, RECEIPTS AND SHIPMENTS OF THE PACIFIC COAST ELEVATORS

IN THE WEEK ENDING OCTOBER 28, 1938.

	WHEAT	OATS	BARLEY	FLAXSEED	RYE
	B u s h e l s				
<hr/>					
<u>STOCKS IN STORE</u>					
Vancouver-New Westminster	17,011,793	213,989	37,349	255	3,500
Victoria	133,070	-	-	-	-
Churchill	377,535	-	-	-	-
 <u>RECEIPTS DURING WEEK</u>					
Vancouver-New Westminster	983,636	36,235	5,187	-	-
Victoria	56,207	-	-	-	-
 <u>SHIPMENTS DURING WEEK</u>					
Vancouver-New Westminster					
Vessel	1,129,340	647	17	3	-
Rail	13,193	4,956	548	-	52

DAILY QUOTATIONS AND WEEKLY AVERAGES OF CASH WHEAT BY GRADES IN CENTS AND

EIGHTHS OF A CENT PER BUSHEL

IN THE WEEK ENDING OCTOBER 29, 1938.

(Basis Vancouver, B.C.)

	Oct. 24	Oct. 25	Oct. 26	Oct. 27	Oct. 28	Oct. 29	Weekly Average
	\$ ¢	\$ ¢	\$ ¢	\$ ¢	\$ ¢	\$ ¢	\$ ¢
No. 1 Hard							
No. 1 Northern							
No. 2 Northern							
No. 3 Northern							
No. 4 Northern							
No. 5							
No. 6							
Feed							
No. 1 Garnet							
No. 2 Garnet							

Vancouver prices discontinued until further notice.

DAILY QUOTATIONS AND WEEKLY AVERAGES OF CASH GRAIN BY
GRADES ON WINNIPEG AND TORONTO MARKETS
Week ending October 29, 1938

	Oct. 24	Oct. 25	Oct. 26	Oct. 27	Oct. 28	Oct. 29	Weekly Average
	\$ ¢	\$ ¢	\$ ¢	\$ ¢	\$ ¢	\$ ¢	\$ ¢
<u>WHEAT</u> (Basis Fort William and Port Arthur)							
No. 1 Man. Hard	.62/5	.61/6	.60/5	.60	.59/6	.61	.61
No. 1 Man. Northern	.62/1	.61/2	.60/1	.59/4	.59/2	.60/4	.60/4
No. 2 Man. Northern	.58/1	.57/2	.56/6	.56/1	.55/7	.57/1	.56/7
No. 3 Man. Northern	.55/3	.54/5	.53/5	.52/6	.52/4	.53/6	.53/6
No. 4 Man. Northern	.48/7	.47/5	.46/5	.45/4	.45/2	.46/4	.46/6
No. 5	.42/7	.42/1	.41/5	.41	.40/6	.42	.41/6
No. 6	.35/7	.35/1	.34/5	.34	.33/6	.35	.34/6
Feed	.34/7	.34/1	.33/5	.33	.32/6	.34	.33/6
No. 4 Special	.41/7	.40/1	.39/5	.39	.38/6	.40	.39/7
No. 5 Special	.39/7	.38/1	.37/5	.37	.36/6	.38	.37/7
No. 6 Special	.37/7	.36/1	.35/5	.35	.34/6	.36	.35/7
Tough No. 1 Hard	.60/5	.59/6	.58/5	.58	.57/6	.59	.59
No. 1 Northern	.60/5	.59/6	.58/5	.58	.57/6	.59	.59
No. 2 Northern	.56/5	.55/6	.55/2	.54/5	.54/3	.55/5	.55/3
No. 3 Northern	.53/7	.53/1	.52/1	.51/2	.51	.52/2	.52/2
Rejected No. 1 Northern	.55/7	.55/1	.54/5	.54	.53/6	.55	.54/6
No. 2 Northern	.52/7	.52/1	.51/5	.51	.50/6	.52	.51/6
No. 3 Northern	.50/7	.50/1	.49/1	.48/2	.48	.49/2	.49/2
Smutty No. 1 Northern	.57/3	.56/5	.56/1	.55/4	.55/2	.56/4	.56/2
No. 2 Northern	.54/3	.53/5	.53/1	.52/4	.52/2	.53/4	.53/2
No. 3 Northern	.51/7	.51/1	.50/1	.49/2	.49	.50/2	.50/2
No. 1 Garnet	.52/7	.52/1	.51/5	.51	.50/6	.52	.51/6
No. 2 Garnet	.49/7	.49/1	.48/5	.48	.47/6	.49	.48/6
No. 3 Garnet	.46/3	.45/5	.44/5	.44	.43/6	.45	.44/7
Durum No. 1	.46/7	.46/1	.45/5	.45	.44/6	.46	.45/6
No. 2	.44/7	.44/1	.43/5	.43	.42/6	.44	.43/6
No. 3	.43/7	.43/1	.42/5	.42	.41/6	.43	.42/6
<u>OATS</u>							
No. 2 C.W.	.28	.27/7	.27/6	.27/6	.27/4	.27/7	.27/6
No. 3 C.W.	.25/6	.25/5	.25/4	.25/4	.25	.25/1	.25/3
Ex. No. 1 Feed	.25/6	.25/5	.25/4	.25/4	.25	.25/1	.25/3
No. 1 Feed	.25	.24/7	.24/2	.24/2	.24	.23/7	.24/3
No. 2 Feed	.24	.23/7	.23/2	.23/2	.23	.22/7	.23/3
No. 3 Feed	.21	.20/7	.20/2	.20/2	.20	.19/7	.20/3
<u>BARLEY</u>							
6 Row	.36/2	.35/7	.36/1	.35/7	.36/3	.36/1	.36/1
2 Row	.36/2	.35/7	.36/1	.35/7	.36/3	.36/1	.36/1
No. 3 C.W.	.35/2	.35/1	.35/3	.34/7	.35/3	.34/7	.35/1
No. 4 C.W.	.33/2	.32/7	.33/5	.33/3	.33/7	.33/5	.33/3
No. 5 C.W.	.32/2	.31/7	.32/5	.32/3	.32/7	.32/5	.32/3
No. 6 C.W.	.31/2	.30/7	.31/5	.31/3	.31/7	.31/5	.31/3
<u>RYE</u>							
No. 2 C.W.	.40	.41/3	.40/4	.39/6	.39	.39/4	.40
No. 3 C.W.	.36/4	.37/7	.37	.36/2	.35/4	.36	.36/4
Rejected No. 2 C.W.	.33	.34/3	.33/4	.32/6	.32	.32/4	.33
No. 4 C.W.	.32	.33/3	.32/4	.31/6	.31	.31/4	.32
Ergoty	.31	.32/3	.31/4	.30/6	.30	.30/4	.31
<u>FLAXSEED</u>							
No. 1 C.W.	1.33	1.33	1.33	1.33	1.33	1.33	1.33
No. 2 C.W.	1.29	1.29	1.29	1.29	1.29	1.29	1.29
No. 3 C.W.	1.17	1.17	1.17	1.17	1.17	1.17	1.17
No. 4 C.W.	1.12	1.12	1.12	1.12	1.12	1.12	1.12
<u>ONTARIO - TORONTO</u>							
Wheat, good milling						N	
Oats	.24- .26	.24- .26	.24- .26	.24- .26	.24- .26	o	.24- .26
Barley	.32- .34	.32- .34	.34- .36	.34- .36	.34- .36	t	.33/2- .35/2
Rye	.40- .42	.40- .42	.43- .45	.43- .45	.43- .45	R	.41/6- .43/6
Corn	-	-	.40- .42	.40- .42	.40- .42	e	.40- .42
Buckwheat	.41- .43	.41- .43	.40- .42	.40- .42	.40- .42	P	.40/3- .42/3
Malting Barley	.43- .44	.43- .44	.43- .44	.43- .44	.43- .44	o	.43- .44
Milling Oats	.24- .26	.24- .26	.24- .26	.24- .26	.24- .26	r	.24- .26
American No. 2						t	
Yellow Corn	.82	.82	-	-	-	e	.82
						d	

STATISTICS CANADA LIBRARY
BIBLIOTHEQUE STATISTIQUE CANADA



1010675139