

CANADA

DEPARTMENT OF TRADE AND COMMERCE

DOMINION BUREAU OF STATISTICS

AGRICULTURAL BRANCH

Vol. 19

No. 37

Historical File Copy

CANADIAN GRAIN STATISTICS

Week ending

APRIL 14, 1939

[Records for Western Inspection Division supplied by Board of Grain Commissioners for Canada]

+ + +

Published by Authority of the HON. W.D. Euler, M.P.,
Minister of Trade and Commerce.

+ + +

OTTAWA

1939

Price \$2 a year

I N D E X

General Summary	1 - 5
Canadian Grain in Store by Elevators	6
Canadian Grain in Store by Grades	7
Comparative Statement of Grain in Store	8
Receipts and Shipments of Canadian Grain	9
United States Grain in Store, Receipts and Shipments	10 - 11
Receipts, Shipments and Quantities in Store at Interior Terminal Elevators	11
Receipts, Shipments and Quantities in Store at Country Elevators, Western Division and Platform Loadings	12
Daily and Weekly Average Prices of Grain at Fort William and Toronto for the week ending April, 15, 1939	13
Receipts and Shipments of Canadian Grain at Country Elevators and Platform Loadings, month of March 1939	14 - 15
Exports of Grain by Canadian Ports of exit, March 1939	16
Exports of Grain by Canadian Ports and Flaxseed by Ports of exit, March 1939	17
Exports of Bran, Oatmeal and Rolled Oats and Corn by Canadian Ports of exit, March 1939	18

DEPARTMENT OF TRADE AND COMMERCE
DOMINION BUREAU OF STATISTICS - CANADA
AGRICULTURAL BRANCH

(Issued April 20, 1939)

Dominion Statistician:	R.H. Coats, LL.D., F.R.S.C.
Acting Chief, Agricultural Branch:	W. Dougan.

WHEAT STOCKS IN STORE

Canadian wheat in store for the week ending April 14, 1939 decreased 916,609 bushels compared with the previous week and increased 94,122,081 bushels when compared with the corresponding week in 1938. The amount in store was reported as 137,881,813 bushels compared with 138,798,422 bushels for the previous week and 43,759,732 bushels for the week ending April 15, 1938. The stocks of 137,881,813 bushels include 11,790,204 bushels of Durum wheat.

CANADIAN WHEAT IN CANADA

The wheat stocks in elevators in Canada for the week ending April 14, 1939 were 136,741,813 bushels compared with 137,231,422 bushels for the previous week and 42,848,559 bushels for the corresponding week last year.

Stocks of wheat in Canadian elevators were located as follows: Western Country Elevators 30,830,000; Interior Terminals 15,589,453; Vancouver-New Westminster 9,834,773; Victoria 755,737; Churchill 2,213,300; Fort William and Port Arthur 44,690,428; Eastern Elevators Lake and Seaboard Ports 11,798,062 and 8,606,479 bushels respectively.

Increases were indicated at Interior Elevators of 175,006; Vancouver-New Westminster 456,109; Victoria 71,869 and Fort William and Port Arthur 1,544,263 bushels, while decreases were noted at Western Country Elevators of 690,000 and Eastern Elevators Lake and Seaboard Ports 619,221 and 101,454 bushels respectively.

Wheat in rail transit amounted to 4,423,501 bushels compared with 3,105,869 bushels for the same week a year ago.

CANADIAN WHEAT IN THE UNITED STATES

Canadian wheat in the United States amounted to 1,140,000 bushels, a decrease of 427,000 bushels from the previous week when 1,567,000 bushels were reported. This Canadian wheat was located at the following ports: Buffalo 214,000; Erie 220,000; New York 205,000; Albany 493,000 and Philadelphia 8,000 bushels. Decreases in stocks were shown at the following ports: Buffalo 5,000; Buffalo Afloat 228,000; Erie 128,000; New York 31,000; Albany 19,000 and Philadelphia 16,000 bushels.

For the same week a year ago, the Canadian wheat in the United States amounted to 911,173 bushels distributed as follows: Buffalo 21,273; Erie 571,000; New York 242,000 and Albany 76,900 bushels.

PRIMARY MOVEMENT

Wheat receipts in the Prairie Provinces for the week ending April 14, 1939 amounted to 1,314,759 bushels, an increase of 325,963 bushels over the previous week when 988,796 bushels were marketed. During the corresponding week a year ago the receipts were 1,139,422 bushels. By provinces the receipts for the week ending April 14, 1939 were as follows, figures within brackets being those for 1938: Manitoba 163,242 (412,725); Saskatchewan 607,430 (214,301); Alberta 544,087 (512,396) bushels.

Marketings in the three Prairie Provinces for the thirty-seven weeks from August 1 1938 to April 14, 1939 as compared with the same period in 1938 were as follows, figures within brackets being those for 1938: Manitoba 41,698,866 (35,651,091) Saskatchewan 107,452,918 (24,114,529); Alberta 120,449,168 (53,734,831) bushels. For the thirty-seven weeks ending April 14, 1939 and the same period in 1938, 269,600,952 and 113,500,451 bushels respectively were received from the farms.



OVERSEAS EXPORT CLEARANCES AND IMPORTS OF WHEAT INTO THE UNITED STATES

During the week ending April 14, 1939 the overseas export clearances of wheat amounted to 971,389 bushels while imports into the United States for consumption and milling in bond were 158,000 bushels. The total is 1,129,389 bushels compared with 1,443,304 bushels for the previous week, a decrease of 313,915 bushels and when compared with the same period in 1938 an increase of 747,060 bushels.

Clearances by ports for the week ending April 14, 1939 and the week ending April 15, 1938 and imports into the United States for consumption and milling in bond were as follows: (in bushels)

<u>Overseas Clearances</u>	<u>Week ending April 14, 1939</u>	<u>Week ending April 15, 1938</u>
Montreal	-	1,299
Saint John, N.B.	71,927	74,519
Vancouver-New Westminster	791,341	123,417
United States Ports	108,121	179,094
<hr/>		
TOTAL	971,389	378,329
<u>Imports into the United States</u>		
For consumption and milling in bond for re-export	158,000	4,000
<hr/>		

Total Overseas Clearances and

<u>United States Imports</u>	1,129,389	382,329
------------------------------	-----------	---------

The following table shows the export clearances of Canadian wheat by ports from August 1, 1938 to April 14, 1939 along with comparative figures for the same period in 1937-38 and imports into the United States for consumption and milling in bond: (in bushels)

	<u>1938-39</u>	<u>1937-38</u>
Montreal	31,196,863	22,565,340
Sorel	9,414,308	2,476,039
Three Rivers	6,022,221	420,811
Saint John, N.B.	2,937,596	8,542,116
Halifax	-	159,968
Fort William and Port Arthur	112,066	114,375
Churchill	916,913	603,982
Vancouver-New Westminster	31,280,713	9,072,979
Victoria	555,146	-
Prince Rupert	-	619,061
United States Ports	10,105,402	12,749,835
<hr/>		
TOTAL	*92,541,228	57,324,506
<u>Imports into the United States</u>		
For consumption and milling in bond for re-export	6,675,728	2,023,983
<hr/>		

Total Overseas Clearances and

<u>United States Imports to Date</u>	99,216,956	59,348,489
--------------------------------------	------------	------------

* Includes 9,302,146 bushels of Durum wheat cleared from Canadian and United States Atlantic Seaboard Ports.

The accumulated totals of imports of wheat into the United States for consumption and milling in bond are adjusted at the end of the month, due to the fact that the United States Department of Domestic and Foreign Commerce revises its weekly figures on a monthly basis.

Stocks in Store at the Head of the Lakes compared with the same week last year were as follows:

	Week ending April 14, 1939	Week ending April 15, 1938	+Increase -Decrease
Wheat	44,690,428	14,767,977	+ 29,922,451
Oats	2,068,443	396,043	+ 1,672,400
Barley	2,109,761	2,166,981	- 57,220
Flaxseed	24,649	211,514	- 186,865
Rye	961,713	950,092	+ 11,621

The receipts (including transfers) at the Head of the Lakes for the week ending April 14, 1939 with comparative figures for the same week last year were as follows:-

	Week ending April 14, 1939	Week ending April 15, 1938	+ Increase - Decrease
Wheat	1,560,268	1,029,765	+ 530,503
Oats	497,367	85,322	+ 412,045
Barley	349,563	134,602	+ 214,961
Flaxseed	3,210	610	+ 2,600
Rye	13,452	5,486	+ 7,966

Preliminary figures showing receipts and shipments at the Head of the Lakes also Vancouver-New Westminster, Churchill and Prince Rupert for the period August 1, 1938 to April 14, 1939 compared with the same period last year:-

	FORT WILLIAM & PORT ARTHUR		VANCOUVER-NEW WESTMINSTER	
	Receipts	Shipments	Receipts	Shipments
Wheat	143,709,131	106,402,653	41,716,012	32,060,515
Oats	9,100,011	8,695,394	2,802,997	2,837,626
Barley	13,272,823	12,154,352	2,357,239	2,280,757
Flaxseed	457,051	567,655	537	369
Rye	1,322,114	958,838	53,701	62,146
TOTAL	167,861,130	128,778,892	46,930,486	37,241,413
Same period last year	86,865,867	77,783,138	10,636,167	12,663,941
+Increase -Decrease	+80,995,263	+50,995,754	+36,294,319	+24,577,472

	PRINCE RUPERT		CHURCHILL	
	Receipts	Shipments	Receipts	Shipments
Wheat	-	-	3,118,250	916,913
Same period last year	--	619,061	-	603,982
+Increase -Decrease	-	- 619,061	+3,118,250	+312,931

	VICTORIA	
	Receipts	Shipments
Wheat April 14, 1939	1,311,206	555,478

Stocks in store in the Western Division compared with the same week last year were as follows:-

	Week ending April 14, 1939	Week ending April 15, 1938	+ Increase - Decrease
Wheat	111,913,771	33,104,630	+ 78,809,141
Oats	7,963,633	7,864,933	+ 98,700
Barley	6,234,657	7,209,102	- 974,445
Flaxseed	167,668	430,556	- 262,888
Rye	2,142,712	1,239,170	+ 903,542

Platform Loadings shown by Prairie Provinces for the period ending April 7, 1939 were as follows:-

	W H E A T	OTHER GRAIN B u s h e l s	T O T A L
Manitoba	3,200	7,100	10,300
Saskatchewan	-	3,400	3,400
Alberta	17,600	31,725	49,325
TOTAL	20,800	42,225	63,025
Period ending April 7, 1938	49,100	53,871	102,971

Shipments Overseas of Canadian Grain from Seaboard Ports were as follows:

		United Kingdom	Other Countries
		B u s h e l s	
West Saint John, N.H.B.	Wheat	63,900	8,027

EASTERN ELEVATORS: United States grain and soya bean stocks were 131,746 bushels higher than at a comparable date last year. Corn and Soya beans increased 2,041,647 and 52,867 bushels respectively, while decreases were noted in wheat of 817,541; oats 579,053 and rye 566,174 bushels.

Number of cars inspected in the Western Division for the week ending April 14, 1939 with comparison for the previous year were as follows:

	Week ending April 14, 1939	Week ending April 14, 1938	+Increase -Decrease
Wheat	1,661	1,903	- 242
Oats	362	232	+ 130
Barley	255	184	+ 71
Flaxseed	4	3	+ 1
Rye	14	8	+ 6
Mixed Grain	-	3	- 3
Corn	3	-	+ 3
Screenings	-	3	- 3
TOTAL	2,299	2,336	- 37

The number of bushels of grain shipped from the Western to the Eastern points over the C.P.R. and C.N.R. for the week ending April 14, 1939 and the period from August 1, 1938 to April 14, 1939:-

	WEEK ENDING APRIL 14, 1939				PERIOD AUG. 1, 1938 to APRIL 14, 1939			
	WHEAT	OATS	BARLEY	FLAX	WHEAT	OATS	BARLEY	FLAX
Via C.P.R.	-	23,765	4,250	-	19,127	501,343	17,719	-
Via C.N.R.	-	72,483	-	-	15,745	1,100,397	38,990	4,188
TOTAL	-	96,248	4,250	-	34,872	1,601,740	56,709	4,188

CARS INSPECTED IN THE WESTERN INSPECTION DIVISION BY PROVINCES, JANUARY 1939

	WHEAT	OATS	BARLEY	FLAX- SEED	RYE	MIXED GRAIN	CORN	BUCK- WHEAT	SCREEN- INGS
Manitoba	375	74	138	-	6	-	5	-	-
Saskatchewan	1,986	152	111	3	12	2	-	-	1
Alberta	3,473	360	307	2	5	1	-	-	-
British Columbia	32	-	-	-	-	-	-	-	-
TOTAL	5,866	586	556	5	23	3	5	-	1

CARS INSPECTED IN THE WESTERN INSPECTION DIVISION BY PROVINCES, FEBRUARY 1939

	WHEAT	OATS	BARLEY	FLAX- SEED	RYE	MIXED GRAIN	CORN	BUCK- WHEAT	SCREEN- INGS
Manitoba	295	29	107	-	3	-	4	-	-
Saskatchewan	1,062	276	160	6	10	-	-	1	-
Alberta	1,950	490	189	-	4	-	1	-	-
British Columbia	20	1	-	-	-	-	-	-	-
TOTAL	3,327	796	456	6	17	-	5	1	-

CARS INSPECTED IN THE WESTERN INSPECTION DIVISION BY PROVINCES, MARCH 1939

	WHEAT	OATS	BARLEY	FLAX- SEED	RYE	MIXED GRAIN	CORN	BUCK- WHEAT	SCREEN- INGS
Manitoba	883	85	354	1	8	2	3	-	-
Saskatchewan	2,205	506	317	14	12	1	-	-	2
Alberta	3,412	527	176	2	10	1	-	-	-
British Columbia	19	-	-	-	1	-	-	-	-
TOTAL	6,519	1,118	847	17	31	4	3	-	2

CARS INSPECTED IN THE WESTERN INSPECTION DIVISION BY PROVINCES DURING THE EIGHT MONTHS ENDING MARCH 1939

	WHEAT	OATS	BARLEY	FLAX- SEED	RYE	MIXED GRAIN	CORN	BUCK- WHEAT	SCREEN- INGS
Manitoba	24,863	1,482	7,274	134	608	31	45	-	15
Saskatchewan	55,551	2,952	1,769	271	233	8	-	1	14
Alberta	62,163	3,794	2,405	79	96	10	1	-	-
British Columbia	357	18	-	-	2	-	-	-	2
TOTAL	142,934	8,246	11,448	484	939	49	46	1	31

STOCKS OF GRAIN IN DIFFERENT ELEVATORS DURING THE WEEK ENDING APRIL 14, 1939

	WHEAT	DURUM WHEAT	OATS	BARLEY	FLAX- SEED	RYE
	B u s h e l s					
Western Country Elevators	35590000	3240000	4380000	2115000	128000	1066000
Interior Private and Mill Elevs.	6313000	54000	1059000	1879000	15000	111000
Interior Pub. & Semi-Pub. Terminals	9222453	-	30685	679	-	-
Vancouver-New Westminster	9834773	-	425505	130217	19	3999
Victoria	755737	-	-	-	-	-
Churchill	2213380	-	-	-	-	-
Fort William and Port Arthur	40751694	3938734	2068443	2109761	24649	961713
In Transit Rail	4423501	-	697707	401309	2872	5968
Eastern Elevators - Lake Ports	7903566	3894496	232711	27391	-	16790
Eastern Elevators-St. Lawrence Ports	8304625	269974	309160	55744	2115	24888
Eastern Elevators - Maritime Ports	31880	-	750	-	-	-
U. S. Lake Ports	356000	78000	-	-	-	-
U. S. Atlantic Seaboard Ports	391000	316000	-	-	-	42000
TOTAL	126091609	11790204	9203961	6719101	172655	2232358
Previous week	126876057	11922365	9332473	6644118	167835	2219036
Same week previous year	29364189	14395543	9032463	8509065	435670	1253474

QUANTITY OF SCREENINGS RECEIVED, SHIPPED AND IN STORE AT THE
UNDERMENTIONED ELEVATORS DURING THE WEEK ENDING APRIL 14, 1939

	Amount in Store April 7, 1939		Amount Received by vessel		Amount shipped		Amount in Store April 14, 1939	
	Tons	Lbs.	Tons	Lbs.	Tons	Lbs.	Tons	Lbs.
Owen Sound	48	30	-	-	10	-	38	30
Goderich Elevator Co.	207	1,572	-	-	120	-	87	1,572
Montreal	148	1,594	-	-	-	-	148	1,594
Dominion Elevator Co.	42	350	-	-	-	1,000	41	1,350
TOTAL	446	1,546	-	-	130	1,000	316	546

NUMBER OF CARS OF GRAIN UNLOADED AT VANCOUVER, B.C., OVER THE DIFFERENT RAILROADS
FOR THE MONTH OF MARCH, 1939, AND THE EIGHT MONTHS ENDING MARCH, 1939.

	MONTH OF MARCH, 1939				EIGHT MONTHS ENDING MARCH, 1939			
	C.P.R.	C.N.R.	G.N.R.	TOTAL	C.P.R.	C.N.R.	G.N.R.	TOTAL
Wheat	1452½	1003	-	2455½	15213	8295	-	23508
Oats	22	29	-	51	565½	597	-	1162½
Barley	55½	46	-	101½	749½	655	-	1404½
Rye	5	3	-	8	41	18	-	59
Mixed Grain	2	-	-	2	16	2	-	18
U.S.A. wheat	-	-	2	2	-	-	46	46
U.S.A. corn	-	-	5	5	-	-	11	11
TOTAL	1537	1081	7	2625	16585	9567	57	26209

NUMBER OF CARS OF GRAIN UNLOADED AT VICTORIA, B. C., OVER THE DIFFERENT RAILROADS
FOR THE MONTH OF MARCH, 1939, AND THE EIGHT MONTHS ENDING MARCH, 1939

	MONTH OF MARCH, 1939			EIGHT MONTHS ENDING MARCH, 1939		
	C.P.R.	C.N.R.	TOTAL	C.P.R.	C.N.R.	TOTAL
Wheat	-	100	100	3	642	645

THE UNIVERSITY OF CHICAGO

THE UNIVERSITY OF CHICAGO
DEPARTMENT OF CHEMISTRY
CHICAGO, ILLINOIS
JANUARY 1950

THE UNIVERSITY OF CHICAGO
DEPARTMENT OF CHEMISTRY
CHICAGO, ILLINOIS
JANUARY 1950

THE UNIVERSITY OF CHICAGO
DEPARTMENT OF CHEMISTRY
CHICAGO, ILLINOIS
JANUARY 1950

THE UNIVERSITY OF CHICAGO
DEPARTMENT OF CHEMISTRY
CHICAGO, ILLINOIS
JANUARY 1950

CANADIAN GRAIN IN STORE - APRIL 14, 1939

	WHEAT	DURUM WHEAT	OATS	BARLEY	FLAX- SEED	RYE
	B u s h e l s					
WESTERN COUNTRY ELEVATORS						
Manitoba	2875000	2770000	605000	875000	16000	393000
Saskatchewan	16685000	470000	1760000	775000	104000	574000
Alberta	16030000	-	2015000	465000	8000	99000
TOTAL WESTERN COUNTRY ELEVATORS	35590000	3240000	4380000	2115000	128000	1066000
INTERIOR PRIVATE AND MILL	6313000	54000	1059000	1879000	15000	111000
INTERIOR PUBLIC & SEMI-PUBLIC	9222453	-	30685	679	-	-
VANCOUVER-NEW WESTMINSTER	9834773	-	425505	130217	19	3999
VICTORIA	755737	-	-	-	-	-
CHURCHILL	2213380	-	-	-	-	-
Semi-Public Terminals	40165644	3936952	2019831	2038721	24649	961713
Private Terminals	3220	1782	48612	3106	-	-
Winter Storage Afloat	582830	-	-	67934	-	-
TOTAL FT. WM. & PT. ARTHUR	40751694	3938734	2068443	2109761	24649	961713
IN TRANSIT RAIL	4423501	-	697707	401309	2872	5968
EASTERN ELEVATORS						
Midland Elev. Co. C.S.L.	736317	-	3147	-	-	-
Midland Simcoe	-	-	44606	-	-	-
Collingwood	25243	-	-	-	-	-
Owen Sound	304094	99124	102454	1260	-	-
Goderich Elevator & Transit	308726	62586	29040	1286	-	-
Goderich W. C. F. M.	17353	-	3000	-	-	-
Sarnia	2074105	7000	661	7827	-	-
Port Colborne, D. G.	22943	997409	494	200	-	-
Port Colborne, D. G. Afloat	109275	-	-	-	-	-
Port Colborne, M. L.	204637	31222	34797	2827	-	3305
Port Colborne, M. L. Afloat	337947	-	-	-	-	-
Toronto	1740900	21740	13612	8116	-	12885
Kingston J. R.	-	4268	-	-	-	-
Kingston Elevator Co.	1800916	25904	-	2875	-	-
Prescott	221110	2645243	900	3000	-	-
TOTAL EASTERN ELEVS. LAKE PORTS	7903566	3894496	232711	27391	-	16790
Montreal	2819435	112506	218564	27533	2115	24888
Ogilvie Flour Mills	129289	15992	7925	-	-	-
Dominion Elevator Co.	2280	84078	20627	5897	-	-
North American Ltd. Sorel	1720136	46944	9020	2508	-	-
Three Rivers	1821905	2257	2100	-	-	-
Quebec	1811580	8197	50924	19806	-	-
Halifax	31880	-	750	-	-	-
TOTAL EASTERN ELEVS. SBD. PORTS	8336505	269974	309910	55744	2115	24888
TOTAL QUANTITY IN CANADA	125344609	11397204	9203961	6719101	172655	2190358
Buffalo	214000	-	-	-	-	-
Erie	142000	78000	-	-	-	-
TOTAL U. S. LAKE PORTS	356000	78000	-	-	-	-
New York	47000	158000	-	-	-	-
Albany	336000	157000	-	-	-	42000
Philadelphia	8000	-	-	-	-	-
TOTAL U. S. ATLANTIC SBD. PORTS	391000	315000	-	-	-	42000
TOTAL QUANTITY IN STORE	126091609	11790204	9203961	6719101	172655	2232358

1236

Grades of Canadian Grain in Store at Public, Semi-Public, and Private (Head of the Lakes), Interior Public and Semi-Public, Vancouver-New Westminster, and Eastern Elevators for the week ending April 14, 1939

	Ft. William & Pt. Arthur Semi-Public and Private	Interior Public and Semi-Public Terminals	Vancouver New West- minster Elevators	Eastern Elevators Lake Ports	Eastern Elevators St. Lawrence Ports	Eastern Elevators Maritime Ports
	B u s h e l s					
WHEAT						
No. 1 Hard	331946	708844	272767	21000	321	-
No. 1 Northern	8800204	3001769	2063140	2147649	2074876	-
No. 2 Northern	11764523	2152985	2768679	4061058	5259443	-
Old No. 2 Northern	-	-	-	-	223	-
No. 3 Northern	10528348	1589734	1891148	955663	244870	23960
Old No. 3 Northern	7488	-	-	-	-	-
No. 4 Northern	1212074	138157	63084	225816	367322	7920
Old No. 4 Northern	-	522	-	2958	14	-
No. 4 Special	1046768	-	29884	97482	2280	-
No. 5 Wheat	1055054	698430	54727	4400	399	-
No. 5 Special	304119	-	-	5500	-	-
No. 6 Wheat	25603	9272	-	-	4333	-
No. 6 Special	65180	-	-	15500	2498	-
Feed	126450	304	-	3656	17105	-
No. 1 C.W. Garnet	358090	299897	79857	-	-	-
No. 2 C.W. Garnet	3193717	1734727	1792321	44427	102177	-
No. 3 C.W. Garnet	1064514	142264	138889	118709	181983	-
No. 1 C.W. Durum	544949	-	598	-	25975	-
No. 2 C.W. Durum	3006657	-	-	3695153	101312	-
No. 3 C.W. Durum	349297	-	-	199343	102547	-
No. 4 C.W. Durum	5767	-	-	-	-	-
Other Durum	30282	-	-	-	25374	-
Other	869396	113605	-	199748	61447	-
TOTAL	44690428	10590510	9222453	11798062	8574499	31880
OATS						
No. 1 C.W.	4074	-	-	-	-	-
No. 2 C.W.	576981	126571	1153	72638	23173	-
No. 3 C.W.	993397	157155	2631	34916	20345	750
Ex. No. 1 Feed	1644	4046	-	-	-	-
No. 1 Feed	236914	55014	372	6331	21480	-
No. 2 Feed	62756	8693	-	5957	12243	-
No. 3 Feed	42348	-	-	-	680	-
Other	150329	74026	26529	112869	231239	-
TOTAL	2068443	425505	30685	232711	309160	750
BARLEY						
3 Ex. C.W. 6 Row	914502	-	-	73	11191	-
2 C.W. 2 Row	1312	-	-	-	-	-
3 C.W.	697560	23227	-	19125	34344	-
4 C.W.	125546	28741	-	-	953	-
5 C.W.	90859	69300	-	-	6177	-
6 C.W.	5190	5009	-	-	1871	-
Other	274792	3940	679	8193	1208	-
TOTAL	2109761	130217	679	27391	55744	-
FLAXSEED						
No. 1 C.W.	18347	1	-	-	2115	-
No. 2 C.W.	2542	11	-	-	-	-
No. 3 C.W.	133	-	-	-	-	-
No. 4 C.W.	1345	-	-	-	-	-
Other	2282	7	-	-	-	-
TOTAL	24649	19	-	-	2115	-
RYE						
No. 1 C.W.	1780	-	-	-	-	-
No. 2 C.W.	733903	919	-	16790	24888	-
No. 3 C.W.	215886	-	-	-	-	-
No. 4 C.W.	3009	-	-	-	-	-
Ergoty	1152	-	-	-	-	-
Other	5983	3080	-	-	-	-
TOTAL	961713	3999	-	16790	24888	-
TOTAL QUANTITY IN STORE	49854994	10394513	9253817	12074954	8966506	32630

CANADIAN GRAIN IN STORE - COMPARATIVE STATEMENT, 1937 - 1939

	W H E A T	(Bushels)	OTHER GRAIN
<u>April 14, 1939</u>			
Country Elevators - Manitoba	5,645,000		1,889,000
Saskatchewan	17,155,000		3,213,000
Alberta	16,030,000		2,587,000
TOTAL	38,830,000		7,689,000
Interior Private and Mill	6,367,000		3,064,000
Interior Public and Semi-Public Terminals	9,222,453		31,364
Vancouver-New Westminster	9,834,773		559,740
Victoria	755,737		-
Churchill	2,213,380		-
Fort William & Port Arthur	44,690,428		5,164,566
In Transit Rail	4,423,501		1,107,856
Eastern Elevators - Lake Ports	11,798,062		276,892
Eastern Elevators - Seaboard Ports	8,606,479		392,657
U. S. Lake Ports	434,000		-
U. S. Atlantic Seaboard Ports	706,000		42,000
TOTAL	137,881,813		18,328,075
<u>April 16, 1938</u>			
Country Elevators - Manitoba	3,695,000		2,580,000
Saskatchewan	3,407,000		2,100,000
Alberta	4,960,000		3,898,000
TOTAL	12,062,000		8,578,000
Interior Private and Mill	3,722,000		3,449,000
Interior Public and Semi-Public Terminals	1,085,677		697,892
Vancouver-New Westminster	1,162,877		294,239
Prince Rupert	292,279		-
Churchill	11,820		-
Fort William and Port Arthur	14,767,977		3,724,630
In Transit Rail	3,105,869		972,476
Eastern Elevators - Lake Ports	5,016,430		856,107
Eastern Elevators - Seaboard Ports	1,621,630		572,680
U. S. Lake Ports	592,273		50,648
U. S. Atlantic Seaboard Ports	318,900		35,000
TOTAL	43,759,732		19,230,672
<u>April 16, 1937</u>			
Country Elevators - Manitoba	1,531,000		851,000
Saskatchewan	9,587,000		4,210,000
Alberta	10,867,000		2,063,000
TOTAL	21,985,000		7,124,000
Interior Private and Mill	3,856,000		3,522,000
Interior Public and Semi-Public Terminals	39,653		400,812
Vancouver-New Westminster	6,818,230		313,460
Prince Rupert	910,994		-
Churchill	614,569		-
Fort William and Port Arthur	14,608,479		5,837,304
In Transit Lakes	820,700		493,917
In Transit Rail	4,253,971		1,038,085
Eastern Elevators - Lake Ports	9,403,442		894,886
Eastern Elevators - Seaboard Ports	2,350,476		472,057
U. S. Lake Ports	5,969,387		2,117,249
U. S. Atlantic Seaboard Ports	6,072,000		46,000
TOTAL	77,702,901		22,259,770

RECEIPTS AND SHIPMENTS OF GRAIN BY CLASSES OF ELEVATORS IN THE WEEK ENDING APRIL 14, 1939

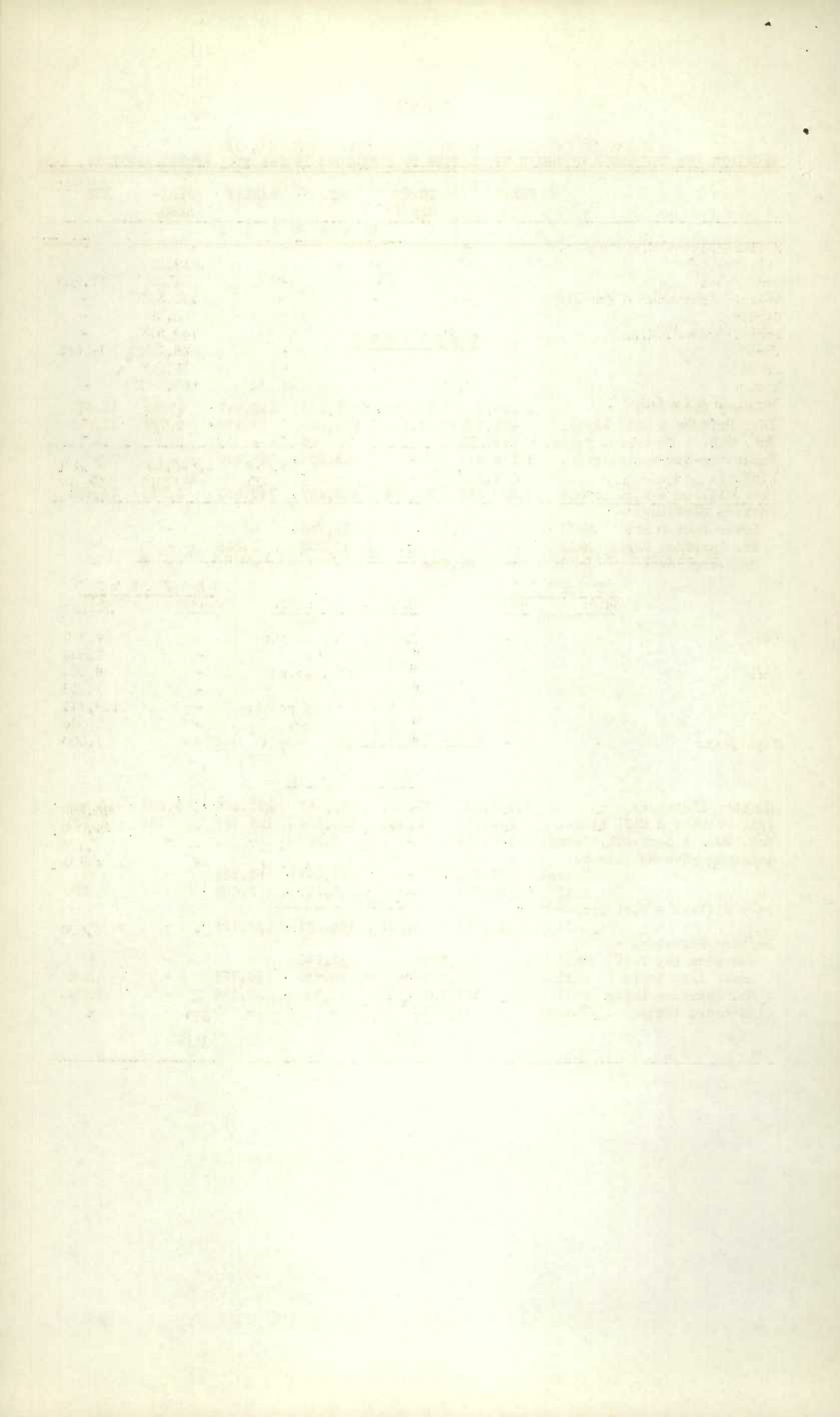
	WHEAT	DURUM WHEAT	OATS	BARLEY	FLAX- SEED	RYE
	B u s h e l s					

R E C E I P T S

Country Elevators	1,256,780	57,979	403,988	213,547	4,880	16,312
Int. Private & Mill Elevs.	427,792	1,103	266,999	59,479	1,723	13,015
Int. Pub. & Semi-Pub. Terms.	244,822	-	45	-	-	-
Vancouver-New Westminster	1,282,287	-	23,358	38,286	-	-
Victoria	71,869	-	-	-	-	-
Fort William & Port Arthur	1,529,312	30,956	497,367	349,563	3,210	13,452
Eastern Elevators -						
Lower Lake Ports Rail	1,000		15,735	-	-	-
St. Lawrence Ports Rail	-		10,003	1,249	-	-
Seaboard Ports Rail	91,784		-	-	-	-

S H I P M E N T S

Country Elevators	1,963,850	33,001	732,457	277,164	4,393	13,400
Int. Private & Mill Elevs.	379,168	2,941	268,664	103,737	196	1,521
Int. Pub. & Semi-Pub. Terms.	119,815	-	7,857	-	-	-
Vancouver-New Westminster						
Vessel	791,341	-	21,241	65,333	-	-
Rail	20,791	-	15,677	2,062	-	220
Fort William & Port Arthur						
Rail	12,411	3,481	163,077	37,484	-	-
Eastern Elevators -						
Georgian Bay Ports Rail	344,338		23,288	-	-	-
Lower Lake Ports Rail	275,882		20,710	14,725	-	6,060
St. Lawrence Ports Rail	121,305		16,360	16,156	-	1,955
Seaboard Ports Vessel	71,927		-	-	-	-



STOCKS OF UNITED STATES GRAIN IN CANADA APRIL 14, 1939

	WHEAT	OATS	RYE B u s h e l s	CORN	SOYA BEANS
Midland Simcoe Elevator Co.	-	23,187	-	-	-
Collingwood	-	-	-	1,219,457	-
Owen Sound	-	-	-	1,237	17,950
Goderich Elevator & Transit	-	-	-	130,355	-
Sarnia	-	-	-	51,583	-
Port Colborne, M.L.	48,762	-	-	159,543	-
Toronto	-	-	-	428,618	74,542
Prescott	-	-	-	72,413	-
Montreal	10,967	5,005	23,655	500,388	-
Dominion Elevator Co.	-	7,485	-	60,570	-
Three Rivers	-	-	-	39,038	-
Halifax	-	25	-	398	-
TOTAL	59,729	35,702	23,655	2,663,600	92,492
Same period last year	877,270	614,755	589,829	621,953	39,625

RECEIPTS AND SHIPMENTS OF UNITED STATES GRAIN IN CANADA APRIL 14, 1939

	R E C E I P T S			S H I P M E N T S	
	Water	Rail		Water	Rail
Oats	-	-	To Can. Dom. points	-	94,870
			" U.S. points	-	1,600
Corn	-	-	" Can. Dom. points	-	6,000
			" U.S. points	-	1,428
			" New England points	-	106,771
			" Maritime ports	-	2,000
Soya Beans	-	-	" Can. Dom. points	-	1,000
LOWER LAKE PORTS					
Wheat	-	-	To Can. Dom. points	-	16,683
Corn	-	-	" Can. Dom. points	-	24,000
			" Can. Flour mills	-	7,460
Soya Beans	-	-	" Can. Dom. points	-	3,193
ST. LAWRENCE PORTS					
Corn	-	-	To Can. Dom. points	-	14,000
MARITIME PORTS					
Oats	-	-	To Can. Dom. points	-	28
Corn	-	-	" Newfoundland	339	-

STOCKS OF FOREIGN GRAIN IN CANADA APRIL 14, 1939

	ARGENTINE CORN	SOUTH AFRICAN CORN	AUSTRALIAN CORN B u s h e l s	ARGENTINE FLAXSEED
Goderich W. C. F. M.	-	5,000	-	-
Port Colborne, M. L.	989	753	-	-
Montreal	26,305	26,341	42,456	700
Three Rivers	-	1,529	-	-
Quebec	-	867	99,794	-
Saint John	-	126,672	-	-
Halifax	-	147,574	-	-
TOTAL	27,294	306,736	142,250	700
Same period last year	159,138	1,648,948	-	108,014

RECEIPTS AND SHIPMENTS OF FOREIGN GRAIN IN CANADA APRIL 14, 1939

	R E C E I P T S			S H I P M E N T S	
	Water	Rail		Water	Rail
Afr. Corn	-	-	LOWER LAKE PORTS		
			To Can. Flour mills	-	75
			ST. LAWRENCE PORTS		
Arg. Corn	-	-	To Can. Dom. points	-	456
Afr. Corn	-	996	" Can. Dom. points	-	4,846
			" Other Eastern Elevators	-	1,000
Australian Corn	-	-	" Can. Dom. points	-	7,500
			MARITIME PORTS		
Afr. Corn	-	-	To Can. Dom. points	-	13,100

STOCKS IN STORE, RECEIPTS AND SHIPMENTS AT THE CANADIAN GOVERNMENT INTERIOR
ELEVATORS, WEEK ENDING APRIL 14, 1939

	WHEAT	OATS	BARLEY B u s h e l s	FLAXSEED	RYE
STOCKS IN STORE					
Calgary	1,468,318	-	-	-	-
Edmonton	2,014,396	27,682	679	-	-
Lethbridge	835,539	-	-	-	-
Moose Jaw	2,551,951	-	-	-	-
Saskatoon	2,352,249	3,003	-	-	-
TOTAL	9,222,453	30,685	679	-	-
RECEIPTS					
Edmonton	229,816	-	-	-	-
Lethbridge	1,703	-	-	-	-
Moose Jaw	13,303	-	-	-	-
Saskatoon	-	45	-	-	-
TOTAL	244,822	45	-	-	-
SHIPMENTS					
Edmonton	1,458	7,812	-	-	-
Lethbridge	17,298	-	-	-	-
Moose Jaw	69,265	-	-	-	-
Saskatoon	31,794	45	-	-	-
TOTAL	119,815	7,857	-	-	-

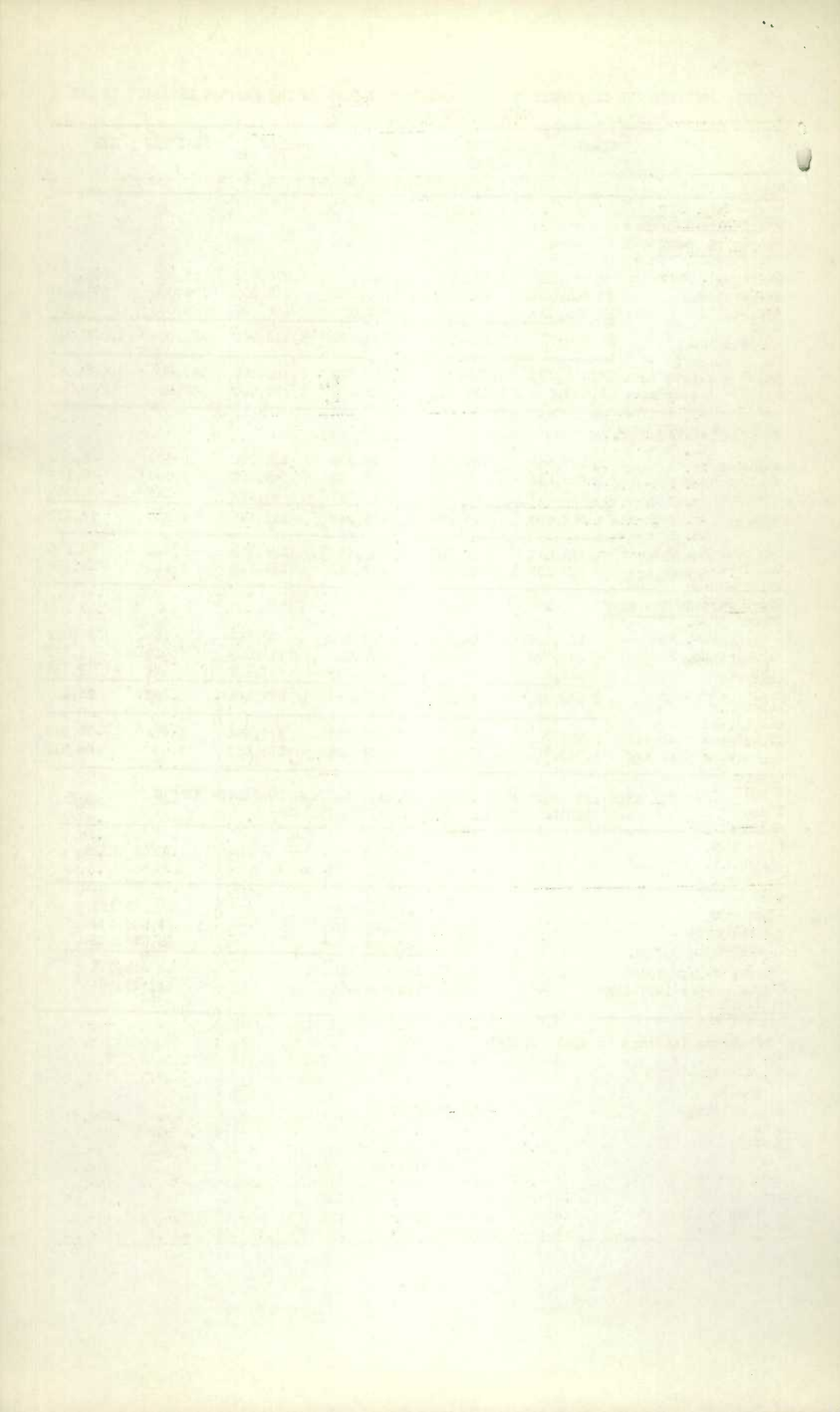
STOCKS, RECEIPTS AND SHIPMENTS OF THE COUNTRY ELEVATORS IN THE WESTERN DIVISION IN THE
WEEK ENDING APRIL 14, 1939

	WHEAT	DURUM WHEAT	OATS	BARLEY	FLAXSEED	RYE
	B u s h e l s					
<u>COUNTRY ELEVATORS</u>						
<u>STOCKS IN STORE</u>						
Manitoba	2,875,000	2,770,000	605,000	875,000	16,000	393,000
Saskatchewan	16,685,000	470,000	1,760,000	775,000	104,000	574,000
Alberta	16,030,000	-	2,015,000	465,000	8,000	99,000
TOTAL	35,590,000	3,240,000	4,380,000	2,115,000	128,000	1,066,000
Total - a week ago	36,305,000	3,215,000	4,710,000	2,180,000	127,000	1,064,000
a year ago	9,885,000	2,177,000	5,315,000	2,835,000	163,000	265,000
<u>RECEIPTS DURING WEEK</u>						
Manitoba	107,459	55,783	46,309	112,490	169	5,084
Saskatchewan	605,234	2,196	107,832	42,806	4,585	8,139
Alberta	544,087	-	249,847	58,251	126	3,089
TOTAL	1,256,780	57,979	403,988	213,547	4,880	16,312
Total - a week ago	934,887	33,109	350,899	194,893	1,431	16,575
a year ago	789,267	174,666	388,031	214,445	1,480	6,158
<u>SHIPMENTS DURING WEEK</u>						
Manitoba	134,707	24,876	37,380	76,599	158	10,891
Saskatchewan	876,723	8,125	378,480	133,083	4,059	1,376
Alberta	952,420	-	316,597	67,482	176	1,133
TOTAL	1,963,850	33,001	732,457	277,164	4,393	13,400
Total - a week ago	2,757,300	19,225	672,047	377,633	5,664	20,945
a year ago	1,986,764	179,954	656,892	394,857	3,897	20,913

TOTAL RECEIPTS AT COUNTRY ELEVATORS AND PLATFORM LOADINGS* IN THE
PERIOD AUGUST 1, 1938 TO APRIL 14, 1939

	W H E A T	OTHER GRAIN
	B u s h e l s	
Manitoba	41,698,866	16,859,121
Saskatchewan	107,452,918	16,536,474
Alberta	120,449,168	15,516,578
Total - 1938-1939	269,600,952	48,912,173
Same period 1937-1938	113,500,451	54,729,564

*Platform loadings to April 7, 1939



DAILY QUOTATIONS AND WEEKLY AVERAGES OF CASH GRAIN BY
GRADES ON WINNIPEG AND TORONTO MARKETS

Week ending April 15, 1939

	April 10	April 11	April 12	April 13	April 14	April 15	Weekly Average
	\$ ¢	\$ ¢	\$ ¢	\$ ¢	\$ ¢	\$ ¢	\$ ¢
(Basis Fort William and Port Arthur)							
WHEAT							
No. 1 Man. Hard	.60/5	.60/1	.60	.60/5	.60/6	.60	.60/3
No. 1 Man. Northern	.60/2	.59/7	.59/6	.60/1	.60/3	.59/5	.60
No. 2 Man. Northern	.57/2	.56/7	.56/6	.57/1	.57/3	.56/5	.57
No. 3 Man. Northern	.52/5	.52/1	.52	.52/5	.52/6	.52	.52/3
No. 4 Man. Northern	.47/7	.47/3	.47/2	.47/5	.47/6	.47	.47/4
No. 5	.42/7	.42/3	.42/4	.42/7	.43	.42/2	.42/5
No. 6	.40/1	.39/5	.39/4	.39/7	.40	.39/2	.39/6
Feed	.40/1	.39/5	.39/4	.39/7	.40	.39/2	.39/6
No. 4 Special	.45/1	.44/5	.45/4	.45/7	.46	.45/2	.45/3
No. 5 Special	.43/5	.43/1	.43/4	.43/7	.44	.43/2	.43/4
No. 6 Special	.43/1	.42/5	.42/4	.42/7	.43	.42/2	.42/6
Tough No. 1 Hard	.59/1	.58/5	.58/4	.58/7	.59	.58/2	.58/6
No. 1 Northern	.58/6	.58/3	.58/2	.58/5	.58/7	.58/1	.58/4
No. 2 Northern	.55/6	.55/3	.55/2	.55/5	.55/7	.55/1	.55/4
No. 3 Northern	.51/1	.50/5	.50/4	.51/1	.51/2	.50/4	.50/7
Rejected No. 1 Northern	.54/1	.53/5	.53/4	.53/7	.54	.53/2	.53/6
No. 2 Northern	.51/1	.50/5	.50/4	.50/7	.51	.50/2	.50/6
No. 3 Northern	.46/5	.46/1	.46	.46/5	.46/6	.46	.46/3
Smutty No. 1 Northern	.54/1	.53/5	.53/4	.53/7	.54	.53/2	.53/6
No. 2 Northern	.51/1	.50/5	.50/4	.50/7	.51	.50/2	.50/6
No. 3 Northern	.46/5	.46/1	.46	.46/5	.46/6	.46	.46/3
No. 1 Garnet	.52/2	.51/7	.51/6	.52/1	.52/3	.51/5	.52
No. 2 Garnet	.49/2	.48/7	.48/6	.49/1	.49/3	.48/5	.49
No. 3 Garnet	.43/5	.43/1	.43	.43/3	.43/4	.42/6	.43/2
Durum No. 1	.47/1	.47/5	.47/4	.47/7	.50	.50/2	.48/3
No. 2	.45/5	.45/5	.45/4	.45/7	.47	.47/2	.46/1
No. 3	.45/1	.44/5	.44/4	.44/7	.46	.46/2	.45/2
OATS							
No. 2 C.W.	.28/4	.28/4	.28/4	.28/5	.28/5	.28/4	.28/4
No. 3 C.W.	.26/4	.26/4	.26/4	.26/5	.26/5	.26/4	.26/4
No. 1 Feed	.26	.26	.26/2	.25/7	.25/7	.25/6	.26
No. 2 Feed	.25	.25	.25	.24/5	.24/5	.24/4	.24/6
No. 3 Feed	.22/4	.22/4	.22/4	.22/5	.22/5	.22/4	.22/4
BARLEY							
6 Row	.39/7	.39/7	.40/2	.40/5	.40/6	.40/4	.40/2
2 Row	.39/7	.39/7	.40/2	.40/5	.40/6	.40/4	.40/2
No. 3 C.W.	.36/7	.36/7	.36/6	.36/3	.36/6	.36/2	.36/5
No. 4 C.W.	.35/7	.35/7	.35/6	.35/3	.35/6	.35/2	.35/5
No. 5 C.W.	.34/7	.34/7	.34/6	.34/3	.34/6	.34/2	.34/5
No. 6 C.W.	.33/7	.33/7	.33/6	.33/3	.33/6	.33/2	.33/5
RYE							
No. 2 C.W.	.40	.39/5	.39/5	.40	.40/1	.39/5	.39/7
No. 3 C.W.	.36	.35/5	.35/5	.36	.36/1	.35/5	.35/7
Rejected No. 2 C.W.	.32/6	.32/3	.32/3	.32/5	.32/6	.32/1	.32/4
No. 4 C.W.	.31/6	.31/3	.31/3	.31/5	.31/6	.31/1	.31/4
Ergoty	.30/6	.30/3	.30/3	.30/5	.30/6	.30/1	.30/4
FLAXSEED							
No. 1 C.W.	1.60/3	1.60/4	1.58	1.57/3	1.58/1	1.56/1	1.58/3
No. 2 C.W.	1.56/3	1.56/4	1.54	1.53/3	1.54/1	1.52/1	1.54/3
No. 3 C.W.	1.43/4	1.43/4	1.41	1.40/2	1.41	1.38/7	1.41/3
No. 4 C.W.	1.38/4	1.38/4	1.36	1.35/2	1.36	1.33/7	1.36/3
Wheat, good milling							
Oats	.60-.61	.60-.61	.60-.61	.60-.61	.60-.61	.60-.61	.60-.61
Barley	.26-.28	.26-.28	.26-.28	.26-.28	.26-.28	.26-.28	.26-.28
Rye	.36-.39	.36-.39	.36-.39	.36-.39	.36-.39	.36-.39	.36-.39
Corn	.40-.42	.40-.42	.40-.42	.40-.42	.40-.42	.40-.42	.40-.42
Buckwheat	.46-.48	.46-.48	.46-.48	.46-.48	.46-.48	.46-.48	.46-.48
Malting Barley	.46-.48	-	-	-	-	-	.46-.48
Milling Oats	.50-.52	.50-.52	.50-.52	.50-.52	.50-.52	.50-.52	.50-.52
	.26-.28	.26-.28	.26-.28	.26-.28	.26-.28	.26-.28	.26-.28

Receipts and Shipments of Grain at the Country Elevators in the Western Division and Platform Loadings for the eight months ending March 1939.

	WHEAT	DURUM WHEAT	OATS B u s h e l s	BARLEY	FLAX- SEED	RYE
COUNTRY ELEVATORS MANITOBA - RECEIPTS						
Aug. 1938	12,293,806	6,500,041	587,998	4,072,643	8,922	547,948
Sept. 1938	9,612,085	4,172,199	1,144,578	3,405,367	107,218	350,305
Oct. 1938	1,933,747	655,304	424,296	1,063,046	42,976	162,149
Nov. 1938	879,281	399,517	199,849	509,795	9,623	64,845
Dec. 1938	389,217	175,098	145,071	391,863	1,933	37,827
Jan. 1939	206,830	86,473	186,065	211,412	845	22,361
Feb. 1939	148,622	63,907	73,077	165,057	208	14,305
March 1939	371,006	174,426	197,180	521,258	743	43,775
TOTAL	25,834,594	12,226,965	2,958,114	10,340,441	172,468	1,243,515

			MANITOBA - PLATFORM LOADINGS			
		WHEAT	OTHER GRAINS			
Aug. 1938		1,771,215	729,700			
Sept. 1938		1,053,871	811,595			
Oct. 1938		225,203	87,059			
Nov. 1938		118,095	53,216			
Dec. 1938		44,305	32,129			
Jan. 1939		17,646	15,325			
Feb. 1939		29,290	30,176			
March 1939		46,580	101,864			
TOTAL		3,306,205	1,861,064			

SASKATCHEWAN RECEIPTS						
Aug. 1938	12,981,401	230,572	199,472	214,160	21,347	147,778
Sept. 1938	50,351,023	911,324	2,003,449	949,096	187,445	259,809
Oct. 1938	24,718,561	358,308	2,744,142	1,199,909	138,623	248,501
Nov. 1938	7,959,464	98,645	1,187,505	591,010	55,616	103,501
Dec. 1938	3,626,452	54,093	854,321	497,572	23,949	76,575
Jan. 1939	1,466,115	33,169	614,485	254,860	7,897	52,595
Feb. 1939	823,241	9,339	575,653	241,918	4,944	35,289
March 1939	2,203,777	34,705	1,713,724	694,961	8,797	76,043
TOTAL	104,130,034	1,730,155	9,892,751	4,643,486	448,618	1,000,091

			SASKATCHEWAN - PLATFORM LOADINGS			
		WHEAT	OTHER GRAINS			
Aug. 1938		83,980	3,100			
Sept. 1938		193,053	23,082			
Oct. 1938		172,422	34,789			
Nov. 1938		66,376	13,684			
Dec. 1938		44,647	6,539			
Jan. 1939		21,240	4,800			
Feb. 1939		15,776	17,303			
March 1939		32,200	21,210			
TOTAL		629,694	124,507			

ALBERTA RECEIPTS						
Aug. 1938	5,739,108	-	141,961	75,189	1,577	24,981
Sept. 1938	54,358,580	-	1,000,229	428,325	13,013	50,874
Oct. 1938	32,636,111	22	2,455,025	891,472	41,242	57,298
Nov. 1938	11,121,915	44	1,223,054	632,762	14,788	35,900
Dec. 1938	5,041,062	-	1,198,038	1,050,377	5,246	28,370
Jan. 1939	2,586,515	305	1,126,731	465,044	257	13,668
Feb. 1939	1,490,459	-	814,546	217,463	111	13,244
March 1939	2,537,181	-	1,437,087	302,971	921	23,579
TOTAL	115,510,931	371	9,396,671	4,063,603	77,155	247,914

			ALBERTA - PLATFORM LOADINGS			
		WHEAT	OTHER GRAINS			
Aug. 1938		34,600	3,400			
Sept. 1938		1,508,863	137,057			
Oct. 1938		1,289,132	314,450			
Nov. 1938		522,604	200,518			
Dec. 1938		184,103	174,986			
Jan. 1939		132,708	80,448			
Feb. 1939		59,434	80,850			
March 1939		100,207	166,045			
TOTAL		3,831,651	1,157,754			

Receipts and Shipments of Grain at the Country Elevators in the Western Division and Platform Loadings for the eight months ending March 1939.

		WHEAT	DURUM. WHEAT	OATS	BARLEY	FLAX- SEED	RYE
		B u s h e l s					
<u>TOTAL COUNTRY ELEVATORS - PRAIRIE PROVINCES - RECEIPTS</u>							
Aug.	1938	31,014,315	6,730,612	923,429	4,361,991	31,844	720,707
Sept.	1938	114,321,688	5,083,524	4,148,257	4,782,789	307,678	660,988
Oct.	1938	59,288,420	1,013,634	5,623,464	3,154,427	222,841	467,948
Nov.	1938	19,960,658	498,206	2,610,406	1,733,566	80,027	204,246
Dec.	1938	9,056,732	229,191	2,197,431	1,939,814	31,128	142,773
Jan.	1939	4,259,460	119,947	1,927,282	931,315	8,999	88,624
Feb.	1939	2,462,323	73,246	1,463,275	624,439	5,264	62,837
March	1939	5,111,963	209,131	3,347,991	1,519,189	10,460	143,397
TOTAL		245,475,559	13,957,491	22,247,535	19,047,530	698,241	2,491,520
<u>TOTAL - PLATFORM LOADINGS - PRAIRIE PROVINCES</u>							
		<u>WHEAT</u>		<u>OTHER GRAINS</u>			
Aug.	1938	1,889,795		736,200			
Sept.	1938	2,755,787		971,734			
Oct.	1938	1,686,757		436,298			
Nov.	1938	707,075		267,418			
Dec.	1938	273,055		213,654			
Jan.	1939	171,594		100,573			
Feb.	1939	104,500		128,329			
March	1939	178,987		289,119			
TOTAL		7,767,550		3,143,325			
<u>TOTAL SHIPMENTS - RAIL - PRAIRIE PROVINCES</u>							
Aug.	1938	13,544,947	4,288,984	478,461	3,265,777	9,784	293,386
Sept.	1938	66,784,821	3,139,817	2,122,466	3,928,480	117,030	359,145
Oct.	1938	61,710,523	1,403,653	4,536,583	2,932,030	215,066	405,845
Nov.	1938	26,960,201	1,221,718	2,785,968	1,850,707	105,033	130,898
Dec.	1938	13,174,191	364,206	1,958,458	1,912,886	110,708	102,495
Jan.	1939	9,432,423	161,817	1,443,218	850,111	7,119	38,806
Feb.	1939	4,611,138	92,885	1,601,619	668,499	8,770	31,664
March	1939	11,623,440	173,312	2,696,279	1,535,374	19,945	75,000
TOTAL		207,841,684	10,846,392	17,623,052	16,943,864	593,455	1,437,239

EXPORTS OF GRAIN BY CANADIAN PORTS
FOR THE EIGHT MONTHS ENDING MARCH 1939

		WHEAT	OATS	BARLEY	RYE	BUCK- WHEAT	WHEAT FLOUR Bbls.
		B u s h e l s					
Halifax	N.S.	6,239	72,102	24,948	-	-	490,332
North Sydney-	N.S.	3	16,190	-	-	-	36,344
Sydney	N.S.	-	4,295	-	-	-	2,598
Charlottetown	P.E.I.	-	12,489	-	-	-	-
Saint John	N.B.	2,377,241	39,635	584,230	-	60,017	512,455
Montreal	Que.	32,609,502	2,955,708	4,617,270	466,464	204,281	1,357,041
Sorel	Que.	9,407,529	-	1,783,461	-	-	-
Three Rivers	Que.	6,021,331	65,767	2,324,990	-	-	-
Quebec	Que.	22,472	-	-	-	-	3,121
Vancouver	B.C.	28,088,058	2,420,353	1,810,059	-	-	309,593
Victoria	B.C.	555,147	-	-	-	-	-
New Westminster	B.C.	1,540,104	165,128	237,767	-	-	11,609
Dawson	Yukon	-	-	-	-	-	5
TOTAL Canadian Atlantic Seaboard Ports		50,444,317	3,166,186	9,334,899	466,464	264,298	2,401,891
Churchill		916,912	-	-	-	-	-
TOTAL Canadian Pacific Ports		30,183,309	2,585,481	2,047,826	-	-	321,207
GRAND TOTAL VIA CANADIAN SEABOARD PORTS		81,544,538	5,751,667	11,382,725	466,464	264,298	2,723,098

F L A X S E E D

		Month of March 1939	Bushels	8 months ending March 1939
Halifax	N.S.	-		1
St. John	N.B.	1,316		5,110
Sarnia	Ont.	6		6
Montreal	Que.	-		8,868
North Portal	Sask.	-		12
Vancouver	B.C.	8		125
New Westminster	B.C.	12		12
TOTAL		1,342		14,134

EXPORTS OF GRAIN BY CANADIAN INLAND PORTS OF EXIT
FOR THE EIGHT MONTHS ENDING MARCH 1939

		WHEAT	OATS	BARLEY	RYE	BUCK- WHEAT	WHEAT FLOUR
		B u s h e l s					Bbls.
Edmunston	N.B.	-	75	-	-	180	-
Woodstock	N.B.	-	321	-	-	-	-
Coaticook	Que.	-	8,705	-	-	-	255
Huntingdon	Que.	53	19,469	-	-	-	-
Lacolle	Que.	639,219	41,720	-	-	-	-
Lake Megantic	Que.	-	510	-	-	-	-
Rock Island	Que.	-	-	-	-	-	24
St. Armand	Que.	76,058	56,814	-	-	-	1
St. John's	Que.	27	-	-	-	80	-
Sutton	Que.	332,034	21,524	-	-	-	4,677
Brockville	Ont.	-	-	-	-	-	2
Cobourg	Ont.	-	-	-	-	-	9,778
Collingwood	Ont.	505,544	-	-	-	-	-
Cornwall	Ont.	-	2,350	-	-	-	-
Fort Erie	Ont.	6,740	65,514	-	-	-	35,042
Fort William	Ont.	5,694,697	-	286,893	100,531	-	95,537
Niagara Falls	Ont.	2	61,311	-	2	-	101,174
Port Arthur	Ont.	12,439,878	-	1,153,987	269,911	-	-
Prescott	Ont.	-	25	-	-	-	13
Sarnia	Ont.	-	25	-	-	691	-
Toronto	Ont.	-	-	-	-	-	3,191
Welland	Ont.	63,122	-	-	-	-	30,782
Windsor	Ont.	-	3	-	-	362	-
TOTAL INLAND PORTS		19,757,374	278,366	1,440,880	370,444	1,313	280,476

EXPORTS OF GRAIN BY PORTS OVER RAIL AND HIGHWAY FROM FORT FRANCES
TO PACIFIC COAST FOR THE EIGHT MONTHS ENDING MARCH 1939

Fort Frances	Ont.	336	9,410	25	-	-	540
Brandon	Man.	5,723	169	-	-	-	-
Emerson	Man.	11,823	1,959	829	-	-	1,024
Gretna	Man.	14,649	-	4	-	-	-
Winnipeg	Man.	301	-	-	-	-	-
Moose Jaw	Sask.	91	25	-	-	-	-
North Portal	Sask.	764	-	2	-	-	3,488
Regina	Sask.	250	-	-	39	-	-
Coutts	Alta.	27	-	-	-	-	-
Lethbridge	Alta.	18	-	-	-	-	-
Cranbrook	B.C.	2	17	-	-	-	-
TOTAL SOUTH BY RAIL AND HIGHWAY		33,984	11,580	860	39	-	5,052
GRAND TOTAL FOR CANADA		101,335,896	6,041,613	12,824,465	836,947	265,611	3,008,626

EXPORTS OF BRAN, SHORTS, ETC., OATMEAL, ROLLED OATS AND CORN FOR THE
EIGHT MONTHS ENDING MARCH 1939

		Bran, Shorts Middlings cwt.	Oatmeal and Rolled Oats cwt.	Corn Bush.
Charlottetown	P.E.I.	3	-	-
Halifax	N.S.	27,577	83,409	1,875
North Sydney	N.S.	1,222	2,145	237
Sydney	N.S.	92	128	44
Saint John	N.B.	31,518	128,810	-
Montreal	Que.	743,399	348,636	405
Quebec.	Que.	4,482	1,183	-
Vancouver	B.C.	77,056	15,770	2
New Westminster	B.C.	19,650	-	-
Prince Rupert	B.C.	20	-	-
TOTAL (Canadian Seaboard Ports)		905,019	580,081	2,563

CANADIAN INLAND PORTS OF EXIT

Edmunston	N.B.	89	-	-
Coaticook	Que.	11,020	-	-
Huntingdon	Que.	2,331	-	-
Lacolle	Que.	379,370	-	-
Rock Island	Que.	5,997	-	-
Sherbrooke	Que.	20	-	-
St. Armand	Que.	146,448	-	-
St. John's	Que.	600	-	-
Sutton	Que.	203,746	-	-
Brockville	Ont.	3	-	-
Fort Erie	Ont.	152,585	43	1,000
Morrisburg	Ont.	612	-	-
Niagara Falls	Ont.	31,612	10,780	-
Prescott	Ont.	495	-	-
Sarnia	Ont.	408	-	-
Sault Ste. Marie	Ont.	5	-	-
Toronto	Ont.	-	472	-
Walkerville	Ont.	153	-	-
Welland	Ont.	30,034	-	-
Windsor	Ont.	757	-	-
TOTAL INLAND PORTS		966,285	11,295	1,000

RAILWAY AND HIGHWAY FROM FORT FRANCES TO PACIFIC COAST

Fort Frances	Ont.	3,500	-	-
Emerson	Man.	2,000	-	-
Winnipeg	Man.	1	-	-
Moose Jaw	Sask.	25	-	-
North Portal	Sask.	6,000	-	-
TOTAL		11,526	-	-
GRAND TOTAL		1,882,830	591,376	3,563



1010675162

TABLE 1. POPULATION OF CANADA BY PROVINCE AND TERRITORY, 1981			
Province/Territory	Population (1981)	Population (1971)	Population (1961)
Alberta	2,411,000	1,811,000	1,411,000
Saskatchewan	961,000	761,000	611,000
Manitoba	1,211,000	1,011,000	811,000
Ontario	6,411,000	5,211,000	4,011,000
Quebec	5,411,000	4,211,000	3,011,000
Atlantic Provinces	2,411,000	2,011,000	1,611,000
Nunavut	21,000	21,000	21,000
Total	18,147,000	14,847,000	11,547,000

TABLE 2. POPULATION OF CANADA BY SEX AND AGE GROUP, 1981			
Sex	Age Group	Population (1981)	Population (1971)
Male	0-14	3,411,000	3,011,000
Male	15-24	2,411,000	2,011,000
Male	25-34	2,411,000	2,011,000
Male	35-44	2,411,000	2,011,000
Male	45-54	2,411,000	2,011,000
Male	55-64	2,411,000	2,011,000
Male	65-74	2,411,000	2,011,000
Male	75+	2,411,000	2,011,000
Female	0-14	3,411,000	3,011,000
Female	15-24	2,411,000	2,011,000
Female	25-34	2,411,000	2,011,000
Female	35-44	2,411,000	2,011,000
Female	45-54	2,411,000	2,011,000
Female	55-64	2,411,000	2,011,000
Female	65-74	2,411,000	2,011,000
Female	75+	2,411,000	2,011,000
Total	All	18,147,000	14,847,000

TABLE 3. POPULATION OF CANADA BY ETHNIC ORIGIN, 1981			
Ethnic Origin	Population (1981)	Population (1971)	Population (1961)
White	12,411,000	10,411,000	8,411,000
Black	1,411,000	1,011,000	711,000
Chinese	411,000	311,000	211,000
Indian	211,000	111,000	111,000
Pacific Islander	111,000	111,000	111,000
Other	1,611,000	1,011,000	711,000
Total	16,067,000	12,667,000	10,267,000