



C A N A D A

DEPARTMENT OF TRADE AND COMMERCE

DOMINION BUREAU OF STATISTICS

AGRICULTURAL BRANCH

Vol. 19

No. 9

Historical File Copy
1938

CANADIAN GRAIN STATISTICS

Week ending

SEPTEMBER 30, 1938

[Records for Western Inspection Division supplied by Board of Grain Commissioners for Canada]

+ + +

Published by Authority of the HON. W.D. Euler, M.P.,
Minister of Trade and Commerce.

OTTAWA

1938

INDEX

General Summary	1 - 6
Canadian Grain in Store by Elevators	7
Canadian Grain in Store by Grades	8
Comparative Statement of Grain in Store	9
Receipts and Shipments of Canadian Grain	10
United States Grain in Store, Receipts and Shipments	11 - 12
Receipts, Shipments and Quantities in Store at Interior Terminal Elevators	12
Receipts, Shipments and Quantities in Store at Country Elevators, Western Division and Platform Loadings	13
Receipts, Shipments and Quantities in Store at Pacific Elevators, and Vancouver Prices	14
Daily and Weekly Average Prices of Grain at Fort William and Toronto for the week ending October 1, 1938	15

.....

DEPARTMENT OF TRADE AND COMMERCE
DOMINION BUREAU OF STATISTICS - CANADA
AGRICULTURAL BRANCH

(Issued October 6, 1938)

Dominion Statistician:
Acting Chief, Agricultural Branch

R.H. Coats, LL.D., F.R.S.C., F.S.S. (Hon.)
W. Dougan.

WHEAT STOCKS IN STORE

Canadian wheat in store for the week ending September 30, 1938 increased 21,884,399 bushels compared with the previous week and increased 78,661,306 bushels when compared with the corresponding week in 1937. The amount in store was reported as 133,470,967 bushels compared with 131,588,568 bushels for the previous week and 74,809,661 bushels for the week ending October 1, 1937. The stocks of 153,470,967 bushels include 16,983,516 bushels of Durum wheat.

CANADIAN WHEAT IN THE UNITED STATES

Canadian wheat in the United States amounted to 2,836,000 bushels, an increase of 1,410,000 bushels over the previous week when 1,426,000 bushels were reported. This Canadian wheat was located at the following ports: Buffalo 781,000; Buffalo Afloat 691,000; Erie 239,000; Erie Canal 795,000; New York 181,000; New York Afloat 30,000 and Albany 119,000 bushels. Increases over those of the previous week were shown in the stocks at all the elevators except those at Albany. The increases were as follows: Buffalo 158,000; Buffalo Afloat 691,000; Erie 239,000; Erie Afloat 335,000; New York 134,000 and New York Afloat 2,000 bushels. Stocks at Albany decreased 149,000 bushels.

For the same week a year ago, the Canadian wheat in the United States amounted to 2,086,314 bushels distributed as follows: Duluth 71,314; Buffalo 494,000; Erie Canal 640,000; New York 410,000; New York Afloat 129,000 and Albany 342,000 bushels.

United States wheat in Canada totalled 162,110 bushels compared with 1,743,704 bushels for the previous year.

CANADIAN WHEAT IN CANADA

The wheat stocks in the elevators in Canada for the week ending September 30, 1938 were 150,634,967 bushels compared with 130,160,568 bushels for the previous week and 72,723,347 bushels for the corresponding week last year.

Stocks of wheat in Canadian elevators were located as follows: Western Country Elevators 66,728,000; Interior Terminals 5,263,114; Vancouver-New Westminster 11,317,907; Churchill 982,004; Fort William and Port Arthur 24,523,877; Eastern Elevators Lake and Seaboard Ports 4,984,946 and 4,440,054 bushels respectively.

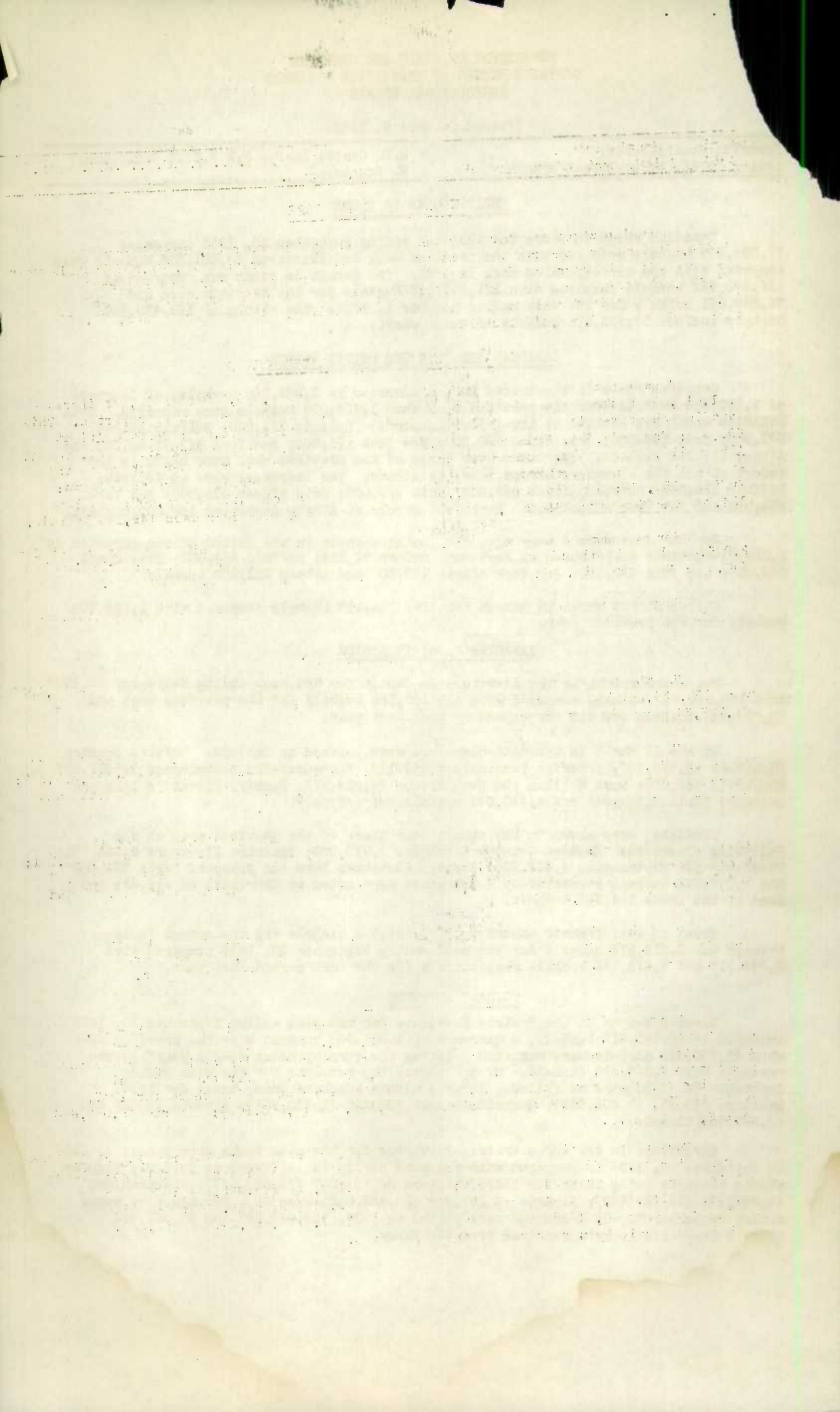
Increases were shown in the stocks over those of the previous week at the following elevators: Western Country Elevators 7,989,000; Interior Elevators 2,375,751; Vancouver-New Westminster 4,402,236; Eastern Elevators Lake and Seaboard Ports 334,400 and 1,385,742 bushels respectively. Decreases were noted at Churchill of 216,371 and Head of the Lakes 114,345 bushels.

Wheat in rail transit amounted to 23,755,493 bushels and the amount in lake transit was 8,639,572 bushels for the week ending September 30, 1938 compared with 2,845,113 and 7,471,143 bushels respectively for the same period last year.

PRIMARY MOVEMENT

Wheat receipts in the Prairie Provinces for the week ending September 30, 1938 amounted to 28,698,617 bushels, a decrease of 3,091,306 bushels over the previous week when 31,789,923 bushels were marketed. During the corresponding week a year ago the receipts were 6,544,558 bushels. By provinces, the receipts for the week ending September 30, 1938 were as follows, figures within brackets being those for 1937; Manitoba 530,011 (1,599,869); Saskatchewan 12,185,920 (1,360,901); Alberta 15,982,686 (3,583,788) bushels.

Marketings in the three Prairie Provinces for the nine weeks from August 1, 1938 to September 30, 1938 as compared with the same period in 1937 were as follows; figures within brackets being those for 1937; Manitoba 36,107,857 (28,025,937); Saskatchewan 62,542,591 (13,729,809); Alberta 59,401,799 (23,822,012) bushels. For the nine weeks ending September 30, 1938 and the same period in 1937, 158,052,247 and 65,577,758 bushels respectively were received from the farms.



OVERSEAS EXPORT CLEARANCES AND IMPORTS OF WHEAT INTO THE UNITED STATES

During the week ending September 30, 1938 the overseas export clearances of wheat amounted to 4,614,231 bushels while imports into the United States for consumption and milling in bond were 328,000 bushels. The total is 4,942,231 bushels compared with 3,265,254 bushels for the previous week, an increase of 1,676,977 bushels, and when compared with the same period in 1937 an increase of 2,651,108 bushels.

Clearances by ports for the week ending September 30, 1938 and the week ending October 1, 1937 and imports into the United States for consumption and milling in bond were as follows (in bushels):-

<u>Overseas Clearances</u>	<u>Week ending September 30, 1938</u>	<u>Week ending October 1, 1937</u>
Montreal	2,225,562	1,601,408
Sorel	774,155	570,000
Three Rivers	654,700	-
Fort William and Port Arthur	56,000	-
Vancouver-New Westminster	330,337	229,870
Churchill	303,191	-
United States Ports	270,286	314,845
TOTAL	4,614,231	2,716,123

Imports into the United States

For consumption and milling in bond for re-export	328,000	75,000
--	---------	--------

Total Overseas Clearances and

<u>United States Imports</u>	4,942,231	2,791,123
------------------------------	-----------	-----------

The following table shows the export clearances of Canadian wheat by ports from August 1, 1938 to September 30, 1938 along with comparative figures for the same period in 1937-38 and imports into the United States for consumption and milling in bond (in bushels):-

<u>Overseas Clearances</u>	<u>1938-39</u>	<u>1937-38</u>
Montreal	12,323,811	9,140,360
Sorel	1,057,596	770,000
Three Rivers	1,953,081	41,078
Fort William and Port Arthur	56,000	-
Churchill	303,191	603,982
Vancouver-New Westminster	1,562,229	600,850
United States Ports	2,666,309	2,401,858
TOTAL	+ 19,922,217	13,558,128

Imports into the United States

For consumption and milling in bond for re-export	984,000	1,316,690
--	---------	-----------

Total Overseas Clearances and

<u>United States Imports to Date</u>	20,906,217	14,874,818
--------------------------------------	------------	------------

+ Includes 4,444,325 bushels Durum wheat cleared from Canadian and United States Atlantic Seaboard Ports.

The accumulated totals of imports of wheat into the United States for consumption and milling in bond are adjusted at the end of the month, due to the fact that the United States Department of Domestic and Foreign Commerce revises their weekly figures on a monthly basis.

THE HISTORY OF THE UNITED STATES OF AMERICA

FROM THE FOUNDATION OF THE COLONIES TO THE PRESENT TIME

BY JAMES M. SMITH

VOLUME I

THE FOUNDATION OF THE COLONIES

THE EARLY YEARS OF THE COLONIES

THE GROWTH OF THE COLONIES

THE DECLINE OF THE COLONIES

INTERNATIONAL TRADE

The following table shows the world shipments of wheat flour for the first nine weeks of the present crop year. (Broomhall's figures).

Week ending	North America	Argentina	Australia	Russia	Danube	India	Other	Total
(Thousand Bushels)								
Aug. 6, 1938	4,288	1,120	2,608	2,784	336	896	-	12,032
13	4,192	1,032	2,104	3,512	696	736	-	12,272
20	4,376	600	2,104	2,624	512	640	-	10,856
27	3,760	1,568	2,576	3,552	808	224	-	12,488
Sept. 3	4,104	1,448	2,160	2,368	280	328	-	10,688
10	3,400	760	1,456	3,960	640	304	-	10,520
17	4,152	1,120	1,384	1,304	992	8	-	8,960
24	4,375	878	1,688	1,552	384	-	384	9,258
Oct. 1	5,567	1,524	1,244	1,512	552	112	384	10,895
TOTAL	38,214	10,050	17,321	23,168	5,200	3,248	768	97,969
Comparative 1937								
9th week	3,312	1,144	704	1,768	1,728	200	400	9,256
TOTAL	25,520	7,584	9,688	7,640	12,464	3,736	2,056	68,688

World shipments for the week ending October 1, 1938 amounted to 10,895,000 bushels as compared with shipments of 9,258,000 bushels for the previous week and 9,256,000 bushels for the corresponding week last year. North American and Argentine shipments showed increases of 1,192,000 bushels and 646,000 bushels respectively, as compared with the previous week, while Australian shipments showed a decrease of 441,000 bushels.

During the first nine weeks of the present crop year world shipments amounted to 97,969,000 bushels as compared with only 68,688,000 bushels for the corresponding weeks last year. North American shipments amounted to 38,214,000 bushels as compared with 25,520,000 bushels for the same period in 1937. For the first nine weeks of the present crop year Russia shipped 23,168,000 bushels as compared with 7,640,000 bushels for the same weeks last year.

WEEKLY AVERAGE SHIPMENTS

The following table shows the weekly average shipments of wheat and wheat flour in the first nine weeks of the present crop year along with comparative figures for 1937:-

	N. America	Argentina	Australia	Russia	Danube	India	Other	Total
(Million Bushels)								
1937	2.8	0.8	1.1	0.9	1.4	0.4	0.2	7.6
1938	4.2	1.1	1.9	2.6	0.6	0.3	0.1	10.8

According to the above table weekly average shipments of wheat and wheat flour amounted to 10.8 million bushels compared with 7.6 million bushels for the corresponding weeks in 1937. North American weekly average shipments amounted to 4.2 million bushels as compared with 2.8 million bushels in the same weeks last year.

TABLE

of the

of the

of the

of the

of the

of the

of the

of the

of the

Stocks in Store at the Head of the Lakes compared with the same week last year as follows:-

	Week ending Sept. 30, 1938	Week ending Oct. 1, 1937	+ Increase - Decrease
Wheat	24,523,877	21,396,166	+ 3,127,711
Oats	786,302	803,005	- 16,703
Barley	3,077,272	5,541,571	- 2,464,299
Flaxseed	180,394	301,825	- 121,431
Rye	872,050	800,223	+ 71,827

The receipts (including transfers) at the Head of the Lakes for the week ending September 30, 1938 with comparative figures for the same week last year were as follows:-

	Week ending Sept. 30, 1938	Week ending Oct. 1, 1937	+ Increase - Decrease
Wheat	9,291,727	5,016,480	+ 4,275,247
Oats	348,298	285,503	+ 62,795
Barley	339,296	886,783	- 547,487
Flaxseed	43,328	4,534	+ 38,794
Rye	38,324	43,911	- 5,587

Preliminary figures showing receipts and shipments at the Head of the Lakes also Vancouver-New Westminster and Churchill for the period August 1, 1938 to September 30, 1938 compared with the same period last year:-

	FORT WILLIAM & PORT ARTHUR		VANCOUVER-NEW WESTMINSTER	
	Receipts	Shipments	Receipts	Shipments
Wheat	52,480,615	35,118,905	12,935,997	1,696,222
Oats	1,521,932	1,785,240	177,425	79,484
Barley	8,185,902	5,883,658	10,953	89,495
Flaxseed	90,404	51,747	284	92
Rye	684,993	422,667	-	1,430
TOTAL	62,963,846	43,262,217	13,125,659	1,866,723
Same period last year	46,087,091	25,938,590	574,651	929,313
+ Increase - Decrease	+ 16,876,755	+ 17,323,627	+ 12,550,008	+ 937,410

	CHURCHILL	
	Receipts	Shipments
Wheat	1,273,375	303,191
Same period last year	-	603,982
+ Increase - Decrease	+ 1,273,375	- 300,791

Stocks in store in the Western Division compared with the same week last year were as follows:-

	Week ending Sept. 30, 1938	Week ending Oct. 1, 1937	+ Increase - Decrease
Wheat	108,814,902	52,874,188	+55,940,714
Oats	4,341,424	4,464,307	- 122,883
Barley	6,679,687	9,837,488	- 3,157,801
Flaxseed	492,617	550,203	- 57,586
Rye	1,706,710	1,164,177	+ 542,533

Platform Loadings shown by Prairie Provinces for the period ending September 21, 1938 were as follows:-

	WHEAT	OTHER GRAIN	TOTAL
	B u s h e l s		
Mani toba	89,979	41,150	131,129
Saskatchewan	69,255	4,350	73,605
Alberta	513,347	19,633	532,980
TOTAL	672,581	65,133	737,714
Period ending Sept. 21, 1937	645,000	960,204	1,605,804

Shipments Overseas of Canadian Grain from St. Lawrence Ports were as follows:

		<u>United Kingdom</u>	<u>B u s h e l s</u>	<u>Other Countries</u>
Montreal, Quebec	Wheat		2,225,441	
	Oats		28,235	
	Barley		91,666	
	Rye		21,592	
Ogilvie Montreal, Quebec	Wheat			120
Sorel, Quebec	Wheat	119,143		655,012
	Barley	-		16,666
Three Rivers, Quebec	Wheat	654,700		-
	Barley	75,000		-

EASTERN ELEVATORS:- United States grain stocks were 273,181 bushels higher than at a comparable date last year. Increases were noted in oats of 382,887, barley 506,922 and corn 1,431,988 bushels while wheat and rye decreased 1,581,594 and 967,022 bushels respectively.

Number of cars inspected in the Western Division for the week ending September 30, 1938 with comparison for the previous year were as follows:

	<u>Week ending</u> <u>September 30, 1938</u>	<u>Week ending</u> <u>September 30, 1937</u>	+ Increase - Decrease
Wheat		6,215	
Oats		331	
Barley	Not	976	
Flaxseed		27	
Rye	Reported	32	
Corn		-	
Mixed Grain		4	
Screenings		4	
TOTAL		7,589	

The number of bushels of grain shipped from the Western to the Eastern points over the C.P.R. and C.N.R. for the week ending September 30, 1938 and the period from August 1, 1938 to September 30, 1938:-

	<u>WEEK ENDING SEPTEMBER 30, 1938</u>				<u>PERIOD AUGUST 1, 1938 TO SEPTEMBER 30, 1938</u>			
	<u>WHEAT</u>	<u>OATS</u>	<u>BARLEY</u>	<u>FLAX</u>	<u>WHEAT</u>	<u>OATS</u>	<u>BARLEY</u>	<u>FLAX</u>
Via C.P.R.	-	5,412	-	-	1,866	7,237	-	-
Via C.N.R.	-	1,859	5,136	3,000	-	16,700	5,136	3,000
TOTAL	-	7,271	5,136	3,000	1,866	23,937	5,136	3,000

Duluth: Receipts of Canadian bonded grain at Duluth by water for the week ending October 1, 1938 were nil. For the period from August 1, 1938 to October 1, 1938 water receipts amounted to barley 51,338 bushels.

Rail shipments for the week ending October 1, 1938 amounted to barley 10,000 bushels. For the period from August 1, 1938 to October 1, 1938 rail shipments amounted to 31,250 bushels.

STOCKS OF GRAIN IN DIFFERENT ELEVATORS DURING THE WEEK ENDING SEPTEMBER 30, 1938.

	WHEAT	DURUM WHEAT	OATS	BARLEY	FLAX- SEED	RYE
		B u s h e l s				
Western Country Elevators	62450000	4278000	3035000	2330000	243000	779000
Interior Private & Mill Elevs.	3010000	140000	359000	1253000	69000	40000
Interior Pub. & Semi-Pub. Terms	2113114	-	7505	1408	-	-
Vancouver-New Westminster	11317907	-	153617	18007	223	9600
Churchill	982004	-	-	-	-	-
Fort William & Port Arthur	15300590	9223287	786302	3077272	180394	372050
In Transit Lakes	7954338	685234	250383	1228756	-	-
In Transit Rail	23755493	-	838337	325708	25109	21375
Eastern Elevators-Lake Ports	3494302	1490644	140219	448690	-	68767
Eastern Elevators-St. Lawrence Ports	3582703	834712	407654	1546469	2115	138490
Eastern Elevators-Maritime Ports	-	22639	-	-	-	-
U. S. Lake Ports	2267000	239000	-	52088	-	-
U. S. Atlantic Seaboard Ports	260000	70000	-	-	-	-
TOTAL	136487451	13983313	5978017	10281398	519841	1935340
Previous week	113819228	17767340	4545037	10736103	407809	1880171
Same week previous year	56923099	17886562	5767791	12993568	590105	1308463

QUANTITY OF SCREENINGS RECEIVED, SHIPPED AND IN STORE AT THE UNDERMENTIONED ELEVATORS DURING THE WEEK ENDING SEPTEMBER 30, 1938

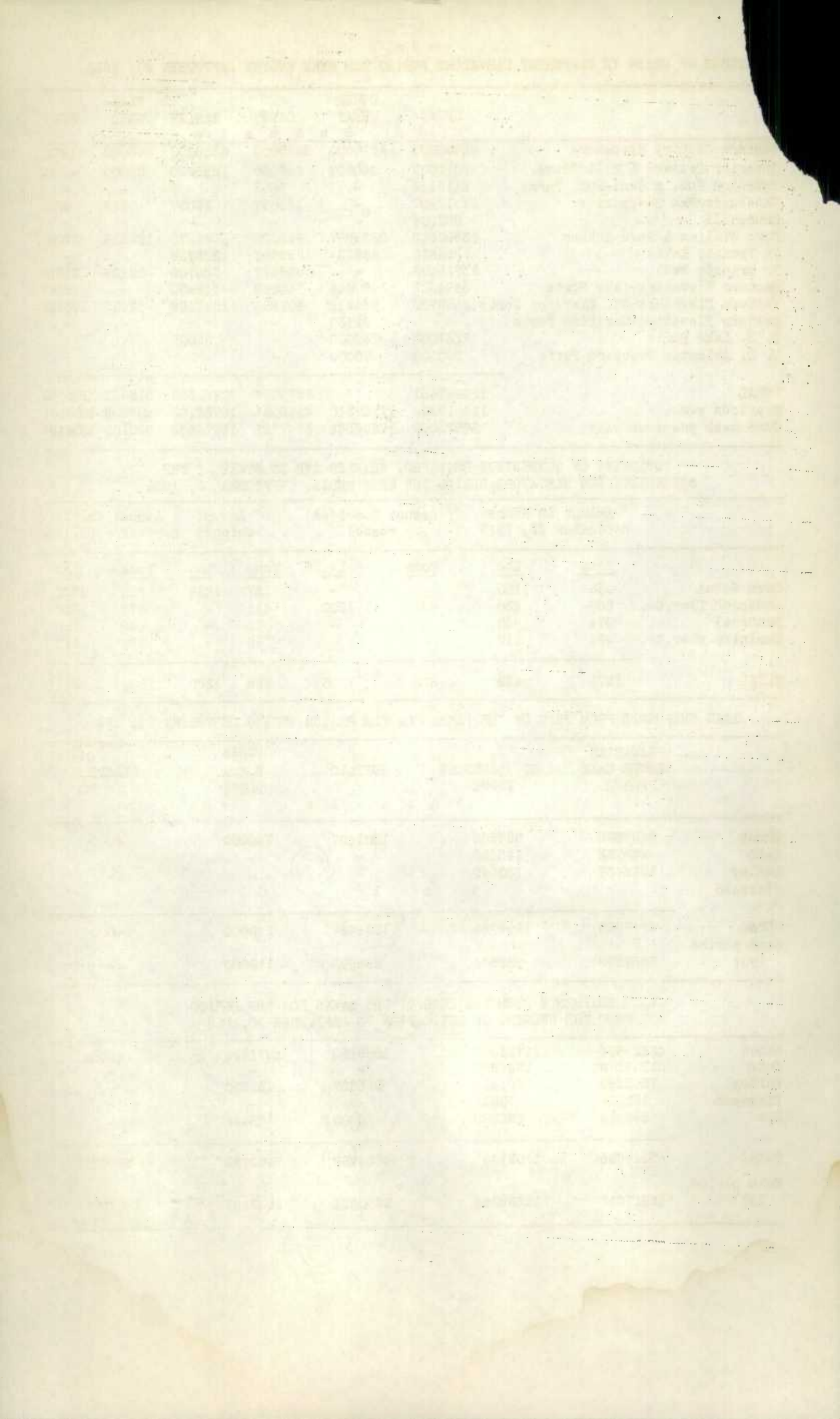
	Amount in Store September 23, 1938		Amount Received by vessel		Amount shipped		Amount in Store September 30, 1938	
	Tons	Lbs.	Tons	Lbs.	Tons	Lbs.	Tons	Lbs.
Owen Sound	438	1100	-	-	157	1230	280	1870
Goderich Elev.Co.	264	330	622	1500	411	-	475	1830
Montreal	374	880	-	-	25	-	349	880
Dominion Elev.Co.	494	112	-	-	96	-	398	112
TOTAL	1571	422	622	1500	689	1230	1504	692

LAKE SHIPMENTS FROM HEAD OF THE LAKES FOR THE PERIOD ENDING SEPTEMBER 30, 1938.

	CANADIAN LOWER LAKE PORTS	ST. LAWRENCE PORTS	BUFFALO	OTHER U.S.A. PORTS	EUROPE
			B u s h e l s		
Wheat	8492593	989263	1201467	240000	56000
Oats	233732	115586	-	-	-
Barley	1016457	100919	-	-	-
Flaxseed		N	i	l	
Rye					
TOTAL	9742782	1205768	1201467	240000	56000
Same period 1937	6557370	582566	296602	110000	-

LAKE SHIPMENTS FROM THE HEAD OF THE LAKES FOR THE PERIOD FROM THE OPENING OF NAVIGATION TO SEPTEMBER 30, 1938

Wheat	43629839	12771402	4059165	2871795	56000
Oats	1197279	2824393	-	-	-
Barley	7563333	2661416	725627	166500	-
Flaxseed	151168	70647	-	-	-
Rye	586984	293589	20000	65444	-
TOTAL	53128603	18621447	4804792	3103739	56000
Same period 1937	45917612	12559266	5200031	2582453	163793



CANADIAN GRAIN IN STORE - SEPTEMBER 30, 1938.

	WHEAT	DURUM WHEAT	OATS	BARLEY	FLAX- SEED	RYE
			B u s h e l s			
WESTERN COUNTRY ELEVATORS						
Manitoba	6380000	3340000	740000	1200000	70000	462000
Saskatchewan	28980000	938000	1340000	700000	160000	262000
Alberta	27090000	-	955000	430000	13000	55000
TOTAL WESTERN COUNTRY ELEVATORS	62450000	4276000	3035000	2330000	243000	779000
INTERIOR PRIVATE AND MILL	3010000	140000	359000	1253000	69000	46000
INTERIOR PUBLIC & SEMI-PUBLIC	2113114	-	7505	11408	-	-
VANCOUVER-NEW WESTMINSTER	11317907	-	153617	18007	223	9660
CHURCHILL	982004	-	-	-	-	-
Semi-Public Terminals	15297976	9222826	777116	3070860	180394	872050
Private Terminals	2614	461	9186	6412	-	-
TOTAL FT.WM. & PT. ARTHUR	15300590	9223287	786302	3077272	180394	872050
IN TRANSIT LAKES	7954333	685234	250383	1228756	-	-
IN TRANSIT RAIL	23755493	-	838337	325708	25109	21373
EASTERN ELEVATORS						
Midland	205916	-	-	-	-	-
Midland Simcoe	345697	612522	34933	-	-	-
Collingwood	-	509544	-	-	-	-
Owen Sound	23251	-	28	9000	-	-
Goderich Elev.& Transit	92139	16080	-	18250	-	-
Goderich W. C. F. M.	130178	3902	4928	-	-	-
Sarnia	603243	249340	661	7827	-	-
Port Colborne, D.G.	72311	33728	-	83405	-	-
Port Colborne, M.L.	349402	30615	5429	10044	-	28781
Toronto	401483	183865	94240	100573	-	39986
Kingston Elevator Co.	1229272	76048	-	219119	-	-
Prescott	41410	5000	-	472	-	-
TOTAL EAST.ELEVS. LAKE PORTS	3494302	1490644	140219	448690	-	68767
Montreal	1695436	729290	275230	727916	2115	130010
Ogilvie Flour Mills	202339	3092	-	-	-	-
Dominion Elevator Co.	-	597	27012	8924	-	8480
North Amer. Ltd. Sorel	1312371	43109	-	566143	-	-
Three Rivers	331121	42175	340	235297	-	-
Quebec	43436	16449	105072	8189	-	-
West Saint John C.P.R.	-	22639	-	-	-	-
TOTAL EAST.ELEVS.SBD. PORTS	3582703	857351	407654	1546469	2115	138490
TOTAL QUANTITY IN CANADA	133960451	16674516	5978017	10229310	519841	1935340
Duluth	-	-	-	20085	-	-
Buffalo	781000	-	-	32000	-	-
Buffalo Afloat	691000	-	-	-	-	-
Erie	-	239000	-	-	-	-
Erie Canal Afloat	795000	-	-	-	-	-
TOTAL U. S. LAKE PORTS	2267000	239000	-	52088	-	-
New York	111000	70000	-	-	-	-
New York Afloat	30000	-	-	-	-	-
Albany	119000	-	-	-	-	-
TOTAL U.S. ATLANTIC SBD. PORTS	260000	70000	-	-	-	-
TOTAL QUANTITY IN STORE	136487451	16983516	5978017	10281398	519841	1935340

Grades of Canadian Grain in Store at Public, Semi-Public, and Private (Head of the Lakes), Interior Public and Semi-Public, Vancouver-New Westminster, and Eastern Elevators for the week ending September 30, 1938.

	Ft. William & Pt. Arthur Semi-Public and Private	Interior Public and Semi-Public Terminals	Vancouver New West- minster Elevators	Eastern Elevators Lake Ports	Eastern Elevators St. Lawrence Ports	Eastern Elevators Maritime Ports
<u>B u s h e l s</u>						
<u>WHEAT</u>						
No. 1 Hard	110,770	129,259	1,637,640	96,195	94,363	-
No. 1 Northern	2,057,764	1,018,020	5,232,549	591,989	1,667,062	-
No. 2 Northern	6,943,689	452,745	1,666,971	1,290,707	850,071	-
Old No. 2 Northern	-	-	-	-	223	-
No. 3 Northern	2,016,141	208,562	1,122,719	1,142,055	789,653	-
Old No. 3 Northern	8,940	-	-	686	-	-
No. 4 Northern	796,463	5,274	55,836	999	-	-
Old No. 4 Northern	1,385	-	522	3,001	14	-
No. 4 Special	676,989	-	-	17,495	-	-
No. 5 Wheat	346,130	31,254	26,908	-	8,089	-
No. 5 Special	164,120	-	-	-	3,464	-
No. 6 Wheat	42,859	-	-	8,097	11,845	-
No. 6 Special	92,665	-	-	24,305	2,498	-
Feed	217,791	-	12,800	10,445	19,996	-
No. 1 C.W. Garnet	313,698	8,029	100,542	-	-	-
No. 2 C.W. Garnet	553,627	187,280	897,788	36,979	-	-
No. 3 C.W. Garnet	388,736	41,415	-	-	-	-
No. 1 C.W. Durum	684,386	-	-	-	69,182	-
No. 2 C.W. Durum	6,810,993	-	-	1,308,771	601,657	22,639
No. 3 C.W. Durum	1,475,525	-	-	181,876	143,649	-
No. 4 C.W. Durum	69,263	-	-	-	-	-
Other Durum	182,659	-	-	-	20,224	-
Other	568,784	-	563,632	271,346	135,425	-
TOTAL	24,523,877	2,113,114	11,317,907	4,984,946	4,417,415	22,639
<u>OATS</u>						
No. 2 C.W.	179,549	-	-	631	27,712	-
No. 3 C.W.	301,964	4,530	688	95,298	110,516	-
Ex. No. 1 Feed	844	-	-	-	433	-
No. 1 Feed	154,384	886	4,182	37,163	98,619	-
No. 2 Feed	84,619	526	1,867	-	3,505	-
No. 3 Feed	26,686	-	-	-	1,453	-
Other	38,256	1,563	146,880	7,127	165,416	-
TOTAL	786,302	7,505	153,617	140,219	407,654	-
<u>BARLEY</u>						
3 Ex. C.W. 6 Row	1,658,194	-	-	111,920	351,979	-
3 Ex. C.W. 2 Row	8,976	-	-	-	-	-
3 C.W.	1,242,314	251	-	270,426	1,156,828	-
4 C.W.	65,746	149	1,502	-	11,575	-
5 C.W.	66,655	-	-	-	21,273	-
6 C.W.	5,041	871	3,760	-	1,871	-
Other	30,346	137	12,745	66,344	2,943	-
TOTAL	3,077,272	1,408	18,007	448,690	1,546,469	-
<u>FLAXSEED</u>						
No. 1 C.W.	159,349	-	24	-	2,115	-
No. 2 C.W.	3,465	-	192	-	-	-
No. 3 C.W.	7,639	-	-	-	-	-
No. 4 C.W.	2,206	-	-	-	-	-
Other	7,735	-	7	-	-	-
TOTAL	180,394	-	223	-	2,115	-
<u>RYE</u>						
No. 1 C.W.	5,120	-	-	-	-	-
No. 2 C.W.	700,745	-	-	68,767	132,950	-
No. 3 C.W.	151,650	-	-	-	5,540	-
No. 4 C.W.	3,654	-	-	-	-	-
Other	10,881	-	9,660	-	-	-
TOTAL	872,050	-	9,660	68,767	138,490	-
TOTAL QUANTITY IN STORE	29,439,895	2,122,027	11,499,414	5,642,622	6,512,143	22,639

CANADIAN GRAIN IN STORE - COMPARATIVE STATEMENT, 1936 - 1938

	W H E A T (Bushels)	OTHER GRAIN
<u>October 30, 1938</u>		
Country Elevators - Manitoba	9,720,000	2,472,000
Saskatchewan	29,918,000	2,462,000
Alberta	27,090,000	1,453,000
TOTAL	66,728,000	6,387,000
Interior Private and Mill	3,150,000	1,727,000
Interior Public and Semi-Public Terminals	2,113,114	8,913
Vancouver-New Westminster	11,317,907	181,507
Prince Rupert	-	-
Churchill	982,004	-
Fort William & Port Arthur	24,523,877	4,916,018
In Transit Lakes	8,639,572	1,479,139
In Transit Rail	23,755,493	1,210,527
Eastern Elevators - Lake Ports	4,984,946	657,676
Eastern Elevators - Sbd. Ports	4,440,054	2,094,728
U. S. Lake Ports	2,506,000	52,088
U. S. Atlantic Sbd. Ports	330,000	-
TOTAL	153,470,967	18,714,596
<u>October 1, 1937</u>		
Country Elevators - Manitoba	4,440,000	3,200,000
Saskatchewan	7,255,000	1,683,000
Alberta	11,380,000	1,137,000
TOTAL	23,075,000	6,020,000
Interior Private and Mill	3,340,000	2,429,000
Interior Public and Semi-Public Terminals	1,083,478	1,547
Vancouver-New Westminster	3,056,384	119,004
Prince Rupert	911,340	-
Churchill	11,820	-
Fort William and Port Arthur	21,396,166	7,446,624
In Transit Lakes	2,845,113	759,970
In Transit Rail	7,471,143	857,157
Eastern Elevators - Lake Ports	6,987,372	1,210,623
Eastern Elevators - Sbd. Ports	2,545,531	1,510,658
U. S. Lake Ports	1,205,314	305,344
U. S. Atlantic Sbd. Ports	881,000	-
TOTAL	74,809,661	20,659,927
<u>October 2, 1936</u>		
Country Elevators - Manitoba	3,456,054	2,100,277
Saskatchewan	23,215,649	6,644,164
Alberta	20,078,004	3,076,968
TOTAL	46,749,707	11,821,409
Interior Private and Mill	6,749,246	4,426,871
Interior Public and Semi-Public Terminals	106,730	513,204
Vancouver-New Westminster	7,092,771	641,533
Prince Rupert	1,025,938	-
Churchill	610,450	-
Fort William and Port Arthur	37,466,237	9,121,510
In Transit Lakes	5,582,360	780,752
In Transit Rails	10,354,693	2,469,480
Eastern Elevators - Lake Ports	14,154,558	1,932,102
Eastern Elevators - Sbd. Ports	13,206,651	1,632,391
U. S. Lake Ports	15,491,122	1,649,914
U. S. Atlantic Sbd. Ports	3,518,740	98,973
TOTAL	162,119,293	35,088,139

RECEIPTS AND SHIPMENTS OF GRAIN BY CLASSES OF ELEVATORS IN THE
WEEK ENDING SEPTEMBER 30, 1938

	WHEAT	DURUM WHEAT	OATS	BARLEY	FLAX- SEED	RYE
	B u s h e l s					
<hr/>						
R E C E I P T S						
Country Elevators	27,734,263	291,773	1,595,070	757,652	108,707	96,277
Int. Private & Mill Elevs.	1,484,665	16,076	245,643	139,438	26,560	1,664
Int. Pub. & Semi-Pub. Terms	1,626,880	-	5,006	146	-	-
Vancouver-New Westminster	4,765,301	-	13,660	-	-	-
Churchill	86,820	-	-	-	-	-
Fort William & Port Arthur	8,963,806	327,921	348,298	339,296	43,328	38,324
Eastern Elevators -						
Georgian Bay Ports	Vessel	1,866,389	87,733	44,273	-	-
	Rail	2,528	-	-	-	-
Lower Lake Ports	Vessel	3,834,223	10,229	580,704	-	39,986
	Rail	480	6,090	17,023	-	-
St. Lawrence Ports	Vessel	5,082,185	95,408	439,713	-	-
	Rail	121,347	-	185	-	-
 S H I P M E N T S						
Country Elevators	19,488,726	240,772	817,877	499,961	46,169	53,280
Int. Private & Mill Elevs.	825,014	23,242	174,141	91,179	16,527	1,385
Int. Pub. & Semi-Pub. Terms.	5,998	-	-	-	-	-
Vancouver-New Westminster						
	Vessel	330,337	7,688	18	3	-
	Rail	28,795	17,453	1,630	-	450
Churchill	Vessel	303,191	-	-	-	-
Fort William & Port Arthur						
	Vessel	8,432,195	973,365	315,411	1,002,641	-
	Rail	-	1,857	39,355	6,999	5
Eastern Elevators -						
Georgian Bay Ports	Vessel	254,317	-	-	-	-
	Rail	763,897	68,708	46,773	-	-
Lower Lake Ports	Vessel	4,139,262	30,229	516,944	-	-
	Rail	211,760	49,441	11,936	-	1,892
St. Lawrence Ports	Vessel	3,654,416	28,235	183,332	-	21,592
	Rail	163,325	53,429	61,383	-	4,900

THE
UNITED STATES

OF THE ARMY

DEPARTMENT OF THE ARMY

OFFICE OF THE

SECRETARY

STATEMENT OF

THE SECRETARY OF THE ARMY
IN RESPONSE TO A RESOLUTION
PASSED BY THE HOUSE OF REPRESENTATIVES
ON MAY 1, 1944
RELATIVE TO THE
ACTIVITY OF THE
ARMY IN THE
PHILIPPINES
DURING THE
PERIOD FROM
JANUARY 1, 1942
TO JANUARY 1, 1944

STATEMENT OF

THE SECRETARY OF THE ARMY
IN RESPONSE TO A RESOLUTION
PASSED BY THE HOUSE OF REPRESENTATIVES
ON MAY 1, 1944
RELATIVE TO THE
ACTIVITY OF THE
ARMY IN THE
PHILIPPINES
DURING THE
PERIOD FROM
JANUARY 1, 1942
TO JANUARY 1, 1944

STOCKS OF UNITED STATES GRAIN IN CANADA SEPTEMBER 30, 1938

	WHEAT	OATS B u s h e l s	BARLEY	RYE	CORN
Midland Aberdeen	99,324	180,675	-	-	69,391
Midland Simcoe	-	346,308	-	-	-
Owen Sound	-	83,508	-	-	22,928
Goderich Elevator & Transit	-	438,203	-	-	-
Goderich W. C. F. M.	-	-	-	-	3,000
Sarnia	-	1,148	-	-	-
Port Colborne, D.G.	-	-	123,979	96,197	384,234
Port Colborne, M.L.	51,819	3,870	-	-	175,643
Toronto	-	-	-	-	11,166
Prescott	-	-	-	-	7,757
Montreal	10,967	60,611	130,215	-	135,762
Dominion Elevator Co.	-	57,371	-	-	67,953
Sorel	-	-	9,935	-	72,578
Three Rivers	-	10,855	411,073	-	477,098
Quebec	-	2,000	-	-	5,164
Halifax	-	8,153	-	-	-
TOTAL	162,110	1,192,702	675,202	96,197	1,432,674
Same period last year	1,743,704	309,815	168,280	1,063,219	686

RECEIPTS AND SHIPMENTS OF UNITED STATES GRAIN IN CANADA SEPTEMBER 30, 1938

R E C E I P T S			S H I P M E N T S		
	Water	Rail		Water	Rail
GEORGIAN BAY PORTS					
Wheat	245,258	-	To Can. Flour Mills	-	3,803
			" U. S. Points	-	18,181
			" Montreal	-	25,258
Oats	-	-	" Can. Dom. Points	-	79,058
			" U. S. Points	-	16,415
			" New England	-	5,270
Corn	139,679	-	" Can. Dom. Points	-	2,000
			" Can. Flour Mills	-	1,000
			" U. S. Points	-	130,814
			" New England	-	1,178
LOWER LAKE PORTS					
Wheat	-	-	To Can. Dom. Points	6,000	-
			" Can. Flour Mills	-	30,216
Oats	-	-	" Can. Flour Mills	-	4,047
Barley	123,979	-	" Montreal	-	-
Rye	96,179	-	" Can. Dom. Points	-	-
Corn	349,668	-	" Can. Dom. Points	100,135	37,498
			" Can. Flour Mills	-	11,578
			" U. S. Points	-	11,166
ST. LAWRENCE PORTS					
Wheat	-	-	To Can. Dom. Points	-	22,005
Oats	-	-	" Can. Dom. Points	-	1,911
			" Other Countries	917	-
Barley	436,658	-	" Other Countries	210,763	-
Rye	-	-	" U. S. Seaboard	-	12,000
			" Other Countries	1,269	-
Corn	38,383	-	" Can. Dom. Points	-	11,197
			" Can. Flour Mills	-	2,367
			" Other Countries	230,984	-
			" United Kingdom	81,357	-
MARITIME PORTS					
Oats	-	-	To Can. Dom. Points	-	1,029
Corn	-	-	" Can. Dom. Points	-	180

STOCKS OF FOREIGN GRAIN IN CANADA SEPTEMBER 30, 1938

	ARGENTINE CORN	SOUTH AFRICAN CORN B u s h e l s	ARGENTINE FLAXSEED
Goderich Elevator & Transit	-	1,500	-
Goderich W. C. F. M.	-	7,000	-
Port Colborne, M.L.	-	2,629	-
Montreal	26,305	105,318	-
Dominion Elevator Co.	33,712	2,500	-
Three Rivers	-	3,535	-
Quebec	-	16,960	-
Halifax	-	54,307	-
TOTAL	60,017	193,749	-
Same period last year	966,725	2,787,916	93,040

RECEIPTS AND SHIPMENTS OF FOREIGN GRAIN IN CANADA SEPTEMBER 30, 1938.

	R E C E I P T S			S H I P M E N T S	
	Water	Rail		Water	Rail
			ST. LAWRENCE PORTS		
Afr. Corn	-	-	To Can. Dom. Points	-	5,000
Arg. Corn	-	-	" Can. Dom. Points	-	8,232
Arg. Corn	-	-	" U. S. Seaboard	-	1,000
			" Can. Dom. Points	-	29,126
			MARITIME PORTS		
Afr. Corn	79,307	-	To Can. Dom. Points	-	28,100

STOCKS IN STORE, RECEIPTS AND SHIPMENTS AT THE CANADIAN GOVERNMENT INTERIOR
TERMINAL ELEVATORS DURING THE WEEK ENDING SEPTEMBER 30, 1938

	WHEAT	OATS	BARLEY	FLAXSEED	RYE
		B u s h e l s			
STOCKS IN STORE					
Calgary	502,917	665	369	-	-
Edmonton	671,666	1,410	893	-	-
Lethbridge	849,586	523	146	-	-
Moose Jaw	56,210	-	-	-	-
Saskatoon	32,735	4,902	-	-	-
TOTAL	2,113,114	7,505	1,408	-	-
RECEIPTS					
Calgary	484,334	239	-	-	-
Edmonton	636,858	-	-	-	-
Lethbridge	461,997	225	146	-	-
Moose Jaw	33,338	-	-	-	-
Saskatoon	10,353	4,542	-	-	-
TOTAL	1,626,880	5,006	146	-	-
SHIPMENTS					
Calgary	3,214	-	-	-	-
Edmonton	2,449	-	-	-	-
Lethbridge	335	-	-	-	-
Moose Jaw	-	-	-	-	-
Saskatoon	-	-	-	-	-
TOTAL	5,998	-	-	-	-

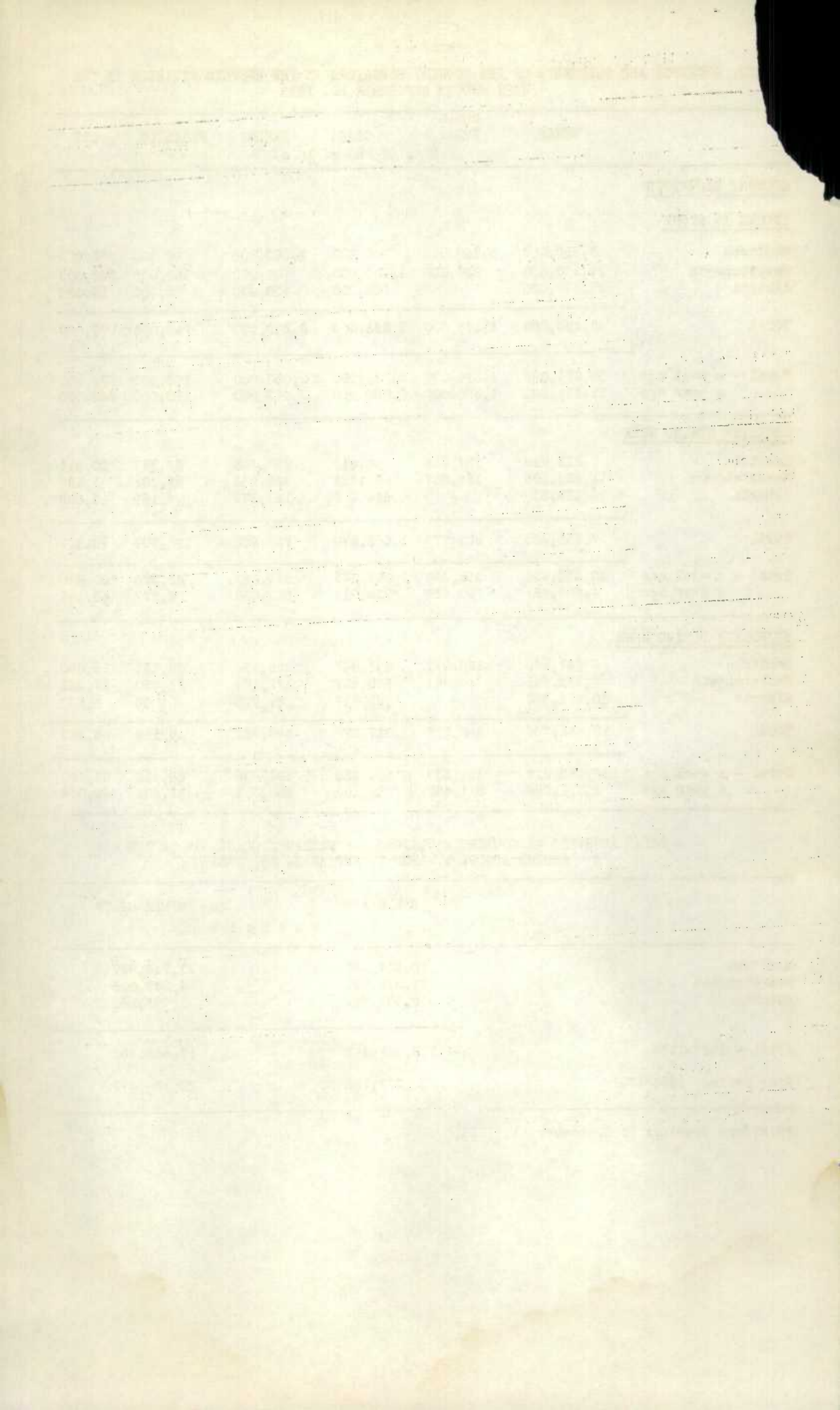
STOCKS, RECEIPTS AND SHIPMENTS OF THE COUNTRY ELEVATORS IN THE WESTERN DIVISION IN THE
WEEK ENDING SEPTEMBER 30, 1938

	WHEAT	DURUM WHEAT	OATS	BARLEY	FLAXSEED	RYE
	B u s h e l s					
<u>COUNTRY ELEVATORS</u>						
<u>STOCKS IN STORE</u>						
Manitoba	6,380,000	3,340,000	740,000	1,200,000	70,000	462,000
Saskatchewan	28,980,000	938,000	1,340,000	700,000	160,000	262,000
Alberta	27,090,000		955,000	430,000	13,000	55,000
TOTAL	62,450,000	4,278,000	3,035,000	2,330,000	243,000	779,000
Total - a week ago	54,425,000	4,314,000	2,190,000	2,055,000	183,000	733,000
a year ago	21,115,000	1,960,000	3,050,000	2,475,000	160,000	335,000
<u>RECEIPTS DURING WEEK</u>						
Manitoba	312,816	127,216	164,417	258,315	33,377	30,911
Saskatchewan	11,952,108	164,557	886,251	305,958	69,161	51,467
Alberta	15,469,339	-	544,402	193,379	6,169	13,899
TOTAL	27,734,263	291,773	1,595,070	757,652	108,707	96,277
Total - a week ago	30,333,496	959,493	1,043,445	677,262	85,576	100,840
a year ago	4,663,763	359,534	905,016	622,056	26,277	43,146
<u>SHIPMENTS DURING WEEK</u>						
Manitoba	947,569	196,031	141,843	265,495	27,231	18,600
Saskatchewan	7,986,781	44,741	540,217	172,467	18,870	27,782
Alberta	10,554,376	-	135,817	61,999	68	6,898
TOTAL	19,488,726	240,772	817,877	499,961	46,169	53,280
Total - a week ago	17,169,215	317,399	509,654	494,453	38,817	58,822
a year ago	5,791,256	611,460	465,100	658,389	11,504	46,046

TOTAL RECEIPTS AT COUNTRY ELEVATORS AND PLATFORM LOADINGS* IN THE
PERIOD AUGUST 1, 1938 TO SEPTEMBER 30, 1938

	W H E A T	OTHER GRAIN
	B u s h e l s	
Manitoba	36,107,857	11,743,927
Saskatchewan	62,542,591	4,009,005
Alberta	59,401,799	1,789,562
TOTAL - 1937-1938	158,052,247	17,542,494
Same period 1936-1937	65,577,758	20,135,477

*Platform loadings to September 21, 1938.



STOCKS, RECEIPTS AND SHIPMENTS OF THE PACIFIC COAST ELEVATORS

IN THE WEEK ENDING SEPTEMBER 30, 1938.

	WHEAT	OATS	BARLEY	FLAXSEED	R RYE
		B u s h e l s			
<u>STOCKS IN STORE</u>					
Vancouver-New Westminster	11,317,907	153,617	18,007	223	9,660
Churchill	982,004	-	-	-	-
<u>RECEIPTS DURING WEEK</u>					
Vancouver-New Westminster	4,765,301	13,660	-	-	-
Churchill	86,820	-	-	-	-
<u>SHIPMENTS DURING WEEK</u>					
Vancouver-New Westminster					
Vessel	330,337	4,658	-	-	-
Rail	28,795	17,453	1,630	-	450
Churchill					
Vessel	303,191	-	-	-	-

DAILY QUOTATIONS AND WEEKLY AVERAGES OF CASH WHEAT BY GRADES IN CENTS AND

EIGHTHS OF A CENT PER BUSHEL

IN THE WEEK ENDING OCTOBER 1, 1938

(Basis Vancouver, B.C.)

	Sept. 26	Sept. 27	Sept. 28	Sept. 29	Sept. 30	Oct. 1	Weekly Average
	\$ ¢	\$ ¢	\$ ¢	\$ ¢	\$ ¢	\$ ¢	\$ ¢
No. 1 Hard							
No. 1 Northern							
No. 3 Northern							
No. 4 Northern							
No. 5							
No. 6							
Feed							
No. 1 Garnet							
No. 2 Garnet							

Vancouver prices discontinued until further notice.

DAILY QUOTATIONS AND WEEKLY AVERAGES OF CASH GRAIN BY
GRADES ON WINNIPEG AND TORONTO MARKETS

Week ending October 1, 1938.

	Sept. 26 \$ ¢	Sept. 27 \$ ¢	Sept. 28 \$ ¢	Sept. 29 \$ ¢	Sept. 30 \$ ¢	Oct. 1 \$ ¢	Weekly Average \$ ¢
WHEAT							
No. 1 Man. Northern	.69/4	.68/1	.65/6	.64/5	.62	.61/1	.65/2
No. 2 Man. Northern	.66	.64/5	.62	.60/7	.58/2	.56/7	.61/4
No. 3 Man. Northern	.64	.62/5	.60	.58/7	.56/2	.54/7	.59/4
No. 4 Man. Northern	.60	.58/5	.55/6	.54/5	.51	.49/5	.54/9
No. 5	.53/4	.52/1	.49/2	.48/1	.45/4	.44/5	.48/9
No. 6	.47/4	.46/1	.43/2	.42/1	.39/4	.38/5	.42/9
Feed	.44/4	.43/1	.40/2	.39/1	.36/4	.35/5	.39/9
No. 4 Special	.54/4	.53/1	.50/2	.49/1	.46/4	.45/5	.49/9
No. 5 Special	.50/4	.49/1	.46/2	.45/1	.42/4	.41/5	.45/9
No. 6 Special	.46/4	.45/1	.42/2	.41/1	.38/4	.37/5	.41/9
Tough No. 1 Northern	.68	.66/5	.64/2	.63/1	.60/4	.59/5	.63/7
No. 2 Northern	.64/4	.63/1	.60/4	.59/3	.56/6	.55/3	.59/9
No. 3 Northern	.62/4	.61/1	.58/4	.57/3	.54/6	.53/3	.57/9
Rejected No. 1 Northern	.63/4	.62/1	.59/2	.58/1	.55/4	.54/5	.58/9
No. 2 Northern	.60/4	.59/1	.56/2	.55/1	.52/4	.51/5	.55/9
No. 3 Northern	.58/4	.57/1	.54/2	.53/1	.50/4	.49/5	.53/9
Smutty No. 1 Northern	.65	.63/5	.60/6	.59/5	.57	.56/1	.60/4
No. 2 Northern	.62	.60/5	.57/6	.56/5	.54	.53/1	.57/4
No. 3 Northern	.59/4	.58/1	.55/2	.54/1	.51/4	.50/5	.54/9
No. 1 Garnet	.61/4	.60/1	.57/2	.55/1	.52/4	.51/5	.56/4
No. 2 Garnet	.58/4	.57/1	.54/2	.52/1	.49/4	.48/5	.53/4
No. 3 Garnet	.55/4	.54/1	.51/2	.50/1	.47/4	.45/5	.50/7
Durum No. 1	.55/4	.54/1	.51/2	.50/1	.47/4	.45/5	.50/7
No. 2	.53	.51/5	.48/6	.47/5	.45	.43/5	.48/3
No. 3	.51/4	.50/1	.47/2	.46/1	.43/4	.42/5	.46/9
OATS							
No. 2 C.W.	.31/6	.30/6	.30/4	.29/2	.28/4	.27/4	.29/7
No. 3 C.W.	.28/6	.27/6	.27/4	.26/2	.25/4	.24/4	.26/7
Ex. No. 1 Feed	.28/6	.27/6	.27/4	.26/2	.25/4	.24/4	.26/7
No. 1 Feed	.28/2	.27/2	.27	.25/2	.24	.23	.25/8
No. 2 Feed	.27/2	.26/2	.26	.24/6	.23	.22	.24/9
No. 3 Feed	.24/2	.23/2	.23	.21/6	.20	.19	.21/9
BARLEY							
6 Row	.39/2	.29/1	.37/7	.38	.36/4	.33/4	.37/4
2 Row	.39/2	.39/1	.37/7	.38	.36/4	.33/4	.37/4
No. 3 C.W.	.38/3	.38/2	.37/4	.37/6	.36	.32/6	.36/8
No. 4 C.W.	.36/3	.36/2	.35	.35/4	.34	.31	.34/7
No. 5 C.W.	.35/3	.35/2	.34	.34/4	.33	.30	.33/7
No. 6 C.W.	.34/3	.34/2	.33	.33/4	.32	.29	.32/7
RYE							
No. 2 C.W.	.44/1	.43/4	.42/3	.43/4	.42	.40/3	.42/6
No. 3 C.W.	.40/6	.40/1	.39	.40	.38/2	.36/7	.39/2
Rejected No. 2 C.W.	.37/2	.36/5	.35/4	.36/4	.34/6	.33/3	.35/7
No. 4 C.W.	.36/2	.35/5	.34/4	.35/4	.33/6	.32/3	.34/7
Ergoty	.35/2	.34/-	.33/4	.34/4	.32/6	.31/3	.33/7
FLAXSEED							
No. 1 C.W.	1.40/2	1.38/3	1.38/4	1.37/4	1.35	1.33/4	1.37/2
No. 2 C.W.	1.36/2	1.34/3	1.34/4	1.33/4	1.31	1.29/4	1.33/2
No. 3 C.W.	1.24/4	1.22/4	1.22/5	1.21/4	1.19	1.17/4	1.21/3
No. 4 C.W.	1.19/4	1.17/4	1.17/5	1.16/4	1.14	1.12/4	1.16/3
Wheat, ONTARIO - TORONTO							
Wheat, good milling	.60- .62	.60- .62	.60- .62	.60- .62	.60- .62	.60- .62	.60- .62
Oats	.25- .27	.25- .27	.25- .27	.25- .27	.25- .27	.24- .26	.24- .26
Barley	.34- .37	.34- .37	.34- .37	.34- .37	.34- .37	.32- .34	.33/7- .36/5
Rye	.40- .42	.40- .42	.40- .42	.40- .42	.40- .42	.40- .42	.40- .42
Corn	.60- .65	.60- .65	.60- .65	.60- .65	.60- .65	-	.60- .65
Buckwheat	-	-	-	-	-	.38- .40	.38- .40
Malting Barley	.42- .44	.42- .44	.42- .44	.42- .44	.42- .44	.43- .44	.42/2- .44
Milling Oats	.25- .27	.25- .27	.25- .27	.25- .27	.25- .27	.24- .26	.24/8- .26/8
American No. 2							
Yellow Corn	.84	.84	.84	.84	.84	.84	.84

344001

STATISTICS CANADA LIBRARY
BIBLIOTHÈQUE STATISTIQUE CANADA



1010675135