

CANADA
DEPARTMENT OF TRADE AND COMMERCE
DOMINION BUREAU OF STATISTICS
AGRICULTURAL BRANCH



Vol. 20

No. 43

Historical File Copy

CANADIAN GRAIN STATISTICS

Week ending

MAY 24, 1940

[Records for Western Inspection Division supplied by Board of Grain Commissioners for Canada]

+ + +

Published by Authority of the Hon. Jas. A. MacKinnon, M.P.,
Minister of Trade and Commerce.

+ + +

OTTAWA

1940

Price \$2 a year

I N D E X

General Summary	1 - 6
Canadian Grain in Store by Elevators	7
Canadian Grain in Store by Grades	8
Comparative Statement of Grain in Store	9
Receipts and Shipments of Canadian Grain	10
United States Grain in Store, Receipts and Shipments	11
Receipts, Shipments and Quantities in Store at Interior Terminal Elevators	12
Receipts, Shipments and Quantities in Store at Country Elevators, Western Division and Platform Loadings, Daily and Weekly Average Prices of Coarse Grain at Toronto for the week ending May 25, 1940	13
Daily and Weekly Average Prices of Grain at Fort William and Montreal for the week ending May 25, 1940	14

DEPARTMENT OF TRADE AND COMMERCE
DOMINION BUREAU OF STATISTICS - CANADA
AGRICULTURAL BRANCH
(Issued May 30, 1940)

Dominion Statistician:	R.H. Coats, LL.D., F.R.S.C.
Acting Chief, Agricultural Branch:	W. Dougan.

WHEAT STOCKS IN STORE

Canadian wheat in store for the week ending May 24, 1940 decreased 4,020,417 bushels as compared with the previous week and increased 164,474,444 bushels when compared with the corresponding week in 1939. The amount in store was reported as 284,228,773 bushels compared with 288,249,190 bushels for the previous week and 119,754,329 bushels for the week of May 26, 1939. The stocks of 284,228,773 bushels include 9,219,423 bushels of Durum wheat.

CANADIAN WHEAT IN CANADA

The wheat stocks in elevators in Canada for the week ending May 24, 1940 were 261,663,967 bushels compared with 265,346,770 bushels for the previous week and 117,246,329 bushels for the corresponding week last year.

Stocks of wheat in Canadian elevators were located as follows: Western Country Elevators 97,325,000; Interior Terminals 19,187,657; Vancouver-New Westminster 15,796,009; Victoria 612,474; Prince Rupert 1,136,049; Churchill 2,494,610; Fort William and Port Arthur 63,145,086; Eastern Elevators Lake Ports 30,300,792 and Eastern Elevators Seaboard Ports 18,782,587.

Decreases were noted at Western Country Elevators of 340,000; Interior Terminals 26,980; Vancouver-New Westminster 57,286; Victoria 263; Fort William and Port Arthur 4,673,368 and Eastern Elevators Seaboard Ports 279,945 bushels, while Eastern Elevators Lake Ports increased 2,623,967 bushels.

For the week ending May 24, 1940, the amount of wheat in transit on the lakes was 7,513,382 bushels, and in transit by rail 5,370,321; compared with 4,392,331 in transit on the lakes and 7,553,671 in transit by rail for the corresponding period in 1939.

Stocks of Ontario grain: According to the Eastern Elevators, the following quantities of Ontario wheat, barley, buckwheat and corn are in the undermentioned ports:

	<u>Wheat</u>	<u>Barley</u>	<u>Buckwheat</u>	<u>Corn</u>
		B u s h e l s		
Goderich Elevator and Transit	70,134	-	-	-
Sarnia Elevator Co.	195,468	4,580	-	243
Port Colborne, M.L.	16,019	-	8,945	-
Toronto Elevators	89,123	1,328	-	21,093
Prescott	-	-	-	9,501
Montreal, N.H.B.	1,793	-	-	4,885
Montreal, Ogilvie	-	-	-	1,887
Three Rivers	-	-	-	992
Quebec	-	-	-	990
TOTAL	372,537	5,908	8,945	39,591

CANADIAN WHEAT IN THE UNITED STATES

Canadian wheat in the United States amounted to 20,577,807 bushels, an increase of 275,112 bushels over the previous week when 20,302,695 bushels were reported. This Canadian wheat was located at the following ports: Duluth 2,731,877; Buffalo 5,634,000; Erie 2,054,000; Erie Canal 675,000; Chicago Afloat 66,000; New York 539,000; New York Afloat 68,000; Albany 4,338,000; Philadelphia 1,387,098; Boston 1,793,439; Portland 60,616 and Baltimore 1,230,777 bushels.

Increases were shown at Erie Canal of 675,000; New York 20,000; Boston 680,346; Portland 57,980 and Baltimore 10,000 bushels, while decreases were noted at Buffalo of 281,000; Buffalo Afloat 459,000; Albany 134,000 and Philadelphia 294,214 bushels.

For the same week a year ago the Canadian wheat in the United States amounted to 2,508,000 bushels distributed as follows; Buffalo 441,000; Erie 470,000; Erie Canal 650,000; New York 104,000 and Albany 843,000 bushels.

Export Clearances

During the week ending May 24, 1940 the export clearances overseas of wheat from Canada and United States ports amounted to 4,854,011 bushels while the imports into the United States for consumption and milling in bond were 141,000 bushels, totalling 4,995,011 bushels. This compared with 3,758,564 bushels for the corresponding week in 1939. The accumulated total for the period from August 1, 1939 to May 24, 1940 was 130,518,636 bushels and the imports into the United States for the same period were 8,067,151 bushels amounting in all to 138,585,787 bushels compared with 114,207,660 bushels a year ago.

Primary Movement

Wheat receipts in the Prairie Provinces for the week ending May 24, 1940 amounted to 1,146,629 bushels, a decrease of 525,721 bushels from the previous week when 1,672,350 bushels were marketed. During the corresponding week a year ago the receipts were 1,102,829 bushels. By provinces the receipts for the week ending May 24, 1940 were as follows, figures within brackets being those for 1939: Manitoba 84,878 (197,042); Saskatchewan 641,857 (528,978); Alberta 419,894 (376,809) bushels.

Marketings in the three Prairie Provinces for the forty-three weeks from August 1, 1939 to May 24, 1940 as compared with the same period in 1939 were as follows, figures within brackets being those for 1939: Manitoba 51,721,814 (42,731,734); Saskatchewan 218,603,058 (110,905,474); Alberta 121,710,808 (122,929,052) bushels. For the forty-three weeks ending May 24, 1940 and the same period in 1939, 392,035,680 and 276,566,260 bushels were received from the farms.

WEEKLY WORLD SHIPMENTS OF WHEAT AND WHEAT FLOUR
(Broomhall's Records)

Week ending	N. America	Argentina	Australia/1	Russia	Danube	India	Other	TOTALS
(thousand bushels)								
Aug. 5, 1939	3,920	3,240	1,020	-	480	-	488	9,148
12	4,856	3,544	1,020	256	488	-	344	10,508
19	5,832	2,672	1,020	-	736	-	496	10,756
26	3,840	4,240	1,020	-	984	-	400	10,484
Sept. 2	2,616	2,784	1,020	192	696	-	328	7,636
9	4,800	4,672	897	-	704	-	88	11,161
16	2,352	2,832	897	-	1,024	-	-	7,105
23	3,104	2,976	898	-	1,512	-	-	8,490
30	5,016	2,936	898	-	600	-	-	9,450
Oct. 7	3,324	1,840	1,410	-	1,664	-	-	8,738
14	1,744	2,688	1,410	464	1,296	-	-	7,602
21	2,512	2,696	1,410	-	1,112	-	-	7,730
28	2,040	3,968	1,410	-	1,296	-	-	8,714
Nov. 4	2,040	3,896	1,164	-	1,280	-	-	8,380
11	3,552	5,152	1,164	-	1,872	-	40	11,788
18	4,208	3,088	1,164	-	1,320	-	80	9,860
25	4,408	4,328	1,164	-	1,600	-	96	11,596
Dec. 2	6,408	4,072	1,164	-	1,632	-	120	13,396
9	4,648	4,264	790	-	2,064	-	32	11,798
16	2,664	2,440	790	-	1,448	-	-	7,342
23	1,408	5,776	790	-	1,824	-	48	9,846
30	3,312	3,344	790	-	1,880	-	56	9,382
Jan. 6, 1940	2,464	2,736	1,106	-	792	-	72	7,170
13	3,248	3,656	1,106	-	1,208	-	40	9,258
20	3,216	3,048	1,106	-	824	-	-	8,194
27	5,832	3,776	1,106	-	976	-	24	11,714
Feb. 3	4,616	2,384	1,106	-	928	-	-	9,034
10	4,232	1,936	1,882	-	1,136	-	-	9,186
17	4,424	2,000	1,882	-	1,120	-	-	9,426
24	4,312	3,712	1,882	-	992	-	-	10,898
Mar. 2	4,272	2,672	1,882	-	272	-	-	9,098
9	7,376	2,088	-	-	1,440	-	-	10,904
16	5,248	1,536	-	-	1,160	-	-	7,944
23	4,728	2,984	-	-	976	-	-	8,688
30	5,400	1,864	-	-	824	-	-	8,088
Apr. 6	5,040	4,056	-	-	616	-	-	9,712
13	3,808	4,288	-	-	1,040	-	-	9,136
20	4,606	2,640	-	-	904	-	-	8,240
27	4,544	2,992	-	-	1,096	-	-	8,632
May 4	4,928	4,280	-	-	1,232	-	-	10,440
11	3,544	2,752	-	-	1,304	-	-	7,600
18	4,676	6,300	-	-	976	-	256	12,208
25	6,378	3,758	-	-	416	-	280	10,832
TOTALS	178,270/2	142,906	36,368	912	47,744	-	3,296	409,496/2
Comparative 1938-39								
43rd week	7,896	4,616	3,496	-	1,296	-	368	17,672
TOTALS	205,312	82,440	83,456	35,904	65,808	3,392	10,480	486,792

/1 Weekly allocations from monthly figures published by the Australian Wheat Board for the August-February period.

/2 Total revised by Broomhall, with weekly figures not yet changed.

World shipments for the week ending May 25, 1940 amounted to 10,832,000 bushels as compared with shipments of 12,208,000 bushels for the previous week and 17,672,000 bushels for the corresponding week last year. North American shipments showed an increase over the previous week of 1,702,000 bushels while Argentine shipments were lower by 2,542,000 bushels.

During the first forty-three weeks of the present crop year world shipments were 409,496,000 bushels as compared with 486,792,000 bushels for the corresponding week last year. North American shipments were 178,270,000 bushels as compared with 205,312,000 bushels for the same period in 1938-39. Argentine shipments amounted to 142,906,000 bushels during the first forty-three weeks of the present crop year as compared with only 82,440,000 bushels for the same period in 1938-39.

The following table shows the weekly average shipments of wheat and wheat flour for the first forty-three weeks of the present crop year with comparative figures for 1938-39.

Years	N. America	Argentina	Australia	Russia	Danube	India	Other	TOTALS
(million bushels)								
1938-39	4.8	1.9	2.0	0.8	1.5	0.1	0.2	11.3
1939-40	4.1	3.3	0.9	0.0	1.1	-	0.1	9.5

Stocks in Store at the Head of the Lakes compared with the same week last year were as follows:-

	<u>Week ending</u> <u>May 24, 1940</u>	<u>Week ending</u> <u>May 26, 1939</u>	<u>+ Increase</u> <u>- Decrease</u>
Wheat	63,145,086	39,196,699	+ 23,948,387
Oats	1,209,243	841,718	+ 367,530
Barley	2,143,365	948,467	+ 1,194,898
Flaxseed	234,423	62,545	+ 171,878
Rye	444,706	993,583	- 548,877

The receipts (including transfers) at the Head of the Lakes for the week ending May 24, 1940 with comparative figures for the same week last year were as follows:-

	<u>Week ending</u> <u>May 24, 1940</u>	<u>Week ending</u> <u>May 26, 1939</u>	<u>+ Increase</u> <u>- Decrease</u>
Wheat	2,849,182	6,815,616	- 3,966,434
Oats	452,738	509,901	- 57,163
Barley	215,426	452,850	- 237,424
Flaxseed	9,504	4,334	+ 5,170
Rye	92,380	22,836	+ 69,544

Preliminary figures showing receipts and shipments at the Head of the Lakes for the period August 1, 1939 to May 24, 1940 compared with the same period last year:-

	<u>FORT WILLIAM AND PORT ARTHUR</u>	
	<u>Receipts</u>	<u>Shipments</u>
Wheat	232,582,367	185,999,907
Oats	18,160,217	20,285,082
Barley	16,135,271	14,885,598
Flaxseed	917,664	740,806
Rye	3,950,144	4,337,669
TOTAL	271,745,663	226,249,062
Same period last year	189,323,316	158,461,502
+Increase	+ 82,422,347	+ 67,787,560

Stocks in Store in the Western Division compared with the same week last year were as follows:-

	<u>Week ending</u> <u>May 24, 1940</u>	<u>Week ending</u> <u>May 26, 1939</u>	<u>+ Increase</u> <u>- Decrease</u>
Wheat	199,696,885	82,886,712	+116,810,173
Oats	5,226,510	5,541,321	- 314,811
Barley	6,435,408	4,507,114	+ 1,928,294
Flaxseed	561,423	137,564	+ 423,859
Rye	1,695,557	2,218,422	- 522,865

Platform Loadings shown by Prairie Provinces for the week ending May 21, 1940 were as follows:-

	<u>WHEAT</u>	<u>OTHER GRAIN</u> <u>B u s h e l s</u>	<u>TOTAL</u>
Manitoba	4,284	3,750	8,034
Saskatchewan	8,438	1,878	10,316
Alberta	17,704	9,390	27,094
TOTAL	30,426	15,018	45,444
Period ending May 21, 1939	15,400	99,000	114,400

EASTERN ELEVATORS: United States grain and soya bean stocks were 734,485 bushels lower than at a comparable date last year. Decreases were noted in wheat of 149,714; oats 51,486; barley 103,907; rye 54; corn 22,327 and soya beans 406,997 bushels.

Number of cars inspected in the Western Division for the week ending May 14, 1940 with comparison for the previous year were as follows:-

	Week ending May 14, 1940	Week ending May 14, 1939	+ Increase - Decrease
Wheat	1,742	5,371	- 3,629
Oats	276	319	- 43
Barley	182	329	- 147
Flaxseed	11	14	- 3
Rye	49	40	+ 9
Mixed Grain	3	1	+ 2
Corn	2	1	+ 1
Screenings	-	1	- 1
TOTAL	2,265	6,076	- 3,811

The number of bushels of grain shipped from the Western to the Eastern points over the C.P.R. and C.N.R. for the week ending May 21, 1940 and the period from August 1, 1939 to May 21, 1940:

	WEEK ENDING MAY 21, 1940				PERIOD AUGUST 1, 1939 to MAY 21, 1940			
	WHEAT	OATS	BARLEY	RYE	WHEAT	OATS	BARLEY	RYE
Via C.P.R.	-	3,115	4,040	-	7,360	1,196,648	60,900	-
Via C.N.R.	-	29,498	1,751	-	18,134	2,036,894	128,650	4,761
TOTAL	-	32,613	5,791	-	25,994	3,233,542	189,550	4,761

THE UNIVERSITY OF CHICAGO
DIVISION OF THE PHYSICAL SCIENCES
DEPARTMENT OF CHEMISTRY

RESEARCH REPORT NO. 100
PUBLISHED BY THE UNIVERSITY OF CHICAGO PRESS

DATE	BY	TO	FROM
1950	W. R. S. R.	W. R. S. R.	W. R. S. R.
1951	W. R. S. R.	W. R. S. R.	W. R. S. R.
1952	W. R. S. R.	W. R. S. R.	W. R. S. R.
1953	W. R. S. R.	W. R. S. R.	W. R. S. R.
1954	W. R. S. R.	W. R. S. R.	W. R. S. R.
1955	W. R. S. R.	W. R. S. R.	W. R. S. R.
1956	W. R. S. R.	W. R. S. R.	W. R. S. R.
1957	W. R. S. R.	W. R. S. R.	W. R. S. R.
1958	W. R. S. R.	W. R. S. R.	W. R. S. R.
1959	W. R. S. R.	W. R. S. R.	W. R. S. R.
1960	W. R. S. R.	W. R. S. R.	W. R. S. R.

THE UNIVERSITY OF CHICAGO
DIVISION OF THE PHYSICAL SCIENCES
DEPARTMENT OF CHEMISTRY

DATE	BY	TO	FROM
1961	W. R. S. R.	W. R. S. R.	W. R. S. R.
1962	W. R. S. R.	W. R. S. R.	W. R. S. R.
1963	W. R. S. R.	W. R. S. R.	W. R. S. R.
1964	W. R. S. R.	W. R. S. R.	W. R. S. R.
1965	W. R. S. R.	W. R. S. R.	W. R. S. R.
1966	W. R. S. R.	W. R. S. R.	W. R. S. R.
1967	W. R. S. R.	W. R. S. R.	W. R. S. R.
1968	W. R. S. R.	W. R. S. R.	W. R. S. R.
1969	W. R. S. R.	W. R. S. R.	W. R. S. R.
1970	W. R. S. R.	W. R. S. R.	W. R. S. R.

STOCKS OF GRAIN IN DIFFERENT ELEVATORS DURING THE WEEK ENDING MAY 24, 1940

	WHEAT	DURUM WHEAT	OATS	BARLEY	FLAX- SEED	RYE
	B u s h e l s					
Western Country Elevators	96000000	1325000	2880000	2130000	296000	1198000
Interior Private and Mill Elevs.	6531000	13000	989000	2021000	31000	42000
Interior Pub. & Semi-Pub. Terms.	12641868	1789	18452	6107	-	967
Vancouver-New Westminster	15796009	-	129810	134936	-	9884
Victoria	612474	-	-	-	-	-
Prince Rupert	1136049	-	-	-	-	-
Churchill	2494610	-	-	-	-	-
Fort William and Port Arthur	60177910	2967176	1209248	2143365	234423	444706
In Transit Lakes	7405128	108254	-	239231	-	-
In Transit Rail	5370321	-	644408	187520	10552	184184
Eastern Elevators - Lake Ports	29045727	1255065	1784594	465144	9576	178140
Eastern Elevators-St. Lawrence Ports	17177666	927302	249866	398526	87705	121052
Eastern Elevators - Seaboard Ports	520038	157581	432	3336	-	103
U.S. Lake Ports	11135877	25000	731000	902000	-	1588000
U.S. Atlantic Seaboard Ports	6977674	2439256	-	372606	-	920668
In Transit U.S.A.	1986999	-	-	-	-	-
TOTAL	275009350	9219423	8636810	9003771	669256	4687704
Previous week	279084353	9164837	9528074	9344903	660545	4685057
Same week previous year	109982684	9771645	8329744	6371921	145313	2464957

QUANTITY OF SCREENINGS RECEIVED, SHIPPED AND IN STORE AT THE UNDERMENTIONED
ELEVATORS WEEK ENDING MAY 24, 1940

	Amount in Store May 17, 1940		Amount Received by vessel		Amount shipped		Amount in Store May 24, 1940	
	Tons	Lbs.	Tons	Lbs.	Tons	Lbs.	Tons	Lbs.
Owen Sound	339	-	249	410	146	-	442	410
Goderich Elev. Co.	1,039	586	1,010	990	315	-	1,734	1,576
Port Colborne, D.G.	60	-	-	-	25	-	35	-
Toronto	44	1,270	24	1,910	10	-	59	1,180
TOTAL	1,482	1,856	1,284	1,310	496	-	2,271	1,166

LAKE SHIPMENTS FROM THE HEAD OF THE LAKES FOR THE PERIOD FROM THE
OPENING OF NAVIGATION TO MAY 21, 1940

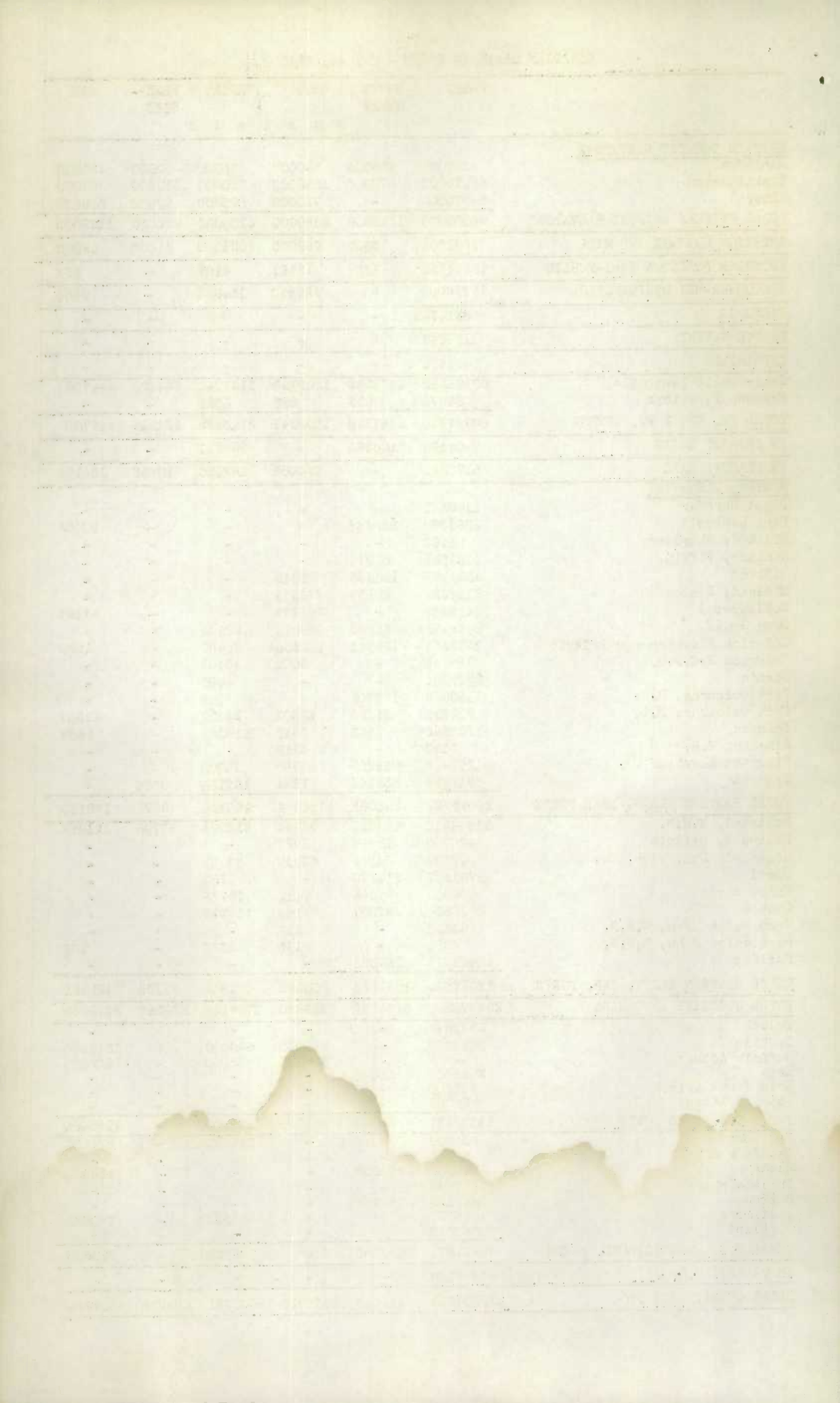
	CANADIAN LOWER LAKE PORTS	ST. LAWRENCE PORTS	BUFFALO	OTHER U. S. A. PORTS	EUROPE DIRECT
	B u s h e l s				
Wheat	7,818,306	1,337,199	644,906	-	-
Durum wheat	89,468	-	-	-	-
Oats	117,445	-	447,768	-	-
Barley	119,976	1,248,500	-	-	-
Flaxseed	-	-	-	-	-
Rye	-	-	368,678	-	-
TOTAL	8,145,195	2,585,699	1,461,352	-	-
Same period 1939	3,701,814	321,032	246,475	612,569	57,033

LAKE SHIPMENTS FROM THE HEAD OF THE LAKES FOR THE PERIOD FROM
THE OPENING OF NAVIGATION TO MAY 21, 1940

Wheat	23,193,656	2,156,384	5,546,756	96,791	-
Durum wheat	400,724	24,602	178,584	778,452	-
Oats	1,521,798	94,112	1,956,132	-	-
Barley	651,643	1,339,700	297,728	-	-
Flaxseed	-	97,277	-	-	-
Rye	7,332	-	718,132	-	-
TOTAL	25,775,153	3,712,075	8,697,332	875,243	-
Same period 1938	19,271,896	2,343,384	1,907,605	1,660,779	57,033

CANADIAN GRAIN IN STORE - MAY 24, 1940

	WHEAT	DURUM WHEAT	OATS	BARLEY	FLAX- SEED	RYE
	B u s h e l s					
WESTERN COUNTRY ELEVATORS						
Manitoba	8020000	755000	390000	635000	50000	198000
Saskatchewan	53270000	570000	1560000	990000	219000	751000
Alberta	34710000	-	930000	505000	27000	249000
TOTAL WESTERN COUNTRY ELEVATORS	96000000	1325000	2880000	2130000	296000	1198000
INTERIOR PRIVATE AND MILL	6531000	13000	989000	2021000	31000	42000
INTERIOR PUBLIC & SEMI-PUBLIC	12641868	1789	18452	6107	-	967
VANCOUVER-NEW WESTMINSTER	15796009	-	129810	134936	-	9884
VICTORIA	612474	-	-	-	-	-
PRINCE RUPERT	1136049	-	-	-	-	-
CHURCHILL	2494610	-	-	-	-	-
Semi-Public Terminals	60145232	2966263	1208395	2139742	234423	444706
Private Elevators	32678	913	853	3623	-	-
TOTAL FT. WM. & PT. ARTHUR	60177910	2967176	1209248	2143365	234423	444706
IN TRANSIT LAKES	7405128	108254	-	239231	-	-
IN TRANSIT RAIL	5370321	-	644408	187520	10552	184184
EASTERN ELEVATORS						
Depot Harbour	1198331	-	-	-	-	-
Port McNicoll	2691899	339666	-	-	-	90402
Midland, Aberdeen	1498	-	-	-	-	-
Midland, Tiffin	4109521	81934	-	-	-	-
Midland	2334079	103986	25349	-	-	-
Midland, Simcoe	2182552	37555	776574	-	-	-
Collingwood	1498038	-	357712	-	-	57197
Owen Sound	2458573	20250	189014	29504	-	-
Goderich Elevator and Transit	1335365	183741	188335	65459	-	1290
Goderich W.C.F.M.	288745	-	8000	10401	-	-
Sarnia	2267104	-	-	4580	-	-
Port Colborne, D.G.	1180089	178702	-	348	-	-
Port Colborne, M.L.	919309	58288	53803	34627	-	19582
Toronto	1700552	3445	169018	118089	-	9669
Kingston J.R.	1190	-	4215	-	-	-
Kingston Elevator Co.	1267427	15235	10980	35000	-	-
Prescott	3611455	232263	1594	167136	9576	-
TOTAL EASTERN ELEVS. LAKE PORTS	29045727	1255065	1784594	465144	9576	178140
Montreal, N.H.B.	11444910	461222	95442	213006	87705	121052
Montreal, Ogilvie	490709	21864	1927	-	-	-
Montreal, Dom. Elev. Co.	45937	34274	63919	39783	-	-
Sorel	1763977	314270	-	1250	-	-
Three Rivers	804609	7865	9412	19775	-	-
Quebec	2627524	87807	79166	124712	-	-
West Saint John, C.P.R.	83330	-	317	-	-	-
West Saint John, N.H.B.	7931	-	115	3336	-	103
Halifax	428777	157581	-	-	-	-
TOTAL EASTERN ELEVS. SBD. PORTS	17697704	1084883	250298	401862	87705	121155
TOTAL QUANTITY IN CANADA	254908800	6755167	7905810	7729165	669256	2179036
Duluth	2731877	-	-	-	-	-
Buffalo	5634000	-	586000	849000	-	1346000
Buffalo Afloat	-	-	145000	53000	-	242000
Erie	2029000	25000	-	-	-	-
Erie Canal Afloat	675000	-	-	-	-	-
Chicago Afloat	66000	-	-	-	-	-
TOTAL U.S. LAKE PORTS	11135877	25000	731000	902000	-	1588000
New York	539000	-	-	217000	-	272000
New York Afloat	68000	-	-	-	-	-
Albany	2049000	2289000	-	-	-	158000
Philadelphia	1387098	-	-	-	-	-
Boston	1643183	150256	-	-	-	-
Baltimore	1230777	-	-	155606	-	490668
Portland	60616	-	-	-	-	-
TOTAL U.S. ATLANTIC SBD. PORTS	6977674	2439256	-	372606	-	920668
IN TRANSIT U.S.A.	1986999	-	-	-	-	-
TOTAL QUANTITY IN STORE	275009350	9219423	8636810	9003771	669256	4687704

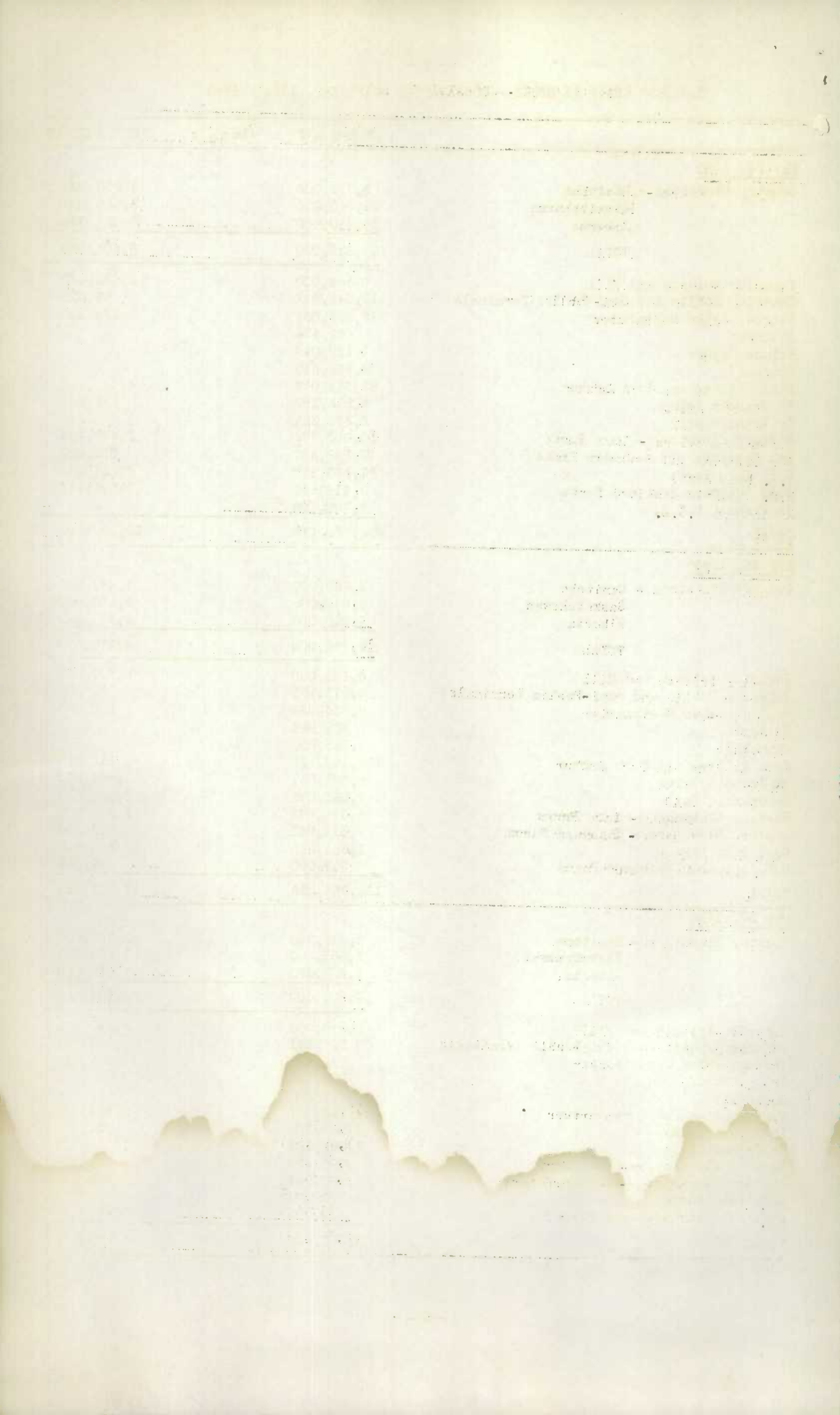


Grades of Canadian Grain in Store at Public, Semi-Public and Private (Head of the Lakes), Interior, Public and Semi-Public, Pacific Ports and Eastern Elevators for the week ending May 24, 1940.

	Ft. William & Ft. Arthur Semi-Public and Private	Interior Public & Semi-Public Terminals	Pacific Port Elevators	Eastern Elevators Lake Ports	Eastern Elevators Seaboard Ports
WHEAT					
B u s h e l s					
No. 1 Hard	2,979,482	1,675	121,977	733,716	2,761,237
No. 1 Northern	43,730,524	11,350,763	8,886,341	17,665,619	6,962,042
No. 2 Northern	6,649,181	405,910	3,240,812	6,084,210	6,214,752
No. 3 Northern	1,380,630	58,471	923,482	1,478,079	874,624
No. 4 Northern	779,225	2,356	127,813	554,040	61,448
No. 4 Special	117,621	167	-	126,130	24
No. 5 Wheat	376,834	-	279,802	124,759	-
No. 5 Special	3,429	1,286	-	-	-
No. 6 Wheat	2,797	-	5,034	-	-
No. 6 Special	704	-	-	-	-
Feed	5,920	-	1,691	-	10,017
Other	3,232,239	107,850	1,286,403	196,330	225,836
No. 1 C.W. Garnet	239,480	133	979,997	352,511	93,401
No. 2 C.W. Garnet	404,939	100	461,078	794,277	484,897
No. 3 C.W. Garnet	207,818	-	94,053	132,028	3,825
Other Garnet	-	-	-	91,476	3,808
No. 1 C.W. Durum	194,462	-	-	216,680	225,389
No. 2 C.W. Durum	2,486,498	-	-	897,315	804,238
No. 3 C.W. Durum	229,941	-	-	141,070	22,114
No. 4 C.W. Durum	4,162	-	-	-	-
Other Durum	51,200	-	-	-	33,142
Ontario Wheat	-	-	-	370,744	1,793
TOTAL	63,145,086	11,928,711	16,408,483	30,300,791	18,782,587
OATS					
No. 1 C.W.	9,071	-	-	-	-
No. 2 C.W.	495,869	2,405	24,995	1,179,045	32,898
Ex. 3 C.W.	269,626	-	39,079	249,075	54,167
No. 3 C.W.	10,848	343	11,942	30,030	3,543
Ex. 1 Feed	13,713	-	-	52,492	-
No. 1 Feed	148,706	-	14,727	157,280	27,860
No. 2 Feed	27,563	251	4,355	-	6,772
No. 3 Feed	7,748	-	833	-	7,403
Other	226,104	4,045	33,879	116,662	117,655
TOTAL	1,209,248	7,044	129,810	1,784,594	250,293
BARLEY					
2 C.W. 2 Row	5,415	-	-	-	-
2 C.W. 6 Row	1,005,479	-	2,098	49,690	54,168
3 C.W. 6 Row	620,691	-	-	117,459	17,187
1 Feed	87,120	-	87,690	21,906	49,134
2 Feed	162,996	-	17,557	143,687	73,270
3 Feed	93,745	-	9,496	1,500	82,118
Ontario	-	-	-	5,908	-
Other	167,919	1,663	18,095	124,994	125,985
TOTAL	2,143,365	1,663	134,936	465,144	401,062
FLAXSEED					
No. 1 C.W.	220,010	-	-	9,576	87,705
No. 2 C.W.	4,612	-	-	-	-
No. 3 C.W.	2,463	-	-	-	-
No. 4 C.W.	709	-	-	-	-
Other	6,629	-	-	-	-
TOTAL	234,423	-	-	9,576	87,705
RYE					
No. 1 C.W.	3,459	-	-	-	-
No. 2 C.W.	235,424	-	7,607	176,850	58,855
No. 3 C.W.	155,797	-	-	1,290	62,300
No. 4 C.W.	32,153	-	-	-	-
Ergoty	4,796	-	-	-	-
Other	13,077	-	2,277	-	-
TOTAL	444,706	-	9,884	178,140	121,155
GRAND TOTAL	67,176,328	11,937,418	16,683,113	32,738,245	19,643,607

CANADIAN GRAIN IN STORE - COMPARATIVE STATEMENT, 1938 - 1940

	W H E A T	(Bushels)	OTHER GRAIN
<u>May 24, 1940</u>			
Country Elevators - Manitoba	8,775,000		1,273,000
Saskatchewan	53,840,000		3,520,000
Alberta	34,710,000		1,711,000
TOTAL	97,325,000		6,504,000
Interior Private and Mill	6,544,000		3,083,000
Interior Public and Semi-Public Terminals	12,643,657		25,526
Vancouver-New Westminster	15,796,009		274,630
Victoria	612,474		-
Prince Rupert	1,136,049		-
Churchill	2,494,610		-
Fort William and Port Arthur	63,145,086		4,031,742
In Transit Lakes	7,513,382		239,231
In Transit Rail	5,370,321		1,026,664
Eastern Elevators - Lake Ports	30,300,792		2,437,454
St. Lawrence and Seaboard Ports	18,782,587		861,020
U.S. Lake Ports	11,160,877		3,221,000
U.S. Atlantic Seaboard Ports	9,416,930		1,293,274
In Transit U.S.A.	1,986,999		-
TOTAL	284,228,773		22,997,541
<u>May 26, 1939</u>			
Country Elevators - Manitoba	1,680,000		1,433,000
Saskatchewan	8,505,000		2,410,000
Alberta	5,610,000		2,317,000
TOTAL	15,795,000		6,210,000
Interior Private and Mill	6,483,000		2,807,000
Interior Public and Semi-Public Terminals	8,911,153		35,009
Vancouver-New Westminster	9,654,534		506,099
Victoria	632,946		-
Churchill	2,213,380		-
Fort William and Port Arthur	39,196,699		2,846,313
In Transit Lakes	4,392,331		1,066,278
In Transit Rail	7,553,671		1,404,560
Eastern Elevators - Lake Ports	15,095,574		1,249,319
Eastern Elevators - Seaboard Ports	7,318,041		910,348
U.S. Lake Ports	1,561,000		235,009
U.S. Atlantic Seaboard Ports	947,000		42,000
TOTAL	119,754,329		17,311,935
<u>May 27, 1938</u>			
Country Elevators - Manitoba	2,395,000		1,763,000
Saskatchewan	1,007,000		1,204,000
Alberta	1,400,000		1,217,000
TOTAL	4,802,000		4,184,000
Interior Private and Mill	2,110,000		2,387,000
Interior Public and Semi-Public Terminals	555,081		57,802
Vancouver-New Westminster	712,423		535,649
Prince Rupert	148,545		-
Churchill	11,820		-
Fort William and Port Arthur	12,093,397		2,621,740
In Transit Lakes	1,587,350		921,370
In Transit Rail	1,956,357		1,164,707
Eastern Elevators - Lake Ports	4,904,458		743,685
Eastern Elevators - Seaboard Ports	2,808,981		843,575
U.S. Lake Ports	544,000		10,648
U.S. Atlantic Seaboard Ports	117,000		-
TOTAL	32,351,412		13,470,176



RECEIPTS AND SHIPMENTS OF GRAIN BY CLASSES OF ELEVATORS IN THE WEEK ENDING MAY 24, 1940

	WHEAT	DURUM WHEAT	OATS	BARLEY	FLAX- SEED	RYE
	B u s h e l s					

R E C E I P T S

Country Elevators	1,091,792	24,411	226,854	99,045	7,762	32,521
Int. Private and Mill Elevs.	5,116	-	36,291	21,626	222	132
Int. Pub. & Semi-Pub. Terms.	107	-	17	149	-	-
Seaboard Ports	4,935	-	-	-	-	-
Fort William and Port Arthur	2,762,688	86,494	452,738	215,426	9,504	92,380
Eastern Elevators - Vessel	10,636,737		810,381	330,117	97,281	-
Rail	1,295,129		3,451	-	-	-

S H I P M E N T S

Country Elevators	1,423,645	39,659	444,460	167,558	7,333	86,259
Int. Private and Mill Elevs.	615,287	1,154	84,576	94,986	5,422	560
Int. Pub. & Semi-Pub. Terms.	45,088	-	24,775	1,714	-	-
Seaboard Ports	62,484	-	13,550	818	-	-
Fort William and Port Arthur						
Vessel	7,515,120	41,113	675,555	195,154	-	611,151
Rail	-	200	43,858	13,645	-	-
Eastern Elevators - Vessel	7,390,065		-	208,546	-	-
Rail	2,221,368		242,918	109,578	-	1,218

THE UNIVERSITY OF CHICAGO LIBRARY

1900

1901

1902

1903

1904

1905

1906

1907

1908

1909

1910

STOCKS OF UNITED STATES GRAIN IN CANADA, MAY 24, 1940

	WHEAT	OATS	BARLEY	RYE	CORN	SOYA BEANS
	B u s h e l s					
Midland, Aberdeen	39,770	78,028	-	-	223,981	-
Collingwood	-	-	-	-	224,118	-
Owen Sound	-	-	-	-	370,799	-
Goderich Elevator and Transit	-	37,758	-	-	-	-
Sarnia	71,256	-	-	-	367,704	-
Port Colborne, M.L.	-	-	-	-	40,567	-
Toronto	-	-	-	-	303,840	31,422
Prescott	-	-	-	-	12,716	-
Montreal, N.H.B.	337,604	3	-	24	37,871	-
Montreal, Dom. Elev. Co.	-	-	-	-	895	-
Sorel	257,288	-	-	-	8,540	-
Three Rivers	-	-	-	23,577	-	8,924
Quebec	-	-	-	-	75,570	-
TOTAL	705,918	115,789	-	23,601	1,666,601	40,346
Same period last year	855,632	187,275	103,907	23,655	1,688,928	447,343

RECEIPTS AND SHIPMENTS OF UNITED STATES GRAIN IN CANADA MAY 24, 1940

	R E C E I P T S			S H I P M E N T S	
	Water	Rail		Water	Rail
			GEORGIAN BAY PORTS		
Wheat	-	-	To U.S.A. Dom. points	-	27,858
Oats	-	-	" U.S.A. Dom. points	-	12,047
Corn	223,889	-	" Canadian mills	-	8,000
			" U.S.A. Dom. points	-	217,592
			LOWER LAKE PORTS		
Corn	12,716	-	To Canadian mills	-	8,758
			" Can. Dom. points	-	21,676
Soya Beans	-	-	" Can. Dom. points	-	3,548
			ST. LAWRENCE PORTS		
Corn	-	-	To United Kingdom	71,998	-

STOCKS OF FOREIGN GRAIN IN CANADA, MAY 24, 1940

	ARGENTINE CORN	SOUTH AFRICAN CORN	AUSTRALIAN CORN	ARGENTINE FLAXSEED
	B u s h e l s			
Port Colborne, M.L.	-	75,070	-	-
Toronto	-	45,716	-	-
Montreal, N.H.B.	59	306,207	-	-
Montreal, Dom. Elev. Co.	-	131,332	-	-
Quebec	-	58,259	-	-
Saint John	-	68,937	-	-
Halifax	-	10,133	-	-
TOTAL	59	695,654	-	-
Same period last year	23,380	219,479	91,475	164,683

RECEIPTS AND SHIPMENTS OF FOREIGN GRAIN IN CANADA, MAY 24, 1940

	R E C E I P T S			S H I P M E N T S	
	Water	Rail		Water	Rail
African Corn	-	-	LOWER LAKE PORTS		
			To Can. Dom. points	-	4,000
			ST. LAWRENCE PORTS		
African Corn	-	-	To Canadian mills	-	5,500
			" Can. Dom. points	-	23,700
			MARITIME PORTS		
African Corn	-	-	To Canadian mills	-	3,996
			" Can. Dom. points	-	4,000

COUNTY OF ALBANY		1880	
NAME	RESIDENCE	AGE	SEX
ALBANY	ALBANY	25	M
ALBANY	ALBANY	20	F
ALBANY	ALBANY	15	M
ALBANY	ALBANY	10	F
ALBANY	ALBANY	5	M
ALBANY	ALBANY	0	F
ALBANY	ALBANY	25	M
ALBANY	ALBANY	20	F
ALBANY	ALBANY	15	M
ALBANY	ALBANY	10	F
ALBANY	ALBANY	5	M
ALBANY	ALBANY	0	F
ALBANY	ALBANY	25	M
ALBANY	ALBANY	20	F
ALBANY	ALBANY	15	M
ALBANY	ALBANY	10	F
ALBANY	ALBANY	5	M
ALBANY	ALBANY	0	F

COUNTY OF ALBANY		1880	
NAME	RESIDENCE	AGE	SEX
ALBANY	ALBANY	25	M
ALBANY	ALBANY	20	F
ALBANY	ALBANY	15	M
ALBANY	ALBANY	10	F
ALBANY	ALBANY	5	M
ALBANY	ALBANY	0	F
ALBANY	ALBANY	25	M
ALBANY	ALBANY	20	F
ALBANY	ALBANY	15	M
ALBANY	ALBANY	10	F
ALBANY	ALBANY	5	M
ALBANY	ALBANY	0	F
ALBANY	ALBANY	25	M
ALBANY	ALBANY	20	F
ALBANY	ALBANY	15	M
ALBANY	ALBANY	10	F
ALBANY	ALBANY	5	M
ALBANY	ALBANY	0	F

COUNTY OF ALBANY		1880	
NAME	RESIDENCE	AGE	SEX
ALBANY	ALBANY	25	M
ALBANY	ALBANY	20	F
ALBANY	ALBANY	15	M
ALBANY	ALBANY	10	F
ALBANY	ALBANY	5	M
ALBANY	ALBANY	0	F
ALBANY	ALBANY	25	M
ALBANY	ALBANY	20	F
ALBANY	ALBANY	15	M
ALBANY	ALBANY	10	F
ALBANY	ALBANY	5	M
ALBANY	ALBANY	0	F
ALBANY	ALBANY	25	M
ALBANY	ALBANY	20	F
ALBANY	ALBANY	15	M
ALBANY	ALBANY	10	F
ALBANY	ALBANY	5	M
ALBANY	ALBANY	0	F

COUNTY OF ALBANY		1880	
NAME	RESIDENCE	AGE	SEX
ALBANY	ALBANY	25	M
ALBANY	ALBANY	20	F
ALBANY	ALBANY	15	M
ALBANY	ALBANY	10	F
ALBANY	ALBANY	5	M
ALBANY	ALBANY	0	F
ALBANY	ALBANY	25	M
ALBANY	ALBANY	20	F
ALBANY	ALBANY	15	M
ALBANY	ALBANY	10	F
ALBANY	ALBANY	5	M
ALBANY	ALBANY	0	F
ALBANY	ALBANY	25	M
ALBANY	ALBANY	20	F
ALBANY	ALBANY	15	M
ALBANY	ALBANY	10	F
ALBANY	ALBANY	5	M
ALBANY	ALBANY	0	F

STOCKS IN STORE, RECEIPTS AND SHIPMENTS AT THE CANADIAN GOVERNMENT INTERIOR TERMINAL
ELEVATORS, WEEK ENDING MAY 23, 1940.

	WHEAT	OATS B u s h e l s	BARLEY	FLAX- SEED	RYE
<u>STOCKS IN STORE</u>					
Calgary	858,437	21	-	-	-
Edmonton	456,349	-	1,663	-	-
Lethbridge	884,423	-	-	-	-
Moose Jaw	4,896,457	3,536	-	-	-
Saskatoon	4,833,045	3,487	-	-	-
TOTAL	11,928,711	7,044	1,663	-	-
<u>RECEIPTS</u>					
Calgary	-	-	-	-	-
Edmonton	-	-	-	-	-
Lethbridge	-	-	81	-	-
Moose Jaw	-	-	-	-	-
Saskatoon	-	-	-	-	-
TOTAL	-	-	81	-	-
<u>SHIPMENTS</u>					
Calgary	11,859	8,252	-	-	-
Edmonton	-	-	-	-	-
Lethbridge	-	-	81	-	-
Moose Jaw	697	5,326	-	-	-
Saskatoon	30,667	-	-	-	-
TOTAL	43,223	13,578	81	-	-

STOCKS, RECEIPTS AND SHIPMENTS OF THE COUNTRY ELEVATORS IN THE WESTERN DIVISION IN THE
WEEK ENDING MAY 24, 1940

	WHEAT	DURUM WHEAT	ONTS B u s h e l s	BARLEY	FLAX- SEED	RYE
<u>COUNTRY ELEVATORS</u>						
<u>STOCKS IN STORE</u>						
Manitoba	8,020,000	755,000	390,000	635,000	50,000	198,000
Saskatchewan	53,270,000	570,000	1,560,000	990,000	219,000	751,000
Alberta	34,710,000	-	930,000	505,000	27,000	249,000
TOTAL	96,000,000	1,325,000	2,880,000	2,130,000	296,000	1,198,000
Total - a week ago	96,325,000	1,340,000	3,125,000	2,200,000	297,000	1,256,000
a year ago	15,010,000	785,000	3,310,000	1,710,000	65,000	1,125,000

RECEIPTS DURING WEEK

Manitoba	62,722	17,872	22,543	43,271	767	1,628
Saskatchewan	626,880	6,539	128,015	38,208	6,037	22,696
Alberta	402,190	-	76,293	17,566	958	8,197
TOTAL	1,091,792	24,411	226,854	99,045	7,762	32,521
Total - a week ago*	1,601,108	39,255	445,670	160,698	4,563	54,830
a year ago	1,021,408	65,045	539,783	382,989	1,629	80,094

SHIPMENTS DURING WEEK

Manitoba	208,401	15,482	47,226	57,790	945	5,987
Saskatchewan	723,421	24,377	236,982	72,056	5,544	59,470
Alberta	491,823	-	160,252	37,712	844	20,802
TOTAL	1,423,645	39,859	444,460	167,558	7,333	86,259
Total - a week ago*	1,956,965	56,423	650,222	225,634	14,336	140,186
a year ago	4,246,307	146,101	772,990	462,296	5,407	55,180

TOTAL RECEIPTS AT COUNTRY ELEVATORS AND PLATFORM LOADINGS# IN THE PERIOD
AUGUST 1, 1939 to MAY 24, 1940

	W H E A T Bushels	OTHER GRAIN
Manitoba	51,721,814	16,774,904
Saskatchewan	218,603,058	26,572,169
Alberta	121,710,808	18,984,066
Total - 1939-1940	392,035,680	62,331,139
Same period 1938-1939	276,566,260	55,579,263

#Platform loadings to May 21, 1940

*Revised figures.

DAILY QUOTATIONS AND WEEKLY AVERAGES OF COARSE GRAIN DELIVERED IN CAR-
LOTS AT TORONTO WEEK ENDING MAY 25, 1940

	May 20 \$ ¢	May 21 \$ ¢	May 22 \$ ¢	May 23 \$ ¢	May 24 \$ ¢	May 25 \$ ¢	Weekly Average \$ ¢
Oats, good, sound, heavy	.34	.34	.34	.34	H	.34	.34
Barley, good malting	.53	.53	.53	.52	O	.52	.52/5
Rye No. 2	.59	.59	.59	.55	L	.55	.57/3
Corn, Natural	.76	.76	.76	.76	I	.76	.76
Buckwheat	.59	.59	.59	.58	D	.58	.58/5
Mixed Grain x	.32	.32	.32	.32	A Y	.32	.32

x 34 lb.

- 14 -
DAILY QUOTATIONS AND WEEKLY AVERAGES OF CASH GRAIN BY
GRADES ON WINNIPEG AND MONTREAL MARKETS
Week ending May 25, 1940

		May 20 \$ ¢	May 21 \$ ¢	May 22 \$ ¢	May 23 \$ ¢	May 24 \$ ¢	May 25 \$ ¢	Weekly Average \$ ¢
WHEAT		(Basis Fort William and Port Arthur)						
No. 1 Man. Hard		.72/6	.70/6	.71/4	.71/1		.75/1	.72/2
No. 1 Man. Northern		.72/5	.70/5	.71/3	.71		.75	.72/1
No. 2 Man. Northern		.69/7	.67/5	.68/5	.68/2		.72/2	.69/3
No. 3 Man. Northern		.66/7	.64/5	.65/3	.66	H	.69	.66/3
No. 4 Man. Northern		.63/3	.61/3	.62/1	.61/6		.65/6	.62/7
No. 5		.60/5	.58/5	.59/3	.59		.63	.60/1
No. 6		.58/5	.56/5	.57/3	.57		.61	.58/1
Feed		.54/5	.52/5	.53/3	.53	O	.57	.54/1
No. 4 Special		.64/1	.61/5	.62/3	.62		.66	.63/2
No. 5 Special		.58/5	.56/5	.57/3	.57		.61	.58/1
No. 6 Special		.56/5	.54/5	.55/3	.55		.59	.56/1
Tough No. 1 Hard		.69/5	.67/5	.68/3	.68	L	.72	.69/1
No. 1 Northern		.69/5	.67/5	.68/3	.68		.72	.69/1
No. 2 Northern		.66/7	.64/5	.65/5	.65/2		.69/2	.66/3
No. 3 Northern		.62/3	.60/1	.61/3	.61		.65	.62
Rejected No. 1 Northern		.65/7	.63/7	.64/5	.64/2	I	.68/2	.65/3
No. 2 Northern		.63/7	.61/5	.62/3	.62		.66	.63/1
No. 3 Northern		.60/7	.58/5	.59/3	.59		.63	.60/1
Smutty No. 1 Northern		.68/1	.66/1	.66/7	.66/4		.70	.67/4
No. 2 Northern		.65/3	.63/1	.63/7	.63/4	D	.67	.64/5
No. 3 Northern		.62/3	.60/1	.60/7	.60/4		.64	.61/5
No. 1 Garnet		.66/5	.64/5	.65/3	.65		.69	.66/1
No. 2 Garnet		.65/5	.63/5	.64/3	.64		.68	.65/1
No. 3 Garnet		.62/5	.60/5	.61/3	.61	A	.65	.62/1
Durum No. 1		.66/1	.64/1	.64/7	.64/4		.68/4	.65/5
No. 2		.64/1	.62/1	.62/7	.62/4		.66/4	.63/5
No. 3		.63/1	.61/1	.61/7	.61/4		.65/4	.62/5
OATS						Y		
No. 2 C.W.		.34/3	.33/2	.33/4	.32/7		.35/2	.33/7
No. 3 C.W.		.32/5	.31/4	.31/6	.31/1		.33/4	.32/1
No. 1 Feed		.32/3	.31/2	.31/4	.30/7		.33/2	.31/7
No. 2 Feed		.29/7	.28/6	.29	.28/3		.30/6	.29/3
No. 3 Feed		.27/3	.26/2	.26/4	.25/7		.28/2	.26/7
BARLEY								
No. 1 C.W. 6 Row		.39/4	.35/6	.36/5	.35/5		.38/1	.37/1
No. 2 C.W. 6 Row		.39/4	.35/6	.36/5	.35/5		.38/1	.37/1
No. 3 C.W. 6 Row		.37/4	.33/6	.34/5	.33/5		.36/1	.35/1
No. 1 C.W. 2 Row		.44/4	.40/6	.41/5	.40/5		.43/1	.42/1
No. 2 C.W. 2 Row		.44/4	.40/6	.41/5	.40/5		.43/1	.42/1
No. 1 Feed		.36/4	.32/6	.33/5	.32/5		.35/1	.34/1
No. 2 Feed		.35/4	.31/6	.32/5	.31/5		.34/1	.33/1
No. 3 Feed		.34/4	.30/6	.31/5	.30/5		.33/1	.32/1
RYE								
No. 2 C.W.		.49/6	.45/7	.47/2	.46		.48/3	.47/4
No. 3 C.W.		.45/2	.41/3	.42/6	.41/4		.43/7	.43
No. 4 C.W.		.43/2	.39/3	.40/6	.39/4		.41/7	.41
Ergoty		.42/2	.38/3	.39/6	.38/4		.40/7	.40
Rejected No. 2 C.W.		.43/2	.39/3	.40/6	.39/4		.41/7	.41
FLAXSEED								
No. 1 C.W.		1.58	1.58	1.58	1.52/2		1.57	1.56/5
No. 2 C.W.		1.54	1.54	1.54	1.48/2		1.53	1.52/5
No. 3 C.W.		1.48	1.48	1.48	1.42/2		1.47	1.46/5
No. 4 C.W.		1.33	1.33	1.33	1.27/2		1.32	1.31/5
Ontario Winter wheat-delivered in carlots					MONTREAL			
No. 1 White		.94	.94	.94	.94	H	.94	.94
No. 2 White		.93	.93	.93	.93	O	.93	.93
No. 3 White		.92	.92	.92	.92	L	.92	.92
No. 1 Red		.94	.94	.94	.94	I	.94	.94
No. 2 Red		.93	.93	.93	.93	D	.93	.93
No. 3 Red		.92	.92	.92	.92	A	.92	.92
No. 1 Mixed		.94	.94	.94	.94	Y	.94	.94
No. 2 Mixed		.93	.93	.93	.93	.	.93	.93
No. 3 Mixed		.92	.92	.92	.92		.92	.92

STATISTICS CANADA LIBRARY
BIBLIOTHÈQUE STATISTIQUE CANADA



1010675220