

C A N A D A

DEPARTMENT OF TRADE AND COMMERCE

DOMINION BUREAU OF STATISTICS

AGRICULTURAL BRANCH

Vol. 20

No. 48

Historical File Copy

CANADIAN GRAIN STATISTICS

Week ending

JUNE 28, 1940

[Records for Western Inspection Division supplied by Board of Grain Commissioners for Canada]

+ + +

Published by Authority of the Hon. James A. MacKinnon, M.P.,
Minister of Trade and Commerce.

+ + +

OTTAWA

1940

Price \$2 a year

I N D E X

General Summary	1 - 6
Canadian Grain in Store by Elevators	7
Canadian Grain in Store by Grades	8
Comparative Statement of Grain in Store	9
Receipts and Shipments of Canadian Grain	10
United States Grain in Store, Receipts and Shipments	11
Receipts, Shipments and Quantities in Store at Interior Terminal Elevators	12
Receipts, Shipments and Quantities in Store at Country Elevators, Western Division and Platform Loadings. Daily and Weekly Average Prices of Coarse Grain at Toronto for the week ending June 29, 1940	13
Daily and Weekly Average Prices of Grain on Winnipeg and Montreal for the week ending June 29, 1940	14

DEPARTMENT OF TRADE AND COMMERCE
DOMINION BUREAU OF STATISTICS - CANADA
AGRICULTURAL BRANCH
(Issued July 5, 1940)

Dominion Statistician:
Acting Chief, Agricultural Branch:

R. H. Coats, LL.D., F.R.S.C.
W. Dougan

WHEAT STOCKS IN STORE

Canadian wheat in store for the week ending June 28, 1940 increased 1,148,624 bushels as compared with the previous week and increased 177,252,519 bushels when compared with the corresponding week in 1939. The amount in store was reported as 281,046,123 bushels compared with 279,897,499 bushels for the previous week and 103,793,604 bushels for the week of June 30, 1939. The stocks of 281,046,123 bushels include 8,820,927 bushels of Durum wheat.

CANADIAN WHEAT IN CANADA

The wheat stocks in elevators in Canada for the week ending June 28, 1940 were 257,131,198 bushels compared with 255,702,787 bushels for the previous week and 97,835,604 bushels for the corresponding week last year.

Stocks of wheat in Canadian elevators were located as follows: Western Country Elevators 68,050,000; Interior Terminals 18,384,069; Vancouver-New Westminster 15,212,787; Victoria 612,474; Prince Rupert 1,136,049; Churchill 2,494,510; Fort William and Port Arthur 63,730,506; Eastern Elevators Lake Ports 39,358,155 and Eastern Elevators Seaboard Ports 21,451,037.

Decreases were shown at Western Country Elevators of 6,945,000; Vancouver New-Westminster 45,419 and Eastern Elevators Seaboard Ports 124,441 bushels, while increases were noted at Interior Terminals of 174,631; Fort William and Port Arthur 5,318,688 and Eastern Elevators Lake Ports 1,941,742 bushels.

For the week ending June 28, 1940 the amount of wheat in transit on the lakes was 2,950,072 bushels and in transit by rail 23,751,439; compared with 3,596,555 in transit on the lakes and 2,545,021 in transit by rail for the corresponding period in 1939.

Stocks of Ontario grain: According to the Eastern Elevators, the following quantities of Ontario wheat, barley, buckwheat and corn are in the undermentioned ports:

	<u>WHEAT</u>	<u>BARLEY</u>	<u>BUCKWHEAT</u>	<u>CORN</u>
	B u s h e l s			
Goderich Elevator and Transit.....	7,540	-	-	-
Goderich Western Canada Flour mills	-	-	-	2,679
Sarnia Elevator Co.	94,367	4,501	-	2,260
Port Colborne, M.L.	18,781	-	8,328	-
Toronto Elevators	20,903	1,328	-	3,748
Kingston, Elevator Co.	-	-	-	13,438
Montreal, N.H.B.	1	-	-	6,640
Three Rivers	-	-	-	22,077
TOTAL	141,592	5,829	8,328	50,842

CANADIAN WHEAT IN THE UNITED STATES

Canadian wheat in the United States amounted to 23,914,925 bushels, a decrease of 279,787 bushels from the previous week when 24,194,712 bushels were reported. This Canadian wheat was located at the following ports: Duluth 2,731,877; Buffalo 5,026,000; Buffalo Afloat 45,000; Erie 2,010,000; Erie Canal 815,000; Chicago 47,000; New York 1,004,000; New York Afloat 171,000; Albany 4,954,000; Philadelphia 1,387,098; Boston 2,146,155; Portland 1,211,145 and Baltimore 1,084,377 bushels. In Transit U.S.A. amounted to 1,282,273 bushels.

Decreases were noted at Buffalo Afloat of 206,000; Erie 13,000; Albany Afloat 158,000; Boston 89,962; Baltimore 20,000 and In Transit U.S.A. 526,825 bushels, while increases were shown at Buffalo of 182,000; Erie Canal 477,000; New York 13,000; New York Afloat 1,000 and Albany 61,000 bushels.

For the same week a year ago the Canadian wheat in the United States amounted to 5,958,000 bushels distributed as follows: Buffalo 1,215,000; Buffalo Afloat 248,000; Erie 394,000; Erie Canal 638,000; New York 88,000; and Albany 3,375,000 bushels.

EXPORT CLEARANCES

During the week ending June 28, 1940 the export clearances overseas of wheat from Canada and United States ports amounted to 2,763,682 bushels while the imports into the United States for consumption and milling in bond were 141,000 bushels, totalling 2,904,682 bushels. This compared with 2,929,455 bushels for the corresponding week in 1939. The accumulated total for the period from August 1, 1939 to June 28, 1940 was 142,370,208 bushels and the imports into the United States for the same period were 9,117,042 bushels amounting in all to 151,487,250 bushels compared with 128,976,994 bushels a year ago.

PRIMARY MOVEMENT

Wheat receipts in the Prairie Provinces for the week ending June 28, 1940 amounted to 3,948,638 bushels, an increase of 463,323 bushels over the previous week when 3,485,310 bushels were marketed. During the corresponding week a year ago the receipts were 1,137,447 bushels. By provinces the receipts for the week ending June 28, 1940 were as follows, figures within brackets being those for 1939: Manitoba 187,962 (166,708); Saskatchewan 2,255,654 (409,607); Alberta 1,505,022 (561,132) bushels.

Marketings in the three Prairie Provinces for the forty-eight weeks from August 1, 1939 to June 28, 1940 as compared with the same period in 1939 were as follows, figures within brackets being those for 1939: Manitoba 52,340,635 (43,598,402); Saskatchewan 226,724,041 (113,620,941); Alberta 126,763,939 (125,404,612) bushels. For the forty-eight weeks ending June 28, 1940 and the same period in 1939, 405,828,615 and 282,623,955 bushels were received from the farms.

WEEKLY WORLD SHIPMENTS OF WHEAT AND WHEAT FLOUR
(Broomhall's Records)

Week ending	N. America	Argentina	Australia	Russia	Danube	India	Other	TOTALS
								(thousand bushels)
Aug. 5, 1939	3,920	3,240	1,020	-	480	-	488	9,148
12	4,856	3,544	1,020	256	488	-	344	10,508
19	5,832	2,672	1,020	-	736	-	496	10,756
26	3,840	4,240	1,020	-	984	-	400	10,484
Sept. 2	2,616	2,784	1,020	192	696	-	328	7,636
9	4,800	4,672	897	-	704	-	88	11,161
16	2,352	2,832	897	-	1,024	-	-	7,105
23	3,104	2,976	898	-	1,512	-	-	8,490
30	5,016	2,936	898	-	600	-	-	9,450
Oct. 7	3,824	1,840	1,410	-	1,664	-	-	8,738
14	1,744	2,688	1,410	464	1,296	-	-	7,602
21	2,512	2,696	1,410	-	1,112	-	-	7,730
28	2,040	3,968	1,410	-	1,296	-	-	8,714
Nov. 4	2,040	3,896	1,164	-	1,280	-	-	8,380
11	3,552	5,152	1,164	-	1,872	-	40	11,788
18	4,208	3,088	1,164	-	1,320	-	80	9,860
25	4,408	3,328	1,164	-	1,600	-	96	11,596
Dec. 2	6,408	4,072	1,184	-	1,632	-	120	13,396
9	4,648	4,264	790	-	2,064	-	32	11,798
16	2,864	2,440	790	-	1,448	-	-	7,342
23	1,408	5,776	790	-	1,824	-	48	9,846
30	3,312	3,344	790	-	1,880	-	56	9,382
Jan. 6, 1940	2,464	2,736	1,106	-	792	-	72	7,170
13	3,248	3,656	1,106	-	1,208	-	40	9,258
20	3,216	3,048	1,106	-	824	-	-	8,194
27	5,832	3,776	1,106	-	976	-	24	11,714
Feb. 3	4,616	2,384	1,106	-	928	-	-	9,034
10	4,232	1,936	1,882	-	1,136	-	-	9,186
17	4,424	2,000	1,882	-	1,120	-	-	9,426
24	4,312	3,712	1,882	-	992	-	-	10,898
Mar. 2	4,272	2,672	1,882	-	272	-	-	9,098
9	7,376	2,088	-	-	1,440	-	-	10,904
16	5,248	1,536	-	-	1,160	-	-	7,944
23	4,728	2,984	-	-	976	-	-	8,688
30	5,400	1,864	-	-	824	-	-	8,088
Apr. 6	5,040	4,056	-	-	616	-	-	9,712
13	3,808	4,288	-	-	1,040	-	-	9,136
20	4,696	2,640	-	-	904	-	-	8,240
27	4,544	2,992	-	-	1,096	-	-	8,632
May 4	4,928	4,280	-	-	1,232	-	-	10,440
11	3,544	2,752	-	-	1,304	-	-	7,600
18	4,672	6,296	-	-	1,232	-	-	12,200
25	6,384	3,768	-	-	696	-	-	10,848
June 1	5,720	3,096	-	-	968	-	-	9,784
8	4,904	3,256	-	-	1,432	-	-	9,592
15	2,968	2,976	-	-	1,752	-	-	7,696
22	2,297	3,986	-	-	456	-	688	7,427
29	2,523	5,180	-	-	16	-	416	8,135
TOTALS	196,684/2	161,406	36,368	912	52,904	-	3,864	452,138/2

Comparative 1938-1939

48th week	3,888	3,704	1,840	-	2,384	-	672	12,488
Totals	229,632	107,872	94,040	35,904	74,024	3,392	13,760	558,624

1/ Weekly allocations from monthly figures published by the Australian Wheat Board for the August-February period.

2/ Total revised by Broomhall, with weekly figures not yet changed.

World shipments for the week ending June 29, 1940 amounted to 8,135,000 bushels as compared with shipments of 7,427,000 bushels for the previous week and 12,488,000 bushels for the corresponding week last year. North American shipments showed an increase over the previous week of 226,000 bushels while Argentine shipments were higher by 1,194,000 bushels.

The following table shows the weekly average shipments of wheat and wheat flour for the first forty-eight weeks of the present crop year with comparative figures for 1938-39.

Years	N. America	Argentina	Australia	Russia	Danube	India	Other	TOTALS
								(million bushels)
1938-39	4.8	2.2	2.0	0.7	1.5	0.1	0.3	11.6
1939-40	4.1	3.4	0.7	0.0	1.1	-	0.1	9.4

Stocks in Store at the Head of the Lakes compared with the same week last year were as follows:-

	Week ending June 28, 1940	Week ending June 30, 1939	+Increase -Decrease
Wheat	63,730,506	26,014,689	+37,715,817
Oats	466,330	1,487,574	- 1,021,244
Barley	1,449,786	1,087,964	+ 361,822
Flaxseed	179,144	56,744	+ 122,400
Rye	445,074	1,277,556	- 832,482

The receipts (including transfers) at the Head of the Lakes for the week ending June 28, 1940 with comparative figures for the same week last year were as follows:-

	Week ending June 28, 1940	Week ending June 30, 1939	+Increase -Decrease
Wheat	8,644,627	957,303	+ 7,687,324
Oats	265,610	573,658	- 308,048
Barley	121,967	254,987	- 133,020
Flaxseed	12,593	1,630	+ 10,963
Rye	128,462	160,474	- 32,012

Preliminary figures showing receipts and shipments at the Head of the Lakes for the period August 1, 1939 to June 28, 1940 compared with the same period last year:-

	FORT WILLIAM AND PORT ARTHUR	
	Receipts	Shipments
Wheat	258,219,625	212,413,218
Oats	19,519,421	22,859,092
Barley	16,639,739	16,072,082
Flaxseed	949,920	823,073
Rye	4,421,155	4,900,965
TOTAL	299,749,860	257,068,430
Same period last year	205,932,169	186,866,766
+Increase	+ 93,817,691	+ 70,201,664

Stocks in Store in the Western Division compared with the same week last year were as follows:-

	Week ending June 28, 1940	Week ending June 30, 1939	+Increase -Decrease
Wheat	169,620,495	62,767,578	+106,852,917
Oats	3,993,659	6,090,463	- 2,096,804
Barley	4,743,775	4,660,520	+ 83,255
Flaxseed	495,144	123,763	+ 371,381
Rye	1,333,081	2,238,981	- 905,900

Platform Loadings shown by Prairie Provinces for the week ending June 21, 1940 were as follows:-

	WHEAT	OTHER GRAIN Bushels	TOTAL
Manitoba	11,282	6,160	17,442
Saskatchewan	8,193	6,880	15,073
Alberta	66,140	5,760	71,900
TOTAL	85,615	18,800	104,415
Week ending June 21, 1939	34,953	40,350	75,303

EASTERN ELEVATORS: United States grain and soya bean stocks were 1,910,203 bushels lower than at a comparable date last year. Decreases were noted in oats of 115,709; barley 9,850; corn 1,837,322 and soya beans 8,398 bushels, while wheat and rye increased 60,394 and 182 bushels respectively.

Number of cars inspected in the Western Division for the week ending June 30, 1940 with comparison for the previous year were as follows:-

	Week ending June 30, 1940	Week ending June 30, 1939	+ Increase - Decrease
Wheat	8,912	1,288	+ 7,624
Oats	260	555	- 295
Barley	104	322	- 218
Flaxseed	20	4	+ 16
Rye	116	236	- 120
Mixed Grain	4	-	+ 4
Screenings	-	2	- 2
TOTAL	9,416	2,407	+ 7,009

LATE SHIPMENTS OF GRAIN FROM DULUTH, JUNE, 1940

	WHEAT	OATS	BARLEY	FLAX- SEED	RYE	CORN
B u s h e l s						
<u>United States Grain to</u>						
<u>United States Ports:</u>						
Buffalo	4,633,368	201,647	301,062	-	317,970	988,885
Chicago	202,565	-	-	-	177,220	-
Detroit	50,000	-	-	-	-	-
Toledo	-	-	80,000	-	-	-
Oswego	-	-	-	-	64,100	829,117
Milwaukee	245,000	-	-	-	-	-
TOTAL	5,130,933	201,647	381,062	-	559,290	1,818,002
<u>United States Grain to</u>						
<u>Canadian Ports:</u>						
Toronto	-	-	-	-	-	256,000
Port Colborne	-	-	-	-	-	217,000
TOTAL	-	-	-	-	-	473,000
GRAND TOTAL	5,130,933	201,647	381,062	-	559,290	2,291,002

DULUTH: Receipts of Canadian bonded grain at Duluth by rail for the period from August 1, 1939 to June 29, 1940, amounted to wheat 2,731,877 and barley 149,893 bushels.

Rail shipments for the period from August 1, 1939 to June 29, 1940 amounted to barley 149,893 bushels.

STOCKS OF GRAIN IN DIFFERENT ELEVATORS DURING THE WEEK ENDING JUNE 28, 1940

	WHEAT	DURUM WHEAT	OATS	BARLEY	FLAX- SEED	RYE
Western Country Elevators	66905000	1145000	2580000	1515000	279000	853000
Interior Private and Mill Elevs.	6243000	17000	814000	1698000	37000	22000
Interior Pub. & Semi-Pub. Terms.	12118376	693	22343	13912	-	1692
Vancouver-New Westminster	15212787	-	110986	67077	-	11315
Victoria	612474	-	-	-	-	-
Prince Rupert	1136049	-	-	-	-	-
Churchill	2494610	-	-	-	-	-
Fort William and Port Arthur	62345168	1385338	466330	1449786	179144	445074
In Transit Lakes	2761743	188329	78824	149497	-	-
In Transit Rail	23751439	-	721271	224096	20808	215092
Eastern Elevators-Lake Ports	37211068	2147087	1325607	581815	-	192242
Eastern Elevators-St. Lawrence Ports	17743765	695604	231814	408150	62222	120817
Eastern Elevators - Seaboard Ports	2854048	157620	650	3345	-	103
U. S. Lake Ports	10650877	24000	258000	849000	-	1868000
U. S. Atlantic Seaboard Ports	8897519	3060256	-	372606	-	920668
In Transit U.S.A.	1282273	-	-	-	-	-
TOTAL	272225196	8820927	6609825	7332284	578174	4650003
Previous week	270812950	9084549	6790206	7613992	572877	4654390
Same week previous year	94389159	9404445	9296968	6374969	143161	2827452

QUANTITY OF SCREENINGS RECEIVED, SHIPPED AND IN STORE AT THE UNDER-MENTIONED ELEVATORS WEEK ENDING JUNE 28, 1940

	Amount in Store June 21, 1940		Amount Received by vessel		Amount shipped		Amount in Store June 28, 1940	
	Tons	Lbs.	Tons	Lbs.	Tons	Lbs.	Tons	Lbs.
Owen Sound	94	410	879	1,210	181	-	792	1,620
Goderich Elev. Co.	1,213	646	-	-	404	1,000	808	1,646
Port Colborne, D.G.	10	-	-	-	-	-	10	-
Toronto	46	180	-	-	1	400	44	1,780
Montreal, Dom. Elev. Co.	417	750	-	-	49	400	368	350
TOTAL	1,780	1,986	879	1,210	635	1,800	2,024	1,396

LAKE SHIPMENTS FROM THE HEAD OF THE LAKES FOR THE PERIOD FROM JUNE 21 TO JUNE 30, 1940

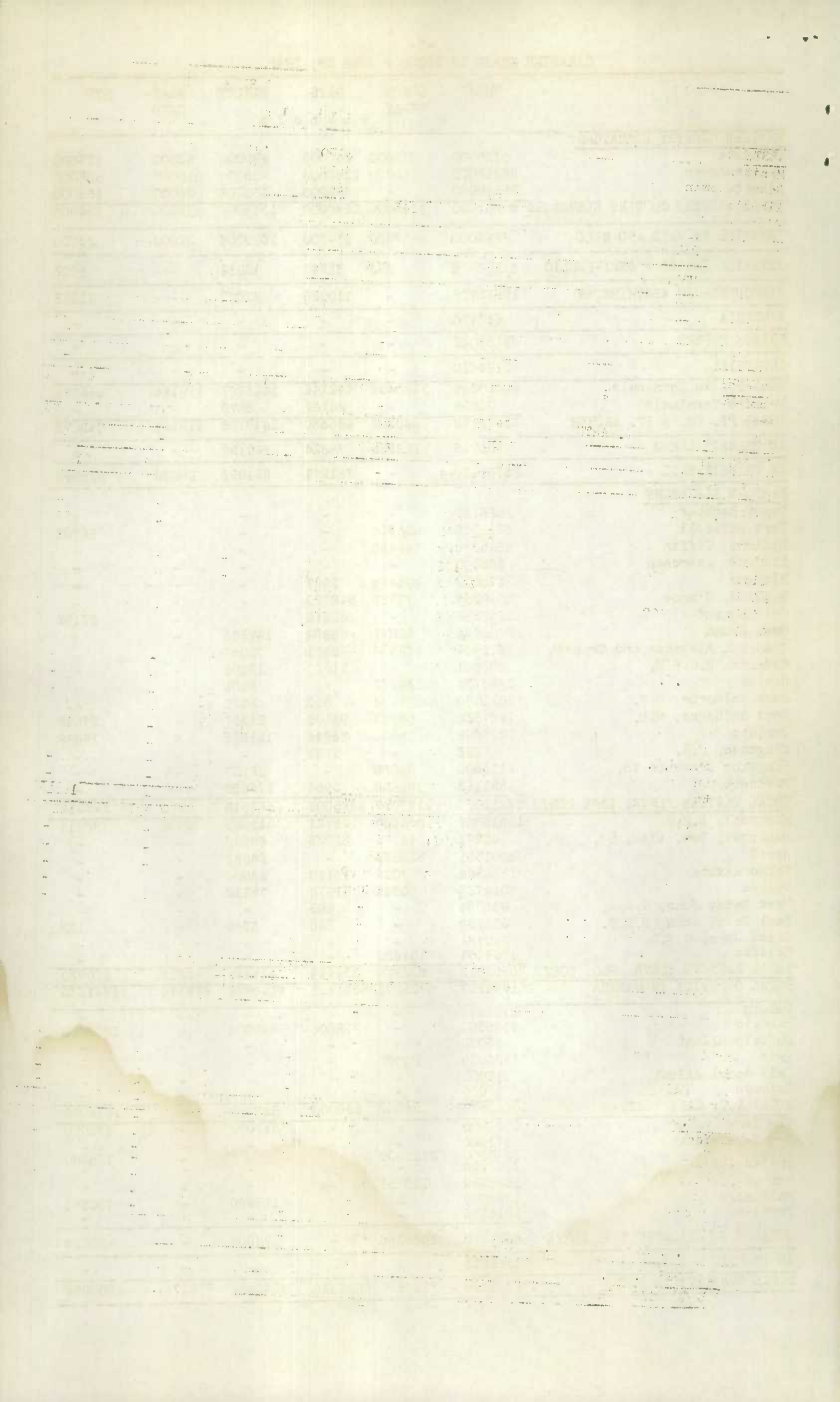
	CANADIAN LOWER LAKE PORTS	ST. LAWRENCE PORTS	BUFFALO	OTHER U. S. A. PORTS	EUROPE DIRECT
Wheat	1,829,452	-	580,198	646,979	-
Durum wheat	726,895	-	-	-	-
Oats	102,832	-	344,333	-	-
Barley	183,478	900,330	-	-	-
Flaxseed		Nil			
Rye		Nil			
TOTAL	2,842,657	900,330	924,531	646,979	-
Same period 1939	5,829,756	1,223,388	1,074,357	244,539	-

LAKE SHIPMENTS FROM THE HEAD OF THE LAKES FOR THE PERIOD FROM THE OPENING OF NAVIGATION TO JUNE 30, 1940

Wheat	44,706,706	2,920,610	8,393,368	1,117,797	-
Durum wheat	1,755,339	24,602	221,909	1,256,617	-
Oats	2,452,232	202,232	3,318,972	377,810	-
Barley	1,501,005	2,420,599	351,358	160,000	-
Flaxseed	21,436	159,754	-	-	-
Rye	50,243	-	1,177,604	173,502	-
TOTAL	50,486,961	5,727,797	13,463,211	3,085,726	-
Same period 1939	42,800,430	7,853,468	4,694,881	4,796,927	225,026

CANADIAN GRAIN IN STORE - JUNE 28, 1940

	WHEAT	DURUM WHEAT	OATS	BARLEY	FLAX- SEED	RYE
	B u s h e l s					
<u>WESTERN COUNTRY ELEVATORS</u>						
Manitoba	5185000	675000	345000	490000	43000	133000
Saskatchewan	36210000	470000	1385000	705000	210000	555000
Alberta	25510000	-	850000	320000	26000	165000
TOTAL WESTERN COUNTRY ELEVATORS	66905000	1145000	2580000	1515000	279000	853000
<hr/>						
INTERIOR PRIVATE AND MILL	6248000	17000	814000	1698000	37000	22000
<hr/>						
INTERIOR PUBLIC & SEMI-PUBLIC	12118376	693	22343	13912	-	1692
<hr/>						
VANCOUVER-NEW WESTMINSTER	15212787	-	110986	67077	-	11315
<hr/>						
VICTORIA	612474	-	-	-	-	-
<hr/>						
PRINCE RUPERT	1136049	-	-	-	-	-
<hr/>						
CHURCHILL	2494610	-	-	-	-	-
<hr/>						
Semi-Public Terminals	62310334	1385338	442148	1445907	179144	445074
Private Terminals	34834	-	24182	3879	-	-
TOTAL FT. WM. & PT. ARTHUR	62345168	1385338	466330	1449786	179144	445074
<hr/>						
IN TRANSIT LAKES	2761743	188329	78824	149497	-	-
<hr/>						
IN TRANSIT RAIL	23751439	-	721271	224096	20808	215092
<hr/>						
<u>EASTERN ELEVATORS</u>						
Depot Harbour	1523182	-	-	-	-	-
Port McNicoll	3626045	830974	-	-	-	88702
Midland, Tiffin	4095088	246483	-	-	-	-
Midland, Aberdeen	266140	-	-	-	-	-
Midland	3275803	103986	9397	-	-	-
Midland, Simcoe	2040385	77953	942729	-	-	-
Collingwood	1942898	-	69216	-	-	57197
Owen Sound	2806988	58671	86664	147563	-	-
Goderich Elevator and Transit	1312545	169569	28501	73957	-	-
Goderich W.C.F.M.	260541	-	11634	10401	-	-
Sarnia	2788734	136913	-	4501	-	-
Port Colborne, D.G.	3011060	177702	300	8498	-	-
Port Colborne, M.L.	1287532	55728	93106	24317	-	27675
Toronto	2238899	18634	75944	121828	-	18668
Kingston, J.R.	566	-	2132	-	-	-
Kingston Elevator Co.	2113509	84986	-	12100	-	-
Prescott	4621153	185488	5984	178650	-	-
TOTAL EASTERN ELEVS. LAKE PORTS	37211063	2147087	1325607	581815	-	192242
Montreal, N.H.B.	12315037	265853	122721	211055	62222	120817
Montreal, Dom. Elev. Co.	42271	19775	33933	69896	-	-
Sorel	2001331	336858	-	25583	-	-
Three Rivers	1340366	7029	13188	23504	-	-
Quebec	2044760	66089	61972	78112	-	-
West Saint John, C.P.R.	836984	-	405	-	-	-
West Saint John, N.H.B.	323132	-	245	3345	-	103
Saint John, C.N.R.	299781	-	-	-	-	-
Halifax	1394151	157620	-	-	-	-
TOTAL EASTERN ELEVS. SBD. PORTS	20597813	853224	232464	411495	62222	120920
TOTAL QUANTITY IN CANADA	251394527	5736671	6351825	6110678	578174	1861335
<hr/>						
Duluth	2731877	-	-	-	-	-
Buffalo	5026000	-	258000	849000	-	1868000
Buffalo Afloat	45000	-	-	-	-	-
Erie	1986000	24000	-	-	-	-
Erie Canal Afloat	815000	-	-	-	-	-
Chicago	47000	-	-	-	-	-
TOTAL U.S. LAKE PORTS	10650877	24000	258000	849000	-	1868000
<hr/>						
New York	1004000	-	-	217000	-	272000
New York Afloat	171000	-	-	-	-	-
Albany	2044000	2910000	-	-	-	158000
Philadelphia	1387098	-	-	-	-	-
Boston	1995899	150256	-	-	-	-
Baltimore	1084377	-	-	155606	-	490668
Portland	1211145	-	-	-	-	-
TOTAL U.S. ATLANTIC SBD. PORTS	8897519	3060256	-	372606	-	920668
<hr/>						
IN TRANSIT U.S.A.	1282273	-	-	-	-	-
TOTAL QUANTITY IN STORE	272225196	8820927	6609825	7332284	578174	4650003



Grades of Canadian Grain in Store at Public, Semi-Public and Private (Head of the Lakes), Interior, Public and Semi-Public, Pacific Ports and Eastern Elevators for the week ending June 28, 1940.

	Ft. William & Pt. Arthur Semi-Public and Private	Interior Public & Semi-Public Terminals	Pacific Port Elevators	Eastern Elevators Lake Ports	Eastern Elevators Seaboard Ports	TOTAL
WHEAT						
	B u s h e l s					
No. 1 Hard	2287185	3	120477	1448385	1794670	5651220
No. 1 Northern	48734424	11221978	8424056	24680867	11444198	104505523
No. 2 Northern	6975384	120212	3275152	4684662	5692923	20748533
No. 3 Northern	916504	38302	949813	1808538	770701	4483858
No. 4 Northern	489249	3881	124979	896184	62074	1576367
No. 4 Special	62498	3526	-	172580	-	238604
No. 5 Wheat	198572	-	282421	293002	-	773995
No. 5 Special	4449	1286	-	-	-	5735
No. 6 Wheat	4882	-	3528	-	-	8410
No. 6 Special	521	-	-	-	-	521
Feed	9172	-	1374	-	84	10630
Other	2266590	12847	1079119	238739	288783	3886078
No. 1 C.W. Garnet	98197	133	990827	893504	79168	2061829
No. 2 C.W. Garnet	178647	100	473983	1499802	450070	2602602
No. 3 C.W. Garnet	118894	-	99532	308013	3824	530263
Other Garnet	-	-	-	144701	11318	156019
No. 1 C.W. Durum	216684	-	-	20404	225806	462894
No. 2 C.W. Durum	938626	-	-	1942029	592082	3472737
No. 3 C.W. Durum	180308	-	-	184654	19947	384909
No. 4 C.W. Durum	1391	-	-	-	-	1391
Other Durum	48329	-	-	-	15388	63717
Ontario Wheat	-	-	-	141591	1	141592
TOTAL	63730506	11402268	15825261	39358155	21451037	151767227
OATS						
No. 1 C.W.	2491	-	-	-	-	2491
No. 2 C.W.	139003	50	24995	916967	16439	1097454
Ex. 3 C.W.	106671	-	39079	129678	67601	343029
No. 3 C.W.	8319	343	11942	9816	2	30422
Ex. 1 Feed	8789	-	-	-	2	8791
No. 1 Feed	86373	-	10856	76146	82557	255932
No. 2 Feed	6344	251	4355	5984	4612	21546
No. 3 Feed	23846	-	833	-	3415	28094
Other	84494	408	18926	187016	57836	348680
TOTAL	466330	1052	110986	1325607	232464	2156439
BARLEY						
2 C.W. 2 Row	10338	-	-	-	-	10338
2 C.W. 6 Row	848647	-	2098	76315	44802	971862
3 C.W. 6 Row	313578	-	-	262576	90143	666297
1 Feed	43416	-	27898	63114	36209	170637
2 Feed	77147	-	17307	88776	52972	236202
3 Feed	64134	-	9496	2083	30496	106209
Ontario	-	-	-	5829	-	5829
Other	92526	1663	10278	83122	156873	344462
TOTAL	1449786	1663	67077	581815	411495	2511836
FLAXSEED						
No. 1 C.W.	166281	-	-	-	62222	228503
No. 2 C.W.	2725	-	-	-	-	2725
No. 3 C.W.	2552	-	-	-	-	2552
No. 4 C.W.	694	-	-	-	-	694
Other	6892	-	-	-	-	6892
TOTAL	179144	-	-	-	62222	241366
RYE						
No. 2 C.W.	296872	-	9038	192242	58686	556838
No. 3 C.W.	91006	-	-	-	62234	153240
No. 4 C.W.	31258	-	-	-	-	31258
Ergoty	6307	-	-	-	-	6307
Other	19631	-	2277	-	-	21908
TOTAL	445074	-	11315	192242	120920	769551
GRAND TOTAL	66270840	11404983	16014639	41457819	22278136	157426419

CANADIAN GRAIN IN STORE - COMPARATIVE STATEMENT, 1938 - 1940

	W H E A T	OTHER GRAIN
	(B u s h e l s)	
<u>June 28, 1940</u>		
Country Elevators - Manitoba	5,860,000	1,011,000
Saskatchewan	36,680,000	2,855,000
Alberta	25,510,000	1,361,000
TOTAL	68,050,000	5,227,000
Interior Private and Mill	6,265,000	2,571,000
Interior Public and Semi-Public Terminals	12,119,069	37,947
Vancouver-New Westminster	15,212,787	189,378
Victoria	612,474	-
Prince Rupert	1,136,049	-
Churchill	2,494,610	-
Fort William & Port Arthur	63,730,506	2,540,334
In Transit Lakes	2,950,072	228,321
In Transit Rail	23,751,439	1,181,267
Eastern Elevators - Lake Ports	39,358,155	2,099,664
St. Lawrence & Seaboard Ports	21,451,037	827,101
U. S. Lake Ports	10,674,877	2,975,000
U. S. Atlantic Sbd. Ports	11,957,775	1,293,274
In Transit U.S.A.	1,282,273	-
TOTAL	281,046,123	19,170,286
<u>June 30, 1939</u>		
Country Elevators - Manitoba	1,090,000	1,291,000
Saskatchewan	7,095,000	2,430,000
Alberta	4,190,000	2,266,000
TOTAL	12,375,000	5,987,000
Interior Private and Mill	5,920,000	2,640,000
Interior Public and Semi-Public Terminals	7,875,550	39,399
Vancouver-New Westminster	8,098,027	537,490
Victoria	270,932	-
Churchill	2,213,380	-
Fort William and Port Arthur	26,014,689	3,909,838
In Transit Lakes	3,596,555	339,055
In Transit Rail	2,545,021	2,280,321
Eastern Elevators - Lake Ports	19,560,811	1,374,392
Eastern Elevators - Sbd. Ports	9,365,639	1,167,055
U. S. Lake Ports	2,495,000	208,000
U. S. Atlantic Sbd. Ports	3,463,000	160,000
TOTAL	103,793,604	18,642,550
<u>July 1, 1938</u>		
Country Elevators - Manitoba	1,780,000	1,298,000
Saskatchewan	1,297,000	827,000
Alberta	1,490,000	1,167,000
TOTAL	4,567,000	3,292,000
Interior Private and Mill	1,538,000	1,614,000
Interior Public and Semi-Public Terminals	11,779	3,306
Vancouver-New Westminster	632,653	188,453
Churchill	11,820	-
Fort William and Port Arthur	7,653,314	1,924,121
In Transit Lakes	700,183	641,864
In Transit Rail	1,368,919	472,789
Eastern Elevators - Lake Ports	5,978,688	352,679
Eastern Elevators - Seaboard Ports	2,602,750	1,335,503
U S Lake Ports	508,000	20,000
U.S. Atlantic Seaboard Ports	333,000	-
TOTAL	25,906,106	9,844,715

RECEIPTS AND SHIPMENTS OF GRAIN BY CLASSES OF ELEVATORS IN THE WEEK ENDING JUNE 28, 1940

	WHEAT	DURUM WHEAT	OATS	BARLEY	FLAX- SEED	RYE
	B u s h e l s					
<u>R E C E I P T S</u>						
Country Elevators	3,898,201	50,437	471,125	95,949	8,495	24,644
Int. Private and Mill Elevs.	20,089	4,751	26,229	24,265	529	-
Int. Pub. & Semi-Pub. Terms	2,393	-	13,038	4,474	-	2,023
Seaboard Ports	14,222	-	-	-	-	-
Fort William and Port Arthur	8,592,861	51,766	265,610	121,967	12,593	128,462
Eastern Elevators - Vessel	3,442,451		85,941	104,806	35,900	24,822
Rail	1,150,395		42,025	26,378	-	3,830
<u>S H I P M E N T S</u>						
Country Elevators	10,608,338	88,647	564,137	257,749	15,076	134,261
Int. Private and Mill Elevs.	619,052	3,479	123,775	136,403	3,106	65
Int. Pub. & Semi-Pub. Terms.	19,762	-	4,687	243	-	2,982
Seaboard Ports	60,640	-	6,462	2,087	-	-
Fort William and Port Arthur						
Vessel	2,748,781	681,896	262,751	124,959	-	-
Rail	974	1,542	20,379	7,990	-	400
Eastern Elevators - Vessel	1,972,569		5,000	-	-	-
Rail	795,635		236,954	151,634	3,423	2,032

STOCKS OF UNITED STATES GRAIN IN CANADA, JUNE 28, 1940

	WHEAT	OATS	BARLEY	RYE	CORN	SOYA BEANS
		B u s h e l s				
Midland, Aberdeen	24,320	40,757	-	-	75,673	-
Collingwood	-	-	-	-	106	-
Owen Sound	-	-	-	-	392,561	-
Goderich Elevator and Transit	-	20,158	-	-	-	-
Sarnia	19,956	-	-	-	180,310	-
Port Colborne, M.L.	-	-	-	-	92,065	-
Toronto	-	-	-	-	391,430	11,827
Prescott	-	-	-	-	12,716	-
Montreal, N.H.B.	337,829	-	4	191	25,203	-
Montreal, Dom. Elev. Co.	-	-	-	-	895	-
Sorel	257,288	-	-	-	8,457	-
Three Rivers	-	-	-	23,577	489,161	8,924
TOTAL	639,393	60,915	4	23,768	1,668,577	20,751
Same period last year	578,499	176,624	9,854	23,586	3,505,899	29,149

RECEIPTS AND SHIPMENTS OF UNITED STATES GRAIN IN CANADA, JUNE 28, 1940

	R E C E I P T S			S H I P M E N T S	
	Water	Rail		Water	Rail
Wheat	-	-	GEORGIAN BAY PORTS		
Oats	-	-	To U.S.A. Dom. points	-	9,400
Corn	613,557	-	" U.S.A. Dom. points	-	18,423
			" Canadian mills	-	26,000
			" St. Lawrence ports	93,500	-
			" U.S.A. Dom. points	-	149,306
			LOWER LAKE PORTS		
Corn	358,156	14,318	To Canadian mills	-	5,996
			" Can. Dom. points	-	33,607
			" St. Lawrence ports	656,105	-
Soya Beans	-	170	" Can. Dom. points	-	-
			ST. LAWRENCE PORTS		
Corn	380,216	-	To Canadian mills	-	4,000
			" Can. Dom. points	-	1,000
			" United Kingdom	506,234	-

STOCKS OF FOREIGN GRAIN IN CANADA, JUNE 28, 1940

	ARGENTINE CORN	SOUTH AFRICAN CORN	AUSTRALIAN CORN	ARGENTINE FLAXSEED
		B u s h e l s		
Port Colborne, M.L.	-	66,730	-	-
Toronto	-	45,716	-	35,760
Montreal, N.H.B.	-	53,166	-	58,915
Montreal, Dom. Elev. Co.	-	65,239	-	-
Quebec	-	24,386	-	-
Saint John	-	22,118	-	-
Halifax	145,203	7,003	-	-
TOTAL	145,203	284,358	-	94,675
Same period last year	21,572	340,835	50,668	75,045

RECEIPTS AND SHIPMENTS OF FOREIGN GRAIN IN CANADA, JUNE 28, 1940

	R E C E I P T S			S H I P M E N T S	
	Water	Rail		Water	Rail
African Corn	-	-	LOWER LAKE PORTS		
Argentine Flaxseed	-	-	To Canadian mills	-	2,283
			" Can. Dom. points	-	9,000
			ST. LAWRENCE PORTS		
African Corn	-	-	To Canadian mills	-	5,500
			" Can. Dom. points	-	16,000
Argentine Flaxseed	268,417	-	" Can. Dom. points	-	209,840
			MARITIME PORTS		
Argentine Corn	-	-	To Canadian mills	-	9,000
			" Other Countries	8	-
African Corn	-	-	" Can. Dom. points	-	14,000

STOCKS IN STORE, RECEIPTS & SHIPMENTS AT THE CANADIAN GOVERNMENT INTERIOR TERMINAL
ELEVATORS, WEEK ENDING JUNE 28, 1940

	WHEAT	OATS	BARLEY	FLAXSEED	RYE
(B u s h e l s)					
<u>STOCKS IN STORE</u>					
Calgary	744,486	21	-	-	-
Edmonton	455,129	-	1,663	-	-
Lethbridge	890,479	-	-	-	-
Moose Jaw	479,499	-	-	-	-
Saskatoon	4,521,675	1,131	-	-	-
TOTAL	11,402,268	1,152	1,663	-	-
<u>RECEIPTS</u>					
Calgary	1,625	2,220	-	-	-
Edmonton	-	-	-	-	-
Lethbridge	-	-	-	-	-
Moose Jaw	-	-	-	-	-
Saskatoon	-	-	-	-	-
TOTAL	1,625	2,220	-	-	-
<u>SHIPMENTS</u>					
Calgary	3,125	2,220	-	-	-
Edmonton	-	-	-	-	-
Lethbridge	-	-	-	-	-
Moose Jaw	-	-	-	-	-
Saskatoon	16,154	-	-	-	-
TOTAL	19,279	2,220	-	-	-

STOCKS, RECEIPTS AND SHIPMENTS OF THE COUNTRY ELEVATORS IN THE WESTERN DIVISION IN THE
WEEK ENDING JUNE 28, 1940

	WHEAT	DURUM WHEAT	OATS	BARLEY	FLAXSEED	RYE
	B u s h e l s					
<u>COUNTRY ELEVATORS</u>						
<u>STOCKS IN STORE</u>						
Manitoba	5,185,000	675,000	345,000	490,000	43,000	133,000
Saskatchewan	36,210,000	470,000	1,385,000	705,000	210,000	555,000
Alberta	25,510,000	-	850,000	320,000	26,000	165,000
TOTAL	66,905,000	1,145,000	2,580,000	1,515,000	279,000	853,000
Total - A Week Ago	78,800,000	1,195,000	2,680,000	1,675,000	286,000	967,000
A Year Ago	11,705,000	670,000	3,255,000	1,795,000	57,000	880,000
<u>RECEIPTS DURING WEEK</u>						
Manitoba	152,811	35,151	48,992	53,169	584	2,678
Saskatchewan	2,240,368	15,286	271,142	32,495	6,734	19,027
Alberta	1,505,022	-	150,991	10,285	1,177	2,939
TOTAL	3,898,201	50,437	471,125	95,949	8,495	24,644
Total - A Week Ago*	3,334,166	65,529	485,294	117,145	21,845	44,755
A Year Ago	1,045,712	71,821	617,465	245,418	4,542	49,307
<u>SHIPMENTS DURING WEEK</u>						
Manitoba	924,806	78,954	57,822	102,892	2,779	12,624
Saskatchewan	5,901,874	9,693	363,902	121,125	11,553	100,075
Alberta	3,781,658	-	142,413	33,732	744	21,562
TOTAL	10,608,338	88,647	564,137	257,749	15,076	134,261
Total - A Week Ago*	12,267,310	70,592	537,048	224,523	21,940	155,895
A Year Ago	1,440,416	167,117	889,485	414,500	4,389	213,767

TOTAL RECEIPTS AT COUNTRY ELEVATORS AND PLATFORM LOADINGS# IN THE
PERIOD AUGUST 1, 1939 TO JUNE 28, 1940

	W H E A T	OTHER GRAIN
	B u s h e l s	
Manitoba	52,340,635	17,245,777
Saskatchewan	226,724,041	28,020,746
Alberta	126,763,939	19,660,701
Total - 1939-1940	405,828,615	64,927,224
Same period 1938 - 1939	282,623,955	61,332,405

#Platform loadings to June 21, 1940

*Revised figures

DAILY QUOTATIONS AND WEEKLY AVERAGES OF COARSE GRAIN DELIVERED IN
CARLOTS AT TORONTO WEEK ENDING JUNE 29, 1940

	June 24	June 25	June 26	June 27	June 28	June 29	Weekly Average
	\$ ¢	\$ ¢	\$ ¢	\$ ¢	\$ ¢	\$ ¢	\$ ¢
Oats, good, sound, heavy	.34	.34	.34	.34	.34	.34	.34
Barley, good malting	.48	.48	.48	.48	.48	.48	.48
Rye No. 2	.49	.49	.49	.49	.49	.49	.49
Corn, Natural	.78	.78	.78	.78	.78	.78	.78
Buckwheat	.48	.48	.48	.48	.48	.48	.48
Mixed Grain x	.32	.32	.32	.32	.32	.32	.32

x 34 lb.

Week ending June 29, 1940

	June 24 \$ ¢	June 25 \$ ¢	June 26 \$ ¢	June 27 \$ ¢	June 28 \$ ¢	June 29 \$ ¢	Weekly Average \$ ¢
(Basis Fort William and Port Arthur)							
WHEAT							
No. 1 Man. Hard	.71	.71/1	.71/1	.71/1	.71/2	.71/3	.71/1
No. 1 Man. Northern	.71	.71/1	.71/1	.71/1	.71/2	.71/3	.71/1
No. 2 Man. Northern	.68/1	.68/1	.68/1	.68/2	.68/2	.68/3	.68/2
No. 3 Man. Northern	.63/5	.63/5	.63/3	.63/3	.63/3	.63/3	.63/4
No. 4 Man. Northern	.62/1	.61/7	.61/7	.61/7	.61/7	.61/7	.61/7
No. 5	.58/3	.57/3	.57/3	.57/3	.57/3	.57/3	.57/4
No. 6	.56/3	.56/3	.56/3	.56/3	.56/3	.56/3	.56/3
Feed	.52/3	.52/3	.52/3	.52/3	.52/3	.52/3	.52/3
No. 4 Special	.62/1	.61/7	.61/7	.61/7	.61/7	.61/7	.61/7
No. 5 Special	.58/3	.57/3	.57/3	.57/3	.57/3	.57/3	.57/4
No. 6 Special	.56/3	.56/3	.56/3	.56/3	.56/3	.56/3	.56/3
Tough No. 1 Hard	.68	.68/1	.68/1	.68/1	.68/2	.68/3	.68/1
No. 1 Northern	.68	.68/1	.68/1	.68/1	.68/2	.68/3	.68/1
No. 2 Northern	.65/1	.65/1	.65/1	.65/1	.65/2	.65/3	.65/1
No. 3 Northern	.60/1	.60/1	.59/7	.59/7	.59/7	.59/7	.60
Rejected No. 1 Northern	.64	.64/1	.64/1	.64/1	.64/2	.64/3	.64/1
No. 2 Northern	.61/5	.61/5	.61/5	.61/5	.61/3	.61/7	.61/5
No. 3 Northern	.57/3	.57/3	.57/1	.57/1	.57/1	.57/1	.57/2
Smutty No. 1 Northern	.66/4	.66/5	.66/5	.66/5	.66/6	.66/7	.66/5
No. 2 Northern	.63/5	.63/5	.63/5	.63/5	.63/6	.63/7	.63/5
No. 3 Northern	.59/1	.59/1	.58/7	.58/7	.58/7	.58/7	.59
No. 1 Garnet	.65/3	.65/1	.65/1	.65/1	.64/3	.63/3	.64/6
No. 2 Garnet	.64/3	.64/1	.64/1	.64/1	.63/7	.62/7	.63/7
No. 3 Garnet	.60/3	.60/3	.60/7	.60/7	.60/7	.60/3	.60/5
Durum No. 1	.62/7	.62/7	.62/7	.62/7	.62/7	.62/7	.62/7
No. 2	.61/7	.61/7	.61/7	.61/7	.61/7	.61/7	.61/7
No. 3	.60/7	.60/7	.60/7	.60/7	.60/7	.60/7	.60/7
OATS							
No. 2 C.W.	.31	.30	.30/4	.30/5	.30/6	.30/6	.30/5
No. 3 C.W.	.29/6	.28/6	.29	.29/1	.29	.29	.29/1
No. 1 Feed	.29/6	.28/6	.29	.29/1	.29	.29	.29/1
No. 2 Feed	.27/6	.26/6	.27	.27/1	.27	.27	.27/1
No. 3 Feed	.25/2	.24/2	.24/4	.24/5	.24/4	.24/4	.24/5
BARLEY							
No. 1 D.W. 6 Row	.33/4	.32/2	.32/1	.31/7	.32	.32	.32/2
No. 2 C.W. 6 Row	.33/4	.32/2	.32/1	.31/7	.32	.32	.32/2
No. 3 C.W. 6 Row	.31/4	.30/2	.30/1	.29/7	.30	.30	.30/2
No. 1 C.W. 2 Row	.38/6	.37/4	.37/3	.37/1	.37/1	.37	.37/4
No. 2 C.W. 2 Row	.38/6	.37/4	.37/3	.37/1	.37/1	.37	.37/4
No. 1 Feed	.30/6	.29/4	.29/3	.29/1	.29/1	.29	.29/4
No. 2 Feed	.30/2	.29	.28/7	.28/5	.28/5	.28/4	.29
No. 3 Feed	.29/2	.28	.27/7	.27/5	.27/5	.27/4	.28
RYE							
No. 2 C.W.	.44/2	.41/2	.41/2	.40/2	.40	.40/2	.41/2
No. 3 C.W.	.39/4	.36/4	.36/4	.35/4	.35/1	.35/2	.36/3
No. 4 C.W.	.37	.34	.34	.33	.32/5	.32/6	.33/7
Ergoty	.36	.33	.33	.32	.31/5	.31/6	.32/7
Rejected No. 2 C.W.	.37	.34	.34	.33	.32/5	.32/6	.33/7
FLAXSEED							
No. 1 C.W.	1.25/7	1.25/5	1.29/6	1.31/6	1.29/7	1.30/4	1.28/7
No. 2 C.W.	1.21/7	1.21/5	1.25/6	1.27/6	1.25/7	1.26/4	1.24/7
No. 3 C.W.	1.14/2	1.14	1.18	1.20	1.18	1.18/4	1.17/1
No. 4 C.W.	1.01/2	1.01	1.05	1.07	1.05	1.05/4	1.04/1
Ontario Winter Wheat-delivered in carlots				MONTREAL			
No. 1 White	.80	.80	.80	.79	.80	.80	.80
No. 2 White	.79	.79	.79	.79	.79	.79	.79
No. 3 White	.78	.78	.78	.78	.78	.78	.78
No. 1 Red	.80	.80	.80	.80	.80	.80	.80
No. 2 Red	.79	.79	.79	.79	.79	.79	.79
No. 3 Red	.78	.78	.78	.78	.78	.78	.78
No. 1 Mixed	.80	.80	.80	.80	.80	.80	.80
No. 2 Mixed	.79	.79	.79	.79	.79	.79	.79
No. 3 Mixed	.78	.78	.78	.78	.78	.78	.78

469004

STATISTICS CANADA LIBRARY
BIBLIOTHÈQUE STATISTIQUE CANADA



1010675225