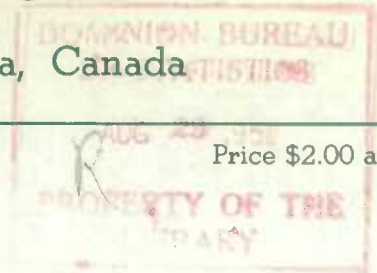


D.B.S. MEMORANDUM

Dominion Bureau of Statistics, Ottawa, Canada

Vol. 32, No. 2



Price \$2.00 a year

Historical File Copy

GRAIN STATISTICS WEEKLY

AUGUST 18, 1951

Prepared in Crops Section,
AGRICULTURE DIVISION

D.B.S. MEMORANDUM

Dominion Bureau of Statistics Ottawa, Canada

Reference

Historical File Copy

GRAND ...

...

Grain Statistics Weekly

Note: In those tables in which data have been rounded to the nearest thousand bushels, the sums of individual items may not agree exactly with the totals

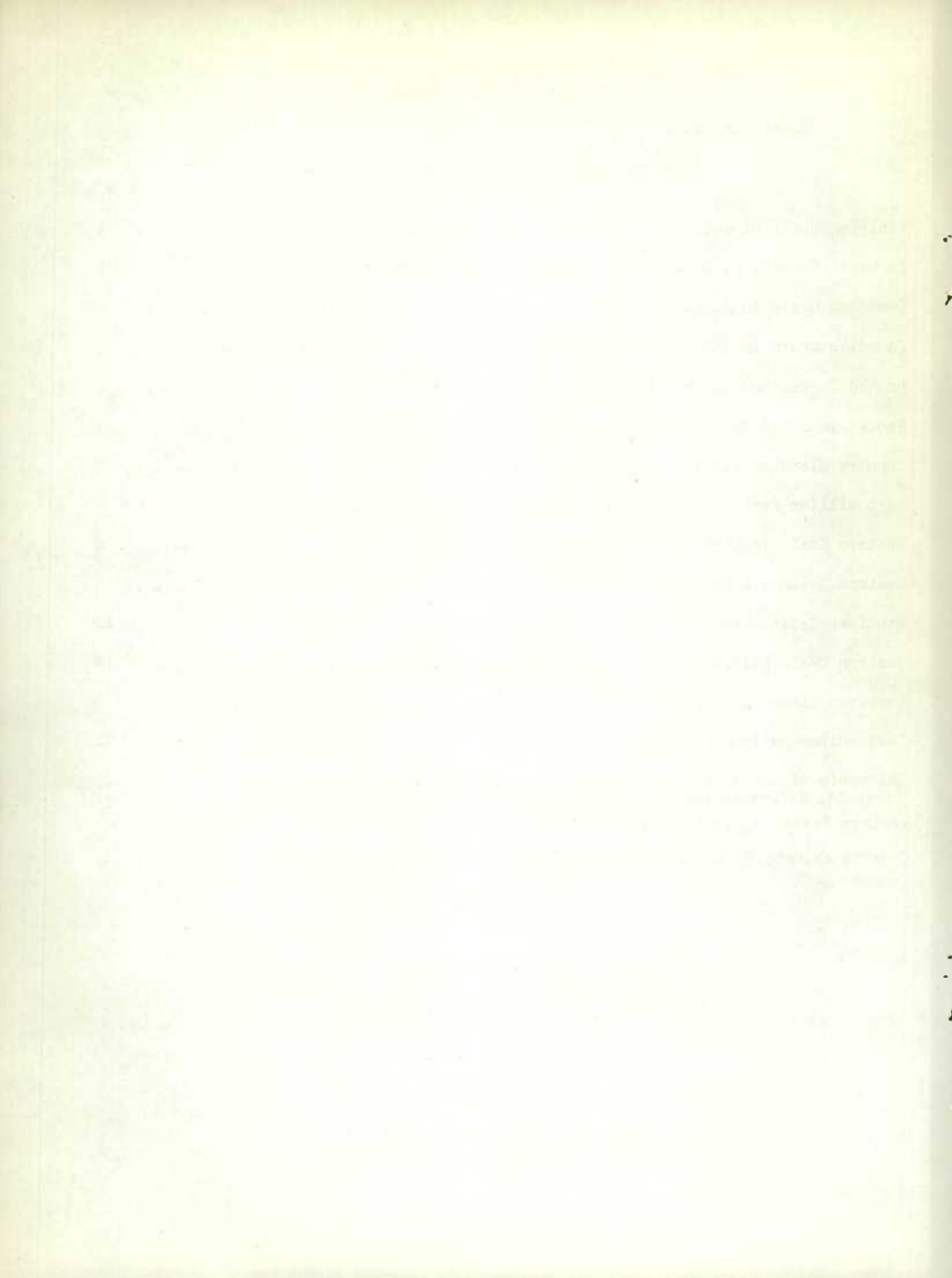
	Page
Visible Supply of Wheat	1
Farmers' Marketings of Wheat and Coarse Grains in the Prairie Provinces	1
Canadian Grain in Store	2
Canadian Grain in Store Eastern Elevators	4
United States and Other Foreign Grain in Store Eastern Elevators	4
Stocks in Store by Grades at Terminal and Eastern Elevators	5
Country Elevator Stocks, Receipts and Shipments	7
Fort William-Port Arthur Stocks, Receipts and Shipments	8
Western Grain Inspections	8
Western Grain Prices, Daily Quotations and Weekly Averages	9
Winnipeg Grain Futures Prices	12
Eastern Grain Prices	12
Overseas Clearances of Wheat by Ports	13
Lake Shipments from Fort William-Port Arthur	14
Shipments of Canadian Grain to the United States	15
Receipts, Shipments and Stocks of Canadian Corn and Western Sunflower Seed	15
Western Grain Inspections August, 1, 1950 to July, 1951	16
Customs Exports by Countries of Consignment, August 1, 1950 to July, 1951	20

Acknowledgment

Records for Western Division

supplied by

Board of Grain Commissioners for Canada



Visible Supply of Canadian Wheat at Close of Business, August 16, 1951
Compared with Previous Week and Year

Position	August 16,	August 9,	August 17,
	1951	1951	1950
	- thousand bushels -		
Vancouver-New Westminster	4,175	4,588	12,923
Country Elevators	67,658	74,378	19,104
Interior Private and Mill	4,105	4,155	4,126
Interior Terminals	9,543	9,679	5
In Transit Rail (Western Division)	9,989	9,789	3,003
Churchill	1,918	2,432	1,215
Fort William-Port Arthur	32,383	33,008	18,105
Eastern Lake Ports	10,236	11,196	15,342
Eastern Seaboard Ports	7,802	5,111	13,139
In Transit Rail (Eastern Division)	1,988	2,477	35
In Transit Lake	4,849	2,841	1,959
In Store Canada	154,647	159,656	88,956
In Store U.S.A.	1,671	2,231	190
Totals	156,317	161,886	89,146

Farmers' Marketings of Wheat and Coarse Grains in the Prairie Provinces

Grain	Week Ending			August 1,	August 1,
	August 16 1951	August 9 ^{1/} 1951	August 17, 1950	to Aug. 16/51	to Aug. 17/50
	- thousand bushels -				
Wheat (ex. Durum)	801	2,002	187	2,803	1,101
Durum wheat	28	17	1	45	30
All wheat	829	2,019	188	2,848	1,131
Oats	789	886	130	1,674	475
Barley	501	589	123	1,090	348
Rye	112	44	153	156	230
Flaxseed	14	13	2	27	9
Totals	2,244	3,551	596	5,795	2,194

^{1/} August 1-9, 1951.

Canadian Grain in Store, August 16, 1951

Position	Wheat	Oats	Barley	Rye	Flaxseed	Total
- thousand bushels -						
Country Elevators						
Manitoba	2,589	2,029	1,898	72	13	6,602
Saskatchewan	46,108	7,215	4,636	154	31	58,143
Alberta	18,961	2,853	3,448	189	14	25,465
Totals	67,658	12,098	9,982	415	58	90,211
Int. Pte. & Mill	4,105	725	2,198	10	88	7,125
Int. Terminals	9,543	17	28	30	1	9,619
Vancouver-New Westminster	4,175	142	503	2	-	4,822
Churchill	1,918	<u>1/</u>	-	-	-	1,918
Ft. William-Port Arthur	32,383	10,618	9,488	911	430	53,829
In Transit Rail	9,989	2,475	1,328	67	36	13,895
Totals, West. Div.	129,771	26,075	23,526	1,435	612	181,419
Eastern Lake Ports						
Collingwood	144	97	17	-	-	258
Midland	369	165	<u>1/</u>	-	-	534
Midland, Simcoe	60	477	666	70	-	1,273
Midland, Tiffin	111	32	35	-	-	178
Midland, Aberdeen	132	-	1	-	1	133
Owen Sound	619	515	28	-	-	1,162
Port McNicoll	801	208	40	-	-	1,049
Goderich, E. & T.	344	565	419	4	19	1,352
Sarnia	1,457	136	105	-	-	1,698
Walkerville	234	48	27	19	-	328
Pt. Colborne, N.H.B.	663	32	1,214	-	-	1,909
Pt. Colborne, M.L.	1,005	19	5	8	-	1,037
Humberstone	1,209	-	-	-	-	1,209
Toronto	2,337	24	57	7	<u>1/</u>	2,425
Kingston Elev. Co.	706	-	-	-	<u>1/</u>	707
Prescott	43	53	88	<u>1/</u>	-	184
Totals	10,236	2,372	2,702	107	20	15,437

1/ Less than 500 bushels.

Canadian Grain in Store, August 16, 1951 (concluded)

Position	Wheat	Oats	Barley	Rye	Flaxseed	Total
- thousand bushels -						
Eastern Seaboard Ports						
Montreal, N.H.B.	5,274	655	2,929	321	93	9,272
Montreal, Dom.El.Ltd.	196	15	52	27	-	290
Sorel	1,089	103	1,305	2	-	2,499
Three Rivers	563	7	<u>1/</u>	-	-	570
Quebec, N.H.B.	679	574	742	-	-	1,995
West Saint John	1	-	-	-	-	1
Saint John	-	8	3	-	-	11
Totals	7,802	1,362	5,032	351	93	14,639
In Transit Lake	4,849	1,408	1,794	-	86	8,138
In Transit Rail	1,988	781	602	-	-	3,371
Totals, East. Div.	24,875	5,923	10,130	458	198	41,585
In Store Canada	154,647	31,997	33,656	1,893	810	223,004
United States Ports						
Baltimore	64	-	-	15	-	79
Buffalo	570	394	-	345	-	1,309
Duluth	362	-	-	-	-	362
Totals	996	394	-	360	-	1,750
In Transit U.S.A.	674	-	-	40	-	715
In Store U.S.A.	1,671	394	-	400	-	2,465
In Store Canada) and U.S.A.)	156,317 <u>2/</u>	32,391	33,656	2,293	810	225,467

1/ Less than 500 bushels.

2/ Includes 7,379 thousand bushels of Durum wheat.

Canadian Eastern Grain in Store Eastern Elevators, August 16, 1951

Position	Wheat	Oats	Barley	Rye	Flax- seed	Corn	Buck- wheat	Peas	Soy- beans
	- thousand bushels -								
Goderich	-	-	103	-	-	-	-	-	-
Sarnia	357	-	-	-	-	5	-	-	-
Walkerville	77	-	-	15	-	60	-	-	-
Pt. Colborne 2/	588	12	-	3	-	12	2	-	-
Toronto	396	-	4	7	1/	70	3	-	4
Prescott	-	-	75	-	-	-	-	-	-
Montreal, N.H.B.	327	28	2	-	1/	12	7	-	-
Montreal, D.E.	-	-	-	-	-	-	1	-	-
Totals	1,746	40	184	24	1/	158	13	-	4
August 17, 1950	1,428	24	-	41	1/	7	7	1	3

1/ Less than 500 bushels. 2/ Includes Humberstone.

United States and Other Foreign Grain in Store Eastern Elevators, August 16, 1951

Position	Wheat	Oats	Barley	Flax- seed	Corn	Buck- wheat	Soy- beans	Argentine Oats
	- thousand bushels -							
Midland, Tiffin	1/	-	512	-	1/	-	-	-
Midland, Aberdeen	-	-	643	-	-	-	-	-
Owen Sound	-	-	568	-	-	-	-	-
Goderich, E.&T.	-	-	-	-	78	-	-	-
Sarnia	-	-	-	-	6	-	-	-
Walkerville	-	-	-	-	140	-	-	-
Toronto	-	-	-	86	34	-	-	-
Prescott	-	-	-	-	81	-	-	-
Montreal, N.H.B.	362	37	-	30	161	-	11	1
Sorel	19	-	-	-	1	-	-	-
Three Rivers	-	-	-	-	7	-	-	-
Totals	381	37	1,723	116	508	-	11	1
August 17, 1950	3,484	36	2,436	-	3,217	1/	-	1,019

1/ Less than 500 bushels.

Stocks in Store by Principal Grades, at Public and Semi-Public Terminals and
Eastern Elevators, August 16, 1951

Grain and Grade	Interior Terms.	Vancouver- New West. & Victoria	Ft. William- Pt. Arthur Elevators	Eastern Elevators			Mari- time Ports
				Bay & Upper Lake	Lower Lake & Upper St. Lawr.	Lower St. Lawrence	
- thousand bushels -							
Wheat							
1 Northern	-	500	198	6	3	19	-
2 Northern	<u>1/</u>	655	937	587	408	492	-
3 Northern	2	456	1,870	458	916	1,689	<u>1/</u>
4 Northern	61	301	2,491	651	879	1,035	-
5 Wheat	3,005	1,252	5,213	310	863	3,313	-
6 Wheat	3,783	264	12,607	1,606	1,605	291	-
Feed Wheat	748	73	3,143	73	-	146	-
2 C.W. Garnet	-	67	2	-	-	-	-
3 C.W. Garnet	-	110	9	-	-	1	-
Tough Contract	-	32	670	-	-	1	-
Others	1,944	465	2,389	90	196	29	-
Eastern	-	-	-	435	984	327	-
Totals	9,543	4,175	29,529	4,217	5,855	7,342	1
Durum							
1 C.W. Amber	-	-	10	-	-	-	-
2 C.W. Amber	-	-	182	<u>1/</u>	-	3	-
3 C.W. Amber	-	-	1,106	53	70	130	-
4 C.W. Amber	-	-	769	-	-	324	-
Tough Durum	-	-	225	-	-	-	-
Others	-	-	562	2	38	2	-
Totals	-	-	2,854	55	109	459	-
Totals, Wheat	9,543	4,175	32,383	4,272	5,964	7,801	1
Oats							
2 C.W.	<u>1/</u>	1	79	-	2	3	-
Ex. 3 C.W.	<u>1/</u>	-	290	317	1	79	-
3 C.W.	<u>1/</u>	-	1,231	657	10	323	-
Ex. 1 Feed	4	33	1,072	337	-	26	-
1 Feed	7	67	6,305	747	60	844	-
2 Feed	2	6	532	74	4	<u>1/</u>	-
3 Feed	<u>1/</u>	3	162	-	-	-	-
Mixed Feed	2	6	61	-	<u>1/</u>	14	-
Tough	1	-	423	3	-	19	8
Others	<u>1/</u>	27	463	108	39	18	-
Eastern	-	-	-	-	12	28	-
Totals	17	142	10,618	2,243	128	1,354	8

Stocks in Store by Principal Grades at Public and Semi-Public Terminals and
Eastern Elevators August 16, 1951 (concluded)

Grain and Grade	Interior Terms.	Vancouver-New West. & Victoria	Ft. William-Pt. Arthur Elevators	Eastern Elevators			
				Bay & Upper Lake	Lower Lake & Upper St. Lawr.	Lower St. Lawrence	Maritime Ports
- thousand bushels -							
Barley							
2 C.W. Six-Row	-	-	21	-	-	-	-
3 C.W. Six-Row	-	3	2,648	-	852	779	-
4 C.W. Six-Row	-	-	293	-	-	242	-
2 C.W. Two-Row	-	-	3	-	-	2	-
3 C.W. Two-Row	1/	2	17	-	-	28	-
2 C.W. Yellow	-	-	2	-	-	-	-
3 C.W. Yellow	-	-	2	-	-	-	-
1 Feed	5	362	2,738	630	359	3,363	-
2 Feed	14	112	1,707	582	64	378	-
3 Feed	3	11	488	1	-	131	-
Tough	1	8	838	6	-	71	3
Others	4	4	730	16	10	33	-
Eastern	-	-	-	103	79	2	-
Totals	28	503	9,488	1,338	1,364	5,029	3
Rye							
2 C.W.	1/	-	349	74	6	274	-
3 C.W.	-	2	355	-	-	76	-
Tough	-	-	24	-	-	-	-
Others	30	-	182	4	-	-	-
Eastern	-	-	-	15	9	-	-
Totals	30	2	911	93	15	351	-
Flaxseed							
1 C.W.	-	-	196	19	-	37	-
2 C.W.	-	-	98	-	1/	56	-
3 C.W.	-	-	80	-	-	-	-
Tough	-	-	11	-	-	-	-
Others	1	-	44	-	-	-	-
Eastern	-	-	-	-	1/	1/	-
Totals	1	-	430	19	1/	93	-
Grand Totals	9,619	4,822	53,829	7,966	7,471	14,627	12

1/ Less than 500 bushels.

Rapeseed 210 thousand bushels.

Country Elevator Stocks, Receipts and Shipments, August 16, 1951

Province	Wheat (except Durum)	Durum Wheat	Oats	Barley	Rye	Flax- seed
- thousand bushels -						
Stocks in Store						
Manitoba	2,222	367	2,029	1,898	72	13
Saskatchewan	43,598	2,510	7,216	4,636	154	31
Alberta	18,799	162	2,853	3,448	189	14
Totals	64,619	3,039	12,098	9,982	415	58
Totals, Week Ago	71,182	3,196	13,511	10,867	330	66
Year Ago	18,101	1,004	2,357	2,300	916	43
Receipts						
Manitoba	90	3	289	278	23	2
Saskatchewan	499	24	373	134	41	3
Alberta	202	1/	112	87	44	1
Totals	790	28	774	498	108	5
Totals, Aug. 1-9	1,991	17	881	589	41	13
Year Ago	181	1	130	123	152	1
Shipments						
Manitoba	251	16	439	329	2	9
Saskatchewan	5,491	159	1,328	645	6	3
Alberta	1,593	22	414	391	15	1/
Totals	7,334	196	2,182	1,364	23	13
Totals, Aug. 1-9	5,353	119	1,580	983	24	10
Year Ago	2,507	315	524	347	64	4

1/ Less than 500 bushels.

Farmers' Marketings, Including Interior Private and Mill and Platform Loadings in the Prairie Provinces, August 1-16, 1951

Province	Wheat (except Durum)	Durum Wheat	Oats	Barley	Rye	Flax- seed
- thousand bushels -						
Manitoba	148	5	404	350	30	10
Saskatchewan	1,112	34	708	312	62	14
Alberta	1,544	6	562	428	63	3
Totals	2,803	45	1,674	1,090	156	27

Fort William-Port Arthur - Stocks, Receipts and Shipments
(Licensed capacity of semi-public terminals and private elevators 84,452 thousand bu.)

Item	Wheat	Durum	Oats	Barley	Rye	Flax-
	(except Durum)	Wheat				seed
	- thousand bushels -					
Stocks in Store						
August 16, 1951	29,529	2,854	10,618	9,488	911	430
Receipts during week	4,565	332	2,424	1,443	16	15
Shipments during week						
Lake	5,204	244	2,673	1,631	55	81
Rail	65	6	462	465	-	-
Milled or Processed	2	-	60	30	-	-
Receipts August 1, to Aug. 16, 1951	10,198	741	5,302	3,344	47	40
Shipments August 1, to August 16, 1951						
Lake	10,357	383	4,848	4,010	94	113
Rail	118	25	905	1,020	-	7
Milled or Processed	7	-	113	67	-	-

Inspections of Western Grain, August 1 to August 14, 1951

Grain and Grade	Cars	Grain and Grade	Cars	Grain and Grade	Cars
Wheat		Oats		Barley	
1 Northern	241	1 C.W.	-	1 C.W. 6-Row	1
2 Northern	941	2 C.W.	1	2 C.W. 6-Row	10
3 Northern	1,107	Ex. 3 C.W.	38	3 C.W. 6-Row	100
4 Northern	1,086	3 C.W.	191	4 C.W. 6-Row	10
5 Wheat	1,359	Ex. 1 Feed	241	3 C.W. 2-Row	5
6 Wheat	1,172	1 Feed	741	1 Feed	425
Feed Wheat	225	2 Feed	96	2 Feed	340
Toughs	457	3 Feed	33	3 Feed	162
Damp	6	Mixed Feed	-	Tough	159
All others	472	Tough	146	Damp	2
		All others	94	All others	17
Total	7,066	Total	1,581	Total	1,231
Rye		Flaxseed		Corn	
1 C.W.	-	1 C.W.	5	1 C.W. Yellow	-
2 C.W.	10	2 C.W.	3	2 C.W. Yellow	-
3 C.W.	5	3 C.W.	4	3 C.W. Yellow	-
4 C.W.	2	4 C.W.	1	4 C.W. Yellow	1
Tough	1	Tough	5	Tough	-
All others	2	All others	1	All others	-
Total	20	Total	19	Total	1

Daily Fixed Western Grain Prices and Open Market Closing Cash Quotations,
Week Ending August 18, 1951

Grain and Grade	Aug. 13	Aug. 14	Aug. 15	Aug. 16	Aug. 17	Aug. 18	Weekly Average
-----------------	------------	------------	------------	------------	------------	------------	-------------------

- cents and eighths per bushel -

Canadian Wheat Board Cash Prices

Wheat 1/

Initial Payment to Producers 1951-52 Pool 5/

1 Hard	-	-	-	-	-	-	-
1 Northern	140	140	140	140	140	140	140
2 Northern	-	-	-	-	-	-	-
3 Northern	-	-	-	-	-	-	-
4 Northern	-	-	-	-	-	-	-
5 Wheat	-	-	-	-	-	-	-
6 Wheat	-	-	-	-	-	-	-
Feed Wheat	-	-	-	-	-	-	-

Domestic 4/ and Export (International Wheat Agreement)

1 Hard	189/7	190/1	190/1	190/2	190/2	190/2	190/1
1 Northern	189/7	190/1	190/1	190/2	190/2	190/2	190/1
2 Northern	187/7	188/1	188/1	188/2	188/2	188/2	188/1
3 Northern	185/7	186/1	186/1	186/2	186/2	186/2	186/1
4 Northern	181/7	182/1	182/1	182/2	182/2	182/2	182/1
5 Wheat	179/7	180/1	180/1	180/2	180/2	180/2	180/1
6 Wheat	153/7	154/1	154/1	154/2	154/2	154/2	154/1
Feed	146/7	147/1	147/1	147/2	147/2	147/2	147/1
1 C.W. Garnet	186/7	187/1	187/1	187/2	187/2	187/2	187/1
2 C.W. Garnet	185/7	186/1	186/1	186/2	186/2	186/2	186/1
3 C.W. Garnet	181/7	182/1	182/1	182/2	182/2	182/2	182/1
1 Alta. Red Winter	189/7	190/1	190/1	190/2	190/2	190/2	190/1
2 Alberta Winter	187/7	188/1	188/1	188/2	188/2	188/2	188/1
3 Alberta Winter	182/7	183/1	183/1	183/2	183/2	183/2	183/1
1 C.W. Amber Durum	189/7	190/1	190/1	190/2	190/2	190/2	190/1
2 C.W. Amber Durum	187/7	188/1	188/1	188/2	188/2	188/2	188/1
3 C.W. Amber Durum	185/7	186/1	186/1	186/2	186/2	186/2	186/1

Export - Class 11

1 Hard	235/7	236/1	236/1	236/2	236/2	236/2	236/1
1 Northern	235/7	236/1	236/1	236/2	236/2	236/2	236/1
2 Northern	233/7	234/1	234/1	234/2	234/2	234/2	234/1
3 Northern	231/7	232/1	232/1	232/2	232/2	232/2	232/1
4 Northern	227/7	228/1	228/1	228/2	228/2	228/2	228/1
5 Wheat	185/7	186/1	186/1	186/2	186/2	186/2	186/1
6 Wheat	159/7	160/1	160/1	160/2	160/2	160/2	160/1
Feed Wheat	152/7	153/1	153/1	153/2	153/2	153/2	153/1
1 C.W. Amber Durum	235/7	236/1	236/1	236/2	236/2	236/2	236/1
2 C.W. Amber Durum	233/7	234/1	234/1	234/2	234/2	234/2	234/1
3 C.W. Amber Durum	231/7	232/1	232/1	232/2	232/2	232/2	232/1

Daily Fixed Western Grain Prices and Open Market Closing Cash Quotations,
Week Ending August 18, 1951

Grain and Grade	Aug. 13	Aug. 14	Aug. 15	Aug. 16	Aug. 17	Aug. 18	Weekly Average
- cents and eighths per bushel -							
<u>Canadian Wheat Board Cash Prices (cont'd)</u>							
<u>Oats 2/</u>							
<u>Initial Payment to Producers 1951-52 Pool 5/</u>							
2 C.W.	65	65	65	65	65	65	65
Ex. 3 C.W.	-	-	-	-	-	-	-
3 C.W.	-	-	-	-	-	-	-
Ex. 1 Feed	-	-	-	-	-	-	-
1 Feed	-	-	-	-	-	-	-
2 Feed	-	-	-	-	-	-	-
3 Feed	-	-	-	-	-	-	-
<u>Domestic and Export 3/</u>							
2 C.W.	86	85	84/4	83	82	81	83/5
Ex. 3 C.W.	84/2	83/2	82/6	81/2	80/2	79/2	81/7
3 C.W.	83/4	82/4	82	80/4	79/4	78/4	81/1
Ex. 1 Feed	83/6	82/6	82/2	80/6	79/6	78/6	81/3
1 Feed	81/6	80/6	80/2	78/6	77/6	76/6	79/3
2 Feed	78/2	77/2	76/6	75/2	74/2	73/2	75/7
3 Feed	75/2	74/2	73/6	72/2	71/2	70/2	72/7
<u>Barley 2/</u>							
<u>Initial Payment to Producers 1951-52 Pool 5/</u>							
1 C.W. Six-Row	-	-	-	-	-	-	-
2 C.W. Six-Row	-	-	-	-	-	-	-
1 C.W. Two-Row	-	-	-	-	-	-	-
2 C.W. Two-Row	-	-	-	-	-	-	-
3 C.W. Six-Row	96	96	96	96	96	96	96
2 C.W. Yellow	-	-	-	-	-	-	-
3 C.W. Yellow	-	-	-	-	-	-	-
4 C.W. Six-Row	-	-	-	-	-	-	-
3 C.W. Two-Row	-	-	-	-	-	-	-
1 Feed	-	-	-	-	-	-	-
2 Feed	-	-	-	-	-	-	-
3 Feed	-	-	-	-	-	-	-
<u>Domestic and Export 3/</u>							
1 C.W. Six-Row	127/2	124/6	124	122	120/6	120	123/1
2 C.W. Six-Row	127/2	124/6	124	122	120/6	120	123/1
1 C.W. Two-Row	125/2	122/6	122	120	118/6	118	121/1
2 C.W. Two-Row	125/2	122/6	122	120	118/6	118	121/1
3 C.W. Six-Row	124/2	121/6	121	119	117/6	117	120/1
2 C.W. Yellow	124/2	121/6	121	119	117/6	117	120/1
3 C.W. Yellow	122/2	119/6	119	117	115/6	115	118/1
4 C.W. Six-Row	121/2	118/6	118	116	114/6	114	117/1
3 C.W. Two-Row	120/6	118/2	117/4	115/4	114/2	113/4	116/5
1 Feed	120/6	118/2	117/4	115/4	114/2	113/4	116/5
2 Feed	115/6	113/2	112/4	110/4	109/2	108/4	111/5
3 Feed	108/2	105/6	106	105	104/2	103/4	105/4

Daily Fixed Western Grain Prices and Open Market Closing Cash Quotations,
Week Ending August 18, 1951

Grain and Grade	Aug. 13	Aug. 14	Aug. 15	Aug. 16	Aug. 17	Aug. 18	Weekly Average
-----------------	------------	------------	------------	------------	------------	------------	-------------------

- cents and eighths per bushel -

Winnipeg Grain Exchange Cash Quotations 2/

Oats

Domestic and Export

2 C.W.	85/5	84/5	84/2	82/5	81/5	80/6	83/2
Ex. 3 C.W.	83/7	82/7	82/4	80/7	79/5	78/6	81/3
3 C.W.	83/1	82/1	81/6	80/1	78/7	78	80/5
Ex. 1 Feed	83/3	82/3	82	80/3	79/1	78/2	80/7
1 Feed	81/3	80/3	79/6	78/1	76/5	75/6	78/5
2 Feed	77/5	76/5	76/2	74/5	73/5	72/6	75/2
3 Feed	74/5	73/5	73/2	71/5	70/5	69/6	72/2

Barley

Domestic and Export

1 C.W. Six-Row	126/1	123/6	122/7	121	119/5	119	122
2 C.W. Six-Row	126/1	123/6	122/7	121	119/5	119	122
1 C.W. Two-Row	124/1	121/6	120/7	119	117/5	117	120
2 C.W. Two-Row	124/1	121/6	120/7	119	117/5	117	120
3 C.W. Six-Row	123/1	120/6	119/7	118	116/5	116	119
2 C.W. Yellow	123/1	120/6	119/7	118	116/5	116	119
3 C.W. Yellow	121/1	118/6	117/7	116	114/5	114	117
4 C.W. Six-Row	119/1	116/6	115/5	113/6	112/1	111/4	114/6
3 C.W. Two-Row	119/1	116/6	115/5	113/6	112/1	111/4	114/6
1 Feed	119/1	116/6	115/5	113/6	112/1	111/4	114/6
2 Feed	115/1	112/6	111/7	110	108/5	108	111
3 Feed	108/1	105/6	105/7	104/4	104/1	103/4	105/2

Rye

Domestic, Export and Producers' Prices

2 C.W.	181/1	175/7	177/3	173/4	170/1	168/3	174/3
3 C.W.	176/1	170/7	172/3	168/4	165/1	163/3	169/3
4 C.W.	167/1	161/7	163/3	159/4	156/1	154/3	160/3
Ergoty	162/1	156/7	158/3	154/4	151/1	149/3	155/3
Rejected 2 C.W.	164/1	158/7	160/3	156/4	153/1	151/3	157/3

Flaxseed

Domestic, Export and Producers' Prices

1 C.W.	414/4	403	404/6	403/4	403/2	403/2	405/3
2 C.W.	408/4	397	398/6	397/4	397/2	397/2	399/3
3 C.W.	353/4	342	343/6	342/4	342/2	342/2	344/3
4 C.W.	-	-	-	-	-	-	-

1/ Basis in store Fort William-Port Arthur or Vancouver.

2/ Basis in store Fort William-Port Arthur.

3/ For local sales and for spot sales subject to confirmation.

4/ Plus 6 cents carrying charge.

5/ Price spreads for remaining grades for 1951-52 season yet to be announced.

Winnipeg Grain Futures Prices

Grain and Month	Aug. 13	Aug. 14	Aug. 15	Aug. 16	Aug. 17	Aug. 18
- cents and eighths per bushel -						
Oats						
October	85/5	84/5	84/2	82/5	81/5	80/6
December	84/1	83/1	83/2	81/6	80/7	80
May	86/1	85/3	86	84/3	83/5	82/7
 Barley						
October	120/5	118/2	117/3	115/4	114/1	113/4
December	116/2	114/1	114	112	110/6	110/5
May	118/1	116/2	116/2	114/3	113/1-1/2	112/5
 Rye						
October	180/1	174/7	176/3	172/4	169/1	167/3
December	175/7	171/4	173	170/4	167/3	165/2
May	177	173/4	174/7	172/2	169/5	167/6

Daily Quotations and Weekly Average Prices of Ontario Wheat and Coarse Grains
Delivered in Carlots at Montreal and Toronto, Week Ending August 11, 1951

	Aug. 6	Aug. 7	Aug. 8	Aug. 9	Aug. 10	Aug. 11	Weekly Average
- cents and eighths per bushel -							
Montreal							
No. 1 White Wheat	<u>HOLIDAY</u>	220	220	220	220	220	220
No. 2 White Wheat		220	220	220	220	220	220
No. 3 White Wheat		217	217	217	217	217	217
 Toronto							
Oats, No. 2 White		80	78	78	78	75	77/6
Barley, good malting		144	144/4	145	145/6	147/4	145/3
Rye No. 2		180	181	181	181	181	180/7
Corn, Yellow 15% Moisture		200	200	200	200	200	200
Buckwheat Tough 3		135	135	135	135	135	135
Mixed Grain		86	86	86	86	86	86

Overseas Clearances of Wheat by Ports, Week Ending August 16, 1951, with Comparable Figures for the Same Week Last Year

Ports	Week Ending Aug. 16/51	Week Ending Aug. 17/50
	- thousand bushels -	
Three Rivers	292	-
Montreal	1,330	1,614
Churchill	915	1,310
Vancouver-New Westminster	1,836	392
Baltimore	4	-
Totals	4,377	3,315

Cumulative Overseas Clearances of Wheat by Ports, August 1-16, 1951, with Comparable Figures for the Same Period 1950-

Ports	1951-52	1950-51
	- thousand bushels -	
Quebec	9	597
Three Rivers	549	-
Sorel	364	403
Montreal	3,307	3,435
Churchill	1,044	2,265
Vancouver-New Westminster	2,471	911
Baltimore	4	-
Totals	7,747	7,610

Lake Shipments from Fort William-Port Arthur, August 10-16, 1951

Grain	Georgian Bay and Upper Lake Ports	Lower Lake & Upper St. Lawr. Ports	Lower St. Lawrence Ports	Buffalo	Other U.S.A. Ports	Overseas Destin- ation	Total
- thousand bushels -							
Wheat (ex. Dur.)	2,168	2,070	68	-	342	-	4,648
Durum Wheat	244	-	-	-	-	-	244
Oats	1,473	87	-	486	781	-	2,827
Barley	493	1,055	180	-	-	-	1,729
Rye	70	-	-	-	-	-	70
Flaxseed	-	82	-	-	-	-	82
Totals	4,448	3,295	248	486	1,122	-	9,600
Same Period 1950	638	1,663	157	185	605	-	3,248

Lake Shipments from Fort William-Port Arthur, from Opening of Navigation to August 16, 1951

Grain	Georgian Bay and Upper Lake Ports	Lower Lake & Upper St. Lawr. Ports	Lower St. Lawrence Ports	Buffalo	Other U.S.A. Ports	Overseas Destin- ation	Total
- thousand bushels -							
Wheat (ex. Dur.)	28,801	35,145	2,875	6,836	4,962	63	78,683
Durum Wheat	5,320	2,928	210	-	512	-	8,970
Oats	13,267	1,447	954	4,986	11,137	-	31,792
Barley	6,728	11,236	1,241	476	3,261	-	22,942
Rye	1,282	1,014	95	1,485	789	-	4,664
Flaxseed	-	802	-	-	-	-	802
Totals	55,399	52,572	5,375	13,783	20,661	63	147,853
Same Period 1950	34,655	49,016	5,239	6,722	8,876	217	104,725

Shipments of Canadian Grain to the United States Week Ending
August 16, 1951

	Pacific Coast Terminals	Western Elevators	Ft. William - Pt. Arthur	Eastern Elevators	Total
- thousand bushels -					
<u>Wheat</u>					
By Vessel	-	-	342	-	342
By Rail	10	-	3	54	67
<u>Oats</u>					
By Vessel	-	-	1,267	-	1,267
By Rail	35	6	59	226	327

Total Shipments Since August 1, 1951

Wheat	25	-	1,272	129	1,426
Oats	77	7	2,071	552	2,706
Barley	2	-	-	-	2

Canadian Corn and Western Sunflower Seed

Receipts, Shipments and Stocks week ending August 16, 1951

	Western Elevators	Eastern Elevators
- thousand bushels -		
<u>Canadian Western Corn</u>		
Receipts during week	2	-
Receipts Aug. 1 to date	2	-
Shipments during week	3	-
Stocks in Store	39	-
<u>Canadian Eastern Corn</u>		
Receipts during week	-	12
Receipts Aug. 1 to date	-	22
Shipments during week	-	87
Stocks in Store	-	158
<u>Canadian Western Sunflower Seed</u>		
- thousand pounds -		
Stocks in Store	27	-

Western Grain Inspected in Western Division

Grain and Grade	July 1951	Aug. 1950- July, 1951	Aug. 1949- July, 1950
Wheat			
1 Man. Hard	-	-	1
1 Man. Northern	768	8,885	31,743
2 Man. Northern	2,499	30,407	100,135
3 Man. Northern	2,921	28,607	20,299
4 Man. Northern	2,381	20,108	5,487
4 Special	-	5	17
5 Wheat	4,126	23,794	3,976
6 Wheat	3,449	18,664	780
Feed Wheat	757	3,762	58
Tough	1,910	30,753	3,980
Damp	28	6,243	117
Rejected	85	568	946
Smutty	36	277	286
Sample	15	88	134
Totals, Red Spring	18,975	172,161	167,959
C.W. Garnet			
1 C.W. Garnet	-	5	20
2 C.W. Garnet	12	350	1,040
3 C.W. Garnet	76	1,366	1,913
Tough C.W. Garnet	1	56	84
Damp C.W. Garnet	-	2	1
Rejected C.W. Garnet	1	15	14
Totals, C.W. Garnet	90	1,794	3,072
C.W. Amber Durum			
1 C.W. Amber Durum	4	24	239
2 C.W. Amber Durum	21	335	2,307
3 C.W. Amber Durum	308	2,670	3,622
4 C.W. Amber Durum	198	1,463	107
5 C.W. Amber Durum	55	362	2
6 C.W. Amber Durum	12	140	-
Tough C.W. Amber Durum	168	2,275	60
Damp C.W. Amber Durum	2	2,049	-
Rejected C.W. Amber Durum	12	67	90
Smutty C.W. Amber Durum	1	16	54
Sample C.W. Amber Durum	-	17	32
Totals, C.W. Amber Durum	781	9,418	6,513

Western Grain Inspected in Western Division

Grain and Grade	July 1951	Aug. 1950- July, 1951	Aug. 1949- July, 1950
Wheat (concluded)			
1 C.W. White Spring	-	25	304
2 C.W. White Spring	9	216	288
3 C.W. White Spring	2	29	50
4 C.W. White Spring	-	4	10
Tough C.W. White Spring	2	19	7
Damp C.W. White Spring	-	.6	1
Rejected C.W. White Spring	-	-	6
Smutty C.W. White Spring	-	-	1
Totals, C.W. White Spring	13	299	667
1 C.W. Mixed Wheat	5	62	119
2 C.W. Mixed Wheat	43	116	4
3 C.W. Mixed Wheat	-	10	43
4 C.W. Mixed Wheat	31	130	1
5 C.W. Mixed Wheat	2	31	36
6 C.W. Mixed Wheat	8	51	-
Tough C.W. Mixed Wheat	9	137	12
Damp C.W. Mixed Wheat	-	14	1
Rejected C.W. Mixed Wheat	-	10	13
Smutty C.W. Mixed Wheat	4	2	2
Totals, C.W. Mixed Wheat	102	563	231
1 A.R.W.	5	288	576
2 A.W.	11	304	314
3 A.W.	3	42	105
4 A.W.	-	5	13
Tough A.W.	-	19	27
Rejected A.W.	-	16	27
Smutty A.W.	-	34	50
Sample A.W.	-	2	1
Totals, Winter Wheat	19	710	1,113
Grand Totals, Cars	19,980	184,945	179,555
Net Bushels	33,029,937	303,616,809	302,472,966

The number of Cars and percentages of inspections grading No. 3 Northern or higher are shown below:

	<u>No. of Cars</u>	<u>% of Inspections</u>
July, 1951	6,188	31.0
August, 1950-July, 1951	67,899	36.7
August, 1949-July, 1950	152,178	84.8

Western Grain Inspected in Western Division

Grain and Grade	July 1951	Aug. 1950- July, 1951	Aug. 1949- July, 1950
Oats			
1 C.W.	-	1	-
2 C.W.	15	169	765
Ex. 3 C.W.	230	1,555	3,241
3 C.W.	737	5,364	9,323
Ex. 1 Feed	773	5,777	4,012
1 Feed	2,021	10,071	11,799
2 Feed	230	1,216	2,012
3 Feed	79	210	273
Mixed Feed	1	16	22
Tough	822	10,151	400
Damp	-	1,378	8
Rejected	66	123	50
Sample	121	160	13
Totals - Cars	5,095	36,191	31,918
Net Bushels	12,389,715	84,852,333	75,424,468
Barley			
1 C.W.)	-	-	3
2 C.W.)	12	693	3,246
3 C.W.) 6-Row	545	6,703	6,946
4 C.W.)	64	830	-
2 C.W.) 2-Row	1	37	146
3 C.W.)	11	320	-
2 C.W. Yellow	-	1	5
3 C.W. Yellow	1	19	27
1 Feed	908	7,084	6,193
2 Feed	737	4,948	6,839
3 Feed	371	2,639	2,016
Tough	913	10,276	1,172
Damp	37	4,361	83
Rejected	23	86	76
Sample	18	45	53
Totals - Cars	3,641	38,042	26,815
Net Bushels	6,863,139	70,740,240	50,603,391
Rye			
1 C.W.	-	3	11
2 C.W.	113	1,778	3,081
3 C.W.	166	1,424	2,153
4 C.W.	117	303	230
Ergoty	23	366	73
Tough	81	794	134
Damp	-	85	2
Rejected	6	22	17
Sample	1	5	5
Totals - Cars	507	4,780	5,706
Net Bushels	758,949	7,654,166	9,367,883

Western Grain Inspected in Western Division

Grain and Grade	July 1951	Aug. 1950- July, 1951	Aug. 1949- July, 1950
Flaxseed			
1 C.W.	37	571	1,075
2 C.W.	23	112	55
3 C.W.	25	109	16
4 C.W.	6	21	3
Tough	32	883	37
Damp	-	276	2
Sample	2	10	11
Flax and Broken Wheat	-	-	1
<hr/>			
Totals - Cars	125	1,982	1,200
Net Bushels	195,461	3,064,430	1,563,240
<hr/>			
Mixed Grain			
No. 1	4	38	124
No. 2	6	41	68
No. 3	12	68	199
No. 4	2	18	4
Tough	13	49	22
Damp	-	37	4
Rejected	2	7	6
Smutty	-	1	2
Sample	1	14	11
<hr/>			
Totals - Cars	40	273	440
Net Bushels	57,380	449,467	845,799
<hr/>			
Corn			
1 C.W. Yellow	-	1	15
2 C.W. Yellow	-	4	24
3 C.W. Yellow	-	5	14
4 C.W. Yellow	-	2	6
5 C.W. Yellow	-	6	5
Tough	-	1	12
Damp	-	-	1
Moist	-	-	66
Wet	-	-	68
Sample	-	23	3
<hr/>			
Totals - Cars	-	42	214
Net Bushels	-	65,100	331,700
<hr/>			
Buckwheat	Cars	16	5
Screenings	Cars	21	385
Peas	Cars	3	24
Sunflower Seed	Cars	-	1
Rapeseed	Cars	-	1
<hr/>			
Grand Totals	Cars	29,412	246,264

Customs Exports of Wheat and Wheat Flour by Countries of Consignment,
July, 1951 and August, 1950-July, 1951

Destination	Wheat		Wheat Flour	
	July	Aug.-July	July	Aug.-July
	- bushels -		- barrels -	
<u>Commonwealth Countries</u>				
United Kingdom	14,363,110	76,069,034	308,637	5,357,015
<u>Africa</u>				
British East Africa	-	-	-	638
Union of South Africa	1,742,719	7,899,088	-	-
<u>British West Africa</u>				
Gambia	-	-	-	617
Gold Coast	-	-	5,729	59,396
Nigeria	-	-	3,261	11,672
Sierra Leone	-	-	1,349	14,497
<u>Asia</u>				
British Malaya	-	-	11,820	144,212
Ceylon	-	-	-	57,144
Hong Kong	-	-	35,944	290,586
India	351,866	11,403,267	-	-
<u>Europe</u>				
Gibraltar	-	4	4,217	53,904
Malta	37,333	1,401,700	63,473	63,473
<u>North America</u>				
Bahamas	-	-	4,104	54,026
Barbados	-	1,083	5,338	95,407
Bermuda	-	133	2,745	26,111
British Honduras	-	-	153	15,149
Jamaica	2,202	24,384	54,331	355,719
Leeward and Windward Islands	-	17	21,024	200,673
Trinidad and Tobago	-	2,000	56,431	489,799
<u>South America</u>				
British Guiana	-	-	22,429	199,963
Totals; Commonwealth Countries	16,497,230	96,800,710	600,985	7,490,001
<u>Foreign Countries</u>				
<u>Africa</u>				
Azores and Madeira	-	-	1,800	9,156
Belgian Congo	-	3,674	4,790	53,305
Canary Islands	-	-	-	14,259
Egypt	-	-	-	19,436
French Africa	-	-	25	5,150
Liberia	-	-	519	3,004
Morocco	-	-	3,477	85,323
Portuguese Africa	-	-	2,201	42,140
Spanish Africa	-	-	-	5,612
Tripoli	528,157	625,223	-	-
<u>Asia</u>				
Arabia	-	65,560	11,369	32,023
China	-	-	562	13,123
Indonesia	-	-	6,275	118,947
Israel	85,138	1,855,629	4,330	63,353
Japan	1,303,802	10,569,933	10,354	144,554
Jordan	-	-	-	8,569
Philippine Islands	-	-	75,402	1,037,519
Siam	-	-	1,224	39,770
Syria	-	-	5,149	139,764
Turkey	-	367,125	-	-

Customs Exports of Wheat and Wheat Flour by Countries of Consignment,
July, 1951 and August, 1950-July, 1951

Destination	Wheat		Wheat Flour	
	July	Aug.-July	July	Aug.-July
	- bushels -		- barrels -	
Foreign Countries				
Europe				
Belgium	1,782,894	16,627,581	-	195
France	248,767	248,767	-	221
Germany	145,227	145,227	10,714	73,798
Greece	-	-	-	1,142
Iceland	-	1,466	-	30,904
Ireland	67,455	4,578,340	-	-
Italy	3,279,987	7,406,944	169,413	792,866
Netherlands	346,593	375,899	-	-
Norway	323,548	2,708,865	38,635	65,413
Portugal	251,978	251,978	-	13,394
Spain	-	1,004,115	-	-
Switzerland	232,780	7,138,151	-	357
Yugoslavia	-	-	357	14,060
North America				
Alaska	-	-	21	599
Costa Rica	-	93,333	17,126	110,870
Cuba	4,600	21,433	64,340	561,964
Dominican Republic	-	15,800	15,379	69,609
El Salvador	-	20,000	1,376	43,502
French West Indies	-	-	26	1,628
Guatemala	-	-	3,665	80,081
Haiti	-	-	5,126	75,454
Honduras	-	55,636	596	5,304
Mexico	-	2,210	-	-
Netherlands Antilles	-	-	3,945	46,980
Nicaragua	-	-	3,478	24,712
Panama	-	-	5,917	59,439
St. Pierre & Miquelon	-	-	389	4,377
United States	1,908,778	23,129,209	17,636	200,681
Virgin Islands	-	-	238	3,911
Oceania				
Guam	-	-	-	204
South America				
Bolivia	-	718,425	-	255
Brazil	-	731,766	-	-
Chile	727,658	2,874,319	-	-
Colombia	-	1,499,394	4,307	108,525
Ecuador	-	178,889	3,221	86,867
Peru	-	172,694	178	12,663
Surinam	-	-	4,140	41,183
Venezuela	6,666	26,895	91,535	656,975
Totals, Foreign Countries	11,244,028	83,514,480	589,235	5,023,140
<hr/>				
Totals, July, 1951	27,741,258	180,315,190	1,190,220	12,513,141
June, 1951	21,586,198		973,775	
July, 1950	14,016,281		712,356	
12 Mos. July, 1950	184,856,830		10,063,422	
12 Mos. July, 1951	180,315,190		12,513,141	

Customs Exports of Oats and Barley by Countries of Consignment
July, 1951 and August, 1950-July, 1951

Destination	Oats		Barley	
	July	Aug.-July	July	Aug.-July
	- bushels -		- bushels -	
<u>Commonwealth Countries</u>				
United Kingdom	-	3	88,386	88,386
<u>Asia</u>				
Hong Kong	-	6,469	-	1,666
<u>Europe</u>				
Gibraltar	-	-	-	5
<u>North America</u>				
Bahamas	1,491	15,780	-	-
Barbados	26,338	110,233	-	-
Bermuda	2,348	23,592	-	-
British Honduras	-	58	-	-
Jamaica	-	11,740	-	-
Leeward and Windward Islands	1,882	4,969	-	62
Trinidad and Tobago	5,882	36,378	-	-
<u>South America</u>				
British Guiana	3,092	36,827	-	-
Totals, Commonwealth Countries	41,033	246,049	88,386	90,119
<u>Foreign Countries</u>				
<u>Asia</u>				
Japan	-	-	96,623	1,197,599
<u>Europe</u>				
Belgium	543,280	2,189,694	1,083,925	6,645,404
Denmark	-	-	459,300	459,300
France	-	-	897,698	1,273,998
Iceland	-	4,851	-	4,582
Ireland	-	131,754	-	-
Netherlands	754,806	952,324	93,333	93,333
Norway	-	-	-	326,114
Switzerland	66,550	323,710	102,130	1,444,422
<u>North America</u>				
Alaska	-	14	-	-
Cuba	16,145	304,966	-	-
Dominican Republic	-	9,175	-	-
Panama	-	47,997	-	-
Puerto Rico	3,528	34,939	-	-
United States	7,146,550	33,623,947	910,779	10,666,028
<u>Oceania</u>				
Hawaii	-	-	2,081	2,081
<u>South America</u>				
Venezuela	10,182	191,333	521	1,191
Totals, Foreign Countries	8,541,041	37,814,704	3,646,390	22,114,052
Totals, July, 1951	8,582,074	38,060,753	3,734,776	22,204,171
June, 1951	4,718,463		3,351,862	
July, 1950	284,996		1,456,305	
12 Mos. July, 1950	22,078,951		17,795,290	
12 Mos. July, 1951	38,060,753		22,204,171	

Customs Exports of Rye and Flaxseed, by Countries of Consignment,
July, 1951 and August, 1950-July, 1951

Destination	Rye		Flaxseed	
	July	Aug.-July	July	Aug.-July
	- bushels -		- bushels -	
<u>Commonwealth Countries</u>				
United Kingdom	-	-	-	40,000
<u>Africa</u>				
Union of South Africa	-	-	-	7,462
<u>Asia</u>				
Hong Kong	-	-	-	100
<u>North America</u>				
Jamaica	-	-	-	34
Trinidad and Tobago	-	-	-	212
<hr/>				
Total, Commonwealth Countries	-	-	-	47,808
<hr/>				
<u>Foreign Countries</u>				
<u>Asia</u>				
Japan	-	-	-	923,330
<u>Europe</u>				
Belgium	-	1,492,093	169,021	2,466,776
Czechoslovakia	-	-	-	2,290
Finland	-	101,633	-	-
Germany	37,751	440,336	-	-
Ireland	-	-	-	93,262
Italy	-	-	-	252,095
Netherlands	437,600	437,600	-	-
Norway	-	255,855	-	-
Switzerland	-	-	-	310,663
<u>North America</u>				
Cuba	-	-	-	220
United States	1,033,213	6,099,677	-	12
<u>South America</u>				
Venezuela	-	-	9	26
<hr/>				
Totals, Foreign Countries	1,508,564	8,827,194	169,030	4,048,674
<hr/>				
Totals, July, 1950	1,508,564	8,827,194	169,030	4,096,482
June, 1951	2,151,693		190,464	
July, 1950	957,283		115,569	
12 Mos. July, 1950	10,881,564		2,907,711	
12 Mos. July, 1951	8,827,194		4,096,482	

Customs Exports of Corn, Buckwheat and Screenings by Countries of
 Consignment, July, 1951 and August, 1950-July, 1951

Destination	Corn		Buckwheat	
	July	Aug.-July	July	Aug.-July
	- bushels -		- bushels -	
<u>Commonwealth Countries</u>				
United Kingdom	-	49	-	-
<u>Foreign Countries</u>				
<u>Europe</u>				
Belgium	-	-	-	218,720
France	-	12	-	-
Italy	-	114	-	-
Netherlands	-	2,702	-	-
Norway	-	16	-	-
Sweden	-	12	-	-
<u>North America</u>				
Netherlands Antilles	-	18	-	-
St. Pierre & Miquelon	-	203	-	-
United States	-	43,402	2,968	47,669
<u>South America</u>				
Venezuela	-	3,928	-	-
<hr/>				
Totals, Foreign Countries	-	50,407	2,968	266,389
<hr/>				
Totals, July, 1951	-	50,456	2,968	266,389
June, 1951	9		1,649	
July, 1950	-		-	
12 Mos. July, 1950	53,067		9,374	
12 Mos. July, 1951	50,456		266,389	

	Screenings	
	July	Aug.-July
	- cwt. -	
<u>Commonwealth Countries</u>		
<u>Foreign Countries</u>		
Totals, July, 1951	-	-
June, 1951	-	-
July, 1950	-	-
12 Mos. July, 1950	2,059,153	
12 Mos. July, 1951	-	

Customs Exports of Bran, Shorts and Middlings, Oatmeal and Rolled Oats by Countries of Consignment, July, 1951 and August, 1950-July, 1951

Destination	Bran, Shorts and Middlings		Oatmeal and Rolled Oats	
	July	Aug.-July	July	Aug.-July
	- cwt. -		- cwt. -	
<u>Commonwealth Countries</u>				
United Kingdom	-	-	21,420	36,960
<u>Asia</u>				
British Malaya	-	-	-	11,407
Ceylon	-	-	-	519
Hong Kong	-	400	-	6,599
Pakistan	-	-	-	90
<u>North America</u>				
Bahamas	10	247	-	266
Barbados	50	14,305	-	-
Bermuda	90	7,764	-	-
British Honduras	-	-	-	15
Jamaica	740	4,665	-	35
Leeward and Windward Islands	90	432	63	215
Trinidad and Tobago	1,013	9,832	-	-
<u>South America</u>				
British Guiana	25	610	56	302
Totals, Commonwealth Countries	2,018	38,255	21,539	56,408
<u>Foreign Countries</u>				
Abyssinia	-	-	-	9
Belgian Congo	-	-	-	200
<u>Asia</u>				
Arabia	-	-	-	21
China	-	-	-	1,125
Indonesia	-	-	-	460
Japan	-	-	-	56
Philippine Islands	-	-	-	2,177
Siam	-	-	-	56
Syria	-	-	-	14
<u>Europe</u>				
Iceland	-	12,200	-	-
Portugal	-	-	-	30
Switzerland	-	-	1,324	4,854
<u>North America</u>				
Costa Rica	-	-	50	881
Cuba	-	800	-	-
Guatemala	-	-	-	2,852
Netherlands Antilles	-	-	-	5
Nicaragua	-	-	148	148
Panama	-	-	-	515
St. Pierre & Miquelon	-	2,244	6	125
United States	567,251	4,648,778	-	1,649
<u>Oceania</u>				
Hawaii	600	600	-	-
<u>South America</u>				
Bolivia	-	-	-	978
Chile	-	-	-	250
Colombia	-	-	1,000	8,719
Ecuador	-	-	-	300
Peru	-	-	-	935
Venezuela	100	3,150	1,311	29,335
Totals, Foreign Countries	567,951	4,667,772	3,839	55,694
Totals, July, 1951	569,969	4,706,027	25,378	112,102
June, 1951	577,235	-	20,172	-
July, 1950	216,216	-	12,108	-
12 Mos. July, 1950	1,107,875	-	231,645	-
12 Mos. June, 1951	4,706,027	-	112,102	-

STATISTICS CANADA LIBRARY
BIBLIOTHÈQUE STATISTIQUE CANADA



1010688306