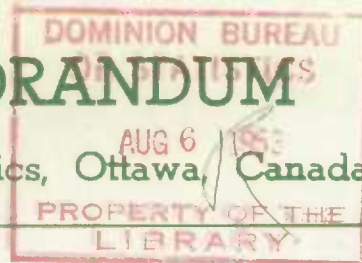


D.B.S. MEMORANDUM

Dominion Bureau of Statistics, Ottawa, Canada



Vol. 33, No. 51

Price \$2.00 a year

Historical File Copy

GRAIN STATISTICS WEEKLY

JULY 25, 1953

Prepared in Crops Section
AGRICULTURE DIVISION



EDMOND CLOUTIER, C.M.G., O.A., D.S.P.
QUEEN'S PRINTER AND CONTROLLER OF STATIONERY
OTTAWA, 1953

D.B.S. MEMORANDUM

Department of Agriculture, Ottawa, Canada

Grain Statistics Weekly

Note: In those tables in which data have been rounded to the nearest thousand bushels, the sums of individual items may not agree exactly with the totals

	Page
Visible Supply of Wheat	1
Farmers' Marketings of Wheat & Coarse Grains in the Prairie Provinces	1
Visible Supply of Canadian Grain	2
Canadian Eastern Grain in Store Eastern Elevators	4
United States & Foreign Grain in Store Eastern Elevators	4
Stocks in Store by Grades at Terminal & Eastern Elevators	5
Country Elevators Stocks, Receipts & Shipments	7
Fort William-Port Arthur Stocks, Receipts & Shipments	8
Western Grain Inspections	8
Western Grain Prices, Daily Quotations & Weekly Averages	9
Winnipeg Grain Futures, Closing Quotations	12
Ontario Grain Prices	12
Overseas Clearances of Wheat by Ports	13
Lake Shipments from the Head of the Lakes	14
Shipments of Canadian Grain to the United States	15
Receipts, Shipments & Stocks of Canadian Corn & Western Sunflower Seed	15
Western Grain Inspections, June, 1953 and August, 1952-June, 1953	16

Acknowledgment
Records for Western Division
supplied by
Board of Grain Commissioners for Canada

Visible Supply of Canadian Wheat at Close of Business, July 23, 1953
Compared with Previous Week and Year

Position	July 23,	July 16,	July 24,
	1953	1953	1952
	- thousand bushels -		
Country Elevators	115,489	109,602	95,019
Interior private and mill	5,704	5,712	4,671
Interior terminals	14,636	14,640	5,484
Vancouver-New Westminster	8,206	8,719	7,202
Victoria	24	24	-
Prince Rupert	356	452	6
Churchill	2,126	2,094	2,492
Fort William-Port Arthur	26,528	27,638	10,925
In transit rail (Western Division)	20,408	16,419	15,537
Bay, Lake and Upper St. Lawrence Ports	29,846	28,624	31,946
Lower St. Lawrence and Maritime Ports	15,141	12,549	4,942
In transit lake	4,631	6,504	4,865
In transit rail (Eastern Division)	3,591	3,921	2,922
In store Canada	246,685	236,897	186,111
In store U.S.A.	364	916	3,921
Totals	247,049	237,813	190,032

Farmers' Marketings of Wheat and Coarse Grains in the Prairie Provinces

Grain	Week Ending			Aug. 1/52-	Aug. 1/51-
	July 23/53	July 16/53	July 24/52	July 23/53	July 24/52
	- thousand bushels -				
Wheat (ex. Dur.)	18,381	12,784	7,668	476,309	428,339
Durum wheat	118	87	173	7,764	10,155
All wheat	18,499	12,871	7,840	484,073	438,494
Oats	3,496	2,619	3,231	99,062	123,418
Barley	5,715	4,454	2,794	149,894	122,376
Rye	404	389	184	15,149	11,116
Flaxseed	105	75	65	8,091	6,193
Totals	28,220	20,409	14,114	756,269	701,596

Visible Supply of Canadian Grain at Close of Business,
July 23, 1953

Position	Wheat	Oats	Barley	Rye	Flaxseed	Total
- thousand bushels -						
<u>Western Division</u>						
Country Elevators						
Manitoba	7,407	4,491	7,191	309	314	19,712
Saskatchewan	62,479	9,716	11,844	1,618	261	85,918
Alberta	45,602	8,004	17,798	1,087	220	72,712
Totals	115,489	22,211	36,834	3,013	795	178,341
Int. Pte. & Mill	5,704	715	2,123	26	14	8,582
Int. Terminals	14,636	46	208	-	1/	14,890
Vancouver-New Westminster	8,206	199	332	-	1/	8,737
Victoria	24	-	196	-	-	221
Prince Rupert	356	1	3	-	-	360
Churchill	2,126	4	-	-	-	2,131
Ft. William-Port Arthur	26,528	4,979	11,363	6,476	713	50,059
In Transit Rail	20,408	3,231	2,976	697	102	27,414
Totals, West. Div.	193,477	31,386	54,034	10,212	1,626	290,736
<u>Eastern Division</u>						
Bay, Lake & Upper St. Lawrence Ports						
Port McNicoll	2,306	1/	-	-	-	2,306
Midland	2,104	-	-	-	-	2,104
Midland, Simcoe	2,269	312	77	-	-	2,657
Midland, Tiffin	1,725	2	1/	-	-	1,727
Midland, Aberdeen	526	22	1/	-	-	547
Collingwood	1,412	21	7	-	-	1,441
Owen Sound	2,839	123	20	-	-	2,982
Goderich, E.&T.	1,975	712	97	91	78	2,952
Sarnia	4,667	128	44	-	-	4,839
Walkerville	817	9	-	24	-	850
Pt. Colborne, N.H.B.	2,418	104	448	-	-	2,969
Pt. Colborne, M.L.	1,168	53	45	32	-	1,298
Humberstone	1,782	-	-	-	-	1,782
Toronto	1,743	139	187	-	108	2,178
Kingston Elev. Co.	1,055	17	189	-	-	1,261
Prescott	1,041	217	399	1/	-	1,657
Totals	29,846	1,859	1,513	147	186	33,552

1/ Less than 500 bushels

Visible Supply of Canadian Grain at Close of Business,
July 23, 1953

Position	Wheat	Oats	Barley	Rye	Flaxseed	Total
- thousand bushels -						
Lower St. Lawrence & Maritime Ports						
Montreal, N.H.B.	6,138	887	2,431	1,300	429	11,185
Montreal, Dom. El. Ltd.	214	33	8	-	-	254
Sorel	1,798	4	5	-	-	1,807
Three Rivers	1,374	23	1	-	-	1,398
Quebec, N.H.B.	1,535	257	178	-	-	1,970
West Saint John	2,259	-	-	1/	-	2,259
Saint John	384	2	1	-	-	387
Halifax	1,439	-	-	-	-	1,439
Totals	15,141	1,205	2,623	1,300	429	20,698
In Transit Lake	4,631	630	3,690	106	81	9,137
In Transit Rail	3,591	163	17	-	-	3,771
Totals, East. Div.	53,208	3,858	7,844	1,553	697	67,159
Totals, Canada	246,685	35,244	61,878	11,765	2,323	357,895
United States						
United States						
Baltimore	20	-	-	-	-	20
Buffalo	264	-	-	380	-	644
Chicago	-	-	-	374	-	374
Duluth	-	-	266	38	-	304
Seaboard Unknown	80	-	-	-	-	80
Totals, U.S.A.	364	-	266	792	-	1,422
Totals, Canada & U.S.A.	247,049 2/	35,244	62,144	12,557	2,323	359,317

1/ Less than 500 bushels

2/ Includes 2,739,000 bushels of Durum wheat

Canadian Eastern Grain in Store Eastern Elevators, July 23, 1953

Position	Wheat	Oats	Barley	Rye	Flax- seed	Corn	Buck- wheat	Soy- beans
	- thousand bushels -							
Collingwood	-	-	-	-	-	25	-	-
Sarnia	138	-	-	-	-	202	-	<u>1/</u>
Walkerville	198	-	-	<u>1/</u>	-	55	-	-
Pt. Colborne <u>2/</u>	356	-	-	-	-	12	7	-
Toronto	238	-	-	-	6	408	1	41
Kingston	-	-	-	-	-	<u>1/</u>	-	-
Prescott	-	-	-	-	-	22	-	-
Montreal, N.H.B.	122	<u>1/</u>	<u>1/</u>	-	5	237	72	-
Montreal, D.E.	-	-	-	-	-	14	-	-
Three Rivers	-	-	-	-	-	5	-	-
West Saint John	6	-	-	-	-	-	-	-
Totals	1,059	<u>1/</u>	<u>1/</u>	<u>1/</u>	11	980	81	41
July 24, 1952	635	<u>1/</u>	<u>1/</u>	12	9	393	9	396

1/ Less than 500 bushels. 2/ Includes Humberstone.

United States and Foreign Grain in Store Eastern Elevators, July 23, 1953

Position	Oats	Barley	Corn	Argentine Oats
	- thousand bushels -			
Sarnia	-	-	28	-
Toronto	-	-	71	-
Prescott	-	-	231	-
Montreal, N.H.B.	<u>1/</u>	-	6	1
Quebec	-	-	1	-
Totals	<u>1/</u>	-	336	1
July 24, 1952	<u>1/</u>	72	533	1

1/ Less than 500 bushels

Stocks in Store by Principal Grades, at Public and Semi-Public Terminals
and Eastern Elevators, July 23, 1953

Grain and Grade	Interior Terms.	Pacific Seaboard	Pt. William- Pt. Arthur Elevators	Eastern Elevators			
				Bay & Upper Lake	Lower Lake & Upper St. Lawr.	Lower St. Lawr.	Maritime Ports
- thousand bushels -							
<u>Wheat (ex. Dur.)</u>							
1 Northern	234	724	1,179	1,731	7	991	-
2 Northern	4,445	1,965	7,437	8,044	5,539	7,212	2,823
3 Northern	2,059	1,670	2,872	5,259	768	713	1,204
4 Northern	879	2,643	1,086	1,377	365	517	-
5 Wheat	6,050	903	1,241	1,876	278	1,299	37
6 Wheat	359	31	890	1,290	161	62	10
Feed Wheat	1/	12	209	-	-	-	-
2 C.W. Garnet	-	70	49	-	-	-	-
3 C.W. Garnet	12	294	94	-	-	-	-
Tough Contract	437	43	7,405	172	842	1	-
Others	160	233	3,365	267	636	47	-
Eastern	-	-	-	337	594	122	6
Totals	14,636	8,586	25,827	20,353	9,191	10,964	4,080
<u>Durum</u>							
1 C.W. Amber	-	-	3	-	-	-	-
2 C.W. Amber	-	-	49	1/	3	1/	-
3 C.W. Amber	-	-	266	190	13	95	2
4 C.W. Amber	-	-	170	96	-	-	-
Tough	-	-	52	-	-	-	-
Others	-	-	161	-	-	-	-
Totals	-	-	701	286	16	95	2
Totals, Wheat	14,636	8,586	26,528	20,639	9,207	11,058	4,032
<u>Oats</u>							
2 C.W.	-	9	92	-	1	2	-
Ex. 3 C.W.	-	8	104	15	4	2	-
3 C.W.	1	6	636	293	32	23	-
Ex. 1 Feed	-	85	406	218	-	81	-
1/2 Feed	-	50	3,021	747	474	880	2
2 Feed	-	3	360	-	16	71	-
3 Feed	-	3	78	5	-	-	-
Mixed Feed	1/	12	145	49	4	126	-
Tough	-	1/	55	-	-	-	-
Others	44	23	62	3	-	18	-
Eastern	-	-	-	-	-	1/	-
Totals	46	200	4,958	1,329	530	1,203	2

Stocks in Store by Principal Grades at Public and Semi-Public Terminals
and Eastern Elevators, July 23, 1953 (concluded)

Grain and Grade	Interior Terms.	Pacific Seaboard	Ft. William- Pt. Arthur Elevators	Bay & Upper Lake	Eastern Elevators		Mari- time Ports
					Lower Lake & Upper St. Lawr.	Lower St. Lawr.	
- thousand bushels -							
<u>Barley</u>							
2 C.W. Six-Row	-	-	60	-	-	-	-
3 C.W. Six-Row	<u>1/</u>	4	4,584	-	48	169	-
4 C.W. Six-Row	1	-	120	-	-	-	-
2 C.W. Two-Row	-	28	52	-	-	-	-
3 C.W. Two-Row	-	153	313	<u>1/</u>	177	338	-
3 C.W. Yellow	-	-	2	-	-	-	-
1 Feed	<u>1/</u>	72	1,549	44	373	1,448	-
2 Feed	-	50	1,589	156	572	343	-
3 Feed	-	7	599	6	96	191	1
Tough	<u>1/</u>	33	926	-	-	95	-
Others	207	184	393	39	1	37	-
Eastern	-	-	-	-	-	<u>1/</u>	-
Totals	208	531	10,189	245	1,268	2,622	1
<u>Rye</u>							
1 C.W.	-	-	2	-	-	-	-
2 C.W.	-	-	3,230	95	32	358	<u>1/</u>
3 C.W.	-	-	2,579	20	-	868	-
Tough	-	-	140	-	-	-	-
Others	-	-	524	-	-	74	-
Eastern	-	-	-	<u>1/</u>	-	-	-
Totals	-	-	6,476	115	32	1,300	<u>1/</u>
<u>Flaxseed</u>							
1 C.W.	<u>1/</u>	<u>1/</u>	508	78	89	391	-
2 C.W.	-	<u>1/</u>	59	-	-	<u>1/</u>	-
3 C.W.	-	-	87	-	-	-	-
Tough	-	-	10	-	-	-	-
Others	<u>1/</u>	-	50	-	13	33	-
Eastern	-	-	-	-	6	5	-
Totals	<u>1/</u>	<u>1/</u>	713	78	108	429	-
Totals, Stocks	14,890	9,318	48,864	22,406	11,146	16,613	4,035

1/ Less than 500 bushels

Country Elevator Stocks, Receipts and Shipments, Week Ending July 23, 1953

Province	Wheat (ex.Dur.)	Durum Wheat	Oats	Barley	Rye	Flax- seed
- thousand bushels -						
<u>Stocks in Store</u>						
Manitoba	7,262	145	4,491	7,191	309	314
Saskatchewan	61,633	846	9,716	11,844	1,618	261
Alberta	45,463	139	8,004	17,796	1,087	220
Totals	114,359	1,130	22,211	36,834	3,013	795
Totals - Week Ago	108,490	1,112	20,783	33,502	2,944	769
Year Ago	92,865	2,154	20,631	23,758	1,800	503
<u>Receipts</u>						
Manitoba	1,695	10	914	1,491	28	37
Saskatchewan	10,775	106	1,400	1,979	268	44
Alberta	5,723	2	1,144	2,232	106	16
✓ Totals	18,194	118	3,458	5,702	402	97
Totals - Week Ago	12,472	87	2,608	4,441	388	73
Year Ago	7,595	172	3,191	2,775	181	61
<u>Shipments</u>						
Manitoba	869	20	373	564	20	20
Saskatchewan	8,166	66	1,146	1,211	270	43
Alberta	3,329	14	634	591	42	7
✓ Totals	12,363	100	2,154	2,366	332	69
Totals - Week Ago	10,828	126	2,074	2,049	350	65
Year Ago	10,392	189	3,746	3,413	277	96

Farmers' Marketings, Including Interior Private and Mill and Platform Loadings in the Prairie Provinces, August 1, 1952-July 23, 1953

Province	Wheat (ex.Dur.)	Durum Wheat	Oats	Barley	Rye	Flax- seed
- thousand bushels -						
Manitoba	40,820	1,686	19,373	39,643	940	3,482
Saskatchewan	306,602	5,634	46,523	54,168	9,799	2,783
Alberta	128,886	444	33,166	56,083	4,410	1,827
Totals	476,309	7,764	99,062	149,894	15,149	8,091

Fort William-Port Arthur - Stocks, Receipts and Shipments
(Licensed capacity of semi-public & private terminal elevators, 90,384,000 bushels)

Item	Wheat	Durum	Oats	Barley	Rye	Flax-
	(ex.Dur.)	Wheat				seed
	- thousand bushels -					
Stocks in store July 23, 1953	25,827	701	4,979	11,363	6,476	713
Receipts during week	4,958	143	1,461	2,401	258	49
Shipments during week						
Lake	6,121	50	1,905	3,125	126	-
Rail	18	10	110	29	-	-
Milled and Processed	-	-	24	26	1	-
Receipts Aug. 1/52-July 23/53	276,785	8,940	90,442	119,458	14,056	7,173
Shipments Aug. 1/52-July 23/53						
Lake	240,486	5,969	77,595	104,986	10,380	5,791
Rail	23,416	3,147	15,989	9,937	54	1,532
Milled and Processed	79	5	1,641	1,500	29	1/

1/ Less than 500 bushels

Inspections of Western Grain August 1, 1952-July 21, 1953

Grain and Grade	Cars	Grain and Grade	Cars	Grain and Grade	Cars
<u>Wheat</u>		<u>Oats</u>		<u>Barley</u>	
1 Man. Hard	49	1 C.W.	11	1 C.W. Six-Row	2
1 Northern	18,845	2 C.W.	177	2 C.W. Six-Row	1,805
2 Northern	82,506	Ex. 3 C.W.	729	3 C.W. Six-Row	18,924
3 Northern	46,100	3 C.W.	3,822	4 C.W. Six-Row	2,393
4 Northern	25,591	Ex. 1 Feed	6,824	1 C.W. Two-Row	2
5 Wheat	27,631	1 Feed	21,071	2 C.W. Two-Row	297
6 Wheat	7,587	2 Feed	3,042	3 C.W. Two-Row	1,644
Feed Wheat	1,208	3 Feed	694	2 & 3 C.W. Yellow	55
Toughs 1/	44,909	Mixed Feed	44	1 Feed	18,753
Damps 1/	370	Tough	1,846	2 Feed	13,362
Rejected 1/	2,650	Damp	12	3 Feed	3,152
All others	7,238	Rejected	340	Tough	7,473
		All others	424	Damp	183
				Rejected	241
				All others	199
Total	<u>264,684</u>	Total	<u>39,036</u>	Total	<u>68,485</u>
<u>Rye</u>		<u>Flaxseed</u>		<u>Corn</u>	
1 C.W.	39	1 C.W.	3,927	1 C.W. Yellow	6
2 C.W.	2,282	2 C.W.	736	2 C.W. Yellow	25
3 C.W.	3,519	3 C.W.	244	3 C.W. Yellow	32
4 C.W.	402	4 C.W.	38	4 C.W. Yellow	16
Tough	800	Tough	88	5 C.W. Yellow	4
Damp	15	Damp	2	Tough	16
Rejected	26	Rejected	2	Damp	1
All others	813	All others	43	All others	5
Total	<u>7,896</u>	Total	<u>5,080</u>	Total	<u>105</u>

1/ All varieties and grades

Daily Fixed Western Grain Prices and Open Market Closing Cash Quotations,
Week Ending July 24, 1953

Grain and Grade	July 20	July 21	July 22	July 23	July 24	Weekly Average
- cents and eighths per bushel -						
<u>Canadian Wheat Board Cash Prices</u>						
<u>Wheat 1/</u>						
<u>Initial Payment to Producers 1952-53 Pool (see page 9 of the May 16 issue of this 1952-53 I.W.A. 2/ publication)</u>						
1 Northern	178/3	178/3	178/2	178/3	178/4	178/3
2 Northern	176/3	176/3	176/2	176/3	176/4	176/3
3 Northern	174/3	174/3	174/2	174/3	174/4	174/3
4 Northern	170/3	170/3	170/2	170/3	170/4	170/3
5 Wheat	169	169	169	169	169	169
6 Wheat	164	164	164	164	164	164
Feed Wheat	159	159	159	159	159	159
1 C.W. Garnet	176/3	176/3	176/2	176/3	176/4	176/3
1 C.W. Amber Durum	178/3	178/3	178/2	178/3	178/4	178/3
1 Alberta Red Winter	178/3	178/3	178/2	178/3	178/4	178/3
<u>Domestic</u>						
1 Hard	203/1	203/1	203	203/1	203/3	203/1
1 Northern	203/1	203/1	203	203/1	203/3	203/1
2 Northern	201/1	201/1	201	201/1	201/3	201/1
3 Northern	199/1	199/1	199	199/1	199/3	199/1
4 Northern	195/1	195/1	195	195/1	195/3	195/1
5 Wheat	175	175	175	175	175	175
6 Wheat	170	170	170	170	170	170
Feed Wheat	165	165	165	165	165	165
1 C.W. Garnet	201/1	201/1	201	201/1	201/3	201/1
2 C.W. Garnet	200/1	200/1	200	200/1	200/3	200/1
3 C.W. Garnet	197/1	197/1	197	197/1	197/3	197/1
1 Alberta Red Winter	203/1	203/1	203	203/1	203/3	203/1
2 Alberta Winter	201/1	201/1	201	201/1	201/3	201/1
3 Alberta Winter	199/1	199/1	199	199/1	199/3	199/1
1 C.W. Amber Durum	203/1	203/1	203	203/1	203/3	203/1
2 C.W. Amber Durum	201/1	201/1	201	201/1	201/3	201/1
3 C.W. Amber Durum	200/1	200/1	200	200/1	200/3	200/1
<u>Class 2 (for export to non-I.W.A. countries)</u>						
1 Hard	207/1	208/1	208	207/1	207/3	207/4
1 Northern	207/1	208/1	208	207/1	207/3	207/4
2 Northern	205/1	206/1	206	205/1	205/3	205/4
3 Northern	203/1	204/1	204	203/1	203/3	203/4
4 Northern	199/1	200/1	200	199/1	199/3	199/4
5 Wheat	175	175	175	175	175	175
6 Wheat	170	170	170	170	170	170
Feed Wheat	165	165	165	165	165	165
1 C.W. Amber Durum	267/1	268/1	268	267/1	267/3	267/4
2 C.W. Amber Durum	264/1	265/1	265	264/1	264/3	264/4
3 C.W. Amber Durum	263/1	264/1	264	263/1	263/3	263/4

Daily Fixed Western Grain Prices and Open Market Closing Cash Quotations,
Week Ending July 24, 1953

Grain and Grade	July 20	July 21	July 22	July 23	July 24	Weekly Average
-----------------	---------	---------	---------	---------	---------	----------------

- cents and eighths per bushel -

Canadian Wheat Board Cash Prices (cont'd)

Oats 3/

Initial Payment to Producers 1952-53 Pool

2 C.W.	65	65	65	65	65	65
Ex. 3 C.W.	62	62	62	62	62	62
3 C.W.	62	62	62	62	62	62
Ex. 1 Feed	62	62	62	62	62	62
1 Feed	60	60	60	60	60	60
2 Feed	53	53	53	53	53	53
3 Feed	48	48	48	48	48	48

Domestic and Export 4/

2 C.W.	71/2	74	74	74	75	73/5
Ex. 3 C.W.	69/6	73	73	73	74	72/4
3 C.W.	69	72/2	72/2	72/2	73/2	71/6
Ex. 1 Feed	69/4	72/6	72/6	72/6	73/6	72/2
1 Feed	66/4	69	69	69	70	68/6
2 Feed	64/4	67/2	67/2	67/2	68/2	66/7
3 Feed	62/2	64/6	64/6	64/6	65/6	64/4

Barley 3/

Initial Payment to Producers 1952-53 Pool

1 C.W. Six-Row	113	113	113	113	113	113
2 C.W. Six-Row	113	113	113	113	113	113
1 C.W. Two-Row	106	106	106	106	106	106
2 C.W. Two-Row	106	106	106	106	106	106
3 C.W. Six-Row	111	111	111	111	111	111
2 C.W. Yellow	105	105	105	105	105	105
3 C.W. Yellow	103	103	103	103	103	103
4 C.W. Six-Row	105	105	105	105	105	105
3 C.W. Two-Row	103	103	103	103	103	103
1 Feed	102	102	102	102	102	102
2 Feed	95	95	95	95	95	95
3 Feed	90	90	90	90	90	90

Domestic and Export 4/

1 C.W. Six-Row	121	121/6	123/2	124/4	124/4	123
2 C.W. Six-Row	121	121/6	123/2	124/4	124/4	123
1 C.W. Two-Row	124	124/6	126/2	127/4	127/4	126
2 C.W. Two-Row	124	124/6	126/2	127/4	127/4	126
3 C.W. Six-Row	117/4	118/2	121/2	122/4	122/4	120/3
2 C.W. Yellow	116	116/6	118/2	119/4	119/4	118
3 C.W. Yellow	116	116/6	118/2	119/4	119/4	118
4 C.W. Six-Row	113	113/2	114/6	116	116	114/5
3 C.W. Two-Row	122	122/6	124/2	125/4	125/4	124
1 Feed	113	113/2	114/6	116	116	114/5
2 Feed	109	110/2	112/2	113/4	113/4	111/6
3 Feed	104/4	105/6	107/2	108/4	108/4	106/7

Daily Fixed Western Grain Prices and Open Market Closing Cash Quotations,
Week Ending July 24, 1953

Grain and Grade	July 20	July 21	July 22	July 23	July 24	Weekly Average
-----------------	---------	---------	---------	---------	---------	----------------

- cents and eighths per bushel -

Winnipeg Grain Exchange Cash Quotations 3/

Oats

Domestic and Export

2 C.W.	71/2	74	73/7	73/7	74/7	73/5
Ex. 3 C.W.	69/6	72/6	72/5	72/5	73/5	72/2
3 C.W.	69	72	71/7	71/7	72/7	71/4
Ex. 1 Feed	69/4	72/4	72/3	72/3	73/3	72
1 Feed	66/2	69	68/7	68/7	69/7	68/5
2 Feed	64/2	67	66/7	66/7	67/7	66/5
3 Feed	61/6	64/4	64/3	64/3	65/3	64/1

Barley

Domestic and Export

1 C.W. Six-Row	119	119/6	122/1	123/4	123/3	121/4
2 C.W. Six-Row	119	119/6	122/1	123/4	123/3	121/4
1 C.W. Two-Row	122	122/6	124/1	125/4	125/3	124
2 C.W. Two-Row	122	122/6	124/1	125/4	125/3	124
3 C.W. Six-Row	116/4	117/2	119/5	121	120/3	119
2 C.W. Yellow	116	116/6	118/1	119/4	119/3	118
3 C.W. Yellow	114	114/6	116/1	117/4	117/3	116
4 C.W. Six-Row	112/6	113	114/3	115/6	115/5	114/2
3 C.W. Two-Row	121	121/6	122/1	123/4	123/3	122/3
1 Feed	112/6	113	114/3	115/6	115/5	114/2
2 Feed	109	110	112/1	113/4	113/3	111/5
3 Feed	104/2	105/4	107/1	108/4	108/3	106/6

Rye

Domestic, Export and Producers' Prices

2 C.W.	121	119/3	118/7	117/6	115	118/3
3 C.W.	116/2	114/5	114/1	113/2	110/4	113/6
4 C.W.	106	104/3	103/7	102/6	98	103
Ergoty	105	103/3	102/7	101/6	97	102
Rejected 2 C.W.	106	104/3	103/7	102/6	100	103/3

Flaxseed

Domestic, Export and Producers' Prices

1 C.W.	289/6	290/4	292	295/4	295/4	292/5
2 C.W.	285	285/6	287/2	290/6	290/6	287/7
3 C.W.	276/6	277/4	279	282/4	282/4	279/5

- 1/ Basis in store Fort William-Port Arthur or Vancouver
 2/ Plus 6 cents carrying charge
 3/ Basis in store Fort William-Port Arthur
 4/ For local sales and for spot sales subject to confirmation

Winnipeg Grain Futures, Closing Quotations

Grain and Month	July 20	July 21	July 22	July 23	July 24
- cents and eighths per bushel -					
<u>Oats</u>					
July	71/2	74	73/7	73/7	74/7
October	70/3	71/5-1/6	71/7	71/6-1/7	71/7
December	69	69/6	69/6	69/4	69/5
May	70/3N	71/3	71/3	71/1	70/7
<u>Barley</u>					
July	116	116/6	118/1	119/4	119/3
October	115/1	115/3	115/5	115/5	115/4
December	111/5	111/4	111/4	111/1	110/6
May	111/4N	111/7	112	111	110/6
<u>Rye</u>					
July	121	119/3	118/7	117/6	115
October	124-124/1	122/4	122-122/1	120/7	117/7-118
December	125/6-126	124/2	123/7	122/5	119/4
May	131	129/6	129/3	128	124/4
<u>Flaxseed</u>					
July	289/6	290/4	292	295/4	295/4
October	291/2	292	292/2	293/4	294/4
December	287/4	288	287/4	287/4	286/4
May	292	292	291/4	290	289

Daily Quotations and Weekly Average Prices of Ontario Grain

Grain and Grade	July 20	July 21	July 22	July 23	July 24	Weekly Average
- cents and eighths per bushel -						
Wheat, Ontario Winter						
No. 2 and better	160	160	160	160	160	160
No. 3	157	157	157	157	157	157
Oats, No. 2 White	65	65	65	65	65	65
Barley, Ontario, good malting	120	120	120	120	120	120
Rye, No. 2 Ontario	115	115	115	115	115	115
Corn, Ont. Yellow No. 2, 15.5% moisture (natural or kiln dried)	152	152	152	152	152	152
Buckwheat, Tough No. 3, 18% moisture	96	96	96	96	96	96
Mixed grain	62	62	62	62	62	62
Flaxseed, No. 1	279	280	282	285	285	282/2
Soybeans, No. 2 and better	257	257	257	255	255	256/2

BASIS OF QUOTATIONS: Buying prices, carlots; corn and soybeans - f.o.b. Chatham; flaxseed - delivered in Toronto; all others - f.o.b. Ontario shipping points

Overseas Clearances of Wheat by Ports, Week Ending July 23, 1953 with
Comparable Figures for the Same Week Last Year

Ports	Week Ending July 23, 1953	Week Ending July 24, 1952
- thousand bushels -		
<u>Pacific Seaboard</u>		
Vancouver-New Westminster	3,099	2,233
Prince Rupert	343	-
<u>St. Lawrence</u>		
Montreal	1,651	3,633
Sorel	341	445
Three Rivers	713	1,057
Quebec	1,173	965
<u>U.S.A. Atlantic</u>	538	-
Totals	7,858	8,333

Cumulative Overseas Clearances of Wheat, by Ports, August 1, 1952-
July 23, 1953 with Comparable Figures for the Same Period 1951-52

Ports	1952-53	1951-52
- thousand bushels -		
<u>Pacific Seaboard</u>		
Vancouver-New Westminster	95,231	97,980
Victoria	853	-
Prince Rupert	3,616	2,625
<u>St. Lawrence</u>		
Montreal	85,897	84,947
Sorel	15,660	11,072
Three Rivers	24,349	14,993
Quebec	26,161	16,399
<u>Lakehead Direct</u>	207	116
<u>Churchill</u>	8,318	7,278
<u>Atlantic Seaboard</u>		
Saint John	2,714	1,052
West Saint John	16,653	10,092
Halifax	13,245	7,806
<u>U.S.A. Atlantic</u>	3,749	3,985
Totals	296,654	258,345

Lake Shipments from Fort William-Port Arthur, July 17-23, 1953

Grain	Georgian Bay & Upper Lake Ports	Lower Lake & Upper St. Lawr. Ports	Lower St. Lawrence Ports	Buffalo	Other U.S.A. Ports	Over- seas Direct	Total
- thousand bushels -							
Wheat (ex. Dur.)	2,215	4,752	78	-	-	-	7,045
Durum wheat	42	-	-	-	-	-	42
Oats	977	396	81	716	-	-	2,170
Barley	339	2,249	412	-	281	146	3,427
Rye	-	58	-	-	68	-	126
Totals	3,574	7,454	572	716	349	146	12,811

Lake Shipments from Fort William-Port Arthur, from Opening of
Navigation to July 23, 1953

Grain	Georgian Bay & Upper Lake Ports	Lower Lake & Upper St. Lawr. Ports	Lower St. Lawrence Ports	Buffalo	Other U.S.A. Ports	Over- seas Direct	Total
- thousand bushels -							
Wheat (ex. Dur.)	71,820	48,965	2,424	3,456	1,322	151	128,398 ^{1/}
Durum wheat	836	264	-	336	372	-	1,809
Oats	10,849	5,682	2,812	15,504	1,803	-	36,650
Barley	1,697	36,876	4,703	344	8,967	212	52,797
Rye	149	2,128	362	85	3,063	-	5,787
Flaxseed	278	1,842	287	-	-	-	2,408
Totals	85,629	95,757	10,587	19,726	15,528	363	227,849^{1/}
Same Period 1952	83,704	71,438	10,218	33,477	21,514	116	220,467

^{1/} Includes 259,524 bushels wrecked

Shipments of Canadian Grain to the United States,
Week Ending July 23, 1953

	Pacific Coast Terminal	Western Elevators	Ft. William- Pt. Arthur	Eastern Elevators	Total
	- thousand bushels -				
<u>Wheat</u>					
By Vessel	-	-	-	-	-
By Rail	1	-	-	2	3
<u>Oats</u>					
By Vessel	-	-	716	-	716
By Rail	48	53	21	373	495
<u>Barley</u>					
By Vessel	-	-	281	-	281
By Rail	-	-	-	-	-
<u>Rye</u>					
By Vessel	-	-	68	-	68
By Rail	-	-	-	-	-

Total Shipments Since August 1, 1952

Wheat	766	226	21,595	4,205	26,791
Oats	1,704	1,614	41,953	9,714	54,984
Barley	-	279	23,513	345	24,136
Rye	-	-	6,269	-	2,269

Canadian Corn and Western Sunflower Seed
Receipts, Shipments and Stocks Week Ending July 23, 1953

	Western Elevators	Eastern Elevators
	- thousand bushels -	
<u>Canadian Western Corn</u>		
Receipts Aug. 1, 1952 to date	75	-
Shipments during week	<u>1/</u>	-
Stocks in store	30	-
<u>Canadian Eastern Corn</u>		
Receipts during week	-	121
Receipts Aug. 1, 1952 to date	-	5,846
Shipments during week	-	138
Stocks in store	-	980
<u>Canadian Western Sunflower Seed</u>	- thousand pounds -	
Receipts Aug. 1, 1952 to date	1,877	-

1/ Less than 500 bushels

Western Grain Inspected in Western Division

Grain and Grade	June 1953	Aug. 1952- June 1953	Aug. 1951- June 1952
<u>Wheat</u>			
1 Man. Hard	-	49	-
1 Man. Northern	2,024	17,837	881
2 Man. Northern	10,799	76,098	9,656
3 Man. Northern	4,728	43,243	34,947
4 Man. Northern	2,129	24,130	23,297
4 Special	-	45	260
5 Wheat	2,714	25,968	20,589
5 Special	-	4	9
Dried No. 5	-	-	7
6 Wheat	399	7,267	11,427
Feed Wheat	100	1,176	1,573
Tough	4,485	42,160	79,749
Damp	9	341	31,846
Rejected	264	2,232	835
Smutty	41	290	96
Sample	26	203	218
Condemned	-	2	-
Totals, Red Spring	27,718	241,045	215,390
2 C.W. Garnet	7	84	70
3 C.W. Garnet	180	1,196	481
Tough C.W. Garnet	31	310	495
Damp C.W. Garnet	-	15	43
Rejected C.W. Garnet	-	11	5
Smutty C.W. Garnet	-	6	-
Totals, C.W. Garnet	218	1,622	1,094
1 C.W. Amber Durum	-	2	3
2 C.W. Amber Durum	10	394	56
3 C.W. Amber Durum	115	2,780	1,442
4 C.W. Amber Durum	40	860	1,128
5 C.W. Amber Durum	5	158	161
6 C.W. Amber Durum	-	18	46
Tough C.W. Amber Durum	10	386	2,334
Damp C.W. Amber Durum	-	9	1,033
Rejected C.W. Amber Durum	10	191	239
Smutty C.W. Amber Durum	1	11	8
Sample C.W. Amber Durum	3	34	32
Totals, C.W. Amber Durum	194	4,843	6,482

Western Grain Inspected in Western Division

Grain and Grade	June 1953	Aug. 1952-June 1953	Aug. 1951-June 1952
<u>Wheat (concluded)</u>			
1 C.W. White Spring	-	8	-
2 C.W. White Spring	19	154	7
3 C.W. White Spring	-	59	14
4 C.W. White Spring	-	1	12
Tough C.W. White Spring	3	17	112
Damp C.W. White Spring	-	-	151
Rejected C.W. White Spring	-	3	7
Totals, C.W. White Spring	22	242	303
1 C.W. Mixed	-	4	8
2 C.W. Mixed	-	4	54
3 C.W. Mixed	6	41	14
4 C.W. Mixed	1	20	75
5 C.W. Mixed	15	196	20
6 C.W. Mixed	1	17	12
Tough C.W. Mixed	5	52	79
Damp C.W. Mixed	-	-	27
Rejected C.W. Mixed	2	14	6
Smutty C.W. Mixed	-	1	-
Totals, C.W. Mixed Wheat	30	349	295
1 A.R.W.	-	69	49
2 A.W.	8	123	151
3 A.W.	-	34	53
4 A.W.	-	8	21
Tough A.W.	-	6	48
Damp A.W.	-	-	10
Rejected A.W.	1	13	23
Smutty A.W.	-	10	7
Sample A.W.	-	2	-
Totals, Winter Wheat	9	265	362
Totals, Cars	28,191	248,366	223,926
Net Bushels	48,254,817	424,057,625	379,944,201

The number of Cars and percentages of Inspections grading No. 3 Northern or higher are shown below:

	<u>No. of Cars</u>	<u>% of Inspections</u>
June, 1953	17,551	62.3
August, 1952-June, 1953	137,227	55.3
August, 1951-June, 1952	45,484	20.3

Western Grain Inspected in Western Division

Grain and Grade	June 1953	Aug. 1952- June 1953	Aug. 1951- June 1952
<u>Oats</u>			
1 C.W.	-	11	-
2 C.W.	24	158	46
Ex. 3 C.W.	79	675	314
3 C.W.	482	3,490	1,984
Ex. 1 Feed	530	6,353	4,333
1 Feed	1,838	19,864	11,769
2 Feed	322	2,890	1,263
3 Feed	74	641	339
Mixed Feed	3	37	9
Tough	162	1,772	13,258
Damp	-	12	5,302
Rejected	9	327	300
Sample	16	395	333
Totals, Cars	3,539	36,625	39,250
Net Bushels	9,135,752	94,951,411	97,510,345

<u>Barley</u>			
1 C.W. Six-Row	-	2	1
2 C.W. Six-Row	75	1,755	384
3 C.W. Six-Row	1,495	18,073	5,946
4 C.W. Six-Row	246	2,284	658
1 C.W. Two-Row	-	2	-
2 C.W. Two-Row	22	291	66
3 C.W. Two-Row	168	1,548	258
2 C.W. Yellow	2	11	1
3 C.W. Yellow	5	41	7
1 Feed	1,594	17,652	9,467
2 Feed	1,488	12,363	4,878
3 Feed	430	2,883	1,151
Tough	1,049	7,025	17,397
Damp	18	178	6,943
Rejected	9	230	91
Sample	11	154	75
Totals, Cars	6,612	64,492	47,323
Net Bushels	13,382,556	130,809,769	93,168,576

<u>Rye</u>			
1 C.W.	1	39	7
2 C.W.	203	2,124	977
3 C.W.	352	3,293	1,370
4 C.W.	36	379	338
Ergoty	68	751	68
Tough	79	753	1,630
Damp	-	15	271
Rejected	1	26	9
Sample	3	15	10
Totals, Cars	743	7,395	4,680
Net Bushels	1,273,658	12,917,882	8,001,068

Western Grain Inspected in Western Division

Grain and Grade	June 1953	Aug. 1952- June, 1953	Aug. 1951- June 1952
<u>Flaxseed</u>			
1 C.W.	131	3,853	827
2 C.W.	48	706	428
3 C.W.	10	235	90
4 C.W.	2	38	16
Tough	2	87	2,141
Damp	-	2	227
Rejected	-	2	-
Sample	2	38	3
Flax and Broken Grain	1	1	1
<hr/>			
Totals, Cars	196	4,962	3,733
Net Bushels	256,262	7,015,722	5,139,744
<hr/>			
<u>Mixed Grain</u>			
No. 1 C.W.	20	115	23
No. 2 C.W.	11	88	23
No. 3 C.W.	71	290	63
No. 4 C.W.	42	126	11
Tough	50	195	137
Damp	1	20	83
Rejected	4	17	7
Sample	14	67	33
<hr/>			
Totals, Cars	213	918	380
Net Bushels	452,861	1,763,157	650,818
<hr/>			
<u>Corn</u>			
1 C.W. Yellow	3	6	-
2 C.W. Yellow	1	25	1
3 C.W. Yellow	-	32	-
4 C.W. Yellow	-	16	1
5 C.W. Yellow	-	4	10
Tough	-	16	3
Damp	-	1	1
Moist	-	1	-
Wet	-	1	1
Sample	-	3	20
<hr/>			
Totals, Cars	4	105	37
Net Bushels	6,420	167,220	57,350
<hr/>			
Buckwheat	Cars	93	30
Peas	Cars	39	25
Soybeans	Cars	5	-
Rapeseed	Cars	15	9
Sunflower Seed	Cars	3	-
Screenings	Cars	27	310
<hr/>			
Totals, Cars Inspected	39,525	363,367	319,703

STATISTICS CANADA LIBRARY
BIBLIOTHÈQUE STATISTIQUE CANADA



1010688448