

22-004

*[Handwritten scribbles]*

Historical File Copy



CANADA

# GRAIN STATISTICS WEEKLY

## SEPTEMBER 19, 1956



Memorandum

*Published by Authority of*  
The Right Honourable C. D. Howe, Minister of Trade and Commerce

**DOMINION BUREAU OF STATISTICS**  
Agriculture Division  
Crops Section

5502-501-96

Price \$2.00 a year

Vol. 37, No. 7

Historical File Copy

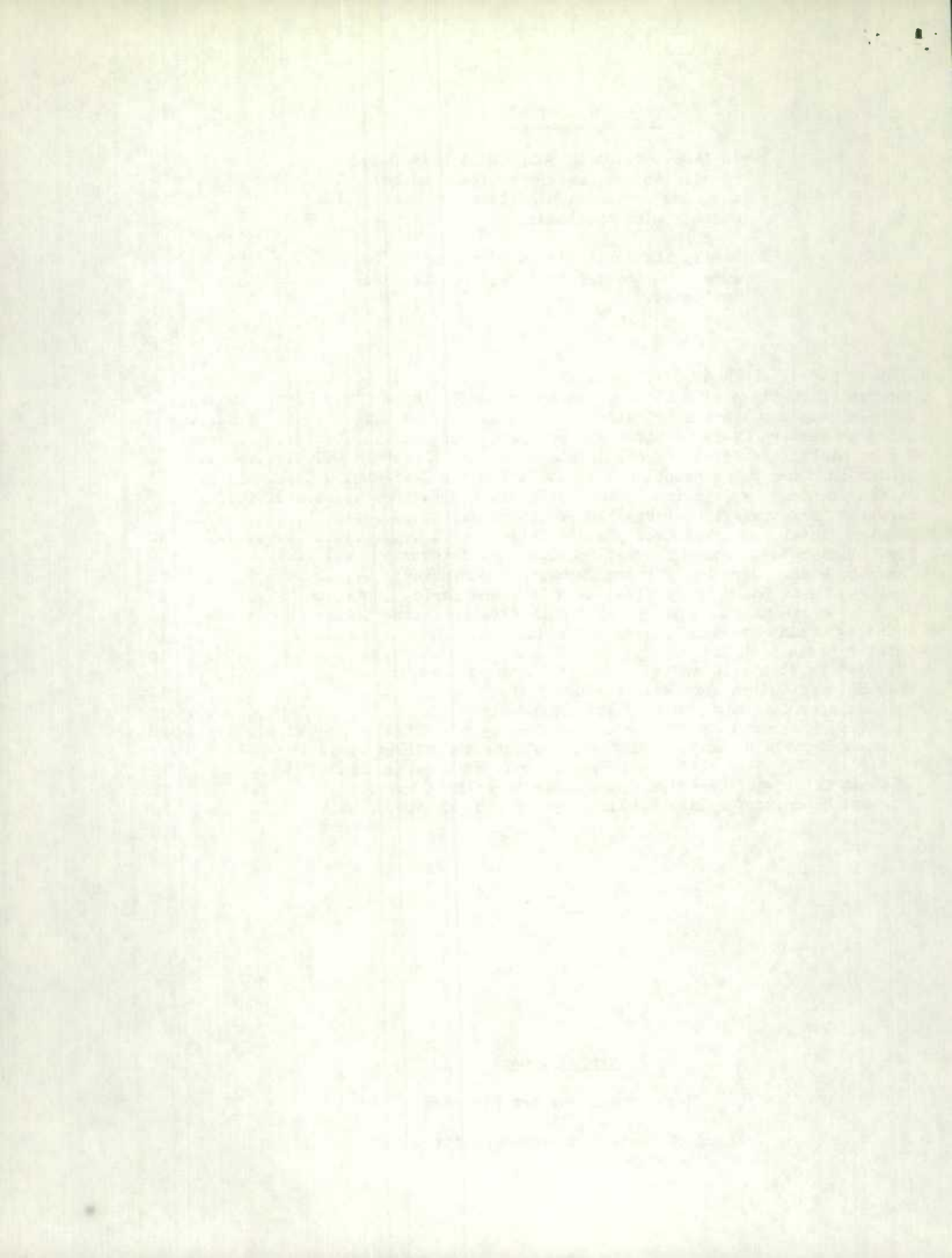
## TABLE OF CONTENTS

- Notes: 1. In those tables in which data have been rounded to the nearest thousand bushels, the sums of individual items may not agree exactly with the totals,
2. Weekly statistics included in this report cover to close of business for the date indicated.

	Page
Visible Supply of Wheat .....	1
Farmers' Marketings of Wheat and Coarse Grains in the Prairie Provinces ...	1
Visible Supply of Canadian Grain .....	2
Canadian Eastern Grain in Store Eastern Elevators .....	4
United States and Foreign Grain in Store Eastern Elevators .....	4
Stocks in Store by Principal Grades at Public and Semi-Public Terminals ...	5
Stocks in Store by Principal Grades at Eastern Elevators .....	7
Farmers' Marketings in the Prairie Provinces .....	9
Country Elevator Stocks, Receipts and Shipments .....	10
Fort William-Port Arthur Stocks, Receipts and Shipments .....	10
Canadian Wheat Board Daily Fixed Cash Wheat Quotations .....	11
Canadian Wheat Board Daily Fixed Cash Oats and Barley Quotations .....	13
Winnipeg Grain Exchange Daily Fixed Cash Closing Coarse Grains Quotations .	14
Winnipeg Grain Futures, Closing Quotations .....	15
Ontario Grain Cash Prices.....	15
Overseas Exports of Canadian Grain by Ports of Loading.....	16
Lake Shipments from Fort William-Port Arthur .....	17
Shipments of Canadian Grain to the United States.....	18
Receipts, Shipments and Stocks of Canadian Corn and Western Sunflower Seed.	18
Customs Exports of Corn, Buckwheat, Soybeans and Milled Products, by Countries of Consignment.....	19
Customs Exports of Canadian Grain by Ports of Exit.....	21
Customs Exports of Milled Products by Ports of Exit.....	22

### Acknowledgment

Records for Western Division  
supplied by  
Board of Grain Commissioners for Canada





Visible Supply of Canadian Wheat, September 19, 1956  
Compared with Previous Week and Year

Position	Sept. 21, 1955	Sept. 12, 1956	Sept. 19, 1956
- thousand bushels -			
Country Elevators	215,700	201,861	200,239
Interior private and mill	6,009	5,886	5,961
Interior terminals	15,833	13,198	13,584
Vancouver-New Westminster	10,516	9,804	10,777
Victoria	227	529	592
Prince Rupert	344	37	37
Churchill	2,089	3,573	2,420
Fort William-Port Arthur	44,936	34,255	33,021
Storage Afloat	177	-	-
In transit rail (Western Division)	6,120	10,906	11,838
Bay, Lake & Upper St. Lawrence ports	41,579	39,206	37,935
Lower St. Lawrence & Maritime ports	24,451	20,117	21,760
In transit lake	8,694	2,772	3,583
In transit rail (Eastern Division)	223	1,814	1,595
In Store Canada	376,897	343,958	343,342
In Store U.S.A.	128	81	146
<b>Totals</b>	<b>377,025</b>	<b>344,039</b>	<b>343,488</b>

Farmers' Marketings of Wheat and Coarse Grains in the Prairie Provinces

Grain	Week Ending			Aug. 1 -	Aug. 1 -
	Sept. 21/55	Sept. 12/56	Sept. 19/56	Sept. 21/55	Sept. 19/56 <sup>1/</sup>
- thousand bushels -					
Wheat (ex. Dur.)	4,644	3,151	5,741	23,606	18,317
Durum Wheat	856	589	940	1,690	1,874
<b>All Wheat</b>	<b>5,500</b>	<b>3,740</b>	<b>6,681</b>	<b>25,296</b>	<b>20,191</b>
Oats	1,048	1,660	2,643	5,121	7,946
Barley	2,745	3,578	5,120	9,145	13,646
Rye	59	164	271	684	1,448
Flaxseed	1,903	154	280	3,283	503
<b>Totals</b>	<b>11,255</b>	<b>9,296</b>	<b>14,994</b>	<b>43,529</b>	<b>43,734</b>

<sup>1/</sup> Subject to revision.



Visible Supply of Canadian Grain, September 19, 1956

Position	Wheat	Oats	Barley	Rye	Flaxseed	Total
- thousand bushels -						
<u>Western Division</u>						
Country Elevators						
Manitoba	18,758	4,056	2,987	425	184	26,410
Saskatchewan	108,335	9,564	7,159	1,308	213	126,580
Alberta	73,146	6,402	16,410	734	56	96,747
<b>Totals</b>	<b>200,239</b>	<b>20,021</b>	<b>26,556</b>	<b>2,467</b>	<b>453</b>	<b>249,737</b>
Int. Pte. & Mill	5,961	964	1,932	54	22	8,933
Int. Terminals	13,584	6	9	13	<u>1</u>	13,611
Vancouver-New West.	10,777	145	1,269	-	4	12,195
Victoria	592	-	1	-	-	593
Prince Rupert	37	-	925	-	<u>1</u>	962
Churchill	2,420	-	-	-	-	2,420
Ft. Wm.-Pt. Ar.	33,021	16,874	13,708	2,656	419	66,678
In Transit Rail	11,838	3,681	5,792	719	160	22,190
<b>Totals, West. Div.</b>	<b>278,469</b>	<b>41,692</b>	<b>50,191</b>	<b>5,909</b>	<b>1,058</b>	<b>377,318</b>
<u>Eastern Division</u>						
Bay, Lake and Upper St. Lawrence Ports						
Port McNicoll	6,284	-	-	-	-	6,284
Midland	1,924	120	65	-	-	2,110
Midland, Simcoe	2,597	509	207	-	-	3,313
Midland, Tiffin	3,866	-	-	-	-	3,866
Midland, Aberdeen	892	-	-	1	-	893
Collingwood	1,066	259	82	-	-	1,408
Owen Sound	2,766	75	70	-	-	2,912
Goderich, E.&T.	1,405	685	244	34	-	2,368
Goderich, Upper Lakes & St. Lawr. Tr. Co.	465	237	45	-	-	748
Sarnia	4,008	154	56	-	-	4,218
Walkerville	533	57	19	101	-	709
Pt. Colborne, N.H.B.	2,588	115	334	<u>1</u>	-	3,037
Pt. Colborne, M.L.	1,158	22	125	7	-	1,313
Humberstone	1,650	-	-	-	-	1,650
Toronto	1,891	239	122	-	-	2,252
Lakefield	164	-	-	-	-	164
Kingston Elev. Co.	1,757	53	66	65	-	1,940
Prescott	2,920	569	922	47	-	4,458
<b>Totals</b>	<b>37,935</b>	<b>3,094</b>	<b>2,358</b>	<b>256</b>	<b>-</b>	<b>43,643</b>





Visible Supply of Canadian Grain, September 19, 1956

Position	Wheat	Oats	Barley	Rye	Flaxseed	Total
- thousand bushels -						
<b>Lower St. Lawrence &amp; Maritime Ports</b>						
Montreal, N.H.B.	8,248	691	1,918	465	99	11,422
Montreal, Dom. El. Ltd.	291	79	90	-	-	460
Sorel	1,557	136	824	14	28	2,559
Three Rivers	4,328	73	70	-	-	4,470
Quebec, N.H.B.	2,836	378	238	6	-	3,458
West Saint John	1,116	-	-	-	-	1,116
Saint John	459	-	-	-	-	459
Halifax	2,924	-	-	-	-	2,924
<b>Totals</b>	<b>21,760</b>	<b>1,357</b>	<b>3,140</b>	<b>485</b>	<b>127</b>	<b>26,869</b>
In Transit Lake	3,583	217	1,831	-	163	5,793
In Transit Rail	1,595	24	-	-	-	1,620
<b>Totals, East. Div.</b>	<b>64,873</b>	<b>4,692</b>	<b>7,328</b>	<b>741</b>	<b>290</b>	<b>77,925</b>
<b>Totals, Canada</b>	<b>343,342</b>	<b>46,384</b>	<b>57,519</b>	<b>6,650</b>	<b>1,348</b>	<b>455,243</b>
<b>United States</b>						
<b>United States Ports</b>						
Buffalo	64	578	407	-	-	1,049
In Transit, U.S.A.	81	-	-	-	-	81
<b>Totals, U.S.A.</b>	<b>146</b>	<b>578</b>	<b>407</b>	<b>-</b>	<b>-</b>	<b>1,130</b>
<b>Totals, Canada and U.S.A.</b>	<b>343,488<sup>2/</sup></b>	<b>46,962</b>	<b>57,926</b>	<b>6,650</b>	<b>1,348</b>	<b>456,373</b>

<sup>1/</sup> Less than 500 bushels.

<sup>2/</sup> Includes 3,442,000 bushels of Durum wheat.



Canadian Eastern Grain in Store Eastern Elevators,  
September 19, 1956

Position	Wheat	Oats	Barley	Rye	Flax- seed	Corn	Buck- wheat	Soy- Beans
- thousand bushels -								
Collingwood	26	-	-	-	-	-	-	-
Goderich, E.&T.	18	-	-	-	-	-	-	-
Sarnia	542	<u>2/</u>	-	-	-	4	-	1
Walkerville	92	-	-	54	-	67	-	<u>2/</u>
Pt. Colborne <u>1/</u>	372	-	-	-	-	2	-	-
Toronto	389	-	-	-	-	<u>2/</u>	-	5
Kingston	-	-	-	-	-	-	-	-
Prescott	-	-	-	-	-	-	-	-
Montreal, N.H.B.	32	12	1	-	-	141	<u>2/</u>	-
Montreal, D.E.	-	-	-	-	-	-	-	-
Quebec	-	-	-	-	-	47	-	-
West Saint John	-	-	-	-	-	-	-	-
<b>Totals</b>	<b>1,472</b>	<b>12</b>	<b>1</b>	<b>54</b>	<b>-</b>	<b>261</b>	<b><u>2/</u></b>	<b>7</b>
September 21, 1955	1,528	10	209	3	1	687	4	55

1/ Includes Humberstone.  
2/ Less than 500 bushels.

United States and Other Foreign Grain in Store Eastern Elevators,  
September 19, 1956

Position	Wheat	Flax- seed	Corn	Soy- beans	Rice	South African Corn
- thousand bushels -						
Goderich	-	-	75	-	-	-
Fort Colborne, M.L.	-	-	18	-	-	-
Toronto	-	-	218	52	-	-
Prescott	-	-	102	-	-	-
Montreal, N.H.B.	-	-	80	-	-	-
Montreal, D.E.	-	-	5	-	-	-
Quebec	-	-	19	-	-	-
<b>Totals</b>	<b>-</b>	<b>-</b>	<b>516</b>	<b>52</b>	<b>-</b>	<b>-</b>
September 21, 1955	1,053	17	213	-	<u>1/</u>	<u>1/</u>

1/ Less than 500 bushels.





Stocks in Store and Afloat by Principal Grades, at Public and Semi-Public Terminals,  
September 19, 1956

Grain and Grade	Pacific Seaboard	Interior Terminals	Churchill	Ft.Wm.—Pt.Ar. Elevators	Total
- thousand bushels -					
<u>Wheat (ex. Dur.)</u>					
1 Northern	522	74	6	2,352	2,953
2 Northern	3,251	8,296	2,101	17,130	30,777
3 Northern	2,834	4,109	65	3,215	10,223
4 Northern	1,262	551	180	3,188	5,181
No. 5 Wheat	1,798	357	-	1,274	3,429
No. 6 Wheat	45	9	-	227	280
Feed Wheat	2	-	-	66	67
1 C.W. Garnet	-	-	-	2	2
2 C.W. Garnet	5	-	-	-	5
3 C.W. Garnet	24	-	-	2	26
Tough Contract	28	35	-	111	174
Others	1,637	154	68	4,824	6,683
<b>Totals</b>	<b>11,406</b>	<b>13,584</b>	<b>2,420</b>	<b>32,391</b>	<b>59,801</b>
<u>Durum</u>					
1 C.W. Amber	-	-	-	10	10
2 C.W. Amber	-	-	-	66	66
3 C.W. Amber	-	-	-	27	27
Ex. 4 C.W. Amber	-	-	-	258	258
4 C.W. Amber	-	-	-	33	33
Tough	-	-	-	16	16
Others	-	-	-	220	220
<b>Totals</b>	<b>-</b>	<b>-</b>	<b>-</b>	<b>630</b>	<b>630</b>
<b>Totals, Wheat</b>	<b>11,406</b>	<b>13,584</b>	<b>2,420</b>	<b>33,021</b>	<b>60,431</b>
<u>Oats</u>					
2 C.W.	6	-	-	7	12
Ex. 3 C.W.	-	-	-	125	125
3 C.W.	4	1	-	3,434	3,439
Ex. 1 Feed	34	-	-	1,694	1,728
1 Feed	66	$\frac{1}{2}$	-	11,168	11,234
2 Feed	4	$\frac{1}{2}$	-	250	254
3 Feed	5	$\frac{1}{2}$	-	32	37
Mixed Feed	9	1	-	76	85
Tough	15	$\frac{1}{2}$	-	1	16
Others	3	3	-	40	46
<b>Totals</b>	<b>145</b>	<b>6</b>	<b>-</b>	<b>16,826</b>	<b>16,976</b>



Stocks in Store and Afloat by Principal Grades, at Public and Semi-Public Terminals,  
September 19, 1956 (concluded)

Grain and Grade	Pacific Seaboard	Interior Terminals	Churchill	Ft.Wm.—Pt.Ar. Elevators	Total
- thousand bushels -					
<u>Barley</u>					
2 C.W. Six-Row	-	-	-	291	291
3 C.W. Six-Row	97	1	-	2,569	2,667
4 C.W. Six-Row	5	<u>1/</u>	-	331	336
2 C.W. Two-Row	2	-	-	82	85
3 C.W. Two-Row	346	-	-	327	674
1 Feed	1,489	<u>1/</u>	-	5,319	6,808
Ex. 2 Feed	154	<u>1/</u>	-	613	767
2 Feed	33	4	-	2,929	2,966
3 Feed	7	1	-	147	155
Tough	45	-	-	8	53
Others	16	3	-	550	568
<b>Totals</b>	<b>2,194</b>	<b>9</b>	<b>-</b>	<b>13,166</b>	<b>15,369</b>
<u>Rye</u>					
1 C.W.	-	-	-	-	-
2 C.W.	-	-	-	746	746
3 C.W.	-	-	-	1,361	1,361
Tough	-	-	-	38	38
Others	-	13	-	511	524
<b>Totals</b>	<b>-</b>	<b>13</b>	<b>-</b>	<b>2,656</b>	<b>2,669</b>
<u>Flaxseed</u>					
1 C.W.	4	<u>1/</u>	-	365	369
2 C.W.	-	-	-	21	21
3 C.W.	-	-	-	11	11
Tough	-	-	-	<u>1/</u>	<u>1/</u>
Others	-	<u>1/</u>	-	22	22
<b>Totals</b>	<b>4</b>	<b><u>1/</u></b>	<b>-</b>	<b>419</b>	<b>423</b>
<b>Totals, Stocks</b>	<b>13,749</b>	<b>13,611</b>	<b>2,420</b>	<b>66,088</b>	<b>95,868</b>

1/ Less than 500 bushels.





Stocks in Store by Principal Grades, at Eastern Elevators,  
September 19, 1956

Grain and Grade	Bay & Upper Lakes	Lower Lake & Upper St. Lawrence	Lower St. Lawrence	Maritime Ports	Total
- thousand bushels -					
<u>Wheat (ex.Dur.)</u>					
1 Northern	486	422	918	386	2,212
2 Northern	11,623	5,575	6,053	2,578	25,829
3 Northern	8,690	1,333	5,920	1,184	17,127
4 Northern	1,732	867	1,864	261	4,723
No. 5 Wheat	929	914	1,038	46	2,926
No. 6 Wheat	45	25	51	-	121
Feed Wheat	10	3	19	-	32
2 C.W. Garnet	-	4	-	-	4
Tough Contract	-	-	-	-	-
Others	1,613	2,117	783	-	4,512
Eastern	678	762	32	-	1,472
<b>Totals</b>	<b>25,807</b>	<b>12,020</b>	<b>16,678</b>	<b>4,455</b>	<b>58,959</b>
<u>Durum</u>					
1 C.W. Amber	-	38	-	-	38
2 C.W. Amber	-	-	-	-	-
3 C.W. Amber	-	44	3	-	47
Ex. 4 C.W. Amber	-	-	95	45	140
4 C.W. Amber	1/	22	6	-	27
Tough	-	-	-	-	-
Others	-	4	478	-	483
Eastern	-	-	-	-	-
<b>Totals</b>	<b>1/</b>	<b>108</b>	<b>582</b>	<b>45</b>	<b>736</b>
<b>Totals, Wheat</b>	<b>25,807</b>	<b>12,128</b>	<b>17,260</b>	<b>4,500</b>	<b>59,695</b>
<u>Oats</u>					
1 C.W.	-	-	-	-	-
2 C.W.	-	-	-	-	-
Ex. 3 C.W.	145	-	42	-	187
3 C.W.	477	212	57	-	746
Ex. 1 Feed	572	26	3	-	602
1 Feed	852	756	1,088	-	2,696
2 Feed	-	2	54	-	56
3 Feed	-	-	3	-	3
Mixed Feed	49	1	55	-	105
Tough	-	-	3	-	3
Others	-	-	40	-	40
Eastern	1/	-	12	-	12
<b>Totals</b>	<b>2,096</b>	<b>998</b>	<b>1,357</b>	<b>-</b>	<b>4,451</b>



Stocks in Store by Principal Grades, at Eastern Elevators,  
September 19, 1956 (concluded)

Grain and Grade	Bay & Upper Lakes	Lower Lake & Upper St. Lawrence	Lower St. Lawrence	Maritime Ports	Total
- thousand bushels -					
<u>Barley</u>					
2 C.W. Six-Row	-	-	-	-	-
3 C.W. Six-Row	-	72	69	-	141
2 C.W. Two-Row	-	-	-	-	-
3 C.W. Two-Row	-	-	150	-	150
1 Feed	464	531	1,093	-	2,088
Ex. 2 Feed	79	264	432	-	775
2 Feed	195	627	1,313	-	2,134
3 Feed	52	27	53	-	132
Tough	-	<u>1/</u>	<u>1/</u>	-	<u>1/</u>
Others	-	48	29	-	77
Eastern	-	-	1	-	1
<b>Totals</b>	<b>790</b>	<b>1,568</b>	<b>3,140</b>	<b>-</b>	<b>5,498</b>
<u>Rye</u>					
1 C.W.	-	-	-	-	-
2 C.W.	57	113	209	-	380
3 C.W.	-	7	273	-	279
Tough	3	-	-	-	3
Others	21	-	3	-	25
Eastern	54	-	-	-	54
<b>Totals</b>	<b>136</b>	<b>120</b>	<b>485</b>	<b>-</b>	<b>741</b>
<u>Flaxseed</u>					
1 C.W.	-	-	104	-	104
2 C.W.	-	-	<u>1/</u>	-	<u>1/</u>
3 C.W.	-	-	-	-	-
Others	-	-	23	-	23
Eastern	-	-	-	-	-
<b>Totals</b>	<b>-</b>	<b>-</b>	<b>127</b>	<b>-</b>	<b>127</b>
<b>Totals, Stocks</b>	<b>28,829</b>	<b>14,814</b>	<b>22,369</b>	<b>4,500</b>	<b>70,512</b>

1/ Less than 500 bushels.





Farmers' Marketings in the Prairie Provinces  
Week Ending September 19, 1956, and Crop Year to Date

Province & Period	Wheat (ex.Dur.)	Durum wheat	Oats	Barley	Rye	Flax- seed
- thousand bushels -						
<u>Manitoba</u>						
This Week	743	10	1,067	727	21	103
To Date	1,783	23	2,851	3,144	317	194
<u>Saskatchewan</u>						
This Week	4,010	707	1,335	3,242	195	134
To Date	13,181	1,499	4,366	7,876	799	229
<u>Alberta</u>						
This Week	988	222	241	1,151	54	42
To Date	3,353	352	729	2,627	332	80
<u>Totals</u>						
This Week	5,741	940	2,643	5,120	271	280
To Date	18,317	1,874	7,946	13,646	1,448	503

Farmers' Marketings in the Prairie Provinces  
August 1 - September 19, 1956 with Comparisons<sup>1/</sup>

Crop Year	Wheat	Oats	Barley	Rye	Flaxseed	Total
- million bushels -						
1945-46	46.6	19.2	16.0	1.1	0.5	83.3
1946-47	84.2	19.2	20.9	2.3	1.1	127.8
1947-48	81.1	11.6	18.6	5.6	1.7	118.6
1948-49	107.1	12.1	15.0	7.9	2.0	144.0
1949-50	132.6	22.3	23.4	3.7	0.4	182.4
1950-51	61.7	6.7	12.8	3.8	<sup>2/</sup>	85.0
1951-52	23.9	7.6	11.2	2.2	0.2	45.1
1952-53	63.3	13.1	23.0	4.2	0.7	104.4
1953-54	50.1	13.9	13.4	2.6	0.7	80.6
1954-55	1.8	15.0	37.4	0.4	0.4	54.9
10-Year Average (1945-46 - 1954-55)	65.2	14.1	19.2	3.4	0.8	102.6
1955-56	25.3	5.1	9.1	0.7	3.3	43.5
1956-57 <sup>3/</sup>	20.2	7.9	13.6	1.4	0.5	43.7

<sup>1/</sup> Since marketing data are compiled on a weekly basis, the length of the period included varies slightly from year to year.

<sup>2/</sup> Less than 50,000 bushels.

<sup>3/</sup> Subject to revision.



Country Elevator Stocks, Receipts and Shipments,  
Week Ending September 19, 1956

Province	Wheat (ex.Dur.)	Durum Wheat	Oats	Barley	Rye	Flax- seed
- thousand bushels -						
<u>Stocks in Store</u>						
Manitoba	18,721	37	4,056	2,987	425	184
Saskatchewan	107,060	1,276	9,564	7,159	1,308	213
Alberta	72,824	322	6,402	16,410	734	56
Totals	198,605	1,635	20,021	26,556	2,467	453
Totals - Week Ago	200,793	1,068	20,394	26,839	2,712	270
Year Ago	213,731	1,968	17,835	34,459	3,002	1,739
<u>Receipts</u>						
Manitoba	741	10	1,067	727	21	103
Saskatchewan	3,974	705	1,330	3,238	195	134
Alberta	934	222	220	1,149	51	18
Totals	5,649	937	2,616	5,114	267	255
Totals - Week Ago	3,082	587	1,565	3,562	162	141
Year Ago	4,571	797	1,021	2,735	57	1,854
<u>Shipments</u>						
Manitoba	845	19	587	1,155	45	30
Saskatchewan	4,720	275	2,078	3,239	352	42
Alberta	2,232	82	318	1,003	111	4
Totals	7,798	376	2,983	5,398	508	76
Totals - Week Ago	7,242	161	2,106	4,679	475	30
Year Ago	3,746	285	438	2,035	66	870

Fort William-Port Arthur - Stocks, Receipts and Shipments

(Licensed capacity of semi-public and private terminal elevators, 92,952,000 bushels)

Item	Wheat (ex.Dur.)	Durum Wheat	Oats	Barley	Rye	Flax- seed
- thousand bushels -						
<u>Stocks in Store</u>						
Sept.19/56	32,391	630	16,874	13,708	2,656	419
Receipts during week	2,191	154	1,706	3,416	422	29
Shipments during week						
Lake	3,585	-	242	1,887	-	-
Rail	7	2	100	15	-	-
Milled and Processed	-	-	5	25	-	-
Receipts Aug.1-Sept.19/56	34,705	769	16,622	15,610	2,512	270
Shipments Aug.1-Sept.19/56						
Lake	26,972	846	5,836	13,915	974	897
Rail	124	27	520	118	3	-
Milled and Processed	1	-	79	181	8	-





Canadian Wheat Board Daily Fixed Cash Wheat Quotations,  
Week Ending September 21, 1956

Class and Grade	Sept. 17	Sept. 18	Sept. 19	Sept. 20	Sept. 21	Weekly Average
- cents and eighths per bushel -						
<u>Initial Payment to Producers (Basis in Store Fort William-Port Arthur or Vancouver)</u>						
1 Northern	140	140	140	140	140	140
2 Northern	136	136	136	136	136	136
3 Northern	132	132	132	132	132	132
4 Northern	125	125	125	125	125	125
No. 5 Wheat	108	108	108	108	108	108
No. 6 Wheat	102	102	102	102	102	102
Feed Wheat	96	96	96	96	96	96
1 C.W. Garnet	122	122	122	122	122	122
2 C.W. Garnet	117	117	117	117	117	117
1 Alberta Red Winter	124	124	124	124	124	124
2 Alberta Winter	119	119	119	119	119	119
1 C.W. Amber Durum	150	150	150	150	150	150
2 C.W. Amber Durum	147	147	147	147	147	147
3 C.W. Amber Durum	140	140	140	140	140	140
<u>International Wheat Agreement and Domestic Sales (Basis in Store Ft.-Wm.-Pt.Ar.)</u>						
1 Northern	172	172/2	172/4	172/3	172/3	172/2
2 Northern	169	169/2	169/4	169/3	169/3	169/2
3 Northern	160	160/2	160/4	160/3	160/3	160/2
4 Northern	155	155/2	155/4	155/3	155/3	155/2
No. 5 Wheat	145	145/2	145/4	145/3	145/3	145/2
No. 6 Wheat	141	141/2	141/4	141/3	141/3	141/2
Feed Wheat	137	137/2	137/4	137/3	137/3	137/2
1 C.W. Garnet	153	153/2	153/4	153/3	153/3	153/2
2 C.W. Garnet	149	149/2	149/4	149/3	149/3	149/2
3 C.W. Garnet	146	146/2	146/4	146/3	146/3	146/2
1 Alberta Red Winter	158	158/2	158/4	158/3	158/3	158/2
2 Alberta Winter	155	155/2	155/4	155/3	155/3	155/2
3 Alberta Winter	152	152/2	152/4	152/3	152/3	152/2
1 C.W. Amber Durum	201	201/2	201/4	201/3	201/3	201/2
2 C.W. Amber Durum	200	200/2	200/4	200/3	200/3	200/2
3 C.W. Amber Durum	198	198/2	198/4	198/3	198/3	198/2
<u>(Basis in Store Vancouver)</u>						
1 Northern	172	172/2	172/4	172/3	172/3	172/2
2 Northern	169	169/2	169/4	169/3	169/3	169/2
3 Northern	160	160/2	160/4	160/3	160/3	160/2
4 Northern	155	155/2	155/4	155/3	155/3	155/2
No. 5 Wheat	145	145/2	145/4	145/3	145/3	145/2
No. 6 Wheat	141	141/2	141/4	141/3	141/3	141/2
Feed Wheat	137	137/2	137/4	137/3	137/3	137/2
1 C.W. Garnet	153	153/2	153/4	153/3	153/3	153/2
2 C.W. Garnet	149	149/2	149/4	149/3	149/3	149/2
3 C.W. Garnet	146	146/2	146/4	146/3	146/3	146/2
1 Alberta Red Winter	158	158/2	158/4	158/3	158/3	158/2
2 Alberta Winter	155	155/2	155/4	155/3	155/3	155/2
3 Alberta Winter	152	152/2	152/4	152/3	152/3	152/2





Canadian Wheat Board Daily Fixed Cash Wheat Quotations,  
Week Ending September 21, 1956

Class and Grade	Sept. 17	Sept. 18	Sept. 19	Sept. 20	Sept. 21	Weekly Average
-----------------	----------	----------	----------	----------	----------	----------------

- cents and eighths per bushel -

Class 2 Exports

(Basis in Store Fort William-Port Arthur)

1 Northern	172	172/2	172/4	172/3	172/3	172/2
2 Northern	169	169/2	169/4	169/3	169/3	169/2
3 Northern	160	160/2	160/4	160/3	160/3	160/2
4 Northern	155	155/2	155/4	155/3	155/3	155/2
No. 5 Wheat	145	145/2	145/4	145/3	145/3	145/2
No. 6 Wheat	141	141/2	141/4	141/3	141/3	141/2
Feed Wheat	137	137/2	137/4	137/3	137/3	137/2
1 C.W. Garnet	153	153/2	153/4	153/3	153/3	153/2
2 C.W. Garnet	149	149/2	149/4	149/3	149/3	149/2
3 C.W. Garnet	146	146/2	146/4	146/3	146/3	146/2
1 C.W. Amber Durum	266	266/2	260/4	260/3	260/3	262/6
2 C.W. Amber Durum	264	264/2	259/4	259/3	259/3	261/2
3 C.W. Amber Durum	262	262/2	257/4	257/3	257/3	259/2

(Basis in Store Vancouver)

1 Northern	172	172/2	172/4	172/3	172/3	172/2
2 Northern	169	169/2	169/4	169/3	169/3	169/2
3 Northern	160	160/2	160/4	160/3	160/3	160/2
4 Northern	155	155/2	155/4	155/3	155/3	155/2
No. 5 Wheat	145	145/2	145/4	145/3	145/3	145/2
No. 6 Wheat	141	141/2	141/4	141/3	141/3	141/2
Feed Wheat	137	137/2	137/4	137/3	137/3	137/2
1 C.W. Garnet	153	153/2	153/4	153/3	153/3	153/2
2 C.W. Garnet	149	149/2	149/4	149/3	149/3	149/2
3 C.W. Garnet	146	146/2	146/4	146/3	146/3	146/2
1 Alberta Red Winter	158	158/2	158/4	158/3	158/3	158/2
2 Alberta Winter	155	155/2	155/4	155/3	155/3	155/2
3 Alberta Winter	152	152/2	152/4	152/3	152/3	152/2



Canadian Wheat Board Daily Fixed Cash Oats and Barley Quotations,  
Week Ending September 21, 1956

Grain and Grade	Sept. 17	Sept. 18	Sept. 19	Sept. 20	Sept. 21	Weekly Average
-----------------	----------	----------	----------	----------	----------	----------------

- cents and eighths per bushel -

OATS 1/

Initial Payment to Producers

2 C.W.	65	65	65	65	65	65
Ex. 3 C.W.	62	62	62	62	62	62
3 C.W.	62	62	62	62	62	62
Ex. 1 Feed	62	62	62	62	62	62
1 Feed	60	60	60	60	60	60
2 Feed	55	55	55	55	55	55
3 Feed	48	48	48	48	48	48

Domestic and Export 2/

2 C.W.	87/6	87/4	87/2	87/2	87/2	87/3
Ex. 3 C.W.	84/2	84	83/6	83/6	83/6	83/7
3 C.W.	81/2	80/4	80/2	80/2	79/6	80/3
Ex. 1 Feed	81/6	81	80/6	80/6	80/2	80/7
1 Feed	79/2	78/4	78/2	78/2	77/6	78/3
2 Feed	77/2	76/4	76/2	76/2	75/6	76/3
3 Feed	74/2	73/4	73/2	73/2	72/6	73/3

BARLEY 1/

Initial Payment to Producers

1 C.W. Six-Row	98	98	98	98	98	98
2 C.W. Six-Row	98	98	98	98	98	98
3 C.W. Six-Row	96	96	96	96	96	96
4 C.W. Six-Row	90	90	90	90	90	90
1 C.W. Two-Row	91	91	91	91	91	91
2 C.W. Two-Row	91	91	91	91	91	91
3 C.W. Two-Row	88	88	88	88	88	88
1 Feed	87	87	87	87	87	87
2 Feed	83	83	83	83	83	83
3 Feed	76	76	76	76	76	76

Domestic and Export 2/

1 C.W. Six-Row	122/2	122/2	122/2	122/6	123	122/4
2 C.W. Six-Row	122/2	122/2	122/2	122/6	123	122/4
3 C.W. Six-Row	117/2	117/2	117/2	117/6	118	117/4
4 C.W. Six-Row	110	110	110	110/2	110/4	110/1
1 C.W. Two-Row	120/2	120/2	120/2	120/6	121	120/4
2 C.W. Two-Row	120/2	120/2	120/2	120/6	121	120/4
3 C.W. Two-Row	110	110	110	110/2	110/4	110/1
1 Feed	105/4	105/4	105/6	105/6	106	105/6
2 Feed	105	105	105/2	105/2	105/4	105/2
3 Feed	102	102	102/2	102/2	102/4	102/2

1/ Basis in store Fort William-Port Arthur.

2/ Local sales and spot sales subject to confirmation.





Winnipeg Grain Exchange Daily Fixed Cash Closing Coarse Grains Quotations 1/,  
Week Ending September 21, 1956

Grain and Grade	Sept. 17	Sept. 18	Sept. 19	Sept. 20	Sept. 21	Weekly Average
-----------------	----------	----------	----------	----------	----------	----------------

- cents and eighths per bushel -

OATS

Domestic and Export

2 C.W.	86/1	86	85/6	85/5	85/6	85/7
Ex. 3 C.W.	82/5	82/4	82/2	82/1	82/2	82/3
3 C.W.	80/7	80/2	80	79/7	79/4	80/1
Ex. 1 Feed	81/1	80/4	80/2	80/1	80	80/3
1 Feed	78/7	78/2	78	77/7	77/4	78/1
2 Feed	76/7	76/2	76	75/7	75/4	76/1
3 Feed	73/7	73/2	73	72/7	72/4	73/1

BARLEY

Domestic and Export

1 C.W. Six-Row	119/7	120	120/2	120/6	121	120/3
2 C.W. Six-Row	119/7	120	120/2	120/6	121	120/3
3 C.W. Six-Row	113/7	114	114/2	114/6	115	114/3
4 C.W. Six-Row	105/1	105/2	105/4	105/4	105/6	105/3
1 C.W. Two-Row	117/7	118	118/2	118/6	119	118/3
2 C.W. Two-Row	117/7	118	118/2	118/6	119	118/3
3 C.W. Two-Row	107/7	108	108/2	108/6	109	108/3
1 Feed	105/1	105/2	105/4	105/4	105/6	105/3
2 Feed	104/5	104/6	105	105	105/2	104/7
3 Feed	106/7	101	101/2	101/2	101/4	101/1

RYE

Producers' Domestic and Export Prices

2 C.W.	133/5	133/7	136	133/7	134/3	134/3
3 C.W.	128/5	128/7	131	128/7	129/3	129/3
4 C.W.	111/2	111/3	113/4	111/3	111/6	111/7
Ergoty	106/2	106/3	108/4	106/3	106/6	106/7

FLAXSEED

Producers' Domestic and Export Prices

1 C.W.	340	338	340/2	344/4	343	341/1
2 C.W.	330	328	330/2	334/4	333	331/1
3 C.W.	290	288	290/2	291/4	285	289

1/ Basis in store Fort William-Port Arthur.



Winnipeg Grain Futures, Closing Quotations,  
Week Ending September 21, 1956

Grain and Month	Sept. 17	Sept. 18	Sept. 19	Sept. 20	Sept. 21
- cents and eighths per bushel -					
<u>Oats</u>					
October	82/5	82/4	82/2	82/1	82/2
December	79/1	79/1	79/2	79/3	79/3
May	79/2	79/1	79/1	79/1	78/7
<u>Barley</u>					
October	107/7	108	108/2	108/6	109
December	102/5	102/7	103/3	103/6	103/7
May	102/7	103/1	103/6	104	104/3
<u>Rye</u>					
October	134/2	134/3	136/4	134/3	134/6
December	135/3-5	135/5	137/3-4	135/4	136/5
May	141/2-6	141/2-3	141/5	140/1	141/3
<u>Flaxseed</u>					
October	325	323	325/2	326/4	325
December	290/4	291-292	294/4-295/4	296/4-297	295
May	291/2	291/2-4	294/4	295-295/2	293

Daily Quotations and Weekly Average Cash Prices of Ontario Grain  
Week Ending September 21, 1956

Grain and Grade	Sept. 17	Sept. 18	Sept. 19	Sept. 20	Sept. 21	Weekly Average
- cents and eighths per bushel -						
Wheat, Ontario Winter						
No. 2 and better	175	175	175	175	175	175
No. 3	172	172	172	172	172	172
Oats, No. 2 white	72	72	72	72	72	72
Barley, Ontario, good malting	115	115	115	115	115	115
Rye, No. 2 Ontario	125	125	125	125	125	125
Corn, Ont. Yellow No. 2, 15.5% Moisture						
(natural or kiln dried - (old crop)	170	170	170	170	170	170
- (new crop)	125	125	125	125	125	125
Buckwheat, Tough No. 3, 18% Moisture	120	120	120	120	120	120
Mixed Grain	68	68	68	68	68	68
Flaxseed, No. 1	315	313	315	316	315	314/6
Soybeans, No. 2 and better	218/2	218/2	215/4	214/4	212/6	215/7

BASIS OF QUOTATIONS: Buying prices, carlots; corn and soybeans - f.o.b. Chatham; flaxseed - delivered in Toronto; all others - f.o.b. Ontario shipping points.





Overseas Exports of Canadian Grain by Ports of Loading,  
Week Ending September 19, 1956

Ports	Wheat	Oats	Barley	Rye	Flaxseed
	- thousand bushels -				
<u>Pacific Seaboard</u>					
Vancouver-New Westminster	1,371	4	-	-	-
Victoria	18	-	-	-	-
<u>Churchill</u>	2,378	-	-	-	-
<u>St. Lawrence</u>					
Montreal	1,214	99	393	20	10
Sorel	-	-	515	-	-
Quebec	131	-	-	-	-
Totals	5,111	102	908	20	10
September 21, 1955	3,035	-	82	140	41

Overseas Exports of Canadian Grain by Ports of Loading,  
August 1-September 19, 1956

Ports	Wheat	Oats	Barley	Rye	Flaxseed
	- thousand bushels -				
<u>Pacific Seaboard</u>					
Vancouver-New Westminster	13,641	6	1,359	-	-
Victoria	36	-	-	-	-
Prince Rupert	-	-	455	-	-
<u>Churchill</u>	11,327	-	-	-	-
<u>St. Lawrence</u>					
Montreal	10,044	108	4,434	30	719
Sorel	687	-	2,209	-	63
Three Rivers	1,779	-	471	-	-
Quebec	2,526	-	-	-	-
Totals	40,041	115	8,928	30	783
August 1-September 21, 1955	28,751	888	2,327	658	364





Lake Shipments from Fort William-Port Arthur,  
September 13-19, 1956

Grain	Georgian Bay & Upper Lake Ports	Lower Lake & Upper St. Lawr. Ports	Lower St. Lawrence Ports	Buffalo	Other U.S.A. Ports	Total
- thousand bushels -						
Wheat (ex.Dur.)	1,993	1,505	184	124	-	3,805
Durum wheat	78	-	-	-	-	78
Oats	263	-	45	-	-	307
Barley	52	659	189	472	794	2,165
Rye	-	-	-	-	-	-
Flaxseed	-	-	-	-	-	-
<b>Totals</b>	<b>2,385</b>	<b>2,164</b>	<b>417</b>	<b>595</b>	<b>794</b>	<b>6,356</b>

Lake Shipments from Fort William-Port Arthur,  
Opening of Navigation April 5 to September 19, 1956

Grain	Georgian Bay & Upper Lake Ports	Lower Lake & Upper St. Lawr. Ports	Lower St. Lawrence Ports	Buffalo	Other U.S.A. Ports	Over- seas Direct	Total
- thousand bushels -							
Wheat (ex.Dur.)	81,654	59,552	2,106	4,312	959	19	148,602
Durum wheat	3,873	1,460	295	-	-	-	5,630
Oats	12,291	9,893	1,217	2,292	-	-	25,692
Barley	8,015	28,938	2,268	1,293	15,680	47	56,241
Rye	606	5,800	95	263	3,114	-	9,878
Flaxseed	-	3,585	111	-	-	-	3,696
<b>Totals</b>	<b>106,439</b>	<b>109,228</b>	<b>6,094</b>	<b>8,160</b>	<b>19,753</b>	<b>66</b>	<b>249,740</b>
April 14,(Opening)- September 21, 1955	56,293	97,229	5,052	3,931	7,004	-	169,510



Shipments of Canadian Grain to the United States,  
Week Ending September 19, 1956

	Pacific Coast Terminals	Western Elevators	Ft. William- Pt. Arthur	Eastern Elevators	Total
	- thousand bushels -				
<u>Wheat</u>					
By Vessel	-	-	124	-	124
By Rail	-	-	-	12	12
<u>Oats</u>					
By Vessel	-	-	-	-	-
By Rail	9	-	1	9	20
<u>Barley</u>					
By Vessel	-	-	774	-	774
By Rail	-	3	-	-	3

Total Shipments Since August 1, 1956

Wheat	-	1/	232	66	298
Oats	74	85	984	423	1,565
Barley	-	3	3,093	-	3,096
Rye	-	-	908	-	908

1/ Less than 500 bushels.

Canadian Corn and Western Sunflower Seed

Receipts, Shipments and Stocks, Week Ending September 19, 1956  
and Crop Year to Date

	Western Elevators	Ft. William- Pt. Arthur	Eastern Elevators
	- thousand bushels -		
<u>Canadian Western Corn</u>			
Receipts during week	-	-	-
Receipts Aug. 1, 1956 to date	-	-	-
Shipments during week	1	-	-
Stocks in store	6	-	-
<u>Canadian Eastern Corn</u>			
Receipts during week	-	-	28
Receipts Aug. 1, 1956 to date	-	-	337
Shipments during week	-	-	83
Stocks in store	-	-	261
<u>Canadian Western Sunflower Seed</u>			
	- thousand pounds -		
Receipts during week	-	-	-
Receipts Aug. 1, 1956 to date	178	-	-
Shipments during week	-	-	-
Stocks in store	-	-	-





Customs Exports of Corn, Buckwheat, Soybeans and Milled Products,  
by Countries of Consignment, August, 1956

Destination	Corn bu.	Buck- wheat bu.	Soy- beans bu.	Wheat Flour cwt.	Bran, Shorts & Middlings cwt.	Oat- meal cwt.	Rolled Oats cwt.
<u>Commonwealth Countries</u>							
United Kingdom	210,000	-	46,667	511,025	140,744	-	-
<u>Africa</u>							
Gambia	-	-	-	1,920	-	-	-
Gold Coast	-	-	-	41,674	-	-	-
Nigeria	-	-	-	9,438	-	-	-
Sierra Leone	-	-	-	12,260	-	-	-
<u>Asia</u>							
Ceylon	-	-	-	-	-	-	14
Hong Kong	-	-	-	33,585	-	-	228
Malaya & Singapore	-	-	-	12,888	-	-	-
Pakistan	-	-	-	20	-	-	-
<u>North America</u>							
Bahamas	-	-	-	9,704	75	-	125
Barbados	-	-	-	12,852	44	-	8
Bermuda	-	-	-	2,726	181	-	30
British Honduras	-	-	-	192	-	-	-
Jamaica	-	-	-	35,265	300	-	530
Leeward & Windward Islands	-	-	-	36,261	-	-	118
Trinidad & Tobago	-	52	-	65,552	150	-	53
<u>South America</u>							
British Guiana	-	-	-	21,107	29	-	-
<hr/>							
Totals, Commonwealth Countries	210,000	52	46,667	806,469	141,523	-	1,106
<hr/>							
<u>Foreign Countries</u>							
<u>Africa</u>							
Azores & Madeira	-	-	-	2,901	-	-	-
Belgian Congo	-	-	-	16,194	-	-	-
Liberia	-	-	-	872	-	-	-
Portuguese East Africa	-	-	-	770	-	-	-
Portuguese West Africa	-	-	-	400	-	-	-
<u>Asia</u>							
Arabia	-	-	-	4,236	-	-	-
Japan	-	-	38,230	50,387	-	-	-
Korea	-	-	-	-	-	-	-
Lebanon	-	-	-	730	-	-	-
Philippine Islands	-	-	-	327,152	-	-	-
Portuguese Asia	-	-	-	4,204	-	-	-
Syria	-	-	-	186	-	-	-
Thailand	-	-	-	25,955	-	-	-



Customs Exports of Corn, Buckwheat, Soybeans and Milled Products,  
by Countries of Consignment, August, 1956

Destination	Corn bu.	Buck- wheat bu.	Soy- beans bu.	Wheat Flour cwt.	Bran, Shorts & Middlings cwt.	Oat- meal cwt.	Rolled Oats cwt.
<u>Foreign Countries</u>							
<u>Europe</u>							
Belgium	-	-	-	13,798	-	-	-
Denmark	-	-	-	200	-	-	-
Greece	-	-	-	550	-	-	-
Netherlands	-	-	-	700	-	-	-
Portugal	-	-	-	2,620	-	-	-
Yugoslavia	-	-	-	1,000	-	-	-
<u>North America</u>							
American Virgin Islands	-	-	-	885	-	-	-
Costa Rica	-	-	-	19,007	-	-	49
Cuba	-	-	-	20,650	-	-	1
Dominican Republic	-	-	-	10,750	-	-	-
El Salvador	-	-	-	8,520	-	-	-
French West Indies	-	-	-	250	-	-	-
Guatemala	-	-	-	5,535	-	-	1,225
Haiti	-	-	-	4,800	-	-	-
Honduras	-	-	-	1,616	-	-	-
Netherlands Antilles	-	-	-	4,402	-	-	-
Nicaragua	-	-	-	10,725	-	-	-
Panama	-	-	-	8,094	-	-	46
St. Pierre & Miquelon	-	-	-	2,137	-	-	14
United States	-	-	-	41,800	136,331	-	-
<u>Oceania</u>							
Guam	-	-	-	750	-	-	-
<u>South America</u>							
Colombia	-	-	-	4,800	-	-	-
Peru	-	-	-	-	-	-	57
Surinam	-	-	-	16,116	-	-	-
Venezuela	-	-	-	72,942	900	-	2,810
Totals, Foreign Countries	-	-	38,230	686,634	137,231	-	4,202
Totals, All Countries	210,000	52	84,897	1,493,103	278,754	-	5,308
Compared with: July, 1956	270,166	3,541	127,954	1,580,750	235,942	-	4,811
August, 1955	10,089	21	9,333	1,305,856 <sup>1/</sup>	167,324	10	26,417

<sup>1/</sup> Revised to remove effect of time lag in the returns made by Customs.





Customs Exports of Canadian Grain by Ports of Exit, August, 1956

Ports of Exit		Wheat	Oats	Barley	Rye
- bushels -					
<u>Via Canadian Seaboard Ports</u>					
Halifax	N.S.	50,258	14,014	521	-
Saint John	N.B.	18,666	-	-	-
Montreal	Que.	8,064,183	46,684	3,587,445	498,495
Quebec	Que.	1,764,490	-	-	-
Three Rivers	Que.	1,213,951	-	-	-
Totals, Canadian Atlantic Seaboard Ports		11,111,548	60,698	3,587,966	498,495
Vancouver	B.C.	7,725,021	27,268	1,059,907	-
Victoria	B.C.	38,266	-	-	-
Totals, Canadian Pacific Seaboard Ports		7,763,287	27,268	1,509,907	-
Totals, Canadian Seaboard Ports		18,874,835	87,966	4,647,873	498,495
<u>Via Canadian Inland Ports</u>					
Centreville	N.B.	-	60	-	-
Clair	N.B.	-	56	-	-
Armstrong	Que.	-	50	-	-
Lac Frontiere	Que.	-	545	-	-
Lacolle	Que.	21,000	250,221	-	-
Phillipsburg	Que.	-	117	-	-
Sutton	Que.	27,523	125,945	-	-
Fort Erie	Ont.	173,651	44,271	-	29,328
Fort William	Ont.	20,340	571,425	1,692,668	715,376
Niagara Falls	Ont.	16,310	14,152	-	-
Port Arthur	Ont.	42,629	1,720,272	842,881	1,314,000
Sarnia	Ont.	12,210	-	-	-
Windsor	Ont.	24,251	-	-	-
The Pas	Man.	4,497,306	-	-	-
Coutts	Alta.	-	-	-	227
Huntingdon	B.C.	-	10,645	-	-
Kingsgate	B.C.	3,018	-	-	-
Pacific Highway	B.C.	-	22,680	-	-
White Rock	B.C.	-	1,882	-	-
Totals, Canadian Inland Ports		4,838,238	2,762,321	2,535,549	2,058,931
Totals, Exported		23,713,073	2,850,287	7,183,422	2,557,426

Ports of Exit		Flaxseed	Corn	Buckwheat	Soybeans
- bushels -					
<u>Via Canadian Seaboard Port</u>					
Montreal	Que.	818,127	210,000	52	84,897
Totals, Canadian Atlantic Seaboard Ports		818,127	210,000	52	84,897
Totals, Exported		818,127	210,000	52	84,897





Customs Exports of Milled Products, by Ports of Exit, August, 1956

Ports of Exit		Wheat Flour cwt.	Bran, Shorts & Middlings cwt.	Rolled Oats cwt.
<u>Via Canadian Seaboard Ports</u>				
Halifax	N.S.	21,572	210	14
Saint John	N.B.	5,356	-	-
Montreal	Que.	758,838	142,213	3,675
Quebec	Que.	518,577	-	-
Totals, Canadian Atlantic Seaboard Ports		1,304,343	142,423	3,689
Vancouver	B.C.	-	-	1,562
Total, Canadian Pacific Seaboard Port		-	-	1,562
Totals, Canadian Seaboard Ports		1,304,343	142,423	5,251
<u>Via Canadian Inland Ports</u>				
Blackpool	Que.	2	-	-
Coaticook	Que.	25,712	1,020	-
Lacolle	Que.	8,100	86,856	-
Phillipsburg	Que.	-	8	-
Sutton	Que.	32,646	27,334	-
Fort Erie	Ont.	53,982	17,903	57
Niagara Falls	Ont.	42,482	2,300	-
Port Colborne	Ont.	13,370	-	-
Prescott	Ont.	4,048	210	-
Toronto	Ont.	1,470	-	-
Windsor	Ont.	603	600	-
Emerson	Man.	2,995	-	-
Moose Jaw	Sask.	-	100	-
North Portal	Sask.	2,200	-	-
Coutts	Alta.	400	-	-
Pacific Highway	B.C.	750	-	-
Totals, Canadian Inland Ports		188,760	136,331	57
Totals, Exported		1,493,103	278,754	5,308

STATISTICS CANADA LIBRARY  
BIBLIOTHÈQUE STATISTIQUE CANADA



1010674010