

Historical File Copy

CATALOGUE No.
22-004
WEEKLY

DOMINION BUREAU OF STATISTICS

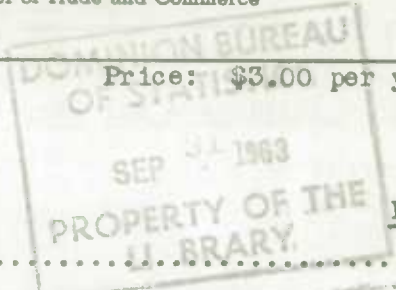
OTTAWA - CANADA

Published by Authority of the Minister of Trade and Commerce

Vol.44 No.5

Price: \$3.00 per year

GRAIN STATISTICS WEEKLY September 4, 1963



In This Issue

	<u>Page</u>
Summary of Stocks and Handlings of Canadian Grain.....	2
Visible Supply of Wheat.....	3
Farmers' Marketings of Wheat and Coarse Grains in the Prairie Provinces.....	3
Visible Supply of Canadian Grain.....	4
Canadian Eastern Grain in Store Eastern Elevators.....	6
United States Grain in Store Eastern Elevators.....	6
Stocks in Store by Principal Grades at Semi-Public Terminals.....	7
Stocks in Store by Principal Grades at Eastern Elevators.....	9
Farmers' Marketings in the Prairie Provinces.....	11
Country Elevator Stocks, Receipts and Shipments.....	12
Fort William-Port Arthur Stocks, Receipts and Shipments.....	12
Canadian Wheat Board Daily Fixed Cash Wheat Quotations.....	13
Canadian Wheat Board Daily Fixed Cash Oats and Barley Quotations.....	15
Winnipeg Grain Exchange Daily Fixed Cash Closing Coarse Grains Quotations....	16
Canadian Wheat Board Monthly Average Cash Grain Prices.....	17
Winnipeg Grain Exchange Monthly Average Cash Grain Prices.....	18
Winnipeg Grain Futures, Closing Quotations.....	19
Ontario Grain Cash Prices.....	19
Overseas Exports of Canadian Grain by Ports of Loading.....	20
Rapeseed Handlings - Crop Year 1962-63.....	21
Rapeseed - Stocks and Handlings.....	22
Lake Shipments from Fort William-Port Arthur.....	23
Handlings of United States Grain.....	24
Receipts, Shipments and Stocks of Canadian Corn and Western Sunflower Seed...	24

- Note: 1. In those tables in which data have been rounded to the nearest thousand bushels, the sums of individual items may not agree exactly with the totals.
2. Weekly statistics included in this report cover to close of business for the date indicated.

Acknowledgment

Records for Western Division
Supplied by Board of Grain Commissioners for Canada

5502-501

Summary of Stocks and Handlings of Canadian Grain Through Licensed Elevator Channels
Week Ending September 4, 1963

	Wheat	Oats	Barley	Rye	Flax- seed	Total
	- million bushels -					
<u>Visible Supplies - All Positions</u>						
Current week	394.5	58.1	58.3	5.3	2.9	519.1
Week ago	398.0	57.3	57.6	5.0	2.8	520.7
Year ago	317.6	22.3	29.3	5.2	2.8	377.2
<u>Farmers' Marketings - East and West</u>						
Current week	3.9	2.1	1.7	.3	.3	8.3
Previous week	3.5	1.1	.7	.6	.3	6.2
Same week year ago	5.1	1.5	.7	.5	.1	7.9
Aug. 1/63-Sept.4/63	12.3	3.9	2.9	1.9	.6	21.6
Aug. 1/62-Sept.5/62	12.2	3.1	1.7	3.3	.2	20.5
<u>Exports^{1/2/}</u>						
Current week	5.9	.5	.3	-	.1	6.8
Previous week	5.0	.01	.6	-	.3	5.9
Same week year ago	3.4	.2	.4	.03	.4	4.4
Aug. 1/63-Sept.4/63	32.3	.7	1.4	.1	.9	35.5
Aug. 1/62-Sept.5/62	23.5	.2	1.1	.6	1.4	26.7
<u>Canadian Domestic^{3/}</u>						
Current week	1.5	.7	.7	.02	.02	2.9
Previous week	1.7	.8	.9	.02	.008	3.4
Same week year ago	1.4	.4	.7	.02	.04	2.5
Aug. 1/63-Sept.4/63	8.2	4.0	3.9	.09	.2	16.3
Aug. 1/62-Sept.5/62	8.0	2.7	3.6	.1	.2	14.6

^{1/} Includes overseas clearances as reported by the Statistics Branch of the Board of Grain Commissioners for Canada plus exports to the United States as compiled from returns of Canadian elevator licensees and shippers and advice from American grain correspondents.

^{2/} Grain only, excludes exports of milled products in terms of grain equivalent and excludes bagged seed. Monthly exports of milled products are shown in certain issues of this publication, usually in that issue covering data for the third week of the month.

^{3/} Includes grain milled for subsequent export but excludes grain used for seed and feed on farms where produced, inter-farm transfers and other transactions outside the jurisdiction of the licensed elevator system.

Visible Supply of Canadian Wheat, September 4, 1963
Compared with Previous Week and Year

Position	Sept. 5	Aug. 28	Sept. 4
	1962	1963	-1963
	- thousand bushels -		
Country Elevators	139,365	213,130	209,515
Interior Private and Mill	7,264	7,386	7,409
Interior Terminals	8,283	5,730	5,841
Vancouver-New Westminster	12,474	13,956	13,986
Victoria	842	924	949
Prince Rupert	-	769	779
Churchill	4,033	3,426	3,596
Fort William-Port Arthur	65,017	54,149	52,936
In Transit Rail (Western Division)	18,210	15,990	17,238
Bay, Lake & Upper St. Lawrence Ports	30,336	41,568	42,602
Lower St. Lawrence & Maritime Ports	28,067	35,364	35,334
In Transit Lake	3,372	5,466	4,162
In Transit Rail (Eastern Division)	351	185	164
In Store Canada	317,615	398,041	394,509
In Store U.S.A.	-	-	-
Totals	317,615	398,041	394,509

Farmers' Marketings of Wheat and Coarse Grains in the Prairie Provinces

Grain	Week Ending			Aug. 1/62-	Aug. 1/63-
	Sept. 5/62	Aug. 28/63	Sept. 4/63	Sept. 5/62	Sept. 4/63
	- thousand bushels -				
Wheat (ex.Dur.)	4,285	2,564	3,223	9,015	6,798
Durum Wheat	769	395	447	1,341	1,191
All Wheat	5,054	2,959	3,670	10,357	7,989
Oats	1,397	1,030	1,999	2,815	3,646
Barley	729	759	1,743	1,652	2,870
Rye	474	466	250	2,783	1,201
Flaxseed	131	303	276	208	616
Totals	7,785	5,517	7,937	17,814	16,323

Visible Supply of Canadian Grain
September 4, 1963

Position	Wheat	Oats	Barley	Rye	Flax- seed	Total
	- thousand bushels -					
<u>Western Division</u>						
<u>Country Elevators</u>						
Manitoba	22,868	9,177	3,193	252	592	36,082
Saskatchewan	124,323	15,569	13,773	866	556	155,087
Alberta	62,324	14,165	22,364	459	300	99,612
Totals	209,515	38,911	39,330	1,577	1,448	290,781
Int. Pte. & Mill	7,409	576	1,361	20	26	9,392
Int. Terminals	5,841	131	102	-	-	6,074
Vancouver-New West.	13,986	142	1,166	68	399	15,761
Victoria	949	-	-	-	-	949
Prince Rupert	779	24	4	-	-	806
Churchill	3,596	-	-	-	1/	3,596
Ft. Wm.-Pt. Ar.	52,936	11,920	10,640	1,888	391	77,774
In Transit Rail	17,238	3,139	3,057	679	322	24,435
Totals, West. Division	312,247	54,842	55,661	4,233	2,586	429,568
<u>Eastern Division</u>						
<u>Bay, Lake and Upper St. Lawrence Ports</u>						
Port McNicoll	6,537	-	-	-	-	6,537
Midland	1,721	1/	1/	-	-	1,722
Midland-Simcoe	3,611	117	97	-	-	3,824
Midland, Tiffin (C.N.R.)	4,569	-	-	-	-	4,569
Midland, Tiffin (Renown)	903	-	-	-	-	903
Collingwood	1,155	170	93	-	-	1,418
Owen Sound	3,063	89	31	-	-	3,183
Goderich Elev. & Transit	1,898	76	183	-	-	2,157
Goderich, Upper Lakes	525	220	183	-	-	928
Sarnia	5,350	52	30	26	-	5,458
Walkerville	192	-	-	575	-	768
Pt. Colborne, N.H.B.	2,716	32	94	-	-	2,841
Pt. Colborne, Maple Leaf	1,154	-	-	176	-	1,330
Humberstone	1,860	-	-	-	-	1,860
Toronto	1,791	239	26	2	6	2,063
Lakefield	-	-	-	-	-	-
Peterborough	348	-	-	-	-	348
Kingston Elev. Co.	1,744	54	44	-	-	1,842
Prescott	3,464	243	158	-	-	3,866
Totals	42,602	1,292	938	779	6	45,616

Visible Supply of Canadian Grain
September 4, 1963

Position	Wheat	Oats	Barley	Rye	Flax- seed	Total
	- thousand bushels -					
Lower St. Lawrence and Maritime Ports						
Montreal, N.H.B.	10,359	688	590	248	127	12,013
Montreal, F.E. Ltd.	557	1	4	-	-	562
Sorel	3,818	-	-	-	-	3,818
Three Rivers	7,205	23	98	-	-	7,325
Quebec, N.H.B.	3,189	301	217	13	-	3,720
Bale Comeau	5,256	<u>1/</u>	-	-	19	5,275
West Saint John, "B" & "H"	1,723	-	-	1	-	1,724
Saint John	403	-	-	-	-	403
Halifax	2,823	60	54	-	1	2,938
Totals	35,334	1,072	963	261	147	37,777
Totals, Eastern Ports	77,936	2,364	1,900	1,041	152	83,393
In Transit Lake	4,162	885	795	-	176	6,017
In Transit Rail	164	6	-	-	-	170
Totals, East. Division	82,261	3,255	2,695	1,041	328	89,580
Totals, Canada	394,509	58,096	58,356	5,273	2,914	519,148
United States						
United States Ports	-	-	-	-	-	-
Totals, Canada and U.S.A.	394,509^{2/}	58,096	58,356	5,273	2,914	519,148

1/ Less than 500 bushels.

2/ Includes 28,985,000 bushels of durum wheat.

Canadian Eastern Grain in Store at Eastern Elevators
September 4, 1963

Position	Wheat	Oats	Barley	Rye	Flax- seed	Corn	Buck- wheat	Soy- beans
- thousand bushels -								
Collingwood	98	-	-	-	-	-	-	-
Goderich, E. & T.	81	-	-	-	-	-	-	-
Sarnia	1,040	18	2	-	-	121	-	-
Walkerville	-	-	-	575	-	3	-	12
Pt. Colborne ^{1/}	1,995	-	-	137	-	-	-	-
Toronto	741	201	-	-	6	-	-	3
Kingston	189	<u>2/</u>	-	-	-	-	-	-
Prescott	111	-	-	-	-	-	-	-
Montreal, N.H.B.	679	11	-	-	-	-	-	191
Montreal, F.E. Ltd.	83	-	-	-	-	-	-	-
Totals	5,017	230	2	712	6	124	-	205
September 5, 1962	3,369	337	2	457	24	7	<u>2/</u>	91

^{1/} Includes Humberstone.
^{2/} Less than 500 bushels.

United States Grain in Store at Eastern Elevators
September 4, 1963

Position	Wheat	Oats	Barley	Rye	Flax- seed	Corn	Soy- beans
- thousand bushels -							
Collingwood	-	-	-	-	-	5	-
Midland, M.S.E.	-	-	-	-	-	-	-
Owen Sound	-	-	-	-	-	22	-
Goderich, E. & T.	-	-	-	-	-	4	-
Goderich, U.L.	-	-	-	-	-	28	-
Walkerville	-	-	-	-	-	129	-
Toronto	-	-	-	-	-	6	20
Kingston	-	<u>1/</u>	-	-	-	173	-
Prescott	-	-	-	-	-	126	-
Montreal, N.H.B.	52	-	-	1	44	655	69
Three Rivers	545	-	12	-	-	599	-
Quebec	-	-	177	-	-	364	-
Baie Comeau	1,458	-	86	66	-	672	8
Halifax	-	-	-	-	-	152	-
Totals	2,054	<u>1/</u>	276	67	44	2,935	97
September 5, 1962	2,217	628	58	-	-	5,817	20

^{1/} Less than 500 bushels.

Stocks in Store by Principal Grades, at Semi-Public Terminals
September 4, 1963

Grain and Grade	Pacific Seaboard	Interior Terminals	Churchill	Ft. Wm.—Pt. Ar. Elevators	Total
- thousand bushels -					
<u>Wheat (ex. Dur.)</u>					
1 Hard	-	-	-	19	19
1 Northern	521	313	430	1,369	2,632
2 Northern	3,049	4,909	1,757	18,197	27,911
3 Northern	1,576	339	572	9,995	12,482
4 Northern	4,949	31	570	2,009	7,558
No. 5 Wheat	3,276	8	113	1,781	5,178
No. 6 Wheat	101	-	-	1,117	1,217
Feed Wheat	-	3	-	89	92
1 C.W. Garnet	11	-	-	-	11
2 C.W. Garnet	53	-	-	2	55
3 C.W. Garnet	86	-	-	-	86
Toughs	384	18	57	8,527	8,986
Others	1,708	220	97	625	2,650
Totals	15,714	5,841	3,596	43,729	68,879

Durum

1 C.W. Amber	-	-	-	98	98
2 C.W. Amber	-	-	-	335	335
3 C.W. Amber	-	-	-	4,733	4,733
Ex. 4 C.W. Amber	-	-	-	611	611
4 C.W. Amber	-	-	-	1,466	1,466
Toughs	-	-	-	160	160
Others	-	-	-	1,805	1,805
Totals	-	-	-	9,207	9,207
Totals, All Wheat	15,714	5,841	3,596	52,936	78,086

Oats

2 C.W.	-	-	-	92	92
Ex. 3 C.W.	-	18	-	242	261
3 C.W.	1	43	-	5,740	5,784
Ex. 1 Feed	33	1/	-	1,753	1,786
1 Feed	6	21	-	2,963	2,990
2 Feed	3	-	-	31	34
3 Feed	2	-	-	8	10
Mixed Feed	116	8	-	127	250
Toughs	1	31	-	856	888
Others	3	9	-	63	74
Totals	165	131	-	11,874	12,170

Stocks in Store by Principal Grades, at Semi-Public Terminals
September 4, 1963 (concluded)

Grain and Grade	Pacific Seaboard	Interior Terminals	Churchill	Ft. Wm.—Pt. Ar. Elevators	Total
- thousand bushels -					
<u>Barley</u>					
2 C.W. Six-Row	-	-	-	7	7
3 C.W. Six-Row	81	-	-	372	453
2 C.W. Two-Row	-	-	-	118	118
3 C.W. Two-Row	42	-	-	466	508
1 Feed	875	9	-	6,784	7,668
2 Feed	64	-	-	525	589
3 Feed	47	1	-	10	58
Toughs	39	2	-	1,671	1,713
Others	21	90	-	70	181
Totals	1,169	102	-	10,023	11,294
<u>Rye</u>					
1 C.W.	2	-	-	14	16
2 C.W.	41	-	-	1,224	1,266
3 C.W.	12	-	-	559	571
Toughs	-	-	-	4	4
Others	13	-	-	86	99
Totals	68	-	-	1,888	1,956
<u>Flaxseed</u>					
1 C.W.	327	-	-	234	561
2 C.W.	24	-	-	93	117
3 C.W.	20	-	-	21	41
Toughs	25	-	-	7	32
Others	4	-	<u>1/</u>	35	39
Totals	399	-	<u>1/</u>	391	790
Totals, 5 Grains	17,516	6,074	3,596	77,111	104,297

1/ Less than 500 bushels.

Stocks in Store by Principal Grades, at Eastern Elevators
September 4, 1963

Grain and Grade	Bay & Upper Lakes	Lower Lake & Upper St. Lawrence	Lower St. Lawrence	Maritime Ports	Total
- thousand bushels -					
Wheat (ex. Dur.)					
1 Northern	11,673	2,245	8,406	278	22,602
2 Northern	11,057	5,012	10,443	3,306	29,819
3 Northern	2,845	826	4,016	576	8,263
4 Northern	2,047	1,568	2,038	432	6,084
No. 5 Wheat	2	48	783	270	1,102
No. 6 Wheat	218	104	245	62	629
Feed Wheat	-	-	-	-	-
2 C.W. Garnet	-	-	-	-	-
Toughs	-	-	-	-	-
Others	152	87	156	1	395
Eastern	1,219	3,036	762	-	5,017
Totals	29,212	12,927	26,848	4,924	73,911
Durum					
1 C.W. Amber	-	-	116	-	116
2 C.W. Amber	1/	85	505	-	591
3 C.W. Amber	130	39	1,110	5	1,284
Ex. 4 C.W. Amber	-	-	928	-	928
4 C.W. Amber	181	23	874	20	1,098
Toughs	-	-	-	-	-
Others	-	4	5	-	9
Eastern	-	-	-	-	-
Totals	312	151	3,537	25	4,025
Totals, All Wheat	29,524	13,078	30,385	4,949	77,936
Oats					
1 C.W.	-	-	-	-	-
2 C.W.	-	-	-	-	-
Ex. 3 C.W.	70	72	-	-	142
3 C.W.	167	65	574	60	866
Ex. 1 Feed	1/	-	-	-	1/
1 Feed	367	228	427	-	1,022
2 Feed	-	-	-	-	-
3 Feed	-	-	-	-	-
Mixed Feed	6	1	-	-	7
Toughs	5	-	-	-	5
Others	91	-	-	-	91
Eastern	18	201	11	-	230
Totals	724	568	1,012	60	2,364

Stocks in Store by Principal Grades, at Eastern Elevators
September 4, 1963 (concluded)

Grain and Grade	Bay & Upper Lakes	Lower Lake & Upper St. Lawrence	Lower St. Lawrence	Maritime Ports	Total
	- thousand bushels -				
Barley					
2 C.W. Six-Row	-	-	-	-	-
3 C.W. Six-Row	-	-	-	-	-
2 C.W. Two-Row	-	-	-	-	-
3 C.W. Two-Row	-	-	-	-	-
1 Feed	246	178	489	31	944
2 Feed	168	144	140	22	475
3 Feed	-	-	-	-	-
Toughs	140	-	-	-	140
Others	60	-	280	-	339
Eastern	2	-	-	-	2
Totals	616	321	909	54	1,900
Rye					
1 C.W.	-	-	-	-	-
2 C.W.	26	21	153	1	201
3 C.W.	-	-	107	-	107
Toughs	-	-	-	-	-
Others	-	20	-	-	20
Eastern	575	137	-	-	712
Totals	602	178	260	1	1,041
Flaxseed					
1 C.W.	-	-	146	-	146
2 C.W.	-	-	-	1	1
3 C.W.	-	-	-	-	-
Toughs	-	-	-	-	-
Others	-	-	-	-	-
Eastern	-	6	-	-	6
Totals	-	6	146	1	152
Totals, 5 Grains	31,465	14,151	32,712	5,065	83,393

1/ Less than 500 bushels.

Farmers' Marketings in the Prairie Provinces
Week Ending September 4, 1963 and Crop Year to Date

Province and Period	Wheat (ex.Dur.)	Durum Wheat	Oats	Barley	Rye	Flaxseed
	- thousand bushels -					
Manitoba						
This week	1,104	76	1,171	360	119	255
To date	1,782	105	1,752	501	364	570
Saskatchewan						
This week	1,563	343	641	805	85	13
To date	3,802	1,058	1,494	1,335	611	29
Alberta						
This week	556	28	187	578	46	8
To date	1,213	29	400	1,034	226	17
Totals						
This week	3,223	447	1,999	1,743	250	276
To date	6,798	1,191	3,646	2,870	1,201	616

Farmers' Marketings in the Prairie Provinces
August 1, 1963 - September 4, 1963 with Comparisons^{1/}

Crop Year	Wheat	Oats	Barley	Rye	Flax- seed	Total
	- million bushels -					
1952-53	36.5	9.2	15.2	3.7	0.3	64.9
1953-54	34.5	12.2	9.3	2.0	0.3	58.2
1954-55	0.5	12.3	31.4	0.1	0.2	44.4
1955-56	12.7	2.7	3.4	0.5	0.8	20.1
1956-57	9.9	3.9	5.2	0.9	0.1	20.1
1957-58	15.3	7.4	5.5	0.6	0.3	29.0
1958-59	10.1	4.2	4.2	0.7	0.3	19.5
1959-60	6.8	2.0	3.0	0.6	0.3	12.7
1960-61	25.0	5.0	6.7	0.9	0.7	38.3
1961-62	21.8	1.6	5.4	0.6	1.1	30.4
10-Year average						
1952-53 - 1961-62	17.3	6.0	8.9	1.1	0.4	33.8
1962 - 63	10.4	2.8	1.7	2.8	0.2	17.8
1963 - 64	8.0	3.6	2.9	1.2	0.6	16.3

^{1/} Since marketing data are compiled on a weekly basis, the length of the period included varies slightly from year to year.

Country Elevator Stocks, Receipts and Shipments
Week Ending September 4, 1963

Province	Wheat (ex.Dur.)	Durum Wheat	Oats	Barley	Rye	Flax- seed
- thousand bushels -						
Stocks in Store						
Manitoba	22,216	651	9,177	3,193	252	592
Saskatchewan	112,394	11,929	15,569	13,773	866	556
Alberta	60,603	1,721	14,165	22,364	459	300
Totals	195,214	14,301	38,911	39,330	1,577	1,448
Totals - week ago	198,882	14,248	37,963	38,799	1,519	1,277
year ago	137,706	1,659	11,665	15,920	1,998	1,048
Receipts						
Manitoba	1,101	76	1,170	360	119	252
Saskatchewan	1,556	341	639	804	85	13
Alberta	543	28	186	573	45	4
Totals	3,200	444	1,995	1,737	249	269
Totals - week ago	2,547	393	1,026	753	466	303
year ago	4,266	768	1,387	722	474	131
Shipments						
Manitoba	1,232	10	291	142	50	9
Saskatchewan	4,222	386	417	595	124	55
Alberta	1,379	2	314	463	19	19
Totals	6,833	398	1,022	1,200	193	83
Totals - week ago	5,420	582	1,126	1,748	422	234
year ago	6,088	238	1,927	665	599	103

Fort William-Port Arthur - Stocks, Receipts and Shipments
(Licensed capacity of semi-public and private terminal elevators, 106,421,000 bushels)

Item	Wheat (ex.Dur.)	Durum Wheat	Oats	Barley	Rye	Flax- seed
- thousand bushels -						
Stocks in store						
Sept. 4/63	43,729	9,207	11,920	10,640	1,888	391
Receipts during week	1,754	535	652	674	257	67
Shipments during week						
Lake	3,493	6	1,174	645	-	172
Rail	-	-	6	1	-	-
Milled and processed	1	-	1	96	-	-
Receipts Aug.1/63-Sept.4/63	13,840	1,832	5,516	3,643	720	388
Shipments Aug.1/63-Sept.4/63						
Lake	19,461	492	3,199	3,851	-	459
Rail	10	2	74	64	-	-
Milled and processed	1	-	5	293	1/	1/

1/ Less than 500 bushels.

Canadian Wheat Board Daily Fixed Cash Wheat Quotations
Week Ending September 6, 1963

Class and Grade	Sept. 2	Sept. 3	Sept. 4	Sept. 5	Sept. 6	Weekly Average
-----------------	---------	---------	---------	---------	---------	----------------

- cents and eighths per bushel -

Initial Payment to Producers (Basis in Store Fort William-Port Arthur or Vancouver)

1 Northern	H	150	150	150	150	150
2 Northern		146	146	146	146	146
3 Northern		142	142	142	142	142
4 Northern		135	135	135	135	135
No. 5 Wheat		118	118	118	118	118
No. 6 Wheat	O	112	112	112	112	112
Feed Wheat		108	108	108	108	108
1 C.W. Garnet		135	135	135	135	135
2 C.W. Garnet		130	130	130	130	130
3 C.W. Garnet		125	125	125	125	125
1 Alberta Red Winter		134	134	134	134	134
2 Alberta Winter	L	129	129	129	129	129
1 C.W. Amber Durum		150	150	150	150	150
2 C.W. Amber Durum		146	146	146	146	146
3 C.W. Amber Durum		142	142	142	142	142

International Wheat Agreement and Domestic Sales (Basis in Store Ft.Wm.-Pt.Ar.)

1 Northern		193/4	193/3	193/2	193/2	193/3
2 Northern		190/4	190/3	190/2	190/2	190/3
3 Northern		187/4	187/3	187/2	187/2	187/3
4 Northern	I	180/4	180/3	180/2	180/2	180/3
No. 5 Wheat		174/4	174/3	174/2	174/2	174/3
No. 6 Wheat		169/4	169/3	169/2	169/2	169/3
Feed Wheat		166/4	166/3	166/2	166/2	166/3
1 C.W. Garnet		175/4	176/3	176/2	176/2	176/1
2 C.W. Garnet		173/4	174/3	174/2	174/2	174/1
3 C.W. Garnet	D	172/4	173/3	173/2	173/2	173/1
1 Alberta Red Winter		178/4	179/3	179/2	179/2	179/1
2 Alberta Winter		176/4	177/3	177/2	177/2	177/1
3 Alberta Winter		175/4	176/3	176/2	176/2	176/1
1 C.W. Amber Durum		218/4	208/3	208/2	208/2	210/7
2 C.W. Amber Durum		217/4	207/3	207/2	207/2	209/7
3 C.W. Amber Durum	A	209/4	199/3	199/2	199/2	201/7

(Basis in Store Vancouver)

1 Northern		197/6	197/5	197/4	197/4	197/5
2 Northern		193/6	193/5	193/4	193/4	193/5
3 Northern		192/6	192/5	192/4	192/4	192/5
4 Northern	Y	184/6	184/5	184/4	184/4	184/5
No. 5 Wheat		174/6	174/5	174/4	174/4	174/5
No. 6 Wheat		172/6	172/5	172/4	172/4	172/5
Feed Wheat		169/6	169/5	169/4	169/4	169/5
1 C.W. Garnet		176/6	176/5	176/4	176/4	176/5
2 C.W. Garnet		174/6	174/5	174/4	174/4	174/5
3 C.W. Garnet		173/6	173/5	173/4	173/4	173/5
1 Alberta Red Winter		176/6	176/5	176/4	176/4	176/5
2 Alberta Winter		174/6	174/5	174/4	174/4	174/5
3 Alberta Winter		173/6	173/5	173/4	173/4	173/5

Canadian Wheat Board Daily Fixed Cash Wheat Quotations
Week Ending September 6, 1963

Class and Grade	Sept. 2	Sept. 3	Sept. 4	Sept. 5	Sept. 6	Weekly Average
-----------------	---------	---------	---------	---------	---------	----------------

- cents and eighths per bushel -

Class 2 Exports

(Basis in Store Fort William-Port Arthur)

1 Northern	H	193/4	193/3	193/2	193/2	193/3
2 Northern		190/4	190/3	190/2	190/2	190/3
3 Northern		187/4	187/3	187/2	187/2	187/3
4 Northern		180/4	180/3	180/2	180/2	180/3
No. 5 Wheat		174/4	174/3	174/2	174/2	174/3
No. 6 Wheat		169/4	169/3	169/2	169/2	169/3
Feed Wheat	O	166/4	166/3	166/2	166/2	166/3
1 C.W. Garnet		175/4	176/3	176/2	176/2	176/1
2 C.W. Garnet		173/4	174/3	174/2	174/2	174/1
3 C.W. Garnet		172/4	173/3	173/2	173/2	173/1
1 C.W. Amber Durum		218/4	208/3	208/2	208/2	210/7
2 C.W. Amber Durum		217/4	207/3	207/2	207/2	209/7
3 C.W. Amber Durum	L	209/4	199/3	199/2	199/2	201/7

(Basis in Store Vancouver)

	I					
1 Northern		197/6	197/5	197/4	197/4	197/5
2 Northern		193/6	193/5	193/4	193/4	193/5
3 Northern		192/6	192/5	192/4	192/4	192/5
4 Northern	D	184/6	184/5	184/4	184/4	184/5
No. 5 Wheat		174/6	174/5	174/4	174/4	174/5
No. 6 Wheat		172/6	172/5	172/4	172/4	172/5
Feed Wheat		169/6	169/5	169/4	169/4	169/5
1 C.W. Garnet		176/6	176/5	176/4	176/4	176/5
2 C.W. Garnet		174/6	174/5	174/4	174/4	174/5
3 C.W. Garnet	A	173/6	173/5	173/4	173/4	173/5
1 Alberta Red Winter		176/6	176/5	176/4	176/4	176/5
2 Alberta Winter		174/6	174/5	174/4	174/4	174/5
3 Alberta Winter		173/6	173/5	173/4	173/4	173/5

Y

Canadian Wheat Board Daily Fixed Cash Oats and Barley Quotations
Week Ending September 6, 1963

Grain and Grade	Sept. 2	Sept. 3	Sept. 4	Sept. 5	Sept. 6	Weekly Average
- cents and eighths per bushel -						
<u>Oats</u> ^{1/}						
<u>Initial Payment to Producers</u>						
2 C.W.	H	60	60	60	60	60
Ex. 3 C.W.		57	57	57	57	57
3 C.W.		57	57	57	57	57
Ex. 1 Feed		57	57	57	57	57
1 Feed		55	55	55	55	55
2 Feed		50	50	50	50	50
3 Feed	O	46	46	46	46	46
<u>Domestic and Export</u> ^{2/}						
2 C.W.		78/4	78/6	78/6	78/6	78/6
Ex. 3 C.W.		75/6	76	76	76	76
3 C.W.		75/2	75/4	75/4	75/4	75/4
Ex. 1 Feed	L	75/2	75/4	75/4	75/4	75/4
1 Feed		74/6	75	75	75	75
2 Feed		71/6	72	72	72	72
3 Feed		68/6	69	69	69	69
<u>Barley</u> ^{1/}						
<u>Initial Payment to Producers</u>						
1 C.W. Six-Row		98	98	98	98	98
2 C.W. Six-Row		98	98	98	98	98
3 C.W. Six-Row		96	96	96	96	96
1 C.W. Two-Row	I	91	91	91	91	91
2 C.W. Two-Row		91	91	91	91	91
3 C.W. Two-Row		88	88	88	88	88
1 Feed		87	87	87	87	87
2 Feed		84	84	84	84	84
3 Feed		79	79	79	79	79
<u>Domestic and Export</u> ^{2/}						
1 C.W. Six-Row		116/4	116/4	116/6	116/6	116/5
2 C.W. Six-Row		116/4	116/4	116/6	116/6	116/5
3 C.W. Six-Row		114/4	114/4	114/6	114/6	114/5
1 C.W. Two-Row		114/4	114/4	114/6	114/6	114/5
2 C.W. Two-Row	A	114/4	114/4	114/6	114/6	114/5
3 C.W. Two-Row		111/4	111/4	111/6	111/6	111/5
1 Feed		105/6	105/6	106	106	105/7
2 Feed		104	104	104/2	104/4	104/1
3 Feed	Y	101	101	101/2	101/4	101/1

^{1/} Basis in store Fort William-Port Arthur.

^{2/} Local sales and spot sales subject to confirmation.

Winnipeg Grain Exchange Daily Fixed Cash Closing Coarse Grains Quotations^{1/}
 Week Ending September 6, 1963

Grain and Grade	Sept. 2	Sept. 3	Sept. 4	Sept. 5	Sept. 6	Weekly Average
-----------------	---------	---------	---------	---------	---------	----------------

- cents and eighths per bushel -

Oats

Domestic and Export

2 C.W.	H	77	77/2	77/3	77/4	77/2
Ex. 3 C.W.		75/6	76	76	76	76
3 C.W.		75	75/2	75/2	75/2	75/2
Ex. 1 Feed		75	75/2	75/2	75/2	75/2
1 Feed		74/4	74/4	74/4	74/6	74/4
2 Feed		71/4	71/4	71/4	71/6	71/4
3 Feed	O	68/4	68/4	68/4	68/6	68/4

Barley

Domestic and Export

1 C.W. Six-Row	L	113/4	113/4	113/6	113/6	113/5
2 C.W. Six-Row		113/4	113/4	113/6	113/6	113/5
3 C.W. Six-Row		111/4	111/4	111/6	111/6	111/5
1 C.W. Two-Row		109/4	109/4	109/6	109/6	109/5
2 C.W. Two-Row		109/4	109/4	109/6	109/6	109/5
3 C.W. Two-Row	I	105/4	105/4	105/6	105/6	105/5
1 Feed		105/4	105/4	105/6	105/6	105/5
2 Feed		103/6	103/6	104	104/2	103/7
3 Feed		100/6	100/6	101	101/2	100/7

Rye

D

Producers' Domestic and Export Prices

2 C.W.		143/2	144/3	141/7	141/1	142/5
3 C.W.		139/7	140/7	138/3	137/5	139/1
4 C.W.	A	124/5	125/5	123/1	122/3	123/7
Ergoty		123/5	124/5	122/1	121/3	122/7

Flaxseed

Producers' Domestic and Export Prices

1 C.W.		311/7	311/5	310/3	310	311
2 C.W.		305/3	305/1	304/3	304	304/6
3 C.W.	Y	276/7	276/5	275/7	275/4	276/2

^{1/} Basis in store Fort William-Port Arthur.

Canadian Wheat Board Monthly Average Cash Grain Prices^{1/2/}
August 1963

- cents and eighths per bushel -

Wheat

Initial Payment to Producers^{3/}

1 Northern	150
2 Northern	146
3 Northern	142
4 Northern	135
No. 5 Wheat	118
No. 6 Wheat	112
Feed Wheat	108
1 C.W. Garnet	135
2 C.W. Garnet	130
3 C.W. Garnet	125
1 Alberta Red Winter	134
2 Alberta Winter	129
1 C.W. Amber Durum	150
2 C.W. Amber Durum	146
3 C.W. Amber Durum	142

International Wheat Agreement & Domestic Sales (Basis in Store Ft.Wm.-Pt.Ar.)

1 Northern	192/6
2 Northern	189/7
3 Northern	187
4 Northern	179/4
No. 5 Wheat	173/7
No. 6 Wheat	168/7
Feed Wheat	165/7
1 C.W. Garnet	175/7
2 C.W. Garnet	173/7
3 C.W. Garnet	172/7
1 Alberta Red Winter	178/7
2 Alberta Winter	176/7
3 Alberta Winter	175/7
1 C.W. Amber Durum	226/4
2 C.W. Amber Durum	225/4
3 C.W. Amber Durum	217/4

(Basis in Store Vancouver)

1 Northern	198/1
2 Northern	194/2
3 Northern	192/6
4 Northern	184/7
No. 5 Wheat	175/1
No. 6 Wheat	173/1
Feed Wheat	170/1
1 C.W. Garnet	177/1
2 C.W. Garnet	175/1
3 C.W. Garnet	174/1
1 Alberta Red Winter	177/1
2 Alberta Winter	175/1
3 Alberta Winter	174/1

Class 2 Exports

(Basis in Store Ft.Wm.-Pt.Ar.)

1 Northern	192/6
2 Northern	189/7
3 Northern	187
4 Northern	179/4
No. 5 Wheat	173/7
No. 6 Wheat	168/7
Feed Wheat	165/7
1 C.W. Garnet	175/7
2 C.W. Garnet	173/7
3 C.W. Garnet	172/7
1 C.W. Amber Durum	226/4
2 C.W. Amber Durum	225/4
3 C.W. Amber Durum	217/4

(Basis in Store Vancouver)

1 Northern	198/1
2 Northern	194/2
3 Northern	192/6
4 Northern	184/7
No. 5 Wheat	175/1
No. 6 Wheat	173/1
Feed Wheat	170/1
1 C.W. Garnet	177/1
2 C.W. Garnet	175/1
3 C.W. Garnet	174/1
1 Alberta Red Winter	177/1
2 Alberta Winter	175/1
3 Alberta Winter	174/1

Oats^{4/}

Initial Payment to Producers

2 C.W.	60
Ex. 3 C.W.	57
3 C.W.	57
Ex. 1 Feed	57
1 Feed	55
2 Feed	50
3 Feed	46

Domestic and Export^{5/}

2 C.W.	77/5
Ex. 3 C.W.	75
3 C.W.	74/4
Ex. 1 Feed	74/4
1 Feed	74
2 Feed	71
3 Feed	68

Canadian Wheat Board Monthly Average Cash Grain Prices ^{1/2/}
August 1963

- cents and eighths per bushel -

Barley^{4/}

<u>Initial Payment to Producers</u>		<u>Domestic and Export</u> ^{5/}	
1 C.W. Six-Row	98	1 C.W. Six-Row	115/7
2 C.W. Six-Row	98	2 C.W. Six-Row	115/7
3 C.W. Six-Row	96	3 C.W. Six-Row	113/7
1 C.W. Two-Row	91	1 C.W. Two-Row	113/6
2 C.W. Two-Row	91	2 C.W. Two-Row	113/6
3 C.W. Two-Row	88	3 C.W. Two-Row	110/6
1 Feed	87	1 Feed	105/6
2 Feed	84	2 Feed	103/6
3 Feed	79	3 Feed	100/6

Winnipeg Grain Exchange Monthly Average Cash Grain Prices ^{1/6/}
August 1963

- cents and eighths per bushel -

Oats^{4/}

<u>Domestic and Export</u>	
2 C.W.	75/3
Ex. 3 C.W.	74/4
3 C.W.	74/2
Ex. 1 Feed	74/2
1 Feed	73/6
2 Feed	70/6
3 Feed	67/6

Barley^{4/}

<u>Domestic and Export</u>	
1 C.W. Six-Row	112/6
2 C.W. Six-Row	112/6
3 C.W. Six-Row	110/6
1 C.W. Two-Row	108/6
2 C.W. Two-Row	108/6
3 C.W. Two-Row	105/2
1 Feed	105/2
2 Feed	103/3
3 Feed	100/3

Rye^{4/}

<u>Producers', Domestic and Export Prices</u>	
2 C.W.	136
3 C.W.	132
4 C.W.	118/2
Ergoty	117/2

Flaxseed^{4/}

<u>Producers', Domestic and Export Prices</u>	
1 C.W.	319/3
2 C.W.	312/6
3 C.W.	281/7

- 1/ Includes 21 trading days.
- 2/ Average of prices fixed daily by the Canadian Wheat Board.
- 3/ Basis in store Fort William-Port Arthur or Vancouver.
- 4/ Basis in store Fort William-Port Arthur.
- 5/ Local sales and spot sales subject to confirmation.
- 6/ Averages of daily closing quotations for cash grain.

Winnipeg Grain Futures, Closing Quotations
Week Ending September 6, 1963

Grain and Month	Sept. 2	Sept. 3	Sept. 4	Sept. 5	Sept. 6
- cents and eighths per bushel -					
Oats					
October	H	78/2	78/4	78/4	78/4
December		76/6	77/4	77/4	77/3
May		78/6	79	78/7	78/7
	O				
Barley					
October	L	109/4	109/4	109/6	109/6
December		107/3	107/7-108	107/4	107/6
May		108/4	109	108/7	108/5
	I				
Rye					
October	D	144/5	145/5	143/1	142/3
December		141/2	141/4	140	139/3
May		144/2-3	144/4	143	142/2
	A				
Flaxseed					
October	Y	311/7	311/5	310/7	310/4
December		310/2	309/6	309/1-2	307/4-5
May		314/6	314/7	314/6	313/4

Daily Quotations and Weekly Average Cash Prices of Ontario Grain
Week Ending September 6, 1963

Grain and Grade	Sept. 2	Sept. 3	Sept. 4	Sept. 5	Sept. 6	Weekly Average
- cents and eighths per bushel -						
Wheat, Ontario Winter						
No. 2 and better	H	175	175	175	175	175
No. 3	O	172	172	172	172	172
Oats, No. 2 White		70	70	70	70	70
Barley, Ontario, good malting	L	125	125	125	125	125
Rye, No. 2 Ontario	I	123	123	123	123	123
Corn, Ont. Yellow No. 2, 15.5% moisture old		160	160	160	160	160
(natural or kiln dried) new	D	116	116	116	116	116
Buckwheat, Tough No. 3, 18% moisture	A	140	140	140	140	140
Mixed Grain	Y	64	64	64	64	64
Flaxseed, No. 1		296	296	295	295	295/4
Soybeans, No. 2 and better		277	275/6	274/2	275	275/4

BASIS OF QUOTATIONS: Buying prices, carlots; **corn** and soybeans - f.o.b. Chatham; flaxseed - delivered in Toronto; all others - f.o.b. Ontario shipping points.

Overseas Exports of Canadian Grain^{1/} by Ports of Loading
Week Ending September 4, 1963

Port	Wheat (ex.Dur.)	Durum Wheat	Oats	Barley	Rye	Flax- seed
	- thousand bushels -					
<u>Pacific Seaboard</u>						
Vancouver-New Westminster	1,410	-	-	117	-	113
<u>Churchill</u>	1,520	-	-	-	-	-
<u>Lakehead Direct</u>	-	-	542	-	-	-
<u>St. Lawrence</u>						
Montreal	710	75	-	-	-	11
Quebec	692	-	-	-	-	-
Baie Comeau	1,448	-	-	-	-	-
Totals	5,779	75	542	117	-	125
September 5, 1962	3,412	25	134	357	-	398

Overseas Exports of Canadian Grain^{1/} by Ports of Loading
August 1 - September 4, 1963

Port	Wheat (ex.Dur.)	Durum Wheat	Oats	Barley	Rye	Flax- seed
	- thousand bushels -					
<u>Pacific Seaboard</u>						
Vancouver-New Westminster	10,628	-	-	522	-	398
Victoria	246	-	-	-	-	-
<u>Churchill</u>	9,194	-	-	-	-	-
<u>Lakehead Direct</u>	912	-	542	418	-	-
<u>Kingston Direct</u>	254	-	-	-	-	-
<u>St. Lawrence</u>						
Montreal	3,452	725	121	95	125	120
Three Rivers	1,190	-	-	-	-	107
Quebec	982	-	-	-	-	-
Baie Comeau	4,698	-	-	-	-	265
Totals	31,555	725	663	1,035	125	890
Aug. 1-Sept. 5, 1962	22,976	497	136	960	344	1,383

^{1/} Excluding bagged seed wheat and seed oats.

Rapeseed^{1/} Handlings - Crop Year 1962-63

Marketings of Canadian rapeseed during the 1962-63 crop year amounted to 5.7 million bushels, a decline of more than 4 million from the previous year's figure. Overseas clearances totalling 5.7 million bushels reflect a decline of some 1.2 million from the 1961-62 figure. Domestic usage of 1.6 million bushels indicates a slight improvement over the previous crop year's total.

The statistical table does not represent an exact accounting balance of the stocks and handlings through the licensed system. The marketing figures are net bushels basis the country elevator dockage assessment; this dockage assessment could be and frequently was altered by cleaning to meet the strict export standards. The marketing data also include an estimate of that portion of the flour into commercial channels (chiefly export) which originated through unlicensed elevators. The data are presented in this form, however, as the statistical report of the basic handling operations.

	- bushels -
In Licensed Storage August 1, 1962 (revised)	2,158,531
<u>Marketings 1962-63</u>	
Through country elevators	5,203,718
Through mill elevators	36,233
Through interior terminals	416
Through unlicensed elevators (estimated)	450,000
	<hr/>
Total	5,690,367
Total available	7,848,898

Disposition

Overseas Exports

Via Pacific ports	5,671,169
	<hr/>
Total	5,671,169
Processed domestically	1,645,142
In licensed storage July 31, 1963	524,646
	<hr/>

Distribution of Exports

Britain	72,800
Belgium-Luxembourg	158,478
Germany - Federal Republic of	215,210
Italy	1,358,002
Netherlands	372,220
Algeria	414,400
Japan	3,080,059
	<hr/>
Total	5,671,169

^{1/} In bushels of 50 pounds.

Rapeseed^{1/} - Stocks and Handlings

	Week Ending September 4, 1963		August 1, 1963- September 4, 1963		Stocks in Store
	Receipts	Shipments	Receipts	Shipments	
	- thousand bushels -				
<u>Country Elevators</u>					
Manitoba	41	3	87	6	90
Saskatchewan	157	100	521	117	522
Alberta	68	11	157	21	167
Totals	266	115	765	144	779

Mill Elevators

Street	-)	-	6)	-	15
Carlot	-)	-	-)	-	
Totals	-	-	6	-	15

Terminal Elevators

Lakehead	-	-	-	-	1
Interior	-	<u>2/</u>	-	<u>2/</u>	1
Pacific	19	235	72	368	79
Eastern	-	-	-	-	-
Totals	19	235	72	368	81

Export Clearances

Pacific Seaboard

Vancouver-New Westminster	235	368
Totals	235	368

^{1/} In bushels of 50 pounds.

^{2/} Less than 500 bushels.

Lake Shipments from Fort William-Port Arthur
Week Ending September 4, 1963

Grain	Georgian Bay & Upper Lake Ports	Lower Lake & Upper St. Lawr. Ports	Lower St. Lawrence Ports	Maritime Ports	Buffalo	U.S.A. Ports	Over- seas Direct	Total
- thousand bushels -								
Wheat (ex.Dur.)	580	61	2,586	-	-	-	149	3,375
Durum wheat	-	-	-	-	-	-	-	-
Oats	50	89	494	-	-	-	542	1,174
Barley	137	65	441	-	-	-	-	643
Rye	-	-	-	-	-	-	-	-
Flaxseed	-	50	126	-	-	-	-	176
Totals	766	264	3,646	-	-	-	691	5,368

Lake Shipments from Fort William-Port Arthur
Opening of Navigation (April 19) - September 4, 1963

Grain	Georgian Bay & Upper Lake Ports	Lower Lake & Upper St. Lawr. Ports	Lower St. Lawrence Ports	Maritime Ports	Buffalo	U.S.A. Ports	Over- seas Direct	Total
- thousand bushels -								
Wheat (ex.Dur.)	10,617	21,971	53,506	2,484	3,087	-	4,393	96,059
Durum wheat	181	898	5,685	-	-	-	1,509	8,273
Oats	4,924	2,050	8,913	357	461	-	6,526	23,231
Barley	2,876	2,916	6,095	281	420	775	1,362	14,725
Rye	29	119	801	-	-	-	599	1,548
Flaxseed	87	314	2,314	-	-	-	942	3,657
Totals	18,714	28,267	77,315	3,122	3,968	775	15,331	147,491
Opening (April 22)- Sept. 5, 1962	7,062	21,558	57,132	3,504	3,323	2,674	9,233	105,175

Handlings of United States Grain at Eastern Elevators

	Opening of Navigation 1963- Week Ending September 4, 1963			August 1, 1963 - September 4, 1963		
	Receipts	Overseas	Canadian Domestic	Receipts	Overseas	Canadian Domestic
	- thousand bushels -					
U.S.A. Wheat	10,848	8,929	-	3,576	2,959	-
U.S.A. Oats	803	803	8	280	420	-
U.S.A. Barley	8,595	8,320	-	3,142	2,993	-
U.S.A. Rye	3,024	2,957	-	423	457	-
U.S.A. Flaxseed	208	164	-	77	33	-
U.S.A. Corn	49,544	41,721	6,067	8,066	7,349	1,389
U.S.A. Soybeans	12,513	11,974	915	2,377	2,564	262
U.S.A. Sorghums	-	-	-	-	-	-
U.S.A. Beans	-	-	-	-	-	-
Totals	85,536	74,867	6,989	17,941	16,775	1,651

Canadian Corn and Western Sunflower Seed

Receipts, Shipments and Stocks, Week Ending September 4, 1963
and Crop Year to Date

	Western Elevators	Ft. William- Pt. Arthur	Eastern Elevators
	- thousand bushels -		
<u>Canadian Western Corn</u>			
Receipts during week	-	-	-
Receipts Aug. 1/63-Sept.4/63	9	-	-
Shipments during week	-	-	-
Stocks in store	17	-	-
<u>Canadian Eastern Corn</u>			
Receipts during week	-	-	5
Receipts Aug. 1/63-Sept.4/63	-	-	6
Shipments during week	-	-	1
Stocks in store	-	-	124
	- thousand pounds -		
<u>Canadian Western Sunflower Seed</u>			
Receipts during week	-	-	-
Receipts Aug. 1/63-Sept.4/63	-	-	-
Shipments during week	-	-	-
Stocks in store	1	-	-