

22-005  
1932  
Aug.  
Suppl.  
c. 2

65

CANADA  
DEPARTMENT OF TRADE AND COMMERCE  
DOMINION BUREAU OF STATISTICS  
AGRICULTURAL BRANCH

Vol. 2

No. 12

STATISTICAL SUPPLEMENT

to the

MONTHLY REVIEW

of the

WHEAT SITUATION

AUGUST 23, 1932

♦ ♦ ♦

Published by Authority of the Hon. H. H. Stevens, M.P.,  
Minister of Trade and Commerce

♦ ♦ ♦

OTTAWA

1932



U.S. DEPARTMENT OF AGRICULTURE  
BUREAU OF PLANT INDUSTRY  
WASHINGTON, D. C.

INTERNATIONAL SUBMITTAL

to the

INTERNATIONAL BOARD

of the

UNITED NATIONS

EDUCATIONAL, SCIENTIFIC AND CULTURAL ORGANIZATION

Approved by the Director of the Bureau of Plant Industry  
on \_\_\_\_\_ 19\_\_\_\_

OFFICE

19\_\_\_\_

DEPARTMENT OF TRADE AND COMMERCE  
DOMINION BUREAU OF STATISTICS - CANADA  
AGRICULTURAL BRANCH

---

Dominion Statistician: R.H. Coats, B.A., F.S.S. (Hon.), F.R.S.C.  
Chief, Agricultural Branch: T.W. Grindley, Ph.D.

---

SUPPLEMENT TO THE MONTHLY REVIEW OF THE WHEAT SITUATION.

The present publication is the third statistical supplement to the Monthly Review of the Wheat Situation and contains authoritative material for the current analysis of the wheat position. The supplement deals with the following points in the order given herewith:

- (a) the supply situation
- (b) international trade
- (c) prices
- (d) import requirements
- (e) the Canadian position

Statistics covering the international movement of wheat deal in particular with the April-July period.

THE SUPPLY SITUATION

Acreage and production statistics are taken from estimates compiled by the International Institute of Agriculture, the United States Department of Agriculture and the Dominion Bureau of Statistics.

1. WHEAT ACREAGE

The following table shows the acreage sown to wheat in important wheat producing countries:-

	<u>NORTH AMERICA</u> (Thousand Acres)			
	<u>1931</u>	<u>1930</u>	<u>1929</u>	<u>1928</u>
Canada	26,116	24,898	25,255	24,119
United States	55,299	61,138	62,671	58,272
Mexico	1,424	1,216	1,293	2,147
<b>T O T A L</b>	82,834	87,252	89,219	84,538

	<u>EUROPE</u> (Thousand Acres)			
	<u>1931</u>	<u>1930</u>	<u>1929</u>	<u>1928</u>
Germany	5,355	4,402	3,955	4,269
Austria	508	508	511	514
Belgium	381	411	432	425
Bulgaria	2,964	3,006	2,617	2,813
Denmark	259	249	257	252
Spain	11,245	11,134	10,478	10,480
Estonia	99	90	82	70
U.K. & Irish Free State	1,270	1,432	1,413	1,490
Finland	47	51	47	46
France	12,494	13,280	12,750	12,957
Greece	1,359	1,396	1,186	1,313
Hungary	4,004	4,187	3,913	4,144
Italy	12,075	11,917	11,803	12,264
Latvia	215	179	145	164
Lithuania	478	526	488	393
Luxemburg	23	25	21	37
Malta	10	9	9	9
Norway	29	30	28	28
Netherlands	191	142	114	148
Poland	4,495	4,066	3,426	3,187
Portugal	1,161	1,120	1,102	1,102
Roumania	8,566	7,551	6,764	7,923
Sweden	684	646	547	562
Switzerland	179	180	174	174
Czechoslovakia	2,047	1,965	2,023	1,871
Yugoslavia	5,390	5,365	5,289	4,747
<b>T O T A L</b>	75,528	73,867	69,576	71,382



SOUTHERN HEMISPHERE

(Thousand Acres)

	<u>1931</u>	<u>1930</u>	<u>1929</u>	<u>1928</u>
Argentina	17,295	21,283	19,486	20,756
Australia	13,990	18,149	14,977	14,840
Chile	1,426	1,610	1,758	1,715
<b>T O T A L</b>	<b>32,711</b>	<b>41,042</b>	<b>36,221</b>	<b>37,311</b>

NORTH AFRICA

(Thousand Acres)

	<u>1931</u>	<u>1930</u>	<u>1929</u>	<u>1928</u>
Algeria	3,640	3,980	3,722	3,665
Morocco	2,732	2,957	2,843	2,665
Egypt	1,649	1,522	1,615	1,590
Tunis	1,927	1,923	1,730	2,011
<b>T O T A L</b>	<b>9,948</b>	<b>10,382</b>	<b>9,910</b>	<b>9,931</b>

ASIA

(Thousand Acres)

	<u>1931</u>	<u>1930</u>	<u>1929</u>	<u>1928</u>
India	32,181	31,654	31,973	32,193
Japan	1,231	1,198	1,213	1,201
<b>T O T A L</b>	<b>33,412</b>	<b>32,852</b>	<b>33,186</b>	<b>33,394</b>

11.

WHEAT PRODUCTION

The following table shows wheat production in important wheat growing countries. The 1931 estimates are compared with the outturn of 1930, 1929 and 1928.

PRODUCTION

NORTH AMERICA

(Thousand Bushels)

	<u>1931</u>	<u>1930</u>	<u>1929</u>	<u>1928</u>
Canada	304,144 <sup>1/</sup>	420,672	304,520	566,726
United States	892,271	858,160	809,176	914,876
Mexico	15,778	11,446	11,333	11,031
<b>T O T A L</b>	<b>1,212,193</b>	<b>1,290,278</b>	<b>1,125,029</b>	<b>1,492,633</b>

EUROPE

(Thousand Bushels)

	<u>1931</u>	<u>1930</u>	<u>1929</u>	<u>1928</u>
Germany	155,545	139,217	123,062	141,596
Austria	9,384	12,008	11,559	12,917
Belgium	13,817	13,236	13,225	19,986
Bulgaria	61,195	57,317	33,191	49,153
Denmark	9,921	10,216	11,772	12,214
Spain	134,426	146,699	154,244	119,884
Estonia	1,738	1,635	1,260	1,036
Finland	1,161	1,210	1,095	998
France	209,630	228,104	319,861	281,283
U.K. & Irish Free State	38,952	43,351	50,941	50,948
Greece	12,228	9,709	8,501	13,085
Hungary	69,187	84,337	74,985	99,211
Italy	247,933	210,069	260,123	228,596
Latvia	3,388	4,066	2,336	2,499
Lithuania	8,340	11,327	9,329	6,327
Luxemburg	406	442	275	713

1. Unrevised.



EUROPE (Cont'd.)  
(Thousand Bushels)

	<u>1931</u>	<u>1930</u>	<u>1929</u>	<u>1928</u>
Malta	227	503	293	289
Norway	592	720	750	798
Netherlands	6,268	6,055	5,467	7,335
Poland	83,220	82,321	65,361	59,218
Portugal	13,216	13,817	10,814	7,546
Roumania	135,295	150,770	99,752	115,544
Sweden	18,048	21,469	19,032	19,155
Switzerland	5,489	5,762	5,787	5,960
Czechoslovakia	41,232	50,606	52,302	51,499
Yugoslavia	98,789	80,325	94,993	103,294
<b>T O T A L</b>	<b>1,439,627</b>	<b>1,365,098</b>	<b>1,431,415</b>	<b>1,411,084</b>

SOUTHERN HEMISPHERE  
(Thousand Bushels)

	<u>1931</u>	<u>1930</u>	<u>1929</u>	<u>1928</u>
Argentina	226,000	235,960	162,576	349,000
Australia	189,000	212,629	126,885	159,497
<b>T O T A L</b>	<b>415,000</b>	<b>448,589</b>	<b>289,461</b>	<b>508,497</b>

NORTH AFRICA  
(Thousand Bushels)

	<u>1931</u>	<u>1930</u>	<u>1929</u>	<u>1928</u>
Algeria	25,649	32,249	32,833	30,302
Morocco	34,708	21,302	26,385	24,746
Egypt	46,076	39,753	45,203	37,296
Tunis	13,962	10,538	12,309	12,125
<b>T O T A L</b>	<b>120,395</b>	<b>103,702</b>	<b>117,255</b>	<b>104,469</b>

ASIA  
(Thousand Bushels)

	<u>1931</u>	<u>1930</u>	<u>1929</u>	<u>1928</u>
India	347,275	390,843	320,731	290,864
Japan	30,901	29,538	30,495	30,812
<b>T O T A L</b>	<b>378,176</b>	<b>420,381</b>	<b>351,226</b>	<b>321,676</b>

111.

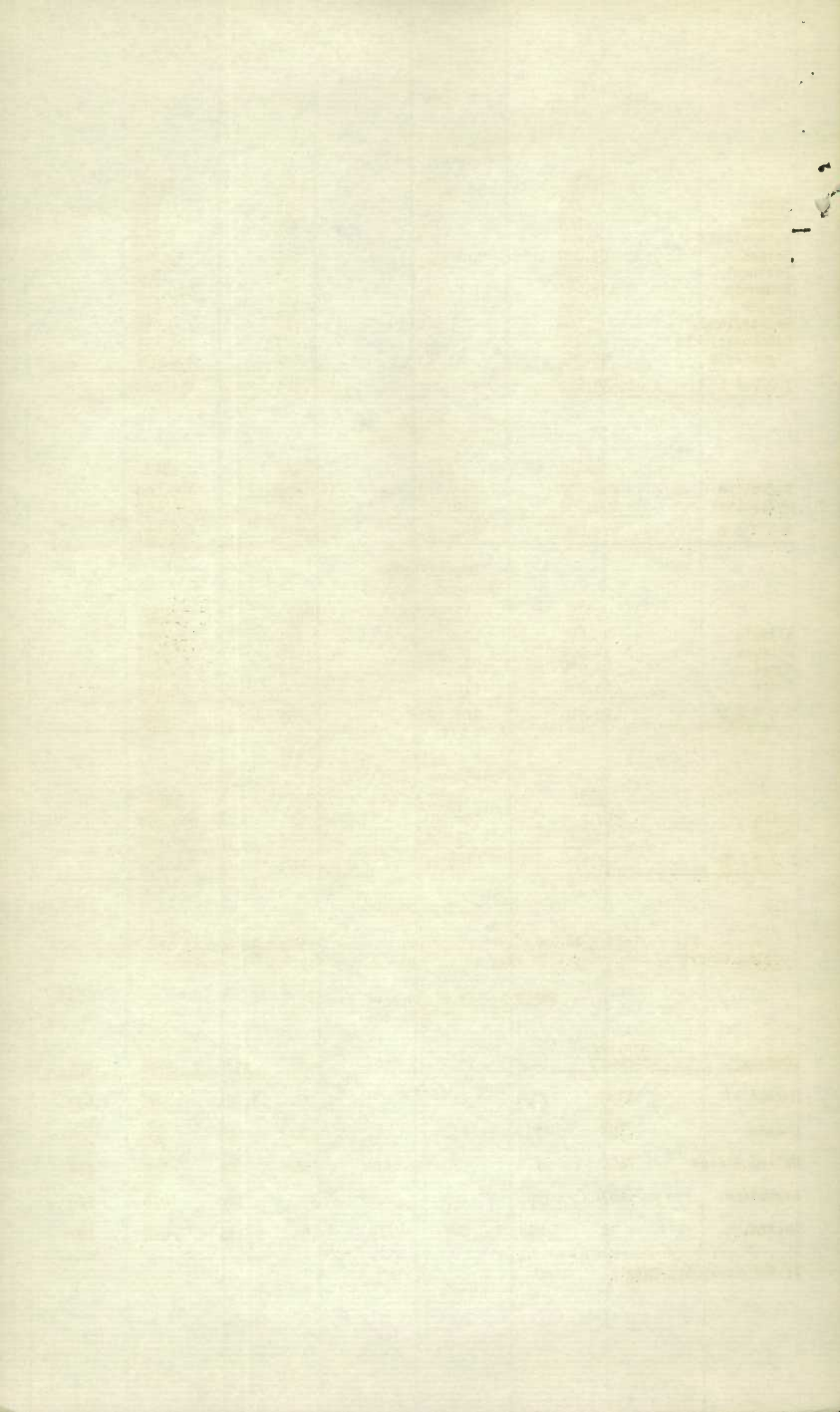
INDEX OF WHEAT PRODUCTION

The following table shows production of wheat in Europe and in the four leading exporting countries from 1925 to 1931 along with the 1909-13 average.

Table 1.- Production of Wheat.  
(Million bushels).

Country	Average 1909-13	1925	1926	1927	1928	1929	1930	1931
Europe 1/	1,363	1,404	1,216	1,275	1,411	1,431	1,365	1,439
Canada	198	397	408	481	566	305	420	304
United States	691	676	830	878	915	809	858	892
Argentina	147	191	223	283	349	162	236	226
Australia	92	114	162	118	159	126	212	189

1/ Not including Russia.





The following table shows index numbers of wheat production in Europe and the four leading exporting countries. Base 1909-13 = 100.

Index of World Wheat Production.

Country	Average 1909-13	1925	1926	1927	1928	1929	1930	1931
Europe 1/	100.0	103.0	89.2	93.5	103.5	105.0	99.9	106.3
Canada	100.0	200.5	206.1	242.9	285.9	154.0	200.5	153.5
United States	100.0	97.8	120.1	127.1	132.4	117.1	124.9	129.1
Argentina	100.0	130.0	155.1	192.5	237.4	110.2	160.5	153.7
Australia	100.0	123.9	176.1	128.3	172.8	137.0	230.4	206.0

1/ Not including Russia.

IV.

RYE PRODUCTION

The following table shows estimated rye production in important producing countries (exclusive of Russia) with comparative figures for last year.

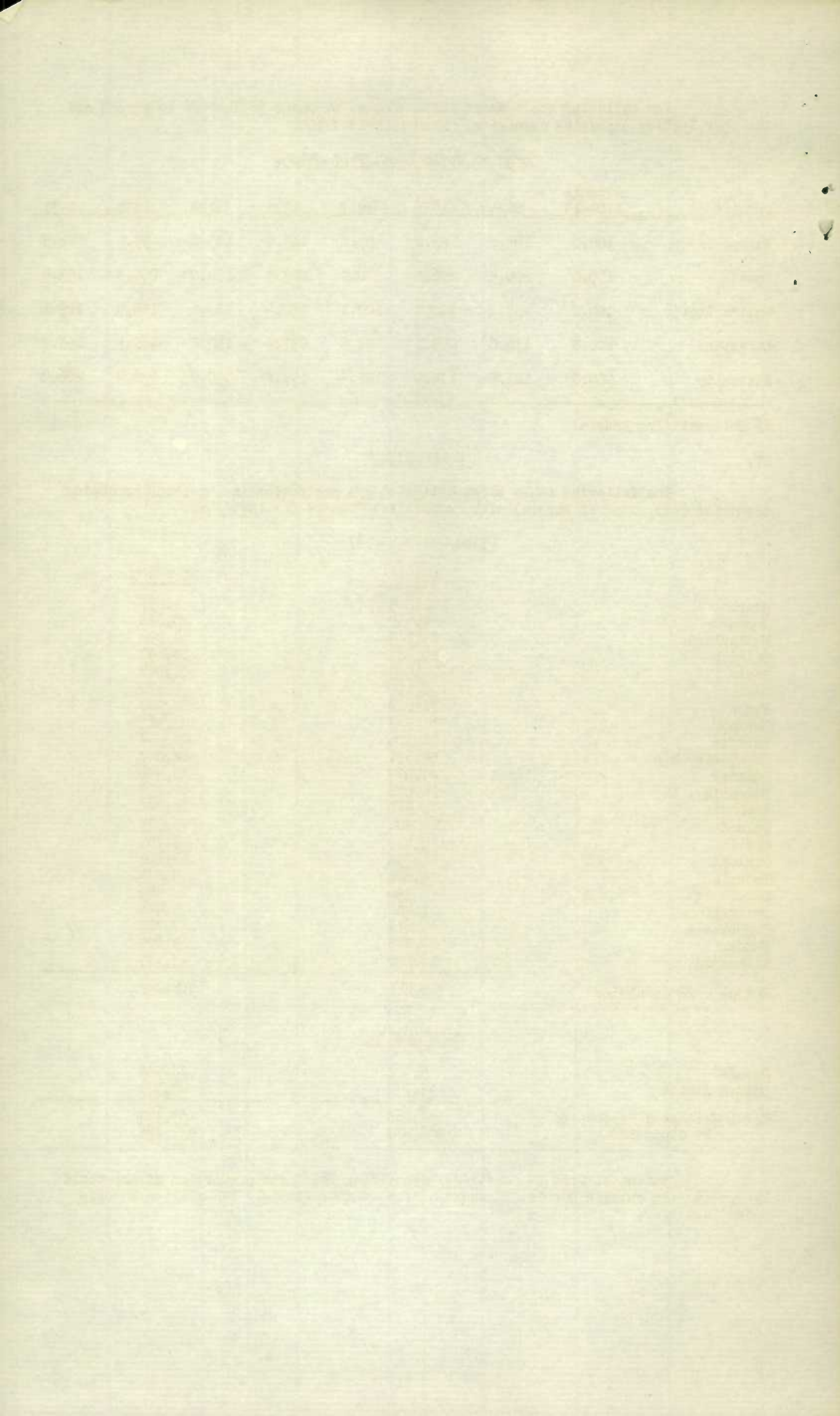
(Thousand Bushels)

	<u>1931</u>	<u>1930</u>
Greece	1,815	1,837
Denmark	8,661	10,026
Netherlands	13,125	14,892
Belgium	20,483	18,630
Spain	18,503	21,544
Italy	6,195	6,127
France	31,022	28,900
Germany	262,982	302,317
Austria	18,306	20,613
Czechoslovakia	54,631	68,047
Hungary	21,575	23,406
Bulgaria	12,072	12,620
Roumania	13,962	18,288
Poland	224,504	273,923
Latvia	5,615	7,757
Finland	11,792	14,104
Estonia	5,320	8,885
Luxemburg	336	480
Switzerland	1,402	1,484
Yugoslavia	7,614	7,825
Sweden	11,745	19,609
Lithuania	16,282	25,177
Europe - 22 countries	768,442	911,491

NORTH AMERICA

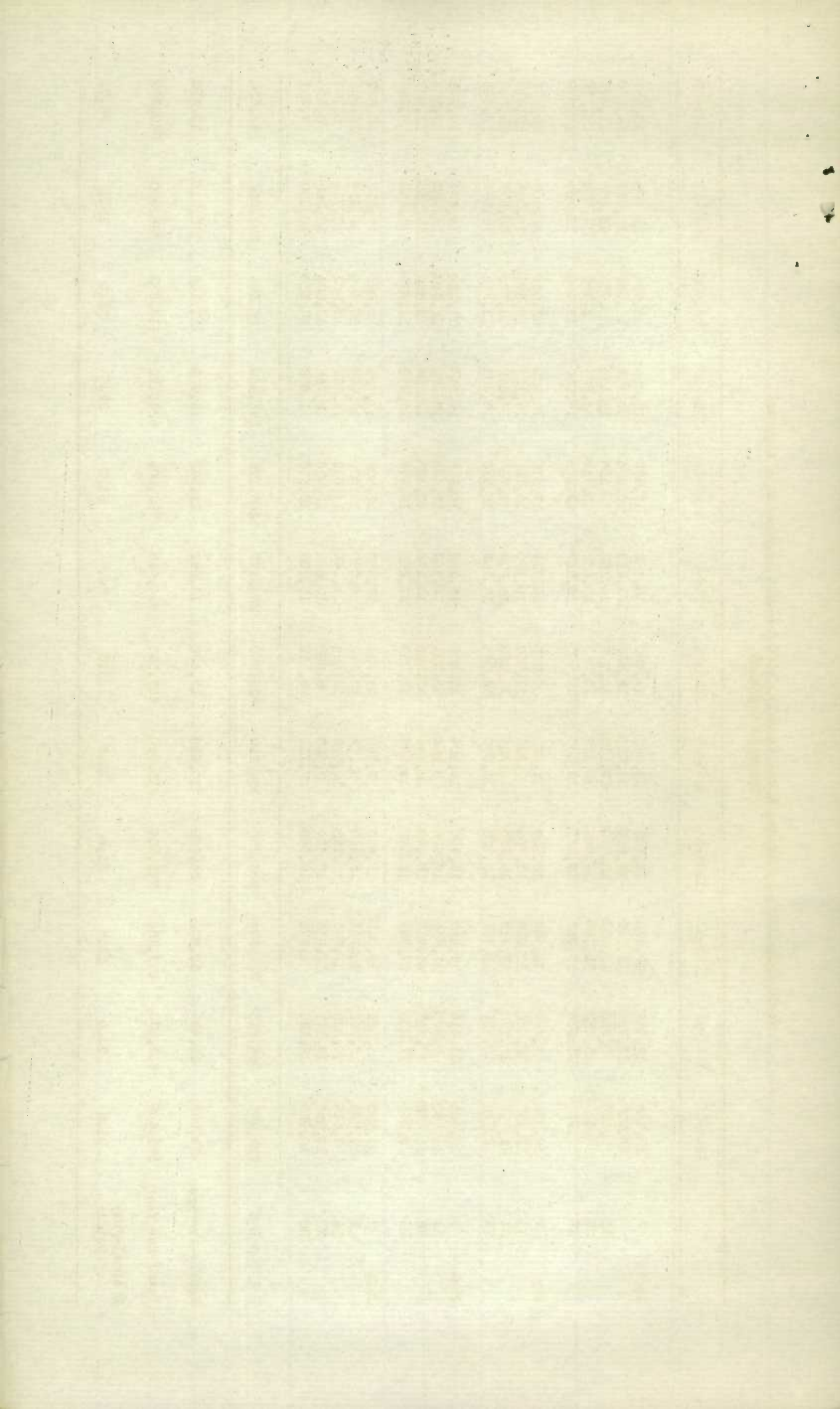
Canada	5,322	22,018
United States	32,746	45,379
Total Estimated Production 24 Countries	38,068 806,510	67,397 978,888

Estimates from 24 countries, comprising the large proportion of the world rye production outside Russia, indicate a crop of approximately 172 million bushels under last year.



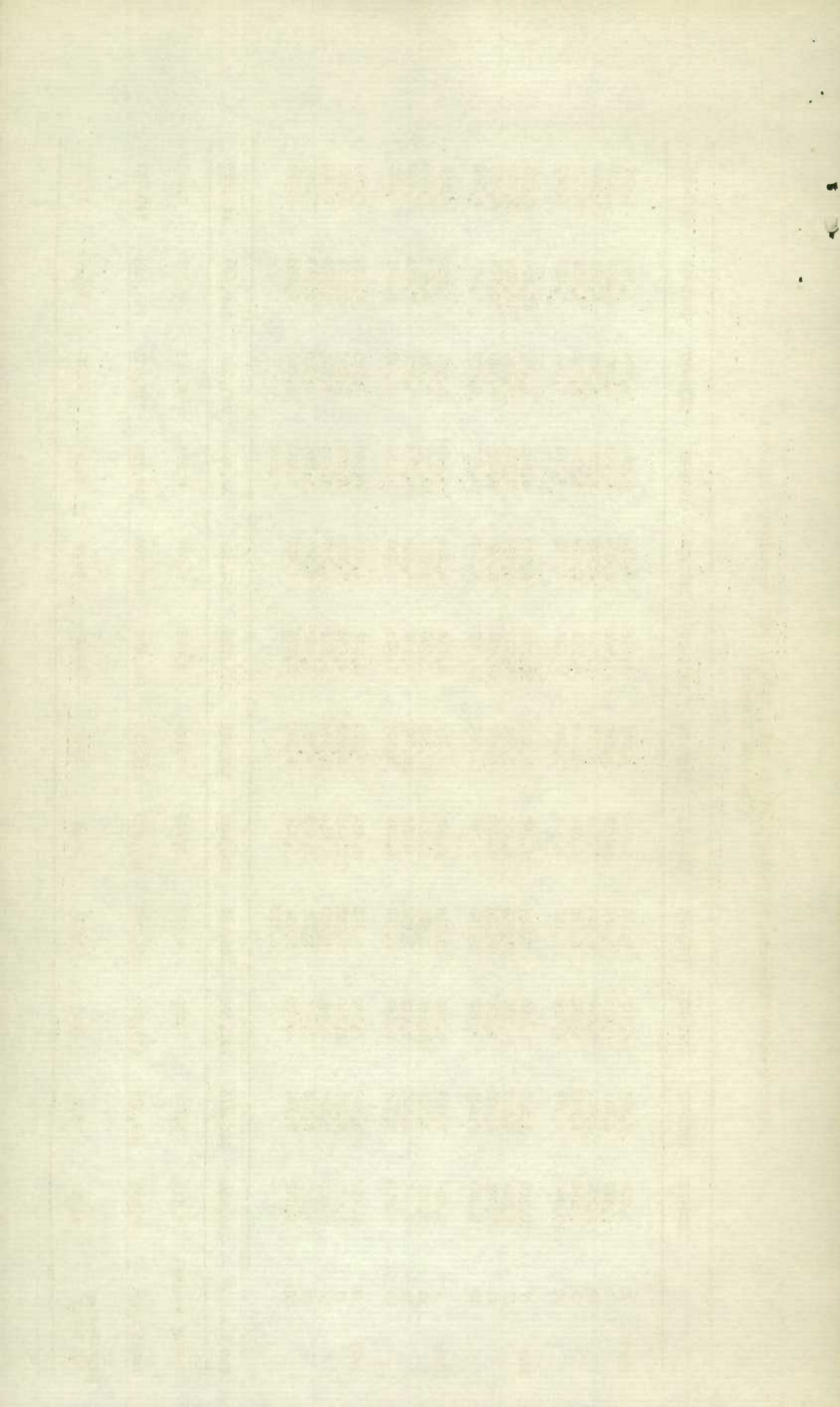
World Shipments, by Weeks, April to July, 1920 to 1932 (Broomhall's figures)  
(Thousand bushels).

		1920-21	1921-22	1922-23	1923-24	1924-25	1925-26	1926-27	1927-28	1928-29	1929-30	1930-31	1931-32
April	2	10,552	12,544	10,520	15,792	13,840	11,400	18,152	17,472	18,056	11,904	13,960	15,656
	9	16,200	15,984	12,960	15,960	14,224	12,528	21,112	16,856	17,192	11,968	11,936	14,760
	16	9,824	9,240	13,088	16,040	12,112	10,728	14,352	17,656	17,496	8,952	15,248	15,920
	23	14,624	13,832	12,376	14,984	13,328	10,960	15,632	16,312	15,504	6,408	14,792	16,376
	30	17,928	11,336	13,832	13,856	10,800	12,400	19,368	15,288	14,640	11,480	16,360	18,072
May	7	18,552	7,736	13,640	18,704	11,928	9,376	21,912	12,976	14,032	12,056	20,408	19,976
	14	17,152	10,624	11,088	17,768	9,336	11,560	19,160	14,168	16,128	10,544	20,016	17,616
	21	11,792	11,728	13,112	15,560	10,136	14,160	18,896	14,784	17,072	13,120	20,576	15,368
	28	12,560	12,632	13,504	15,728	11,000	16,544	17,280	15,936	19,600	11,312	15,390	13,448
June	4	12,424	13,416	14,640	17,104	11,904	15,200	16,368	14,176	14,544	11,224	19,264	14,448
	11	11,896	6,376	17,464	17,936	6,944	15,232	16,760	13,488	19,640	12,968	14,962	14,708
	18	12,128	10,368	14,912	16,248	10,144	17,288	13,176	16,608	17,608	10,856	17,535	12,939
	25	13,264	11,208	12,984	13,880	10,008	12,752	14,280	15,792	15,840	11,656	14,453	9,918
July	2	13,800	15,328	12,040	15,600	7,960	11,024	10,360	13,504	13,784	12,888	14,210	10,692
	9	11,968	10,288	10,792	15,200	8,112	12,192	10,080	13,024	16,448	10,640	13,356	10,354
	16	9,416	10,888	11,960	11,792	10,072	13,696	11,040	14,032	14,032	11,560	10,734	8,707
	23	10,496	10,168	12,816	10,624	8,680	8,968	13,840	13,568	12,768	12,504	12,288	8,164
	30	10,920	12,120	9,376	10,048	7,712	9,352	10,704	12,536	11,688	12,536	10,200	9,331
T O T A L S		235,496	205,816	231,104	283,256	188,240	225,360	282,472	268,176	296,960	204,576	275,688	246,453
Weekly Average		13,083	11,434	12,839	14,908	10,458	12,520	15,692	14,899	15,629	11,365	15,316	13,690
Total for Year		591,048	642,520	675,184	773,304	715,240	667,552	814,448	792,808	928,120	612,872	786,000	769,372
% April-July of Total		39.8	32.0	34.2	36.6	26.3	33.8	34.7	33.8	32.0	33.4	35.1	32.03



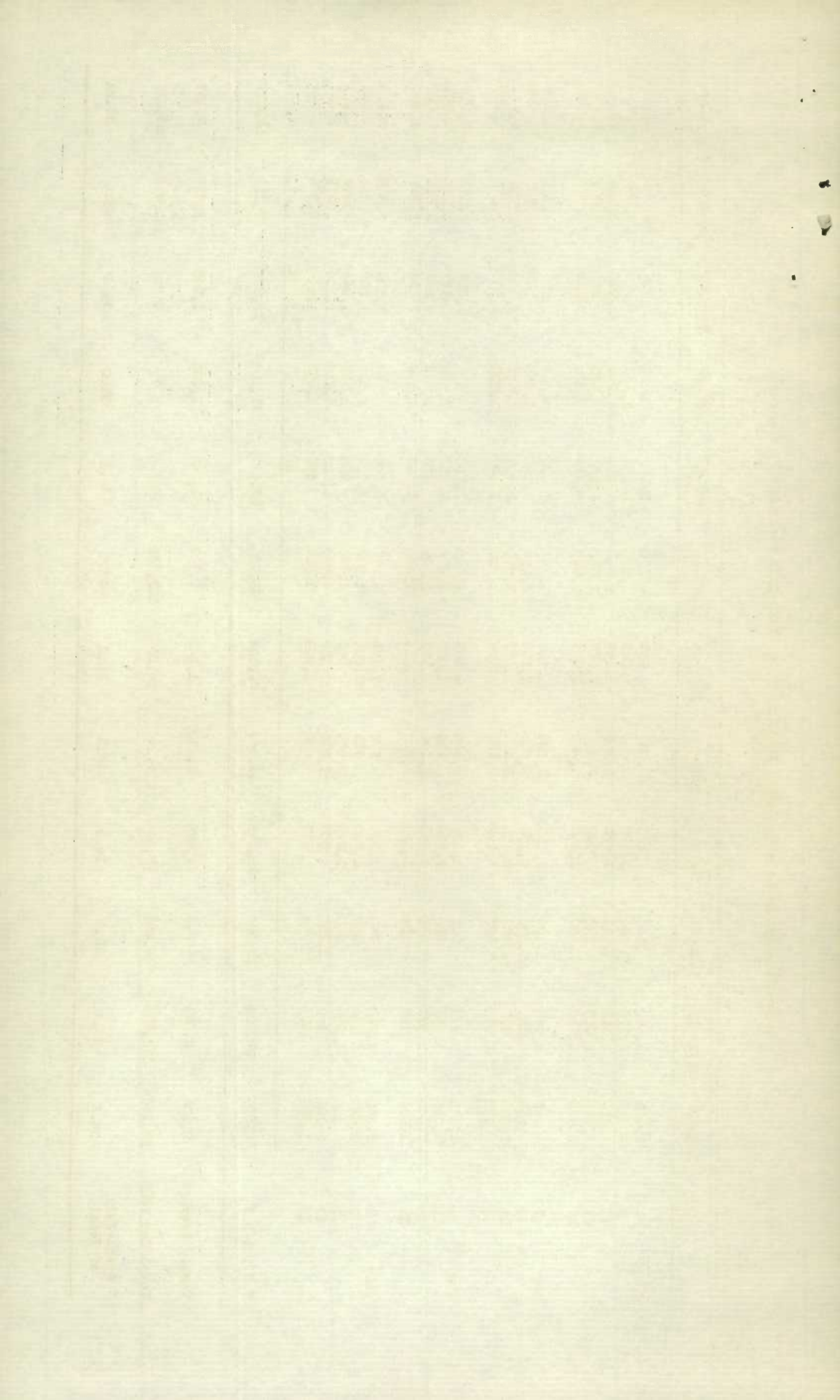
North American Shipments, by Weeks, April to July, 1920 to 1932 (Broomhall's figures)  
(Thousand Bushels)

		1920-21	1921-22	1922-23	1923-24	1924-25	1925-26	1926-27	1927-28	1928-29	1929-30	1930-31	1931-32
April	2	7,008	5,768	6,272	7,392	6,144	6,208	6,648	7,736	8,696	4,936	4,184	6,096
	9	6,880	6,624	6,816	5,880	6,712	6,840	7,576	8,024	7,448	4,992	3,864	4,856
	16	6,104	4,032	6,696	6,464	6,736	5,408	6,216	8,928	7,800	5,192	5,032	7,304
	23	6,528	6,208	6,632	6,272	6,072	4,768	7,592	8,728	5,624	3,752	4,432	7,520
	30	10,904	3,776	8,088	7,152	3,704	5,688	9,632	6,912	7,584	7,144	7,520	7,680
May	7	10,720	3,200	6,960	7,824	7,280	5,176	12,336	8,240	6,592	6,472	10,624	8,856
	14	8,552	4,520	4,728	9,696	6,192	5,552	9,848	5,584	7,184	7,184	8,728	9,656
	21	7,096	6,000	7,888	9,456	6,088	8,832	10,872	8,880	8,032	9,160	10,208	6,384
	28	9,000	7,624	8,112	9,592	6,264	11,152	11,080	8,520	10,472	6,672	7,450	6,560
June	4	9,088	7,056	9,928	10,712	6,640	9,456	8,656	8,776	9,656	5,752	9,850	8,352
	11	8,088	3,056	11,664	9,808	5,000	10,368	8,400	8,392	10,728	7,776	6,444	7,344
	18	7,984	5,600	8,912	9,840	4,456	10,960	8,192	8,568	9,376	4,872	7,798	7,760
	25	7,960	6,816	6,864	6,528	6,216	8,536	7,328	6,672	8,952	6,712	6,531	5,312
July	2	9,784	8,680	6,584	7,360	4,632	7,232	3,928	6,624	6,448	7,728	6,264	6,544
	9	7,904	6,392	5,240	7,256	5,416	8,056	4,664	7,648	8,672	6,800	5,853	5,888
	16	7,000	6,280	6,888	6,800	5,584	11,376	5,512	9,232	7,824	7,728	5,260	4,720
	23	7,160	6,856	8,696	5,392	5,936	6,680	7,448	8,360	7,984	9,520	5,855	5,484
	30	8,848	7,328	4,800	5,448	4,936	6,840	5,792	9,600	7,480	8,840	4,584	6,513
					4,720					6,888			
T O T A L S		146,608	105,816	131,768	143,592	104,088	139,128	141,720	145,424	153,440	121,232	120,481	122,829
Weekly Average		8,145	5,879	7,320	7,557	5,783	7,729	7,873	8,079	8,076	6,735	6,693	6,823
Total Year		440,832	403,128	455,384	454,352	422,600	413,232	484,528	489,720	543,120	318,696	354,014	330,717
April-July of Total		33.3	26.2	28.9	31.6	24.6	33.7	29.2	29.7	28.3	38.0	34.0	37.14



Australian Shipments - by Weeks, April to July, 1920-1932 (Broomhall's figures).  
(Thousand Bushels).

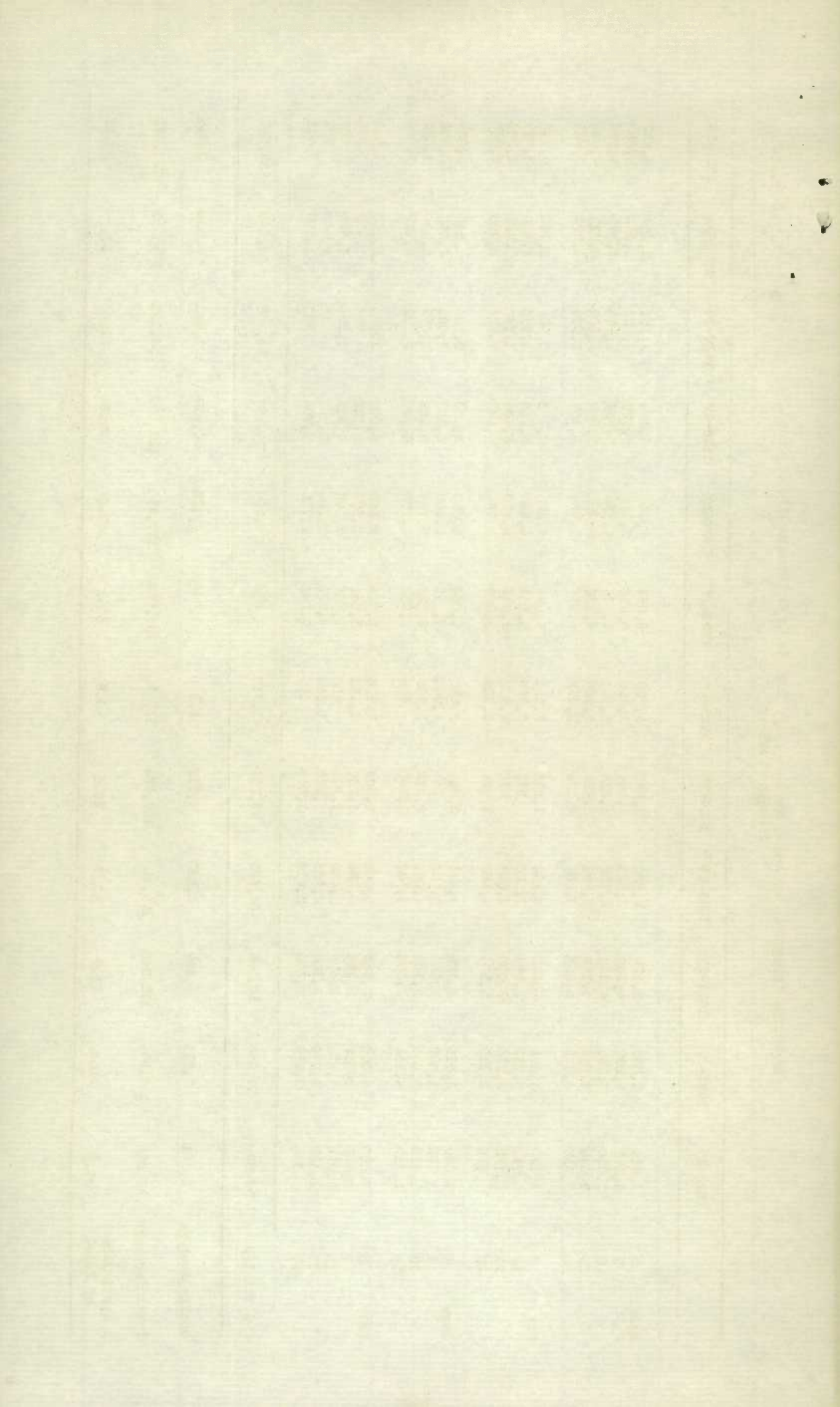
		1920-21	1921-22	1922-23	1923-24	1924-25	1925-26	1926-27	1927-28	1928-29	1929-30	1930-31	1931-32
April	2	2,008	3,640	344	920	4,624	912	4,336	2,200	3,455	2,016	5,004	3,944
	9	4,416	3,176	1,064	3,040	4,032	1,128	5,760	2,296	3,152	872	3,840	3,936
	16	1,624	1,312	1,056	1,672	3,360	1,144	2,648	1,308	2,840	1,248	3,756	3,144
	23	4,528	2,848	912	400	4,672	1,488	2,472	1,656	3,920	376	5,604	3,176
	30	2,944	3,216	1,432	1,640	4,760	1,248	2,520	2,216	2,320	1,536	3,784	3,736
May	7	4,416	2,664	1,200	3,120	3,184	1,128	3,184	1,496	2,656	1,904	4,224	5,472
	14	4,784	1,832	1,688	4,152	2,640	2,104	2,856	3,336	1,856	260	5,280	4,317
	21	2,584	3,312	1,048	2,776	3,040	1,384	3,560	2,496	1,656	1,200	2,732	4,744
	28	2,320	2,824	1,096	1,272	2,568	1,976	1,720	3,048	1,800	1,600	2,812	4,184
June	4	2,336	2,816	592	1,104	1,816	1,560	2,808	1,768	496	1,336	3,872	3,016
	11	3,008	1,656	680	1,584	984	1,080	2,616	664	2,264	472	3,116	3,224
	18	2,440	1,672	560	1,008	2,440	1,528	2,304	664	1,332	1,832	3,512	2,408
	25	1,984	952	656	1,328	1,096	1,416	2,400	3,056	1,384	656	3,732	1,840
July	2	1,392	1,920	768	1,184	776	1,176	2,776	2,664	688	1,504	3,988	2,128
	9	1,424	304	248	1,352	712	1,006	1,808	1,704	1,544	1,000	4,048	1,896
	16	488	1,208	840	1,216	1,904	400	1,456	752	1,176	1,064	2,296	2,584
	23	2,184	640	1,128	600	1,048	536	1,976	1,552	1,160	1,304	3,072	1,634
	30	1,624	936	724	512	808	1,048	1,504	672	1,272	1,448	2,376	1,624
T O T A L S		46,504	36,928	16,056	29,976	44,464	22,352	46,704	33,648	35,864	22,328	67,116	57,017
Weekly Average		2,584	2,052	892	1,578	2,470	1,242	2,700	1,869	1,888	1,240	3,729	3,167
Total for Year		82,144	110,824	47,824	77,944	117,144	74,048	103,624	74,640	112,216	64,928	153,792	153,225
% April-July of Total		56.6	33.3	33.6	38.5	38.0	30.2	47.0	45.1	32.0	34.4	43.6	37.21





Argentine Shipments, by Weeks, April - July, 1920 to 1932 (Broomhall's figures).  
(Thousand bushels)

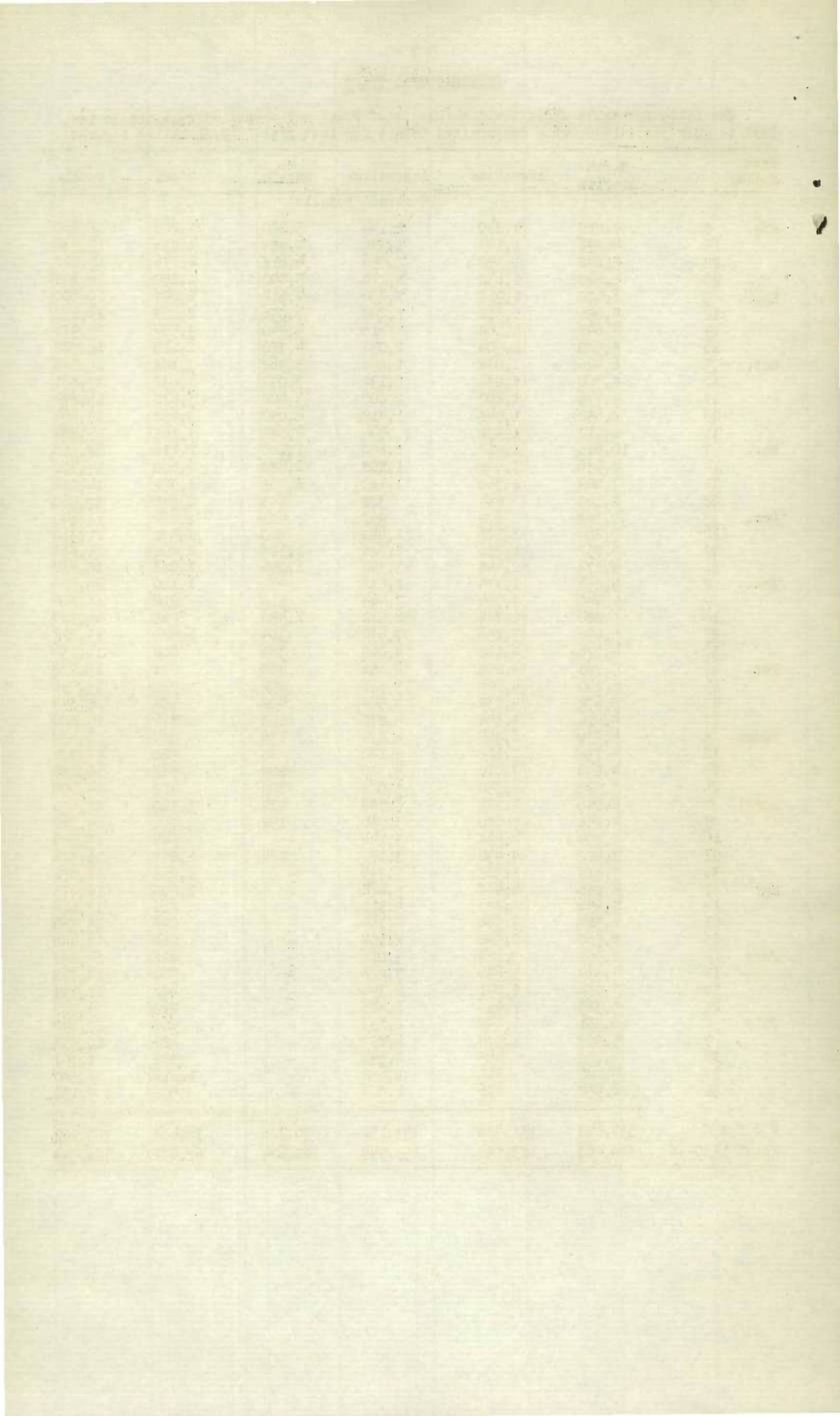
		1920-21	1921-22	1922-23	1923-24	1924-25	1925-26	1926-27	1927-28	1928-29	1929-30	1930-31	1931-32
April	2	1,464	2,896	3,120	6,920	2,880	3,720	6,064	7,040	5,448	3,152	3,104	4,232
	9	4,176	6,032	4,280	6,520	3,144	3,456	6,336	5,992	5,928	4,120	3,456	5,080
	16	2,096	3,760	4,448	6,752	1,824	3,496	4,176	6,936	5,936	1,696	4,672	4,528
	23	3,024	4,656	4,128	6,992	2,432	3,408	4,936	5,480	5,208	1,600	3,712	4,432
	30	3,656	4,272	4,056	4,584	2,128	3,992	6,416	5,792	4,152	1,568	4,272	5,368
May	7	3,120	1,696	4,240	6,832	1,336	2,104	5,088	2,328	4,272	2,504	3,740	4,448
	14	3,712	3,768	3,896	3,520	272	2,960	5,264	4,504	6,216	1,096	3,800	3,827
	21	2,112	2,384	3,400	3,008	856	2,912	3,512	2,720	6,496	1,760	5,384	3,544
	28	928	2,120	3,504	4,160	1,784	1,328	3,888	3,784	6,672	2,104	3,980	2,040
June	4	1,000	3,416	3,168	4,336	2,640	3,080	4,008	2,680	3,656	2,344	4,512	3,024
	11	800	1,600	3,464	5,056	544	1,944	4,352	3,648	6,120	3,080	4,668	3,648
	18	1,616	3,000	3,168	4,064	2,232	3,208	2,128	5,744	5,968	2,672	5,500	2,072
	25	2,832	3,352	3,056	4,472	1,360	968	2,784	4,176	4,800	2,192	3,132	2,000
July	2	2,096	4,616	3,352	5,008	1,408	1,408	2,736	3,360	6,088	1,624	2,984	1,048
	9	2,440	3,552	3,216	4,888	1,160	1,488	1,552	2,888	5,328	776	1,492	1,984
	16	1,256	3,024	1,608	2,480	1,944	960	2,560	3,008	4,312	1,336	1,624	465
	23	1,152	1,776	2,304	2,736	1,320	1,056	3,200	2,504	2,992	416	2,048	302
	30	344	3,736	2,240	2,016	1,560	624	2,048	1,712	2,384	728	1,208	498
T O T A L S		37,824	59,656	60,648	86,688	30,824	42,112	71,056	74,296	94,592	34,768	63,289	52,540
Weekly Average		2,101	3,314	3,369	4,563	1,712	2,340	3,948	4,128	4,979	1,932	3,516	2,919
Total for Year		13,848	117,544	138,240	174,400	121,384	93,920	139,008	177,744	223,464	152,192	123,353	138,428
% April-July of Total		59.2	50.8	43.9	49.7	25.4	44.8	51.1	41.8	42.3	22.8	51.3	37.95



INTERNATIONAL TRADE

The following table shows world shipments of wheat and wheatflour from August 1st, 1931, to July 31st, 1932, with comparative totals for last year. (Broomhall's figures).

Week Ending	North America	Argentine	Australia	Russia	Other	Total
	(Thousand Bushels)					
Aug. 8	7,888	1,240	2,144	3,080	1,208	15,560
15	4,296	1,144	1,576	4,484	1,836	13,336
22	5,648	1,352	2,096	4,618	2,176	15,890
29	5,520	1,632	1,776	5,800	1,880	16,608
Sept. 5	6,072	1,912	2,056	4,512	2,048	16,600
12	5,256	1,312	1,248	6,056	2,280	16,152
19	7,648	1,168	1,616	5,040	3,504	18,976
26	5,560	1,504	2,032	4,720	2,112	15,928
Oct. 3	6,424	1,032	1,256	3,368	3,168	15,248
10	8,720	1,848	2,192	3,072	1,632	17,461
17	5,776	1,200	2,000	3,408	3,888	16,272
24	8,632	1,048	1,712	4,040	3,632	19,064
31	6,912	1,472	944	2,088	3,168	14,584
Nov. 7	10,616	1,912	2,656	1,160	2,216	18,560
14	8,936	1,648	1,808	2,480	2,600	17,472
21	7,024	1,360	1,112	2,768	1,752	14,016
28	8,160	944	328	448	2,680	12,560
Dec. 5	7,128	672	992	984	1,864	11,640
12	5,864	1,176	1,448	520	2,352	11,360
19	5,032	1,736	1,528	1,328	2,208	11,832
26	4,272	2,448	3,368	1,256	1,088	12,432
Jan. 2	5,856	1,424	1,536	272	1,120	10,208
9	5,448	1,504	3,464	512	912	11,840
16	5,080	2,744	6,512	1,456	968	16,760
23	5,456	3,856	7,672	304	1,824	19,112
30	4,776	4,168	4,000	384	808	14,136
Feb. 6	5,768	4,208	4,656	408	736	15,776
13	5,240	4,024	5,728	352	752	16,096
20	5,672	4,232	4,544	408	432	15,344
27	4,416	5,144	4,872	112	776	15,320
March 5	4,536	6,344	4,872	136	584	16,472
12	4,736	7,112	5,120	88	920	17,976
19	4,040	7,016	4,320	264	648	16,288
26	3,520	4,352	3,024	200	912	14,008
April 2	6,096	4,232	3,944	224	1,160	15,656
9	4,856	5,080	3,936	152	736	14,760
16	7,304	4,528	3,144	-	944	15,920
23	7,520	4,432	3,176	224	1,024	16,376
30	7,680	5,368	3,736	-	1,288	18,072
May 7	8,856	4,448	5,472	-	1,200	19,976
14	9,656	3,827	4,317	-	816	17,616
21	6,384	3,544	4,744	-	696	15,368
28	6,560	2,040	4,184	-	664	13,448
June 4	8,352	3,024	3,016	-	496	14,888
11	7,334	3,646	3,228	-	500	14,708
18	7,984	2,071	2,396	-	488	12,939
25	5,319	1,996	2,843	-	760	9,918
July 2	6,551	1,048	2,133	-	960	10,692
9	5,807	1,974	1,894	-	680	10,354
16	4,720	465	2,594	-	928	8,707
23	5,880	312	1,632	-	1,016	8,840
31	6,552	496	1,552	-	592	9,192
<b>T O T A L</b>	<b>331,192</b>	<b>138,436</b>	<b>153,151</b>	<b>70,726</b>	<b>76,404</b>	<b>769,909</b>
Total 1930-31	354,200	123,144	153,944	92,624	62,632	786,544



IMPORT REQUIREMENTS

Mr. Broomhall estimated world wheat import requirements for 1931-32 at 776 million bushels or an average of 14.9 million bushels per week. During the crop year from August 1st, 1931, to July 31st, 1932, world shipments amounted to 770 million bushels, or 6 million bushels short of Mr. Broomhall's estimate of import requirements.

World shipments of wheat and wheatflour for recent years are shown in the following table.

	(million bushels)
1925-26.....	668
1926-27.....	814
1927-28.....	793
1928-29.....	928
1929-30.....	613
1930-31.....	786
1931-32.....	770

THE COURSE OF WHEAT PRICES

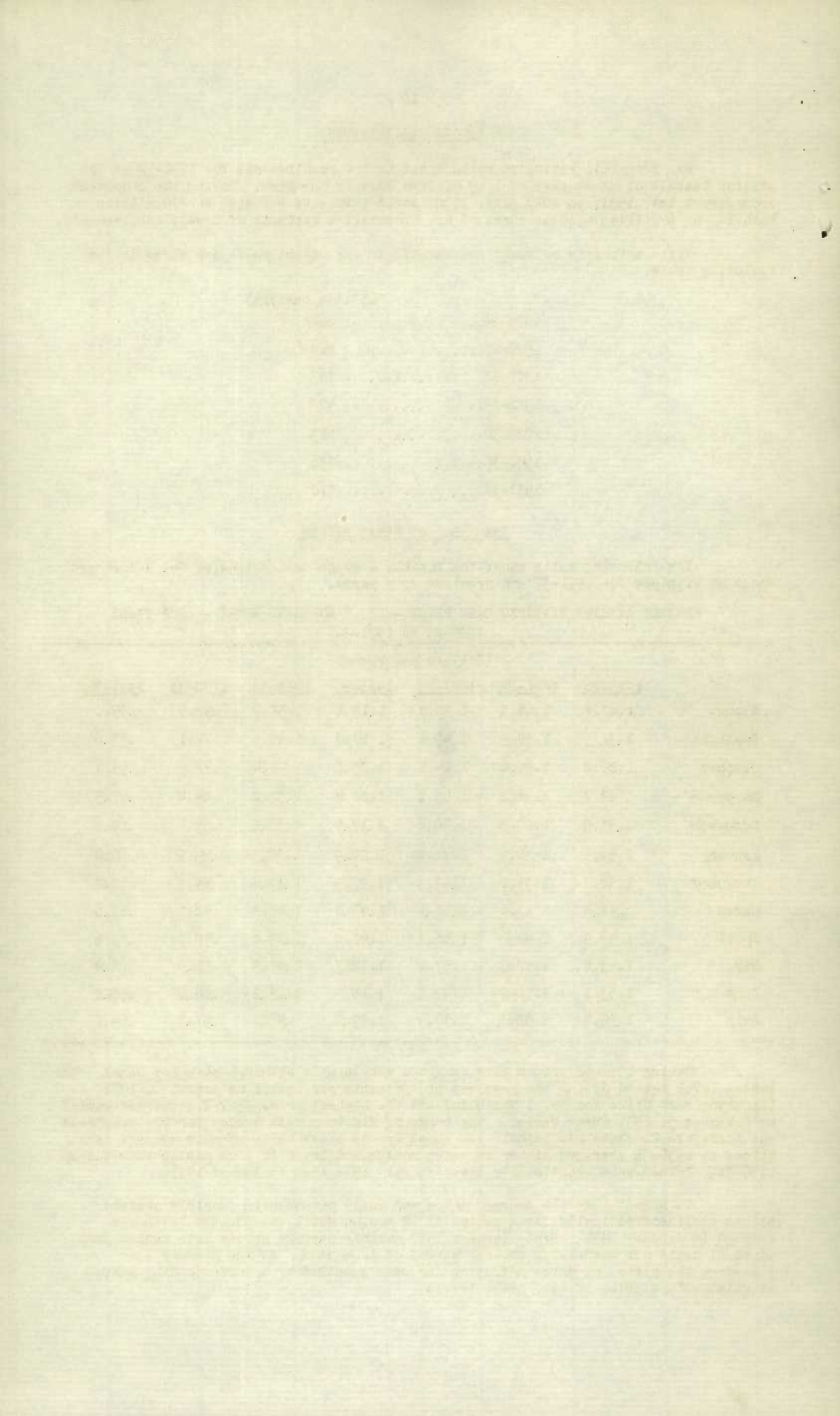
The following table shows the monthly average cash prices of No. 1 Northern wheat at Winnipeg for 1931-32 and previous crop years.

MONTHLY AVERAGE WINNIPEG CASH PRICE - NO. 1 NORTHERN WHEAT - CROP YEARS  
1925-26 to 1931-32

	(Dollars per bushel)						
	<u>1925-26</u>	<u>1926-27</u>	<u>1927-28</u>	<u>1928-29</u>	<u>1929-30</u>	<u>1930-31</u>	<u>1931-32</u>
August	1.67.5	1.46.3	1.59.9	1.18.8	1.58.0	.92.5	.55.1
September	1.37.5	1.38.5	1.45.1	1.17.0	1.49.5	.78.1	.53.6
October	1.27.0	1.39.6	1.44.1	1.23.7	1.41.4	.72.5	.59.9
November	1.42.0	1.36.2	1.45.1	1.20.9	1.33.0	.64.4	.67.3
December	1.57.0	1.29.2	1.40.6	1.17.1	1.37.8	.55.4	.60.6
January	1.56.5	1.30.9	1.42.8	1.20.9	1.30.5	.53.9	.60.0
February	1.54.7	1.35.1	1.42.5	1.27.9	1.17.4	.59.3	.63.2
March	1.48.4	1.37.6	1.48.1	1.27.0	1.06.2	.56.7	.63.1
April	1.56.9	1.41.2	1.56.3	1.22.8	1.09.8	.59.7	.62.6
May	1.53.8	1.52.3	1.57.2	1.12.3	1.07.9	.60.6	.62.9
June	1.53.1	1.56.9	1.42.6	1.18.3	1.03.2	.60.8	.55.1
July	1.59.6	1.58.3	1.50.9	1.59.9	.95.1	.57.3	.54.7

During 1931-32 prices have remained very stable although at a low level. The lowest level marked during the year was 51 1/8 cents per bushel on August 6, 1931 (Winnipeg cash price for No. 1 Northern) and the highest price, 73 1/8 cents per bushel on November 5, 1931 (Same basis). The range of Winnipeg cash prices for the crop year was therefore 22 cents per bushel. As shown by the above table monthly average cash prices in 1930-31 averaged higher in seven months and lower in five months than during 1931-32. Prices were fractionally lower in July 1932 than in August 1931.

In August 1929 the average price was \$1.58 per bushel. Monthly average prices declined drastically for a period of 18 months until the 53 cent level was reached in January 1930. Since January 1930 monthly average prices have ranged from 53 to 67 cents per bushel for another period of 18 months. At the present time therefore the period of price deflation has been equalled by a corresponding period of relatively stable, if low, price levels.



CANADIAN SITUATION

STOCKS OF GRAIN IN CANADA

The Dominion Bureau of Statistics reports the following as the total stocks of grain in Canada at the end of the crop year, July 31, 1932, as compared with stocks on the same date in 1930 and 1931.

	<u>July 31, 1930</u> Bushels	<u>July 31, 1931</u> Bushels	<u>July 31, 1932</u> Bushels
Wheat	111,094,912	134,078,963	130,948,901
Oats	21,582,780	63,431,989	29,972,324
Barley	22,875,432	29,461,716	7,161,920
Rye	9,190,705	14,435,795	5,380,879
Flaxseed	636,658	833,954	1,321,358

The following table gives in detail the stocks of grain in Canada at July 31, 1932. The quantities in farmers' hands are compiled from the reports of crop correspondents.

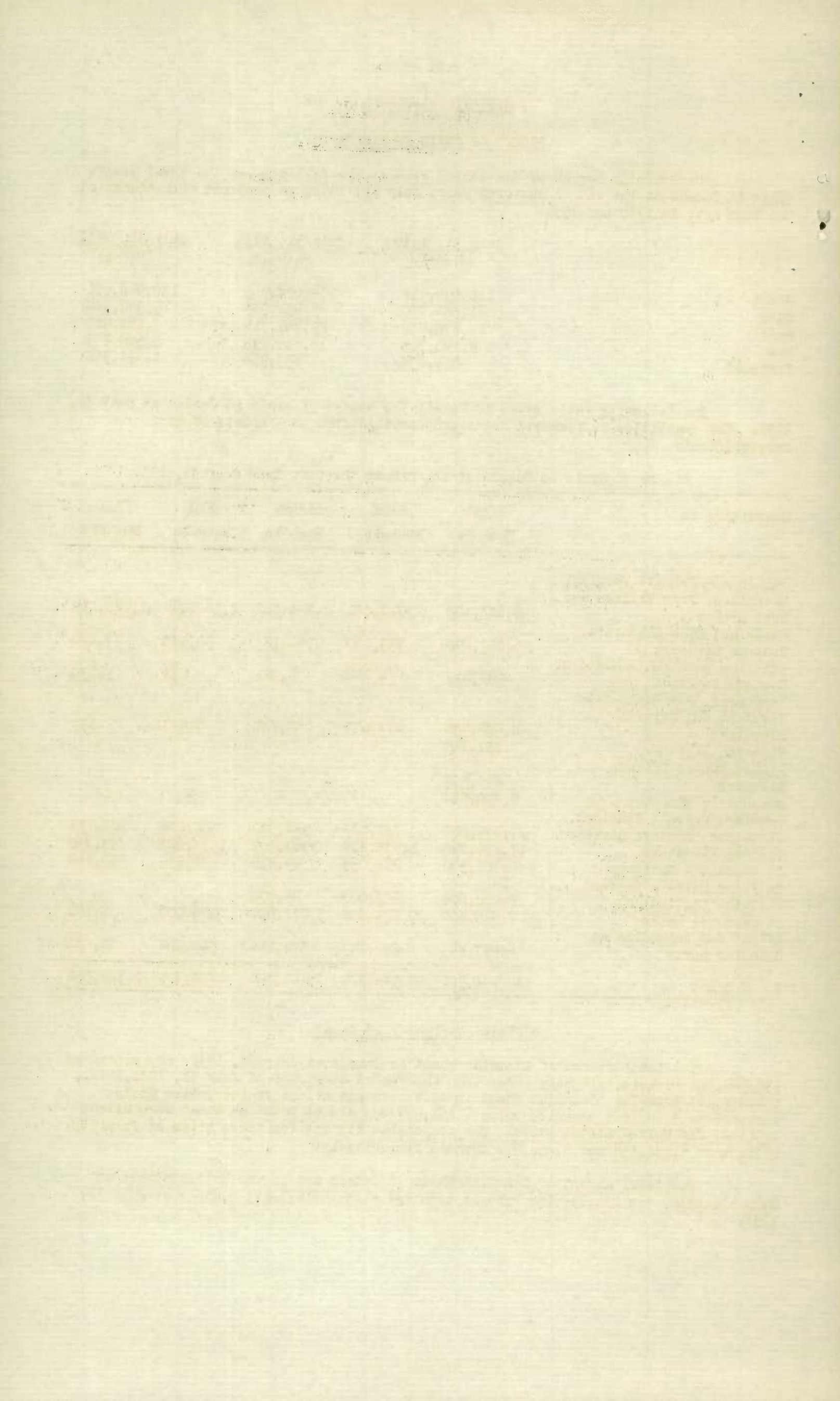
Stocks of Grain in Canada at the End of the Crop Year July 31, 1932.

Quantities in	WHEAT	OATS	BARLEY	RYE	FLAX
	Bushels	Bushels	Bushels	Bushels	Bushels
Public and Private Terminal Elevators, Fort William and Port Arthur	48,683,128	2,727,871	1,296,802	2,542,044	1,040,165
Mills and Mill Elevators, Western Division	6,009,490	733,000	966,123	30,385	47,266
Interior Terminal Elevators, Western Division	102,412	4,444	4,121	263	1,030
Vancouver, New Westminster Terminal and Private Elevators	8,530,406	477,097	140,881	7,983	199
Victoria Elevator	337,349	-	-	-	-
Prince Rupert Private Elevator	837,533	-	-	-	-
Churchill, Man. Country, Private Terminal Elevators, Western Division	2,290,508	-	-	-	-
Eastern Elevators	27,499,002	731,029	384,330	502,278	126,113
In transit - Railways	17,839,890	1,335,807	369,709	1,535,827	33,790
In Flour Mills - Eastern Division (Estimated)	2,725,540	288,033	99,836	71,835	30,162
In farmers' hands	2,000,000	600,000	45,000	-	-
Afloat for unloading at Canadian Ports	7,495,800	22,823,000	3,477,000	146,000	7,100
	6,597,843	252,043	378,118	544,264	35,533
<b>T O T A L S</b>	<b>130,948,901</b>	<b>29,972,324</b>	<b>7,161,920</b>	<b>5,380,879</b>	<b>1,321,358</b>

Official Carryover of Wheat

The total stocks of Canadian wheat in Canada at July 31, 1932, are placed at 130,948,901 bushels, slightly lower than the record carryover of July 31, 1931, viz., 134,078,963 bushels. Canadian wheat in elevators and afloat in the United States amounted to 4,706,828 bushels, while 1,181,427 bushels of Canadian wheat were afloat destined for United States ports. The comparable figures for these items at July 31, 1931, were 5,538,334 and 1,259,978 bushels respectively.

The total amount of Canadian wheat in Canada and in the United States at July 31, 1932, was 136,837,156 bushels compared with 140,877,275 bushels at July 31, 1931.





Distribution of the 1931 Wheat Crop

The final revision of the 1931 wheat crop estimates is not possible until January 1933, when the final figures for deliveries and platform loadings are made available by the Board of Grain Commissioners and when the final acreage figures for 1931 are released by the Census Branch of this Bureau. At the present time, however, a preliminary analysis of the distribution of the 1931 wheat crop may be interesting.

The carryover of wheat in Canada at July 31, 1931, was placed at 134,078,963 bushels and additional supplies were provided by the 1931 crop, estimated last January at 304,144,000 bushels. Adding the further small amount of 216,327 bushels imported during the period August, 1931 to July, 1932, the total for distribution amounts to 438,439,290 bushels.

The disposition of wheat during the same period was as follows:

	<u>Bushels</u>
Exports.....	207,029,555
Human consumption.....	41,500,000
Seed for 1932 crop.....	36,763,000
Feed for live stock and poultry.....	32,606,000
Loss in cleaning.....	5,040,000
Unmerchantable.....	2,826,100
Carryover, July 31, 1932.....	130,948,901
	456,713,556

The figures for seed, feed and human consumption are subject to later revision.

The January estimate of the 1931 wheat crop appears to be about 18½ million bushels too low, on the basis of the above disposition of supplies.

The 1931 wheat crop of the Prairie Provinces was estimated last January at 284,000,000 bushels. To this must be added the carryover on farms at July 31, 1931, of 17,804,000 bushels, making a total of 301,804,000 bushels for disposition. The un-revised total marketings in the period from August 1, 1931, to July 29, 1932, amounted to 265,098,385 bushels. In addition, allowance must be made for 2,477,000 bushels of un-merchantable grain, 1,650,000 bushels (approximately) as custom millings, 29,931,000 bushels for seed, 23,079,000 bushels as feed, and 5,829,000 bushels as carryover on farms at July 31, 1932. The total of these items is 328,064,385 bushels, an underestimate of 26,260,385 bushels. This figure will probably be reduced when final figures are available. The final revision is made in January, 1933.

The following table will show that over half of the underestimate is in Saskatchewan.

	<u>Manitoba</u>	<u>Saskatchewan</u>	<u>Alberta</u>	<u>Total</u>
	000 bushels			
Carryover on Farms, July 31, 1931	2,042	6,459	9,303	17,804
January Estimate, 1931 crop	27,000	121,000	136,000	284,000
Total Available	29,042	127,459	145,303	301,804
<b>Disposition:</b>				
Marketings (#)	24,780	118,875	121,443	265,098
Seed (1)	3,826	13,804	12,301	29,931
Feed (#)	2,808	7,623	12,648	23,079
Unmerchantable	270	847	1,360	2,477
Country Millings (2) (#)	420	530	700	1,650
Carryover on farms				
July 31, 1932	624	1,016	4,189	5,829
Total Disposition (#)	32,728	142,695	152,641	328,064
Extent of Underestimate indicated	3,686	15,236	7,338	26,260

(#) Subject to revision.

(1) Allows for 100,000 acres in Manitoba and 4,500,000 acres in Saskatchewan drought areas to be seeded from deliveries.

(2) July millings estimated.

Statement of the

...

...

...

...

...

...

...

...

...

...

...

...

...

...

...

...

...

...

...

...

...

...

...

...

...

...

...

...

...

...



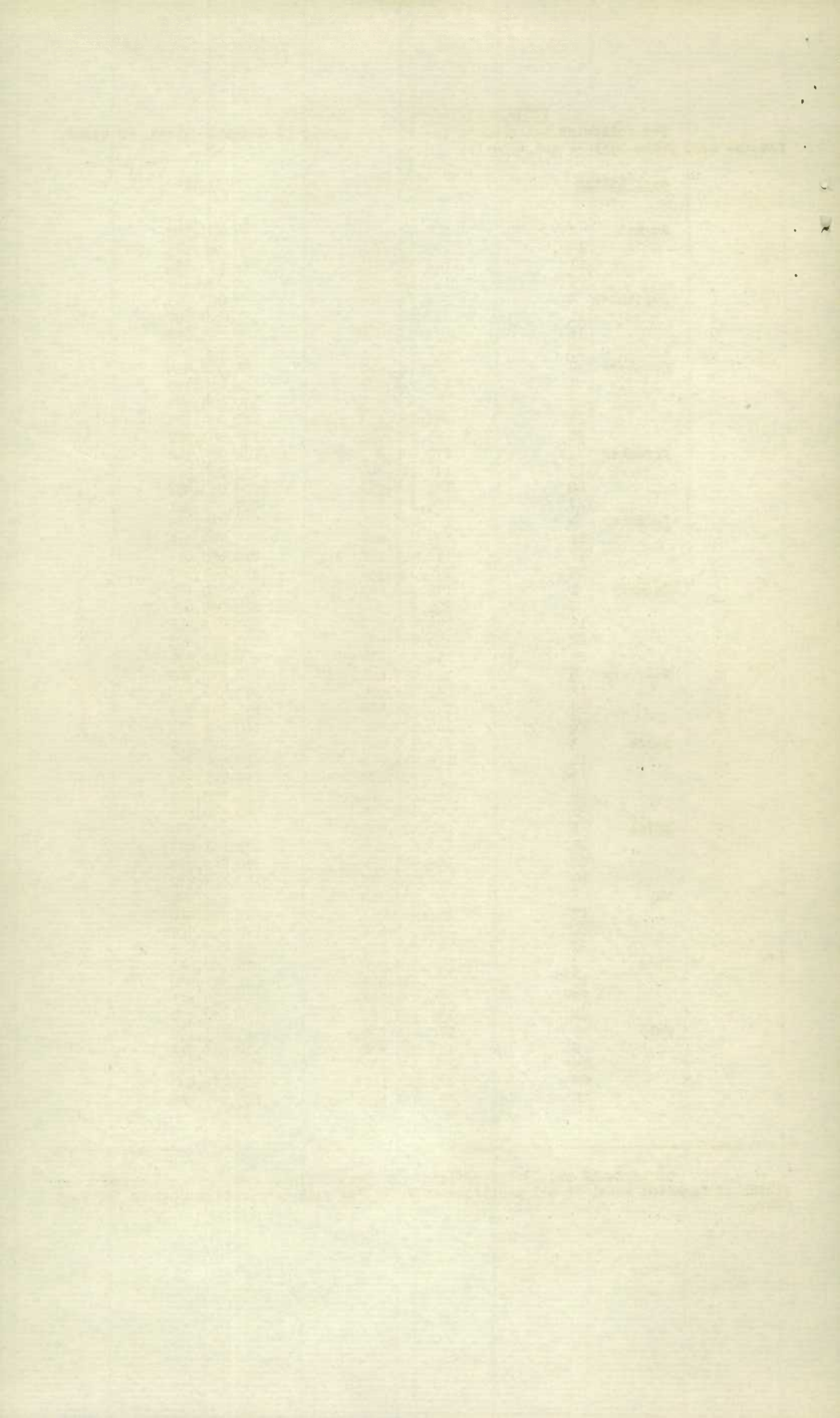


VISIBLE SUPPLY OF CANADIAN WHEAT

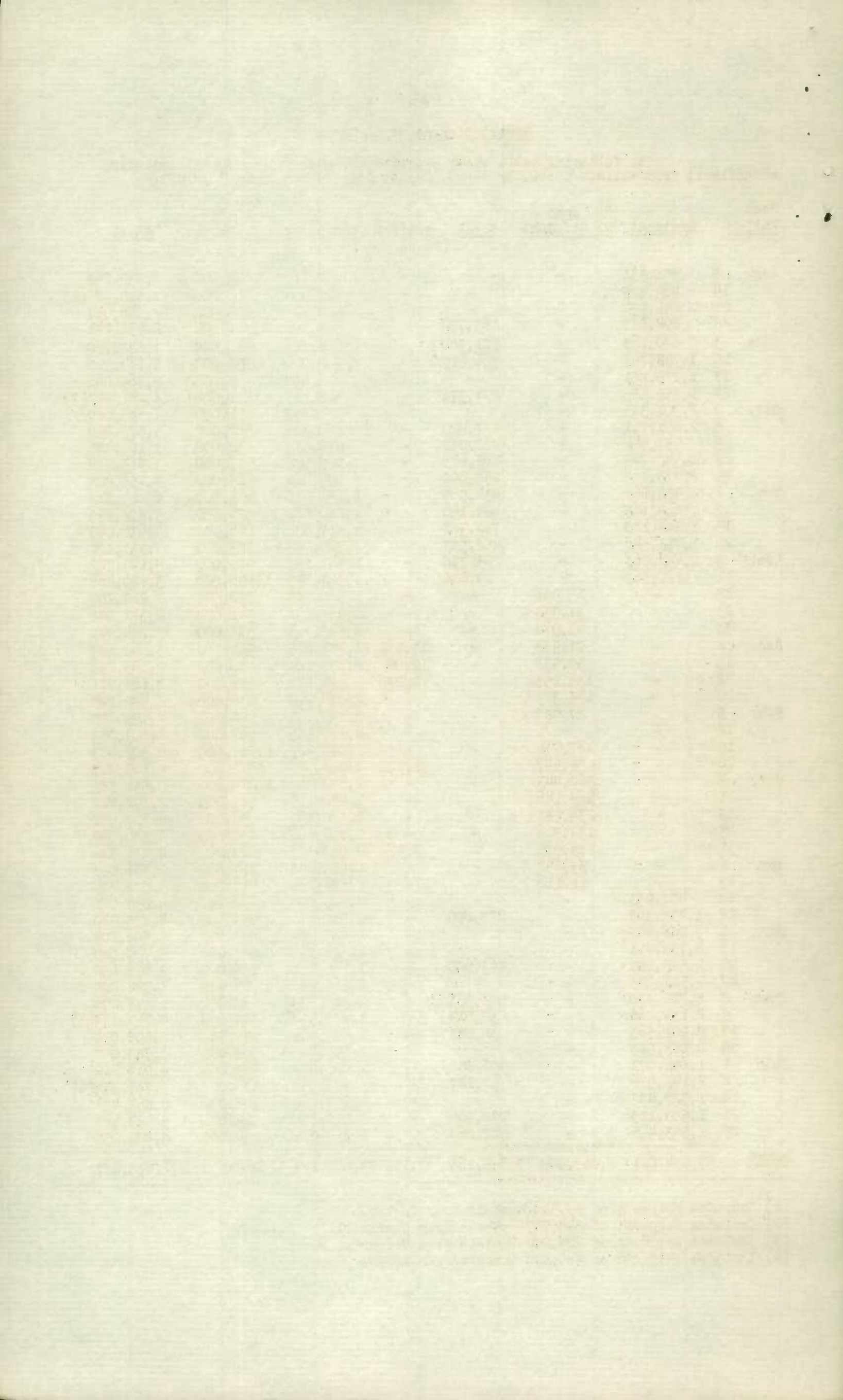
The following table shows the visible supply of Canadian wheat, by weeks, for the crop years 1931-32 and 1930-31.

<u>Week Ending</u>	<u>1931-32</u>	<u>Bushels</u>	<u>1930-31</u>
August 8	107,825,654		96,917,100
14	105,819,736		95,161,149
21	102,833,346		89,874,556
28	101,732,943		96,143,469
September 4	104,563,524		111,987,943
11	111,689,572		131,218,687
18	114,219,450		143,799,092
25	121,238,225		152,210,868
October 2	126,461,396		158,606,425
9	134,236,709		171,419,360
16	141,824,373		177,024,044
23	153,850,824		180,554,728
30	163,132,738		188,653,912
November 6	170,642,297		194,775,942
13	176,186,402		198,083,922
20	181,767,541		204,033,457
27	185,810,627		207,386,081
December 4	187,187,671		211,431,865
11	189,497,624		215,324,811
18	192,289,151		216,650,613
25	191,009,332		217,643,647
January 1	192,305,007		216,700,161
8	200,829,004		213,029,621
15	198,650,529		209,912,982
22	196,835,031		205,758,003
29	195,510,142		202,282,971
February 5	193,417,611		198,850,768
12	191,282,009		193,926,695
19	190,183,503		191,798,949
26	186,119,880		190,201,734
March 3	184,920,044		189,843,029
10	185,436,854		187,304,315
17	186,703,074		185,192,500
24	186,242,211		183,400,829
31	184,045,935		180,540,105
April 8	181,307,459		178,057,369
15	176,215,009		171,081,483
22	168,473,031		162,040,874
29	164,562,278		155,863,930
May 6	160,302,200		148,578,589
13	157,051,237		143,748,410
20	152,606,638		137,954,929
27	149,251,281		132,502,538
June 3	144,574,193		126,207,040
10	139,838,567		121,391,402
17	135,579,382		115,325,611
24	137,778,280		115,672,324
July 1	132,571,705		113,823,170
8	136,063,968		111,801,915
15	134,356,040		111,332,815
22	129,205,117		110,476,443
29	121,473,624		110,731,356

On pages 12 and 13 the official carry-over figures are given showing stocks of Canadian wheat in all positions on July 31st with comparative figures for last year.









EXPORTS OF CANADIAN WHEAT

The following table shows exports of wheat and flour during 1931-32 along with comparative figures for preceding years:

<u>W H E A T</u>			
	<u>1931-32</u>	<u>1930-31</u> (Bushels)	<u>1929-30</u>
August	11,909,108	17,639,228	10,156,266
September	14,335,637	27,817,053	7,409,809
October	18,925,303	29,784,275	20,721,853
November	27,452,063	31,217,924	22,444,896
December	22,355,975	22,230,397	15,960,792
January	9,472,346	9,608,852	4,994,054
February	9,898,363	10,296,603	6,732,826
March	9,920,634	12,855,567	11,592,472
April	7,513,289	4,680,769	3,428,406
May	15,543,013	29,521,699	13,466,884
June	15,857,427	20,783,219	18,989,550
July	19,620,224	12,060,817	19,868,298
Total.....	182,803,382	228,536,403	155,766,106

<u>F L O U R</u>			
	<u>1931-32</u>	<u>1930-31</u> (Barrels)	<u>1929-30</u>
August	522,178	627,233	643,246
September	556,565	734,349	492,381
October	558,459	813,691	554,039
November	476,487	792,271	538,038
December	451,310	601,894	604,979
January	331,806	392,256	502,888
February	337,513	414,773	480,587
March	414,779	560,553	680,697
April	255,390	326,117	451,395
May	461,867	481,265	573,187
June	570,861	490,294	597,752
July	446,379	466,967	658,834
Total.....	5,383,594	6,701,663	6,778,023

<u>WHEAT AND WHEATFLOUR</u>			
	<u>1931-32</u>	<u>1930-31</u> (Bushels)	<u>1929-30</u>
August	14,258,909	20,461,776	13,050,873
September	16,840,179	31,121,623	9,625,524
October	21,438,369	33,445,885	23,215,028
November	29,596,254	34,783,144	24,866,067
December	24,386,870	24,938,920	18,683,198
January	10,965,473	11,374,004	7,257,050
February	11,417,172	12,163,082	6,895,468
March	11,787,139	15,418,055	14,655,609
April	8,662,544	6,148,295	5,459,684
May	17,621,415	31,687,391	16,046,226
June	18,426,301	22,989,542	21,679,434
July	21,628,930	14,106,169	22,833,051
Total.....	207,029,555	258,637,887	186,267,212

Faintly visible table with multiple columns and rows of data, possibly a ledger or record book.

Second faintly visible table, similar in structure to the first one, located in the middle section of the page.

Third faintly visible table at the bottom of the page, continuing the data recording.

Canadian Trade Commissioners report as follows:-

GERMANY. The Markets Reports Bureau of the German Agricultural Council have published the results of their investigations as to the stocks of grain still in the hands of farmers on June 15th, 1932, in the form of percentages of the final crop estimates, which are as follows, compared with the percentages for the same date of the previous year:-

<u>Kind of Grain</u>	<u>Percentage of Total Crop in Hands of Farmers</u>	
	<u>June 15th, 1932</u>	<u>June 15th, 1931</u>
Winter wheat.....	3.6	2.8
Summer wheat.....	5.1	3.5
Winter rye.....	4.5	6.7
Winter barley.....	2.4	2.9
Summer barley.....	4.6	2.5

The German Grain Journal have translated these percentages into actual quantities, which the following table shows in bushels:-

<u>Kind of Grain</u>	<u>Total Crop in Hands of Farmers Bushels</u>	
	<u>June 15th, 1932</u>	<u>June 15th, 1931</u>
Winter wheat.....	4,776,603	3,674,310
Summer wheat.....	1,102,293	367,431
Winter rye.....	11,810,550	20,077,935
Winter barley.....	459,306	459,306
Summer barley.....	5,511,672	2,755,836

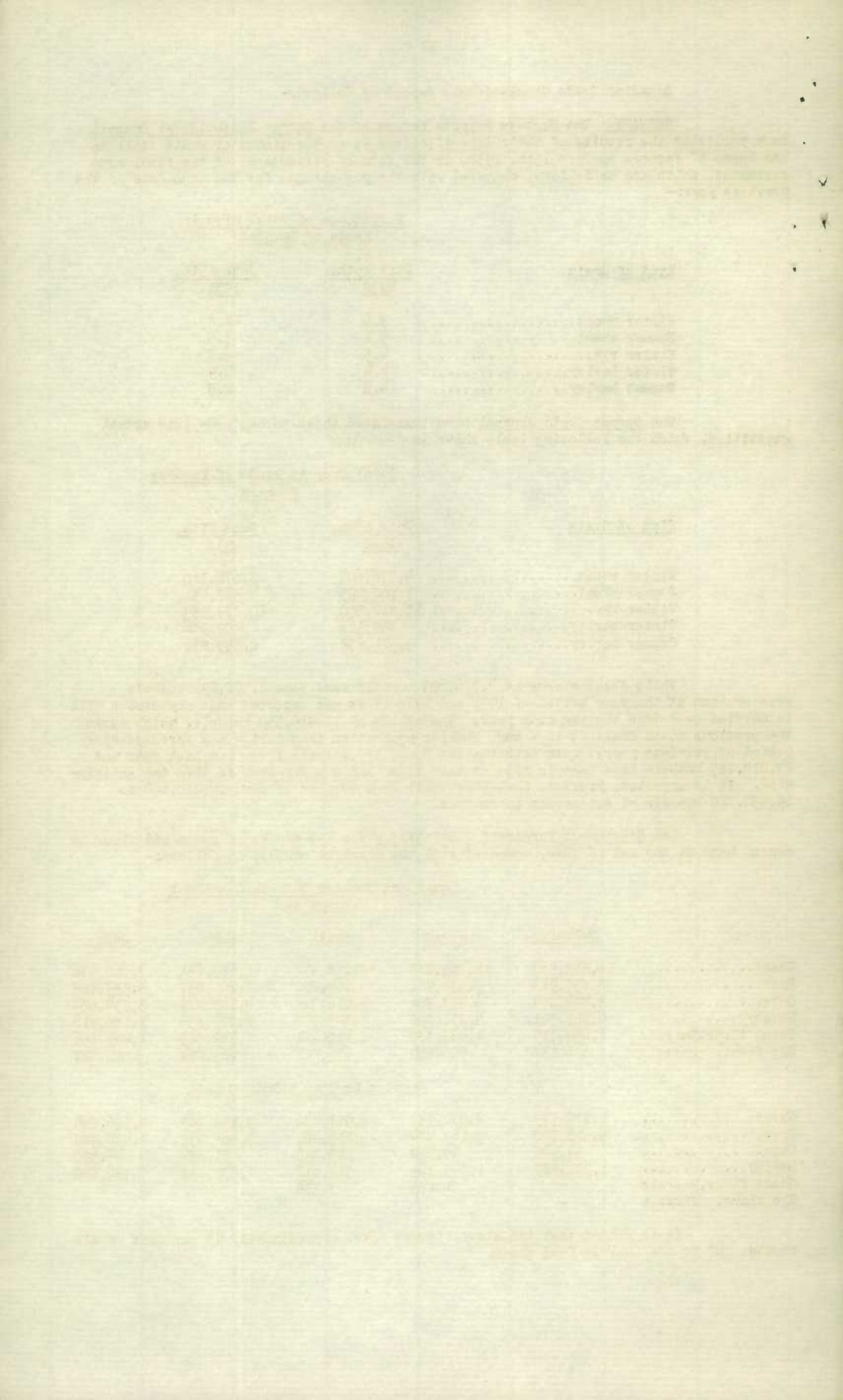
While wheat stocks at 4,776,603 bushels were some 1,102,293 bushels greater than at the same period of 1931 and 1930 it is not expected that any stocks will be carried over into the new crop year. Rye stocks at 11,810,550 bushels, which during the previous month declined in a much smaller proportion than during the corresponding period of previous years, were nevertheless 8,267,385 bushels less than last year and 24,014,785 bushels less than in 1930 at this time, and a carry-over is also not anticipated. It is expected, however, that there will be a surplus of some 16,210,600 to 19,452,720 bushels of oat stocks taken over.

The Government Bureau of Statistics gives the stocks of grain and flour in second hand at the end of June, compared with the previous months, as follows:-

	<u>Local and Foreign Duty-paid Product Bushels</u>				
	<u>February</u>	<u>March</u>	<u>April</u>	<u>May</u>	<u>June</u>
Wheat.....	18,812,467	16,535,855	13,058,498	11,680,631	7,660,936
Rye.....	8,857,913	9,538,988	11,609,891	8,102,037	4,539,188
Oats.....	8,494,354	6,477,756	5,012,318	4,188,319	3,034,624
Barley.....	6,935,521	4,831,899	3,343,748	2,213,855	1,180,416
Wheat flour, Barrels	1,664,719	1,463,378	1,442,761	1,329,525	1,299,156
Rye flour, Barrels	686,134	626,519	671,512	629,894	520,787

<u>Foreign Product - Duty Unpaid</u>					
Wheat.....	1,175,779	2,094,357	2,917,402	3,159,907	2,186,214
Rye.....	5,511,590	5,169,084	5,113,928	5,484,032	4,464,388
Oats.....	64,842	45,390	45,390	51,874	45,390
Barley.....	1,331,987	1,079,369	918,612	1,038,032	780,820
Wheat flour, Barrels	-	1,125	3,374	-	-
Rye flour, Barrels	-	-	-	-	-

It is stated that the above figures cover approximately 95 per cent of all stocks, but do not include feed wheat.



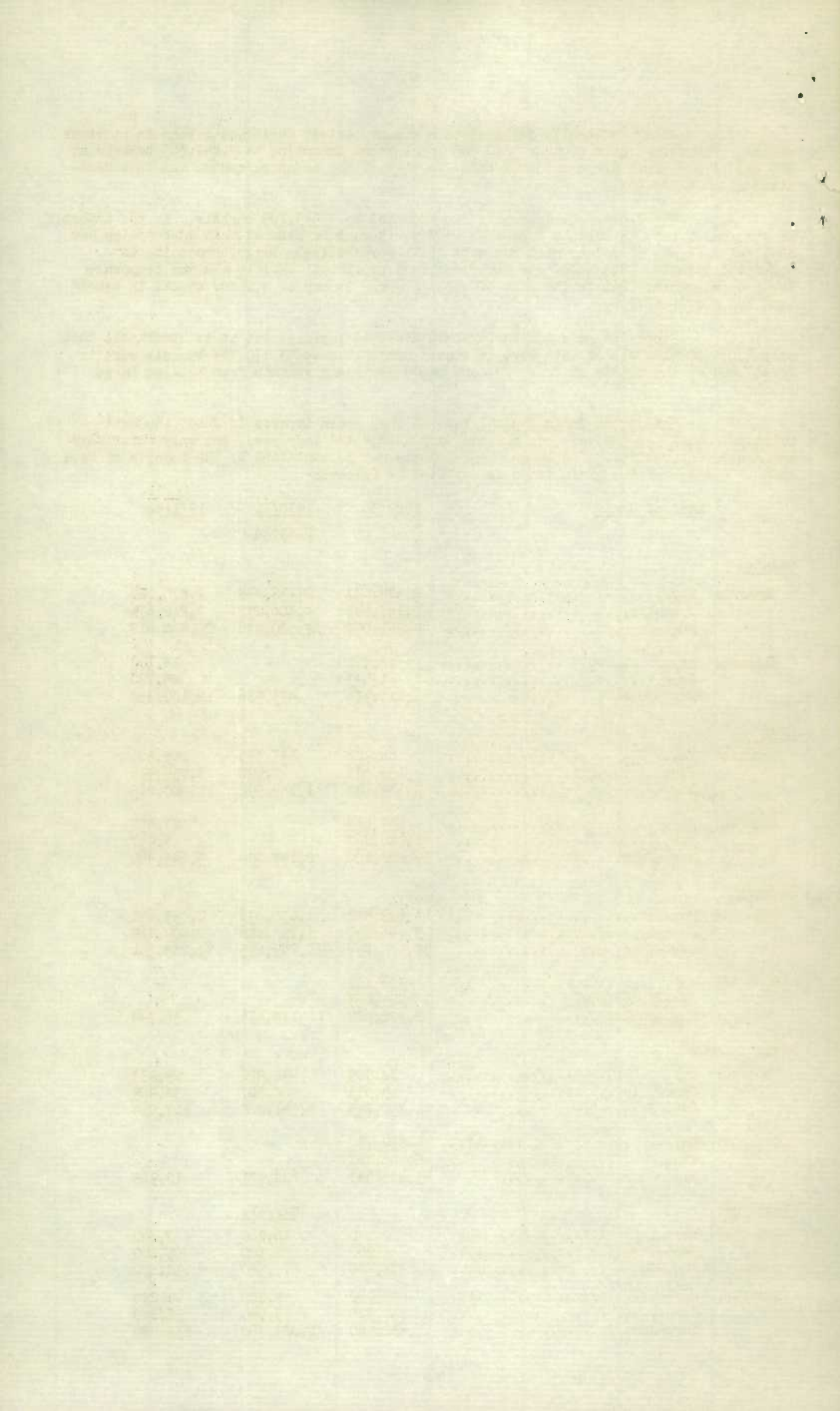
Stocks naturally declined to a greater extent during June than in previous months. However, stocks of duty-paid and local wheat amounting to 7,642,565 bushels at the end of the month are considered large in view of the advanced season and in expectation of an early crop.

The decline in duty-paid rye amounted to 3,543,165 bushels. As the import in June was 1,181,055 bushels less than in May, it must be assumed that consumption has declined. Stocks of unduty-paid rye were still comparatively large, amounting to 4,448,641 bushels. Stocks of rye flour declined by 112,481 barrels and are comparatively much greater than in the case of wheat flour. In any case flour stocks in second hand are very small.

Stocks of oats and barley have declined rapidly, but it is remarkable that only 3,034,624 bushels of oats were in second hand, whereas 53,170,768 bushels were in first hand at the middle of June. Second hands obviously refrain from holding large stocks.

The German Grain Journal reports that grain imports in June, the last principal month for the year, do not show any unexpected increases, but only cover very immediate requirements. The large wheat imports may be explained by the imports of feed wheat. A table of the grain trade is supplied as follows:-

<u>Kind of Grain</u>		<u>1929/30</u>	<u>1930/31</u>	<u>1931/32</u>
		<u>Bushels</u>		
<u>Wheat:</u>				
Imports:	May.....	2,384,627	2,138,448	1,870,224
	June.....	2,167,843	4,306,291	7,212,671
	Aug.-June.....	49,221,057	27,020,876	29,460,618
Exports:	May.....	18,372	-	18,372
	June.....	11,023	-	25,720
	Aug.-June.....	3,813,934	473,986	12,180,338
<u>Rye:</u>				
Imports:	May.....	66,926	133,853	145,503
	June.....	153,537	2,990	3,054,996
	Aug.-June.....	3,389,628	1,184,992	18,003,215
Exports:	May.....	657,454	-	27,558
	June.....	1,940,867	-	3,937
	Aug.-June.....	17,822,120	2,157,394	3,649,460
<u>Barley:</u>				
Imports:	May.....	1,699,432	1,630,536	2,057,691
	June.....	3,646,890	1,795,886	2,604,265
	Aug.-June.....	98,687,894	30,249,893	29,285,351
Exports:	May.....	326,107	-	-
	June.....	229,653	-	-
	Aug.-June.....	2,392,984	174,536	36,744
<u>Oats:</u>				
Imports:	May.....	38,905	492,802	25,937
	June.....	19,453	408,507	38,905
	Aug.-June.....	1,750,745	2,541,822	817,014
Exports:	May.....	3,812,733	-	-
	June.....	5,446,762	-	-
	Aug.-June.....	43,839,947	628,971	12,968
<u>Flour, etc.:</u>		<u>Barrels</u>		
Imports:	May.....	7,840	36,960	7,840
	June.....	8,960	12,320	5,600
	Aug.-June.....	371,840	27,520	138,880
Exports:	May.....	120,960	95,200	49,280
	June.....	157,920	75,040	58,240
	Aug.-June.....	1,632,960	1,089,760	833,280



The Government Bureau of Statistics has published the first estimate of the yields per acre of the 1932 German crop as follows:-

Yields per Acre

	<u>First Estimate</u>	<u>1924-30</u>	<u>Final Estimate</u>		
	<u>1932</u>		<u>1929</u>	<u>1930</u>	<u>1931</u>
	<u>Bushels per Acre</u>				
Winter rye.....	28.5	25.3	27.2	26.1	24.5
Summer rye.....	22.3	18.6	20.7	18.8	19.4
Winter wheat.....	32.7	29.1	31.1	31.7	29.0
Summer wheat.....	31.8	16.8	32.1	31.1	29.6
Winter barley.....	44.1	42.6	39.2	45.0	41.4
Summer barley.....	36.4	34.0	37.9	33.5	33.5
Oats.....	50.4	47.2	54.3	43.0	48.5

According to the above estimate the yields per acre of all kinds of grain are above the average of 1924-30, and in most cases also above that of the latter three years. The following figures are given of the first estimate of the crop returns, compared with the final estimate of latter years:-

	<u>First Estimate</u>	<u>1924-30</u>	<u>Final Estimate</u>		
	<u>1932</u>		<u>1929</u>	<u>1930</u>	<u>1931</u>
	<u>Bushels</u>				
Rye.....	312,980	289,004	321,050	302,311	262,982
Wheat.....	183,348	118,166	123,053	139,220	155,534
Winter barley.....	25,823	16,902	17,500	21,817	23,287
Summer barley.....	119,420	111,611	128,606	109,544	115,332
Oats.....	409,156	407,081	478,731	366,749	402,347

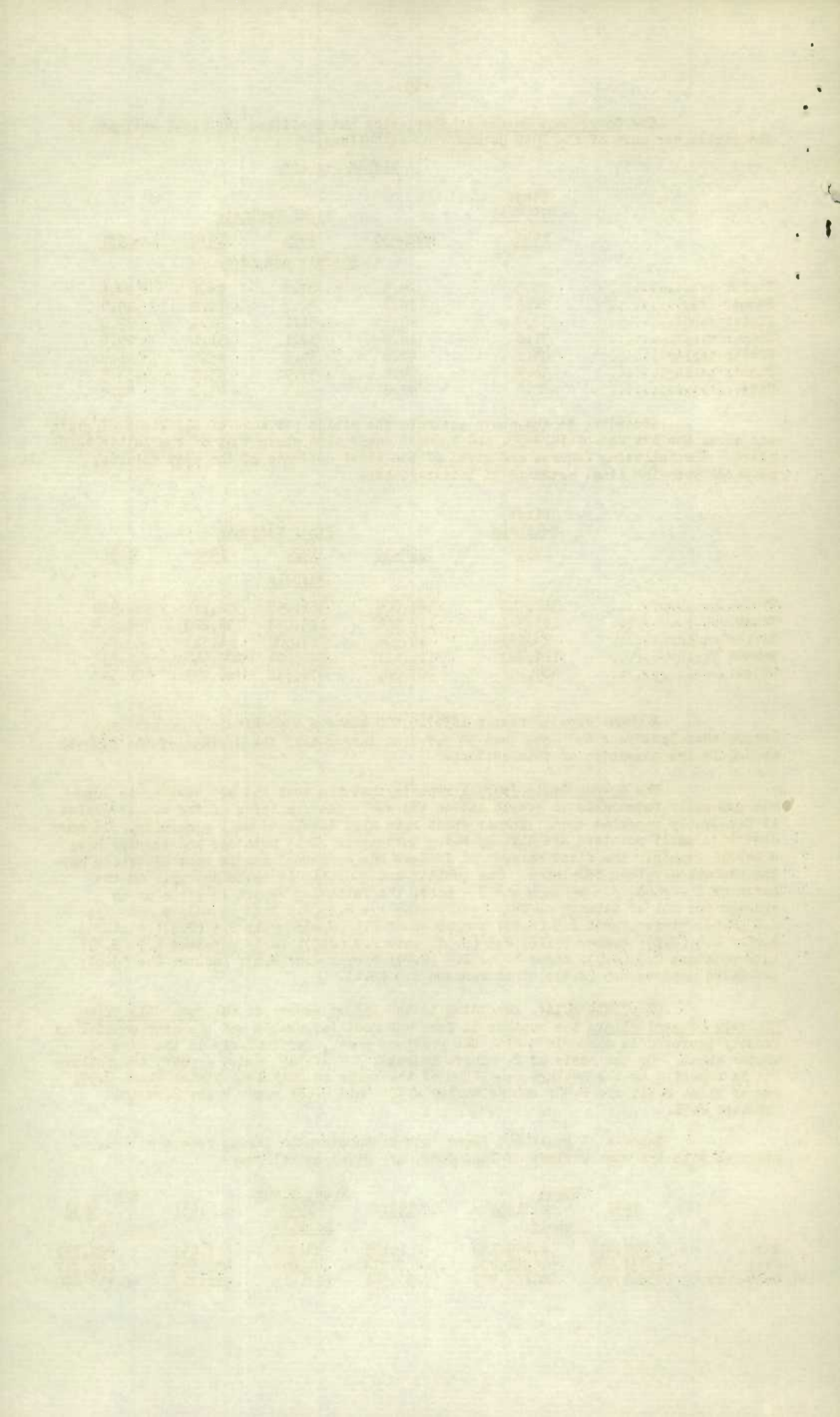
A wheat crop of nearly 183,715,500 bushels, approximately 20 per cent larger than last year and more than 50 per cent larger than the average of the 1924-30 crops, is the sensation of this estimate.

The German Grain Journal reports that the cool and wet weather in June was generally favourable to growth and on the whole the condition of the winter grains is favourably reported upon. Summer seeds have also developed well generally. In some districts early potatoes are already being harvested. Late potatoes and turnips have a normal growth. The first harvest of fodders has commenced and in some districts hay-making has already been completed. The quality and quantity is satisfactory. On the basis of 2 - good, 3 - average and 4 - poor, the following report is given as an average for all of Germany on July 1st: winter rye 2.5 (2.5 last month); summer rye 2.7 (2.8); winter wheat 2.5 (2.6); summer wheat 2.6 (2.6); spelt 2.3 (2.5); winter barley 2.6 (2.8); summer barley 2.5 (2.5); oats 2.7 (2.7); early potatoes 2.7 (2.7); late potatoes 2.7 (2.9); sugar beets 2.9 (2.7); clover 2.6 (2.6); lucerne 2.6 (2.6); irrigated meadows 2.5 (2.4); other meadows 2.6 (2.6).

CZECHOSLOVAKIA: According to the latest report of the Czechoslovakian Ministry of Agriculture the weather in June was most favourable and the crop conditions greatly improved in comparison with the previous month, particularly in the case of winter wheat. On the basis of 2 - above average, 3 - average and 4 - poor, the following is reported as the average condition of the seeds on July 1st: winter wheat 2.58; summer wheat 2.51; rye 2.40; summer barley 2.30; oats 2.28; sugar beets 2.64 and potatoes 2.51.

Imports of grain and flour into Czechoslovakia during recent months, compared with the same periods of last year, are given as follows:-

	<u>Wheat</u>		<u>1931</u>	<u>Wheat Flour</u>		<u>Rye</u>	
	<u>1931</u>	<u>1932</u>		<u>1932</u>	<u>1931</u>	<u>1932</u>	
	<u>Bushels</u>			<u>Barrels</u>		<u>Bushels</u>	
May	999,412	1,679,160	1,125	44,992	3,937	228,337	
June	1,337,449	1,701,206	7,874	44,992	456,675	141,727	
Aug.-June	10,864,935	20,182,985	1,230,542	517,413	578,717	8,936,650	





It is reported from Prague that wheat stocks are 6,200 waggons less than are necessary to cover requirements up to the new crop. For this reason new import contingents, amounting to a total of 4,500 waggons, will have to be granted.

AUSTRIA: The Austrian Board of Agriculture have published the following figures regarding this year's anticipated grain crop in proportion to the total requirements of Austria:-

	<u>Anticipated Grain Crop</u>	<u>Yearly Average Requirements</u>	<u>Requirements Supplied by Local Supplies</u>
	<u>Bushels</u>		<u>In Percentages</u>
Rye.....	20,471,620	21,652,675	84.5
Wheat.....	11,757,792	20,024,990	59.0
Barley.....	11,023,344	14,238,486	72.0
Oats.....	24,640,112	35,014,896	70.0

The hope that Austria might provide her own requirements of rye and 70 per cent of wheat will not be reached, but a great improvement has taken place in comparison with previous years. The percentage of local supplies of all kinds of grain, which in the good crop year of 1926 only amounted to 56 per cent, has now increased to 71 per cent. The harvest of hay and other green fodder was disappointing and amounted to hardly 70 per cent of an average year. The areas cultivated with rye have increased by 494 acres and with wheat by 86,488 acres compared with last year. On the other hand areas cultivated with oats have decreased by 197,687 acres and with barley by 123,555 acres.

POLAND: The Polish Government Bureau of Statistics has published a report on the condition of the crops as on July 15th, which in general shows an improvement in comparison with that of June 15th, mainly as a result of sufficient rains and warm weather. On the basis of 4 - good, 3 - average and 1 - bad, the condition of the seeds was as follows: winter wheat 3.3 (3.1 on June 15th); winter rye 3.4 (3.3); winter barley 3.3 (3.2); summer wheat 3.5 (3.3); summer barley 3.6 (3.3); oats 3.4 (3.4); potatoes 3.5 (3.4); sugar beets 3.2 (3.0).

LATVIA: The German Grain Journal reports on July 15th that the latter warm weather greatly improved vegetation in Latvia. In some districts rye and wheat were farther advanced than usual, while clover and grass lands were rated from good to exceptionally good. The first coarse fodder harvest had already begun and farmers were very satisfied with the results. If in the near future more rains fell the Baltic countries could expect a grain crop above average.

The German Grain Journal reports on July 28th that in spite of the fact that the wheat areas this year were greatly increased in Latvia, the crop will not be sufficient to cover local requirements for the year. It is estimated by the Ministry of Agriculture that the crop will be between 514,403 and 551,147 bushels.

LITHUANIA: The German Grain Journal reports that the condition of the seeds in Lithuania on July 15th was as follows: rye 3.8 (2.6 at the same period last year); winter barley 3.4; winter wheat 3.6; summer wheat 3.5; oats 3.3; flax 2.9; clover 3.6; and potatoes 3.5.

STATISTICS CANADA LIBRARY  
BIBLIOTHÈQUE STATISTIQUE CANADA



1010686364