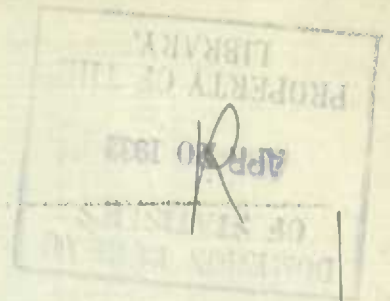


22-005  
1932  
Apr.  
Suppl.  
c. 1



CANADA  
DEPARTMENT OF TRADE AND COMMERCE  
DOMINION BUREAU OF STATISTICS  
AGRICULTURAL BRANCH

Vol. 2

No. 7

STATISTICAL SUPPLEMENT

to the

MONTHLY REVIEW

of the

WHEAT SITUATION

APRIL 19, 1932

— + + + —

Published by Authority of the Hon. H. H. Stevens, M.P.,  
Minister of Trade and Commerce

+ + +

OTTAWA

1932



DEPARTMENT OF TRADE AND COMMERCE  
DOMINION BUREAU OF STATISTICS - CANADA  
AGRICULTURAL BRANCH

Dominion Statistician: R.H. Coats, B.A., F.S.S. (Hon.), F.R.S.O.  
Chief, Agricultural Branch: F.W. Grindley, Ph.D.

SUPPLEMENT TO THE MONTHLY REVIEW OF THE WHEAT SITUATION.

The present publication is the second statistical supplement to the Monthly Review of the Wheat Situation and contains authoritative material for the current analysis of the wheat position. The supplement deals with the following points in the order given herewith:

- (a) the supply situation
- (b) international trade
- (c) prices
- (d) import requirements
- (e) the Canadian position

Statistics covering the international movement of wheat deal in particular with the December-March period.

THE SUPPLY SITUATION

Acreage and production statistics are taken from estimates compiled by the International Institute of Agriculture, the United States Department of Agriculture and the Dominion Bureau of Statistics. Estimates for 1931 are subject to final revision.

I. WHEAT ACREAGE

The following table shows the acreage sown to wheat in important wheat producing countries:-

	<u>NORTH AMERICA</u> (Thousand Acres)			
	<u>1931</u>	<u>1930</u>	<u>1929</u>	<u>1928</u>
Canada	26,116	24,898	25,255	24,119
United States	57,669	60,520	61,464	58,272
Mexico	1,424	1,216	1,293	2,147
<b>T O T A L</b>	<b>85,209</b>	<b>86,634</b>	<b>88,012</b>	<b>84,538</b>

	<u>EUROPE</u> (Thousand Acres)			
	<u>1931</u>	<u>1930</u>	<u>1929</u>	<u>1928</u>
Germany	5,355	4,402	3,955	4,269
Austria	508	501	511	514
Belgium	396	414	432	425
Bulgaria	2,964	2,958	2,617	2,813
Denmark	250	252	257	252
Spain	11,245	10,531	10,478	10,480
Estonia	99	90	82	70
U.K. & Irish Free State	1,248	1,432	1,413	1,490
Finland	47	51	47	46
France	12,494	13,502	12,750	12,957
Greece	1,359	1,119	1,186	1,313
Hungary	4,004	4,071	3,913	4,144
Italy	12,075	11,910	11,803	12,264
Latvia	215	179	145	164
Lithuania	478	526	488	393
Luxemburg	23	25	21	37
Malta	10	9	9	9
Norway	29	30	28	28
Netherlands	151	144	114	148
Poland	4,495	3,920	3,426	3,187
Portugal	1,100	1,091	1,102	1,102
Roumania	8,566	7,552	6,764	7,923
Sweden	684	646	547	562
Switzerland	179	182	174	174
Czechoslovakia	2,047	2,112	2,023	1,871
Yugoslavia	5,300	5,357	5,289	4,747
<b>T O T A L</b>	<b>75,021</b>	<b>73,005</b>	<b>69,576</b>	<b>71,382</b>



SOUTHERN HEMISPHERE  
(Thousand Acres)

	<u>1931</u>	<u>1930</u>	<u>1929</u>	<u>1928</u>
Argentina	17,295	21,283	19,486	20,756
Australia	13,990	18,149	14,977	14,840
Chile	1,426	1,610	1,758	1,715
<b>T O T A L</b>	<b>32,711</b>	<b>41,042</b>	<b>36,221</b>	<b>37,311</b>

NORTH AFRICA  
(Thousand Acres)

	<u>1931</u>	<u>1930</u>	<u>1929</u>	<u>1928</u>
Algeria	3,640	3,980	3,722	3,665
Morocco	2,732	2,957	2,843	2,665
Egypt	1,649	1,522	615	1,590
Tunis	1,927	1,923	1,730	2,011
<b>T O T A L</b>	<b>9,948</b>	<b>10,382</b>	<b>9,910</b>	<b>9,931</b>

ASIA  
(Thousand Acres)

	<u>1931</u>	<u>1930</u>	<u>1929</u>	<u>1928</u>
India	32,181	31,654	31,973	32,193
Japan	1,231	1,198	1,213	1,201
<b>T O T A L</b>	<b>33,412</b>	<b>32,852</b>	<b>33,186</b>	<b>33,394</b>

II.

WHEAT PRODUCTION

The following table shows wheat production in important wheat growing countries. The 1931 estimates are compared with the outturn of 1930, 1929 and 1928.

PRODUCTION  
NORTH AMERICA  
(Thousand Bushels)

	<u>1931</u>	<u>1930</u>	<u>1929</u>	<u>1928</u>
Canada	304,144	420,672	304,520	566,726
United States	892,271	853,160	809,176	914,876
Mexico	15,778	11,446	11,333	11,031
<b>T O T A L</b>	<b>1,212,193</b>	<b>1,290,278</b>	<b>1,125,029</b>	<b>1,492,633</b>

EUROPE  
(Thousand Bushels)

	<u>1931</u>	<u>1930</u>	<u>1929</u>	<u>1928</u>
Germany	155,534	139,217	123,062	141,596
Austria	9,370	11,384	11,559	12,917
Belgium	15,026	13,236	13,225	19,986
Bulgaria	61,496	58,272	33,191	49,153
Denmark	9,186	10,216	11,772	12,214
Spain	134,444	145,339	154,244	119,884
Estonia	1,200	1,635	1,260	1,036
Finland	1,121	1,210	1,095	998
France	270,048	238,832	319,861	281,283
U.K. & Irish Free State	36,707	39,954	50,941	50,948
Greece	12,236	12,048	8,501	13,085
Hungary	69,187	84,337	74,985	99,211
Italy	247,136	210,817	260,123	228,596
Latvia	2,600	4,062	2,336	2,499
Lithuania	8,818	11,327	9,329	6,327
Luxemburg	372	442	275	713



EUROPE (Cont'd.)

(Thousand Bushels)

	<u>1931</u>	<u>1930</u>	<u>1929</u>	<u>1928</u>
Malta	227	303	293	289
Norway	752	776	750	798
Netherlands	6,268	6,055	5,467	7,335
Poland	80,835	82,322	65,861	59,218
Portugal	12,052	13,531	10,814	7,546
Roumania	135,289	130,770	99,752	115,544
Sweden	19,504	22,320	19,032	19,155
Switzerland	4,361	5,337	5,787	5,960
Czechoslovakia	41,226	53,077	52,902	51,499
Yugoslavia	98,789	80,325	94,998	103,294
<b>T O T A L</b>	<b>1,433,784</b>	<b>1,377,144</b>	<b>1,431,415</b>	<b>1,411,084</b>

SOUTHERN HEMISPHERE

(Thousand Bushels)

	<u>1931</u>	<u>1930</u>	<u>1929</u>	<u>1928</u>
Argentina	226,000	235,960	162,576	349,000
Australia	175,000	212,629	126,885	159,497
<b>T O T A L</b>	<b>401,000</b>	<b>448,589</b>	<b>289,461</b>	<b>508,497</b>

NORTH AFRICA

(Thousand Bushels)

	<u>1931</u>	<u>1930</u>	<u>1929</u>	<u>1928</u>
Algeria	22,046	32,249	32,833	30,302
Morocco	34,708	21,302	26,885	24,746
Egypt	46,076	41,100	45,228	37,296
Tunis	13,562	10,398	12,309	12,125
<b>T O T A L</b>	<b>116,392</b>	<b>105,049</b>	<b>117,255</b>	<b>104,469</b>

ASIA

(Thousand Bushels)

	<u>1931</u>	<u>1930</u>	<u>1929</u>	<u>1928</u>
India	347,275	390,843	320,731	290,864
Japan	30,901	29,538	30,495	30,812
<b>T O T A L</b>	<b>378,176</b>	<b>430,381</b>	<b>351,226</b>	<b>321,676</b>

III.

INDEX OF WHEAT PRODUCTION

The following table shows production of wheat in Europe and in the four leading exporting countries from 1925 to 1931 along with the 1909-13 average.

Table I.- Production of Wheat.  
(Million bushels).

Country	Average 1909-13	1925	1926	1927	1928	1929	1930	1931
Europe 1/	1,363	1,404	1,216	1,275	1,411	1,431	1,377	1,433
Canada	198	397	408	481	566	305	420	304
United States	691	676	830	878	915	809	858	892
Argentina	147	191	228	283	349	162	236	226
Australia	92	114	162	118	159	126	212	175

1/ Not including Russia.

100	100	100	100	100
100	100	100	100	100
100	100	100	100	100
100	100	100	100	100
100	100	100	100	100

100	100	100	100	100
100	100	100	100	100
100	100	100	100	100
100	100	100	100	100
100	100	100	100	100

100	100	100	100	100
100	100	100	100	100
100	100	100	100	100
100	100	100	100	100
100	100	100	100	100

100	100	100	100	100
100	100	100	100	100
100	100	100	100	100
100	100	100	100	100
100	100	100	100	100

100	100	100	100	100
100	100	100	100	100
100	100	100	100	100
100	100	100	100	100
100	100	100	100	100

100	100	100	100	100
100	100	100	100	100
100	100	100	100	100
100	100	100	100	100
100	100	100	100	100



The following table shows index numbers of wheat production in Europe and the four leading exporting countries. Base 1909-13 = 100.

Index of World Wheat Production.

Country	Average 1909-13	1925	1926	1927	1928	1929	1930	1931
Europe 1/	100.0	103.0	89.2	93.5	103.5	105.0	101.0	105.1
Canada	100.0	200.5	206.1	242.9	285.9	154.0	200.5	153.5
United States	100.0	97.8	120.1	127.1	132.4	117.1	124.9	129.1
Argentina	100.0	130.0	155.1	192.5	237.4	110.2	160.5	153.7
Australia	100.0	123.9	176.1	128.3	172.8	137.0	230.4	190.2

1/ Not including Russia.

IV.

RYE PRODUCTION

The following table shows estimated rye production in important producing countries (exclusive of Russia) with comparative figures for last year.

(Thousand Bushels)

	<u>1 9 3 1</u>	<u>1 9 3 0</u>
Greece	1,815	1,837
Denmark	8,661	10,026
Netherlands	13,125	14,892
Belgium	20,483	18,630
Spain	18,503	21,544
Italy	6,195	6,127
France	31,022	28,900
Germany	262,982	302,317
Austria	18,306	20,613
Czechoslovakia	54,631	68,047
Hungary	21,575	28,406
Bulgaria	12,889	13,530
Roumania	13,962	18,288
Poland	224,504	273,923
Latvia	5,615	7,757
Finland	11,792	14,104
Estonia	5,820	8,885
Luxemburg	378	480
Switzerland	1,402	1,514
Yugoslavia	7,614	7,825
Sweden	11,745	19,169
Lithuania	16,282	25,177
Europe - 22 countries reported	769,301	911,991

NORTH AMERICA

Canada	5,888	22,018
United States	32,746	48,149
Total Estimated Production 24 Countries	38,634 807,935	70,167 982,158

Estimates from 24 countries, comprising the large proportion of the world rye production outside Russia, indicate a crop of approximately 165 million bushels under last year.



V.

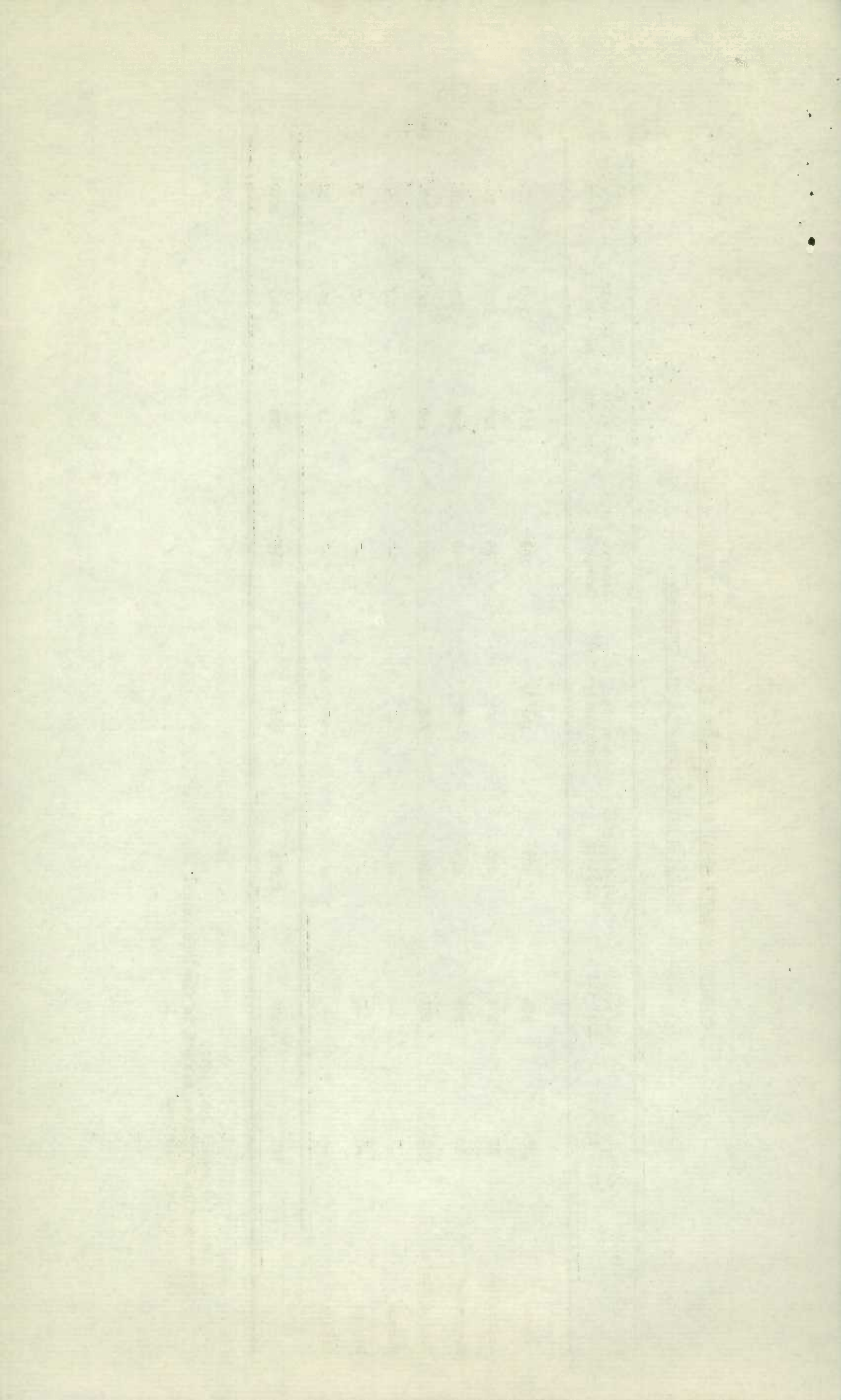
ESTIMATED AVAILABLE WHEAT SUPPLIES CEREAL YEAR 1931-32 (AUGUST - JULY).  
and  
ESTIMATED DISPOSITION OF TOTAL SUPPLIES.

	Carryover July 31, 1931	Production 1931 (2)	Total Supplies 1931-32	Domestic Consumption (3)	Reserve for Carryover	Available for Export	Exports Aug.-March	Balance for Export
Canada	133	304	437	121(3)	103	216	140	73
Australia	30	175	205	50	25	130	100	30
Argentina	50	226	276	90	40	146	90	16
United States	252(1)	892	1,144	735	250	159	80(3)	79
Russia	-	-	-	-	-	75	70	5
Danube	-	-	-	-	-	55	50	5
Others	-	-	-	-	-	12	10	2
	465	1,597	2,062	996	415	793	540	250

(1) Estimated August 1st, 1931.

(2) Production Estimates subject to final revision.

(3) Partially Estimated.



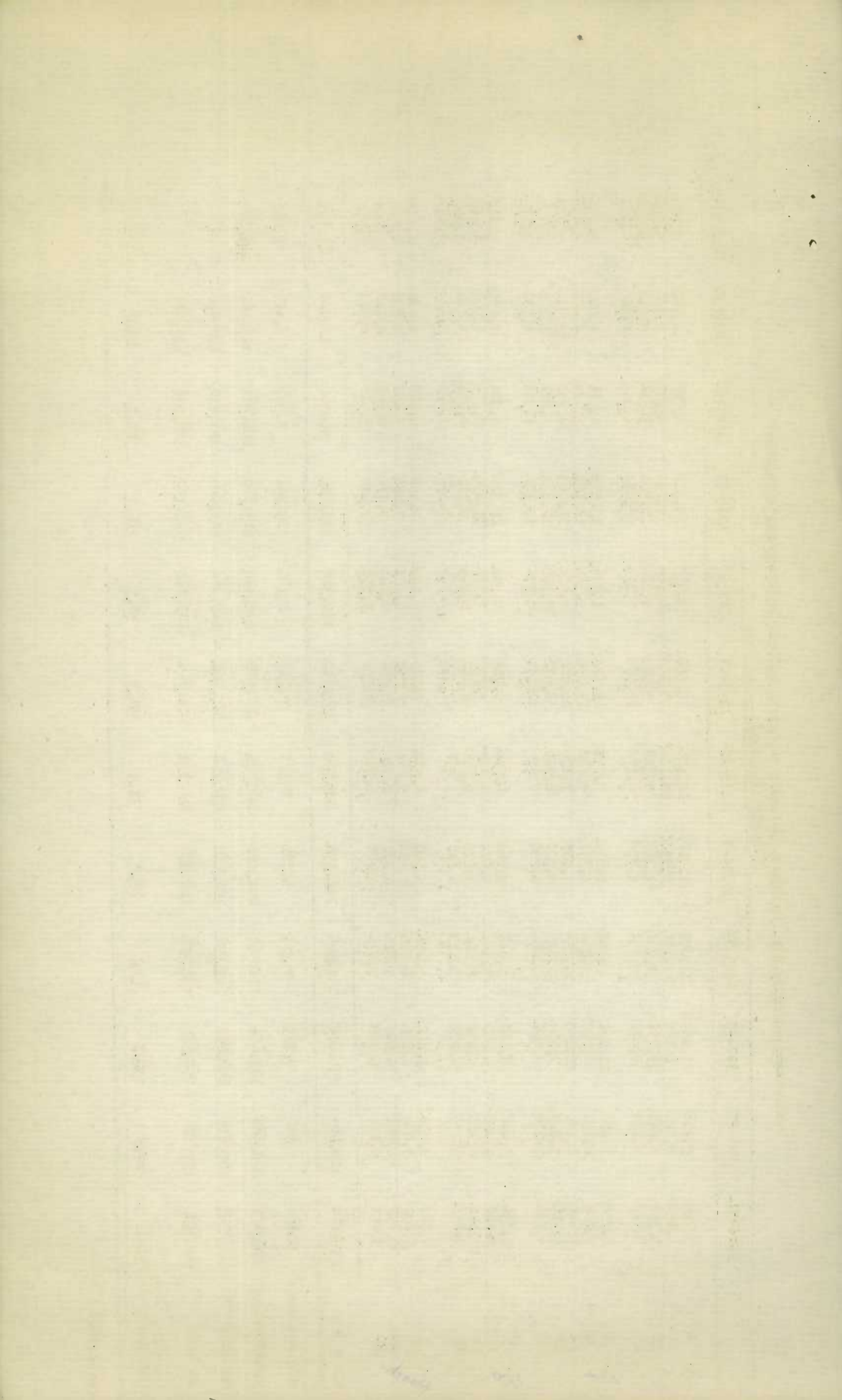
World Shipments, by Weeks, December to March, 1920 to 1932 (Broomhall's figures)  
(Thousand Bushels)

		1920-21	1921-22	1922-23	1923-24	1924-25	1925-26	1926-27	1927-28	1928-29	1929-30	1930-31	1931-32
Dec.	4	10,592	10,944	19,768	19,016	14,240	14,568	12,544	17,656	22,728	12,032	16,848	11,640
	11	8,056	9,472	12,528	15,736	11,064	13,264	13,376	13,416	16,656	10,736	11,632	11,360
	18	9,680	10,232	11,064	13,904	9,240	13,736	12,488	12,200	17,480	9,416	12,200	11,832
	25	7,960	7,536	11,712	12,400	9,784	11,760	17,480	12,560	15,568	11,296	10,944	12,432
Jan.	1	9,160	9,280	11,776	11,472	10,264	11,160	17,152	12,256	20,288	8,512	9,576	10,208
	8	11,960	10,816	12,584	12,736	13,512	14,408	19,920	14,688	20,160	11,592	11,464	11,840
	15	9,816	13,120	15,712	14,760	15,024	14,560	17,920	15,520	21,968	10,216	13,832	16,760
	22	8,960	16,136	12,696	14,040	12,496	17,088	17,520	19,712	21,864	13,056	13,304	19,112
	29	12,320	12,648	13,768	16,904	19,480	17,496	19,168	18,616	21,368	11,648	17,096	14,136
Feb.	5	13,168	13,576	15,736	15,736	19,008	14,000	21,728	18,992	22,984	12,568	14,776	15,776
	12	9,720	13,712	13,544	21,120	18,600	17,080	19,328	19,344	23,328	12,392	17,504	16,096
	19	13,472	13,424	12,304	17,680	19,120	13,440	17,496	16,840	19,040	12,632	16,472	15,202
	26	13,672	14,296	11,512	16,792	18,896	12,324	18,592	15,032	20,512	10,352	14,848	15,176
Mar.	5	10,712	18,352	15,120	19,344	17,456	13,976	16,512	14,888	21,640	12,184	14,056	16,386
	12	11,056	13,592	11,568	17,504	19,472	11,520	21,472	18,400	21,840	10,408	15,352	17,709
	19	9,472	17,704	10,280	16,944	17,888	12,456	22,032	15,296	18,192	8,640	16,176	16,016
	26	11,360	13,904	13,400	17,944	15,176	12,176	14,320	17,264	20,416	11,144	14,904	13,985
Totals		181,336	218,744	225,072	274,112	260,720	234,712	299,056	272,680	346,040	188,824	241,144	245,666
Weekly Average		10,667	12,867	13,240	16,124	15,336	13,807	17,592	16,040	20,355	11,107	14,185	14,451
August-November		174,216	217,960	219,008	215,936	255,024	207,480	232,848	251,952	285,120	219,472	270,792	274,066
April-July		235,496	205,816	231,104	283,256	188,240	225,360	282,544	268,176	296,960	204,576	274,064	-
Total for Year		591,048	642,520	675,184	773,304	715,240	667,552	814,448	792,808	928,120	612,872	786,000	-
% Dec.- Mar. of Total		30.7	34.0	33.3	35.4	36.5	35.2	36.7	34.4	37.3	30.8	30.7	-



North American Shipments, by Weeks, December to March, 1920-1932 (Broomhall's figures)  
(Thousand Bushels)

	1920-21	1921-22	1922-23	1923-24	1924-25	1925-26	1926-27	1927-28	1928-29	1929-30	1930-31	1931-32
<i>Dec.</i> 4	9,224	9,328	17,464	14,400	11,080	10,496	9,696	14,312	15,416	6,376	8,792	7,128
11	7,632	6,920	8,496	12,128	8,944	10,168	9,560	10,664	9,904	4,672	5,264	5,364
18	9,544	8,696	9,312	9,936	7,368	9,528	9,928	9,288	10,904	3,624	5,072	5,032
25	7,728	5,720	9,872	10,144	6,808	8,176	13,056	8,224	8,424	4,944	4,960	4,272
<i>Jan.</i> 1	8,768	7,080	10,904	8,792	5,864	7,320	12,424	8,792	13,576	4,856	4,080	5,856
8	9,784	8,272	9,200	9,560	6,872	9,632	13,856	9,384	11,168	6,224	5,472	5,448
15	7,624	8,744	12,200	10,336	7,096	7,136	10,808	9,624	11,104	4,792	5,544	5,080
22	6,568	7,824	7,800	9,312	4,400	8,048	8,072	9,840	12,832	5,224	6,280	5,456
29	8,576	7,232	6,488	8,664	6,200	8,456	10,144	8,296	10,376	6,504	6,992	4,776
<i>Feb.</i> 5	9,736	5,248	8,640	7,048	5,880	6,544	9,264	8,944	11,328	6,384	4,496	5,768
12	9,720	4,968	6,288	9,144	5,624	7,520	7,960	7,976	11,256	5,376	6,504	5,240
19	13,472	6,120	5,296	8,664	7,616	6,144	6,464	8,264	8,112	5,872	5,040	5,630
26	5,896	6,776	4,272	8,160	6,640	5,232	7,344	7,456	9,392	3,920	4,720	4,437
<i>March</i> 5	6,960	8,344	7,872	9,296	5,560	6,432	7,176	5,240	9,688	5,688	5,080	4,455
12	5,192	5,080	4,872	8,440	7,824	5,264	7,880	8,104	7,096	5,438	4,600	4,626
19	4,752	6,368	4,800	7,816	6,416	5,824	8,664	7,064	7,072	4,696	4,728	3,665
26	5,952	6,144	6,048	7,528	6,784	6,848	7,152	7,856	8,144	5,928	4,400	5,552
<b>Totals</b>	137,128	118,864	139,824	159,368	116,976	128,768	159,448	149,328	175,792	90,568	92,024	87,785
<b>Weekly Average</b>	8,066	6,992	8,225	9,375	6,881	7,575	9,379	8,784	10,341	5,328	5,413	5,163
<b>August-November</b>	156,936	178,448	183,864	151,392	201,456	145,336	183,376	194,968	213,888	106,896	143,152	119,182
<b>April-July</b>	146,768	105,816	131,696	143,592	104,168	139,128	141,704	145,424	153,440	121,232	118,838	-
<b>Total Year</b>	440,832	403,128	455,384	454,352	422,600	413,232	484,528	489,720	543,120	318,696	354,014	-
<b>Dec.-Mar. of Total</b>	31.1	29.5	30.7	35.1	27.7	31.2	32.9	30.5	32.4	28.4	26.0	-





Argentine Shipments, by Weeks, December to March, 1920 to 1932 (Broomhall's figures)  
(Thousand Bushels)

		1920-21	1921-22	1922-23	1923-24	1924-25	1925-26	1926-27	1927-28	1928-29	1929-30	1930-31	1931-32
Dec.	4	-	160	1,464	616	1,192	1,064	392	592	3,960	3,408	920	672
	11	16	336	3,152	1,008	1,448	480	200	1,352	3,264	3,312	544	1,176
	18	-	528	1,056	560	1,128	1,280	496	1,192	3,464	2,208	1,240	1,736
	25	-	760	1,496	328	1,784	1,296	40	2,504	3,424	3,208	992	2,448
Jan.	1	-	1,056	752	472	2,688	848	832	1,792	3,616	1,512	1,256	1,424
	8	80	1,096	1,552	936	2,448	432	744	2,704	3,456	2,312	968	1,504
	15	96	576	1,792	1,544	4,184	664	1,960	3,968	4,984	2,584	2,400	2,744
	22	120	2,200	2,384	2,824	4,048	1,656	3,520	5,880	4,208	4,216	2,368	3,856
	29	904	2,272	2,976	3,344	6,848	2,128	4,128	6,416	5,624	2,116	3,528	4,168
Feb.	5	1,040	3,872	5,552	5,432	6,448	2,096	6,304	6,824	6,176	2,416	3,600	4,208
	12	488	5,064	4,232	6,720	6,304	3,664	6,800	9,176	7,008	2,896	4,392	4,024
	19	2,040	4,648	4,376	5,408	5,816	2,624	5,840	5,856	6,240	3,048	4,268	4,216
	26	2,160	4,832	4,296	4,880	5,120	3,408	6,312	5,592	6,760	3,032	4,232	5,174
Mar.	5	2,720	5,824	5,008	4,296	4,880	3,024	5,160	7,176	7,264	2,888	4,296	6,333
	12	2,000	5,200	4,936	5,888	4,496	2,528	5,744	7,624	10,304	2,280	3,168	7,093
	19	2,928	6,496	3,456	5,176	4,872	3,344	7,576	6,776	5,640	1,520	3,352	7,023
	26	1,664	6,024	4,544	6,440	2,520	2,576	4,920	6,920	8,152	2,408	3,800	4,313
<b>T o t a l s</b>		16,256	50,944	53,024	55,872	66,224	33,112	60,968	82,344	93,544	45,784	45,344	62,114
<b>Weekly Average</b>		956	2,997	3,119	3,287	3,896	1,940	3,586	4,844	5,503	2,693	2,667	3,693
<b>August-November</b>		9,760	6,944	24,568	31,840	24,336	18,696	6,984	21,104	35,328	71,640	14,512	23,639
<b>April - July</b>		37,824	59,656	60,648	86,688	30,824	42,112	71,056	74,296	94,592	34,768	63,497	-
<b>Total for year</b>		63,848	117,544	138,240	174,400	121,384	93,920	139,008	177,744	223,464	152,192	123,353	-
<b>% Dec. - Mar. of Total</b>		25.5	43.3	38.4	32.0	54.6	35.2	43.9	46.3	41.9	30.1	36.8	-



Australian Shipments, by Weeks, December to March, 1920 to 1932 (Broomhall's figures).

(Thousand Bushels)

	1920-21	1921-22	1922-23	1923-24	1924-25	1925-26	1926-27	1927-28	1928-29	1929-30	1930-31	1931-32
Dec. 4	136	1,448	240	312	616	456	312	728	1,168	520	1,896	992
11	224	2,192	336	672	248	200	200	264	1,480	1,056	1,848	1,448
18	-	760	96	280	448	392	280	680	1,536	1,032	2,184	1,528
25	216	768	200	504	288	360	2,064	800	2,856	2,128	2,200	3,368
Jan. 1	272	776	-	632	944	656	1,848	472	1,920	1,184	2,192	1,536
8	1,000	1,152	1,280	808	3,552	2,176	3,112	1,712	4,424	1,776	3,712	3,464
15	1,416	3,216	1,152	1,624	2,784	4,032	3,184	1,160	4,960	2,072	4,856	6,512
22	2,056	5,968	2,272	1,928	2,944	4,744	4,992	3,408	3,928	2,728	3,728	7,672
29	2,152	2,864	3,168	3,304	5,400	4,328	3,512	3,168	4,752	1,216	5,416	4,000
Feb. 5	1,896	4,272	1,144	2,368	5,472	3,256	4,040	2,608	4,536	2,056	4,520	4,656
12	1,320	3,400	2,216	4,008	4,800	3,984	2,688	1,688	4,400	1,592	4,000	5,728
19	3,608	2,408	2,416	2,960	4,000	3,784	3,664	2,128	3,792	2,064	4,608	4,546
26	4,824	2,472	2,504	2,072	5,576	2,464	4,032	1,400	3,776	2,256	4,784	4,901
Mar. 5	832	3,952	1,880	4,344	6,016	3,456	2,840	1,832	4,120	2,304	3,024	4,878
12	3,384	3,008	1,712	2,128	5,800	2,816	6,256	2,296	3,976	1,480	5,304	5,118
19	1,376	4,480	1,736	1,744	6,080	2,400	4,448	976	4,760	1,248	5,256	4,328
26	3,536	1,504	2,480	3,296	5,368	1,832	1,728	2,064	3,624	1,696	5,096	3,009
Totals	28,248	44,640	24,832	32,984	60,336	41,336	49,200	27,384	60,008	28,408	64,624	67,684
Weekly Average	1,662	2,626	1,461	1,940	3,549	2,432	2,894	1,611	3,530	1,671	3,801	3,922
August-November	7,392	29,256	6,936	14,984	12,344	10,360	5,720	13,608	16,344	14,192	22,208	28,541
April - July	46,504	36,928	16,056	29,976	44,464	22,352	48,704	33,648	35,864	22,328	66,960	-
Total for year	82,144	110,824	47,824	77,944	117,144	74,048	103,624	74,640	112,216	64,928	153,792	-
% Dec. - Mar. of Total	34.4	40.3	51.9	42.3	51.5	55.8	47.5	36.7	53.5	43.8	42.0	-



International Trade.

The following table shows world shipments of wheat and wheatflour from August 1st, 1931 to April 16th, 1932, with comparative totals for last year (Broomhall's figures).

Week ending	North					Total
	America	Argentine	Australia	Russia	Other	
(Thousand Bushels)						
Aug. 8	7,888	1,240	2,144	3,080	1,208	15,560
15	4,296	1,144	1,576	4,484	1,836	13,336
22	5,648	1,352	2,096	4,618	2,176	15,890
29	5,520	1,632	1,776	5,800	1,880	16,608
Sept. 5	6,072	1,912	2,056	4,512	2,048	16,600
12	5,256	1,312	1,248	6,056	2,280	16,152
19	7,648	1,168	1,616	5,040	3,504	18,976
26	5,560	1,504	2,032	4,720	2,112	15,928
Oct. 3	6,424	1,032	1,256	3,368	3,168	15,248
10	8,720	1,848	2,192	3,072	1,632	17,464
17	5,776	1,200	2,000	3,408	3,883	16,267
24	8,632	1,048	1,712	4,040	3,632	19,064
31	6,912	1,472	944	2,088	3,168	14,584
Nov. 7	10,616	1,912	2,656	1,160	2,216	18,560
14	8,936	1,648	1,808	2,480	2,600	17,472
21	7,024	1,360	1,112	2,768	1,752	14,016
28	8,160	944	328	448	2,680	12,560
Dec. 5	7,128	672	992	984	1,864	11,640
12	5,864	1,176	1,448	520	2,352	11,360
19	5,032	1,736	1,528	1,328	2,208	11,832
26	4,272	2,448	3,368	1,256	1,088	12,432
Jan. 2	5,856	1,424	1,536	272	1,120	10,208
9	5,448	1,504	3,464	512	912	11,840
16	5,080	2,744	6,512	1,456	968	16,760
23	5,456	3,856	7,672	304	1,824	19,112
30	4,776	4,168	4,000	384	808	14,136
Feb. 6	5,768	4,208	4,656	408	736	15,776
13	5,240	4,024	5,728	352	792	16,096
20	5,672	4,232	4,544	408	488	15,344
27	4,416	5,144	4,872	112	776	15,320
Mar. 5	4,455	6,333	4,878	136	584	16,386
12	4,626	7,093	5,118	88	784	17,709
19	3,665	7,023	4,328	264	736	16,016
26	5,552	4,313	3,009	200	911	13,985
Apr. 2	6,114	4,154	3,927	224	1,200	15,619
9	4,845	5,074	3,950	152	728	14,749
16	7,299	4,526	3,144	-	902	15,871
<b>T O T A L</b>	<b>225,652</b>	<b>99,580</b>	<b>107,226</b>	<b>70,502</b>	<b>63,514</b>	<b>566,476</b>
<u>Comparative 1930-31</u>						
Corresponding week	5,032	4,654	3,760	584	1,218	15,248
Total to Date	248,426	71,119	99,432	85,696	48,977	553,650

World shipments of wheat and wheatflour for the first 37 weeks of the present crop year amounted to 566 million bushels compared with 554 million bushels for the same period in 1930-31. North American shipments for the 37 weeks amounted to 226 million bushels compared with 248 million bushels for the same period last year. Australia and Argentine shipments for the present crop year exceed those of last year by 8 and 28 million bushels respectively.

Import Requirement Estimate.

Mr. Broomhall estimates world import requirements for the present crop year at 776 million bushels. The position of this estimate on April 16, is shown in the following table.

Import Requirements	Actual shipments	Balance to be shipped
(52 weeks)	Aug. 1, 1931 to April 16, 1932	(15 weeks)
776,000 Bushels or	(37 weeks)	210,000,000 Bushels or
14,923,000 Bushels Weekly.	566,476,000 Bushels or	14,000,000 Bushels Weekly.
	15,310,000 Bushels Weekly.	

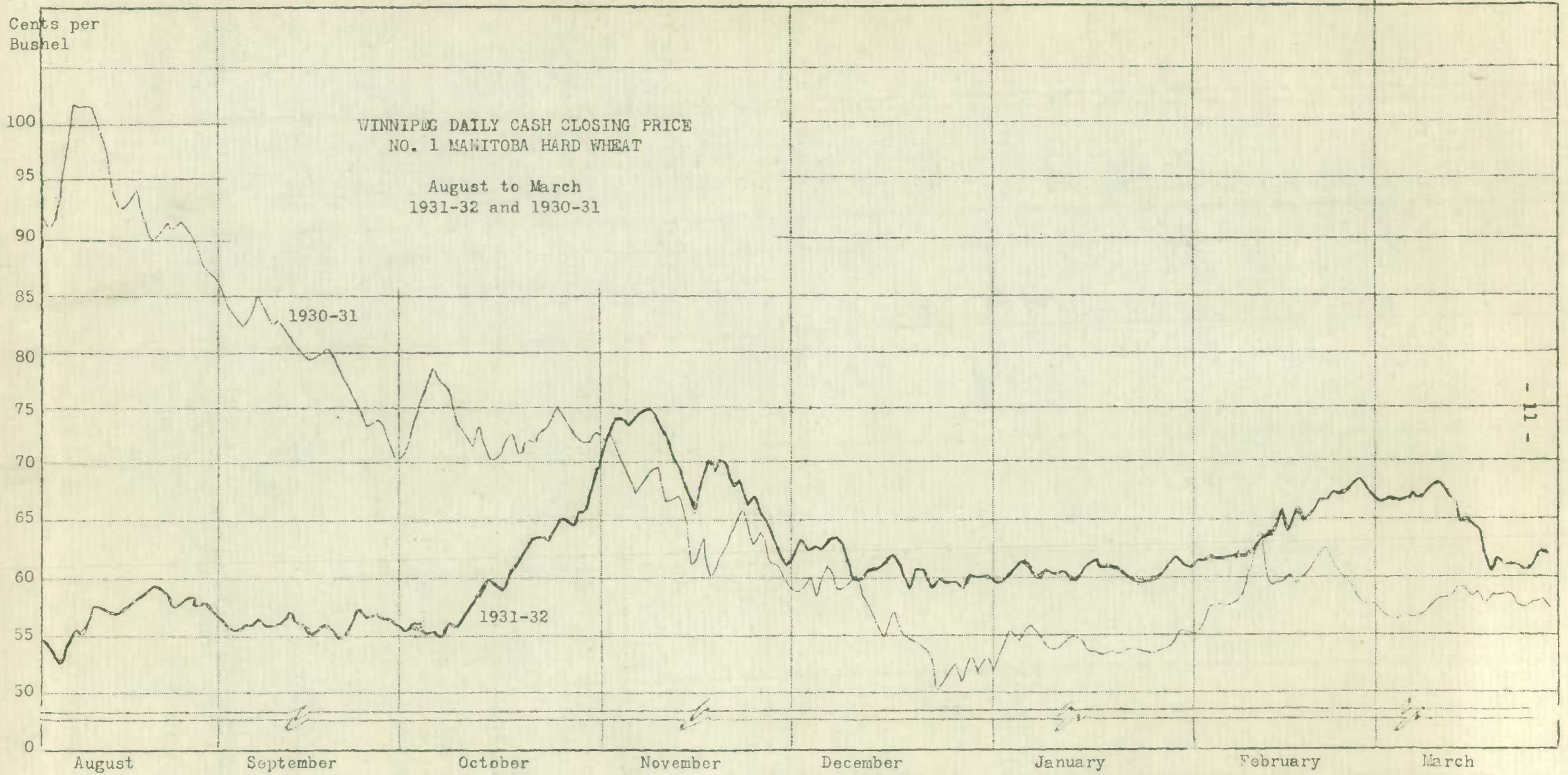
World shipments to date have averaged considerably higher than the weekly amount required to fulfil Mr. Broomhall's estimate.



Cents per  
Bushel

WINNIPEG DAILY CASH CLOSING PRICE  
NO. 1 MANITOBA HARD WHEAT

August to March  
1931-32 and 1930-31







The Course of Wheat Prices.

The following summary of wheat price movements from March 1st to April 16th, has been prepared by the Internal Trade Branch of the Dominion Bureau of Statistics.

Wheat markets held firm for nearly a fortnight in March. The February advance was not continued due chiefly to the increasing weight of Southern Hemisphere shipments, which began to assume record proportions. Low temperatures in U. S. winter wheat areas, however, tended to offset this influence during the first week. On March 11th, a reaction commenced which carried prices down from 7¢ to 8¢ per bushel within the next two weeks. This movement could be traced largely to the effect of continued heavy Southern Hemisphere offerings and to persistent reports that considerable quantities of U. S. wheat were to be placed upon the market, although this rumour elicited repeated denials. Dating from March 28th an unsteady rise set in which by mid-April had regained most of the ground lost in the preceding decline. Much concern in this internal was shown regarding the dry weather in U. S. winter wheat areas. There was also a marked improvement in the ratio of North American grain shipments to those from other parts of the world.

The range of cash closing quotations for No. 1 Northern wheat, basis Fort William and Port Arthur between March 1st and April 16th was 7.9¢, the highest price being 66.5¢ on March 10th and the lowest 58.6¢ on March 26th. The close on April 16th was 63.7¢ as compared with 63.9¢ on March 16th. The average price for March was 63.1¢ as against 63.2¢ per bushel in February.

MONTHLY AVERAGE CASH PRICE - NO. 1 NORTHERN WHEAT - CROP YEARS - 1925-26 to 1931-32.

	(Dollars per bushel).						
	<u>1925-26</u>	<u>1926-27</u>	<u>1927-28</u>	<u>1928-29</u>	<u>1929-30</u>	<u>1930-31</u>	<u>1931-32</u>
August	1.67.5	1.46.3	1.59.9	1.18.8	1.58.0	.92.5	.55.1
September	1.37.5	1.38.5	1.45.1	1.17.0	1.49.5	.78.1	.53.6
October	1.27.0	1.39.6	1.44.1	1.23.7	1.41.4	.72.5	.59.9
November	1.42.0	1.36.2	1.45.1	1.20.9	1.33.0	.64.4	.67.3
December	1.57.0	1.29.2	1.40.6	1.17.1	1.37.8	.55.4	.60.6
January	1.56.5	1.30.9	1.42.8	1.20.9	1.30.5	.53.9	.60.0
February	1.54.7	1.35.1	1.42.6	1.27.9	1.17.4	.59.3	.63.2
March	1.48.4	1.37.6	1.48.1	1.27.0	1.06.2	.56.7	.63.1
April	1.56.9	1.41.2	1.56.3	1.22.8	1.09.8	.59.7	-
May	1.53.8	1.52.3	1.57.2	1.13.3	1.07.9	.60.6	-
June	1.53.1	1.56.9	1.42.6	1.18.3	1.03.2	.60.8	-
July	1.59.6	1.58.3	1.30.9	1.59.9	.95.1	.57.3	-

Since November, 1931, as shown by the above table and the chart on page 11, monthly average cash prices at Winnipeg have averaged higher than for the corresponding months of the previous crop year. For the past 16 months wheat prices have been steady although clinging to low levels. As shown by the chart on the previous page, prices during the present crop year have been relatively steady and have shown a tendency to work toward higher levels, although the upward movement to date has not been well defined.

It is a significant fact that prices have remained relatively steady during the past 15 months in spite of many bearish influences which have affected the market on occasions during that period.



The Statistical Position of Canadian Wheat Supplies.

The following table shows the statistical position of Canadian wheat as at March 31st, 1932, with comparative figures for last year. (Calculated on the basis of the revised estimate for 1930 and the final estimate for 1931, as issued on January 21st, by the Dominion Bureau of Statistics).

	<u>1930-31</u> (Bushels)	<u>1931-32</u> (Bushels)
Carryover July 31st.	112,094,912	133,381,623
Production	420,672,000 <sup>1/</sup>	304,144,000 <sup>2/</sup>
Total Supplies	532,766,912	437,525,623
Domestic Requirements	134,000,000	121,000,000 <sup>3/</sup>
Available Supplies	397,766,912	316,525,623
Exports - August to March	183,706,489	140,691,265
Balance for export and carryover.	214,060,423	175,834,358

1/ Revised Estimate.

2/ Final Estimate.

3/ Preliminary Estimate.

Supplies of wheat available in Canada for export and carryover amounted to 175,834,358 bushels on March 31st compared with 214,060,423 bushels on the same date last year. Available supplies on March 31st, 1932 were therefore 38 million bushels less than on the same date in 1931. Exports of Canadian wheat from August to March, 1931-32 amount to about 43 million bushels less than exports for the same period in 1930-31.

With a falling off in the seasonably heavy country marketings of wheat which have characterized the past three months and with the opening of inland navigation stocks of wheat in Canada should decrease substantially in the next two months.

Stocks of Wheat in Canada on March 31st, 1932.

On April 12th the Dominion Bureau of Statistics issued a report showing the stocks of Canadian grains in all positions as at March 31st.

The volume of stocks of grain in all positions in Canada on March 31, 1932, showed substantial reductions compared with the volume of stocks in corresponding positions on March 31, 1931. Extensive reduction in stocks as compared with a year ago are shown in the case of wheat, oats, barley, flax and rye, the total reduction in all grains amounting to 179 million bushels.

Returns received from elevators, flour mills, railway companies, and crop correspondents show that on March 31, 1932, stocks of wheat in Canada amounted to 243,300,165 bushels, compared with 280,095,391 bushels on the same date in 1931, or a reduction of 36,795,226 bushels. Total stocks in various positions on March 31, 1932 are shown as follows, with corresponding figures for 1931 in brackets. In elevators, afloat and in flour mills, 176,271,266 bushels (178,892,679 bushels); in transit, 8,377,899 bushels (7,280,712 bushels). in farmers' hands, 58,651,000 bushels (93,922,000 bushels). Stocks of wheat in farmers' hands on March 31, 1932 showed a reduction of 35 million bushels compared with March 31, 1931.

Stocks in Farmers' Hands

According to the reports of crop correspondents, 19 per cent of the 1931 wheat crop, or 58,651,000 bushels out of a total crop of 304,144,000 bushels remained in farmers' hands at March 31, 1932. This includes seed for the 1932 crop. At March 31, 1931, 22 per cent or 93,922,000 bushels remained on farms, while in 1930 at the same date, 15 per cent or 46,304,000 bushels remained.



The following table shows stocks of Canadian wheat in all positions as at March 31, 1932, with comparative figures for the corresponding date last year.

	<u>1932</u>	<u>1931</u>
Public, Semi-Public Terminals and Private Elevators, Fort William and Port Arthur and Afloat	55,595,087	51,417,557
Mill and Mill Elevators	6,256,450	6,441,976
Interior Terminal Elevators, Western Division	387,635	4,665,974
Vancouver and New Westminster Elevators	12,085,346	12,458,932
Victoria Elevators	855,535	933,422
Prince Rupert Private Elevator	1,110,389	1,166,474
Country Elevators, Western Division	83,509,854	76,391,715
Eastern Elevators and Afloat	12,470,970	15,801,225
In Transit - Railways	8,377,899	7,280,712
In Flour Mills Eastern Division (Estimated)	4,000,000	9,615,404
In Farmers' Hands	58,651,000	93,922,000
<b>T O T A L - 1932</b>	<b>243,300,165</b>	<b>280,095,391</b>

Distribution of the Wheat Crop of 1931.

The 1931 wheat crop of Canada was estimated in January at 304,144,000 bushels. An allowance of 0.9 per cent for grain not merchantable involves a reduction of 2,826,100 bushels, while estimating dockage at 2 per cent on deliveries of 252 million bushels justifies a further deduction of 5,040,000 bushels. These subtractions leave a net crop of 296,277,900 bushels. Adding the carry-over of Canadian wheat in Canada on July 31, 1931, (133,381,623 bushels) the total available for distribution amounts to 429,659,523 bushels. Of this total, 128,903,226 bushels of wheat (and wheat flour) were exported in the period from August 1, 1931, to February 28, 1932. The exports in the remaining five months of the crop year are estimated at 85 million bushels. Further requirements for domestic consumption during the present crop year are 38 million bushels for seed, 41 million bushels for human consumption and 33 million bushels for feeding live stock and poultry. Such calculations indicate that the carry-over of Canadian wheat in Canada at July 31, 1932, will be in the neighborhood of 103 million bushels, which will be the smallest carry-over since July 31, 1928.

Our total stocks of wheat in Canada (carry-over at July 31, 1931 plus the new crop) have fallen approximately 194 million bushels since the beginning of the present crop season, of which total exports account for about 140 million bushels. Proceeding from the total stocks on hand at March 31, 1932 (viz. 243,300,165 bushels) and with allowances proportionate to those stated above for domestic consumption, further proof of reduced carry-over is obtained.

Preliminary Estimate of the Extent of Feeding of Wheat to  
Live Stock and Poultry, Crop Season 1931-32.

As in 1931, the Bureau conducted a preliminary investigation into the extent of wheat-feeding on farms. The compilation showed a close relation to the survey of the previous year in that the highest percentages of the crop were fed in the Maritime and Eastern Provinces and in British Columbia, while the highest actual amounts were used on farms in the Prairie Provinces. The extended drought area and the bonus on deliveries reduced the percentage fed in the West and the smaller crop resulted in smaller absolute amounts being fed. For the whole of Canada, the percentage of the crop fed to live stock and poultry is estimated at 11.1 compared with 9.7 last year, while the total amount is placed at 33,710,000 bushels compared with 40,690,000 bushels in 1930-31. The final estimate of 1931 was slightly over 5 per cent below the preliminary estimate. A detailed tabulation of wheat-feeding by provinces is attached.



Preliminary Estimate of the Proportion of the 1931 Wheat Crop Retained on Farms as Feed for Live Stock and Poultry during the Crop Year ending July 31, 1932, as compared with the previous Crop Year.

Province	Production in 1930	Quantities Fed in 1930-31		Production in 1931	Quantities Fed or to be Fed, in 1931-32.	
	Bushels	P.C.	Bushels	Bushels	P.C.	Bushels
P.E. Island	485,000	20.0	97,000	328,000	21.0	69,000
Nova Scotia	104,000	31.0	32,000	50,000	28.0	14,000
New Brunswick	186,000	32.0	60,000	142,000	30.0	43,000
Quebec	1,050,000	55.0	578,000	798,000	36.4	890,000
Ontario	20,226,000	41.0	8,293,000	17,246,000	44.7	7,709,000
Manitoba	43,600,000	10.5	4,573,000	27,000,000	12.0	3,240,000
Saskatchewan	206,700,000	5.7	11,779,000	121,000,000	6.3	7,623,000
Alberta	147,000,000	9.8	14,353,000	136,000,000	10.0	13,600,000
British Columbia	1,321,000	70.0	925,000	1,580,000	71.0	1,122,000
<b>CANADA</b>	<b>420,672,000</b>	<b>9.7</b>	<b>40,690,000</b>	<b>304,144,000</b>	<b>11.1</b>	<b>33,710,000</b>

Country Deliveries of Wheat.

The following table shows the combined deliveries of wheat at country elevators and platform loadings for the period from August 1st, 1931 to April 8, 1932, with comparative totals for last year.

Week Ending	Manitoba	Saskatchewan	Alberta	Total	Total Last Year
( Bushels )					
Aug. 7	52,684	258,945	313,528	625,157	431,796
14	111,316	575,840	577,603	1,264,759	875,076
22	926,783	683,872	1,103,292	2,713,947	2,484,320
29	1,388,652	1,959,121	1,028,609	4,376,382	12,126,110
Sept. 4	1,667,980	3,874,823	3,781,236	9,324,039	33,266,767
11	2,641,482	10,242,152	3,306,963	16,190,597	33,423,710
18	4,140,278	6,171,677	2,425,400	12,737,355	17,050,523
25	533,689	2,883,972	1,391,755	4,809,416	20,820,394
Oct. 2	954,298	4,882,179	4,822,894	10,659,371	11,671,075
9	1,077,044	8,958,140	7,125,278	17,160,462	20,336,129
16	1,179,395	9,803,896	7,205,219	18,188,510	9,176,726
23	940,375	9,126,929	9,269,411	19,336,715	6,751,239
31	811,616	7,824,205	7,367,954	16,003,775	11,700,454
Nov. 6	495,984	5,454,068	7,468,536	13,418,588	14,088,941
13	827,548	5,785,065	6,818,008	13,430,621	13,625,180
20	732,529	4,073,288	4,785,199	9,591,016	13,441,911
27	312,176	1,697,857	3,221,333	5,231,366	9,039,386
Dec. 4	330,090	2,009,978	3,619,177	5,959,245	7,069,712
11	314,219	1,759,854	2,890,765	4,964,838	3,691,908
18	276,769	1,450,285	3,246,343	4,973,397	4,144,380
25	177,183	1,232,548	1,988,278	3,398,009	3,453,171
Jan. 1	125,463	753,976	1,222,252	2,101,691	1,412,905
8	96,339	870,054	1,851,307	2,817,700	2,671,066
15	91,788	470,166	1,217,562	1,779,516	1,932,506
22	64,412	553,604	1,545,813	2,163,829	2,236,619
29	161,695	1,346,815	1,927,219	3,435,729	1,957,681
Feb. 5	429,437	291,970	1,319,412	2,040,819	1,574,975
12	617,168	1,265,491	2,294,032	2,942,355	2,340,340
19	85,285	860,287	1,817,598	2,763,170	2,677,181
26	164,275	1,255,446	2,107,629	3,527,350	3,057,822
Mar. 4	172,406	1,210,825	2,033,591	3,416,822	2,827,821
11	164,847	836,838	1,696,306	2,697,991	1,732,957
18	261,656	1,574,973	1,928,653	3,765,282	2,337,640
25	266,882	1,282,708	1,522,848	3,072,438	2,015,954
April 1	167,762	733,393	620,388	1,521,543	1,124,224
8	184,033	607,881	796,290	1,588,204	3,576,040
<b>T O T A L</b>	<b>21,711,202</b>	<b>104,623,121</b>	<b>107,657,681</b>	<b>233,992,004</b>	<b>282,144,639</b>





Million  
Bushels

230  
210  
190  
170  
150  
130  
110  
90  
0

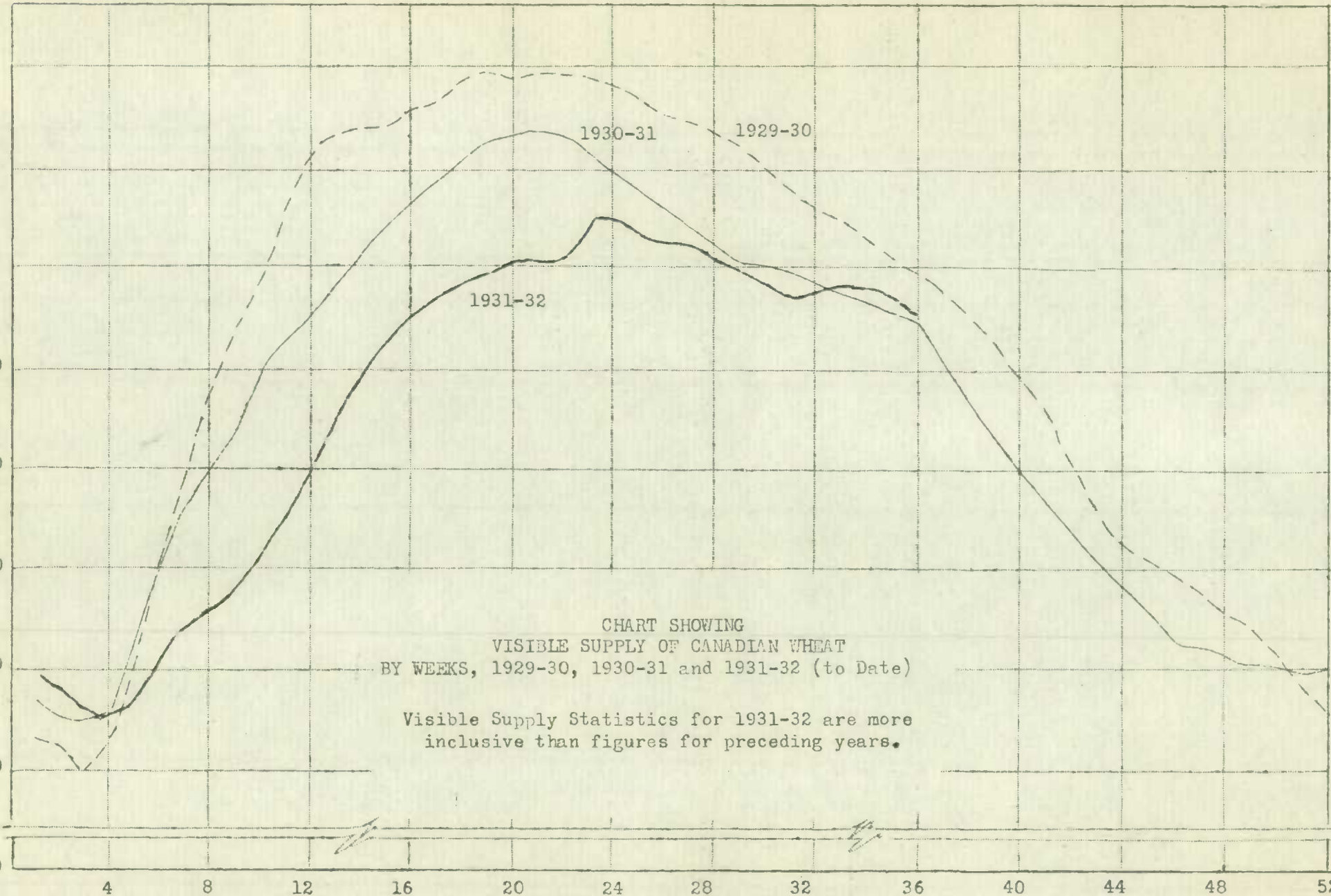


CHART SHOWING  
VISIBLE SUPPLY OF CANADIAN WHEAT  
BY WEEKS, 1929-30, 1930-31 and 1931-32 (to Date)

Visible Supply Statistics for 1931-32 are more  
inclusive than figures for preceding years.

Weeks from August 1st.



Stocks of Wheat in Store

Stocks of wheat in store in Canada and the United States are shown as follows:- (with comparative totals for previous week and the same week in 1931).

<u>April 8, 1932.</u>	<u>(Bushels)</u>
Western Country Elevators	82,523,604
Interior Terminal Elevators	478,802
Vancouver Elevators	12,433,702
Victoria Elevators	855,535
Prince Rupert Elevators	1,110,389
Fort William and Port Arthur Elevators	56,541,415
Interior Private and Mill Elevators	6,252,141
Eastern Elevators - Lake Ports	6,049,098
Eastern Elevators - Sbd. Ports	4,789,411
U. S. Lake Ports	9,067,791
U. S. Atlantic Seaboard Ports	1,792,241
<b>T o t a l s</b>	<b>181,894,129</b>
Week ending April 1st, 1932	184,565,284
Week ending March 11, 1932	185,057,175
Week ending February 5, 1932	193,826,839
Week ending January 8, 1932	200,829,004
Week ending April 8, 1931	178,059,369

As shown by the above table the visible supply of Canadian wheat has decreased by about 19 million bushels during the past three months.

Exports of Wheat and Wheatflour

The following table shows Canadian exports of wheat and wheatflour for the first eight months of the present cereal year, with comparative figures for 1930-31, 1929-30 and the five year average 1925-26 to 1929-30.

Month	1931-32	1930-31	1929-30	Average 1925-26 to 1929-30
	Bushels	Bushels	Bushels	Bushels
August	14,258,909	20,461,776	13,050,873	17,360,617
September	16,840,180	31,121,623	9,625,524	17,970,697
October	21,438,369	33,445,885	23,215,028	35,409,445
November	29,596,255	34,783,144	24,866,067	50,677,528
December	24,386,870	24,938,920	18,683,198	46,319,649
January	10,965,473	11,374,004	7,257,050	16,682,720
February	11,417,172	12,163,082	6,895,468	16,615,866
March	11,788,039	15,418,055	14,655,609	21,526,470
April		6,148,295	5,459,684	11,552,050
May		31,687,391	16,046,226	27,204,945
June		22,989,542	21,679,434	25,750,989
July		14,106,169	22,833,051	21,781,964
<b>T o t a l s</b>		<b>258,637,887</b>	<b>186,267,212</b>	<b>308,853,540</b>

Exports of wheat and wheat flour for the eight months ending March amounted to 141 million bushels compared with 184 million bushels for the corresponding period in 1930-31. In every month on the preceding crop year exports have exceed those for the corresponding month in 1931-32. The greater part of the deficit this year compared with last year is found on the August-November period. Since December exports in 1931-32 have followed the figures for the same months in 1930-31 very closely, being slightly under in each month.



Export Clearances of wheat.

The following table shows export clearances of wheat (not including wheat-flour) from various ports, by weeks, August 1st, 1931 to April 8, 1932:

Week Ending	Montreal	St. John & N. St. John	Sorel	Halifax	Vancouver	U.S. Ports	Total
(Bushels)							
Aug. 7	558,931				1,022,316	649,000	2,230,247
14	469,325				313,333	550,000	1,420,984 <sup>(1)</sup>
21	686,254				558,783	801,000	2,046,037
28	802,887		165,754		592,600	1,371,000	2,932,241
Sept. 5	640,163		221,866		968,761	13,000	1,843,790
10	1,793,743		366,919		900,066	99,000	3,164,728
17	1,175,251		-		651,550	939,000	2,765,801
24	1,355,935		291,376		548,847	501,000	3,241,927 <sup>(2)</sup>
Oct. 2	1,301,333		-		933,327	831,000	3,065,660
8	2,051,711		277,420		684,765	562,000	3,575,896
15	933,544		462,032		838,412	932,000	3,165,988
22	1,545,764		262,413		694,595	713,000	3,215,772
29	2,035,755		235,000		493,466	989,000	3,753,221
Nov. 6	2,908,621		434,565		2,151,628	635,000	6,129,814
12	1,664,665		408,150		1,220,080	586,000	3,878,895
19	1,844,180		730,308		1,417,532	646,000	4,638,020
26	1,713,546		452,533		1,368,792	203,000	3,737,871
Dec. 3	1,453,067		263,778		1,947,857	478,000	4,142,702
11	121,563		29,608		1,349,295	1,620,000	3,120,466
18		15,986			1,566,714	330,000	1,912,700
23		71,950			1,965,091	341,000	2,378,041
31		43,978			2,845,513	375,000	3,264,491
Jan. 8		71,983		15,939	2,781,765	591,000	3,460,687
15		39,934		12,000	2,157,164	456,000	2,665,098
22		135,153		9,276	1,771,842	712,000	2,628,271
29		143,389			2,066,740	232,000	2,442,129
Feb. 5		27,987			2,139,631	586,000	2,753,618
12					2,142,055	467,000	2,609,055
19		167,774			1,074,629	1,067,000	2,309,403
26		56,947		31,922	1,256,348	818,000	2,163,217
Mar. 4		369,443			1,148,346	1,014,000	2,531,789
11		165,146			1,434,116	593,000	2,192,262
18		234,281			1,352,261	682,000	2,218,542
25		154,716			1,662,083	430,000	2,206,799
31		273,575		7,974	2,080,777	614,000	2,976,326
Apr. 8		33,650			1,565,448	767,000	2,366,098
<b>TOTALS</b>	<b>25,061,238</b>	<b>2,005,892</b>	<b>4,601,722</b>	<b>77,111</b>	<b>49,666,528</b>	<b>23,143,000</b>	<b>105,188,586</b>

(1) Includes shipment of 88,326 bushels from Quebec.  
 (2) Includes shipment of 544,769 bushels from Churchill.

Statement of Assets and Liabilities

As at the end of the year 1951, the assets and liabilities of the Corporation were as follows:

Assets	Liabilities	Assets	Liabilities
Fixed Assets	Capital	Fixed Assets	Capital
Land	Reserves	Land	Reserves
Buildings	Provisions	Buildings	Provisions
Plant and Machinery	Other Liabilities	Plant and Machinery	Other Liabilities
Investments		Investments	
Current Assets		Current Assets	
Stocks		Stocks	
Debtors		Debtors	
Prepaid Expenses		Prepaid Expenses	
Other Assets		Other Assets	
Total	Total	Total	Total

As at the end of the year 1952, the assets and liabilities of the Corporation were as follows:

Approved and signed on behalf of the Board of Directors: [Signature]

Foreign Statistics

Canadian Trade Commissioners report on the grain situation in their respective countries as follows:-

Germany. The Markets Reports Bureau of the German Agricultural Council have published the results of their investigations as to the stocks of grain still in the hands of farmers on February 15th, 1932, in the form of percentages of the final crop estimates, which are as follows, compared with the percentages for the same date of the previous year:-

<u>Kind of Grain</u>	<u>Percentage of Total Crop in Hands of Farmers</u>	
	<u>February 15th. 1932</u>	<u>February 15th. 1931</u>
Winter wheat.....	22.6	23.4
Summer wheat.....	48.5	50.5
Winter rye.....	25.1	35.2
Winter barley.....	15.3	16.7
Summer barley.....	31.6	26.3
Oats.....	50.9	54.1
Potatoes.....	40.8	40.9

The German Grain Journal have translated these percentages into actual quantities which the following table shows in bushels:-

<u>Kind of Grain</u>	<u>Total Crop in Hands of Farmers (Bushels)</u>	
	<u>February 15th. 1932</u>	<u>February 15th. 1931</u>
Winter wheat.....	30,496,773	29,394,480
Summer wheat.....	9,920,637	6,246,327
Winter rye.....	64,958,025	105,113,895
Winter barley.....	3,674,448	3,674,448
Summer barley.....	36,285,174	28,936,278
Oats.....	204,901,984	199,714,592

The German Grain Journal have published the results of investigations which the Government Bureau of Statistics have made for the first time concerning German stocks in second hand. It was ascertained that the following quantities of grain and flour were available in warehouses and mills on February 29th:-

<u>Kind</u>	<u>Local Product</u>	<u>Foreign Product</u>	
		<u>Duty paid (Bushels)</u>	<u>Duty unpaid</u>
Wheat.....	16,056,735	2,645,503	1,175,779
Rye.....	7,834,332	984,213	5,275,379
Oats.....	8,364,670	32,421	45,390
Barley.....	5,879,117	1,010,473	1,331,987
Wheat flour.....	6,858,688	391,639	9,810
Rye flour.....	3,096,962	83,973	5,236

The grain stocks in the hands of the farmers (first hand) are not included in the above figures, nor the stocks in breweries, foodstuffs and corn coffee factories.

It is stated that the statistics of the stocks in second hand, together with the figures of the German Agricultural Council, show that there is no reason for uneasiness regarding the supply of bread grains up to the new crop. Stocks of wheat in first and second hand amounted to about 62,463,270 bushels on March 1st. This quantity corresponds to the milling requirements up to the middle of August, but it is not thought that stocks in first hand will all be brought on the market and the mills can also not be entirely without stocks at the beginning of the new crop. Import requirements, therefore, still remain, but will probably be below the estimated 14,697,240 bushels.

The rye situation is not so favourable. Home rye and rye flour in second hand amounts to 10,931,294 bushels. This quantity is considered small and does not cover the usual stocks of the milling industry.

1234567890  
1234567890  
1234567890

1234567890

1234567890

1234567890

1234567890

1234567890

1234567890

1234567890

1234567890

1234567890

1234567890

1234567890

1234567890

1234567890

1234567890

1234567890

1234567890



The Markets Reports Bureau of the German Agricultural Council have also published figures of the stocks still available for sale on February 15th., 1932, which are given below in percentages of the total crops as compared with those on the same date of the previous year:-

	<u>Stocks available for Sale</u>	
	<u>February 15th.</u> 1932	<u>February 15th.</u> 1931
Winter wheat.....	16.9	16.8
Summer wheat.....	38.6	37.3
Winter rye.....	9.9	17.0
Winter barley.....	2.2	2.0
Summer barley.....	15.3	10.5
Oats.....	11.9	13.3
Potatoes.....	12.5	11.9

Czechoslovakia. The German Grain Journal reports that the Czechoslovakian Grain Import Commission has fixed the wheat import contingent for March at 4,500 waggons, whereby 1 wagon of local wheat must be purchased with 2 wagons of foreign wheat. For February and March together a contingent of 600 wagons of flour has been granted.

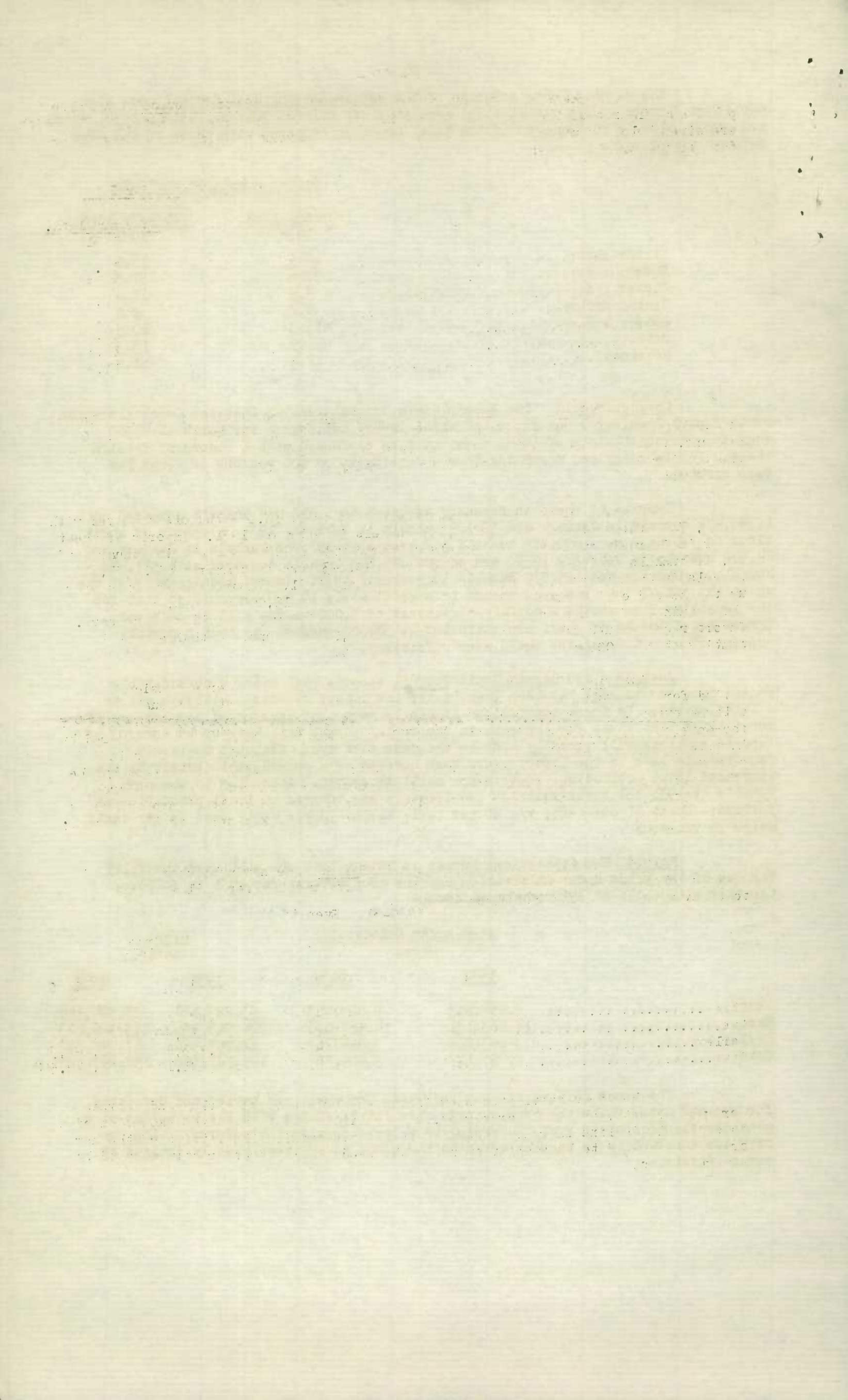
Imports of wheat in February amounted to 1,318,054 bushels compared with 1,348,472 bushels in January and 58,789 bushels in February 1931. Imports of wheat flour in February were 200,875 bushels compared with 107,768 bushels in January and 24,508 bushels in February 1931, and of rye 645,643 bushels compared with 577,418 bushels in January and 125,979 bushels in February 1931. Import requirements of rye up to the end of the crop year amount to approximately 19,000 wagons, so that for the remaining five months a monthly contingent of 2,000 wagons will be necessary. Import requirements of wheat are estimated at 30,000 wagons, so that a monthly contingent of 6,000 wagons would seem sufficient.

Austria. The German Grain Journal reports that after a considerable period foreign exchange has been granted for the import of wheat, although not to a large extent. By these concessions it can be seen that Government circles are of the opinion that wheat requirements in the coming months will have to be covered by imports and this will probably also be the case with rye. Although the grain requirements have in the latter years been covered to a considerable extent by the increased local production, imports are still necessary. According to the crop results of 1931 the total Austrian requirements are covered by local production as follows: Wheat 41 per cent; rye 81 per cent; barley 70 per cent; oats 79 per cent; maize 36 per cent.

Poland. The Statistical Bureau in Warsaw have now published the final figures of the areas under cultivation and the crop returns for 1931 as follows; together with those of 1930 for comparison:-

	<u>Area under Cultivation</u> acres		<u>Crop</u> Bushels	
	<u>1931</u>	<u>1930</u>	<u>1931</u>	<u>1930</u>
Wheat.....	4,494,913	4,064,943	83,223,122	82,304,544
Rye.....	14,263,131	14,567,076	224,518,556	273,926,023
Barley.....	3,143,226	3,054,267	67,793,566	67,242,398
Oats.....	2,896,117	5,404,274	149,721,102	152,249,552

The areas cultivated show increases for wheat and barley and decreases for rye and oats, while the crop returns show little change with the exception of a considerable decline in rye. According to private opinion the returns of the new crop are expected to be smaller owing to the seeds having been greatly damaged by severe frosts.



The Central Bureau of Agricultural Associations in Poland has made enquiries with regard to the grain stocks available on February 1st., 1932, which show the following results:-

Rye stocks amounted to 33.4 per cent of the total grain crop compared with 40.6 per cent last year. Of this amount 16.6 per cent (17.3 per cent last year) are intended for the farmers' own use and 16.8 per cent (22.7 per cent last year) for sale.

Wheat stocks amounted to 39.1 per cent (45.2 per cent), of which 6.5 per cent are for own use (6.3 per cent) and 32.6 per cent (38.9 per cent) for sale.

Barley stocks amounted to 32.7 per cent (32.6 per cent), of which 20.2 per cent (21.7 per cent) are for own use and 12.5 per cent (10.9 per cent) for sale.

Oat stocks amounted to 43.9 per cent (46.3 per cent), of which 42.7 per cent are for own use (43.5 per cent) and 11.2 per cent (12.8 per cent) for sale.

Accordingly stocks are considerably less than last year.

It is stated by Polish branch circles that the condition of seeds this year is not as good as officially reported. The seeds are said to have had an insufficient covering of snow and to have been greatly damaged by the severe frost. Even under ideal conditions this year's crop of winter grain will be worse than the last, which was less than average.

Lithuania. The final figures for 1931 have been published of the crops and areas under cultivation in Lithuania with figures for 1930 for comparison:-

	<u>Area under Cultivation</u>		<u>Crop</u>	
	(acres)		(Bushels)	
	<u>1931</u>	<u>1930</u>	<u>1931</u>	<u>1930</u>
Rye.....	1,257,785	1,196,008	16,298,559	25,195,840
Wheat.....	479,391	526,342	8,340,684	11,316,875
Barley.....	474,449	528,813	10,839,622	10,885,552
Oats.....	899,477	854,997	26,390,857	25,288,536
Mixed grain.....	212,514	264,407	5,584,951	6,466,786

The rye crop is more than 7,873,700 bushels less and the wheat crop 2,939,448 bushels less than in 1930. From the 1930-31 crop about 433,054 bushels of rye and 918,578 bushels of wheat were exported, as well as 32,151 bushels of barley and 239,917 bushels of oats. Taking into consideration the carry-over there is a shortage of 6,692,645 bushels of rye and 1,469,724 bushels of wheat in the 1931 crop compared with the consumption in 1930-31. Even if the consumption of grain decreases in view of the large potato crop an import of grain will commence in April.

The following cable has been received from the Canadian Trade Commissioner for Australia:-

To date shipments Australian wheat including flour equivalent to Europe nearly forty million bushels and to other countries, chiefly Orient, thirty seven and half million bushels, totalling over seventy seven million bushels. Tonnage engaged further 730,000 tons making total commitments 2,300,000 tons leaving balance uncommitted approximately 600,000 tons. China, owing unfavourable weather, again interested in Australian wheat. Prices to growers vary from two shillings eight pence to two shillings ten pence per bushels Australian currency according to rail freight exclusive of four pence half penny bushel Government bonus. Flour demand poor during March but now showing improvement and inquiries from United Kingdom, Egypt, and the East. Today's price sacks 150 pounds gross seven pounds seven shillings six pence ton F.O.B. Freights easier twenty seven shillings six pence full cargoes to Europe; part cargoes thirty shillings. To Hongkong twenty to twenty five shillings plus twenty five per cent exchange.



1010686357

1010686357