

22-005  
v. 21  
no. 4  
Nov. 1950  
c. 2



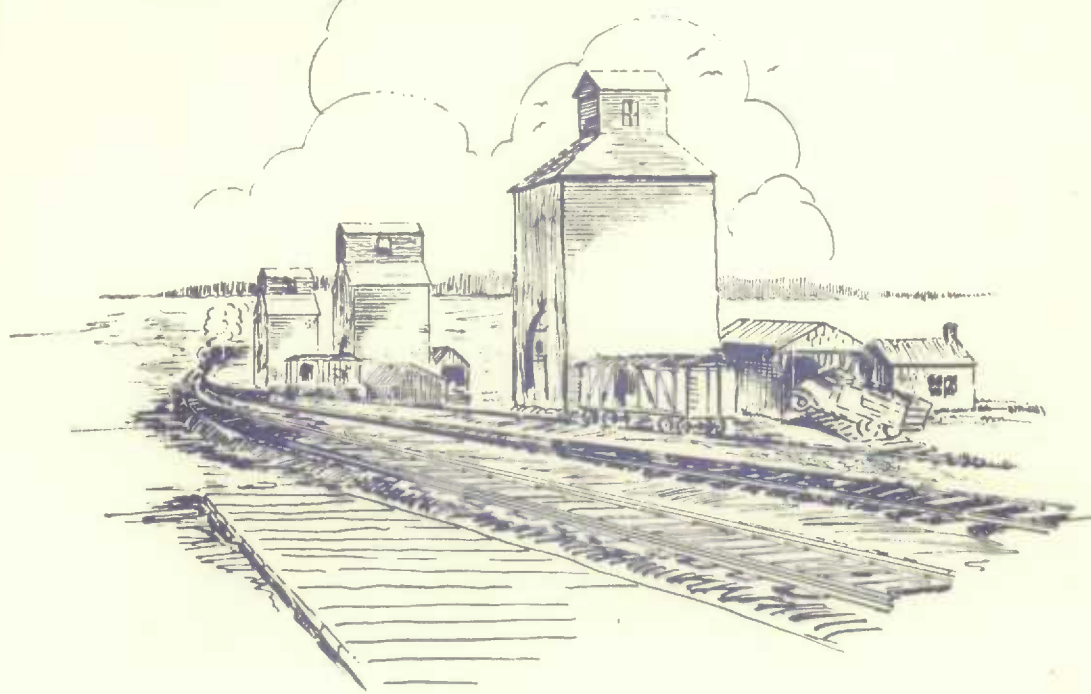
CANADA

DOMINION BUREAU  
OF STATISTICS

DEC 9 1950  
PROPERTY OF THE  
LIBRARY

DOMINION BUREAU OF STATISTICS  
AGRICULTURE DIVISION

# THE WHEAT REVIEW



NOVEMBER, 1950



DOMINION BUREAU OF STATISTICS

Department of Trade and Commerce

---

THE  
WHEAT REVIEW

(Formerly Monthly Review of the Wheat Situation)

NOVEMBER, 1950

---

*Published by Authority of the Rt. Hon. C. D. Howe*  
Minister of Trade and Commerce

*Prepared in the*  
Crops Section, Agriculture Division  
Dominion Bureau of Statistics, Ottawa

# TABLE OF CONTENTS

	Page
World Wheat Situation	
Current Supplies .....	1
New Quotas under the International Wheat Agreement .....	1
International Wheat Agreement Purchases .....	1
Canadian Situation	
Supply Position .....	3
November Estimate of Canada's 1950 Wheat Crop .....	4
Area and Condition of Winter Wheat .....	4
Farmers' Marketings, by weeks .....	5
Visible Supply of Canadian Wheat .....	5
Weekly Visible Supply and Farmers' Marketings (Chart) .....	6
Grading of Wheat, August—October Inspections .....	7
Lake Shipments of Canadian Grain .....	7
Wheat Shipments to the United States .....	8
Rail Shipments of Wheat to Maritime Ports .....	8
Rail Shipments of Wheat from Fort William—Port Arthur .....	9
Freight Assistance Shipments .....	10
Monthly Export Clearances .....	11
Exports of Canadian Wheat and Wheat Flour by Destination .....	12
Exports of Canadian Wheat and Wheat Flour by Destination, Crop Year 1949-50 .....	15
Acreage of Wheat, Oats and Barley in Canada, 1922-1950 (Chart) .....	18
Production of Wheat, Oats and Barley in Canada, 1922-1950 (Chart) .....	18
Average Farm Price, Wheat, Oats and Barley in Canada 1922-23—1949-50 (Chart) .....	19
Distribution of Wheat Supplies in Canada, 1922-23—1949-50 (Chart) .....	19
Current Wheat Prices .....	20
Canadian Flour Milling Situation	
Production and Exports .....	21
United States Wheat Situation	
Supply Position .....	22
Outlook for Wheat in 1951-52 .....	22
Flour Production .....	24
July—October Grain Exports .....	24
Chicago and Minneapolis Cash Wheat .....	25
Chicago Wheat Futures .....	26
Argentine Situation .....	27
Australian Situation .....	31
Calendar of Wheat Events .....	32



## WORLD WHEAT SITUATION

Current Supplies - The latest available estimates indicate that supplies of wheat remaining on or about November 1, 1950 in the four major exporting countries for export and carryover at the end of their respective crop years amounted to 1,061 million bushels. At the same time in 1949, 959 million bushels were available. Supplies this year (in millions of bushels) were held as follows, last year's figures in brackets: United States 629 (604); Canada 370 (275); Australia 47 (24), and Argentina 15 (56).

New Quotas under the International Wheat Agreement - The new quotas of guaranteed sales at maximum prices by the four wheat exporting countries in the Agreement were announced in the latter part of October. Adjustments in the quotas for the three remaining crop years of the four-year Agreement provide for a continuous increase in sales by Canada and a corresponding decrease in sales by the United States. Under the new quotas Canada's allotment is nearly 26 million bushels greater than the quantity provided for in the original version of the Agreement. The United States' share in 1952-53, though some 17 million bushels less than in 1949-50 will be about 51 million more than was originally allotted to that country under the Agreement. The adjustments have resulted from various changes in the membership of the Agreement since it was first drawn up. The major change was the admission of Germany whose import quota of some 66 million bushels was at first almost entirely supplied by the United States.

According to a press statement date-lined Geneva, October 30, the new export quotas of the four supplying countries in relation to the original quotas under the Agreement and the actual, previously agreed revised quotas for the crop year 1949-50 were as follows:

	Canada	United States	Australia	France
- thousand bushels -				
Agreement (original), ....	203,082	168,066	77,786	3,307
1949-50 (adjusted) .....	205,103	235,858	80,799	3,344
1950-51 .....	218,904	229,082	86,110	3,910
1951-52 .....	226,877	221,109	86,110	3,910
1952-53 .....	228,898	219,088	86,110	3,910

Further changes in these quotas may be made by the Wheat Council from time to time as conditions change or new members enter the Agreement.

International Wheat Agreement Purchases - According to records of the International Wheat Council, purchases of wheat recorded under the International Wheat Agreement from August 1 to November 17, 1950 amounted to 235.8 million bushels or about 44 per cent of the total guaranteed quantities. Leading purchases under the Agreement during the period, with quantities in millions of bushels, were: the United Kingdom, 86.9; India, 28.7; Germany, 20.0; Egypt 10.5; Belgium, 9.5 and the Netherlands, 9.4. Among the four exporting countries Canada leads with sales of 89.7 million bushels, followed by Australia with 77.9 million, the United States with 66.3 million and France with 1.9 million bushels.

International Wheat Agreement Sales and Purchases, August 1 to November 17, 1950,  
Together with Annual Quantities Guaranteed

Importing Countries	Guaranteed Purchases	Source				Total Purchases
		Australia	Canada	France	U.S.A.	
- thousand bushels -						
Austria .....	11,023	-	-	-	1,837	1,837
Belgium .....	20,209	-	6,239	-	3,296	9,535
Bolivia .....	2,756	-	748	-	874	1,622
Brazil .....	13,228	-	377	1,670	3,137	5,184
Ceylon .....	4,409	4,096	-	-	-	4,096
Costa Rica .....	1,212	-	258	-	109	367
Cuba .....	7,422	-	2,345	-	616	2,961
Denmark .....	1,617	-	-	-	-	-
Dominican Republic .	735	-	290	-	82	372
Ecuador .....	1,286	-	297	-	211	508
Egypt .....	14,698	10,543	-	-	-	10,543
El Salvador <u>1/</u> .....	404	-	81	-	372	453
Germany .....	66,139	-	-	-	20,025	20,025
Greece .....	15,726	-	-	-	-	-
Guatemala .....	919	-	190	-	327	517
Haiti .....	1,029	-	657	-	113	770
India .....	38,287	14,000	11,200	-	3,472	28,672
Indonesia .....	2,756	932	3	-	37	972
Ireland .....	10,105	1,867	2,486	-	-	4,353
Israel .....	5,879	320	1,345	184	1,515	3,364
Italy .....	40,418	-	1,493	-	2,707	4,200
Lebanon .....	2,388	-	53	-	9	62
Liberia .....	36	-	14	-	-	14
Mexico .....	9,186	-	-	-	5,541	5,541
Netherlands .....	24,802	1,904	261	-	7,257	9,422
New Zealand .....	4,593	4,514	-	-	-	4,514
Nicaragua .....	331	-	124	-	196	320
Norway .....	7,716	1,120	1,534	-	1,560	4,214
Panama .....	625	-	182	-	42	224
Peru .....	5,512	1,232	55	-	2,273	3,560
Philippines .....	7,202	-	719	-	735	1,454
Portugal .....	5,626	172	153	-	2,712	3,037
Saudi Arabia .....	1,837	154	40	-	495	689
Spain .....	4,372	-	241	-	1	242
Sweden .....	2,756	1,232	-	-	-	1,232
Switzerland .....	6,430	-	2,050	-	2,048	4,098
Union of S. Africa .	11,023	-	8,213	-	-	8,213
United Kingdom .....	177,068	35,830	46,660	-	4,431	86,921
Venezuela .....	6,246	-	1,427	-	283	1,710
Totals .....	538,006	77,916	89,735	1,854	66,313	235,818
Guaranteed Sales ...		86,110	218,904	3,910	229,082	538,006
Balance .....		8,194	129,169	2,056	162,769	302,188

1/ Guaranteed quantity fulfilled.



## CANADIAN SITUATION

Supply Position - Canadian wheat supplies for 1950-51 are now placed at 574.9 million bushels, comprised of carryover stocks of 113.2 million and the 1950 crop estimated at 461.7 million. The slight reduction in the November estimate from the special October estimate has not made any significant changes in the current crop year supply position from that presented last month. Total supplies for 1950-51, the largest since 1945-46, are some 105 million bushels in excess of the 1949-50 level. The quantity available for export and carryover during the current crop year is now estimated at 419.9 million bushels as against 338.3 million in 1949-50.

Exports of wheat and flour in terms of wheat for the first three months of 1950-51 amounted to 50.1 million bushels, a decrease of 13.4 million from the comparable period of last year. During October the largest exports of wheat, in millions of bushels, went to the United Kingdom (7.1), the United States (1.4) and Switzerland (1.1). Exports of wheat during the August-October period to the United Kingdom amounted to 19.3 million bushels, with the next largest quantities (in millions of bushels) going to Belgium (4.6), Switzerland (3.3), United States (2.3) and the Union of South Africa (2.2). The balance remaining on November 1 for export and carryover amounted to 369.8 million bushels as against 274.8 million on the same date last year.

### Canadian Wheat Supplies

Item	1950-51	1949-50
- million bushels -		
Carryover in North America at July 31 .....	113.2	102.4
New crop .....	461.7	367.4
Imports of wheat August-September .....	<u>1/</u>	<u>1/</u>
Total estimated supplies .....	574.9	469.8
Less estimated domestic requirements for crop year .....	<u>155.0</u>	<u>131.5</u>
Available for export and carryover .....	419.9	338.3
Deduct:		
Overseas clearances of wheat as grain, August 1		
to October 31 .....	38.1	50.0
Exports of Canadian wheat to U.S., August 1 to October 31 ...	<u>2.2</u>	<u>2.6</u>
Total exports of wheat .....	40.3	52.6
Exports of wheat flour in terms of wheat,		
August 1 to October 31 .....	<u>9.8</u>	<u>10.9</u> <sup>2/</sup>
Total exports of wheat and wheat flour .....	50.1	63.5
Balance on November 1 for export and carryover .....	369.8	274.8

1/ Less than 50,000 bushels.

2/ Adjusted for time lag in the returns made by Customs.

# November Estimate of Canada's 1950 Wheat Crop -

Canada's 1950 wheat crop is now placed at 461.7 million bushels according to the November estimate of 1950 field crop production issued by the Dominion Bureau of Statistics. The 1950 wheat outturn is 94.3 million bushels above the 1949 crop of 367.4 million bushels. The current estimate is 3.6 million bushels less than the special October estimate, with 3 million of the decrease occurring in Saskatchewan. This year's acreage, based on the June 1 survey is 0.5 million less than that of 1949. However, generally higher yields more than offset the reduction in acreage.

In the Prairie Provinces the wheat crop is now expected to yield 427 million bushels, an increase of 90 million bushels over the 1949 outturn of 337 million bushels. The estimated average yield per acre of wheat in the Prairie Provinces this year is 16.5 bushels per seeded acre, with Manitoba averaging 21, Saskatchewan 16 and Alberta 16.1 bushels per seeded acre. The wheat crop in the Prairie Provinces contains a small proportion of winter wheat, grown chiefly in Alberta and included under the spring wheat classification in this estimate. The estimated 1950 production of wheat in the remaining provinces of Canada is 34.7 million bushels of which 30.1 million is Ontario winter wheat.

## November Estimate of Production of Canadian Wheat, 1950 Compared with 1949

	Area		Yield Per Acre		Production	
	1949	1950	1949	1950	1949	1950
	- acres -		- bushels -		- bushels -	
<u>Canada</u>						
Winter wheat ..	805,000	928,000	30.7	32.4	24,714,000	30,067,000
Spring wheat ..	26,735,700	26,093,200	12.8	16.5	342,692,000	431,663,000
All wheat ....	27,540,700	27,021,200	13.3	17.1	367,406,000	461,730,000
<u>Prairie Provinces</u>						
Manitoba .....	3,167,000	2,382,000	18.0	21.0	57,000,000	50,000,000
Saskatchewan ..	15,737,000	16,203,000	11.6	16.0	183,000,000	260,000,000
Alberta .....	7,586,000	7,251,000	12.8	16.1	97,000,000	117,000,000
Totals .....	26,490,000	25,836,000	12.7	16.5	337,000,000	427,000,000

## Area and Condition of Ontario Winter Wheat -

The area sown to winter wheat in Ontario in the autumn of 1950 is estimated at 918,000 acres, a decrease of 125,000 or 12 per cent as compared with the area sown in 1949, viz., 1,043,000 acres. The condition at October 31 was reported at 100 per cent of average as compared with 106 per cent in 1949.



# Farmers' Marketings of Wheat in Prairie Provinces, 1950-51

Week ending	Manitoba	Saskatchewan	Alberta	Total	Last Year
- bushels -					
August 3	56,630	200,501	479,171	736,302	1,341,010
10	4,974	72,619	128,912	206,505	2,248,255
17	4,066	21,645	162,186	187,897	8,328,858
24	4,598	144,894	735,136	884,628	19,757,234
31	19,680	1,508,096	1,476,906	3,004,682	20,664,400
September 7	482,380	11,872,230	4,725,194	17,079,804	24,683,003
14	1,124,925	14,528,820	5,261,905	20,915,650	28,182,569
21	546,440	9,353,787	8,718,071	18,618,298	25,417,993
28	5,399,449	20,640,005	10,778,034	36,817,488	19,678,814
October 5	2,242,056	13,367,828	5,148,002	20,757,886	19,330,152
12	845,821	6,382,477	2,685,372	9,913,670	9,783,049
19	2,719,537	9,227,407	3,295,275	15,242,219	8,042,380
26	1,742,624	5,563,617	1,976,591	9,282,832	6,497,062
November 2	2,404,846	6,476,560	2,543,648	11,425,054	6,026,714
9	2,055,569	8,099,070	2,951,569	13,106,208	5,428,034
16	2,045,166	6,040,186	3,306,361	11,391,713	4,008,800
Totals	21,698,761	113,499,742	54,372,333	189,570,836	209,418,327

Farmers' marketings of wheat in the Prairie Provinces from August 1 to November 16 of the current crop year totalled 189.6 million bushels, 19.8 million less than for the comparable period last year. This year's wheat marketings, delayed by the late harvest, have been maintained at a comparatively high level throughout October and November when a noticeable seasonal decline normally takes place.

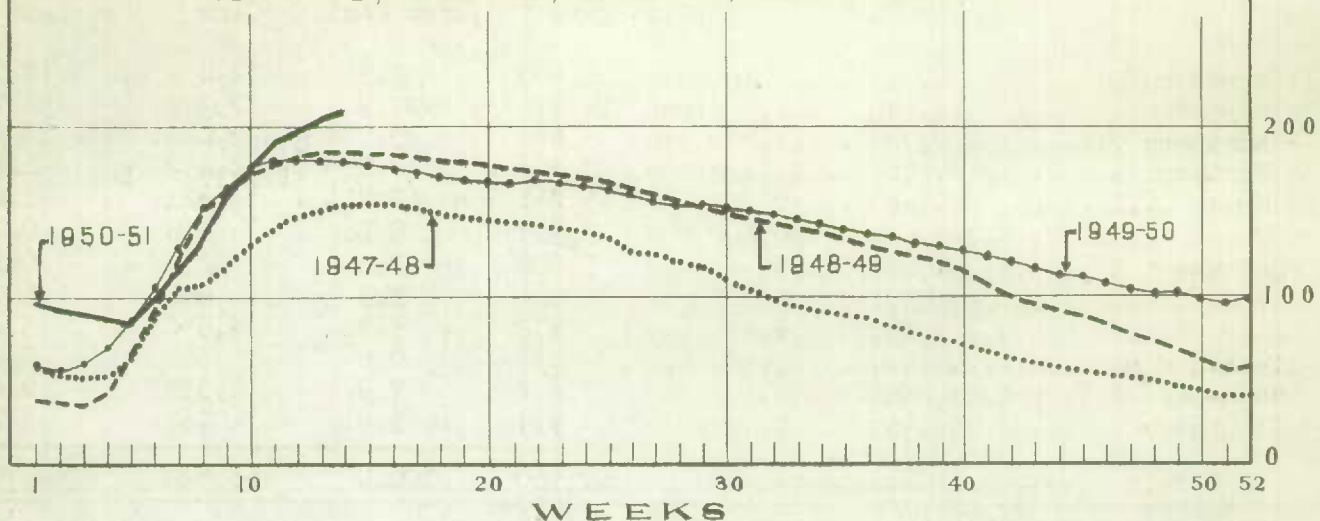
## Visible Supply of Canadian Wheat, November 16, 1950 Compared with Approximately the Same Date, 1949 and 1948

Position	1950	1949	1948
- thousand bushels -			
Country elevators - Manitoba .....	10,877	6,497	12,447
Saskatchewan .....	70,522	44,660	59,598
Alberta .....	44,418	37,201	44,767
Totals .....	125,817	88,358	116,812
Interior private and mill elevators .....	4,664	3,987	5,014
Interior terminals .....	4,701	101	128
Vancouver-New Westminster .....	9,620	11,248	4,744
Churchill .....	461	126	99
Fort William and Port Arthur .....	28,994	11,836	16,499
In transit rail (western division) .....	10,380	12,120	9,700
Eastern elevators lake ports .....	11,447	18,958	9,238
St. Lawrence and seaboard ports .....	7,284	15,425	3,669
In transit lake .....	5,767	5,808	8,857
In transit rail (eastern division) .....	1,201	2,041	1,847
United States ports .....	151	936	4,411
In transit U.S.A. ....	-	221	2,981
Totals .....	210,487	171,165	183,999

MILLION  
BUSHELS

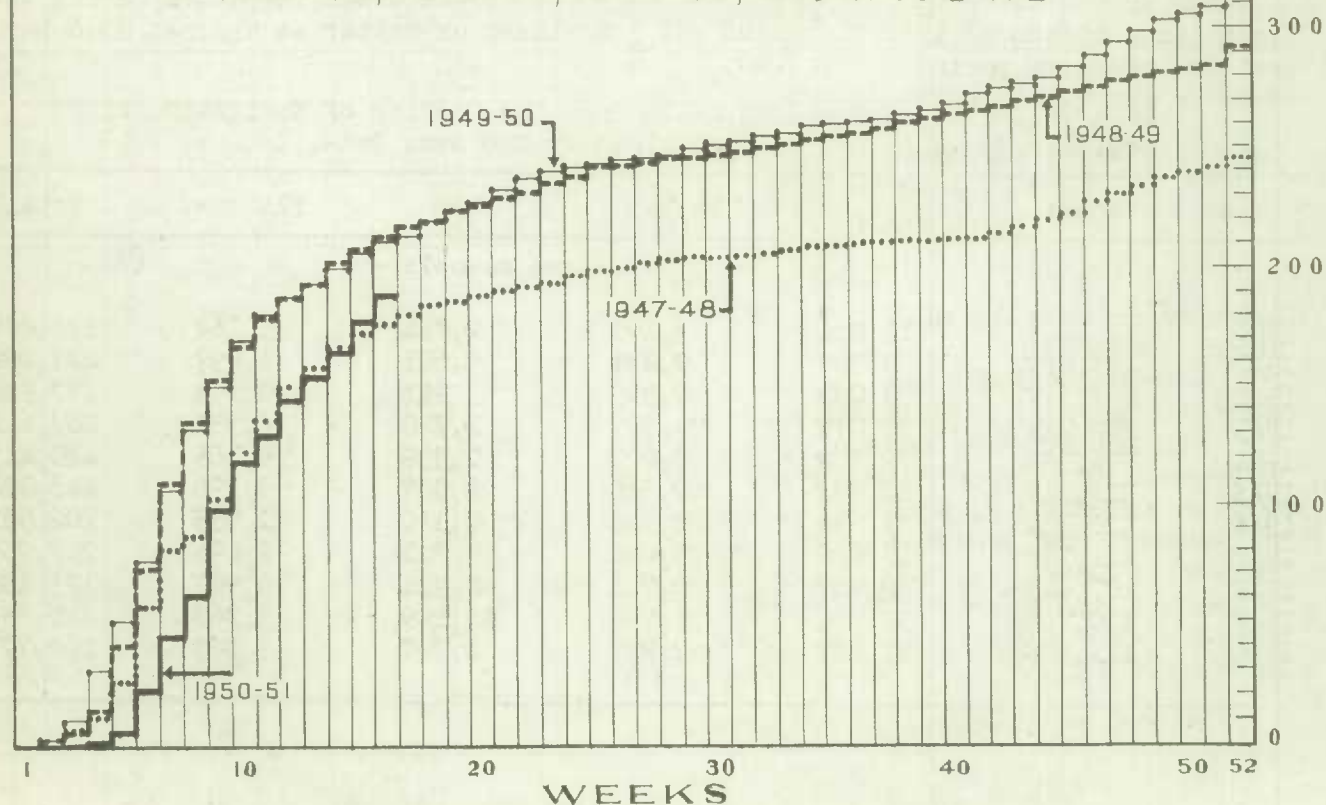
# WEEKLY VISIBLE SUPPLY OF CANADIAN WHEAT

1947-48, 1948-49, 1949-50, 1950-51 TO DATE



## CUMULATIVE RECORD OF WHEAT MARKETINGS IN THE PRAIRIE PROVINCES, BY WEEKS

1947-48, 1948-49, 1949-50, 1950-51 TO DATE



(Data in both charts for crop years beginning August 1)

# Grading of Wheat Inspected, August—October 1950 and 1949

Grade	Inspections			
	August—October 1950		August—October 1949	
	Cars	Per Cent	Cars	Per Cent
1 Northern .....	3,405	8.3	12,059	18.3
2 Northern .....	11,426	27.9	37,349	56.7
3 Northern .....	5,591	13.7	7,082	10.8
4 Northern .....	3,746	9.1	1,132	1.7
5 Wheat .....	5,261	12.8	921	1.4
6 Wheat .....	3,343	8.2	218	0.3
Feed Wheat .....	1,008	2.5	36	0.1
Garnet .....	524	1.3	804	1.2
Amber Durum .....	2,338	5.7	3,550	5.4
Alberta Winter .....	337	0.8	569	0.9
Toughs - All Varieties and Grades.	3,252	7.9	1,333	2.0
All Others .....	729	1.8	767	1.2
Totals .....	40,960	100.0	65,820	100.0

Inspections of wheat during the first quarter of the current crop year amounted to 40,960 cars, 24,860 less than for the August—October period of 1949. While no breakdown is available for inspections of old and new-crop wheat after September, records of the Board of Grain Commissioners show that approximately 10,800 cars of old-crop wheat were inspected during August and September, 1950. The exclusion of this relatively high quality wheat from this year's inspections would further reduce the already low proportions qualifying for the higher grades as shown in the above table. Only 49.9 per cent of the wheat inspected during the first three months of 1950-51 graded No. 3 Northern or better as against 85.8 per cent for the same period in 1949-50.

Lake Shipments of Canadian Grain from the Opening of Navigation to November 16, 1950 and to Approximately the Same Date, 1940 to 1949

Year	Wheat	Oats	Barley	Rye	Flaxseed	Total
- thousand bushels -						
1940	149,688	13,816	9,192	2,834	1,162	176,692
1941	197,839	8,268	9,877	5,601	1,497	223,082
1942	157,317	9,082	8,363	991	2,158	177,911
1943	202,711	37,079	39,512	1,778	6,532	287,612
1944	271,338	72,572	53,003	7,339	6,165	410,417
1945	314,319	80,382	42,568	4,307	3,598	445,174
1946	120,362	51,536	26,348	2,150	1,935	202,331
1947	141,378	40,660	25,014	7,721	2,496	217,269
1948	107,649	28,967	26,741	4,924	6,907	175,188
1949	150,756	38,554	31,770	12,109	8,363	241,552
1950	111,378	21,067	22,827	4,202	3,303	162,777



Wheat Shipments to the United States by Destination  
August 1 to November 16, 1950  
Compared with Approximately the same period 1949 and 1948

Destination	1950	1949	1948
	bu.	bu.	bu.
<u>By Vessel</u>			
Buffalo .....	3,087,677	5,081,621	6,714,985
Oswego .....	-	-	737,500
Erie .....	-	-	1,575,567
Duluth .....	234,352	-	-
Totals, Vessel Shipments ..	3,322,029	5,081,621	9,028,052
<u>By Rail</u>			
U.S.A. Seaboard Ports .....	35,619	-	-
Other U.S.A. Points .....	134,332	17,500	-
Totals, Rail Shipments ....	169,951	17,500	-
Grand Totals .....	3,491,980	5,099,121	9,028,052

Shipments of Canadian wheat to the United States, either for domestic use or re-export, from the beginning of the current crop year to November 16 amounted to 3.5 million bushels, well below the totals for the corresponding periods of 1948 and 1949. As in the preceding two years, all but a relatively small proportion of the shipments went by lake to Buffalo.

Rail Shipments of Wheat to Maritime Ports from Bay and Lake Ports

Ports	August 1 to November 16, 1950	August 1 to November 17, 1949
	- bushels -	
Collingwood .....	-	271,330
Midland .....	359,977	2,024,545
Owen Sound .....	108,302	347,747
Port McNicoll .....	-	2,147,274
Goderich .....	-	65,510
Totals .....	468,279	4,856,406

Rail movements of wheat to Maritime ports from ports on the Great Lakes and Georgian Bay from the beginning of the current crop year to November 16 amounted to less than half a million bushels, a sharp drop from the 4.9 million shipped during the corresponding period last year. This year's reduced shipments are due in part to the lateness of the western Canadian harvest and the tight transportation situation existing with respect to both box cars and grain vessels.



Rail Shipments of Wheat from Fort William-Port Arthur, 1947-48 to 1950-51

Month	1947-48	1948-49	1949-50	1950-51
- bushels -				
August .....	90,574	51,283	158,893	122,532
September .....	91,366	30,017	131,711	123,256
October .....	131,290	46,274	122,482	73,543
November .....	100,563	138,600	92,334	
December .....	691,223	1,740,405	342,946	
January .....	3,149,421	3,794,391	277,502	
February .....	1,851,773	3,720,733	240,087	
March .....	3,423,684	1,511,072	423,774	
April .....	371,950	659,467	2,305,727	
May .....	154,551	884,171	124,533	
June .....	81,133	330,348	96,626	
July .....	231,414	469,797	52,122	
Totals .....	10,368,942	13,376,558	4,368,737	

Distribution of Rail Shipments of Wheat from Fort William-Port Arthur,  
October 1950

Grade	New Brunswick	Quebec	Ontario	U.S.A.
- bushels -				
3 Northern .....	-	-	-	10
4 Northern .....	-	-	-	10
Number 5 .....	-	16,500	3,667	10
Number 6 .....	-	7,500	750	-
Tough Number 5 .....	-	333	1,333	-
Rejected No. 5 .....	-	3,000	833	-
Feed .....	50	-	-	-
1 C.W. Amber Durum .....	-	-	15,490	-
3 C.W. Amber Durum .....	-	3,000	7,500	-
Sample Red Spring Htd. ....	-	3,104	2,166	-
Tough Sample Red Spring Htd. ....	-	-	2,517	-
Tough Sample Red Spring Htd. & Htg. ....	-	-	714	-
Damp Sple. Red Spring Htd. ....	-	-	493	-
Sample Alta. Winter Htd. ....	-	-	1,907	-
Sample Alta. Winter & Red Spring Htd. ..	-	-	2,656	-
Totals .....	50	33,437	40,026	30

Grand Total - 73,543

Freight Assistance Shipments - Wheat shipments to eastern Canada and British Columbia under the freight assistance plan during the first two months of the current crop year increased 17.2 per cent over shipments for the same period a year ago according to claims filed to the end of October. All provinces receiving freight-assisted wheat shipments except British Columbia and Newfoundland shared in the increase. Ontario and Quebec received 80.8 per cent of the shipments during August and September of this year, compared with 68.1 per cent during the same months in 1949. The filing of further claims for shipments made during this period will necessitate an upward revision in the total and the provincial distribution.

Provincial Distribution of Freight-Assisted Wheat Shipments,  
1950-51 and 1949-50

Month	New found- land	Prince Edward Island	Nova Scotia	New Bruns- wick	Quebec	Ontario	British Columbia	Total
- thousand bushels -								
August 1950	3	28	57	36	542	473	170	1,309
September	1	19	56	29	466	296	22	889
Totals	4	47	113	65	1,008	769	192	2,198
Same period 1949-50	4	37	52	45	775	501	461	1,875

Shipments of millfeeds under the freight assistance plan during August and September amounted to 63,355 tons as compared with 105,373 tons for the same period a year ago. Quebec and Ontario received approximately 77 per cent of the shipments to date while comparatively small amounts have moved to the Atlantic provinces and British Columbia. As with wheat shipments the filing of further claims will increase the current year's totals over those shown in the table below.

Provincial Distribution of Freight-Assisted Millfeed Shipments,  
1950-51 and 1949-50

Province	August 1 to September 30, 1950	August 1 to September 30, 1949
.. tons -		
Newfoundland .....	281	459
Prince Edward Island .....	1,613	2,481
Nova Scotia .....	6,478	7,963
New Brunswick .....	3,724	7,264
Quebec .....	32,831	47,835
Ontario .....	15,875	30,835
British Columbia .....	2,553	8,536
Totals .....	63,355	105,373

Monthly Export Clearances, Etc., in Comparison with the Customs Exports of  
Wheat and Wheat Flour

Year and Month	Overseas Clearances of Canadian Wheat	U.S. Imports 1/ of Canadian Wheat for Consumption and Grinding in Bond	Customs 2/ Exports of Canadian Wheat Flour	Total	Customs 3/ Exports of Wheat and Wheat Flour
- thousand bushels -					
<u>1948-49</u>					
August	9,111	1	4,244	13,356	13,829
September	10,555	3	3,671	14,229	11,942
October	11,566	1	6,509	18,076	21,913
November	15,604	6	5,455	21,065	20,792
December	12,744	8	3,803	16,555	18,205
January	14,431	22	3,756	18,209	18,342
February	12,053	43	3,082	15,178	14,214
March	13,806	206	3,612	17,624	13,707
April	13,769	869	3,368	18,006	20,303
May	22,483	1,381	3,780	27,644	26,683
June	23,297	1,899	3,225	28,421	24,850
July	19,561	816	3,589	23,966	23,422
Totals	178,980	5,255	48,094	232,329	228,202
<u>1949-50 4/</u>					
August	16,639	62	3,898	20,599	24,013
September	14,947	881	3,771	19,599	18,294
October	18,420	1,675	3,240	23,335	21,903
November	20,680	2,019	4,410	27,109	27,292
December	9,751	867	3,798	14,416	21,002
January	10,608	411	3,280	14,299	15,102
February	7,419	495	3,551	11,465	11,216
March	10,232	964	3,712	14,908	13,607
April	8,460	515	3,076	12,051	12,628
May	18,103	4,223	5,317	27,643	23,993
June	17,949	703	4,140	22,792	23,870
July	12,762	672	3,487	16,921	17,222
Totals	165,970	13,487	45,680	225,137	230,142
<u>1950-51 4/</u>					
August	11,956	459	4,121	16,536	15,247
September	13,172	904	2,289	16,365	15,257
October	12,950	900	3,412	17,262	19,715
Totals	38,078	2,263	9,822	50,163	50,219

1/ U.S.A. official figures for 1948-49. From August 1949 to date compiled from returns of Canadian elevator licensees and advice from American grain correspondents.

2/ Exports for Crop Years 1948-49 and 1949-50 revised to remove effect of time lag in the returns made by Customs. Subsequent months to be revised as data become available.

3/ Unadjusted as published by the External Trade Division, D.B.S.

4/ Subject to revision.



Exports of Canadian Wheat and Wheat Flour,  
August—October 1950

Destination	September		October		August—October	
	Wheat Flour <u>1/</u>	Wheat	Wheat Flour <u>1/</u>	Wheat	Wheat Flour <u>1/</u>	Wheat
	- bushels -		- bushels -		- bushels -	
<u>COMMONWEALTH COUNTRIES</u>						
United Kingdom .....	211,707	6,983,487	1,313,024	7,139,467	3,015,887	19,331,893
<u>Africa</u>						
British East Africa.	-	-	-	-	1,724	-
Union of S. Africa .	-	668,444	-	1,363,423	-	2,232,459
<u>British West Africa</u>						
Gold Coast .....	19,125	-	19,557	-	52,038	-
Nigeria .....	554	-	4,239	-	9,261	-
Sierra Leone .....	3,240	-	5,261	-	16,101	-
<u>Asia</u>						
Hong Kong .....	132,799	-	174,636	-	352,197	-
<u>Europe</u>						
Gibraltar .....	31,203	-	22,482	-	53,685	-
Malta .....	-	657,100	-	-	-	1,003,100
<u>North America</u>						
Bahamas .....	23,463	-	30,195	-	65,254	-
Barbados .....	40,936	933	29,295	-	131,859	933
Jamaica .....	56,322	-	168,277	-	376,677	-
Trinidad-Tobago ....	309,020	-	118,593	-	534,164	-
Leeward-Windward Is.	94,383	-	71,793	-	230,315	-
Bermuda .....	11,637	-	9,437	-	27,612	-
British Honduras ...	7,402	16,520	3,051	4,500	12,289	21,020
<u>South America</u>						
British Guiana .....	59,526	-	91,867	-	270,211	-
<hr/>						
Totals, Commonwealth Countries	1,001,317	8,326,484	2,061,707	8,507,390	5,149,274	22,589,405



Exports of Canadian Wheat and Wheat Flour,  
August—October 1950

Destination	September		October		August—October	
	Wheat Flour <u>1/</u>	Wheat <u>2/</u>	Wheat Flour <u>1/</u>	Wheat <u>2/</u>	Wheat Flour <u>1/</u>	Wheat <u>2/</u>
	- bushels -		- bushels -		- bushels -	
<u>FOREIGN COUNTRIES</u>						
<u>Africa</u>						
Azores and Madeira	1,962	-	2,354	-	4,770	-
Belgian Congo ....	12,717	3,674	23,544	-	47,083	3,674
Canary Islands ...	25,475	-	-	-	60,881	-
French Africa ....	-	-	-	-	20,259	-
Liberia .....	2,511	-	707	-	3,744	-
Morocco .....	89,357	-	50,548	-	176,409	-
Portuguese Africa.	40,262	-	38,430	-	107,078	-
<u>Asia</u>						
Arabia .....	2,120	18,839	9,576	12,892	16,056	31,731
China .....	-	-	6,255	-	6,255	-
Israel .....	-	432,907	-	-	-	1,280,874
Japan .....	62,235	-	146,506	-	259,425	-
Philippine Islands	3,438	-	231,066	-	791,442	-
Siam .....	12,281	-	9,261	-	34,794	-
Syria .....	-	-	51,457	-	77,157	-
<u>Europe</u>						
Belgium .....	369	1,465,433	-	756,106	369	4,618,519
France .....	-	-	-	-	207	-
Germany .....	459	-	27,662	-	42,755	-
Iceland .....	-	-	16,438	-	18,967	-
Ireland .....	-	619,143	-	190,400	-	839,410
Italy .....	4,819	31,233	5,504	721,576	10,323	951,166
Netherlands .....	-	-	-	11,200	-	11,200
Norway .....	-	364,728	-	115,833	-	536,561
Portugal .....	-	-	-	-	9,180	-
Spain .....	-	240,682	-	629,280	-	869,962
Switzerland .....	-	368,400	-	1,070,867	-	3,268,317
Yugoslavia .....	12,380	-	2,565	-	21,830	-
<u>North America</u>						
Alaska .....	2,295	-	4	-	2,299	-
Costa Rica .....	47,822	46,667	31,324	23,333	105,610	70,000
Cuba .....	292,775	1,500	181,323	1,500	801,068	3,000
Dominican Republic	26,392	4,800	16,416	2,400	72,810	7,200
El Salvador .....	13,711	-	26,379	10,000	56,605	10,000
French West Indies	229	-	230	-	459	-
Guatemala .....	35,910	-	22,144	-	73,552	-
Haiti .....	24,786	-	52,438	-	115,263	-
Honduras .....	3,438	-	1,485	-	9,801	-
Netherlands Antilles	22,549	-	18,581	-	62,532	-

Exports of Canadian Wheat and Wheat Flour,  
August--October 1950

Destination	September		October		August—October	
	Wheat Flour 1/	Wheat 2/	Wheat Flour 1/	Wheat 2/	Wheat Flour 1/	Wheat 2/
	- bushels -		- bushels -		- bushels -	
<u>FOREIGN COUNTRIES</u>						
<u>North America</u>						
Nicaragua .....	8,320	-	5,081	-	29,142	-
Panama .....	20,974	-	21,452	-	72,671	-
St. Pierre-Miquelon	1,836	-	1,836	-	6,718	-
<u>United States</u>						
Flour in terms of wheat.....	41,760	-	49,959	-	130,820	-
For grinding in bond 3/ .....	-	892,137	-	801,814	-	2,152,686
For domestic consumption 3/ .	-	11,888	-	98,287	-	110,175
Virgin Islands....	1,710	-	1,687	-	3,820	-
<u>Oceania</u>						
Guam .....	-	-	-	-	459	-
<u>South America</u>						
Bolivia .....	-	15,590	-	345,910	-	361,500
Brazil .....	-	-	-	-	-	377,066
Chile .....	-	977,846	-	356,151	-	1,440,397
Colombia .....	43,691	226,297	65,687	158,058	354,272	664,441
Ecuador .....	12,172	27,558	6,102	36,744	28,363	64,302
Peru .....	-	-	-	-	-	75,627
Surinam .....	18,126	-	15,165	-	42,791	3,666
Venezuela .....	398,718	-	210,901	-	994,599	-
<u>Totals,</u>						
Foreign Countries .	1,287,599	5,749,322	1,350,067	5,342,351	4,672,638	17,751,474
<u>Grand Totals,</u>						
Exported .....	2,288,916	14,075,806	3,411,774	13,849,741	9,821,912	40,340,879

1/ Canadian Customs Returns - Conversion rate 4 1/2 wheat bushels equal 1 barrel.

2/ Overseas clearances as reported by the Statistics Branch of the Board of Grain Commissioners. Subject to revision.

3/ Compiled from returns of Canadian elevator licensees and advice from American grain correspondents.

Exports of Canadian Wheat and Wheat Flour  
Crop Year 1949-50

Destination	Wheat <sup>1/</sup>	Wheat Flour <sup>2/</sup>	Total Wheat <sup>1/</sup> and Wheat Flour <sup>2/</sup>
	bu.	bu.	bu.
<u>COMMONWEALTH COUNTRIES</u>			
United Kingdom .....	110,802,989	19,481,787	130,284,776
Ireland <sup>3/</sup> .....	1,241,333	-	1,241,333
<u>Africa</u>			
British East Africa .....	-	576	576
Union of South Africa .....	6,764,823	1,030	6,765,853
<u>British West Africa</u>			
Gambia .....	-	3,695	3,695
Gold Coast .....	-	232,132	232,132
Nigeria .....	-	9,819	9,819
Sierra Leone .....	-	97,403	97,403
<u>Asia</u>			
British Malaya .....	-	1,004,049	1,004,049
Ceylon .....	-	2,143,858	2,143,858
Hong Kong .....	-	1,522,481	1,522,481
India .....	-	239	239
<u>Europe</u>			
Gibraltar .....	-	55,094	55,094
Malta .....	1,796,433	-	1,796,433
<u>North America</u>			
Bahamas .....	-	242,937	242,937
Barbados .....	899	478,863	479,762
Jamaica .....	-	1,604,597	1,604,597
Trinidad-Tobago .....	1,000	2,466,355	2,467,355
Leeward-Windward Islands ...	-	858,807	858,807
Bermuda .....	-	118,642	118,642
British Honduras .....	27,520	45,527	73,047
<u>South America</u>			
British Guiana .....	-	922,824	922,824
Totals, Commonwealth Countries	120,634,997	31,290,715	151,925,712



## Exports of Canadian Wheat and Wheat Flour - continued

Destination	Wheat <sup>1/</sup>	Wheat Flour <sup>2/</sup>	Total Wheat <sup>1/</sup> and Wheat Flour <sup>2/</sup>
	bu.	bu.	bu.
<u>FOREIGN COUNTRIES</u>			
<u>Africa</u>			
Azores and Madeira .....	-	23,584	23,584
Belgian Congo .....	-	108,171	108,171
Canary Islands .....	-	50,157	50,157
Egypt .....	1,041,600	-	1,041,600
Eritrea .....	93,333	-	93,333
Liberia .....	-	11,020	11,020
Madagascar .....	-	17,824	17,824
Morocco .....	213,124	452,763	665,887
Portuguese Africa .....	-	277,578	277,578
Spanish Africa .....	-	48,024	48,024
Tripoli .....	186,667	-	186,667
<u>Asia</u>			
Arabia .....	91,768	143,964	235,732
China .....	2,483	138,947	141,430
Indonesia .....	-	14,706	14,706
Iran .....	4,274,108	41,773	4,315,881
Israel .....	3,145,209	3,105	3,148,314
Japan .....	5,075,505	75,838	5,151,343
Korea .....	-	688	688
Philippine Islands .....	-	4,894,920	4,894,920
Portuguese Asia .....	-	43,564	43,564
Siam .....	-	146,880	146,880
Turkey .....	2,114,933	-	2,114,933
<u>Europe</u>			
Belgium .....	10,253,597	18,180	10,271,777
Denmark .....	122,000	513	122,513
Finland .....	110,236	-	110,236
France .....	-	1,377	1,377
Germany .....	-	45,180	45,180
Greece .....	-	24,093	24,093
Ireland <sup>3/</sup> .....	2,822,400	-	2,822,400
Italy .....	617,775	71,703	689,478
Netherlands .....	-	17,532	17,532
Norway .....	1,153,007	-	1,153,007
Poland .....	-	1,062	1,062
Portugal .....	-	46,444	46,444
Spain .....	1,550,138	-	1,550,138
Switzerland .....	8,948,395	5,202	8,953,597
Yugoslavia .....	-	29,835	29,835
<u>North America</u>			
Alaska .....	-	68	68
Costa Rica .....	130,000	382,873	512,873
Cuba .....	5,000	2,126,097	2,131,097
Dominican Republic .....	9,250	186,561	195,811
El Salvador .....	10,000	146,650	156,650



# Exports of Canadian Wheat and Wheat Flour - Concluded

Destination	Wheat <sup>1/</sup>	Wheat Flour <sup>2/</sup>	Total Wheat and Wheat Flour <sup>1/ 2/</sup>
	bu.	bu.	bu.
<u>FOREIGN COUNTRIES</u>			
<u>North America</u>			
Guatemala .....	73,467	323,847	397,314
Haiti .....	-	284,108	284,108
Honduras .....	89,160	10,823	99,983
Mexico .....	349,440	-	349,440
Netherlands Antilles .....	-	206,438	206,438
Nicaragua .....	5,000	101,511	106,511
Panama .....	-	229,388	229,388
Puerto Rico .....	-	788	788
St. Pierre-Miquelon .....	-	19,755	19,755
<u>United States</u>			
Flour in terms of wheat....	-	243,400	243,400
For grinding in bond <sup>4/</sup> ....	12,070,531	-	12,070,531
For domestic consumption <sup>4/</sup>	1,416,803	-	1,416,803
<b>Virgin</b> Islands .....	-	16,295	16,295
<u>Oceania</u>			
French Oceania .....	-	101,237	101,237
Guam .....	-	459	459
Hawaii .....	433	1,377	1,810
<u>South America</u>			
Bolivia .....	716,168	4,986	721,154
Brazil .....	356,539	-	356,539
Colombia .....	1,226,293	130,482	1,356,775
Ecuador .....	110,931	208,503	319,434
Peru .....	427,757	53,064	480,821
Surinam .....	-	181,472	181,472
Venezuela .....	8,833	2,674,381	2,683,214
Totals, Foreign Countries ...	58,821,883	14,389,190	73,211,073
Grand Totals, Exported .....	179,456,880	45,679,905	225,136,785

<sup>1/</sup> Subject to revision, overseas clearances compiled by Board of Grain Commissioner

<sup>2/</sup> Canadian Customs returns (conversion rate 4 1/2 wheat bushels equal 1 barrel) revised to remove effect of time lag in the returns made by Customs.

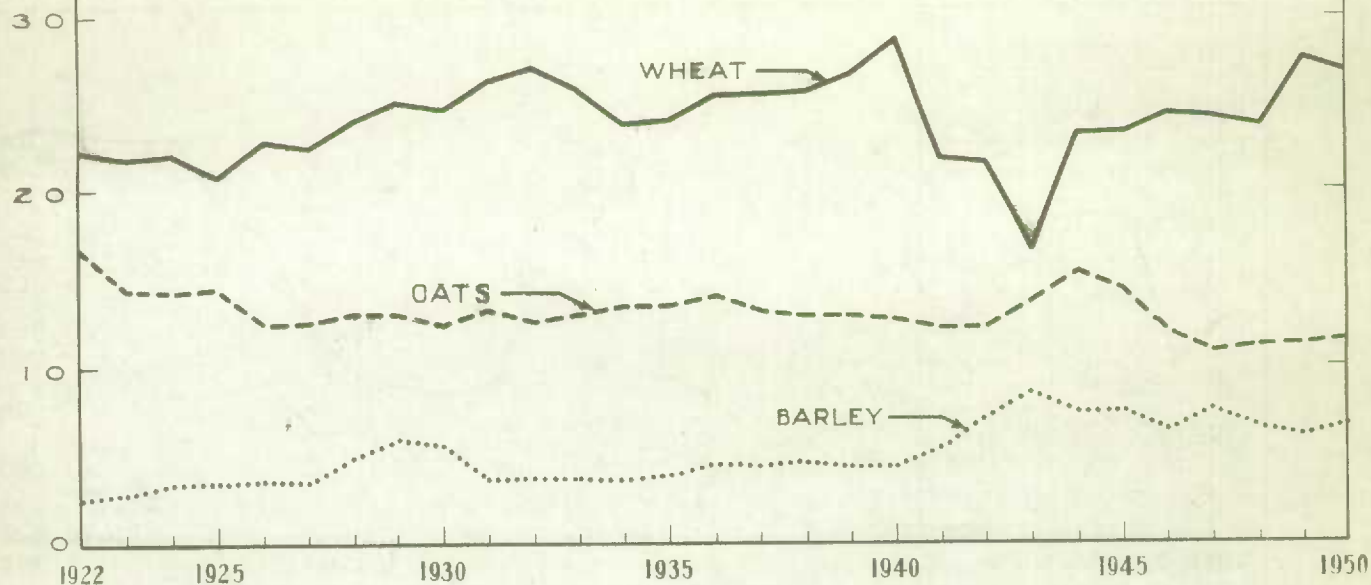
<sup>3/</sup> Ireland included in Commonwealth Countries from August to December 1949, and in Foreign Countries from January to July 1950.

<sup>4/</sup> Compiled from returns of Canadian elevator licensees and advice from American grain correspondents.

MILLION  
ACRES

## ACREAGE OF WHEAT, OATS AND BARLEY IN CANADA

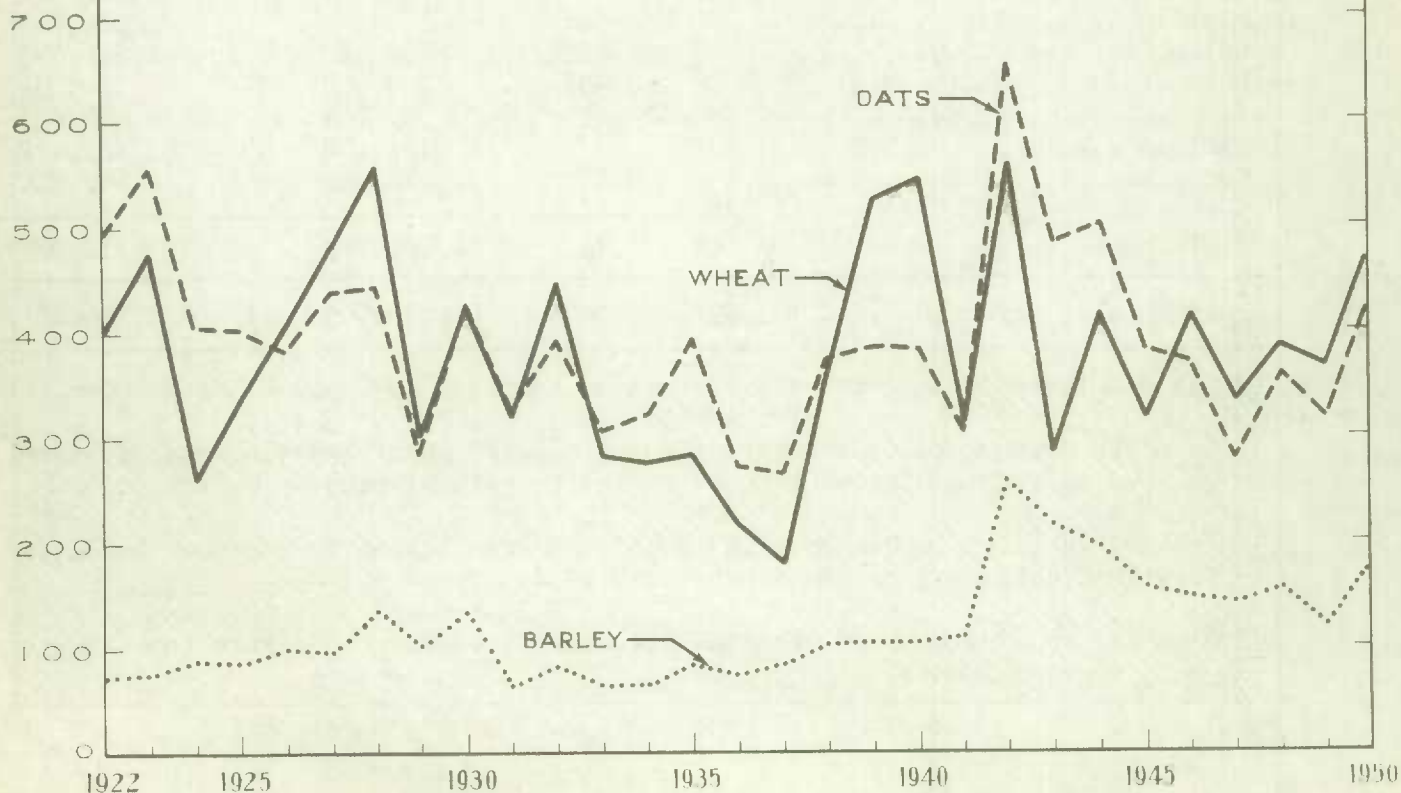
1922-1950



MILLION  
BUSHELS

## PRODUCTION OF WHEAT, OATS AND BARLEY IN CANADA

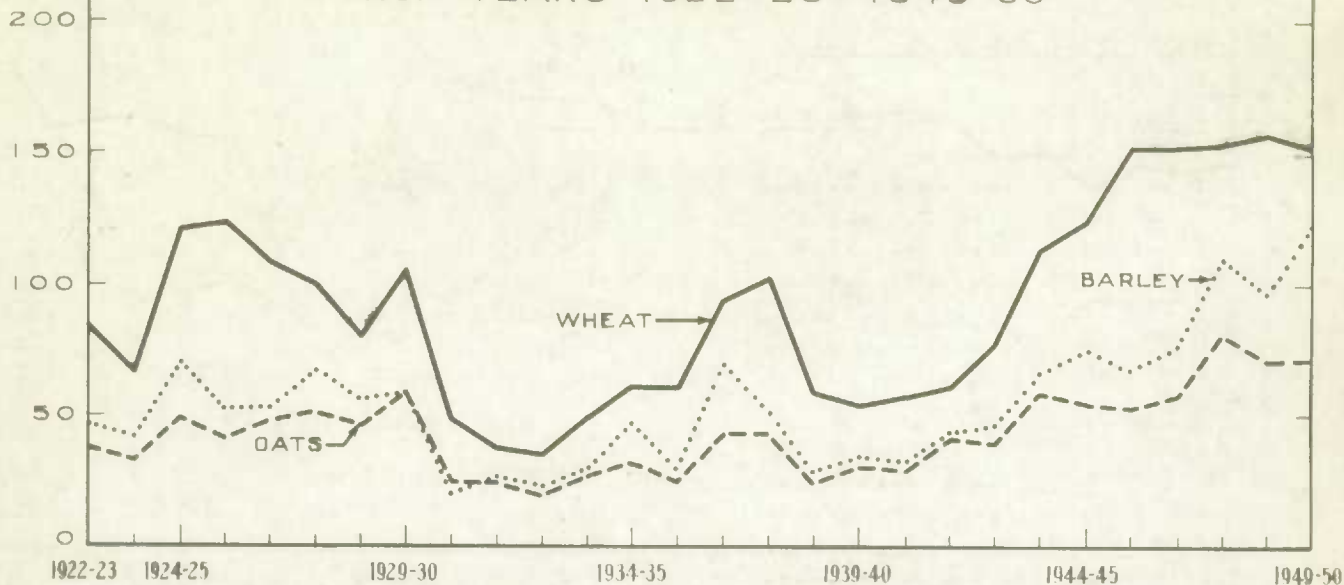
1922-1950



CENTS PER  
BUSHEL

## AVERAGE FARM PRICE, WHEAT, OATS AND BARLEY IN CANADA

CROP YEARS 1922-23—1949-50

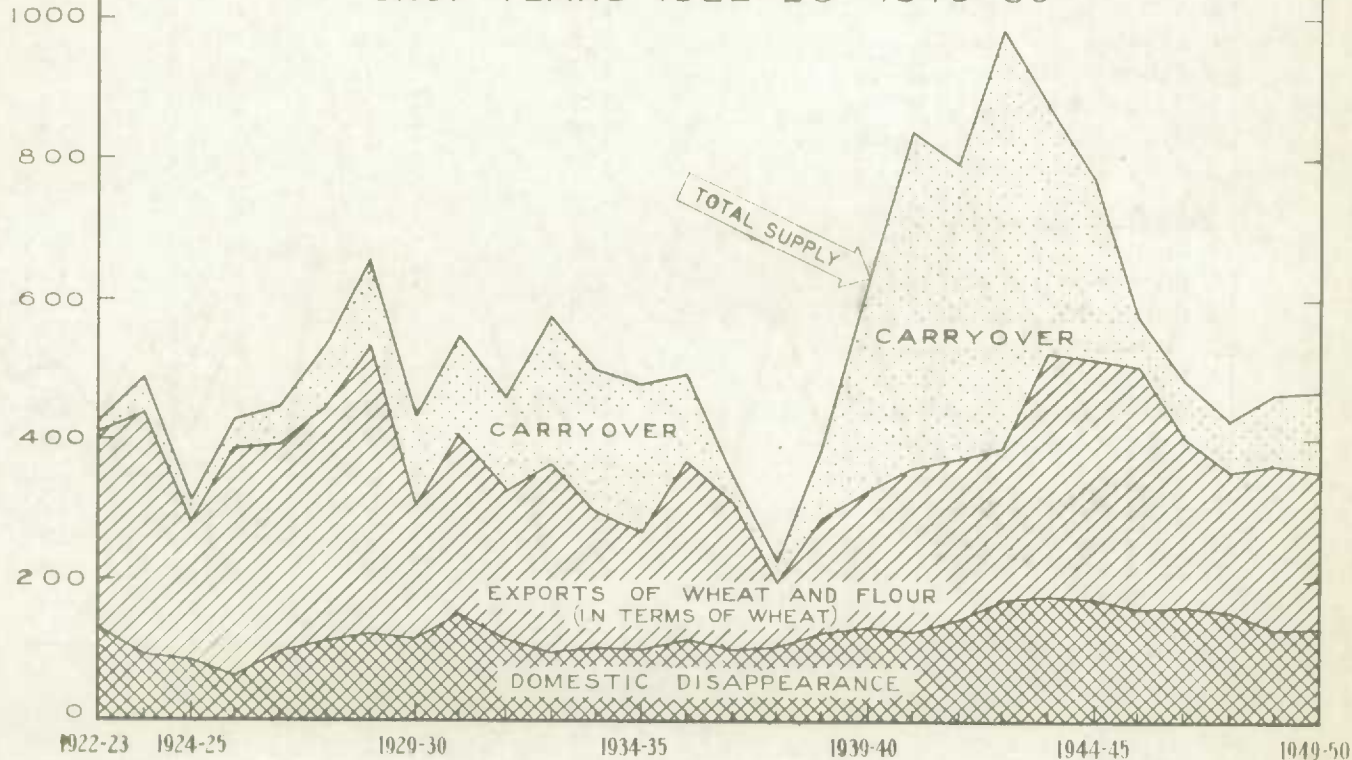


NOTE: Average farm price of wheat for five year pool period (1945-46 - 1949-50) subject to upward adjustment when final payment made known.

MILLION  
BUSHELS

## DISTRIBUTION OF WHEAT SUPPLIES IN CANADA

CROP YEARS 1922-23—1949-50





Weekly Average Prices of Canadian Wheat  
Basis in Store Fort William-Port Arthur or Vancouver

Grade	Week ending			
	Oct. 28	Nov. 4	Nov. 11	Nov. 18
CANADIAN WHEAT BOARD CASH PRICES				
- cents and eighths per bushel -				
<u>WHEAT</u>				
(1) Initial Payment to Producers 1950-51 Pool				
1 Hard .....	140	140	140	140
1 Northern .....	140	140	140	140
2 Northern .....	137	137	137	137
3 Northern .....	130	130	130	130
4 Northern .....	122	122	122	122
5 Wheat .....	112	112	112	112
6 Wheat .....	106	106	106	106
Feed Wheat .....	100	100	100	100
(2) Domestic and Export				
(International Wheat Agreement)				
1 Hard .....	189	188/2	186/5	186/7
1 Northern .....	189	188/2	186/5	186/7
2 Northern .....	186	185/2	183/5	183/7
3 Northern .....	181	180/2	178/5	178/7
4 Northern .....	175	174/2	172/5	172/7
5 Wheat .....	160/3	158/3	157/5	157/7
6 Wheat .....	156/3	154/3	153/5	153/7
Feed Wheat .....	152/3	150/3	148/5	148/7
1 C.W. Garnet .....	181	180/2	178/5	178/7
2 C.W. Garnet .....	178	177/2	175/5	175/7
3 C.W. Garnet .....	175	174/2	172/5	172/7
1 Alta. Red Winter .....	189	188/2	186/5	186/7
2 Alberta Winter .....	184	183/2	181/5	181/7
3 Alberta Winter .....	181	180/2	178/5	178/7
1 C.W. Amber Durum .....	189	188/2	186/5	186/7
2 C.W. Amber Durum .....	187	186/2	184/5	184/7
3 C.W. Amber Durum .....	177	176/2	174/5	174/7
(3) Export - Class II				
1 Hard .....	196	195/2	193/5	193/7
1 Northern .....	196	195/2	193/5	193/7
2 Northern .....	193	192/2	190/5	190/7
3 Northern .....	188	187/2	185/5	185/7
4 Northern .....	182	181/2	179/5	179/7
5 Wheat .....	160/3	158/3	157/5	157/7
6 Wheat .....	156/3	154/3	153/5	153/7
Feed .....	152/3	150/3	148/5	148/7
1 C.W. Amber Durum .....	196	195/2	193/5	193/7
2 C.W. Amber Durum .....	194	193/2	191/5	191/7
3 C.W. Amber Durum .....	184	183/2	181/5	181/7



## CANADIAN FLOUR MILLING SITUATION

Production - Canadian flour production during October amounted to 2.1 million barrels, an increase over the 1.9 million milled in the preceding month and in October, 1949. Mills reporting operations during October of this year had a rated capacity of 96,074 barrels and, on the basis of a 25-day working period, 87.8 per cent of the rated capacity was effective.

Exports - Canadian wheat flour exports during October, according to Customs returns, amounted to 758,172 barrels. The preliminary total for the first three months of the current crop year is 2.2 million barrels, a decrease of about 10 per cent from the August-October period of 1949-50. Of the October exports, 291,783 barrels went to the United Kingdom, 51,348 to the Philippine Islands and 46,867 to Venezuela. Exports of wheat flour to the United Kingdom during August-October were approximately 670,000 barrels or about 30 per cent of the total. Other areas receiving Canadian flour in excess of 100,000 barrels during the period were Venezuela, Cuba, the Philippine Islands and Trinidad and Tobago.

### Production and Exports of Wheat Flour, Canada, 1938-39 to 1950-51

Crop Year	Production	Exports <u>1/</u>
- barrels of 196 pounds -		
1938-39 .....	15,197,297	4,604,245
1939-40 .....	17,778,311	6,781,367
1940-41 .....	19,575,833	10,288,827
1941-42 .....	19,905,741	10,205,778
1942-43 .....	23,590,516	12,575,215
1943-44 .....	24,303,833	13,464,371
1944-45 .....	24,634,905	13,923,832
1945-46 .....	26,435,341	14,470,177
1946-47 .....	28,588,456	16,896,233
1947-48 .....	24,159,696	13,661,573
1948-49 .....	20,379,997	10,687,561
1949-50 .....	20,303,871 <u>2/</u>	10,151,090
<u>1950-51</u>		
August .....	1,713,860	915,827
September .....	1,859,762	508,648
October .....	2,107,612	758,172
Totals .....	5,681,234	2,182,647
Same Period 1949-50 .....	5,431,967	2,424,201

1/ Based on Customs returns. Exports for the crop years 1945-46 to 1949-50 revised to remove effect of time lag in the returns made by Customs. Subsequent months to be revised as data become available.

2/ Subject to revision.

## UNITED STATES SITUATION

Supply Position - Total wheat supplies in the United States for 1950-51 are now placed at 1,427 million bushels, of which an estimated 697 million are available for export and carryover. Exports of both wheat and flour continue to be well below those of last year, with wheat exports down from 105.7 million to 56.4 million for the July--October period. Exports of wheat flour and macaroni in terms of wheat for the same four-month period amounted to 11.7 million bushels as against 15.3 million in 1949-50. The balance remaining on November 1, 1950 for export and carryover was 628.9 million bushels, 24.9 million more than on the same date last year.

### United States Wheat Supplies (Estimates rounded to nearest 100,000 bushels)

Item	1950-51	1949-50
	- million bushels -	
Carryover at July 1 .....	416.8	307.7
New crop .....	1,010.1	1,146.5
Imports of wheat for domestic use, August--October .....	.1	<u>1/</u>
Total estimated supplies .....	1,427.0	1,454.2
Less estimated domestic requirements for crop year .....	730.0	729.2
Available for export and carryover .....	697.0	725.0
Deduct:		
Exports of wheat as grain, July 1 to October 31 .....	56.4	105.7
Exports of wheat flour and macaroni in terms of wheat, July 1--October 31 .....	11.7	15.3
Total exports of wheat, wheat flour and macaroni .....	68.1	121.0
Balance on November 1 for export and carryover .....	628.9	604.0

1/ Less than 50,000 bushels.

Outlook for Wheat in 1951-52 - The following statement on the outlook for wheat in 1951-52 was presented at the 28th Annual Agricultural Outlook Conference, Washington, D.C. on November 2, 1950.

"The highlights of the wheat outlook for 1951-52 include a continued large wheat acreage, the accumulation of a substantial reserve, and the likelihood of an increase in the wheat loan rate which will be offset, at least in part, by the discontinuation of payments by CCC of storage charges while the grain is under loan. I shall discuss the outlook under three main headings--supply, price and exports.

The Prospective Supply Situation - A national acreage allotment of 72.8 million acres for 1951 was announced on July 14. This allowed ample time for the farmers to plan their fall seedlings. While this allotment of 72.8 million acres is 2 per cent above the actual seedings of 71.5 million acres for the 1950 crop, and the same as the final acreage allotment for that crop, it has



been exceeded by actual seedings in only 7 years in our history.

If yields should equal the 1941-50 national average per seeded acre, the allotted acreage would produce a 1951 wheat crop of 1,150 million bushels, which is 14 per cent above the 1,010 million bushels estimated for the 1950 crop. With the **carryover** of old wheat on July 1, 1951 estimated at about 450 million bushels, total supply for 1951-52 would be 1,600 million bushels.

Now if domestic disappearance in 1951-52 is about the same as 730 million estimated for 1950-51, 870 million bushels would remain for export during the year and carryover July 1, 1952. Moreover, if exports should total 250 million bushels, the same as estimated for the current year, the carryover July 1, 1952 would total about 620 million bushels. This would approach the record high in 1942 of 631 million bushels, and would constitute a substantial emergency reserve.

To date moisture conditions for winter wheat have been unusually favourable. With average conditions from here on out for winter wheat and also for spring wheat, the acreage allotment will assure more than ample supplies for prospective requirements. This is in line with the Department's policy of planning on the side of abundance. Reports being received indicate that farmers are overplanting their allotments in certain areas where summerfallow is available. In other areas, especially in the Corn Belt, allotments are ample to cover intended acreage.

On June 26 Secretary Brannan announced that there would be no marketing quotas on the 1951 wheat crop.

The Prospective Price Situation - On August 21, before the time of seeding the winter wheat crop, a national average support price for the 1951 wheat crop was announced at not less than \$1.99 a bushel--the same as the support level for the 1950 crop. If parity is higher at the beginning of the 1951-52 marketing year, as is now expected, the support will be increased to reflect the full 90 per cent of parity at that time. In any event, the support price will not be less than 90 per cent of parity. Price support by means of loans and purchase agreements will be available on the 1951 crop, from time of harvest through January 31, 1952, to farmers who comply with their acreage allotments.

On the basis of a prospective increase in the index of prices paid, interest and taxes, upon which parity is based, the national average loan rate in 1951-52 may be 10 cents or more above the \$1.99 for the 1950 crop. The increase, however, will be offset, in part at least, by the discontinuation of payments to producers for farm storage and the assumption of warehouse charges (except the receiving charges) accruing prior to May 1, 1952. These changes from previous years place wheat on the same basis as other grains with respect to storage charges on loan commodities delivered to CCC.

The Prospective Export Situation - The volume of United States wheat exports during 1951-52 will depend upon a number of factors. The United States export quota under the International Wheat Agreement for 1951-52 will be about 230 million bushels, which importers are obligated to buy at minimum prices. In 1949-50 when prices were at the maximum, our quota was not entirely filled.



In 1950-51 prices continue at the maximum, and the rate of movement is exceeding that of the previous year. In 1949-50 exports to countries not now parties to the Agreement totalled about 60 million bushels. Most of this quantity went to Japan. For the year ahead much seems likely to depend upon the extent to which deficit areas for which the United States has, or may assume supply responsibility, procure wheat or substitute grains from other countries, especially from non-dollar sources. Also our exports will depend upon the size of production in other countries, especially in exporting countries. The extent to which rice continues to be available in the Far East is also an important factor."

Flour Production - Wheat flour production in September is estimated by the Bureau of the Census, United States Department of Commerce, at 18.9 million sacks, a figure 7 per cent lower than September 1949. Production in August, with 3 more working days, was 12 per cent higher. Wheat flour mills operated at 82.3 per cent of capacity compared with 79.6 per cent the previous month.

Wheat grindings amounted to 43.8 million bushels in September as against 49.1 million in August. Wheat offal output was 374 thousand tons, and 422 thousand the previous month.

These figures represent the production of all commercial flour mills in the United States. About 96 per cent of the totals is reported by the 400 largest mills and the balance estimated. The estimated portion is derived from an annual survey of the smaller mills.

July--October Grain Exports - On November 27 the Production and Marketing Administration of the U.S. Department of Agriculture estimated July--October exports of United States grains and grain products at approximately 3,375,000 long tons (131,951,000 bushels of grain equivalent) as compared with 4,910,000 long tons (193,982,000 bushels of grain equivalent) in the like period of 1949.

United States Grain Exports, July--October, 1949 and 1950

Month	1 9 4 9		1 9 5 0	
	Wheat, Flour and Macaroni	Other Grains and Products <sup>1/</sup>	Wheat, Flour and Macaroni	Other Grains and Products <sup>1/</sup>
- thousand bushels -				
July .....	30,949	19,999	18,316	13,694
August .....	30,799	24,086	14,830	18,290
September .....	33,329	15,950	18,141	15,540
October .....	25,947	12,923	16,713 <sup>2/</sup>	16,427 <sup>2/</sup>
Totals .....	121,024	72,958	68,000	63,951 <sup>2/</sup>

<sup>1/</sup> Includes corn, oats, grain sorghums, barley, rye, corn grits and meal, corn starch and flour, oatmeal and malt.

<sup>2/</sup> Preliminary.

<sup>3/</sup> Includes 28,404,000 bushels of corn, 836,000 bushels of oats, 24,673,000 bushels of grain sorghums, 6,162,000 bushels of barley, and 775,000 bushels of rye. (Corn includes 14,440,000 bushels to Canada, a part of which is for storage for U. S. commercial accounts).

Chicago and Minneapolis Cash Wheat -

The cash wheat market at Chicago throughout the period October 24--November 28 was rather inactive, with no sales registered on ten of the trading days in this period. Despite this, prices made gains during the period. In the week ending November 2 nominal quotations on No. 2 Red Winter wheat were 8 cents under the December futures but this spread had been narrowed to 3 to 4 cents toward the end of the month. Receipts of wheat were relatively small, only 279 cars reaching the Chicago market in the four weeks ending November 23.

Cash wheat prices at Minneapolis showed general firmness, with a high of \$2.23 for No. 1 Dark Northern on November 18. Receipts continued in fairly heavy volume with 8,643 cars reaching Minneapolis and 9,287 going to Duluth in the four-week period ending November 23.

Daily Cash Wheat Prices on the Chicago and Minneapolis Markets

Date	Chicago		Minneapolis	
	Grade	Price	Grade	Price
		cents per bu.		cents per bu.
Oct. 24, 1950	None		1 Dark Northern	215 - 218
25	3 Red	210 1/2	1 Dark Northern	215 1/2 - 218 1/2
26	2 Red	212 3/4	1 Dark Northern	217 5/8 - 220 5/8
27	3 Red	200	1 Dark Northern	218 1/4 - 221 1/4
28	None		1 Dark Northern	218 - 221
30	3 Red	213 - 215	1 Dark Northern	219 - 221
31	1 Red	217 1/2	1 Dark Northern	220 - 222
Nov. 1	3 Red Tough	213 1/2	1 Dark Northern	218 3/4 - 220 3/4
2	4 Red	198	1 Dark Northern	218 3/8 - 220 3/8
3	3 Red Tough	215 1/4	1 Dark Northern	219 - 221
4	3 Red	217	1 Dark Northern	218 7/8 - 220 7/8
6	4 Red	212	1 Dark Northern	220 3/4 - 222 3/4
7		Election Day		
8	3 Red	217 1/2	1 Dark Northern	216 1/2 - 217 1/2
9	None		1 Dark Northern	215 3/8 - 216 3/8
10	4 Red	213	1 Dark Northern	215 5/8 - 216 5/8
11		Remembrance Day		
13	2 Red	220	1 Dark Northern	215 7/8 - 217 7/8
14	None		1 Dark Northern	219 1/4 - 220 1/4
15	None		1 Dark Northern	221 3/8 - 222 3/8
16	None		1 Dark Northern	221 7/8
17	None		1 Dark Northern	220 3/4 - 221 3/4
18	None		1 Dark Northern	222 - 223
20	3 Red	224	1 Dark Northern	221 3/8 - 222 3/8
21	Sple. Gr. Red Tough	175	1 Dark Northern	220 - 221
22	1 Red	222	1 Dark Northern	221 - 222
23		Thanksgiving Day		
24	3 Red	220	1 Dark Northern	218 - 219
25	2 Red	224 1/2	1 Dark Northern	219 - 220
27	None		1 Dark Northern	218 3/4 - 219 3/4
28	None		1 Dark Northern	220 1/4 - 221 1/4

Chicago Wheat Futures - With the exception of July futures, no marked movement was noticeable in the Chicago wheat futures market during the period October 28--November 30. While the basic underlying conditions--weak export demand, large stocks and slow domestic flour market--continued to exert a bearish influence on the futures market, there were temporary offsetting factors imparting some strength to futures prices. Chief among these was a renewed interest from speculators based on the fact that wheat was lagging behind the price upturns on other grains and was becoming relatively cheap. In addition, a worsening of the Korean situation had a temporary strengthening effect toward the end of the month. A new seasonal high was reached for the July futures on November 18 at \$2.27 1/4, partly as a result of reports from the south-west that the winter wheat crop was beginning to need surface moisture. However, the over-all outlook for the 1951 crop remains promising.

Chicago Wheat Futures, High Points of Closing

Date	December	March	May	July
- cents and eighths per bushel -				
Oct. 28, 1950	225/4	230/2	230	218
30	225/2	230/1	230/2	219/1
31	226	231	231/1	220/6
Nov. 1	225/2	230/2	230/5	221
2	226	230/6	230/2	220
3	226/5	231/3	231/1	221/6
4	227/2	231/5	231/3	222/4
6	228/7	233	233/2	226/4
7		Election day		
8	226	230/5	230/6	223/5
9	225	229/6	230/1	222/7
10	225/4	230	230/5	223/1
11		Remembrance Day		
13	225/3	229/6	229/5	222/5
14	228/4	232/7	232/4	224/6
15	229/1	233/4	233/2	226/5
16	228/3	233/1	233	226
17	227	232	232	225/4
18	228/4	233/4	233/5	227/2
20	228	233/2	233/2	226/6
21	227/2	232/4	232	225/2
22	228/4	233	232/4	225/4
23		Thanksgiving Day		
24	224/6	228/7	228/3	222/2
25	225/7	230	229/7	223/5
27	226/5	231/2	231	224/6
28	227	231/2	231/2	225/3
29	226/2	230/4	230/5	224/2
30	226/2	230/4	230/3	224/2



## ARGENTINE SITUATION

Supply Position - The data in the following table are extracted from reports provided by Mr. W. B. McCullough, Commercial Secretary (Agriculture) at Buenos Aires, from trade sources and from publications of the United States Department of Agriculture. These data are subject to revision as new information becomes available.

### Argentine Wheat Supplies (Estimates rounded to nearest million bushels)

Item	1949-50	1948-49
- million bushels -		
Carryover at December 1 .....	44	75
New crop .....	198	190
Total estimated supplies .....	242	265
Less estimated domestic requirements for crop year .....	132	147
Available for export and carryover .....	110	118
Deduct:		
Exports of wheat as grain, Dec. 1, 1949—Oct. 31, 1950 .....	95	62
Exports of wheat flour in terms of wheat		
December 1, 1949—October 31, 1950 .....	<u>1/</u>	<u>1/</u>
Total exports of wheat and wheat flour .....	95	62
Balance on November 1 for export and carryover .....	15	56

1/ Less than 100,000 bushels.

With only one month remaining in the current crop year, the Argentine has exported 95 million bushels of wheat out of the estimated 110 million available for export and carryover. Exports for the December 1, 1949 to October 31, 1950 period were some 33 million bushels greater than for the first eleven months of 1948-49. The balance remaining on November 1 for export and carryover was estimated at 15 million bushels as against 56 million on the same date last year.

The following account of the Argentine situation has been extracted from Mr. McCullough's report of November 20 and is reproduced with the kind permission of the Trade Commissioner Service. Conversions of Argentine measures to Canadian equivalents have been made for the convenience of our readers. Currency quotations have been left in terms of the United States dollar.

Weather and Crops - Growing conditions over the past month in Argentina have been, on the whole, very satisfactory for the fine grain crops. There have been several general rains in all zones and the drought areas in the west came in for a good share. Some districts in the northern grain belt have had too much rain which caused some lodging of the weak stemmed varieties of wheat and has favoured the spread of rust. However, in general, the wheat crop continues to develop very satisfactorily as do the flax and other grains.

Soil conditions have been very favourable for sowing corn and the early fields are coming along well. Temperatures during the past month have been below normal but there were only light frosts in isolated districts. Pasture conditions are excellent in all areas and there is no concern about lack of soil moisture.

Wheat - With only a few weeks to go before harvest, the wheat crop is developing satisfactorily and prospects are good for an excellent yield. In the northern grain zone wheat is ripening and will be ready for harvest early in December. In the southern zone around Bahia Blanca, wheat is heading and the condition is reported good. While there is some danger of damage from hail or a late frost, the chief concern is that the weather may favour the spread of rust which is already prevalent in the grain belt.

There has been no further official intimation on the Argentine wheat acreage this year and the trade generally accept the Minister of Agriculture's preliminary estimate of 6.6 million hectares (16.3 million acres). However, there is considerable variance of opinion and some trade sources place sowings as high as 7 million hectares (17.3 million acres), which was the official goal set by President Peron last March. Undoubtedly, Argentina has the largest area seeded to wheat for some years but it is still below prewar averages, as is shown in the following table.

Argentine Wheat Acreage and Production

	Acres	Production bu.
Average 1936-37—1940-41 .....	19,315,000	253,371,000
Average 1941-42—1945-46 .....	16,291,000	203,407,000
1945-46 .....	14,232,000	143,558,000
1946-47 .....	16,484,000	206,316,000
1947-48 .....	13,491,000	244,838,000
1948-49 <u>1/</u> .....	13,585,000	183,719,000
1949-50 <u>1/</u> .....	13,585,000	198,416,000
1950-51 .....	16,302,000	-

1/ Trade estimates in the absence of official estimates.

The current acreage represents a satisfactory gain over the past few seasons, particularly in view of inadequate soil moisture in parts of the country during seeding. Had it not been for this factor and generally unfavourable growing conditions in parts of La Pampa and Cordoba, acreages might well have been above the official goal of 7 million hectares (17.3 million acres). This response on the part of the growers shows that the declining acreages over the past few seasons has been caused chiefly by the government's policy of low, fixed prices and by their late announcement, allowing the grower almost no latitude in planning his production. Even latterly, complaints have been expressed by various rural societies over the government's delay in establishing the wages for the coming harvest which is only a few weeks away. The government has promised to announce the new wage scale within a very short period.

The trade forecast that Argentina will harvest the largest wheat crop in many years, which, barring damage from rain, hail or possibly a late frost, should be at least 6.5 million metric tons (238.8 million bushels). This will



permit Argentina to replenish stocks to former levels and after allowing for domestic requirements, to export at least an equal quantity as last year. Wheat in all positions at December 1st, the beginning of the new grain year, will probably be about 400,000 metric tons (14.7 million bushels), a very low carry-over as compared with the normal reserve of about 1 million tons (36.7 million bushels).

Other Grains - Fields of oats, barley and rye are developing well, and with improved pasture conditions, many of these fields which were sown for winter feed will now be harvested. It is understood that owing to the poor pastures following the drought early in the year, there was a larger area sown to rye, which has probably reached between 1.7 and 2 million hectares (4.2 and 4.9 million acres). While in many years as little as 20 per cent of the rye acreage is harvested, this year with improved grazing conditions of natural pastures, it is expected that between 45 and 50 per cent of the acreage will be harvested.

Reports from the principal rye zone in the west of the province of Buenos Aires are that the crop is developing well and the total crop may reach 500,000 metric tons (19.7 million bushels). With some 200,000 (7.9 million bushels) required for home consumption, there would remain about 300,000 metric tons (11.8 million bushels) for export. Reports on the favourable prospects for this crop are further borne out by the fact that recently IAPI sold local exporters 39,000 metric tons (1.5 million bushels) of new crop rye at 34.50 pesos per 100 kilos f.o.b. (\$1.75 per bushel); it is expected that much of this will move to Germany. Following this sale the price was increased to 35.50 pesos (\$1.80 per bushel).

Purchase of Grain Crops by IAPI - It has been announced that the Argentine Trade Promotion Institute (IAPI) will commence purchasing the 1950-51 crops of wheat, oats, barley and rye on November 13th and continue until May 31st of next year. Offers may be made through the branches of Banco de la Nacion, the General Produce Market at Rosario or in Buenos Aires at the office of IAPI or the Grain Market for wheat and barley and at the Grain Exchange for oats and rye.

With regard to flax, the same practice will be followed as last year; producers and dealers may sell direct to the crushing plants, the minimum price to be that of 41 pesos per quintal established last March by the government.

Uruguay Wheat Price Raised Slightly - A recent decree increases the official price of the 1950-51 wheat crop from 16.50 to 16.80 Uruguayan pesos per quintal (\$2.96 to \$3.01 per bushel), basis station Montevideo. Last July the price was set at 14.50 (\$2.60 per bushel) and later raised to 16.50 (\$2.96 per bushel); and the new price may be compared with 13.50 pesos (\$2.42 per bushel) last year (exchange rate of 151.90 Uruguayan pesos per U\$S 100).

A further report from Uruguay tells of the sale of 12,000 metric tons of wheat (440,925 bushels) and 10,000 tons of flour to Chile.

Argentine Grain Shipments - Aggregate grain shipments from Argentina for the first ten months of this year show an improvement of some 35 per cent over the figures for the same period of last year although they still remain below the 1948 ten months' figure.



# Grain Shipments - First Ten Months

Grain	1950	1949	1948
- thousand bushels -			
Wheat .....	90,414	56,647	69,906
Corn .....	30,965	31,639	76,222
Flax .....	2,492	-	-
Oats .....	21,565	8,022	4,972
Rye .....	6,192	6,596	5,437
Barley .....	3,609	8,485	27,367

Grain shipments by destination for the first ten months are as follows:

## Argentine Grain Shipments - Ten Months 1950

Destination	Wheat	Corn	Flax	Oats	Rye	Barley
- thousand bushels -						
United Kingdom ...	-	13,662	1,473	-	-	-
Italy .....	17,254	410	77	1,861	981	-
France .....	-	8,792	392	-	-	-
Switzerland .....	2,330	1,132	-	6,327	55	1,841
Germany .....	6,660	-	-	1,121	333	109
Holland .....	-	1,357	511	4,090	368	271
Sweden .....	1,781	1,626	-	396	-	-
Spain .....	1,793	92	-	-	1,653	-
Belgium .....	28	2,493	-	885	114	154
Norway .....	-	-	-	259	1,569	-
Portugal .....	1,159	105	-	324	-	-
Denmark .....	-	-	39	167	829	-
Finland .....	559	-	-	-	-	-
Ireland .....	-	87	-	491	-	-
Austria .....	-	-	-	-	14	-
United States ....	-	-	-	2,530	-	-
Brazil .....	29,750	-	-	6	-	-
India .....	17,994	-	-	-	-	30
Japan .....	6,844	-	-	-	-	1,204
Chile .....	1,864	-	-	-	-	-
Peru .....	1,260	-	-	-	-	-
Paraguay .....	1,138	-	-	-	-	-
Uruguay .....	-	1,099	-	175	-	-
Canada .....	-	-	-	1,471	-	-
South Africa .....	-	-	-	1,174	-	-
Lebanon .....	-	-	-	126	276	-
French Africa ....	-	110	-	-	-	-
Cuba .....	-	-	-	162	-	-
Totals .....	90,414	30,965	2,492	21,565	6,192	3,609

## AUSTRALIAN SITUATION

Supply Position - Australian wheat supplies for the crop year ending November 30, 1950, are now placed at 236 million bushels through a recent revision of the 1949 crop estimate. Of the estimated 153 million bushels available for export and carryover, 74 million were exported as wheat and 32 million as wheat flour in the period December 1—October 28. Exports of both wheat and flour are slightly below those for the comparable period of 1948-49. As a result of increased supplies and reduced exports, Australia had an estimated total of some 47 million bushels for export and carryover on October 29, 1950, approximately twice as much as on the same date last year.

### Australian Wheat Supplies (Estimates rounded to nearest million bushels)

Item	1949-50	1948-49
	- million bushels -	
Carryover at November 30 (including flour as wheat) .....	19	26
New crop .....	217 <sup>1/</sup>	191
Total estimated supplies .....	236 <sup>1/</sup>	217
Less estimated domestic requirements for crop year .....	83	78
Available for export and carryover .....	153 <sup>1/</sup>	139
Deduct:		
Exports of wheat as grain, December 1—October 28 .....	74	79
Exports of wheat flour in terms of wheat, December 1—October 28 .....	32	36
Total exports of wheat and wheat flour .....	106	115
Balance on October 29 for export and carryover .....	47	24

<sup>1/</sup> Revised.

Australian Cable - The following cable dated November 16 has been received from the Canadian Trade Commissioner in Melbourne:

"Australian wheat stocks at October 28th totalled 54,478,000 bushels. Wheat exports from December 1st, 1949 to October 28th totalled 74,432,000 bushels, with shipments during the preceding four weeks mainly to the United Kingdom, Japan and Egypt. Flour exports for the same period were 598,327 long tons, with shipments during the preceding four weeks of 15,680 to the United Kingdom, 11,312 to India and 5,405 to Malaya. The latest 1950-51 crop forecast is 190 million bushels. The Wheat Board reports the following recent sales: 48,000 tons of wheat to India, 100,000 tons to Italy, both outside the I.W.A. and 50,000 tons of wheat to Sweden within the I.W.A."

Wheat and Wheat Flour Exports - Four countries—India, the United Kingdom, Egypt and Japan—took about 72 per cent of the 74 million bushels of Australian wheat exported up to October 28. India has purchased 24.7 million bushels of the total, with the other three countries each taking from 9 to 10 million bushels. During the same period flour exports have amounted to 598,327 long tons as against 669,534 for the December 1—October 28 period of 1948-49. The major outlets for Australian wheat flour during the current crop year have been Egypt, Ceylon, India and Malaya.

## CALENDAR OF WHEAT EVENTS

October 30 A press release from Geneva indicates that the International Wheat Council agreed on a progressive increase in Canada's quota of wheat sales for the remaining crop years under the International Wheat Agreement. Canada's 1950-51 export quota of 218.9 million bushels will be increased to 228.9 million by 1952-53, subject to further adjustments as conditions change or new members enter the Agreement.

November 11 Tests made on representative samples of the 1950 western Canadian wheat crop by the Board of Grain Commissioners' Laboratory show that the top grades, No. 1 to 4 Northern, have an average protein content of 13.6 per cent and are high in bushel weight, ranging from 64.8 pounds per bushel for No. 1 to 63.0 for No. 4.

14 Ricky Sharpe of Munson, Alberta won the World Wheat Championship at the Royal Winter Fair with an exhibit of Marquis wheat.

16 Canada's 1950 wheat crop is estimated at 461.7 million bushels as against 367.4 million last year. The spring wheat crop in the Prairie Provinces was estimated, in millions of bushels, as follows: Saskatchewan, 260; Alberta, 117 and Manitoba, 50; while the winter wheat crop in Ontario was placed at 30 million bushels. The area sown to winter wheat in Ontario in the autumn of 1950 is estimated at 918,000 acres, a decrease of 125,000 or 12 per cent from 1949. The condition at October 31 was reported at 100 per cent of average as compared with 106 per cent on the same date last year.

25 Effective this date, an open delivery quota on wheat, oats and barley was authorized at all delivery points in Alberta by the Canadian Wheat Board.

27 Exports of wheat, wheat flour and macaroni (all in terms of wheat) from the United States during the period July--October 1950 are estimated at 68 million bushels, down sharply from the 121 million exported during the same months of 1949.

R. P. Robbins of Shaunavon, Saskatchewan, won the wheat championship at the International Live Stock Exposition's Hay and Grain Show at Chicago with an entry of Mindum variety durum wheat weighing 63.7 pounds to the bushel.

The initial payment for the 1950-51 Australian wheat crop is reported to be 6/7 (74 cents) per bushel bulk and 7/3 (83 cents) bagged, both amounts less freight.

28 Farmers in the United States put 141.5 million bushels of 1950-crop wheat under Commodity Credit Corporation price support during the July--October period, as compared with 281.4 million for the same period last year.

1500- 8-12-50.





STATISTICS CANADA LIBRARY  
BIBLIOTHÈQUE STATISTIQUE CANADA



1010686686