

22-005

v. 21

no. 6

Jan. 1951

c. 2

no. 6
Jan. 1951
c. 2

CIRCULATE
NE PAS PRÊTER

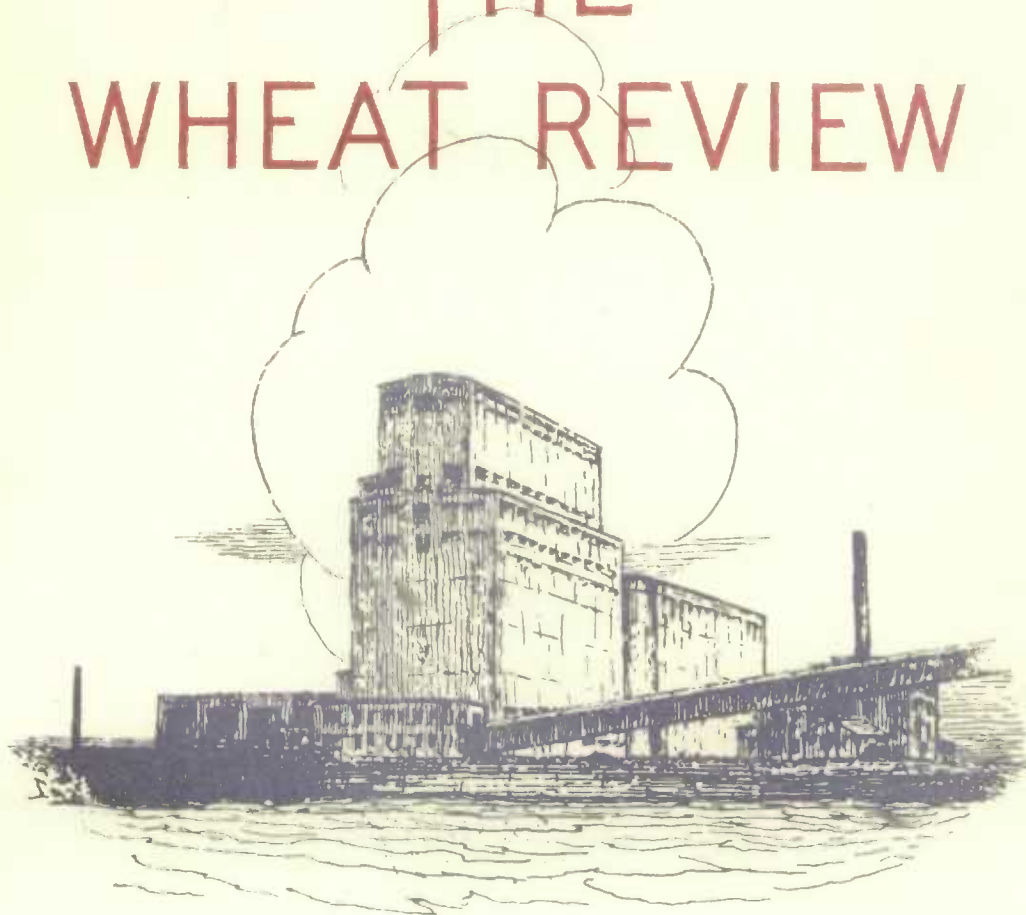


DOMINION BUREAU OF STATISTICS
AGRICULTURE DIVISION

DOMINION BUREAU
OF STATISTICS

PROPERTY OF THE
LIBRARY

THE WHEAT REVIEW



JANUARY, 1951

DOMINION BUREAU OF STATISTICS
Department of Trade and Commerce

THE WHEAT REVIEW

(Formerly Monthly Review of the Wheat Situation)

JANUARY, 1951

Published by Authority of the Rt. Hon. C. D. Howe,
Minister of Trade and Commerce

Prepared in the
Crops Section, Agriculture Division
Dominion Bureau of Statistics, Ottawa, Canada

TABLE OF CONTENTS

	Page
World Wheat Situation	
Current Supplies	1
Exports	1
Notes on New Crops	1
International Wheat Agreement Sales and Purchases	1
Canadian Situation	
Increased Initial Payments on Western Wheat, Oats and Barley	3
Supply Position	3
Farmers' Marketings, by weeks	5
Visible Supply of Canadian Wheat	6
Grading of Wheat Inspected, August—December	6
Weekly Visible Supply and Farmers' Marketings (Charts)	7
Wheat Shipments to the United States	8
Rail Shipments of Wheat to Maritime Ports	8
Rail Shipments of Wheat from Fort William—Port Arthur	9
Freight Assistance Shipments	10
Monthly Export Clearances	11
Exports of Canadian Wheat and Wheat Flour by Destination	12
Current Wheat Prices	15
Licensed Storage Capacity of Canadian Grain Elevators	16
Canadian Flour Milling Situation	
Production and Exports	18
United States Situation	
Supply Position	19
No Acreage Allotments for 1951-Crop Corn and Wheat	19
Wheat Stocks on Farms	20
July—December Grain Exports	21
Flour Production	21
Chicago and Minneapolis Cash Wheat	22
Chicago Wheat Futures	23
Argentine Situation	24
Australian Situation	28
Calendar of Wheat Events	30

WORLD WHEAT SITUATION

Current Supplies - The latest available estimates indicate that supplies of wheat remaining on or about January 1, 1951 in the four major exporting countries for export and carryover at the end of their respective crop years amounted to 1,183 million bushels. At the same time in 1950, 1,041 million bushels were available. Supplies this year (in millions of bushels) were held as follows, last year's figures in brackets: United States, 618 (557); Canada, 334 (233); Australia 136 (152), and Argentina 95 (99). The increased supplies indicated in the Argentine and Australia over those shown last month reflect the inclusion of the surplus for export and carryover from the new crops in these two countries where the crop year commences on December 1.

Exports - Wheat exports in recent months have lagged behind shipments during the similar period last year. An increased rate of exports may, however, be anticipated for some months to come. Forward sales for export from both the United States and Canada have been fairly heavy in recent weeks and new-crop wheat is beginning to move from the Argentine and Australia. Many importing countries have begun, or are contemplating, the stockpiling of emergency reserves against the contingency of war, and this factor will have a significant effect on world trade in wheat. The rate of overseas clearances from Canada may be expected to increase materially with the spring opening of navigation on the Lakes, while impetus has been given to the United States export program through substantial allocations of E.C.A. funds to several European countries for the purchase of United States wheat.

Notes on New Crops - Official estimates are now available for the Argentine and Australian crops which were harvested during the months of December and January. The Argentine estimate is 222 million bushels, up 33 million over the 1949 level. Some trade sources, however, have placed the crop as much as 20 million bushels below the official estimate. In Australia the crop is estimated at 185 million bushels as compared with the previous year's outturn of 218 million. Australian trade sources, however, are inclined to think that the official estimate is somewhat too low.

With the removal of acreage allotments from the United States picture an increase in spring wheat seedings in that country may be anticipated. The current U. S. acreage of winter wheat at 56.1 million is 6 per cent higher than seedings in the fall of 1949. Based on December 1 conditions, the winter wheat crop was forecast by the United States Department of Agriculture at 899 million bushels as against the 1950 crop of 751 million. However, the southwestern winter wheat area has been extremely dry and ample precipitation will be needed if the forecast is to be realized. Reports from the major European wheat growing areas have been fairly favourable, with Italy indicating some increase in acreage over last year.

International Wheat Agreement Sales and Purchases - According to records of the International Wheat Council, purchases of wheat recorded under the I.W.A. from August 1, 1950 to January 12, 1951 amounted to 314.2 million bushels or about 58 per cent of the total guaranteed quantities. Leading purchasers under the Agreement during the period, with quantities in millions of bushels, were: The United Kingdom, 112.2; India, 30.4; Germany, 28.8; Belgium, 14.4; Egypt, 13.2; the Netherlands, 11.6; Mexico, 9.7 and the Union of South Africa, 8.2. Sales recorded to January 12 by the four exporting countries were: United States, 116.7; Canada, 112.3; Australia, 83.4, and France, 1.9 million.

International Wheat Agreement Sales and Purchases, August 1,1950 to January 12,1951
Together with Annual Quantities Guaranteed

Importing Countries	Guaranteed Purchases	Source				Total Purchases
		Australia	Canada	France	U.S.A.	
- thousand bushels -						
Austria	11,023	-	-	-	2,939	2,939
Belgium	20,209	-	7,654	-	6,788	14,442
Bolivia	2,756	-	729	-	1,461	2,190
Brazil	13,228	-	377	1,670	5,148	7,195
Ceylon	5,512	5,432	-	-	-	5,432
Costa Rica	1,212	-	424	-	137	561
Cuba	7,422	-	2,833	-	1,077	3,910
Denmark	1,617	-	-	-	-	-
Dominican Republic .	876	-	358	-	129	487
Ecuador	1,286	-	513	-	461	974
Egypt	14,698	10,543	-	-	2,636	13,179
El Salvador 1/.....	404	-	80	-	373	453
Germany	66,139	1,400	2	-	27,374	28,776
Greece	15,726	-	-	-	6,557	6,557
Guatemala	919	-	276	-	490	766
Haiti 1/	1,029	-	837	-	225	1,062
Iceland	404	-	-	-	-	-
India	38,287	15,254	11,200	-	3,926	30,380
Indonesia	3,674	2,049	32	-	410	2,491
Ireland	10,105	1,867	3,605	-	788	6,260
Israel	5,879	320	1,281	184	2,602	4,387
Italy	40,418	-	1,493	-	4,736	6,229
Lebanon	2,388	-	197	-	377	574
Liberia	36	-	17	-	1	18
Mexico	12,860	-	-	-	9,661	9,661
Netherlands	24,802	1,904	351	-	9,376	11,631
New Zealand	4,593	4,529	-	-	-	4,529
Nicaragua 1/.....	331	-	135	-	196	331
Norway	7,716	1,120	1,535	-	2,905	5,560
Panama	625	-	252	-	101	353
Peru	5,512	1,232	58	-	2,915	4,205
Philippines	7,202	-	2,050	-	1,830	3,880
Portugal	5,626	172	199	-	3,931	4,302
Saudi Arabia	1,837	154	45	-	615	814
Spain	4,372	-	248	-	1	249
Sweden	2,756	1,232	-	-	-	1,232
Switzerland	6,430	-	2,050	-	3,501	5,551
Union of S. Africa .	11,023	-	8,213	-	-	8,213
United Kingdom	177,068	36,194	63,402	-	12,579	112,175
Venezuela	6,246	-	1,868	-	432	2,300
Totals	544,246	83,402	112,314	1,854	116,678	314,248
Guaranteed Sales ...		87,109	221,443	3,955	231,739	544,246
Balance		3,707	109,129	2,101	115,061	229,998

1/ Guaranteed quantity fulfilled.

CANADIAN SITUATION

Increased Initial Payments on Western Wheat, Oats and Barley - The

Rt. Hon. C. D. Howe, Minister of Trade and Commerce, announced on January 25 that increases in the 1950-51 initial payments of western wheat, oats and barley would become effective on February 1, 1951. Mr. Howe stated sales of these grains by the Canadian Wheat Board since August 1, 1950, and the present market outlook indicated that 1950-51 initial payments could now be increased.

The increases in 1950-51 initial payments, effective February 1, 1951 are: wheat, 20 cents per bushel, oats, 10 cents per bushel, and barley 20 cents per bushel. The increases apply to all grades of these grains delivered or to be delivered to the Board during the crop year 1950-51.

The new initial payments are: for wheat, \$1.60 per bushel basis No. 1 Northern Wheat in store Fort William-Port Arthur or Vancouver; for oats 75 cents per bushel basis No. 2 Canada Western Oats in store Fort William or Port Arthur; and for Barley \$1.13 per bushel basis No. 3 Canada Western 6 Row Barley in store Fort William-Port Arthur.

The new initial payments will apply on all wheat, oats and barley delivered to the Board in the crop year 1950-51. Adjustment payments will be made to producers who delivered or may deliver their grain to the Board between August 1, 1950, and January 31, 1951. Producers delivering wheat, oats and barley between February 1, 1951, and July 31, 1951, will receive payment basis the new initial payments.

Mr. Howe estimated that adjustment payments to producers on grains delivered to the Board between August 1, 1950, and January 31, 1951, would amount to about \$51,400,000 on wheat, \$5,900,000 on oats and \$11,600,000 on barley. In addition to these adjustment payments, producers will receive an estimated additional \$28,000,000 on their deliveries of wheat, oats and barley between February 1, 1951, and July 31, 1951, as a result of the new schedule of initial payments.

The adjustment payments on oats and barley delivered to the Board between August 1, 1950, and January 31, 1951, would commence as soon as the Board received complete reports of country purchases up to and including January 31, 1951. The Minister said that the Board should commence oats and barley adjustment payments about March 1, 1951. The oats and barley payments will be followed by the adjustment payment on wheat.

Mr. Howe said that before long he expected to be able to make an announcement about the final payment on the 1945-49 pool.

Supply Position -

Despite an indicated increase in 1950-51 Canadian wheat supplies of some 105 million bushels over 1949-50, the combination of a late harvest and tight transportation situation in the fall of 1950 has prevented this year's crop from being moved into forward positions in the usual volume. Cumulative marketings of wheat in the Prairie Provinces in the current crop year remained below those of 1949-50 until late in December, but on January 11, 1951 amounted to 246.2 million bushels, an increase of 5 million over last year's total on that date.

Visible supplies on January 11 were 224.9 million bushels, representing increases of 61.7 million and 58.2 million bushels, respectively, over the totals on approximately the same date in 1950 and 1949. The increase in off-farm wheat supplies over last year's level was almost entirely accounted for by larger stocks at western interior points. Country elevators held 134.6 million bushels this year as compared with 70.6 million in 1950, while interior terminal elevators had 7.7 million bushels in store this year as against 0.1 million last year. Little change was registered in supplies in three other main positions—Vancouver-New Westminster, Fort William-Port Arthur, and eastern lake port elevators. Stocks in St. Lawrence and eastern seaboard port elevators, however, were little more than one third as large as at the same time last year (3.8 million as against 10.5 million), which means that, until the opening of lake navigation, overseas clearances via Atlantic ports will be largely dependent on the rail movement of wheat into these forward positions.

Canadian Wheat Supplies

Item	1950-51	1949-50
- million bushels -		
Carryover in North America at July 31	113.2	102.4
New crop	461.7	367.4
Imports of wheat August—November	<u>1/</u>	<u>1/</u>
Total estimated supplies	574.9	469.8
Less estimated domestic requirements for crop year	155.0	131.5
Available for export and carryover	419.9	338.3
Deduct:		
Overseas clearances of wheat as grain, August 1 to December 31	61.9	80.4
Exports of Canadian wheat to U.S., Aug. 1 to Dec. 31 .	6.4	5.5
Total exports of wheat	68.3	85.9
Exports of wheat flour in terms of wheat, August 1 to December 31	17.4 ^{2/}	19.1 ^{2/}
Total exports of wheat and wheat flour	85.7	105.0
Balance on January 1 for export and carryover	334.2	233.3

1/ Less than 50,000 bushels.

2/ Adjusted for time lag in the returns made by Customs.

Exports of wheat during December amounted to 10.2 million bushels, of which 4.0 million went to the United Kingdom, 2.1 million to the United States, 1.3 million to Belgium and 1.2 million to India. Cumulative exports of wheat for the August—December period of the current crop year were 68.3 million bushels as against 85.9 million for the comparable period of 1949-50. Flour exports in terms of wheat have also declined from last year's level—17.4 million bushels as against 19.1 million. Total exports of wheat and wheat flour in terms of wheat for the first five months of 1950-51 amounted to 85.7 million bushels, a decrease of 19.3 million from the total for the comparable period of 1949-50. The balance remaining on January 1, 1951 for export and carryover was estimated at 334.2 million bushels, slightly more than 100 million bushels in excess of last year's total on the same date.

Farmers' Marketings of Wheat in Prairie Provinces, 1950-51

Week ending	Manitoba	Saskatchewan	Alberta	Total	Last Year
- bushels -					
August 3	56,630	200,501	479,171	736,302	1,341,010
10	4,974	72,619	128,912	206,505	2,248,255
17	4,066	21,645	162,186	187,897	8,328,858
24	4,598	144,894	735,136	884,628	19,757,234
31	19,680	1,508,096	1,476,906	3,004,682	20,664,400
September 7	482,380	11,872,230	4,725,194	17,079,804	24,683,003
14	1,124,925	14,528,820	5,261,905	20,915,650	28,182,569
21	546,440	9,353,787	8,718,071	18,618,298	25,417,993
28	5,399,449	20,640,005	10,778,034	36,817,488	19,678,814
October 5	2,242,056	13,367,828	5,148,002	20,757,886	19,330,152
12	845,821	6,382,477	2,685,372	9,913,670	9,783,049
19	2,719,537	9,227,407	3,295,275	15,242,219	8,042,380
26	1,742,624	5,563,617	1,976,591	9,282,832	6,497,062
November 2	2,404,846	6,476,560	2,543,648	11,425,054	6,026,714
9	2,055,569	8,099,070	2,951,569	13,106,208	5,428,034
16	2,045,166	6,040,186	3,306,361	11,391,713	4,008,800
23	2,293,679	5,709,968	2,838,163	10,841,810	4,383,594
30	1,308,044	5,003,321	2,142,392	8,453,757	4,421,034
December 7	916,472	4,610,955	1,793,317	7,320,744	4,540,591
14	929,170	3,709,269	1,982,368	6,620,807	3,977,303
21	988,830	4,816,832	2,757,573	8,563,235	5,734,251
28	759,970	3,574,122	2,102,996	6,437,088	4,881,010
January 4	472,039	2,471,371	1,616,858	4,560,268	1,900,587
11	554,005	2,322,898	1,001,726	3,878,629	1,903,005
Totals	29,920,970	145,718,478	70,607,726	246,247,174	241,159,702

Marketings of wheat in the Prairie Provinces from August 1 to January 11 of the current crop year amounted to 246.2 million bushels as against 241.2 million for the comparable period of 1949-50. An unseasonably late harvesting season throughout western Canada delayed marketings during the current crop year and, despite a much larger crop in 1950, cumulative marketings for 1950-51 remained below those for 1949-50 until the week ending December 28. Peak marketings in 1950-51 occurred during the week ending September 28, when 36.8 million bushels were delivered. While there has been the usual seasonal decline since that date, weekly totals have remained well above the corresponding figures for the previous crop year.

Wheat marketings in Saskatchewan during the period of 1950-51 under review totalled 145.7 million bushels or 59 per cent of the total. Alberta, with 70.6 million bushels and Manitoba with 29.9 million bushels accounted for 29 per cent and 12 per cent, respectively, of the total. Saskatchewan's wheat marketings are some 16.8 million bushels greater than for the comparable period in 1949-50 but the totals in Manitoba and Alberta are down by 8.5 million and 3.3 million bushels, respectively.

Visible Supply of Canadian Wheat, January 11, 1951 Compared with
Approximately the Same Date, 1950 and 1949

Position	1951	1950	1949
- thousand bushels -			
Country elevators - Manitoba	11,619	4,195	8,945
Saskatchewan	74,257	33,375	46,116
Alberta	48,761	33,058	41,059
Totals	134,637	70,628	96,120
Interior private and mill elevators	4,166	4,013	4,521
Interior terminals	7,702	101	181
Vancouver-New Westminster	8,124	7,727	5,053
Churchill	461	126	100
Fort William and Port Arthur	31,563	32,537	17,062
In transit rail (western division)	8,546	9,720	8,242
Eastern elevators lake ports	15,774	17,947	14,939
St. Lawrence and seaboard ports	3,806	10,503	4,817
Storage afloat	4,427	6,471	8,682
In transit rail (eastern division)	3,280	1,844	3,456
United States ports	2,234	1,529	2,486
In transit U.S.A.	186	10	1,028
Totals	224,906	163,156	166,687

Grading of Wheat Inspected - Inspections of wheat during the August-December period of the current crop year amounted to 77,265 cars, approximately 26 per cent below the total for the first five months of 1949-50. Only 49 per cent of the 1950-51 inspections to date has qualified for No. 4 Northern or better (excluding 'Toughs' in these grades) in marked contrast to approximately 87 per cent for the corresponding period of 1949-50. Further indications of the unfavourable harvesting conditions prevailing in the fall of 1950 are the proportions grading 5, 6 and Feed (20.8 as against 2.5 per cent) and Tough (18.2 as against 2.9 per cent).

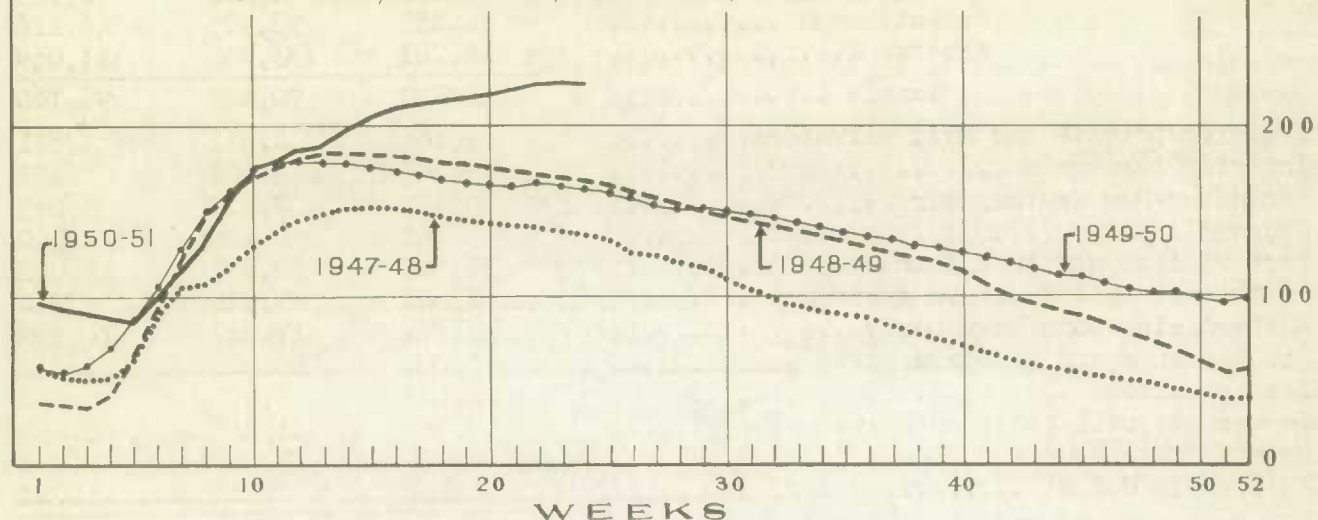
Grading of Wheat Inspected, August-December 1950 and 1949

Grade	Inspections			
	August-December 1950		August-December 1949	
	Cars	Per Cent	Cars	Per Cent
1 Northern	3,890	5.0	16,495	15.8
2 Northern	14,336	18.6	60,053	57.4
3 Northern	10,890	14.1	11,874	11.3
4 Northern	8,637	11.2	2,384	2.3
5 Wheat	8,750	11.3	2,087	2.0
6 Wheat	5,830	7.5	501)	0.5
Feed Wheat	1,570	2.0	49)	
Garnet	780	1.0	1,734	1.7
Amber Durum	4,320	5.6	4,495	4.3
Alberta Winter	374	0.5	697	0.7
Toughs - All Varieties and Grades ..	14,062	18.2	2,995	2.9
All Others	3,826	5.0	1,210	1.1
Totals	77,265	100.0	104,574	100.0

MILLION
BUSHELS

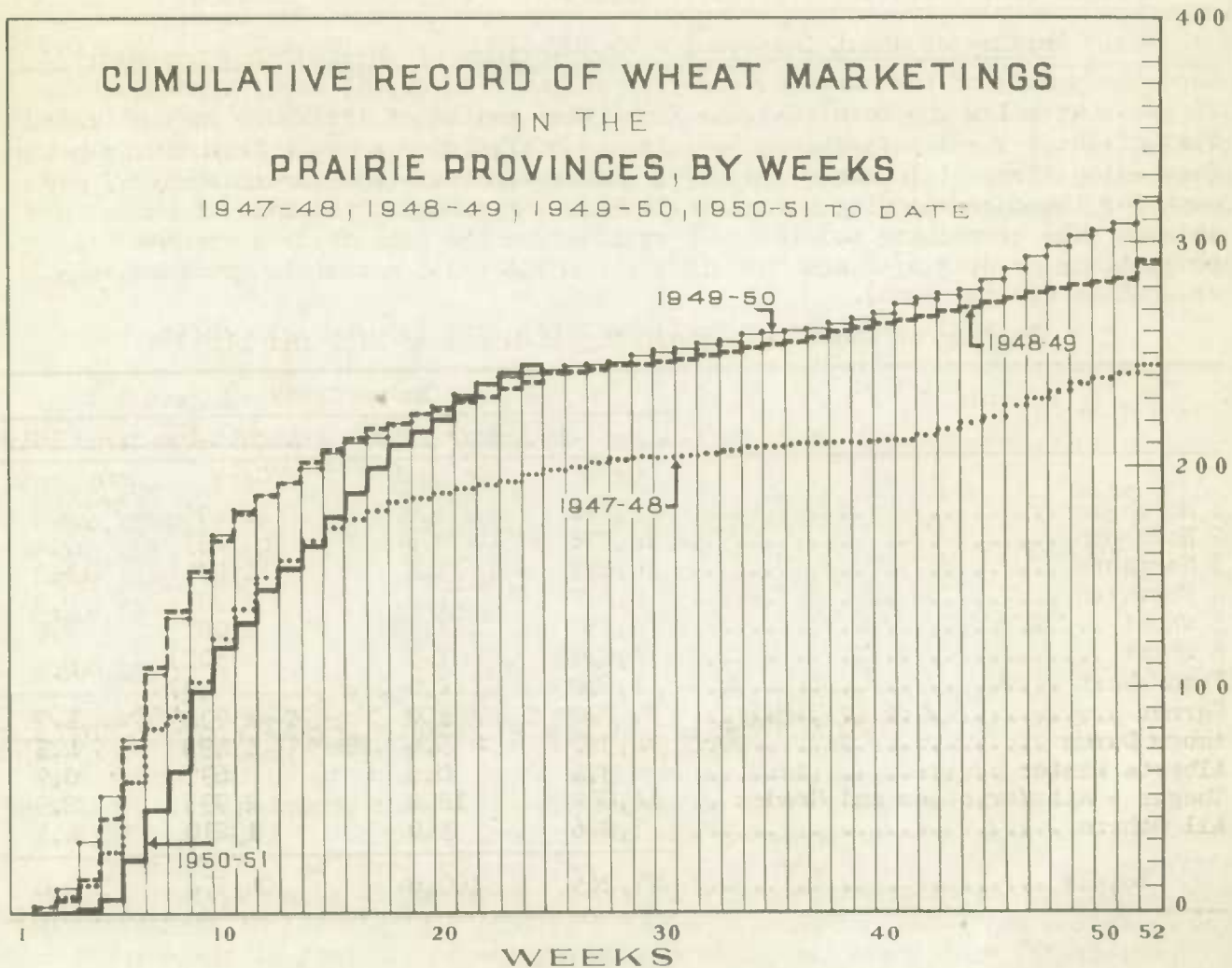
WEEKLY VISIBLE SUPPLY OF CANADIAN WHEAT

1947-48, 1948-49, 1949-50, 1950-51 TO DATE



CUMULATIVE RECORD OF WHEAT MARKETINGS IN THE PRAIRIE PROVINCES, BY WEEKS

1947-48, 1948-49, 1949-50, 1950-51 TO DATE



(Data in both charts for crop years beginning August 1)

Wheat Shipments to the United States by Destination
August 1 to January 11, 1951
Compared with Approximately the Same Period 1950 and 1949

Destination	1951	1950	1949
	bu.	bu.	bu.
By Vessel			
Buffalo	7,121,643	6,738,682	7,161,915
Oswego	-	-	737,500
Erie	-	-	1,575,567
Duluth-Superior	978,121	-	-
Chicago	269,510	192,766	-
Detroit	287,165	-	-
Milwaukee	140,673	-	-
Toledo	-	-	325,053
Totals, Vessel Shipments	8,797,112	6,931,448	9,800,035
By Rail			
U.S.A. Seaboard Ports	54,835	37,210	-
Other U.S.A. Points	700,182	22,833	-
Totals, Rail Shipments	755,017	60,043	-
Grand Totals	9,552,129	6,991,491	9,800,035

With the close of navigation in December, wheat shipments to the United States, either for re-export or domestic use, have dropped in volume from the early part of the crop year. Shipments during the four-week period ending January 11 amounted to approximately 450 thousand bushels, bringing the total for the crop year to date to 9.6 million. Totals for the comparable periods of the two preceding crop years were 7.0 million and 9.8 million bushels, respectively.

Rail Shipments of Wheat to Maritime Ports from Bay and Lake Ports

Ports	August 1 to January 11, 1951	August 1 to January 12, 1950
	- bushels -	
Collingwood	478,259	271,330
Midland	1,750,242	3,737,622
Owen Sound	311,100	526,885
Port McNicoll	1,840,982	4,561,787
Goderich	248,053	65,510
Sarnia	70,398	-
Humberstone	-	232,900
Totals	4,699,034	9,396,034

Rail shipments of wheat to Maritime ports from ports on the Great Lakes and Georgian Bay up to January 11 of the current crop year amounted to 4.7 million bushels, just half of the total for the corresponding period of 1949-50. With elevator stocks in bay and lake ports at a fairly high level at the close of navigation, however, some acceleration in wheat movement to seaboard positions in the Maritimes may be expected. Shipments from Port McNicoll and Midland continue to predominate, with these two ports accounting for 76 per cent of the current crop year's total to date.

Rail Shipments of Wheat from Fort William-Port Arthur, 1947-48 to 1950-51

Month	1947-48	1948-49	1949-50	1950-51
	- bushels -			
August	90,574	51,283	158,893	122,532
September	91,366	30,017	131,711	123,256
October	131,290	46,274	122,482	73,543
November	100,563	138,600	92,334	133,847
December	691,223	1,740,405	342,946	1,517,624
January	3,149,421	3,794,391	277,502	
February	1,851,773	3,720,733	240,087	
March	3,423,684	1,511,072	423,774	
April	371,950	659,467	2,305,727	
May	154,551	884,171	124,533	
June	81,133	330,348	96,626	
July	231,414	469,797	52,122	
Totals	10,368,942	13,376,558	4,368,737	

Distribution of Rail Shipments of Wheat from Fort William-Port Arthur, December 1950

Grade	Prince Edward Island	Nova Scotia	New Brunswick	Quebec	Ontario	U.S.A.
	- bushels -					
1 Northern	-	-	-	-	1,600	1,400
2 Northern	-	-	-	-	104,200	-
3 Northern	-	-	10,000	8,000	8,000	8,000
4 Northern	-	451,500	100,000	9,000	3,000	30,000
Number 5	-	-	4,500	20,500	16,000	10,000
Number 6	-	-	20,000	4,500	2,833	29,000
Feed	-	-	-	1,500	-	-
Tough 3 Northern	-	68,000	454,000	2,000	-	-
Tough Number 5	1,500	-	-	4,167	1,500	-
Tough Number 6	-	-	-	3,000	-	-
2 C.W. Amber Durum	-	-	-	-	10,500	-
3 C.W. Amber Durum	-	-	-	4,000	-	-
5 C.W. Amber Durum	-	-	1,500	19,501	2,668	-
6 C.W. Amber Durum	1,333	1,500	1,333	2,833	8,500	-
Damp 4 C.W. Amber Durum	-	-	-	-	1,500	-
Tough 4 C.W. Amber Durum	-	-	-	-	71	-
Tough 5 C.W. Amber Durum	1,333	-	-	8,792	2,865	-
Tough 6 C.W. Amber Durum	-	-	-	1,582	1,944	-
Rej. 6 C.W. Amber Durum Mxd.Htd.	-	-	-	-	1,336	-
Sample C.W. Amber Durum	-	-	-	-	1,263	-
Sample C.W. Amber Durum Heated.	-	-	-	-	3,363	-
2 C.W. Soft White Spring	-	-	-	-	55,500	-
Sample Red Spring Heated	1,550	-	-	5,075	82	-
Totals	5,716	521,000	591,333	94,450	226,725	78,400

Grand Total 1,517,624

Freight Assistance Shipments - Movement of wheat to eastern Canada and British Columbia from the Prairie Provinces under the freight assistance plan is continuing in greater volume during the current crop year than in 1949-50. Claims filed up to December 31 indicate that shipments for the first four months of 1950-51 amounted to 4.1 million bushels as against 3.6 million for the same period of the preceding crop year. This increase was shared by all provinces except British Columbia which received only slightly more than half the total for the first third of the 1949-50 crop year. The filing of additional claims for the period under review, however, will increase current crop year totals over those shown in the accompanying table.

Provincial Distribution of Freight-Assisted Wheat Shipments,
1950-51 and 1949-50

Month	New found- land	Prince Edward Island	Nova Scotia	New Brunsw- wick	Quebec	Ontario	British Columbia	Total
- thousand bushels -								
August 1950 ..	4	31	60	37	563	474	242	1,411
September	3	24	78	47	565	379	104	1,200
October	2	4	31	19	348	264	84	752
November	1	6	37	18	372	308	17	759
Totals ..	10	65	206	121	1,848	1,425	447	4,122
Same period 1949-50	9	55	106	85	1,465	1,038	880	3,638

In contrast to the situation in respect of wheat shipments, millfeed shipments under the freight assistance plan for the August-November period of 1950-51 are well below those for the same four months of 1949-50. The preliminary total for the current crop year, subject to revision with the filing of additional claims, is 148,652 tons as against 218,474 tons for the comparable period of 1949-50.

Provincial Distribution of Freight-Assisted Millfeed Shipments,
1950-51 and 1949-50

Province	August 1 to November 30, 1950	August 1 to November 30, 1949
- tons -		
Newfoundland	786	1,081
Prince Edward Island	2,869	4,383
Nova Scotia	13,205	16,217
New Brunswick	9,353	14,887
Quebec	73,523	99,426
Ontario	41,217	65,587
British Columbia	7,699	16,893
Totals	148,652	218,474

Monthly Export Clearances, Etc., in Comparison with the Customs Exports of
Wheat and Wheat Flour

Year and Month	Overseas Clearances of Canadian Wheat	U.S. Imports ^{1/} of Canadian Wheat for Consumption and Grinding in Bond	Customs ^{2/} Exports of Canadian Wheat Flour	Total	Customs ^{3/} Exports of Wheat and Wheat Flour
- thousand bushels -					
<u>1948-49</u>					
August	9,111	1	4,244	13,356	13,829
September	10,555	3	3,671	14,229	11,942
October	11,566	1	6,509	18,076	21,913
November	15,604	6	5,455	21,065	20,792
December	12,744	8	3,803	16,555	18,205
January	14,431	22	3,756	18,209	18,342
February	12,053	43	3,082	15,178	14,214
March	13,806	206	3,612	17,624	13,707
April	13,769	869	3,368	18,006	20,303
May	22,483	1,381	3,780	27,644	26,683
June	23,297	1,899	3,225	28,421	24,850
July	19,561	816	3,589	23,966	23,422
Totals	178,980	5,255	48,094	232,329	228,202
<u>1949-50 ^{4/}</u>					
August	16,639	62	3,898	20,599	24,013
September	14,947	881	3,771	19,599	18,294
October	18,420	1,675	3,240	23,335	21,903
November	20,680	2,019	4,410	27,109	27,292
December	9,751	867	3,798	14,416	21,002
January	10,608	411	3,280	14,299	15,102
February	7,419	495	3,551	11,465	11,216
March	10,232	964	3,712	14,908	13,607
April	8,460	515	3,076	12,051	12,628
May	18,103	4,223	5,317	27,643	23,993
June	17,949	703	4,140	22,792	23,870
July	12,762	672	3,487	16,921	17,222
Totals	165,970	13,487	45,680	225,137	230,142
<u>1950-51 ^{4/}</u>					
August	11,956	459	3,060	15,475	15,247
September	13,172	904	2,273	16,349	15,257
October	12,950	900	3,412	17,262	19,715
November	15,801	2,007	4,732	22,540	20,140
December	8,030	2,149	3,960	14,139	20,424
Totals	61,909	6,419	17,437	85,765	90,783

^{1/} U.S.A. official figures for 1948-49. From August 1949 to date compiled from returns of Canadian elevator licensees and advice from American grain correspondents. ^{2/} Exports for crop years 1948-49, 1949-50 and August and September 1950 revised to remove effect of time lag in the returns made by Customs. Subsequent months to be revised as data become available. ^{3/} Unadjusted as published by the External Trade Division, D.B.S. ^{4/} Subject to revision.

Exports of Canadian Wheat and Wheat Flour

August—December 1950

Destination	November		December		August—December	
	Wheat Flour 1/	Wheat 2/	Wheat Flour 1/	Wheat 2/	Wheat Flour 1/3/	Wheat 2/
	- bushels -		- bushels -		- bushels -	
<u>COMMONWEALTH COUNTRIES</u>						
United Kingdom	2,471,103	7,493,534	2,518,141	4,041,197	7,339,802	30,866,624
<u>Africa</u>						
British East Africa.	-	-	1,147	-	2,295	-
Union of S. Africa .	-	366,800	-	87,360	-	2,686,619
<u>British West Africa</u>						
Gold Coast	23,067	-	20,016	-	92,120	-
Nigeria	1,975	-	1,773	-	11,897	-
Sierra Leone	2,983	-	689	-	20,646	-
<u>Asia</u>						
Hong Kong	303,282	-	64,274	-	717,458	-
India	-	1,748,731	-	1,172,453	-	2,921,184
<u>Europe</u>						
Gibraltar	26,096	-	24,889	-	104,670	-
Malta	-	26,133	-	-	-	1,029,233
<u>North America</u>						
Bahamas	11,025	-	16,470	-	99,972	-
Barbados	36,311	-	1,548	-	148,649	933
Bermuda	7,677	-	6,773	-	40,649	-
British Honduras ...	10,503	-	5,531	13,116	28,315	34,136
Jamaica	161,118	-	76,500	-	586,732	-
Leeward-Windward Is.	81,792	-	56,974	-	347,138	-
Trinidad and Tobago.	206,734	-	91,467	-	796,473	-
<u>South America</u>						
British Guiana	73,683	-	62,501	-	385,623	-
<hr/>						
Totals,	3,417,349	9,635,198	2,948,693	5,314,126	10,722,439	37,538,729
Commonwealth Countries						

Exports of Canadian Wheat and Wheat Flour
August—December 1950 - Continued

Destination	November		December		August—December	
	Wheat Flour 1/	Wheat 2/	Wheat Flour 1/	Wheat 2/	Wheat Flour 1/2/	Wheat 2/
	- bushels -		- bushels -		- bushels -	
<u>FOREIGN COUNTRIES</u>						
<u>Africa</u>						
Azores and Madeira .	8,672	-	2,344	-	15,786	-
Belgian Congo	20,295	-	17,514	-	90,738	3,674
Canary Islands	-	-	459	-	61,339	-
French Africa	-	-	-	-	20,259	-
Liberia	652	-	846	-	5,243	-
Morocco	38,916	-	27,671	-	242,996	-
Portuguese Africa ..	616	-	459	-	82,061	-
<u>Asia</u>						
Arabia	513	13,388	6,552	-	23,121	45,119
China	35,568	-	-	-	41,823	-
Indonesia	2,529	-	5,967	-	8,496	-
Israel	-	-	-	-	-	1,280,874
Japan	58,370	-	87,601	16,656	389,484	16,656
Philippine Islands .	335,165	-	281,250	-	1,081,341	-
Siam	7,708	-	4,244	-	45,027	-
Syria	103,478	-	-	-	180,635	-
<u>Europe</u>						
Belgium	-	1,872,260 ^{4/}	-	1,340,660	369	7,831,439
France	-	-	-	-	207	-
Germany	3,442	-	2,065	-	45,967	-
Iceland	22,518	-	68,225	-	109,710	-
Ireland	-	842,833	-	360,733	-	2,042,976
Italy	10,323	1,168,950	19,413	387,510	42,354	2,507,626
Netherlands	-	18,107	-	-	1,130	29,307
Norway	-	-	-	122,640	-	659,201
Portugal	15,034	-	-	-	24,214	-
Spain	-	106,102	-	-	-	976,064
Switzerland	-	1,085,338 ^{4/}	-	42,933	-	4,396,588
Yugoslavia	3,510	-	3,974	-	27,018	-
<u>North America</u>						
Alaska	-	-	-	-	2,299	-
Costa Rica	30,231	-	29,835	23,334	159,822	93,334
Cuba	149,602	-	141,786	2,000	1,094,679	5,000
Dominican Republic .	18,347	-	13,536	-	103,770	7,200
El Salvador	10,575	-	19,598	10,000	88,578	20,000
French West Indies .	1,836	-	-	-	2,296	-
Guatemala	28,265	-	46,085	-	153,909	-
Haiti	42,039	-	37,328	-	183,384	-
Honduras	1,836	15,380	1,818	-	13,217	15,380
Netherlands Antilles	16,060	-	9,486	-	90,666	-

Exports of Canadian Wheat and Wheat Flour,
August—December 1950 - Concluded

Destination	November		December		August—December	
	Wheat Flour <u>1/</u>	Wheat <u>2/</u>	Wheat Flour <u>1/</u>	Wheat <u>2/</u>	Wheat Flour <u>1/3/</u>	Wheat <u>2/</u>
	- bushels -		- bushels -		- bushels -	
<u>FOREIGN COUNTRIES</u>						
<u>North America</u>						
Nicaragua	6,678	-	2,551	-	34,227	-
Panama	23,422	-	22,477	-	111,100	-
St. Pierre Miquelon.	1,031	-	2,326	-	8,545	-
<u>United States</u>						
Flour in terms of wheat	62,671	-	52,650	-	238,923	-
For grinding in bond <u>5/</u>	-	1,620,283	-	1,244,287	-	5,017,256
For domestic consumption <u>5/</u>	-	387,041	-	904,504	-	1,401,720
Virgin Islands	1,589	-	3,159	-	8,397	-
<u>Oceania</u>						
Guam	459	-	-	-	918	-
<u>South America</u>						
Bolivia	1,148	41,738	-	312,929	1,148	716,167
Brazil	-	-	-	-	-	377,066
Chile	-	696,267	-	-	-	2,136,664
Colombia	20,101	226,623	8,937	96,222	434,587	987,286
Ecuador	9,518	77,516	18,054	-	55,935	141,818
Peru	31,442	-	688	-	32,130	75,627
Surinam	17,338	-	6,484	-	65,983	-
Venezuela	173,601	1,104	65,988	-	1,291,122	4,770
<u>Totals,</u>						
Foreign Countries ..	1,315,098	8,172,930	1,011,370	4,864,408	6,714,953	30,788,812
<u>Grand Totals,</u>						
Exported	4,732,447	17,808,128	3,960,063	10,178,534	17,437,392	68,327,541

1/ Canadian Customs Returns - Conversion rate 4 1/2 wheat bushels equal 1 barrel.

2/ Overseas clearances as reported by the Statistics Branch of the Board of Grain Commissioners. Subject to revision.

3/ Exports for August and September 1950 revised to remove effect of time lag in the returns made by Customs.

4/ Revised: 12,710 bushels deducted from Belgium and added to Switzerland.

5/ Compiled from returns of Canadian elevator licensees and advice from American grain correspondents.

Weekly Average Prices of Canadian Wheat
Basis in Store Fort William-Port Arthur or Vancouver

Grade	Week ending			
	Dec. 30	Jan. 6	Jan. 13	Jan. 20
- cents and eighths per bushel -				
<u>CANADIAN WHEAT BOARD CASH PRICES</u>				
<u>WHEAT</u>				
(1) Initial Payment to Producers 1950-51 Pool				
1 Hard	140	140	140	140
1 Northern	140	140	140	140
2 Northern	137	137	137	137
3 Northern	130	130	130	130
4 Northern	122	122	122	122
5 Wheat	112	112	112	112
6 Wheat	106	106	106	106
Feed Wheat	100	100	100	100
(2) Domestic and Export				
(International Wheat Agreement)				
1 Hard	190/6	189/1	189/1	189/2
1 Northern	190/6	189/1	189/1	189/2
2 Northern	187/6	186/1	186/1	186/2
3 Northern	183/6	182/1	182/1	182/2
4 Northern	178/6	177/1	177/1	177/2
5 Wheat	165/6	165/1	166/5	168/2
6 Wheat	160/6	161	163/5	165/2
Feed Wheat	152/6	151/1	152/1	152/2
1 C.W. Garnet	182/6	181/1	181/3	182/2
2 C.W. Garnet	181/6	180/1	180/3	181/2
3 C.W. Garnet	176/6	175/1	175/3	176/2
1 Alta. Red Winter	190/6	189/1	189/1	189/2
2 Alberta Winter	187/6	186/1	186/1	186/2
3 Alberta Winter	182/6	181/1	181/1	181/2
1 C. W. Amber Durum	190/6	189/1	189/1	189/2
2 C.W. Amber Durum	188/6	187/1	187/1	187/2
3 C.W. Amber Durum	178/6	177/1	177/1	177/2
(3) Export - Class II				
1 Hard	197/6	196/1	197/3	203/1
1 Northern	197/6	196/1	197/3	203/1
2 Northern	194/6	193/1	194/3	200/1
3 Northern	190/6	189/1	190/3	196/1
4 Northern	185/6	184/1	185/3	191/1
5 Wheat	165/6	165/1	166/5	168/2
6 Wheat	160/6	161	163/5	165/2
Feed Wheat	152/6	151/1	152/1	152/2
1 C.W. Amber Durum	197/6	196/1	197/3	203/1
2 C.W. Amber Durum	195/6	194/1	195/3	201/1
3 C.W. Amber Durum	185/6	184/1	185/3	191/1

Licensed Storage Capacity of Canadian Grain Elevators
as at December 1, 1950

Province	Kind of Licence	Elevators Proper and Permanet Annexes	Temporary Annexes	Total
		bu.	bu.	bu.
<u>WESTERN DIVISION</u>				
Manitoba:	Public Country	26,599,100	8,671,000	35,270,100
	Private Country	87,000	-	87,000
	Mill	1,775,000	-	1,775,000
	Private Terminal	2,940,000	200,000	3,140,000
	Semi-Public Terminal .	3,500,000	-	3,500,000
		<u>34,901,100</u>	<u>8,871,000</u>	<u>43,772,100</u>
Saskatchewan:	Public Country	107,572,700	36,307,700	143,880,400
	Private Country	29,000	-	29,000
	Mill	4,906,500	-	4,906,500
	Public Terminal	11,000,000	-	11,000,000
		<u>123,508,200</u>	<u>36,307,700</u>	<u>159,815,900</u>
Alberta:	Public Country	72,044,400	25,811,950	97,856,350
	Private Country	207,500	-	207,500
	Mill	3,994,000	-	3,994,000
	Private Terminal	1,755,000	-	1,755,000
	Public Terminal	6,100,000	-	6,100,000
		<u>84,100,900</u>	<u>25,811,950</u>	<u>109,912,850</u>
British Columbia:	Public Country	1,101,000	243,000	1,344,000
	Mill	1,150,110	-	1,150,110
	Semi-Public Terminal .	20,474,500	-	20,474,500
	Public Terminal	1,250,000	-	1,250,000
		<u>23,975,610</u>	<u>243,000</u>	<u>24,218,610</u>
Ontario:	Public Country	65,000	-	65,000
	Mill	1,480,000	-	1,480,000
	Private Terminal	2,435,000	-	2,435,000
	Semi-Public Terminal .	82,017,210	-	82,017,210
		<u>85,997,210</u>	<u>-</u>	<u>85,997,210</u>
Totals, Western Division		<u>352,483,020</u>	<u>71,233,650</u>	<u>423,716,670</u>
<u>EASTERN DIVISION</u>				
Ontario:	Eastern	52,325,000	-	52,325,000
Quebec:	Eastern	24,912,000	-	24,912,000
New Brunswick:	Eastern	3,076,800	-	3,076,800
Nova Scotia:	Eastern	2,200,000	-	2,200,000
Totals, Eastern Division		<u>82,513,800</u>	<u>-</u>	<u>82,513,800</u>
Grand Totals, Licensed Storage ..		<u>434,996,820</u>	<u>71,233,650</u>	<u>506,230,470</u>

Source: Board of Grain Commissioners for Canada.

Summary of Storage Capacity as at December 1, 1950

Type of Storage	Location	Capacity bu.
Licensed Permanent Storage -	Western Division	352,483,020
	Eastern Division	82,513,800
Licensed Temporary Storage -	Western Division	71,233,650
Unlicensed Permanent Storage -	Manitoba	318,000
	Saskatchewan	2,180,000
	Alberta.....	1,455,000
	British Columbia ...	427,300
	Ontario	9,570,000
Total Storage Capacity, Licensed and Unlicensed, Temporary and Permanent		520,180,770 ^{1/}

^{1/} Permanent storage accounted for 448,947,120 bushels of this amount. For a historical series on the capacity of Canadian grain elevators at December 1, 1900-1949 see page 15 of the January 1950 issue of this publication.

Total licensed grain storage capacity in Canada at December 1, 1950 amounted to 506.2 million bushels of which 435.0 million were in elevators proper and permanent annexes and 71.2 million in temporary annexes. On the same date unlicensed storage capacity was 14.0 million bushels, making a combined total of 520.2 million bushels of licensed and unlicensed storage. On a regional basis, 83.7 per cent of the total licensed storage capacity was located in the Western Division and 16.3 per cent in the Eastern Division. Total licensed storage capacity of elevators in the Prairie Provinces was as follows in million of bushels: Saskatchewan, 159.8; Alberta 109.9; and Manitoba, 43.8.

A summary of licensed and unlicensed elevators in Canada compiled by the Board of Grain Commissioners indicates that all but 131 of the total of 5,598 are public country elevators. Mill, semi-public terminal, and eastern elevators make up the bulk of the remainder.

Number of Elevators, Licensed and Unlicensed, as at December 1, 1950

	Public Country	Private Country	Mill	Private Terminal	Public Terminal	Semi- Public Terminal	Eastern	Total
B.C.	31	-	11	-	1	9	-	52
Alta. ...	1,690	4	12	4	3	-	-	1,713
Sask. ...	3,034	1	10	-	2	-	-	3,047
Man.	707	4	6	2	-	2	-	721
Ont.	5	-	3	2	-	25	18	53
Que.	-	-	-	-	-	-	8	8
N.B.	-	-	-	-	-	-	3	3
N.S.	-	-	-	-	-	-	1	1
Canada ..	5,467	9	42	8	6	36	30	5,598

CANADIAN FLOUR MILLING SITUATION

Production - Wheat flour production reported by Canadian mills for December 1950 amounted to 2.0 million barrels, a decrease of approximately 6 per cent from each of the preceding two months. Mills reporting operations during December had a rated capacity of 97,159 barrels and, on the basis of a 25-day working period, 81.3 per cent of the rated capacity was effective. Production for the first five months of 1950-51 showed an increase over the corresponding period of 1949-50, with the totals standing at 9.8 million and 9.0 million barrels, respectively.

Exports - Customs returns indicate that Canadian wheat flour exports during December amounted to 880,014 barrels, with approximately 64 per cent of the total, 559,587 barrels, going to the United Kingdom. The next largest shipments went to the Philippine Islands (62,500 barrels), Cuba (31,508 barrels), Trinidad and Tobago (20,326 barrels) and Japan (19,467 barrels). The preliminary total for the first five months of 1950-51 places flour exports at 3.9 million barrels, compared with 4.2 million in the August-December period of the previous crop year.

Production and Exports of Wheat Flour, Canada, 1938-39 to 1950-51

Crop Year	Production	Exports ^{1/}
	- barrels of 196 pounds -	
1938-39	15,197,297	4,604,245
1939-40	17,778,311	6,781,367
1940-41	19,575,833	10,288,827
1941-42	19,905,741	10,205,778
1942-43	23,590,516	12,575,215
1943-44	24,303,833	13,464,371
1944-45	24,634,905	13,923,832
1945-46	26,435,341	14,470,177
1946-47	28,588,456	16,896,233
1947-48	24,159,696	13,661,573
1948-49	20,379,997	10,687,561
1949-50	20,259,200 ^{2/}	10,151,090
<u>1950-51</u>		
August	1,713,860	680,010
September	1,859,762	505,125
October	2,107,612	758,172
November	2,104,476	1,051,655
December	1,974,903	880,014
Totals	9,760,613	3,874,976
Same Period 1949-50	9,032,064	4,248,189

^{1/} Based on Customs returns. Exports for the crop years 1945-46 to 1949-50, and August and September 1950 revised to remove effect of time lag in the returns made by Customs. Subsequent months to be revised as data become available.

^{2/} Revised.

UNITED STATES SITUATION

Supply Position -

A further revision of the July 1, 1950 carryover stocks has increased total estimated wheat supplies for the 1950-51 crop year to just over the 1,450 million bushel level, almost the same as in 1949-50. Half of the total supplies, some 725 million bushels, is expected to be used domestically, leaving an equivalent amount for export and carryover. Exports of wheat, wheat flour and macaroni for the first half of the 1950-51 crop year totalled 108 million bushels, a decrease of 36 per cent from the 169 million bushels exported during the first half of 1949-50. As a result of reduced exports during the July-December period of 1950, the balance remaining for export on January 1, 1951 was 618.5 million bushels, 61.5 million greater than on the same date last year.

United States Wheat Supplies

Item	1950-51	1949-50
	- million bushels -	
Carryover at July 1	423.3	307.8
New crop	1,026.8	1,141.2
Imports of wheat for domestic use, August—December	1.4	.5
Total estimated supplies	1,451.5	1,449.5
Less estimated domestic requirements for crop year	725.0	723.4
Available for export and carryover	726.5	726.1
Deduct:		
Exports of wheat as grain, July 1 to December 31	91.8	147.8
Exports of wheat flour and macaroni in terms of wheat, July 1—December 31	16.2	21.3
Total exports of wheat, wheat flour and macaroni ...	108.0	169.1
Balance on January 1 for export and carryover	618.5	557.0

No Acreage Allotments for 1951-Crop Corn and Wheat -

The following report is extracted from a press release of the Production and Marketing Administration, United States Department of Agriculture, dated January 5, 1951:

Secretary of Agriculture Charles F. Brannan announced today that there will be no acreage allotments on the 1951 crops of corn and wheat.

"This action is being taken," the Secretary said, "because of the need for maximum production of these basic food and feed grains in the national emergency proclaimed by the President on December 16. Ample supplies of both corn and wheat are an essential safeguard in the national defense program.

"As for wheat, even though the supply of wheat is substantially greater than domestic requirements and probable exports during the remainder of the 1950-51

marketing year, it is advisable to terminate acreage allotments at this time. The wheat carryover at the end of this current marketing season is not expected to exceed 430 million bushels, which would be about the same as at the beginning of the season. Termination of all wheat allotments at this time will afford producers an opportunity to increase their acreage of spring wheat.

"This call for increased acreages of wheat and corn," the Secretary warned, "does not mean a call for a plow-up of acreages that from the standpoint of conservation might better be left in hay or pasture and other essential crops. For our increased live-stock numbers we will need pasture as well as feed, and each farmer should make sure that in devoting more land to wheat and corn he is not doing violence to continuing needs for soil conservation."

Secretary Brannan had announced on June 26, 1950 that no marketing quotas would be proclaimed for the 1951 wheat crop but that acreage allotments would be issued at a later date. On July 14 a national allotment of 72.8 million acres was announced for the 1951 crop. This amount was the same as the final wheat allotment for 1950.

With average yields, it was expected that the 1951 allotment would result in a 1951 wheat crop of 1,150 million bushels. This compares with a 1950 crop of approximately 1,027 million bushels. State acreage allotments for the 1951 crop were announced on August 1, with the statement that the State allotments would in turn be broken down by each State into county allotments, which would then be divided into individual farm allotments.

Today's announcement relieves all wheat producers from compliance with allotments as a condition for price support which has been announced at 90 per cent of parity as of July 1, 1951. On August 21, the Secretary announced a national average price support of not less than \$1.99 a bushel for 1951-crop wheat, which is the same as the support level now in effect for the 1950 crop.

Wheat Stocks on Farms - According to the January crop report of the United States Department of Agriculture, January 1 stocks of wheat on farms totalled 335,670,000 bushels, slightly larger than the 327 million bushels on farms a year ago but the second lowest stocks for the date since 1941. The 10-year average stocks was 368 million bushels. Disappearance of wheat from farms during the October-December 1950 period amounted to 148 million bushels, compared with disappearance of 145 million bushels for the like period a year ago and the 10-year average of 141 million bushels. Except for a low disappearance in the South Central States, where a short crop was produced last year, movement of the crop from farms has been about normal. In the North Dakota and Montana, high moisture content wheat has delayed movement to market to some extent, while the lack of available box cars has slowed movement from country elevators to terminal markets in areas where large crops were produced last year.

Farm reserves of wheat are considerably higher than a year ago in the late spring wheat States of North Dakota, Montana, Washington and Idaho. Likewise, Nebraska stocks are relatively large compared with recent years but the crop of 1950 was rather large. However, stocks of wheat in most of the eastern North Central States is relatively low compared with farm holdings a year earlier. In the southern Great Plains States of Kansas, Oklahoma, Texas and New Mexico, January 1 wheat stocks are materially below a year ago. The combined Texas and Oklahoma farm stocks of 5,420,000 bushels are only one-fourth as large as the

21,691,000 bushels in these 2 States a year earlier. The short 1950 crop production in these States is the main factor contributing to low farm stocks in this area.

July—December Grain Exports - On January 22 the Production and Marketing Administration of the U. S. Department of Agriculture estimated July—December exports of United States grains and grain products at approximately 5,468,000 long tons (217,637,000 bushels of grain equivalent) as compared with 7,319,000 long tons (288,708,000 bushels of grain equivalent) in the like period of 1949.

United States Grain Exports, July—December 1949 and 1950

Month	1949		1950	
	Wheat, Flour and Macaroni	Other Grains and Products <u>1/</u>	Wheat, Flour and Macaroni	Other Grains and Products <u>1/</u>
- thousand bushels -				
July	30,949	19,999	18,316	13,694
August	30,799	24,086	14,830	18,290
September	33,337	15,950	18,141	15,540
October	25,947	12,923	18,353	17,948
November	23,095	24,256	18,719	22,495
December	24,973	22,394	19,634 <u>2/</u>	21,677 <u>2/</u>
Totals ..	169,100	119,608	107,993	109,644 <u>3/</u>

1/ Includes corn, oats, grain sorghums, barley, rye, corn grits and meal, corn starch and flour, oatmeal and malt.

2/ Preliminary.

3/ Includes 54,224,000 bushels of corn, 835,000 bushels of oats, 37,098,000 bushels of grain sorghums, 11,952,000 bushels of barley, and 835,000 bushels of rye. (Corn includes 17,813,000 bushels to Canada, a part of which is for storage for U. S. commercial accounts).

Flour Production - Wheat flour production by United States mills during November totalled 18.5 million sacks, a decline of 0.3 million sacks from the October output, according to the Bureau of the Census. The average production per working day in November was 881,000 sacks compared with a daily average of 855,000 sacks in October, and 909,000 sacks per working day in November, 1949. Production in most states showed an average decrease of about 4 per cent from the October level but this decrease was offset by increases averaging 6 per cent in six of the states. Wheat flour mills operated at 76.8 per cent of capacity in November, compared with 74.5 per cent in the previous month. Wheat grindings amounted to 42.9 million bushels in November as against 43.7 million in October.

Chicago and Minneapolis Cash Wheat -

New seasonal high points were posted in both the Chicago and Minneapolis cash wheat markets early in January, with No. 1 Dark Northern reaching the \$2.40 per bushel level in the latter market for the first time since last July. Both futures and cash markets remained highly sensitive to international developments, and some uncertainty was also evident as to the status of grains under the impending price controls. Some strength was added to the cash market through record sales under the International Wheat Agreement, amounting to 11.6 million bushels in the week ending January 9 and 19.0 million bushels in the following week. Domestic demand, however, was rather quiet, with millers generally acquiring only sufficient inventories for current needs.

Daily Cash Wheat Prices on the Chicago and Minneapolis Markets

Date	Chicago		Minneapolis	
	Grade	Price	Grade	Price
		cents per bu.		cents per bu.
Dec. 29, 1950	4 Mixed	234 1/4	1 Dark Northern	238 1/2
30		Market Closed		
Jan. 1, 1951		New Year's Day		
2	2 Red Tough	239 1/4	1 Dark Northern	238 1/4
3	3 Red Tough	234	1 Dark Northern	238 1/4 - 239 1/4
4	1 Yellow Hard	246 1/2	1 Dark Northern	238 5/8 - 239 5/8
5	3 Red Tough	238 1/2	1 Dark Northern	239 1/8 - 240 1/8
6	4 Hard	243 1/4	1 Dark Northern	237 3/4 - 238 3/4
8	3 Red	246	1 Dark Northern	240 3/4
9	4 Red	240 1/4	1 Dark Northern	241 5/8
10	3 Red	243	1 Dark Northern	240 3/8
11	None		1 Dark Northern	240 3/8
12	Sple. Grade Red	222	1 Dark Northern	240 1/4
13	2 Mixed	243 1/4	1 Dark Northern	238
15	2 Red	242	1 Dark Northern	240 5/8
16	2 Red	243 1/2	1 Dark Northern	238 7/8
17	4 Red	238 1/2	1 Dark Northern	239 1/8
18	3 Red	240 3/4	1 Dark Northern	238 3/8 - 239 3/8
19	2 Hard	243 3/4	1 Dark Northern	239 1/4 - 240 1/4
20	3 Hard	242 1/2	1 Dark Northern	241 1/8
22	3 Red	245 1/2	1 Dark Northern	241 5/8
23	2 Red	241	1 Dark Northern	242 1/4
24	3 Red	241	1 Dark Northern	240 7/8

Chicago Wheat Futures -

The Chicago wheat futures market maintained a predominantly firm tone throughout the period January 2 to 27, with all futures reaching new highs in the early part of the month. General international conditions, particularly the Korean situation and the possibility of stockpiling supplies, continued to outweigh such normally bearish factors as large stocks, reduced exports, and the removal of acreage allotments on the 1951 crop. Further uncertainty during the month was added to the market through speculation as to what effect price controls would have. However, when the regulations were made known on January 26, grains were not affected because they were selling below parity levels. The market reacted favourably on the following day, with all futures advancing from 2 to 3 cents.

Chicago Wheat Futures, High Points of Closing

Date	March	May	July	September
- cents and eighths per bushel -				
January 1, 1951		New Year's Day		
2	246/3	245	240/1	241/1
3	247	245/6	241/1	242/3
4	246/7	245/3	241	242/6
5	247/4	246	241/5	243/2
6	246/4	245/1	240/3	241/7
8	248/1	247	242	243
9	248/3	247/3	241/5	242/5
10	246/1	246/1	240/4	241/5
11	246/3	245/5	239/4	240/7
12	245/4	245/3	239/2	240/2
13	243/1	243/1	236/1	237/4
15	244/6	245	238	239
16	243	243/3	236/4	237/4
17	243/6	243/5	237/7	239/2
18	242/3	242/7	237/5	238/1
19	243/5	243/7	239/2	240
20	244/6	245/2	241/3	242
22	245/3	246/1	242	242/3
23	245/2	246	241	241/2
24	244/2	244/4	239/5	239/7
25	244/6	244/5	239/4	240/3
26	244/2	244	238/3	239/1
27	246/2	246/7	241/4	242/4

ARGENTINE SITUATION

Supply Position - The 1950 Argentine wheat crop has been officially estimated at 222 million bushels, an increase of 33 million over the 1949 outturn. While no official statistics are available on the carryover at December 1, trade sources have indicated that it was probably in the neighbourhood of 7 million bushels. A carryover of this size together with the new crop would place total supplies for 1950-51 at 229 million bushels, slightly less than for 1949-50. On the assumption that domestic requirements will be comparable to those for 1949-50, approximately 100 million bushels will be available for export and carryover. Trade sources are of the opinion, however, that the new crop could be as much as 20 million bushels below the official estimate and, if this should prove correct, estimates of amounts available for domestic use and export will have to be reduced accordingly.

Argentine Wheat Supplies

Item	1950-51	1949-50
	- million bushels -	
Carryover at beginning of crop year (December 1)	7	44
New crop	222	189
Total estimated supplies	229	233
Less estimated domestic requirements for crop year	129	129
Available for export and carryover	100	104
Deduct:		
Exports of wheat as grain, December	5	5
Exports of wheat flour in terms of wheat, December	<u>1/</u>	<u>1/</u>
Total exports of wheat and wheat flour	5	5
Balance on January 1 for export and carryover	95	99

1/less than 100,000 bushels.

Exports of wheat during December 1950 amounted to approximately 5 million bushels, the same as in December 1949. Based on the statistical position as indicated above, the balance remaining on January 1, 1951 for export and carryover was 95 million bushels as against 99 million a year ago. Data for both years are subject to revision as additional information is made available.

The following account of the Argentine situation has been extracted from a report provided by Mr. W. B. McCullough, Commercial Secretary (Agriculture) at Buenos Aires, and is reproduced with the kind permission of the Trade Commissioner Service. Where practicable, conversions of Argentine measures to Canadian equivalents have been made for the convenience of our readers. Price conversions have been made in terms of the United States dollar at the rate of 5 pesos to the dollar.

Growing Conditions - Weather conditions were generally variable throughout the grain belt over the past four weeks. There were heavy showers of up to 3 inches in the corn zone the last week of December, bringing the total rainfall in some districts in southern Santa Fe to above normal for this period. In the

provinces of Cordoba and La Pampa rainfall has been light during the past month. In all zones there were strong winds and scattered hail storms causing damage to unharvested grain. Pastures are generally good for this time of the year.

Wheat - The first official estimate of the 1950-51 wheat crop, recently published, placed the crop at 6,045,800 metric tons (222.1 million bushels) as compared with the official estimate of 5,144,000 (189.0 million bushels) last season. This figure was included in the monthly publication of statistics, the second to be issued since 1948, and presumably made before the damage from rust was fully appraised. Lately, trade estimates have placed the crop at about 5.5 million tons (202.1 million bushels). Harvesting is practically completed in all zones. The wet weather in late November and early December favoured the development of rust and together with damage from frost, has resulted in a considerable variation in yields. In Cordoba, yields were from 500 to 1,200 kilos per hectare (7.4 to 17.8 bushels per acre) in Santa Fe from 600 to 1,500 (8.9 to 22.3 bushels per acre) and in Entre Rios and La Pampa from 700 to 1,100 kilos per hectare (10.4 to 16.4 bushels per acre). In the south of the province of Buenos Aires, which suffered less from rust damage, yields were from 1,000 to 1,600 kilos per hectare (14.9 to 23.8 bushels per acre).

As a result of the extensive damage from rust, the quality of this year's crop is poorer than last year, particularly in the northern zone where there is a substantial percentage which will grade only as feed wheat. It has been announced that IAPI will buy feed wheat at 21.00 pesos per 100 kilos (\$1.14 per bushel) as compared with 30.50 pesos (\$1.66 per bushel) for standard grade wheat.

Increase in Current Producers' Prices for Grains - On January 12th the Ministry of Economic Affairs announced an increase of 2.50 pesos on the basic prices for the 1950-51 crops of wheat, oats, barley and rye. This brings growers' prices for wheat to 30.50 (\$1.66 per bushel), oats 21.00 (\$0.65 per bushel), brewers' barley 23.50 (\$1.02 per bushel) and rye 23.50 (\$1.19 per bushel) all per 100 kilos, basis railcar Buenos Aires.

The original prices for the current crops were announced last April, well in advance of seeding. However, costs of production have been rising in the meantime and rural organizations have been pressing for an increase of up to 5 pesos (\$1.00) in the official prices. It is claimed that the new wage scale for harvest labour announced in December has absorbed almost all the increase over last year's price. Wind and hail storms in December and attacks of rust have greatly reduced yields and made the wheat crop much less remunerative. Other adverse factors have been the higher cost of sacks, the rise in road transport tariffs, the shortage and high cost of machinery and spare parts.

The new prices to the grower, as compared with those prevailing previously, in dollars per bushel, railcar Buenos Aires, are as follows:

Growers' Prices - Argentina

Grain	1949-50	Former Prices 1950-51			New Prices 1950-51(Jan.12)		
		Basic	Bonus	Total	Basic	Bonus	Total
Wheat	1.28	1.28	0.24	1.52	1.42	0.24	1.66
Oats	0.43	0.43	0.14	0.57	0.51	0.14	0.65
Rye	0.84	0.84	0.23	1.07	0.96	0.23	1.19
Brewers' Barley.	0.74	0.74	0.17	0.91	0.85	0.17	1.02

Property owners selling grain in payment of rent receive the basic price and not the bonus. Any deductions or premiums on a percentage basis from the specific weight are calculated on the basic price. In addition, landowners receiving grain as rent must pay for new sacks at the following rates: wheat 0.83 pesos (16.6 cents); oats 1.18 pesos (23.6 cents); barley 0.90 pesos (18 cents); rye 0.83 pesos (16.6 cents) and flax 0.82 pesos (16.4 cents) per sack.

New Sales: India - A new barter deal has been completed whereby Argentina will supply 468,000 metric tons (17.2 million bushels) of wheat for 60,000 tons of Indian jute, to be shipped during the current year. Last year the quantities involved were 546,000 tons (20.1 million bushels) of wheat for 70,000 tons of jute covered by two barter deals.

France - Under the terms of a protocol to the trade agreement between France and Argentina, the latter agrees to supply the following grains during the current year valued in millions of French francs: wheat 4,300 corn 9,800 and flaxseed and linseed oil 4,100.

Grain Exports - Wheat shipments during the year 1950 show a considerable improvement over last year as do oats and flax. Other grains, however, especially corn, are on a lower level. Flax appears among exports for the first time in three years due to the reversal of government policy to ship flax unprocessed.

Argentine Grain Shipments

Grain	1950	1949	1948
- thousand bushels -			
Wheat	100,811	67,492	78,765
Corn	31,118	42,574	99,237
Flax	5,160	-	-
Oats	25,246	12,443	5,288
Rye	6,782	7,720	5,573
Barley	4,399	9,108	30,583
- short tons -			
Flour	7,411	2,262	12,564
Bran and middlings	242,823	285,941	399,486

Brazil remained Argentina's best customer for wheat taking 974,156 tons (35.8 million bushels) in 1950 as compared with 746,463 tons (27.4 million bushels) last year. Italy took a little over 500,000 tons (18.4 million bushels) in both 1949 and 1950, but in the latter year India became prominent for absorbing 517,333 tons (19.0 million bushels) on an exchange deal for jute. Spain, which was in third position in 1949, became a minor importer of Argentine wheat in 1950 due to the cancellation of the Argentine credit facilities.

Shipments by destination for the year 1950 are as follows:

Exports of Argentine Grain, January—December 1950

Destination	Wheat	Corn	Flax	Oats	Rye	Barley
- thousand bushels -						
Austria	-	-	-	-	14	-
Belgium	388	2,493	39	1,245	114	164
Brazil	35,794	-	-	6	-	-
Canada	-	-	-	1,471	-	-
Chile	2,186	-	-	-	-	-
Cuba	-	-	-	162	-	-
Denmark	-	-	39	167	829	-
Finland	559	-	-	-	-	-
France	-	8,799	1,005	-	-	-
French Africa	-	110	-	-	-	-
Germany	6,760	-	262	1,748	333	454
Holland	214	1,503	1,693	5,570	958	459
India	19,009	-	-	-	-	30
Ireland	-	87	-	491	-	-
Italy	18,690	410	180	1,860	981	-
Japan	7,413	-	-	-	-	1,451
Lebanon	-	-	-	126	276	-
Norway	-	-	-	389	1,569	-
Paraguay	1,219	-	-	-	-	-
Peru	1,463	-	-	-	-	-
Portugal	1,159	105	-	324	-	-
South Africa	-	-	-	1,174	-	-
Spain	1,793	92	-	-	1,653	-
Sweden	1,781	1,626	-	396	-	-
Switzerland	2,383	1,132	20	7,363	55	1,841
United Kingdom ...	-	13,662	1,906	-	-	-
United States	-	-	-	2,530	-	-
Uruguay	-	1,099	-	224	-	-
Yugoslavia	-	-	16	-	-	-
Totals	100,811	31,118	5,160	25,246	6,782	4,399

AUSTRALIAN SITUATION

Supply Position -

Australian wheat supplies for 1950-51 are currently placed at 226.6 million bushels, comprised of carryover stocks of 41.6 million and the new crop estimated at 185 million. While carryover stocks are more than double those of November 30, 1949, the indicated decrease in production from the 1949 crop leaves current crop-year supplies some 10.7 million below those of 1949-50. However, estimates of both stocks and production are preliminary and trade sources are of the opinion that the new crop may amount to more than the 185 million bushels indicated in the preliminary estimate. On the assumption that domestic requirements are the same as those for 1949-50 (79 million bushels), a balance of 147.6 million will be available for export and carryover in 1950-51.

Australian Wheat Supplies

Item	1950-51 ^{1/}	1949-50 ^{2/}
	- million bushels -	
Carryover at November 30 (including flour as wheat) ...	41.6	19.1
New crop	185.0	218.2
Total estimated supplies	226.6	237.3
Less estimated domestic requirements for crop year	79.0	79.0
Available for export and carryover	147.6	158.3
Deduct:		
Exports of wheat as grain, December 1-January 6	8.6	3.3
Exports of wheat flour in terms of wheat		
December 1-January 6	3.3	3.4
Total exports of wheat and wheat flour	11.9	6.7
Balance on January 7 for export and carryover	135.7	151.6

^{1/} Preliminary. ^{2/} Based on information in the December 1950 issue of the "Summary of the Wheat Situation: Australia".

Exports of wheat as grain from the beginning of the current crop year (December 1) to January 6 amounted to 8.6 million bushels, an increase of 5.3 million over the total for the comparable period in 1949-50. Exports of wheat flour in terms of wheat up to January 6, 1951 were 3.3 million bushels, practically unchanged from the preceding crop year.

Australian Cable - The following cable, dated January 15, 1950, has been received from the Commercial Secretary for Canada (Agricultural) in Melbourne:

"Australian wheat stocks at January 6th totalled 140 million bushels. Wheat exports from December 1, 1950 to January 6, totalled 8,596,000 bushels, with shipments mainly to India, Egypt and the United Kingdom. Flour exports for the same period were 61,458 long tons, with 15,873 going to Malaya, 9,492 to Egypt, 7,411 to the United Kingdom, 3,992 to Mauritius, 3,675 to Ceylon and 3,542 to Hong Kong. Deliveries of new season's wheat to Wheat Board now estimated at 167 million bushels."

Historical Data on Production and Disposal of Australian Wheat - The accompanying table on production and disposal of Australian wheat has been extracted from the December, 1950 issue of the Summary of the Wheat Situation: Australia published by the Commonwealth Bureau of Census and Statistics, Canberra.

Production and Disposal of Wheat, Australia

Particulars	Average three years ended Nov.30,1939	Year ended 30th November				
		1946	1947	1948	1949	1950 (a)
- million bushels -						
Opening Stocks (including Flour as Wheat)	10.4	11.5	20.2	13.5	26.4	19.1
Production	164.7	142.4	117.3	220.1	190.7	218.2
Total Available Supplies.	175.1	153.9	137.5	233.6	217.1	237.3
Exports:						
Wheat	75.0	19.4	12.0	87.0	82.4	116.7 (b)
Flour as wheat	31.8	37.7	34.0	44.6	37.1	
Local Consumption:						
Flour as wheat	30.9	32.2	33.5	33.6	34.5	35.5 (b)
Stock feed	8.2	24.4	22.2	20.7	22.6	23.5 (b)
Seed	14.6	13.2	13.8	12.5	12.2	11.7 (b)
Breakfast foods and other uses	(c)	3.0	4.2	4.2	4.2	3.0 (b)
Balance retained on farm (excluding seed)	(d)	3.8	4.3	4.6	5.0	5.3
Closing stocks (including flour as wheat)	14.6	20.2	13.5	26.4	19.1	41.6 (b)
Total Disposals	175.1	153.9	137.5	233.6	217.1	237.3

(a) Subject to revision.

(b) Estimate.

(c) Included with flour.

(d) Included with stock feed.

Exports of Wheat and Wheat Flour, 1949-50 -

Exports of Australian wheat as grain during the crop year ended November 30, 1950 totalled 78.4 million bushels, compared with 83.0 million in 1948-49 and 60.2 million in 1947-48. India retained its position as the chief outlet for Australian wheat, receiving 35.3 million bushels, approximately 45 per cent of the total, during 1949-50. Other countries receiving substantial shipments during the crop year were the United Kingdom, 9.4 million bushels; Japan, 6.9 million; Egypt, 6.5 million; and New Zealand, 5.8 million. Flour exports during 1949-50 amounted to 775,095 short tons, compared with 854,780 in 1948-49 and 784,371 in 1947-48. The chief markets for Australian wheat flour in 1949-50, in order of size of exports, were India, Ceylon, Hong Kong, Malaya, Egypt, and the United Kingdom.

CALENDAR OF WHEAT EVENTS

- January 4 Visible supplies of Canadian wheat, 225.2 million bushels, were at the highest level since July 19, 1945 when stocks in commercial positions totalled 229.9 million bushels.
- 5 Secretary of Agriculture Charles F. Brannan announced that there will be no acreage allotments on the 1951 crops of corn and wheat in the United States. This statement cancelled a previous announcement requiring compliance with acreage allotments as a condition for price support on the 1951 wheat crop.
- 9 Broomhall reports that the 1950 Italian wheat crop has been estimated at 278 million bushels as compared with 275 million in 1949, 250 million in 1948, and 278 million for the 1935-39 average.
- 10 The Monthly Agricultural Report of the Ministry of Agriculture stated that the condition of early-sown winter wheat in England and Wales is generally satisfactory but that some later seedings are thin and backward.
- Stocks of wheat on United States farms as at January 1, 1951 totalled 335.7 million bushels, slightly larger than the 327 million bushels on farms a year ago but the second lowest stocks for the date since 1941.
- 12 The Argentine government in its first estimate of the 1950 wheat crop, placed production at 222 million bushels, an increase of 33 million over the 1949 outturn of 189 million bushels.
- 13 The Canadian Wheat Board's price for Class II 'Commercial' wheat was advanced to \$2.01 1/4 per bushel, basis No. 1 Northern in store Fort William-Port Arthur or Vancouver, the first time since the decontrol of the dollar that this class has been quoted at more than \$2.00 per bushel.
- 19 Argentine wheat exports for the calendar year 1950 amounted to 100.8 million bushels as against 67.5 million in 1949 and 78.8 million in 1948.
- 22 Exports of United States wheat, wheat flour and macaroni during the first half of the 1950-51 crop year totalled 108 million bushels as compared with 169 million for the July-December period of 1949-50.
- 23 The Canadian Wheat Board issued instructions limiting the movement of grain from country elevators to the lakehead to damp grain only in an attempt to get it to terminal driers before the spring thaw. Shipment of other grades of grain to mills and destinations other than the lakehead will not be affected.
- 25 The Rt. Hon. C. D. Howe, Minister of Trade and Commerce, announced that, effective February 1, 1951, the initial payment for western wheat delivered to the Canadian Wheat Board would be increased to \$1.60 per bushel, basis No. 1 Northern in store Fort William-Port Arthur or Vancouver. The increase of 20 cents per bushel will apply to all grades of wheat delivered or to be delivered to the Board during the 1950-51 crop year.

STATISTICS CANADA LIBRARY
BIBLIOTHEQUE STATISTIQUE CANADA



1010686688