

2

22-005

v. 28

no. 11

June 1958

c. 2

DO NOT CIRCULATE

NE PAS PRETER



CANADA

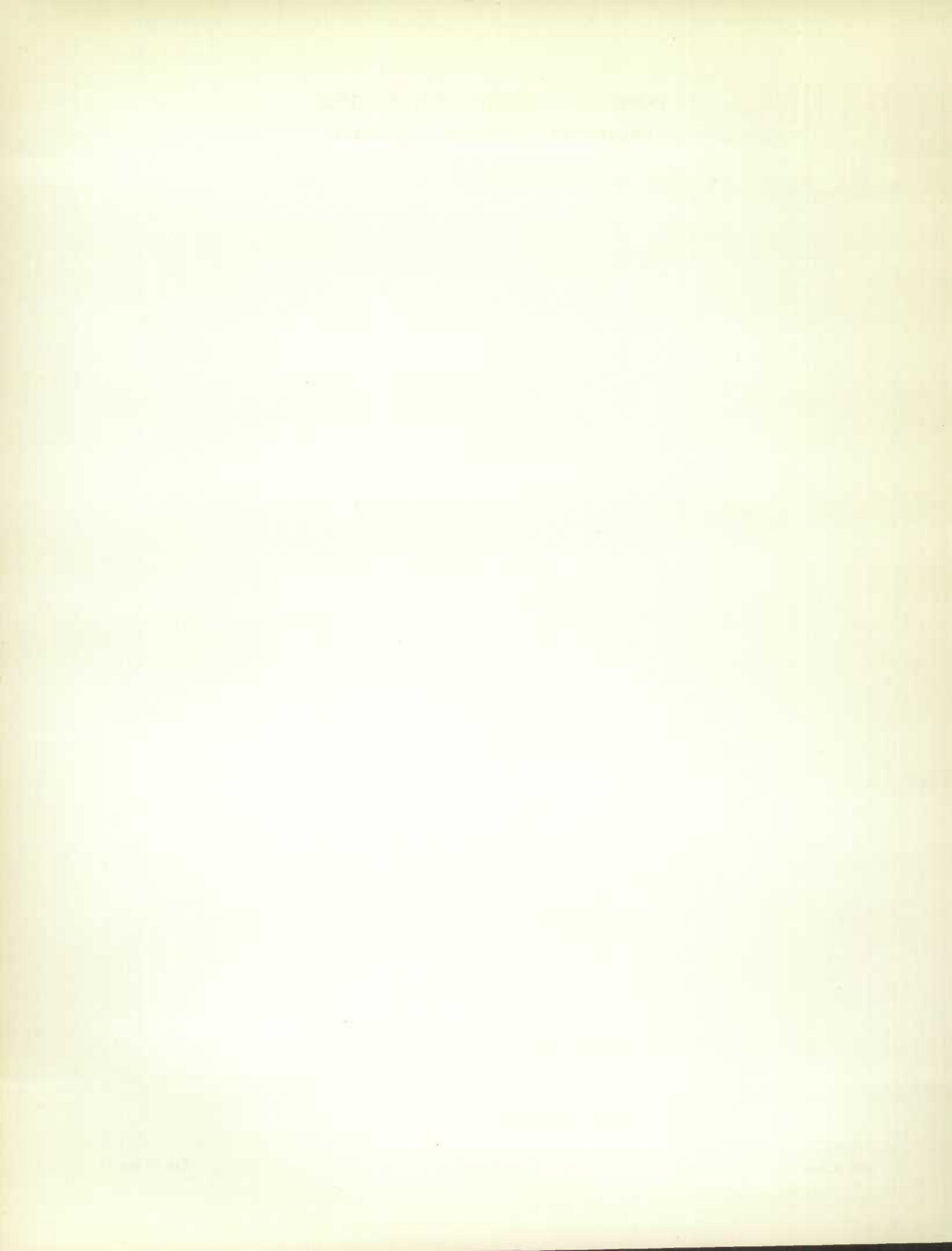
DOMINION BUREAU OF STATISTICS  
AGRICULTURE DIVISION

# THE WHEAT REVIEW



JUNE, 1958

EDMOND CLOUTIER, C.M.G., O.A., D.S.P.  
QUEEN'S PRINTER AND CONTROLLER OF STATIONERY  
OTTAWA, 1958



DOMINION BUREAU OF STATISTICS  
Department of Trade and Commerce

---

THE  
WHEAT REVIEW

JUNE, 1958

*Published by*  
Authority of the Honourable Gordon Churchill  
Minister of Trade and Commerce

Prepared in the Crops Section, Agriculture Division  
Dominion Bureau of Statistics, Ottawa.

# TABLE OF CONTENTS

	Page
World Wheat Situation	
Current Supplies .....	1
Exports .....	1
Notes on World Crops .....	1
World Wheat Trade in 1957-58 May be Second Highest on Record .....	2
I.W.A. Sales and Purchases for Crop Year 1957-58 .....	3
Canadian Situation	
Final Payment on 1956-57 Wheat Pool .....	4
Mr. W.C. McNamara Appointed Chief Commissioner of the Canadian Wheat Board .....	4
Supply Position .....	4
May 1958 Exports of Wheat and Flour Total 40.1 Million Bushels .....	6
Delivery Policy .....	7
Retention of Grain Stocks in Country Elevators .....	7
Crop Conditions in the Prairie Provinces .....	8
Rust Situation .....	8
Lake Shipments of Canadian Grain .....	9
General Quota Position .....	9
Farmers' Marketings of Wheat .....	10
Visible Supply of Canadian Wheat .....	11
Grading of Wheat Inspected, August 1957-May 1958 with Comparisons .....	11
Weekly Visible Supply and Farmers' Marketings (Charts) .....	12
Wheat Shipments to the United States by Destination .....	13
Rail Shipments of Wheat to Maritime Ports .....	13
Rail Shipments of Wheat from Fort William Port Arthur .....	14
Overseas Exports of Canadian Grain by Ports of Loading .....	14
Freight Assistance Shipments .....	15
Monthly Export Clearances in Comparison with Customs Exports of Wheat and Wheat Flour .....	16
Exports of Canadian Wheat and Wheat Flour by Destination .....	17
Canadian Wheat Board Weekly Average Cash Wheat Prices .....	19
Canadian Flour Milling Situation	
Production and Exports .....	21
United States Situation	
Supply Position .....	22
1958 Wheat Crop Forecast 1,271 Million Bushels .....	23
Preliminary Tally in Wheat Referendum Shows 83.7 Per Cent Favourable ....	24
National Average Wheat Support Price to be \$1.82 per Bushel for 1958 Crop	24
Flour Milling Products 1957 .....	24
United States Exports of Wheat and Flour by Country of Destination .....	25
Cash Wheat Prices on the Kansas City and Minneapolis Markets .....	26
Chicago Wheat Futures, High Points of Closing .....	26
Argentine Situation .....	27
Australian Situation .....	32
French Situation .....	36
Calendar of Wheat Events .....	40



## WORLD WHEAT SITUATION

Current Supplies Latest available estimates indicate that supplies of wheat remaining on or about June 1, 1958 in the four major exporting countries for export and for carryover at the end of their respective crop years amounted to 1,725.7 million bushels, representing a decline of 12 per cent from the 1,951.4 million available a year ago. Supplies at June 1, 1958, in millions of bushels, were held as follows, with last year's comparable figures in brackets: United States, 918.2 (965.7); Canada, 680.5 (777.0); Argentina, 82.7 (119.0); and Australia, 44.3 (89.7). Estimates for both years include on-farm stocks as well as those in commercial positions.

Exports Total exports of wheat and wheat flour in terms of grain equivalent from the four major exporting countries during the first ten months (August-May) of the current Canadian crop year, at 694.8 million bushels, were 19 per cent below the 854.2 million exported during the corresponding period of 1956-57. Canada continued to be the only one of the four countries showing wheat exports at a higher level than last year. On a percentage basis, shipments from the four countries during the August-May period of 1957-58 were shared as follows, with corresponding percentages for the same months of 1956-57 in brackets: United States, 46 (52); Canada, 37 (25); Argentina, 9 (10); and Australia, 8 (13). Shipments from each of the four countries during August-May of the current (Canadian) and seven preceding crop years are shown in the table below.

Exports of Wheat and Flour in Terms of Wheat, August-May, 1957-58  
with Comparisons

August-May	United States	Canada	Argentina	Australia	Total
- million bushels -					
1950-51 .....	304.6	178.8	75.8	106.5	665.7
1951-52 .....	413.5	268.5	24.1	81.1	787.2
1952-53 .....	279.8	297.5	19.2	84.8	681.3
1953-54 .....	170.7	209.1	94.1	52.2	526.1
1954-55 .....	226.4	209.7	112.0	81.8	629.9
1955-56 .....	267.7	233.9	97.9	84.6	684.1
1956-57 1/ .....	448.4	214.3	82.6	108.9	854.2
1957-58 2/ .....	319.0	259.6	62.9	53.3	694.8

1/ Revised.      2/ Preliminary.

Notes on World Crops Wheat prospects are promising in most countries of western Europe, with indicated acreage slightly larger than in 1957 and crop condition reported to be generally good despite excessive moisture in some areas. Only minor winter damage occurred to fall-seeded crops but a cold spring caused seeding to be later than usual. Warm weather in May, however, caused crops to make rapid development. In Eastern Europe spring rains were late and lack of sufficient moisture retarded crop development in many areas. As a result, only about average yields are expected in contrast to last year when record crops were harvested in most countries. Warm, sunny weather prevailed over large areas of Europe during the first week of July, offsetting the effect of excessive late-June rains, and bringing some improvement to crop prospects.

In early July warm sunny weather was reported in the United Kingdom after a period of very stormy weather. Although extensive lodging had occurred it was not expected to affect yields to any appreciable extent and given a reasonable period of dry weather a good production of grains was still expected.

Root rot was showing in some grain fields in France but this was not considered serious. Reports on the wheat crop continue to be optimistic and good yields are predicted provided the weather remains favourable during the approaching harvesting period. In Western Germany the weather has become more settled in early July and the general crop situation is satisfactory. In Italy the weather was hot and harvesting was underway. Unofficial estimates placed the wheat crop between 331 million and 367 million bushels compared with 312 million last year.

Extensive areas of Argentina received beneficial rains during the first week of July and, coupled with higher temperatures, promoted germination of recently planted grains. On the basis of preliminary reports, India and Pakistan have harvested wheat crops near the record levels of 1957. India's production is tentatively placed at some 325 million bushels compared with 338 million last year. The crop in Pakistan is estimated at about 140 million bushels, little changed from the 1957 production. Japan's wheat crop is expected to be less than normal as a result of cold weather which prevailed in late March. In Turkey indications are that the size of the harvest will depend to a great extent on the amount of rain received during the remainder of the growing season. Hot, dry weather had caused deterioration in some areas.

Conditions in North Africa appear favourable and production is expected to be somewhat larger than last year. The harvest in Tunisia is forecast as the best in recent years while production in Morocco is well above the small crop of last season. Private estimates place the crop in Algeria at about the same level as in 1957.

Wheat production in the United States was forecast, on the basis of conditions at June 1, at 1,271 million bushels, one of the largest crops on record. The forecast of 1,069 million bushels for winter wheat is a record and 51 per cent above the 1957 outturn. United States production of spring wheat was forecast (as at June 1) at 202 million bushels, 16 per cent less than last year's below-average crop. Production of durum is expected to be only 16 million bushels, one of the smallest outturns in recent years. Rains during the first week of July benefited crops in the three Prairie Provinces, Canada's major grain producing area. General improvement had resulted in the province of Manitoba and good conditions had been maintained in Western Alberta particularly. Although deterioration had been temporarily checked in many parts of Saskatchewan and Eastern Alberta, more rain was urgently needed.

World Wheat Trade in 1957-58 May  
be Second Highest on Record

the volume of world wheat trade in 1957-58 (July-June) will probably be the second highest on record, judging by present indications. Although the current year's exports will be down from the record 1,280 million bushels of last year, they are expected to reach about 1,100 million bushels and thus exceed the 1951-52 level of

According to the June 23 issue of Foreign Crops and Markets, published by the Foreign Agricultural Service, United States Department of Agriculture,



International Wheat Agreement Sales and Purchases for Crop Year 1957-58

Importing Countries	Guaranteed Quantities	S O U R C E						Total Purchases	Remainder 2/
		Canada	Argentina	Australia	France	Sweden	U.S.A.		
		1/	2/	2/	2/	2/	2/		
- thousand bushels -									
Austria .....	3,674	-	-	-	-	-	-	-	3,674
Belgium .....	16,535	1,888	-	3	8	-	1,732	3,631	12,904
Bolivia .....	4,042	-	-	-	-	-	694	694	3,348
Brazil .....	7,349	-	-	-	-	-	-	-	7,349
Costa Rica .....	1,470	454	-	-	-	-	960	1,414	56
Cuba 4/ .....	8,084	604	-	-	-	-	7,480	8,084	-
Denmark .....	1,837	246	-	-	-	-	1,205	1,451	386
Dominican Republic.	1,286	528	-	-	-	-	603	1,131	155
Ecuador .....	1,837	216	-	-	-	-	448	664	1,173
Egypt .....	11,023	-	-	-	-	-	-	-	11,023
El Salvador .....	919	125	-	-	-	-	737	862	57
Germany 4/ .....	55,116	25,526	-	-	6,831	2,224	20,331	54,912	-
Greece .....	11,023	-	-	-	-	-	-	-	11,023
Guatemala 4/ .....	1,653	398	-	-	-	-	1,267	1,665	-
Haiti .....	2,204	463	-	-	-	-	1,406	1,869	335
Honduras Republic .	919	55	-	-	-	-	225	280	639
Iceland .....	73	2	-	-	-	-	21	23	50
India 4/ .....	7,349	-	-	-	-	-	7,459	7,459	-
Indonesia .....	5,144	-	-	2,715	-	-	-	2,715	2,429
Ireland .....	5,512	1,329	-	642	-	-	365	2,336	3,176
Israel .....	8,267	1,421	-	-	-	-	2,360	3,781	4,486
Italy .....	3,674	-	-	-	-	-	-	-	3,674
Japan 4/ .....	36,744	13,182	-	3,082	-	-	20,632	36,896	-
Korea .....	2,205	-	-	-	-	-	204	204	2,001
Lebanon .....	2,756	-	-	-	-	-	-	-	2,756
Liberia .....	73	6	-	-	-	-	40	46	27
Mexico .....	3,674	-	-	-	-	-	-	-	3,674
Netherlands .....	25,721	14,949	-	72	-	-	8,805	23,826	1,895
New Zealand .....	5,879	-	-	5,878	-	-	-	5,878	1
Nicaragua 4/ .....	367	100	-	-	-	-	249	349	-
Norway 4/ .....	6,614	3,448	105	-	1,404	202	1,509	6,668	-
Panama .....	1,102	203	-	-	-	-	563	766	336
Peru .....	7,349	-	-	-	-	-	606	606	6,743
Philippines 4/ .....	6,063	2,270	-	454	-	-	3,360	6,084	-
Portugal .....	5,879	189	-	30	1,483	-	560	2,262	3,617
Saudi Arabia .....	3,674	-	-	-	-	-	108	108	3,566
Spain .....	4,593	-	-	-	-	-	-	-	4,593
Switzerland 4/ .....	6,981	6,708	-	-	-	-	336	7,044	-
Union of S. Africa.	5,512	-	-	-	-	-	-	-	5,512
Vatican City 4/ ...	551	-	-	-	-	-	561	561	-
Venezuela 4/ .....	6,246	1,994	-	-	-	-	4,236	6,230	-
Yugoslavia .....	3,674	-	-	-	-	-	-	-	3,674
Totals .....	294,647	76,304	105	12,876	9,726	2,426	89,062	190,499	
Guaranteed Quantities (Exporting Countries)		100,089	14,296	29,432	16,082	6,255	128,493	294,647	
Balance .....		23,785	14,191	16,556	6,356	3,829	39,431	104,148	

1/ Canadian Sales through June 24, 1958.

2/ Sales recorded by International Wheat Council through June 20, 1958.

3/ The quantities are the unfulfilled balances of the total guaranteed quantities for the year.

4/ Quota filled.

CANADIAN SITUATION

Final Payment  
on 1956-57  
Wheat Pool

The Hon. Gordon Churchill, Minister of Trade and Commerce, announced on June 9 that the final accounting of the 1956-57 Wheat Account had been completed, and that the 1956-57 Pool Account was closed as at May 9.

The surplus available for distribution to producers was \$25,083,697.42. As producers delivered 361.4 million bushels of wheat to the 1956-57 Pool Account, the average per bushel final payment was 6.941 cents.

Mr. W.C. McNamara  
Appointed Chief Commissioner  
of the Canadian Wheat Board

The Hon. Gordon Churchill, Minister of Trade and Commerce, announced on June 9, 1958 that Mr. W. C. McNamara has been appointed Chief Commissioner of The Canadian Wheat Board, in succession to Mr. George McIvor, who resigned last April to enter private industry. Mr. McNamara has been associated with the Canadian Wheat Board since 1942, when he was appointed Supervisor of Car Supply and was involved in wartime transportation problems of the Board. He was appointed special representative of the Board in Washington, D.C., in 1944, and served as an alternative member for the Canadian Government on the Cereals Committee of the Combined Food Board. While in Washington, he worked closely with the International Emergency Food Council in the world-wide distribution of cereals, when urgent demands had to be met. He had an opportunity of meeting many government officials and representatives of the grain trade throughout the world. Mr. McNamara was appointed a Commissioner of the Canadian Wheat Board in 1945, and has been Assistant Chief Commissioner since 1947.

Supply Position      Total estimated supplies of Canadian wheat for the 1957-58 crop year, consisting of the August 1 carryover of 729.5 million bushels and the 1957 production of 370.5 million, amount to 1,100.1 million bushels, representing a decline of 5 per cent from the 1956-57 record total of 1,152.7 million (including imports of 0.1 million bushels). After making an allowance of 160.0 million bushels for anticipated domestic requirements, some 940.1 million are available for export and for carryover during 1957-58 compared with 991.3 million in 1956-57.

Combined exports of wheat as grain and wheat flour in terms of grain equivalent during the August-May period of the current crop year amounted to 259.6 million bushels, surpassing by 21 per cent the total of 214.3 million exported during the same months of the preceding crop year. The balance remaining on June 1, 1958 for export and for carryover amounted to 680.5 million bushels, about 12 per cent less than the June 1, 1957 total of 777.0 million.



# Canadian Wheat Supplies

Item	1956-57 <u>1/</u>	1957-58 <u>2/</u>
- million bushels -		
Carryover in North America at beginning of crop year (August 1) .....	579.6	729.5
New Crop .....	573.1	370.5
Total estimated domestic supplies .....	1,152.6	1,100.1
Imports of wheat for domestic use, August-March ....	0.1	<u>3/</u>
Total estimated supplies .....	1,152.7	1,100.1
Less estimated domestic requirements for crop year .	161.4	160.0
Available for export and for carryover .....	991.3	940.1
Deduct:		
Overseas clearances of wheat as grain, August-May .....	180.9	220.4
Exports of Canadian wheat to U.S., August-May .....	4.6	6.1
Total exports of wheat .....	185.4	226.5
Exports of wheat flour in terms of wheat, August-May .....	28.8 <u>4/</u>	33.1
Total exports of wheat and wheat flour .....	214.3	259.6
Balance on June 1 for export and for carryover .....	777.0	680.5

1/ Subject to revision. 2/ Preliminary. 3/ Less than 50,000 bushels.

4/ Adjusted for time lag in returns made by Customs.

Marketings of wheat by farmers in the three Prairie Provinces up to June 18 of the current crop year amounted to 287.6 million bushels, compared with 287.3 million marketed during the corresponding period of 1956-57. This year's marketings at the week ending June 18 marked the first time since the week ending September 18, 1957 that cumulative marketings of wheat exceeded those of 1956-57. During the five-week period May 15 to June 18, 1958 marketings of wheat amounted to 58.8 million bushels as against 46.6 million in the comparable period of the preceding crop year. During the current five-week period under review some 53.3 million bushels entered domestic and export channels (overseas clearances, plus imports into the United States plus Canadian Domestic use) and as a result the total visible supply at the week ending June 18, at 360.0 million bushels showed a slight increase over the May 14 total of 354.6 million. The total visible supply of Canadian wheat at June 18 this year was below the comparable 1957 total of 377.3 million bushels but above the 1956 figure of 335.8 million.

The bulk of this year's June 18 total visible supply of wheat was accounted for by country elevator stocks with the 215.1 million bushels held in this position, relatively little changed from the 217.5 million of a year ago but above the 202.6 million of two years ago. "In transit rail" (Western Division)

accounted for 15.0 million bushels of the June 18, 1958 total compared with 16.9 million in 1957 and 12.4 million in 1956. Stocks in Lakehead position, at 33.8 million bushels, were well below both the 1957 comparable total of 41.3 million and the 1956 figure of 42.0 million. Some 36.6 million bushels were in Bay, Lake and Upper St. Lawrence Ports at June 18 this year, virtually unchanged from the 36.4 million of a year ago but above the 28.1 million of two years ago. Supplies in Lower St. Lawrence and Maritime Ports, at 19.7 million bushels, were below the 22.9 million in this position at approximately the same date in 1957 but sharply above the 1956 total of 6.3 million bushels. Supplies in West Coast ports (Vancouver-New Westminster, Victoria and Prince Rupert) totalled 9.7 million bushels compared with the 1957 and 1956 comparable totals of 11.4 million and 8.2 million bushels, respectively.

May 1958 Exports of  
Wheat and Flour Total  
40.1 Million Bushels

Combined exports of wheat as grain and wheat flour in terms of grain equivalent during May 1958 were the highest for any month since June 1956 and amounted to 40.1 million bushels. This total represented increases of 55 per cent above the April total of 25.9 million, 72 per cent above the May 1957 figure of 23.3 million and 33 per cent greater than the ten-year (1947-1956) May average of 30.1 million bushels. Exports of wheat as grain during April 1958, at 35.3 million bushels, were 55 per cent greater than the 22.8 million exported during the preceding month and 70 per cent greater than the May 1957 total of 20.7 million bushels. Preliminary Customs returns indicate that the equivalent of 4.9 million bushels of wheat was exported in the form of flour during May 1958, some 59 per cent above the 3.1 million exported during April and 88 per cent above the adjusted May 1957 figure of 2.6 million bushels.

Cumulative exports of wheat as grain during the August-May period of the current crop year amounted to 226.5 million bushels exceeding by 22 per cent the corresponding 1956-57 total of 185.4 million. The United Kingdom, remaining in its position as Canada's leading purchaser of wheat as grain, received shipments totalling 76.6 million bushels and representing 34 per cent of the ten-month total. During the August-May period of the 1956-57 crop year shipments of wheat to the United Kingdom amounted to 66.3 million bushels and accounted for 36 per cent of the total. Other principal markets for Canadian wheat as grain during the first ten months of the current crop year, with figures for the corresponding period of the preceding crop year in brackets, were as follows, in millions of bushels: Japan, 29.4 (26.8); the Federal Republic of Germany, 27.4 (31.6); India, 19.1 (nil); Netherlands, 18.2 (8.1); U.S.S.R. (Russia), 11.3 (nil); Belgium, 10.3 (11.8); Switzerland, 7.5 (9.2); and United States, 6.1 (4.6).

Cumulative exports of wheat flour during the first ten months of the 1957-58 crop year based on preliminary Customs returns were the equivalent of 33.1 million bushels of wheat, about 15 per cent above the adjusted August-May, 1956-57 total of 28.8 million. As with wheat as grain, the United Kingdom was also the major market for Canadian wheat flour. Shipments of wheat flour to that country during the period under review amounted to the equivalent of 11.3 million bushels of wheat and accounted for 34 per cent of the ten-month total. During the August-May period of 1956-57 shipments of Canadian wheat flour to the United Kingdom amounted to the equivalent of 9.1 million bushels and represented 31 per cent of the total. Other leading markets for Canadian wheat flour in terms of grain equivalent, with revised data for the August-May period of the preceding crop year in brackets, were as follows, in millions of bushels: Philippine Islands, 4.1 (4.6); Venezuela, 3.1 (2.5); Ceylon, 1.6 (0.4); United States, 1.5 (1.5); Jamaica, 1.4 (1.2); and Trinidad and Tobago, 1.3 (1.2).



Delivery Policy      Supplementary Quota on Rye      The Canadian Wheat Board, in its Instructions to the Trade, re Quotas No. 66, under date of June 5, 1958 announced in part as follows: "In order to place additional stocks of rye in a marketable position the supplementary quota of ten (10) bushels per acre seeded to rye, as authorized in Instructions to the Trade re Quotas No. 34 of January 9, 1958, will be increased to fifteen (15) bushels per acre seeded to rye, as indicated in producers' delivery permit books, effective on Monday, June 9, 1958 at all delivery points in the designated area.

Producers whose indicated rye acreage was less than thirty (30) acres were previously authorized to deliver a minimum rye quota of three hundred (300) bushels. This minimum is hereby increased to four hundred and fifty (450) bushels. Where no acreage seeded to rye is indicated in the current year's delivery permit book the producer may deliver the above minimum quota provided the rye was produced by him in previous years on land covered by such permit."

Rye      The Canadian Wheat Board in its Instructions to the Trade, re Quotas No. 71, under date of June 18, 1958, announced that "Instructions to the Trade re Quotas No. 66 of June 5, 1958, authorizing a supplementary quota on Rye of fifteen (15) bushels per acre seeded to Rye as indicated in producers' delivery permits, with a minimum delivery of four hundred and fifty (450) bushels will be cancelled on July 15, 1958, and on and after that date further deliveries of Rye must be made on and within the producer's specified acreage quota at his regular delivery point."

Retention of Grain  
Stocks in  
Country Elevators      The Canadian Wheat Board in its Instructions to the Trade No. 48, under date of July 3, 1958 announced that "In view of the wide spread drought in the West, and requests that have been received from certain municipalities that stocks of wheat, oats and barley presently in store country elevators be held for local requirements, the Board is prepared to facilitate the holding of necessary supplies of wheat, oats and barley for local sales purposes, provided prior arrangements are completed by the local authorities concerned for the payment of carrying charges on stocks to be held for this purpose.

In cases where the local municipal authorities approach the Elevator Companies to arrange for specific stocks of wheat, oats or barley to be held at their expense for local resale at the Board's regular daily selling prices, the Elevator Companies should immediately notify the Board, and the Board will enter into a provisional sales contract with the Company on the definite understanding that Board carrying charges on the stocks to be held cease forthwith.

In the event of all the grain covered by the provisional sales contract not being disposed of on a regular local sales basis, within a period to be specified in the provisional sales contract, the Board will agree to cancel the portion of the provisional sales contract not completed on notification from the Elevator Company, such balance to be re-instated for Board carrying charges as from that date and made available for shipment."



Crop Conditions in  
the Prairie Provinces

According to a telegraphic crop report published by the Dominion Bureau of Statistics under date of July 9, rains during the past week have benefited crops in the three Prairie Provinces. General improvement has resulted in Manitoba and good conditions have been maintained in western Alberta particularly. Although deterioration has been temporarily checked in many parts of Saskatchewan and eastern Alberta, more rain is urgently needed. A high proportion of the early-seeded crop has headed and in most districts the straw is short. The hay crop in most areas is light, with extremely poor yields in the drought-stricken areas. Supplementary fodder crops are now being sown in those areas where sufficient moisture has been received.

Recent, heavy widespread rains have materially improved crop outlook in Manitoba. Crops sown on summerfallow, given normal moisture conditions for the next few weeks should produce a reasonable, although below normal yield. Crops on stubble land are mostly beyond help and will yield poorly. The present hay crop is poor and is too far advanced to benefit from recent rains. The second cut of hay may be better and pastures will now improve. Supplementary crops are now being planted to relieve the critical fodder situation. The grasshopper situation is serious in western Manitoba and pea aphids and beet webworms are giving some concern in special crop areas.

Recent rains provided temporary relief for crops in most districts of Saskatchewan but further moisture is needed to improve the outlook. The precipitation checked the deterioration of crops and while some improvement is expected moisture is still inadequate to promote satisfactory development. Severe drought conditions exist in the southeastern, Regina-Weyburn and central districts of the province. Although the precipitation is below normal in the east-central and northern districts and also in the area adjacent to the Alberta border, timely rains have maintained fair to good conditions. Additional moisture is required in all districts. Wheat averages 12 inches and coarse grains 9 inches in height. Many fields of fall rye have been cut for hay. Haying operations are under way and a concerted effort is being made to salvage all possible roughage.

Good to heavy rains occurred during the past week in southern Alberta and throughout the western half of the province as far north as the Dawson Creek-Grande Prairie section in the Peace River. Crop conditions are good in the south although more moisture will be needed soon. Considerable improvement has resulted from rains throughout the western half of the province and average yields are in prospect. Throughout the eastern portion of the province, scattered showers have been received but more rain is urgently needed to prevent deterioration. Crops are only fair in the eastern part. Haying has become general throughout the province, with light yields reported in eastern sections and the northern part of the Peace River District. Insect damage to crops is generally light except in southern Alberta where infestation of the beet webworm has been severe.

Rust Situation

According to a report from the Canada Department of Agriculture's research laboratory at Winnipeg, under date of July 3, a survey in southeastern Manitoba on July 2 failed to reveal any stem rust of wheat, stem rust of oats or crown rust of oats, but a trace of leaf rust of wheat was found in the Red River Valley, near the United States border. On this date in 1957, leaf rust of wheat was much more prevalent than at present and a trace of stem rust of wheat was found on wheat at that time last year. As northerly winds have prevailed over Western Canada and the Great Plains area of the United States from the beginning of the crop season to date, conditions have been unfavourable for the northward movement of rust spores.

Lake Shipments of Canadian Grain from the Opening of Navigation to June 18, 1958  
and to Approximately the Same Date, 1948 to 1957\*

Year	Wheat	Oats	Barley	Rye	Flaxseed	Total
- thousand bushels -						
1948 .....	29,081	5,172	5,366	302	2,511	42,432
1949 .....	61,207	7,290	8,663	4,501	3,923	85,582
1950 .....	51,636	5,127	7,306	1,320	140	65,529
1951 .....	49,833	16,277	12,882	3,683	458	83,132
1952 .....	83,174	31,841	26,735	3,080	1,743	146,573
1953 .....	94,974	26,611	39,449	4,948	1,453	167,435
1954 .....	39,818	20,238	19,062	3,580	1,474	84,173
1955 .....	58,140	10,496	23,828	4,876	2,189	99,528
1956 .....	78,954	9,281	25,929	6,339	1,917	122,420
1957 .....	62,379	12,000	17,178	3,081	4,620	99,257
1958 .....	81,643	16,274	30,829	3,691	2,182	134,619

\* Shipments from opening of navigation to June 17, 1948; June 16, 1949; June 15, 1950; June 21, 1951; June 19, 1952; June 18, 1953; June 21, 1954; June 15, 1955; June 20, 1956; and June 19, 1957.

Total shipments of the five major grains out of Lakehead terminals from the opening of navigation to June 18 this year amounted to 134.6 million bushels, compared with 99.3 million during the comparable period of 1957 and the highest for the period since 1953. In 1958 the season of navigation opened on April 18, the 1957 season opened on April 10 and the 1953 season on March 27. Shipments of wheat at 81.6 million bushels, were 13 per cent above the 1957 comparable figure of 62.4 million and accounted for 61 per cent of the current total. Lake shipments of oats, barley and rye during the period under review were also above comparable 1957 levels with flaxseed being the only one of the five grains moving in smaller volume this year than last.

General Quota

Position

By June 30, 1958 out of a total of 2,071 shipping points in the Western Division the Canadian Wheat Board had been able to place 1,460 on a quota of 6 bushels per specified acre and 579 on a 5-bushel quota. Thirty-two stations were

reported as "closed".

Summary of Elevator Shipping Points in Each Quota Group  
as at June 30, 1958

Province	Quota in Bushels per Specified Acre		Closed Stations	Total
	Five	Six		
Ontario .....	-	1	1	2
Manitoba .....	14	361	1	376
Saskatchewan .....	533	560	8	1,101
Alberta .....	32	534	22	588
British Columbia .....	-	4	-	4
All Provinces .....	579	1,460	32	2,071



Farmers' Marketings of Wheat in the Prairie Provinces, 1957-58

Week Ending		Manitoba	Saskatchewan	Alberta	Total	Last Year
- bushels -						
August	7, 1957	57,134	319,056	79,312	455,502	86,149
	14 ....	51,489	1,073,769	506,259	1,631,517	827,064
	21 ....	436,403	1,848,980	747,223	3,032,606	1,884,249
	28 ....	497,229	3,705,358	1,247,539	5,450,126	3,949,527
September	4 ....	334,501	3,237,345	876,295	4,448,141	3,182,696
	11 ....	269,013	2,143,978	842,281	3,255,272	3,739,721
	18 ....	573,078	2,315,055	900,777	3,788,910	5,760,514
	25 ....	510,534	2,787,644	844,213	4,142,391	7,588,949
October	2 ....	574,874	3,262,986	1,410,979	5,248,839	8,757,469
	9 ....	499,194	4,127,394	1,537,209	6,163,797	7,157,121
	16 ....	527,574	4,037,854	1,146,248	5,711,676	8,628,989
	23 ....	697,465	3,168,778	1,045,896	4,912,139	6,845,753
	30 ....	596,318	3,780,089	896,001	5,273,008	9,885,464
November	6 ....	626,142	3,031,519	1,106,214	4,763,875	9,372,931
	13 ....	627,457	3,567,995	1,470,042	5,665,494	7,900,996
	20 ....	727,275	3,345,325	1,591,939	5,664,539	8,452,536
	27 ....	738,393	4,176,486	1,911,975	6,826,854	8,145,061
December	4 ....	1,184,123	6,388,300	2,065,265	9,637,688	8,496,816
	11 ....	1,145,870	5,693,072	1,936,581	8,775,523	5,492,991
	18 ....	908,845	5,583,609	2,356,077	8,848,531	6,310,643
	24 ....	866,477	4,917,760	2,669,920	8,454,157	5,505,998
	31 ....	633,537	4,124,623	1,599,236	6,357,396	7,553,773
January	8, 1958	525,328	3,099,047	1,906,926	5,531,301	6,000,290
	15 ....	915,675	4,849,588	2,946,339	8,711,602	3,417,856
	22 ....	929,855	3,866,777	3,521,061	8,317,693	5,813,059
	29 ....	655,780	4,473,566	2,250,474	7,379,820	4,721,111
February	5 ....	680,859	4,113,459	1,953,841	6,748,159	7,566,009
	12 ....	479,848	2,809,109	1,653,238	4,942,195	6,730,006
	19 ....	340,381	2,187,204	1,301,389	3,828,974	6,976,103
	26 ....	510,116	2,212,617	1,831,113	4,553,846	3,887,400
March	5 ....	574,995	2,880,614	1,635,944	5,091,553	6,926,902
	12 ....	489,962	1,964,331	1,639,380	4,093,673	6,606,705
	19 ....	401,484	1,983,163	1,396,293	3,780,940	7,090,335
	26 ....	255,216	2,097,837	1,514,023	3,867,076	6,655,715
April	2 ....	238,206	1,544,796	1,051,182	2,834,184	4,401,233
	9 ....	373,031	1,230,903	287,948	1,891,902	4,276,063
	16 ....	618,466	4,297,809	583,897	5,500,172	4,706,871
	23 ....	568,728	7,171,363	3,354,106	11,094,197	2,921,973
	30 ....	646,467	4,792,249	2,732,203	8,170,919	3,900,937
May	7 ....	1,172,564	4,911,400	2,241,465	8,325,429	7,510,704
	14 ....	1,097,760	3,234,637	1,303,486	5,635,883	5,017,368
	21 ....	1,088,785	3,592,110	1,181,644	5,862,539	4,941,154
	28 ....	1,332,073	4,781,009	1,678,990	7,792,072	7,917,343
June	4 ....	2,034,067	10,782,864	2,192,787	15,009,718	11,289,822
	11 ....	2,136,535	10,277,612	2,909,142	15,323,289	13,023,549
	18 ....	1,971,275	10,365,608	2,441,242	14,778,125	9,434,368
Totals .....		33,120,401	180,157,247	74,295,594	287,573,242	287,258,286
Average similar period:						
1946-47-1955-56 .		34,901,691	178,961,551	91,368,952	305,232,194	



Visible Supply of Canadian Wheat, June 18, 1958  
Compared with Approximately the Same Date, 1956 and 1957

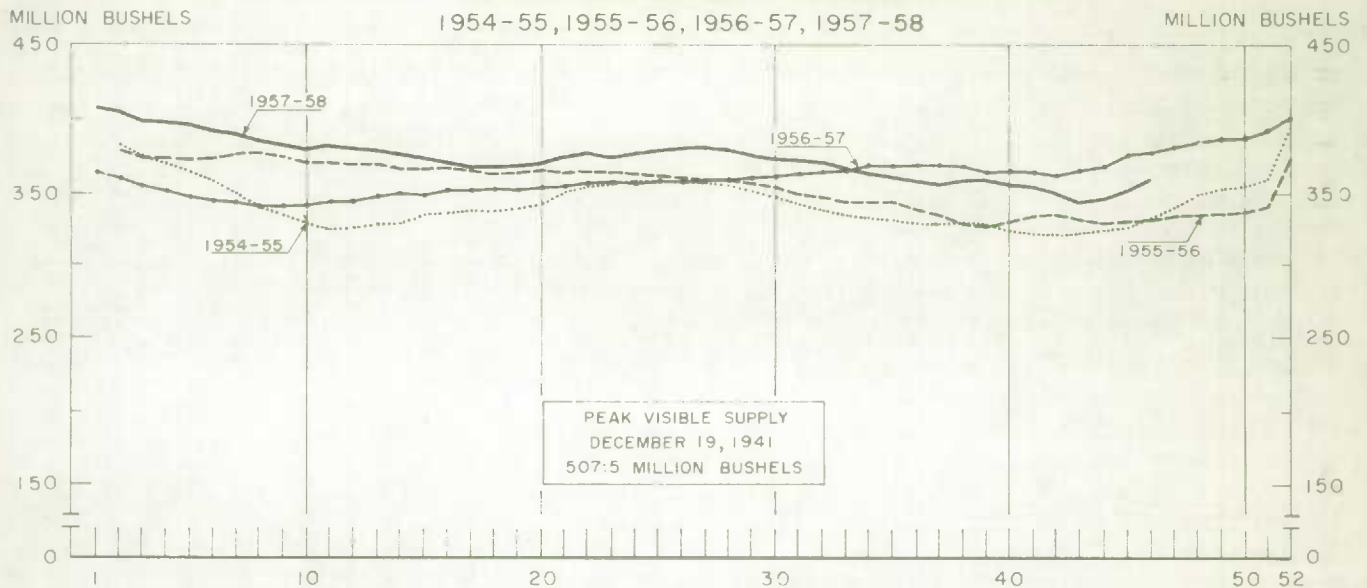
Position	1956	1957	1958
- thousand bushels -			
Country elevators - Manitoba .....	20,851	23,138	23,190
Saskatchewan .....	108,694	122,524	121,708
Alberta .....	73,008	71,800	70,163
Totals .....	202,553	217,462	215,061
Interior private and mill .....	7,213	6,899	7,571
Interior terminals .....	14,110	11,795	10,952
Vancouver-New Westminster .....	7,754	11,296	9,418
Victoria .....	413	133	323
Prince Rupert .....	37	-	-
Churchill .....	4,206	4,801	4,620
Fort William-Port Arthur .....	41,972	41,297	33,755
In transit rail (Western Division) ...	12,373	16,927	14,964
Bay, Lake and Upper St. Lawrence Ports	28,092	36,422	36,601
Lower St. Lawrence and Maritime Ports.	6,292	22,893	19,667
In transit lake .....	6,919	6,088	5,221
In transit rail (Eastern Division) ...	3,192	1,093	1,609
United States ports .....	640	169	210
Totals .....	335,765	377,277	359,973

Grading of Wheat Inspected, August 1957-May 1958 with Comparisons

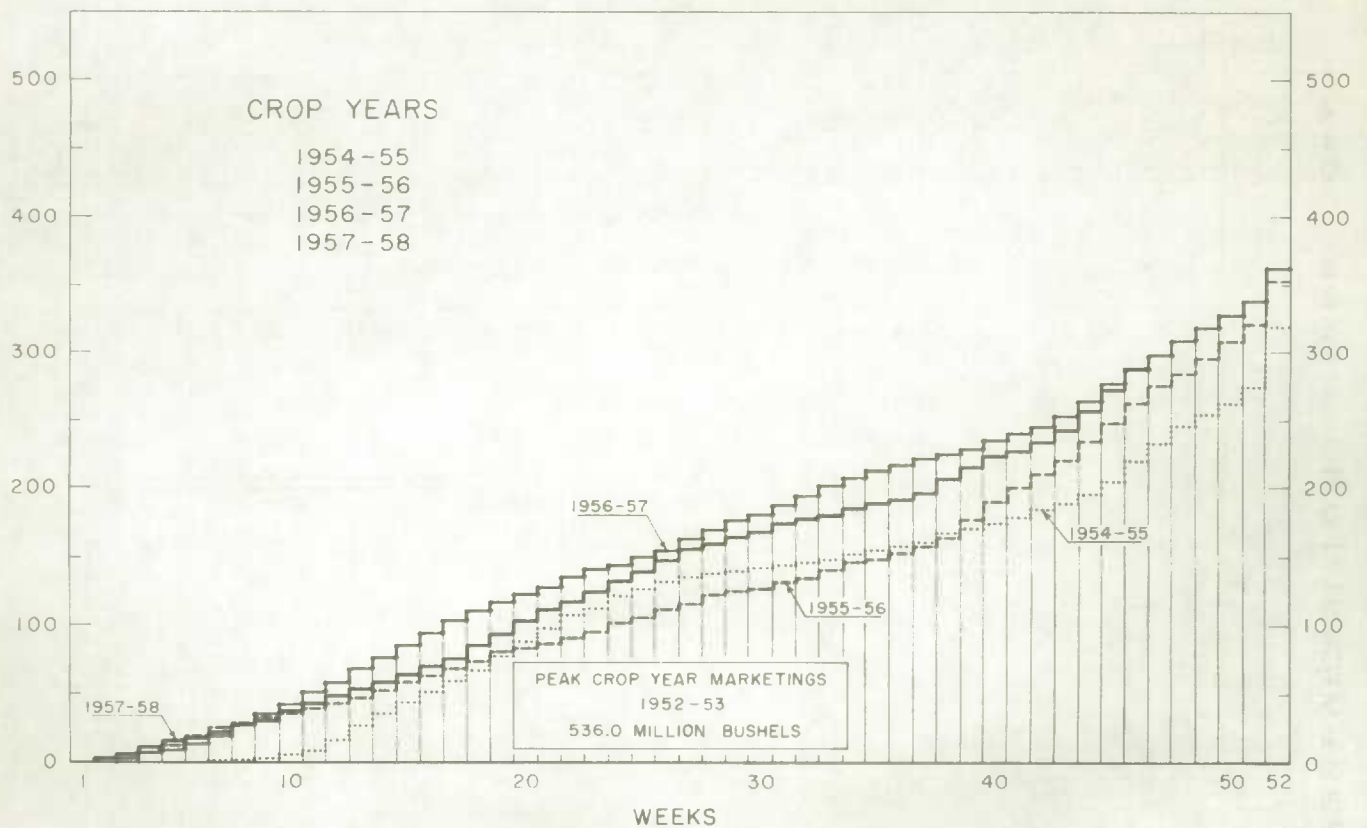
Grade	Crop Year			August-May		
	Average					
	1951-52	1956-57		1956-57	1957-58	
	1955-56					
	per cent	per cent	cars	per cent	cars	per cent
1 Hard .....	1/	-	-	-	-	-
1 Man. Northern .....	4.6	1.2	2,150	1.4	518	0.4
2 Man. Northern .....	30.7	26.9	44,398	28.6	32,445	22.3
3 Man. Northern .....	20.5	27.1	39,711	25.6	45,038	30.9
4 Man. Northern .....	8.5	13.0	17,998	11.6	30,773	21.1
5 Wheat .....	8.1	14.6	22,963	14.8	16,188	11.1
6 Wheat .....	3.2	4.2	6,008	3.9	5,812	4.0
Feed Wheat .....	0.6	0.2	295	0.2	143	0.1
Garnet .....	0.5	0.1	193	0.1	7	1/
Amber Durum .....	2.2	5.5	9,210	5.9	6,671	4.6
Alberta Winter .....	0.3	0.6	1,238	0.8	70	1/
Toughs 2/ 3/ .....	15.9	3.2	5,473	3.5	4,507	3.1
Damps 2/ 4/ .....	2.7	1/	36	1/	181	0.1
Rejected 2/ .....	1.8	2.8	4,598	3.0	2,744	1.9
All Others .....	0.5	0.5	872	0.6	502	0.3
Totals .....	100.0	100.0	155,143	100.0	145,599	100.0

- 1/ Less than .05 per cent. 2/ All varieties and grades. 3/ Moisture content 14.9 to 17 per cent for Durum, 14.6 to 17 per cent for all other varieties.  
4/ Moisture content over 17 per cent.

## WEEKLY VISIBLE SUPPLY OF CANADIAN WHEAT



## CUMULATIVE RECORD OF WHEAT MARKETINGS IN THE PRAIRIE PROVINCES BY WEEKS



(Data in both charts for crop years beginning August 1)

Wheat Shipments\* to the United States by Destination  
August 1, 1957 to June 18, 1958  
Compared with Approximately the Same Period 1955-56 and 1956-57

Destination	1955-56	1956-57	1957-58
		- bushels -	
<u>By Vessel</u>			
Chicago .....	341,044	110,580	236,933
Duluth Superior .....	1,189,406	1,564,727	1,816,119
Milwaukee .....	170,524	27,745	-
Huron .....	40,000	30,000	35,000
Buffalo .....	4,401,426	2,976,268	4,087,574
Totals, Vessel .....	6,142,400	4,709,320	6,175,626
<u>By Rail</u>			
U.S.A. Seaboard Ports .....	1,335	-	-
Other U.S.A. Points .....	1,986,549	942,449	906,441
Totals, Rail .....	1,987,884	942,449	906,441
Totals, Shipments .....	8,130,284	5,651,769	7,082,067

\* Either for re-export or retention for domestic use.

Total shipments of wheat to the United States either for re-export or retention for domestic use, from the beginning of the current crop year to June 18, amounted to 7.1 million bushels. During the comparable periods of 1956-57 and 1955-56 shipments amounted to 5.7 million and 8.1 million bushels, respectively. Of the current season's total to date about 87 per cent has been shipped by vessel.

Rail shipments of wheat to Maritime Ports from Bay, Lake and Upper St. Lawrence Ports during the first ten months of the current crop year totalled 24.7 million bushels, compared with 23.7 million shipped during the same months of 1956-57.

Rail Shipments of Wheat to Maritime Ports from Bay, Lake  
and Upper St. Lawrence Ports

Origin of Shipments	August 1, 1956 to May 31, 1957	August 1, 1957 to May 31, 1958
		- bushels -
Port McNicoll .....	7,831,679	6,500,967
Midland, Tiffin .....	10,755,574	10,746,107
Collingwood .....	650,987	1,268,250
Owen Sound .....	2,143,234	2,758,684
Goderich .....	924,114	276,293
Sarnia .....	831,376	1,956,705
Port Colborne .....	-	242,343
Toronto .....	-	34,000
Lakefield .....	579,649	936,214
Prescott .....	3,112	-
Totals .....	23,719,725	24,719,563



Rail Shipments of Wheat from Fort William-Port Arthur, 1954-55--1957-58

Month	1954-55	1955-56	1956-57	1957-58
- bushels -				
August .....	61,070	56,951	100,667	33,297
September .....	50,633	64,033	70,324	42,125
October .....	46,053	63,975	120,535	34,937
November .....	81,253	148,576	240,628	67,894
December .....	179,272	477,622	613,482	232,252
January .....	352,109	2,340,921	792,000	525,238
February .....	318,009	1,735,097	490,778	178,204
March .....	245,958	1,599,503	338,534	191,312
April .....	169,137	300,913	161,103	215,546
May .....	68,878	91,534	73,212	33,839
June .....	43,600	91,162	23,281	
July .....	57,619	102,560	31,432	
Totals .....	1,673,591	7,072,847	3,055,976	

Distribution of Rail Shipments of Wheat from Fort William-Port Arthur, May 1958

Grade	Nova Scotia	Quebec	Ontario
- bushels -			
3 Northern .....	-	-	1,500
#5 Wheat .....	-	14,917	6,000
#6 Wheat .....	416	-	1,333
Amber Durum .....	-	4,000	4,000
Others .....	-	-	1,673
Totals .....	416	18,917	14,506

Overseas Exports of Canadian Grain by Ports of Loading, August 1, 1957-June 18, 1958  
with Comparisons

Ports	Wheat	Oats	Barley	Rye	Flaxseed
- bushels -					
<u>Pacific Seaboard</u>					
Vancouver-New Westminster .....	114,771,440	1,683,649	17,397,642	1,354,620	4,754,865
Victoria .....	1,729,878	-	-	-	701,739
Prince Rupert .....	-	-	9,090,060	-	-
<u>Churchill</u> .....	16,577,206	56,750	-	-	-
<u>Lakehead Direct</u> .....	-	-	56,280	-	-
<u>Eastern Lake Ports Direct</u> .....	32,328	-	39,445	-	-
<u>St. Lawrence</u>					
Montreal .....	45,417,557	1,469,761	13,369,943	792,873	4,758,319
Sorel .....	9,219,682	-	2,734,360	-	286,246
Three Rivers .....	12,061,084	230,427	-	-	10,349
Quebec .....	9,910,120	-	178,930	-	-
<u>Maritime</u>					
Saint John .....	1,028,855	-	-	-	-
West Saint John .....	14,283,736	98,766	309,937	10,125	2,152,190
Halifax .....	13,014,709	-	11,640	-	20,494
Totals .....	238,046,595	3,539,353	43,188,237	2,157,618	12,684,202
August 1, 1956-June 19, 1957 .....	193,880,996	487,658	49,832,152	1,054,379	19,810,418 1/

Overseas Clearances - Canadian Rapeseed 2/ August 1, 1957-June 18, 1958

Canadian Pacific Seaboard .....	bushels
Canadian Atlantic Seaboard .....	5,162,069
Total, Rapeseed .....	1,070,244
	6,232,313

1/ Revised. 2/ In bushels of 50 pounds.

Freight Assistance Shipments Claims filed for payment up to May 31, 1958 represent the movement of some 13.6 million bushels of wheat from the Prairie Provinces to Eastern Canada and British Columbia under the freight assistance policy during the August-April period of the 1957-58 crop year. During the same months of the 1956-57 crop year claims had been filed for a total of 14.8 million bushels, indicating on the assumption of approximately the same rate of submission of claims during both the current and preceding crop years that the August-April shipments of wheat under the policy were running about 8 per cent below those of 1956-57. Revised data on the 1956-57 shipments of wheat based on claims submitted up to May 31, 1958 place the August-April total at 15.1 million bushels. The bulk of the shipments during the August-April period of the current crop year went to destinations in Ontario and Quebec.

Provincial Distribution of Wheat Shipments under the Freight Assistance Policy  
August-April, 1957-58 and 1956-57

Month	Nfld.	P.E.I.	N.S.	N.B.	Que.	Ont.	B.C.	Total
- thousand bushels -								
August, 1957 .....	10	22	114	52	616	759	285	1,858
September .....	12	12	86	40	599	630	265	1,644
October .....	16	10	107	45	564	699	196	1,637
November .....	12	10	99	47	571	744	300	1,783
December .....	9	16	106	45	501	665	194	1,535
January, 1958 .....	6	14	88	49	509	685	198	1,548
February .....	4	15	67	36	391	621	169	1,303
March .....	4	12	74	36	507	647	110	1,389
April .....	4	10	65	33	310	446	58	926
Totals 1/ .....	76	120	805	382	4,567	5,896	1,775	13,622
Same period 1956-57:								
Preliminary 2/ .....	75	179	830	411	4,844	6,542	1,892	14,773
Revised 1/ .....	77	181	837	423	4,866	6,580	2,162	15,126

Preliminary data on millfeed shipments under the freight assistance policy indicate shipments of 393,581 tons during the August-April period of the current crop year. This total, based on claims submitted up to May 31, 1958 will most likely be subject to considerable upward revision with the filing of additional claims. Some indication of the possible size of the revision is given by the fact that by May 31, 1957 claims had been filed for only 382,116 tons out of a total of 397,447 tons shipped during the August-April period of the 1956-57 crop year. As with freight-assisted shipments of wheat, the greater portion of the millfeed shipments during the period under review went to destinations in Ontario and Quebec.

Provincial Distribution of Millfeed Shipments under the Freight Assistance Policy  
August-April, 1957-58 and 1956-57

Province	1956-57		1957-58
	Preliminary 2/	Revised 1/	Preliminary 1/
- tons -			
Newfoundland .....	3,207	3,359	2,721
Prince Edward Island .....	5,028	5,124	5,277
Nova Scotia .....	25,808	26,311	24,410
New Brunswick .....	20,121	20,843	18,964
Quebec .....	184,473	189,859	196,040
Ontario .....	119,705	122,482	120,022
British Columbia .....	23,774	29,469	26,147
Totals .....	382,116	397,447	393,581

1/ Based on claims filed up to May 31, 1956.

2/ Based on claims filed up to May 31, 1957.



Monthly Export Clearances, etc., in Comparison with the Customs Exports of Wheat and Wheat Flour

Year and Month	Overseas Clearances of Canadian Wheat <sup>1/</sup>	Exports of Canadian Wheat to U.S.A. for Domestic Use and Milling in Bond <sup>2/</sup>	Customs <sup>3/</sup> Exports of Canadian Wheat Flour	Total	Customs <sup>3/</sup> Exports of Wheat and Wheat Flour
- thousand bushels -					
<u>1955-56</u>					
August .....	19,777	469	3,003	23,250	22,228
September .....	14,877	292	3,816	18,985	16,718
October .....	14,075	416	3,091	17,582	19,776
November .....	16,447	440	3,839	20,726	21,362
December .....	10,323	429	2,810	13,562	15,953
January .....	19,053	476	2,742	22,270	20,969
February .....	16,985	537	3,069	20,592	22,066
March .....	17,631	130	3,353	21,115	23,027
April .....	28,974	1,333	3,207	33,514	32,360
May .....	37,350	1,149	3,846	42,345	39,712
June .....	42,219	1,246	3,656	47,121	49,735
July .....	24,233	322	3,565	28,120	30,044
Totals .....	261,943	7,238	40,000	309,181	313,950
<u>1956-57</u>					
August .....	26,107	223	2,989	29,319	27,149
September .....	24,477	146	3,144	27,767	25,579
October .....	20,663	222	3,084	23,969	29,253
November .....	20,577	875	2,920	24,372	24,410
December .....	17,028	834	3,403	21,266	22,042
January .....	14,431	487	2,515	17,433	17,393
February .....	11,938	115	2,741	14,794	15,334
March .....	13,735	168	2,909	16,812	18,671
April .....	12,380	296	2,542	15,218	13,238
May .....	19,494	1,231	2,596	23,321	25,507
June .....	22,043	795	2,213	25,051	23,955
July .....	19,490	481	2,482	22,454	24,684
Totals .....	222,386	5,872	33,540	261,797	267,214
<u>1957-58 <sup>4/</sup></u>					
August .....	24,313	403	2,477	27,193	22,886
September .....	20,659	507	2,740	23,906	26,712
October .....	17,231	684	3,477	21,392	18,117
November .....	26,957	949	2,870	30,776	24,359
December .....	19,209	691	3,920	23,820	31,866
January .....	18,600	243	3,507	22,350	22,542
February .....	18,499	63	2,303	20,865	18,929
March .....	19,062	381	3,837	23,280	26,247
April .....	22,406	382	3,068	25,855	22,053
May .....	33,419	1,848	4,868	40,134	34,571
Totals .....	220,355	6,149	33,067	259,571	248,281

<sup>1/</sup> Compiled by the Statistics Branch, Board of Grain Commissioners for Canada.

<sup>2/</sup> Compiled by the Statistics Branch, Board of Grain Commissioners for Canada from returns of Canadian elevator licensees and shippers and advice from American grain correspondents.

<sup>3/</sup> In terms of wheat equivalent. Exports for crop years 1955-56 and 1956-57 adjusted to remove effect of time lag in the returns made by Customs for both wheat and wheat flour. Wheat flour conversion rate: 2.3 bushels per cwt.

<sup>4/</sup> Subject to revision. Unadjusted customs returns.



Exports of Canadian Wheat and Wheat Flour by Destination, 1957-58

Destination	February	May		August-May	
	Wheat Flour 1/	Wheat Flour 2/	Wheat 3/	Wheat Flour 2/	Wheat 3/

Exports of Canadian Wheat and Wheat Flour by Destination, 1957-58

Destination	February	May		August-May	
	Wheat Flour 1/	Wheat Flour 2/	Wheat 3/	Wheat Flour 2/	Wheat 3/
			- bushels -		
FOREIGN COUNTRIES					
Asia					
Philippine Islands .....	419,971	564,266	-	4,102,494	-
Portuguese Asia .....	10,258	17,951	-	140,148	-
Syria .....	676	258	-	2,986	-
Thailand .....	20,861	31,062	-	314,263	-
Europe					
Austria .....	-	-	106,561	-	1,802,637
Belgium .....	44,710	23,667	3,029,109	283,740	10,259,678
Denmark .....	460	460	35,280	2,300	226,762
Germany, Federal Republic .....	-	-	4,928,856	-	27,396,746
Greece .....	-	-	-	26,020	-
Iceland .....	-	-	-	16,100	-
Ireland .....	-	-	164,267	805	1,550,454
Italy .....	-	-	59,733	-	647,671
Netherlands .....	-	-	2,150,666	1,691	18,208,340
Norway .....	-	-	450,672	-	3,446,371
Poland .....	-	-	-	-	1,443,680
Portugal .....	8,142	1,267	-	39,714	-
Sweden .....	-	-	9,333	2,532	9,333
Switzerland .....	-	-	1,250,667	184	7,524,727
U.S.S.R. (Russia) .....	-	-	3,927,152	-	11,313,889
North America					
American Virgin Islands .....	-	-	-	46	-
Costa Rica .....	37,053	62,974	-	419,451	16,667
Cuba .....	11,500	27,485	-	450,657	1,000
Dominican Republic .....	71,461	18,860	-	522,270	-
El Salvador .....	9,545	13,050	-	127,360	18,666
French West Indies .....	115	345	-	6,382	-
Guatemala .....	75,475	54,126	16,667	268,408	126,727
Haiti .....	22,977	31,349	-	383,099	-
Honduras .....	5,520	8,660	-	56,495	29,333
Netherlands Antilles .....	17,388	10,500	-	152,711	-
Nicaragua .....	23,872	34,799	-	218,070	-
Panama .....	17,101	27,853	-	205,999	-
St. Pierre and Miquelon .....	460	230	-	16,238	-
United States					
Flour in terms of wheat .....	123,278	201,372	-	1,487,610	-
For Milling in bond 4/ .....	-	-	1,115,384	-	1,767,015
For Domestic use 4/ .....	-	-	732,200	-	4,381,932
Oceania					
French Oceania .....	-	6,909	-	32,299	-
Guam .....	-	-	-	1,840	-
South America					
Colombia .....	4,600	-	-	40,429	183,727
Ecuador .....	-	-	-	-	211,986
Peru .....	908	807	-	31,064	1,615,040
Surinam .....	11,150	16,240	-	117,042	-
Venezuela .....	180,499	141,181	430,363	3,063,490	620,101
Totals, Foreign Countries .....	1,208,439	1,895,220	22,247,987	14,154,747	124,507,484
Totals, All Countries .....	2,764,402	4,868,037	35,266,195	33,066,787	226,504,198

1/ In terms of wheat equivalent. Adjusted to remove effect of time lag in the returns made by Customs. Conversion rate: 2.3 bushels per cwt. 2/ In terms of wheat equivalent. Unadjusted Canadian Customs returns. Conversion rate: 2.3 bushels per cwt. 3/ Overseas clearances as reported by the Statistics Branch, Board of Grain Commissioners for Canada, for all countries except the United States. Subject to Revision. 4/ Compiled from returns of Canadian elevator licensees and shippers and advice from American Grain correspondents.

Canadian Wheat Board Weekly Average Cash Wheat Prices  
Basis in Store Fort William-Port Arthur

Class and Grade	Week Ending			
	June 6	June 13	June 20	June 27

- cents and eighths per bushel -

Initial Payment to Producers

1 Northern .....	140	140	140	140
2 Northern .....	136	136	136	136
3 Northern .....	132	132	132	132
4 Northern .....	125	125	125	125
5 Wheat .....	108	108	108	108
6 Wheat .....	102	102	102	102
Feed Wheat .....	96	96	96	96
1 C.W. Garnet .....	122	122	122	122
2 C.W. Garnet .....	117	117	117	117
1 Alberta Red Winter .....	124	124	124	124
2 Alberta Winter .....	119	119	119	119
1 C.W. Amber Durum .....	150	150	150	150
2 C.W. Amber Durum .....	147	147	147	147
3 C.W. Amber Durum .....	140	140	140	140

International Wheat Agreement

and Domestic Sales

1 Northern .....	160/4	160/4	160/4	160/3
2 Northern .....	156/4	156/4	156/4	156/3
3 Northern .....	148/4	148/4	148/4	148/3
4 Northern .....	141/4	141	140/4	140
5 Wheat .....	127/4	127/7	128/4	128/3
6 Wheat .....	123/4	123/7	124/4	124/3
Feed Wheat .....	120/4	120/7	121/4	121/3
1 C.W. Garnet .....	154/4	154/4	154/4	154
2 C.W. Garnet .....	150/4	150/4	150/4	150
3 C.W. Garnet .....	147/4	147/4	147/4	147
1 Alberta Red Winter .....	150/4	150/4	150/4	150
2 Alberta Winter .....	146/4	146/4	146/4	146
3 Alberta Winter .....	141/4	141/4	141/4	141
1 C.W. Amber Durum .....	192/4	192/4	192/4	192
2 C.W. Amber Durum .....	191/4	191/4	191/4	191
3 C.W. Amber Durum .....	179/4	179/4	177/1	176

Export - Class II

1 Northern .....	160/4	160/4	160/4	160/3
2 Northern .....	156/4	156/4	156/4	156/3
3 Northern .....	148/4	148/4	148/4	148/3
4 Northern .....	141/4	141	140/4	140
5 Wheat .....	127/4	127/7	128/4	128/3
6 Wheat .....	123/4	123/7	124/4	124/3
Feed Wheat .....	120/4	120/7	121/4	121/3
1 C.W. Garnet .....	154/4	154/4	154/4	154
2 C.W. Garnet .....	150/4	150/4	150/4	150
3 C.W. Garnet .....	147/4	147/4	147/4	147
1 C.W. Amber Durum .....	192/4	192/4	192/4	192
2 C.W. Amber Durum .....	191/4	191/4	191/4	191
3 C.W. Amber Durum .....	179/4	179/4	177/1	176



Canadian Wheat Board Weekly Average Cash Wheat Prices  
Basis in Store Vancouver

Class and Grade	Week Ending			
	June 6	June 13	June 20	June 27

- cents and eighths per bushel -

Initial Payment to Producers

1 Northern .....	140	140	140	140
2 Northern .....	136	136	136	136
3 Northern .....	132	132	132	132
4 Northern .....	125	125	125	125
5 Wheat .....	108	108	108	108
6 Wheat .....	102	102	102	102
Feed Wheat .....	96	96	96	96
1 C.W. Garnet .....	122	122	122	122
2 C.W. Garnet .....	117	117	117	117
1 Alberta Red Winter .....	124	124	124	124
2 Alberta Winter .....	119	119	119	119
1 C.W. Amber Durum .....	150	150	150	150
2 C.W. Amber Durum .....	147	147	147	147
3 C.W. Amber Durum .....	140	140	140	140

International Wheat Agreement

and Domestic Sales

1 Northern .....	172/4	172/4	172/4	172
2 Northern .....	168/4	168/4	168/4	168
3 Northern .....	161/4	161/4	161/4	161
4 Northern .....	153/4	153	152/4	152
5 Wheat .....	141/4	141/4	141/4	141
6 Wheat .....	132/4	132/4	132/4	132
Feed Wheat .....	129/4	129/4	129/4	129
1 C.W. Garnet .....	154/4	154/4	154/4	154
2 C.W. Garnet .....	150/4	150/4	150/4	150
3 C.W. Garnet .....	147/4	147/4	147/4	147
1 Alberta Red Winter .....	150/4	150/4	150/4	150
2 Alberta Winter .....	146/4	146/4	146/4	146
3 Alberta Winter .....	141/4	141/4	141/4	141

Export - Class II

1 Northern .....	172/4	172/4	172/4	172
2 Northern .....	168/4	168/4	168/4	168
3 Northern .....	161/4	161/4	161/4	161
4 Northern .....	153/4	153	152/4	152
5 Wheat .....	141/4	141/4	141/4	141
6 Wheat .....	132/4	132/4	132/4	132
Feed Wheat .....	129/4	129/4	129/4	129
1 C.W. Garnet .....	154/4	154/4	154/4	154
2 C.W. Garnet .....	150/4	150/4	150/4	150
3 C.W. Garnet .....	147/4	147/4	147/4	147
1 Alberta Red Winter .....	150/4	150/4	150/4	150
2 Alberta Winter .....	146/4	146/4	146/4	146
3 Alberta Winter .....	141/4	141/4	141/4	141

# CANADIAN FLOUR MILLING SITUATION

**Production** Wheat flour production by Canadian mills during May 1958 amounted to 3,781,000 hundredweight, exceeding by 3 per cent the April output of 3,654,000 hundredweight, 27 per cent above the May 1957 total of 2,968,000 hundredweight and 7 per cent greater than the ten-year (1947-1956) average production for the month of May of 3,533,000 hundredweight. Mills reporting operations during May 1958 had a total rated capacity of 180,000 hundredweight per 24-hour day and on the basis of a 25-day working period 84 per cent of this rated capacity was effective.

Wheat milled for flour during May 1958 amounted to 8.6 million bushels compared with 8.3 million bushels milled during the previous month and 6.7 million bushels milled during May 1957. Of the wheat milled for flour during May 1958, some 7.9 million bushels were Western Canadian Spring wheat (other than Durum) while the remainder consisted of Ontario Winter wheat (548,000 bushels); Durum (108,000 bushels); and all others (61,000 bushels).

**Exports** According to preliminary Customs returns, exports of Canadian wheat flour during May 1958 amounted to 2,117,000 hundredweight (some 4,868,000 bushels of wheat equivalent) representing an increase of 59 per cent over the 3,068,000 bushels exported in April and 88 per cent greater than the adjusted May 1957 total of 2,596,000 bushels. Flour shipments during the month went to fifty-three countries, with exports to the United Kingdom amounting to 1,365,000 bushels of wheat equivalent and accounting for 28 per cent of the May 1958 total. Other leading markets for Canadian wheat flour during the month, with shipments in thousands of bushels of wheat equivalent were as follows: Ceylon, 988; Philippine Islands, 564; Lebanon, 356; United States, 201; Israel, 151; Jamaica, 144; Venezuela, 141; and Trinidad and Tobago, 100.

## Wheat Milled for Flour, and Production and Exports of Wheat Flour, Canada

Crop Year	Wheat Milled for Flour - bushels -	Wheat Flour	
		Production	Exports 1/
		- cwt. -	
1935-36—1939-40 average .....	67,845,114	29,405,451	9,603,941
1940-41—1944-45 average .....	99,704,638	43,908,245	23,699,546
1945-46 .....	118,074,774	52,018,498	28,361,546
1946-47 .....	127,775,176	56,033,374	33,116,617
1947-48 .....	109,822,011	47,353,004	26,776,683
1948-49 .....	90,896,984	39,944,794	20,947,620
1949-50 .....	90,082,917	39,708,032	19,896,137
1950-51 .....	106,748,343	46,315,153	24,356,912
1951-52 .....	104,494,021	44,771,184	22,258,324
1952-53 .....	106,727,237	46,776,625	24,609,199
1953-54 .....	91,855,269	40,769,909	20,142,824
1954-55 .....	92,406,768	40,606,599	17,692,945
1955-56 .....	91,770,025	40,148,750	17,391,300
1956-57 .....	85,149,373	37,623,446	14,582,431
1957-58 2/			
August .....	7,094,364	3,151,879	1,076,815
September .....	7,629,799	3,372,860	1,191,300
October .....	8,315,059	3,688,086	1,511,826
November .....	8,185,725	3,637,969	1,247,654
December .....	7,046,817	3,127,026	1,704,554
January .....	7,845,002	3,464,747	1,524,670
February .....	7,002,252	3,097,834	1,001,259
March .....	7,740,565	3,415,066	1,668,435
April .....	8,274,049	3,653,951	1,333,813
May .....	8,595,281	3,781,333	2,116,538
Totals .....	77,728,913	34,390,751	14,376,864
Same period 1956-57 (revised) .....	72,051,091	31,836,869	12,541,058

1/ Based on Customs returns. Exports for the crop years 1945-46—1956-57 revised to remove effect of time lag in the returns made by Customs. 2/ Subject to revision.



UNITED STATES SITUATION

Supply Position Total estimated supplies of wheat in the United States for the 1957-58 (July-June) crop year consisting of the July 1 carry-over of 908.7 million bushels and the 1957 production of 947.1 million, amount to 1,855.8 million bushels, representing a decline of 9 per cent from the 1956-57 total of 2,037.7 million. Imports of wheat and wheat flour in terms of grain equivalent from Canada for all purposes during the July-May period of the current United States crop year amounted to 6.4 million bushels. After deducting an estimated 586.0 million bushels for anticipated domestic requirements, some 1,276.2 million remain available for export and for carryover during 1957-58 compared with 1,455.7 million in 1956-57.

United States Wheat Supplies

Item	1956-57	1957-58 <u>1/</u>
	- million bushels -	
Carryover at beginning of crop year (July 1) .....	1,033.4	908.7
New crop .....	1,004.3	947.1
Total estimated domestic supplies .....	2,037.7	1,855.8
Imports of wheat and wheat flour in terms of wheat for domestic use, July-May .....	5.5	6.4
Total estimated supplies <u>2/</u> .....	2,043.2	1,862.2
Less estimated domestic requirements for crop year <u>3/</u>	587.5	586.0
Available for export and for carryover .....	1,455.7	1,276.2
Deduct:		
Exports of wheat as grain, July-May .....	423.5	285.7
Exports of wheat flour and products in terms of wheat, July-May <u>4/</u> .....	66.5	72.3
Total exports of wheat, wheat flour and products <u>5/</u>	490.0	358.0
Balance on June 1 for export and for carryover .....	965.7	918.2

1/ Preliminary. 2/ Excluding imports for June. 3/ Includes allowances for shipments of United States wheat and wheat products to Alaska, Hawaii, Puerto Rico, Guam, Samoa, Virgin Islands and Wake Island. These shipments are not included in exports as set out in the table. 4/ Flour exports exclude "Milled in bond." 5/ These figures now include all shipments under review which formerly were not available from Census data.

Exports of wheat as grain and wheat flour and other products in terms of grain equivalent during the first eleven months of the 1957-58 United States crop year amounted to 358.0 million bushels, about 27 per cent below the 490.0 million exported during the same months in 1956-57. The balance remaining on June 1, 1958 for export and for carryover was estimated at 918.2 million bushels as against 965.7 million on the same date a year ago.



1958 Wheat Crop  
Forecast at 1,271  
Million Bushels

In a report released on June 10, the Crop Reporting Board of the United States Department of Agriculture stated in part that all wheat production in 1958 is forecast at 1,271 million bushels. A crop of this size would be more than a third larger than the 1957 production of 947 million bushels and 14 per cent more than average.

The prospective winter wheat crop of 1,069 million bushels is the largest of record and sharply above the 1957 production but the production of all spring wheat in 1958 is expected to be 16 per cent smaller than the 1957 crop.

A record winter wheat crop is at hand with production estimated at 1,069 million bushels. This is an increase of 59 million from the May 1 forecast and compares with 707 million bushels produced in 1957 and the average of 850 million bushels. Increases from May 1 occurring largely in Colorado, Kansas, Oklahoma, Nebraska, Missouri, Illinois and most South Atlantic and South Central States more than offset decreases in several North Central and Western States.

The indicated yield at 25.4 bushels per acre for harvest is the highest of record, being significantly above the 1957 yield of 22.4 bushels and sharply above the average of 18.9 bushels. Yield prospects are uniformly good to excellent throughout the winter wheat producing area. All States expect above average yields except Wisconsin, Mississippi, and Louisiana. Record yields are expected in Texas, Oklahoma, Kansas, Nebraska, Colorado, Ohio, New Jersey, and Georgia. Several additional States expect near record or record equalling yields.

A total spring wheat crop of 202 million bushels is indicated by conditions prevailing on June 1. A crop of this size would be 16 per cent below the 1957 crop of 240 million bushels, 23 per cent below the 1956 crop of 263 million bushels and 24 per cent below the average of 267 million bushels. The smaller crop prospect this year is due largely to lower prospective yields per acre as the acreage intended for planting reported by farmers in March was slightly larger. Moisture during May was deficient in the principal spring wheat States and crop conditions were beginning to decline at the close of the month. Rain during the first week of June, however, provided much needed moisture and brightened the yield outlook.

Production of durum wheat is expected to total only 16.1 million bushels and rank with the smaller crops of recent years. Last year's crop was 40 million bushels, and the 10-year average, 30 million bushels. The small crop of durum wheat this year is due largely to reduced plantings which growers reported in March to be only one-half as large as in 1957 and the smallest of record. Durum growers in the Dakotas apparently seeded their intended acreage. Montana growers planted more acres but fewer acres were planted in Minnesota, compared with intentions expressed in March. Development of the crop to date has been only fair as a result of dry, cool weather, and growth is less advanced than usual.

Production of spring wheat other than durum is forecast at 186 million bushels. Last year's crop was 200 million bushels and the average, 237 million bushels.

Preliminary Tally in Wheat  
Referendum Shows 83.7  
Per Cent Favourable

Preliminary returns from the referendum held on June 20 in the 38-State wheat producing area show that 83.7 per cent of farmers voting favoured marketing quotas for 1959-crop wheat.

Incomplete returns show a total of 198,210 votes counted. Of these, 165,868 (83.7 per cent) favoured quotas on 1959-crop wheat and 32,342 (16.3 per cent) were opposed.

Marketing quotas will be in effect for the 1959 crop because of approval by two-thirds or more of farmers voting in the referendum.

The referendum this year marked the eighth time farmers have voted on marketing quotas for wheat. They approved quotas for the 1941 crop by an 81.0 per cent favourable vote, for the 1942 crop by 82.4 per cent, the 1954 crop by 87.2 per cent, the 1955 crop by 73.3 per cent, the 1956 crop by 77.5 per cent, the 1957 crop by 87.4 per cent and the 1958 crop by 86.2 per cent.

National Average Wheat  
Support Price to be  
\$1.82 per Bushel for  
1958 Crop

On July 1, the U.S. Department of Agriculture announced that because of an increase in the wheat parity price, the national average support price to producers for 1958-crop wheat will be \$1.82 per bushel, an increase of 4 cents per bushel above the "advance" minimum price for this year's crop announced

in April 1957.

The 1958-crop average support of \$1.82 per bushel announced today compares to a national average support of \$2 per bushel for the 1957 crop.

When the minimum price was set in accordance with "forward pricing" provisions of law, the USDA announced that the support price would be redetermined as of July 1, 1958, the beginning of the 1958-crop wheat marketing year, on the basis of the current wheat parity price and the per cent level of support as indicated by the relationship of the total supply of wheat available to a determined normal supply for the marketing year.

The July 1958 wheat parity price of \$2.43 per bushel is higher than the estimated parity price of \$2.37 per bushel used to determine the minimum price in April 1957.

Flour Milling  
Products 1957

According to a report published by the Bureau of the Census, United States Department of Commerce, total commercial production of wheat flour in the United States in 1957 amounted to 238.9 million sacks, about 9 million sacks above the previous year's production. Production in 1957 was at 86.6 per cent of total annual capacity.

Wheat flour mills in 1957 ground 548.5 million bushels of wheat; offal production during the year totalled 4,584 thousand tons.

Production of rye flour in 1957 amounted to 2,073 thousand sacks, compared with 2,185 thousand sacks in 1956. Rye grindings amounted to 4,724 thousand bushels.



United States Exports of Wheat and Flour by Country of Destination,  
July-April 1956-57 and July-April 1957-58

NOTE

These data on exports by destination cover only the first ten months of the United States crop year beginning July 1. The table on United States wheat supplies (see page 22) contains a preliminary estimate of total exports for the first eleven months of the United States crop year. Neither of these tables should be confused with the United States export figure shown on page one of this publication which, for comparative purposes, is based on the Canadian crop year beginning August 1.

Destination	July-April 1956-57			July-April 1957-58		
	Wheat	Flour 1/	Total	Wheat	Flour 1/	Total
	- 1,000 bushels, grain equivalent -					
<b>Western Hemisphere</b>						
Central America .....	1,131	3,653	4,784	1,544	3,722	5,266
Cuba .....	2,720	3,393	6,113	2,361	3,779	6,140
British West Indies .....	32	2,877	2,909	1	2,845	2,846
Haiti .....	-	1,136	1,136	156	1,233	1,389
Colombia .....	2,624	60	2,684	3,522	588	4,110
Venezuela .....	354	5,381	5,735	641	5,704	6,345
Peru .....	3,329	232	3,561	2,826	246	3,072
Bolivia .....	2,748	1,245	3,993	184	823	1,007
Chile .....	4,883	33	4,916	1,968	80	2,048
Brazil .....	6,738	2	6,740	8,571	2,081	10,652
Others .....	1,670	2,303	3,973	491	1,968	2,459
Totals .....	26,229	20,315	46,544	22,265	23,069	45,334
<b>Europe</b>						
Norway .....	1,889	792	2,681	231	717	948
Denmark .....	3,456	34	3,490	1,304	9	1,313
United Kingdom .....	31,806	1,538	33,344	16,931	820	17,751
Netherlands .....	16,486	2,867	19,353	3,492	3,146	6,638
Belgium-Luxembourg .....	17,073	20	17,093	1,836	46	1,882
France .....	31,134	7	31,141	-	11	11
Germany, West .....	31,906	146	32,052	14,932	38	14,970
Austria .....	1,866	3	1,869	1,117	-	1,117
Switzerland .....	8,274	6	8,280	474	2/	474
Finland .....	2,979	-	2,979	907	-	907
Poland .....	-	-	-	18,479	-	18,479
Portugal .....	5,535	96	5,631	288	85	373
Italy .....	8,564	625	9,189	742	1,932	2,674
Yugoslavia .....	24,394	19	24,413	9,415	28	9,443
Greece .....	17,731	31	17,762	2,920	3	2,923
Others .....	2,083	71	2,154	2,097	402	2,499
Totals .....	205,176	6,255	211,431	75,165	7,237	82,402
<b>Asia</b>						
Turkey .....	17,212	-	17,212	6,723	-	6,723
Lebanon .....	-	2,087	2,087	-	1,250	1,250
Israel .....	7,358	524	7,882	8,807	8	8,815
Saudi Arabia .....	977	3,017	3,994	14	1,531	1,545
India .....	43,573	39	43,612	71,316	22	71,338
Pakistan .....	21,937	2	21,939	19,863	1	19,864
Vietnam, Laos and Cambodia .....	-	2,776	2,776	-	893	893
Indonesia .....	-	4,003	4,003	-	99	99
Philippine Republic .....	-	5,365	5,365	-	6,838	6,838
Korea .....	11,665	773	12,438	9,723	949	10,672
Formosa .....	5,368	1	5,369	6,195	5	6,200
Japan .....	39,719	1,946	41,665	36,663	1,891	38,554
Others .....	2,099	877	2,976	2,824	1,823	4,647
Totals .....	149,908	21,410	171,318	162,128	15,310	177,438
<b>Africa</b>						
Morocco .....	-	23	23	1,448	8	1,456
Tunisia .....	2,904	2	2,906	151	168	319
Egypt .....	1,071	358	1,429	-	343	343
French West Africa .....	2,694	6	2,700	458	1	459
Ghana .....	-	1,387	1,387	-	1,378	1,378
Western British Africa .....	-	1,748	1,748	-	1,796	1,796
Others .....	1,792	1,648	3,440	523	1,205	1,728
Totals .....	8,461	5,172	13,633	2,580	4,899	7,479
<b>Oceania</b>	-	33	33	-	33	33
<b>Unspecified 3/</b>	1,117	7,158	8,275	544	13,764	14,308
<b>Totals, All Countries</b>	<b>390,891</b>	<b>60,343</b>	<b>451,234</b>	<b>262,682</b>	<b>64,312</b>	<b>326,994</b>

1/ Wholly of U.S. wheat. Beginning July 1, 1957, the factor for converting 100 pounds of flour into bushels of grain equivalent changed from 2.33 to 2.3. 2/ Less than 500 bushels. 3/ Includes shipments for relief or charity which are not shown by destination.



Cash Wheat Prices on the Kansas City and Minneapolis Markets

No. 2 Hard Winter, Kansas City			No. 1 Northern Spring, Minneapolis		
Date		Price	Date		Price
		cents per bushel			cents per bushel
June 2, 1958	.....	215	June 2, 1958	.....	238 1/4 - 241 1/4
3	.....	205 3/4 - 209 3/4	3	.....	236 7/8 - 239 7/8
4	.....	210	4	.....	238 - 241
5	.....	207 1/4	5	.....	240 1/2 - 243 1/2
6	.....	209 1/4	6	.....	238 5/8 - 241 5/8
9	.....	203 1/2 - 237 1/2	9	.....	239 1/8 - 242 1/8
10	.....	197 3/4	10	.....	240 1/8 - 243 1/8
11	.....	197 - 235 1/2	11	.....	240 1/2 - 243 1/2
12	.....	197 3/4 - 238 1/2	12	.....	241 1/2 - 244 1/2
13	.....	199 - 238 1/2	13	.....	241 1/4 - 244 1/4
16	.....	192 3/4 - 232 3/4	16	.....	241 7/8 - 244 7/8
17	.....	190 - 194 1/4	17	.....	243 1/2 - 245 1/2
18	.....	191 3/4	18	.....	247 - 249
19	.....	191 1/2	19	.....	250 1/4 - 252 1/4
20	.....	192 3/4	20	.....	244 3/8 - 246 3/8
23	.....	189 3/4 - 196 1/4	23	.....	242 - 244
24	.....	185 1/2 - 188	24	.....	242 - 245
25	.....	192 1/2	25	.....	242 5/8 - 245 5/8
26	.....	177 3/4 - 228 1/2	26	.....	243 3/8 - 246 3/8
27	.....	177 - 187 1/4	27	.....	244 1/4 - 247 1/4
30	.....	171 - 194	30	.....	242 3/4 - 245 3/4

Chicago Wheat Futures, High Points of Closing

Date	July	September	December	March	May
	- cents and eighths per bushel -				
June 2, 1958	.....	184/2	187/2	192/6	196/3
3	.....	183/4	186/2	191/6	195/3
4	.....	183/6	186/5	192/1	195/5
5	.....	184/4	187/1	192/5	196/1
6	.....	183/3	186	191/3	194/3
9	.....	183/7	186/4	192	194/7
10	.....	183/7	186/3	191/7	195
11	.....	185/2	187/6	193/4	196/3
12	.....	186/1	188/6	194/1	197
13	.....	186/4	188/6	194/3	197
16	.....	185/7	188	193/3	196/1
17	.....	184	186/2	191/4	194/2
18	.....	184/2	186/4	192	195
19	.....	184/2	186/2	191/6	194/2
20	.....	184/7	187	192/3	194/5
23	.....	183/6	186/1	191/6	194/2
24	.....	184	186/6	192/1	194/6
25	.....	184	186/4	192	195
26	.....	184/7	187/3	192/7	195/7
27	.....	185/3	188/2	193/5	196/5
30	.....	182/6	185/6	191/4	194/6

# ARGENTINE SITUATION

Supply Position      Estimated supplies of wheat in the Argentine for the crop year 1957-58, consisting of the December 1, 1957 carryover of 59.4 million bushels and the new crop placed at 194.7 million amount to some 254.1 million bushels. Supplies of the size indicated represent a decrease of 18 per cent from the 1956-57 total of 309.2 million bushels. After making an allowance of 139.6 million bushels for anticipated domestic requirements an estimated 114.5 million are available for export and for carryover as against 169.6 million in 1956-57. Exports of wheat as grain and wheat flour in terms of grain equivalent during the period December 1957-May 1958 amounted to 31.8 million bushels compared with a total of 50.6 million exported during the same months of 1956-57. The balance remaining on June 1, 1958 for export and for carryover was estimated at 82.7 million bushels, about 31 per cent below the June, 1957 figure of 119.0 million.

## Argentine Wheat Supplies

Item	1956-57	1957-58 <u>1/</u>
	- million bushels -	
Carryover at beginning of crop year (December 1) <u>2/</u>	48.3	59.4
New Crop <u>3/</u> .....	260.9	194.7
Total estimated domestic supplies .....	309.2	254.1
Less estimated domestic requirements for crop year .	139.6	139.6
Available for export and for carryover .....	169.6	114.5
Deduct:		
Exports of wheat as grain, December-May .....	50.6	31.5
Exports of wheat flour in terms of wheat, Dec.-May	<u>4/</u>	0.3
Total exports of wheat and wheat flour .....	50.6	31.8
Balance on June 1 for export and for carryover .....	119.0	82.7

1/ Preliminary.      2/ Includes allowances for farm stocks.      3/ Official estimate.      4/ Less than 50,000 bushels.

The following account of the Argentine situation has been extracted from a report from Mr. C.S. Bissett, Commercial Counsellor, Buenos Aires, under date of June 19, 1958, and is reproduced with the permission of the Trade Commissioner Service, Department of Trade and Commerce. Where possible, conversions from Argentine to Canadian measures have been made for the convenience of our readers. Currency conversions have been made at the rate of 18 pesos to the United States dollar.

## Weather and Crops

It was mainly cold and dry throughout the grain region during May and frosts were widespread. A few scattered rains have fallen recently, and more would be welcomed especially as they tend to diminish the frost damage which has been even heavier during the last two days.



Wheat  
1957-58

The highlight of this last period has been the sale of 200,000 metric tons (7,349,000 bushels) of "Southern" grain to the Brazilian Government, at a price of US\$ 61.30 per metric ton (\$1.67 per bushel) (reported in the last review). Now another important deal has been closed, this time with the Paraguayan Government. On June 6 the sale was announced of 30,000 metric tons (1,102,000 bushels) of "Rivers" grain at a price of US\$ 61.50 (\$1.67 per bushel). In the meantime during the past month, sales to private exporters amounted to only 30,450 metric tons (1,119,000 bushels), the bulk of which was 20,000 metric tons (735,000 bushels) of "Southern" wheat (1957-58) sold at prices ranging from pesos 1,418 to 1,440 per ton (\$2.14 to \$2.18 per bushel), and 8,000 tons (294,000 bushels) of "Rivers" wheat also of the new crop sold at pesos 1,400 (\$2.12 per bushel). The latest statistical table issued by the National Grain Board is dated June 12. It reports that 5,005,354 metric tons (183,915,000 bushels) of the new crop have been bought so far, while 620,687 tons (22,806,000 bushels) have been sold both for export and to local millers. Actual shipments of the 1957-58 crop to date amount to 228,379 metric tons (8,391,000 bushels) while 429,788 (15,792,000 bushels) are already stored in ports.

Wheat  
1958-59

Wheat sowings are now in full swing and crop growth is generally good, with the exception of some areas in the Province of La Pampa. Nevertheless more general rains would be welcomed. At present there have been some attacks of green aphids in a number of areas but these are not as yet serious. The outlook in regard to the final sown area for wheat is not at all clear. When the new minimum producers' price of 130 pesos per 100 kilos (\$1.97 per bushel) was announced at the end of last April many plans were made to increase acreages sown as the newly set price was highly encouraging in comparison with that for other grains. All this resulted in a quick and total disposal of the available supplies of "fiscalized" seed and the Ministry of Agriculture and Livestock was forced to allow the sowing of 2nd. generation seed. On June 16, the minimum producers' prices were increased for all grains for 1958-59 with the exception of wheat. It is not yet possible to state what shall the producers' reaction be to these. As sowings continue during June and July it will be some time before a prediction of final area can be made particularly since sowings generally seem to have been somewhat delayed.

Corn

Harvesting of this grain is now at its peak and even late sown varieties are near maturity. A new official estimate of production was released on May 23 last at 4,810,000 metric tons (189.4 million bushels), a figure very close to the previous official estimate of April 15. Local trade circles, both of Buenos Aires and Santa Fé, still consider this a very low figure and their estimates range from 5,500,000 to 6,500,000 metric tons (216.5 million to 255.9 million bushels). In the meantime corn is steadily moving to the ports and some difficulties are being experienced with the handling and storage of the heavy flow. The Grain Board is buying at the official price of 100 pesos (\$1.41 per bushel) all that is being offered to it and at June 21 total Grain Board purchases amounted to 437,352 metric tons (17,218,000 bushels). Exports are not keeping the same pace. Last month only 112,977 metric tons (4,448,000 bushels) were authorized for export, under the ruling "aforo" while the Board sold 28,500 tons (1,122,000 bushels), although 171,113 tons (6,736,000 bushels) were actually shipped during May. In the meantime no changes have been announced or are expected in the near future in the present ruling "aforo" for corn.

Oats,  
Barley  
and Rye

No official report on these grains has been issued and trade reports are incomplete. However it is known that sowings have progressed normally and the condition of the crops can be considered as good, except for some areas in the Province of



La Pampa. Attacks of green aphids have been experienced in many regions but as yet without serious effect. Export sales of the three grains are now temporarily suspended and forbidden, as we understand new increased "aforos" will soon be put into effect. Prior to this sales were at somewhat higher levels than in the previous month, totalling 87,439 metric tons. Oats sales were by far the most important with 51,941 metric tons (3,368,000 bushels), all of which were "aforo" authorizations with the exception of 8,000 tons (519,000 bushels) sold by the Grain Board of the 1956-57 crop, at prices ranging from 1,033.70 to 1,053.90 pesos (89 to 90 cents per bushel). Barley totalled 25,730 tons (1,182,000 bushels) and rye only 9,768 tons (385,000 bushels). As regards actual shipments, oats were at the top with 110,626 metric tons (7,173,000 bushels). As always, trade in these three grains was almost all by private firms. To date the Board has bought only 59,203 metric tons (3,839,000 bushels) of oats, and practically none of the other two grains.

Argentine Prices for Grains and Oilseed  
(f.o.r. Buenos Aires, in bags)

Grain	1958-59
	- dollars per bushel -
<u>Wheat</u>	
New basis to be established by National Grain Board	
Semi-hard .....	1.97
Candeal and/or Taganrock .....	2.12
<u>Barley</u>	
Brewers barley, Grade 2, (basis 52 lb. per bu.) .....	.97
Forage type, Grade 2, (basis 47 lb. per bu.) .....	.90
<u>Oats</u>	
Yellow, Grade 2, (basis 38 lb. per bu.) .....	.60
White, Grade 2, (basis 39 lb. per bu.) .....	.62
<u>Rye</u>	
Grade 2, (basis 58 lb. per bu.) .....	.99
<u>Flaxseed</u>	
Grade 2, (basis 4% foreign matter) .....	2.82
<u>Corn</u>	
Flint and dented, Yellow or red .....	1.69

## Policy

### New Increased Minimum Producers' Prices Announced for 1958-59 for all Grains Except Wheat.

On June 16 increases were announced in the minimum producers' prices for all grains for 1958-59 over those already announced at the end of last April. The one exception is wheat for which the same price announced in April is maintained. The new Secretary of Agriculture and Livestock, in announcing the new prices, which are set in the accompanying table form, said that the prices established in April, in spite of having been based on the Parity Index System were nevertheless contributing to further imbalance among the different agricultural products, and that he hoped the situation could be remedied by the new prices. However, he said, no change in the wheat price was advisable, as that would upset plans for sowings of this grain which are already well under way and that therefore the only solution was to increase the prices for other grains. The Secretary said at the same time that due to evident changes in the quality of Argentine wheat it now becomes necessary to change the present official standards of this grain. The same decree which established the newly revised prices, announced that new standards will be established by the National Grain Board as soon as possible.

### New "Aforos" being Contemplated for Oats, Barley and Rye.

The steady decline in the value of the Argentine pesos, is the main reason behind the contemplated "aforo" increases for these grains, as Government policy is to maintain on approximately the same level of about 60 per cent and 40 per cent the amounts set for all exports sales, to be refundable through the official and the free exchange markets respectively. All export sales of these grains are suspended for the present, and the new increased "aforos" are expected to be announced shortly.

## Grain Sales

Total grain sales during the past month increased noticeably from the previous period reaching 489,365 metric tons. Most

important factor were the wheat sales which at 260,450 tons (9,570,000 bushels) made up more than half of the total. The two most important wheat sales were made to the Brazilian Government - 200,000 metric tons (7,349,000 bushels) of "Southern" wheat at US\$ 61.30 and to the Paraguayan Government 30,000 tons (1,102,000 bushels) of "Rivers" wheat at US\$ 61.50. Sales to private exporters reached 30,450 tons (1,119,000 bushels): 20,000 (735,000 bushels) of "Southern" wheat of 1957-58 at prices from 1,418 to 1,421.50 pesos (\$2.14 to \$2.15 per bushel); 8,000 (294,000 bushels) of "Rivers" wheat of 1957-58 at 1,400.00 pesos (\$2.12 per bushel); 1,750 tons (64,000 bushels) of Candeal at 1,300 (\$1.97 per bushel) and 500 tons (18,000 bushels) of "Rivers" grain of 1956-57 at 1,357.50 (\$2.05 per bushel).

Corn was in second place with 141,477 metric tons (5,570,000 bushels) most of the sales being "aforo" authorizations, 105,601 (4,157,000 bushels) under multilateral currencies, 3,582 (141,000 bushels) in US\$ and 3,794 (149,000 bushels) in £, while the Board sold 28,500 tons (1,122,000 bushels) at 1,035 and 1,040 pesos (\$1.46 and \$1.47 per bushel). Oats were third with 51,941 metric tons (3,368,000 bushels) all "aforo" authorizations with the exception of 8,000 tons (519,000 bushels) sold by the Grain Board at prices ranging from 1,033.70 to 1,053.90 pesos (89 to 90 cents per bushel), 35,800 tons (2,321,000 bushels) were authorized for multilateral currencies, 4,000 (259,000 bushels) for Czechoslovakia, 2,000 (130,000 bushels) for Hungary and 1,500 (97,000 bushels) for Poland, while a small lot of bagged grain went to Brazil. Finally, rye sales amounted to 9,768 metric tons (385,000 bushels) only, all "aforo" authorizations for multilateral currencies.



Grain Shipments Grain shipments during the month of May at 552,828 metric tons, almost doubled those of the previous month, and totalled the highest amount since the end of 1954. Wheat was in first place with 232,511 metric tons (8,543,000 bushels), Brazil being the main importer with 83,152 tons (3,055,000 bushels) followed by Western Germany with 62,728 (2,305,000 bushels), the United Kingdom with 34,297 (1,260,000 bushels), Netherlands with 23,666 (870,000 bushels) and others with a number of smaller lots. Corn followed with 171,113 metric tons (6,736,000 bushels), Netherlands, Italy and Belgium being the main buyers with 44,191 (1,740,000 bushels), 44,169 (1,739,000 bushels) and 35,733 metric tons (1,407,000 bushels), respectively. The United Kingdom took 13,769 tons (542,000 bushels) and Japan 13,334 (525,000 bushels), while other lots went to Denmark, Switzerland, Austria, France and North-Africa. Oats were in third place with 110,626 metric tons (7,173,000 bushels) with West Germany as the main importer some 31,764 tons (2,060,000 bushels), followed by Netherlands with 28,486 (1,847,000 bushels), while 12,854 tons (833,000 bushels) were sent to the United Kingdom. Other importers were Denmark 8,600 (558,000 bushels), Sweden 6,950 (451,000 bushels) and Italy 6,150 (399,000 bushels). Barley was in fourth place at the much lower level of 22,204 metric tons (1,020,000 bushels), more than half of which, 11,946 (549,000 bushels), were shipped to West Germany, while Netherlands followed with 6,848 tons (315,000 bushels). Rye was last with only 16,374 metric tons (645,000 bushels) distributed to Netherlands 6,068 (239,000 bushels), Italy 4,493 (177,000 bushels), West Germany 3,663 (144,000 bushels), Denmark 1,150 (45,000 bushels) and Norway 1,000 (39,000 bushels).

Argentine Wheat Exports, December 1957 - May 1958 with Comparisons

Destination	Wheat	Destination	Wheat
	- thousand bushels -		- thousand bushels -
Belgium .....	914	Netherlands .....	2,365
Bolivia .....	110	Norway .....	110
Brazil .....	11,140	Paraguay .....	1,113
Chile .....	1,999	Peru .....	1,211
Denmark .....	231	Sweden .....	20
Germany, Western .....	6,249	Switzerland .....	61
Italy .....	1,527	United Kingdom .....	4,429
		Total .....	31,479

Same Period:

1956-57 .....	50,591
1955-56 .....	53,285
1954-55 .....	66,359
1953-54 .....	49,287
1952-53 .....	19,195



# AUSTRALIAN SITUATION

Supply Position      Estimated domestic supplies of wheat in Australia for the 1957-58 crop year consisting of the December 1, 1957 carry-over of 41.4 million bushels and the new crop now placed at 96.0 million amount to some 137.4 million bushels, representing a decline of 37 per cent from the 1956-57 total of 218.6 million. Imports of wheat from Canada during the December-May period of the current Australian crop year amounted to 1.1 million bushels. After deducting 72.5 million bushels for anticipated domestic requirements, an estimated 66.0 million are available for export and for carryover during 1957-58 as against 146.1 million in 1956-57.

Combined exports of wheat as grain and wheat flour in terms of grain equivalent during the period December 1, 1957 to May 31, 1958 amounted to 21.7 million bushels, sharply below the 56.4 million exported during the corresponding period of 1956-57. The balance remaining on June 1, 1958 for export and for carryover, at 44.3 million bushels, represented a decrease of 51 per cent from the comparable 1957 figure of 89.7 million.

## Australian Wheat Supplies

Item	1956-57	1957-58 <u>1/</u>
	- million bushels -	
Carryover, including flour as wheat, at beginning of crop year (December 1) .....	83.9	41.4
New Crop .....	134.7	96.0
Total estimated domestic supplies .....	218.6	137.4
Imports December - May .....	-	1.1
Total estimated supplies .....	218.6	138.5
Less estimated domestic requirements for crop year ..	72.5	72.5
Available for export and for carryover .....	146.1	66.0
Deduct:		
Exports of wheat as grain, December 1 - May 31 ....	39.2	13.6
Exports of wheat flour in terms of wheat, December 1 - May 31 .....	17.2	8.1
Total exports of wheat and wheat flour .....	56.4	21.7
Balance on June 1, for export and for carryover .....	89.7	44.3

1/ Preliminary.

The following information relative to the Australian situation has been extracted from a report from Mr. H.S. Hay, Acting Commercial Secretary for Canada, Melbourne, under date of June 13, 1958 and is reproduced with the permission of the Trade Commissioner Service, Department of Trade and Commerce. Currency conversions have been made at the rate of £1 equals \$2.1673 (Canadian), the quotation in effect on June 9, 1958.

Weather and  
Crops

The latter part of May brought much needed rains to most of Australia's grain areas and a substantial acreage this year is now anticipated. Although the drought of 1957 had been broken earlier in the year, hot and dry conditions in the interim caused considerable concern to graingrowers. The recent rains, received during the critical sowing period, should result in an estimated 10.2 million acres being sown to wheat this season - a big increase over last year's 7.8 million acres - and comparable to the average for the preceding five seasons.

In New South Wales, crops are off to the best start for several seasons. Almost all of the originally prepared land has been sown and in some districts late prepared land may also be sown if conditions remain favourable. The May rains revived early-sown crops and this year's acreage, estimated at 3.5 million, should be well in excess of that for the past two years - above average in all but the south and Riverina districts. Nevertheless, sub-soil moisture is low and a good spring will be necessary to ensure satisfactory yields.

Conditions in all districts of Victoria except possibly the Mallee are considered very favourable. It is expected that last year's acreage of 1,864,000 acres will be exceeded, and there is every indication of a continuing satisfactory winter.

Seeding has commenced generally throughout Western Australia after the best rains of the season. A general follow-on rain is now hoped for to ensure a really successful start.

South Australia, also, has benefited considerably from May rains and from above-average temperatures which have speeded germination. In a few northern and mid-northern districts falls were disappointing, but the position is not generally considered serious.

Wheat Research  
Programme

A sum of £198,000 (\$429,000) has been approved by the Australian Government for an expansion of wheat research throughout Australia.

The expanded programme stems from recommendations submitted to the Minister for Primary Industry by the Wheat Industry Research Council which recently examined research proposals submitted by organizations interested in the development of the wheat industry. The programme will be financed from Commonwealth funds available under the Wheat Research Act and will be complementary to a large number of research projects financed by State Wheat Research Committees. Participants will include the State Departments of Agriculture, the Waite Research Institute, the Bread Research Institute, the Commonwealth Scientific and Industrial Research Organization, and the Universities.

Research will cover nutritional and baking qualities from the standpoint of varieties, environment and genetics; disease and insect problems; agricultural machinery; and improvement of the range of leguminous plants used to build up the fertility of wheat growing soils. Provision has been made for new buildings and the purchase of new equipment. In addition it was recently announced that a new research station is being established on the Darling Downs in Queensland where there is scope for expanding production of medium hard to hard wheat of high protein content. Plans for the development of marketing intelligence and the economic and financial aspects of the industry, which are not as yet considered adequate, will be given greater emphasis.



In announcing the programme, the Minister for Primary Industry noted that the Australian Wheat Industry was at a critical stage of development. With 60,000 growers marketing 150 million bushels in an average year, worth approximately £100 million (\$216.7 million) it was Australia's largest agricultural crop. And with £65 to £80 million (\$140.9 to \$173.4 million) being derived from overseas shipments, it was one of Australia's most important export earners. Nevertheless, there was plenty of scope for further development with new varieties, bigger yields and better quality wheat. Potentially it is the cheapest wheat industry in the world, but whatever advantages were now held must be maintained through better scientific research than other major producers - i.e. in the discovery and application of more efficient techniques to the production of wheat and flour.

He further noted that it was necessary to know the types of wheat and flour wanted by consumers and bakers, especially in overseas markets. This problem was assuming increasing importance as requirements in the baking industry became more exacting - due largely to the influence of mechanization. Significant for Australian interests has been the growth of the noodle market in Eastern countries creating a big demand for noodle wheat. The particular quality of flour required can be milled from Australian low protein wheats grown mainly in Victoria.

Wheat and  
Flour Sales

The following sales are reported by the Australian Wheat Board since our last report was sent:

United Kingdom	..	70,000 long tons (2,613,000 bushels)
Japan	..	4,300 long tons ( 161,000 bushels)
China	..	10,500 long tons ( 392,000 bushels)
New Zealand	..	30,000 long tons (1,120,000 bushels)

Lowest Postwar Wheat  
Harvest in 1957-58

It now appears, from official estimates, that last year's wheat crop at 96 million bushels was the smallest since 1944-45 when only 53 million bushels were produced. The 1956-57 crop of 135 million bushels was also well below the ten year post-war average of 186 million bushels. The area sown to wheat in 1957-58 was estimated at 7.8 million acres, only slightly below that of 1956-57, and lower than any other post-war year. Largest acreage since the war was 13.9 in 1947-48.

F.a.q. Standards in each of the four main producing States except Victoria were higher than for the previous year, and the bushel weight of 66 lb. for semi-hard South Australian wheat was the highest ever recorded in any Australian State. Nevertheless, the dry season resulted in less than one million bushels of high protein wheat being available from north-western New South Wales which generally produces about four million bushels for use in special breads. This resulted in approval of a request by the New South Wales Flour Millers' Council for the import of four to five cargoes of Canadian wheat, the first sizeable importation from anywhere since 1945-46. The normal customs duties were waived on this occasion.

After allowing for a minimum carryover of 18 million bushels on November 30, 1958, the surplus available for export in 1957-58 totalled about 66 million bushels compared with 146 million for export and carryover in 1956-57. Of this, the Australian Wheat Board has provisionally allocated 19.2 million bushels



for export as flour. Due to the difficulty being experienced from European competitors in traditional Australian export markets, it is felt that this amount should be sufficient to meet all sales opportunities, and it has not been considered necessary to allocate it among markets. Nevertheless, export sales are being confined to traditional outlets for Australian grain.

### Grain Sorghum

Until the size of this year's grain sorghum crop is known, applications for the import of this grain will be deferred. Last year, 3.2 million bushels were grown in Australia and this year's crop may approximate 2 million bushels. Import License applications for primary products such as feed grains are referred to the Department of Primary Industry by the Department of Trade for recommendation and the Minister of the former Department has assured growers that their interests would be put first when these were being considered.

### Barley

Australia has sold 121,000 tons (5,647,000 bushels) of barley from the 1957-58 crop to Japan. Competition is very severe with the substantial world surplus available but very little of Australia's exportable surplus remains unplaced. Overseas sales this season have been mainly in bags - buyers having sought less than 14 per cent in bulk. Japan has required all her barley purchases in bags.

The local Australian market has been considerably expanded because of the prolonged dry conditions. However, recent rains in most areas can be expected to alleviate the demand for barley for animal feed.

Exports of Australian Wheat and Wheat Flour in Terms of Wheat, December 1, 1957-May 31, 1958 and Corresponding Period 1956-57

Destination	Wheat		Wheat Flour	
	1956-57	1957-58	1956-57	1957-58
- thousand bushels -				
Aden and Aden I/T .....	4	19	342	377
Aden and Aden (Atta Flour) .....	-	-	Not Available	37
Belgian Congo .....	-	-	1	2
British North Borneo .....	-	-	127	116
British West Indies .....	1	-	233	1
Brunei .....	-	-	19	16
Burma .....	-	108	558	208
Ceylon .....	4	6	3,963	201
Cocos Islands .....	-	-	1/	1/
Cyprus .....	353	-	-	-
Czechoslovakia .....	315	-	-	-
Dutch New Guinea .....	-	-	38	48
Eire .....	686	162	-	-
Germany, West .....	4,342	-	-	-
Ghana .....	-	-	1/	1/
Hong Kong .....	928	843	-	-
Hong Kong (General) .....	-	-	176	81
Hong Kong (a/c War Office) .....	-	-	33	4
India .....	6,288	209	-	-
Indonesia .....	5	-	3,161	1,172
Iran .....	783	-	-	-

Exports of Australian Wheat and Wheat Flour in Terms of Wheat, December 1, 1957-  
May 31, 1958 and Corresponding Period 1956-57

Destination	Wheat		Wheat Flour	
	1956-57	1957-58	1956-57	1957-58
- thousand bushels -				
Iraq .....	1,395	-	-	-
Japan .....	152	2,780	-	-
Macao .....	-	-	9	3
Malaya .....	398	266	-	-
Malaya (Atta Flour) .....	-	-	Not Available	28
Malaya (General) .....	-	-	2,992	2,158
Maldives Islands .....	-	-	-	42
Malta .....	-	410	-	-
Mauritius .....	-	-	668	420
New Zealand .....	4,959	5,012	3	5
Nigeria .....	-	-	1/	2
Nyasaland .....	-	-	59	142
Pacific Islands .....	11	12	1,072	969
Pakistan .....	2,328	-	-	-
Pakistan (Atta Flour) .....	-	-	Not Available	1
Persian Gulf .....	38	35	385	63
Persian Gulf (Atta Flour) .....	-	-	Not Available	295
Philippine Islands .....	-	-	460	218
Port Said (a/c S/S) .....	-	-	-	5
Portuguese East Africa .....	336	-	-	-
Portuguese India (Goa) .....	79	-	35	15
Rhodesia .....	1,036	1,344	-	-
Sarawak .....	-	-	76	94
Saudi Arabia .....	2	113	-	29
Scandinavia .....	20	-	-	-
Seychelles Islands .....	-	-	18	14
Singapore (a/c War Office) .....	-	-	69	40
Somaliland, British .....	-	-	-	1
Sudan .....	-	-	509	-
Thailand .....	4	8	361	346
Timor .....	-	-	9	19
United Kingdom .....	14,724	2,300	1,567	725
Zanzibar .....	4	6	178	137
Royal Navy .....	20	6	9	7
Ships' Stores .....	-	-	69	60
Totals .....	39,215	13,639	17,200	8,100

1/ Less than 500 bushels.

FRENCH SITUATION

Supply Position Total estimated commercial supplies of wheat in France for the crop year (August-July) 1957-58, consisting of the August 1 carryover of 35.5 million bushels and anticipated marketings of 293.9 million, amount to some 329.5 million bushels, exceeding by 38 per cent the 1956-57 total of 239.5 million (including August-April 1956-57 imports of 41.7 million bushels).



After deducting 187.4 million bushels for anticipated domestic requirements, a total of 142.1 million are available for export and for carryover, up sharply from the unusually low 1956-57 level of 52.1.

Combined exports of wheat and wheat flour in terms of grain equivalent during the first nine months of the current crop year amounted to 71.1 million bushels in contrast to the August-April 1956-57 total of only 9.2 million. The balance of commercial supplies remaining on May 1, 1958 totalled 71.0 million bushels as against 42.9 million at May 1, 1957.

#### French Supplies of Soft Wheat

Item	1956-57	1957-58 <u>1/</u>
	- million bushels -	
Commercial carryover, August 1 .....	31.4	35.5
Anticipated deliveries to Grain Board .....	166.4	293.9
Total estimated commercial domestic supplies ...	197.8	329.5
Imports, August-April .....	41.7	-
Total commercial supplies .....	239.5	329.5
Less domestic requirements for crop year .....	187.4	187.4
Available for export and for carryover .....	52.1	142.1
Deduct:		
Exports of wheat and flour in wheat equivalent, August-April .....	9.2	71.1
Balance on May 1 for export and for carryover .....	42.9	71.0

1/ Preliminary.

The following account of the current crop situation in France has been extracted from a report by Miss V.F. Wightman, Agricultural Attaché, Canadian Embassy, Paris, under date of June 18, 1958, and is reproduced with the permission of the Trade Commissioner Service, Department of Trade and Commerce. Where possible, conversions from French to Canadian measures have been made and rounded for the convenience of our readers.

Weather and Crops Climatic conditions continue to favour the developing grain-fields, and warm weather in June, coming after the heavy rains in May, should make up for the setback experienced from the cold, dry period in April. Around Paris, fields of winter wheat have all headed well. The Ministry of Agriculture, in its crop bulletin, remarks that the heading is frequently too heavy in the north of the country since the rapid growth may have contributed to weakening the stems. Weed development often presents a problem, since treatment has been held up by bad weather.

As will be seen in the accompanying table, the total area to grain is on about the same level as last year. The wheat acreage is slightly below the 1957 level and that for barley has gained at the expense of oats. The main

changes in this regard have been noted in northern France.

The first official estimate of the 1958 wheat crop is 10.7 million tons (393.2 million bushels). However, the first estimate of the Ministry of Agriculture is always very conservative, and the trade feels that the new crop should reach at least the 1957 volume of 11 million tons (404.2 million bushels). The current outlook is for a wheat yield of 23.5 quintals per hectare (35.0 bushels per acre), which is slightly ahead of that 23.3 (34.7 bushels per acre) foreseen this time last year, and should thus make up for the slightly lower area seeded.

The area seeded and first estimate of output for the 1958 grains are as follows:

Area Seeded to Grain

Grain	Average 1953 - 1957	June 1, 1957	1957 Final	June 1, 1958
- thousand acres -				
Wheat .....	10,214	11,378	11,529	11,289
Wheat and Rye ....	74	50	85	55
Rye .....	956	927	900	878
Barley .....	3,790	3,940	4,057	4,359
Oats .....	5,130	4,298	3,971	3,793
Mixed Grains .....	273	242	212	231
Totals .....	20,437	20,835	20,755	20,606

The June 1 estimate of grain outputs is as follows:

Grain	Average 1953 - 1957	June 1, 1957	Crop 1957	June 1, 1958
- thousand bushels -				
Wheat .....	343,009	394,674	407,182	394,600
Wheat and Rye .....	1,392	1,069	1,139	1,256
Rye .....	18,691	18,874	18,954	18,716
Barley .....	160,508	164,132	166,548	178,474
Oats .....	234,200	207,515	167,246	180,100
Mixed Grains <u>1/</u> ...	7,457	6,080	5,928	6,371
Totals .....	765,257	792,344	766,997	779,517

1/ In bushels of 50 pounds.

Source: French Ministry of Agriculture.

The following have been monthly wheat and flour exports during the crop year to date:



Monthly Wheat and Wheat Flour Exports, August 1957-April 1958  
and the Corresponding Months in 1956-57

Month	Foreign Countries		French Union		Total	
	1956-57	1957-58	1956-57	1957-58	1956-57	1957-58
- thousand bushels -						
August .....	439	778	497	732	936	1,510
September .....	162	4,899	642	556	804	5,455
October .....	119	7,665	545	709	664	8,375
November .....	235	9,412	604	783	839	10,194
December .....	226	11,075	745	720	971	11,796
January .....	721	9,085	737	1,025	1,458	10,110
February .....	264	4,154	534	579	798	4,733
March .....	921	8,738	505	922	1,425	9,660
April .....	976	7,950	297	1,334	1,274	9,284
Totals .....	4,062	63,757	5,106	7,359	9,169	71,116

Exports by  
Country

The following have been the principal export markets of wheat and flour during the first nine months of the current crop year, as compared with the equivalent period in 1955-56, the last comparable period.

Wheat and Wheat Flour by Destination, August-April

Destination	1955-56	1957-58
- thousand bushels -		
United Kingdom .....	16,925	19,692
Germany .....	15,610	18,616
Egypt .....	-	5,797
Ceylon .....	2,078	3,593
Pakistan .....	-	3,562
Netherlands .....	4,993	2,757
Indonesia .....	-	2,005
Portugal .....	1,443	1,319
Malaya .....	722	947
Tangiers .....	-	914
Norway .....	929	847
Switzerland .....	3,351	794

Cont'd from page 2.

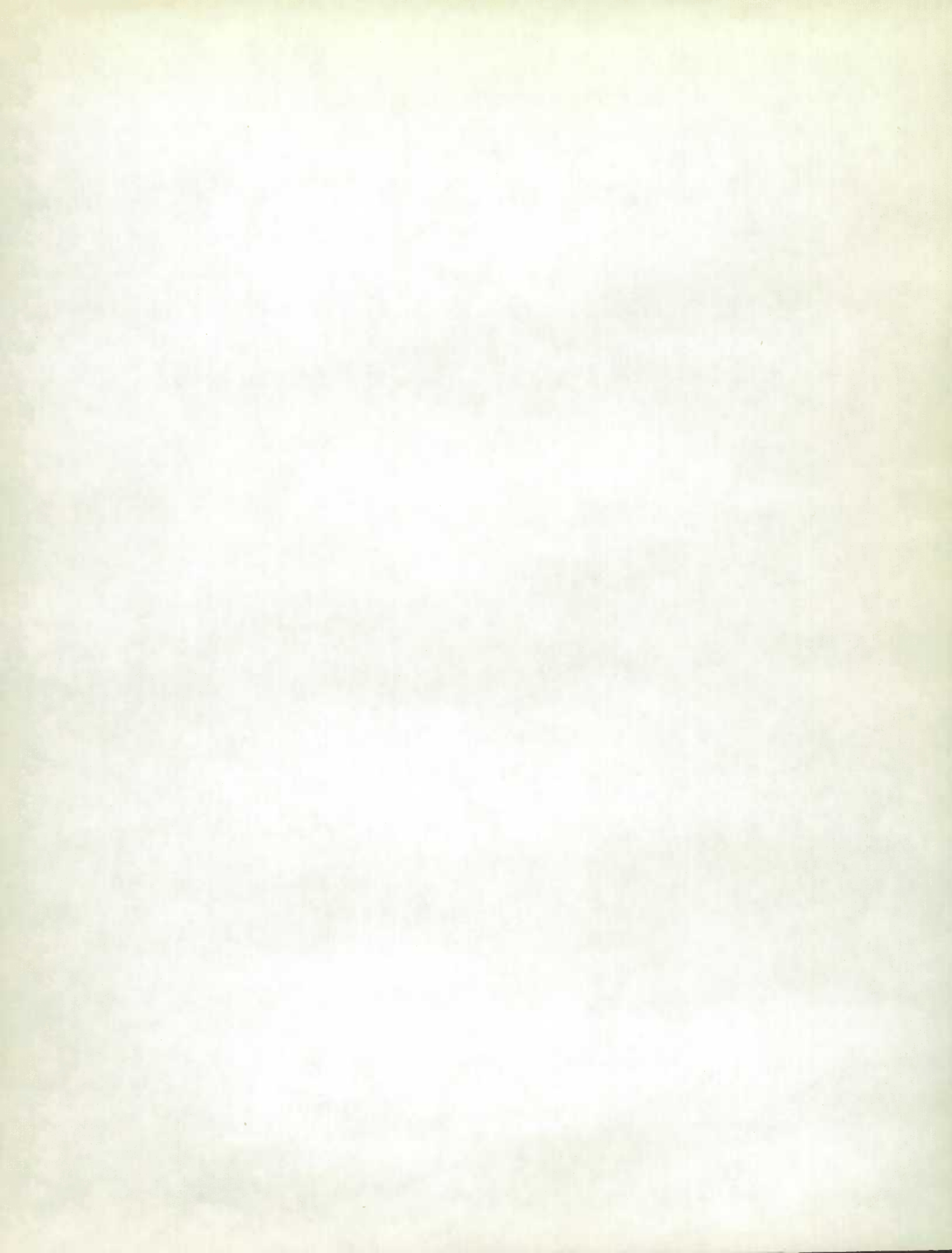
1,066 million bushels. Exports of 1,100 million bushels would be about 17 per cent above the 10-year (1946-1955) average of 941 million bushels, and about 72 per cent above the 5-year (1935-1939) average of 639 million bushels. The primary factor in the decline from last year is the improved supply situation in several major importing countries, particularly in Western Europe. Carrying stocks were generally higher, and a number of countries harvested record crops.

CALENDAR OF WHEAT EVENTS

- June 5 The Bureau of the Census, United States Department of Commerce, estimated wheat flour production in the United States in April 1958 at 19,394,000 sacks, an average of 882,000 sacks per working day.
- 9 The Hon. Gordon Churchill, Minister of Trade and Commerce, announced that the final accounting of the 1956-57 wheat account had been completed. The average per bushel final payment was 6.941 cents.
- The Hon. Gordon Churchill, Minister of Trade and Commerce, announced on June 9, that Mr. W.C. McNamara had been appointed Chief Commissioner of the Canadian Wheat Board, in succession to Mr. George McIvor, who resigned last April.
- 10 According to a report published by the Crop Reporting Board of the United States Department of Agriculture, production of all wheat in the United States, based on conditions at June 1, was forecast at 1,271 million bushels, one third larger than the 1957 production of 947 million and 14 per cent more than the 1947-1956 average of 1,116 million bushels.
- 18 According to a report received from Miss V.F. Wightman, Agricultural Attaché, Canadian Embassy, Paris the first official estimate of the 1958 wheat crop in France places production at some 393 million bushels.
- 23 Preliminary returns from the June 20 referendum held in the 38-State commercial wheat-producing area show that 83.7 per cent of farmers voted in favour of marketing quotas on 1959-crop wheat.
- July 1 The United States Department of Agriculture announced that the national average support price to producers for 1958-crop wheat would be \$1.82 per bushel.











STATISTICS CANADA LIBRARY  
BIBLIOTHÈQUE STATISTIQUE CANADA



1010686809