

22-005

v. 29

no. 1

Aug. 1958

c. 2

NOT CIRCULATE

NE PAS PRÊTER



CANADA

DOMINION BUREAU OF STATISTICS

AGRICULTURE DIVISION

# THE WHEAT REVIEW

DOMINION BUREAU  
OF STATISTICS

SEP 25 1958

PROPERTY OF THE  
LIBRARY



AUGUST, 1958

EDMOND CLOUTIER, C.M.G., O.A., D.S.P.  
QUEEN'S PRINTER AND CONTROLLER OF STATIONERY  
OTTAWA, 1958



DOMINION BUREAU OF STATISTICS  
Department of Trade and Commerce

---

# THE WHEAT REVIEW

AUGUST, 1958

*Published by*  
Authority of the Honourable Gordon Churchill  
Minister of Trade and Commerce

Prepared in the Crops Section, Agriculture Division  
Dominion Bureau of Statistics, Ottawa.

# TABLE OF CONTENTS

	Page
World Wheat Situation	
Current Supplies .....	1
Exports .....	1
Wheat Still World's Largest Grain Crop .....	1
Record 1958 World Wheat Production Expected .....	25
I.W.A. Sales and Purchases, Crop Year 1958-59 .....	2
Canadian Situation	
Canadian Wheat Supplies 1958-59 .....	3
1957-58 Exports of Wheat and Flour Total 315.6 Million Bushels .....	3
August Forecast of Production of Canada's 1958 Grain Crops .....	4
Quota Policy .....	7
Lake Shipments .....	7
Wheat Production in Canada and the Prairie Provinces 1910-1958 .....	8
Carryover Stocks of Canadian Grain at July 31, 1958 .....	9
Canadian Wheat Carryover 1927-1958 .....	10
Farmers' Marketings .....	11
Visible Supply of Canadian Wheat .....	12
Grading of Wheat Inspected August-July 1957-58 with Comparisons .....	12
Weekly Visible Supply and Farmers' Marketings (Charts) .....	13
Wheat Shipments to the United States by Destination .....	14
Rail Shipments of Wheat to Maritime Ports .....	14
Rail Shipments of Wheat from Fort William-Port Arthur .....	15
Overseas Exports of Canadian Grain by Ports of Loading .....	15
Freight Assistance Shipments .....	16
Monthly Export Clearances in Comparison with Customs Exports of Wheat and Wheat Flour .....	17
Exports of Canadian Wheat and Wheat Flour by Destination .....	18
Canadian Wheat Board Weekly Average Cash Wheat Prices .....	20
Canadian Flour Milling Situation	
Production and Exports .....	22
United States Situation	
Supply Position .....	23
1958 Wheat Crop Forecast at 1,421 Million Bushels .....	24
July 1 Carryover of Hard Red Winter; White and Soft Red are Down from Year Ago; Large Increase Next July in Hard Red Winter .....	24
Flour Production .....	25
United States Exports of Wheat and Flour by Country of Destination .....	26
Cash Wheat Prices on the Kansas City and Minneapolis Markets .....	27
Chicago Wheat Futures, High Points of Closing .....	27
Argentina Situation .....	28
Australian Situation .....	31
French Situation .....	35
Calendar of Wheat Events .....	40
Preliminary Data on Canadian Crop Year 1857-58 with Comparisons .....	40



## WORLD WHEAT SITUATION

Current Supplies Latest available estimates indicate that supplies of wheat remaining on or about August 1, 1958 in the four major exporting countries for export and for carryover at the end of their respective crop years amounted to 2,404.1 million bushels, some 12 per cent above the 2,151.7 million available a year ago. Supplies at August 1, 1958, in millions of bushels, were held as follows, with last year's comparable figures in brackets: United States, 1,665.6 (1,243.5); Canada, 614.8 (729.5); Argentina, 87.4 (101.4); and Australia, 36.3 (77.3). Estimates for both years include on-farm stocks as well as those in commercial positions. It is to be noted that the 1958 United States crop, estimated at 1,421 million bushels is now included in these calculations. The supply figures for Canada represent crop-year-end carryover only, the new crop not being taken into account until September 1. Australian and Argentine production will be included at January 1.

Exports Total exports of wheat and wheat flour in terms of wheat from the four major exporting countries during August 1957 to July 1958 (the Canadian crop year), at 851.5 million bushels, were 17 per cent below the 1,021.7 million exported during the crop year 1956-57. Canada was the only one of the four countries showing wheat exports at a higher level than in the preceding year. On a percentage basis, shipments from the four countries during the 1957-58 (Canadian) crop year were shared as follows, with corresponding percentages for 1956-57 in brackets: United States, 47 (53); Canada, 37 (25); Argentina, 9 (10); and Australia, 7 (12). Shipments from each of the four countries during the 1957-58 Canadian (August-July) crop year and seven preceding crop years are shown in the table below.

Exports of Wheat and Flour in Terms of Wheat, August-July, 1957-58  
with Comparisons

August-July	United States	Canada	Argentina	Australia	Total
- million bushels -					
1950-51 .....	375.3	241.0	94.5	127.8	838.6
1951-52 .....	466.6	355.8	24.1	93.4	939.9
1952-53 .....	322.6	385.5	38.9	107.0	854.0
1953-54 .....	211.4	255.1	110.3	63.4	640.2
1954-55 .....	280.4	251.9	134.5	94.3	761.1
1955-56 .....	359.4	309.2	108.6	107.5	884.7
1956-57 <u>1/</u> .....	539.5	261.8	100.2	120.2	1,021.7
1957-58 <u>2/</u> .....	397.0	315.6	77.0	61.9	851.5

1/ Revised.    2/ Preliminary.

Wheat Still World's Largest Grain Crop Wheat still holds first place in world grain production, despite substantial increases in production of rice and corn. Wheat production in 1957 was estimated at a near-record 207 million metric tons. Production of rough rice that year was estimated at 194 million metric tons and corn at 164 million.

World acreage of wheat in 1957 was estimated at about 500 million

Cont'd on page 25

International Wheat Agreement Sales and Purchases for Crop Year 1958-59

Importing Countries	Guaranteed Quantities	S O U R C E						Total Remainder	
		Canada	Argentina	Australia	France	Sweden	U.S.A.	Purchases	2/
		1/	2/	2/	2/	2/	2/		
- thousand bushels -									
Austria .....	3,674	-	-	-	-	-	-	-	3,674
Belgium .....	16,535	182	-	-	10	-	69	261	16,274
Bolivia .....	4,042	-	-	-	-	-	255	255	3,787
Brazil .....	7,349	-	-	-	-	-	-	-	7,349
Costa Rica .....	1,653	107	-	-	-	-	62	169	1,484
Cuba .....	8,084	11	-	-	-	-	1,230	1,241	6,843
Denmark .....	1,837	43	-	-	-	-	28	71	1,766
Dominican Republic	1,286	34	-	-	-	-	25	59	1,227
Ecuador .....	1,837	-	-	-	-	-	-	-	1,837
Egypt .....	11,023	-	-	-	-	-	-	-	11,023
El Salvador .....	919	36	-	-	-	-	24	60	859
Germany .....	55,116	4,010	-	-	473	739	5,254	10,476	44,640
Greece .....	11,023	-	-	-	-	-	-	-	11,023
Guatemala .....	1,653	10	-	-	-	-	116	126	1,527
Haiti .....	2,204	-	-	-	-	-	-	-	2,204
Honduras Republic.	919	9	-	-	-	-	11	20	899
Iceland .....	73	-	-	-	-	-	22	22	51
India .....	7,349	-	-	-	-	-	-	-	7,349
Indonesia .....	5,144	-	-	40	-	-	-	40	5,104
Ireland .....	5,512	575	-	153	-	-	-	728	4,784
Israel .....	8,267	-	-	-	-	-	810	810	7,457
Italy .....	3,674	-	-	-	-	-	-	-	3,674
Japan .....	36,744	4,422	-	788	-	-	3,395	8,605	28,139
Korea .....	2,205	-	-	-	-	-	-	-	2,205
Lebanon .....	2,756	-	-	-	-	-	-	-	2,756
Liberia .....	73	1	-	-	-	-	3	4	69
Mexico .....	3,674	-	-	-	-	-	-	-	3,674
Netherlands .....	25,721	1,643	-	-	-	-	958	2,601	23,120
New Zealand .....	5,879	-	-	561	-	-	-	561	5,318
Nicaragua .....	367	13	-	-	-	-	15	28	339
Norway .....	6,614	1,126	-	-	22	28	21	1,197	5,417
Panama .....	1,102	15	-	-	-	-	45	60	1,042
Peru .....	7,349	-	-	-	-	-	-	-	7,349
Philippines .....	6,063	7	-	1	-	-	17	25	6,038
Portugal .....	5,879	13	-	-	601	-	5	619	5,260
Saudi Arabia .....	3,674	-	-	-	-	-	-	-	3,674
Spain .....	4,593	-	-	-	-	-	-	-	4,593
Switzerland .....	6,981	2,240	-	-	-	-	-	2,240	4,741
Union of S. Africa	5,512	-	-	-	-	-	-	-	5,512
Vatican City .....	551	-	-	-	-	-	-	-	551
Venezuela .....	6,246	89	-	-	-	-	68	157	6,089
Yugoslavia .....	3,674	-	-	-	-	-	-	-	3,674
Totals .....	294,830	14,586	-	1,543	1,106	767	12,433	30,435	
Guaranteed Quantities (Exporting Countries)		100,151	14,305	29,450	16,092	6,259	128,573	294,830	
Balance .....		85,565	14,305	27,907	14,986	5,492	116,140	264,395	

1/ Canadian Sales through August 26, 1958.

2/ Sales recorded by International Wheat Council through August 22, 1958.

3/ The quantities are the unfulfilled balances of the total guaranteed quantities for the year.



CANADIAN SITUATION

Canadian Wheat Supplies 1958-59 Assuming realization of the August 29 forecast of production, Canadian wheat supplies for the crop year 1958-59, consisting of the July-end carryover of 614.8 million bushels and the new crop placed at 338.7 million (forecast on the basis of conditions at August 15) will amount to 953.5 million bushels. Supplies of the size indicated would represent a decline of 13 per cent from last year's total of 1,100.1 million bushels.

Total Supply and Disposition of Canadian Wheat 1953-54 - 1957-58  
and Estimated Supply, 1958-59  
(Crop Years August 1 - July 31)

Item	1953-54	1954-55	1955-56	1956-57	1957-58	1958-59
- million bushels -						
Supplies						
Carryover, at beginning of crop year .....	383.2	618.7	536.7	579.6	729.5	614.8 <sup>1/</sup>
Production .....	634.0	332.0	519.2	573.0	370.5	338.7 <sup>2/</sup>
Imports Wheat and Flour.	0.5	0.2	3/	0.1	3/	-
Totals <sup>4/</sup> .....	1,017.7	950.8	1,055.9	1,152.8	1,100.1	953.5
Disposition						
Exports Wheat and Flour.	255.1	251.9	309.2	261.8	315.6	
Human Consumption .....	46.4	53.7	53.7	53.8	55.0	
Seed .....	37.1	35.9	32.1	32.3	30.1	
Industrial Use .....	3/	0.4	3/	3/	3/	
Carryover, at end of crop year .....	618.7	536.7	579.6	729.5	614.8	
Residual item <sup>5/</sup> .....	60.4	72.1	81.3	75.3	84.6	
Totals <sup>4/</sup> .....	1,017.7	950.8	1,055.9	1,152.7	1,100.1	

- <sup>1/</sup> Subject to further revision pending receipts of Board of Grain Commissioners' final data on commercial stocks at July 31, 1957. <sup>2/</sup> Based on August 29, 1958 forecast of production and subject to revision as later estimates become available.  
<sup>3/</sup> Less than 50,000 bushels. <sup>4/</sup> Components may not add exactly to the totals due to rounding. <sup>5/</sup> Includes feed for livestock and waste but also reflects the effect of any estimating errors in other components of the balance sheet.

It is emphasized, however, that realization of the 1958 production forecast for wheat will be dependent upon how weather and other developments affect the crop between August 15 and completion of harvesting. The second official forecast of production, to be released on October 3, will give greater effect to actual harvesting conditions and outturns.

1957-58 Exports of Wheat and Flour Total 315.6 Million Bushels According to preliminary data, exports of Canadian wheat and wheat flour in terms of grain equivalent during the crop year 1957-58 amounted to 315.6 million bushels exceeding by 21 per cent the 1956-57 total of 261.8 million, 17 per cent greater than the ten-year (1946-47-1955-56) average of 269.0 million and 25 per cent greater than the long-term (1927-28-1956-57) average exports of 252.8

million. Exports of wheat as grain, at 275.7 million bushels, represented an increase of 21 per cent over the 1956-57 total of 228.3 million. Wheat flour exports in terms of grain equivalent, amounted to 39.9 million bushels and surpassed by 19 per cent the 1956-57 revised figure of 33.5 million.

The 1957-58 totals for exports of wheat as grain are compiled from overseas clearances and exports to the United States as recorded by the Statistics Branch of the Board of Grain Commissioners for Canada, while data on exports of wheat flour are obtained from Canadian Customs returns. Adjusted data on wheat flour exports for the 1957-58 crop year, removing the effect of time lag in reporting Customs returns, will be included in the November issue of this publication.

Monthly exports of wheat and wheat flour during the crop year recently completed ranged from a high of 40.1 million bushels in May to a low of 20.9 million in February. Overseas clearances of wheat as grain, the major component of the total exports of wheat and flour, ranged between 33.4 million bushels in May and 17.2 million in October.

The United Kingdom, remaining in its position as Canada's largest market for wheat as grain, increased purchases of Canadian wheat by 10.7 million bushels to a total of 90.3 million during the crop year 1957-58. Japan raised imports of Canadian wheat by 3.6 million bushels to a total of 38.0 million and took over second place from the Federal Republic of Germany, whose purchases declined by 6.6 million to 29.7 million bushels in 1957-58. Shipments to the Netherlands were 10.5 million greater and amounted to 21.7 million bushels. Two other major factors influencing the increased wheat export total were the shipment of 23.8 million bushels of Canadian wheat to India, part of which moved under the Colombo plan, and the re-entry of the U.S.S.R. (Russia) as an importer of Canadian wheat with the purchase of 14.8 million bushels during the crop year 1957-58.

In addition to the above fourteen other countries purchased wheat as grain in amounts exceeding one million bushels. These countries, with quantities imported during the 1957-58 crop year and figures for the preceding crop year in brackets, were as follows, in millions of bushels: Belgium, 12.8 (16.0); Switzerland, 9.7 (10.8); United States, 7.2 (5.9); China, 3.8 (nil); Norway, 3.5 (3.6); Pakistan, 3.5 (1.0); Peru, 2.7 (2.8); Austria, 2.2 (2.1); Ireland, 1.9 (2.6); Malta, 1.5 (1.6), Australia, 1.5 (nil); Israel, 1.5 (1.7); Poland, 1.4 (9.5); and Italy, 1.0 (2.4).

Exports of wheat flour during 1957-58 went to seventy-five countries. The United Kingdom, with imports amounting to the equivalent of 13.8 million bushels, accounted for 35 per cent of the total crop year movement, compared with the equivalent of 10.8 million bushels in 1956-57 and 32 per cent of the total wheat flour exports. In addition to the United Kingdom, flour exports equivalent to at least one million bushels of wheat went to the following countries, with revised data for the 1956-57 crop year in brackets, in millions of bushels: Philippine Islands, 4.9 (5.4); Venezuela, 3.4 (2.9); Ceylon, 2.1 (0.4); United States, 1.7 (1.7); Trinidad and Tobago, 1.6 (1.5); Jamaica, 1.6 (1.4); and Leeward and Windward Islands, 1.1 (0.9).

August Forecast of  
Production of Canada's  
1958 Grain Crops

On the basis of yields indicated at August 15, production of all wheat and all rye will be below last year's levels while production of oats, barley, mixed grains and flaxseed will be larger than a year ago. Prospects at that time pointed



to a 339 million bushels wheat crop, 9 per cent below last year's estimate of 371 million and 31 per cent below the ten-year (1948-1957) average. The oats and barley crops are placed at 384 million and 229 million bushels, respectively, with flaxseed being estimated at 22 million bushels. Fall and spring rye together account for some 8 million bushels. Average yields per acre of most of the principal grain crops this year are close to those of a year ago and the long-term average but generally below the ten-year average.

It is emphasized, however, that realization of the 1958 yield and production forecasts in the accompanying table will be dependent upon how weather and other developments affect the crop between August 15 (date of survey) and completion of harvesting. Harvesting commenced early in the Prairie Provinces this year and good progress was made during the second and third week of August. However, wet weather during the last week of August and the first week of September temporarily delayed operations in most districts. The effect of wet weather and other developments up to September 15 will be reflected in the second official forecast of production to be released on October 3.

August Forecast of the 1958 Production of Principal Grain Crops,  
Canada and Prairie Provinces, Compared with 1957

Province and Crop	Area		Yield per Acre		Production	
	1957	1958	1957	1958 <u>1/</u>	1957	1958 <u>1/</u>
	- acres -		- bushels -		- bushels -	
<u>CANADA</u>						
Winter wheat ...	590,000	580,000	33.2	41.0	19,588,000	23,780,000
Spring wheat ...	20,440,800	20,319,100	17.2	15.5	350,920,000	314,948,000
All wheat .....	21,030,800	20,899,100	17.6	16.2	370,508,000	338,728,000
Oats for grain .	11,017,000	11,039,200	34.5	34.8	380,599,000 <sup>2/</sup>	384,082,000
Barley .....	9,403,200	9,548,000	23.0	24.0	215,993,000 <sup>2/</sup>	228,859,000
Fall rye .....	439,500	409,900	16.6	16.8	7,299,000	6,891,000
Spring rye .....	111,100	111,500	11.2	10.2	1,240,000	1,135,000
All rye .....	550,600	521,400	15.5	15.4	8,539,000	8,026,000
Flaxseed .....	3,485,600	2,664,700	5.5	8.2	19,179,000 <sup>2/</sup>	21,950,000
Mixed grains ...	1,452,200	1,421,800	43.6	44.8	63,292,000	63,681,000
<u>PRAIRIE PROVINCES</u>						
Wheat .....	20,360,000	20,244,000	17.1	15.5	349,000,000	313,000,000
Oats .....	7,805,000	7,584,000	30.0	29.1	234,000,000 <sup>2/</sup>	221,000,000
Barley .....	9,209,000	9,369,000	22.7	23.7	209,000,000 <sup>2/</sup>	222,000,000
Rye .....	455,300	418,800	13.8	12.4	6,300,000	5,200,000
Flaxseed .....	3,462,000	2,644,000	5.5	8.2	18,900,000 <sup>2/</sup>	21,700,000

1/ As indicated on basis of conditions on or about August 15.

2/ Revised.

Canada's 1958 wheat crop, forecast at 338.7 million bushels will, if realized, be 9 per cent smaller than last year's estimate of 370.5 million and 31 per cent below the ten-year (1948-1957) average of 489.8 million. Apart from the rust year of 1954 it will, at present forecast level, be the smallest crop since 1947 when only 338.5 million bushels were harvested. The decrease from 1957 is

attributable jointly to the decline of 1 per cent in acreage and a reduction of average yield from 17.6 bushels in 1957 to 16.2 bushels per acre this year.

The 1958 crop of spring wheat, forecast at 314.9 million bushels is being harvested from a seeded area of 20.3 million acres yielding an indicated 15.5 bushels per acre. The 1957 spring wheat crop was produced on 20.4 million acres yielding an average of 17.2 bushels per acre. The 1958 yield for Ontario's winter wheat crop is placed at a record 41.0 bushels per acre as compared with 33.2 in 1957. A 2 per cent reduction in acreage was more than offset by the increased yield, and production at 23.8 million bushels is up 21 per cent from last year's outturn of 19.6 million.

In the Prairie Provinces the 1958 wheat crop is forecast at 313.0 million bushels, 36 million bushels or 10 per cent below last year's crop of 349.0 million and 152.0 million or 33 per cent below the ten-year average of 465.0 million. The indicated average yield per seeded acre in the Prairie Provinces, on the basis of conditions at August 15, is 15.5 bushels per acre with Manitoba averaging 19.9, Saskatchewan 13.1 and Alberta 19.8 bushels per acre. Production in each of these provinces in millions of bushels, with last year's estimate in brackets, is as follows: Manitoba, 47.0 (45.0); Saskatchewan, 173.0 (211.0); and Alberta, 93.0 (93.0). Relatively small amounts of winter wheat are included in these forecasts for the Prairie Provinces.

August Forecast of the 1958 Production of Wheat, Canada and Provinces,  
Compared with 1957

Province	Area		Yield per Acre		Production	
	1957	1958 <sup>1/</sup>	1957	1958 <sup>1/</sup>	1957	1958 <sup>1/</sup>
	acres	acres	bu.	bu.	bu.	bu.
All wheat -						
Canada .....	21,030,800	20,899,100	17.6	16.2	370,508,000	338,728,000
Ontario .....	605,000	595,000	32.9	40.7	19,921,000	24,200,000
Spring wheat -						
Canada .....	20,440,800	20,319,100	17.2	15.5	350,920,000	314,948,000
Prince Ed. Is.	2,900	3,300	27.0	28.0	78,000	92,000
Nova Scotia ..	600	700	28.0	27.0	17,000	19,000
New Brunswick.	2,500	2,400	27.0	26.0	68,000	62,000
Quebec .....	15,100	12,700	26.0	26.0	393,000	330,000
Ontario .....	15,000	15,000	22.2	28.0	333,000	420,000
Manitoba .....	2,114,000	2,358,000	21.3	19.9	45,000,000	47,000,000
Saskatchewan .	13,365,000	13,182,000	15.8	13.1	211,000,000	173,000,000
Alberta .....	4,881,000	4,704,000	19.1	19.8	93,000,000	93,000,000
Br. Columbia .	44,700	41,000	23.1	25.0	1,031,000	1,025,000
Winter wheat -						
Canada <sup>2/</sup> ....	590,000	580,000	33.2	41.0	19,588,000	23,780,000

<sup>1/</sup> As indicated on basis of conditions on or about August 15.

<sup>2/</sup> Winter wheat estimates apply to Ontario only. The western wheat crop contains a relatively small proportion of winter wheat but, due to difficulties encountered in obtaining acreage data required for a separate winter wheat estimate in the Prairie Provinces, all western wheat is currently included under spring wheat.



The indicated production of durum wheat, which is included in the above forecast of spring wheat is 15.3 million bushels compared with last year's estimate of 44.1 million. Forecasts of 1958 production in the Prairie Provinces in millions of bushels, with last year's estimates in brackets are Manitoba, 1.7 (1.4); Saskatchewan, 12.0 (32.0); Alberta, 1.6 (10.7); and the Prairie Provinces, 15.3 (44.1).

The decrease in production is attributable to a 52 per cent decrease in acreage and a reduction in average yields from 18.7 bushels in 1957 to 13.6 bushels this season. Yields per acre in 1958, with 1957 figures in brackets are: Manitoba, 18.1 (19.1); Saskatchewan, 12.5 (17.8); Alberta, 22.2 (21.7); and the Prairie Provinces, 13.6 (18.7).

Quota Policy Durum Wheat In its Instructions to the Trade, re Quotas No. 4, under date of August 15, 1958 the Canadian Wheat Board announced that producers holding delivery permits at delivery points in Manitoba may deliver Durum Wheat to any delivery point selected by them where space is available. Deliveries of Durum Wheat at delivery points in Saskatchewan and Alberta are confined to the delivery point indicated in the producer's permit book. However, where there is not sufficient Durum Wheat grown at a shipping point to permit of shippable quantities being delivered, the Board will, on application, give consideration to allowing producers at such a point to deliver Durum Wheat at some other point where space is available for Durum Wheat.

Lake Shipments Total shipments of the five major grains out of Lakehead terminals from the opening of navigation to August 20 this year amounted to 189.8 million bushels, compared with 156.0 million during the comparable period of 1957. In 1958 the season of navigation opened on April 18, while the 1957 season opened on April 10. Shipments of wheat at 113.8 million bushels, were 18 per cent above the 1957 comparable figure of 96.3 million and accounted for 60 per cent of the current total. Lake shipments of oats, barley and rye during the period under review were also above comparable 1957 levels with flaxseed being the only one of the five grains moving in smaller volume this year than last.

**Lake Shipments of Canadian Grain from the Opening of Navigation to August 20, 1958 and to Approximately the Same Date, 1948 to 1957\***

Year	Wheat	Oats	Barley	Rye	Flaxseed	Total
- thousand bushels -						
1948 .....	52,357	11,415	10,447	302	3,847	78,368
1949 .....	76,509	13,946	14,377	5,840	4,767	115,440
1950 .....	77,232	10,757	12,834	2,918	984	104,725
1951 .....	91,634	33,278	23,440	4,664	845	153,861
1952 .....	138,195	56,133	50,368	4,534	2,867	252,097
1953 .....	147,933	47,410	63,353	6,700	2,777	268,174
1954 .....	63,639	31,306	35,898	4,255	1,985	137,083
1955 .....	88,873	18,425	34,325	6,850	3,271	151,744
1956 .....	139,049	23,426	49,097	9,828	3,535	224,936
1957 .....	96,319	23,391	25,967	3,723	6,609	156,008
1958 .....	113,800	24,369	43,946	4,531	3,115	189,760

\* Shipments from the opening of navigation to the following dates: August 19, 1948; August 18, 1949; August 17, 1950; August 23, 1951; August 21, 1952; August 20, 1953; August 20, 1954; August 17, 1955; August 22, 1956; and August 21, 1957.



Wheat Production in  
Canada and the Prairie  
Provinces 1910 - 1958

The first forecast of the 1958 wheat crop in Canada, based on conditions at August 15, placed the probable outturn at 338.7 million bushels, of which the Prairie Provinces accounted for 313.0 million. If a crop of this size is realized, it would be 9 per cent smaller than the 1957 revised estimate of 370.5 million bushels and 30 per cent below the ten-year (1947-1956) average of 486.6 million.

Wheat Production in Canada and the Prairie Provinces, 1910-1958

Year	Canada	Manitoba	Saskatchewan	Alberta	Three Prairie Provinces
- thousand bushels -					
1910 .....	132,078	34,127	66,979	9,060	110,167
1911 .....	231,237	62,820	109,323	36,554	208,697
1912 .....	224,159	63,017	106,960	34,303	204,280
1913 .....	231,717	53,331	121,559	34,372	209,262
1914 .....	161,280	38,605	73,494	28,859	140,958
1915 .....	393,543	69,337	224,312	66,538	360,187
1916 .....	262,781	29,667	147,559	65,088	242,314
1917 .....	233,743	41,040	117,921	52,992	211,953
1918 .....	189,075	48,191	92,493	23,752	164,436
1919 .....	193,260	40,975	89,994	34,575	165,544
1920 .....	263,189	37,542	113,135	83,461	234,138
1921 .....	300,858	39,054	188,000	53,044	280,098
1922 .....	399,786	60,051	250,167	64,976	375,194
1923 .....	474,199	35,804	271,622	144,834	452,260
1924 .....	262,097	41,464	132,918	61,312	235,694
1925 .....	395,475	33,624	235,472	97,962	367,058
1926 .....	407,136	47,133	219,646	113,986	380,765
1927 .....	479,665	30,773	252,500	171,286	454,559
1928 .....	566,726	52,383	321,215	171,000	544,598
1929 .....	302,192	28,565	160,565	90,206	279,336
1930 .....	420,672	43,600	206,700	147,000	397,300
1931 .....	321,325	28,112	132,466	140,603	301,181
1932 .....	443,061	44,041	211,551	167,355	422,947
1933 .....	281,892	32,666	128,004	102,334	263,004
1934 .....	275,849	37,100	114,200	112,500	263,800
1935 .....	281,935	23,250	142,198	98,648	264,096
1936 .....	219,218	26,000	110,000	66,000	202,000
1937 .....	180,210	45,100	36,000	75,700	156,800
1938 .....	360,010	50,000	137,800	148,200	336,000
1939 .....	520,623	61,300	271,300	161,400	494,000
1940 .....	540,190	66,400	266,700	180,700	513,800
1941 .....	314,710	51,000	147,000	98,000	296,000
1942 .....	556,067	53,000	305,000	171,000	529,000
1943 .....	282,377	39,000	146,000	82,800	267,800
1944 .....	414,859	50,300	242,100	99,300	391,700
1945 .....	316,320	38,800	168,100	87,700	294,600
1946 .....	411,601	58,000	208,000	127,000	393,000
1947 .....	338,506	42,000	173,000	105,000	320,000
1948 .....	381,413	50,000	191,000	115,000	356,000
1949 .....	366,028	52,000	186,000	103,000	341,000
1950 .....	466,490	50,000	272,000	117,000	439,000
1951 <u>1/</u> .....	553,678	53,000	325,000	152,000	530,000
1952 <u>1/</u> .....	701,973	57,000	449,000	172,000	678,000
1953 <u>1/</u> .....	634,040	48,000	391,000	165,000	604,000
1954 <u>1/</u> .....	331,981	29,000	169,000	107,000	305,000
1955 <u>1/</u> .....	519,178	42,000	320,000	135,000	497,000
1956 <u>1/</u> .....	573,040	56,000	355,000	140,000	551,000
1957 <u>1/</u> .....	370,508	45,000	211,000	93,000	349,000
1958 <u>2/</u> .....	338,728	47,000	173,000	93,000	313,000

1/ Revised.

2/ Based on conditions on or about August 15, 1958.

Carryover Stocks  
of Canadian Grain  
at July 31, 1958

Total carryover stocks of the five major Canadian grains in all North American positions at July 31, 1958, were estimated at 903.7 million bushels, about 19 per cent below last year's 1,120.3 million, but some 62 per cent above the ten year (1948-1957) average of 557.4 million bushels. Total stocks of wheat were estimated at 614.8 million bushels, compared with last year's record estimate of 729.5 million and the previous high at July 31, 1954 of 618.7 million bushels. Stocks of oats in all positions were estimated at 155.0 million bushels, 32 per cent smaller than last year's 226.2 million but about 47 per cent higher than the ten-year average of 105.6 million. Barley stocks, at 118.3 million bushels, were down 17 per cent from the 142.8 million held in 1957 but 45 per cent above the ten-year average of 81.7 million bushels. Carryover stocks of rye in all positions, estimated at 10.1 million bushels, were down 29 per cent from last year's total of 14.2 million and 12 per cent below the ten-year average of 11.4 million bushels. July-end carryover stocks of flaxseed, at 5.6 million bushels, were well below last year's 7.6 million but above the ten-year average of 4.0 million.

Position of Canadian Grain Stocks, July 31, 1958

Position	Wheat	Oats	Barley	Rye	Flaxseed
- thousand bushels -					
In Canada					
On farms .....	203,900	108,000	57,500	6,030	930
Country elevators <u>1/</u> .....	240,616	32,754	35,409	1,798	1,044
Interior private and mill elevators .....	7,786	675	2,310	38	54
Interior terminal elevators .....	10,944	38	357	-	2/
Pacific Coast terminals .....	11,814	65	755	70	630
Churchill elevators .....	3,559	183	-	-	-
Fort William-Port Arthur elevators .....	45,137	5,311	14,888	1,326	2,105
In transit - lake .....	5,354	828	1,595	-	78
In transit - rail .....	19,649	2,733	1,010	456	315
Eastern elevators .....	63,386	4,168	4,293	294	419
Eastern mills (mill bins only) .....	2,464	188	12	-	-
Western mills (mill bins only) .....	155	8	1	3	-
Totals in Canada <u>2/</u> .....	614,764	154,951	118,130	10,015	5,575
In United States <u>2/</u> .....	-	-	176	64	-
Total Canadian Grain in Canada and United States, July 31, 1958 <u>2/</u> .....	614,764	154,951	118,306	10,079	5,575
Comparative Stocks, July 31, 1957 <u>4/</u>					
In Canada .....	729,335	226,111	142,692	14,142	7,581
In United States .....	211	105	86	18	-
Total in Canada and United States .....	729,546	226,215	142,779	14,160	7,581
Average stocks, July 31, 1948-1957 <u>4/</u> .....	354,643	105,630	81,727	11,408	4,016

1/ Revised - subject to further revision. 2/ Less than 500 bushels. 3/ Subject to revision.  
4/ Revised.

Farm-held stocks of wheat, oats, barley, rye and flaxseed at July 31, 1958 amounted to 376.4 million bushels down sharply from the July-end 1957 total of 584.4 million but considerably above the ten-year (1948-1957) average of 230.0 million bushels. Since the bulk of farm stocks of grain is held in Western Canada, stocks in the Prairie Provinces have been segregated from the above table for ease in comparison with last year's totals.

Estimated Farm Stocks in the Prairie Provinces, July 31, 1958 and 1957

Province	Wheat	Oats	Barley	Rye	Flaxseed
- thousand bushels -					
Manitoba .....	6,000	23,000	6,000	500	100
Saskatchewan .....	148,000	37,000	25,000	3,600	600
Alberta .....	47,000	28,000	24,000	1,100	200
Totals, July 31, 1958 <u>1/</u> .....	201,000	88,000	55,000	5,200	900
Totals, July 31, 1957 .....	315,000	155,000	79,000	10,300	1,500

1/ Subject to revision.



Canadian Wheat Preliminary estimates place total stocks of Canadian Wheat in all North American positions at July 31, 1958 at 614.8 million bushels, compared with last year's record estimate of 729.5 million and the previous high at July 31, 1954 of 618.7 million bushels. An estimated 209.9 million bushels of this year's total were held on farms, while 240.6 million of the off-farm stocks were in country elevators. The next largest amounts, 63.4 million and 45.1 million bushels, were in store in Eastern elevators and in the Fort William-Port Arthur terminals, respectively.

It should be pointed out that the figures in the table below are not strictly comparable because of certain omissions in the earlier years. For example, figures for the years 1927 to 1931 do not include wheat in transit to United States ports. Beginning with 1932, this item is included in stocks of Canadian wheat in United States positions. It should also be noted that from 1927 to 1931 the stocks of Canadian wheat in the United States lake and seaboard ports are reported for the week-end nearest to the close of the crop year. Stocks of Canadian wheat held in bond by United States flour mills were omitted each year until 1940-41 when they were included for the first time. The carryover totals now include all Canadian wheat in North American positions whether on farms, in store or in transit.

Carryover of Canadian Wheat in Canada and the United States, July 31, 1927-1958

Year	Carryover of Wheat in Canada	Stocks of Canadian Wheat in U.S. Positions	Total Carryover of Canadian Wheat in Canada and U.S.
- thousand bushels -			
1927 .....	50,786	4,835	55,622
1928 .....	77,547	13,610	91,157
1929 .....	104,325	22,914	127,239
1930 .....	110,517	16,065	126,582
1931 .....	133,060	5,538	138,598
1932 .....	130,053	5,888	135,941
1933 .....	209,969	7,688	217,657
1934 .....	192,948	9,954	202,902
1935 .....	202,148	11,705	213,852
1936 .....	108,094	19,268	127,363
10-Year average 1927-1936 ....	131,945	11,746	143,691
1937 .....	32,938	4,111	37,049
1938 .....	23,553	983	24,536
1939 .....	94,632	8,279	102,911
1940 .....	272,928	27,546	300,473
1941 .....	448,338	31,792	480,129
1942 .....	404,897	18,856	423,752
1943 .....	579,371	15,255	594,626
1944 .....	338,138	18,394	356,531
1945 .....	238,480	19,593	258,073
1946 .....	73,466	134	73,600
10-Year average 1937-1946 ....	250,674	14,494	265,168
1947 .....	86,055	87	86,141
1948 .....	77,676	35	77,710
1949 .....	102,343	68	102,411
1950 .....	112,200	-	112,200
1951 .....	187,190	2,013	189,203
1952 .....	214,934	2,244	217,178
1953 .....	382,546	640	383,185
1954 .....	618,568	107	618,675
1955 .....	536,302	446	536,748
1956 .....	578,803	771	579,574
10-Year average 1947-1956 ....	289,662	641	290,303
1957 1/ .....	729,335	211	729,546
1958 2/ .....	614,764	-	614,764

1/ Revised.

2/ Preliminary.



Farmers' Marketings of Wheat in the Prairie Provinces, 1957-58

Week Ending		Manitoba	Saskatchewan	Alberta	Total	Last Year
- bushels -						
August	7, 1957	57,134	319,056	79,312	455,502	86,149
	14 ....	51,489	1,073,769	506,259	1,631,517	827,064
	21 ....	436,403	1,848,980	747,223	3,032,606	1,884,249
	28 ....	497,229	3,705,358	1,247,539	5,450,126	3,949,527
September	4 ....	334,501	3,237,345	876,295	4,448,141	3,182,696
	11 ....	269,013	2,143,978	842,281	3,255,272	3,739,721
	18 ....	573,078	2,315,055	900,777	3,788,910	5,760,514
	25 ....	510,534	2,787,644	844,213	4,142,391	7,588,949
October	2 ....	574,874	3,262,986	1,410,979	5,248,839	8,757,469
	9 ....	499,194	4,127,394	1,537,209	6,163,797	7,157,121
	16 ....	527,574	4,037,854	1,146,248	5,711,676	8,628,989
	23 ....	697,465	3,168,778	1,045,896	4,912,139	6,845,753
	30 ....	596,318	3,780,689	896,001	5,273,008	9,885,464
November	6 ....	626,142	3,031,519	1,106,214	4,763,875	9,372,931
	13 ....	627,457	3,567,995	1,470,042	5,665,494	7,900,996
	20 ....	727,275	3,345,325	1,591,939	5,664,539	8,452,536
	27 ....	738,393	4,176,486	1,911,975	6,826,854	8,145,061
December	4 ....	1,184,123	6,388,300	2,065,265	9,637,688	8,496,816
	11 ....	1,145,870	5,693,072	1,936,581	8,775,523	5,492,991
	18 ....	908,845	5,583,609	2,356,077	8,848,531	6,310,643
	24 ....	866,477	4,917,760	2,669,920	8,454,157	5,505,998
	31 ....	633,537	4,124,623	1,599,236	6,357,396	7,553,773
January	8, 1958	525,328	3,099,047	1,906,926	5,531,301	6,000,290
	15 ....	915,675	4,849,588	2,946,339	8,711,602	3,417,856
	22 ....	929,855	3,866,777	3,521,061	8,317,693	5,813,059
	29 ....	655,780	4,473,566	2,250,474	7,379,820	4,721,111
February	5 ....	680,859	4,113,459	1,953,841	6,748,159	7,566,009
	12 ....	479,848	2,809,109	1,653,238	4,942,195	6,730,006
	19 ....	340,381	2,187,204	1,301,389	3,828,974	6,976,103
	26 ....	510,116	2,212,617	1,831,113	4,553,846	3,887,400
March	5 ....	574,995	2,880,614	1,635,944	5,091,553	6,926,902
	12 ....	489,962	1,964,331	1,639,380	4,093,673	6,606,705
	19 ....	401,484	1,983,163	1,396,293	3,780,940	7,090,335
	26 ....	255,216	2,097,837	1,514,023	3,867,076	6,655,715
April	2 ....	238,206	1,544,796	1,051,182	2,834,184	4,401,233
	9 ....	373,051	1,230,903	287,948	1,891,902	4,276,063
	16 ....	618,466	4,297,809	583,897	5,500,172	4,706,871
	23 ....	568,728	7,171,363	3,354,106	11,094,197	2,921,973
	30 ....	646,467	4,792,249	2,732,203	8,170,919	3,900,937
May	7 ....	1,172,564	4,911,400	2,241,465	8,325,429	7,510,704
	14 ....	1,097,760	3,234,637	1,303,486	5,635,883	5,017,368
	21 ....	1,088,785	3,592,110	1,181,644	5,862,539	4,941,154
	28 ....	1,332,073	4,781,009	1,678,990	7,792,072	7,917,343
June	4 ....	2,034,067	10,782,864	2,192,787	15,009,718	11,289,822
	11 ....	2,136,535	10,277,612	2,909,142	15,323,289	13,023,549
	18 ....	1,971,275	10,365,608	2,441,242	14,778,125	9,434,368
	25 ....	1,848,066	9,179,168	2,648,859	13,676,093	10,835,410
July	2 ....	1,308,194	6,720,315	2,009,721	10,038,230	10,281,146
	9 ....	451,569	7,231,671	1,804,791	9,488,031	9,758,448
	16 ....	377,420	7,189,969	1,718,995	9,286,384	8,406,904
	23 ....	1,239,237	9,641,558	2,058,657	12,939,452	11,110,912
	31 1/2	3,207,809	26,543,377	5,890,575	35,641,761	24,251,954
Totals 1/ ...		41,552,696	246,663,305	90,427,192	378,643,193	361,903,600
Average similar period: 1946-47-1955-56.		39,208,686	218,336,150	104,823,998	362,368,834	

1/ Including preliminary revisions.

Visible Supply of Canadian Wheat, August 20, 1958  
Compared with Approximately the Same Date, 1956 and 1957

Position	1956	1957	1958
- thousand bushels -			
Country elevators - Manitoba .....	21,025	23,434	24,922
Saskatchewan .....	116,417	125,787	127,949
Alberta .....	78,288	74,737	73,110
Totals .....	215,730	223,959	225,981
Interior private and mill .....	5,419	5,780	7,597
Interior terminals .....	12,225	12,292	10,575
Vancouver-New Westminster .....	9,379	11,916	9,454
Victoria .....	402	301	493
Prince Rupert .....	37	-	-
Churchill .....	3,225	2,344	3,401
Fort William-Port Arthur .....	31,394	50,490	49,297
In transit rail (Western Division) ...	14,182	17,383	15,277
Bay, Lake and Upper St. Lawrence Ports	37,565	43,563	37,950
Lower St. Lawrence and Maritime Ports.	18,542	26,862	26,636
In transit lake .....	4,717	2,907	3,315
In transit rail (Eastern Division) ...	2,283	917	700
United States Ports .....	-	75	-
In transit U.S.A. ....	81	-	-
Totals .....	355,180	398,789	390,674

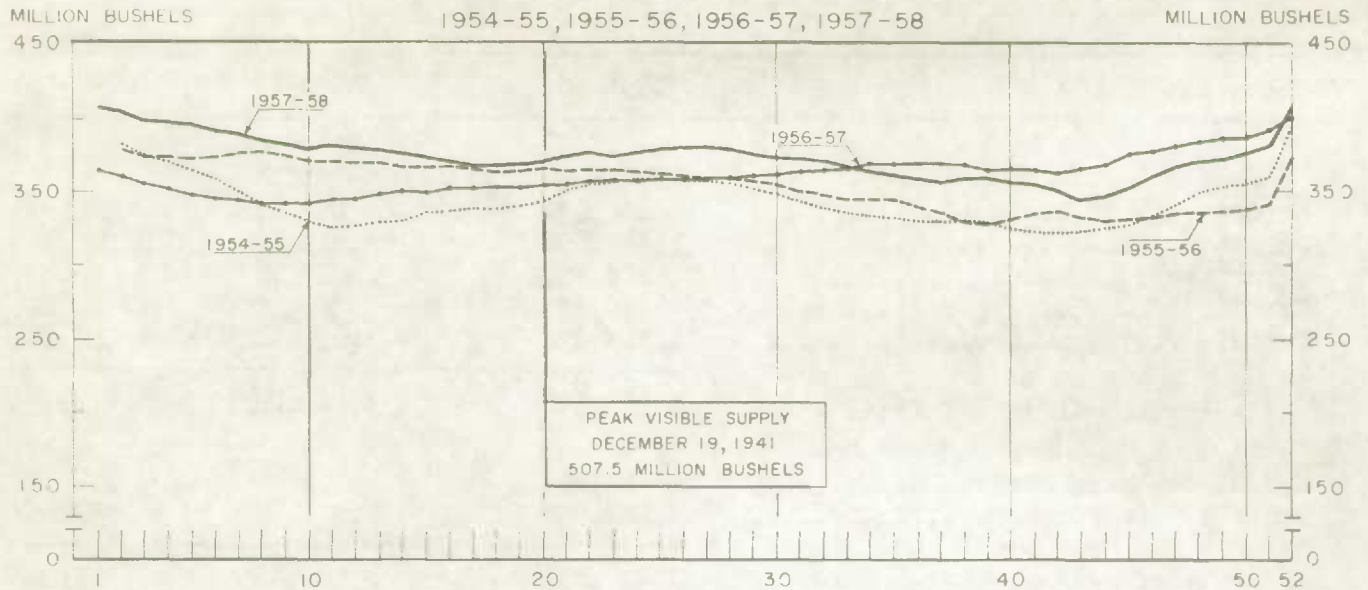
Grading of Wheat Inspected, August-July, 1957-58 with Comparisons

Grade	Crop Year				
	Average	1956-57		1957-58	
	1951-52- 1955-56				
	per cent	cars	per cent	cars	per cent
1 Hard .....	1/	-	-	-	-
1 Manitoba Northern .....	4.6	2,412	1.2	659	0.3
2 Manitoba Northern .....	30.7	53,489	26.9	40,897	20.4
3 Manitoba Northern .....	20.5	53,918	27.1	64,170	32.1
4 Manitoba Northern .....	8.5	25,758	13.0	43,916	22.0
5 Wheat .....	8.1	29,049	14.6	22,310	11.2
6 Wheat .....	3.2	8,372	4.2	6,688	3.3
Feed Wheat .....	0.6	423	0.2	193	0.1
Garnet .....	0.5	210	0.1	13	1/
Amber Durum .....	2.2	10,919	5.5	11,413	5.7
Alberta Winter .....	0.3	1,245	0.6	214	0.1
Toughs 2/ 3/ .....	15.9	6,407	3.2	5,020	2.5
Damps 2/ 4/ .....	2.7	46	1/	184	0.1
Rejected 2/ .....	1.8	5,533	2.8	3,661	1.8
All others .....	0.5	1,015	0.5	692	0.3
Totals .....	100.0	198,796	100.0	200,030	100.0

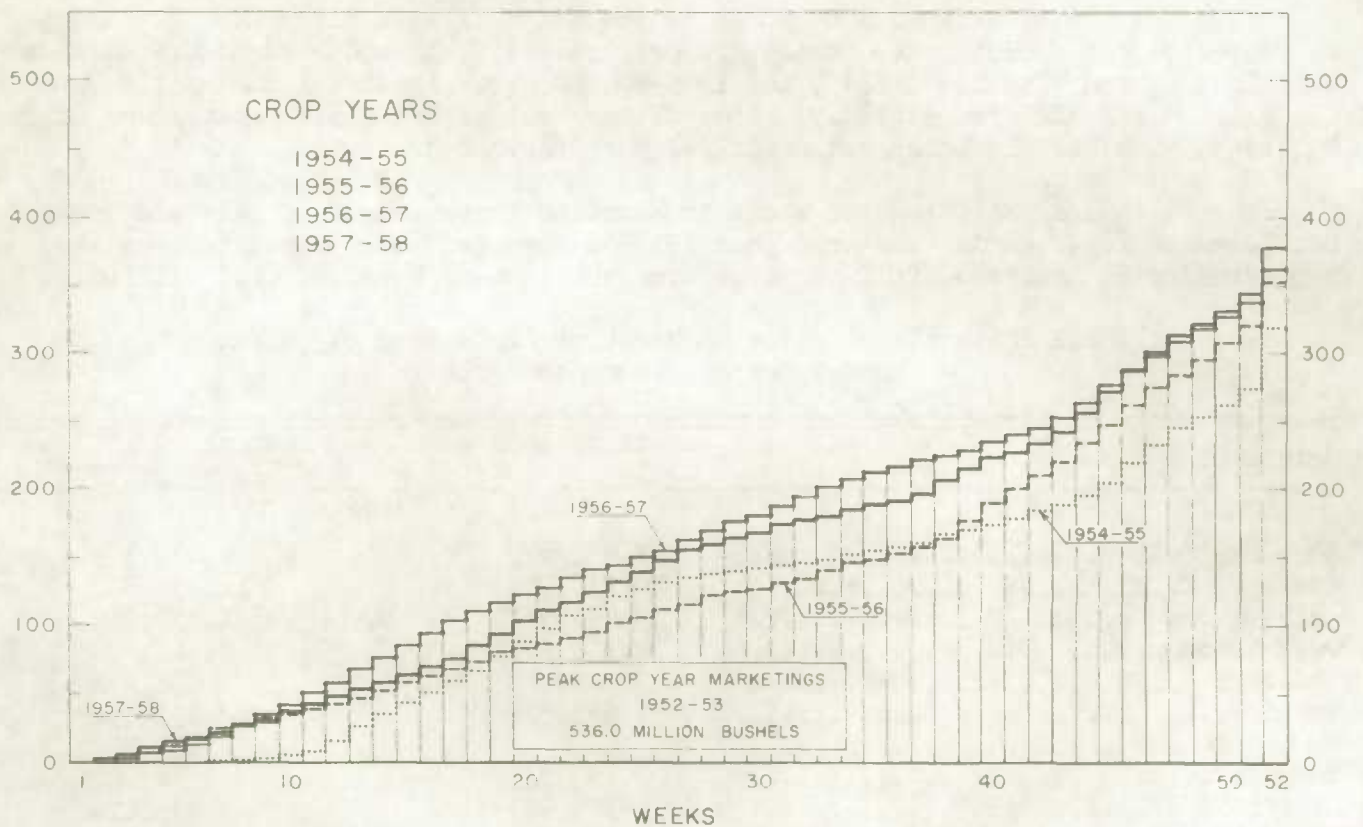
1/ Less than .05 per cent. 2/ All varieties and grades. 3/ Moisture content 14.9 to 17 per cent for Durum, 14.6 to 17 per cent for all other varieties.  
4/ Moisture content over 17 per cent.



## WEEKLY VISIBLE SUPPLY OF CANADIAN WHEAT



## CUMULATIVE RECORD OF WHEAT MARKETINGS IN THE PRAIRIE PROVINCES BY WEEKS



(Data in both charts for crop years beginning August 1)



Wheat Shipments\* to the United States by Destination  
Crop Year 1957-58  
Compared with 1956-57 and 1955-56

Destination	1955-56	1956-57	1957-58
- bushels -			
<u>By Vessel</u>			
Chicago .....	451,494	293,273	236,933
Duluth Superior .....	1,185,090	1,813,778	2,182,126
Milwaukee .....	170,523	27,745	-
Huron .....	40,385	30,000	35,000
Buffalo .....	4,305,036	3,277,447	4,118,574
Totals, Vessel .....	6,152,528	5,442,243	6,572,633
<u>By Rail</u>			
U.S.A. Seaboard Ports .....	46,235	-	-
Other U.S.A. Points .....	2,182,096	1,092,959	957,863
Totals, Rail .....	2,228,331	1,092,959	957,863
Totals, Shipments .....	8,380,859	6,535,202	7,530,496

\* Either for re-export or retention for domestic use.

Total shipments of wheat to the United States either for re-export or retention for domestic use during the crop year 1957-58 amounted to 7.5 million bushels compared with the 1956-57 and 1955-56 crop year totals of 6.5 million and 8.4 million bushels, respectively. Some 87 per cent of the 1957-58 total was shipped by vessel with Buffalo being the principal port of unload.

Rail shipments of wheat to Maritime Ports from Bay, Lake and Upper St. Lawrence Ports during the crop year 1957-58 amounted to 26.6 million bushels, representing an increase of 12 per cent over the 1956-57 total of 23.7 million.

Rail Shipments of Wheat to Maritime Ports from Bay, Lake  
and Upper St. Lawrence Ports

Origin of Shipments	August 1, 1956 to July 31, 1957	August 1, 1957 to July 31, 1958
- bushels -		
Port McNicoll .....	7,831,679	6,810,375
Midland, Tiffin .....	10,755,574	11,353,540
Collingwood .....	650,987	1,333,919
Owen Sound .....	2,143,234	2,921,896
Goderich .....	924,114	698,038
Sarnia .....	831,376	2,256,552
Port Colborne .....	-	242,343
Toronto .....	-	34,000
Lakefield .....	579,649	936,214
Prescott .....	3,112	3,000
Totals .....	23,719,725	26,589,877

Rail Shipments of Wheat from Fort William-Port Arthur, 1954-55--1957-58

Month	1954-55	1955-56	1956-57	1957-58
- bushels -				
August .....	61,070	56,951	100,667	33,297
September .....	50,633	64,033	70,324	42,125
October .....	46,053	63,975	120,535	34,937
November .....	81,253	148,576	240,628	67,894
December .....	179,272	477,622	613,482	232,252
January .....	352,109	2,340,921	792,000	525,238
February .....	318,009	1,735,097	490,778	178,204
March .....	245,958	1,599,503	338,534	191,312
April .....	169,137	300,913	161,103	215,546
May .....	68,878	91,534	73,212	33,839
June .....	43,600	91,162	23,281	35,368
July .....	57,619	102,560	31,432	37,984
Totals .....	1,673,591	7,072,847	3,055,976	1,627,996

Distribution of Rail Shipments of Wheat from Fort William-Port Arthur, July 1958

Grade	Quebec	Ontario
- bushels -		
5 Wheat .....	19,500	7,792
Tough .....	-	1,000
Amber Durum .....	4,000	167
Others .....	1,000	4,525
Totals .....	24,500	13,484

Overseas Exports of Canadian Grain by Ports of Loading, August 1, 1957-July 31, 1958  
with Comparisons

Ports	Wheat	Oats	Barley	Rye	Flaxseed
- bushels -					
<u>Pacific Seaboard</u>					
Vancouver-New Westminster .....	127,497,256	2,256,692	19,710,719	1,354,620	5,293,715
Victoria .....	2,170,411	-	-	-	709,112
Prince Rupert .....	-	-	10,562,860	-	-
<u>Churchill</u> .....	18,395,046	56,750	-	-	-
<u>Lakehead Direct</u> .....	143,405	-	275,899	-	-
<u>Eastern Lake Ports Direct</u> .....	32,328	-	80,008	-	-
<u>St. Lawrence</u>					
Montreal .....	55,515,065	1,671,309	17,486,330	928,873	5,138,019
Sorel .....	11,545,507	-	4,589,478	-	326,252
Three Rivers .....	13,890,366	230,427	-	-	10,349
Quebec .....	11,009,887	-	635,430	-	-
<u>Maritime</u>					
Saint John .....	1,028,855	-	-	-	-
West Saint John .....	14,283,738	98,766	309,936	10,125	2,152,188
Halifax .....	13,014,707	-	11,640	-	20,494
Totals .....	268,526,571	4,313,944	53,662,300	2,293,618	13,650,129
August 1, 1956-July 31, 1957 .....	222,385,633	724,445	55,318,712	1,094,209	21,582,467

Overseas Clearances - Canadian Rapeseed 1/ August 1, 1957-July 31, 1958

	bushels
Canadian Pacific Seaboard .....	5,281,287
Canadian Atlantic Seaboard .....	1,070,244
Total, Rapeseed .....	6,351,531

1/ In bushels of 50 pounds.



Freight Assistance Shipments Claims filed for payment up to July 31, 1958 represent the movement of some 17.3 million bushels of wheat from the Prairie Provinces to Eastern Canada and British Columbia under the freight assistance policy during the August-June period of the 1957-58 crop year. During the same months of the 1956-57 crop year claims had been filed for a total of 17.9 million bushels, indicating on the assumption of approximately the same rate of submission of claims during both the current and preceding crop years that the August-June shipments of wheat under the policy were running about 3 per cent below those of 1956-57. Revised data on the 1956-57 shipments of wheat based on claims submitted up to July 31, 1958 place the eleven-month total at 18.4 million bushels. The bulk of the shipments during the current eleven-month period under review went to destinations in Ontario and Quebec.

Provincial Distribution of Wheat Shipments under the Freight Assistance Policy  
August-June, 1957-58 and 1956-57

Month	Nfld.	P.E.I.	N.S.	N.B.	Que.	Ont.	B.C.	Total
- thousand bushels -								
August, 1957 .....	10	22	114	52	616	759	285	1,858
September .....	12	12	86	40	599	630	265	1,644
October .....	16	10	107	45	564	699	196	1,637
November .....	12	10	99	47	571	744	300	1,783
December .....	9	16	106	45	501	665	194	1,535
January, 1958 .....	6	14	88	49	509	685	209	1,558
February .....	4	15	67	36	391	621	179	1,312
March .....	5	13	76	36	523	665	151	1,469
April .....	6	12	77	40	367	687	230	1,418
May .....	6	20	99	75	649	811	150	1,810
June .....	2	12	71	38	450	615	79	1,267
Totals 1/ .....	88	155	989	503	5,740	7,580	2,237	17,291
Same period 1956-57:								
Preliminary 2/ .....	90	218	1,015	487	5,830	7,903	2,328	17,869
Revised 1/ .....	93	219	1,037	493	5,916	8,053	2,634	18,446

Preliminary data on millfeed shipments under the freight assistance policy indicate shipments of 485,799 tons during the August-June period of the 1957-58 crop year. This total, based on claims submitted up to July 31, 1958 surpasses by 2 per cent the 1956-57 August-June revised total of 477,101 tons. Shipments to the provinces of Quebec and Ontario amounted to 244,982 tons and 147,521 tons, respectively, and accounted for a combined 81 per cent of the 1957-58 August-June total movement of freight-assisted millfeeds.

Provincial Distribution of Millfeed Shipments under the Freight Assistance Policy  
August-June, 1957-58 and 1956-57

Province	1956-57		1957-58
	Preliminary 2/	Revised 1/	Preliminary 1/
- tons -			
Newfoundland .....	3,665	3,808	3,186
Prince Edward Island .....	5,796	5,897	6,245
Nova Scotia .....	30,499	30,866	28,328
New Brunswick .....	24,558	24,852	22,889
Quebec .....	224,183	230,204	244,982
Ontario .....	142,787	146,414	147,521
British Columbia .....	29,969	35,060	32,648
Totals .....	461,457	477,101	485,799

- 1/ Based on claims filed up to July 31, 1958.  
2/ Based on claims filed up to July 31, 1957.



Monthly Export Clearances, etc., in Comparison with the Customs Exports of Wheat and Wheat Flour

Year and Month	Overseas Clearances of Canadian Wheat <sup>1/</sup>	Exports of Canadian Wheat to U.S.A. for Domestic Use and Milling in Bond <sup>2/</sup>	Customs <sup>2/</sup> Exports of Canadian Wheat Flour	Total	Customs <sup>3/</sup> Exports of Wheat and Wheat Flour
- thousand bushels -					
<u>1955-56</u>					
August .....	19,777	469	3,003	23,250	22,228
September .....	14,877	292	3,816	18,985	16,718
October .....	14,075	416	3,091	17,582	19,776
November .....	16,447	440	3,839	20,726	21,362
December .....	10,323	429	2,810	13,562	15,953
January .....	19,053	476	2,742	22,270	20,969
February .....	16,985	537	3,069	20,592	22,066
March .....	17,631	130	3,353	21,115	23,027
April .....	28,974	1,333	3,207	33,514	32,360
May .....	37,350	1,149	3,846	42,345	39,712
June .....	42,219	1,246	3,656	47,121	49,735
July .....	24,233	322	3,565	28,120	30,044
Totals .....	261,943	7,238	40,000	309,181	313,950
<u>1956-57</u>					
August .....	26,107	223	2,989	29,319	27,149
September .....	24,477	146	3,144	27,767	25,579
October .....	20,683	222	3,084	23,989	29,253
November .....	20,577	875	2,920	24,372	24,410
December .....	17,028	834	3,403	21,266	22,042
January .....	14,431	487	2,515	17,433	17,393
February .....	11,938	115	2,741	14,794	15,334
March .....	13,735	168	2,909	16,812	18,671
April .....	12,380	296	2,542	15,218	13,238
May .....	19,494	1,231	2,596	23,321	25,507
June .....	22,043	795	2,213	25,051	23,955
July .....	19,490	481	2,482	22,454	24,684
Totals .....	222,386	5,872	33,540	261,797	267,214
<u>1957-58 <sup>4/</sup></u>					
August .....	24,313	403	2,477	27,193	22,886
September .....	20,659	507	2,740	23,906	26,712
October .....	17,231	684	3,477	21,392	18,117
November .....	26,957	949	2,870	30,776	24,359
December .....	19,209	691	3,920	23,820	31,866
January .....	18,600	243	3,507	22,350	22,542
February .....	18,499	63	2,303	20,865	18,929
March .....	19,062	381	3,837	23,280	26,247
April .....	22,406	382	3,068	25,855	22,053
May .....	33,419	1,848	4,868	40,134	34,571
June .....	26,125	780	3,911	30,817	38,675
July .....	22,046	237	2,922	25,206	22,274
Totals .....	268,527	7,166	39,901	315,593	309,230

<sup>1/</sup> Compiled by the Statistics Branch, Board of Grain Commissioners for Canada.

<sup>2/</sup> Compiled by the Statistics Branch, Board of Grain Commissioners for Canada from returns of Canadian elevator licensees and shippers and advice from American grain correspondents.

<sup>3/</sup> In terms of wheat equivalent. Exports for crop years 1955-56 and 1956-57 adjusted to remove effect of time lag in the returns made by Customs for both wheat and wheat flour. Wheat flour conversion rate: 2.3 bushels per cwt.

<sup>4/</sup> Subject to revision. Unadjusted customs returns.

Exports of Canadian Wheat and Wheat Flour by Destination, 1957-58

Destination	April	July		August-July	
	Wheat Flour 1/	Wheat Flour 2/	Wheat 3/	Wheat Flour 2/	Wheat 3/
- bushels -					
<u>COMMONWEALTH COUNTRIES</u>					
United Kingdom .....	1,027,412	1,134,261	6,187,714	13,772,581	90,325,520
<u>Africa</u>					
British East Africa .....	1,030	1,265	-	4,940	-
Federation of Rhodesia and Nyasaland .....	-	2,061	-	10,964	486,453
Gambia .....	-	-	-	7,940	-
Ghana .....	25,512	61,573	-	504,898	-
Nigeria .....	4,830	20,972	-	59,106	-
Other British West Africa .....	-	-	-	62	-
Sierra Leone .....	17,784	24,097	-	230,821	-
<u>Asia</u>					
Ceylon .....	1,005,633	-	-	2,144,973	-
Hong Kong .....	54,878	40,641	19,600	514,004	153,400
India .....	-	-	1,105,136	20,355	23,774,946
Malaya and Singapore .....	24,992	38,233	-	393,914	-
Pakistan .....	-	-	-	633	3,525,915
Other British East Indies .....	-	-	-	1,513	-
<u>Europe</u>					
Gibraltar .....	6,182	-	-	44,590	-
Malta .....	-	-	377,067	-	1,527,307
<u>North America</u>					
Bahamas .....	32,322	17,772	-	277,695	-
Barbados .....	27,977	34,787	1,667	332,387	2,500
Bermuda .....	12,629	12,531	-	100,236	-
British Honduras .....	801	50	-	14,874	-
Jamaica .....	133,069	122,256	1,667	1,582,655	2,867
Leeward and Windward Islands .....	108,183	106,276	-	1,087,790	-
Trinidad and Tobago .....	90,452	143,550	-	1,604,812	-
<u>Oceania</u>					
Australia .....	-	-	-	-	1,490,534
Fiji .....	2,116	-	-	8,556	-
<u>South America</u>					
British Guiana .....	15,307	25,694	-	299,771	-
Totals, Commonwealth Countries .	2,591,109	1,786,019	7,692,851	23,020,070	121,289,442
<u>FOREIGN COUNTRIES</u>					
<u>Africa</u>					
Azores and Madeira .....	-	8,874	-	25,482	-
Belgian Congo .....	40,689	40,062	-	410,615	-
Egypt .....	-	53,130	-	53,130	-
Liberia .....	681	379	-	5,927	-
Morocco .....	-	633	-	2,404	-
Portuguese East Africa .....	-	773	-	5,869	129,546
Portuguese West Africa .....	3,358	690	-	39,033	-
<u>Asia</u>					
Arabia .....	1,065	5,950	-	28,288	-
China .....	12,880	-	1,178,800	12,880	3,774,027
Indochina .....	-	-	-	460	-
Iran .....	55	72	-	265	-
Israel .....	-	-	850,158	152,306	1,463,840
Japan .....	120,154	13,158	5,266,979	722,637	37,993,945
Jordan .....	-	-	-	161	-
Lebanon .....	264	70,189	-	714,021	-
Okinawa .....	-	-	39,200	-	233,333



Exports of Canadian Wheat and Wheat Flour by Destination, 1957-58

Destination	April	July		August-July	
	Wheat Flour 1/	Wheat Flour 2/	Wheat 3/	Wheat Flour 2/	Wheat 3/
- bushels -					
<u>FOREIGN COUNTRIES</u>					
<u>Asia</u>					
Philippine Islands .....	393,318	184,501	367	4,852,947	367
Portuguese Asia .....	33,223	3,036	-	144,196	-
Syria .....	690	-	-	3,816	-
Thailand .....	23,931	17,423	-	347,211	-
<u>Europe</u>					
Austria .....	-	-	145,215	-	2,153,570
Belgium .....	23,966	84,734	1,302,820	368,474	12,820,424
Denmark .....	-	460	29,866	2,760	275,948
Germany, Federal Republic .....	-	-	447,627	-	29,736,006
Greece .....	920	-	-	26,020	-
Iceland .....	1,610	-	-	16,100	-
Ireland .....	-	-	265,067	805	1,910,721
Italy .....	-	782	224,000	2,042	1,002,338
Netherlands .....	322	-	2,471,839	1,691	21,730,881
Norway .....	-	-	94,800	-	3,541,171
Poland .....	-	-	-	-	1,443,680
Portugal .....	8,432	-	-	46,616	-
Sweden .....	-	-	-	2,532	9,333
Switzerland .....	-	-	1,236,593	184	9,672,754
U.S.S.R. (Russia) .....	-	-	-	-	14,833,328
<u>North America</u>					
American Virgin Islands .....	-	-	-	46	-
Costa Rica .....	55,844	36,742	-	491,556	16,667
Cuba .....	22,540	38,571	-	553,536	1,000
Dominican Republic .....	42,895	100,395	-	696,748	-
El Salvador .....	9,315	18,432	11,617	166,837	30,283
French West Indies .....	460	874	-	7,831	-
Guatemala .....	7,590	7,682	20,000	305,981	166,727
Haiti .....	39,330	52,141	-	465,324	-
Honduras .....	7,401	1,265	3,333	64,660	32,666
Netherlands Antilles .....	14,283	16,063	-	175,260	-
Nicaragua .....	22,628	15,941	-	260,507	-
Panama .....	22,046	19,504	-	241,914	-
Puerto Rico .....	-	-	-	9,987	-
St. Pierre and Miquelon .....	757 5/	759	-	22,975	-
United States					
Flour in terms of wheat .....	145,222	112,245	-	1,746,784	-
For Milling in bond 4/ .....	-	-	-	-	1,795,924
For Domestic use 4/ .....	-	-	237,142	-	5,370,162
<u>Oceania</u>					
French Oceania .....	-	-	-	32,299	-
Guam .....	-	-	-	1,840	-
<u>South America</u>					
Colombia .....	3,105	575	-	41,464	183,727
Ecuador .....	-	-	33,070	2,084	401,856
Peru .....	3,338	6,440	377,067	37,964	2,696,960
Surinam .....	11,921	12,061	-	137,346	-
Venezuela .....	291,548	211,940	354,980	3,428,888	982,031
Totals, Foreign Countries .....	1,365,781	1,136,476	14,590,540	16,880,703	154,403,215
Totals, All Countries .....	3,956,890	2,922,495	22,283,391	39,900,773	275,692,657

1/ In terms of wheat equivalent. Adjusted to remove effect of time lag in the returns made by Customs. Conversion rate: 2.3 bushels per cwt. 2/ In terms of wheat equivalent. Unadjusted Canadian Customs returns. Conversion rate: 2.3 bushels per cwt. 3/ Overseas clearances as reported by the Statistics Branch, Board of Grain Commissioners for Canada, for all countries except the United States. Subject to revision. 4/ Compiled from returns of Canadian elevator licensees and shippers and advice from American Grain correspondents. 5/ March figure in the July 1958 Wheat Review page 16 should read 2,757 not 2,957. Totals unchanged.

Canadian Wheat Board Weekly Average Cash Wheat Prices  
Basis in Store Fort William-Port Arthur

Class and Grade	Week Ending			
	Aug. 8	Aug. 15	Aug. 22	Aug. 29
- cents and eighths per bushel -				
<u>Initial Payment to Producers</u>				
1 Northern .....	140	140	140	140
2 Northern .....	136	136	136	136
3 Northern .....	132	132	132	132
4 Northern .....	125	125	125	125
5 Wheat .....	108	108	108	108
6 Wheat .....	102	102	102	102
Feed Wheat .....	96	96	96	96
1 C.W. Garnet .....				
2 C.W. Garnet .....				
1 Alberta Red Winter .....		PRICES NOT ESTABLISHED		
2 Alberta Winter .....				
1 C.W. Amber Durum .....	140	140	140	140
2 C.W. Amber Durum .....	136	136	136	136
3 C.W. Amber Durum .....	132	132	132	132

International Wheat Agreement  
and Domestic Sales

1 Northern .....	163/2	163/3	164	165/2
2 Northern .....	159/2	159/3	160	161/2
3 Northern .....	151/2	151/3	152	153/2
4 Northern .....	142/2	142/3	143	144/2
5 Wheat .....	134/2	134/3	135	136/2
6 Wheat .....	130/2	130/3	131	132/2
Feed Wheat .....	127/2	127/3	128	129/2
1 C.W. Garnet .....	156/2	156/3	157	158/2
2 C.W. Garnet .....	152/2	152/3	153	154/2
3 C.W. Garnet .....	149/2	149/3	150	151/2
1 Alberta Red Winter .....	152/2	152/3	153	154/2
2 Alberta Winter .....	148/2	148/3	149	150/2
3 Alberta Winter .....	143/2	143/3	144	145/2
1 C.W. Amber Durum .....	192/2	192/3	193	194/2
2 C.W. Amber Durum .....	191/2	191/3	192	193/2
3 C.W. Amber Durum .....	177/2	177/3	178	179/2

Export - Class II

1 Northern .....	163/2	163/3	164	165/2
2 Northern .....	159/2	159/3	160	161/2
3 Northern .....	151/2	151/3	152	153/2
4 Northern .....	142/2	142/3	143	144/2
5 Wheat .....	134/2	134/3	135	136/2
6 Wheat .....	130/2	130/3	131	132/2
Feed Wheat .....	127/2	127/3	128	129/2
1 C.W. Garnet .....	156/2	156/3	157	158/2
2 C.W. Garnet .....	152/2	152/3	153	154/2
3 C.W. Garnet .....	149/2	149/3	150	151/2
1 C.W. Amber Durum .....	192/2	192/3	193	194/2
2 C.W. Amber Durum .....	191/2	191/3	192	193/2
3 C.W. Amber Durum .....	177/2	177/3	178	179/2



Canadian Wheat Board Weekly Average Cash Wheat Prices  
Basis in Store Vancouver

Class and Grade	Week Ending			
	Aug. 8	Aug. 15	Aug. 22	Aug. 29

- cents and eighths per bushel -

Initial Payment to Producers

1 Northern .....	140	140	140	140
2 Northern .....	136	136	136	136
3 Northern .....	132	132	132	132
4 Northern .....	125	125	125	125
5 Wheat .....	108	108	108	108
6 Wheat .....	102	102	102	102
Feed Wheat .....	96	96	96	96
1 C.W. Garnet .....				
2 C.W. Garnet .....				
1 Alberta Red Winter .....				
2 Alberta Winter .....				
1 C.W. Amber Durum .....	140	140	140	140
2 C.W. Amber Durum .....	136	136	136	136
3 C.W. Amber Durum .....	132	132	132	132

PRICES NOT ESTABLISHED

International Wheat Agreement  
and Domestic Sales

1 Northern .....	174/2	174/3	175	176/2
2 Northern .....	170/2	170/3	171	172/2
3 Northern .....	163/2	163/3	164	165/2
4 Northern .....	154/2	154/3	155	156/2
5 Wheat .....	145/2	145/3	146	147/2
6 Wheat .....	136/2	136/3	137	138/2
Feed Wheat .....	133/2	133/3	134	135/2
1 C.W. Garnet .....	156/2	156/3	157	158/2
2 C.W. Garnet .....	152/2	152/3	153	154/2
3 C.W. Garnet .....	149/2	149/3	150	151/2
1 Alberta Red Winter .....	152/2	152/3	153	154/2
2 Alberta Winter .....	148/2	148/3	149	150/2
3 Alberta Winter .....	143/2	143/3	144	145/2

Export - Class II

1 Northern .....	174/2	174/3	175	176/2
2 Northern .....	170/2	170/3	171	172/2
3 Northern .....	163/2	163/3	164	165/2
4 Northern .....	154/2	154/3	155	156/2
5 Wheat .....	145/2	145/3	146	147/2
6 Wheat .....	136/2	136/3	137	138/2
Feed Wheat .....	133/2	133/3	134	135/2
1 C.W. Garnet .....	156/2	156/3	157	158/2
2 C.W. Garnet .....	152/2	152/3	153	154/2
3 C.W. Garnet .....	149/2	149/3	150	151/2
1 Alberta Red Winter .....	152/2	152/3	153	154/2
2 Alberta Winter .....	148/2	148/3	149	150/2
3 Alberta Winter .....	143/2	143/3	144	145/2

CANADIAN FLOUR MILLING SITUATION

**Production** Wheat flour production by Canadian mills during July 1958 amounted to 3,080,000 hundredweight representing an increase of 2 per cent over the July 1957 output of 3,021,000 hundredweight but 8 per cent below the June 1958 total of 3,351,000 hundredweight and 3 per cent less than the ten-year (1948-1957) average production for the month of July of 3,160,000 hundredweight. Mills reporting operations during July 1958 had a total rated capacity of 176,835 hundredweight per 24-hour day and on the basis of a 26-day working period 67 per cent of this rated capacity was effective.

Wheat milled for flour during July 1958 amounted to 7.0 million bushels compared with 7.6 million bushels milled during the previous month and 6.8 million bushels milled during July 1957. Of the wheat milled for flour during July 1958, some 6.4 million bushels were Western Canadian Spring wheat (other than Durum) while the remainder consisted of Ontario Winter wheat (383,000 bushels); Durum (119,000 bushels); and all others (36,000 bushels).

**Exports** According to preliminary Customs returns, exports of Canadian wheat flour during July 1958 amounted to 1,271,000 hundredweight (some 2,922,000 bushels of wheat equivalent) representing an increase of 18 per cent over the adjusted July 1957 total of 2,482,000 bushels but 25 per cent less than the June 1958 exports of 3,911,000 bushels. Flour shipments during the month went to fifty countries with exports to the United Kingdom amounting to 1,134,000 bushels of wheat equivalent and accounting for 39 per cent of the July 1958 total. Other leading markets for Canadian wheat flour during the month, with shipments in thousands of bushels of wheat equivalent were as follows: Venezuela, 212; Philippine Islands, 185; Trinidad and Tobago, 144; Jamaica, 122; United States, 112; Leeward and Windward Islands, 106; and the Dominican Republic, 100.

Wheat Milled for Flour, and Production and Exports of Wheat Flour, Canada

Crop Year	Wheat Milled for Flour - bushels -	Wheat Flour	
		Production	Exports 1/
		- cwt. -	
1935-36-1939-40 average .....	67,845,114	29,405,451	9,603,941
1940-41-1944-45 average .....	99,704,638	43,908,245	23,699,546
1945-46 .....	118,074,774	52,018,498	28,361,546
1946-47 .....	127,775,176	56,033,374	33,116,617
1947-48 .....	109,822,011	47,353,004	26,776,683
1948-49 .....	90,896,984	39,944,794	20,947,620
1949-50 .....	90,082,917	39,708,032	19,896,137
1950-51 .....	106,748,343	46,315,153	24,356,912
1951-52 .....	104,494,021	44,771,184	22,258,324
1952-53 .....	106,727,237	46,776,625	24,609,199
1953-54 .....	91,855,269	40,769,909	20,142,824
1954-55 .....	92,406,768	40,606,599	17,692,945
1955-56 .....	91,770,025	40,148,750	17,391,300
1956-57 .....	85,149,373	37,623,446	14,582,431
1957-58 2/			
August .....	7,094,364	3,151,879	1,076,815
September .....	7,629,799	3,372,860	1,191,300
October .....	8,315,059	3,688,086	1,511,826
November .....	8,185,725	3,637,969	1,247,654
December .....	7,046,817	3,127,026	1,704,554
January .....	7,845,002	3,464,747	1,524,670
February .....	7,002,252	3,097,834	1,001,259
March .....	7,740,565	3,415,066	1,668,435
April .....	8,274,049	3,653,951	1,333,813
May .....	8,595,281	3,781,333	2,116,538
June .....	7,575,207	3,350,821	1,700,648
July .....	6,987,963	3,079,504	1,270,650
Totals .....	92,292,083	40,821,076	17,348,162
Crop year 1956-57 .....	85,149,373	37,623,446	14,582,431

1/ Based on Customs returns. Exports for the crop years 1945-46-1956-57 revised to remove effect of time lag in the returns made by Customs. 2/ Subject to revision.



UNITED STATES SITUATION

Supply Position Domestic supplies of wheat in the United States for the 1958-59 crop year are estimated at 2,301.8 million bushels, consisting of the July 1, 1958 carryover of 880.8 million bushels and the 1958 crop, estimated as at August 1, at a record 1,421.0 million. Domestic supplies of the size indicated would be 24 per cent above the 1957-58 total of 1,885.9 million bushels and exceed by 13 per cent the previous peak of 2,037.7 million in 1956-57. In addition, current crop year supplies may be supplemented by imports of about 8 million bushels, the bulk of which would be of feeding quality. Imports of wheat from Canada during the month of July amounted to some 0.3 million bushels.

United States Wheat Supplies

Item	1957-58	1958-59 <u>1/</u>
	- million bushels -	
Carryover at beginning of crop year (July 1) .....	908.8	880.8
New crop .....	947.1	1,421.0
Total estimated domestic supplies .....	1,855.9	2,301.8
Imports of wheat and wheat flour in terms of wheat for domestic use, July .....	0.5	0.3
Total estimated supplies .....	1,856.4	2,302.1
Less estimated domestic requirements for crop year <u>2/</u> .	580.6 <u>3/</u>	609.0
Available for export and for carryover .....	1,275.8	1,693.1
Deduct:		
Exports of wheat as grain, July .....	27.8	21.0
Exports of wheat flour and products in terms of wheat, July <u>4/</u> .....	4.5	6.5
Total exports of wheat, wheat flour and products <u>5/</u>	32.3	27.5
Balance on August 1 for export and for carryover .....	1,243.5	1,665.6

- 1/ Preliminary. 2/ Includes allowances for shipments of United States wheat and wheat products to Alaska, Hawaii, Puerto Rico, Guam, Samoa, Virgin Islands and Wake Island. These shipments are not included in exports as set out in the table. 3/ Revised. 4/ Flour exports exclude "Milled in bond."  
5/ These figures now include all shipments under review which formerly were not available from Census data.

Domestic disappearance during 1958-59 is estimated at about 609 million bushels somewhat above the 1957-58 level because of increased feeding resulting from poor quality wheat. After deducting anticipated domestic requirements for the current United States crop year, some 1,693.1 million remain available for export and for carryover, representing an increase of 33 per cent over the 1,275.8 million in 1957-58. Exports of wheat, wheat flour and other products in terms of grain equivalent during July 1958 amounted to 27.5 million bushels compared with 32.3 million exported during the same month last year. The balance remaining on August 1, 1958 for export and for carryover was estimated at 1,665.6 million bushels as against 1,243.5 million on the same date a year ago.

1958 Wheat Crop Forecast  
at 1,421 Million Bushels

In a report released on August 11, the Crop Reporting Board of the United States Department of Agriculture stated in part that "Production of all wheat is estimated at 1,421 million bushels, the largest crop of record. This is an increase of 77 million bushels from the July 1 prospects, 50 per cent larger than the 1957 crop and more than one-fourth above average. The change from July 1 prospects reflects an increase of 41 million bushels in winter wheat, an increase of almost 4 million bushels in durum wheat and an increase of 32 million bushels in other spring wheat. Prospective yield of 26.5 bushels per harvested acre is the highest of record and compares with 21.7 in 1957 and the average of 17.7 bushels.

Production of winter wheat estimated at 1,171 million bushels, exceeds the previous record of 1,065 million bushels harvested in 1952 by 10 per cent. The current estimate is 41 million bushels above production expected a month ago and two-thirds more than the 707 million bushels harvested in 1957. It exceeds average production of 850 million bushels by 38 per cent. Yield per harvested acre is indicated at a record high 28.1 bushels. Such a yield would exceed the previous record of 22.4 bushels harvested in 1957 by 5.7 bushels and compares with the 10-year average of 18.9 bushels per acre.

Yields above average have been realized or virtually assured for each geographic area and for most States. The greater proportion of the increase in indicated production from a month ago occurs in the Northcentral States where combines found more wheat than growers expected earlier in the season. Only in New York, Delaware, Ohio and Missouri are the present estimates below production indicated on July 1.

Prospective production of all spring wheat increased during July and is now indicated at 250 million bushels. A crop this size would be 4 per cent larger than the 1957 production but 6 per cent below average. Prospective yield per harvested acre at 20.8 bushels is a record. This compares with 19.9 bushels produced in 1957 and the average of 14.6 bushels.

The prospective crop of durum wheat is forecast at 18.8 million bushels, up 25 per cent from July 1 prospects but less than one-half the 1957 crop and 37 per cent below average. A near record yield of 19.4 bushels is indicated. Rust damage was not a serious factor and cool weather along with adequate moisture allowed the crop to advance satisfactorily.

A crop of 231.2 million bushels is forecast for spring wheat other than durum, 16 per cent above the 199 million bushels forecast on July 1. Prospective production is 15 per cent above the 1957 crop but 2 per cent below average. The indicated yield of 20.9 bushels per acre is nearly a half bushel above the previous record established last year and is 6 bushels above average."

July 1 Carryovers of Hard Red Winter;  
White and Soft Red are Down  
from Year Ago; Large Increase  
Next July in Hard Red Winter

Analysis of supply and distribution by classes shows a moderate decline from a year ago in the July 1 carryover of hard red winter and a slight decline in that of white and soft red winter wheat. Durum stocks are up significantly while those of hard red spring show little change. Because of the record crop of hard red winter wheat, the carryover of this class next July 1 will be increased greatly. The carryover of hard red spring is expected to increase some but stocks still will not be very burdensome. Some increase over the small carryover of soft red winter wheat by July 1, 1959 may be expected. Little change



may take place in stocks of white wheat and durum. The change in durum, however, assumes significance because of the small total supplies compared with supplies of other classes of wheat.

Estimated Carryover of Wheat by Classes July 1, 1957 and 1958

Class	1957	1958	Change
- million bushels -			
Hard red winter .....	648	612	- 36
Soft red winter .....	10	7	- 3
Hard red spring .....	195	201	+ 6
Durum .....	14	27	+ 13
White .....	42	34	- 8
Totals .....	909	881	- 28

Flour  
Production

The Bureau of the Census, Department of Commerce estimated wheat flour production in the United States in June 1958 at 19,205,000 sacks, an average of 915,000 sacks per working day. This compared with an average output per working day of 920,000 sacks in May 1958 and 907,000 sacks in June 1957. Production of wheat flour in June was at 83.4 per cent of capacity compared with 84.1 per cent and 83.6 per cent, respectively, for the previous month and the same month a year ago. Flour mills in June ground 44,046,000 bushels of wheat compared with 44,278,000 in the previous month.

Cont'd from page 1

acres, compared with 271 million acres of rice and 230 million acres of corn. Per-acre yields of rice and corn are somewhat higher than wheat yields, which partly offsets the great difference in acreage.

Record 1958 World  
Wheat Production Expected

According to the August 21 issue of Foreign Crops and Markets, World Summaries, world wheat production in 1958 is expected to be at a new high, according to preliminary information available to the Foreign Agricultural Service. Increases indicated for the 3 leading wheat producers, the United States, the Soviet Union, and Communist China are so large that they will more than offset any possible decline in countries not yet reporting, especially in the Southern Hemisphere. The record outlook for these 3 countries, which normally account for almost half the world wheat production, is the outstanding feature of the present situation.

World wheat trade possibilities are limited by relatively good supplies in many normally import markets of Western Europe and Asia. Reports from Europe are incomplete, but it now appears that total wheat production in Western Europe may be around the high 1957 level. Conditions are less favourable than last year in Eastern Europe, however, and total production for that area is expected to be significantly lower. Wheat production is less than in 1957 in many countries of Asia, but larger stocks carried over from bumper crops last year may reduce import needs in some of these countries, as is the case in Turkey.

United States Exports of Wheat and Flour by Country of Destination,  
July-June 1956-57 and July-June 1957-58

NOTE

These data on exports by destination cover the complete United States crop year beginning July 1. The table on United States wheat supplies (see page 23) contains a preliminary estimate of exports for the first month of the United States crop year. Neither of these tables should be confused with the United States export figure shown on page one of this publication which, for comparative purposes, is based on the Canadian crop year beginning August 1.

Destination	July-June 1956-57			July-June 1957-58		
	Wheat	Flour 1/	Total	Wheat	Flour 1/	Total
- 1,000 bushels, grain equivalent -						
<b>Western Hemisphere</b>						
Central America .....	1,384	4,328	5,712	1,746	4,388	6,134
Cuba .....	3,379	4,159	7,538	3,060	4,428	7,488
British West Indies .....	2	3,675	3,677	1	3,545	3,546
Haiti .....	-	1,395	1,395	275	1,446	1,721
Colombia .....	2,863	61	2,924	4,055	767	4,822
Venezuela .....	409	5,934	6,343	897	6,142	7,039
Peru .....	3,875	489	4,364	2,826	302	3,128
Bolivia .....	2,796	1,422	4,218	184	838	1,022
Chile .....	7,030	85	7,115	1,968	99	2,067
Brazil .....	13,895	9	13,904	8,571	2,081	10,652
British Guiana .....	-	1,048	1,048	1	906	907
Others .....	1,978	1,820	3,798	512	1,417	1,929
Totals .....	37,611	24,425	62,036	24,096	26,359	50,455
<b>Europe</b>						
Norway .....	1,890	970	2,860	588	875	1,463
Denmark .....	3,542	36	3,578	1,457	10	1,467
United Kingdom .....	37,496	2,295	39,791	21,450	1,037	22,487
Netherlands .....	17,834	3,549	21,383	4,241	3,656	7,897
Belgium-Luxembourg .....	17,691	22	17,713	2,147	48	2,195
France .....	31,134	25	31,159	-	11	11
Germany, West .....	35,266	147	35,413	20,389	37	20,426
Austria .....	2,744	3	2,747	1,117	-	1,117
Switzerland .....	8,526	6	8,532	492	8	500
Finland .....	3,273	-	3,273	2,030	-	2,030
Poland .....	-	-	-	19,959	-	19,959
Portugal .....	5,534	125	5,659	287	99	386
Italy .....	8,939	628	9,567	742	2,265	3,007
Yugoslavia .....	36,462	38	36,500	18,386	28	18,414
Greece .....	18,845	44	18,889	2,920	3	2,923
Others .....	2,234	104	2,338	2,141	448	2,589
Totals .....	231,410	7,992	239,402	98,346	8,525	106,871
<b>Asia</b>						
Turkey .....	22,249	-	22,249	10,714	-	10,714
Lebanon .....	-	2,256	2,256	-	1,308	1,308
Iran .....	2,842	20	2,862	1,315	18	1,333
Israel .....	10,001	524	10,525	9,179	45	9,224
Saudi Arabia .....	977	3,028	4,005	14	2,129	2,143
India .....	66,559	46	66,605	76,480	22	76,502
Pakistan .....	22,314	2	22,316	24,507	1	24,508
Ceylon .....	-	898	898	-	1,348	1,348
Vietnam, Laos and Cambodia ...	-	2,903	2,903	-	1,367	1,367
Indonesia .....	-	4,022	4,022	-	103	103
Philippine Republic .....	-	6,118	6,118	-	8,955	8,955
Korea .....	14,616	781	15,397	14,383	1,181	15,564
Formosa .....	7,497	2	7,499	8,158	5	8,163
Japan .....	47,405	2,447	49,852	49,181	2,262	51,443
Others .....	1,327	997	2,324	2,197	1,473	3,670
Totals .....	195,787	24,044	219,831	196,128	20,217	216,345
<b>Africa</b>						
Morocco .....	-	23	23	1,830	9	1,839
Tunisia .....	3,123	3	3,126	519	175	694
Egypt .....	1,071	364	1,435	-	348	348
French West Africa .....	2,905	8	2,913	458	1	459
Ghana .....	-	1,675	1,675	-	1,627	1,627
Western British Africa .....	-	2,099	2,099	-	2,441	2,441
Belgian Congo .....	-	1,196	1,196	-	1,158	1,158
Others .....	1,869	827	2,696	523	298	821
Totals .....	8,968	6,195	15,163	3,330	6,057	9,387
Oceania .....	-	39	39	-	42	42
Unspecified 2/ .....	1,119	10,616	11,735	665	17,420	18,085
Totals, All Countries .....	474,895	73,311	548,206	322,565	78,620	401,185

1/ Wholly of U.S. wheat. Beginning July 1, 1957, the factor for converting 100 pounds of flour into bushels of grain equivalent changed from 2.33 to 2.3. 2/ Includes shipments for relief or charity which are not shown by destination.



Cash Wheat Prices on the Kansas City and Minneapolis Markets

No. 2 Hard Winter, Kansas City			No. 1 Northern Spring, Minneapolis		
Date	Price		Date	Price	
	- cents per bushel -			- cents per bushel -	
August 1, 1958 .....	181 1/4	- 184 1/2	August 1, 1958 .....	218 3/8	- 225 3/8
4 .....	181	- 193 1/2	4 .....	210 1/4	- 219 1/4
5 .....	180 1/4	- 199 1/4	5 .....	205 1/8	- 215 1/8
6 .....	180 1/2	- 194 1/2	6 .....	205 7/8	- 215 7/8
7 .....	178	- 193 1/2	7 .....	205 5/8	- 213 5/8
8 .....	179 3/4	- 186 3/4	8 .....	203 5/8	- 211 5/8
11 .....	180 1/4	- 198 1/4	11 .....	201 1/2	- 206 1/2
12 .....	179 3/4	- 196 3/4	12 .....	200 1/4	- 204 1/4
13 .....	180	- 185 1/2	13 .....	199 3/4	- 203 3/4
14 .....	179 1/2	- 184	14 .....	199 1/2	- 203 1/2
15 .....	178 3/4	- 186	15 .....	199	- 201
18 .....	185 1/4	- 187	18 .....	196 7/8	- 197 7/8
19 .....	179	- 193	19 .....	196 3/8	- 197 3/8
20 .....	183	- 198 3/4	20 .....	197 1/8	- 198 1/8
21 .....	182 1/2	- 191	21 .....	193 3/4	
22 .....	181 1/2	- 184 3/4	22 .....	193 5/8	
25 .....	186		25 .....	198 1/8	
26 .....	184 1/2	- 187	26 .....	200 1/8	
27 .....	186 3/4	- 201	27 .....	200 7/8	
28 .....	187 1/2	- 209	28 .....	203	
29 .....	188 1/4	- 194 3/4	29 .....	202 3/8	

Chicago Wheat Futures, High Points of Closing

Date	September	December	March	May	July
	- cents and eighths per bushel -				
August 1, 1958 .....	185/7	191/2	195/4	194/6	186/6
4 .....	185/3	191/1	195/4	194/4	186/5
5 .....	184/6	190/5	195/1	194/3	186/2
6 .....	185/1	191	195/3	194/5	187
7 .....	184/7	190/6	195/3	194/6	186/6
8 .....	184/5	190/6	195/2	194/6	187/2
11 .....	184/3	190/3	195/2	194/7	187/2
12 .....	184/3	190/6	195/5	195/4	187/7
13 .....	183/7	190/2	195/2	195/2	188/2
14 .....	184	190/3	195/3	195/4	187/6
15 .....	184/2	190/5	195/4	195/3	187/5
18 .....	183/5	190/1	195/1	194/7	186/7
19 .....	182/4	188/6	194	194	186/2
20 .....	183/1	189/3	194/4	194/4	186/4
21 .....	182/7	189/3	194/4	194/4	186/4
22 .....	182	188/4	193/5	193/7	185/7
25 .....	184	190/3	195/4	195/4	187/2
26 .....	184/5	190/7	196	195/7	187/1
27 .....	185/2	191/5	196/5	196/3	186/3
28 .....	186/7	193	198	197/4	188
29 .....	186/4	193	197/6	197/4	187/6

# ARGENTINE SITUATION

Supply Position      Estimated supplies of wheat in the Argentine for the 1957-58 (December-November) crop year, consisting of the December 1, carryover of 59.4 million bushels and the new crop, placed at 213.5 million bushels, amount to some 272.9 million bushels. Supplies of the size indicated represent a decrease of 12 per cent from the 1956-57 total of 309.2 million bushels. After deducting 139.6 million bushels for anticipated domestic requirements, an estimated 133.3 million are available for export and for carryover during the current Argentine crop year as against 169.6 million in 1956-57. Exports of wheat as grain and wheat flour in terms of grain equivalent during the period December 1957 - July 1958 amounted to 45.9 million bushels compared with a total of 68.2 million exported during the same months of 1956-57. The balance remaining on August 1, 1958 for export and for carryover was estimated at 87.4 million bushels, about 14 per cent below the August 1, 1957 figure of 101.4 million.

## Argentine Wheat Supplies

Item	1956-57	1957-58 <u>1/</u>
	- million bushels -	
Carryover at beginning of crop year (December 1) <u>2/</u> .	48.3	59.4
New Crop <u>3/</u> .....	260.9	213.5
Total estimated domestic supplies .....	309.2	272.9
Less estimated domestic requirements for crop year ..	139.6	139.6
Available for export and for carryover .....	169.6	133.3
Deduct:		
Exports of wheat as grain, December-July .....	68.1	45.2
Exports of wheat flour in terms of wheat, Dec.-July	0.1	0.6
Total exports of wheat and wheat flour .....	68.2	45.9
Balance on August 1 for export and for carryover ....	101.4	87.4

1/ Preliminary.      2/ Includes allowances for farm stocks.      3/ Official estimate.

The following account of the Argentine situation has been extracted from a report from Mr. C.S. Bissett, Commercial Counsellor, Buenos Aires, under date of August 22, 1958, and is reproduced with the permission of the Trade Commissioner Service, Department of Trade and Commerce. Where possible, conversions from Argentine to Canadian measures have been made for the convenience of our readers. Currency conversions have been made at the rate of 18 pesos to the United States dollar.

## Weather and Crops

The two main weather characteristics of the month of July were the lack of rainfall and the extreme changes in temperature. The weather was humid in general but this condition plus the light rains during the first part of the month were not enough to counteract the effect of the persistent drought. However they were helpful for the seeding of grain and fodder crops, which had been delayed by the unfavourable conditions. During the



last few days of the month rains were widespread and heavy throughout the grain regions and cold weather followed with widespread frosts.

The attack of green aphids diminished somewhat, but even so they caused considerable damage especially to the oats crop.

Wheat  
1957-58

The outstanding feature of this month's wheat sales was the contract signed with the Brazilian Government for the purchase of 250,000 metric tons (9,186,000 bushels). This total includes 160,000 metric tons (5,879,000 bushels) of 1957-58 wheat and 90,000 metric tons (3,307,000 bushels) of the 1956-57 crop, both either "Rivers" or "Southern" wheat. Prices are: US\$ 61.30 (\$1.67 per bushel) for grain in bulk, and US\$ 67.30 (\$1.83 per bushel) for bagged grain, for either of the two above types. Shipment is to be as follows: 40,000 metric tons (1,470,000 bushels) from river ports and 210,000 metric tons (7,716,000 bushels) from southern Atlantic ports. It is believed that any 1956-57 wheat shipped will be from stocks in storage in the underground silos of the south of the Province of Buenos Aires.

Other sales during this period amounted to 101,079 metric tons (3,714,000 bushels) constituting an important increase over the previous month's total. Of this amount almost half, 47,825 metric tons (1,757,000 bushels) was of "Southern" grain of 1957-58 sold at 1,480 and 1,482 pesos (\$2.24 per bushel). "Rivers" wheat sales totalled 50,300 metric tons (1,848,000 bushels). This quantity included 13,000 metric tons (478,000 bushels) of the 1956-57 crop, sold at prices ranging from pesos 1,437.50 to 1,442.20 (\$2.17 to \$2.18 per bushel), and 37,300 metric tons (1,371,000 bushels) of the 1957-58 crop sold at prices ranging up to 1,480 pesos (\$2.24 per bushel), with 14,300 metric tons (525,000 bushels) being sold at 1,440 pesos (\$2.18 per bushel), f.o.r. port Buenos Aires. It may be seen from these prices that the Board has been selling wheat at a noticeable profit, which it is believed serves to compensate for the losses incurred in the sales of corn.

The latest statistical position table issued by the National Grain Board is dated August 11. It reports that 5,041,137 metric tons (185,228,000 bushels) of the new crop had been bought up to that date, including 142,608 (5,240,000 bushels) of the "durum" of the Candéal-Taganrog type. Sales from December 2 to date, both for export and to local millers amount to 896,571 metric tons (32,943,000 bushels) including 1,200 (44,000 bushels) of the "durum" type. The actual total stock on August 11 amounted to 346,825 metric tons (12,743,000 bushels) while 1,224,063 metric tons (44,976,000 bushels) had been purchased but not delivered. Export orders amounted to 355,738 tons (13,071,000 bushels) with practically no "durum" wheat included. Actual shipments of the new crop amounted to 540,079 tons (19,844,000 bushels) of "bread" type wheats, and 1,171 (43,000 bushels) of the "Candéal" variety.

Wheat shipments during the month of July at 190,006 metric tons (6,981,000 bushels) showed a slight increase over the previous month's total. Brazil was by far the most important receiver with 119,686 metric tons (4,398,000 bushels).

Wheat  
1958-59

The widespread rains at the end of July, were beneficial both for sowings and also for the wheat now growing. Sowings have now been fairly well completed. In the northern regions where seeding is earlier in the season it was not possible to counteract the effects of the widespread drought and so the final seeded area is estimated to be much less than that originally planned.

The above heavy rains however, permitted intensified sowings in the



southern regions, compensating for the decrease in the north. It is believed that the final overall total seeded area will be somewhat higher than that of the last crop year. However more or less precise figures will not be available for another month or so.

Regarding the growth of previously seeded lots, the surprisingly mild weather during the greater part of July promoted over-development of plantings in the northern regions, but this was checked by the subsequent cold weather which will allow better rooting out of the plants. More recently there were excessive rains in the southern regions but now with the present fine weather conditions are almost ideal for the crops. There is a possibility of future light frosts but as many stands are already well developed from 20 to 30 cm. high (8 to 12 inches) no noticeable damage should result. In fact, cold weather and frosts would serve to check diseases that might attack them.

#### Policy

The "aforo" system There have been no further changes in the established aforos since those reported last month. They were fully justified by the declining value of the Argentine peso, but all exporters are still waiting for a more flexible aforo policy. The Grain Board promised there would be a weekly revision of all aforos and that increases or decreases of them would be quickly announced but nothing has happened so far.

Present trends The National Grain Board appears to be abandoning the grain sales policy established by the former Provisional Government consisting of a gradual freeing of the whole grain trade system. The present trend towards increased control is especially noticeable in recent corn export sales. No reliable forecast can be made at present as to what sales policy the Board will adopt respecting the oats, barley and rye of the next harvest.

#### Grain Sales

Wheat and corn sales and in lesser degree oats sales were the factors contributing to this month's outstanding total sales of 1,045,691 metric tons. Corn again placed first with 587,434 metric tons (23,126,000 bushels). The Grain Board was in the market with 231,450 metric tons (9,112,000 bushels) with prices starting at 1,041.50 and 1,045.50 pesos (\$1.47 and \$1.48 per bushel) which then declined as far as 950.60 pesos (\$1.34 per bushel) and finally advanced somewhat to 1,020 pesos (\$1.44 per bushel). Aforo authorizations totalled 355,980 tons (14,014,000 bushels) mostly for countries under multilateral agreements, but they included 5,000 metric tons (197,000 bushels) for Czechoslovakia, 2,043 (80,000 bushels) for Western Germany, and small lots of bagged grain for Brazil. Wheat was in second place with 351,079 metric tons (12,900,000 bushels) the bulk of which 250,000 metric tons (9,186,000 bushels) was the sale made to the Brazilian Government, the remainder of 101,079 metric tons (3,714,000 bushels) was composed as follows: 47,825 (1,757,000 bushels) of "Southern" wheat of 1957-58 sold at 1,480 and 1,482 pesos (\$2.24 per bushel) - 37,300 metric tons (1,371,000 bushels) of "Rivers" wheat of 1957-58 sold at prices ranging from 1,437 to 1,470 pesos (\$2.17 to \$2.22 per bushel), and including 14,300 (525,000 bushels) sold at 1,440 pesos (\$2.18 per bushel) f.o.r. port - 13,000 metric tons (478,000 bushels) of "Rivers" wheat of 1956-57 sold at 1,330 pesos (\$2.01 per bushel). Oats were in third place at the much lower level of 64,518 metric tons (4,183,000 bushels). Aforo authorizations amounted to 34,529 metric tons (2,239,000 bushels) mostly for countries under multilateral agreements. The Grain Board sold 27,064 metric tons (1,755,000 bushels) of the 1956-57 crop at prices ranging from 1,085 and 1,100 pesos (93 and 94 cents per bushel) and 2,925 metric tons (190,000 bushels) of new crop oats, at 1,085 pesos (93 cents per bushel). Rye sales totalled 37,672 metric tons (1,483,000 bushels), 22,172 (873,000 bushels) of which were sold by the Board at 752.30 and 760.00 pesos (\$1.06 and \$1.07 per bushel) while the rest were aforo authorizations for multilateral countries. Barley sales



barely reached 4,988 tons (229,000 bushels) all being aforo authorizations.

Grain Shipments Total grain shipments at 382,093 metric tons showed a decline from the previous month. Wheat again was the leading commodity with 190,006 metric tons (6,981,000 bushels) shipped more than half of which, 119,686 metric tons (4,398,000 bushels) being exported to Brazil. The next most important buyers were Western Germany with 20,369 metric tons (748,000 bushels), the United Kingdom with 16,288 (598,000 bushels) and The Netherlands with 10,294 metric tons (378,000 bushels). Corn exports were in second place with 157,236 metric tons (6,190,000 bushels), with Italy as the main buyer with 54,435 tons (2,143,000 bushels) followed by The Netherlands, with 42,336 (1,667,000 bushels) United Kingdom: 25,972 (1,022,000 bushels) and Western Germany: 8,882 metric tons (350,000 bushels). Oats followed with only 22,861 metric tons (1,482,000 bushels) of which 11,315 tons (734,000 bushels) were for Western Germany, while other buyers were: The Netherlands: 2,758 (179,000 bushels), Belgium: 2,050 (133,000 bushels), and Sweden: 1,190 (77,000 bushels). Barley exports totalled only 11,130 metric tons (511,000 bushels); 8,380 (385,000 bushels) for Western Germany, 2,250 (103,000 bushels) for The Netherlands, and 500 (23,000 bushels) for Brazil. Finally rye exports were only 860 metric tons (34,000 bushels) divided among The Netherlands, Italy and Denmark.

#### Argentine Wheat Exports, December 1957 - July 1958 with Comparisons

Destination	Wheat	Destination	Wheat
	- thousand bushels -		- thousand bushels -
Africa, South .....	448	Netherlands .....	2,863
Belgium .....	1,123	Norway .....	405
Bolivia .....	110	Paraguay .....	1,556
Brazil .....	19,329	Peru .....	1,475
Chile .....	1,999	Sweden .....	50
Denmark .....	282	Switzerland .....	60
Germany, Western .....	8,192	United Kingdom .....	5,821
Italy .....	1,527		
		Total .....	45,243

#### Same Period:

1956-57 .....	68,065
1955-56 .....	63,981
1954-55 .....	88,264
1953-54 .....	65,008
1952-53 .....	38,929

#### AUSTRALIAN SITUATION

Supply Position Estimated domestic supplies of wheat in Australia for the 1957-58 (December-November) crop year, consisting of the December 1 carry-over of 41.4 million bushels and the new crop placed at 96.0 million, amount to some 137.4 million bushels, representing a decline of 37 per cent from the 1956-57 total of 218.6 million. Imports of wheat from Canada during the December-July period of the current Australian crop year amounted to 1.5 million bushels. After deducting 72.3 million bushels for anticipated domestic requirements, an estimated 66.6 million are available for export and for carryover during 1957-58 as against 145.0 million

in 1956-57.

Combined exports of wheat as grain and wheat flour in terms of grain equivalent during the period December 1, 1957 to July 26, 1958 amounted to 30.3 million bushels, sharply below the 67.7 million exported during the corresponding period of 1956-57. The balance remaining on July 27, 1958 for export and for carry-over, at 36.3 million bushels, was less than one-half the comparable 1957 figure of 77.3 million.

#### Australian Wheat Supplies

Item	1956-57	1957-58 <u>1/</u>
	- million bushels -	
Carryover, including flour as wheat, at beginning of crop year (December 1) .....	83.9	41.4
New Crop .....	134.7	96.0
Total estimated domestic supplies .....	218.6	137.4
Imports December - July .....	-	1.5
Total estimated supplies .....	218.6	138.9
Less estimated domestic requirements for crop year	73.6	72.3
Available for export and for carryover .....	145.0	66.6
Deduct:		
Exports of wheat as grain, December 1 - July 26.	46.6	19.9
Exports of wheat flour in terms of wheat, December 1 - July 26 .....	21.1	10.4
Total exports of wheat and wheat flour .....	67.7	30.3
Balance on July 27, for export and for carryover .	77.3	36.3

1/ Preliminary.

The following information relative to the Australian situation has been extracted from a report from Mr. H.S. Hay, Acting Commercial Secretary for Canada, Melbourne, under date of August 15, 1958 and is reproduced with the permission of the Trade Commissioner Service, Department of Trade and Commerce.

#### Prospects for New Season's Crop

The outlook continues to be favourable throughout the grain areas of Australia. Moderate overall rains in New South Wales have permitted satisfactory growth, except in the drier areas. In a number of districts heavy frosts have somewhat checked growth. Low wool prices have led to a very large area being sown to wheat and oats this year, and if normal spring rains are received the crop should be good, and even possibly a record. Stem rust is affecting some crops in the northern wheat belt, but so far there has been no appreciable build up of the disease. Some of the more advanced wheat has been grazed, especially where there has been a scarcity of natural feed,



but this is not expected to adversely affect later grain yields.

In Victoria, rain came opportunely in mid-July, breaking the effects of a succession of damaging frosts, and follow-up rains have continued during the first half of August. It is now felt that the originally intended wheat acreage will be sown, and that prospects for good yields are bright.

Record July rains in Western Australia over most of the agricultural zones of the State caused flooding in some of the wheat belt districts near Perth, with crops becoming yellowed or water-logged. In the warmer, north coastal section of the wheatbelt crops have made good headway and prospects appear bright for a successful season.

South Australian wheat sowings are slightly less than the average for the past five years, however early sown crops stood up well and yield prospects are good. Recent widespread rains were especially beneficial to the northern districts which had been hardest hit by the lack of good opening rains. Growers are now hoping for good follow-up rains to ensure a normal harvest.

In Queensland, practically all sowings of wheat and barley have been completed, and excellent germination, together with early satisfactory growth, has been reported. Further rain is now required in some areas where soil moisture reserves are inadequate.

This year's Australian wheat acreage should be the largest for eight seasons and might conceivably equal the 11,663,000 acres sown in 1950. Estimates place the acreage by States at 3,650,000 for New South Wales, 2,900,000 for Western Australia, 2,600,000 for Victoria, 1,600,000 for South Australia and 750,000 for Queensland. It is noted, though, that reserves of all fodders in Eastern Australia are very low, which may mean that greater than usual acreages are cut for hay next spring.

#### Wheat Stabilization Plan

The Australian Wheatgrowers' Federation have asked the Australian Agricultural Council to reconsider two points of the proposed new wheat stabilization plan - the question of a lack of profit margin on home consumption wheat, and the yield divisor of 15.5 bushels. The Minister for Primary Industry has received the Federation's views and forwarded them to members of the Council for consideration and decision as to whether another meeting will be held. The Minister noted that the profit margin principle was a matter for State governments, and that the yield divisor of 15.5 bushels had been based on a survey of the industry.

The Farmers' and Settlers' Association, which is affiliated with the Wheatgrowers' Federation, wants two ballots taken among wheatgrowers, one on orderly marketing and one on the new stabilization plan, before the latter is implemented. If the growers in any State demand a ballot, it will have to be taken in all States.

#### Imports of Wheat into New South Wales End

The final cargo of wheat to be imported into New South Wales following last season's crop failure has arrived. In all, forty cargoes were brought in from Western Australia and Victoria, three from South Australia and four from Canada. The State should have a carryover of slightly more than four million bushels in December, according to the New South Wales Wheat Board.

Wheat and  
Flour Sales

The following sales are reported by the Australian Wheat Board since our last report was sent:-

United Kingdom	..	17,200 long tons ( 642,000 bushels)
Japan	..	21,500 long tons ( 803,000 bushels)
New Zealand	..	30,000 long tons (1,120,000 bushels)
Eire	..	8,600 long tons ( 321,000 bushels)

Exports of Australian Wheat and Wheat Flour in Terms of Wheat, December 1, 1957-  
July 26, 1958 and Corresponding Period 1956-57

Destination	Wheat		Wheat Flour	
	1956-57	1957-58	1956-57	1957-58
	- thousand bushels -			
Aden and Aden I/T .....	33	36	591	604
Aden and Aden (Atta Flour) .....	-	-	NOT AVAILABLE	68
Belgian Congo .....	-	-	1	3
British North Borneo .....	-	-	141	152
British West Indies .....	1	-	233	1
Brunei .....	-	-	22	21
Burma .....	-	108	769	390
Ceylon .....	5	9	4,493	210
China .....	-	388	-	-
Cocos Islands .....	-	-	1/	1/
Cyprus .....	353	-	-	-
Czechoslovakia .....	315	-	-	-
Dutch New Guinea .....	-	-	46	62
Eire .....	846	315	-	-
Germany, West .....	4,350	-	-	-
Ghana .....	-	-	1/	1
Hong Kong .....	1,192	1,156	-	-
Hong Kong (General) .....	-	-	222	113
Hong Kong (a/c War Office) .....	-	-	33	4
Italy (a/c S/S) .....	-	-	1	-
India .....	6,472	209	-	-
Indonesia .....	5	-	4,050	1,216
Iran .....	783	-	-	-
Iraq .....	1,395	262	-	-
Japan .....	152	2,922	-	-
Macao .....	-	-	13	5
Malaya .....	481	390	-	-
Malaya (Atta Flour) .....	-	-	-	40
Malaya (General) .....	-	-	3,551	2,715
Maldiv Islands .....	-	-	-	68
Malta .....	-	410	-	-
Mauritius .....	-	-	749	551
New Zealand .....	6,950	6,576	5	5
Nigeria .....	-	-	1/	2
Nyasaland .....	-	-	77	161
Pacific Islands .....	14	15	1,392	1,317
Pakistan .....	3,990	-	-	-
Pakistan (Atta Flour) .....	-	-	-	1



Exports of Australian Wheat and Wheat Flour in Terms of Wheat, December 1, 1957-  
July 26, 1958 and Corresponding Period 1956-57

Destination	Wheat		Wheat Flour	
	1956-57	1957-58	1956-57	1957-58
	- thousand bushels -			
Persian Gulf .....	51	35	372	81
Persian Gulf (Atta Flour) .....	-	-	NOT AVAILABLE	327
Philippine Islands .....	-	-	684	270
Port Said (a/c S/S) .....	-	-	-	9
Portuguese East Africa .....	469	-	-	-
Portuguese India (Goa) .....	79	-	35	17
Rhodesia .....	1,561	1,692	-	-
Sarawak .....	-	-	92	120
Saudi Arabia .....	2	131	-	45
Scandinavia .....	20	-	-	-
Seychelles Islands .....	-	-	24	14
Singapore (a/c War Office) .....	-	-	76	60
Somaliland, British .....	-	-	-	4
Somaliland, French .....	-	-	-	11
Sudan .....	-	-	678	-
Thailand .....	6	9	457	474
Timor .....	-	-	11	22
United Kingdom .....	17,018	5,185	1,914	965
Zanzibar .....	4	7	265	200
Royal Navy .....	20	12	10	8
Ships' Stores .....	-	-	92	67
Totals .....	46,567	19,867	21,100	10,400

1/ Less than 500 bushels.

FRENCH SITUATION

Supply Position Total estimated commercial supplies of wheat in France for the crop year (August-July) 1957-58, consisting of the August 1 carryover of 35.5 million bushels and estimated marketings of 297.6 million, amount to some 333.1 million bushels, exceeding by 39 per cent the 1956-57 total of 239.7 million (including August-June 1956-57 imports of 41.9 million bushels). After deducting some 216.8 million bushels for estimated domestic requirements, a total of 116.3 million are available for export and for carryover as against only 52.3 million in 1956-57.

Combined exports of wheat as grain and wheat flour in terms of grain equivalent during the first eleven months of the 1957-58 crop year amounted to 84.9 million bushels in contrast to the August-June 1956-57 total of only 13.8 million. The balance of commercial supplies remaining on July 1, 1958 totalled 31.4 million bushels compared with 38.5 million at July 1, 1957.

French Supplies of Soft Wheat

Item	1956-57	1957-58 <u>1/</u>
	- million bushels -	
Commercial carryover, August 1 .....	31.4	35.5
Anticipated deliveries to Grain Board .....	166.4	297.6
Total estimated commercial domestic supplies ....	197.8	333.1
Imports, August-June .....	41.9	-
Total commercial supplies .....	239.7	333.1
Less domestic requirements for crop year .....	187.4	216.8 <u>2/</u>
Available for export and for carryover .....	52.3	116.3
Deduct:		
Exports of wheat and flour in terms of wheat, August-June .....	13.8	84.9
Balance on July 1 for export and for carryover .....	38.5	31.4

(Private estimate based on Grain Board statistics).

1/ Preliminary. 2/ Revised to include an estimated 29.4 million bushels of wheat absorbed in a program designed to utilize denatured wheat as feed on the farm (See Wheat Review, March 1958, page 38, item 4).

The following account of the current crop situation in France has been extracted from a report by Miss V.F. Wightman, Agricultural Attaché, Canadian Embassy, Paris, under date of August 19, 1958, and is reproduced with the permission of the Trade Commissioner Service, Department of Trade and Commerce. Where possible, conversions from French to Canadian measures have been made and rounded for the convenience of our readers. Currency conversions have been made at the rate of one franc equals .002273 Canadian dollars.

Weather and Crops

The month of July was marked by extremely variable weather conditions, according to the Ministry of Agriculture crop report for August 1. Abundant rains in the north of the country made haying difficult and delayed the grain harvest, whereas the south suffered from a continuing lack of rainfall.

Lack of adequate sunshine in June and July has delayed the grain harvest by two to three weeks. Frequent rain storms, often accompanied by heavy winds, have caused some damage to grainfields, reducing quality and encouraging weed growth. Wheat fields show lodging, rust and some loss of grain. As a result, the official production estimate has been reduced by around a half million tons (18.4 million bushels) from the July 1 level and now stands at 10.4 million tons (382.1 million bushels). Similarly, the estimated national yield has been lowered from 23.9 to 22.6 quintals per hectare (35.6 to 33.6 bushels per acre). Overall yields are expected to be lower than 1957 in the west, south-west and center of the country and higher in other areas.

Barley sowings at 1,785,900 hectares (4,411,000 acres) are some 6



per cent above the last five year average, in response to the government's program to encourage output and in response to the attractive price. The yield should be close to the past five year average, which will give a crop of around 4 million tons (183.7 million bushels).

The August 1 estimate of 1958 grain production and yields compared with previous years is as follows:

1958 Grain Production

Grain	Average 1953-1957	Year 1957	August 1, 1958
- thousand bushels -			
Wheat .....	343,005	407,177	383,433
Rye .....	18,691	18,954	18,978
Barley .....	160,508	166,548	185,121
Oats .....	234,200	167,246	174,680
Yield per Acre - bushels -			
Wheat .....	33.6	35.3	33.6
Rye .....	19.6	21.0	21.5
Barley .....	42.4	41.1	42.0
Oats .....	45.7	42.0	47.0

Source: French Ministry of Agriculture.

The following have been monthly wheat and flour exports for the current crop year, compared with previous years:

Monthly Wheat and Wheat Flour Exports, August 1957-June 1958  
and the Corresponding Months in 1956-57

Month	Foreign Countries		French Union		Total	
	1956-57	1957-58	1956-57	1957-58	1956-57	1957-58
- thousand bushels -						
August .....	439	778	497	732	936	1,510
September .....	162	4,899	642	556	804	5,455
October .....	119	7,665	545	709	664	8,375
November .....	235	9,412	604	783	839	10,194
December .....	226	11,075	745	720	971	11,796
January .....	721	9,085	737	1,025	1,458	10,110
February .....	264	4,154	534	579	798	4,733
March .....	921	8,738	505	922	1,425	9,660
April .....	976	7,950	297	1,334	1,274	9,284
May .....	1,712	5,807	405	1,133	2,117	6,940
June .....	2,042	5,810	480	1,053	2,522	6,863
Totals .....	7,817	75,373	5,991	9,546	13,808	84,920

French Wheat and  
Flour Exports

The following have been the principal export markets during the first eleven months of the current crop year, compared with the same period in 1955-56.

Wheat and Wheat Flour by Destination, August-June

Destination	1955-56	1957-58
	- thousand bushels -	
United Kingdom .....	17,606	26,082
Germany .....	16,639	20,242
Egypt .....	-	5,797
Ceylon .....	2,929	3,862
Pakistan .....	-	3,562
Netherlands .....	4,993	3,271
Indonesia .....	-	2,756
Portugal .....	1,443	1,521
Switzerland .....	3,702	1,258
Norway .....	929	1,151
Tangiers .....	-	1,006
Malaya .....	-	985

Marketing  
Outlook

Due to difficult growing conditions in June and July, and the consequent downward revision of the crop estimate, the Grain Board Council now forecasts farmers' marketings from the 1958 wheat crop at 7.8 million tons (286.6 million bushels). This may be compared with the 8.1 million (297.6 million bushels) delivered during the 1957-58 crop year. This current estimate is, of course, preliminary and undertaken even before the harvest was well under way. Such a forecast is required in order to determine the percentage of marketings which will fall outside the quota of 7.2 million tons (264,552,000 bushels) enjoying the price guarantee; this year it is set at 8 per cent.

1958-59 Grain  
Prices

At the beginning of August, the French government announced official prices for the new crops, based on the Grain Plan of last February and last fall's decree of forward prices up to

1961.

As indicated in last month's report, considerable controversy arose over the 1958 wheat price since strict application of such regulations would have resulted in a new basic price of around 3700 francs per quintal (\$2.29 per bushel), compared with 3350 francs (\$2.07) last season; this is based on a rise of 12.4 per cent since last fall of the price indices to which forward prices are tied. Unfortunately, this came into conflict with the de Gaulle government's policy of price stabilization, and the agricultural community, along with other sectors of the population, was called on to make sacrifices for the economic recovery of the country.

As a compromise, the French government advanced the base price to the 1961 level of 3200 (\$1.98) which modified by price indices, gives a basic price of 3596 francs per quintal (\$2.22 per bushel), for soft wheat produced in both France and Algeria. This price is, however, modified by a number of factors:

- (1) the full price, minus taxes, or a net price of 3527 francs per quintal (\$2.18 per bushel), is paid for the first 50 quintals (184 bushels) from all producers. This is obviously a measure



to aid small-scale growers. To cover this, there is a surcharge of 60 francs per quintal (4 cents per bushel) on all deliveries over 50 quintals (184 bushels).

- (2) The quantity enjoying the price guarantee is raised to 7.2 million tons (264,552,000 bushels) from the level of 6.8 million (249,854,000 bushels) last year. With total deliveries estimated at 7.8 million tons (286,598,000 bushels), 92 per cent of marketings are paid at the official price. The remaining 8 per cent will be paid at the end of the season at the average price obtained at export. Contrary to last year's practice, no initial payment is offered. Last season, the French government paid an initial price of 1500 francs per quintal (93 cents per bushel) whereas export proceeds yielded an average of only 1381 francs per quintal (85 cents per bushel). This loss will be absorbed from the public treasury, - without, however, establishing any precedent.
- (3) Exemptions from the export levy are established for (a) durum wheat, (b) certain hard wheat varieties and (c) producers pledging by October 1 to reduce their wheat deliveries for the next three crop years by 15 per cent of their average deliveries 1955 to 1957.
- (4) Over 50 quintals (184 bushels), the graduated levy to help offset export losses is applied. This year's levy ranges from 84 francs per quintal (5 cents per bushel) for deliveries just over 50 quintals (184 bushels) to 420 francs (26 cents) over 1000 quintals (3,674 bushels), 72 to 360 francs (4 to 22 cents per bushel) in 1957. The net price to growers, after subtracting this levy and taxes, therefore ranges from 3527 francs per quintal (\$2.18 per bushel) for small scale marketings down to 3047 francs (\$1.88 for over 1000 quintals (3,674 bushels). With a slightly different breakdown, last season's net prices ranged from 3286 to 2926 francs per quintal (\$2.03 to \$1.81 per bushel). This does not represent any gain in purchasing power for the 1958 crop since it is mainly the result of recent inflation and it incorporates both a slightly lower base price and higher levy for export losses. The only gain is the exoneration from such charges for the first 50 quintals (184 bushels).

Other Grain  
Prices

Durum wheat - 4468 francs per quintal (\$2.76 per bushel), compared with 3967 (\$2.45) for the past two years. To encourage production, durum seed wheat is available at the subsidized prices.

Barley - 2914 francs per quintal (\$1.44 per bushel) compared with 2620 (\$1.30) in 1957, with a premium of up to 200 francs (10 cents) for brewers barley. There is a levy of 135 francs (7 cents), 125 per quintal (6 cents per bushel) last year, to help offset export losses. Feed barley will be resold to farmers at the subsidized price of 2750 francs per quintal 1/ (\$1.36 per bushel).

Rye - 2877 francs per quintal (\$1.66 per bushel) as against 2680 (\$1.55) in 1957, and an export levy of 150 francs (9 cents). Rye for feeding is made available at 2750 francs (\$1.59 per bushel).

1/ Control over barley marketing has been tightened, with sales permitted only to agents of the Grain Board, with the one exception of sales between farmers of the same département (county).

Oats - marketing is free, but with a support price of 2200 francs per quintal (77 cents per bushel), 2000 francs last year (70 cents).

Corn - 3968 francs per quintal (\$2.29 per bushel), compared with 3600 francs (\$2.08) for the 1957 crop.

Denatured Wheat for Feed The price ex-warehouse for denatured feed wheat is kept at last year's level of 2600 francs per quintal (\$1.61 per bushel). The French Grain Board will subsidize this operation at a fixed rate of 1541 francs per quintal (95 cents per bushel). The price of feed wheat is thus kept below that of barley in order to encourage the use of low quality wheat in this manner. This is considered more practical than exporting at a heavy loss and is intended to raise livestock output both to meet increasing home demand and to build up export surpluses.

The Grain Board is authorized to subsidize the transport of all feed grains, either for use on farms or in commercial mixed feeds, at a rate of 70 per cent of the cost over 100 francs per quintal.

#### CALENDAR OF WHEAT EVENTS

- August 11 Based on conditions at August 1, production of all wheat in the United States in 1958 was forecast at a record 1,421 million bushels.
- 12 Preliminary estimates place the total wheat acreage in Canada for 1958 at 20.9 million acres.
- 20 Preliminary estimates place total carryover stocks of Canadian wheat in all North American positions at July 31, 1958 at 614.8 million bushels.
- 29 Based on conditions at August 15, Canada's 1958 wheat crop was forecast at 338.7 million bushels.
- 30 The Prime Minister, the Right Hon. J.G. Diefenbaker, indicated in the House of Commons that the further supplementary estimates of the Department of Finance for 1958-59 provide for \$40 million to be distributed to Western grain producers on the basis of \$1 per specified acre on up to two hundred acres per farm, including acreage seeded to flaxseed, in accordance with regulations of the cabinet. This was announced in conjunction with the outlining of a comprehensive program to provide for the needs of Western grain producers.

#### Preliminary Data on Canadian Wheat, Crop Year 1957-58, with Comparisons

Item	1955-56	1956-57 <u>1/</u>	1957-58 <u>2/</u>
- thousand bushels -			
Production .....	519,178	573,040	370,508
Marketings <u>3/</u> .....	352,961	361,903	378,643
Inspections <u>4/</u> .....	341,138	367,349	379,893
Receipts, Fort William-Port Arthur.	175,910	195,262	176,447
Shipments, Fort William-Port Arthur	190,926	173,913	178,164
Exports, wheat and wheat flour ....	309,181	261,797	315,593
I.W.A. sales .....	75,650	58,006	78,072
Carryover, end of crop year .....	579,574	729,546	614,764

1/ Revised. 2/ Preliminary. 3/ Western Canadian wheat at Country Elevators, Interior Private and Mill Elevators and Platform Loadings.  
4/ Western Canadian wheat only.











STATISTICS CANADA LIBRARY  
BIBLIOTHÈQUE STATISTIQUE CANADA



1010686811

THE WHITE DEVIL  
BY JACQUES  
1959